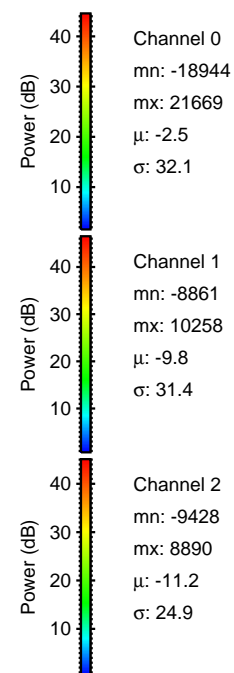
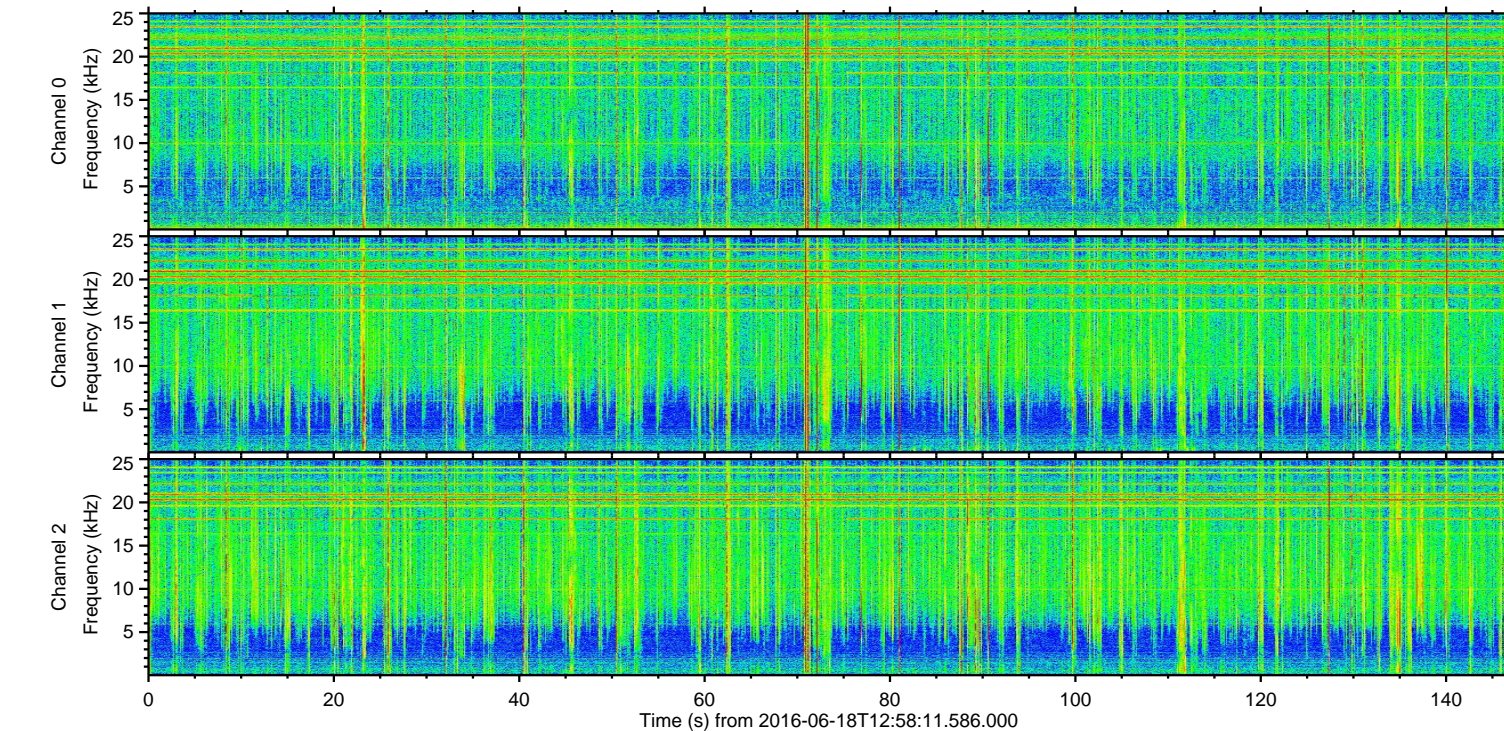
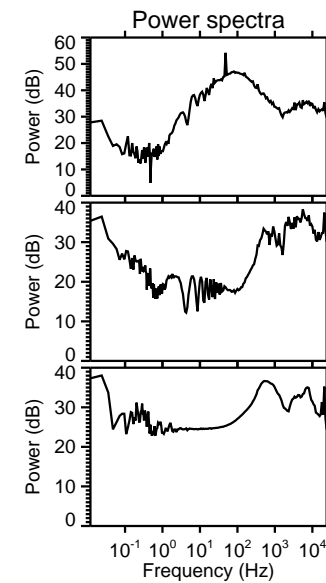
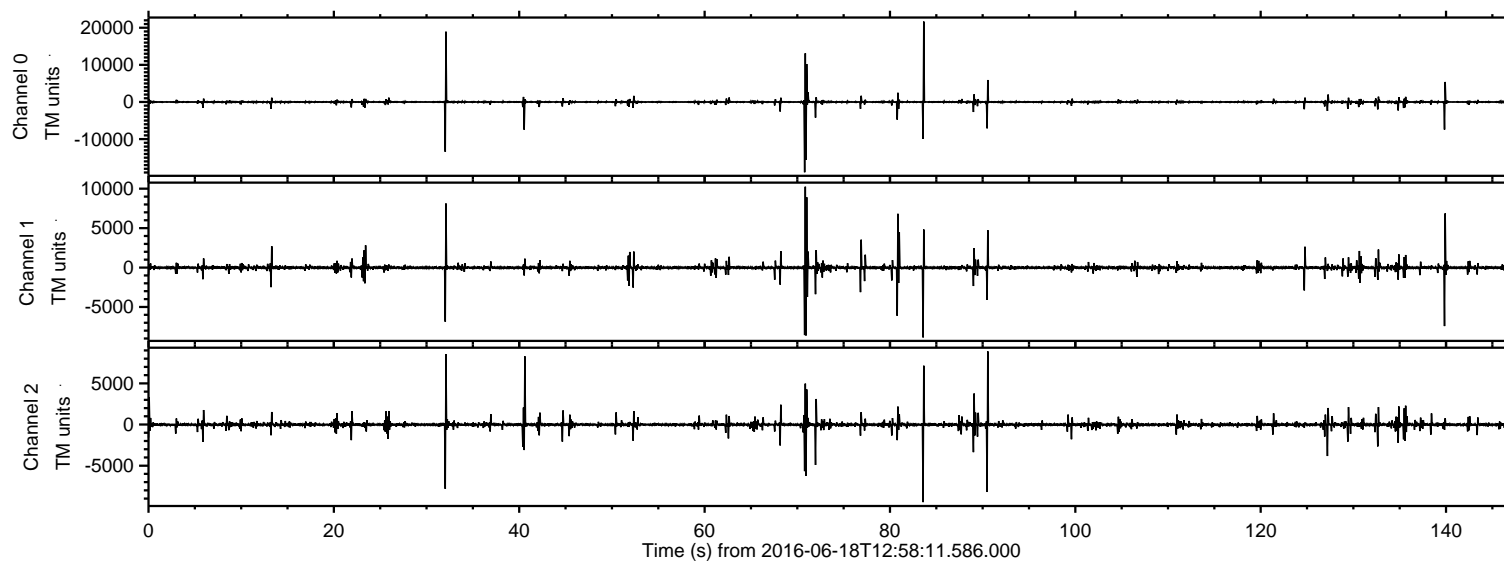


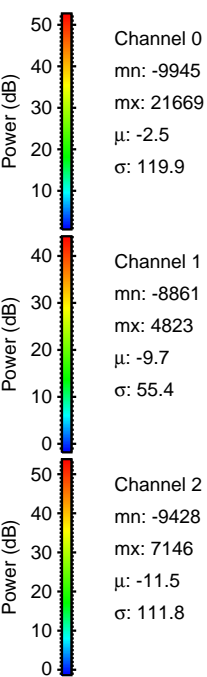
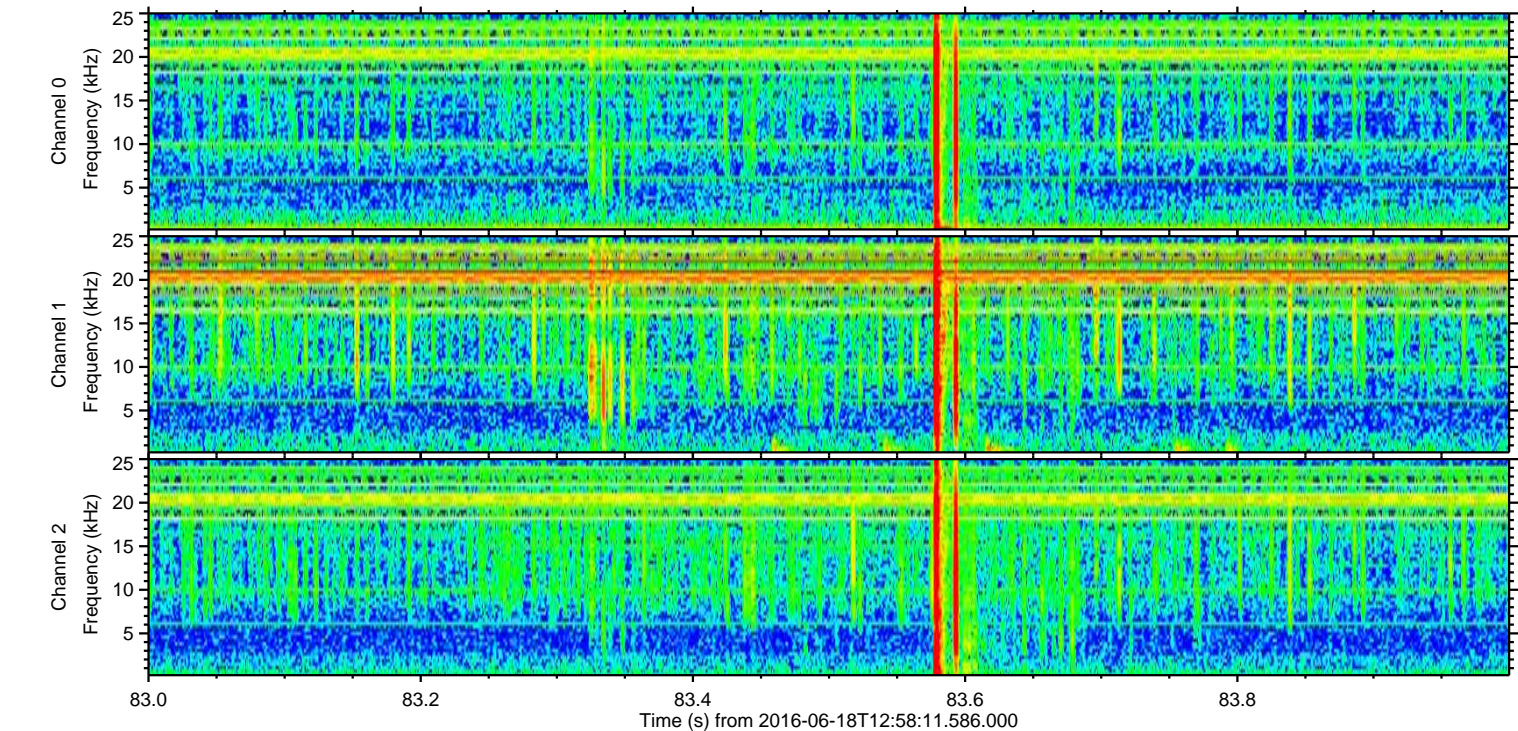
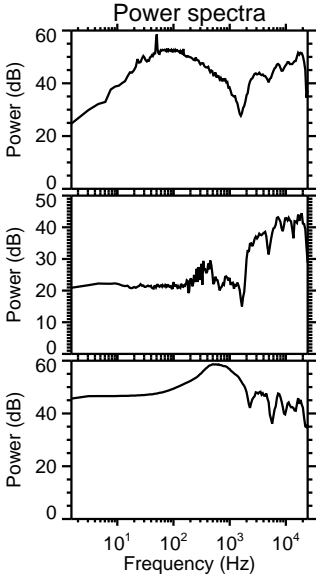
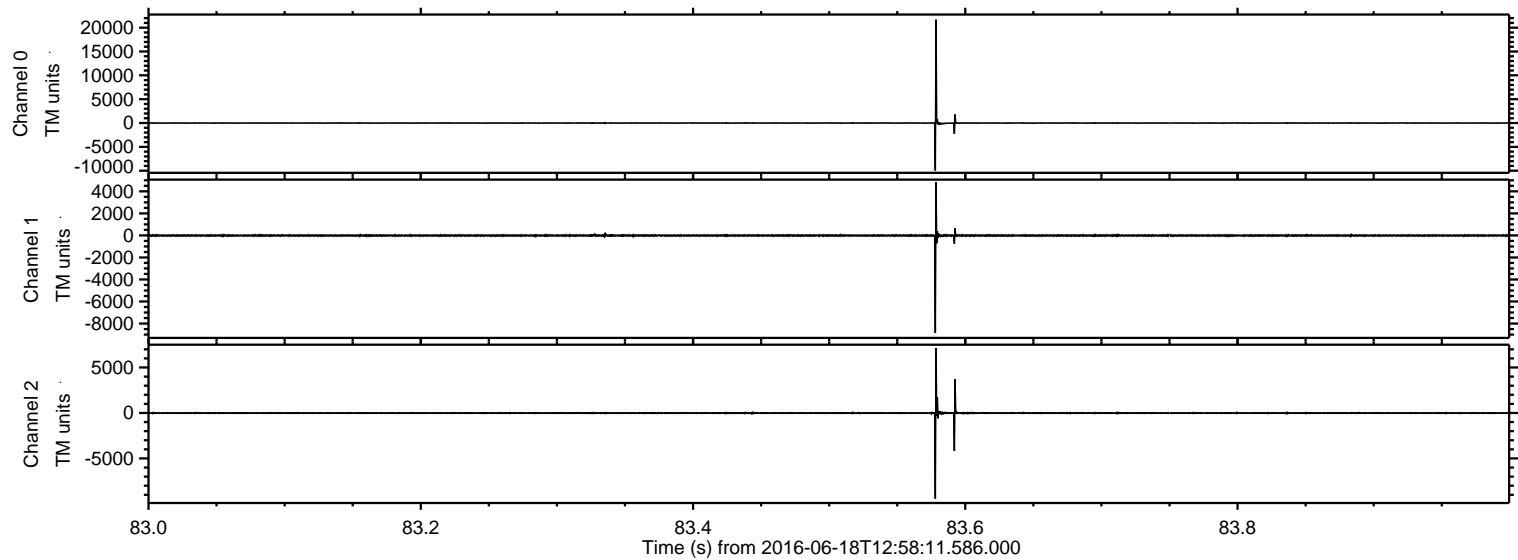
ELMAVAN 3D WAVEFORMS (Measured data sampled at 50 kHz) 51000 packets of 144 samples from 2016-06-18T12:58:11.586.000.

Processed Sat Jun 18 15:06:34 2016 by ELM ver.2012-10-06 from 001__elm20160618_125810__dat00.bin



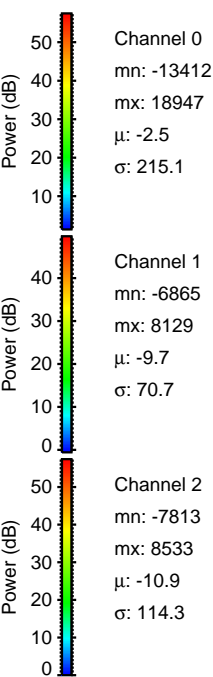
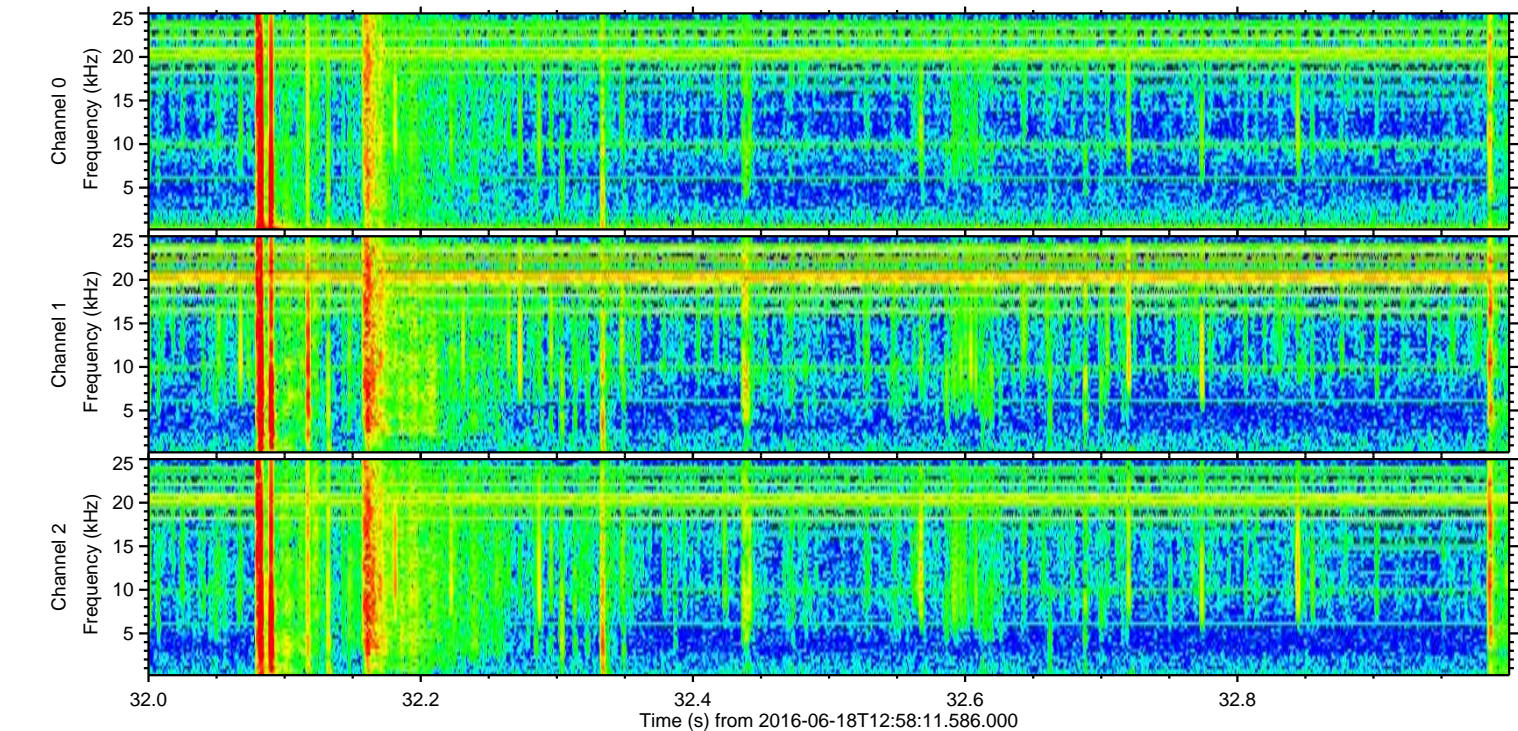
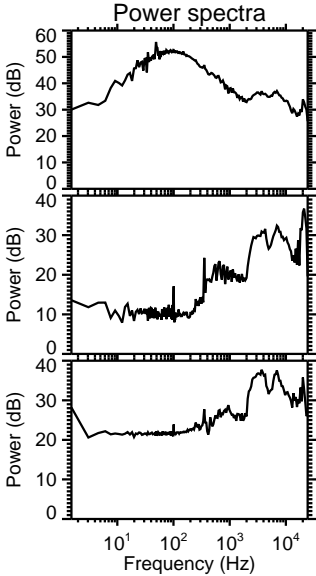
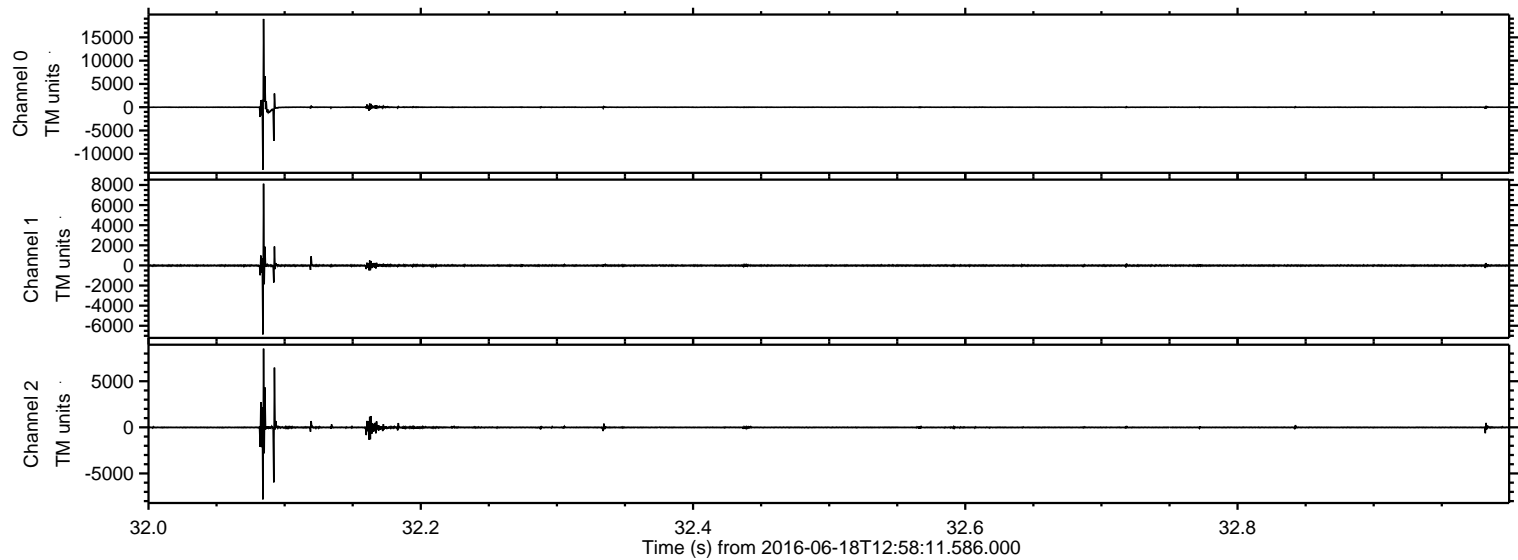
ELMAVAN 3D WAVEFORMS (Measured data sampled at 50 kHz) 51000 packets of 144 samples from 2016-06-18T12:58:11.586.000. Part 84/147

Processed Sat Jun 18 15:06:46 2016 by ELM ver.2012-10-06 from 001__elm20160618_125810__dat00.bin



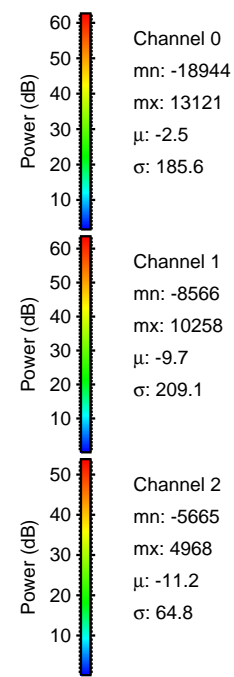
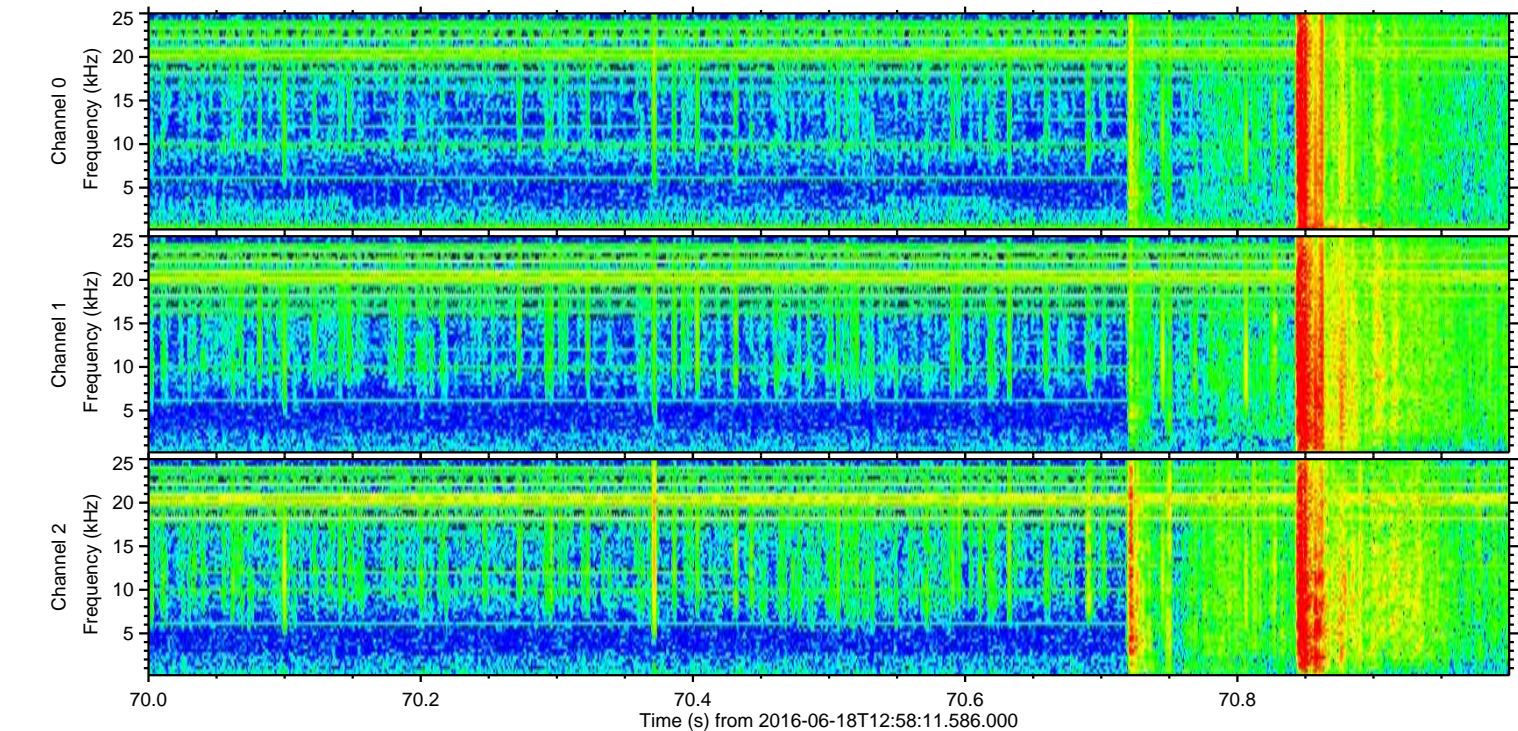
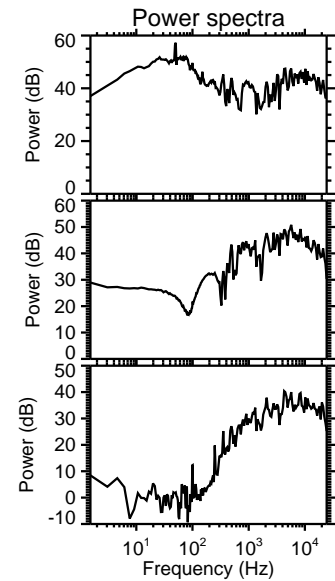
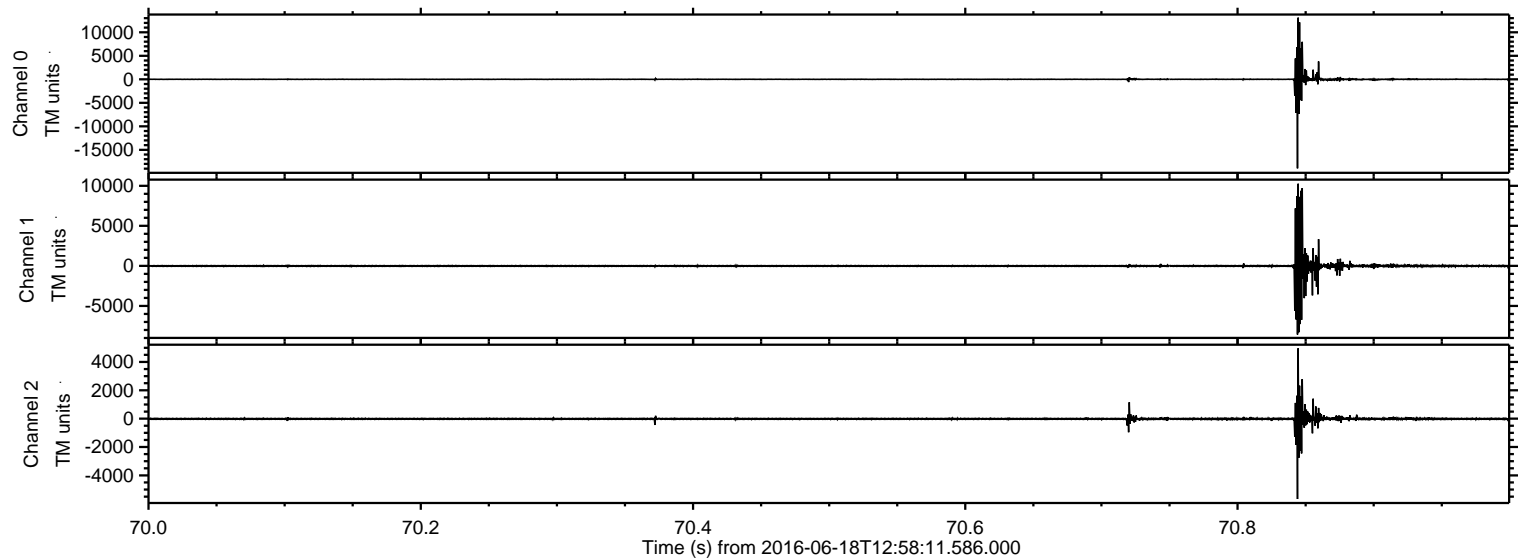
ELMAVAN 3D WAVEFORMS (Measured data sampled at 50 kHz) 51000 packets of 144 samples from 2016-06-18T12:58:11.586.000. Part 33/147

Processed Sat Jun 18 15:06:47 2016 by ELM ver.2012-10-06 from 001__elm20160618_125810__dat00.bin

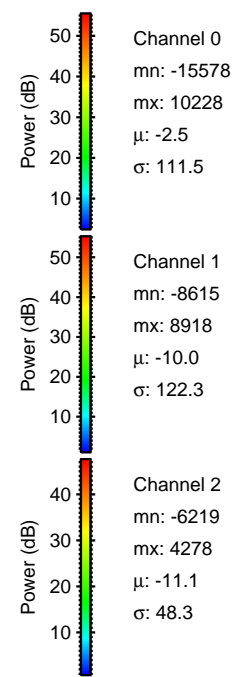
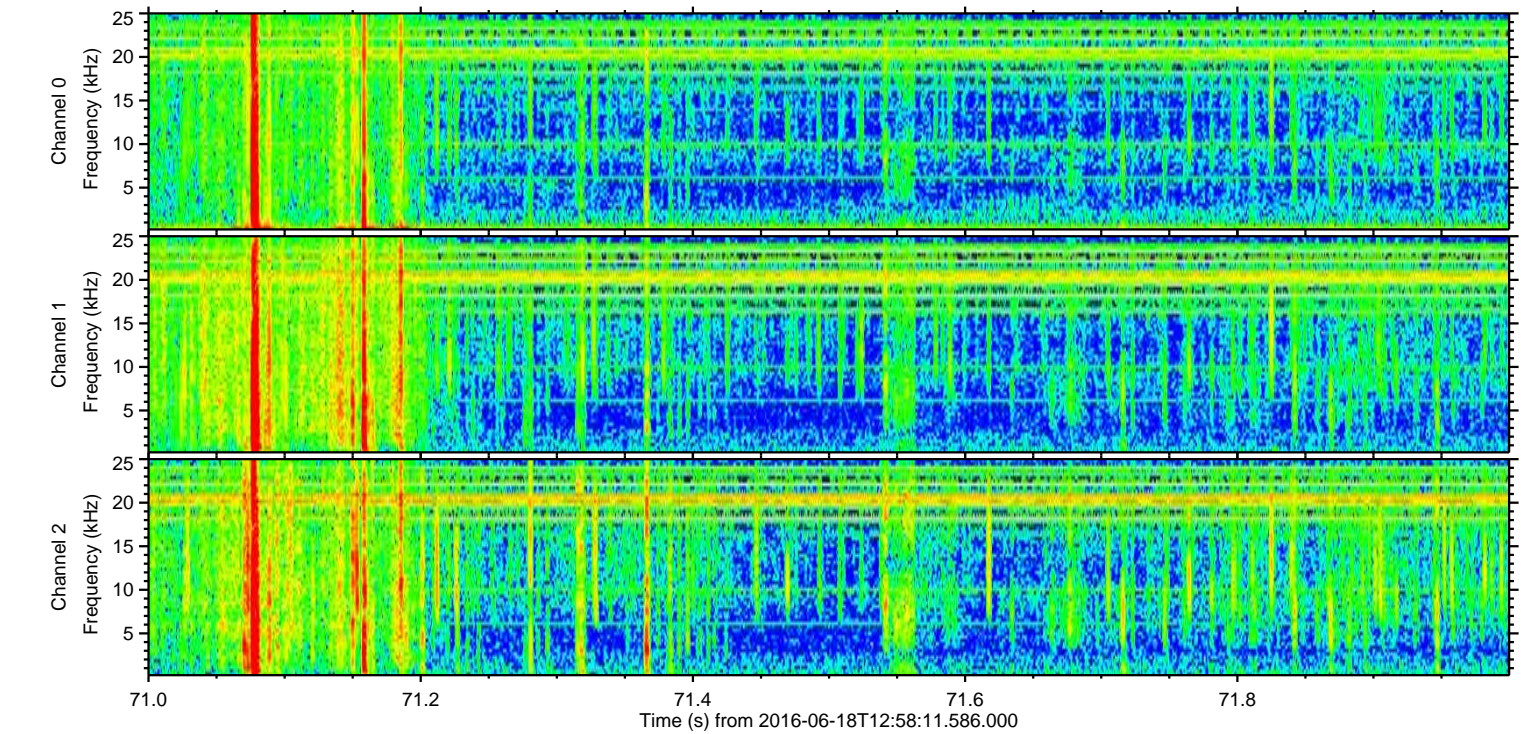
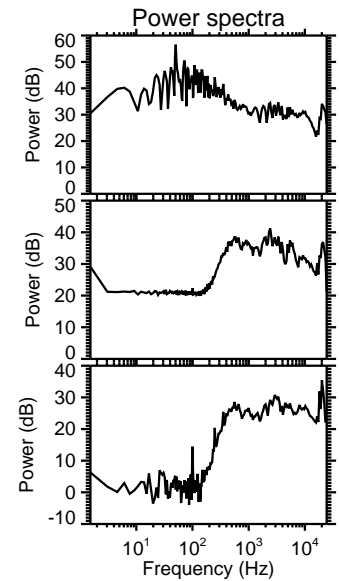
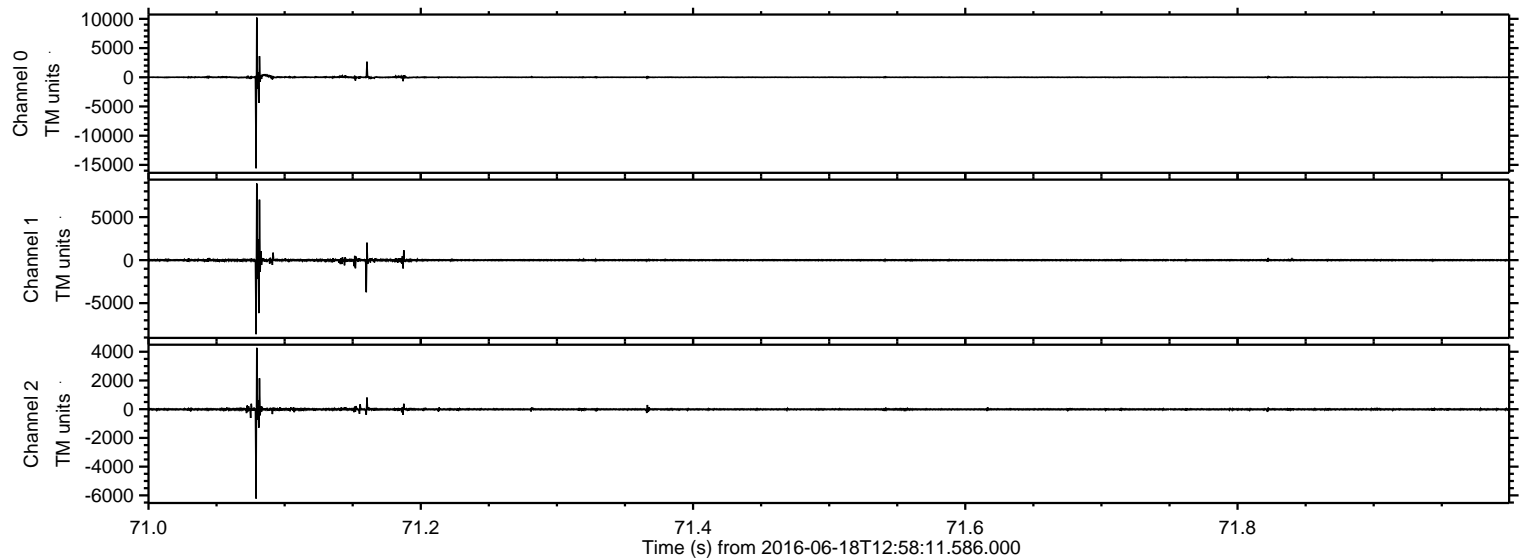


ELMAVAN 3D WAVEFORMS (Measured data sampled at 50 kHz) 51000 packets of 144 samples from 2016-06-18T12:58:11.586.000. Part 71/147

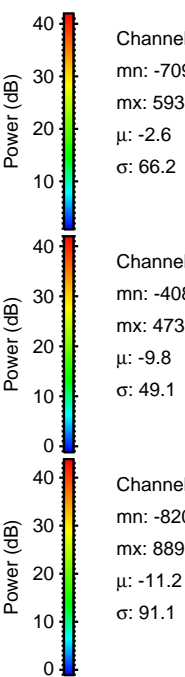
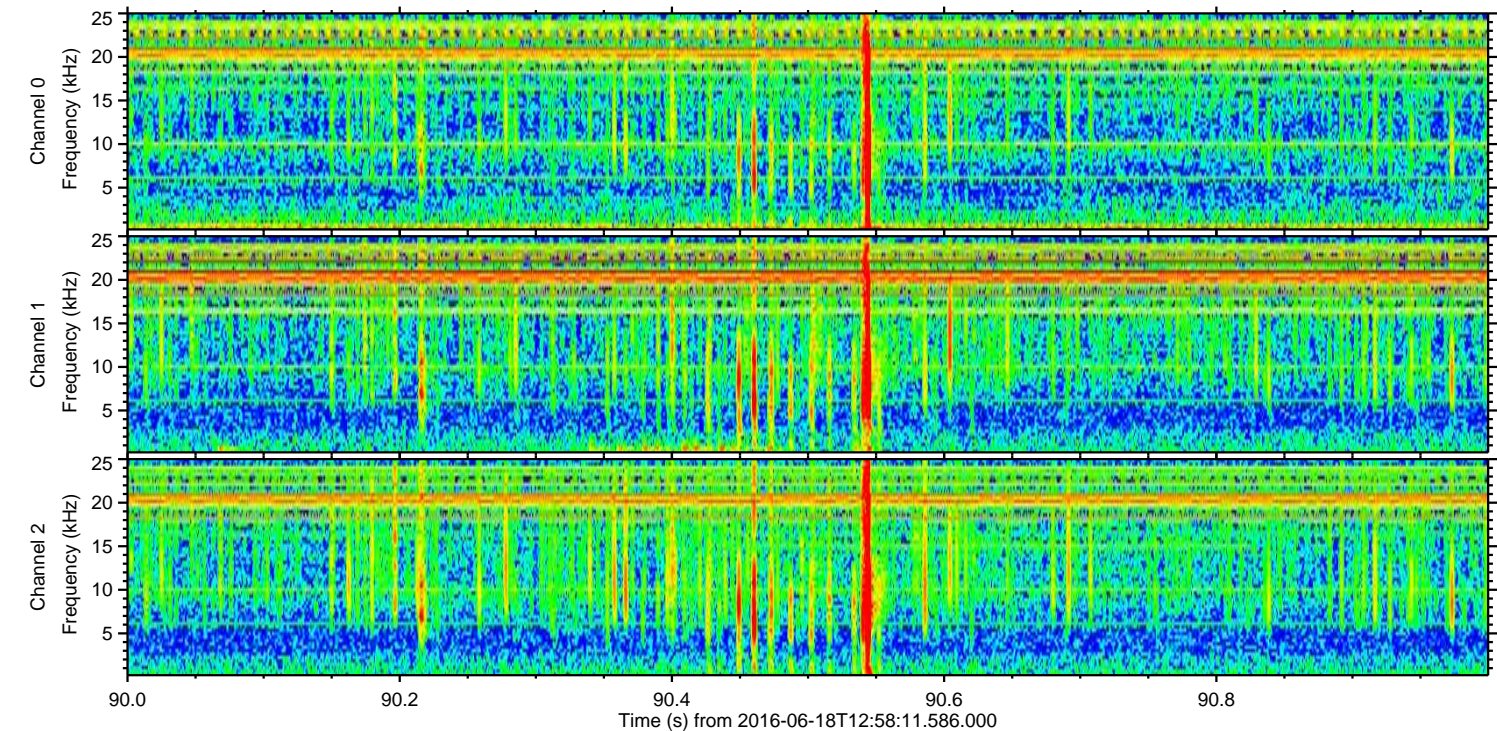
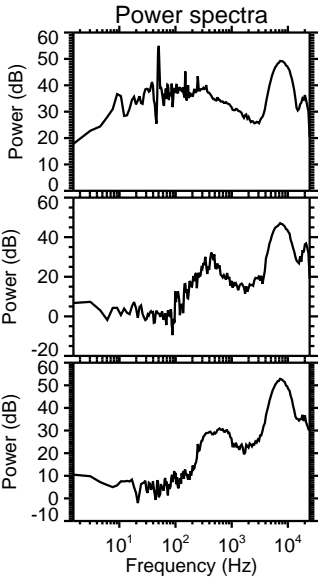
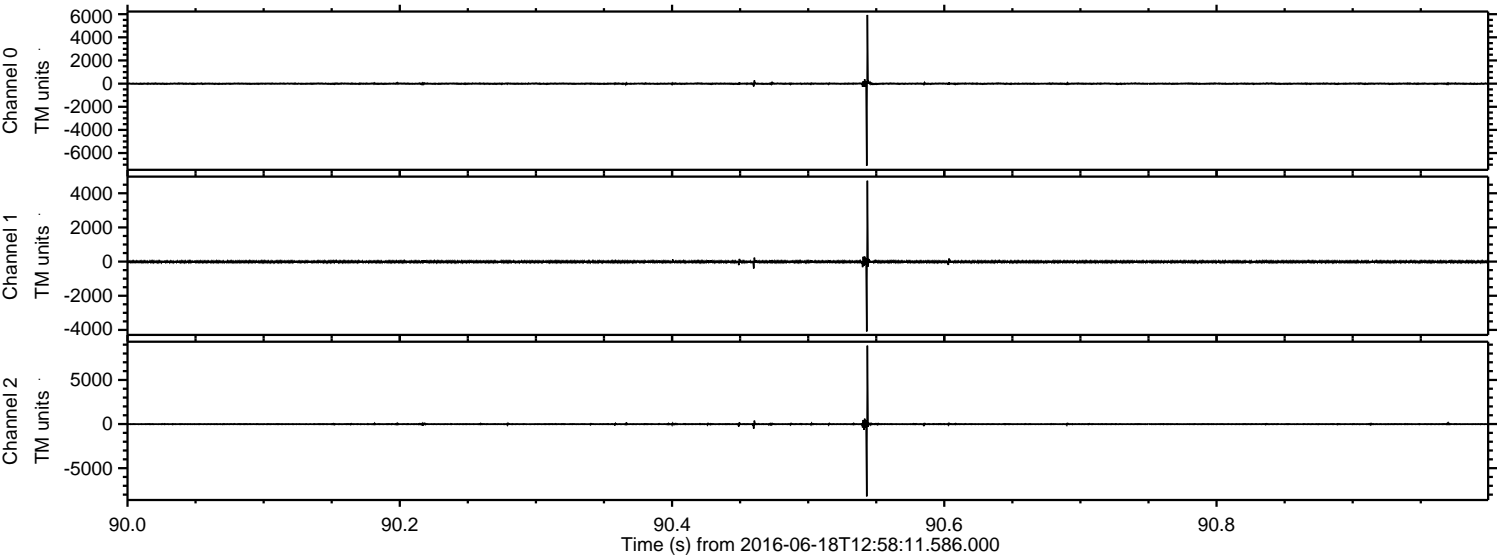
Processed Sat Jun 18 15:06:48 2016 by ELM ver.2012-10-06 from 001__elm20160618_125810__dat00.bin



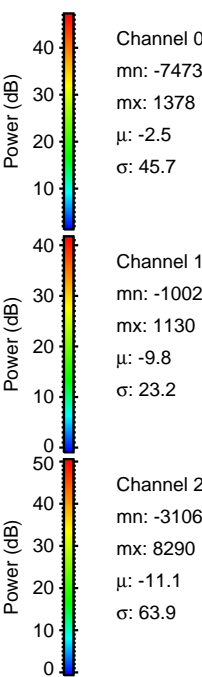
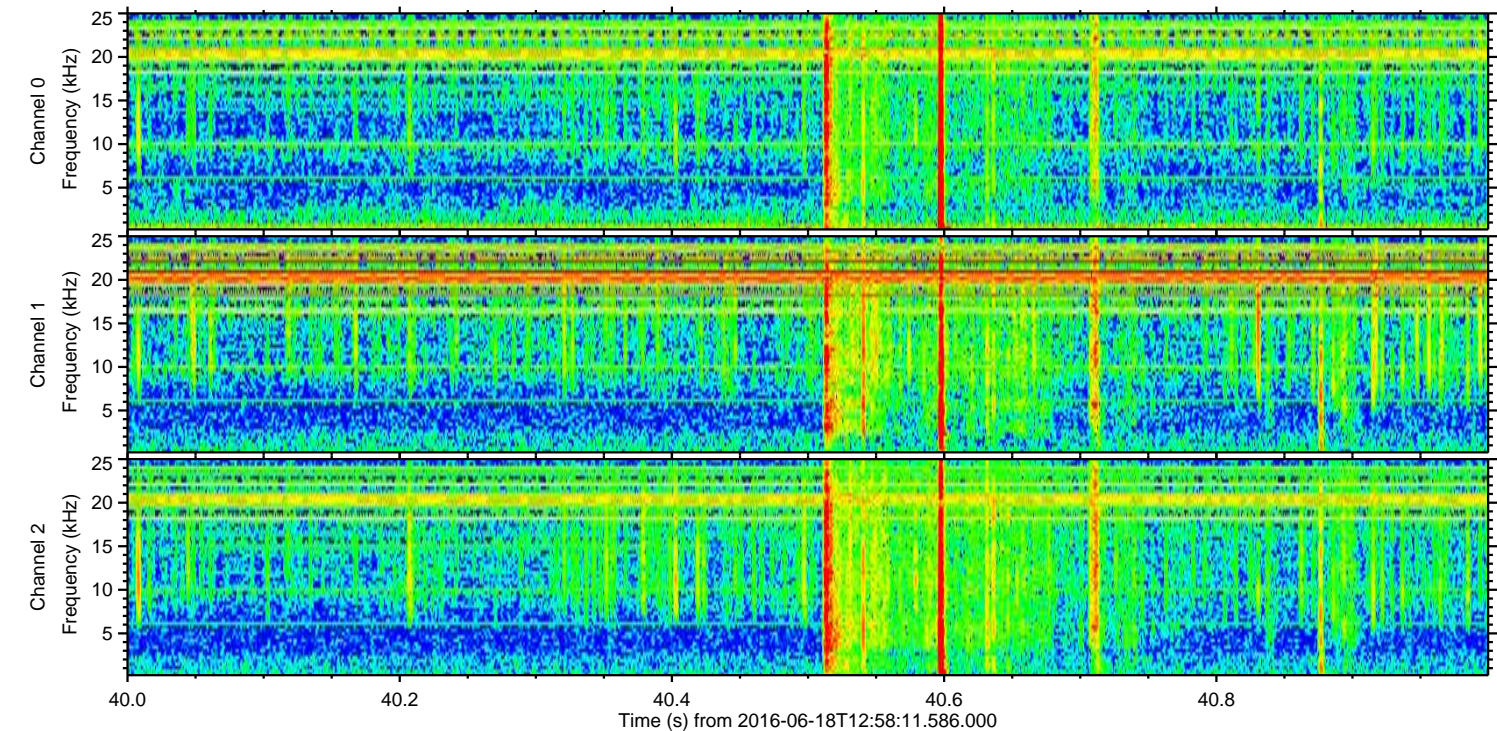
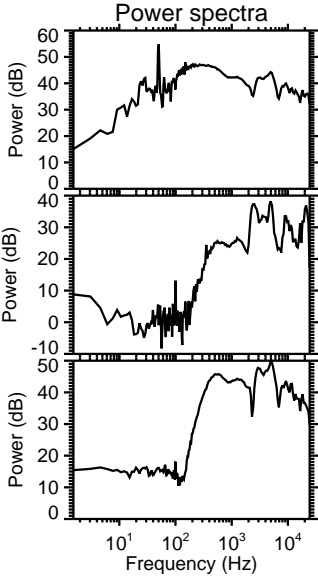
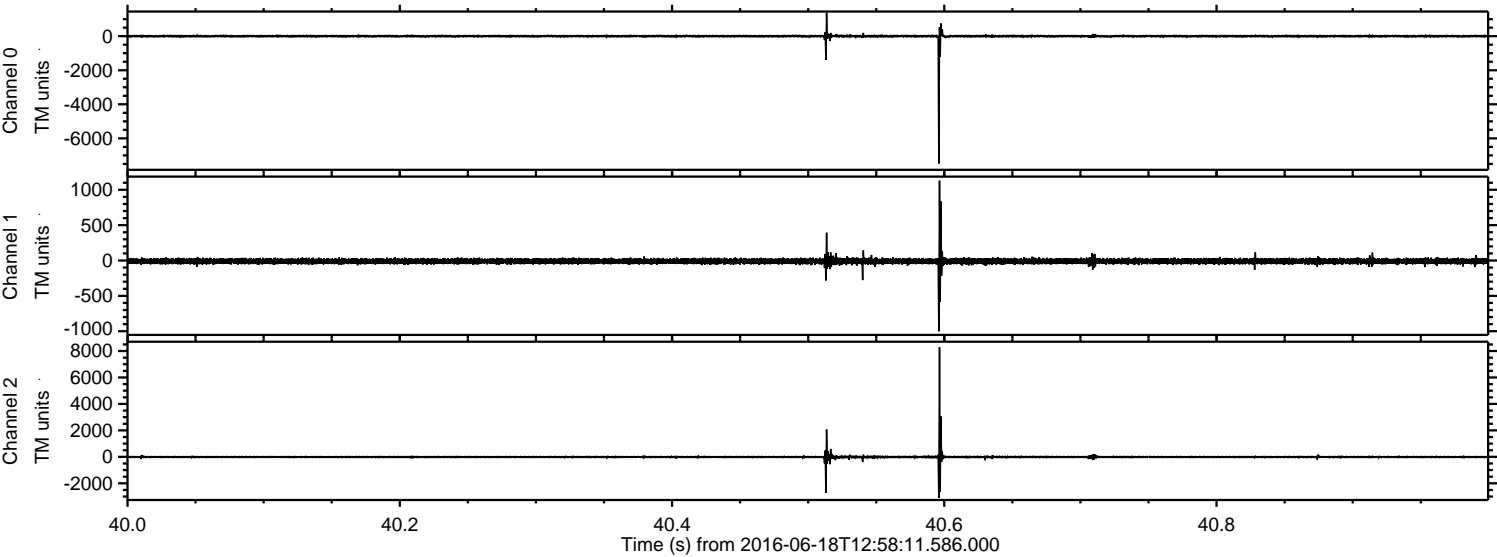
Processed Sat Jun 18 15:06:49 2016 by ELM ver.2012-10-06 from 001__elm20160618_125810__dat00.bin



Processed Sat Jun 18 15:06:50 2016 by ELM ver.2012-10-06 from 001__elm20160618_125810__dat00.bin

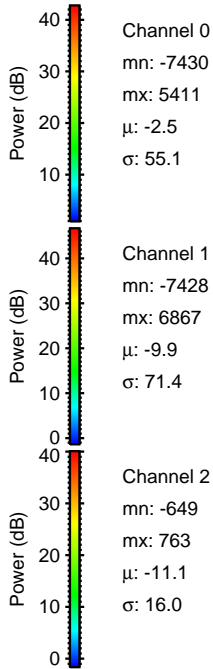
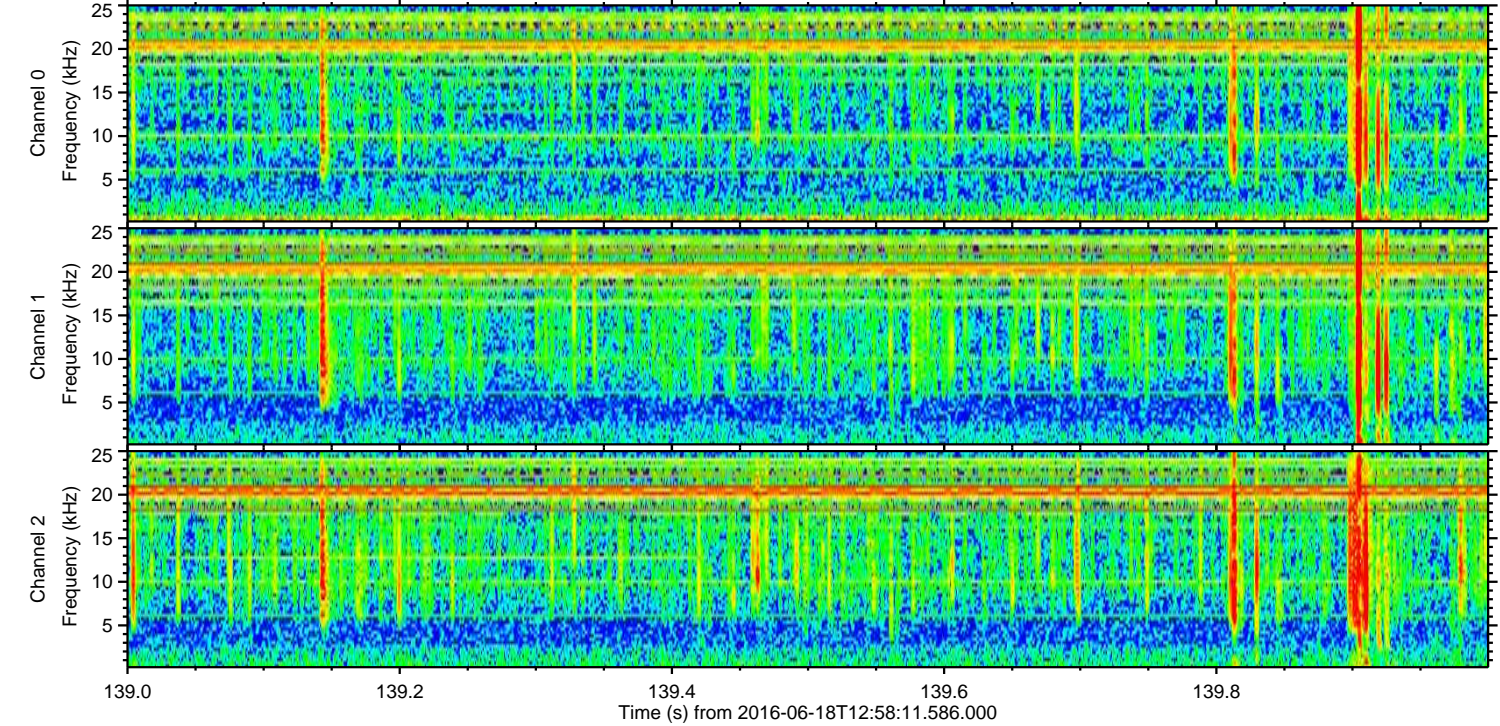
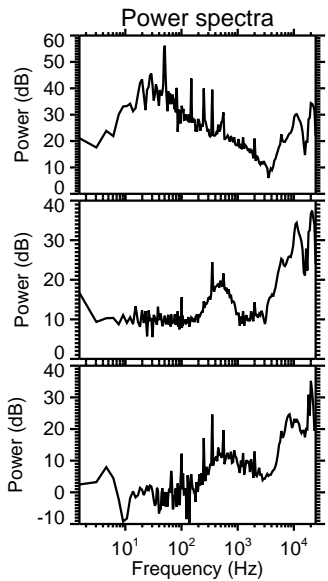
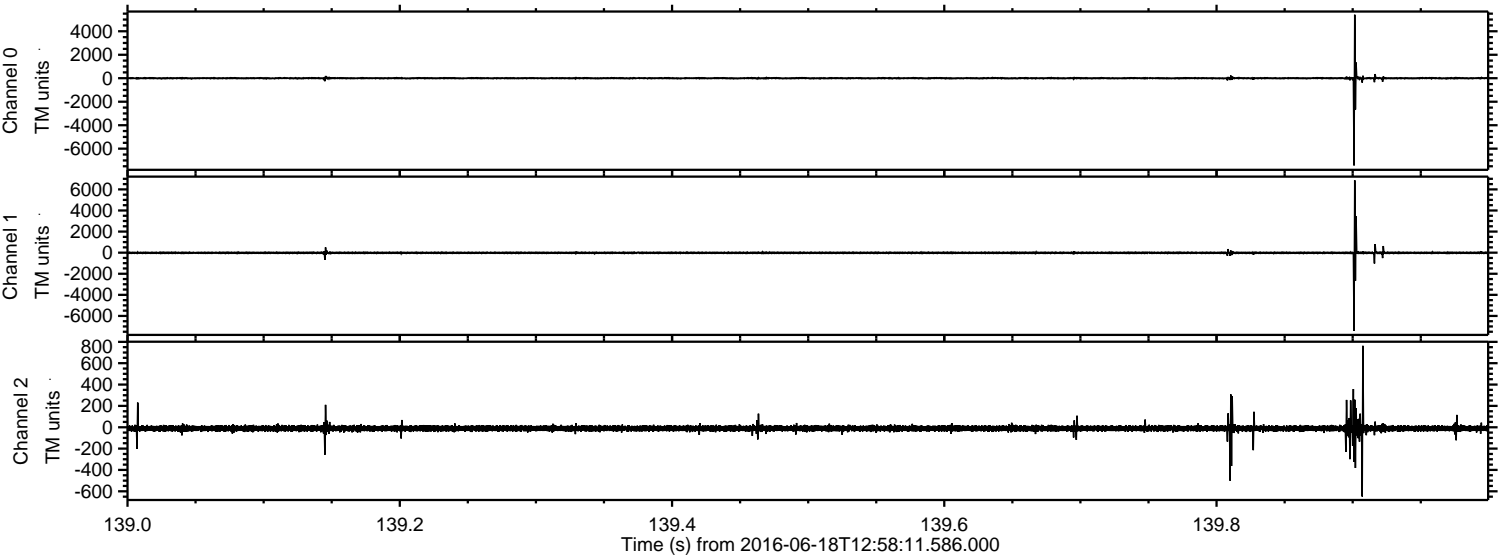


Processed Sat Jun 18 15:06:51 2016 by ELM ver.2012-10-06 from 001__elm20160618_125810__dat00.bin



ELMAVAN 3D WAVEFORMS (Measured data sampled at 50 kHz) 51000 packets of 144 samples from 2016-06-18T12:58:11.586.000. Part 140/147

Processed Sat Jun 18 15:06:52 2016 by ELM ver.2012-10-06 from 001__elm20160618_125810__dat00.bin

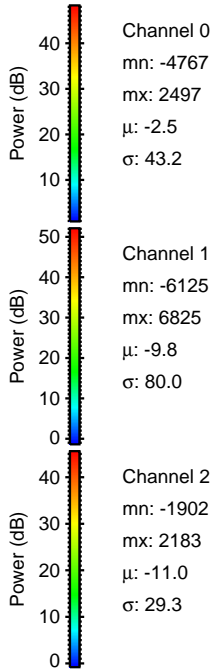
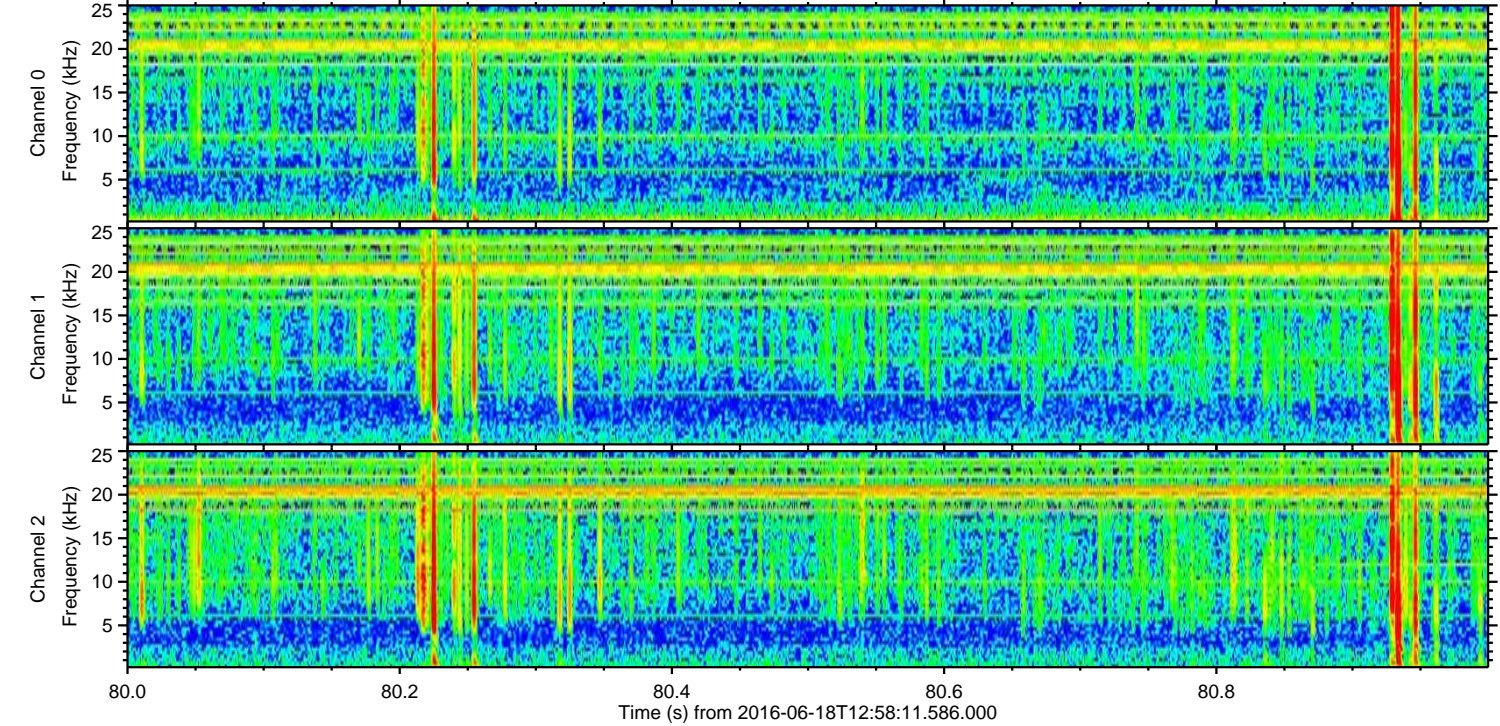
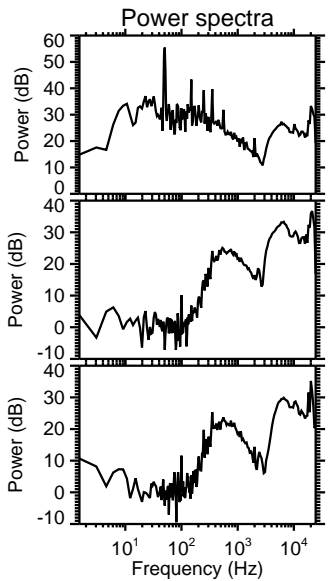
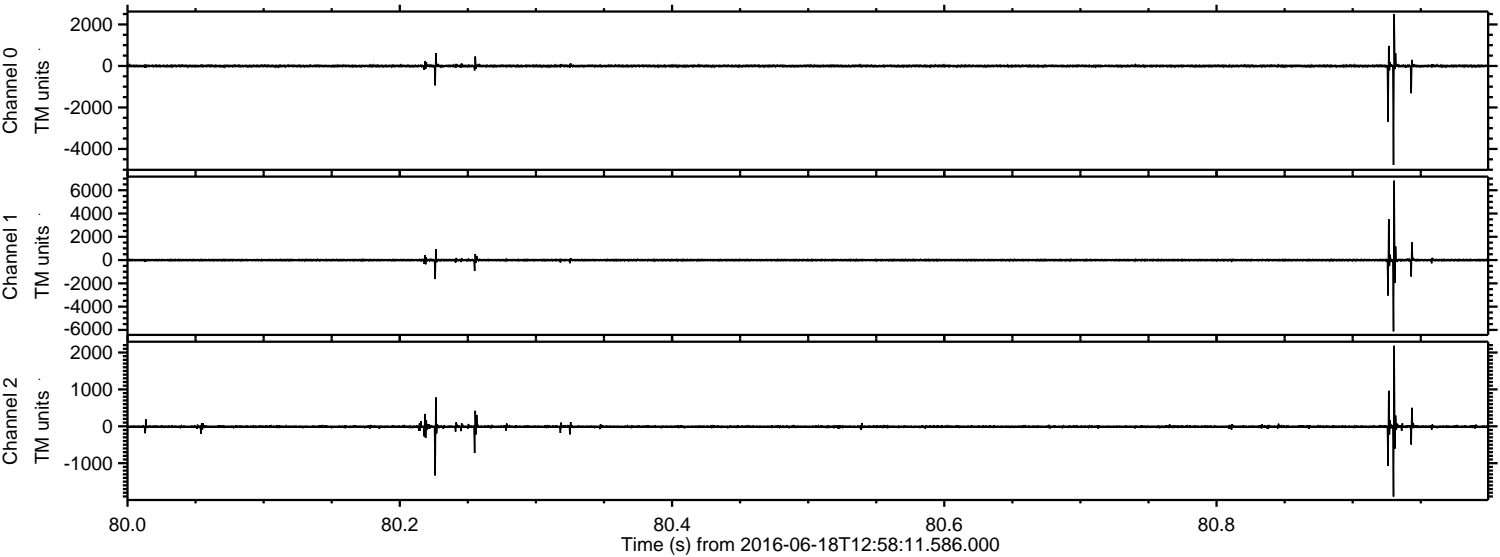


Channel 0
mn: -7430
mx: 5411
 μ : -2.5
 σ : 55.1

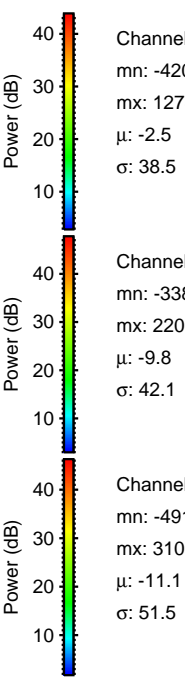
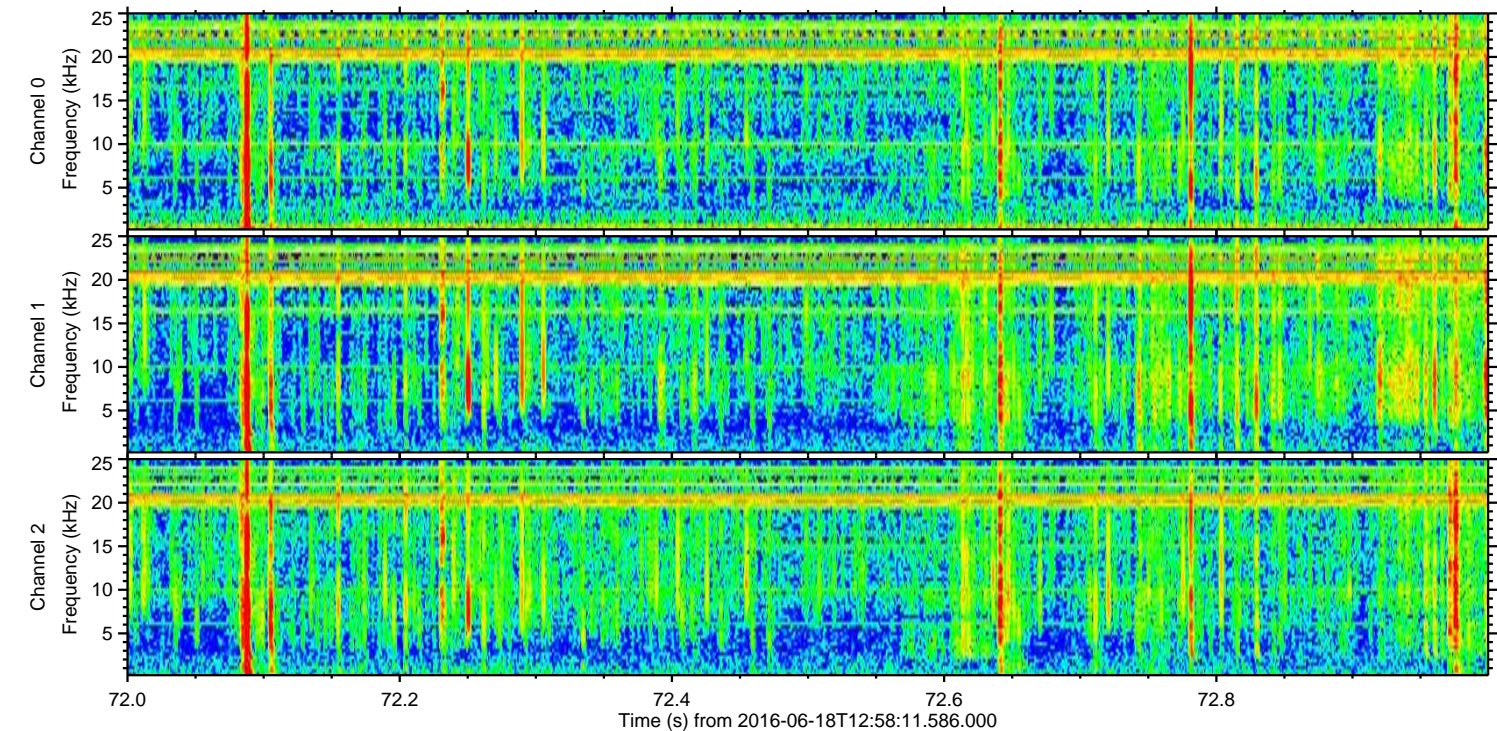
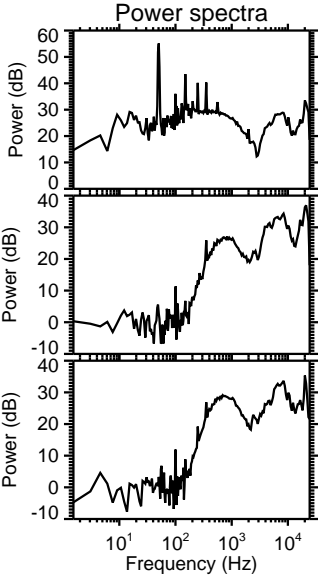
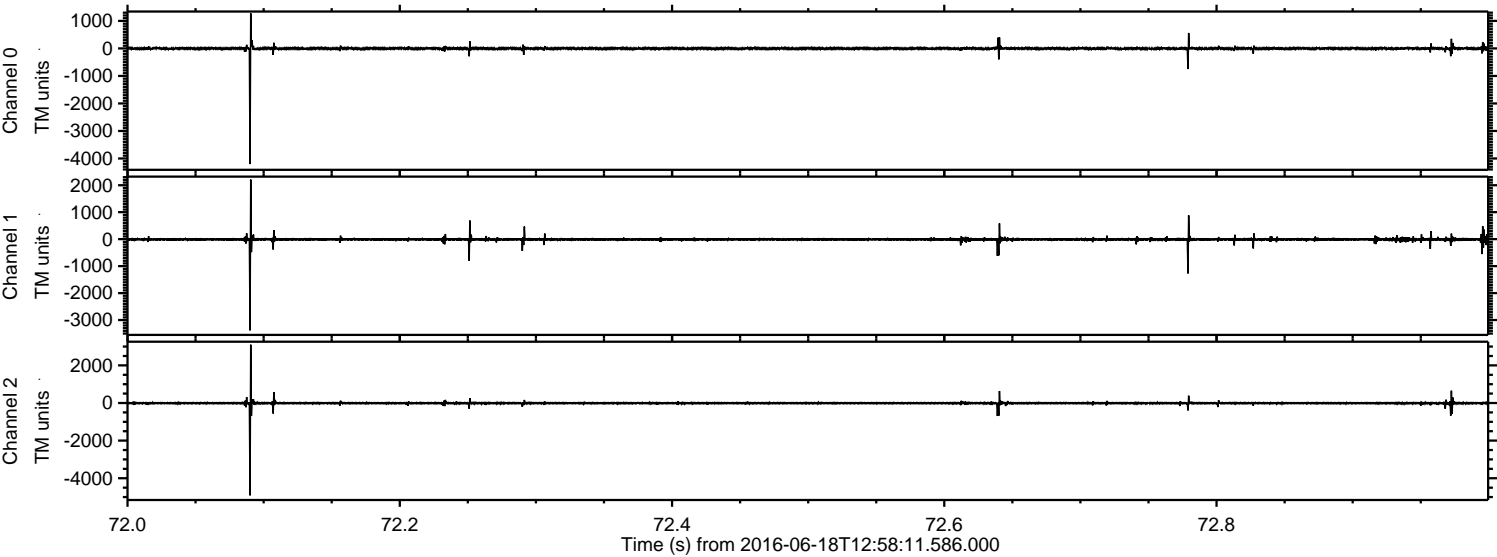
Channel 1
mn: -7428
mx: 6867
 μ : -9.9
 σ : 71.4

Channel 2
mn: -649
mx: 763
 μ : -11.1
 σ : 16.0

Processed Sat Jun 18 15:06:53 2016 by ELM ver.2012-10-06 from 001__elm20160618_125810__dat00.bin



Processed Sat Jun 18 15:06:54 2016 by ELM ver.2012-10-06 from 001__elm20160618_125810__dat00.bin



Channel 0
mn: -4203
mx: 1278
 μ : -2.5
 σ : 38.5

Channel 1
mn: -3382
mx: 2208
 μ : -9.8
 σ : 42.1

Channel 2
mn: -4911
mx: 3103
 μ : -11.1
 σ : 51.5

Processed Sat Jun 18 15:06:55 2016 by ELM ver.2012-10-06 from 001__elm20160618_125810__dat00.bin

