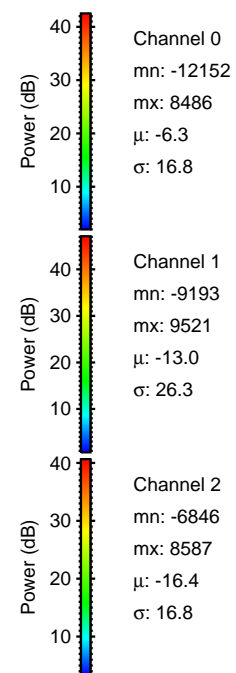
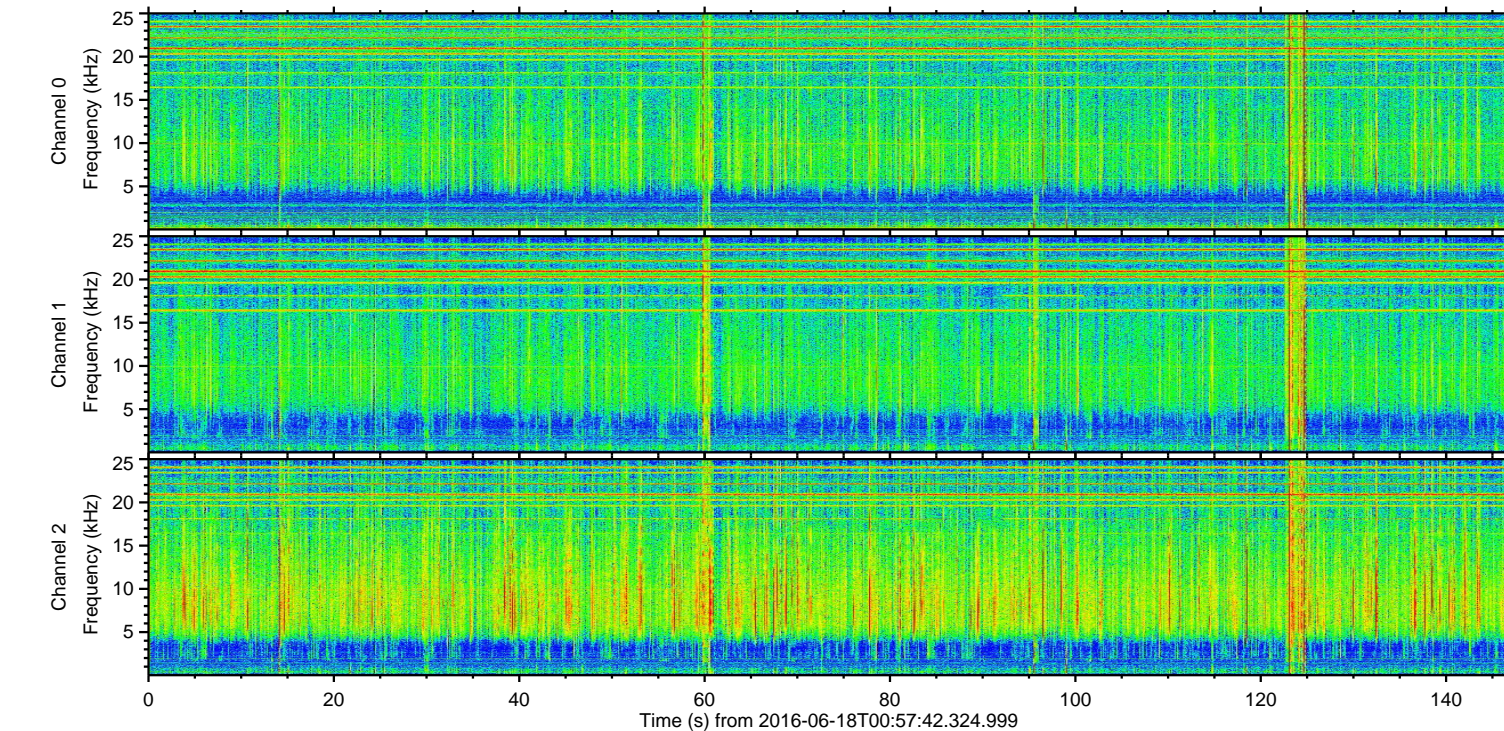
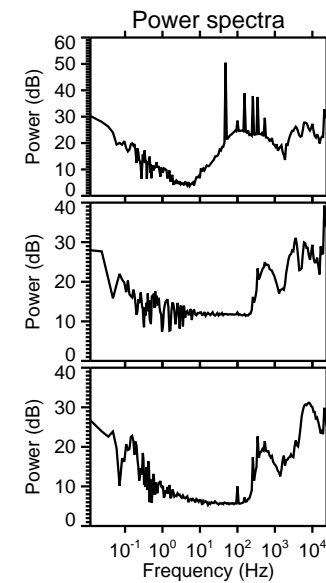
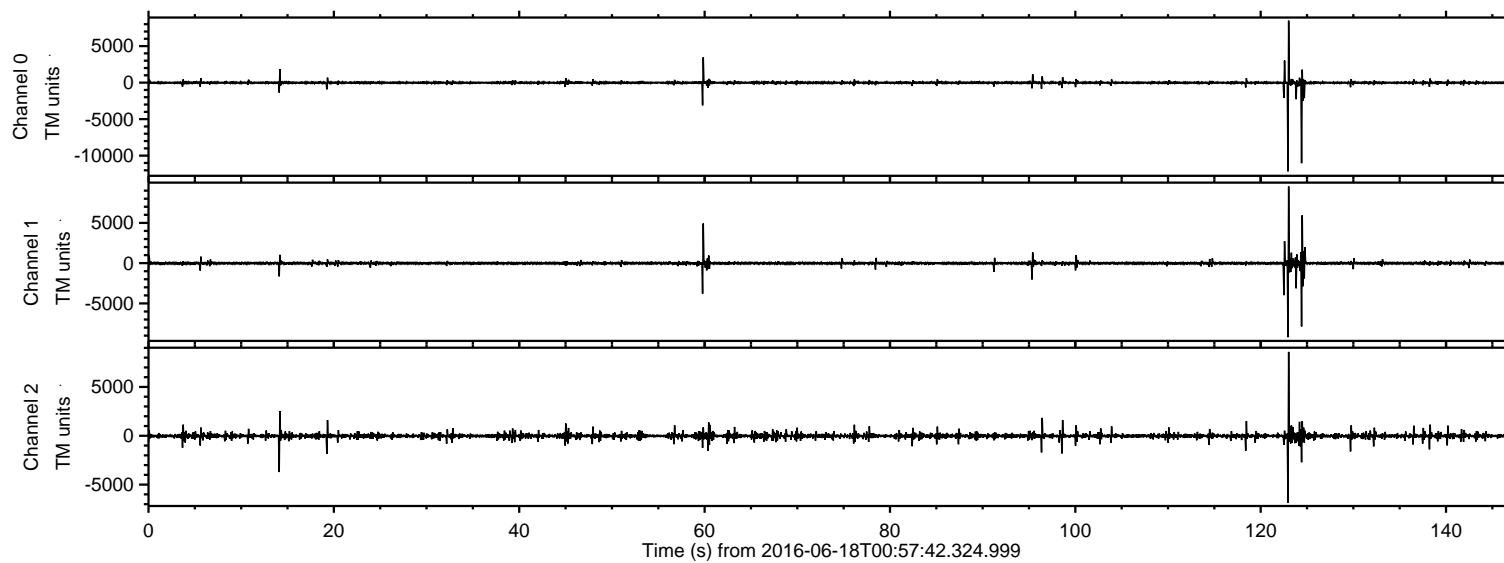


# ELMAVAN 3D WAVEFORMS (Measured data sampled at 50 kHz) 51000 packets of 144 samples from 2016-06-18T00:57:42.324.999.

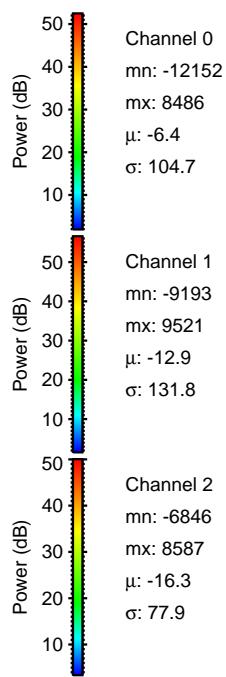
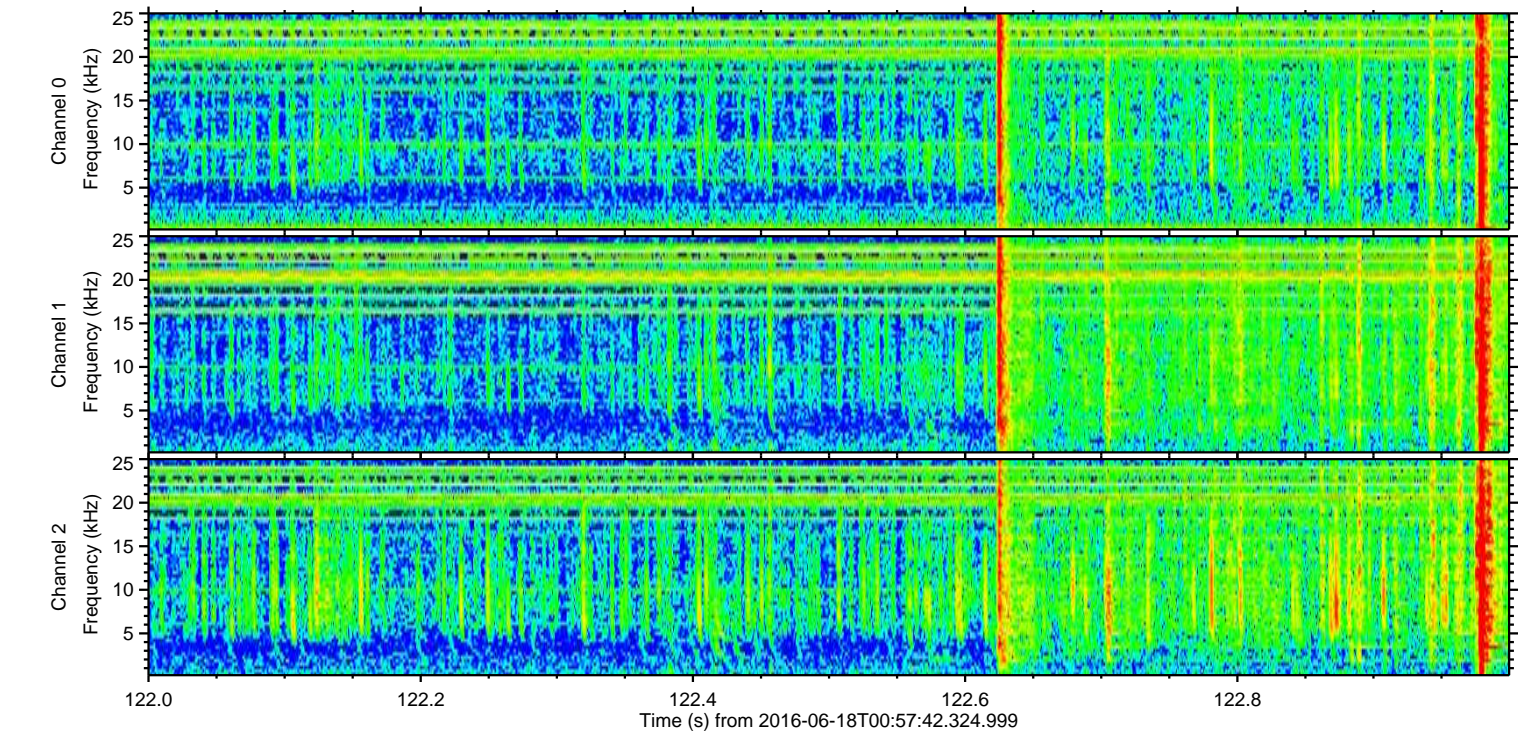
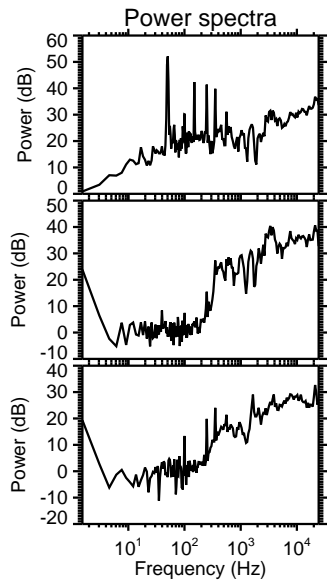
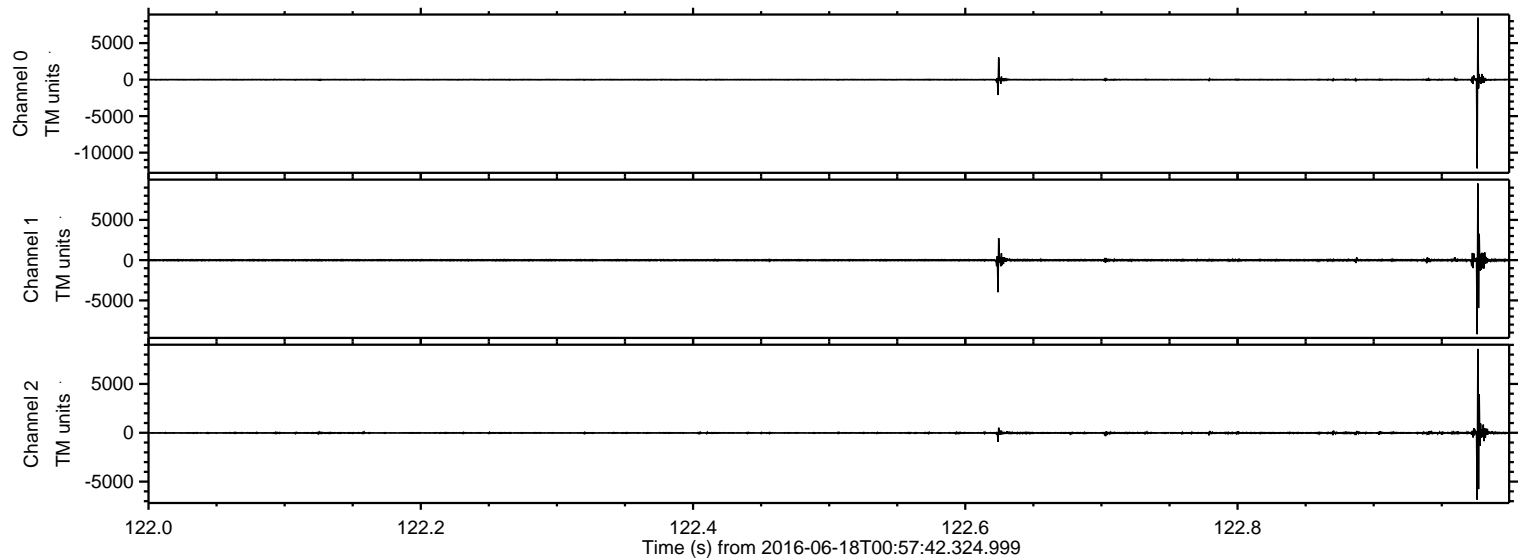
Processed Sat Jun 18 03:05:47 2016 by ELM ver.2012-10-06 from 001\_\_elm20160618\_005741\_\_dat00.bin





ELMAVAN 3D WAVEFORMS (Measured data sampled at 50 kHz) 51000 packets of 144 samples from 2016-06-18T00:57:42.324.999. Part 123/147

Processed Sat Jun 18 03:06:02 2016 by ELM ver.2012-10-06 from 001\_\_elm20160618\_005741\_\_dat00.bin



Channel 0  
mn: -12152  
mx: 8486  
 $\mu$ : -6.4  
 $\sigma$ : 104.7

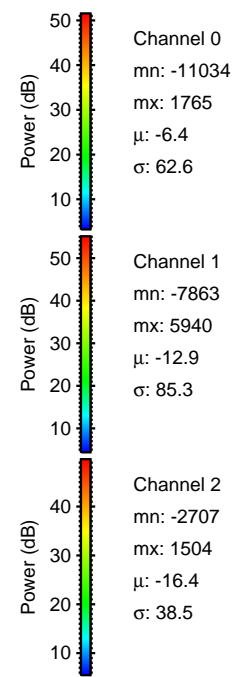
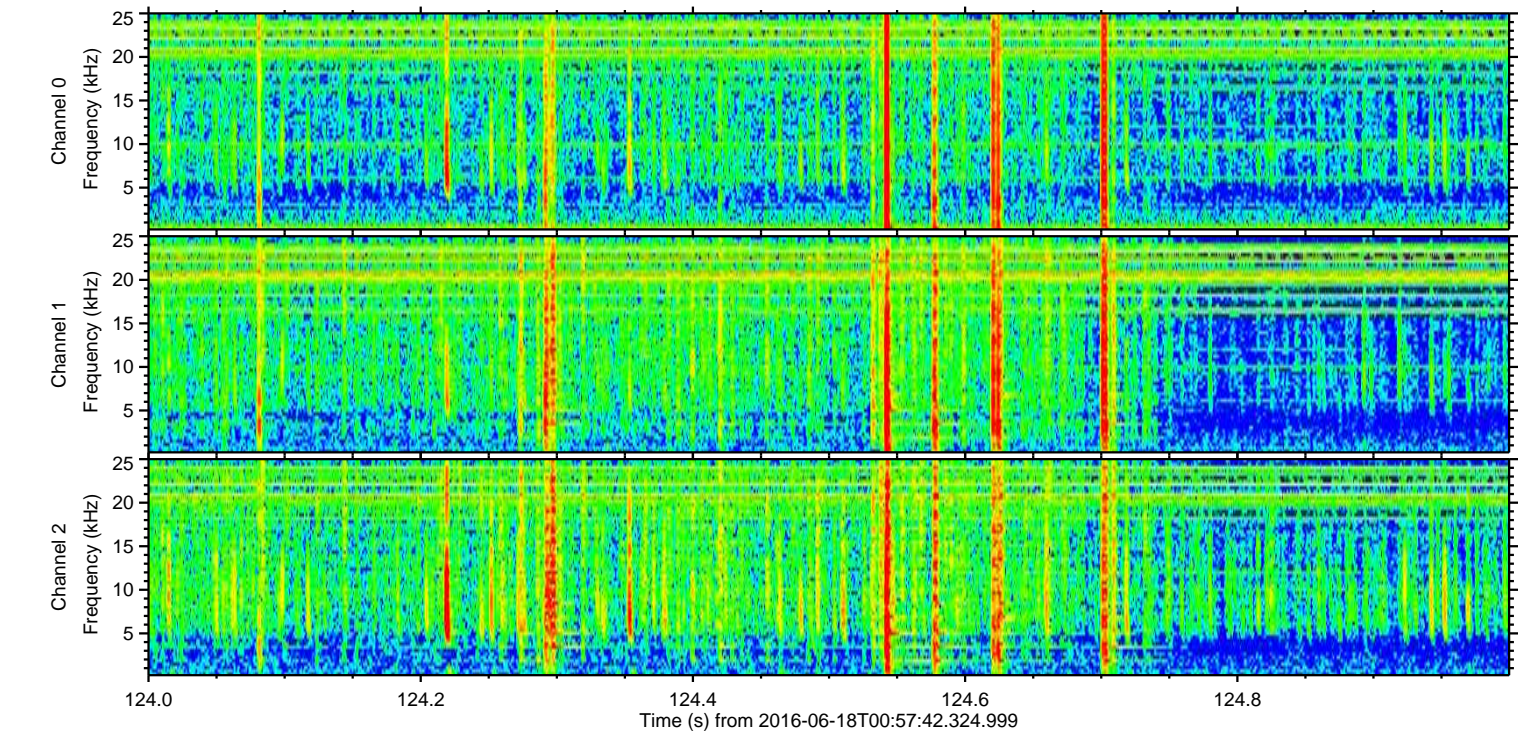
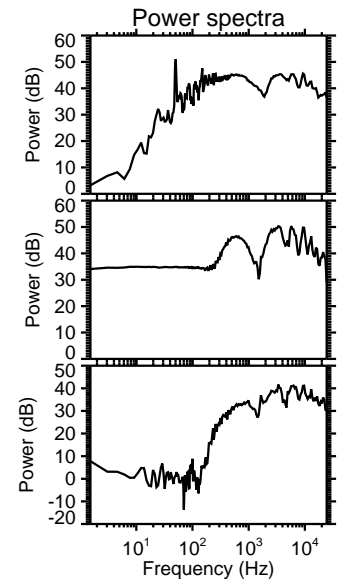
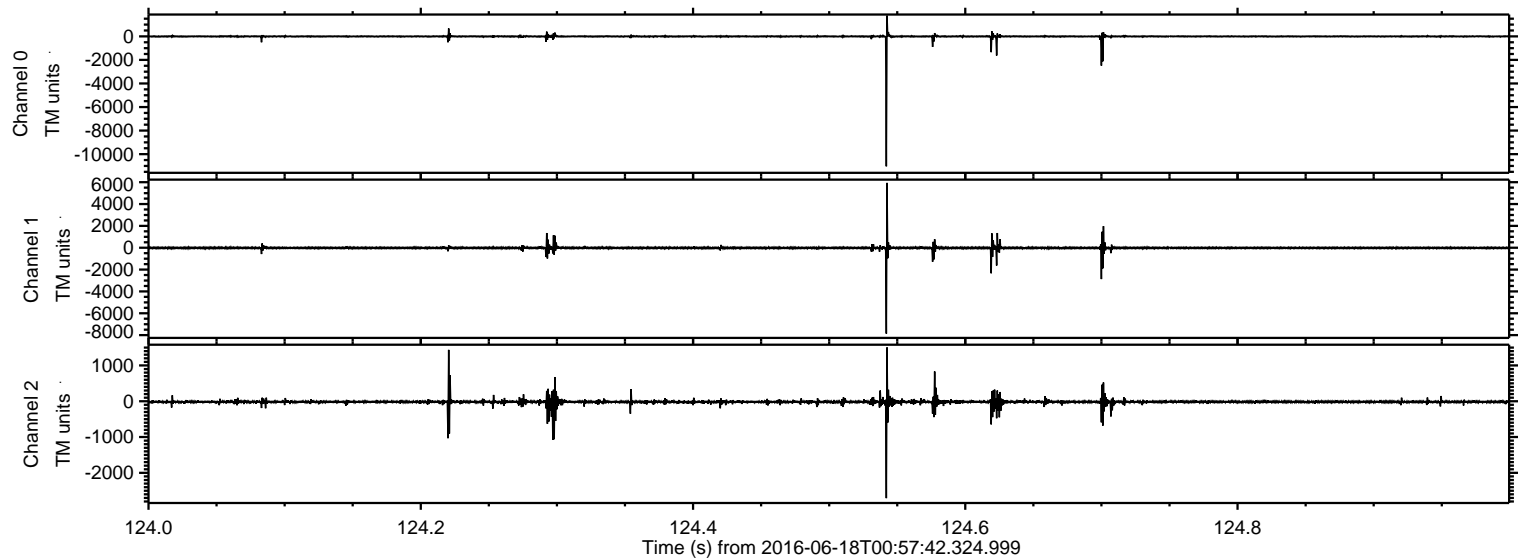
Channel 1  
mn: -9193  
mx: 9521  
 $\mu$ : -12.9  
 $\sigma$ : 131.8

Channel 2  
mn: -6846  
mx: 8587  
 $\mu$ : -16.3  
 $\sigma$ : 77.9



ELMAVAN 3D WAVEFORMS (Measured data sampled at 50 kHz) 51000 packets of 144 samples from 2016-06-18T00:57:42.324.999. Part 125/147

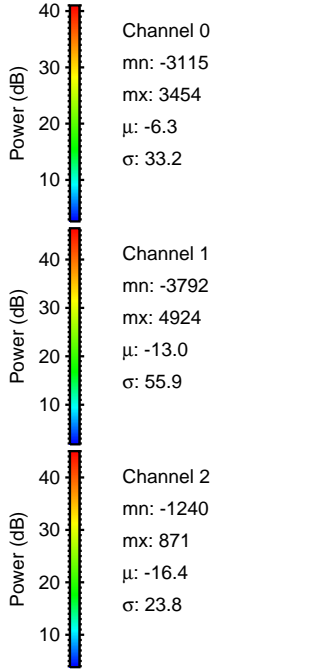
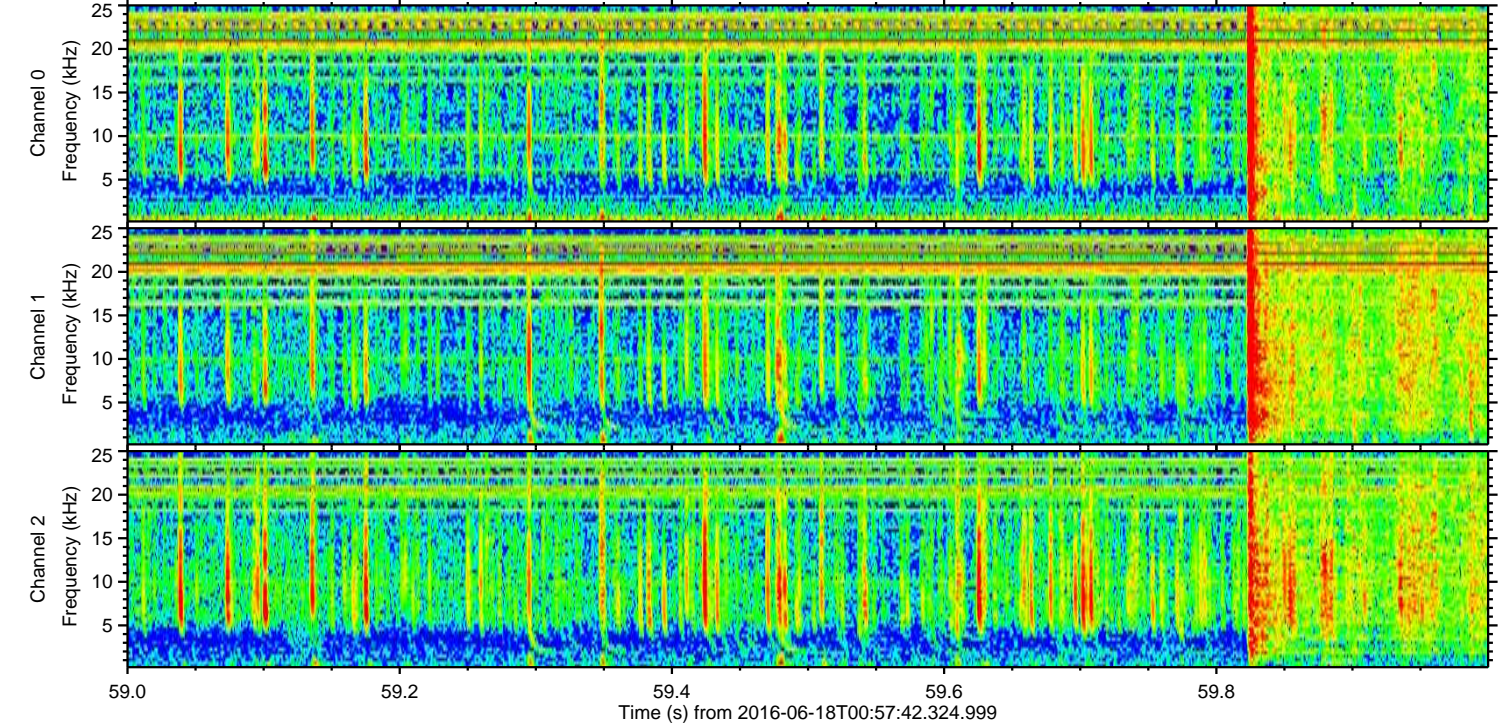
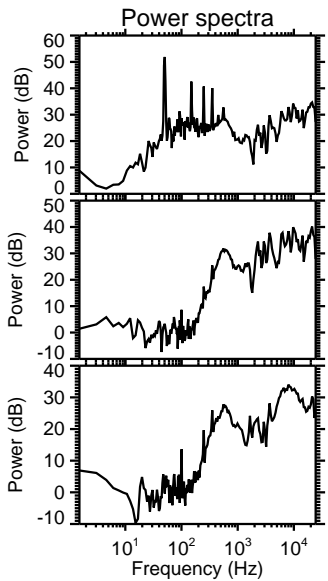
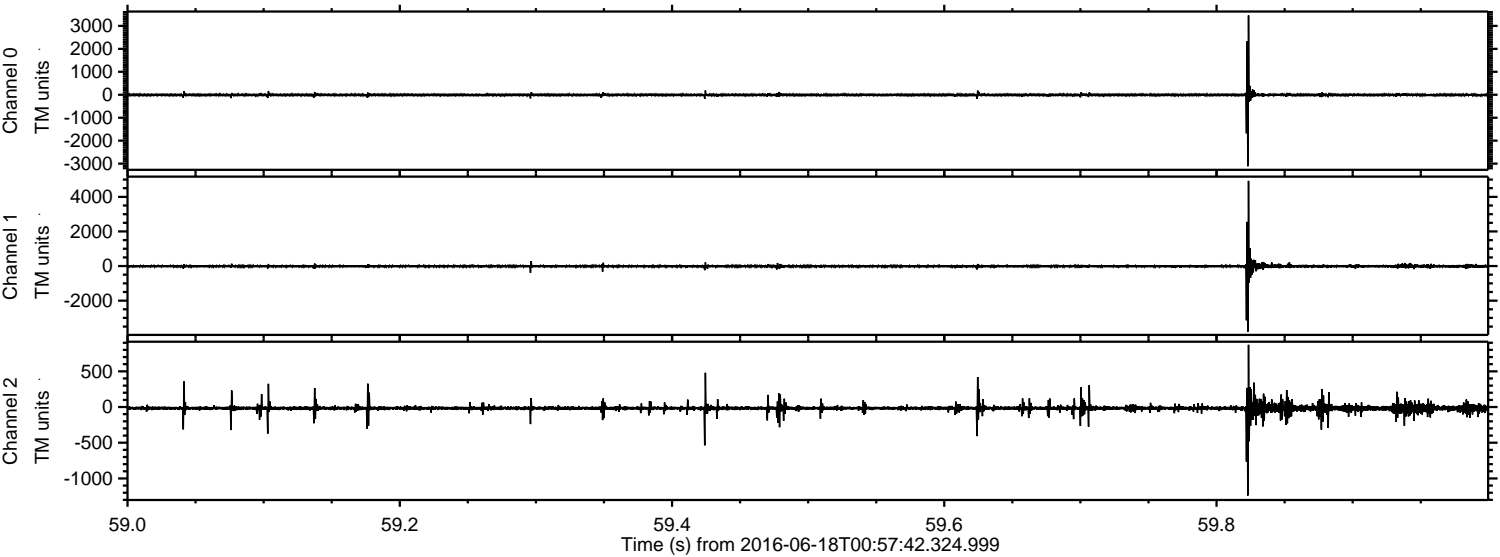
Processed Sat Jun 18 03:06:03 2016 by ELM ver.2012-10-06 from 001\_\_elm20160618\_005741\_\_dat00.bin





ELMAVAN 3D WAVEFORMS (Measured data sampled at 50 kHz) 51000 packets of 144 samples from 2016-06-18T00:57:42.324.999. Part 60/147

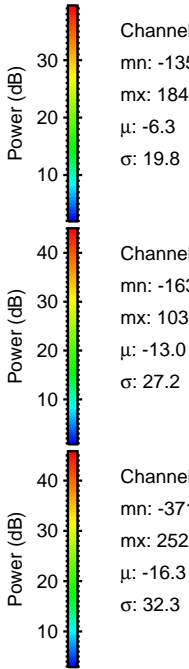
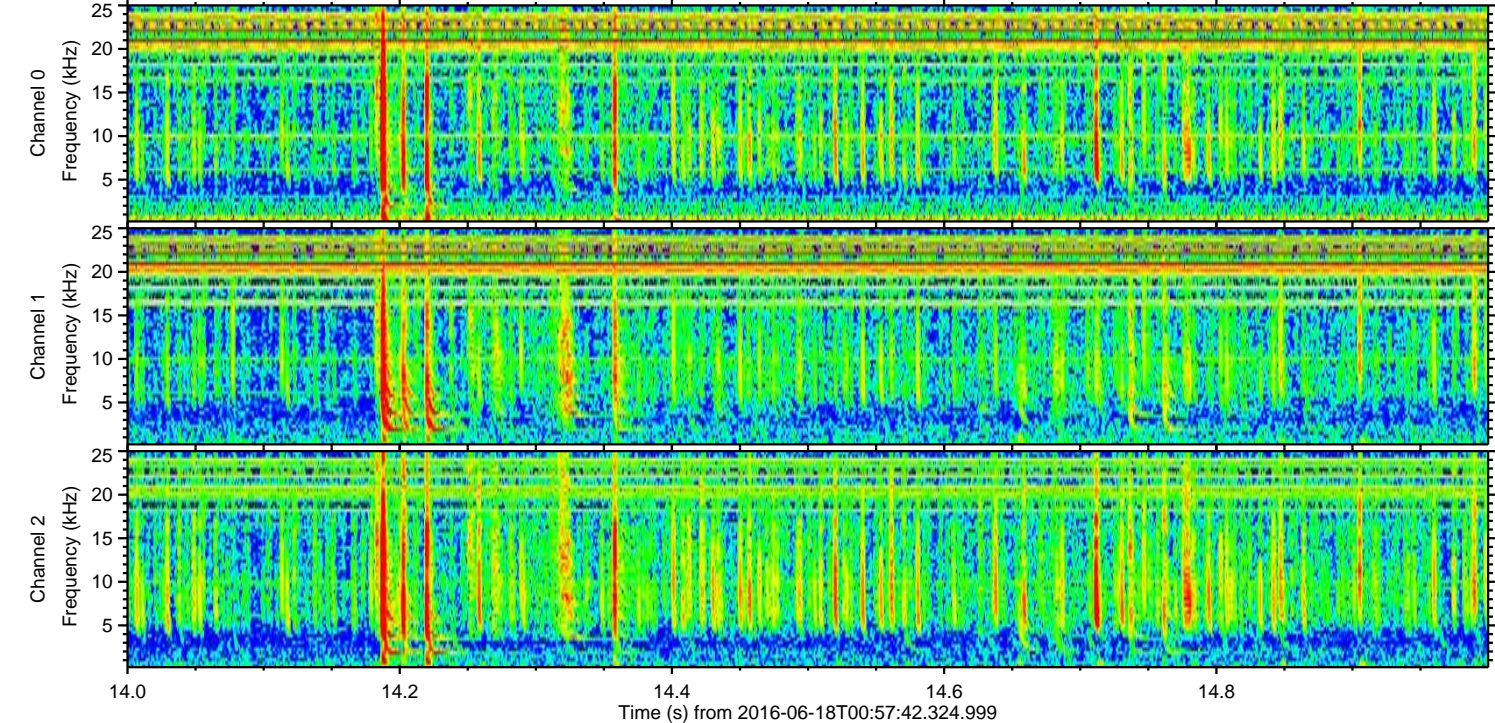
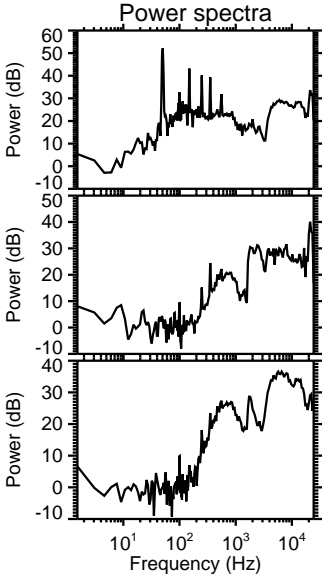
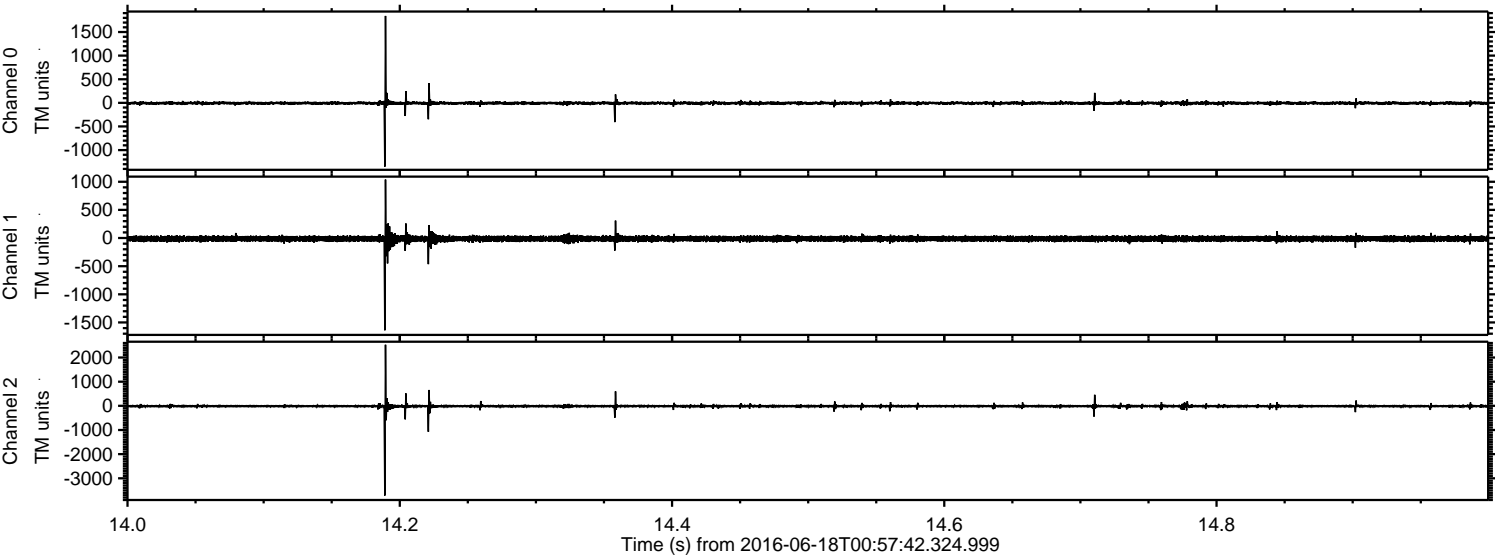
Processed Sat Jun 18 03:06:04 2016 by ELM ver.2012-10-06 from 001\_\_elm20160618\_005741\_\_dat00.bin





ELMAVAN 3D WAVEFORMS (Measured data sampled at 50 kHz) 51000 packets of 144 samples from 2016-06-18T00:57:42.324.999. Part 15/147

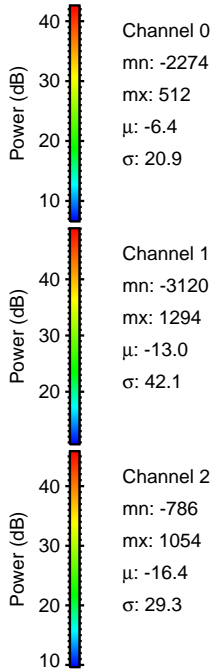
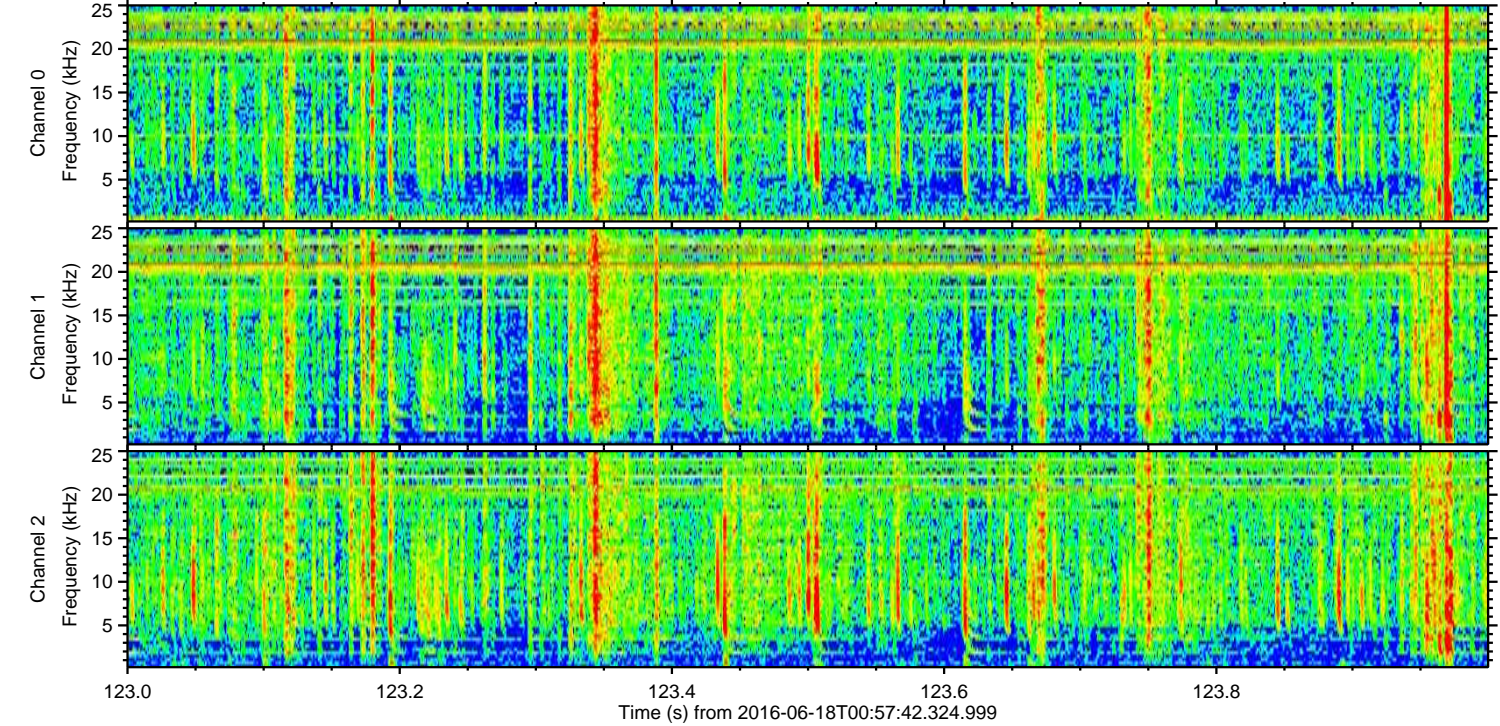
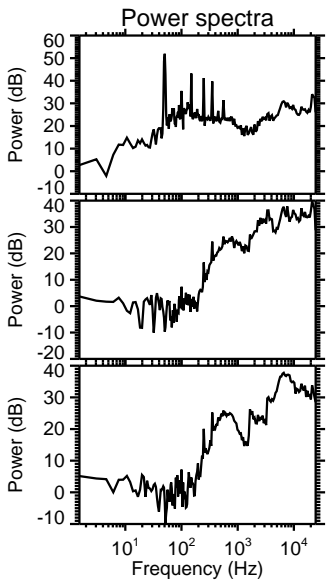
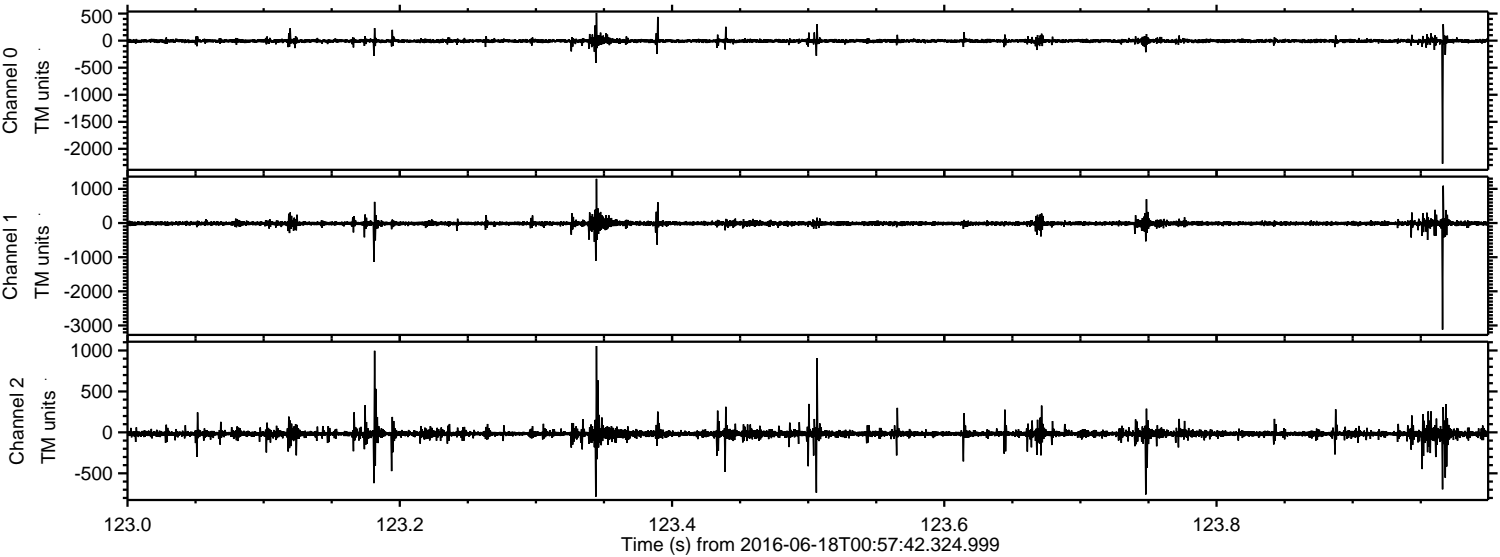
Processed Sat Jun 18 03:06:05 2016 by ELM ver.2012-10-06 from 001\_\_elm20160618\_005741\_\_dat00.bin





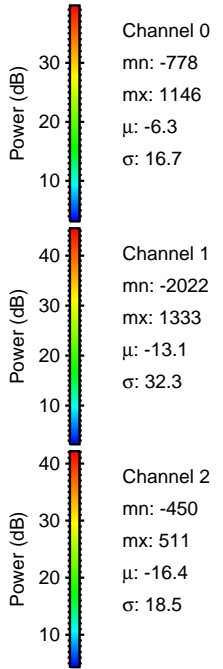
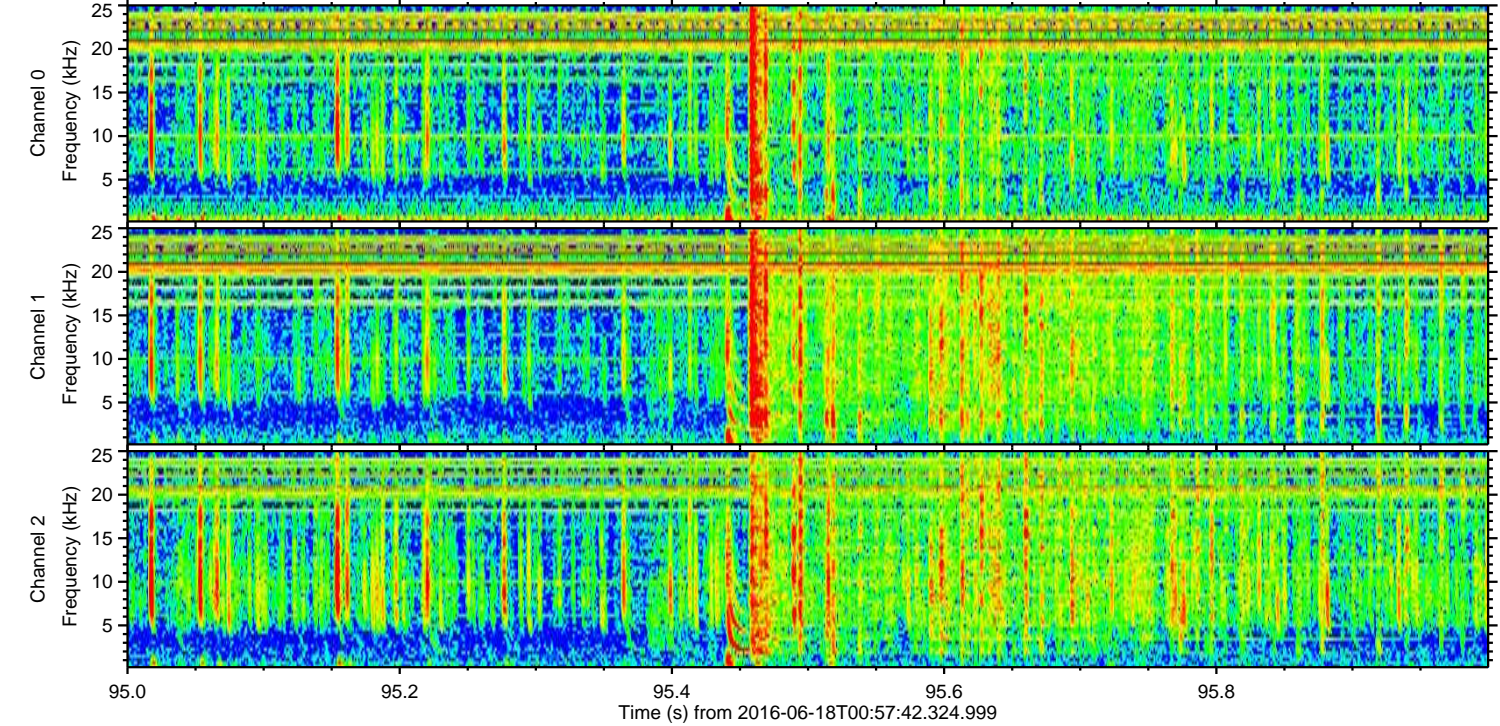
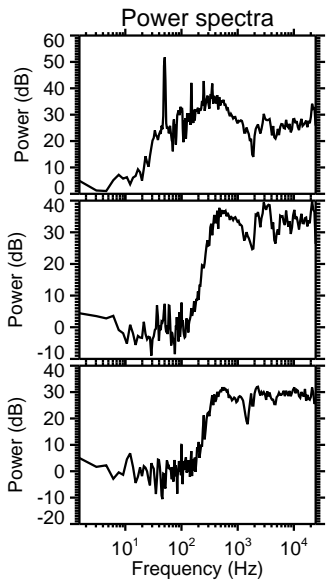
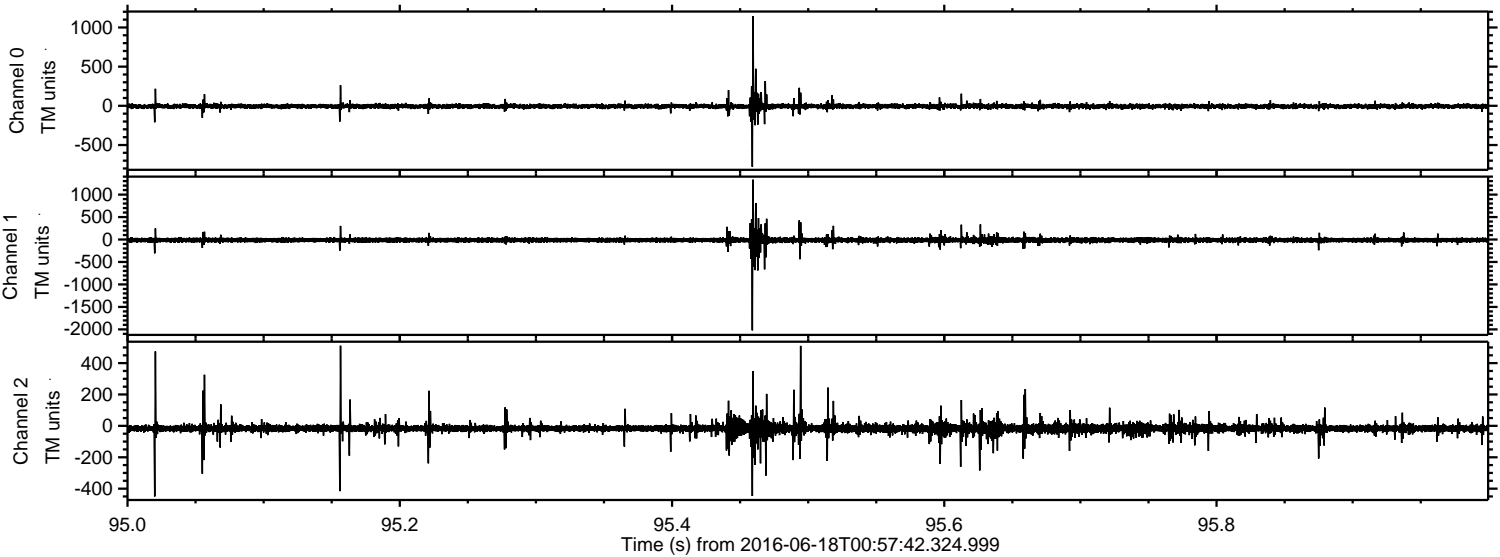
ELMAVAN 3D WAVEFORMS (Measured data sampled at 50 kHz) 51000 packets of 144 samples from 2016-06-18T00:57:42.324.999. Part 124/147

Processed Sat Jun 18 03:06:05 2016 by ELM ver.2012-10-06 from 001\_\_elm20160618\_005741\_\_dat00.bin



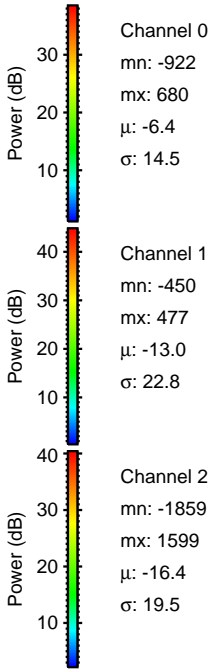
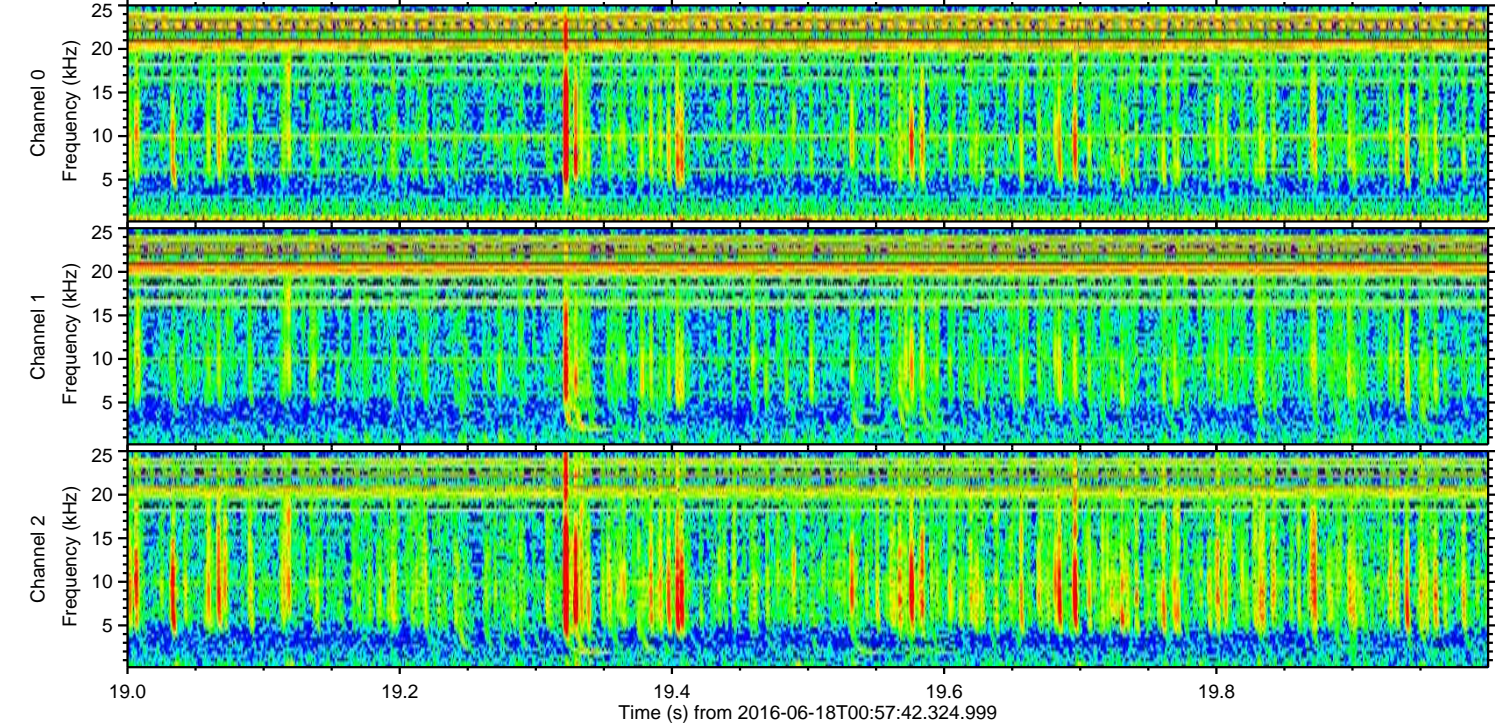
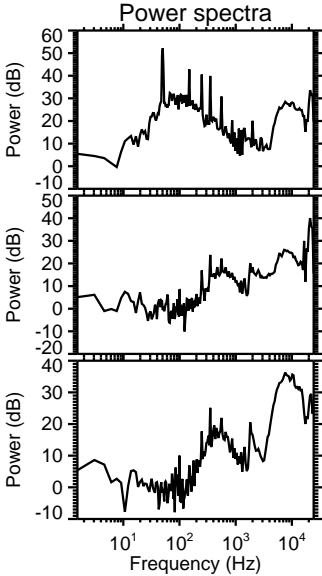
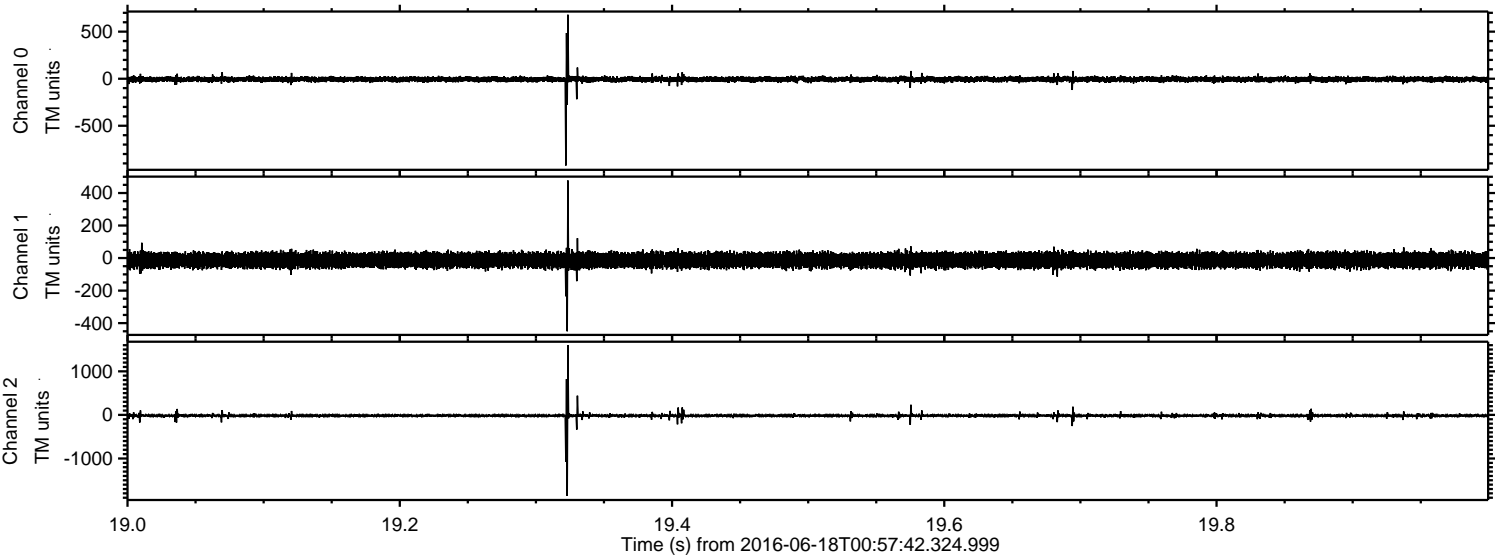


Processed Sat Jun 18 03:06:06 2016 by ELM ver.2012-10-06 from 001\_\_elm20160618\_005741\_\_dat00.bin



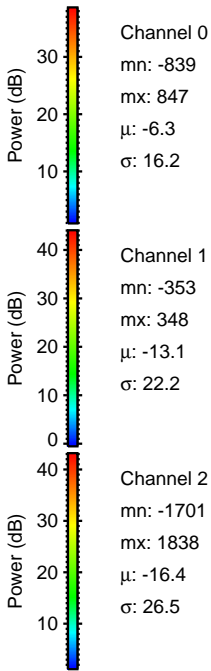
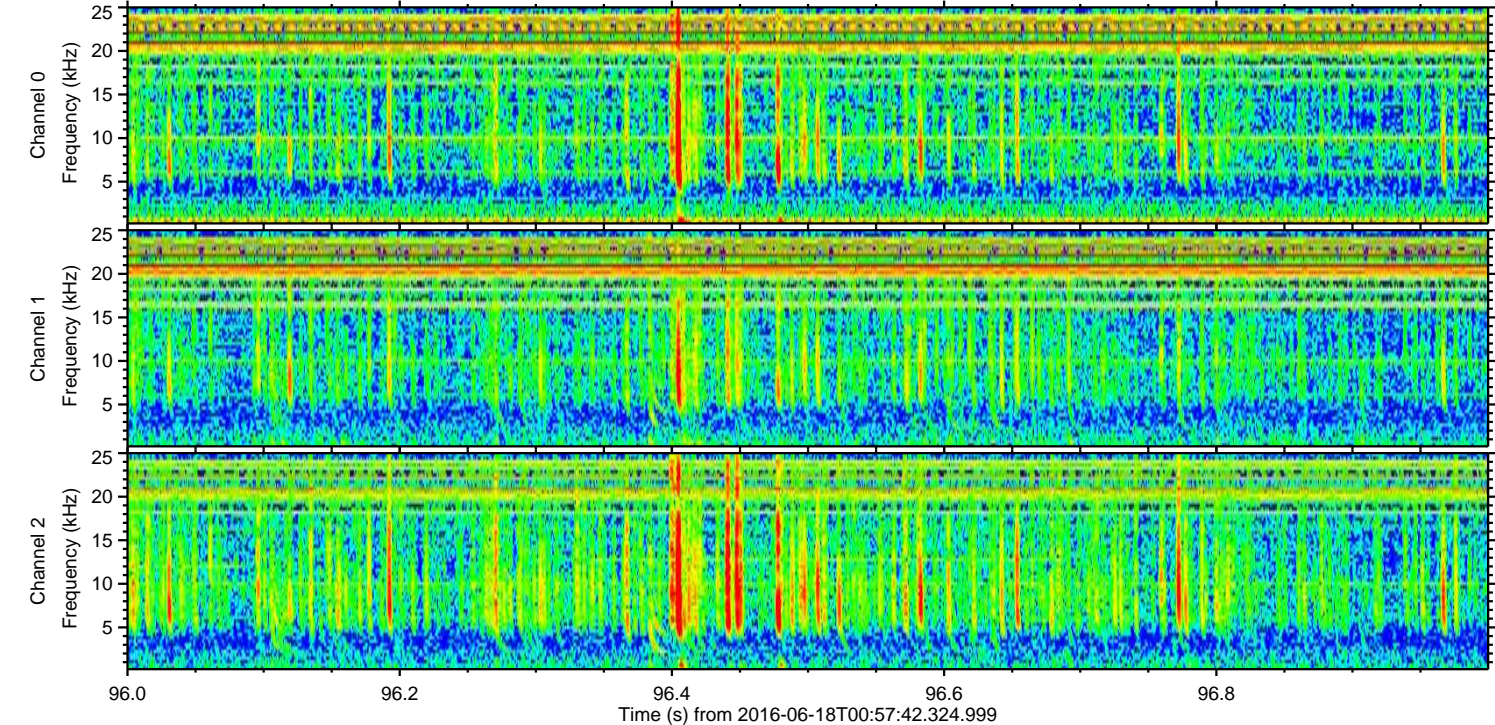
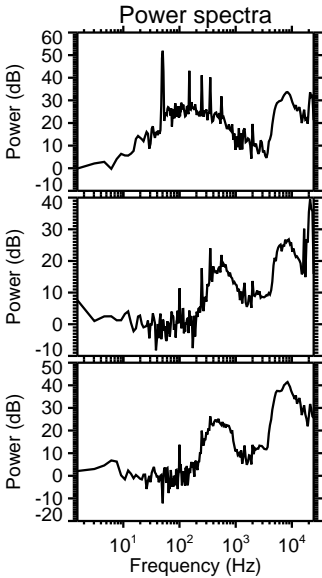
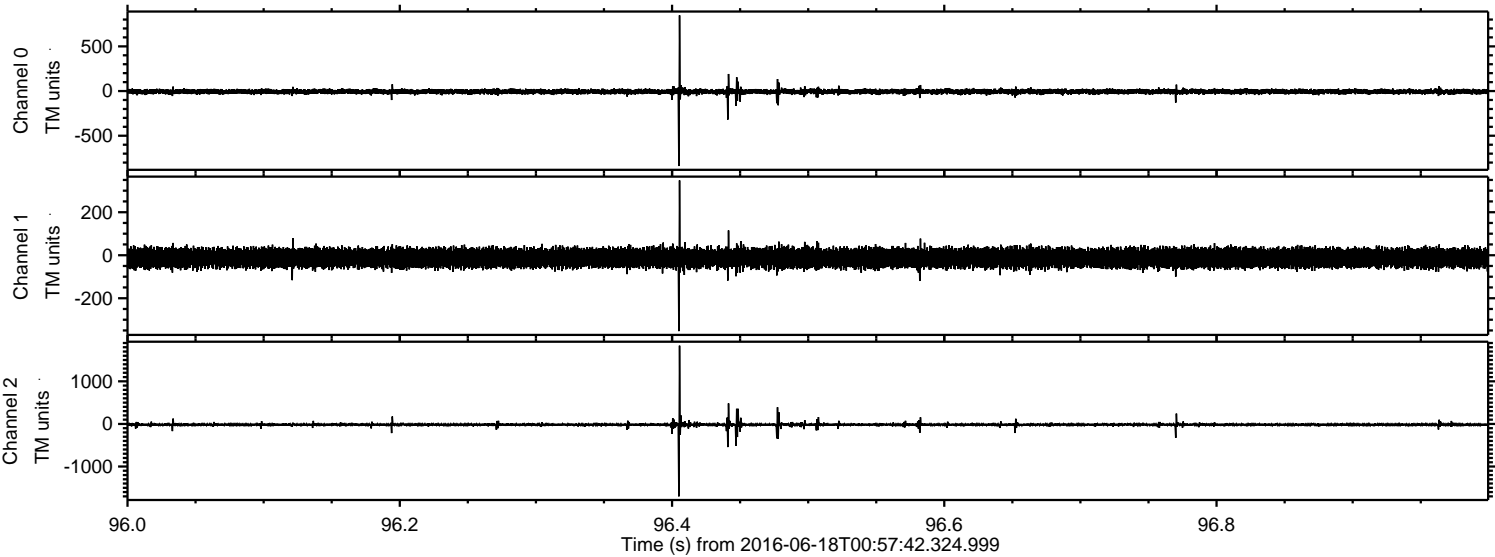


Processed Sat Jun 18 03:06:07 2016 by ELM ver.2012-10-06 from 001\_\_elm20160618\_005741\_\_dat00.bin



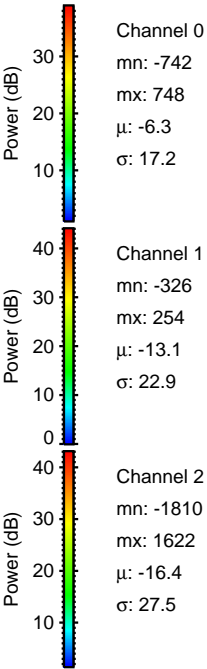
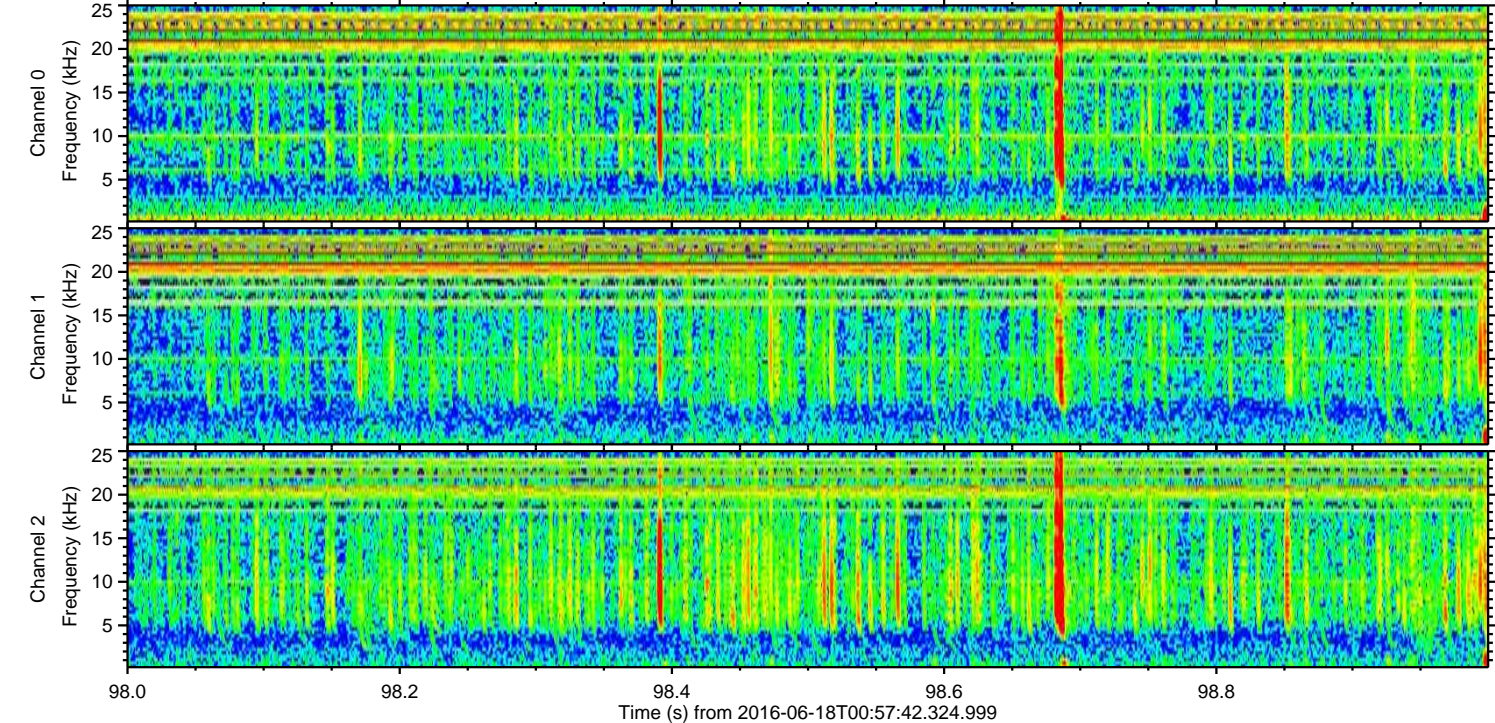
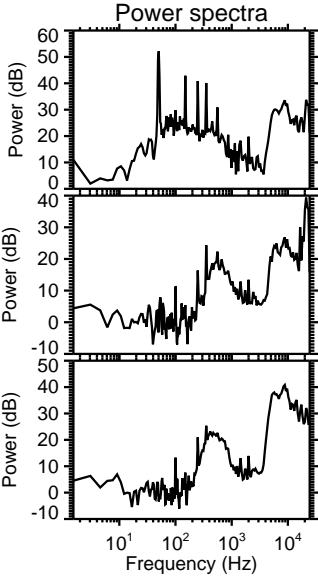
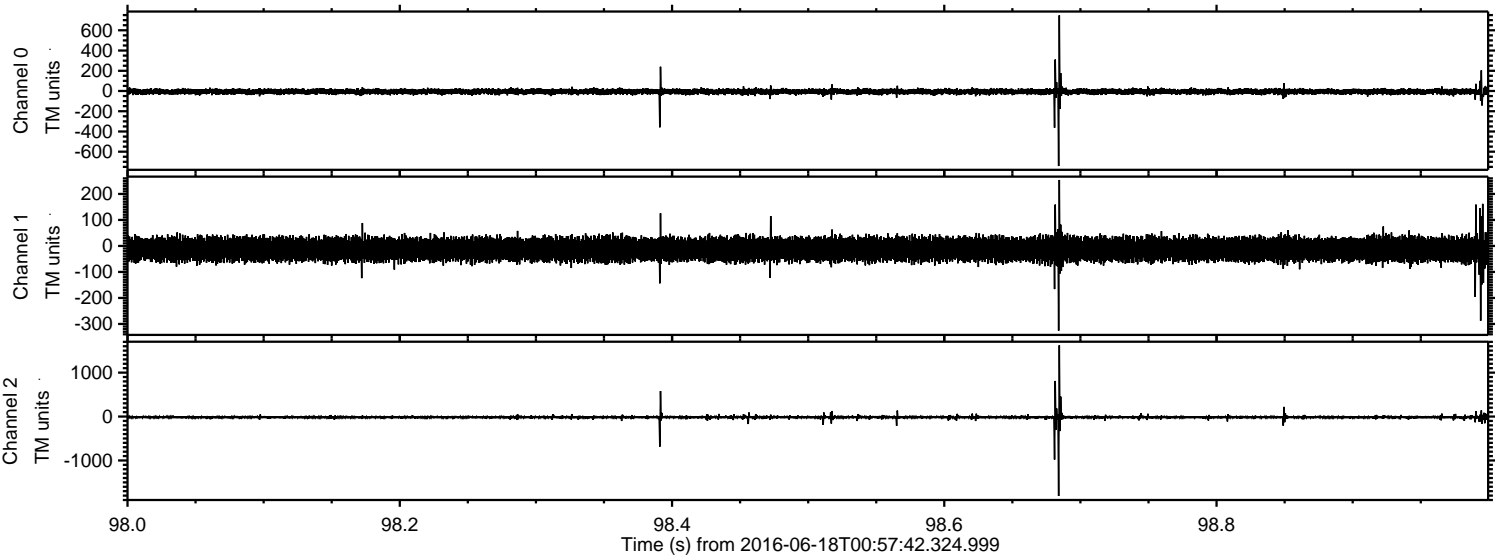


Processed Sat Jun 18 03:06:08 2016 by ELM ver.2012-10-06 from 001\_\_elm20160618\_005741\_\_dat00.bin





Processed Sat Jun 18 03:06:09 2016 by ELM ver.2012-10-06 from 001\_\_elm20160618\_005741\_\_dat00.bin





Processed Sat Jun 18 03:06:10 2016 by ELM ver.2012-10-06 from 001\_\_elm20160618\_005741\_\_dat00.bin

