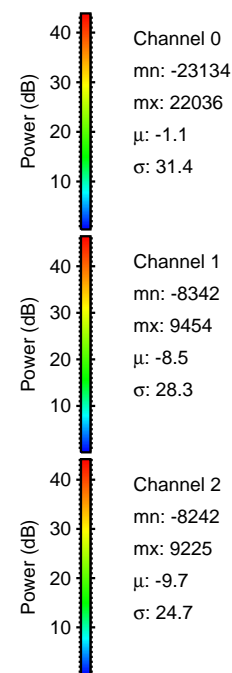
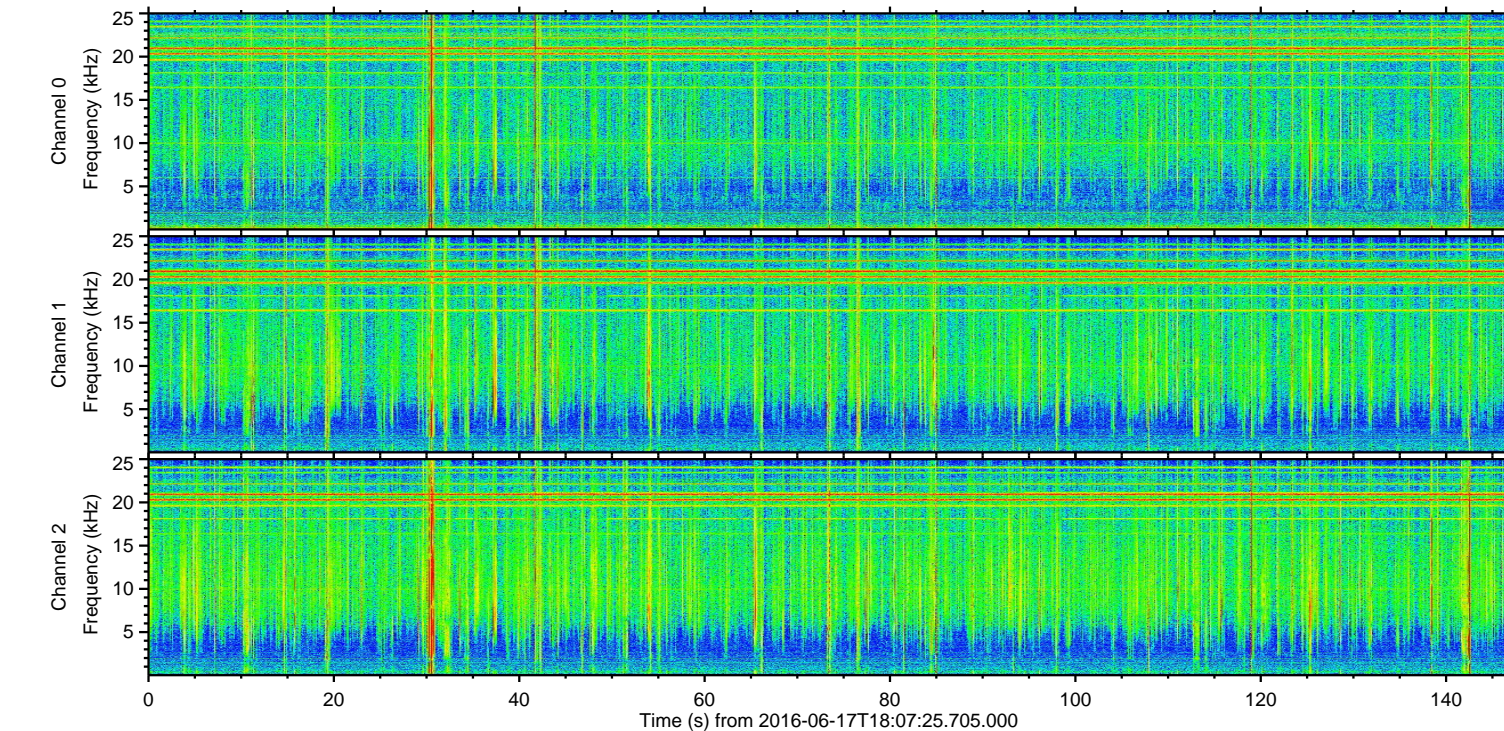
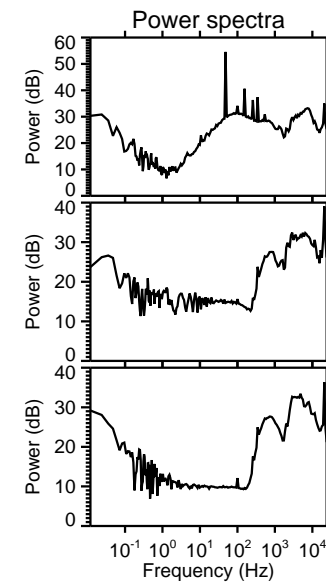
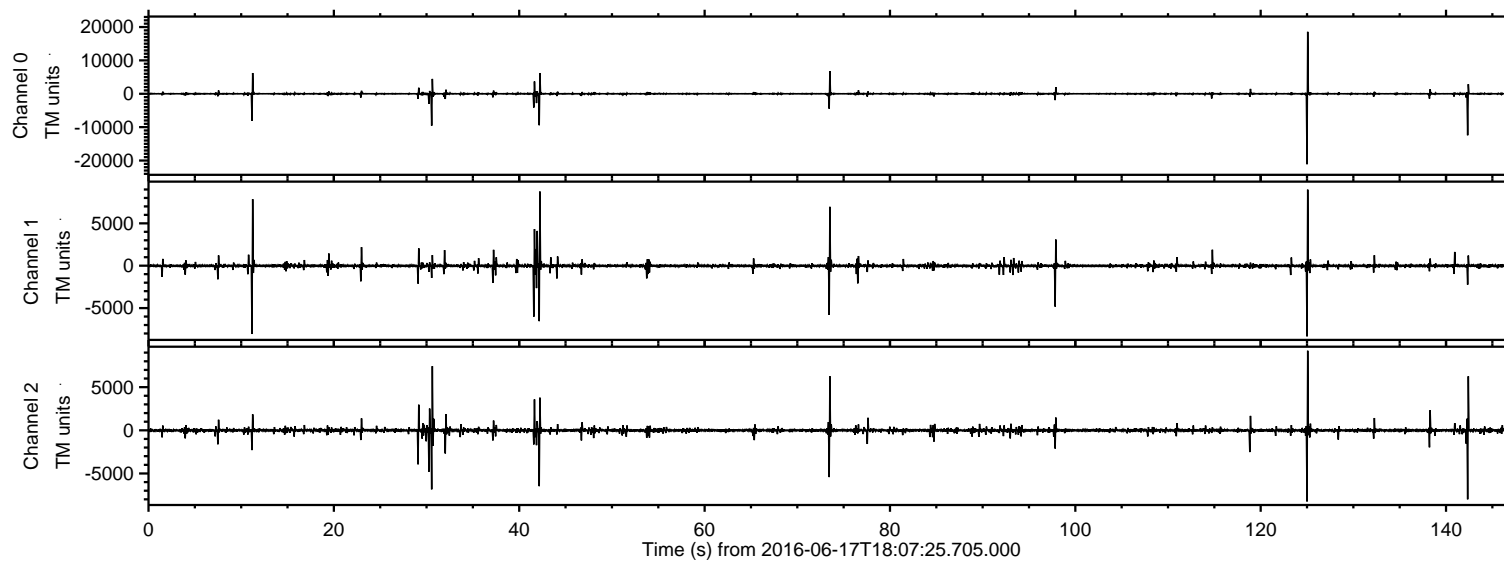


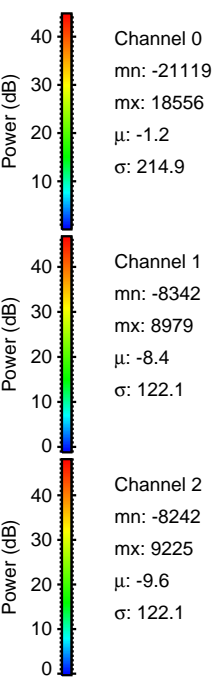
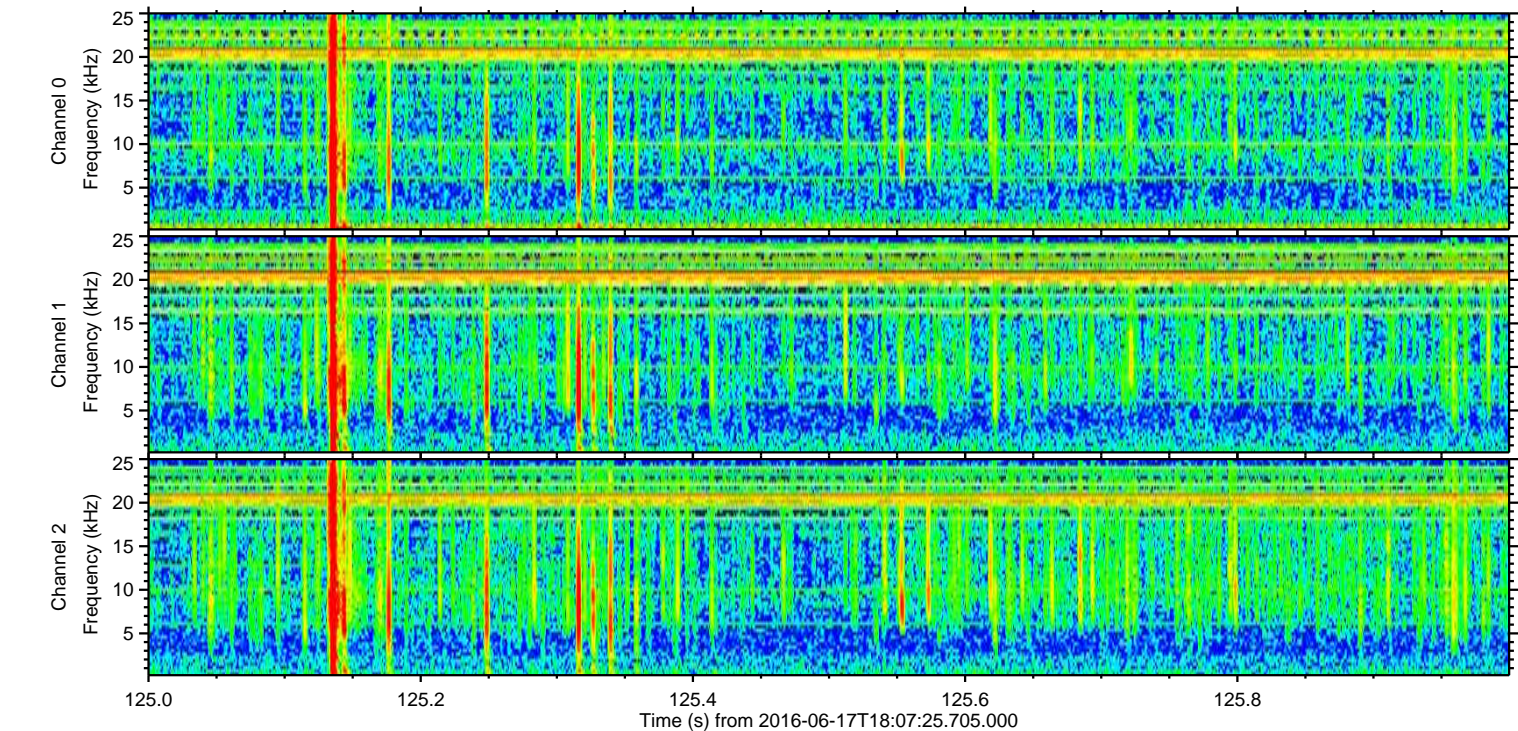
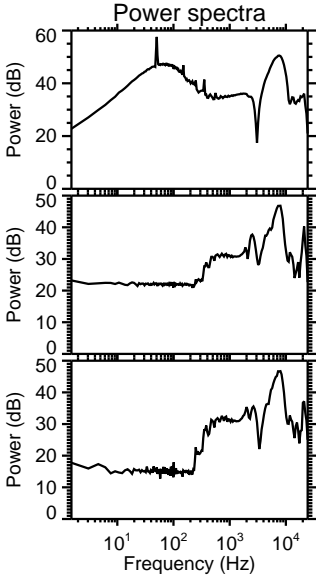
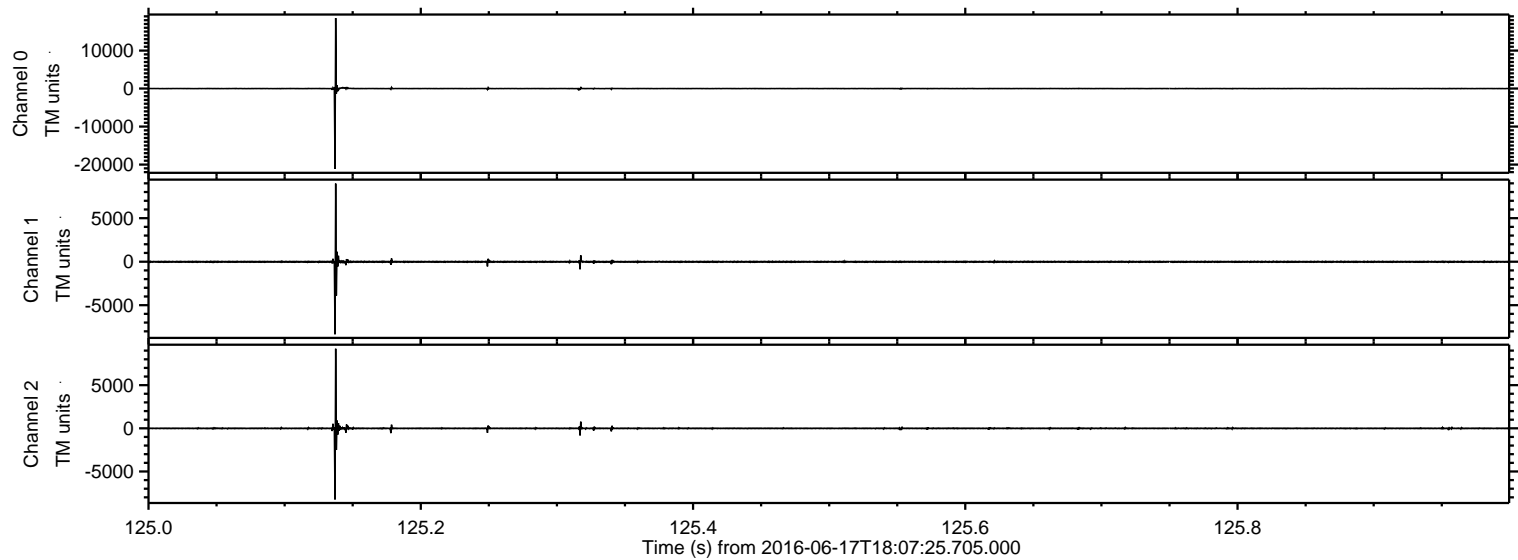
ELMAVAN 3D WAVEFORMS (Measured data sampled at 50 kHz) 51000 packets of 144 samples from 2016-06-17T18:07:25.705.000.

Processed Fri Jun 17 20:15:42 2016 by ELM ver.2012-10-06 from 001__elm20160617_180724__dat00.bin

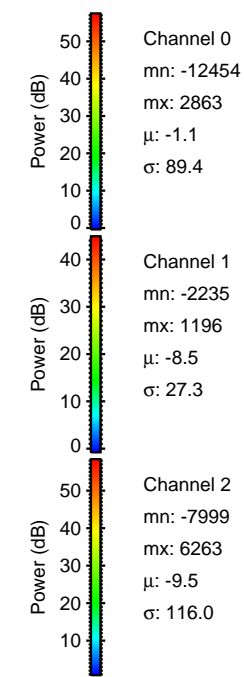
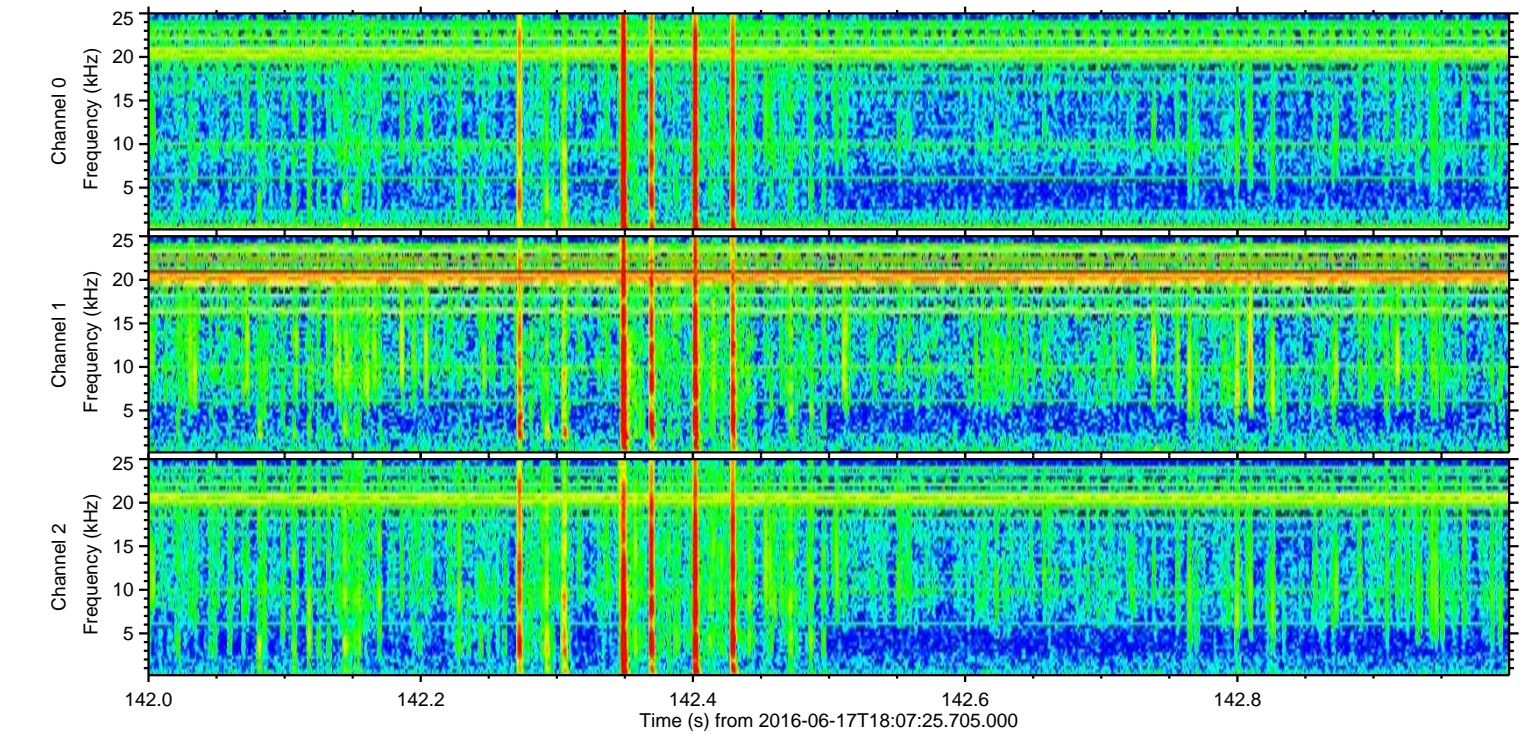
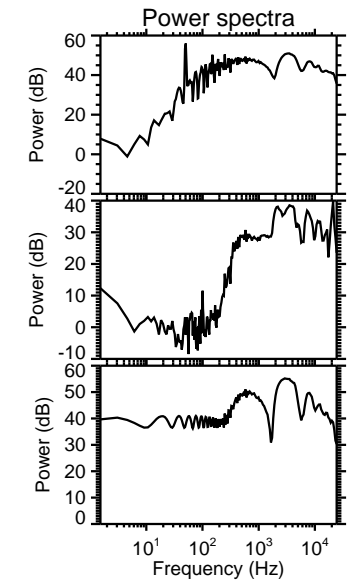
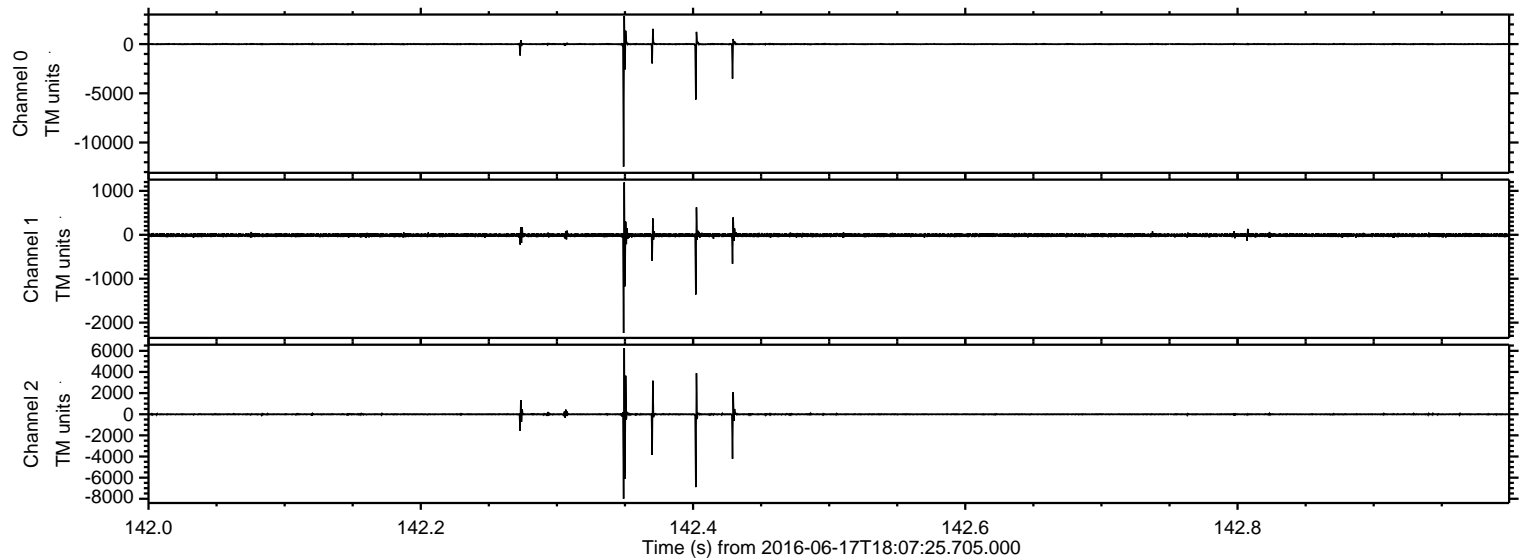


ELMAVAN 3D WAVEFORMS (Measured data sampled at 50 kHz) 51000 packets of 144 samples from 2016-06-17T18:07:25.705.000. Part 126/147

Processed Fri Jun 17 20:15:53 2016 by ELM ver.2012-10-06 from 001__elm20160617_180724__dat00.bin

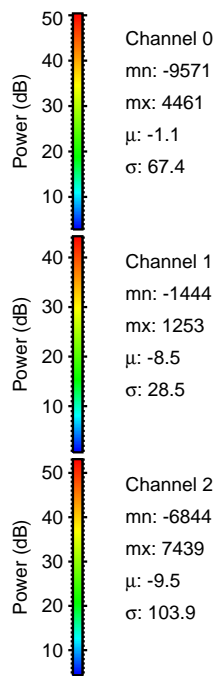
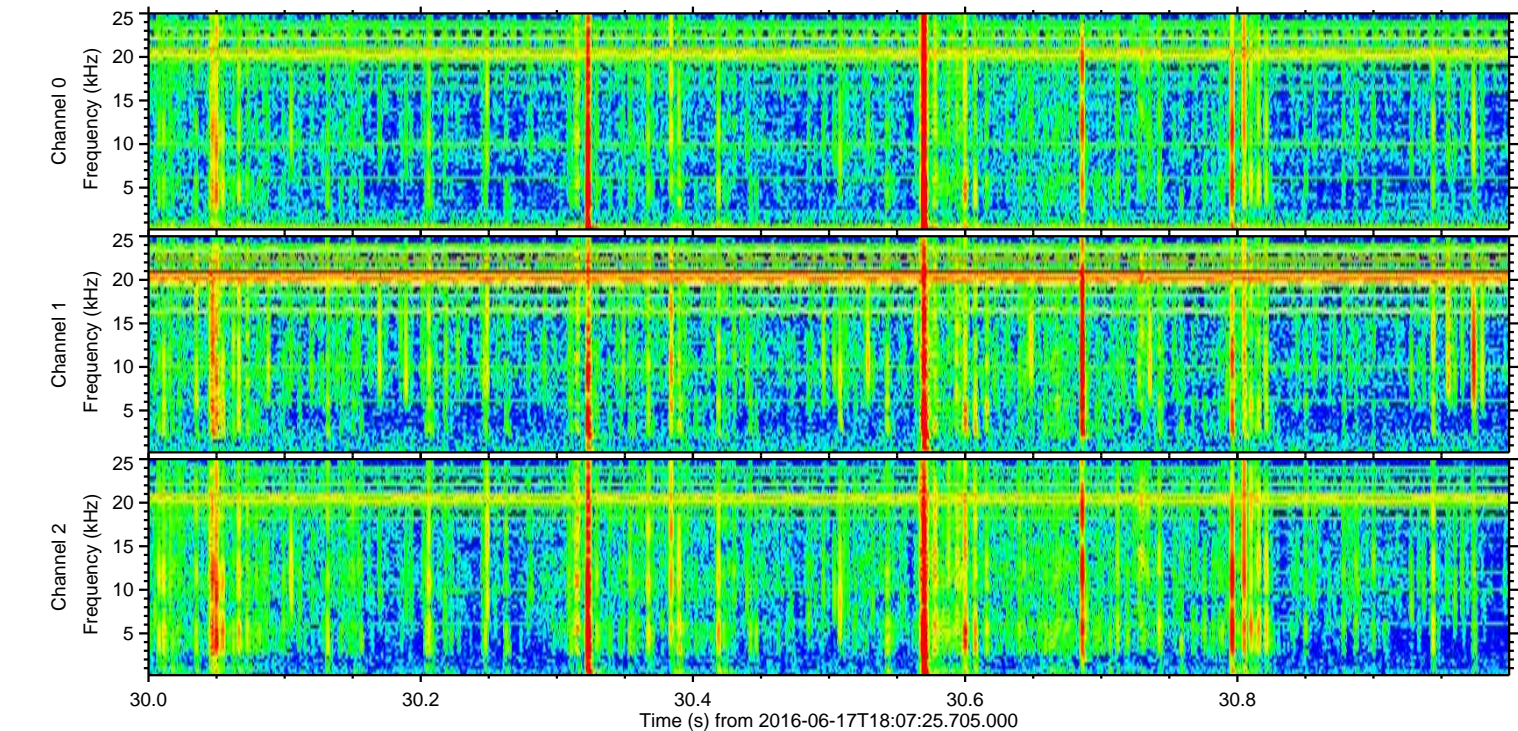
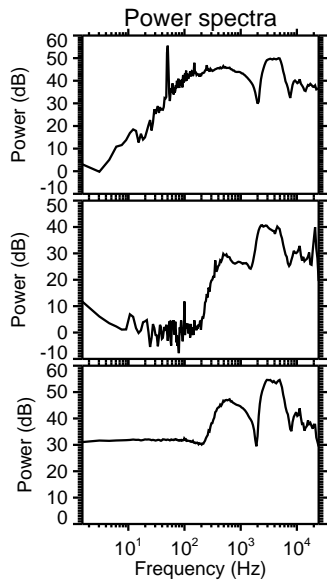
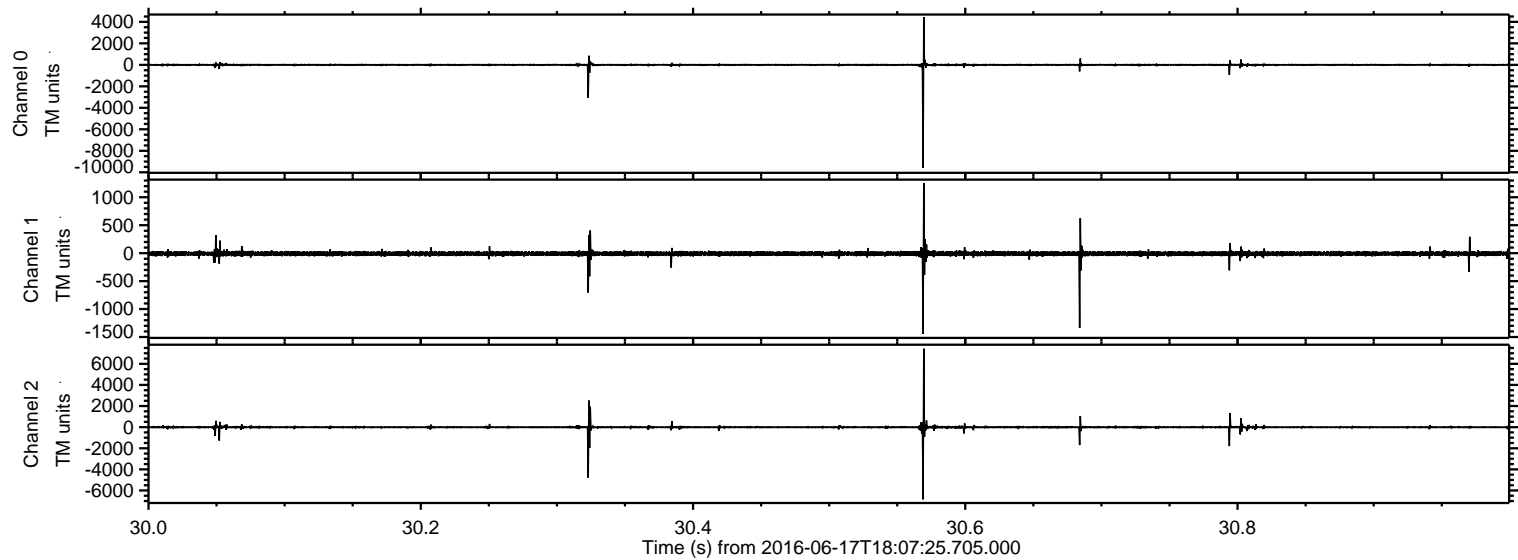


Processed Fri Jun 17 20:15:54 2016 by ELM ver.2012-10-06 from 001__elm20160617_180724__dat00.bin

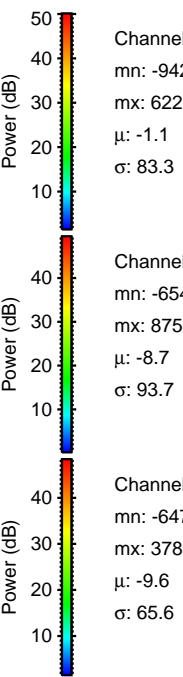
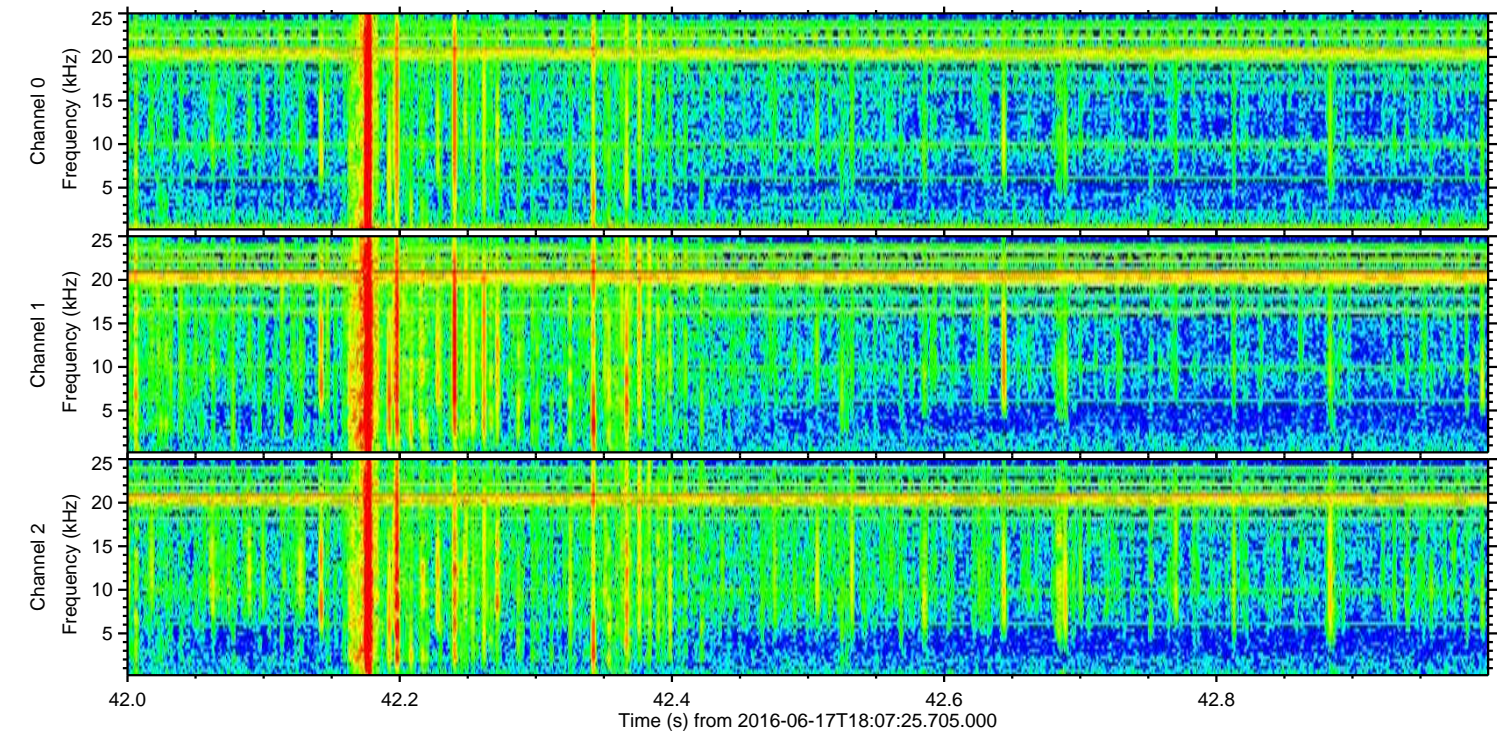
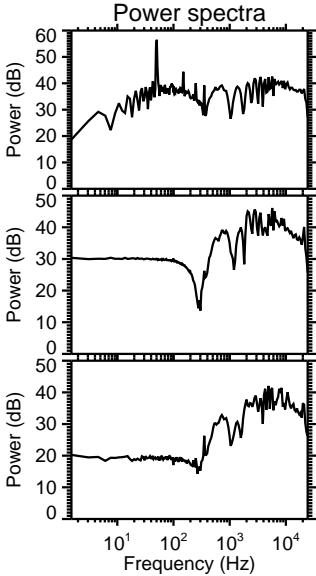
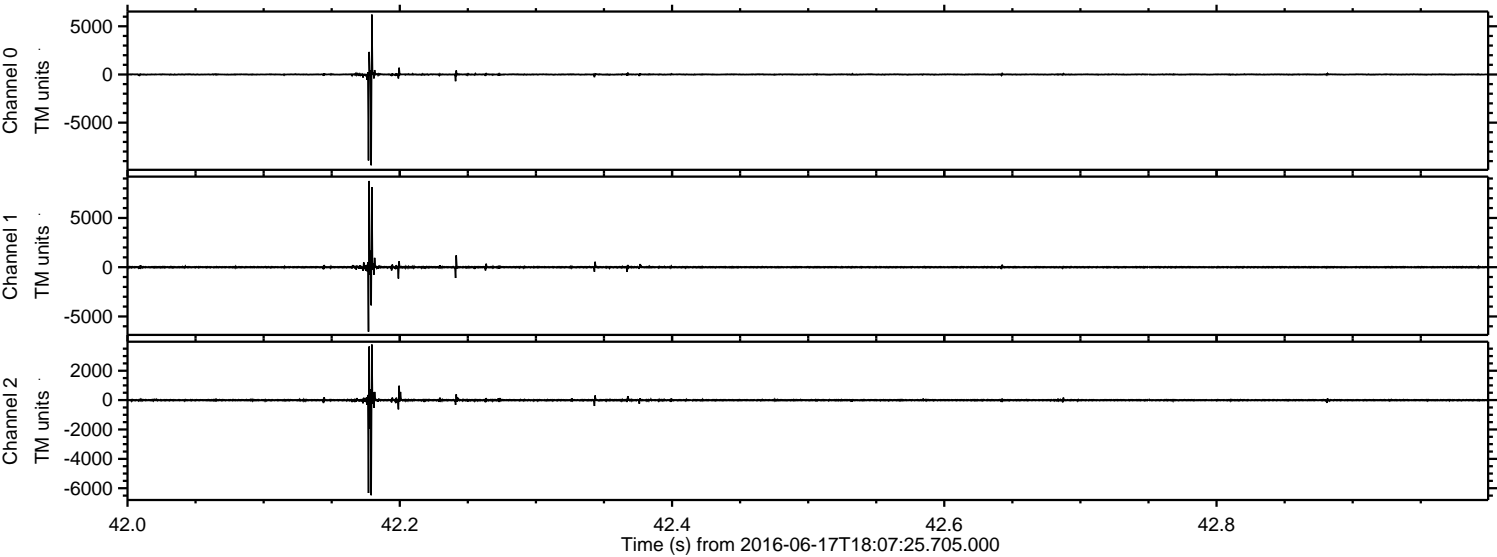


ELMAVAN 3D WAVEFORMS (Measured data sampled at 50 kHz) 51000 packets of 144 samples from 2016-06-17T18:07:25.705.000. Part 31/147

Processed Fri Jun 17 20:15:55 2016 by ELM ver.2012-10-06 from 001__elm20160617_180724__dat00.bin

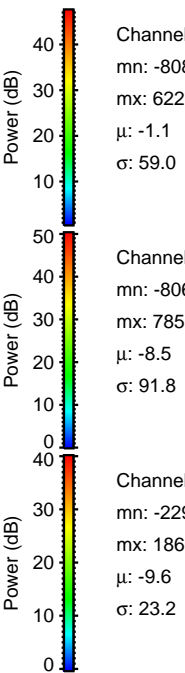
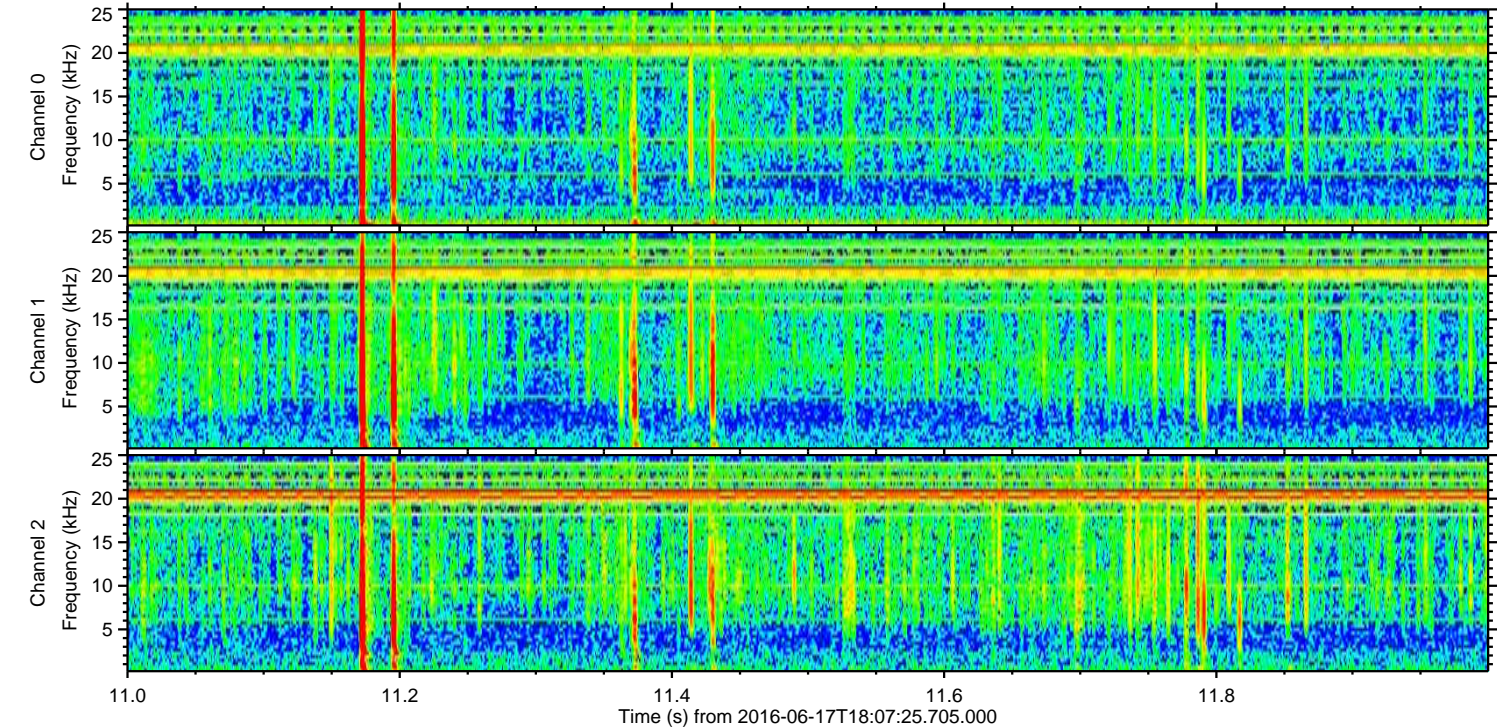
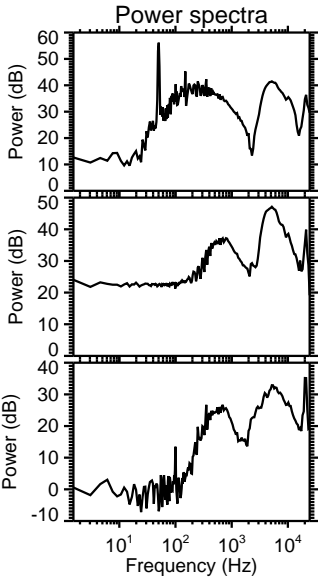
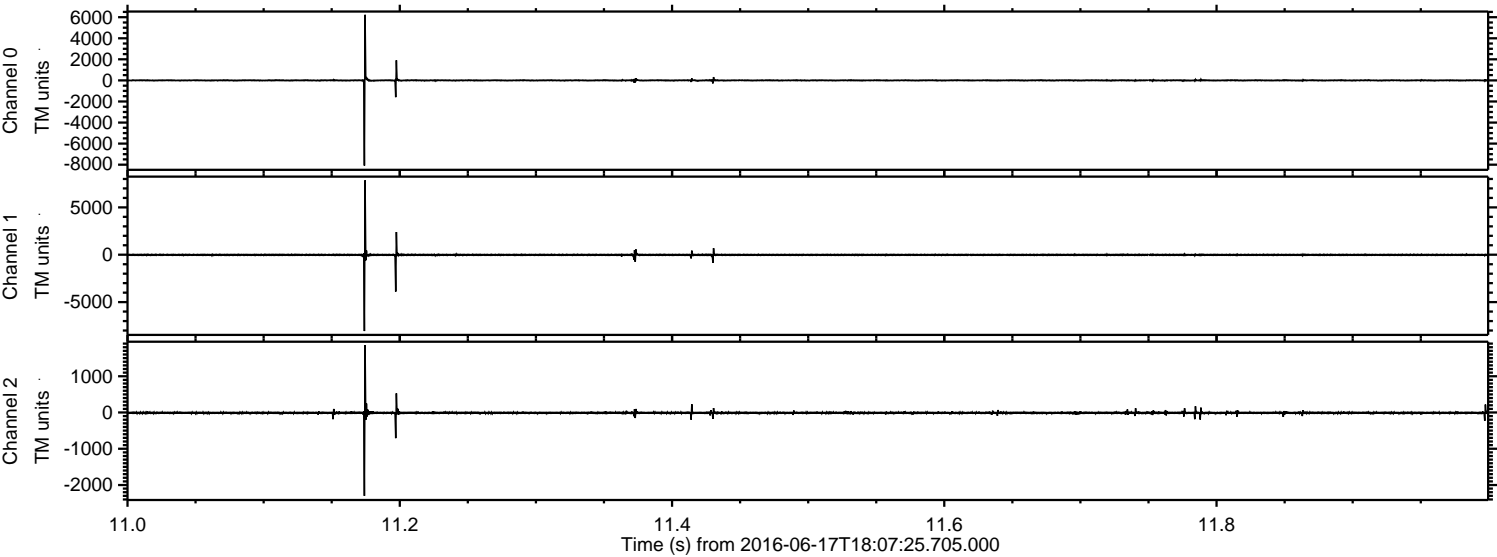


Processed Fri Jun 17 20:15:56 2016 by ELM ver.2012-10-06 from 001__elm20160617_180724__dat00.bin

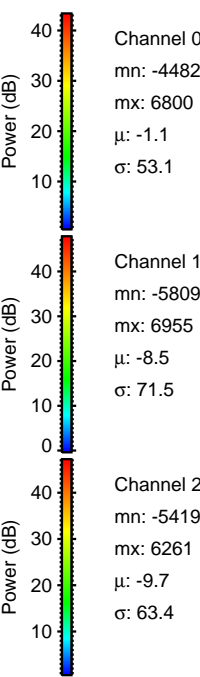
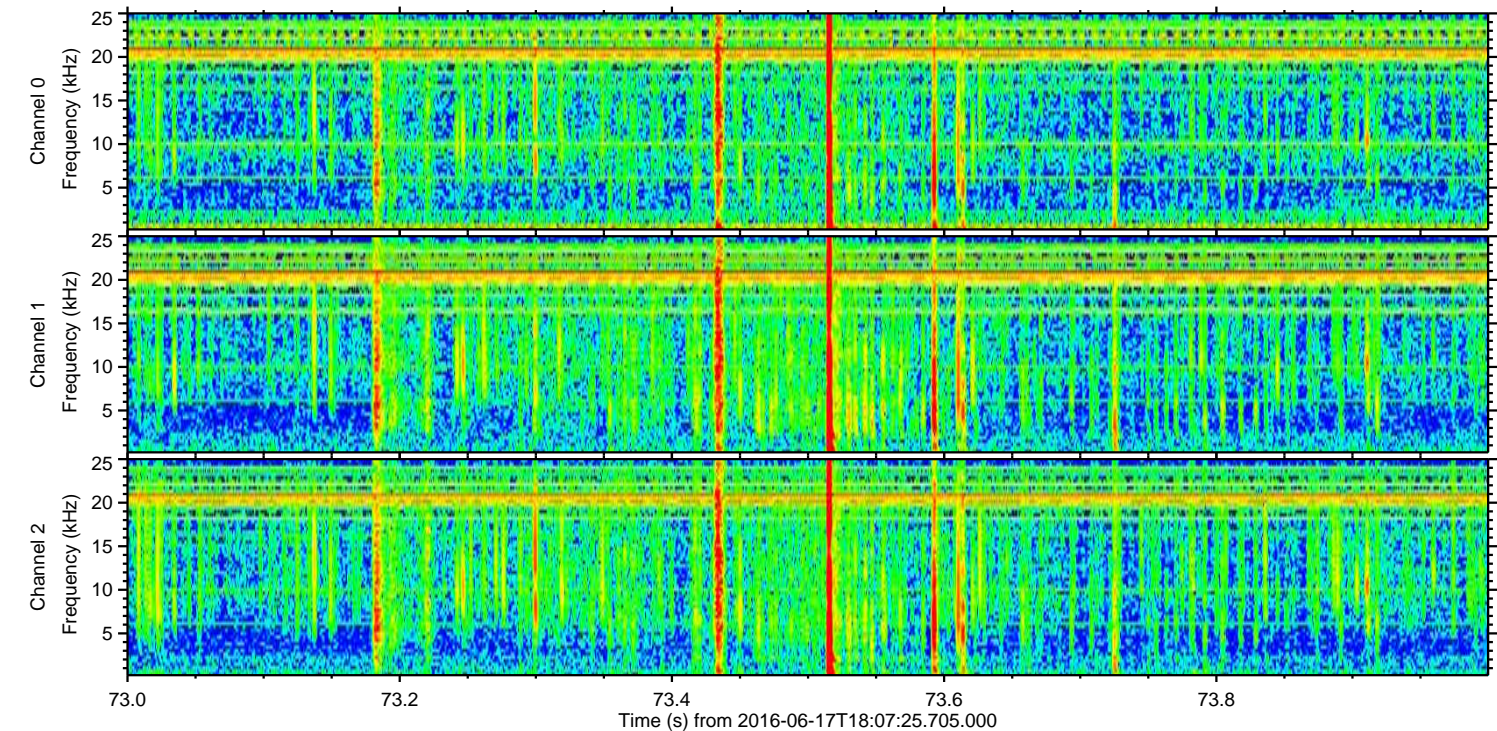
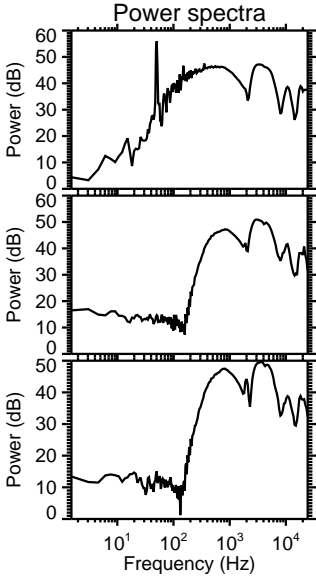
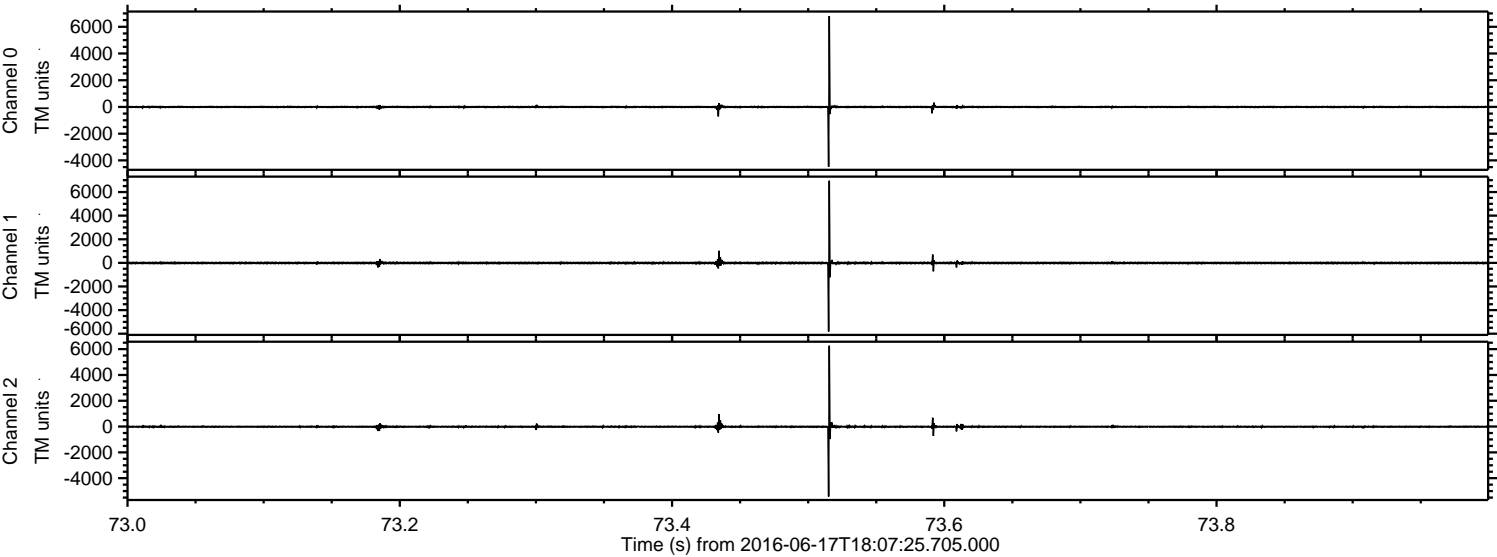


ELMAVAN 3D WAVEFORMS (Measured data sampled at 50 kHz) 51000 packets of 144 samples from 2016-06-17T18:07:25.705.000. Part 12/147

Processed Fri Jun 17 20:15:57 2016 by ELM ver.2012-10-06 from 001__elm20160617_180724__dat00.bin

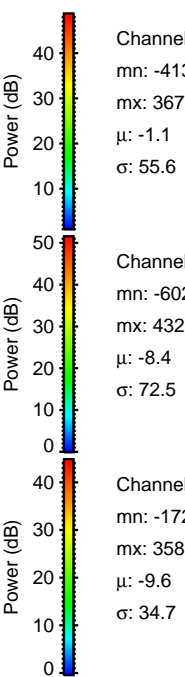
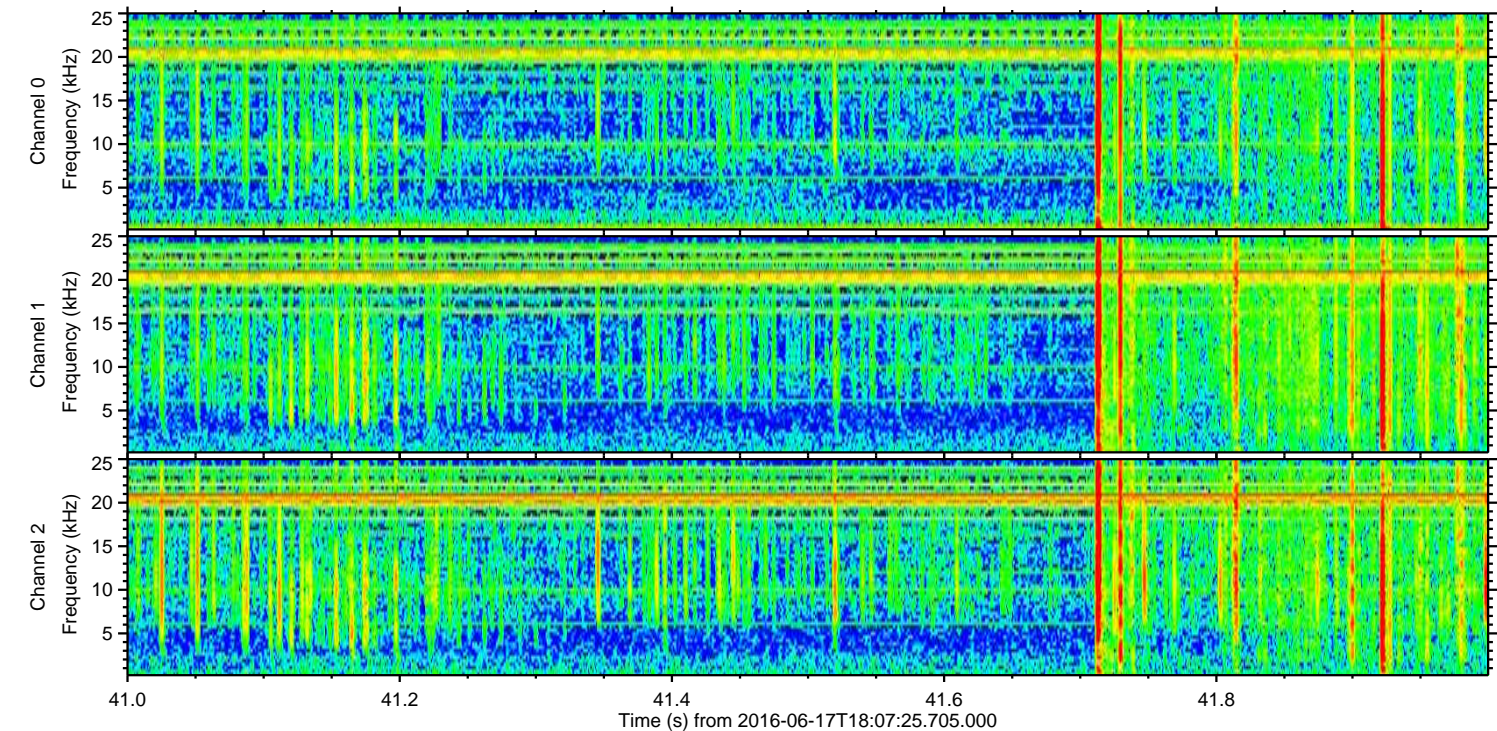
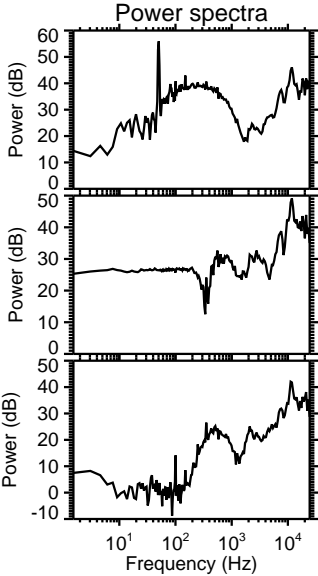
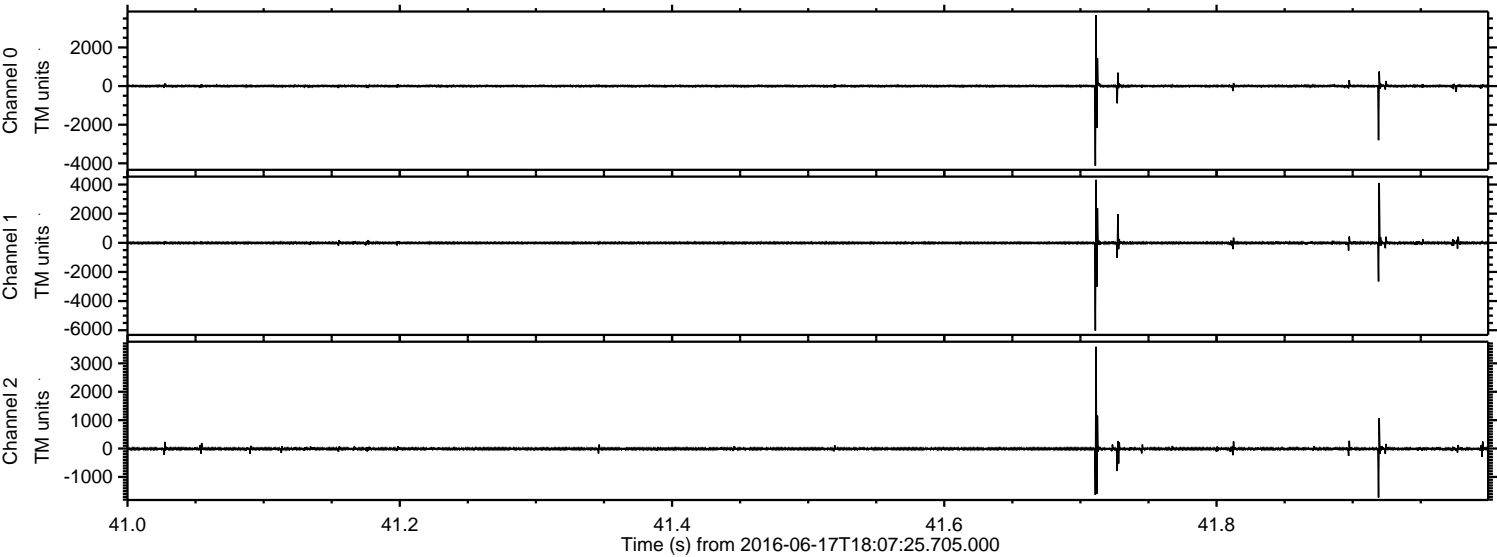


Processed Fri Jun 17 20:15:58 2016 by ELM ver.2012-10-06 from 001__elm20160617_180724__dat00.bin



ELMAVAN 3D WAVEFORMS (Measured data sampled at 50 kHz) 51000 packets of 144 samples from 2016-06-17T18:07:25.705.000. Part 42/147

Processed Fri Jun 17 20:15:59 2016 by ELM ver.2012-10-06 from 001__elm20160617_180724__dat00.bin

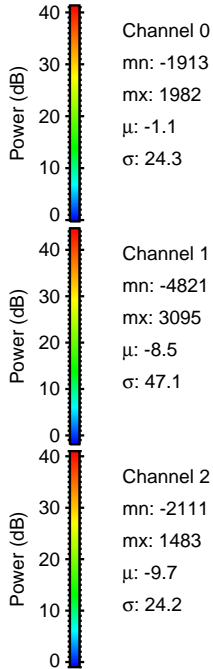
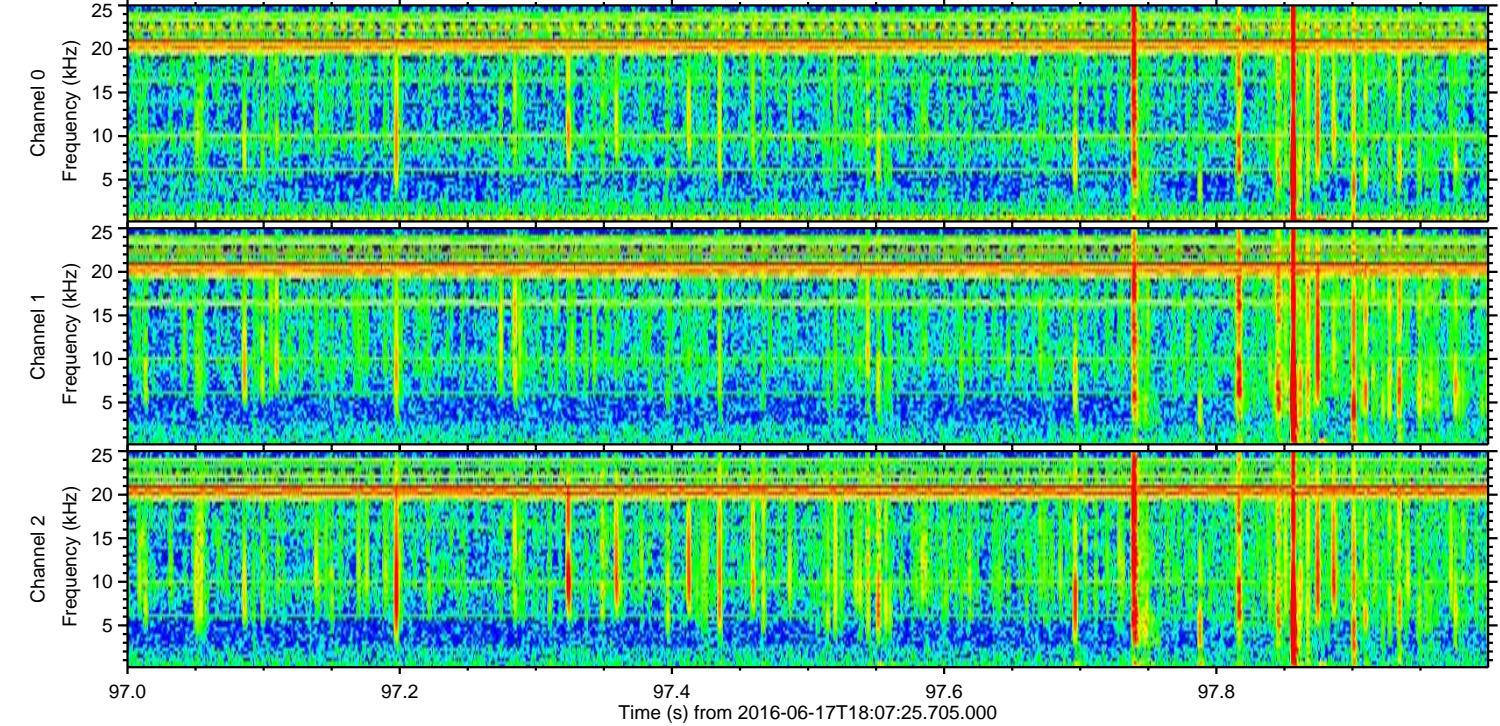
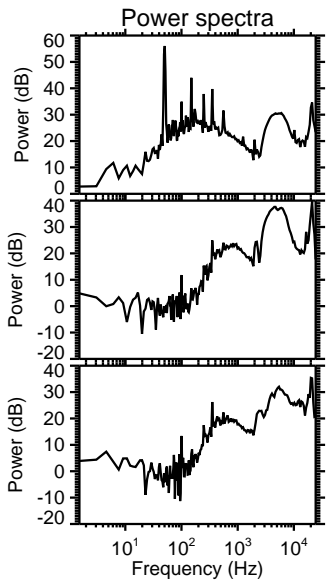
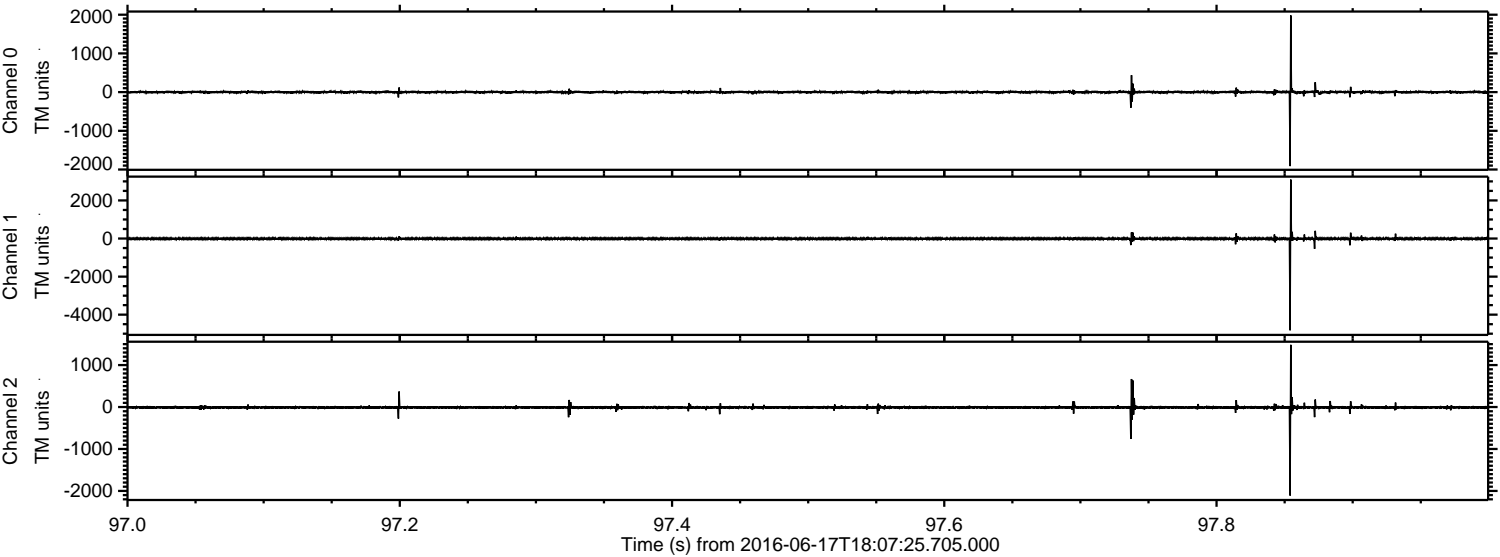


Channel 0
mn: -4131
mx: 3675
 μ : -1.1
 σ : 55.6

Channel 1
mn: -6021
mx: 4327
 μ : -8.4
 σ : 72.5

Channel 2
mn: -1726
mx: 3583
 μ : -9.6
 σ : 34.7

Processed Fri Jun 17 20:16:00 2016 by ELM ver.2012-10-06 from 001__elm20160617_180724__dat00.bin



Channel 0
mn: -1913
mx: 1982
 μ : -1.1
 σ : 24.3

Channel 1
mn: -4821
mx: 3095
 μ : -8.5
 σ : 47.1

Channel 2
mn: -2111
mx: 1483
 μ : -9.7
 σ : 24.2

Processed Fri Jun 17 20:16:01 2016 by ELM ver.2012-10-06 from 001__elm20160617_180724__dat00.bin

