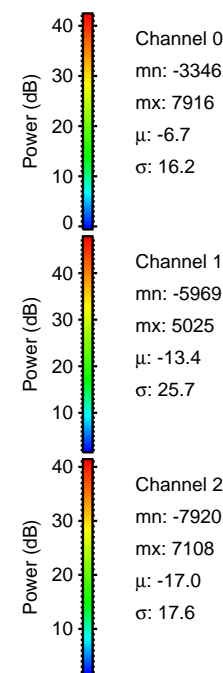
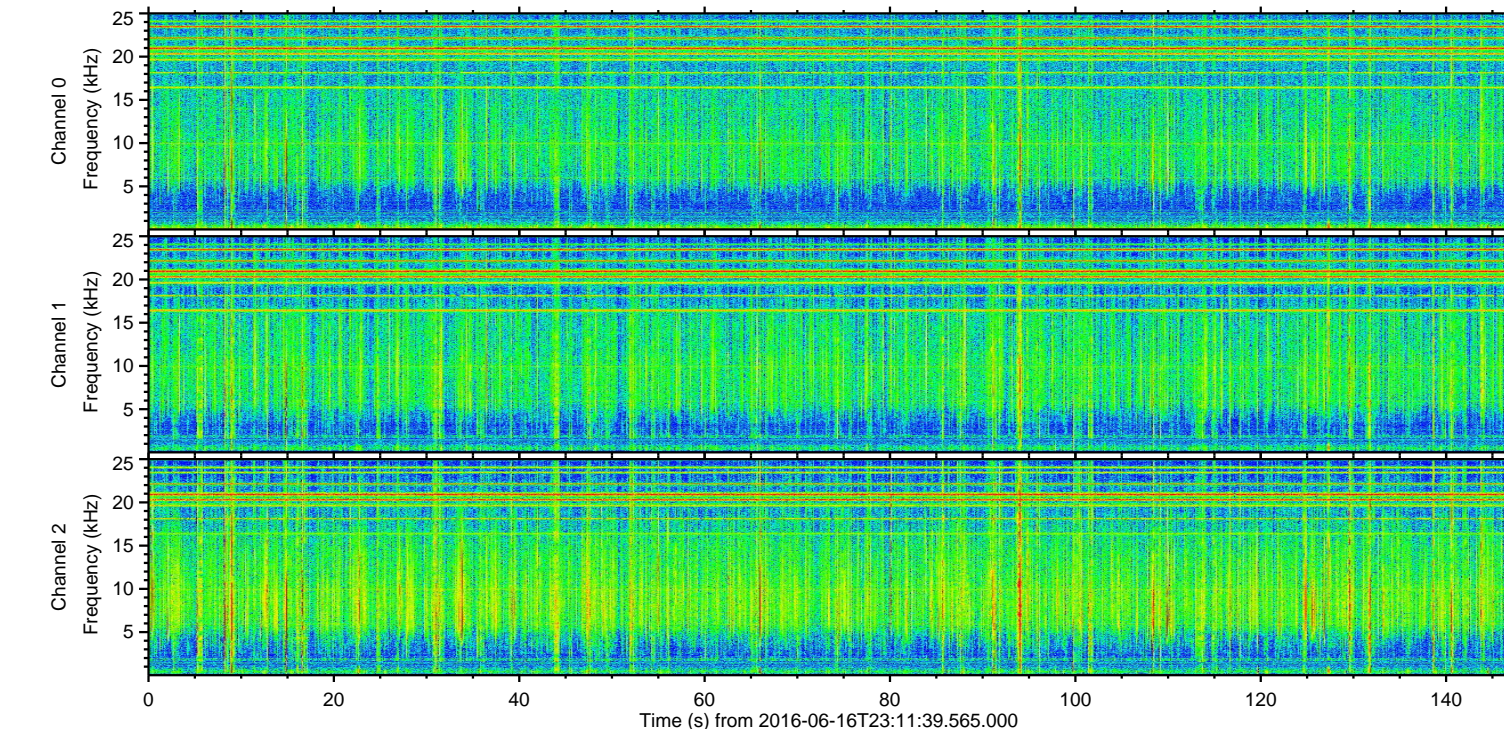
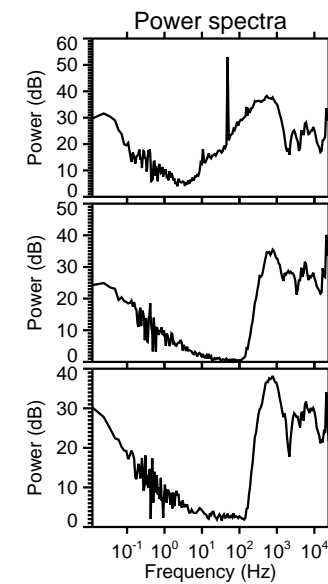
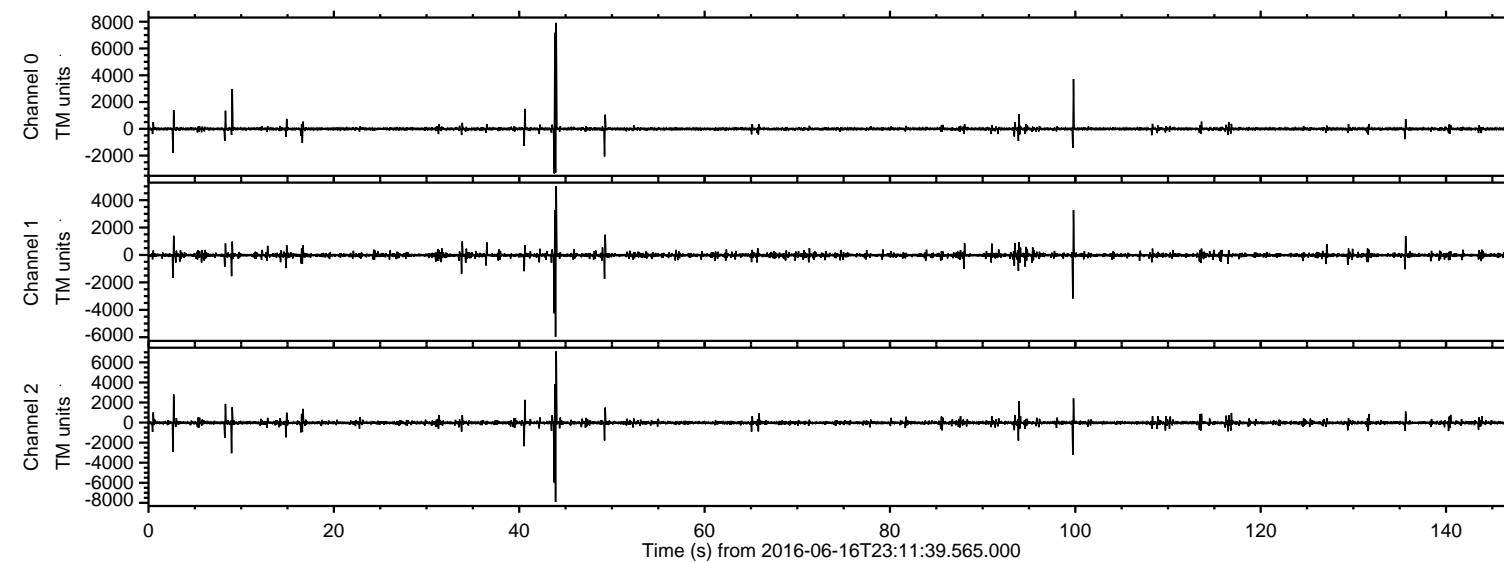
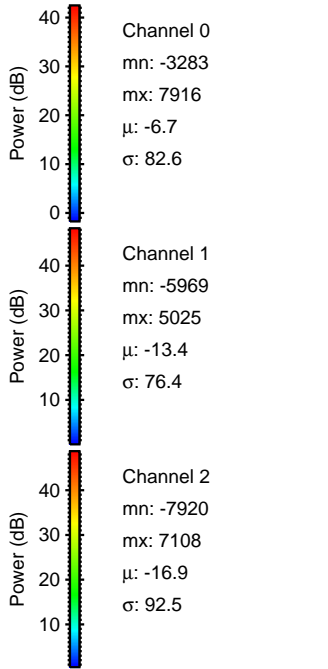
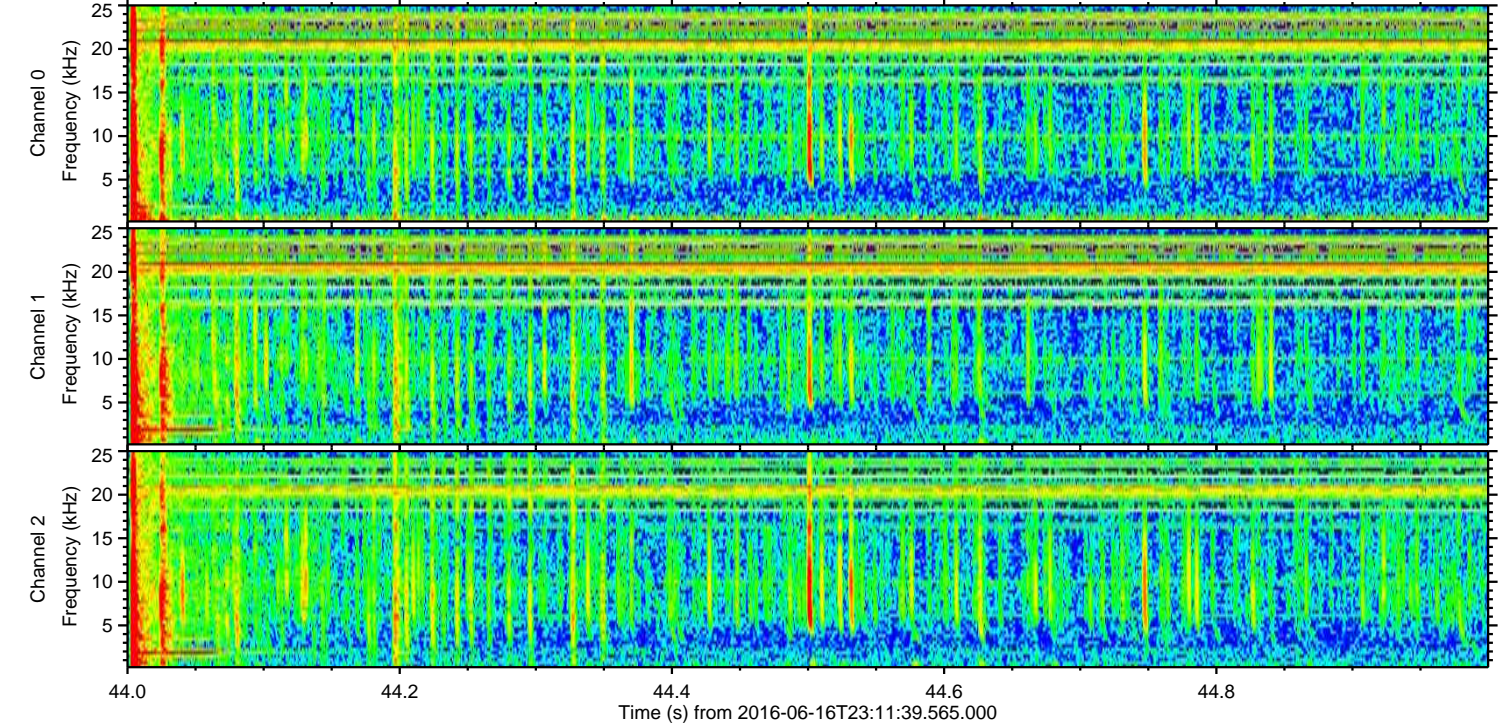
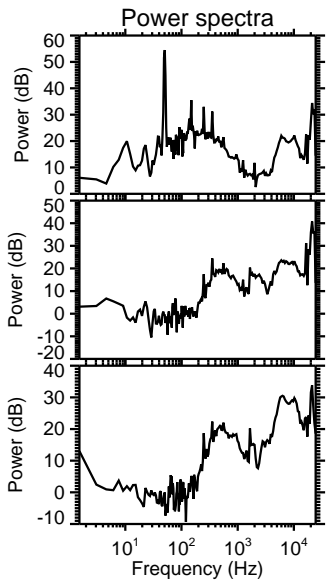
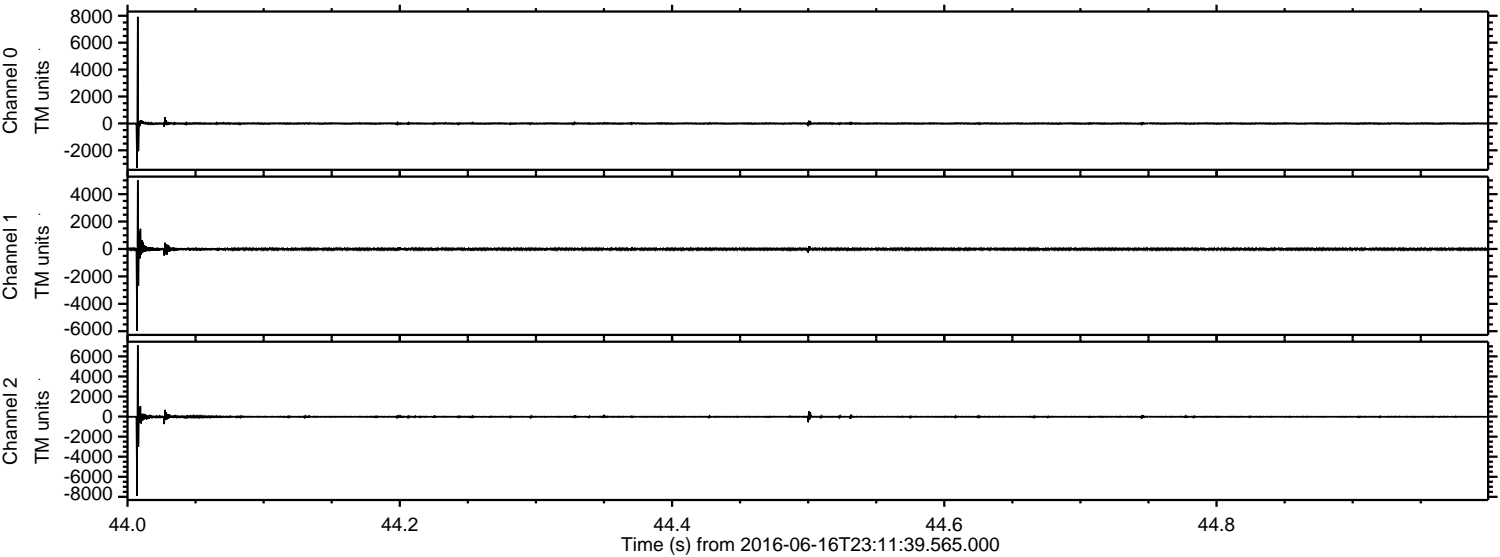


ELMAVAN 3D WAVEFORMS (Measured data sampled at 50 kHz) 51000 packets of 144 samples from 2016-06-16T23:11:39.565.000.

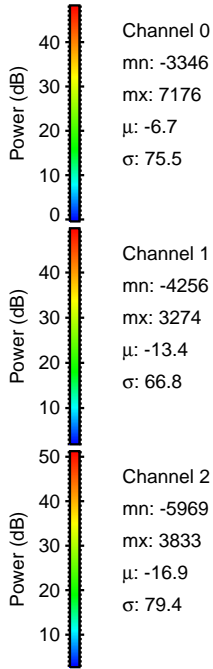
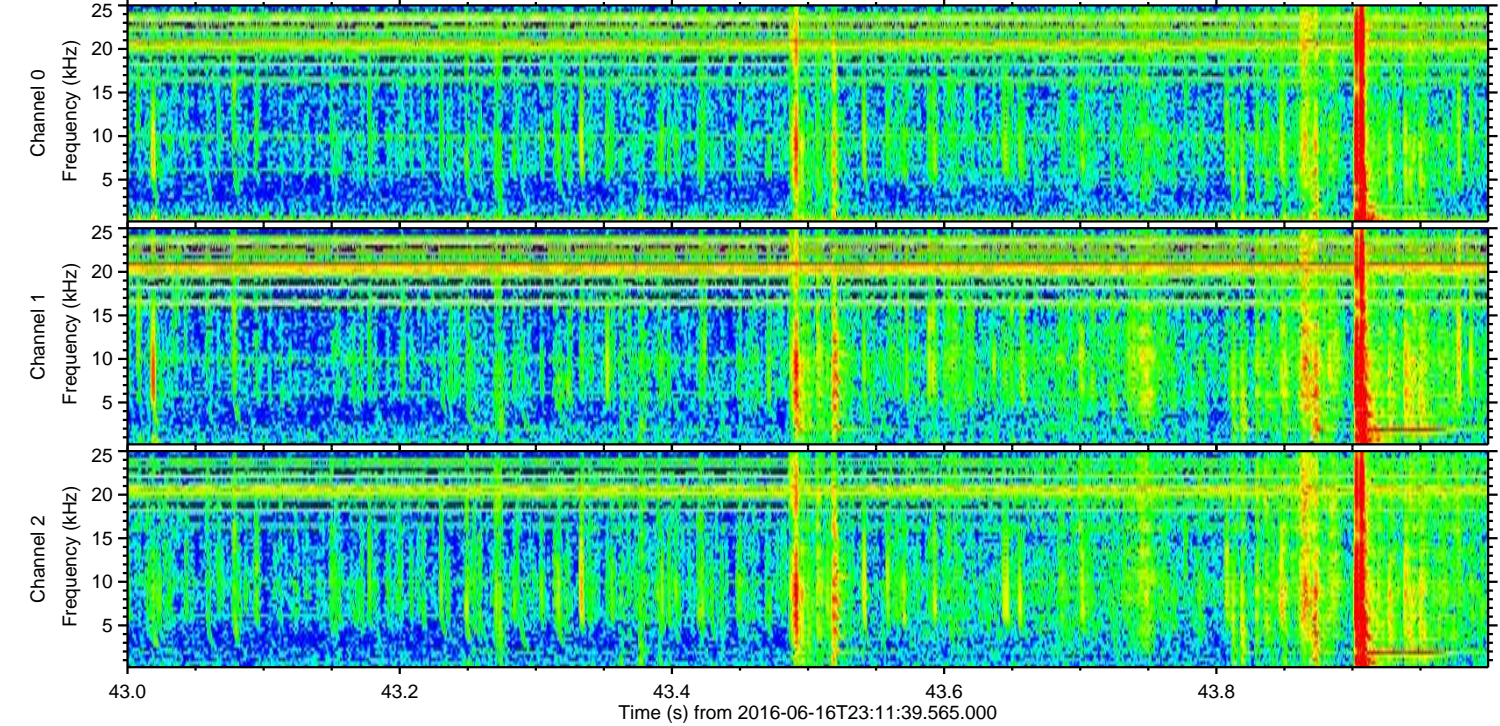
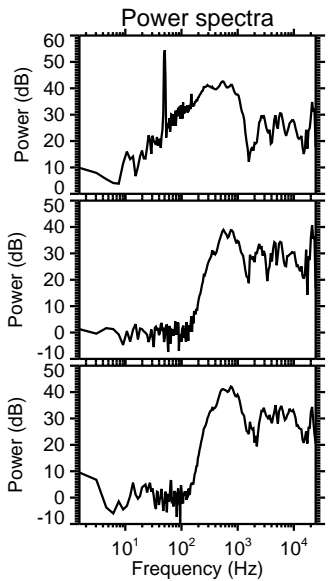
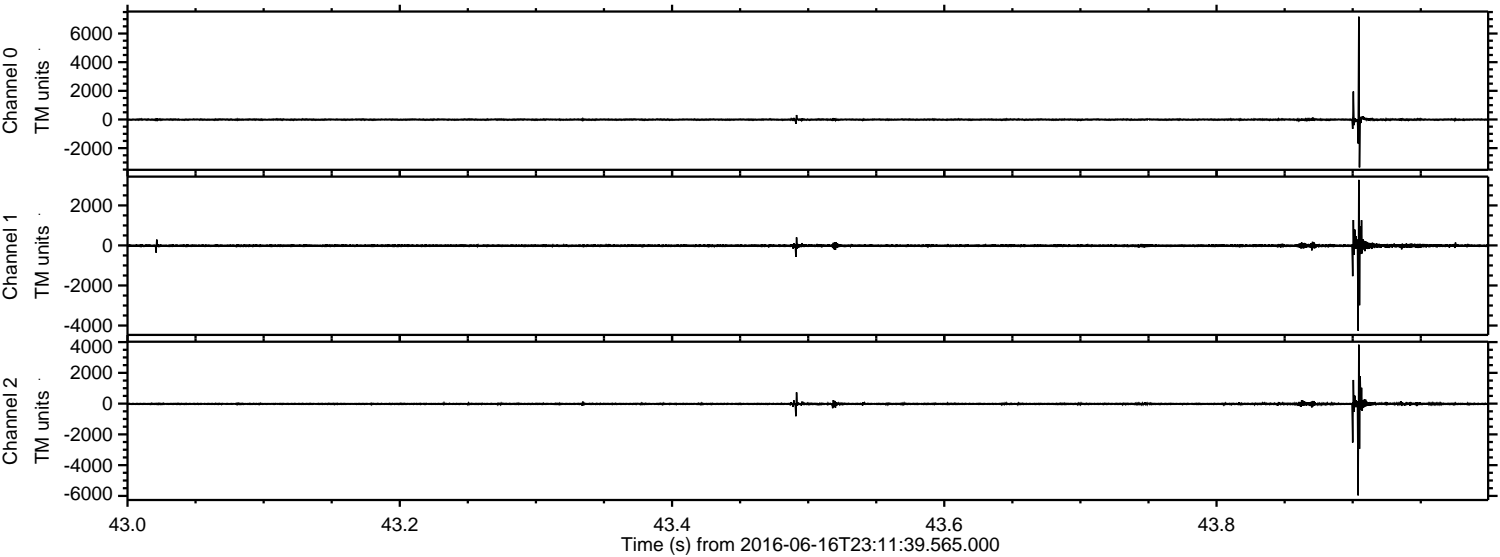
Processed Fri Jun 17 01:20:09 2016 by ELM ver.2012-10-06 from 001__elm20160616_231138__dat00.bin



Processed Fri Jun 17 01:20:24 2016 by ELM ver.2012-10-06 from 001__elm20160616_231138__dat00.bin

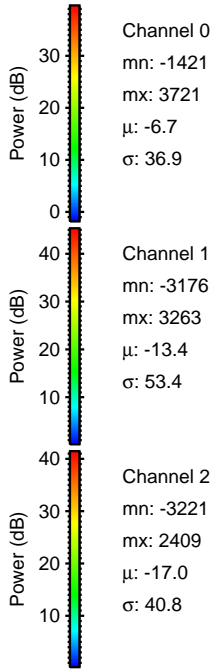
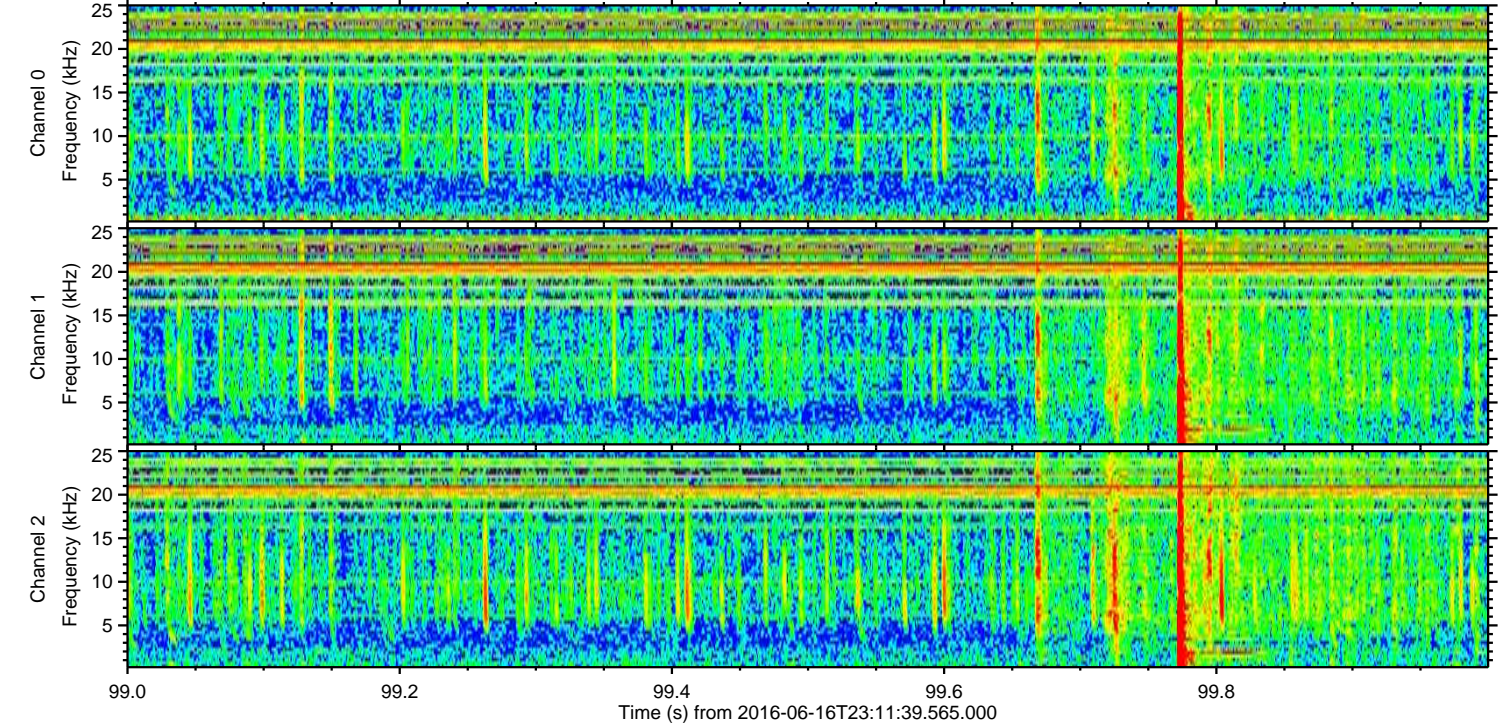
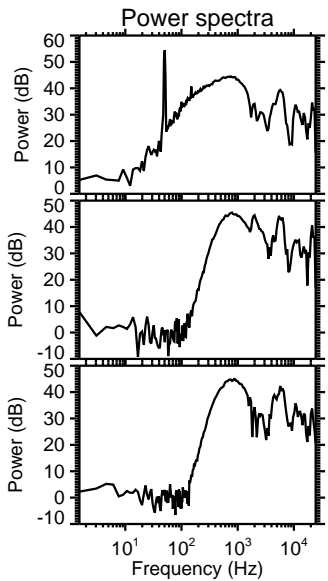
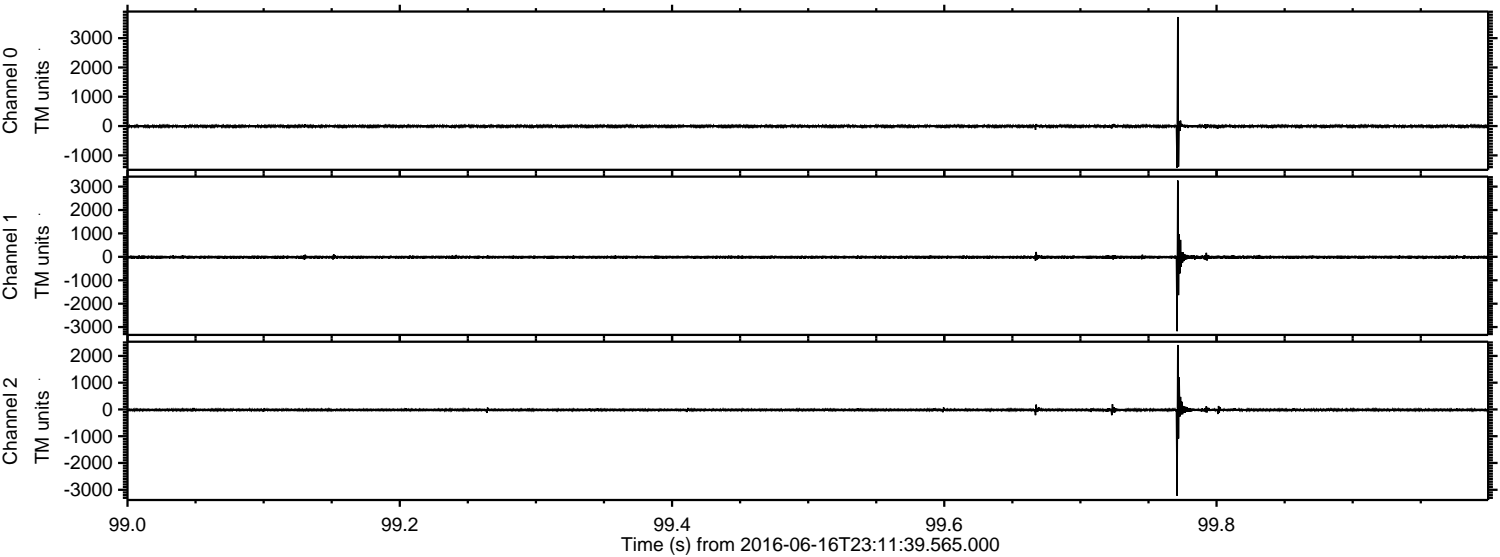


Processed Fri Jun 17 01:20:25 2016 by ELM ver.2012-10-06 from 001__elm20160616_231138__dat00.bin



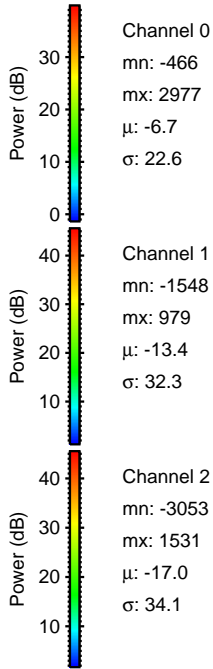
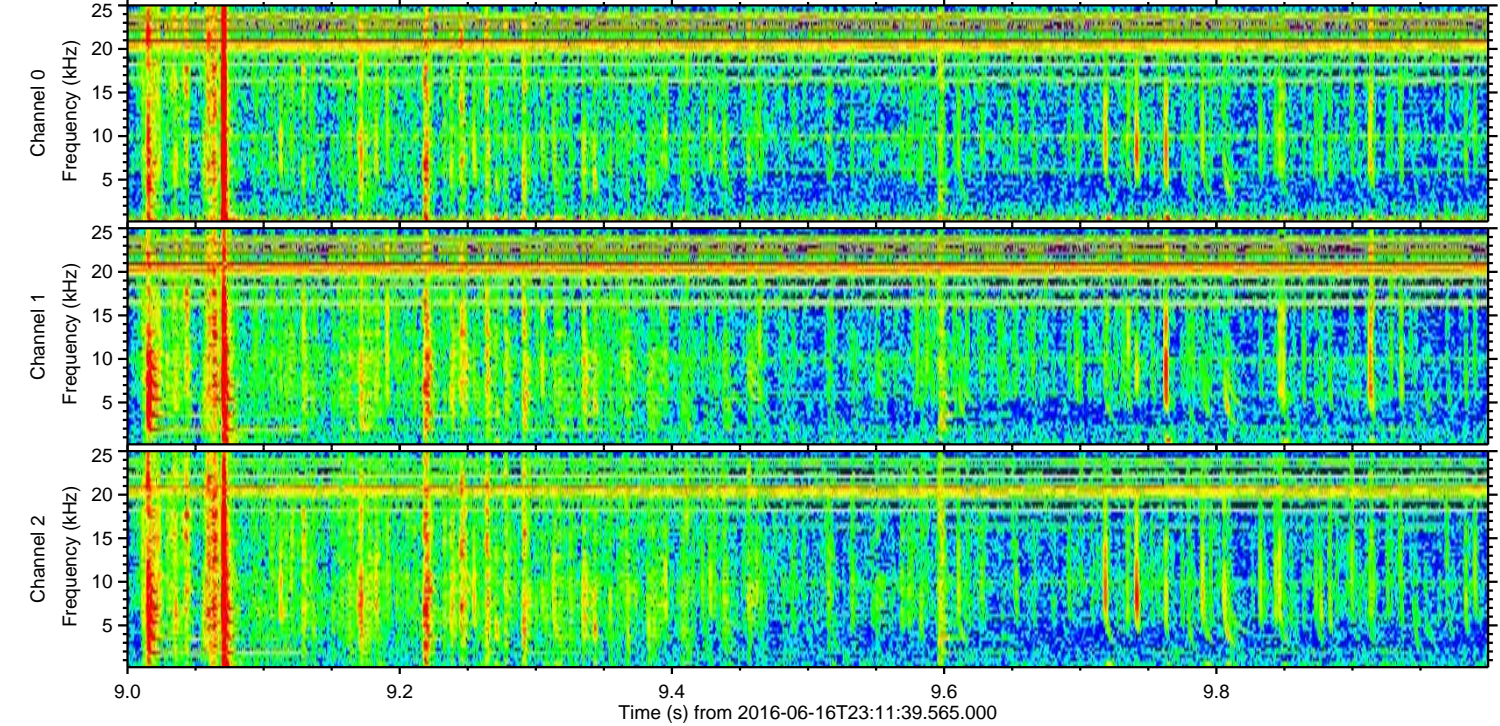
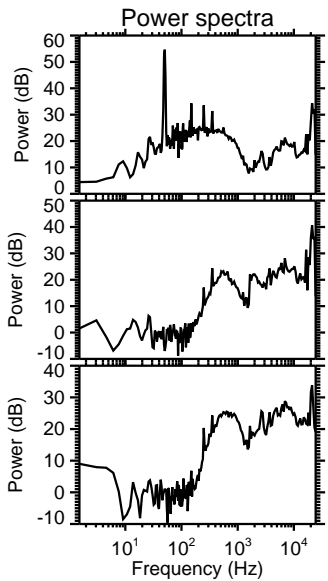
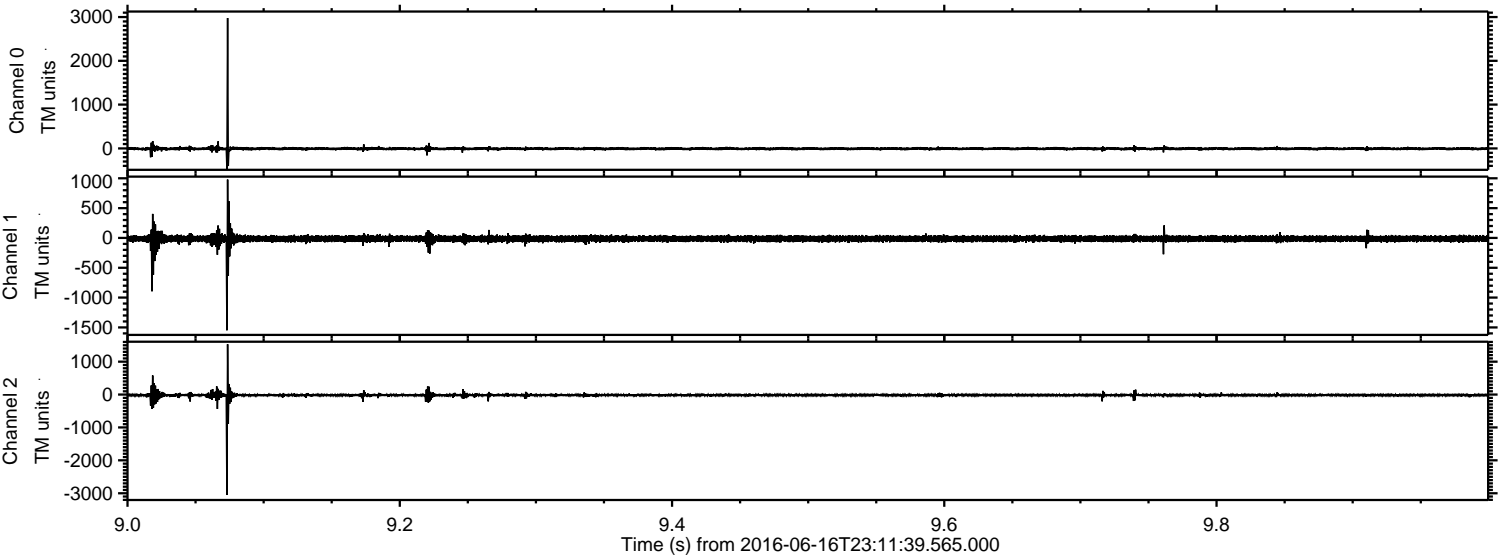
ELMAVAN 3D WAVEFORMS (Measured data sampled at 50 kHz) 51000 packets of 144 samples from 2016-06-16T23:11:39.565.000. Part 100/147

Processed Fri Jun 17 01:20:26 2016 by ELM ver.2012-10-06 from 001__elm20160616_231138__dat00.bin



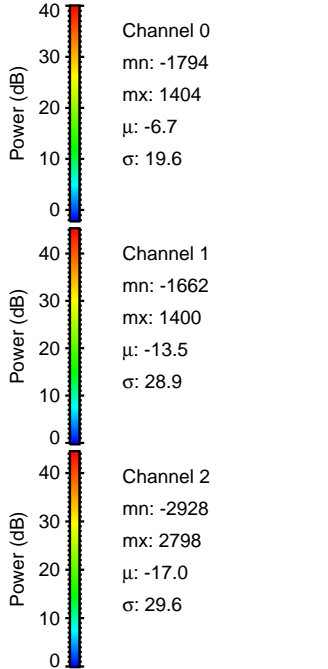
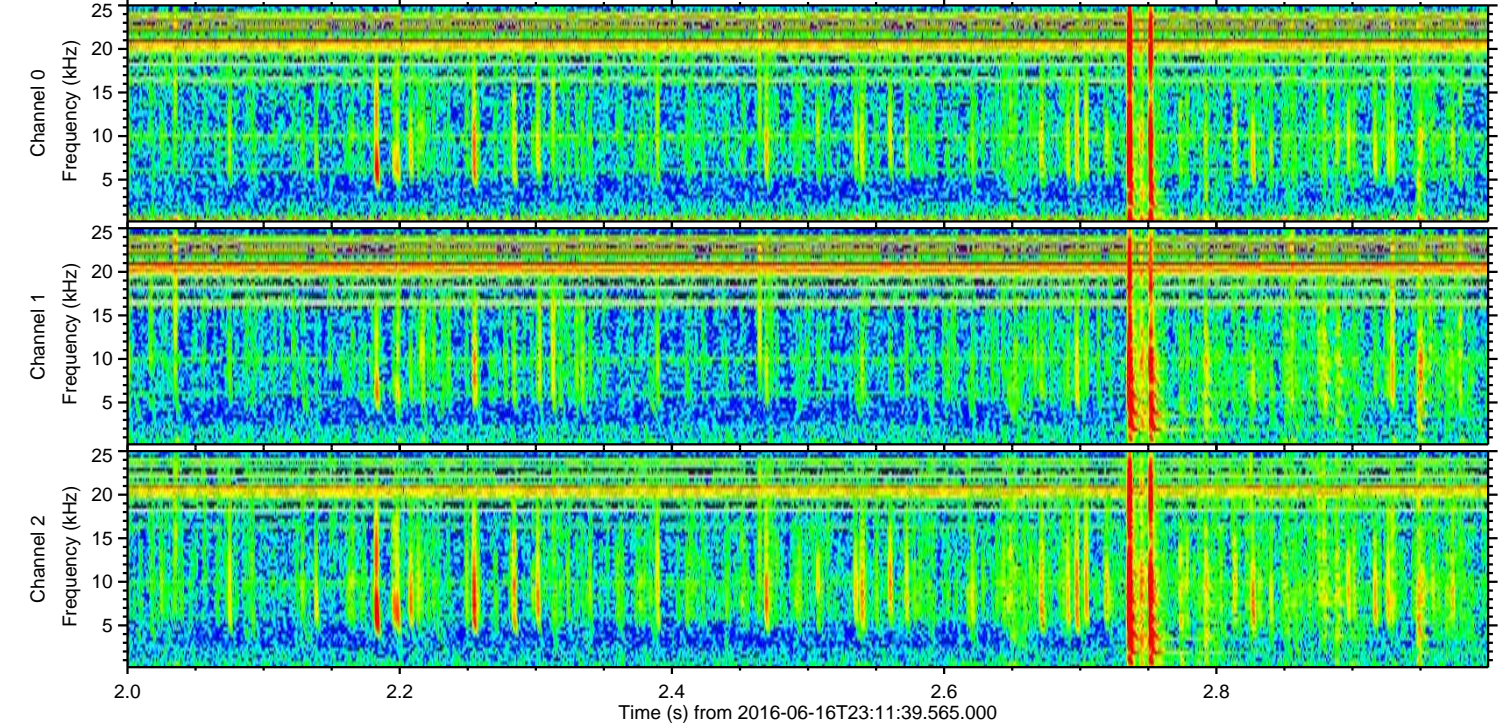
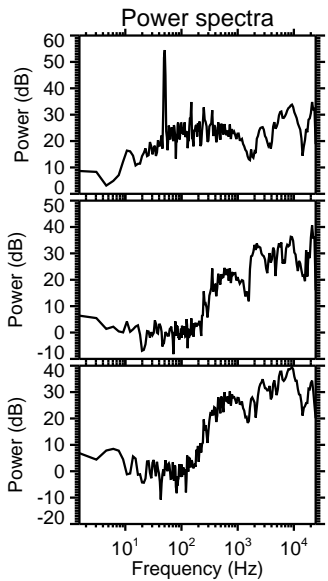
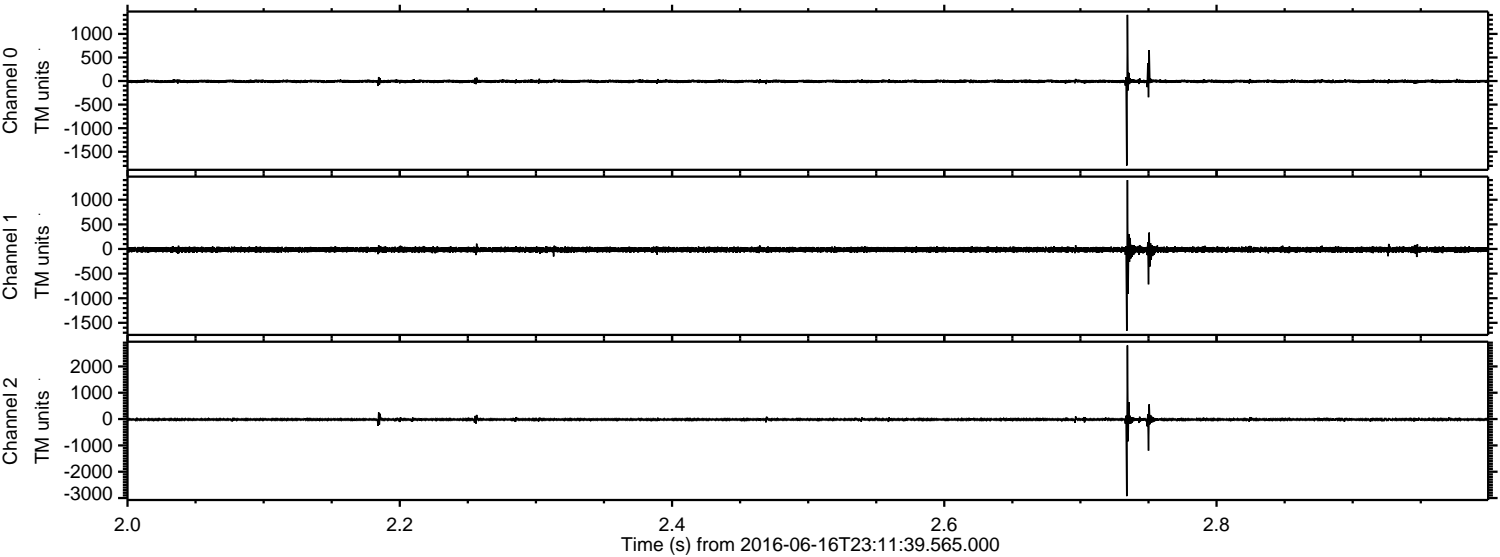
ELMAVAN 3D WAVEFORMS (Measured data sampled at 50 kHz) 51000 packets of 144 samples from 2016-06-16T23:11:39.565.000. Part 10/147

Processed Fri Jun 17 01:20:27 2016 by ELM ver.2012-10-06 from 001__elm20160616_231138__dat00.bin



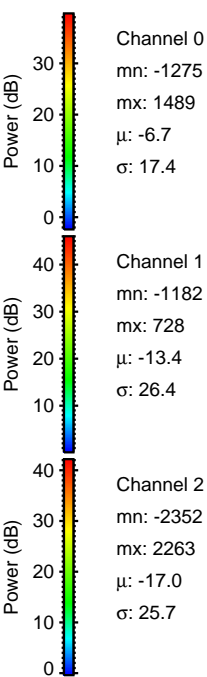
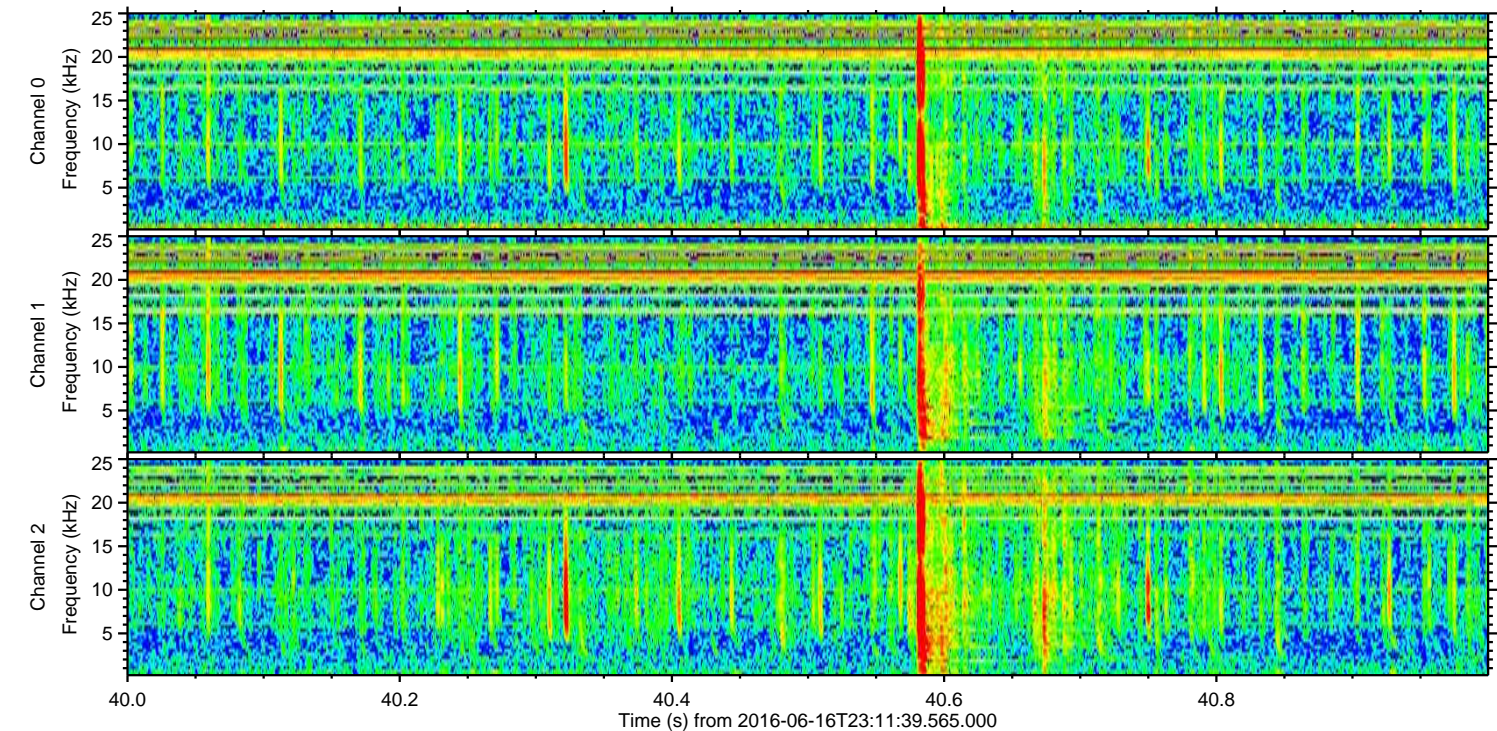
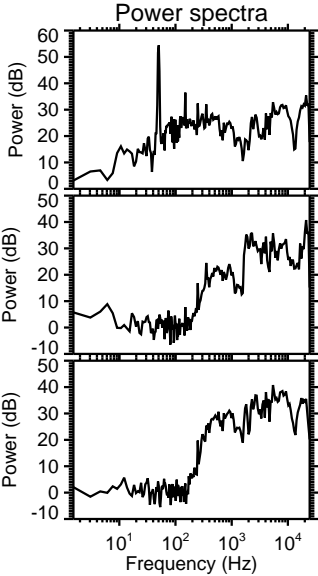
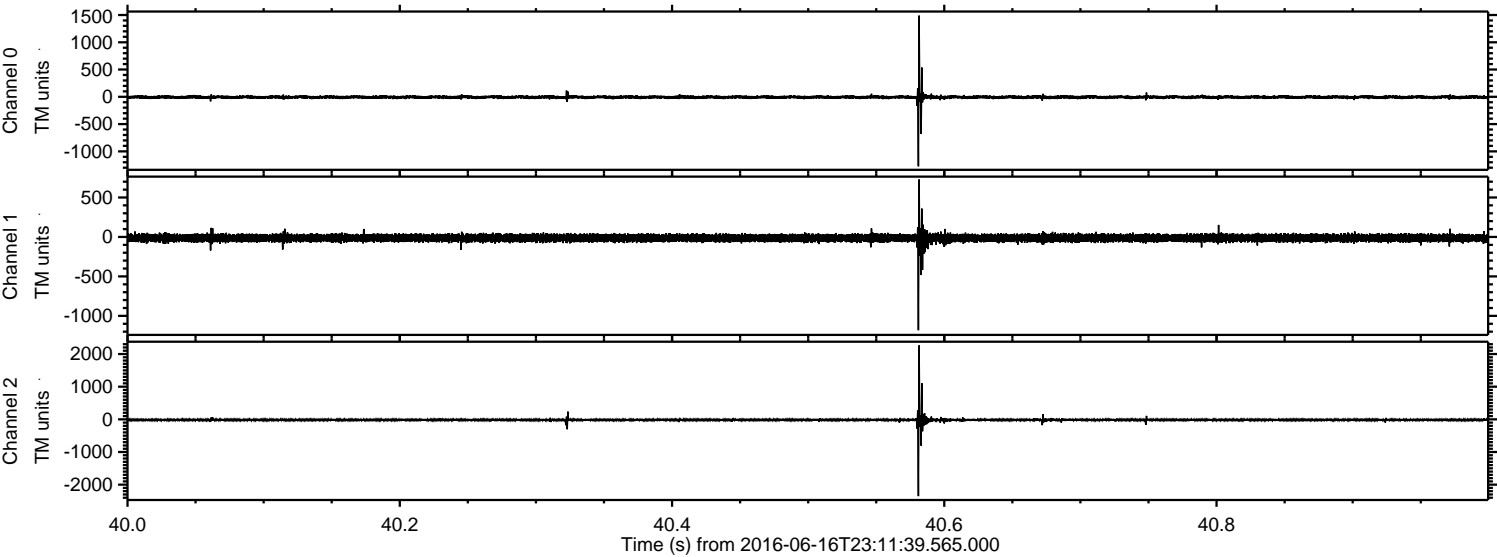
ELMAVAN 3D WAVEFORMS (Measured data sampled at 50 kHz) 51000 packets of 144 samples from 2016-06-16T23:11:39.565.000. Part 3/147

Processed Fri Jun 17 01:20:28 2016 by ELM ver.2012-10-06 from 001__elm20160616_231138__dat00.bin



ELMAVAN 3D WAVEFORMS (Measured data sampled at 50 kHz) 51000 packets of 144 samples from 2016-06-16T23:11:39.565.000. Part 41/147

Processed Fri Jun 17 01:20:29 2016 by ELM ver.2012-10-06 from 001__elm20160616_231138__dat00.bin

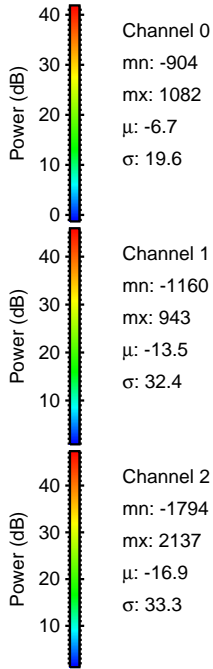
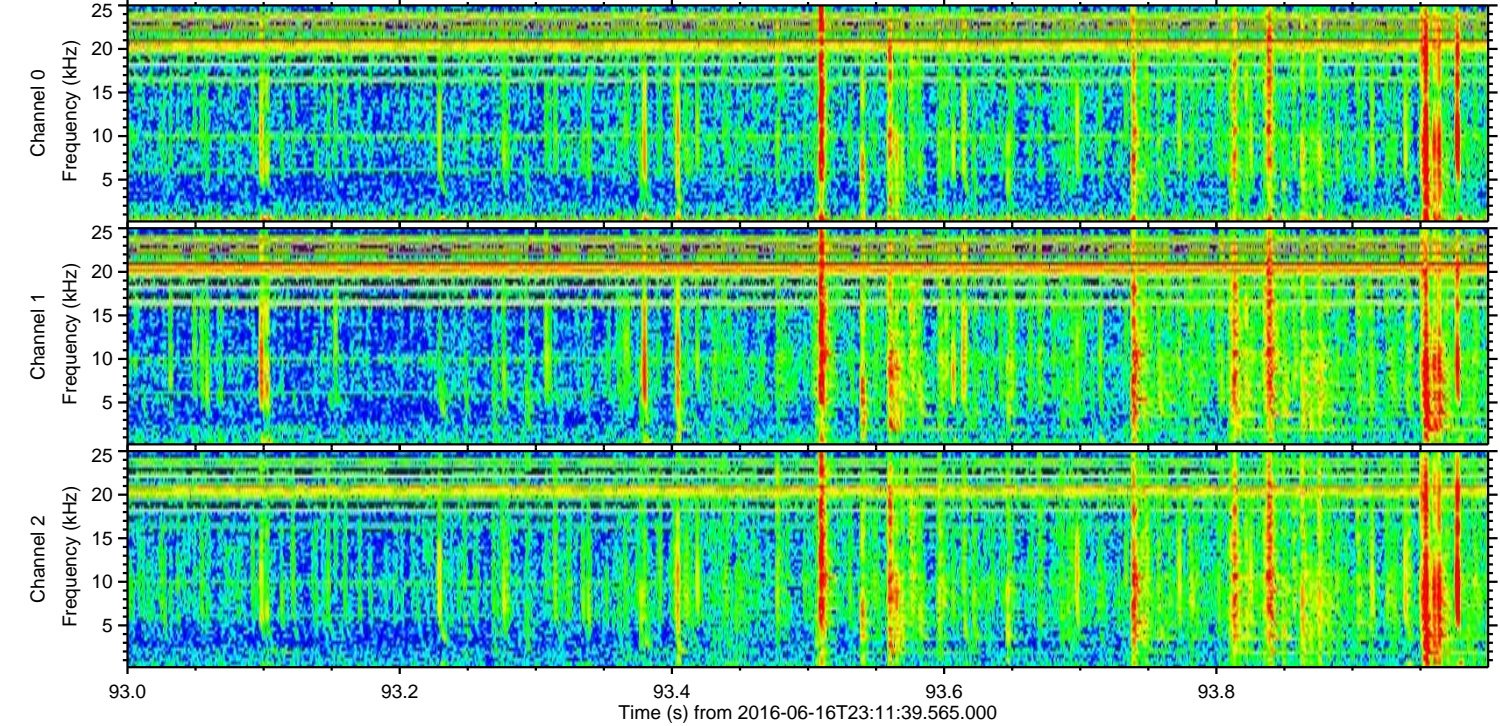
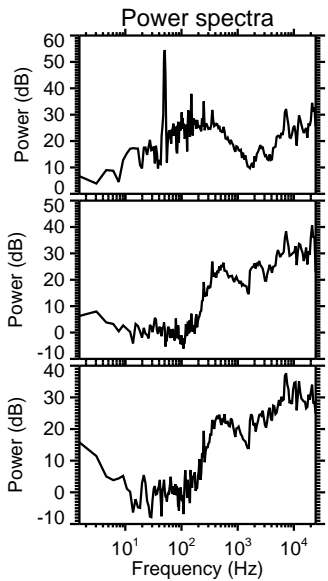
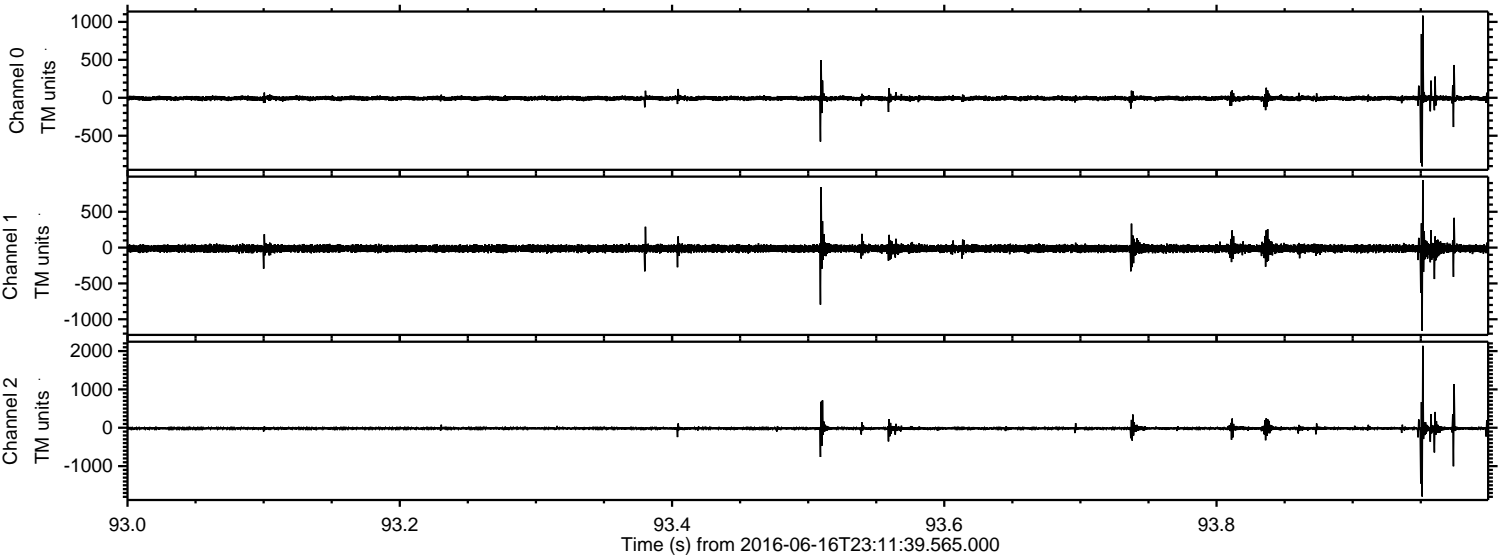


Channel 0
mn: -1275
mx: 1489
 μ : -6.7
 σ : 17.4

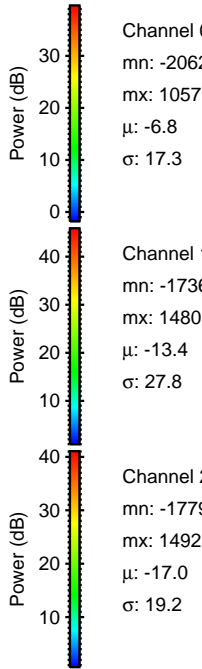
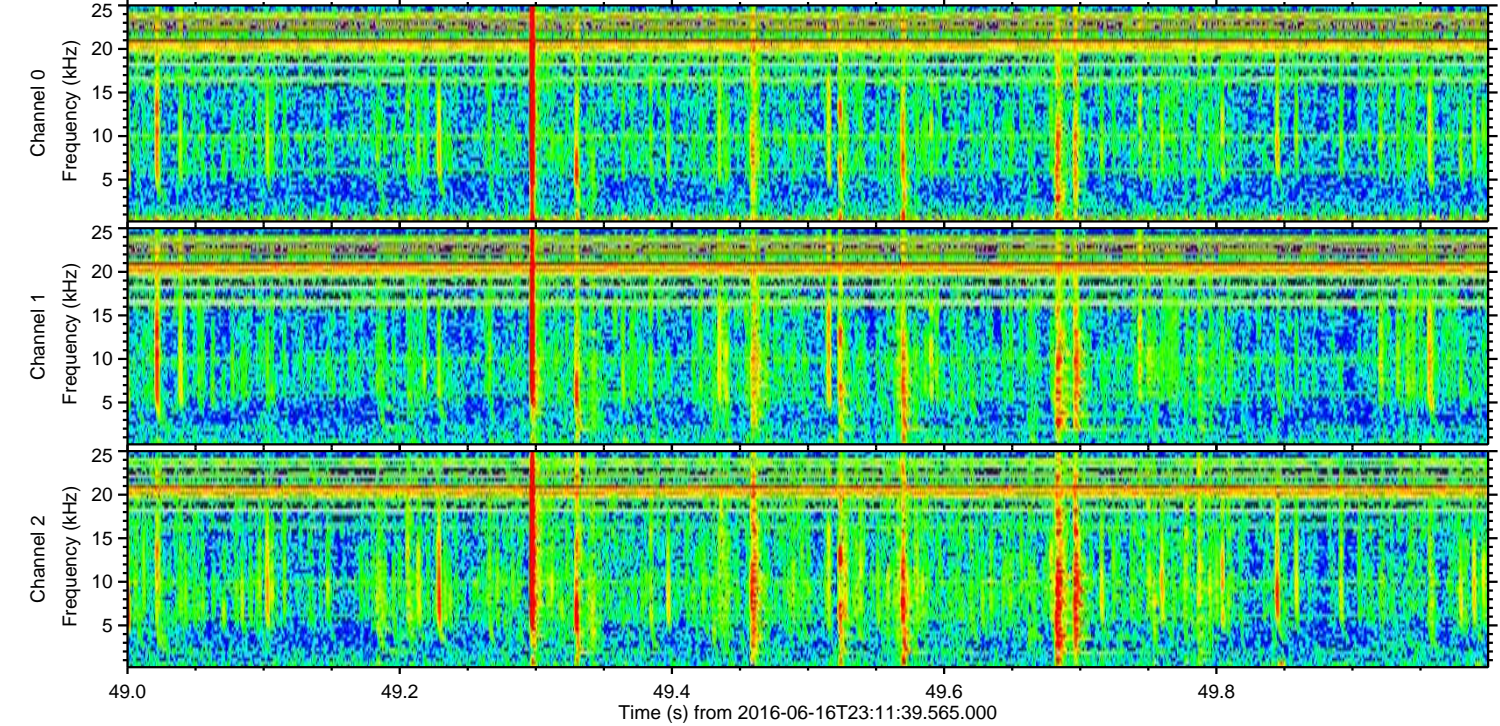
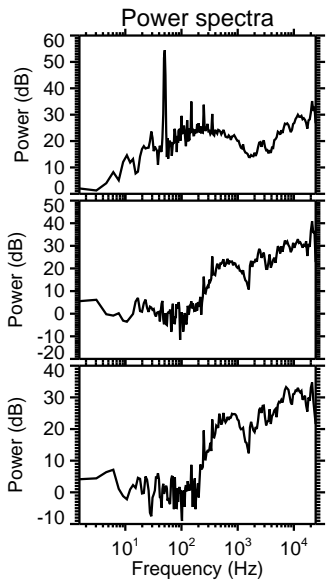
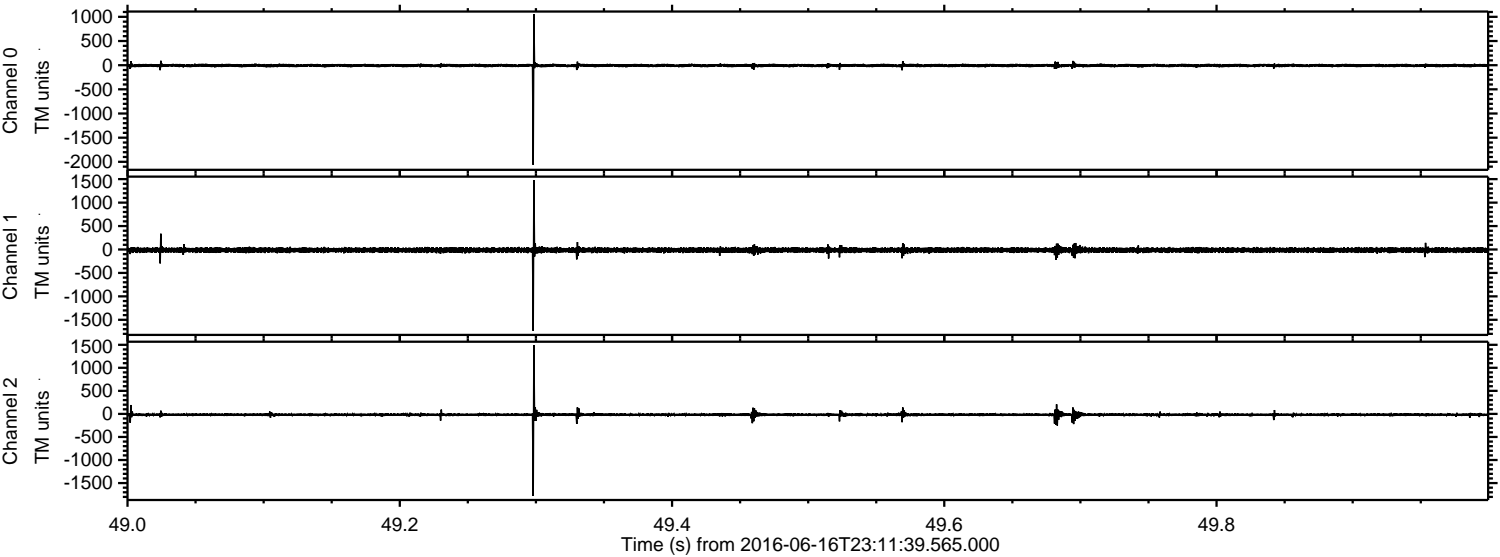
Channel 1
mn: -1182
mx: 728
 μ : -13.4
 σ : 26.4

Channel 2
mn: -2352
mx: 2263
 μ : -17.0
 σ : 25.7

Processed Fri Jun 17 01:20:30 2016 by ELM ver.2012-10-06 from 001__elm20160616_231138__dat00.bin



Processed Fri Jun 17 01:20:31 2016 by ELM ver.2012-10-06 from 001__elm20160616_231138__dat00.bin



Channel 0
mn: -2062
mx: 1057
 μ : -6.8
 σ : 17.3

Channel 1
mn: -1736
mx: 1480
 μ : -13.4
 σ : 27.8

Channel 2
mn: -1779
mx: 1492
 μ : -17.0
 σ : 19.2

Processed Fri Jun 17 01:20:32 2016 by ELM ver.2012-10-06 from 001__elm20160616_231138__dat00.bin

