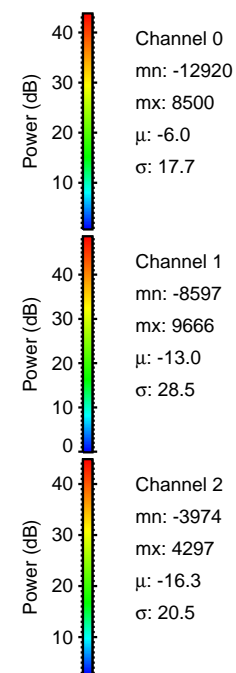
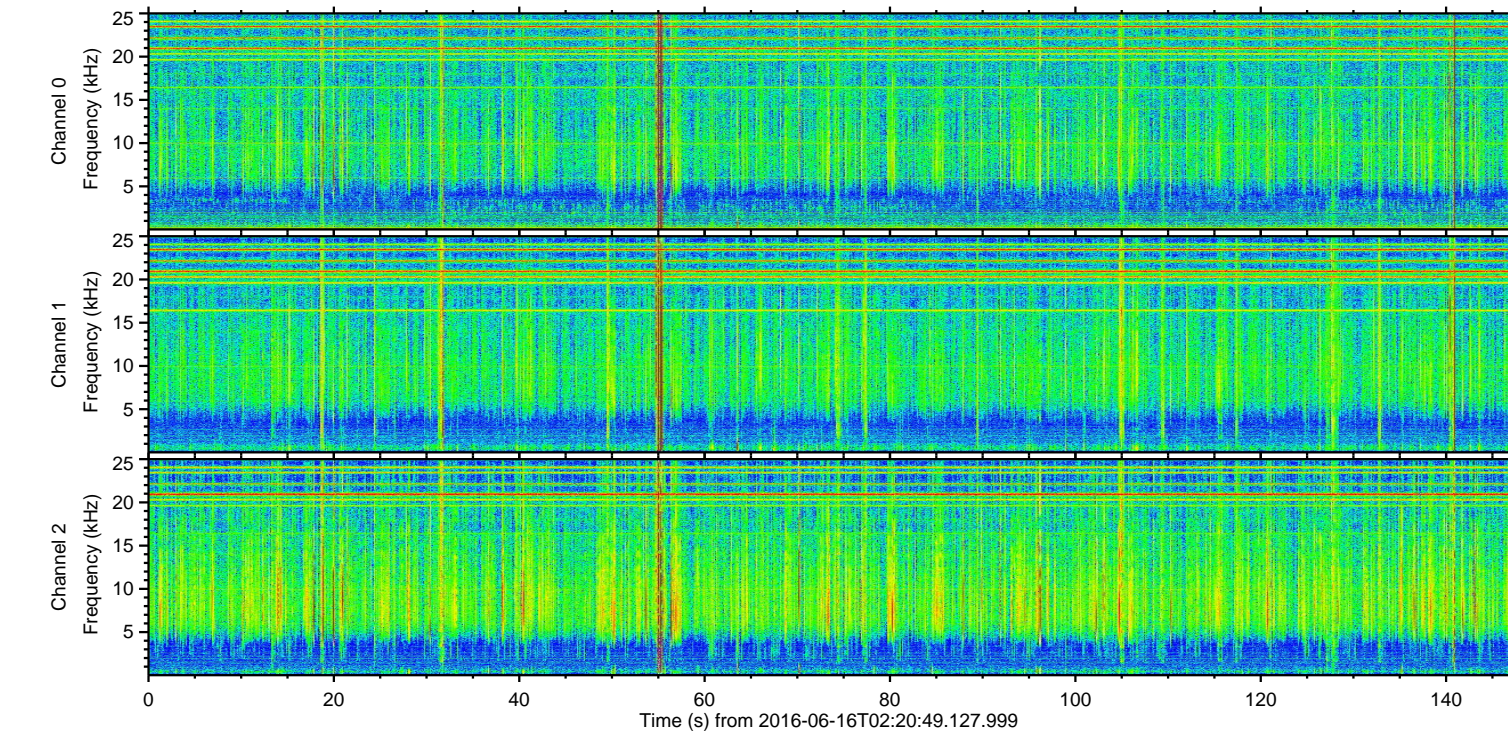
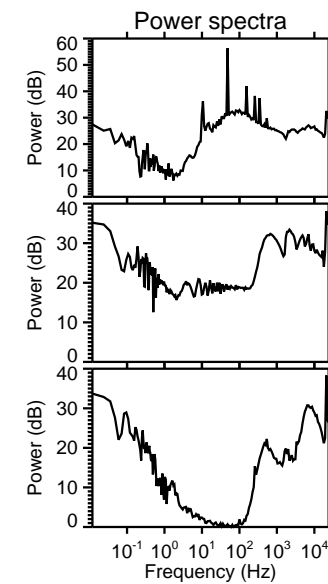
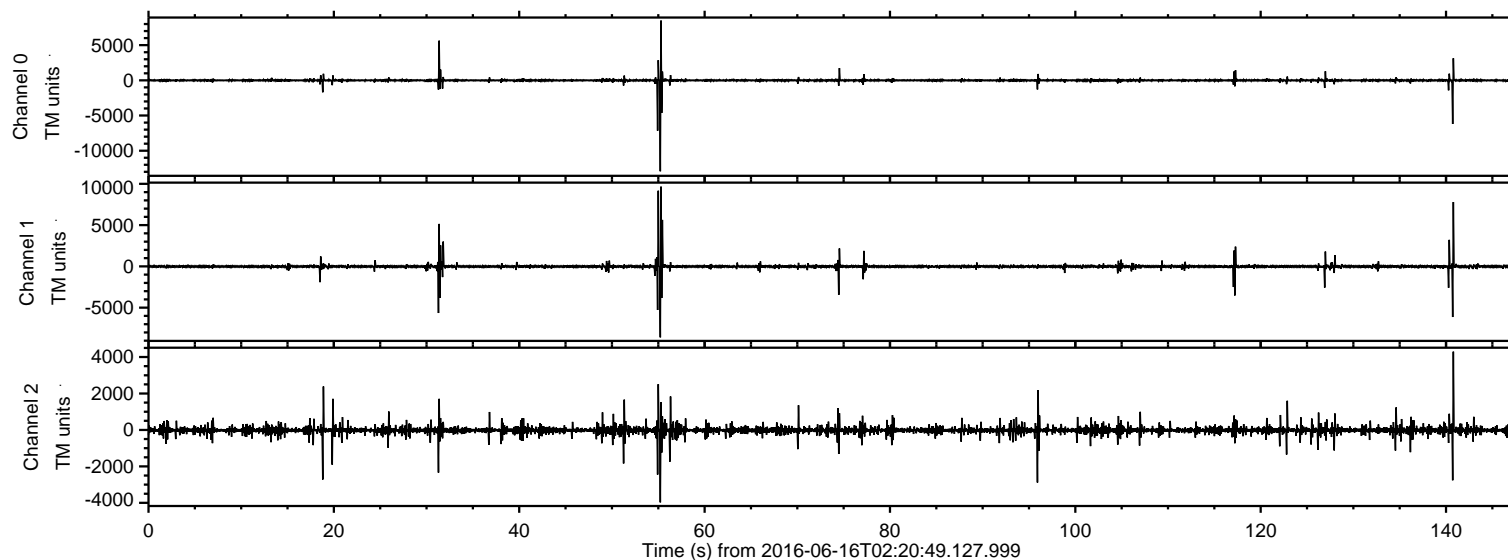


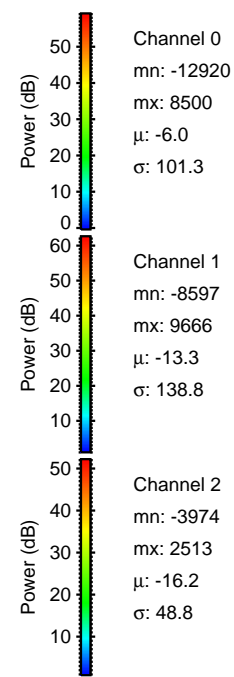
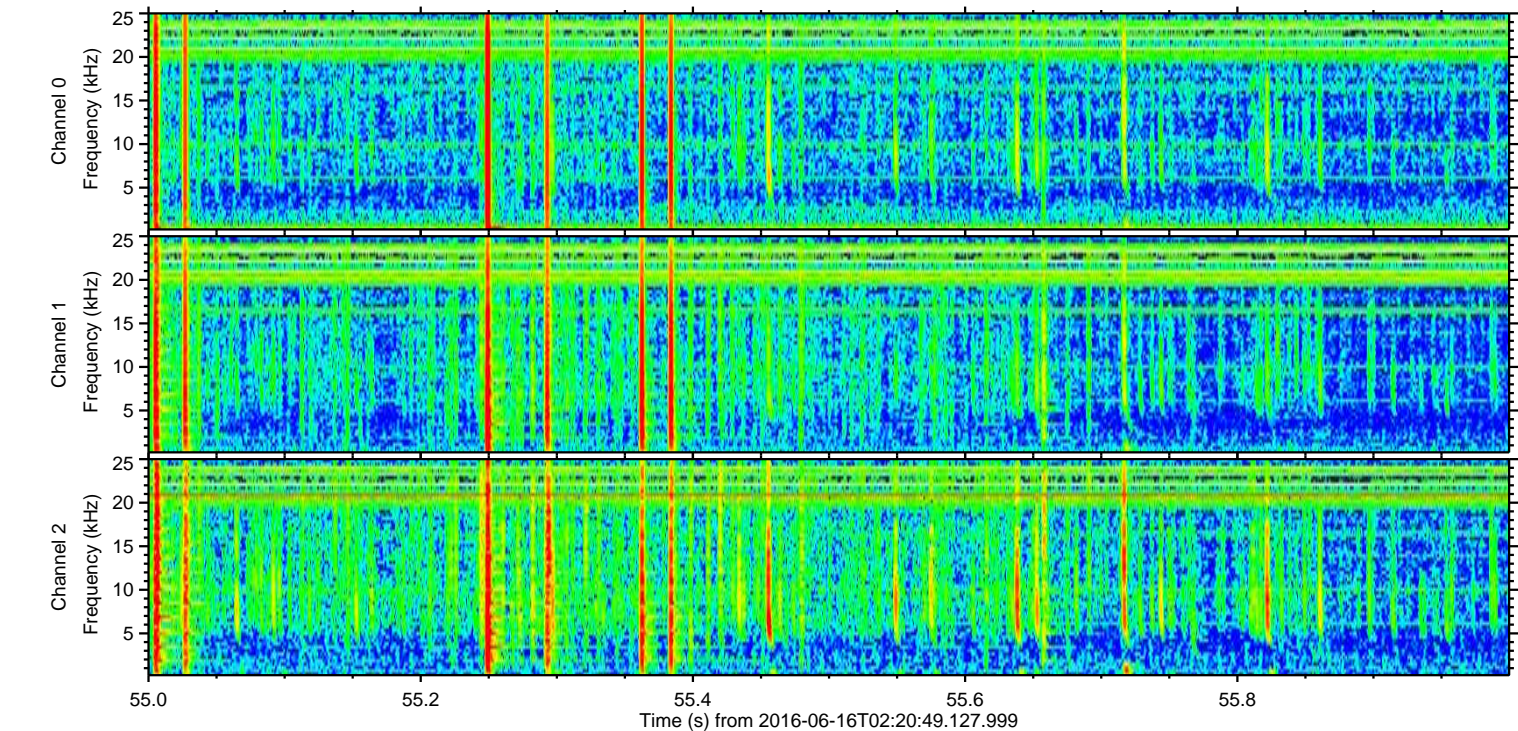
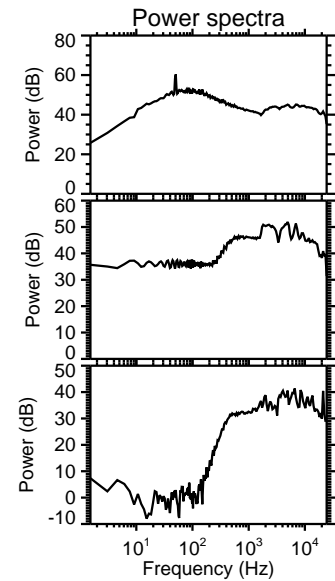
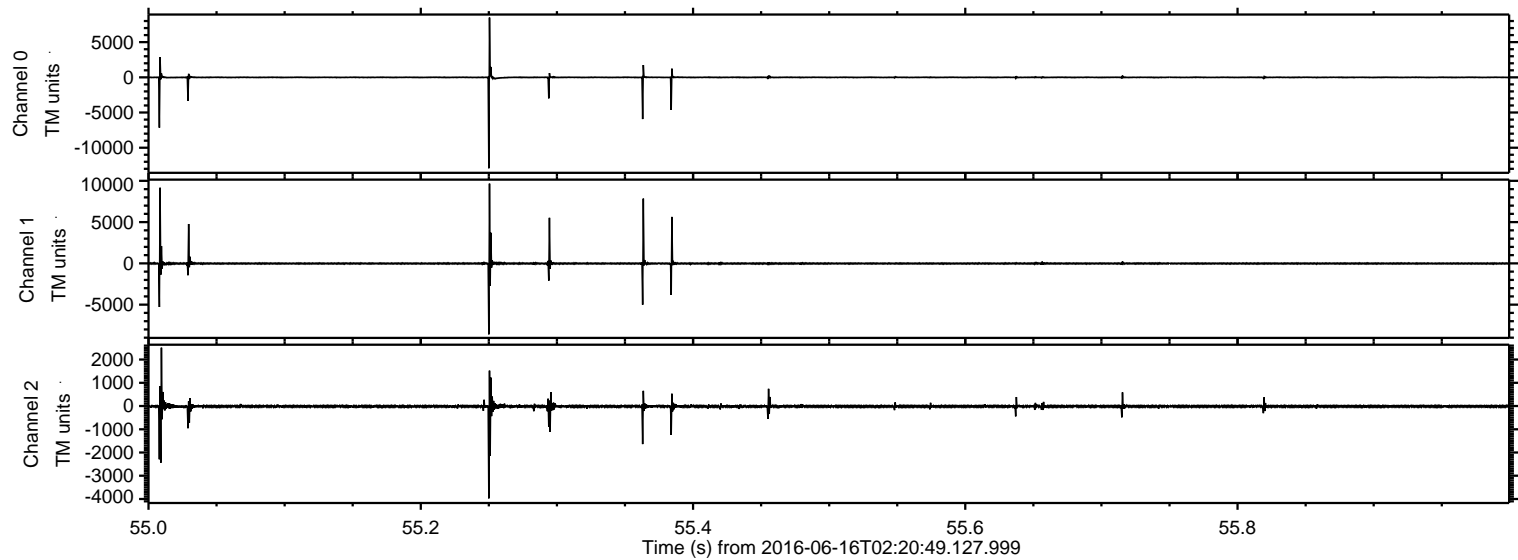
# ELMAVAN 3D WAVEFORMS (Measured data sampled at 50 kHz) 51000 packets of 144 samples from 2016-06-16T02:20:49.127.999.

Processed Thu Jun 16 04:28:41 2016 by ELM ver.2012-10-06 from 001\_\_elm20160616\_022048\_\_dat00.bin





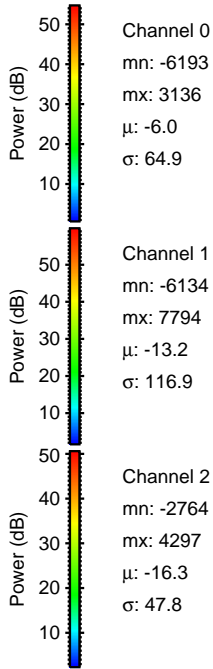
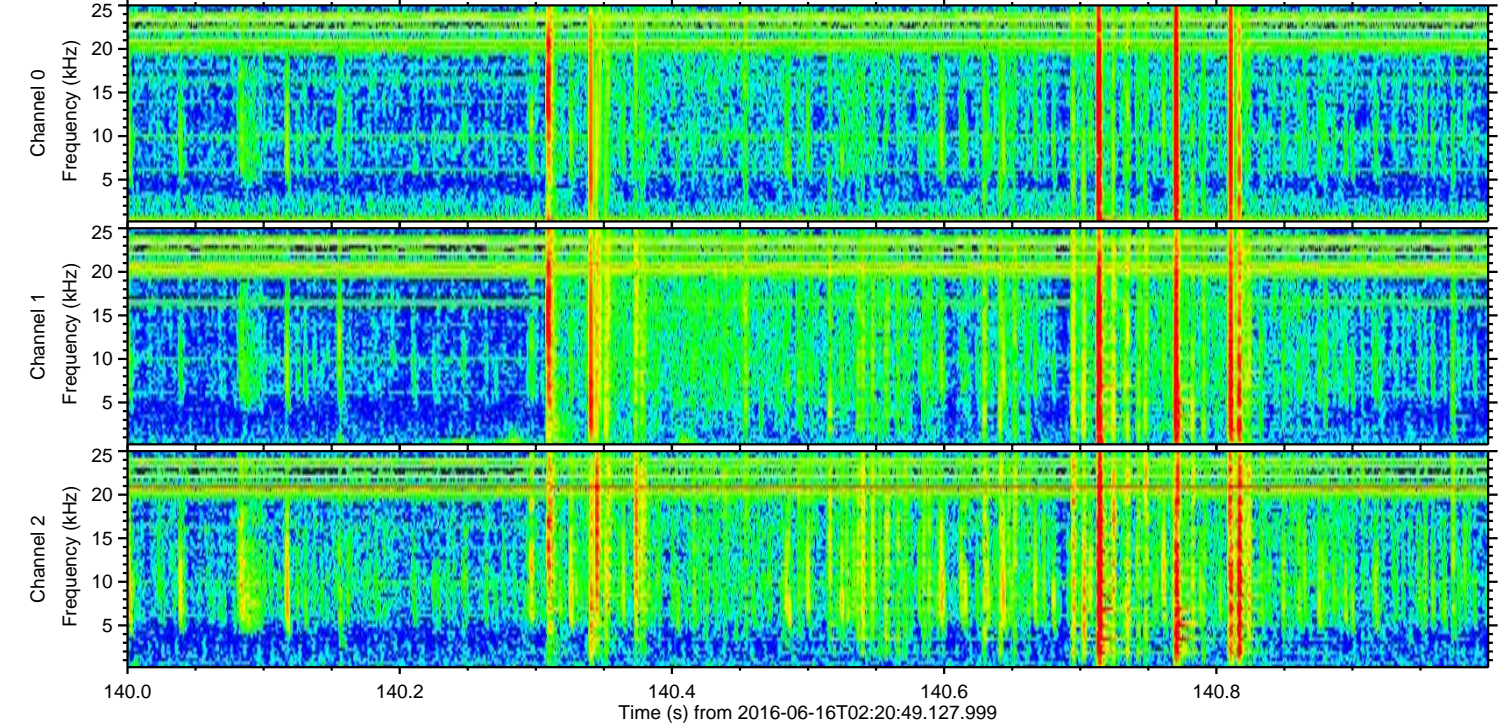
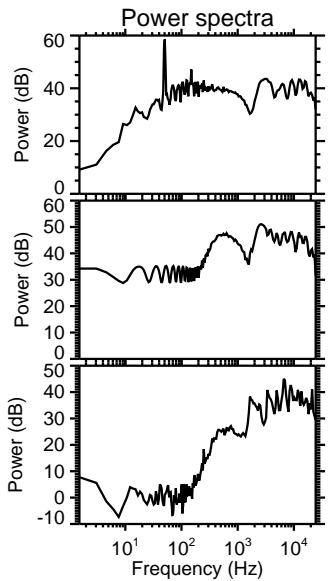
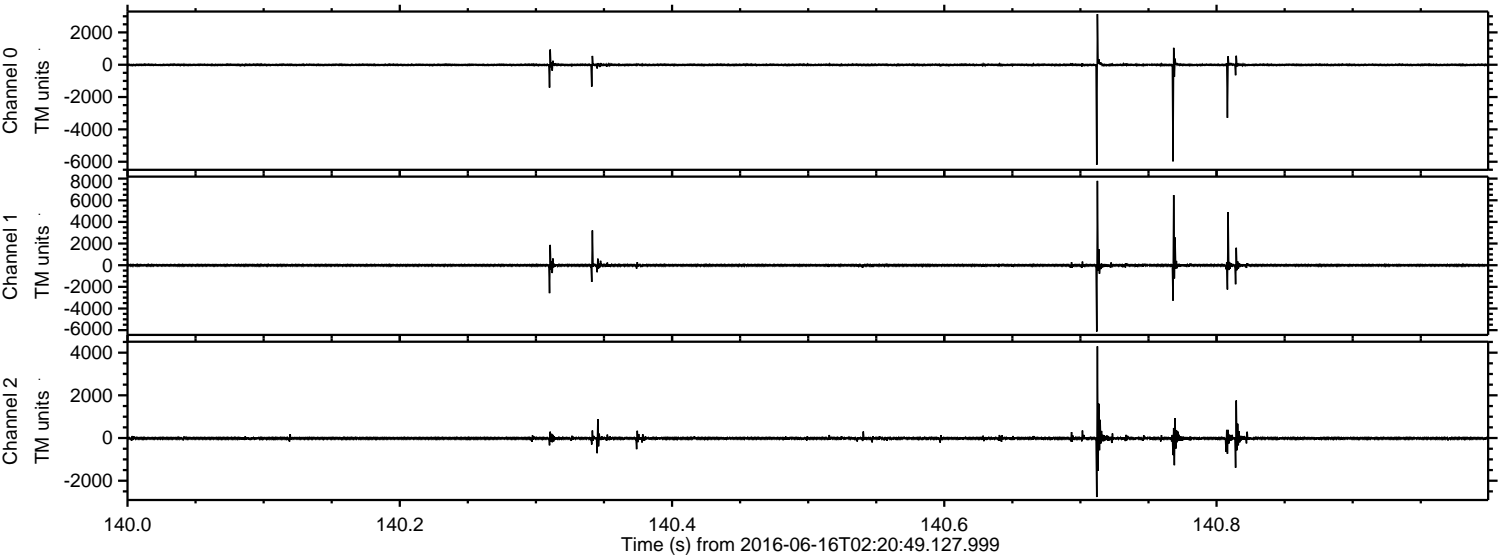
Processed Thu Jun 16 04:28:53 2016 by ELM ver.2012-10-06 from 001\_\_elm20160616\_022048\_\_dat00.bin





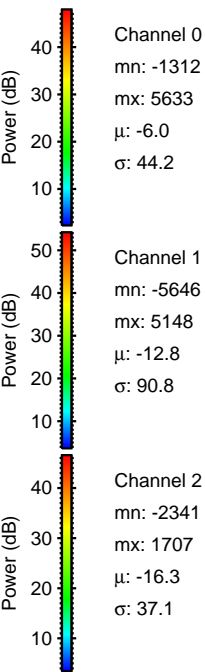
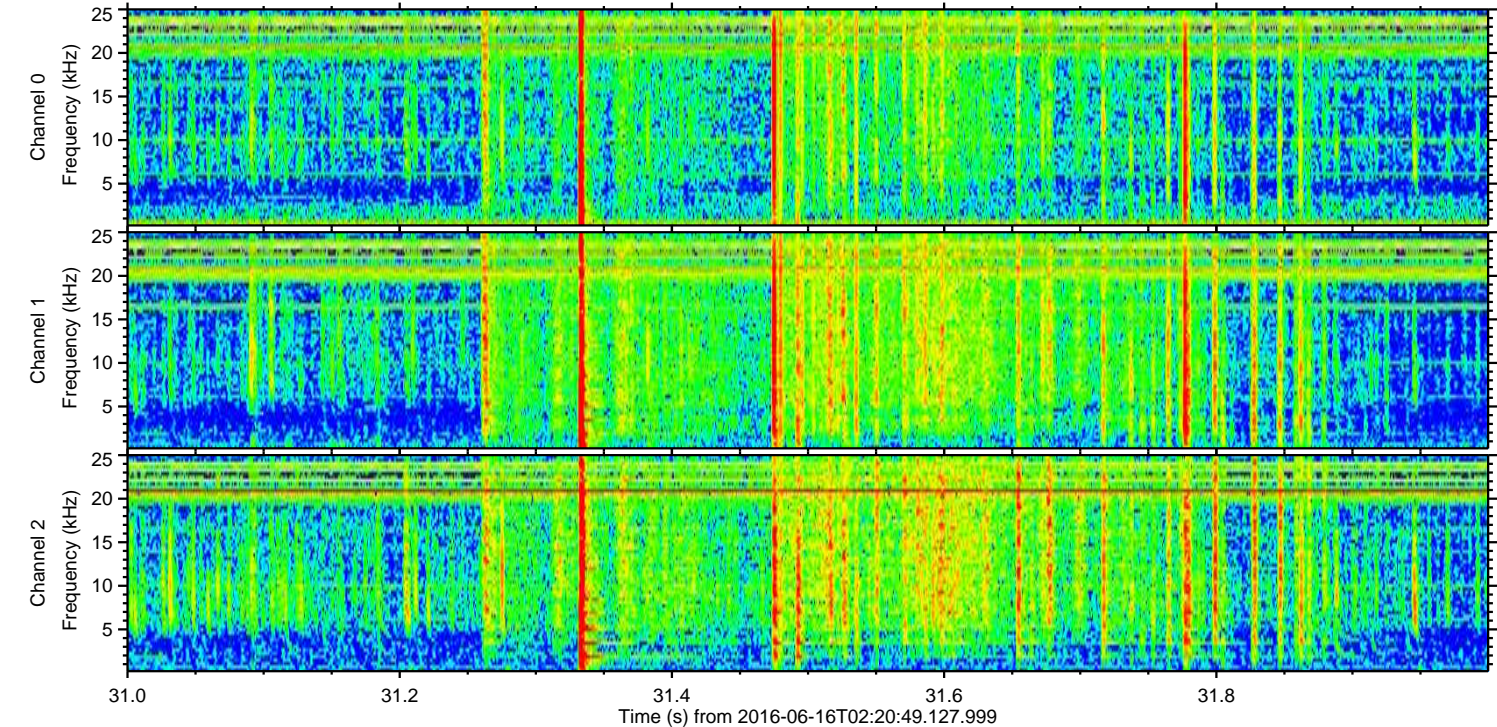
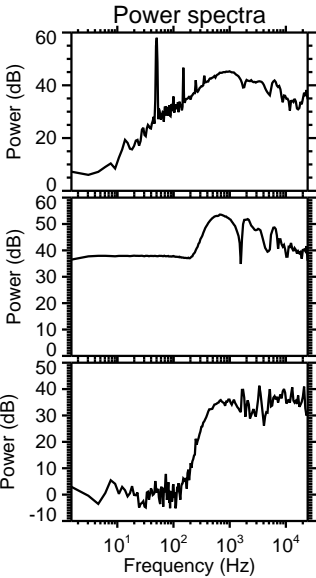
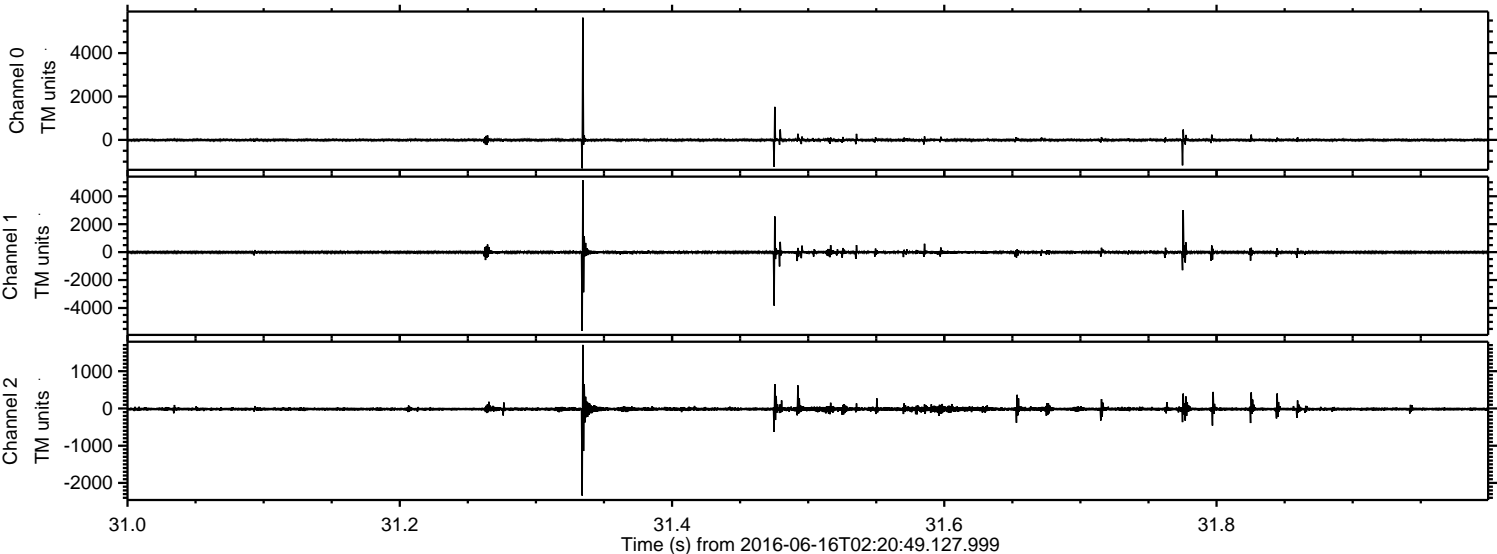
ELMAVAN 3D WAVEFORMS (Measured data sampled at 50 kHz) 51000 packets of 144 samples from 2016-06-16T02:20:49.127.999. Part 141/147

Processed Thu Jun 16 04:28:54 2016 by ELM ver.2012-10-06 from 001\_\_elm20160616\_022048\_\_dat00.bin





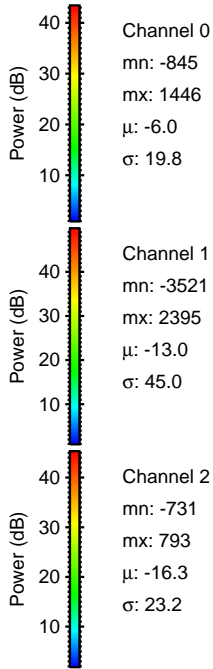
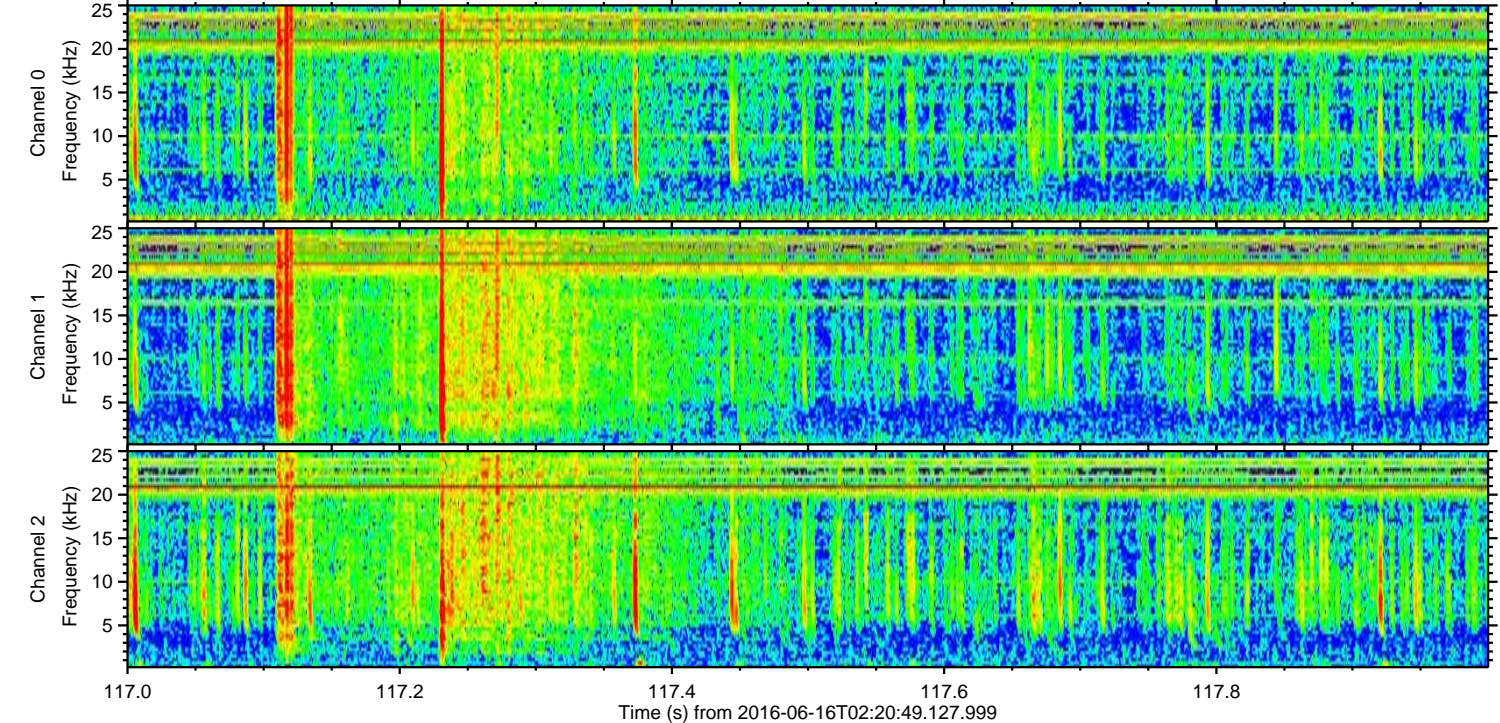
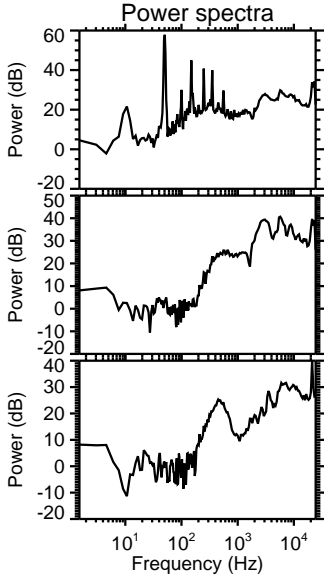
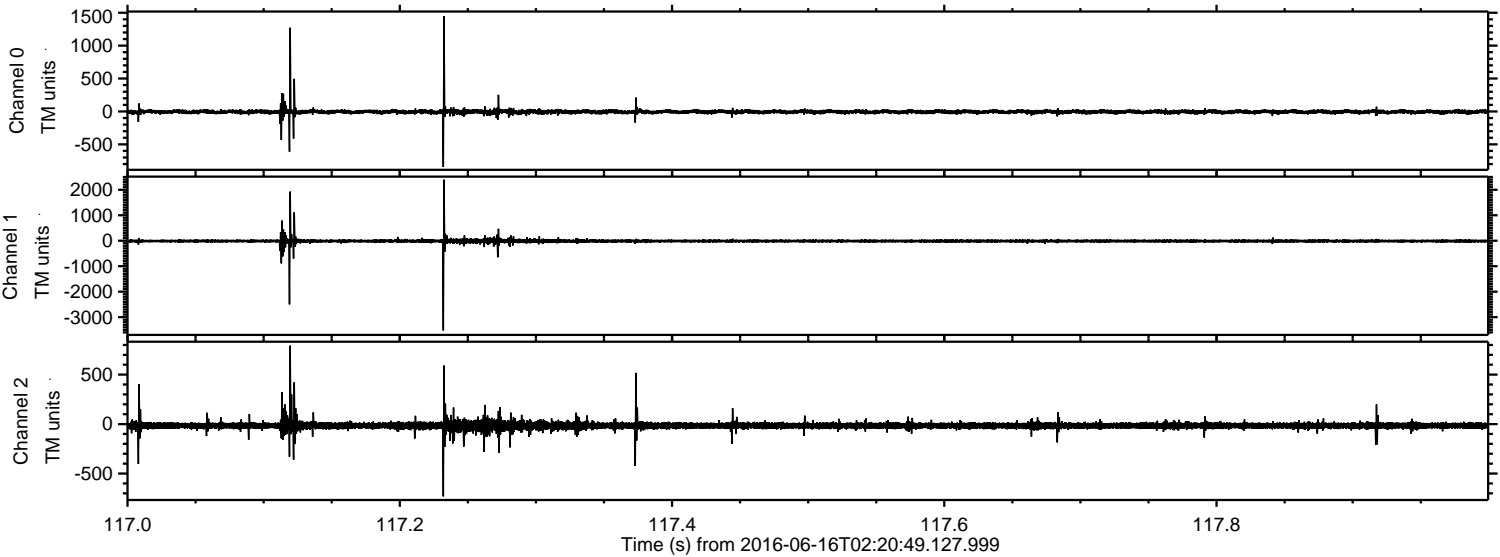
Processed Thu Jun 16 04:28:55 2016 by ELM ver.2012-10-06 from 001\_\_elm20160616\_022048\_\_dat00.bin





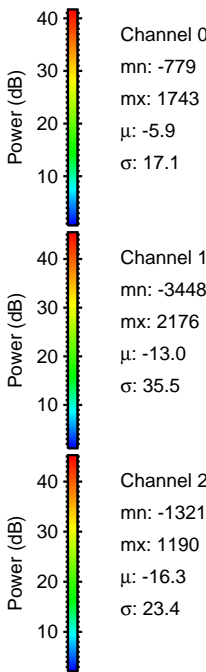
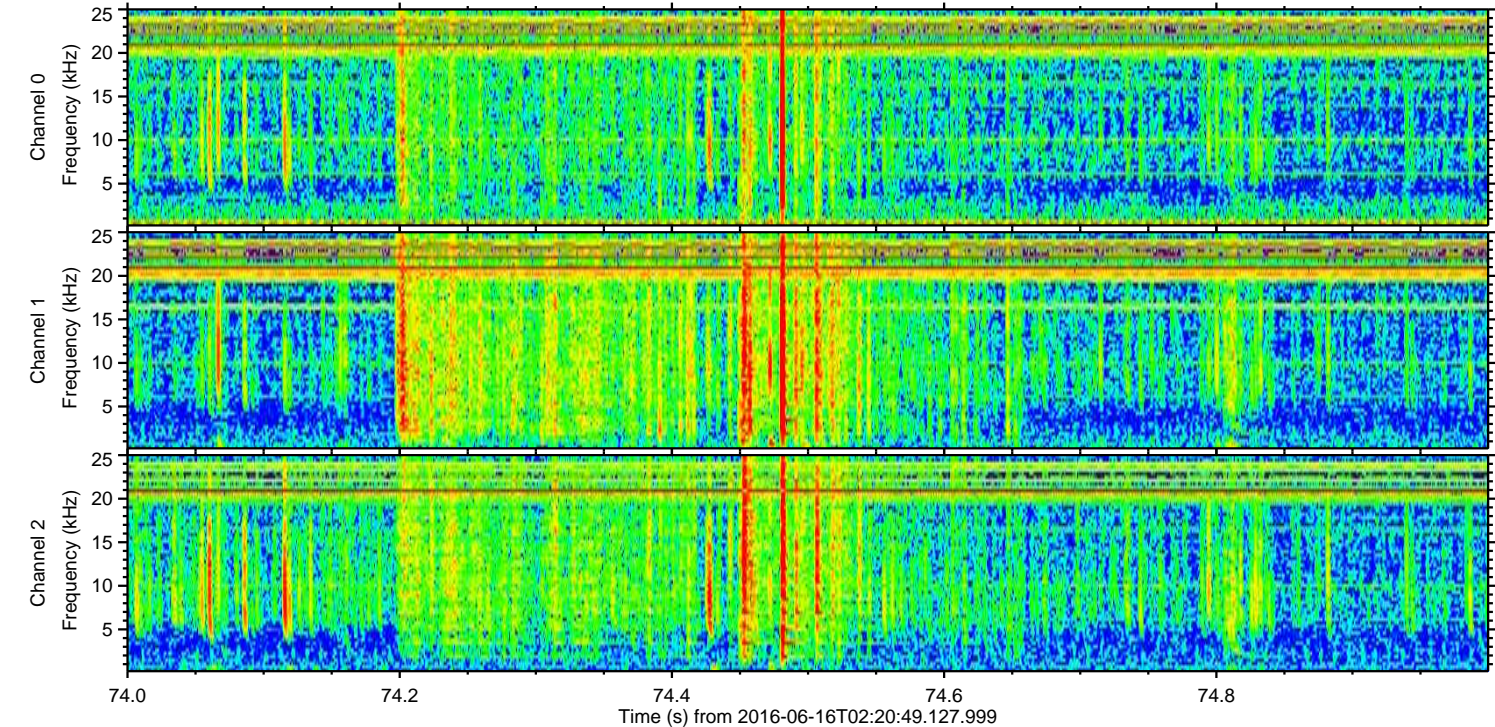
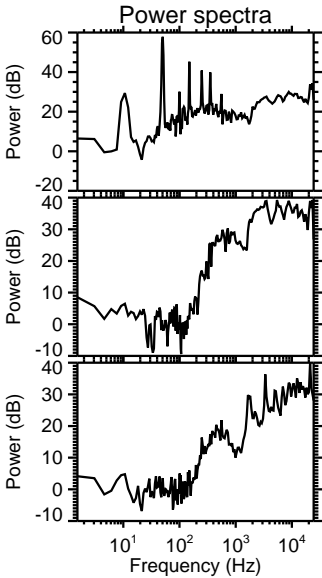
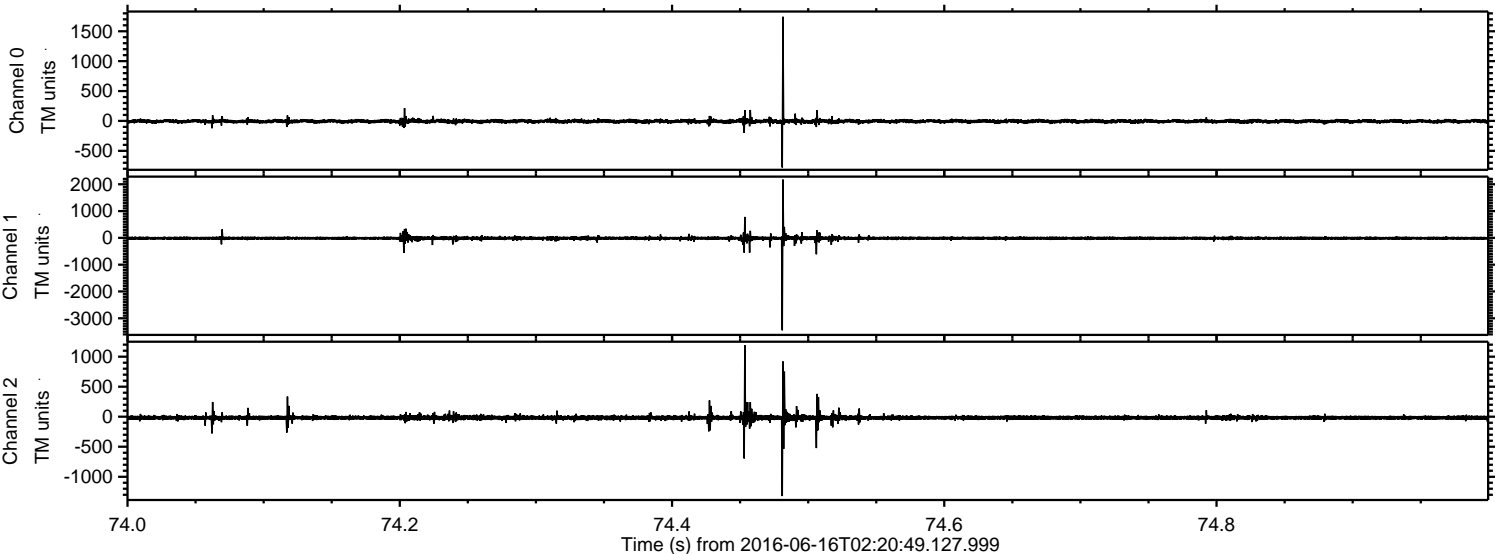
ELMAVAN 3D WAVEFORMS (Measured data sampled at 50 kHz) 51000 packets of 144 samples from 2016-06-16T02:20:49.127.999. Part 118/147

Processed Thu Jun 16 04:28:56 2016 by ELM ver.2012-10-06 from 001\_\_elm20160616\_022048\_\_dat00.bin



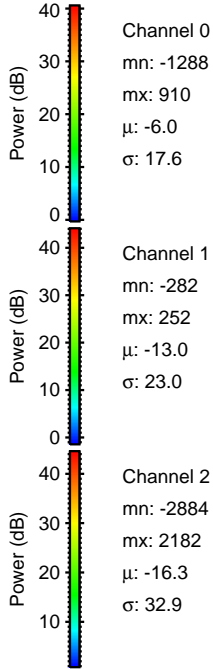
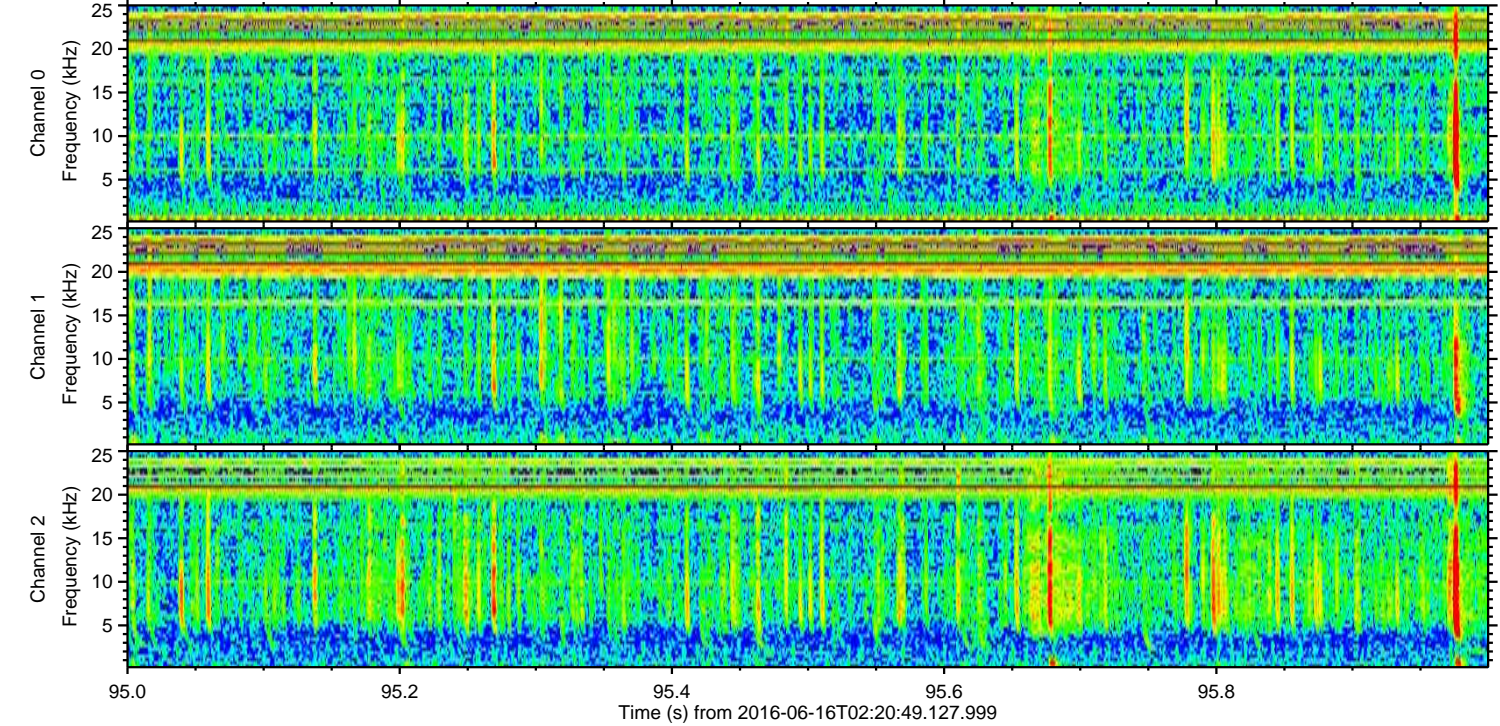
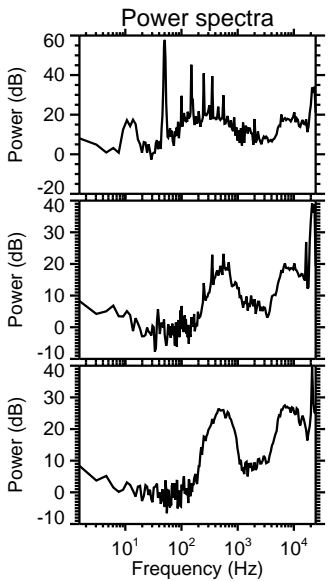
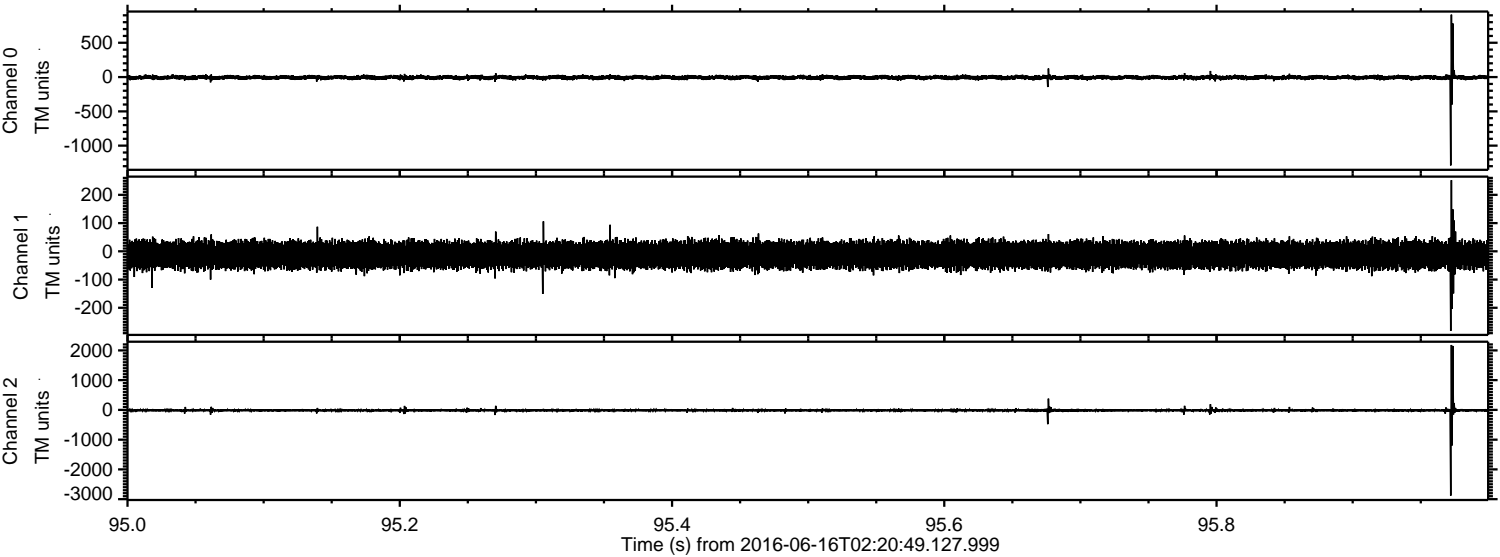


Processed Thu Jun 16 04:28:56 2016 by ELM ver.2012-10-06 from 001\_\_elm20160616\_022048\_\_dat00.bin





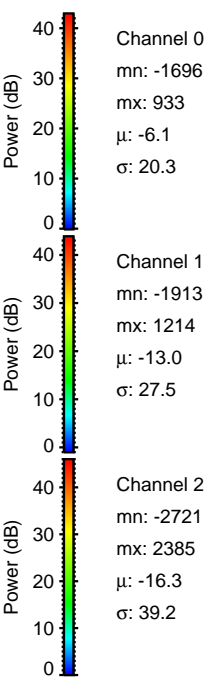
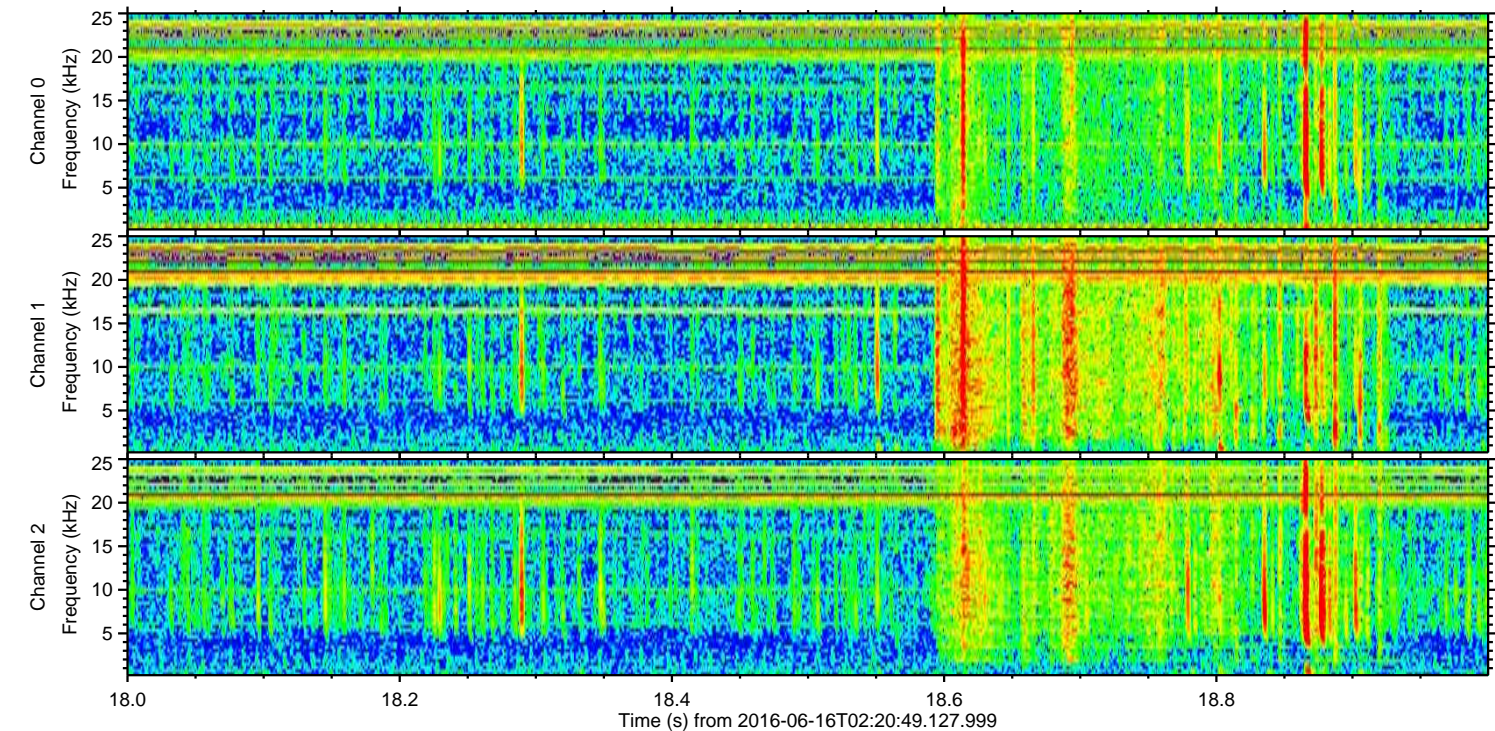
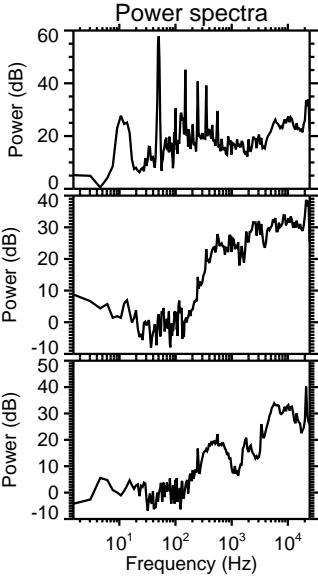
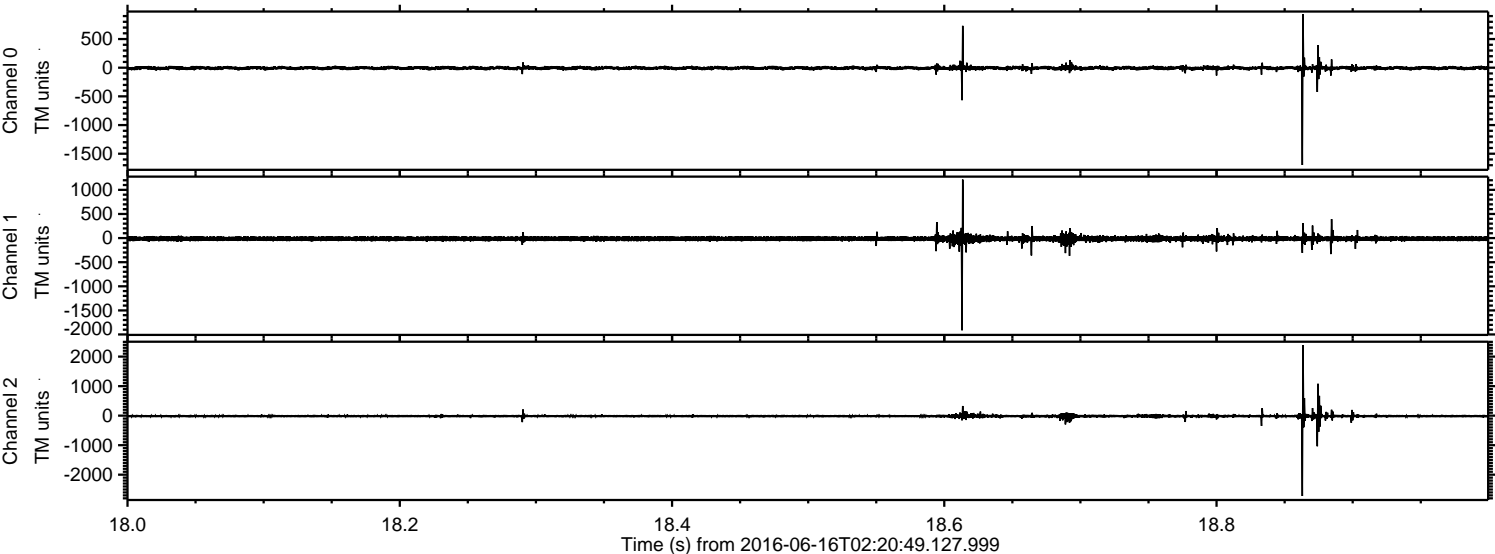
Processed Thu Jun 16 04:28:57 2016 by ELM ver.2012-10-06 from 001\_\_elm20160616\_022048\_\_dat00.bin





ELMAVAN 3D WAVEFORMS (Measured data sampled at 50 kHz) 51000 packets of 144 samples from 2016-06-16T02:20:49.127.999. Part 19/147

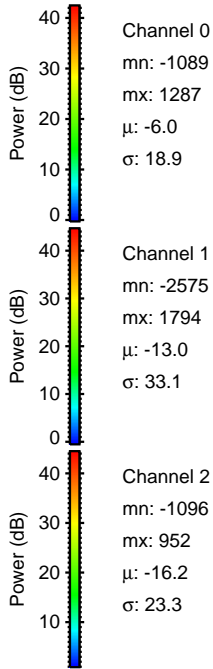
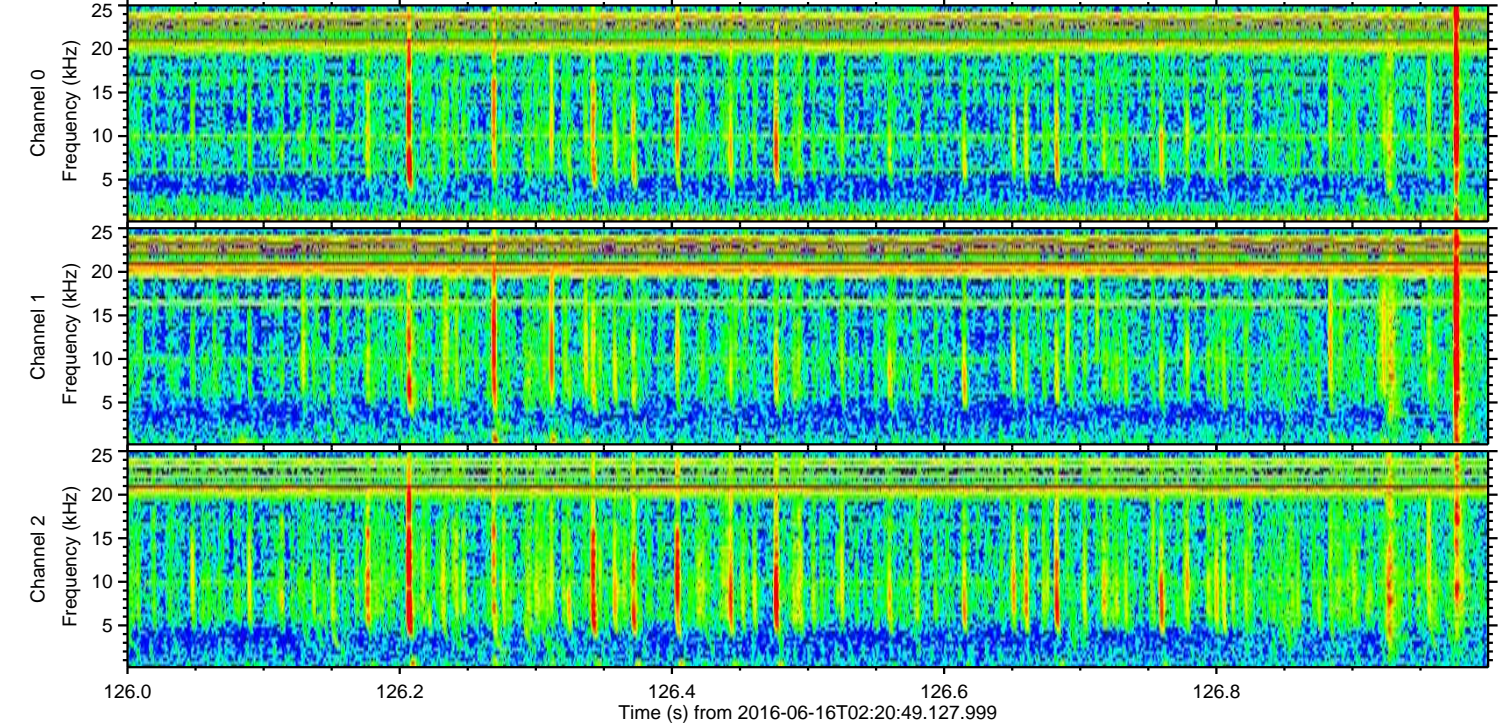
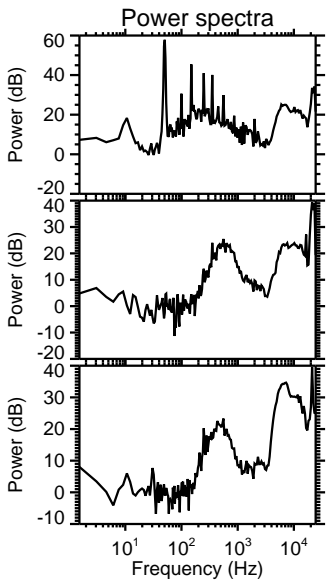
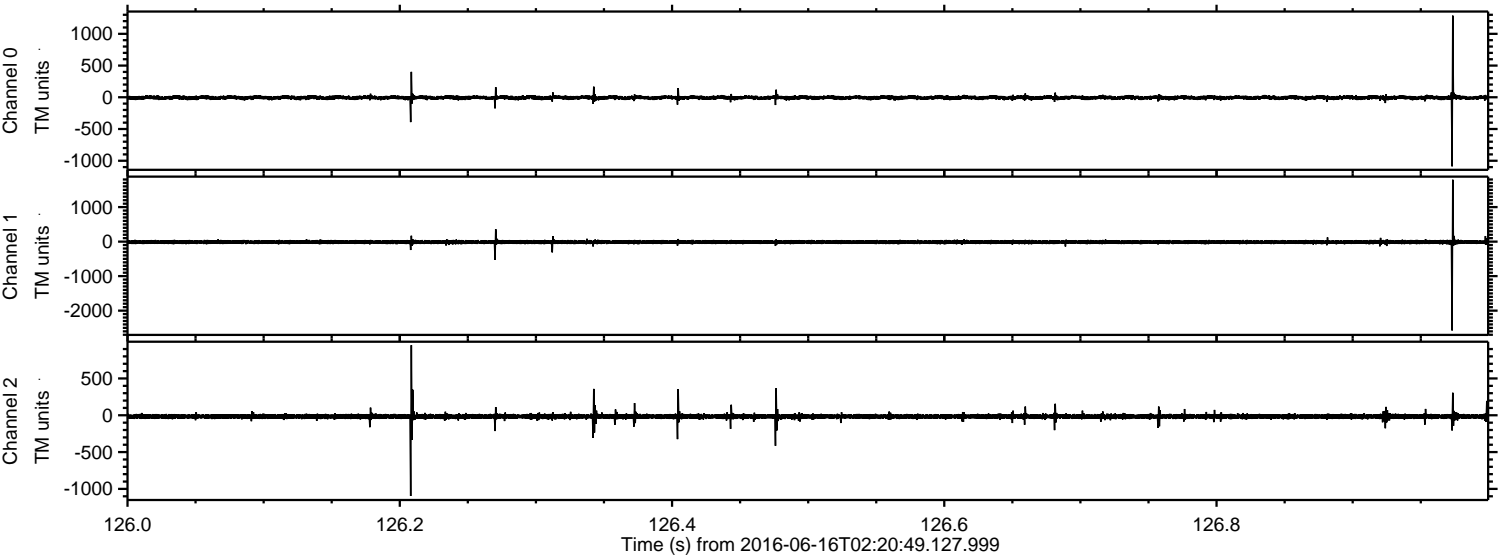
Processed Thu Jun 16 04:28:58 2016 by ELM ver.2012-10-06 from 001\_\_elm20160616\_022048\_\_dat00.bin





ELMAVAN 3D WAVEFORMS (Measured data sampled at 50 kHz) 51000 packets of 144 samples from 2016-06-16T02:20:49.127.999. Part 127/147

Processed Thu Jun 16 04:28:59 2016 by ELM ver.2012-10-06 from 001\_\_elm20160616\_022048\_\_dat00.bin



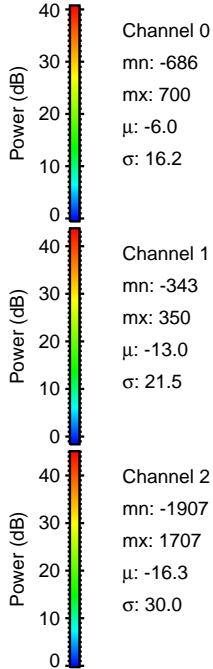
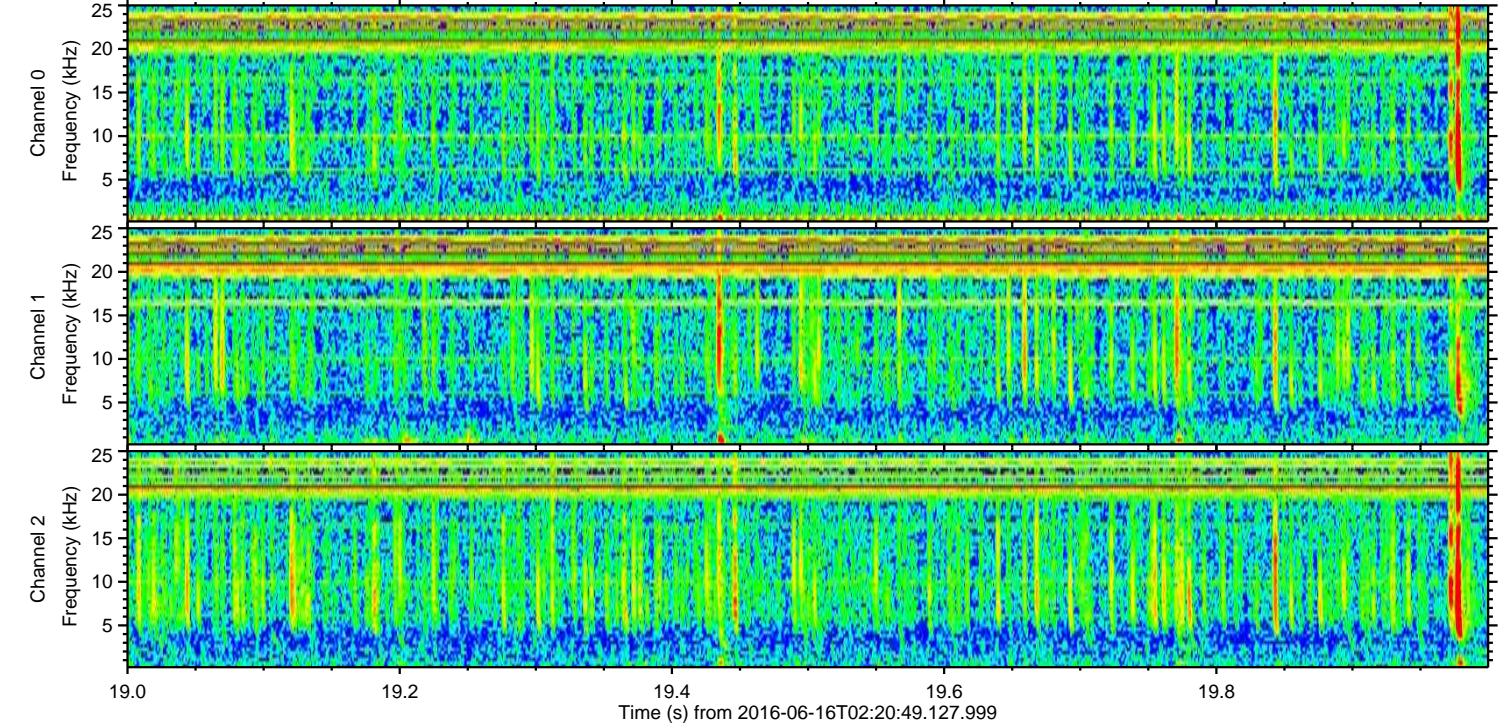
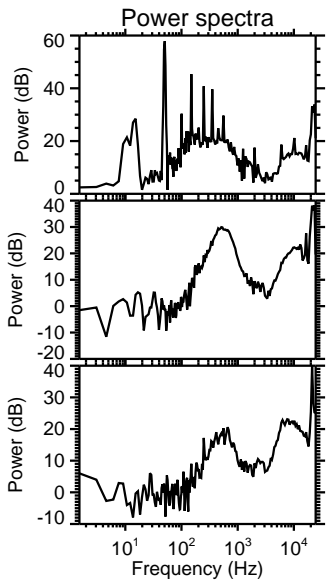
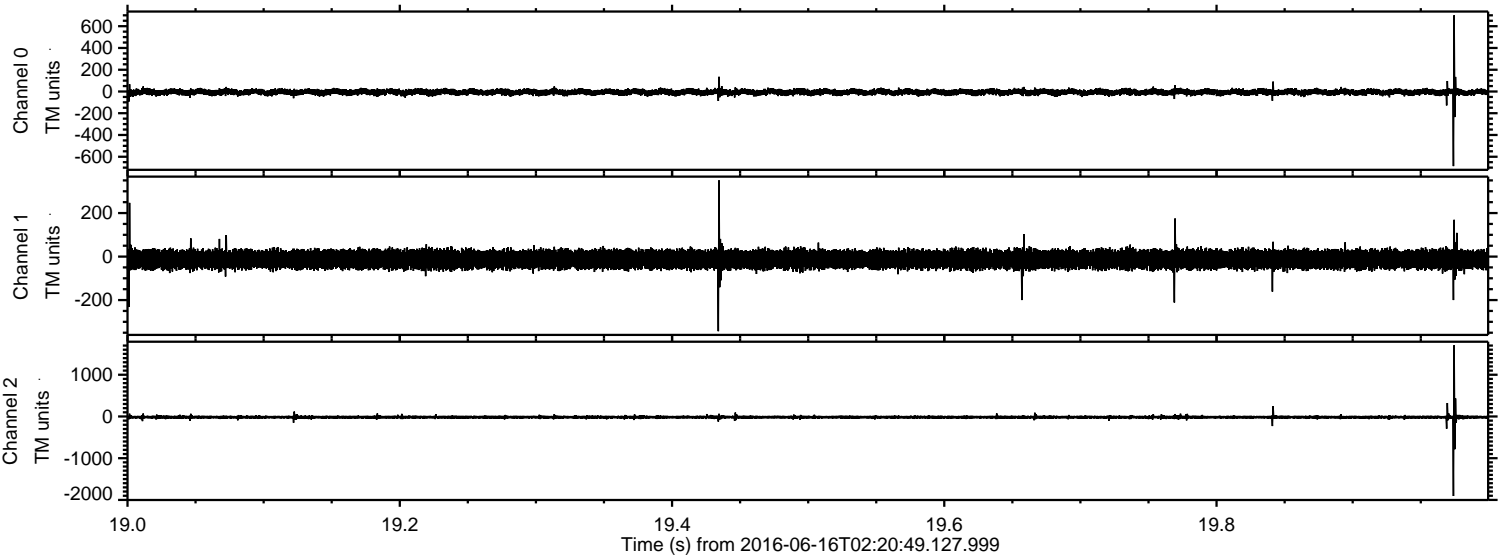
Channel 0  
mn: -1089  
mx: 1287  
 $\mu$ : -6.0  
 $\sigma$ : 18.9

Channel 1  
mn: -2575  
mx: 1794  
 $\mu$ : -13.0  
 $\sigma$ : 33.1

Channel 2  
mn: -1096  
mx: 952  
 $\mu$ : -16.2  
 $\sigma$ : 23.3



Processed Thu Jun 16 04:29:00 2016 by ELM ver.2012-10-06 from 001\_\_elm20160616\_022048\_\_dat00.bin





Processed Thu Jun 16 04:29:01 2016 by ELM ver.2012-10-06 from 001\_\_elm20160616\_022048\_\_dat00.bin

