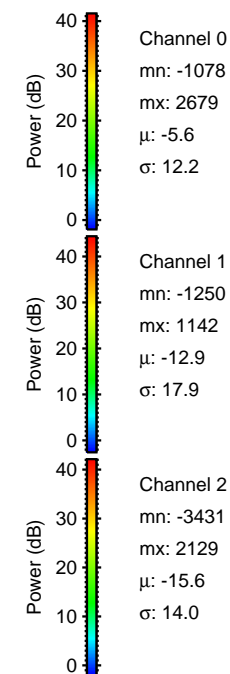
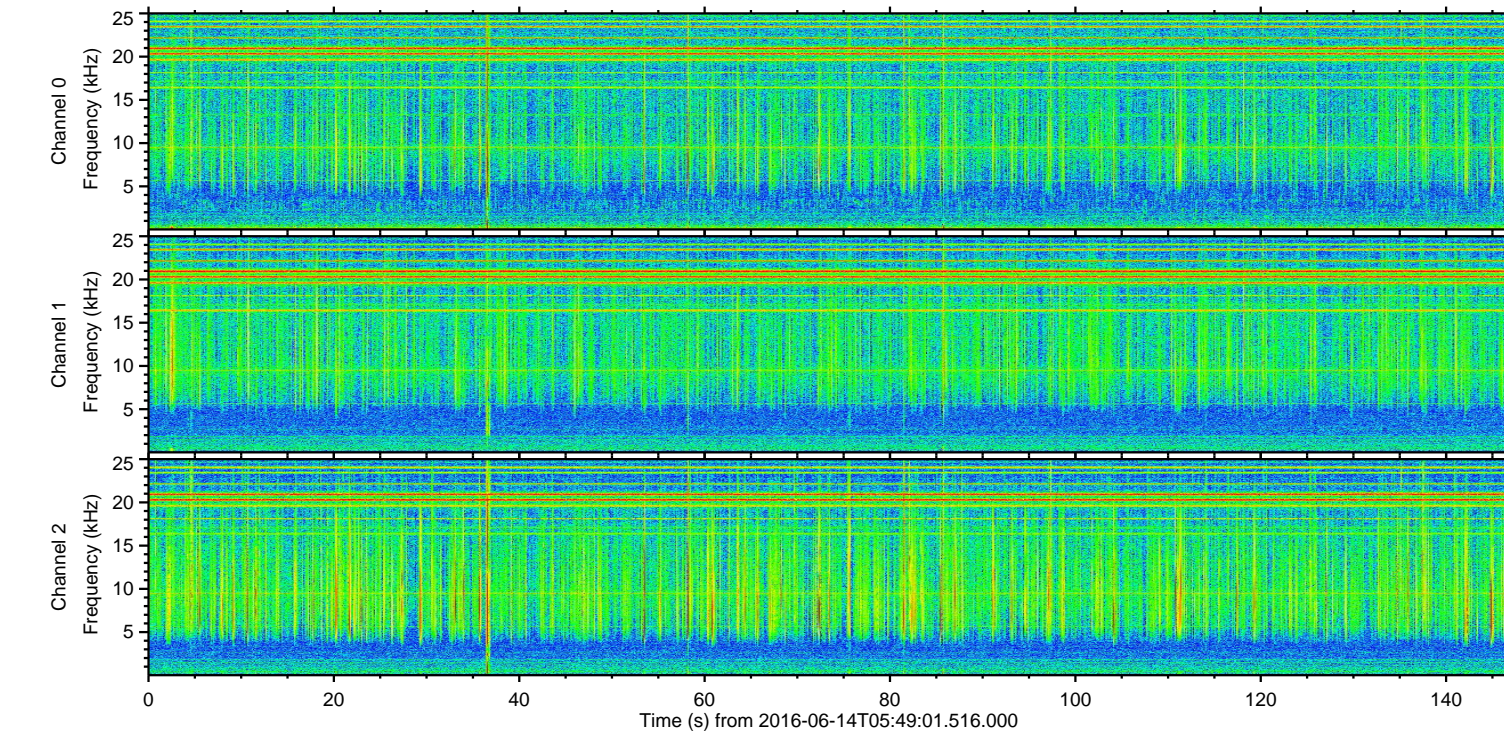
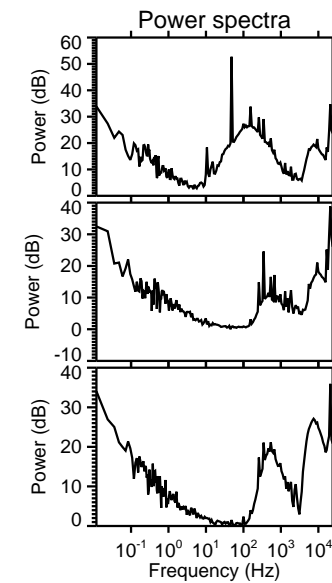
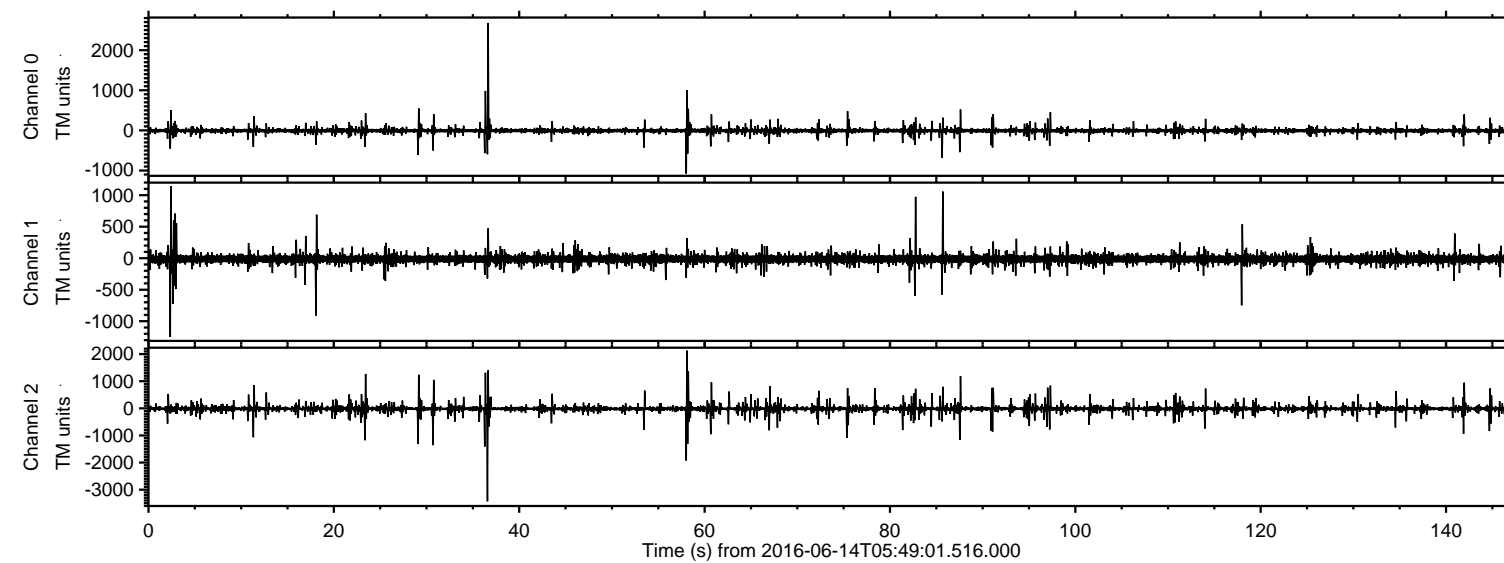


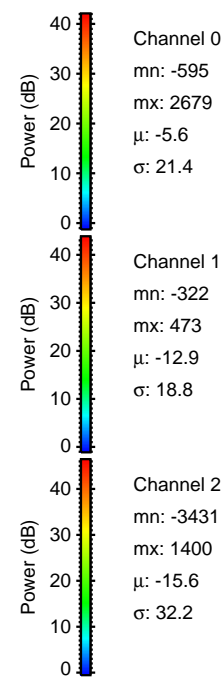
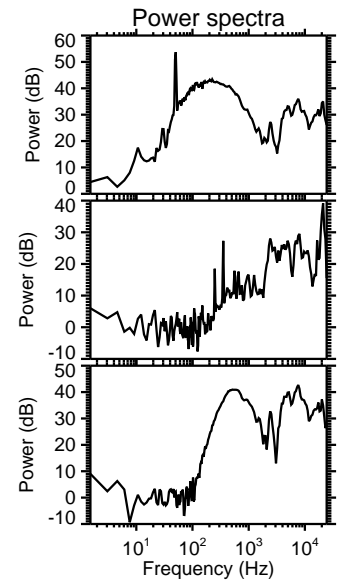
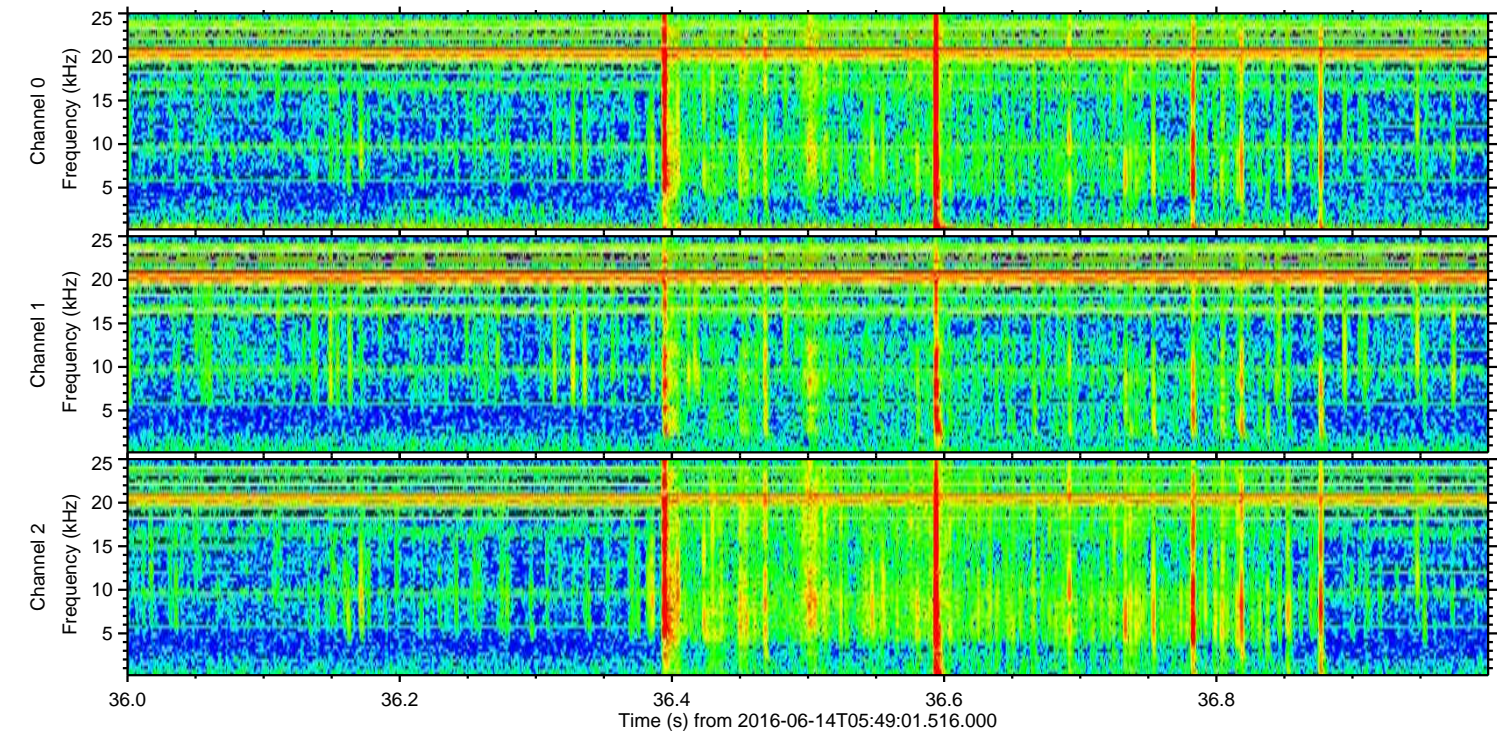
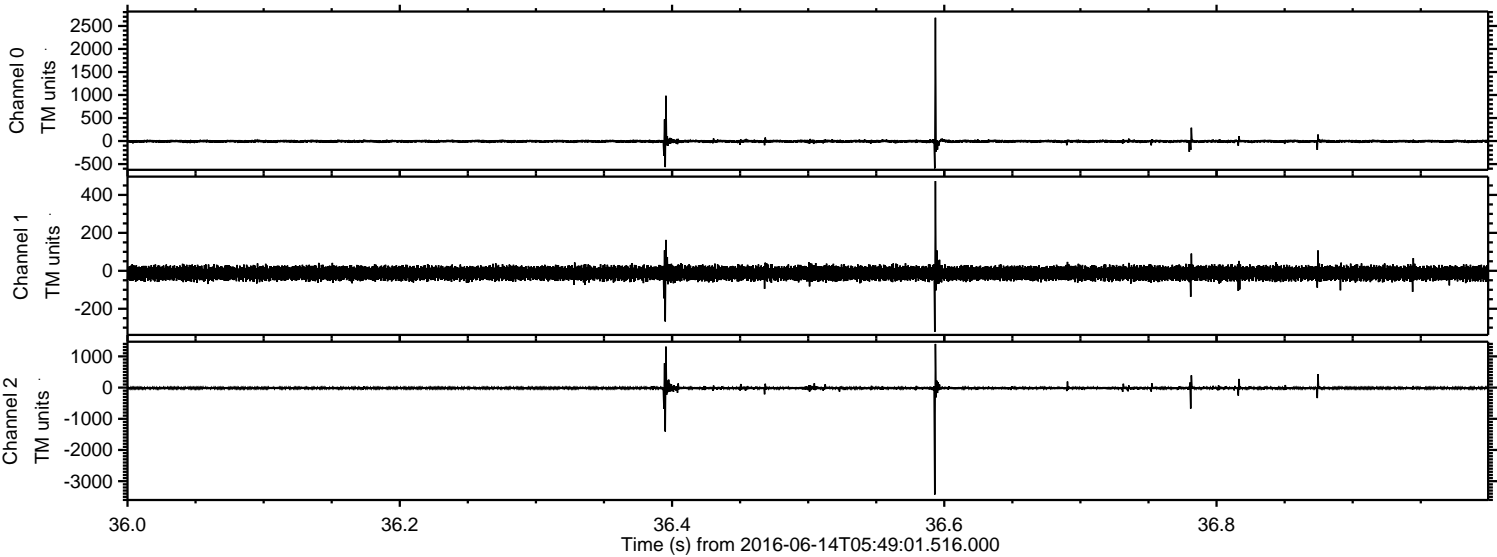
ELMAVAN 3D WAVEFORMS (Measured data sampled at 50 kHz) 51000 packets of 144 samples from 2016-06-14T05:49:01.516.000.

Processed Tue Jun 14 07:57:26 2016 by ELM ver.2012-10-06 from 001__elm20160614_054900__dat00.bin

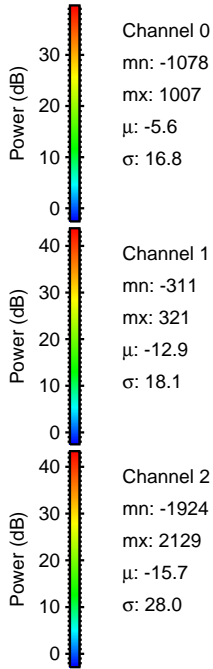
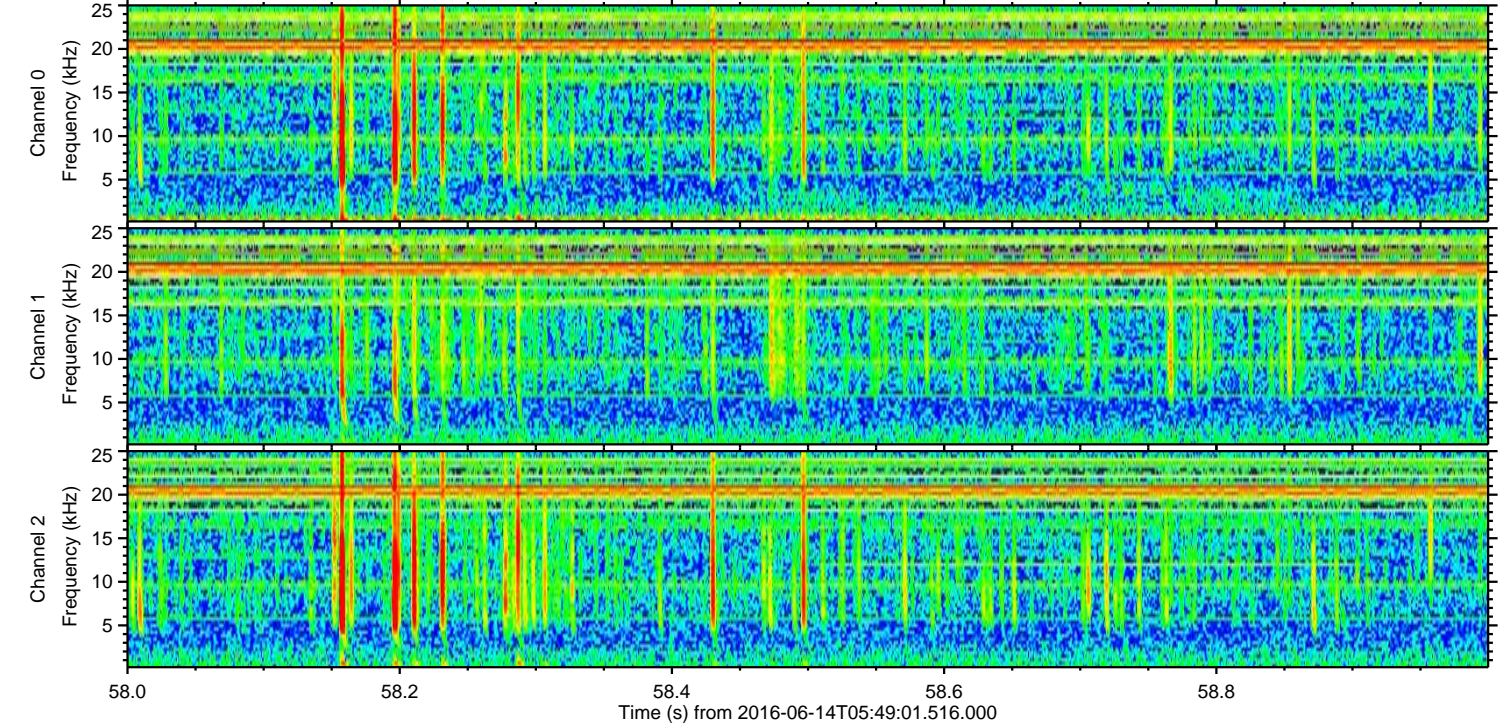
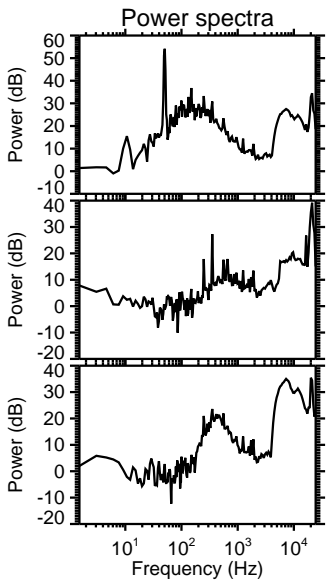
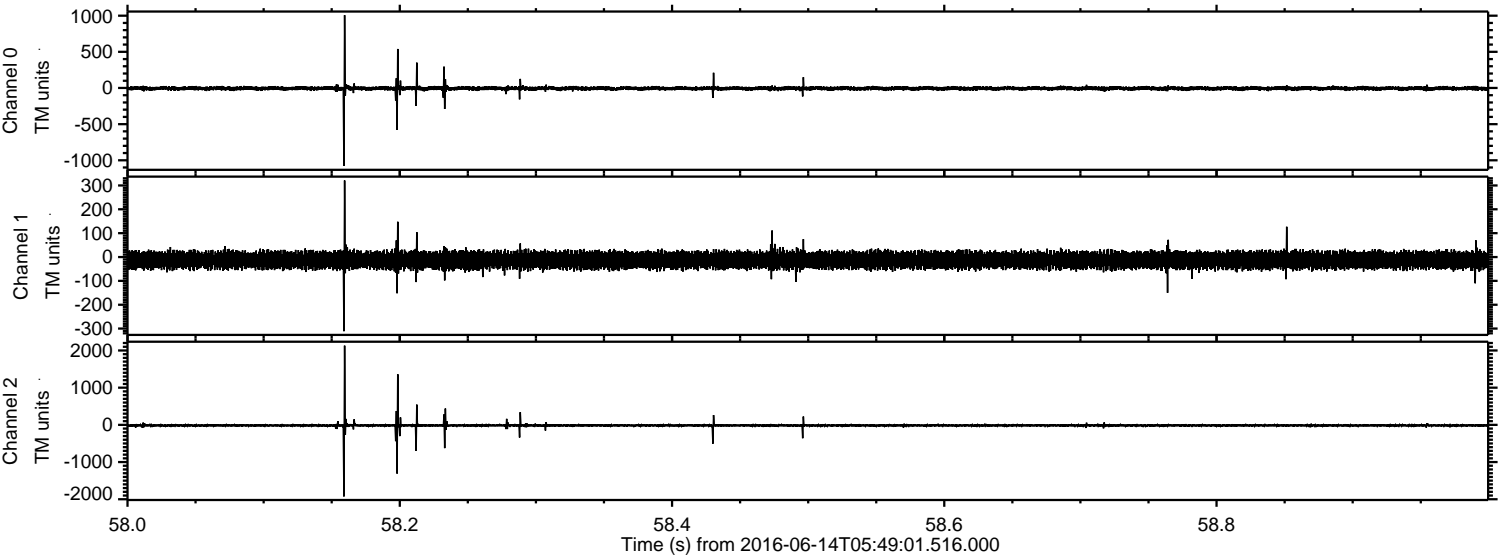


ELMAVAN 3D WAVEFORMS (Measured data sampled at 50 kHz) 51000 packets of 144 samples from 2016-06-14T05:49:01.516.000. Part 37/147

Processed Tue Jun 14 07:57:38 2016 by ELM ver.2012-10-06 from 001__elm20160614_054900__dat00.bin

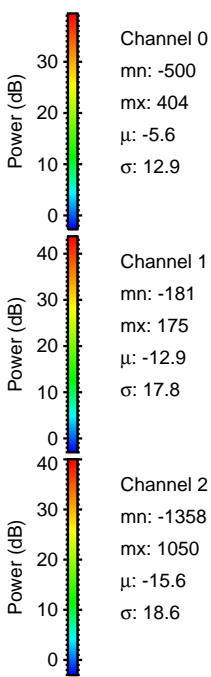
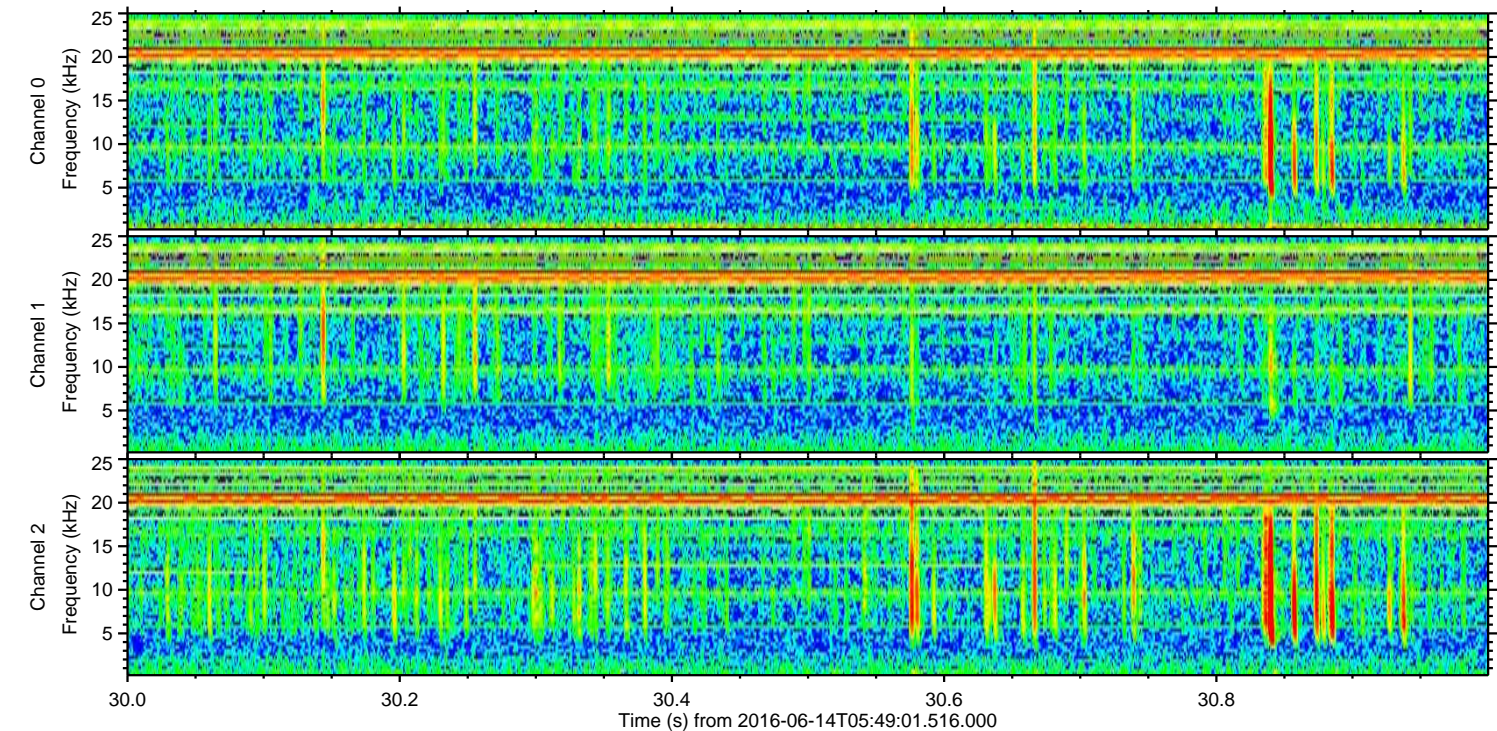
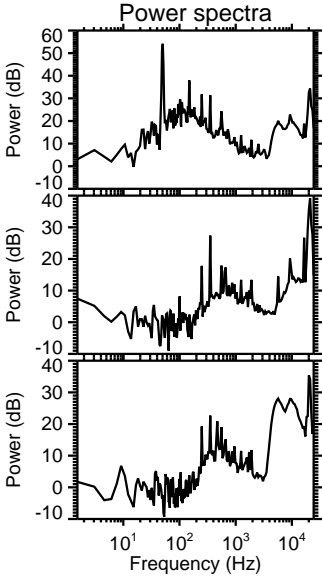
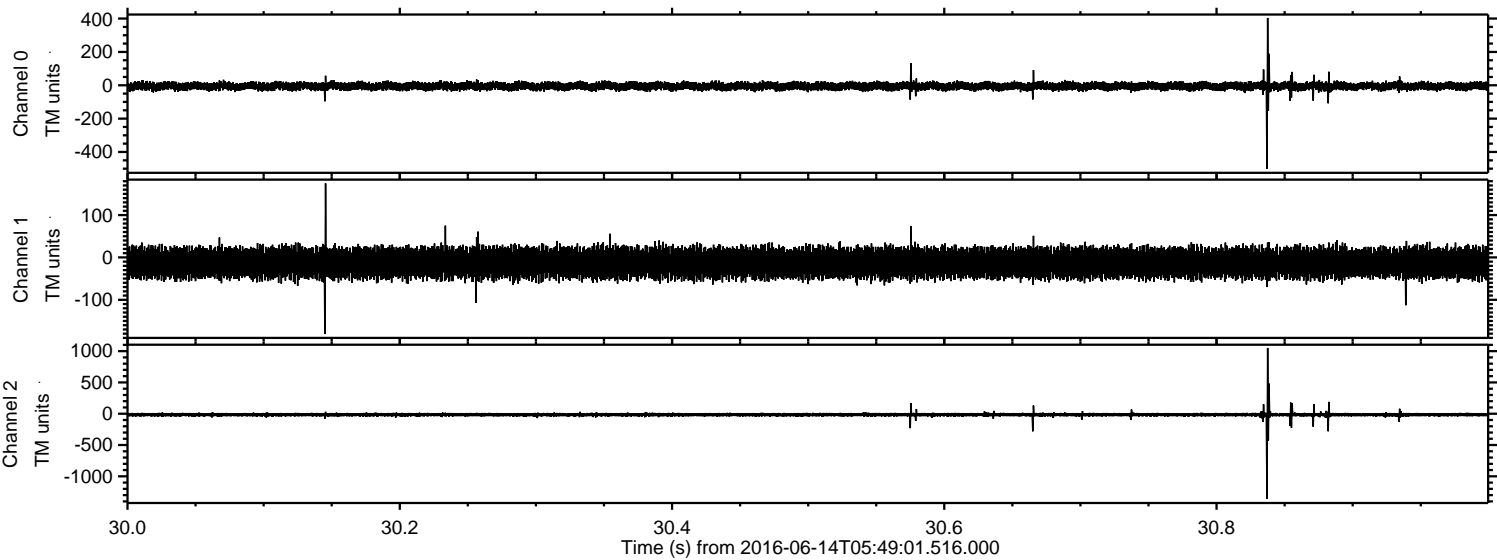


Processed Tue Jun 14 07:57:39 2016 by ELM ver.2012-10-06 from 001__elm20160614_054900__dat00.bin



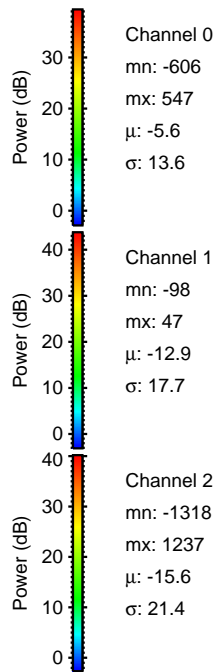
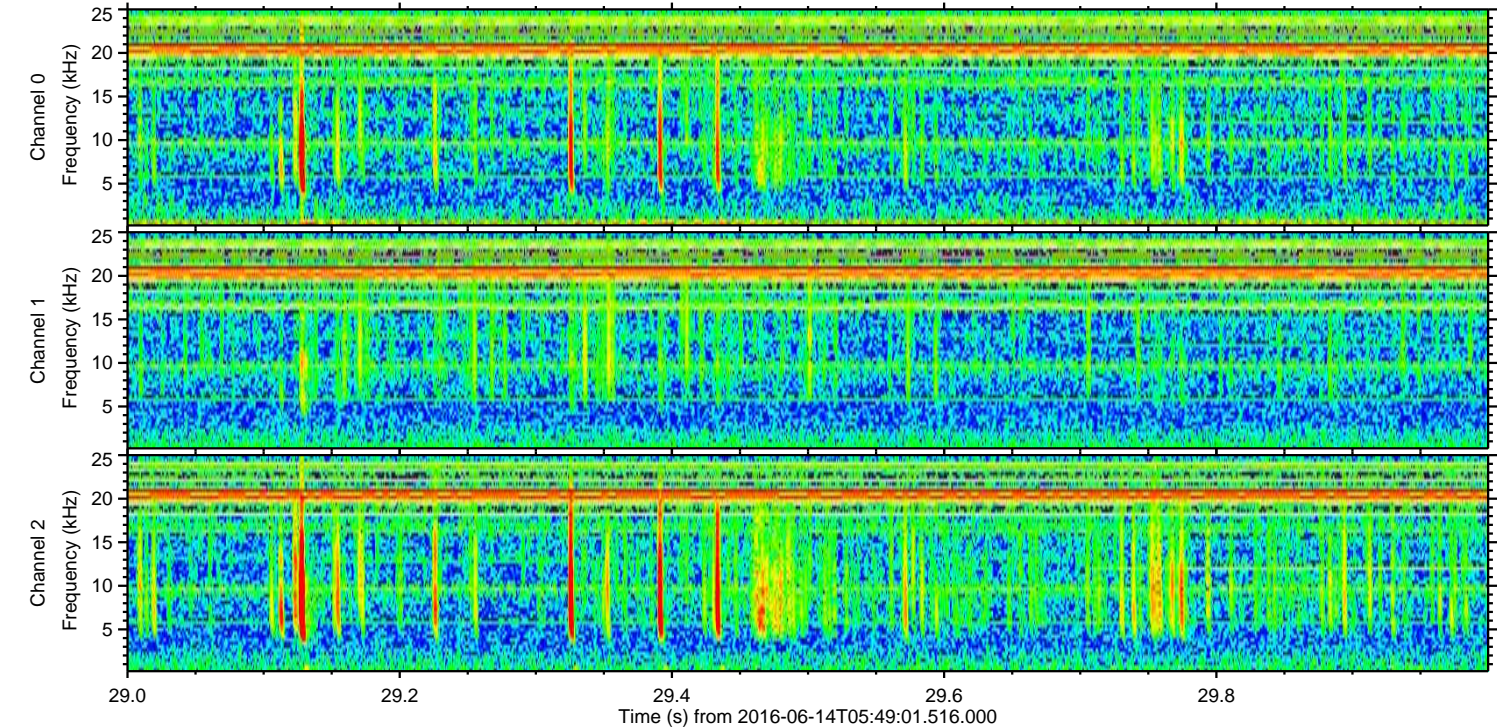
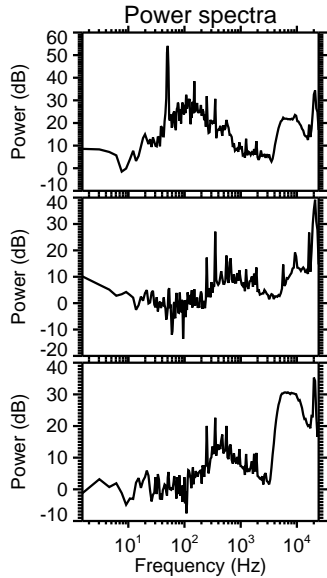
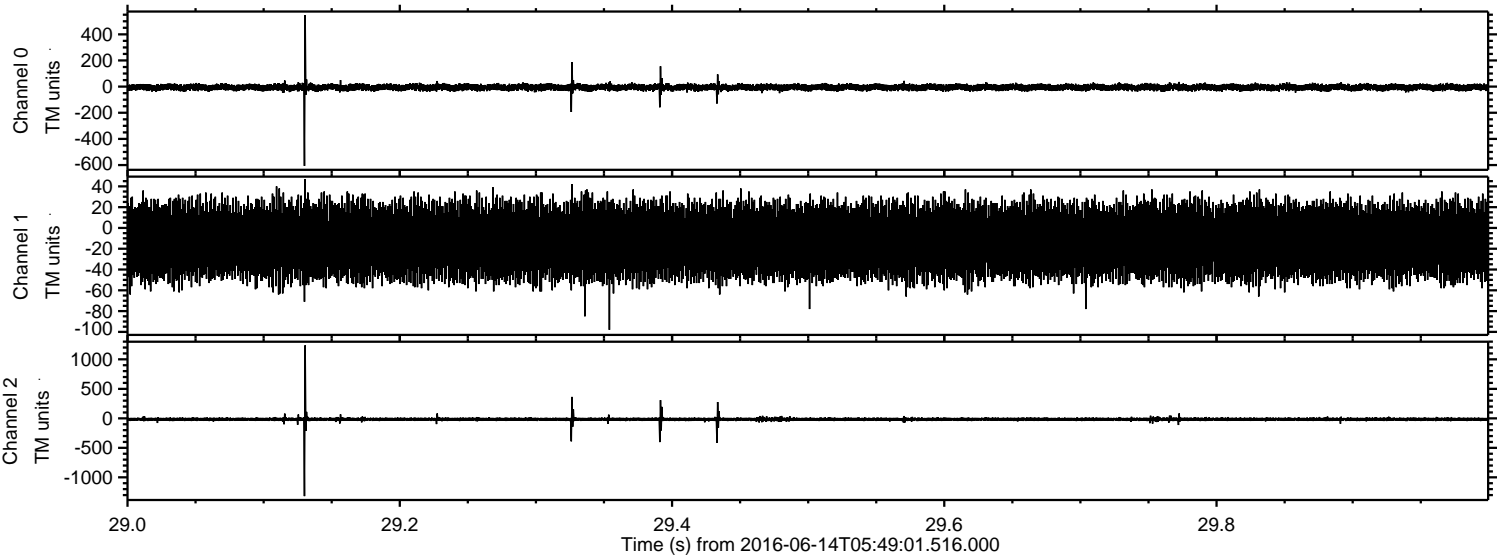
ELMAVAN 3D WAVEFORMS (Measured data sampled at 50 kHz) 51000 packets of 144 samples from 2016-06-14T05:49:01.516.000. Part 31/147

Processed Tue Jun 14 07:57:40 2016 by ELM ver.2012-10-06 from 001__elm20160614_054900__dat00.bin

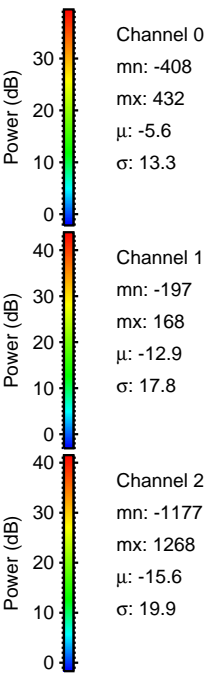
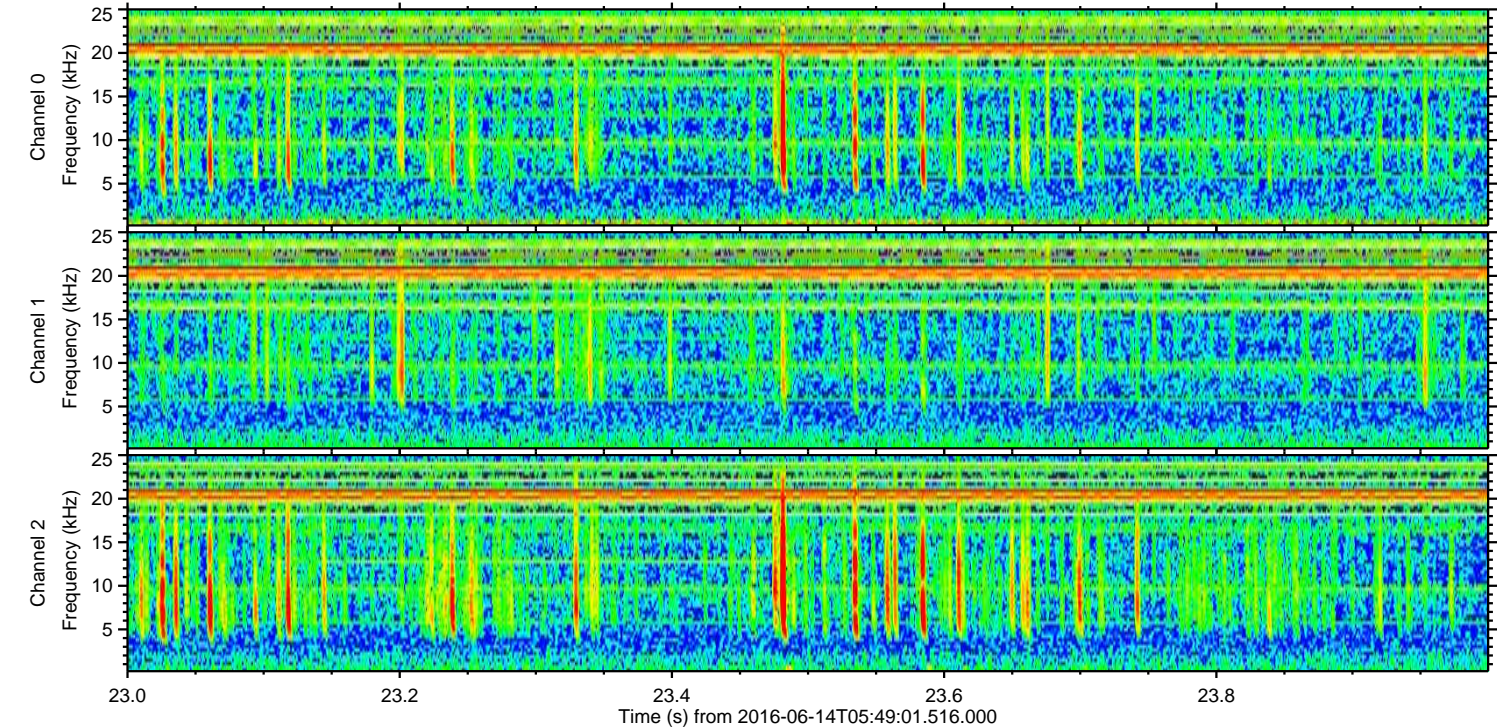
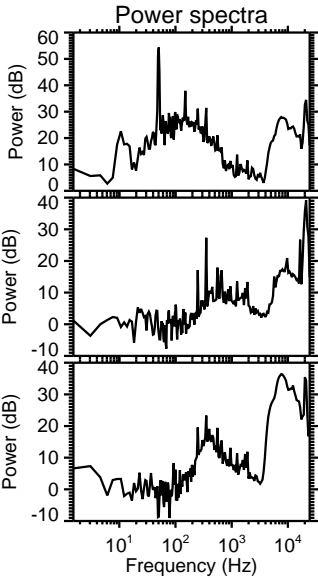
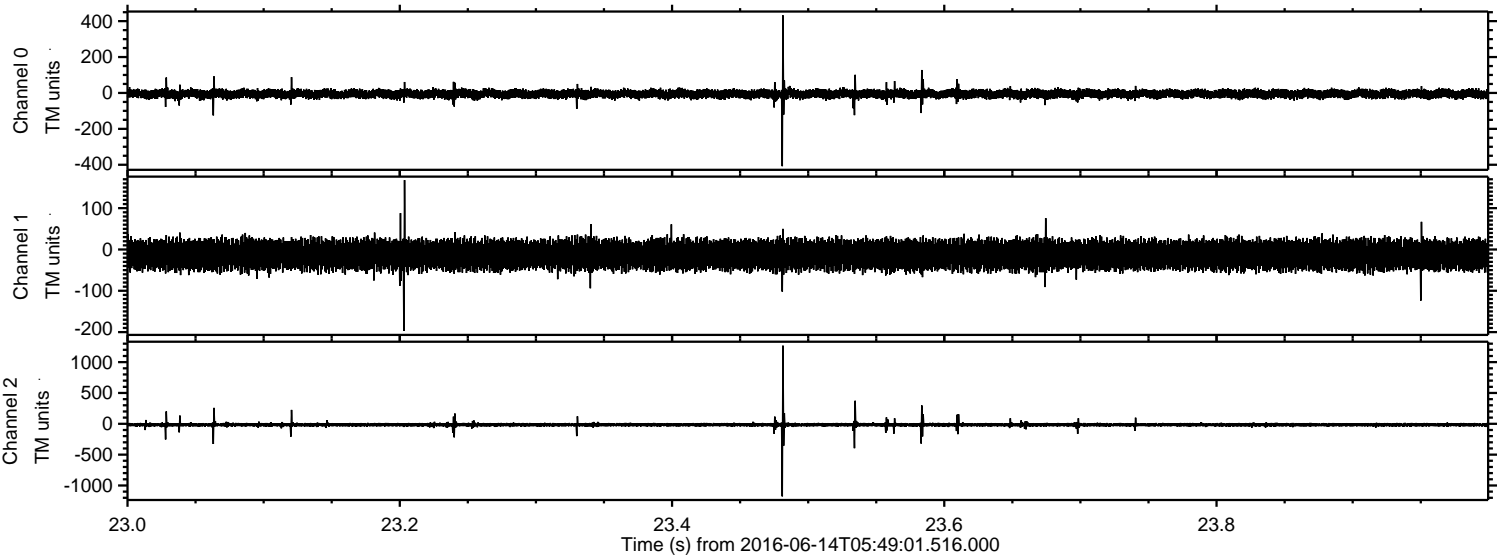


ELMAVAN 3D WAVEFORMS (Measured data sampled at 50 kHz) 51000 packets of 144 samples from 2016-06-14T05:49:01.516.000. Part 30/147

Processed Tue Jun 14 07:57:40 2016 by ELM ver.2012-10-06 from 001__elm20160614_054900__dat00.bin

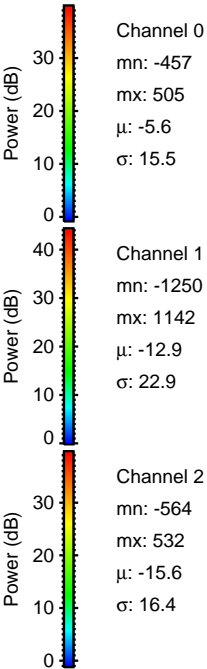
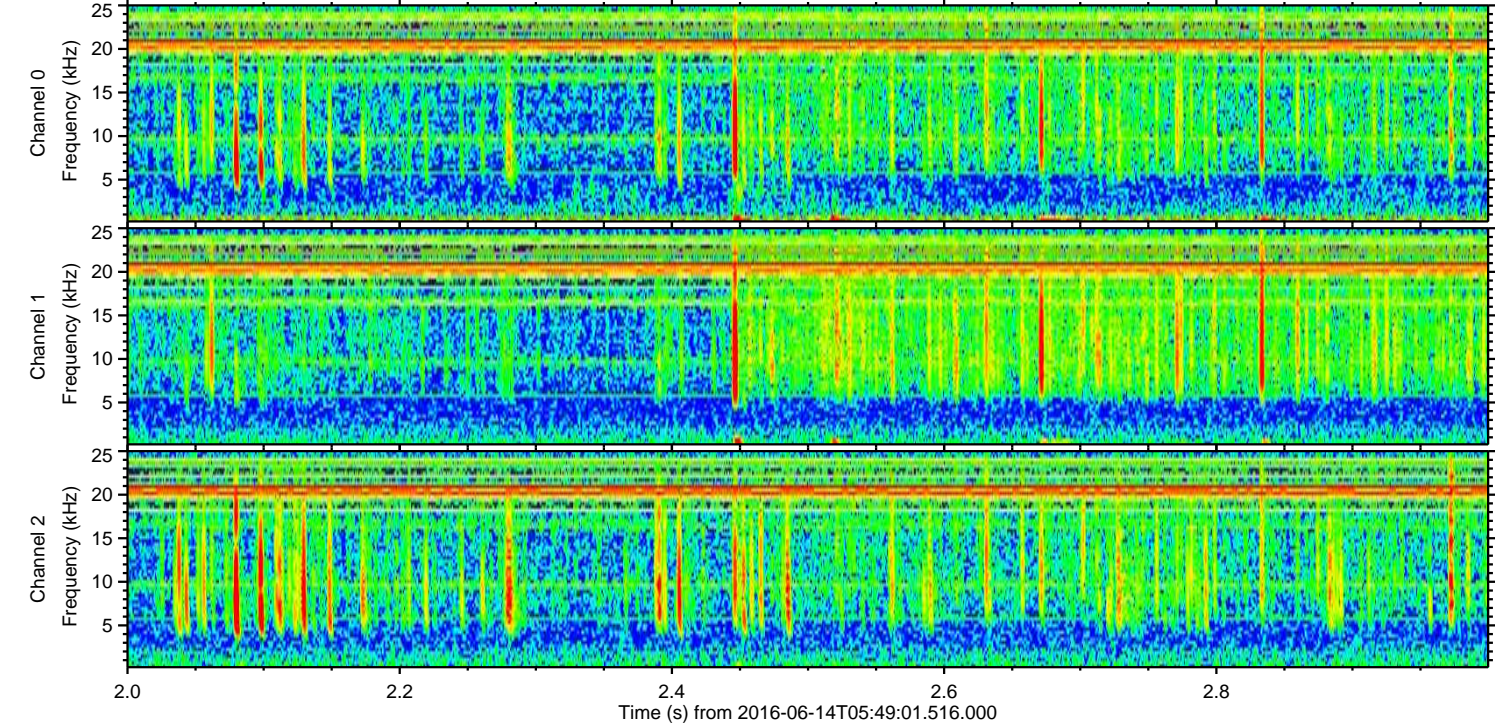
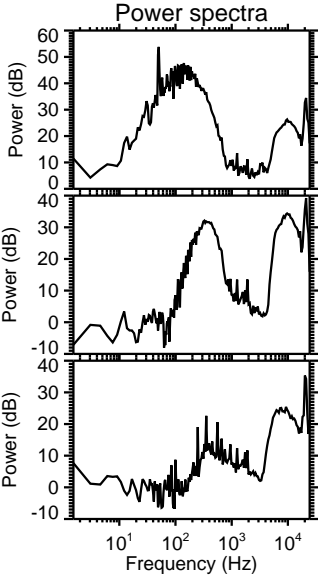
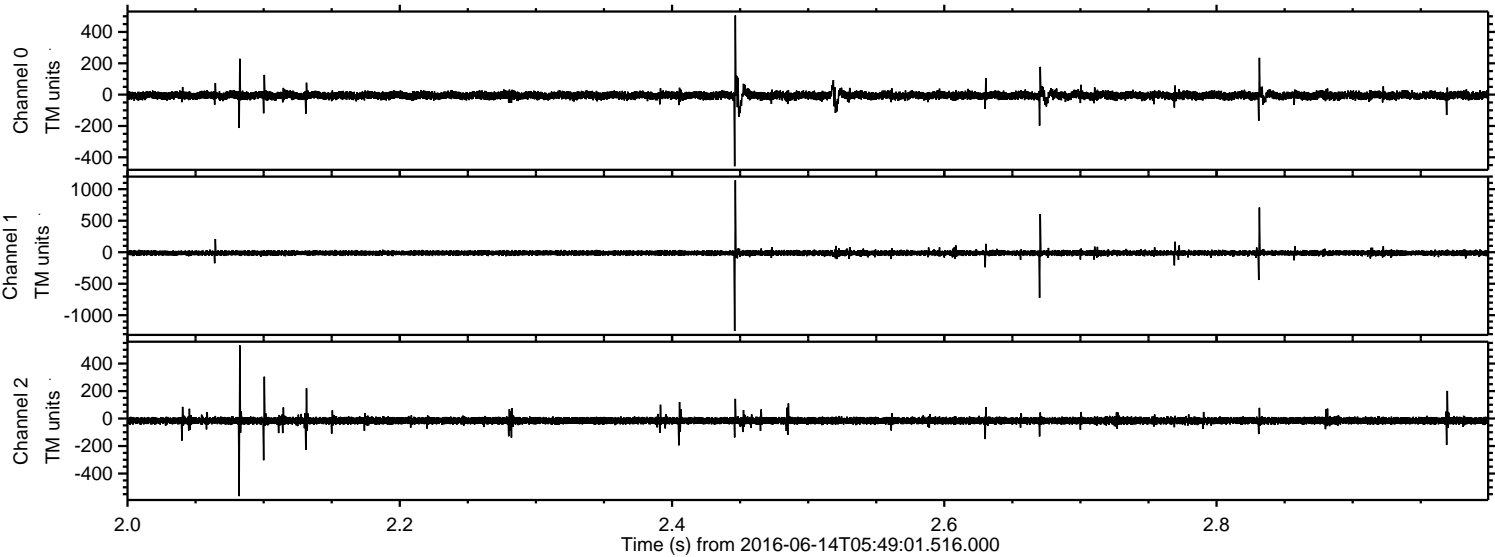


Processed Tue Jun 14 07:57:41 2016 by ELM ver.2012-10-06 from 001__elm20160614_054900__dat00.bin

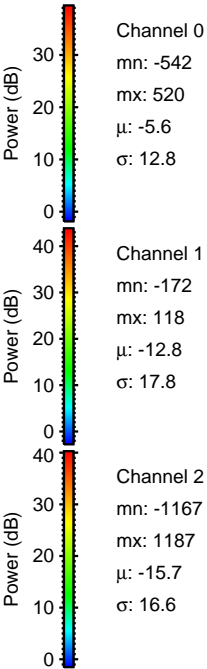
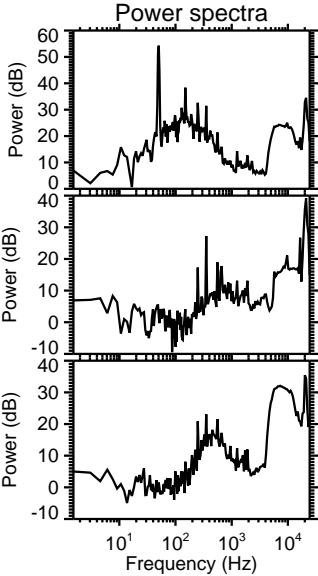
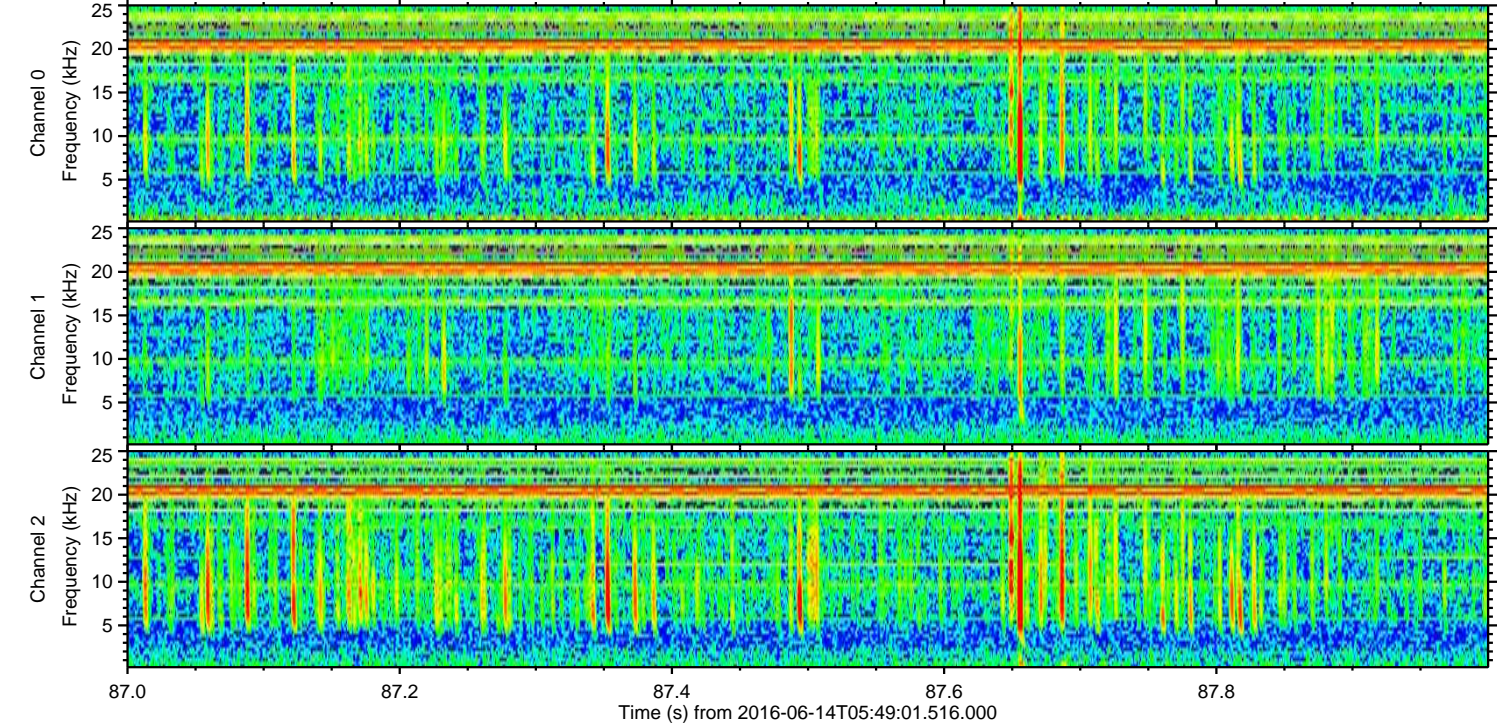
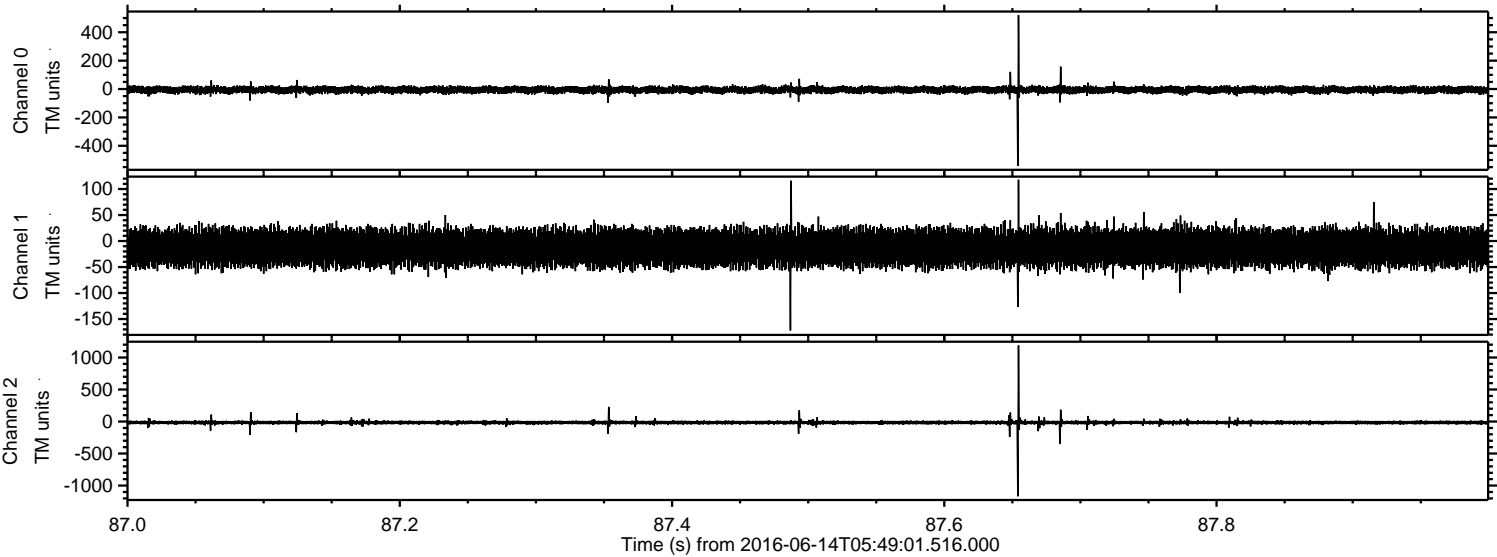


ELMAVAN 3D WAVEFORMS (Measured data sampled at 50 kHz) 51000 packets of 144 samples from 2016-06-14T05:49:01.516.000. Part 3/147

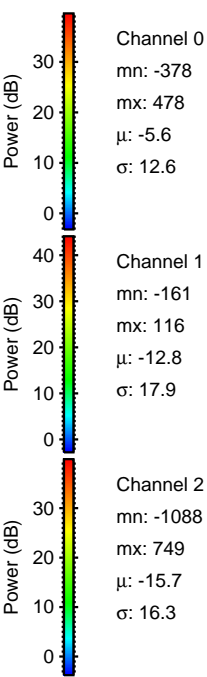
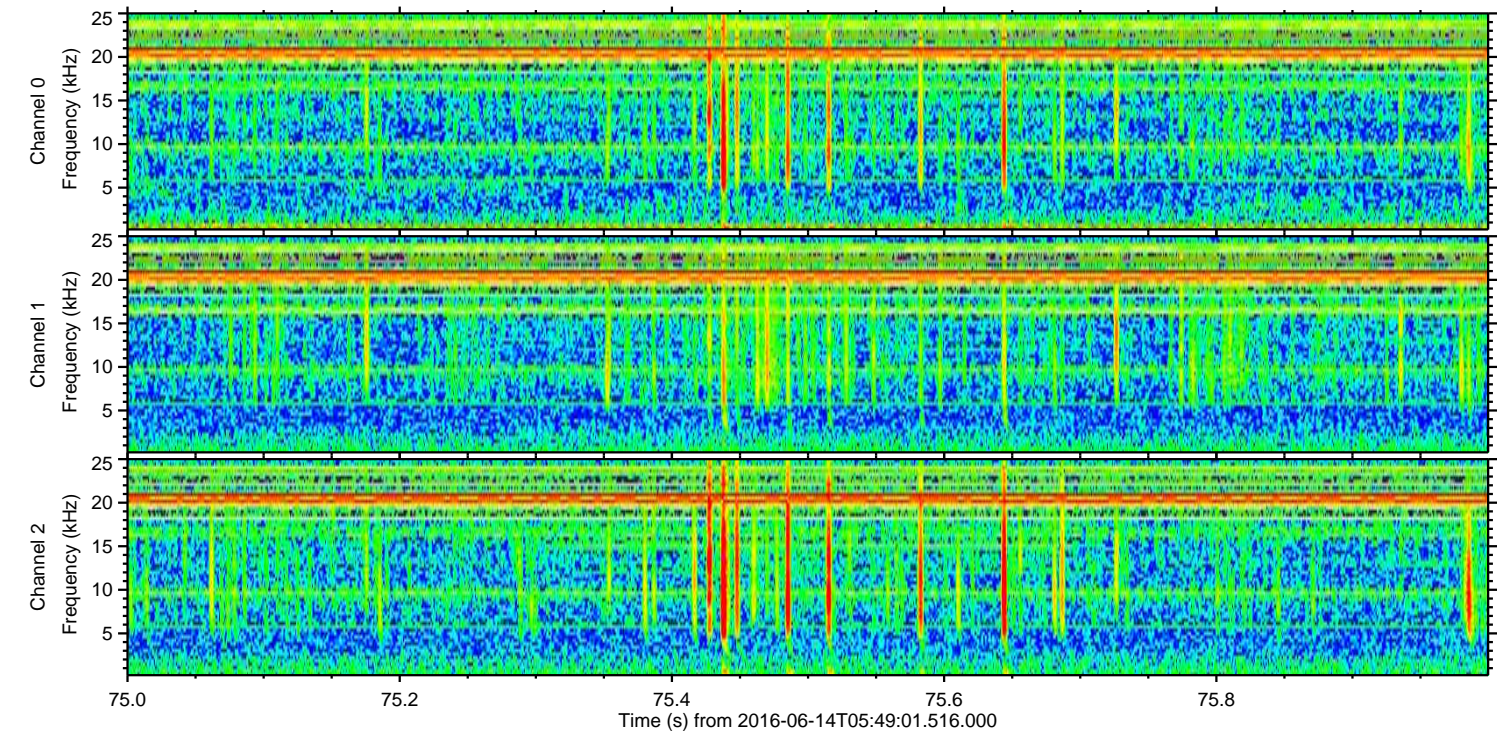
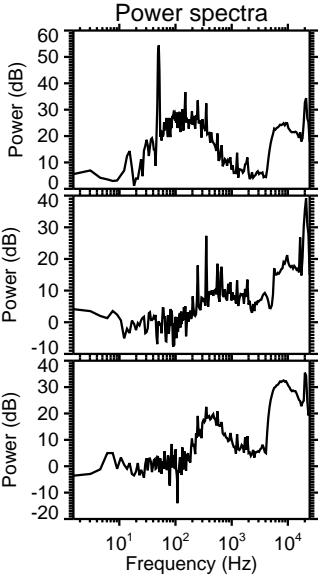
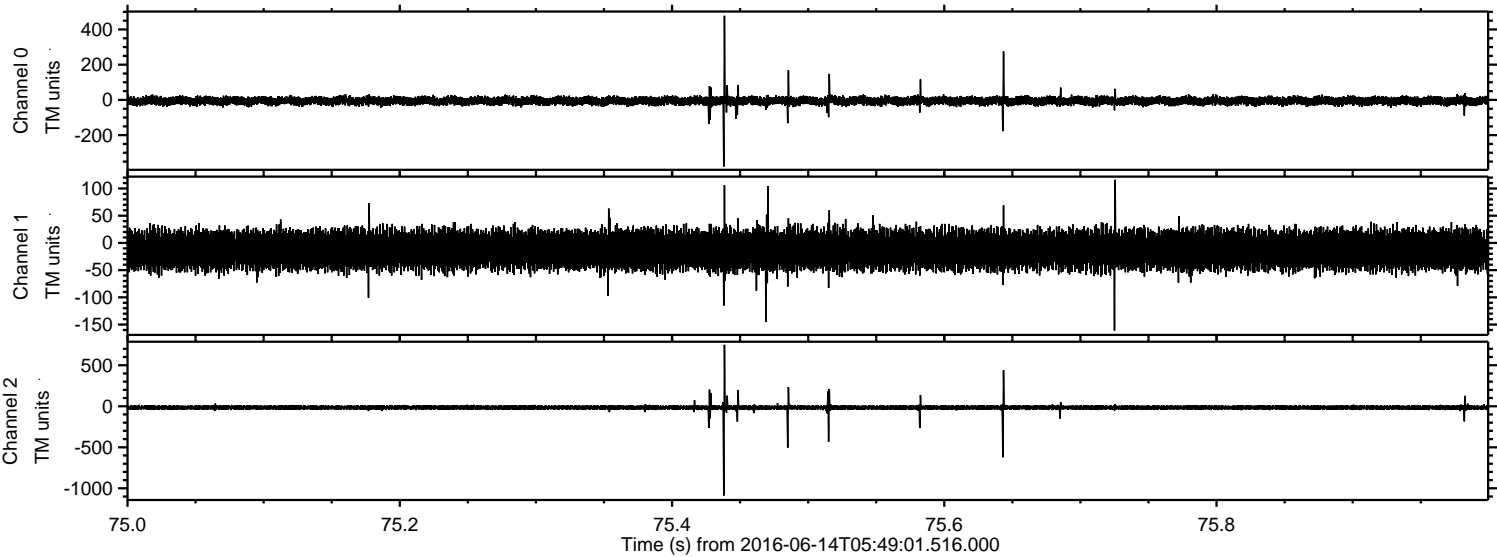
Processed Tue Jun 14 07:57:42 2016 by ELM ver.2012-10-06 from 001__elm20160614_054900__dat00.bin



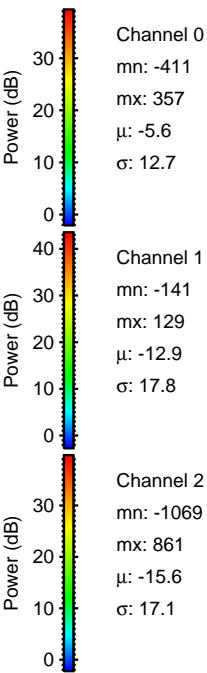
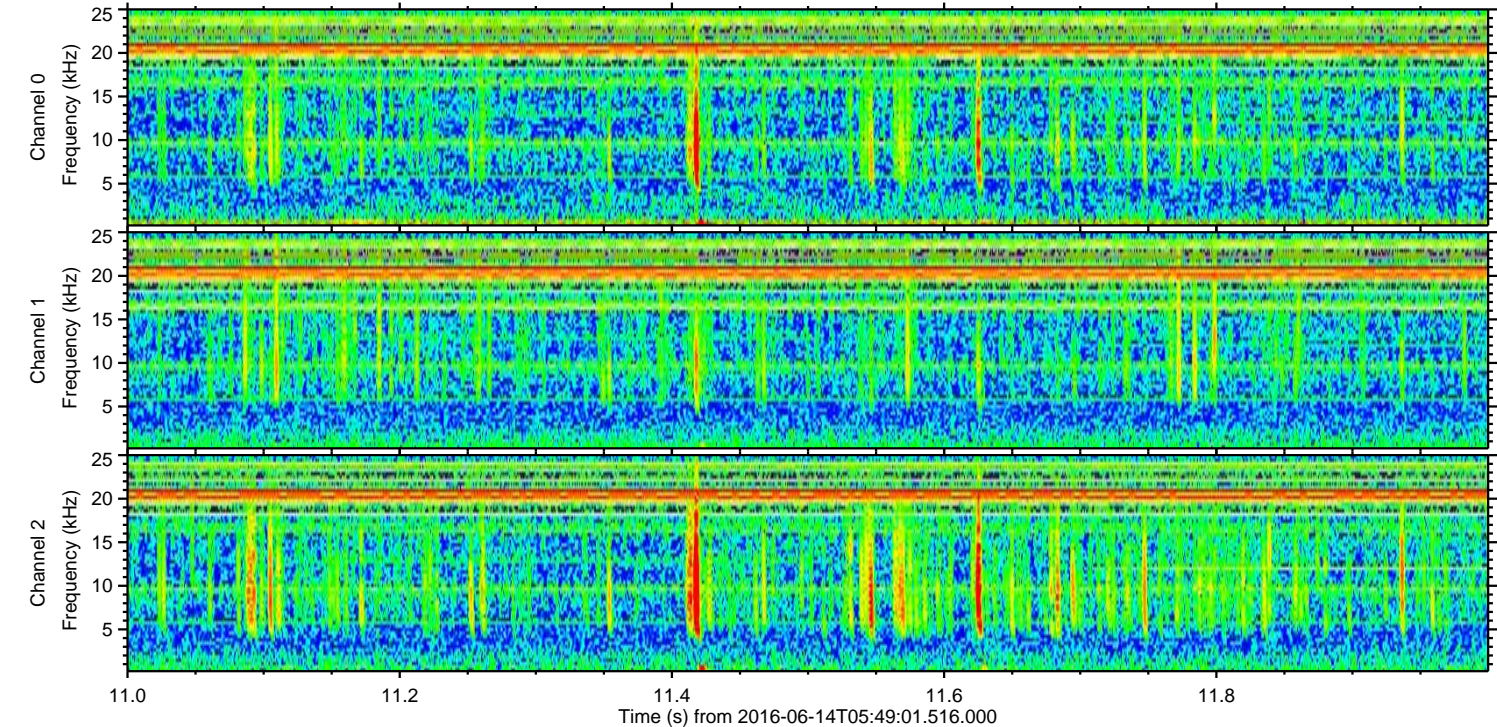
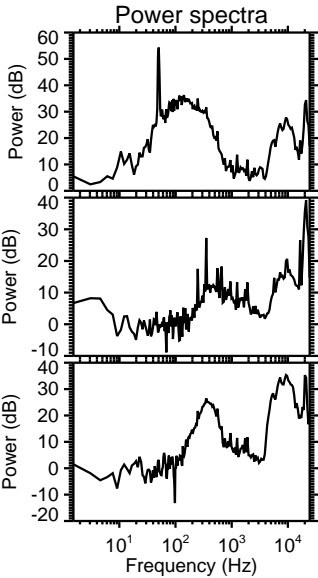
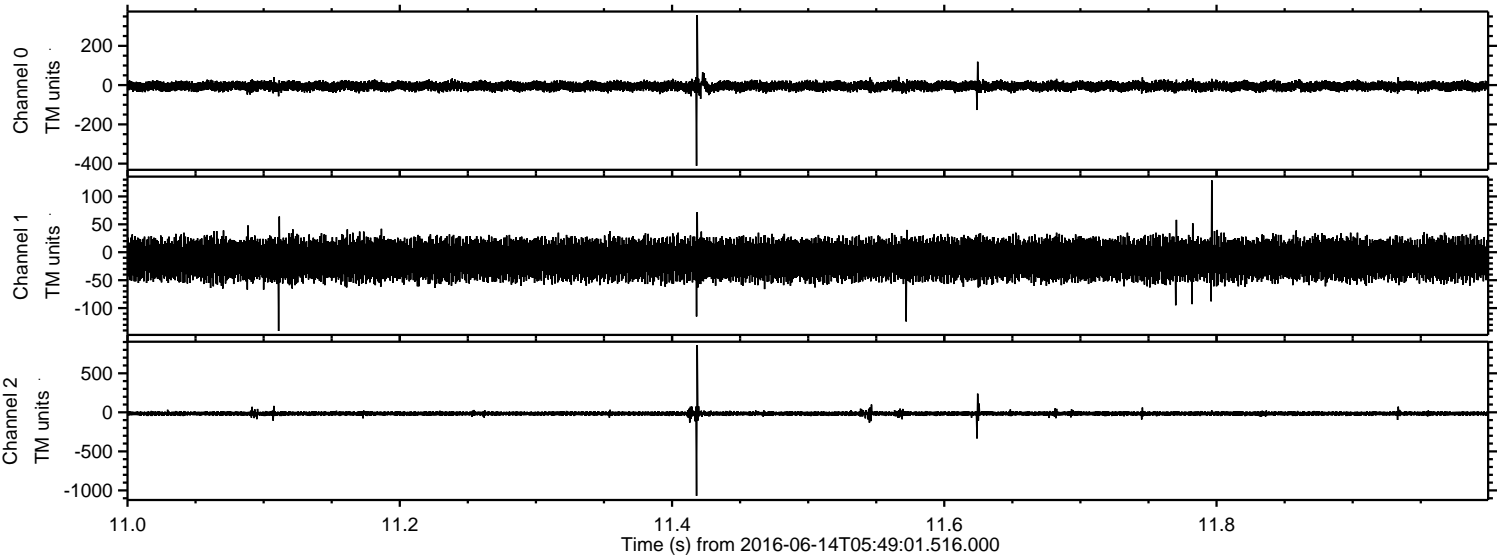
Processed Tue Jun 14 07:57:43 2016 by ELM ver.2012-10-06 from 001__elm20160614_054900__dat00.bin



Processed Tue Jun 14 07:57:44 2016 by ELM ver.2012-10-06 from 001__elm20160614_054900__dat00.bin



Processed Tue Jun 14 07:57:45 2016 by ELM ver.2012-10-06 from 001__elm20160614_054900__dat00.bin



Channel 0
mn: -411
mx: 357
 μ : -5.6
 σ : 12.7

Channel 1
mn: -141
mx: 129
 μ : -12.9
 σ : 17.8

Channel 2
mn: -1069
mx: 861
 μ : -15.6
 σ : 17.1

Processed Tue Jun 14 07:57:46 2016 by ELM ver.2012-10-06 from 001__elm20160614_054900__dat00.bin

