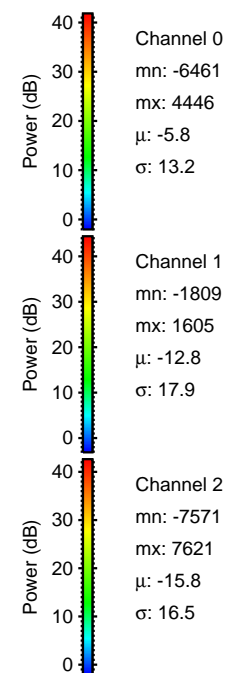
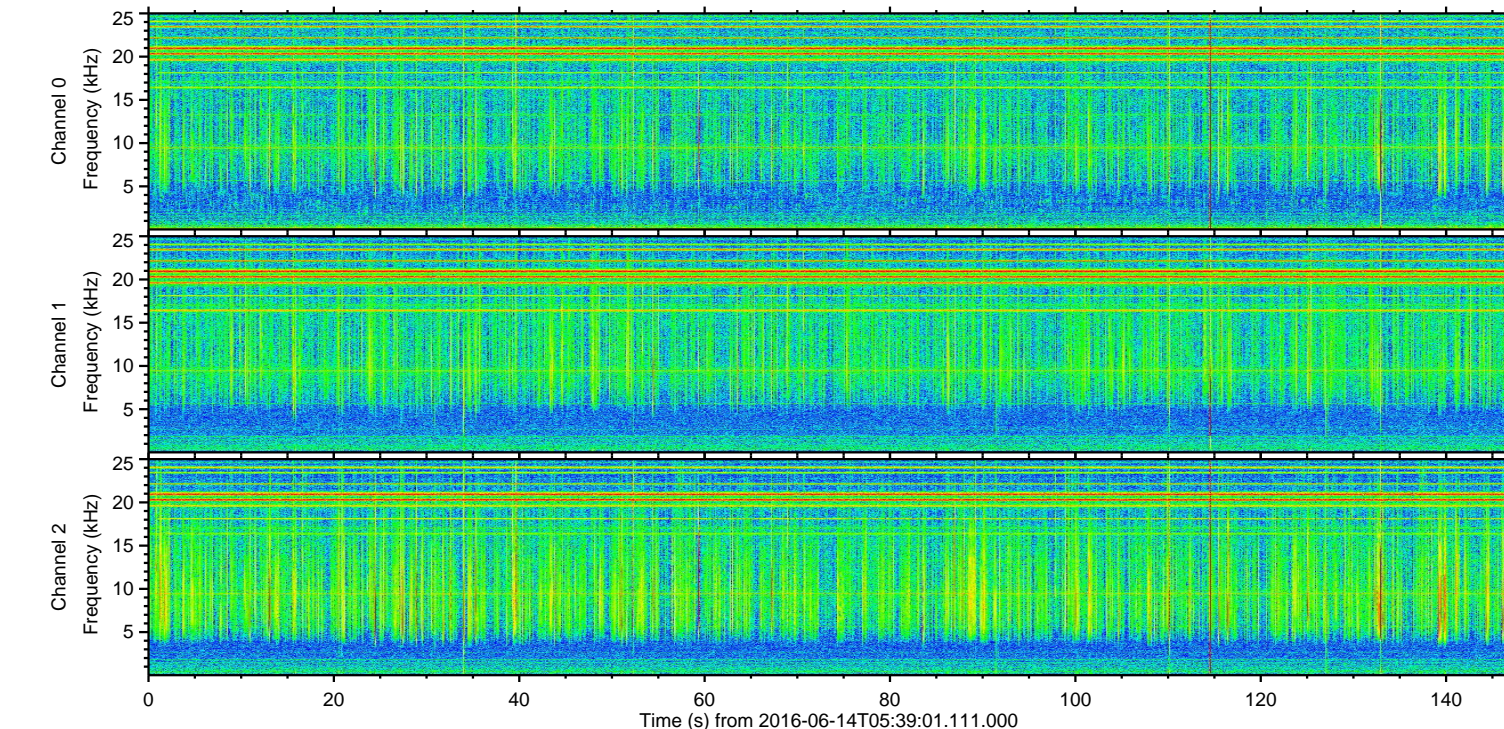
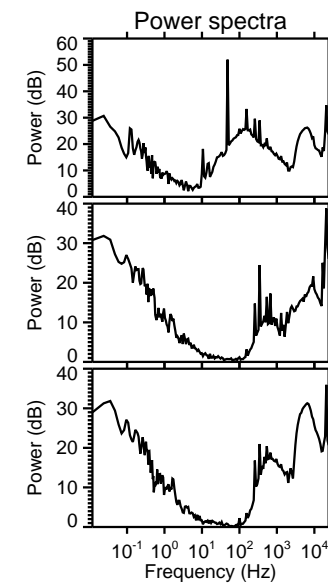
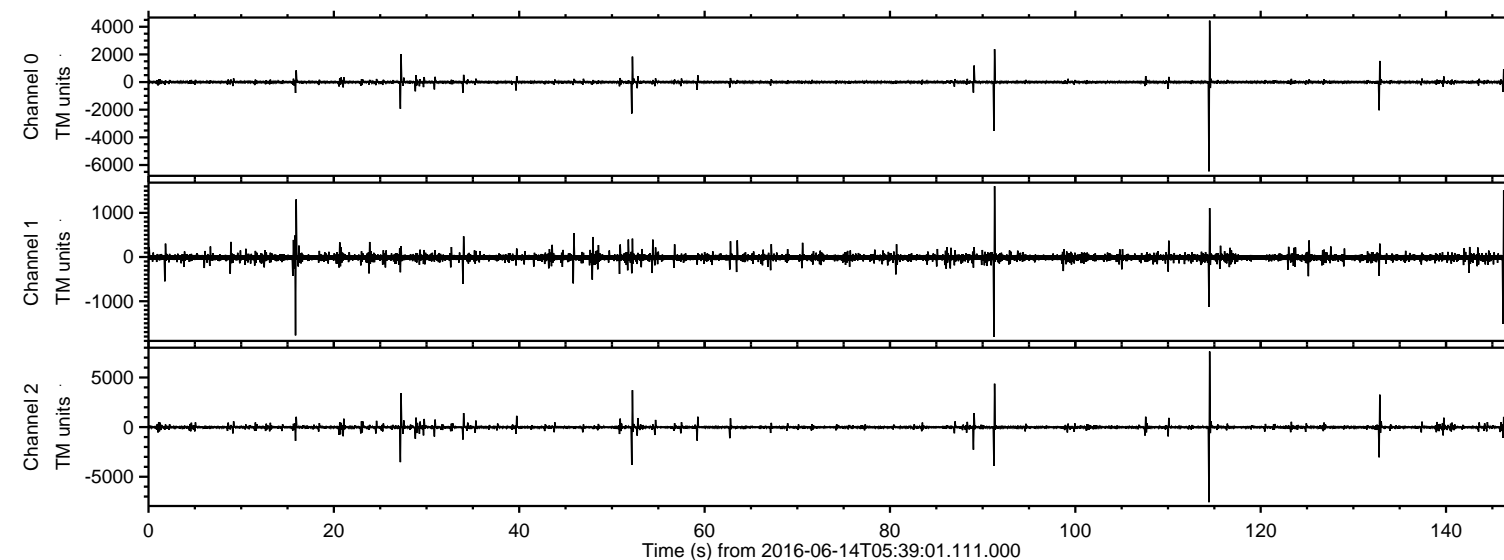


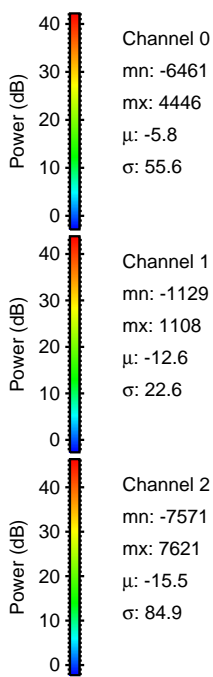
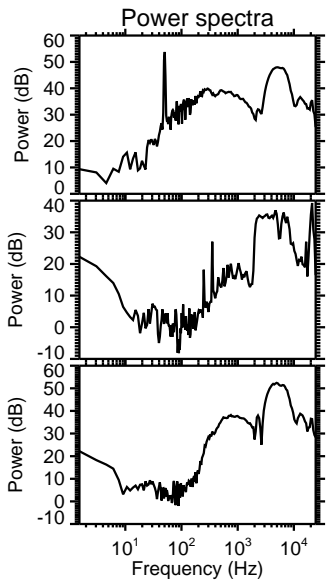
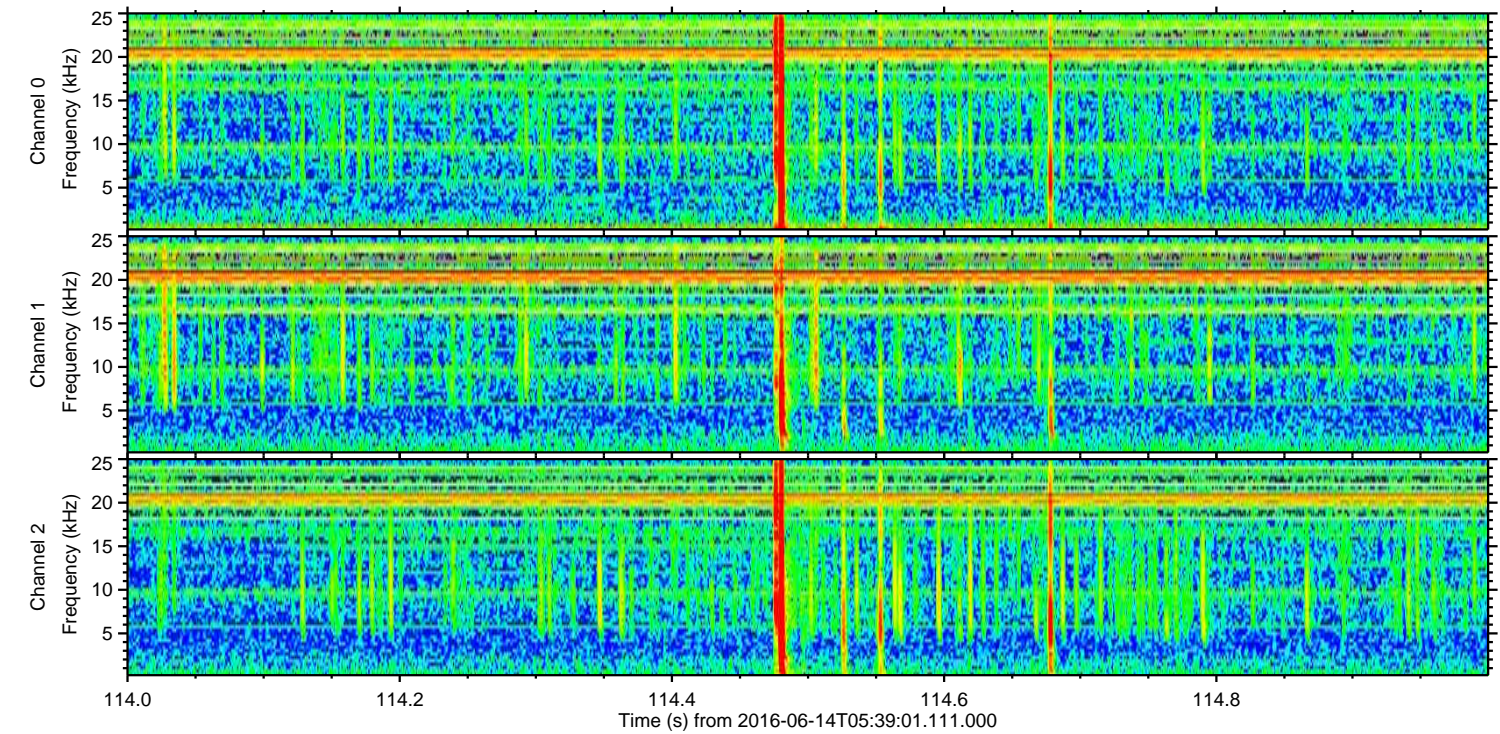
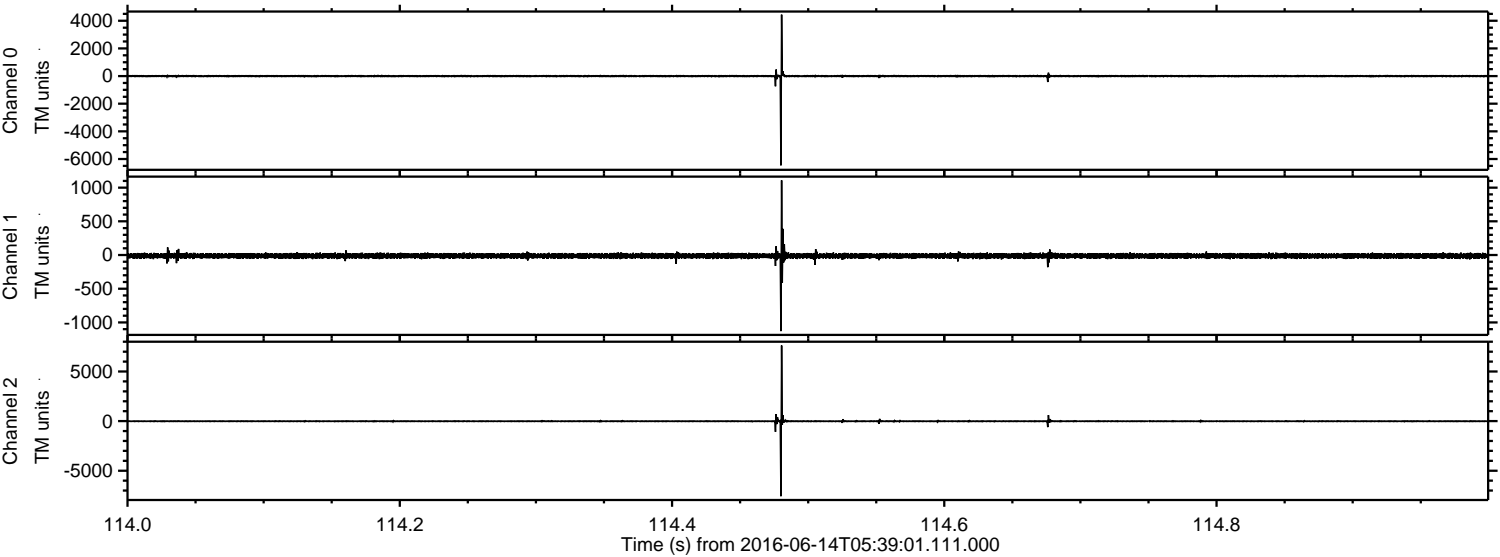
ELMAVAN 3D WAVEFORMS (Measured data sampled at 50 kHz) 51000 packets of 144 samples from 2016-06-14T05:39:01.111.000.

Processed Tue Jun 14 07:47:06 2016 by ELM ver.2012-10-06 from 001__elm20160614_053900__dat00.bin

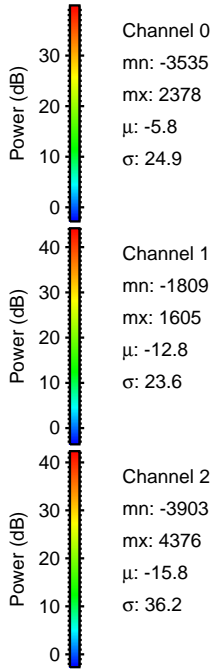
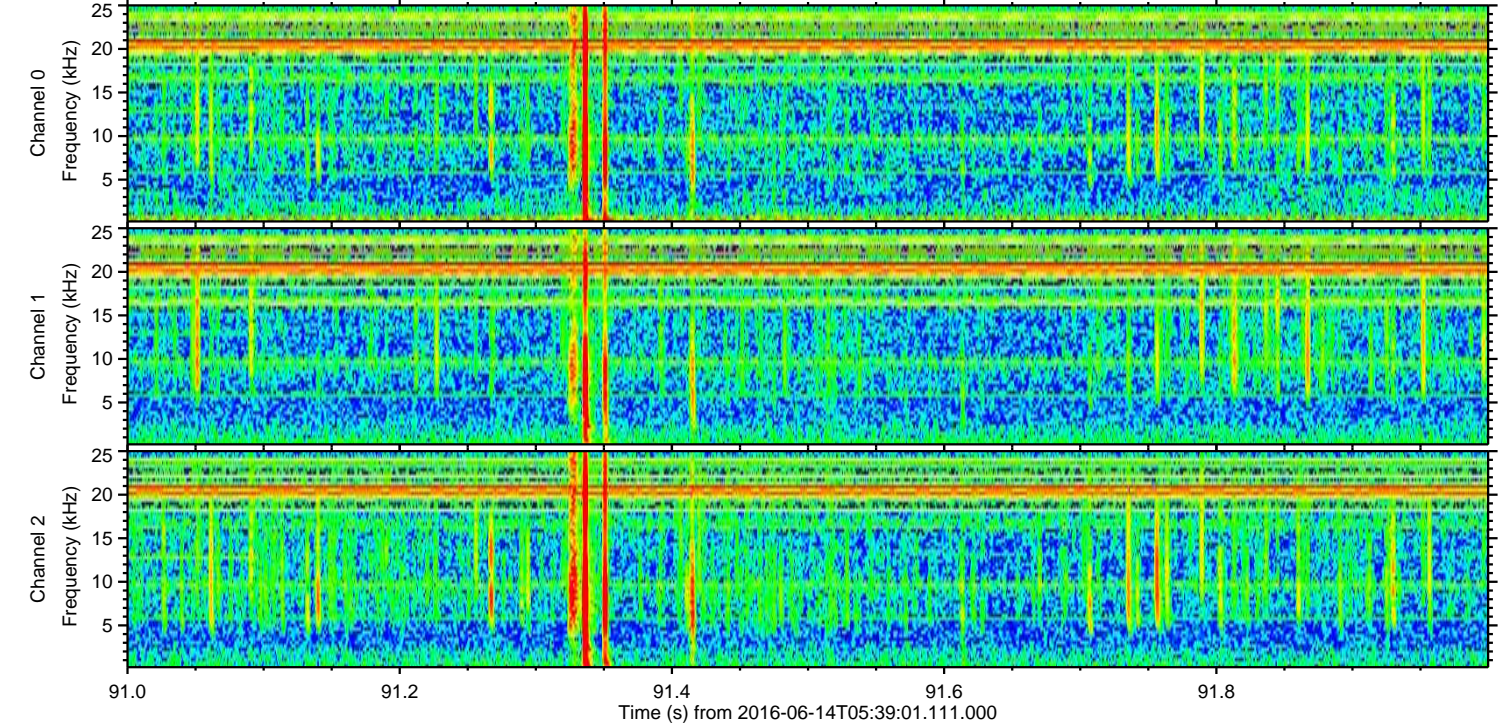
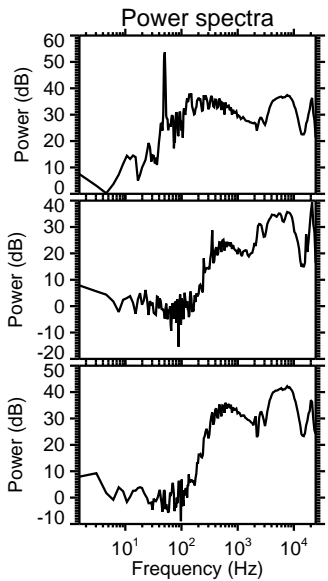
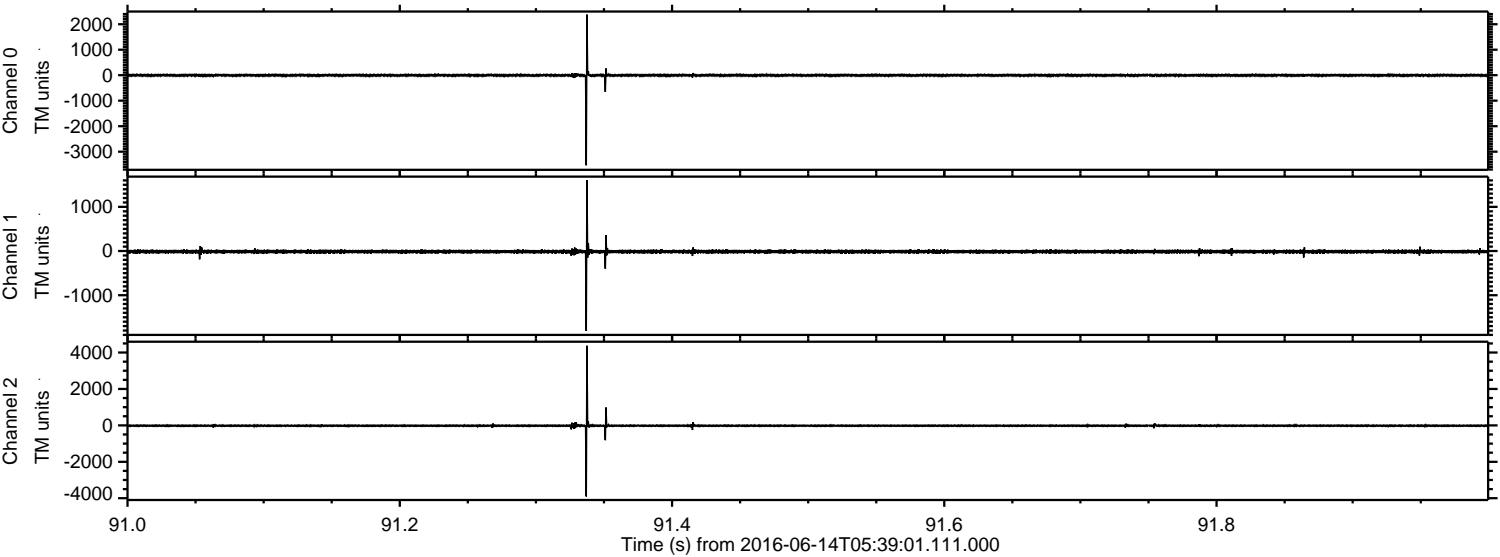


ELMAVAN 3D WAVEFORMS (Measured data sampled at 50 kHz) 51000 packets of 144 samples from 2016-06-14T05:39:01.111.000. Part 115/147

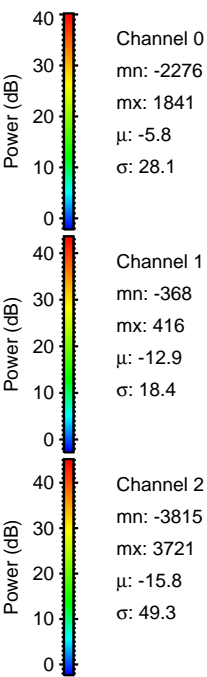
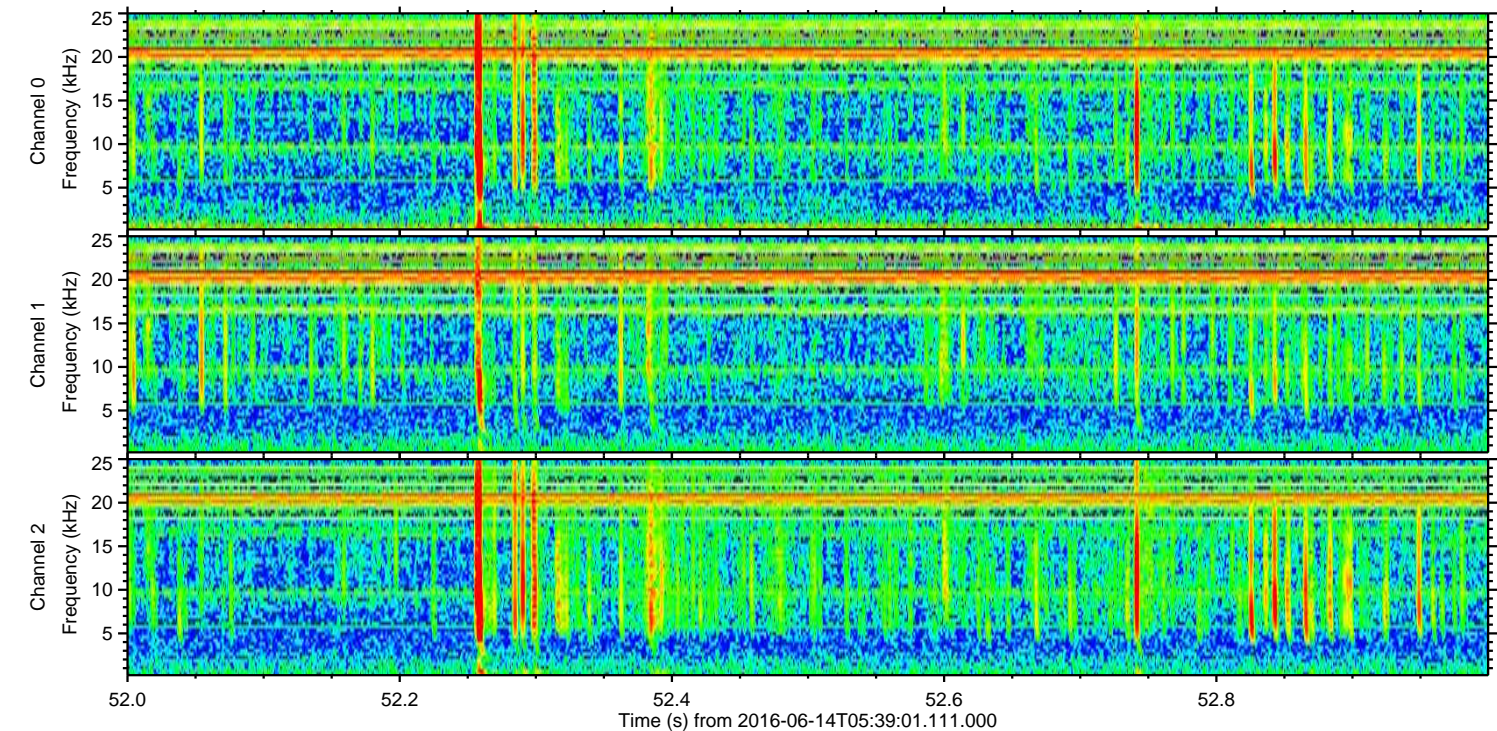
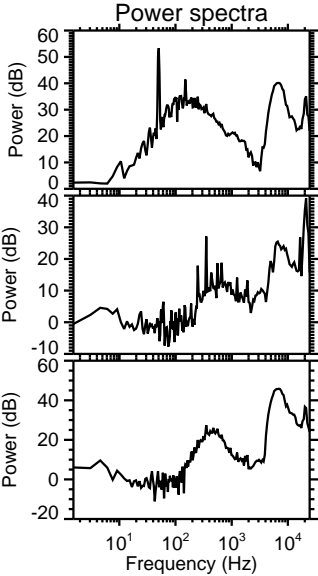
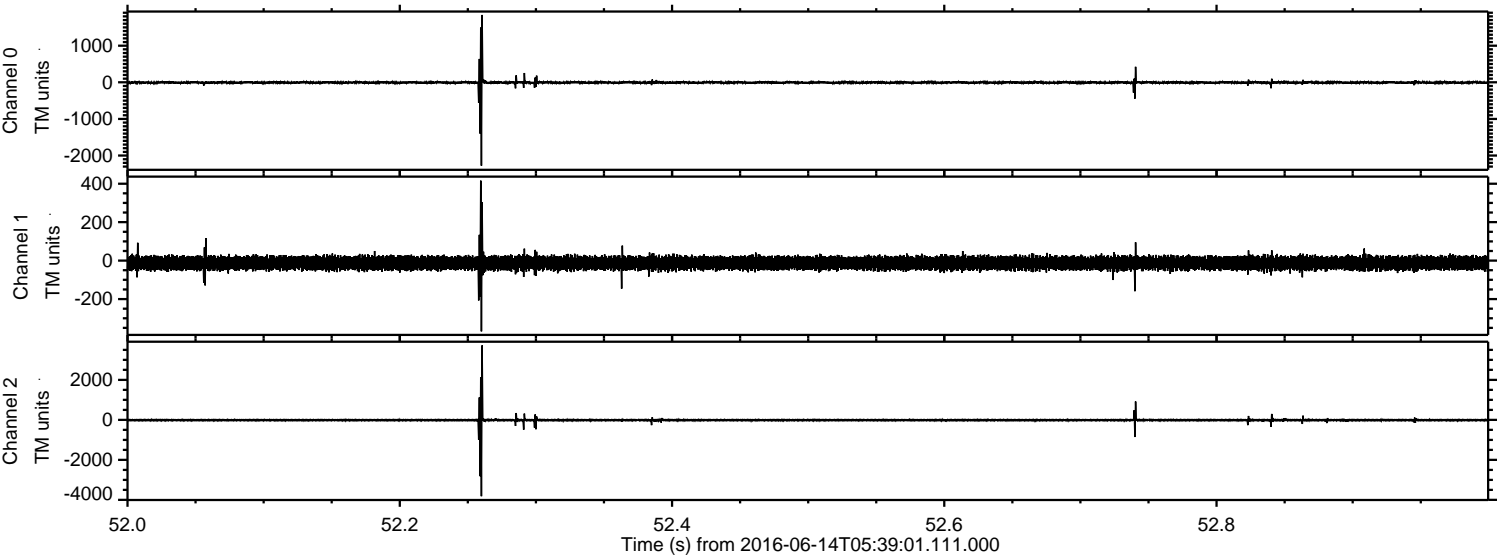
Processed Tue Jun 14 07:47:17 2016 by ELM ver.2012-10-06 from 001__elm20160614_053900__dat00.bin



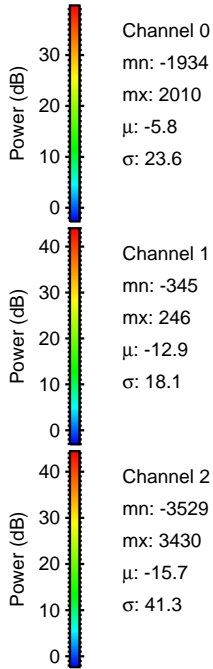
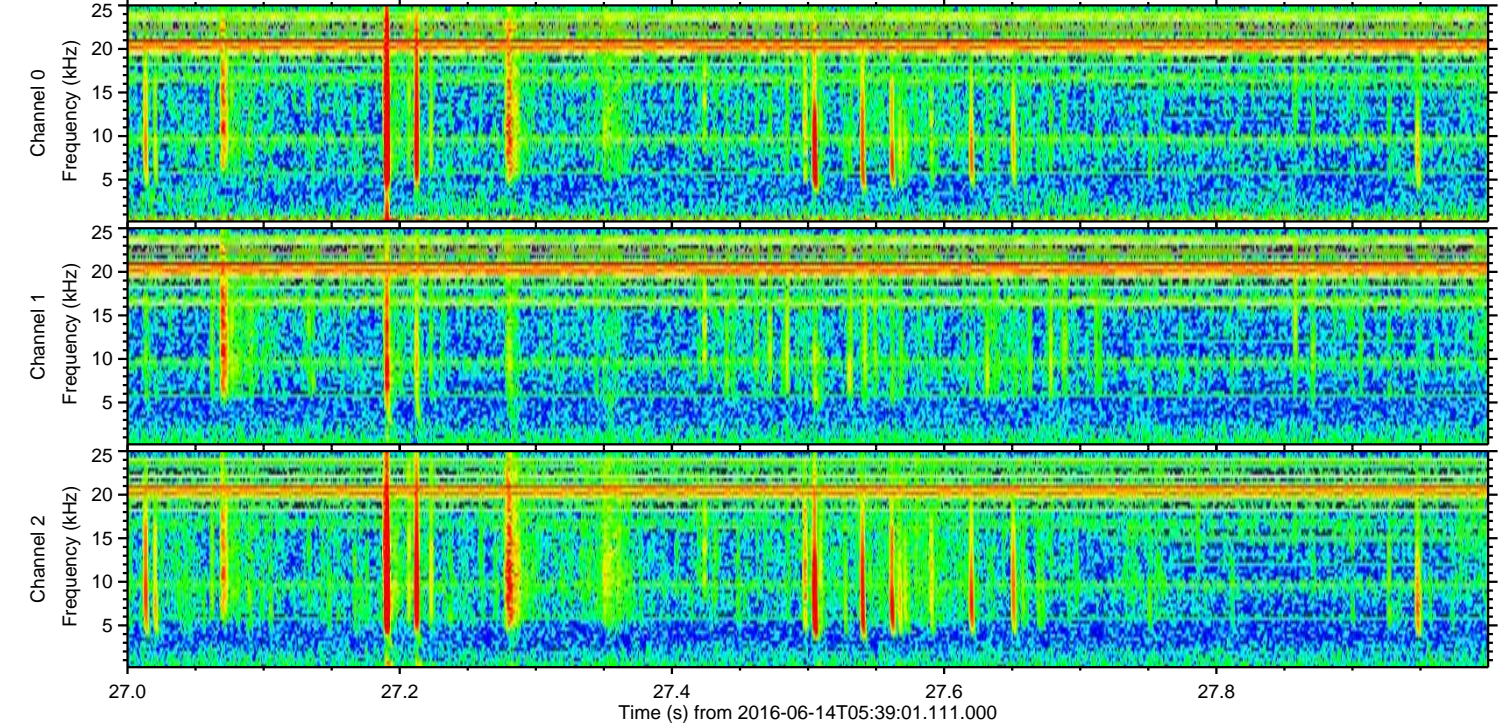
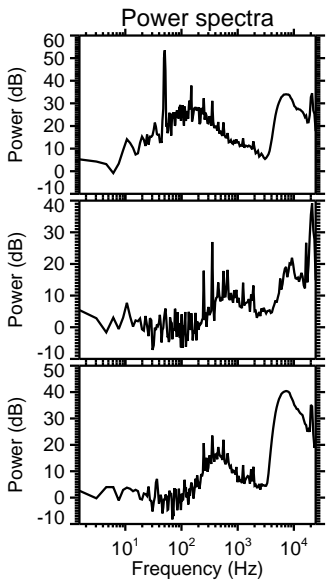
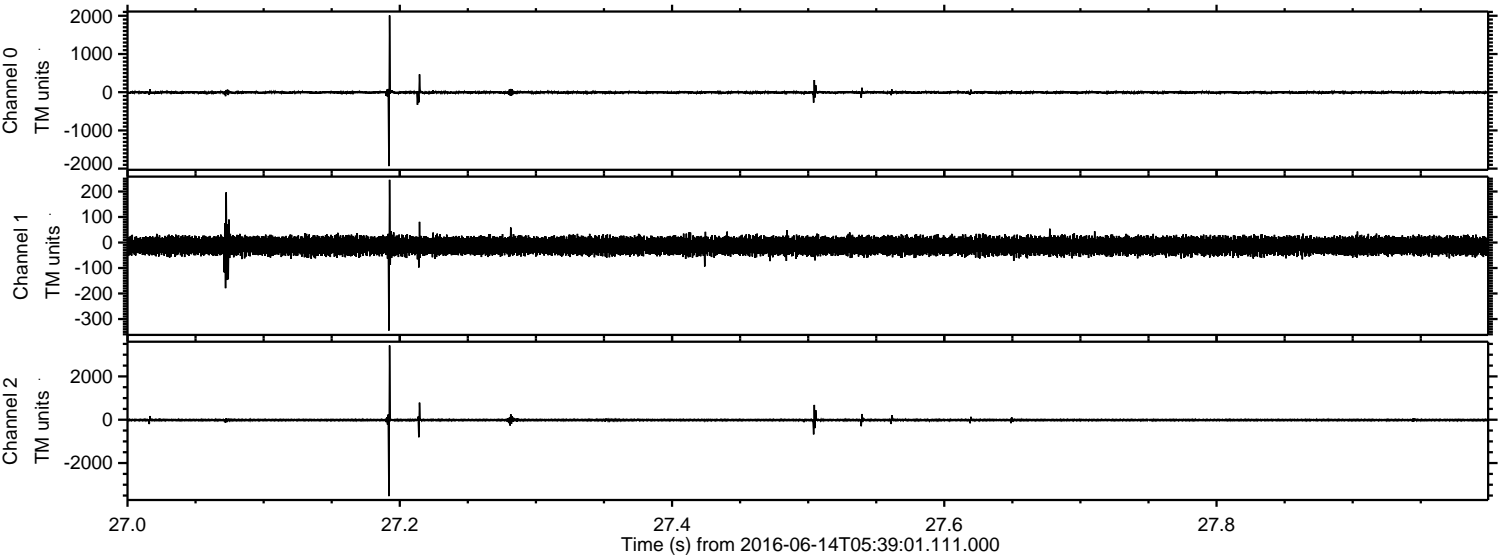
Processed Tue Jun 14 07:47:18 2016 by ELM ver.2012-10-06 from 001__elm20160614_053900__dat00.bin



Processed Tue Jun 14 07:47:19 2016 by ELM ver.2012-10-06 from 001__elm20160614_053900__dat00.bin



Processed Tue Jun 14 07:47:20 2016 by ELM ver.2012-10-06 from 001__elm20160614_053900__dat00.bin



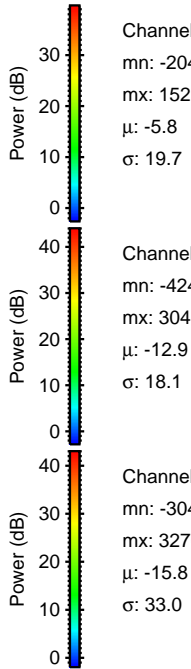
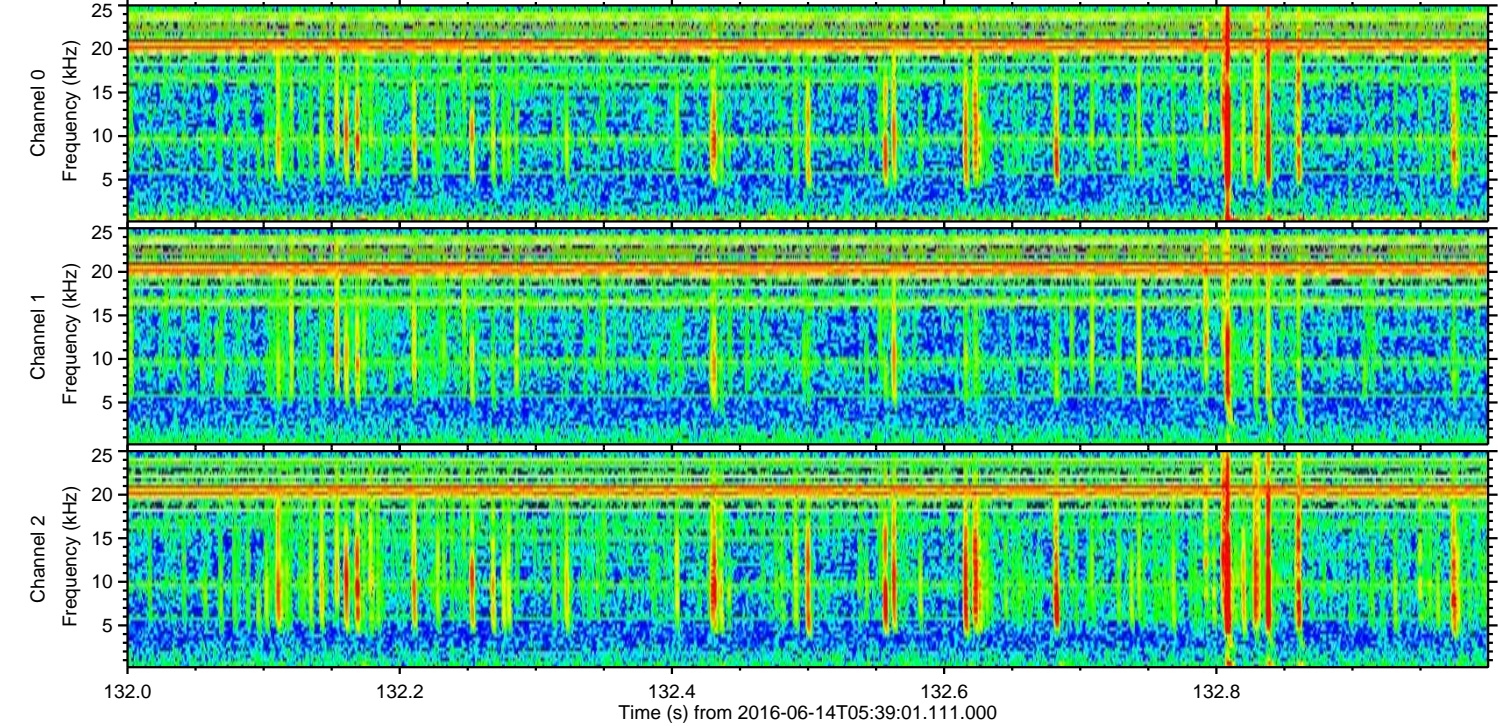
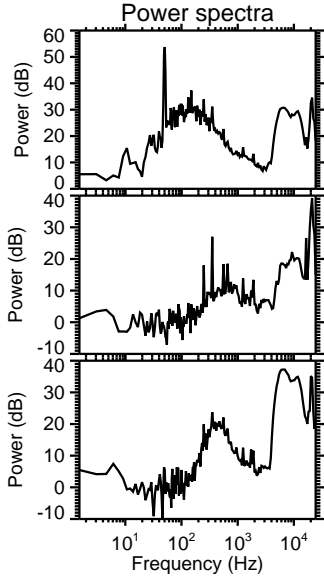
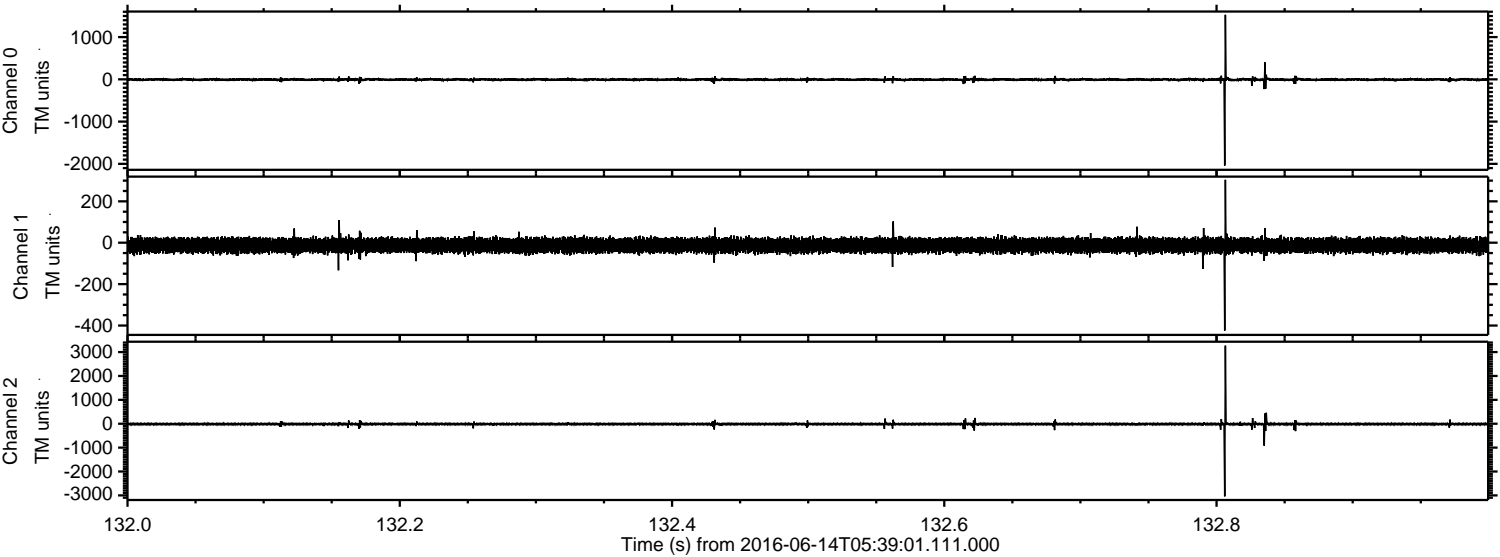
Channel 0
mn: -1934
mx: 2010
 μ : -5.8
 σ : 23.6

Channel 1
mn: -345
mx: 246
 μ : -12.9
 σ : 18.1

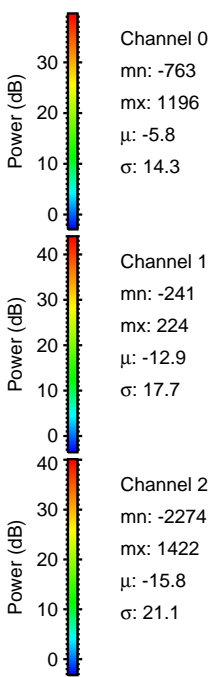
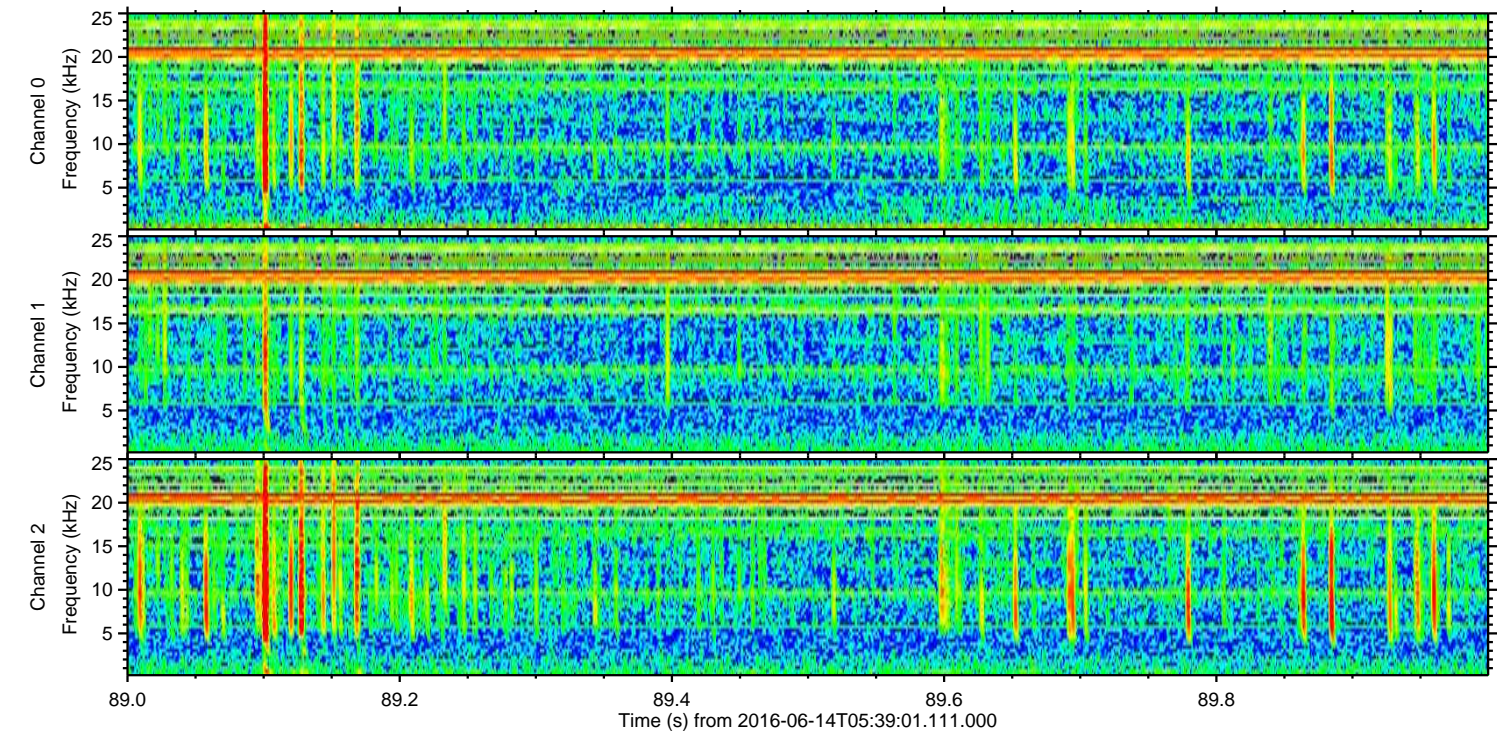
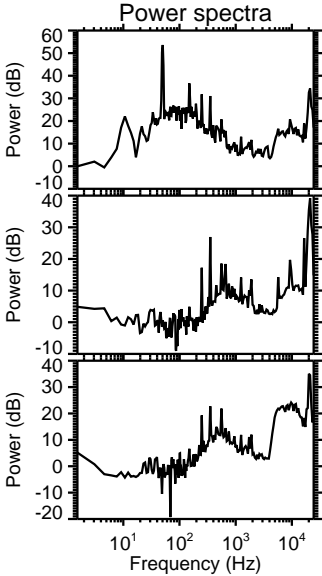
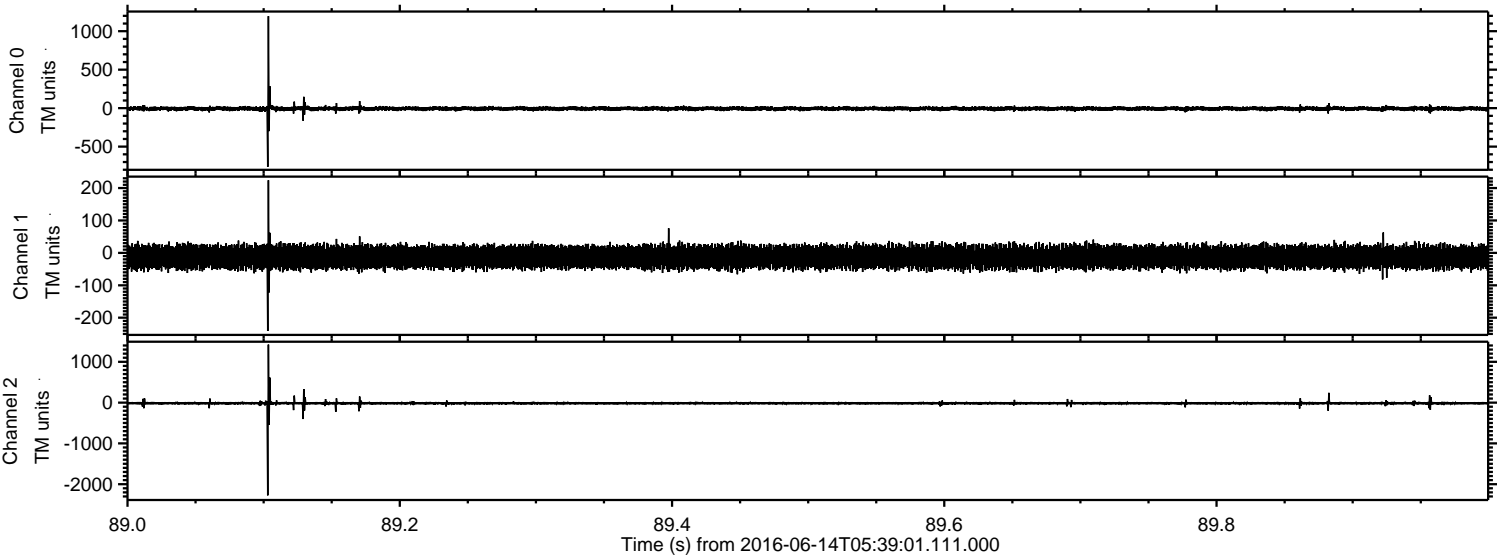
Channel 2
mn: -3529
mx: 3430
 μ : -15.7
 σ : 41.3

ELMAVAN 3D WAVEFORMS (Measured data sampled at 50 kHz) 51000 packets of 144 samples from 2016-06-14T05:39:01.111.000. Part 133/147

Processed Tue Jun 14 07:47:21 2016 by ELM ver.2012-10-06 from 001__elm20160614_053900__dat00.bin

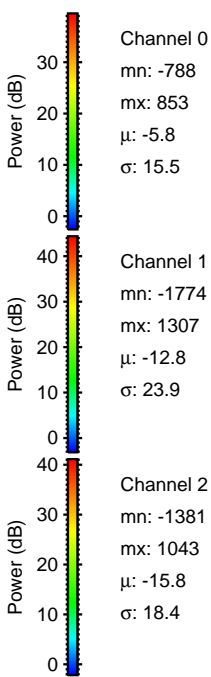
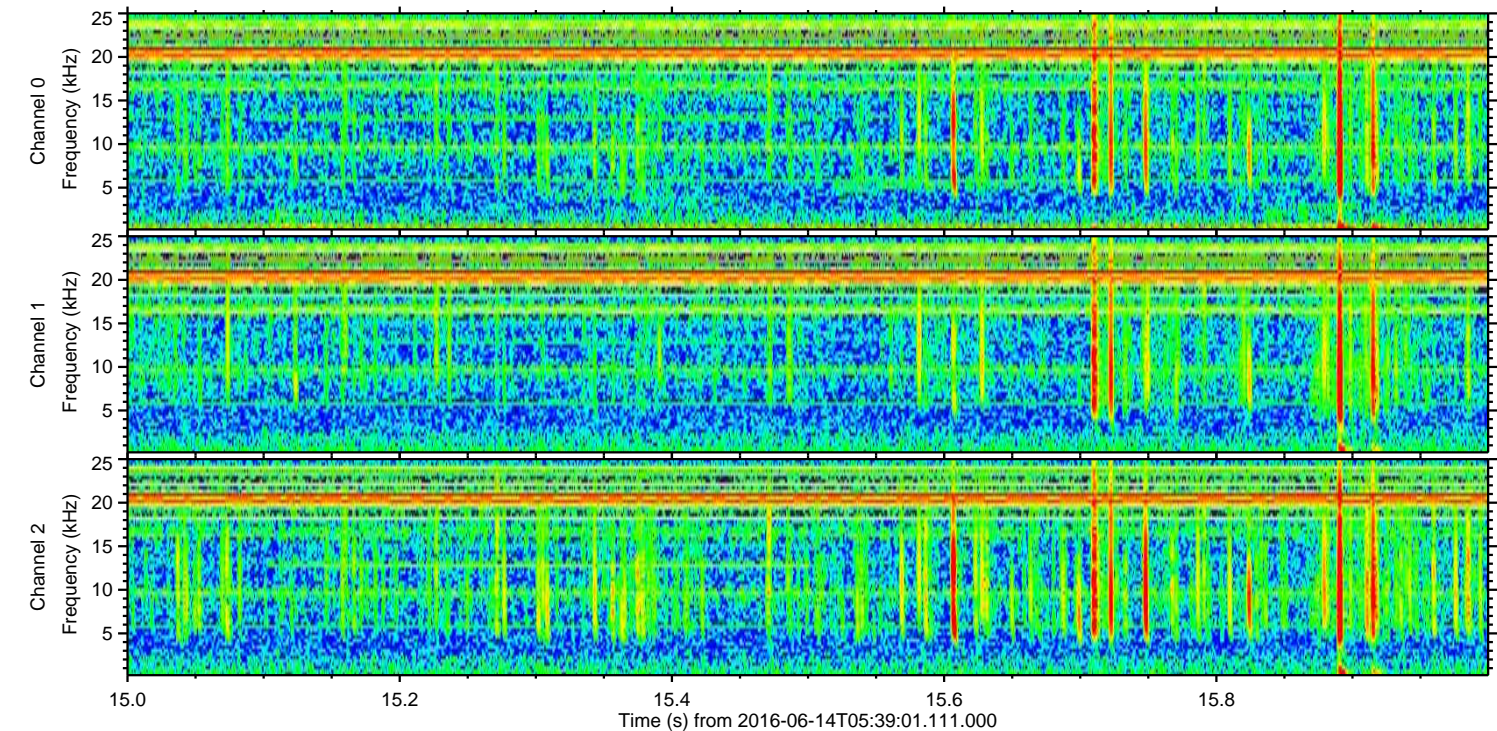
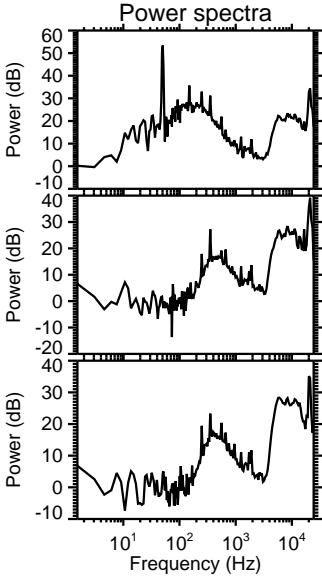
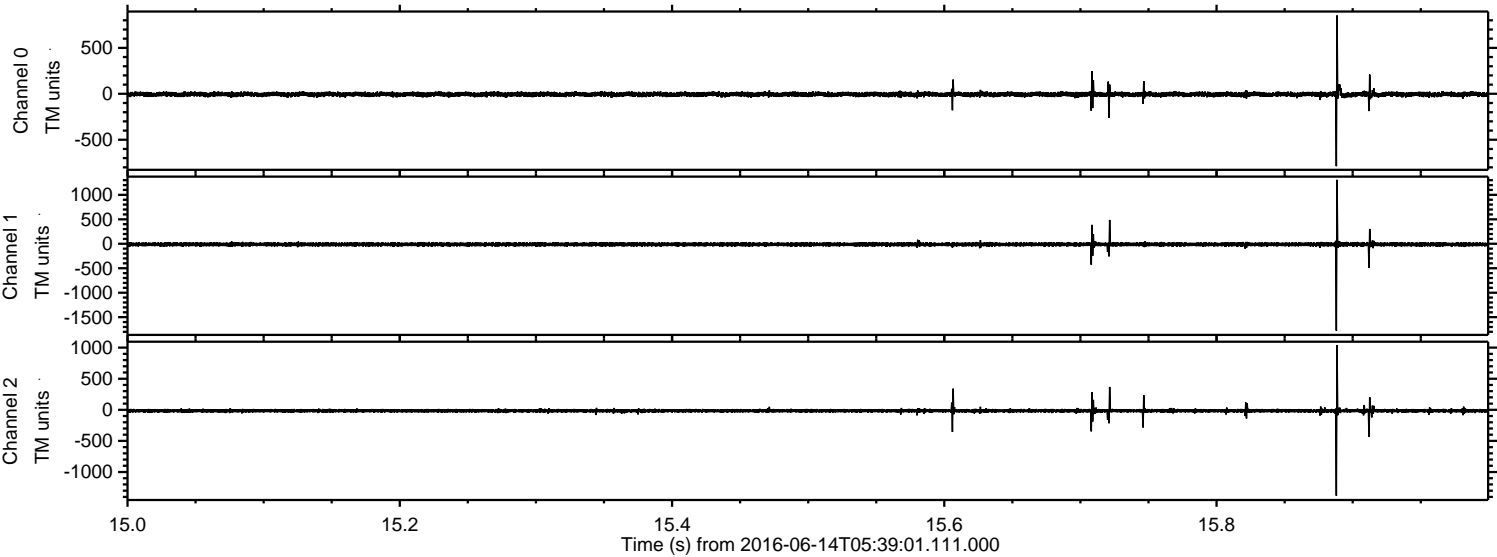


Processed Tue Jun 14 07:47:22 2016 by ELM ver.2012-10-06 from 001__elm20160614_053900__dat00.bin

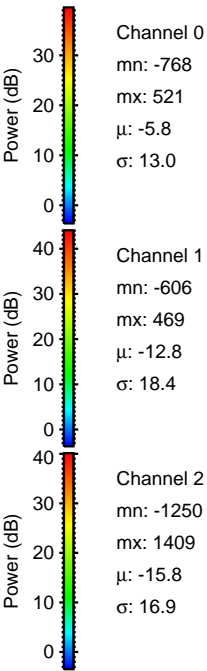
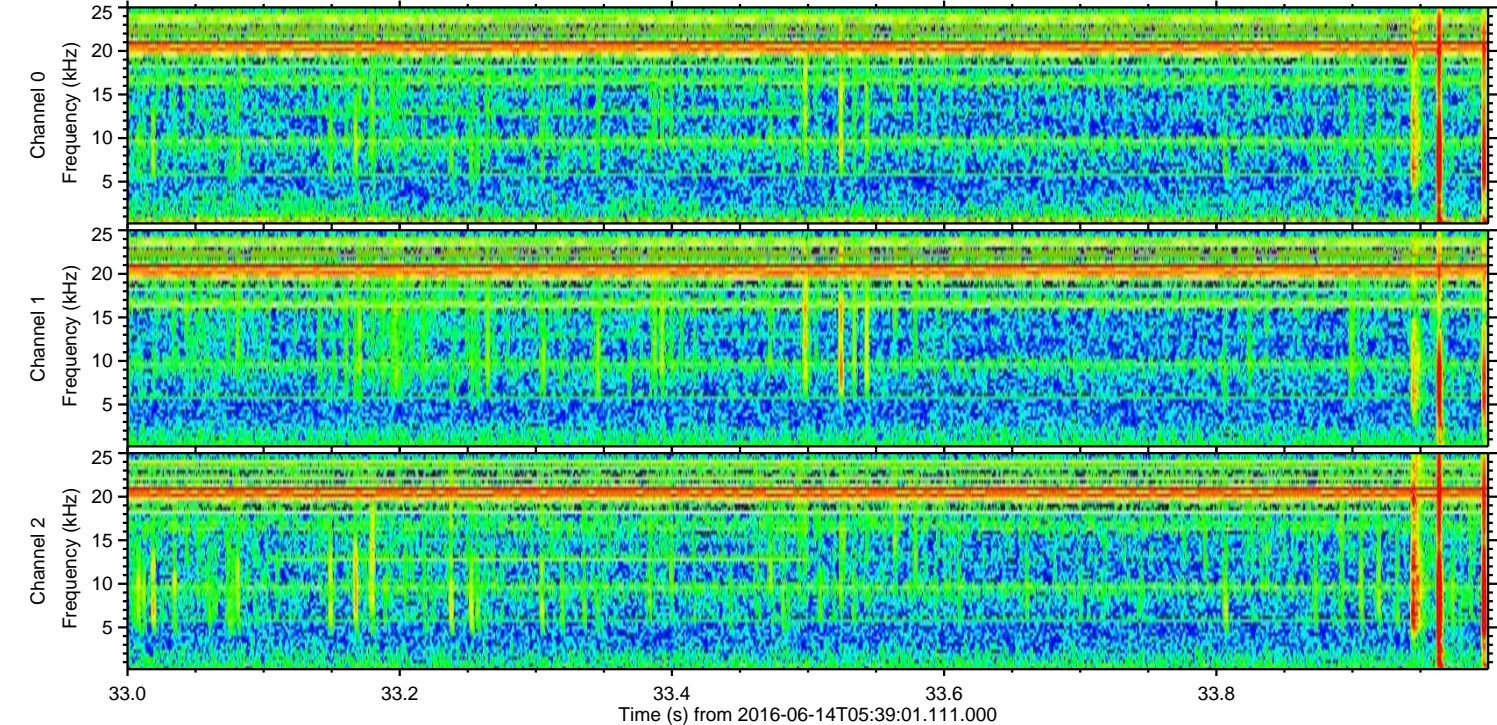
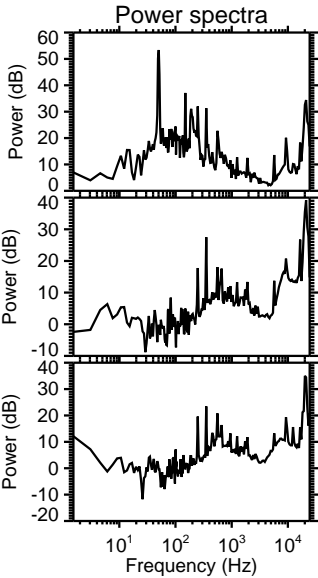
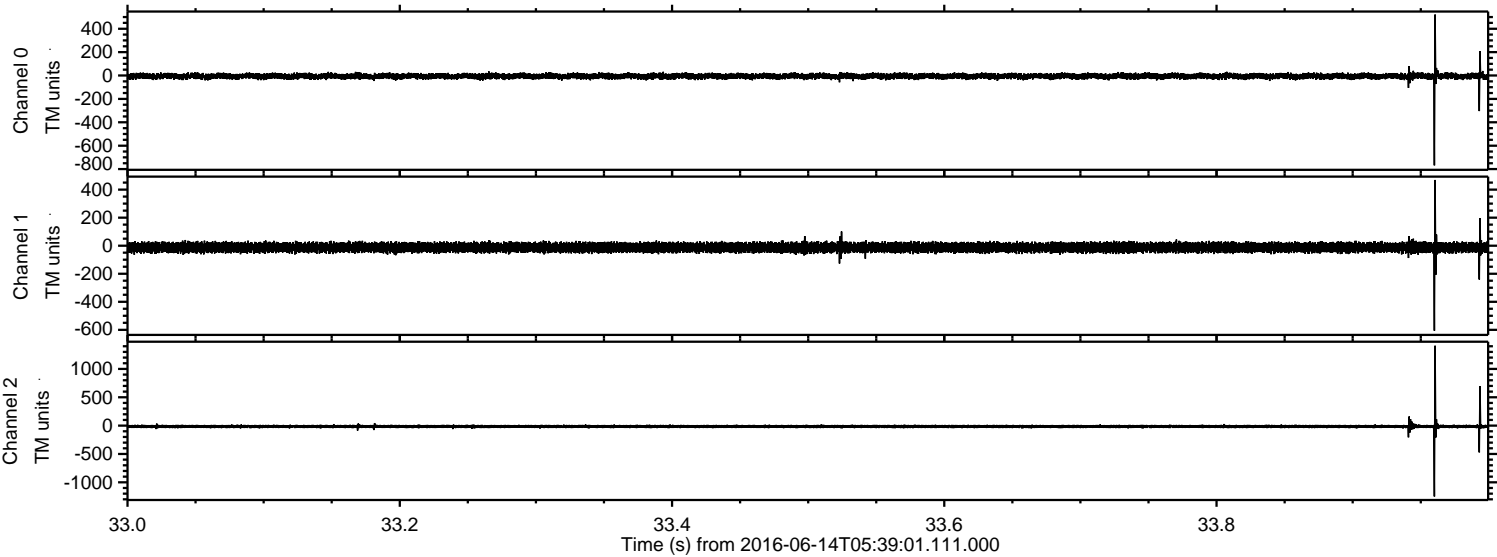


ELMAVAN 3D WAVEFORMS (Measured data sampled at 50 kHz) 51000 packets of 144 samples from 2016-06-14T05:39:01.111.000. Part 16/147

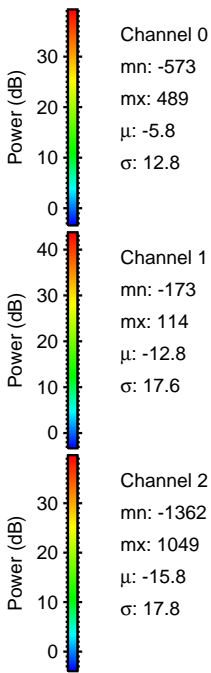
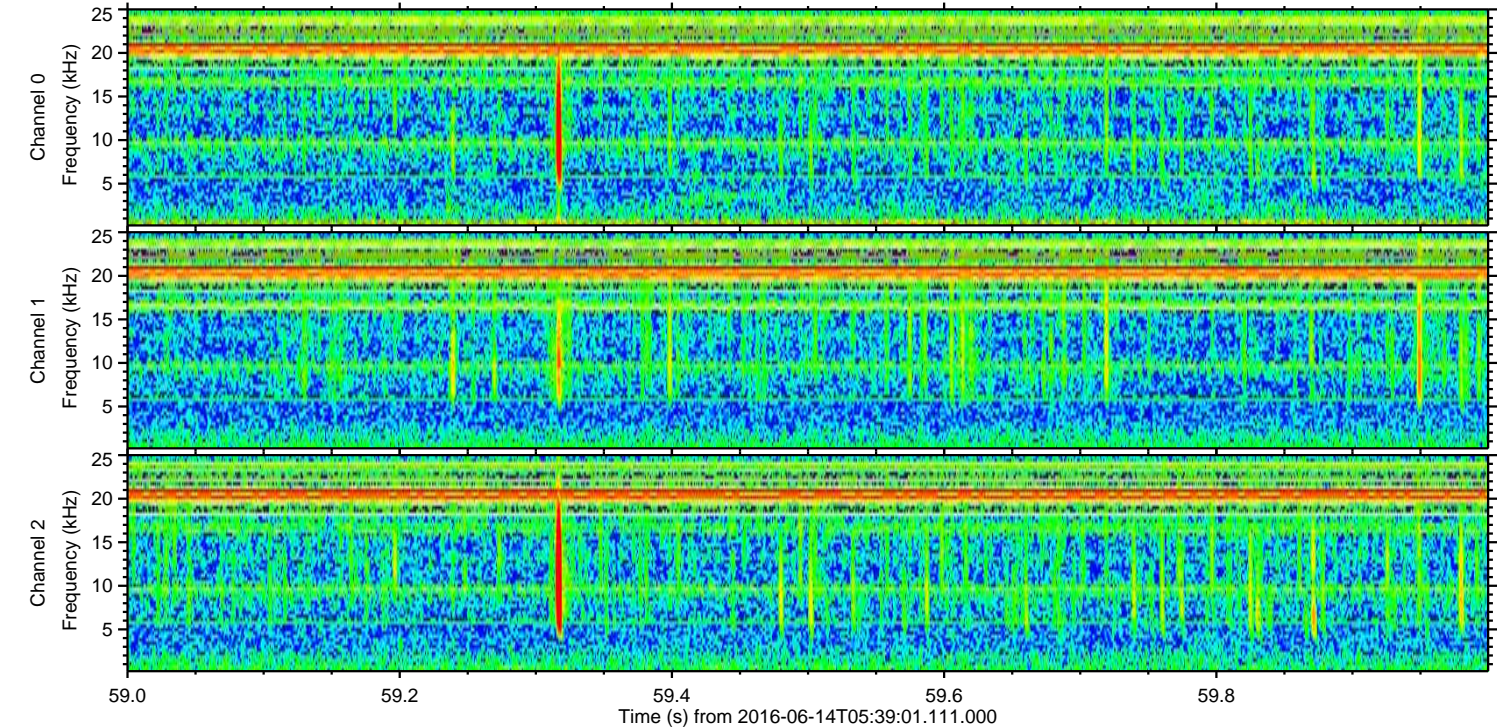
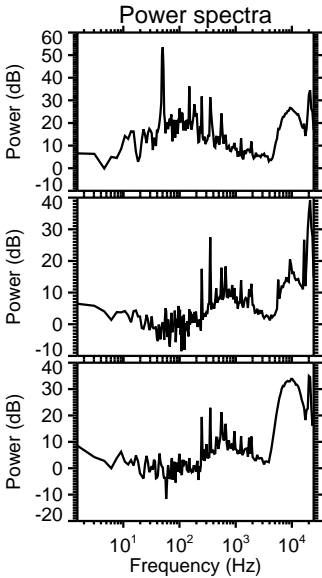
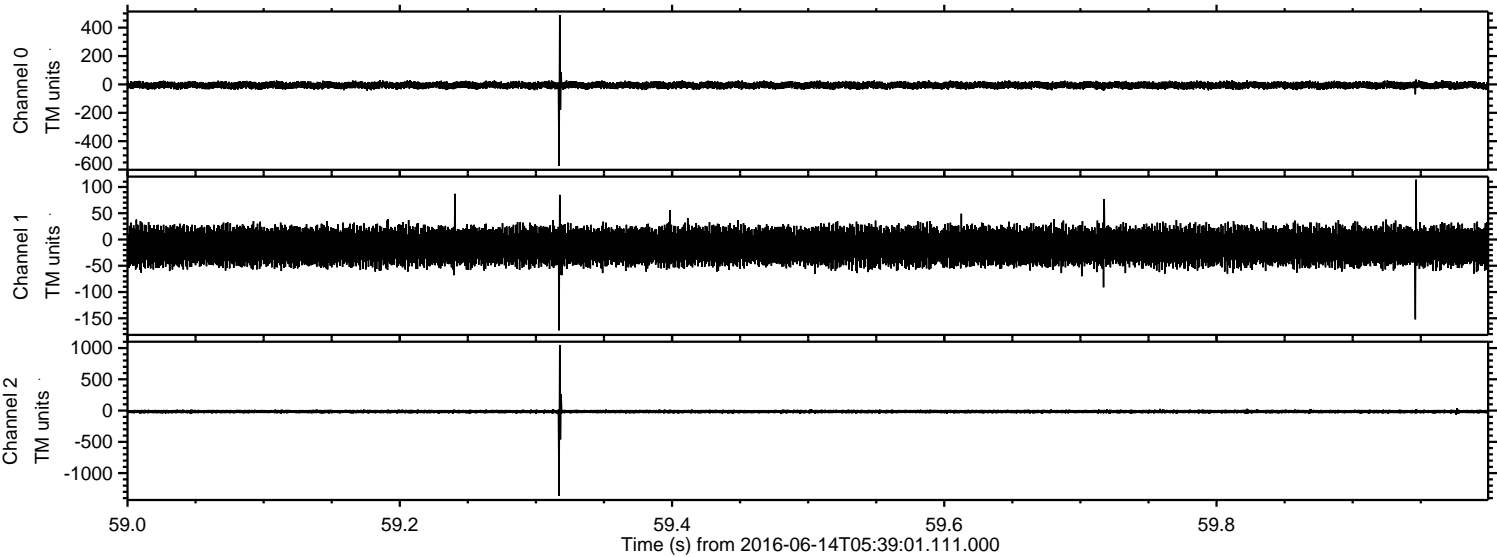
Processed Tue Jun 14 07:47:23 2016 by ELM ver.2012-10-06 from 001__elm20160614_053900__dat00.bin



Processed Tue Jun 14 07:47:24 2016 by ELM ver.2012-10-06 from 001__elm20160614_053900__dat00.bin



Processed Tue Jun 14 07:47:25 2016 by ELM ver.2012-10-06 from 001__elm20160614_053900__dat00.bin



Processed Tue Jun 14 07:47:26 2016 by ELM ver.2012-10-06 from 001__elm20160614_053900__dat00.bin

