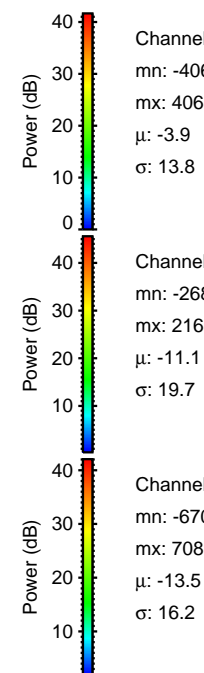
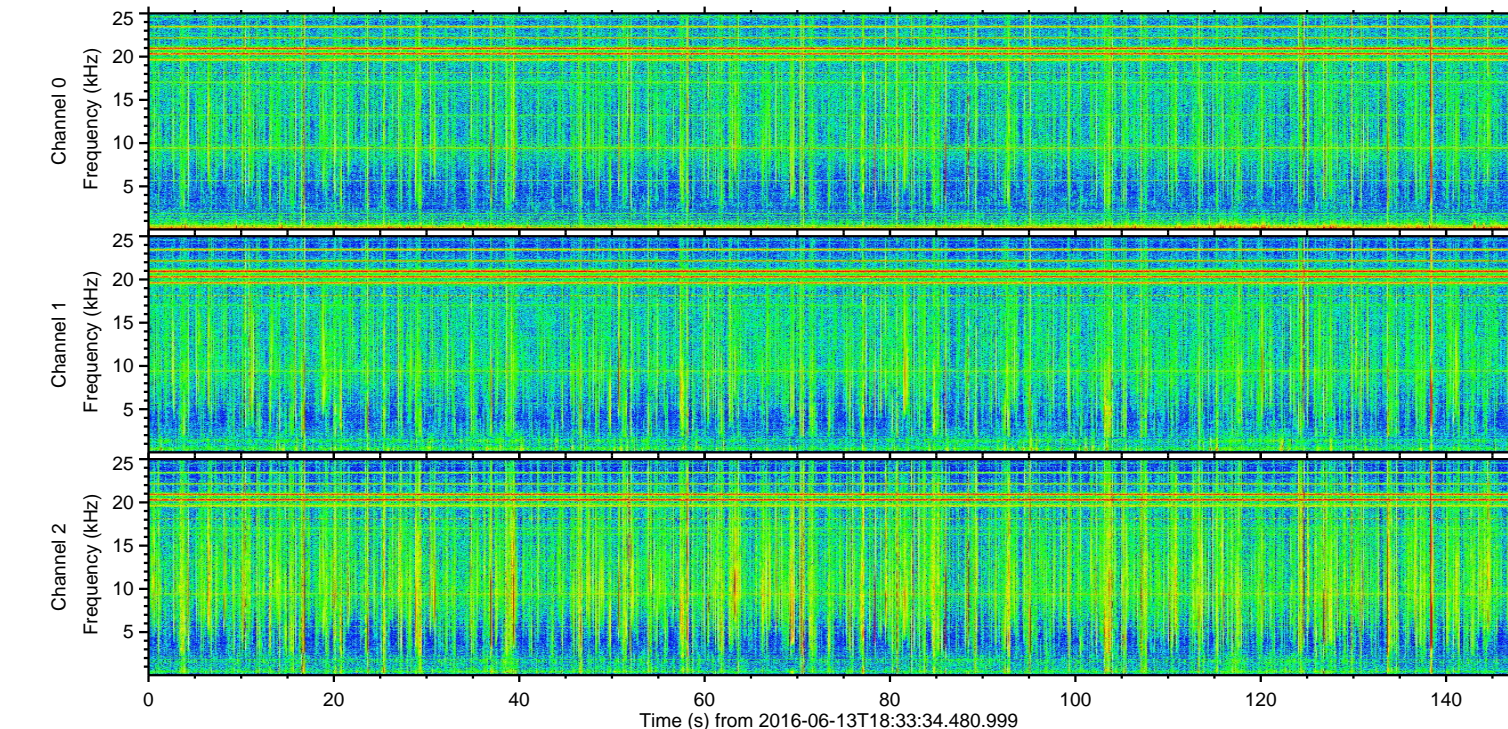
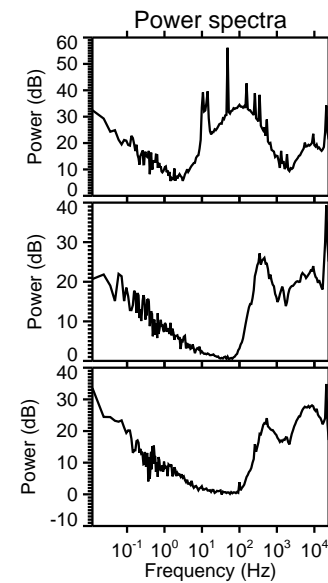
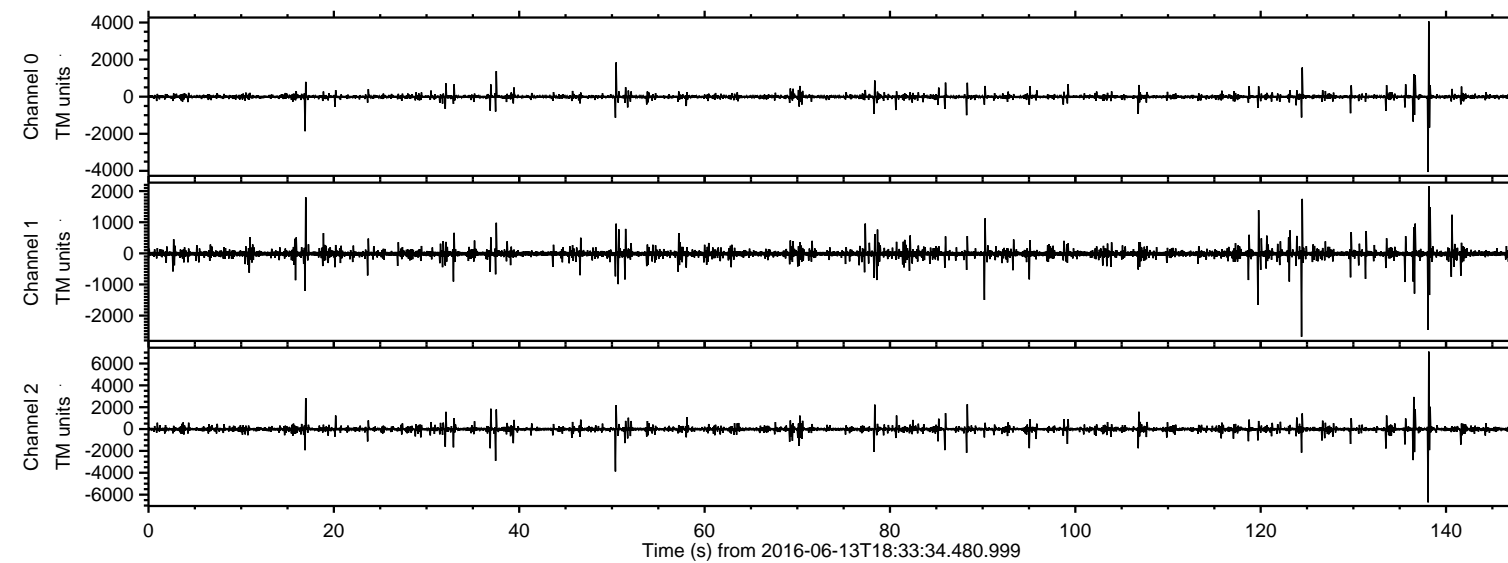


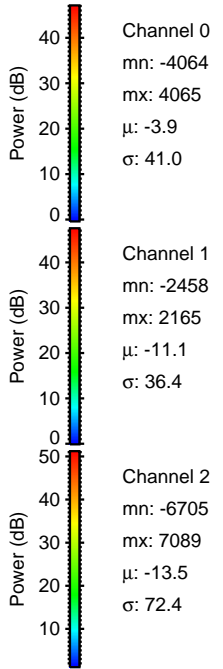
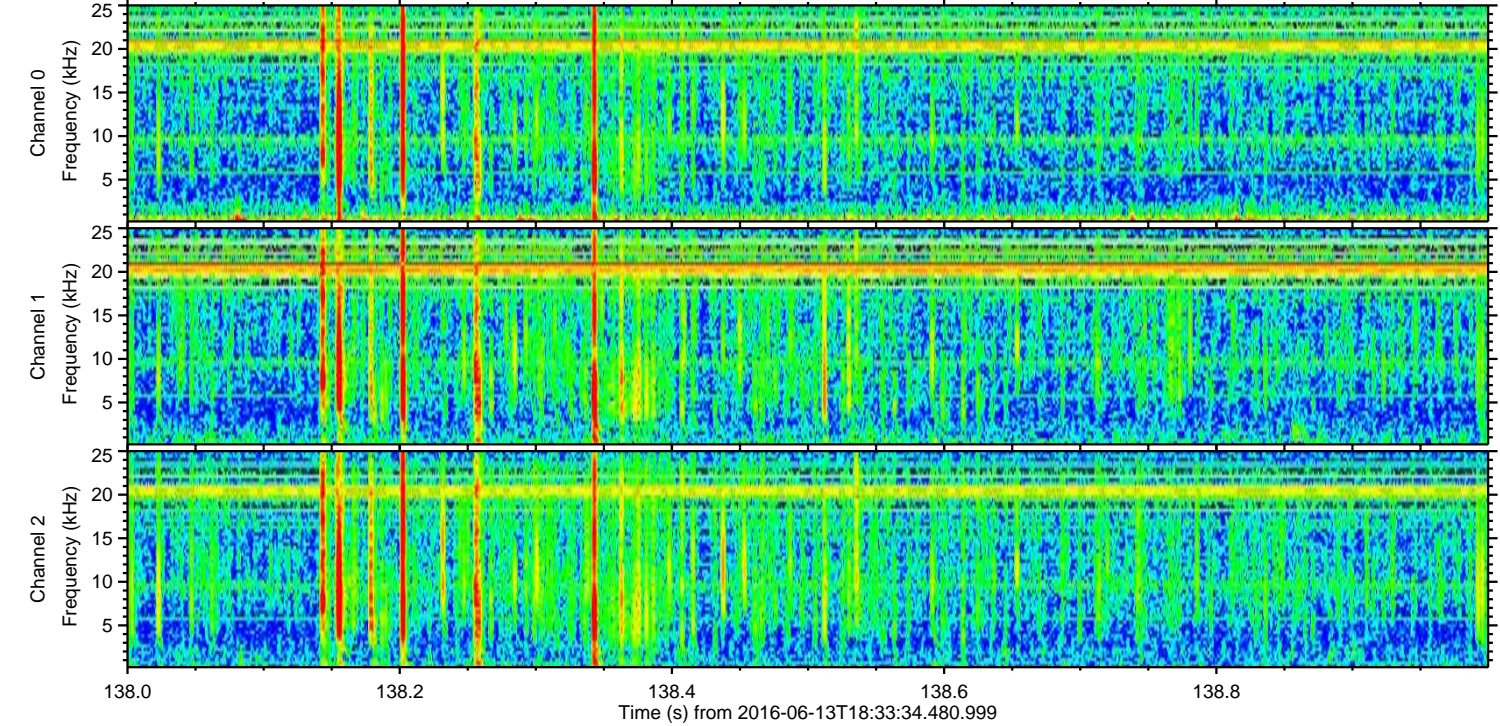
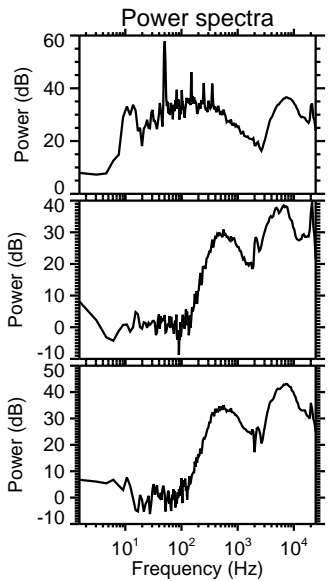
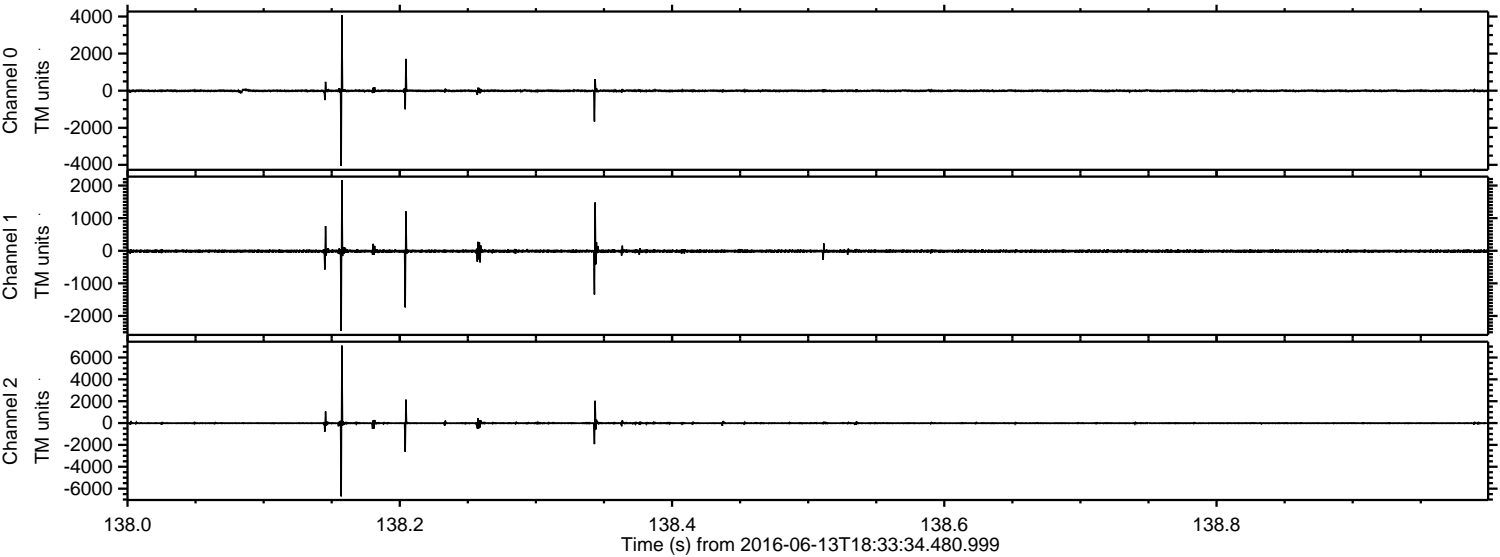
ELMAVAN 3D WAVEFORMS (Measured data sampled at 50 kHz) 51000 packets of 144 samples from 2016-06-13T18:33:34.480.999.

Processed Mon Jun 13 20:41:58 2016 by ELM ver.2012-10-06 from 001__elm20160613_183333__dat00.bin

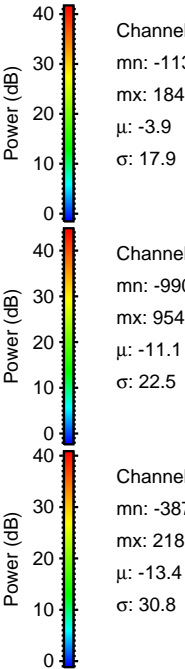
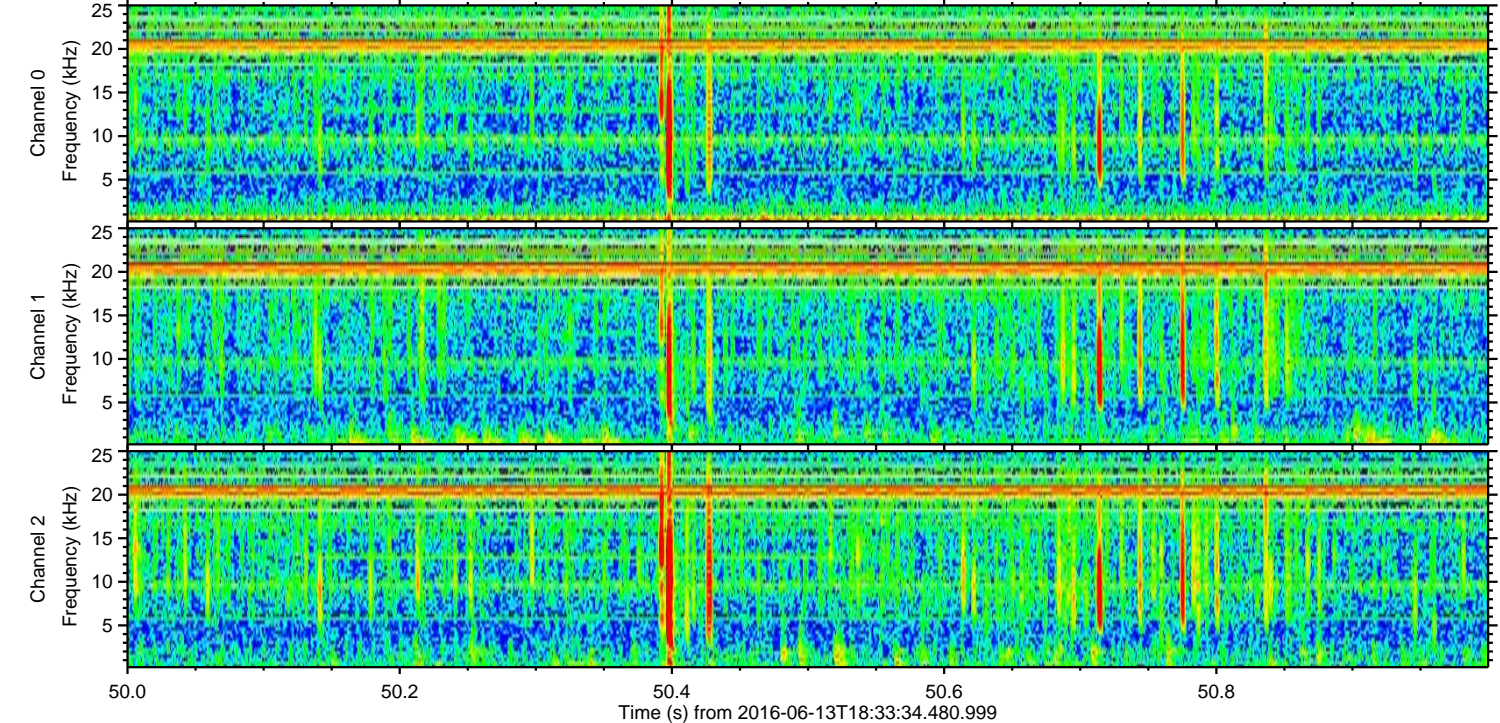
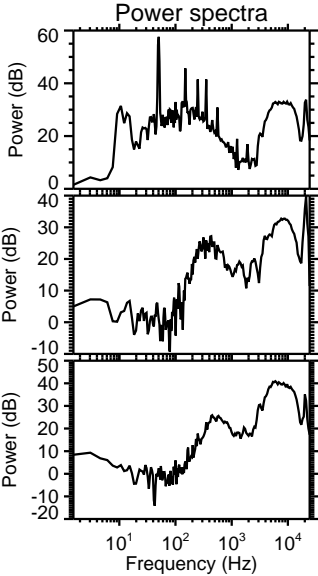
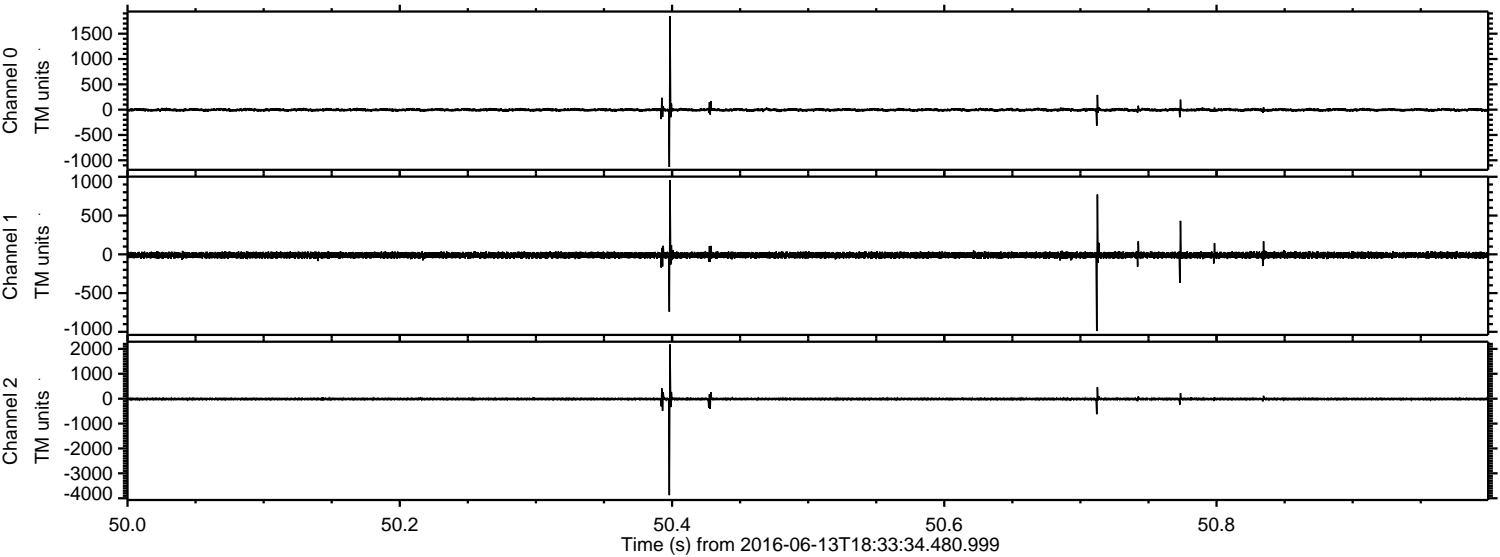


ELMAVAN 3D WAVEFORMS (Measured data sampled at 50 kHz) 51000 packets of 144 samples from 2016-06-13T18:33:34.480.999. Part 139/147

Processed Mon Jun 13 20:42:13 2016 by ELM ver.2012-10-06 from 001__elm20160613_183333__dat00.bin



Processed Mon Jun 13 20:42:14 2016 by ELM ver.2012-10-06 from 001__elm20160613_183333__dat00.bin



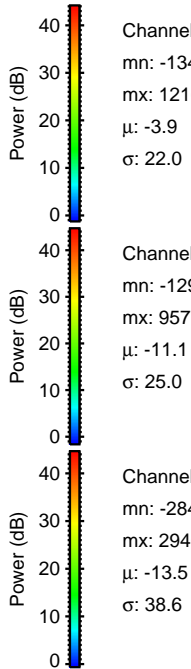
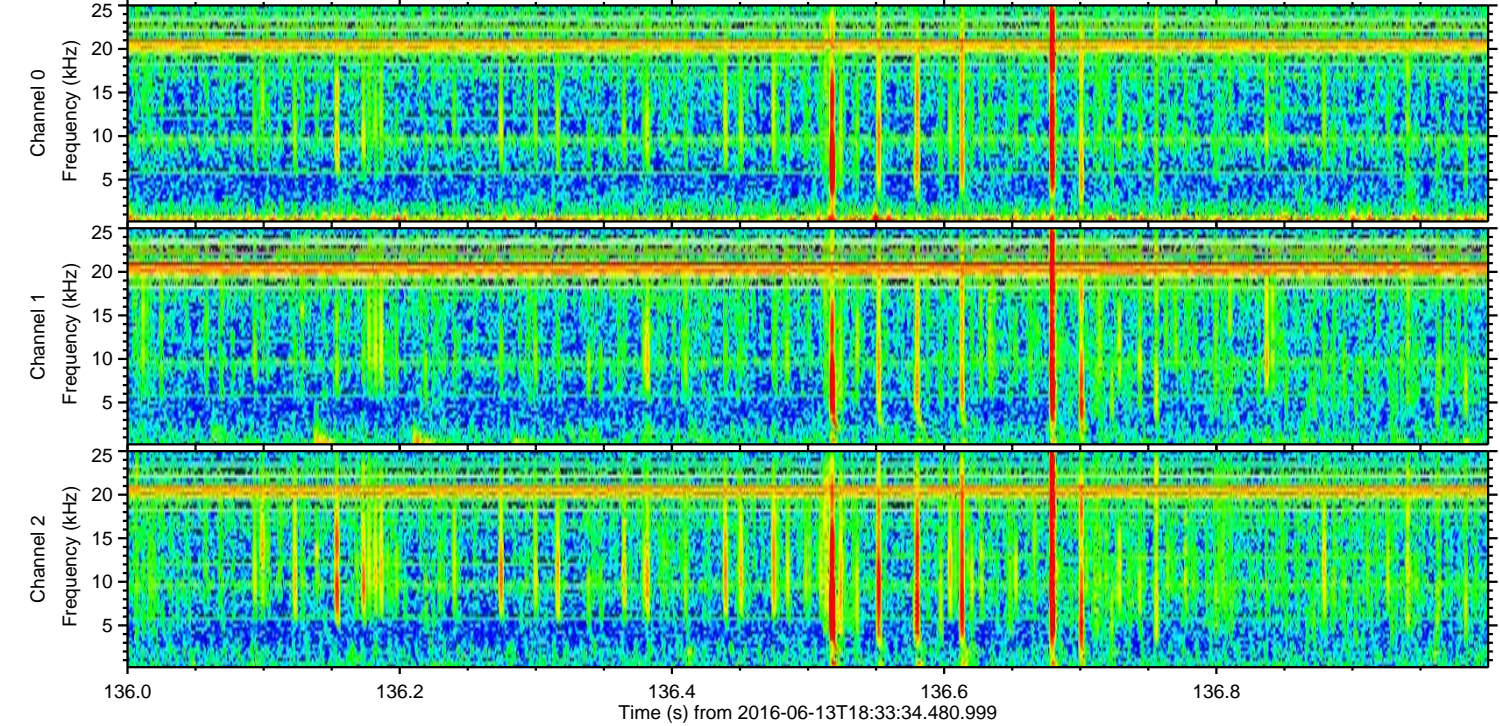
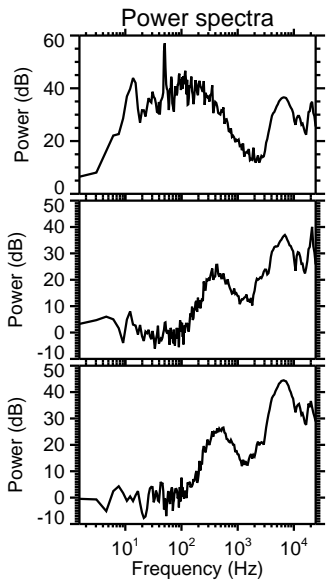
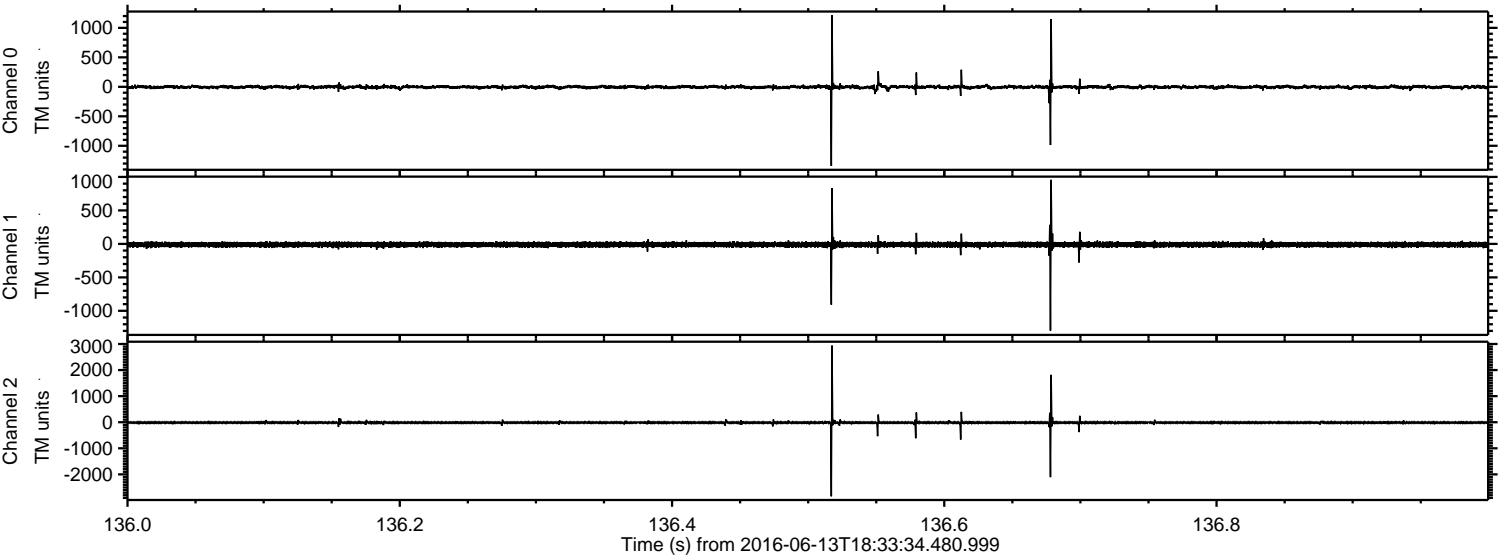
Channel 0
mn: -1132
mx: 1845
 μ : -3.9
 σ : 17.9

Channel 1
mn: -990
mx: 954
 μ : -11.1
 σ : 22.5

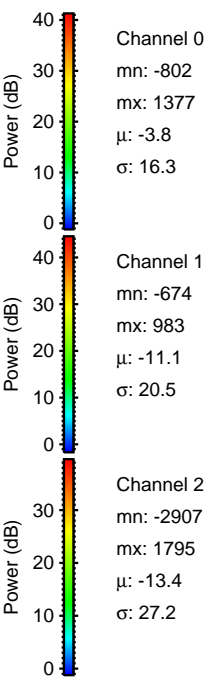
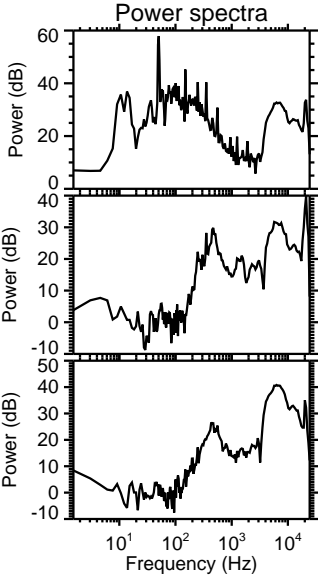
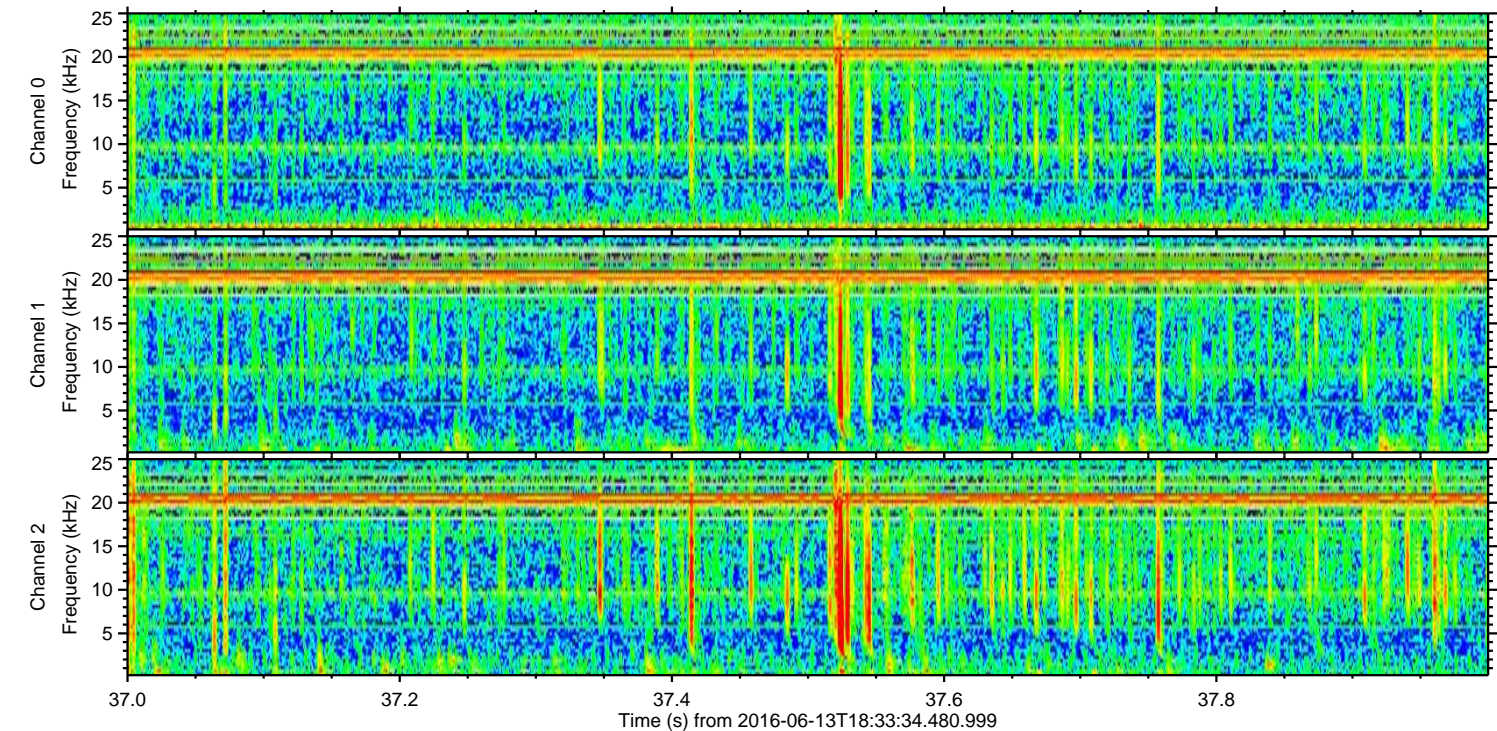
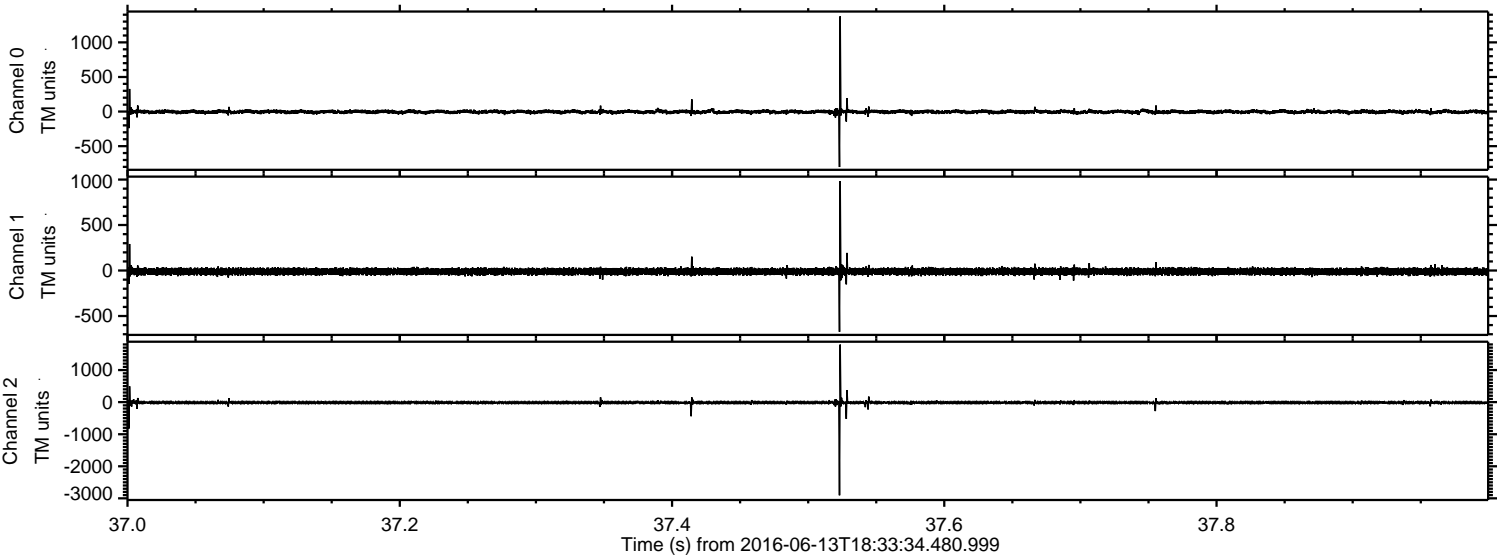
Channel 2
mn: -3877
mx: 2180
 μ : -13.4
 σ : 30.8

ELMAVAN 3D WAVEFORMS (Measured data sampled at 50 kHz) 51000 packets of 144 samples from 2016-06-13T18:33:34.480.999. Part 137/147

Processed Mon Jun 13 20:42:16 2016 by ELM ver.2012-10-06 from 001__elm20160613_183333__dat00.bin

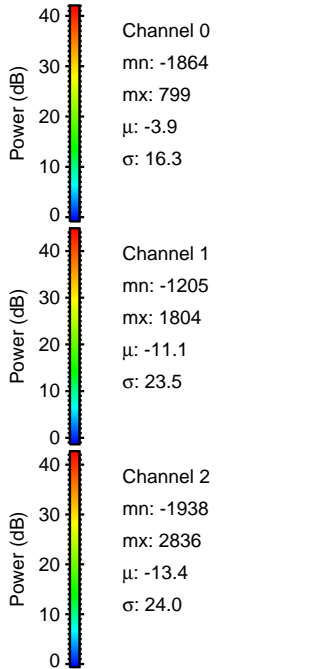
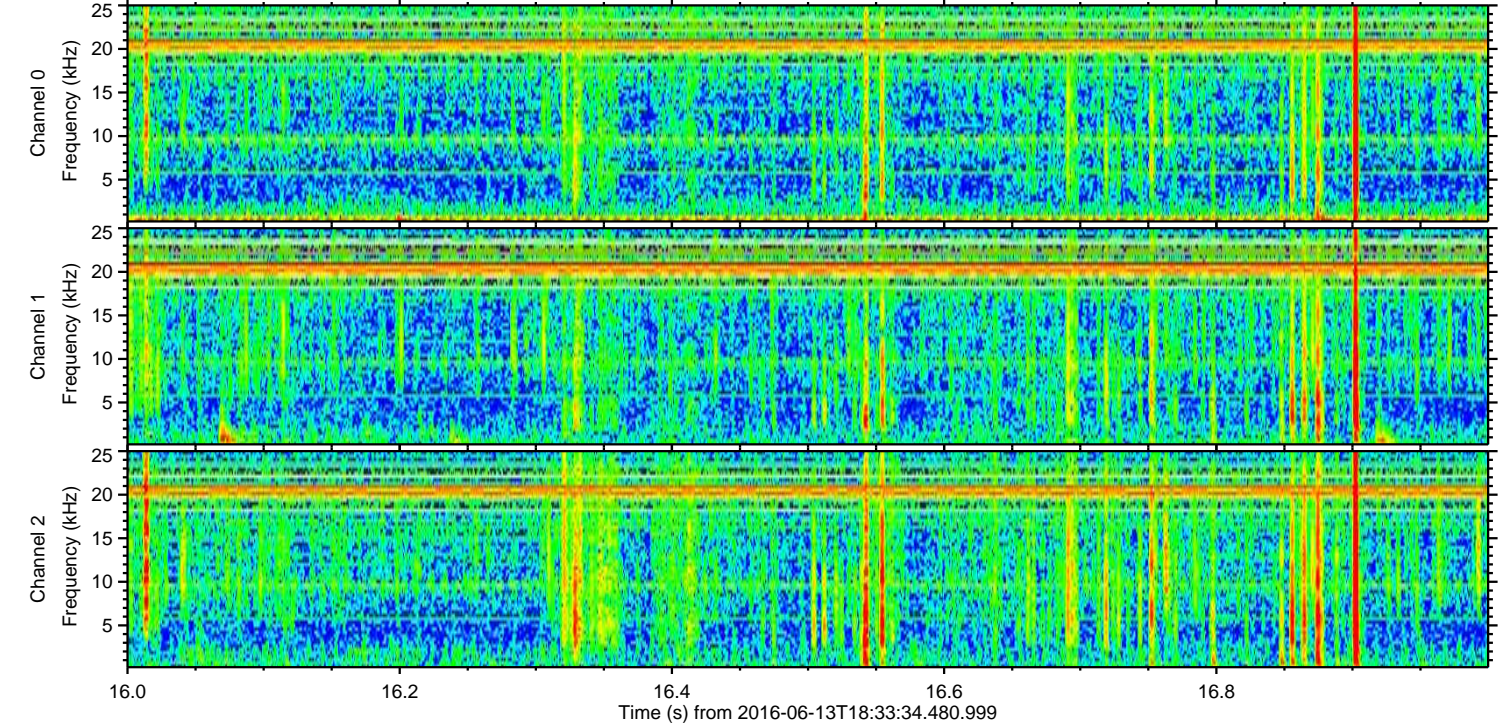
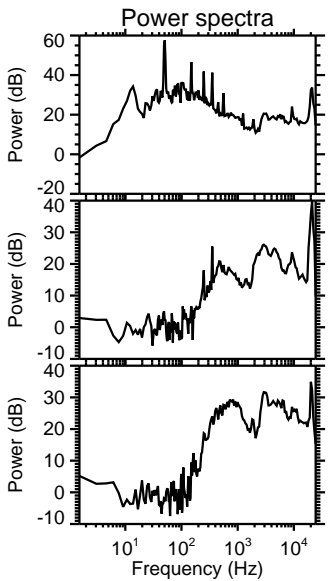
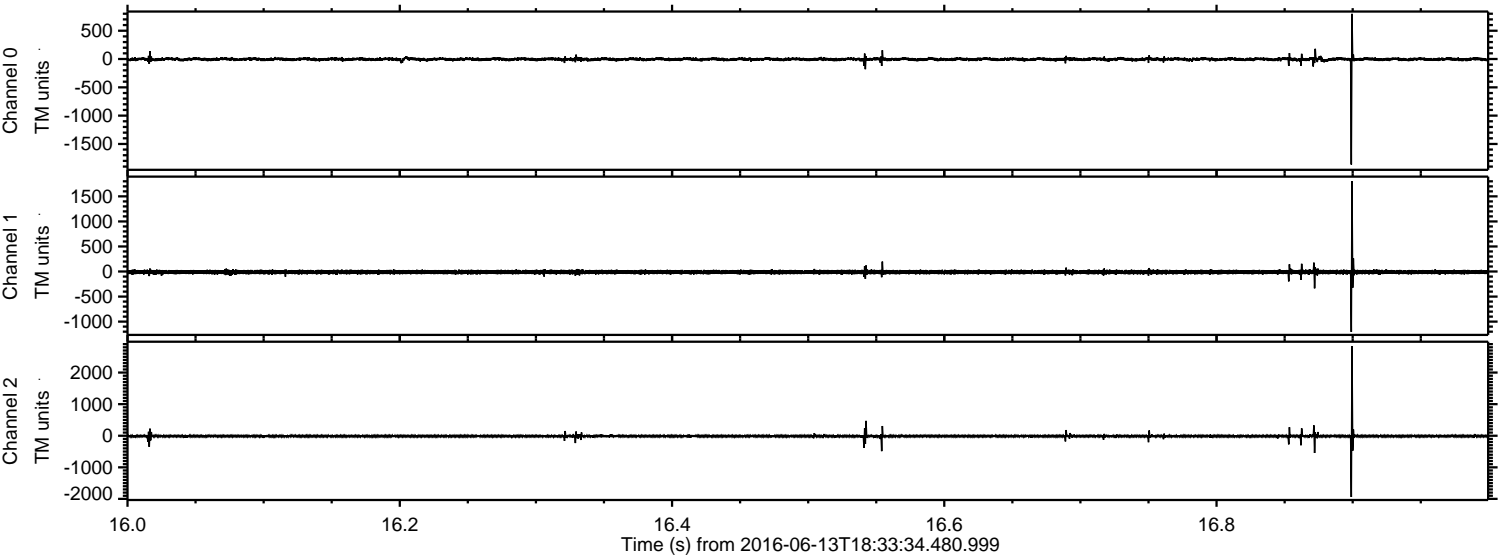


Processed Mon Jun 13 20:42:17 2016 by ELM ver.2012-10-06 from 001__elm20160613_183333__dat00.bin



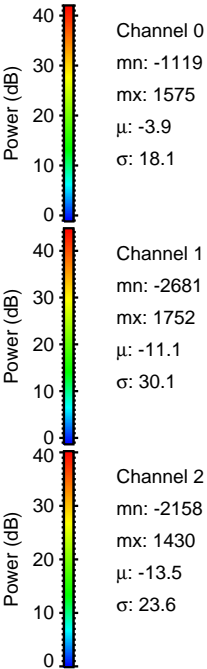
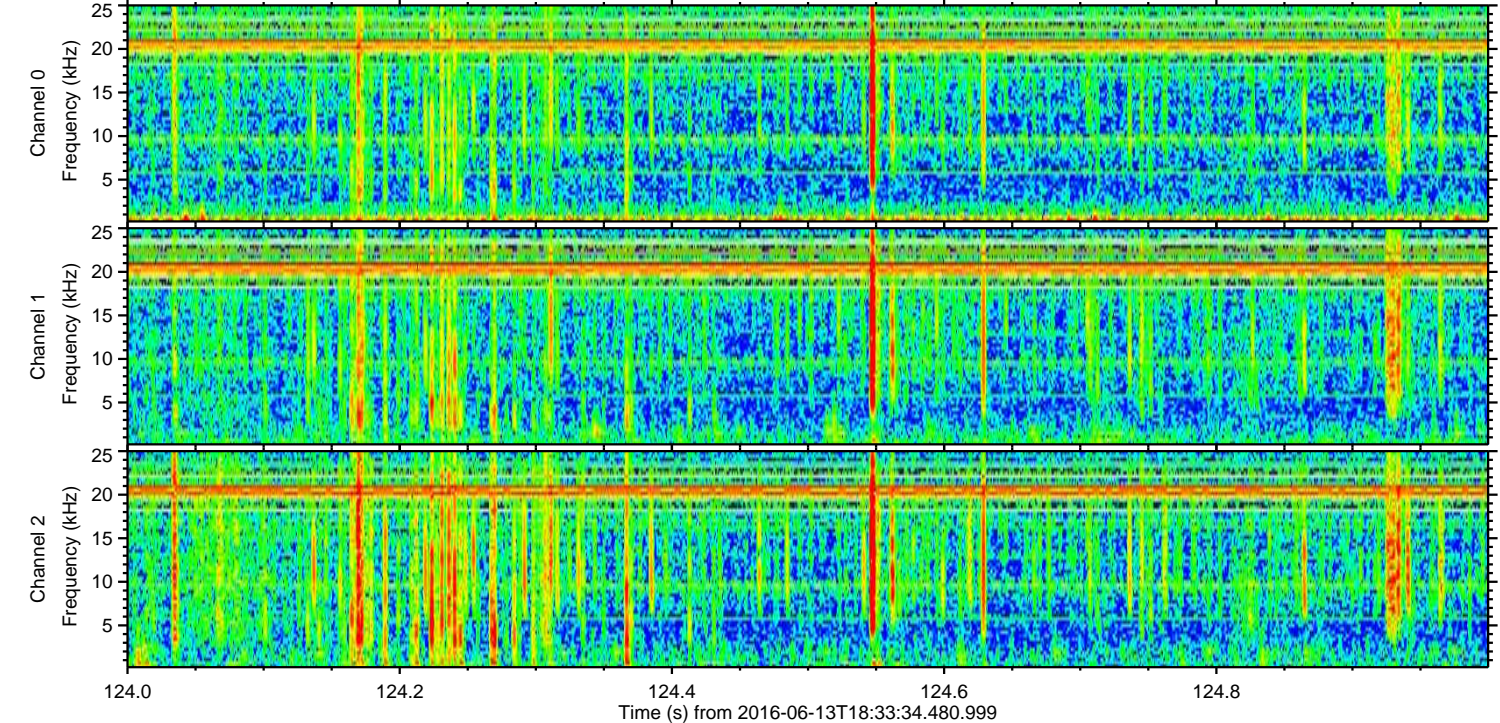
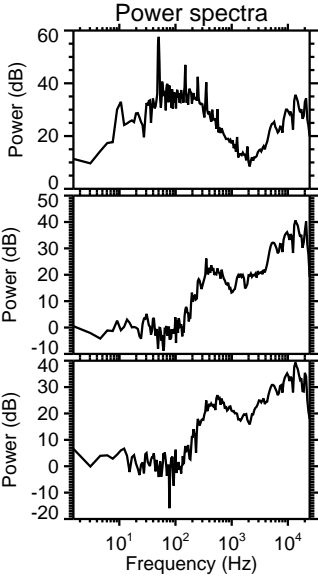
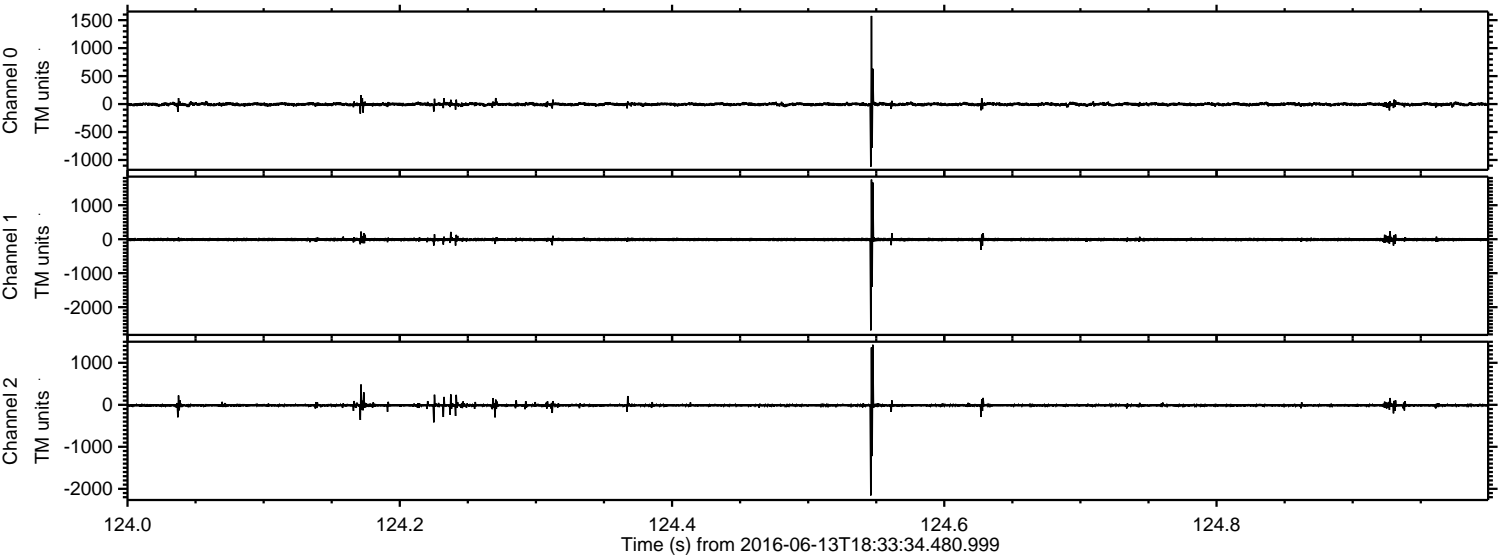
ELMAVAN 3D WAVEFORMS (Measured data sampled at 50 kHz) 51000 packets of 144 samples from 2016-06-13T18:33:34.480.999. Part 17/147

Processed Mon Jun 13 20:42:18 2016 by ELM ver.2012-10-06 from 001__elm20160613_183333__dat00.bin



ELMAVAN 3D WAVEFORMS (Measured data sampled at 50 kHz) 51000 packets of 144 samples from 2016-06-13T18:33:34.480.999. Part 125/147

Processed Mon Jun 13 20:42:19 2016 by ELM ver.2012-10-06 from 001__elm20160613_183333__dat00.bin

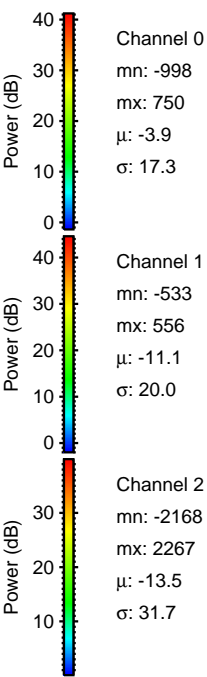
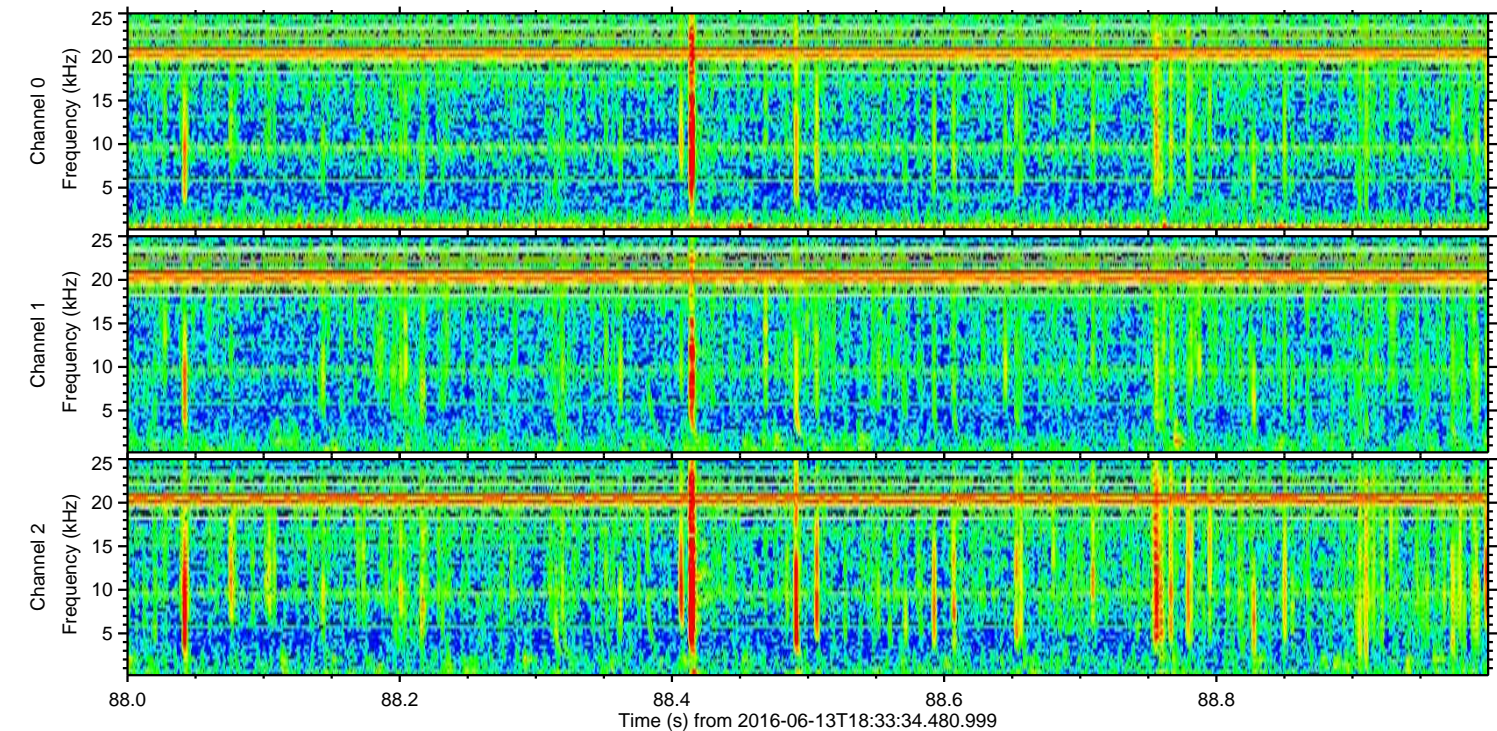
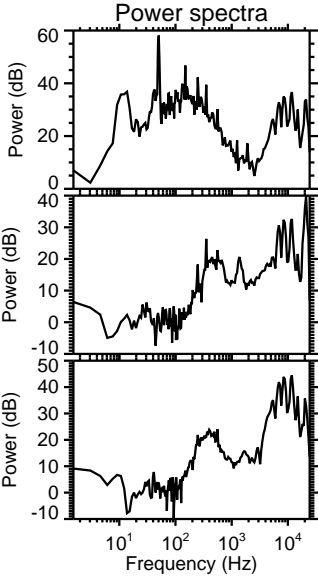
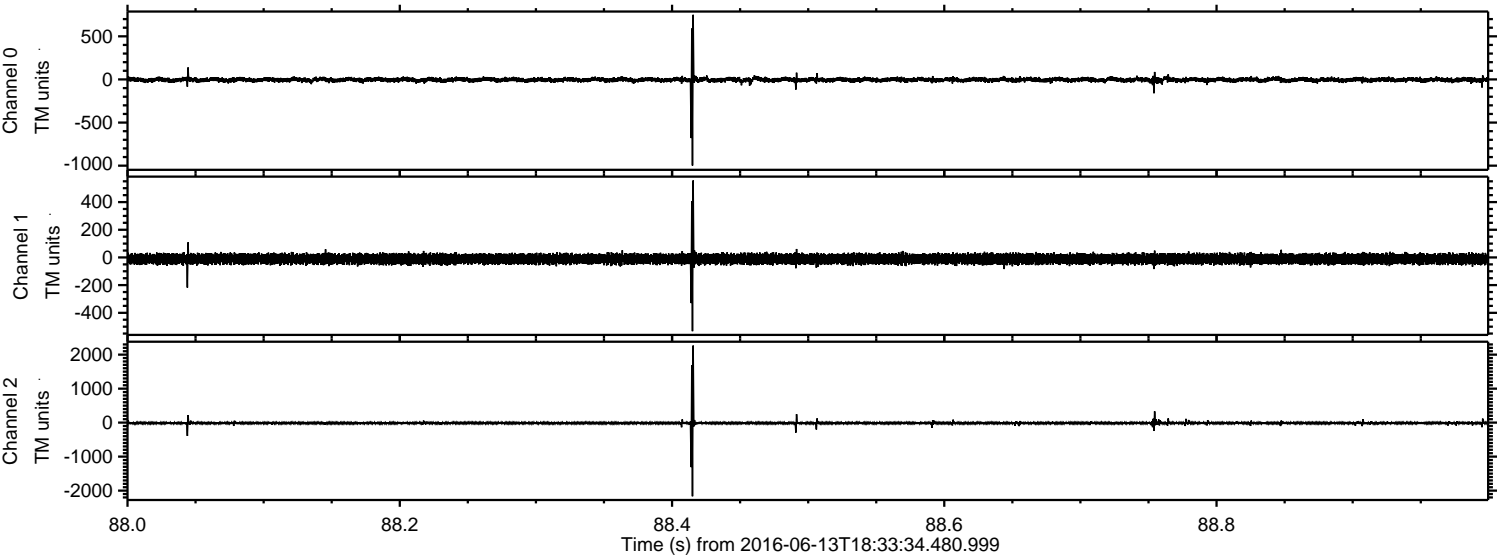


Channel 0
mn: -1119
mx: 1575
 μ : -3.9
 σ : 18.1

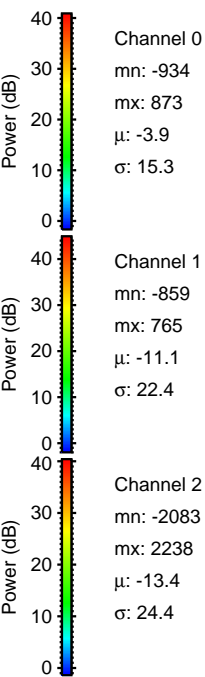
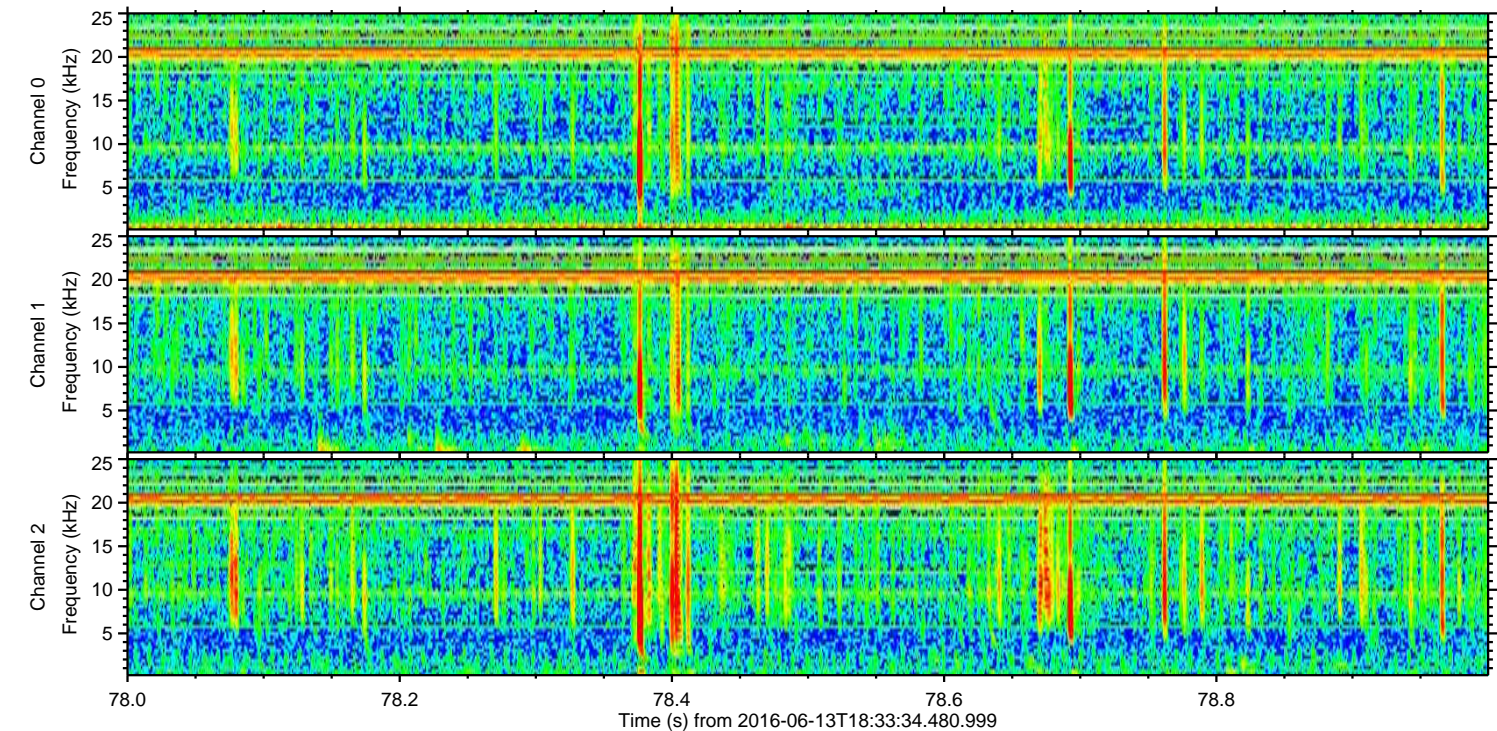
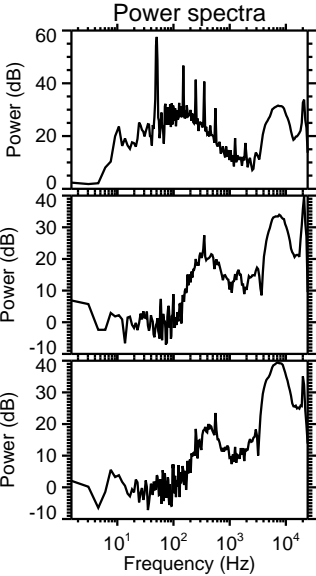
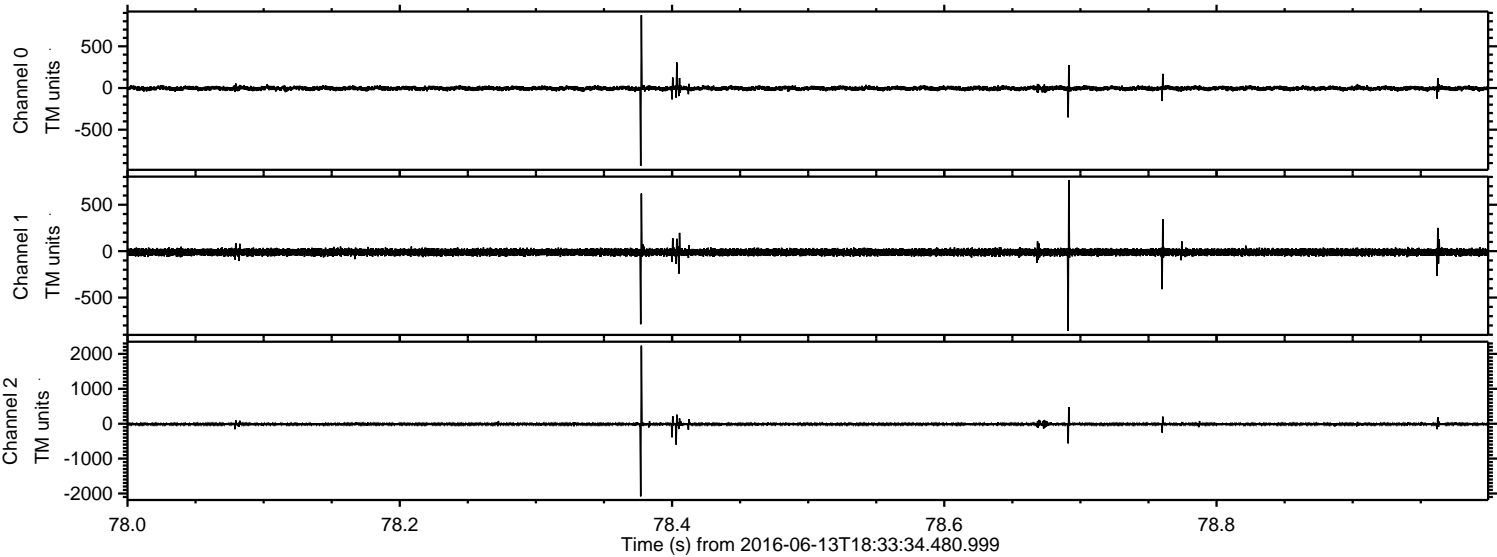
Channel 1
mn: -2681
mx: 1752
 μ : -11.1
 σ : 30.1

Channel 2
mn: -2158
mx: 1430
 μ : -13.5
 σ : 23.6

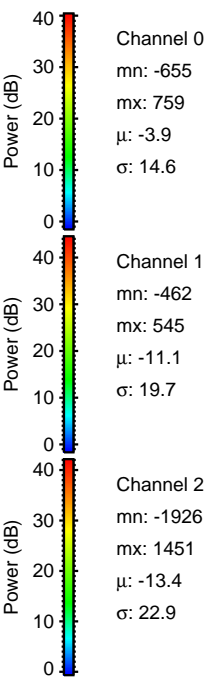
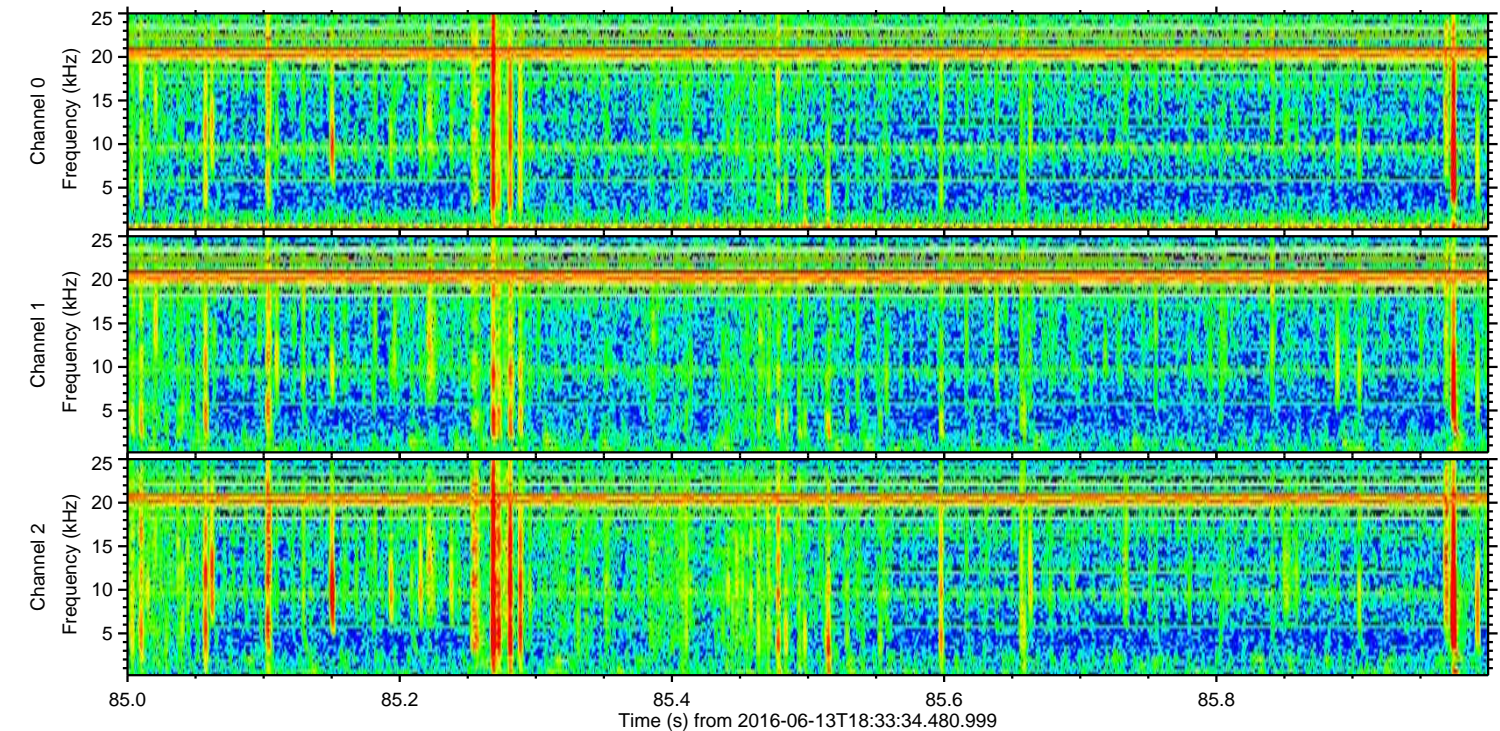
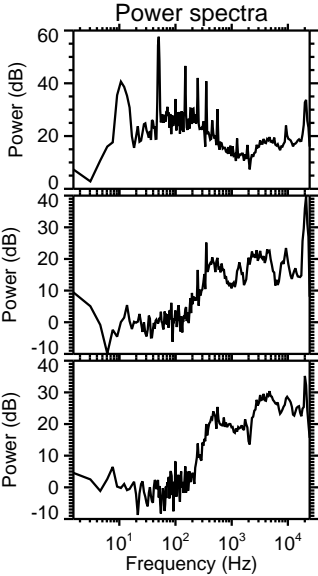
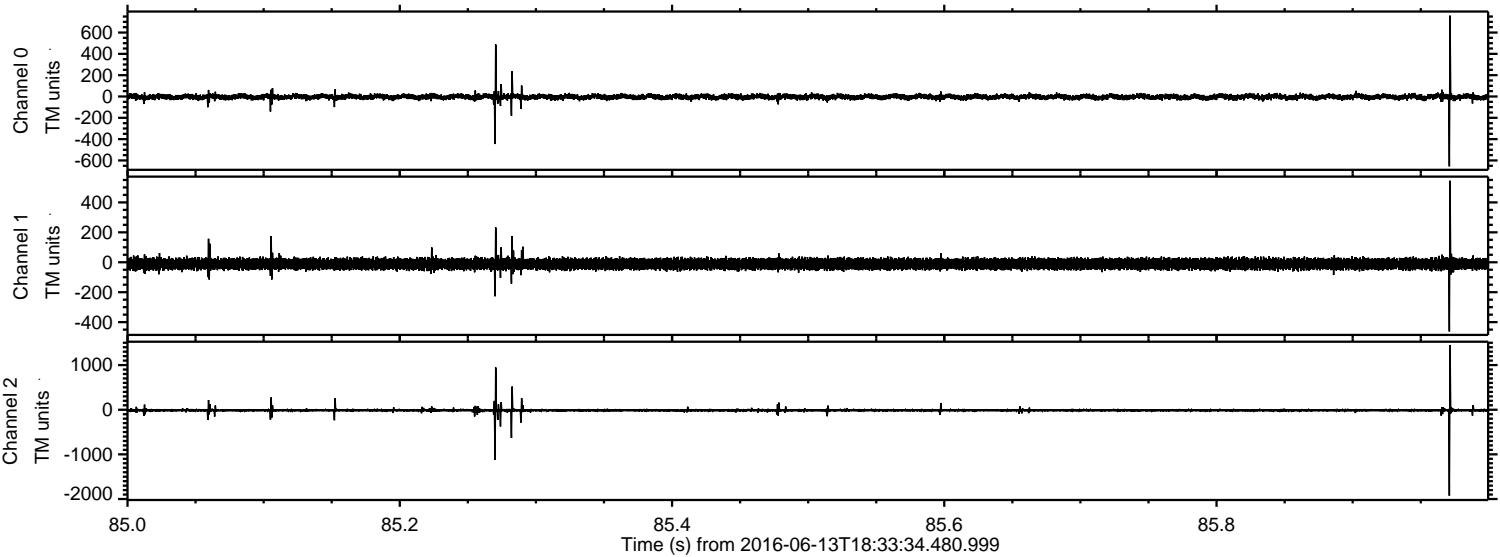
Processed Mon Jun 13 20:42:20 2016 by ELM ver.2012-10-06 from 001__elm20160613_183333__dat00.bin



Processed Mon Jun 13 20:42:21 2016 by ELM ver.2012-10-06 from 001__elm20160613_183333__dat00.bin



Processed Mon Jun 13 20:42:22 2016 by ELM ver.2012-10-06 from 001__elm20160613_183333__dat00.bin



Channel 0
mn: -655
mx: 759
 μ : -3.9
 σ : 14.6

Channel 1
mn: -462
mx: 545
 μ : -11.1
 σ : 19.7

Channel 2
mn: -1926
mx: 1451
 μ : -13.4
 σ : 22.9

Processed Mon Jun 13 20:42:23 2016 by ELM ver.2012-10-06 from 001__elm20160613_183333__dat00.bin

