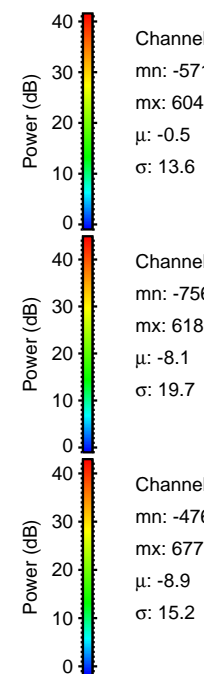
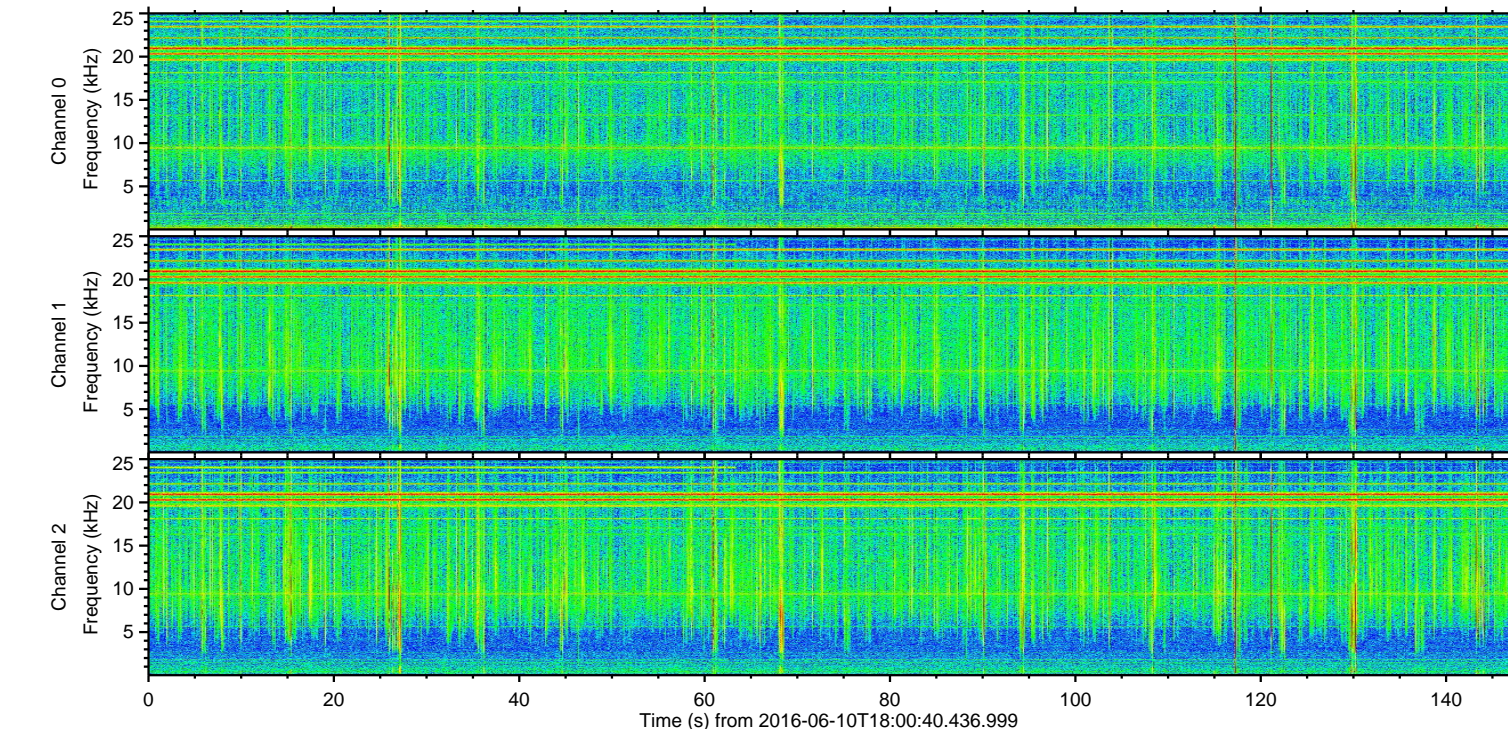
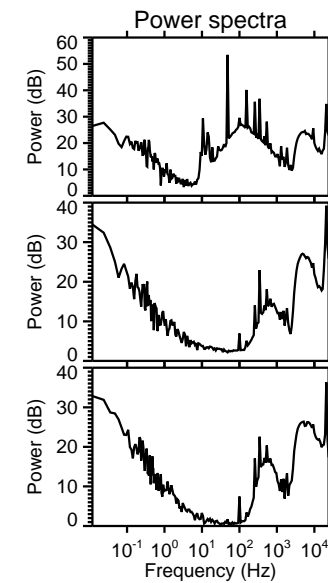
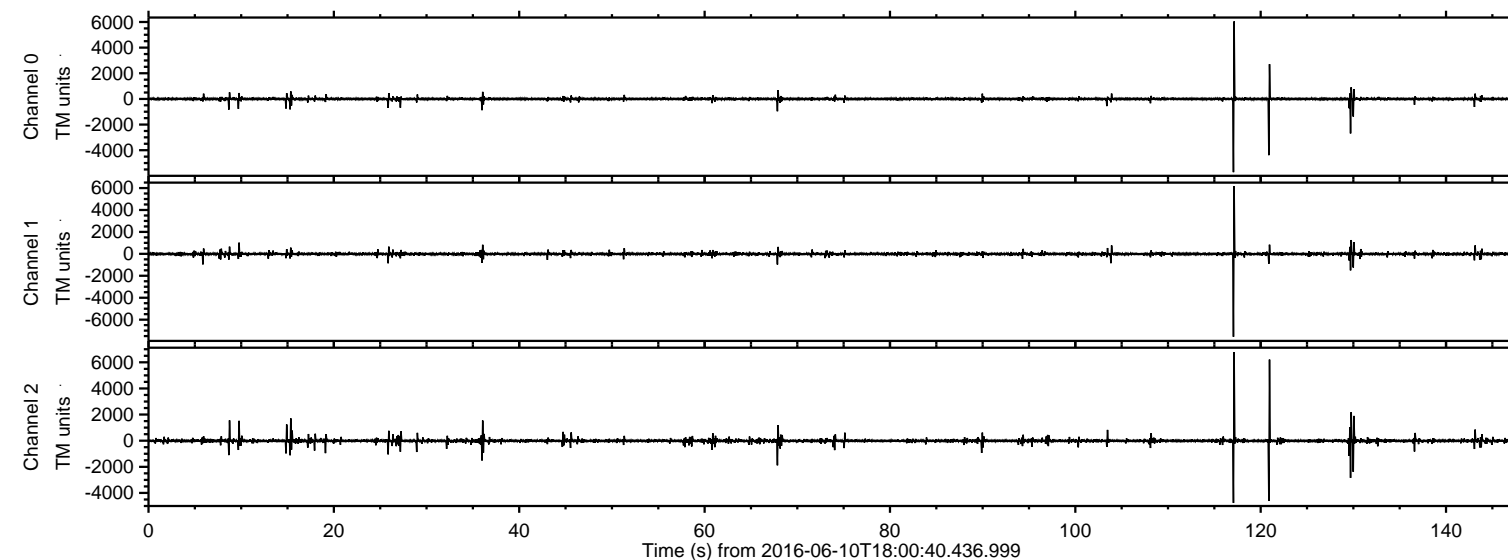


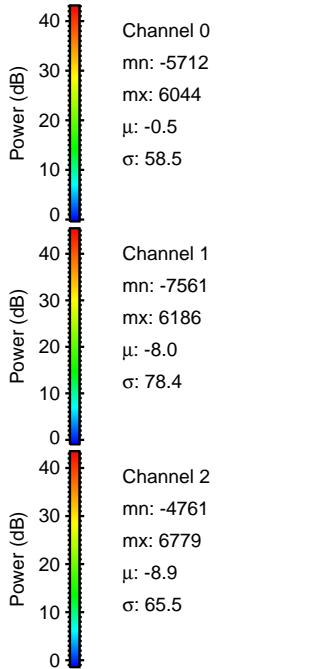
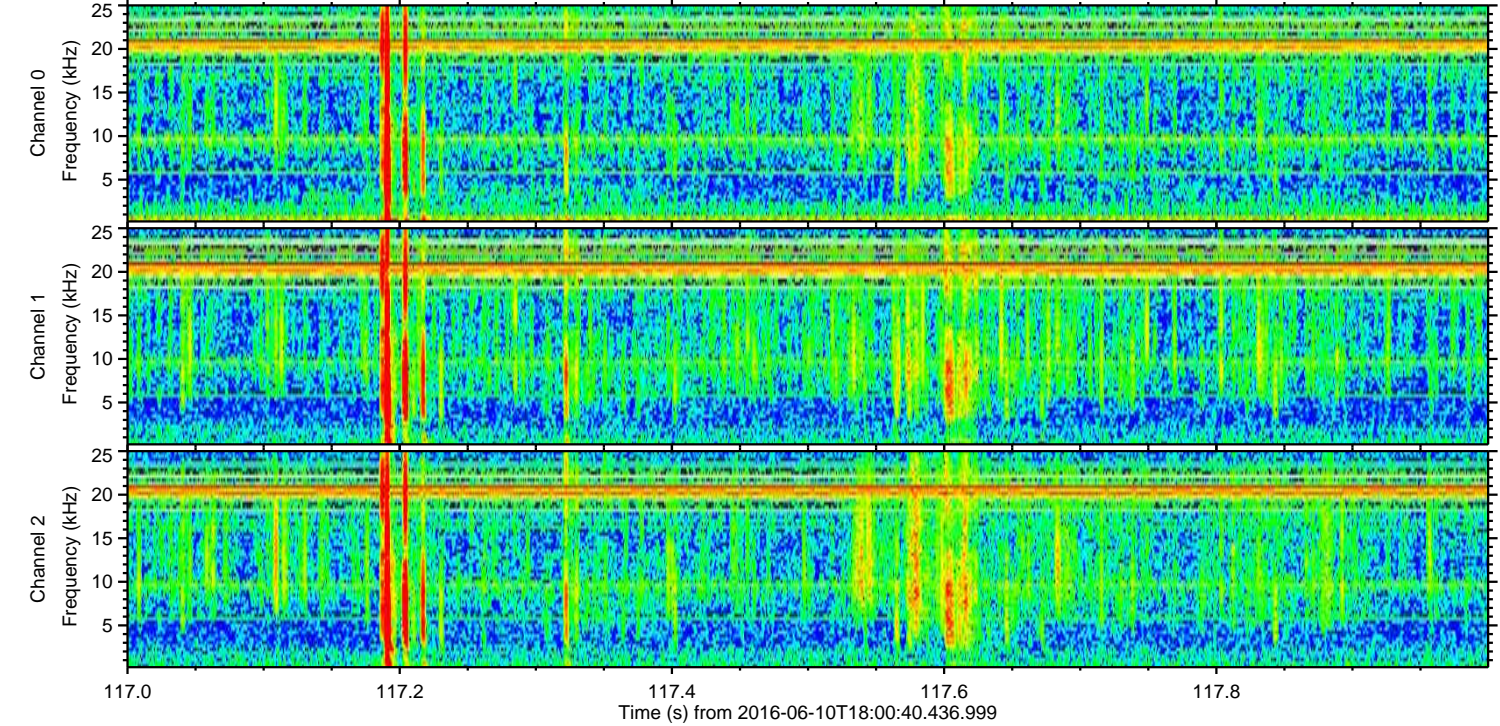
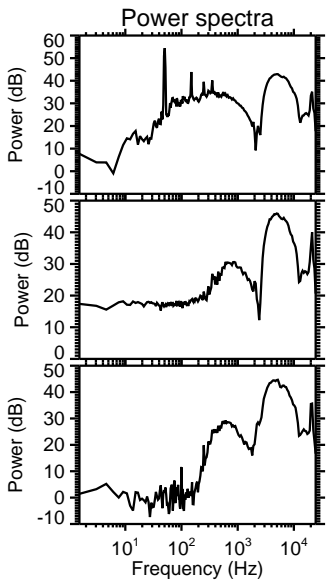
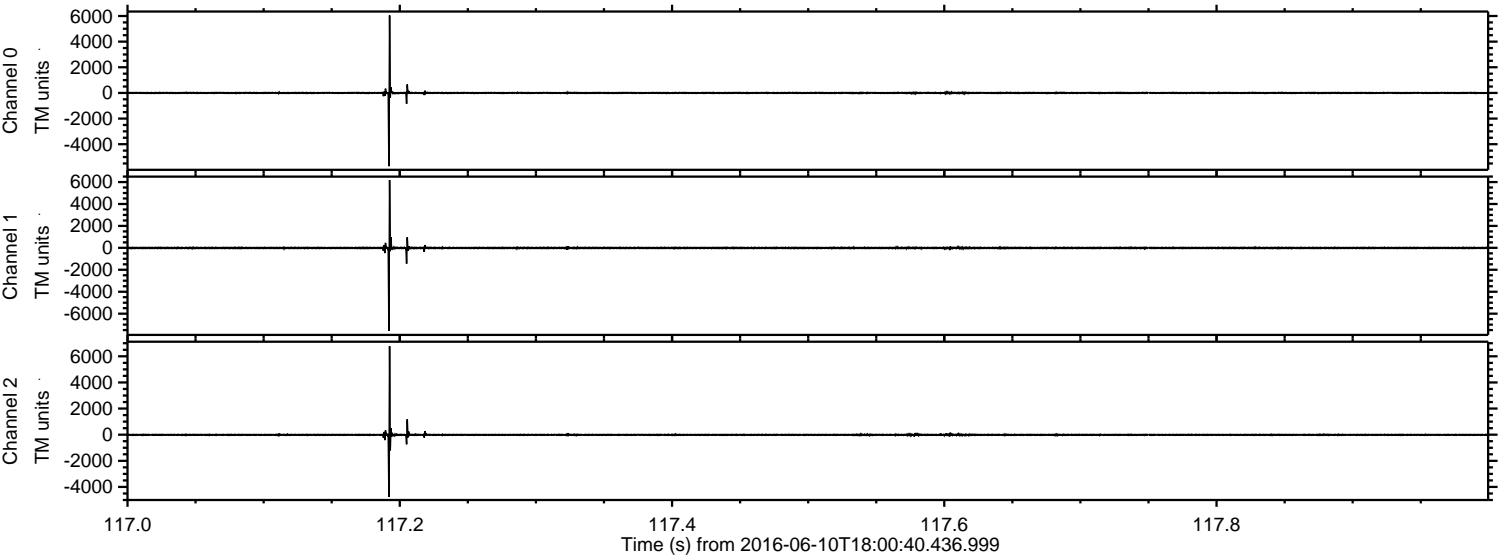
ELMAVAN 3D WAVEFORMS (Measured data sampled at 50 kHz) 51000 packets of 144 samples from 2016-06-10T18:00:40.436.999.

Processed Fri Jun 10 20:09:06 2016 by ELM ver.2012-10-06 from 001__elm20160610_180039__dat00.bin



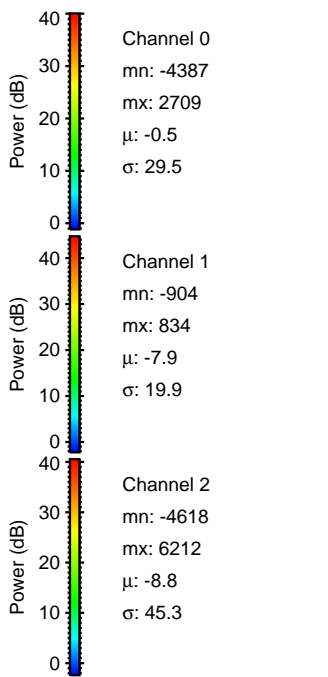
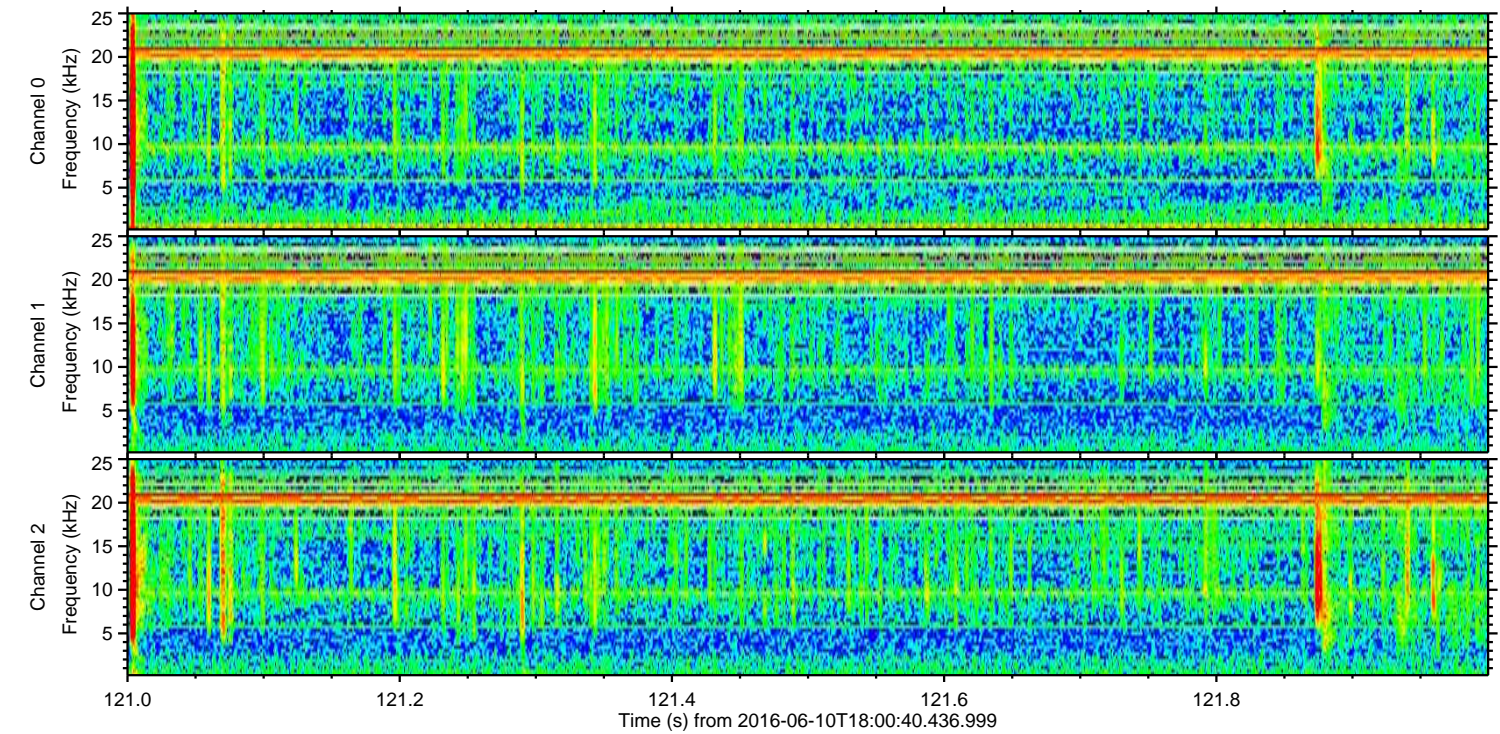
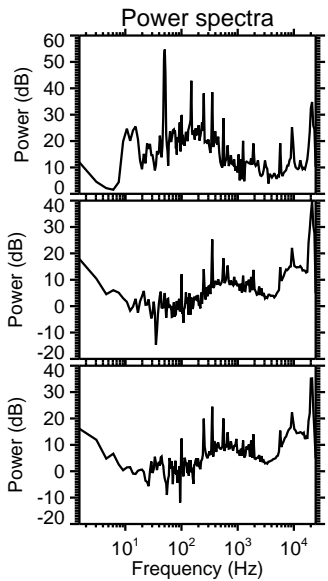
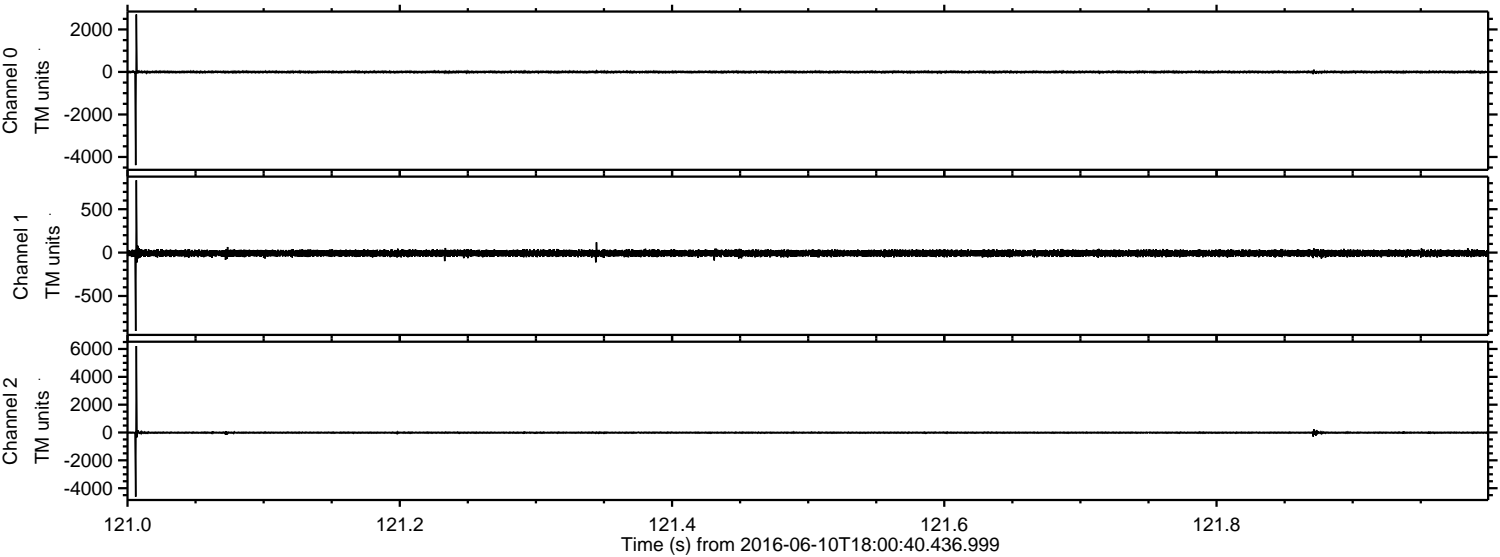
ELMAVAN 3D WAVEFORMS (Measured data sampled at 50 kHz) 51000 packets of 144 samples from 2016-06-10T18:00:40.436.999. Part 118/147

Processed Fri Jun 10 20:09:18 2016 by ELM ver.2012-10-06 from 001__elm20160610_180039__dat00.bin



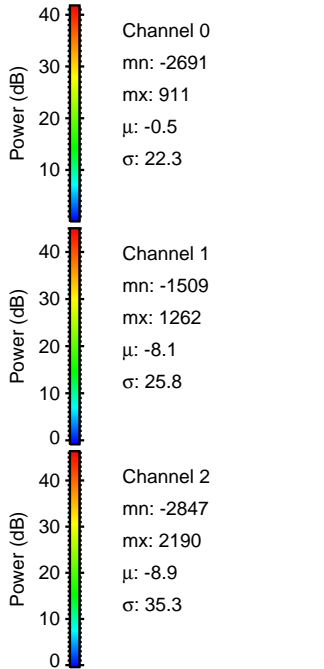
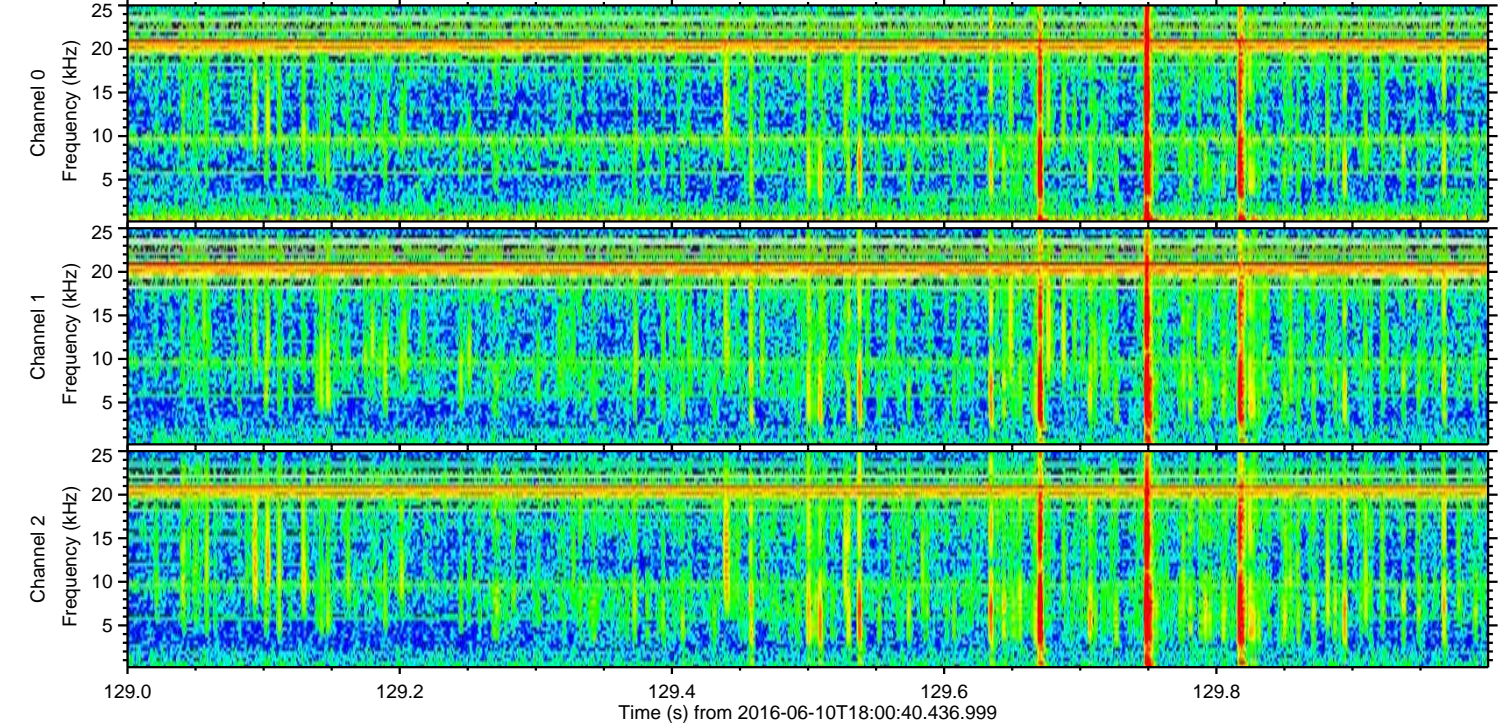
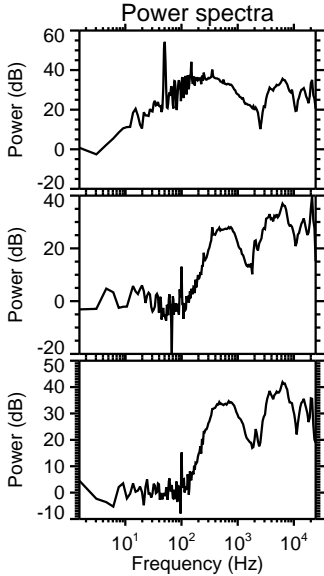
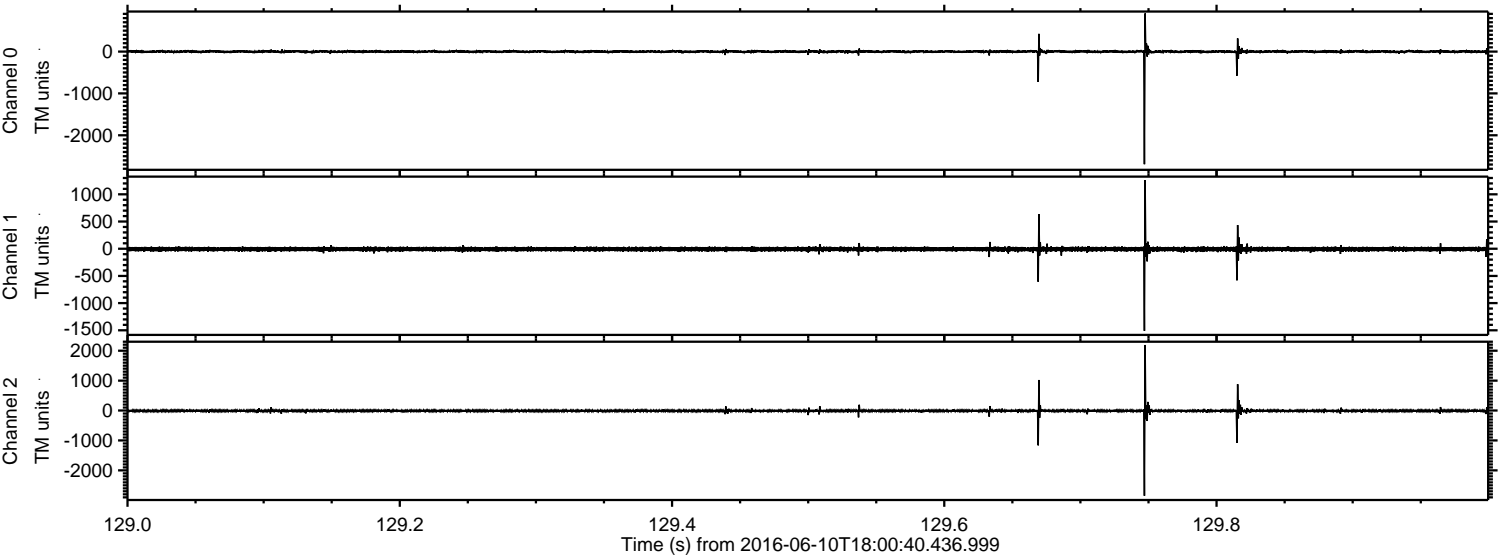
ELMAVAN 3D WAVEFORMS (Measured data sampled at 50 kHz) 51000 packets of 144 samples from 2016-06-10T18:00:40.436.999. Part 122/147

Processed Fri Jun 10 20:09:19 2016 by ELM ver.2012-10-06 from 001__elm20160610_180039__dat00.bin



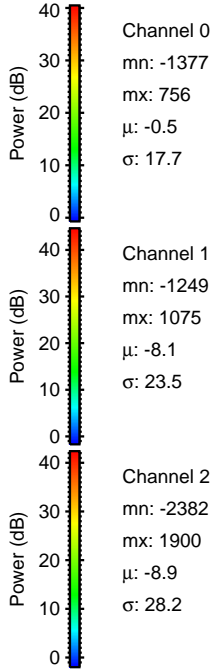
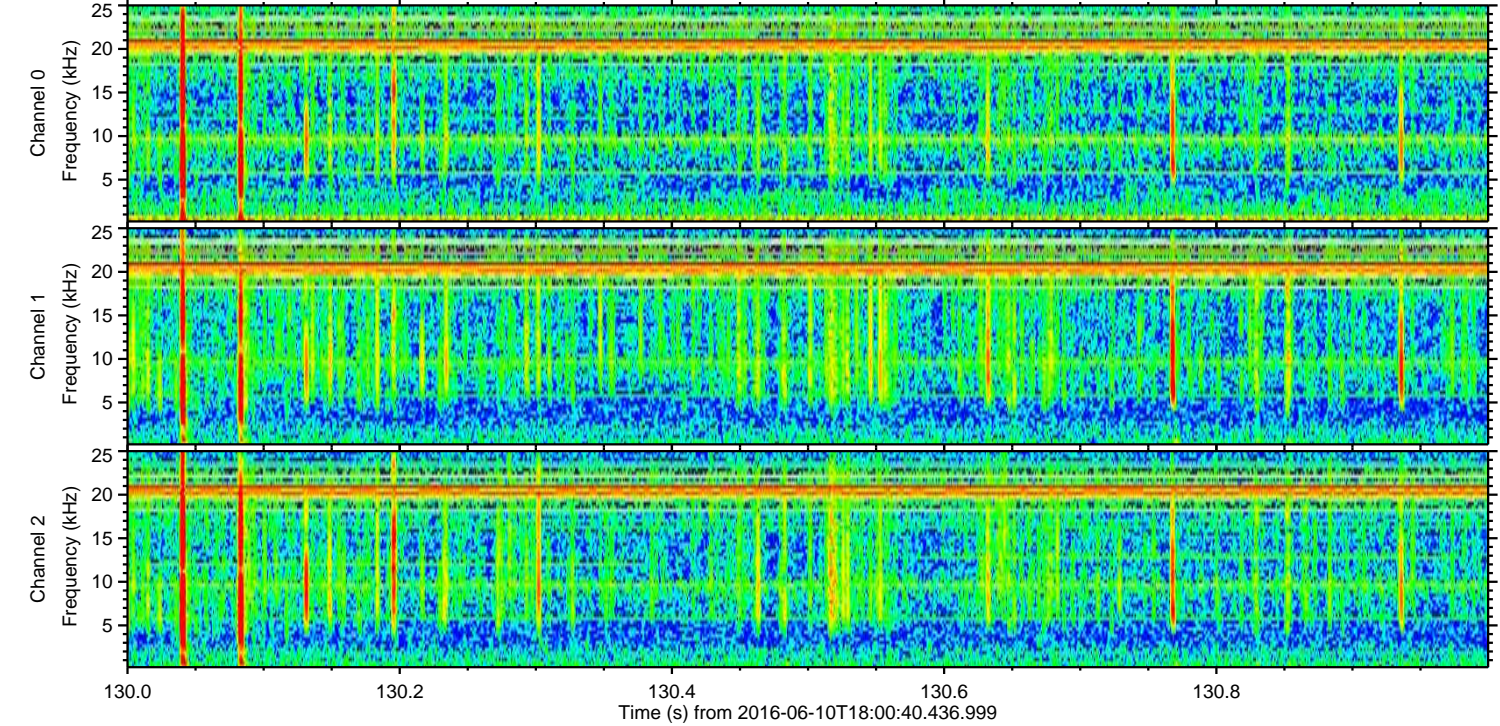
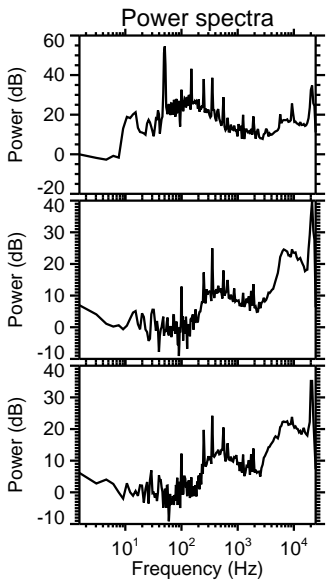
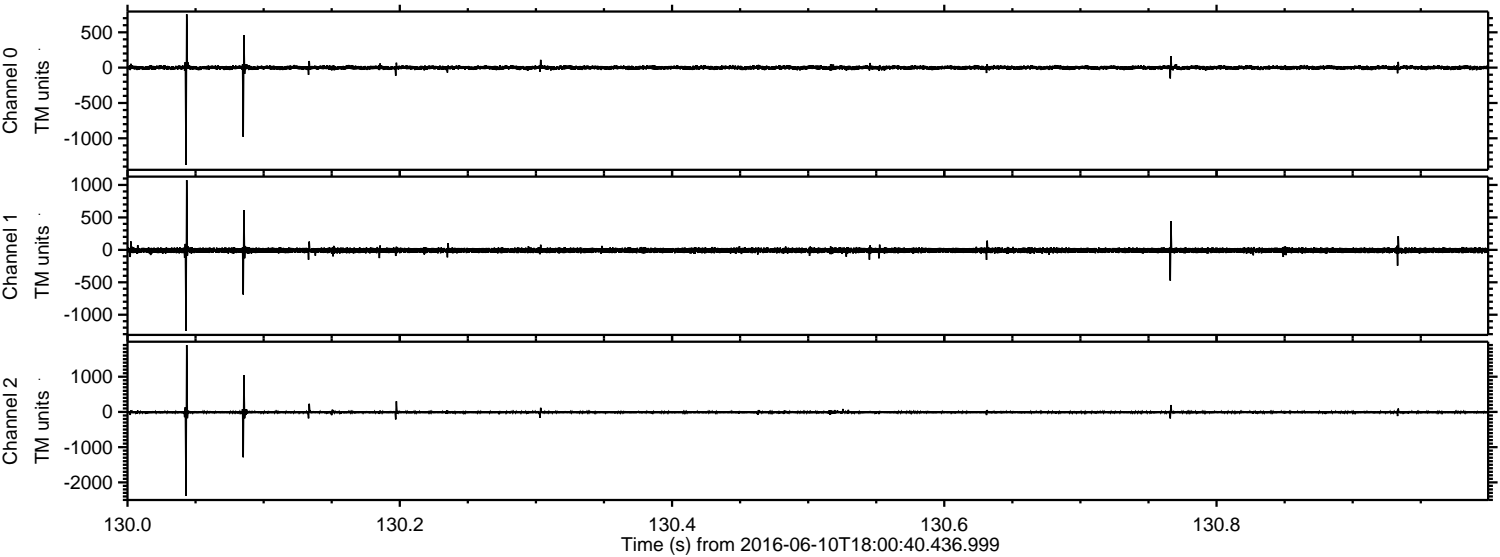
ELMAVAN 3D WAVEFORMS (Measured data sampled at 50 kHz) 51000 packets of 144 samples from 2016-06-10T18:00:40.436.999. Part 130/147

Processed Fri Jun 10 20:09:20 2016 by ELM ver.2012-10-06 from 001__elm20160610_180039__dat00.bin

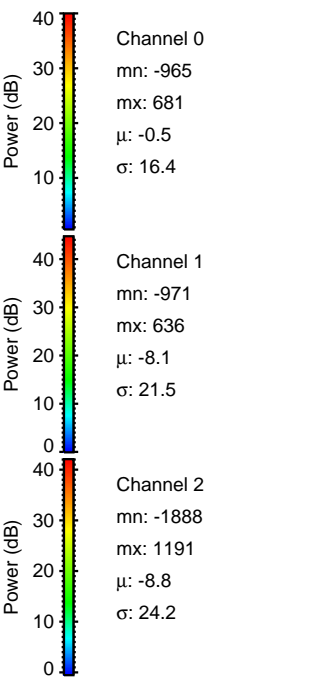
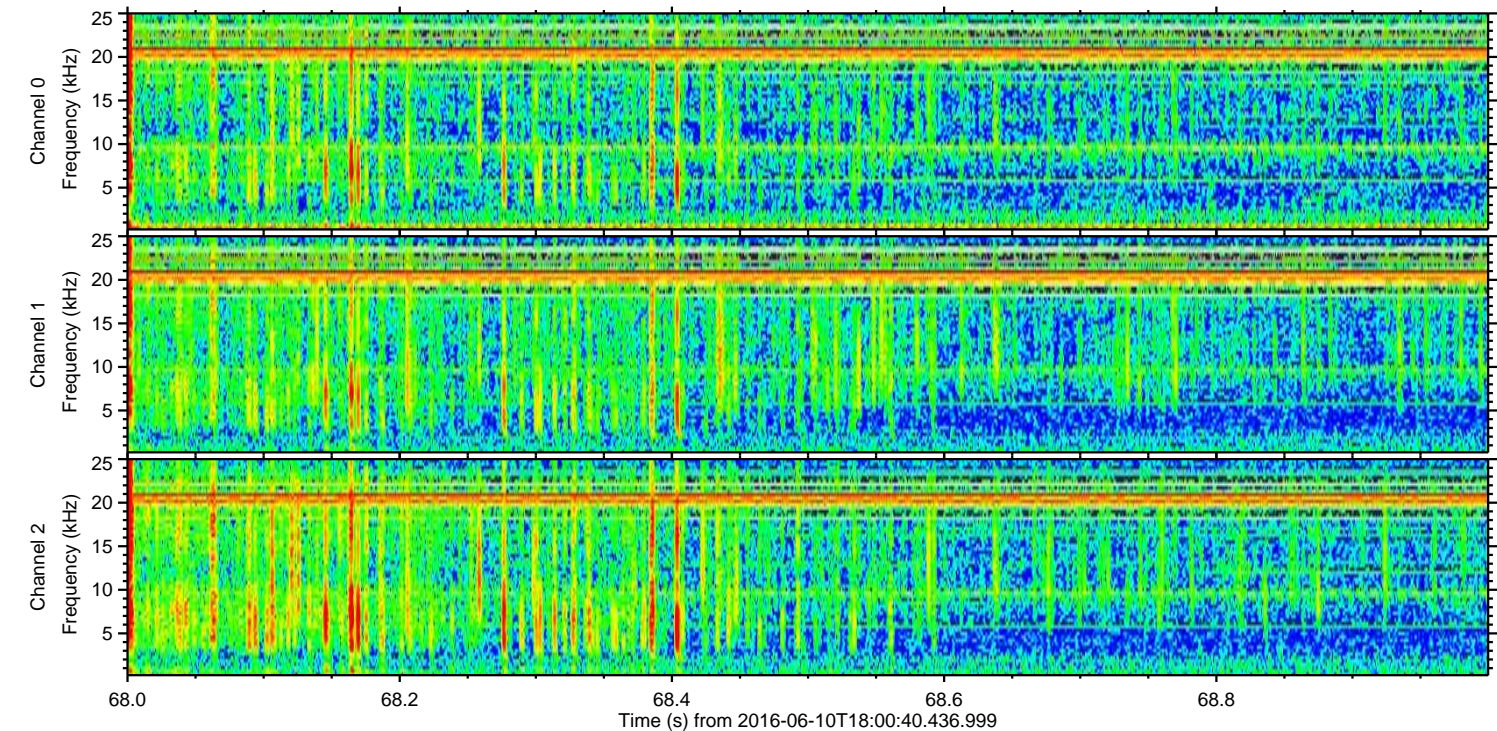
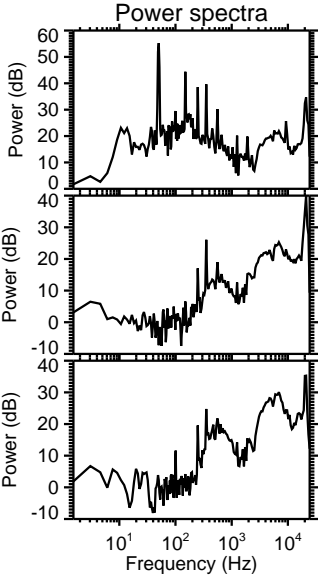
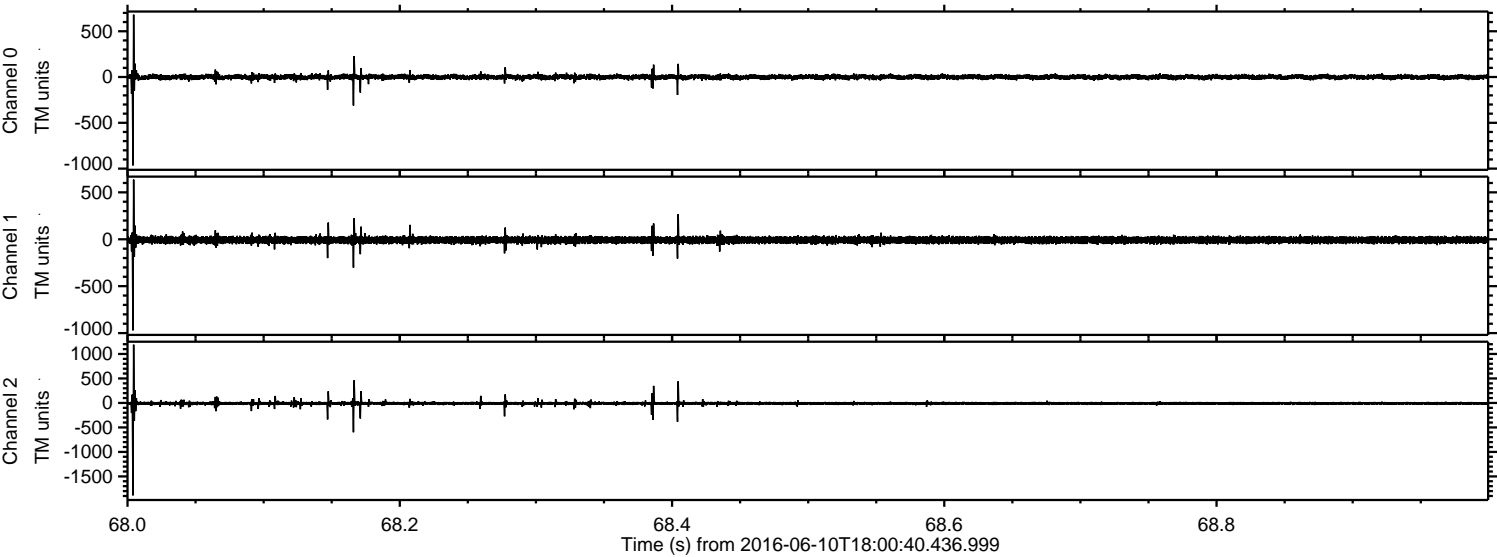


ELMAVAN 3D WAVEFORMS (Measured data sampled at 50 kHz) 51000 packets of 144 samples from 2016-06-10T18:00:40.436.999. Part 131/147

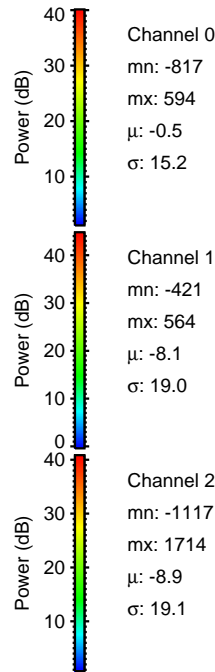
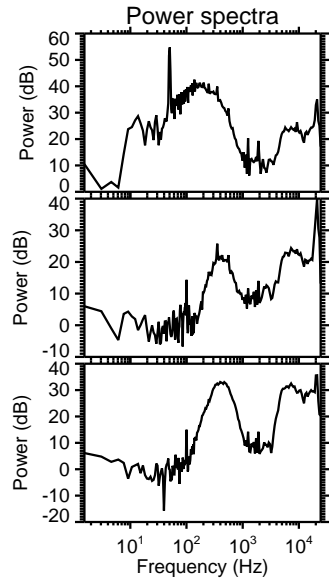
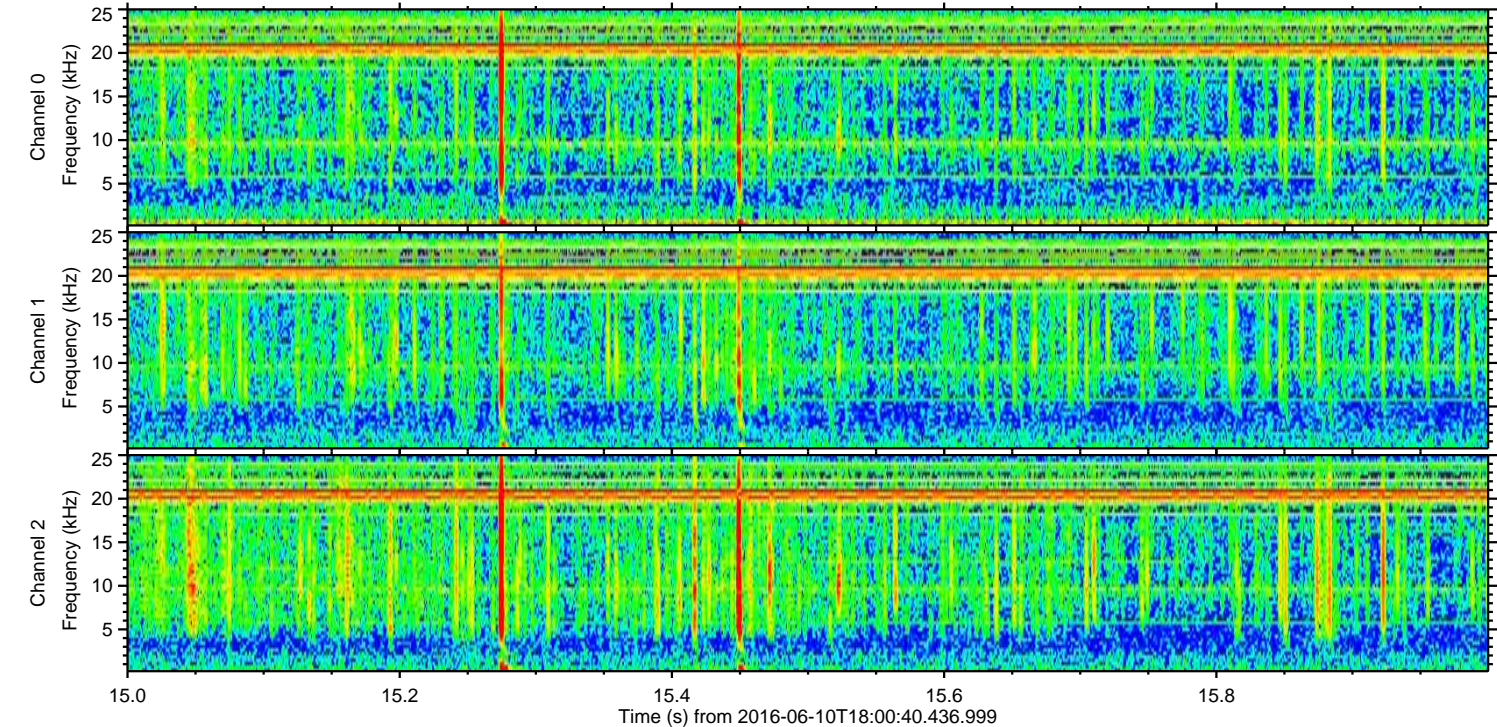
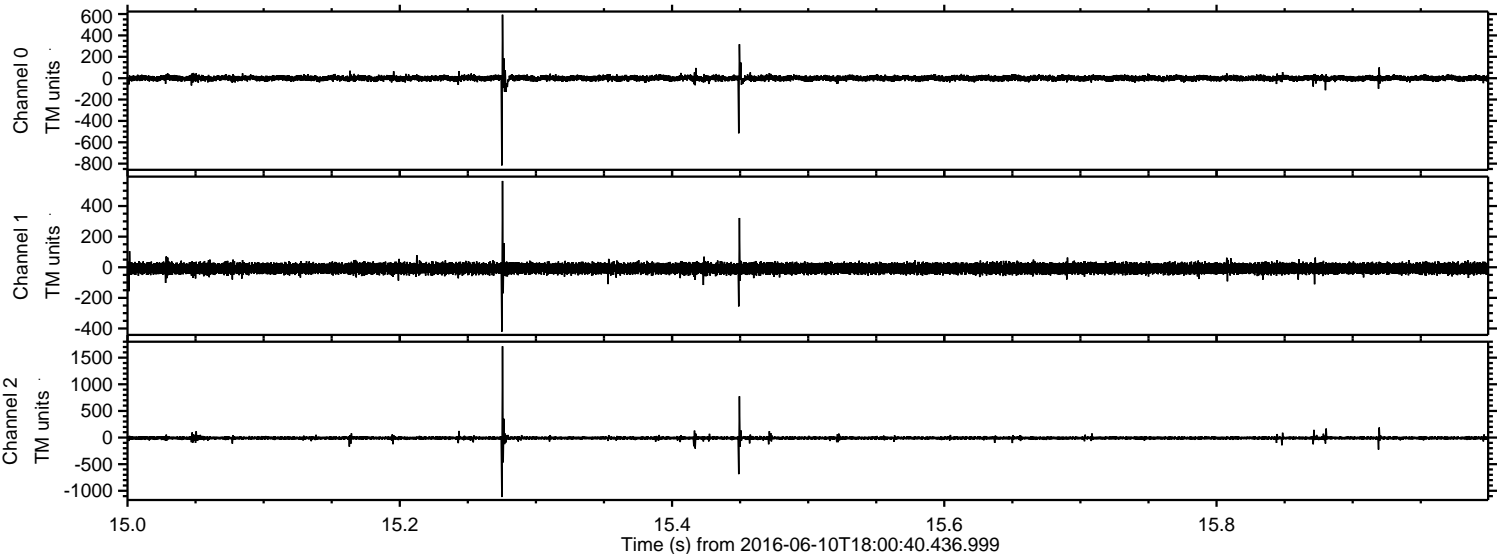
Processed Fri Jun 10 20:09:21 2016 by ELM ver.2012-10-06 from 001__elm20160610_180039__dat00.bin



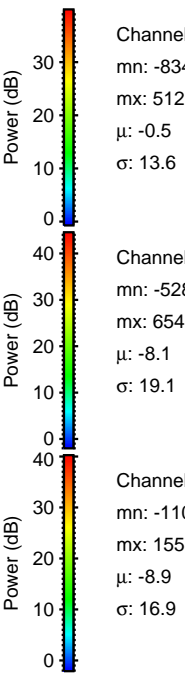
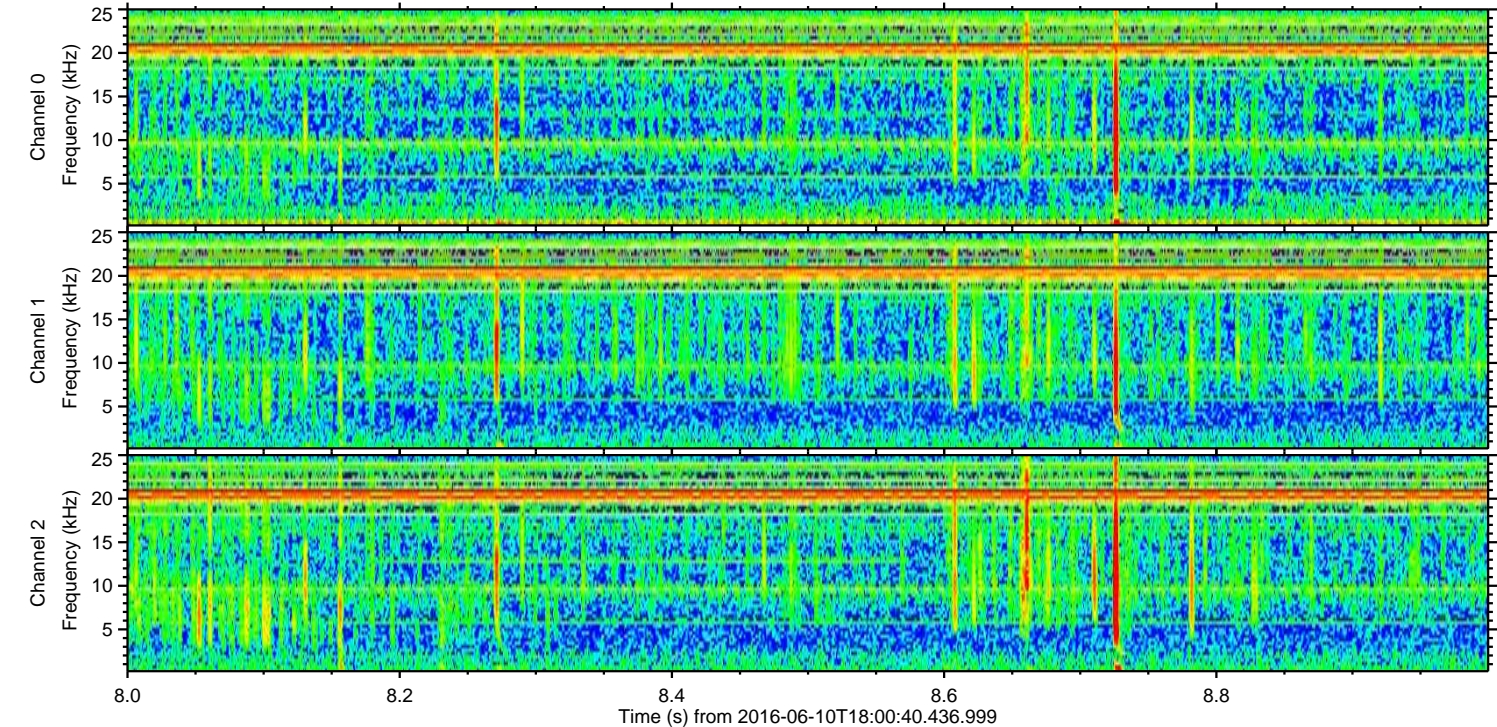
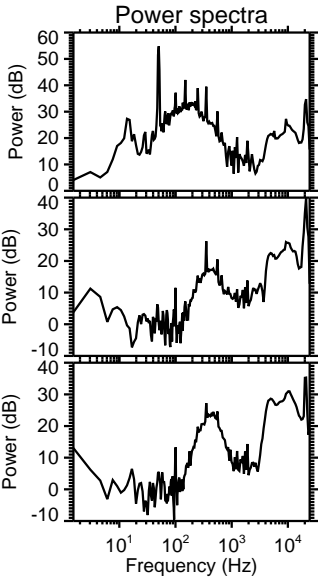
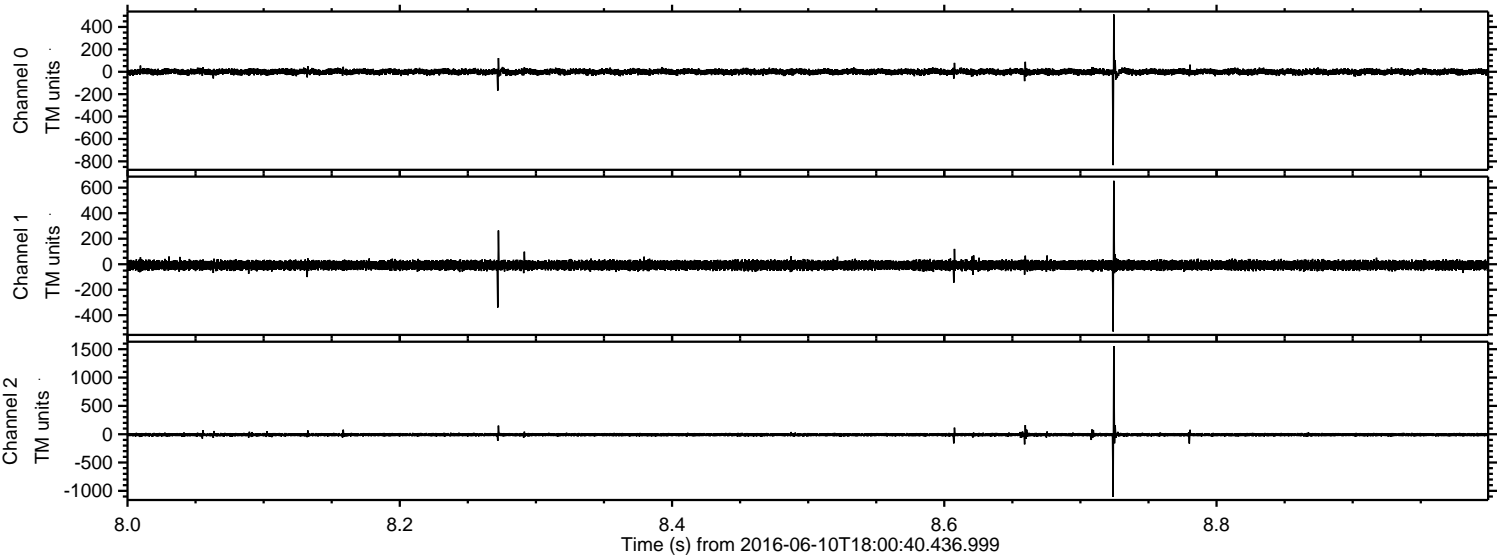
Processed Fri Jun 10 20:09:22 2016 by ELM ver.2012-10-06 from 001__elm20160610_180039__dat00.bin



Processed Fri Jun 10 20:09:23 2016 by ELM ver.2012-10-06 from 001__elm20160610_180039__dat00.bin



Processed Fri Jun 10 20:09:24 2016 by ELM ver.2012-10-06 from 001__elm20160610_180039__dat00.bin

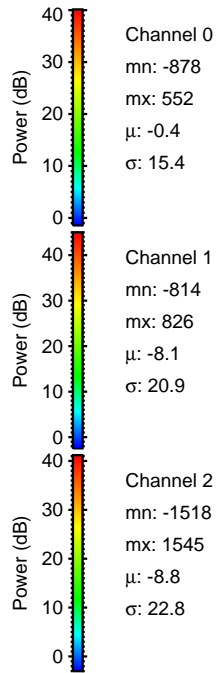
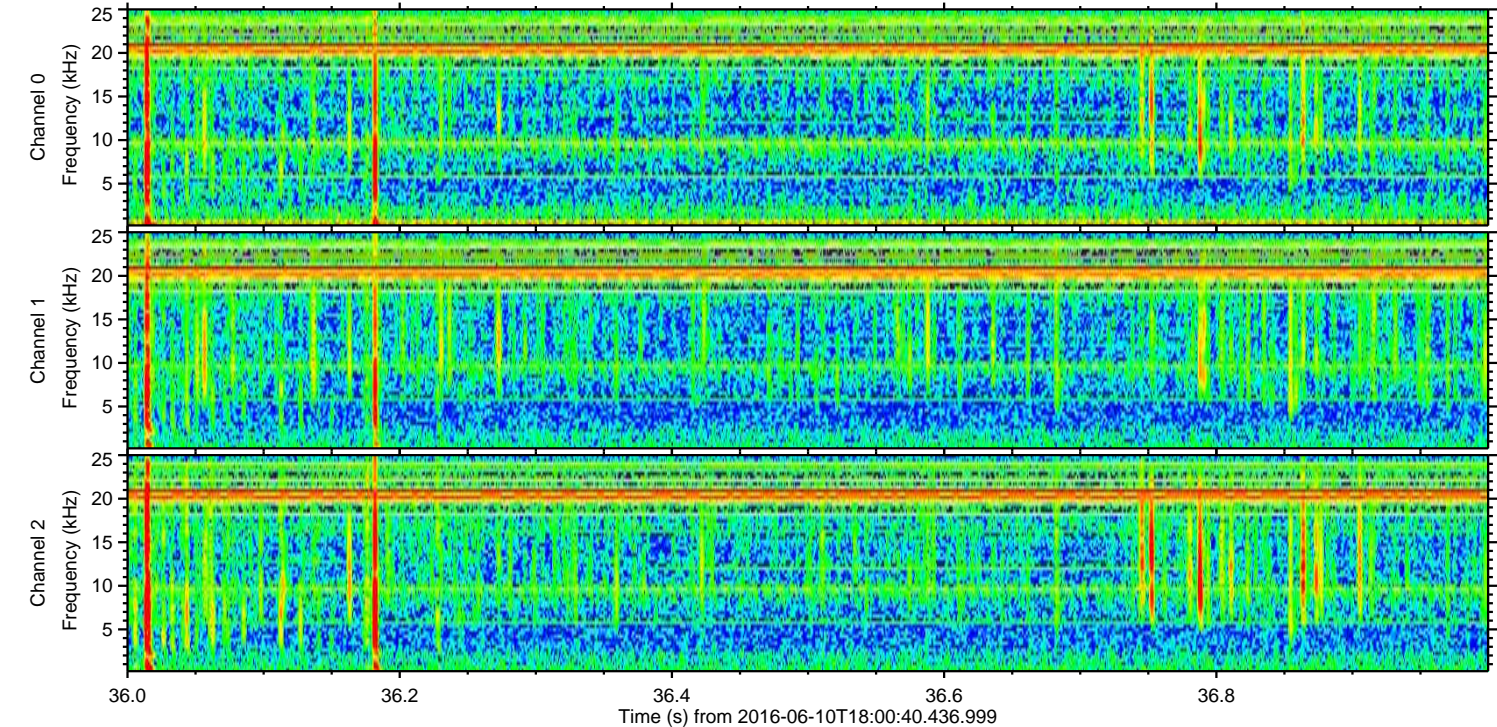
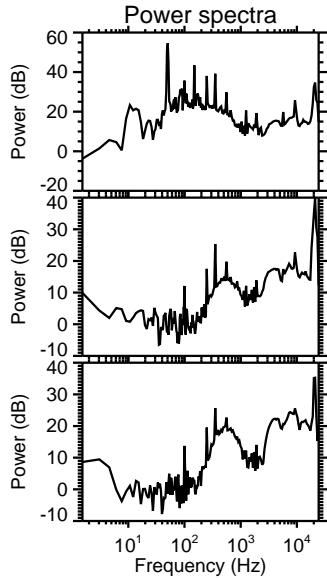
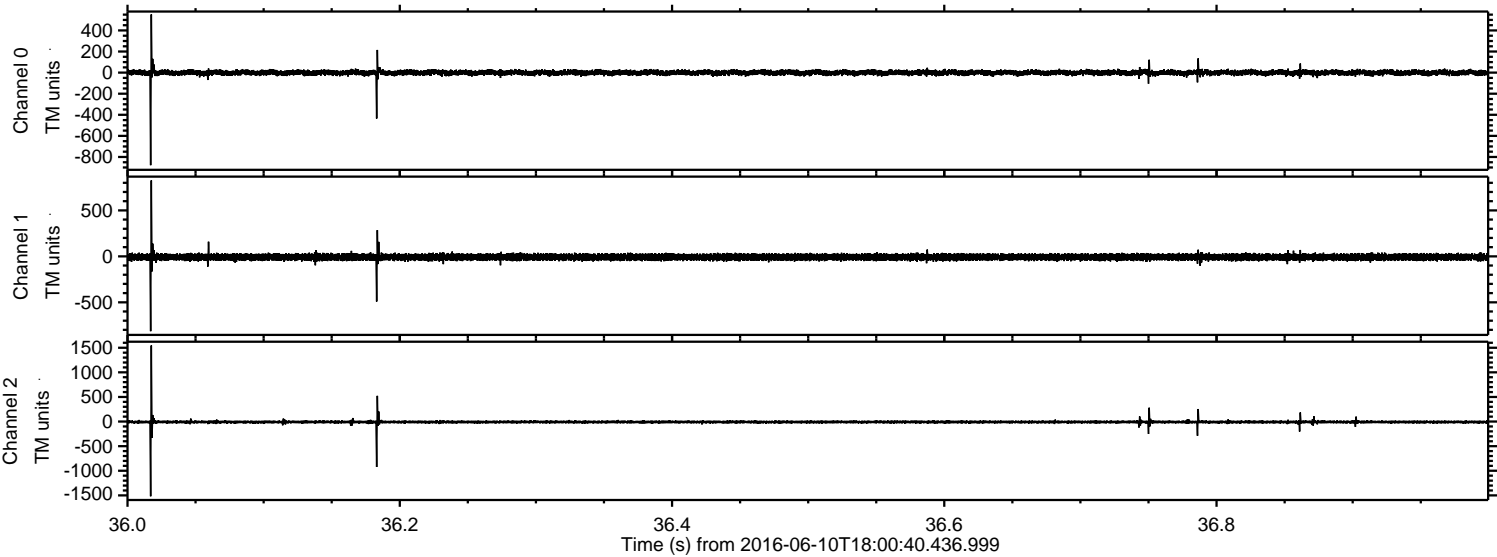


Channel 0
mn: -834
mx: 512
 μ : -0.5
 σ : 13.6

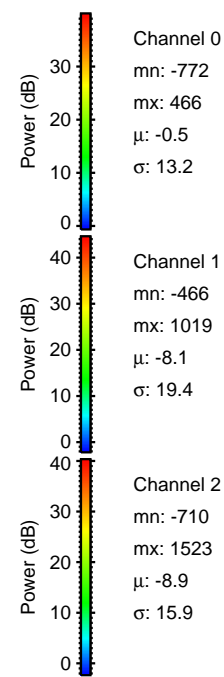
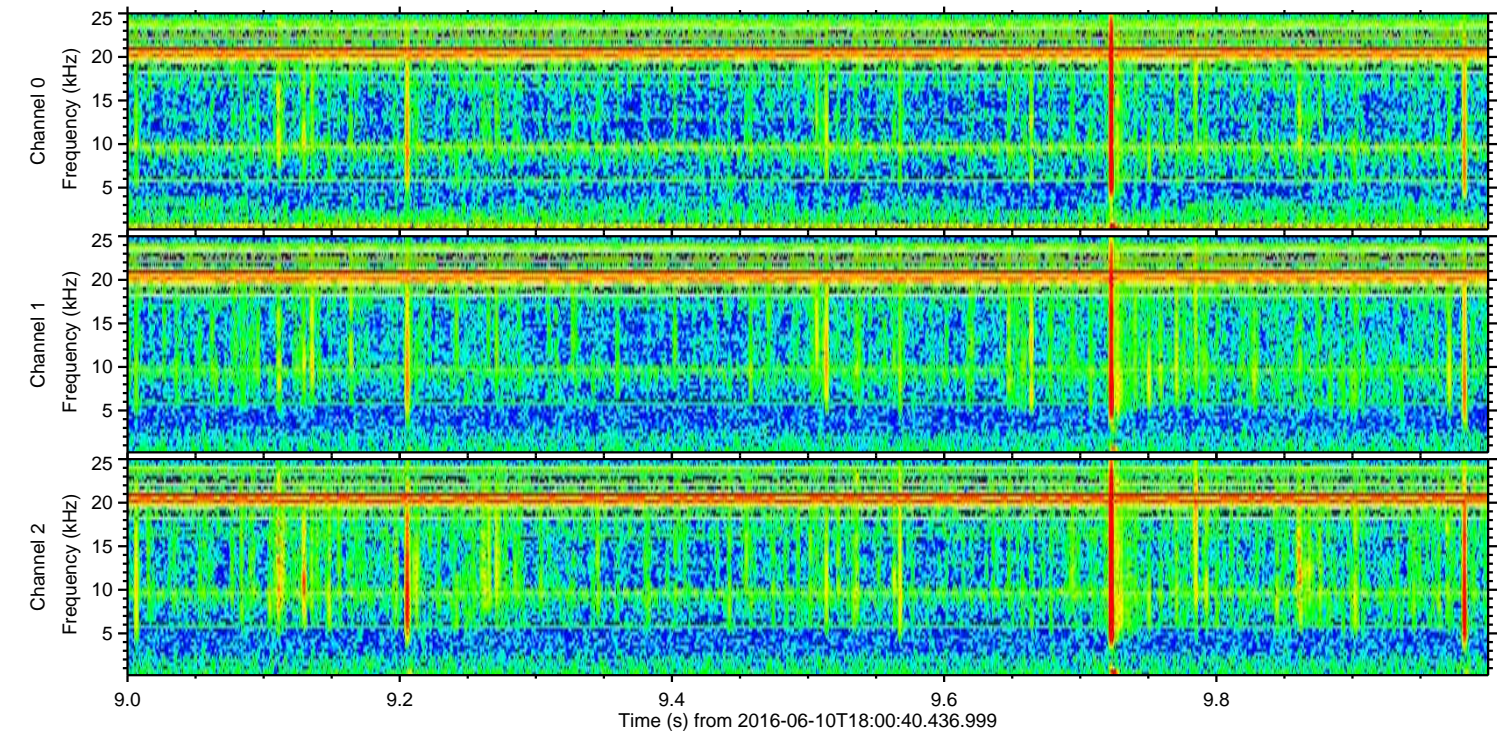
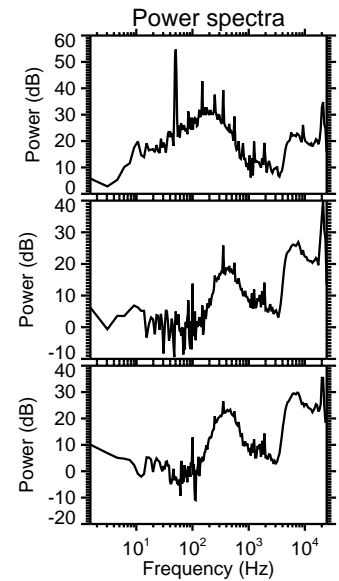
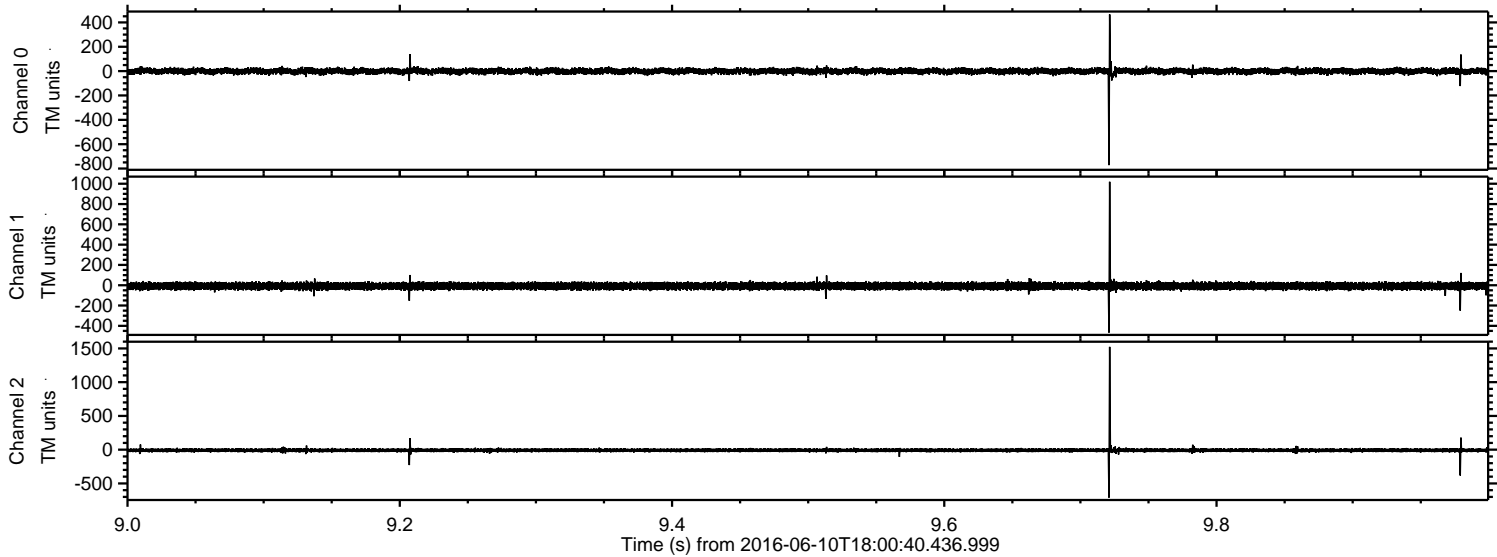
Channel 1
mn: -528
mx: 654
 μ : -8.1
 σ : 19.1

Channel 2
mn: -1106
mx: 1555
 μ : -8.9
 σ : 16.9

Processed Fri Jun 10 20:09:25 2016 by ELM ver.2012-10-06 from 001__elm20160610_180039__dat00.bin



Processed Fri Jun 10 20:09:26 2016 by ELM ver.2012-10-06 from 001__elm20160610_180039__dat00.bin



Processed Fri Jun 10 20:09:26 2016 by ELM ver.2012-10-06 from 001__elm20160610_180039__dat00.bin

