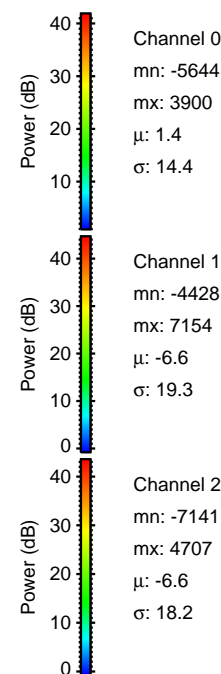
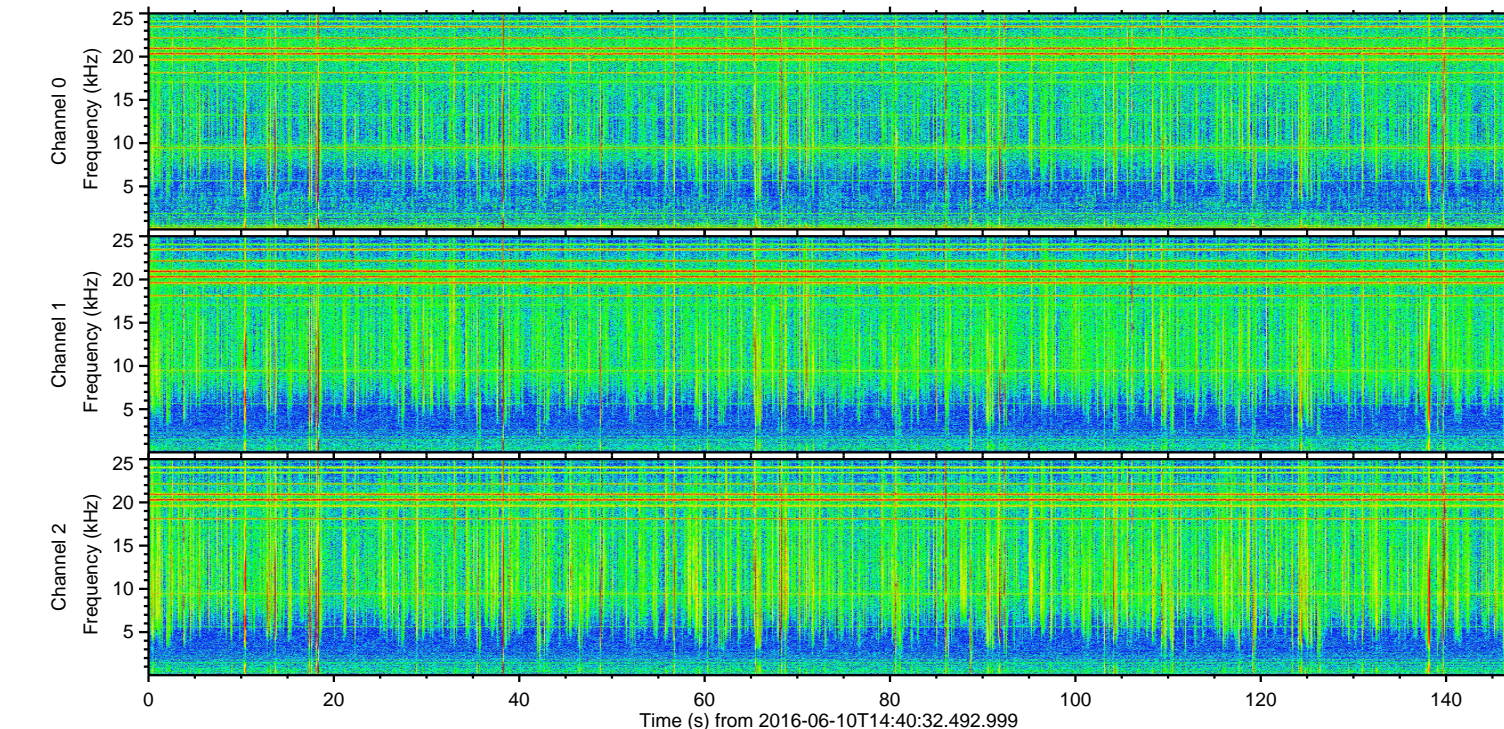
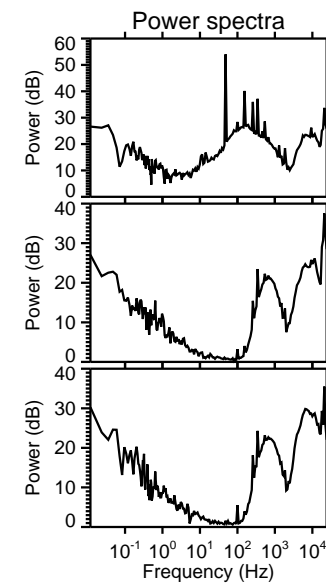
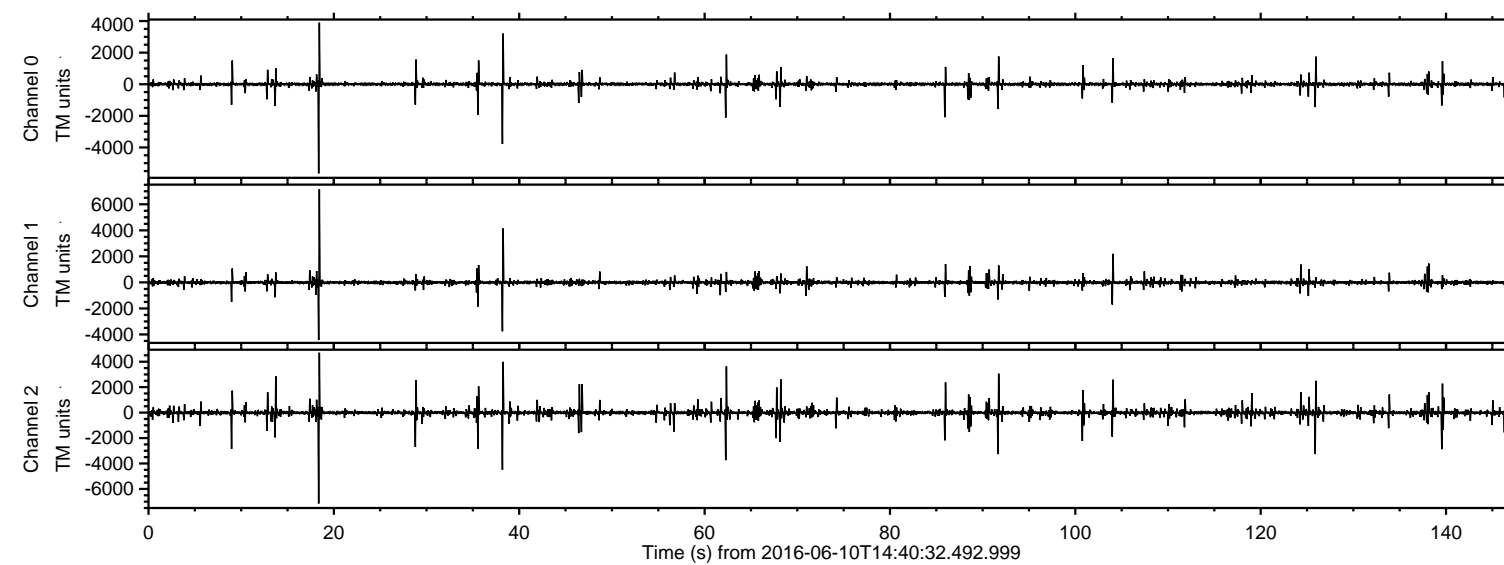
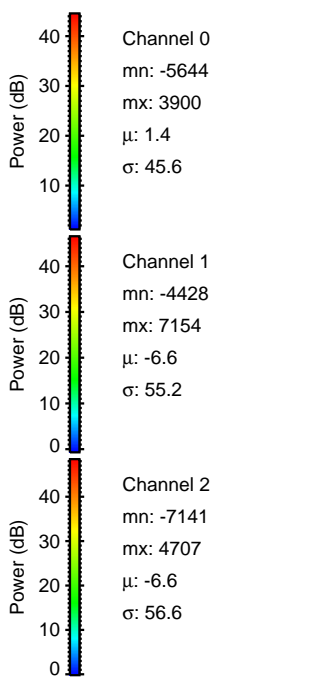
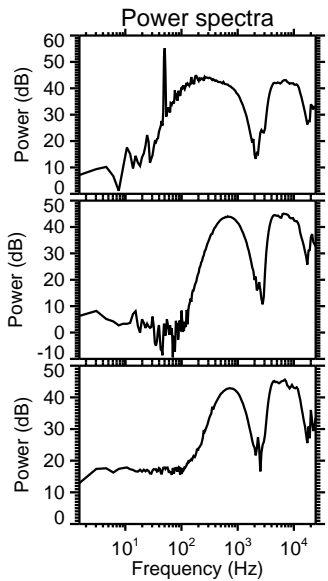
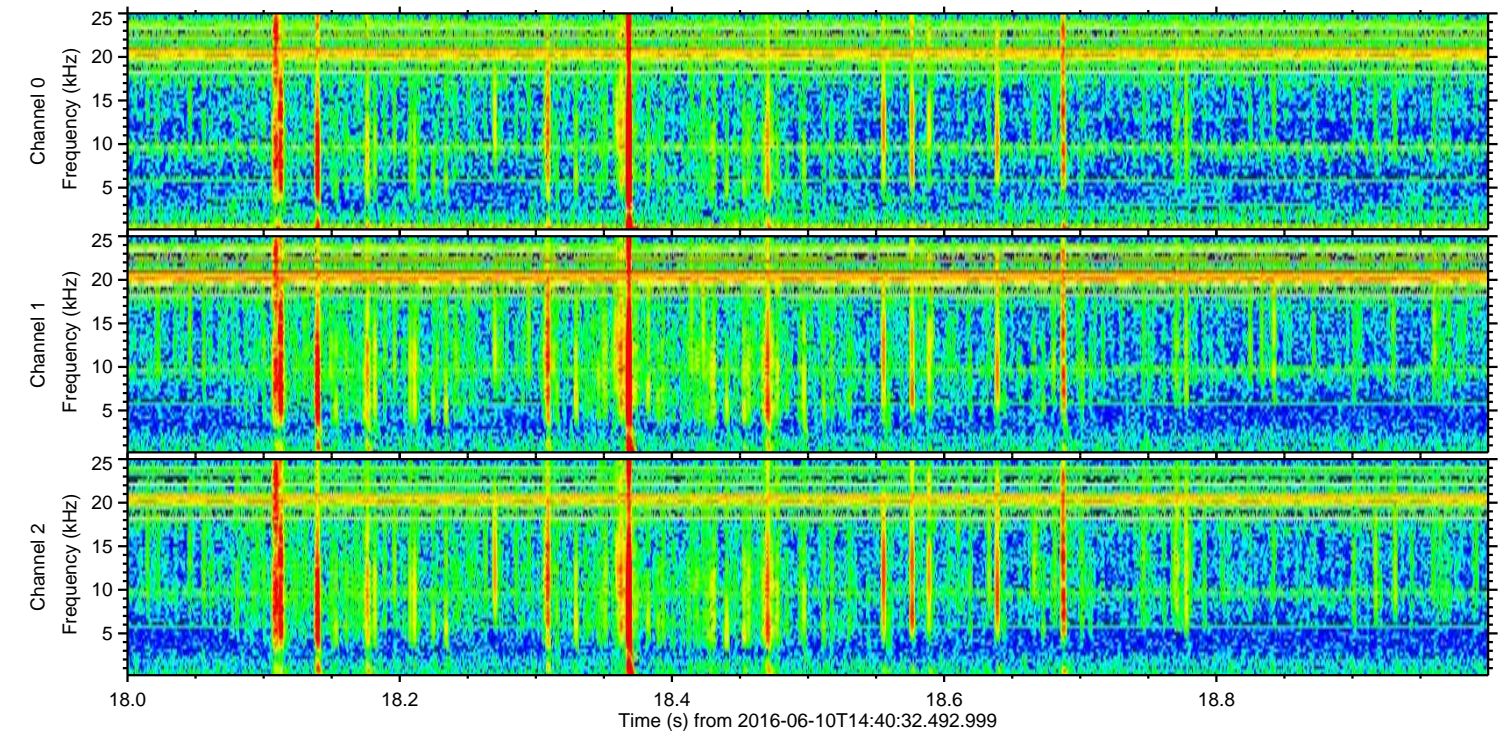
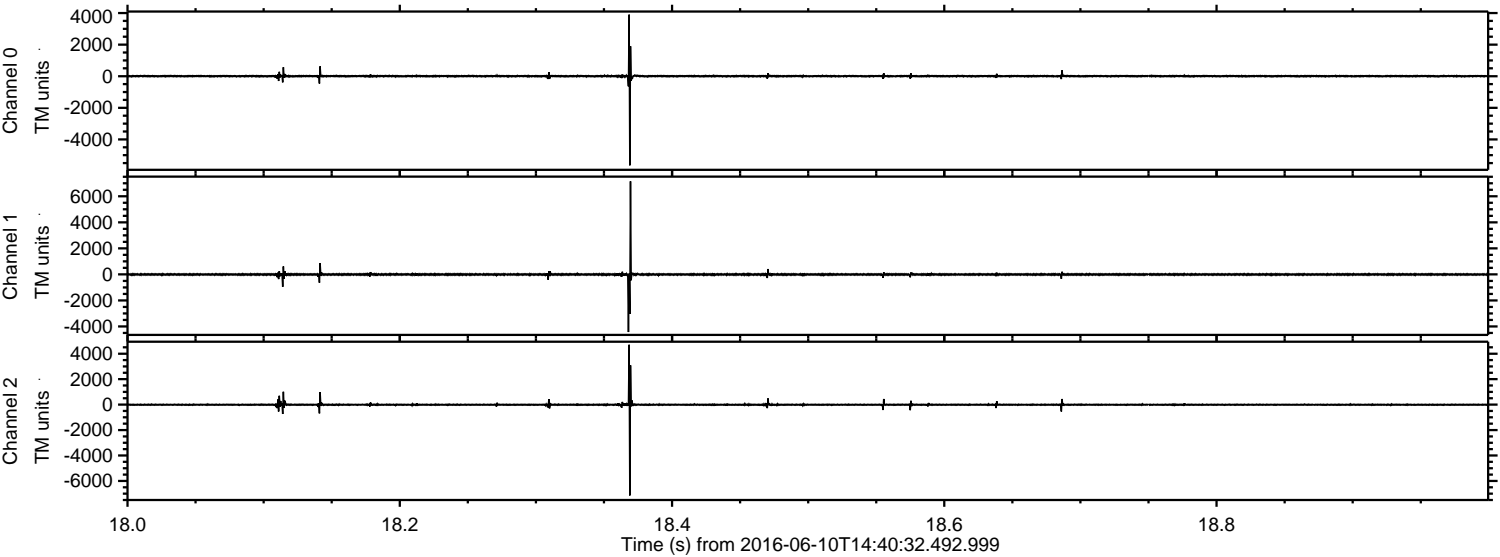


ELMAVAN 3D WAVEFORMS (Measured data sampled at 50 kHz) 51000 packets of 144 samples from 2016-06-10T14:40:32.492.999.

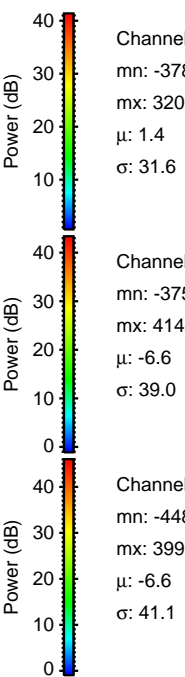
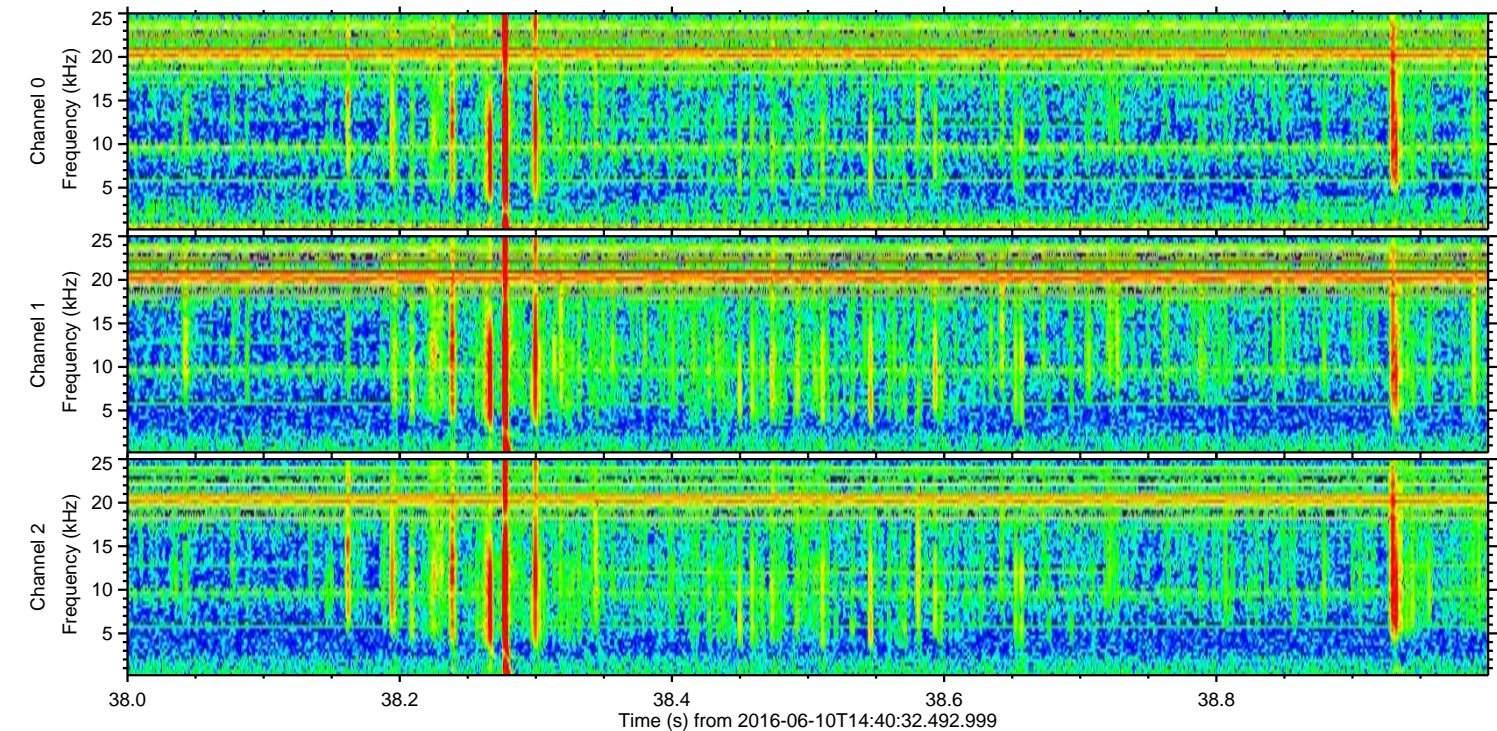
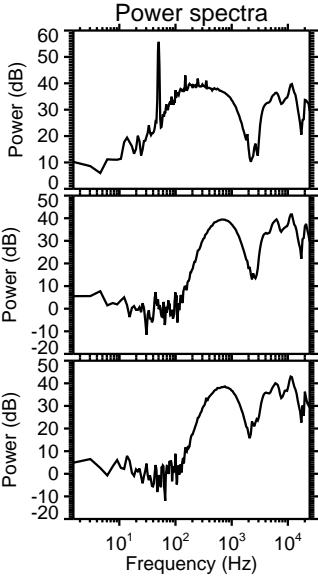
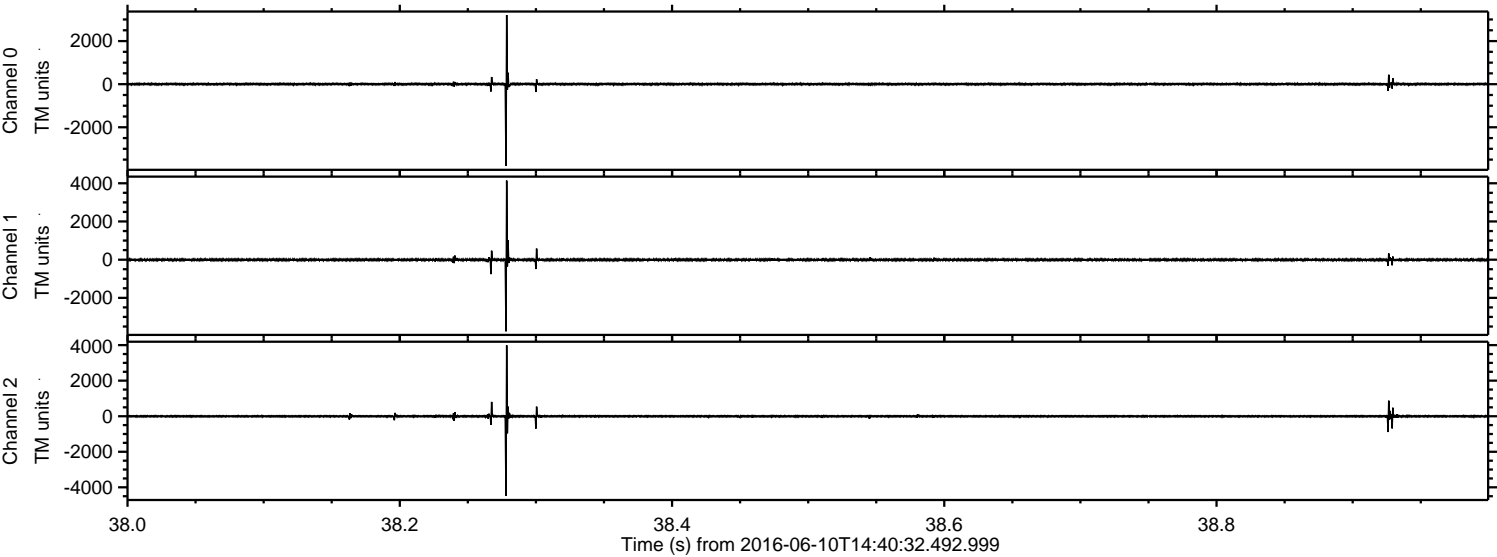
Processed Fri Jun 10 16:48:24 2016 by ELM ver.2012-10-06 from 001__elm20160610_144031__dat00.bin



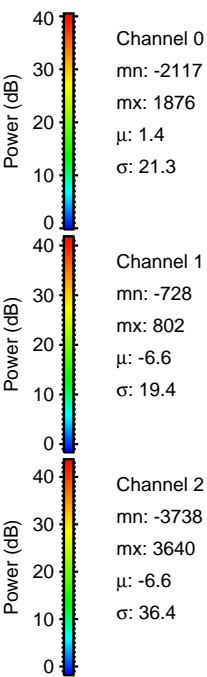
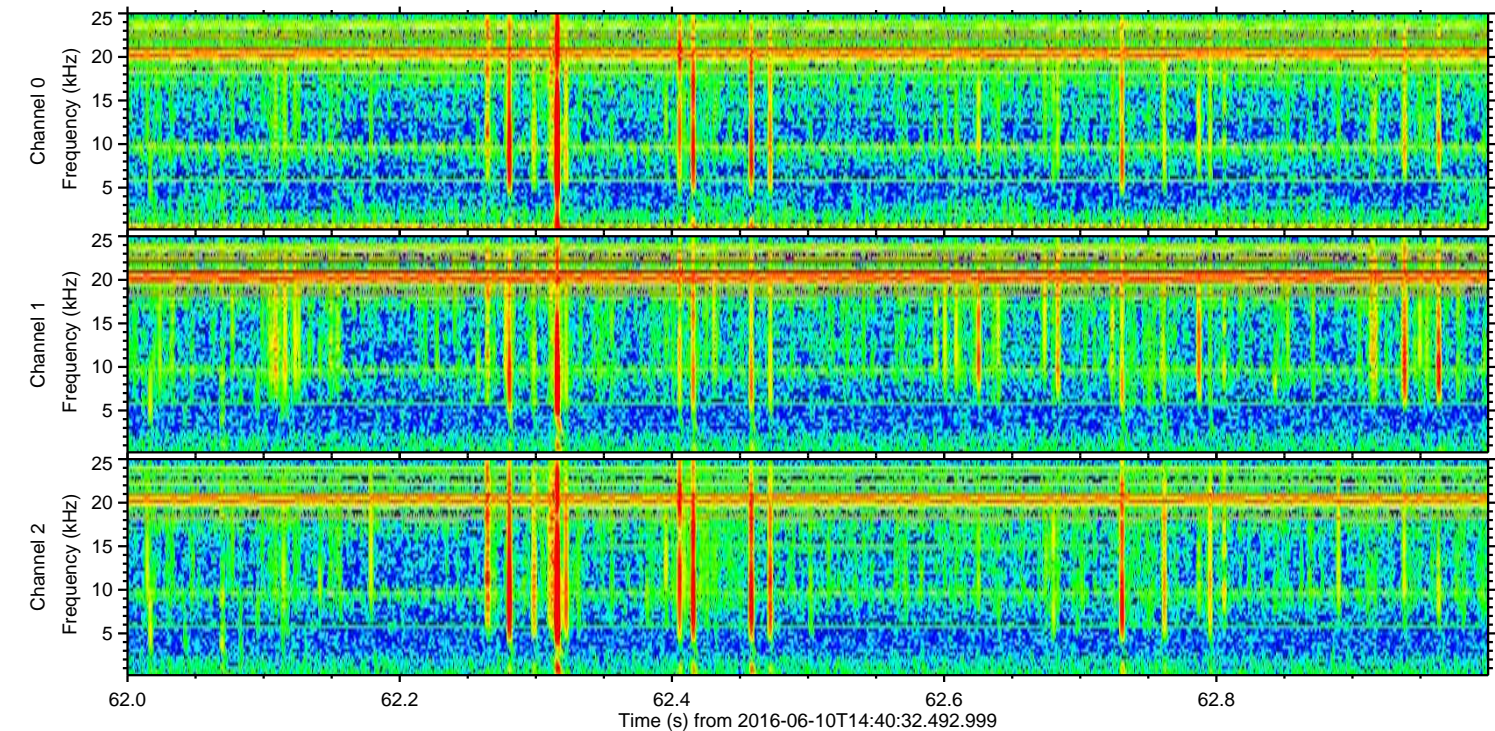
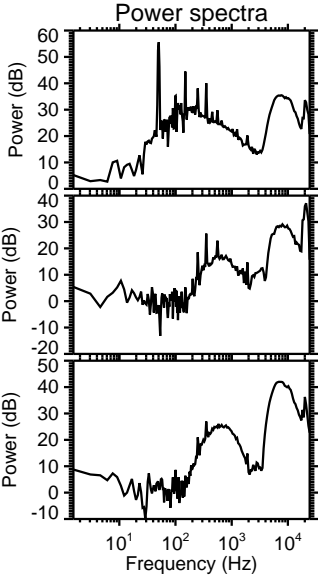
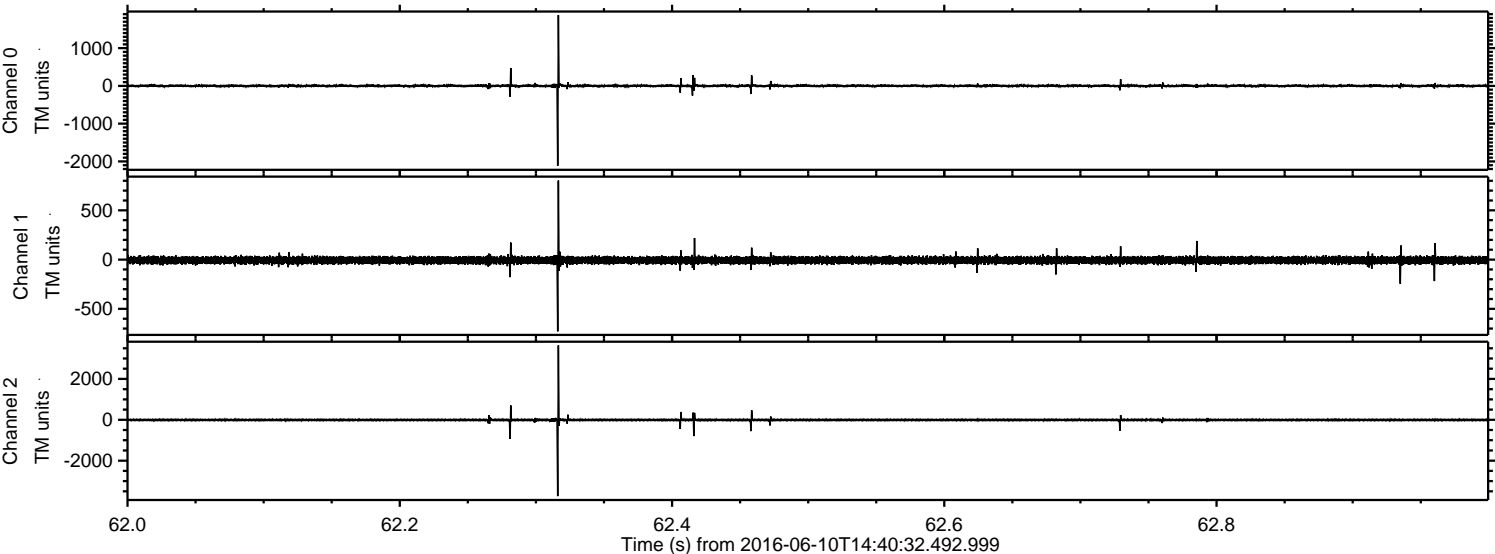
Processed Fri Jun 10 16:48:40 2016 by ELM ver.2012-10-06 from 001__elm20160610_144031__dat00.bin



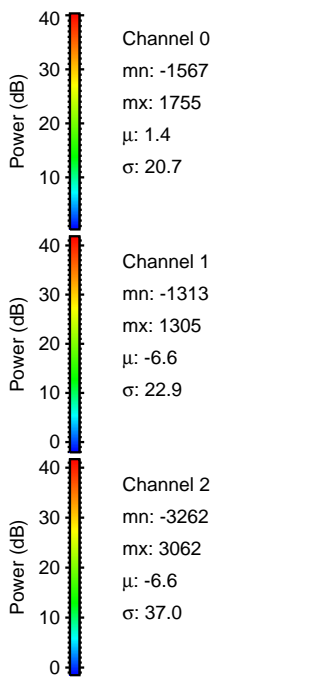
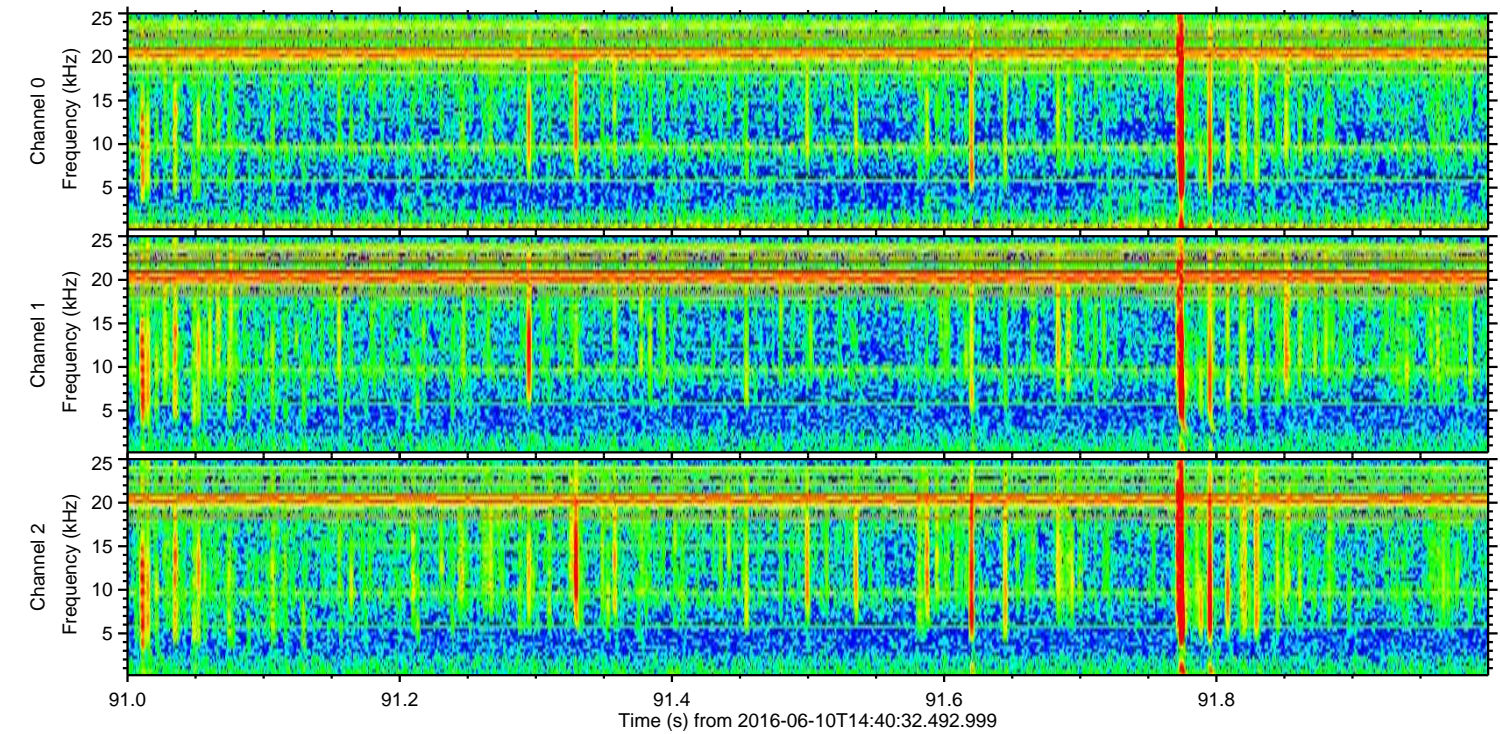
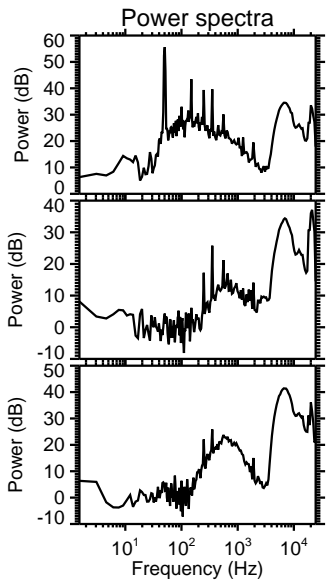
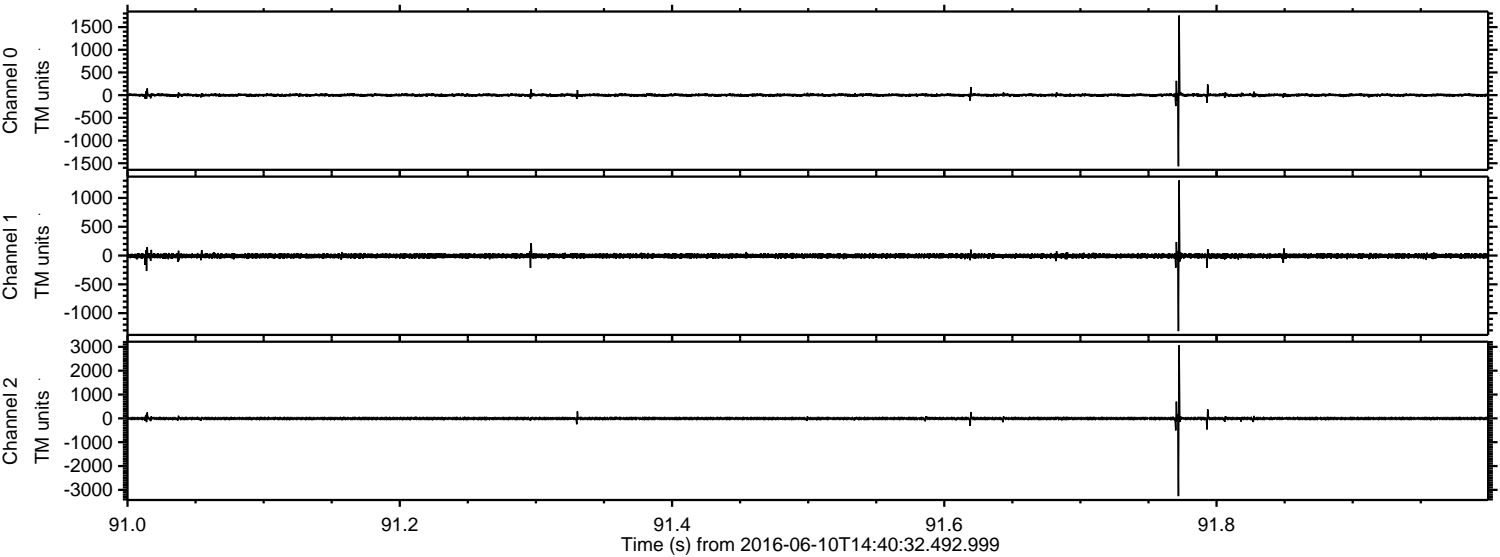
Processed Fri Jun 10 16:48:41 2016 by ELM ver.2012-10-06 from 001__elm20160610_144031__dat00.bin



Processed Fri Jun 10 16:48:42 2016 by ELM ver.2012-10-06 from 001__elm20160610_144031__dat00.bin

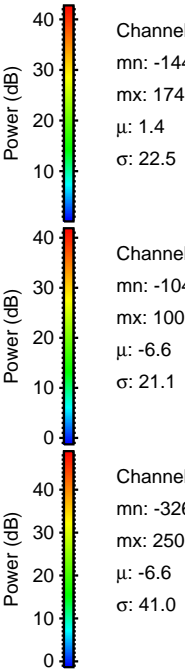
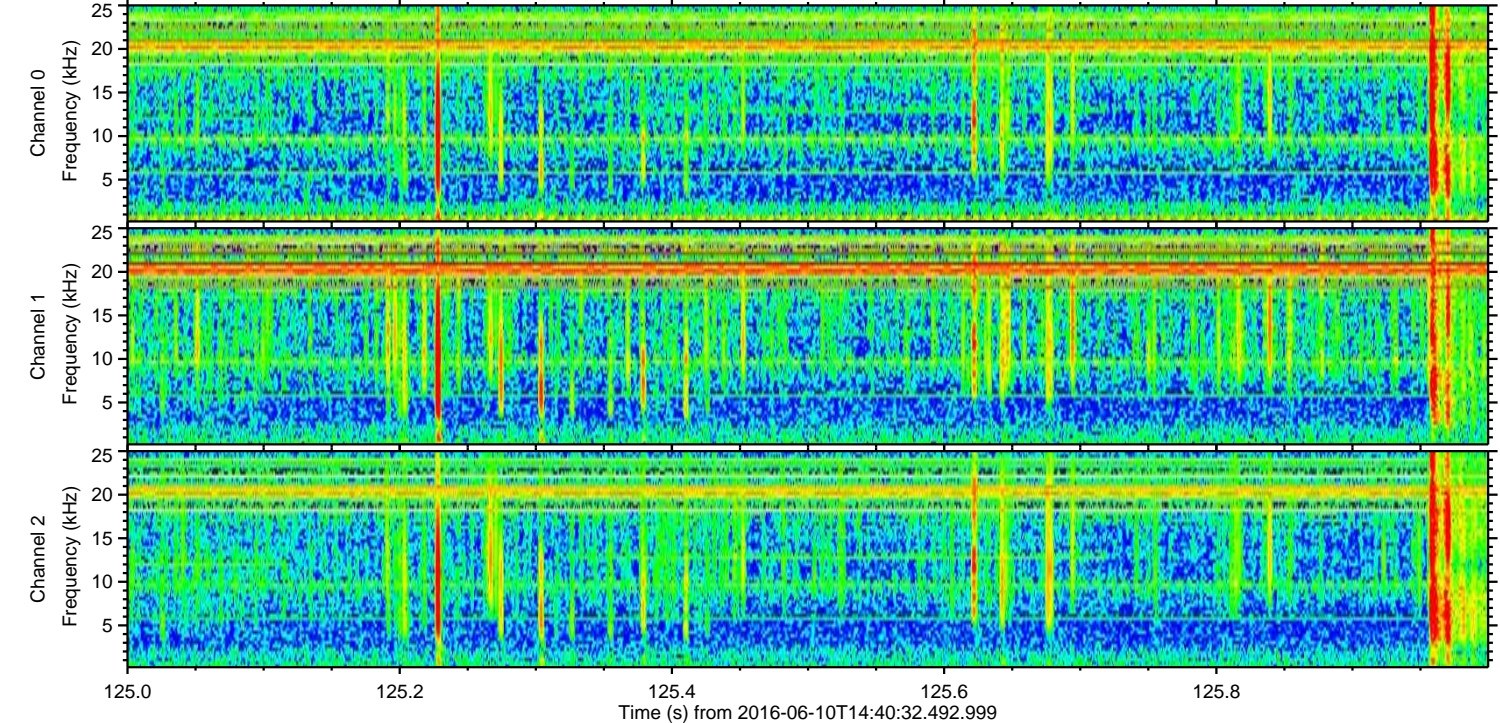
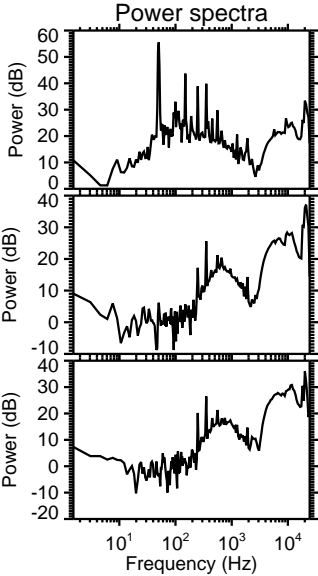
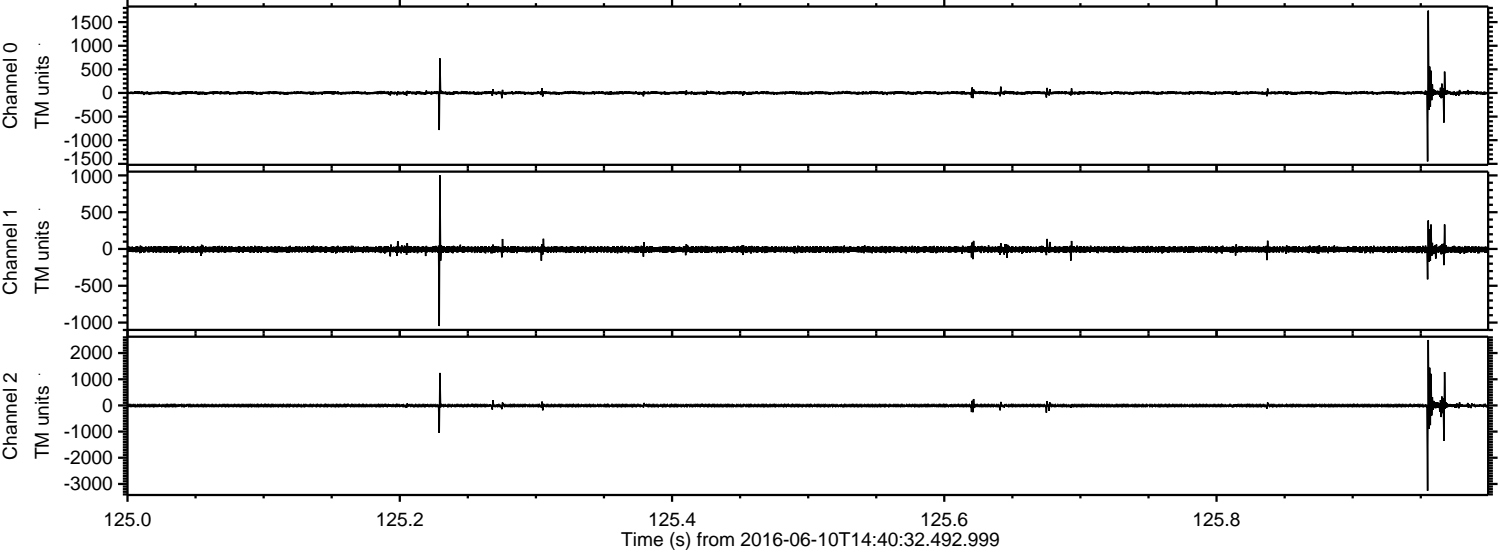


Processed Fri Jun 10 16:48:43 2016 by ELM ver.2012-10-06 from 001__elm20160610_144031__dat00.bin



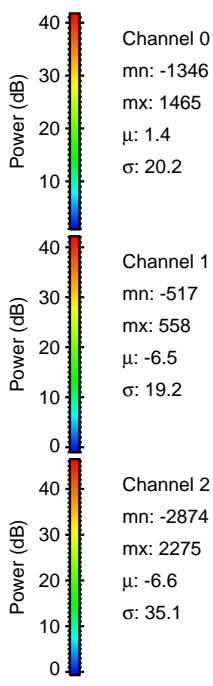
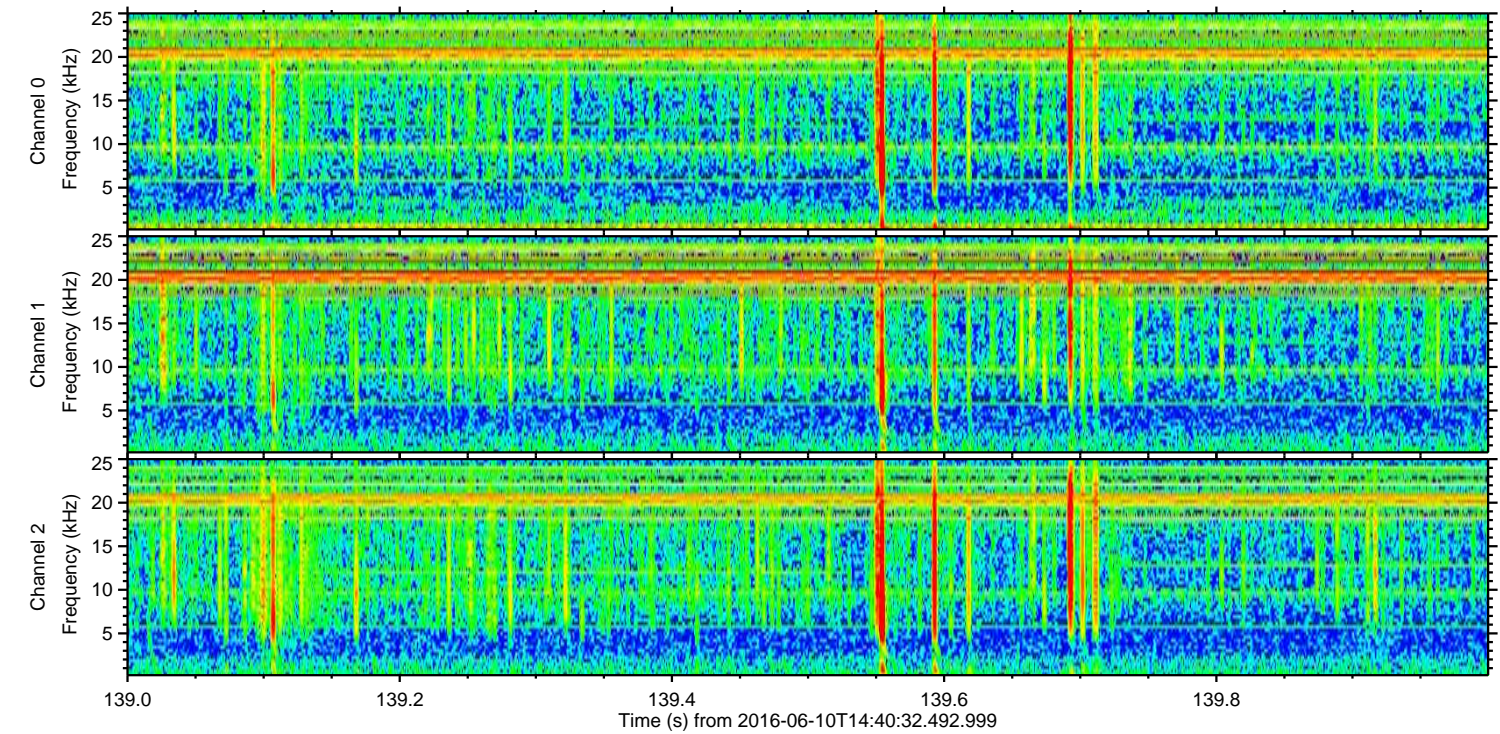
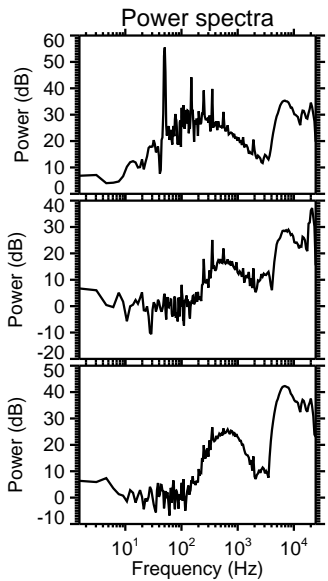
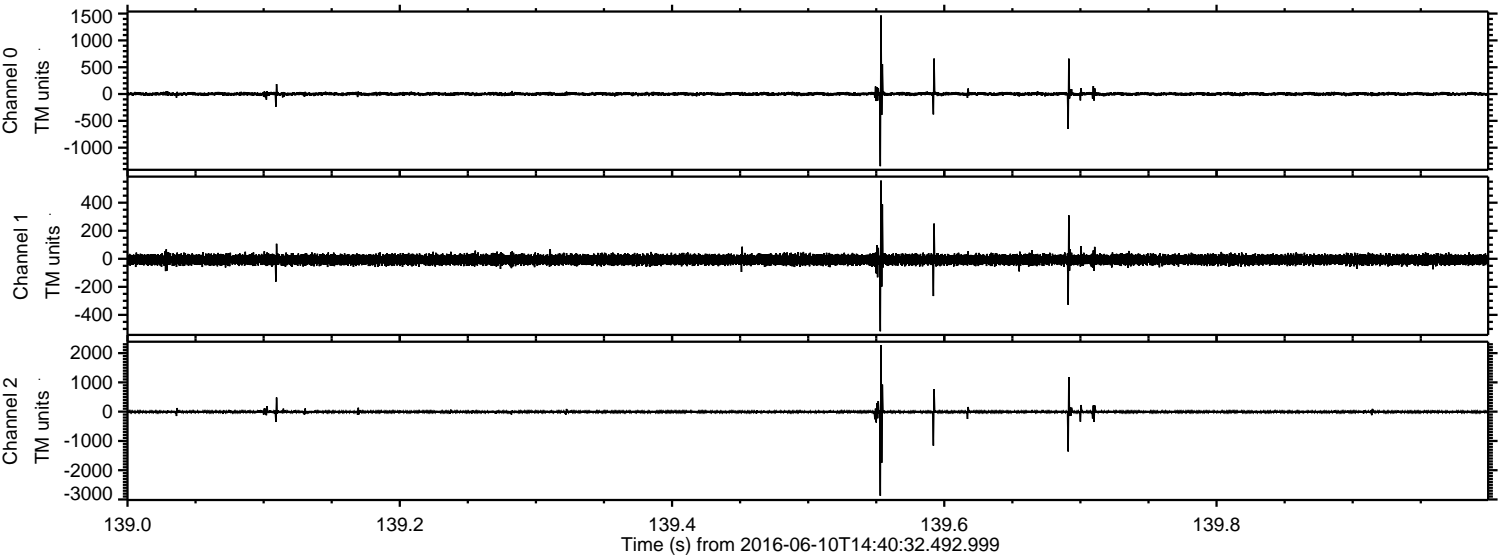
ELMAVAN 3D WAVEFORMS (Measured data sampled at 50 kHz) 51000 packets of 144 samples from 2016-06-10T14:40:32.492.999. Part 126/147

Processed Fri Jun 10 16:48:44 2016 by ELM ver.2012-10-06 from 001__elm20160610_144031__dat00.bin

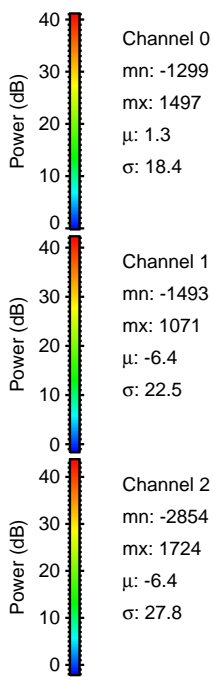
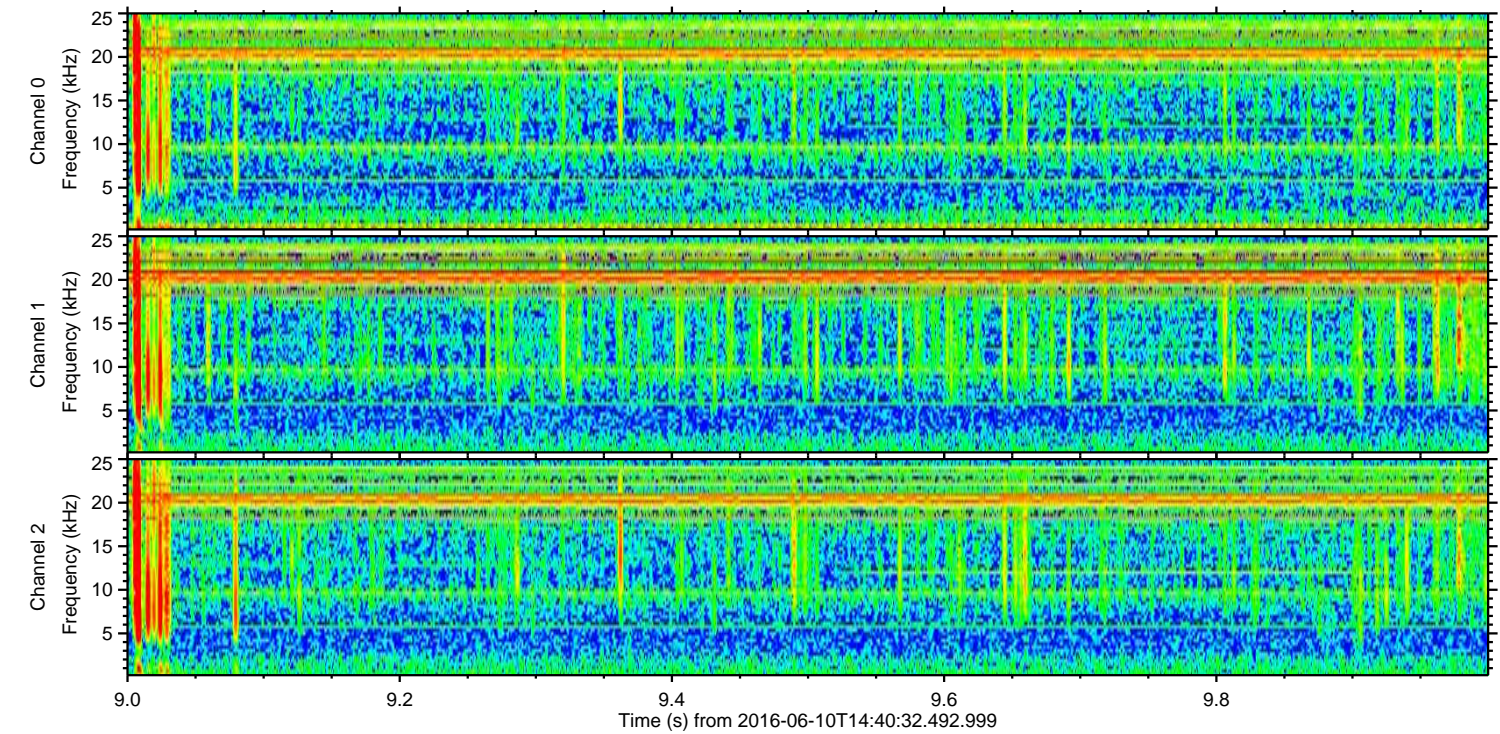
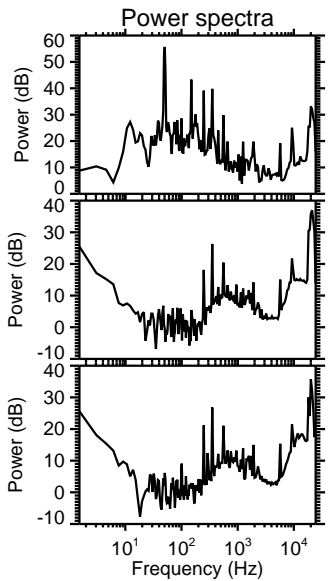
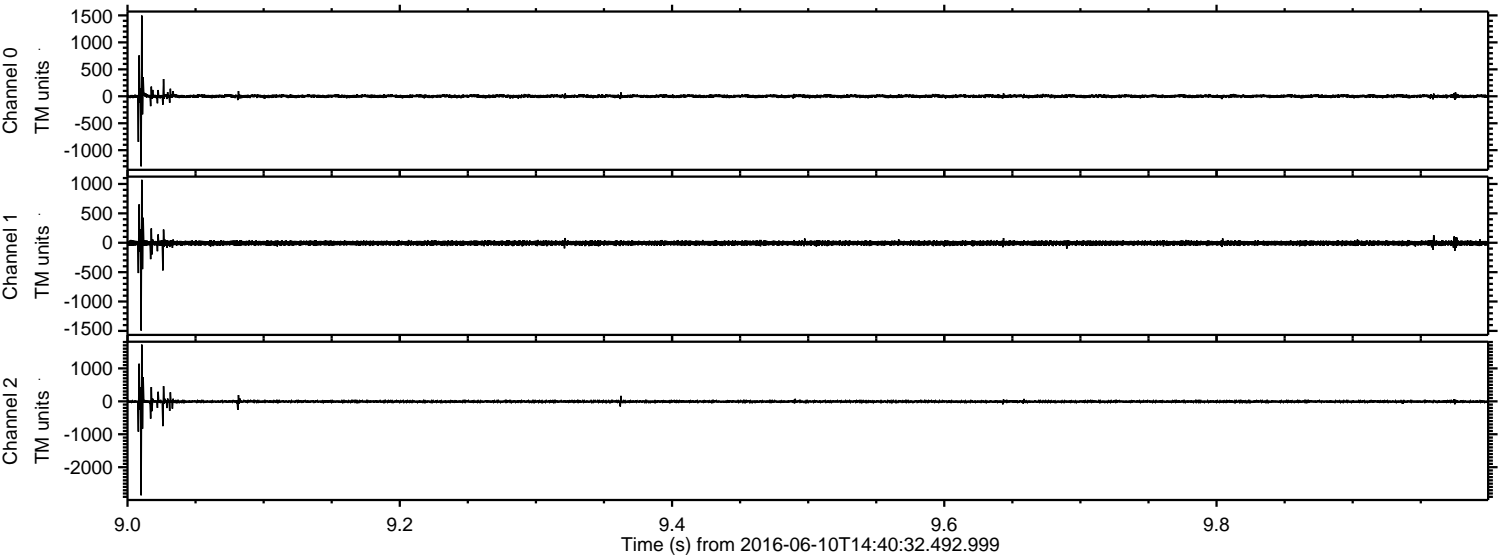


ELMAVAN 3D WAVEFORMS (Measured data sampled at 50 kHz) 51000 packets of 144 samples from 2016-06-10T14:40:32.492.999. Part 140/147

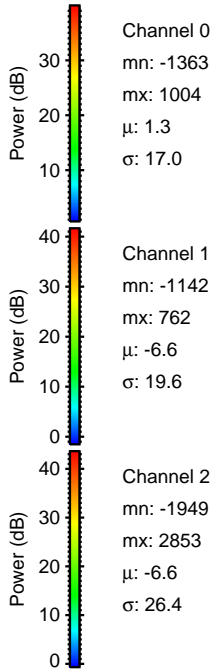
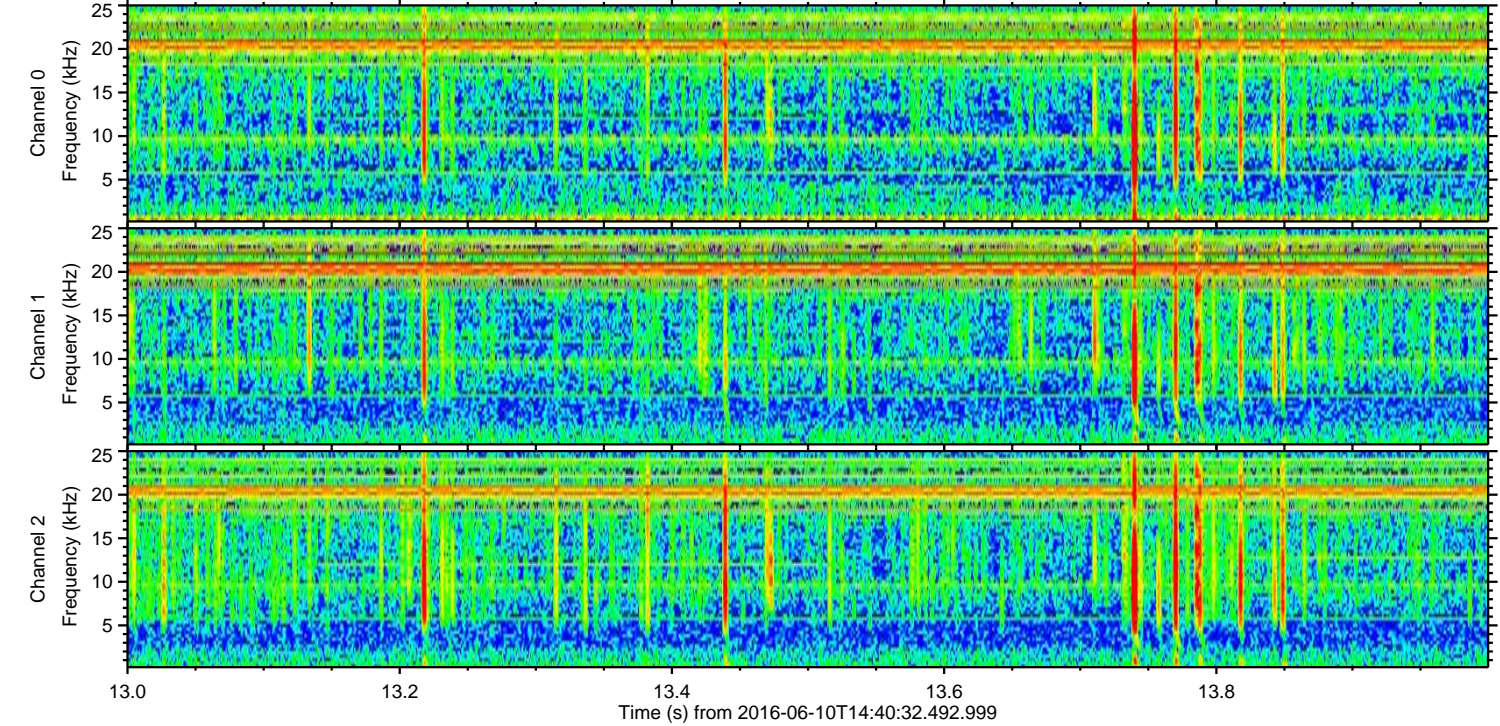
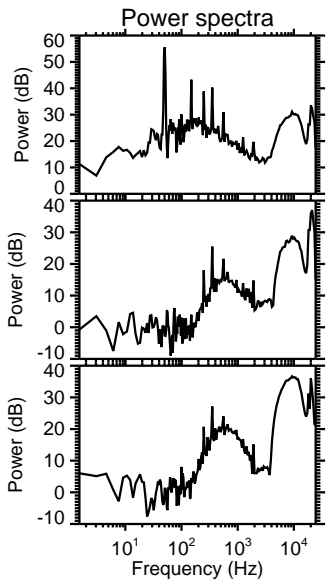
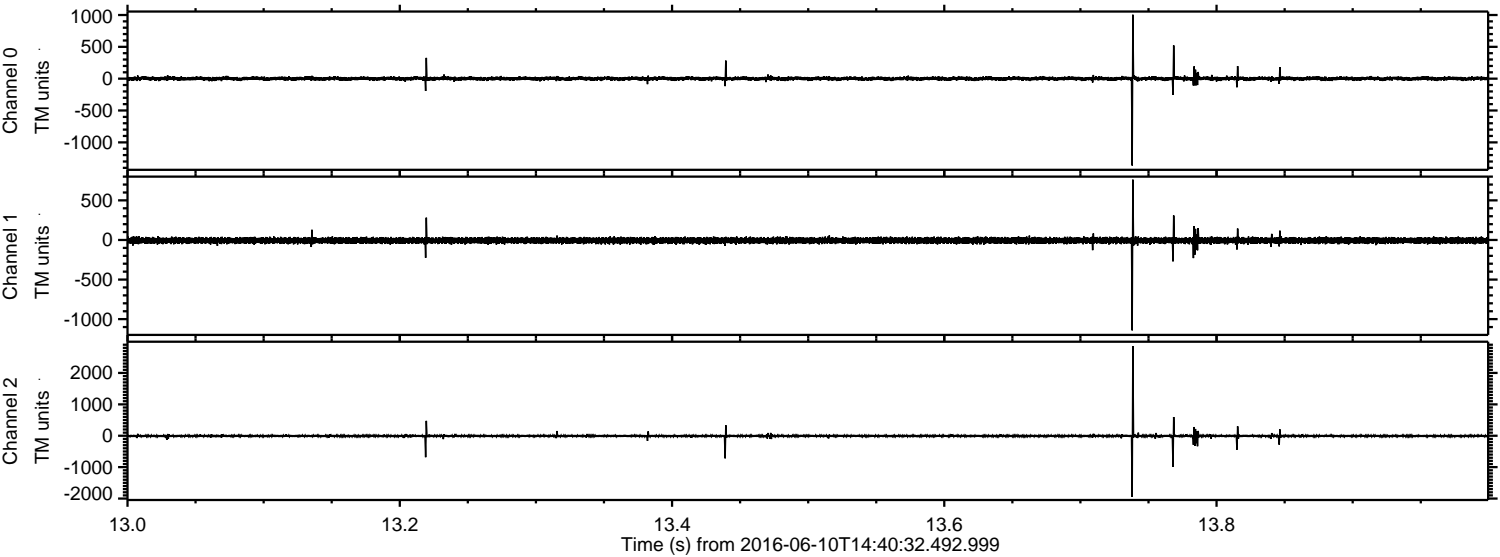
Processed Fri Jun 10 16:48:45 2016 by ELM ver.2012-10-06 from 001__elm20160610_144031__dat00.bin



Processed Fri Jun 10 16:48:46 2016 by ELM ver.2012-10-06 from 001__elm20160610_144031__dat00.bin



Processed Fri Jun 10 16:48:47 2016 by ELM ver.2012-10-06 from 001__elm20160610_144031__dat00.bin

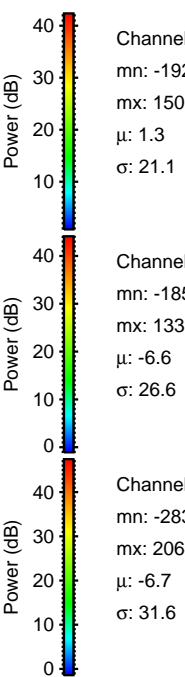
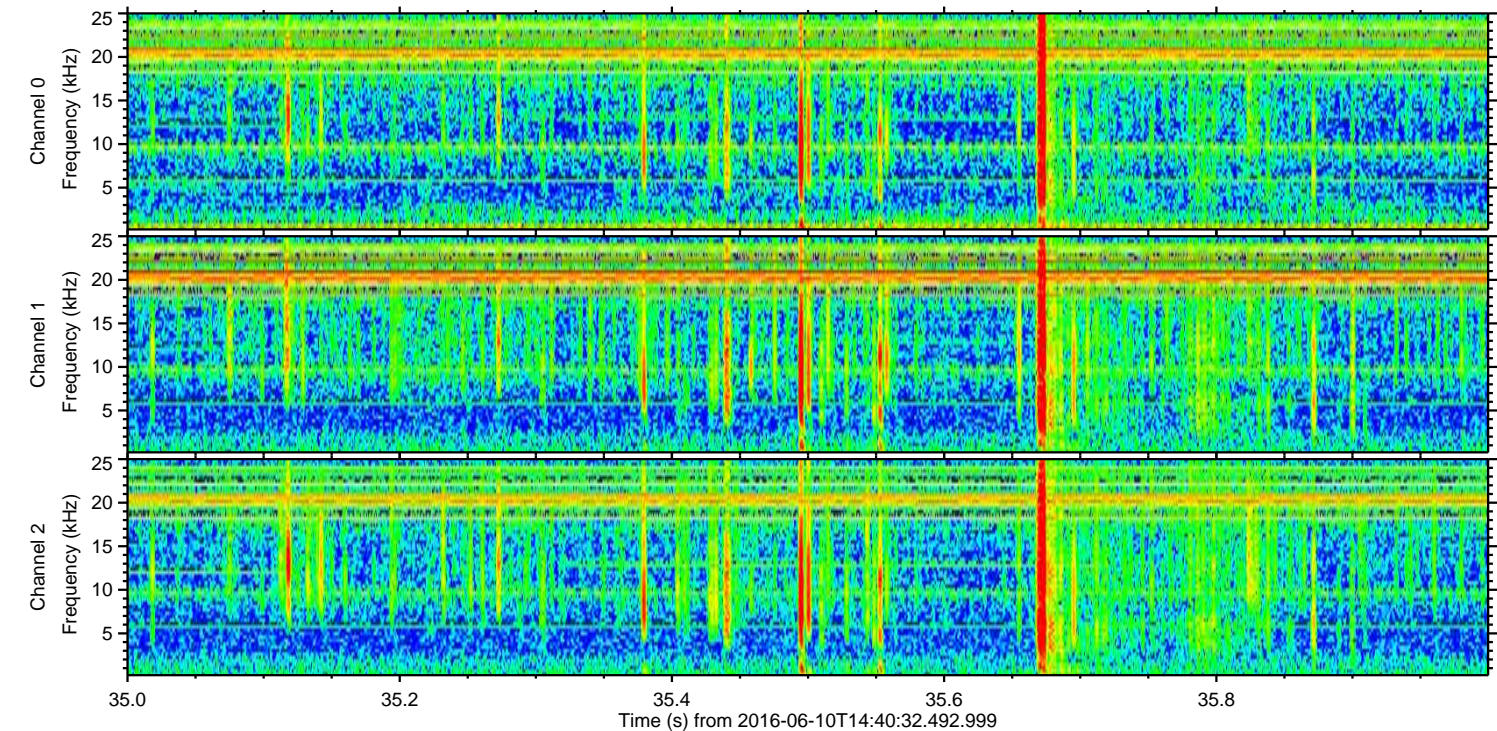
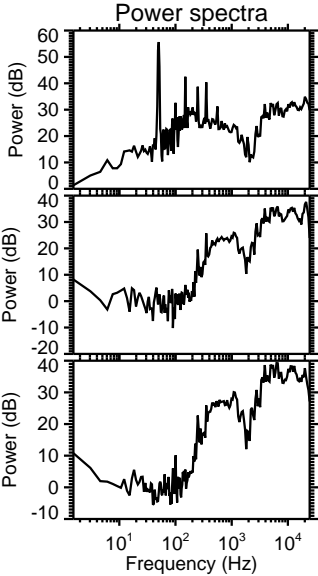
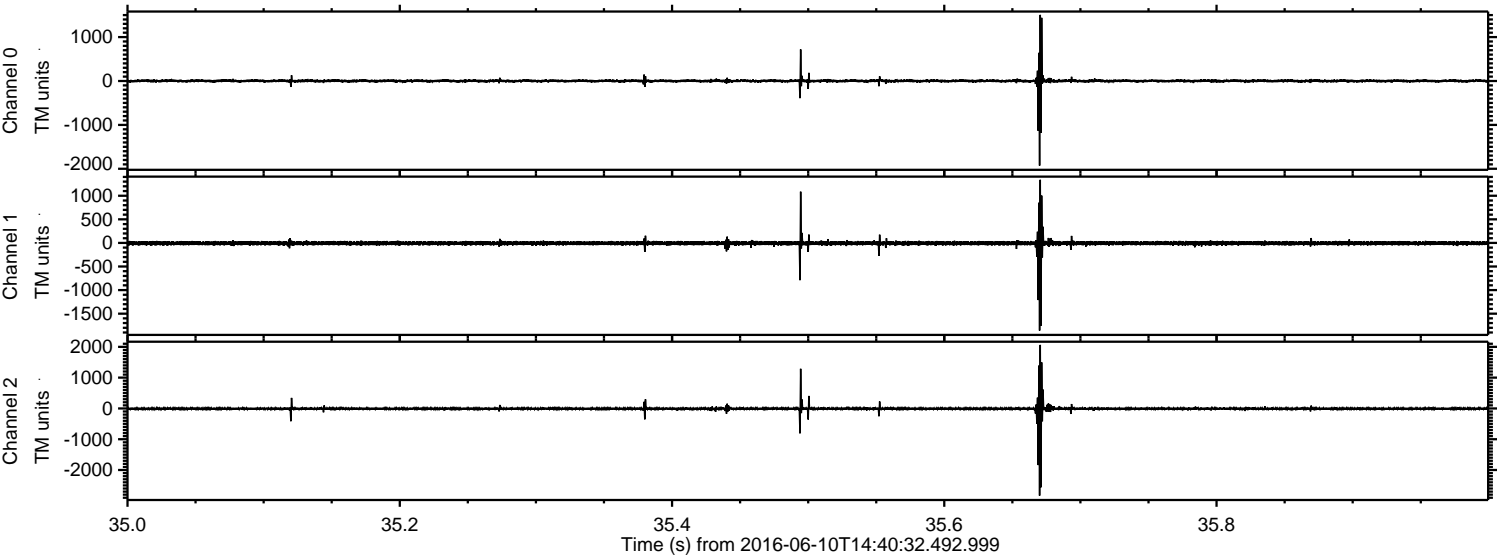


Channel 0
mn: -1363
mx: 1004
 μ : 1.3
 σ : 17.0

Channel 1
mn: -1142
mx: 762
 μ : -6.6
 σ : 19.6

Channel 2
mn: -1949
mx: 2853
 μ : -6.6
 σ : 26.4

Processed Fri Jun 10 16:48:48 2016 by ELM ver.2012-10-06 from 001__elm20160610_144031__dat00.bin



Processed Fri Jun 10 16:48:49 2016 by ELM ver.2012-10-06 from 001__elm20160610_144031__dat00.bin

