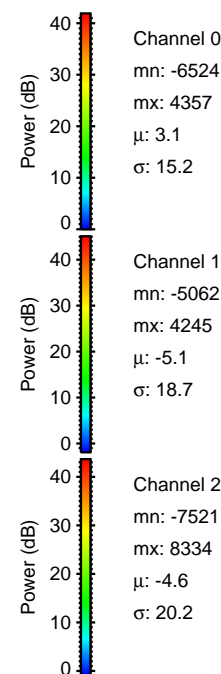
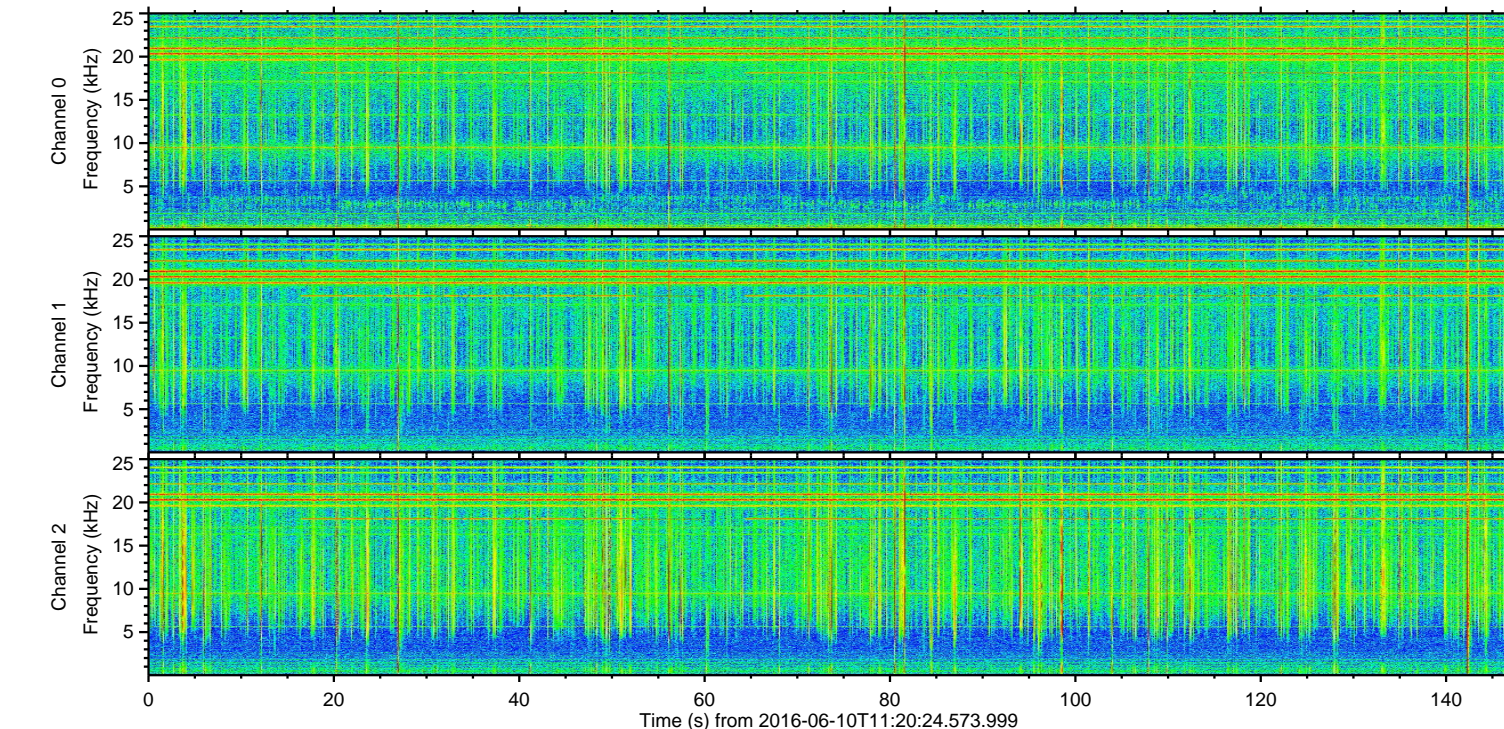
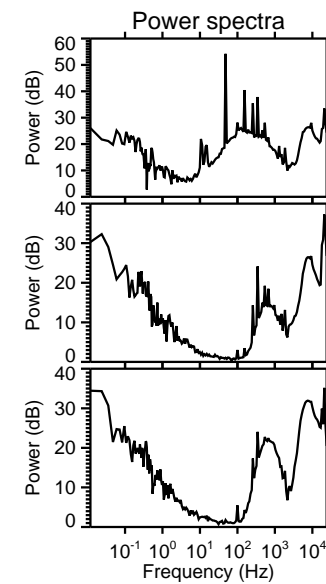
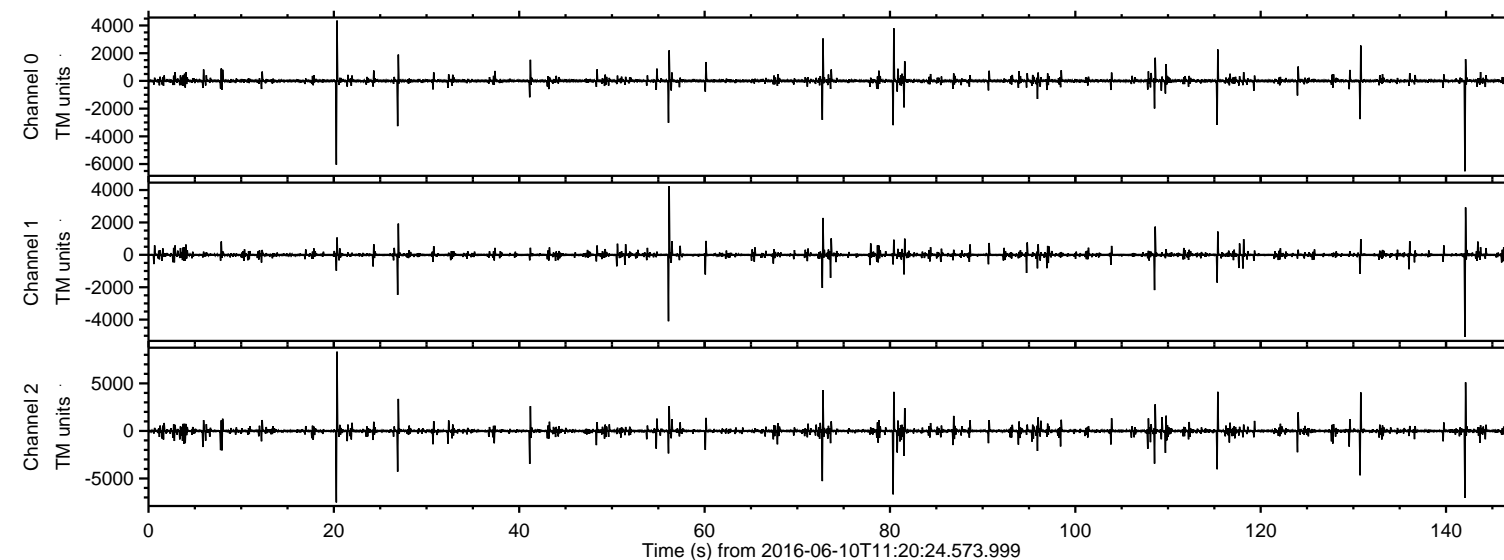
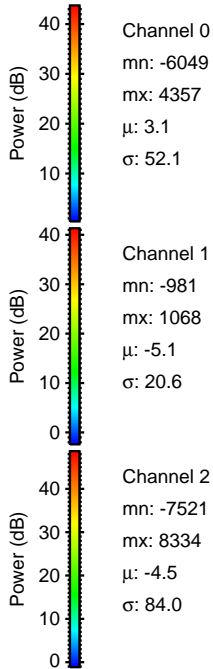
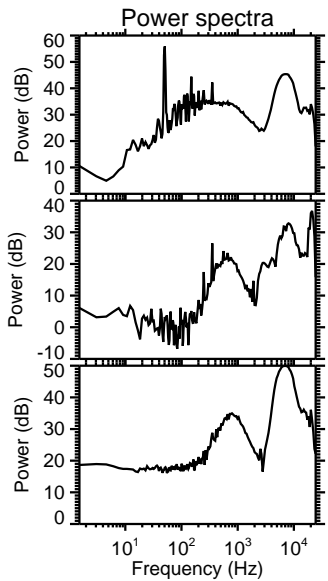
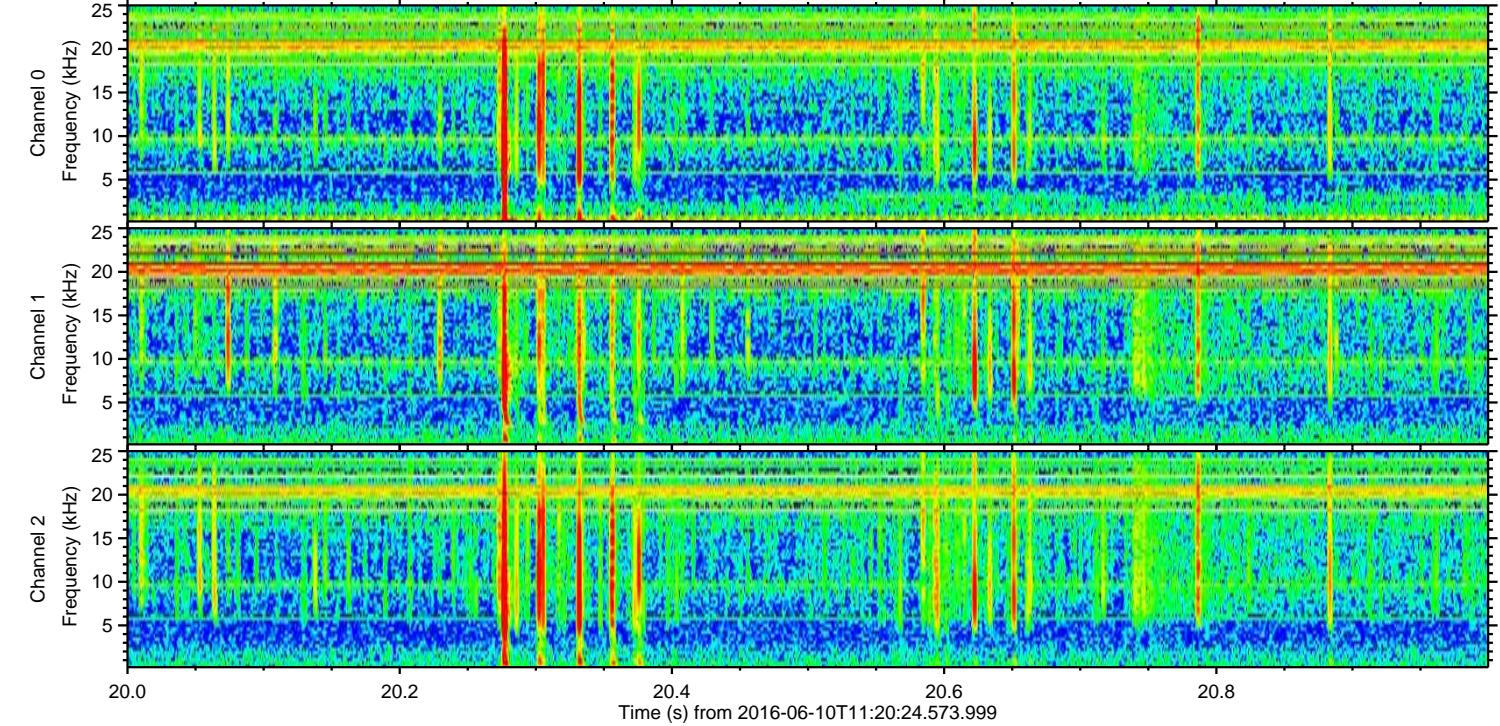
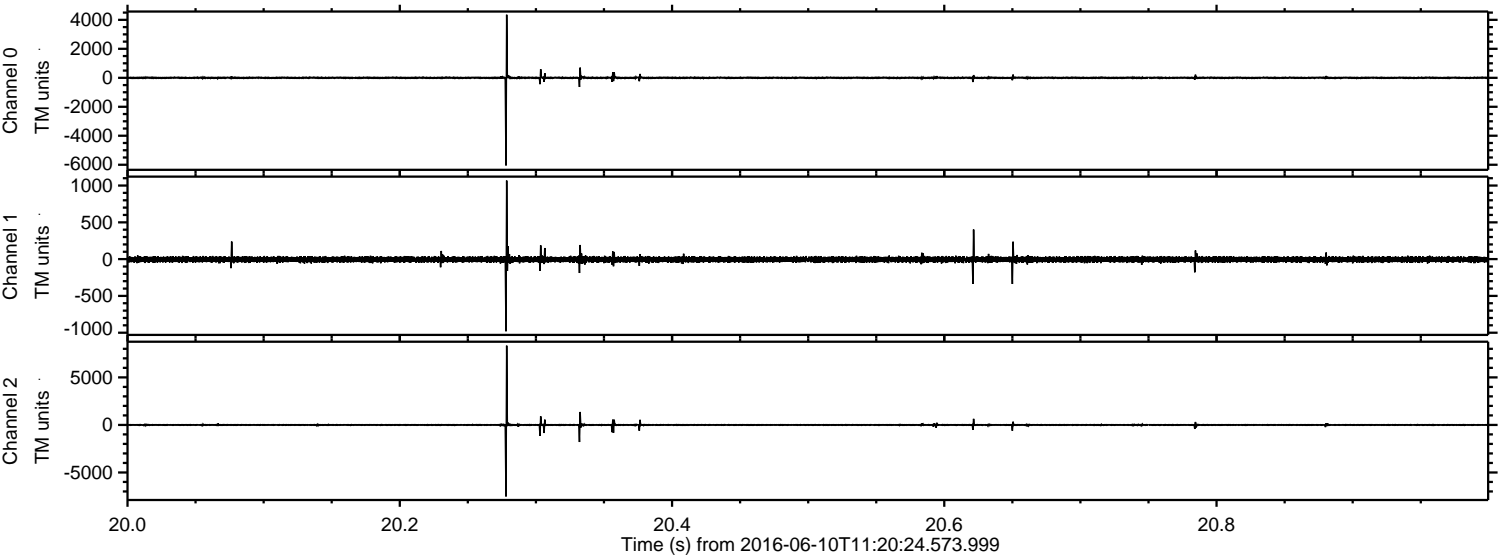


ELMAVAN 3D WAVEFORMS (Measured data sampled at 50 kHz) 51000 packets of 144 samples from 2016-06-10T11:20:24.573.999.

Processed Fri Jun 10 13:28:13 2016 by ELM ver.2012-10-06 from 001__elm20160610_112023__dat00.bin

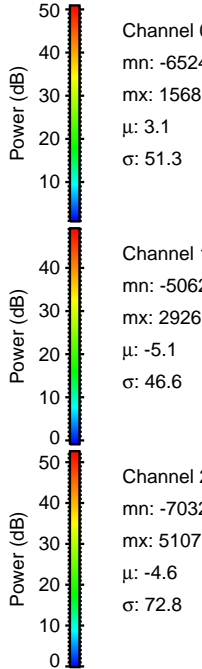
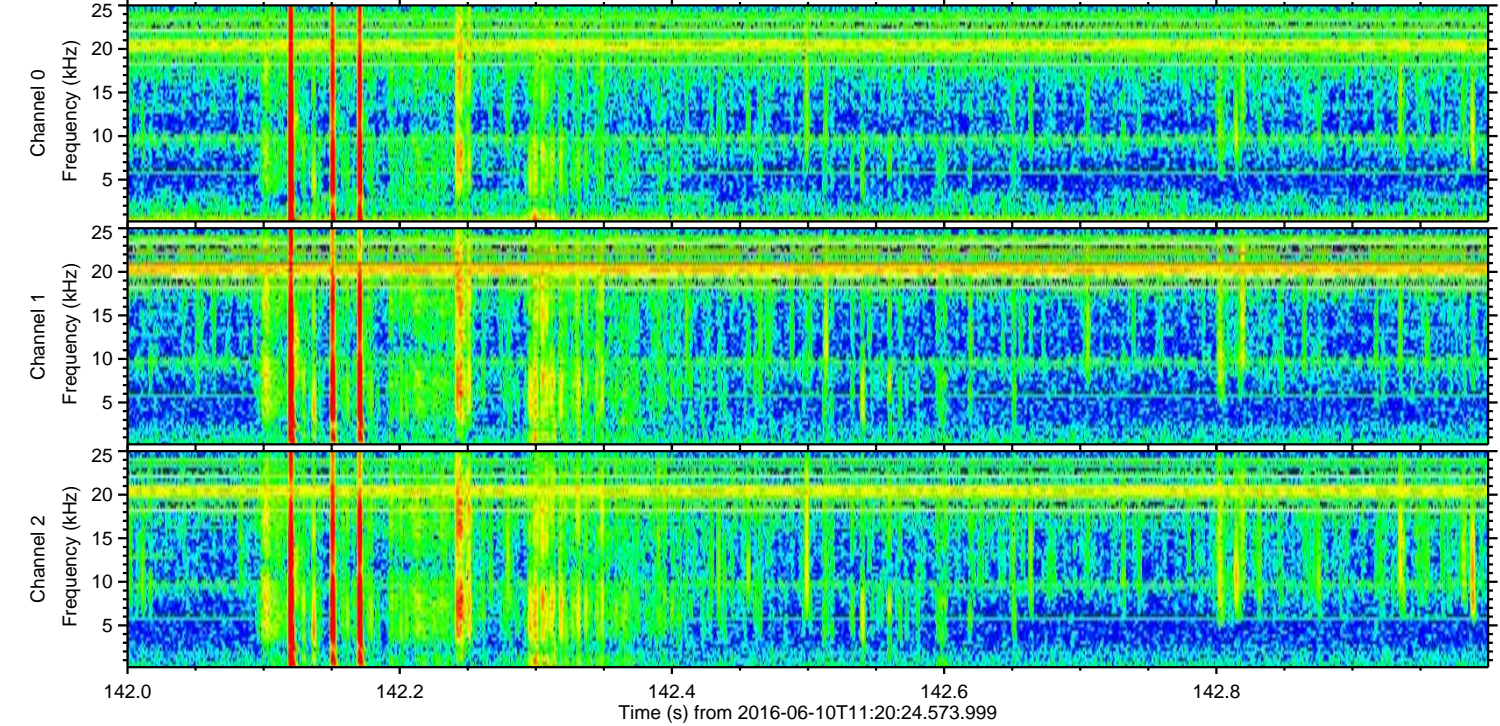
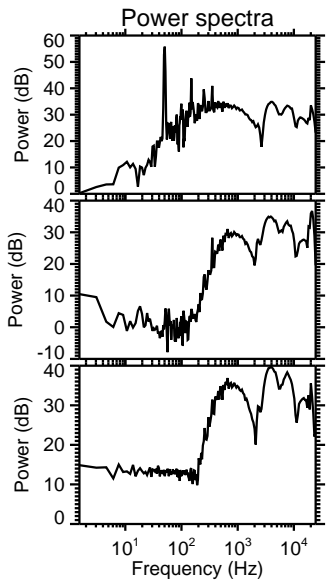
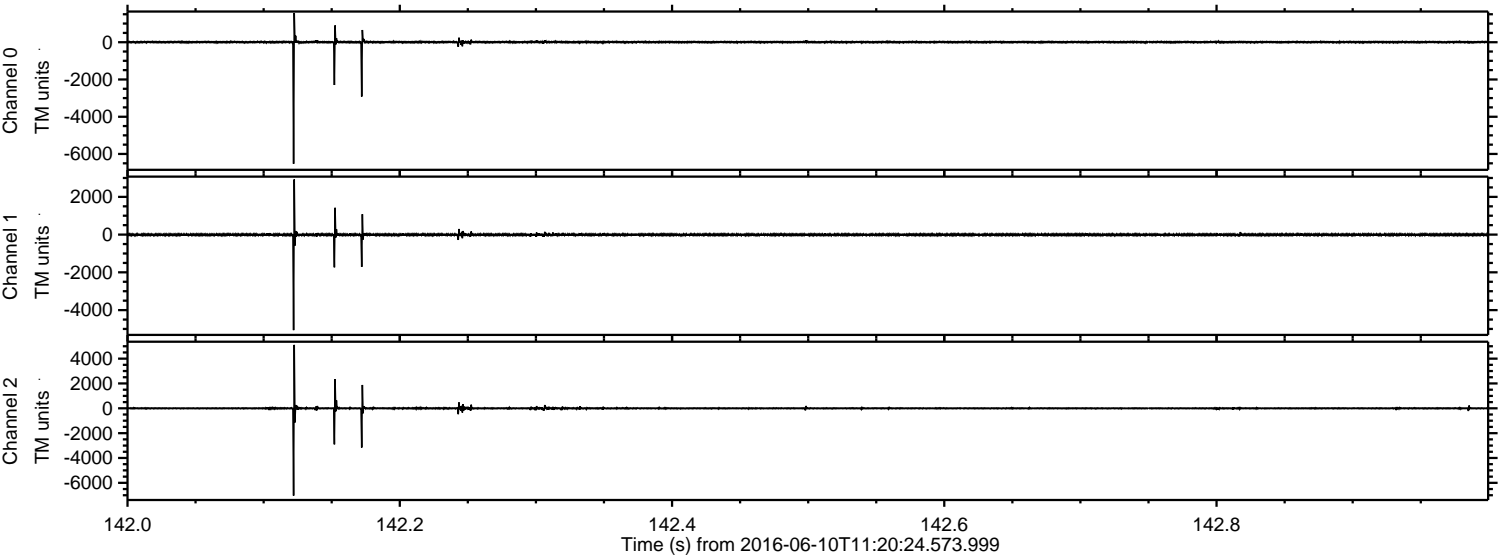


Processed Fri Jun 10 13:28:27 2016 by ELM ver.2012-10-06 from 001__elm20160610_112023__dat00.bin

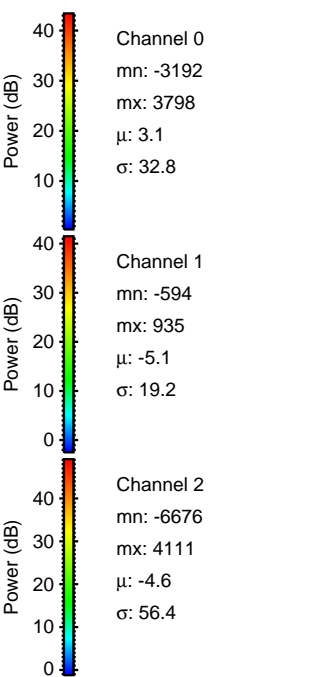
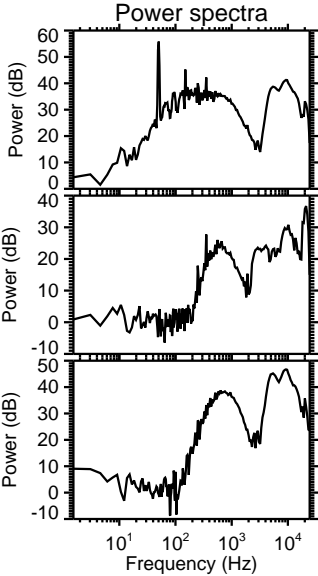
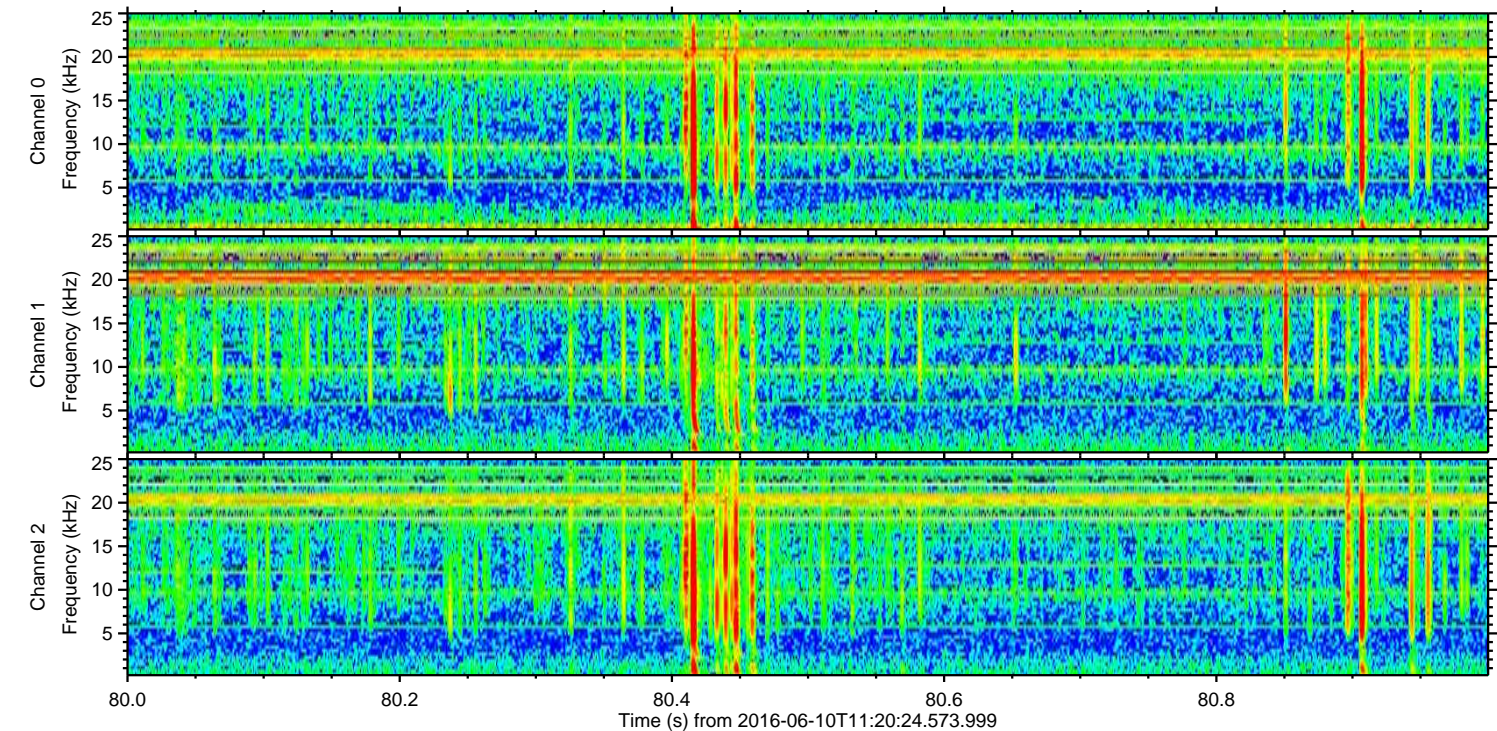
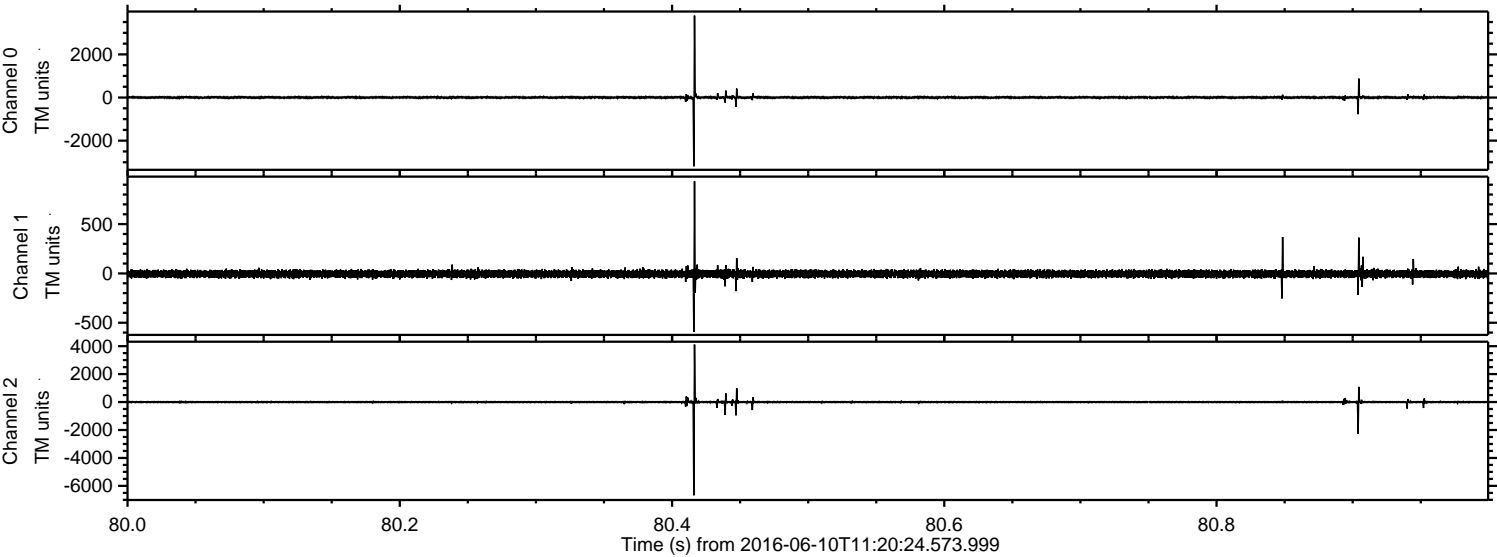


ELMAVAN 3D WAVEFORMS (Measured data sampled at 50 kHz) 51000 packets of 144 samples from 2016-06-10T11:20:24.573.999. Part 143/147

Processed Fri Jun 10 13:28:28 2016 by ELM ver.2012-10-06 from 001__elm20160610_112023__dat00.bin

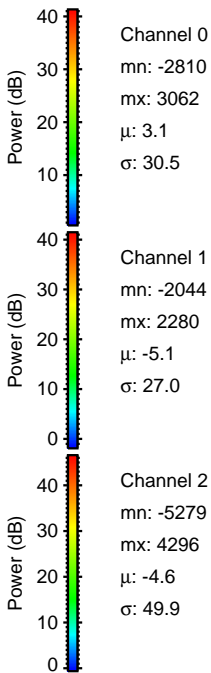
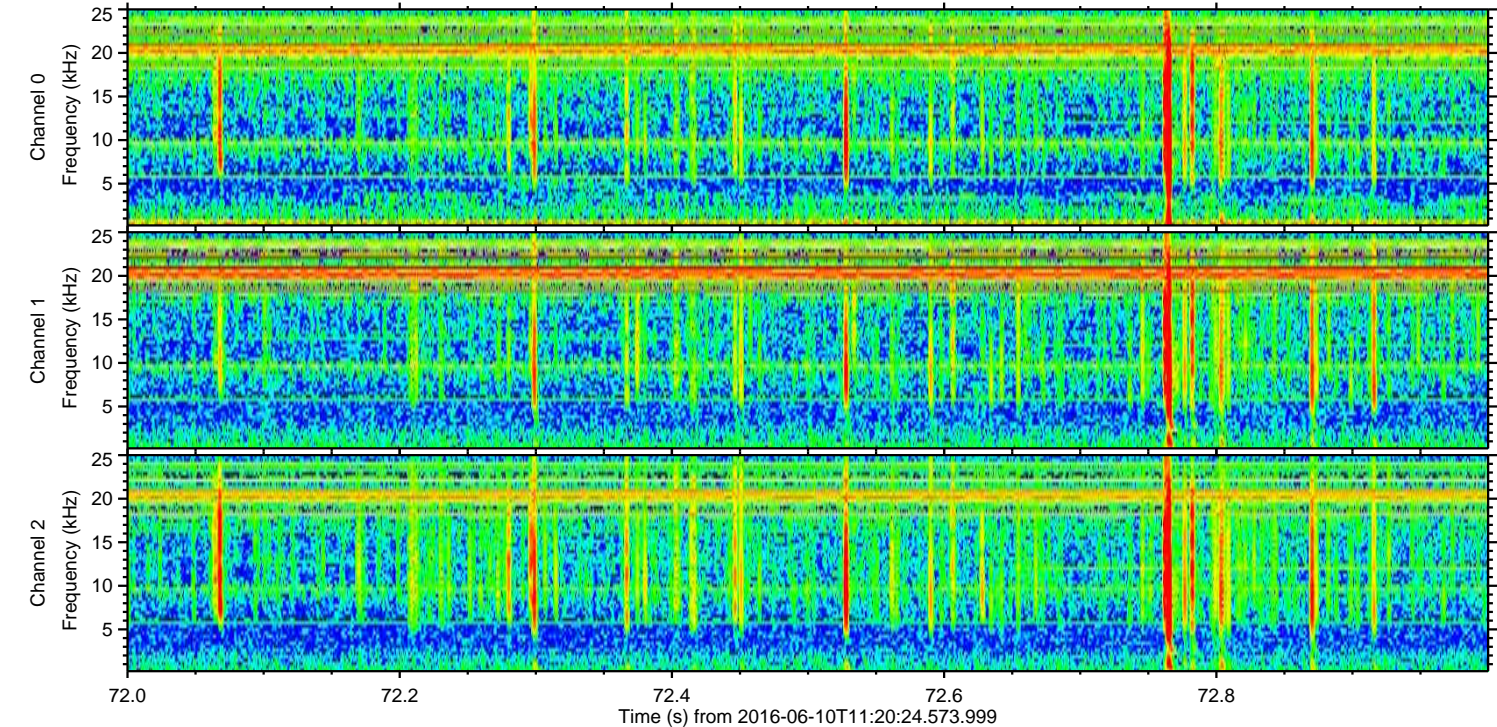
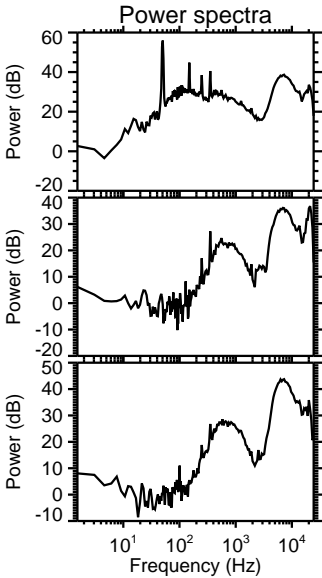
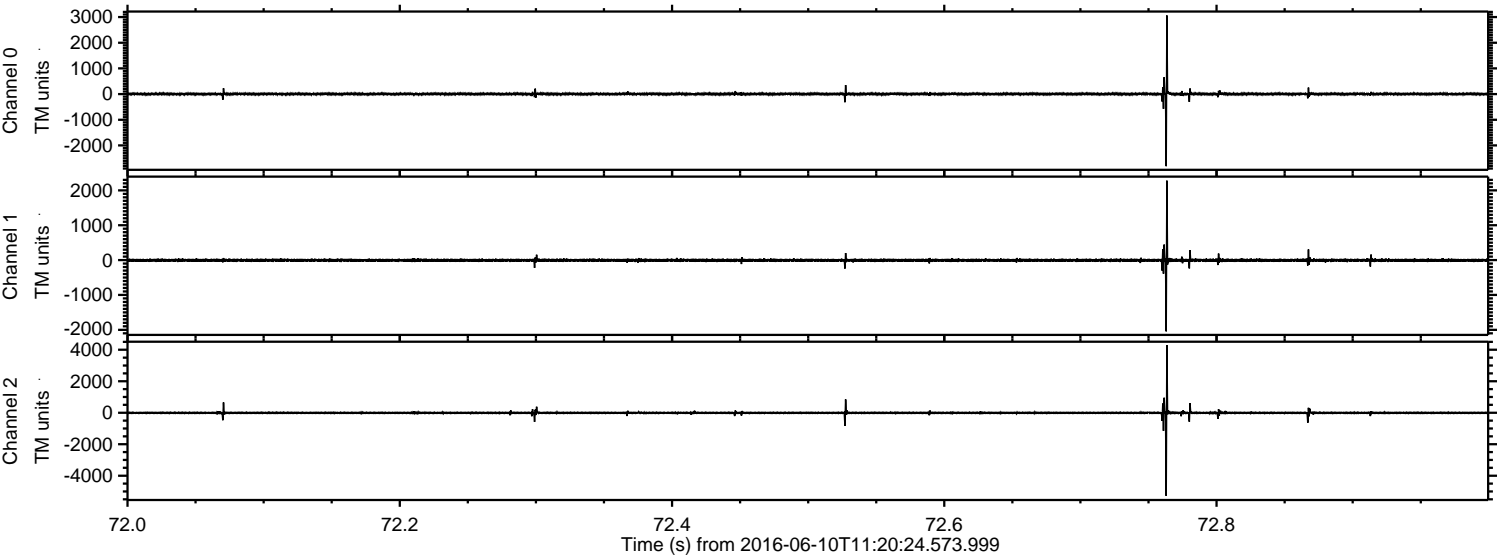


Processed Fri Jun 10 13:28:30 2016 by ELM ver.2012-10-06 from 001__elm20160610_112023__dat00.bin



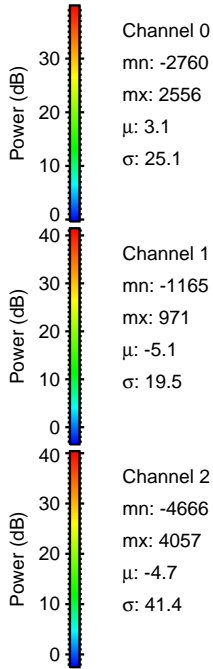
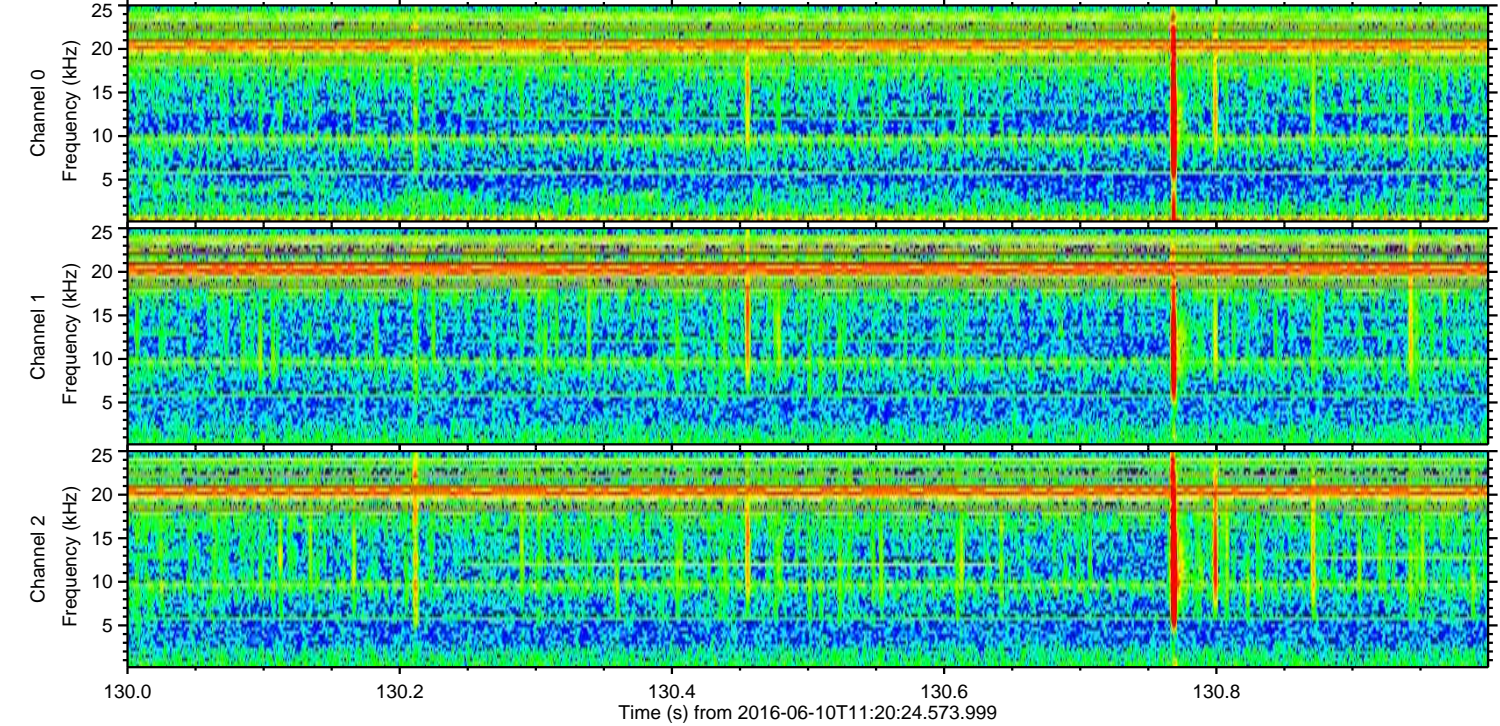
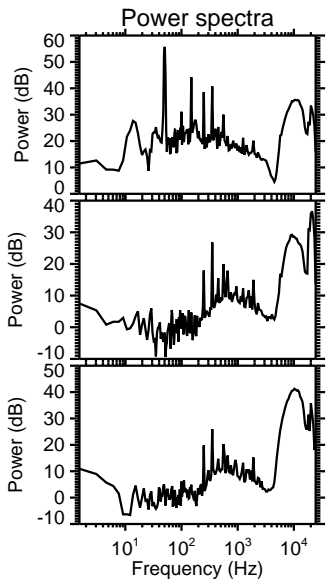
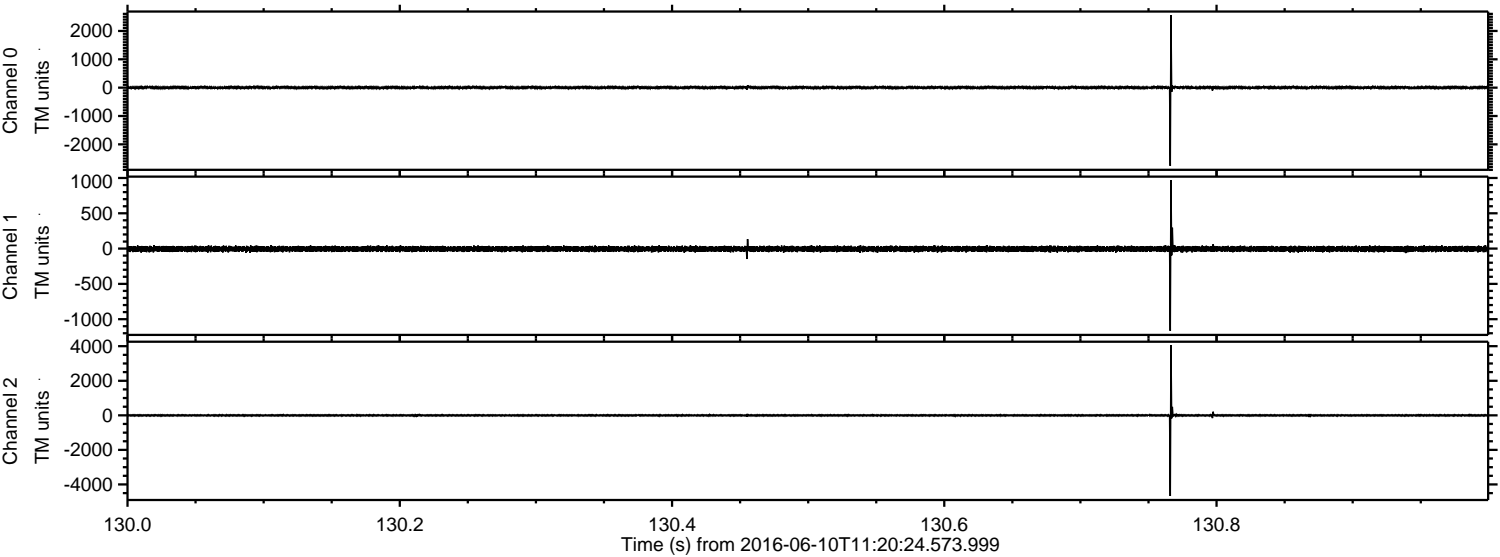
ELMAVAN 3D WAVEFORMS (Measured data sampled at 50 kHz) 51000 packets of 144 samples from 2016-06-10T11:20:24.573.999. Part 73/147

Processed Fri Jun 10 13:28:31 2016 by ELM ver.2012-10-06 from 001__elm20160610_112023__dat00.bin

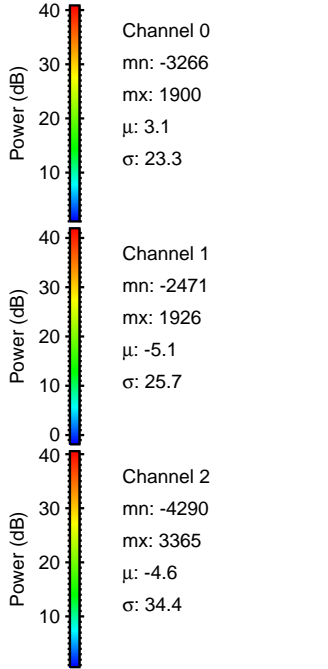
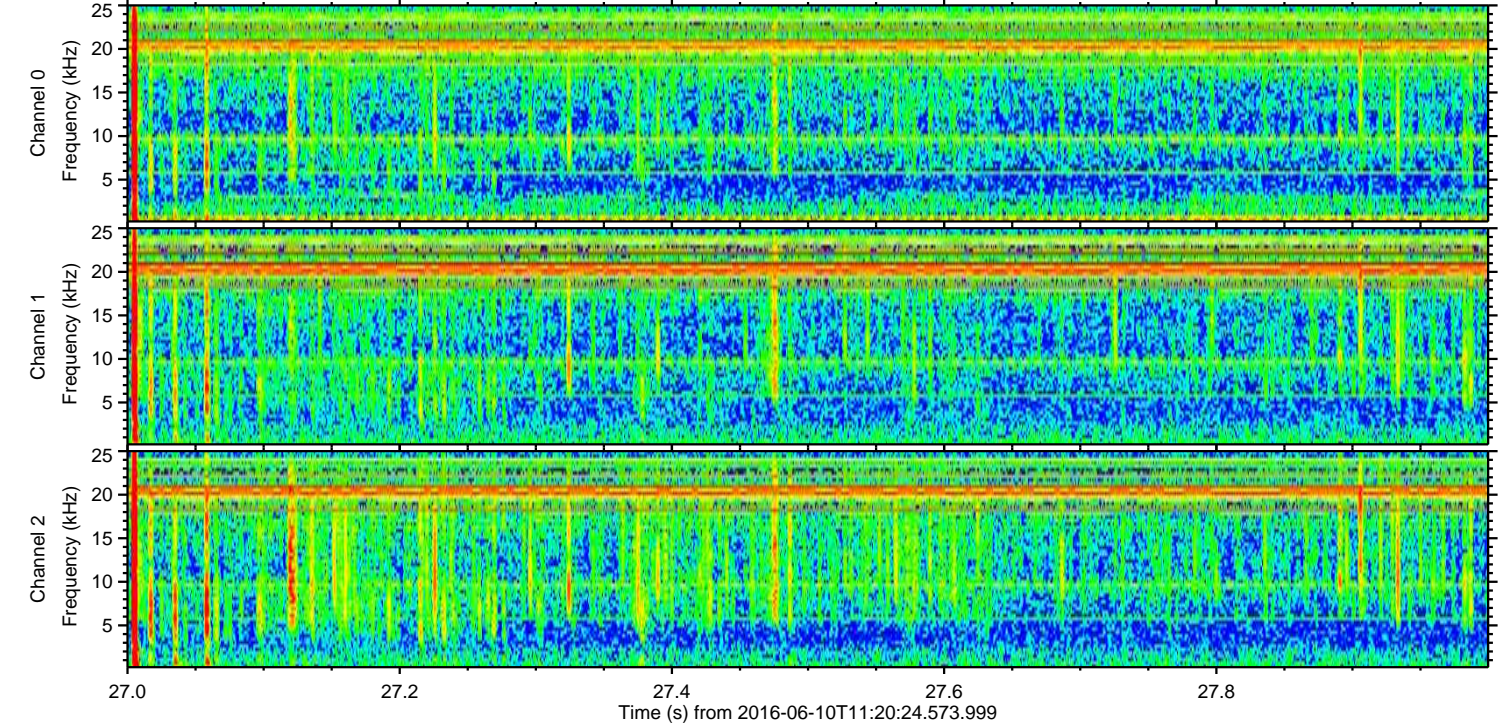
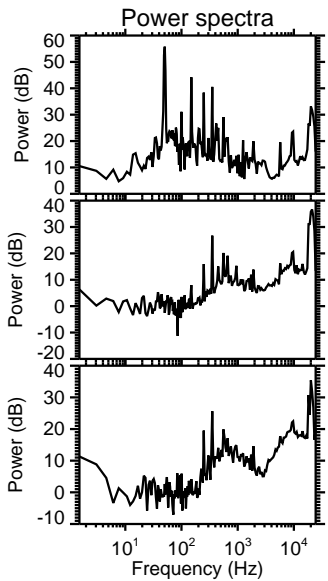
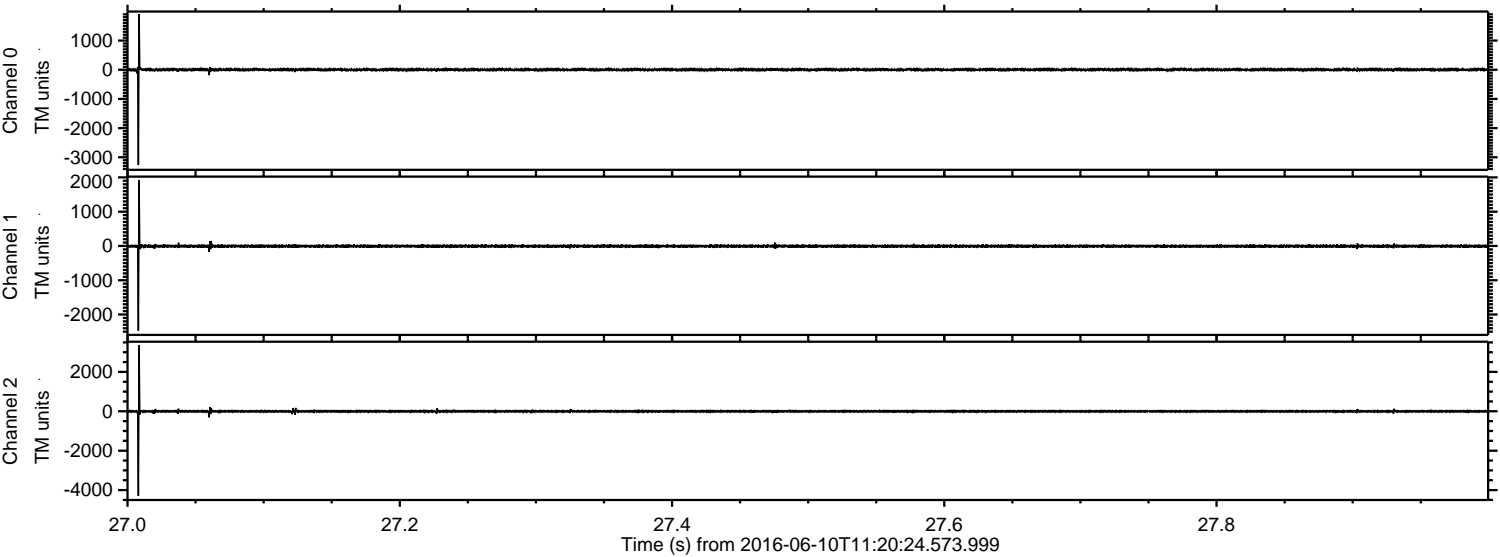


ELMAVAN 3D WAVEFORMS (Measured data sampled at 50 kHz) 51000 packets of 144 samples from 2016-06-10T11:20:24.573.999. Part 131/147

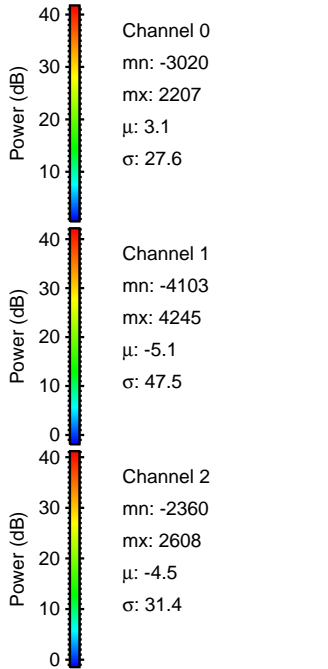
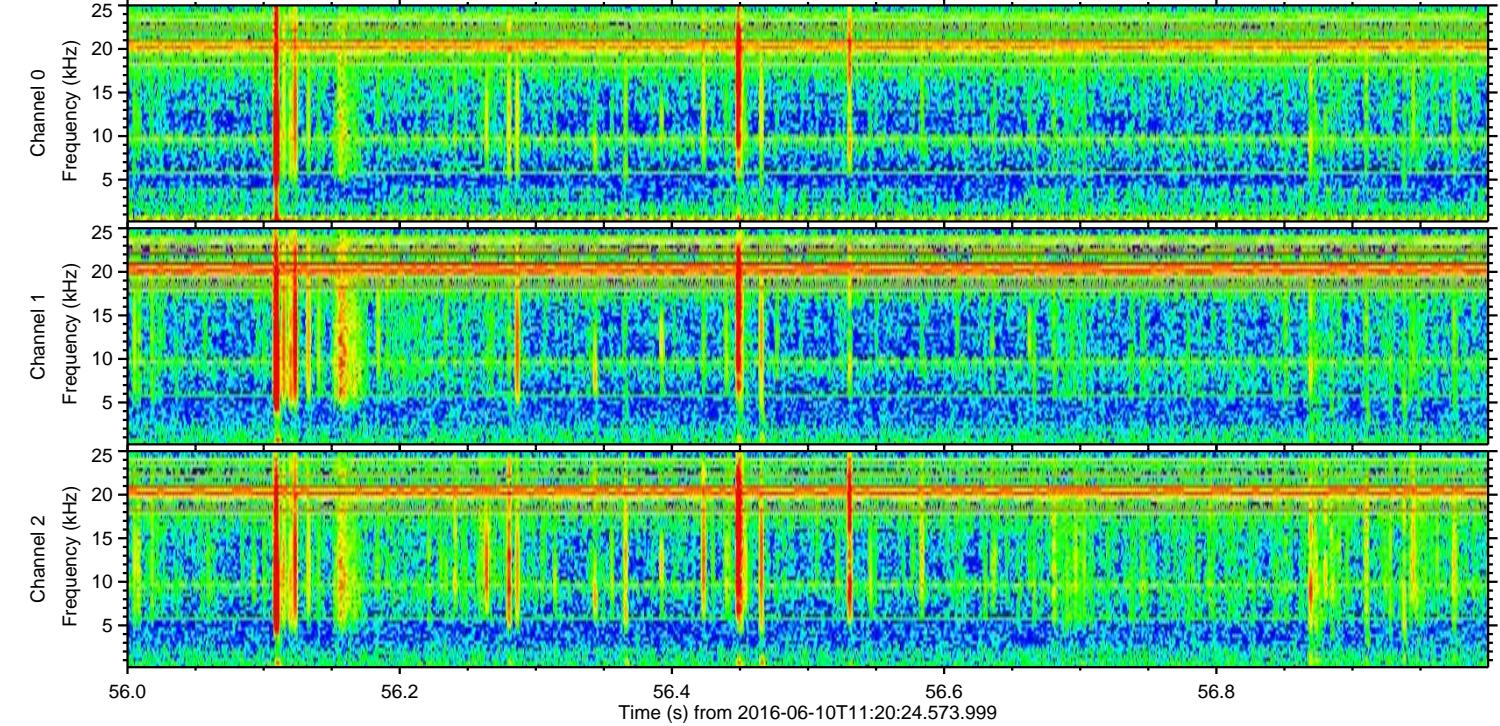
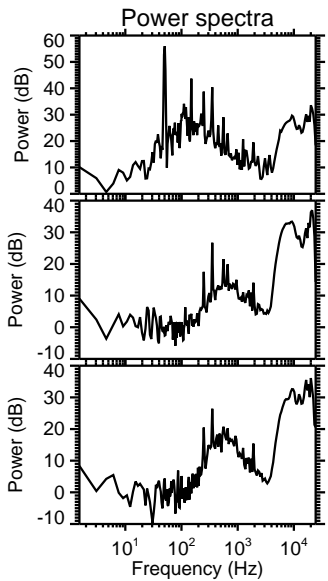
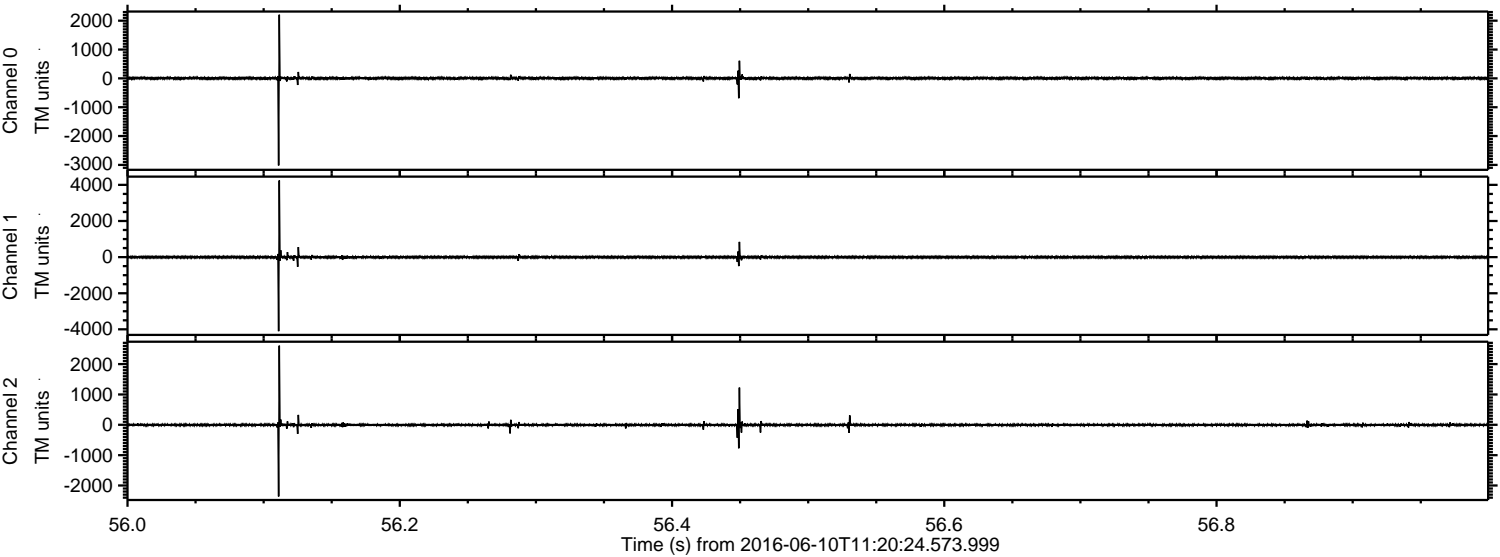
Processed Fri Jun 10 13:28:32 2016 by ELM ver.2012-10-06 from 001__elm20160610_112023__dat00.bin



Processed Fri Jun 10 13:28:33 2016 by ELM ver.2012-10-06 from 001__elm20160610_112023__dat00.bin

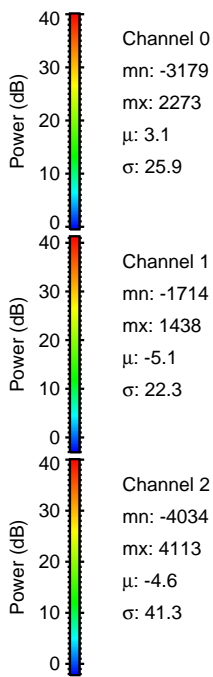
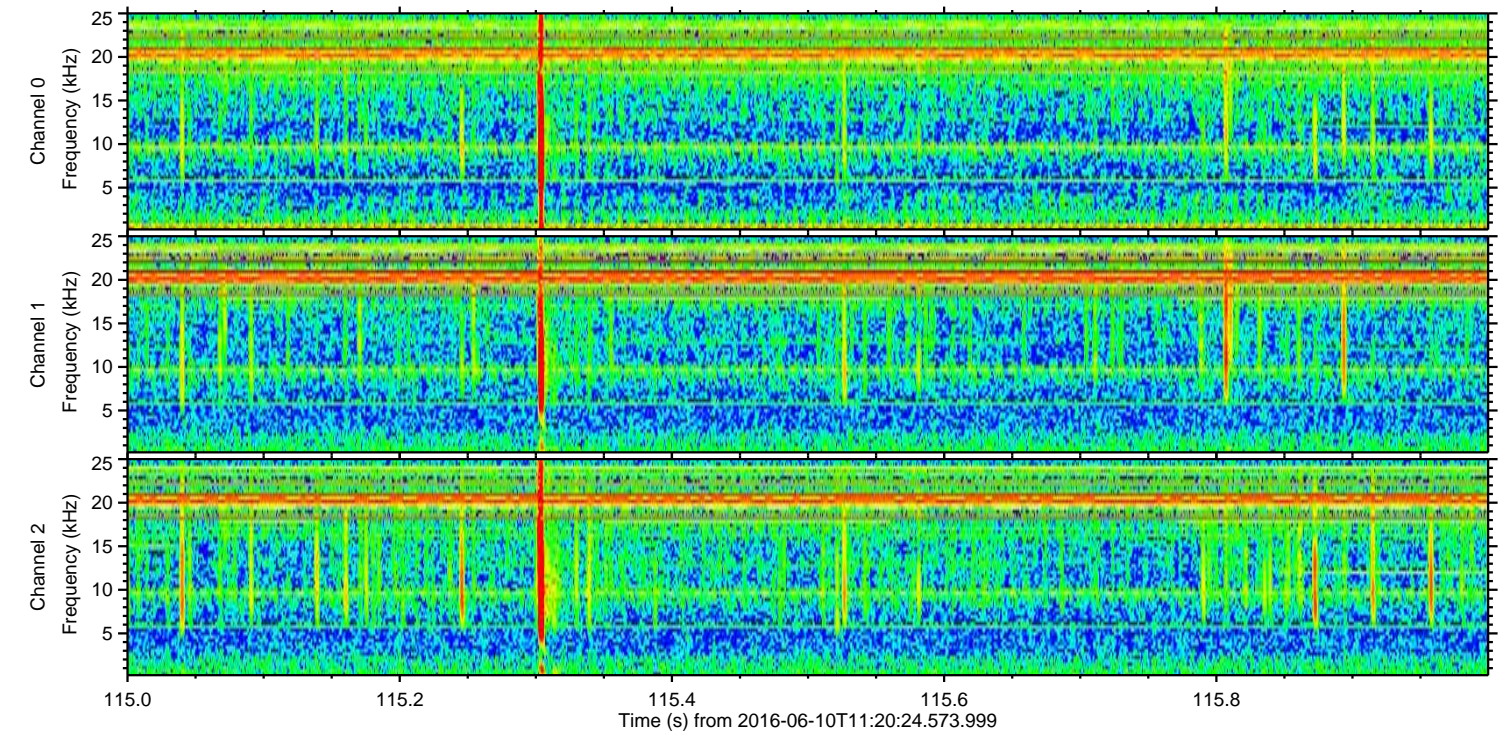
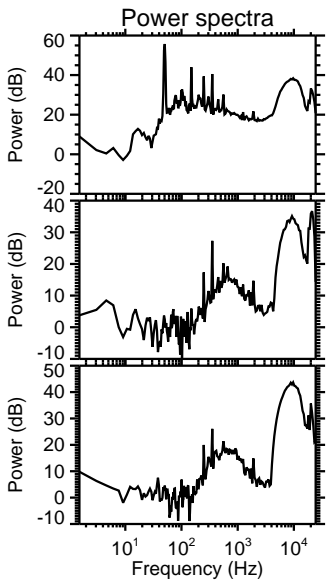
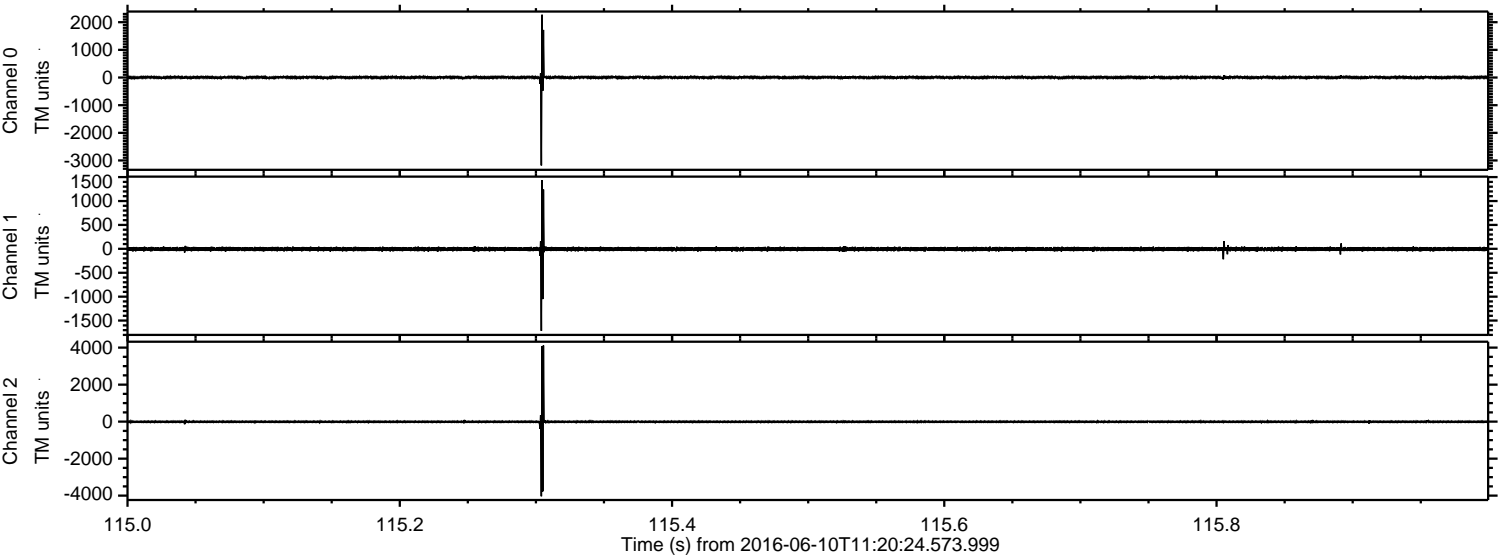


Processed Fri Jun 10 13:28:34 2016 by ELM ver.2012-10-06 from 001__elm20160610_112023__dat00.bin



ELMAVAN 3D WAVEFORMS (Measured data sampled at 50 kHz) 51000 packets of 144 samples from 2016-06-10T11:20:24.573.999. Part 116/147

Processed Fri Jun 10 13:28:35 2016 by ELM ver.2012-10-06 from 001__elm20160610_112023__dat00.bin



Channel 0
mn: -3179
mx: 2273
 μ : 3.1
 σ : 25.9

Channel 1
mn: -1714
mx: 1438
 μ : -5.1
 σ : 22.3

Channel 2
mn: -4034
mx: 4113
 μ : -4.6
 σ : 41.3

Processed Fri Jun 10 13:28:37 2016 by ELM ver.2012-10-06 from 001__elm20160610_112023__dat00.bin

