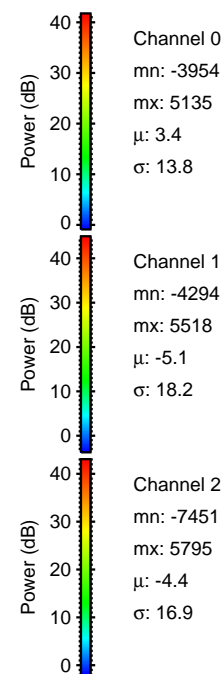
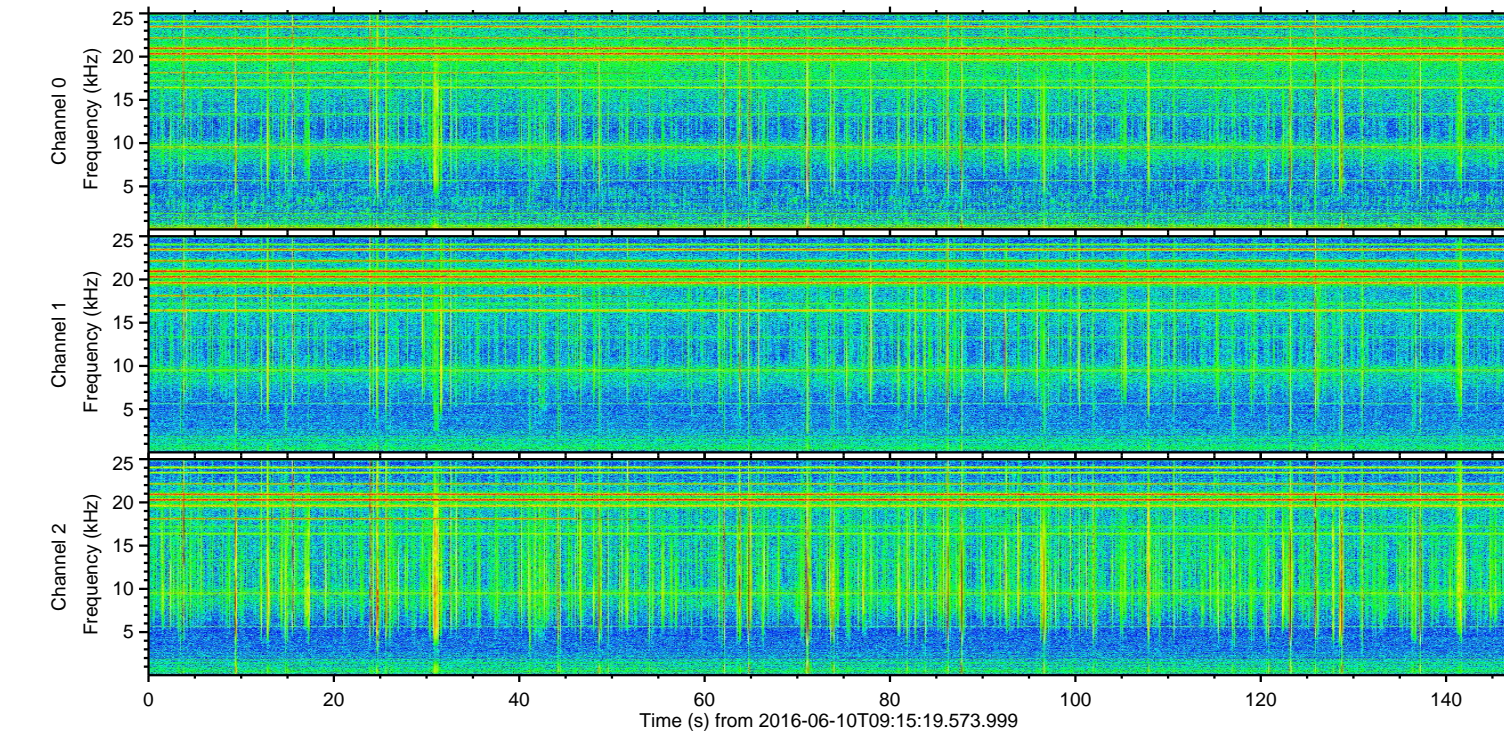
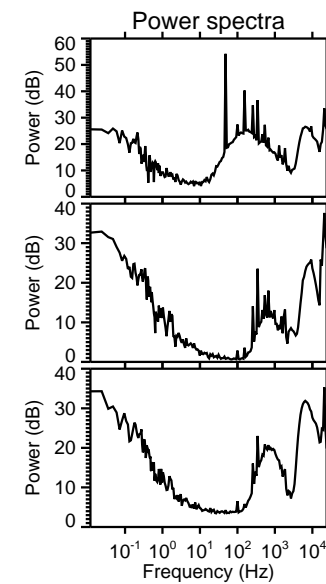
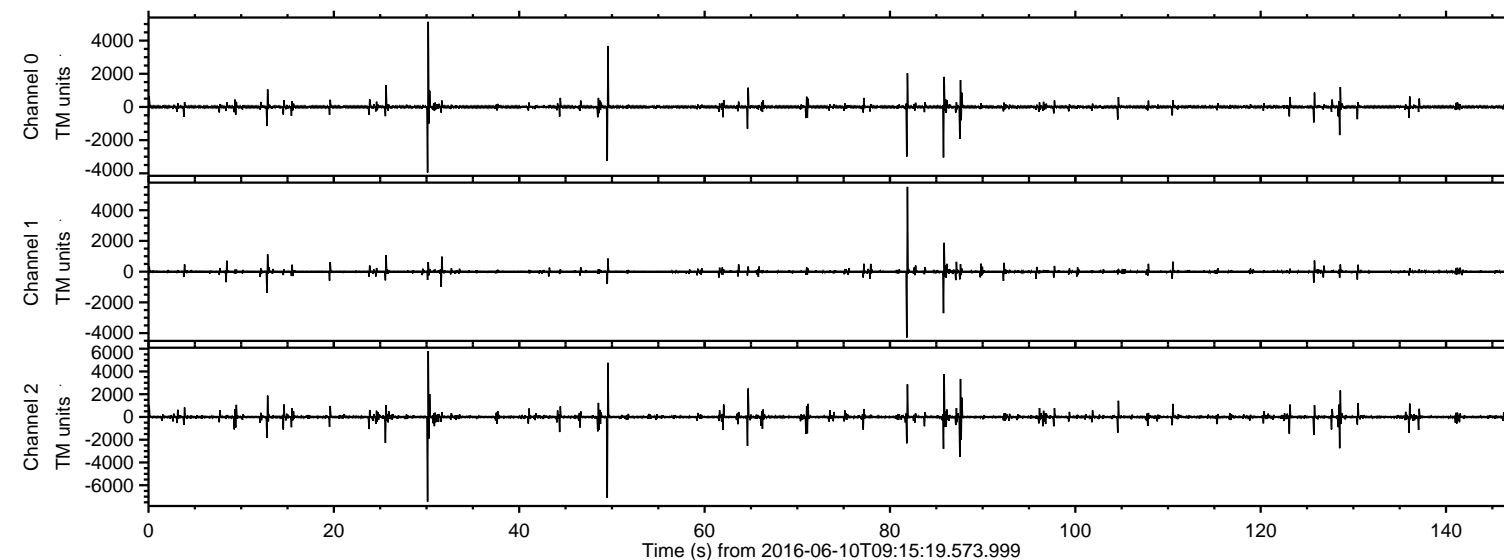
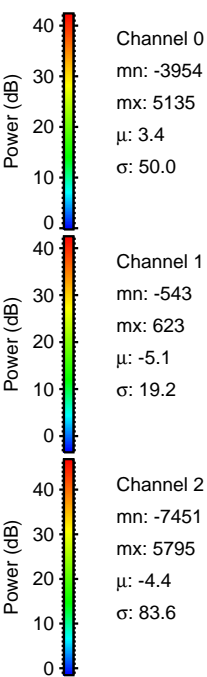
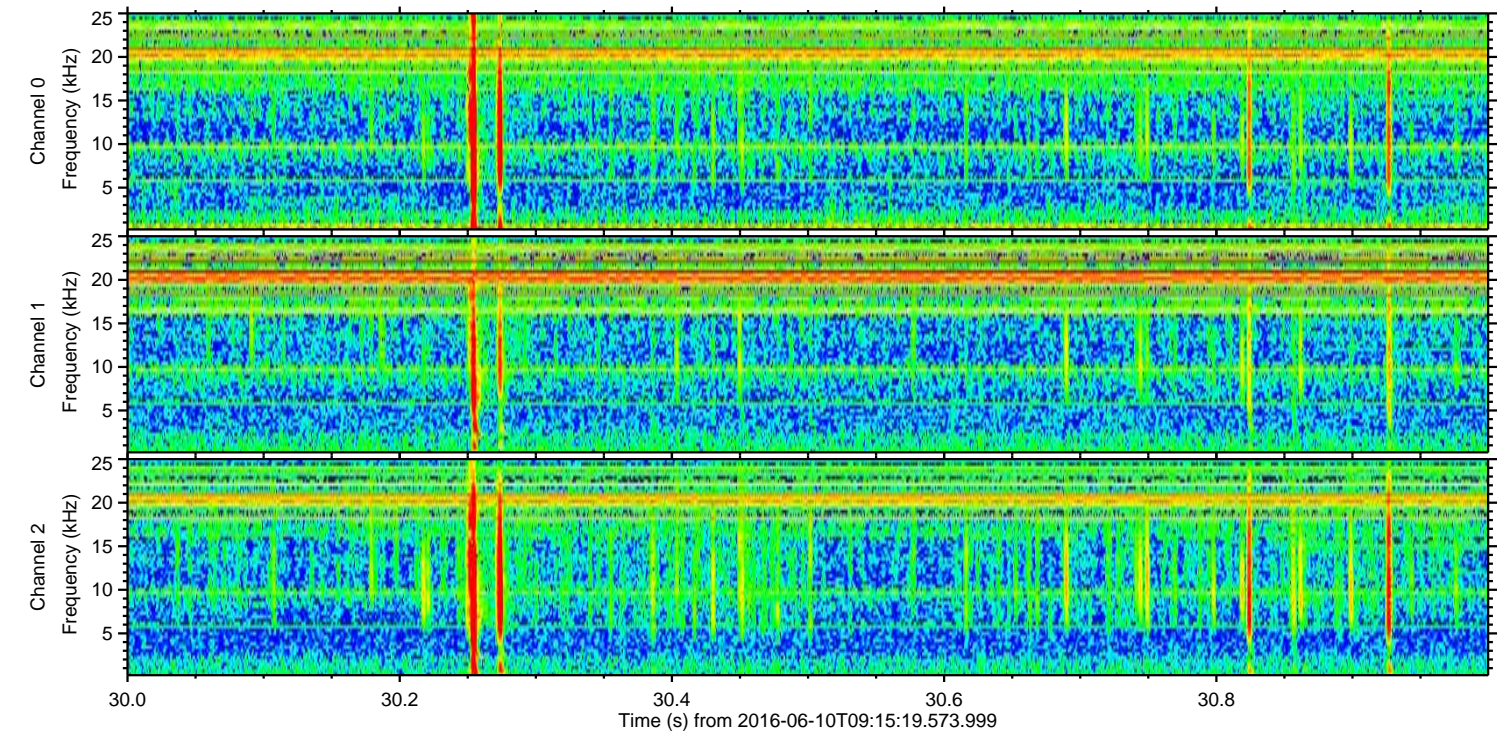
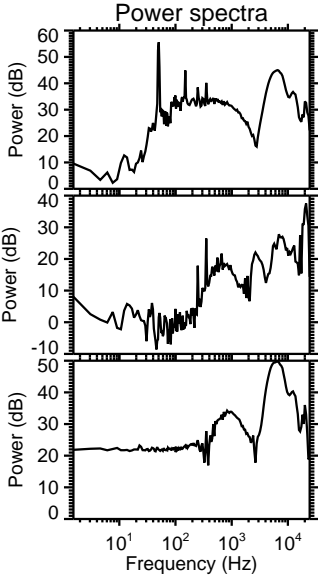
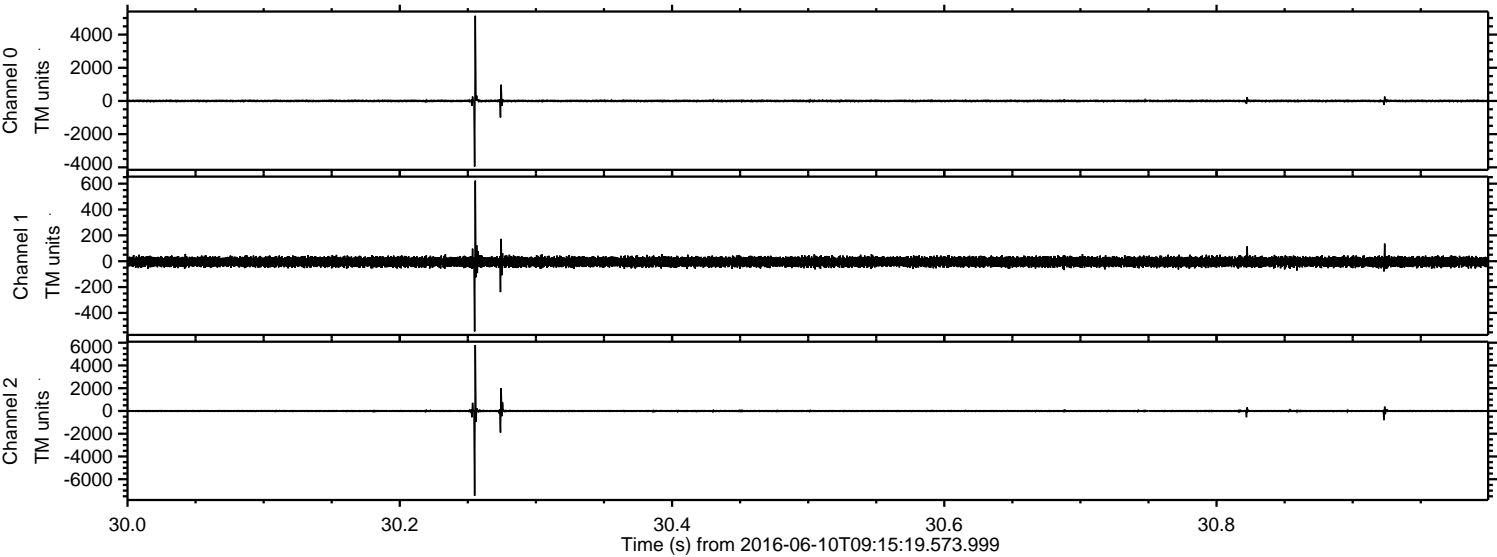


ELMAVAN 3D WAVEFORMS (Measured data sampled at 50 kHz) 51000 packets of 144 samples from 2016-06-10T09:15:19.573.999.

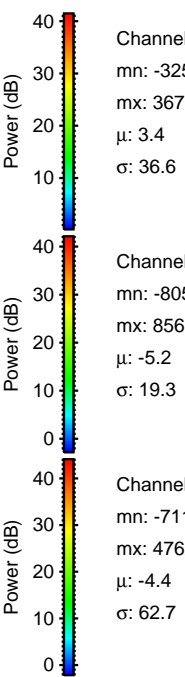
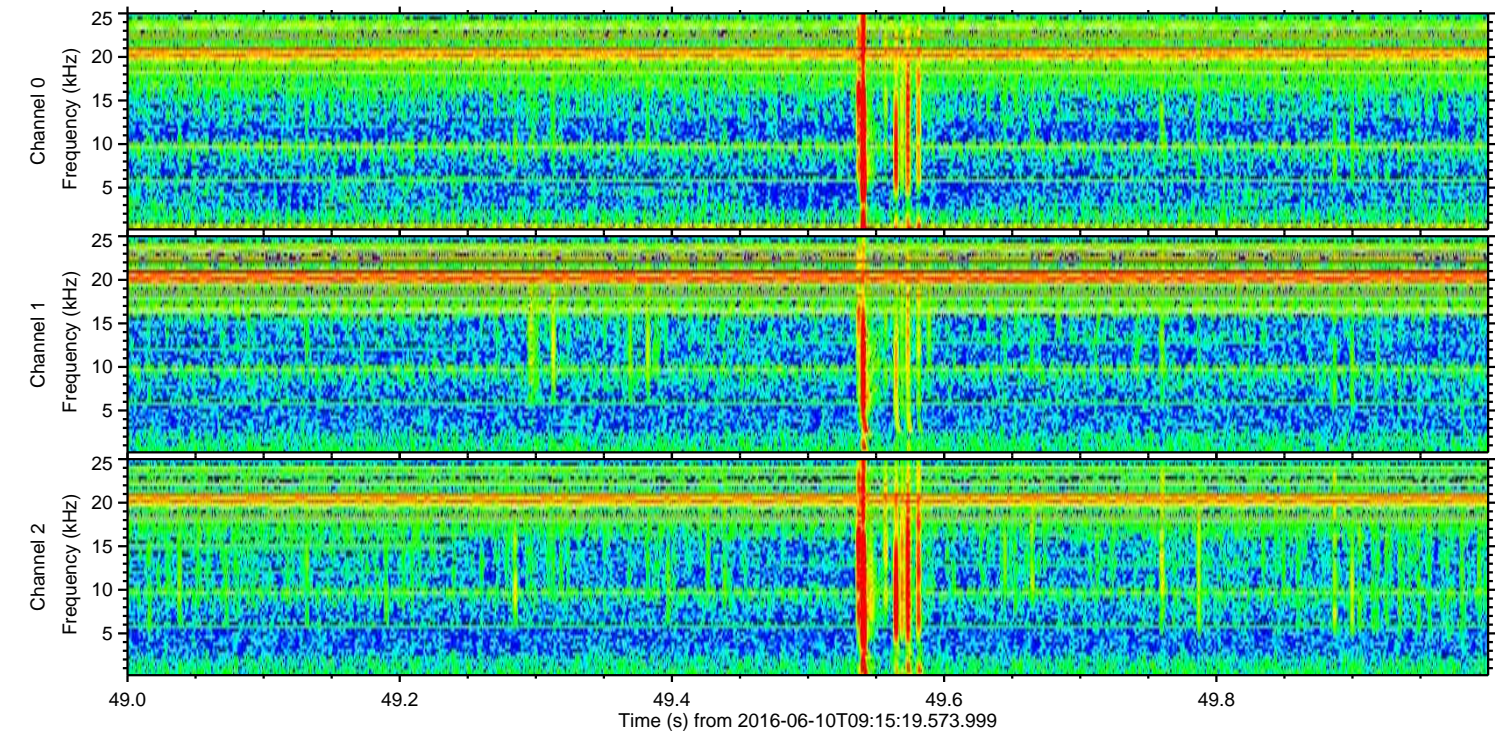
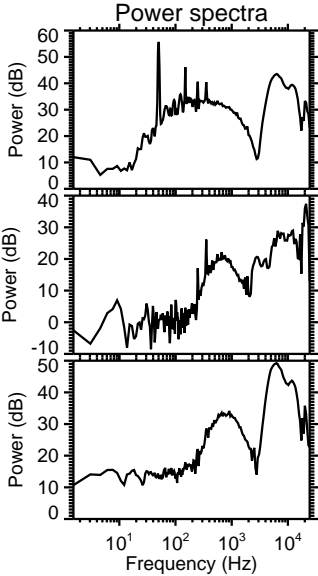
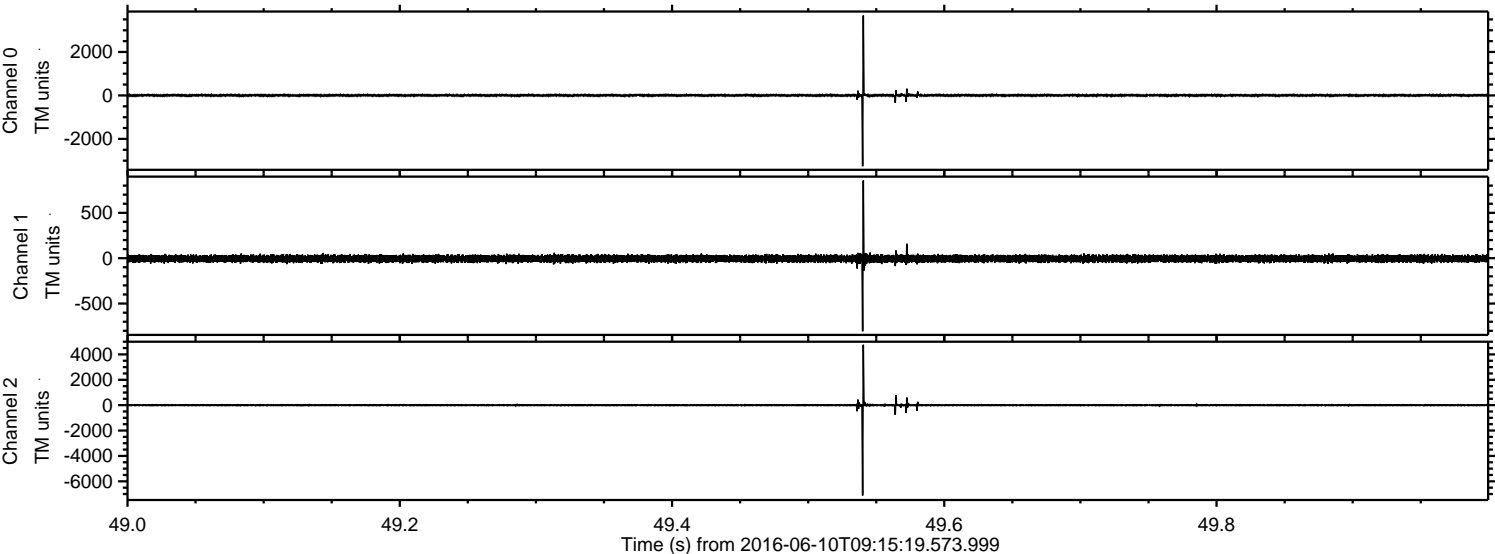
Processed Fri Jun 10 11:23:15 2016 by ELM ver.2012-10-06 from 001__elm20160610_091518__dat00.bin



Processed Fri Jun 10 11:23:27 2016 by ELM ver.2012-10-06 from 001__elm20160610_091518__dat00.bin

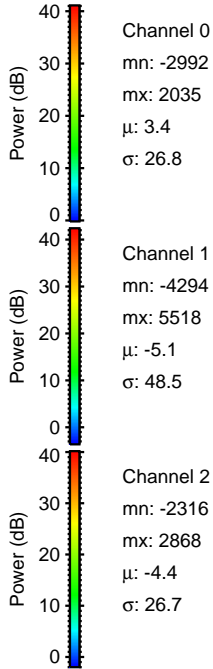
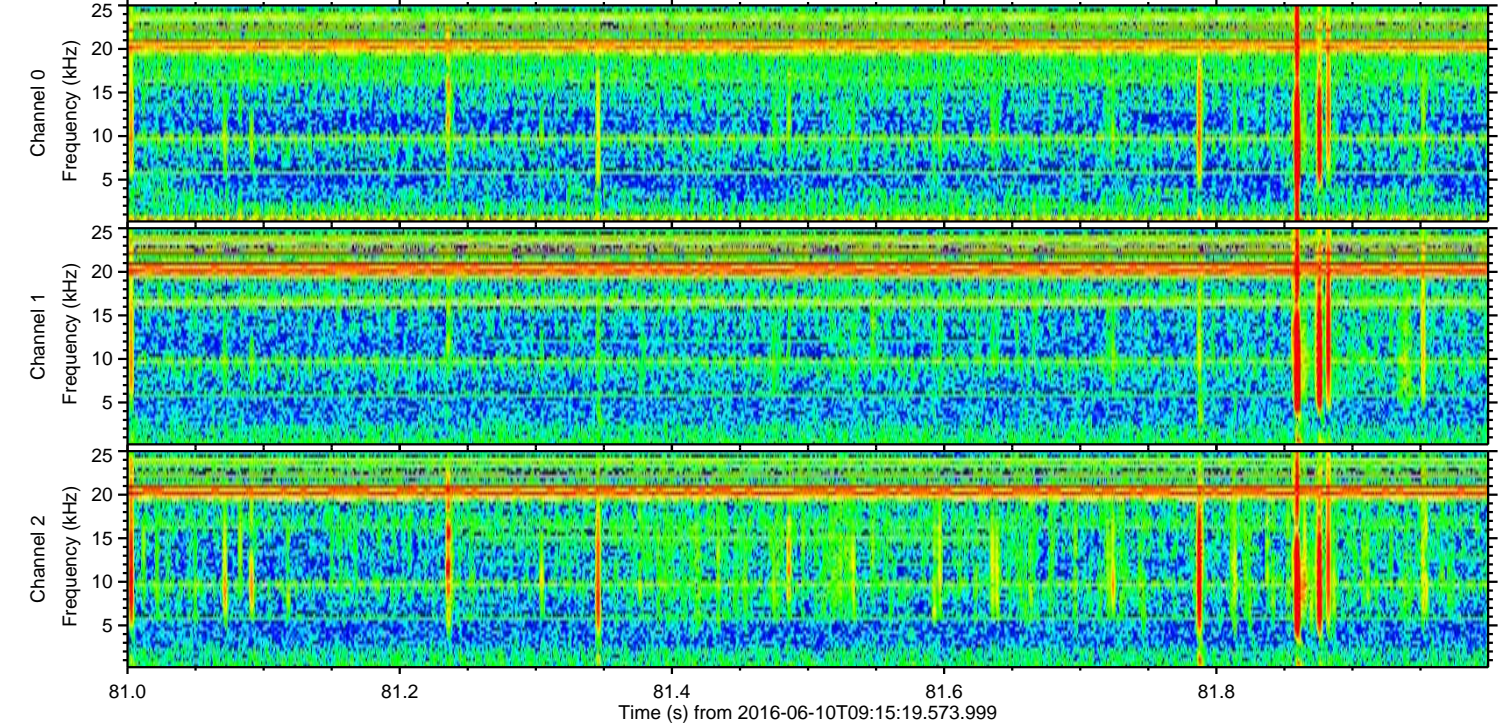
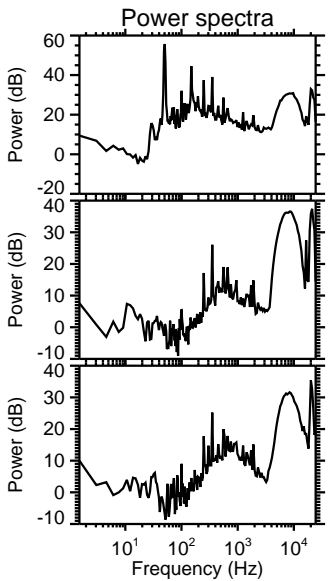
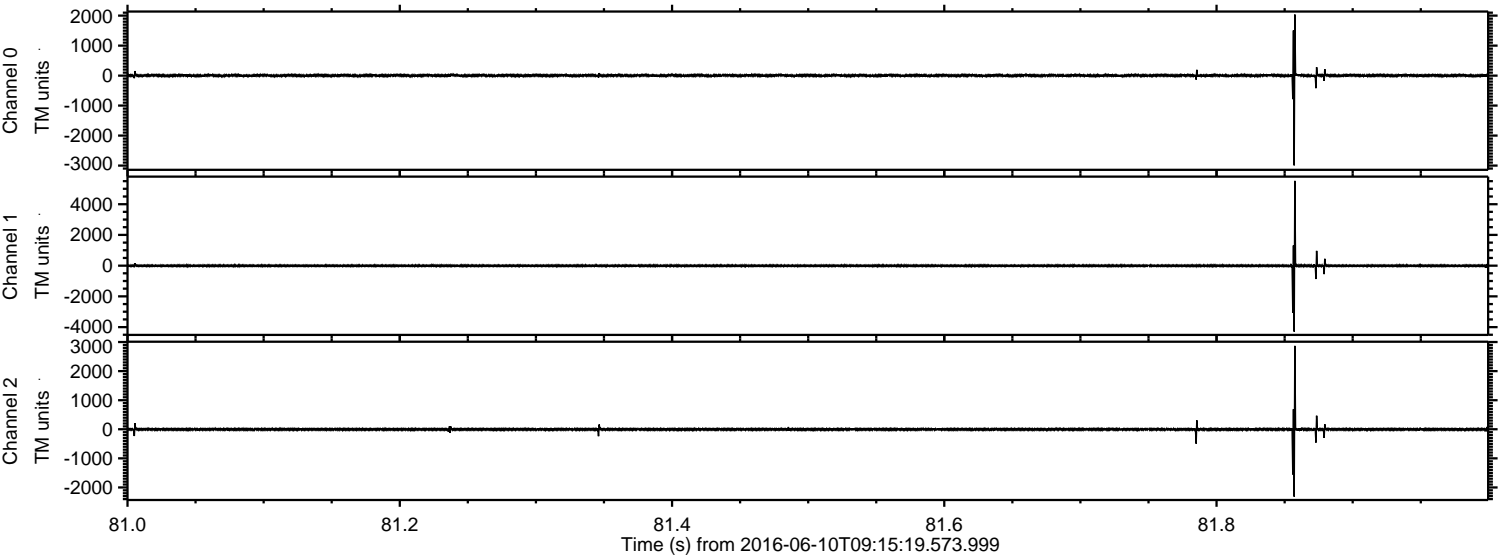


Processed Fri Jun 10 11:23:28 2016 by ELM ver.2012-10-06 from 001__elm20160610_091518__dat00.bin

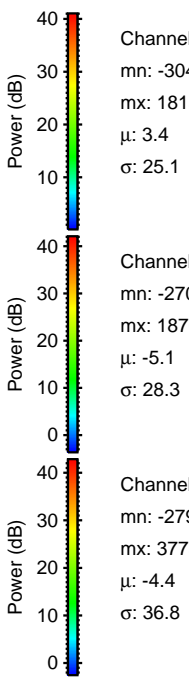
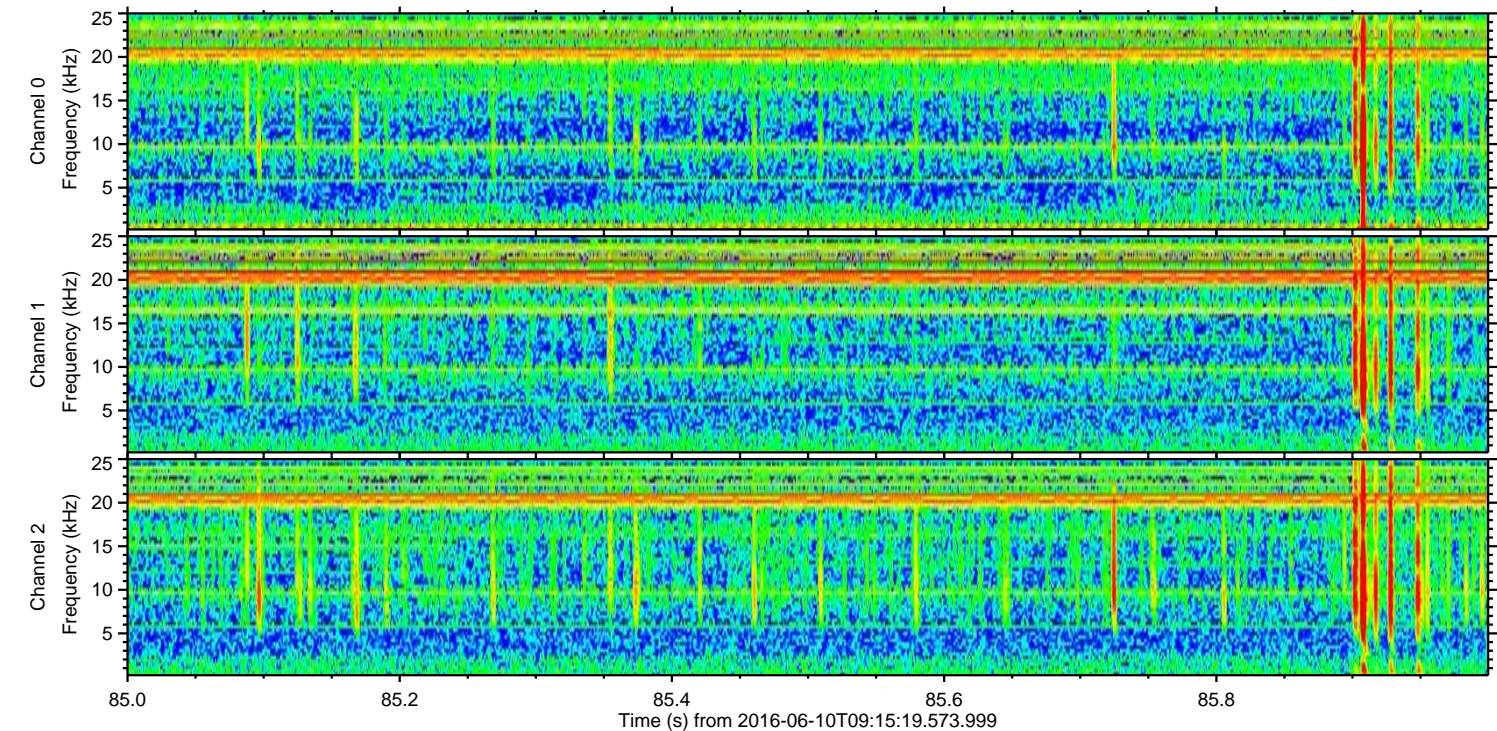
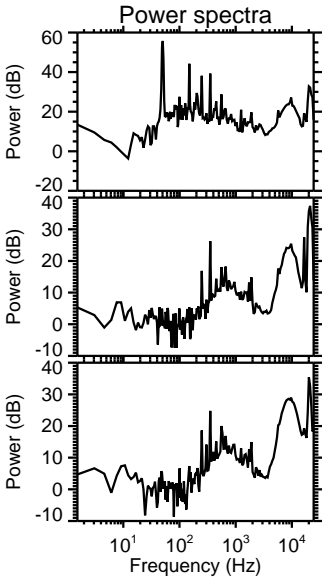
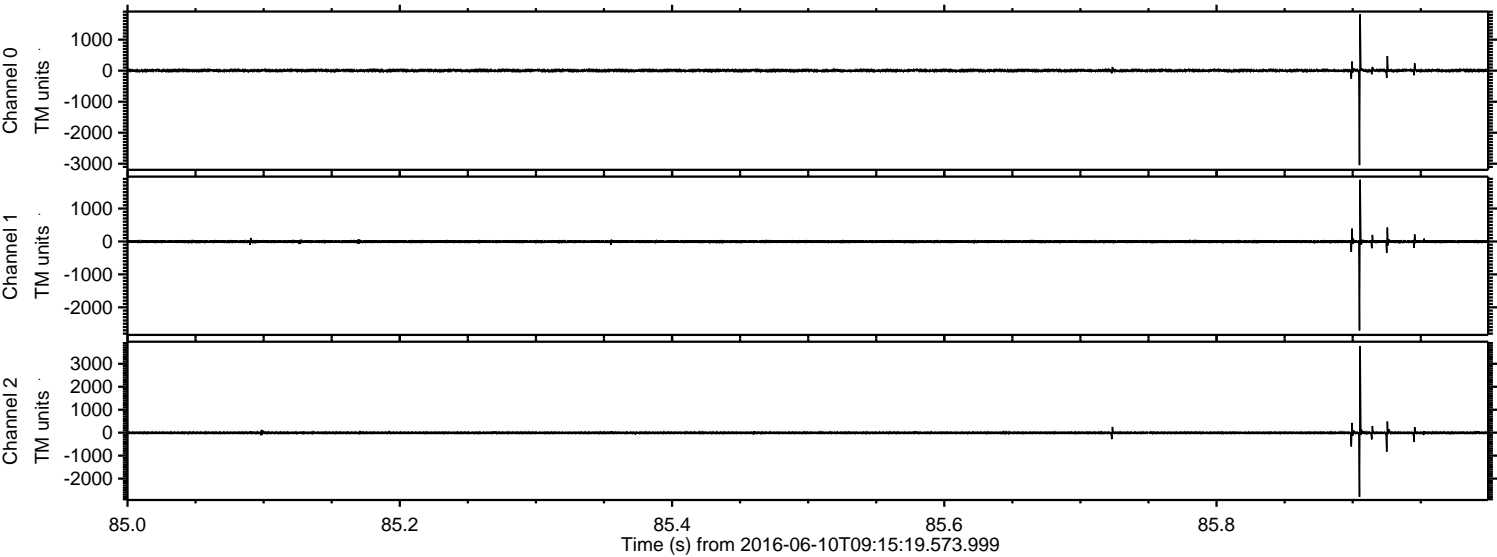


ELMAVAN 3D WAVEFORMS (Measured data sampled at 50 kHz) 51000 packets of 144 samples from 2016-06-10T09:15:19.573.999. Part 82/147

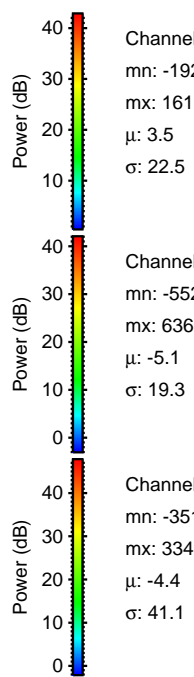
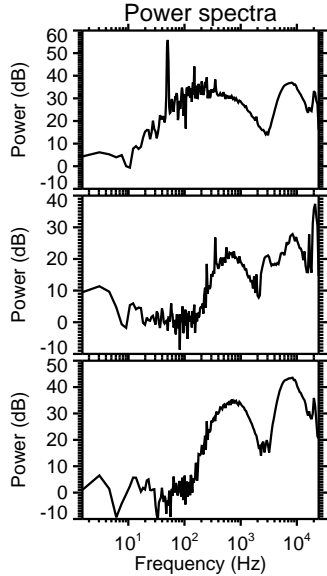
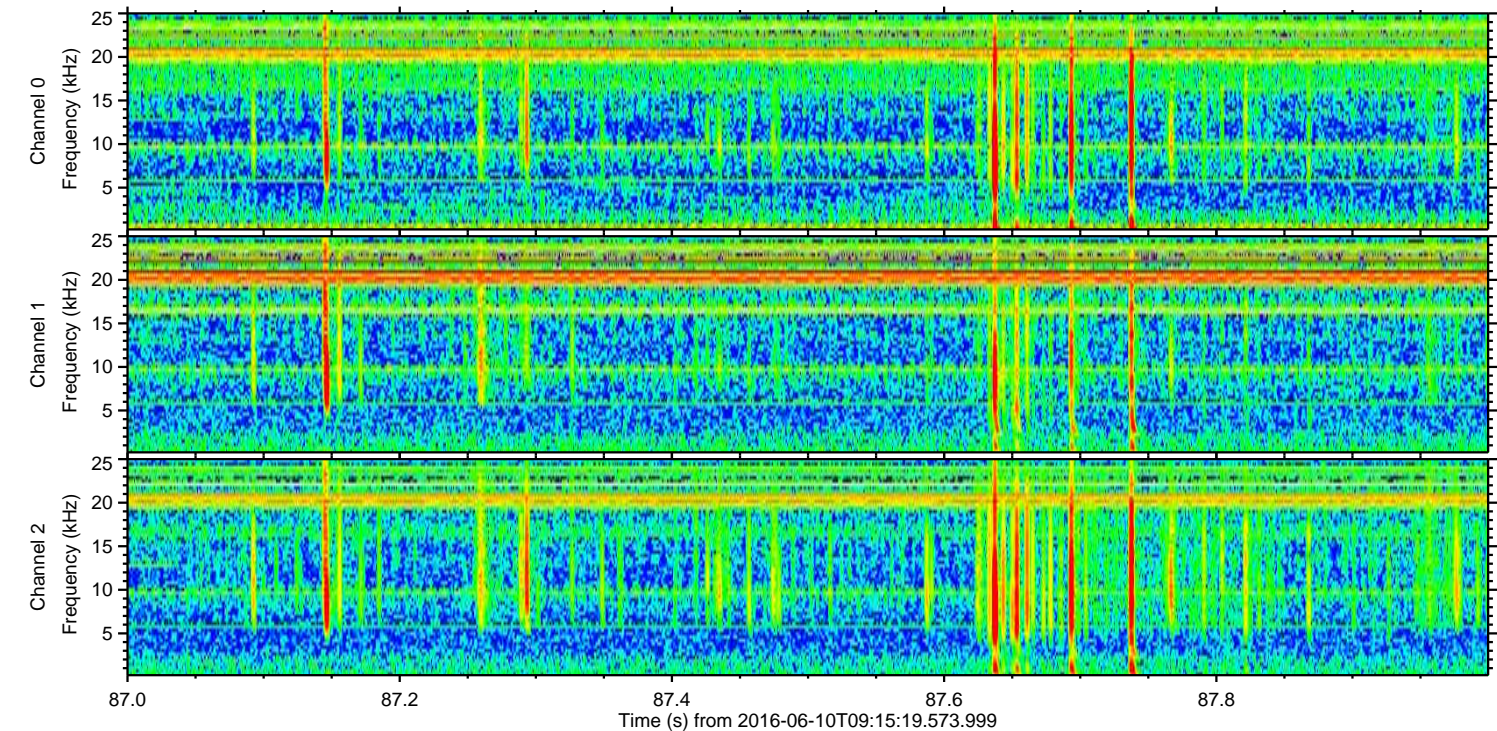
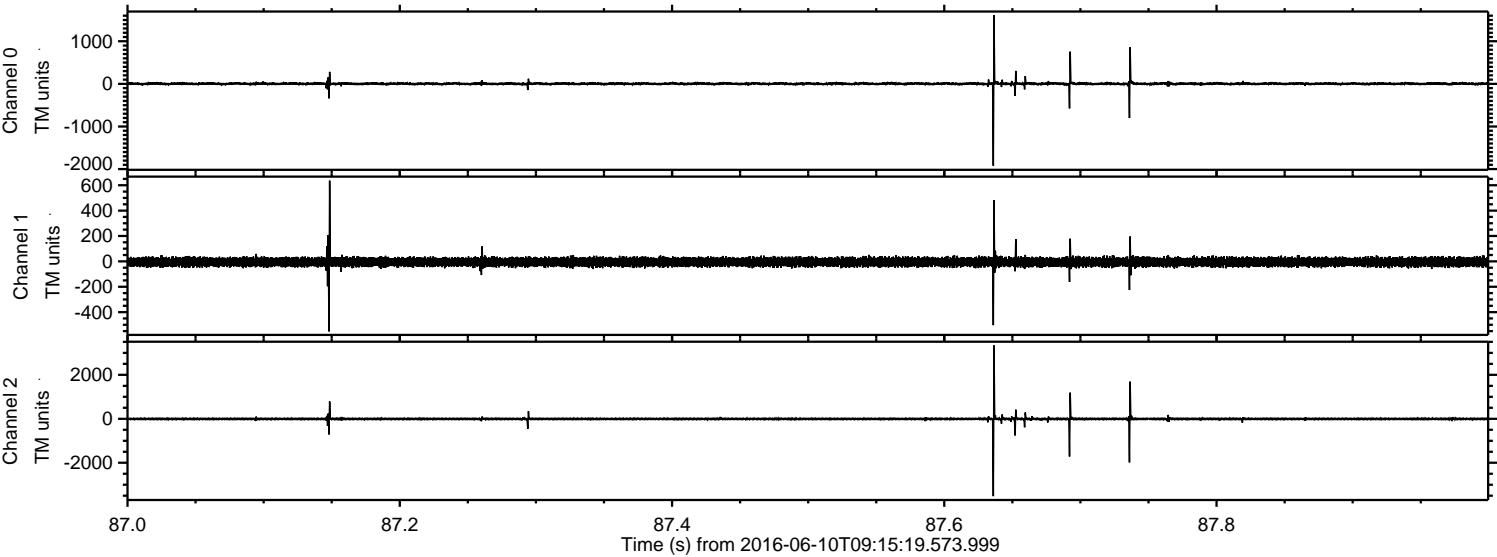
Processed Fri Jun 10 11:23:29 2016 by ELM ver.2012-10-06 from 001__elm20160610_091518__dat00.bin



Processed Fri Jun 10 11:23:30 2016 by ELM ver.2012-10-06 from 001__elm20160610_091518__dat00.bin

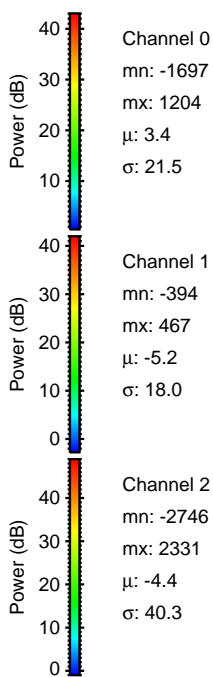
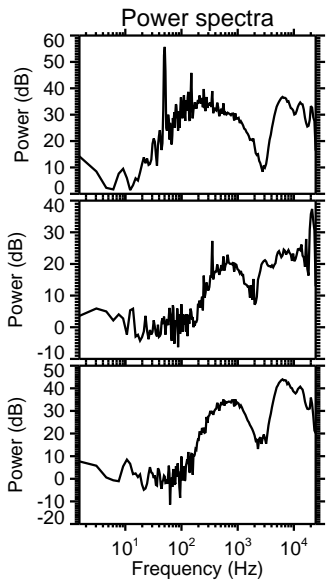
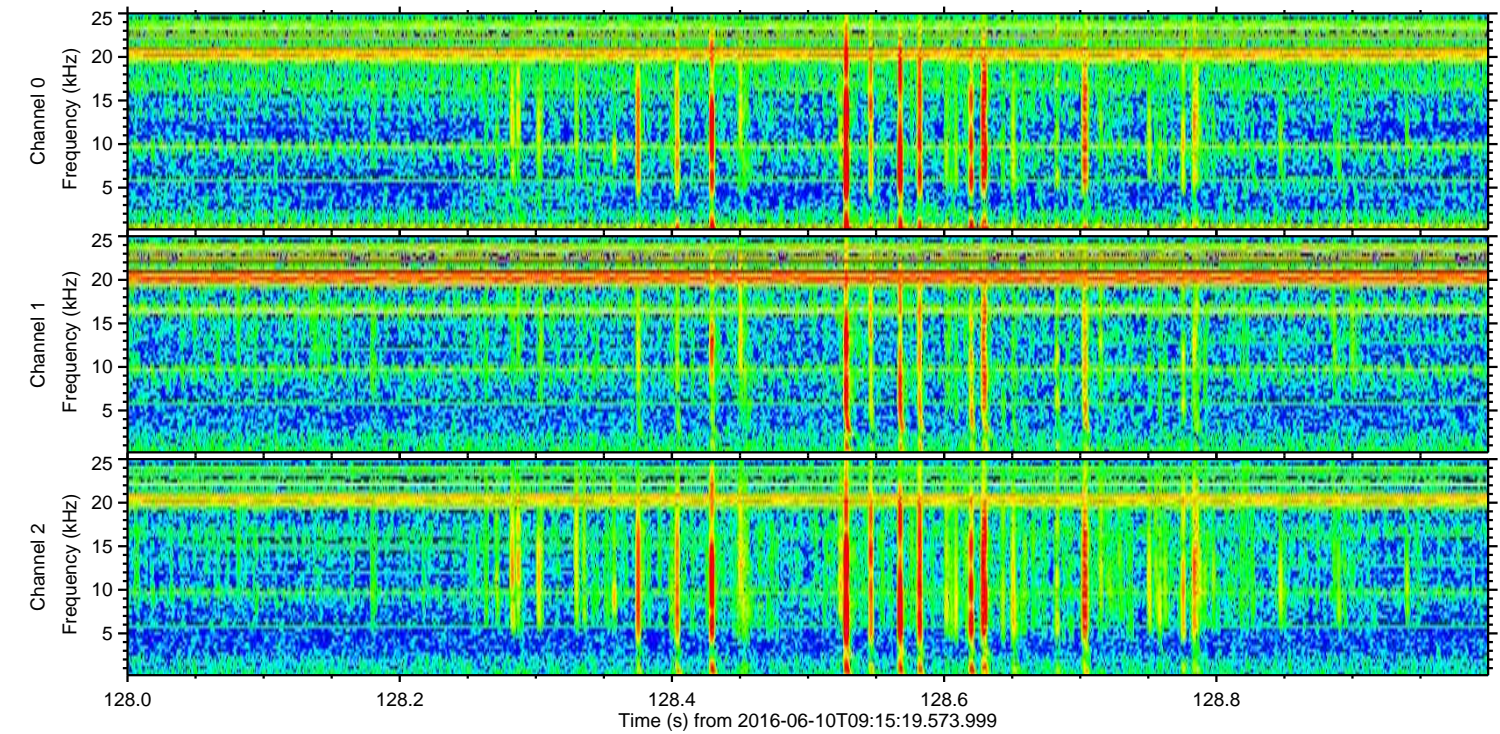
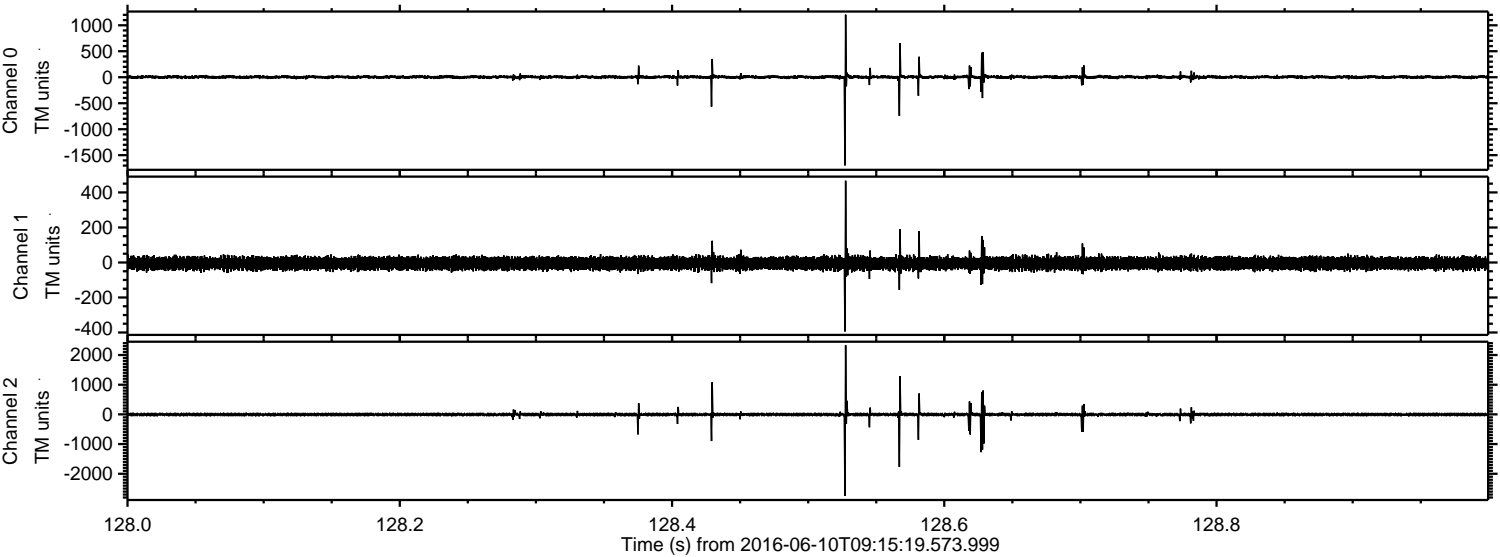


Processed Fri Jun 10 11:23:30 2016 by ELM ver.2012-10-06 from 001__elm20160610_091518__dat00.bin

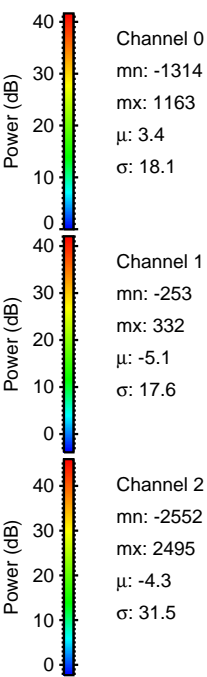
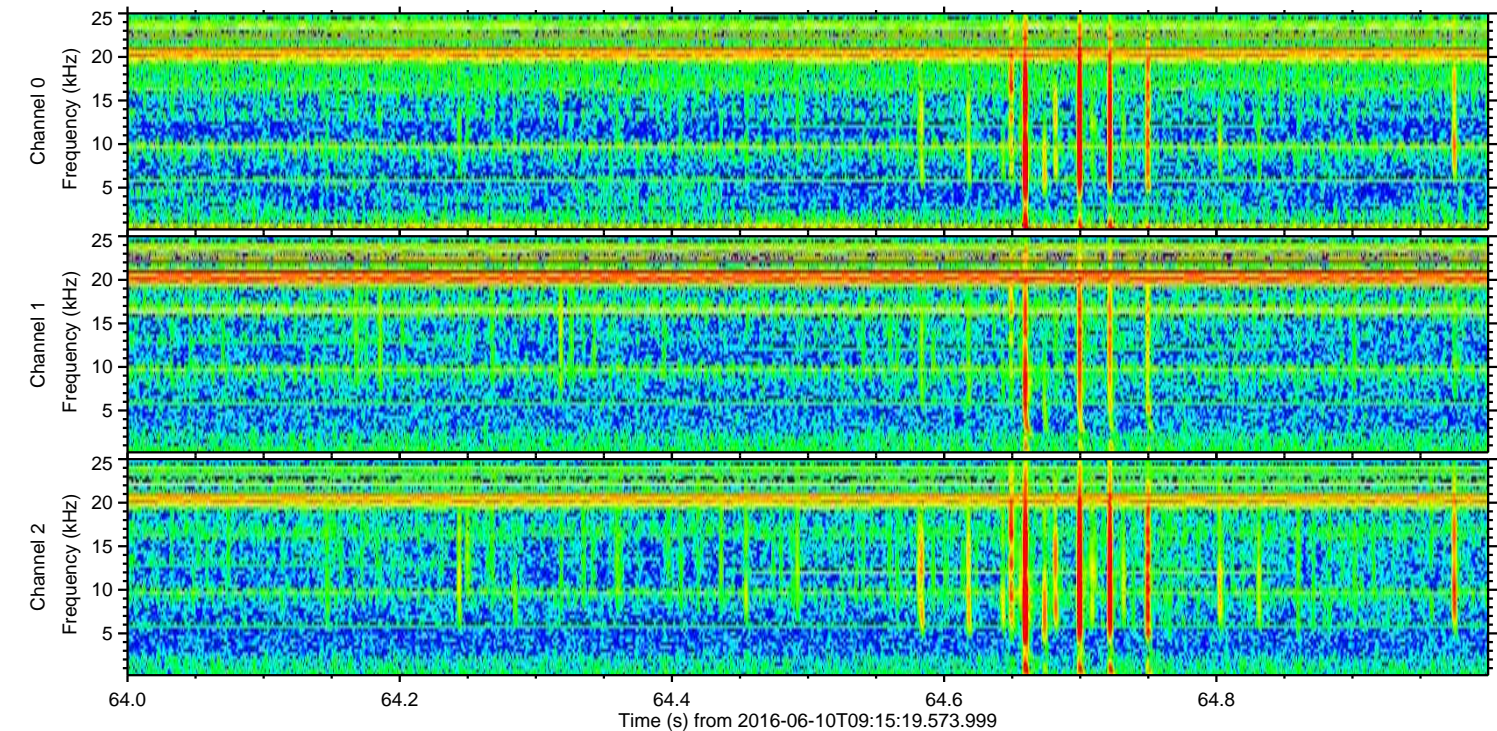
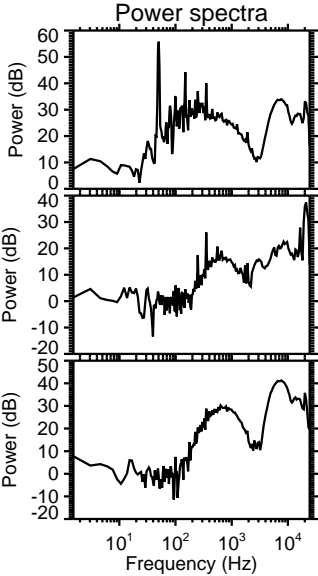
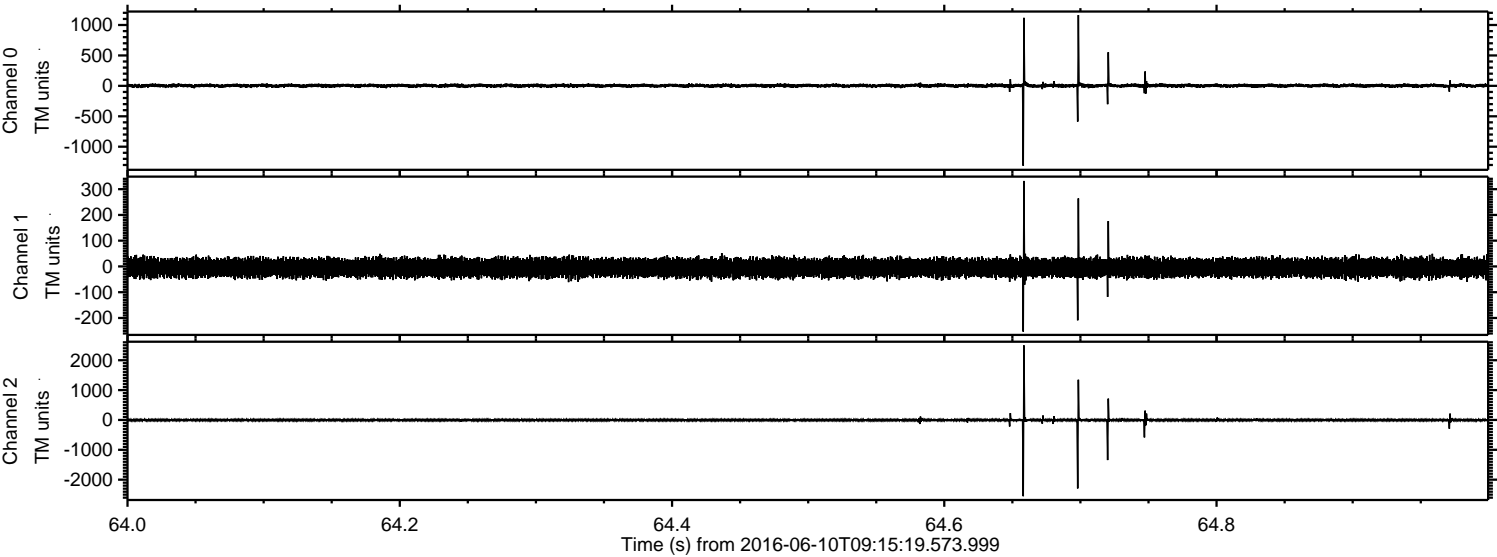


ELMAVAN 3D WAVEFORMS (Measured data sampled at 50 kHz) 51000 packets of 144 samples from 2016-06-10T09:15:19.573.999. Part 129/147

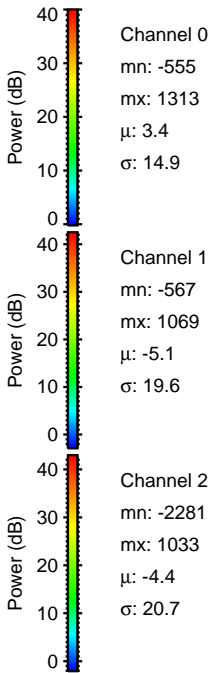
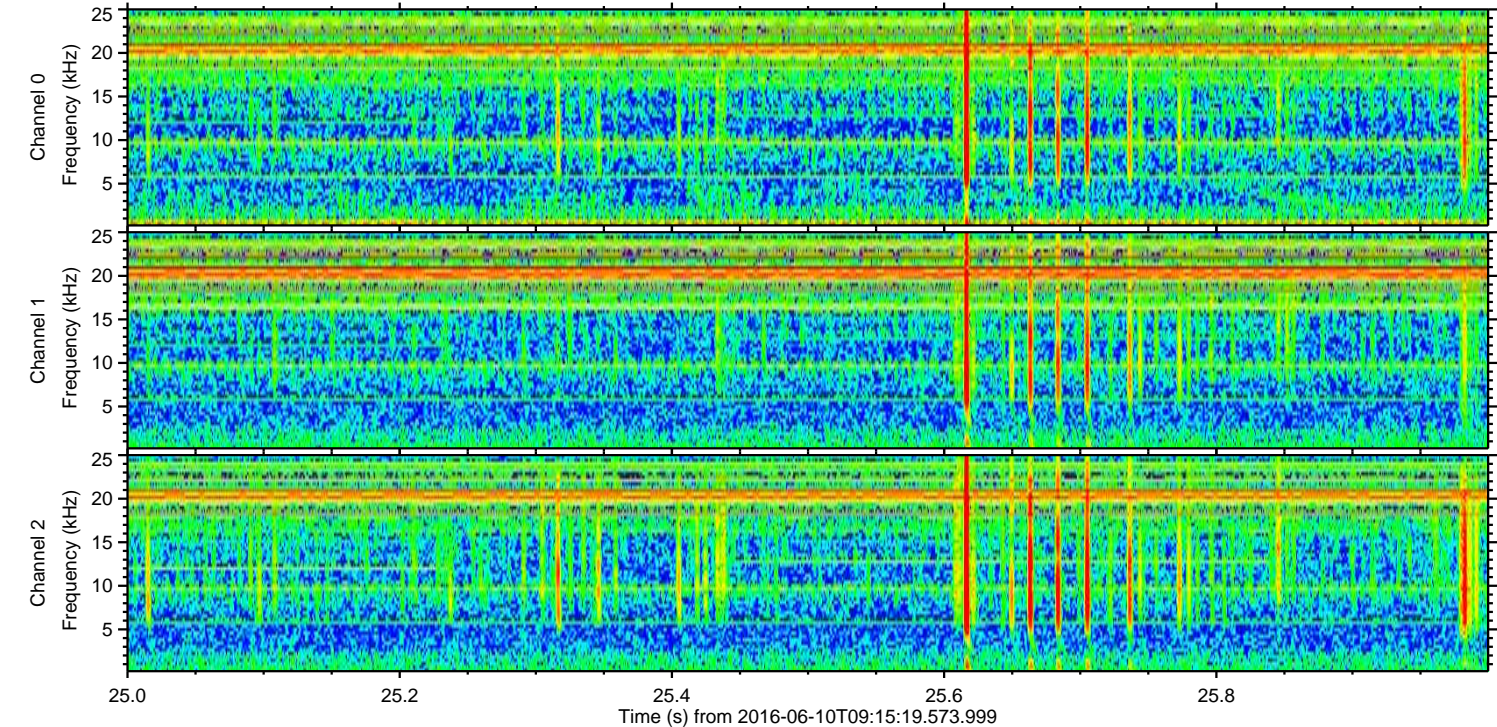
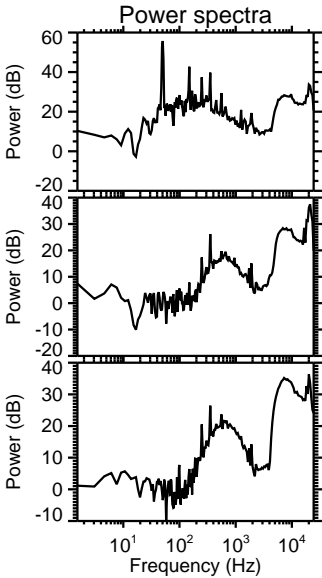
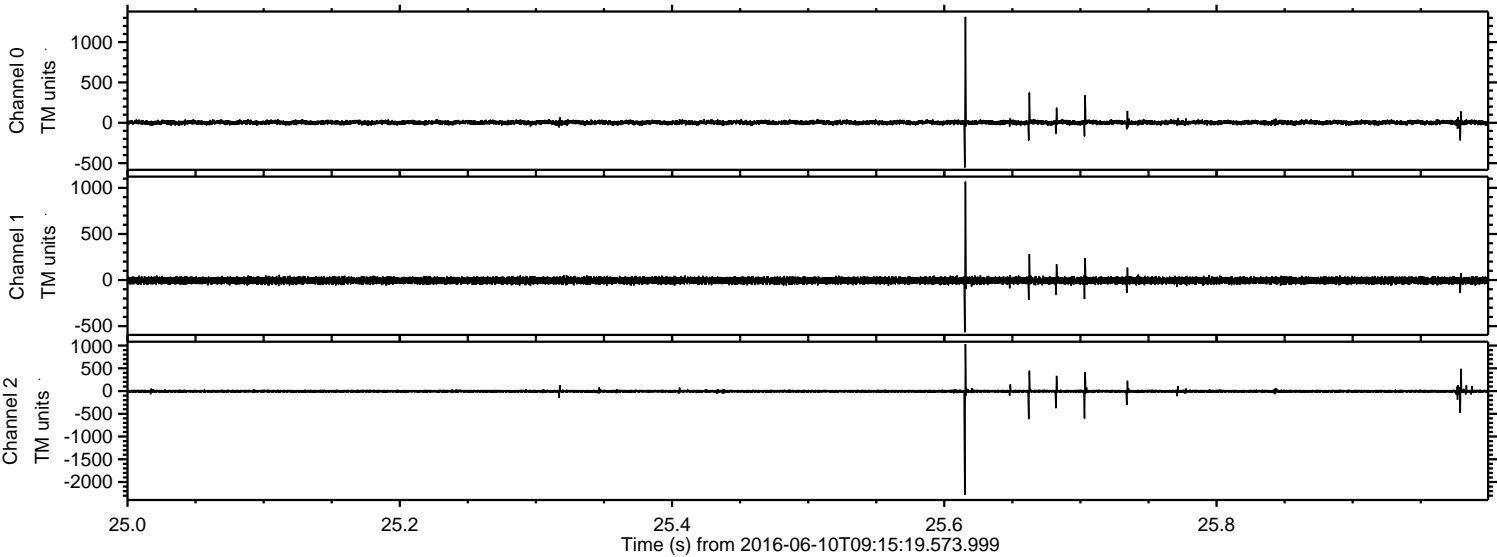
Processed Fri Jun 10 11:23:31 2016 by ELM ver.2012-10-06 from 001__elm20160610_091518__dat00.bin



Processed Fri Jun 10 11:23:32 2016 by ELM ver.2012-10-06 from 001__elm20160610_091518__dat00.bin

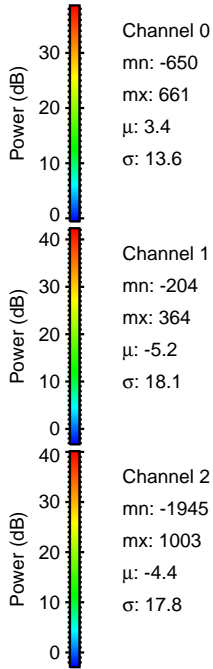
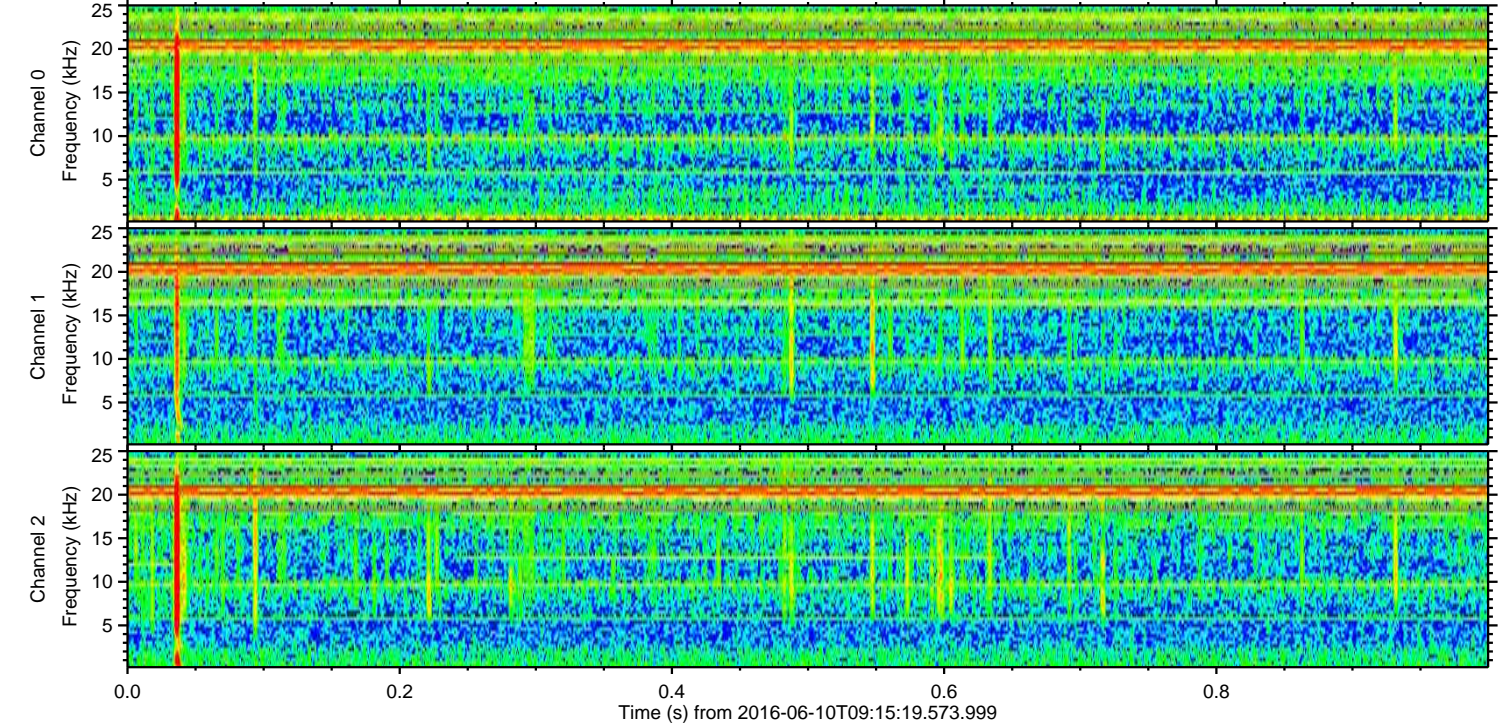
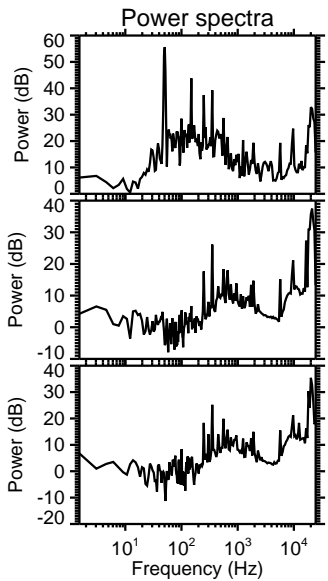
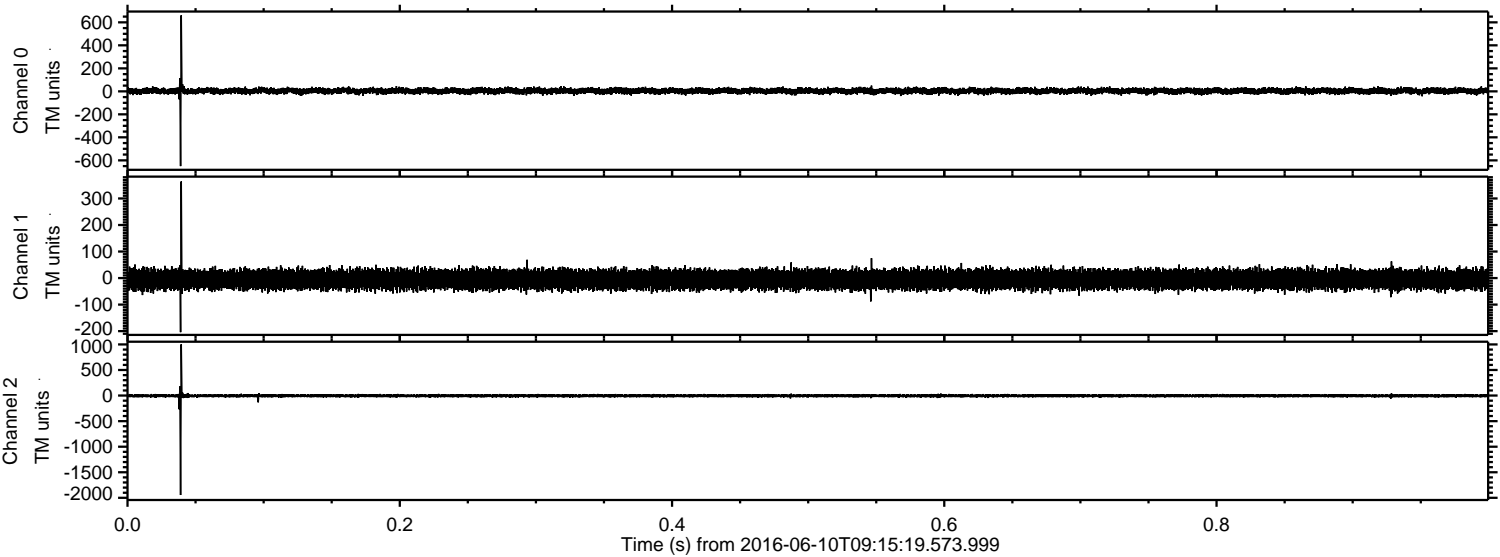


Processed Fri Jun 10 11:23:33 2016 by ELM ver.2012-10-06 from 001__elm20160610_091518__dat00.bin



ELMAVAN 3D WAVEFORMS (Measured data sampled at 50 kHz) 51000 packets of 144 samples from 2016-06-10T09:15:19.573.999. Part 1/147

Processed Fri Jun 10 11:23:34 2016 by ELM ver.2012-10-06 from 001__elm20160610_091518__dat00.bin



Channel 0
mn: -650
mx: 661
 μ : 3.4
 σ : 13.6

Channel 1
mn: -204
mx: 364
 μ : -5.2
 σ : 18.1

Channel 2
mn: -1945
mx: 1003
 μ : -4.4
 σ : 17.8

Processed Fri Jun 10 11:23:35 2016 by ELM ver.2012-10-06 from 001__elm20160610_091518__dat00.bin

