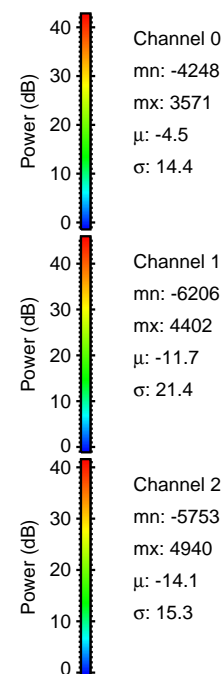
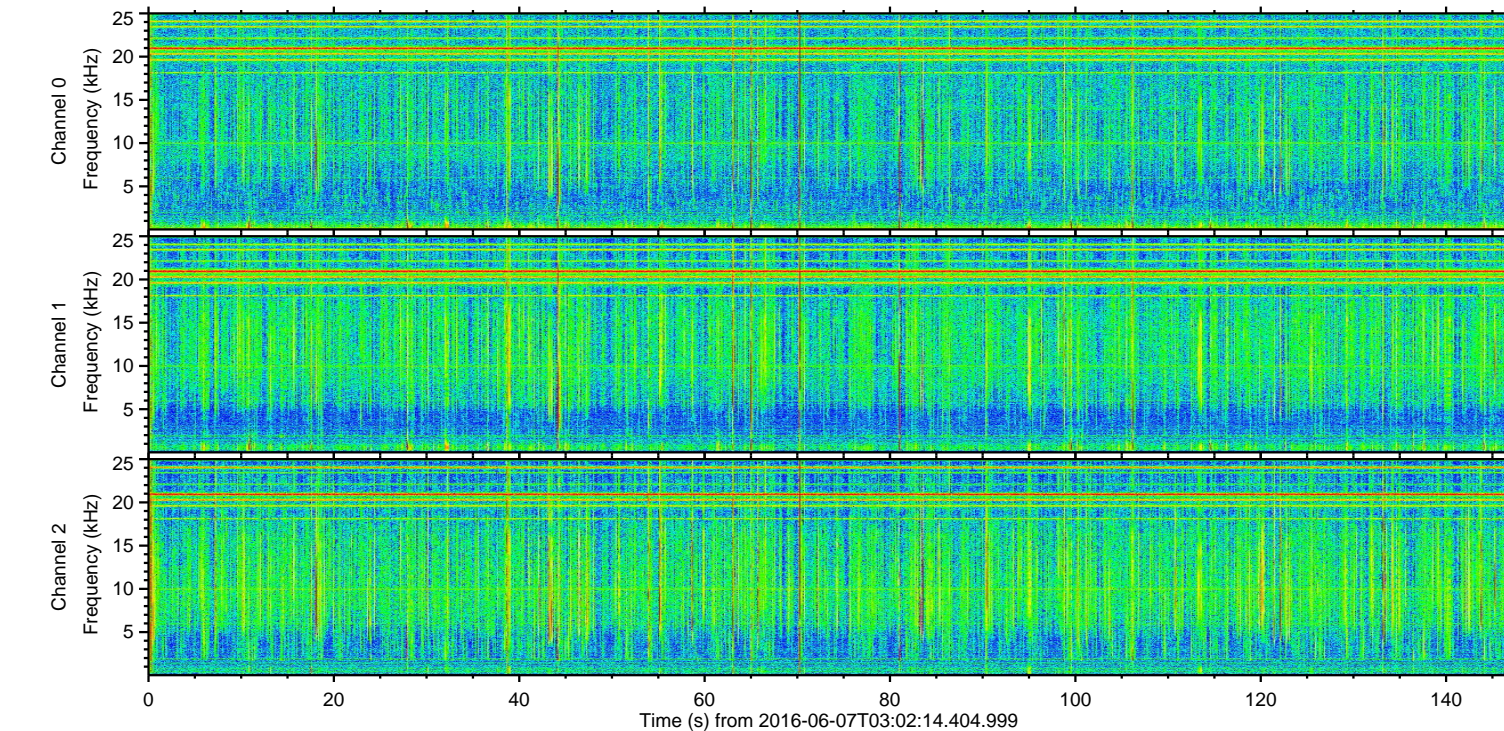
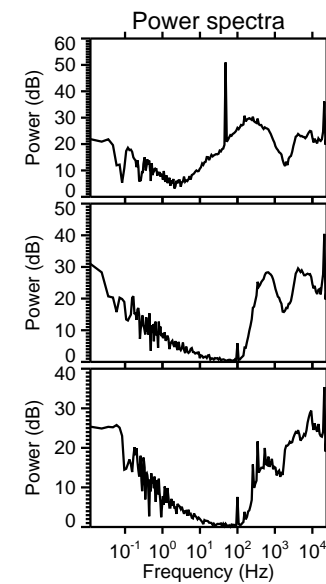
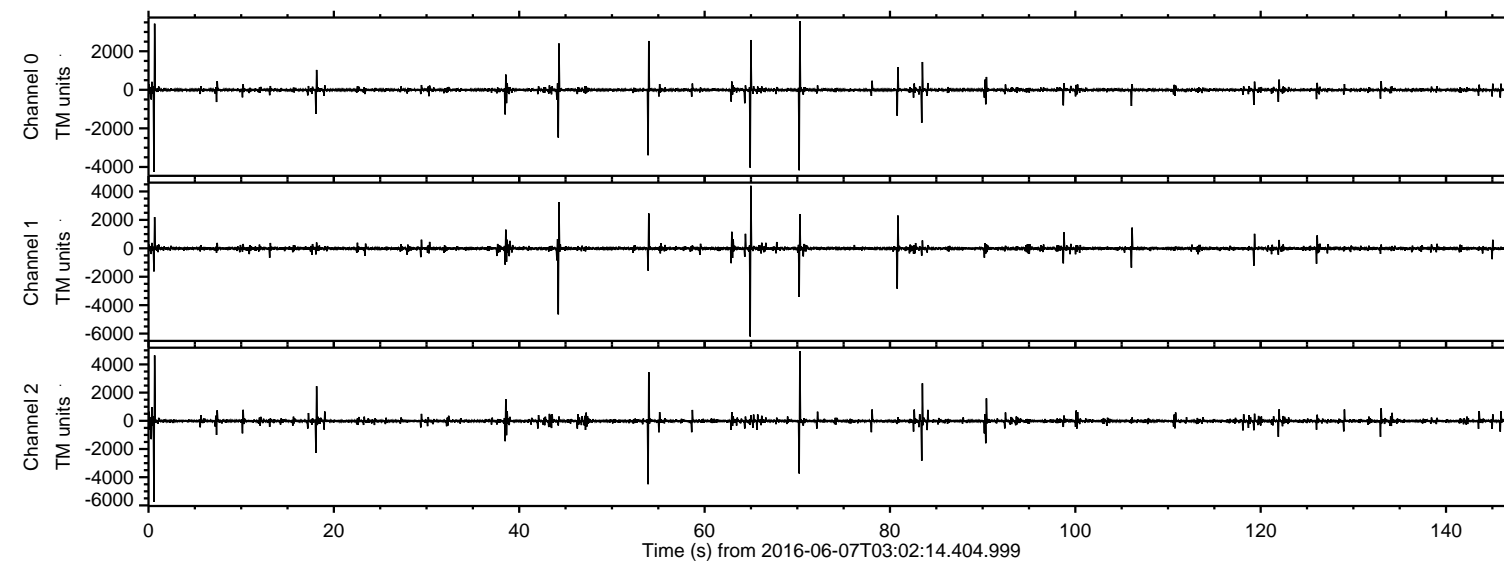
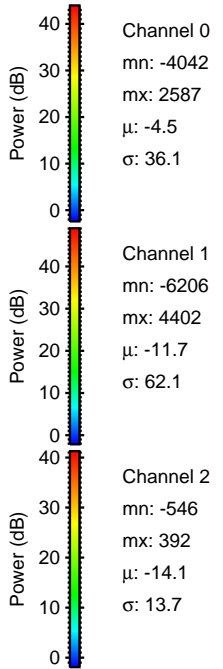
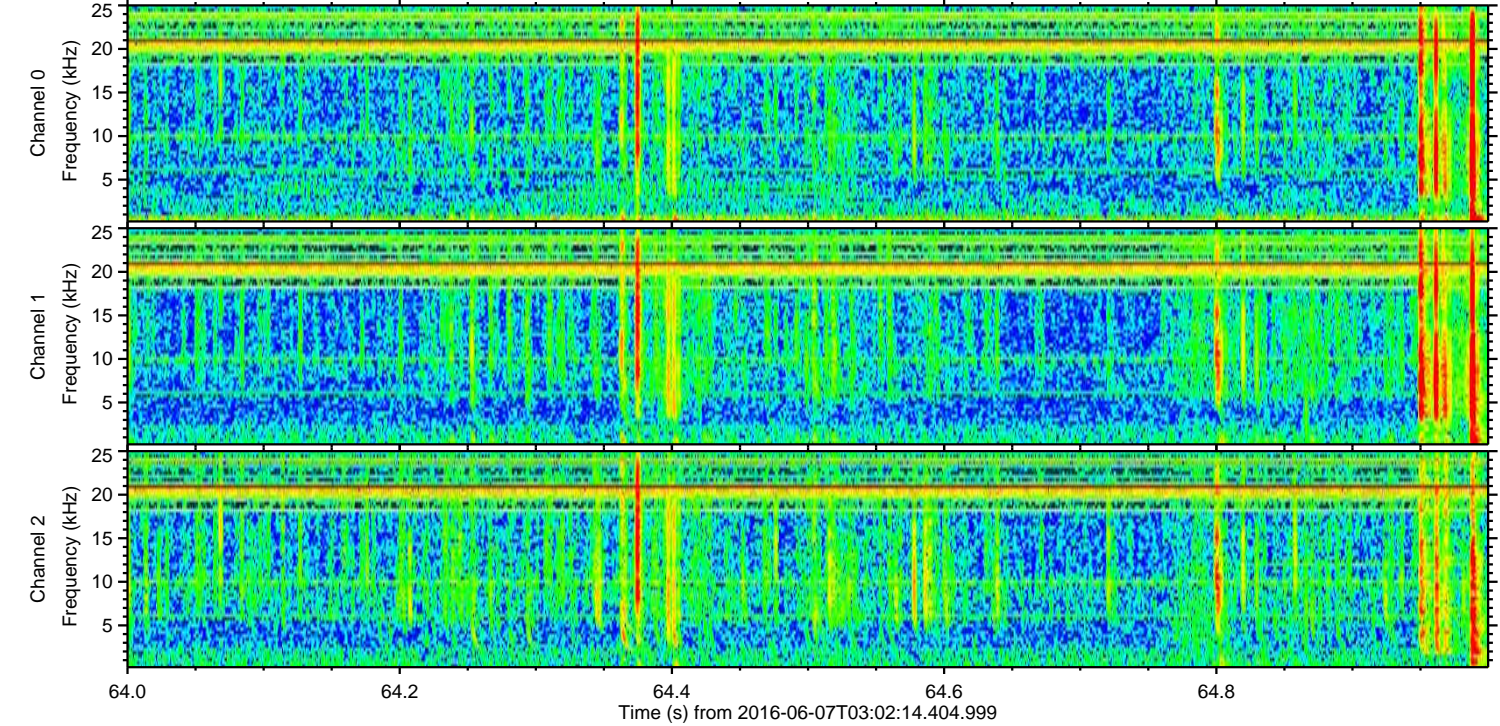
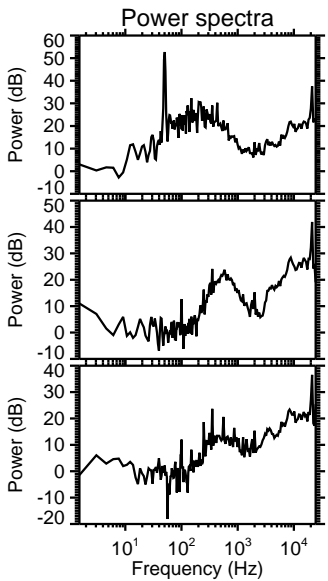
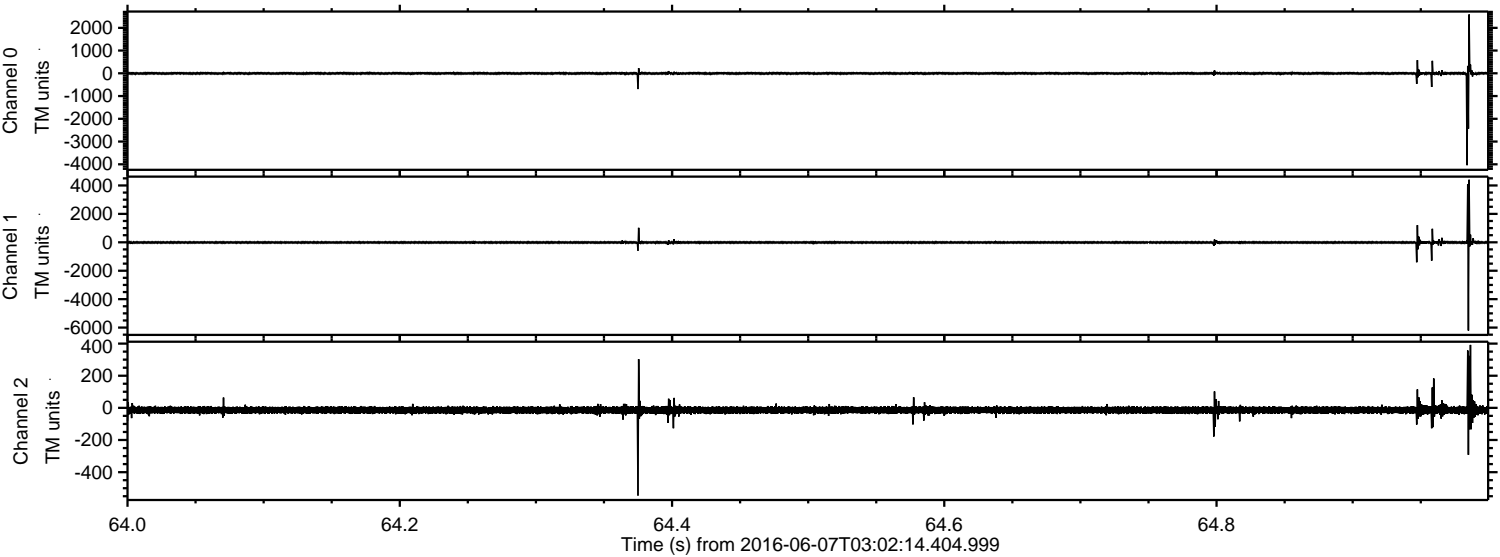


ELMAVAN 3D WAVEFORMS (Measured data sampled at 50 kHz) 51000 packets of 144 samples from 2016-06-07T03:02:14.404.999.

Processed Tue Jun 7 05:10:21 2016 by ELM ver.2012-10-06 from 001__elm20160607_030213__dat00.bin

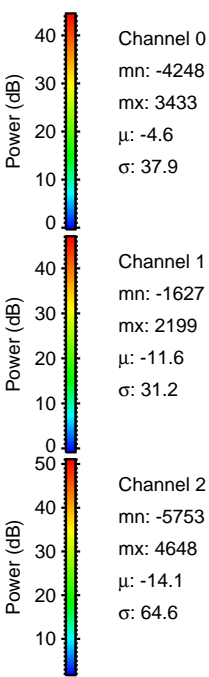
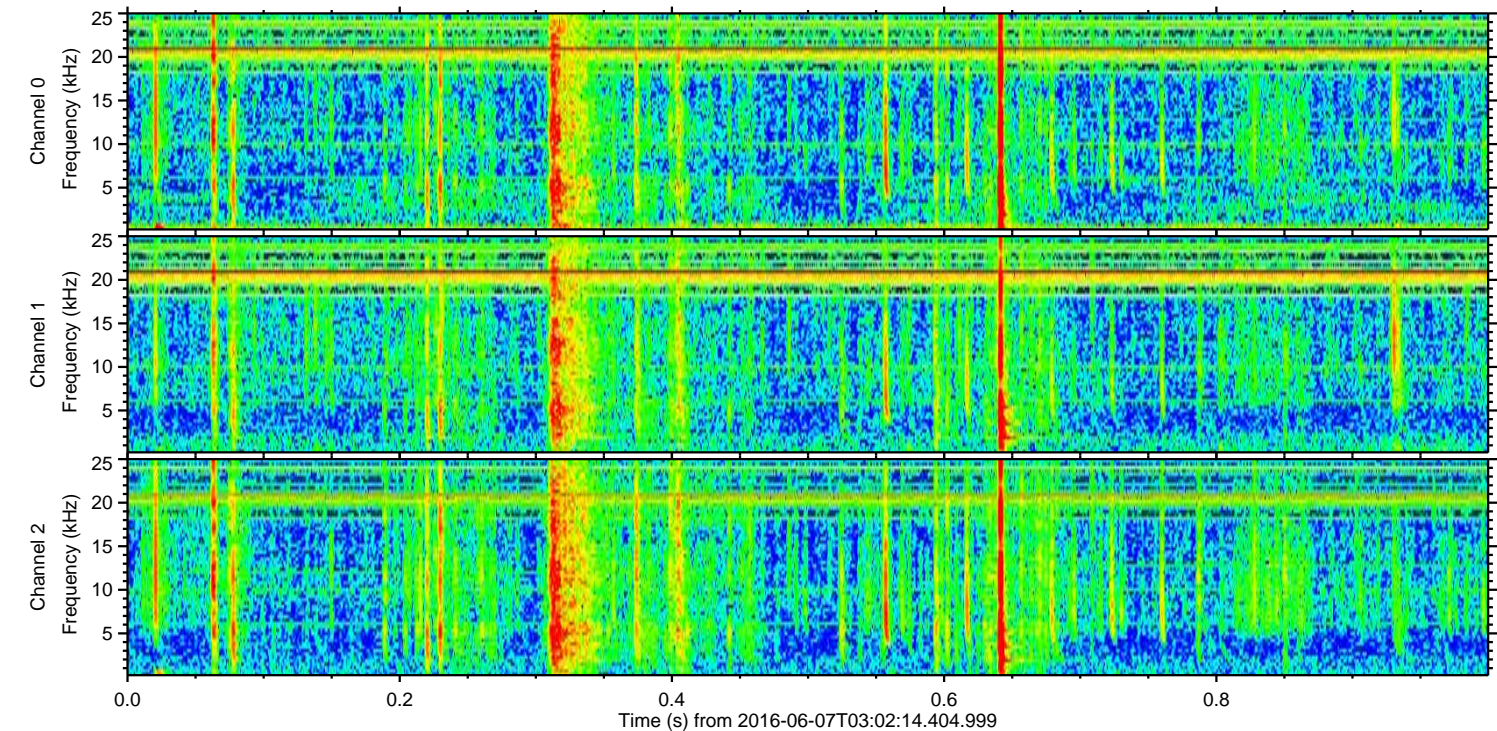
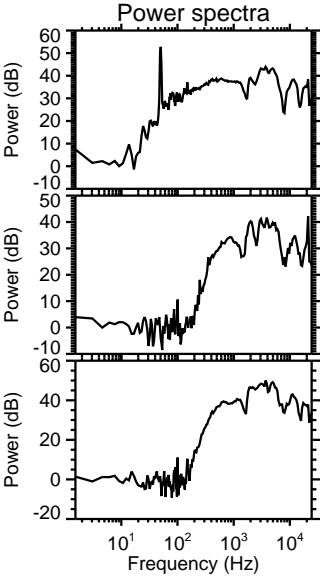
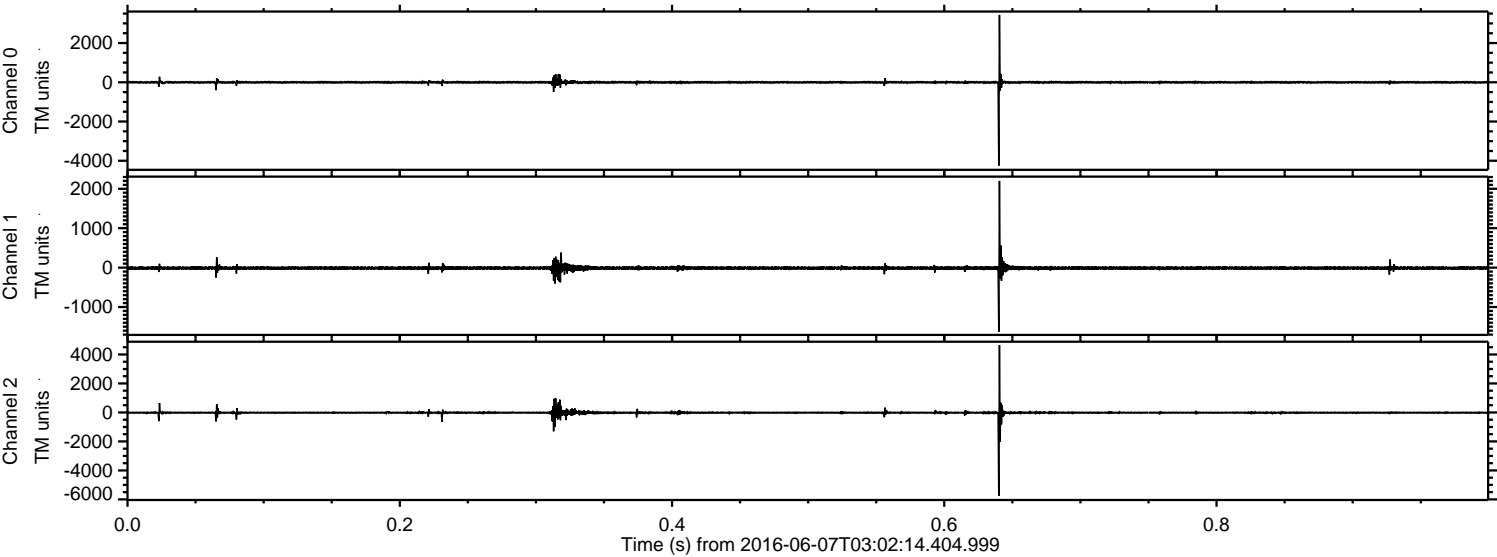


Processed Tue Jun 7 05:10:41 2016 by ELM ver.2012-10-06 from 001__elm20160607_030213__dat00.bin

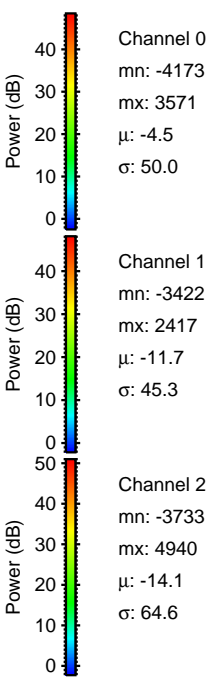
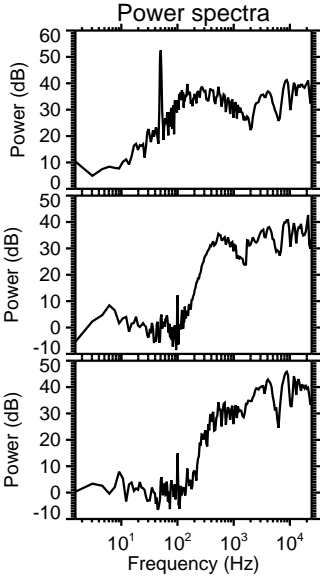
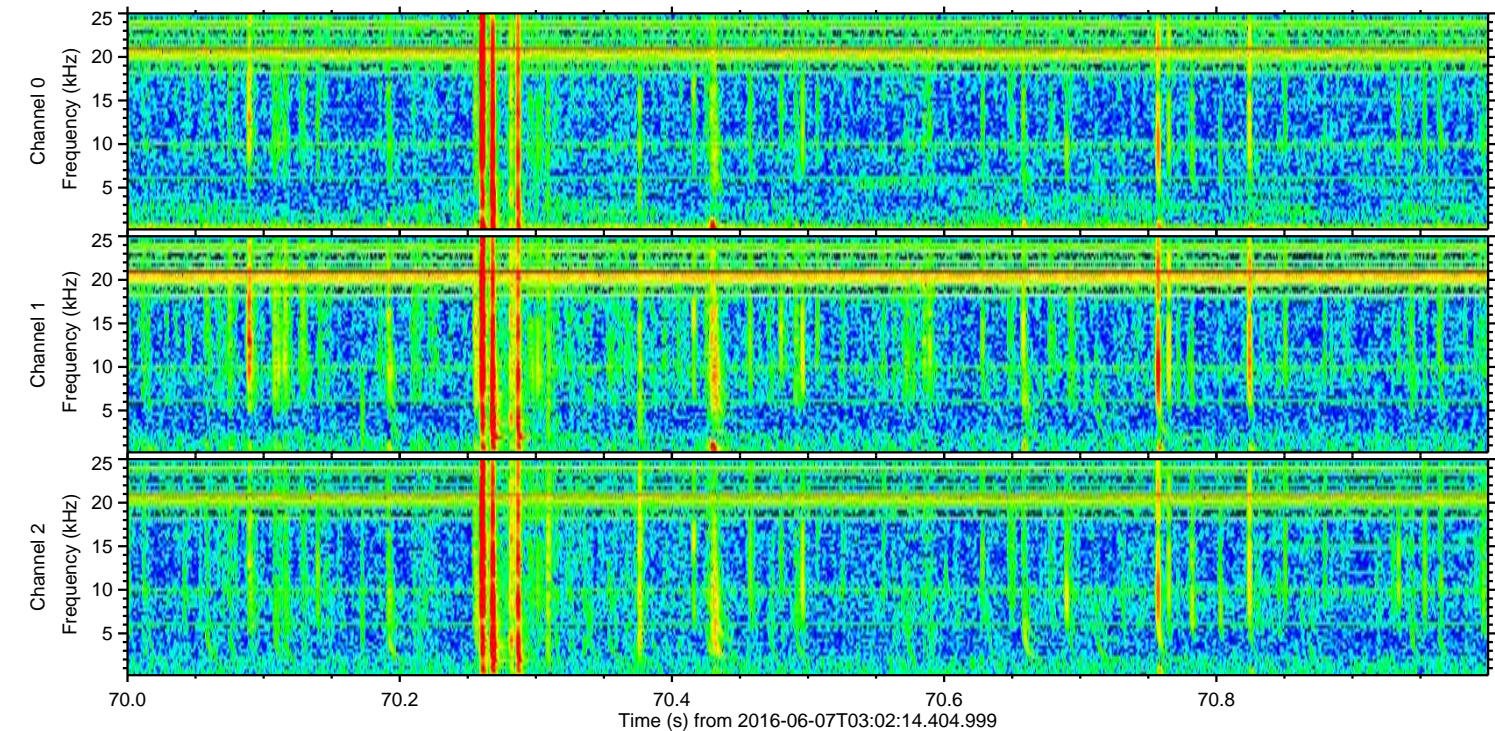
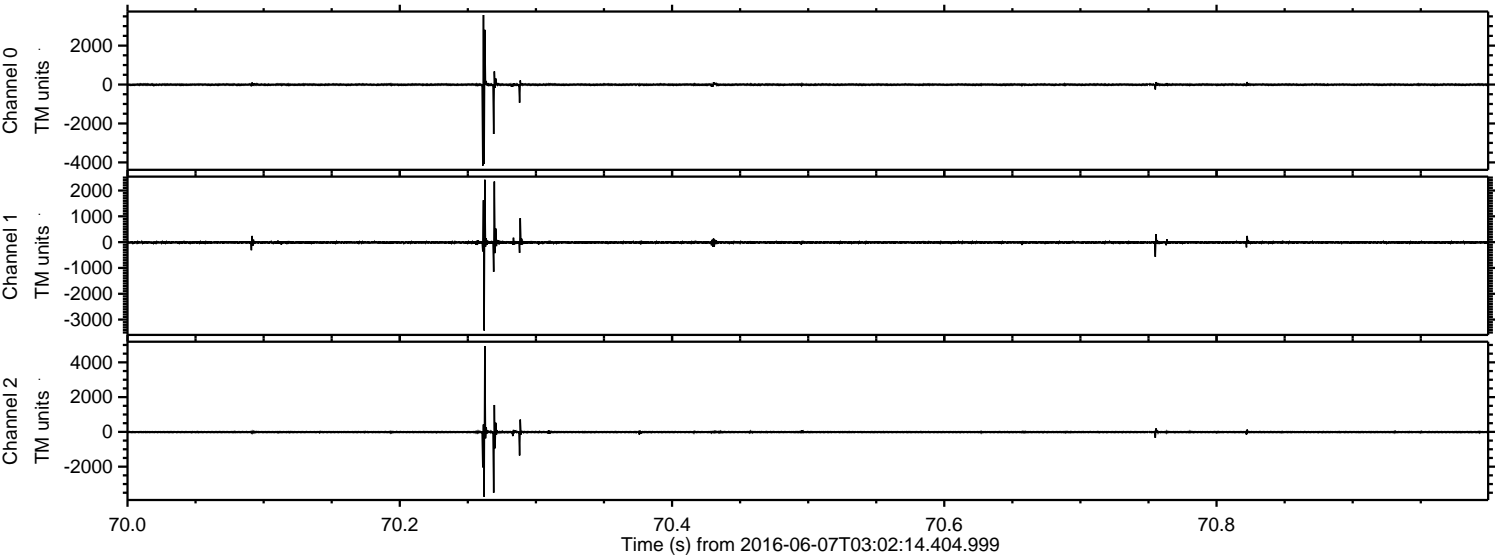


ELMAVAN 3D WAVEFORMS (Measured data sampled at 50 kHz) 51000 packets of 144 samples from 2016-06-07T03:02:14.404.999. Part 1/147

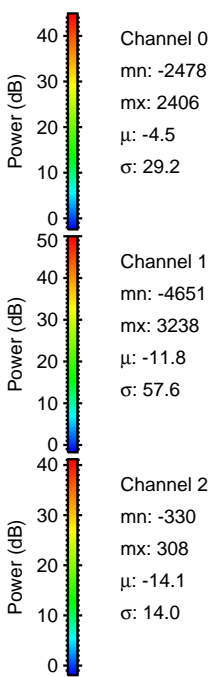
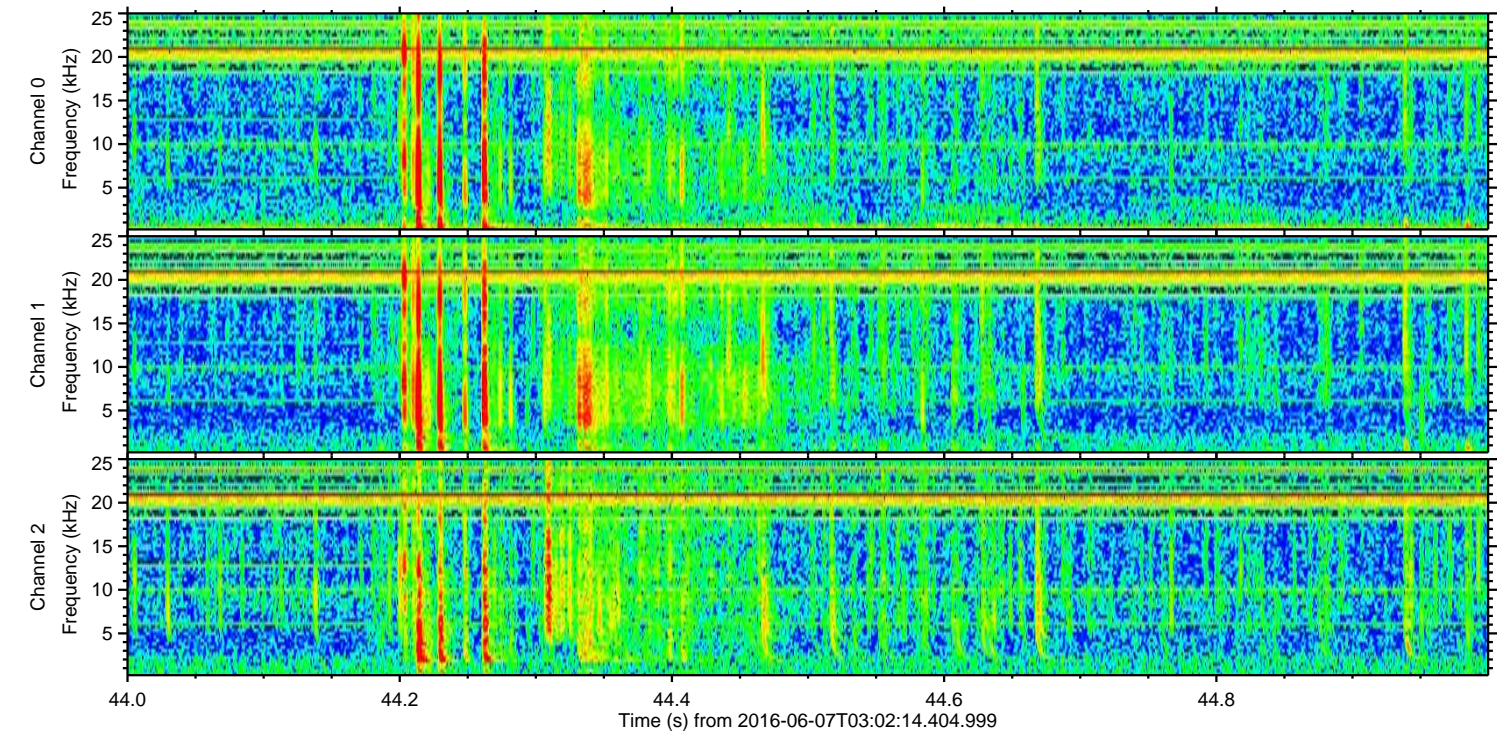
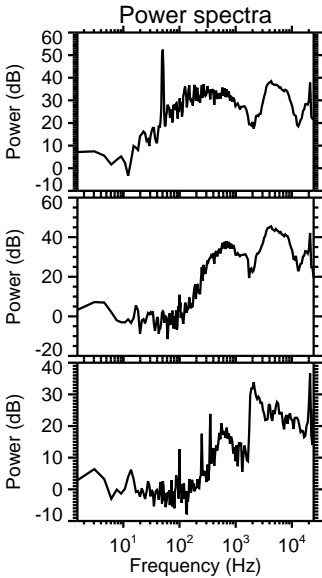
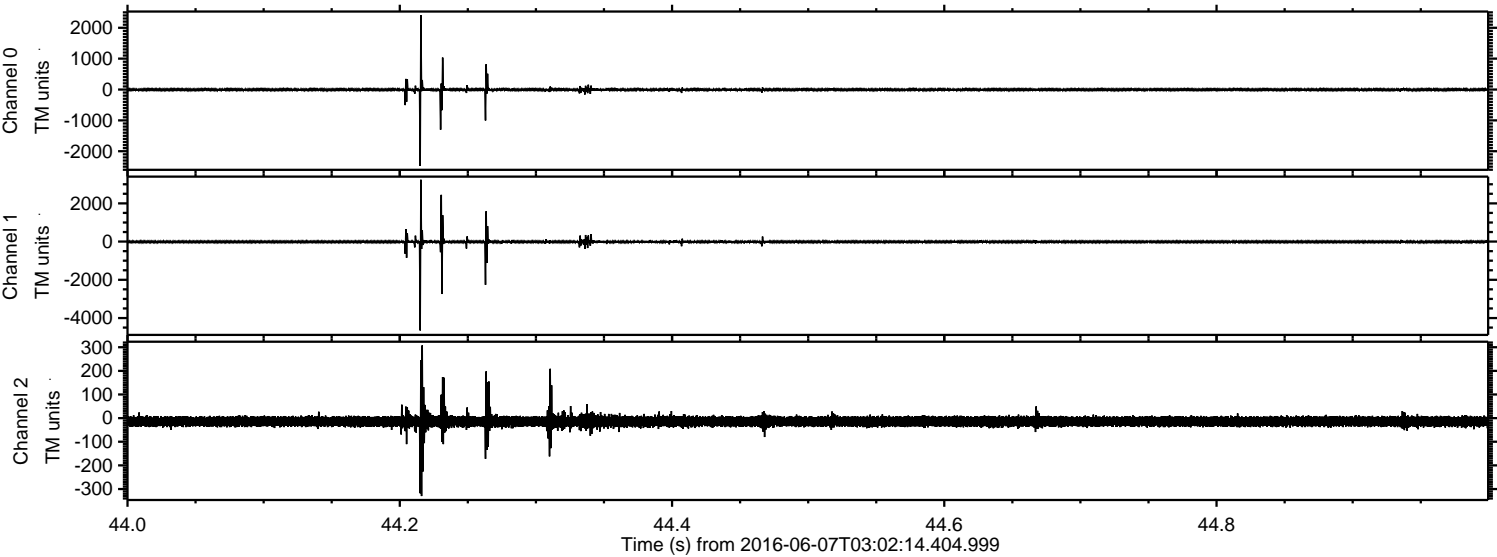
Processed Tue Jun 7 05:10:42 2016 by ELM ver.2012-10-06 from 001__elm20160607_030213__dat00.bin



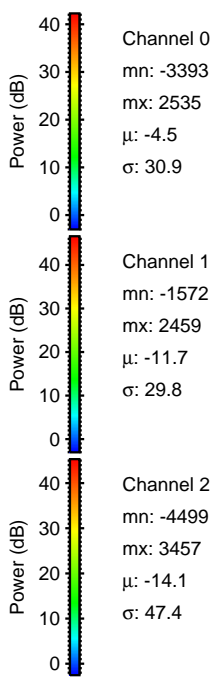
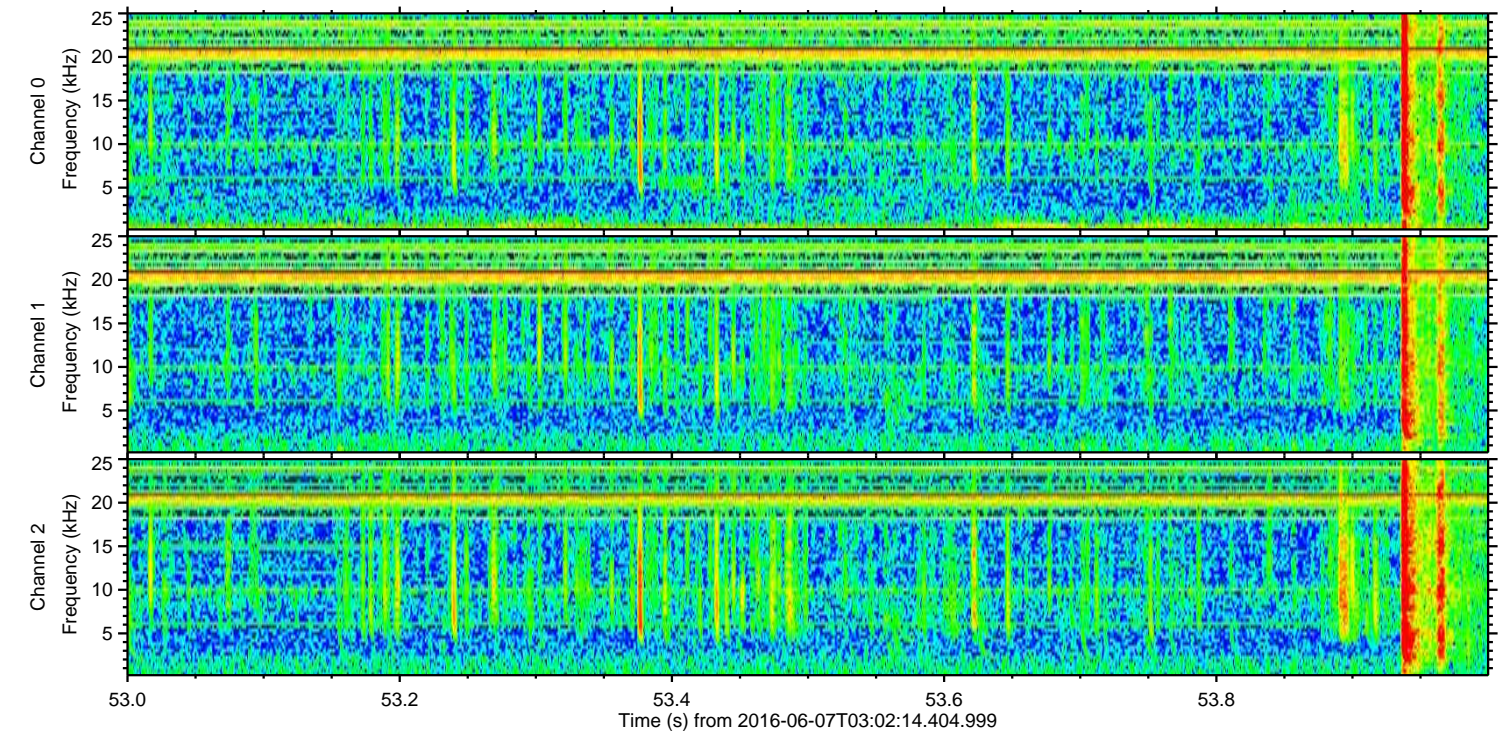
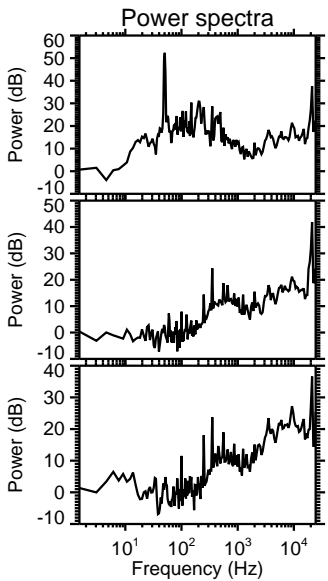
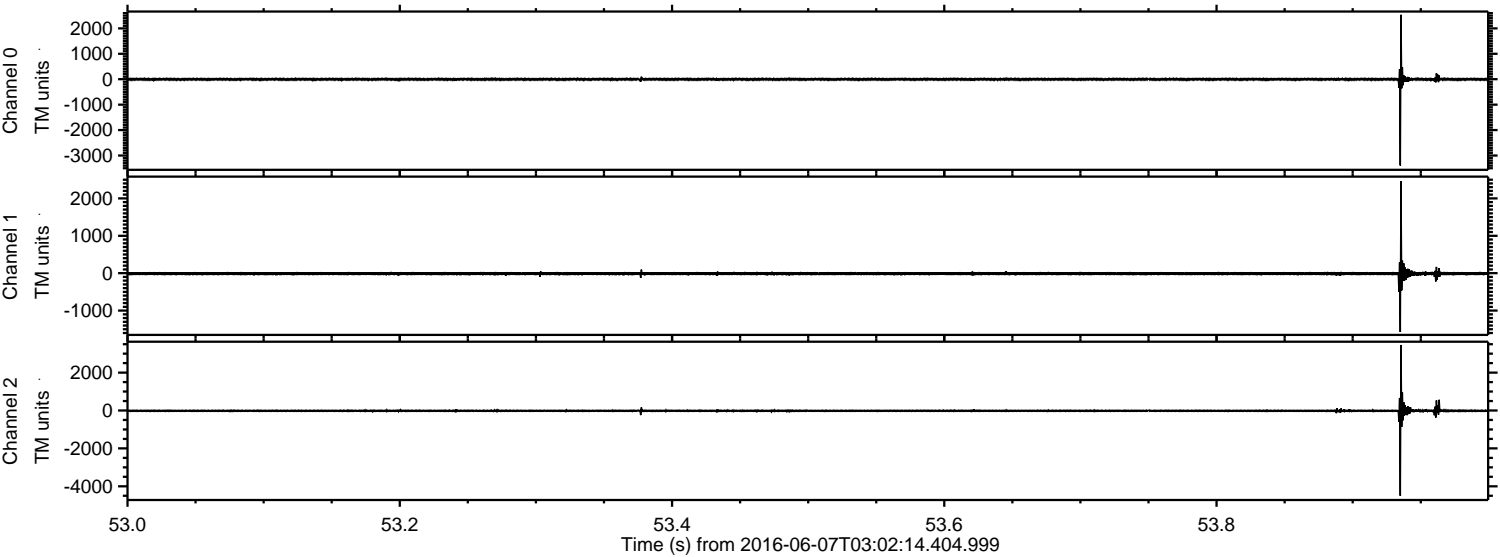
Processed Tue Jun 7 05:10:43 2016 by ELM ver.2012-10-06 from 001__elm20160607_030213__dat00.bin



Processed Tue Jun 7 05:10:44 2016 by ELM ver.2012-10-06 from 001__elm20160607_030213__dat00.bin

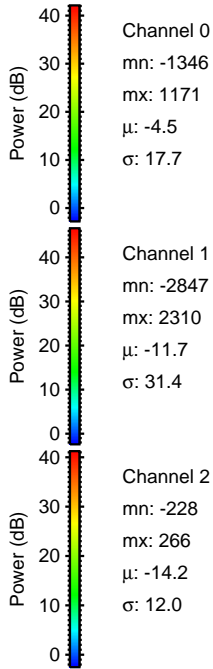
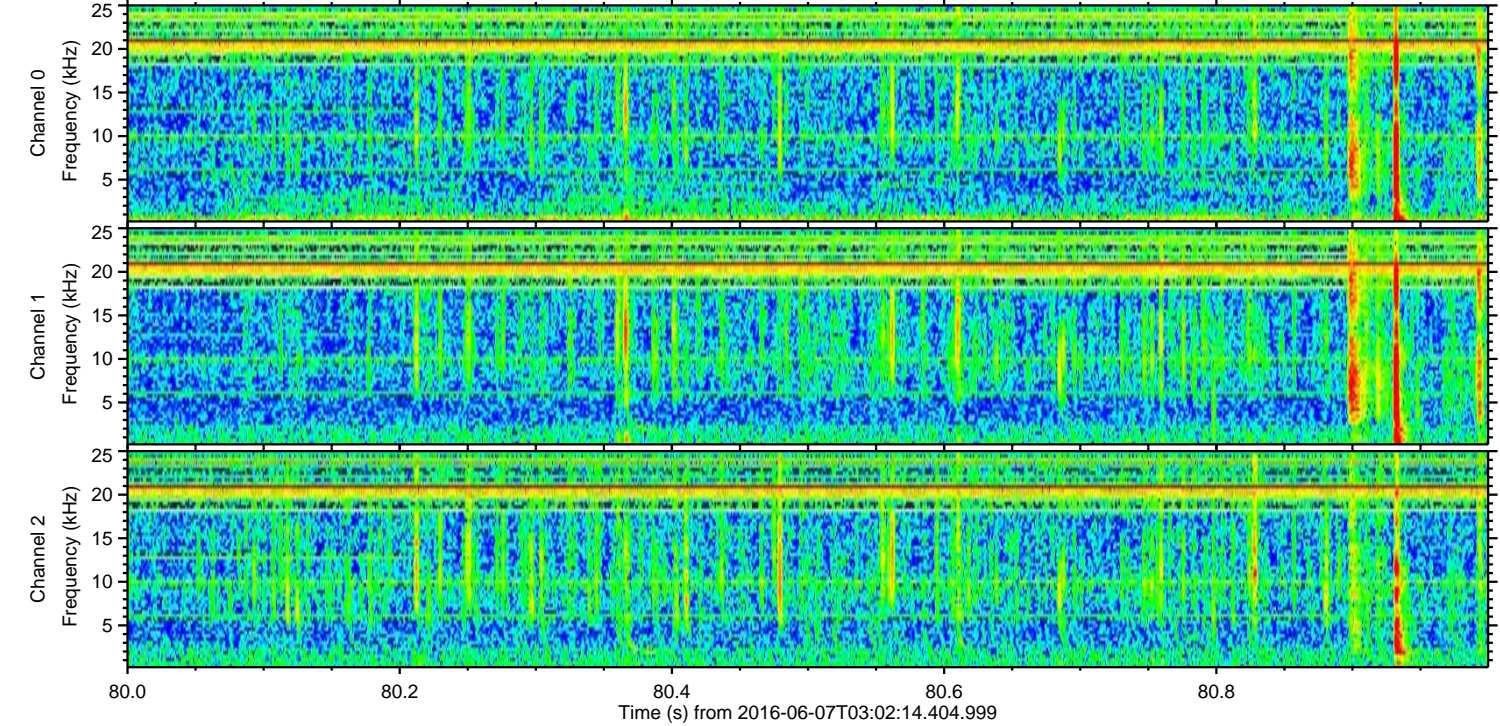
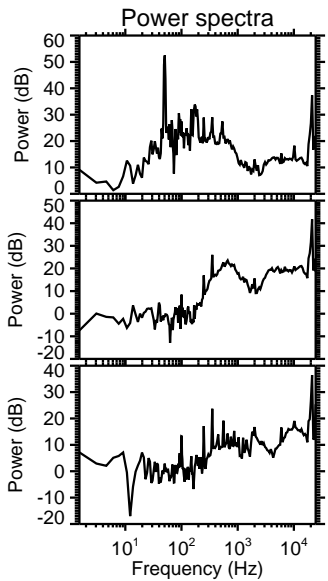
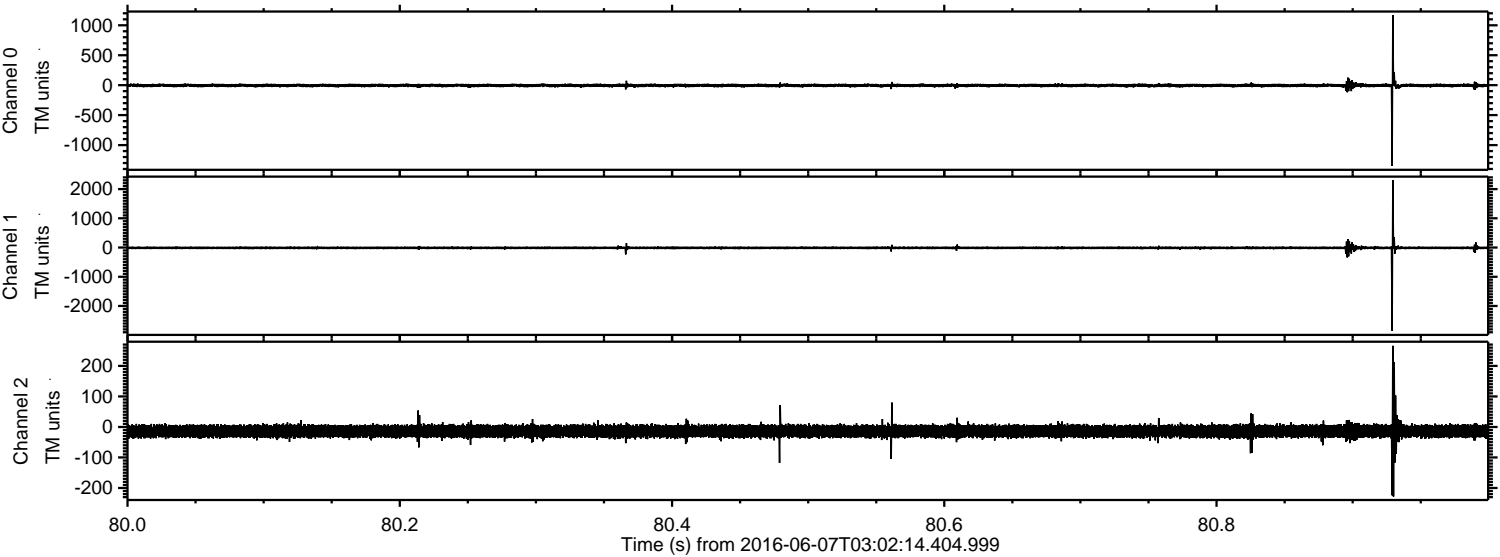


Processed Tue Jun 7 05:10:45 2016 by ELM ver.2012-10-06 from 001__elm20160607_030213__dat00.bin

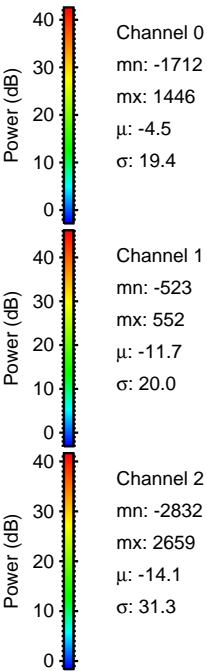
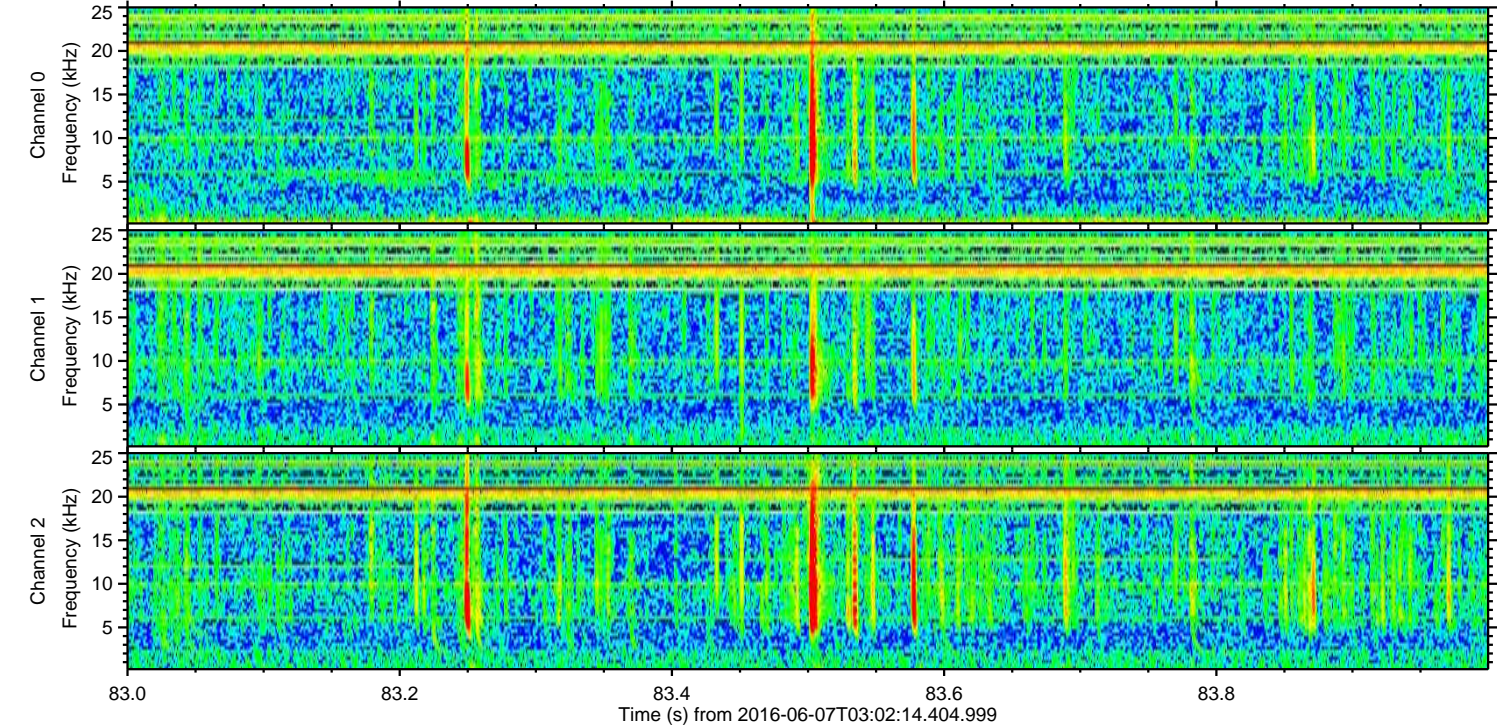
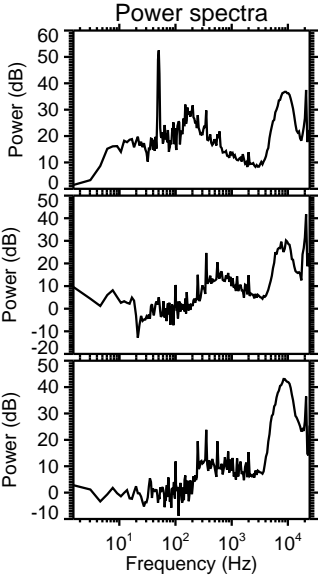
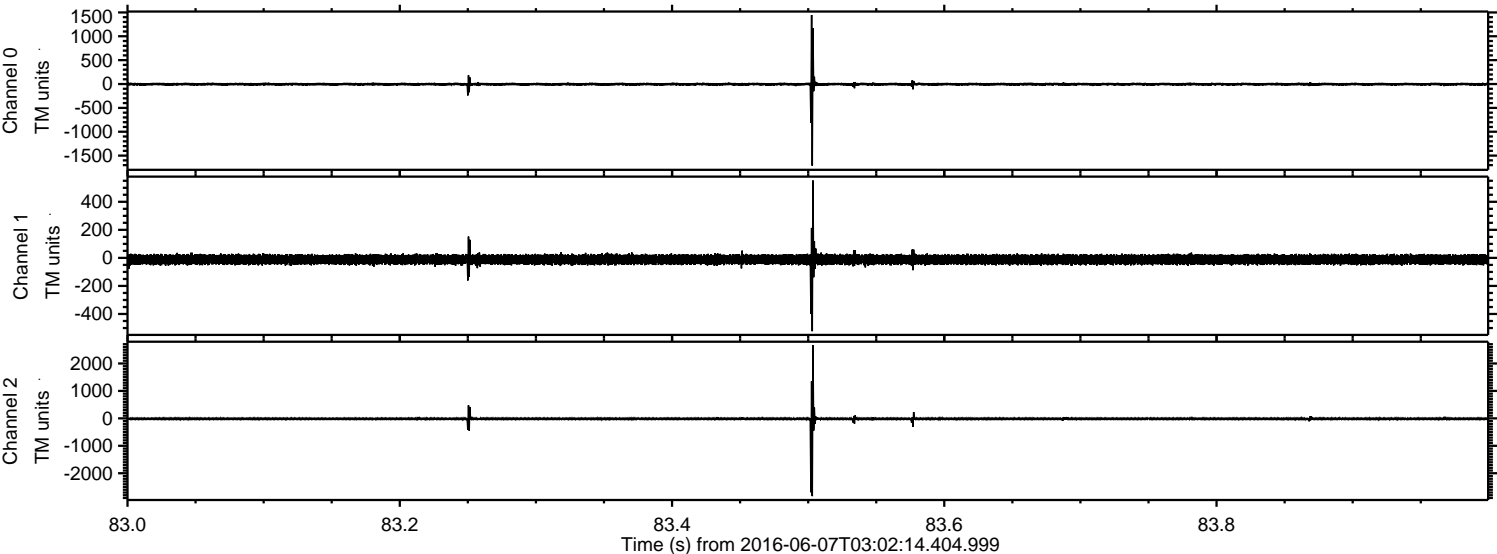


ELMAVAN 3D WAVEFORMS (Measured data sampled at 50 kHz) 51000 packets of 144 samples from 2016-06-07T03:02:14.404.999. Part 81/147

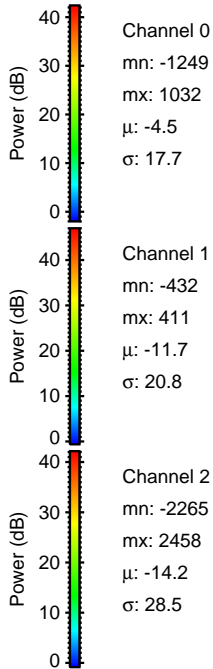
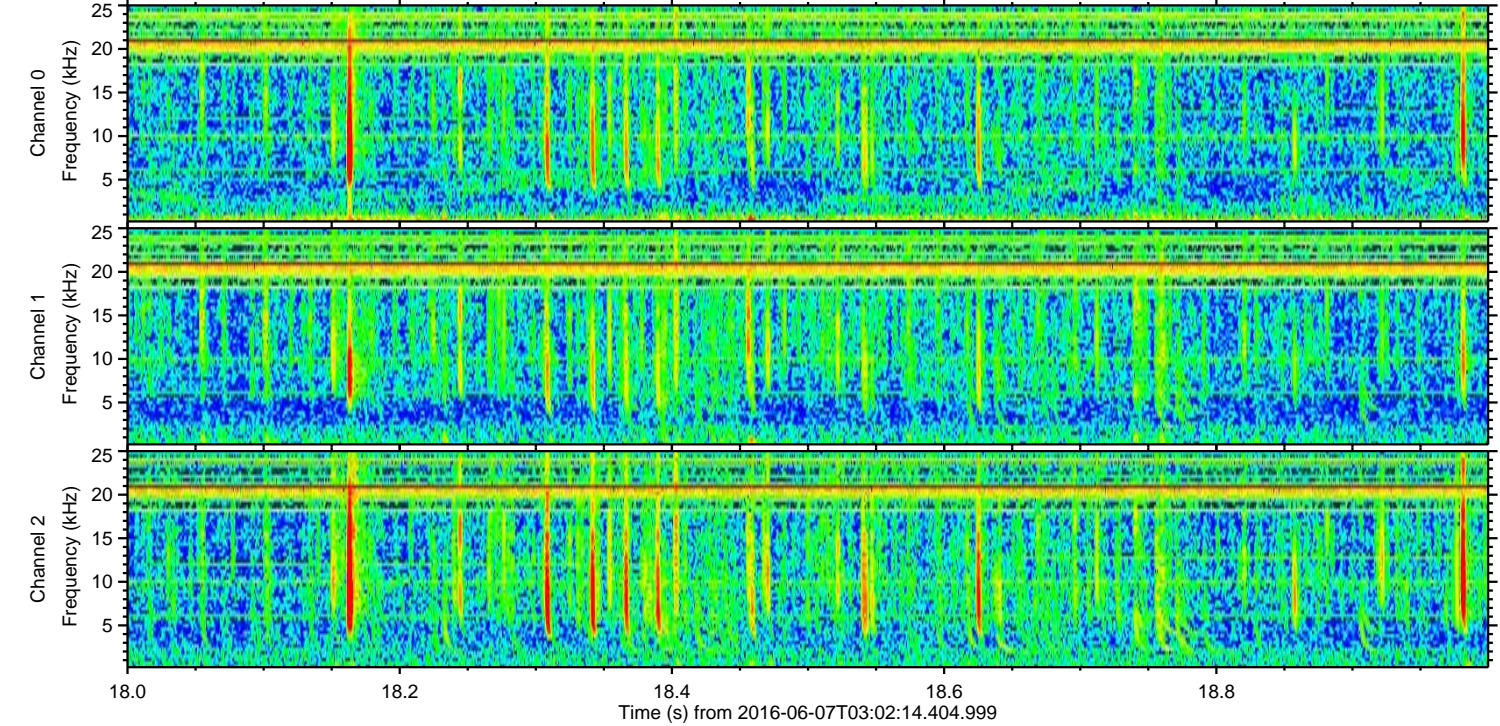
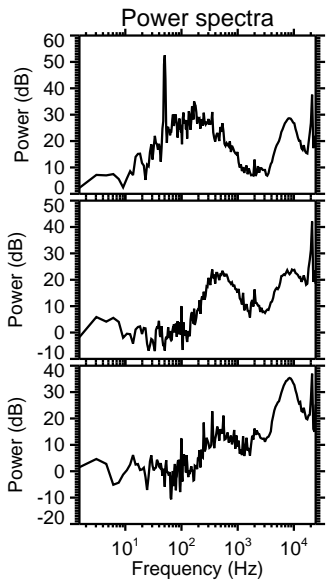
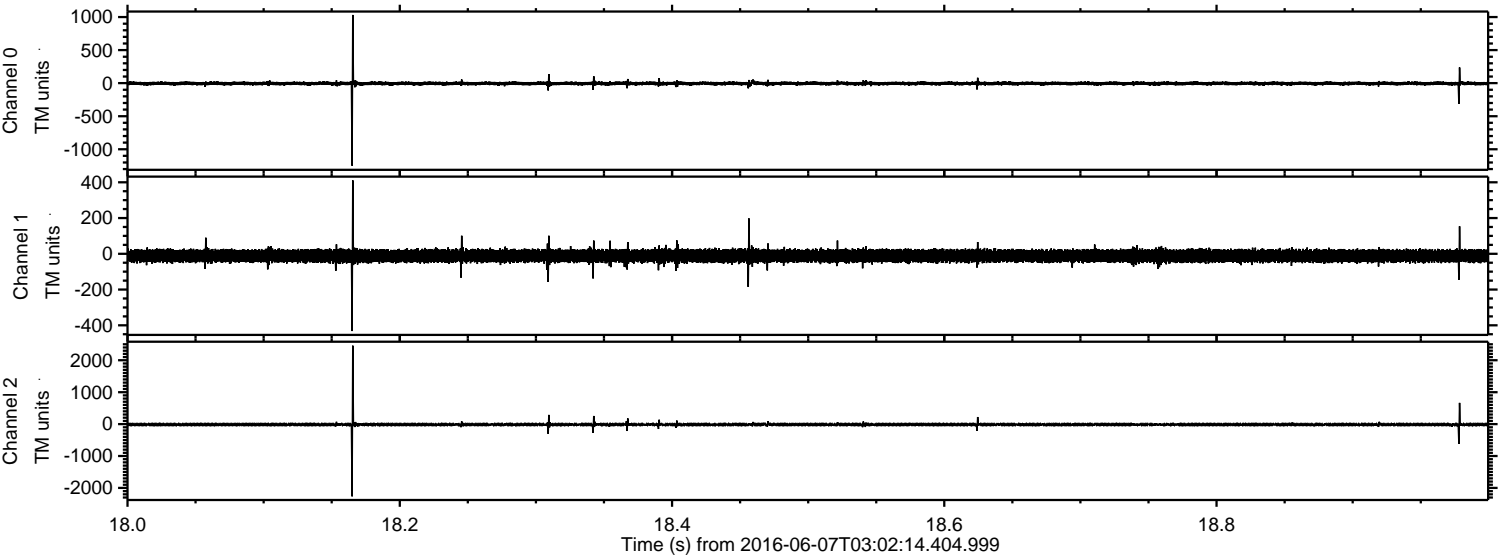
Processed Tue Jun 7 05:10:46 2016 by ELM ver.2012-10-06 from 001__elm20160607_030213__dat00.bin



Processed Tue Jun 7 05:10:47 2016 by ELM ver.2012-10-06 from 001__elm20160607_030213__dat00.bin



Processed Tue Jun 7 05:10:48 2016 by ELM ver.2012-10-06 from 001__elm20160607_030213__dat00.bin

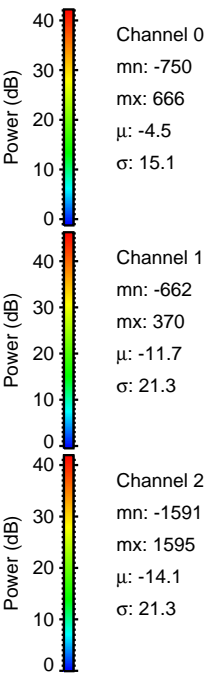
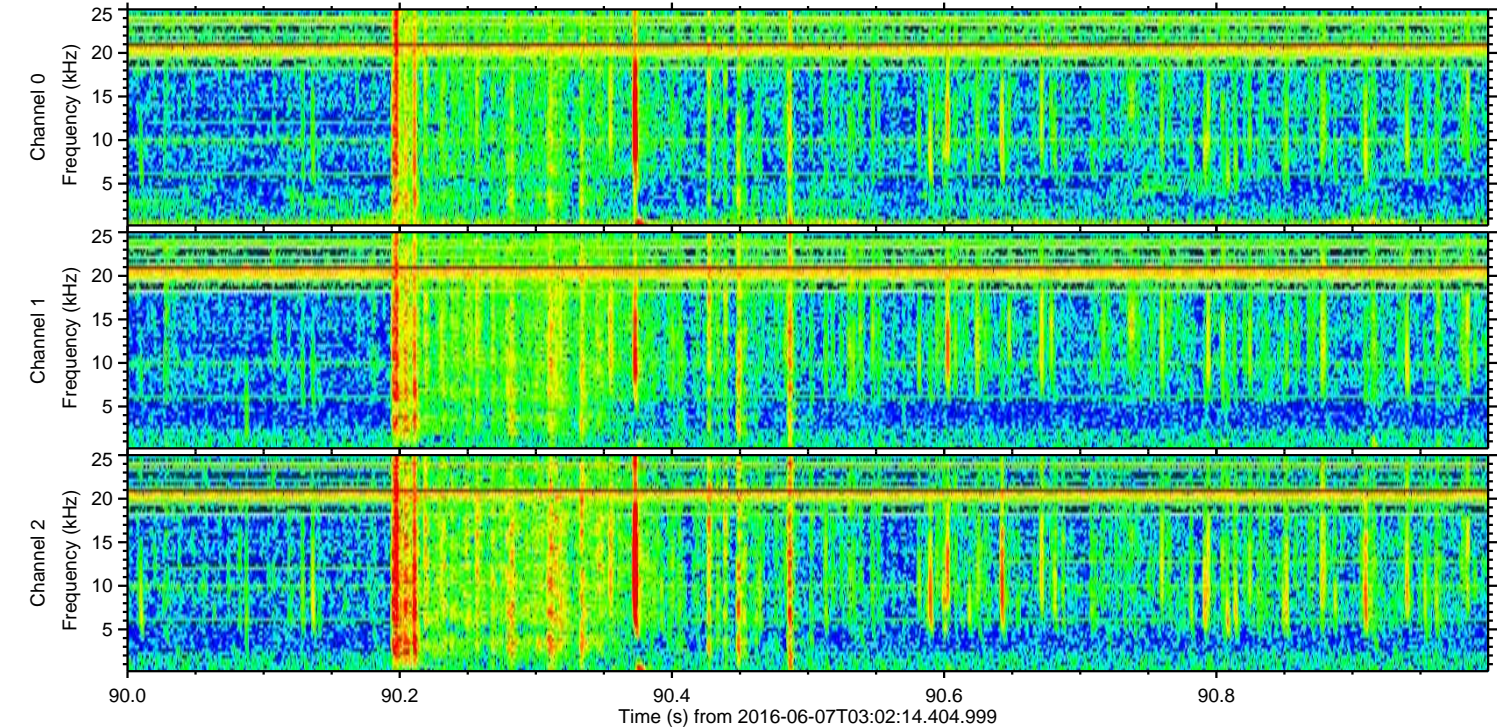
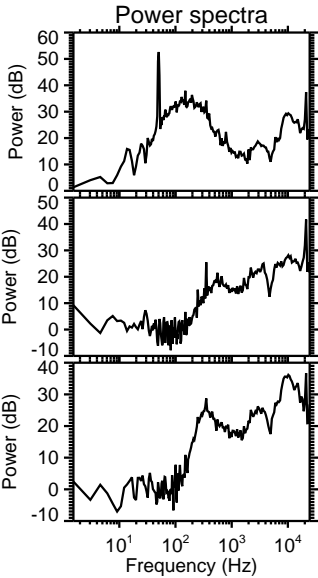
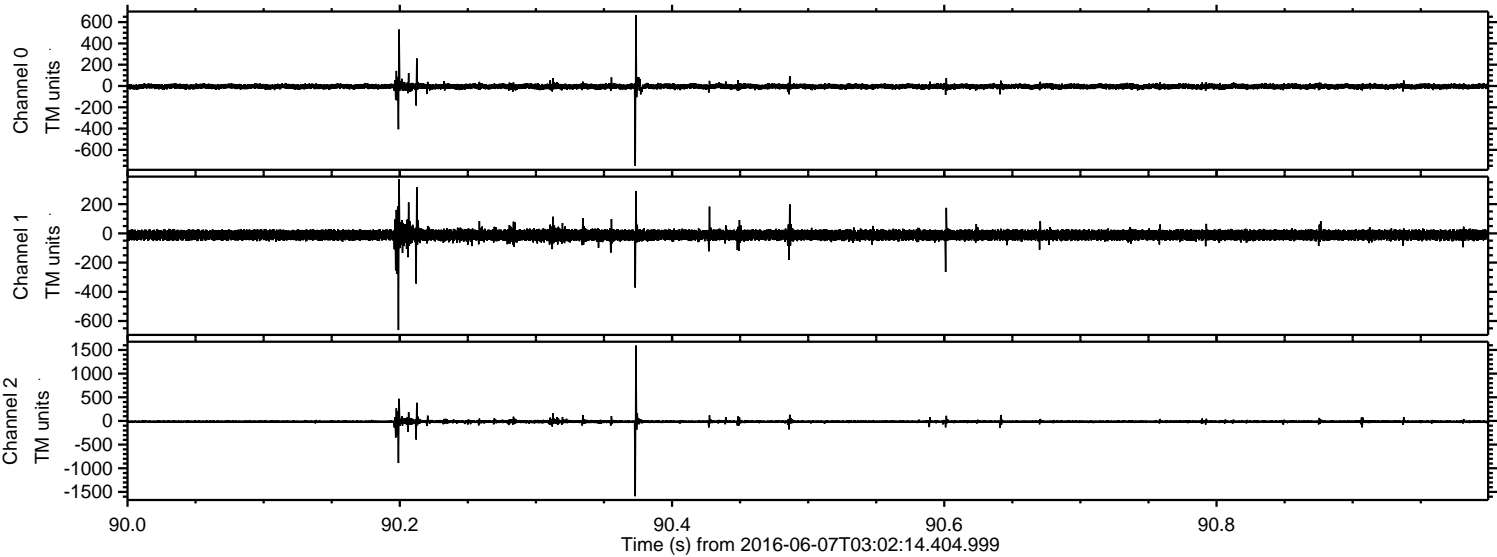


Channel 0
mn: -1249
mx: 1032
 μ : -4.5
 σ : 17.7

Channel 1
mn: -432
mx: 411
 μ : -11.7
 σ : 20.8

Channel 2
mn: -2265
mx: 2458
 μ : -14.2
 σ : 28.5

Processed Tue Jun 7 05:10:49 2016 by ELM ver.2012-10-06 from 001__elm20160607_030213__dat00.bin



Channel 0
mn: -750
mx: 666
 μ : -4.5
 σ : 15.1

Channel 1
mn: -662
mx: 370
 μ : -11.7
 σ : 21.3

Channel 2
mn: -1591
mx: 1595
 μ : -14.1
 σ : 21.3

Processed Tue Jun 7 05:10:50 2016 by ELM ver.2012-10-06 from 001__elm20160607_030213__dat00.bin

