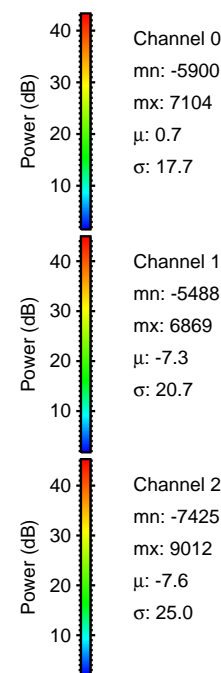
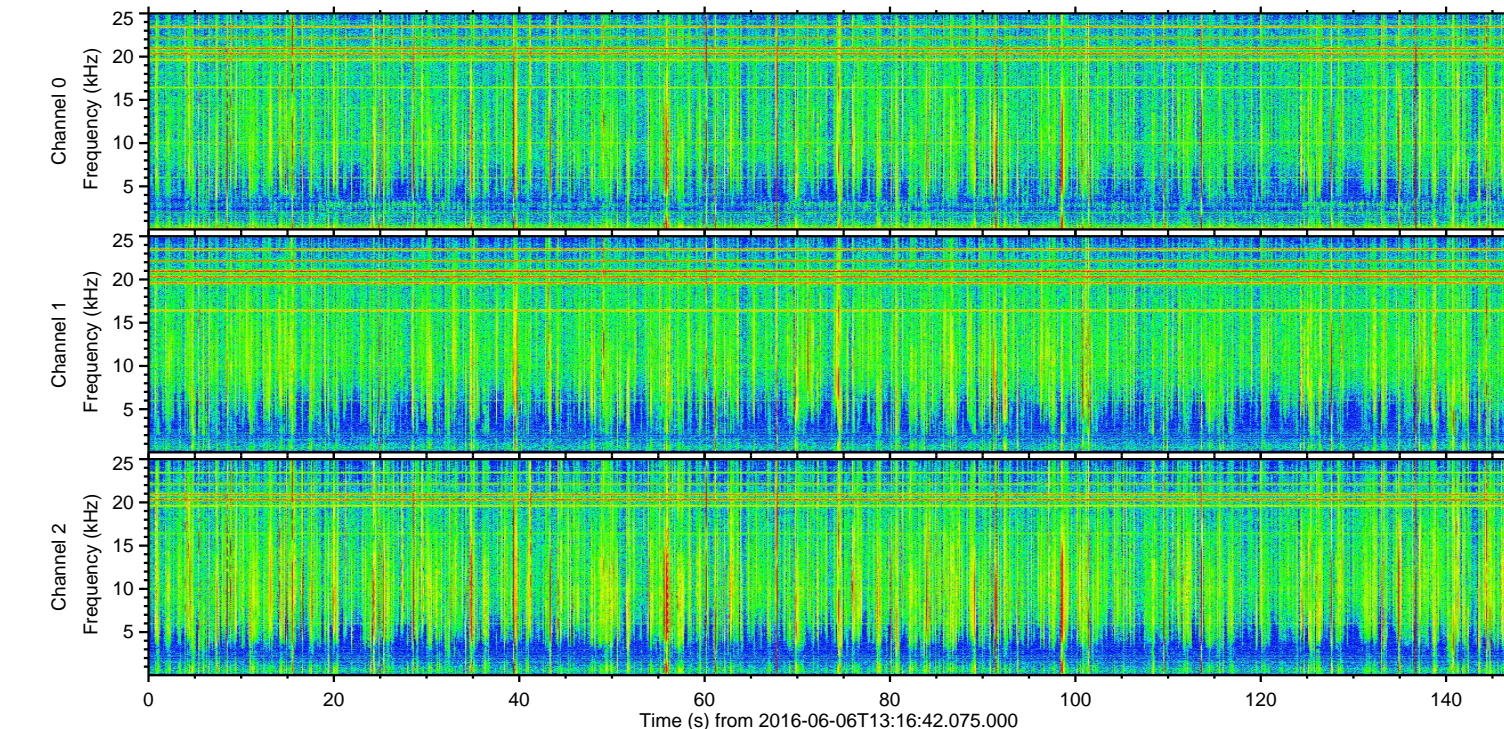
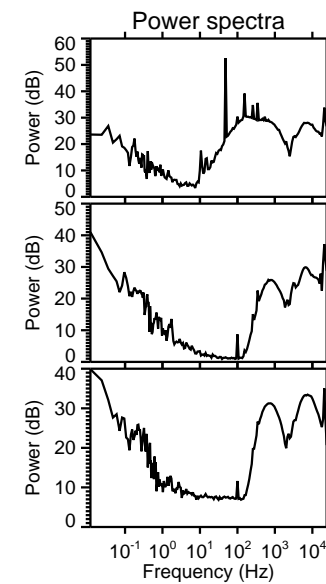
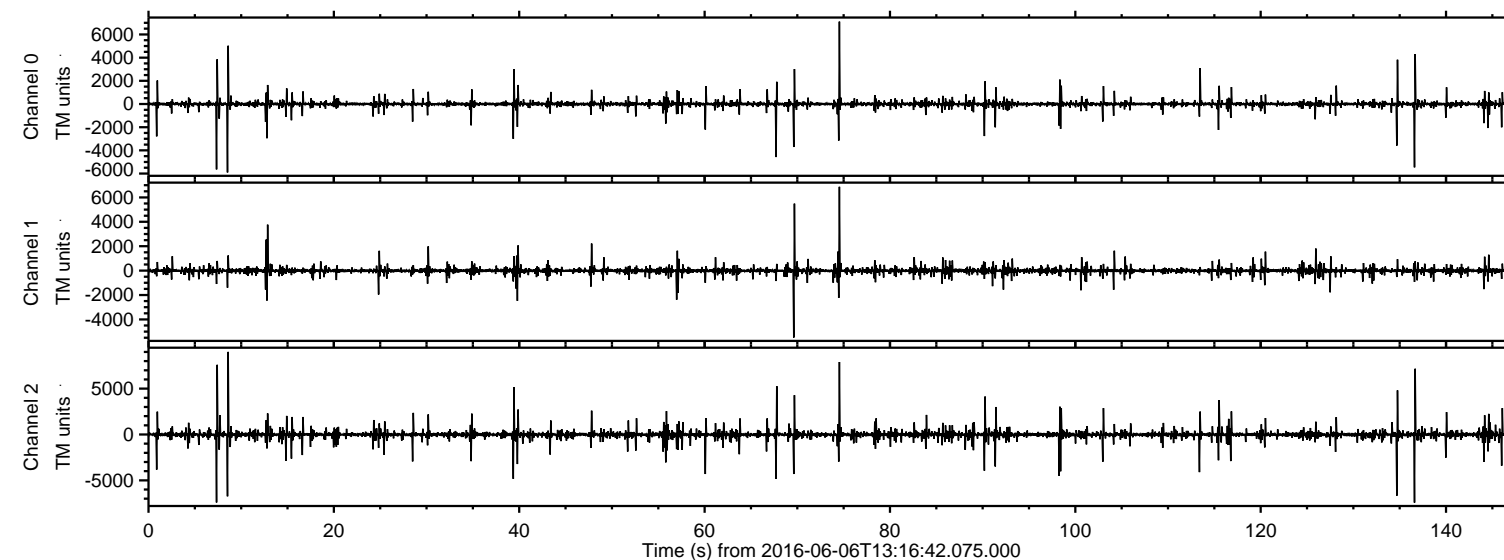
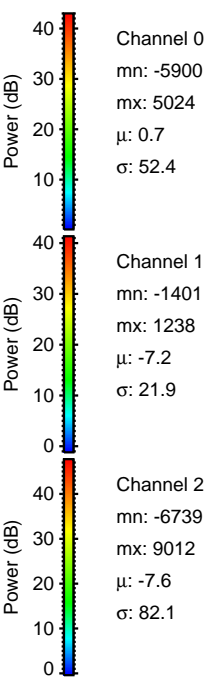
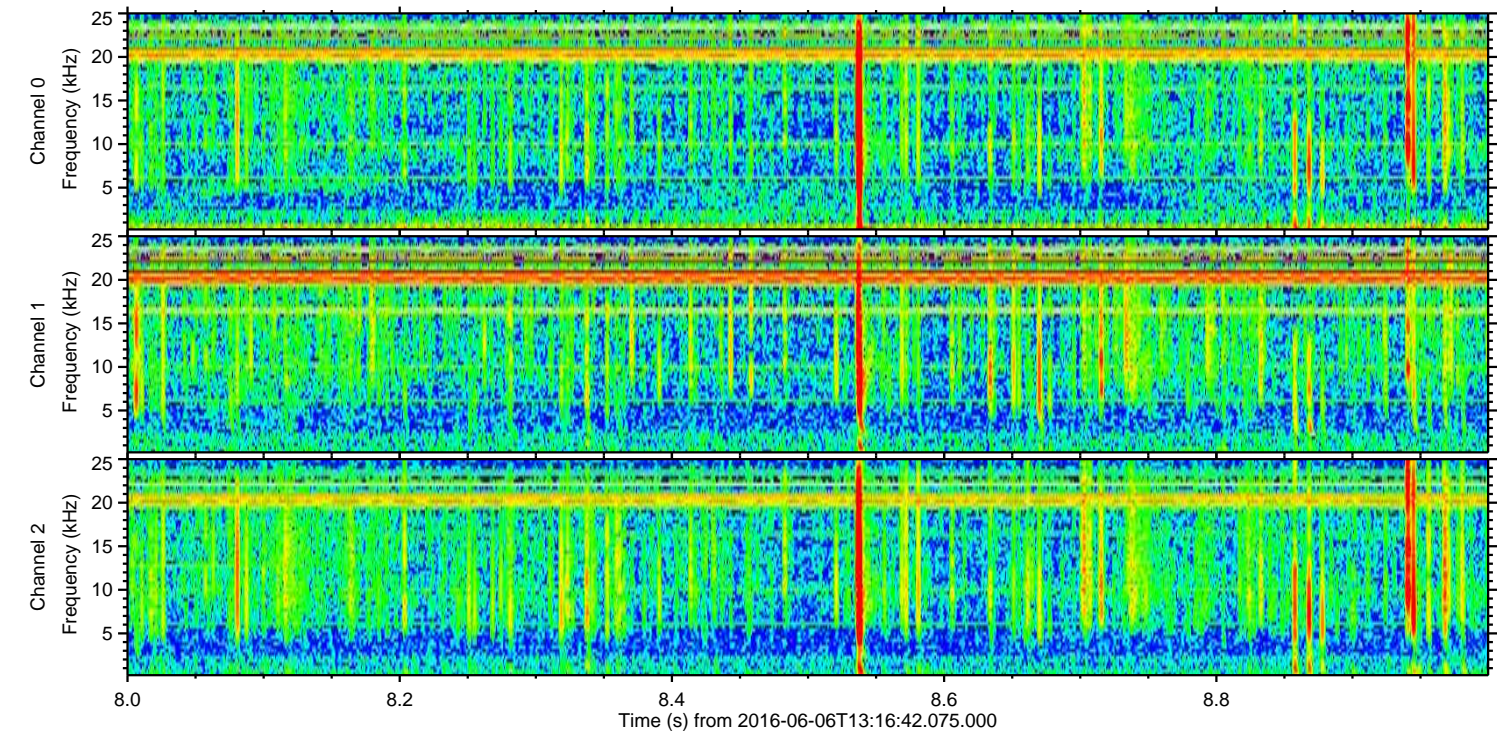
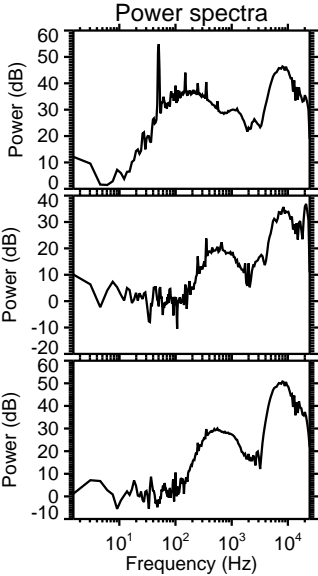
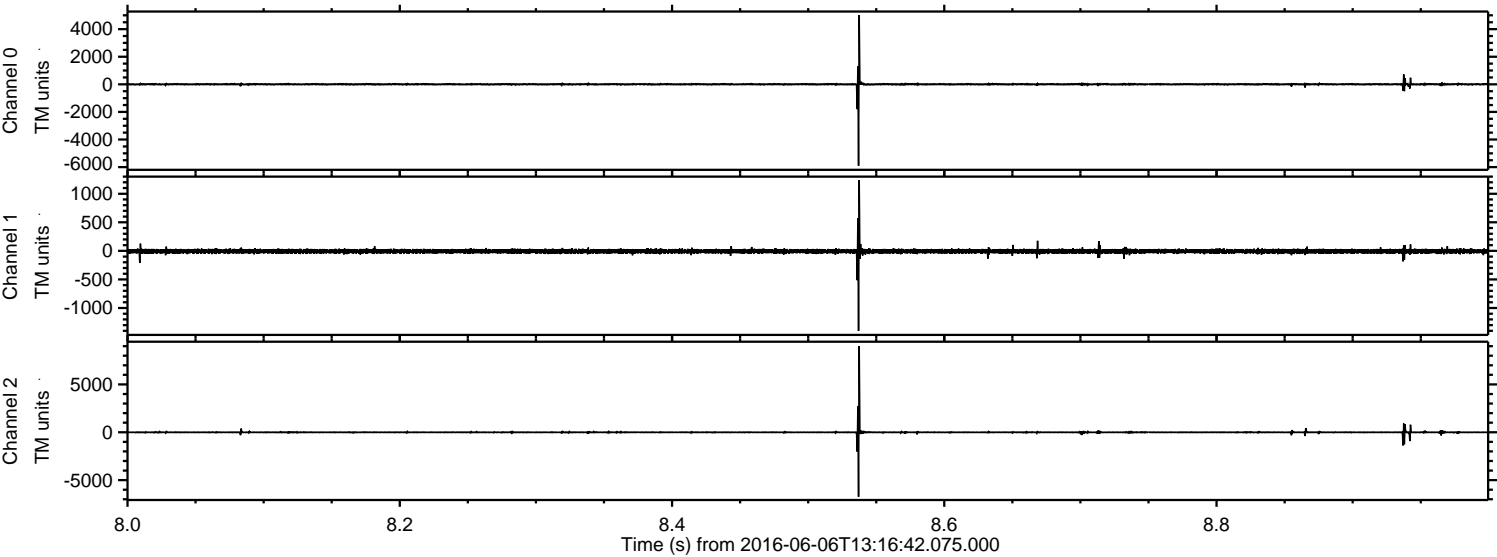


ELMAVAN 3D WAVEFORMS (Measured data sampled at 50 kHz) 51000 packets of 144 samples from 2016-06-06T13:16:42.075.000.

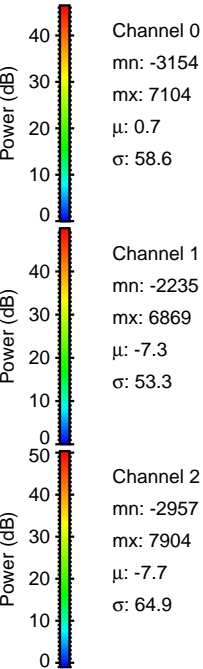
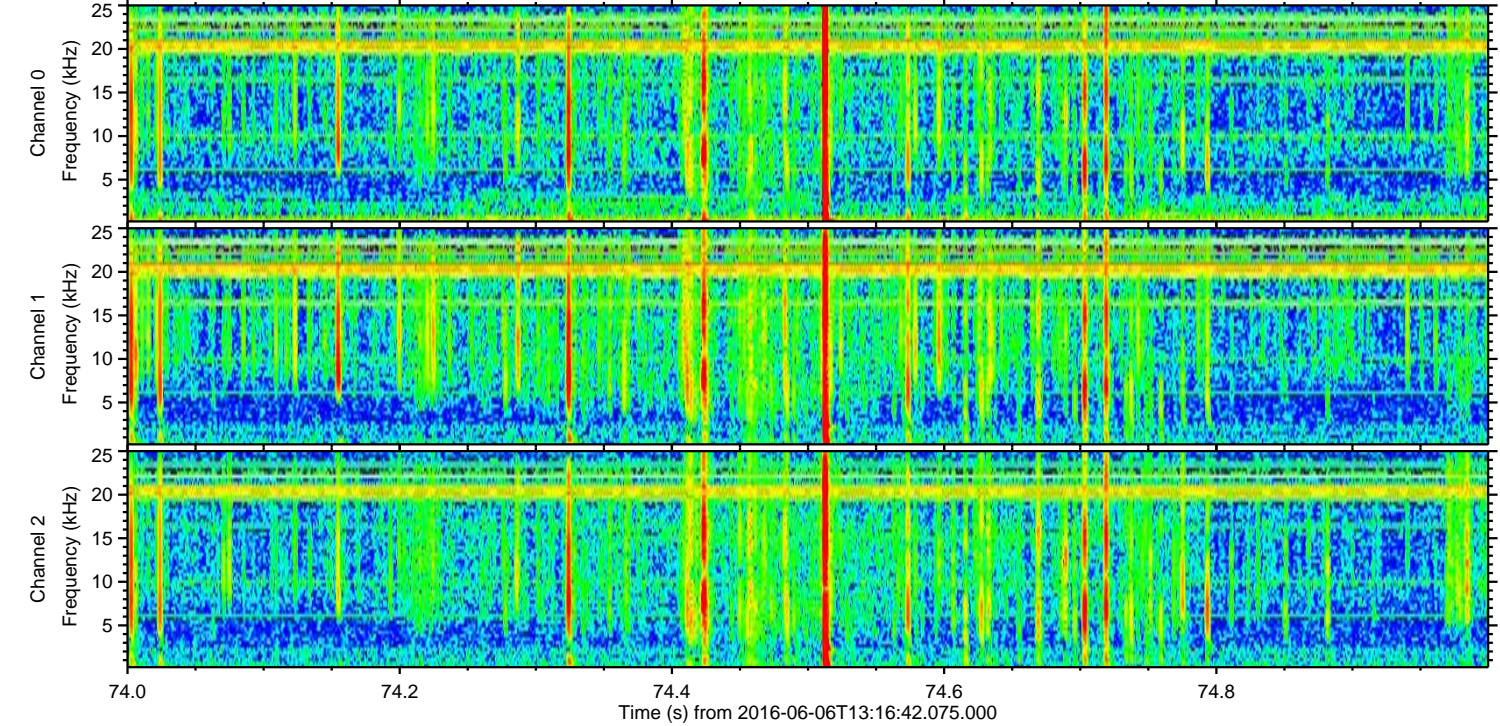
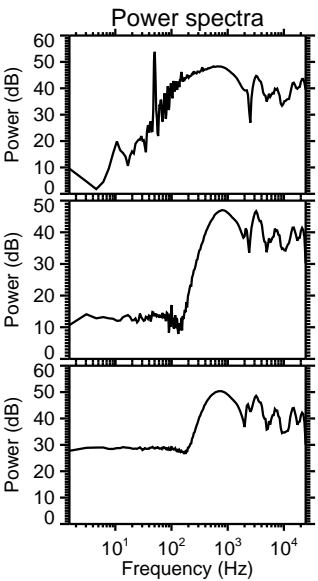
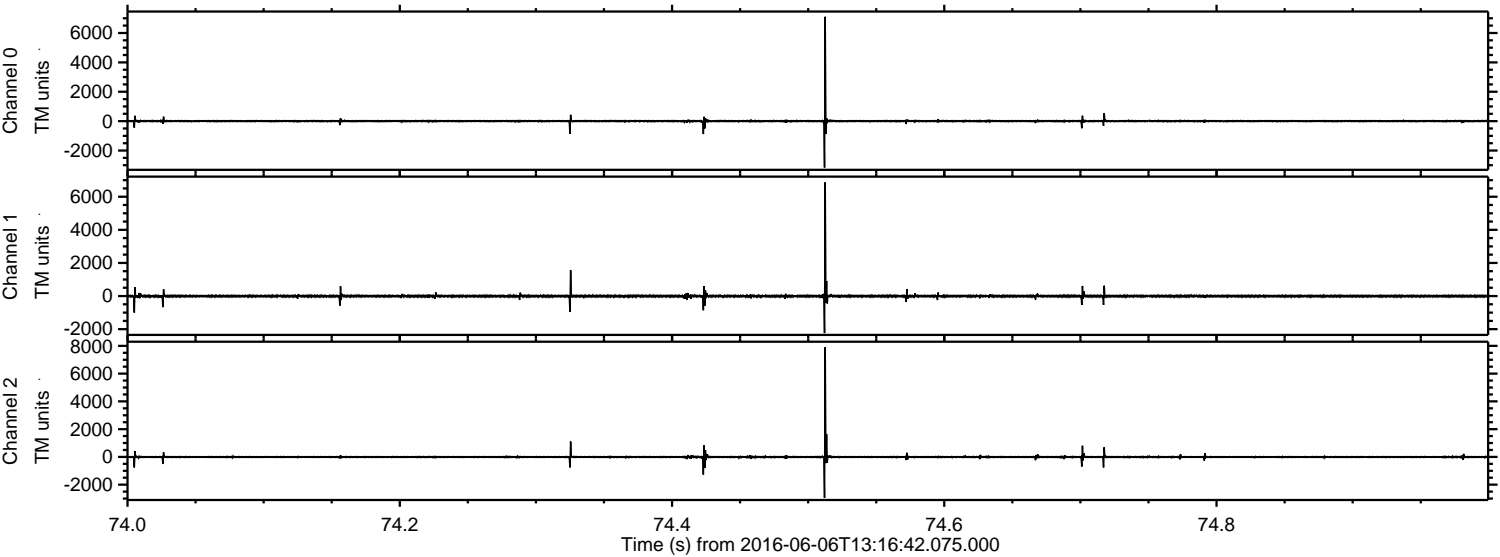
Processed Mon Jun 6 15:25:06 2016 by ELM ver.2012-10-06 from 001__elm20160606_131641__dat00.bin



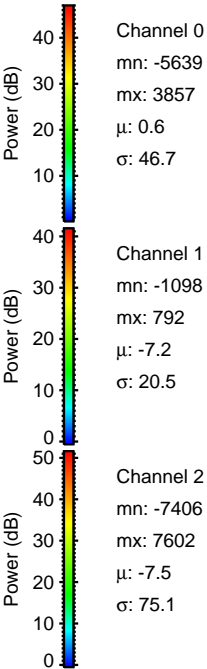
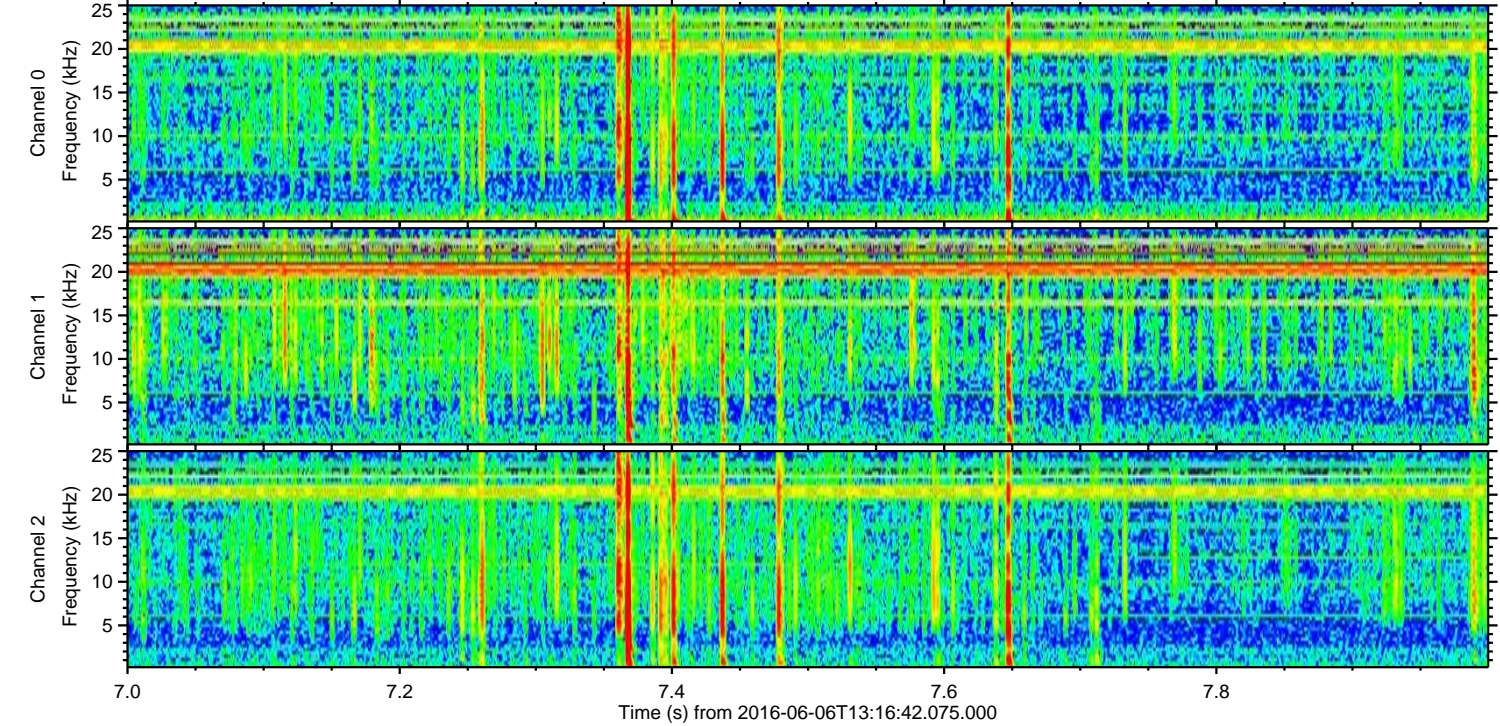
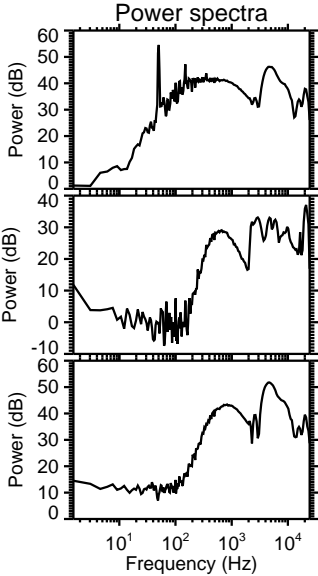
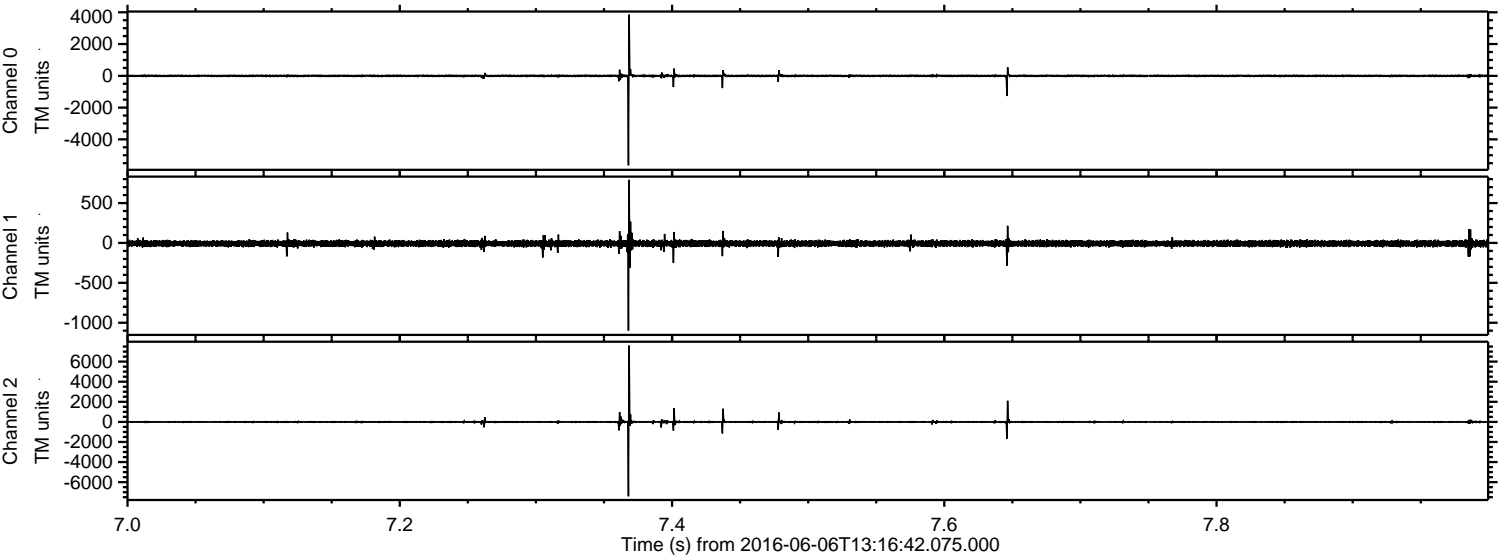
Processed Mon Jun 6 15:25:17 2016 by ELM ver.2012-10-06 from 001__elm20160606_131641__dat00.bin



Processed Mon Jun 6 15:25:18 2016 by ELM ver.2012-10-06 from 001__elm20160606_131641__dat00.bin

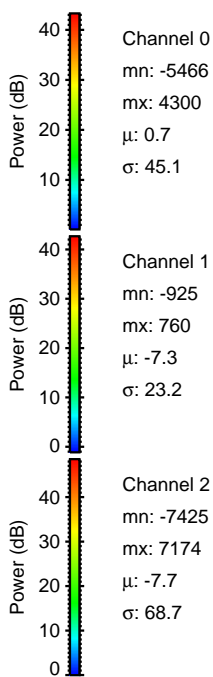
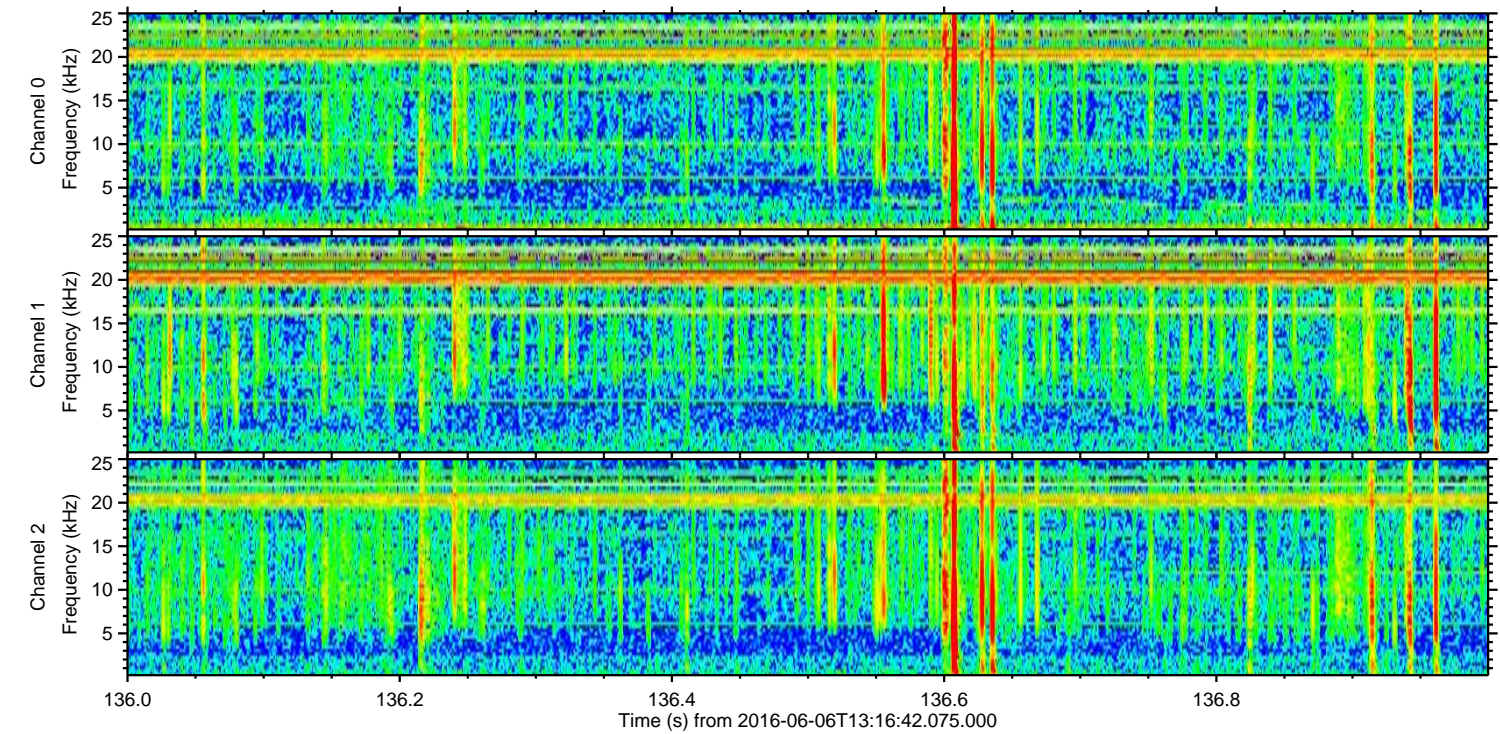
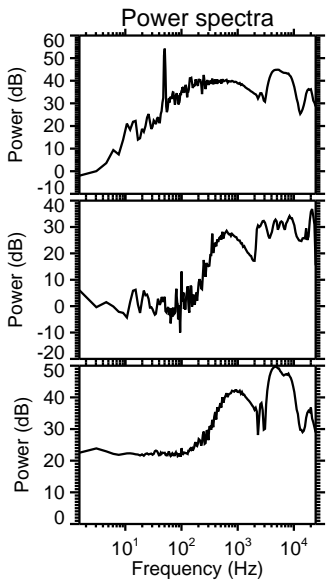
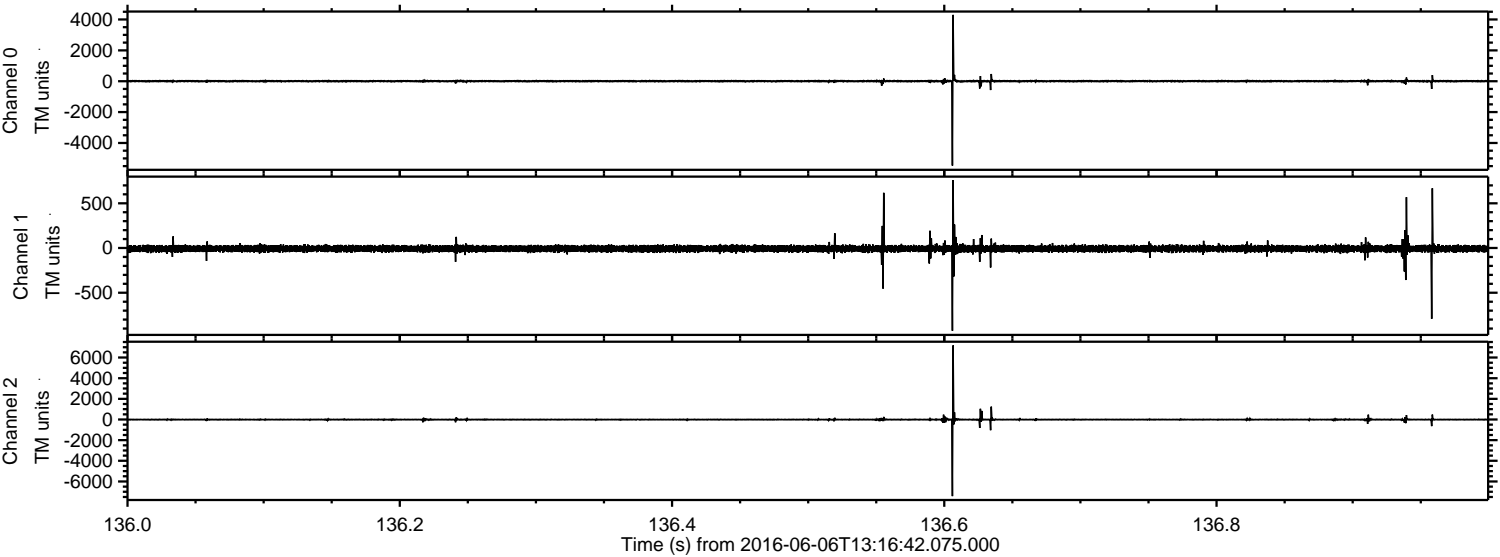


Processed Mon Jun 6 15:25:19 2016 by ELM ver.2012-10-06 from 001__elm20160606_131641__dat00.bin



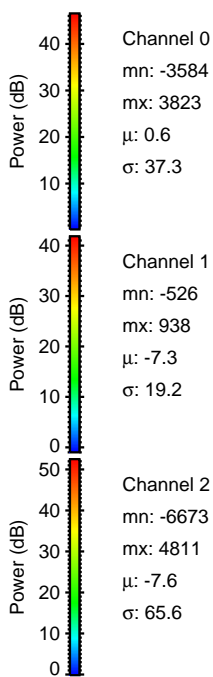
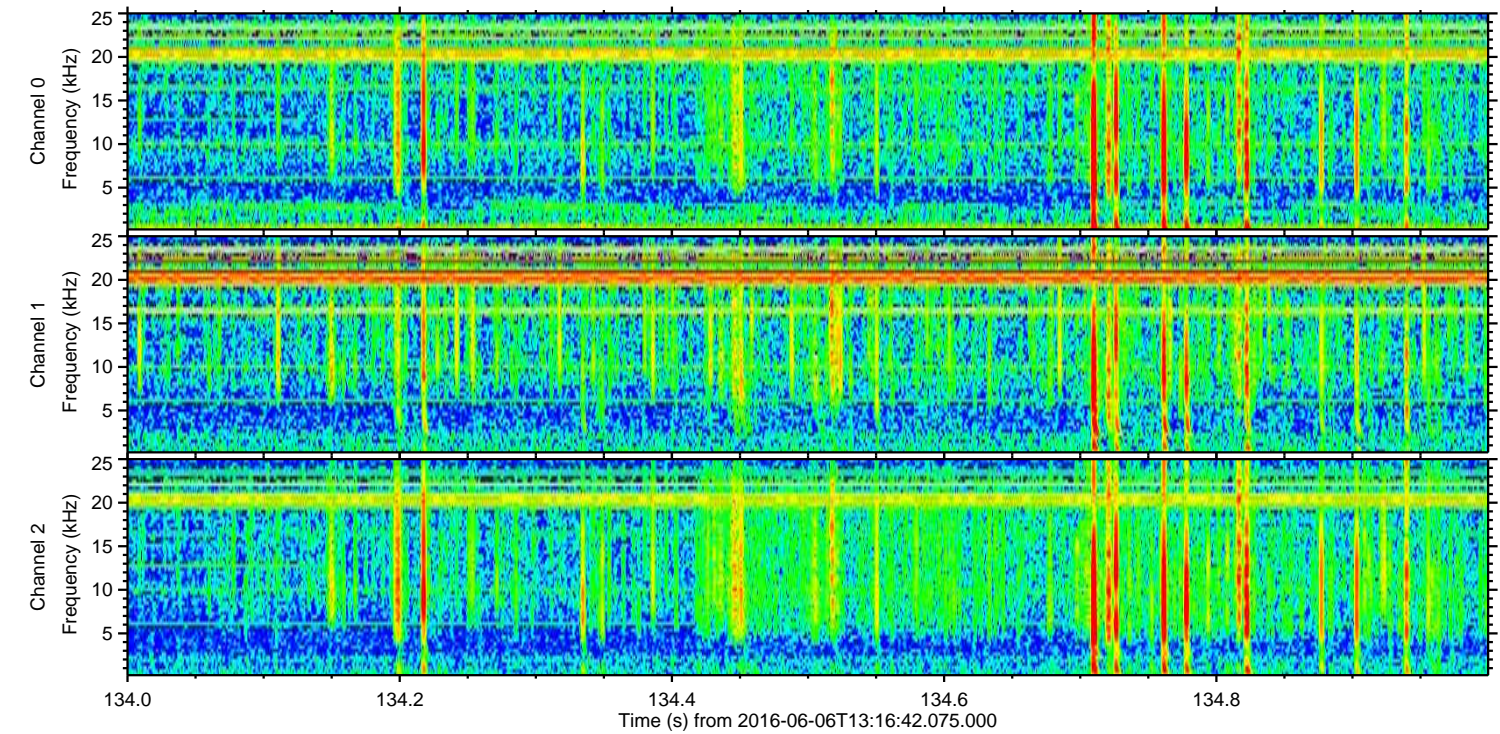
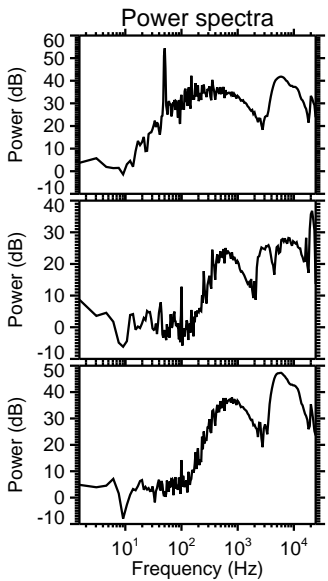
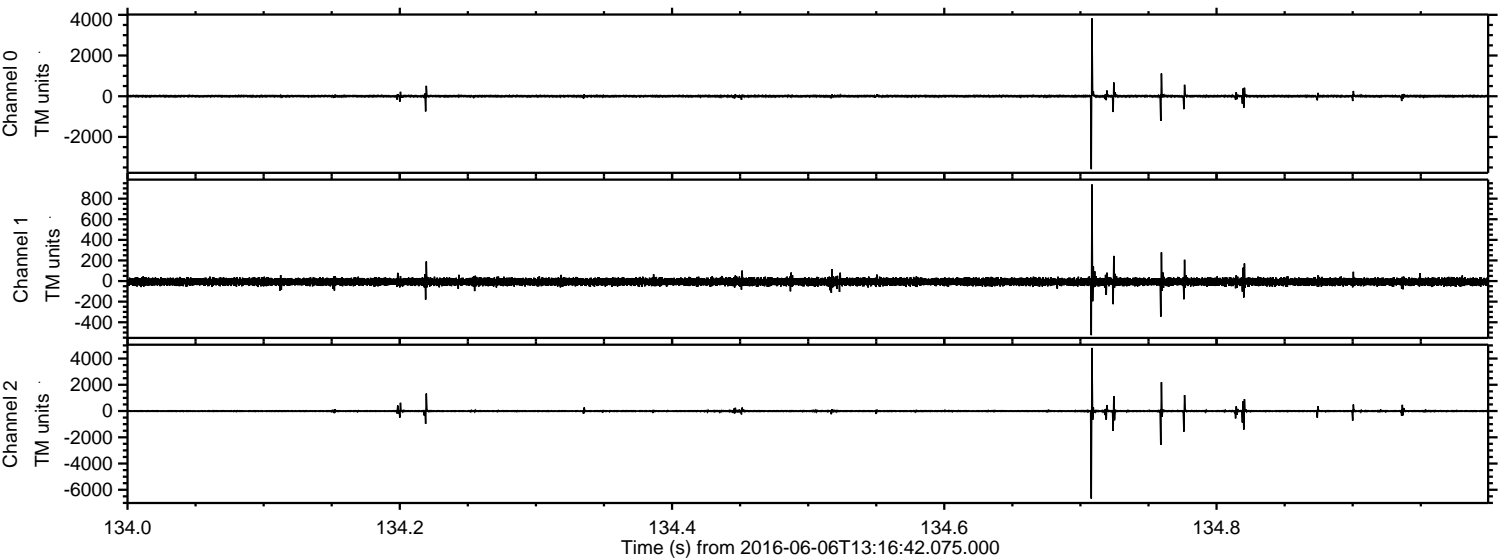
ELMAVAN 3D WAVEFORMS (Measured data sampled at 50 kHz) 51000 packets of 144 samples from 2016-06-06T13:16:42.075.000. Part 137/147

Processed Mon Jun 6 15:25:20 2016 by ELM ver.2012-10-06 from 001__elm20160606_131641__dat00.bin

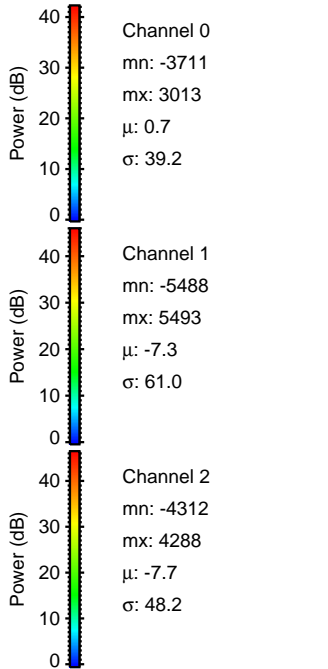
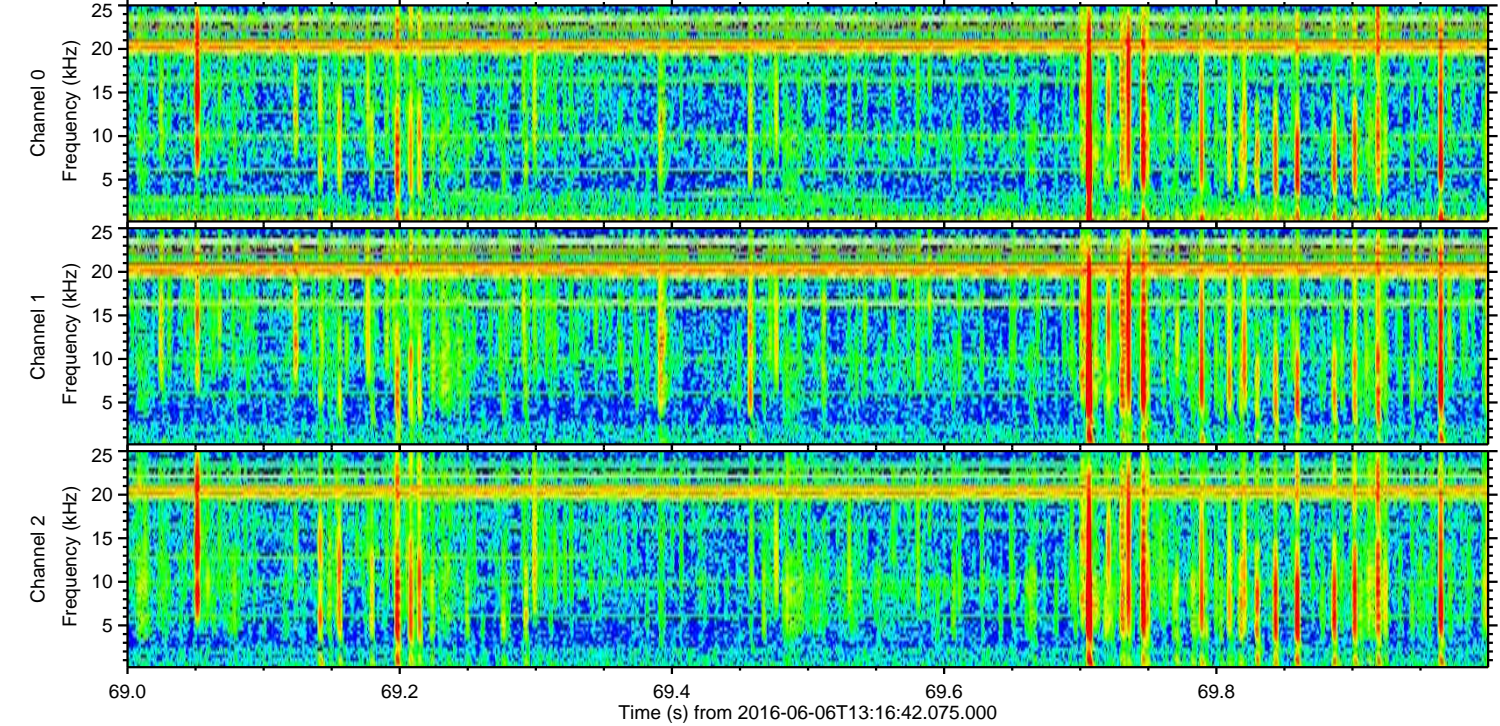
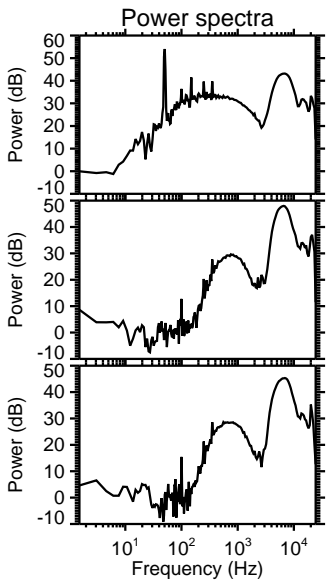
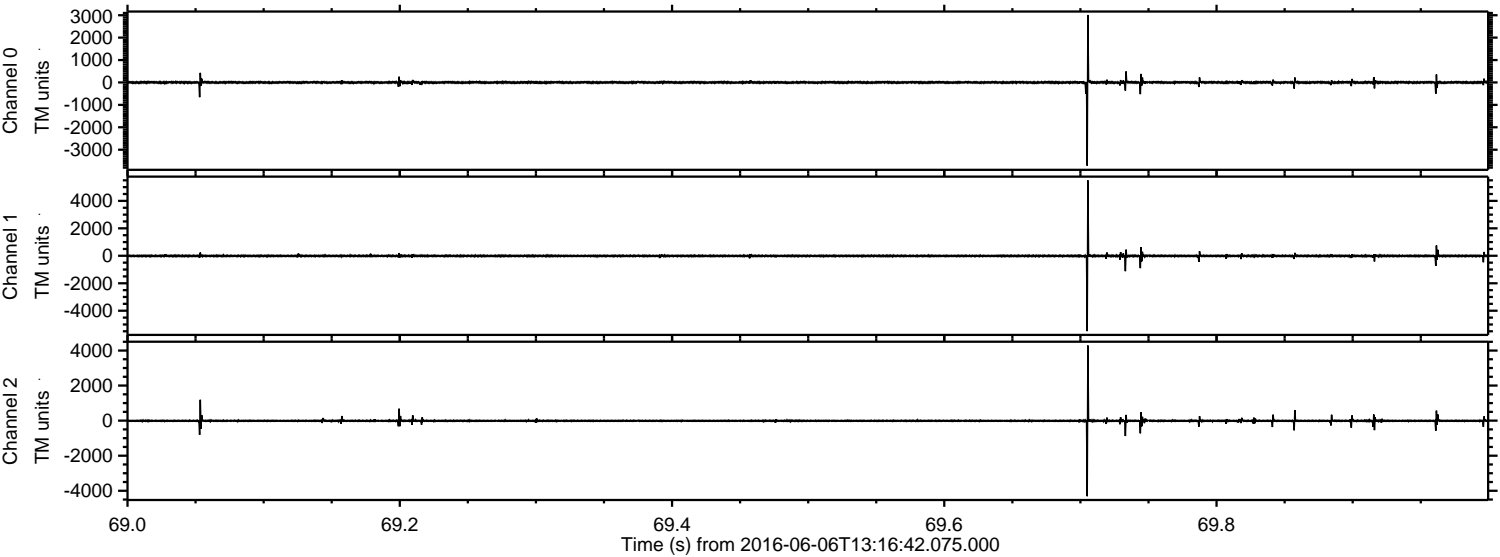


ELMAVAN 3D WAVEFORMS (Measured data sampled at 50 kHz) 51000 packets of 144 samples from 2016-06-06T13:16:42.075.000. Part 135/147

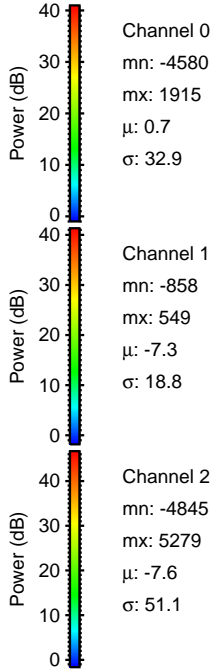
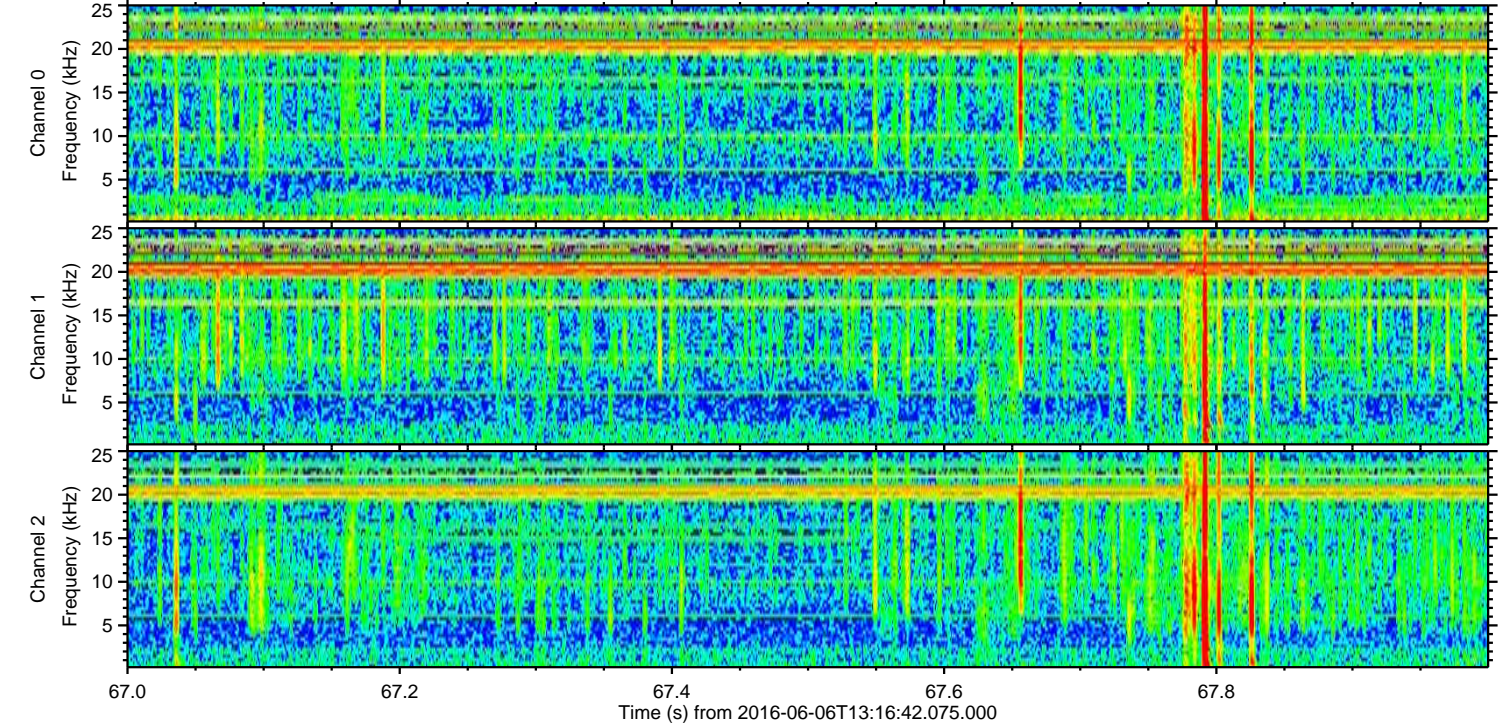
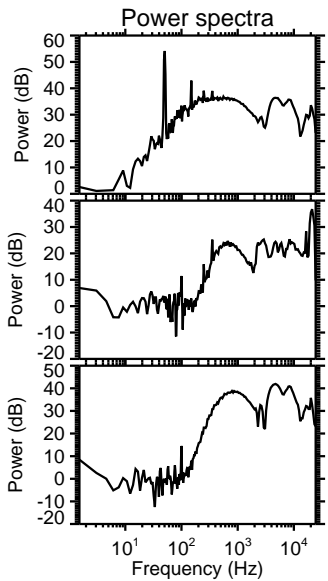
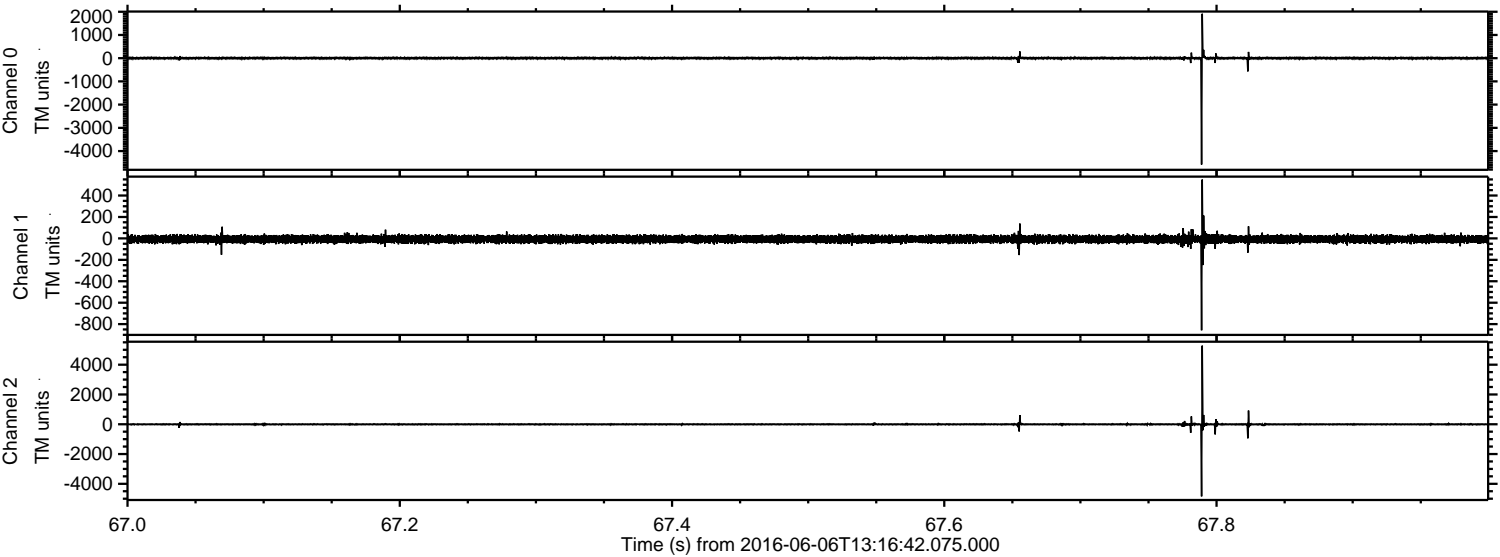
Processed Mon Jun 6 15:25:21 2016 by ELM ver.2012-10-06 from 001__elm20160606_131641__dat00.bin



Processed Mon Jun 6 15:25:22 2016 by ELM ver.2012-10-06 from 001__elm20160606_131641__dat00.bin

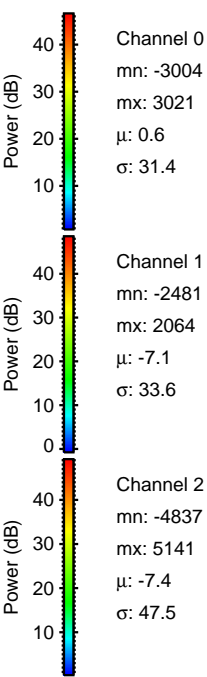
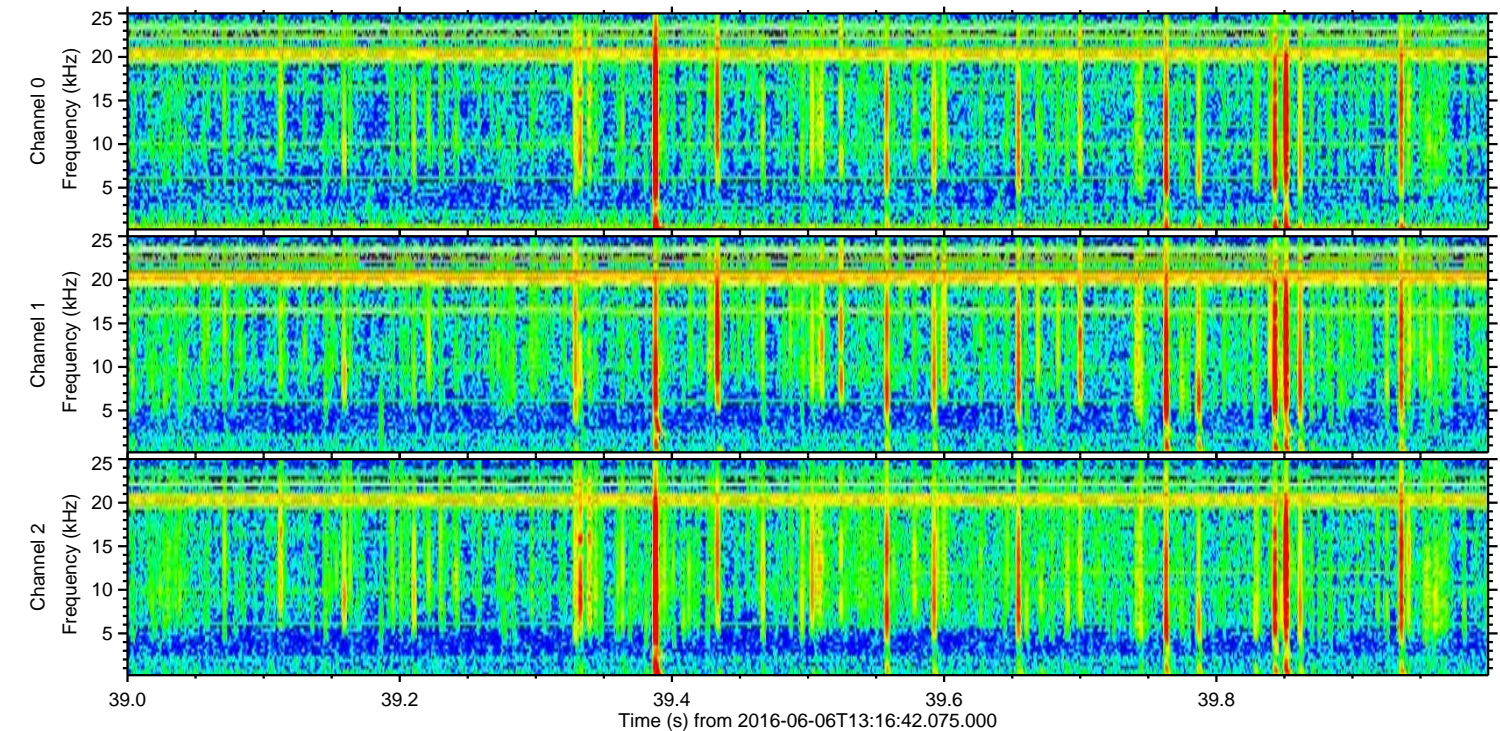
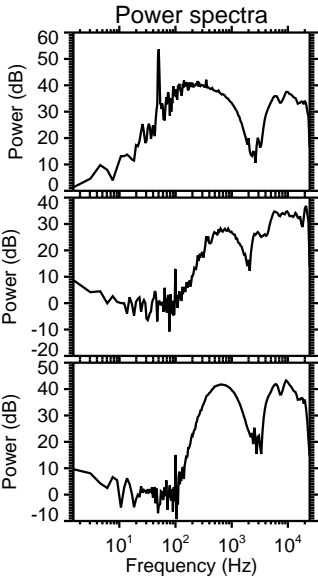
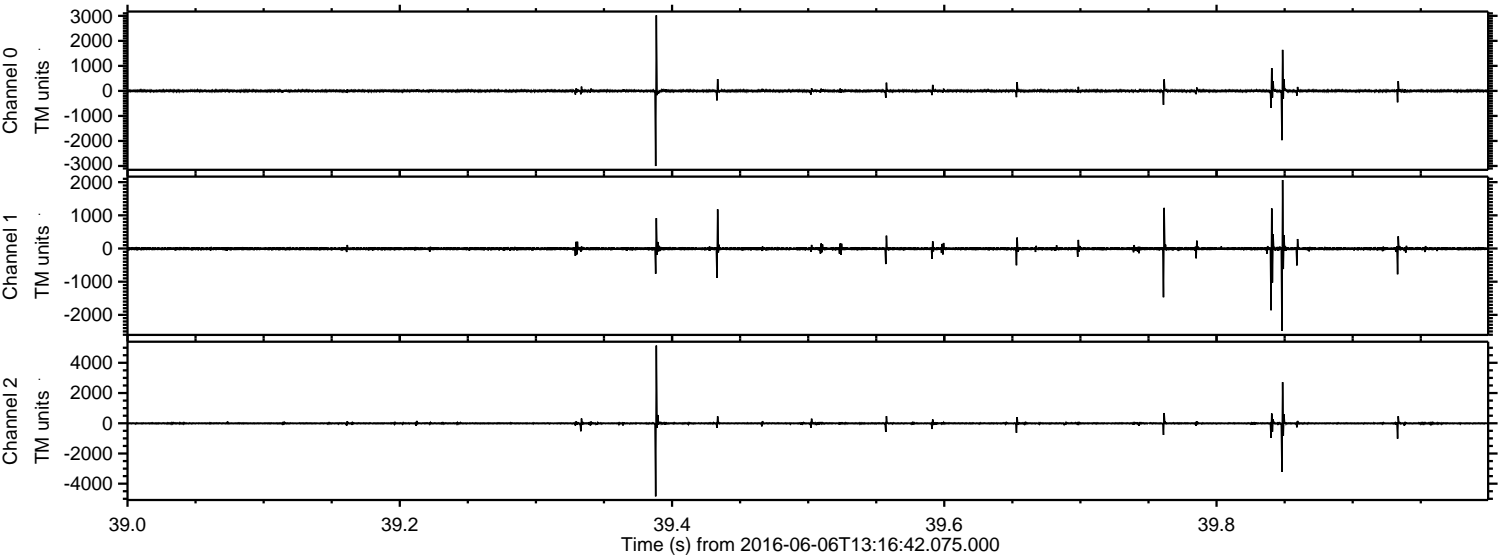


Processed Mon Jun 6 15:25:23 2016 by ELM ver.2012-10-06 from 001__elm20160606_131641__dat00.bin



ELMAVAN 3D WAVEFORMS (Measured data sampled at 50 kHz) 51000 packets of 144 samples from 2016-06-06T13:16:42.075.000. Part 40/147

Processed Mon Jun 6 15:25:24 2016 by ELM ver.2012-10-06 from 001__elm20160606_131641__dat00.bin

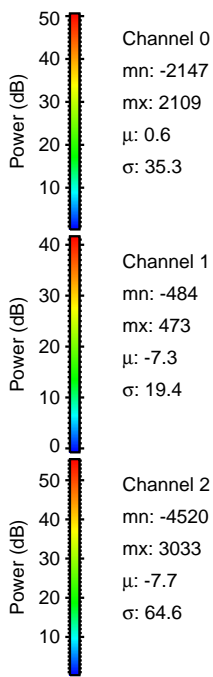
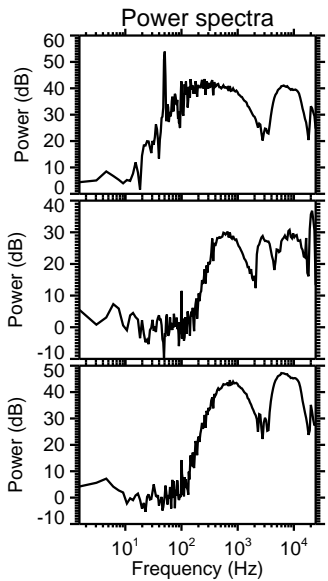
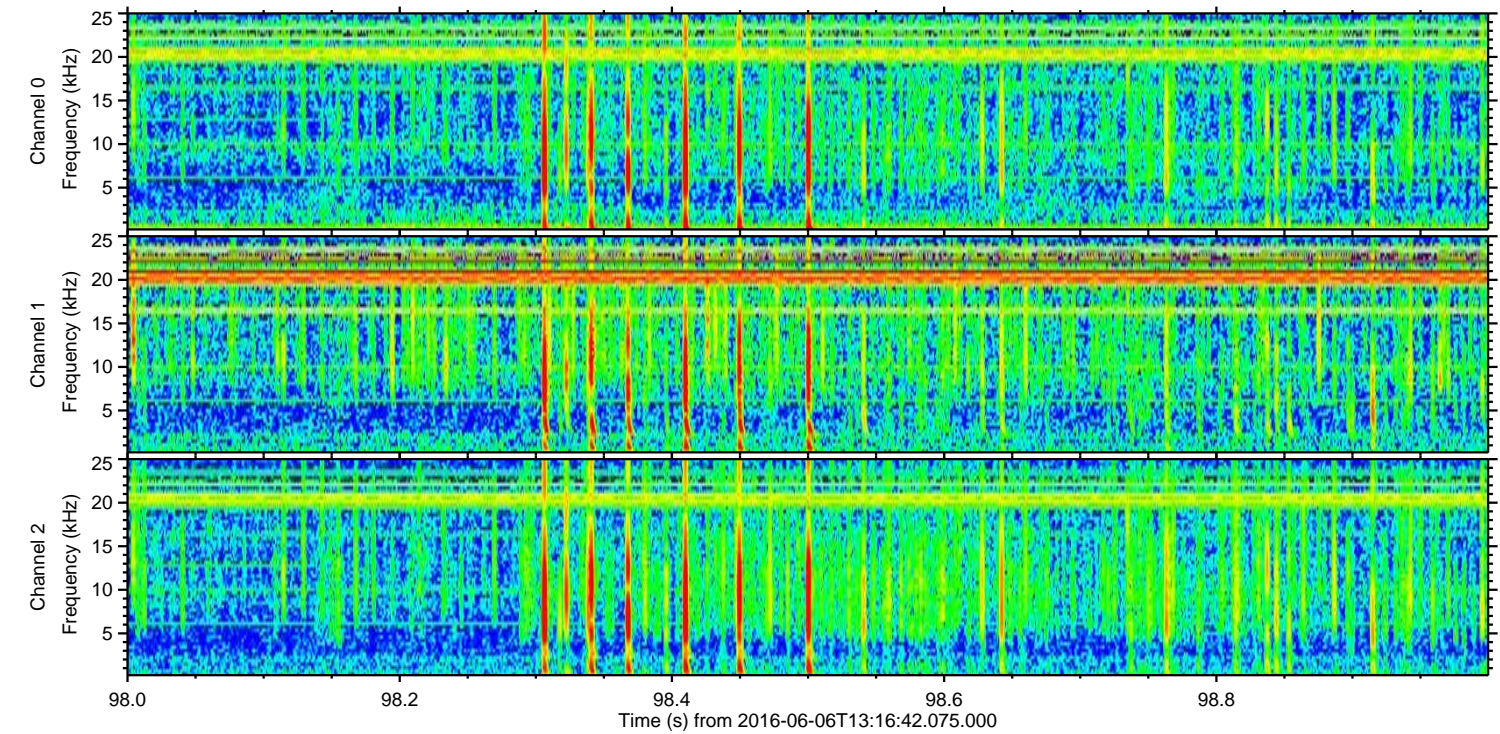
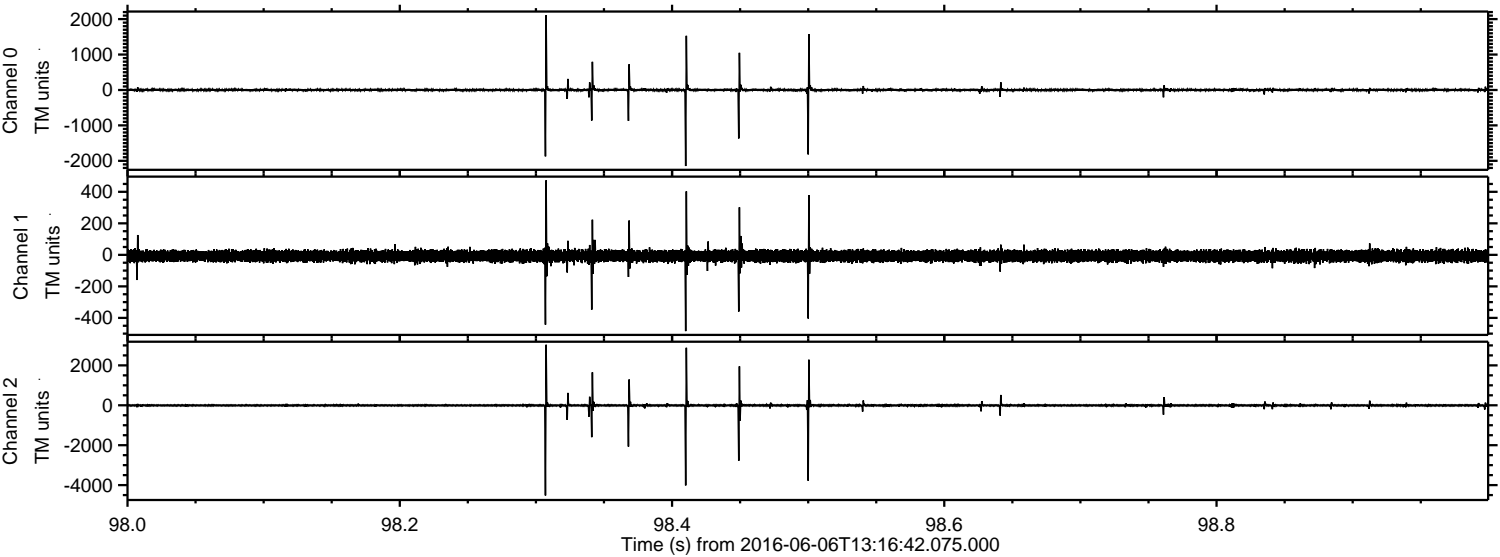


Channel 0
mn: -3004
mx: 3021
 μ : 0.6
 σ : 31.4

Channel 1
mn: -2481
mx: 2064
 μ : -7.1
 σ : 33.6

Channel 2
mn: -4837
mx: 5141
 μ : -7.4
 σ : 47.5

Processed Mon Jun 6 15:25:25 2016 by ELM ver.2012-10-06 from 001__elm20160606_131641__dat00.bin



Processed Mon Jun 6 15:25:26 2016 by ELM ver.2012-10-06 from 001__elm20160606_131641__dat00.bin

