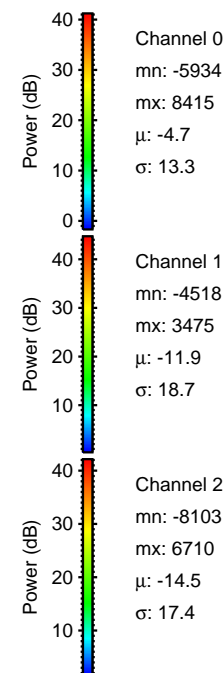
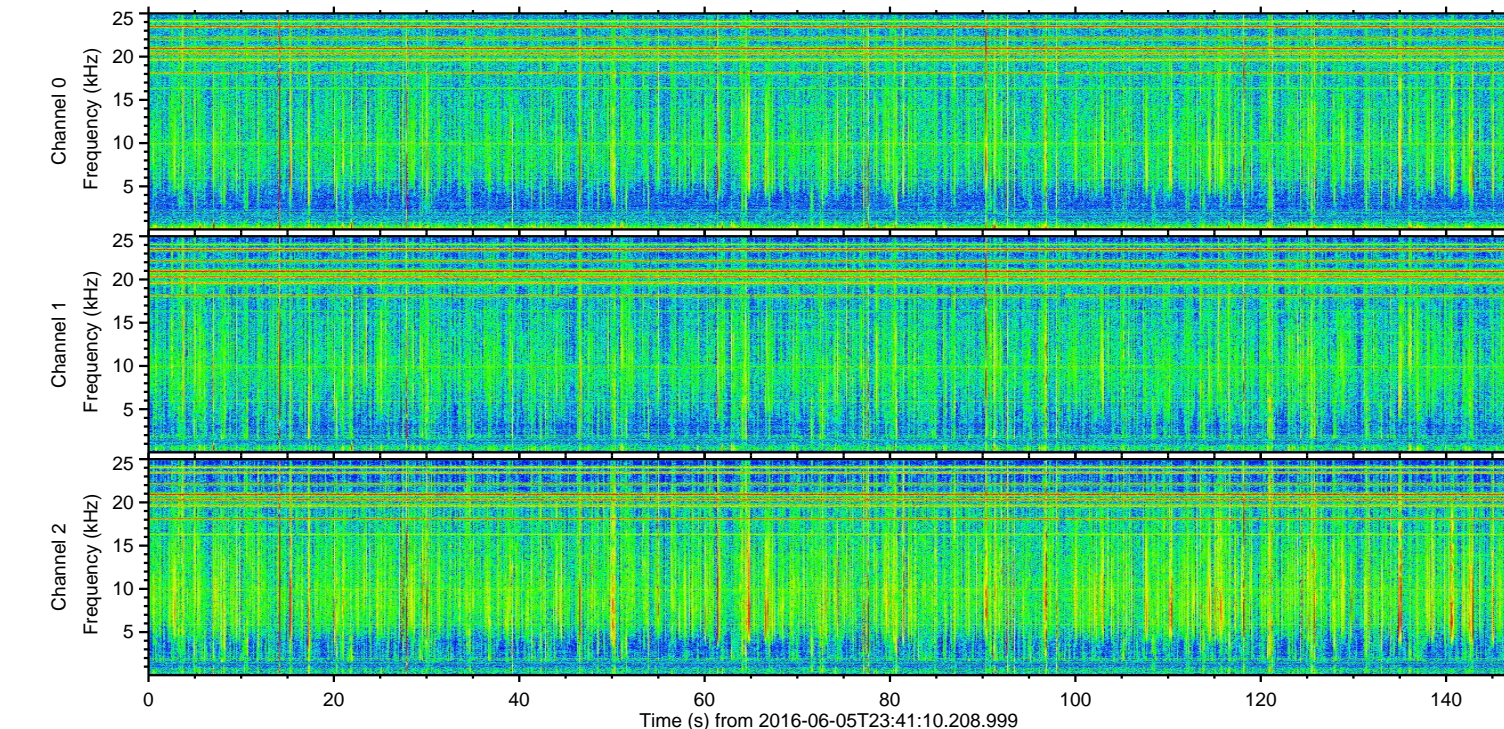
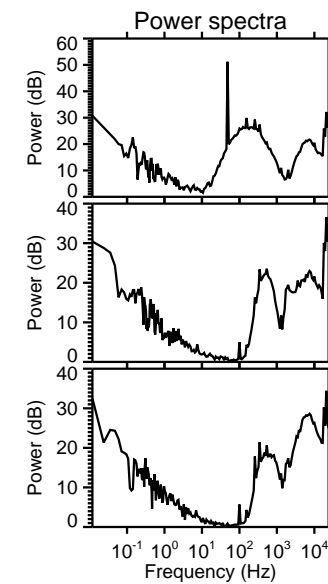
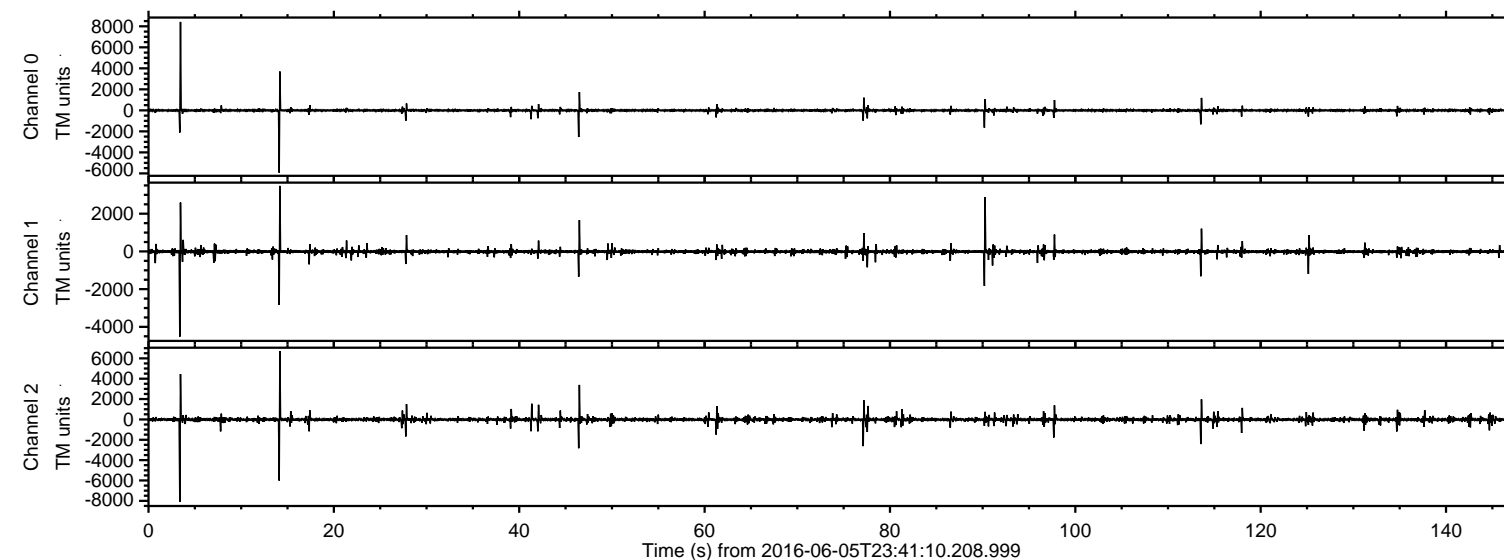


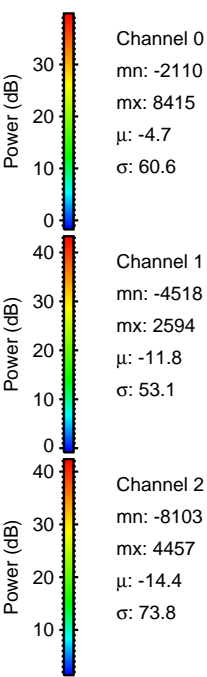
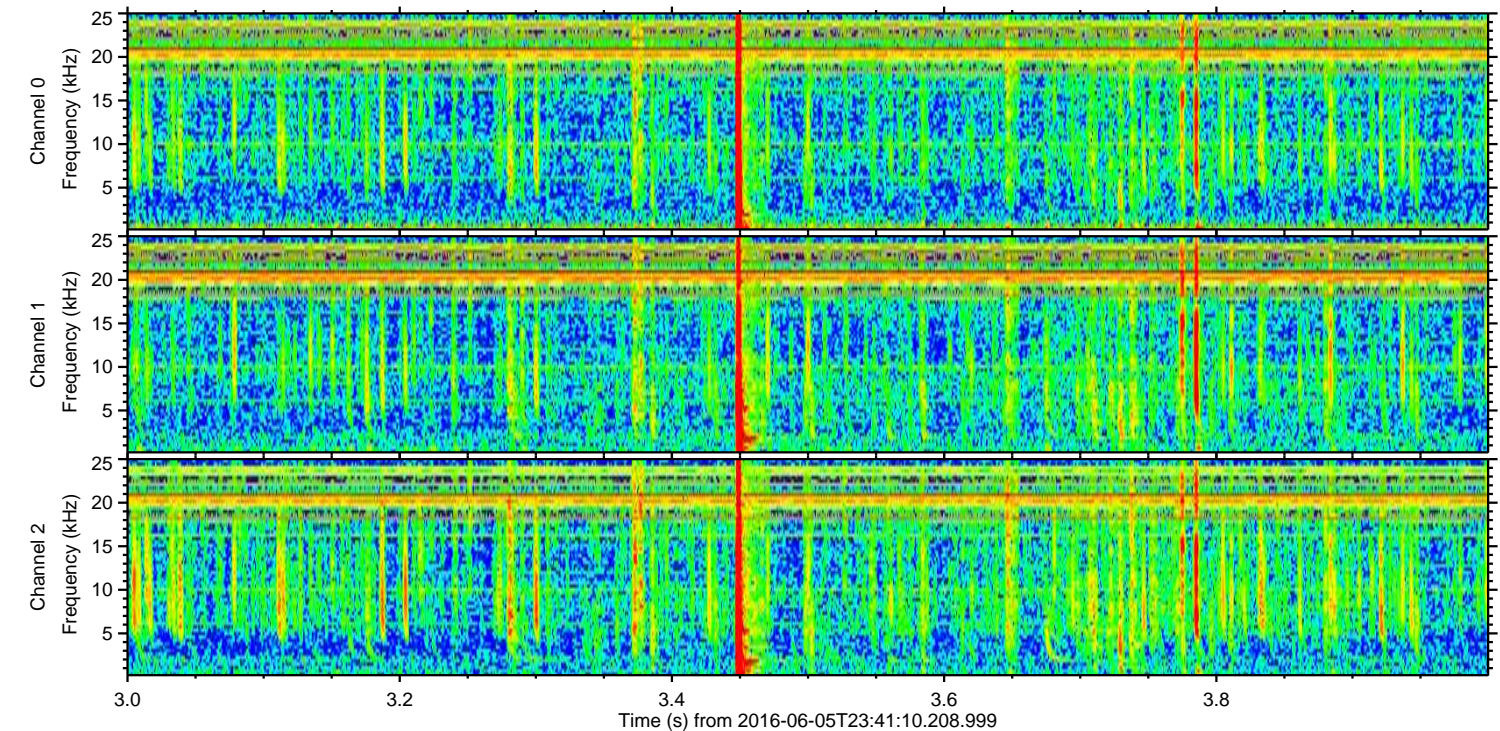
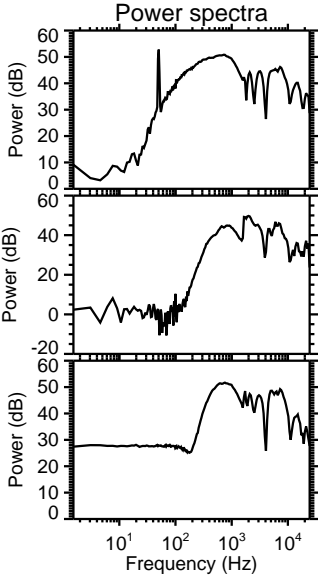
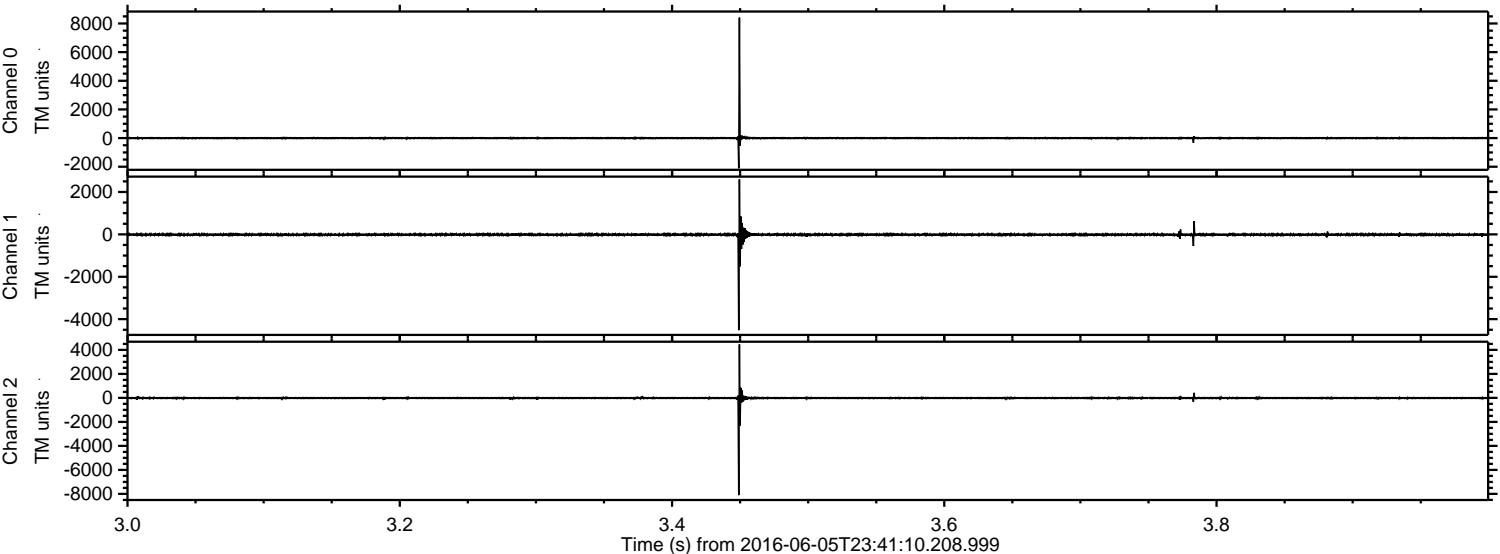
ELMAVAN 3D WAVEFORMS (Measured data sampled at 50 kHz) 51000 packets of 144 samples from 2016-06-05T23:41:10.208.999.

Processed Mon Jun 6 01:49:17 2016 by ELM ver.2012-10-06 from 001__elm20160605_234109__dat00.bin



ELMAVAN 3D WAVEFORMS (Measured data sampled at 50 kHz) 51000 packets of 144 samples from 2016-06-05T23:41:10.208.999. Part 4/147

Processed Mon Jun 6 01:49:32 2016 by ELM ver.2012-10-06 from 001__elm20160605_234109__dat00.bin

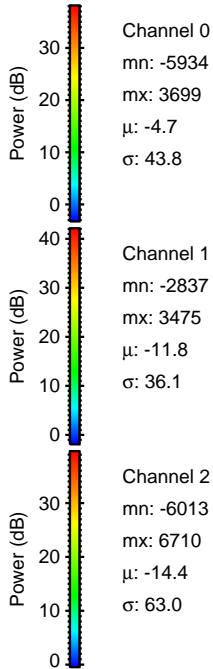
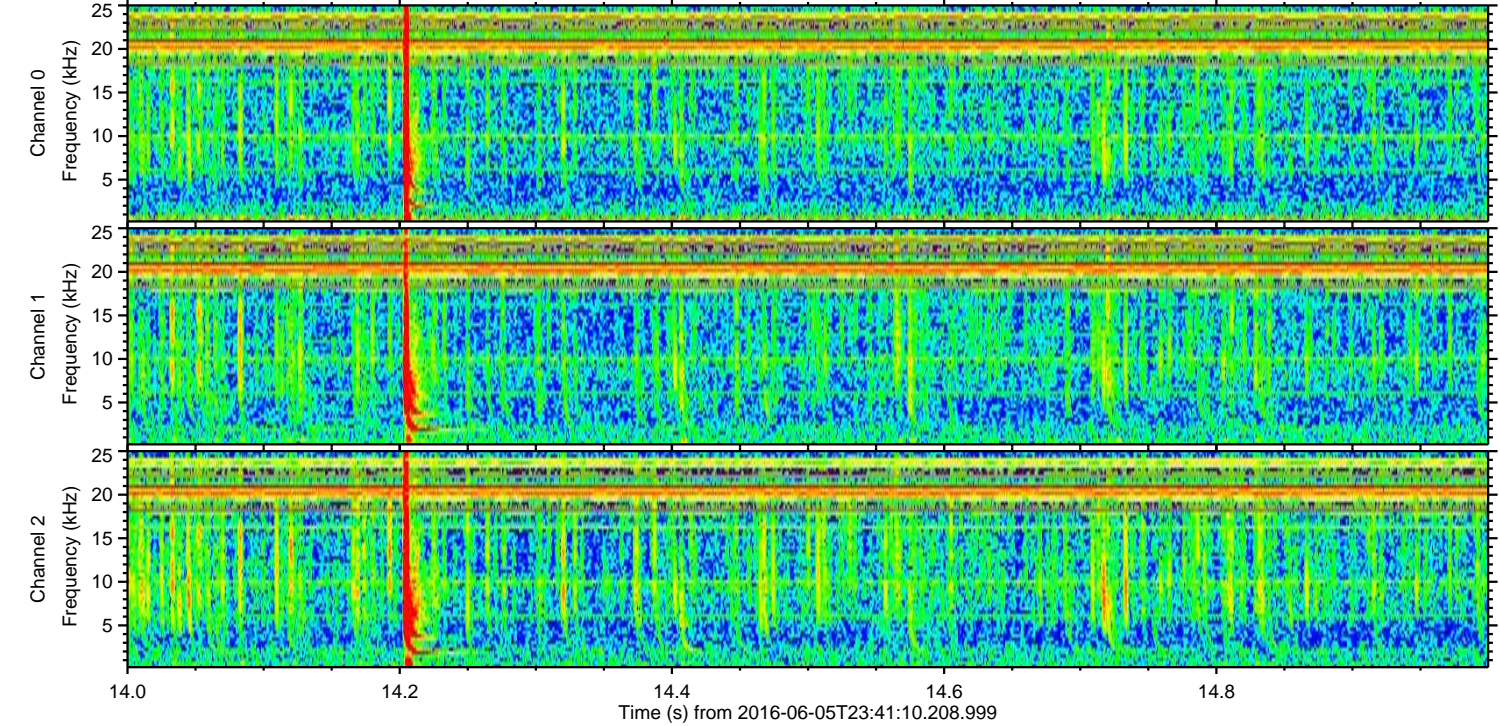
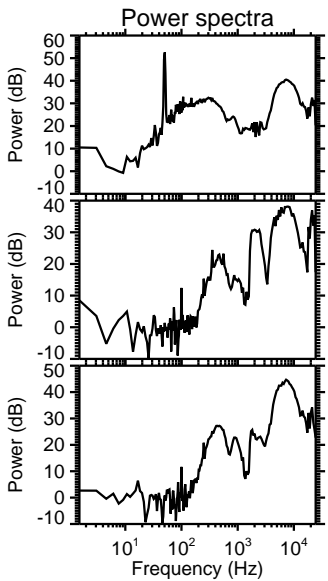
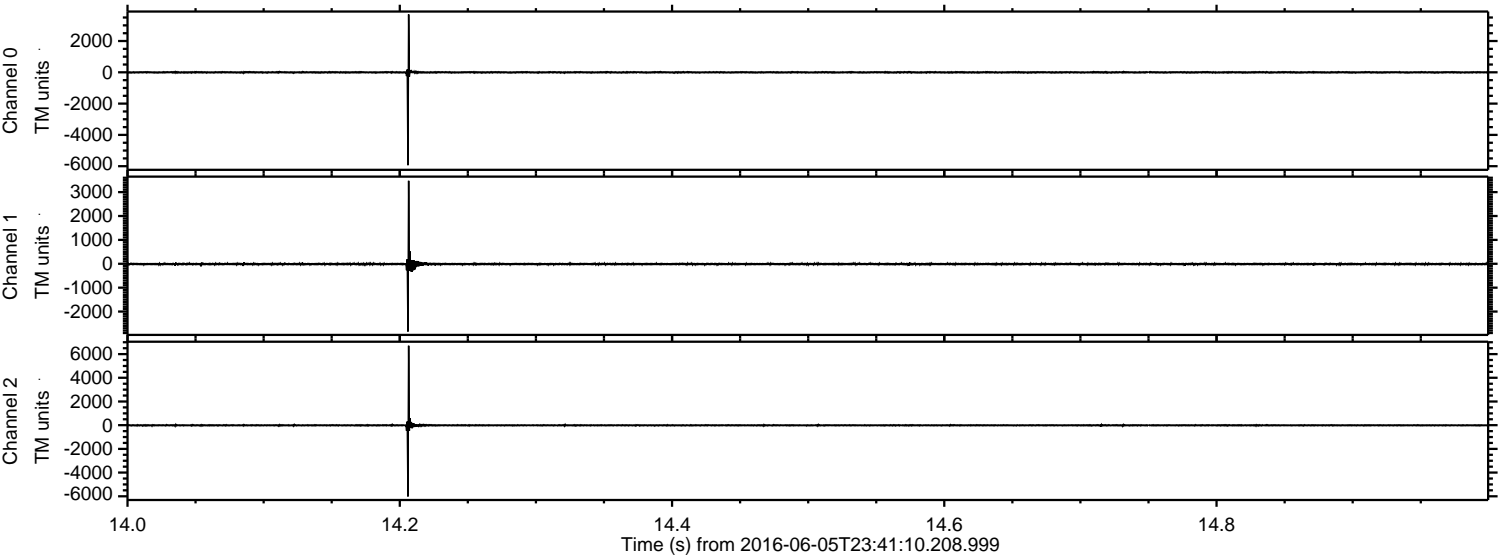


Channel 0
mn: -2110
mx: 8415
 μ : -4.7
 σ : 60.6

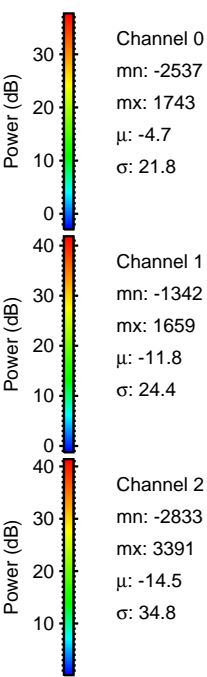
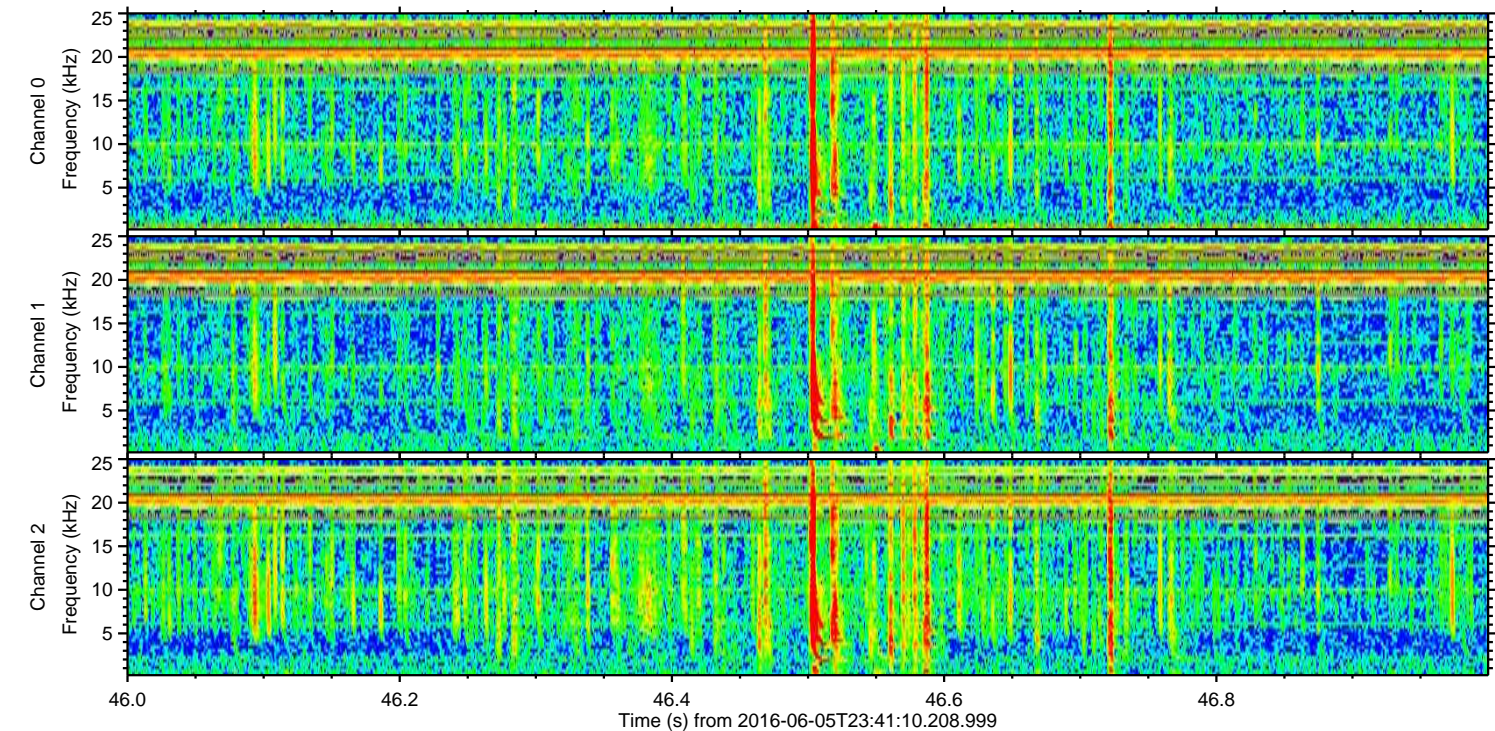
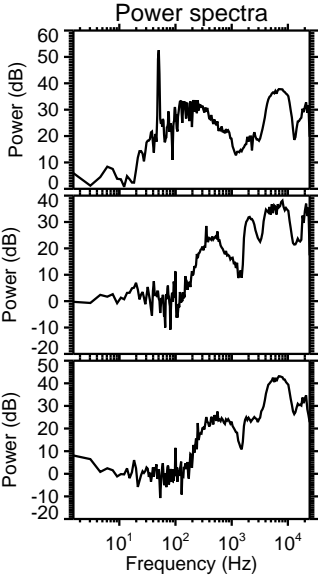
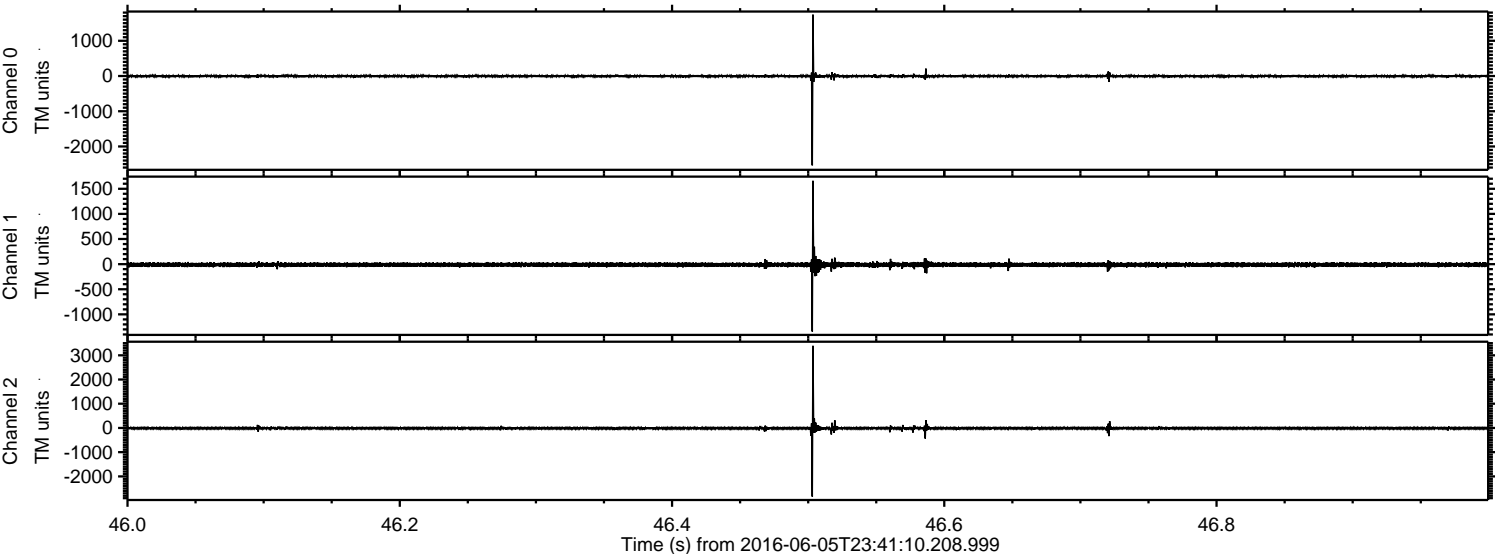
Channel 1
mn: -4518
mx: 2594
 μ : -11.8
 σ : 53.1

Channel 2
mn: -8103
mx: 4457
 μ : -14.4
 σ : 73.8

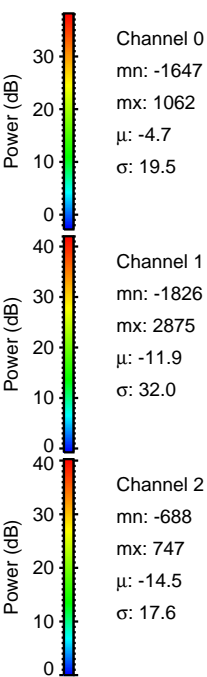
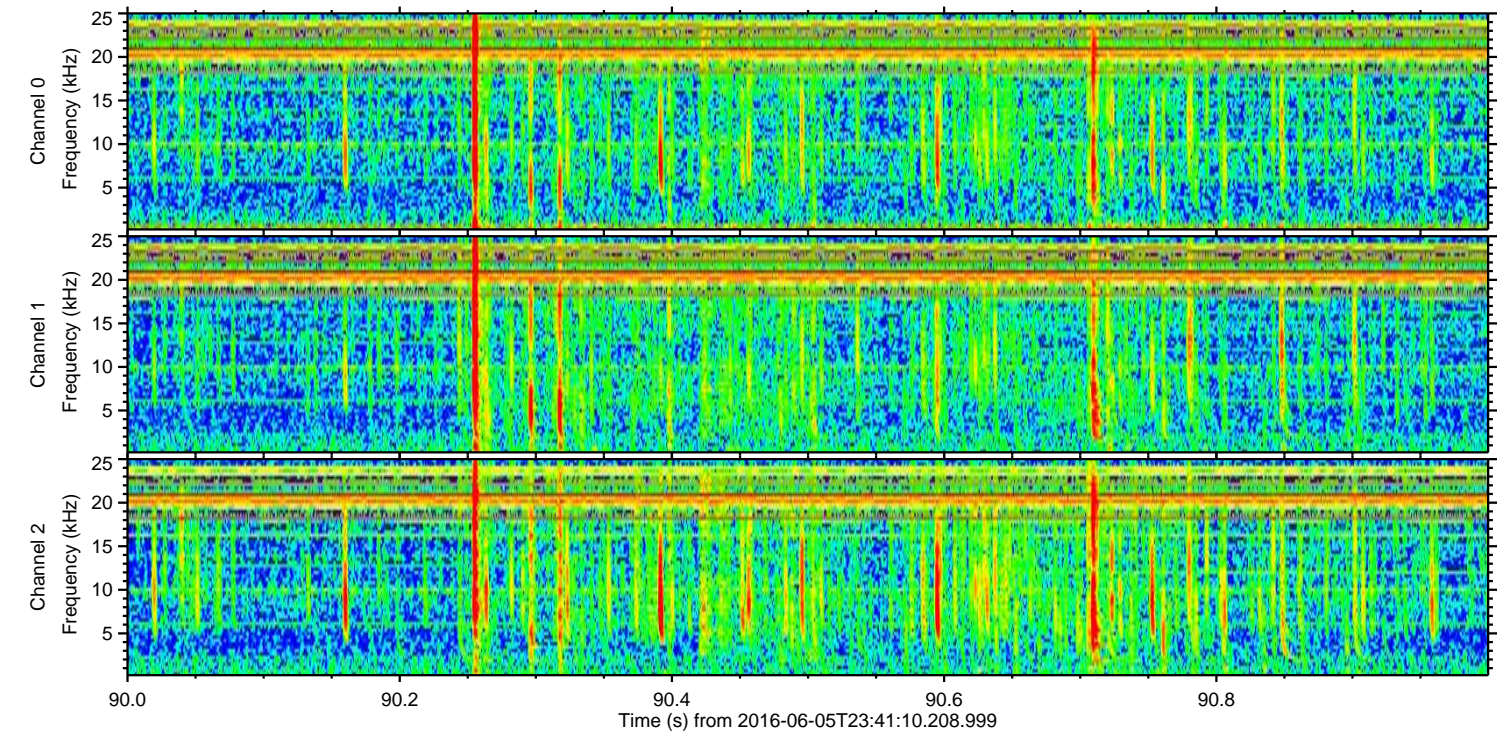
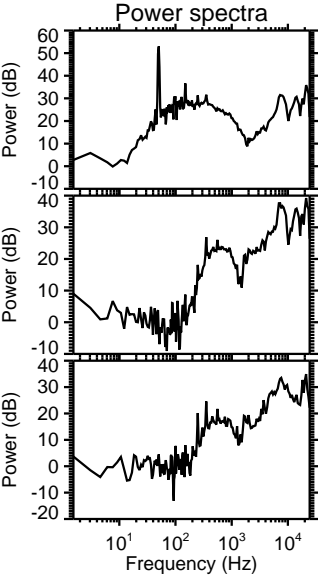
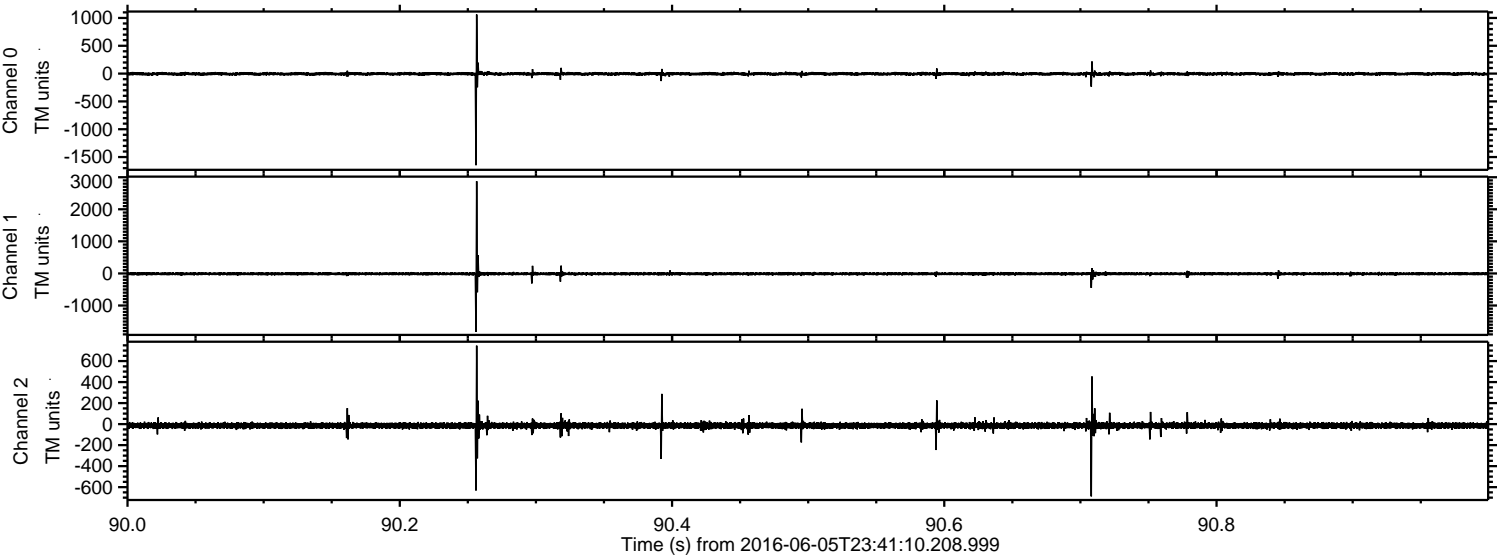
Processed Mon Jun 6 01:49:33 2016 by ELM ver.2012-10-06 from 001__elm20160605_234109__dat00.bin



Processed Mon Jun 6 01:49:34 2016 by ELM ver.2012-10-06 from 001__elm20160605_234109__dat00.bin

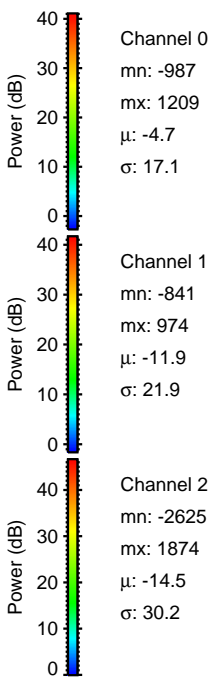
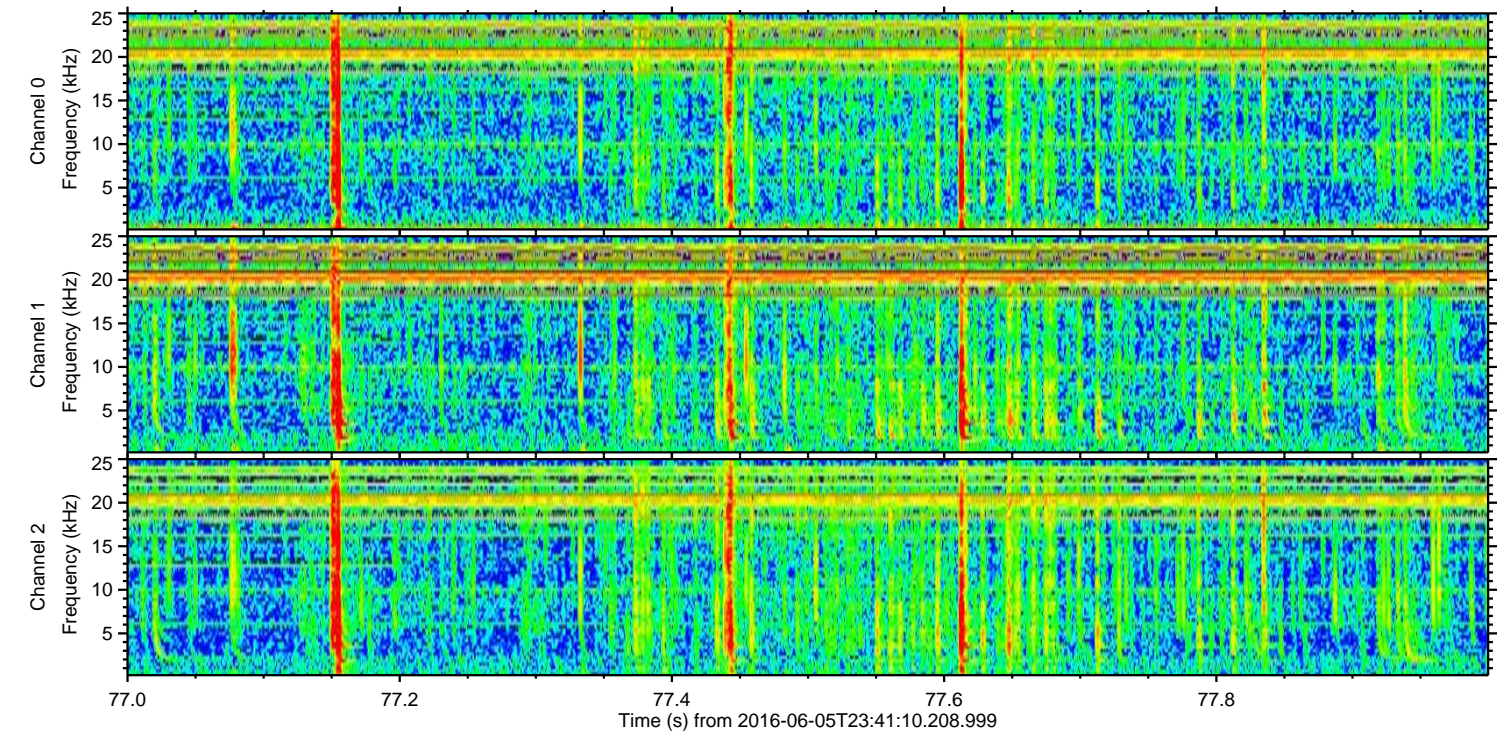
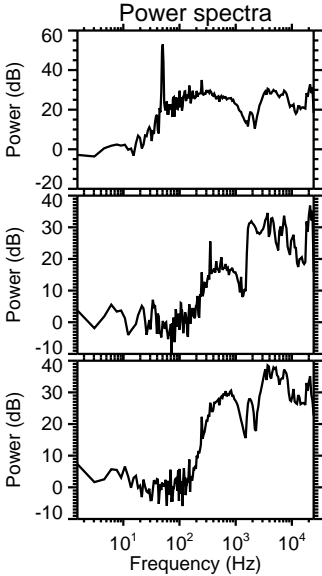
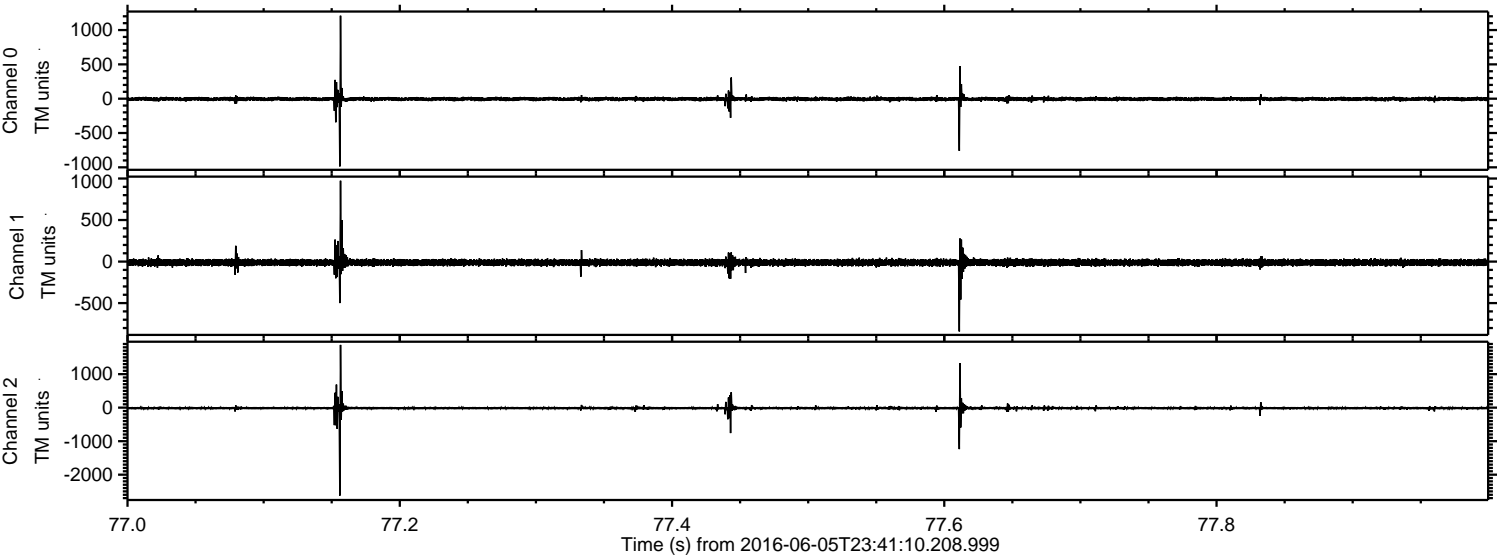


Processed Mon Jun 6 01:49:35 2016 by ELM ver.2012-10-06 from 001__elm20160605_234109__dat00.bin



ELMAVAN 3D WAVEFORMS (Measured data sampled at 50 kHz) 51000 packets of 144 samples from 2016-06-05T23:41:10.208.999. Part 78/147

Processed Mon Jun 6 01:49:36 2016 by ELM ver.2012-10-06 from 001__elm20160605_234109__dat00.bin



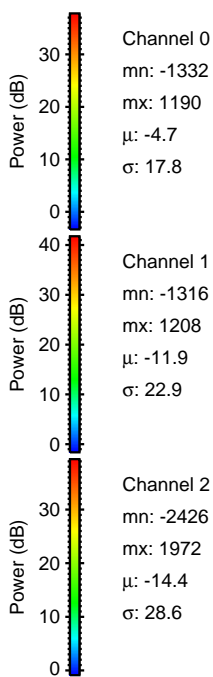
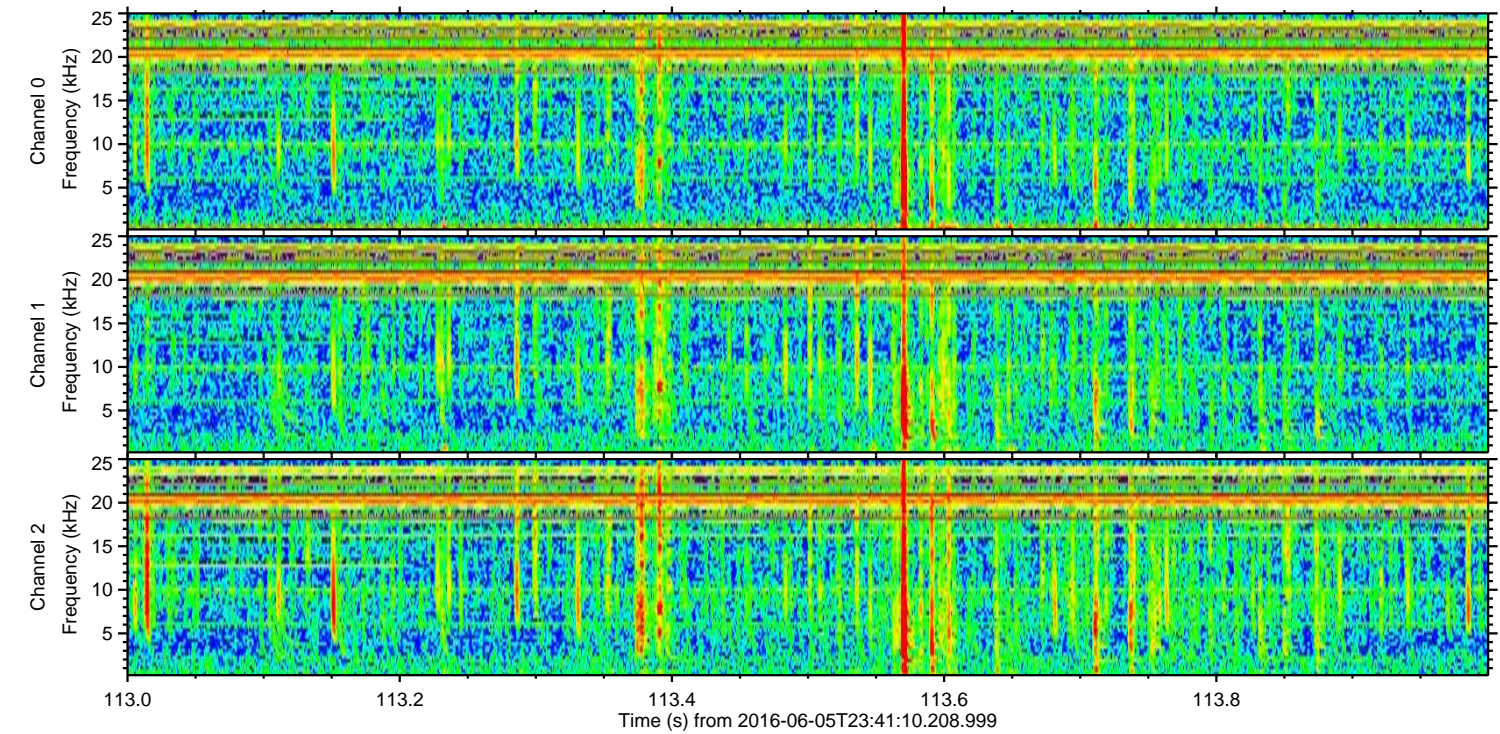
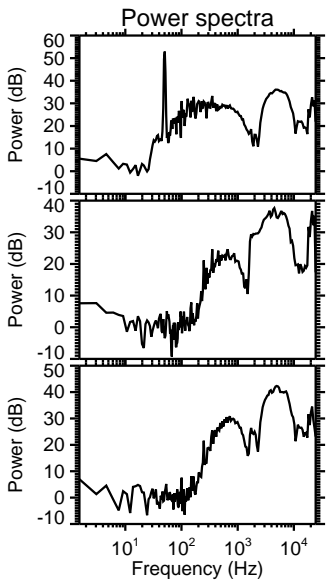
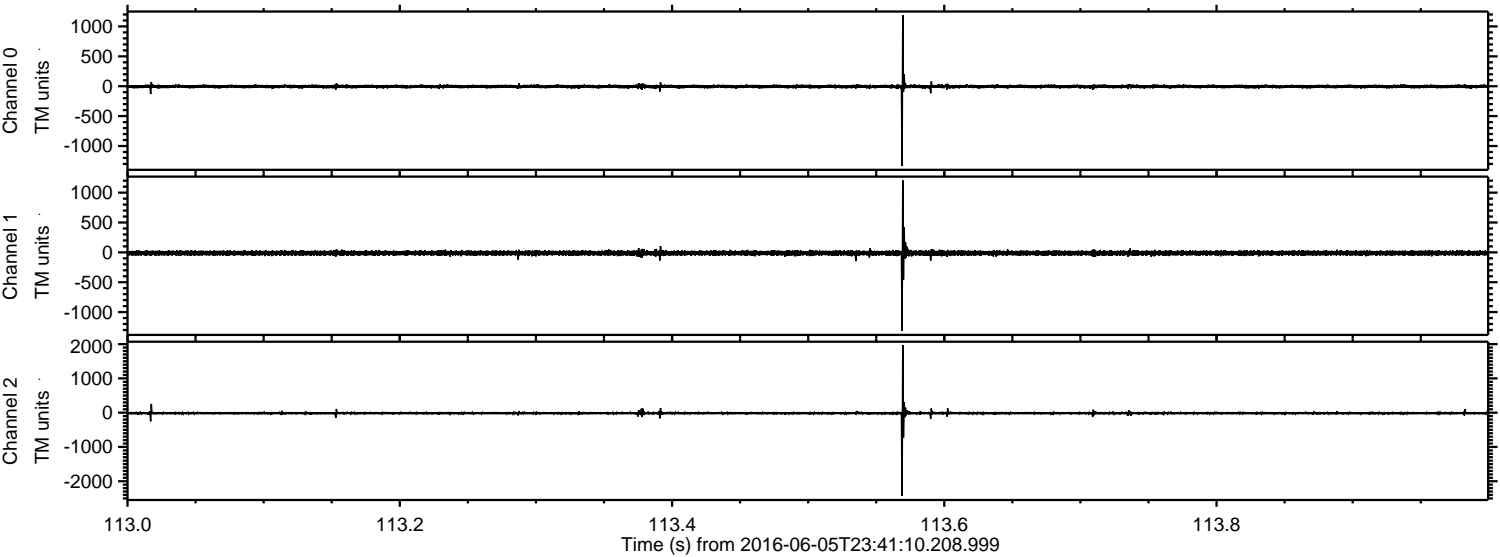
Channel 0
mn: -987
mx: 1209
 μ : -4.7
 σ : 17.1

Channel 1
mn: -841
mx: 974
 μ : -11.9
 σ : 21.9

Channel 2
mn: -2625
mx: 1874
 μ : -14.5
 σ : 30.2

ELMAVAN 3D WAVEFORMS (Measured data sampled at 50 kHz) 51000 packets of 144 samples from 2016-06-05T23:41:10.208.999. Part 114/147

Processed Mon Jun 6 01:49:37 2016 by ELM ver.2012-10-06 from 001__elm20160605_234109__dat00.bin

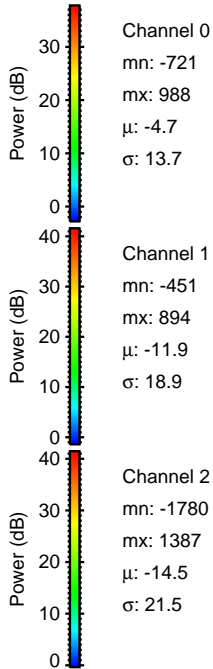
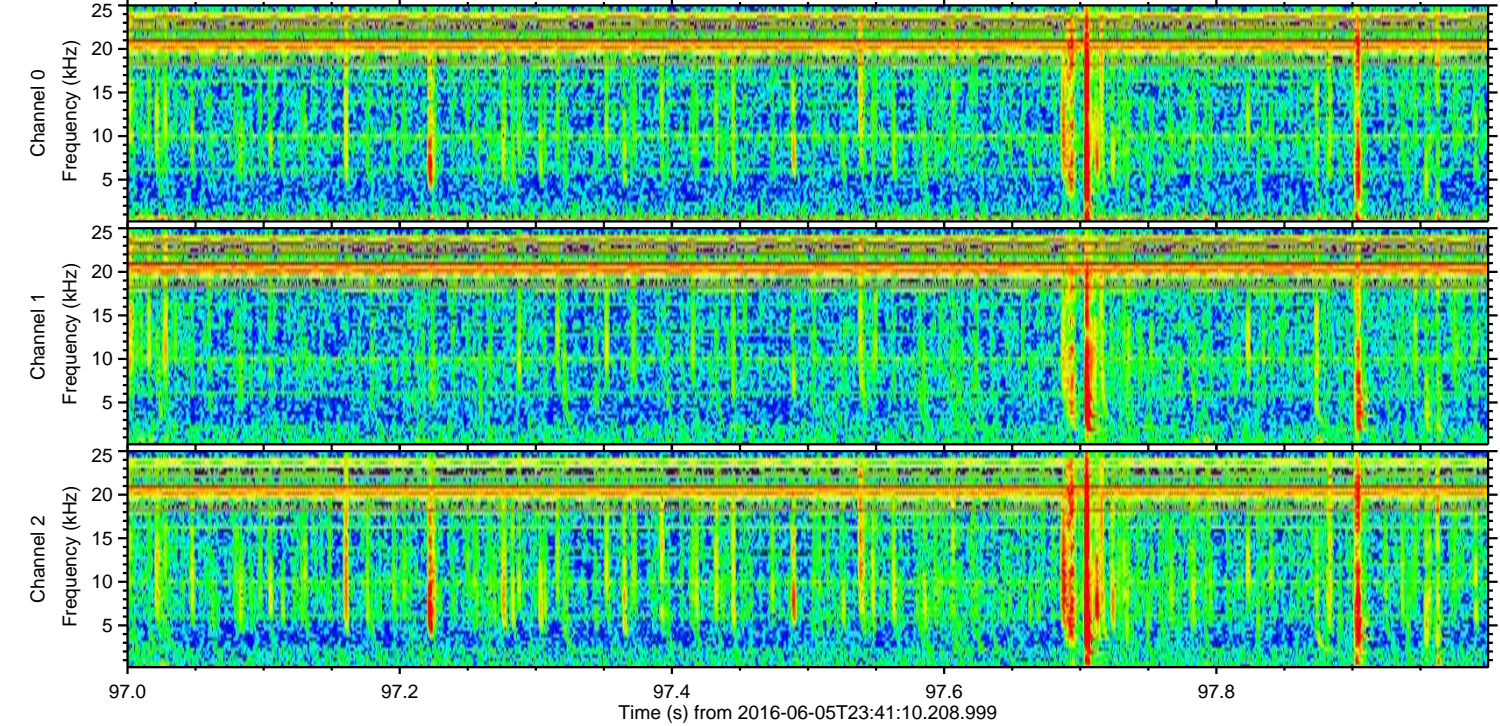
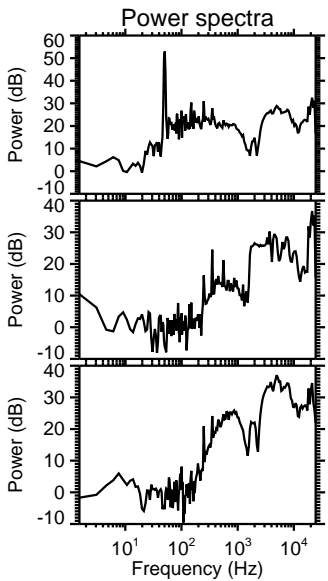
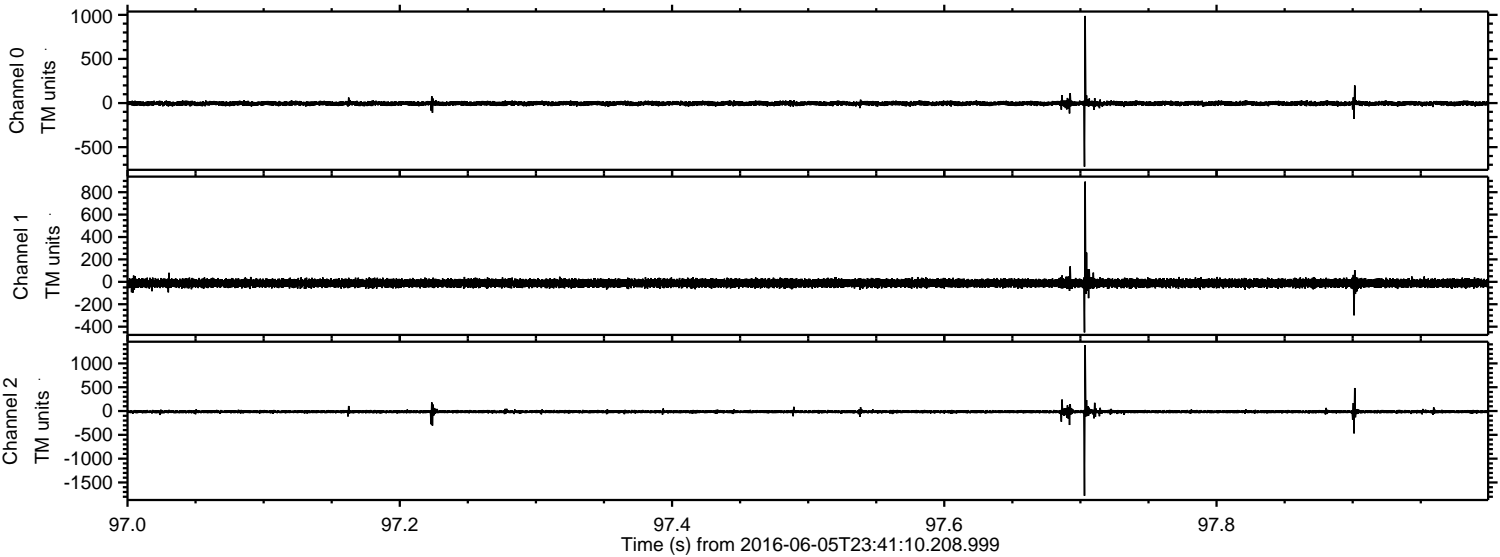


Channel 0
mn: -1332
mx: 1190
 μ : -4.7
 σ : 17.8

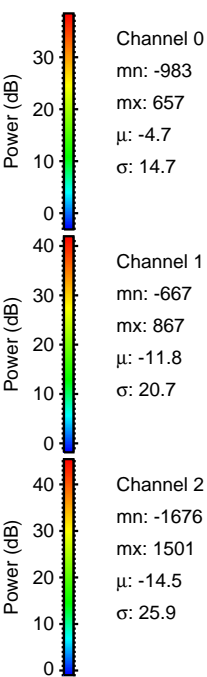
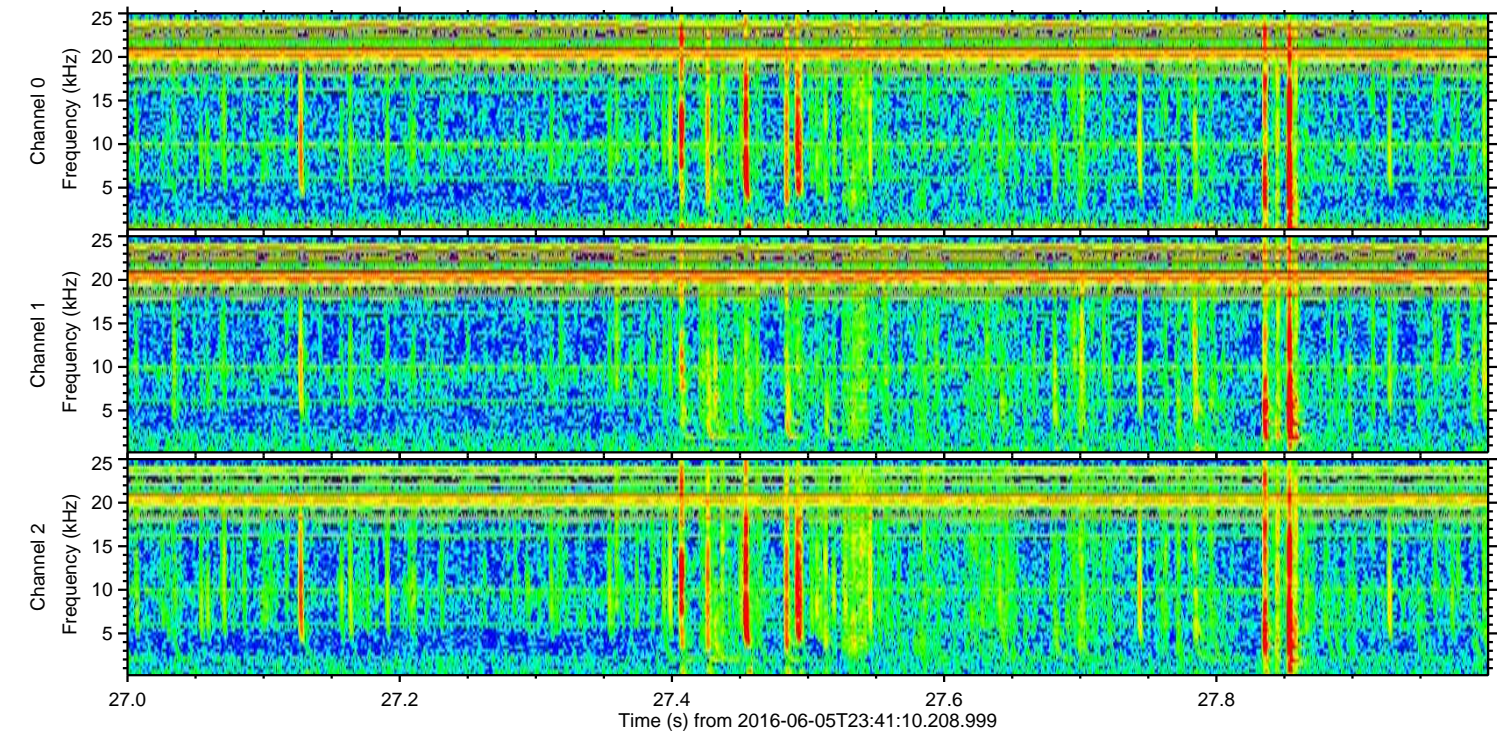
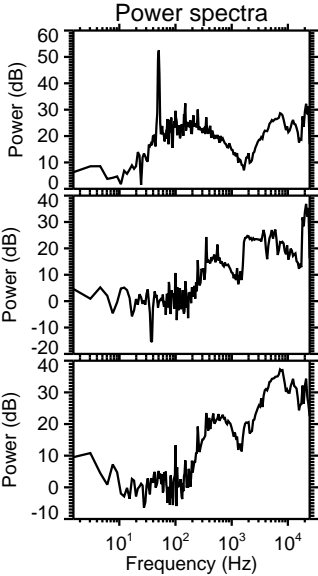
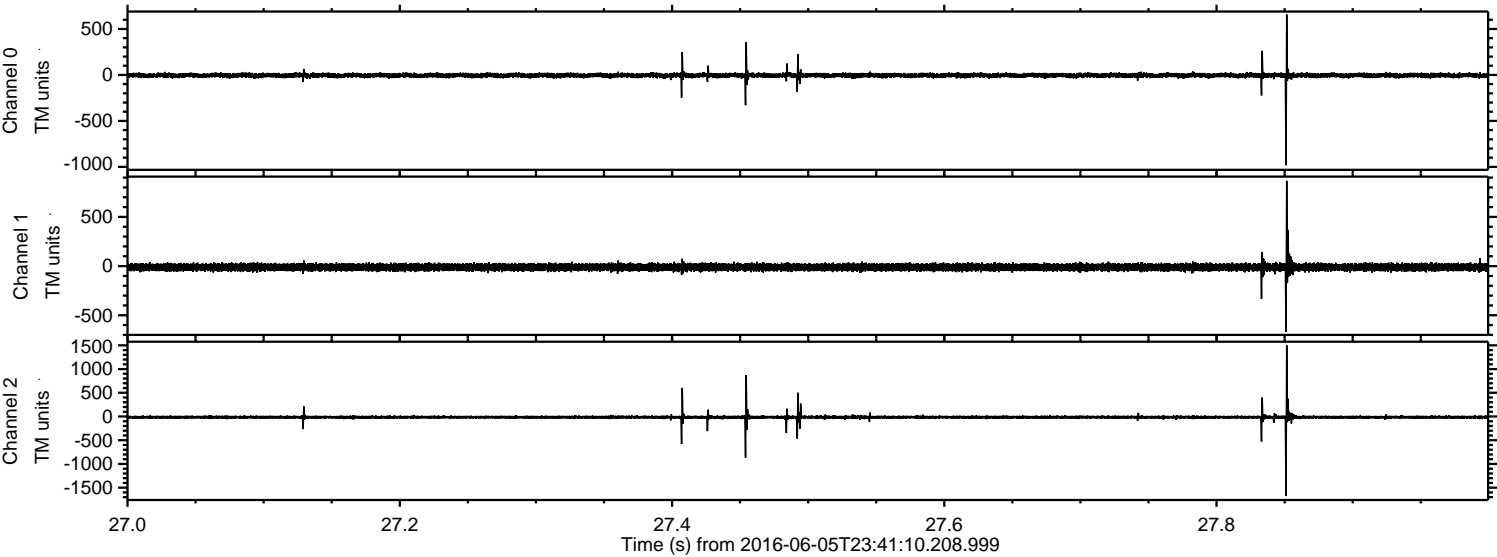
Channel 1
mn: -1316
mx: 1208
 μ : -11.9
 σ : 22.9

Channel 2
mn: -2426
mx: 1972
 μ : -14.4
 σ : 28.6

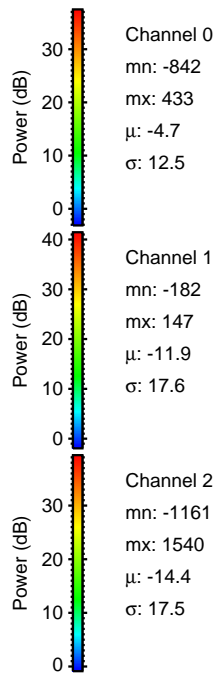
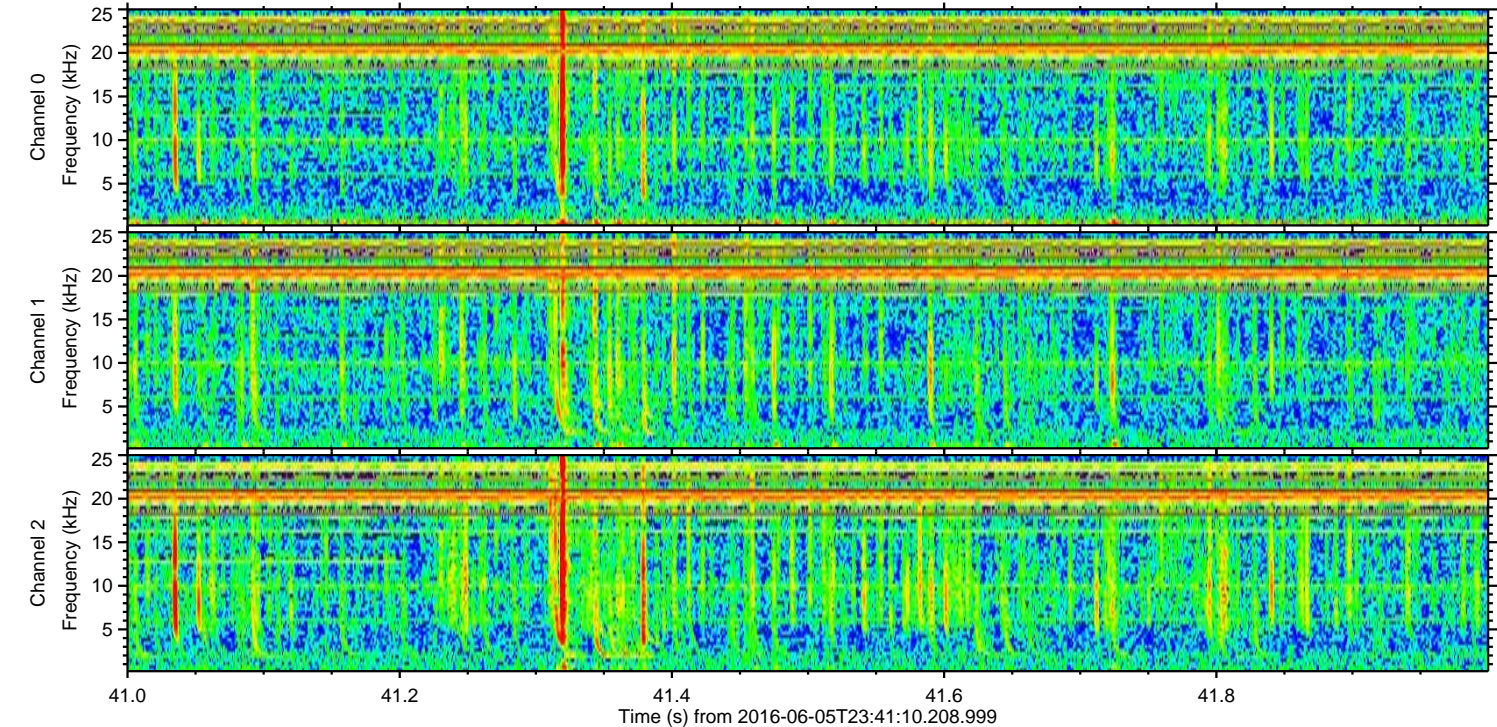
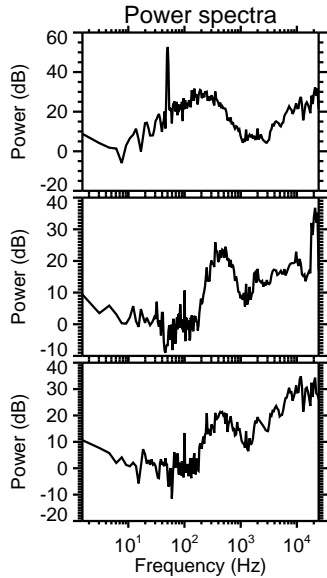
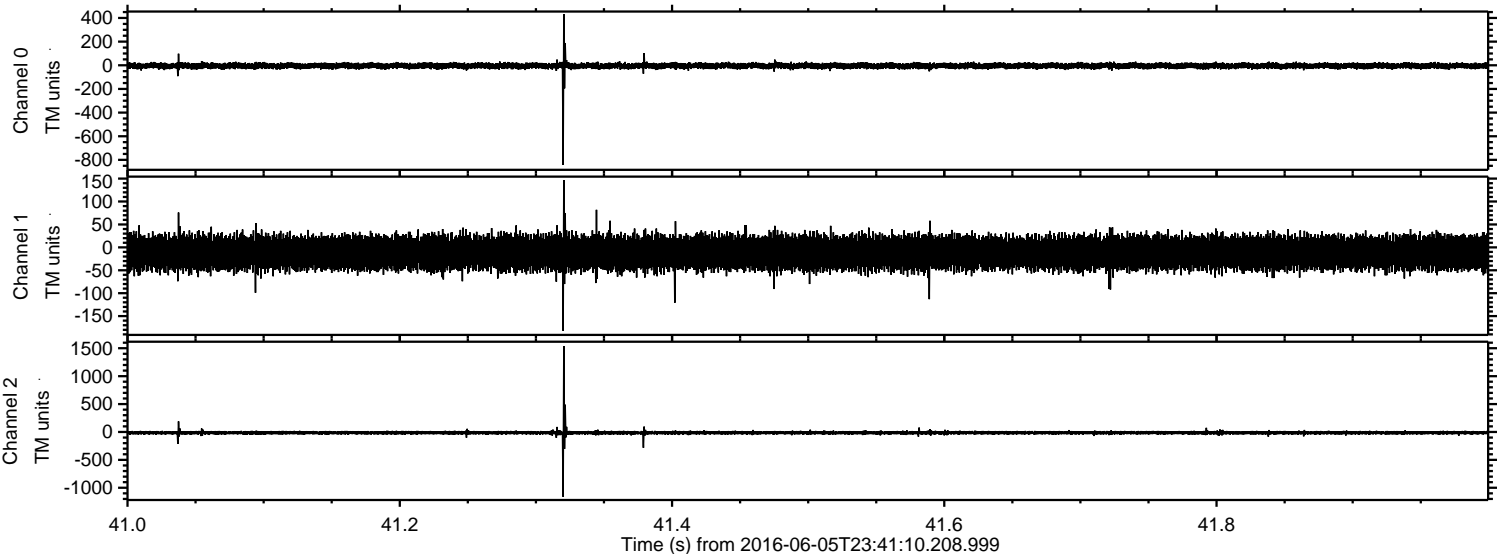
Processed Mon Jun 6 01:49:38 2016 by ELM ver.2012-10-06 from 001__elm20160605_234109__dat00.bin



Processed Mon Jun 6 01:49:39 2016 by ELM ver.2012-10-06 from 001__elm20160605_234109__dat00.bin



Processed Mon Jun 6 01:49:41 2016 by ELM ver.2012-10-06 from 001__elm20160605_234109__dat00.bin



Processed Mon Jun 6 01:49:42 2016 by ELM ver.2012-10-06 from 001__elm20160605_234109__dat000.bin

