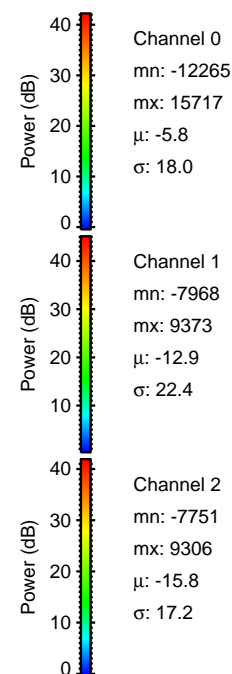
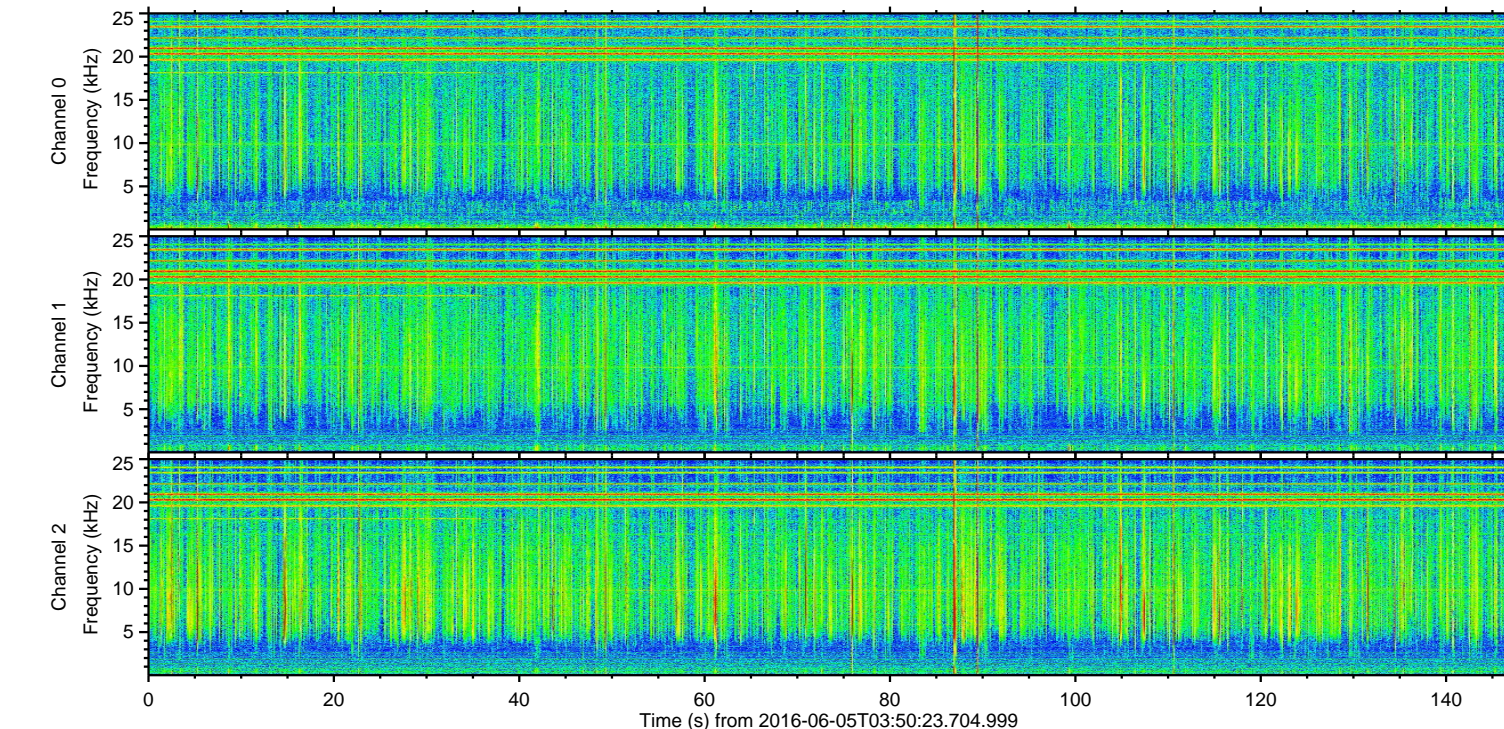
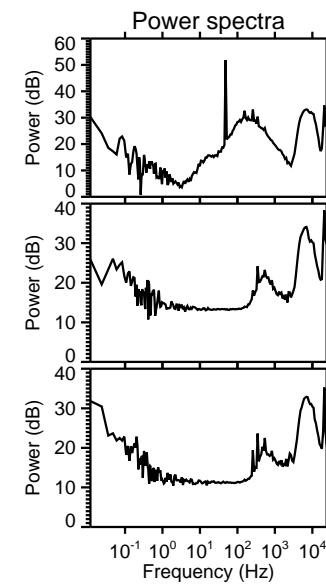
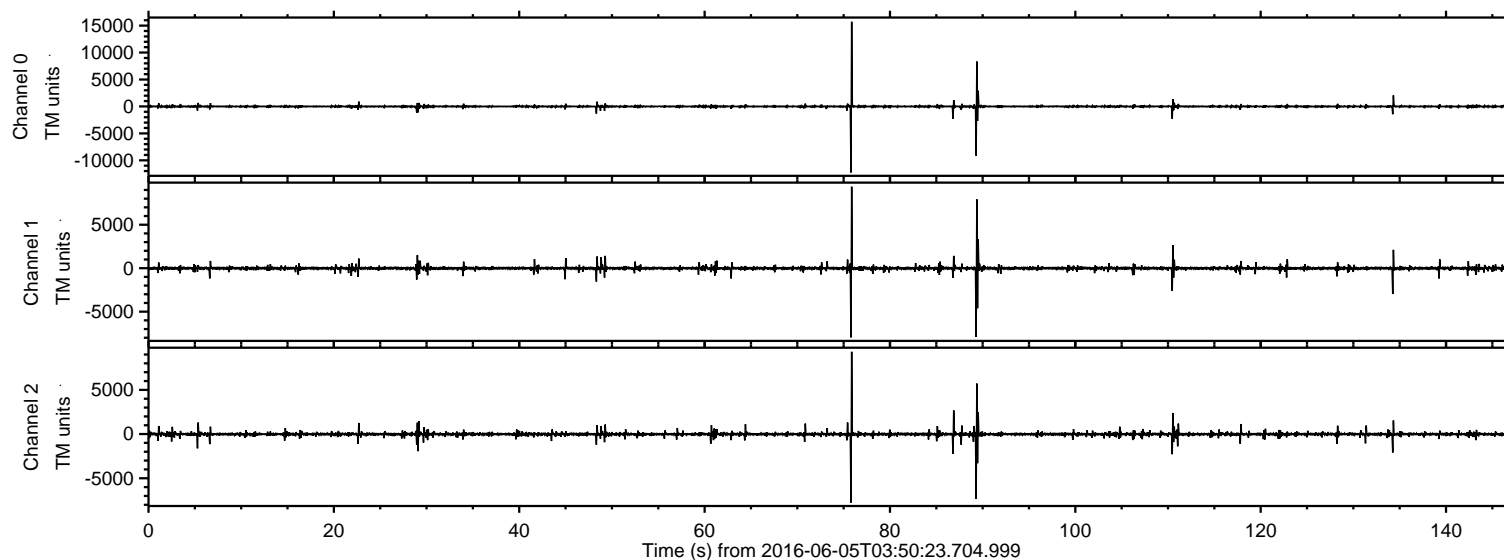


# ELMAVAN 3D WAVEFORMS (Measured data sampled at 50 kHz) 51000 packets of 144 samples from 2016-06-05T03:50:23.704.999.

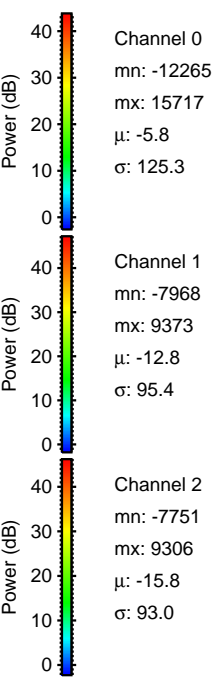
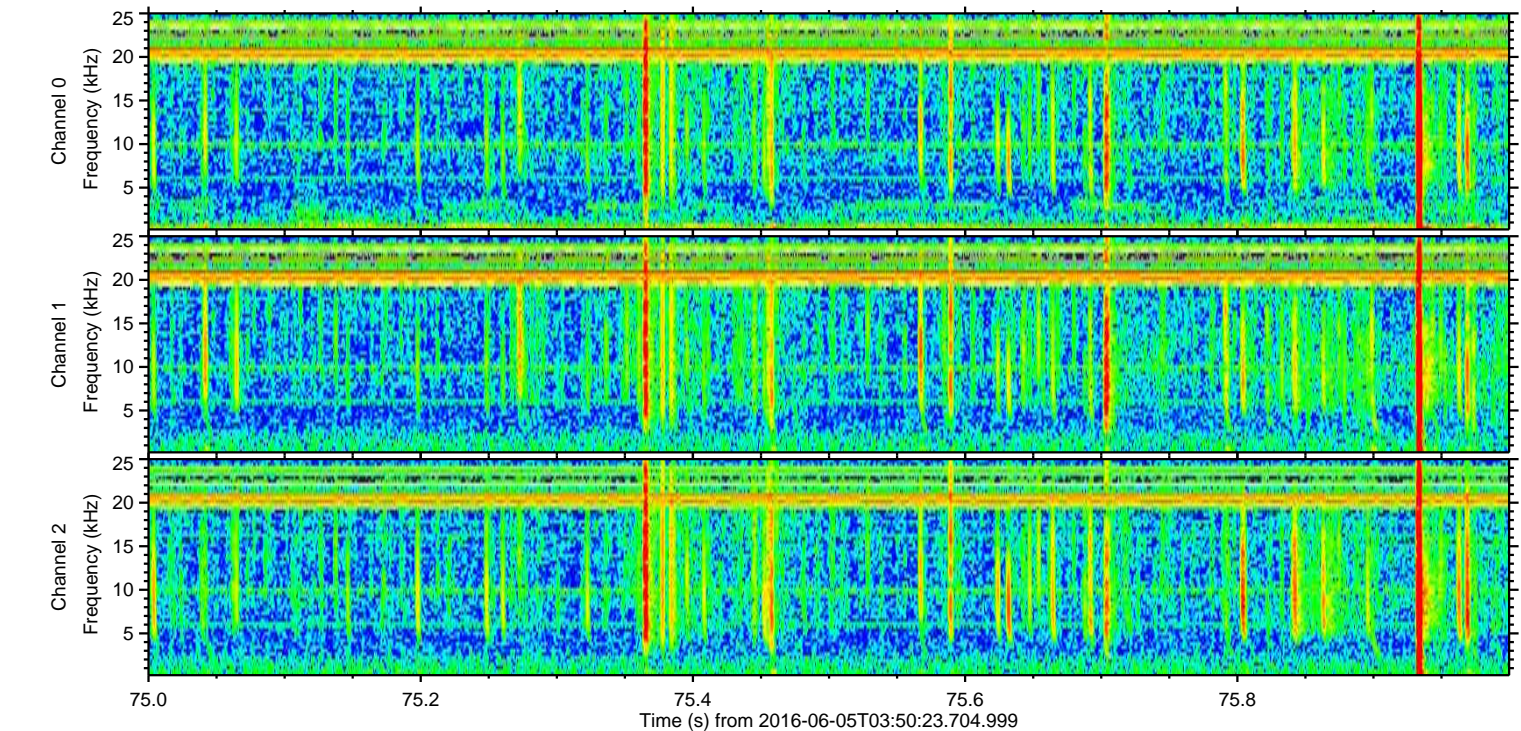
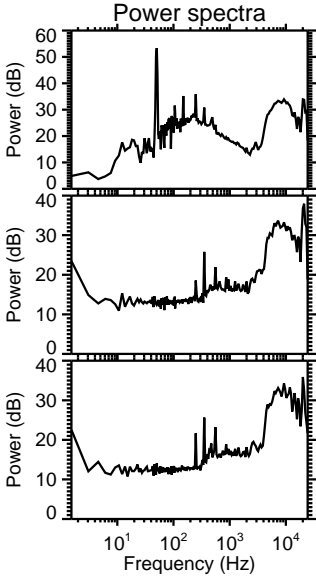
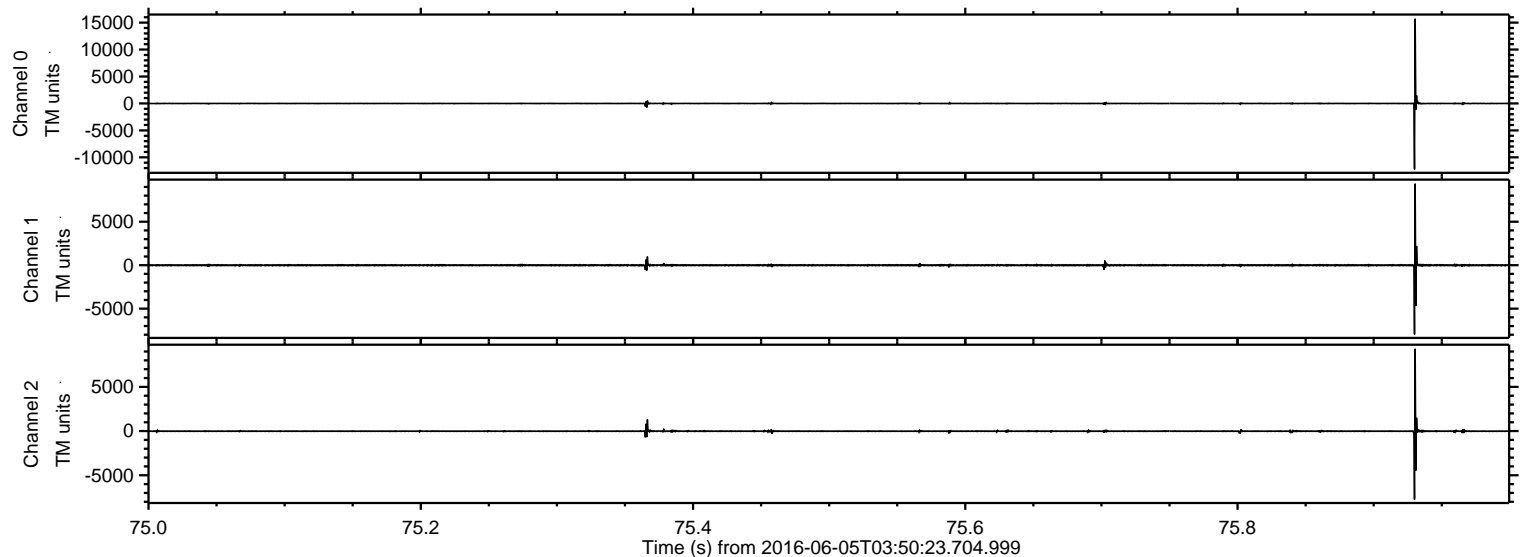
Processed Sun Jun 5 05:58:44 2016 by ELM ver.2012-10-06 from 001\_\_elm20160605\_035022\_\_dat00.bin





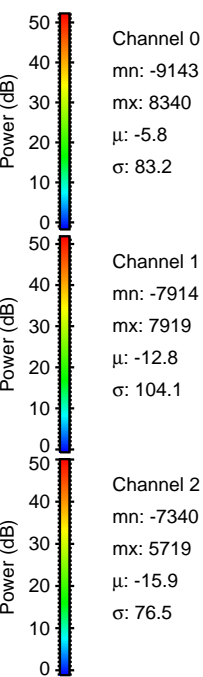
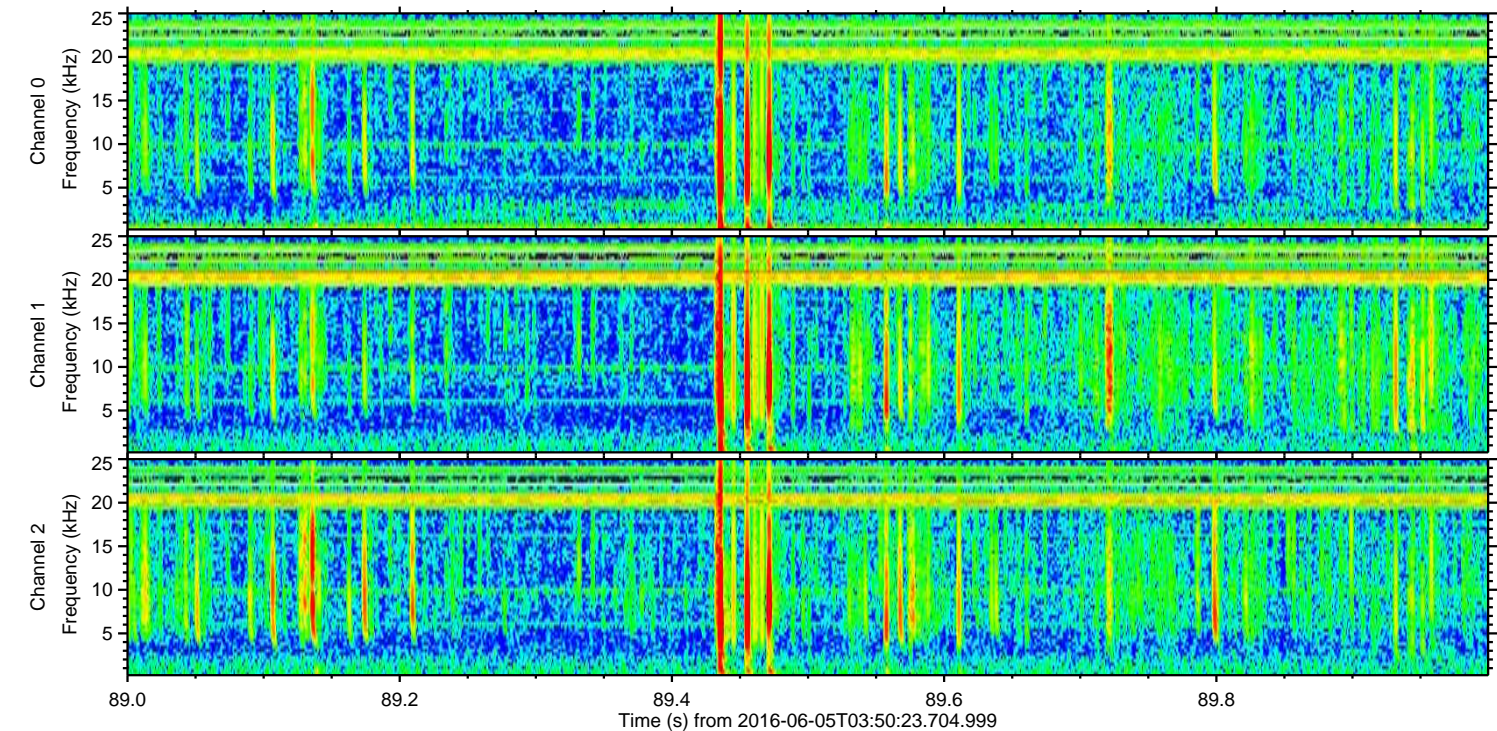
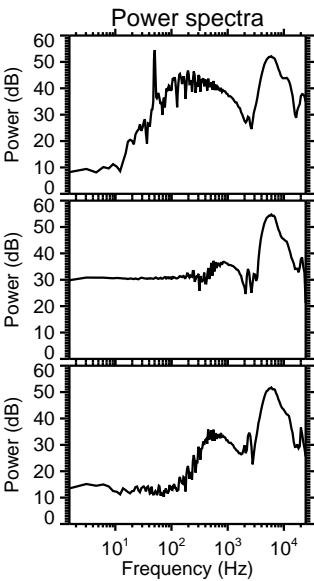
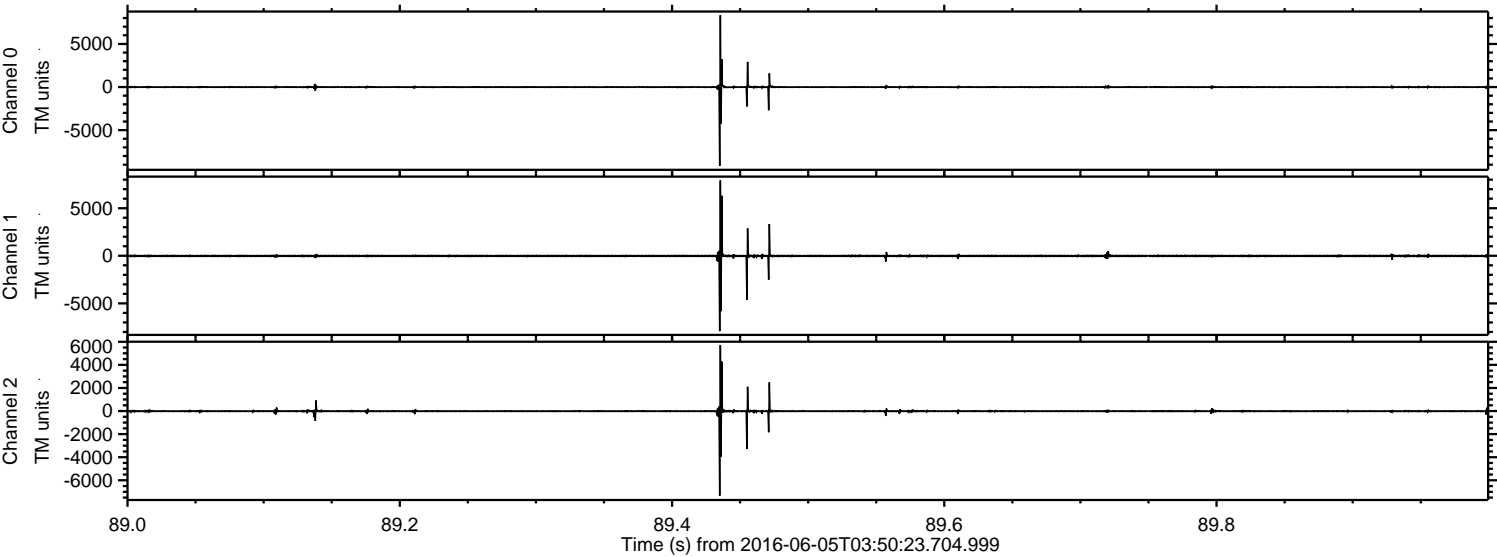
ELMAVAN 3D WAVEFORMS (Measured data sampled at 50 kHz) 51000 packets of 144 samples from 2016-06-05T03:50:23.704.999. Part 76/147

Processed Sun Jun 5 05:58:55 2016 by ELM ver.2012-10-06 from 001\_\_elm20160605\_035022\_\_dat00.bin





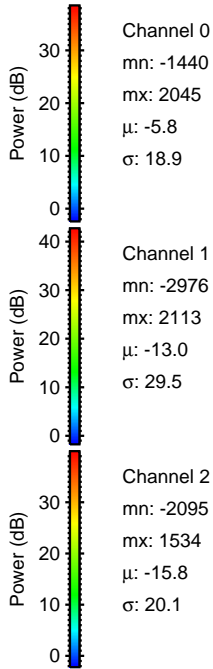
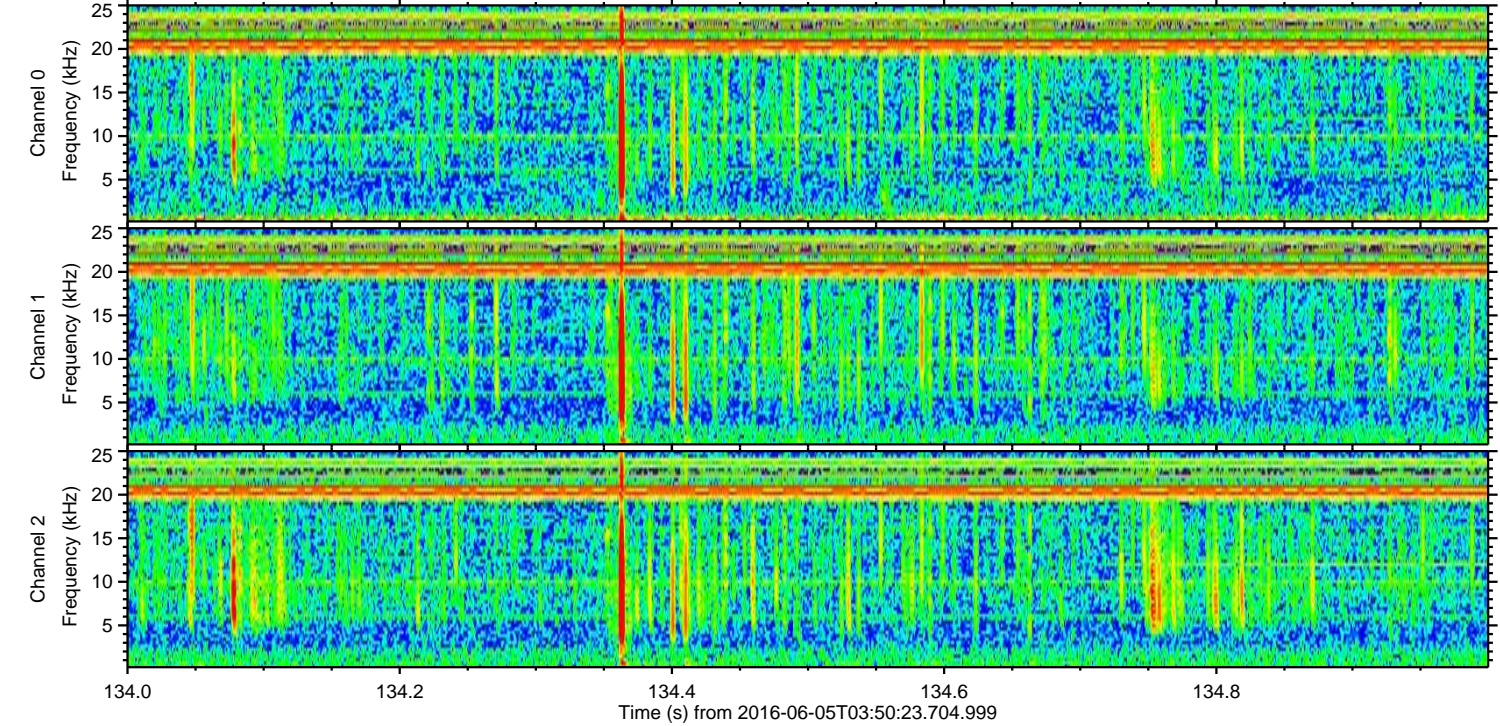
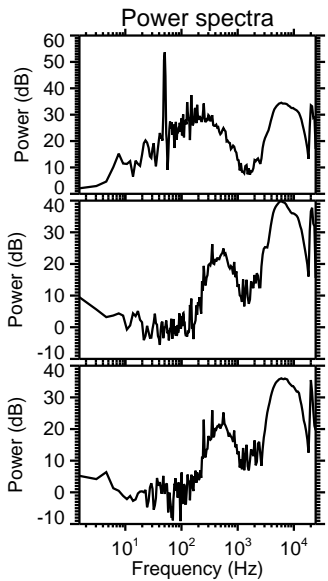
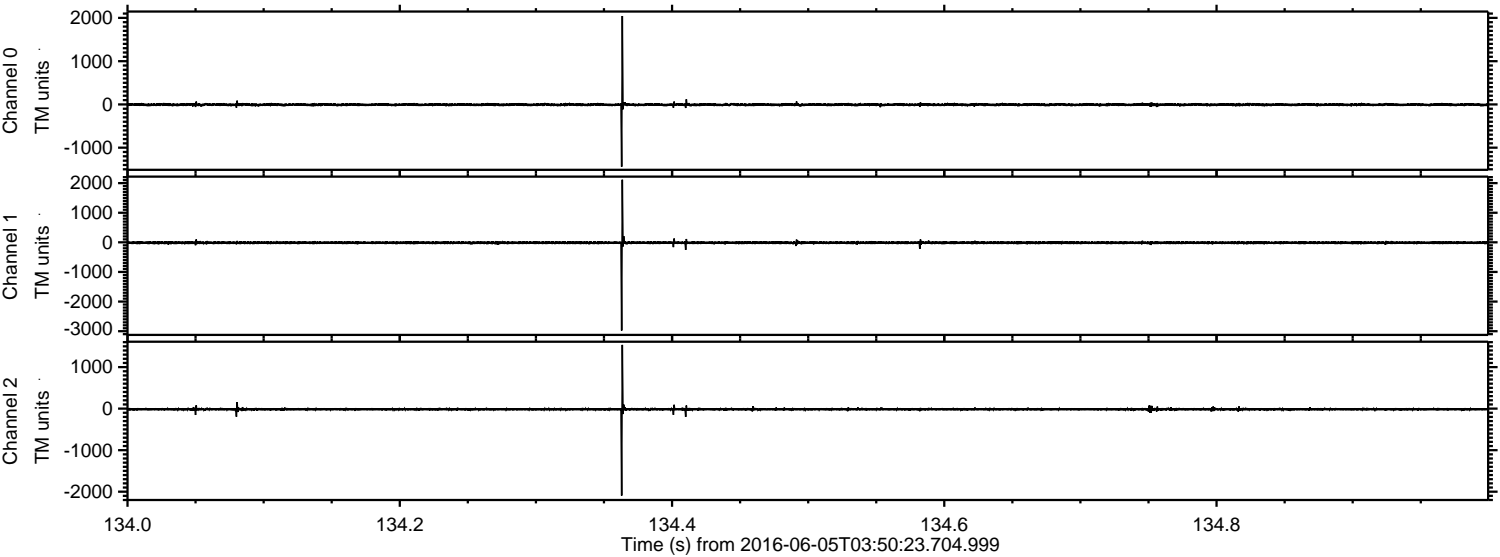
Processed Sun Jun 5 05:58:56 2016 by ELM ver.2012-10-06 from 001\_\_elm20160605\_035022\_\_dat00.bin





ELMAVAN 3D WAVEFORMS (Measured data sampled at 50 kHz) 51000 packets of 144 samples from 2016-06-05T03:50:23.704.999. Part 135/147

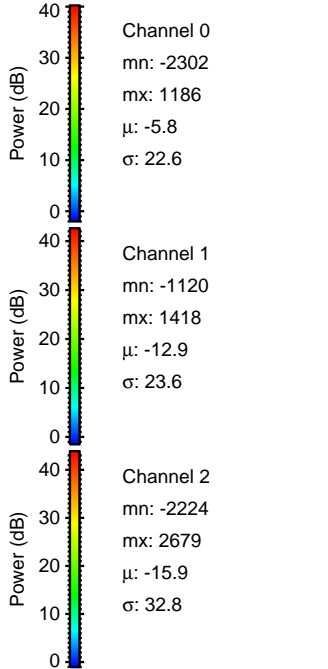
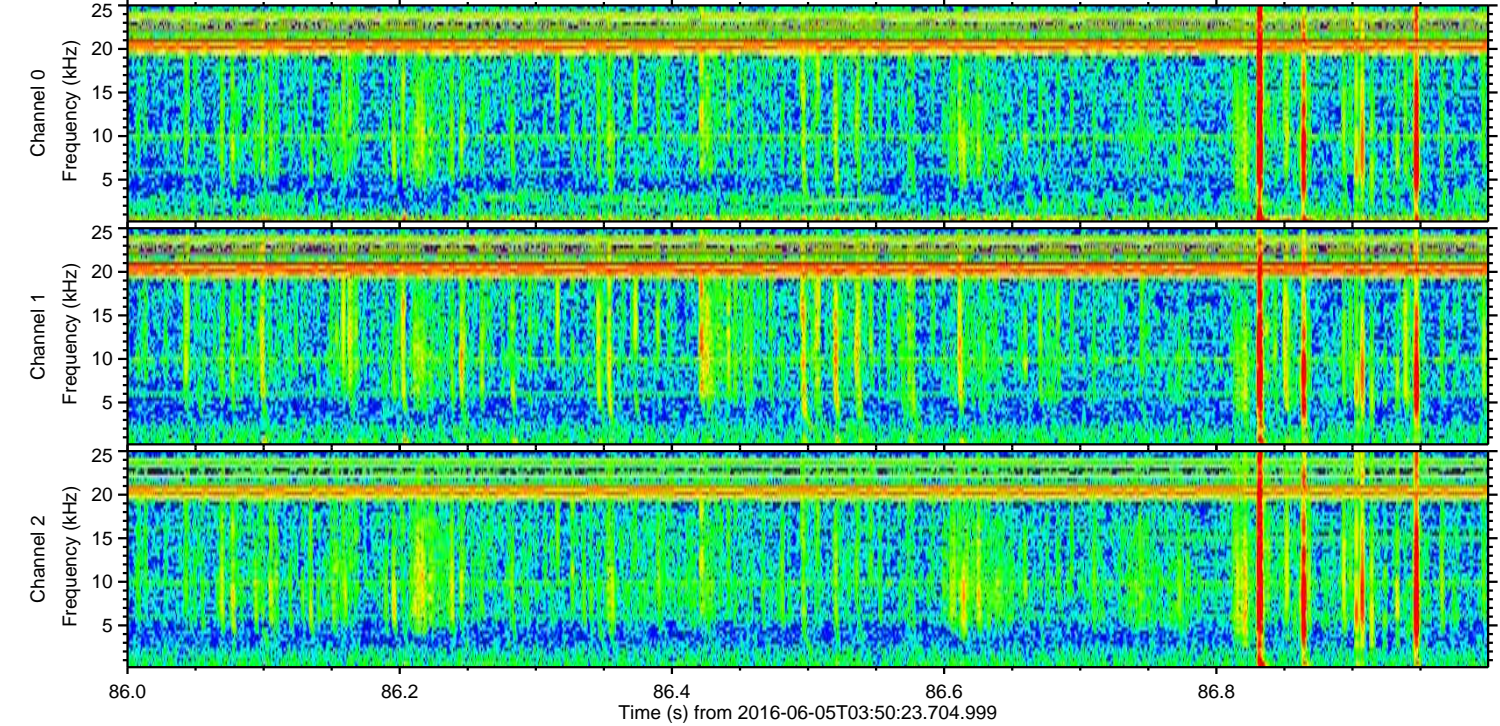
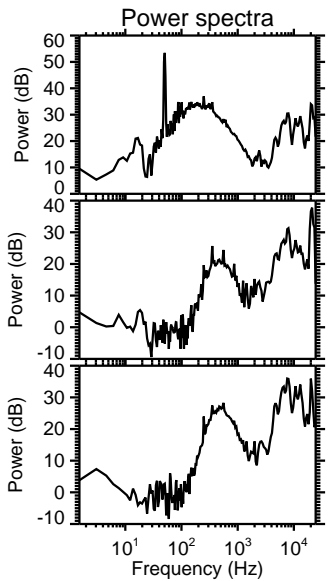
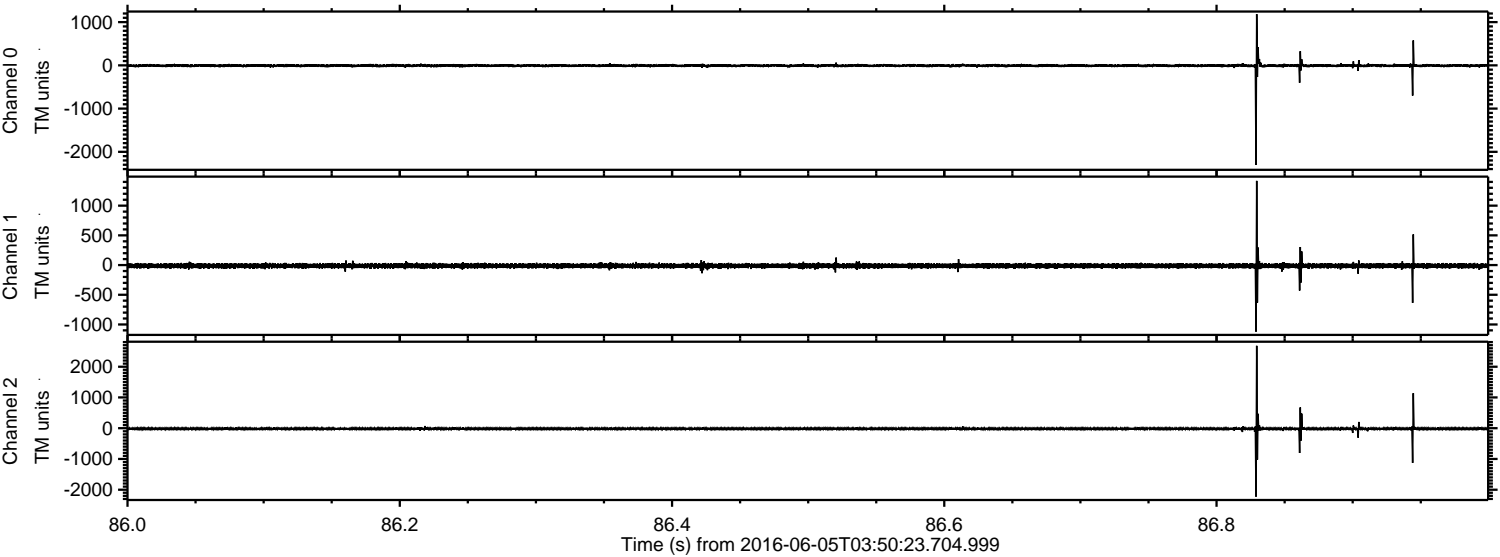
Processed Sun Jun 5 05:58:57 2016 by ELM ver.2012-10-06 from 001\_\_elm20160605\_035022\_\_dat00.bin





ELMAVAN 3D WAVEFORMS (Measured data sampled at 50 kHz) 51000 packets of 144 samples from 2016-06-05T03:50:23.704.999. Part 87/147

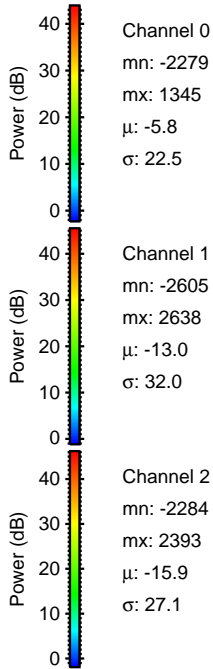
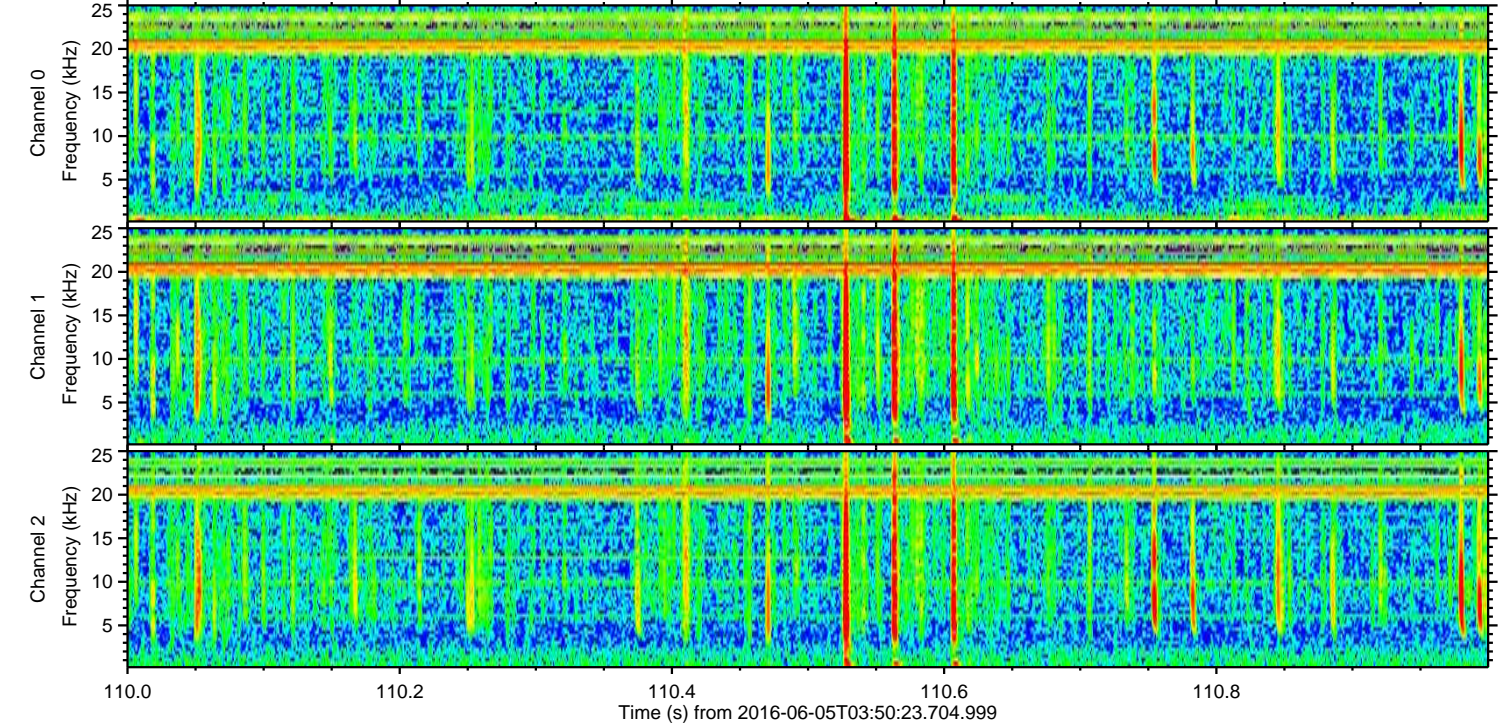
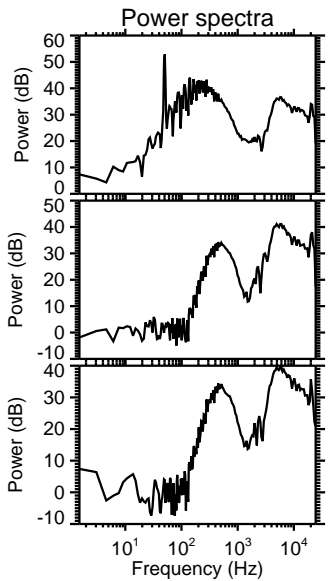
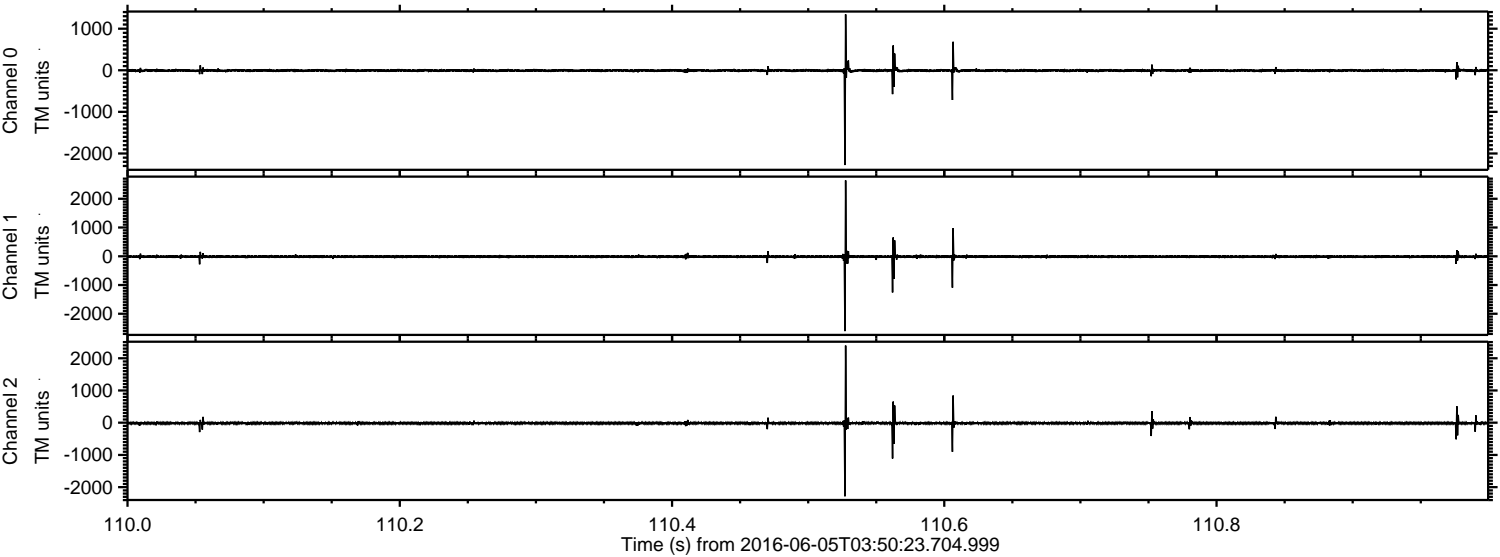
Processed Sun Jun 5 05:58:58 2016 by ELM ver.2012-10-06 from 001\_\_elm20160605\_035022\_\_dat00.bin





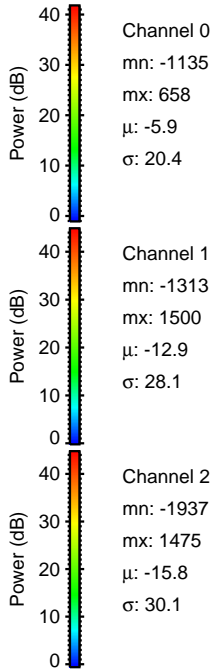
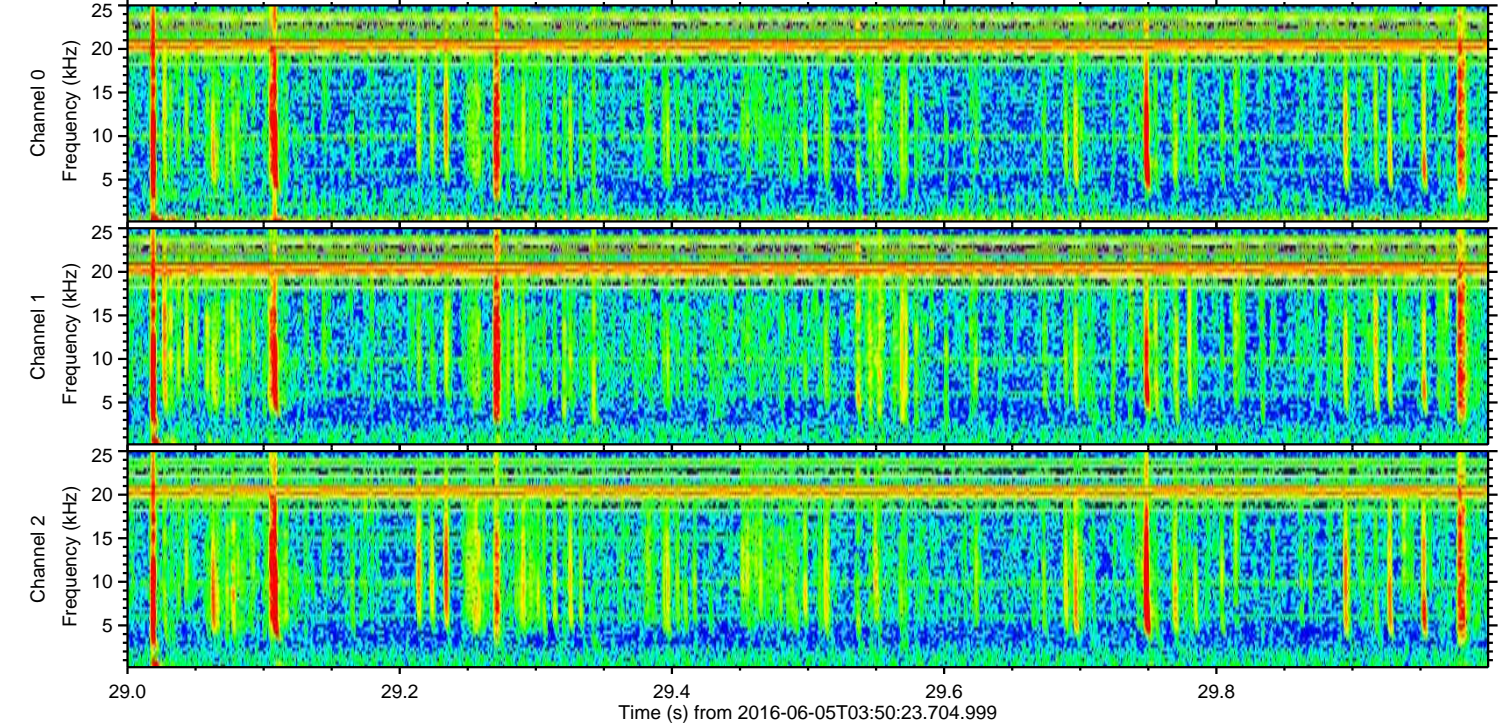
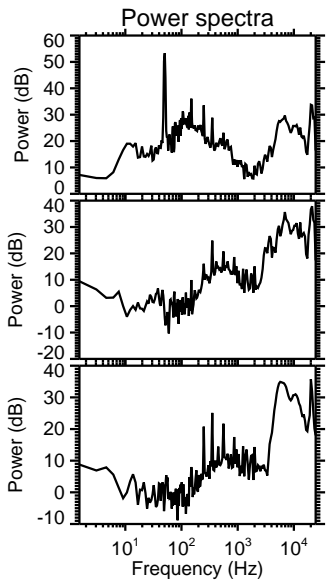
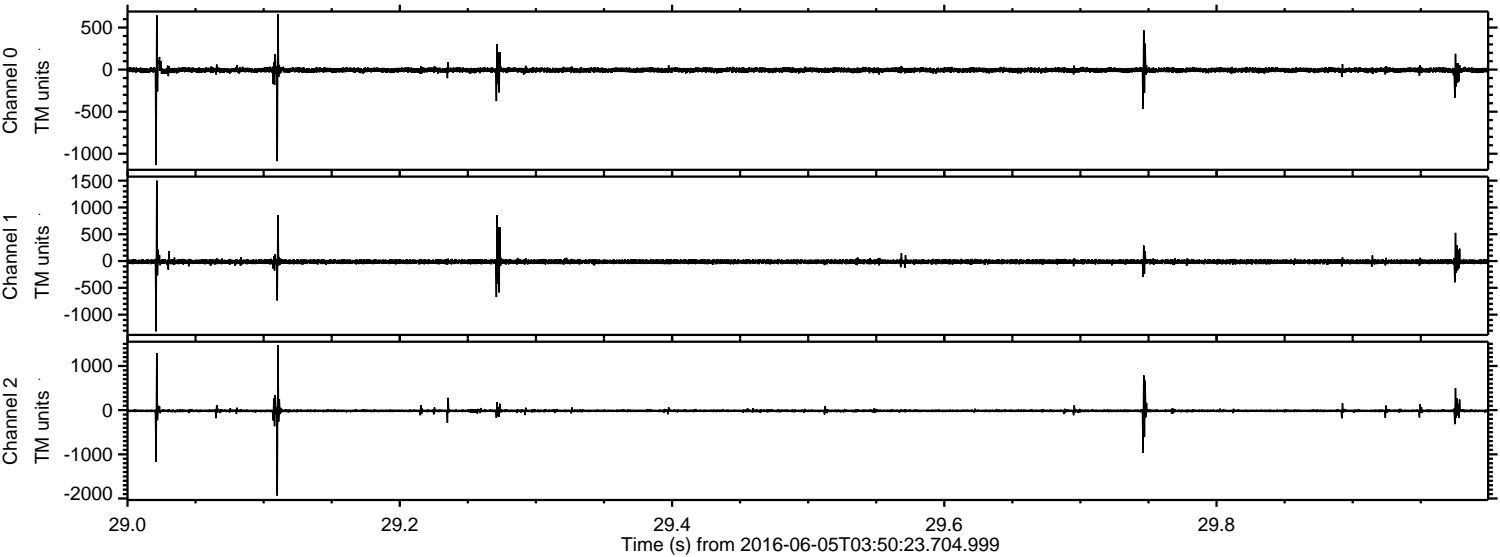
ELMAVAN 3D WAVEFORMS (Measured data sampled at 50 kHz) 51000 packets of 144 samples from 2016-06-05T03:50:23.704.999. Part 111/147

Processed Sun Jun 5 05:58:59 2016 by ELM ver.2012-10-06 from 001\_\_elm20160605\_035022\_\_dat00.bin



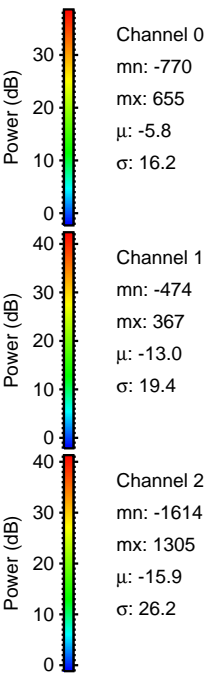
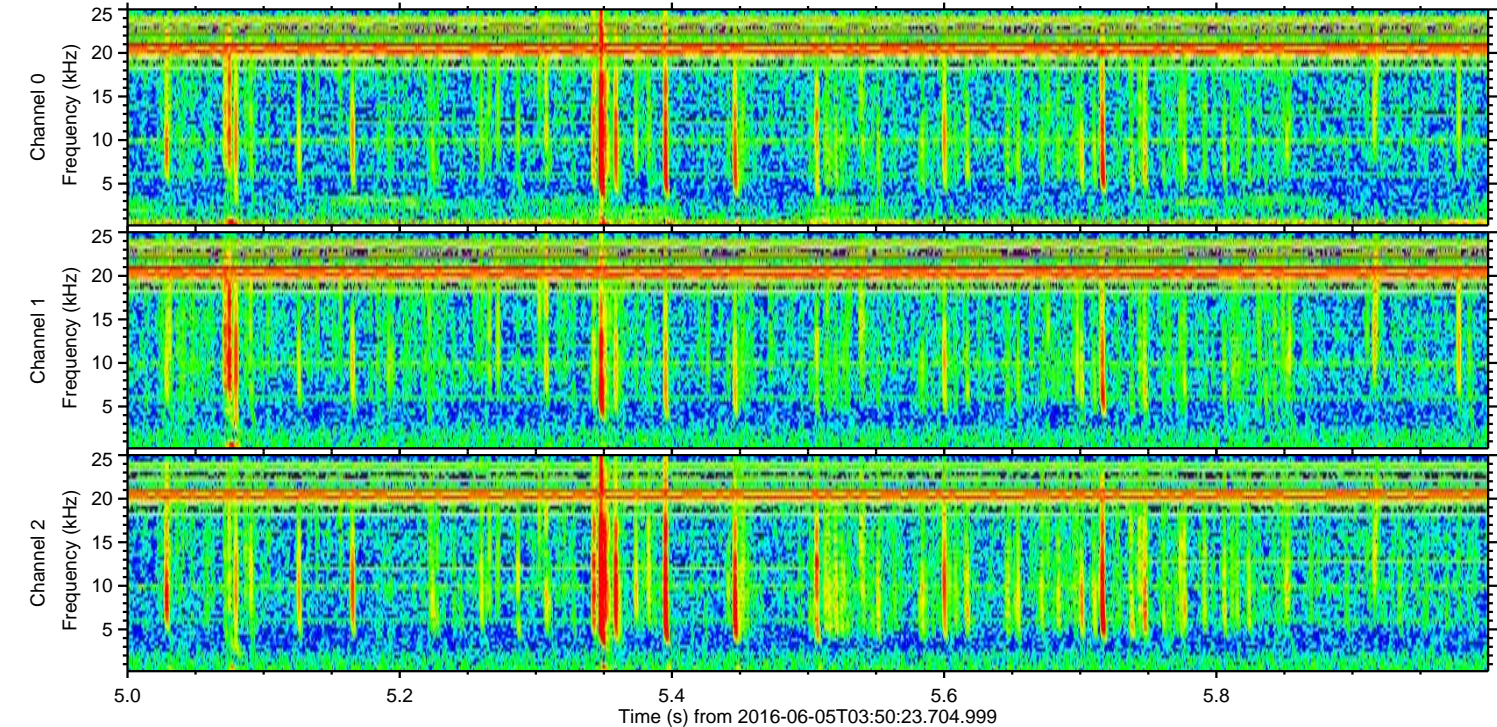
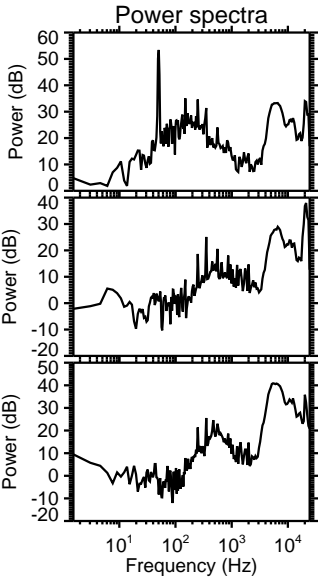
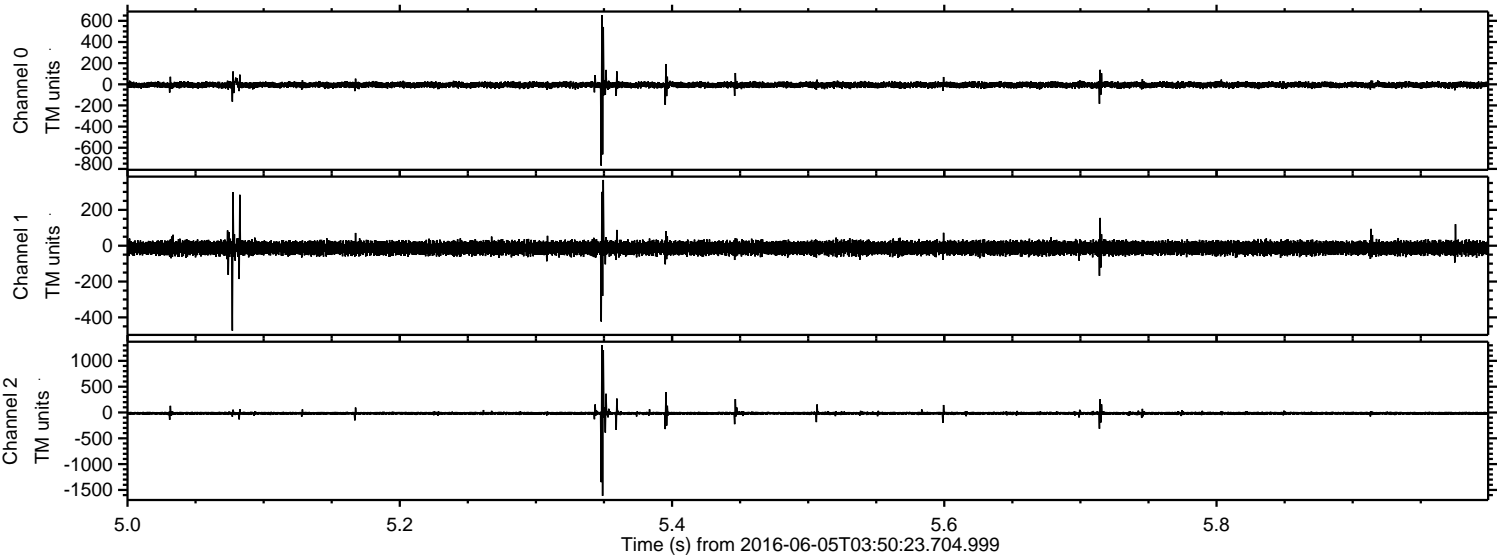


Processed Sun Jun 5 05:59:00 2016 by ELM ver.2012-10-06 from 001\_\_elm20160605\_035022\_\_dat00.bin



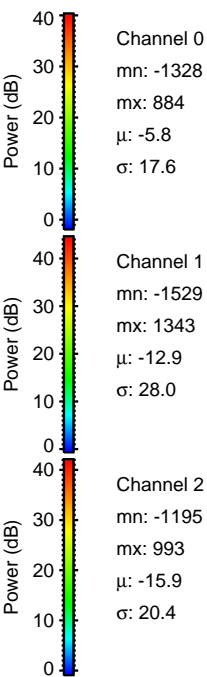
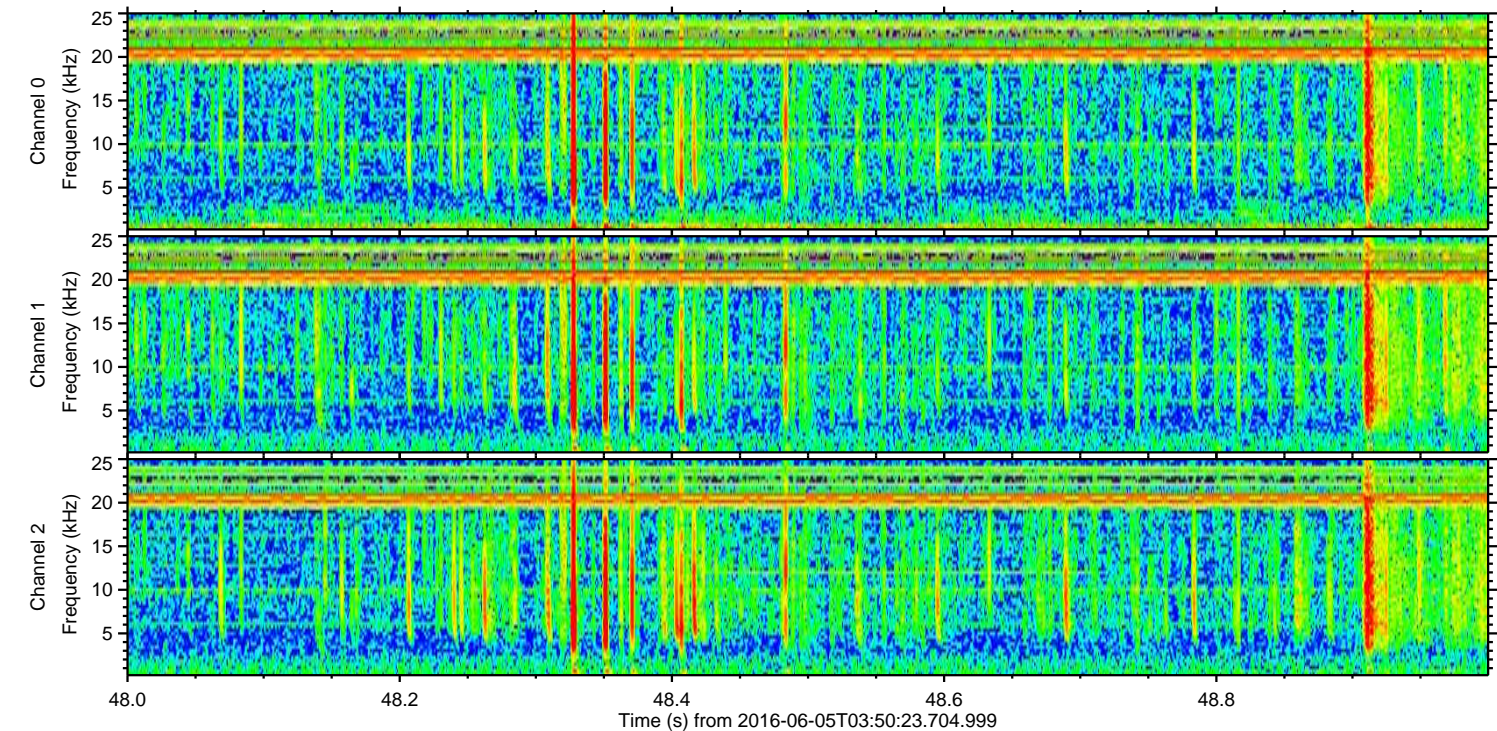
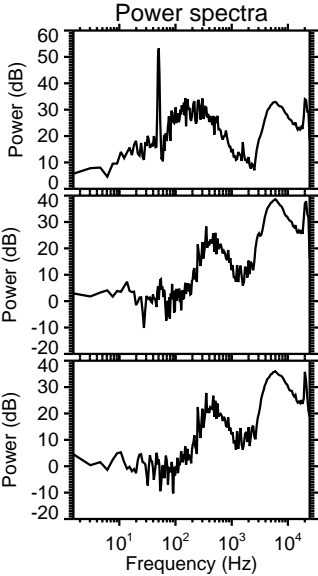
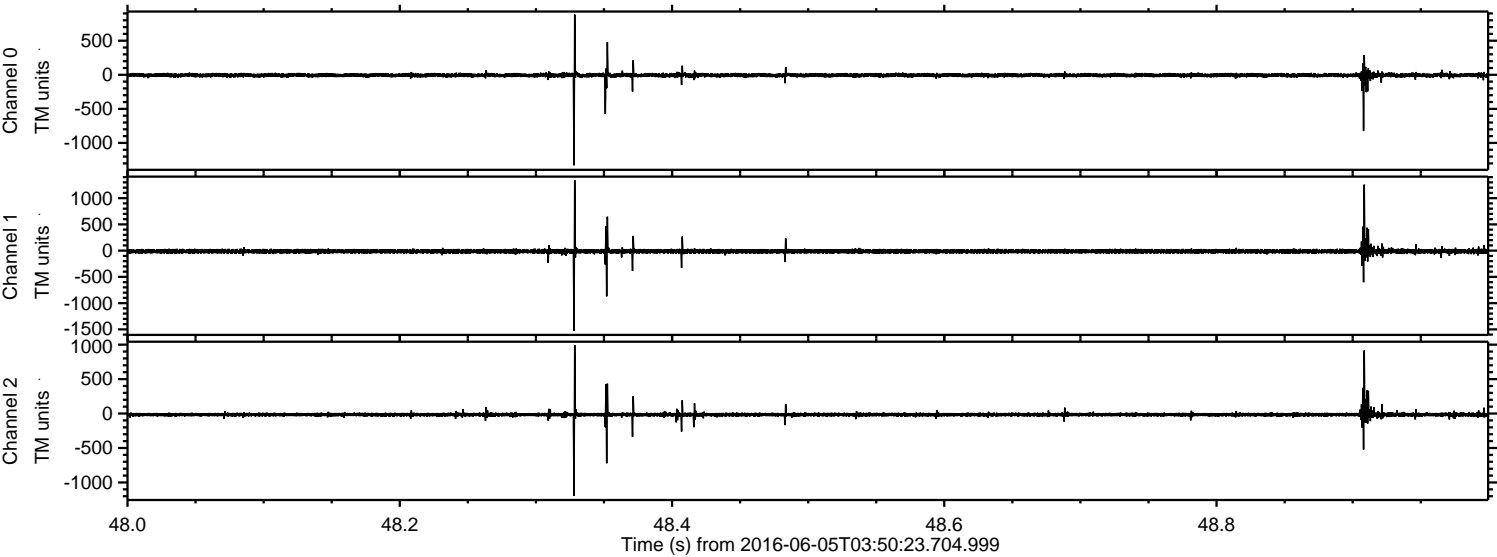


Processed Sun Jun 5 05:59:01 2016 by ELM ver.2012-10-06 from 001\_\_elm20160605\_035022\_\_dat00.bin





Processed Sun Jun 5 05:59:02 2016 by ELM ver.2012-10-06 from 001\_\_elm20160605\_035022\_\_dat00.bin



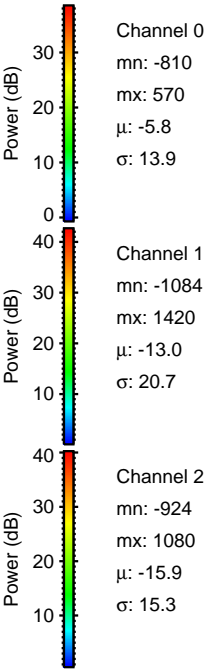
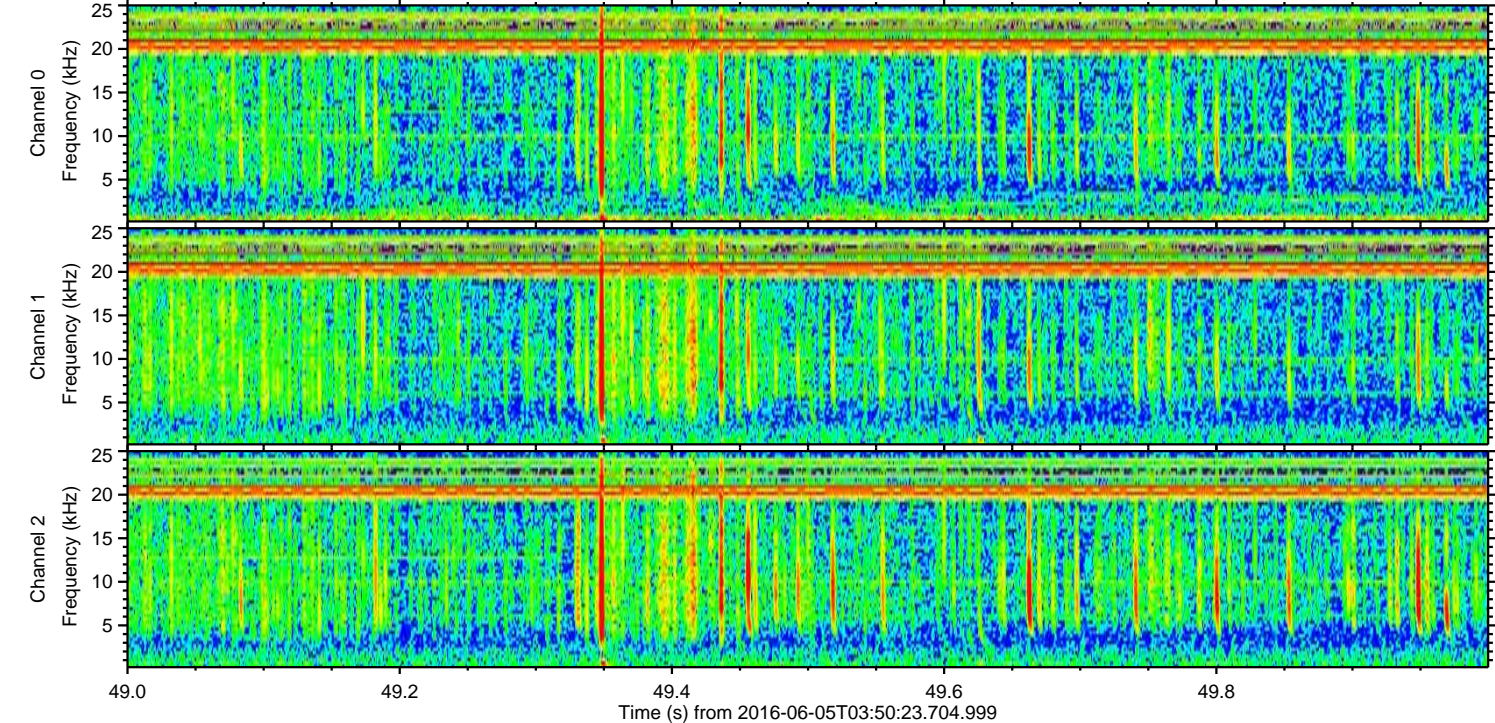
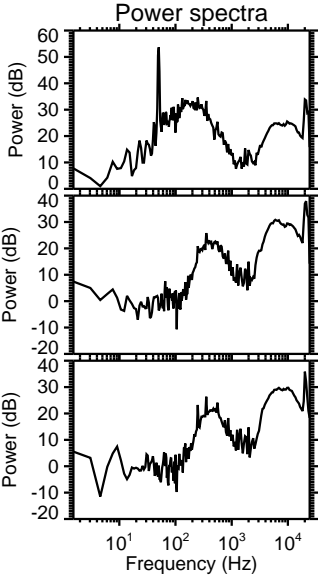
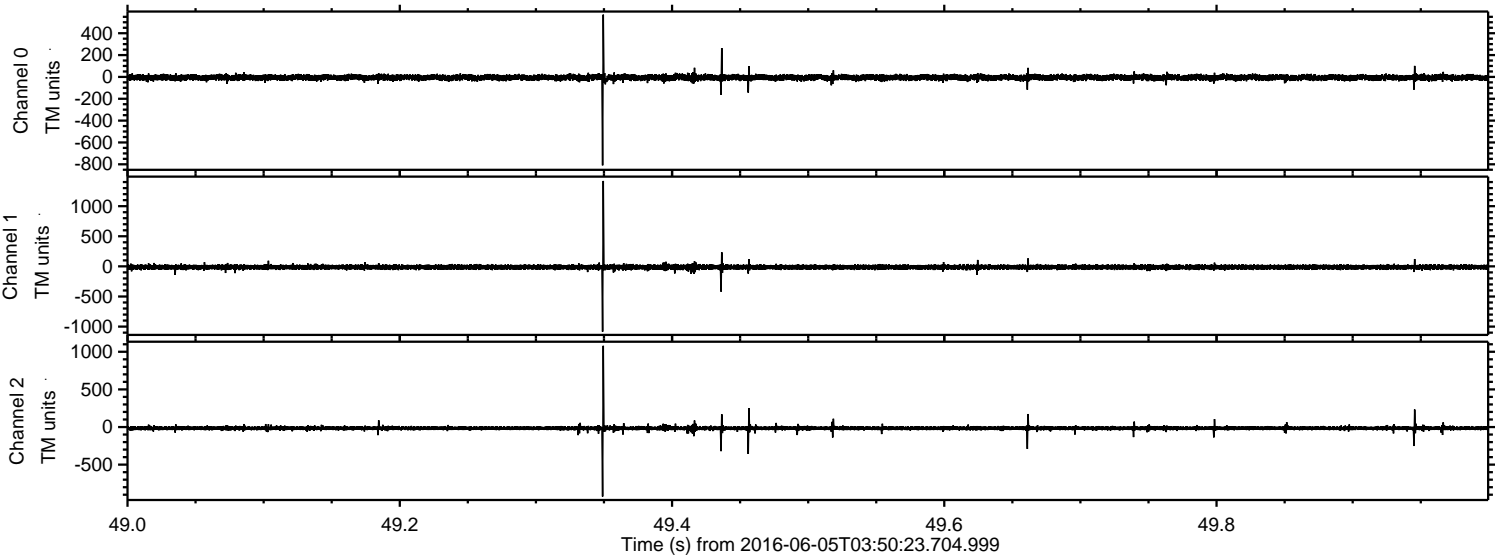
Channel 0  
mn: -1328  
mx: 884  
 $\mu$ : -5.8  
 $\sigma$ : 17.6

Channel 1  
mn: -1529  
mx: 1343  
 $\mu$ : -12.9  
 $\sigma$ : 28.0

Channel 2  
mn: -1195  
mx: 993  
 $\mu$ : -15.9  
 $\sigma$ : 20.4



Processed Sun Jun 5 05:59:03 2016 by ELM ver.2012-10-06 from 001\_\_elm20160605\_035022\_\_dat00.bin





Processed Sun Jun 5 05:59:04 2016 by ELM ver.2012-10-06 from 001\_\_elm20160605\_035022\_\_dat00.bin

