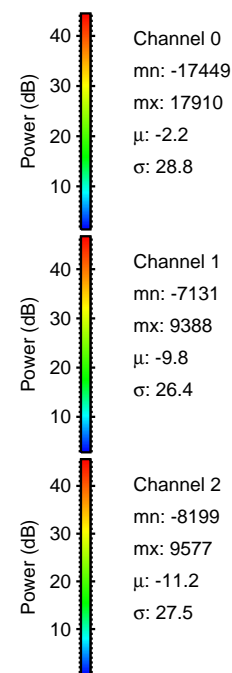
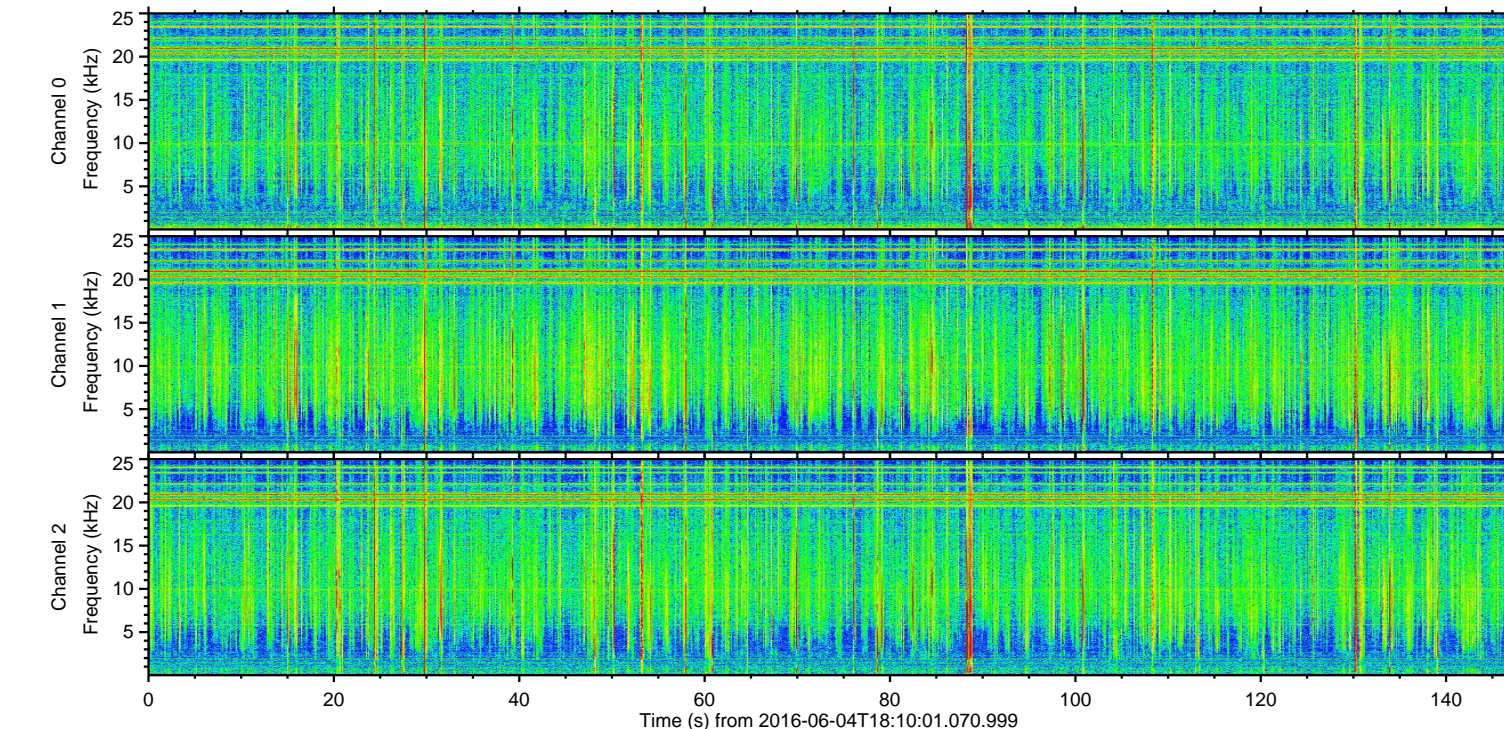
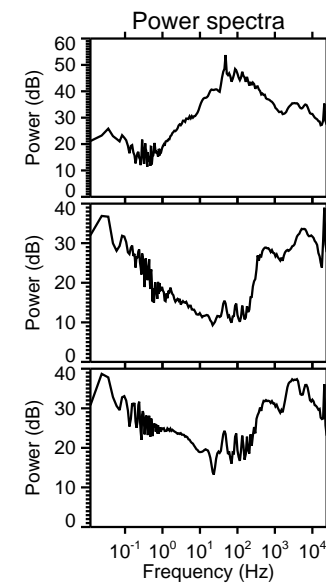
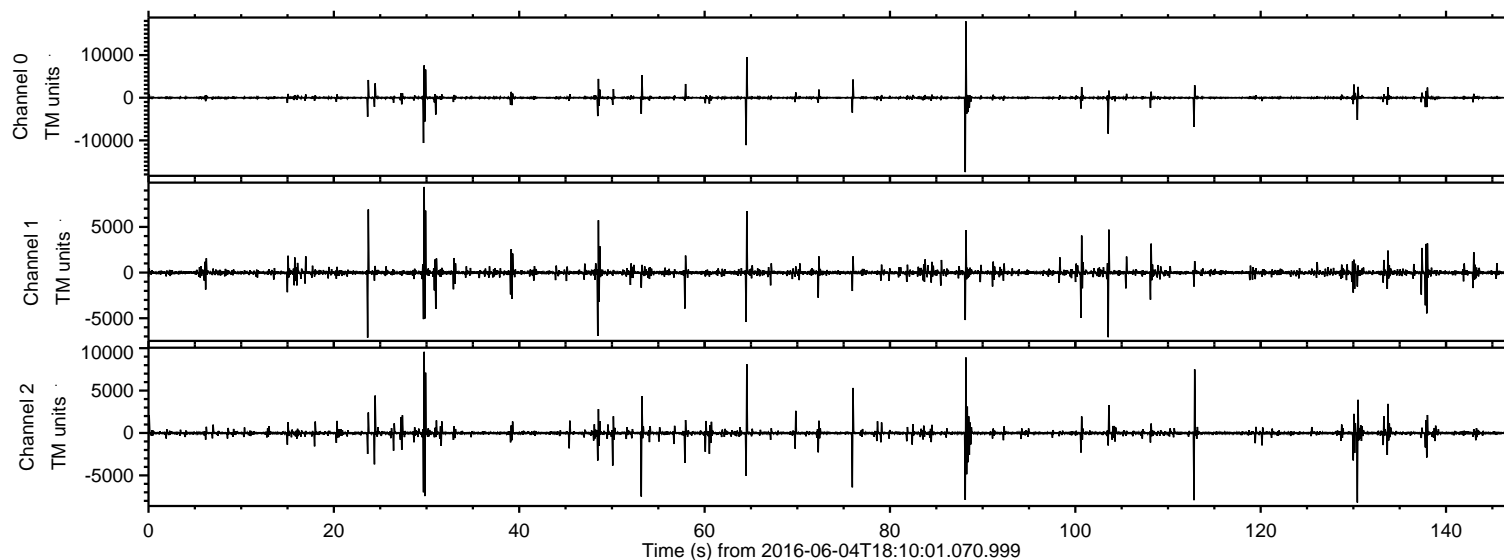


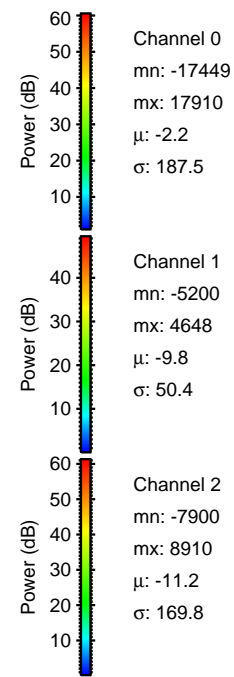
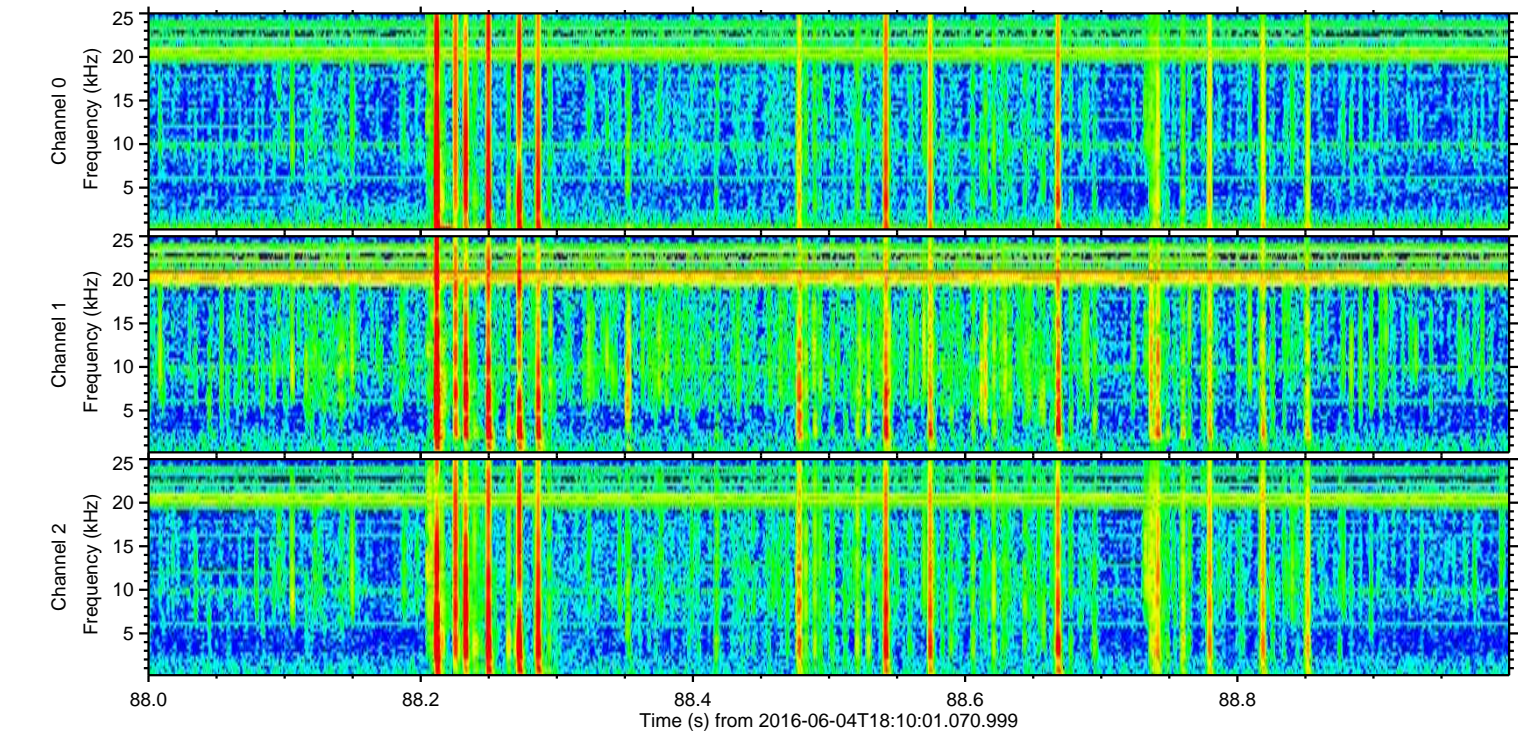
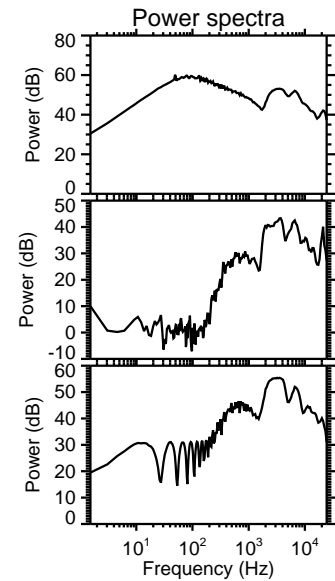
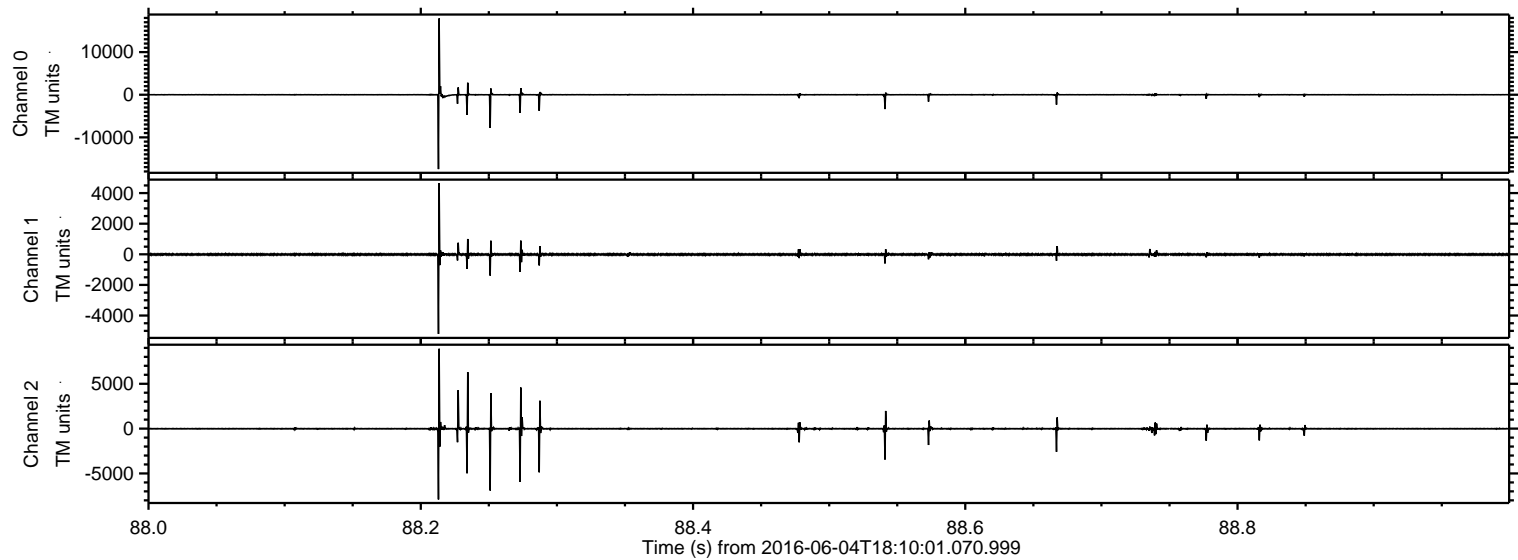
ELMAVAN 3D WAVEFORMS (Measured data sampled at 50 kHz) 51000 packets of 144 samples from 2016-06-04T18:10:01.070.999.

Processed Sat Jun 4 20:18:26 2016 by ELM ver.2012-10-06 from 001__elm20160604_181000__dat00.bin



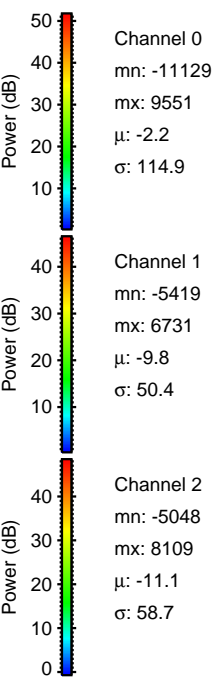
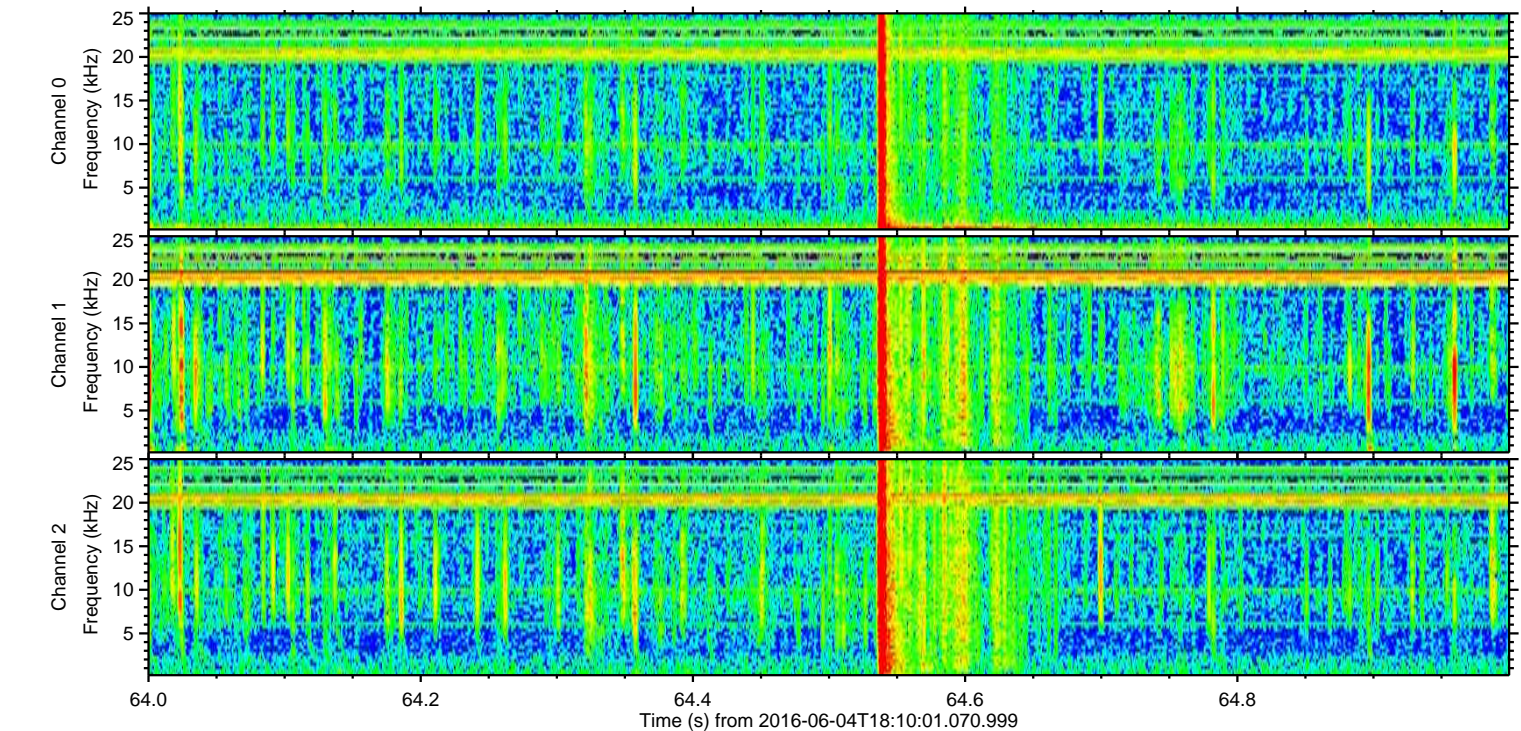
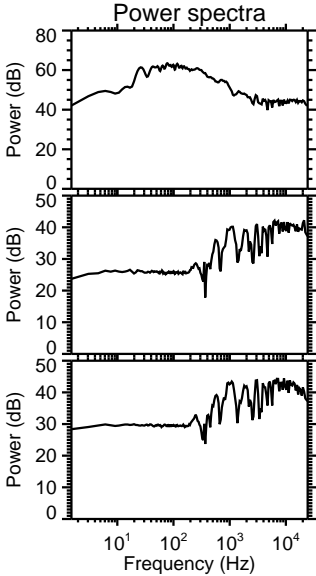
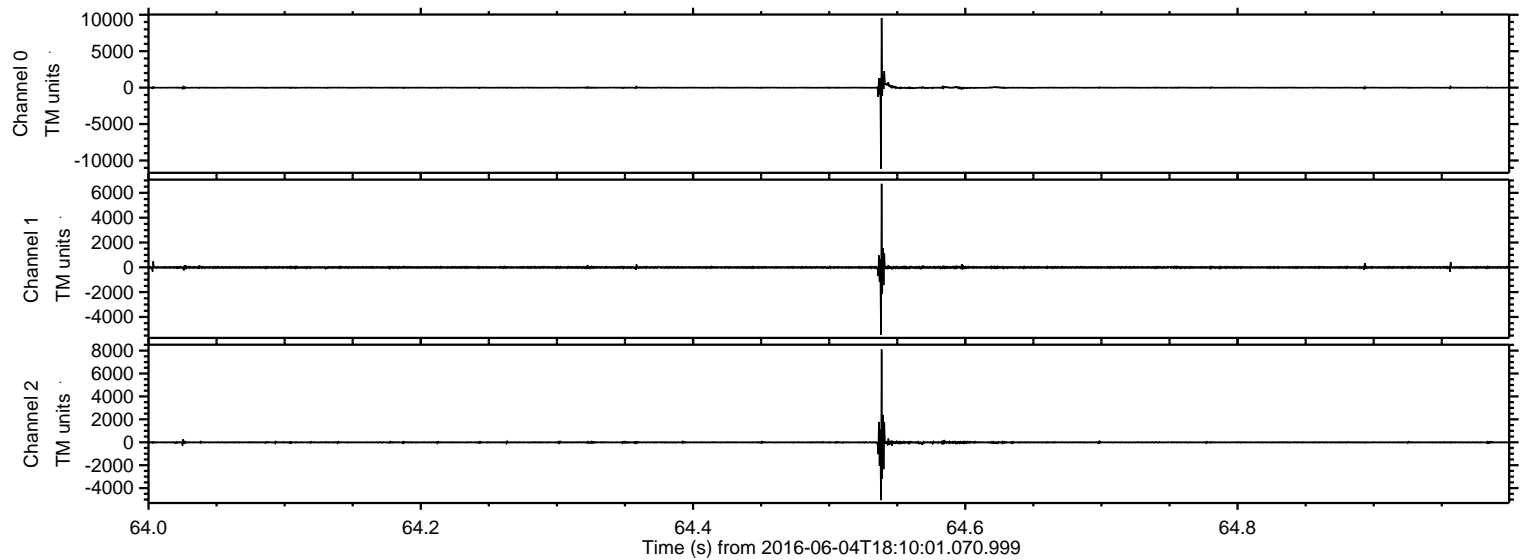
ELMAVAN 3D WAVEFORMS (Measured data sampled at 50 kHz) 51000 packets of 144 samples from 2016-06-04T18:10:01.070.999. Part 89/147

Processed Sat Jun 4 20:18:38 2016 by ELM ver.2012-10-06 from 001__elm20160604_181000__dat00.bin



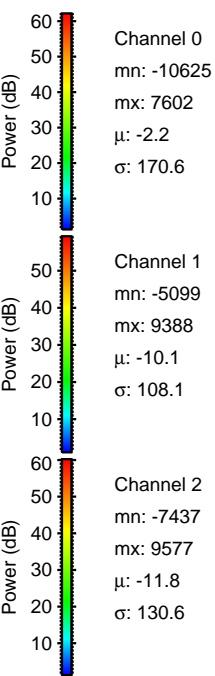
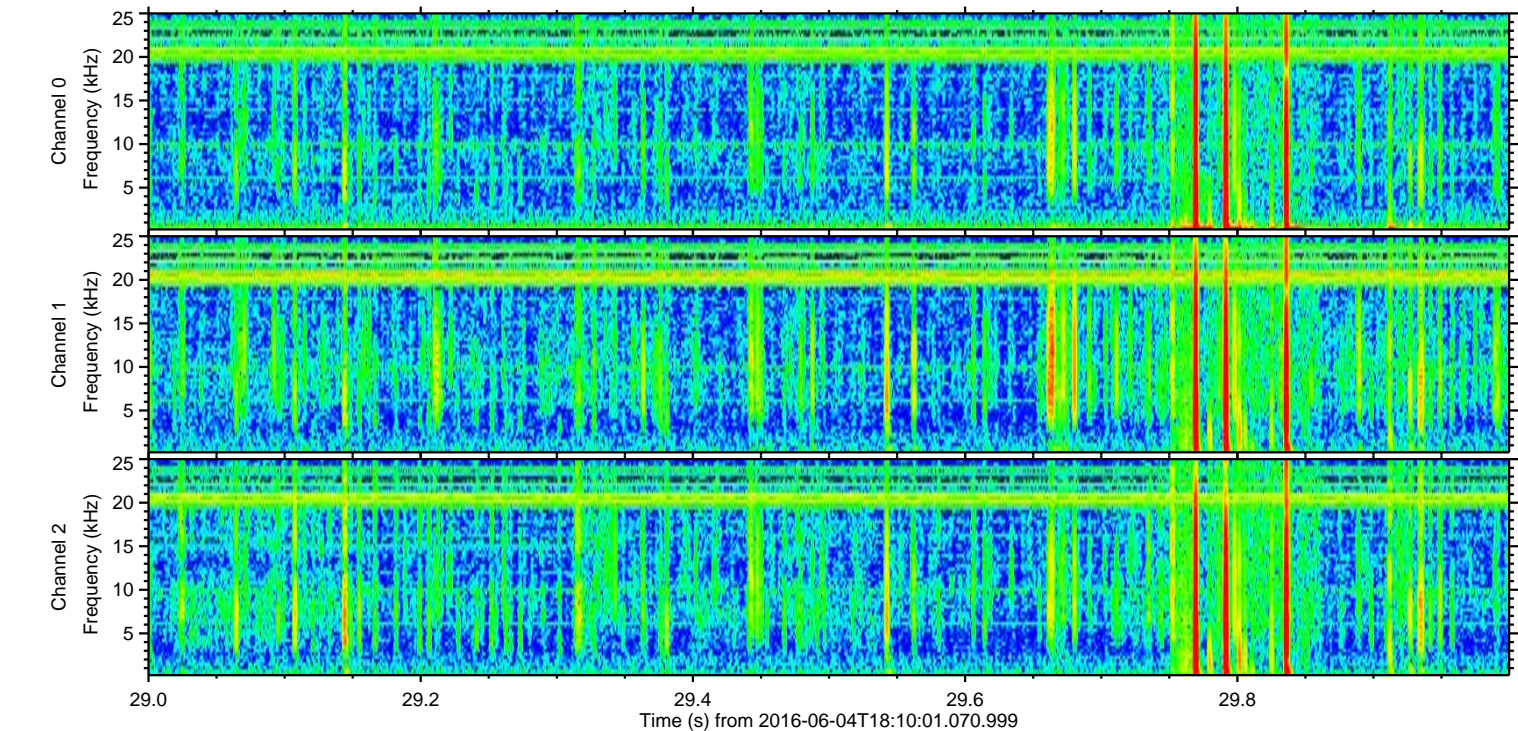
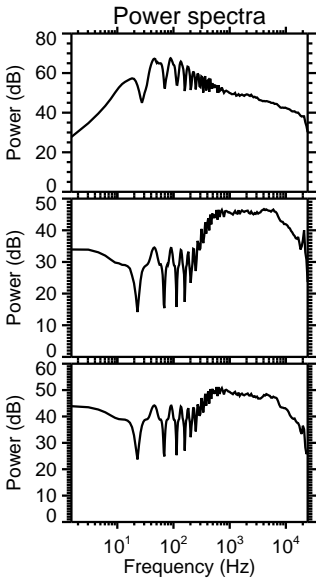
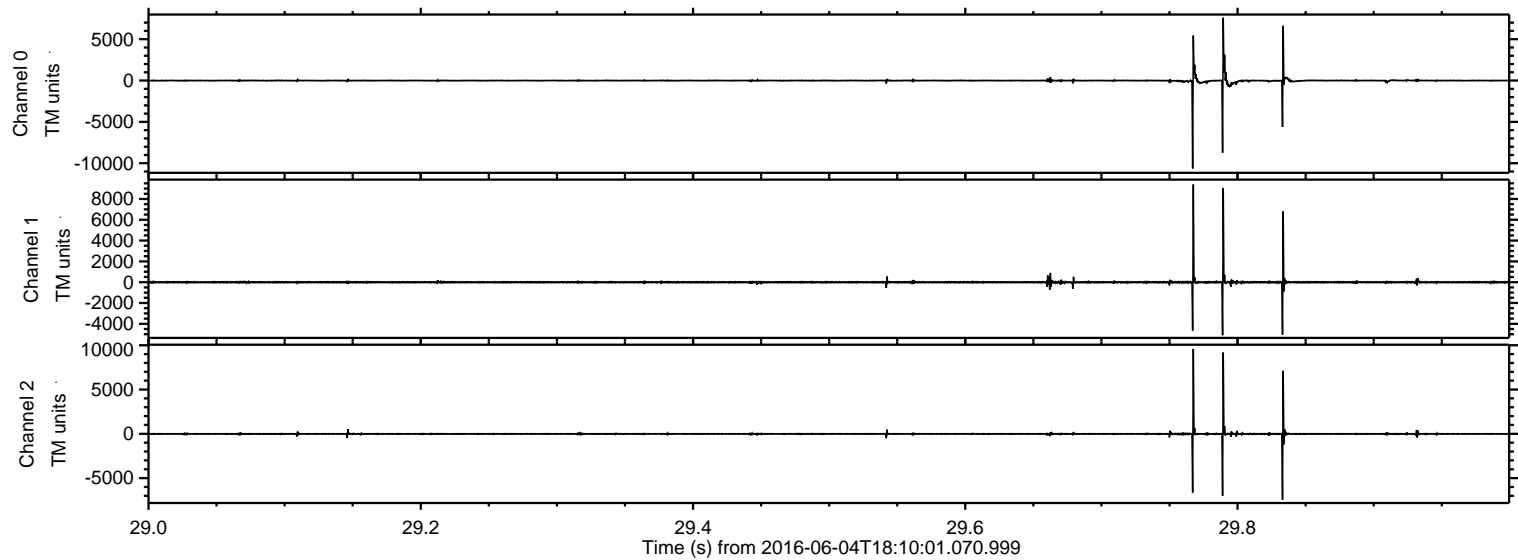
ELMAVAN 3D WAVEFORMS (Measured data sampled at 50 kHz) 51000 packets of 144 samples from 2016-06-04T18:10:01.070.999. Part 65/147

Processed Sat Jun 4 20:18:39 2016 by ELM ver.2012-10-06 from 001__elm20160604_181000__dat00.bin



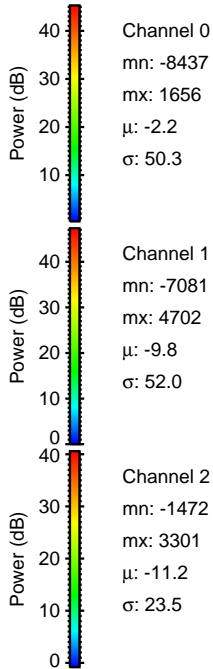
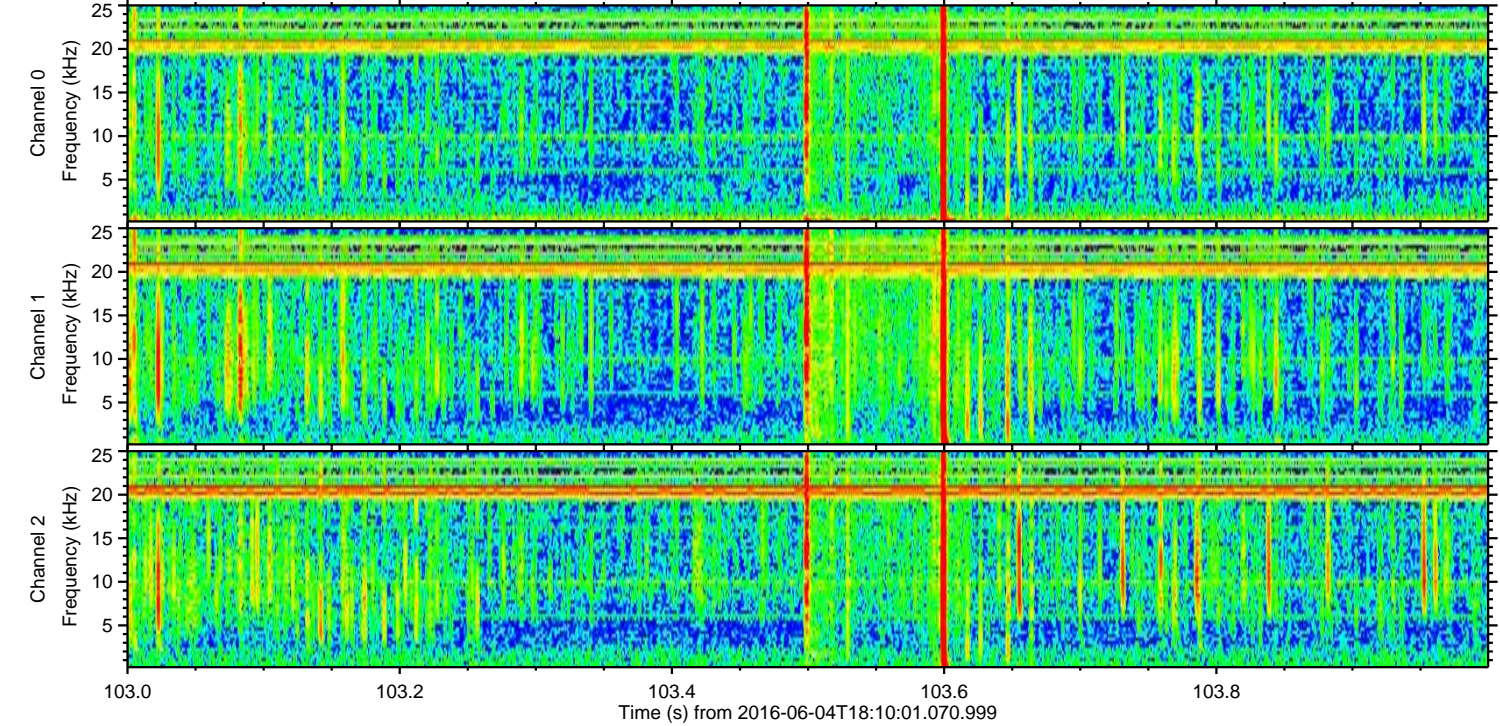
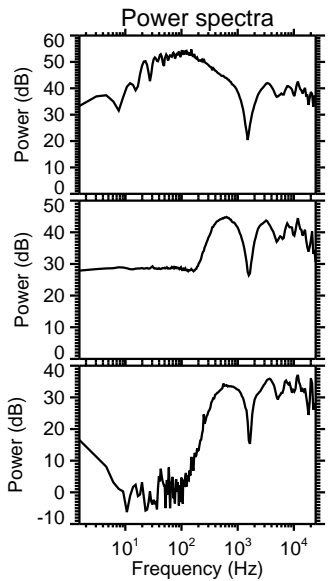
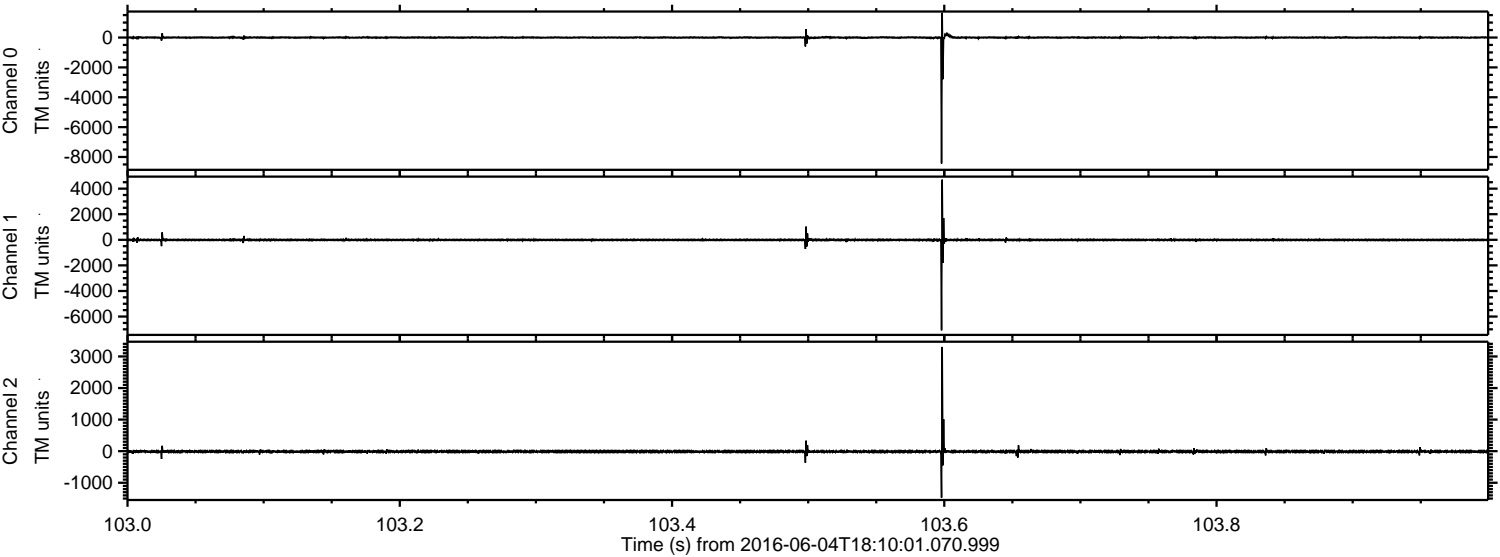
ELMAVAN 3D WAVEFORMS (Measured data sampled at 50 kHz) 51000 packets of 144 samples from 2016-06-04T18:10:01.070.999. Part 30/147

Processed Sat Jun 4 20:18:40 2016 by ELM ver.2012-10-06 from 001__elm20160604_181000__dat00.bin



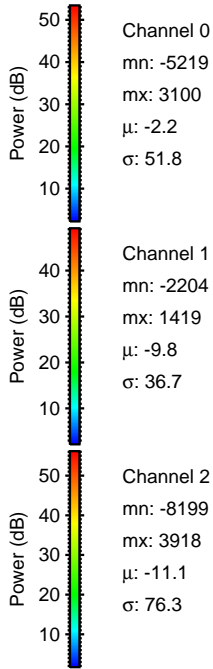
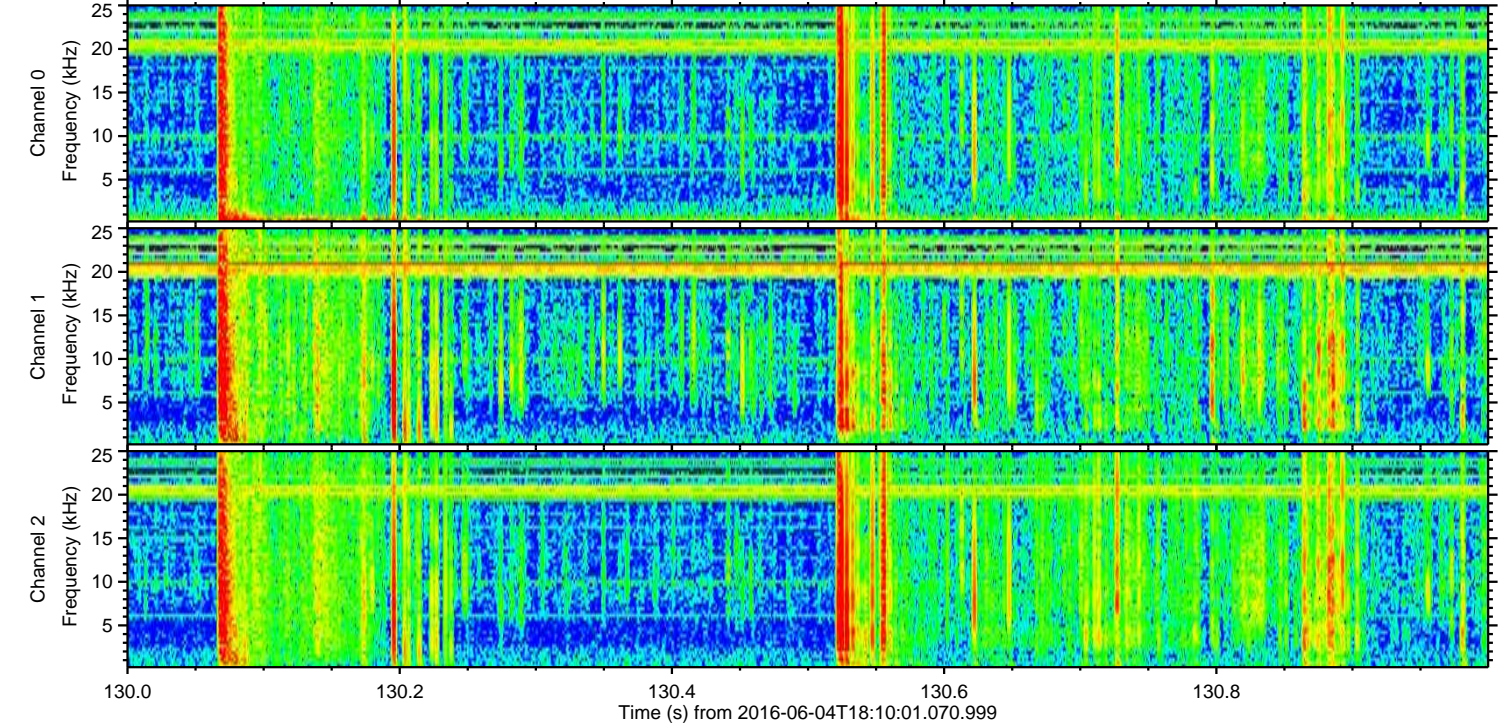
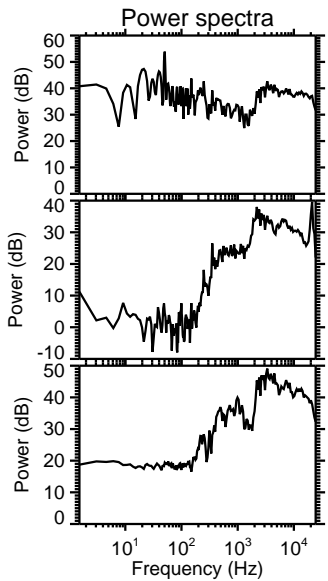
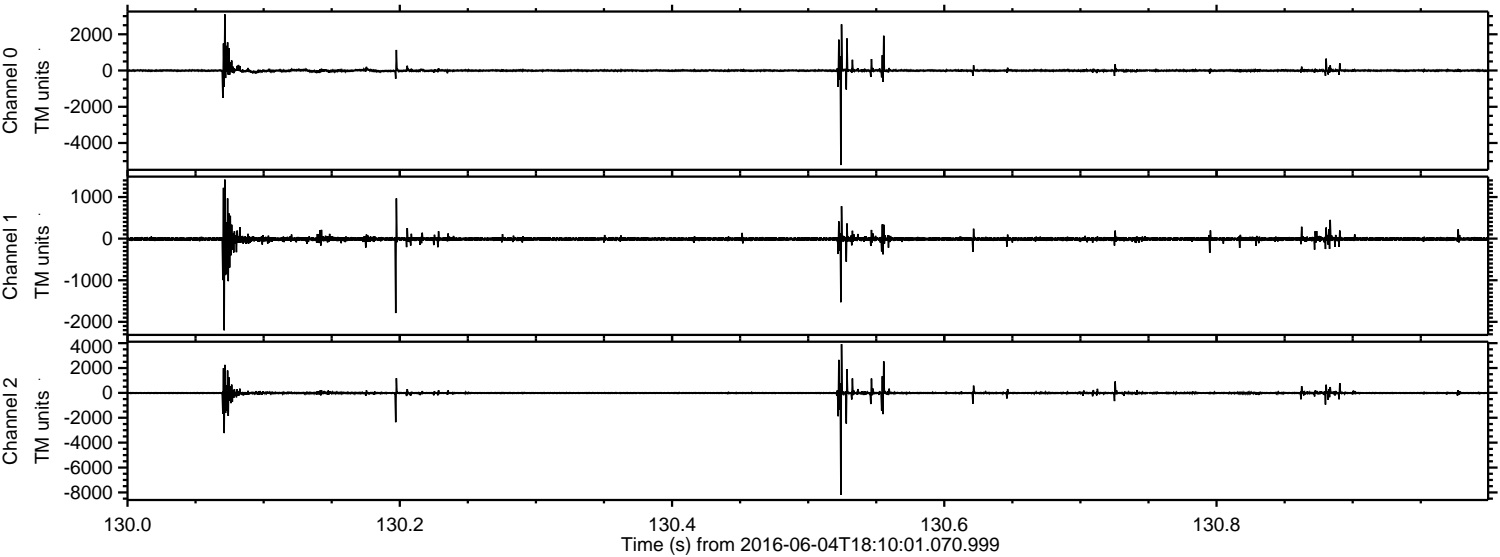
ELMAVAN 3D WAVEFORMS (Measured data sampled at 50 kHz) 51000 packets of 144 samples from 2016-06-04T18:10:01.070.999. Part 104/147

Processed Sat Jun 4 20:18:40 2016 by ELM ver.2012-10-06 from 001__elm20160604_181000__dat00.bin



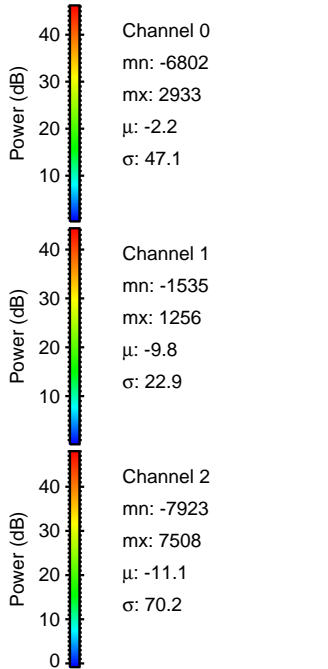
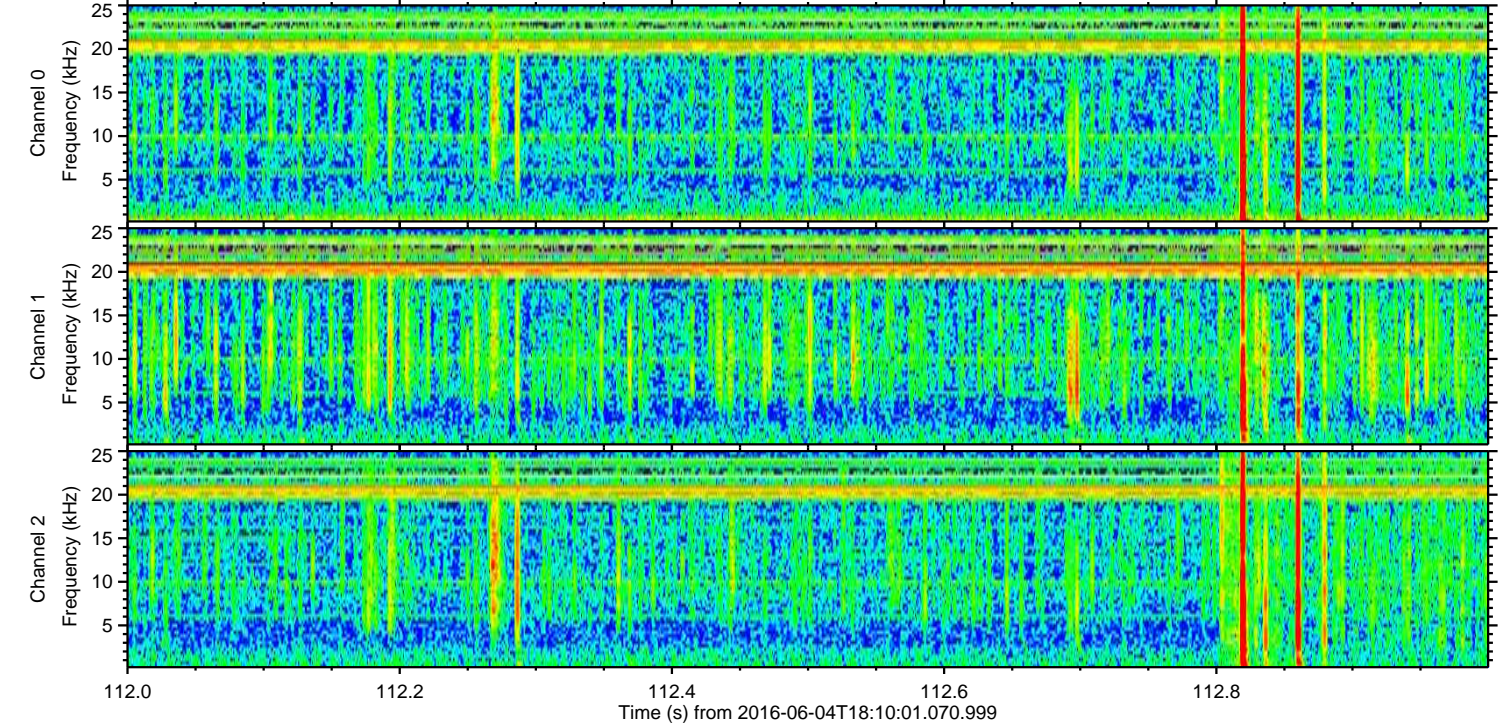
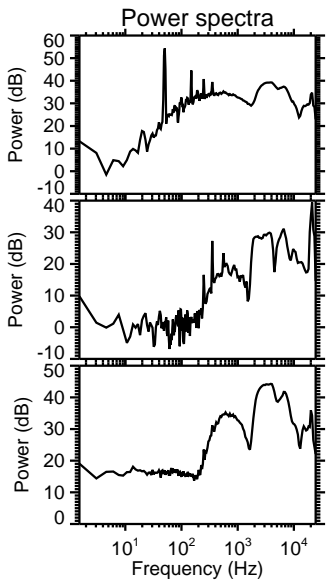
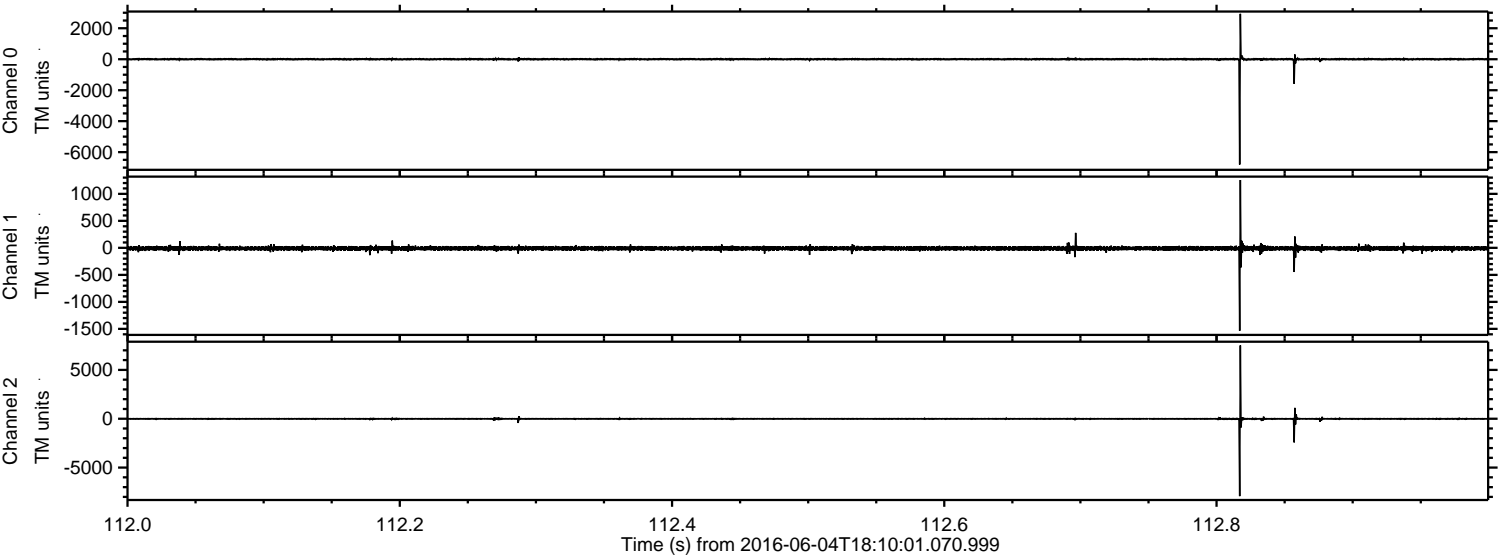
ELMAVAN 3D WAVEFORMS (Measured data sampled at 50 kHz) 51000 packets of 144 samples from 2016-06-04T18:10:01.070.999. Part 131/147

Processed Sat Jun 4 20:18:41 2016 by ELM ver.2012-10-06 from 001__elm20160604_181000__dat00.bin

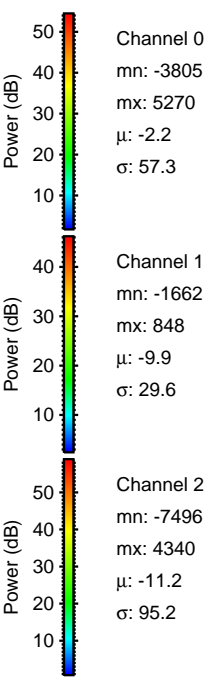
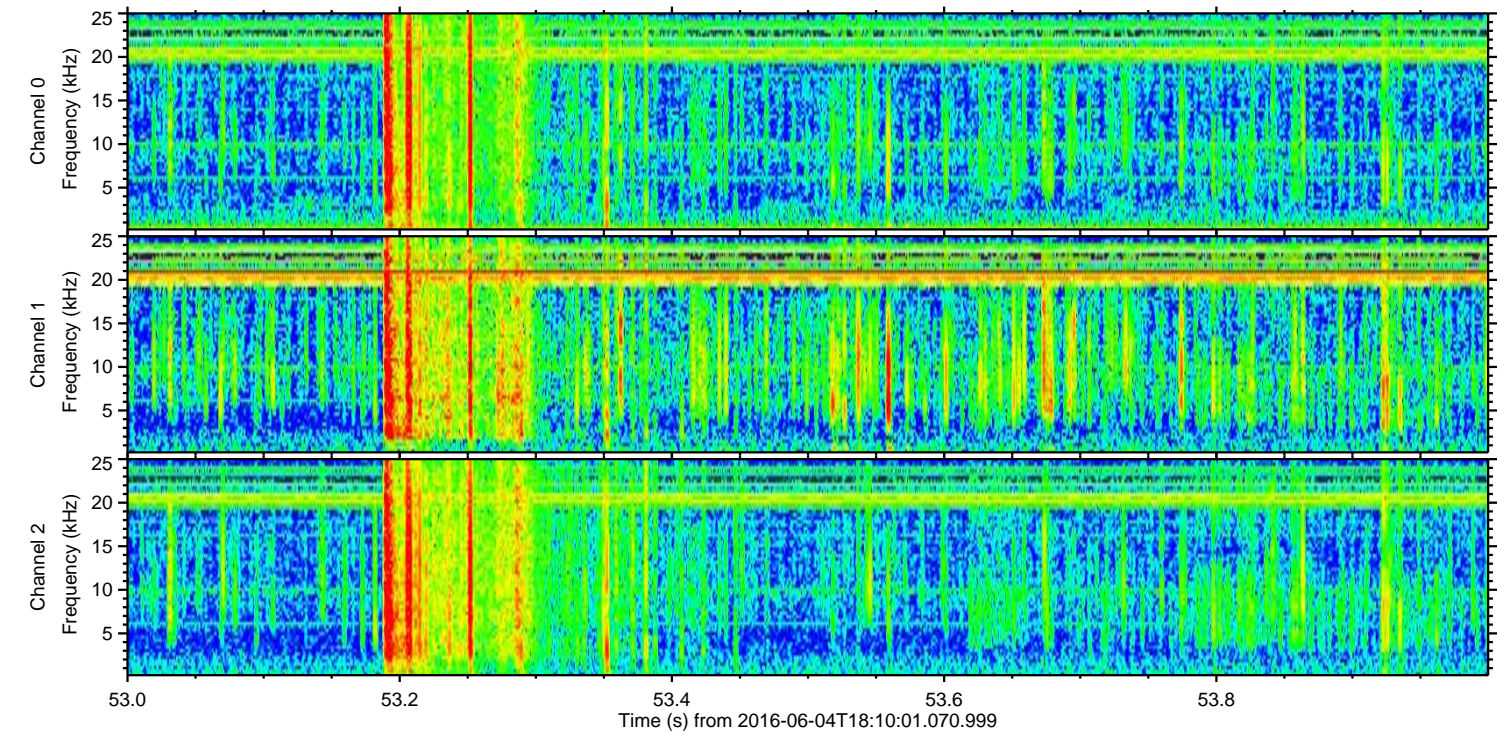
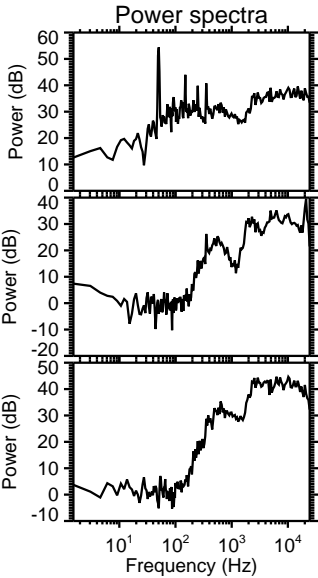
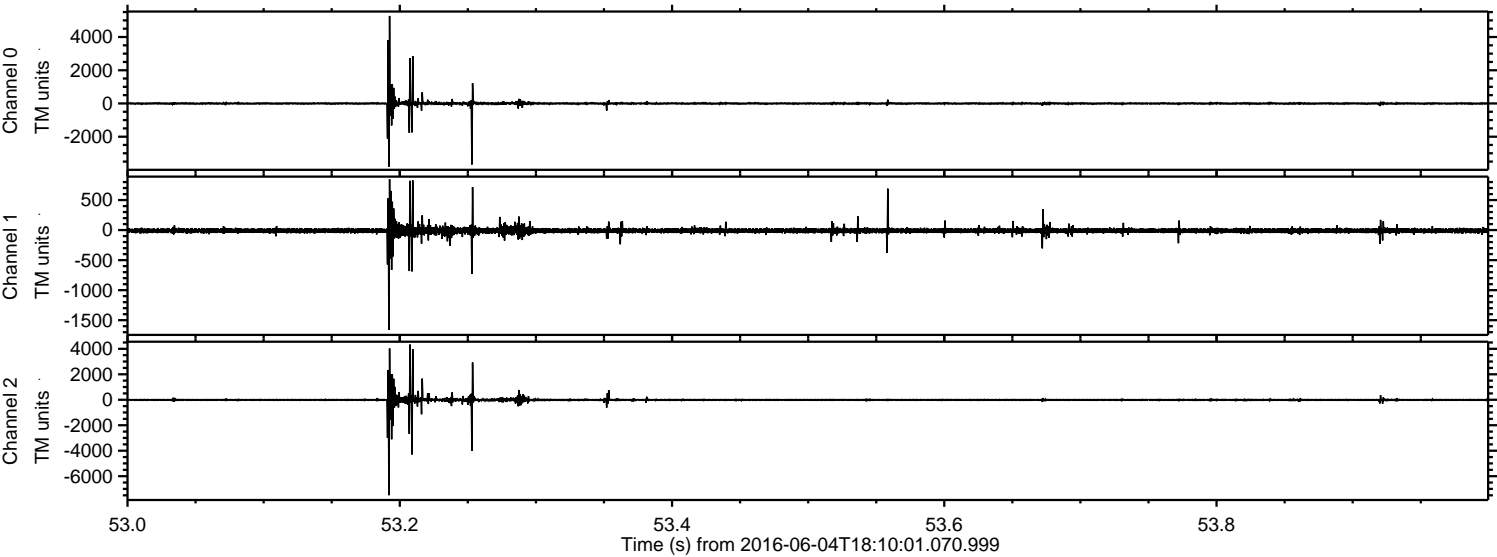


ELMAVAN 3D WAVEFORMS (Measured data sampled at 50 kHz) 51000 packets of 144 samples from 2016-06-04T18:10:01.070.999. Part 113/147

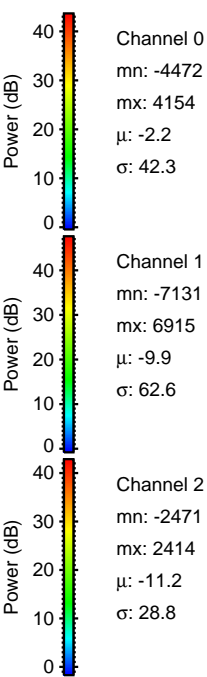
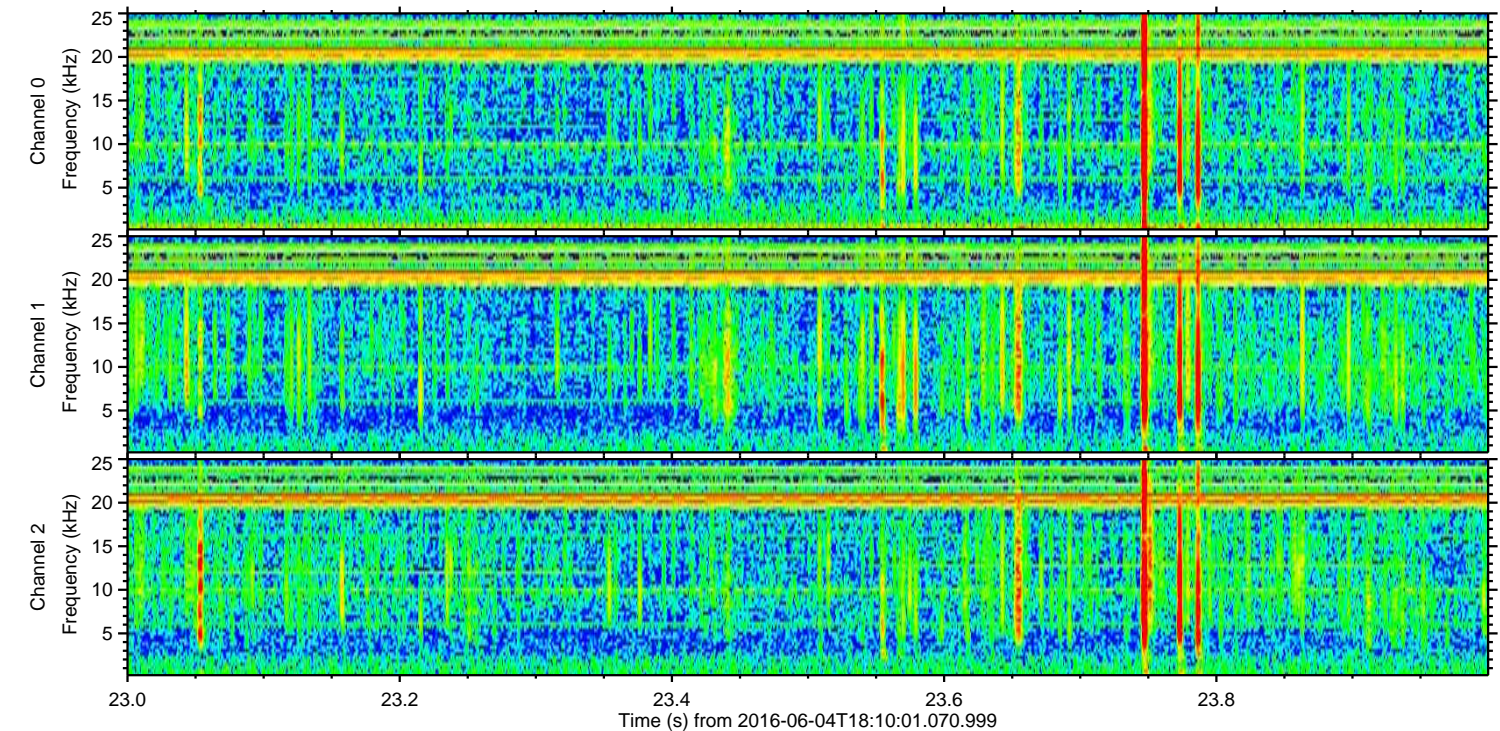
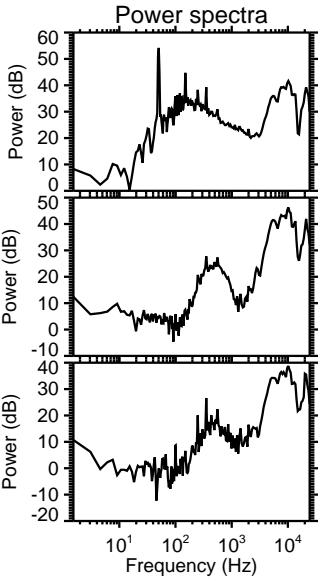
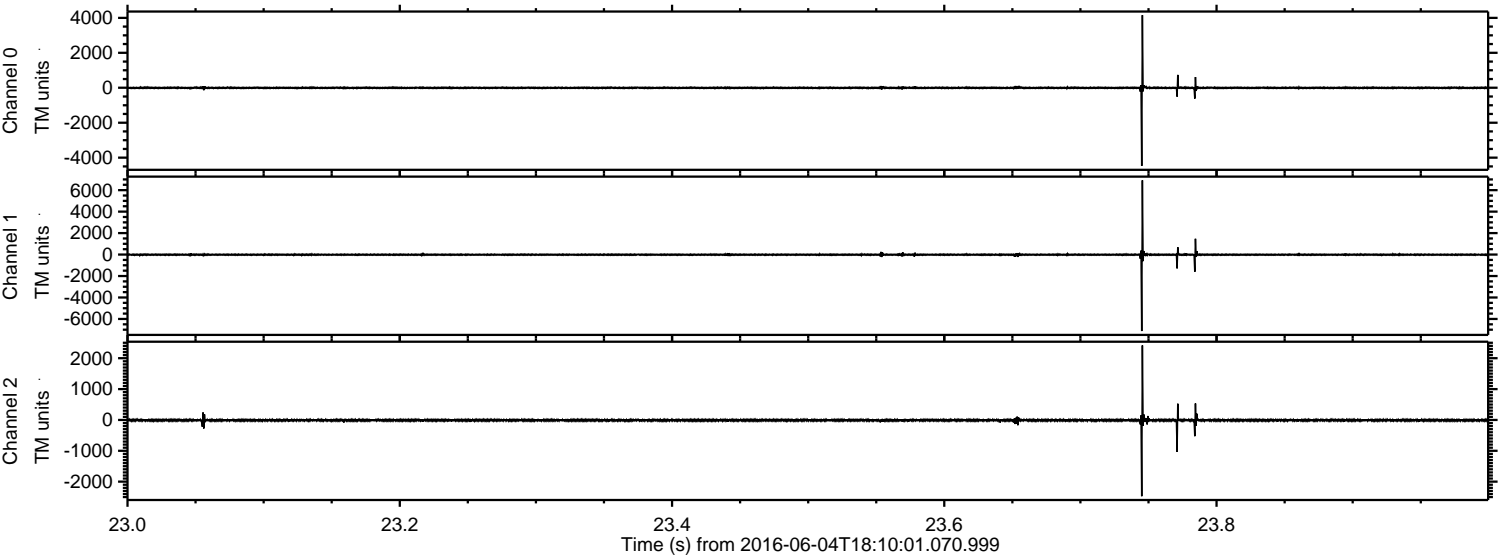
Processed Sat Jun 4 20:18:42 2016 by ELM ver.2012-10-06 from 001__elm20160604_181000__dat00.bin



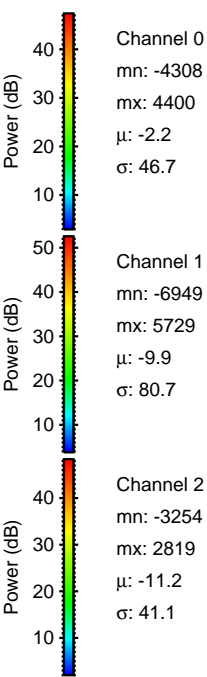
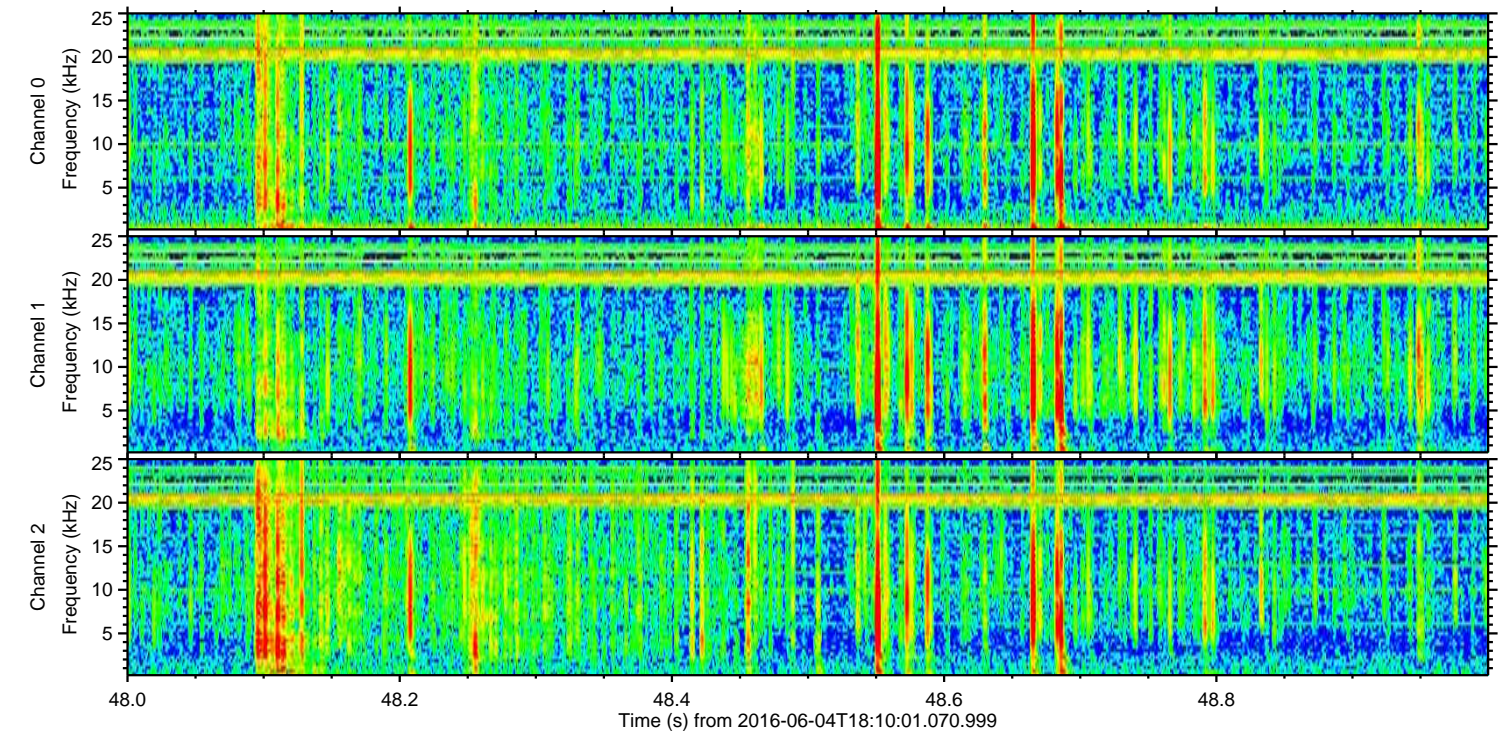
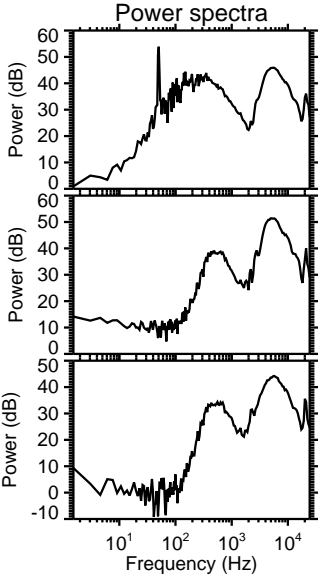
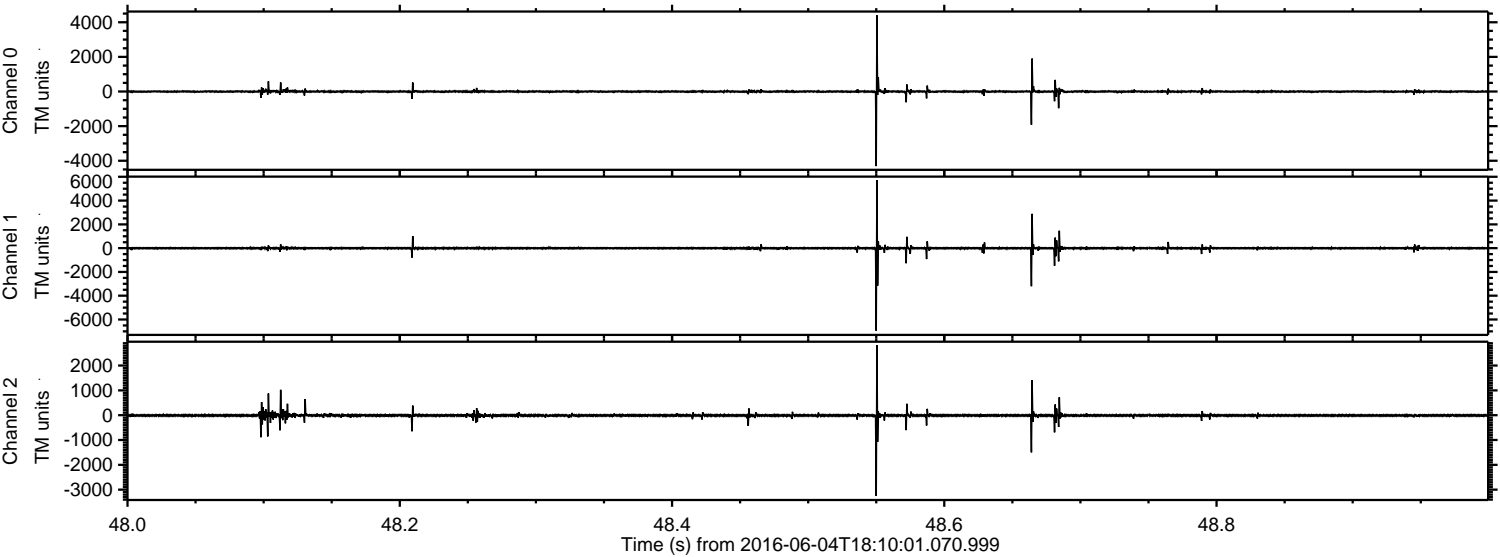
Processed Sat Jun 4 20:18:43 2016 by ELM ver.2012-10-06 from 001__elm20160604_181000__dat00.bin



Processed Sat Jun 4 20:18:44 2016 by ELM ver.2012-10-06 from 001__elm20160604_181000__dat00.bin



Processed Sat Jun 4 20:18:45 2016 by ELM ver.2012-10-06 from 001__elm20160604_181000__dat00.bin



Channel 0
mn: -4308
mx: 4400
 μ : -2.2
 σ : 46.7

Channel 1
mn: -6949
mx: 5729
 μ : -9.9
 σ : 80.7

Channel 2
mn: -3254
mx: 2819
 μ : -11.2
 σ : 41.1

Processed Sat Jun 4 20:18:46 2016 by ELM ver.2012-10-06 from 001__elm20160604_181000__dat00.bin

