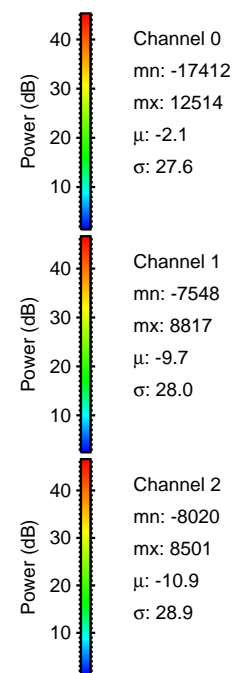
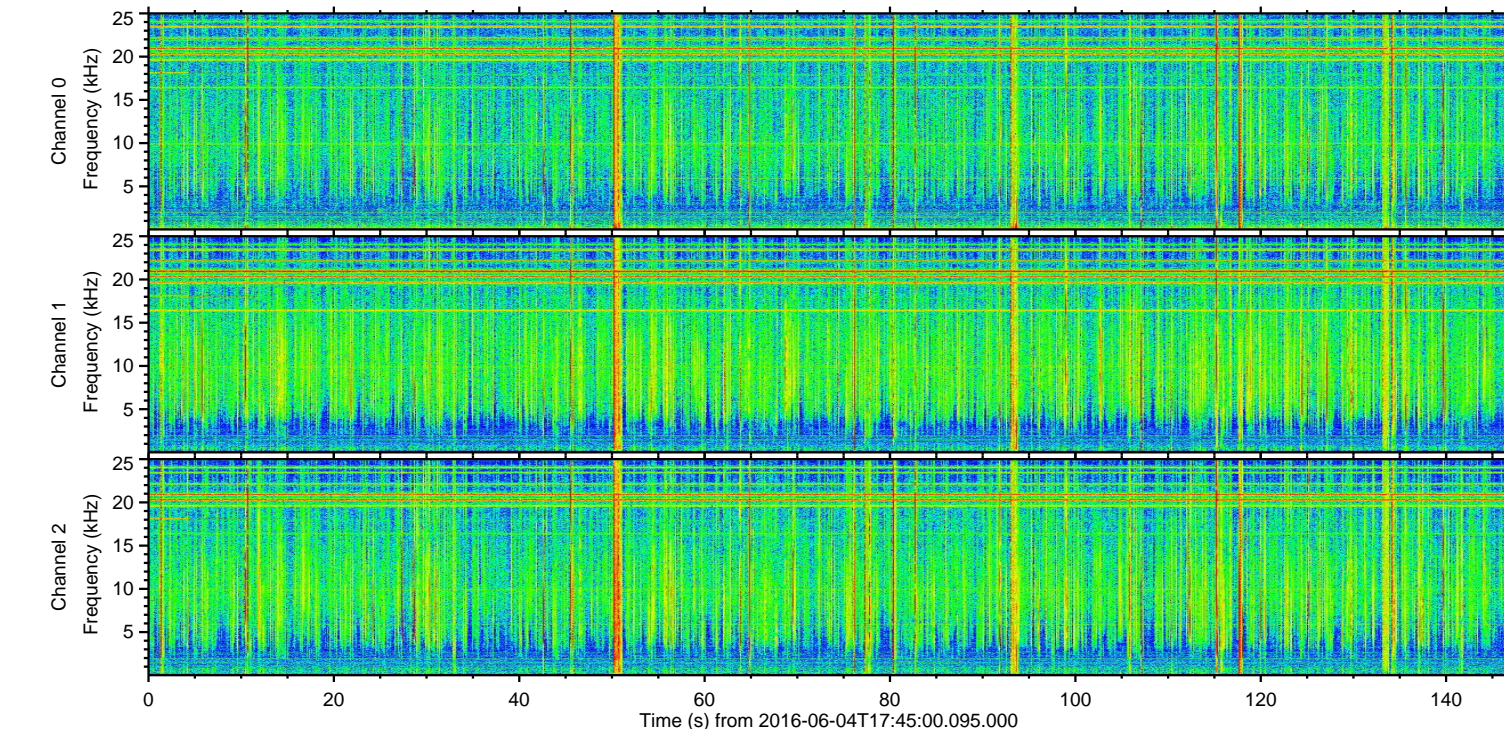
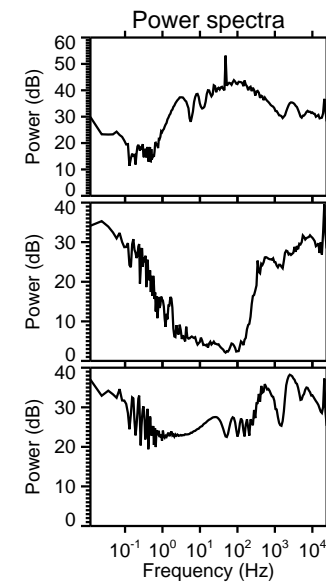
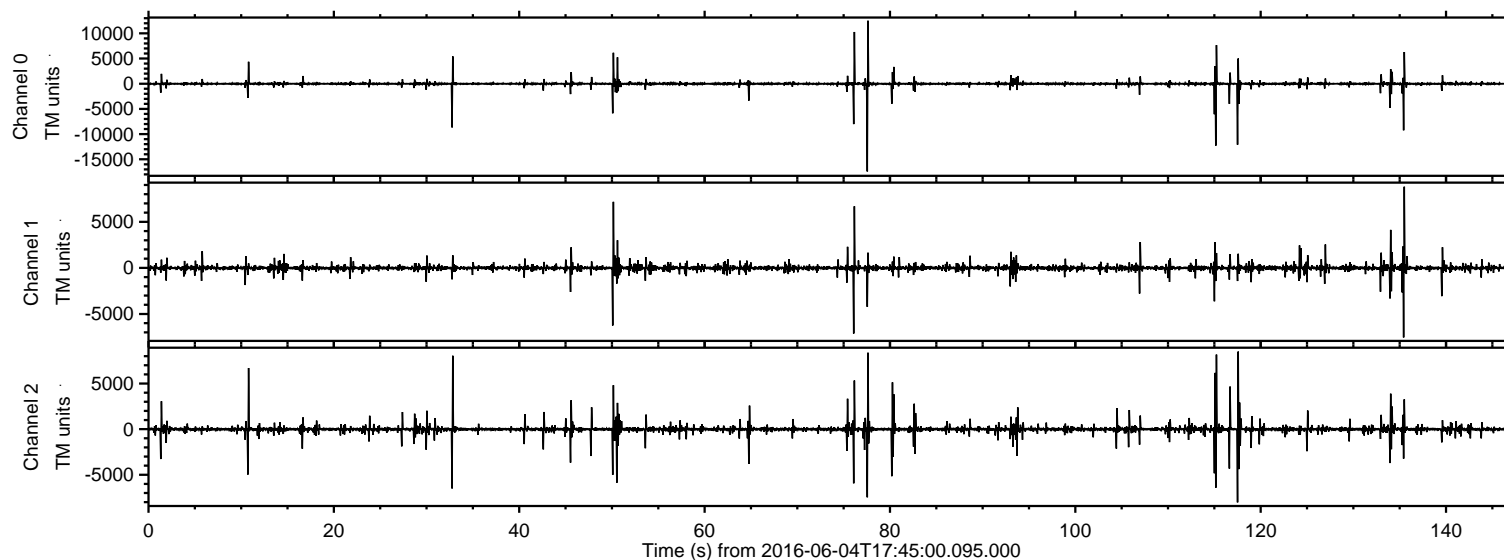


# ELMAVAN 3D WAVEFORMS (Measured data sampled at 50 kHz) 51000 packets of 144 samples from 2016-06-04T17:45:00.095.000.

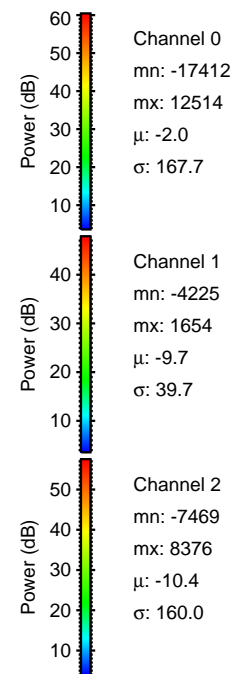
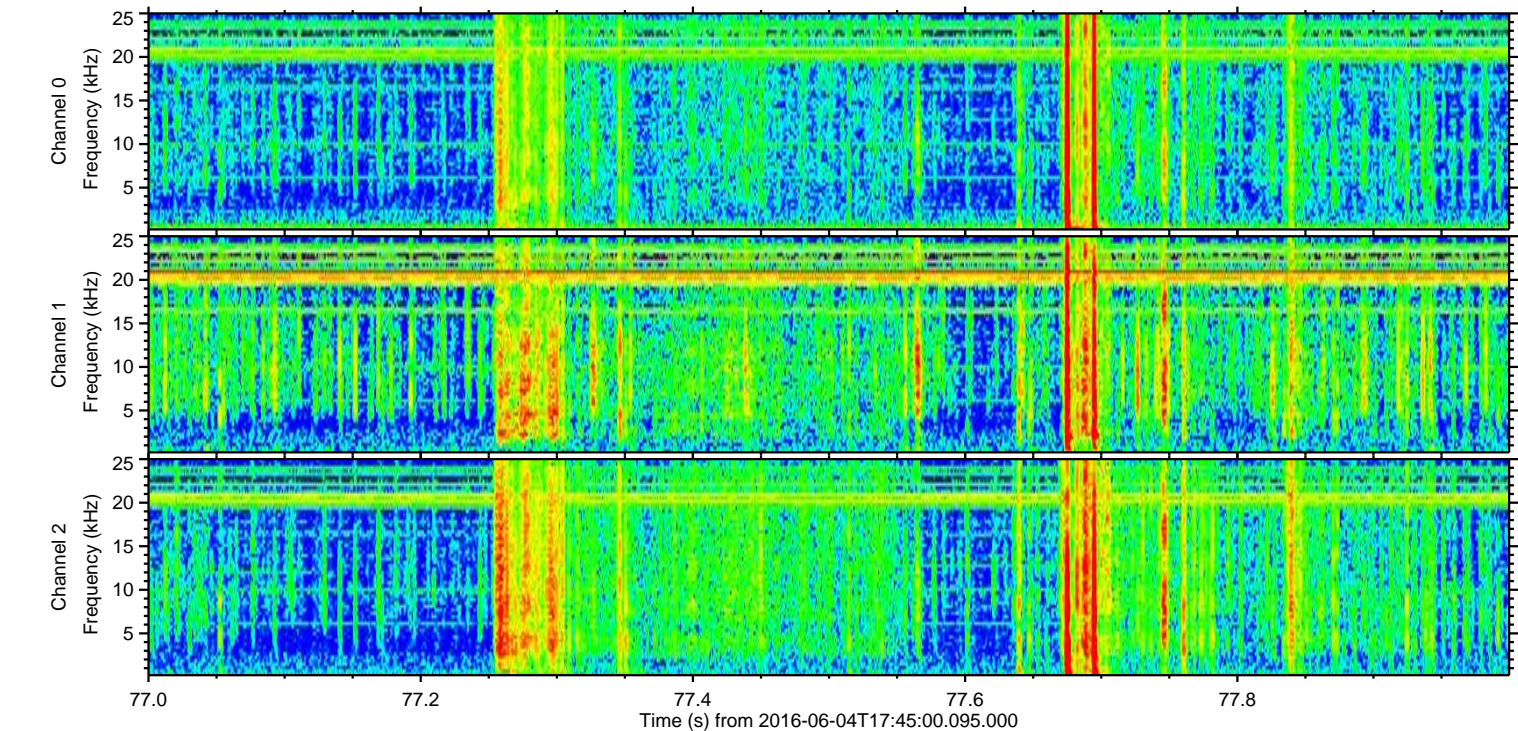
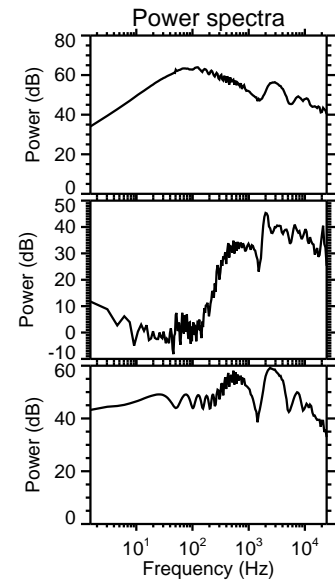
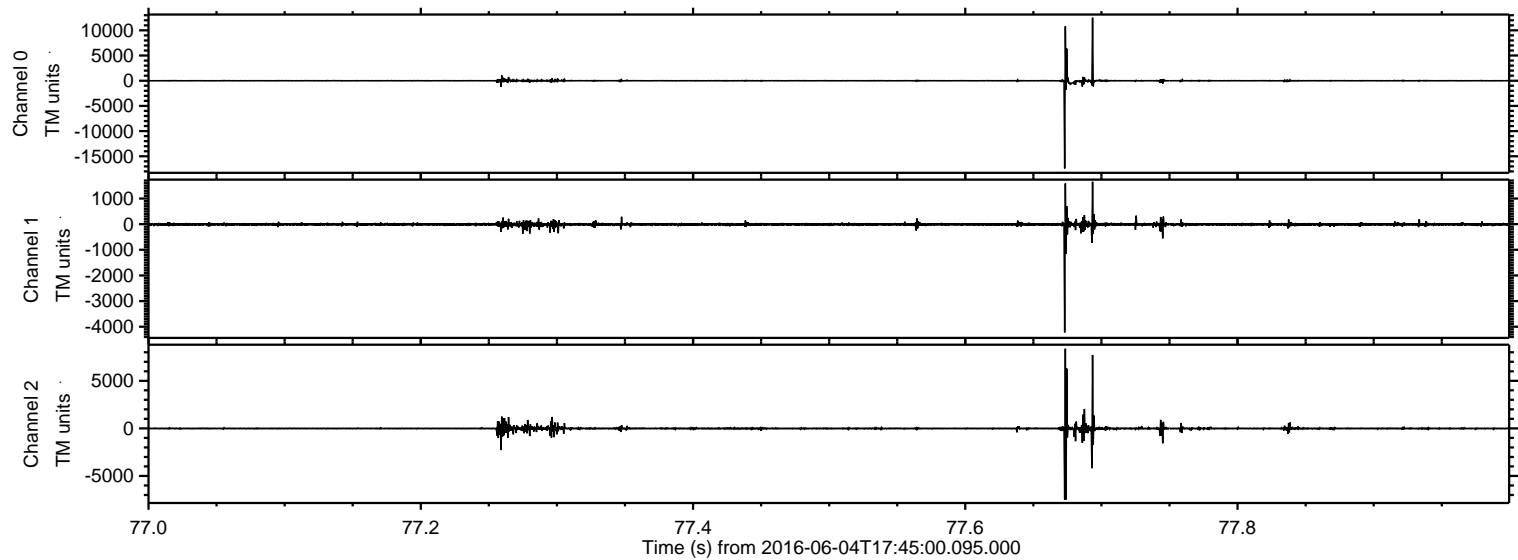
Processed Sat Jun 4 19:53:32 2016 by ELM ver.2012-10-06 from 001\_\_elm20160604\_174459\_\_dat00.bin





ELMAVAN 3D WAVEFORMS (Measured data sampled at 50 kHz) 51000 packets of 144 samples from 2016-06-04T17:45:00.095.000. Part 78/147

Processed Sat Jun 4 19:53:43 2016 by ELM ver.2012-10-06 from 001\_\_elm20160604\_174459\_\_dat00.bin



Channel 0  
mn: -17412  
mx: 12514  
 $\mu$ : -2.0  
 $\sigma$ : 167.7

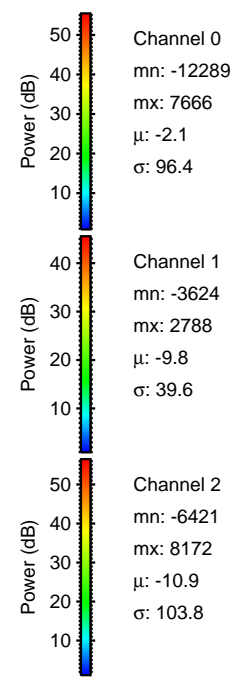
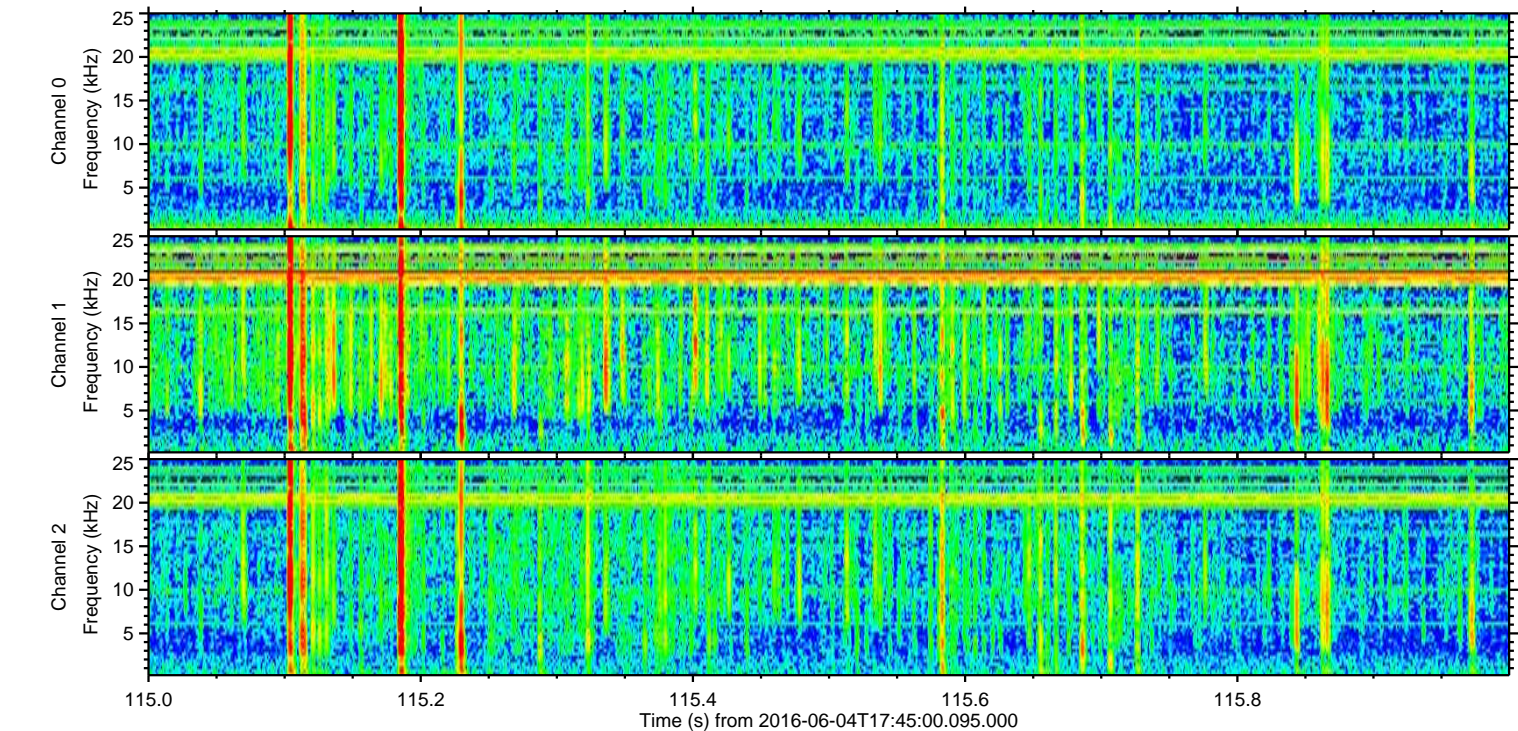
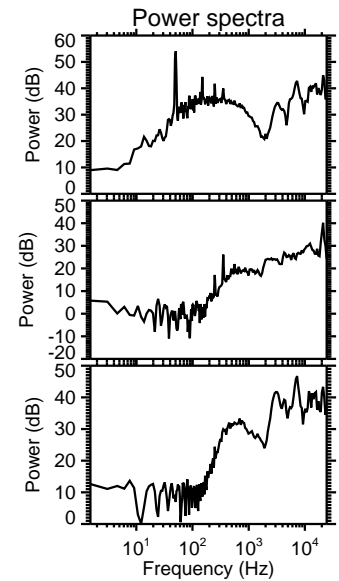
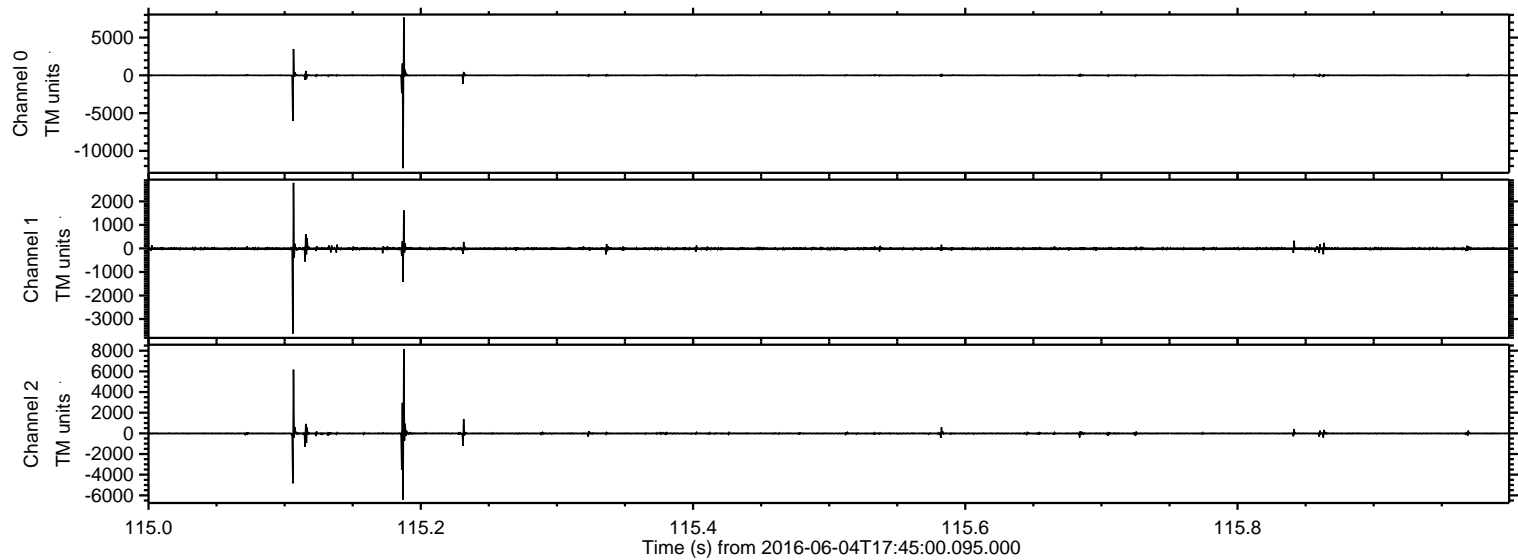
Channel 1  
mn: -4225  
mx: 1654  
 $\mu$ : -9.7  
 $\sigma$ : 39.7

Channel 2  
mn: -7469  
mx: 8376  
 $\mu$ : -10.4  
 $\sigma$ : 160.0



ELMAVAN 3D WAVEFORMS (Measured data sampled at 50 kHz) 51000 packets of 144 samples from 2016-06-04T17:45:00.095.000. Part 116/147

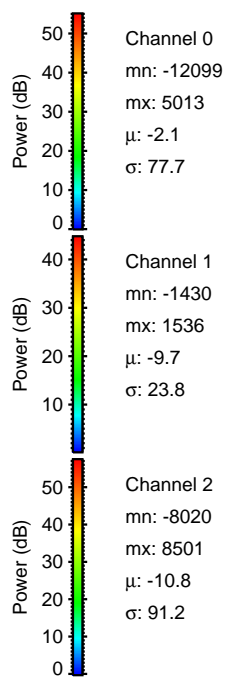
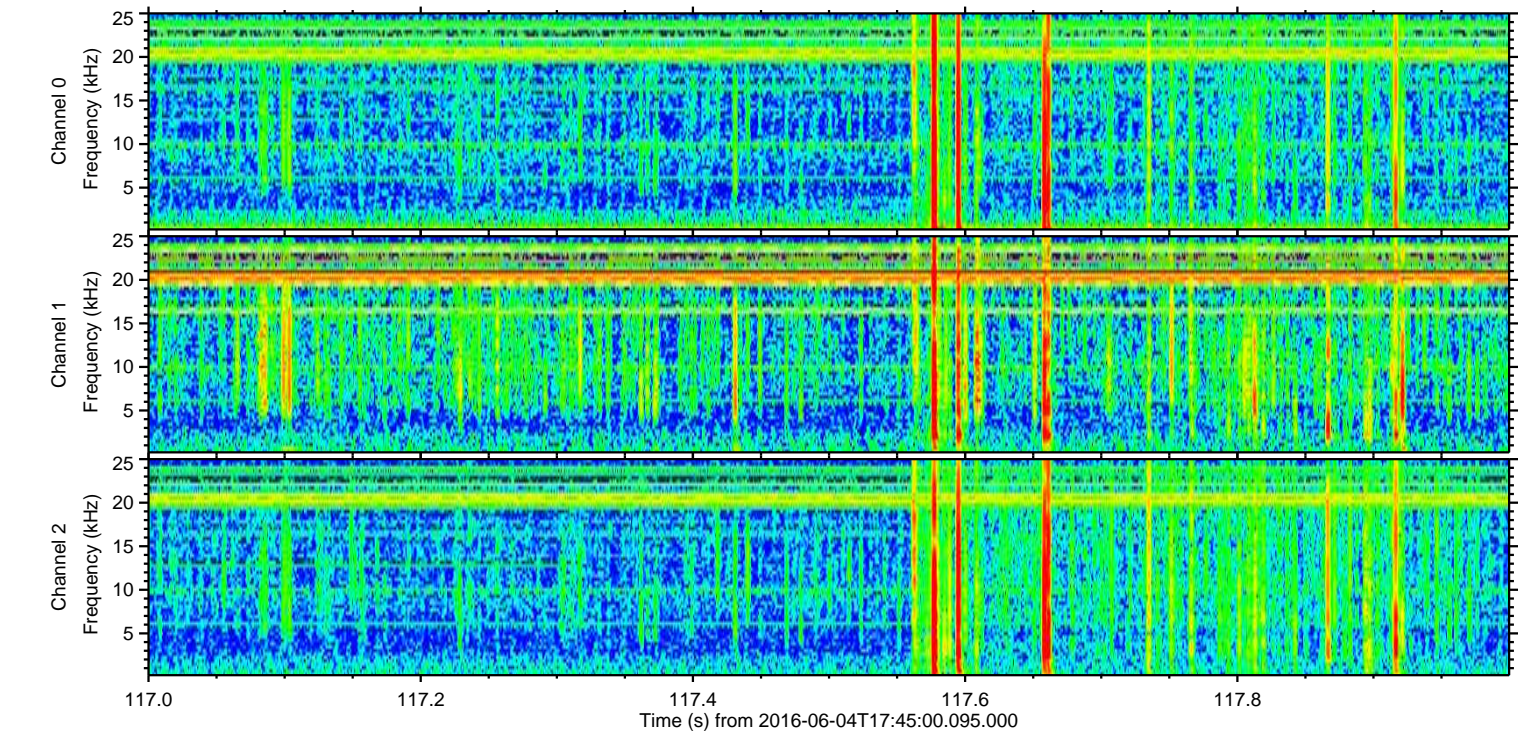
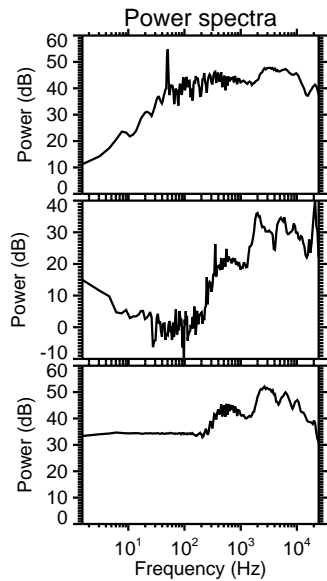
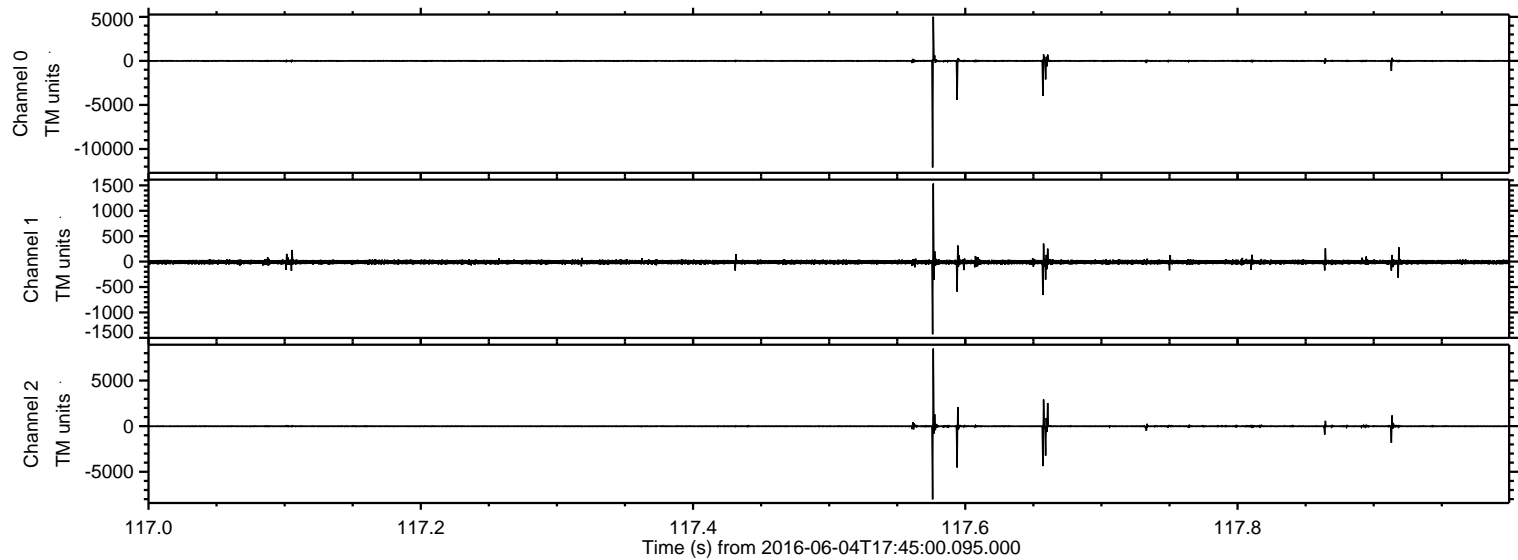
Processed Sat Jun 4 19:53:44 2016 by ELM ver.2012-10-06 from 001\_\_elm20160604\_174459\_\_dat00.bin





ELMAVAN 3D WAVEFORMS (Measured data sampled at 50 kHz) 51000 packets of 144 samples from 2016-06-04T17:45:00.095.000. Part 118/147

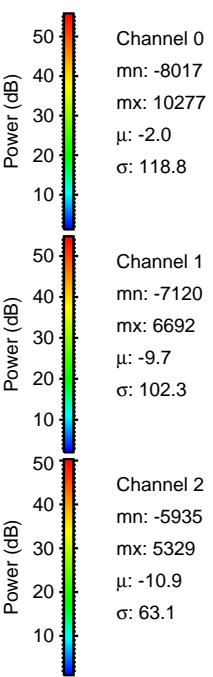
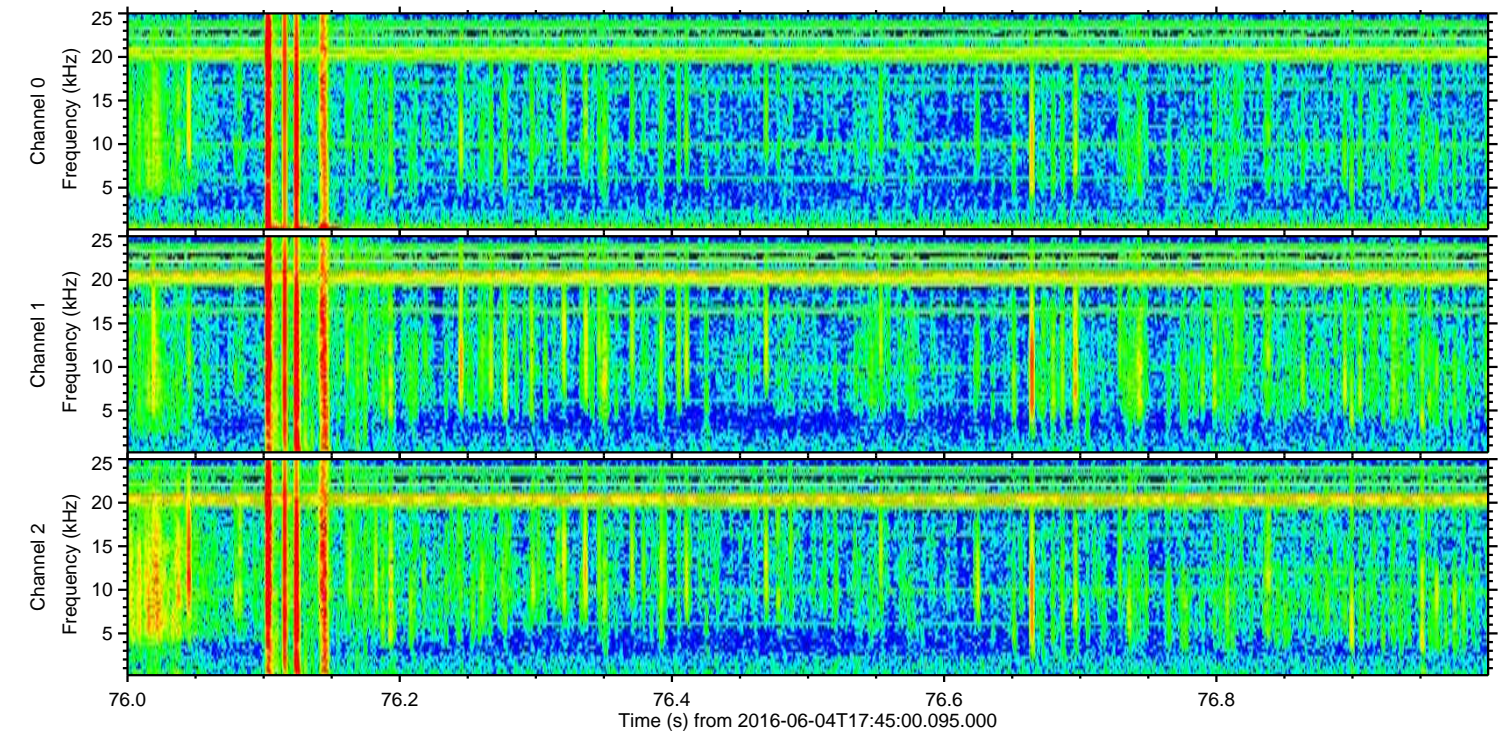
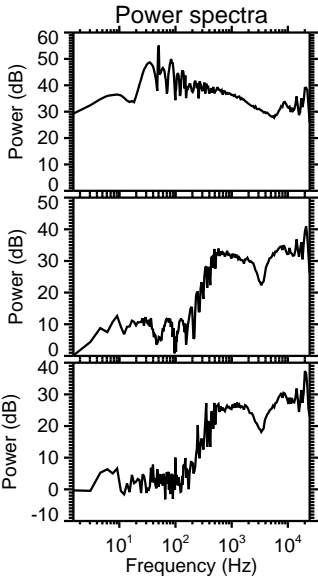
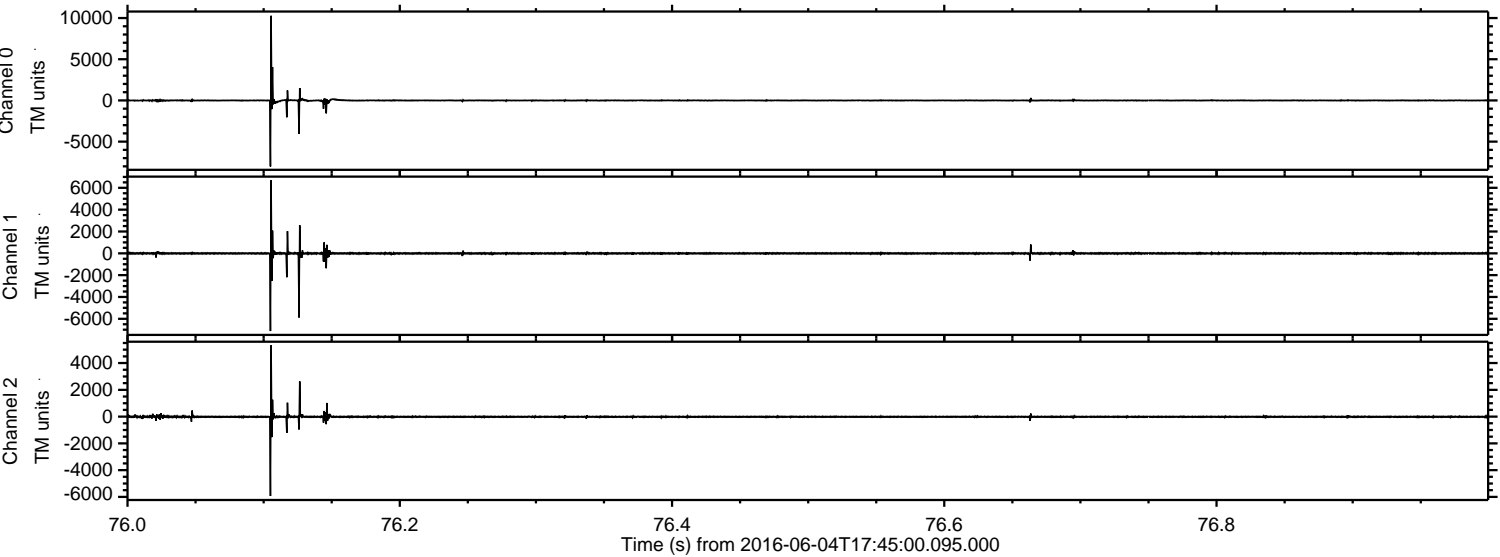
Processed Sat Jun 4 19:53:45 2016 by ELM ver.2012-10-06 from 001\_\_elm20160604\_174459\_\_dat00.bin





ELMAVAN 3D WAVEFORMS (Measured data sampled at 50 kHz) 51000 packets of 144 samples from 2016-06-04T17:45:00.095.000. Part 77/147

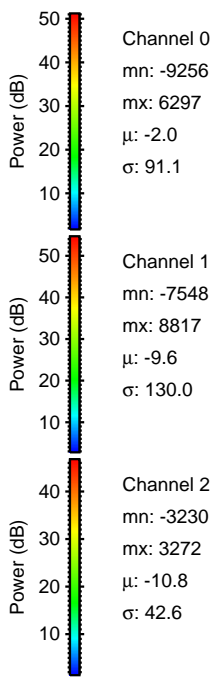
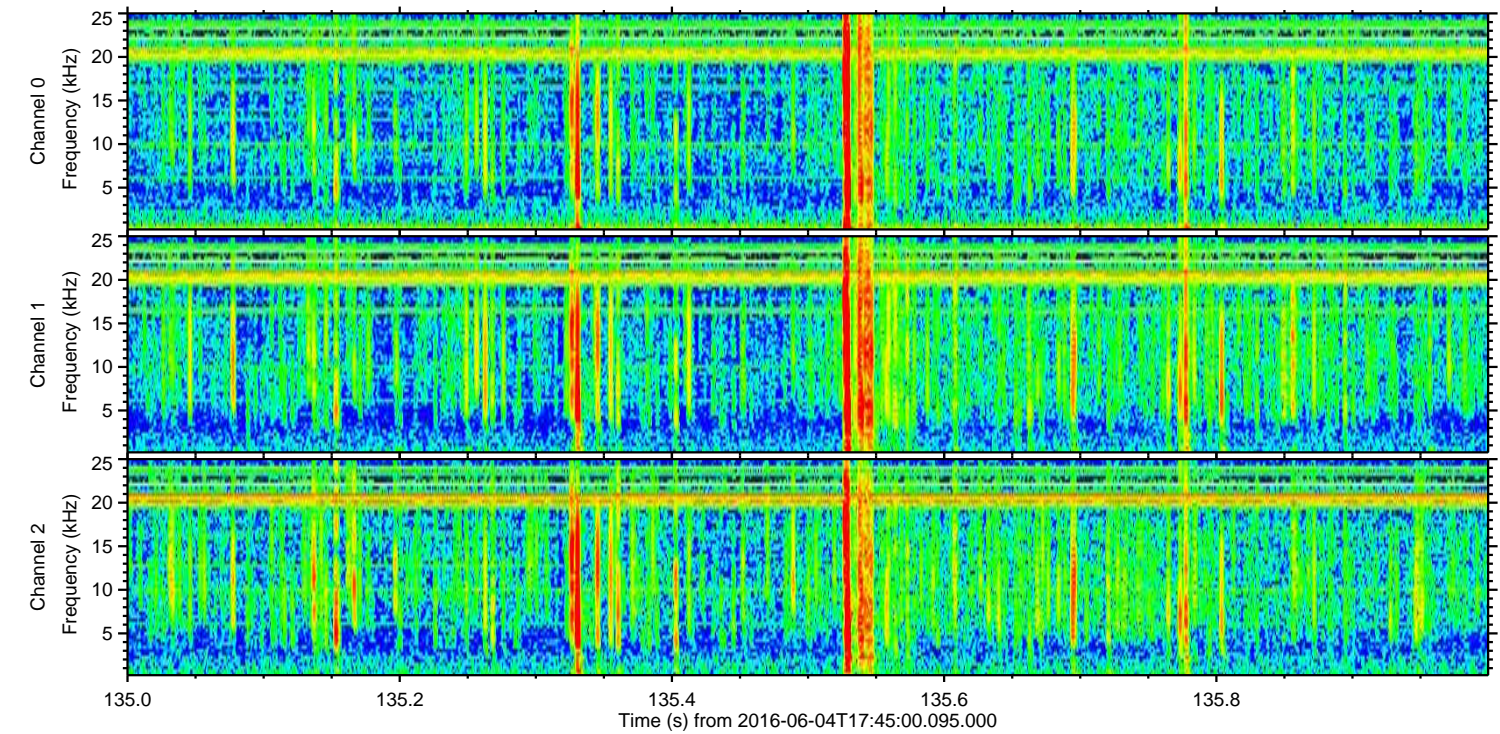
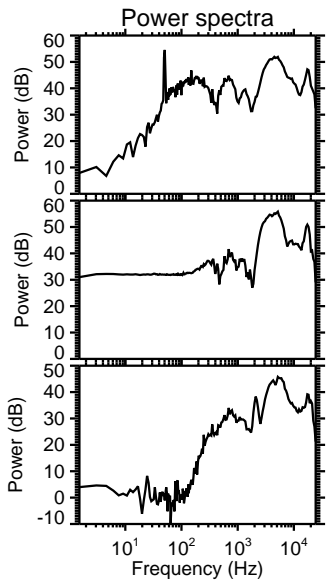
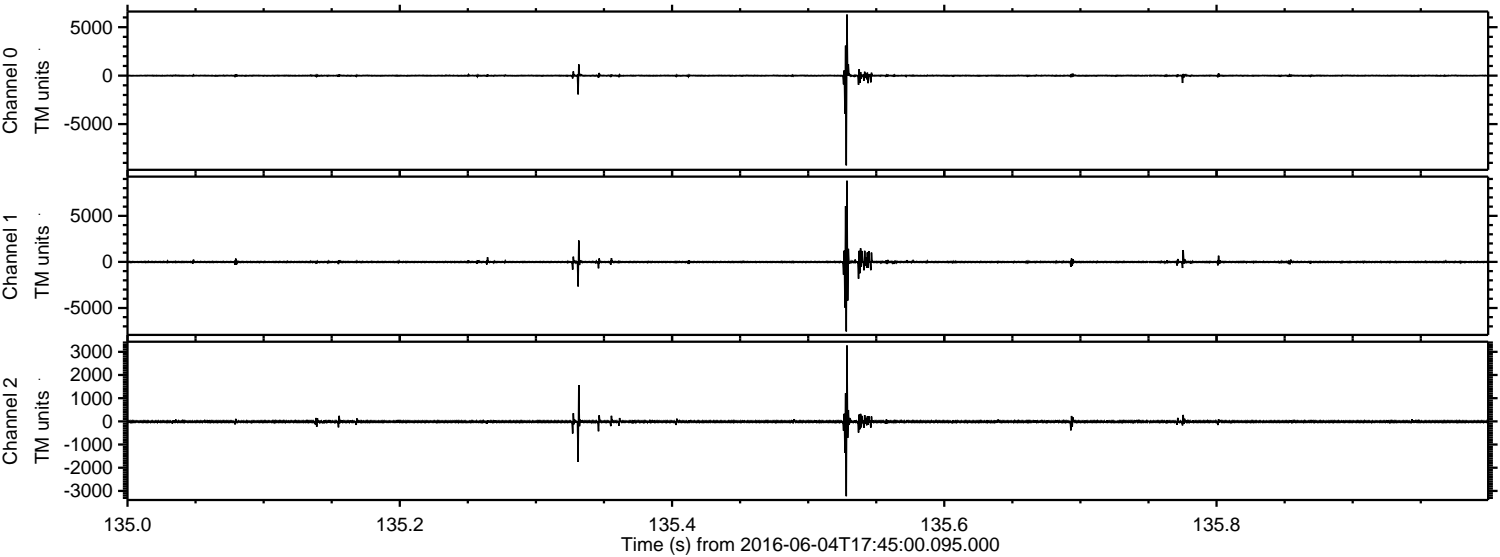
Processed Sat Jun 4 19:53:46 2016 by ELM ver.2012-10-06 from 001\_\_elm20160604\_174459\_\_dat00.bin





ELMAVAN 3D WAVEFORMS (Measured data sampled at 50 kHz) 51000 packets of 144 samples from 2016-06-04T17:45:00.095.000. Part 136/147

Processed Sat Jun 4 19:53:47 2016 by ELM ver.2012-10-06 from 001\_\_elm20160604\_174459\_\_dat00.bin



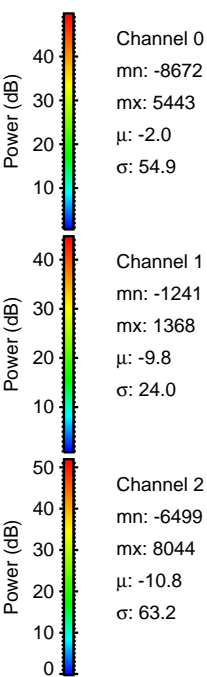
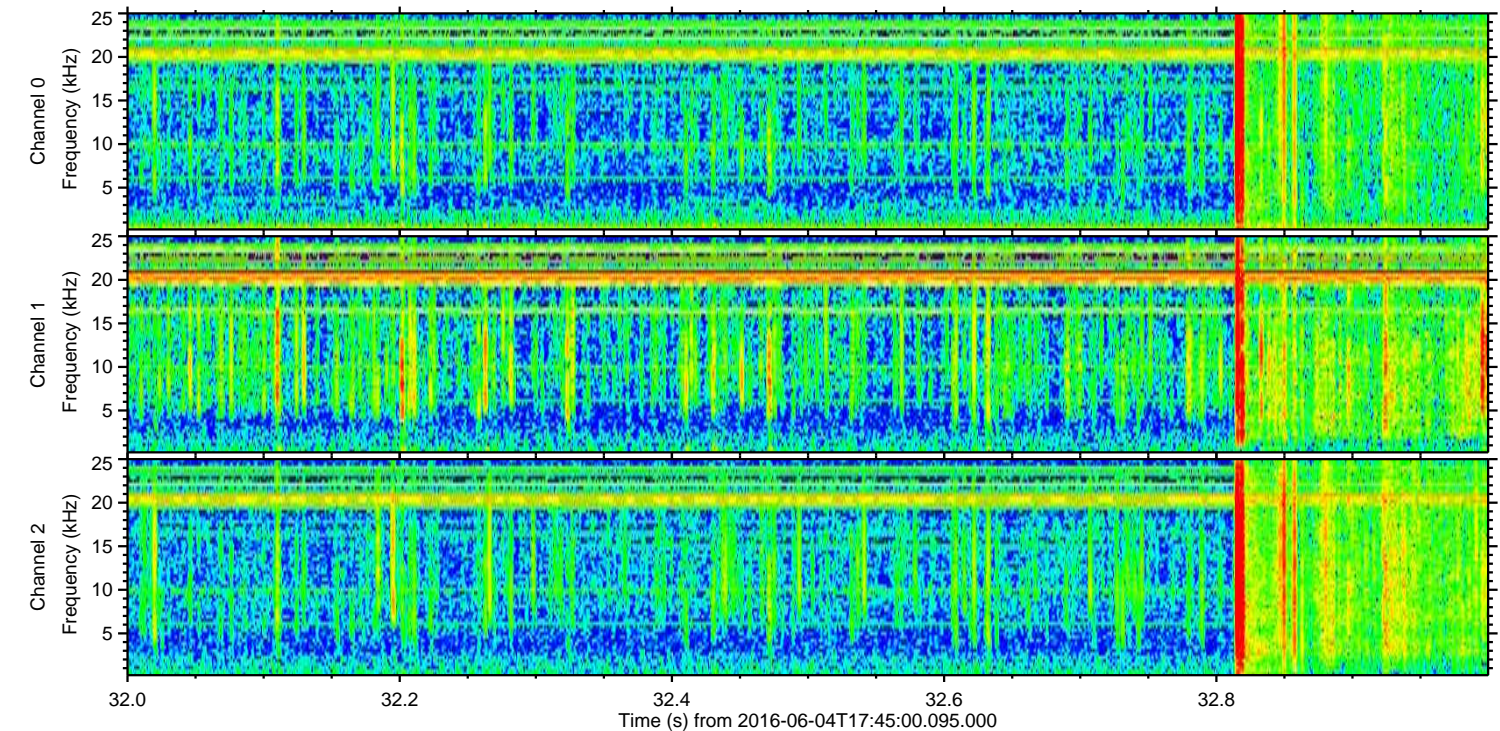
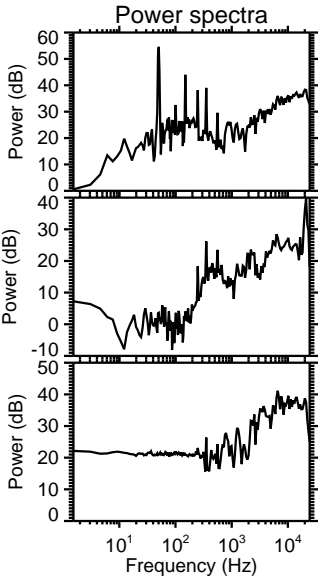
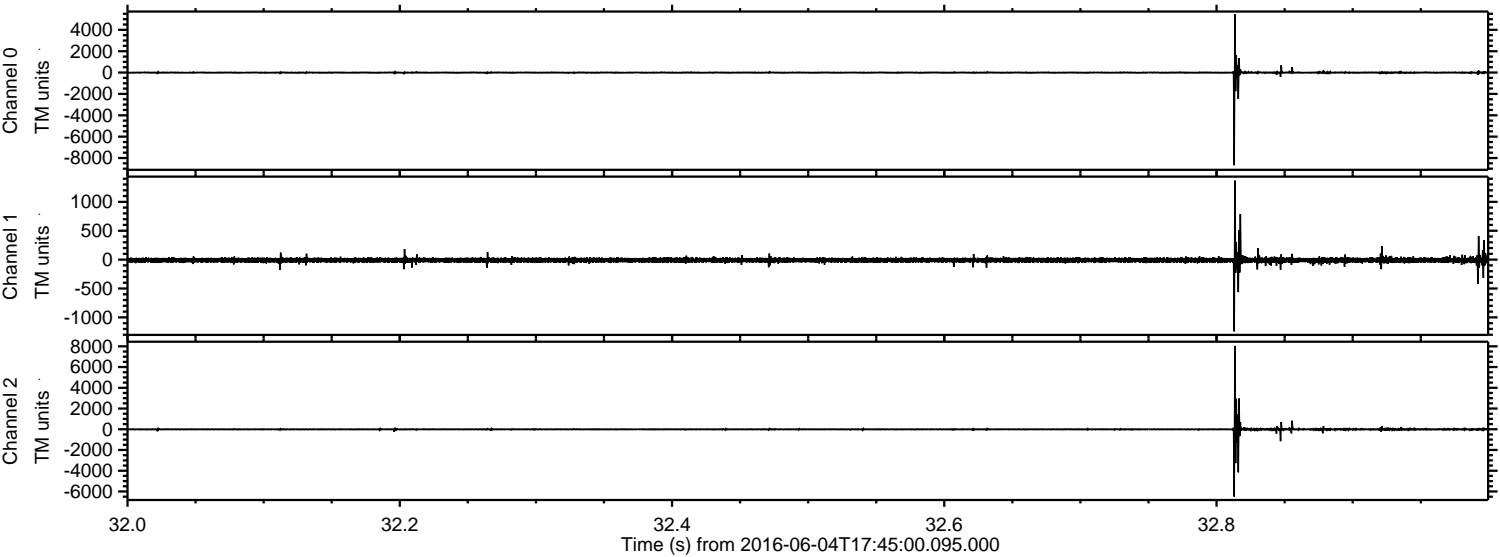
Channel 0  
mn: -9256  
mx: 6297  
 $\mu$ : -2.0  
 $\sigma$ : 91.1

Channel 1  
mn: -7548  
mx: 8817  
 $\mu$ : -9.6  
 $\sigma$ : 130.0

Channel 2  
mn: -3230  
mx: 3272  
 $\mu$ : -10.8  
 $\sigma$ : 42.6

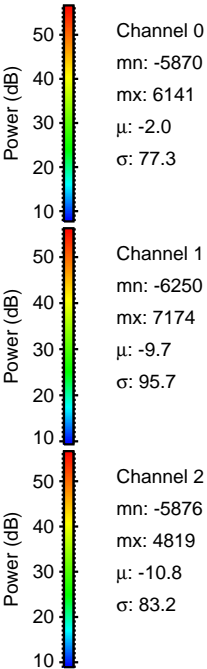
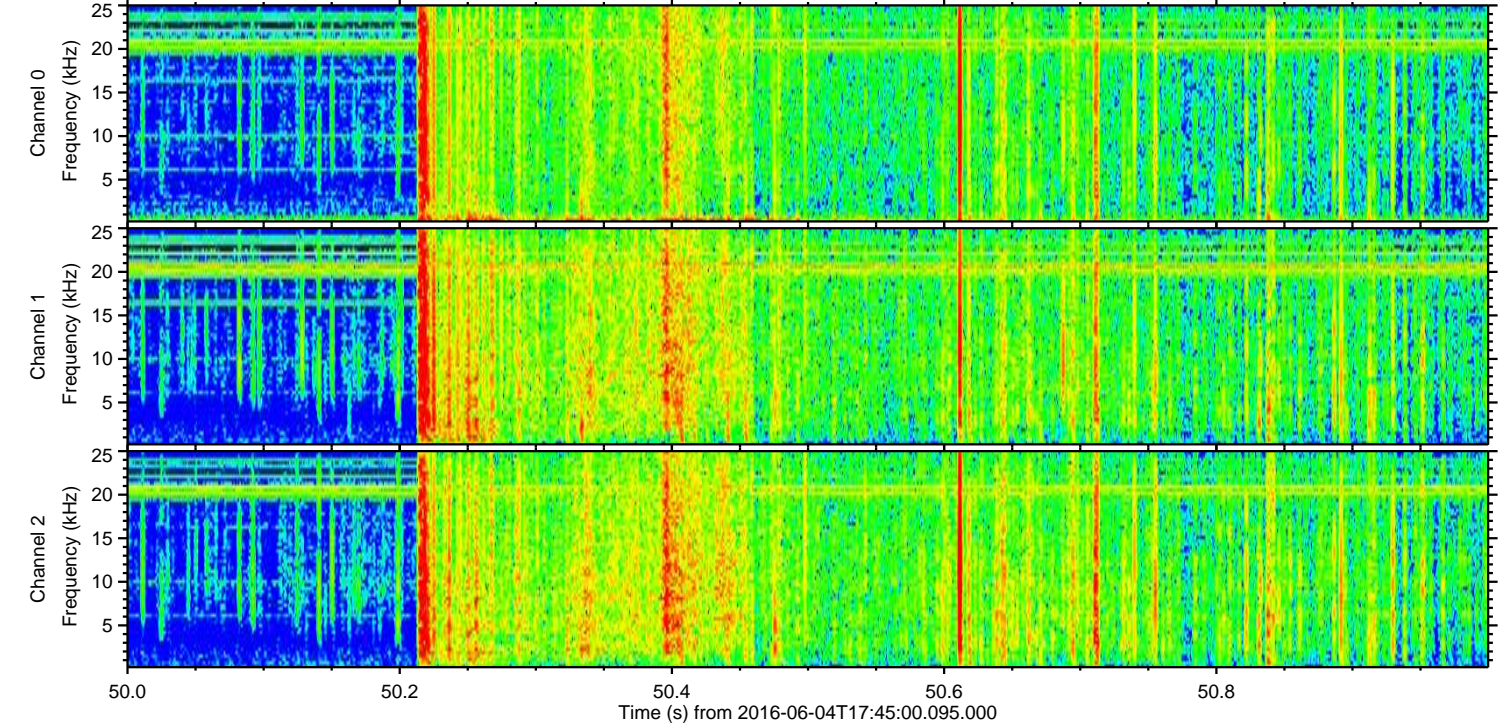
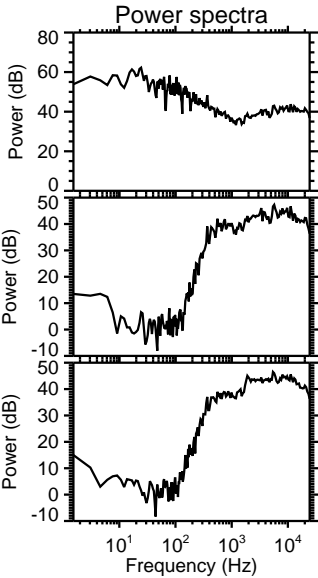
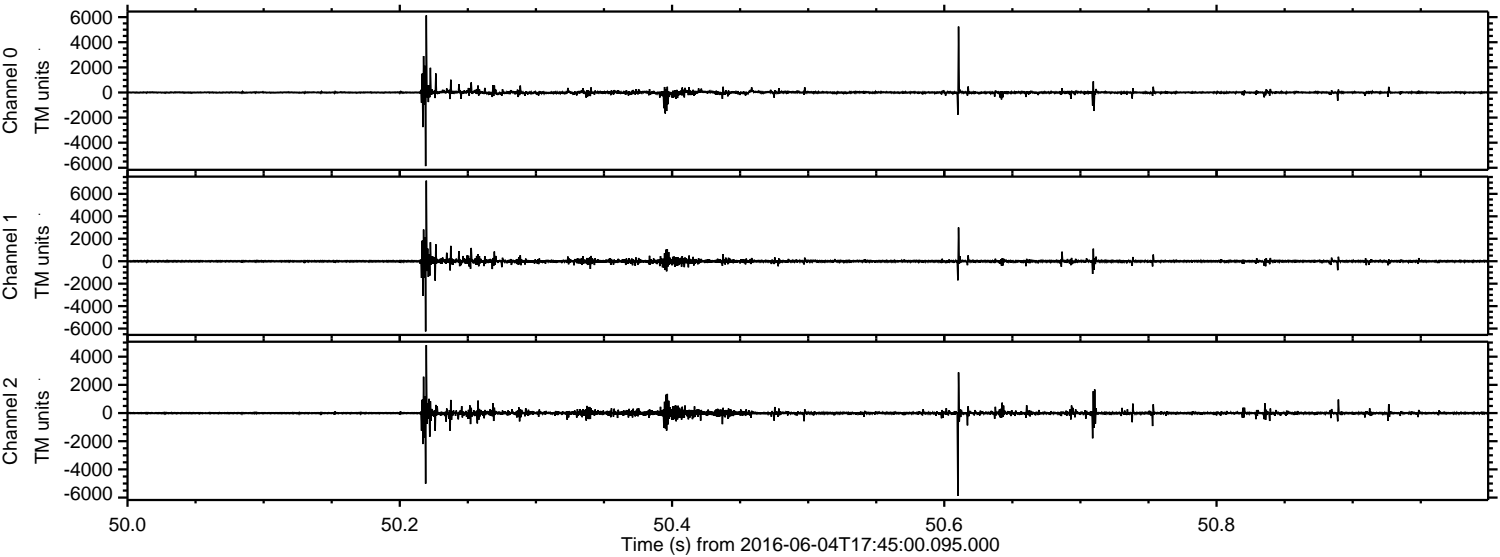


Processed Sat Jun 4 19:53:48 2016 by ELM ver.2012-10-06 from 001\_\_elm20160604\_174459\_\_dat00.bin



ELMAVAN 3D WAVEFORMS (Measured data sampled at 50 kHz) 51000 packets of 144 samples from 2016-06-04T17:45:00.095.000. Part 51/147

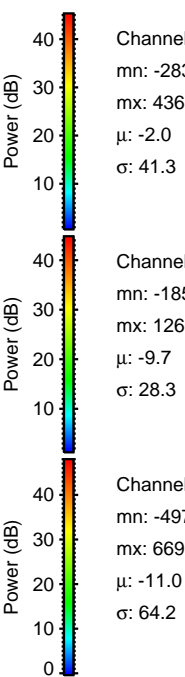
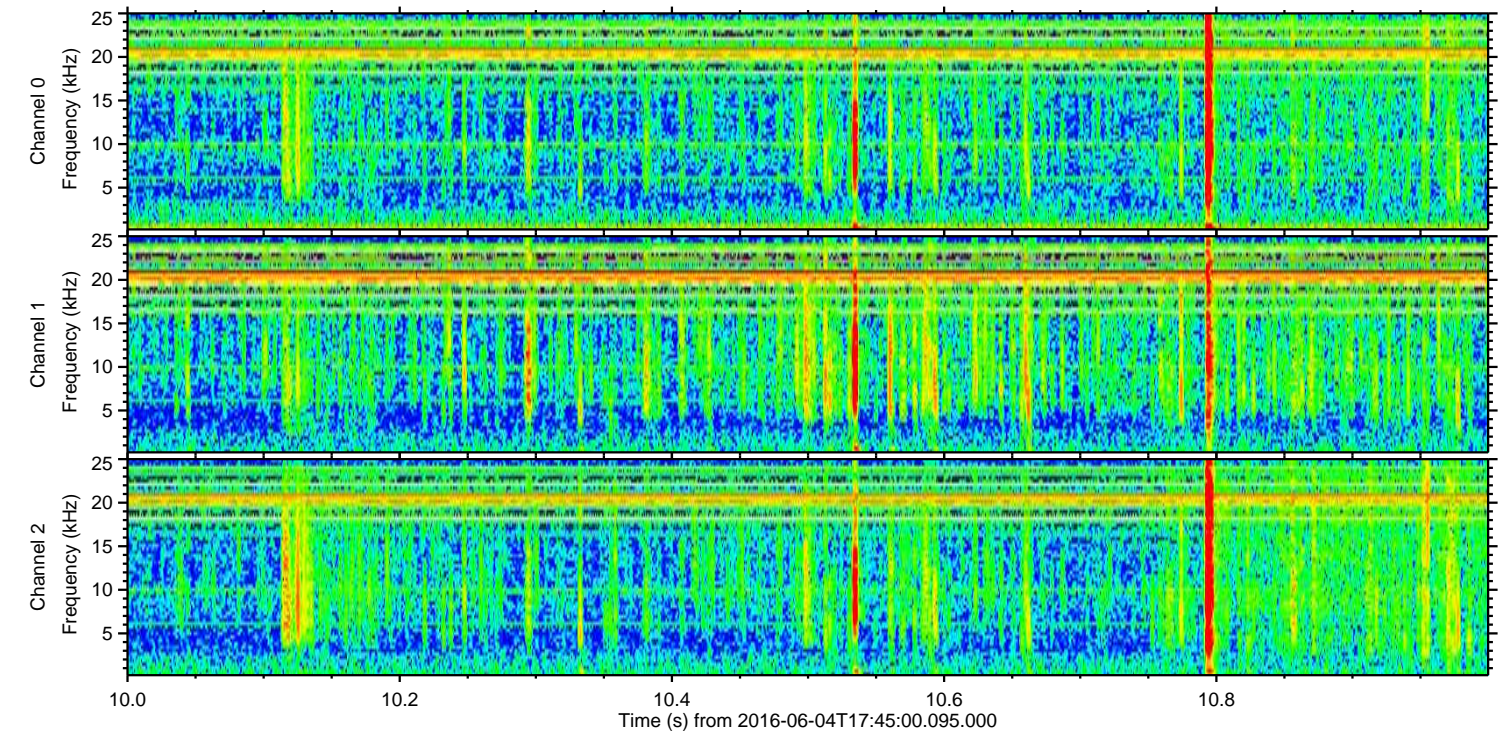
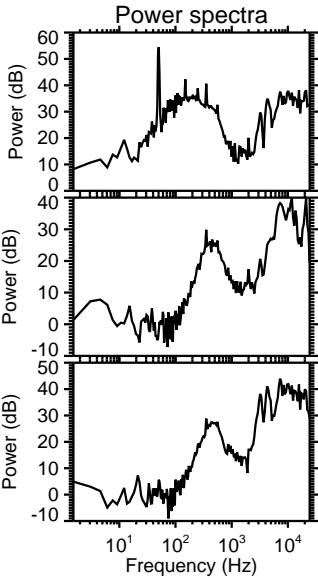
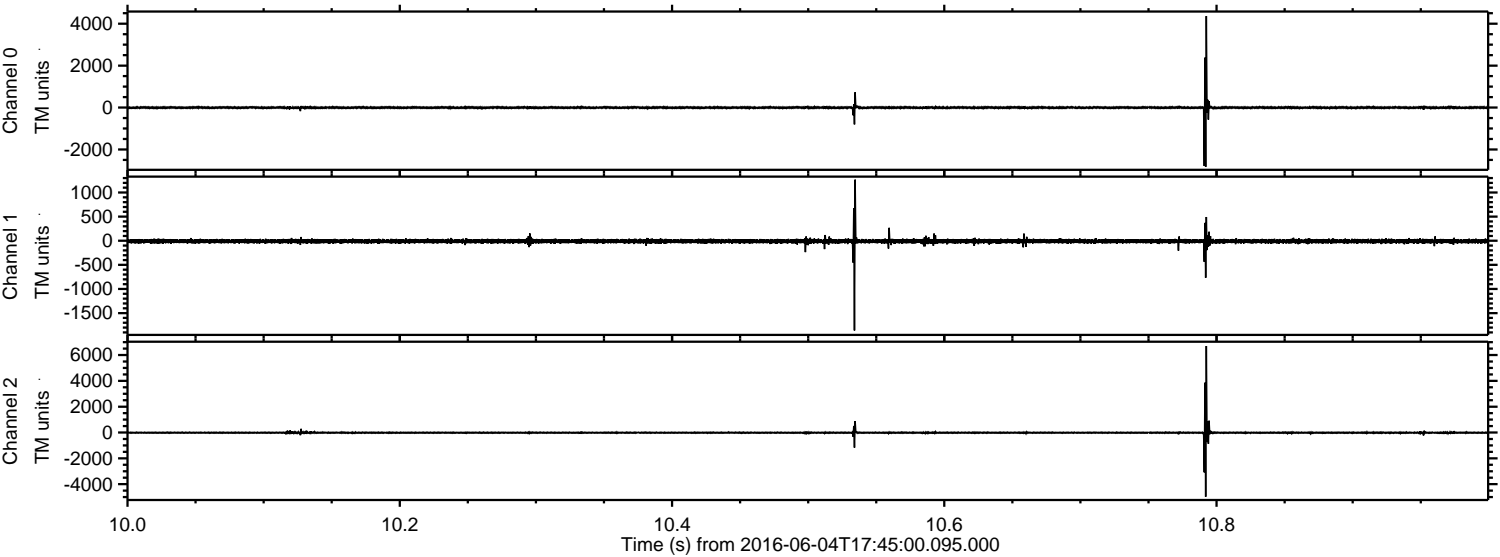
Processed Sat Jun 4 19:53:49 2016 by ELM ver.2012-10-06 from 001\_\_elm20160604\_174459\_\_dat00.bin





ELMAVAN 3D WAVEFORMS (Measured data sampled at 50 kHz) 51000 packets of 144 samples from 2016-06-04T17:45:00.095.000. Part 11/147

Processed Sat Jun 4 19:53:50 2016 by ELM ver.2012-10-06 from 001\_\_elm20160604\_174459\_\_dat00.bin



Channel 0  
mn: -2830  
mx: 4363  
 $\mu$ : -2.0  
 $\sigma$ : 41.3

Channel 1  
mn: -1859  
mx: 1266  
 $\mu$ : -9.7  
 $\sigma$ : 28.3

Channel 2  
mn: -4978  
mx: 6698  
 $\mu$ : -11.0  
 $\sigma$ : 64.2



ELMAVAN 3D WAVEFORMS (Measured data sampled at 50 kHz) 51000 packets of 144 samples from 2016-06-04T17:45:00.095.000. Part 81/147

Processed Sat Jun 4 19:53:51 2016 by ELM ver.2012-10-06 from 001\_\_elm20160604\_174459\_\_dat00.bin

