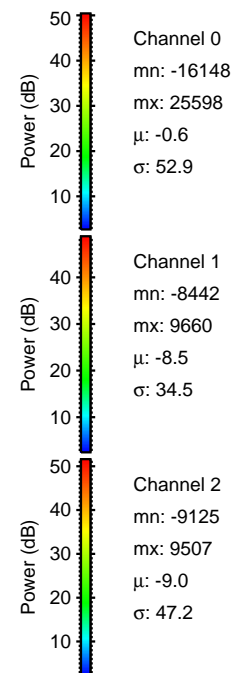
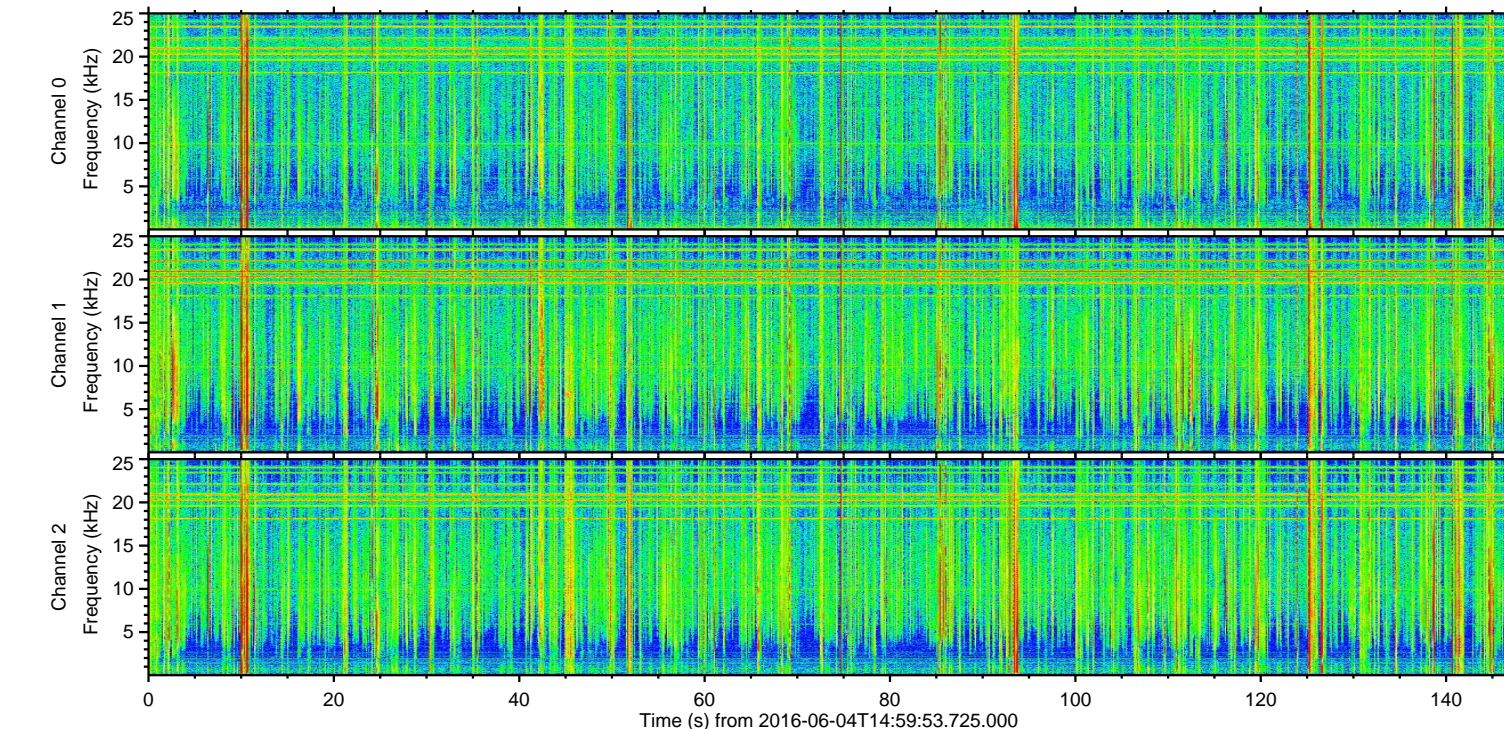
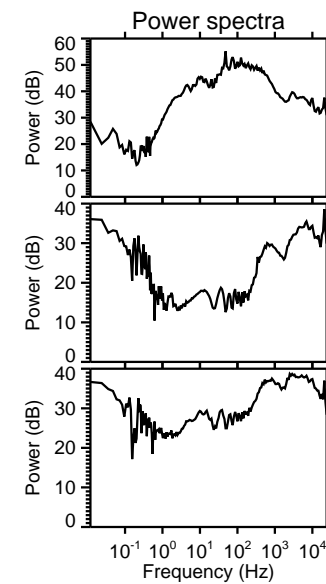
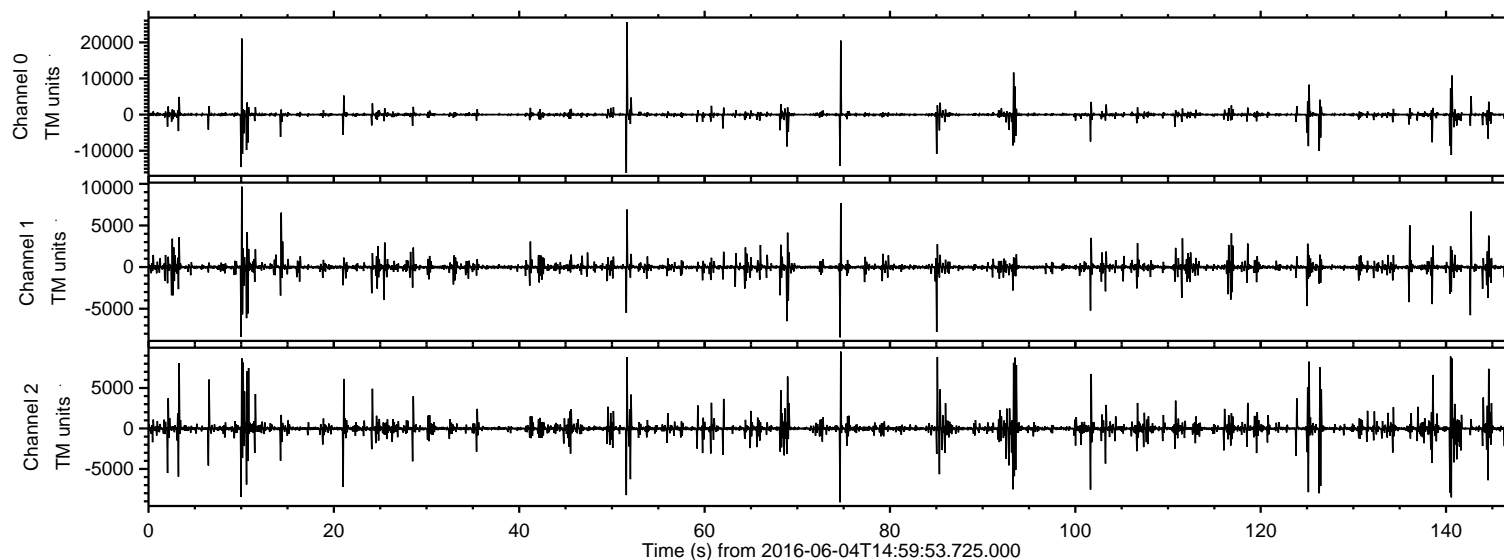
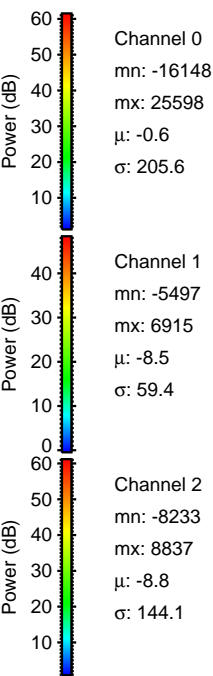
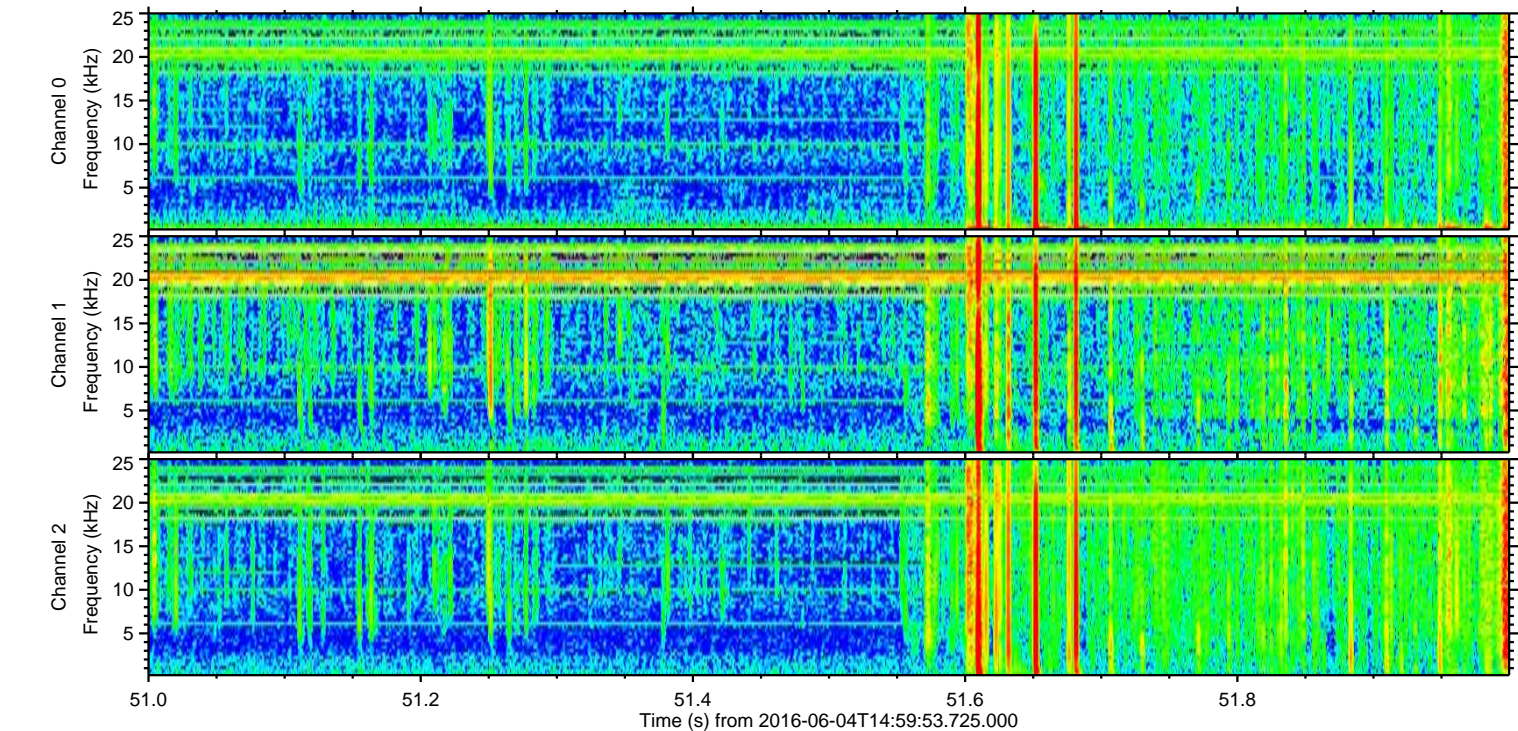
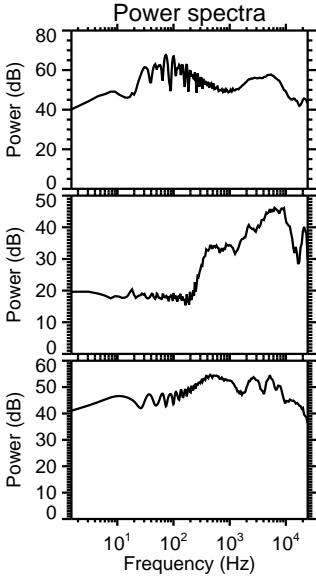
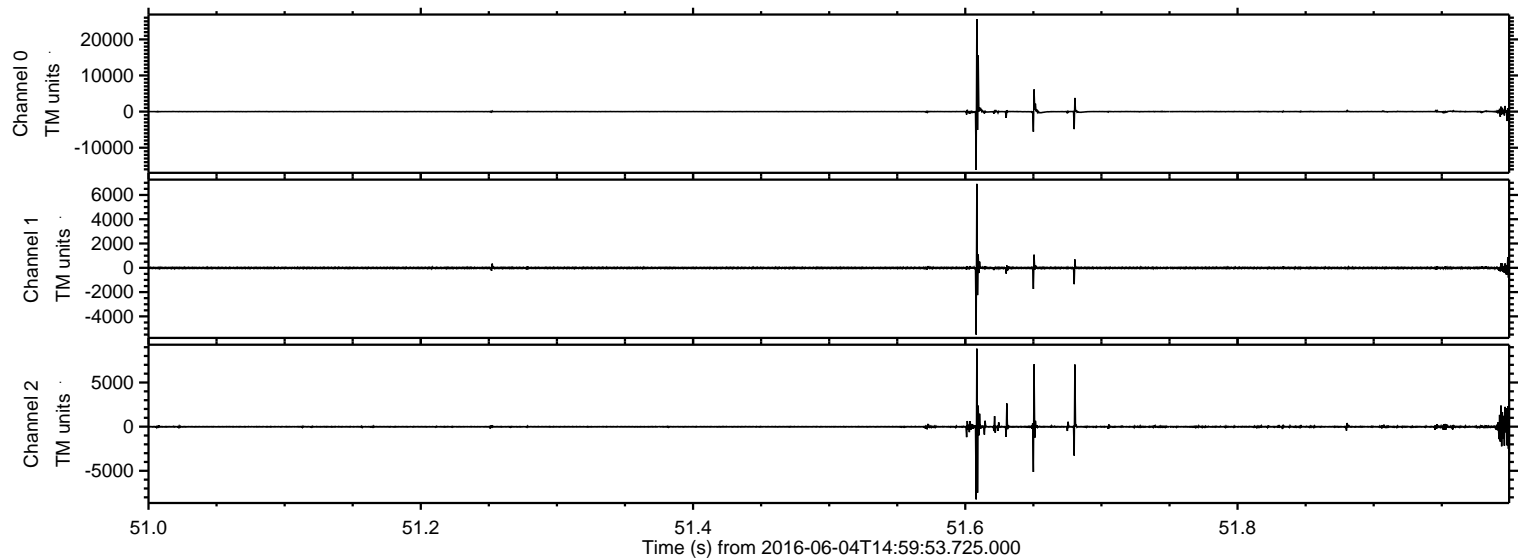


ELMAVAN 3D WAVEFORMS (Measured data sampled at 50 kHz) 51000 packets of 144 samples from 2016-06-04T14:59:53.725.000.

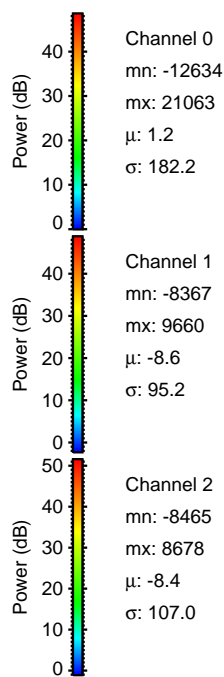
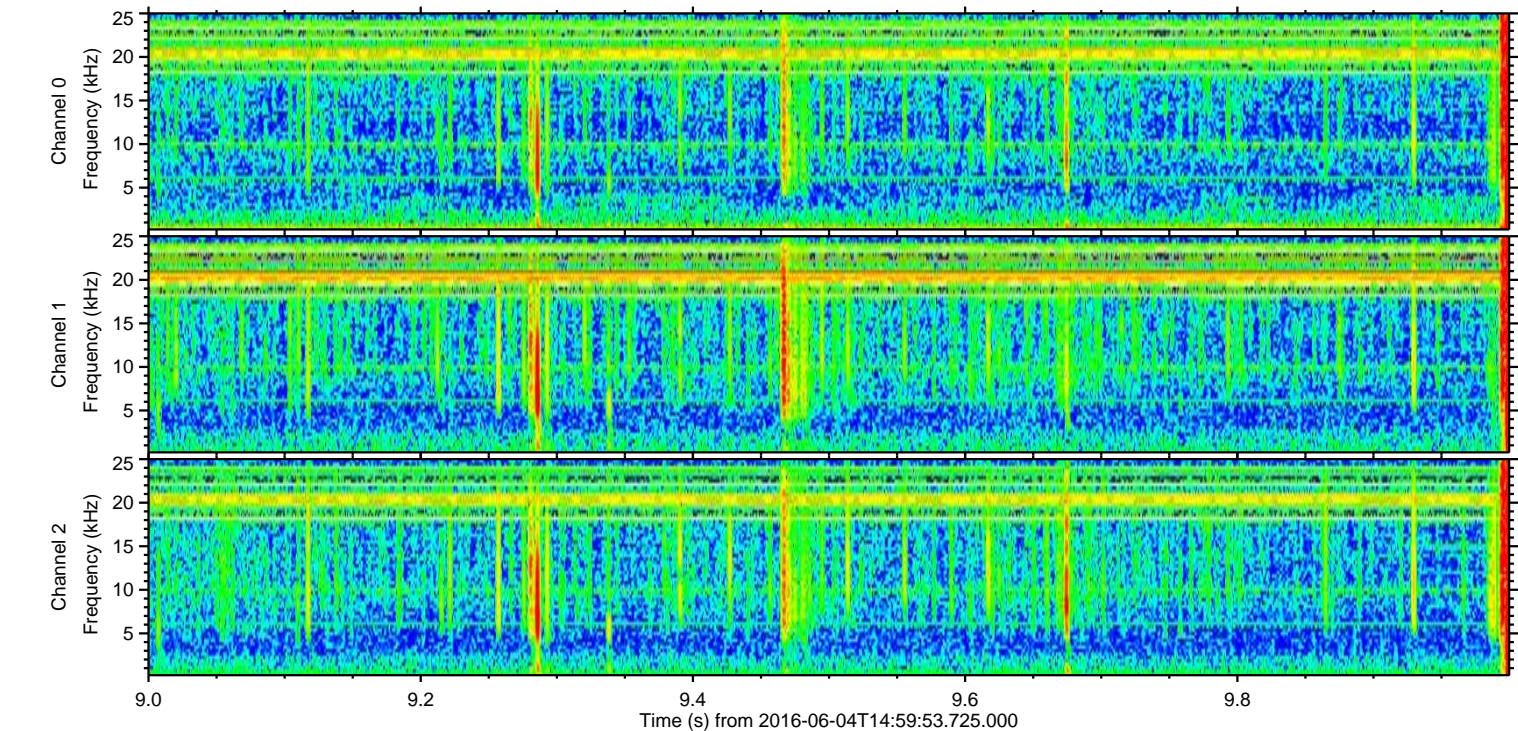
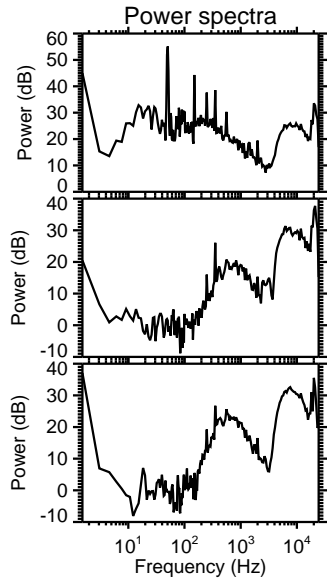
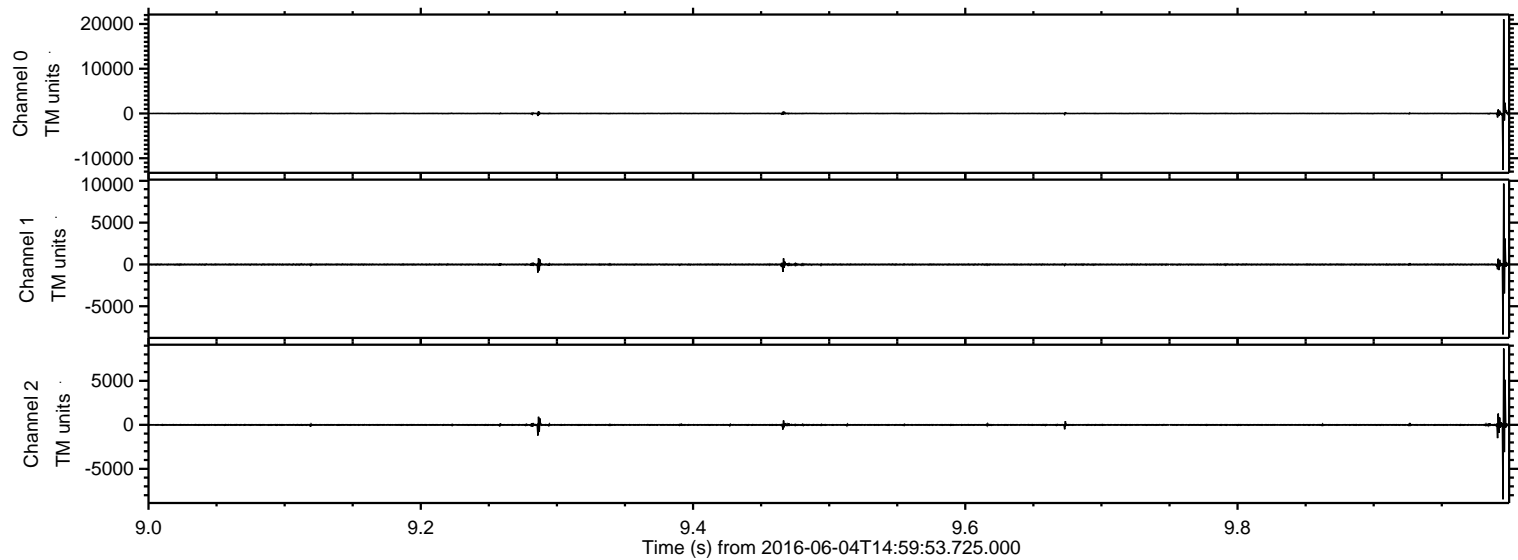
Processed Sat Jun 4 17:08:01 2016 by ELM ver.2012-10-06 from 001__elm20160604_145952__dat00.bin



Processed Sat Jun 4 17:08:16 2016 by ELM ver.2012-10-06 from 001__elm20160604_145952__dat00.bin

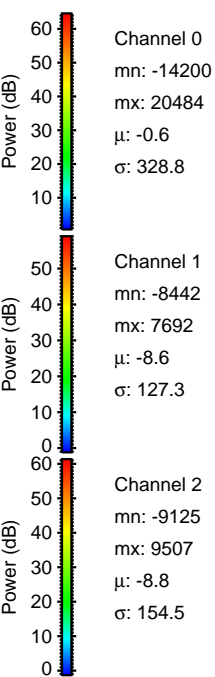
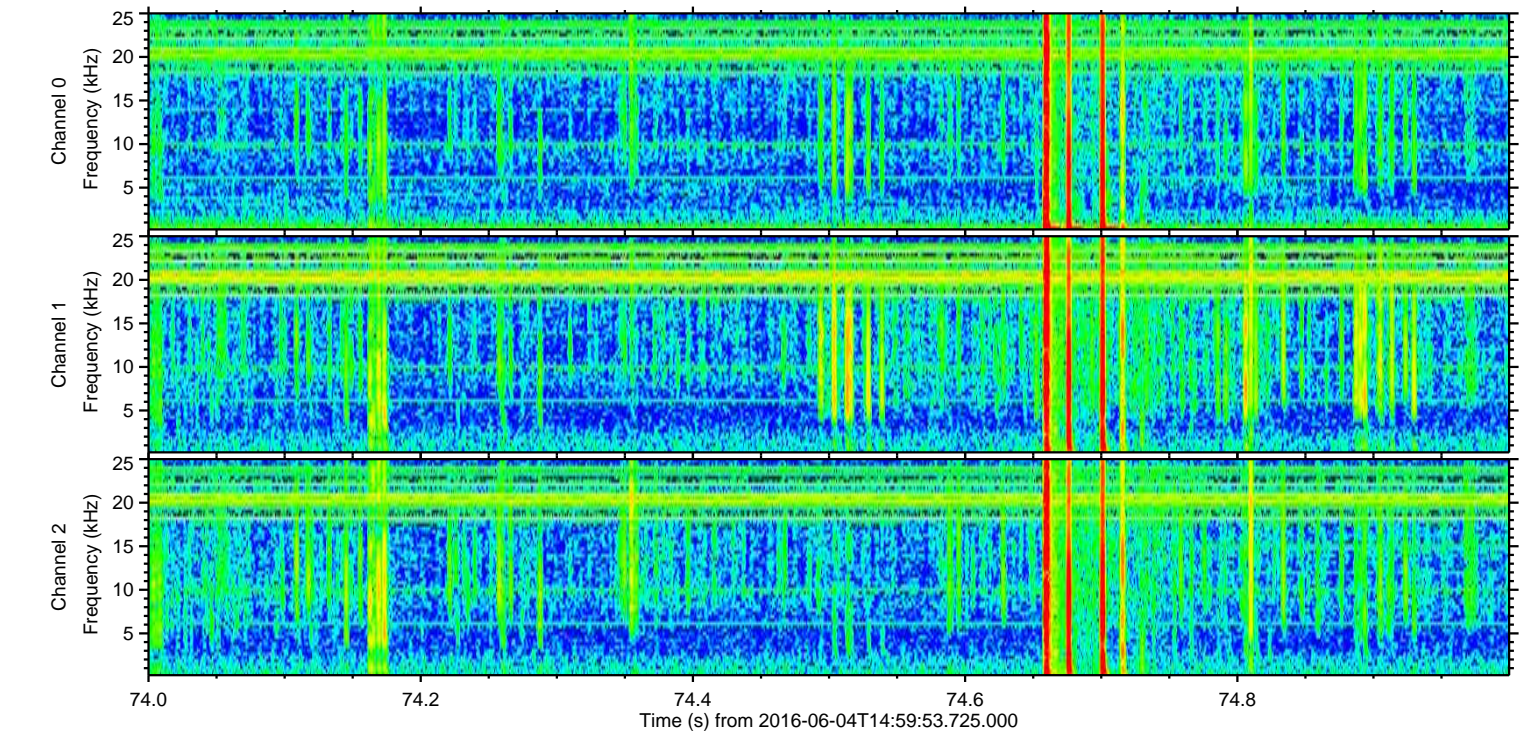
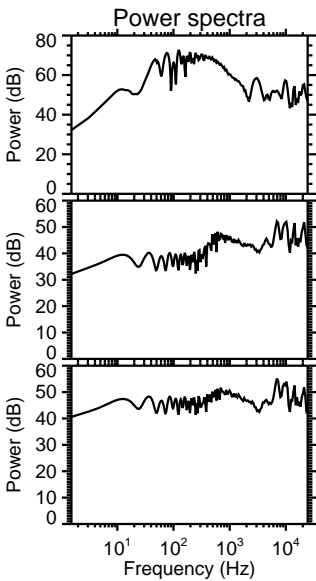
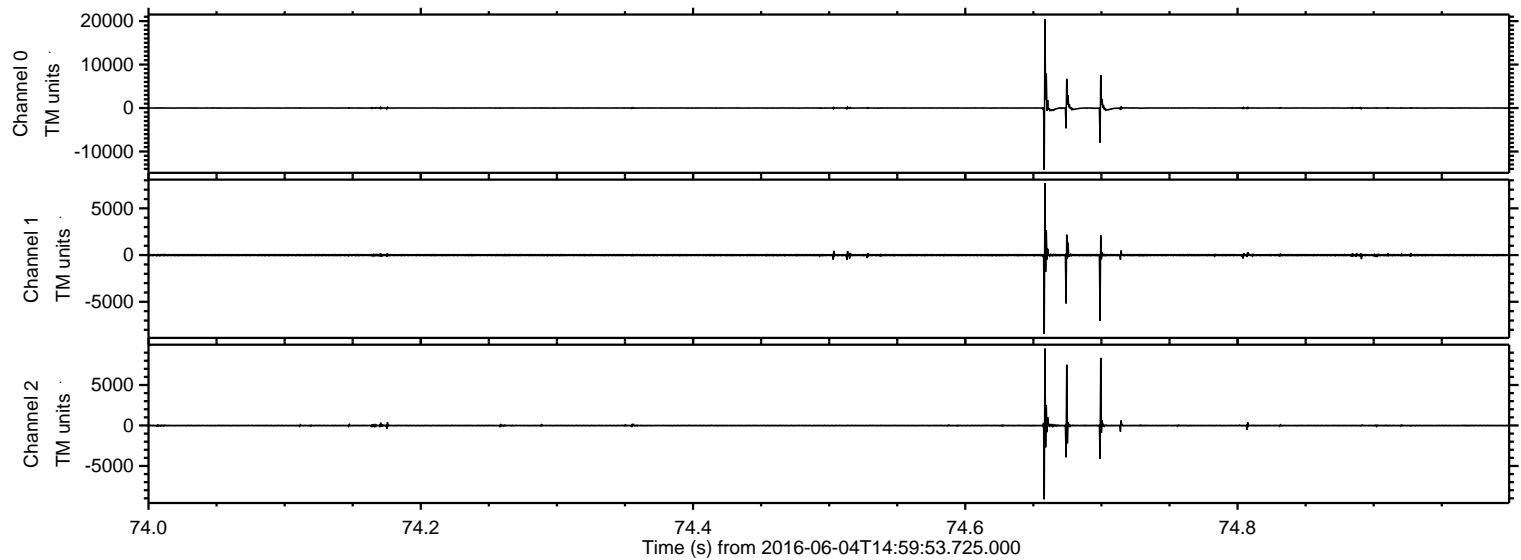


Processed Sat Jun 4 17:08:17 2016 by ELM ver.2012-10-06 from 001__elm20160604_145952__dat00.bin

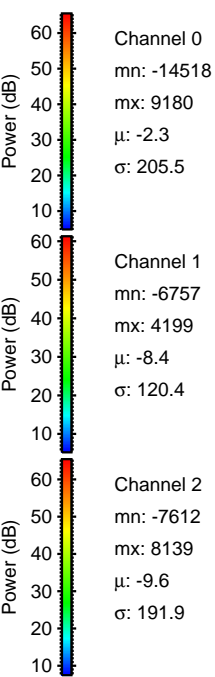
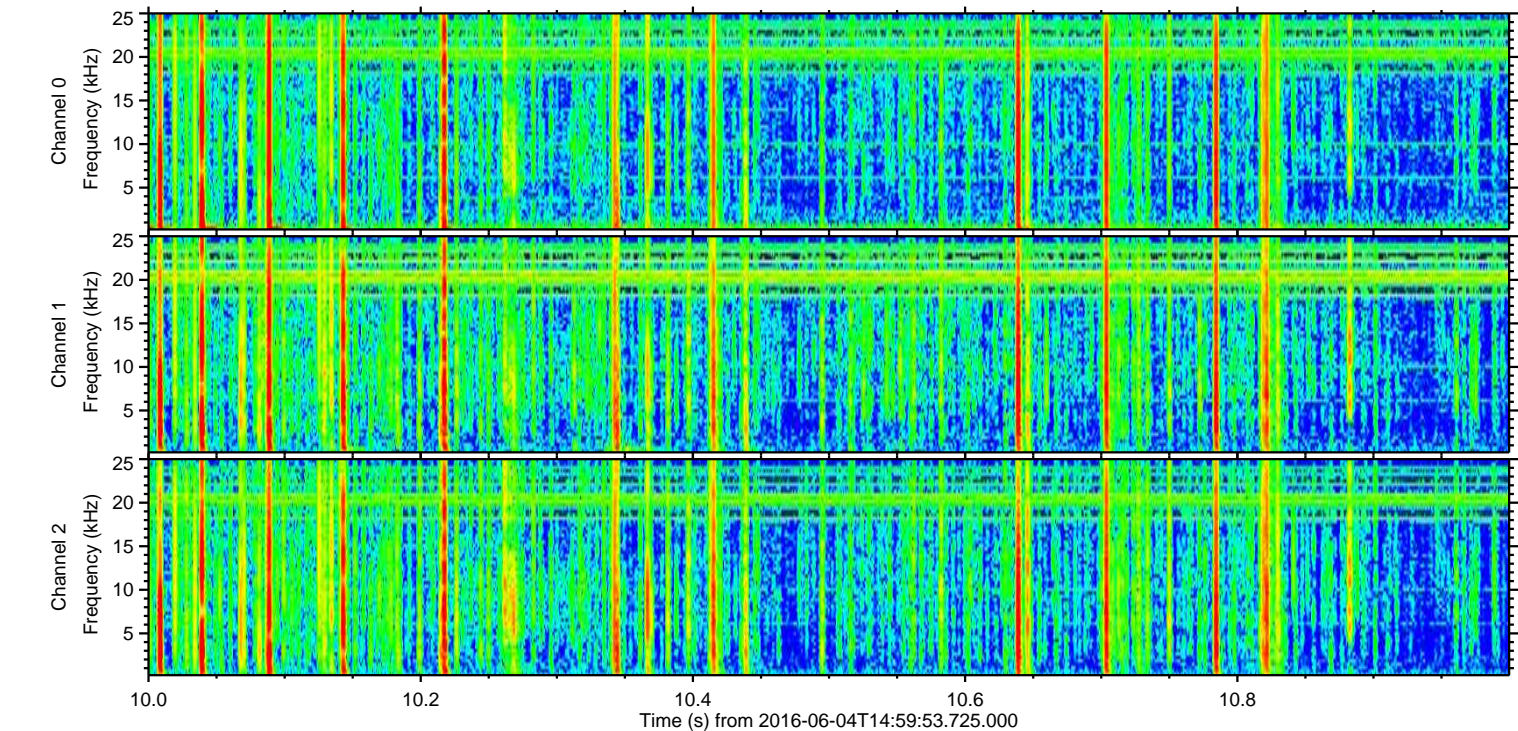
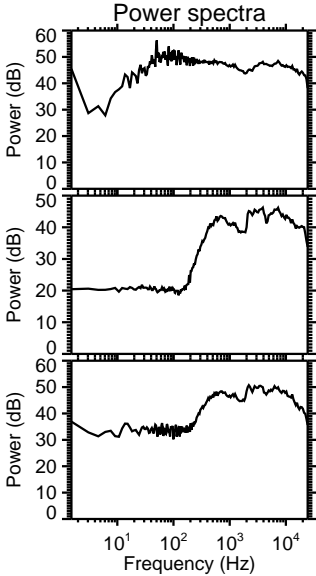
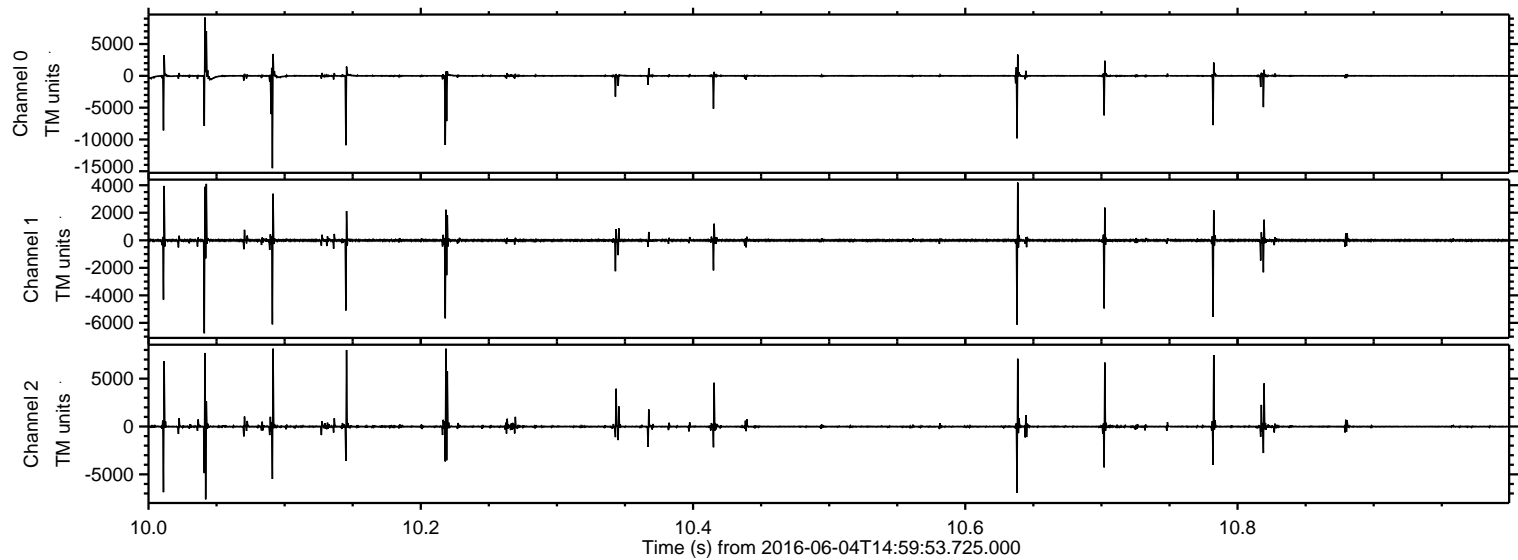


ELMAVAN 3D WAVEFORMS (Measured data sampled at 50 kHz) 51000 packets of 144 samples from 2016-06-04T14:59:53.725.000. Part 75/147

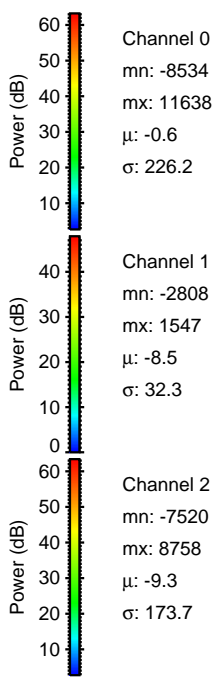
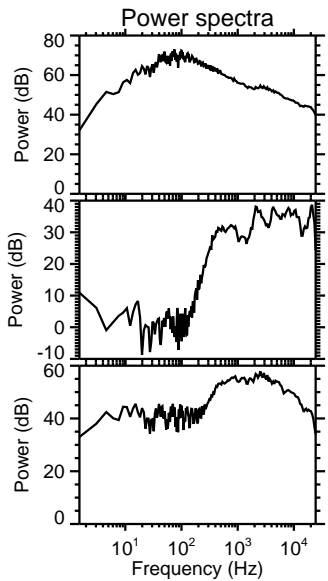
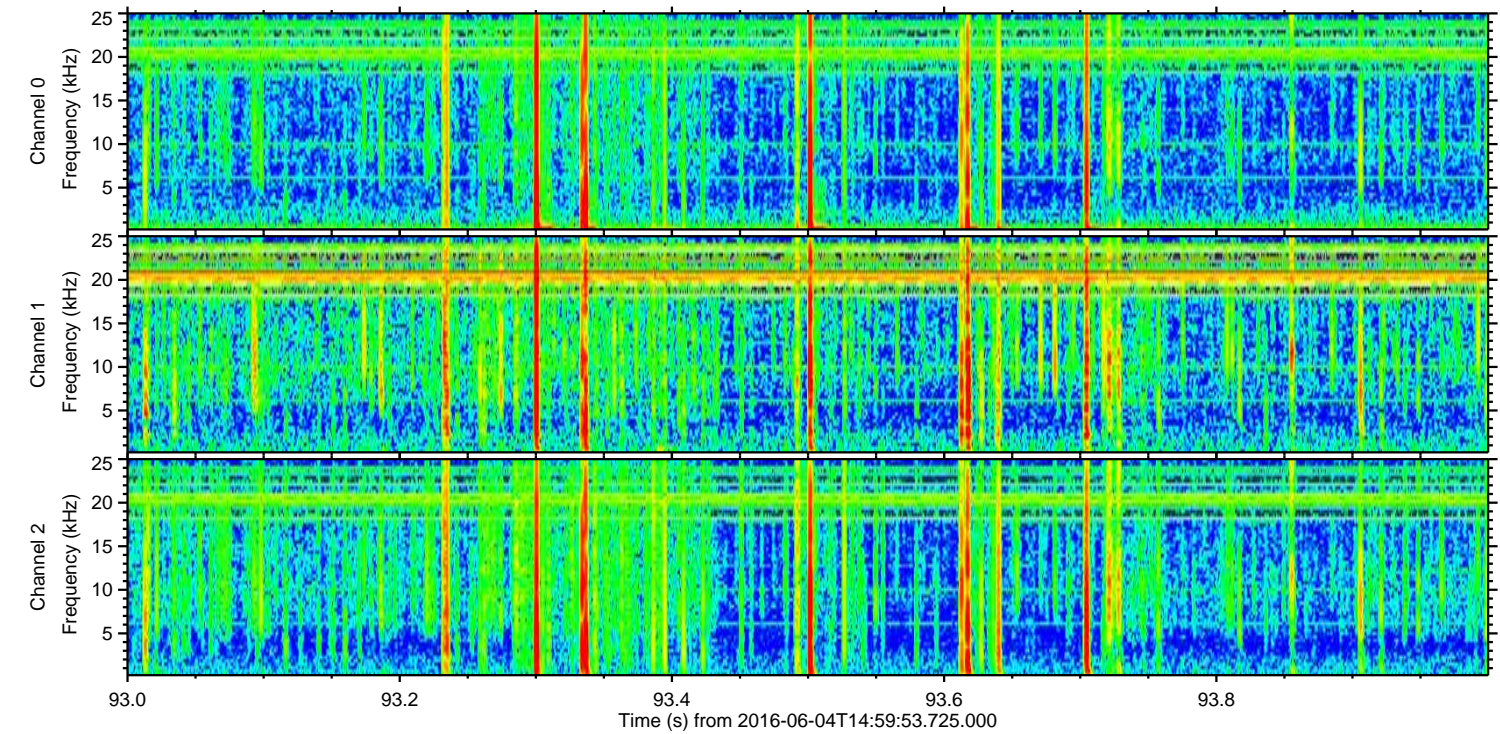
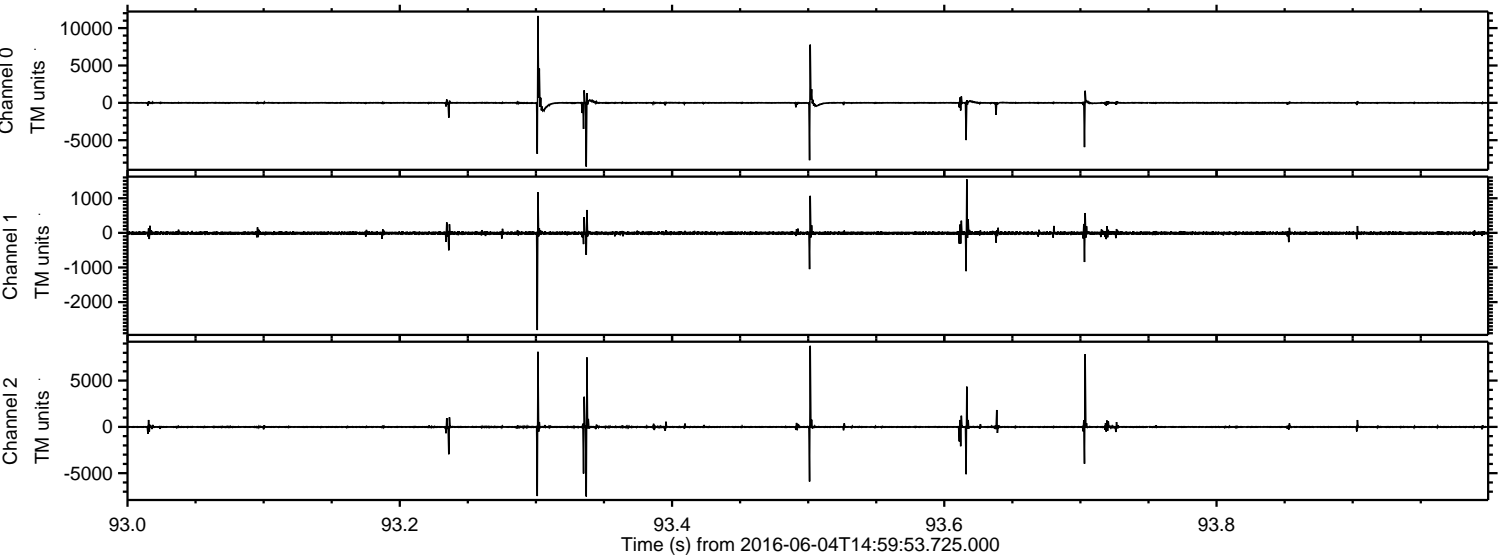
Processed Sat Jun 4 17:08:18 2016 by ELM ver.2012-10-06 from 001__elm20160604_145952__dat00.bin



Processed Sat Jun 4 17:08:19 2016 by ELM ver.2012-10-06 from 001__elm20160604_145952__dat00.bin

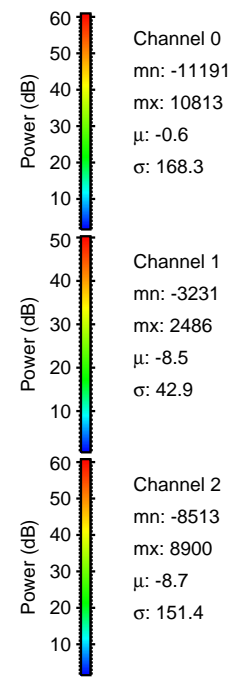
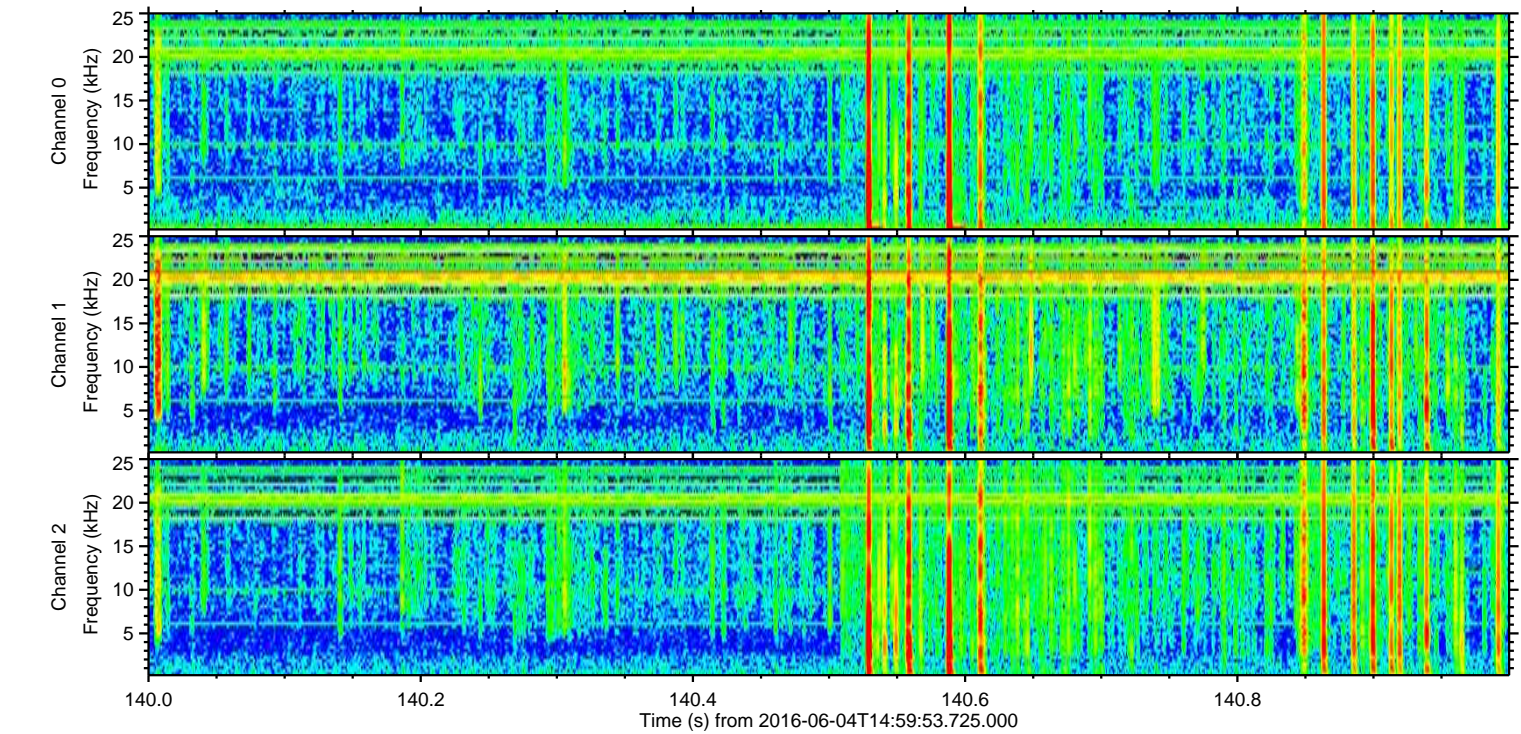
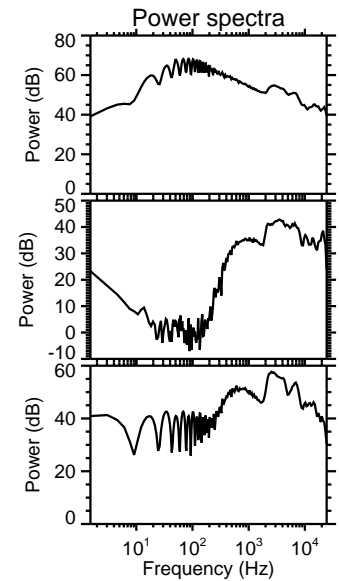
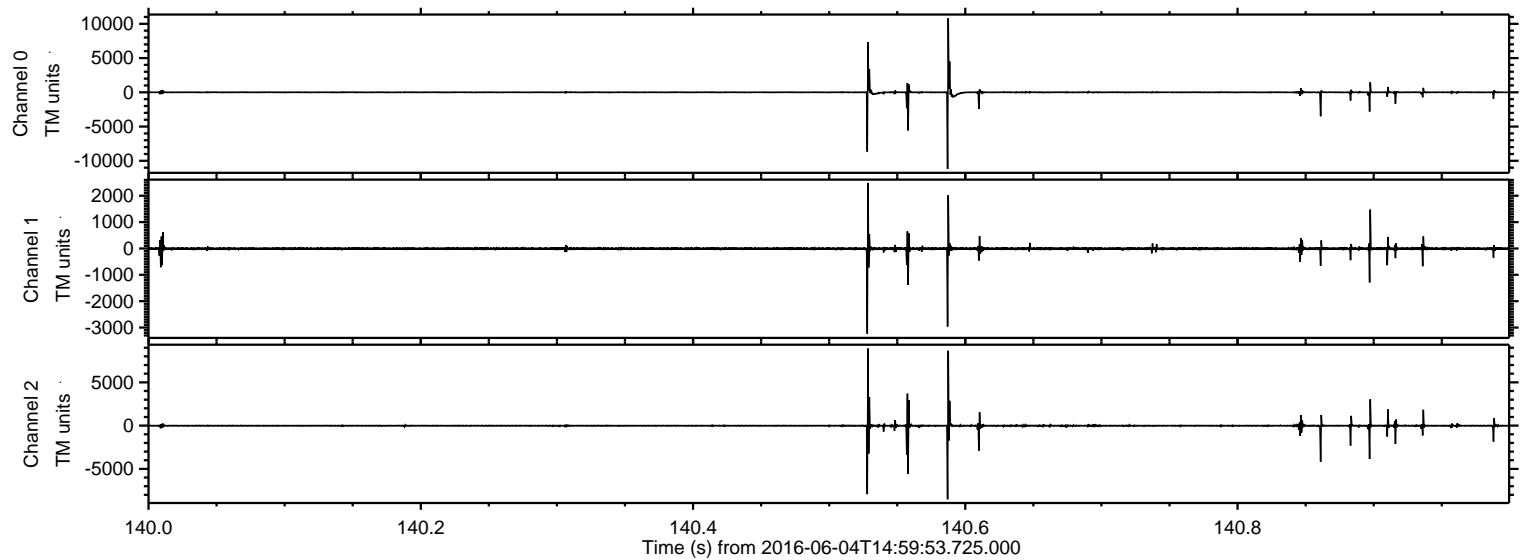


Processed Sat Jun 4 17:08:20 2016 by ELM ver.2012-10-06 from 001__elm20160604_145952__dat00.bin

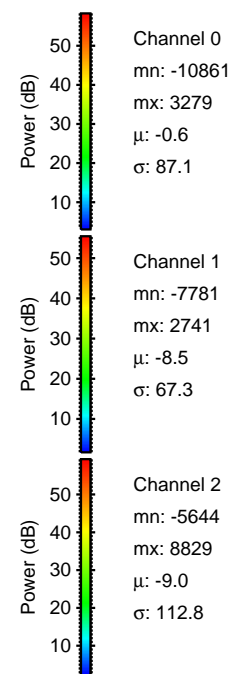
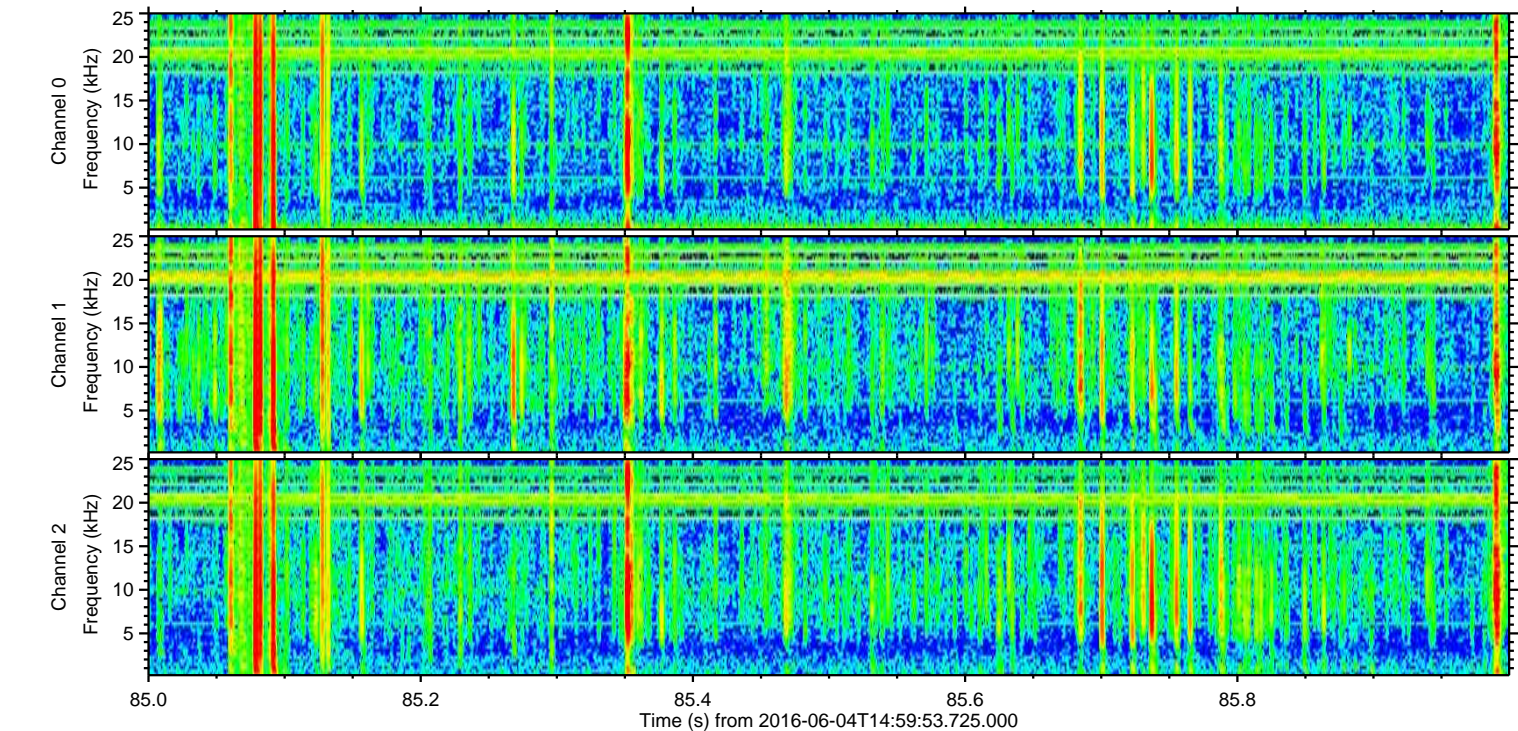
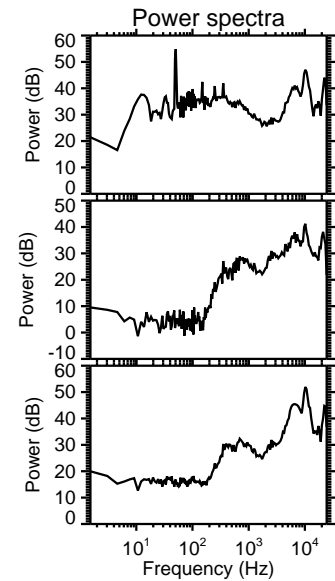
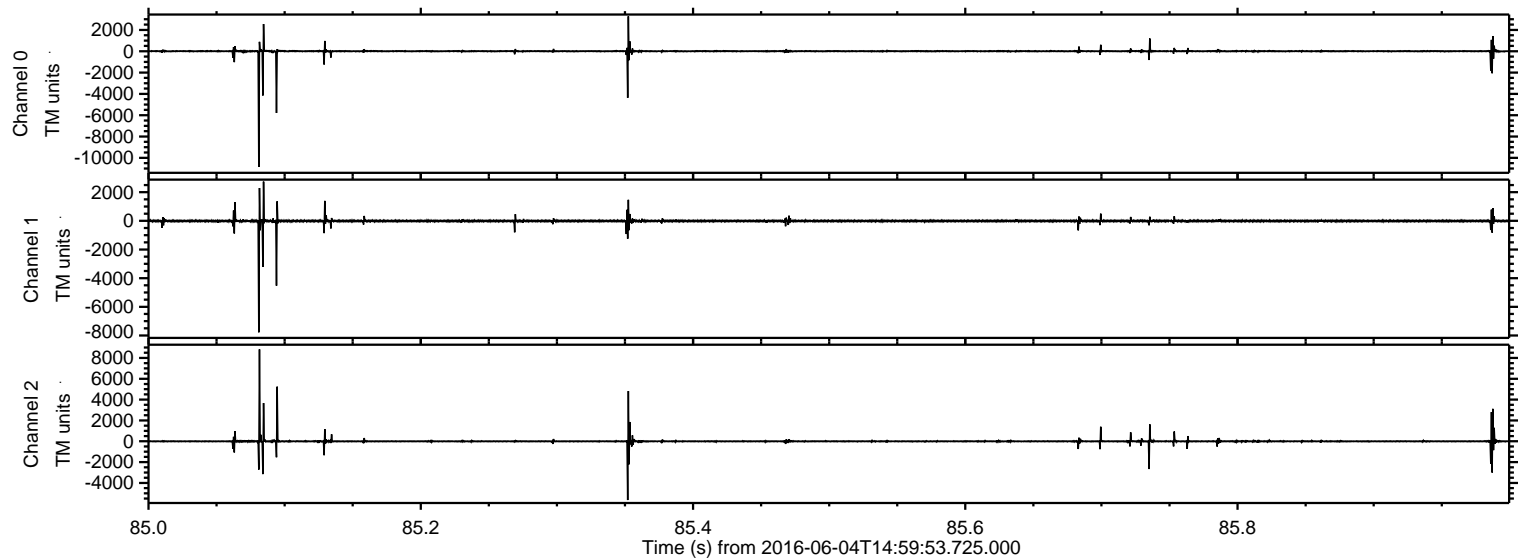


ELMAVAN 3D WAVEFORMS (Measured data sampled at 50 kHz) 51000 packets of 144 samples from 2016-06-04T14:59:53.725.000. Part 141/147

Processed Sat Jun 4 17:08:21 2016 by ELM ver.2012-10-06 from 001__elm20160604_145952__dat00.bin

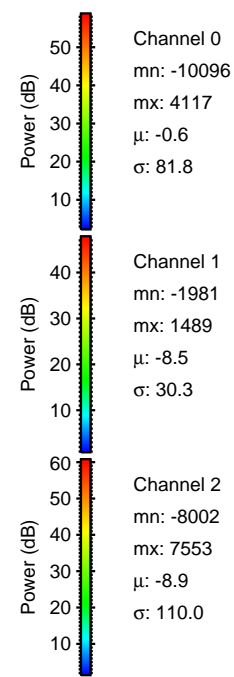
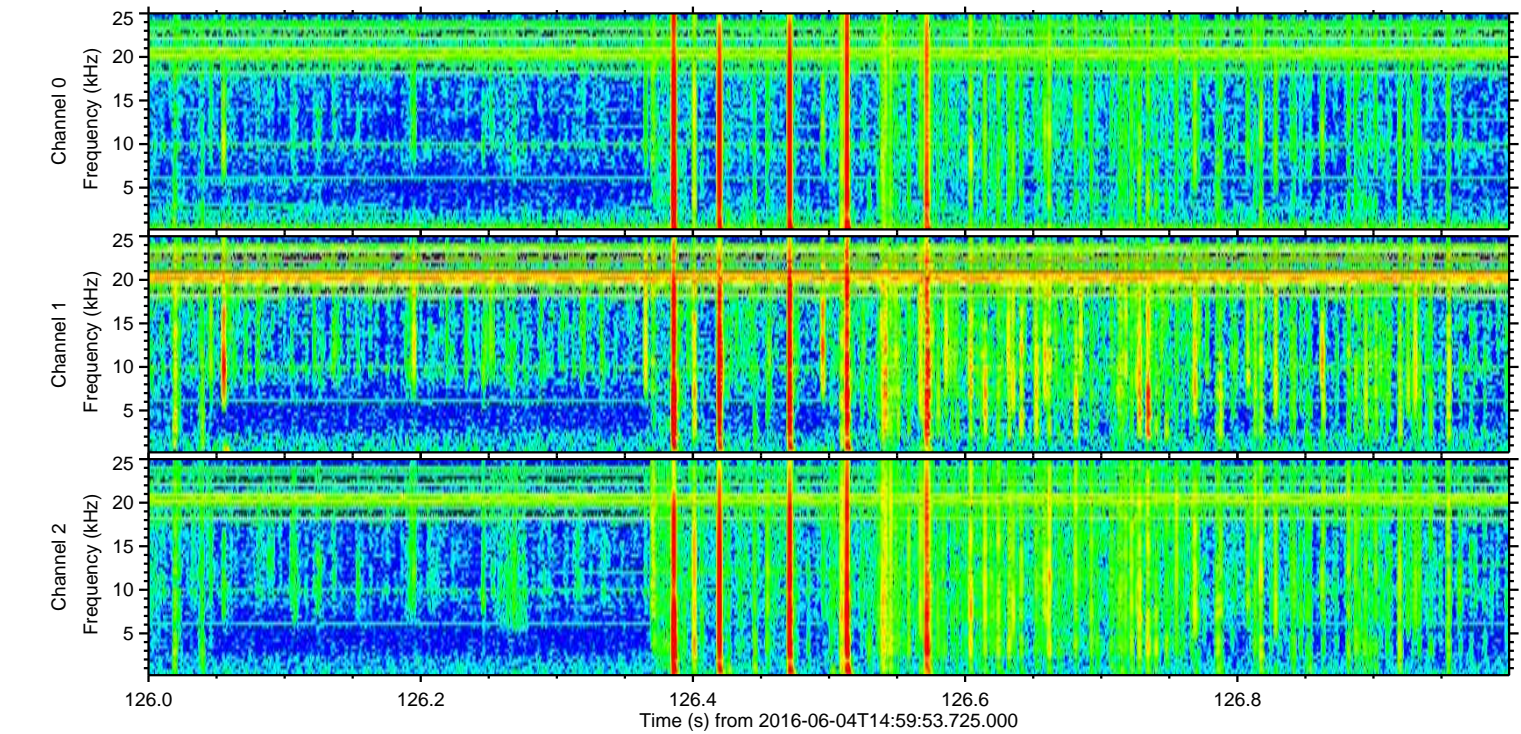
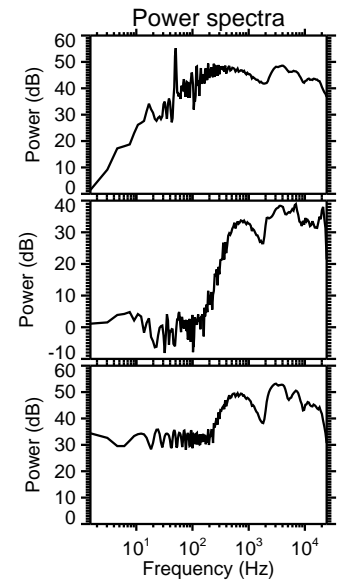
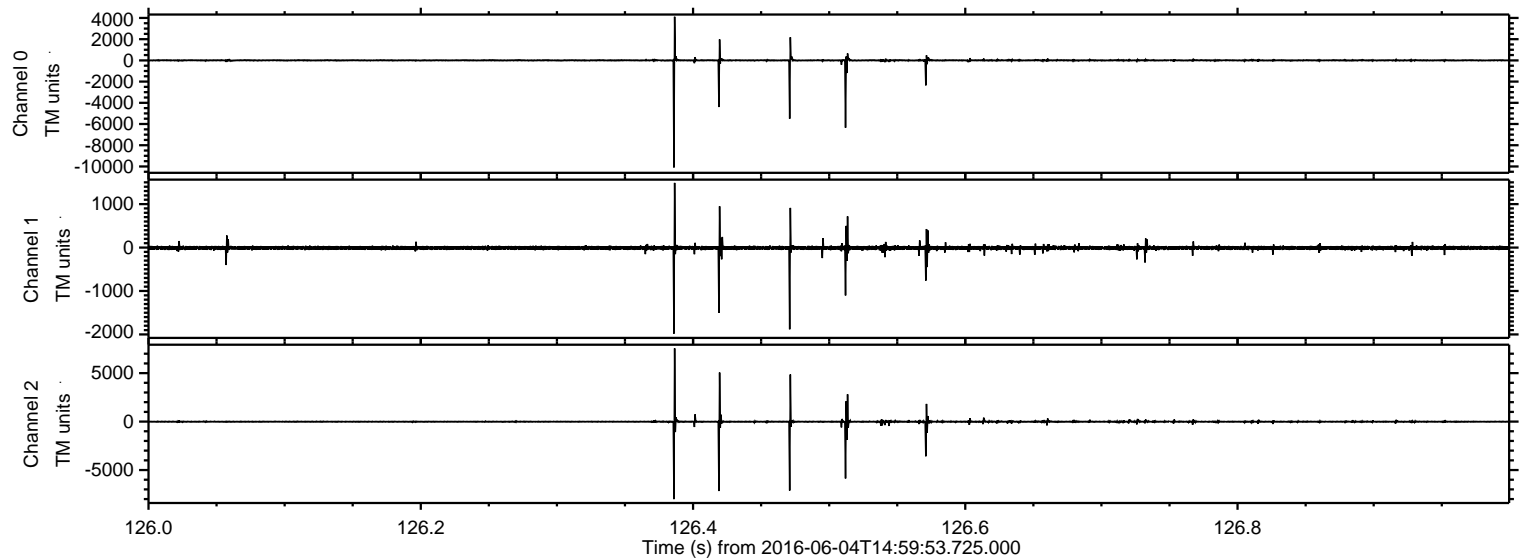


Processed Sat Jun 4 17:08:22 2016 by ELM ver.2012-10-06 from 001__elm20160604_145952__dat00.bin

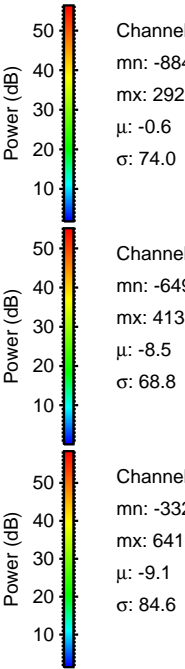
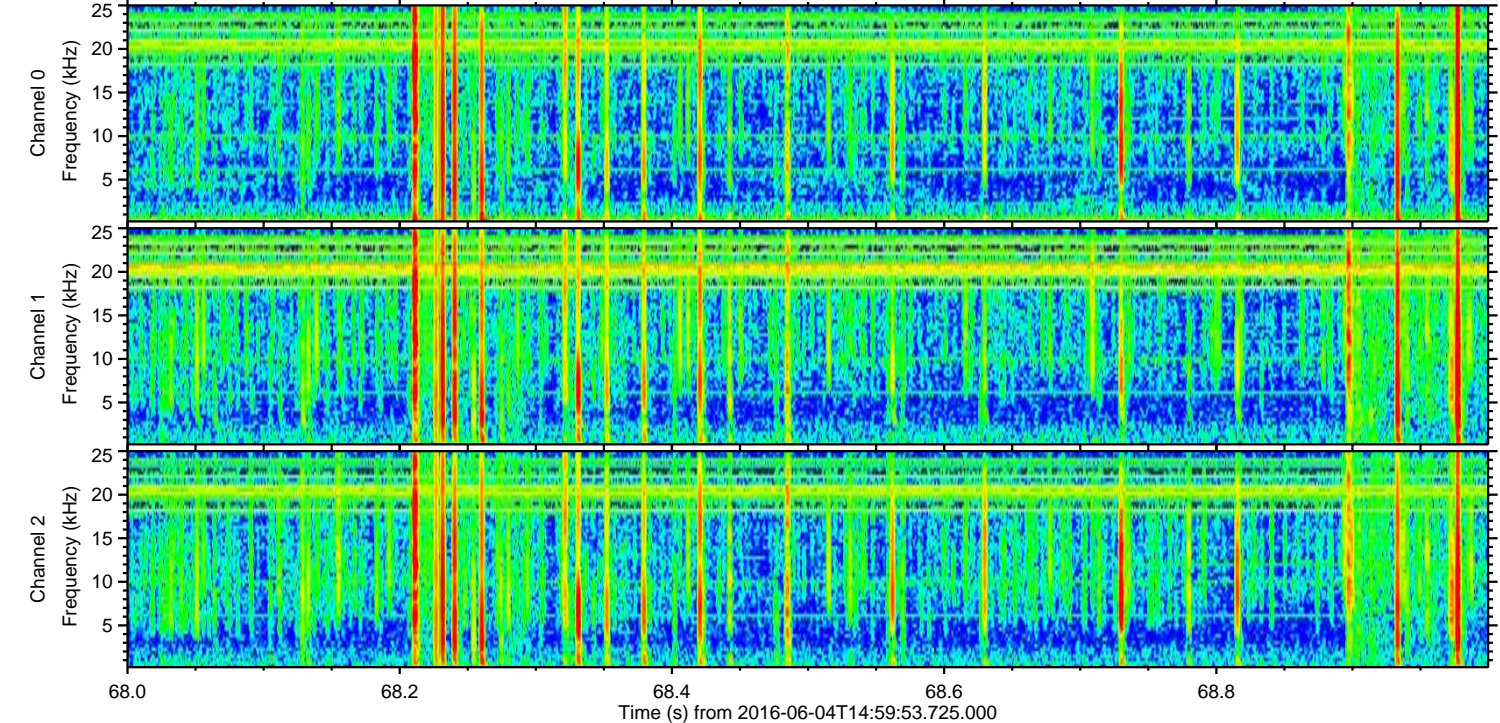
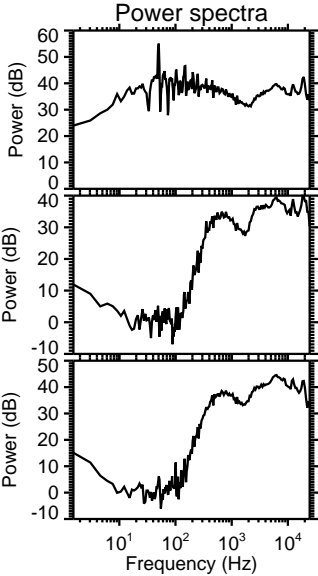
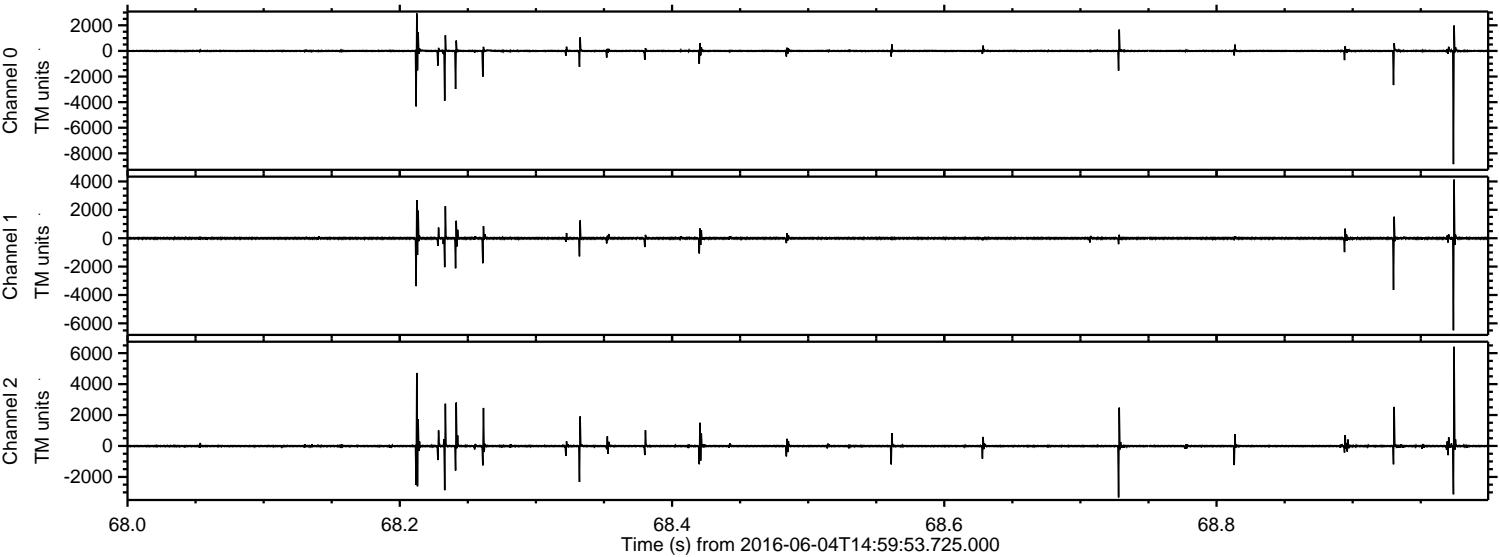


ELMAVAN 3D WAVEFORMS (Measured data sampled at 50 kHz) 51000 packets of 144 samples from 2016-06-04T14:59:53.725.000. Part 127/147

Processed Sat Jun 4 17:08:23 2016 by ELM ver.2012-10-06 from 001__elm20160604_145952__dat00.bin



Processed Sat Jun 4 17:08:24 2016 by ELM ver.2012-10-06 from 001__elm20160604_145952__dat00.bin



Channel 0
mn: -8843
mx: 2929
 μ : -0.6
 σ : 74.0

Channel 1
mn: -6491
mx: 4135
 μ : -8.5
 σ : 68.8

Channel 2
mn: -3326
mx: 6419
 μ : -9.1
 σ : 84.6

Processed Sat Jun 4 17:08:25 2016 by ELM ver.2012-10-06 from 001__elm20160604_145952__dat00.bin

