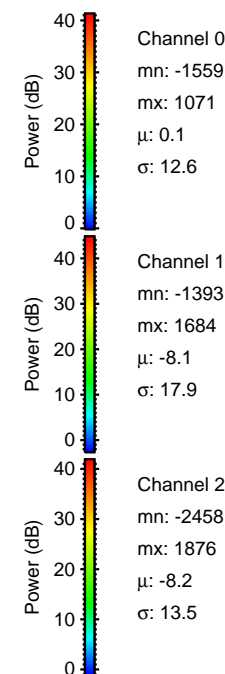
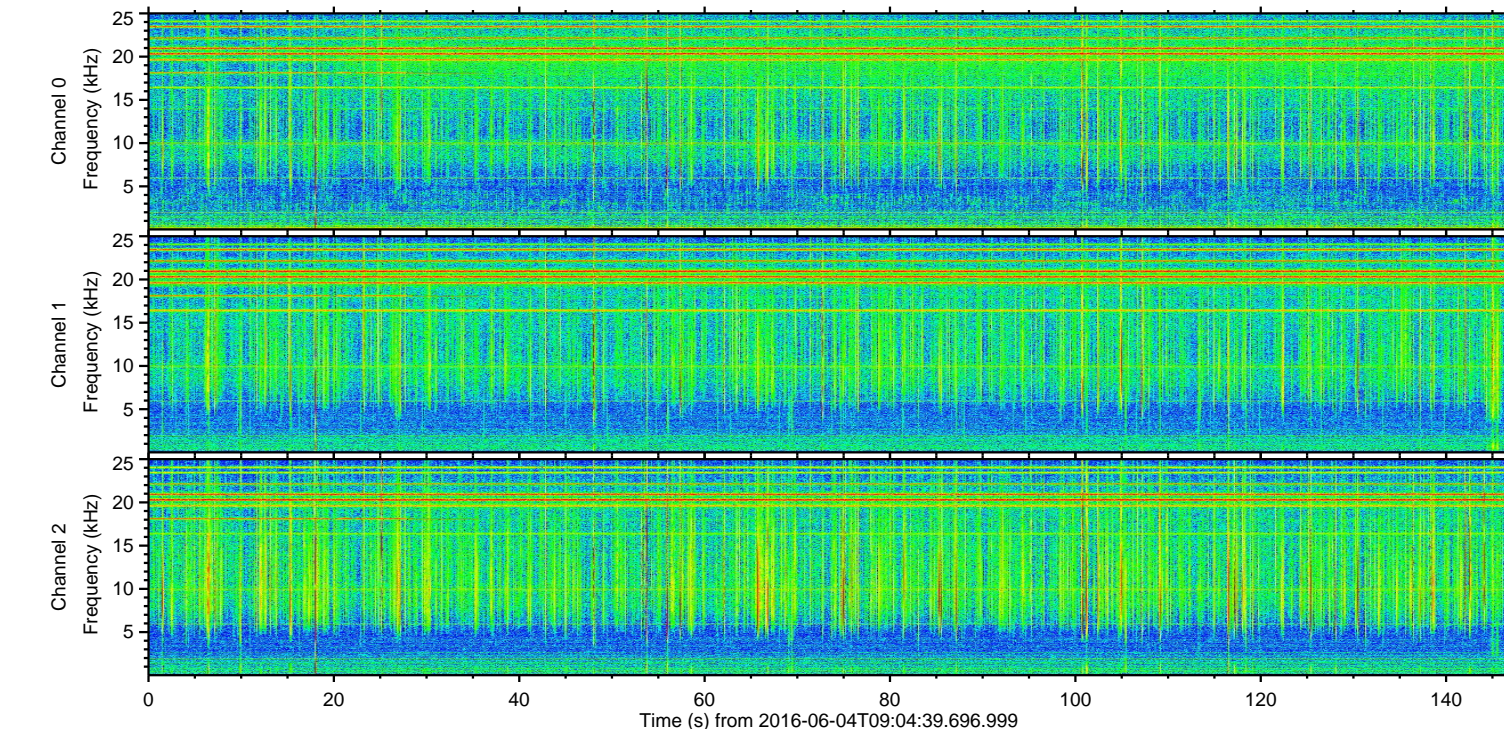
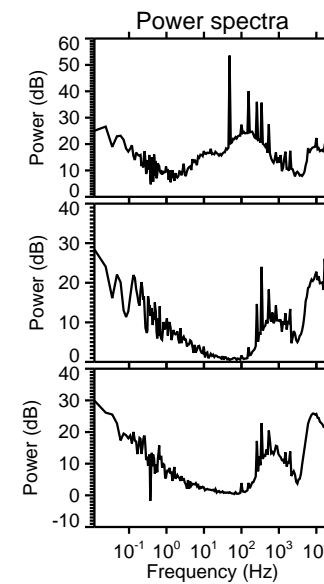
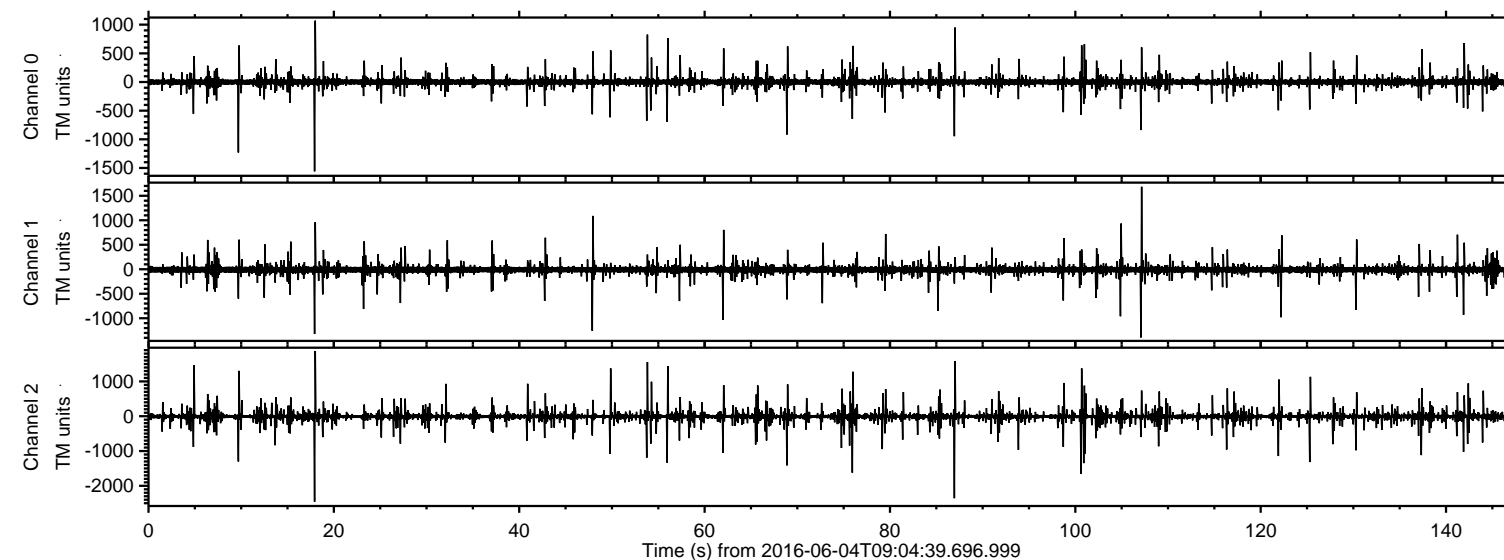
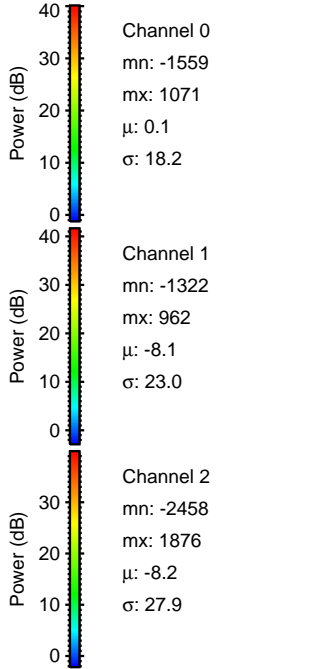
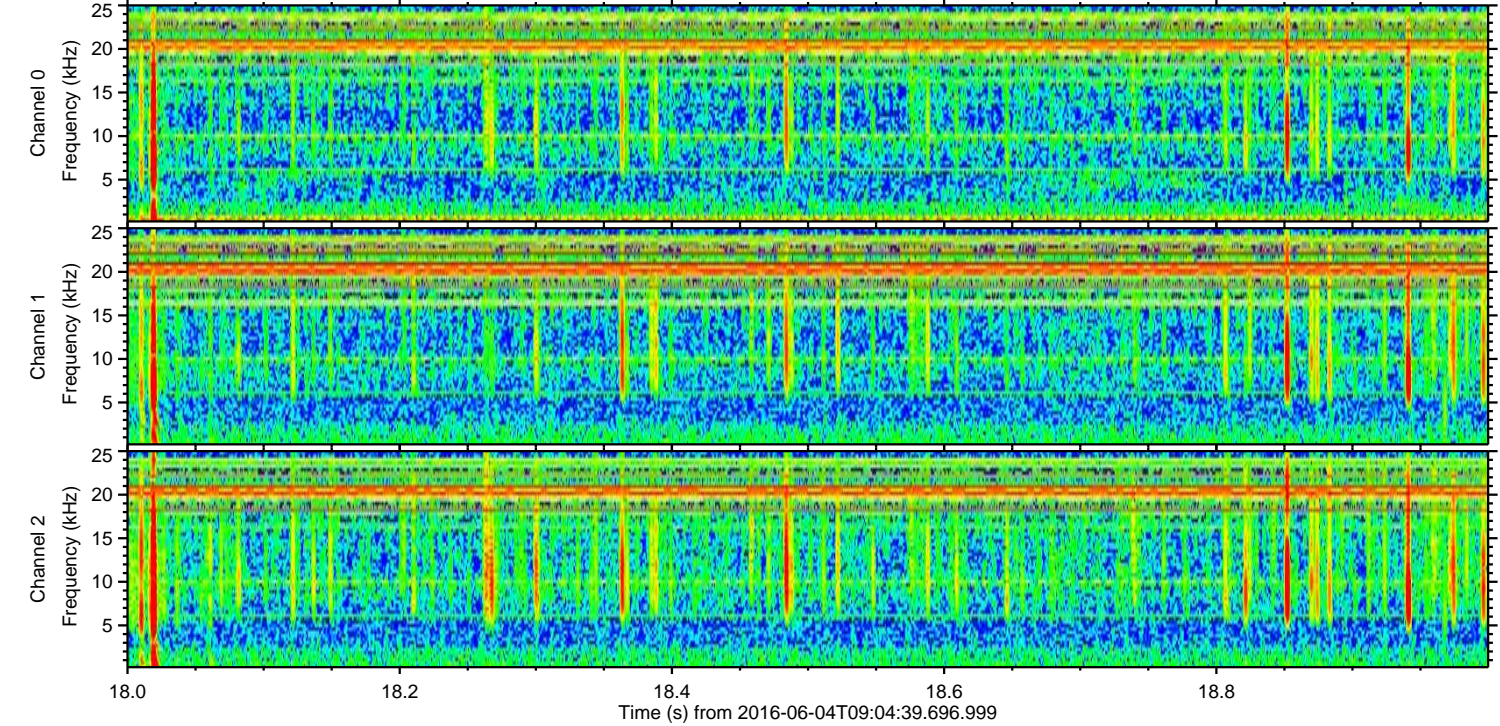
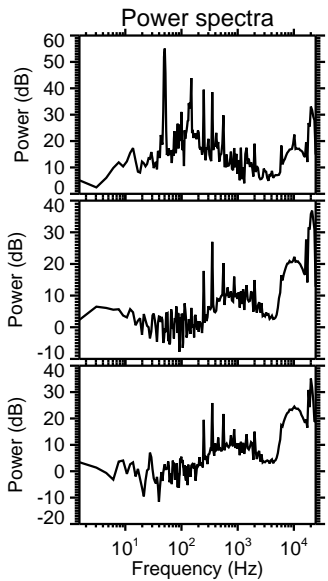
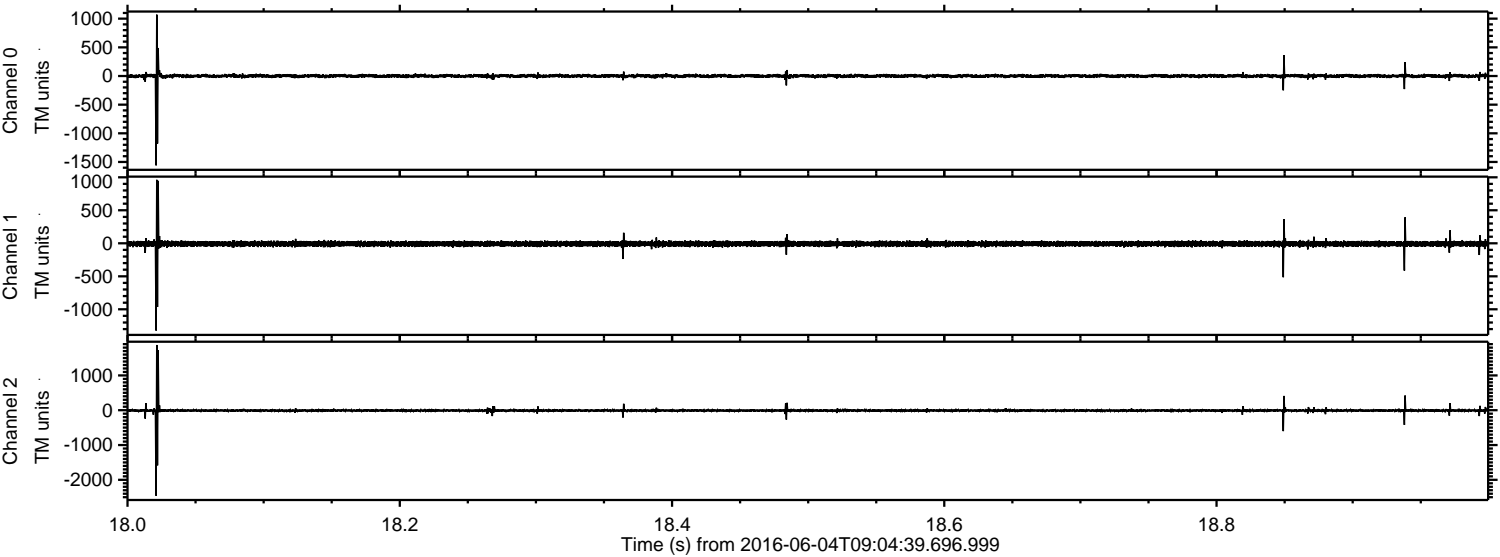


ELMAVAN 3D WAVEFORMS (Measured data sampled at 50 kHz) 51000 packets of 144 samples from 2016-06-04T09:04:39.696.999.

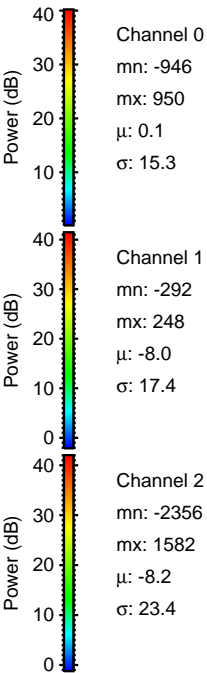
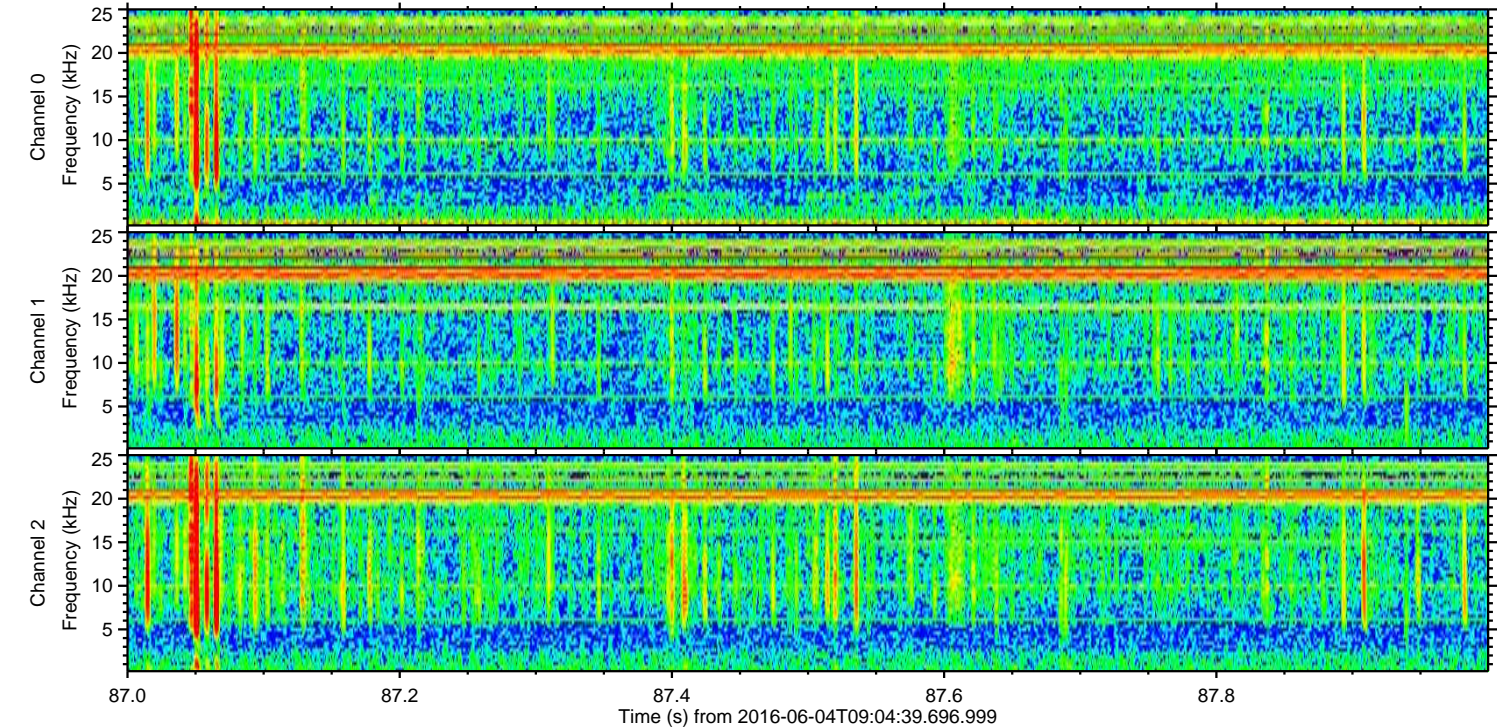
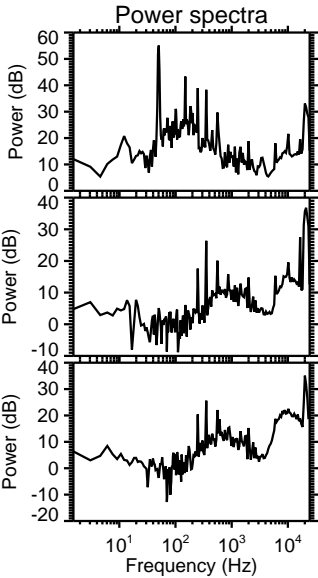
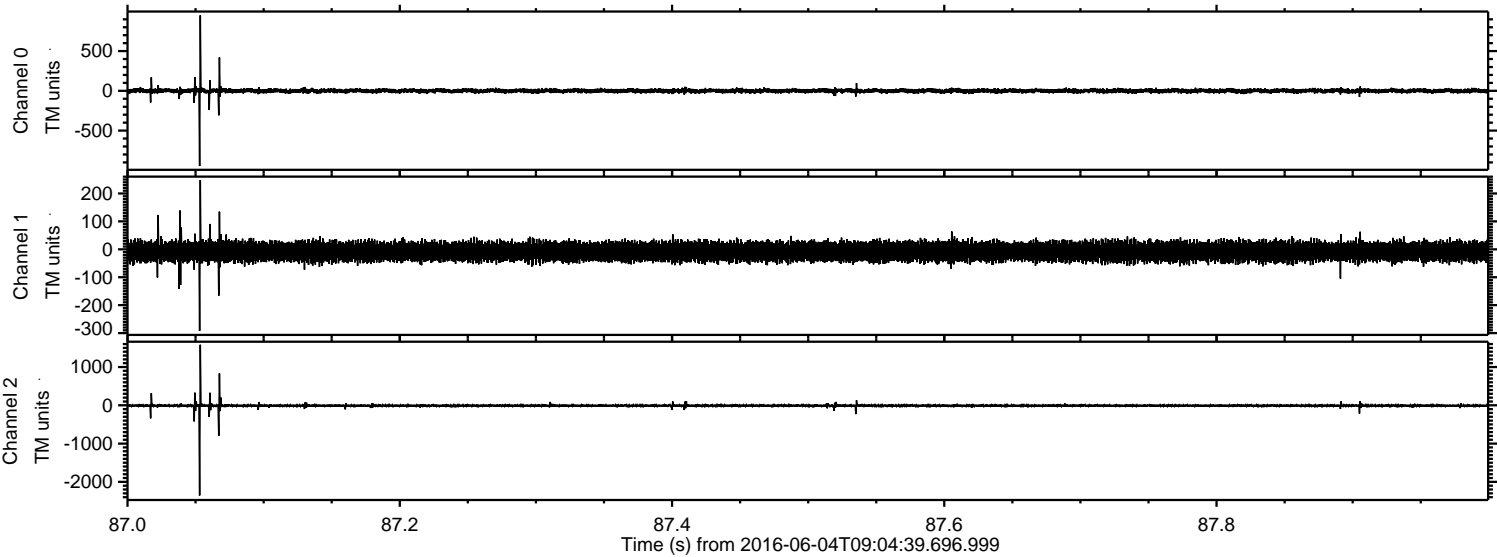
Processed Sat Jun 4 11:12:22 2016 by ELM ver.2012-10-06 from 001__elm20160604_090438__dat00.bin



Processed Sat Jun 4 11:12:34 2016 by ELM ver.2012-10-06 from 001__elm20160604_090438__dat00.bin

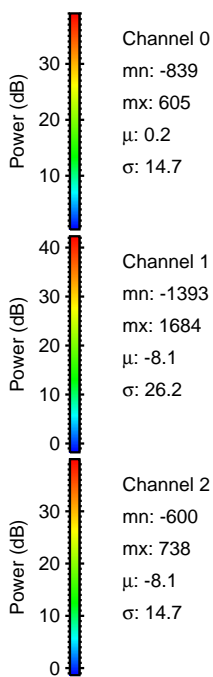
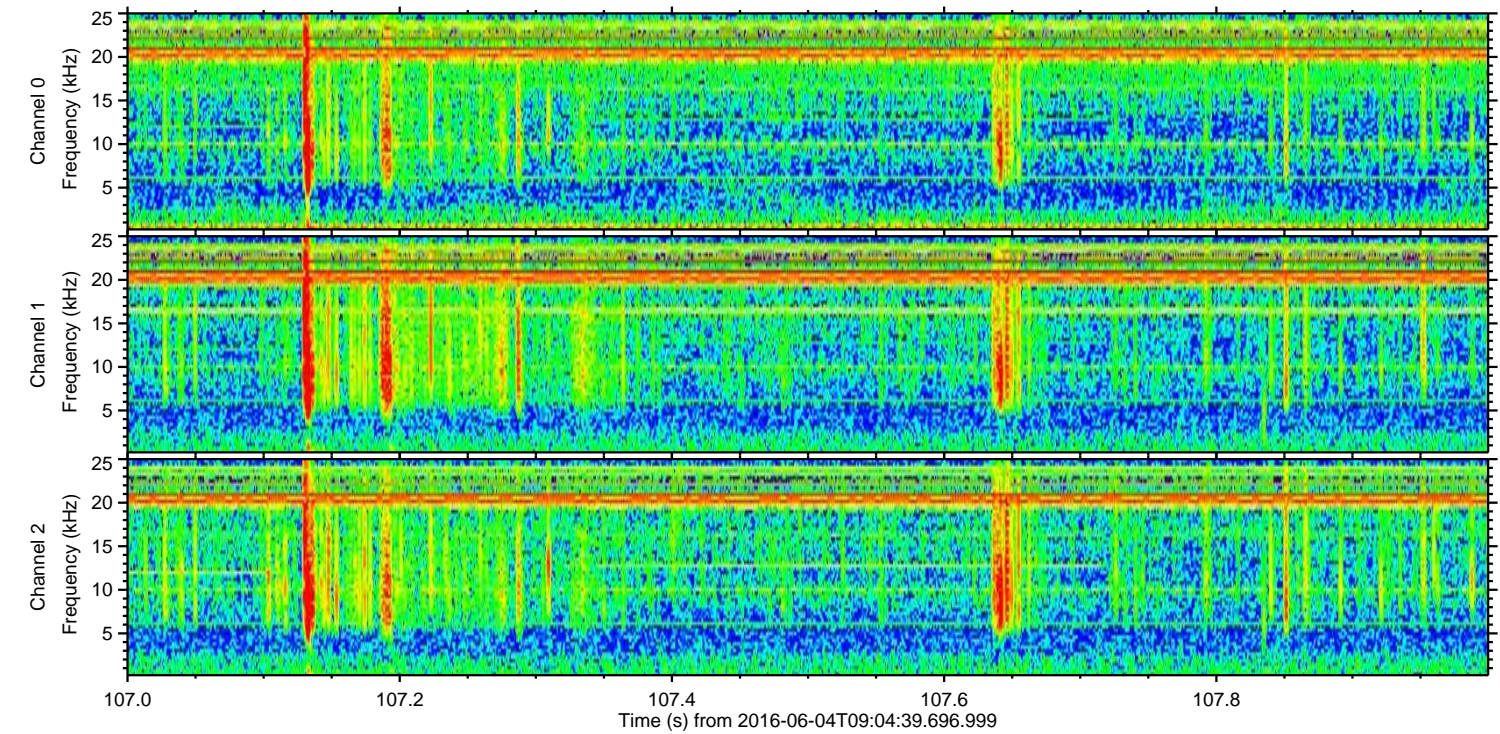
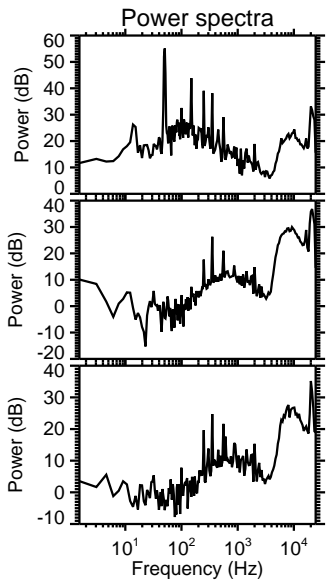
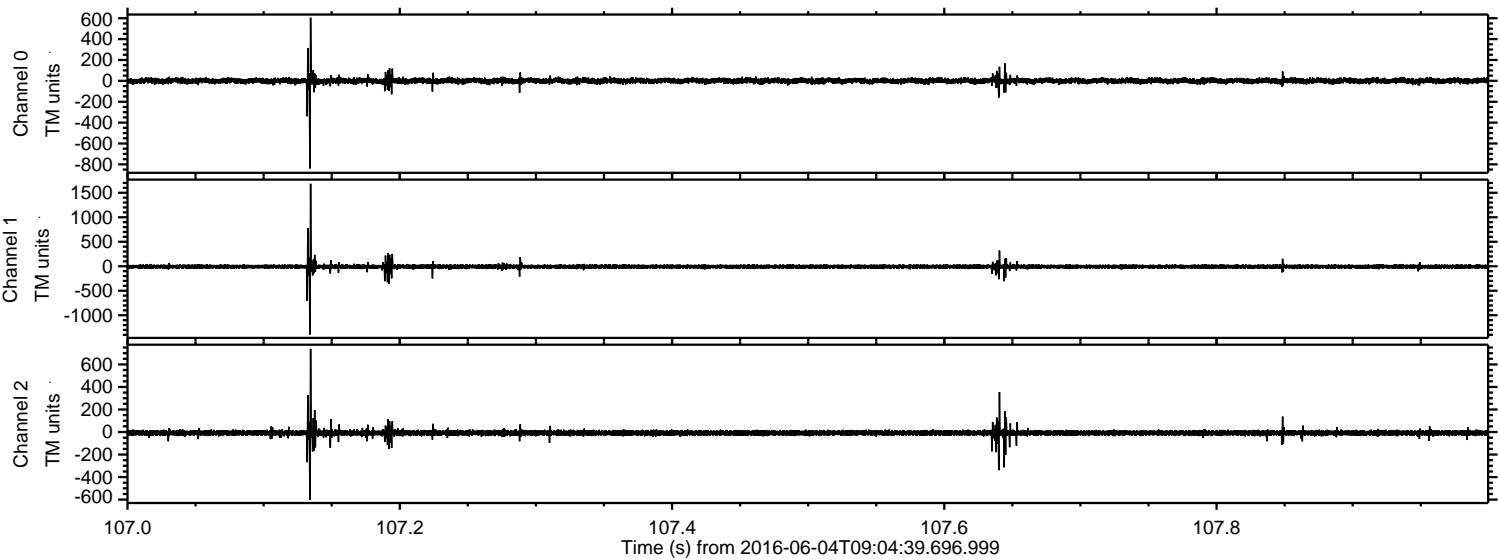


Processed Sat Jun 4 11:12:35 2016 by ELM ver.2012-10-06 from 001__elm20160604_090438__dat00.bin



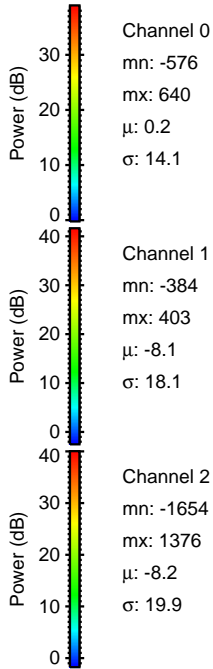
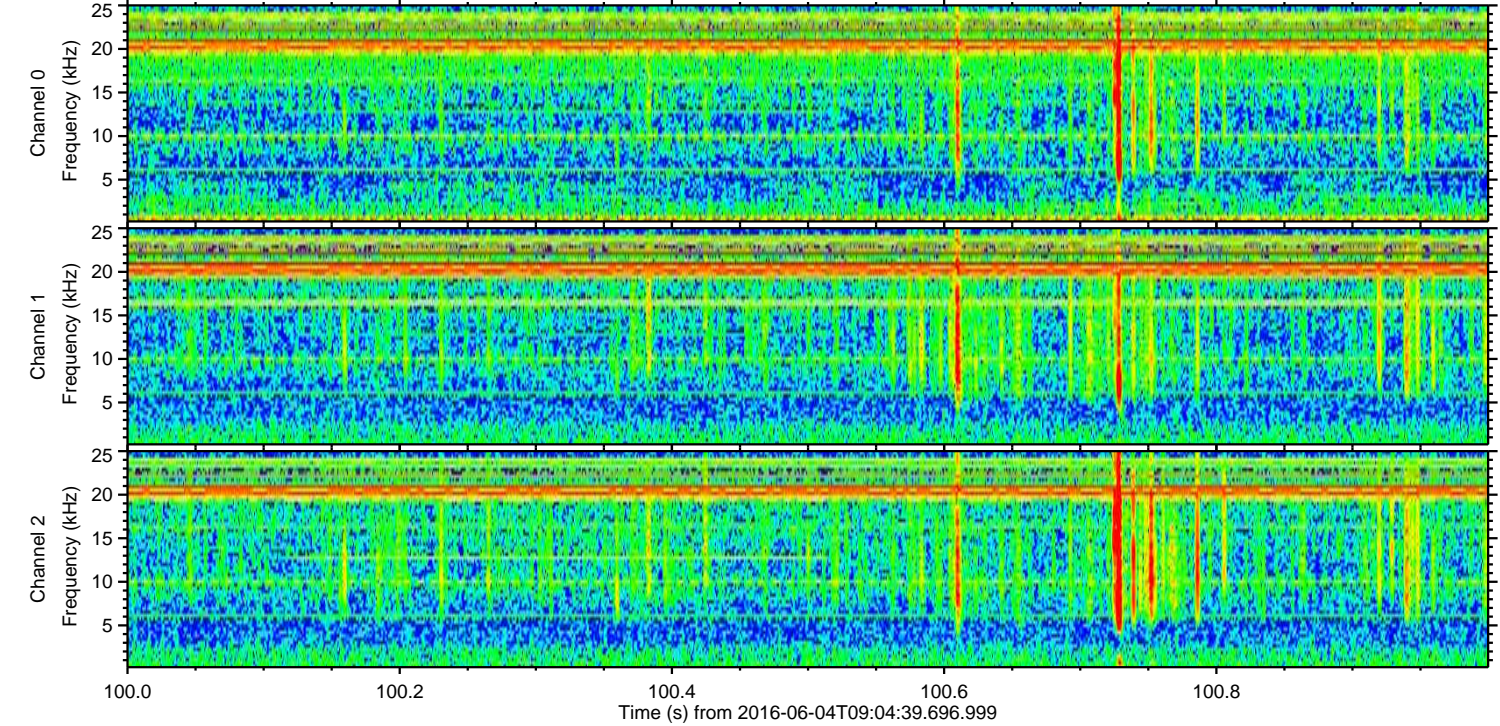
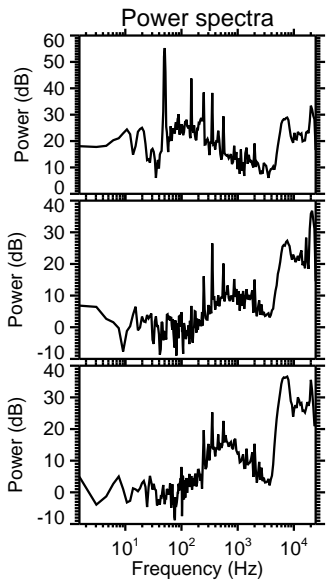
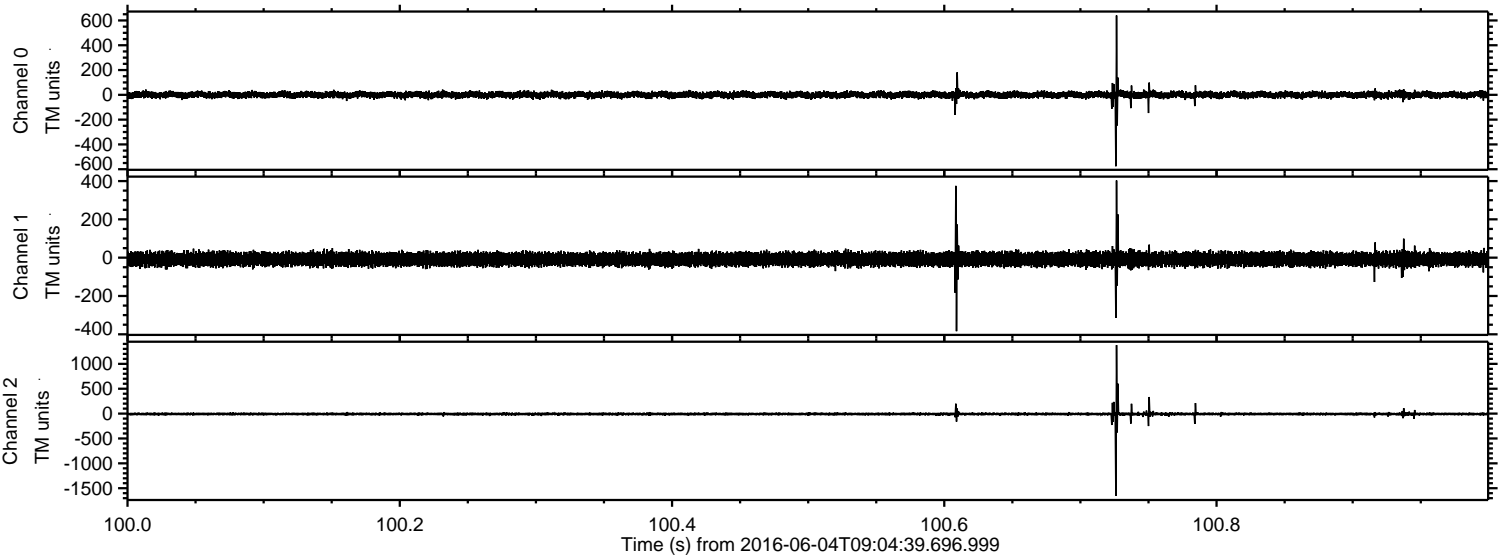
ELMAVAN 3D WAVEFORMS (Measured data sampled at 50 kHz) 51000 packets of 144 samples from 2016-06-04T09:04:39.696.999. Part 108/147

Processed Sat Jun 4 11:12:35 2016 by ELM ver.2012-10-06 from 001__elm20160604_090438__dat00.bin



ELMAVAN 3D WAVEFORMS (Measured data sampled at 50 kHz) 51000 packets of 144 samples from 2016-06-04T09:04:39.696.999. Part 101/147

Processed Sat Jun 4 11:12:36 2016 by ELM ver.2012-10-06 from 001__elm20160604_090438__dat00.bin



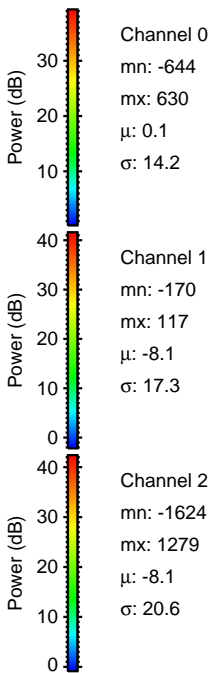
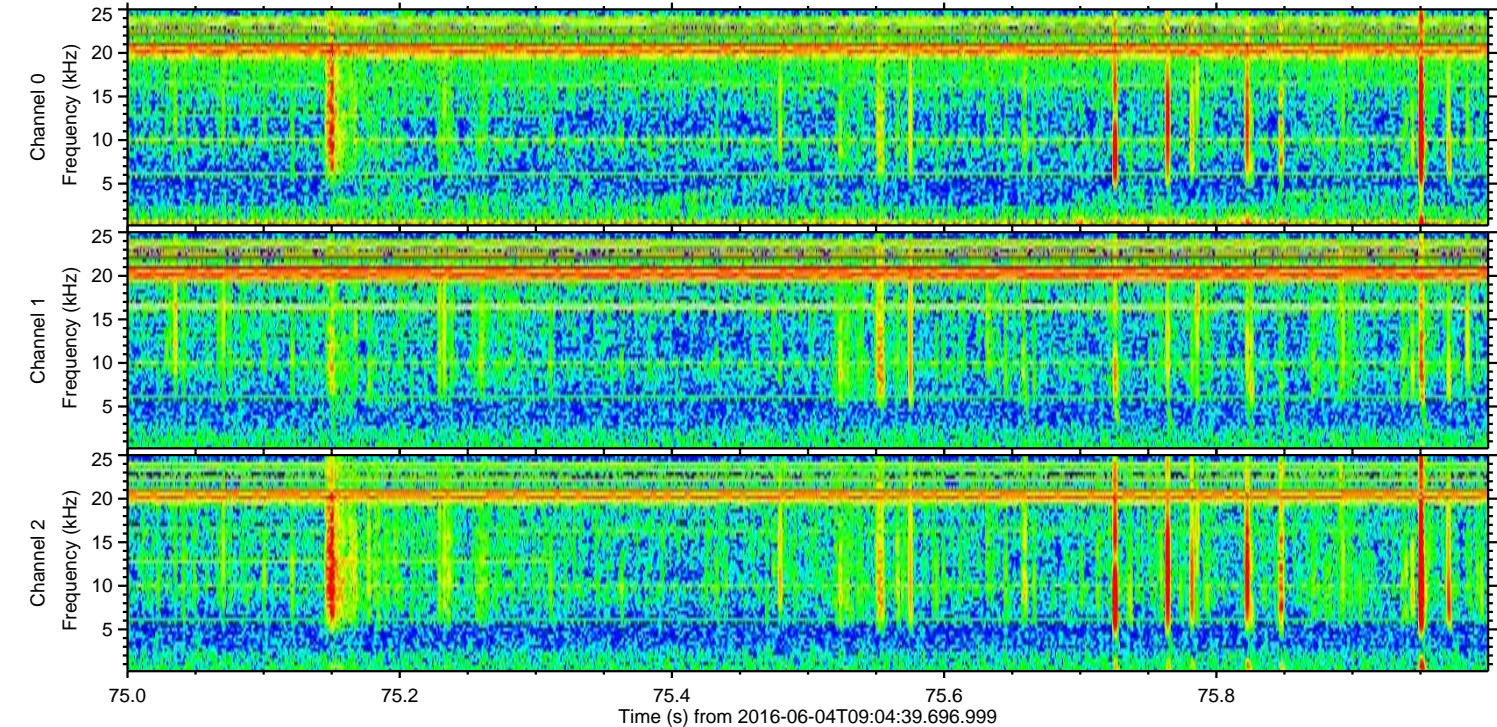
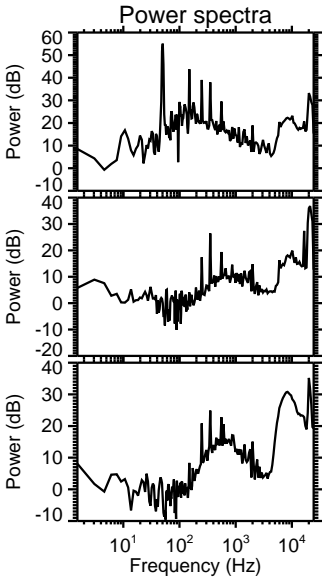
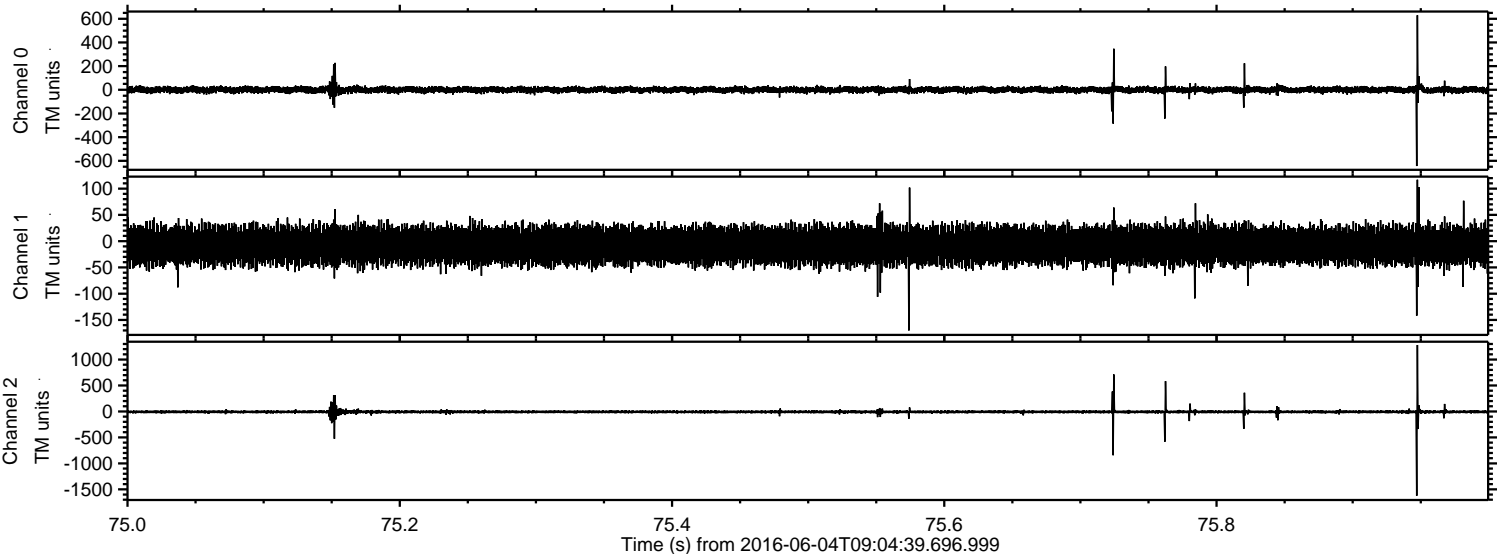
Channel 0
mn: -576
mx: 640
 μ : 0.2
 σ : 14.1

Channel 1
mn: -384
mx: 403
 μ : -8.1
 σ : 18.1

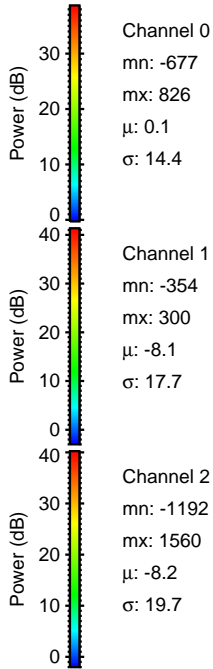
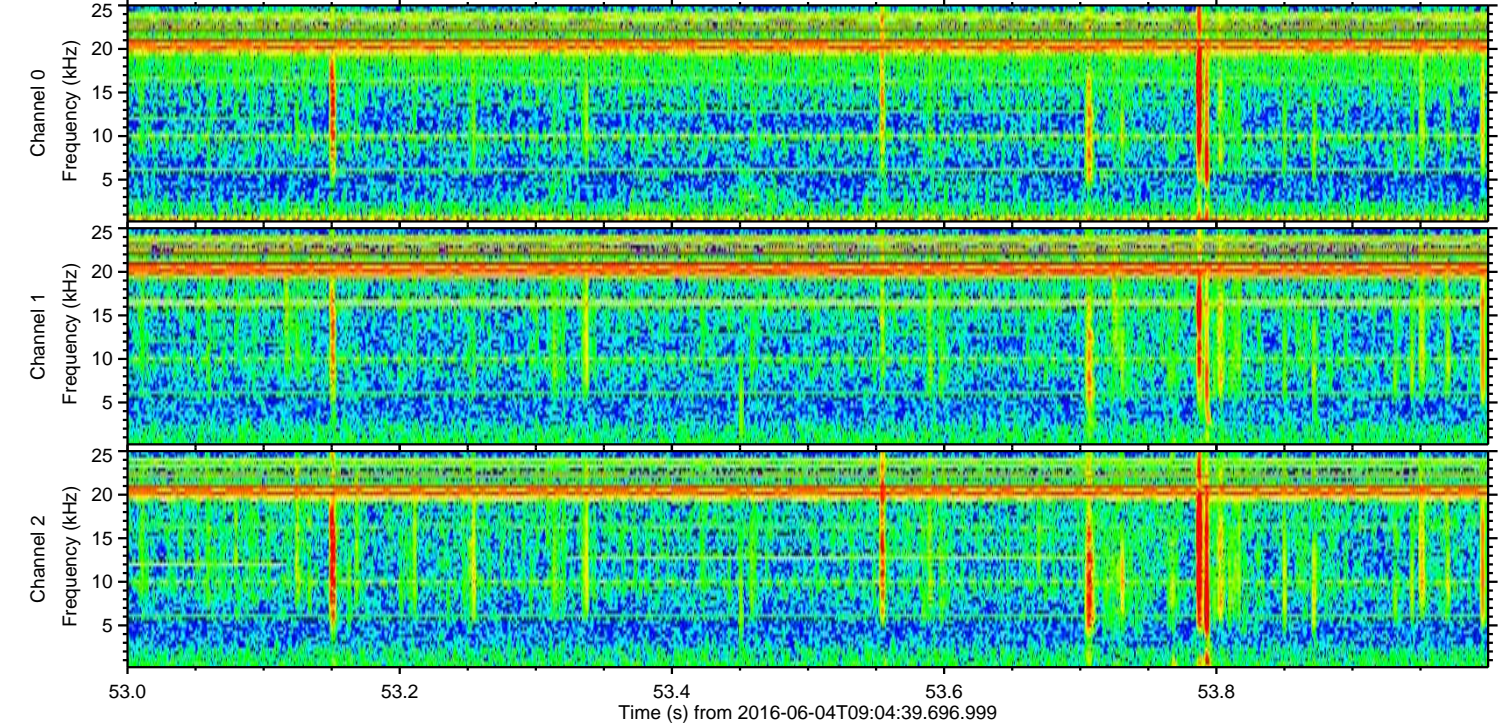
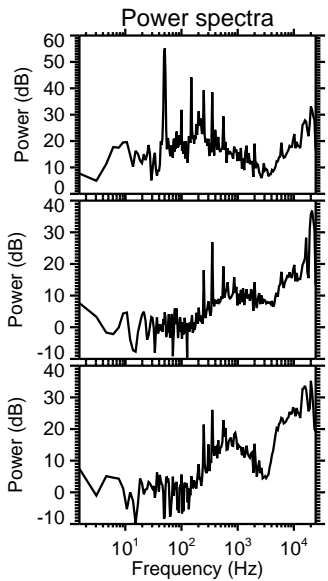
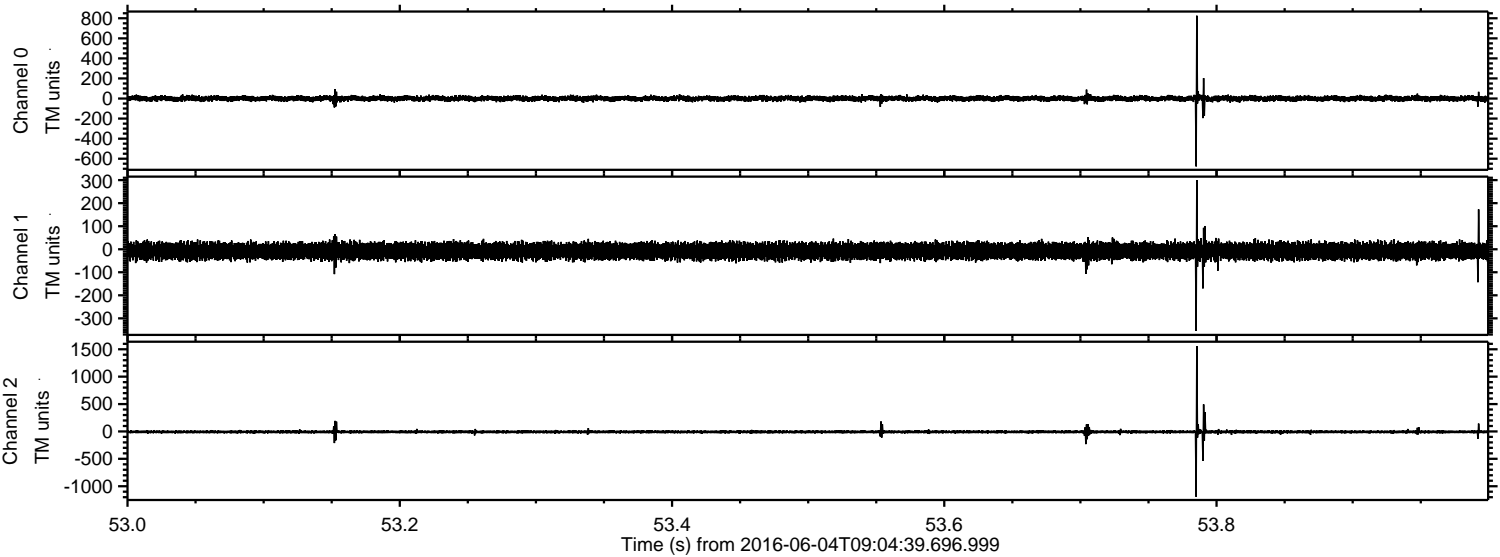
Channel 2
mn: -1654
mx: 1376
 μ : -8.2
 σ : 19.9

ELMAVAN 3D WAVEFORMS (Measured data sampled at 50 kHz) 51000 packets of 144 samples from 2016-06-04T09:04:39.696.999. Part 76/147

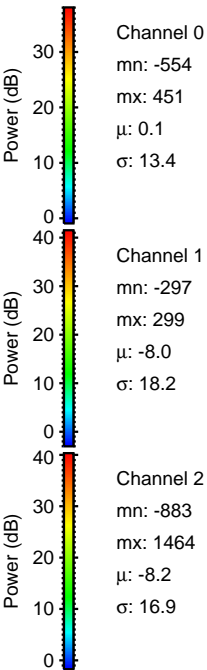
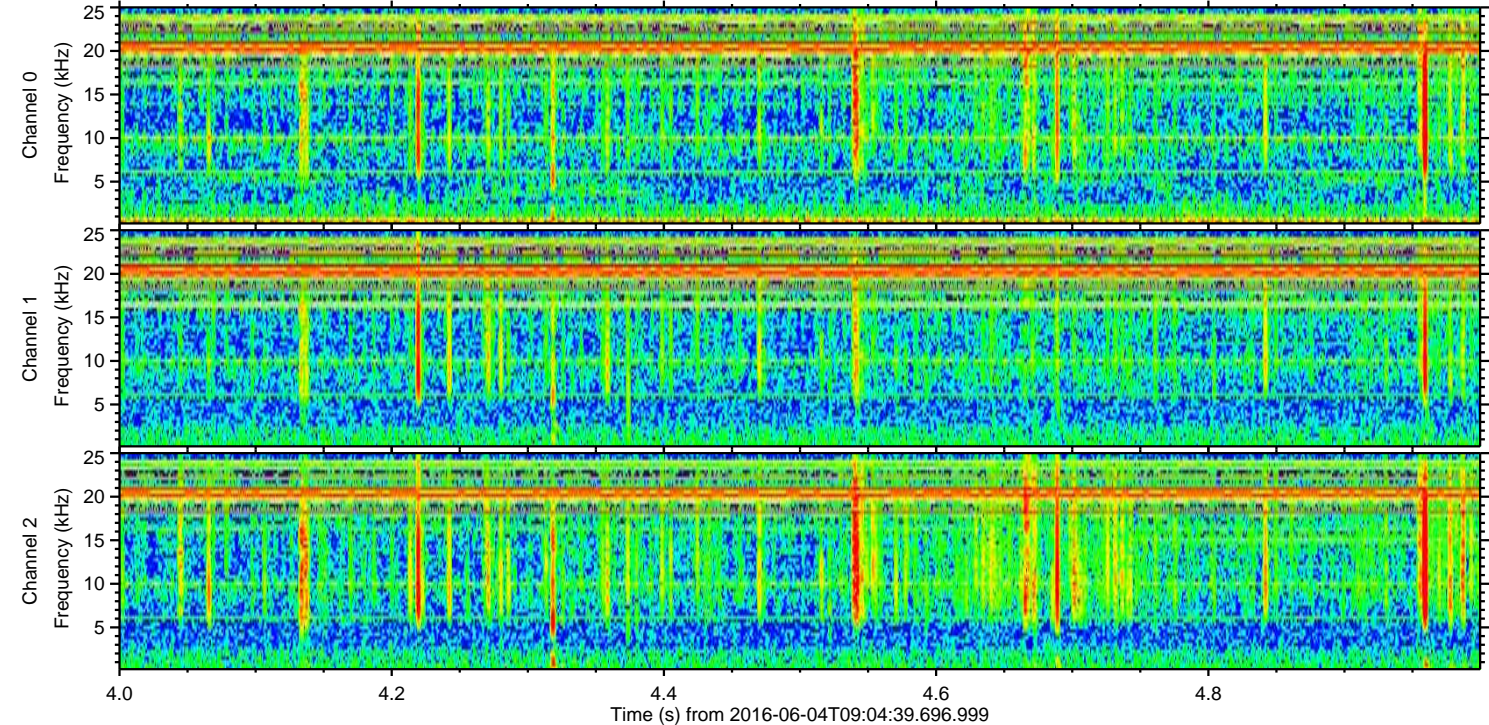
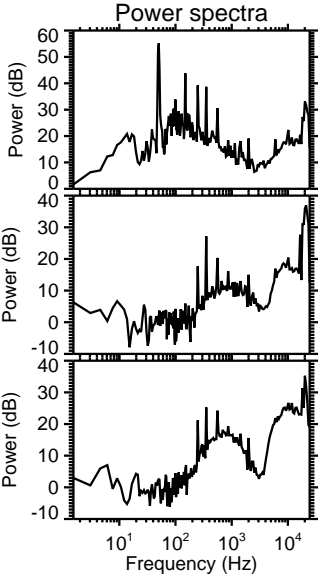
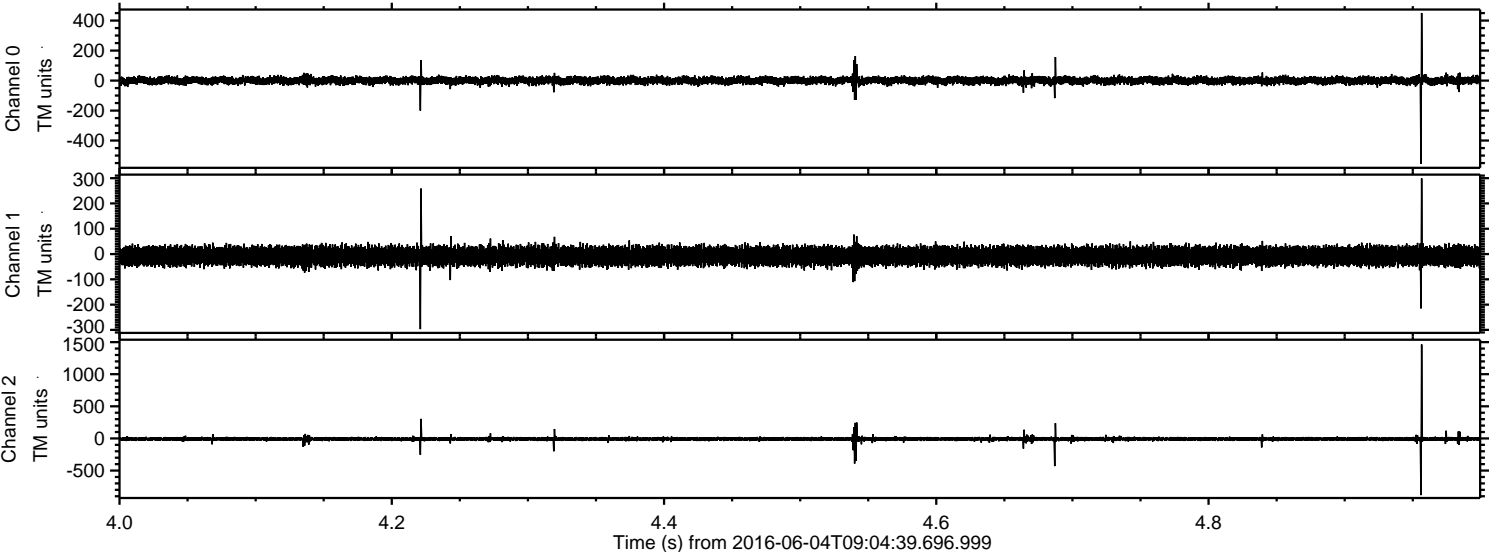
Processed Sat Jun 4 11:12:37 2016 by ELM ver.2012-10-06 from 001__elm20160604_090438__dat00.bin



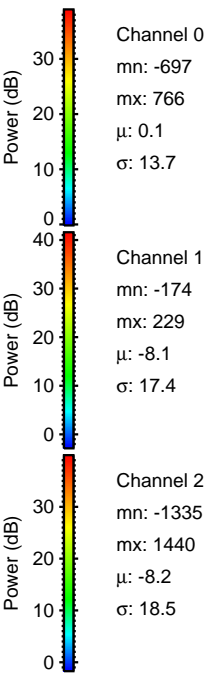
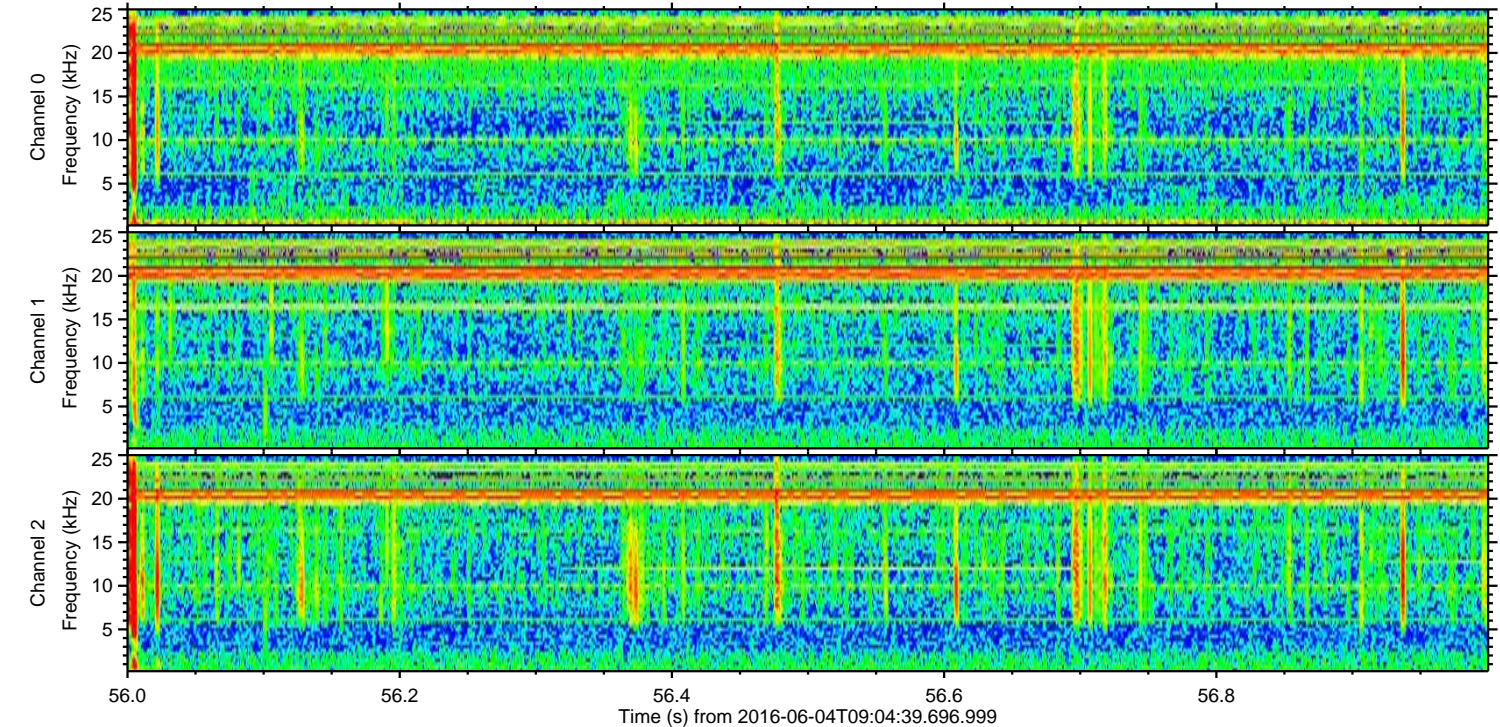
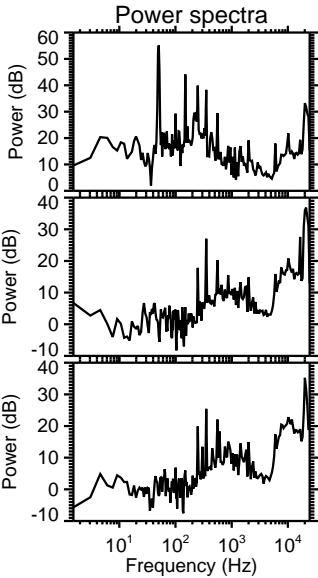
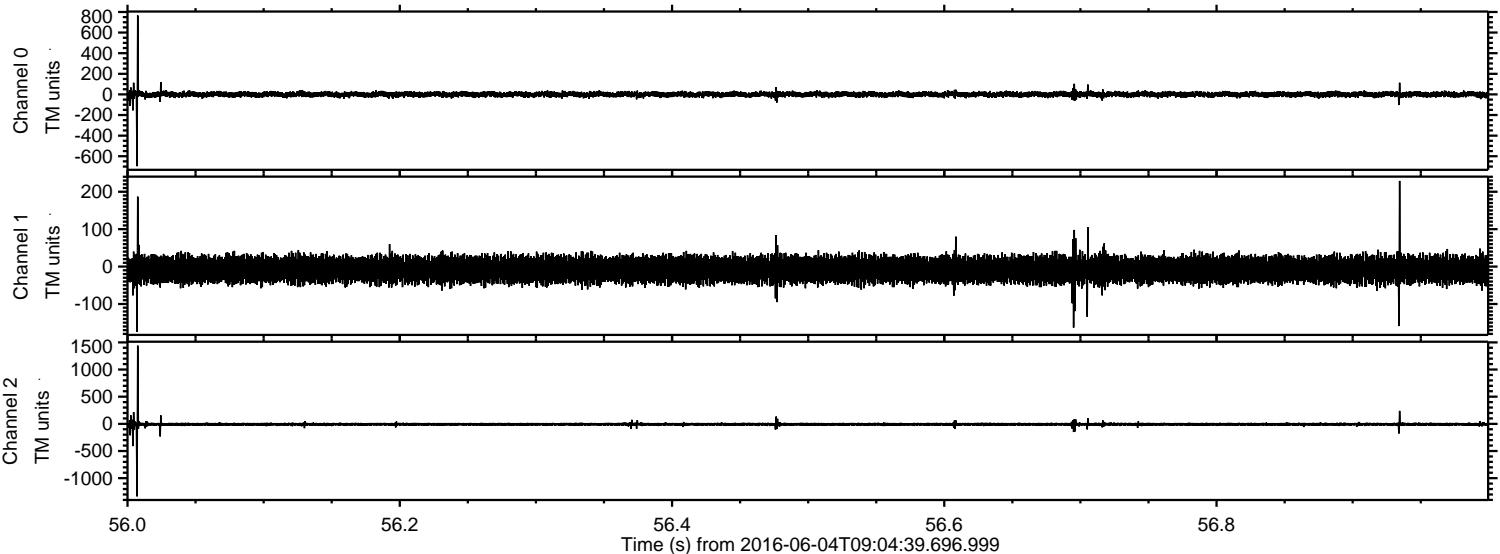
Processed Sat Jun 4 11:12:38 2016 by ELM ver.2012-10-06 from 001__elm20160604_090438__dat00.bin



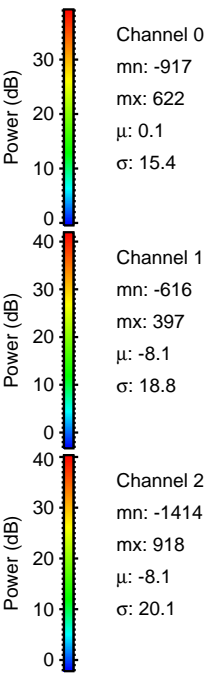
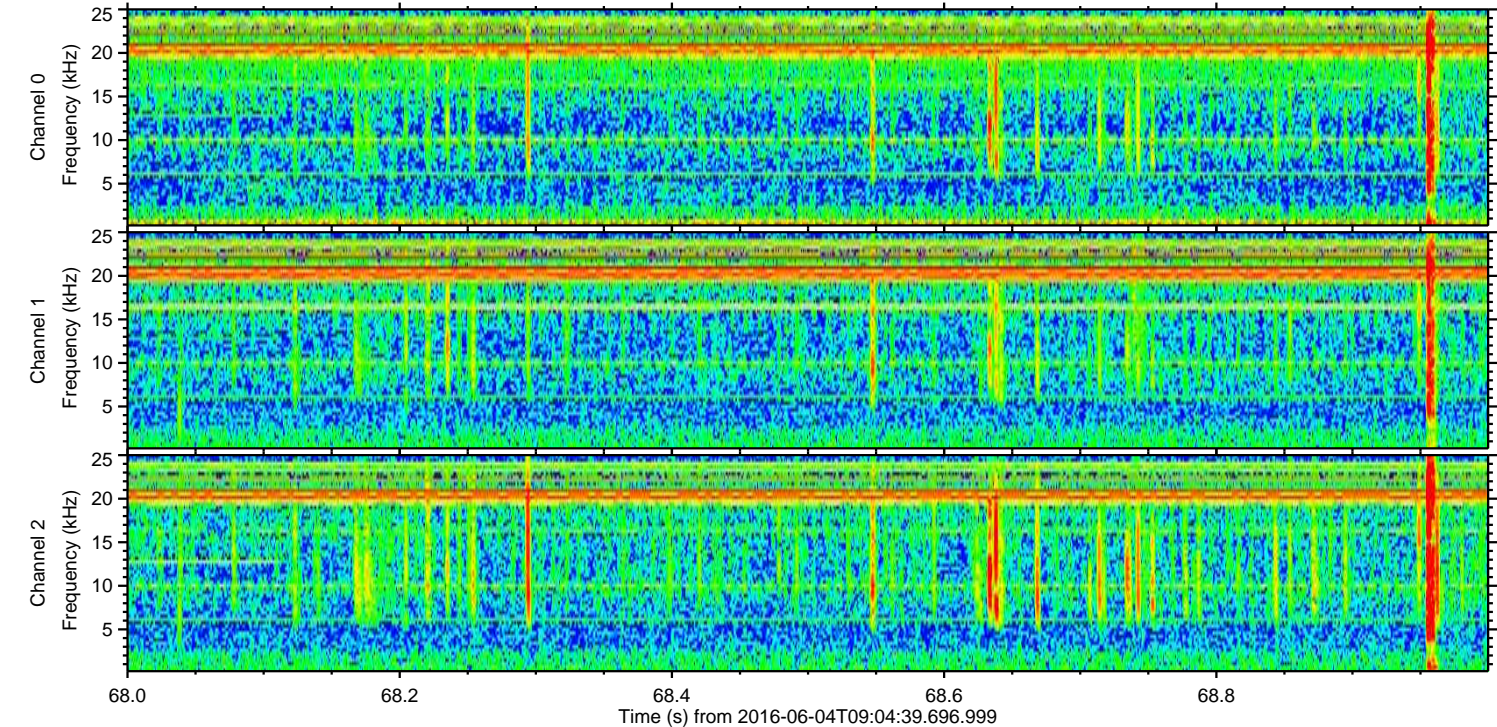
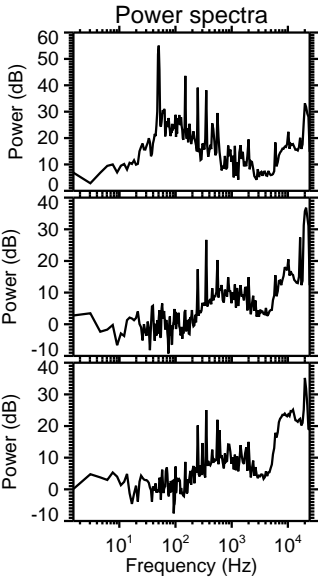
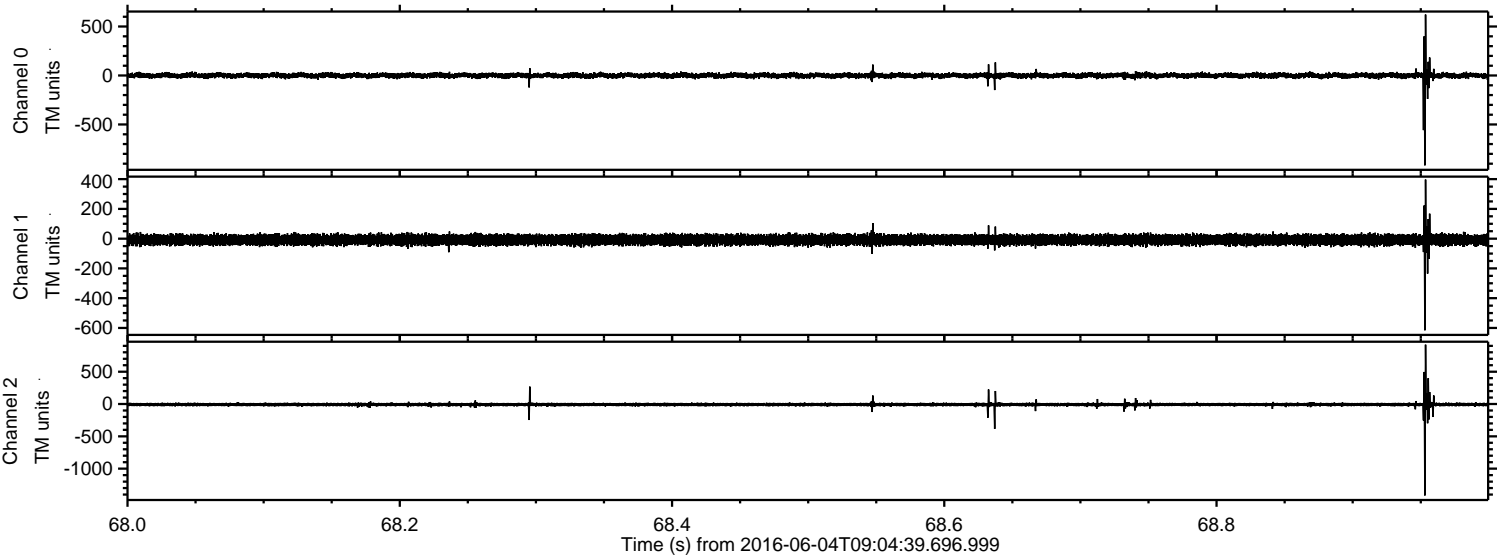
Processed Sat Jun 4 11:12:39 2016 by ELM ver.2012-10-06 from 001__elm20160604_090438__dat00.bin



Processed Sat Jun 4 11:12:40 2016 by ELM ver.2012-10-06 from 001__elm20160604_090438__dat00.bin



Processed Sat Jun 4 11:12:41 2016 by ELM ver.2012-10-06 from 001__elm20160604_090438__dat00.bin



Processed Sat Jun 4 11:12:42 2016 by ELM ver.2012-10-06 from 001__elm20160604_090438__dat00.bin

