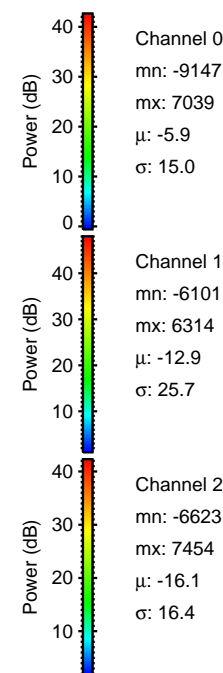
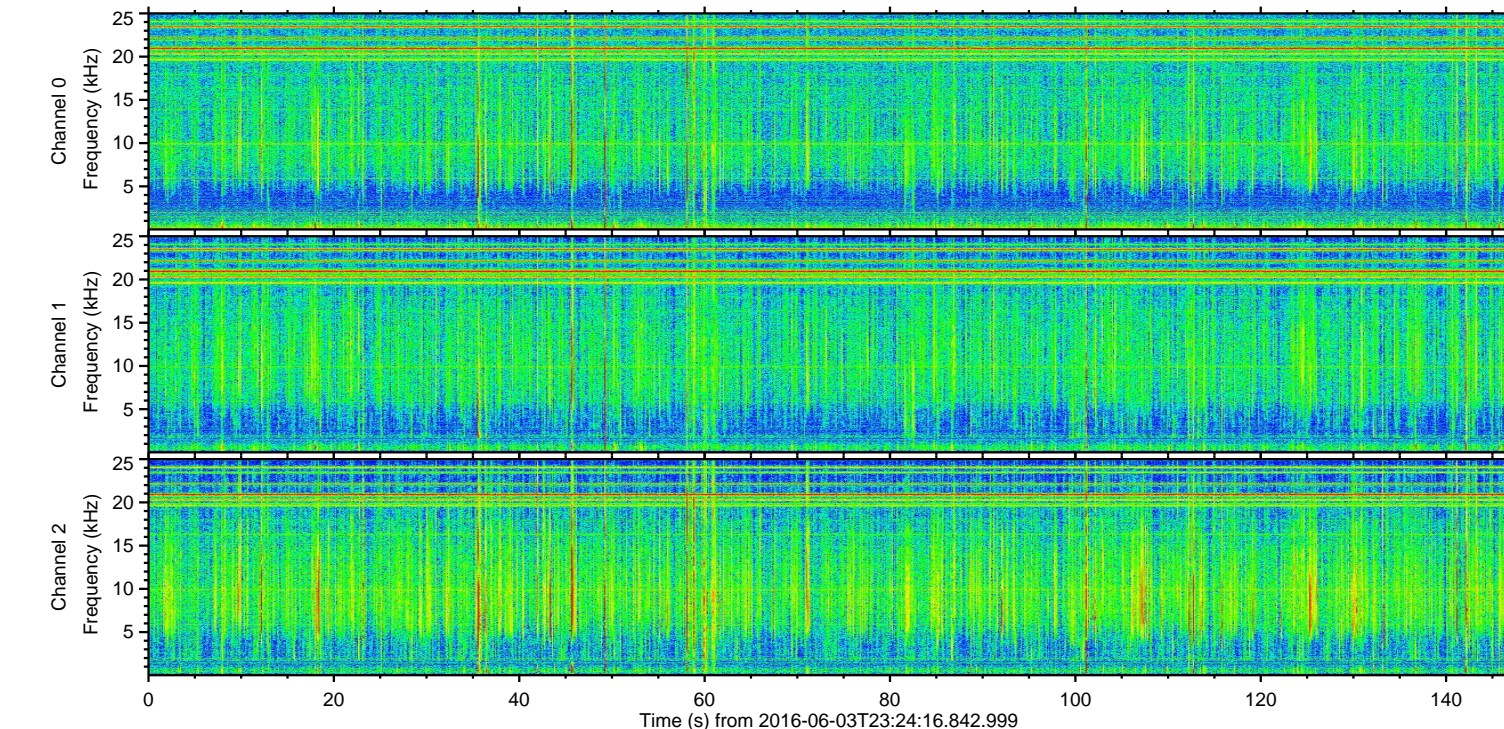
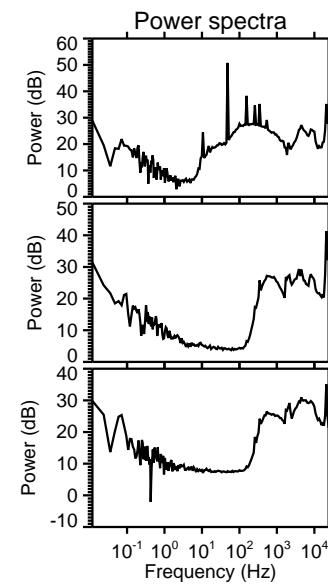
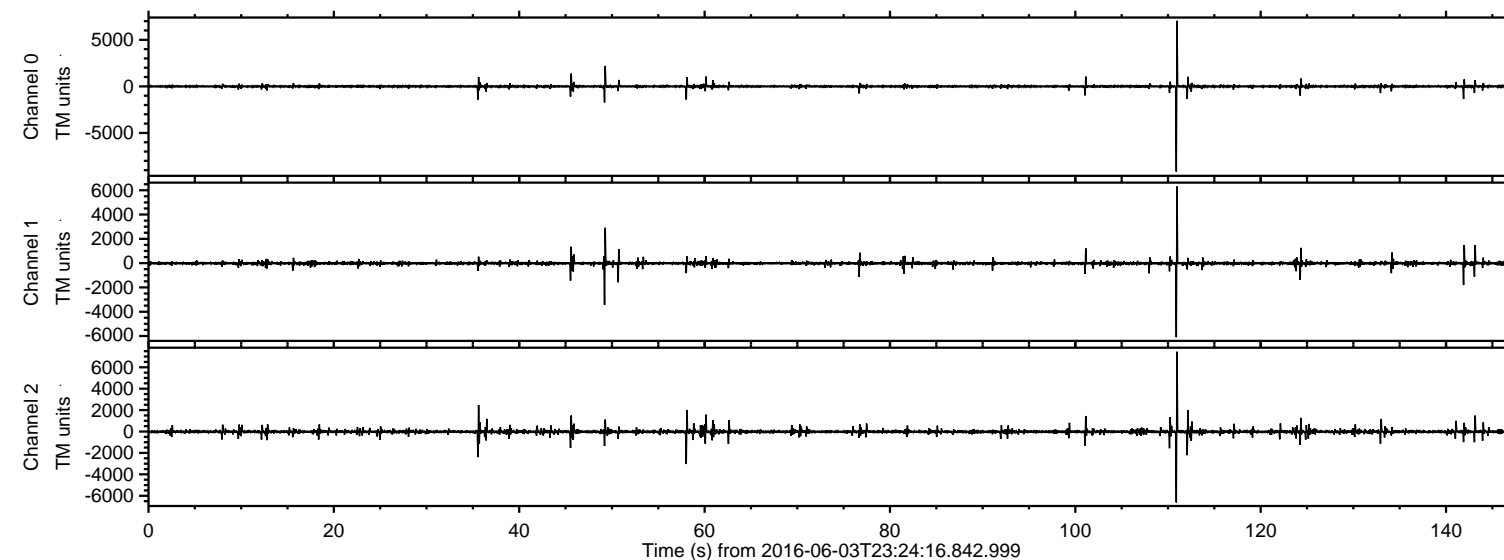


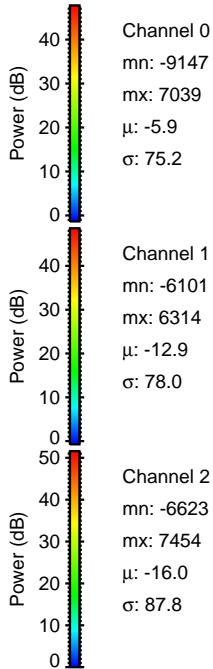
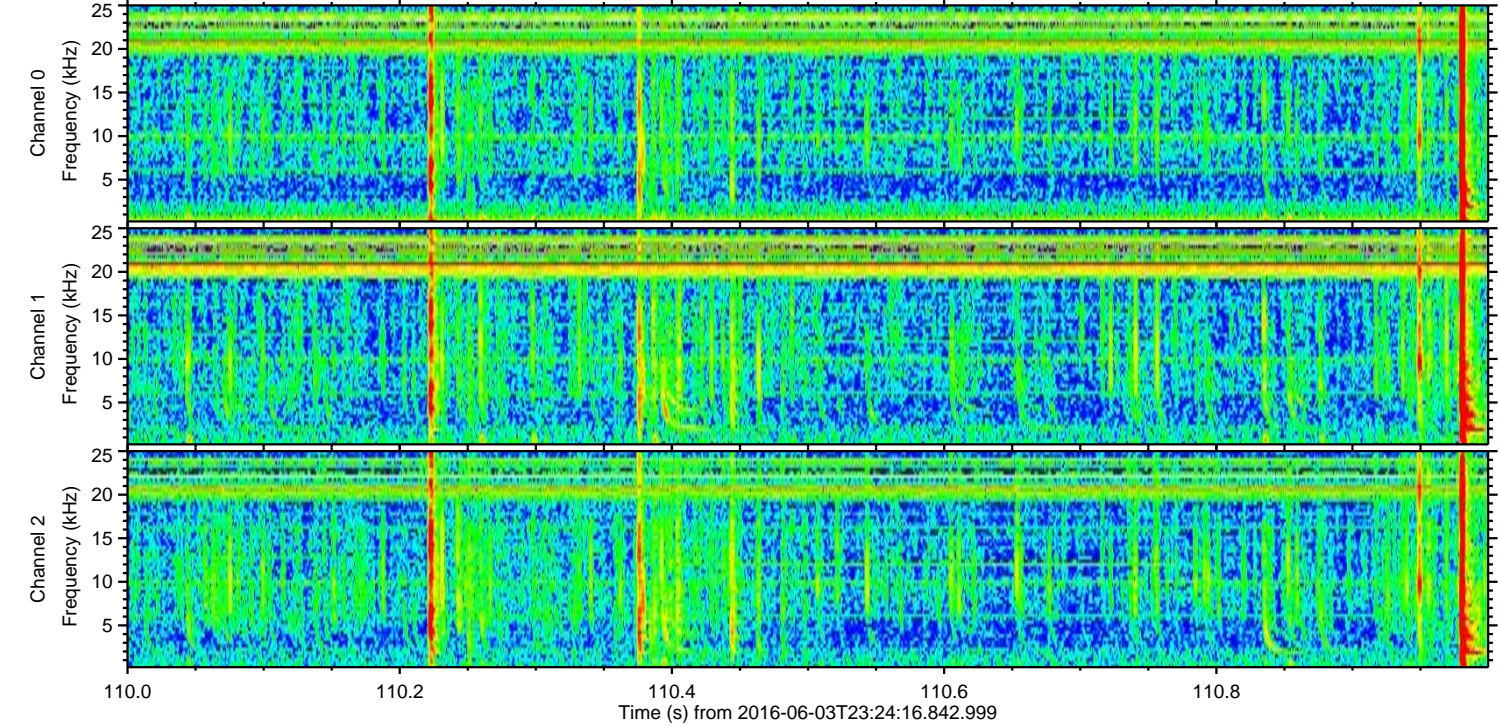
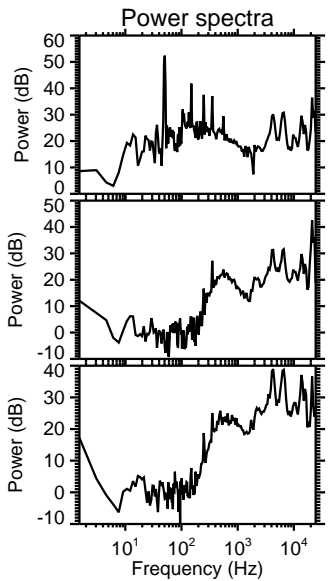
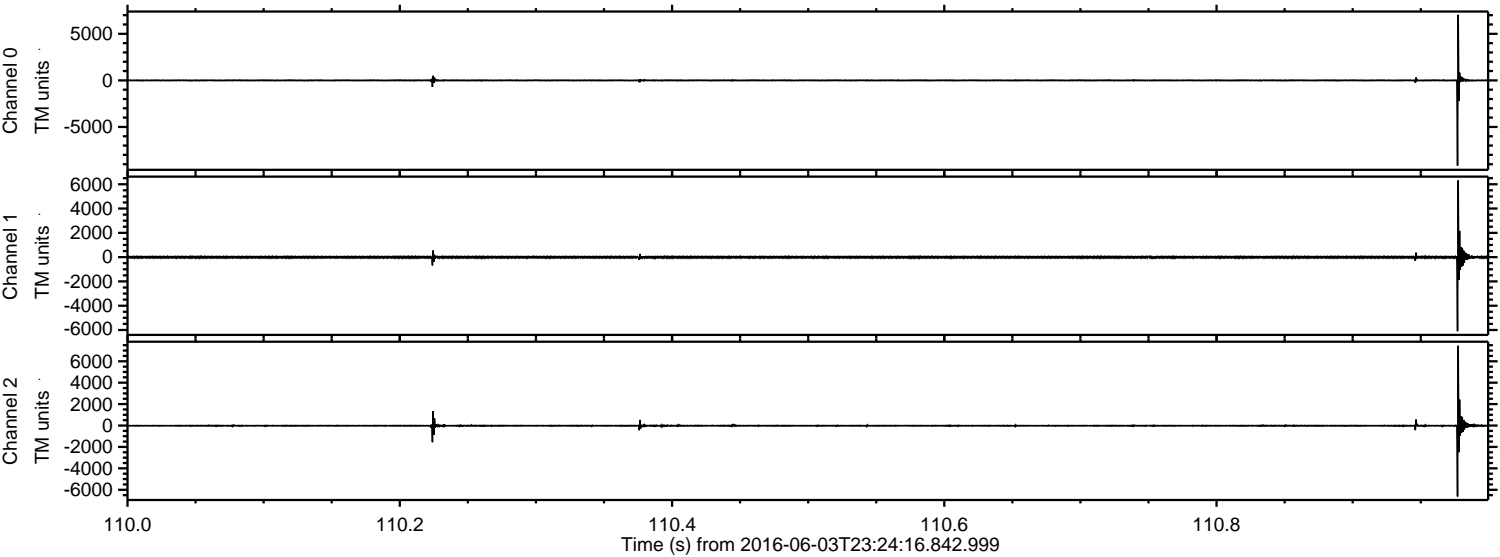
ELMAVAN 3D WAVEFORMS (Measured data sampled at 50 kHz) 51000 packets of 144 samples from 2016-06-03T23:24:16.842.999.

Processed Sat Jun 4 01:32:25 2016 by ELM ver.2012-10-06 from 001__elm20160603_232415__dat00.bin

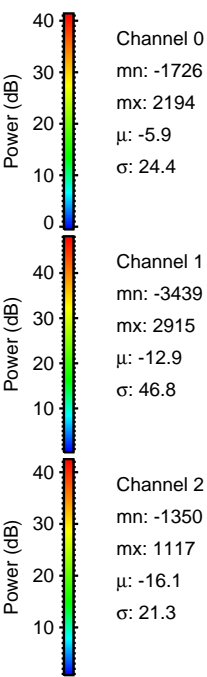
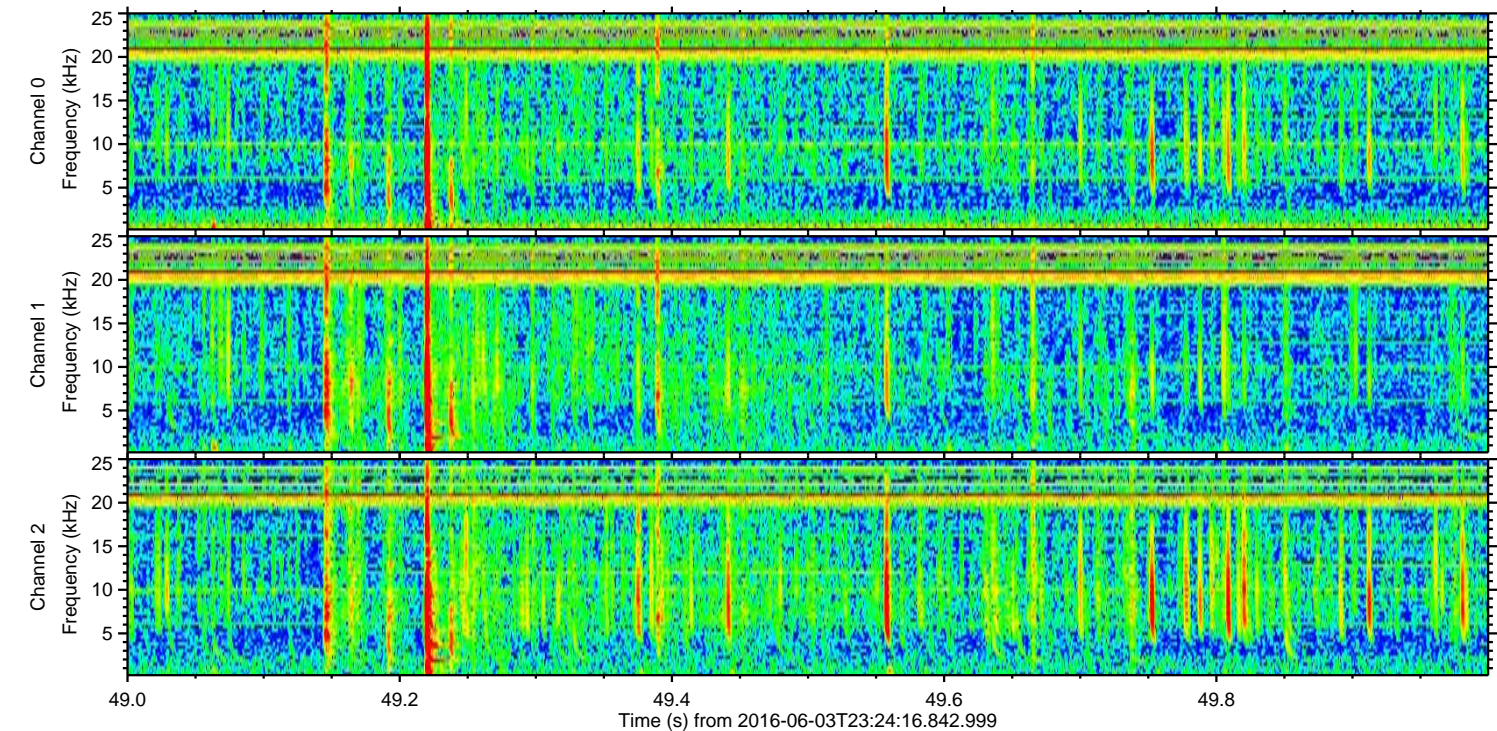
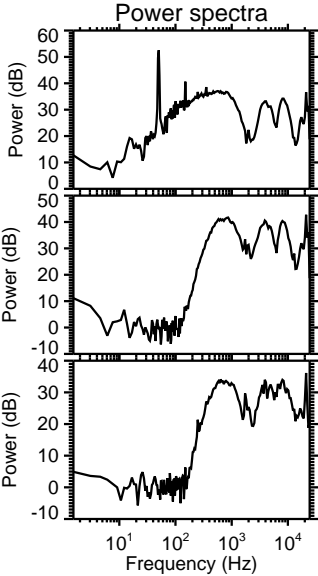
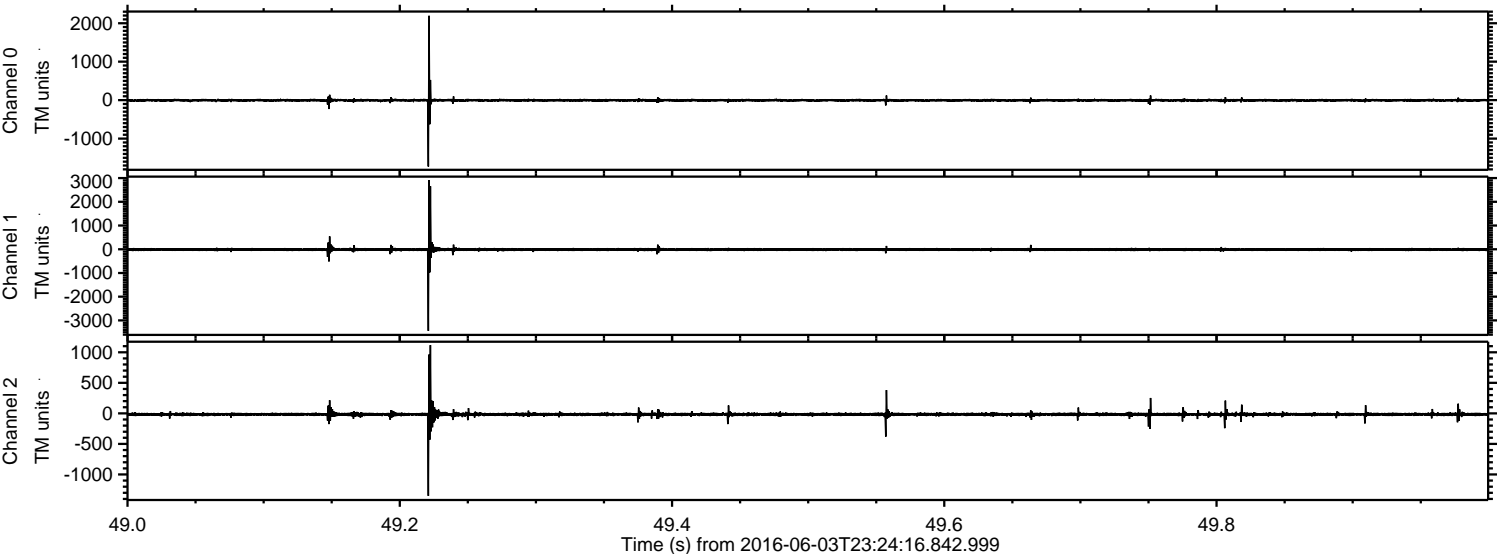


ELMAVAN 3D WAVEFORMS (Measured data sampled at 50 kHz) 51000 packets of 144 samples from 2016-06-03T23:24:16.842.999. Part 111/147

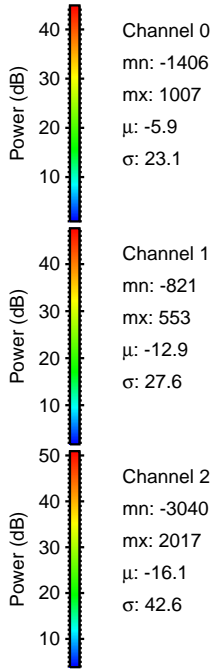
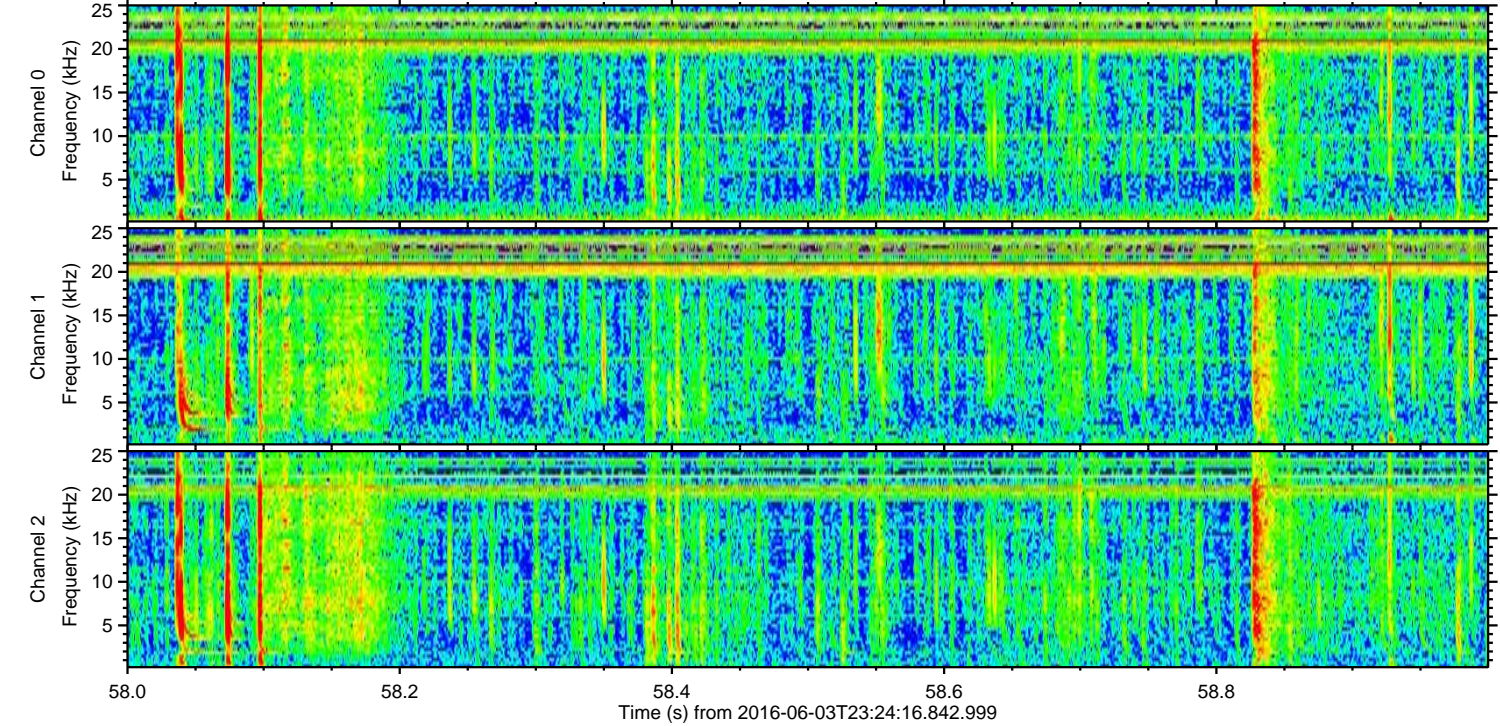
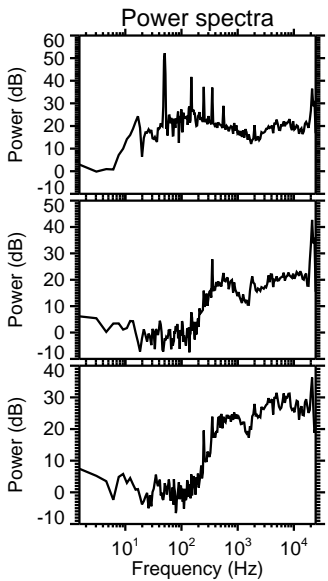
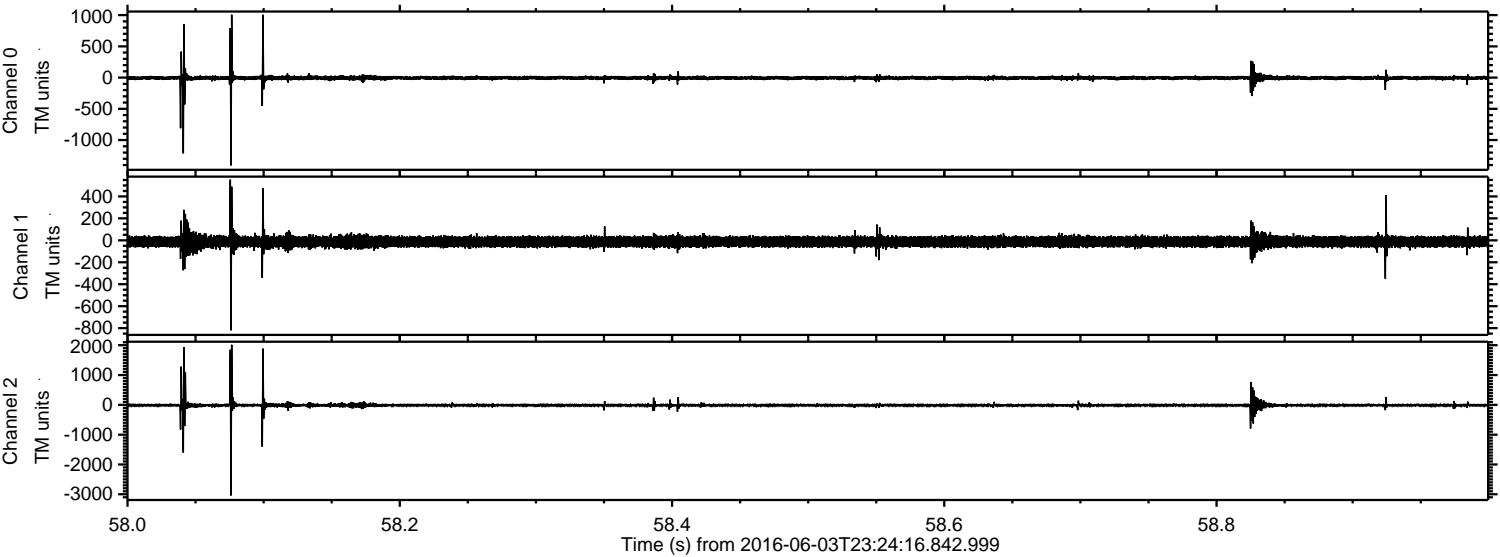
Processed Sat Jun 4 01:32:37 2016 by ELM ver.2012-10-06 from 001__elm20160603_232415__dat00.bin



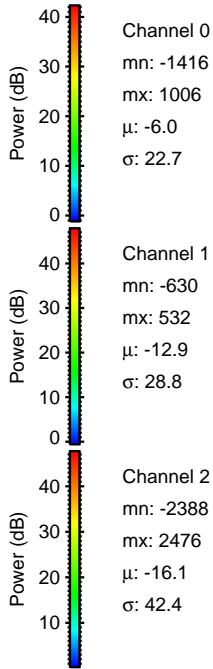
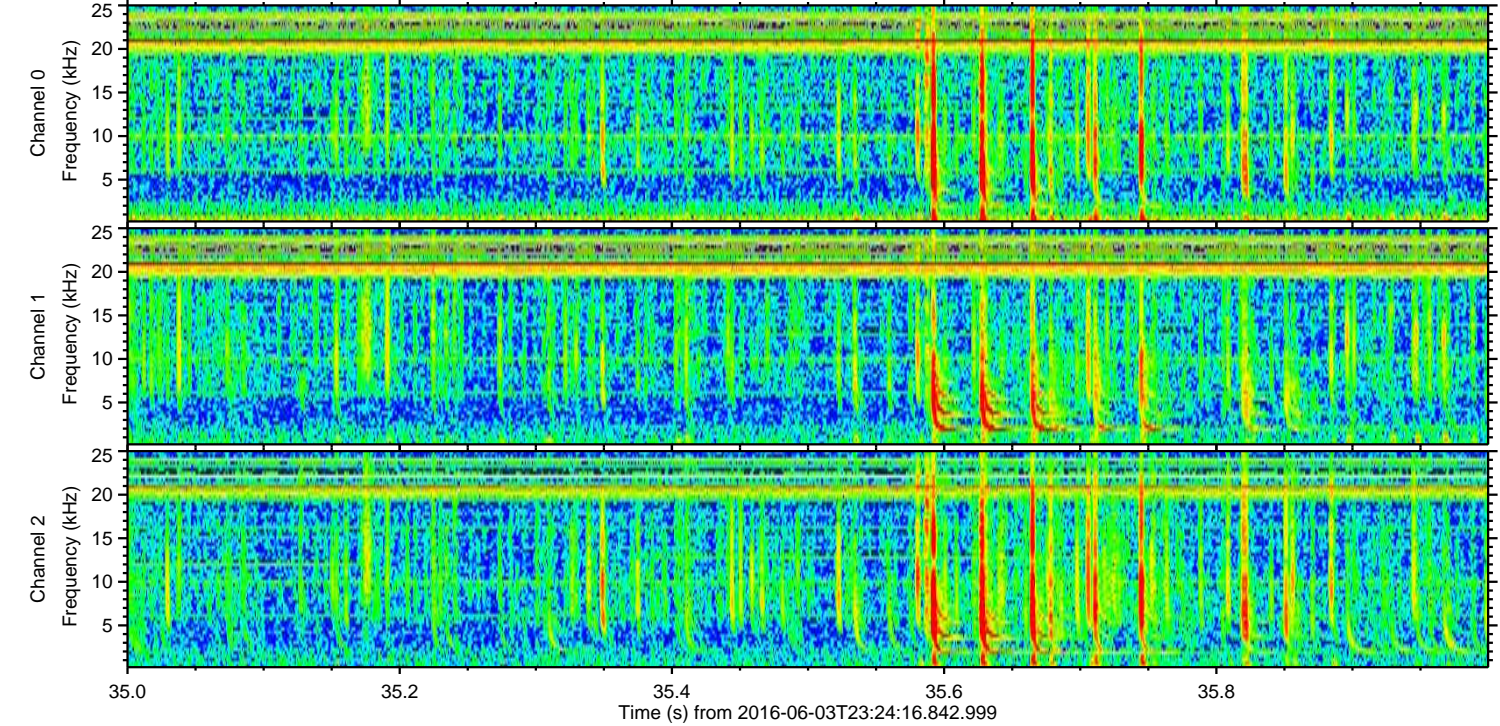
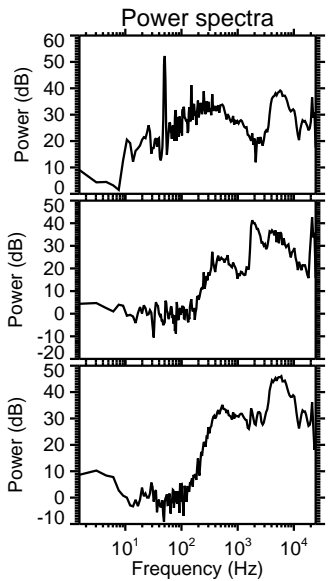
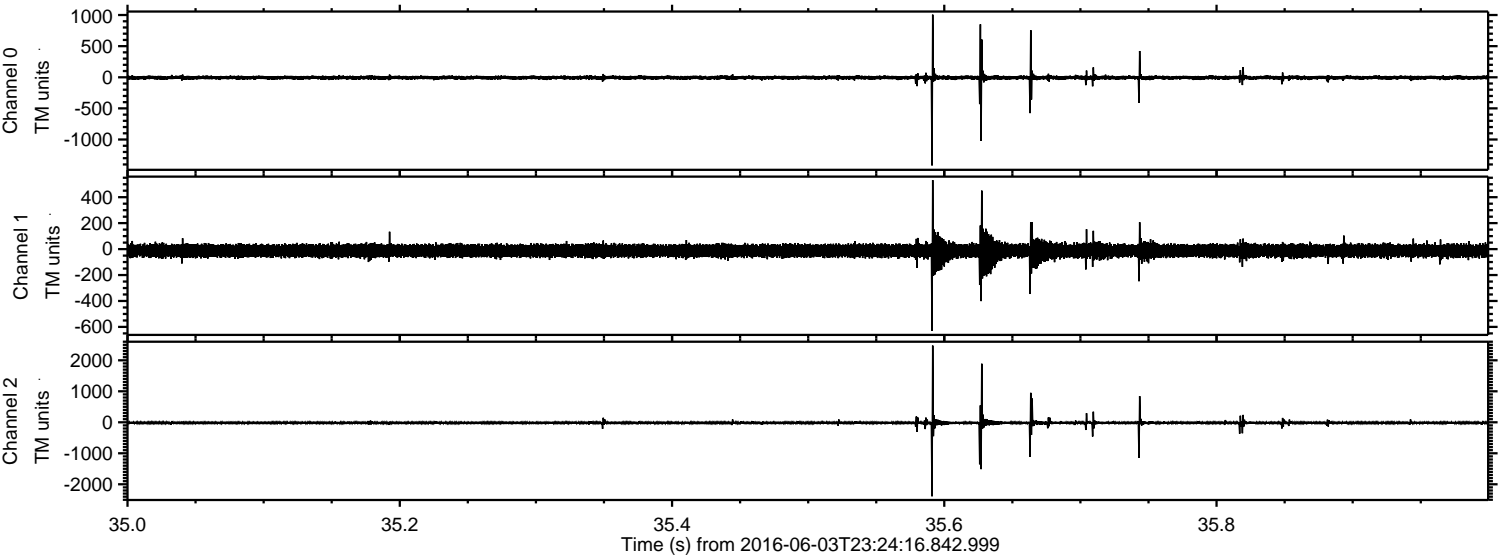
Processed Sat Jun 4 01:32:38 2016 by ELM ver.2012-10-06 from 001__elm20160603_232415__dat00.bin



Processed Sat Jun 4 01:32:39 2016 by ELM ver.2012-10-06 from 001__elm20160603_232415__dat00.bin



Processed Sat Jun 4 01:32:40 2016 by ELM ver.2012-10-06 from 001__elm20160603_232415__dat00.bin



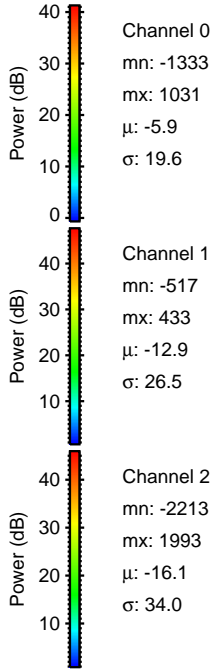
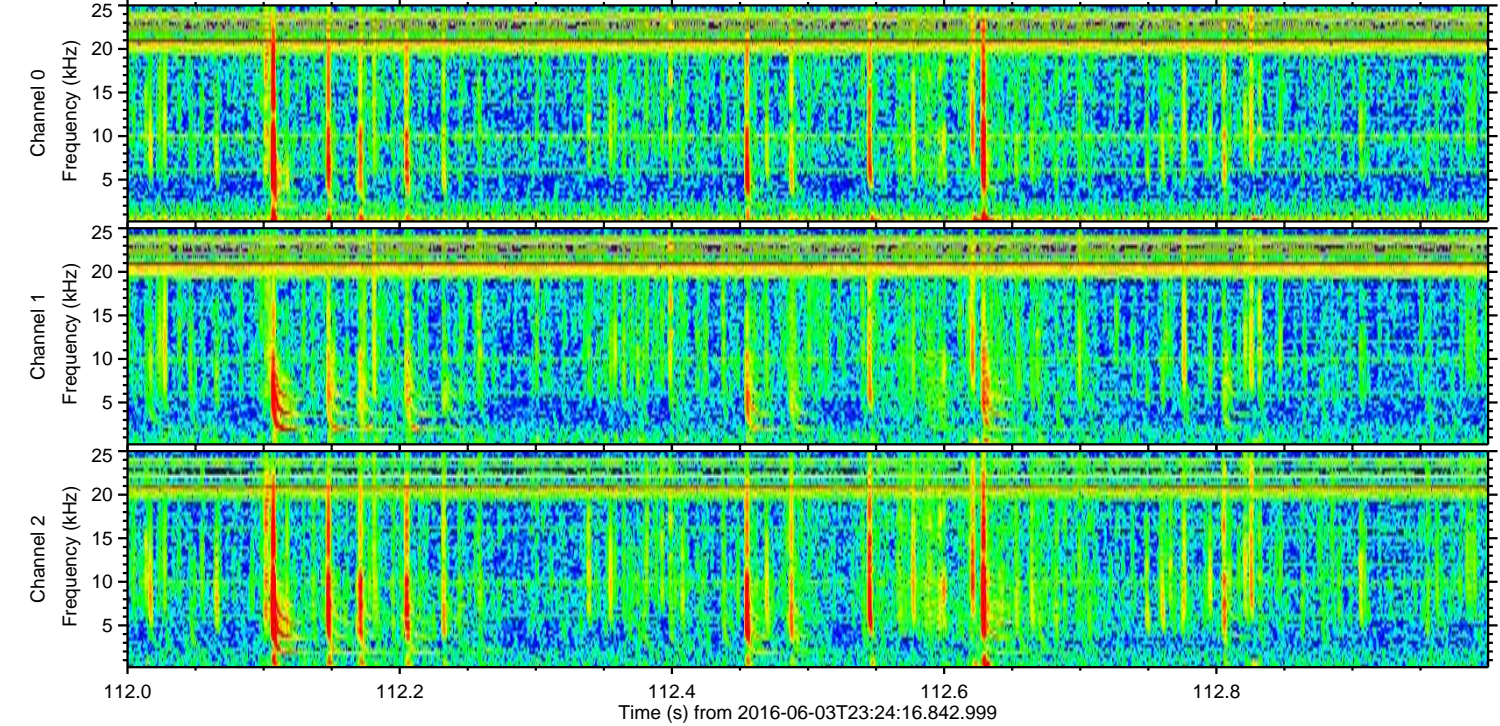
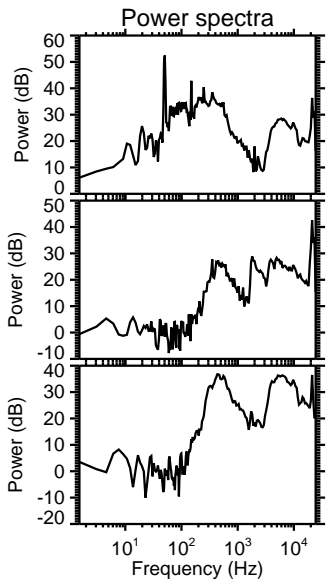
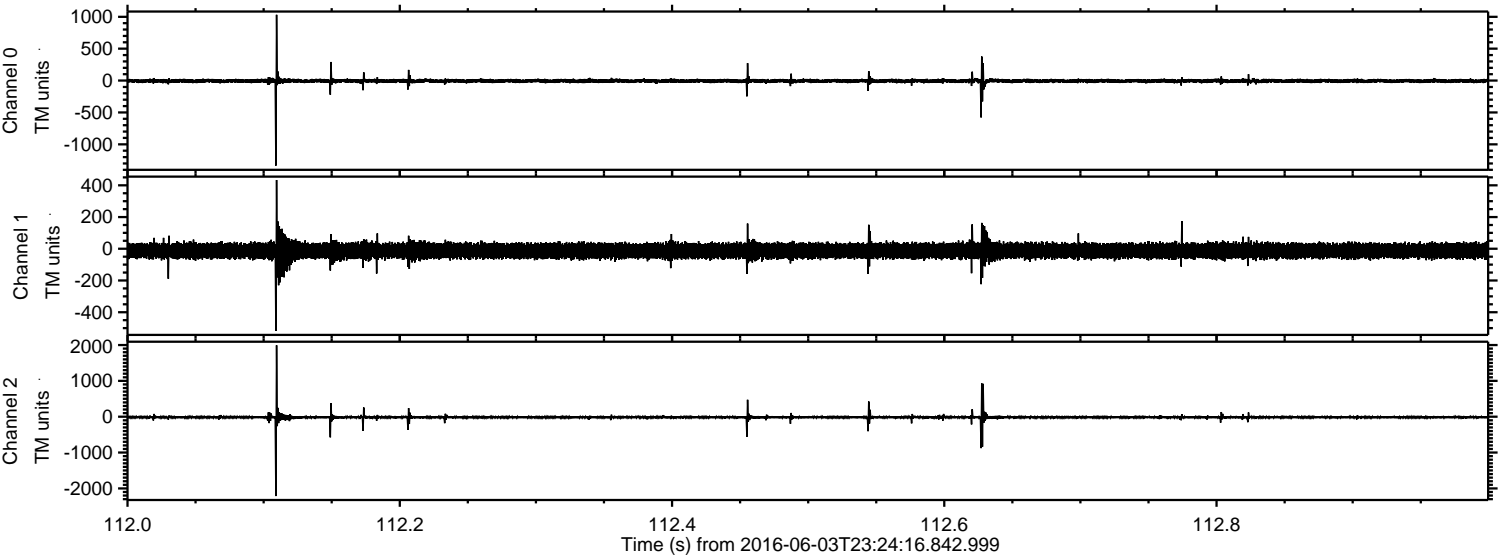
Channel 0
mn: -1416
mx: 1006
 μ : -6.0
 σ : 22.7

Channel 1
mn: -630
mx: 532
 μ : -12.9
 σ : 28.8

Channel 2
mn: -2388
mx: 2476
 μ : -16.1
 σ : 42.4

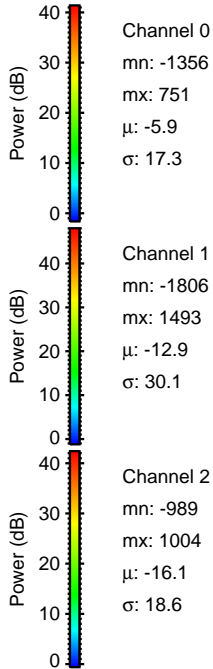
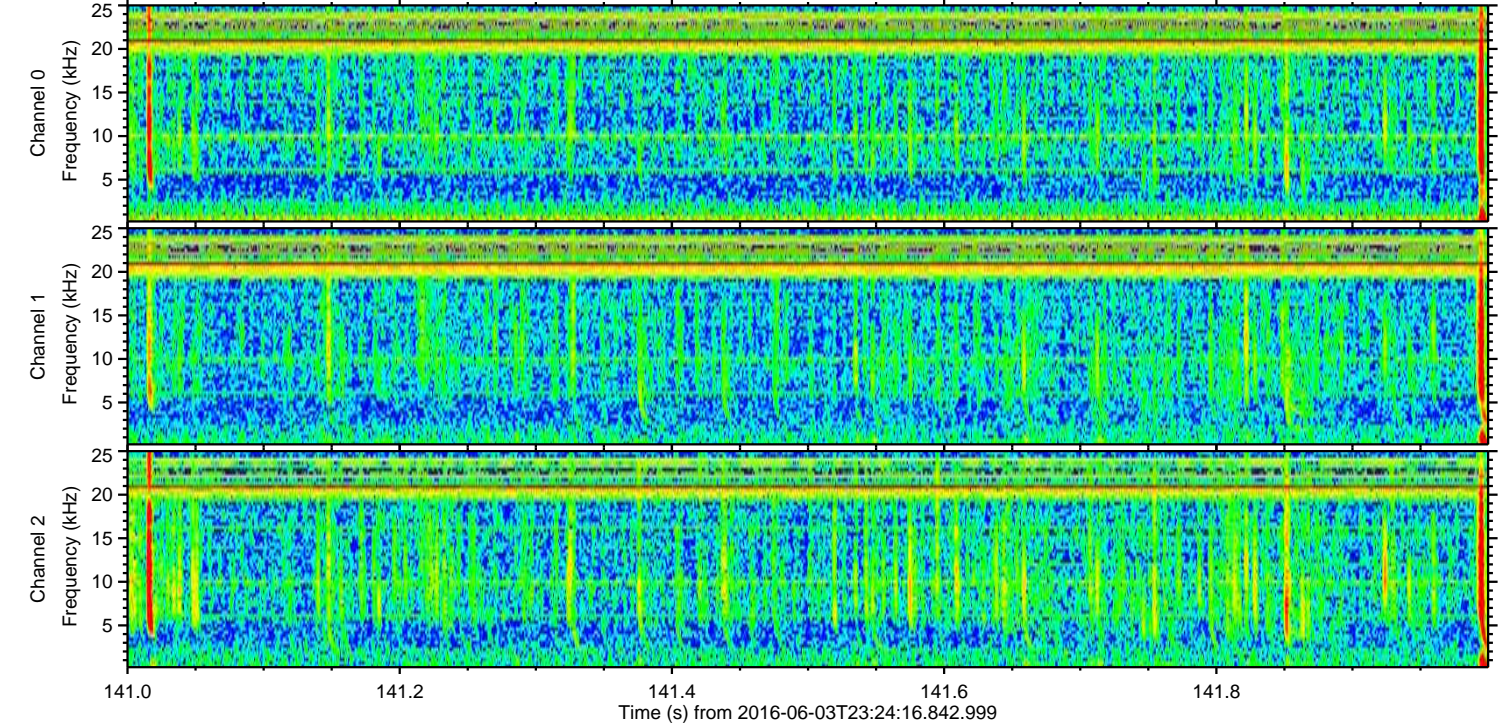
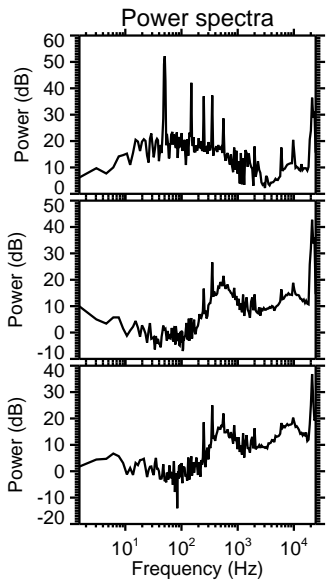
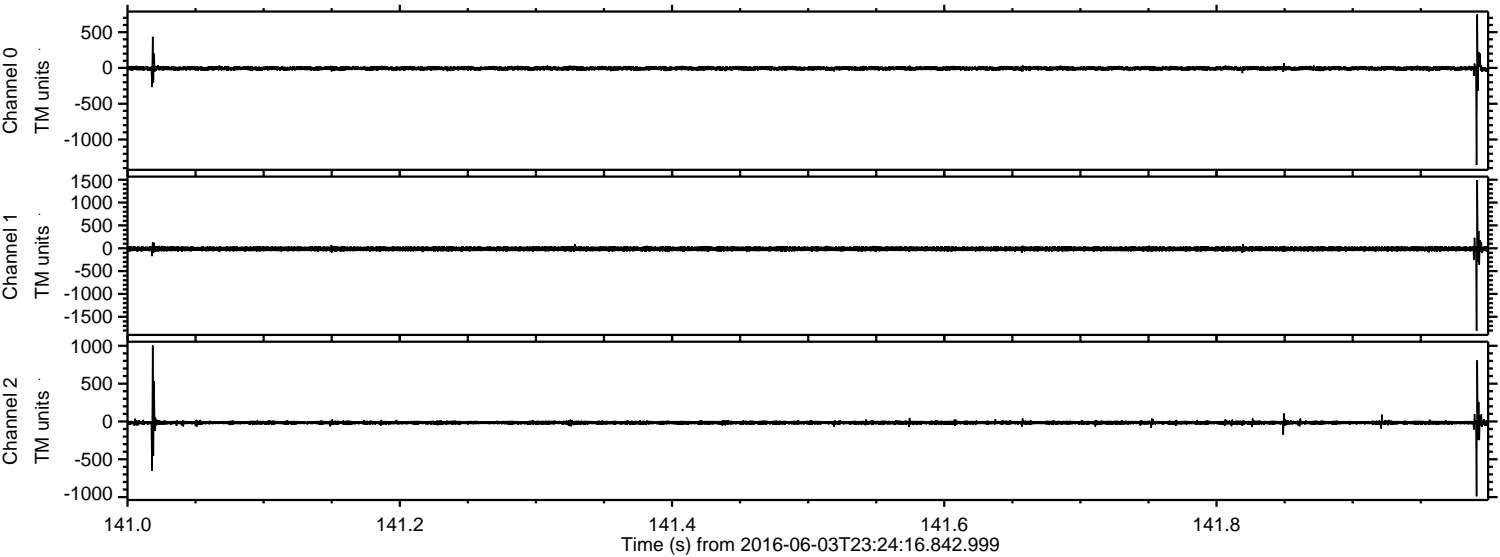
ELMAVAN 3D WAVEFORMS (Measured data sampled at 50 kHz) 51000 packets of 144 samples from 2016-06-03T23:24:16.842.999. Part 113/147

Processed Sat Jun 4 01:32:41 2016 by ELM ver.2012-10-06 from 001__elm20160603_232415__dat00.bin



ELMAVAN 3D WAVEFORMS (Measured data sampled at 50 kHz) 51000 packets of 144 samples from 2016-06-03T23:24:16.842.999. Part 142/147

Processed Sat Jun 4 01:32:42 2016 by ELM ver.2012-10-06 from 001__elm20160603_232415__dat00.bin

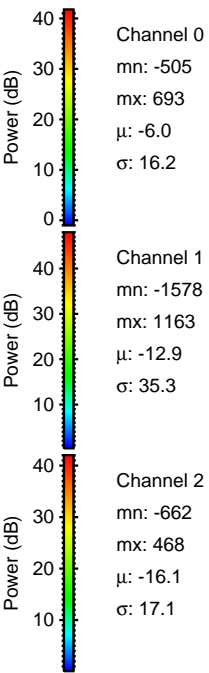
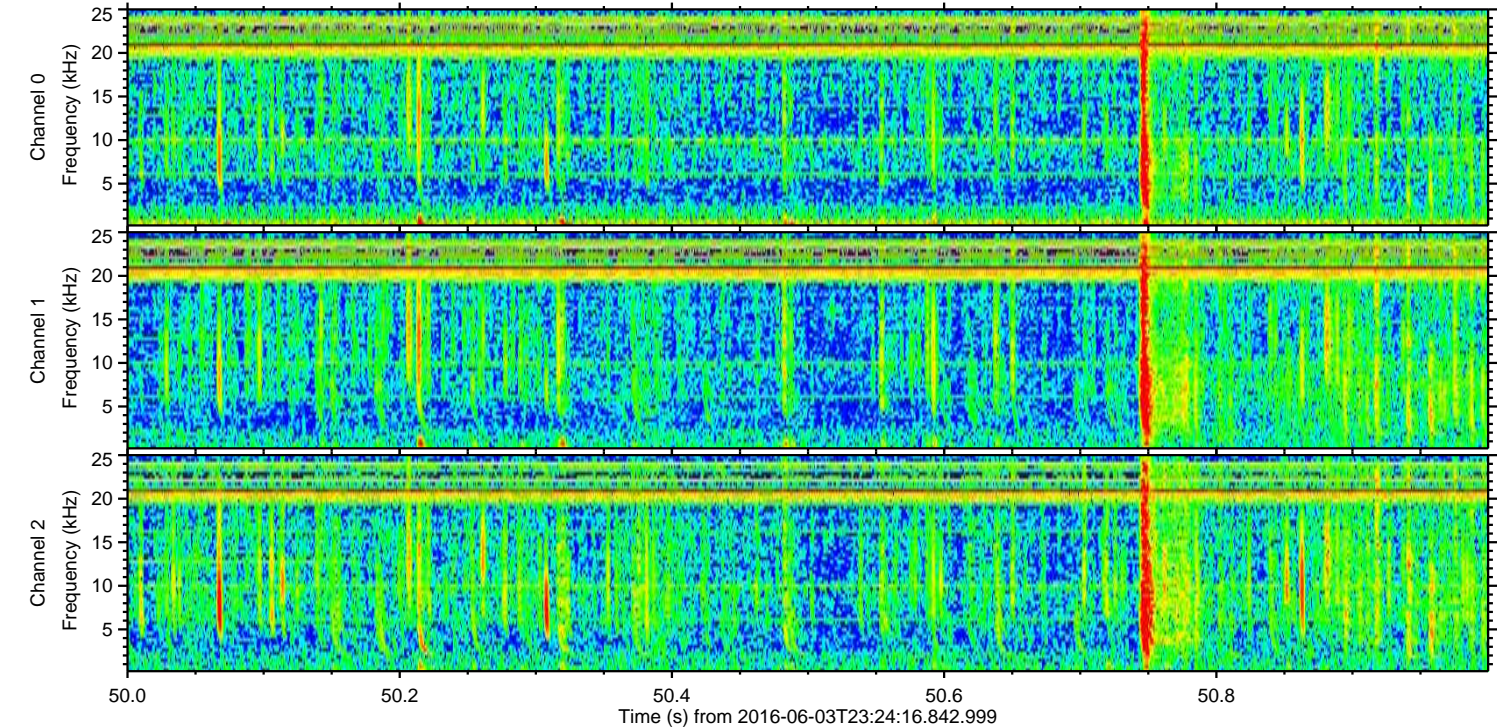
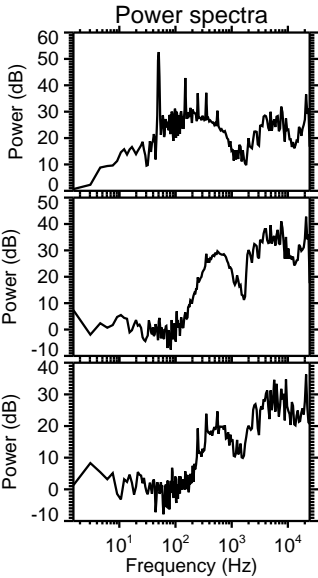
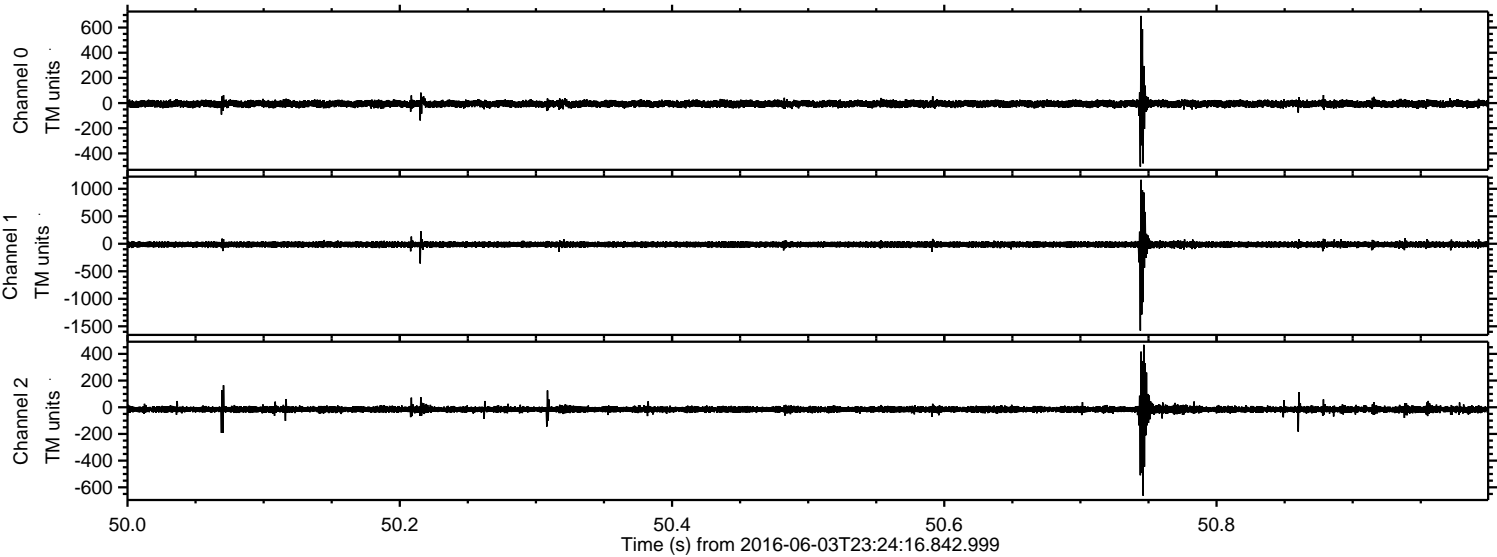


Channel 0
mn: -1356
mx: 751
 μ : -5.9
 σ : 17.3

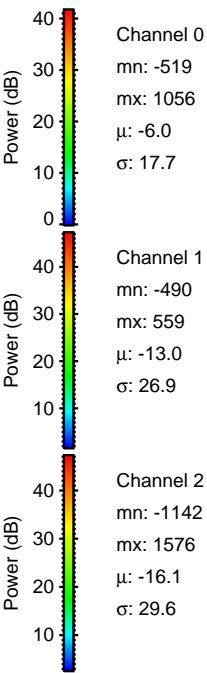
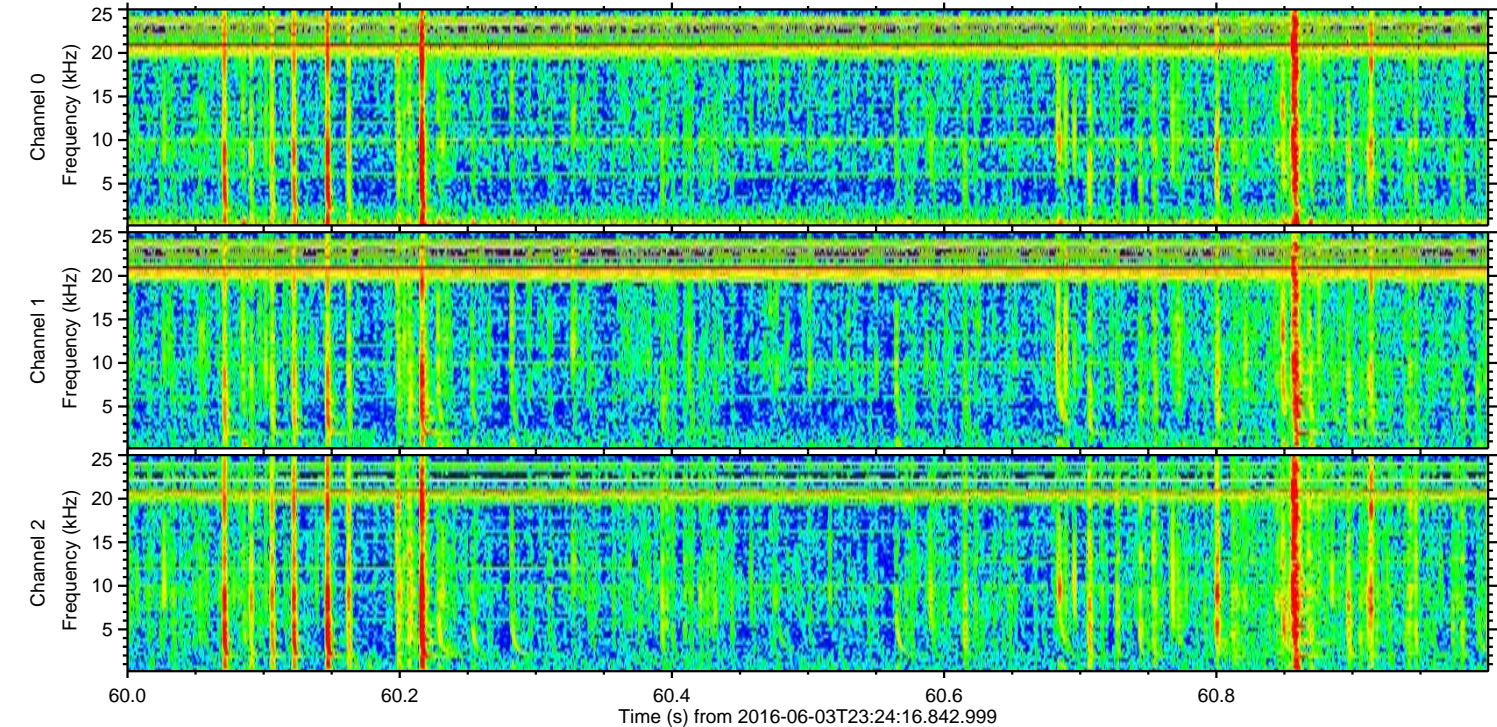
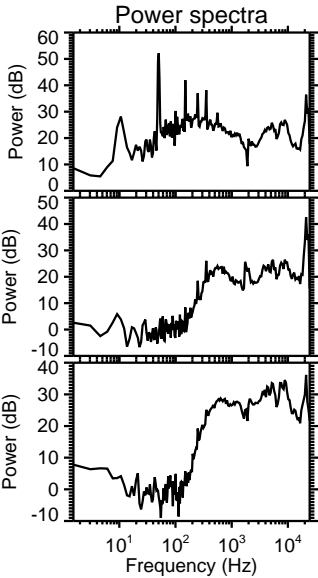
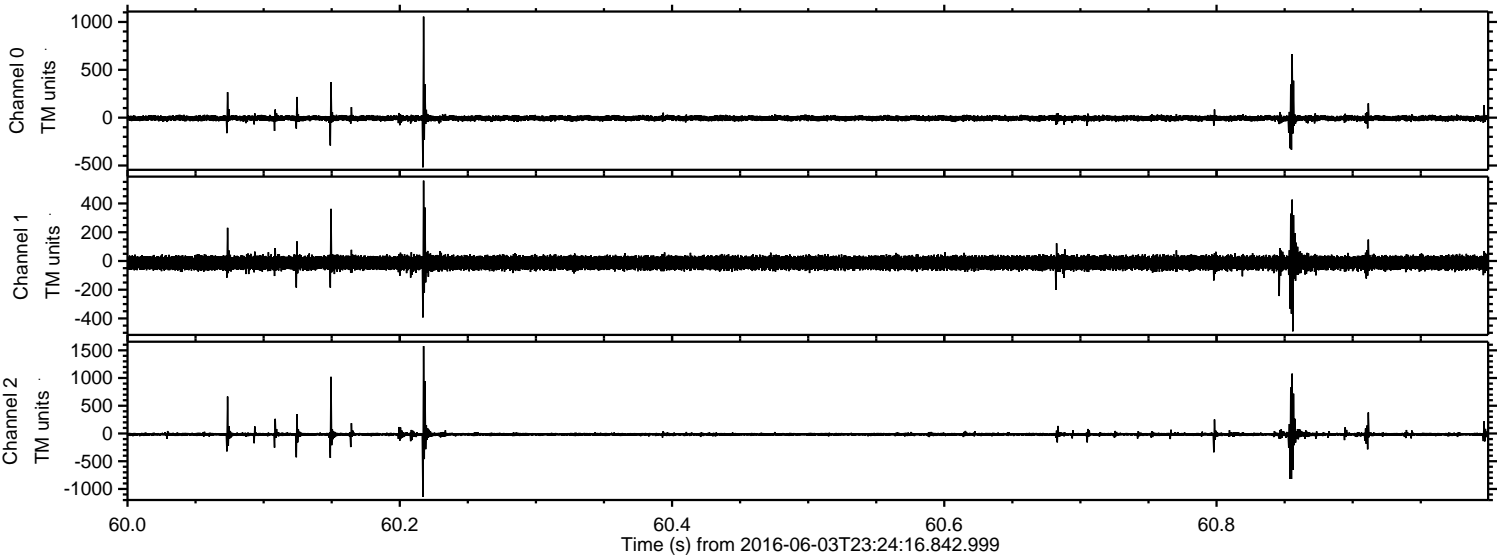
Channel 1
mn: -1806
mx: 1493
 μ : -12.9
 σ : 30.1

Channel 2
mn: -989
mx: 1004
 μ : -16.1
 σ : 18.6

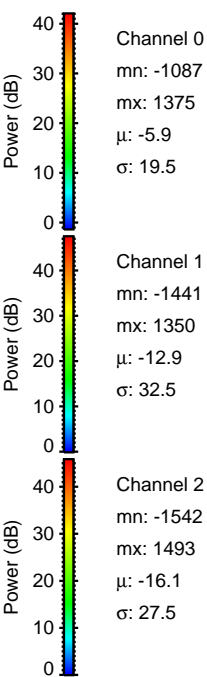
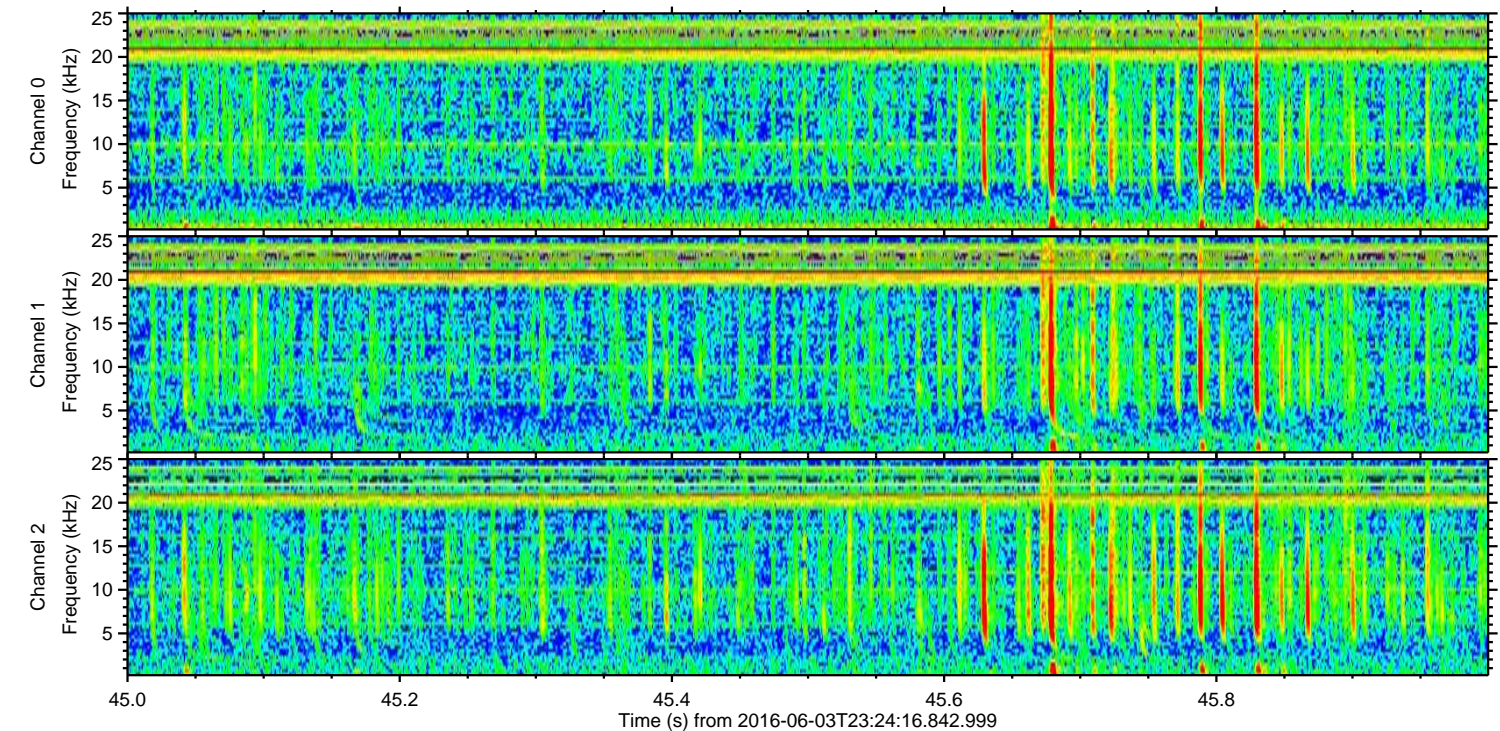
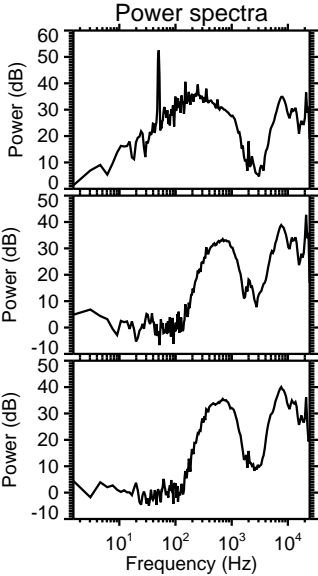
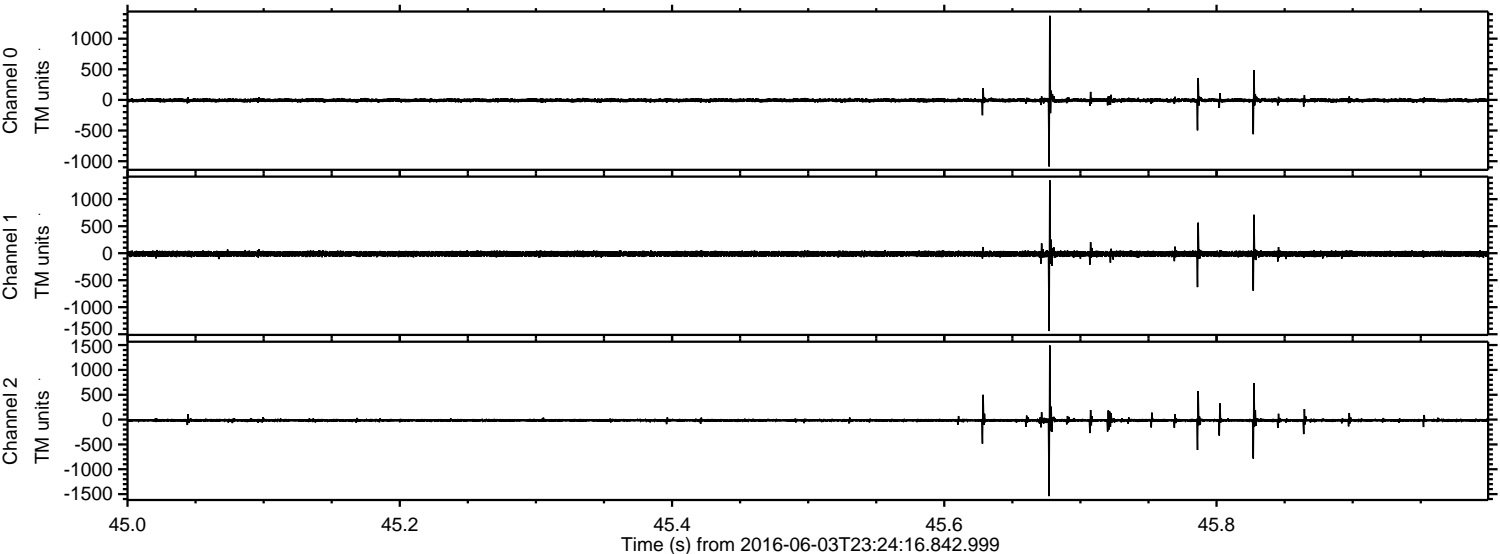
Processed Sat Jun 4 01:32:43 2016 by ELM ver.2012-10-06 from 001__elm20160603_232415__dat00.bin



Processed Sat Jun 4 01:32:44 2016 by ELM ver.2012-10-06 from 001__elm20160603_232415__dat00.bin



Processed Sat Jun 4 01:32:44 2016 by ELM ver.2012-10-06 from 001__elm20160603_232415__dat00.bin



Processed Sat Jun 4 01:32:45 2016 by ELM ver.2012-10-06 from 001__elm20160603_232415__dat00.bin

