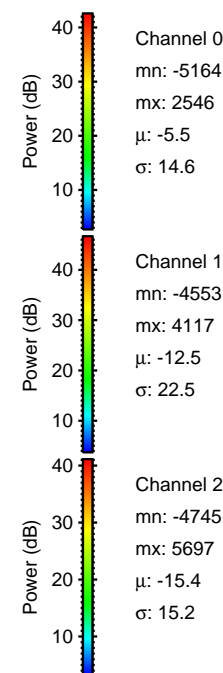
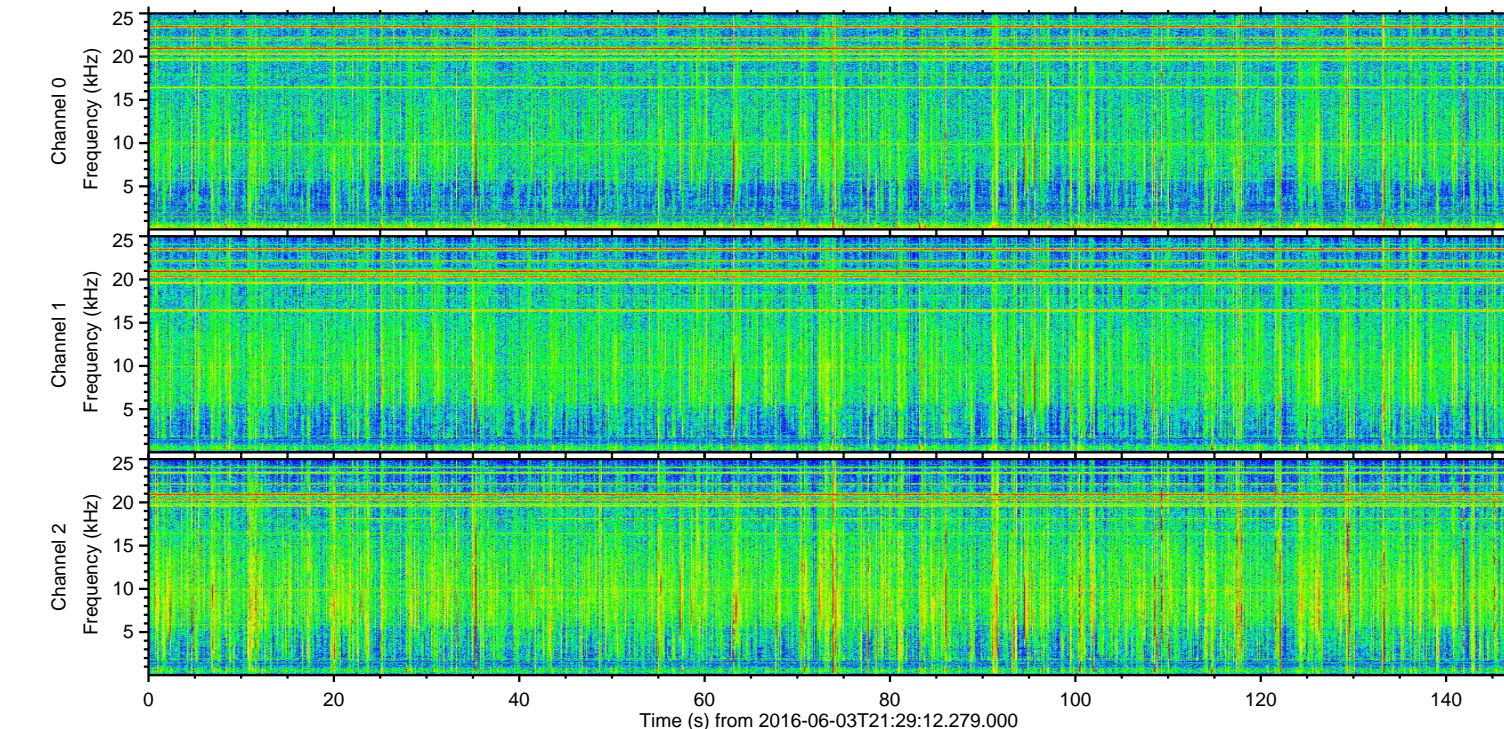
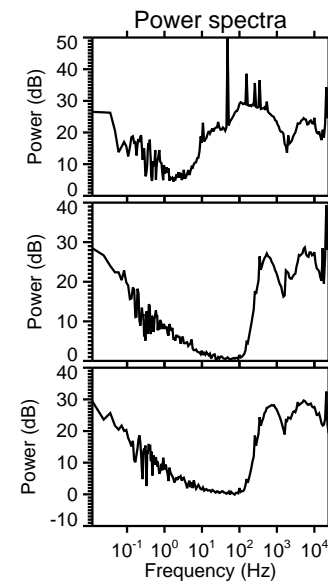
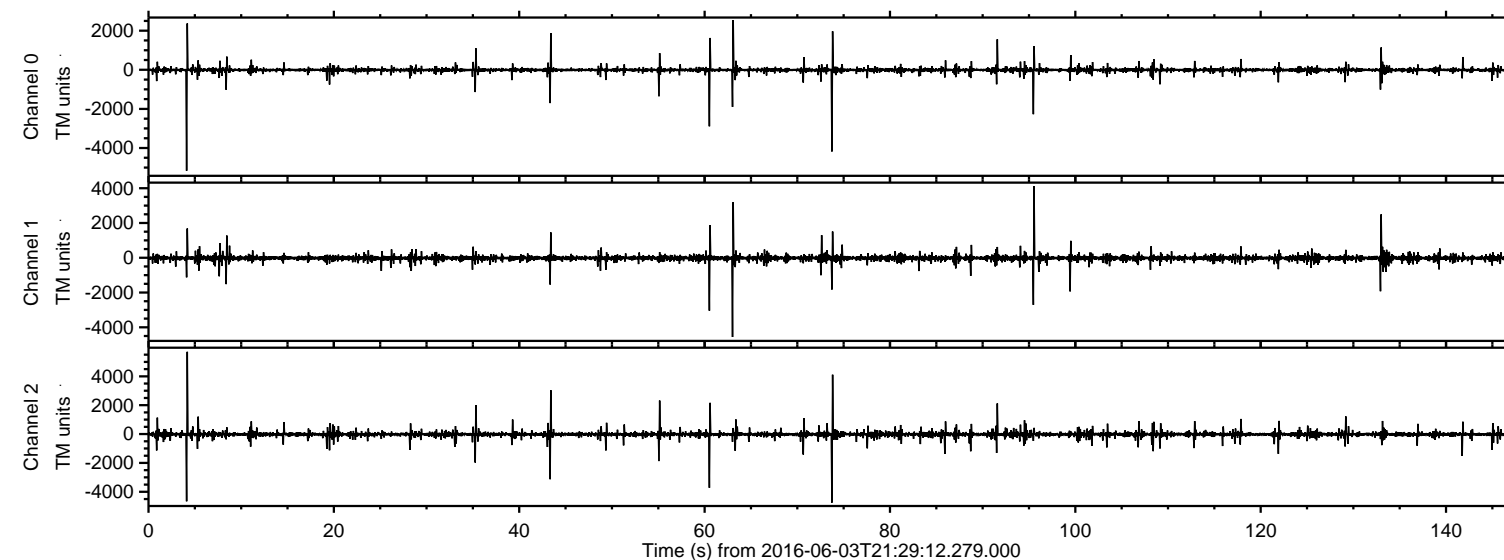


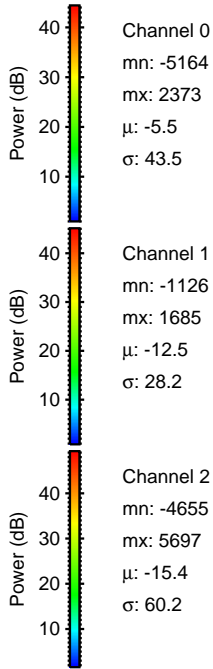
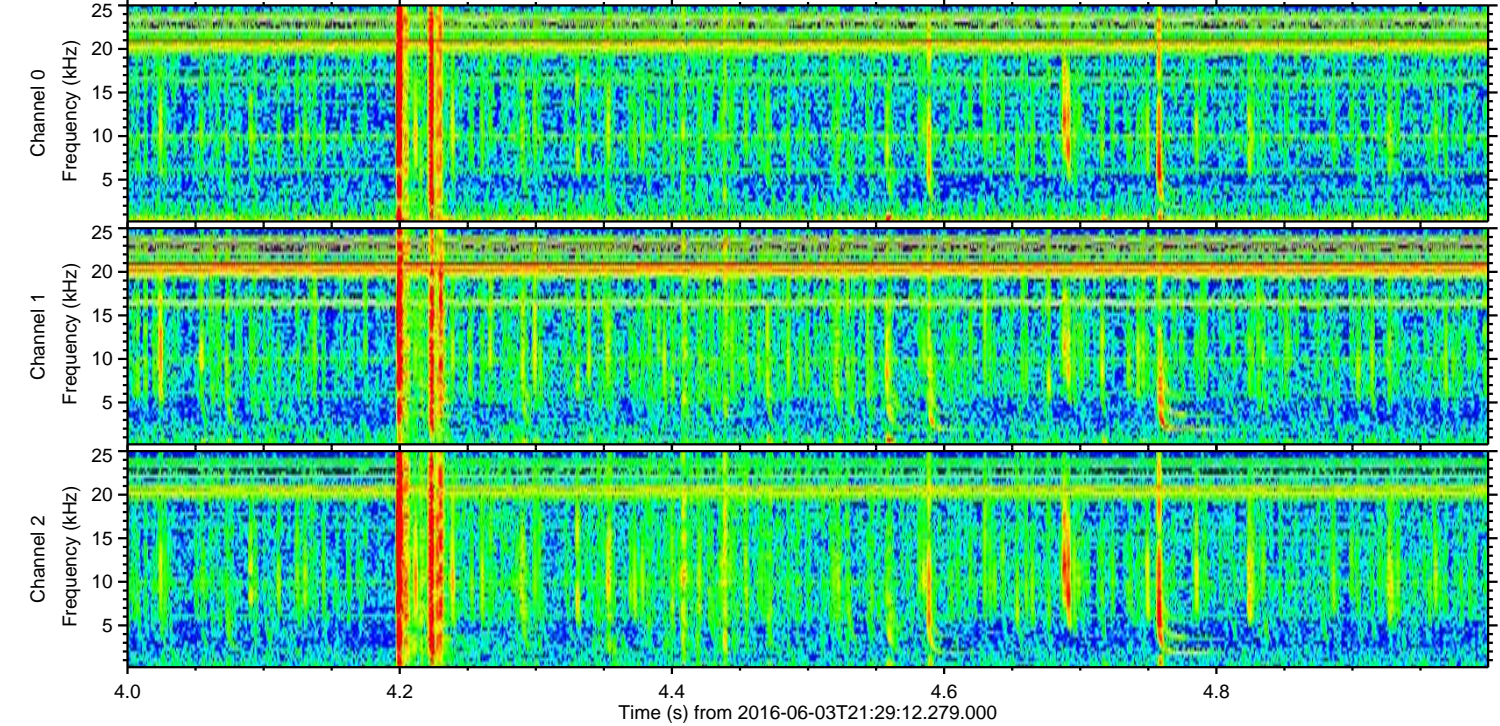
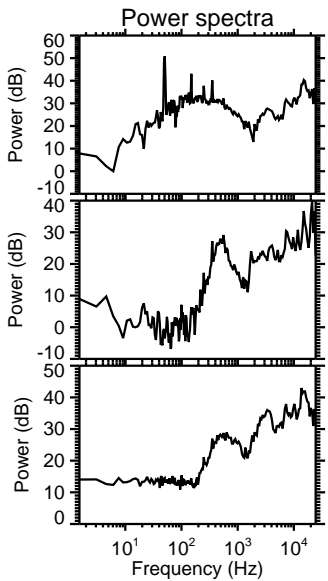
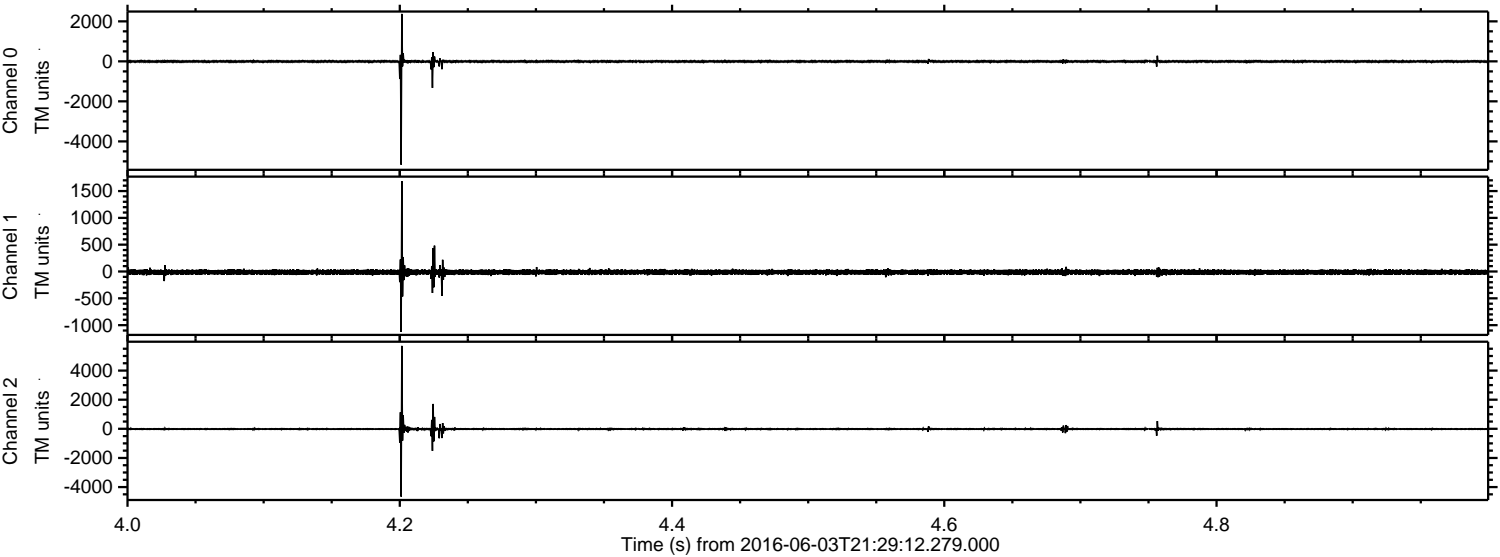
# ELMAVAN 3D WAVEFORMS (Measured data sampled at 50 kHz) 51000 packets of 144 samples from 2016-06-03T21:29:12.279.000.

Processed Fri Jun 3 23:36:58 2016 by ELM ver.2012-10-06 from 001\_\_elm20160603\_212911\_\_dat00.bin



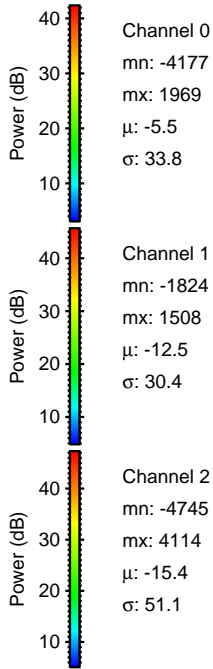
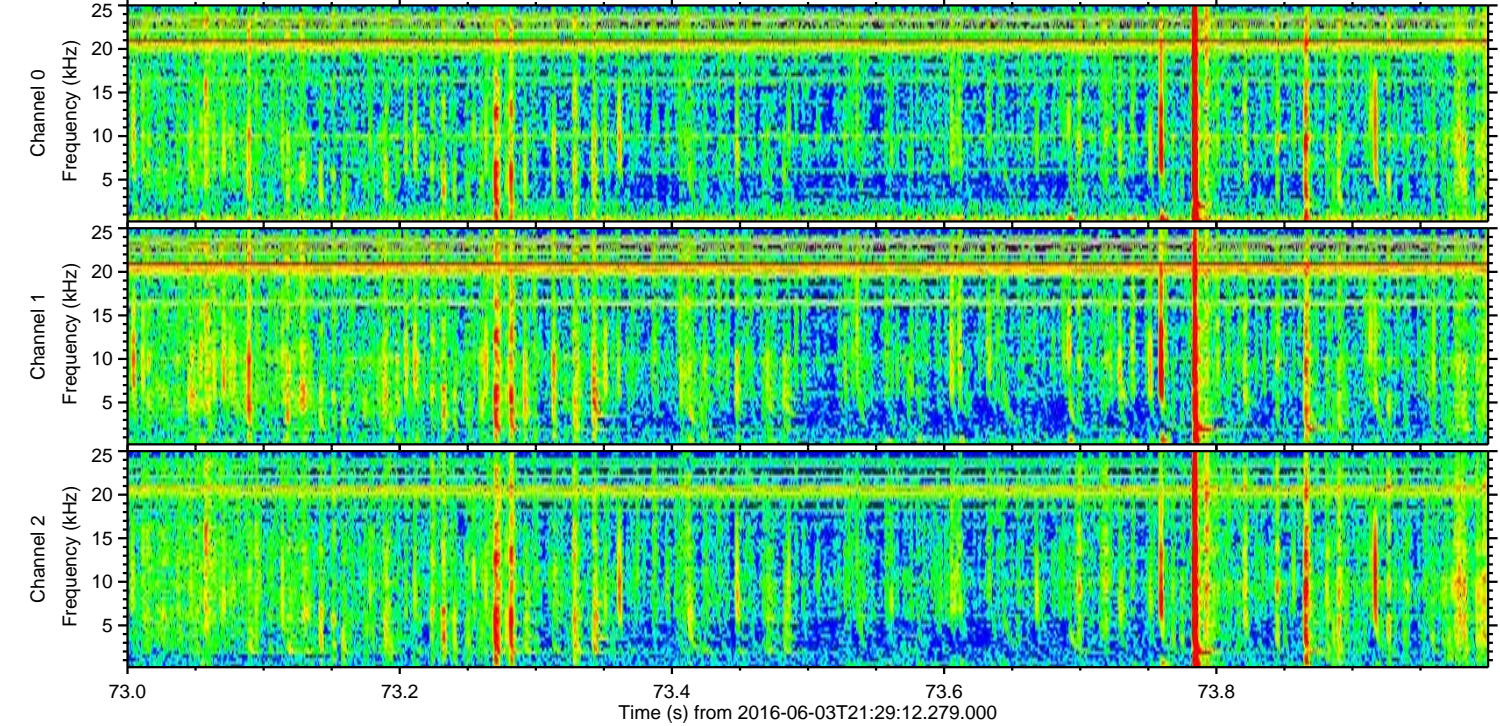
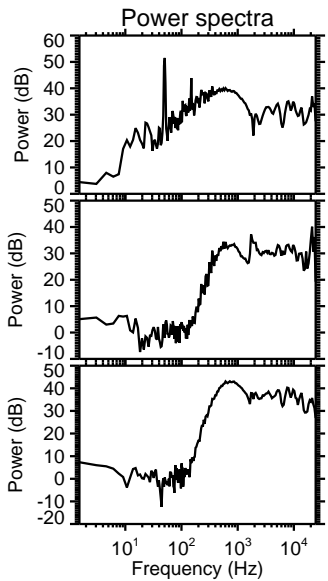
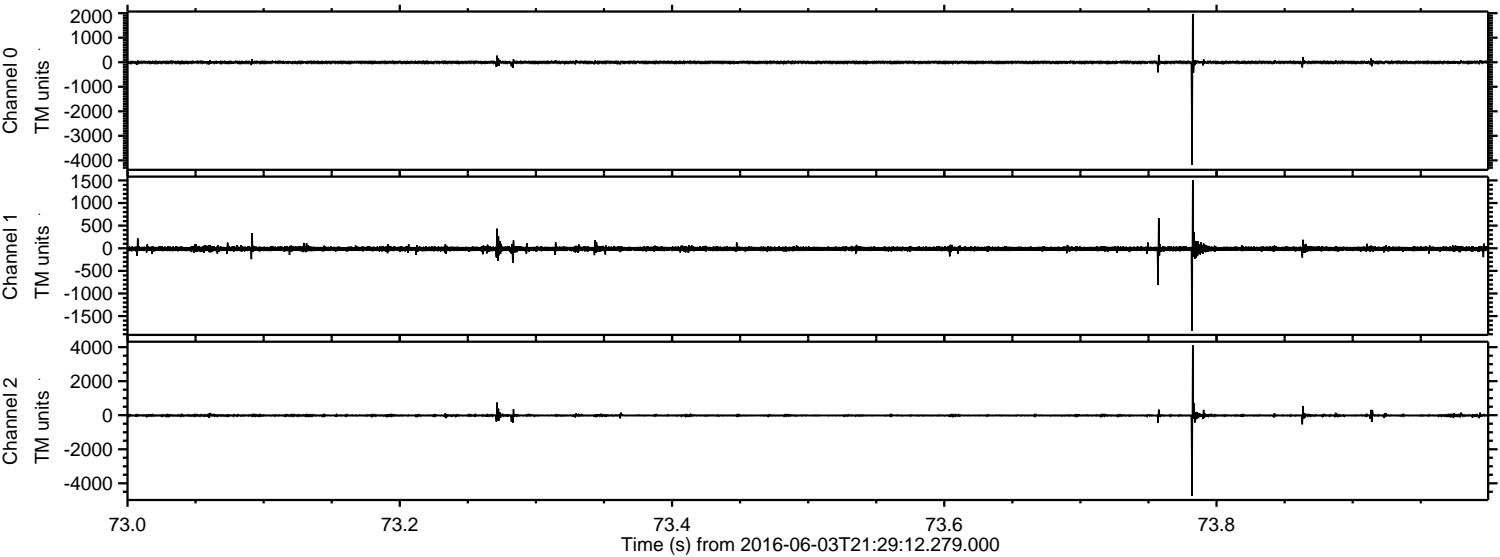


Processed Fri Jun 3 23:37:10 2016 by ELM ver.2012-10-06 from 001\_\_elm20160603\_212911\_\_dat00.bin



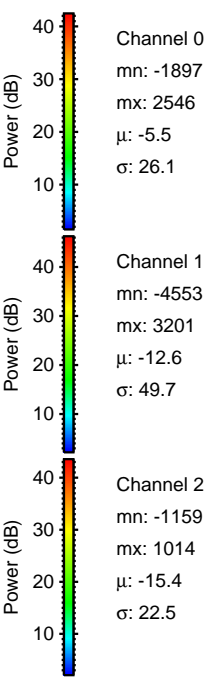
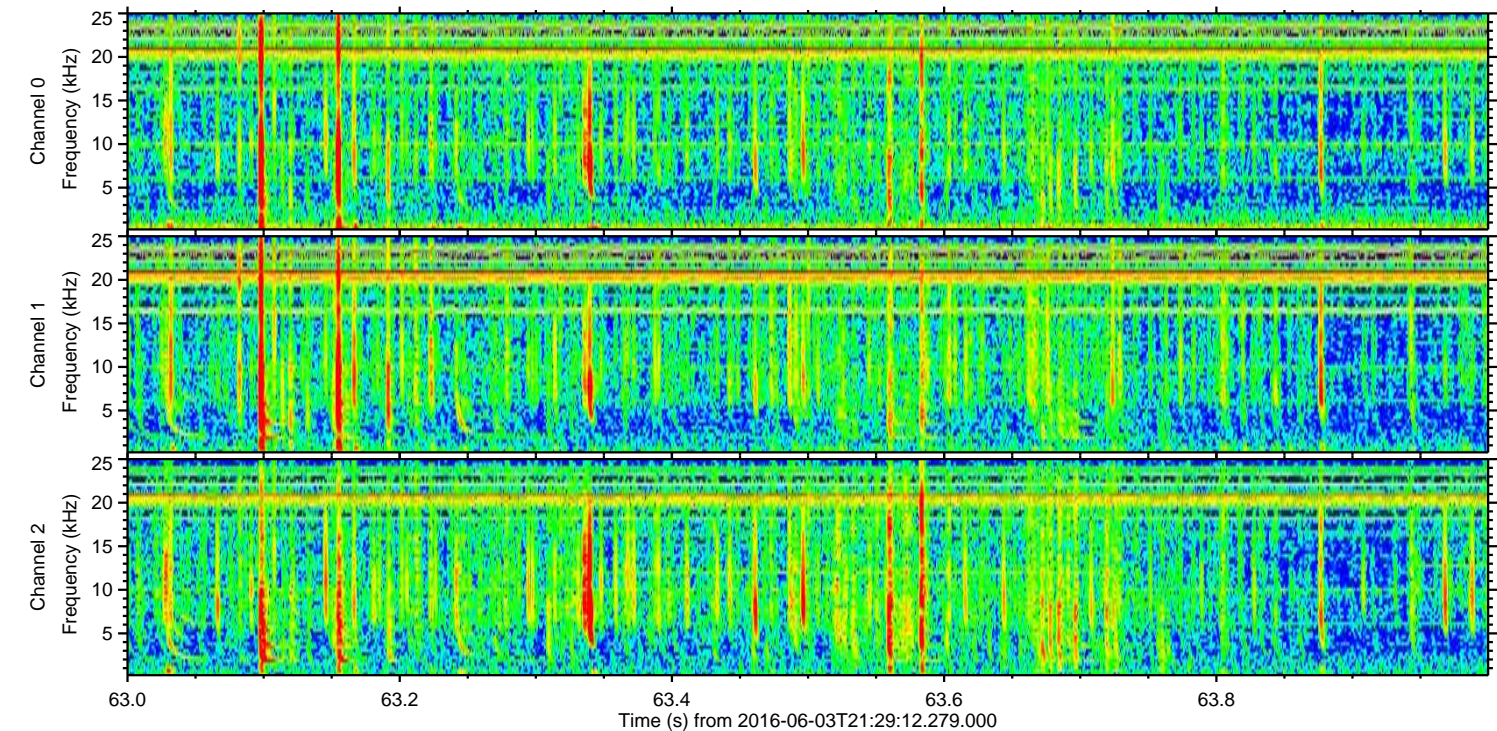
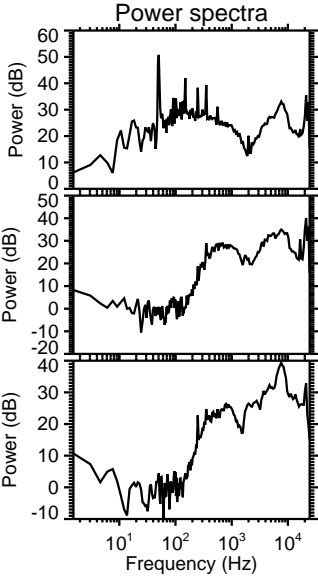
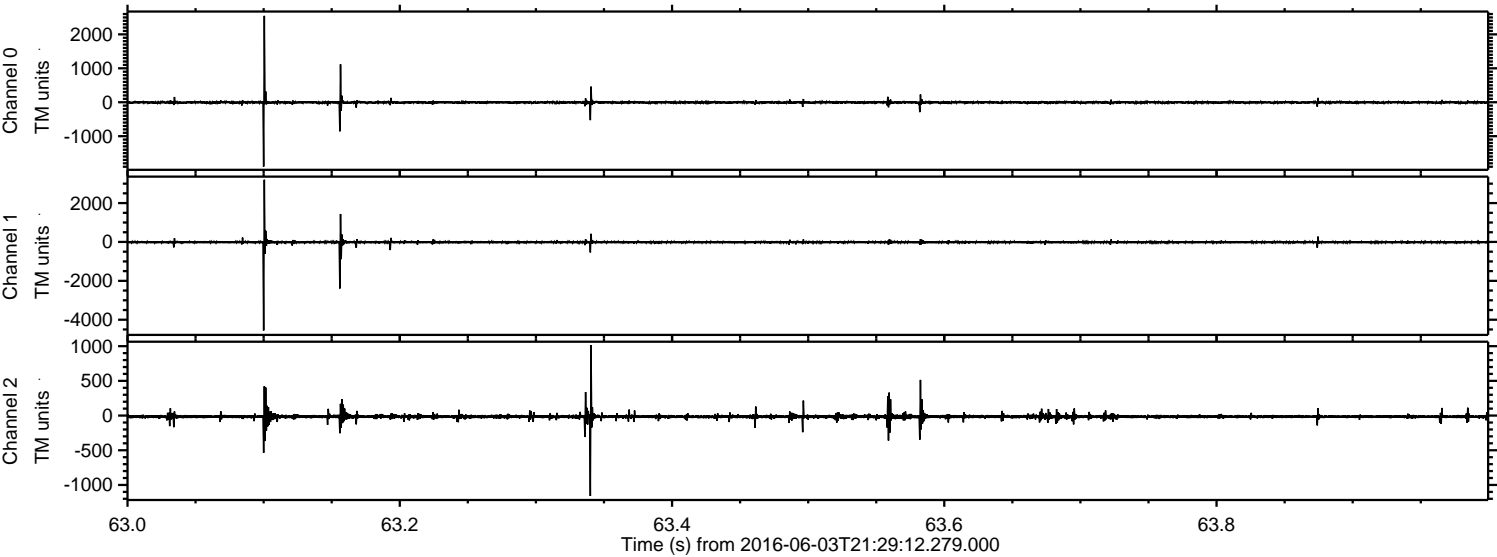


Processed Fri Jun 3 23:37:11 2016 by ELM ver.2012-10-06 from 001\_\_elm20160603\_212911\_\_dat00.bin





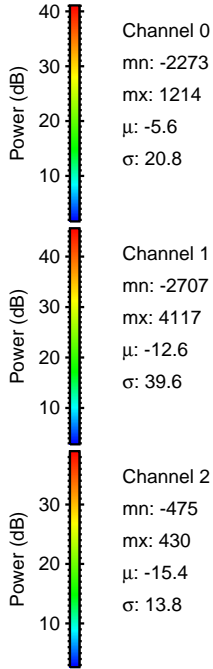
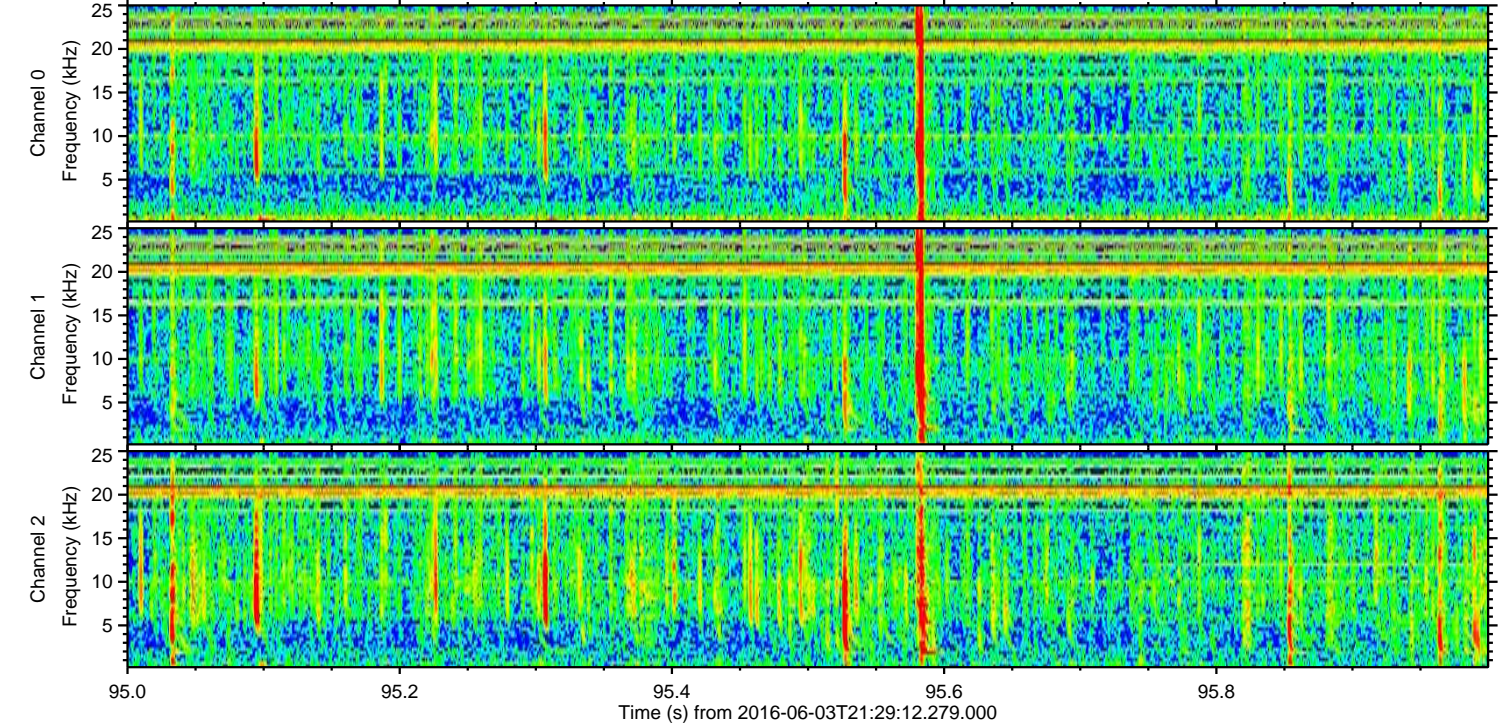
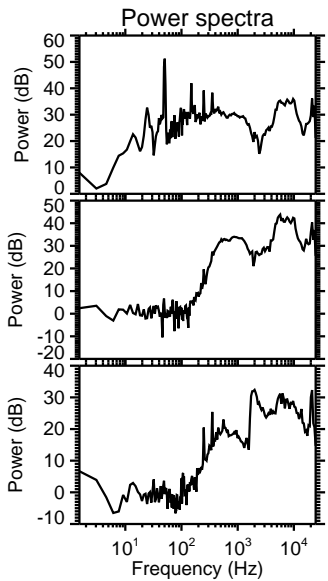
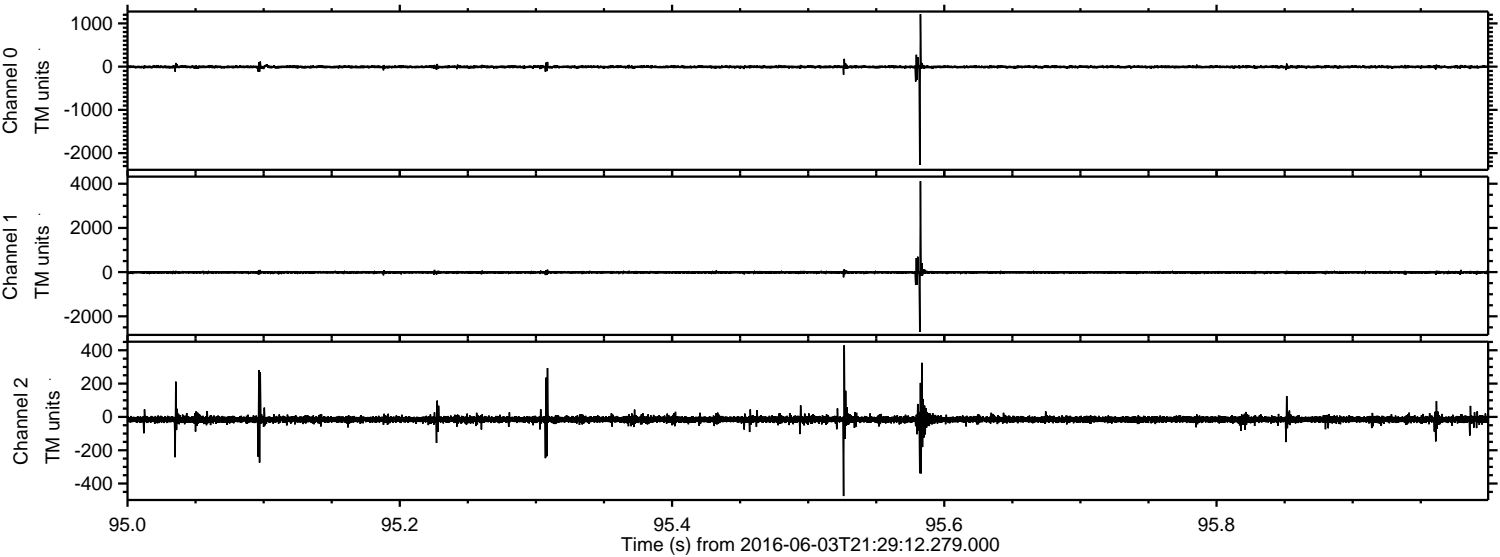
Processed Fri Jun 3 23:37:12 2016 by ELM ver.2012-10-06 from 001\_\_elm20160603\_212911\_\_dat00.bin





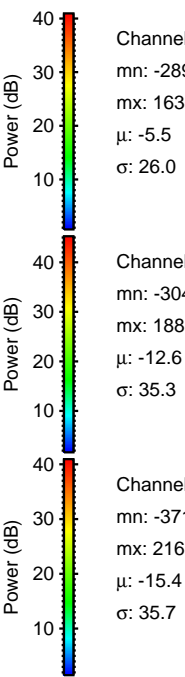
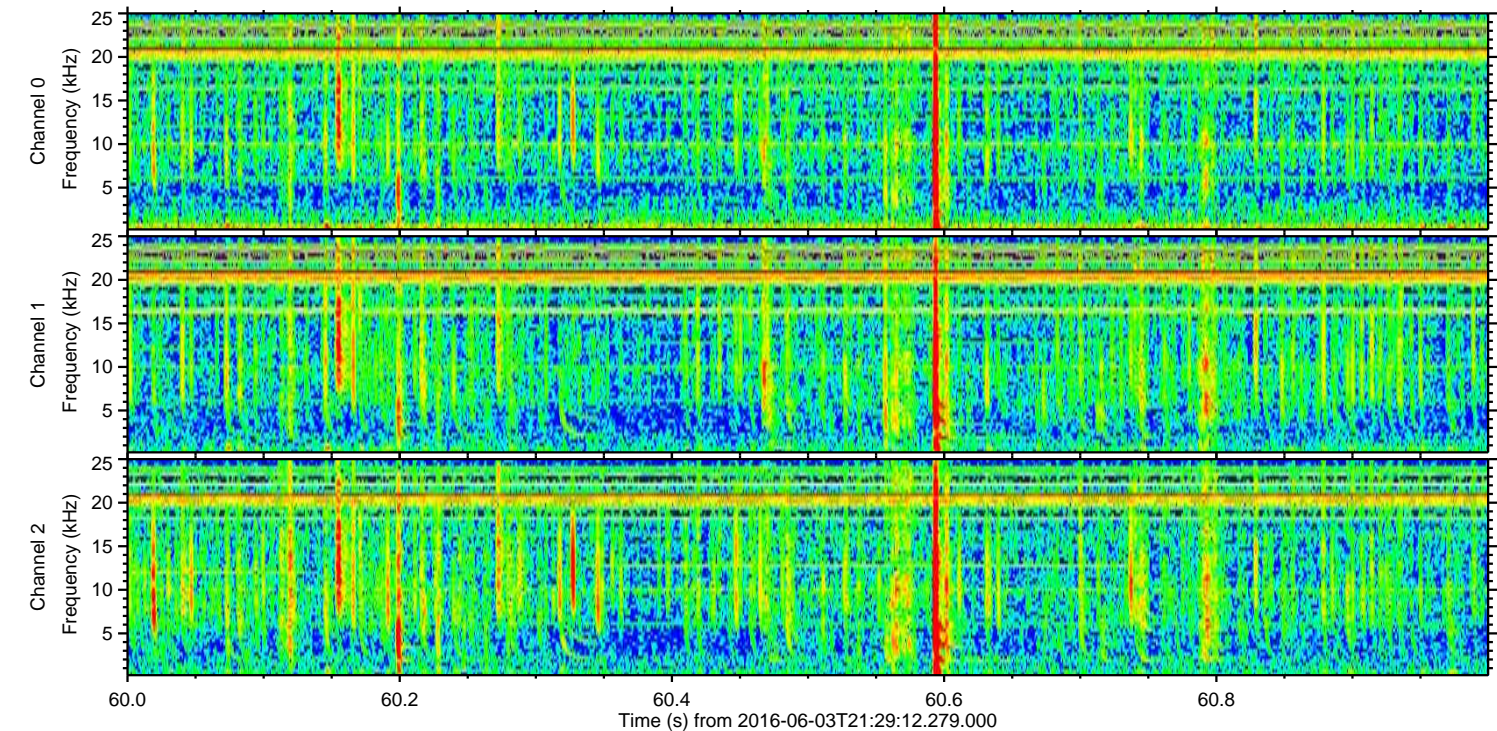
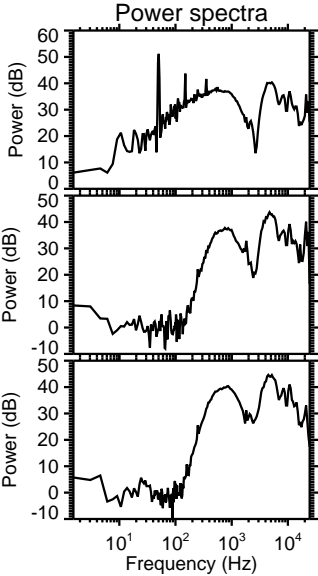
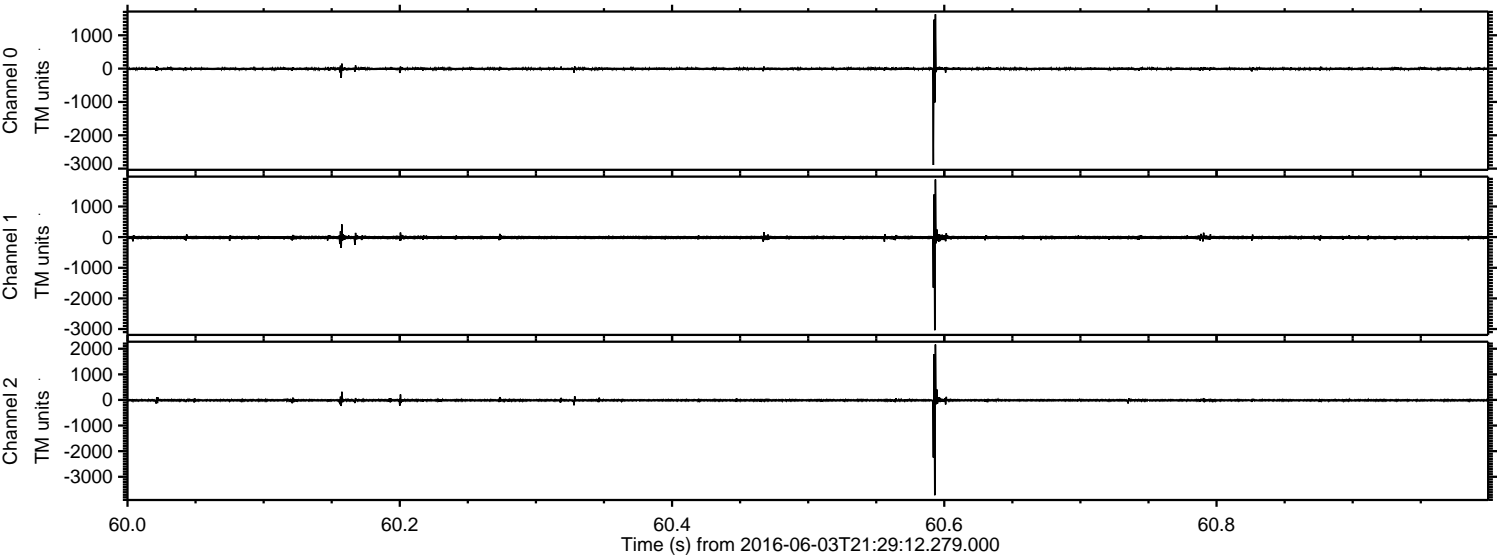
ELMAVAN 3D WAVEFORMS (Measured data sampled at 50 kHz) 51000 packets of 144 samples from 2016-06-03T21:29:12.279.000. Part 96/147

Processed Fri Jun 3 23:37:12 2016 by ELM ver.2012-10-06 from 001\_\_elm20160603\_212911\_\_dat00.bin



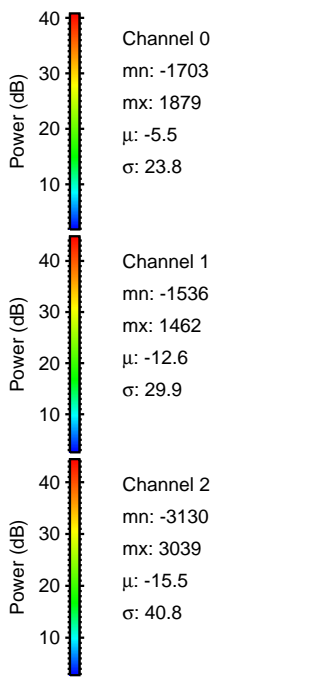
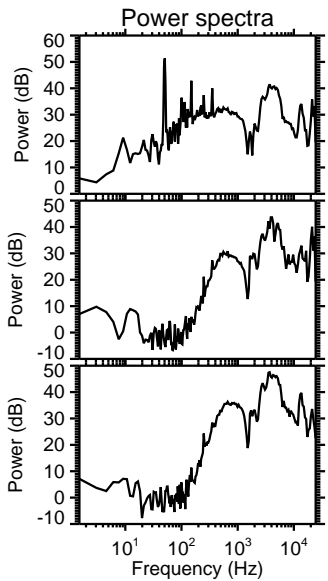
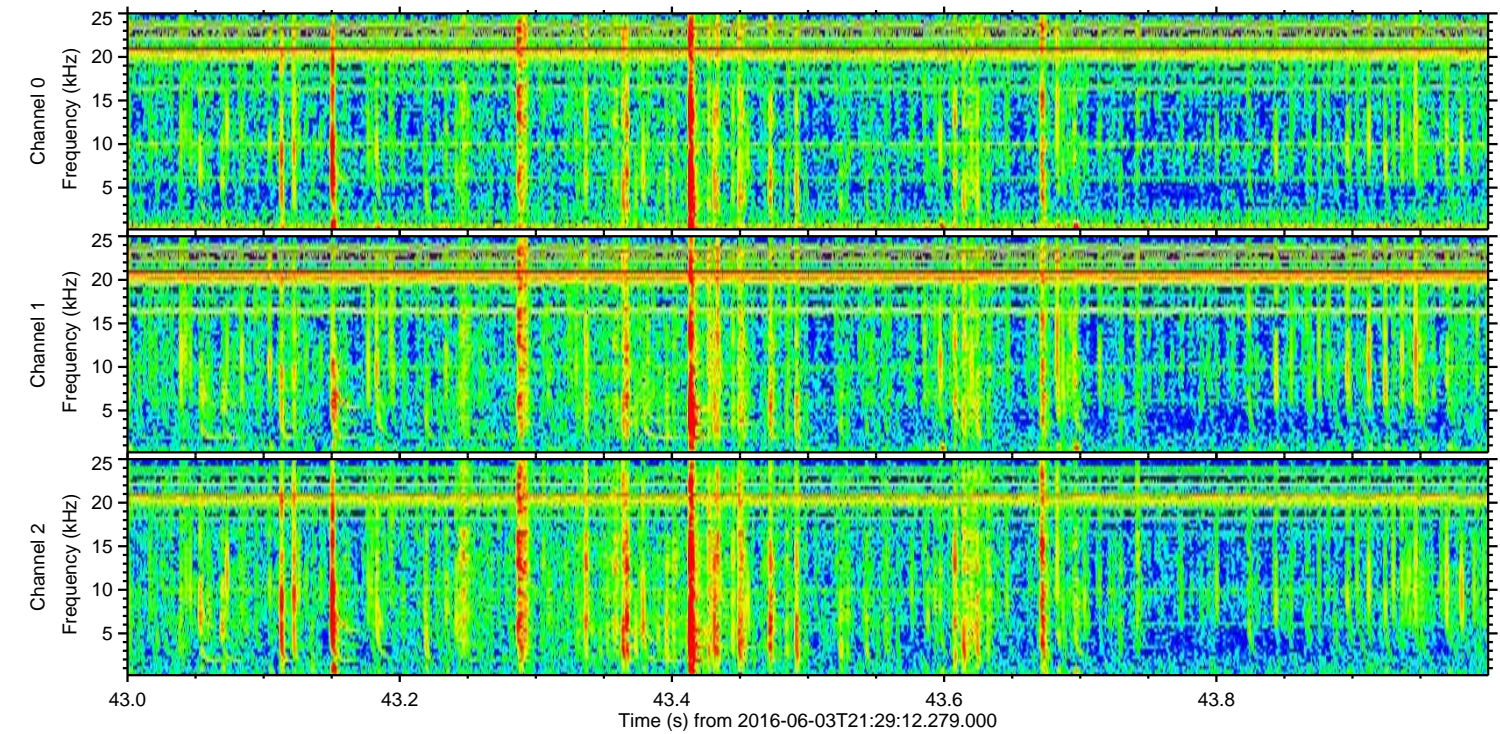
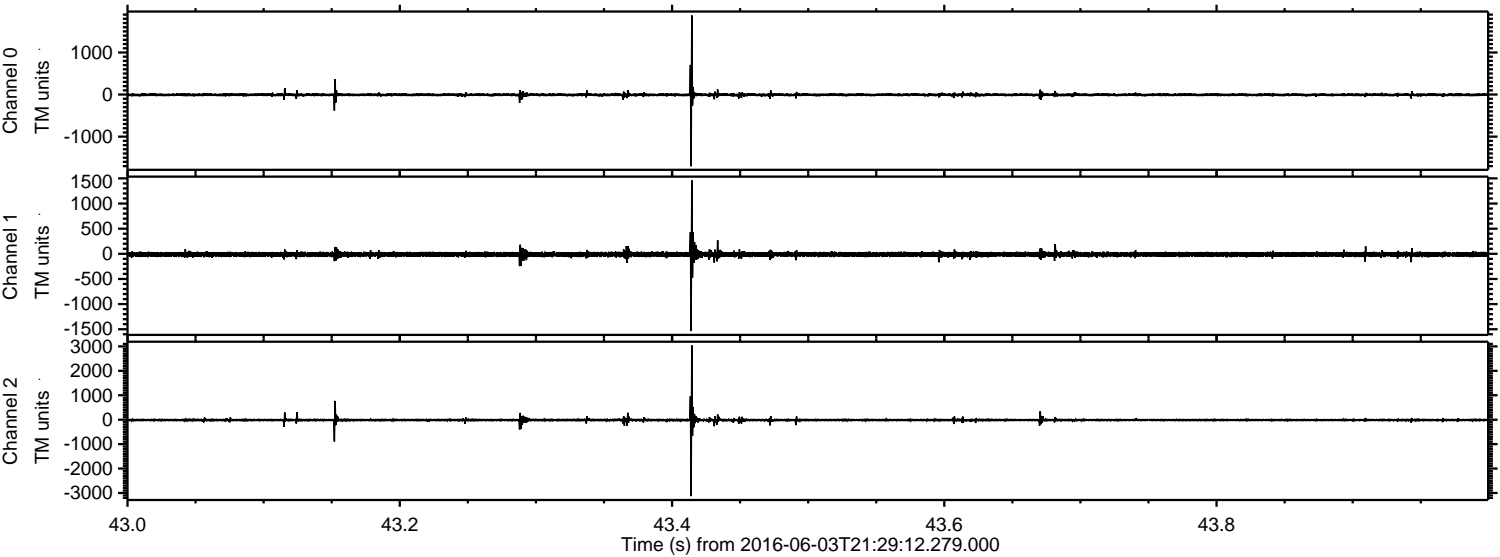


Processed Fri Jun 3 23:37:13 2016 by ELM ver.2012-10-06 from 001\_\_elm20160603\_212911\_\_dat00.bin





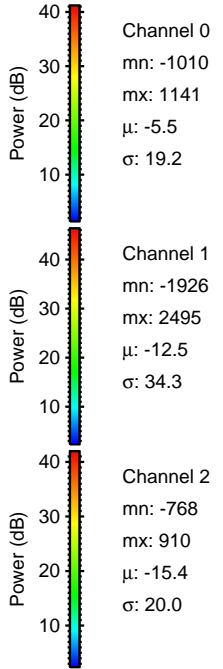
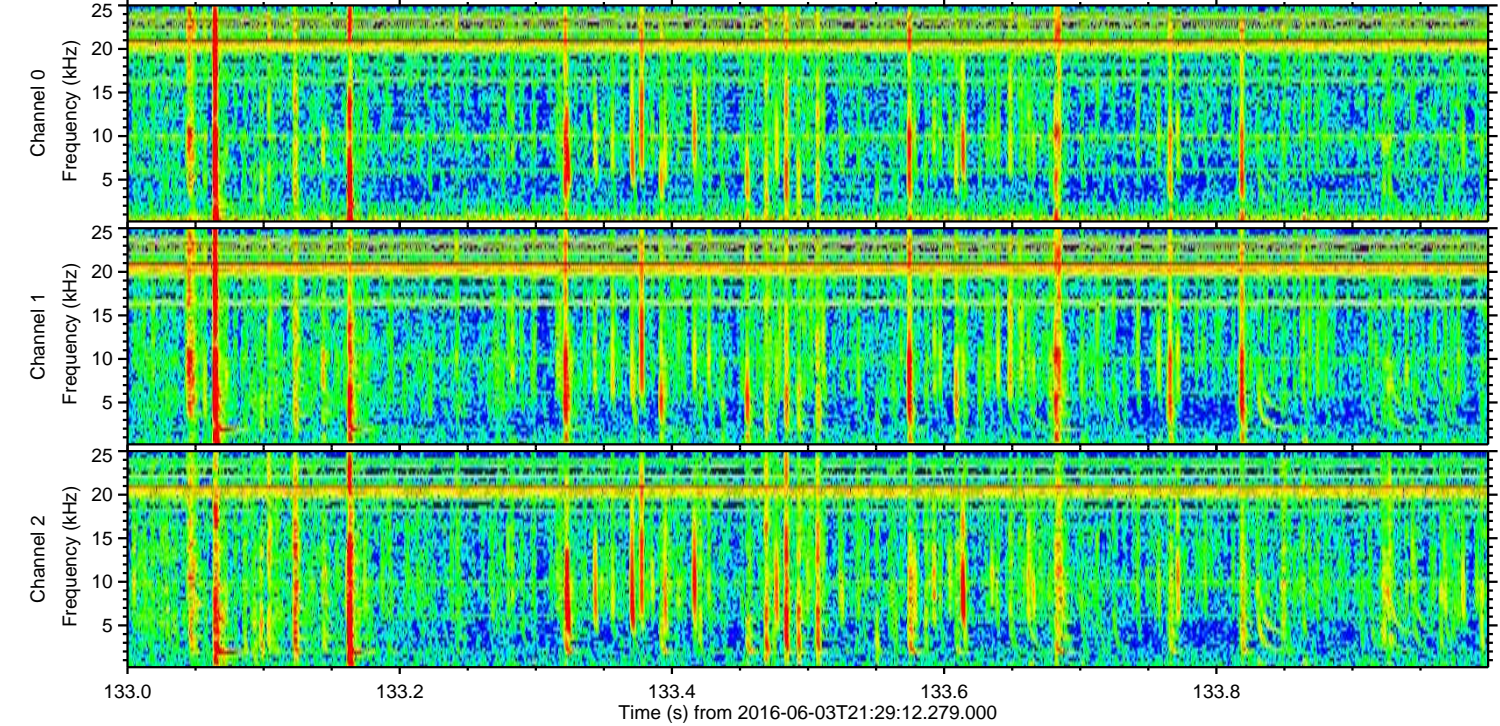
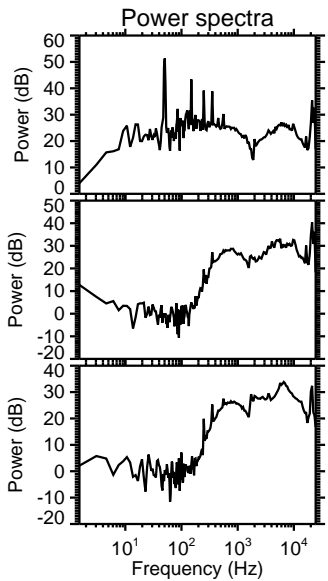
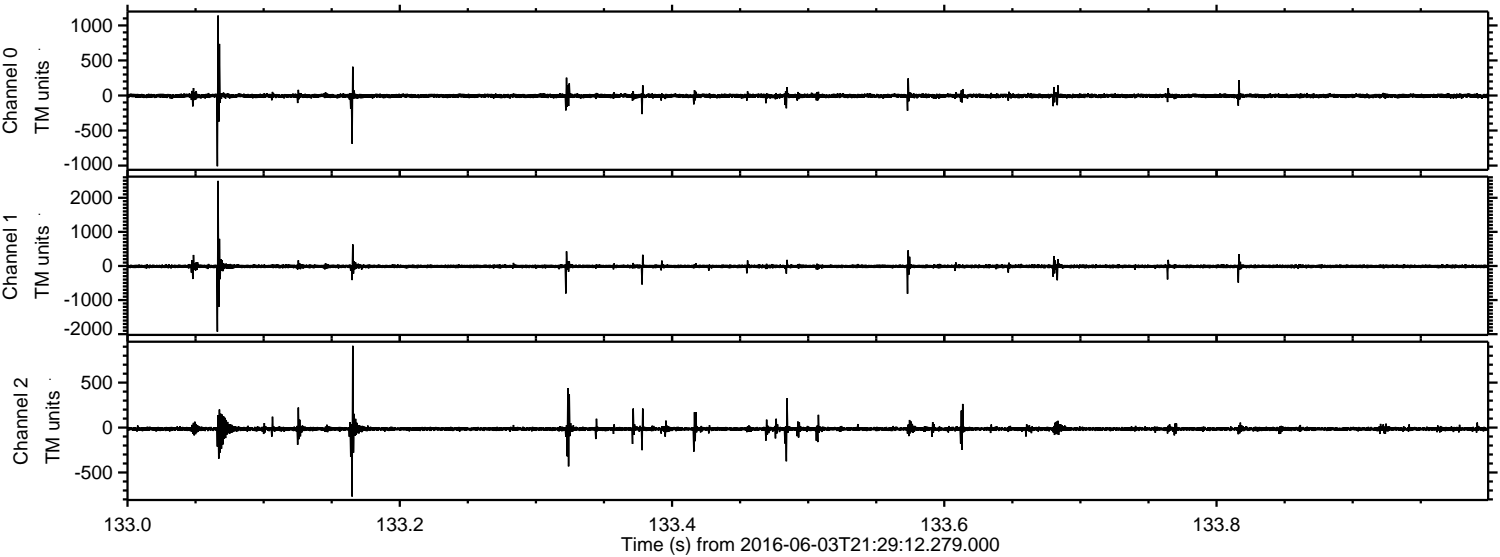
Processed Fri Jun 3 23:37:14 2016 by ELM ver.2012-10-06 from 001\_\_elm20160603\_212911\_\_dat00.bin





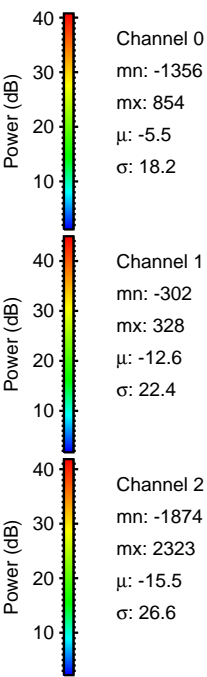
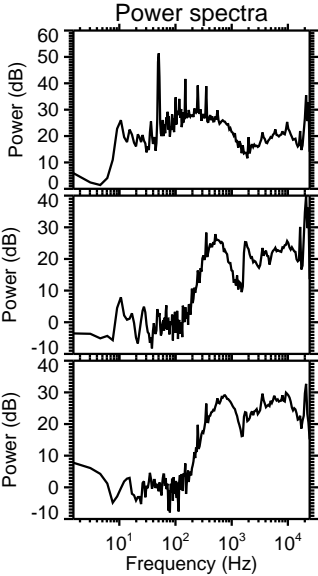
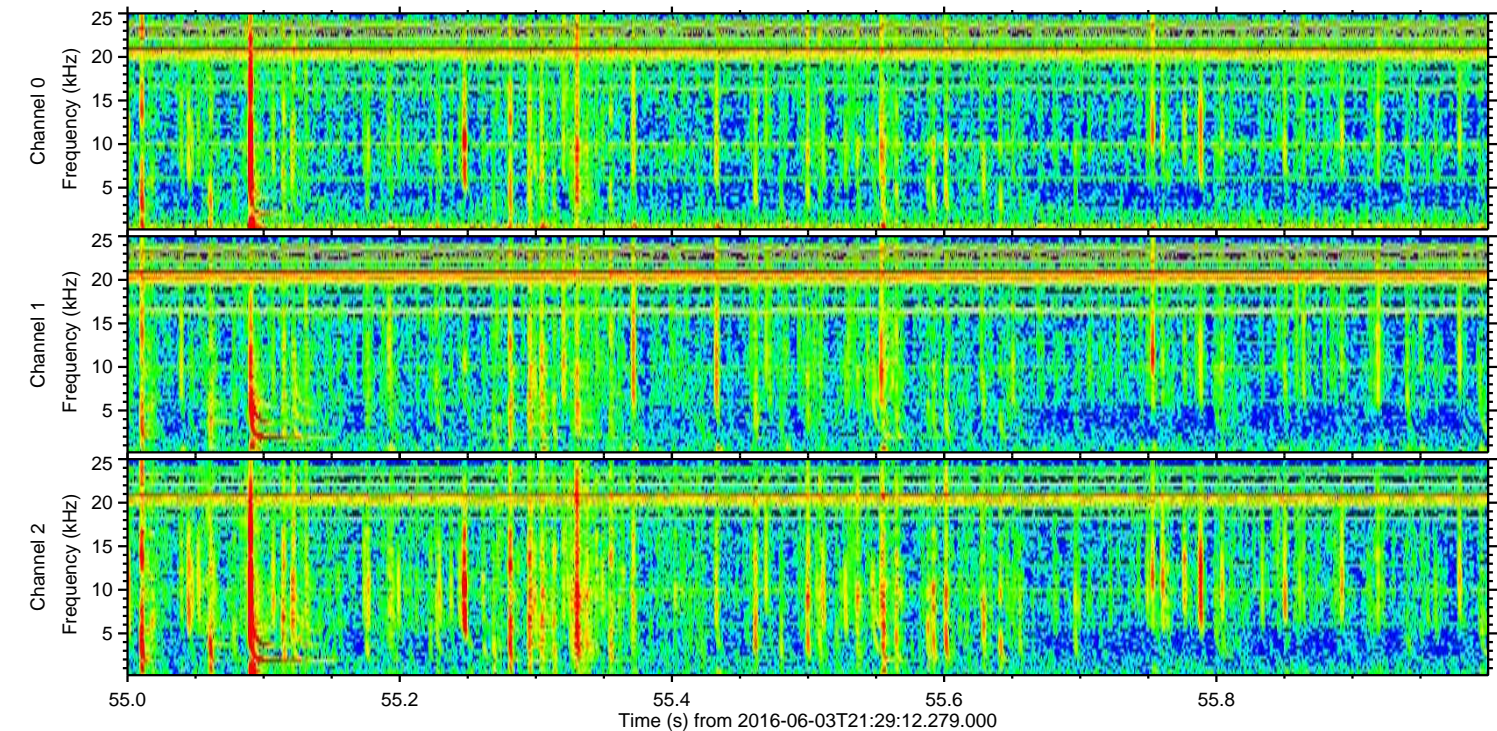
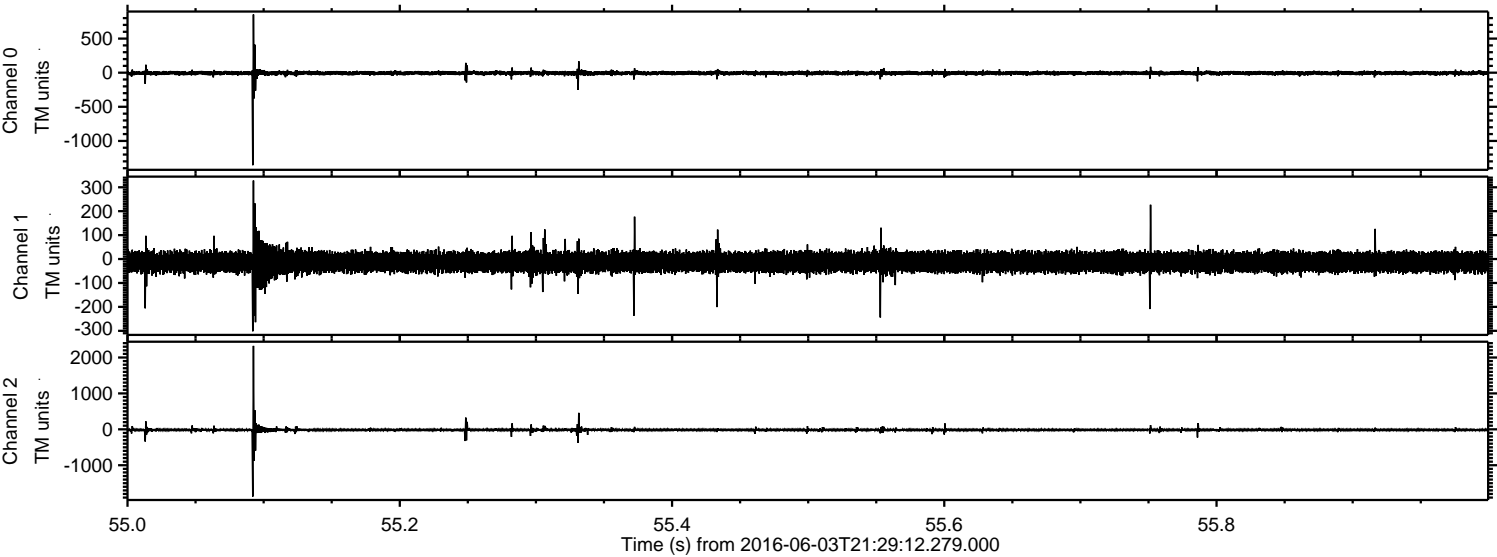
ELMAVAN 3D WAVEFORMS (Measured data sampled at 50 kHz) 51000 packets of 144 samples from 2016-06-03T21:29:12.279.000. Part 134/147

Processed Fri Jun 3 23:37:15 2016 by ELM ver.2012-10-06 from 001\_\_elm20160603\_212911\_\_dat00.bin





Processed Fri Jun 3 23:37:16 2016 by ELM ver.2012-10-06 from 001\_\_elm20160603\_212911\_\_dat00.bin





Processed Fri Jun 3 23:37:17 2016 by ELM ver.2012-10-06 from 001\_\_elm20160603\_212911\_\_dat00.bin

