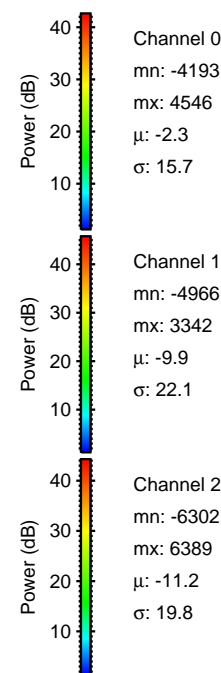
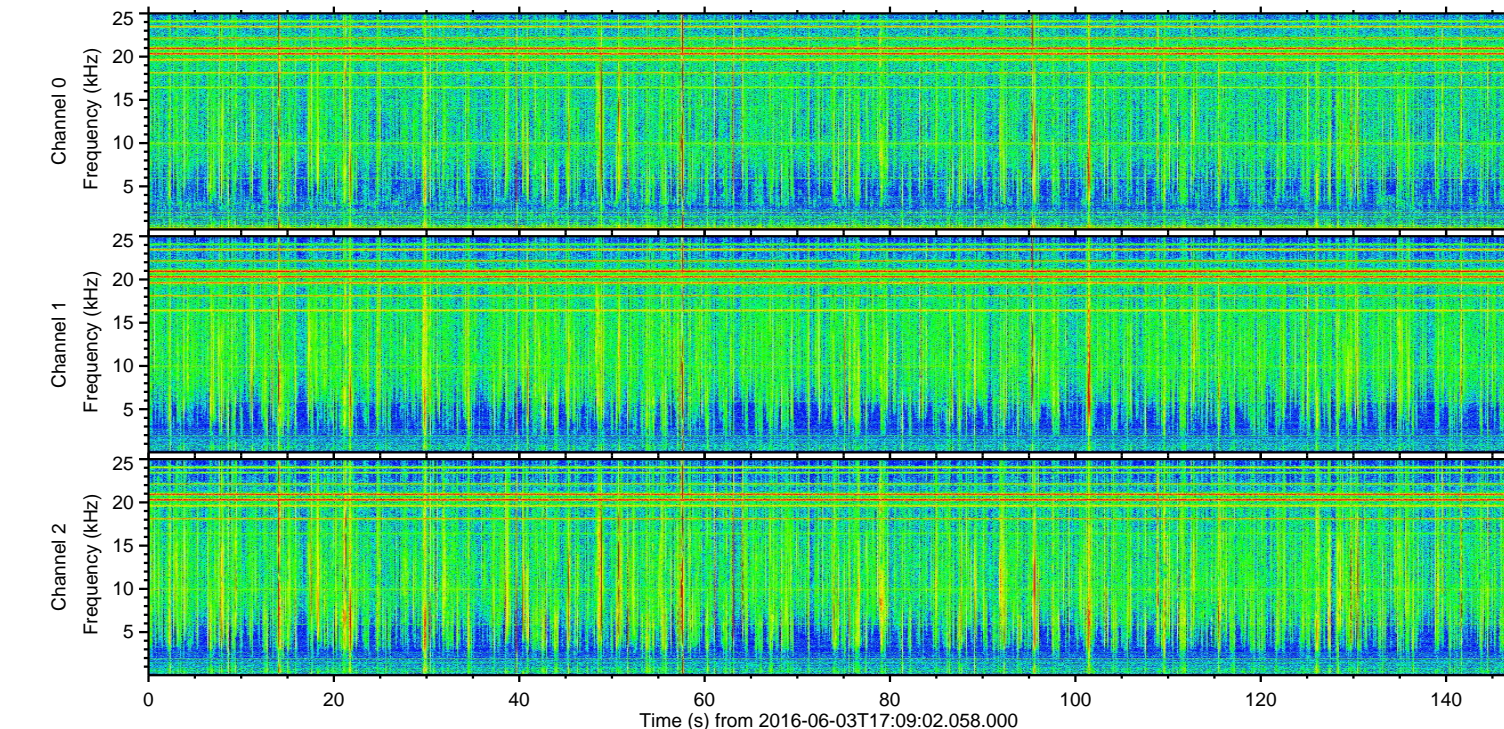
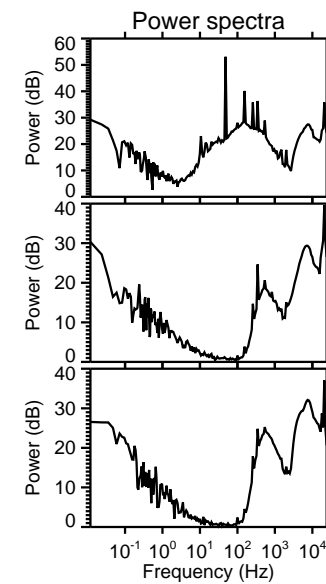
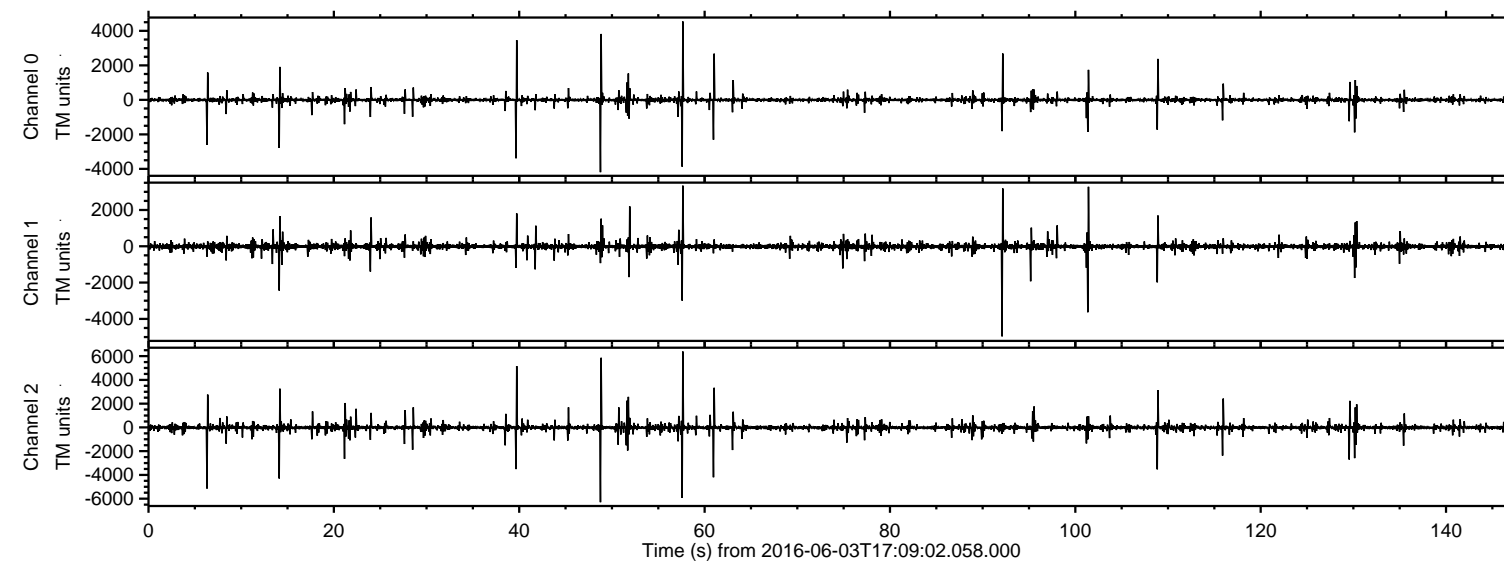


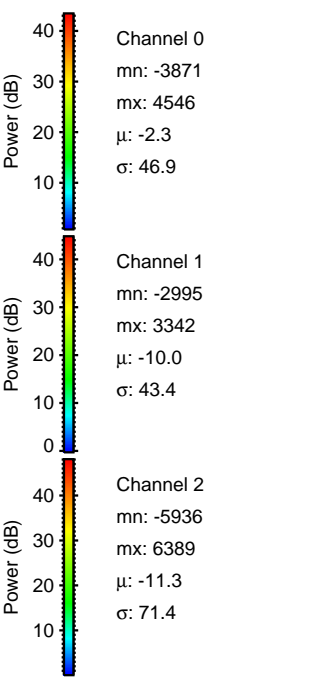
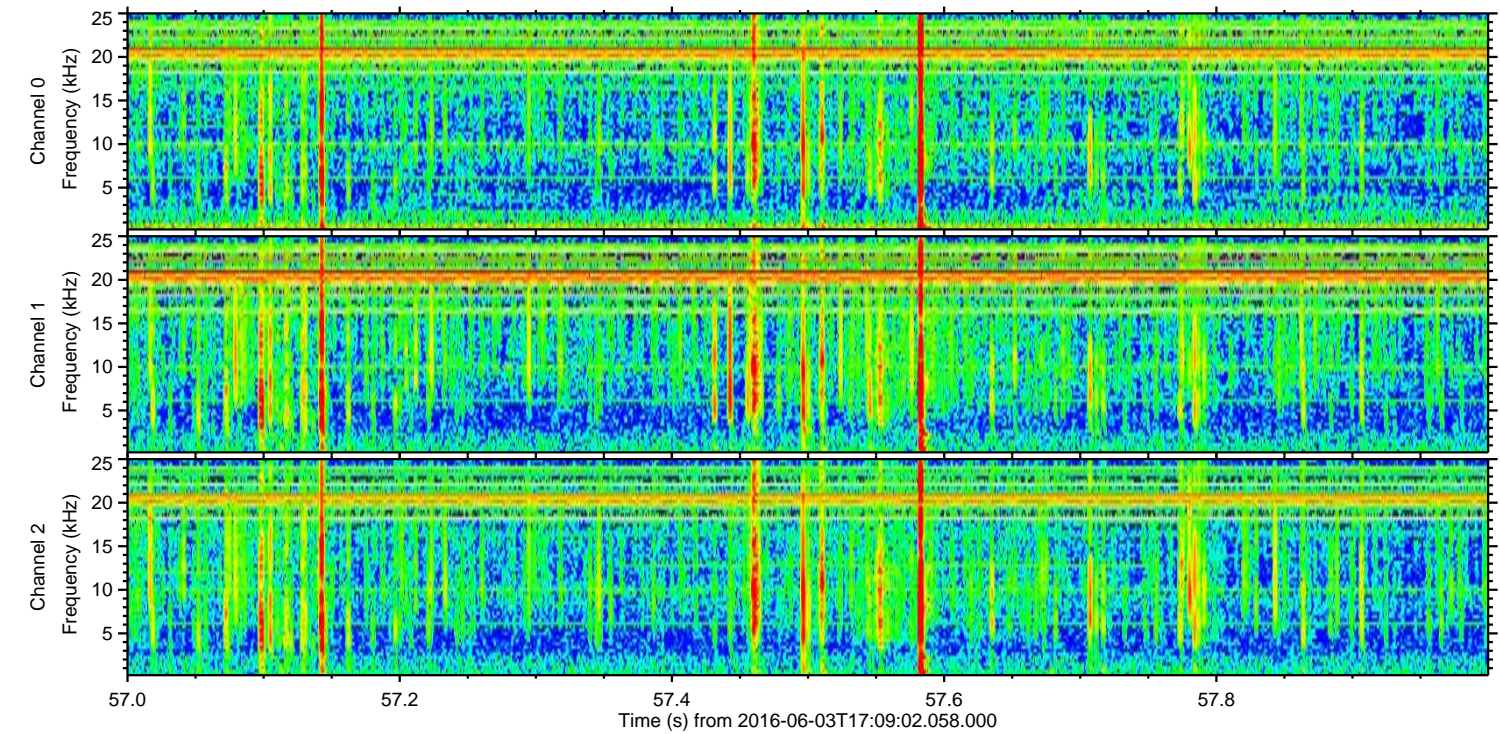
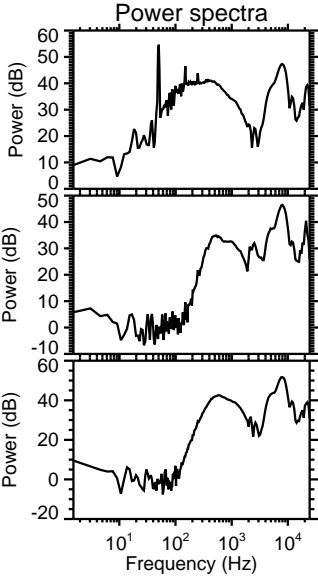
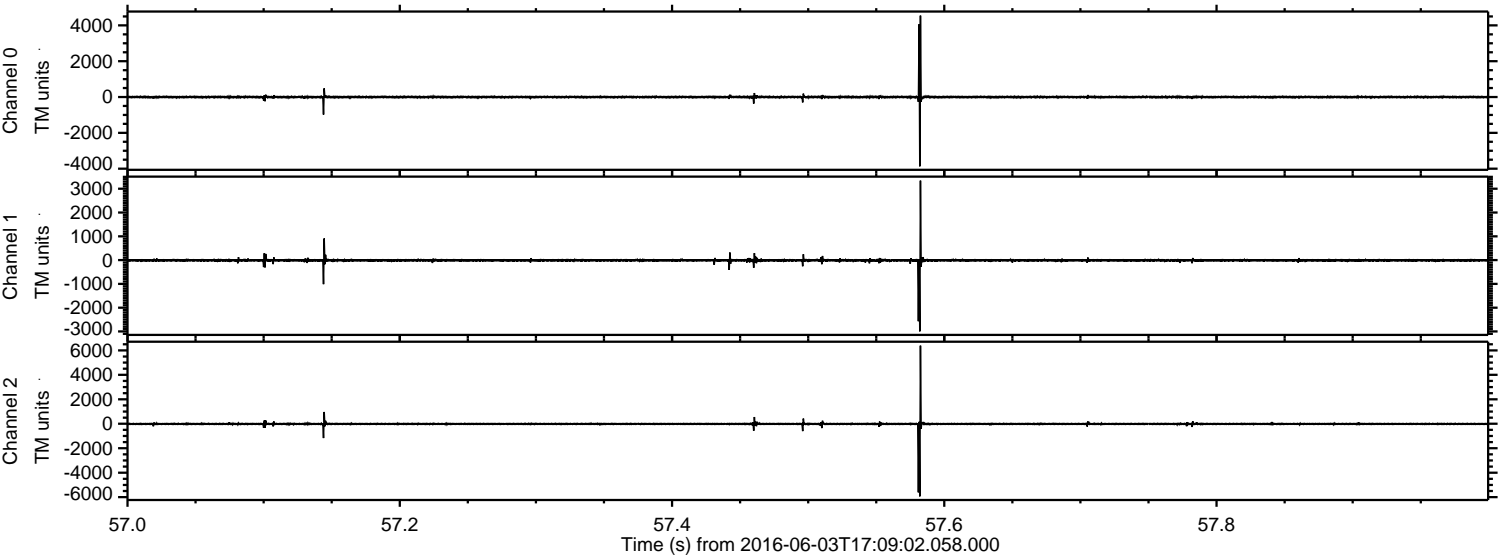
# ELMAVAN 3D WAVEFORMS (Measured data sampled at 50 kHz) 51000 packets of 144 samples from 2016-06-03T17:09:02.058.000.

Processed Fri Jun 3 19:16:58 2016 by ELM ver.2012-10-06 from 001\_\_elm20160603\_170901\_\_dat00.bin



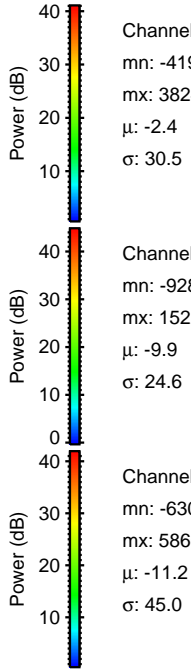
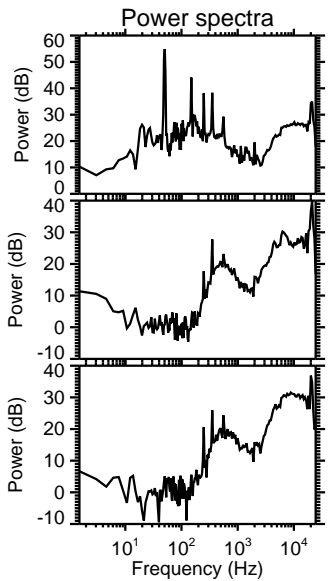
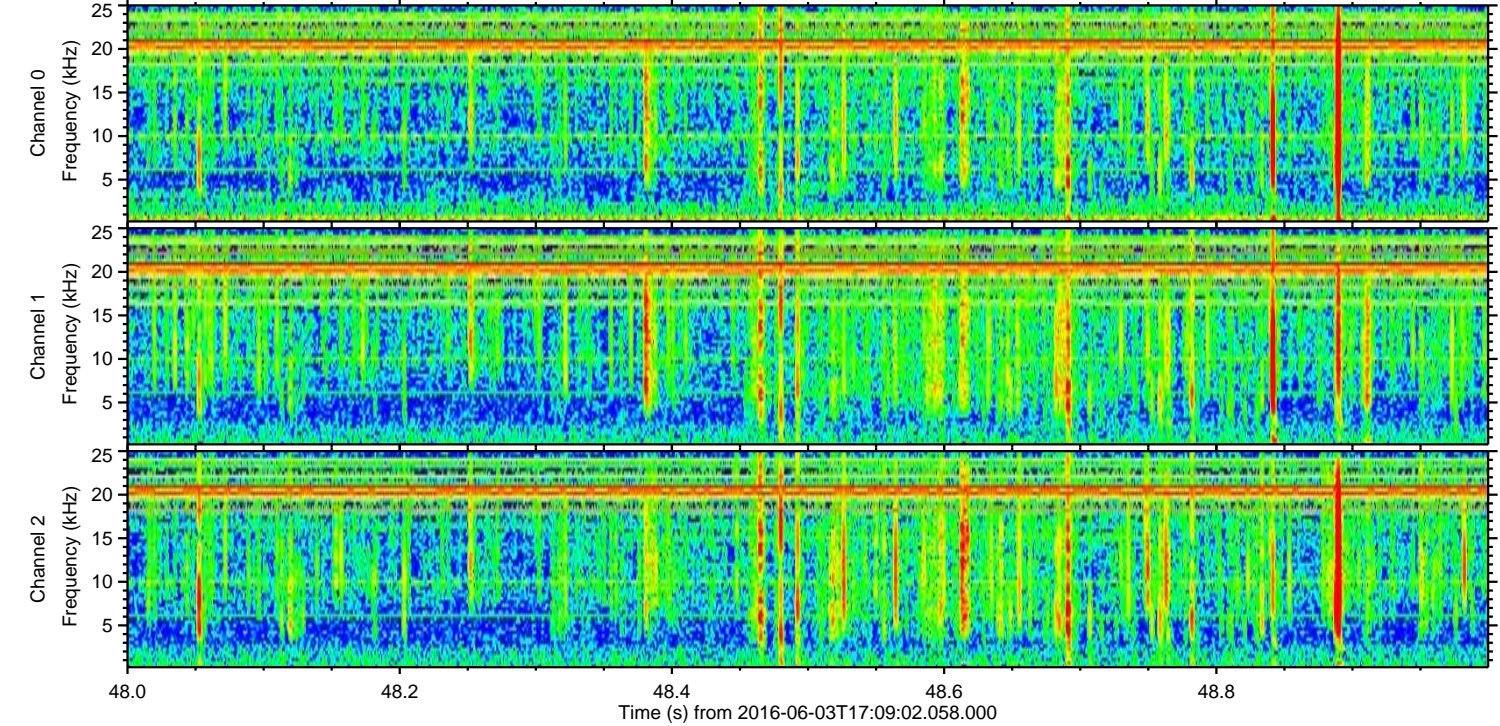
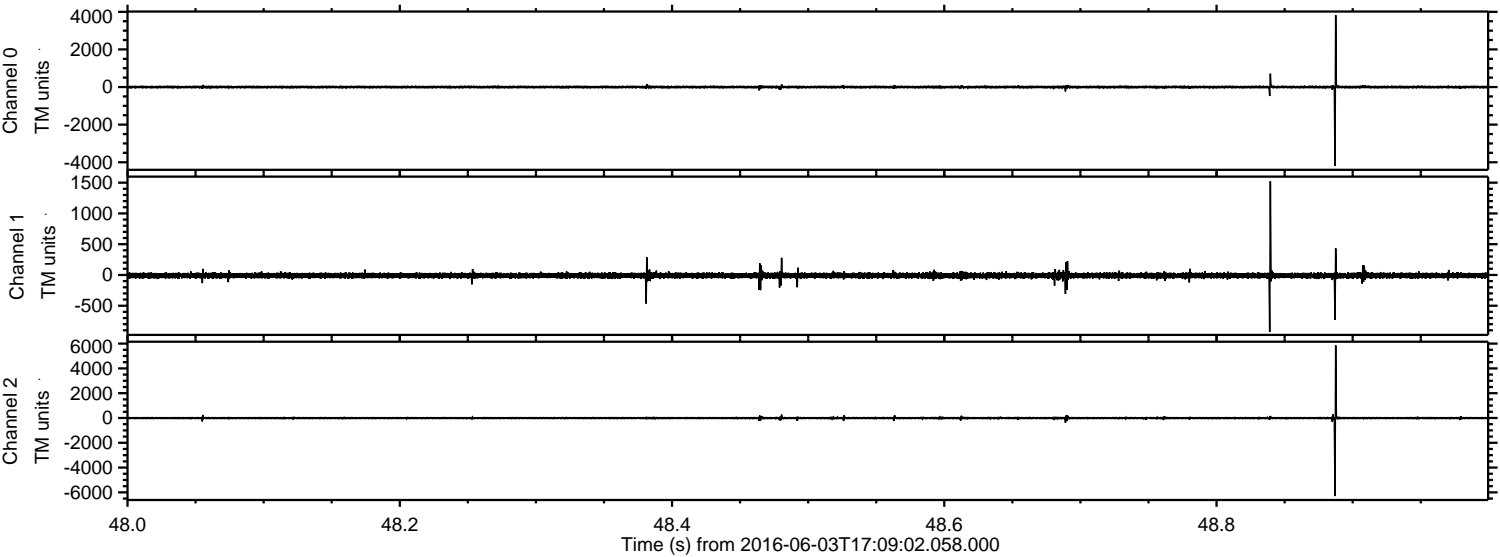


Processed Fri Jun 3 19:17:09 2016 by ELM ver.2012-10-06 from 001\_\_elm20160603\_170901\_\_dat00.bin



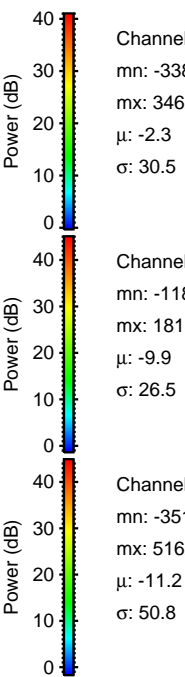
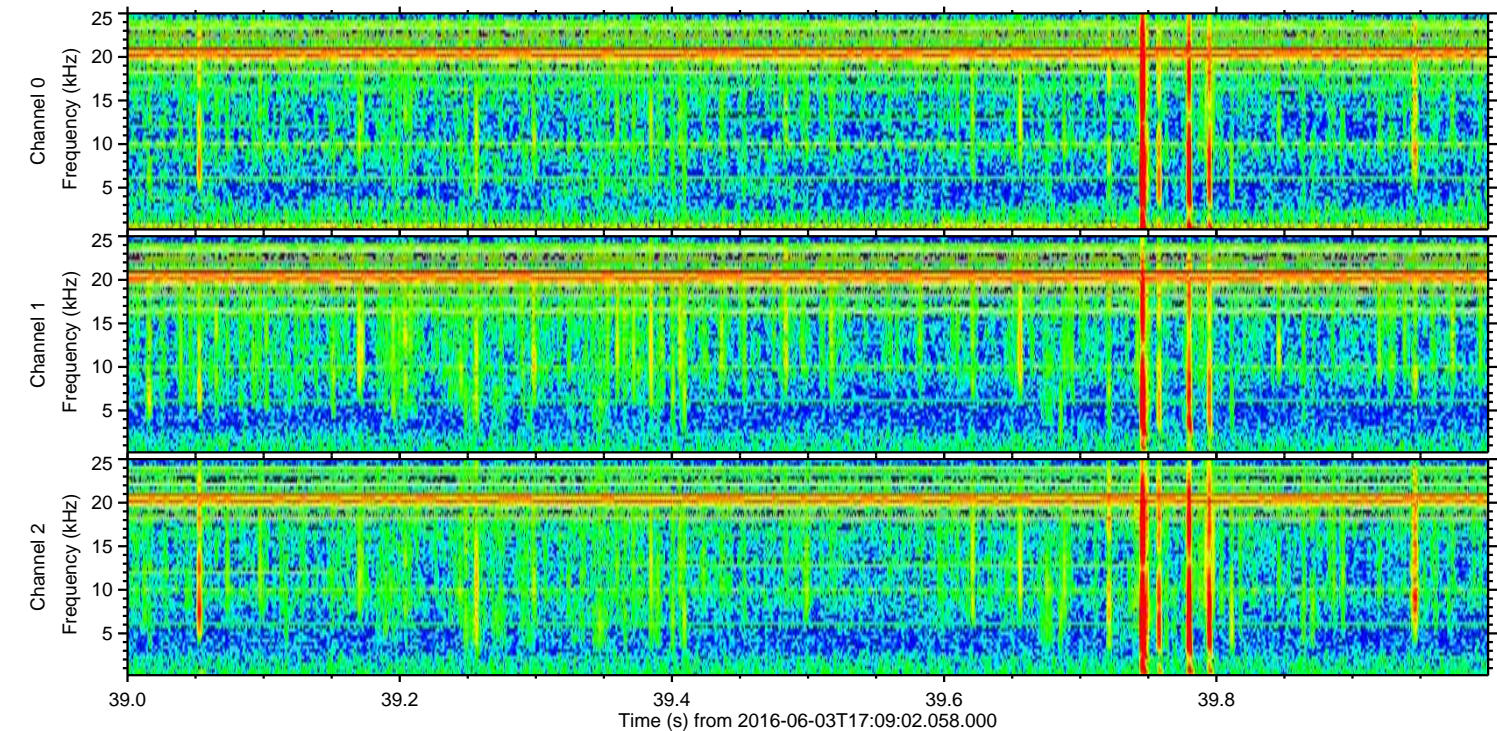
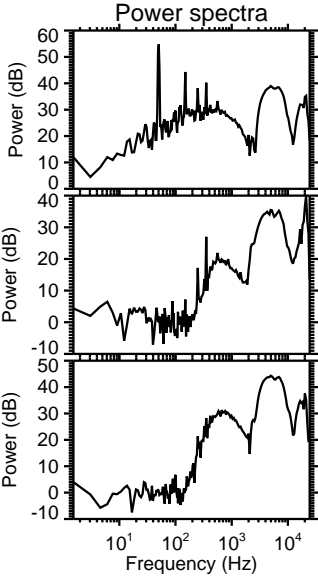
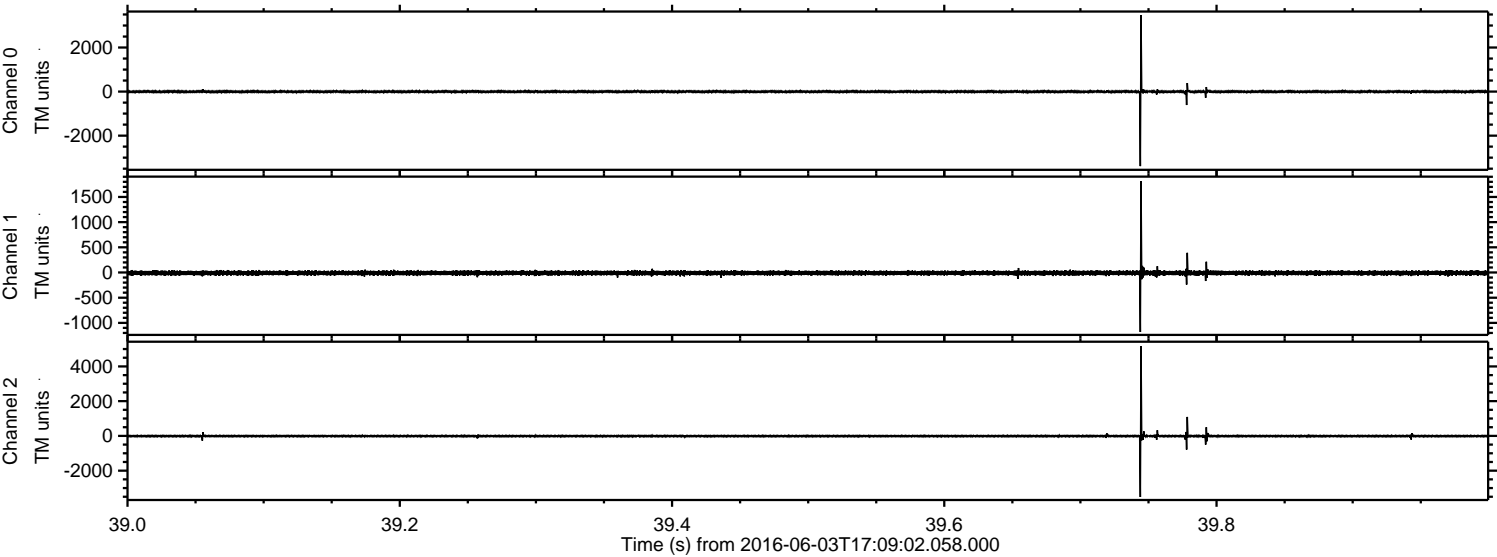


Processed Fri Jun 3 19:17:10 2016 by ELM ver.2012-10-06 from 001\_\_elm20160603\_170901\_\_dat00.bin



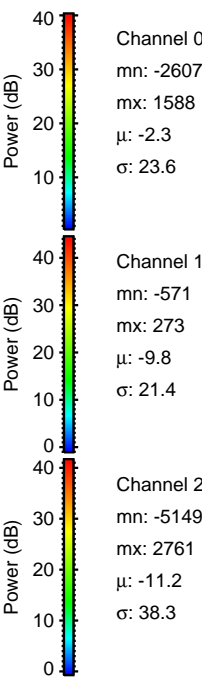
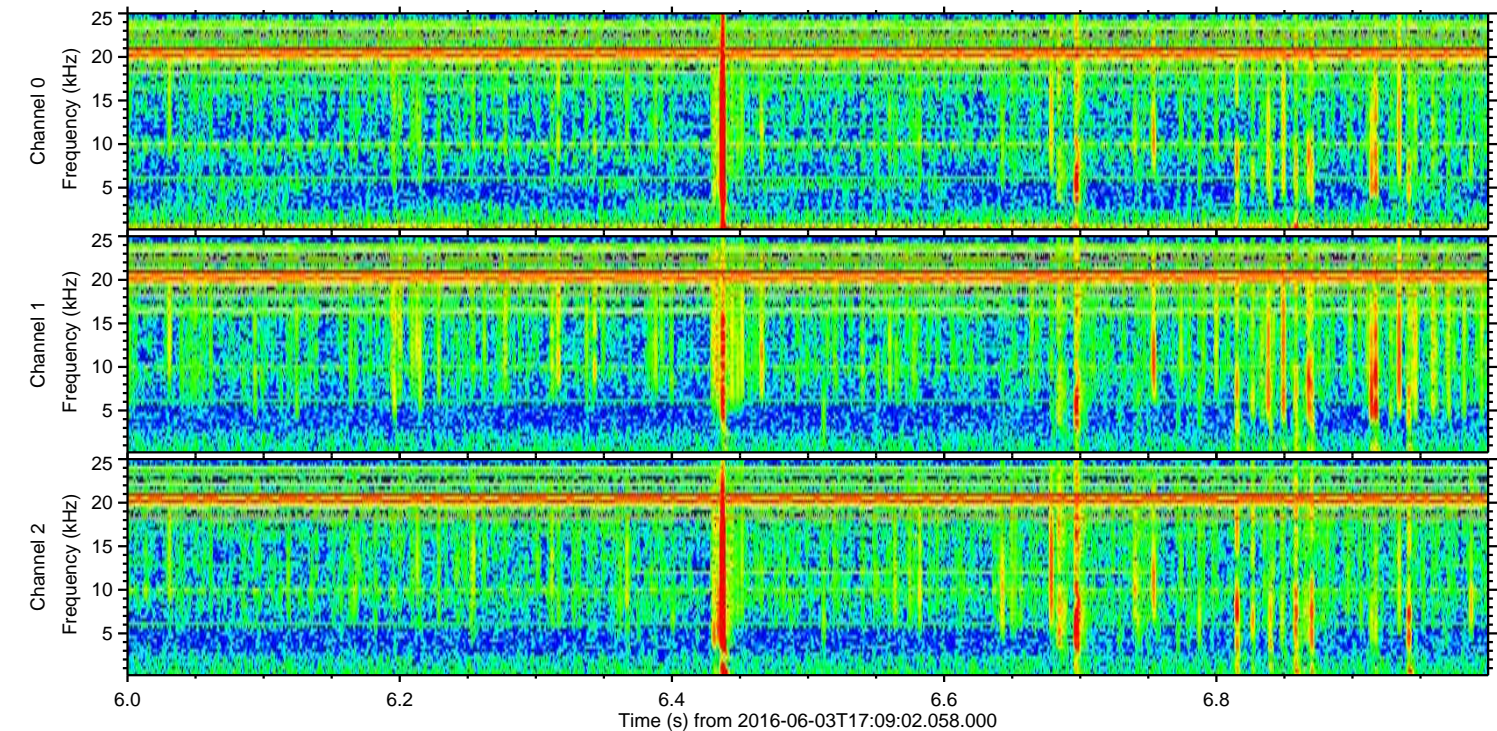
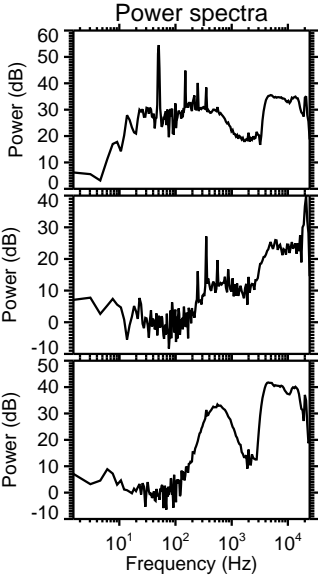
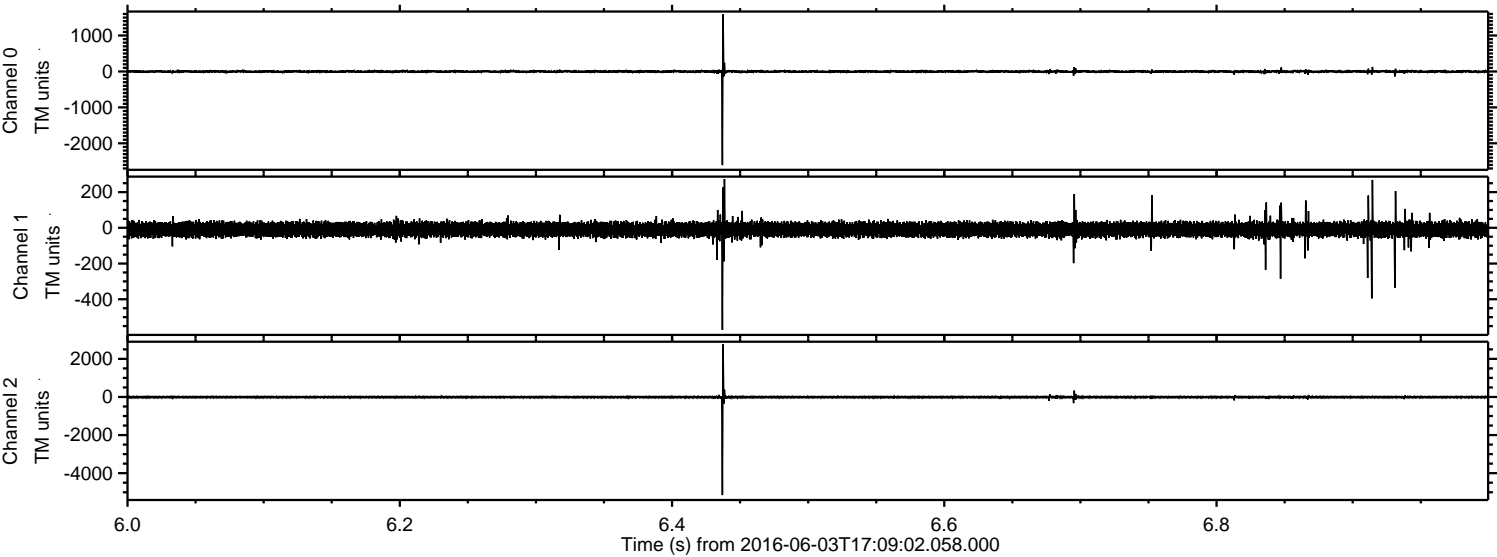


Processed Fri Jun 3 19:17:11 2016 by ELM ver.2012-10-06 from 001\_\_elm20160603\_170901\_\_dat00.bin



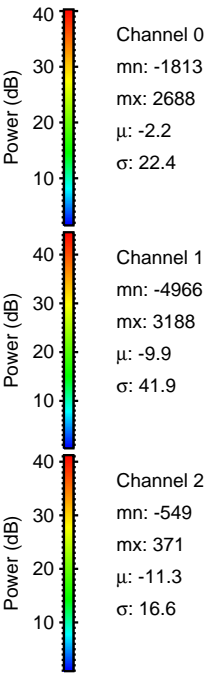
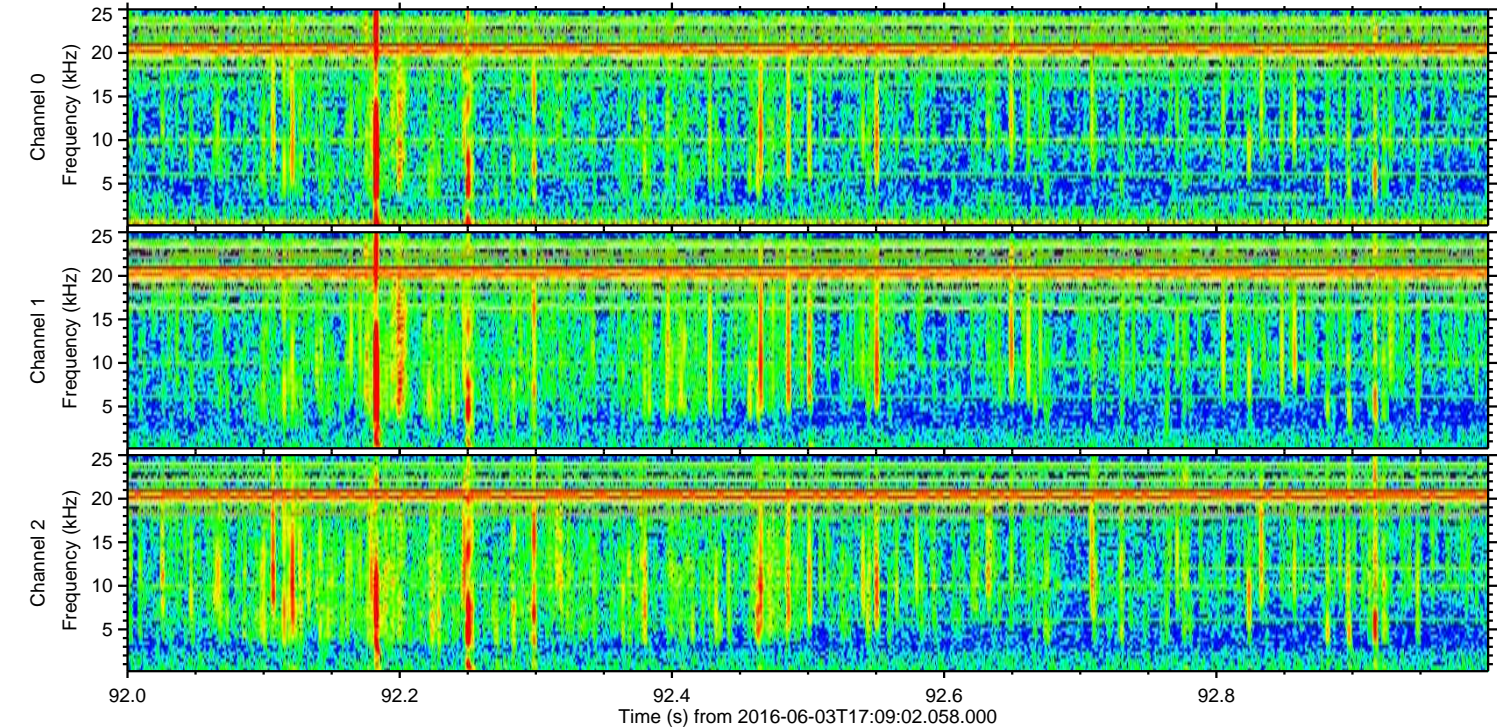
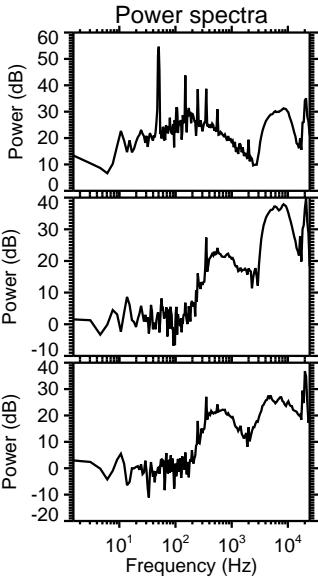
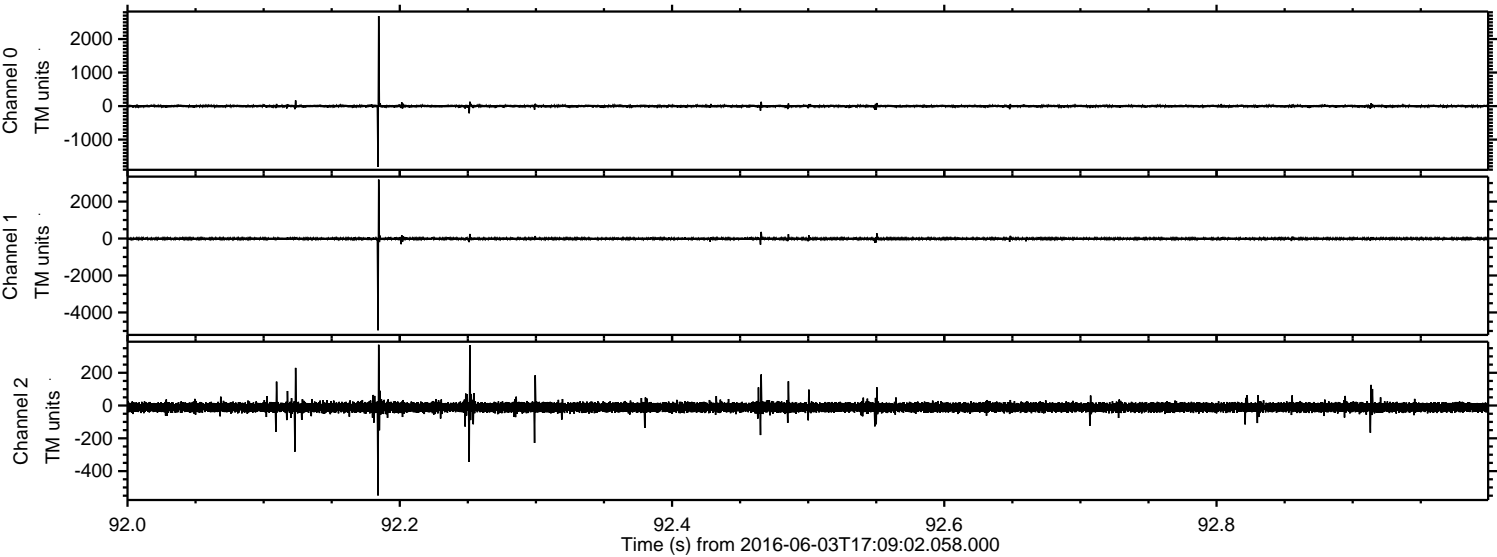


Processed Fri Jun 3 19:17:12 2016 by ELM ver.2012-10-06 from 001\_\_elm20160603\_170901\_\_dat00.bin



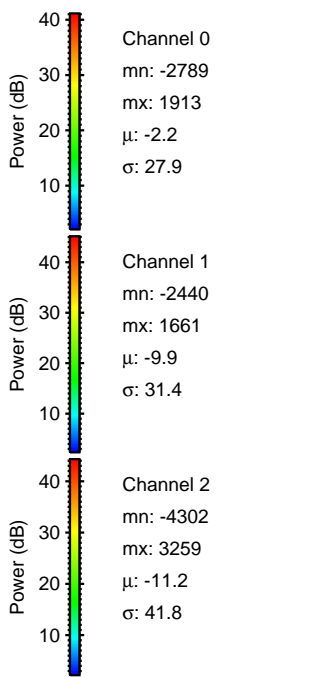
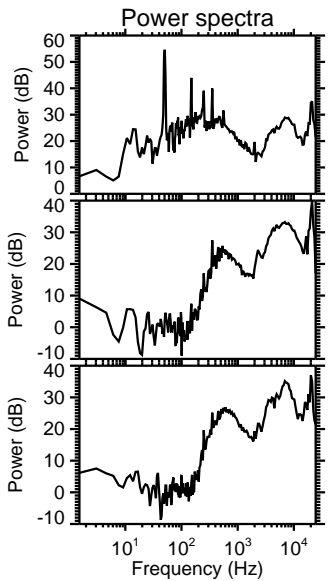
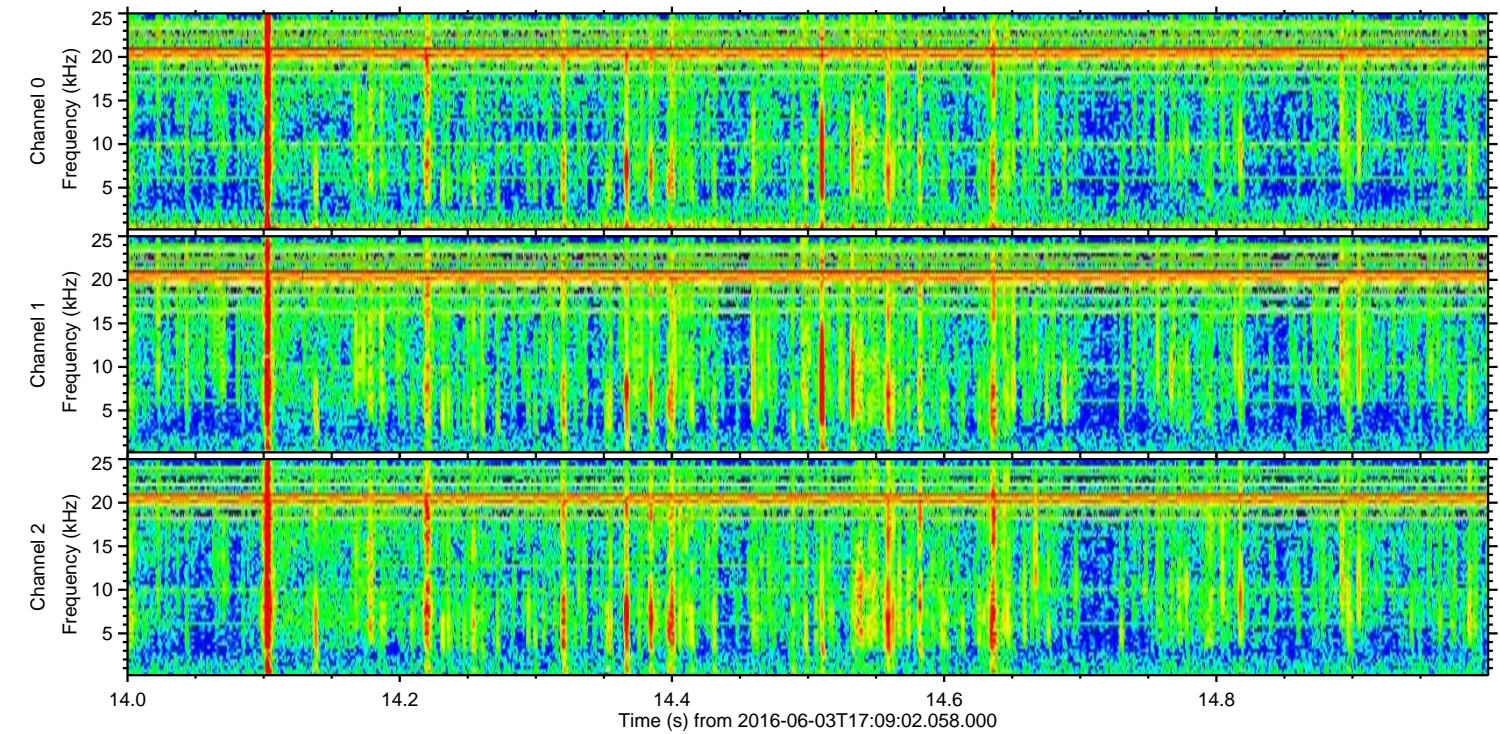
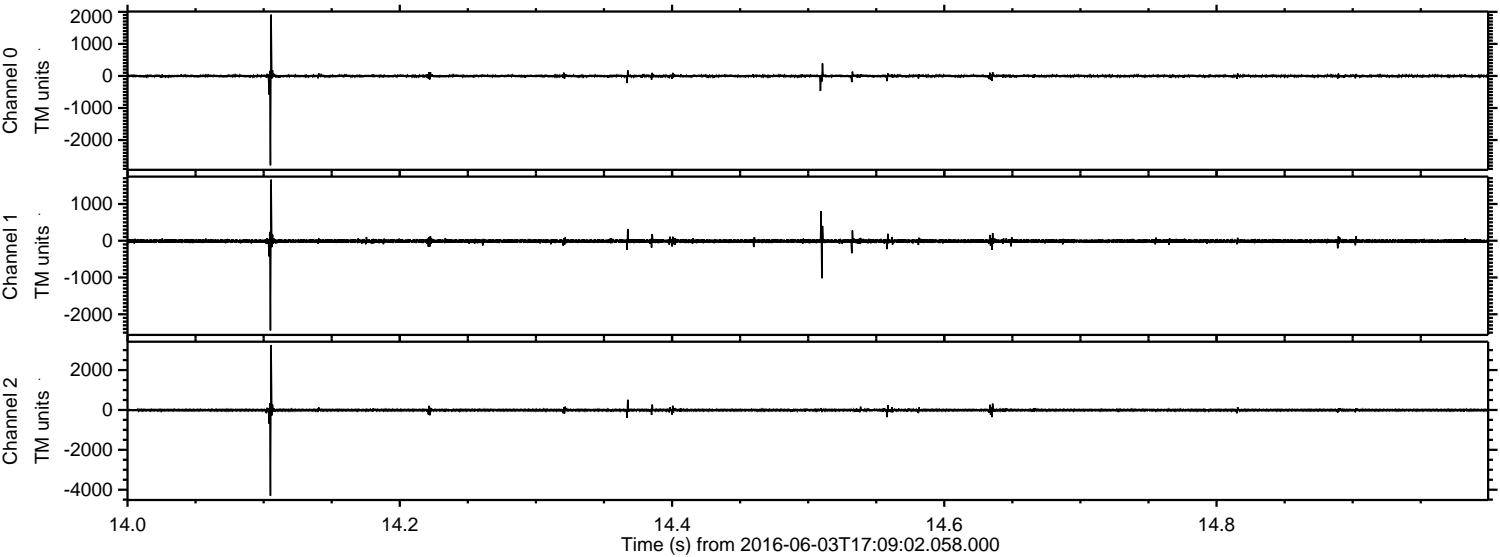


Processed Fri Jun 3 19:17:13 2016 by ELM ver.2012-10-06 from 001\_\_elm20160603\_170901\_\_dat00.bin



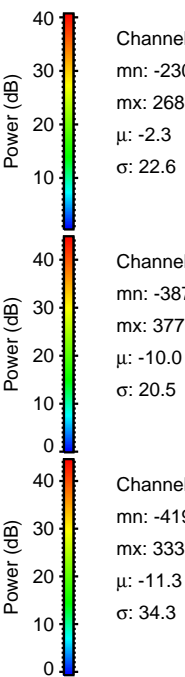
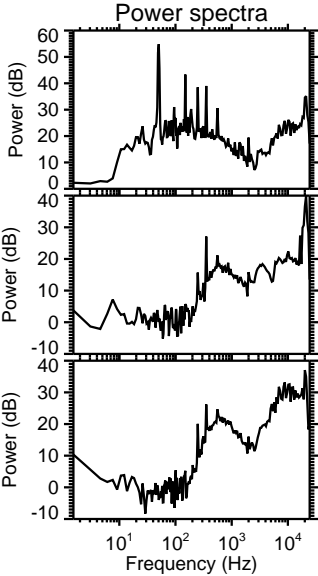
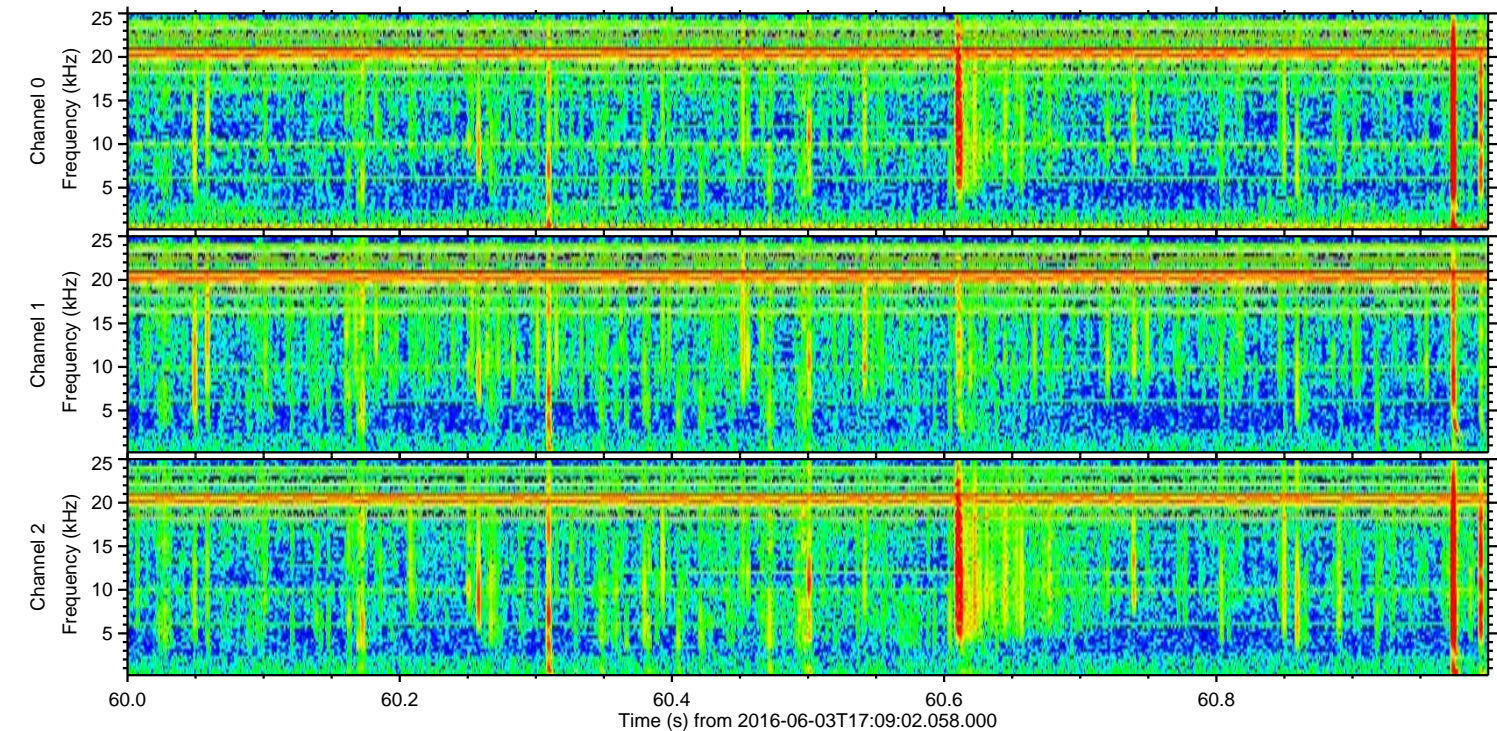
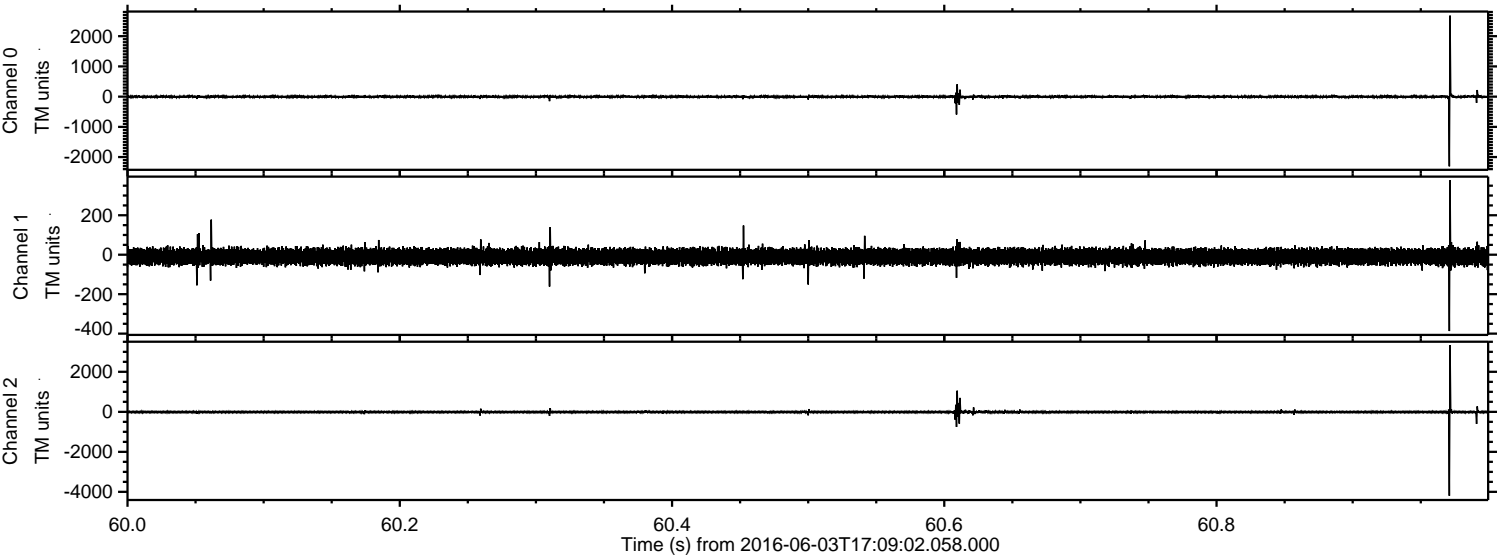


Processed Fri Jun 3 19:17:14 2016 by ELM ver.2012-10-06 from 001\_\_elm20160603\_170901\_\_dat00.bin





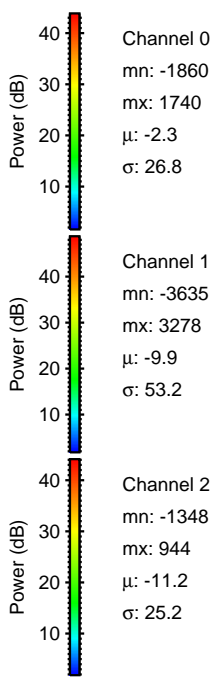
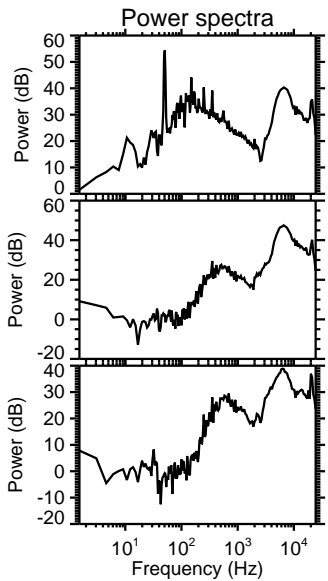
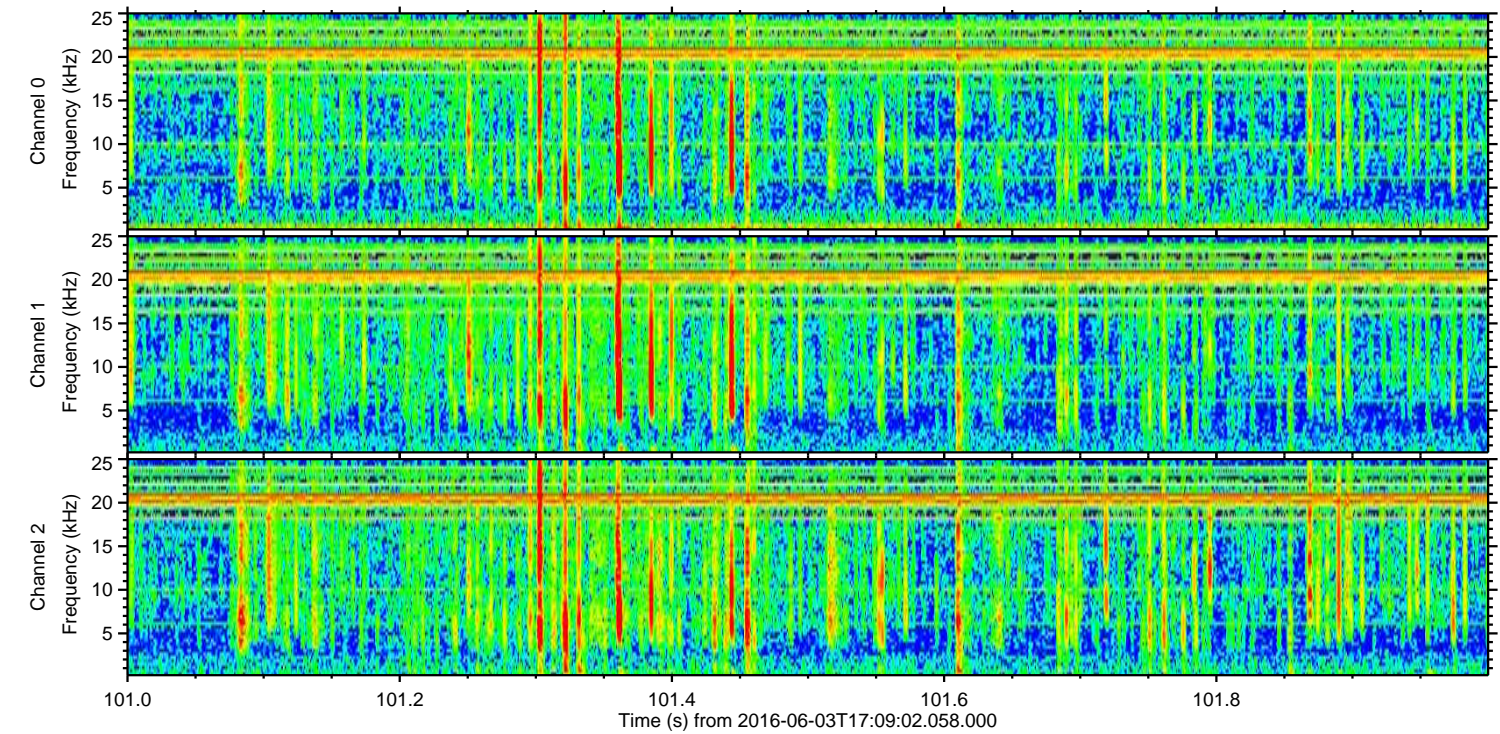
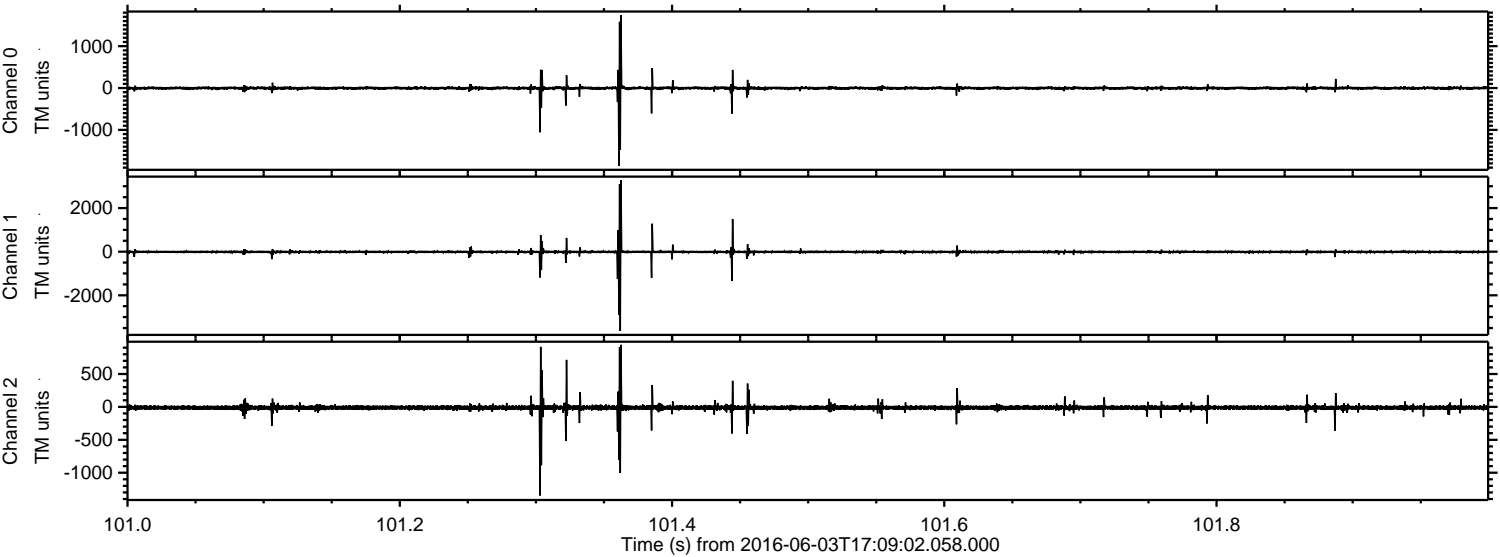
Processed Fri Jun 3 19:17:15 2016 by ELM ver.2012-10-06 from 001\_\_elm20160603\_170901\_\_dat00.bin





ELMAVAN 3D WAVEFORMS (Measured data sampled at 50 kHz) 51000 packets of 144 samples from 2016-06-03T17:09:02.058.000. Part 102/147

Processed Fri Jun 3 19:17:16 2016 by ELM ver.2012-10-06 from 001\_\_elm20160603\_170901\_\_dat00.bin





ELMAVAN 3D WAVEFORMS (Measured data sampled at 50 kHz) 51000 packets of 144 samples from 2016-06-03T17:09:02.058.000. Part 109/147

Processed Fri Jun 3 19:17:17 2016 by ELM ver.2012-10-06 from 001\_\_elm20160603\_170901\_\_dat00.bin

