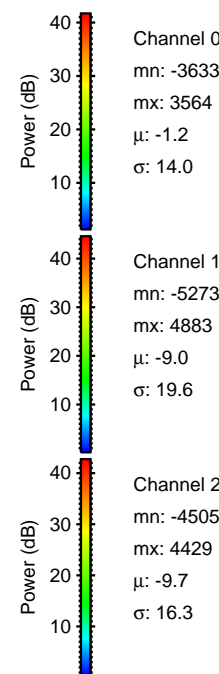
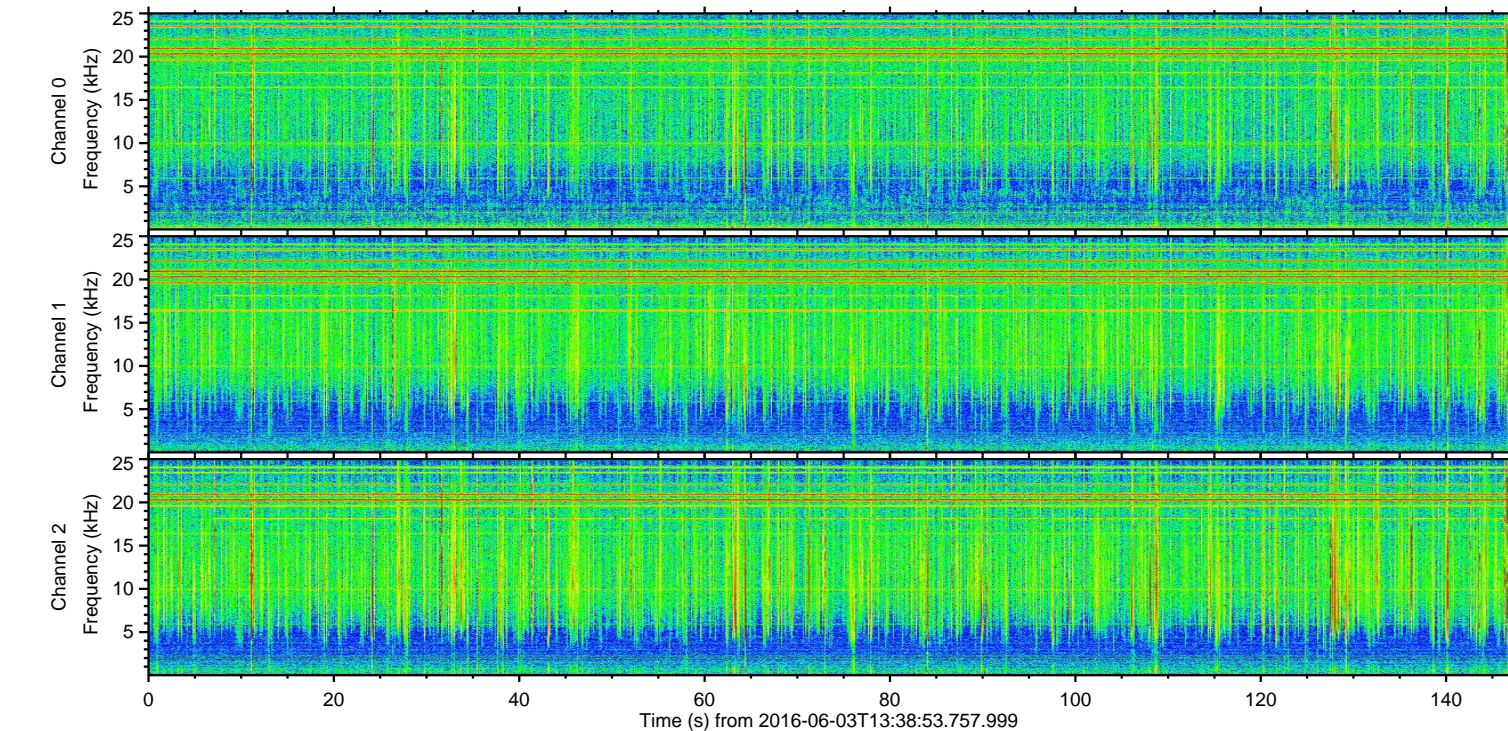
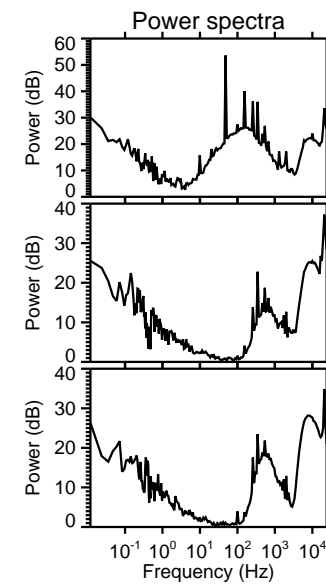
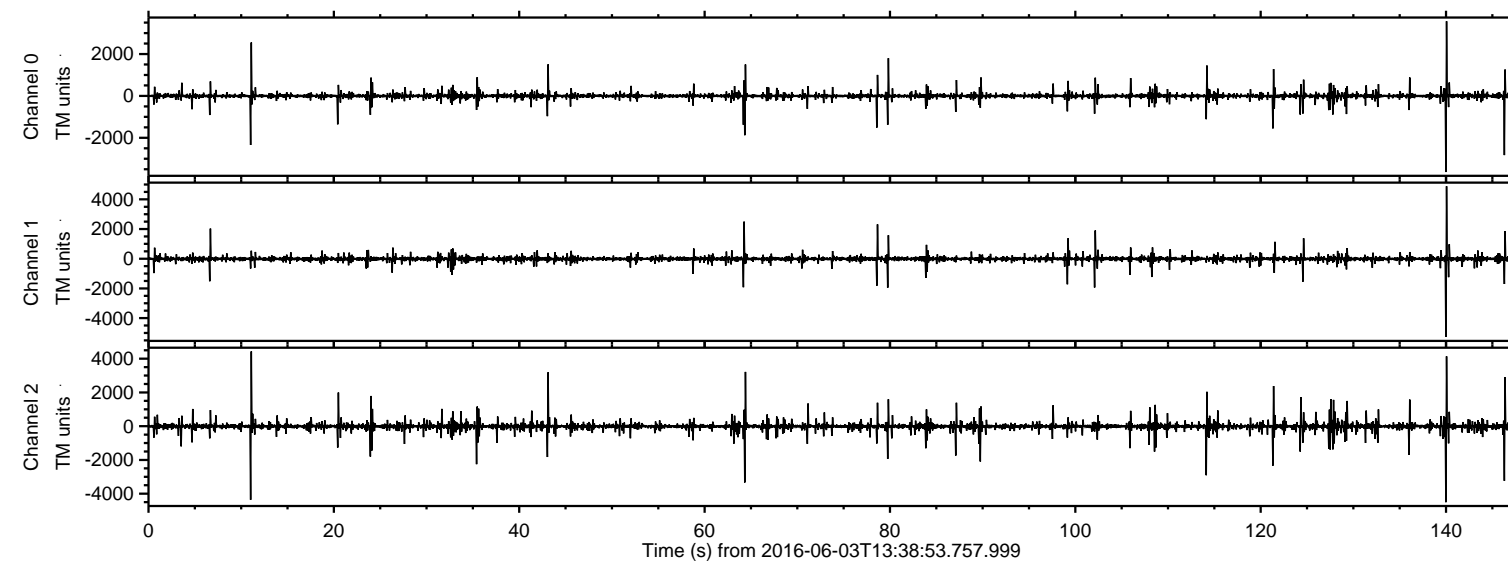


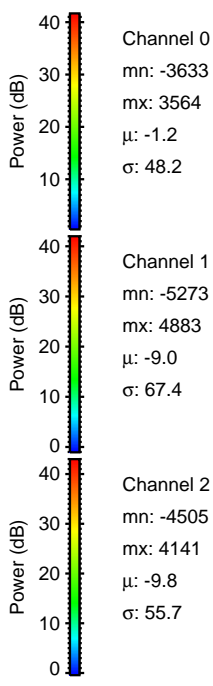
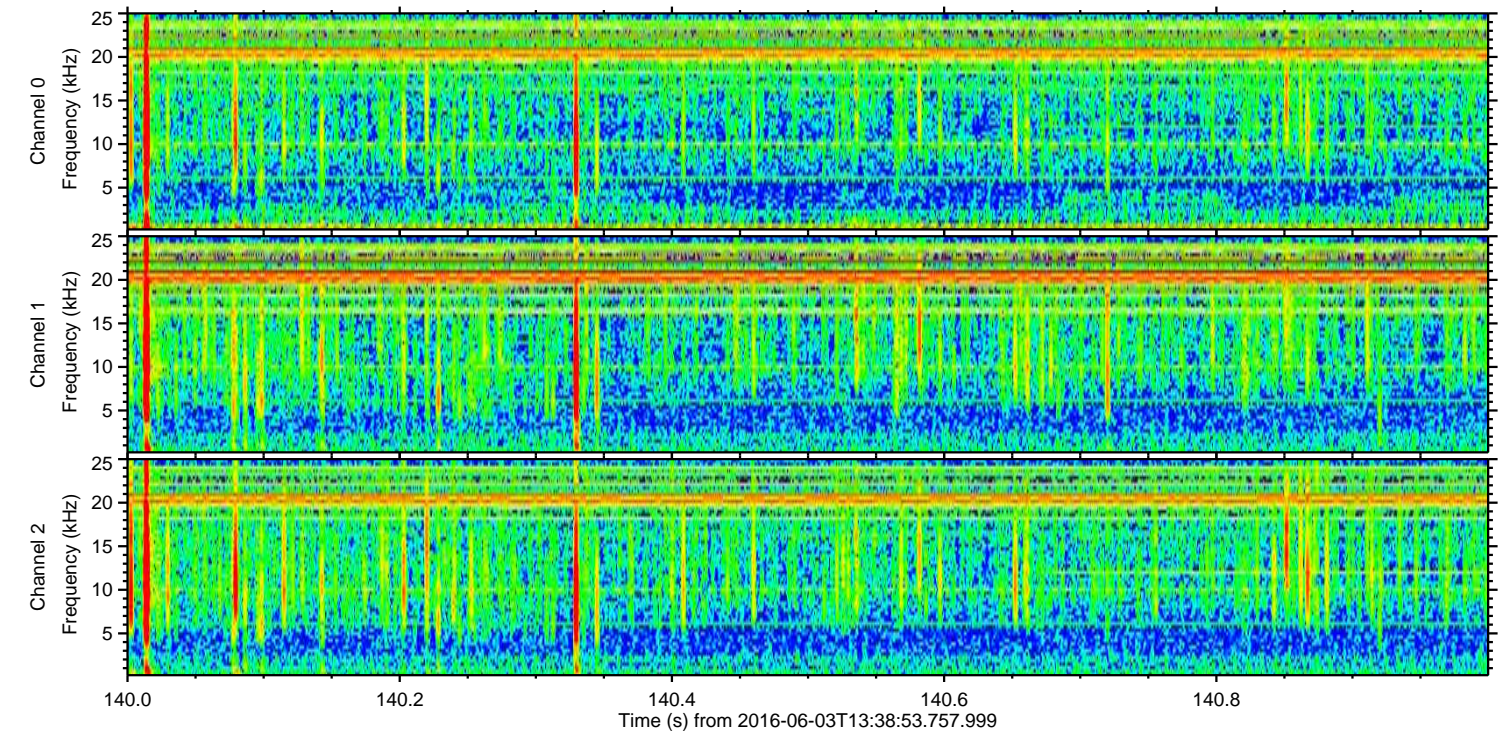
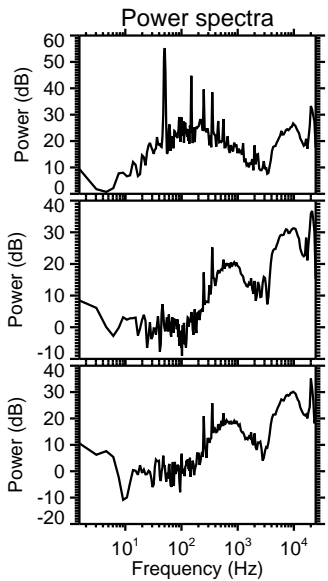
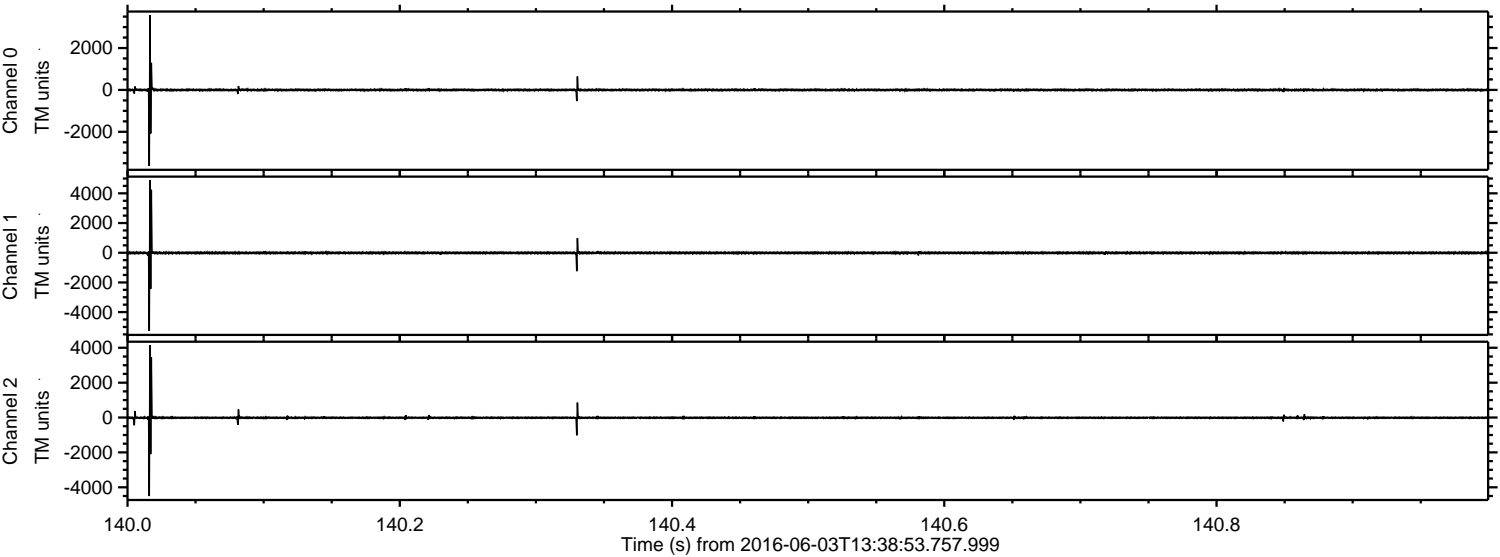
ELMAVAN 3D WAVEFORMS (Measured data sampled at 50 kHz) 51000 packets of 144 samples from 2016-06-03T13:38:53.757.999.

Processed Fri Jun 3 15:46:28 2016 by ELM ver.2012-10-06 from 001__elm20160603_133852__dat00.bin



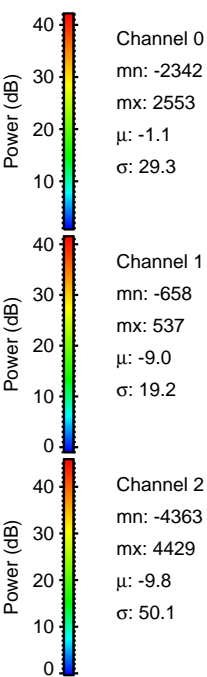
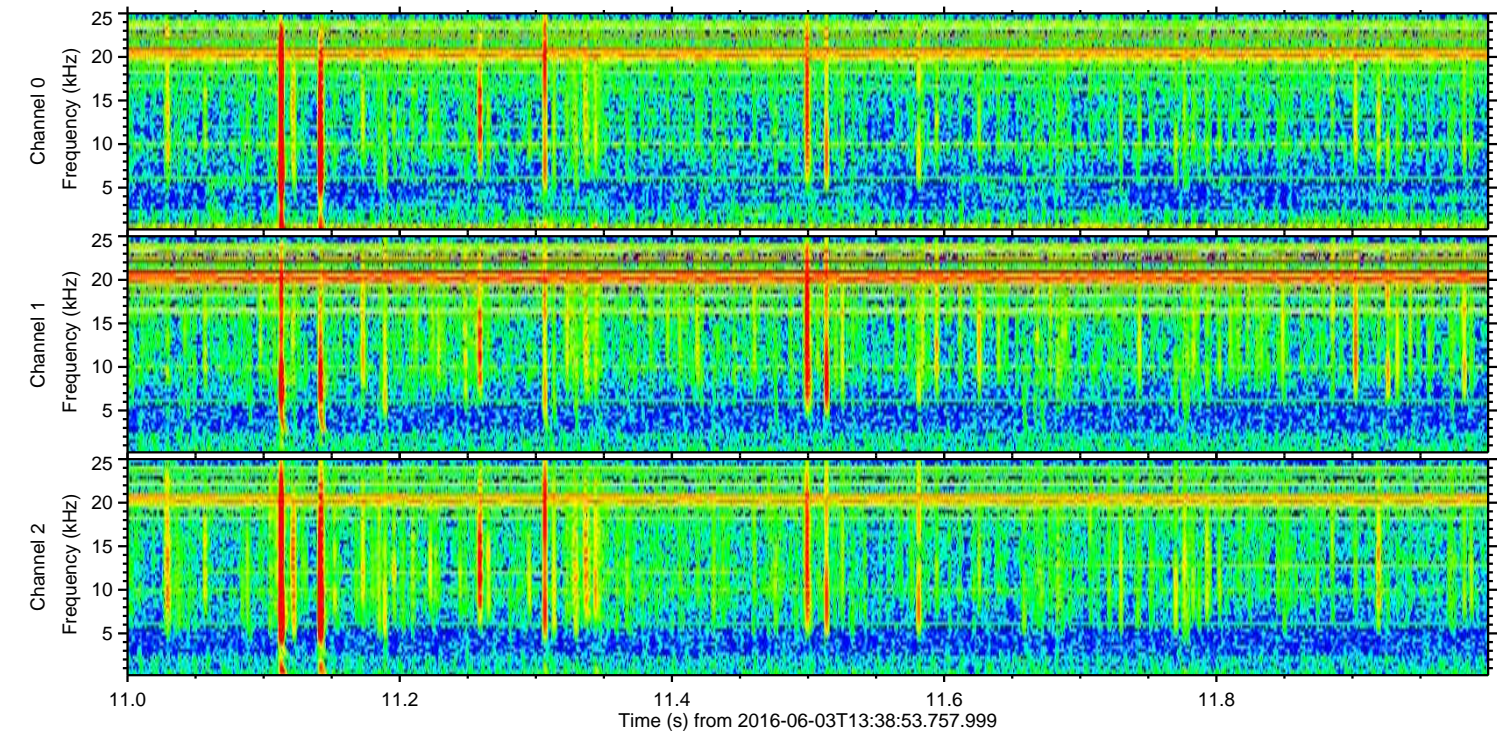
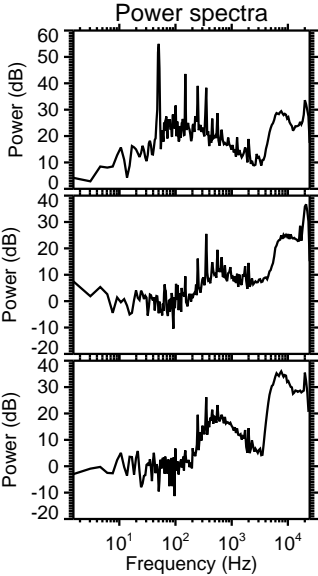
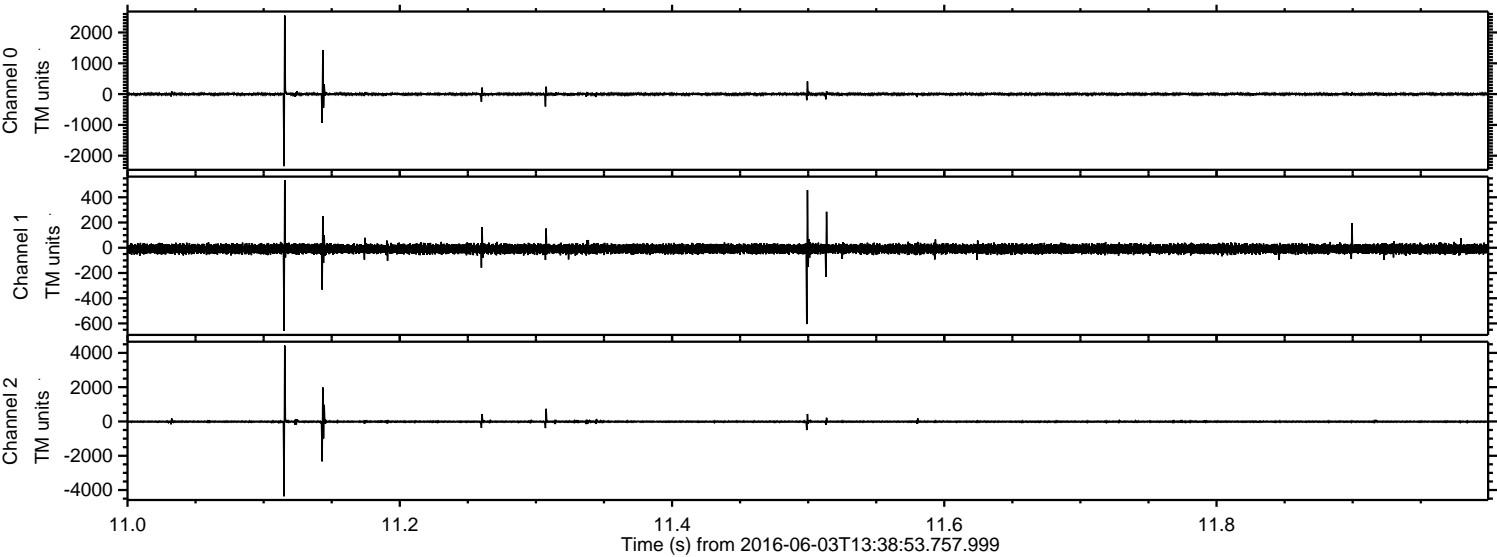
ELMAVAN 3D WAVEFORMS (Measured data sampled at 50 kHz) 51000 packets of 144 samples from 2016-06-03T13:38:53.757.999. Part 141/147

Processed Fri Jun 3 15:46:39 2016 by ELM ver.2012-10-06 from 001__elm20160603_133852__dat00.bin



ELMAVAN 3D WAVEFORMS (Measured data sampled at 50 kHz) 51000 packets of 144 samples from 2016-06-03T13:38:53.757.999. Part 12/147

Processed Fri Jun 3 15:46:40 2016 by ELM ver.2012-10-06 from 001__elm20160603_133852__dat00.bin

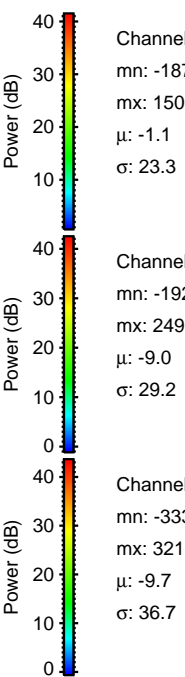
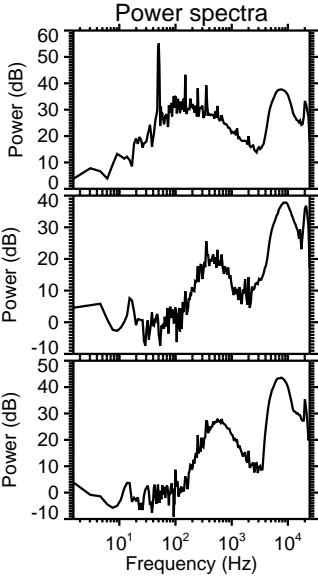
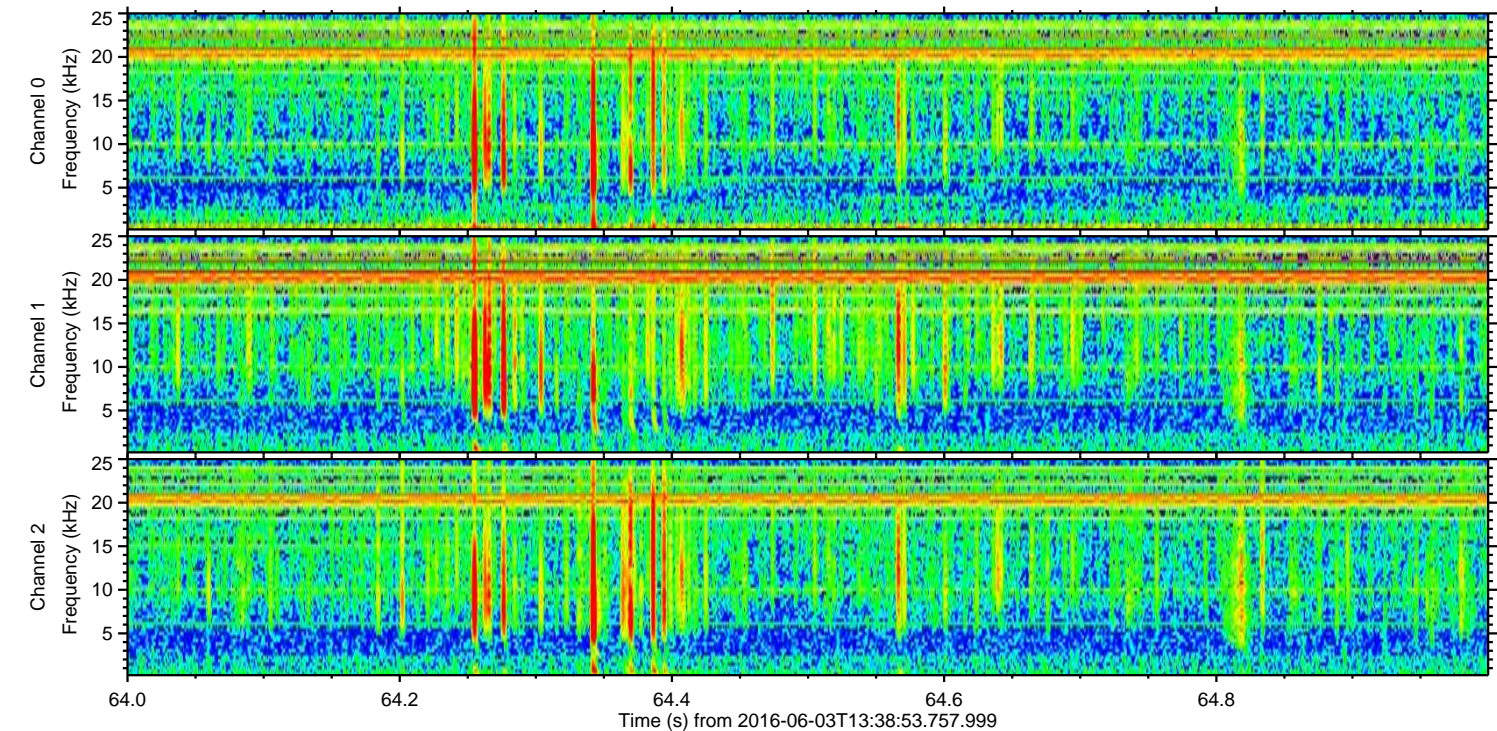
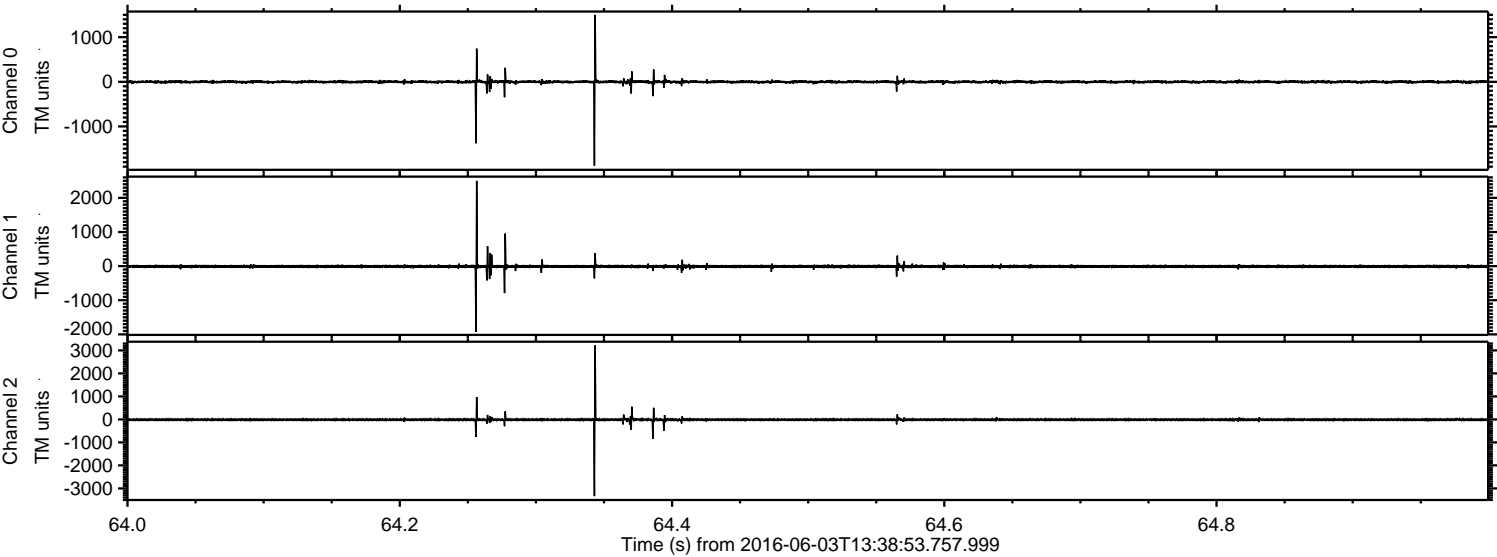


Channel 0
mn: -2342
mx: 2553
 μ : -1.1
 σ : 29.3

Channel 1
mn: -658
mx: 537
 μ : -9.0
 σ : 19.2

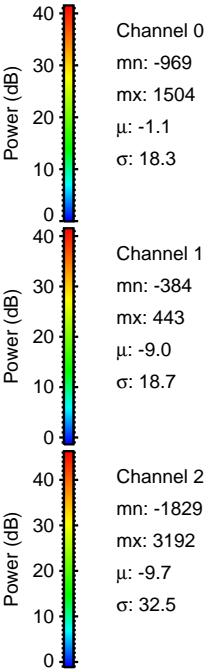
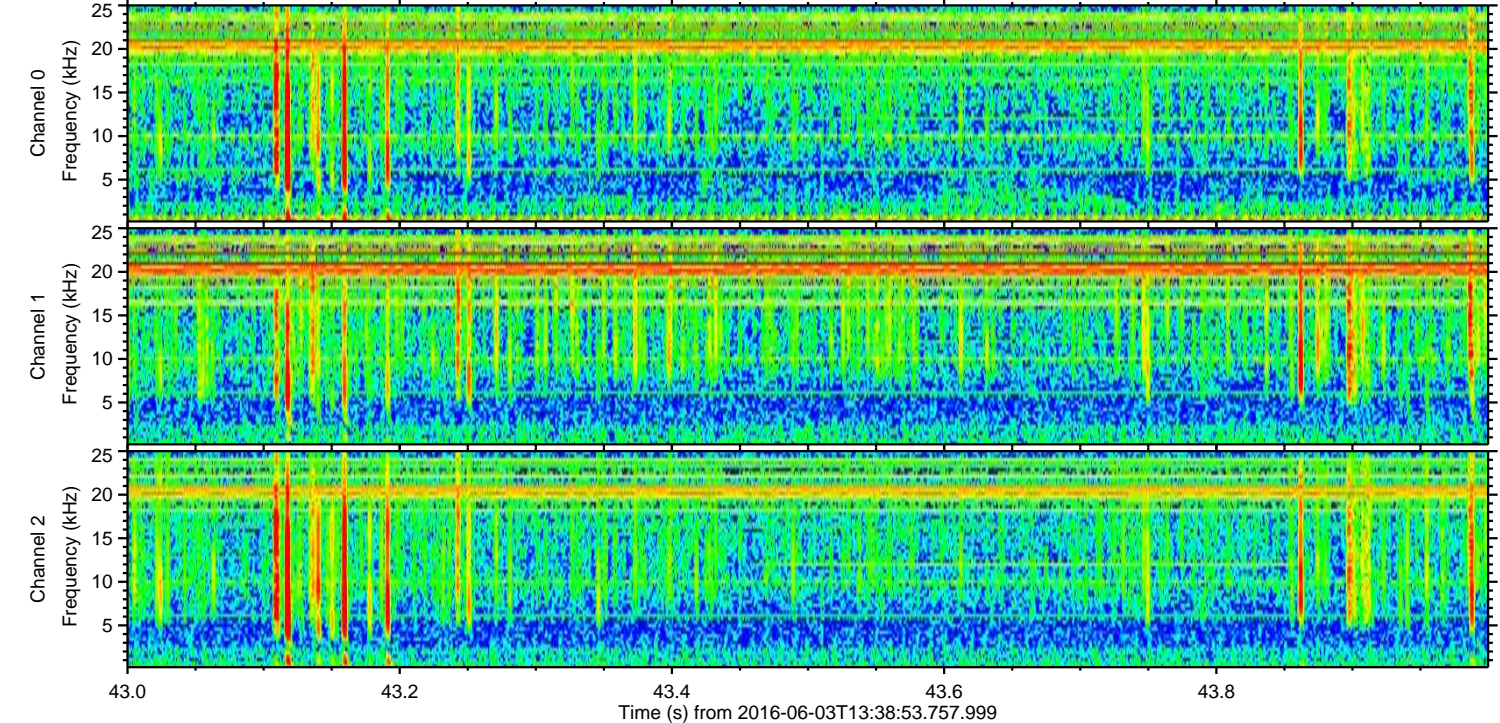
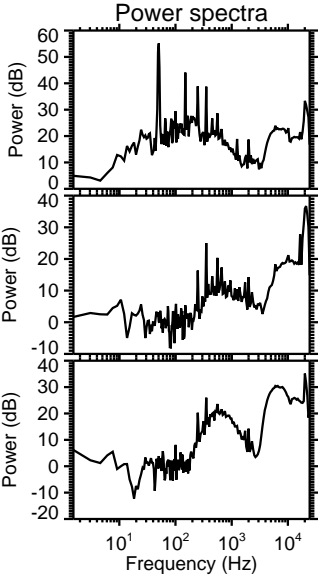
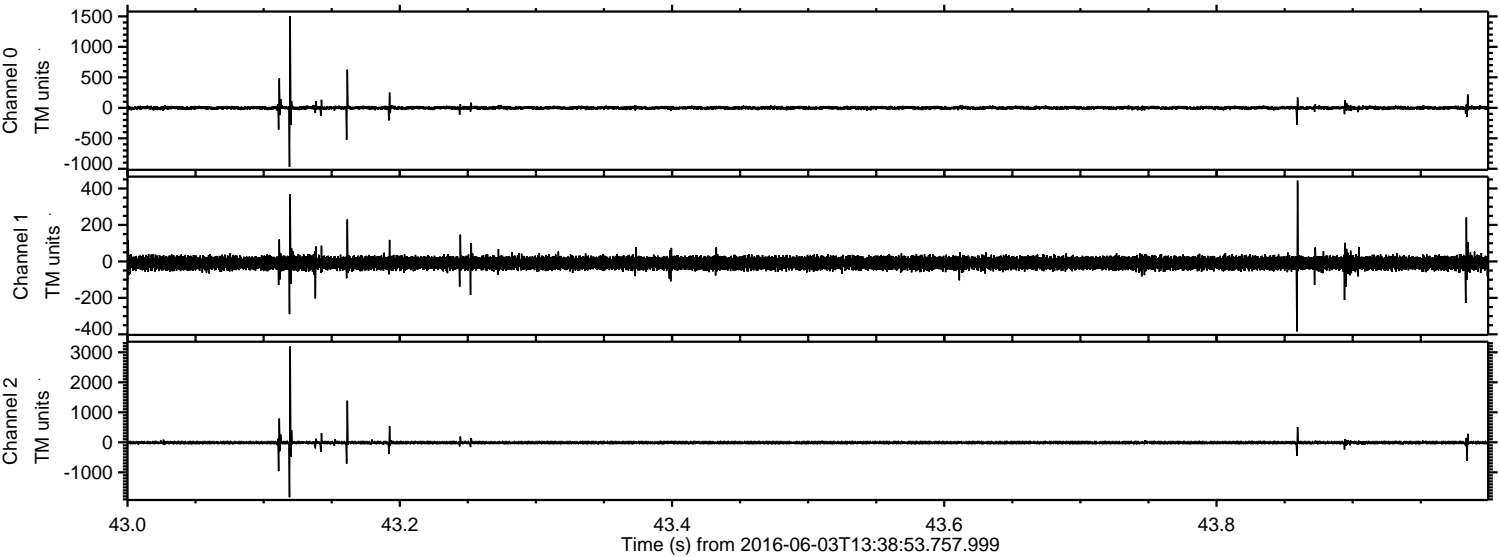
Channel 2
mn: -4363
mx: 4429
 μ : -9.8
 σ : 50.1

Processed Fri Jun 3 15:46:41 2016 by ELM ver.2012-10-06 from 001__elm20160603_133852__dat00.bin



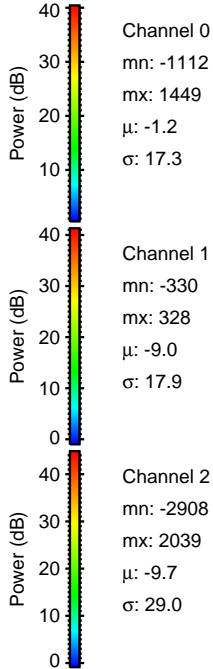
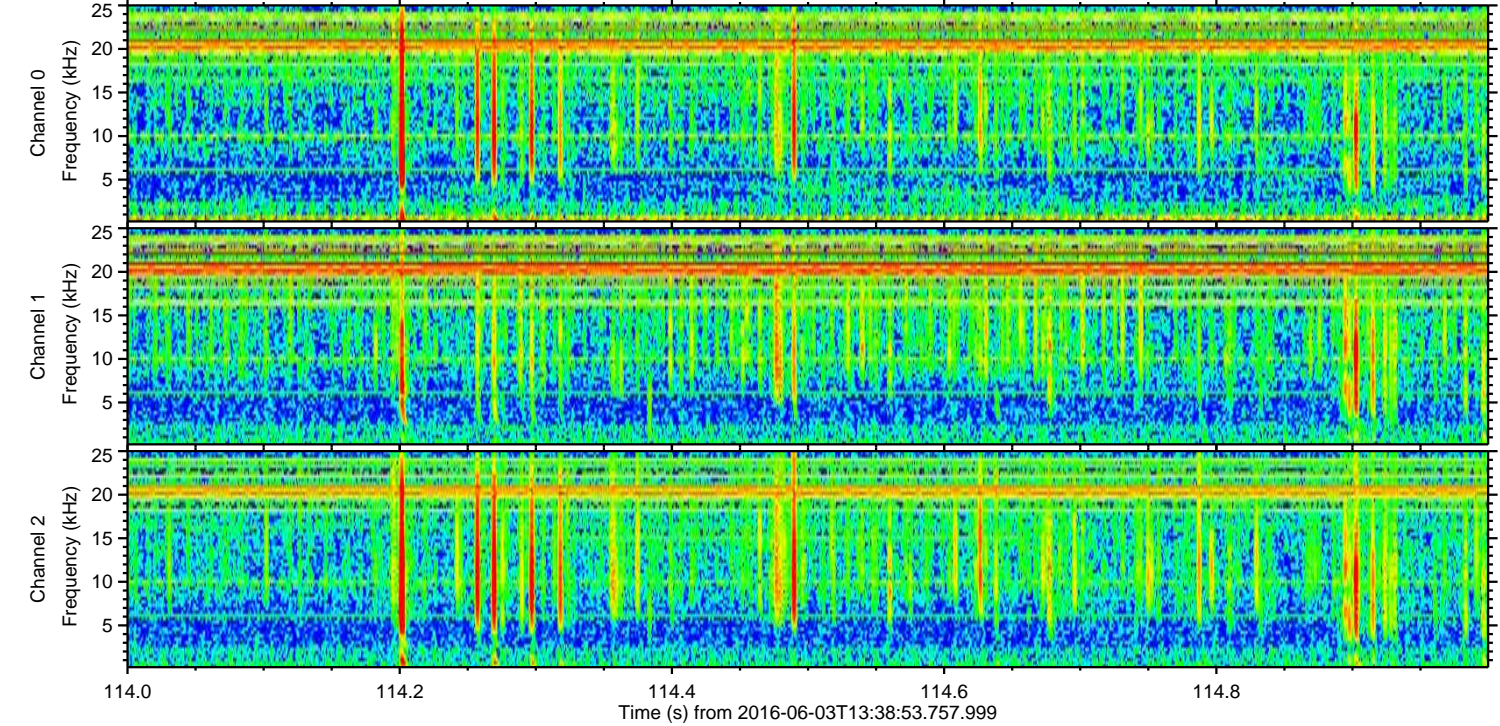
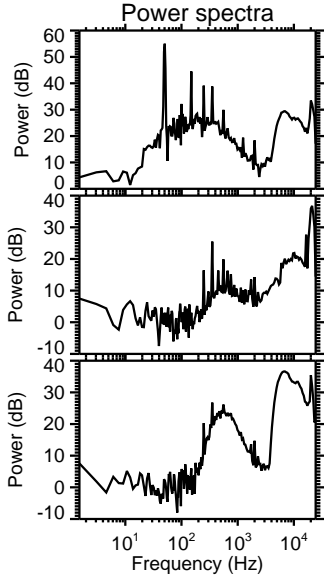
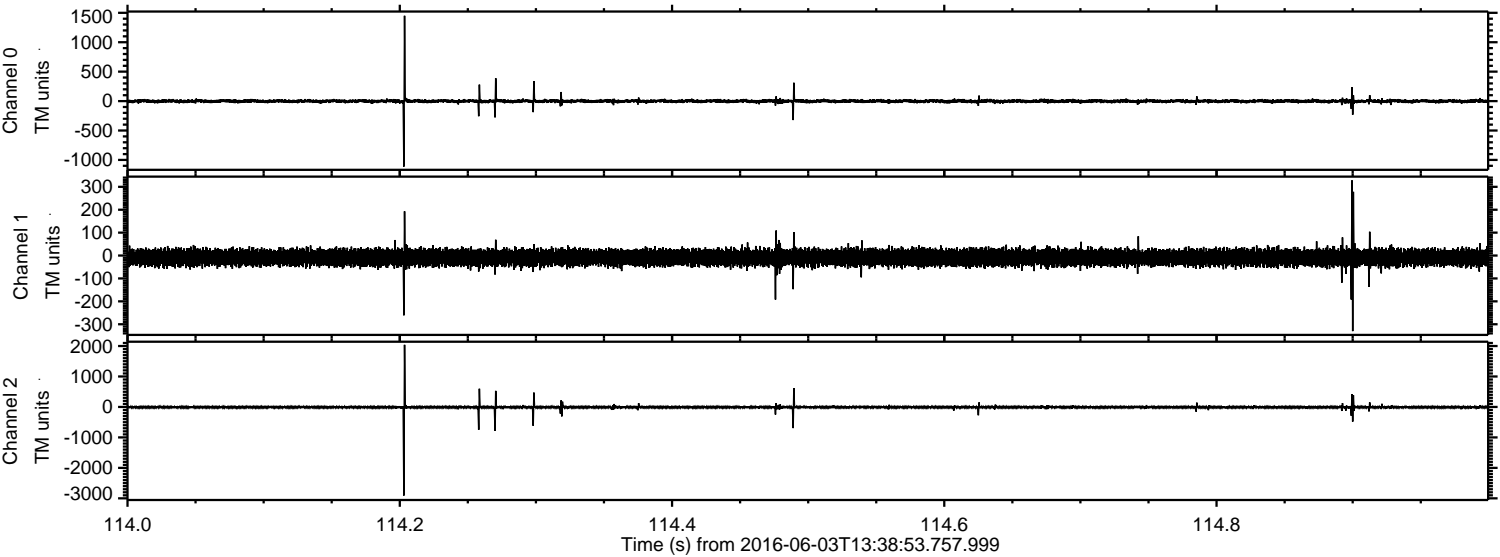
ELMAVAN 3D WAVEFORMS (Measured data sampled at 50 kHz) 51000 packets of 144 samples from 2016-06-03T13:38:53.757.999. Part 44/147

Processed Fri Jun 3 15:46:42 2016 by ELM ver.2012-10-06 from 001__elm20160603_133852__dat00.bin



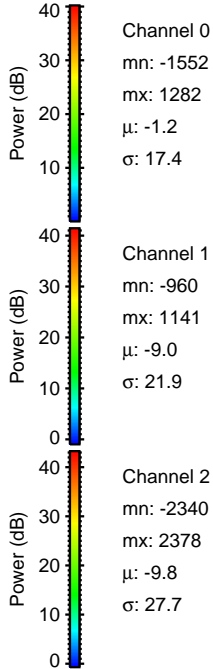
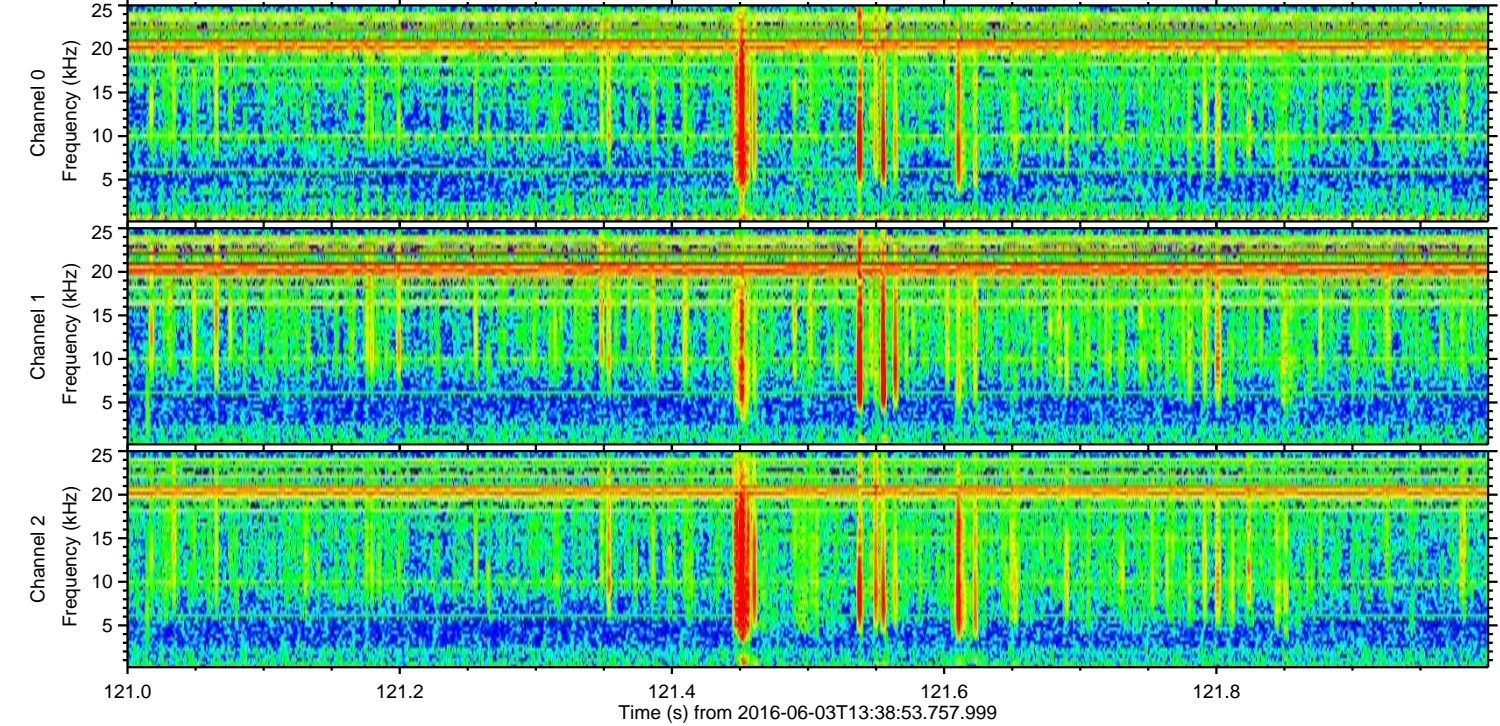
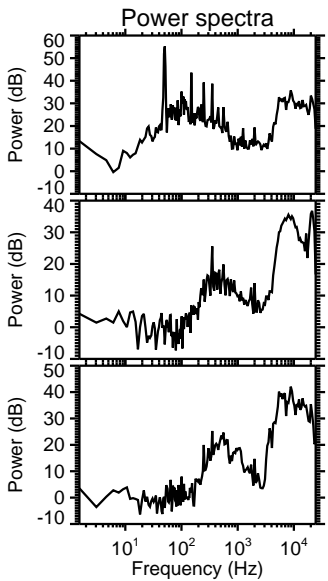
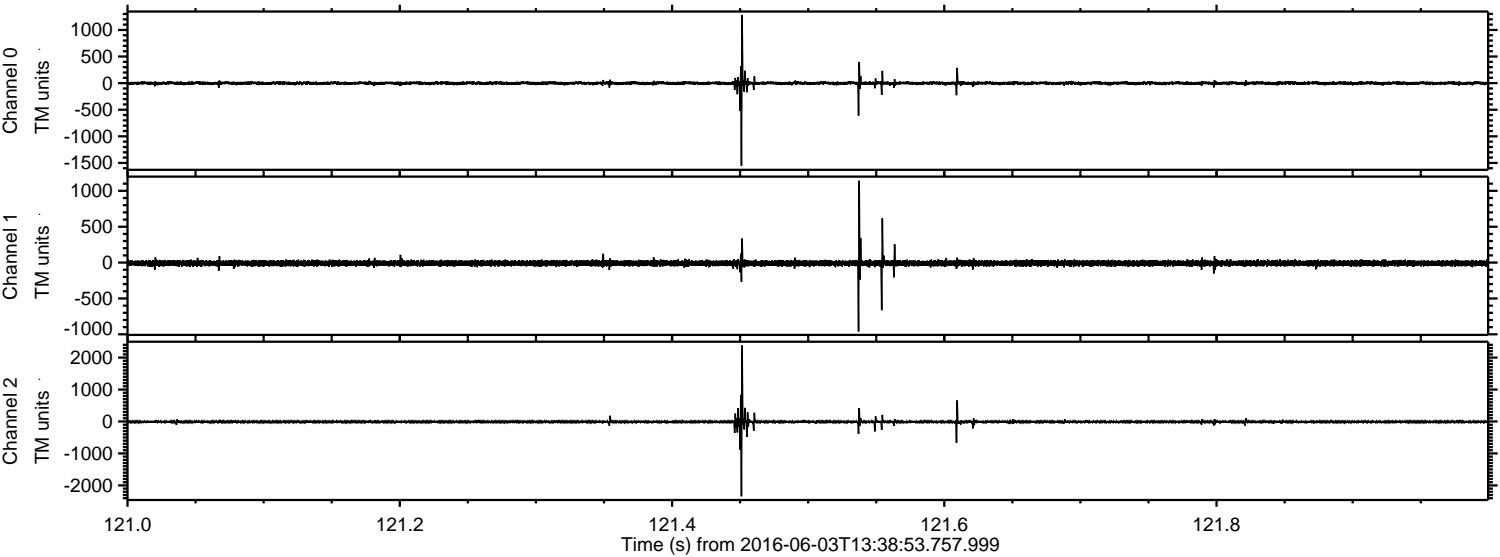
ELMAVAN 3D WAVEFORMS (Measured data sampled at 50 kHz) 51000 packets of 144 samples from 2016-06-03T13:38:53.757.999. Part 115/147

Processed Fri Jun 3 15:46:43 2016 by ELM ver.2012-10-06 from 001__elm20160603_133852__dat00.bin

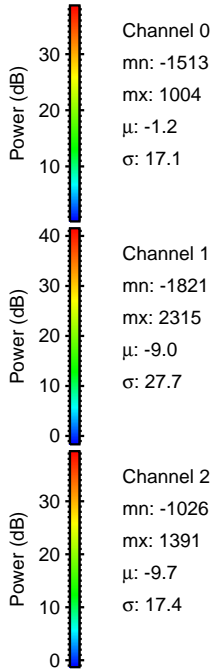
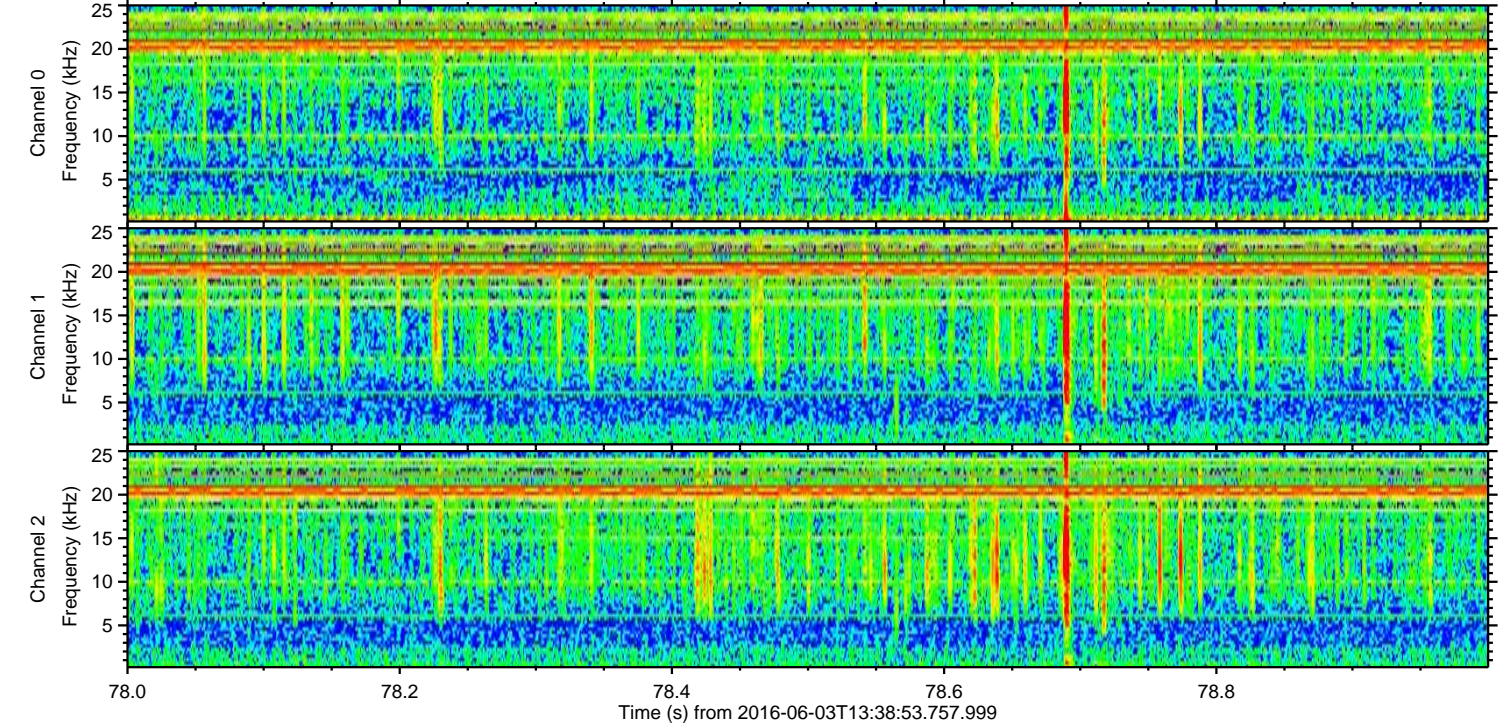
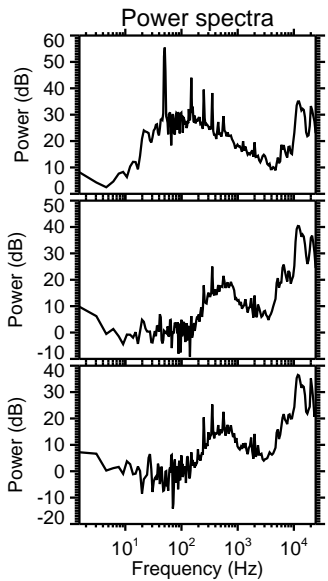
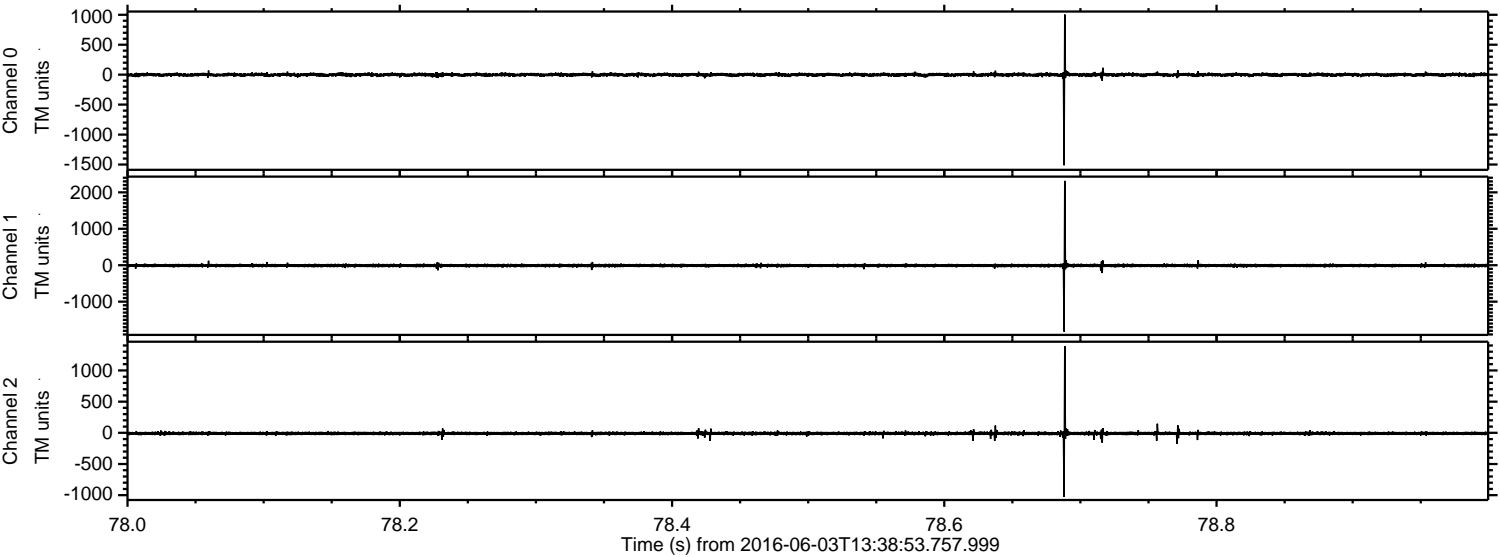


ELMAVAN 3D WAVEFORMS (Measured data sampled at 50 kHz) 51000 packets of 144 samples from 2016-06-03T13:38:53.757.999. Part 122/147

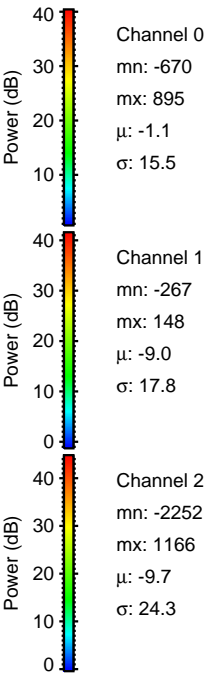
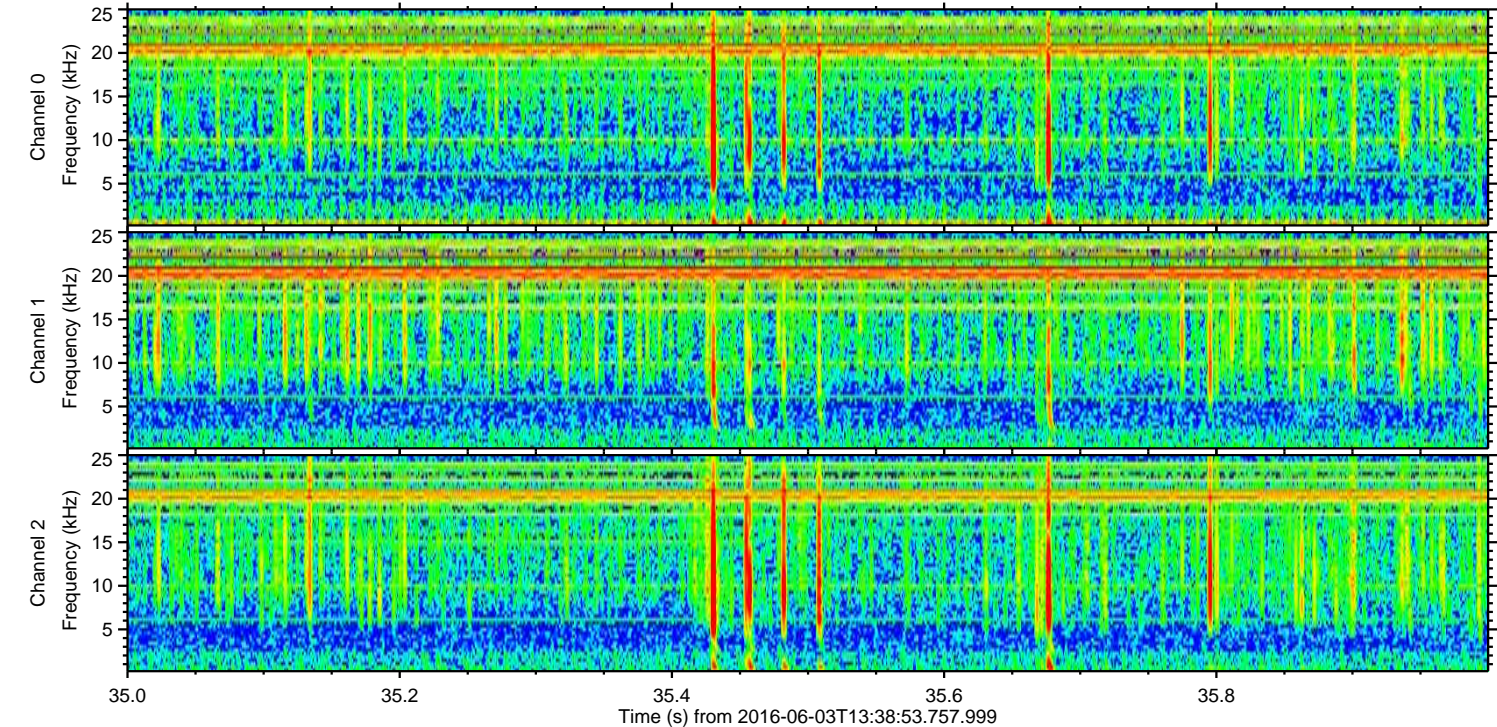
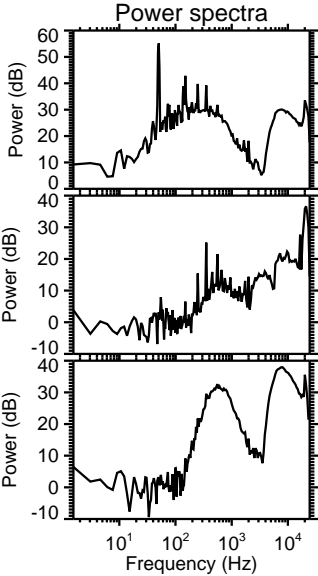
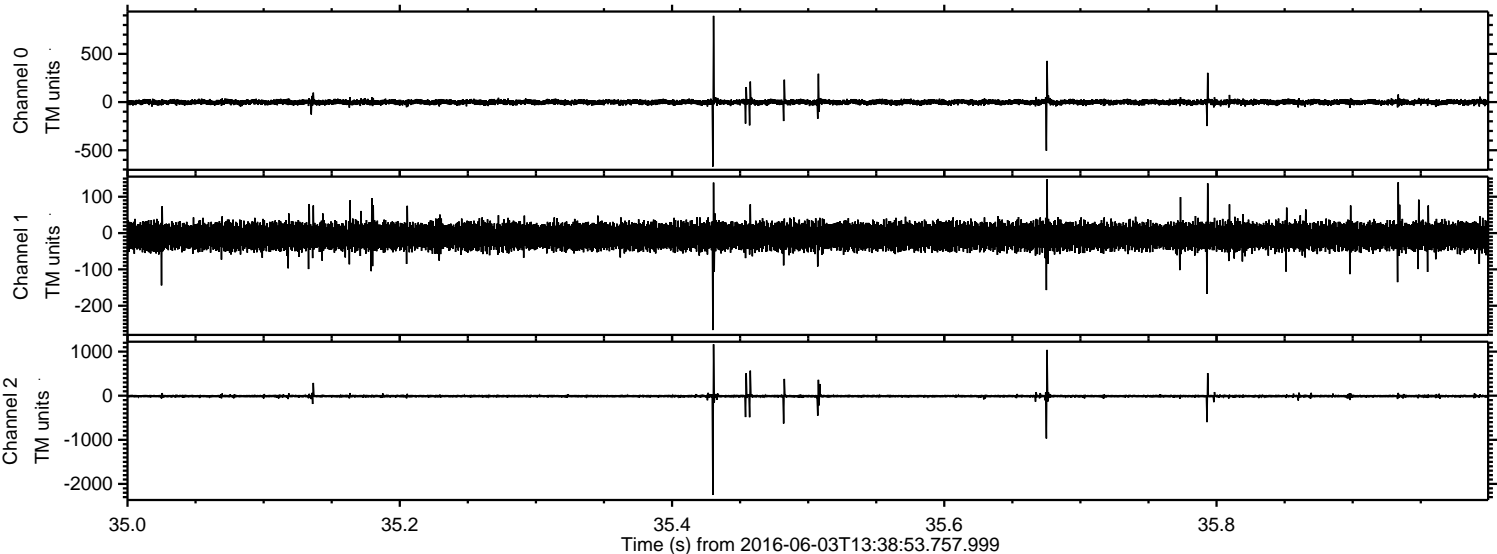
Processed Fri Jun 3 15:46:44 2016 by ELM ver.2012-10-06 from 001__elm20160603_133852__dat00.bin



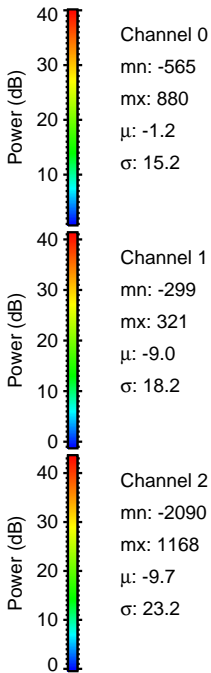
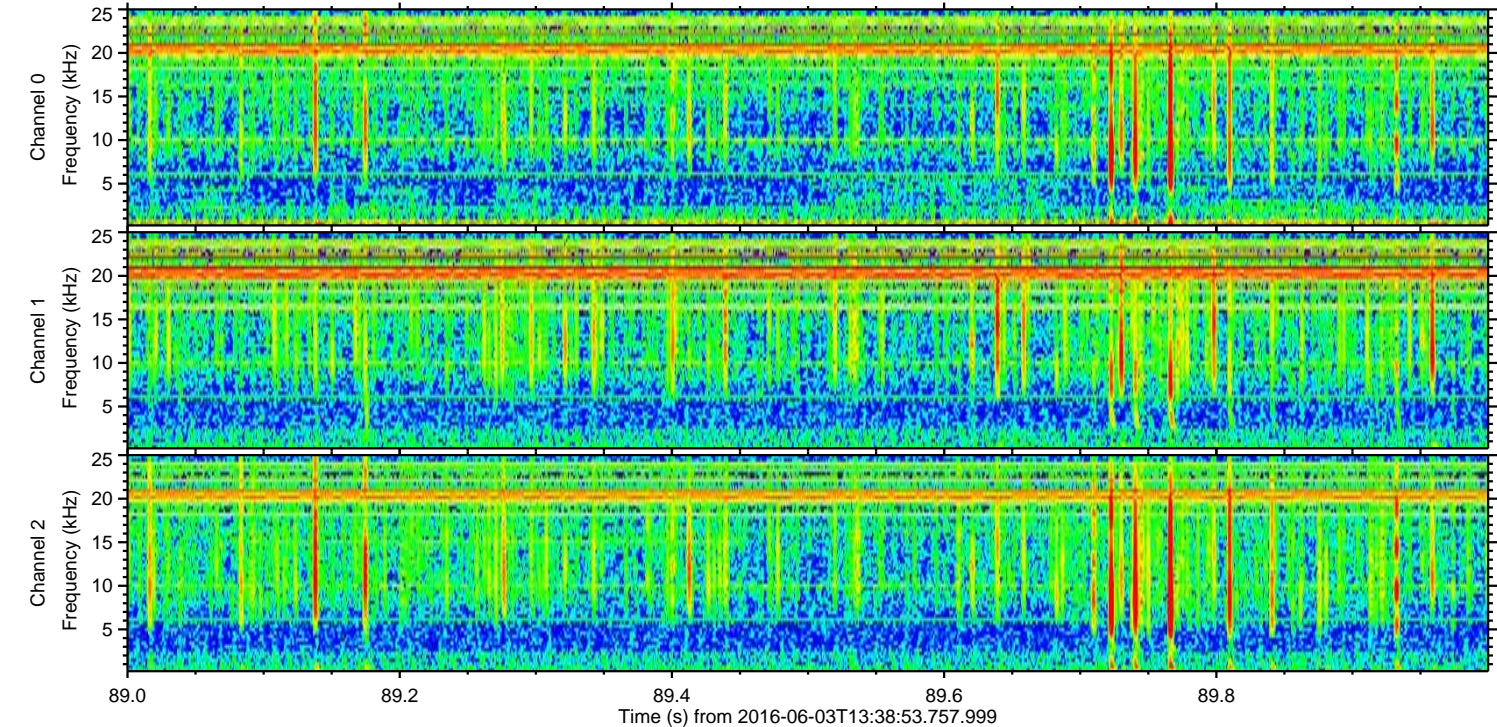
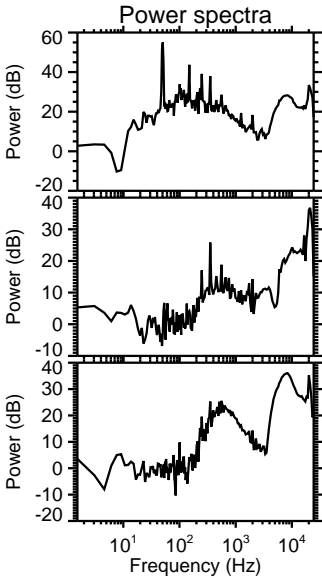
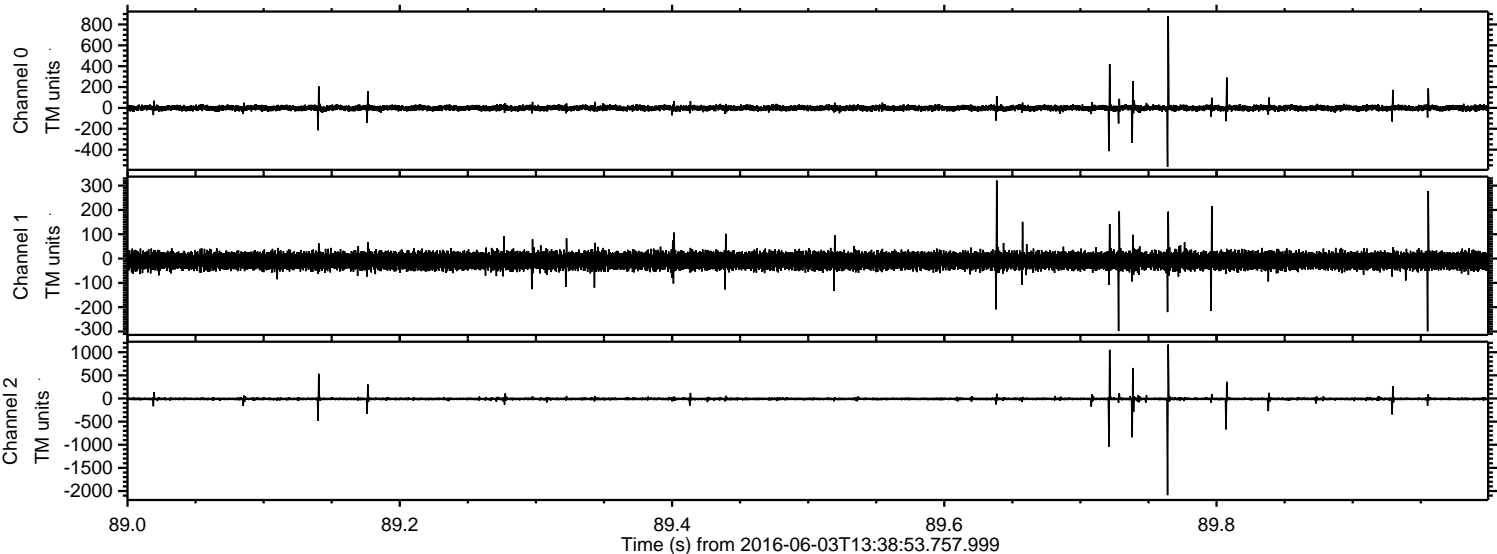
Processed Fri Jun 3 15:46:45 2016 by ELM ver.2012-10-06 from 001__elm20160603_133852__dat00.bin



Processed Fri Jun 3 15:46:46 2016 by ELM ver.2012-10-06 from 001__elm20160603_133852__dat00.bin



Processed Fri Jun 3 15:46:47 2016 by ELM ver.2012-10-06 from 001__elm20160603_133852__dat00.bin



Processed Fri Jun 3 15:46:48 2016 by ELM ver.2012-10-06 from 001__elm20160603_133852__dat00.bin

