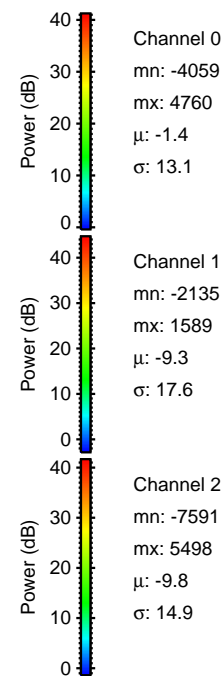
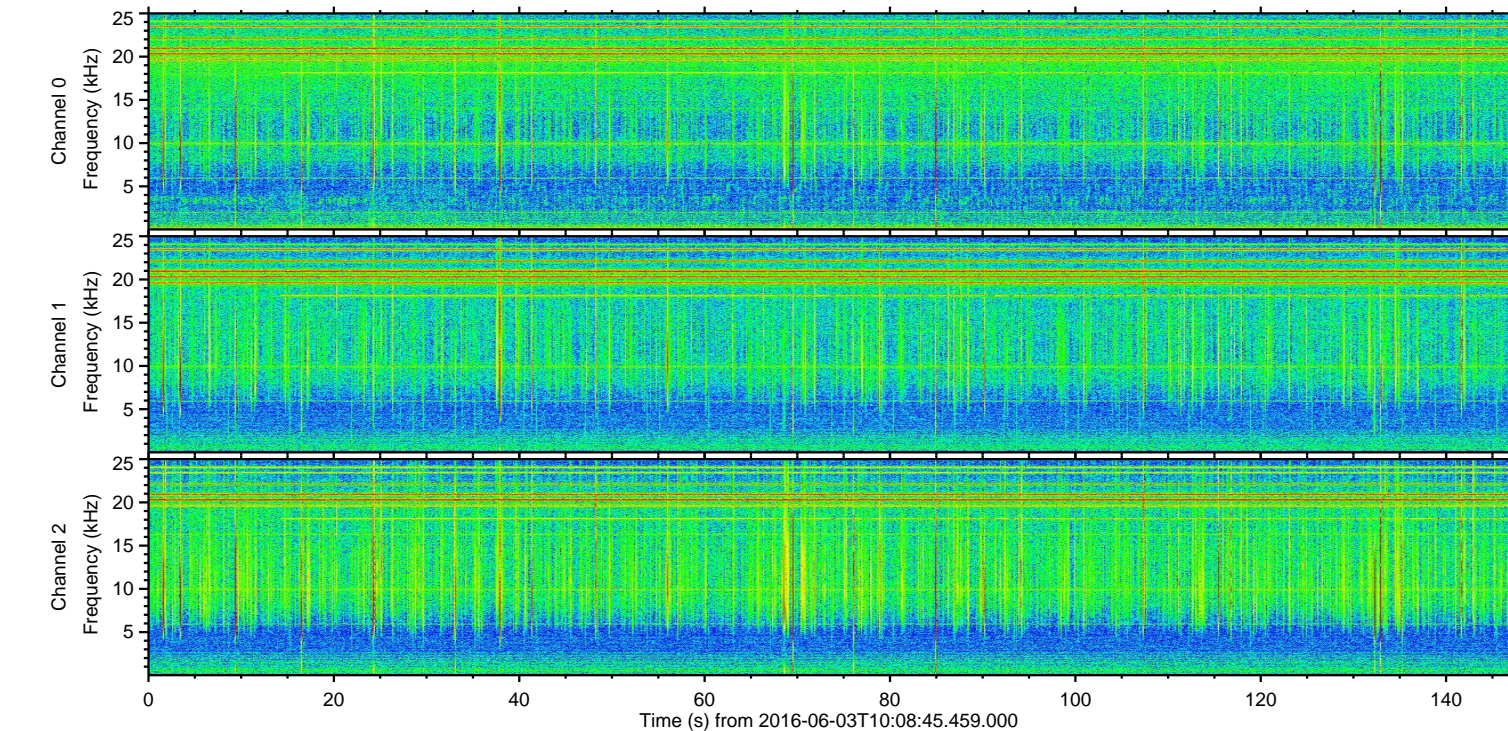
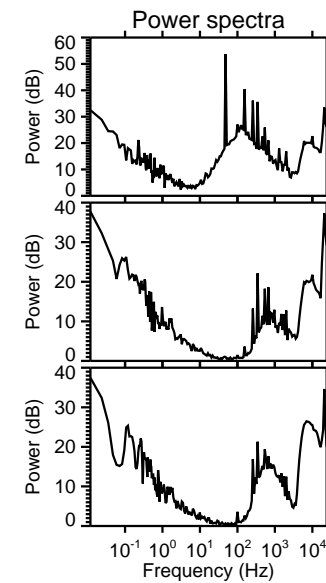
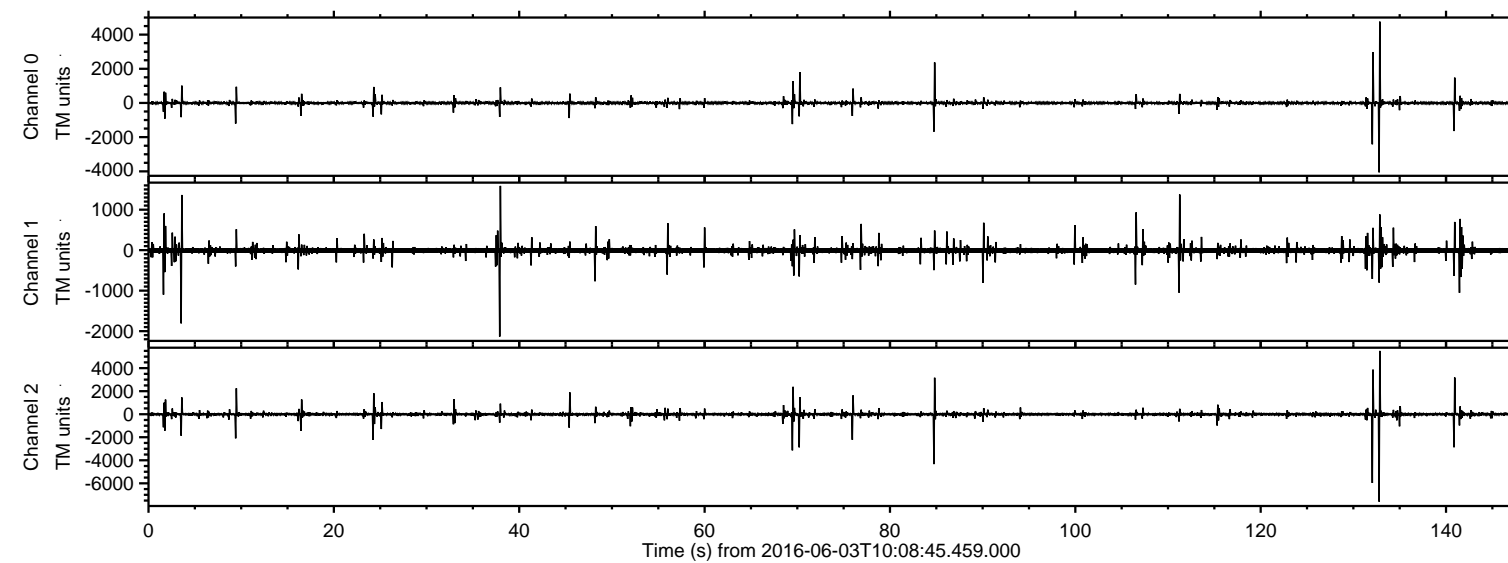


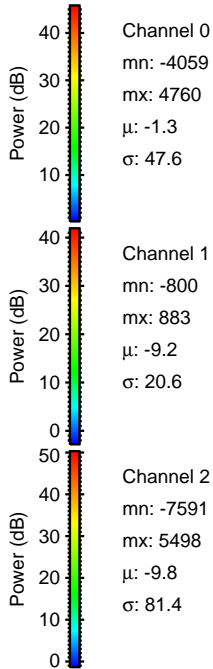
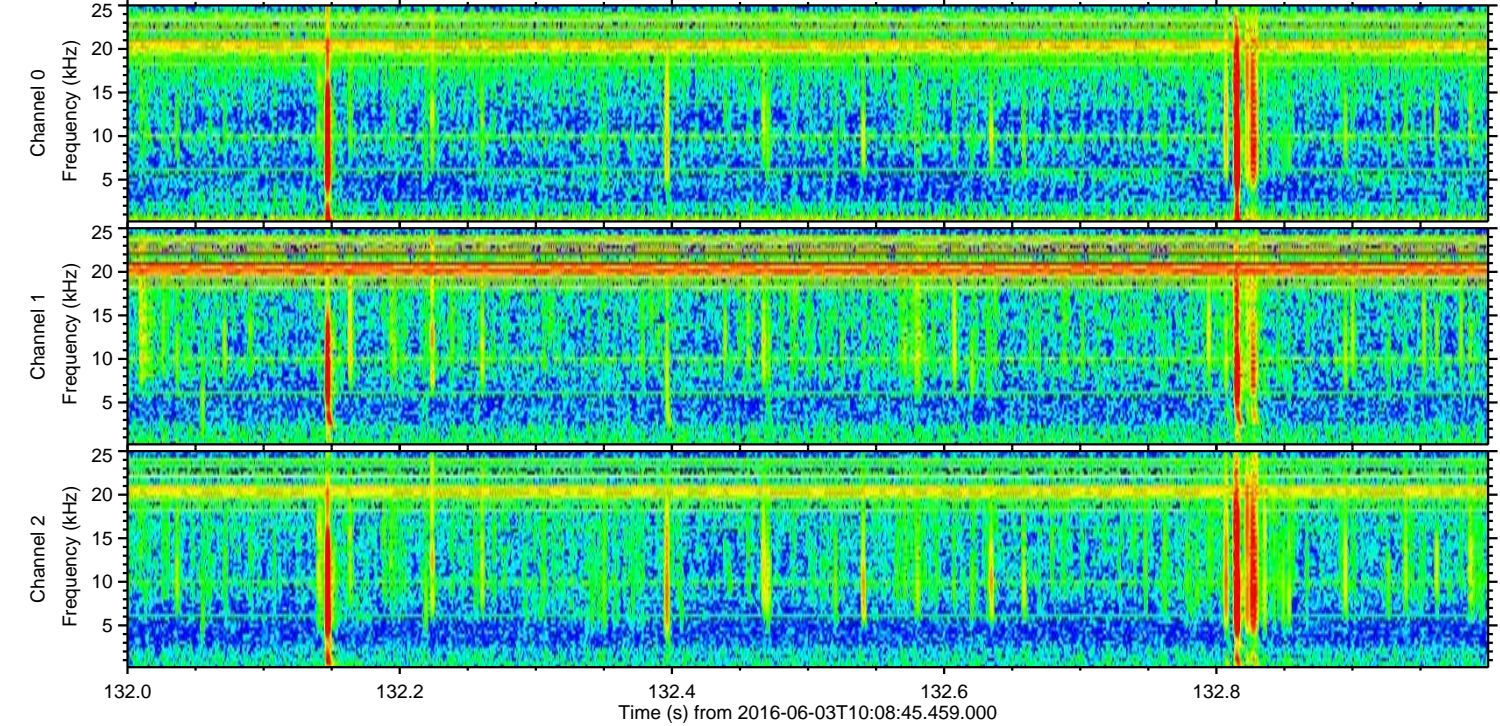
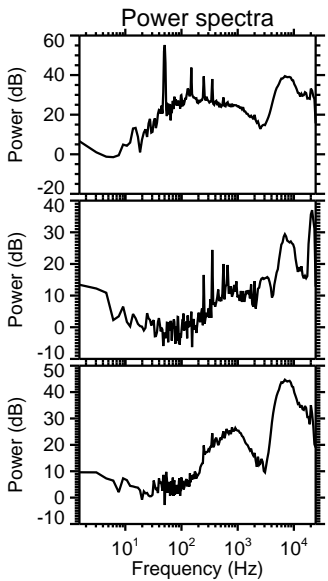
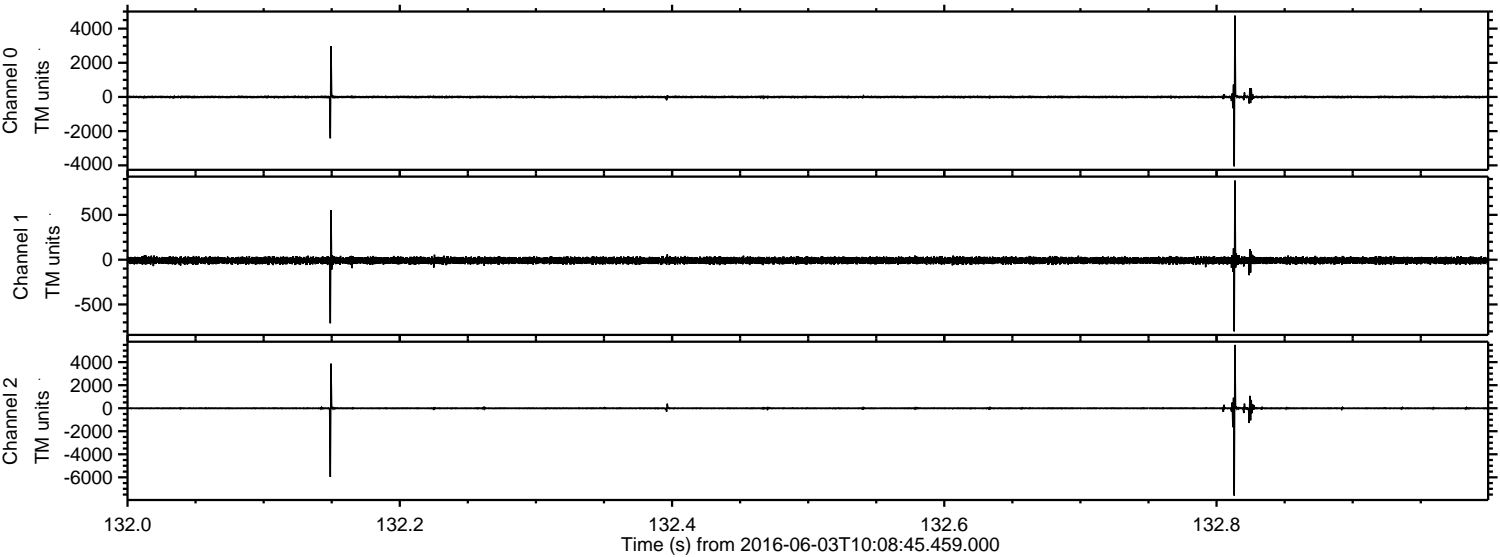
ELMAVAN 3D WAVEFORMS (Measured data sampled at 50 kHz) 51000 packets of 144 samples from 2016-06-03T10:08:45.459.000.

Processed Fri Jun 3 12:16:58 2016 by ELM ver.2012-10-06 from 001__elm20160603_100844__dat00.bin

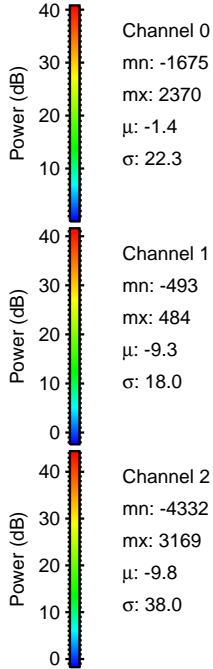
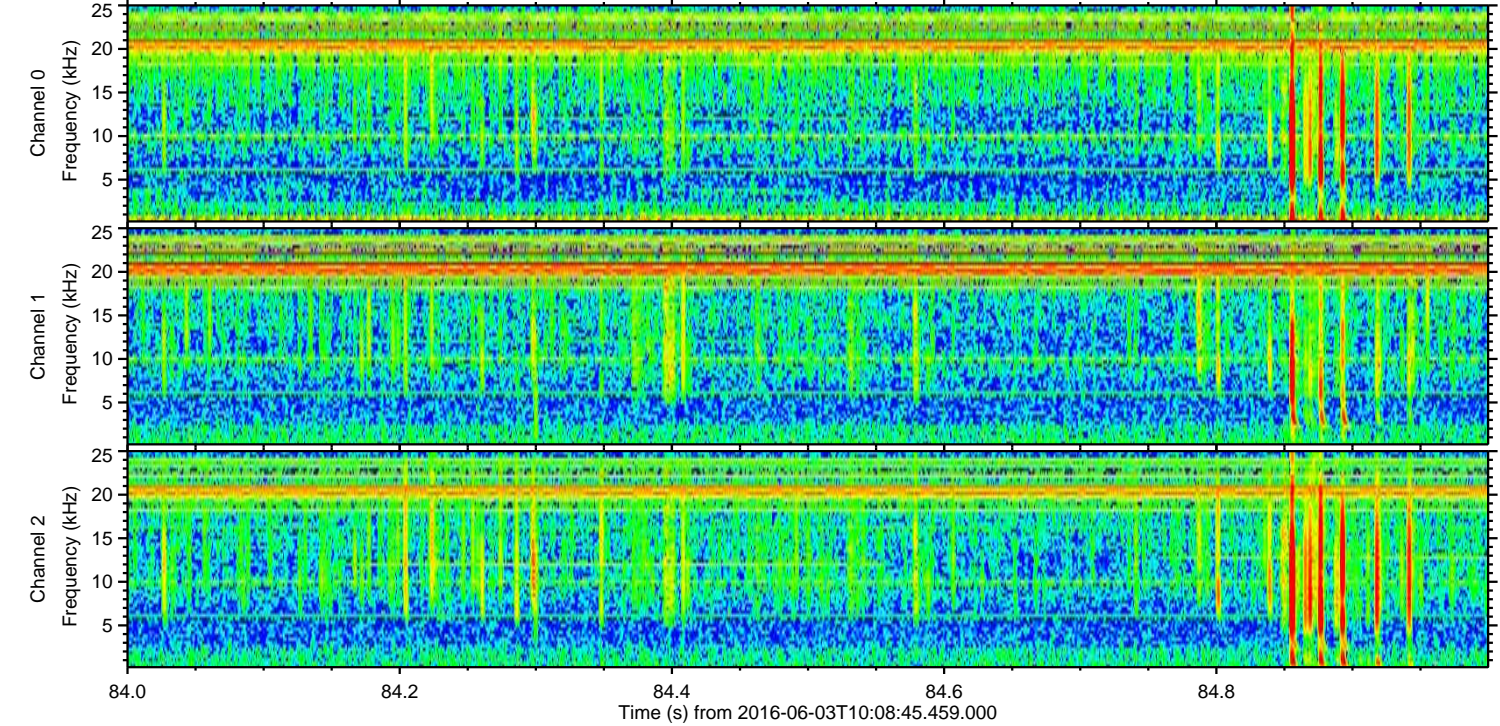
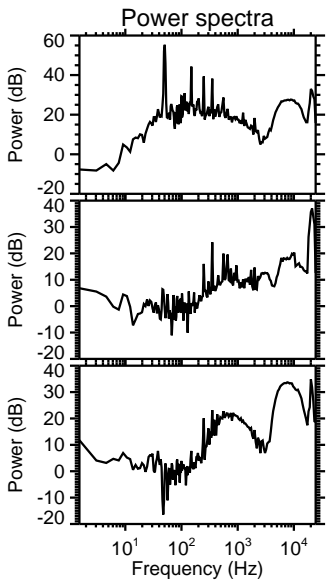
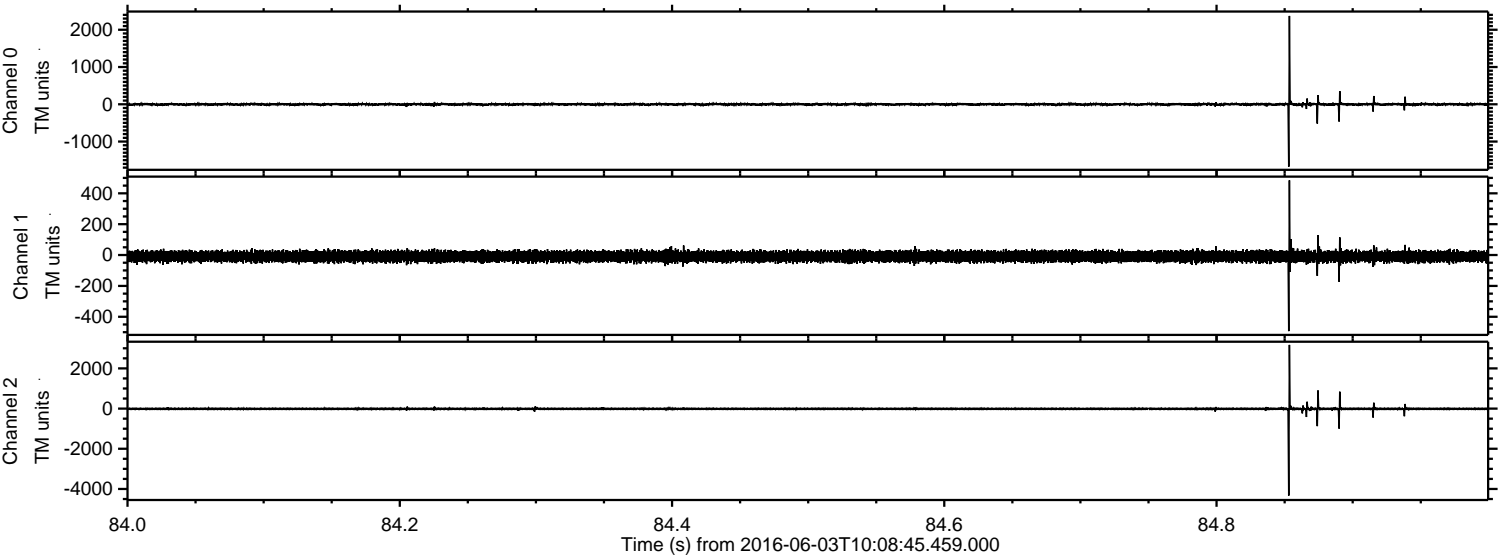


ELMAVAN 3D WAVEFORMS (Measured data sampled at 50 kHz) 51000 packets of 144 samples from 2016-06-03T10:08:45.459.000. Part 133/147

Processed Fri Jun 3 12:17:13 2016 by ELM ver.2012-10-06 from 001__elm20160603_100844__dat00.bin

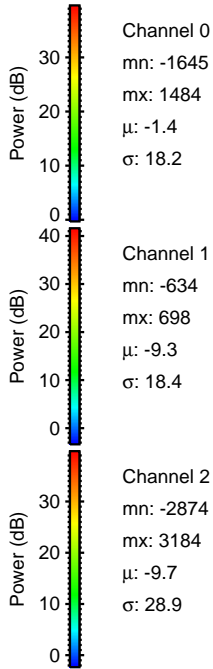
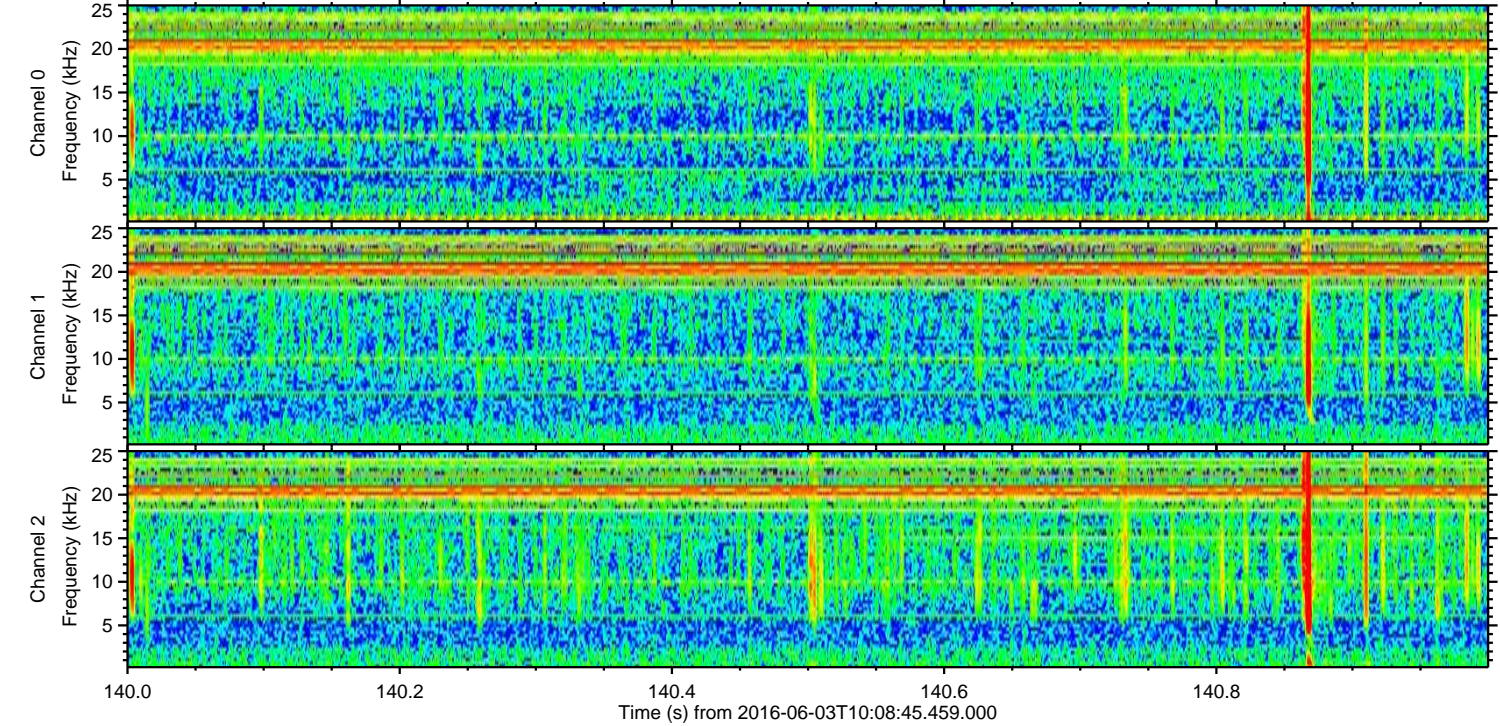
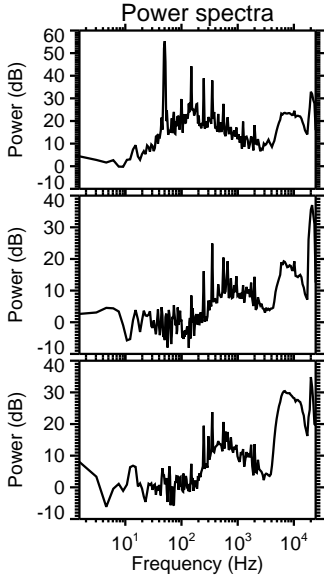
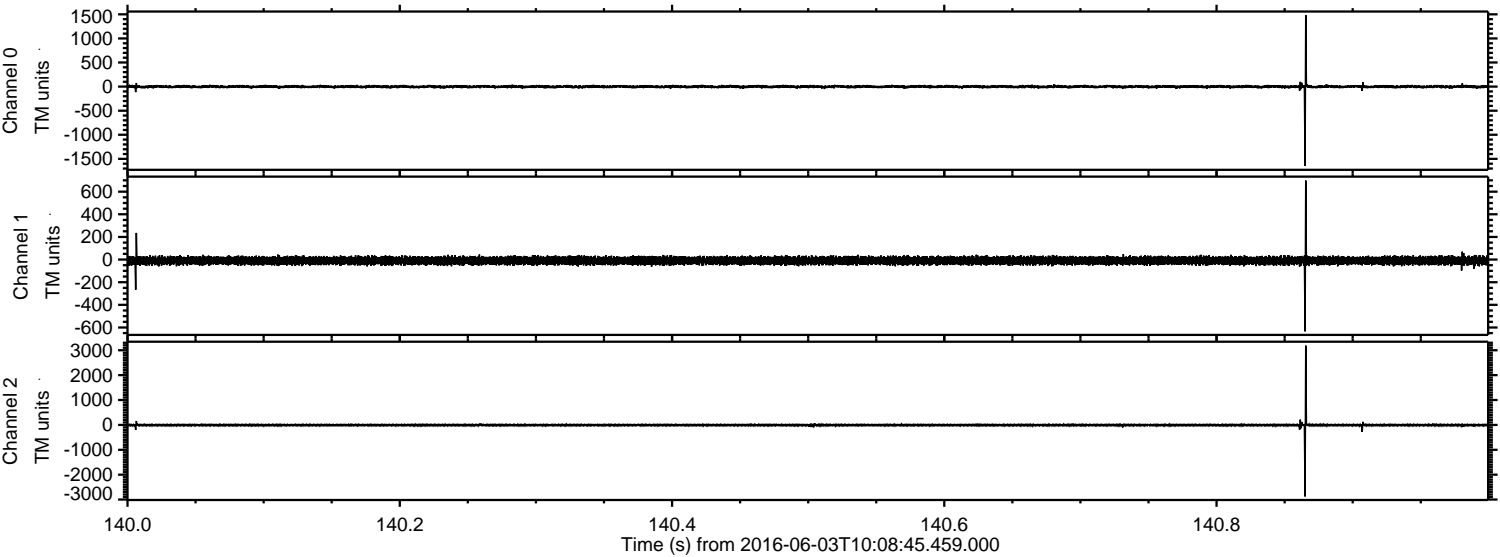


Processed Fri Jun 3 12:17:14 2016 by ELM ver.2012-10-06 from 001__elm20160603_100844__dat00.bin



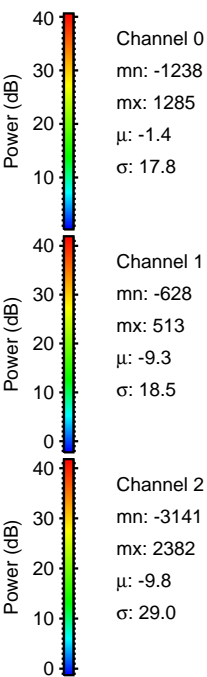
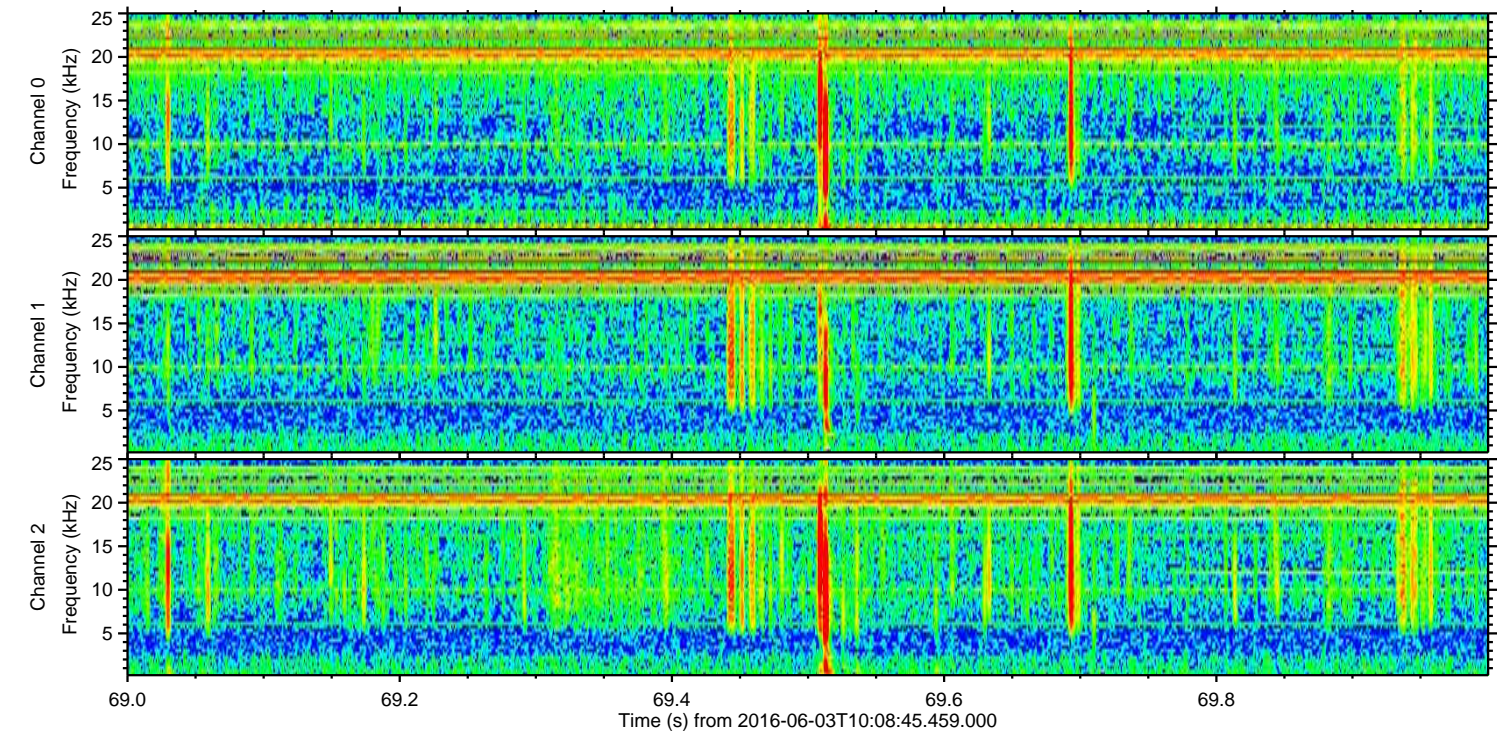
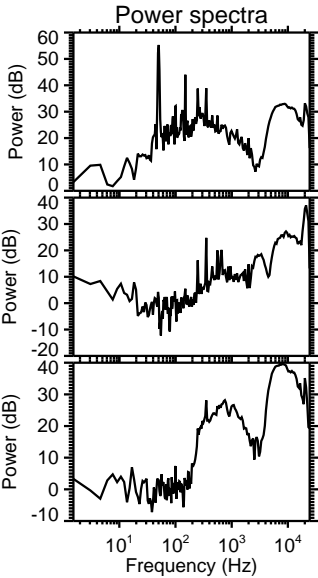
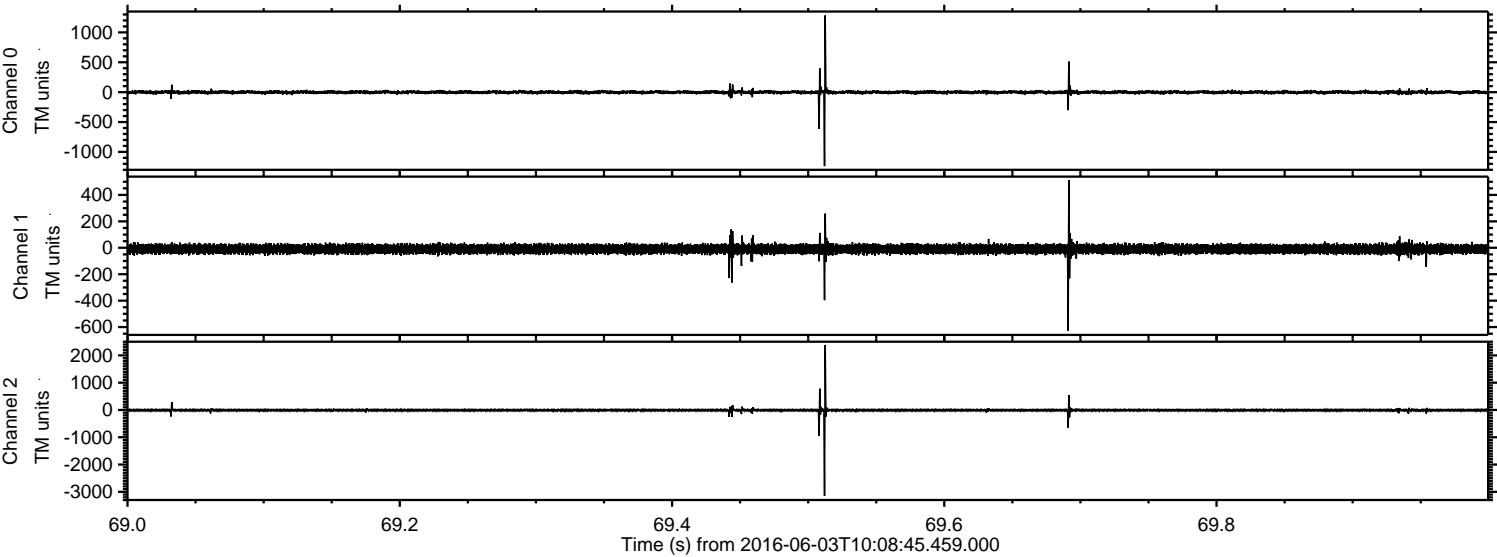
ELMAVAN 3D WAVEFORMS (Measured data sampled at 50 kHz) 51000 packets of 144 samples from 2016-06-03T10:08:45.459.000. Part 141/147

Processed Fri Jun 3 12:17:15 2016 by ELM ver.2012-10-06 from 001__elm20160603_100844__dat00.bin

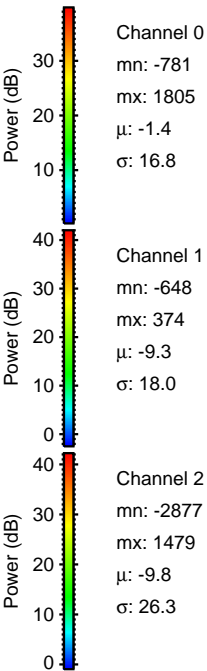
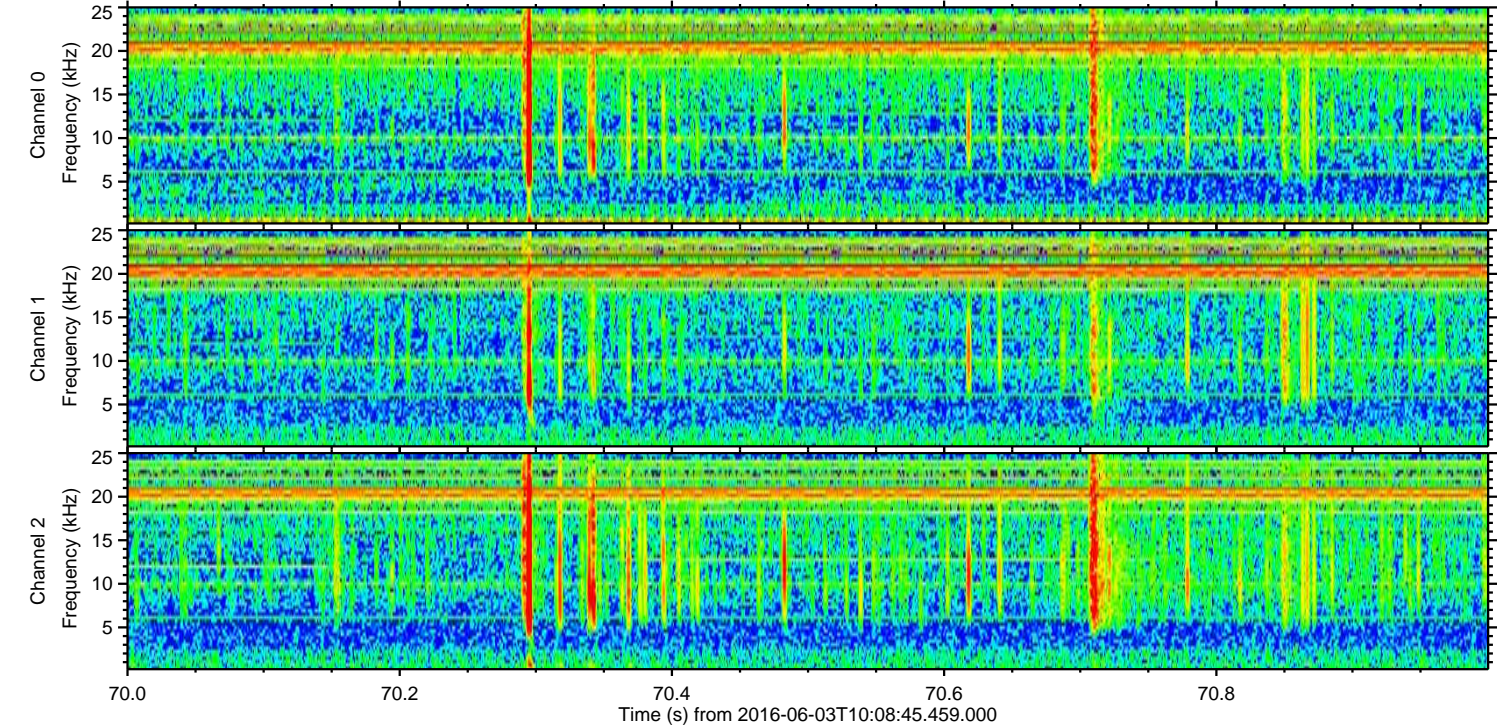
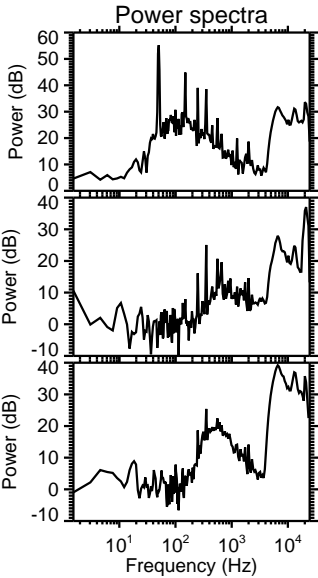
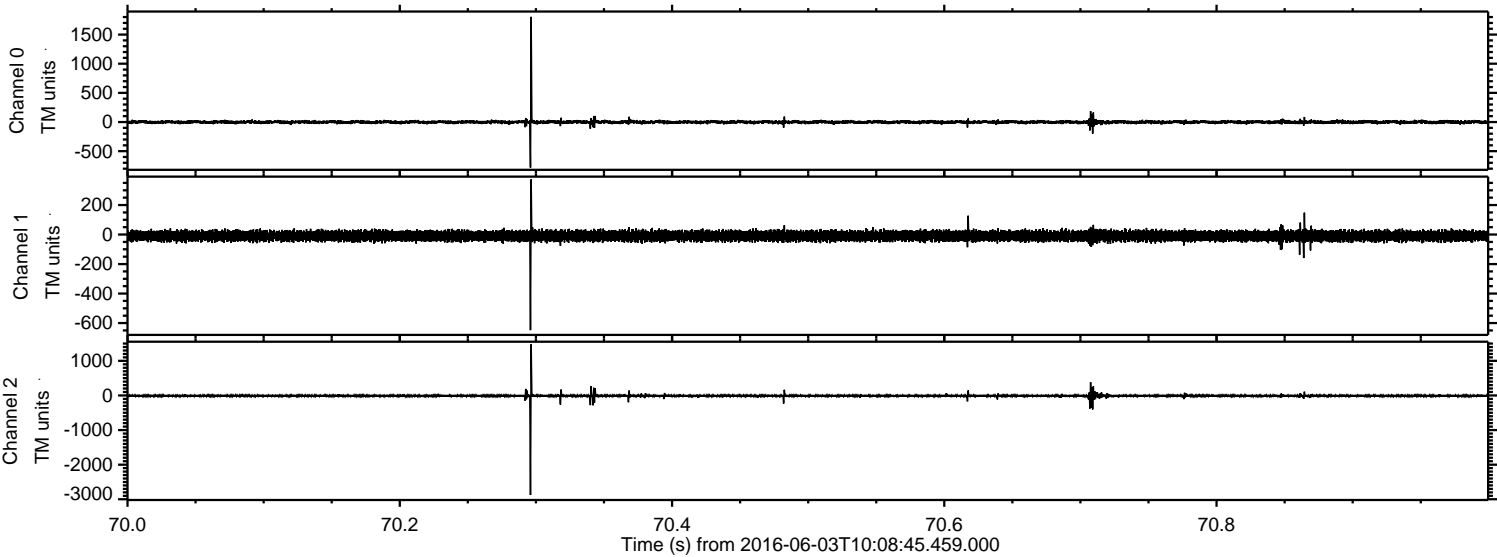


ELMAVAN 3D WAVEFORMS (Measured data sampled at 50 kHz) 51000 packets of 144 samples from 2016-06-03T10:08:45.459.000. Part 70/147

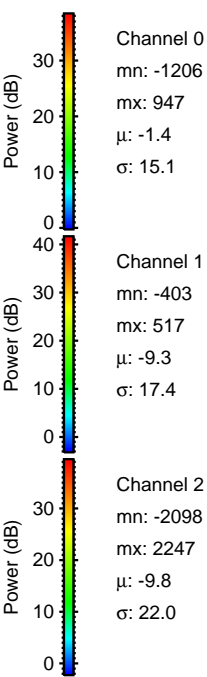
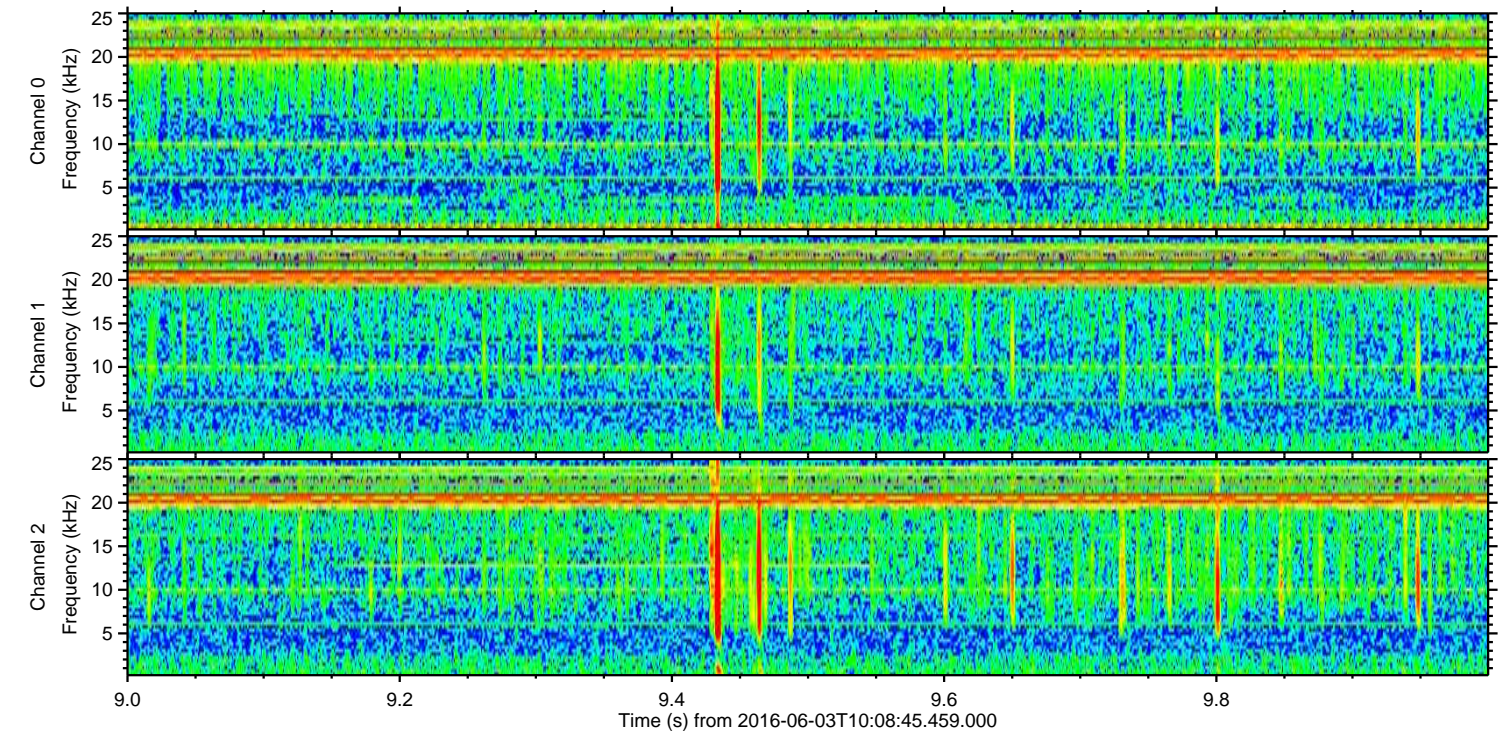
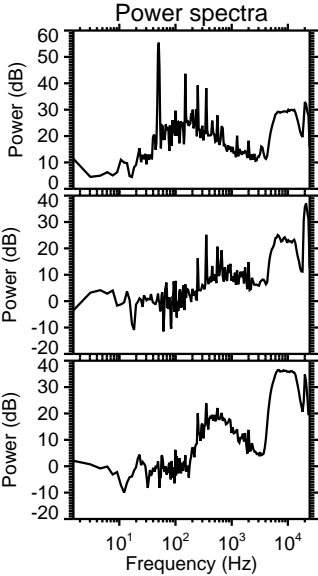
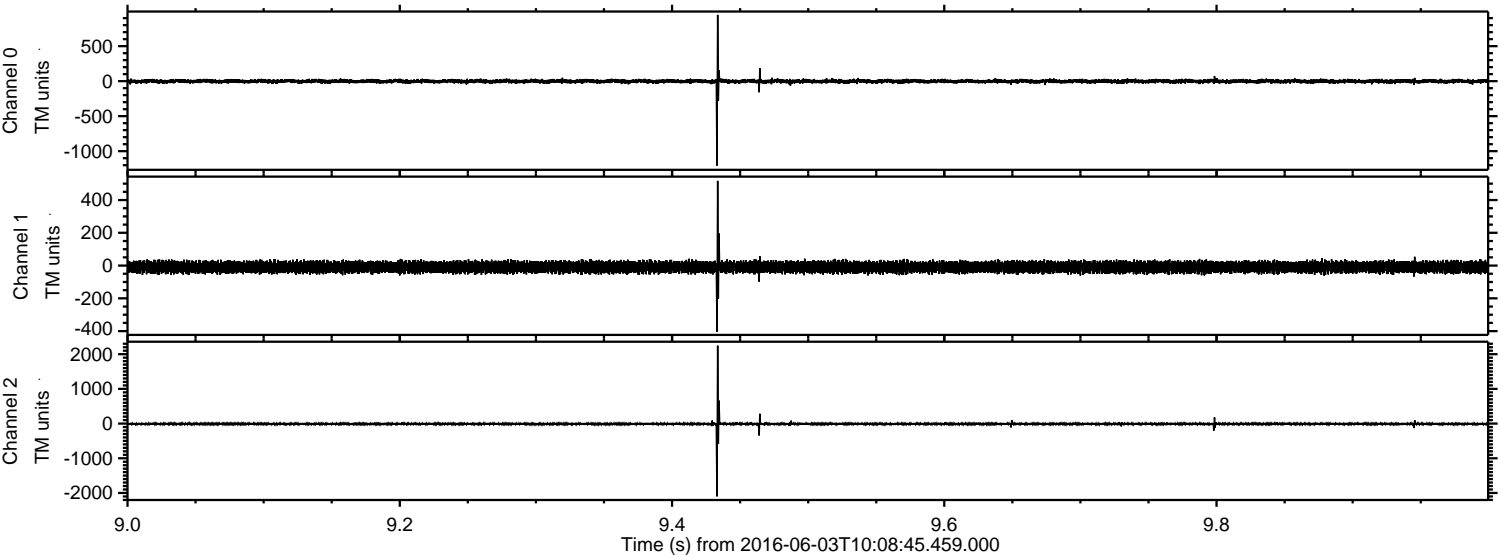
Processed Fri Jun 3 12:17:16 2016 by ELM ver.2012-10-06 from 001__elm20160603_100844__dat00.bin



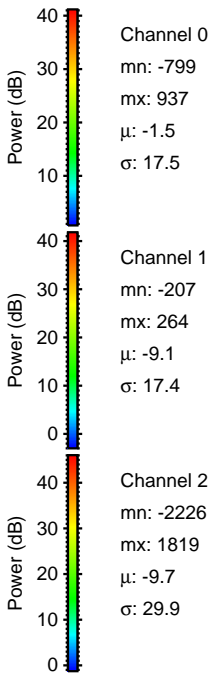
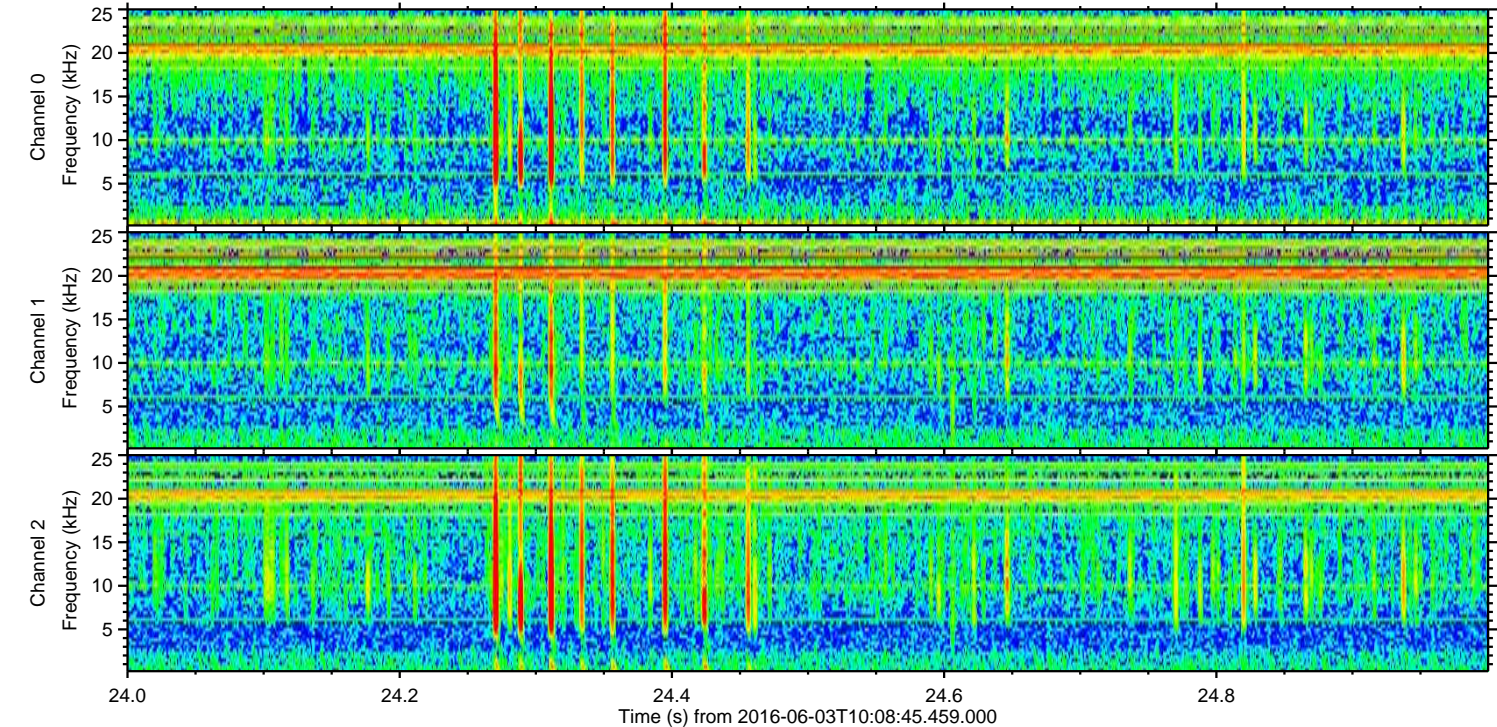
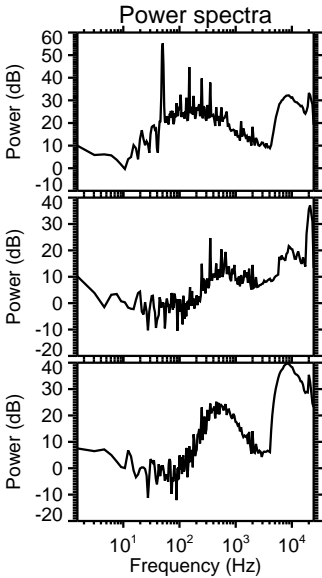
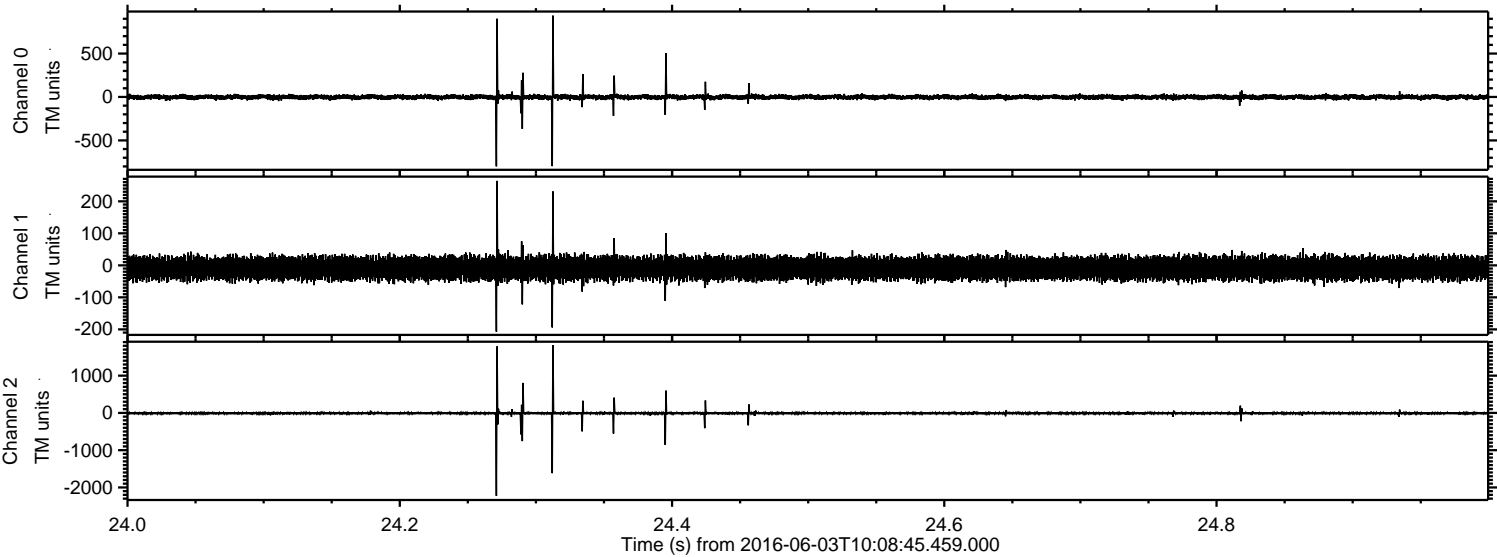
Processed Fri Jun 3 12:17:17 2016 by ELM ver.2012-10-06 from 001__elm20160603_100844__dat00.bin



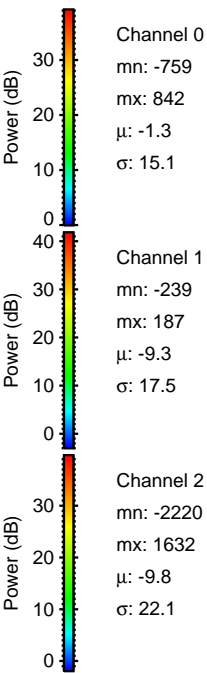
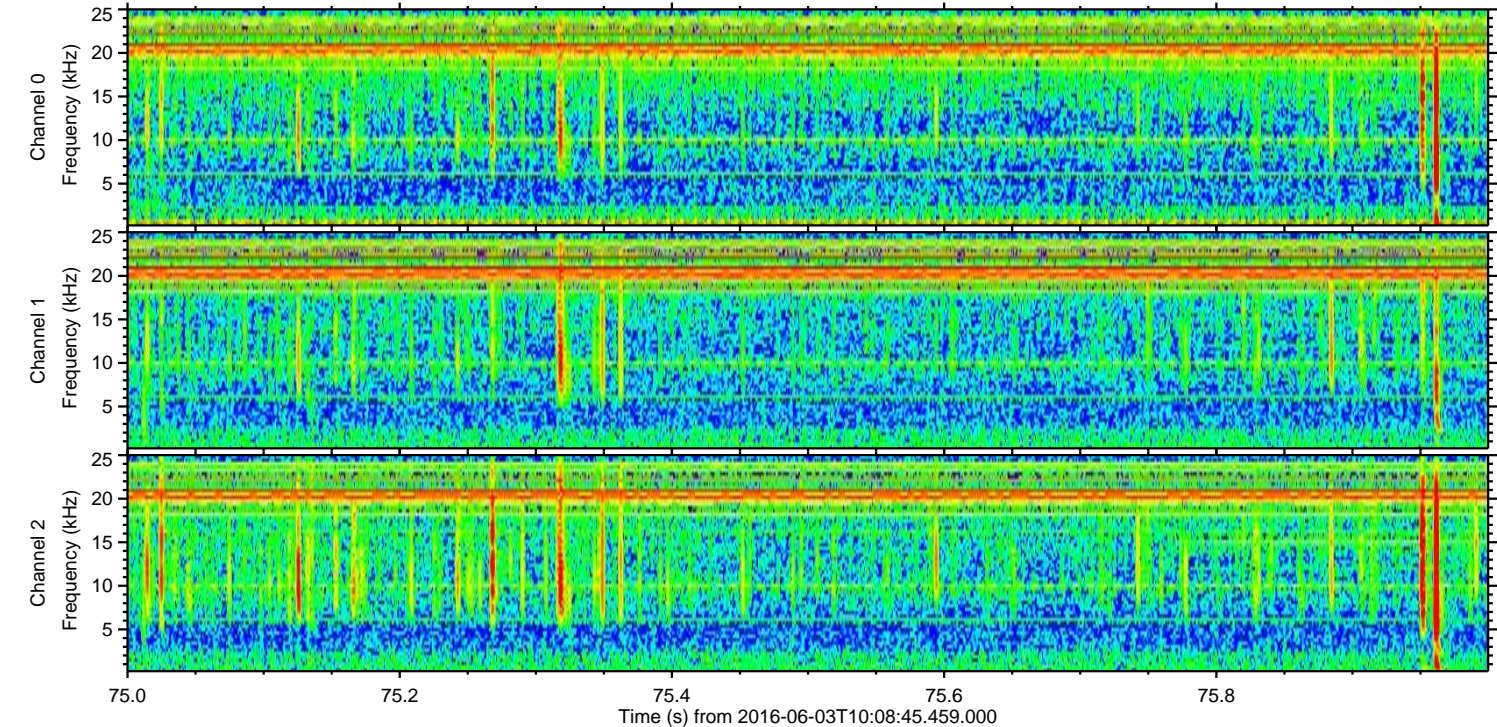
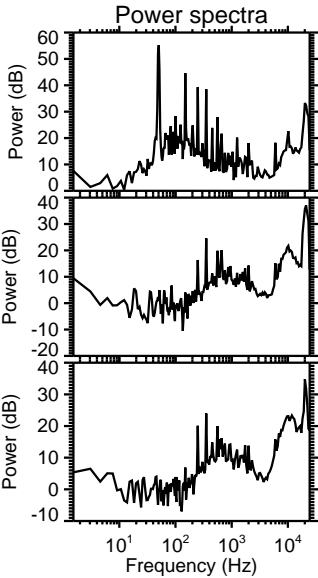
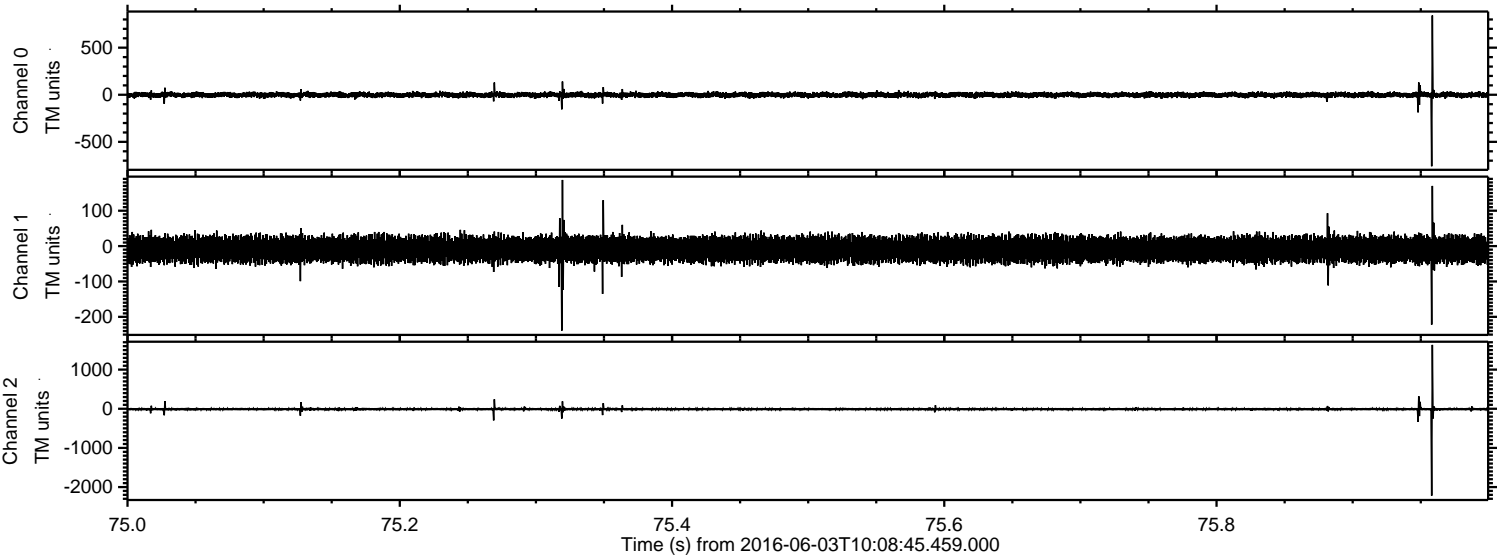
Processed Fri Jun 3 12:17:18 2016 by ELM ver.2012-10-06 from 001__elm20160603_100844__dat00.bin



Processed Fri Jun 3 12:17:19 2016 by ELM ver.2012-10-06 from 001__elm20160603_100844__dat00.bin



Processed Fri Jun 3 12:17:20 2016 by ELM ver.2012-10-06 from 001__elm20160603_100844__dat00.bin



Channel 0
mn: -759
mx: 842
 μ : -1.3
 σ : 15.1

Channel 1
mn: -239
mx: 187
 μ : -9.3
 σ : 17.5

Channel 2
mn: -2220
mx: 1632
 μ : -9.8
 σ : 22.1

Processed Fri Jun 3 12:17:21 2016 by ELM ver.2012-10-06 from 001__elm20160603_100844__dat00.bin

