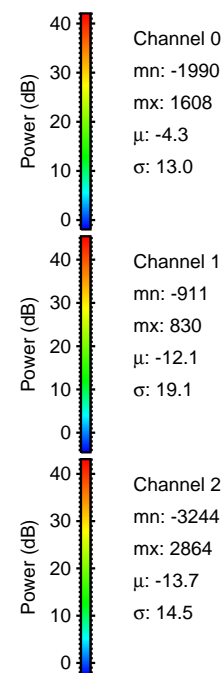
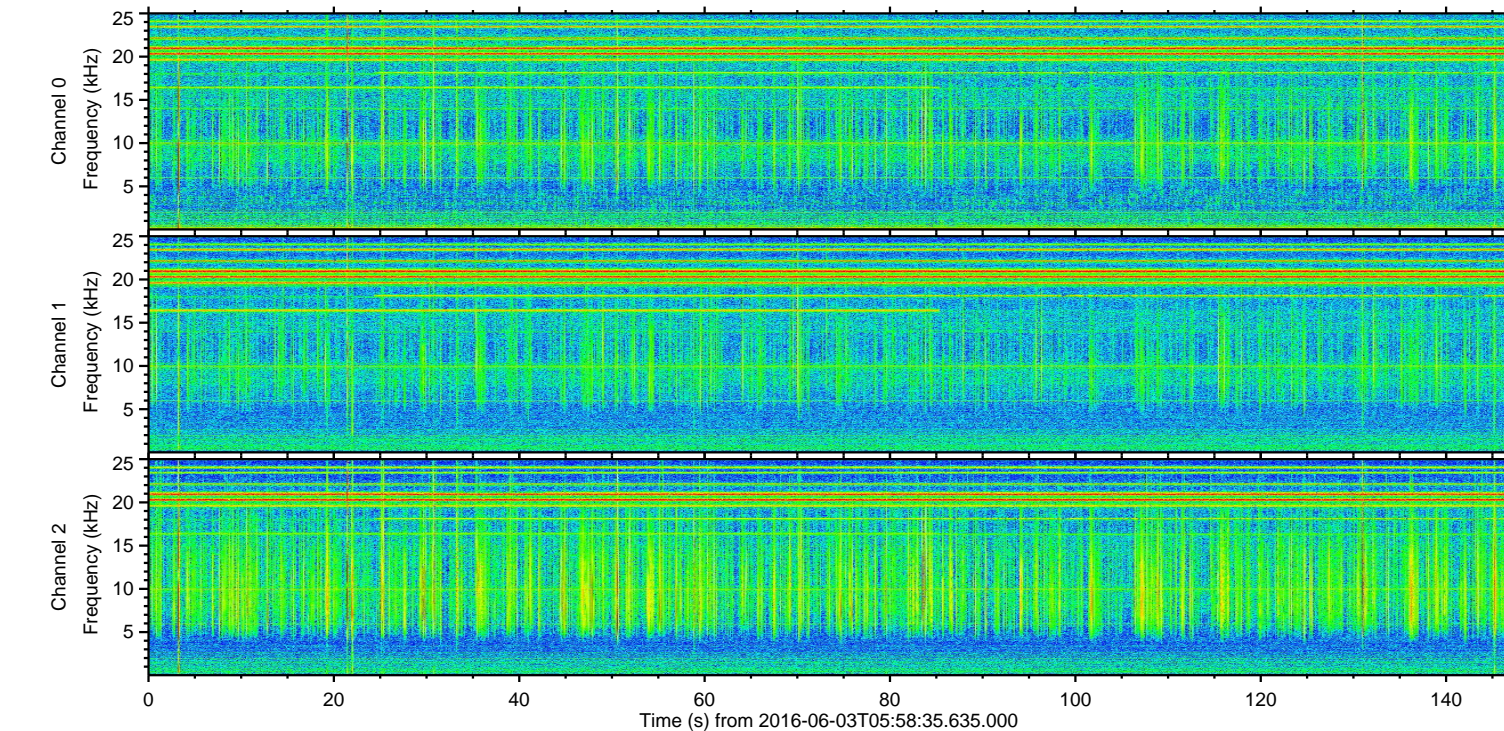
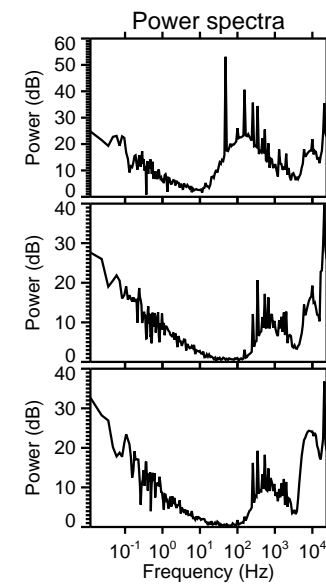
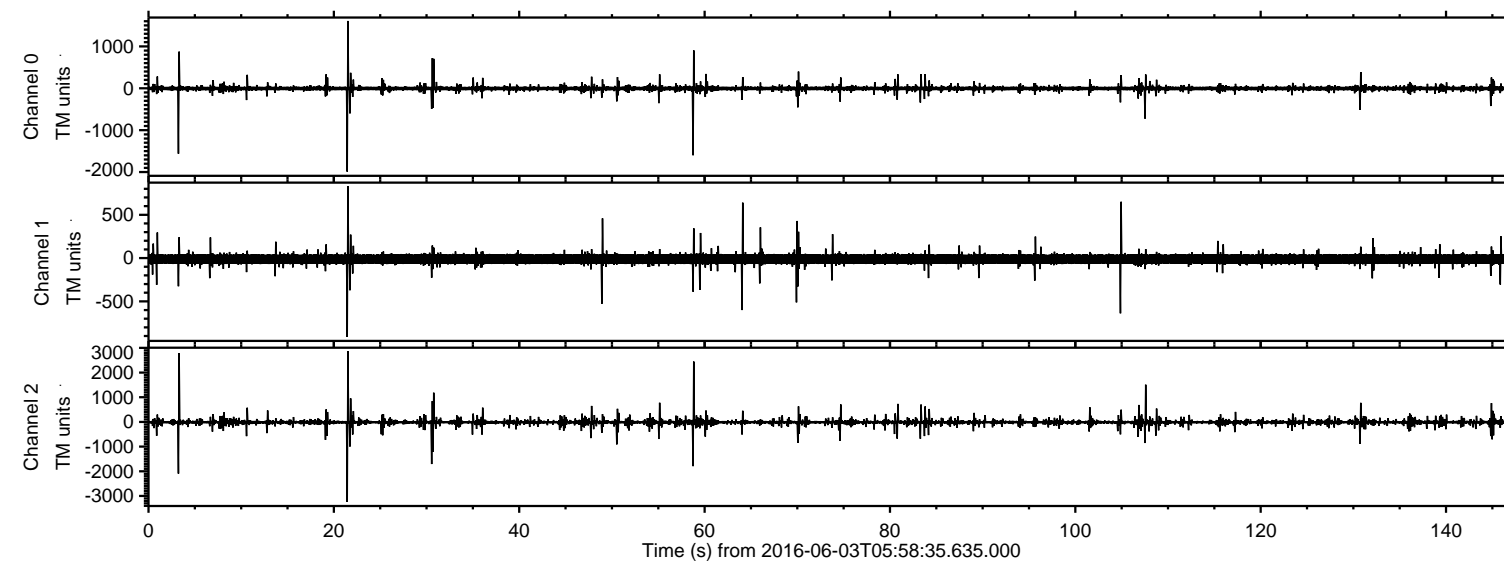


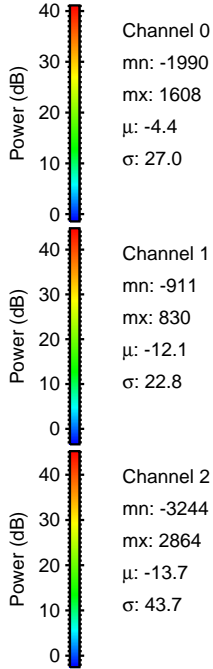
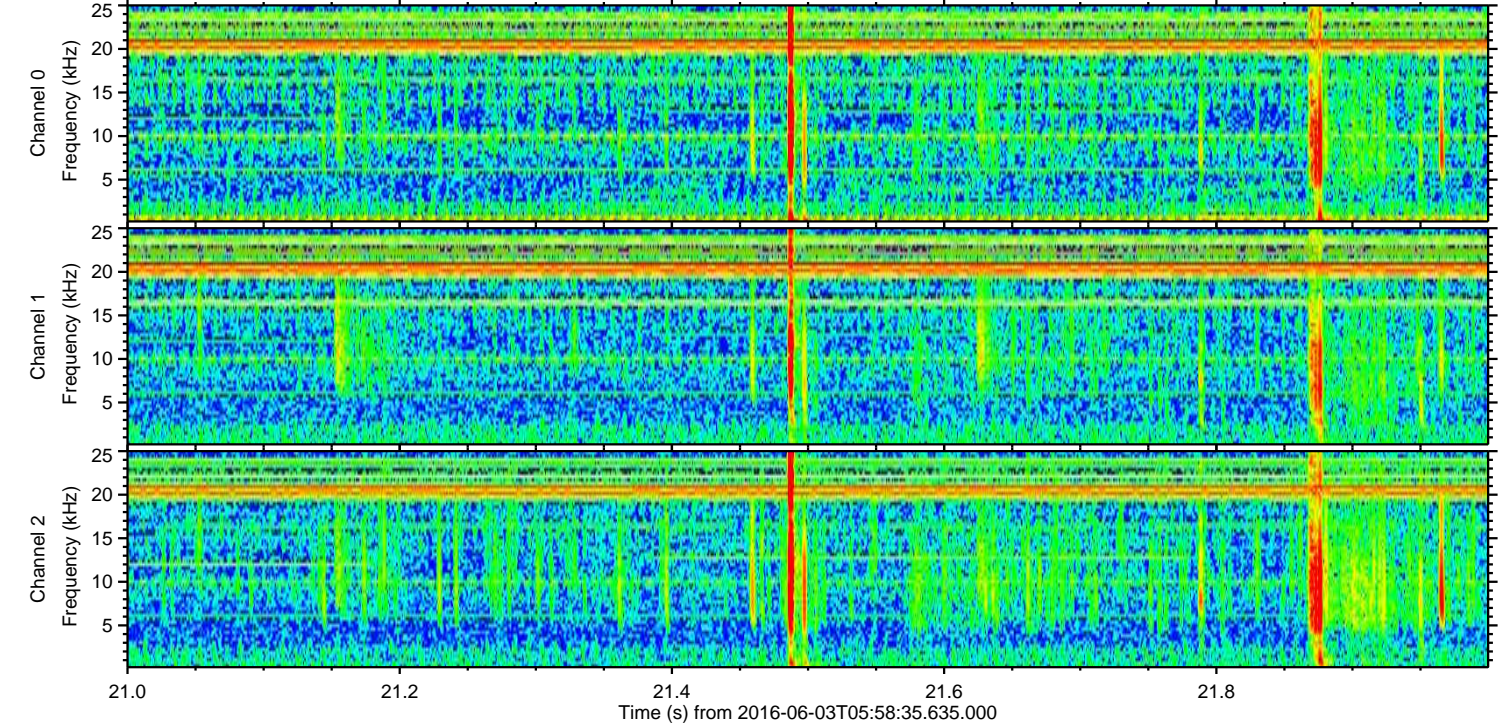
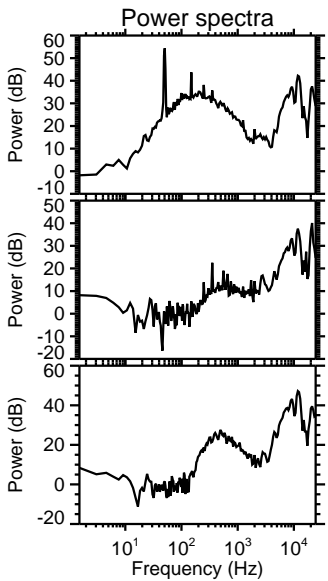
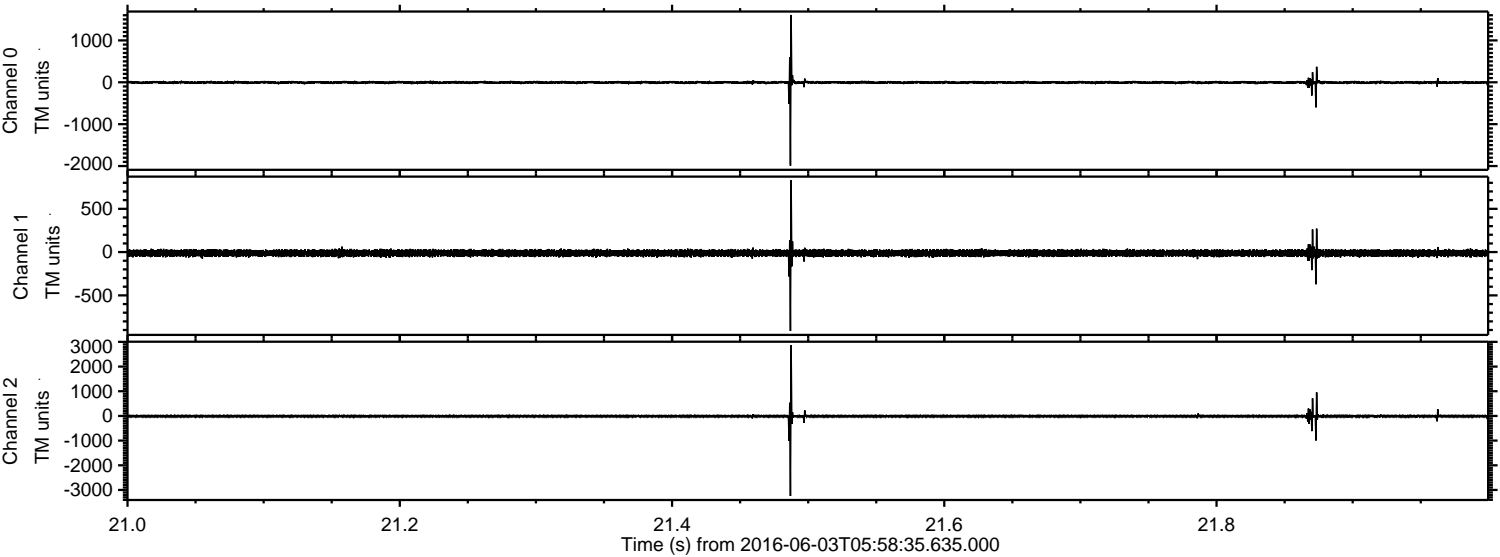
# ELMAVAN 3D WAVEFORMS (Measured data sampled at 50 kHz) 51000 packets of 144 samples from 2016-06-03T05:58:35.635.000.

Processed Fri Jun 3 08:06:32 2016 by ELM ver.2012-10-06 from 001\_\_elm20160603\_055834\_\_dat00.bin



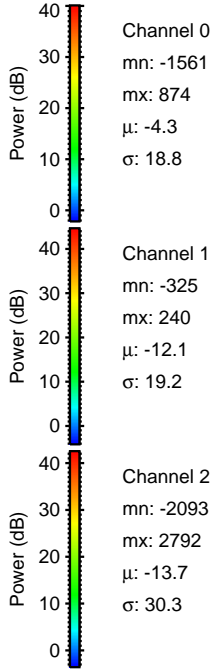
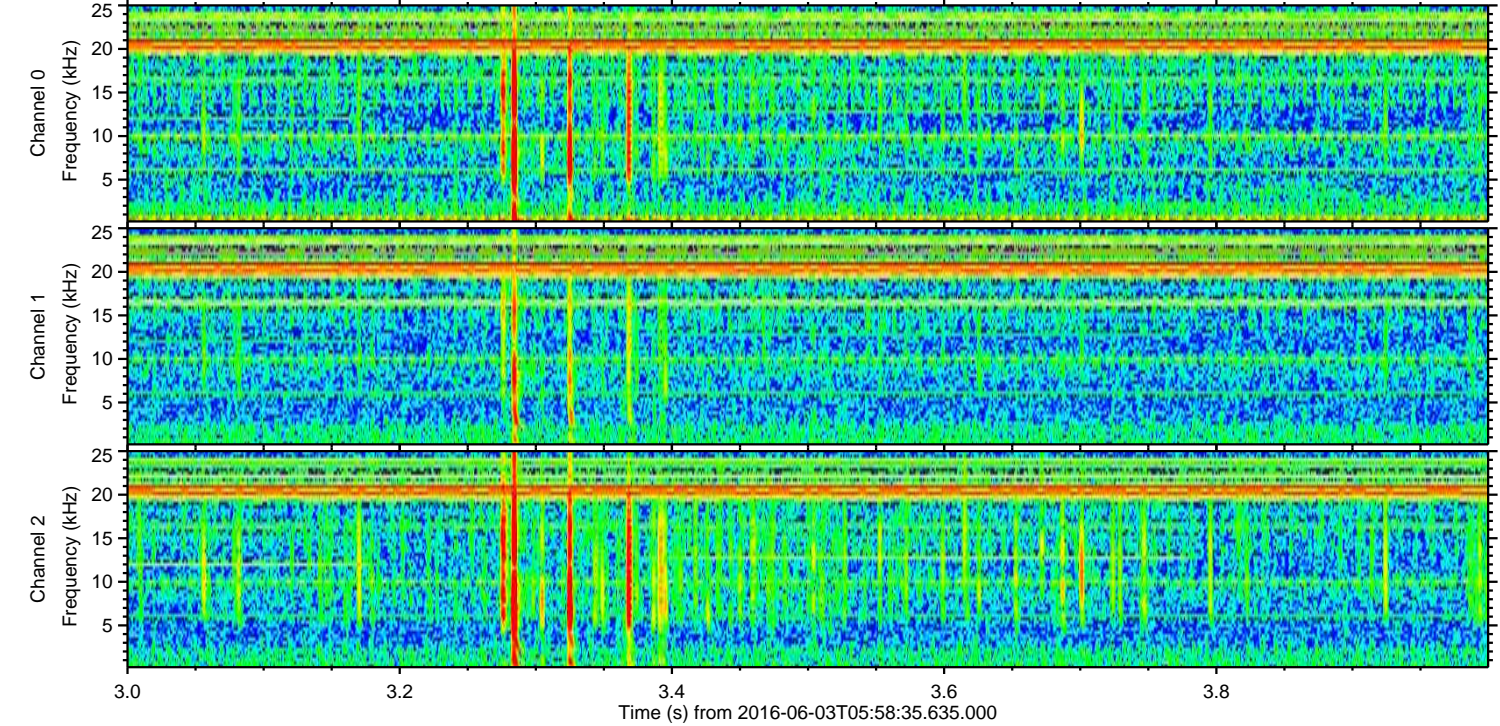
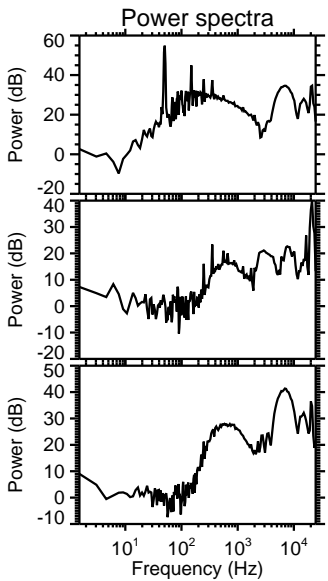
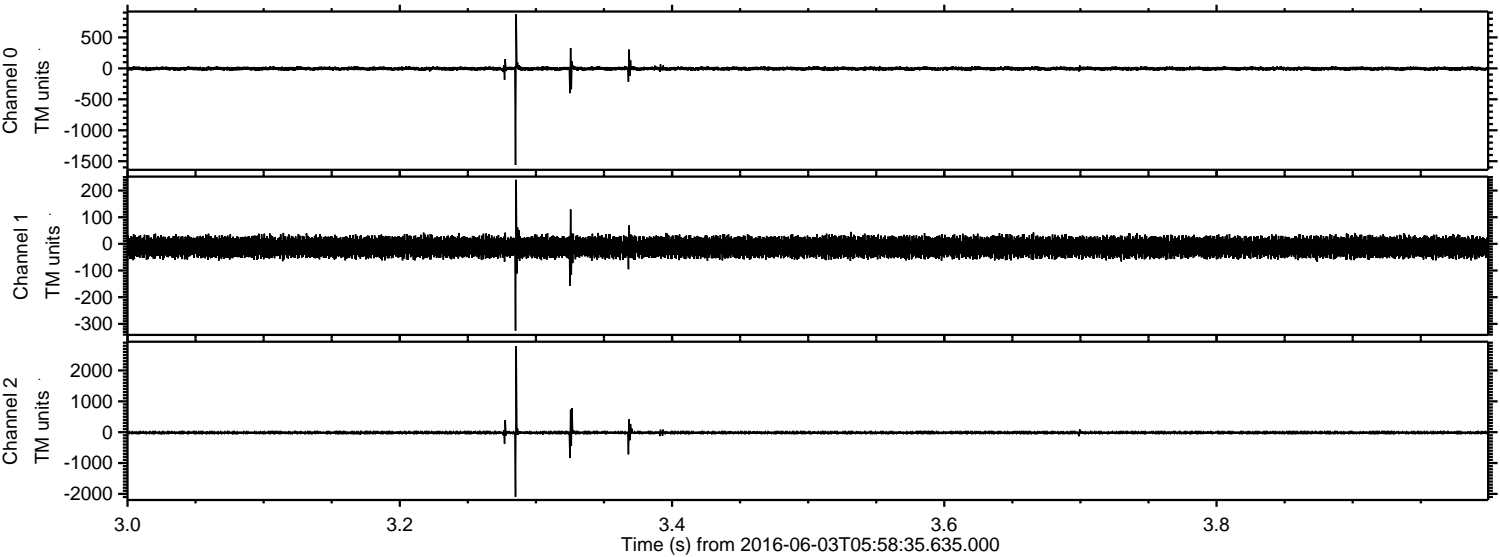


Processed Fri Jun 3 08:06:44 2016 by ELM ver.2012-10-06 from 001\_\_elm20160603\_055834\_\_dat00.bin



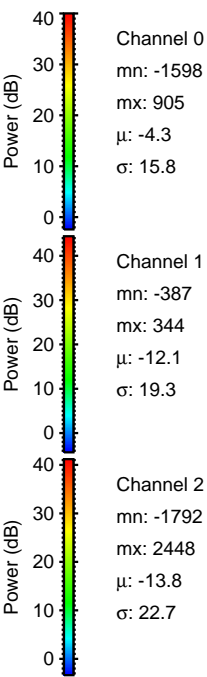
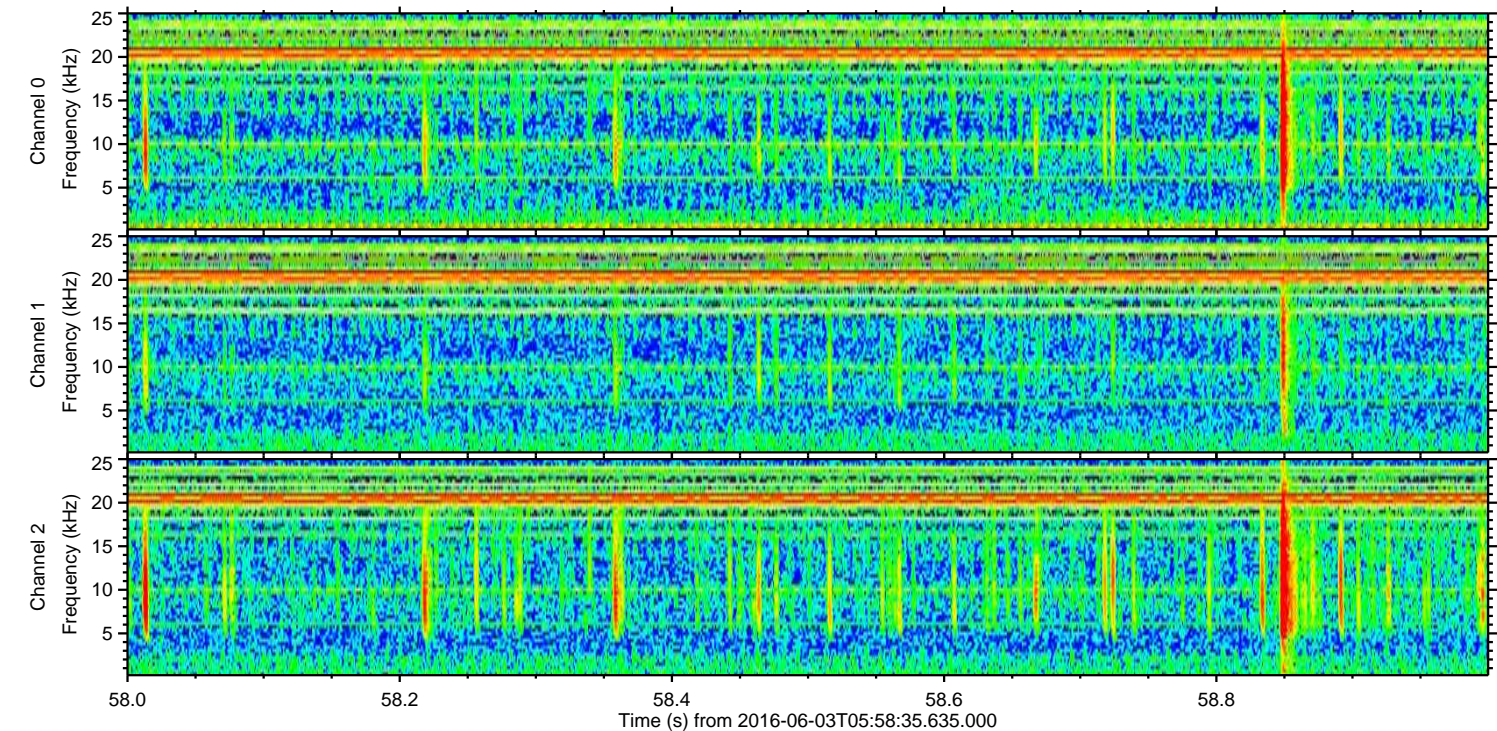
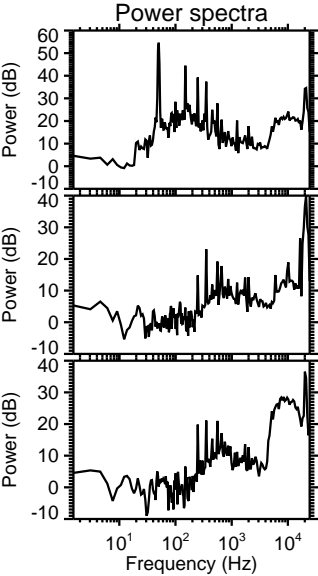
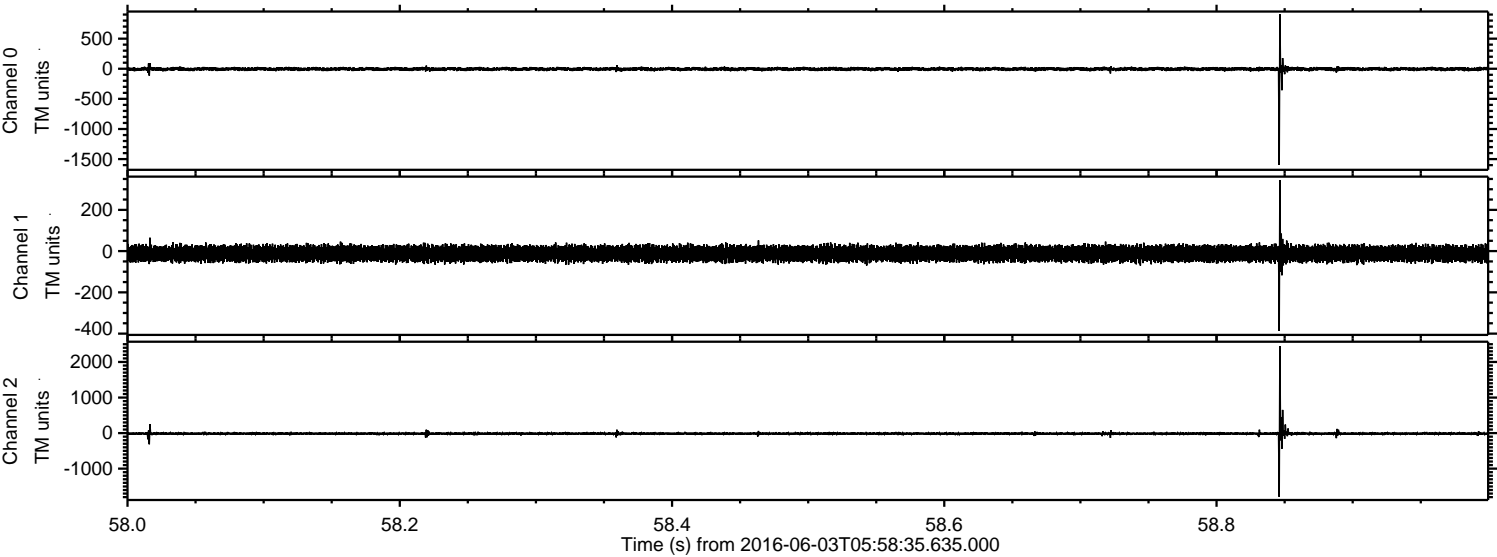


Processed Fri Jun 3 08:06:45 2016 by ELM ver.2012-10-06 from 001\_\_elm20160603\_055834\_\_dat00.bin





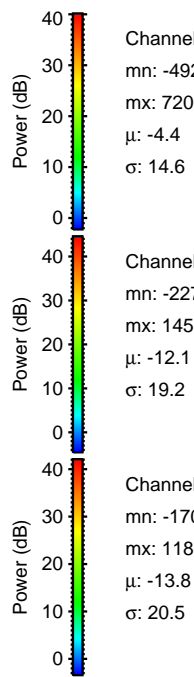
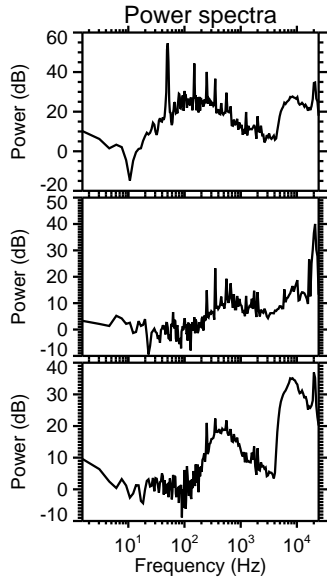
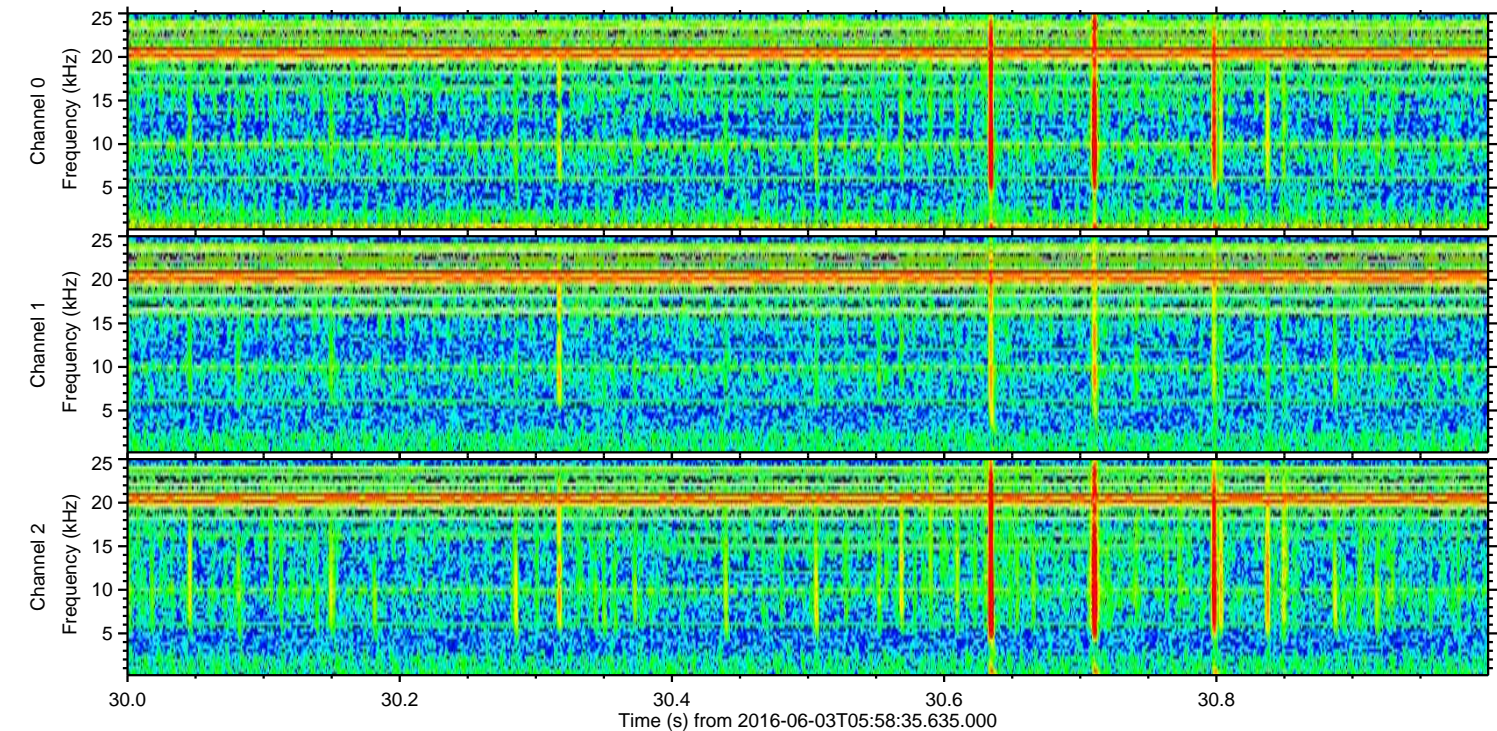
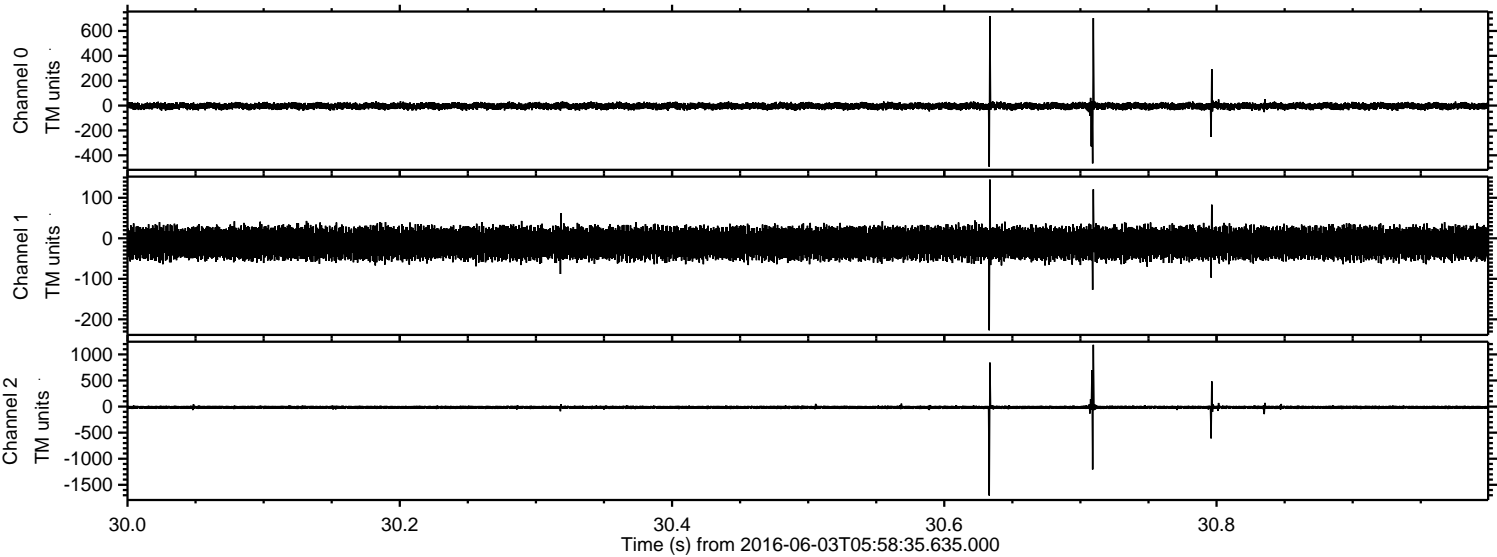
Processed Fri Jun 3 08:06:46 2016 by ELM ver.2012-10-06 from 001\_\_elm20160603\_055834\_\_dat00.bin





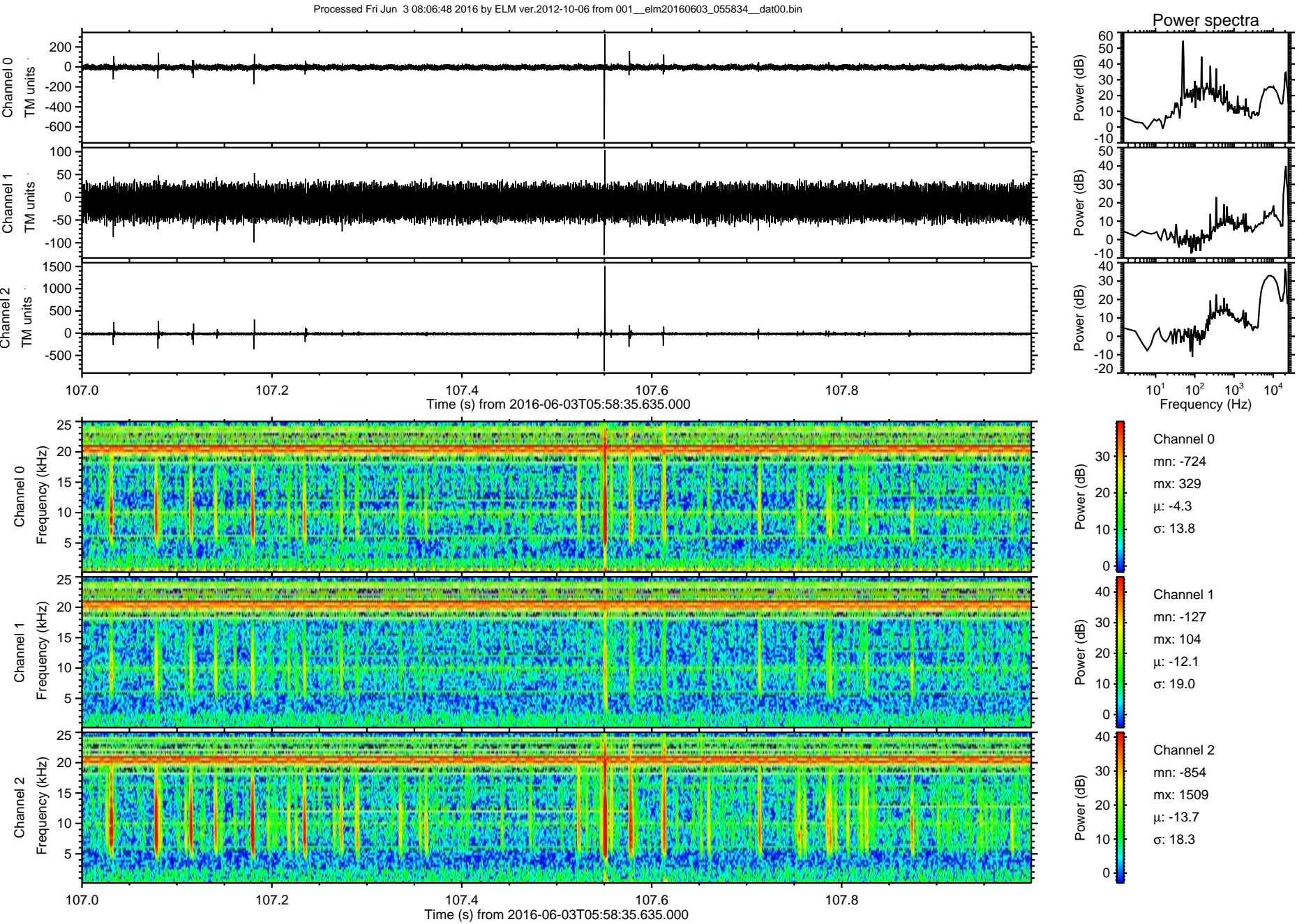
ELMAVAN 3D WAVEFORMS (Measured data sampled at 50 kHz) 51000 packets of 144 samples from 2016-06-03T05:58:35.635.000. Part 31/147

Processed Fri Jun 3 08:06:47 2016 by ELM ver.2012-10-06 from 001\_\_elm20160603\_055834\_\_dat00.bin



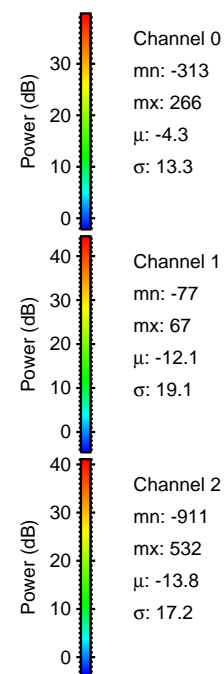
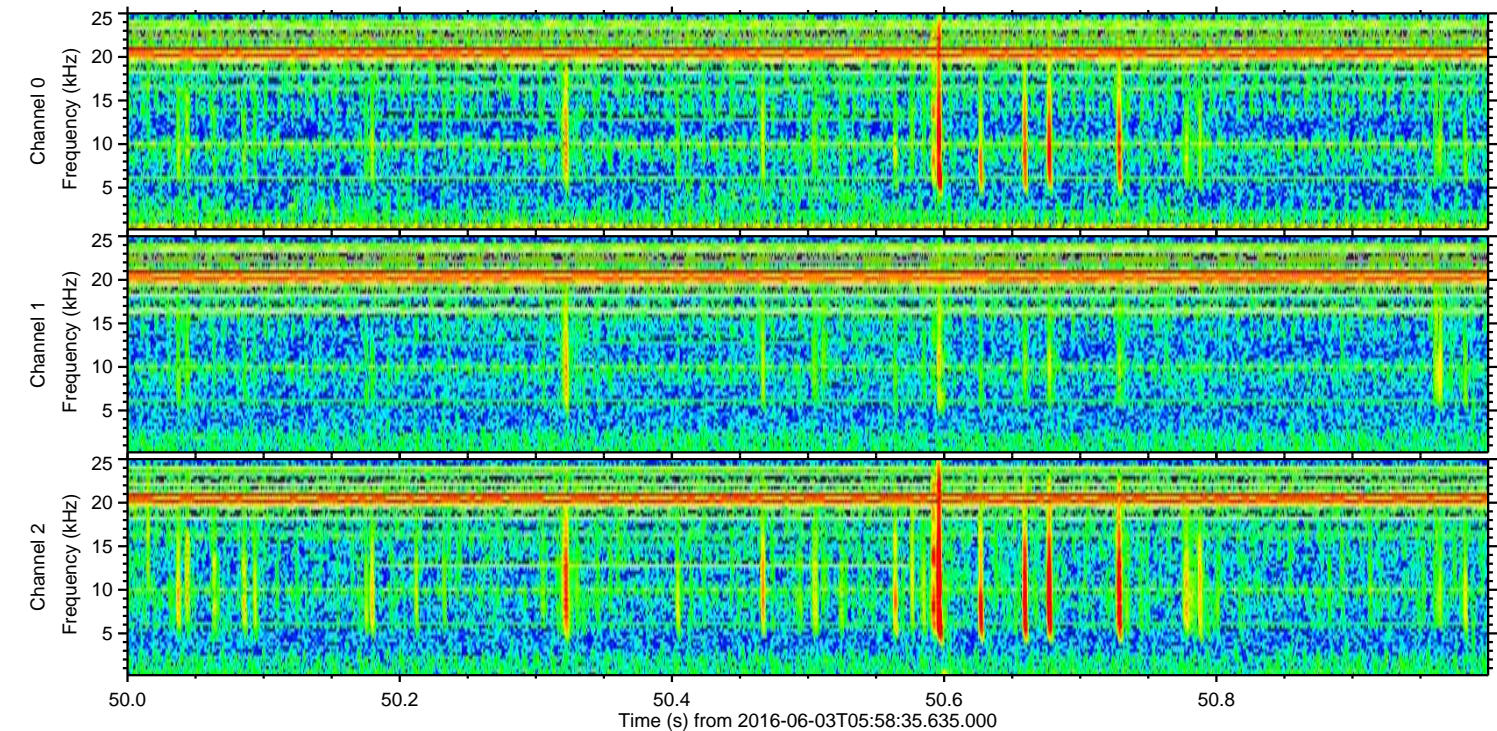
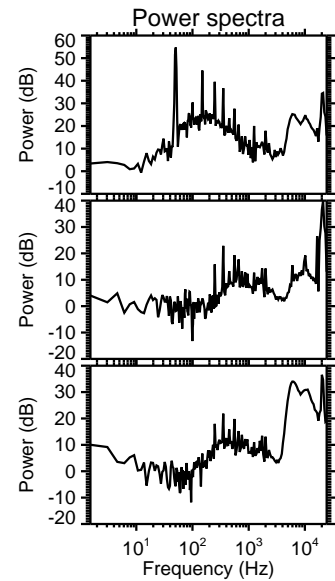
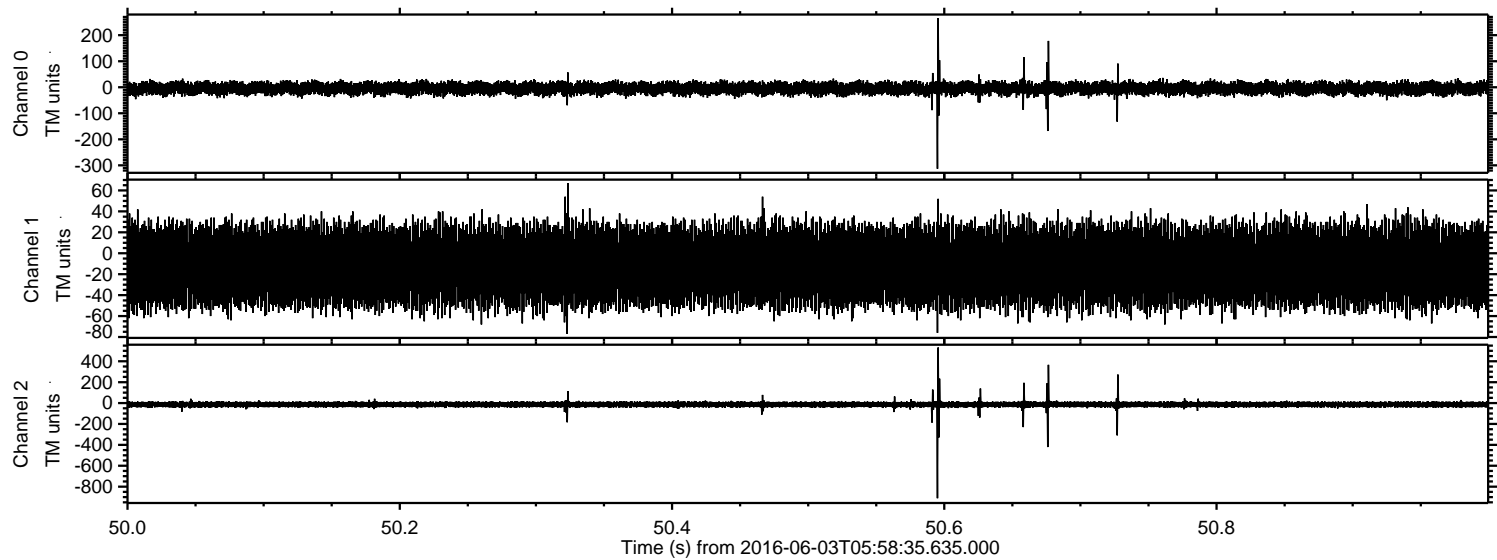


ELMAVAN 3D WAVEFORMS (Measured data sampled at 50 kHz) 51000 packets of 144 samples from 2016-06-03T05:58:35.635.000. Part 108/147



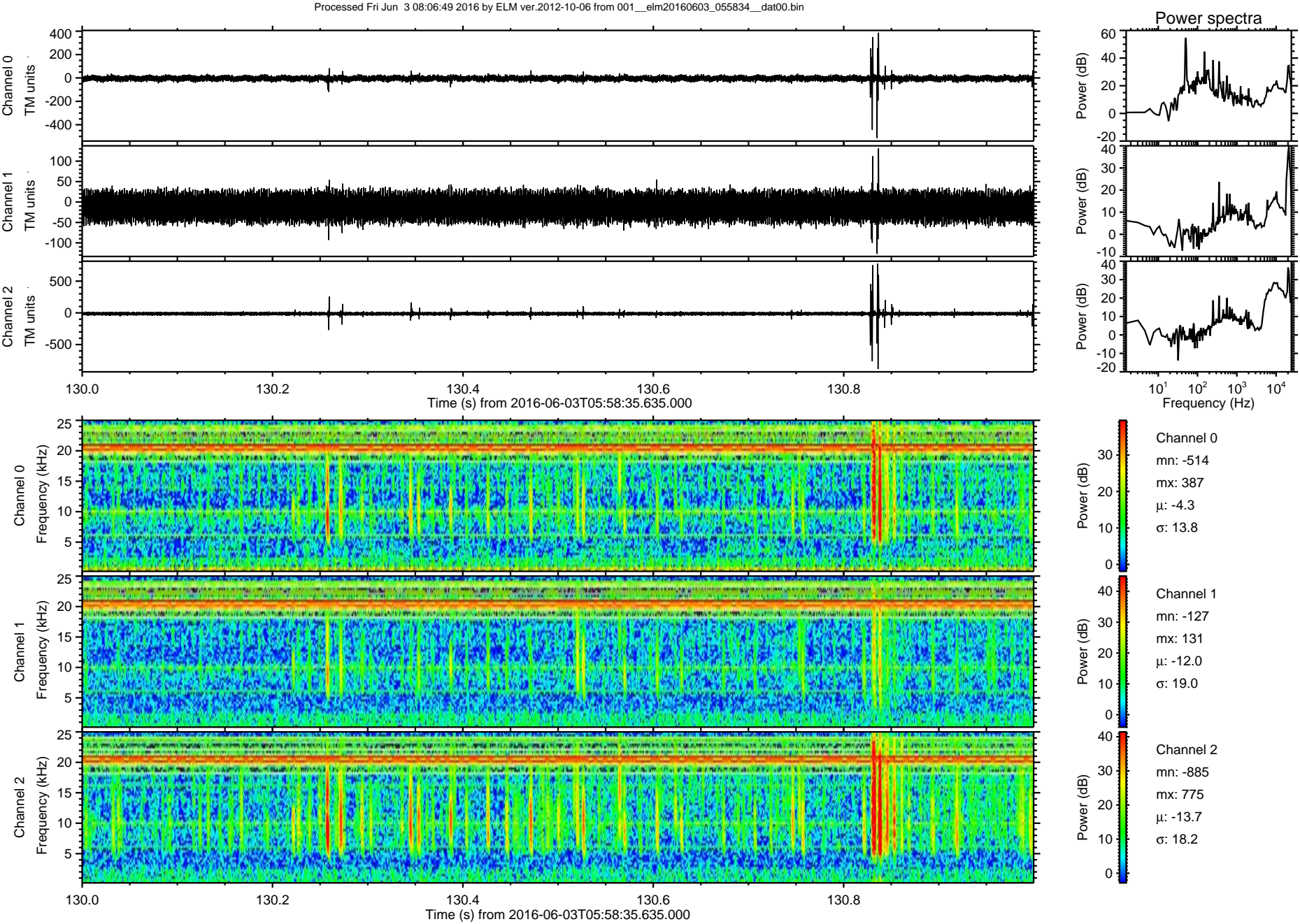


Processed Fri Jun 3 08:06:48 2016 by ELM ver.2012-10-06 from 001\_\_elm20160603\_055834\_\_dat00.bin



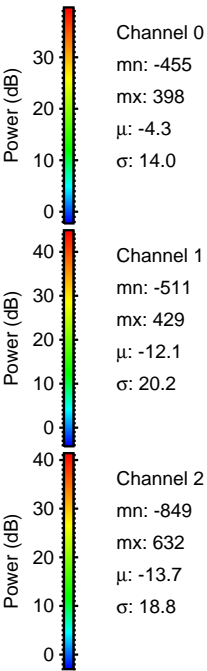
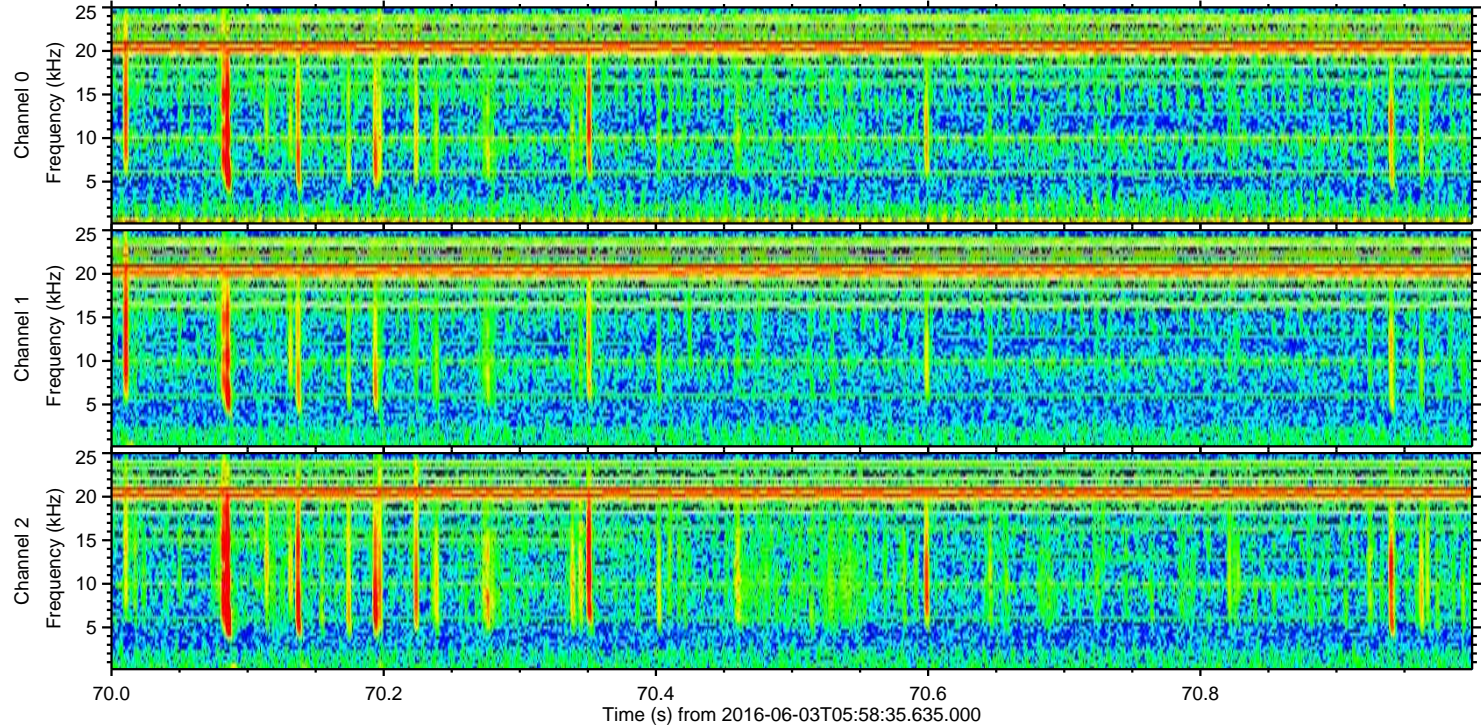
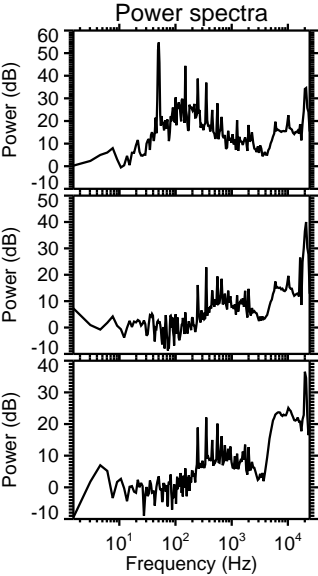
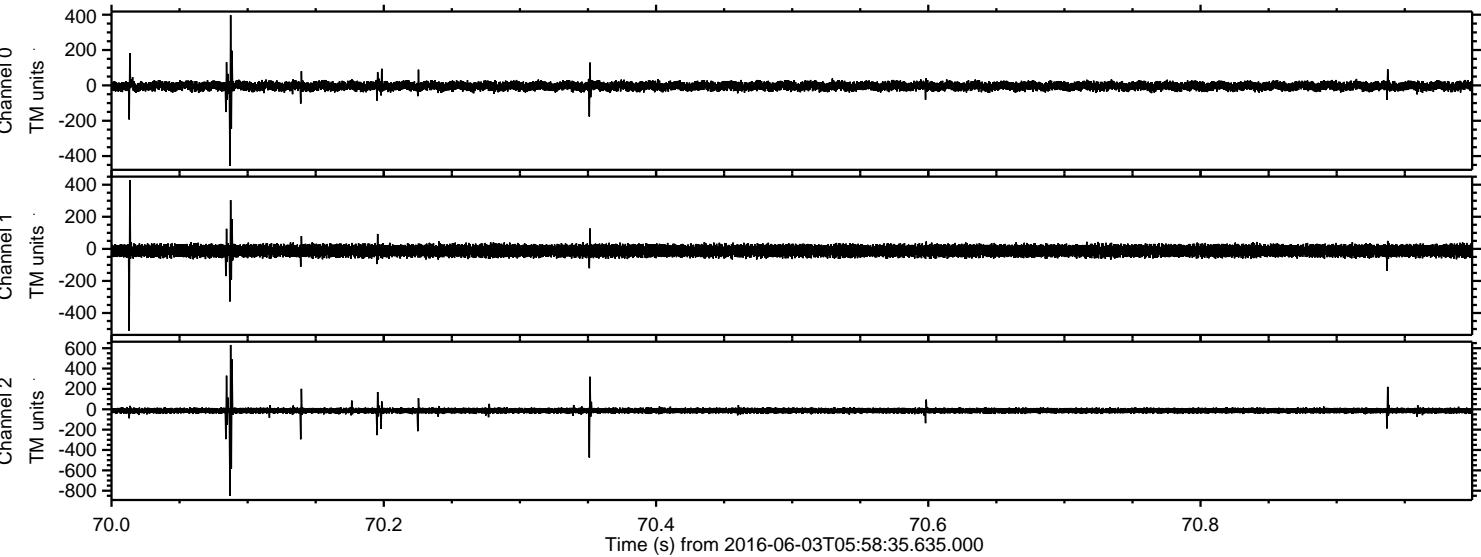


ELMAVAN 3D WAVEFORMS (Measured data sampled at 50 kHz) 51000 packets of 144 samples from 2016-06-03T05:58:35.635.000. Part 131/147



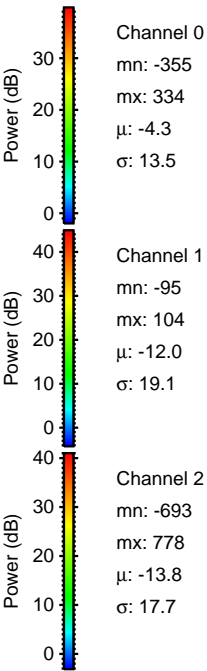
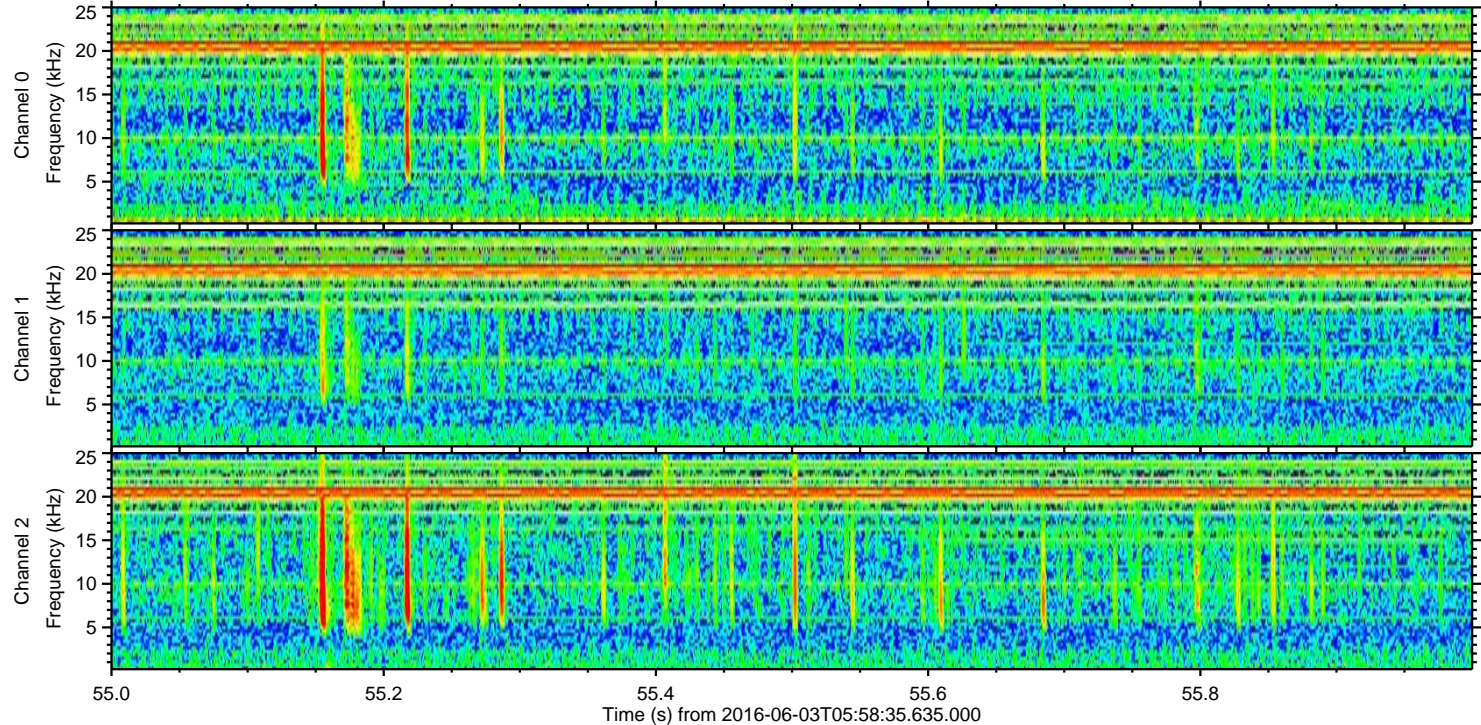
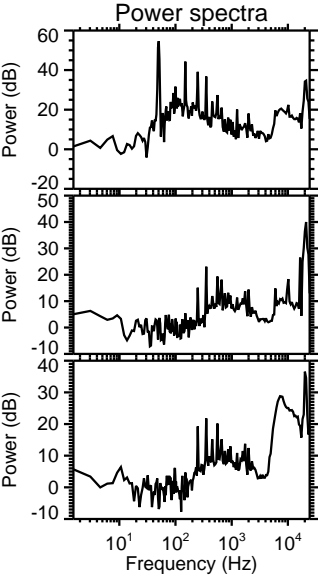
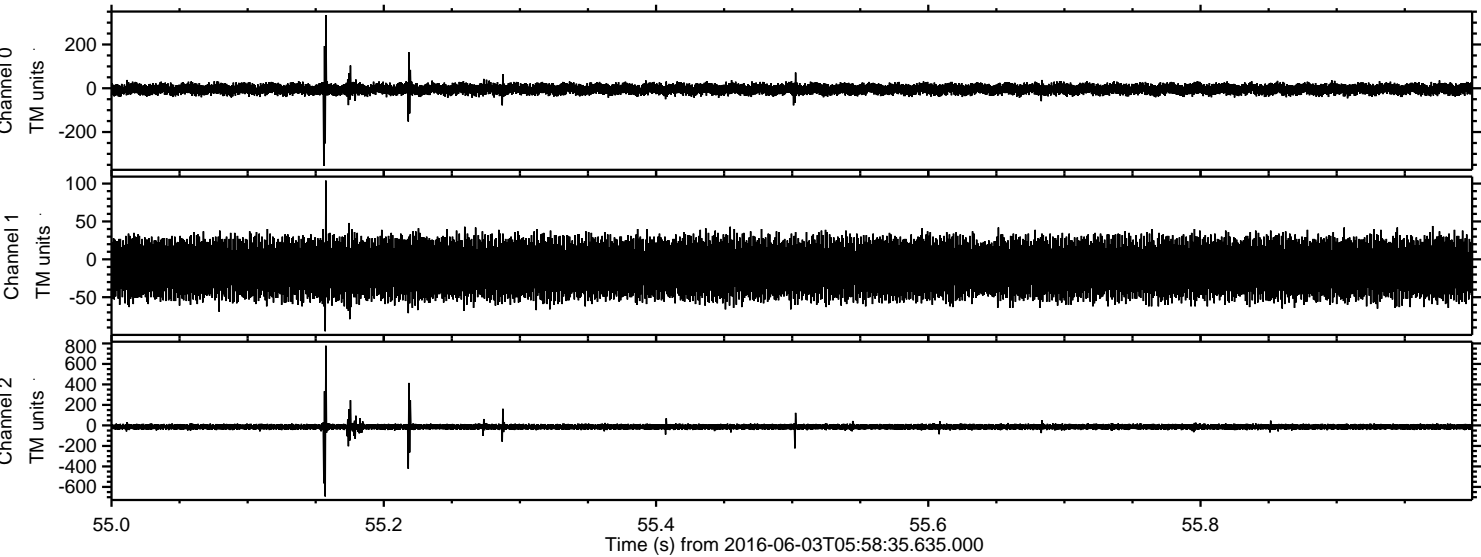


Processed Fri Jun 3 08:06:50 2016 by ELM ver.2012-10-06 from 001\_\_elm20160603\_055834\_\_dat00.bin





Processed Fri Jun 3 08:06:51 2016 by ELM ver.2012-10-06 from 001\_\_elm20160603\_055834\_\_dat00.bin





Processed Fri Jun 3 08:06:52 2016 by ELM ver.2012-10-06 from 001\_\_elm20160603\_055834\_\_dat00.bin

