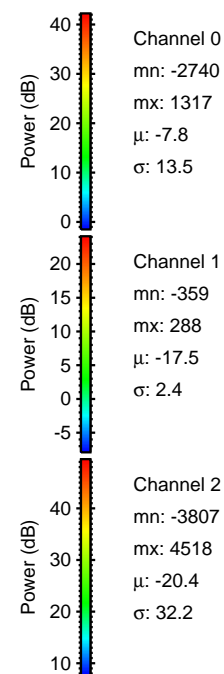
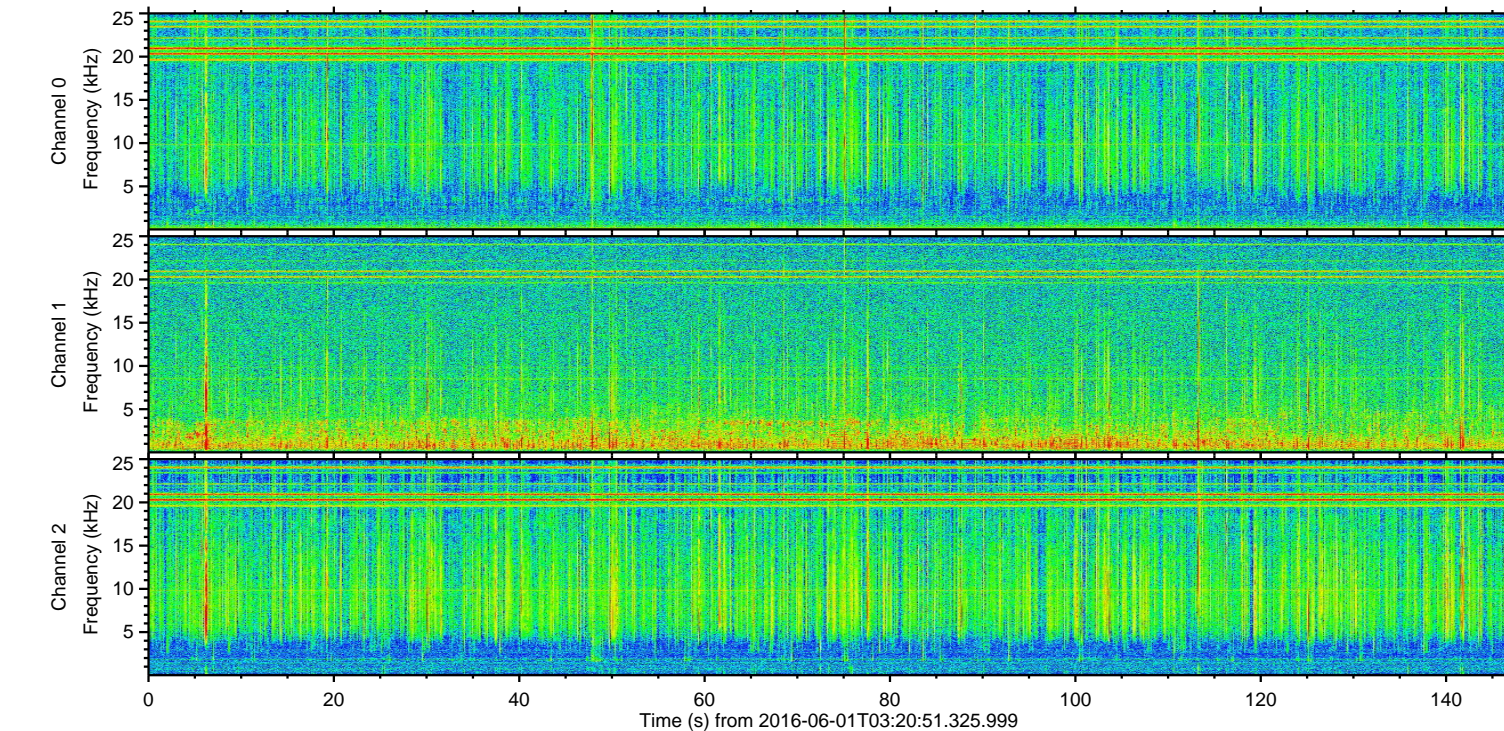
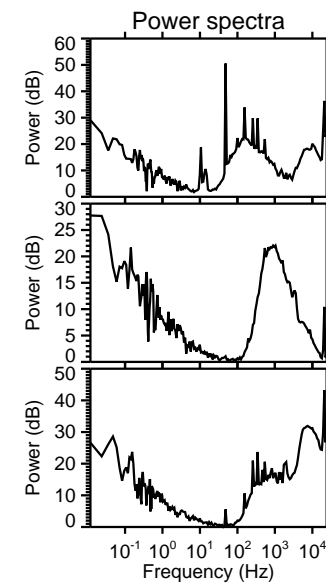
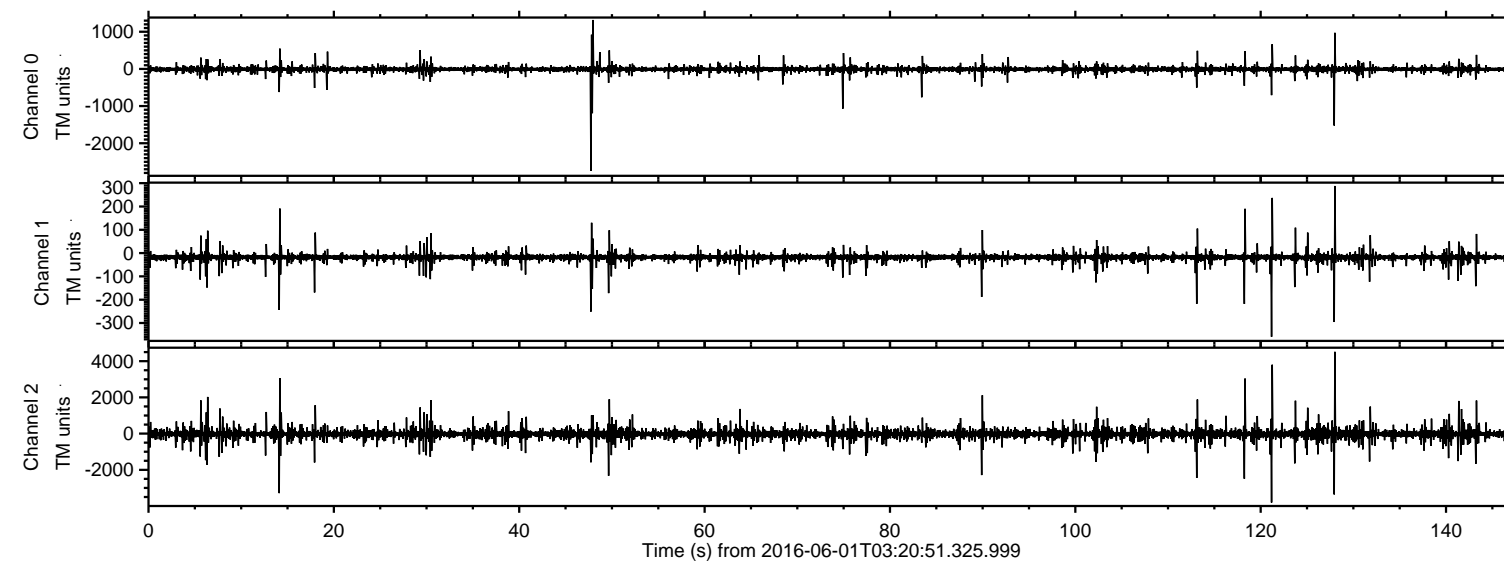


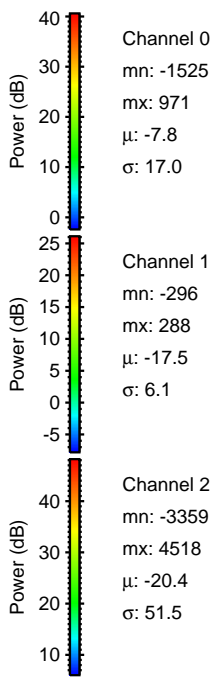
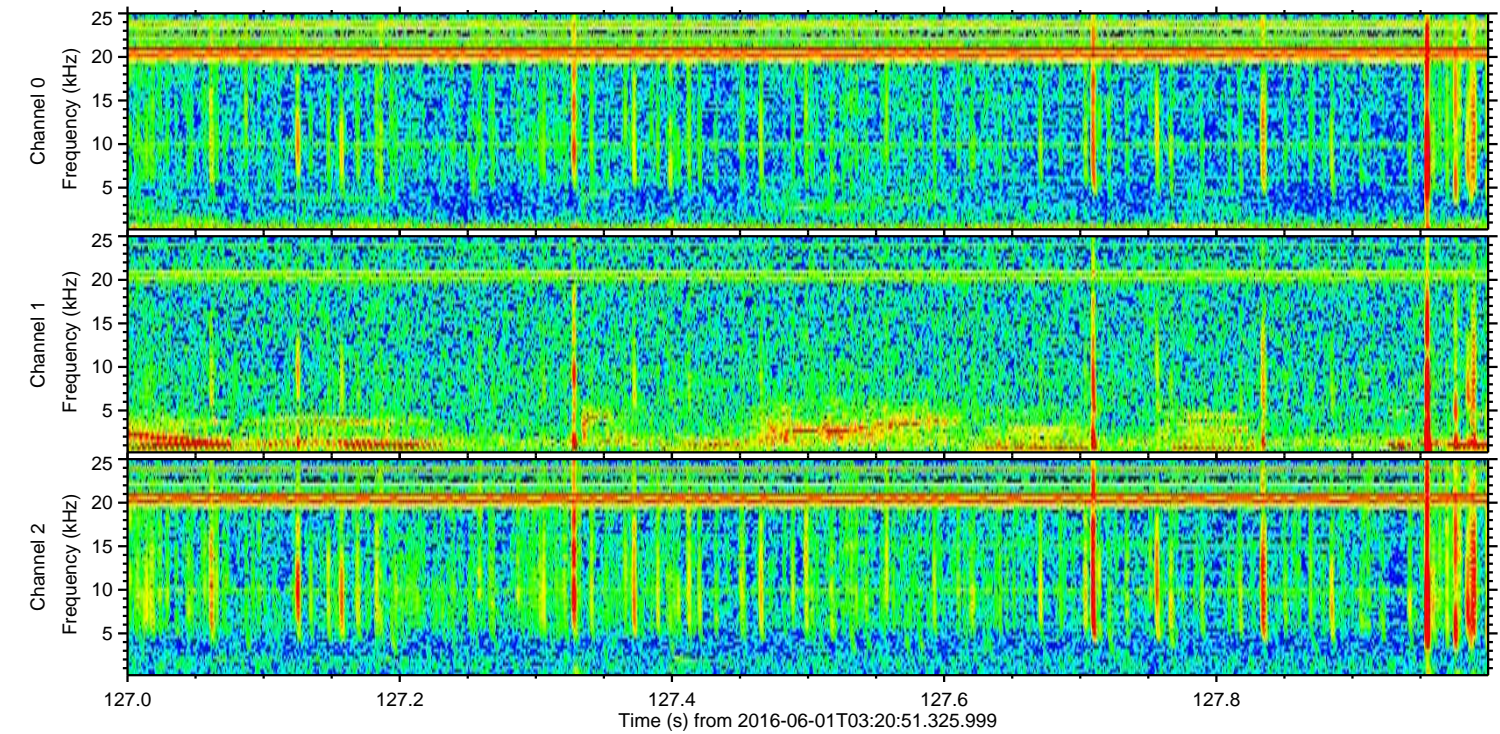
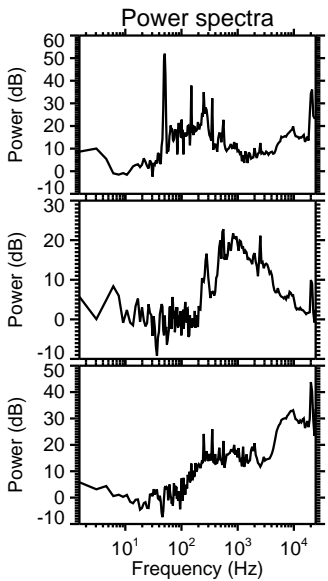
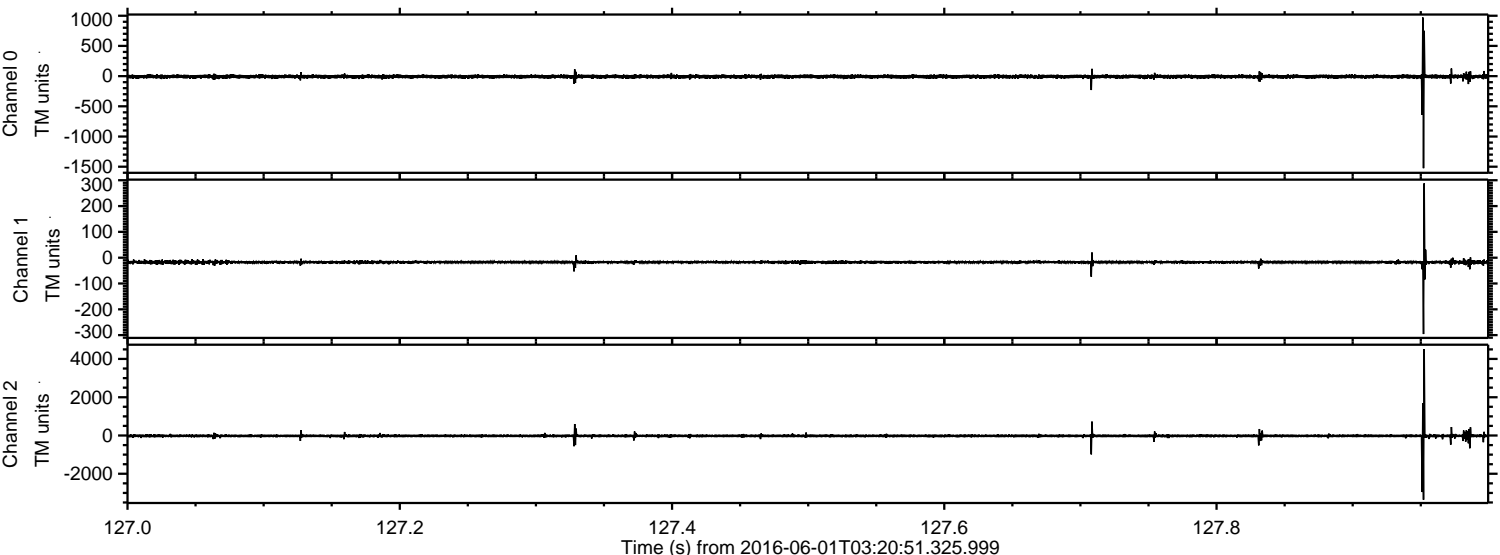
ELMAVAN 3D WAVEFORMS (Measured data sampled at 50 kHz) 51000 packets of 144 samples from 2016-06-01T03:20:51.325.999.

Processed Wed Jun 1 05:29:09 2016 by ELM ver.2012-10-06 from 001__elm20160601_032050__dat00.bin



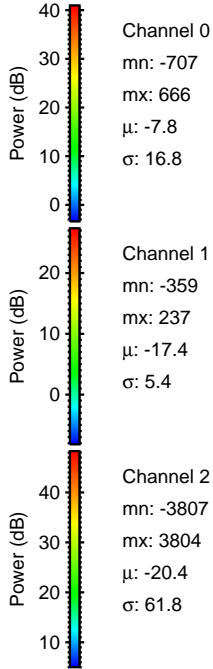
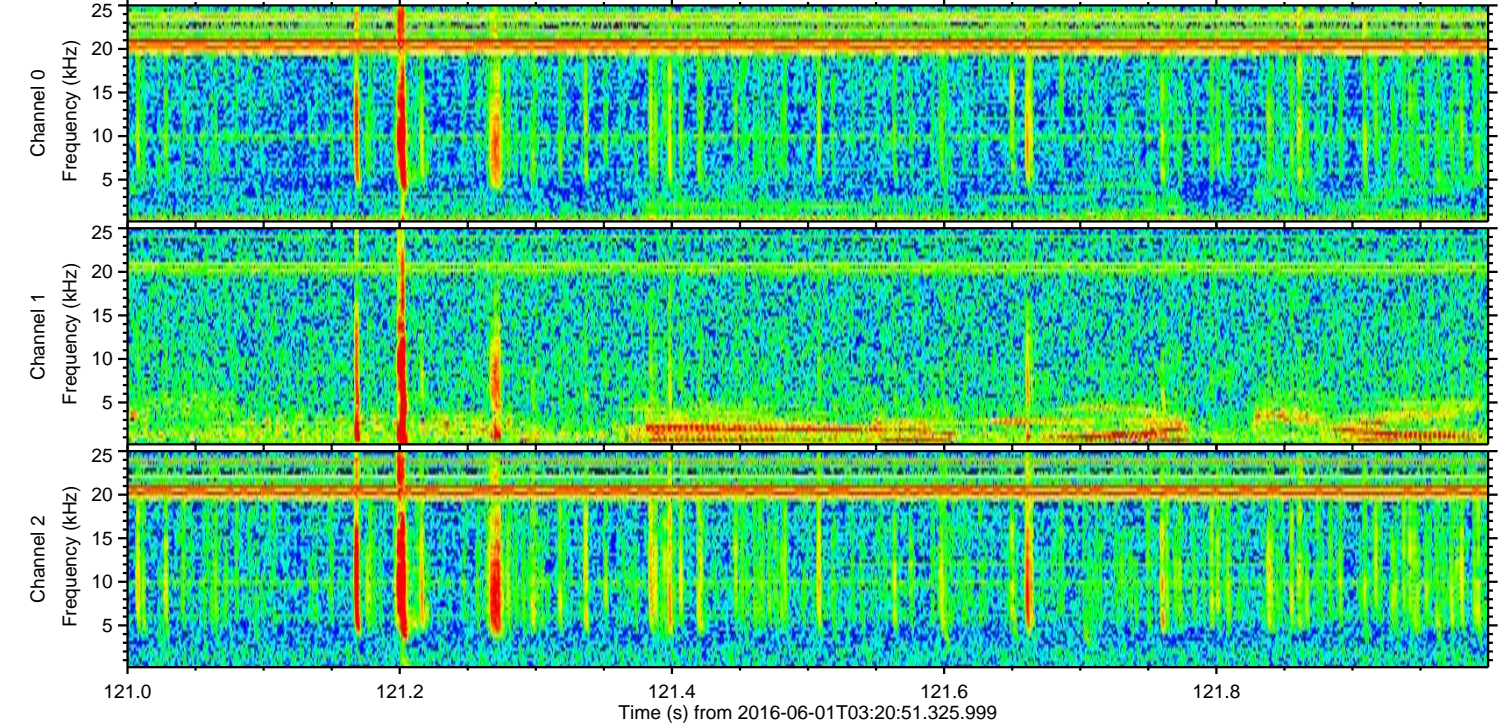
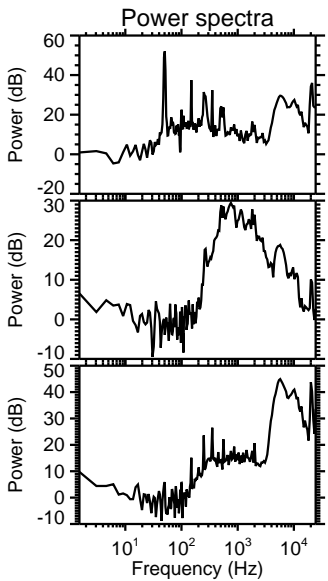
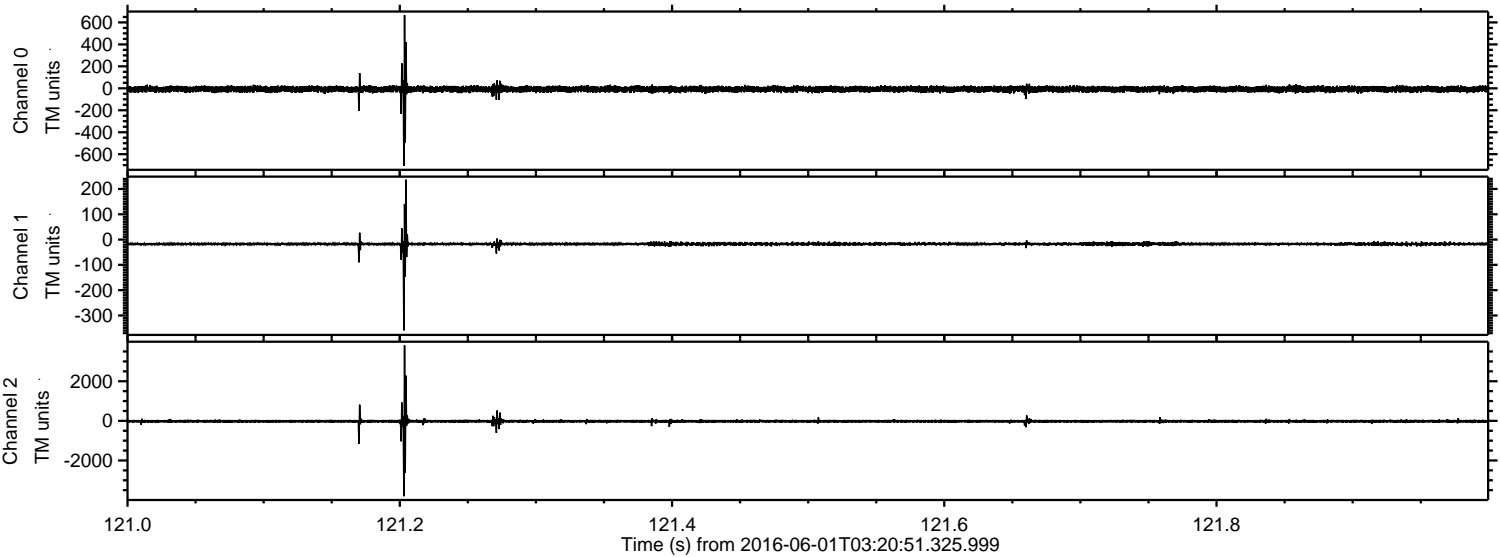
ELMAVAN 3D WAVEFORMS (Measured data sampled at 50 kHz) 51000 packets of 144 samples from 2016-06-01T03:20:51.325.999. Part 128/147

Processed Wed Jun 1 05:29:21 2016 by ELM ver.2012-10-06 from 001__elm20160601_032050__dat00.bin

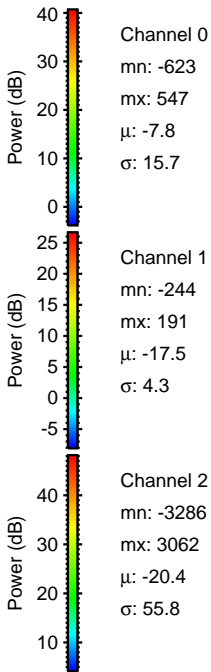
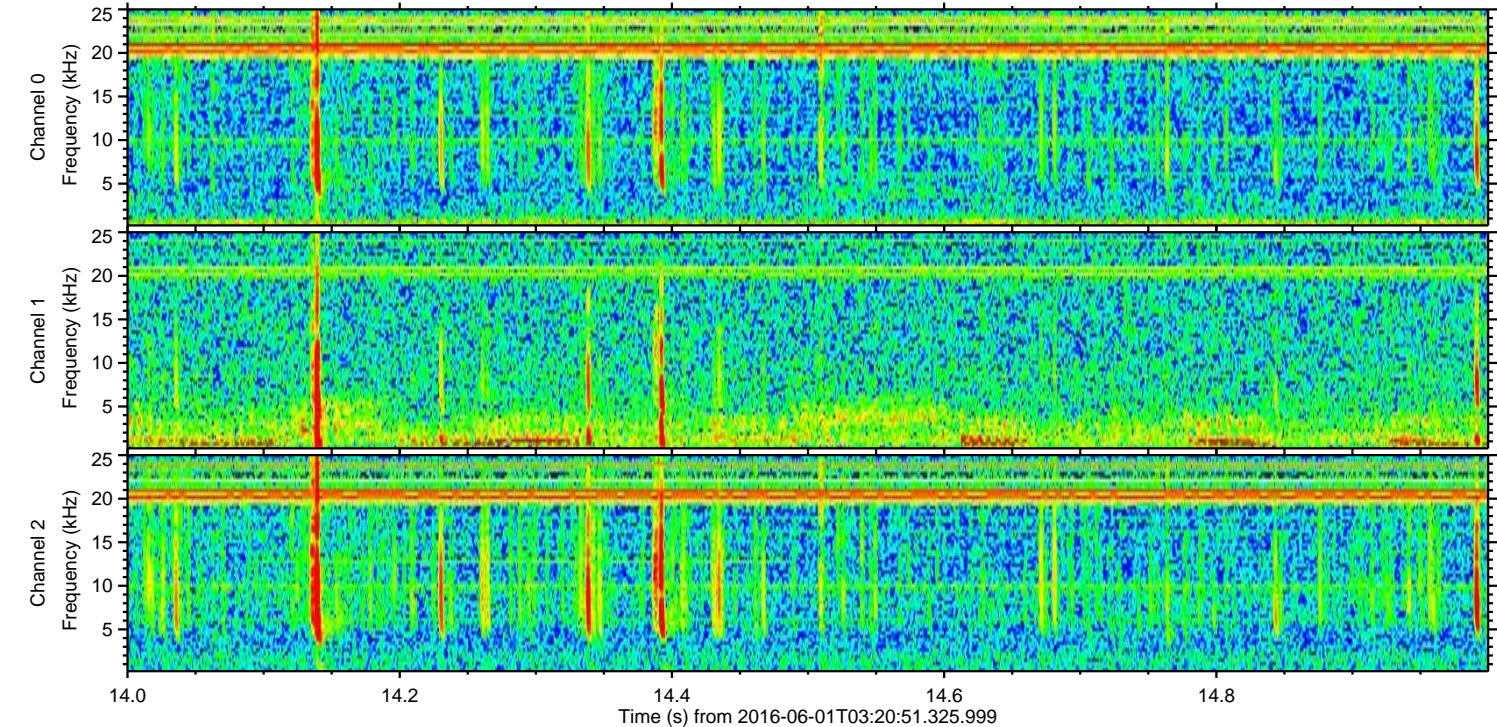
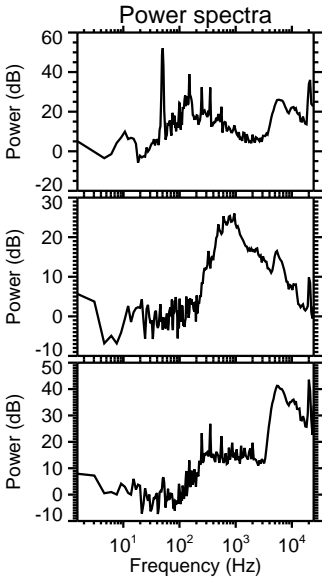
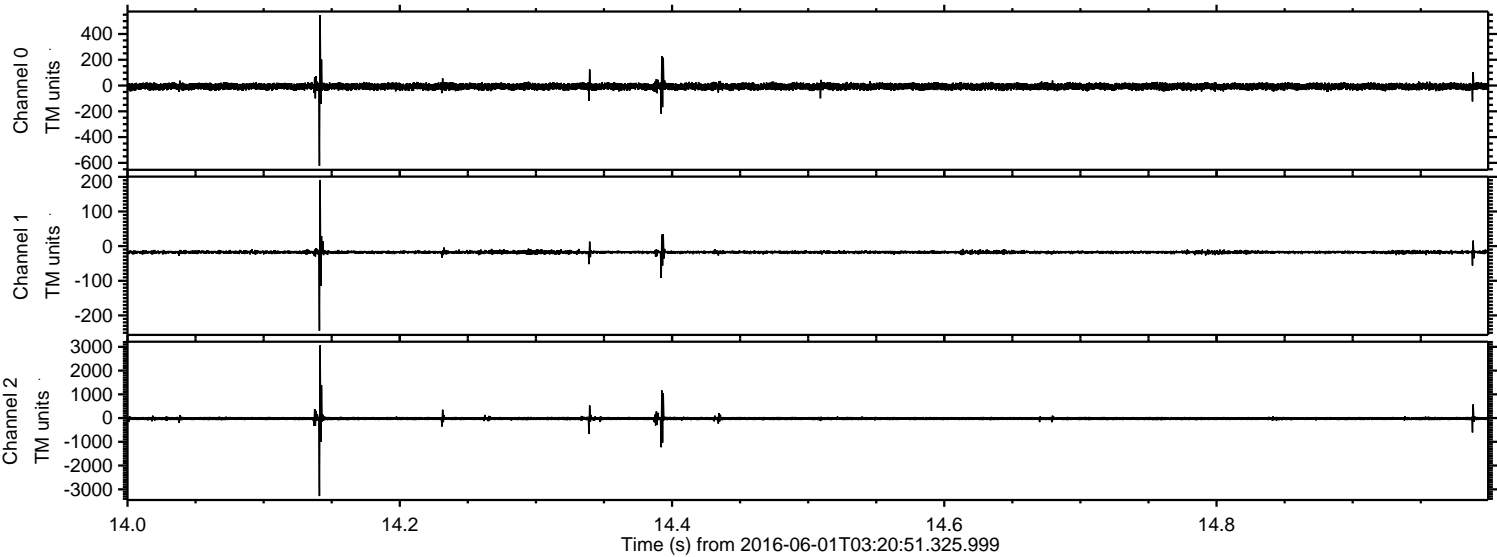


ELMAVAN 3D WAVEFORMS (Measured data sampled at 50 kHz) 51000 packets of 144 samples from 2016-06-01T03:20:51.325.999. Part 122/147

Processed Wed Jun 1 05:29:22 2016 by ELM ver.2012-10-06 from 001__elm20160601_032050__dat00.bin

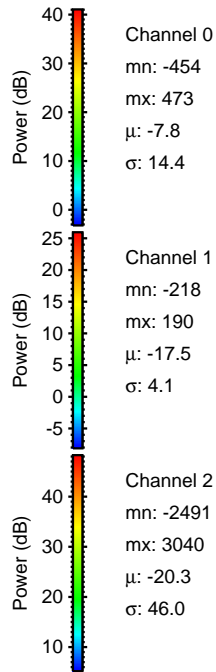
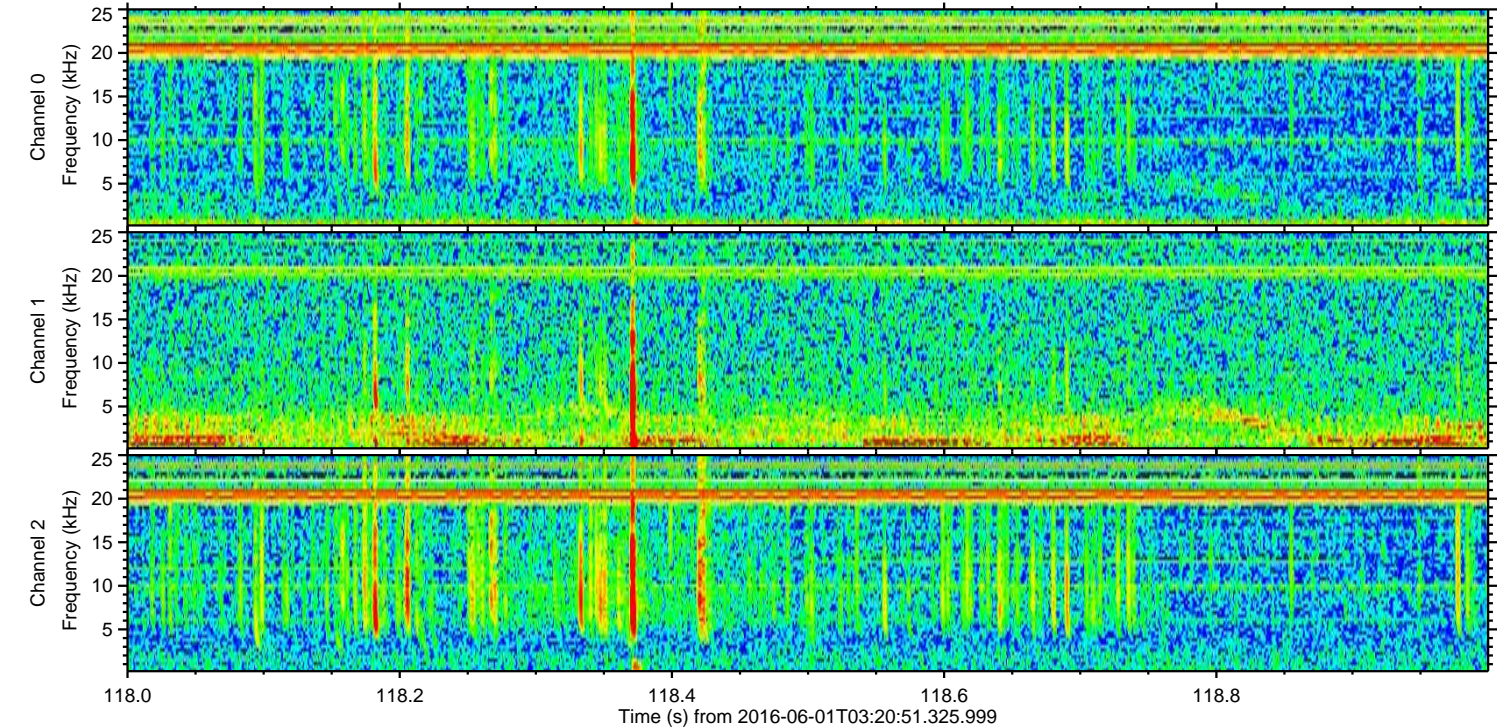
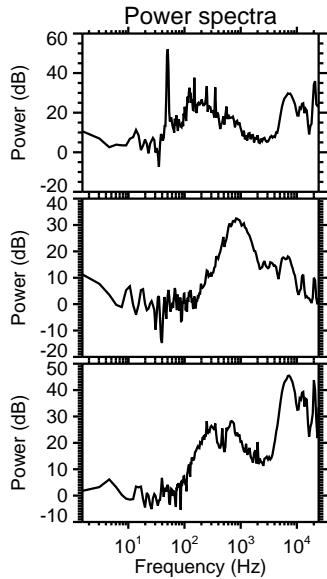
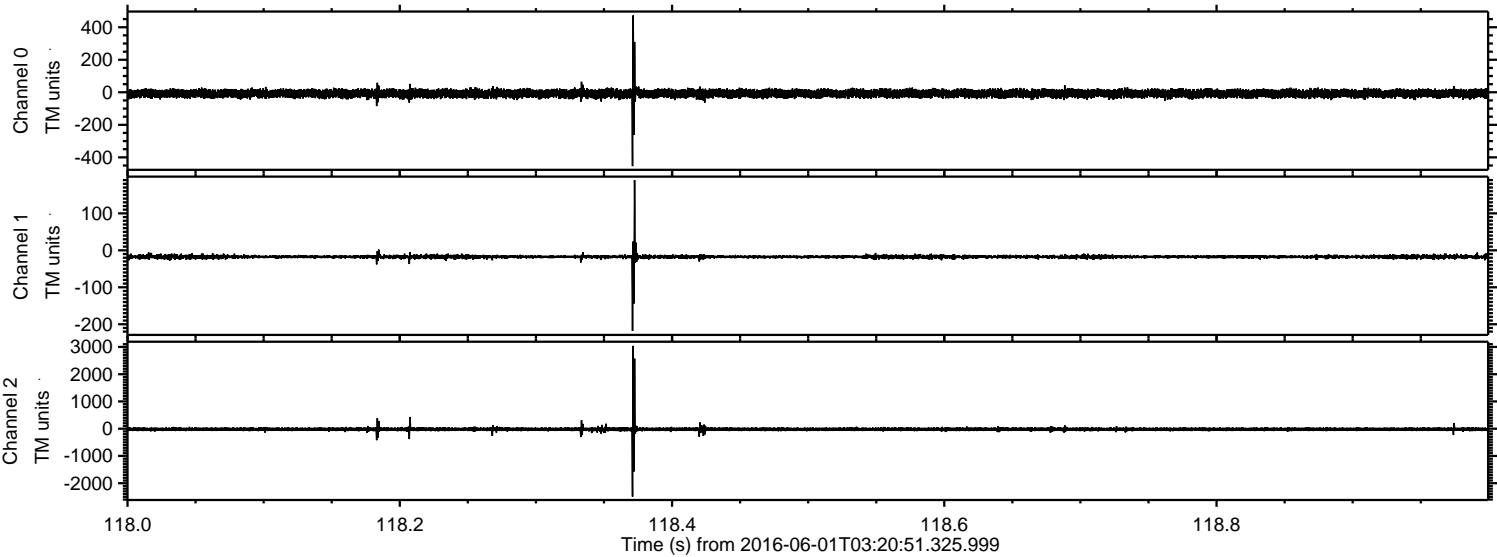


Processed Wed Jun 1 05:29:23 2016 by ELM ver.2012-10-06 from 001__elm20160601_032050__dat00.bin



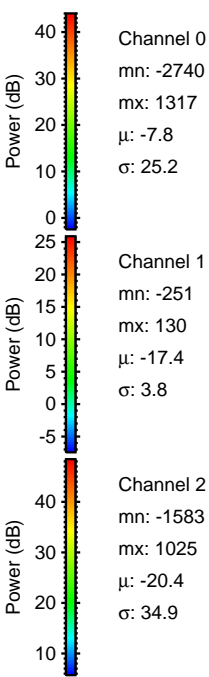
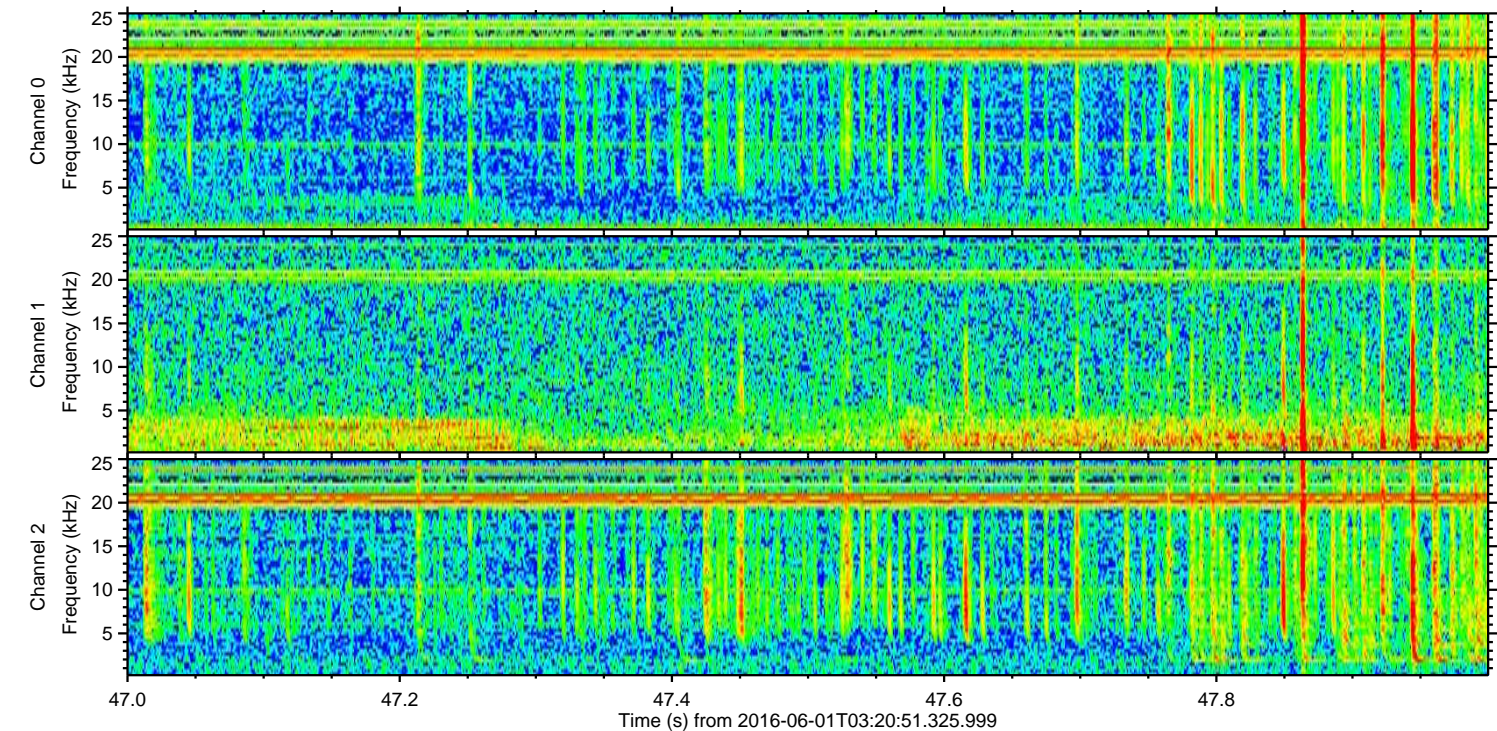
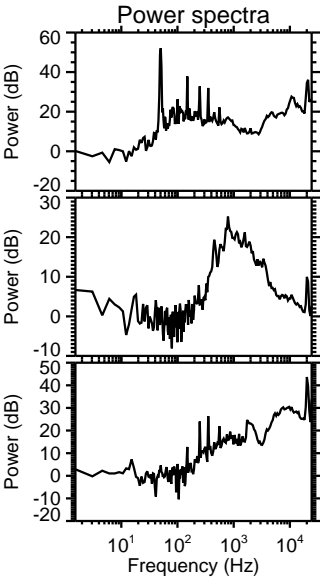
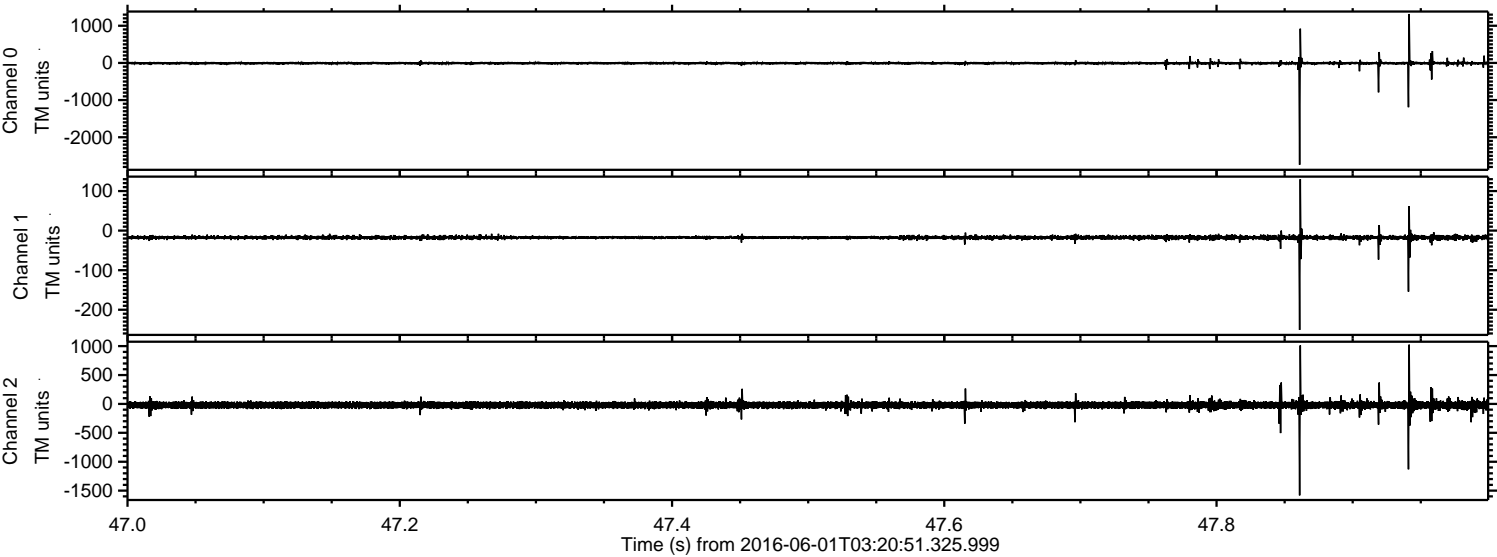
ELMAVAN 3D WAVEFORMS (Measured data sampled at 50 kHz) 51000 packets of 144 samples from 2016-06-01T03:20:51.325.999. Part 119/147

Processed Wed Jun 1 05:29:24 2016 by ELM ver.2012-10-06 from 001__elm20160601_032050__dat00.bin



ELMAVAN 3D WAVEFORMS (Measured data sampled at 50 kHz) 51000 packets of 144 samples from 2016-06-01T03:20:51.325.999. Part 48/147

Processed Wed Jun 1 05:29:25 2016 by ELM ver.2012-10-06 from 001__elm20160601_032050__dat00.bin



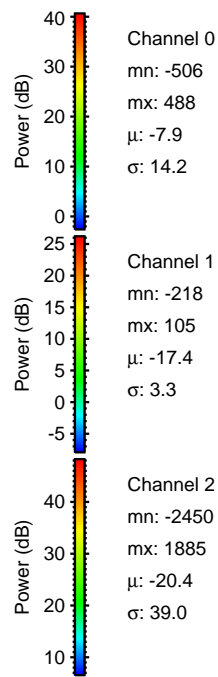
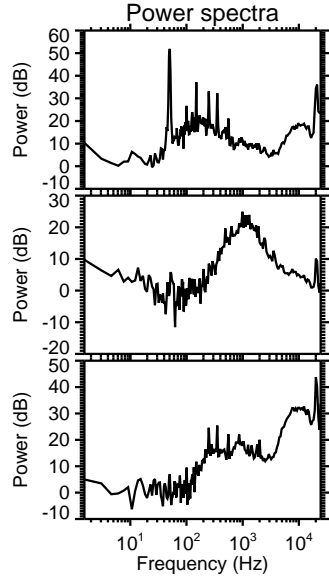
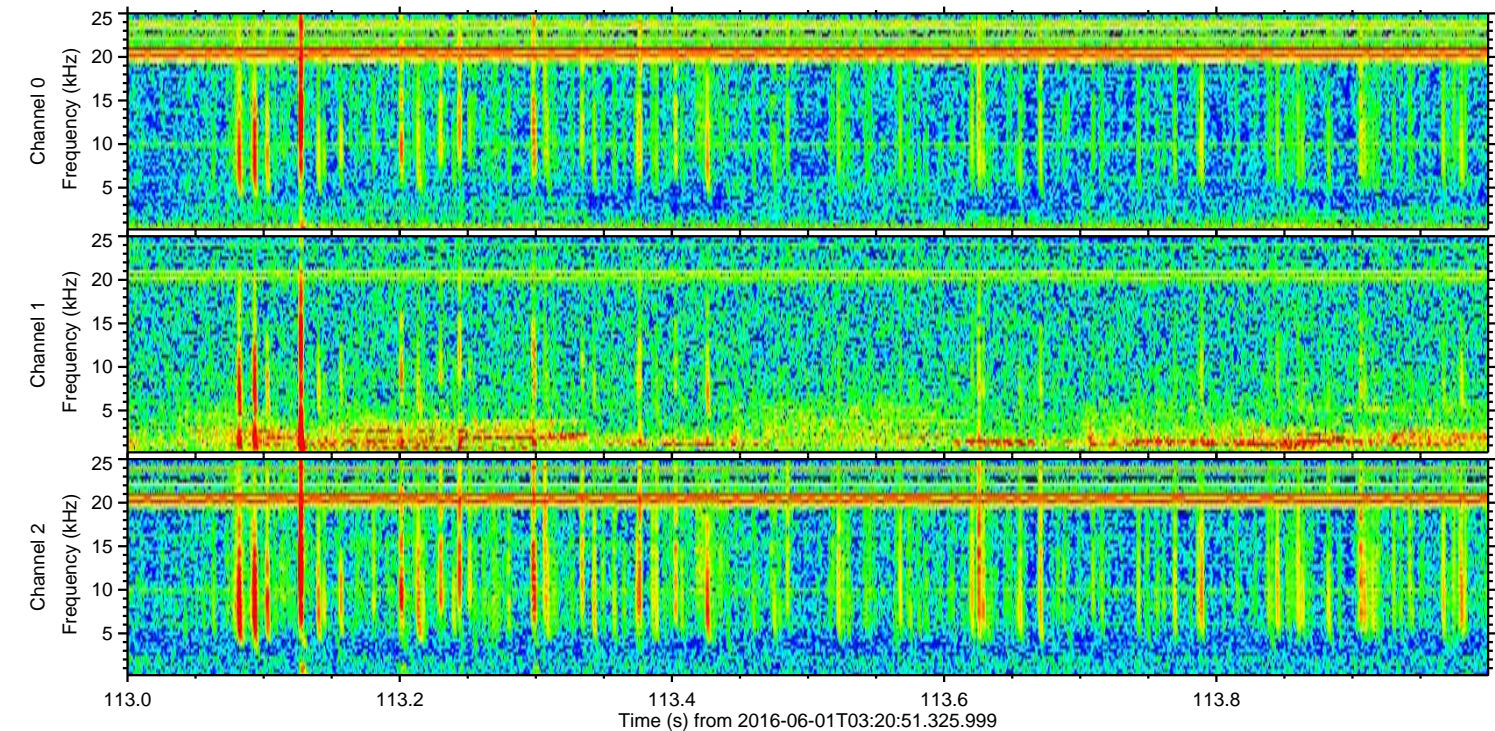
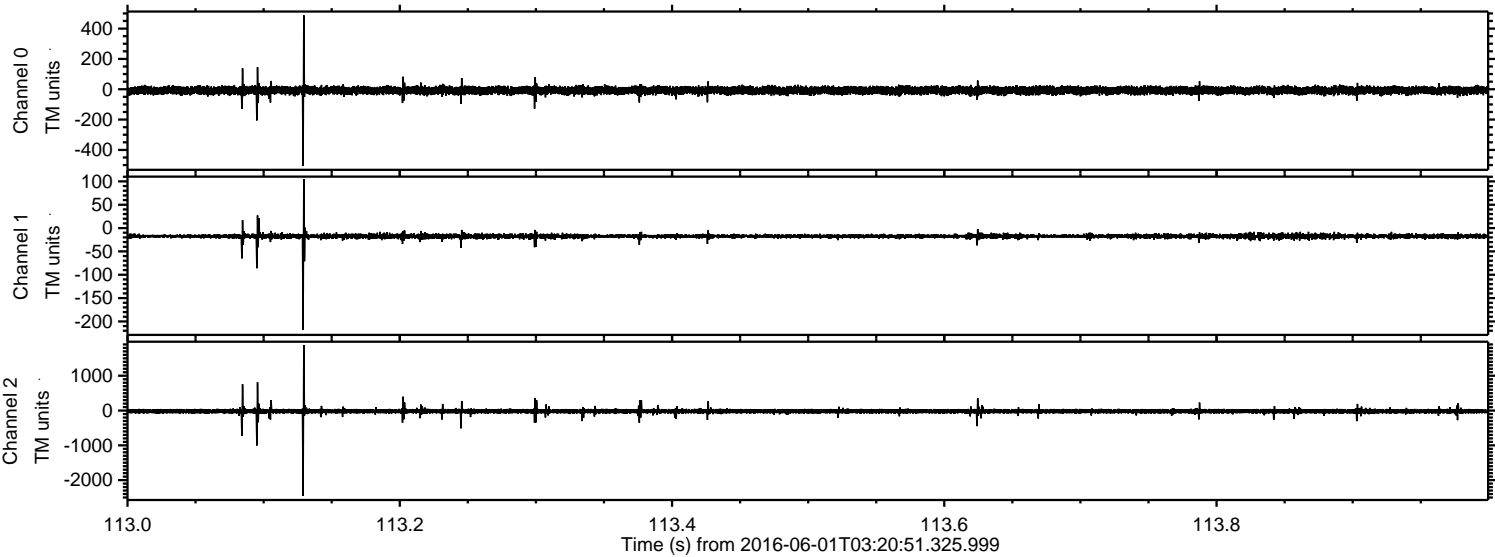
Channel 0
mn: -2740
mx: 1317
 μ : -7.8
 σ : 25.2

Channel 1
mn: -251
mx: 130
 μ : -17.4
 σ : 3.8

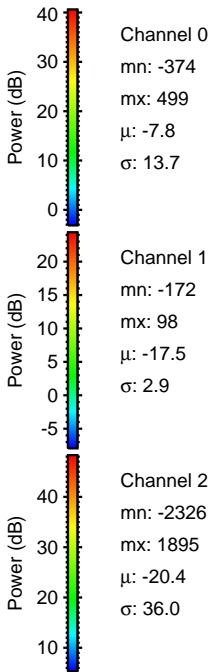
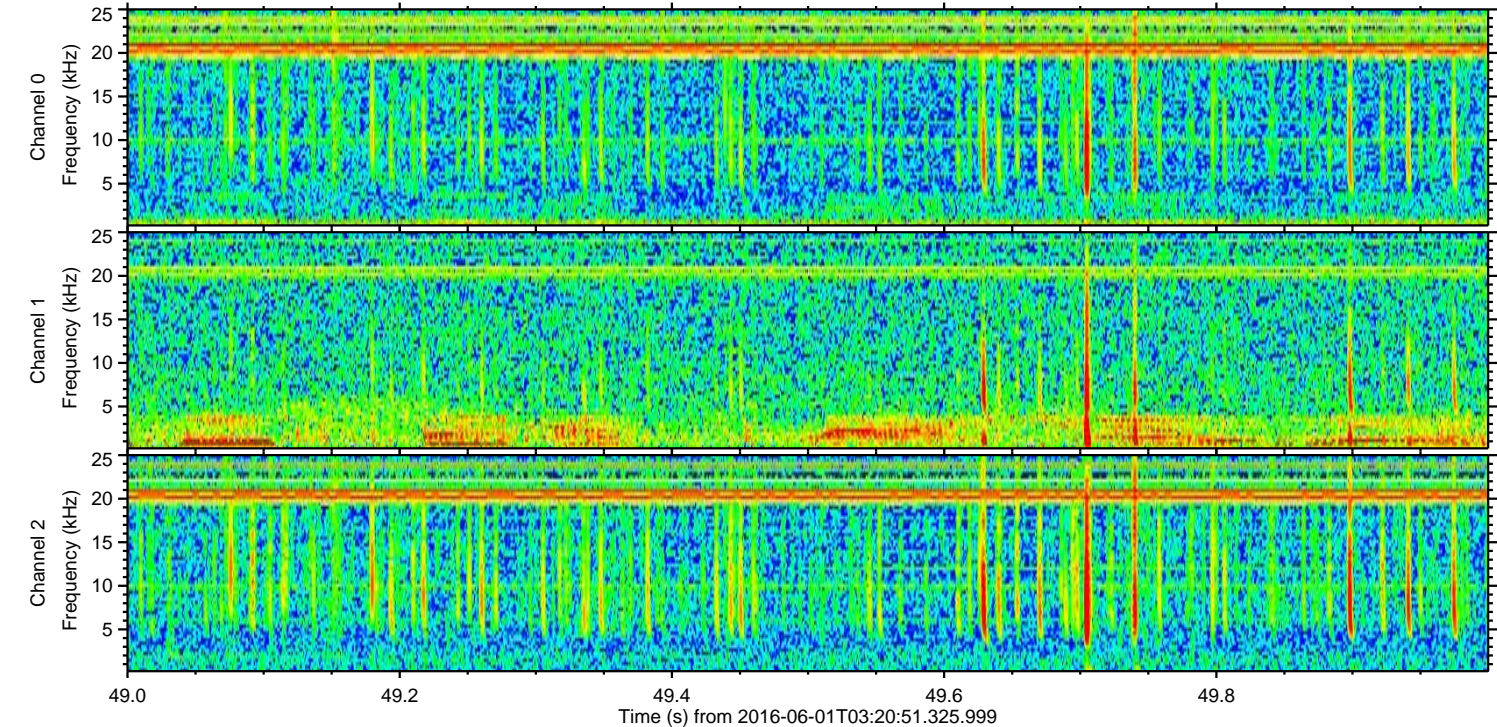
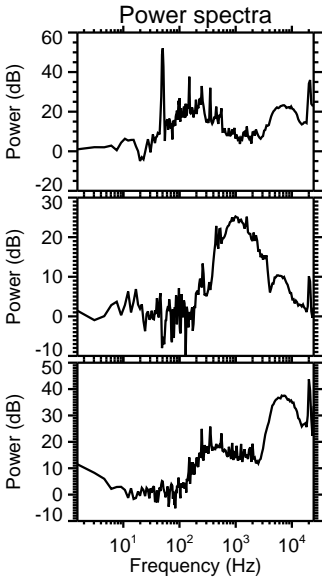
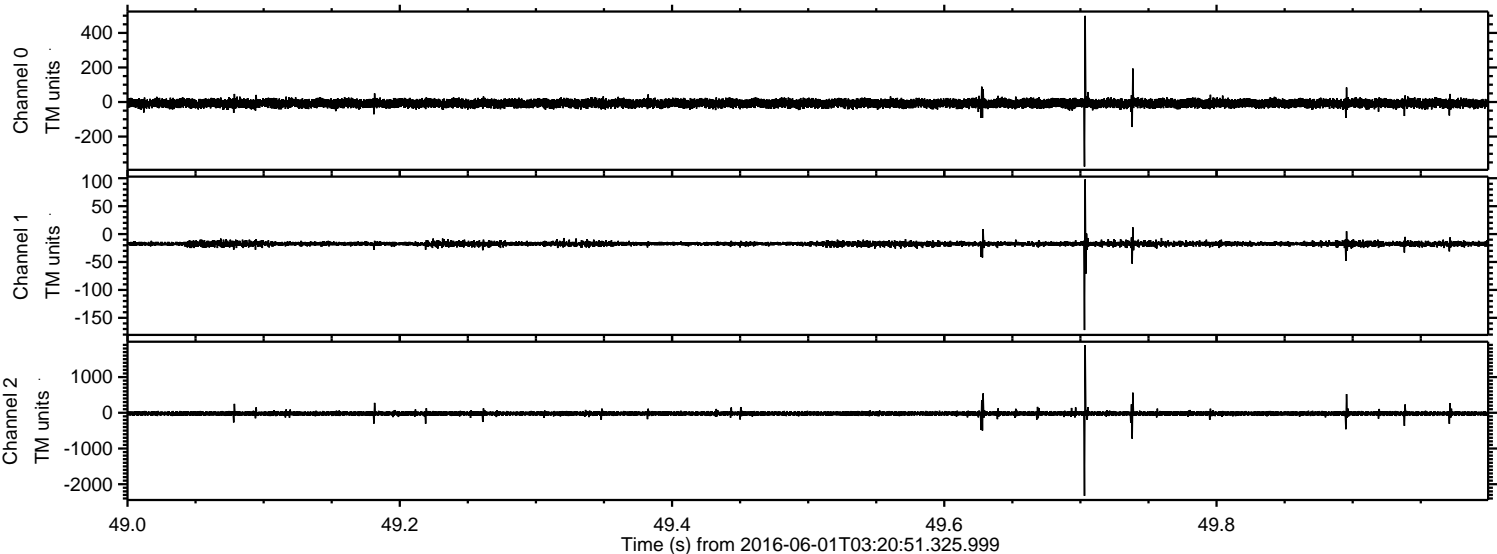
Channel 2
mn: -1583
mx: 1025
 μ : -20.4
 σ : 34.9

ELMAVAN 3D WAVEFORMS (Measured data sampled at 50 kHz) 51000 packets of 144 samples from 2016-06-01T03:20:51.325.999. Part 114/147

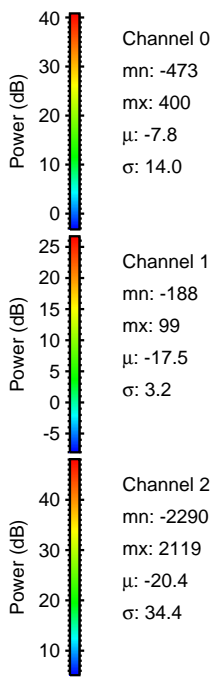
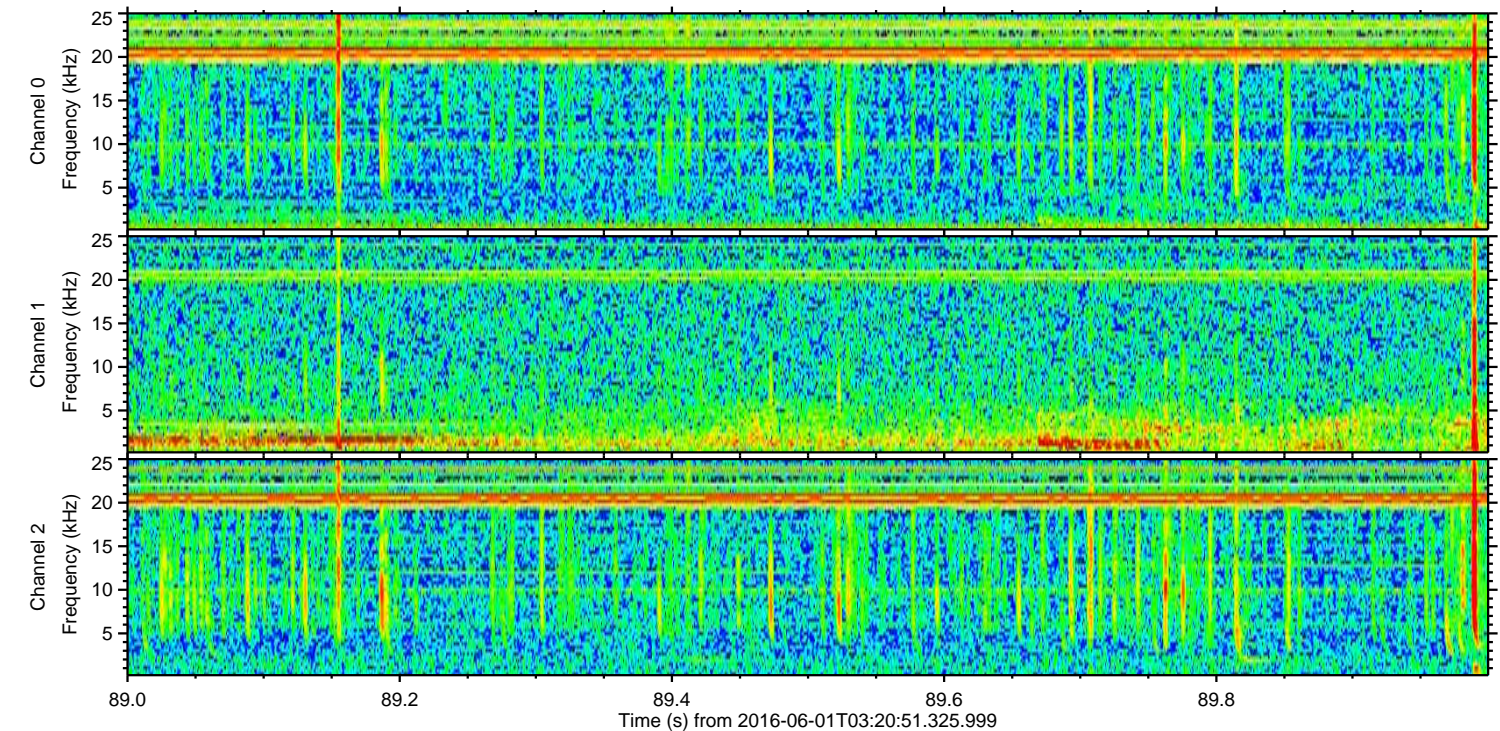
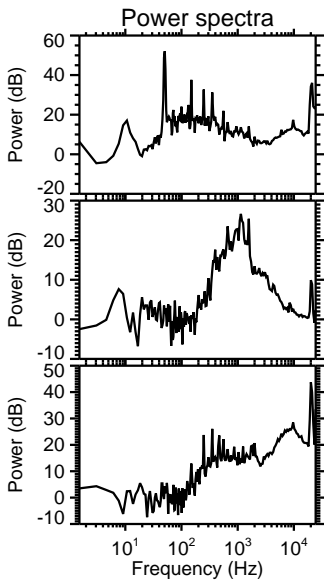
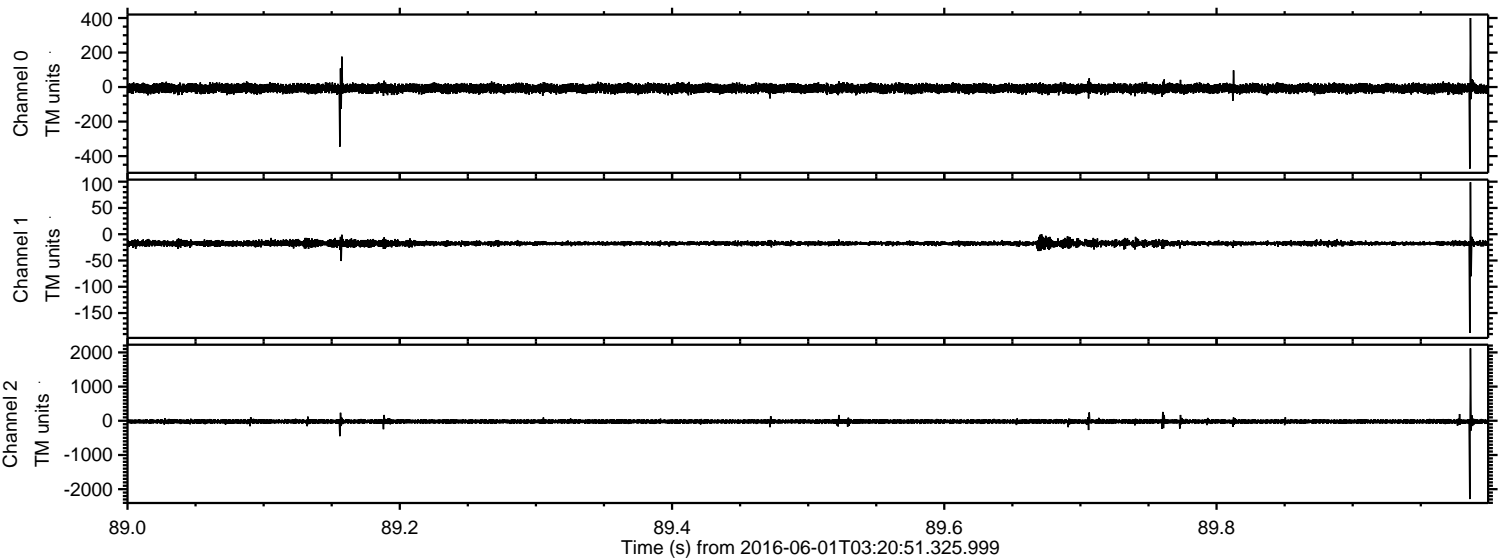
Processed Wed Jun 1 05:29:26 2016 by ELM ver.2012-10-06 from 001__elm20160601_032050__dat00.bin



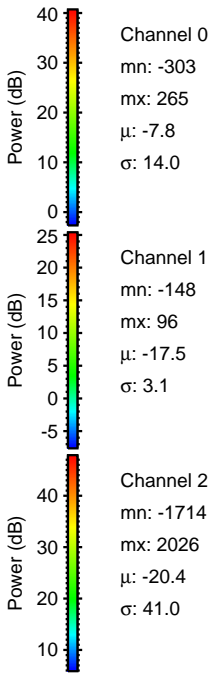
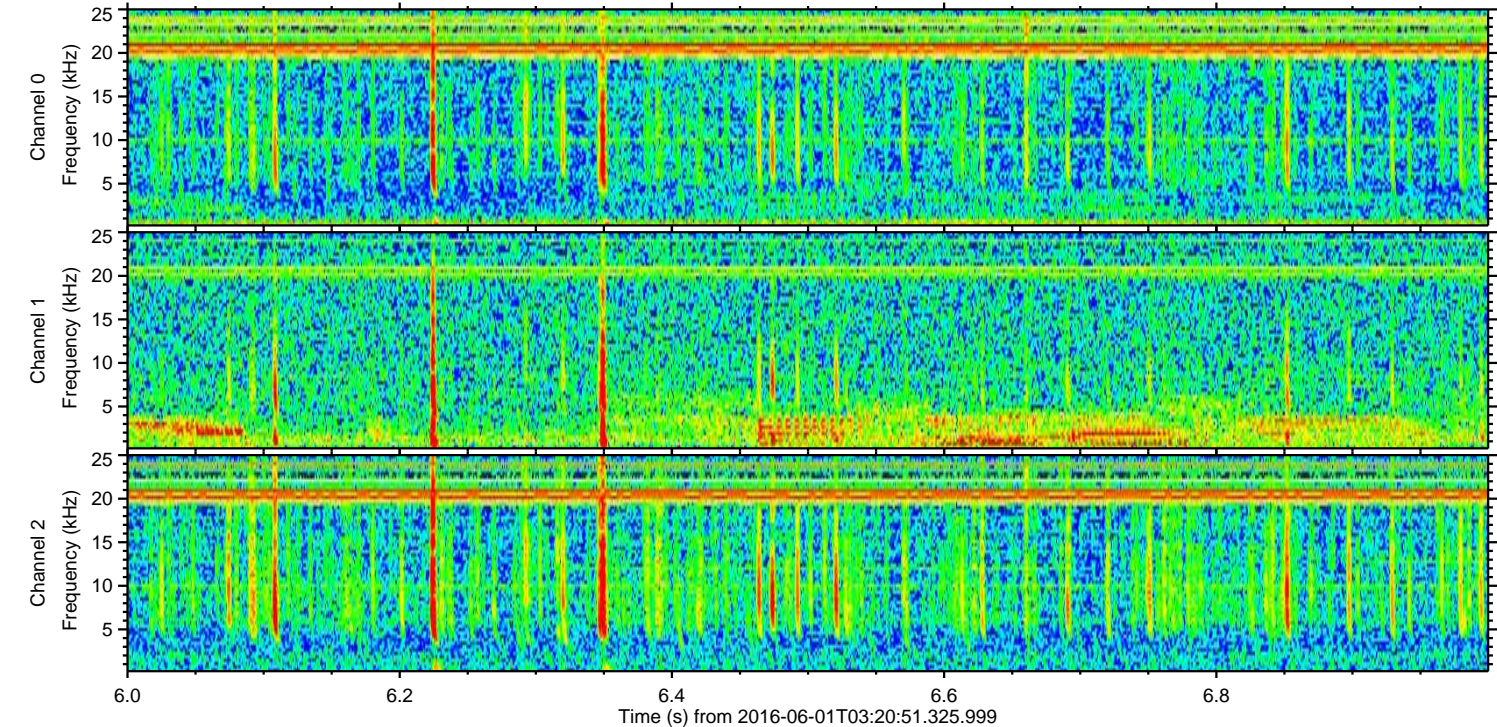
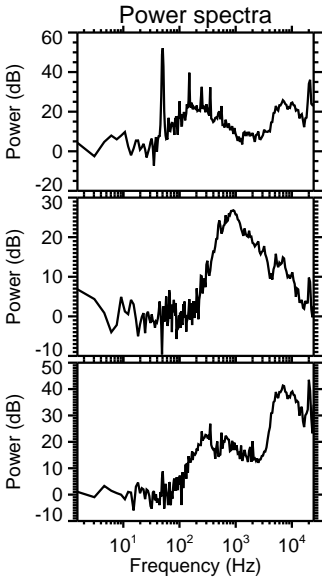
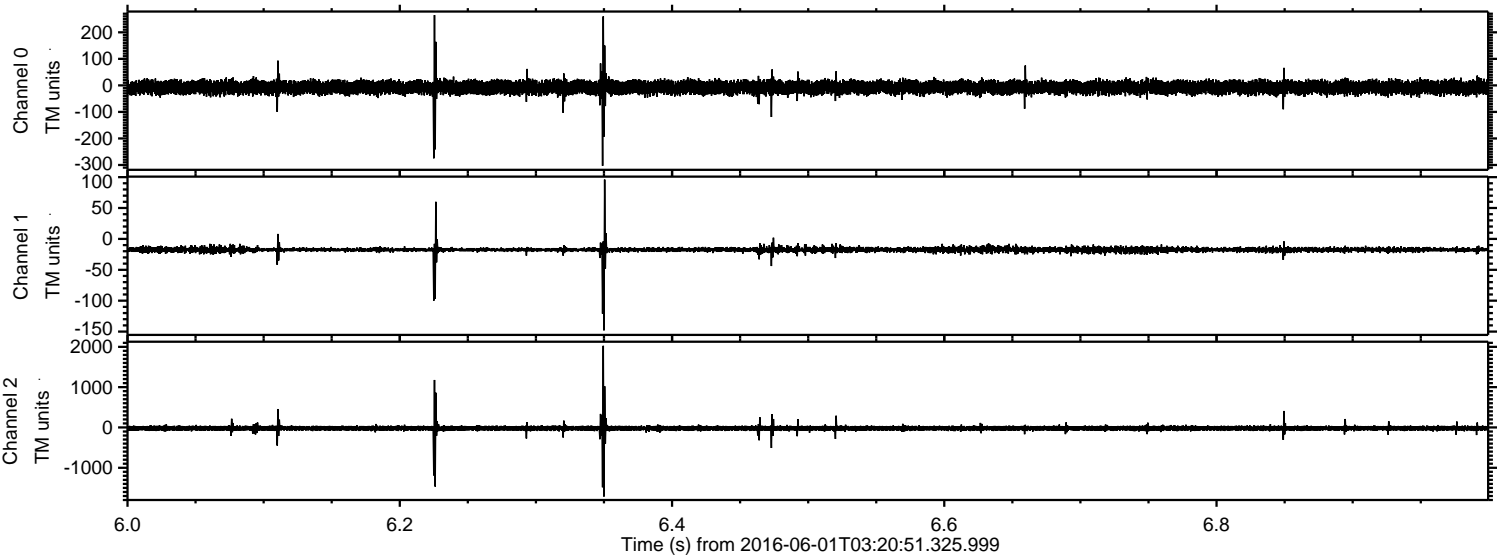
Processed Wed Jun 1 05:29:26 2016 by ELM ver.2012-10-06 from 001__elm20160601_032050__dat00.bin



Processed Wed Jun 1 05:29:27 2016 by ELM ver.2012-10-06 from 001__elm20160601_032050__dat00.bin



Processed Wed Jun 1 05:29:28 2016 by ELM ver.2012-10-06 from 001__elm20160601_032050__dat00.bin



Processed Wed Jun 1 05:29:29 2016 by ELM ver.2012-10-06 from 001__elm20160601_032050__dat00.bin

