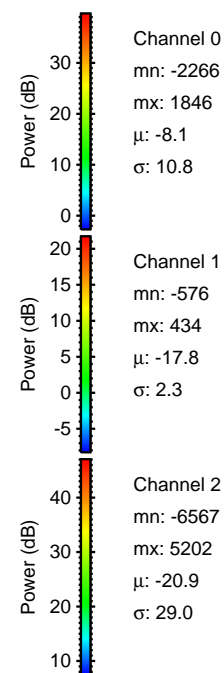
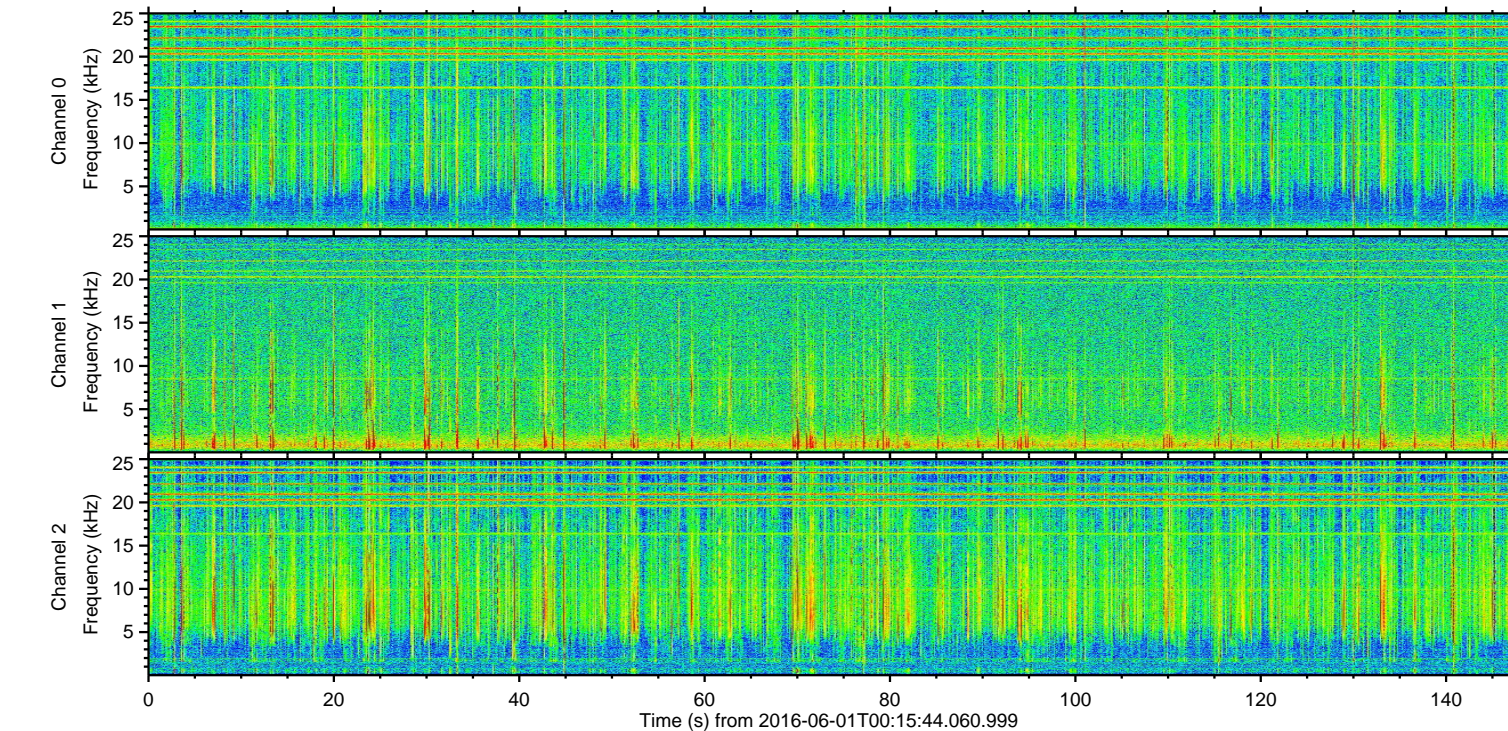
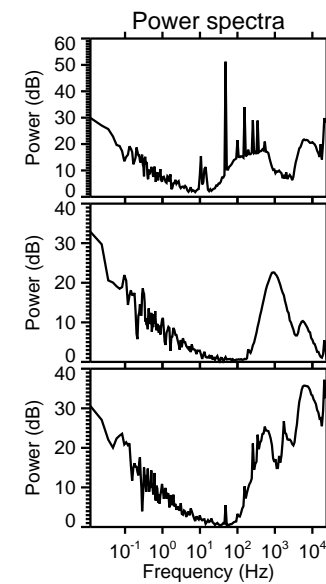
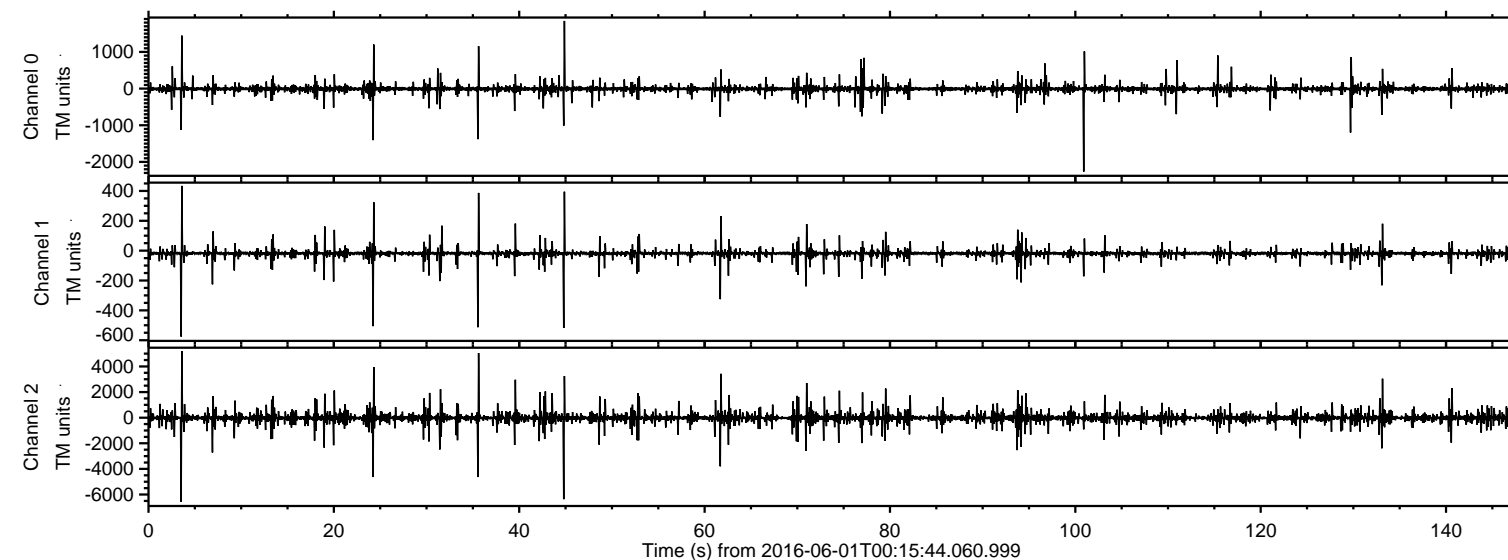


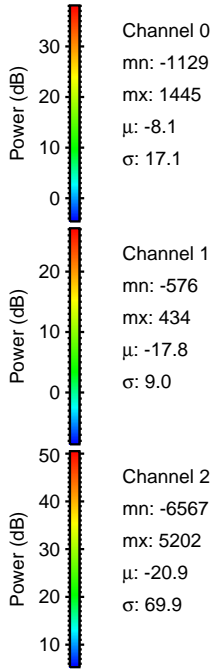
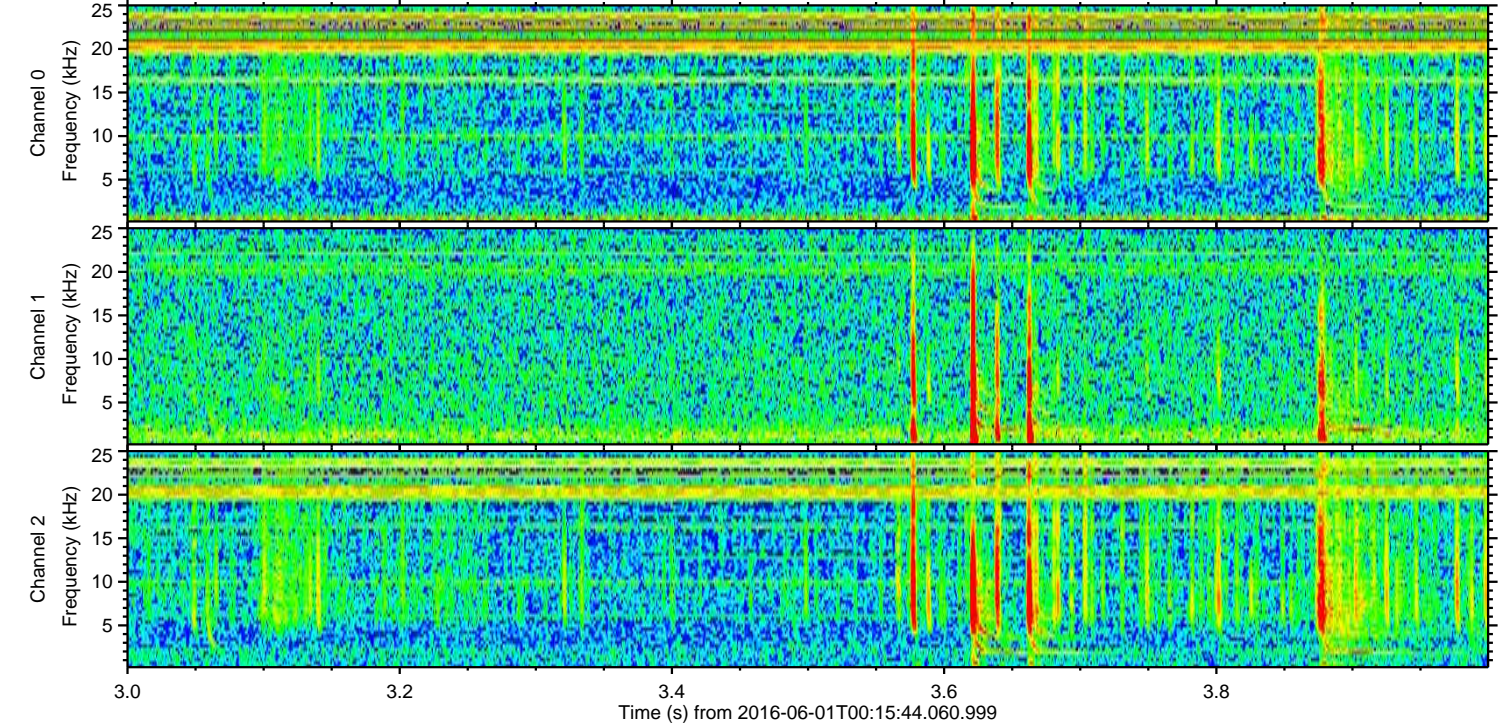
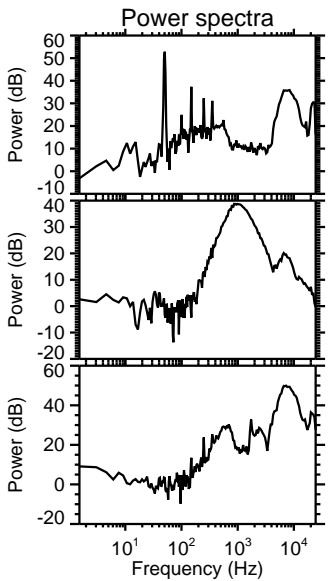
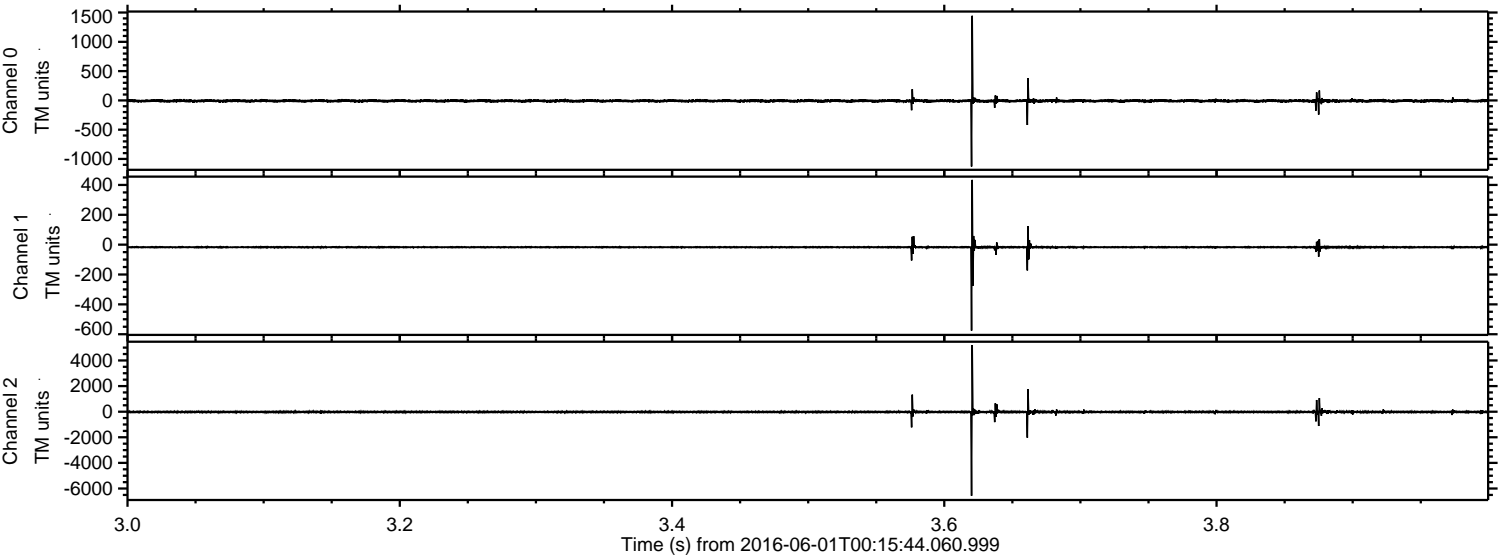
ELMAVAN 3D WAVEFORMS (Measured data sampled at 50 kHz) 51000 packets of 144 samples from 2016-06-01T00:15:44.060.999.

Processed Wed Jun 1 02:24:17 2016 by ELM ver.2012-10-06 from 001__elm20160601_001543__dat00.bin



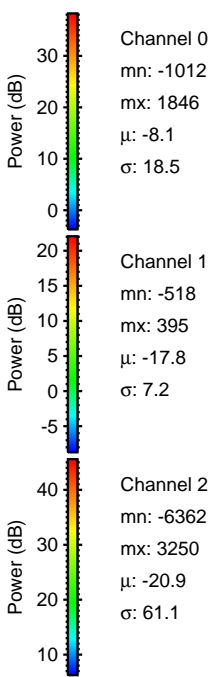
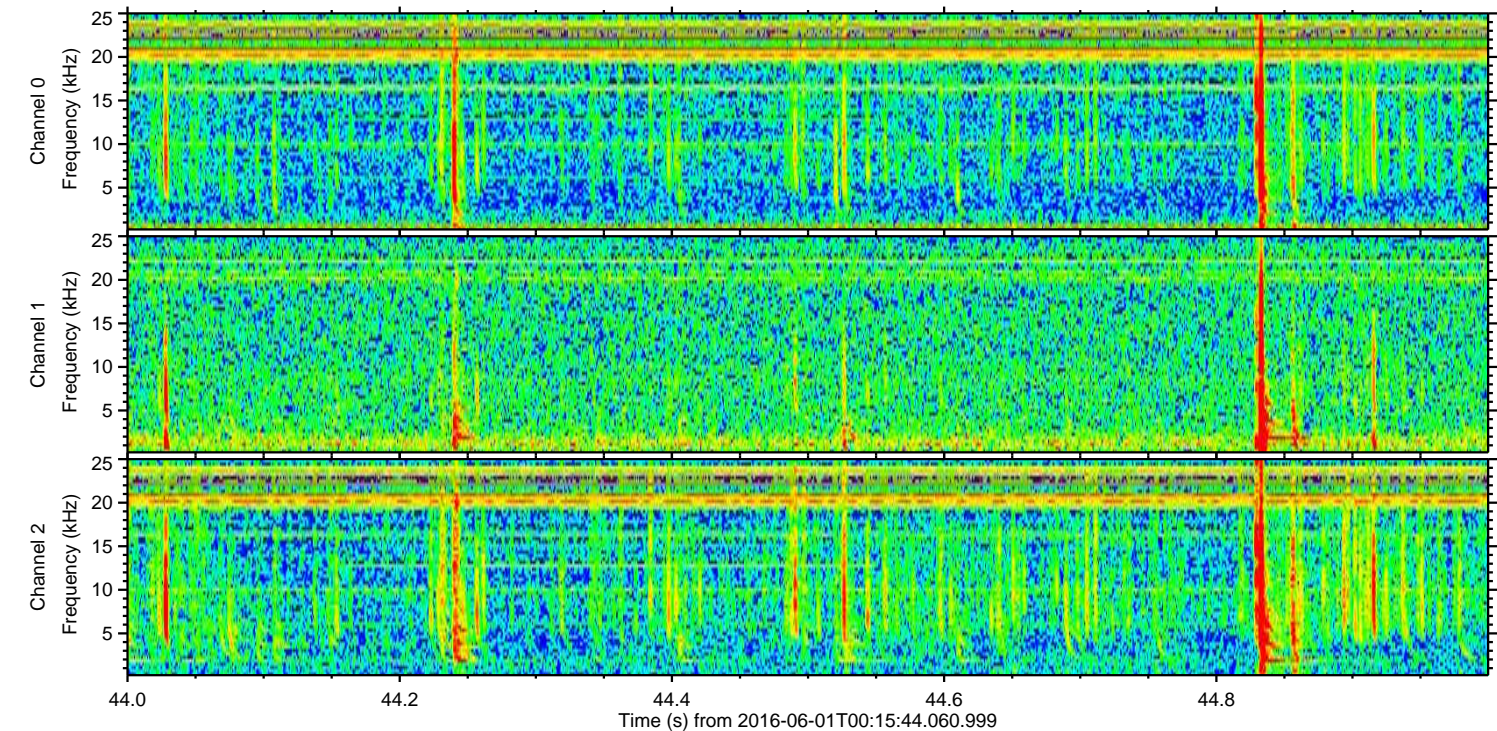
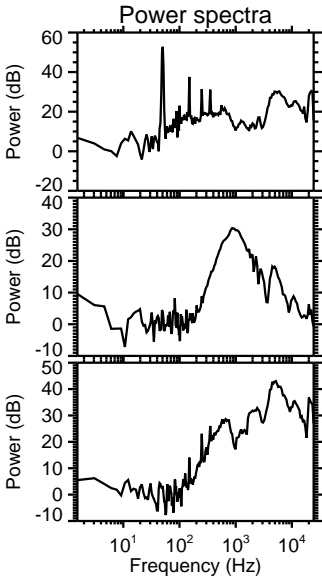
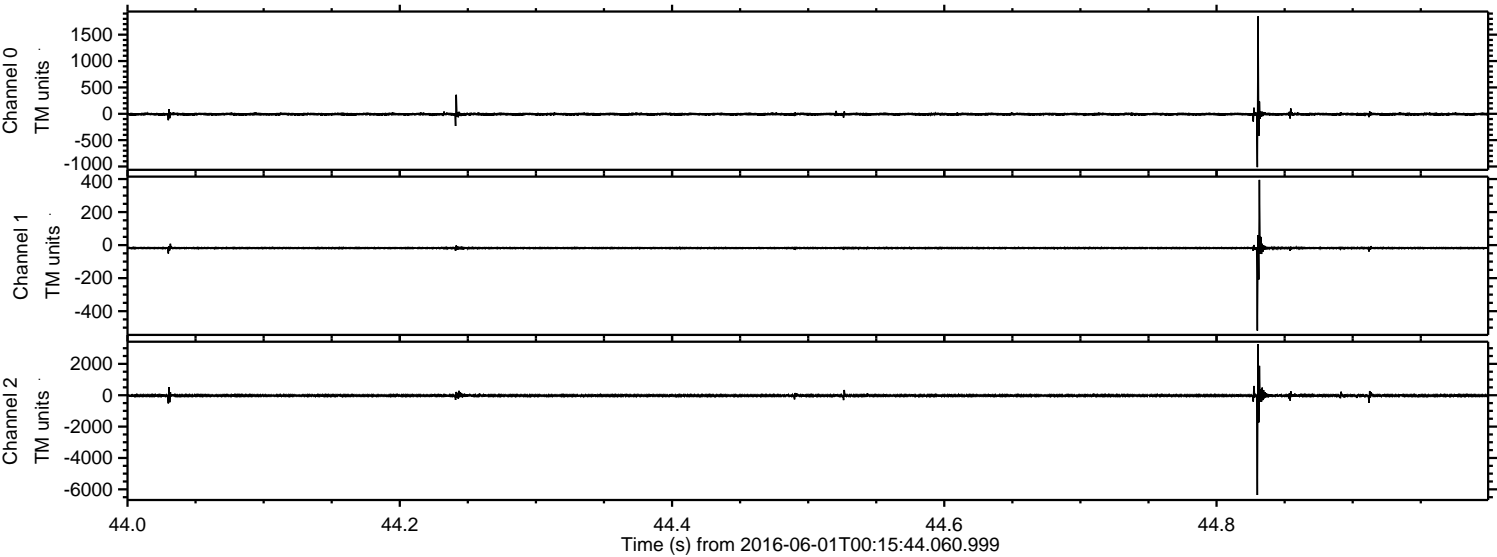
ELMAVAN 3D WAVEFORMS (Measured data sampled at 50 kHz) 51000 packets of 144 samples from 2016-06-01T00:15:44.060.999. Part 4/147

Processed Wed Jun 1 02:24:29 2016 by ELM ver.2012-10-06 from 001__elm20160601_001543__dat00.bin

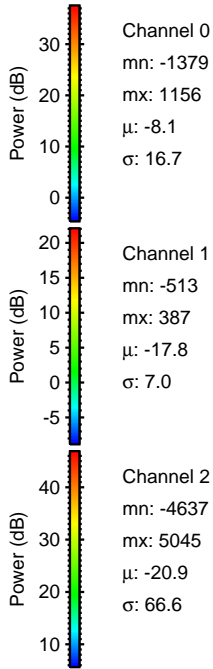
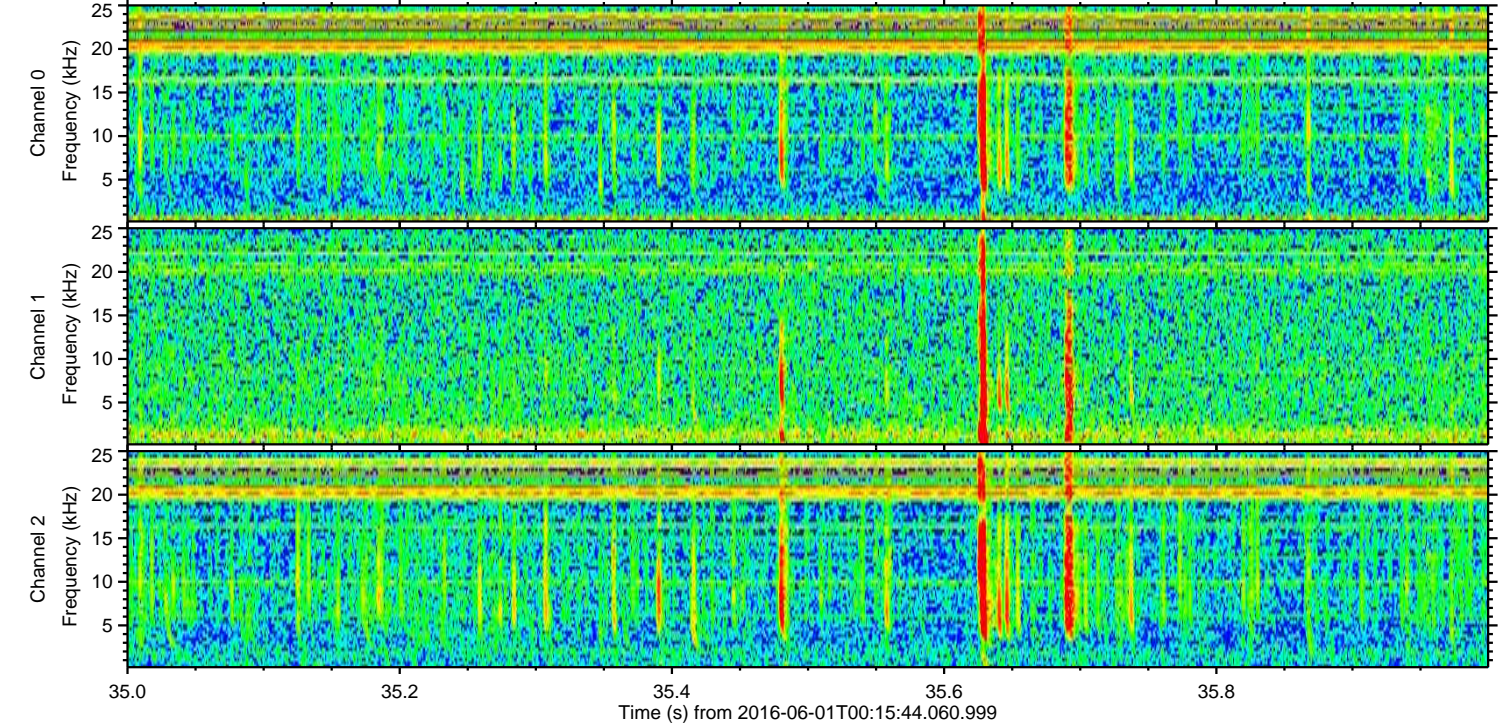
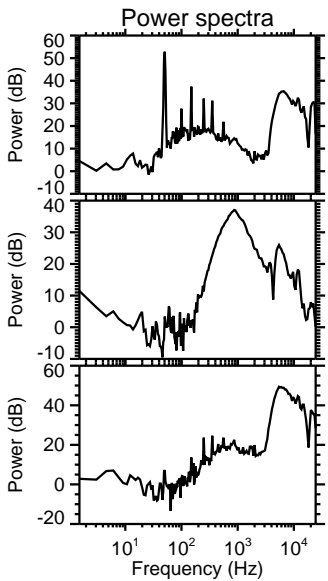
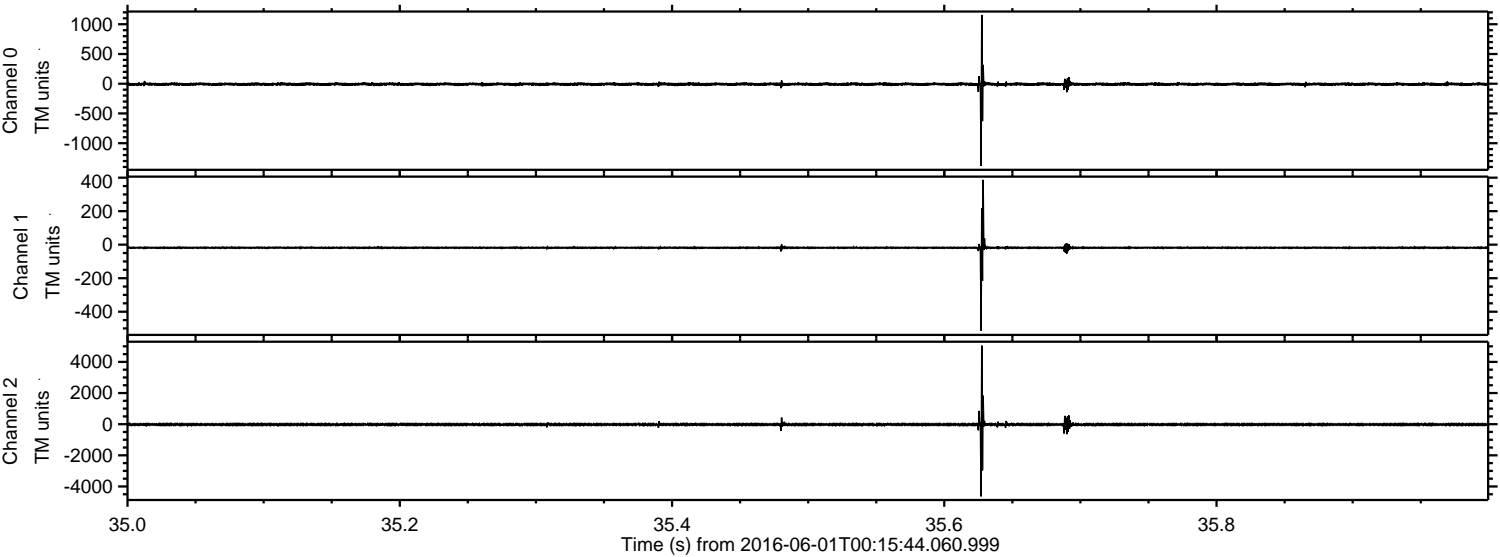


ELMAVAN 3D WAVEFORMS (Measured data sampled at 50 kHz) 51000 packets of 144 samples from 2016-06-01T00:15:44.060.999. Part 45/147

Processed Wed Jun 1 02:24:30 2016 by ELM ver.2012-10-06 from 001__elm20160601_001543__dat00.bin



Processed Wed Jun 1 02:24:31 2016 by ELM ver.2012-10-06 from 001__elm20160601_001543__dat00.bin



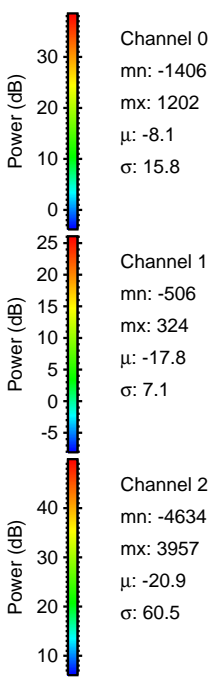
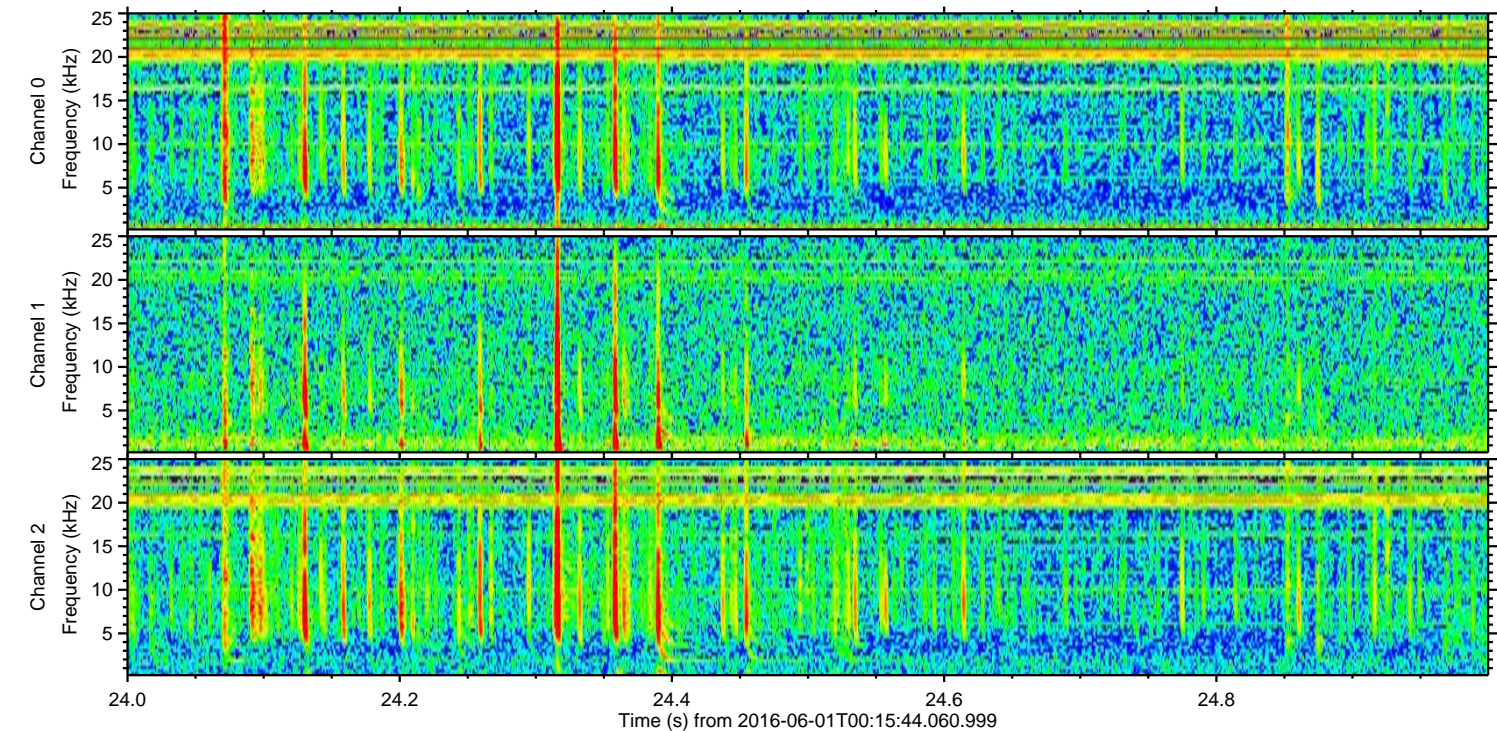
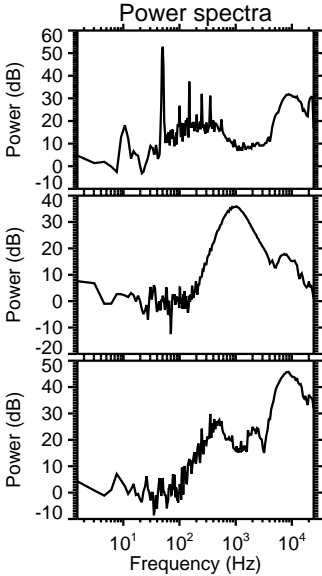
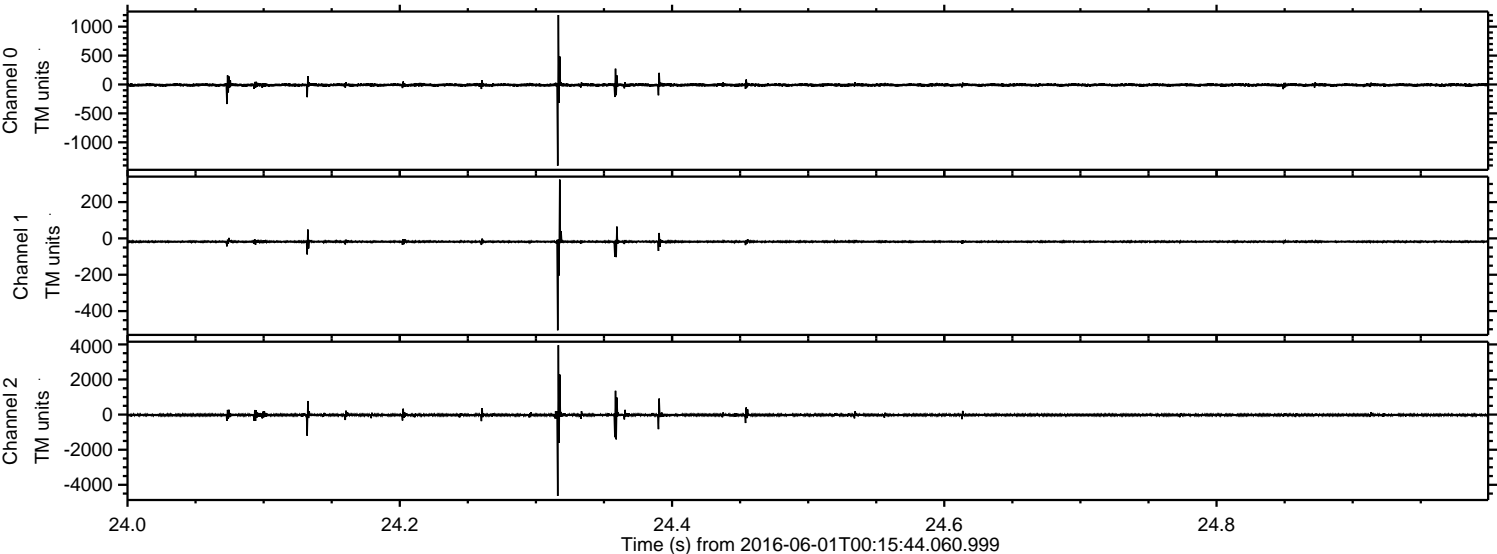
Channel 0
mn: -1379
mx: 1156
 μ : -8.1
 σ : 16.7

Channel 1
mn: -513
mx: 387
 μ : -17.8
 σ : 7.0

Channel 2
mn: -4637
mx: 5045
 μ : -20.9
 σ : 66.6

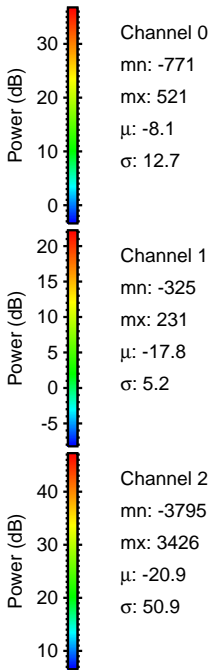
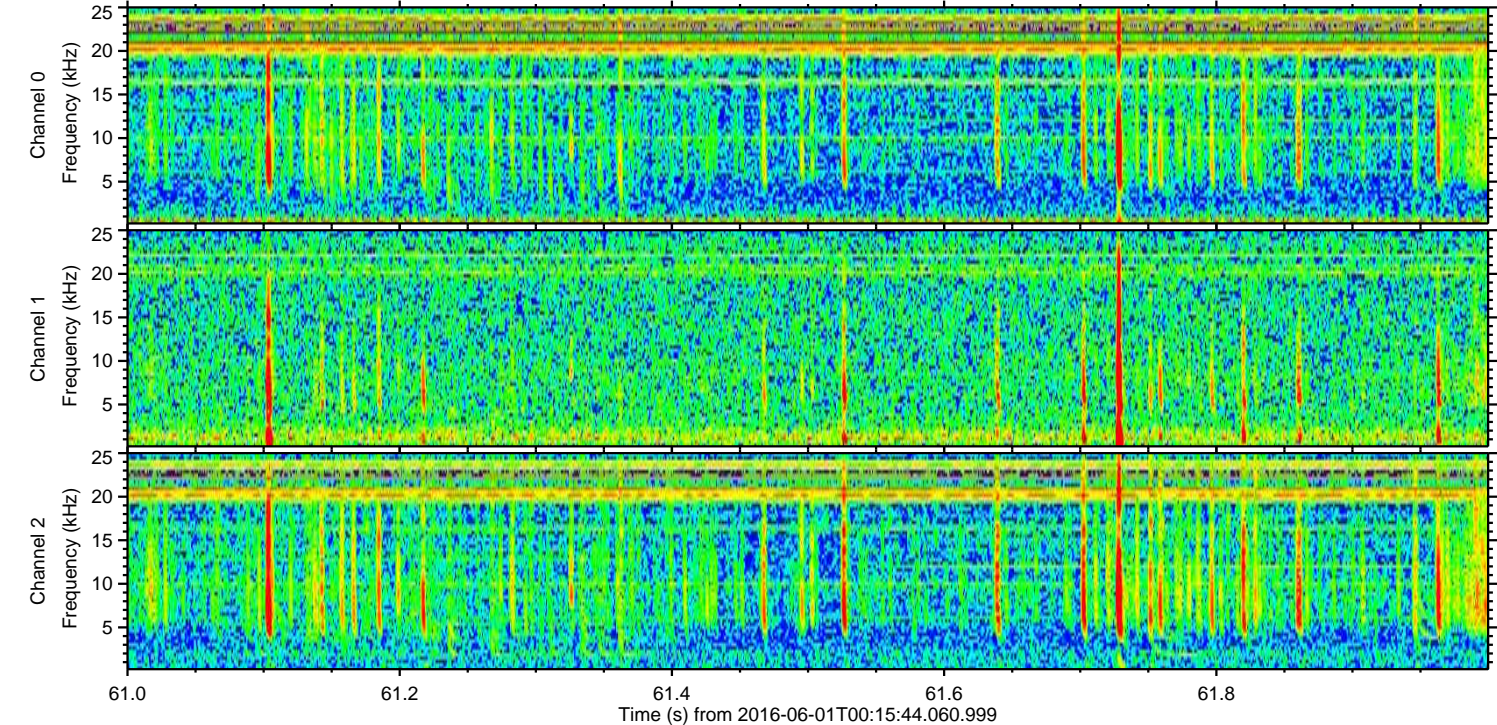
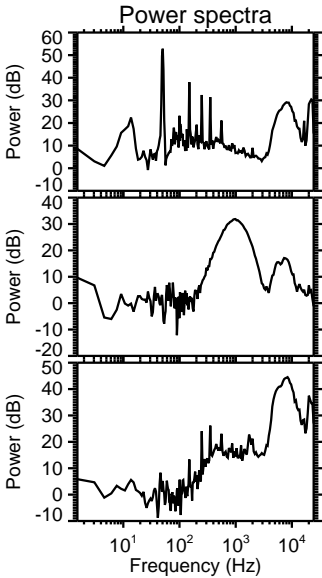
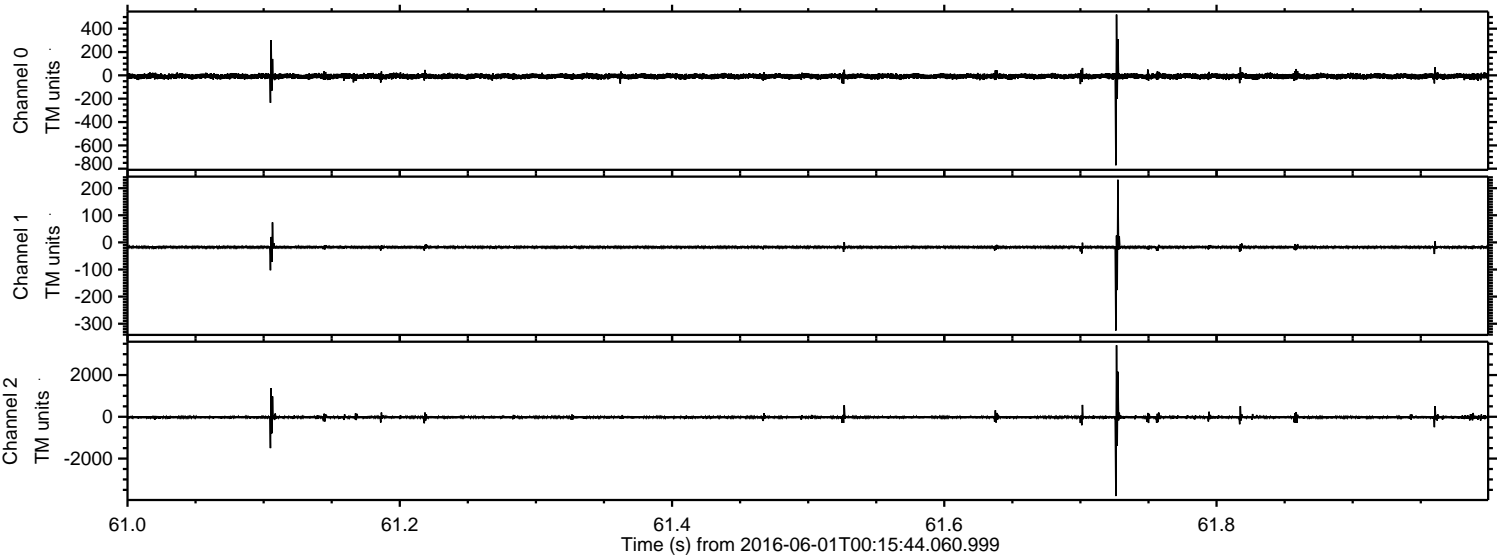
ELMAVAN 3D WAVEFORMS (Measured data sampled at 50 kHz) 51000 packets of 144 samples from 2016-06-01T00:15:44.060.999. Part 25/147

Processed Wed Jun 1 02:24:32 2016 by ELM ver.2012-10-06 from 001__elm20160601_001543__dat00.bin



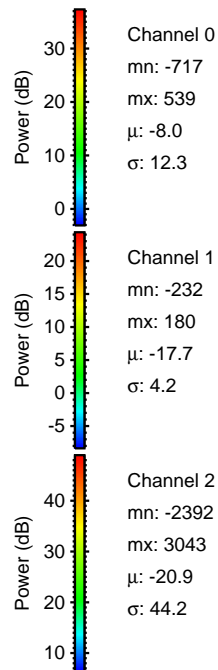
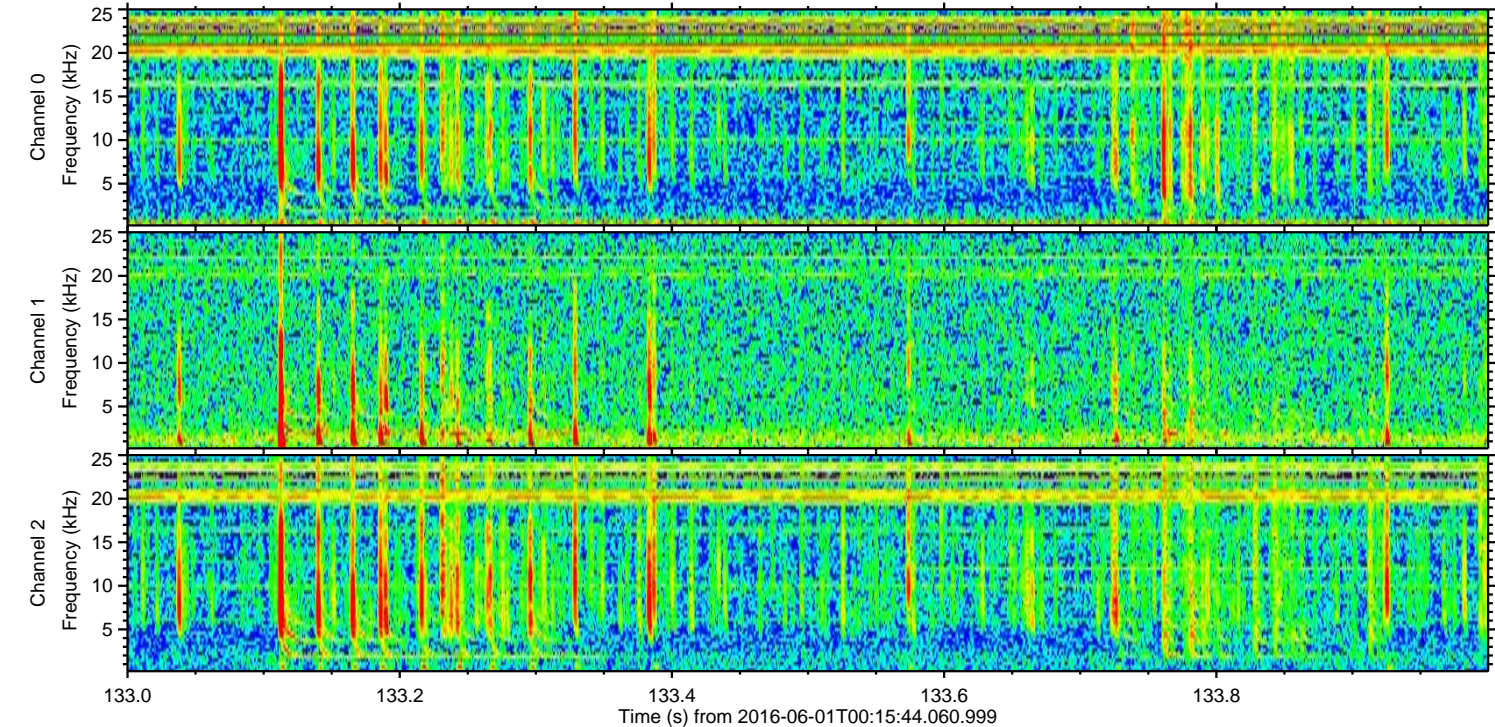
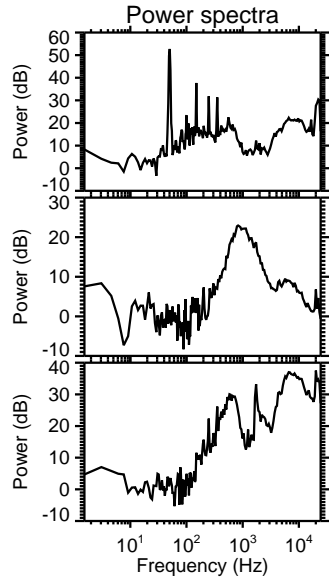
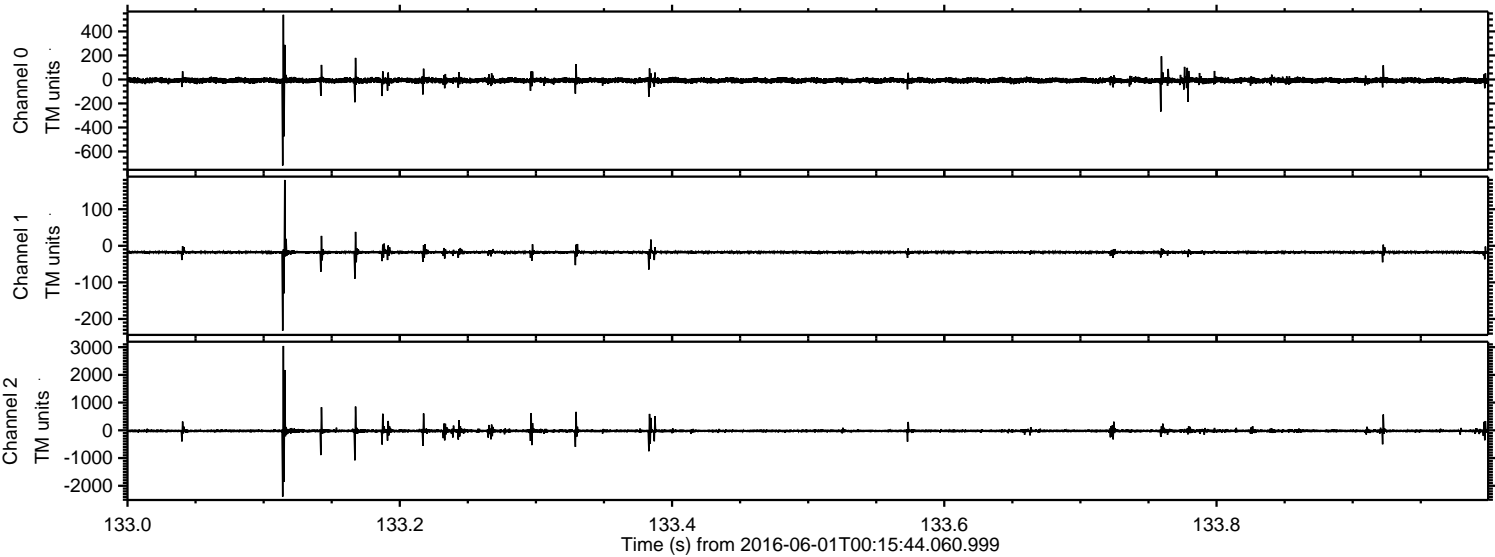
ELMAVAN 3D WAVEFORMS (Measured data sampled at 50 kHz) 51000 packets of 144 samples from 2016-06-01T00:15:44.060.999. Part 62/147

Processed Wed Jun 1 02:24:33 2016 by ELM ver.2012-10-06 from 001__elm20160601_001543__dat00.bin

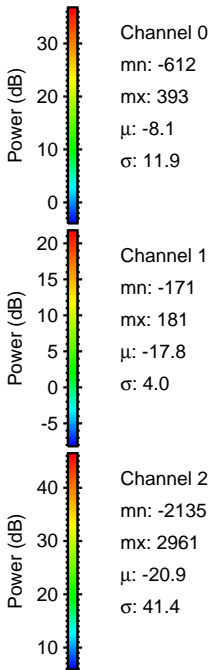
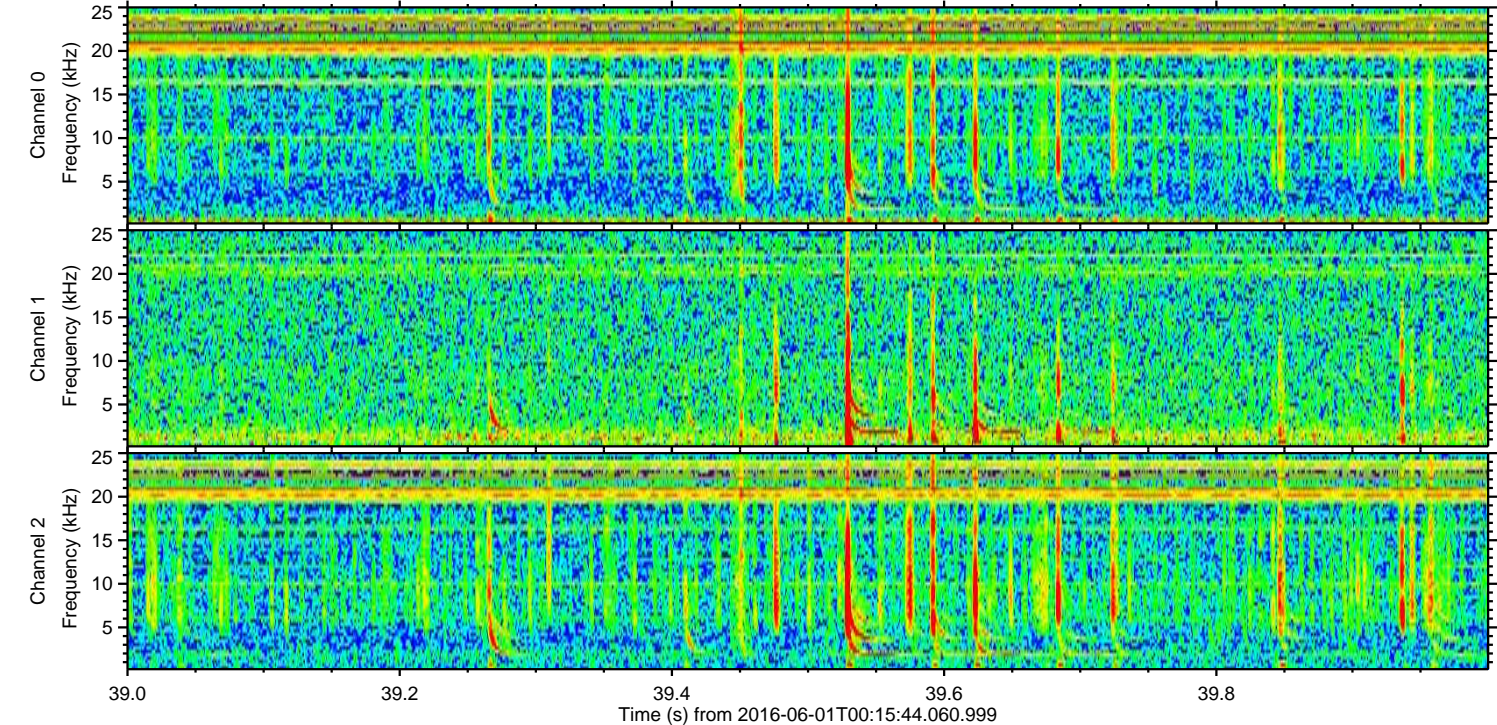
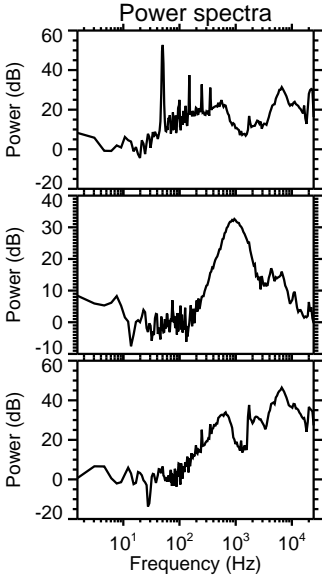
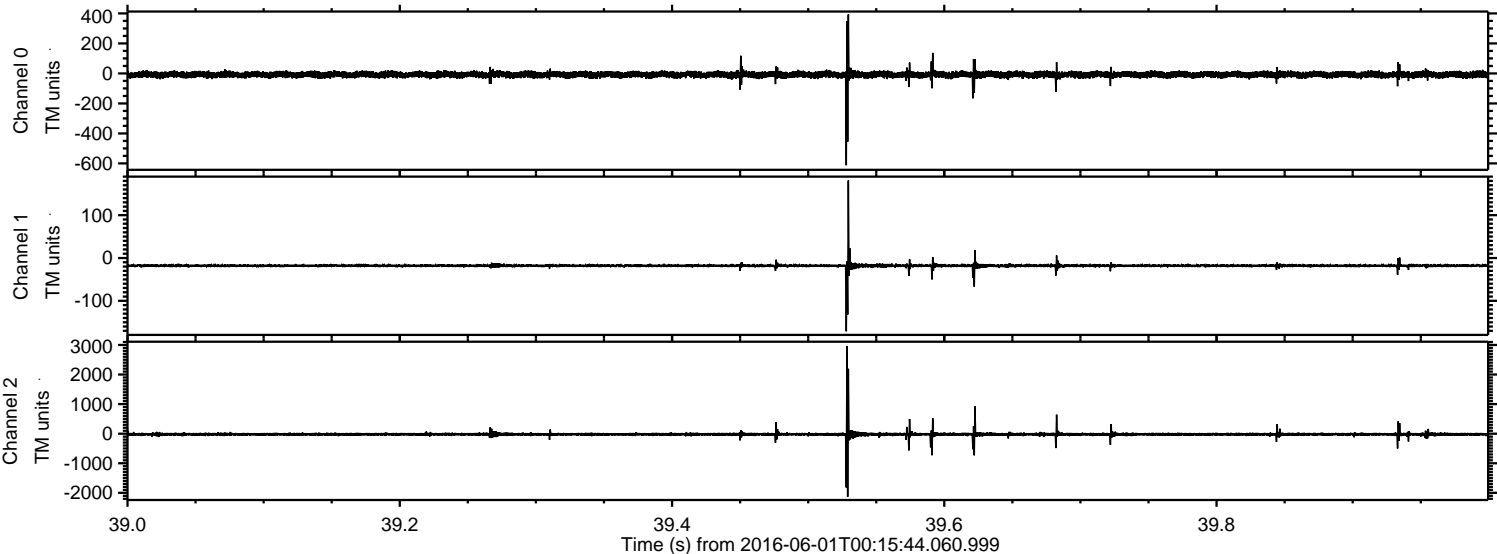


ELMAVAN 3D WAVEFORMS (Measured data sampled at 50 kHz) 51000 packets of 144 samples from 2016-06-01T00:15:44.060.999. Part 134/147

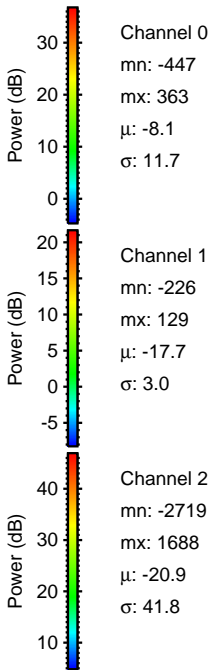
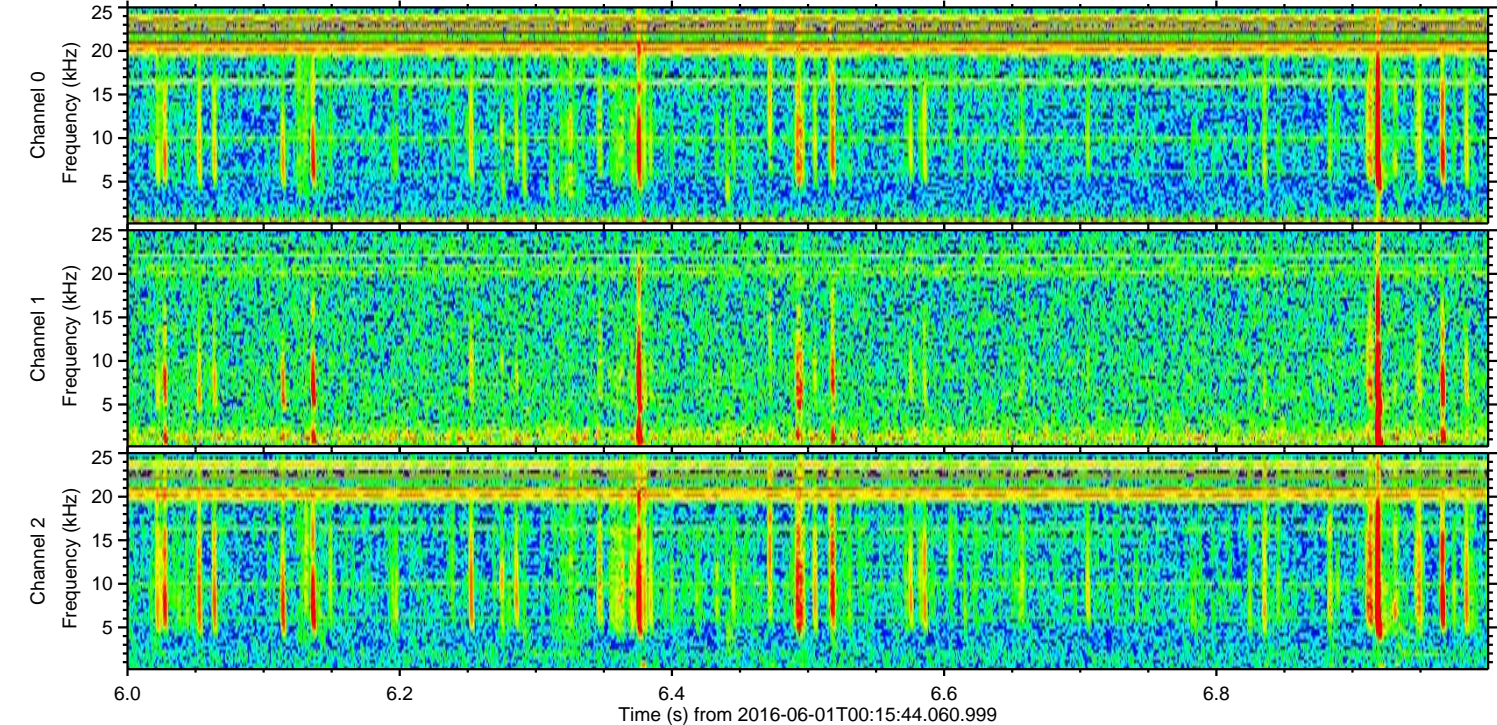
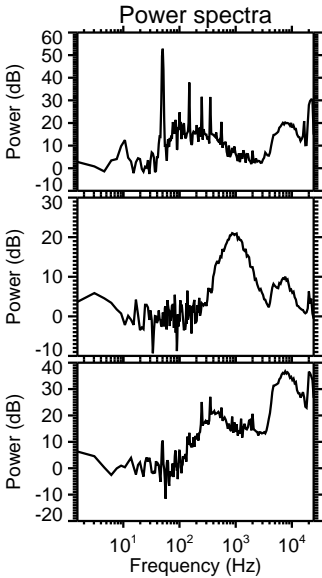
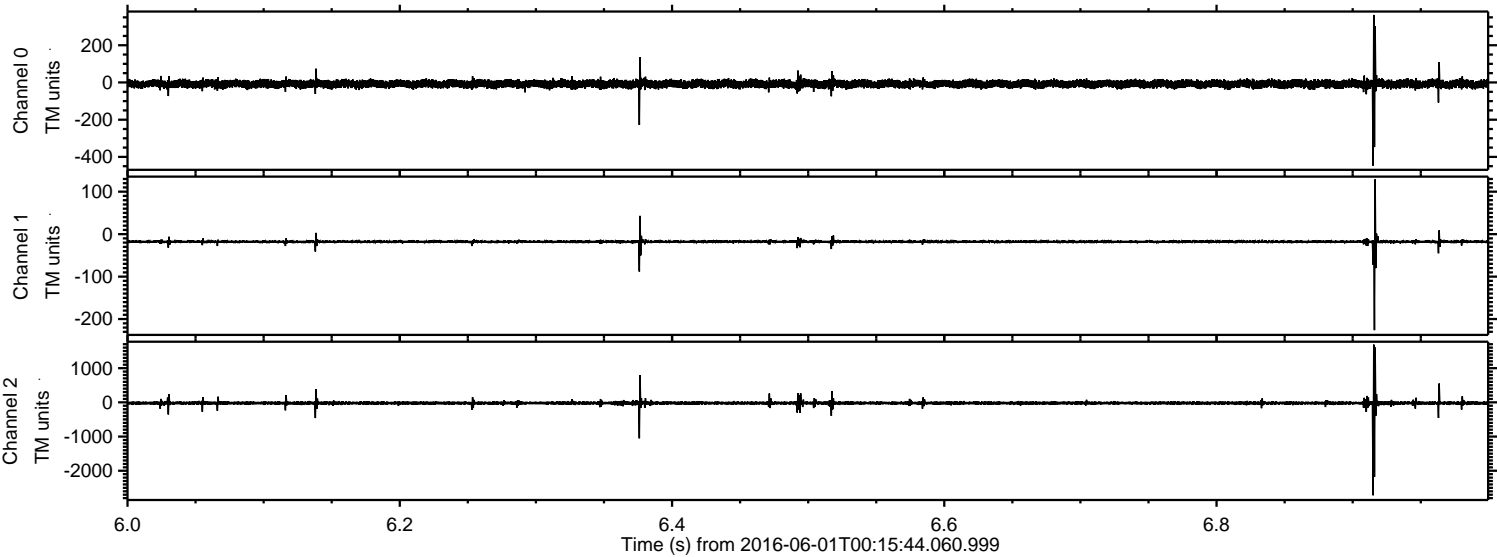
Processed Wed Jun 1 02:24:34 2016 by ELM ver.2012-10-06 from 001__elm20160601_001543__dat00.bin



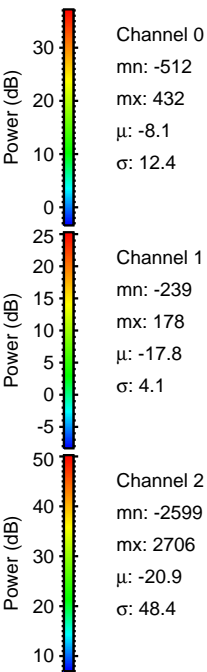
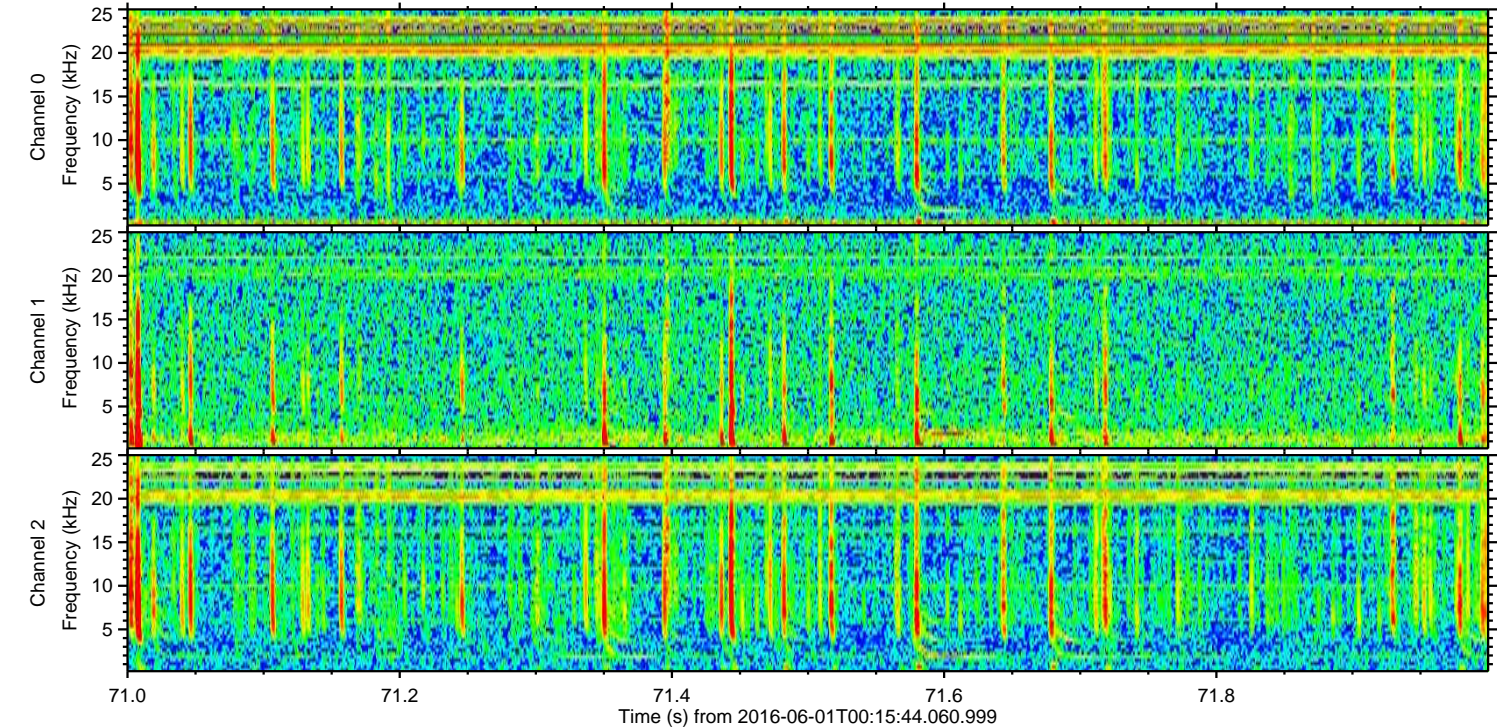
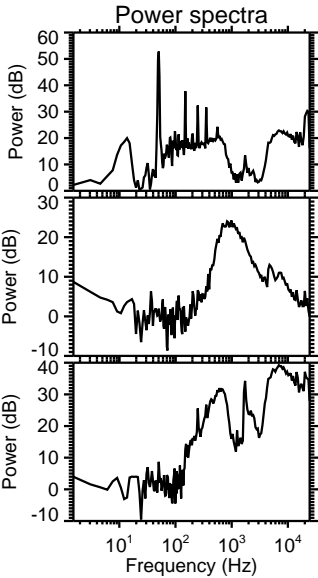
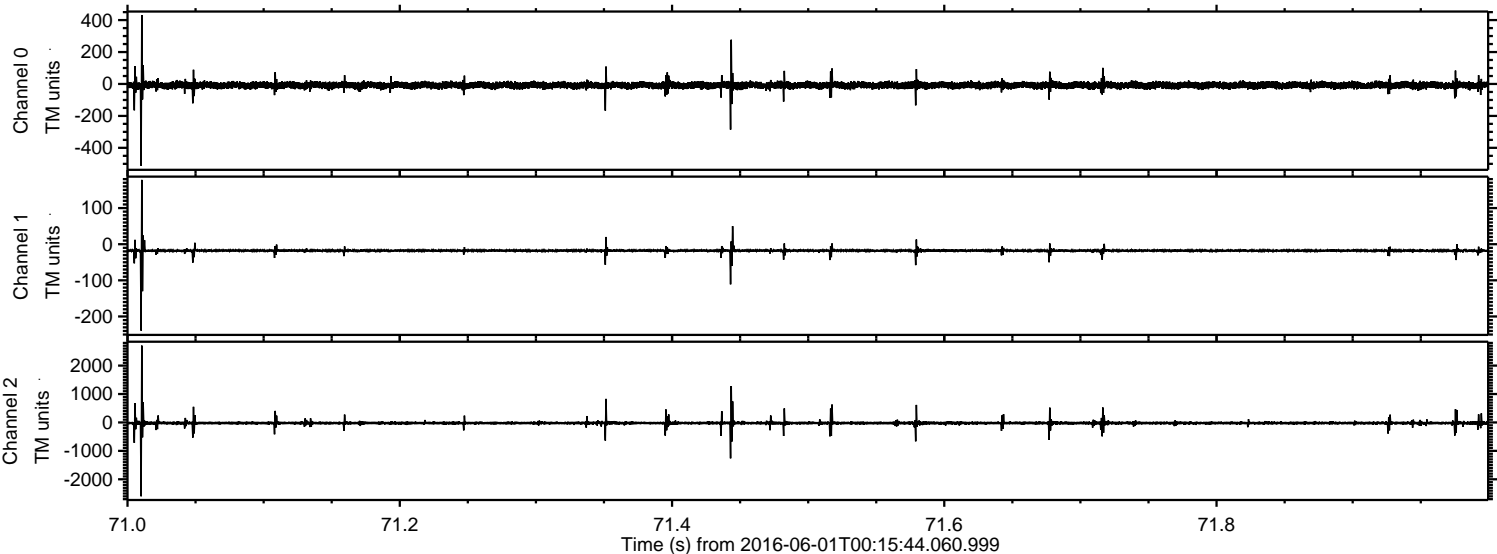
Processed Wed Jun 1 02:24:34 2016 by ELM ver.2012-10-06 from 001__elm20160601_001543__dat00.bin



Processed Wed Jun 1 02:24:35 2016 by ELM ver.2012-10-06 from 001__elm20160601_001543__dat00.bin



Processed Wed Jun 1 02:24:36 2016 by ELM ver.2012-10-06 from 001__elm20160601_001543__dat00.bin



Processed Wed Jun 1 02:24:37 2016 by ELM ver.2012-10-06 from 001__elm20160601_001543__dat00.bin

