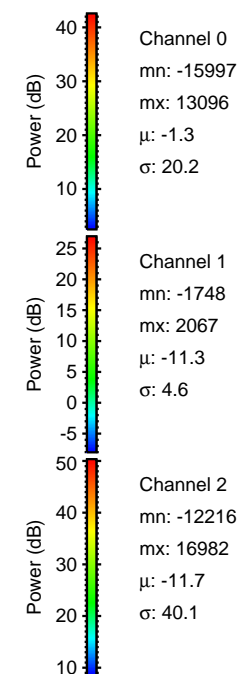
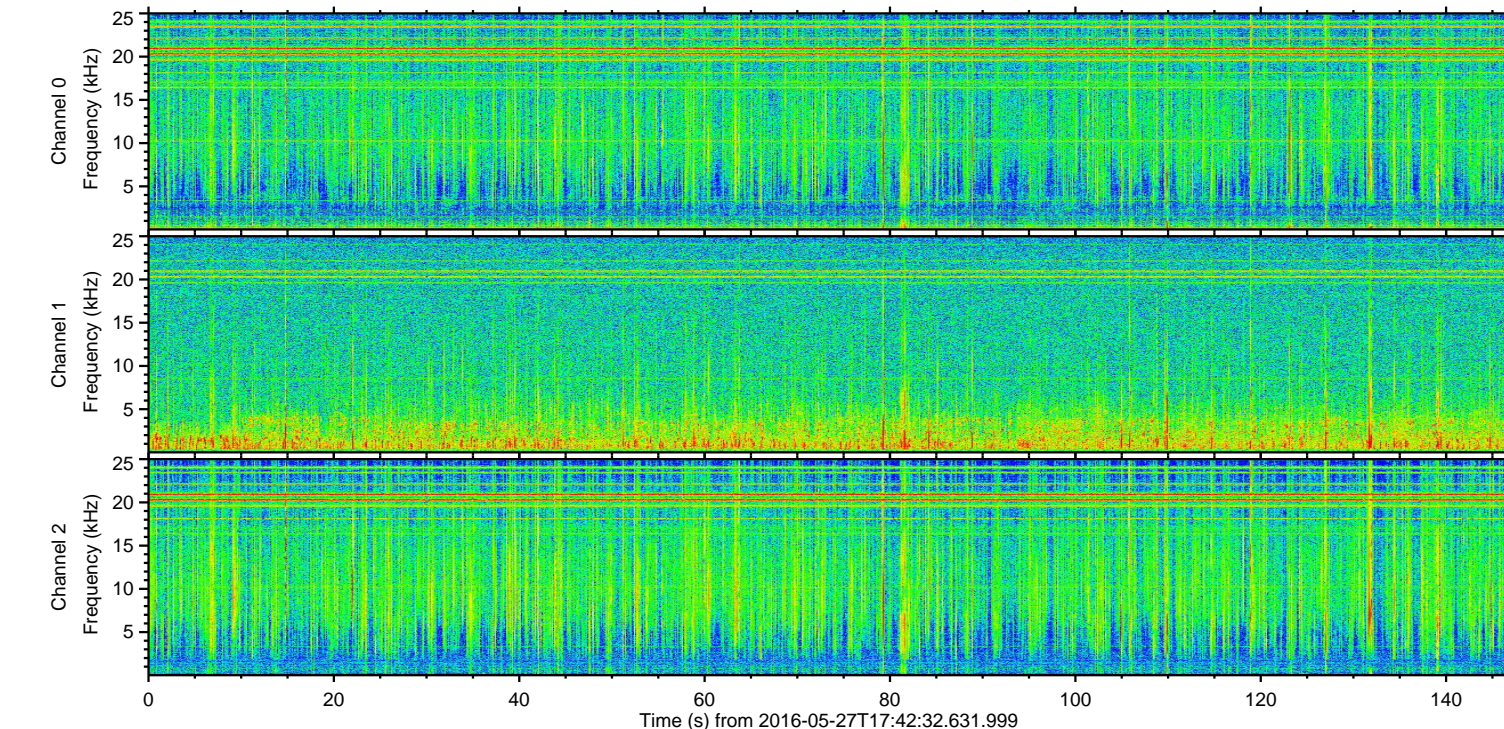
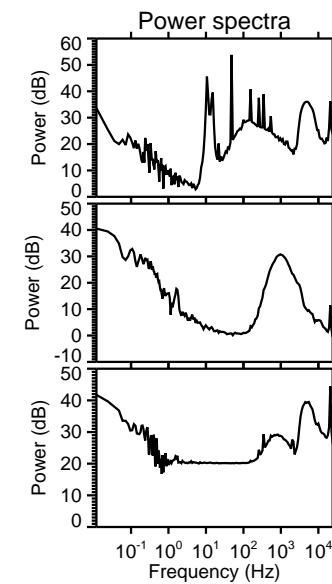
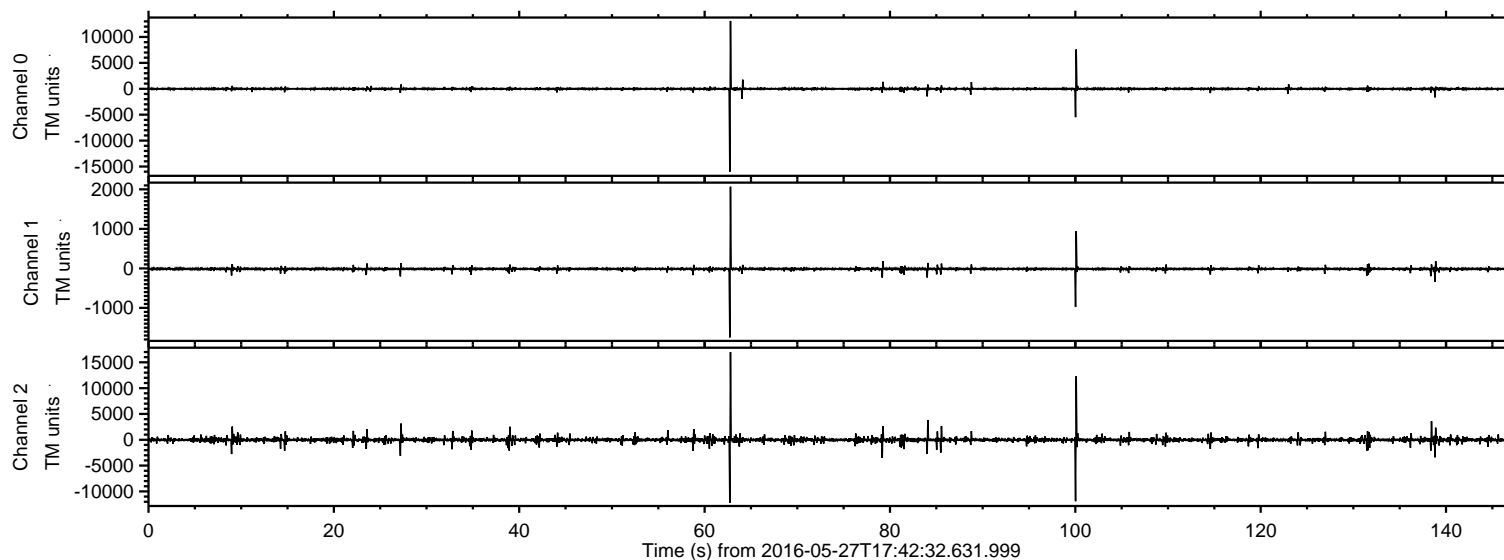
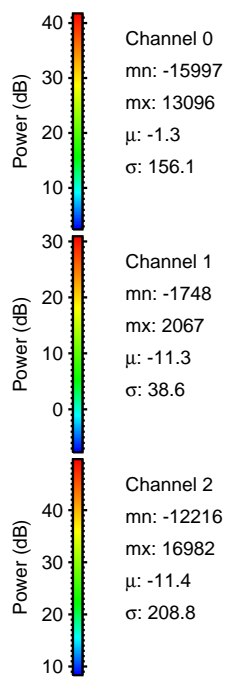
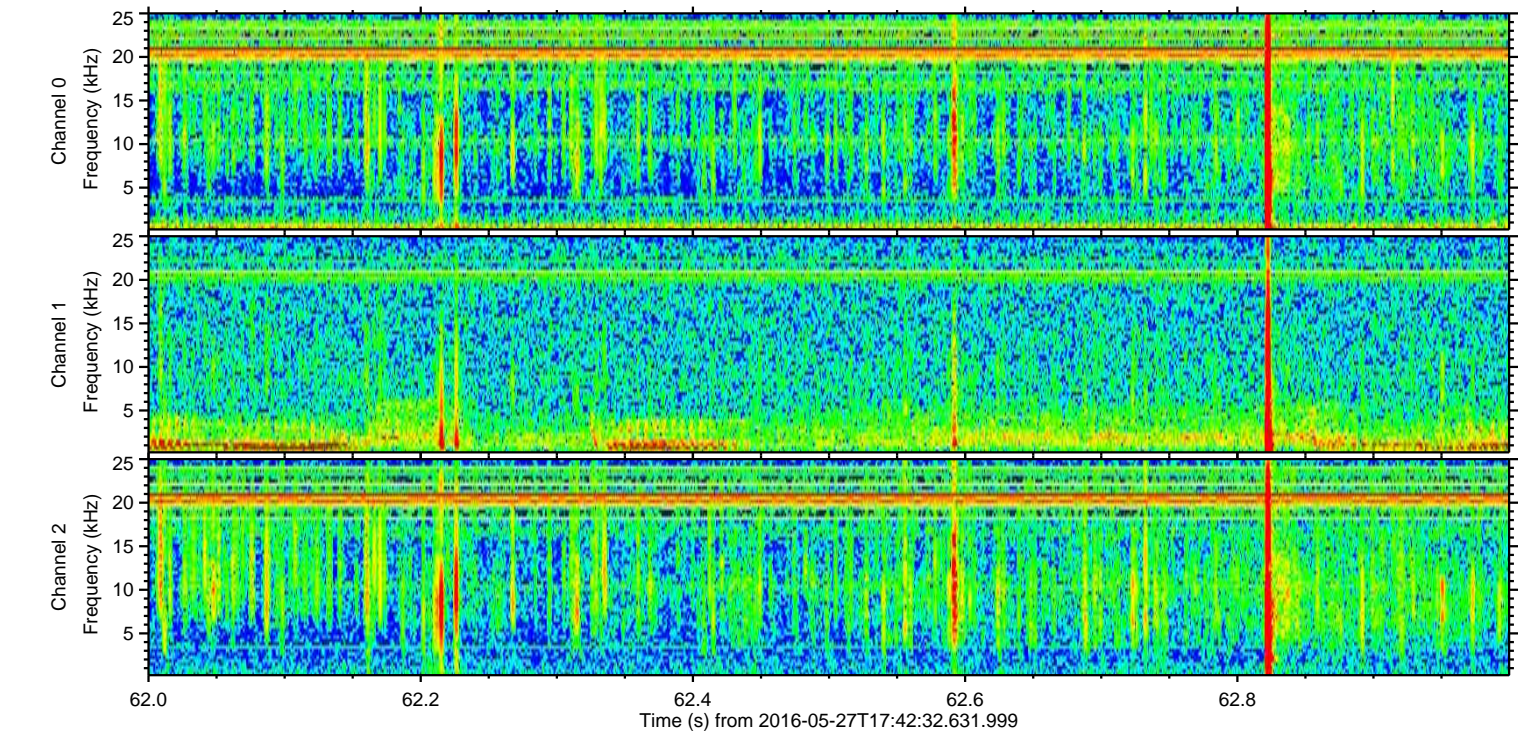
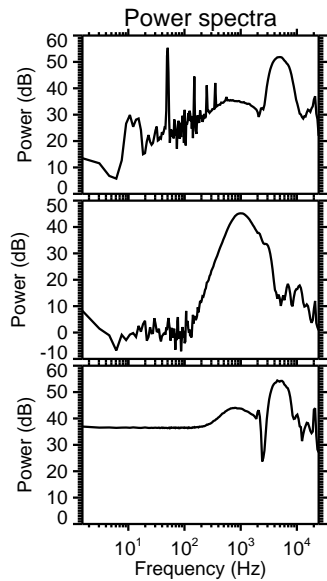
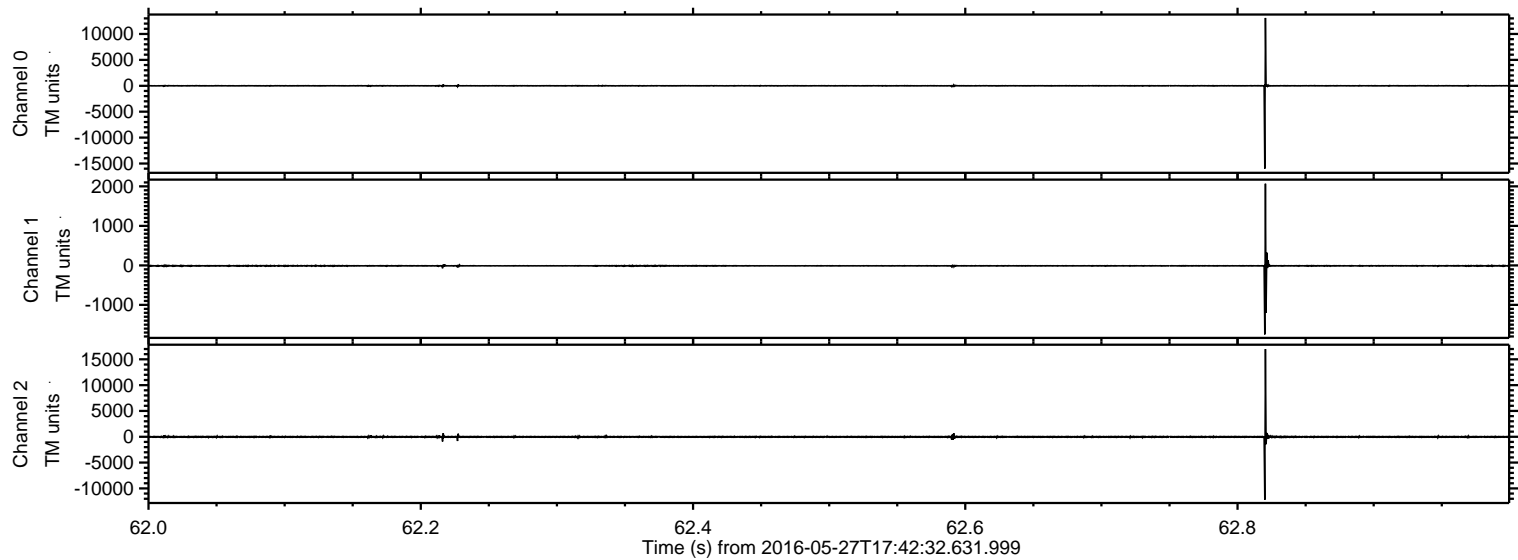


ELMAVAN 3D WAVEFORMS (Measured data sampled at 50 kHz) 51000 packets of 144 samples from 2016-05-27T17:42:32.631.999.

Processed Fri May 27 19:50:24 2016 by ELM ver.2012-10-06 from 001__elm20160527_174231__dat00.bin

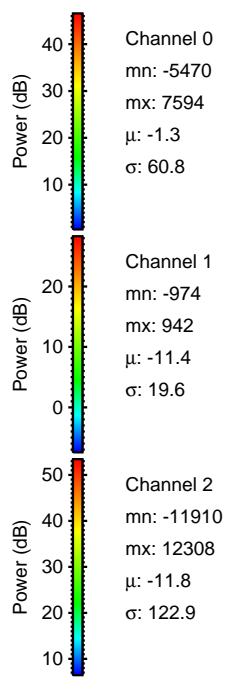
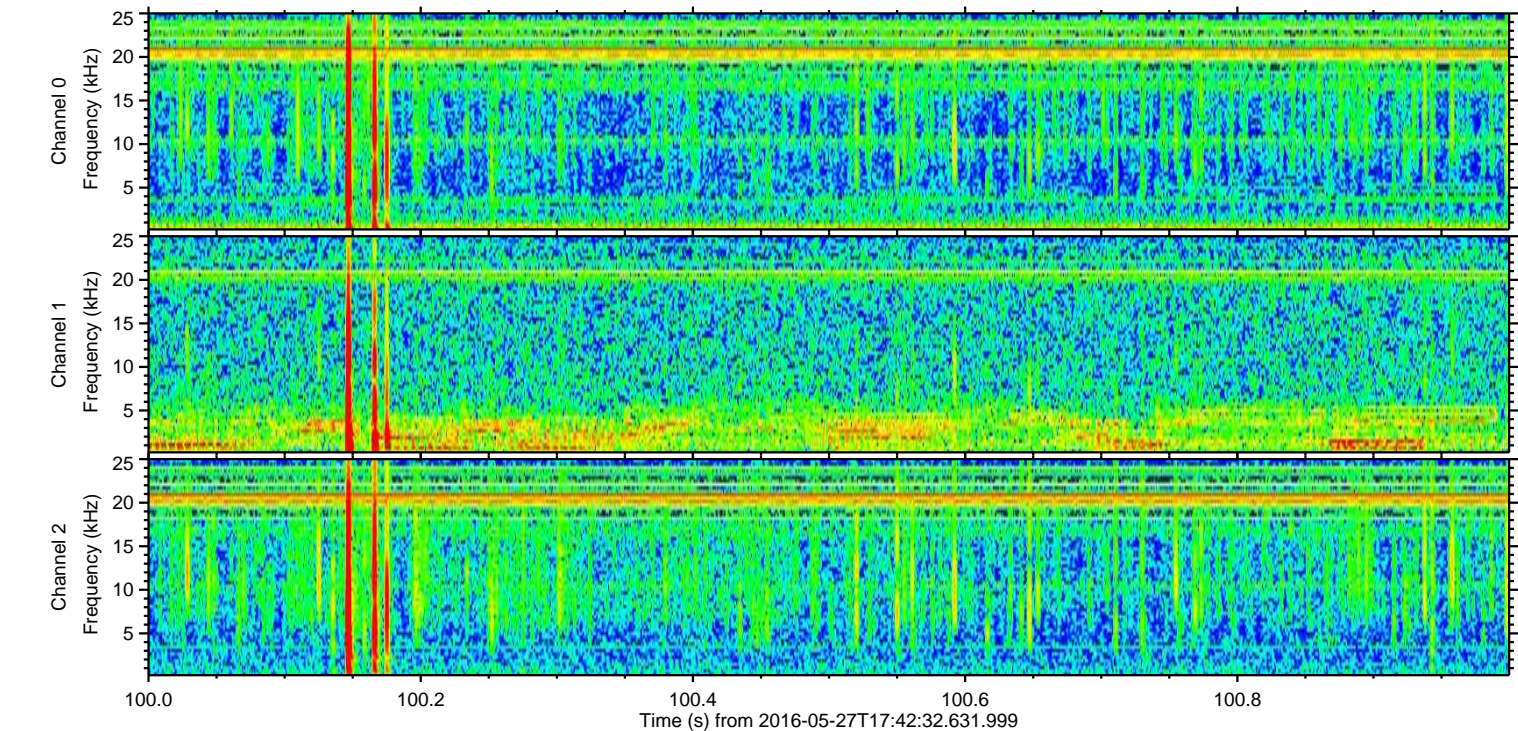
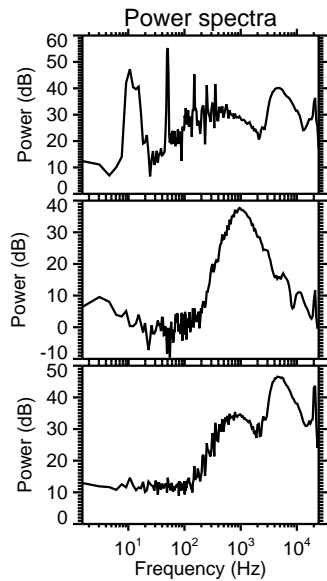
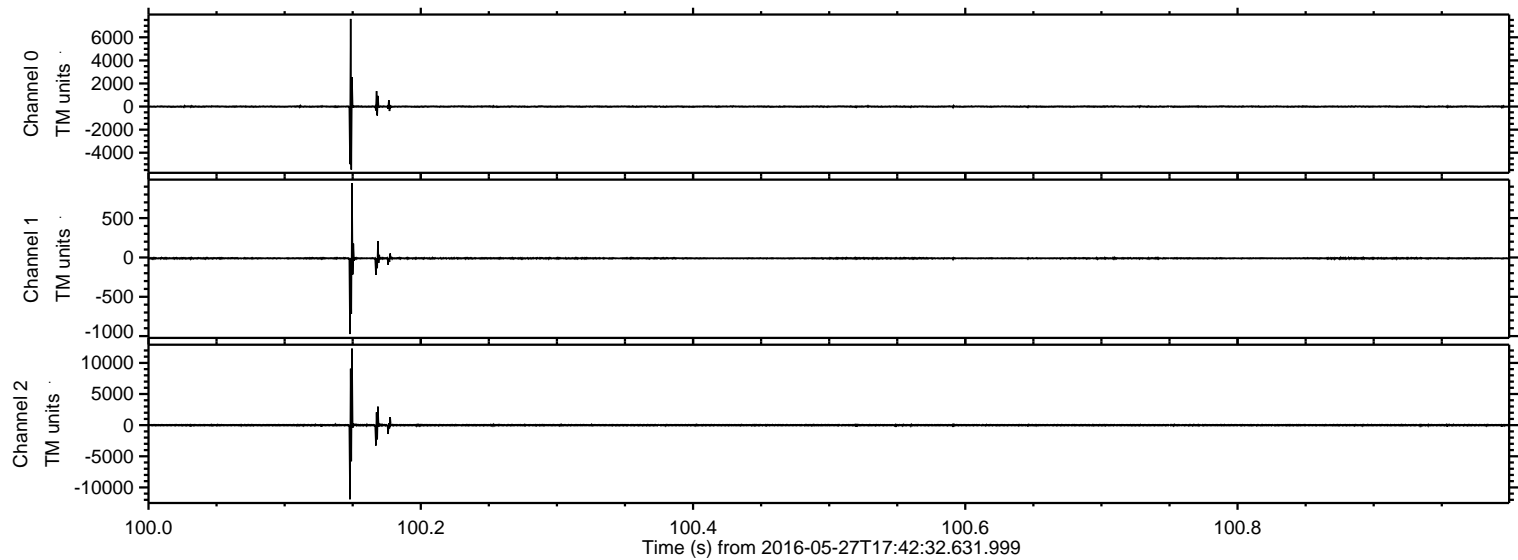


Processed Fri May 27 19:50:36 2016 by ELM ver.2012-10-06 from 001__elm20160527_174231__dat00.bin

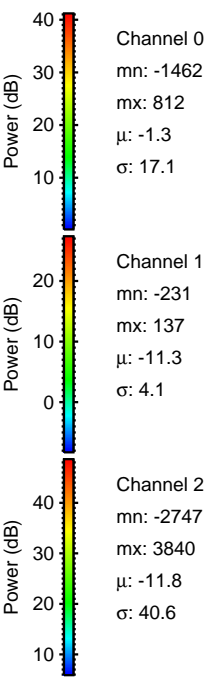
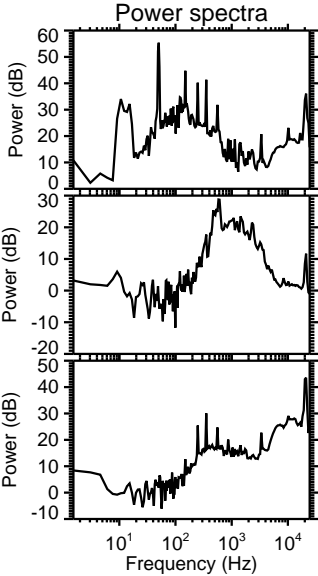
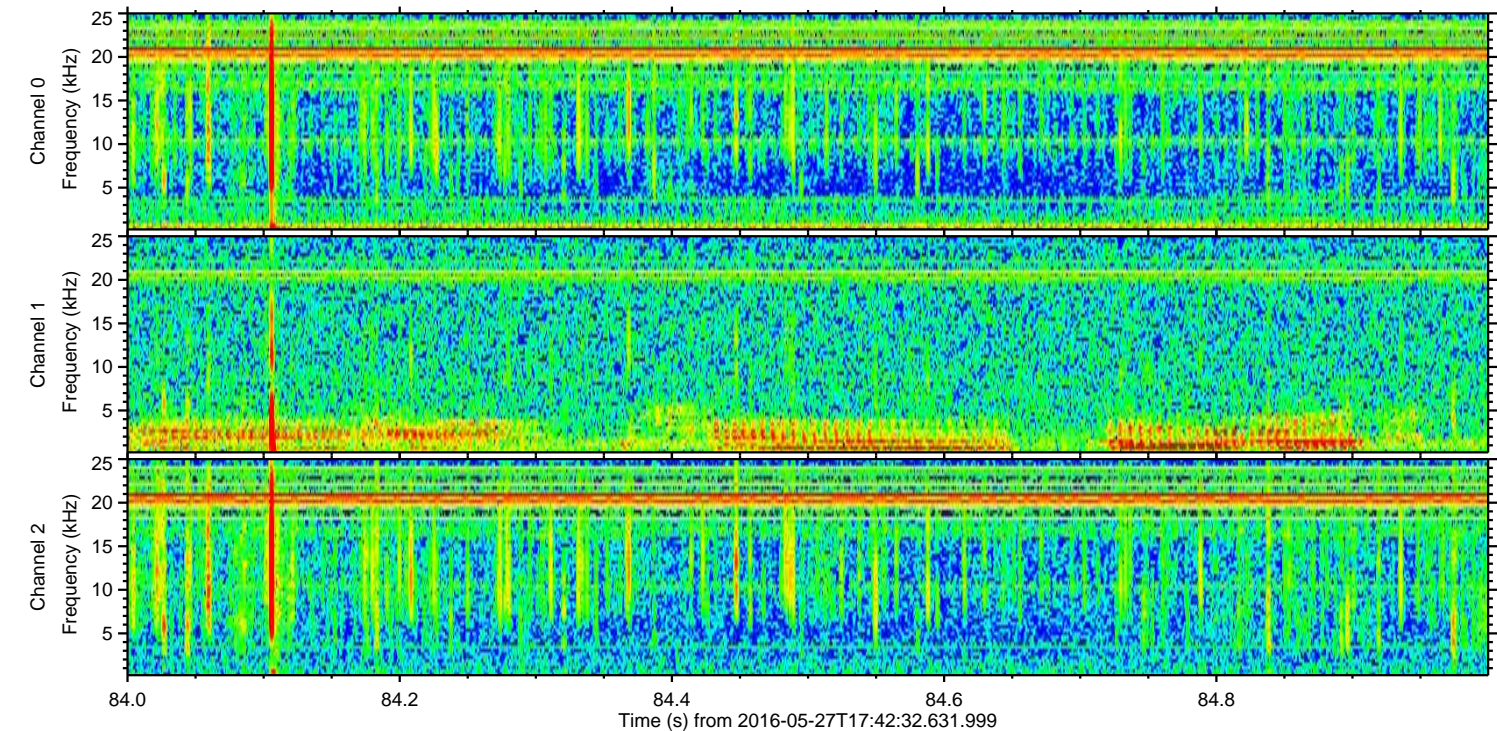
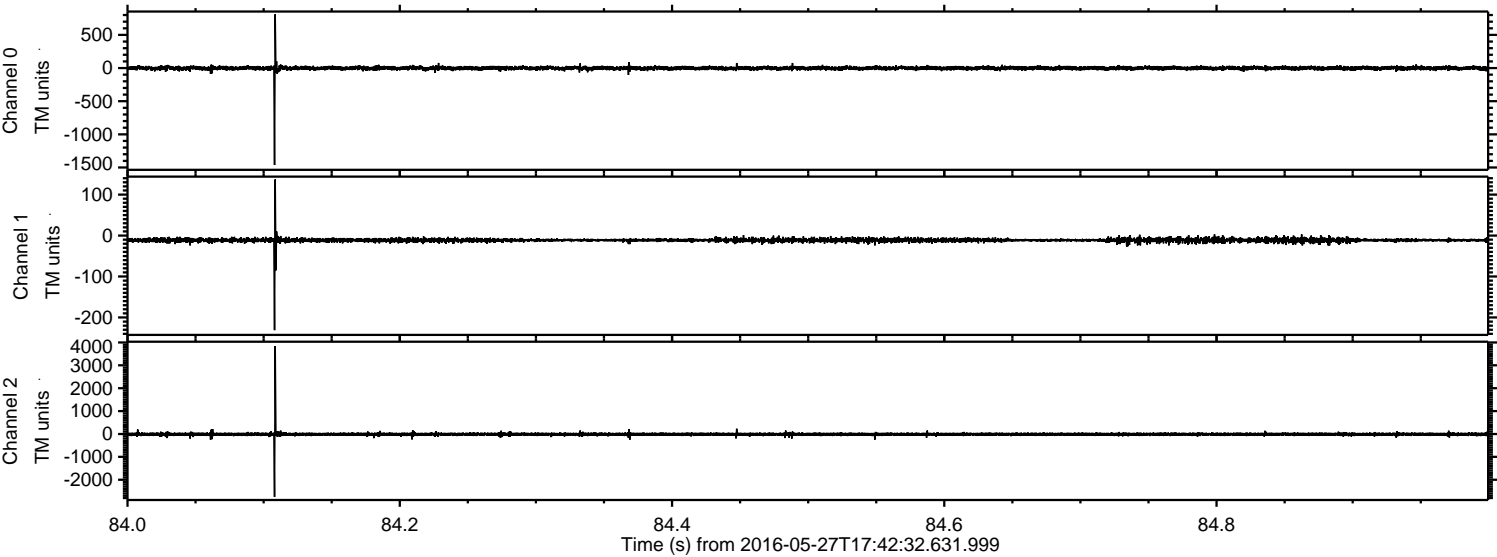


ELMAVAN 3D WAVEFORMS (Measured data sampled at 50 kHz) 51000 packets of 144 samples from 2016-05-27T17:42:32.631.999. Part 101/147

Processed Fri May 27 19:50:37 2016 by ELM ver.2012-10-06 from 001__elm20160527_174231__dat00.bin

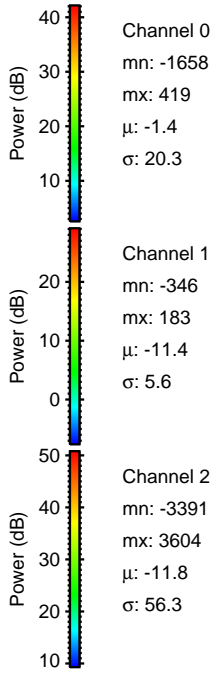
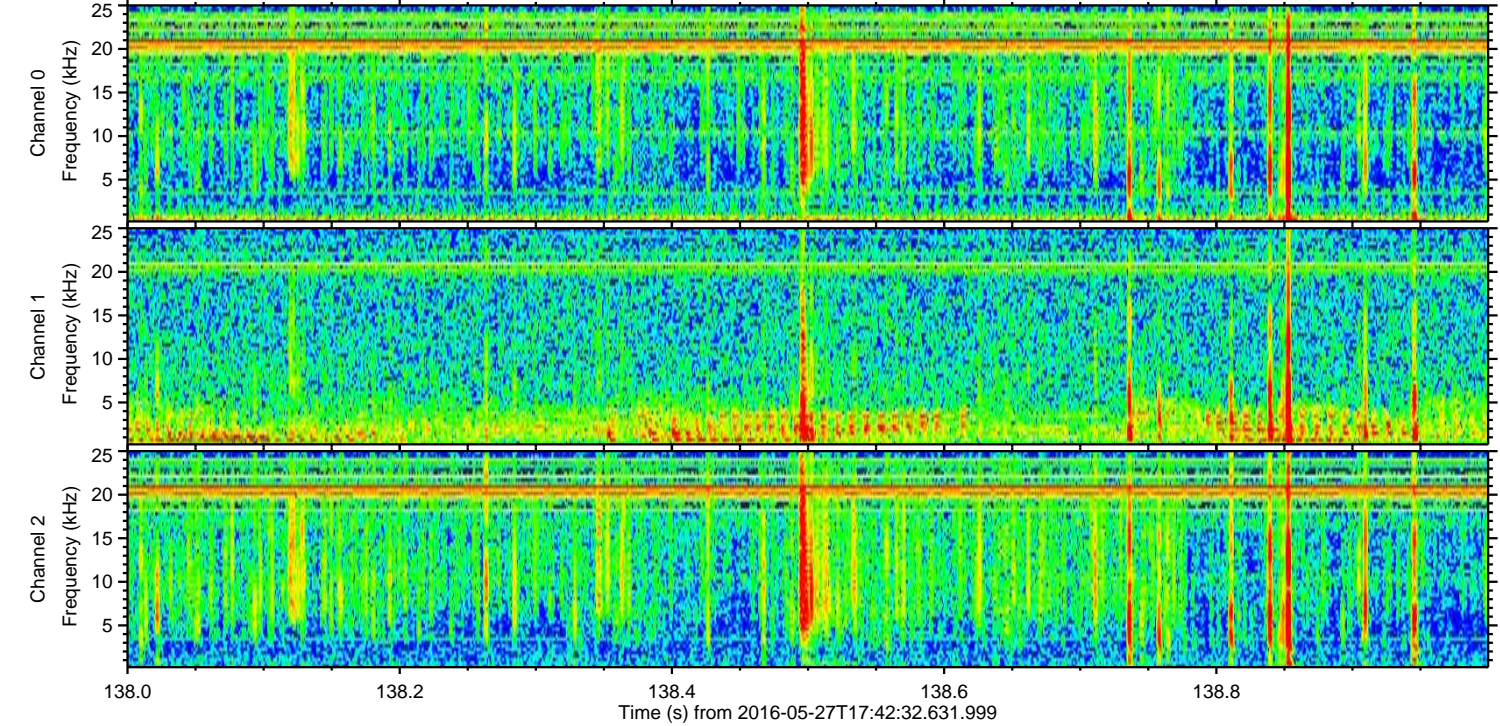
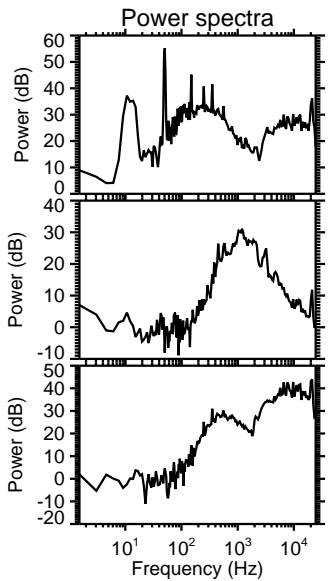
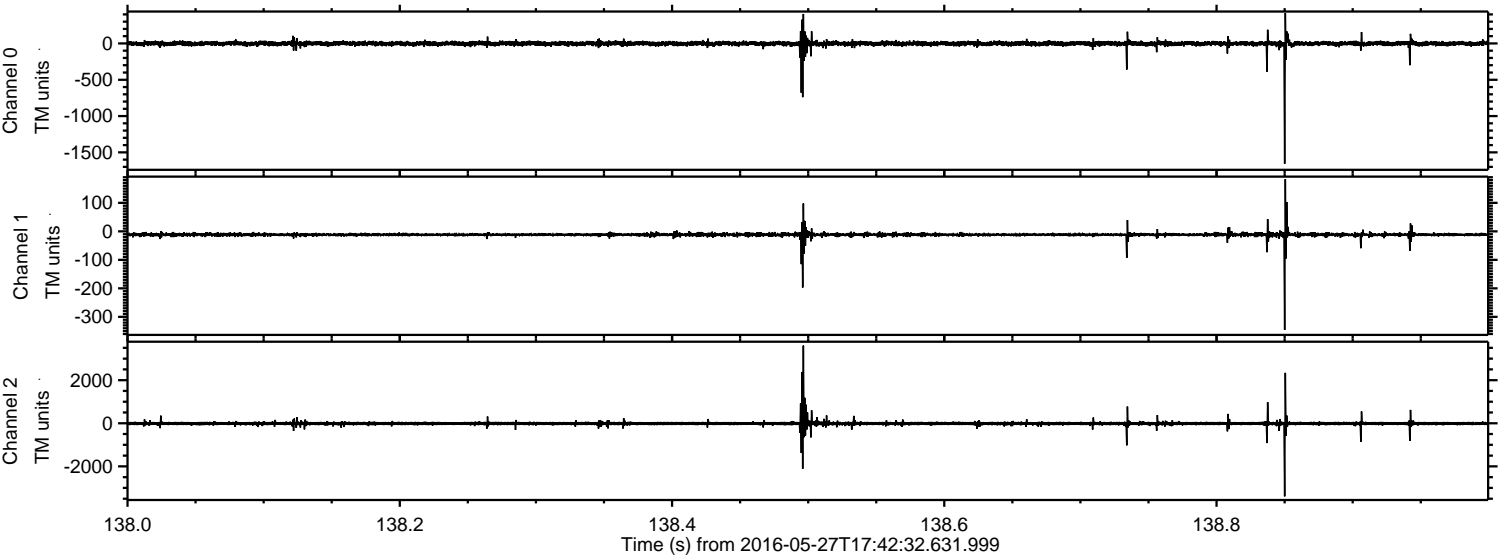


Processed Fri May 27 19:50:38 2016 by ELM ver.2012-10-06 from 001__elm20160527_174231__dat00.bin



ELMAVAN 3D WAVEFORMS (Measured data sampled at 50 kHz) 51000 packets of 144 samples from 2016-05-27T17:42:32.631.999. Part 139/147

Processed Fri May 27 19:50:39 2016 by ELM ver.2012-10-06 from 001__elm20160527_174231__dat00.bin

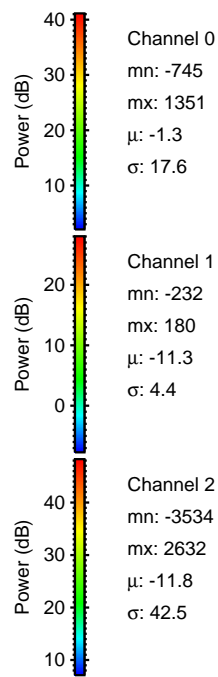
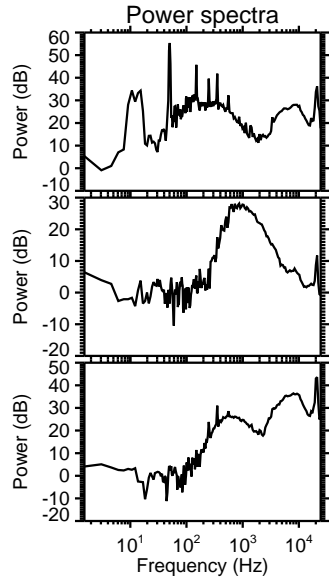
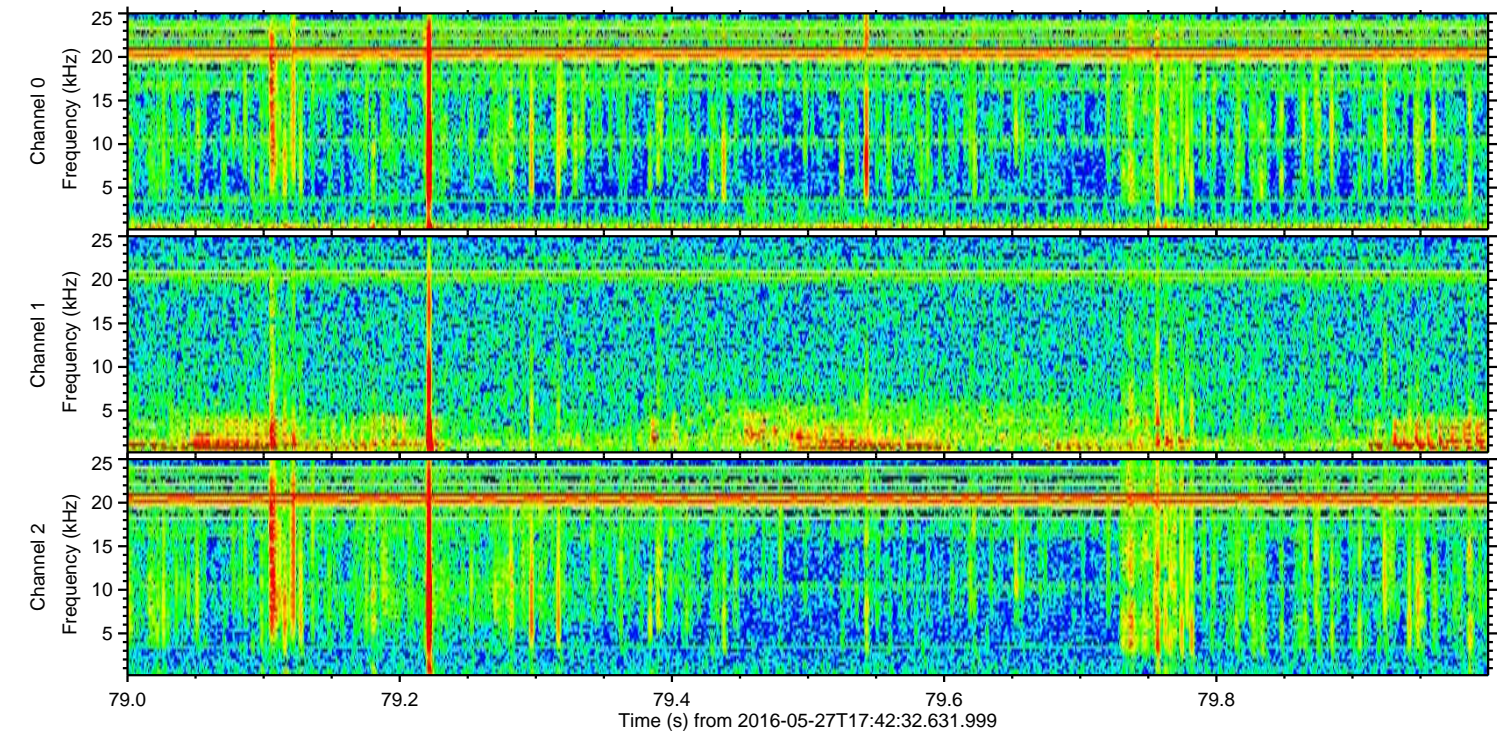
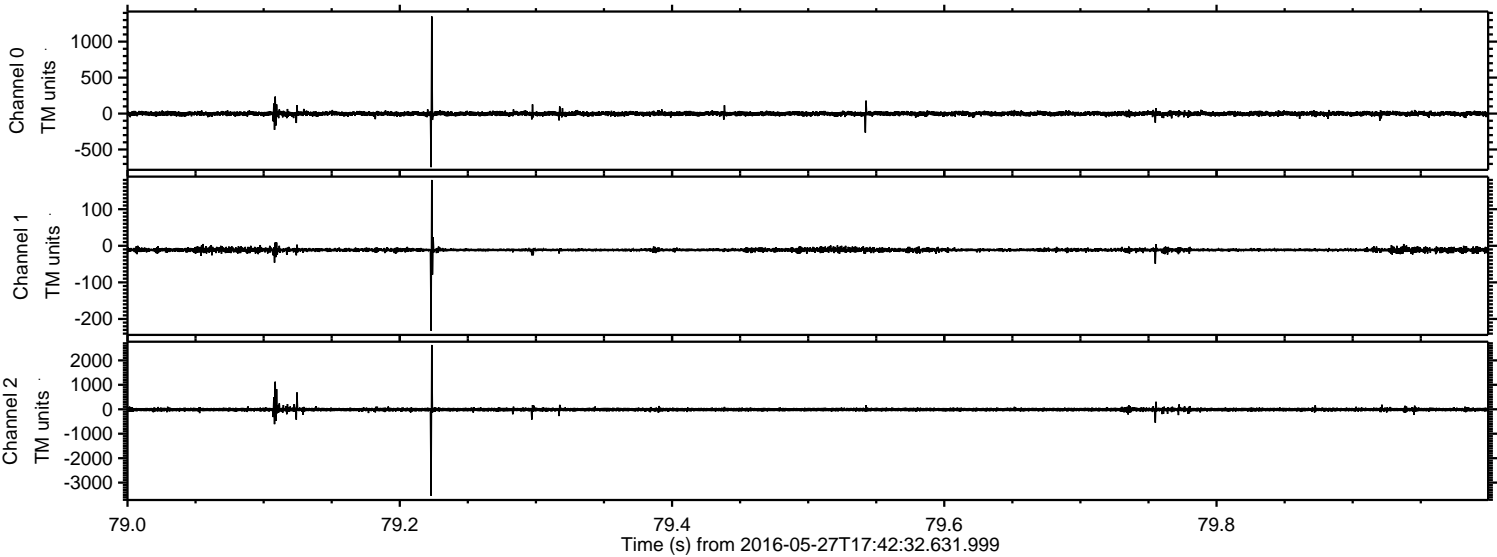


Channel 0
mn: -1658
mx: 419
 μ : -1.4
 σ : 20.3

Channel 1
mn: -346
mx: 183
 μ : -11.4
 σ : 5.6

Channel 2
mn: -3391
mx: 3604
 μ : -11.8
 σ : 56.3

Processed Fri May 27 19:50:40 2016 by ELM ver.2012-10-06 from 001__elm20160527_174231__dat00.bin

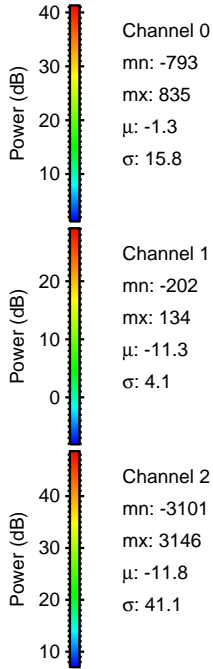
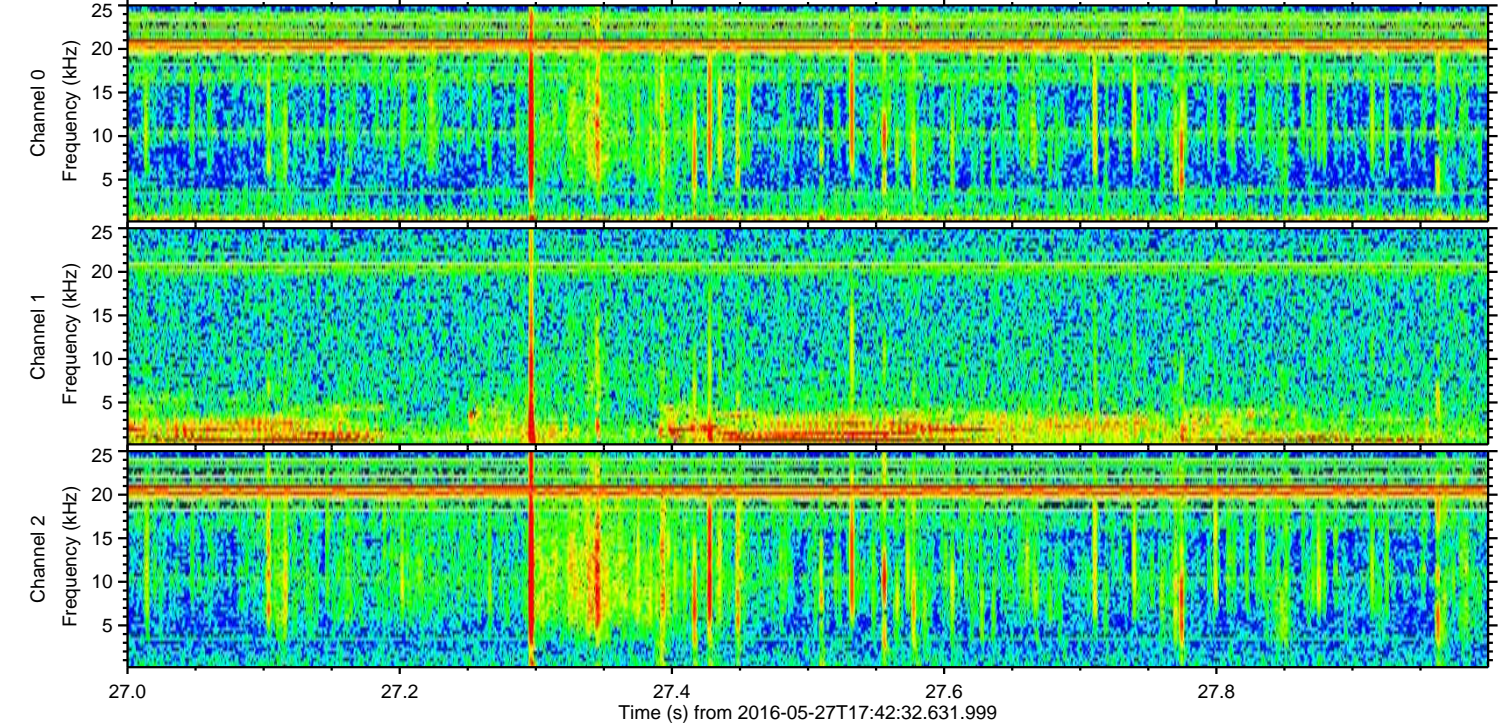
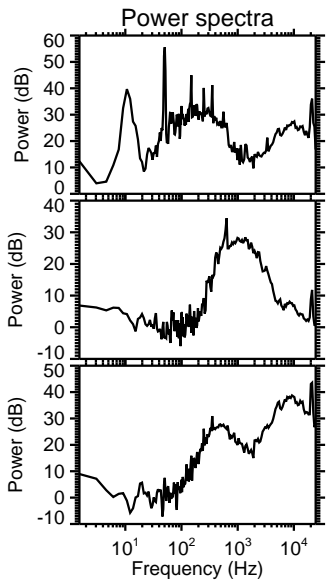
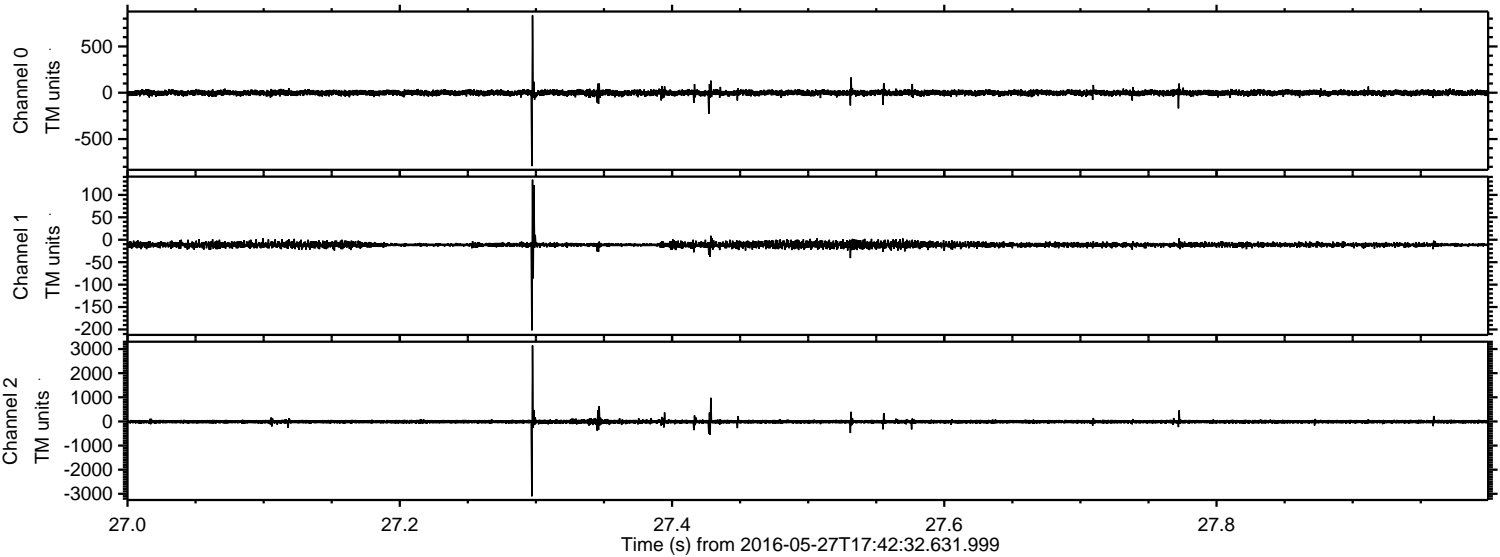


Channel 0
mn: -745
mx: 1351
 μ : -1.3
 σ : 17.6

Channel 1
mn: -232
mx: 180
 μ : -11.3
 σ : 4.4

Channel 2
mn: -3534
mx: 2632
 μ : -11.8
 σ : 42.5

Processed Fri May 27 19:50:41 2016 by ELM ver.2012-10-06 from 001__elm20160527_174231__dat00.bin

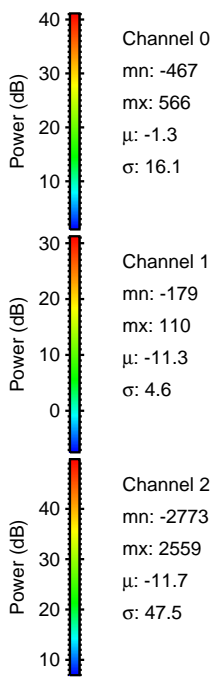
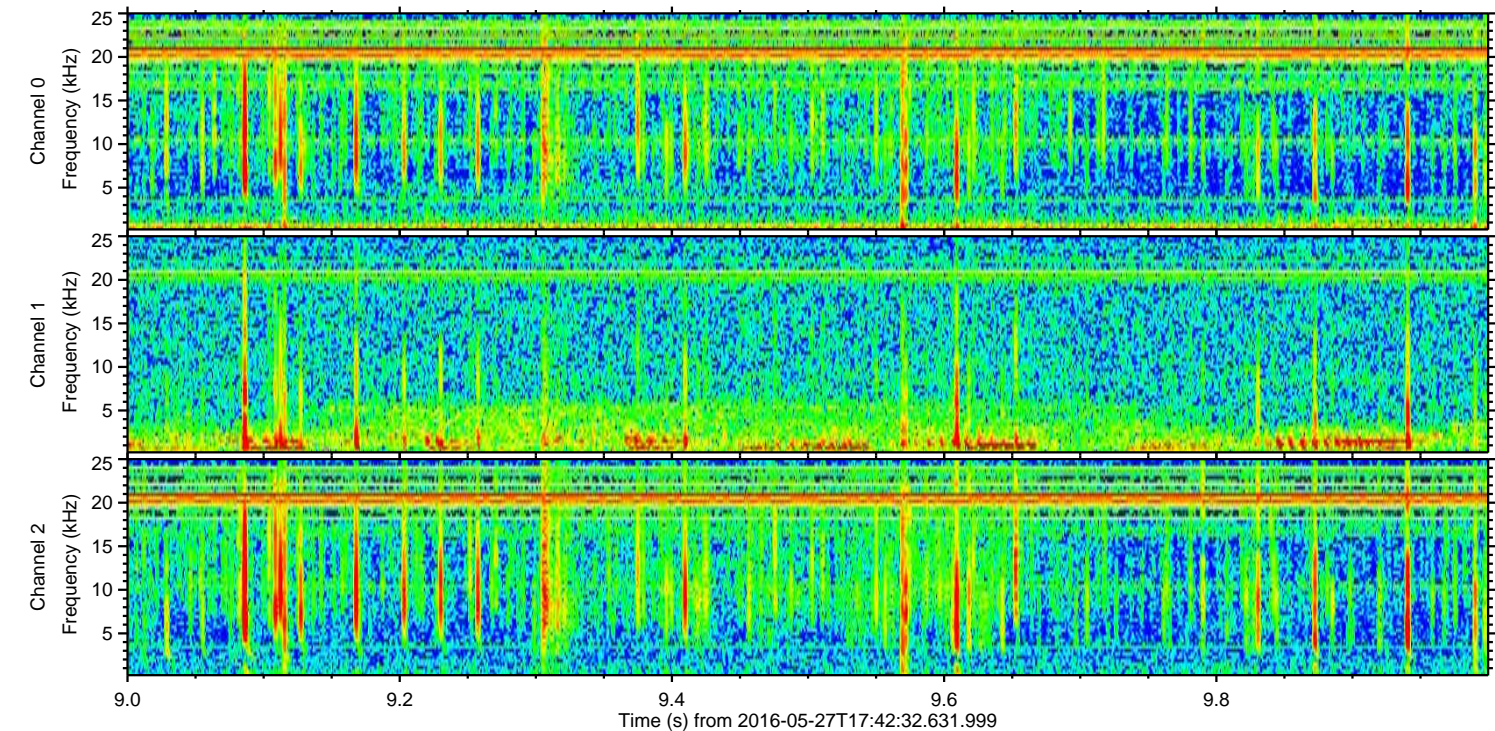
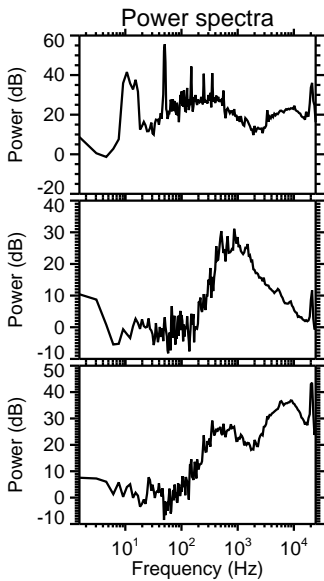
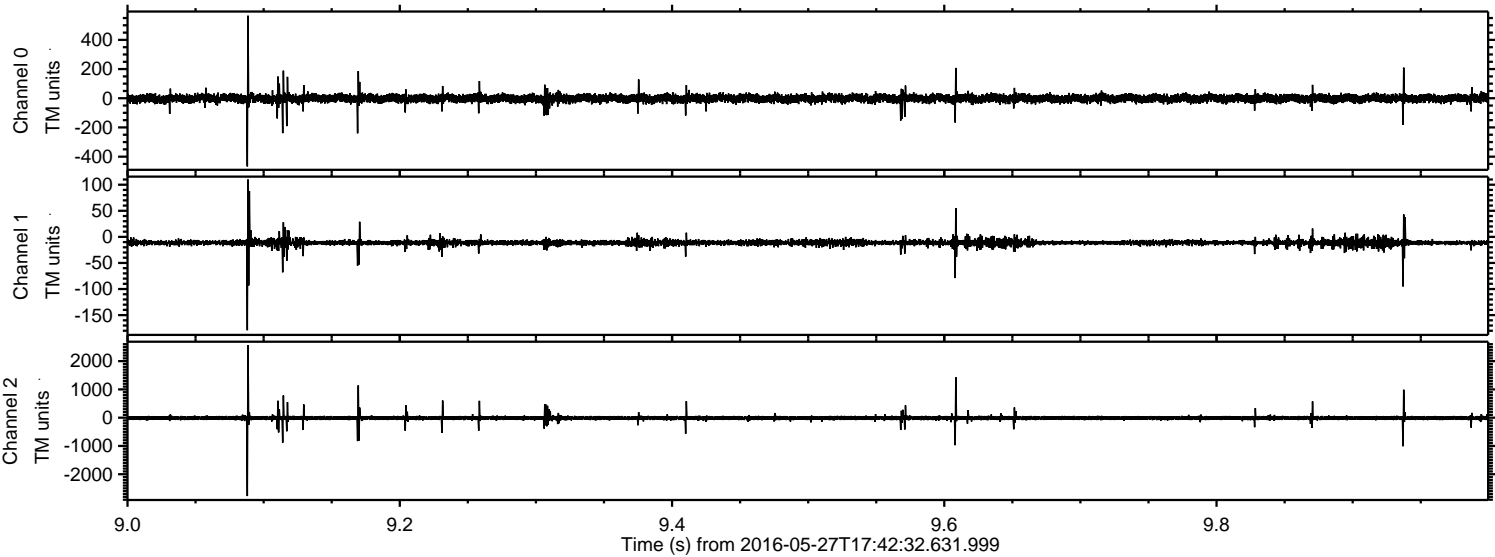


Channel 0
mn: -793
mx: 835
 μ : -1.3
 σ : 15.8

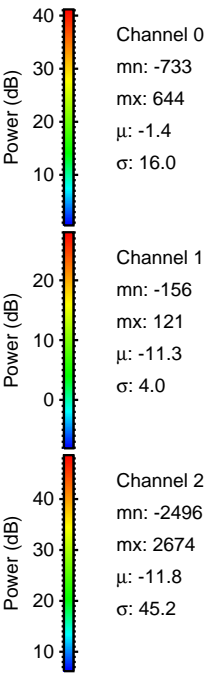
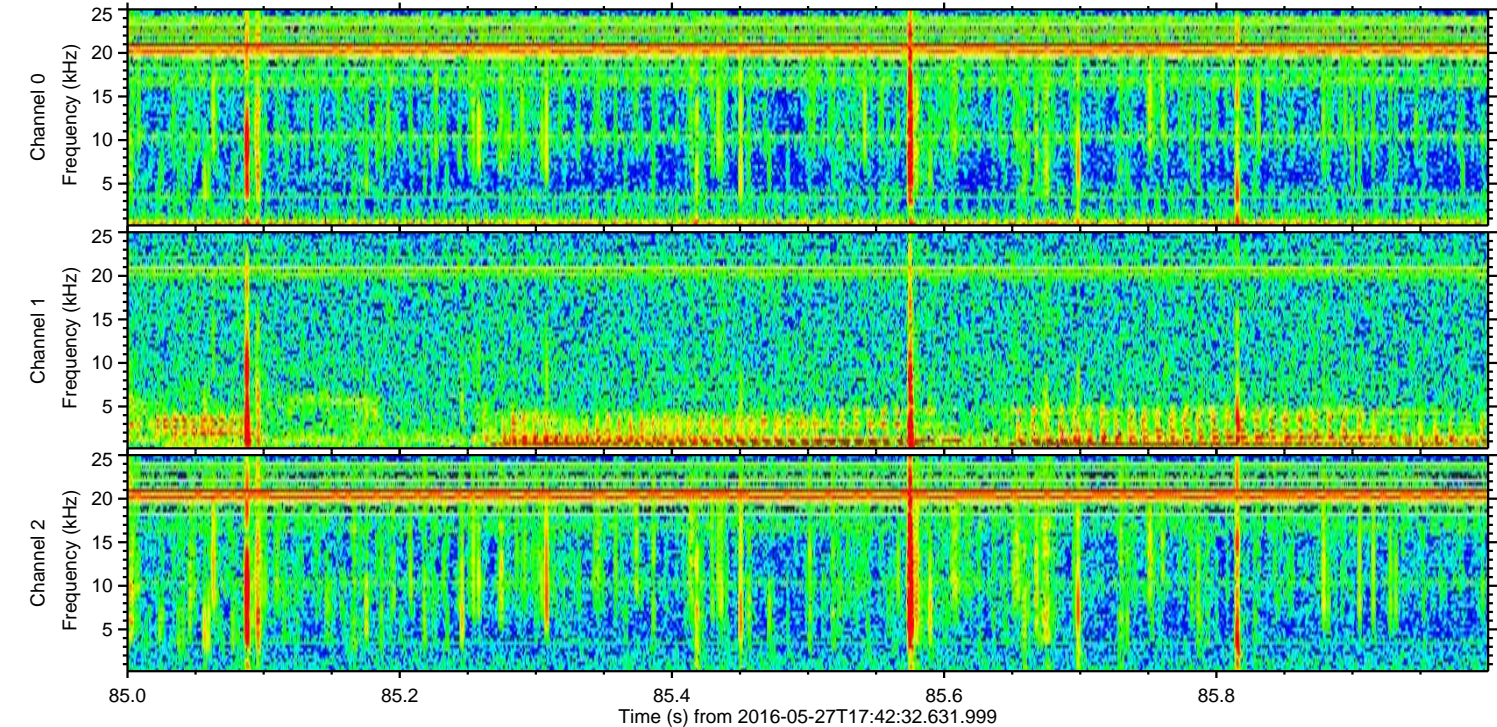
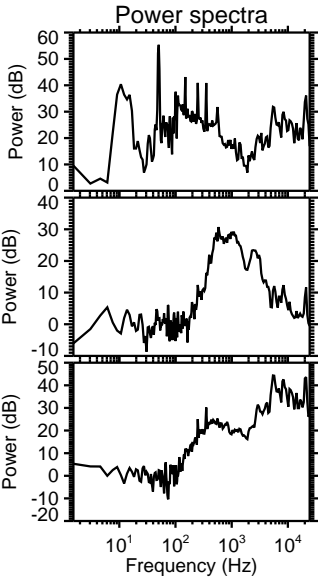
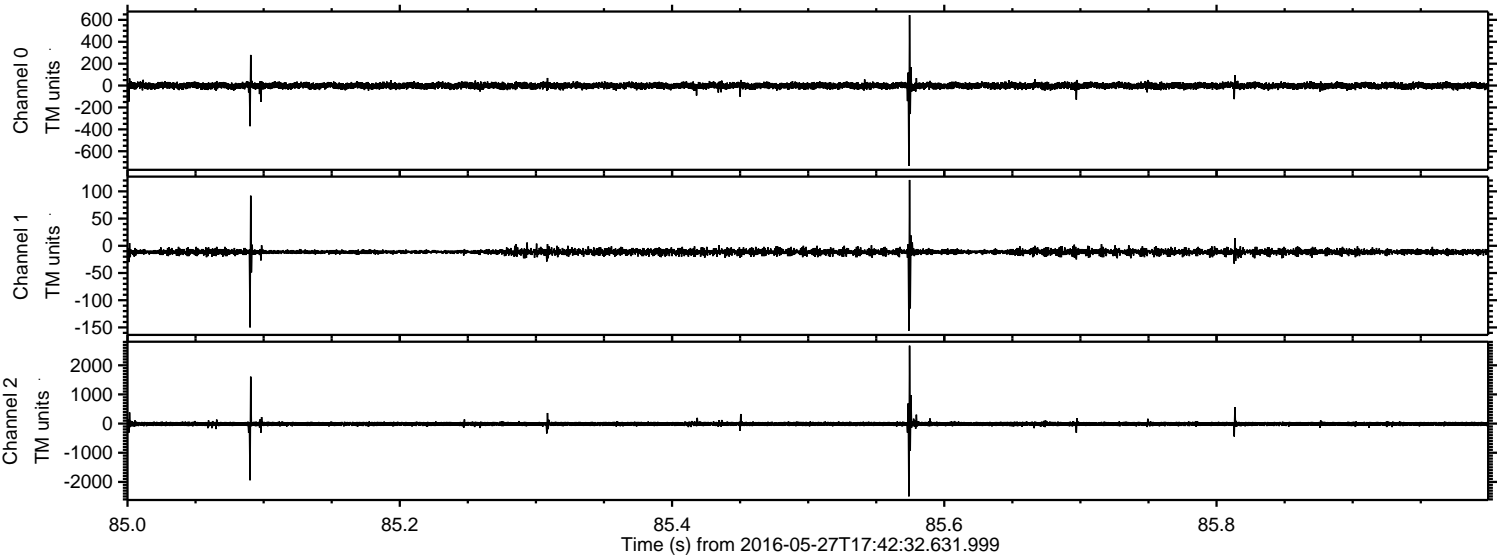
Channel 1
mn: -202
mx: 134
 μ : -11.3
 σ : 4.1

Channel 2
mn: -3101
mx: 3146
 μ : -11.8
 σ : 41.1

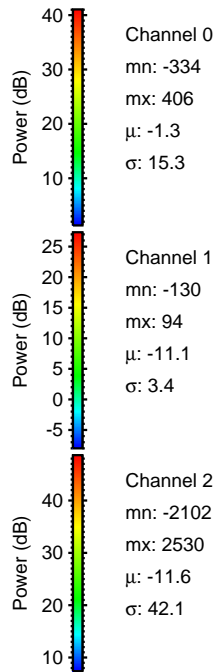
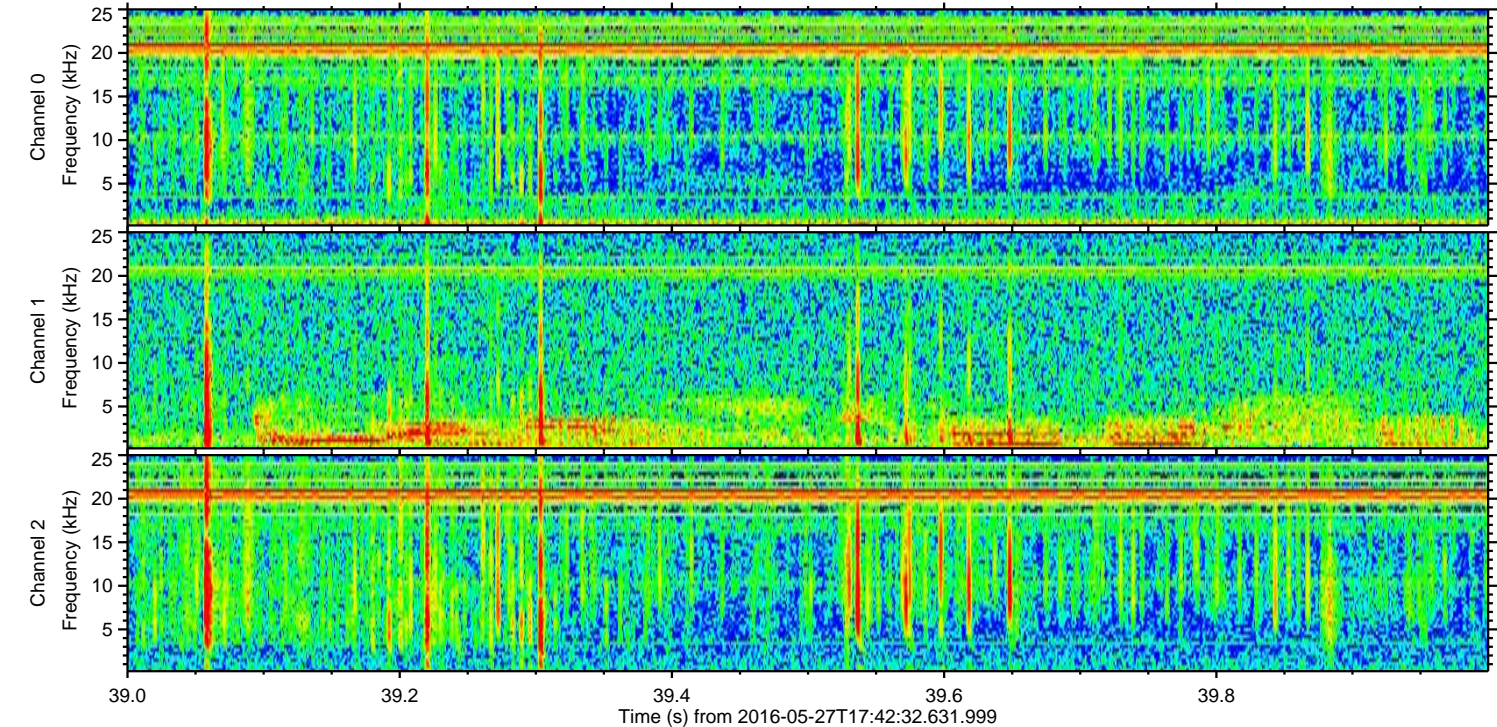
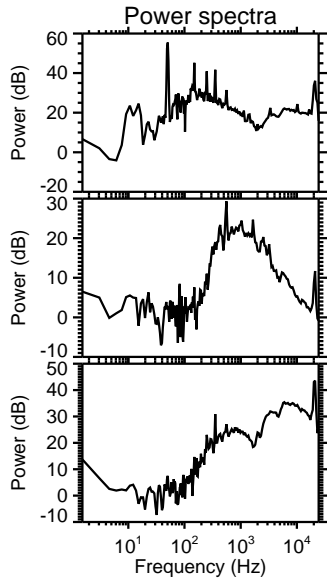
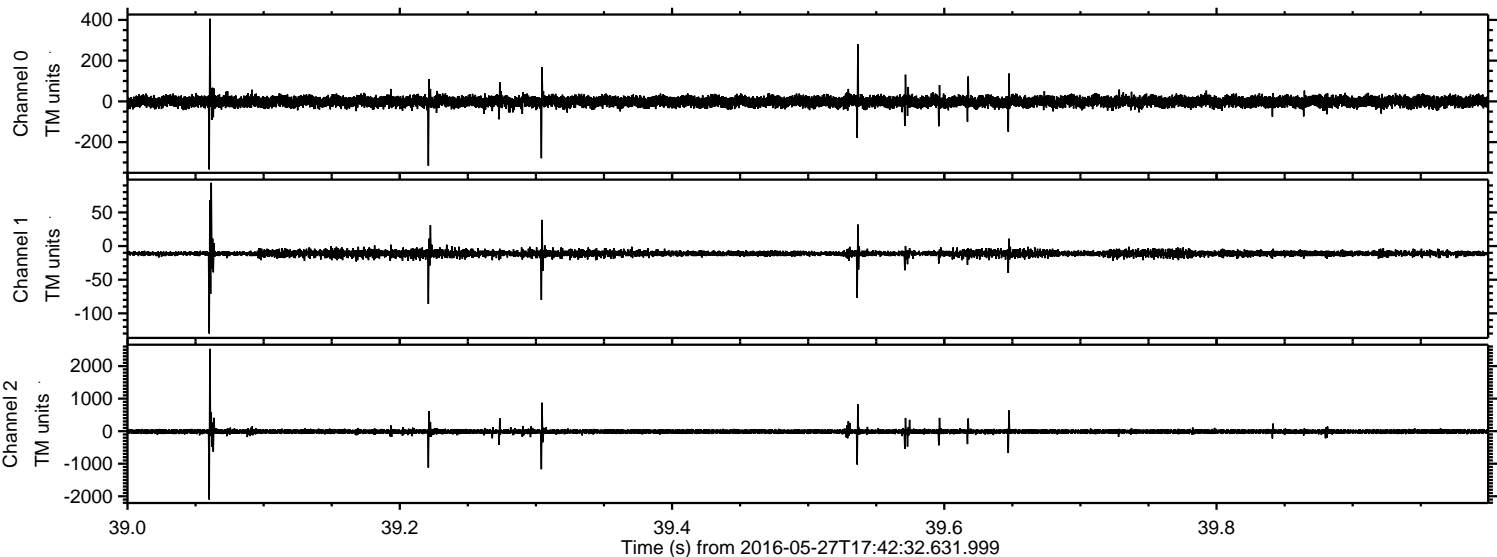
Processed Fri May 27 19:50:41 2016 by ELM ver.2012-10-06 from 001__elm20160527_174231__dat00.bin



Processed Fri May 27 19:50:42 2016 by ELM ver.2012-10-06 from 001__elm20160527_174231__dat00.bin



Processed Fri May 27 19:50:43 2016 by ELM ver.2012-10-06 from 001__elm20160527_174231__dat00.bin



Processed Fri May 27 19:50:44 2016 by ELM ver.2012-10-06 from 001__elm20160527_174231__dat00.bin

