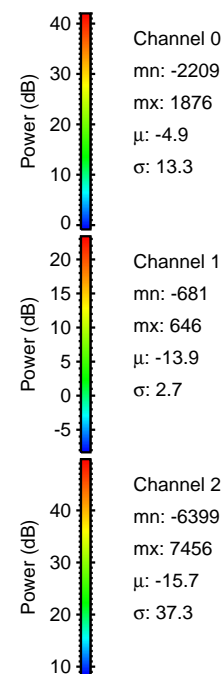
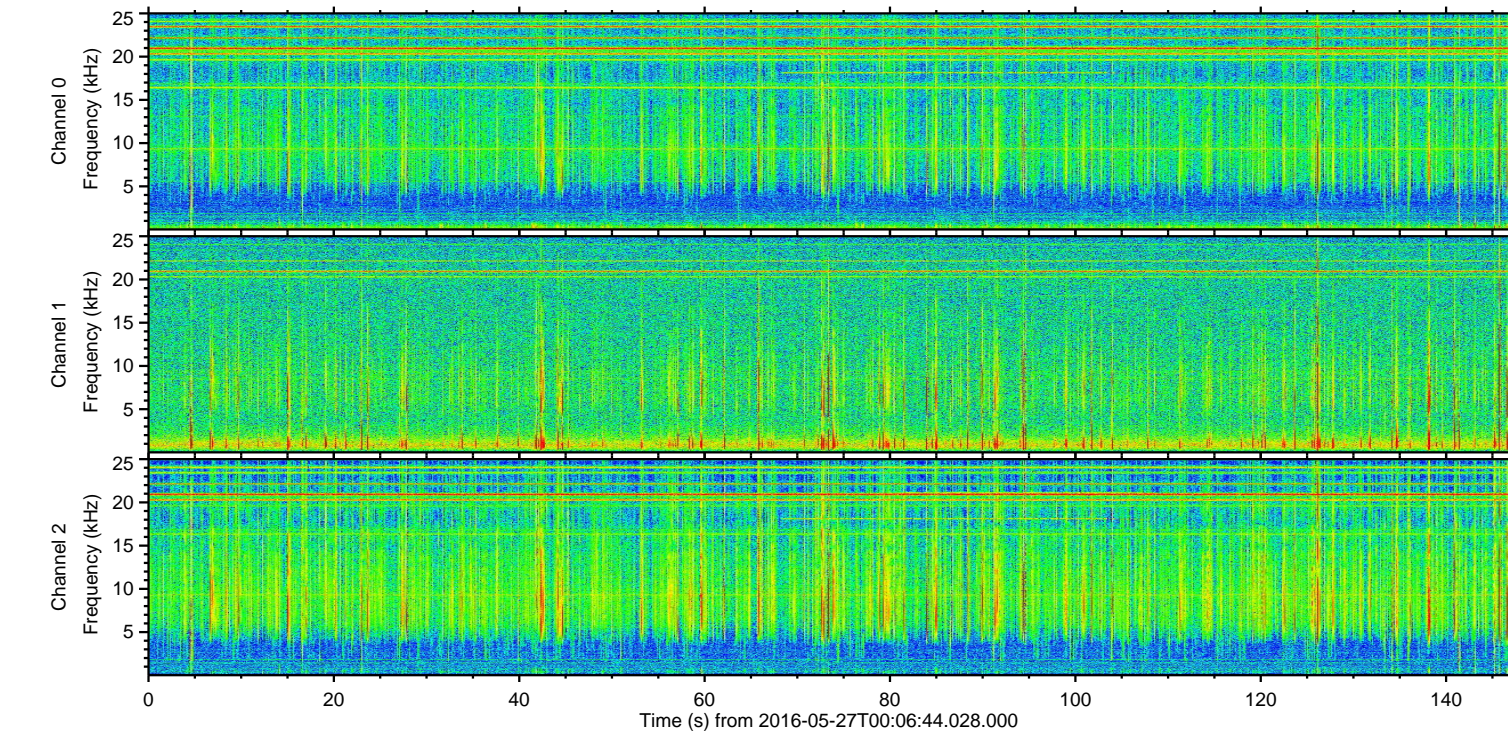
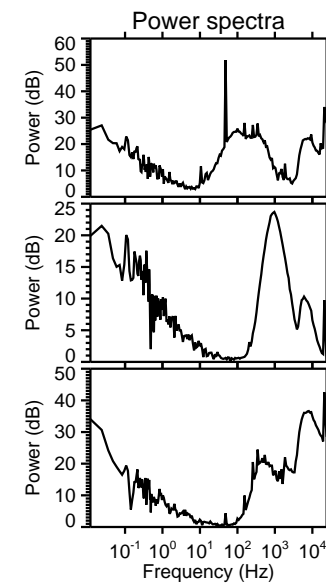
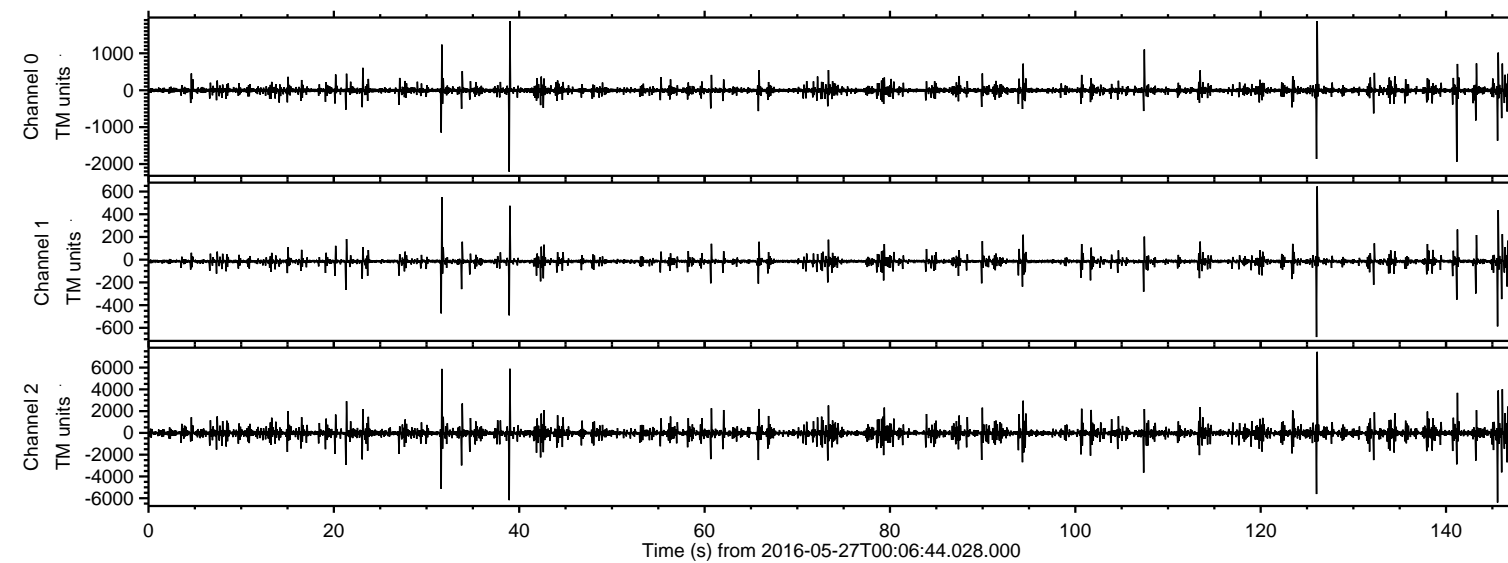


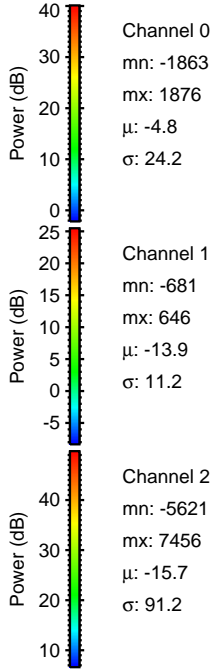
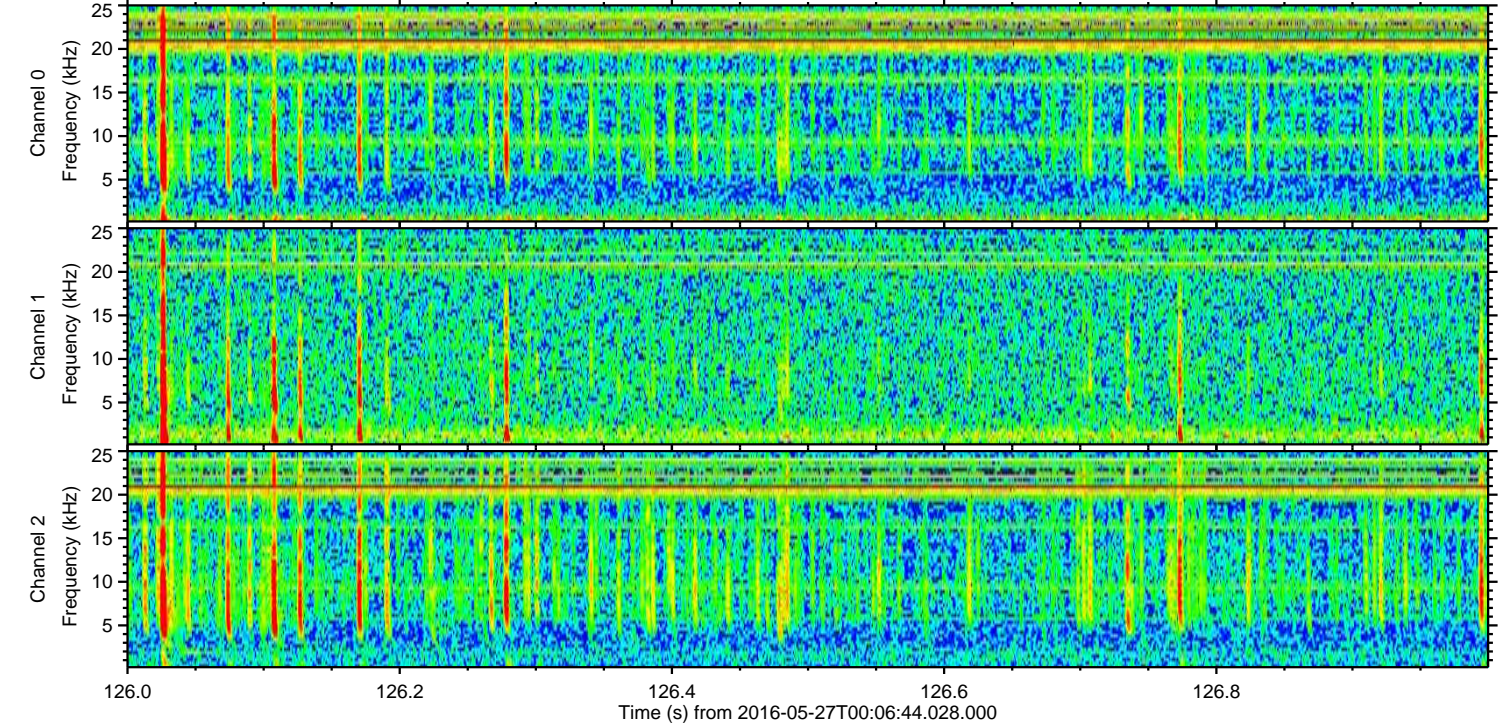
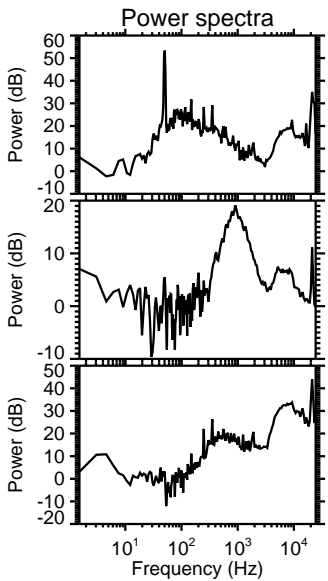
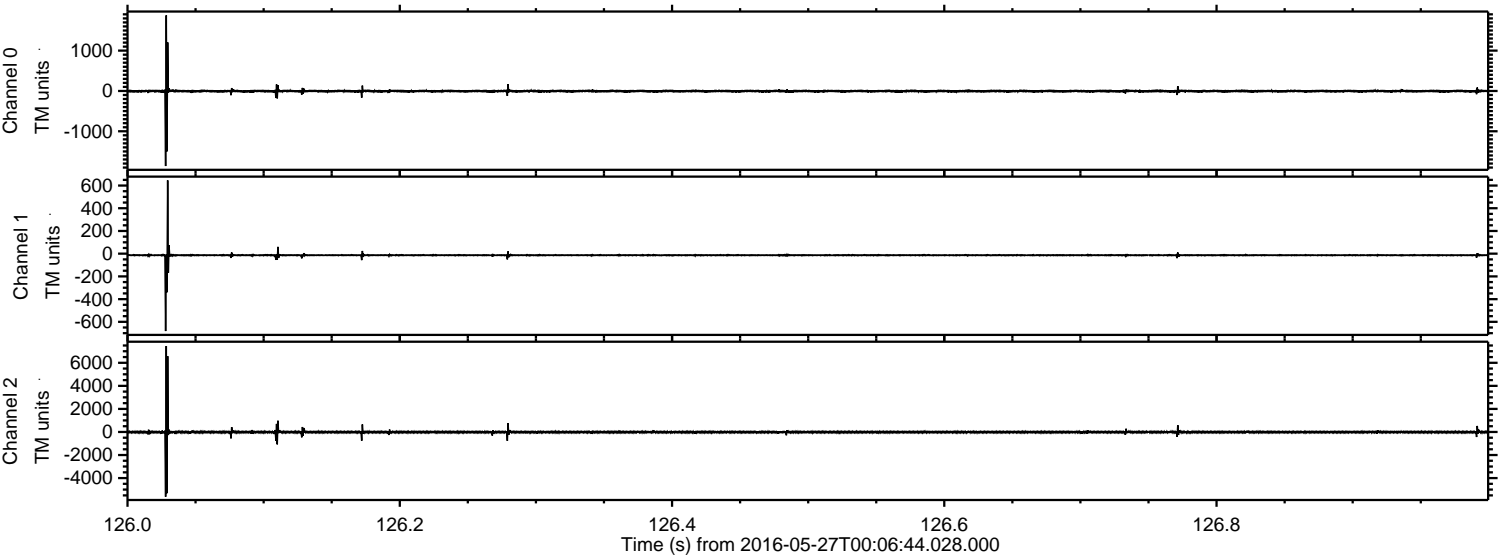
ELMAVAN 3D WAVEFORMS (Measured data sampled at 50 kHz) 51000 packets of 144 samples from 2016-05-27T00:06:44.028.000.

Processed Fri May 27 02:14:38 2016 by ELM ver.2012-10-06 from 001__elm20160527_000643__dat00.bin



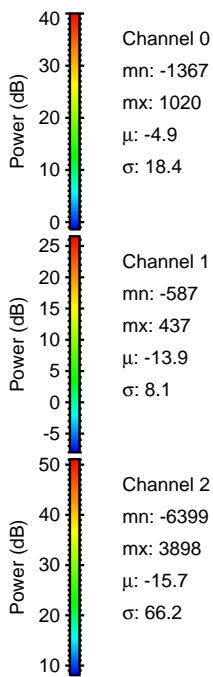
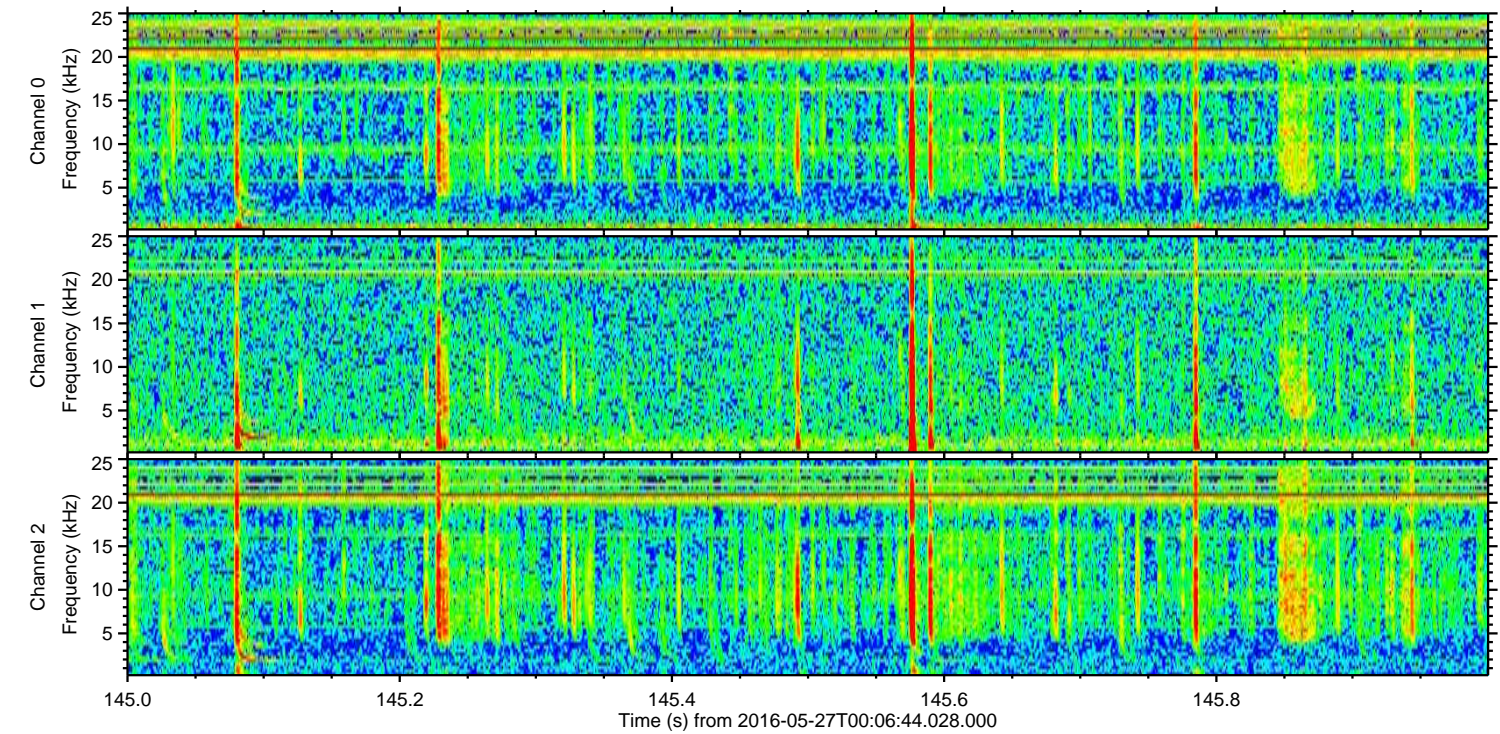
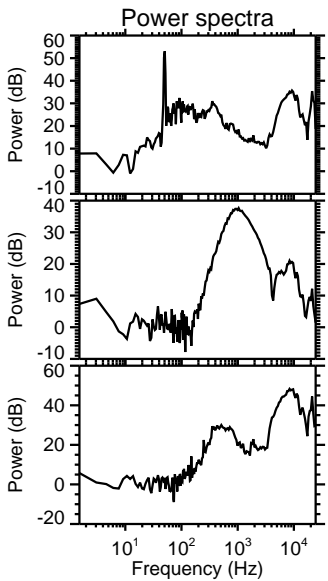
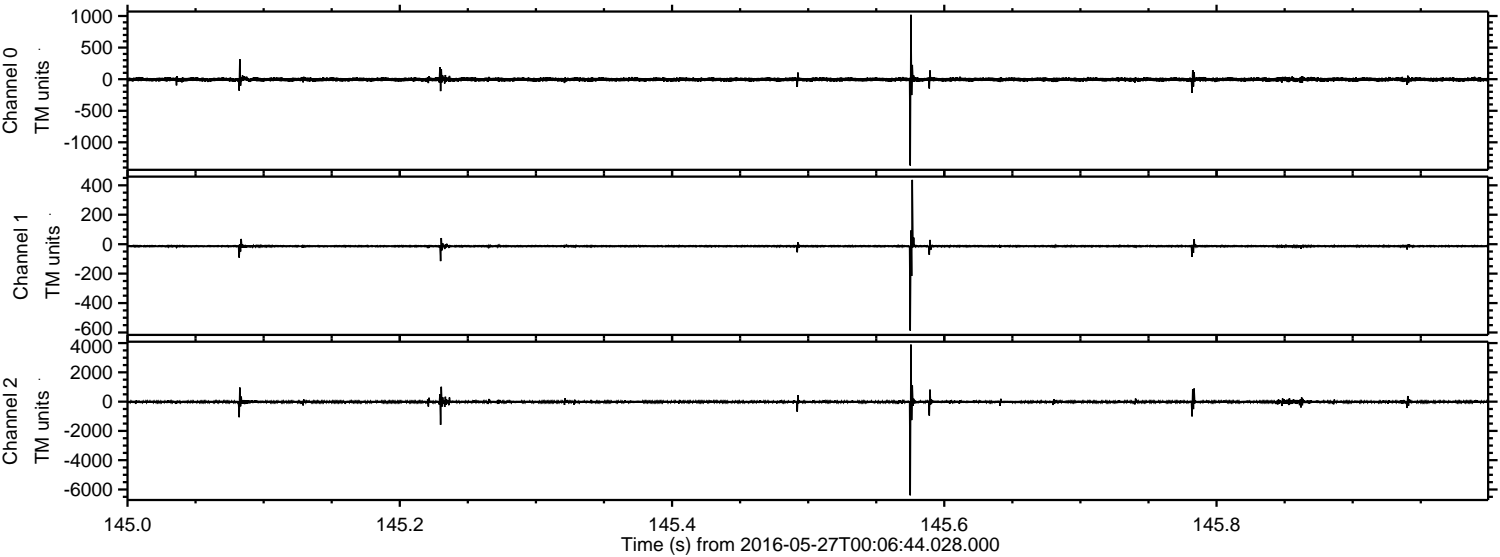
ELMAVAN 3D WAVEFORMS (Measured data sampled at 50 kHz) 51000 packets of 144 samples from 2016-05-27T00:06:44.028.000. Part 127/147

Processed Fri May 27 02:14:50 2016 by ELM ver.2012-10-06 from 001__elm20160527_000643__dat00.bin

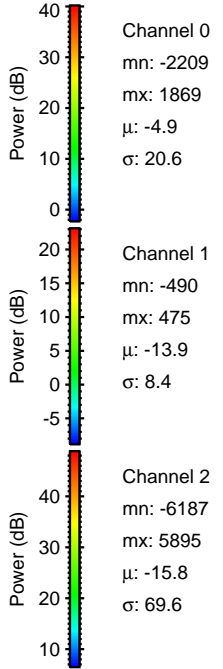
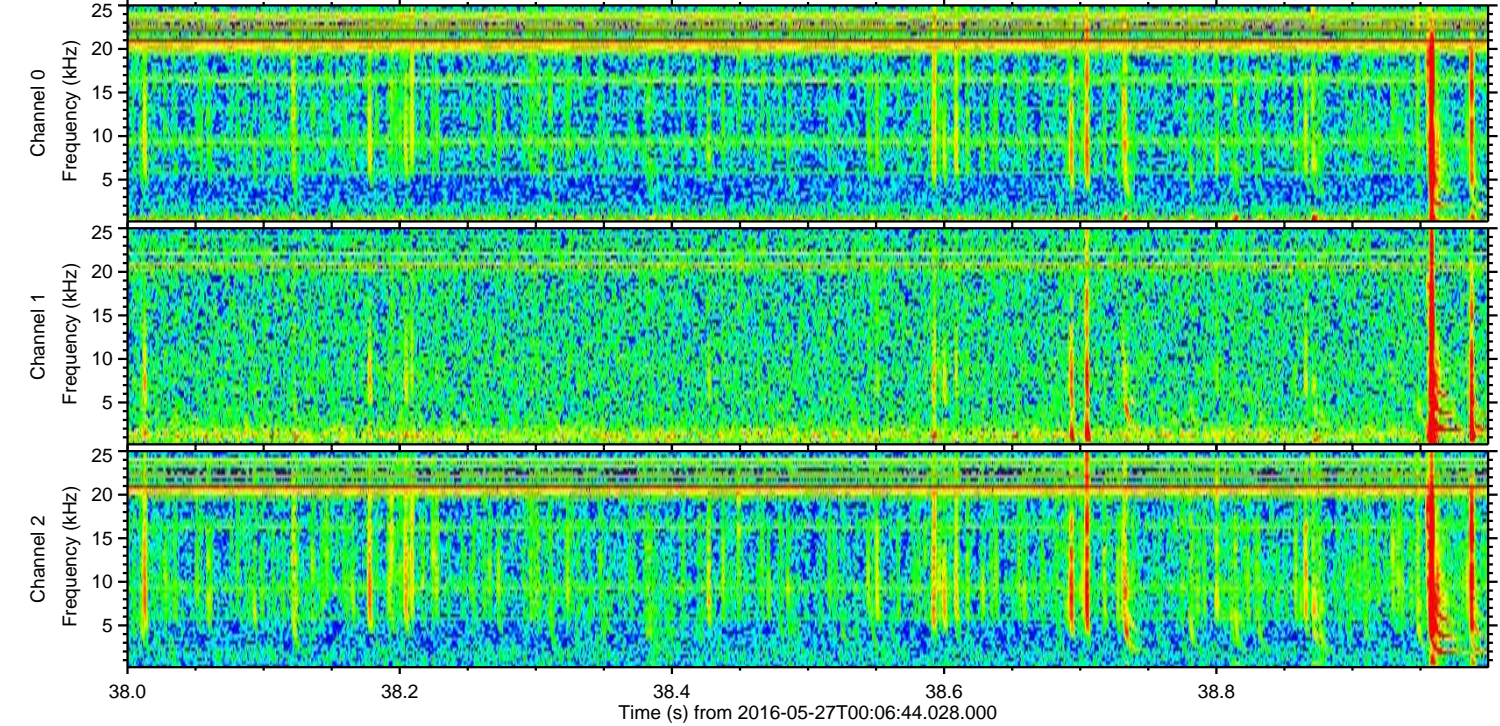
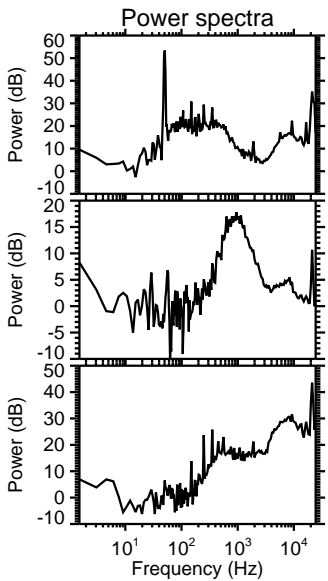
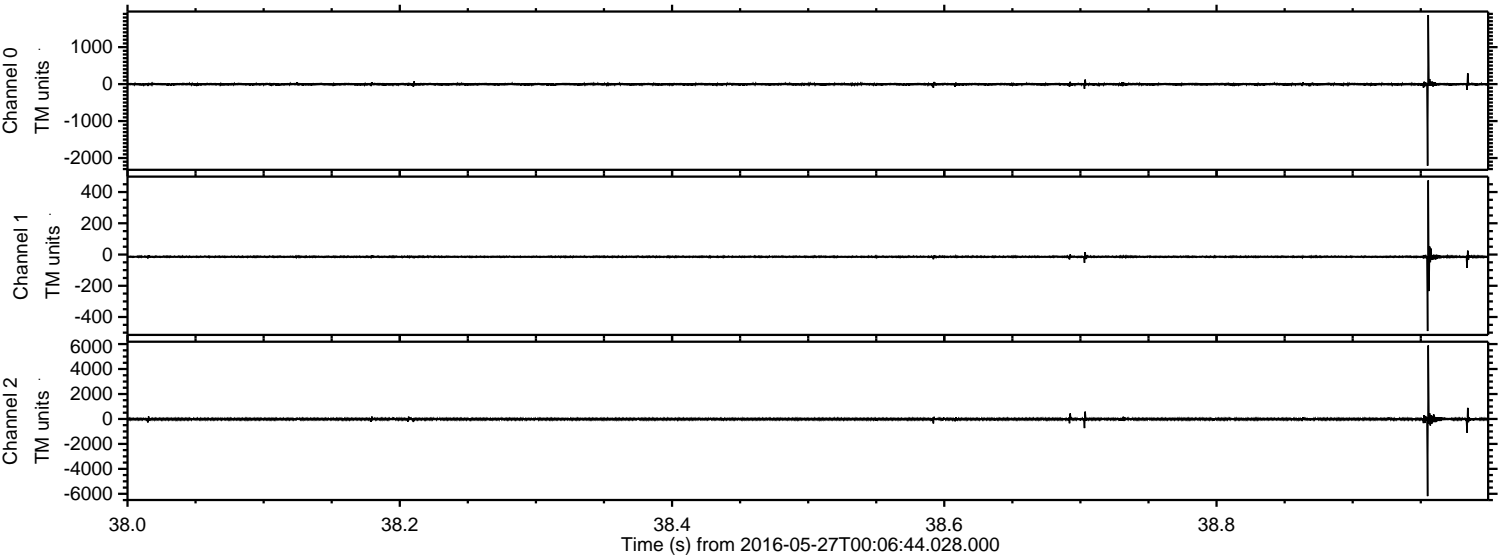


ELMAVAN 3D WAVEFORMS (Measured data sampled at 50 kHz) 51000 packets of 144 samples from 2016-05-27T00:06:44.028.000. Part 146/147

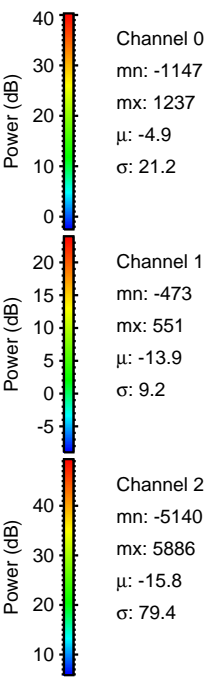
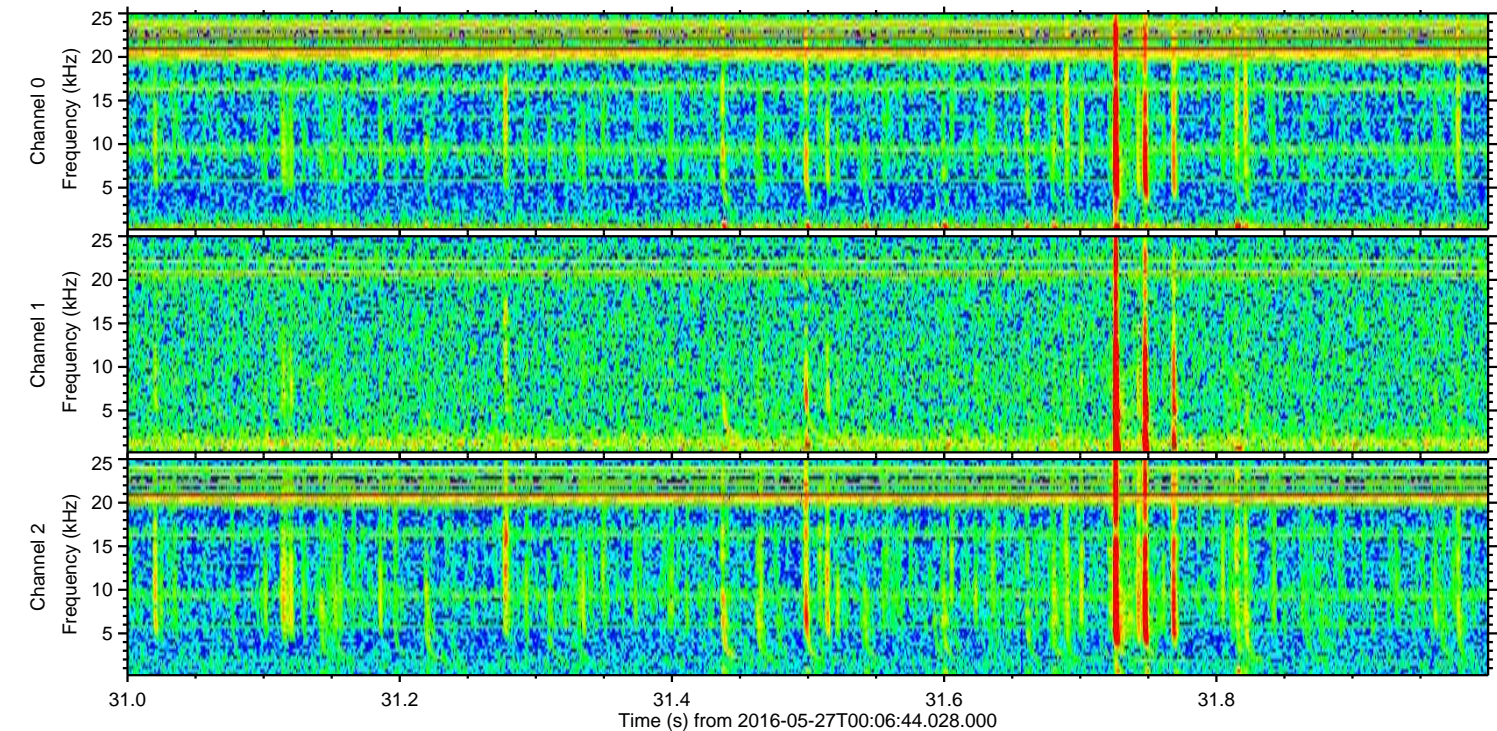
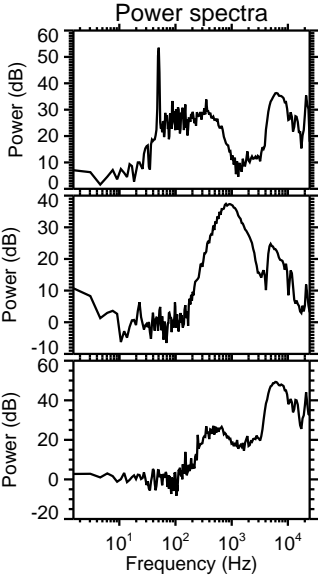
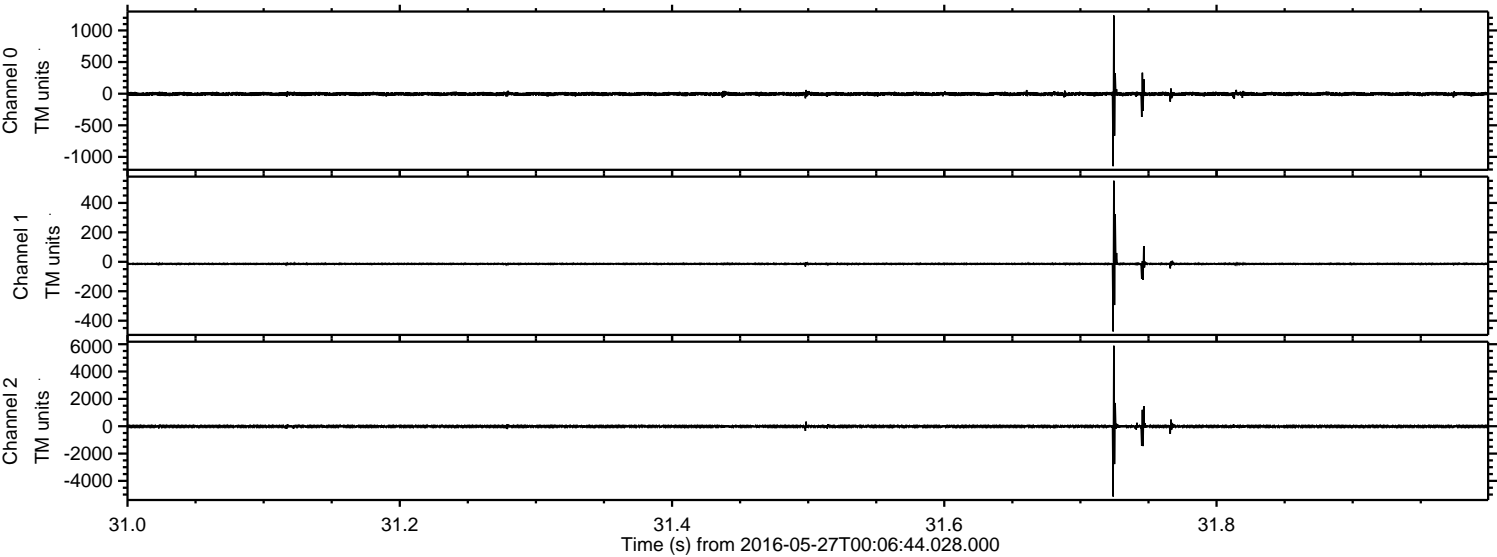
Processed Fri May 27 02:14:50 2016 by ELM ver.2012-10-06 from 001__elm20160527_000643__dat00.bin



Processed Fri May 27 02:14:51 2016 by ELM ver.2012-10-06 from 001__elm20160527_000643__dat00.bin

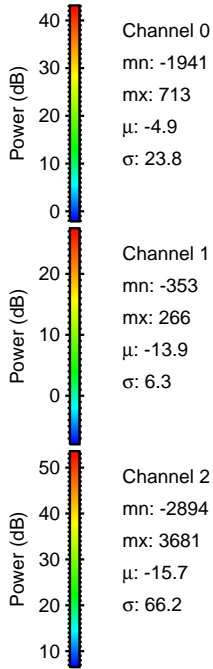
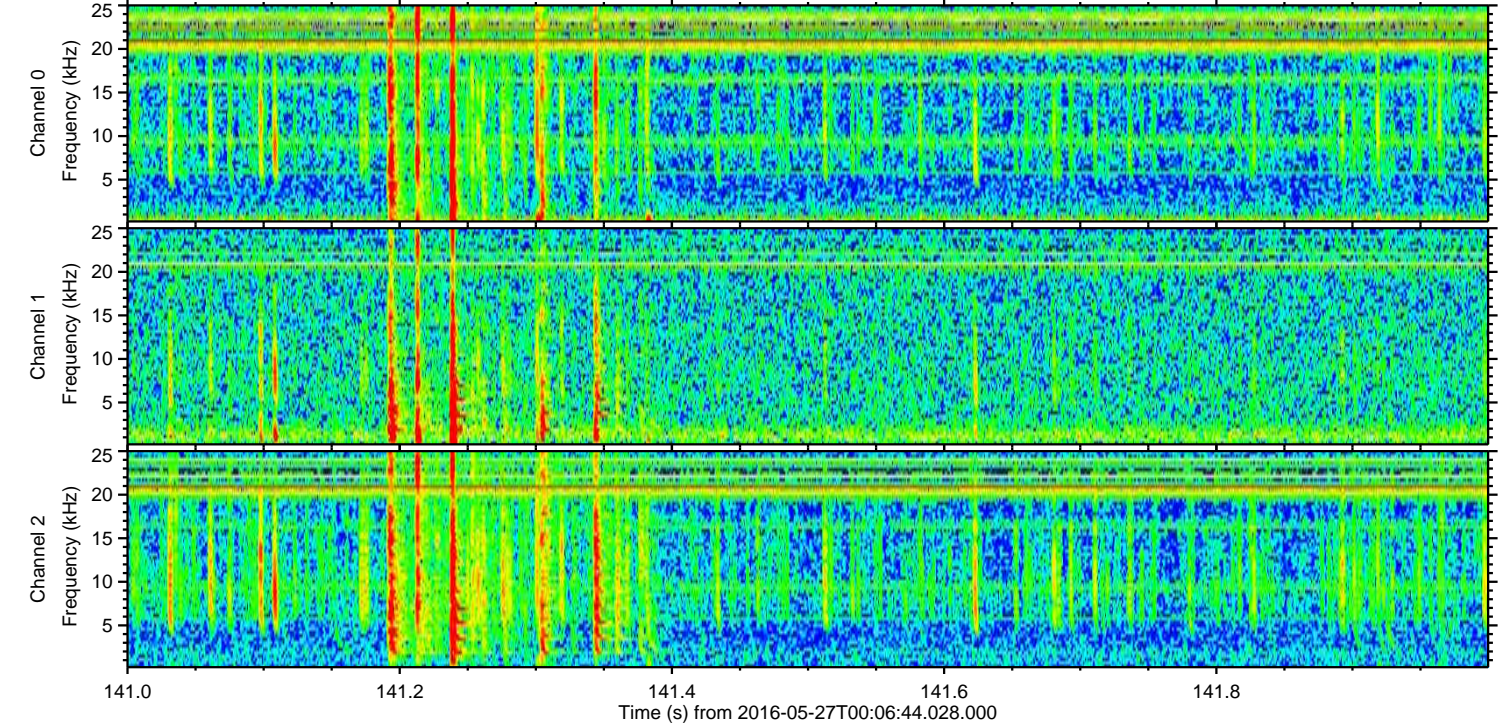
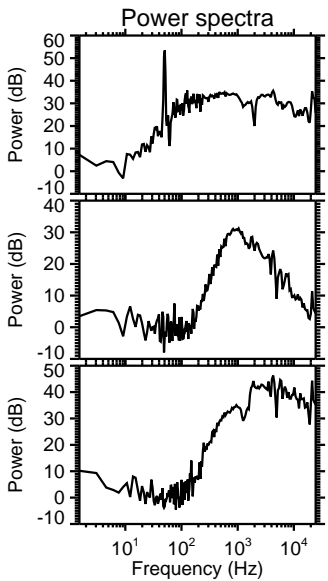
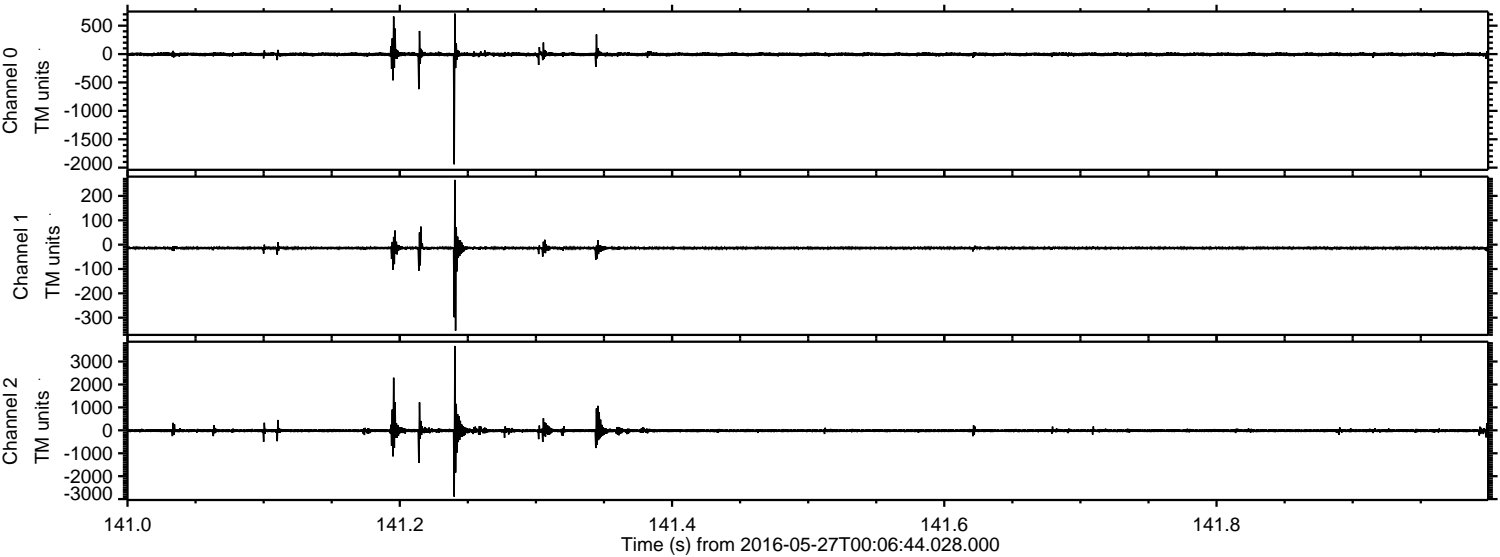


Processed Fri May 27 02:14:52 2016 by ELM ver.2012-10-06 from 001__elm20160527_000643__dat00.bin



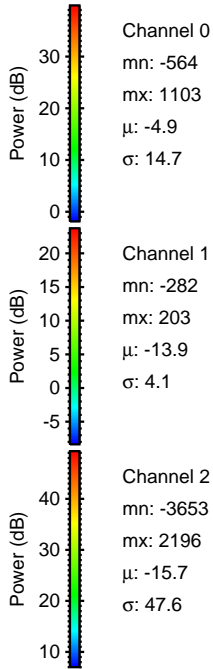
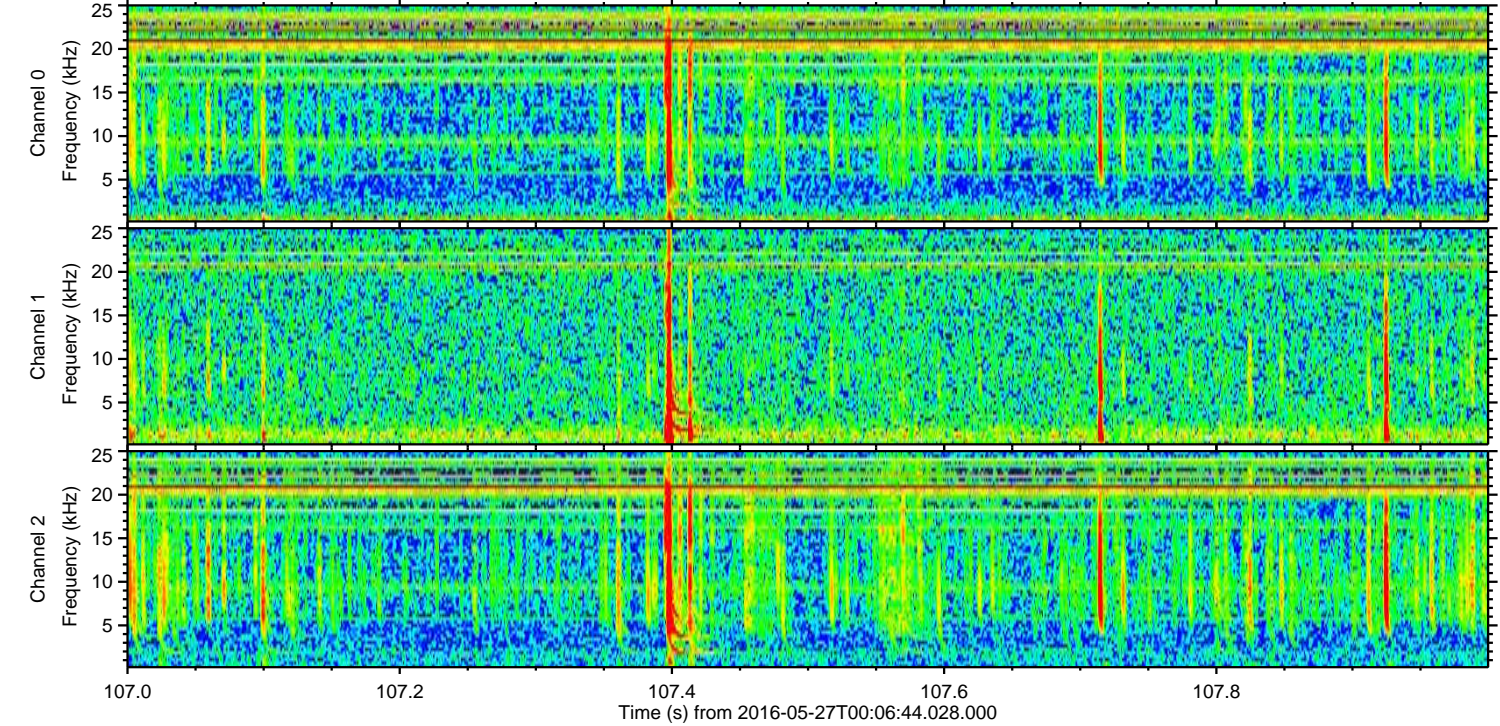
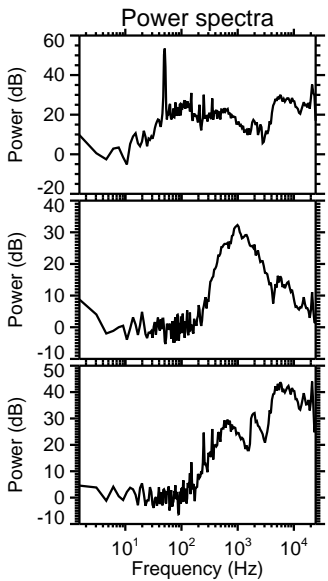
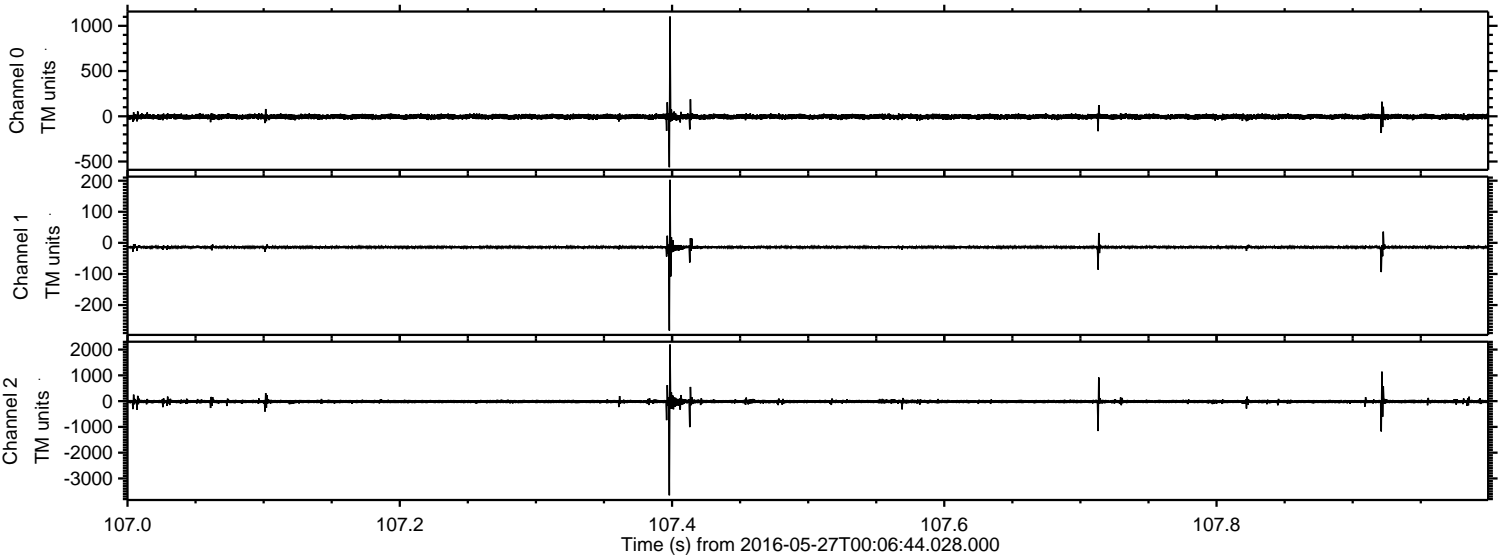
ELMAVAN 3D WAVEFORMS (Measured data sampled at 50 kHz) 51000 packets of 144 samples from 2016-05-27T00:06:44.028.000. Part 142/147

Processed Fri May 27 02:14:53 2016 by ELM ver.2012-10-06 from 001__elm20160527_000643__dat00.bin

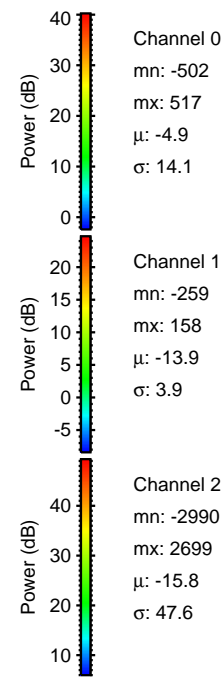
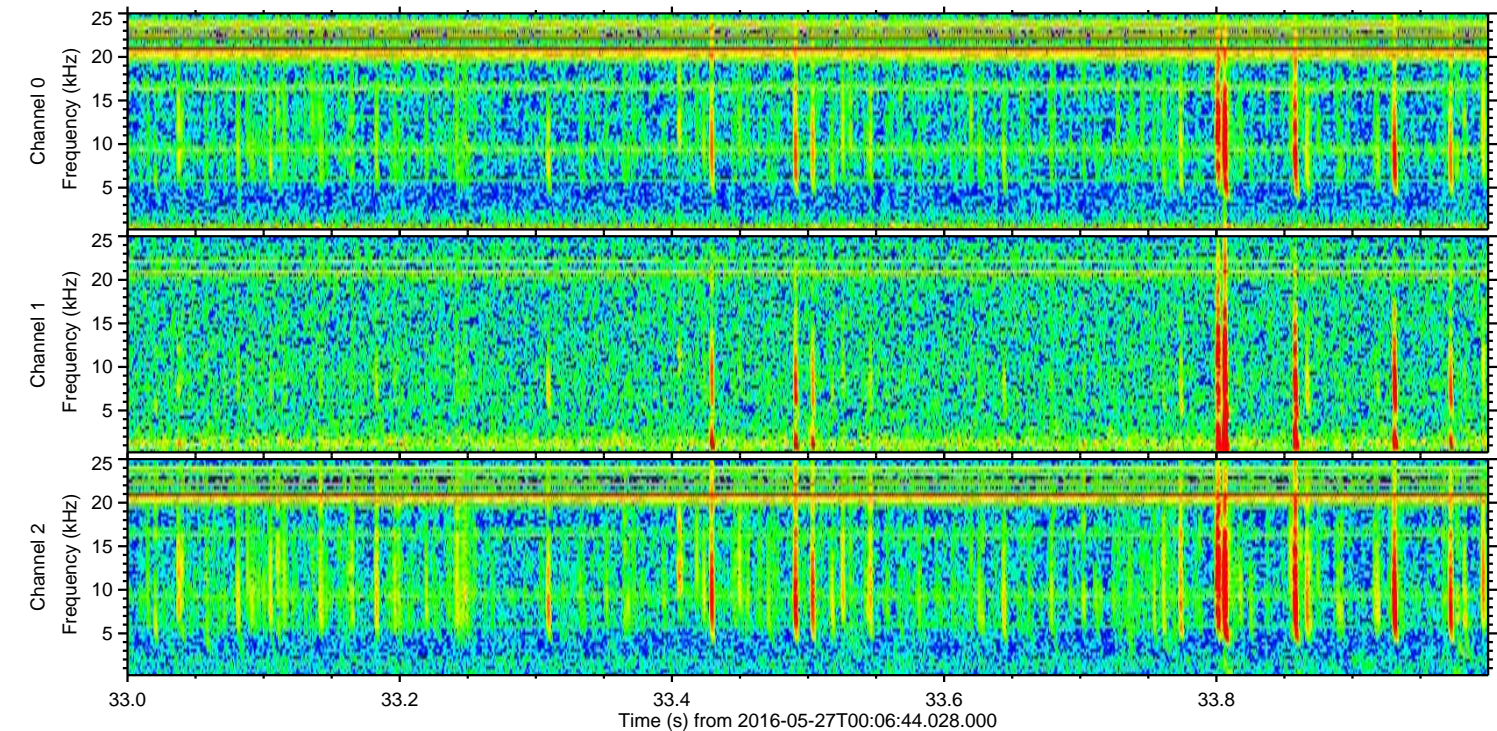
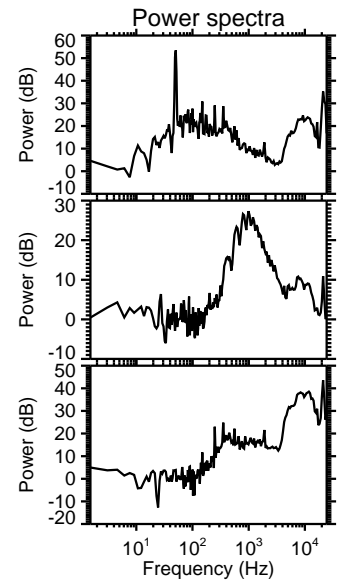
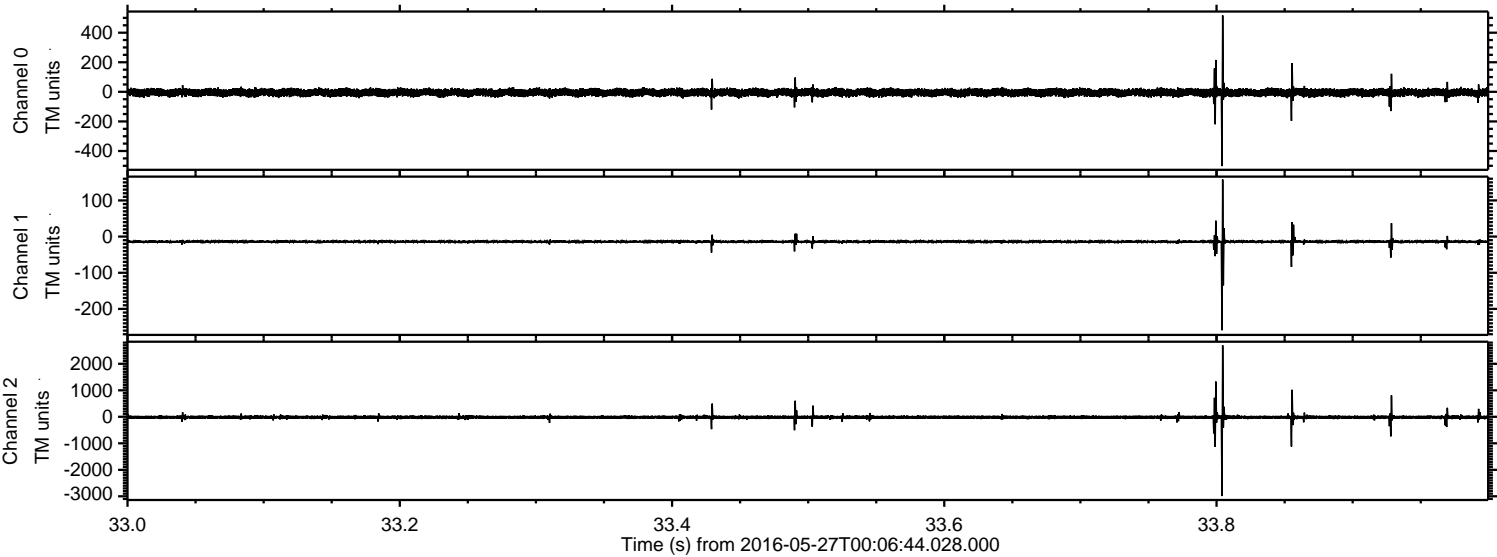


ELMAVAN 3D WAVEFORMS (Measured data sampled at 50 kHz) 51000 packets of 144 samples from 2016-05-27T00:06:44.028.000. Part 108/147

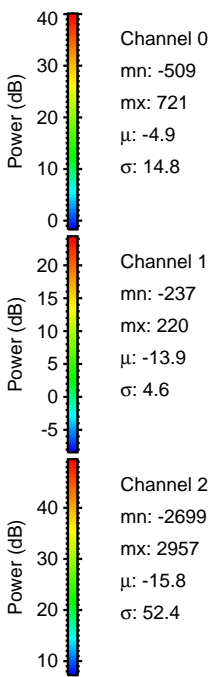
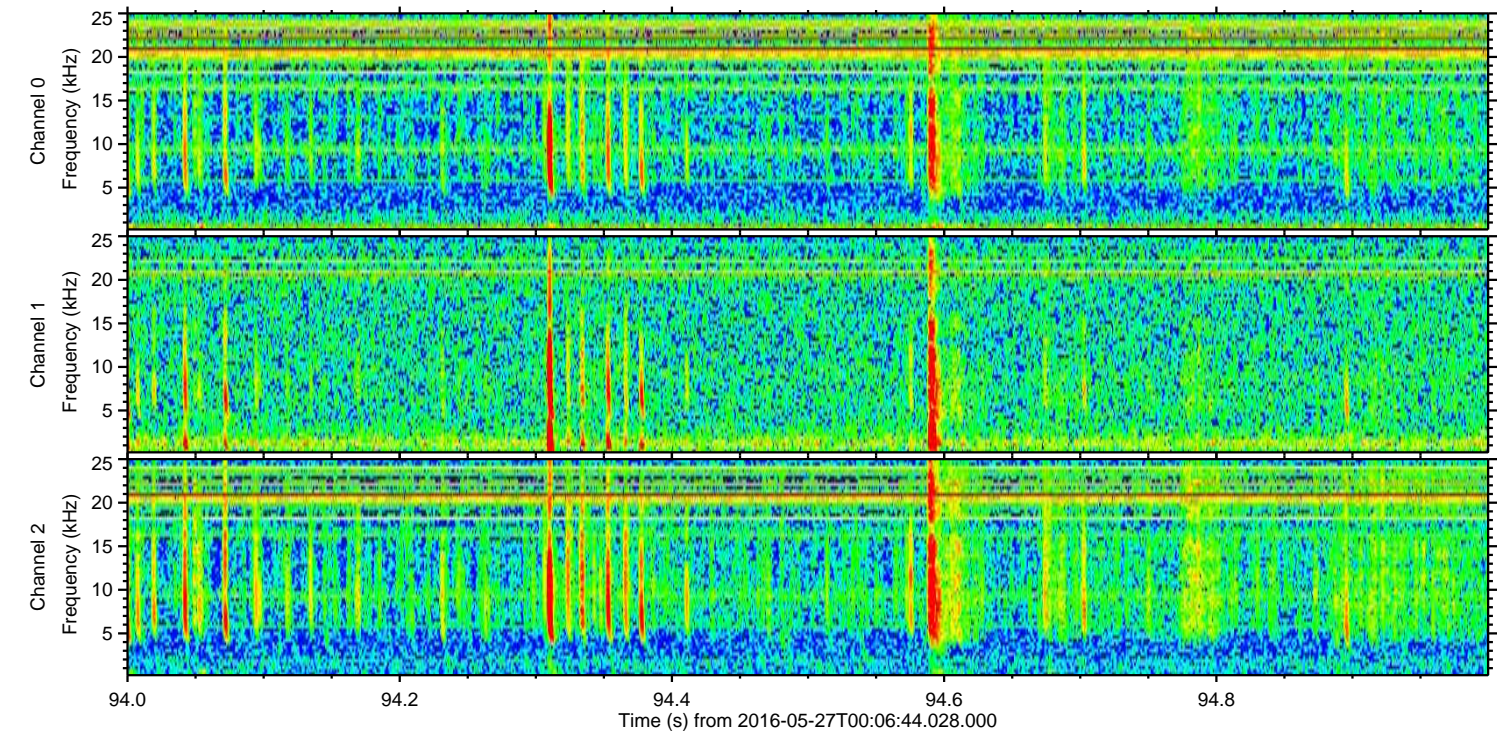
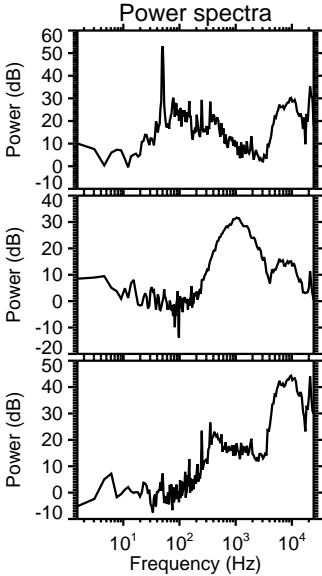
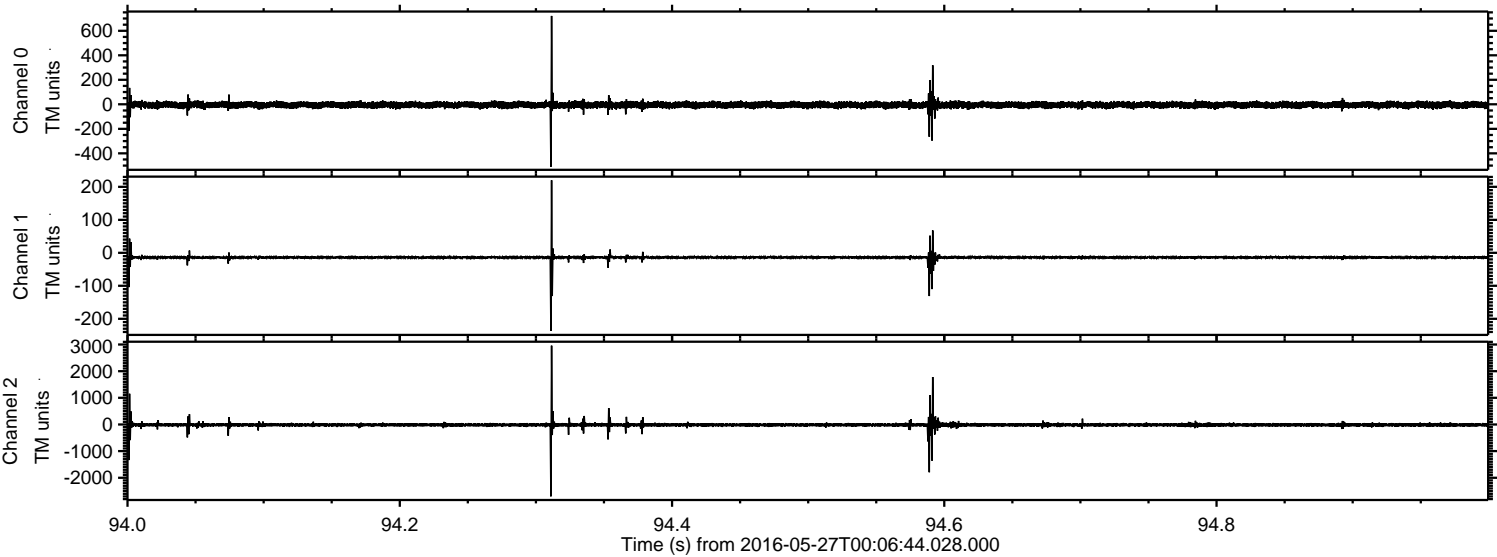
Processed Fri May 27 02:14:54 2016 by ELM ver.2012-10-06 from 001__elm20160527_000643__dat00.bin



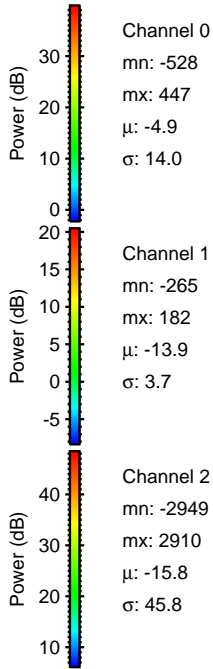
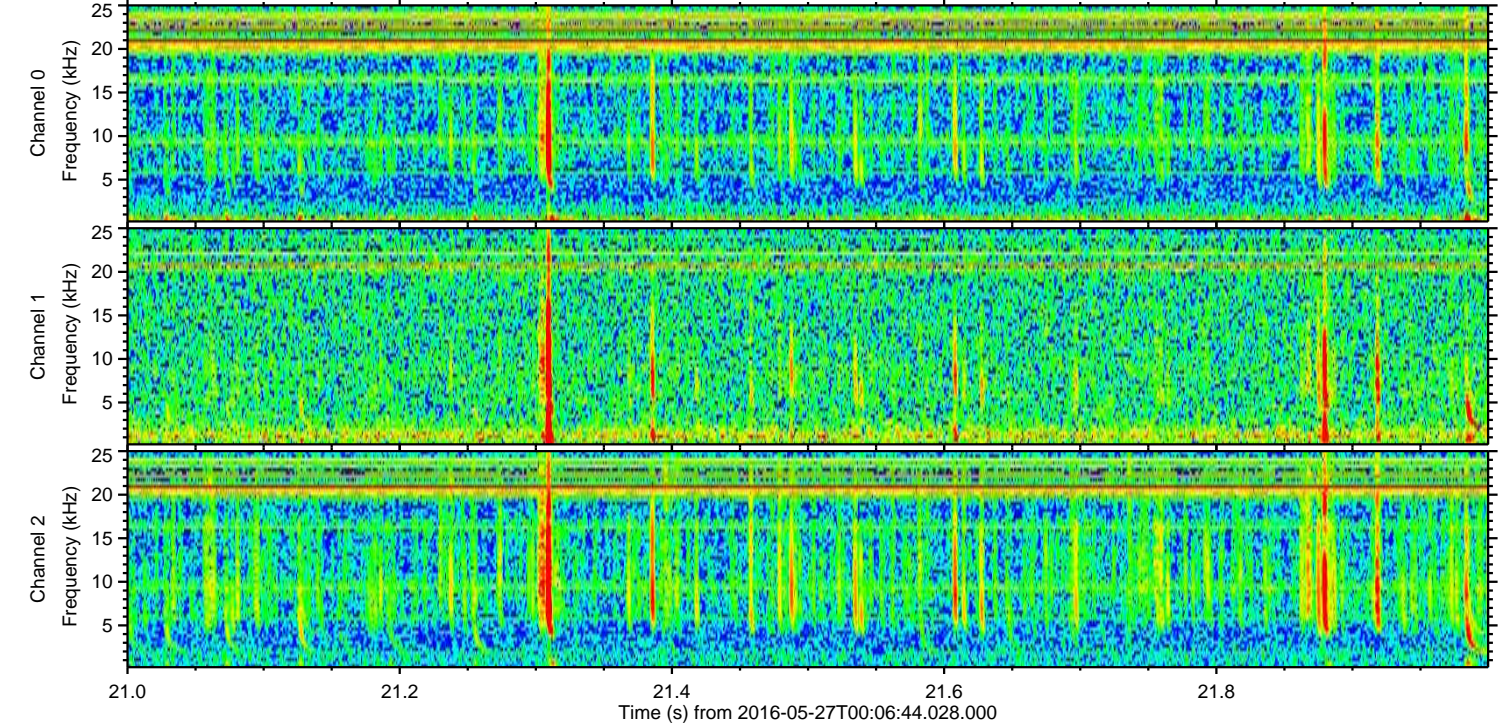
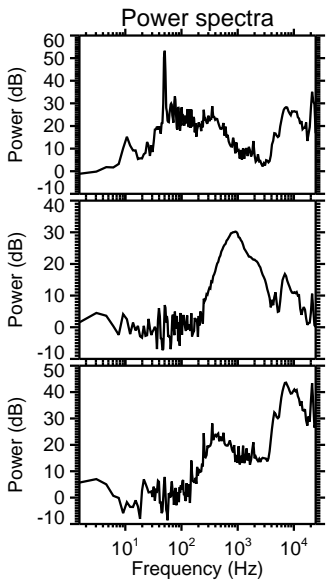
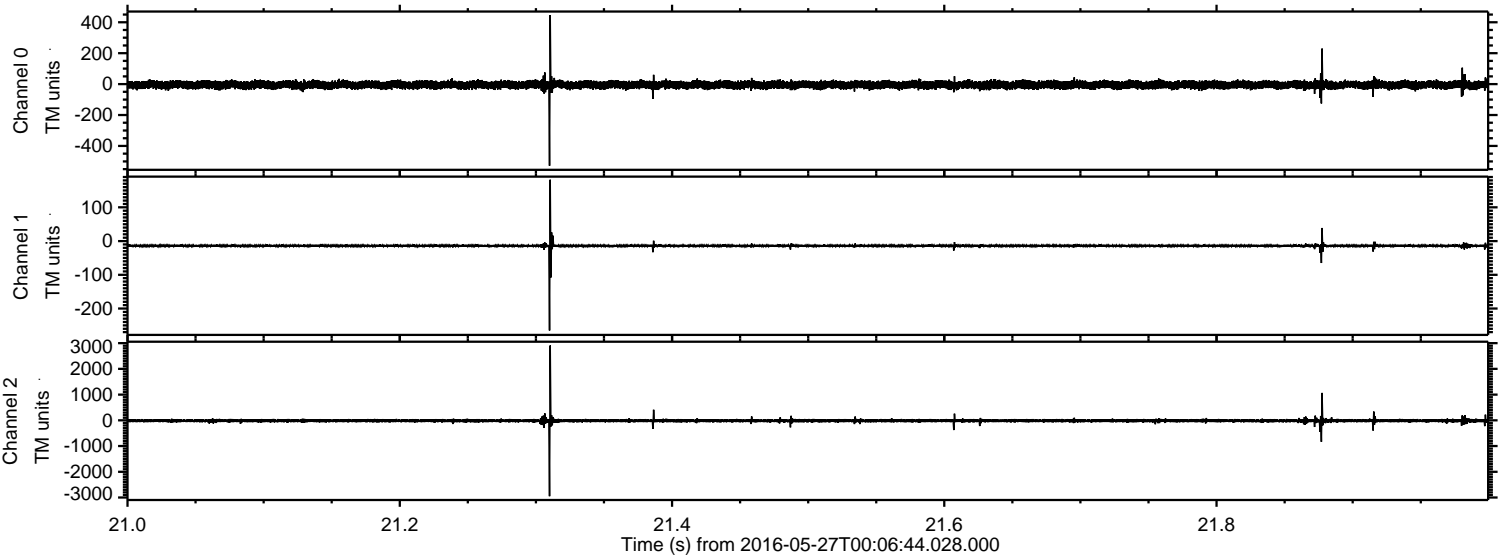
Processed Fri May 27 02:14:55 2016 by ELM ver.2012-10-06 from 001__elm20160527_000643__dat00.bin



Processed Fri May 27 02:14:56 2016 by ELM ver.2012-10-06 from 001__elm20160527_000643__dat00.bin



Processed Fri May 27 02:14:57 2016 by ELM ver.2012-10-06 from 001__elm20160527_000643__dat00.bin



Channel 0
mn: -528
mx: 447
 μ : -4.9
 σ : 14.0

Channel 1
mn: -265
mx: 182
 μ : -13.9
 σ : 3.7

Channel 2
mn: -2949
mx: 2910
 μ : -15.8
 σ : 45.8

Processed Fri May 27 02:14:58 2016 by ELM ver.2012-10-06 from 001__elm20160527_000643__dat00.bin

