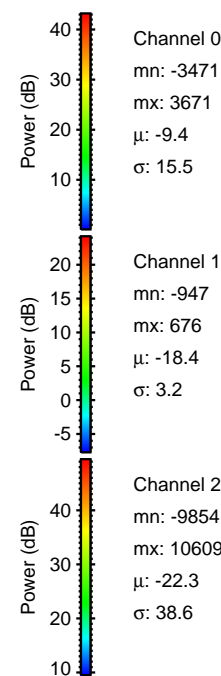
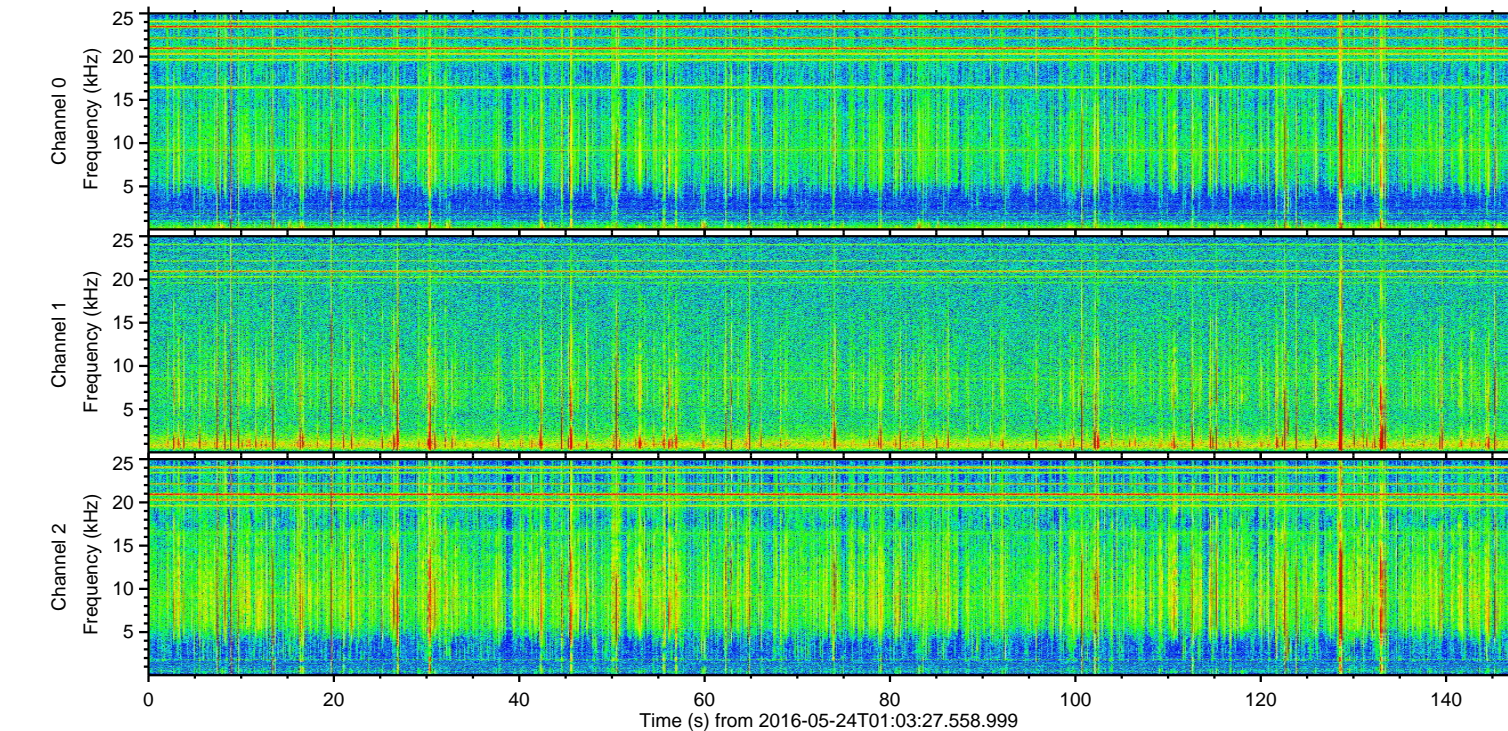
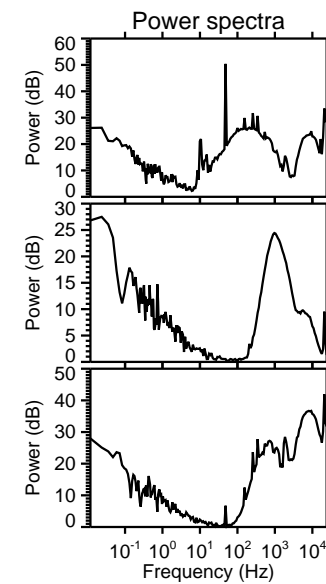
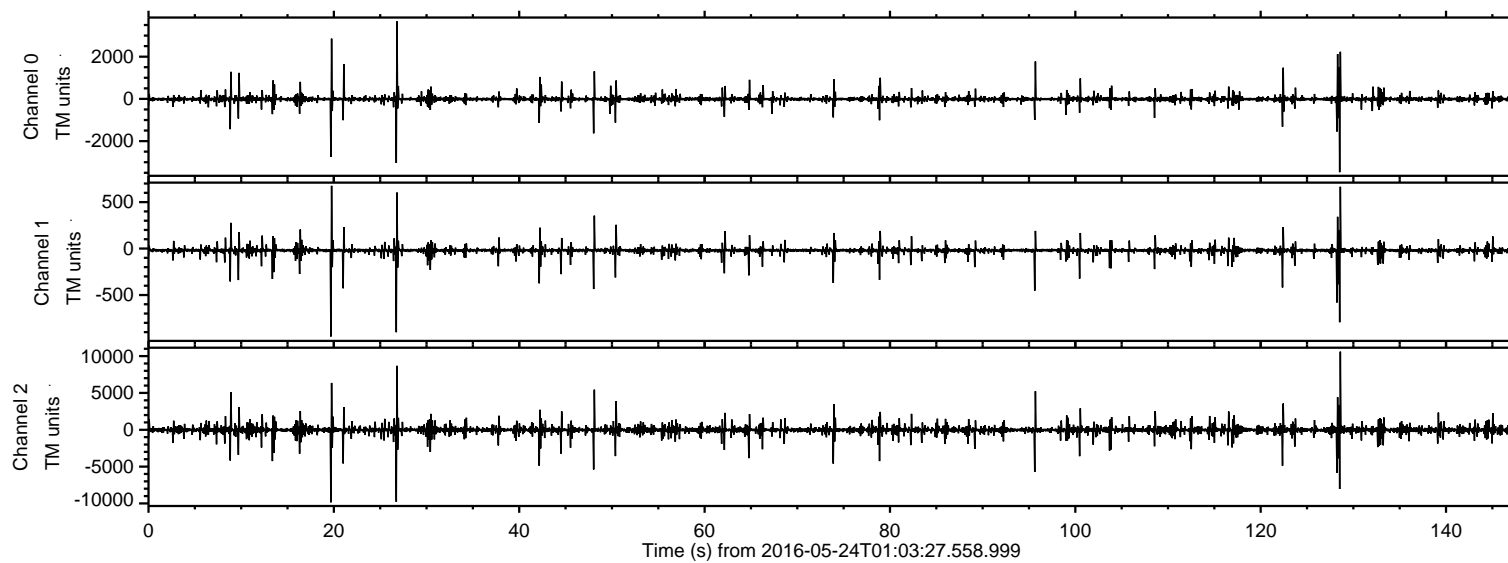


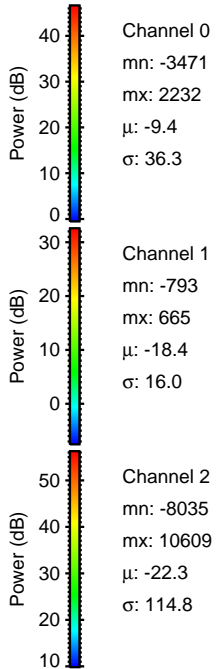
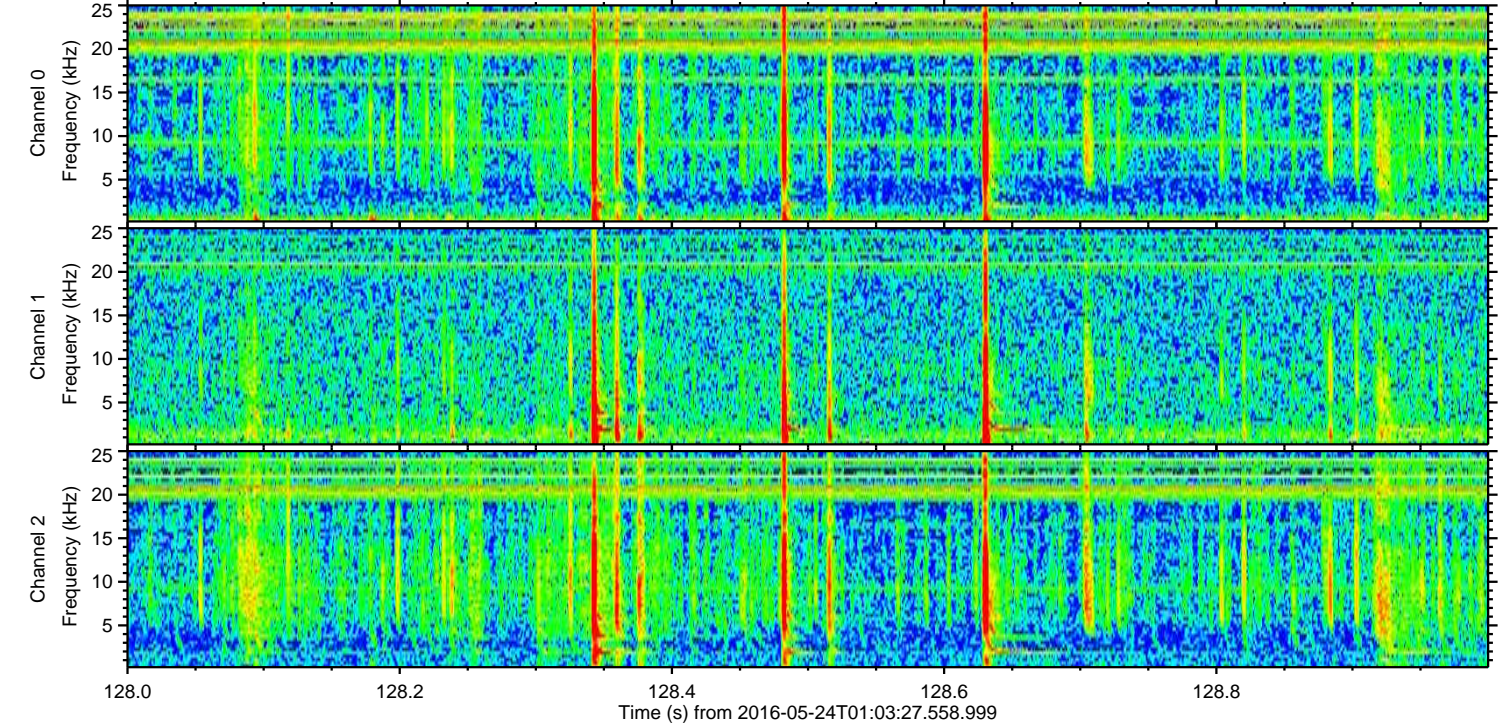
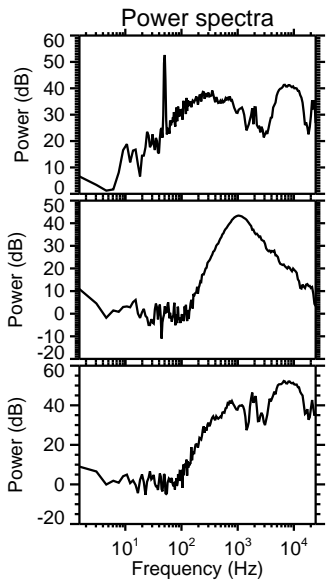
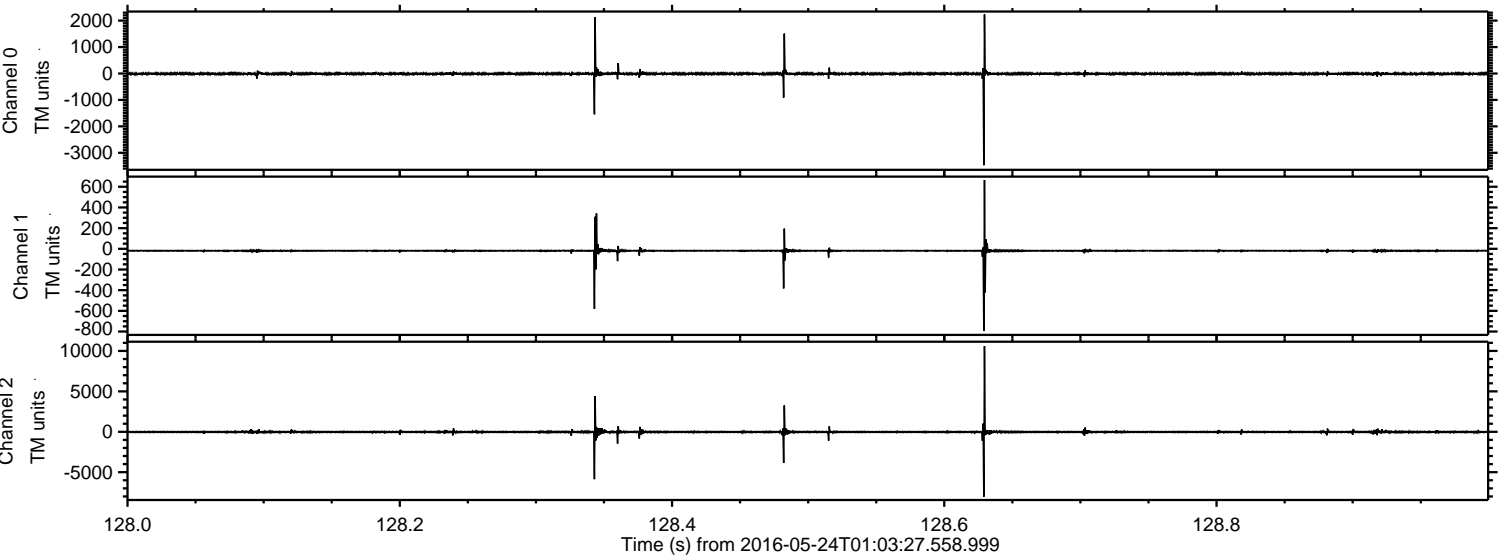
ELMAVAN 3D WAVEFORMS (Measured data sampled at 50 kHz) 51000 packets of 144 samples from 2016-05-24T01:03:27.558.999.

Processed Tue May 24 03:13:16 2016 by ELM ver.2012-10-06 from 001__elm20160524_010326__dat00.bin

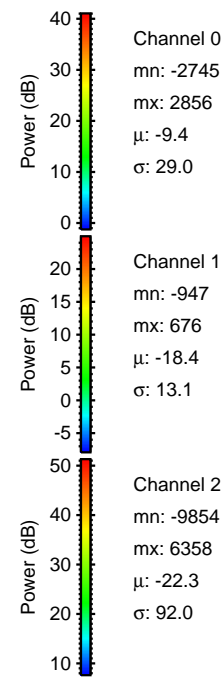
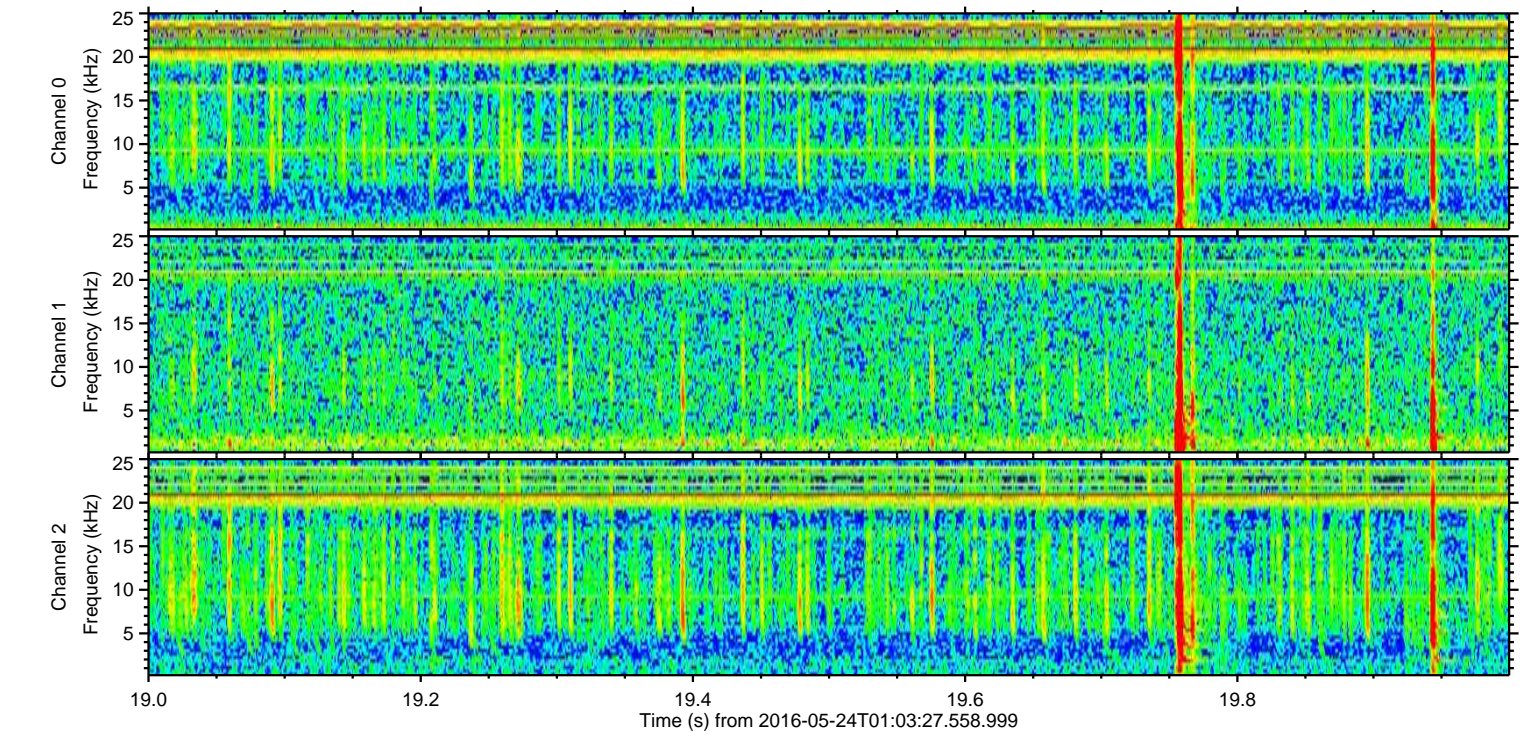
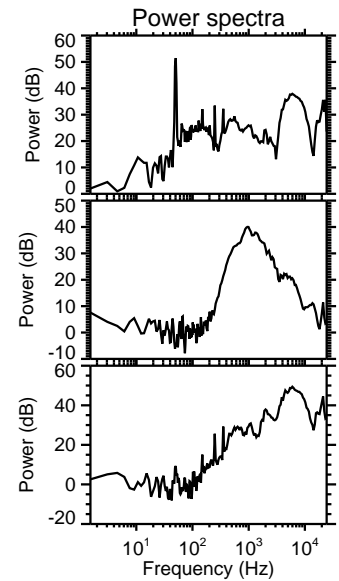
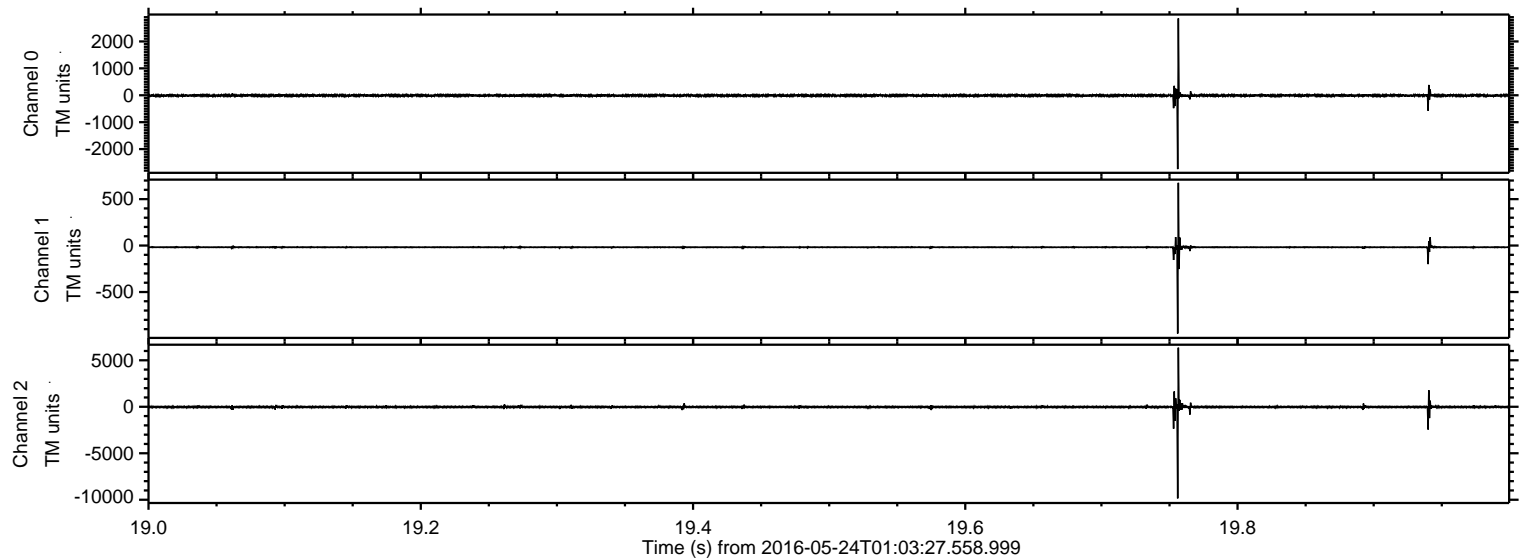


ELMAVAN 3D WAVEFORMS (Measured data sampled at 50 kHz) 51000 packets of 144 samples from 2016-05-24T01:03:27.558.999. Part 129/147

Processed Tue May 24 03:13:27 2016 by ELM ver.2012-10-06 from 001__elm20160524_010326__dat00.bin



Processed Tue May 24 03:13:28 2016 by ELM ver.2012-10-06 from 001__elm20160524_010326__dat00.bin

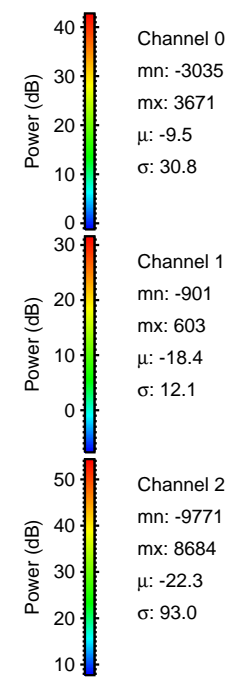
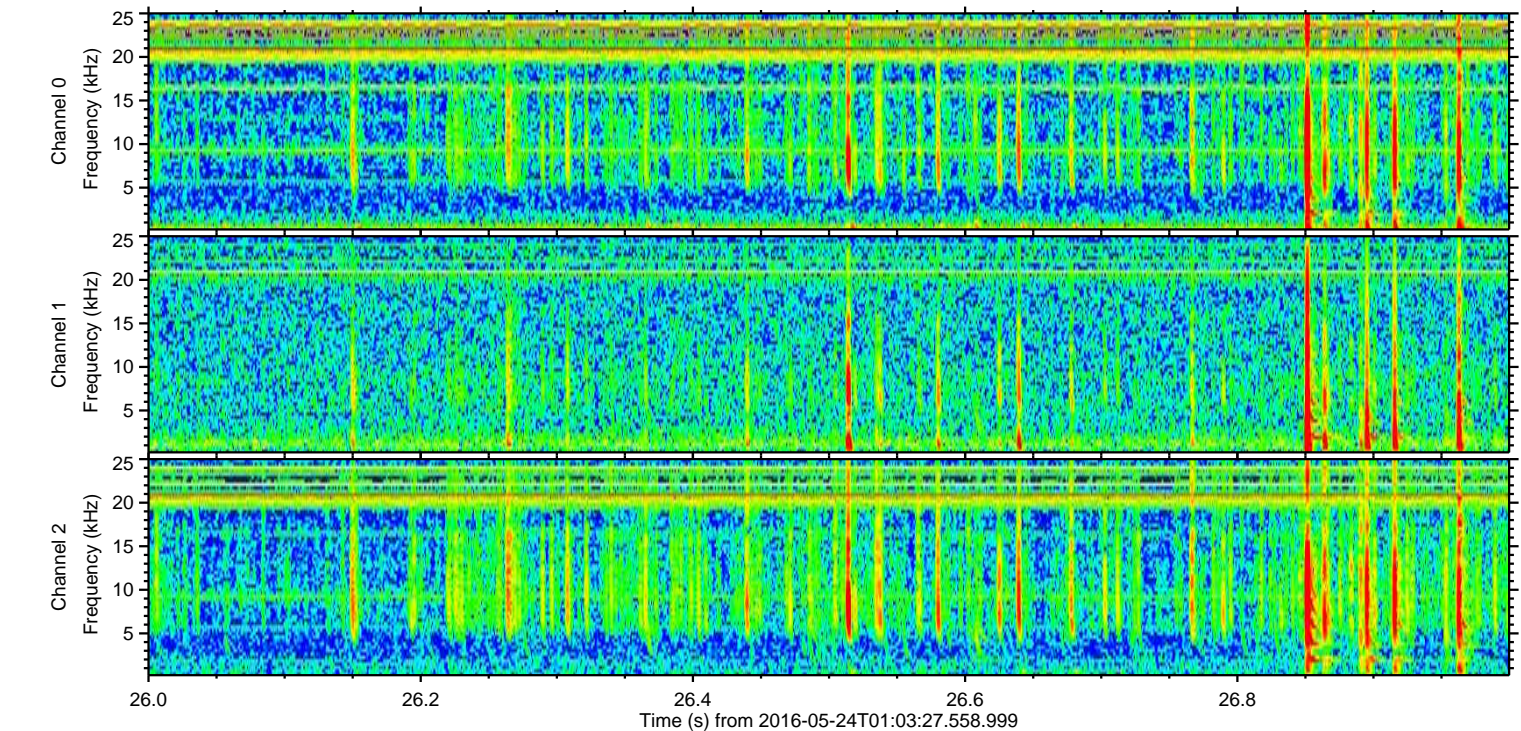
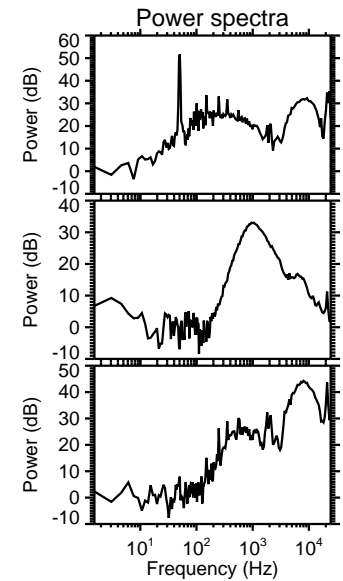
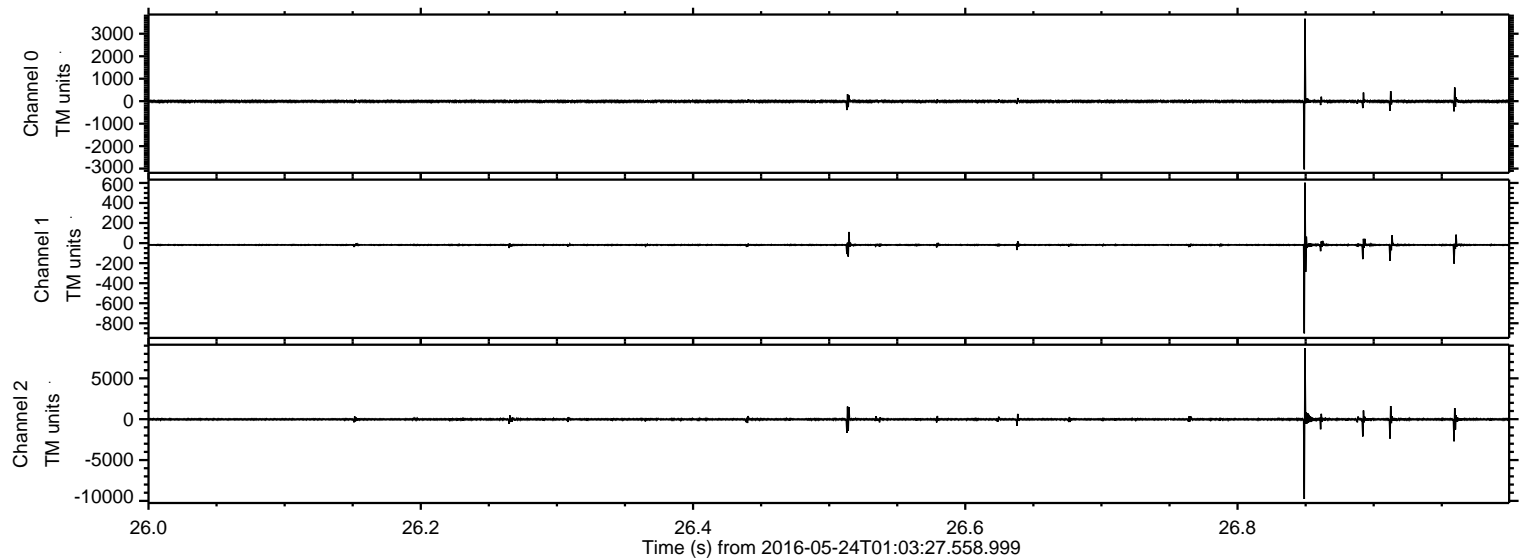


Channel 0
mn: -2745
mx: 2856
 μ : -9.4
 σ : 29.0

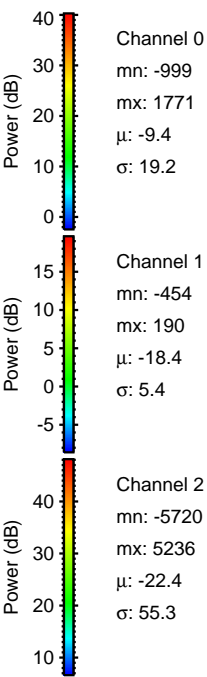
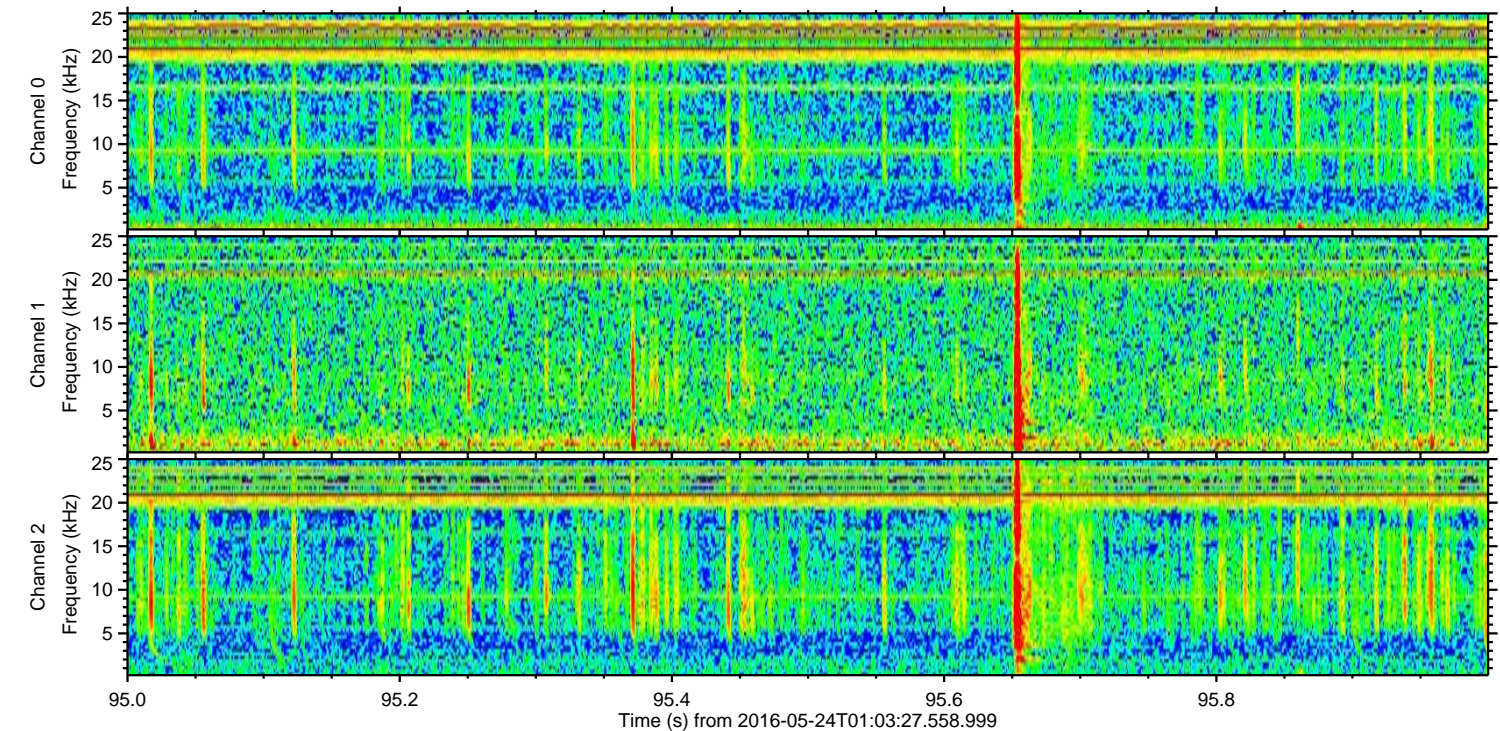
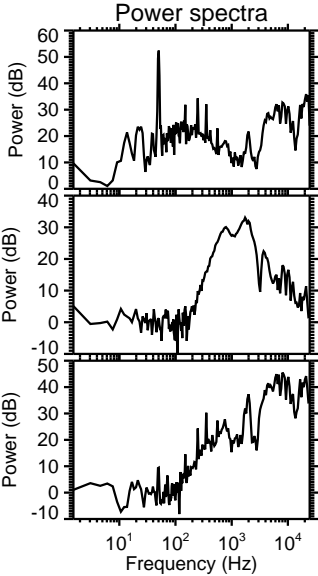
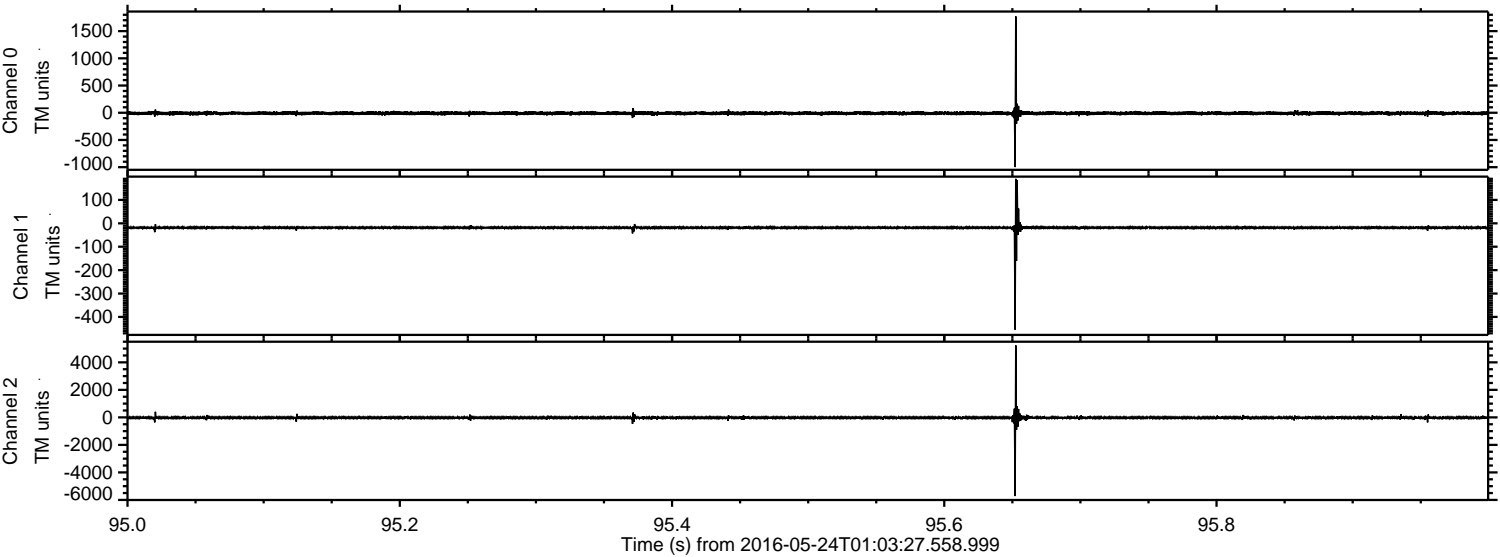
Channel 1
mn: -947
mx: 676
 μ : -18.4
 σ : 13.1

Channel 2
mn: -9854
mx: 6358
 μ : -22.3
 σ : 92.0

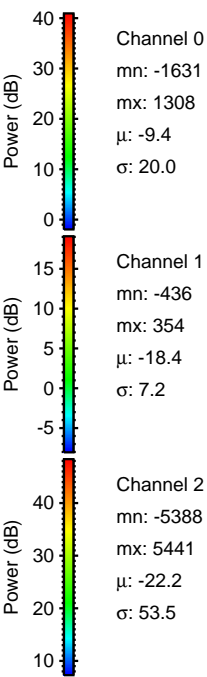
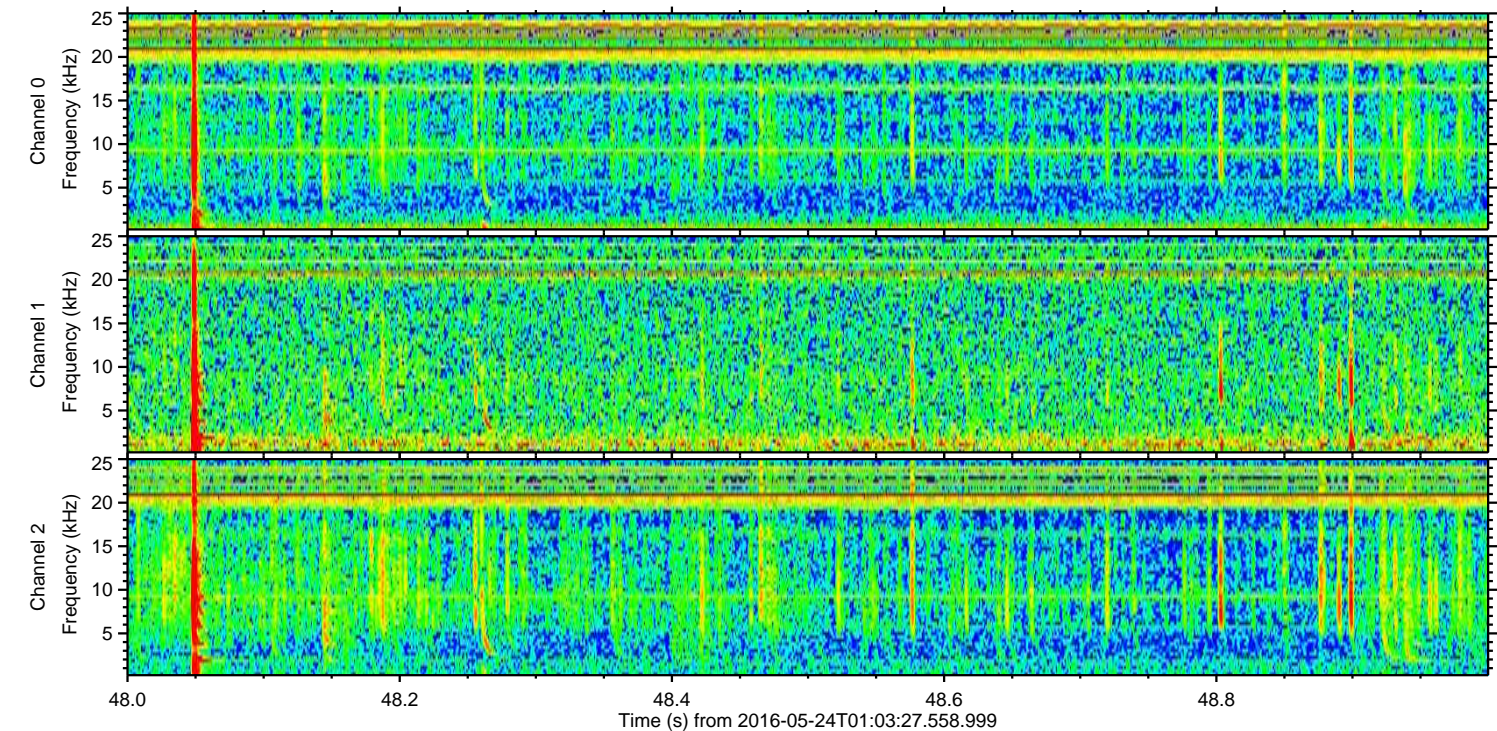
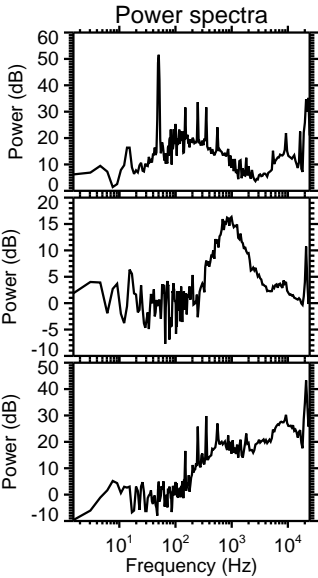
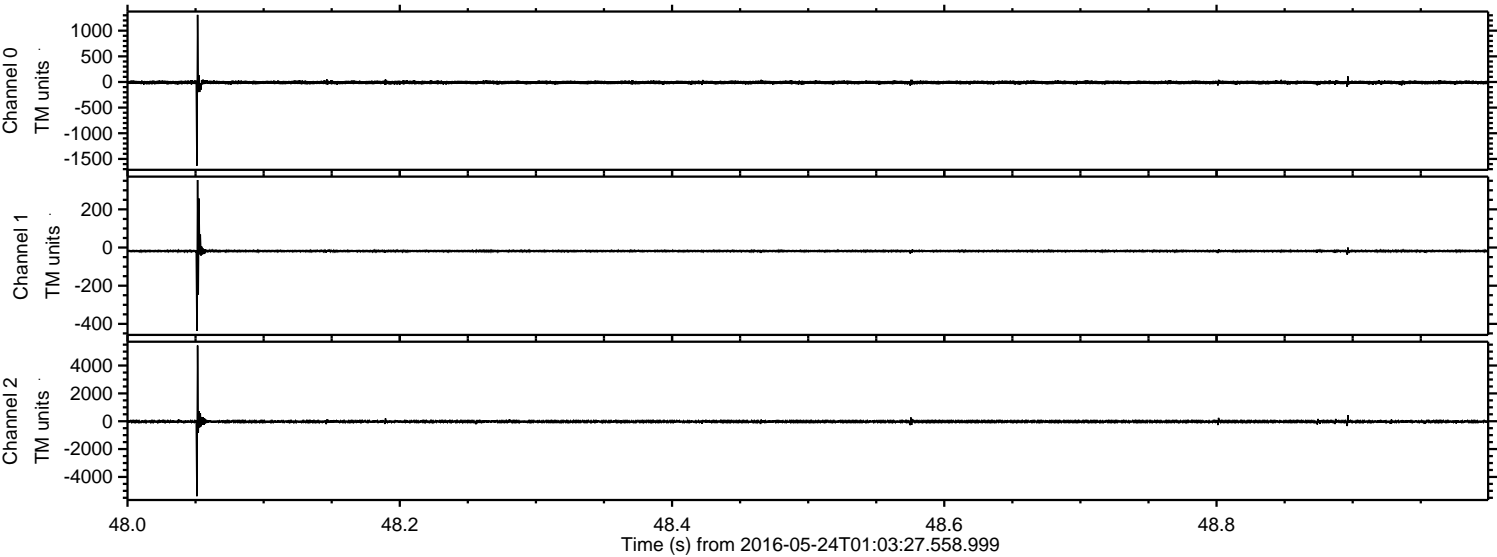
Processed Tue May 24 03:13:29 2016 by ELM ver.2012-10-06 from 001__elm20160524_010326__dat00.bin



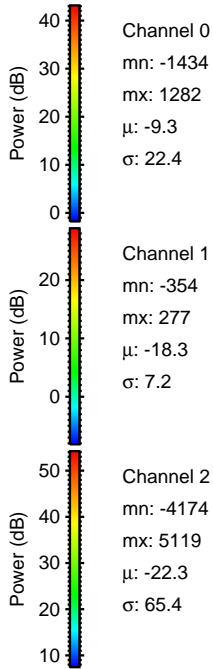
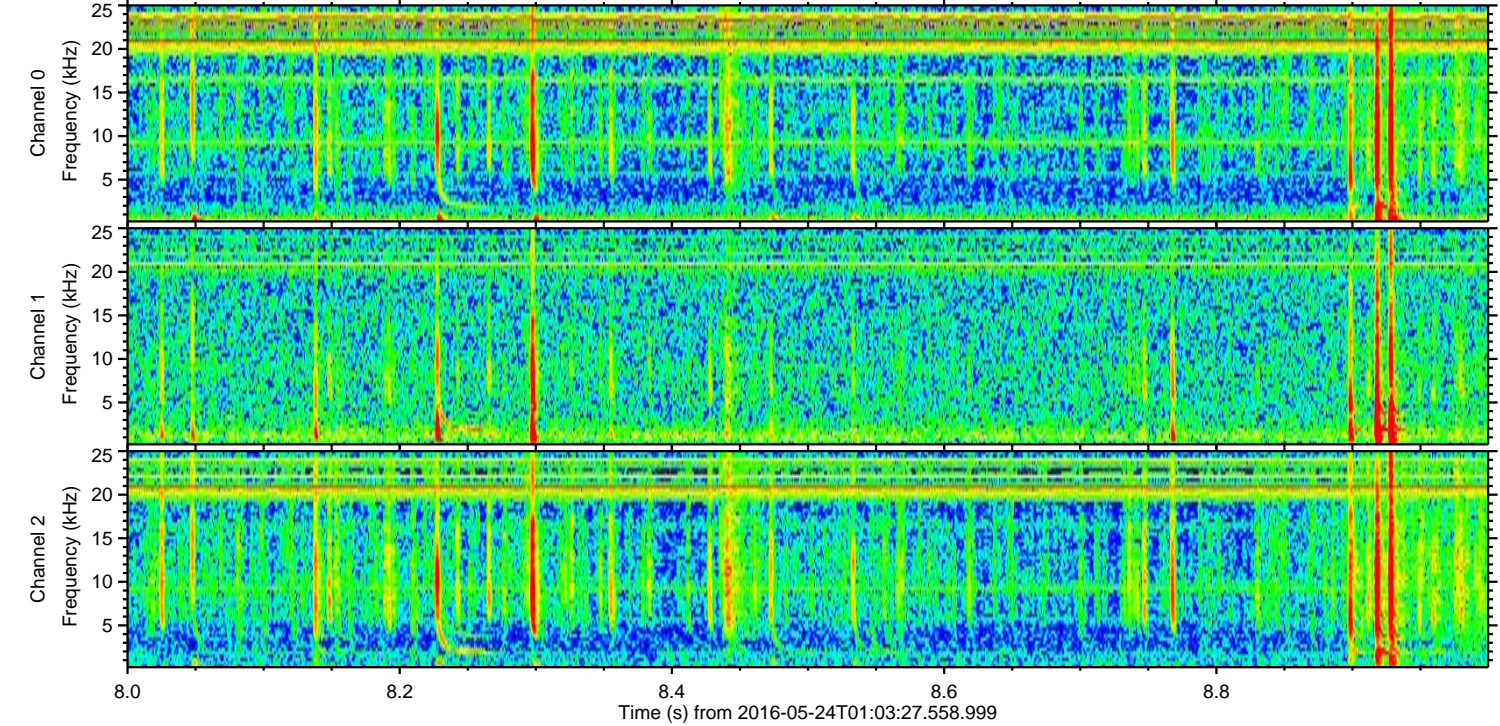
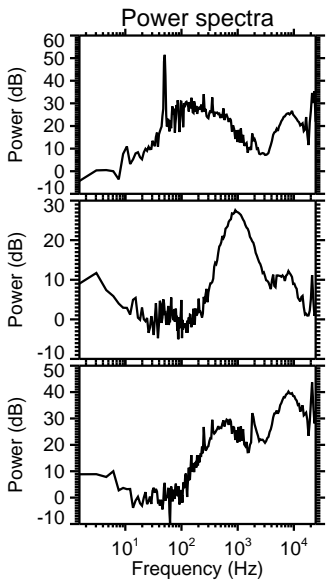
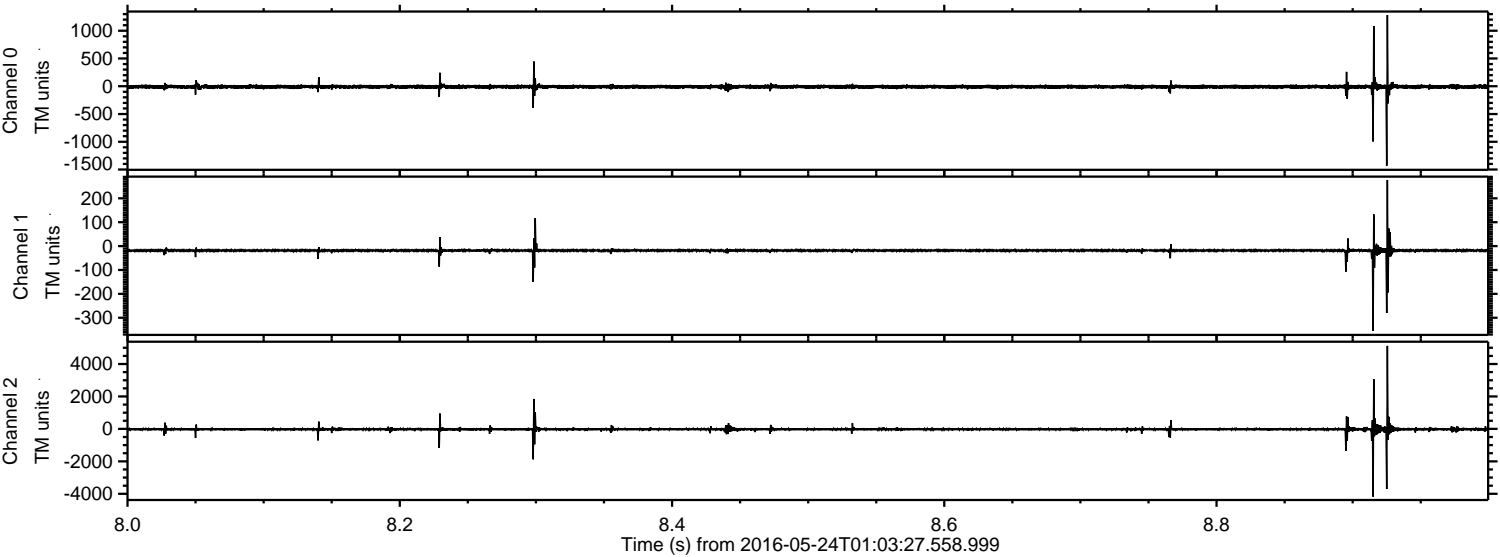
Processed Tue May 24 03:13:30 2016 by ELM ver.2012-10-06 from 001__elm20160524_010326__dat00.bin



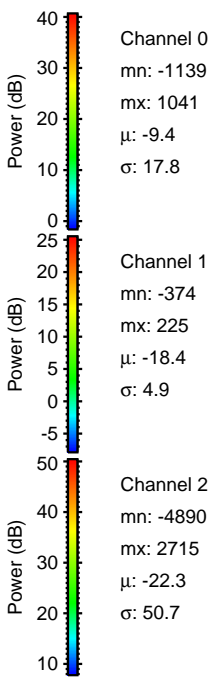
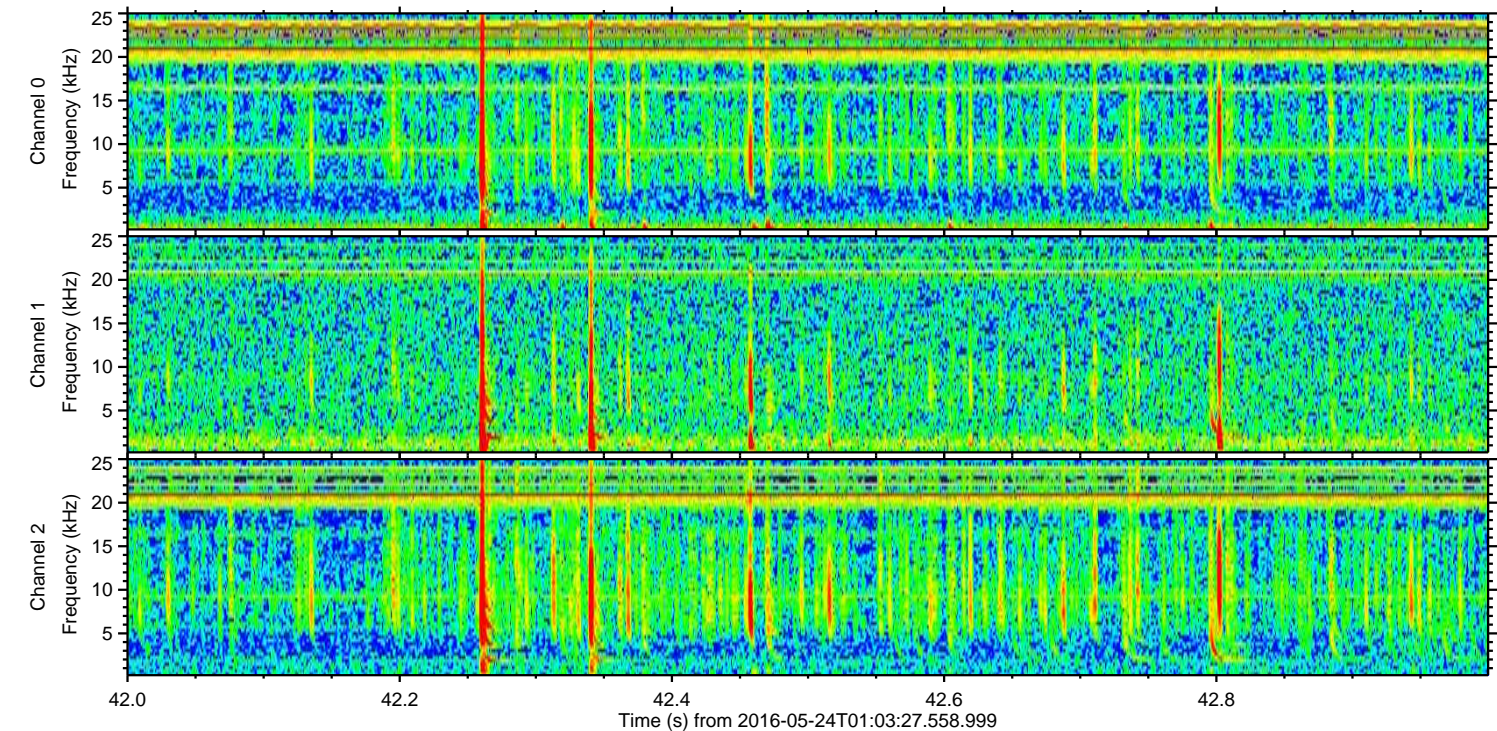
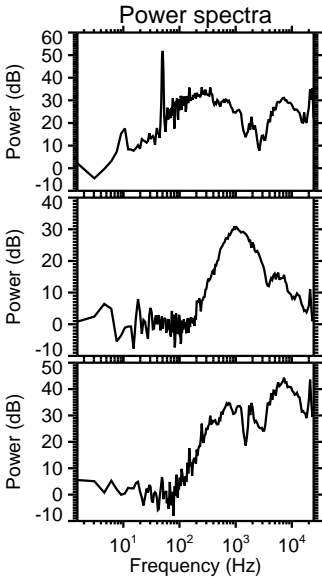
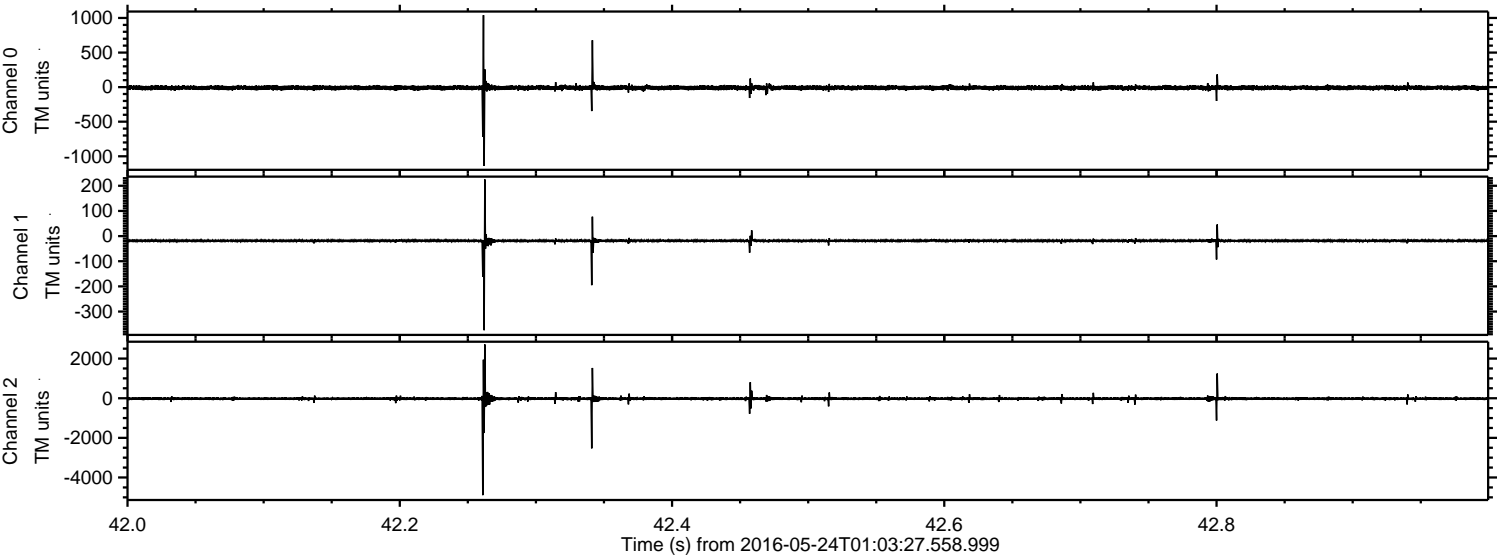
Processed Tue May 24 03:13:31 2016 by ELM ver.2012-10-06 from 001__elm20160524_010326__dat00.bin



Processed Tue May 24 03:13:32 2016 by ELM ver.2012-10-06 from 001__elm20160524_010326__dat00.bin

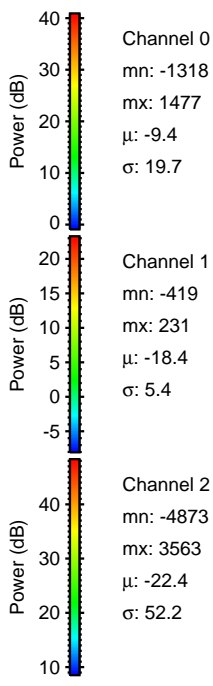
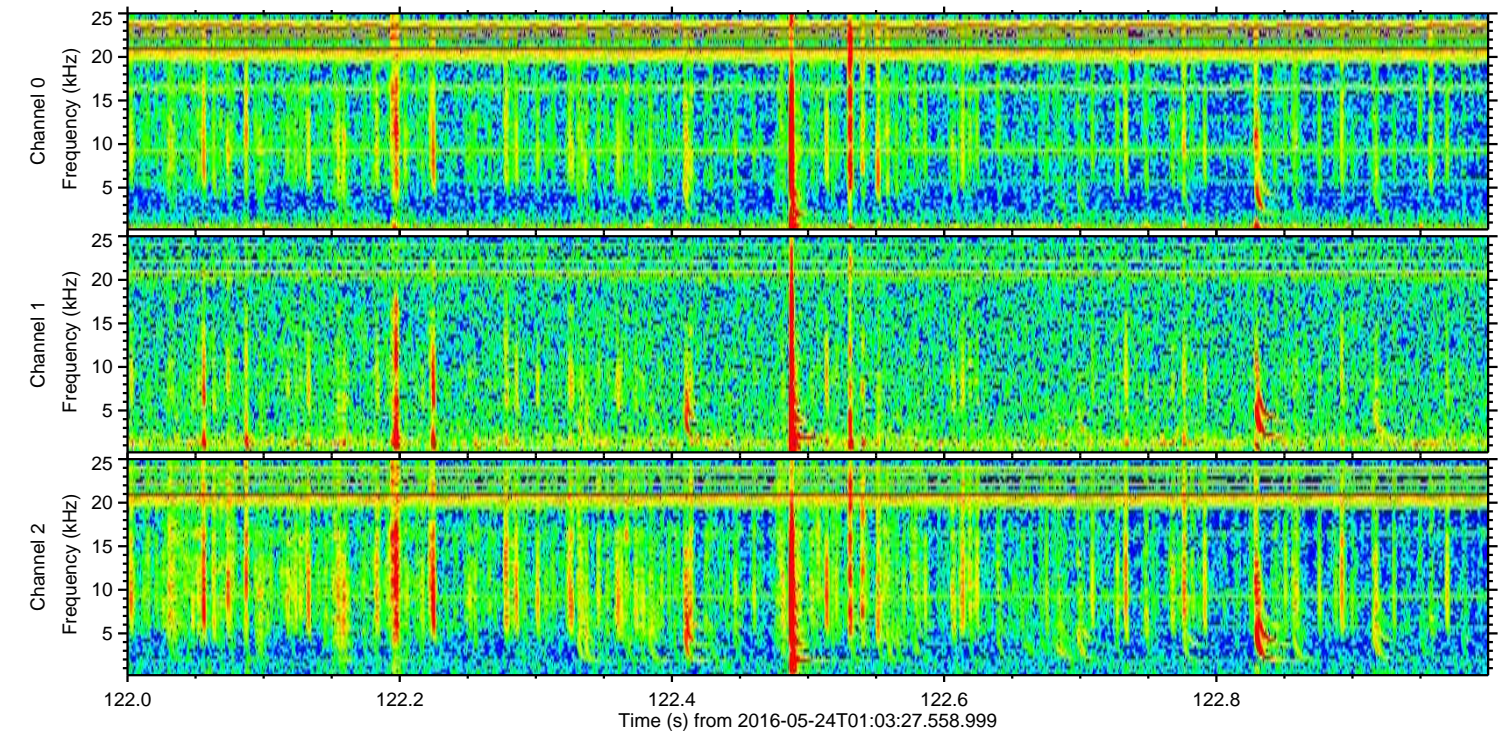
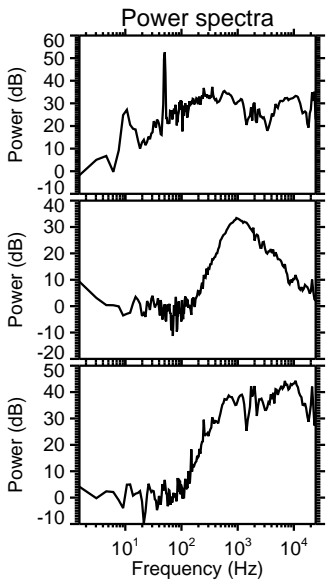
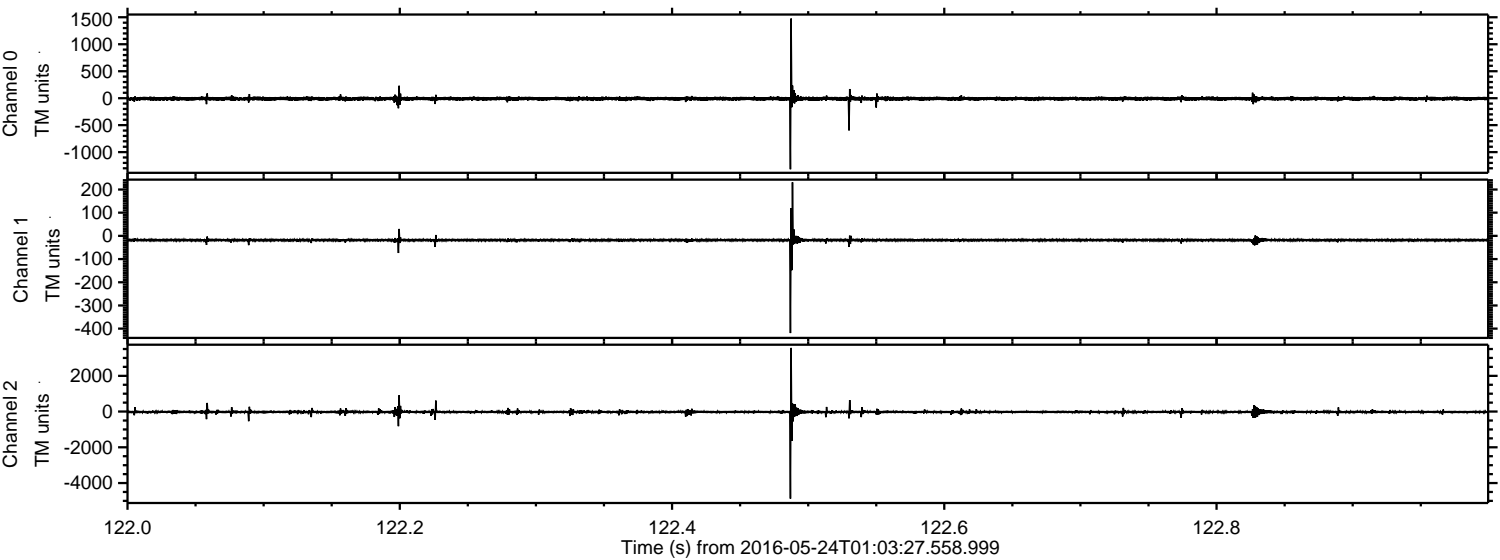


Processed Tue May 24 03:13:33 2016 by ELM ver.2012-10-06 from 001__elm20160524_010326__dat00.bin

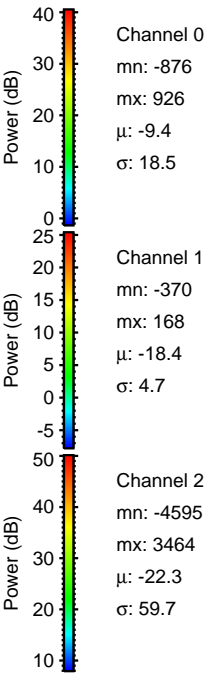
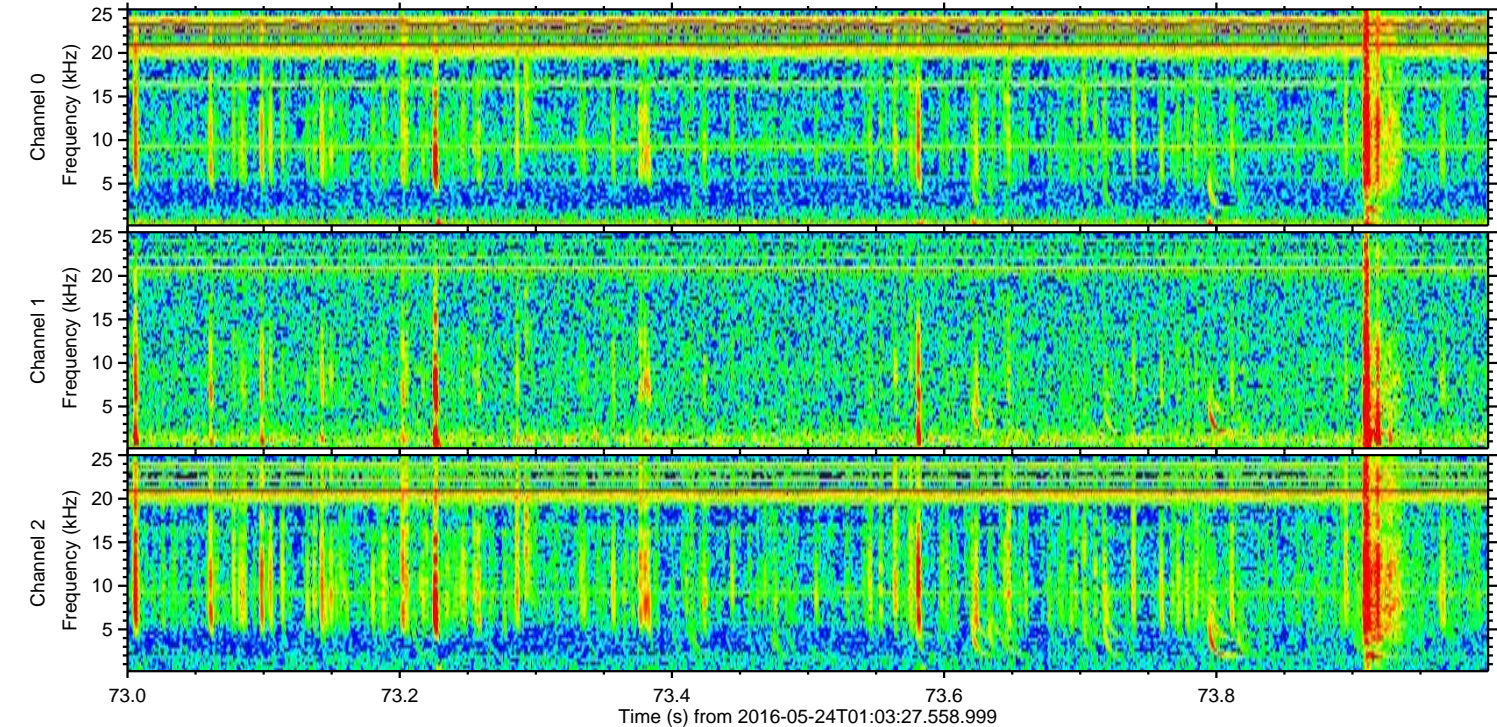
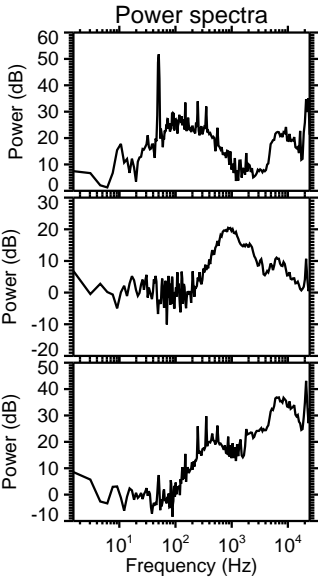
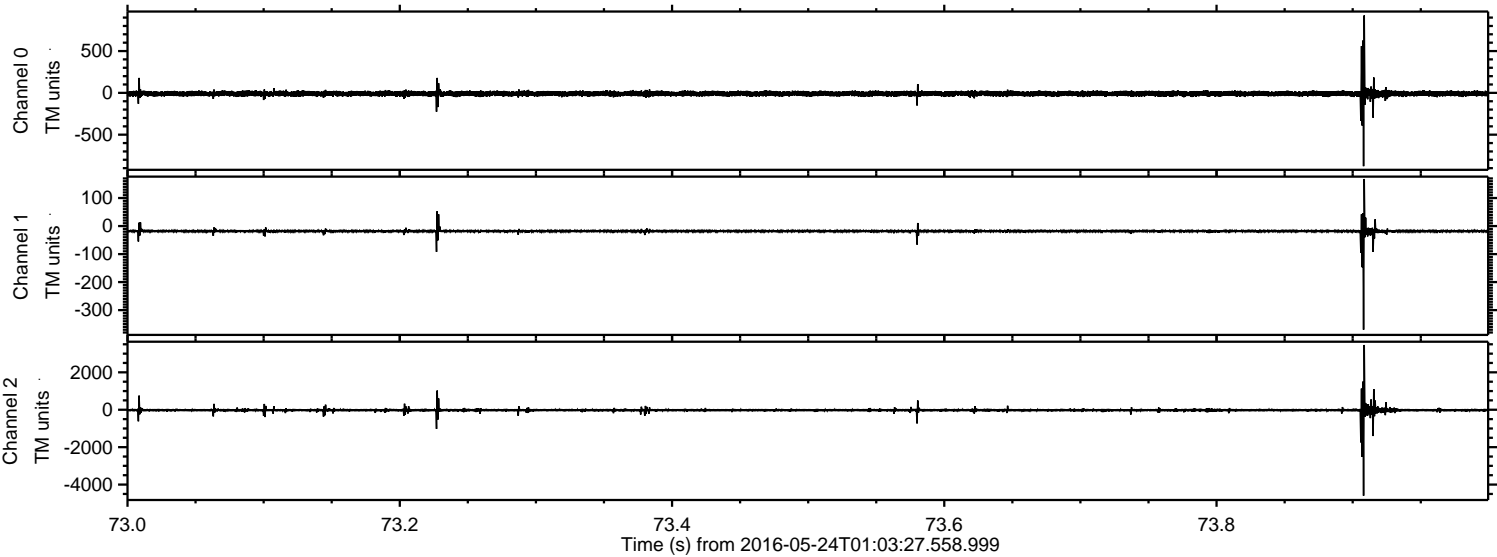


ELMAVAN 3D WAVEFORMS (Measured data sampled at 50 kHz) 51000 packets of 144 samples from 2016-05-24T01:03:27.558.999. Part 123/147

Processed Tue May 24 03:13:34 2016 by ELM ver.2012-10-06 from 001__elm20160524_010326__dat00.bin



Processed Tue May 24 03:13:35 2016 by ELM ver.2012-10-06 from 001__elm20160524_010326__dat00.bin



Processed Tue May 24 03:13:36 2016 by ELM ver.2012-10-06 from 001__elm20160524_010326__dat00.bin

