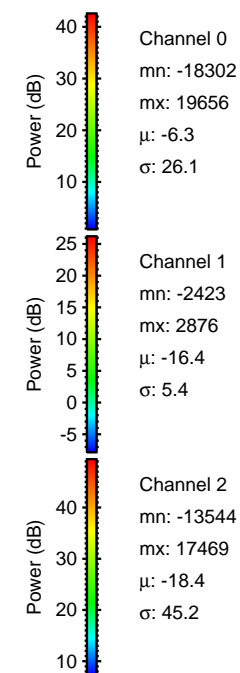
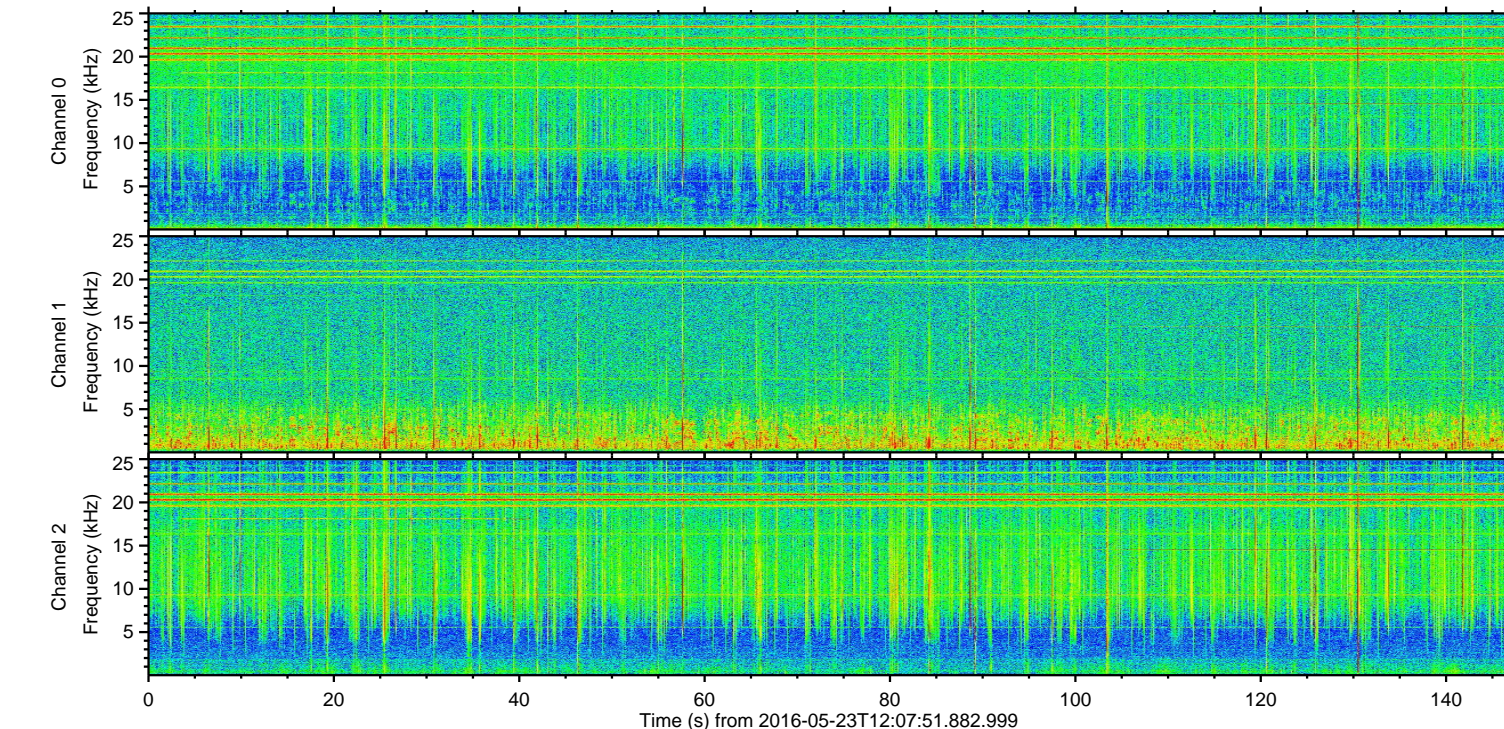
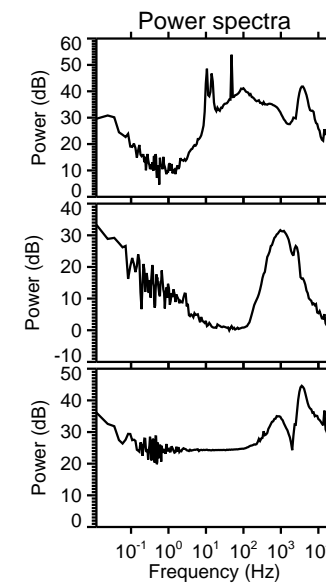
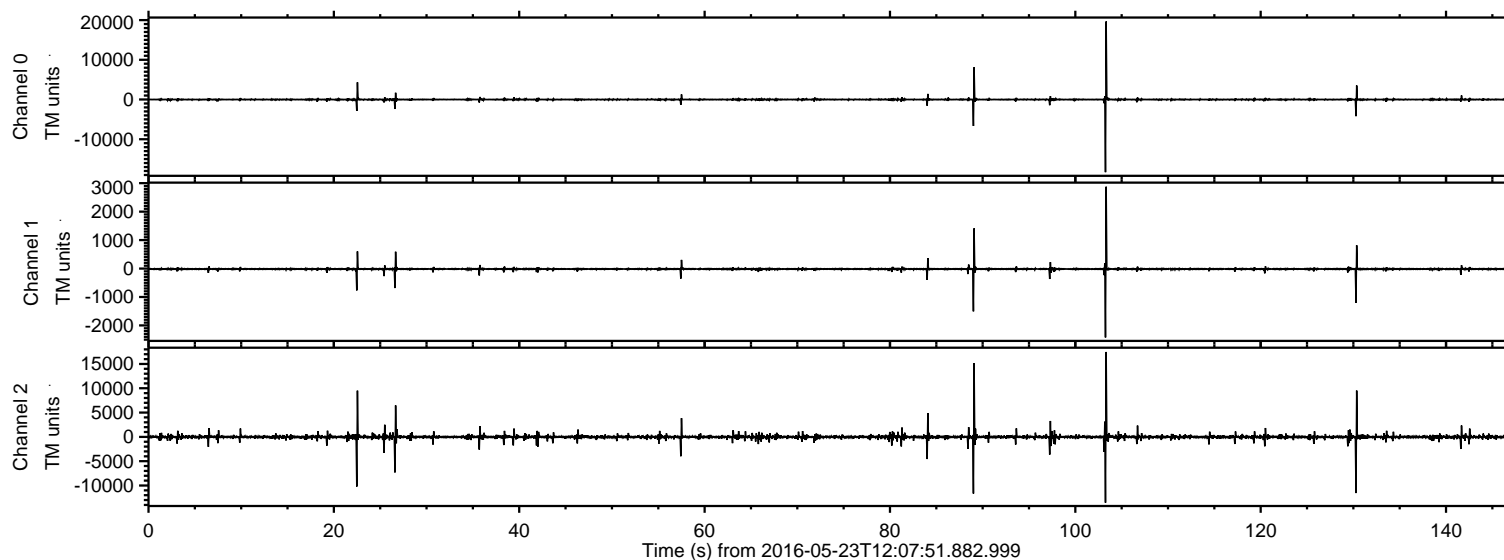


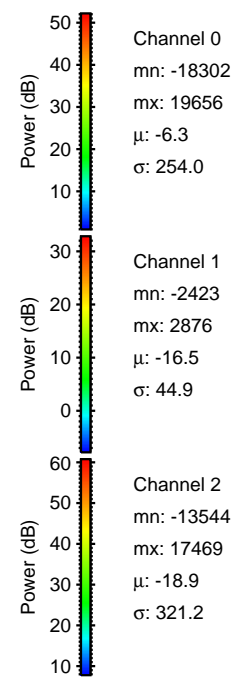
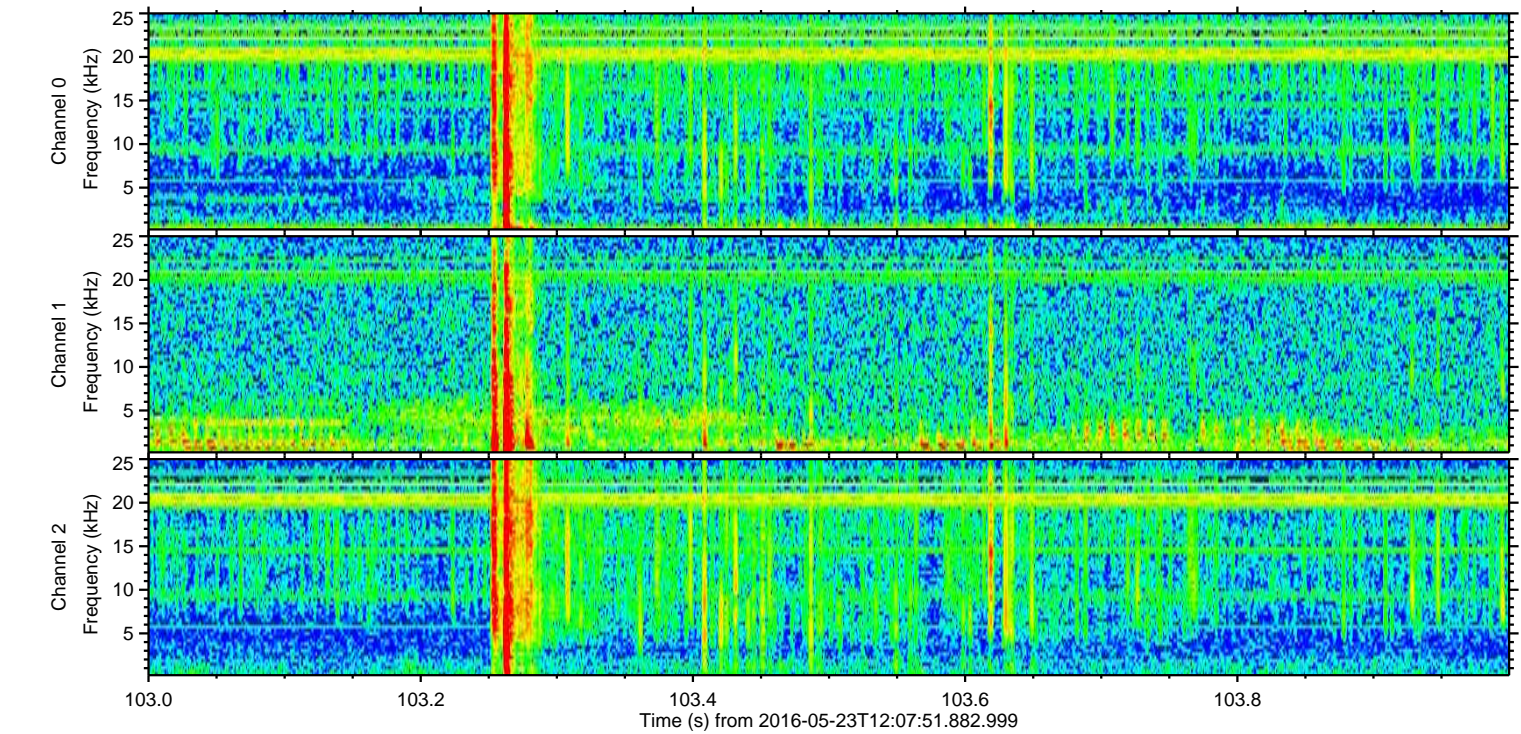
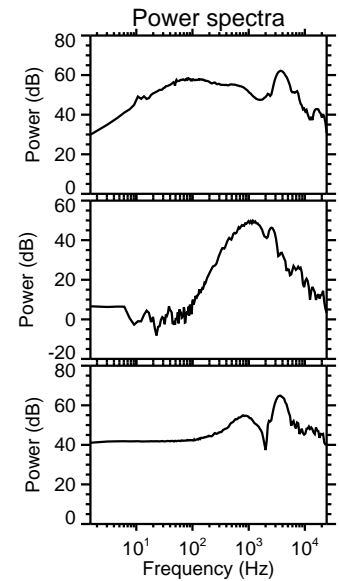
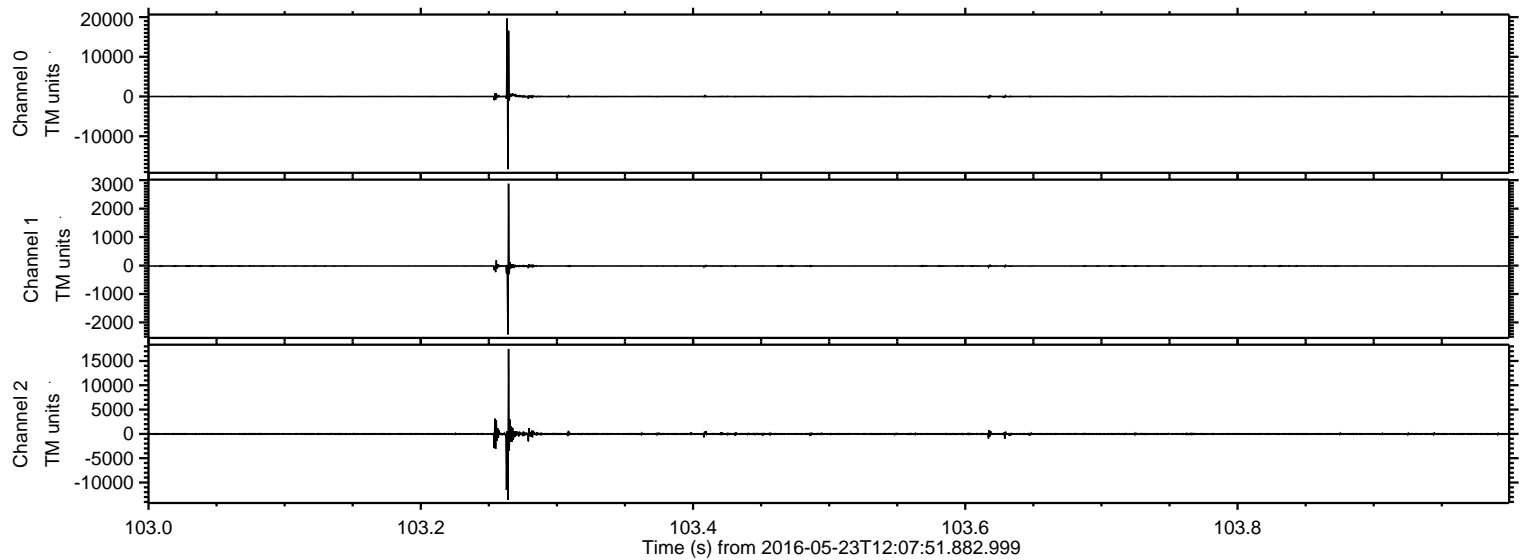
ELMAVAN 3D WAVEFORMS (Measured data sampled at 50 kHz) 51000 packets of 144 samples from 2016-05-23T12:07:51.882.999.

Processed Mon May 23 14:19:26 2016 by ELM ver.2012-10-06 from 001__elm20160523_120750__dat00.bin

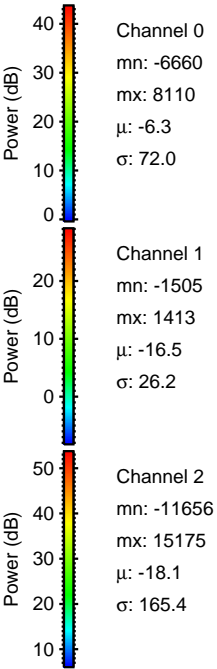
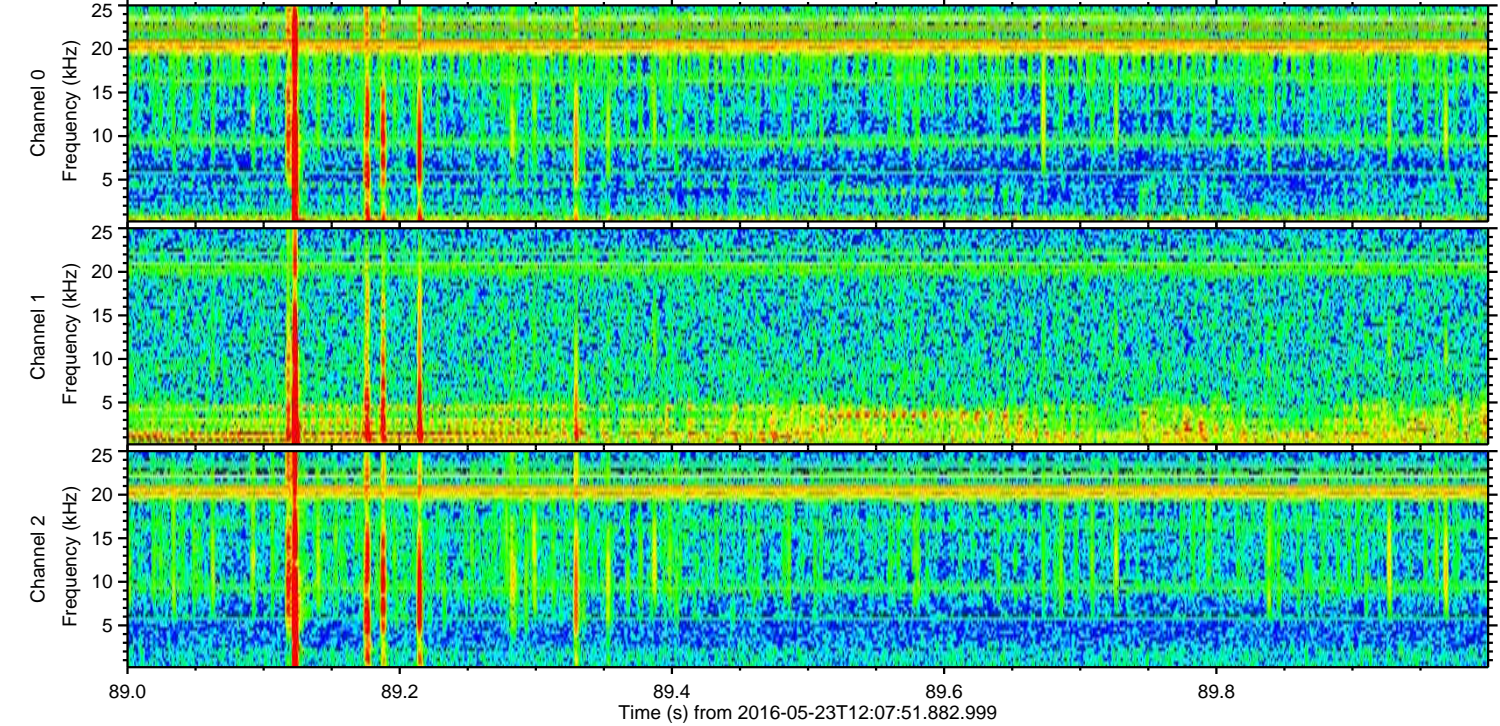
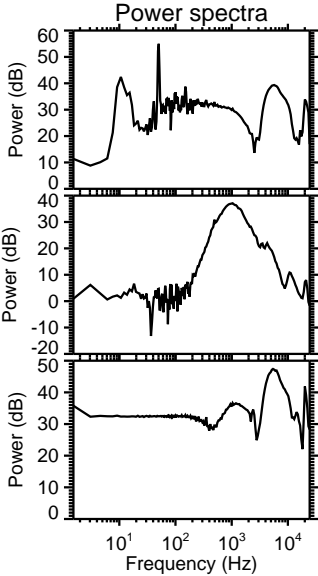
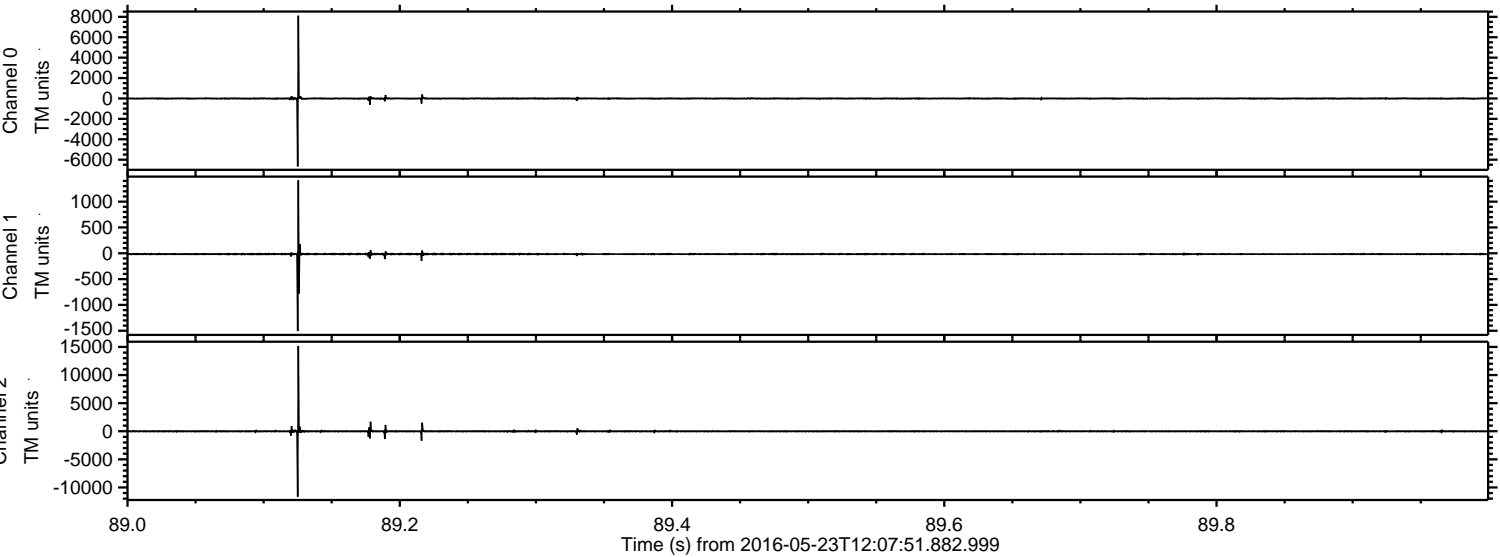


ELMAVAN 3D WAVEFORMS (Measured data sampled at 50 kHz) 51000 packets of 144 samples from 2016-05-23T12:07:51.882.999. Part 104/147

Processed Mon May 23 14:19:41 2016 by ELM ver.2012-10-06 from 001__elm20160523_120750__dat00.bin

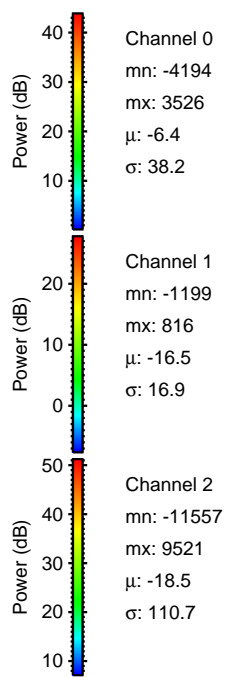
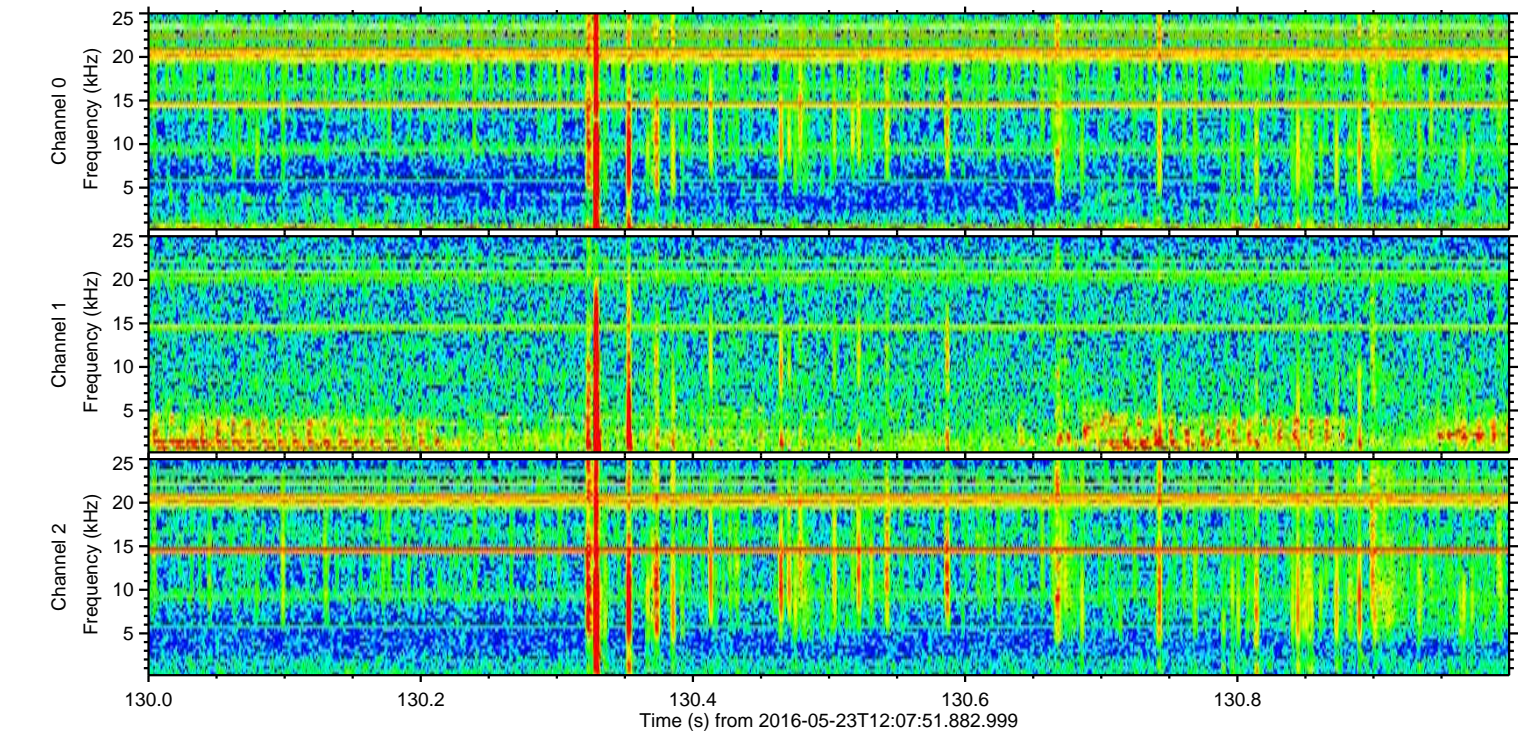
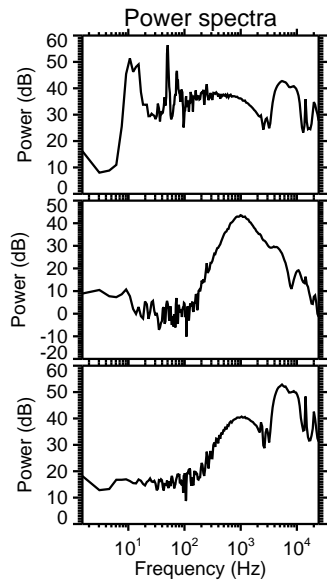
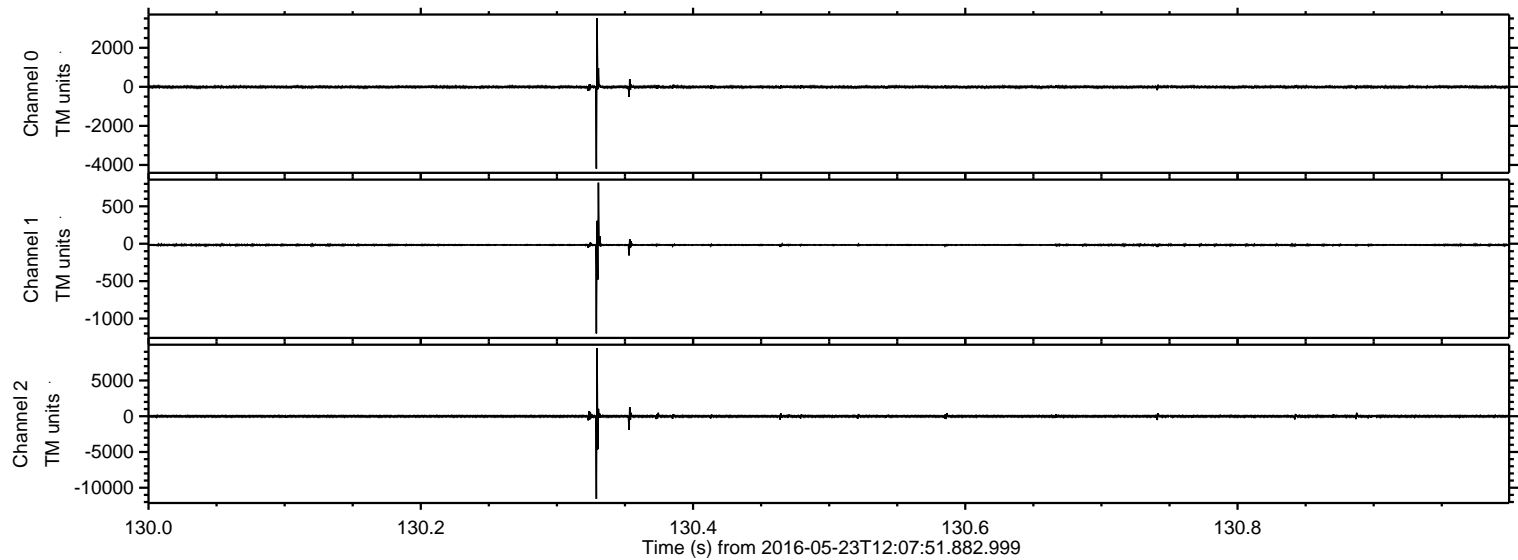


Processed Mon May 23 14:19:43 2016 by ELM ver.2012-10-06 from 001__elm20160523_120750__dat00.bin

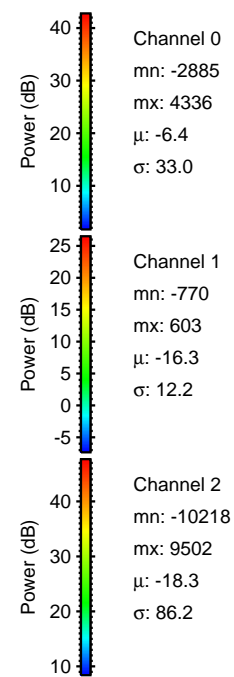
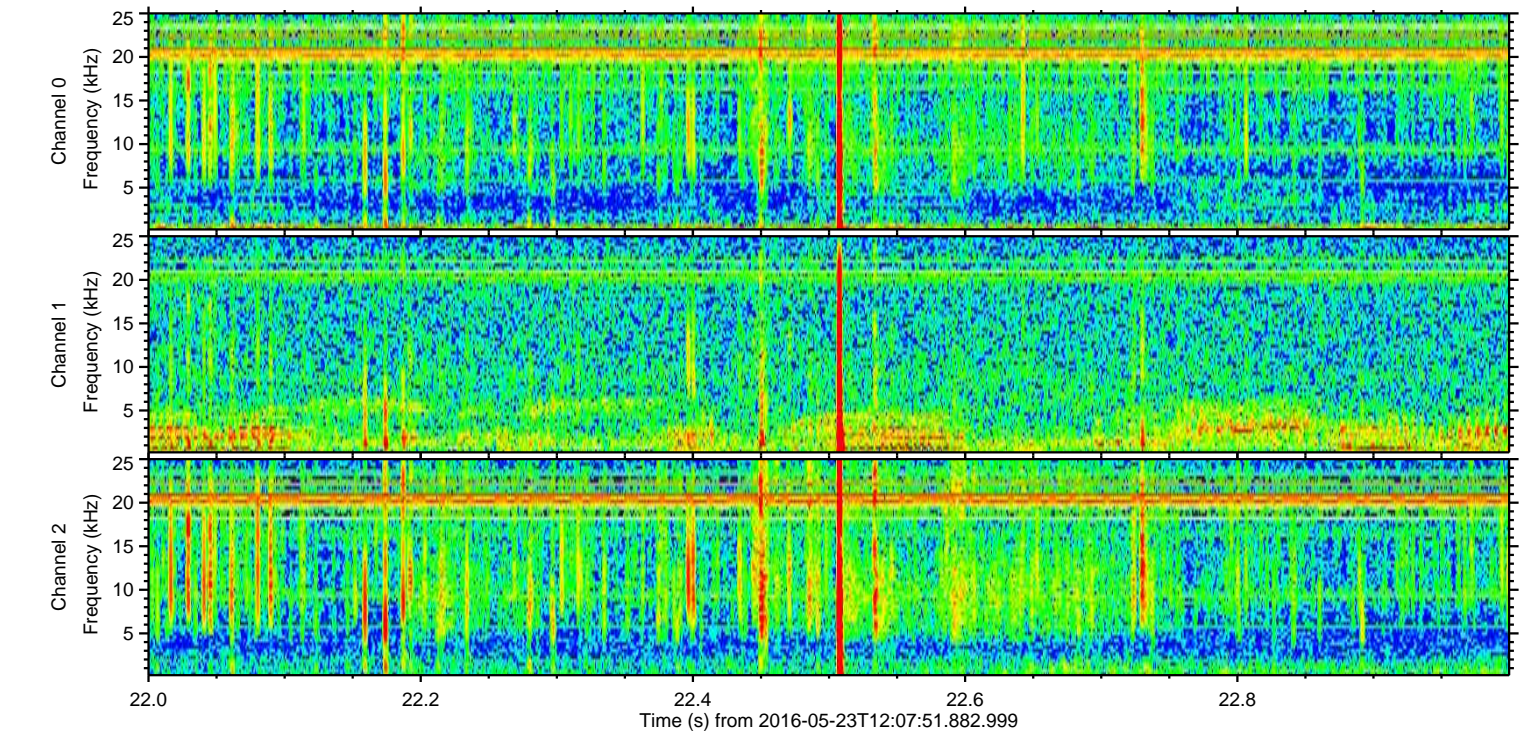
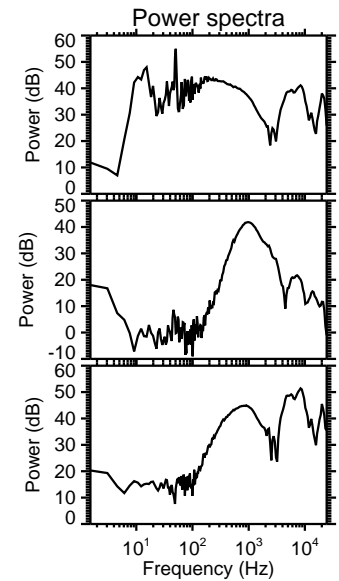
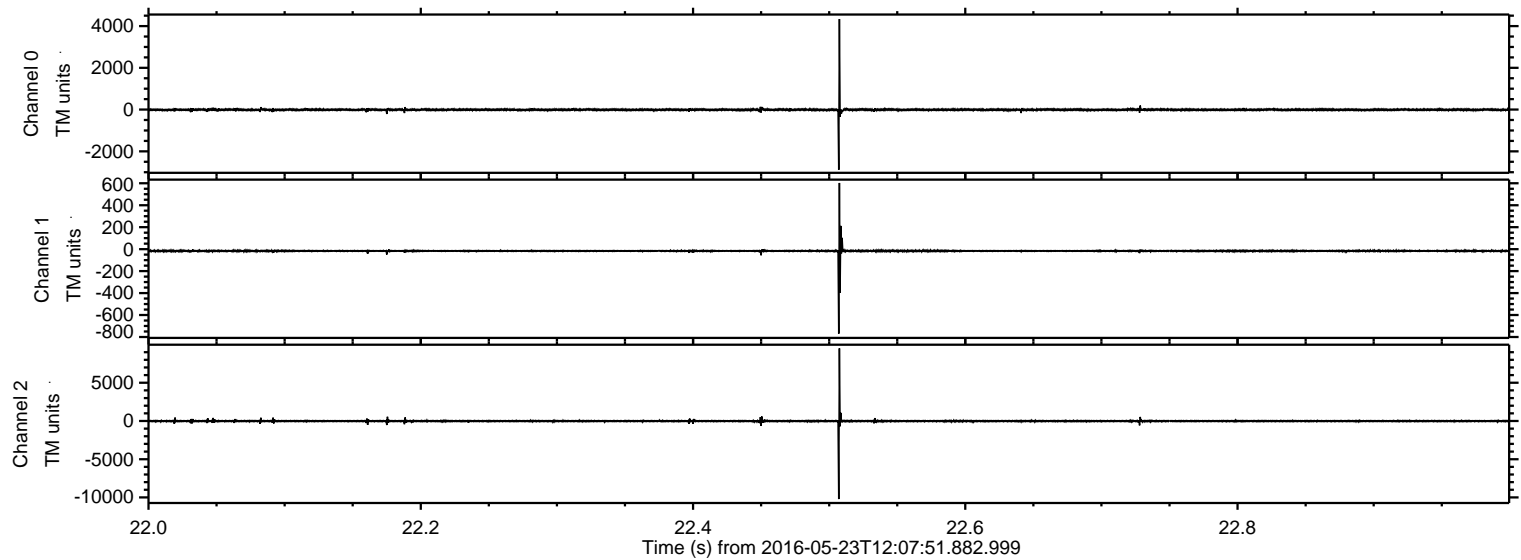


ELMAVAN 3D WAVEFORMS (Measured data sampled at 50 kHz) 51000 packets of 144 samples from 2016-05-23T12:07:51.882.999. Part 131/147

Processed Mon May 23 14:19:44 2016 by ELM ver.2012-10-06 from 001__elm20160523_120750__dat00.bin

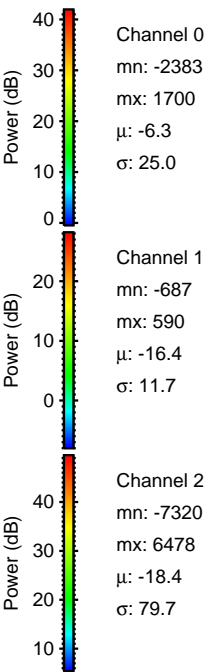
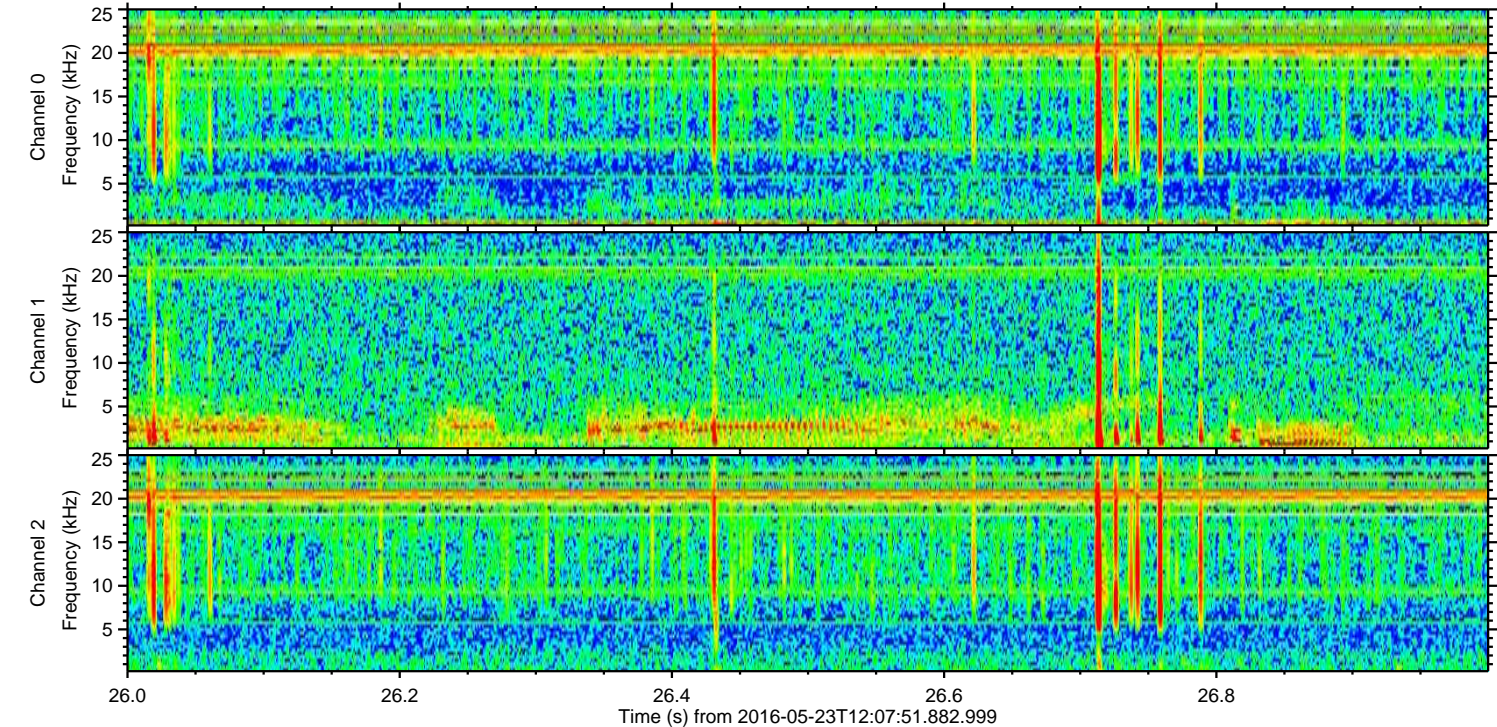
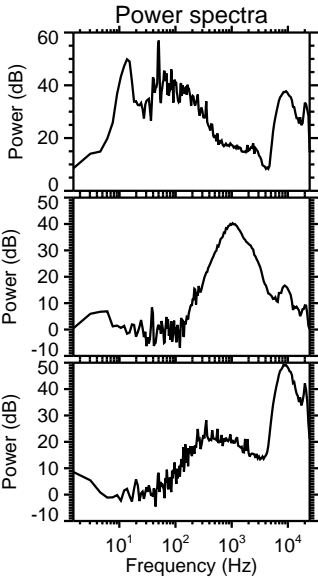
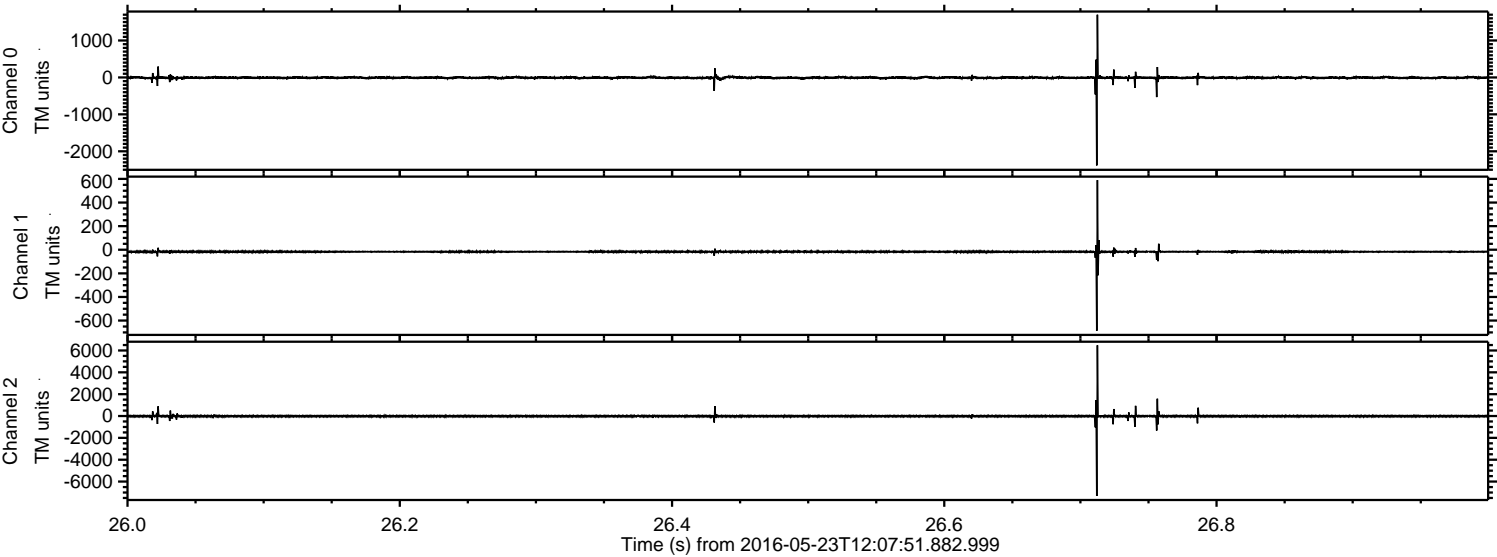


Processed Mon May 23 14:19:45 2016 by ELM ver.2012-10-06 from 001__elm20160523_120750__dat00.bin

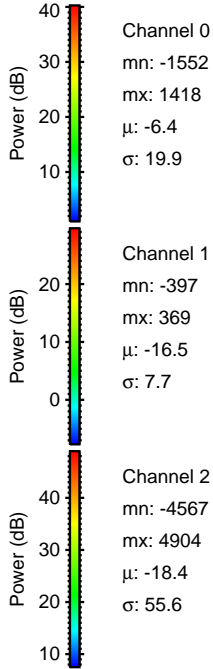
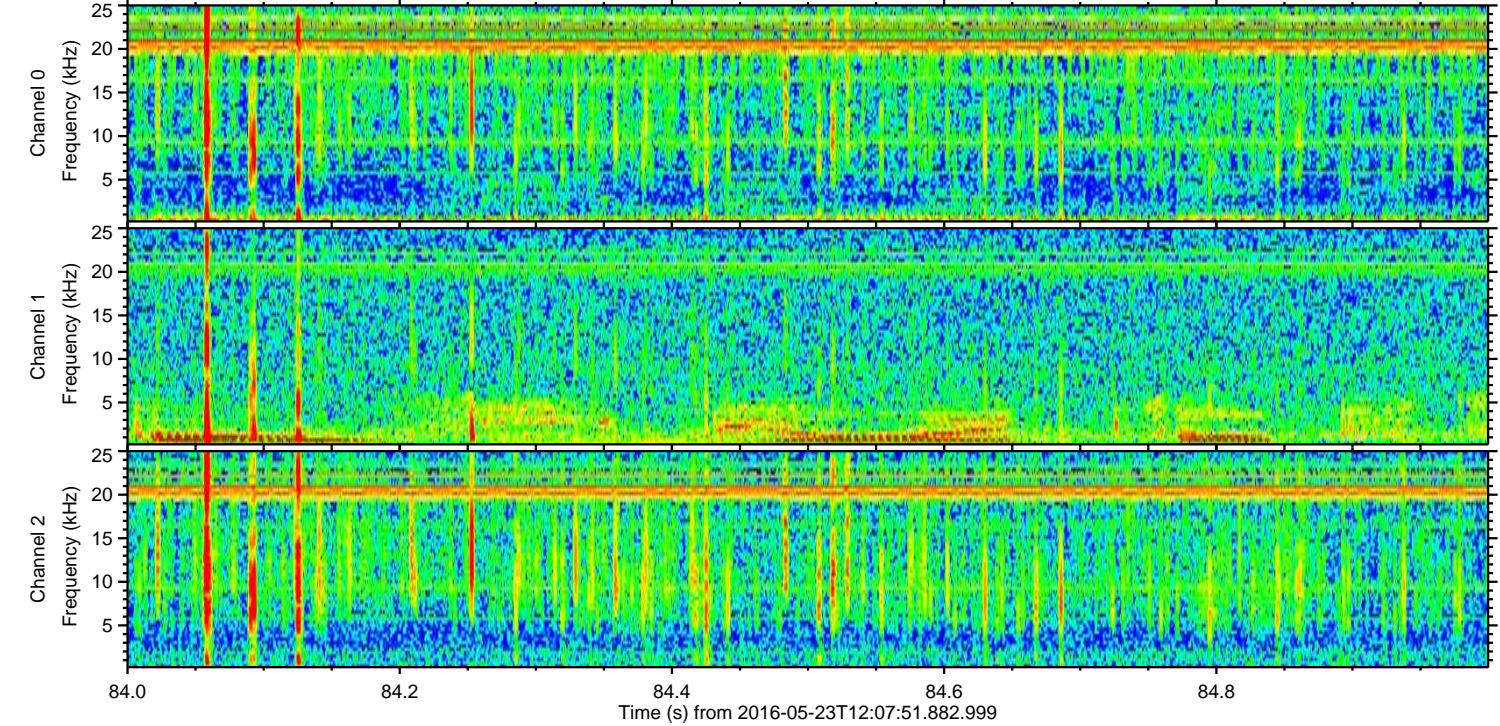
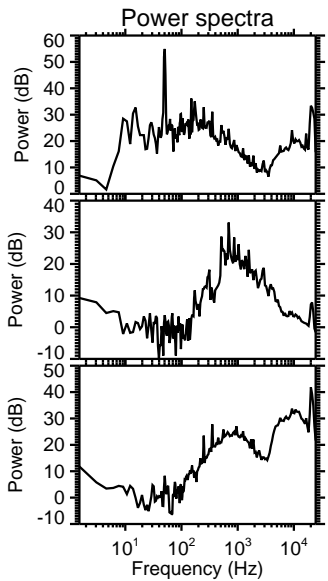
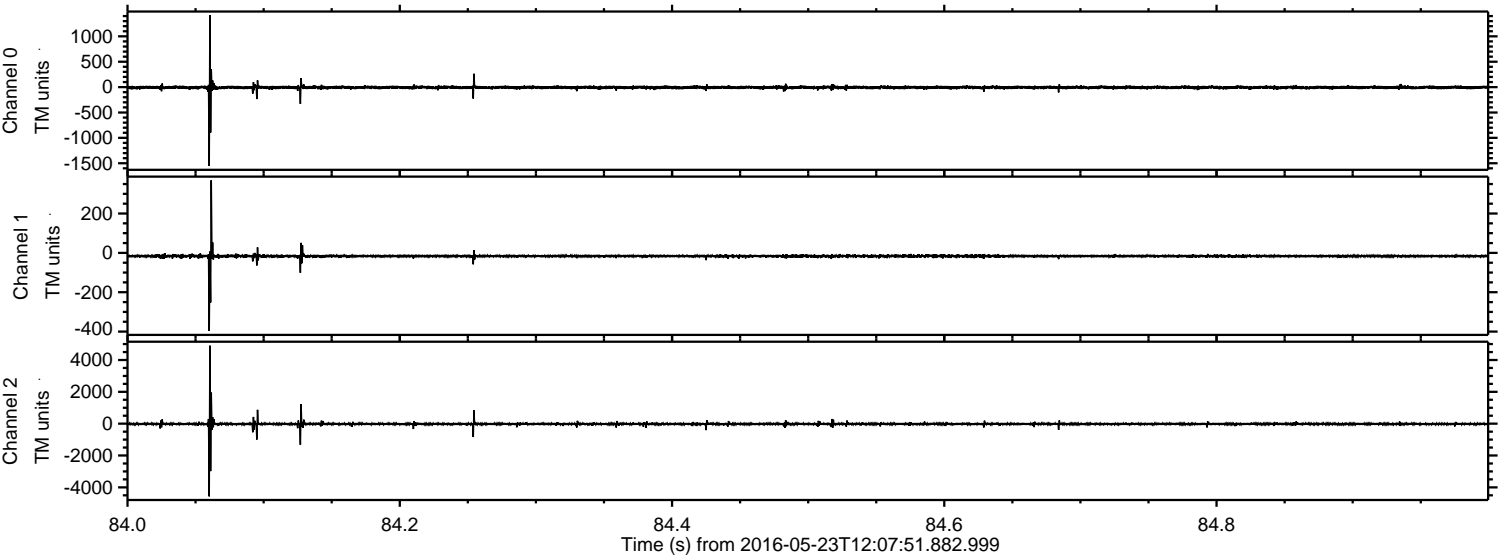


ELMAVAN 3D WAVEFORMS (Measured data sampled at 50 kHz) 51000 packets of 144 samples from 2016-05-23T12:07:51.882.999. Part 27/147

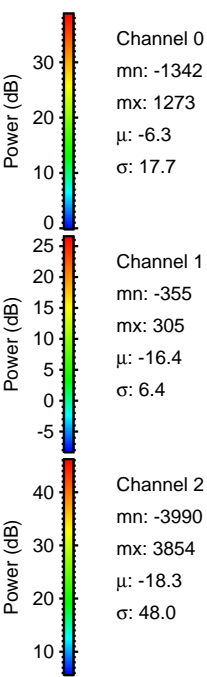
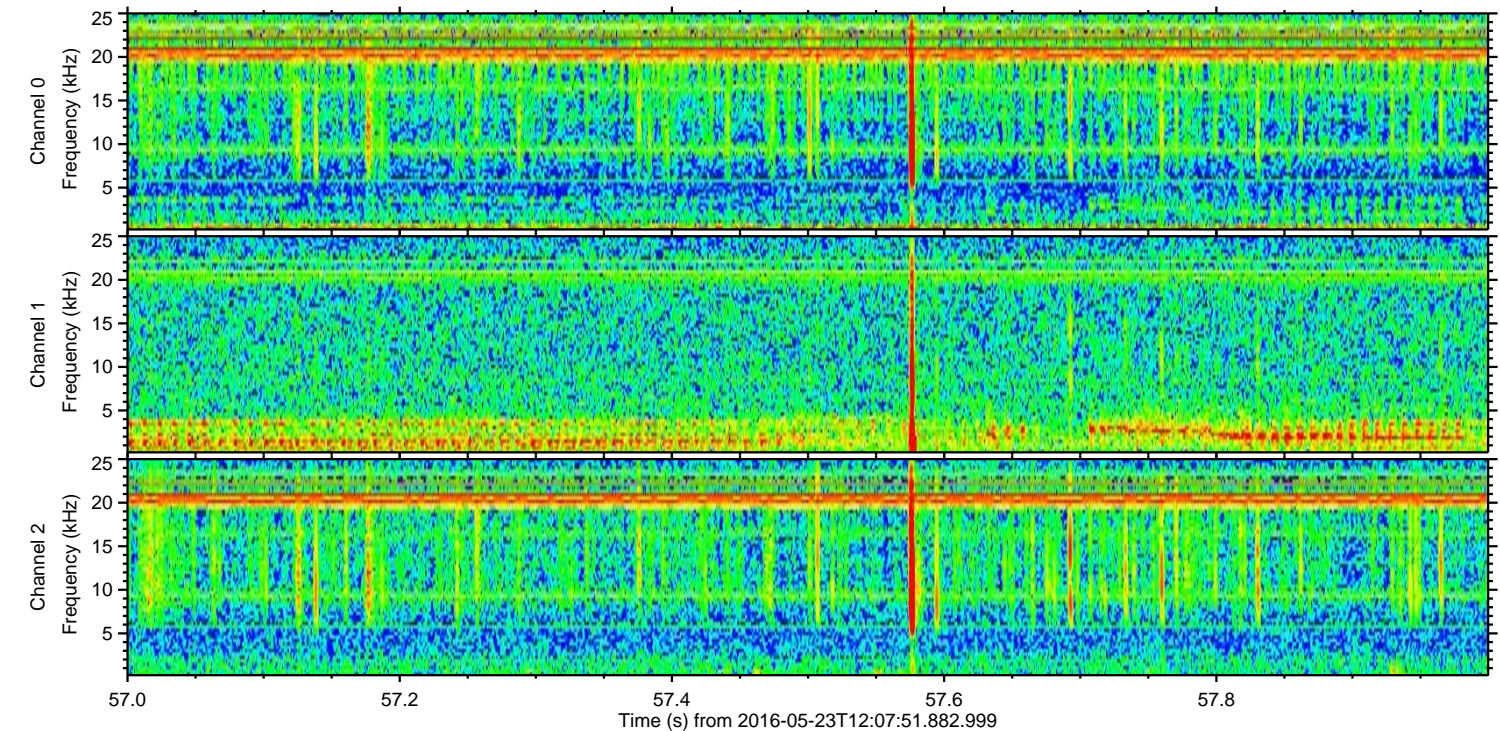
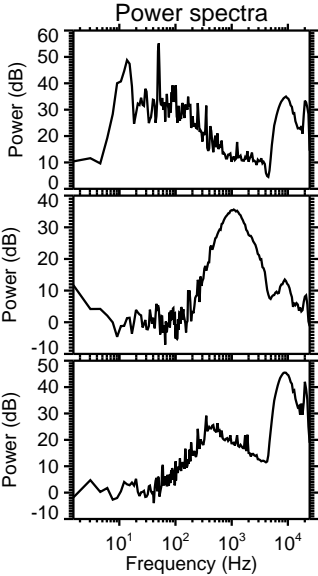
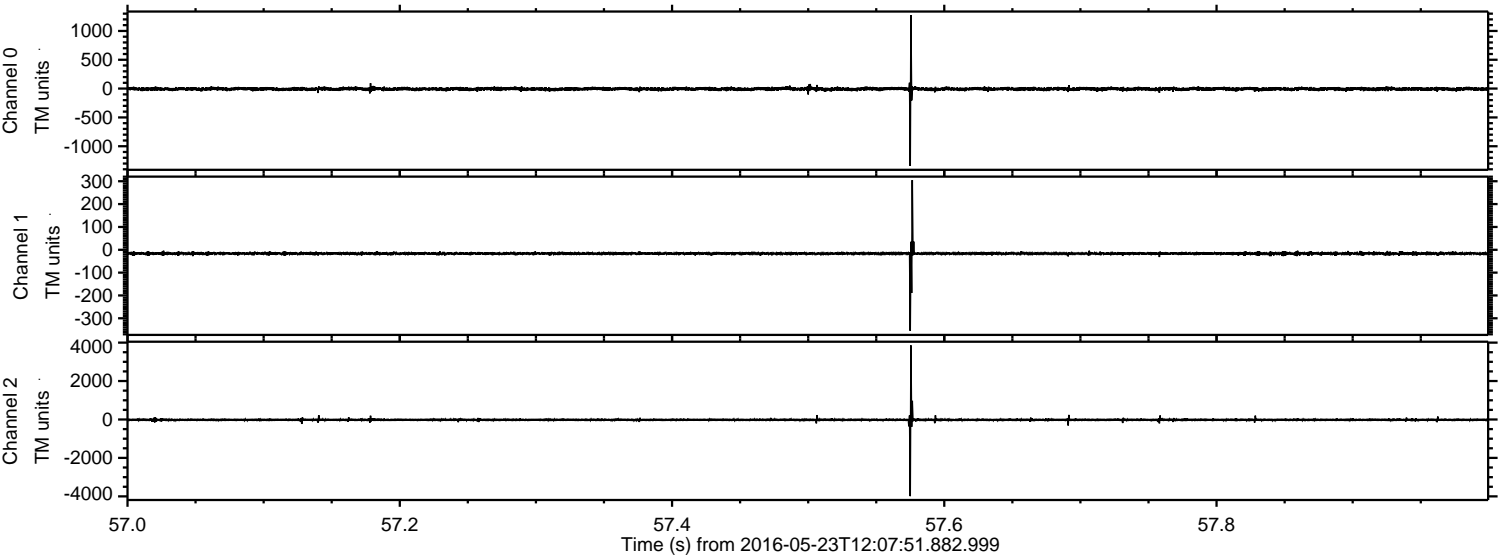
Processed Mon May 23 14:19:46 2016 by ELM ver.2012-10-06 from 001__elm20160523_120750__dat00.bin



Processed Mon May 23 14:19:47 2016 by ELM ver.2012-10-06 from 001__elm20160523_120750__dat00.bin



Processed Mon May 23 14:19:48 2016 by ELM ver.2012-10-06 from 001__elm20160523_120750__dat00.bin

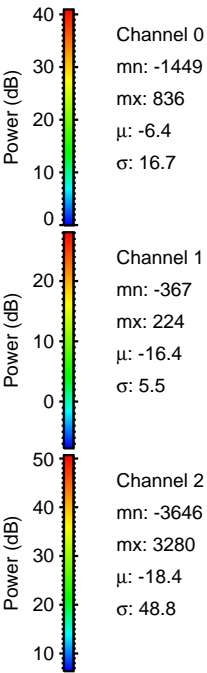
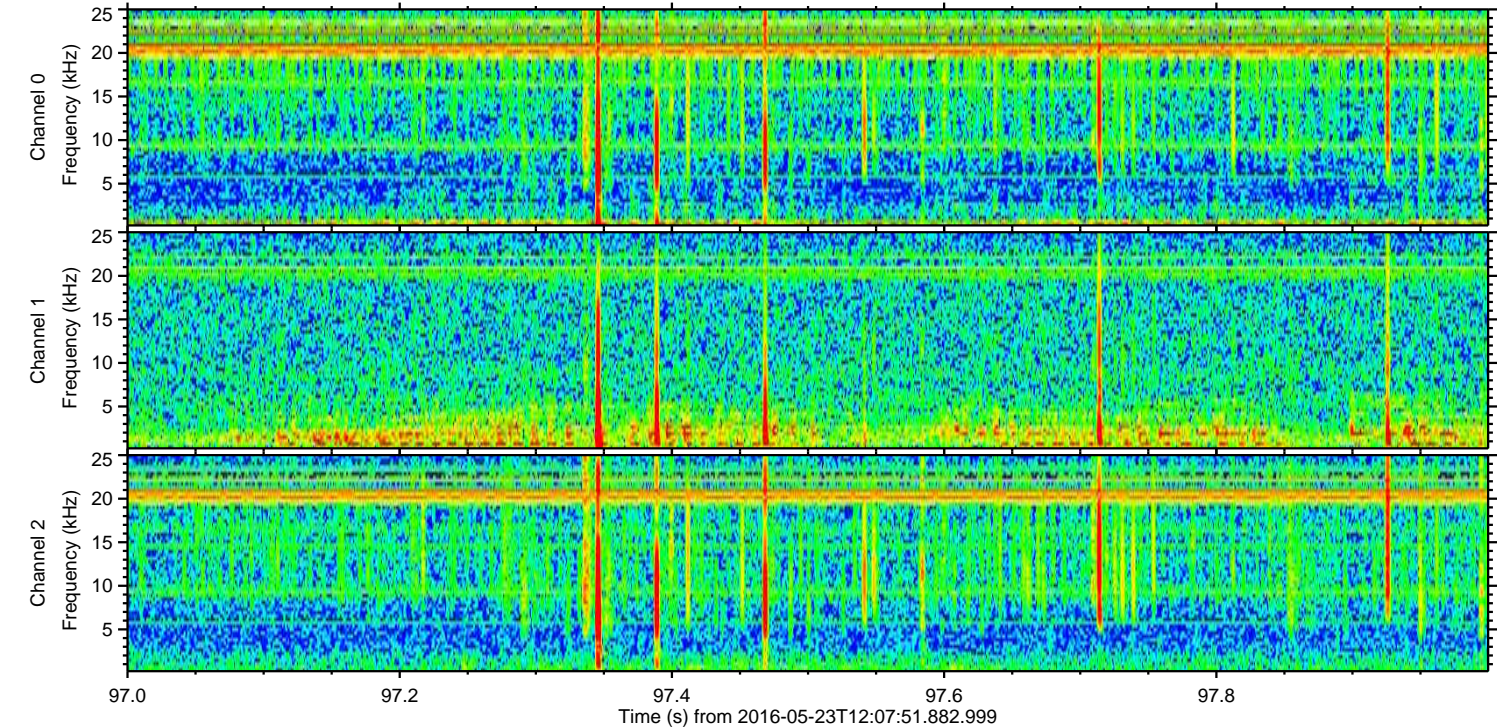
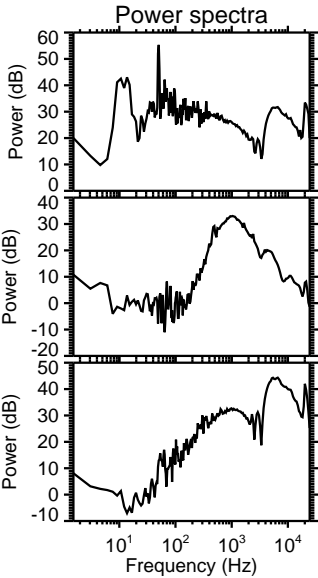
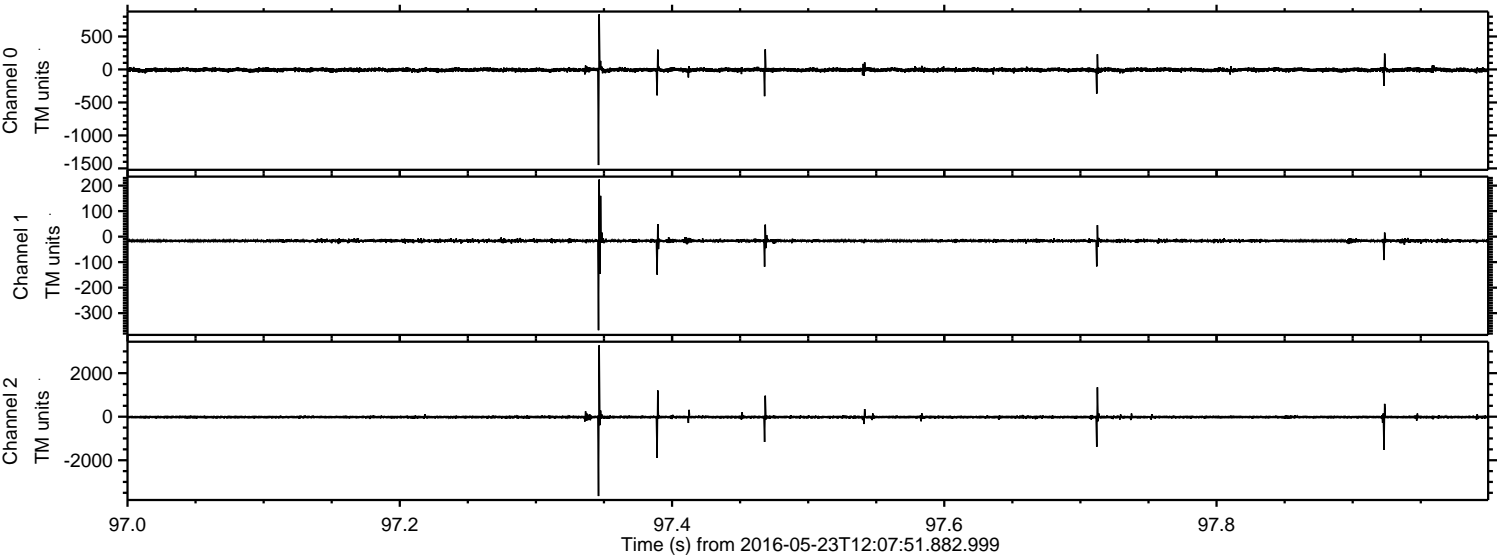


Channel 0
mn: -1342
mx: 1273
 μ : -6.3
 σ : 17.7

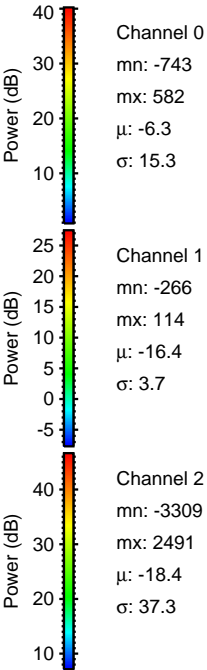
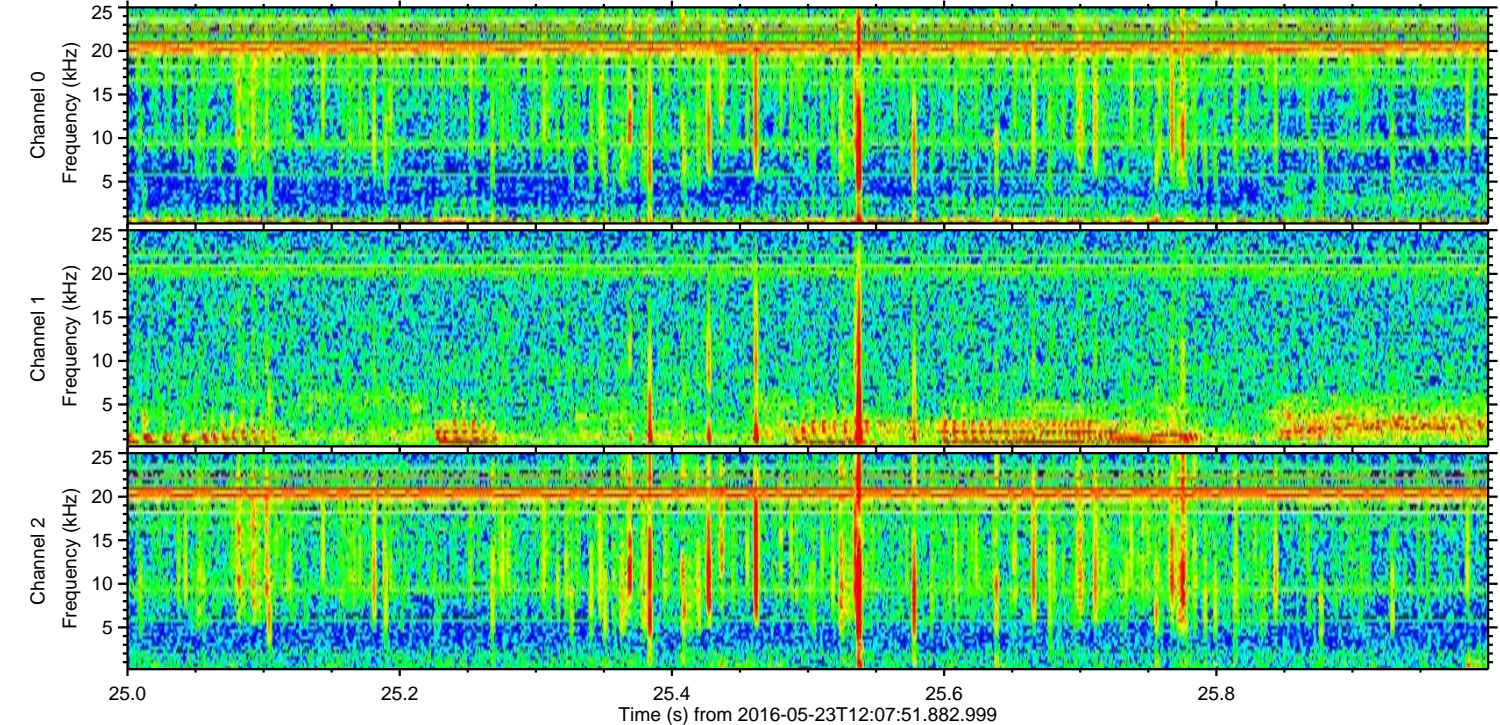
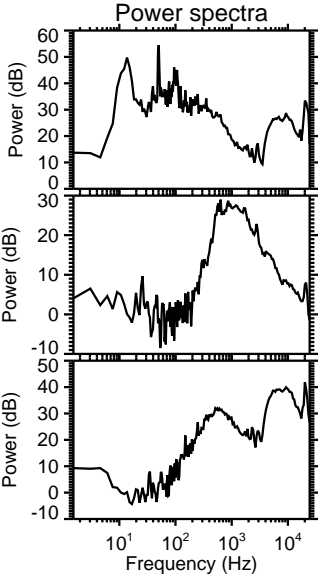
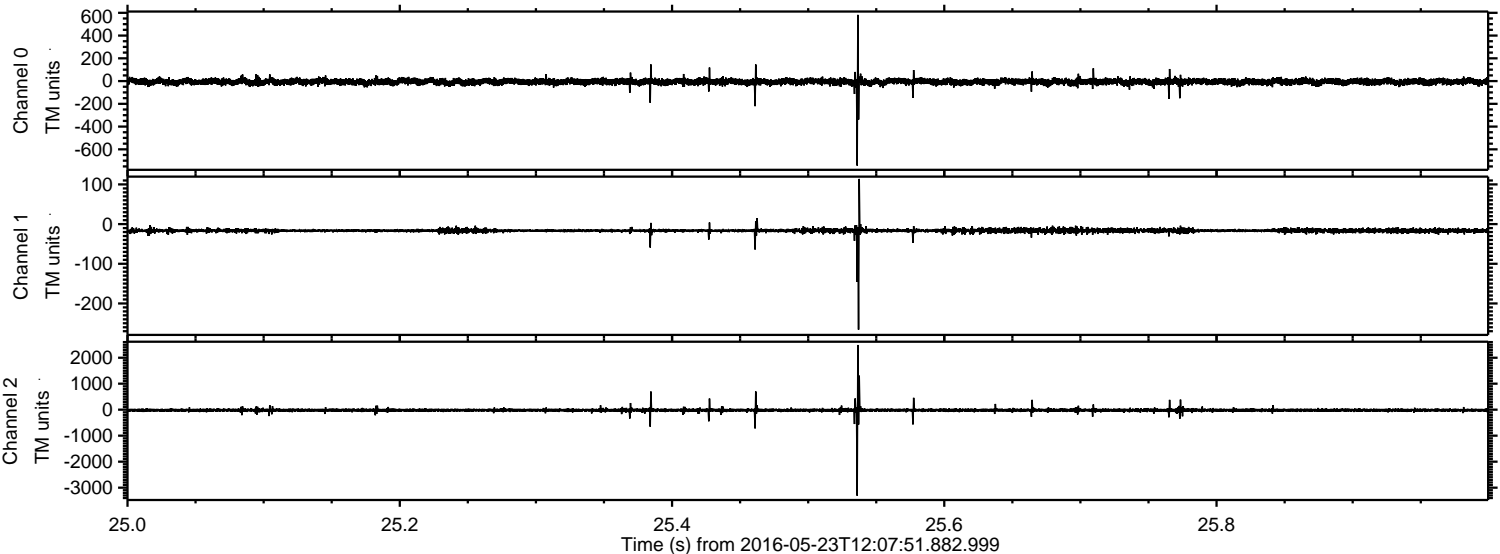
Channel 1
mn: -355
mx: 305
 μ : -16.4
 σ : 6.4

Channel 2
mn: -3990
mx: 3854
 μ : -18.3
 σ : 48.0

Processed Mon May 23 14:19:49 2016 by ELM ver.2012-10-06 from 001__elm20160523_120750__dat00.bin



Processed Mon May 23 14:19:50 2016 by ELM ver.2012-10-06 from 001__elm20160523_120750__dat00.bin



Processed Mon May 23 14:19:52 2016 by ELM ver.2012-10-06 from 001__elm20160523_120750__dat00.bin

