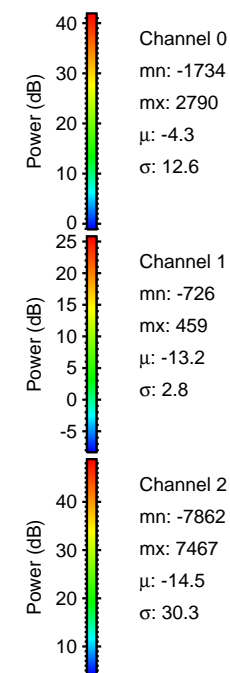
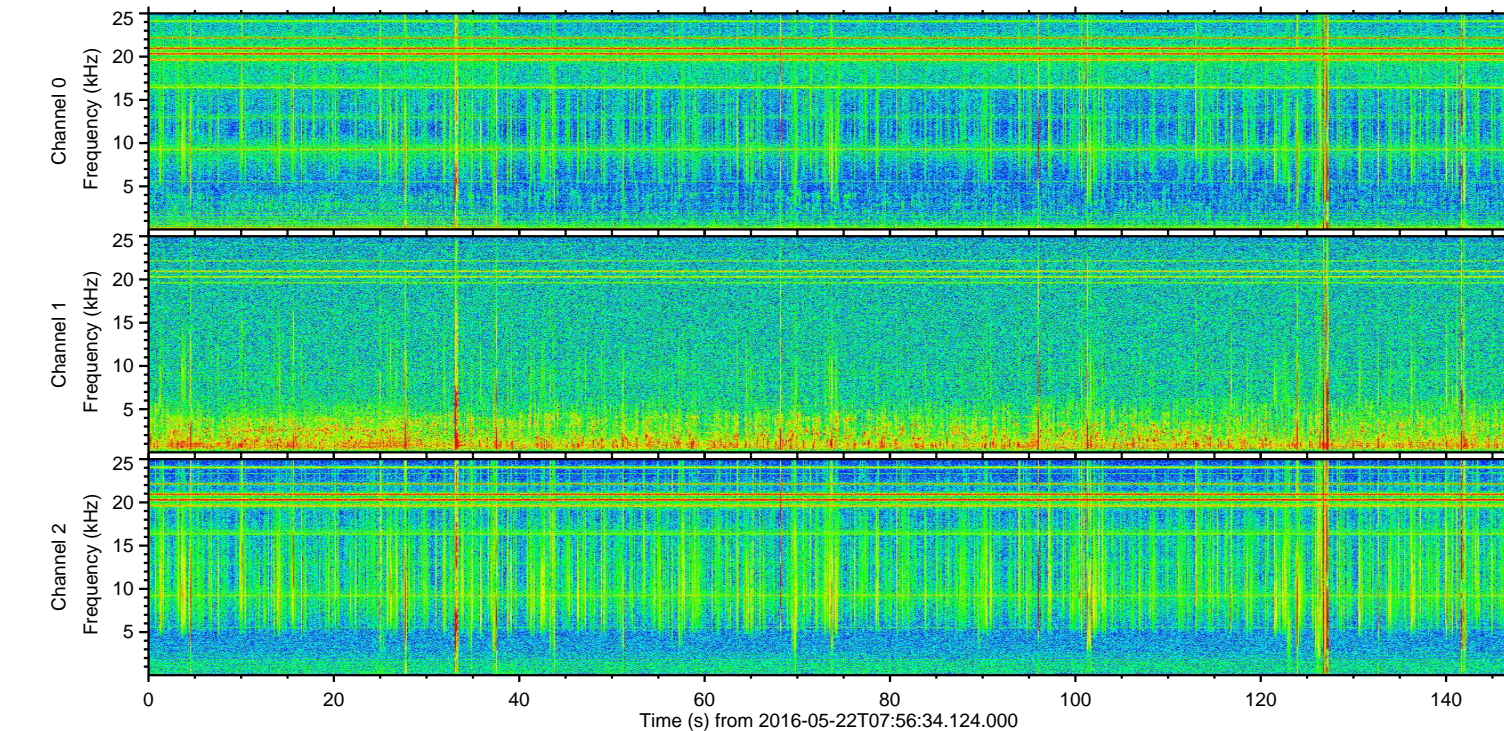
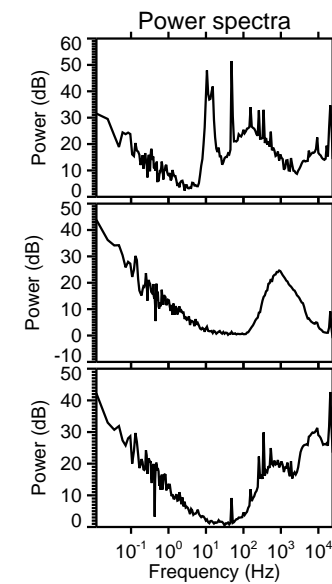
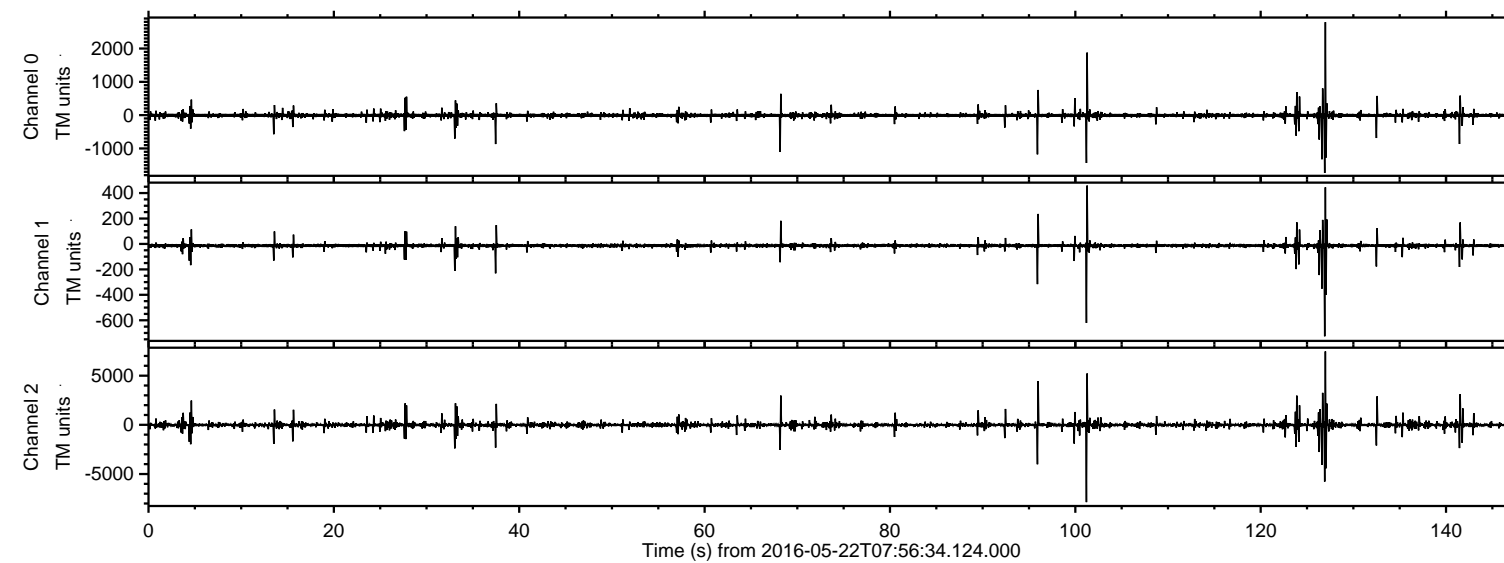


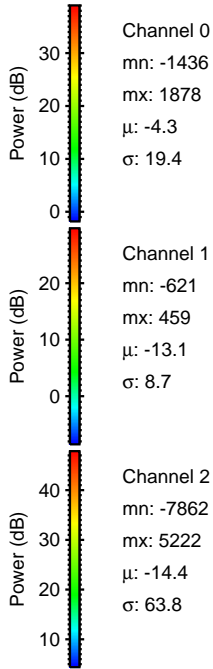
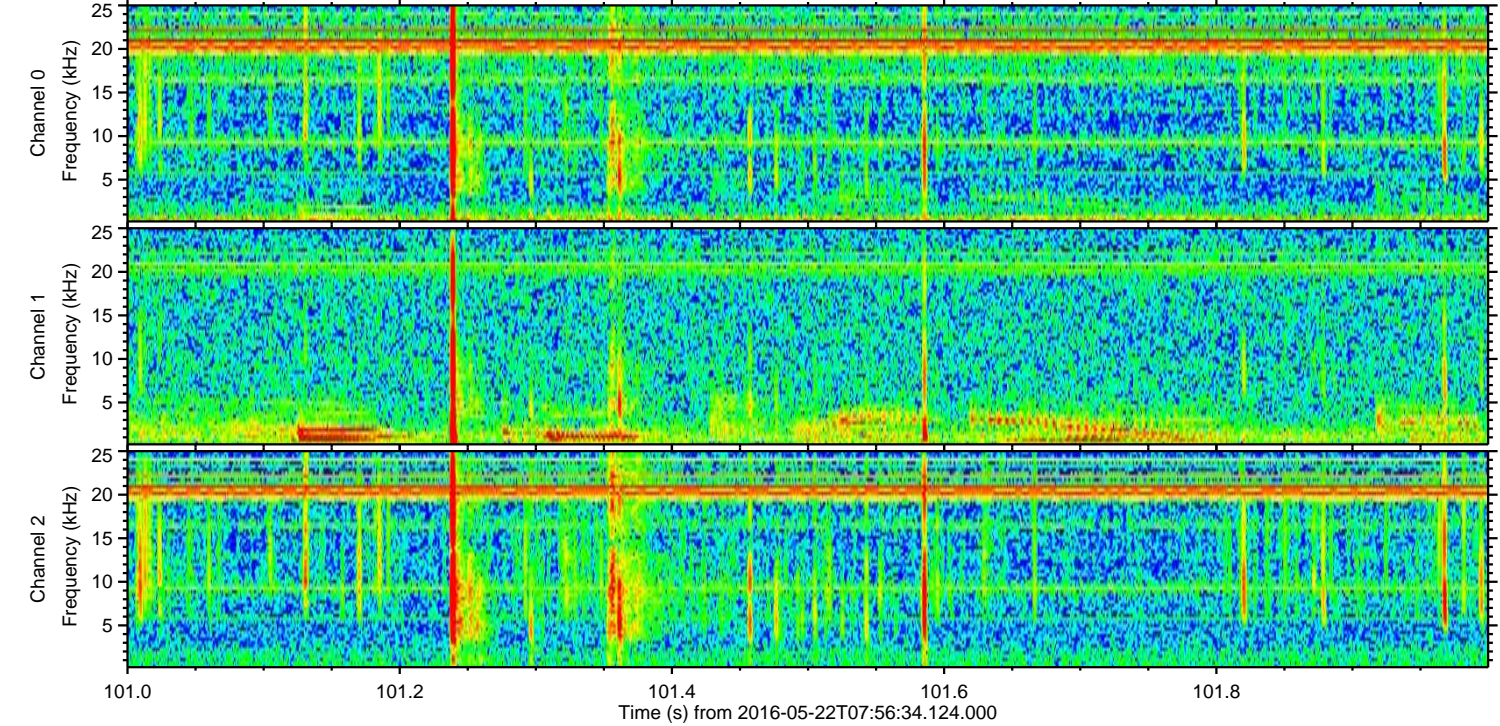
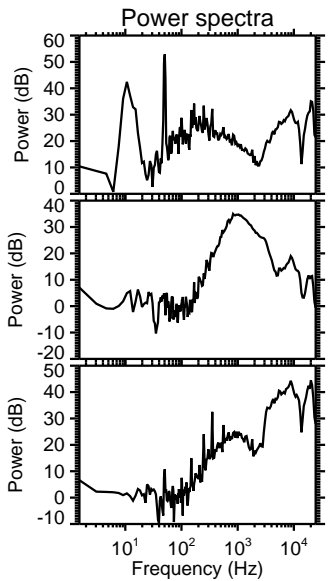
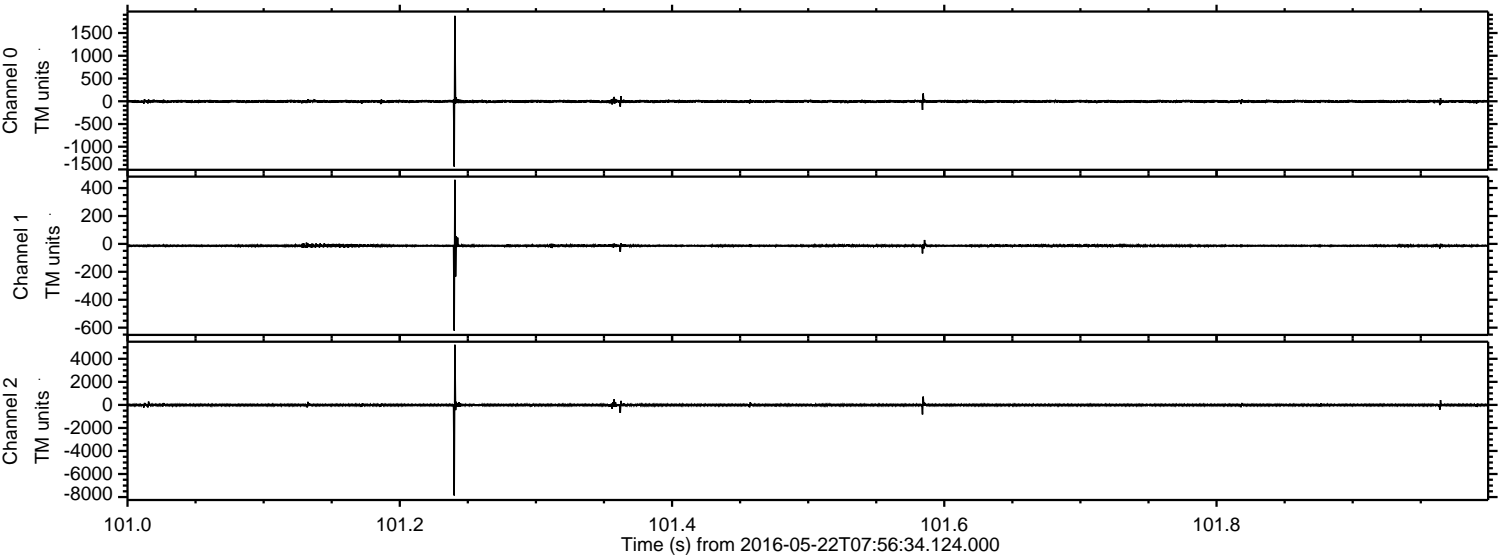
# ELMAVAN 3D WAVEFORMS (Measured data sampled at 50 kHz) 51000 packets of 144 samples from 2016-05-22T07:56:34.124.000.

Processed Sun May 22 10:04:32 2016 by ELM ver.2012-10-06 from 001\_\_elm20160522\_075633\_\_dat00.bin





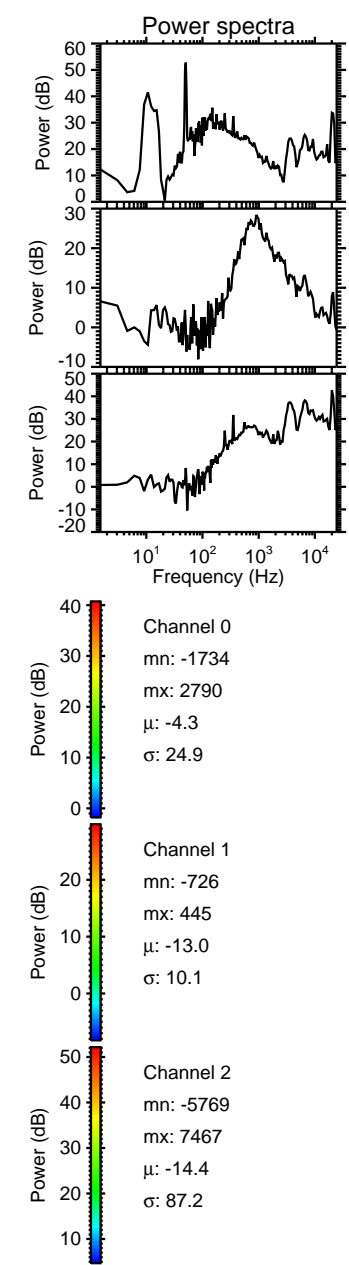
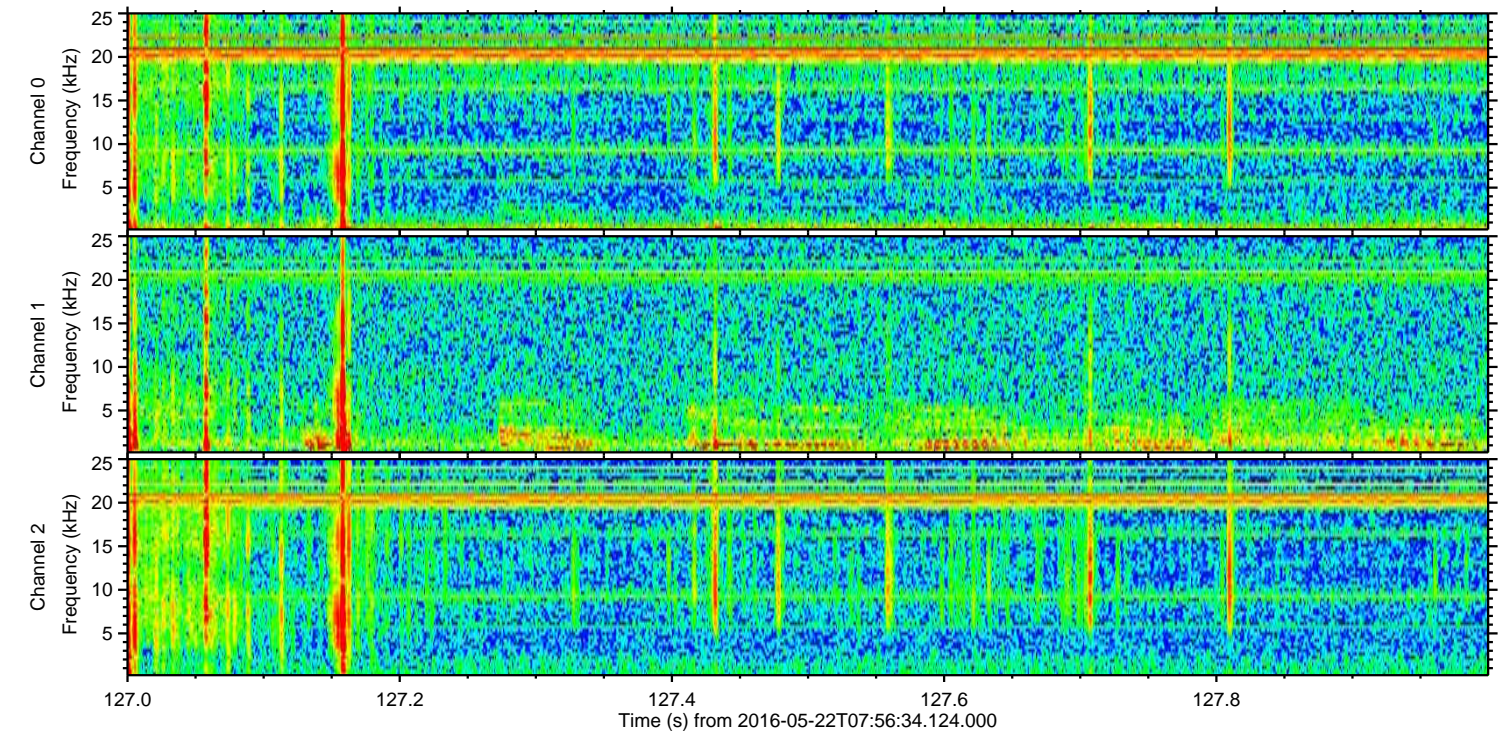
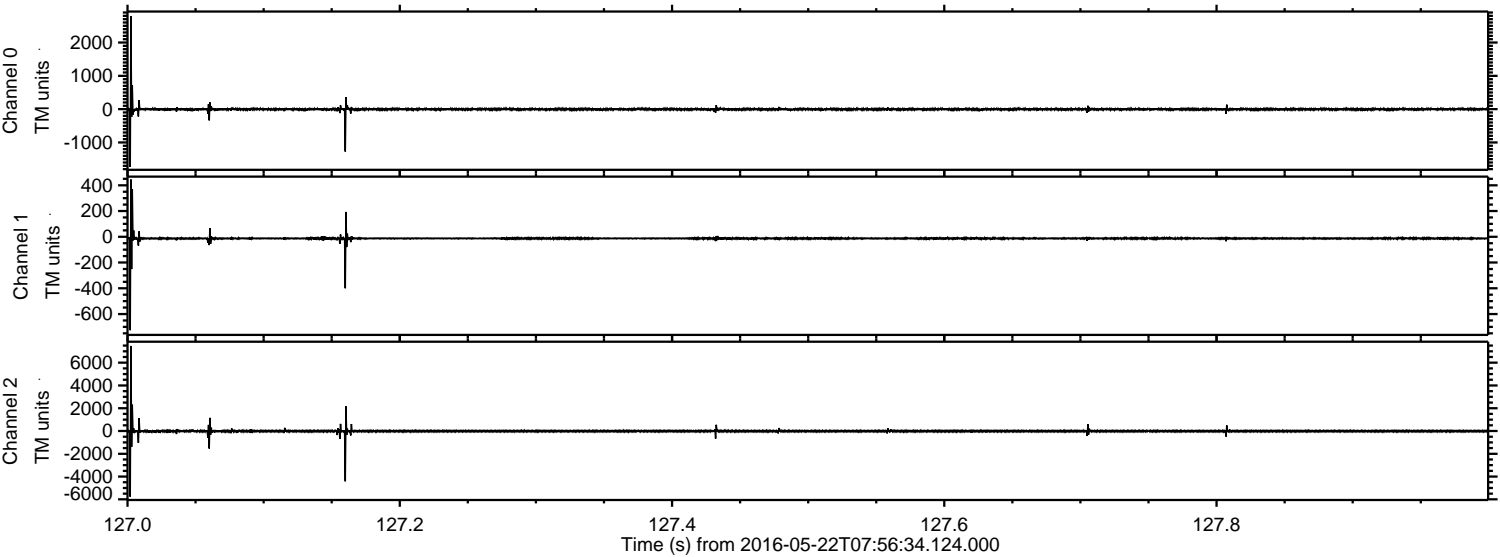
Processed Sun May 22 10:04:43 2016 by ELM ver.2012-10-06 from 001\_\_elm20160522\_075633\_\_dat00.bin





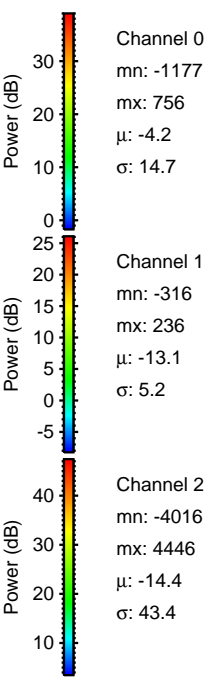
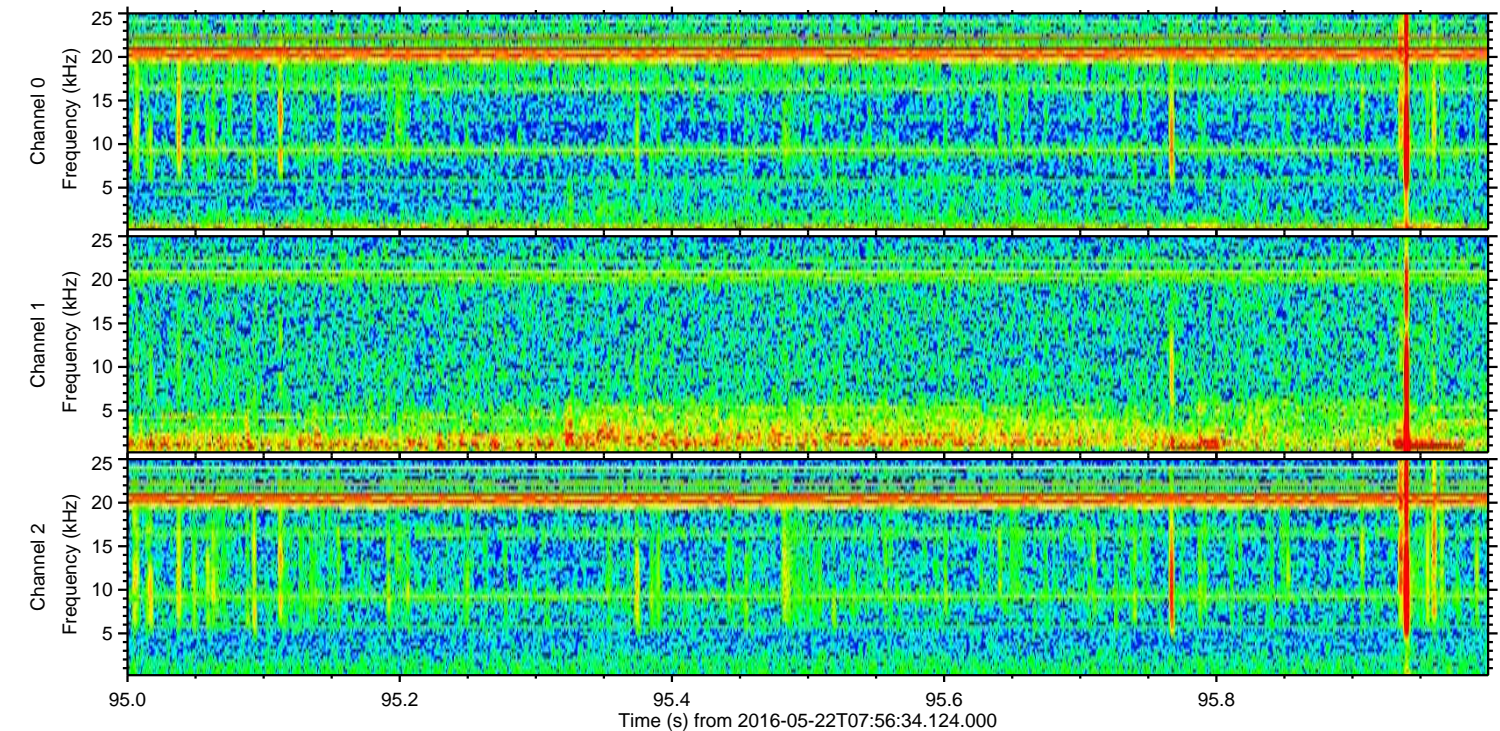
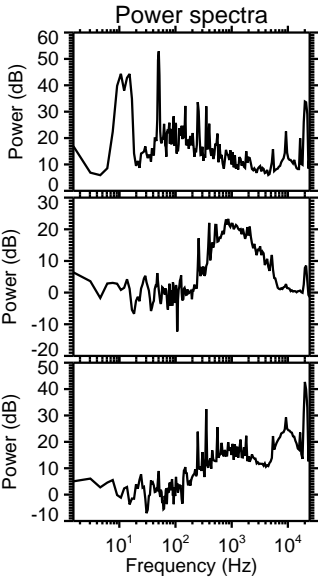
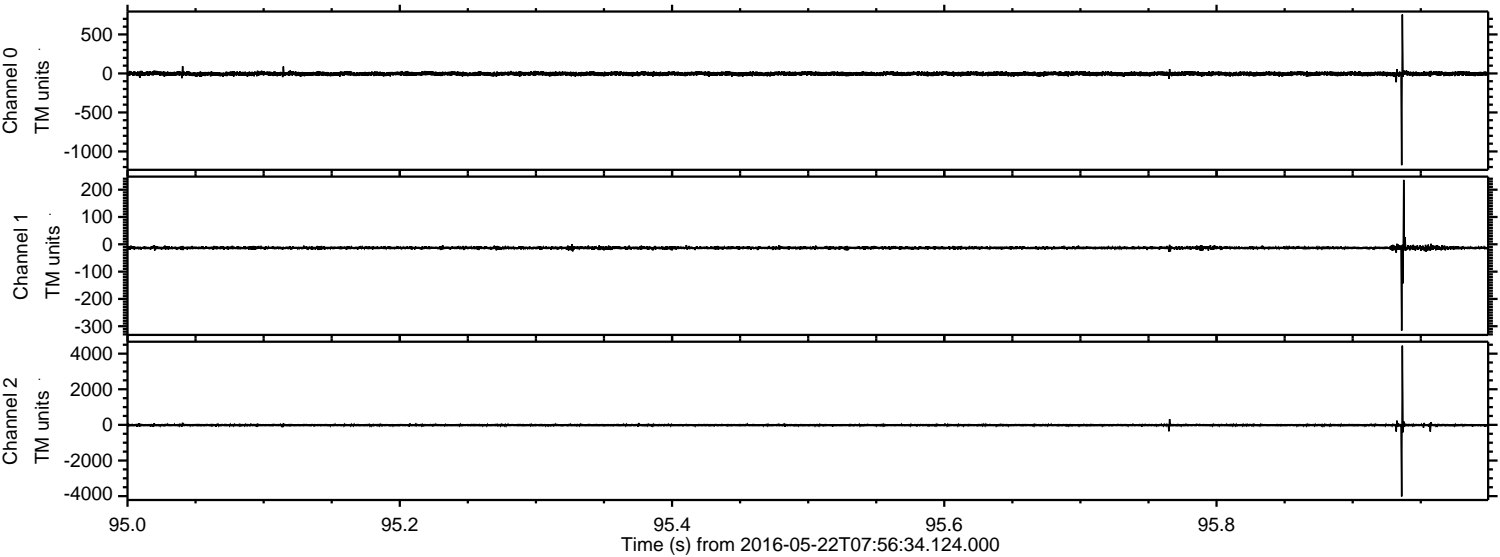
ELMAVAN 3D WAVEFORMS (Measured data sampled at 50 kHz) 51000 packets of 144 samples from 2016-05-22T07:56:34.124.000. Part 128/147

Processed Sun May 22 10:04:44 2016 by ELM ver.2012-10-06 from 001\_\_elm20160522\_075633\_\_dat00.bin





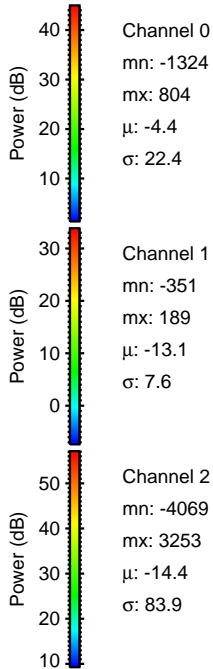
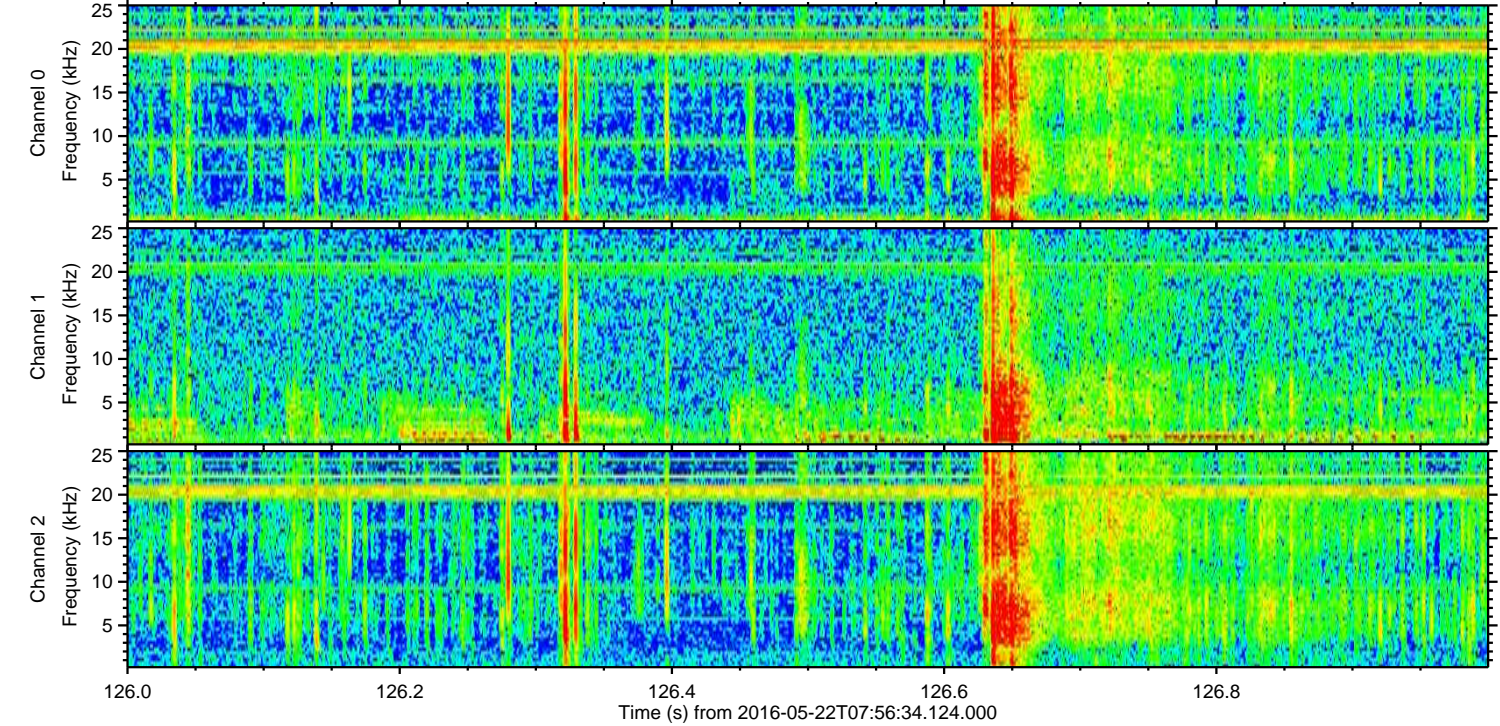
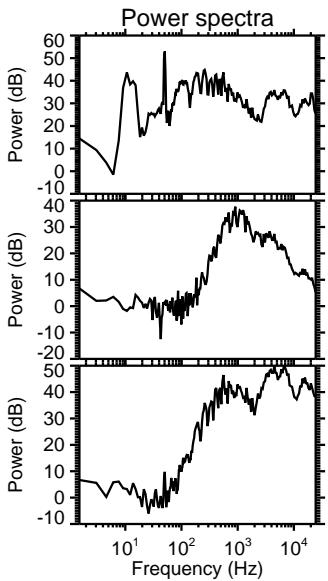
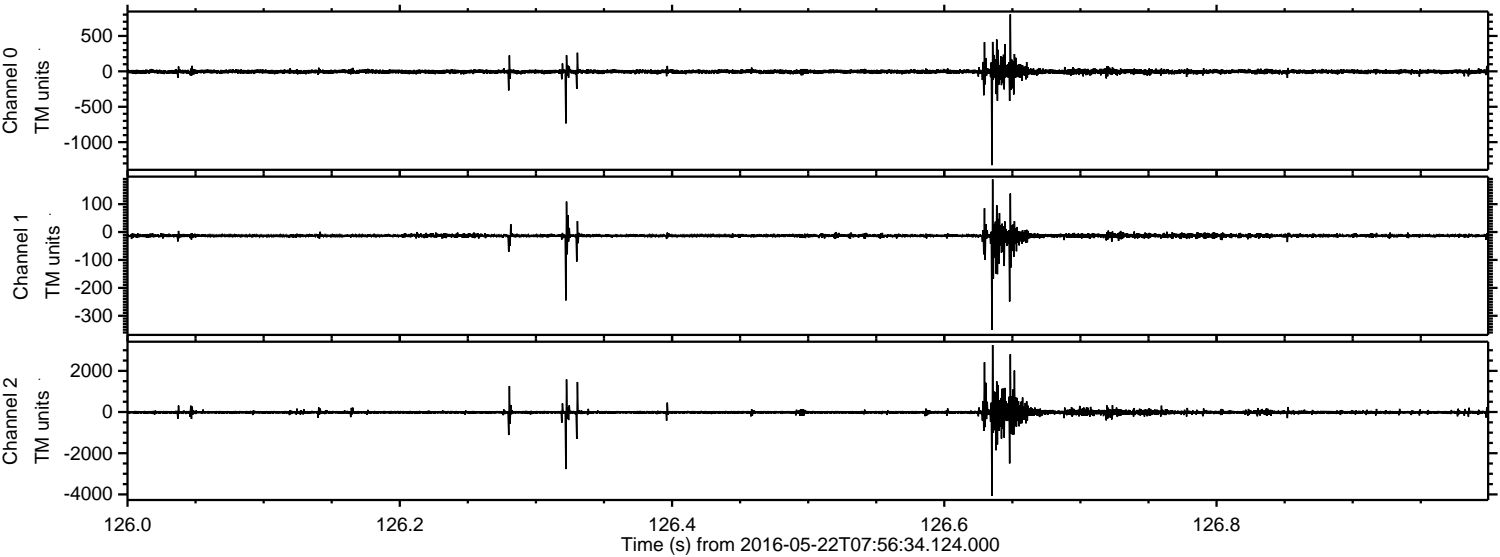
Processed Sun May 22 10:04:45 2016 by ELM ver.2012-10-06 from 001\_\_elm20160522\_075633\_\_dat00.bin





ELMAVAN 3D WAVEFORMS (Measured data sampled at 50 kHz) 51000 packets of 144 samples from 2016-05-22T07:56:34.124.000. Part 127/147

Processed Sun May 22 10:04:46 2016 by ELM ver.2012-10-06 from 001\_\_elm20160522\_075633\_\_dat00.bin



Channel 0  
mn: -1324  
mx: 804  
 $\mu$ : -4.4  
 $\sigma$ : 22.4

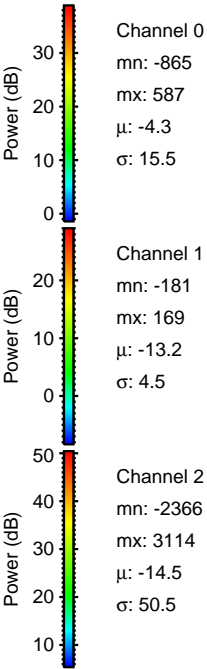
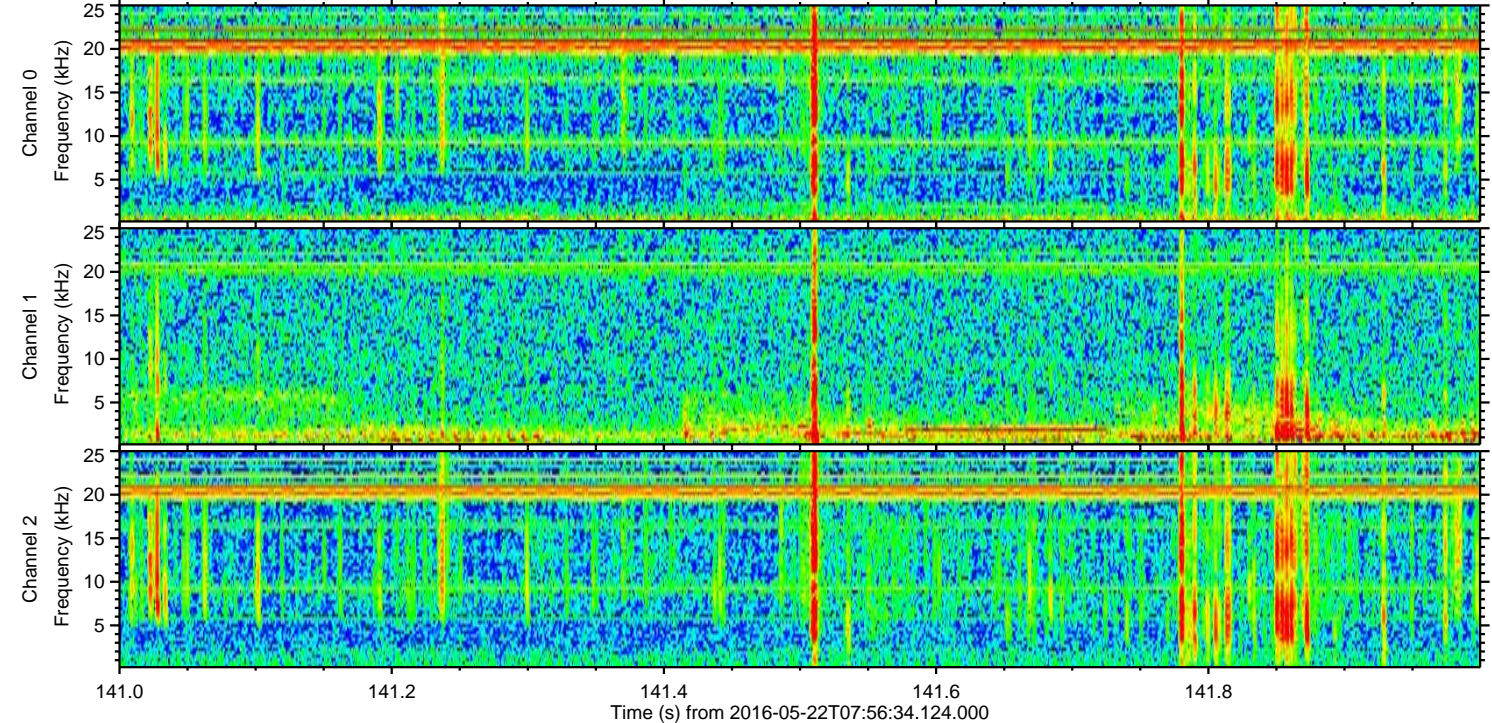
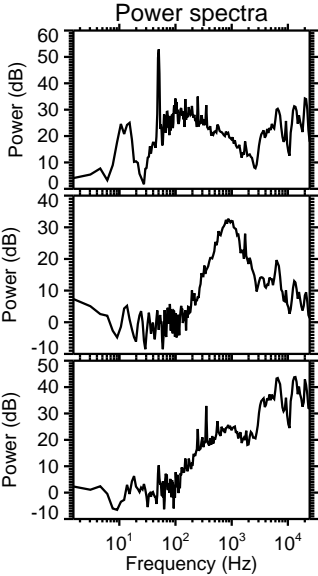
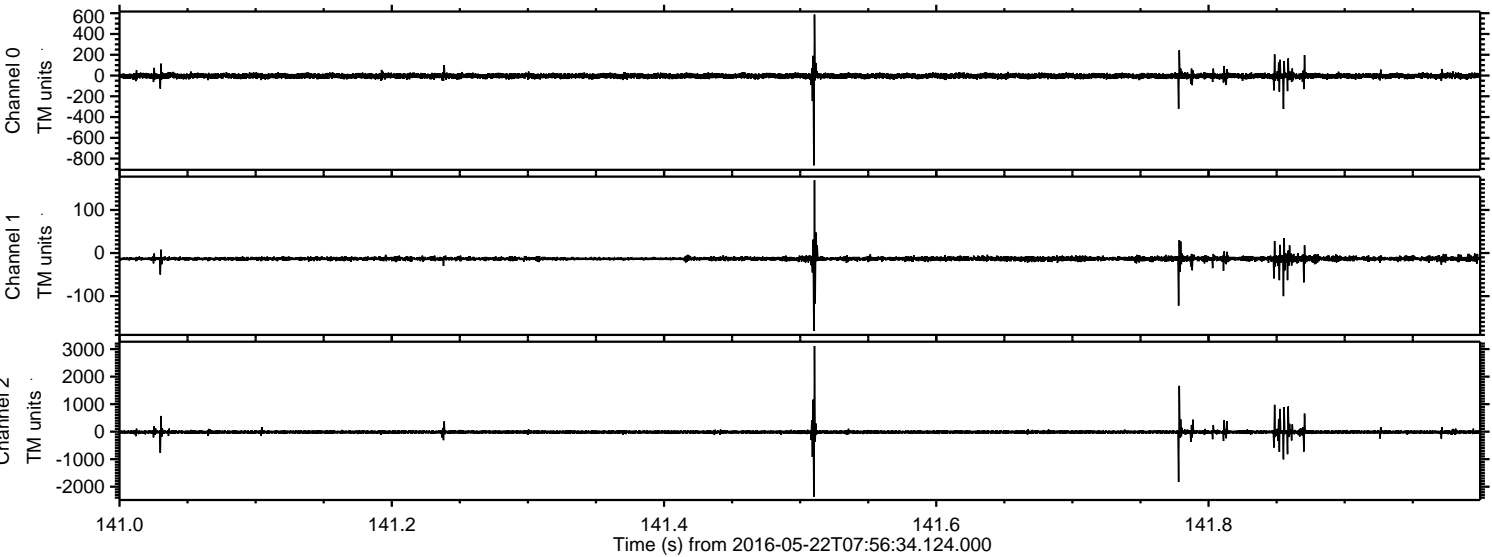
Channel 1  
mn: -351  
mx: 189  
 $\mu$ : -13.1  
 $\sigma$ : 7.6

Channel 2  
mn: -4069  
mx: 3253  
 $\mu$ : -14.4  
 $\sigma$ : 83.9



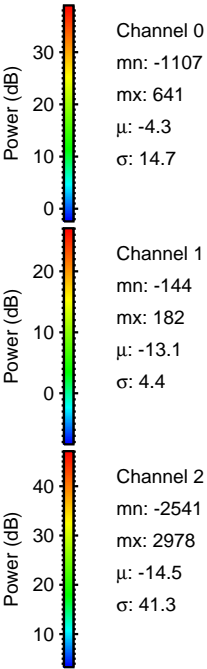
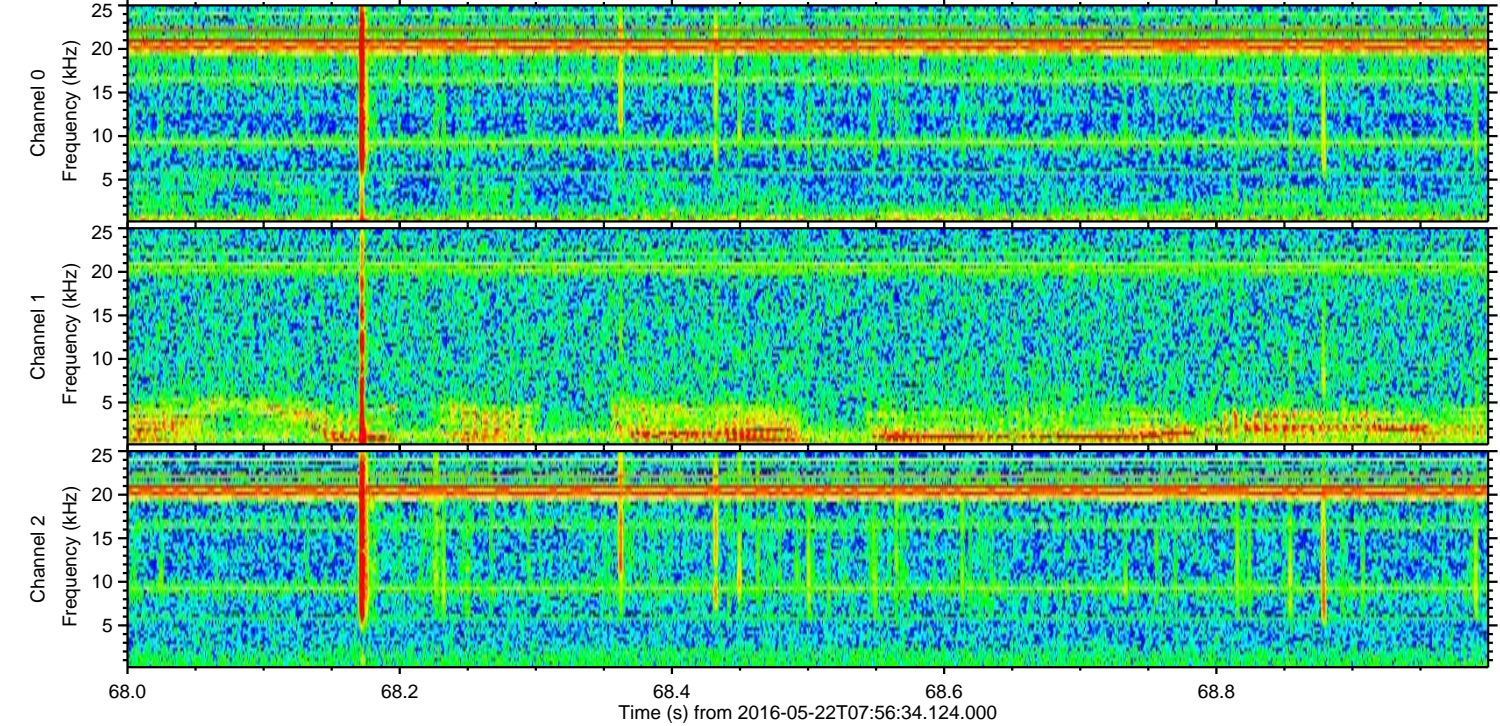
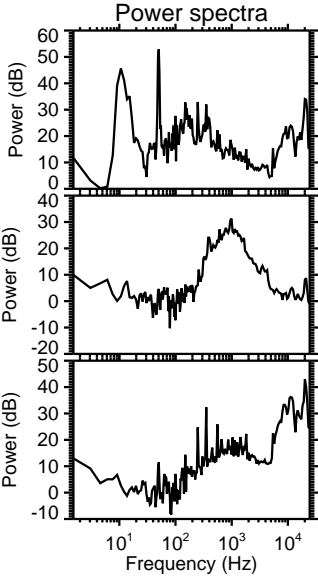
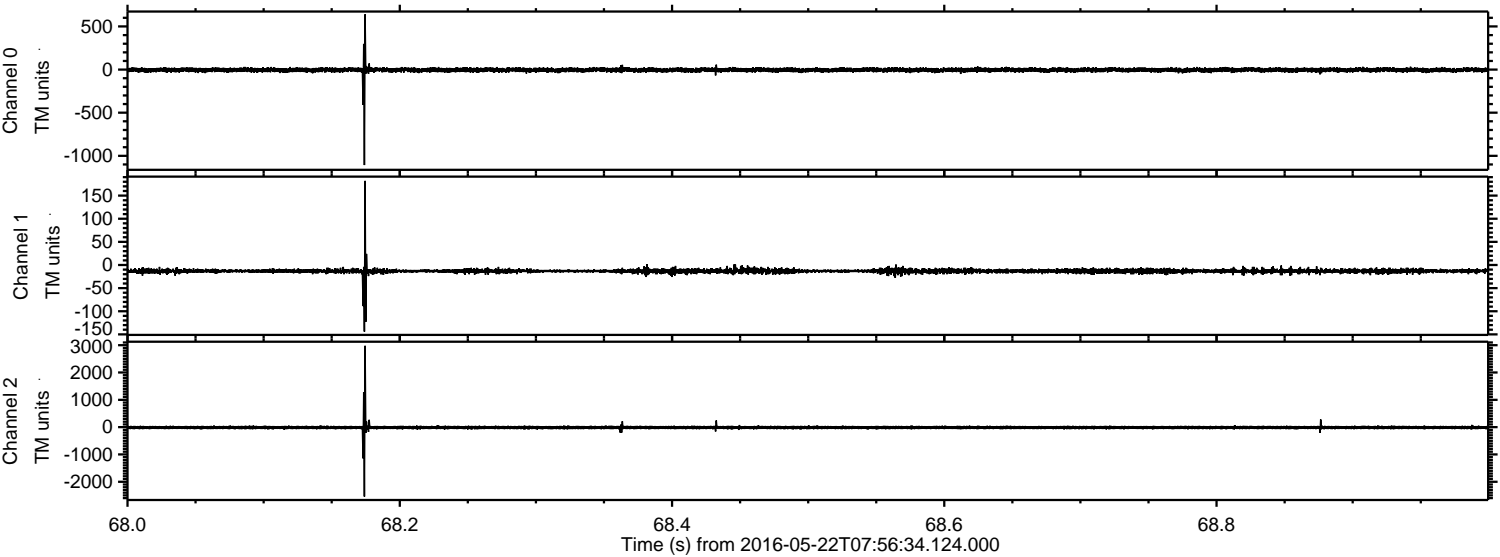
ELMAVAN 3D WAVEFORMS (Measured data sampled at 50 kHz) 51000 packets of 144 samples from 2016-05-22T07:56:34.124.000. Part 142/147

Processed Sun May 22 10:04:47 2016 by ELM ver.2012-10-06 from 001\_\_elm20160522\_075633\_\_dat00.bin





Processed Sun May 22 10:04:48 2016 by ELM ver.2012-10-06 from 001\_\_elm20160522\_075633\_\_dat00.bin



Channel 0  
mn: -1107  
mx: 641  
 $\mu$ : -4.3  
 $\sigma$ : 14.7

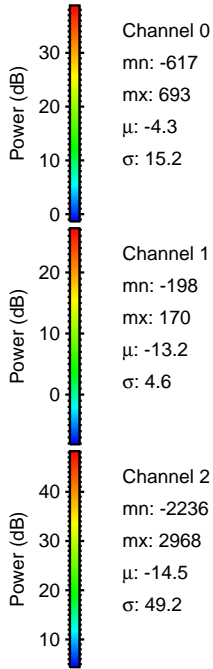
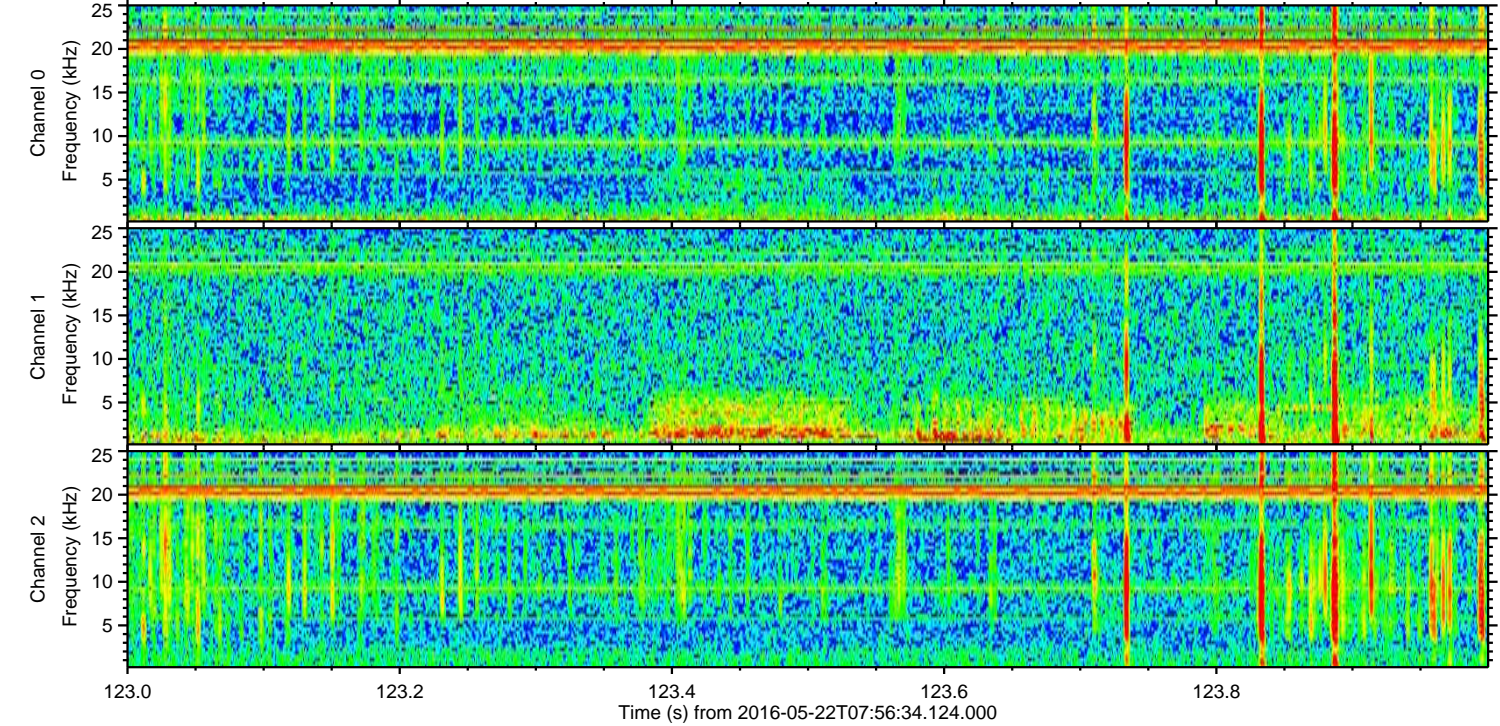
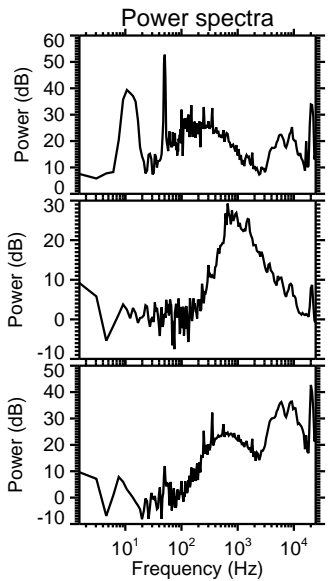
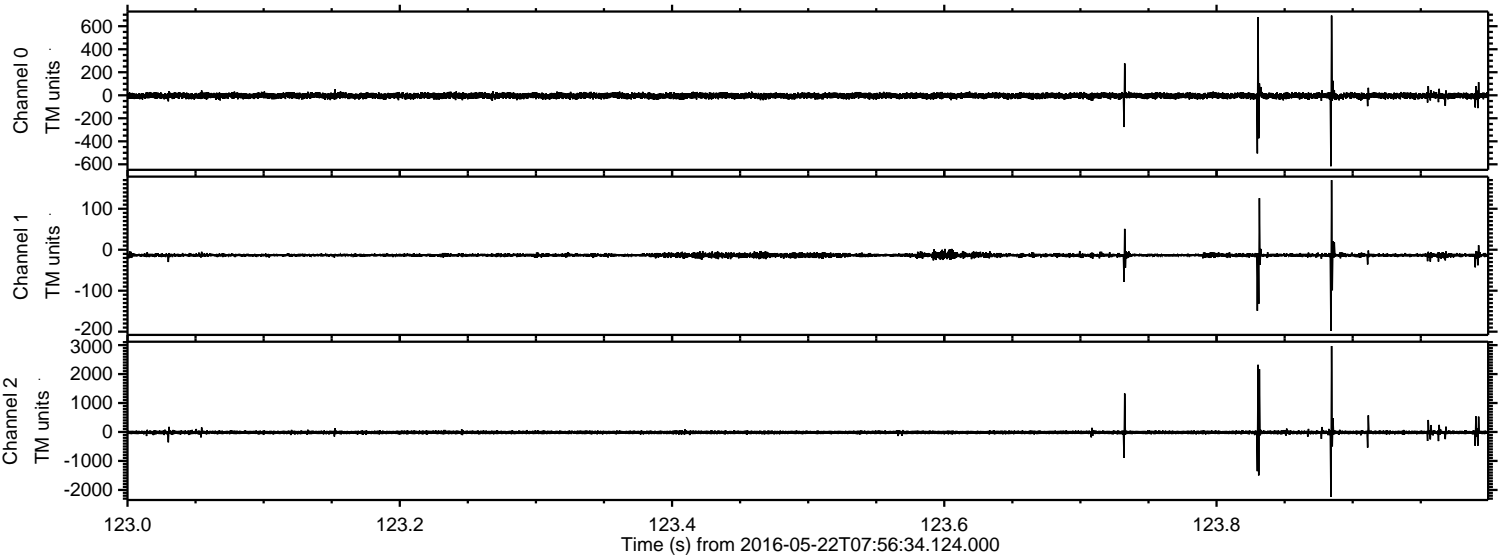
Channel 1  
mn: -144  
mx: 182  
 $\mu$ : -13.1  
 $\sigma$ : 4.4

Channel 2  
mn: -2541  
mx: 2978  
 $\mu$ : -14.5  
 $\sigma$ : 41.3



ELMAVAN 3D WAVEFORMS (Measured data sampled at 50 kHz) 51000 packets of 144 samples from 2016-05-22T07:56:34.124.000. Part 124/147

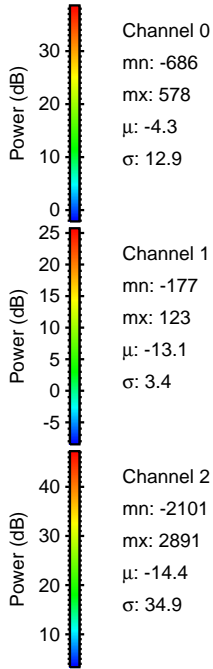
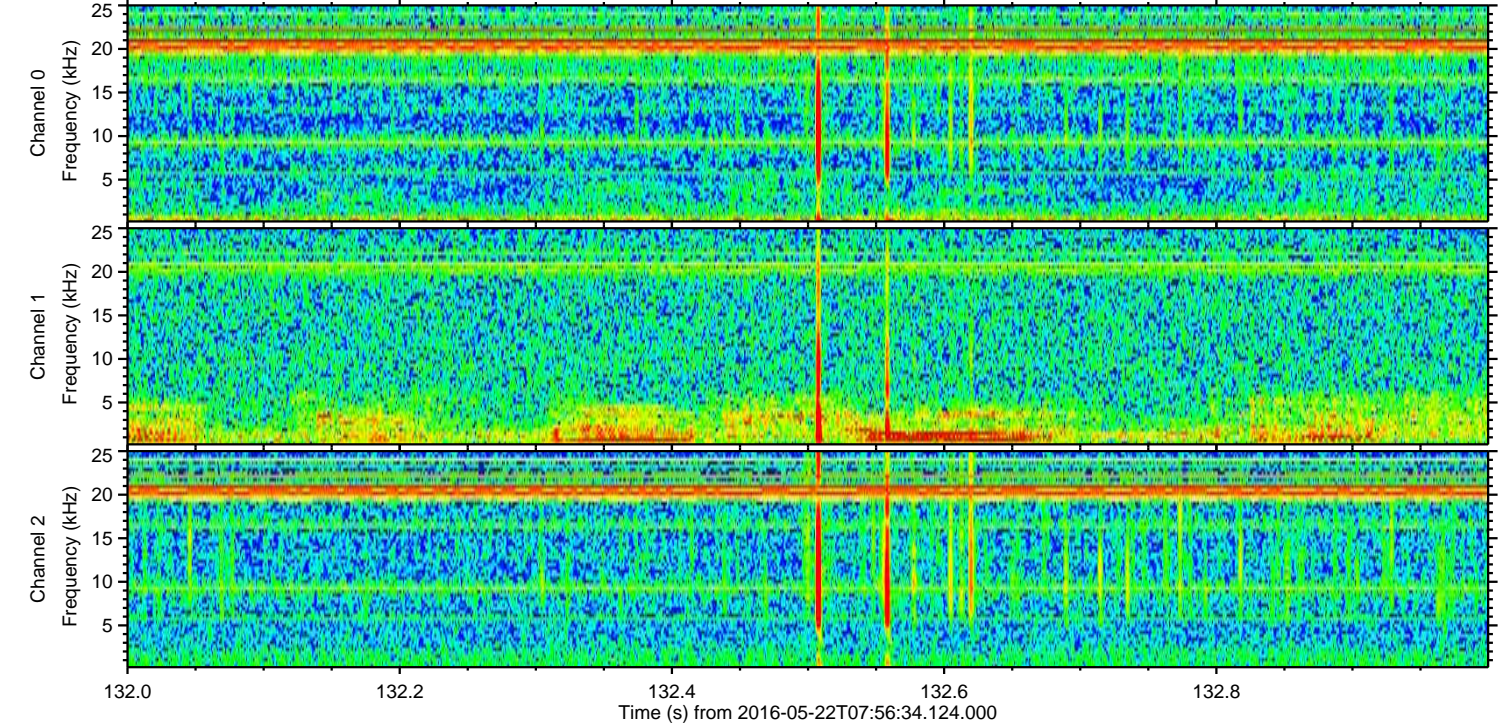
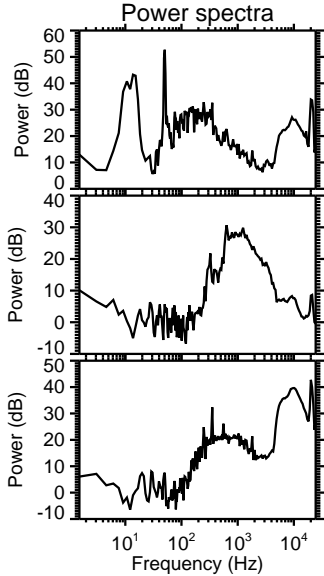
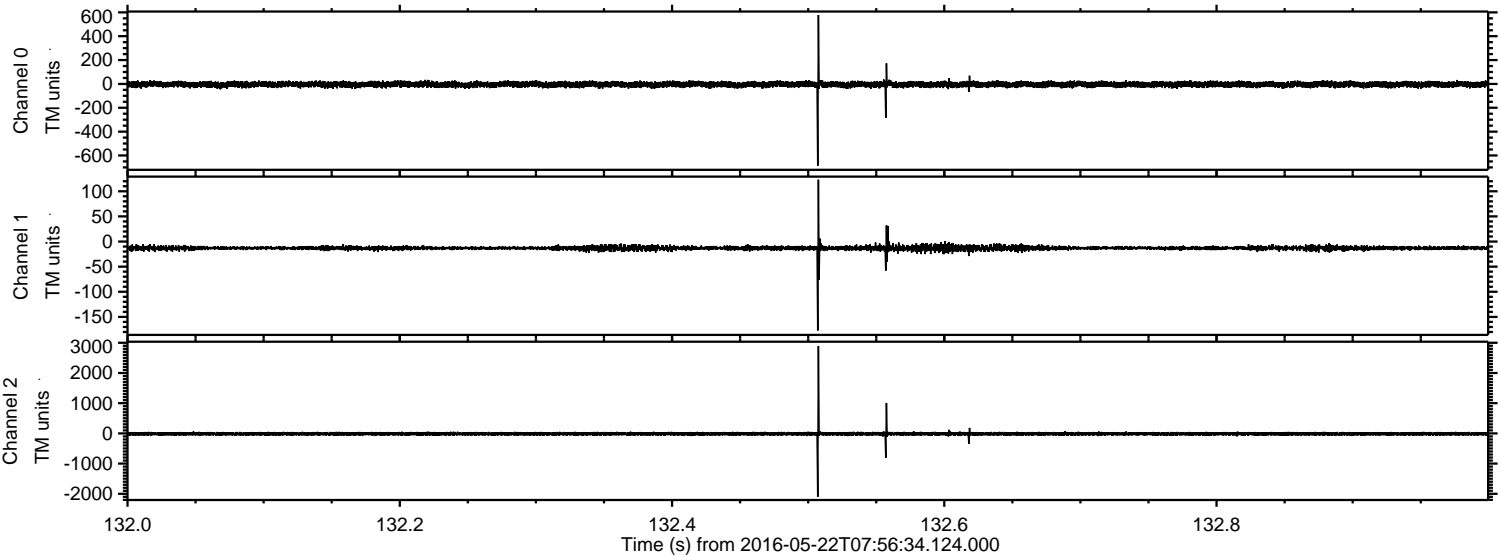
Processed Sun May 22 10:04:49 2016 by ELM ver.2012-10-06 from 001\_\_elm20160522\_075633\_\_dat00.bin





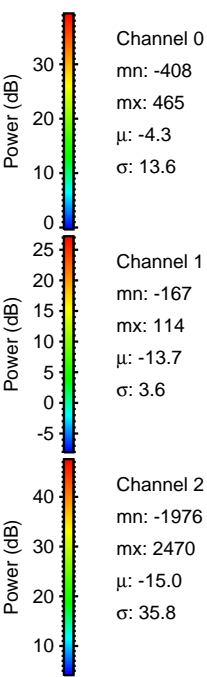
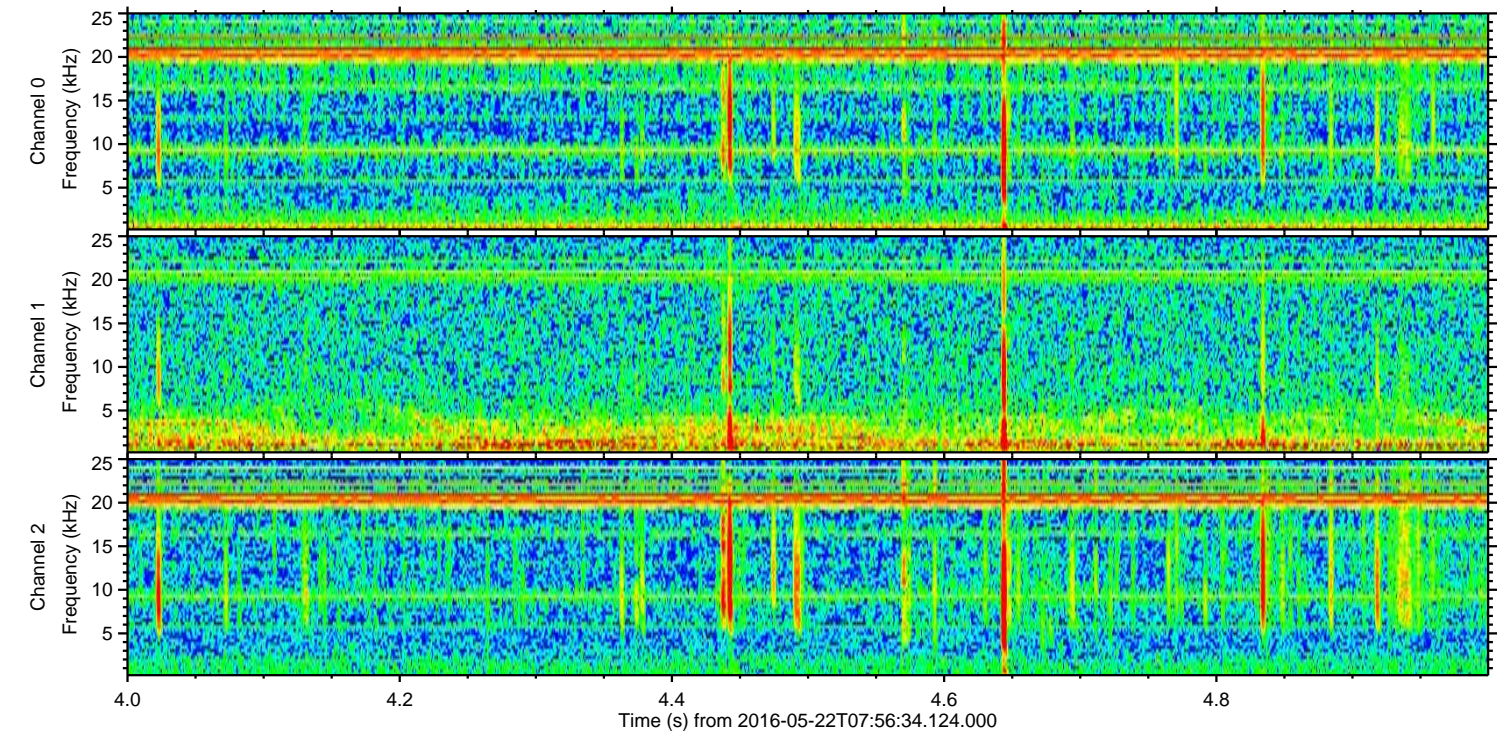
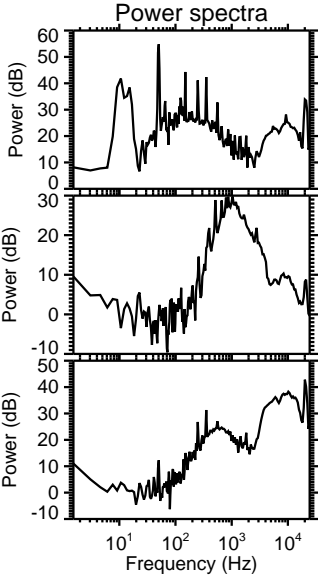
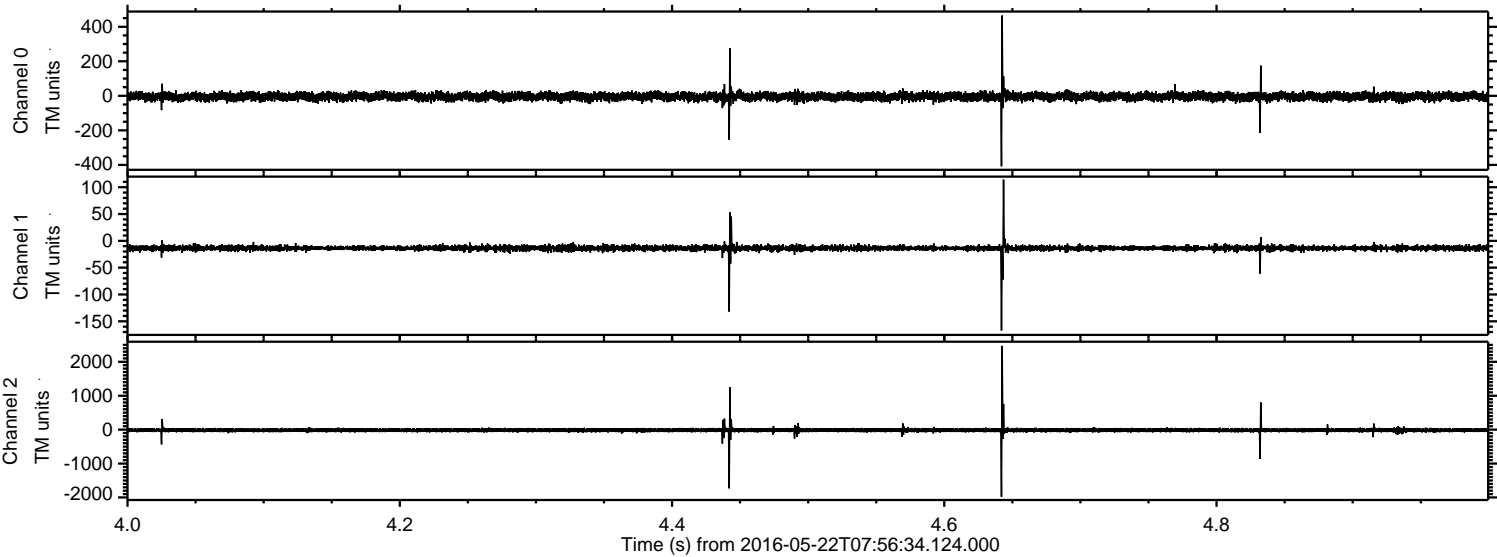
ELMAVAN 3D WAVEFORMS (Measured data sampled at 50 kHz) 51000 packets of 144 samples from 2016-05-22T07:56:34.124.000. Part 133/147

Processed Sun May 22 10:04:50 2016 by ELM ver.2012-10-06 from 001\_\_elm20160522\_075633\_\_dat00.bin





Processed Sun May 22 10:04:51 2016 by ELM ver.2012-10-06 from 001\_\_elm20160522\_075633\_\_dat00.bin





ELMAVAN 3D WAVEFORMS (Measured data sampled at 50 kHz) 51000 packets of 144 samples from 2016-05-22T07:56:34.124.000. Part 76/147

Processed Sun May 22 10:04:51 2016 by ELM ver.2012-10-06 from 001\_\_elm20160522\_075633\_\_dat00.bin

