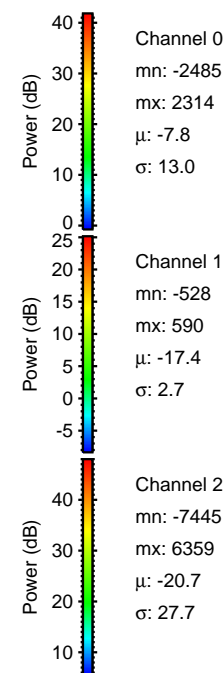
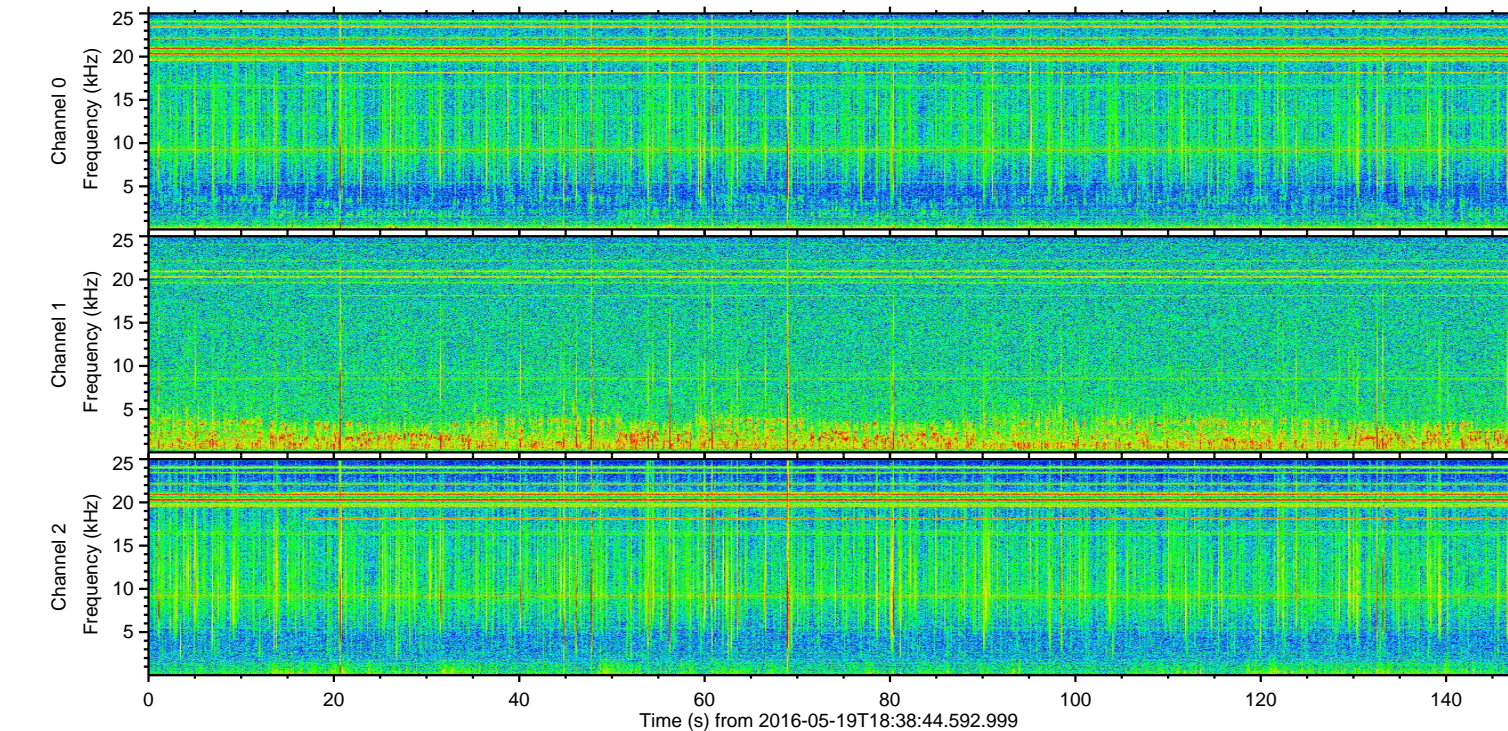
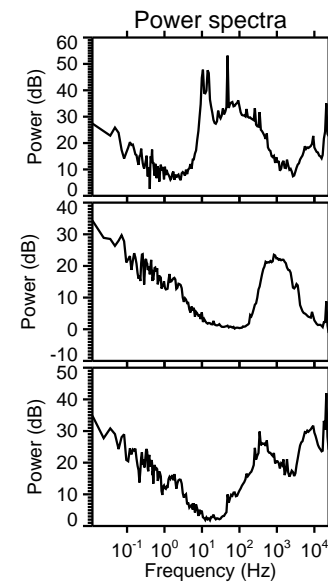
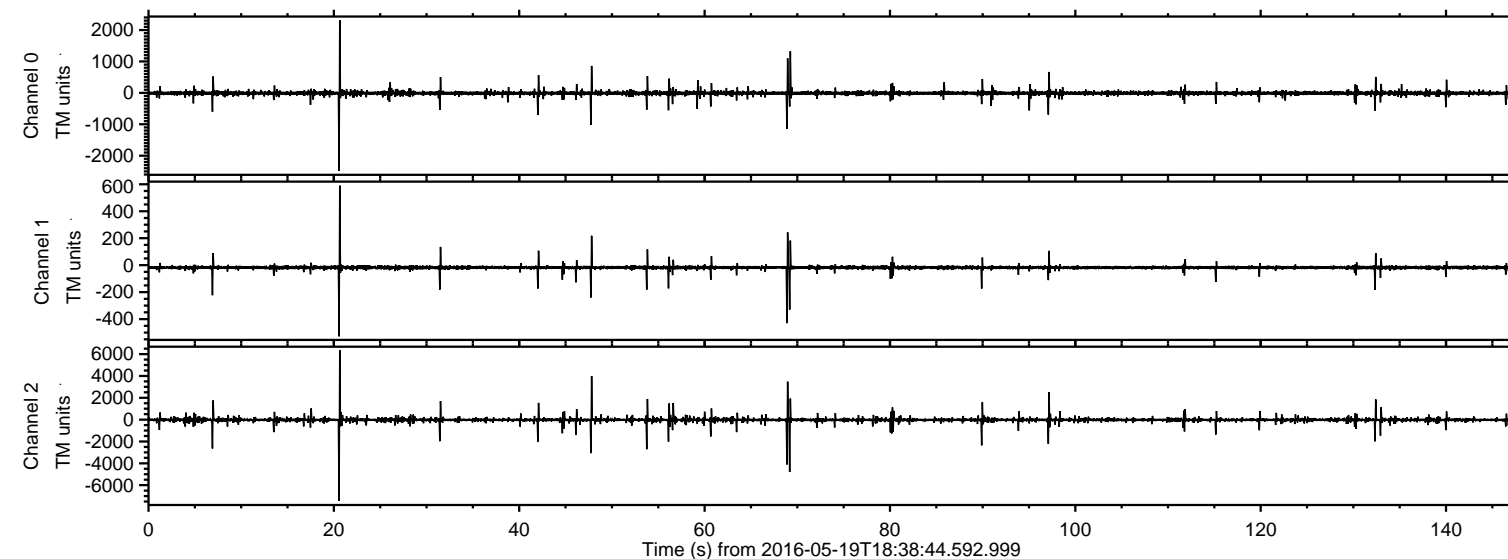


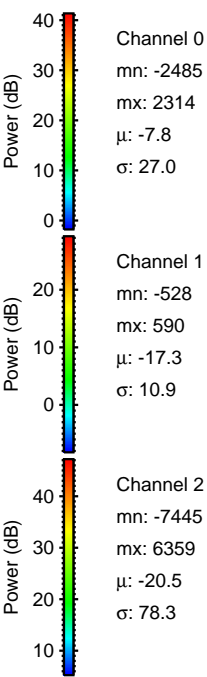
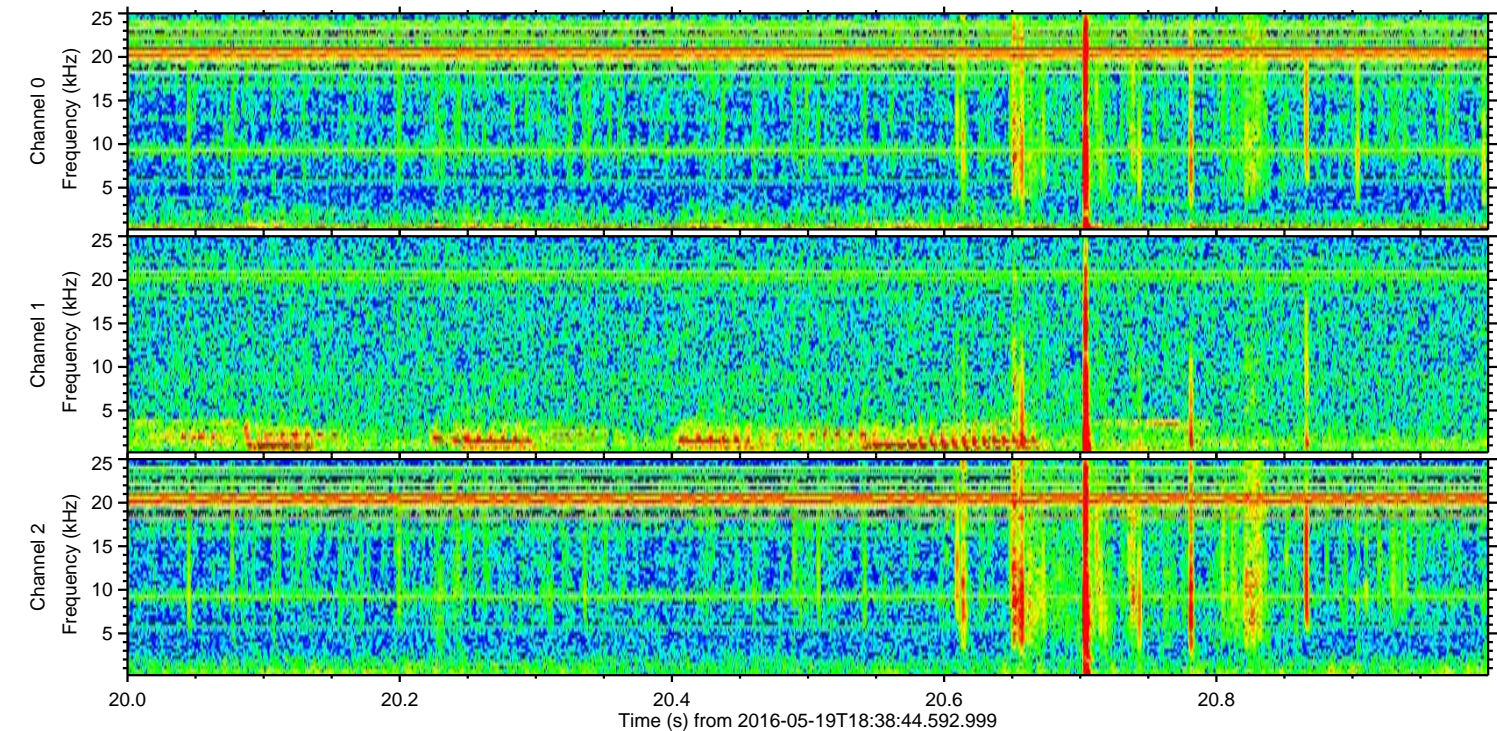
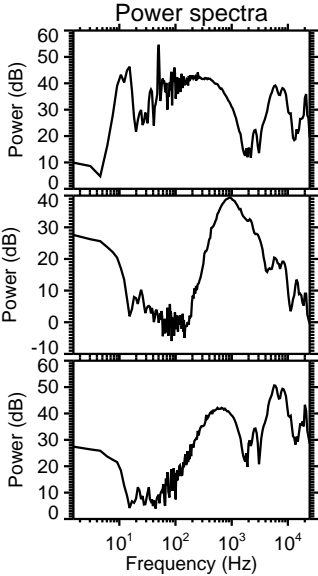
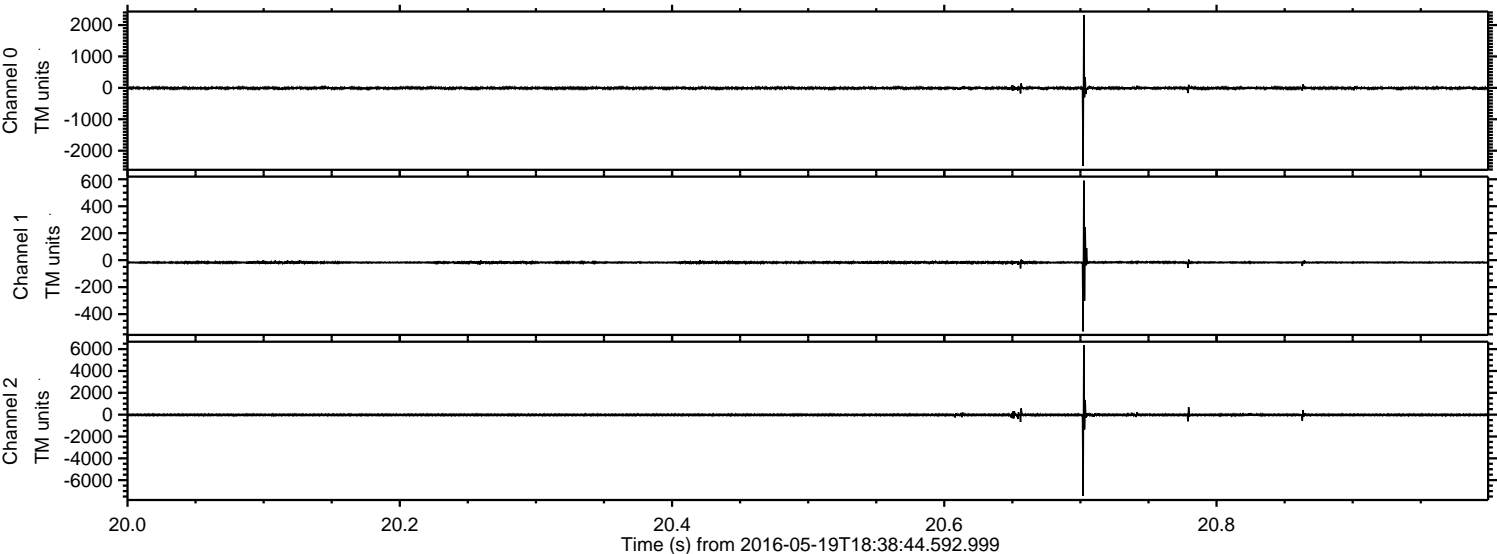
ELMAVAN 3D WAVEFORMS (Measured data sampled at 50 kHz) 51000 packets of 144 samples from 2016-05-19T18:38:44.592.999.

Processed Thu May 19 20:47:42 2016 by ELM ver.2012-10-06 from 001__elm20160519_183843__dat00.bin

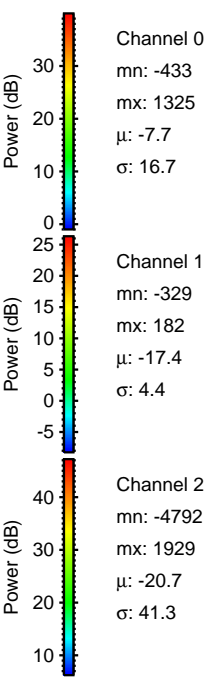
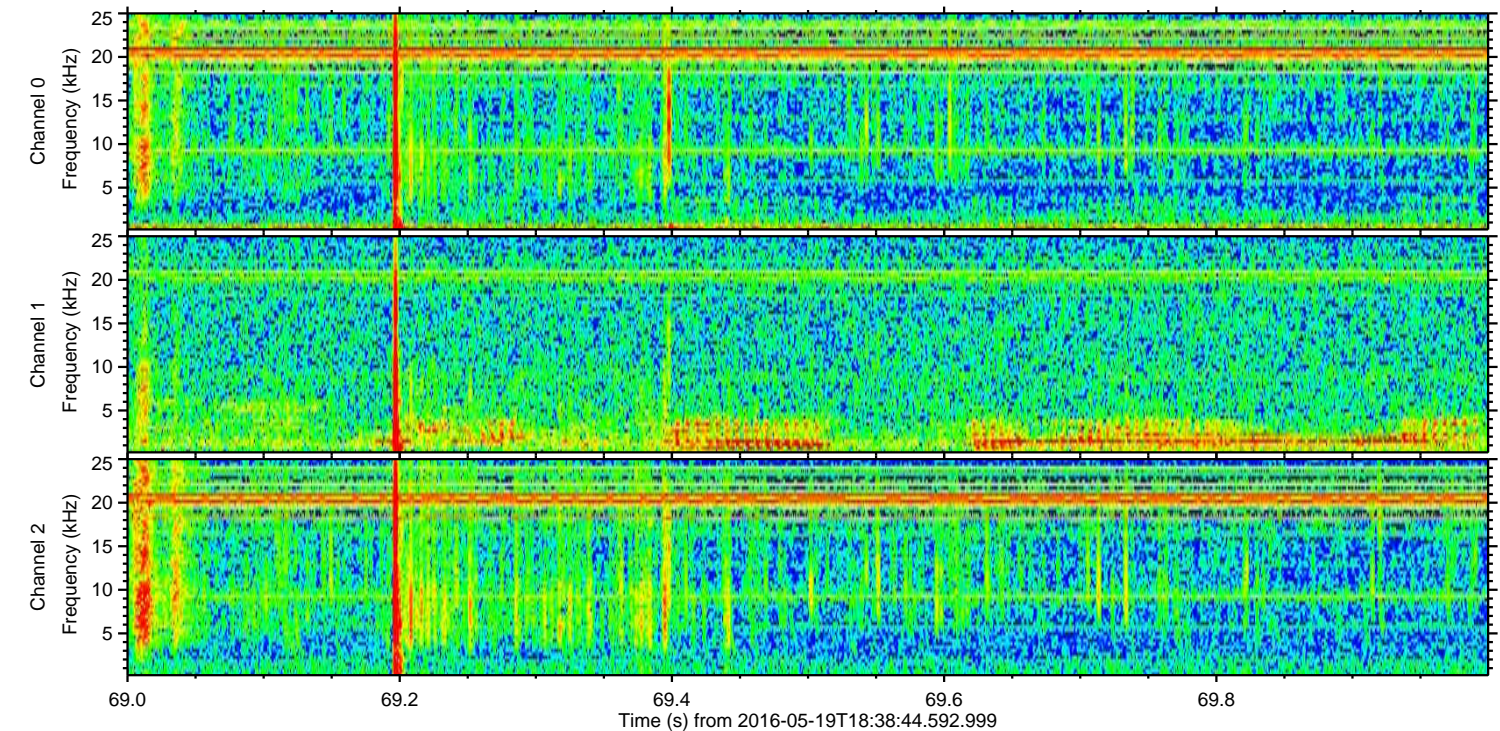
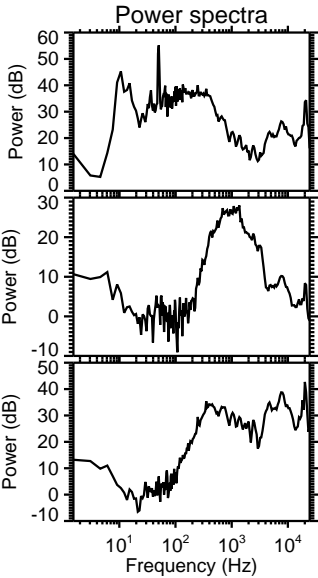
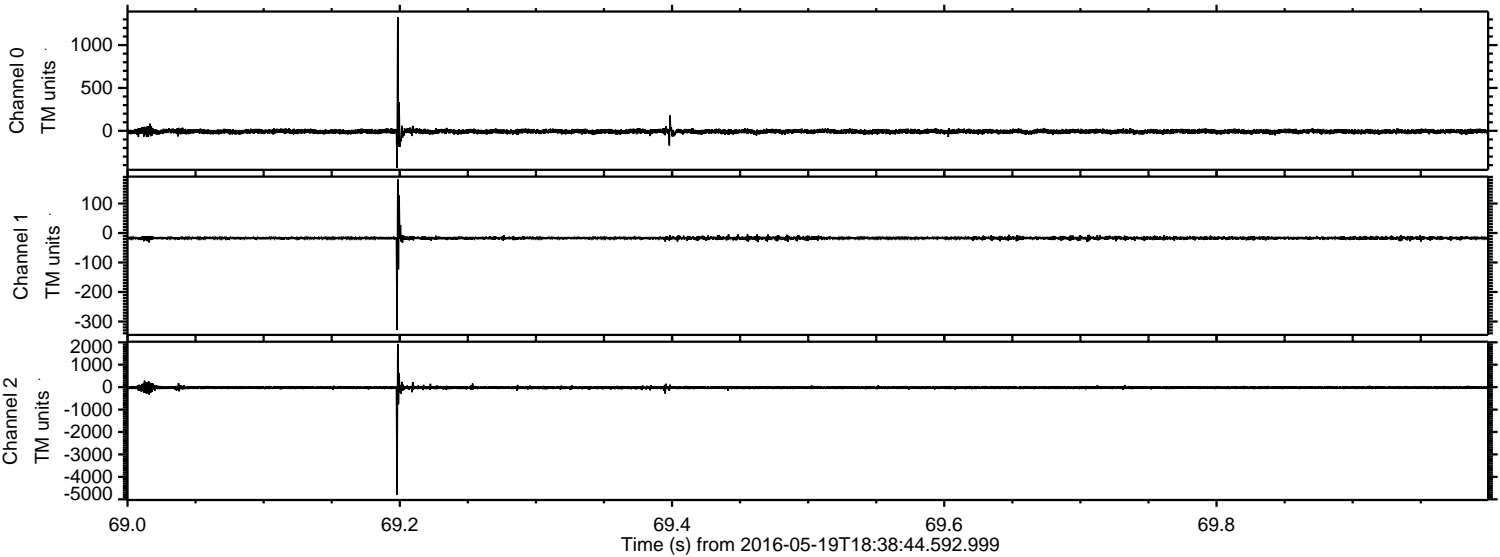


ELMAVAN 3D WAVEFORMS (Measured data sampled at 50 kHz) 51000 packets of 144 samples from 2016-05-19T18:38:44.592.999. Part 21/147

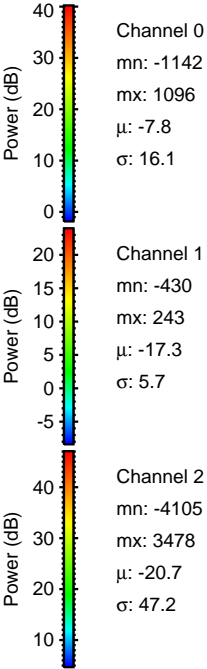
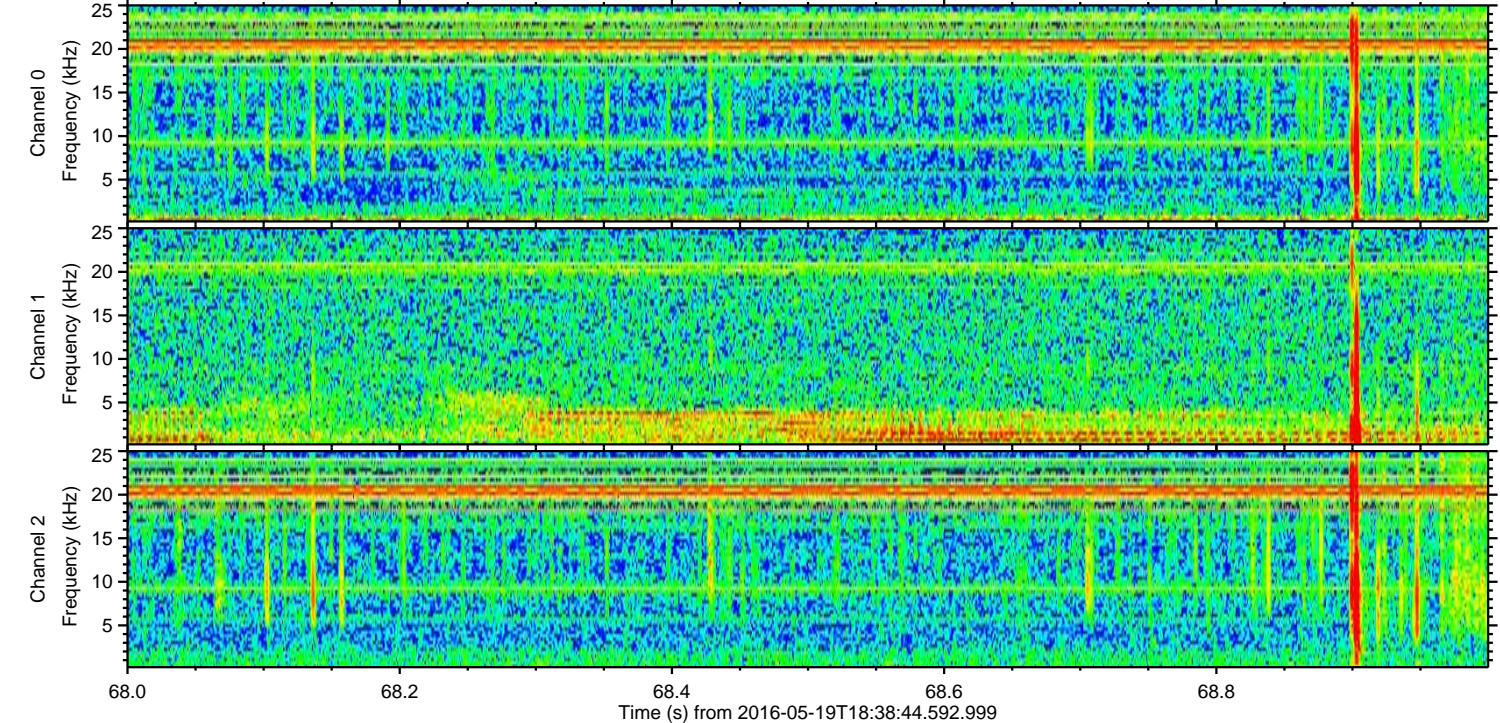
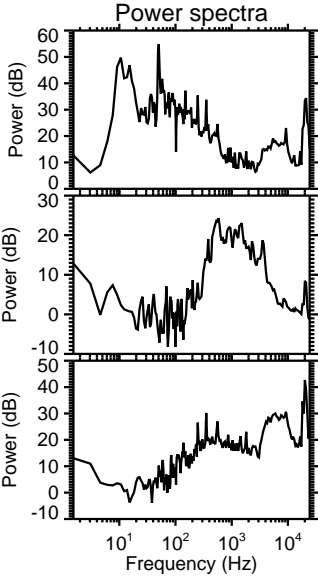
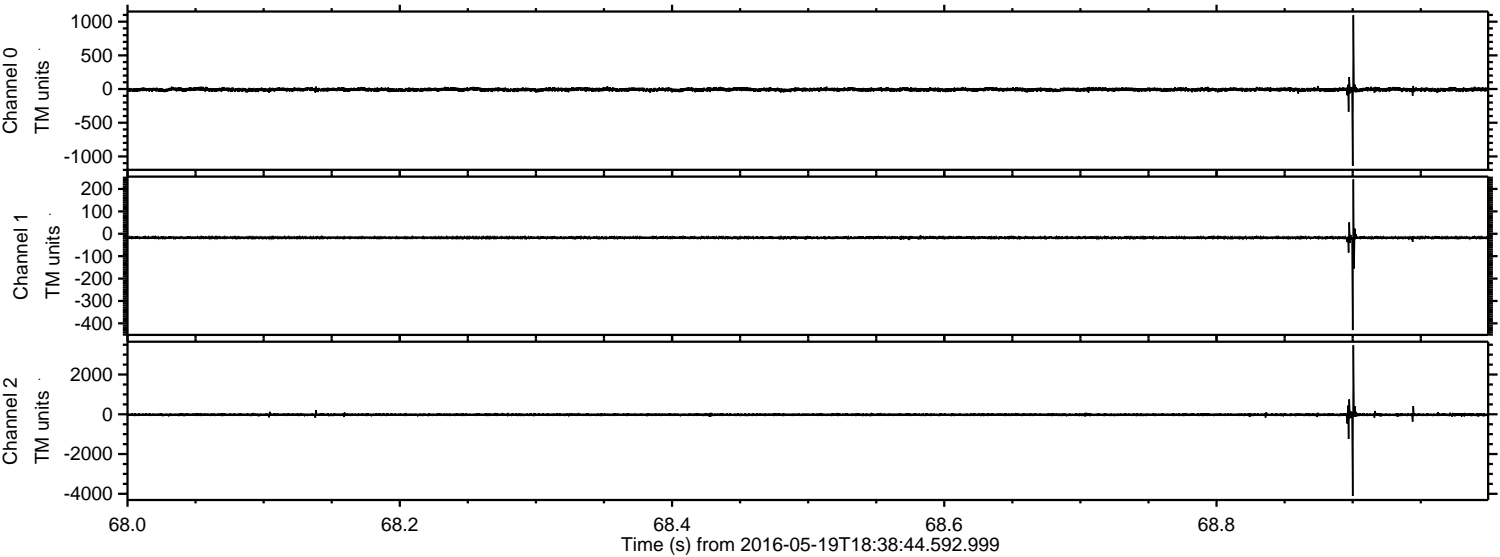
Processed Thu May 19 20:47:53 2016 by ELM ver.2012-10-06 from 001__elm20160519_183843__dat00.bin



Processed Thu May 19 20:47:54 2016 by ELM ver.2012-10-06 from 001__elm20160519_183843__dat00.bin

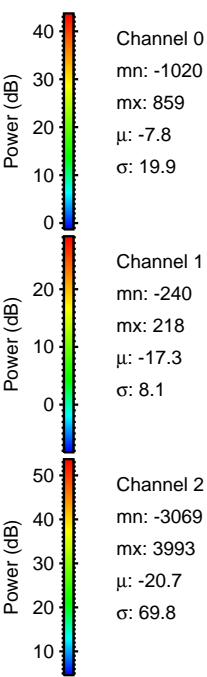
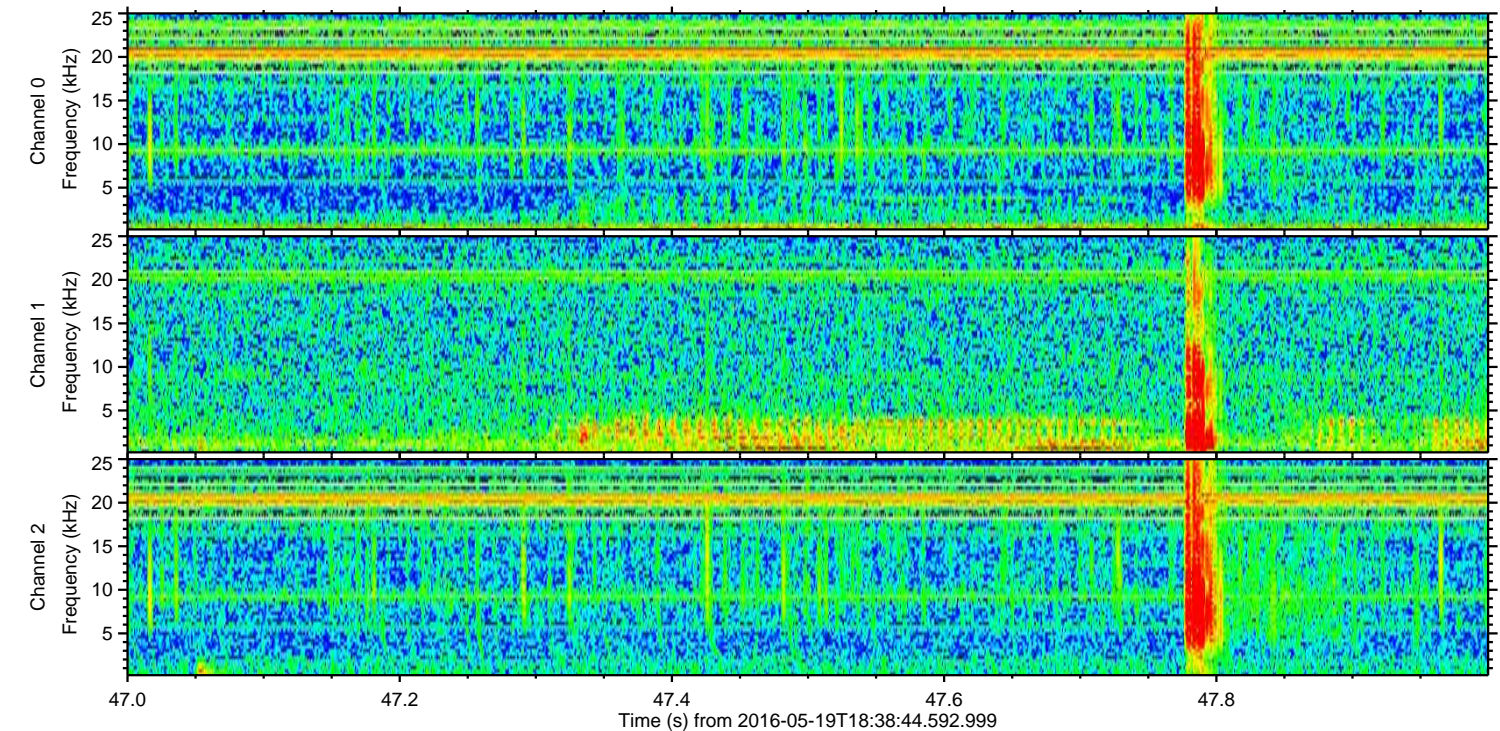
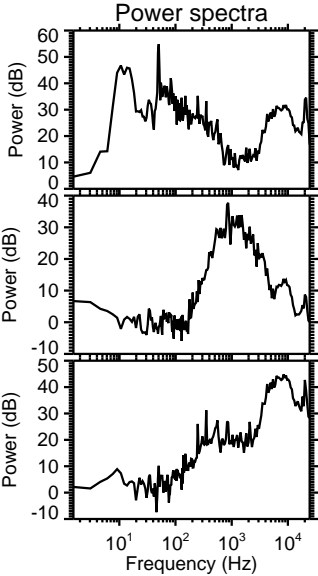
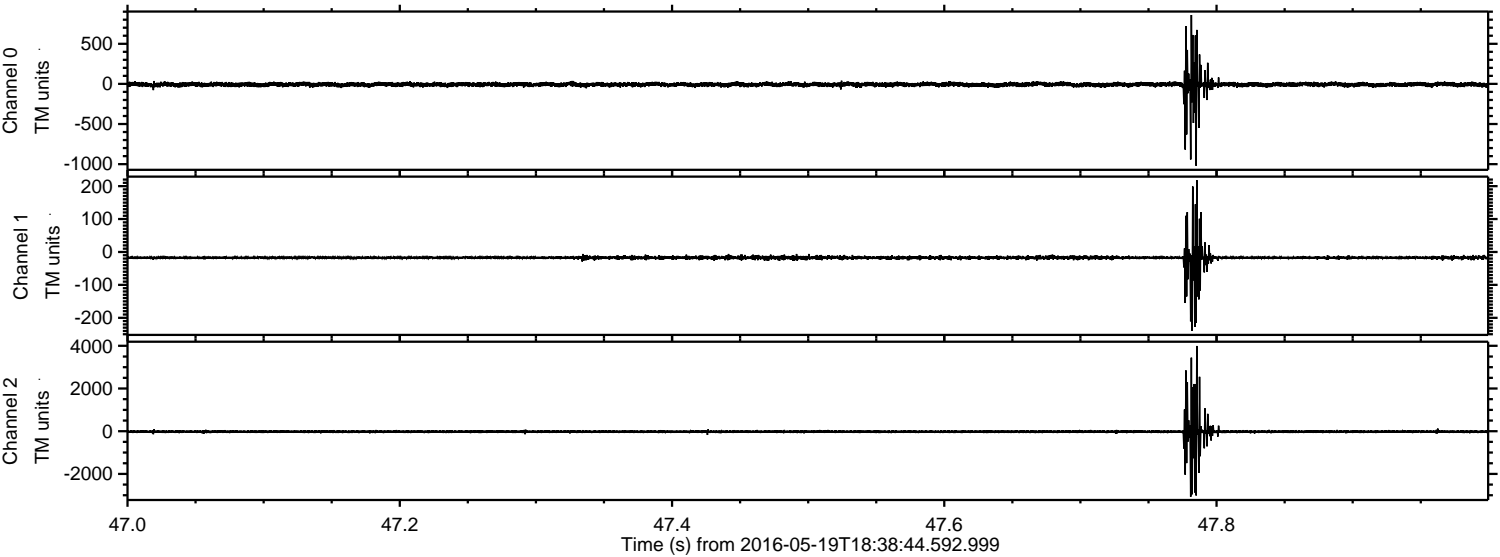


Processed Thu May 19 20:47:55 2016 by ELM ver.2012-10-06 from 001__elm20160519_183843__dat00.bin

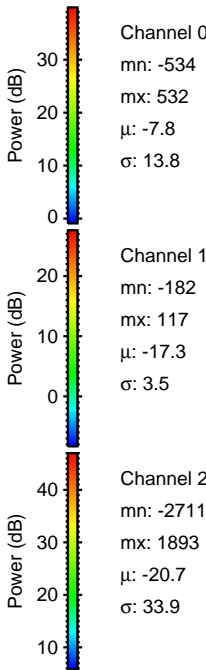
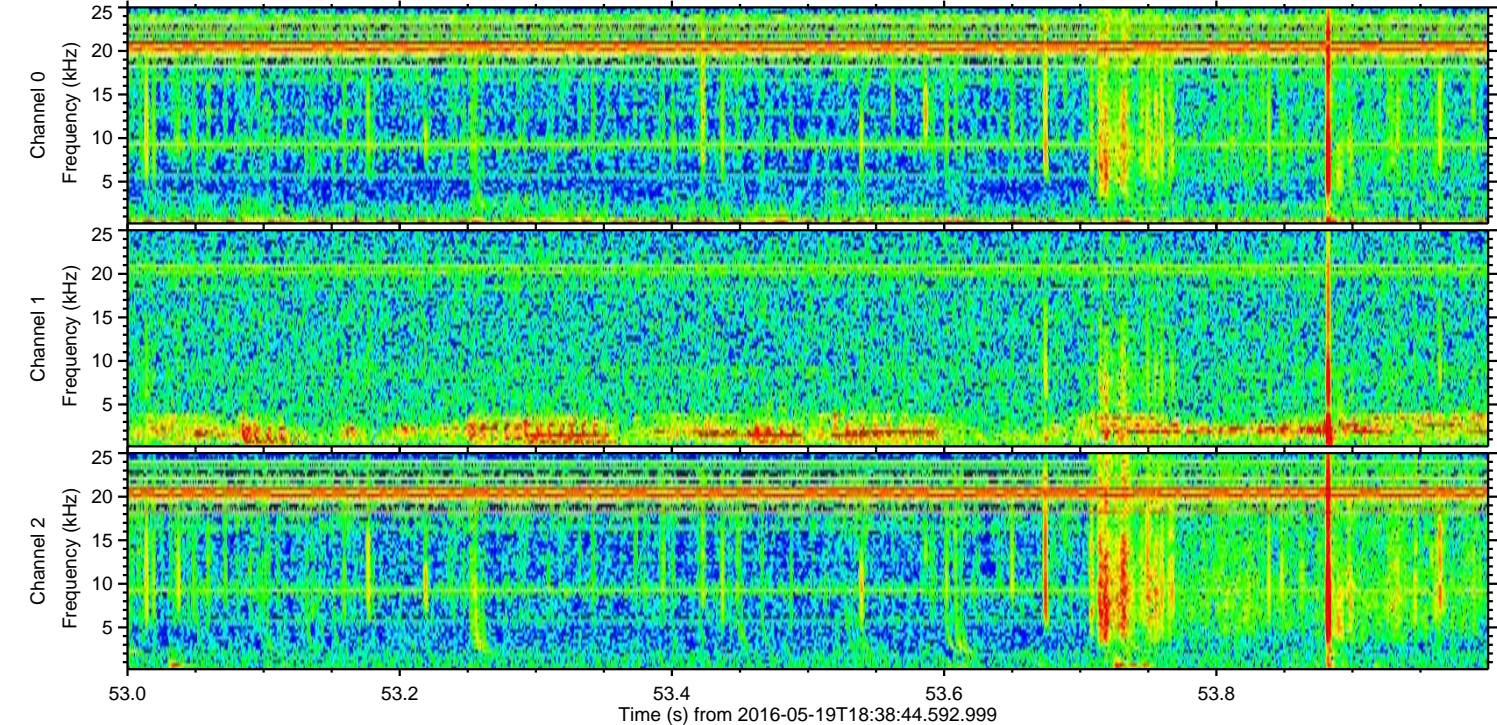
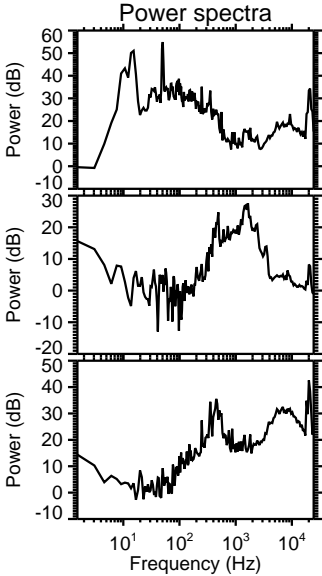
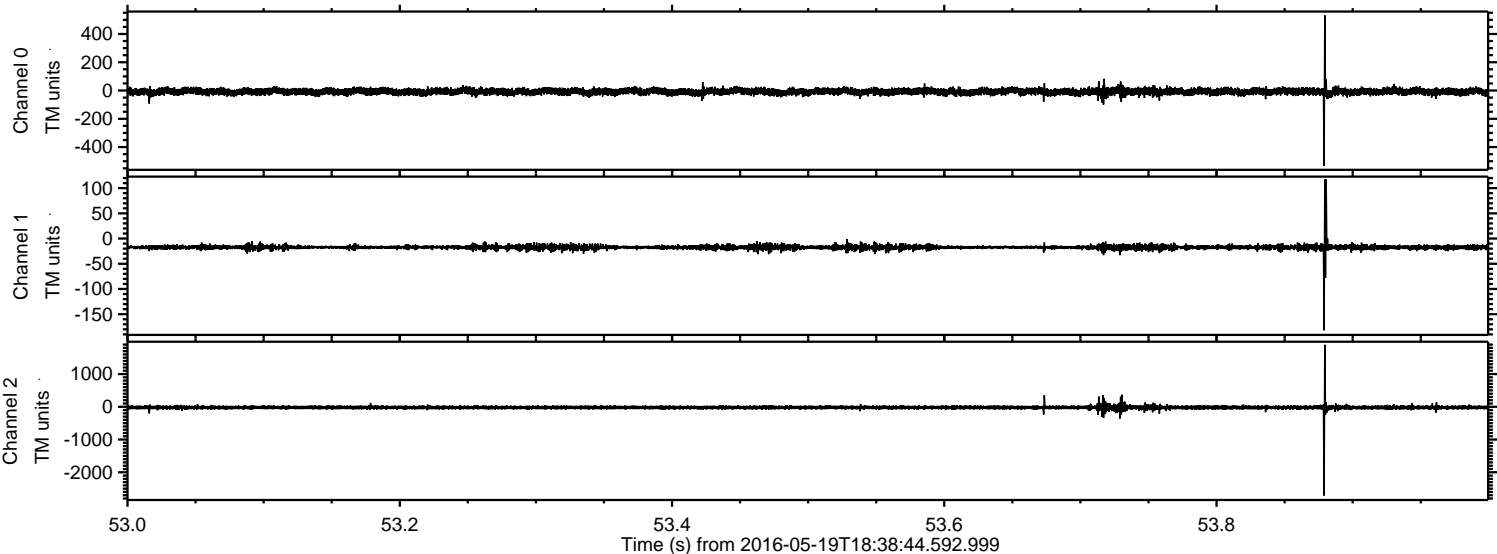


ELMAVAN 3D WAVEFORMS (Measured data sampled at 50 kHz) 51000 packets of 144 samples from 2016-05-19T18:38:44.592.999. Part 48/147

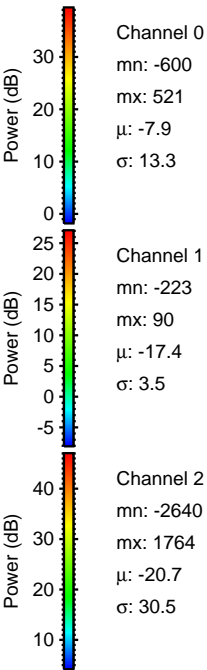
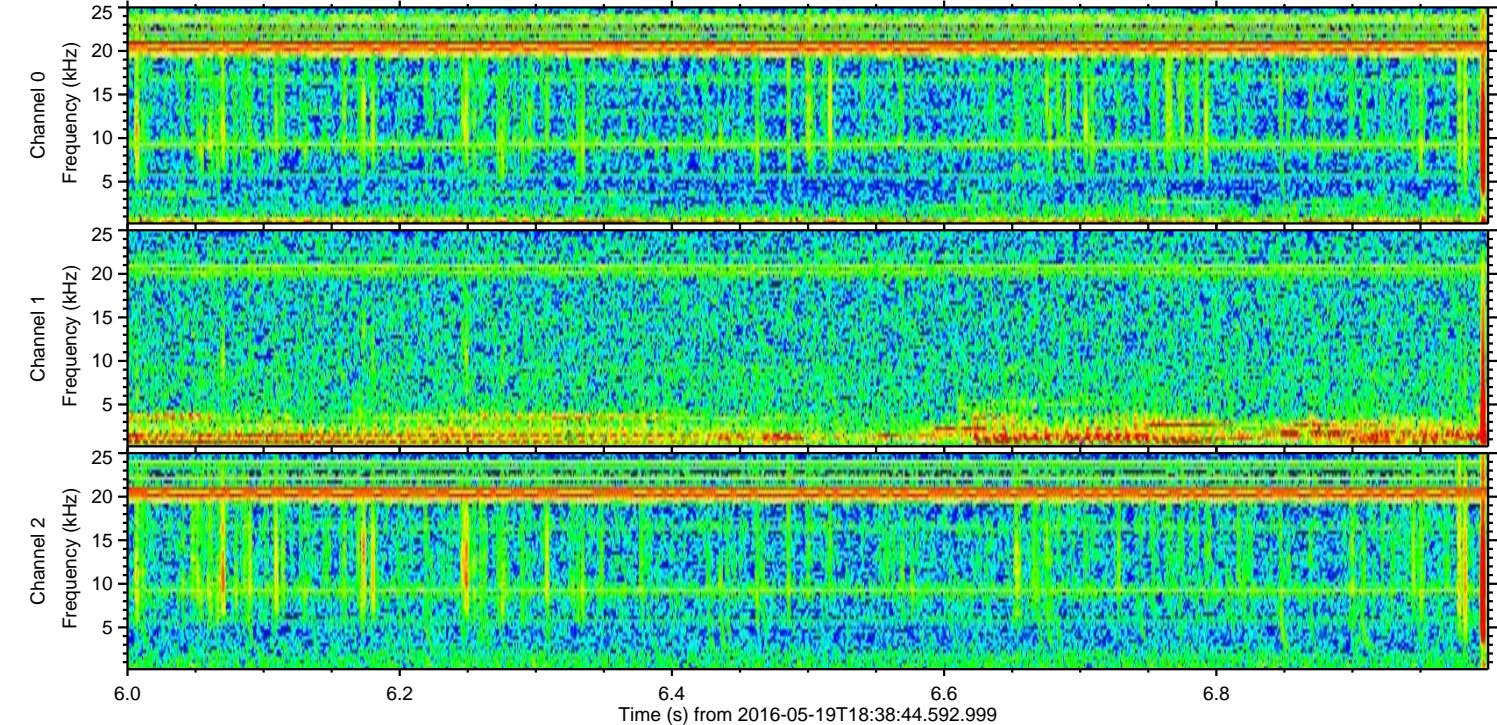
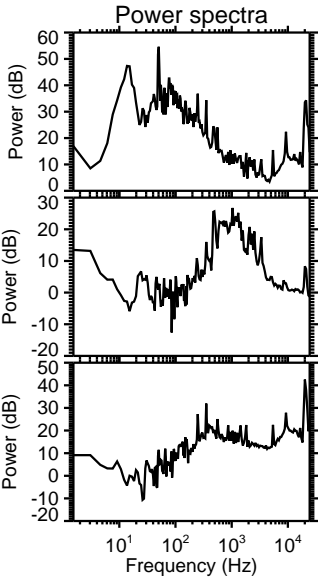
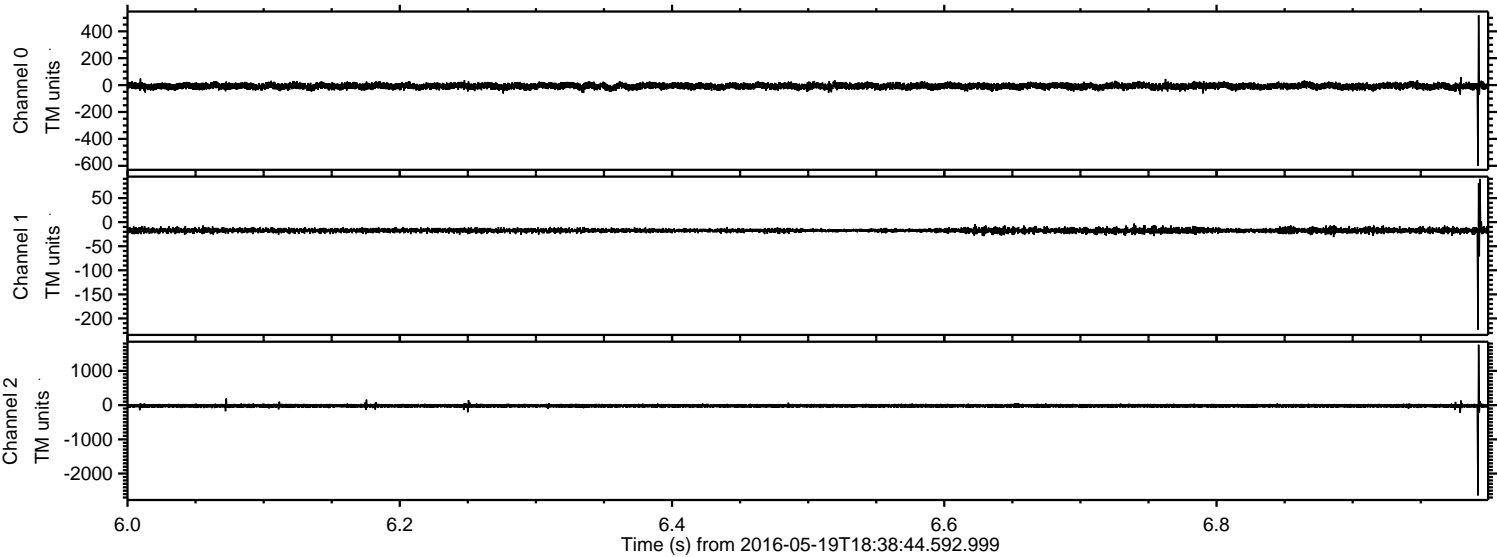
Processed Thu May 19 20:47:56 2016 by ELM ver.2012-10-06 from 001__elm20160519_183843__dat00.bin



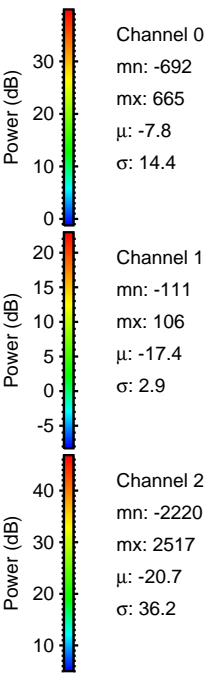
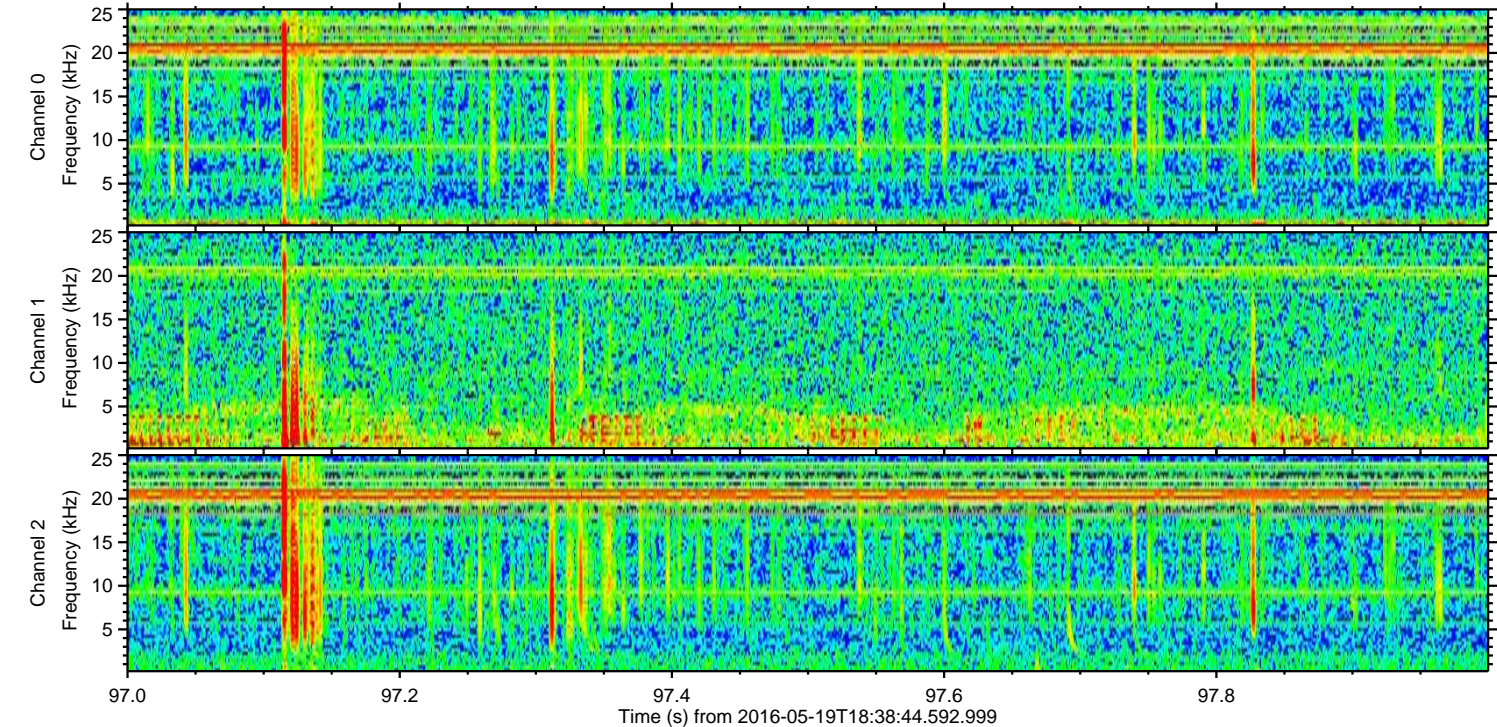
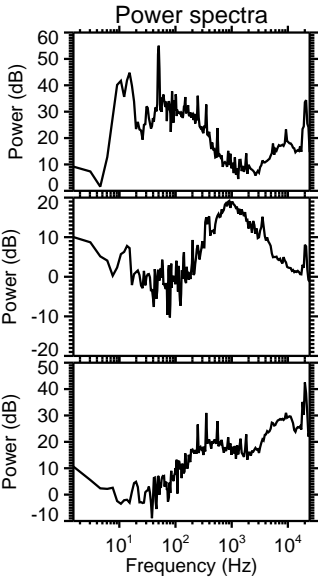
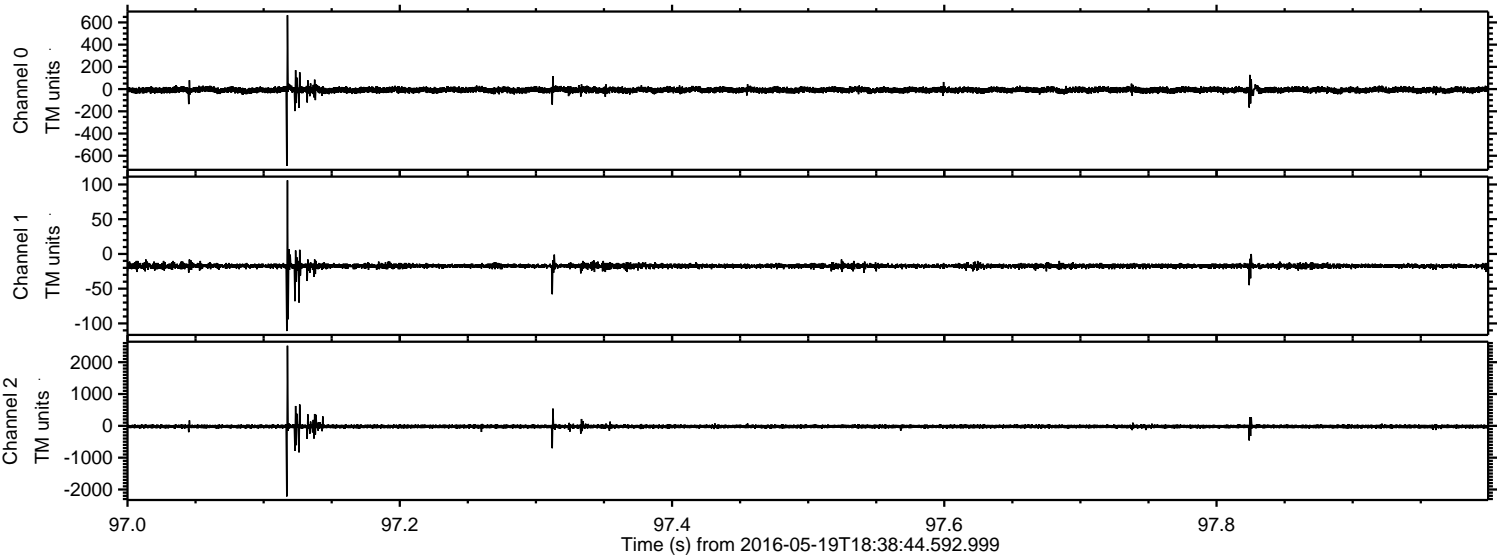
Processed Thu May 19 20:47:57 2016 by ELM ver.2012-10-06 from 001__elm20160519_183843__dat00.bin



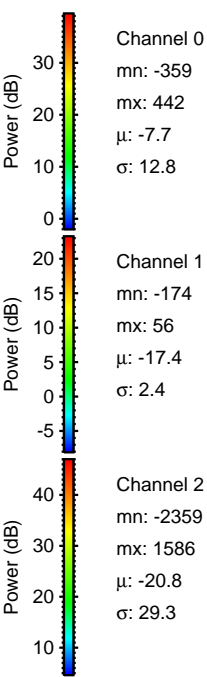
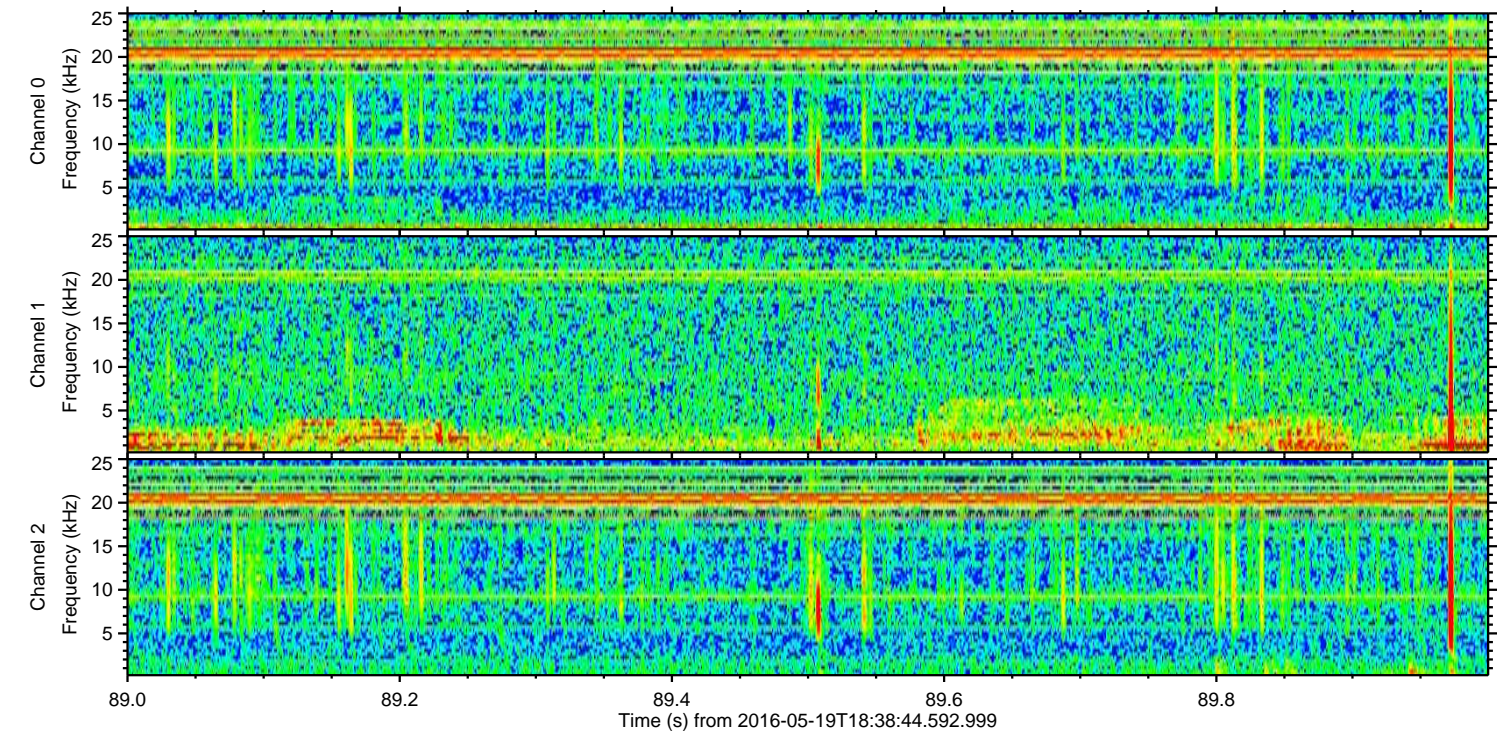
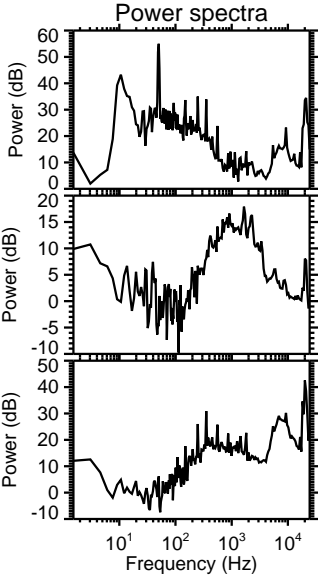
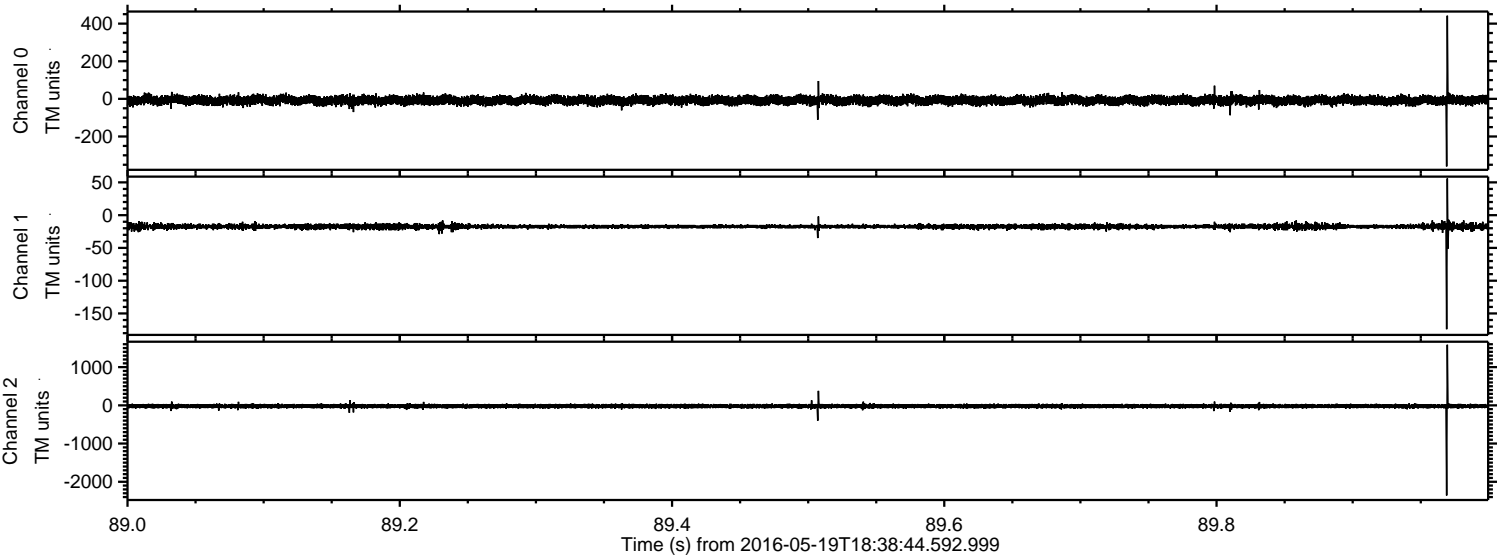
Processed Thu May 19 20:47:58 2016 by ELM ver.2012-10-06 from 001__elm20160519_183843__dat00.bin



Processed Thu May 19 20:47:59 2016 by ELM ver.2012-10-06 from 001__elm20160519_183843__dat00.bin



Processed Thu May 19 20:48:00 2016 by ELM ver.2012-10-06 from 001__elm20160519_183843__dat00.bin

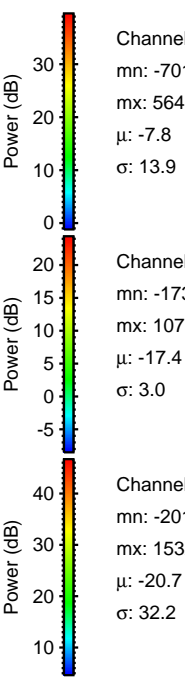
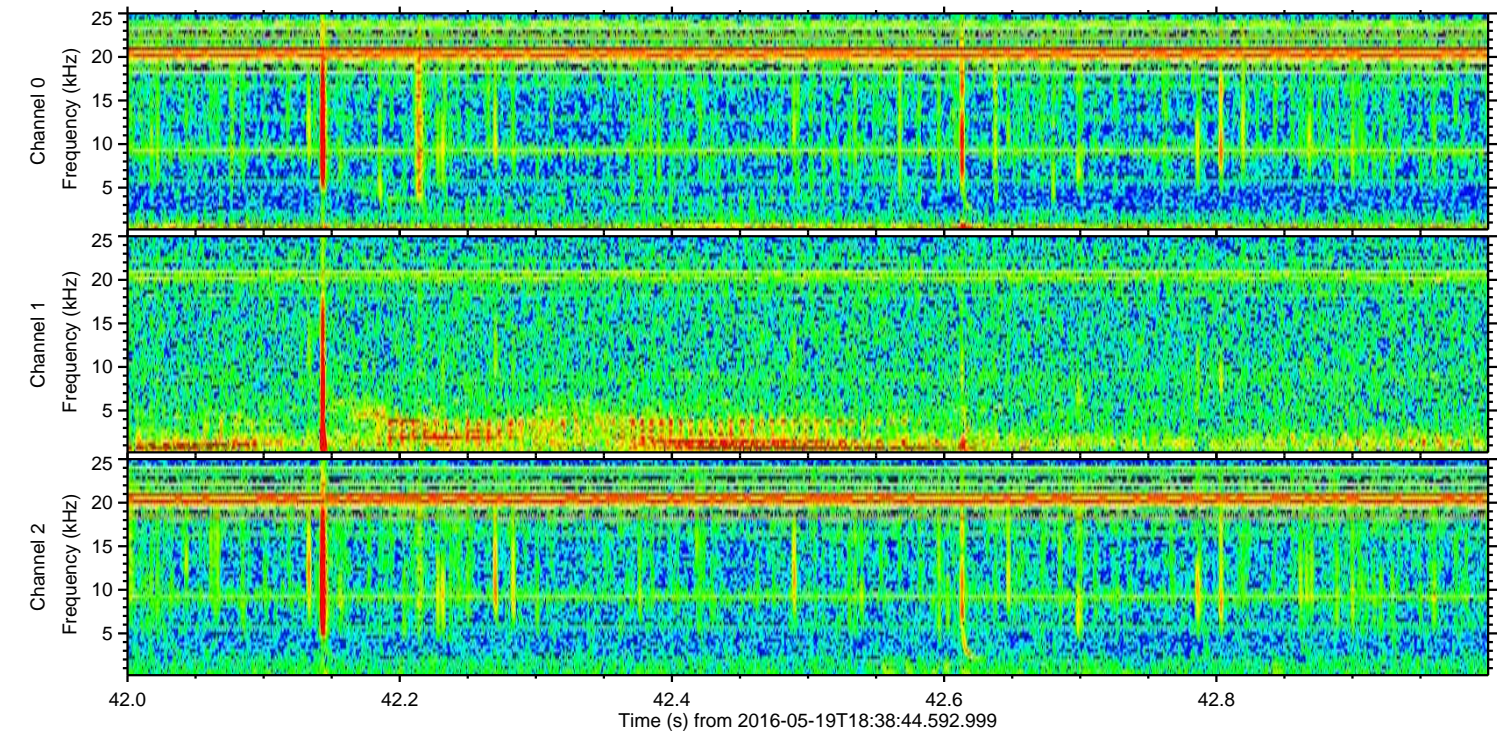
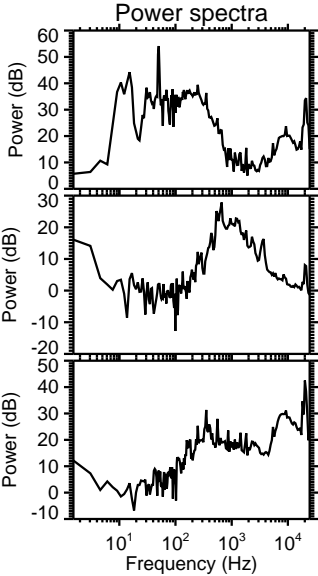
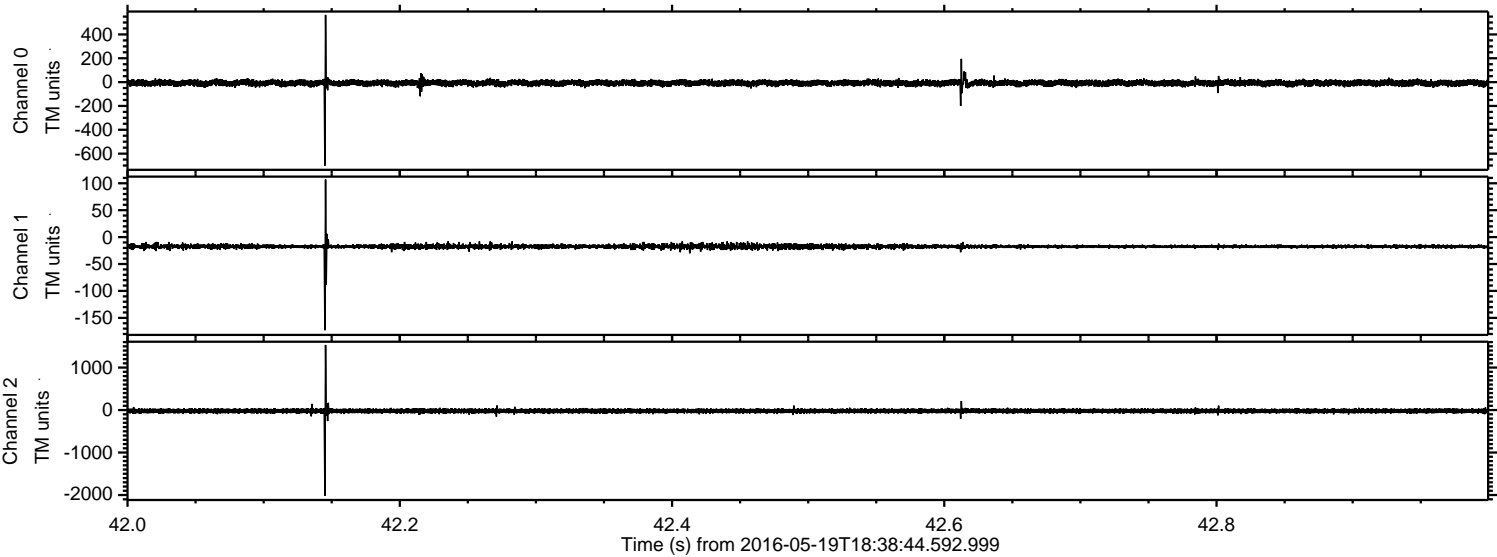


Channel 0
mn: -359
mx: 442
 μ : -7.7
 σ : 12.8

Channel 1
mn: -174
mx: 56
 μ : -17.4
 σ : 2.4

Channel 2
mn: -2359
mx: 1586
 μ : -20.8
 σ : 29.3

Processed Thu May 19 20:48:01 2016 by ELM ver.2012-10-06 from 001__elm20160519_183843__dat00.bin



Processed Thu May 19 20:48:02 2016 by ELM ver.2012-10-06 from 001__elm20160519_183843__dat00.bin

