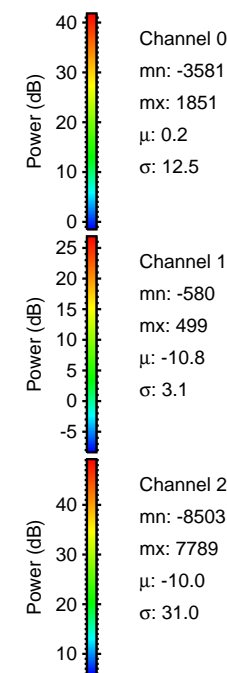
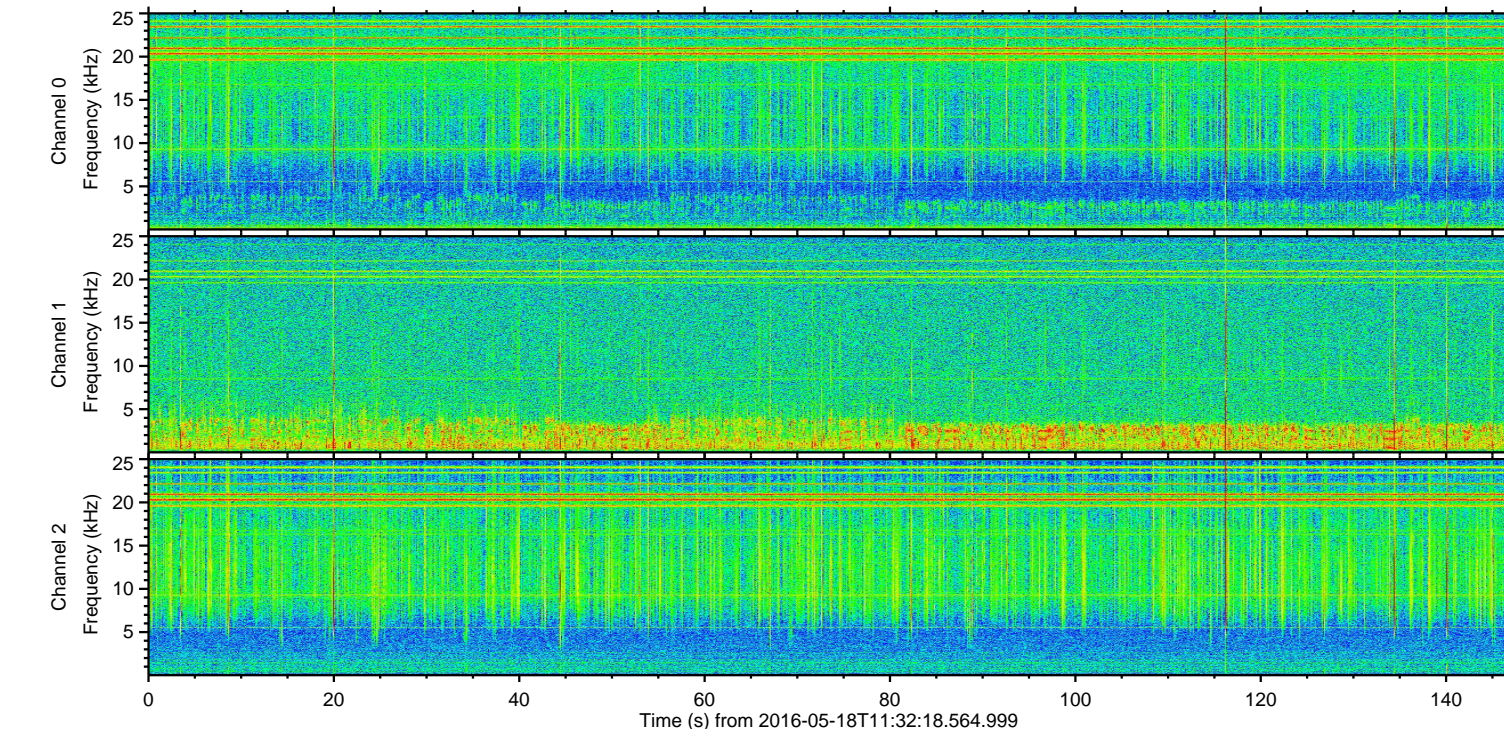
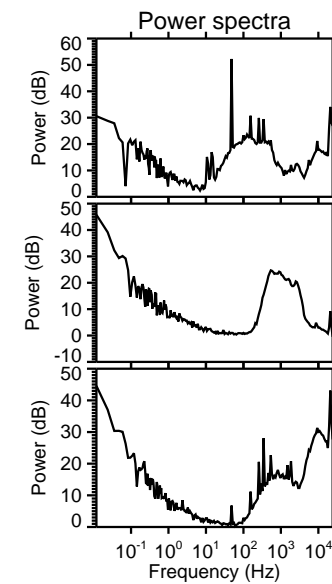
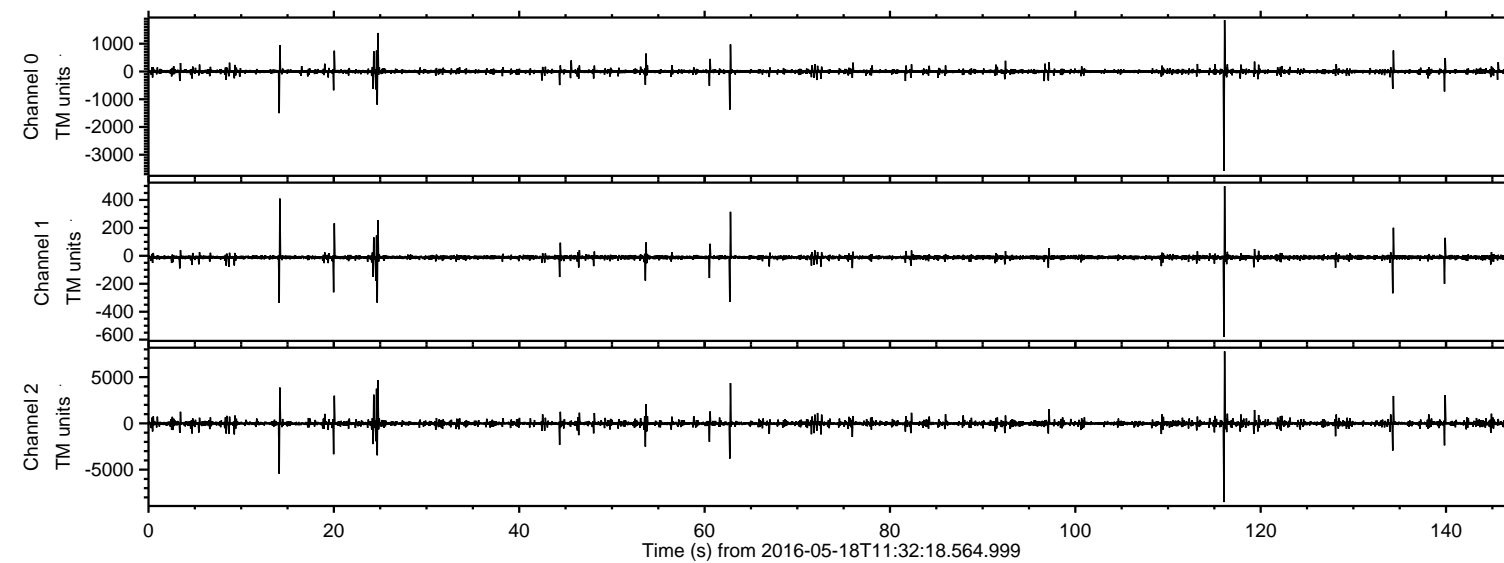


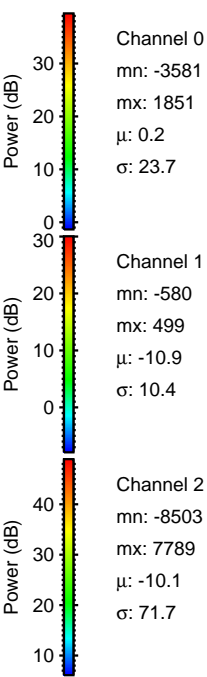
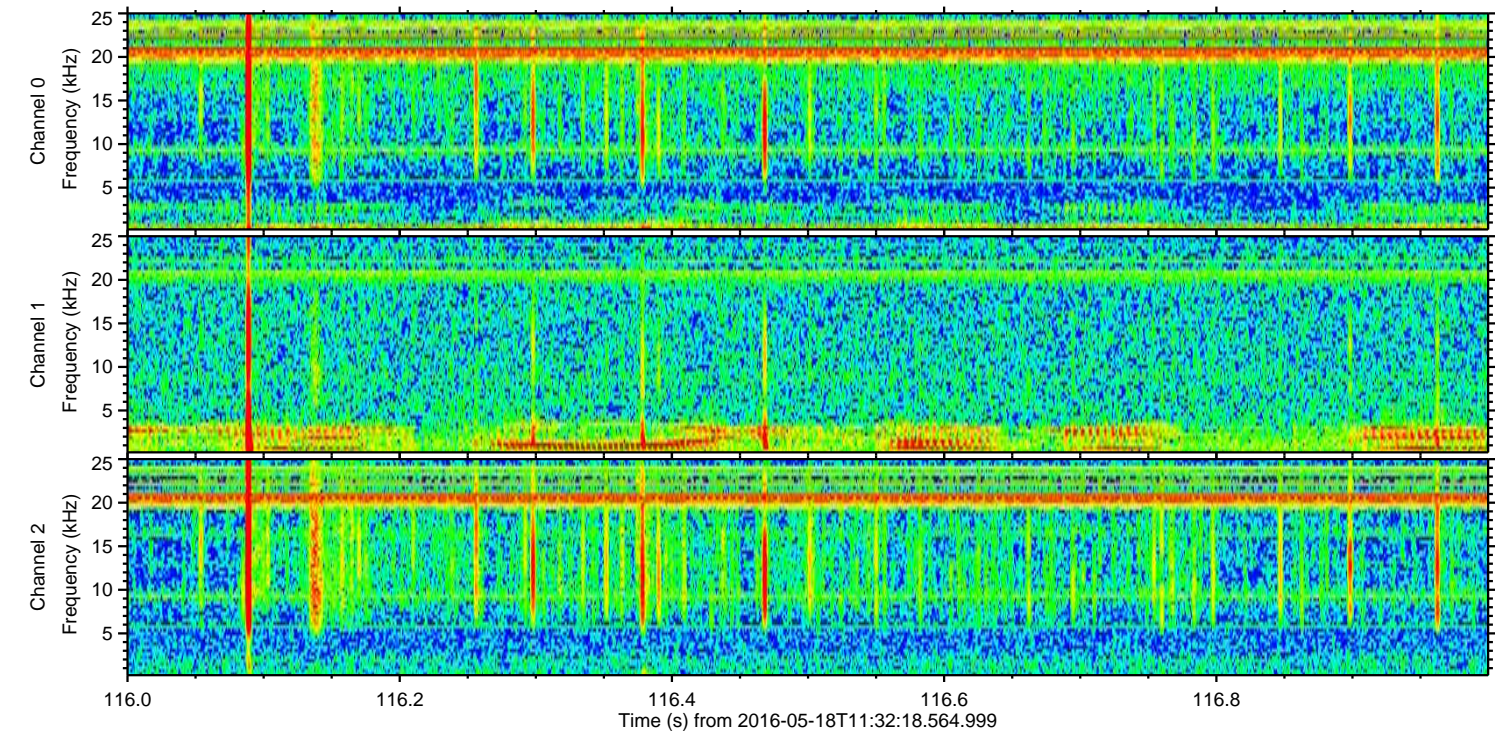
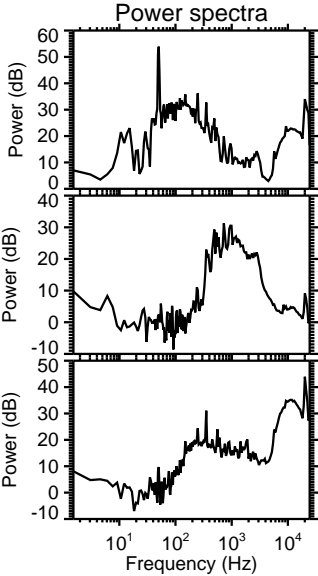
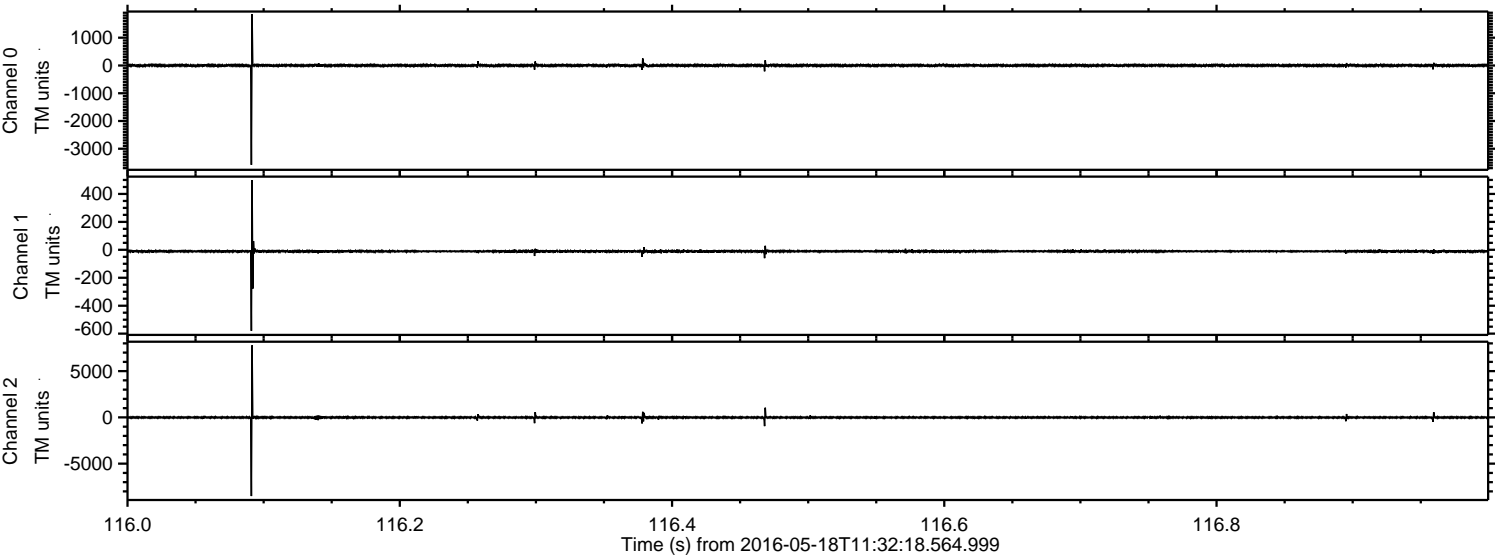
ELMAVAN 3D WAVEFORMS (Measured data sampled at 50 kHz) 51000 packets of 144 samples from 2016-05-18T11:32:18.564.999.

Processed Wed May 18 13:40:11 2016 by ELM ver.2012-10-06 from 001__elm20160518_113217__dat00.bin



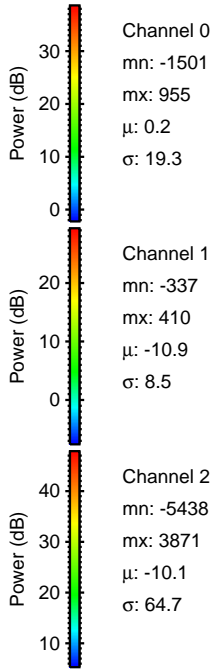
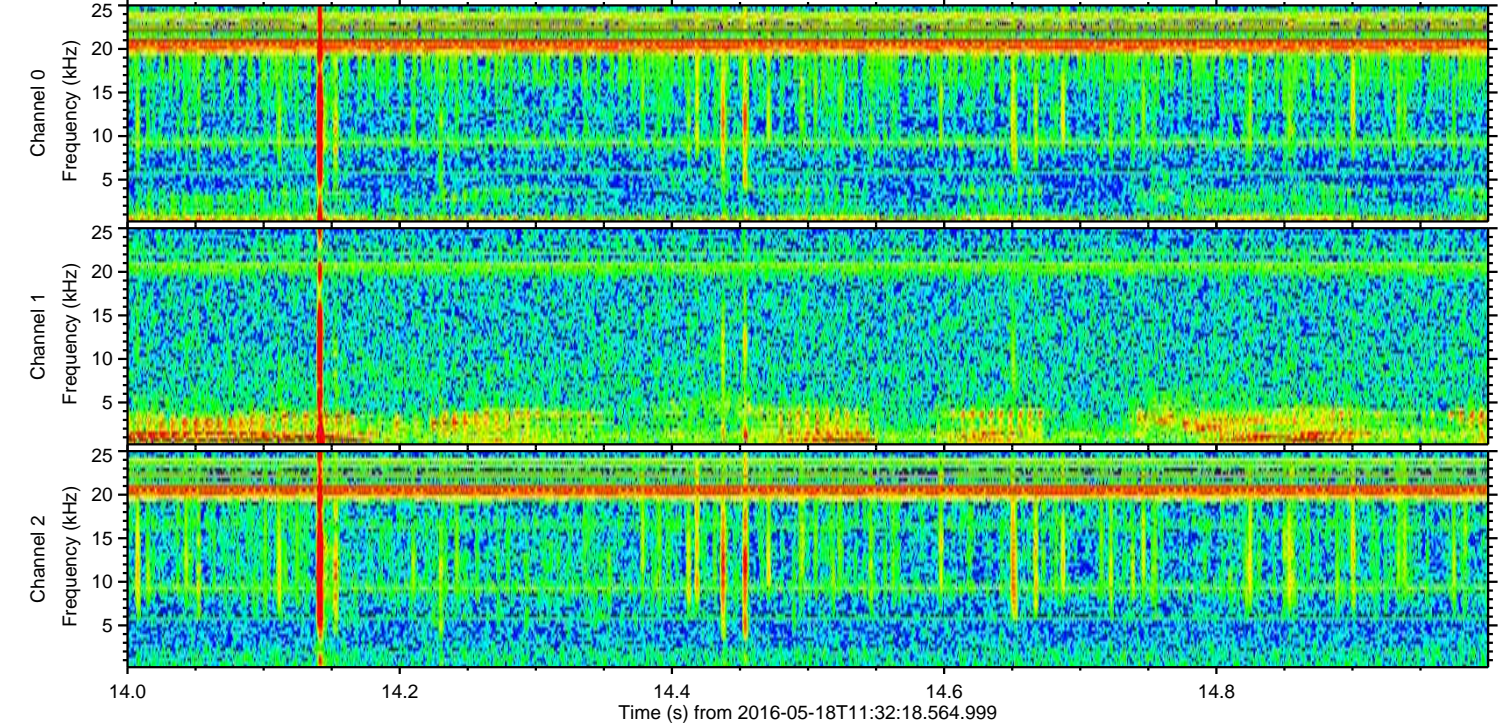
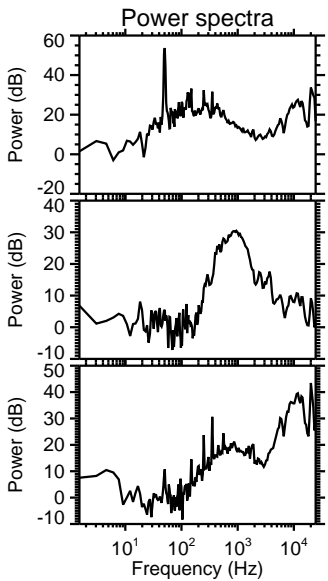
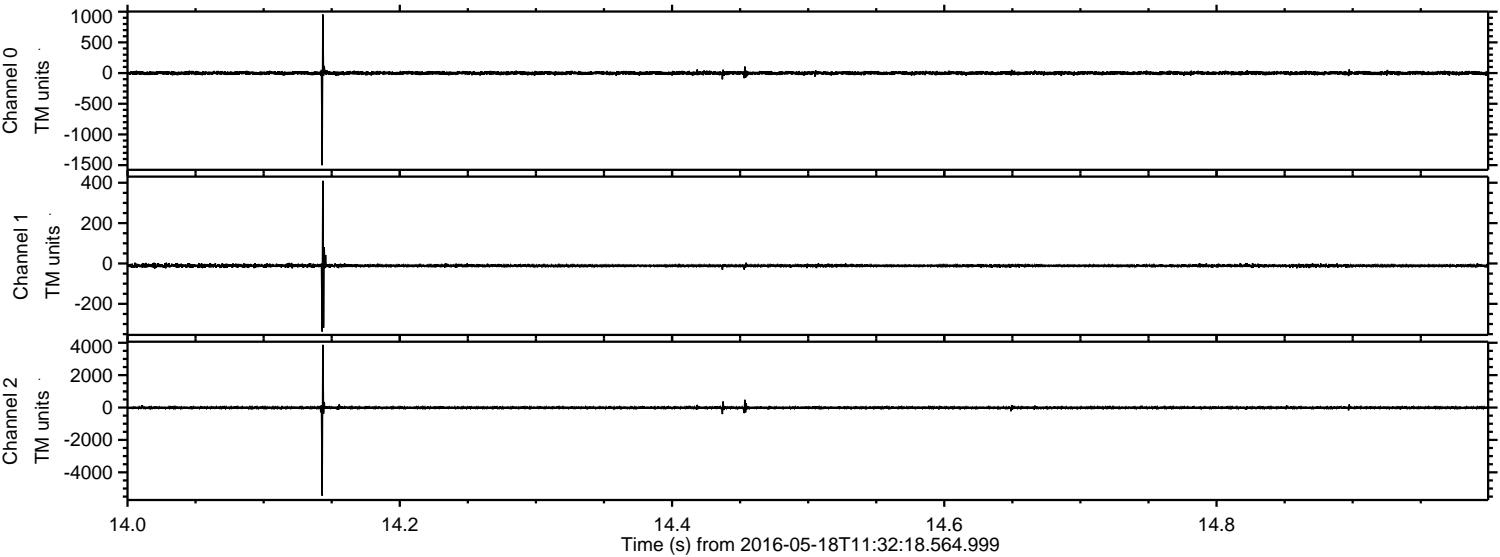
ELMAVAN 3D WAVEFORMS (Measured data sampled at 50 kHz) 51000 packets of 144 samples from 2016-05-18T11:32:18.564.999. Part 117/147

Processed Wed May 18 13:40:23 2016 by ELM ver.2012-10-06 from 001__elm20160518_113217__dat00.bin

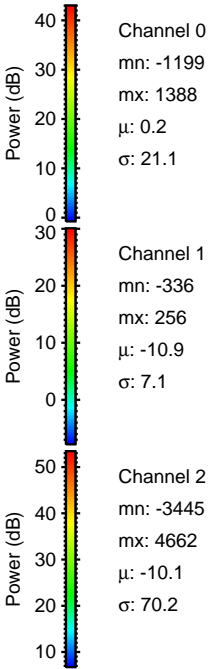
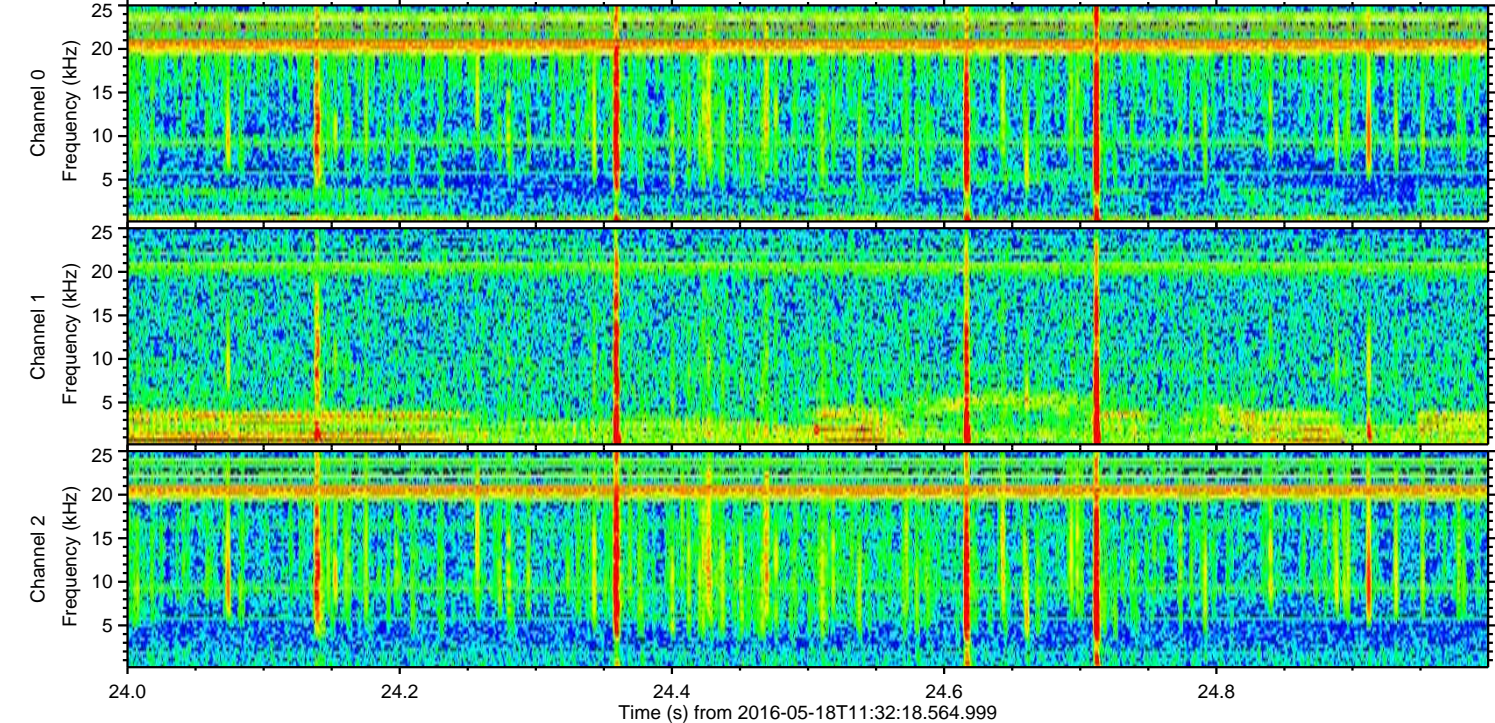
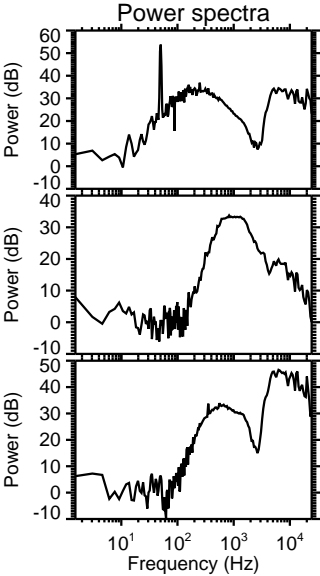
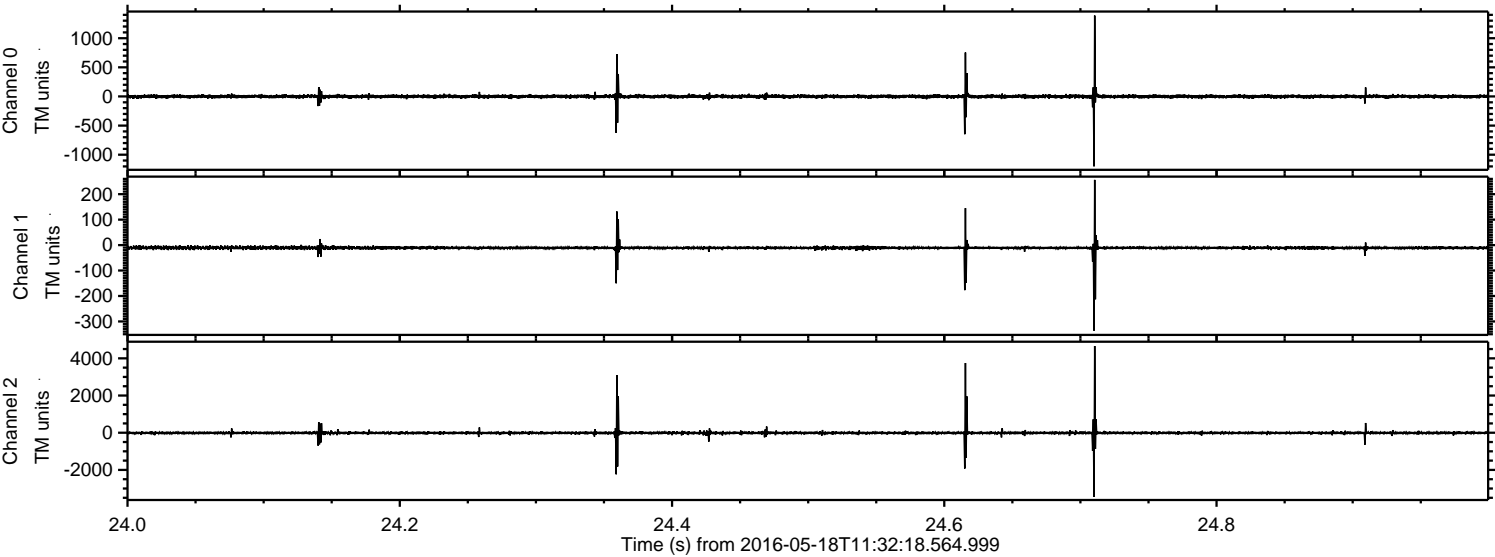


ELMAVAN 3D WAVEFORMS (Measured data sampled at 50 kHz) 51000 packets of 144 samples from 2016-05-18T11:32:18.564.999. Part 15/147

Processed Wed May 18 13:40:24 2016 by ELM ver.2012-10-06 from 001__elm20160518_113217__dat00.bin



Processed Wed May 18 13:40:25 2016 by ELM ver.2012-10-06 from 001__elm20160518_113217__dat00.bin



Power spectra

Channel 0

mn: -1199
mx: 1388
 μ : 0.2
 σ : 21.1

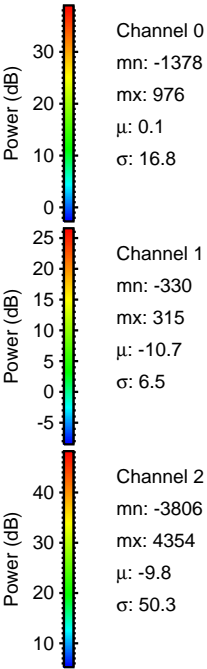
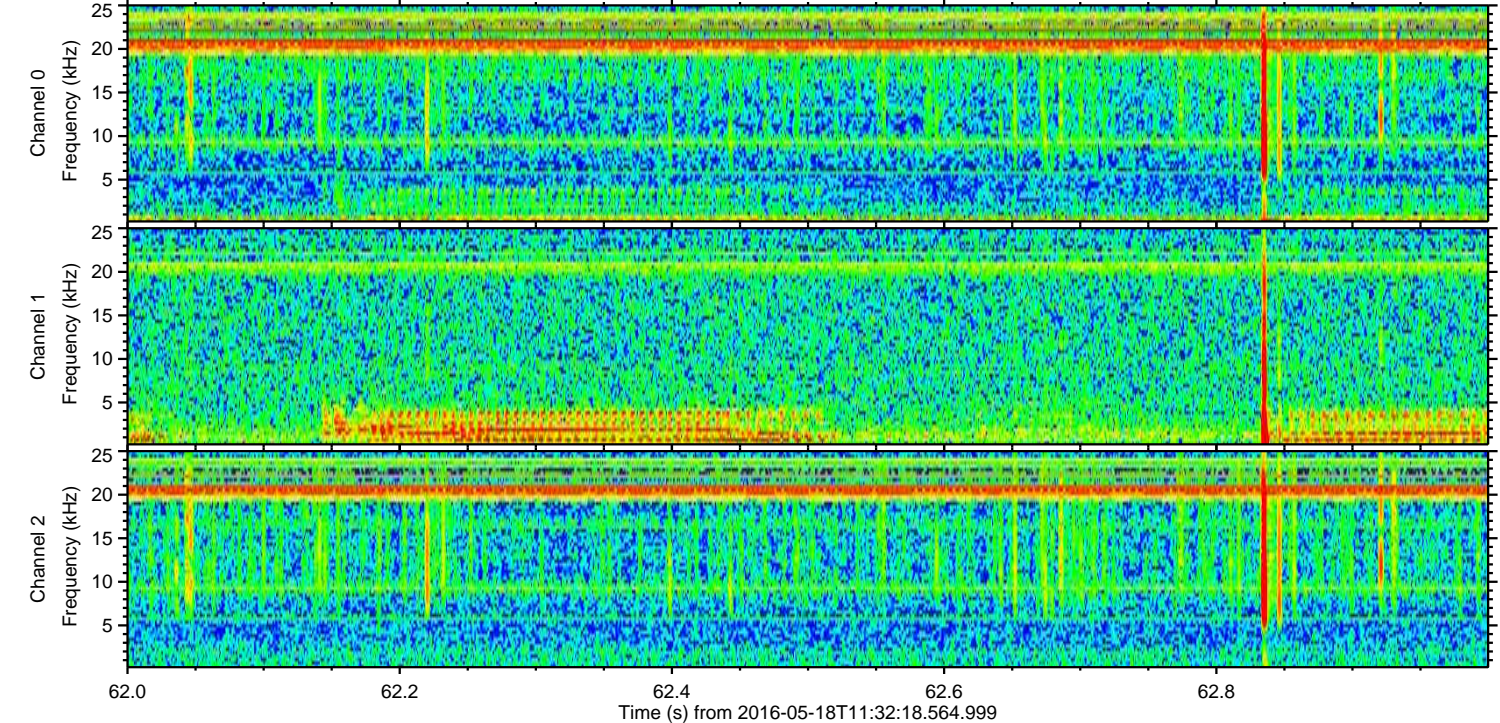
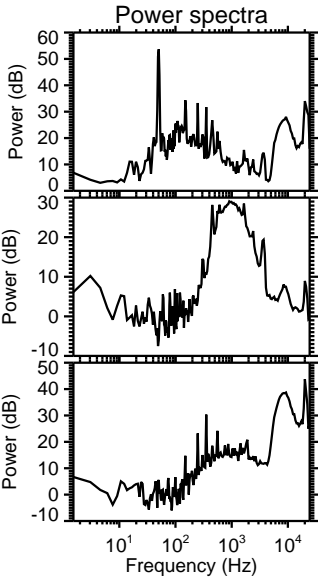
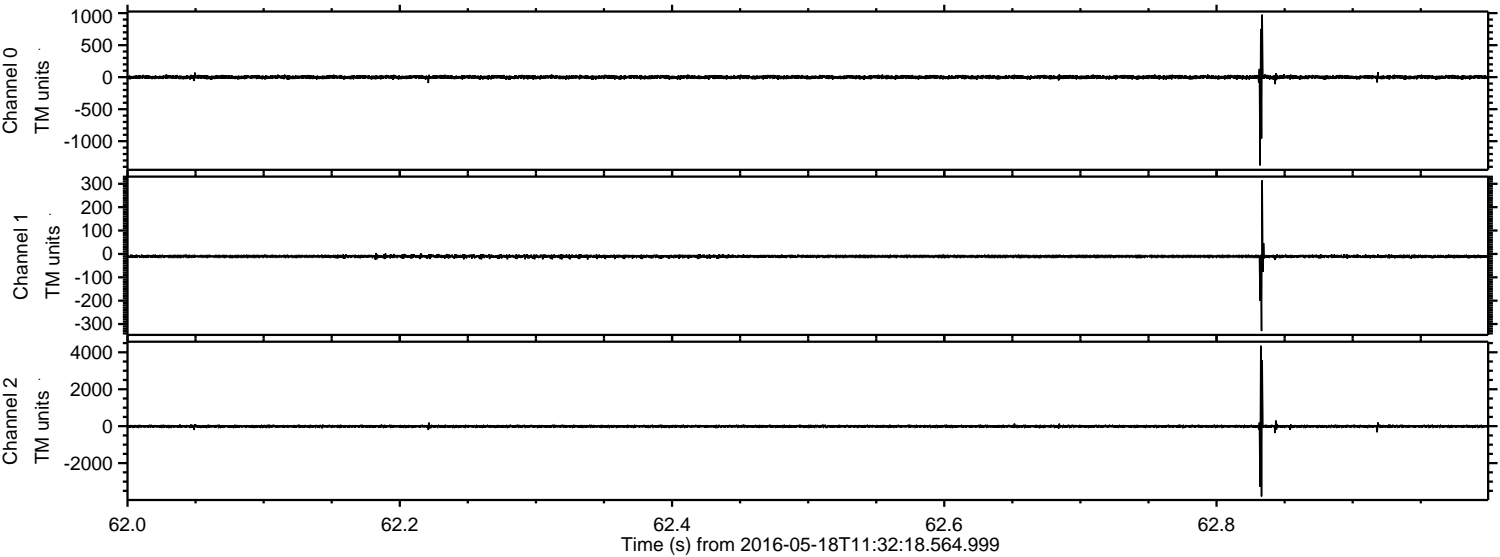
Channel 1

mn: -336
mx: 256
 μ : -10.9
 σ : 7.1

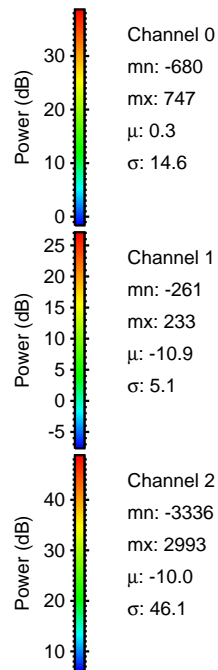
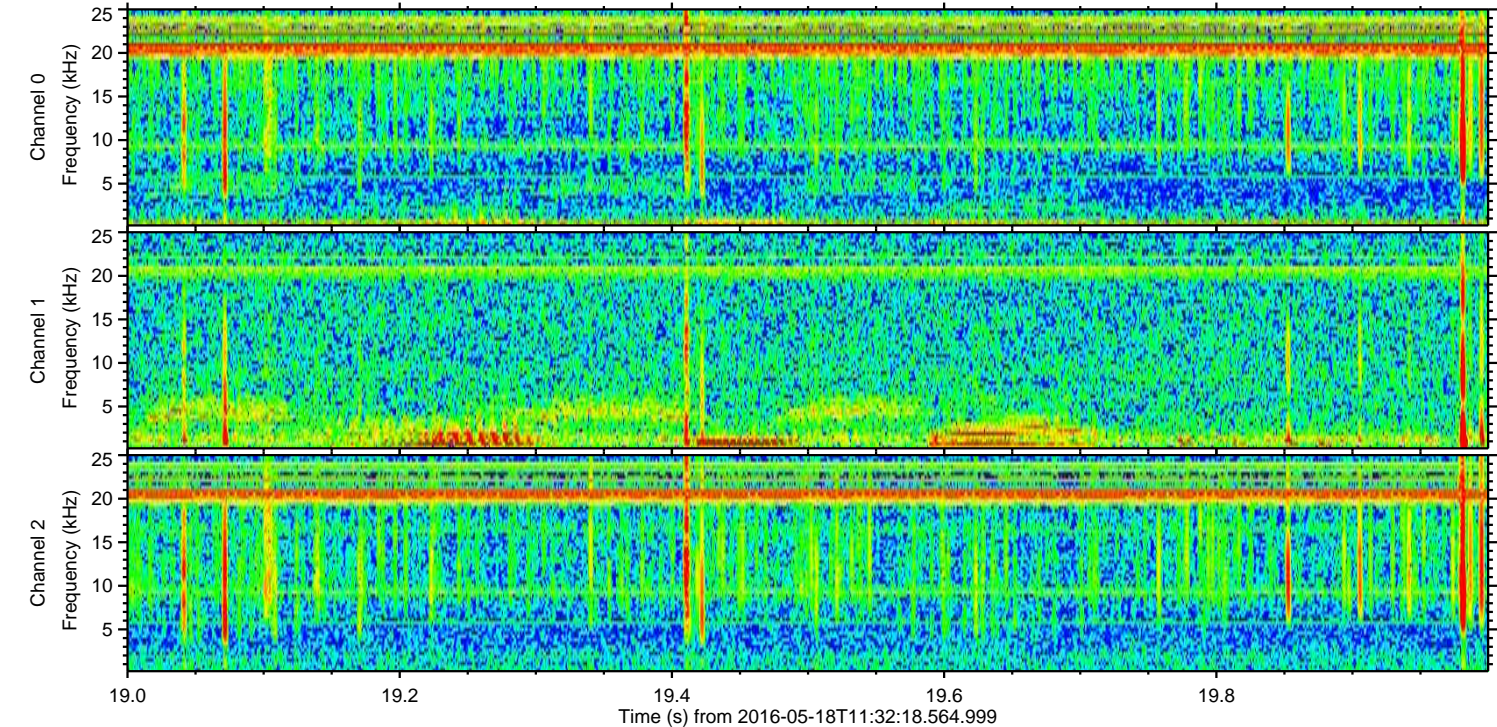
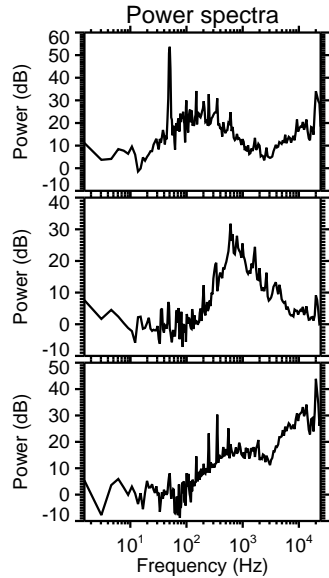
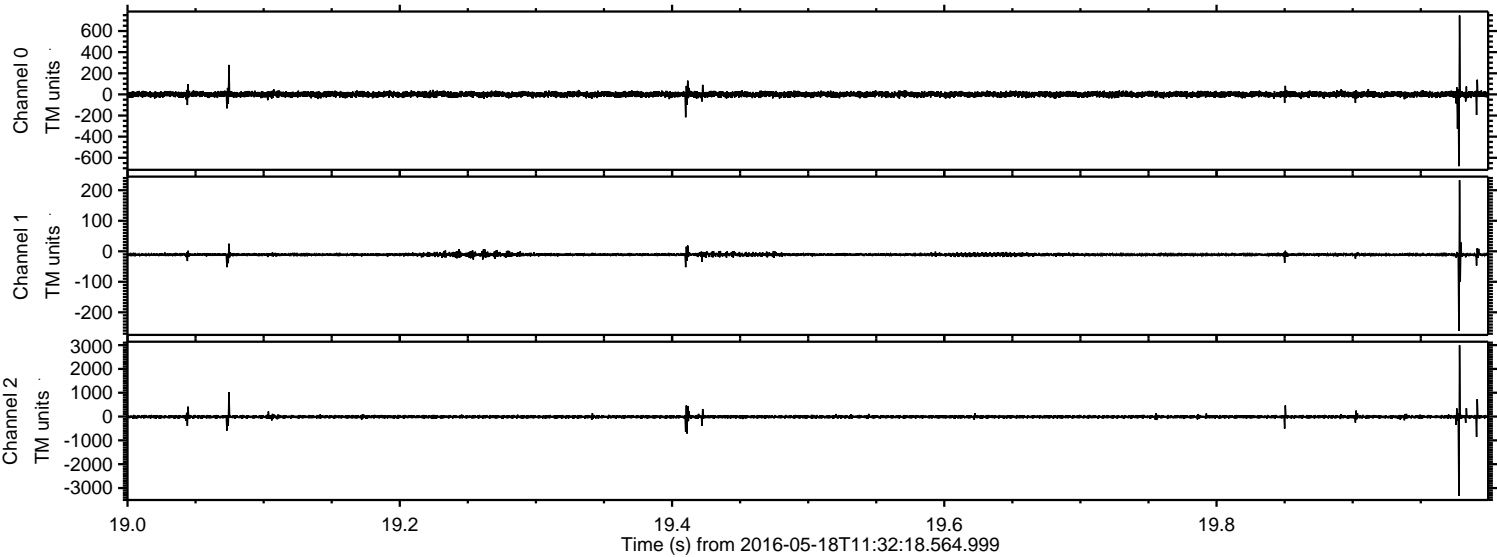
Channel 2

mn: -3445
mx: 4662
 μ : -10.1
 σ : 70.2

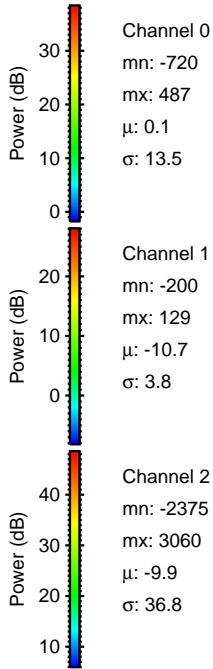
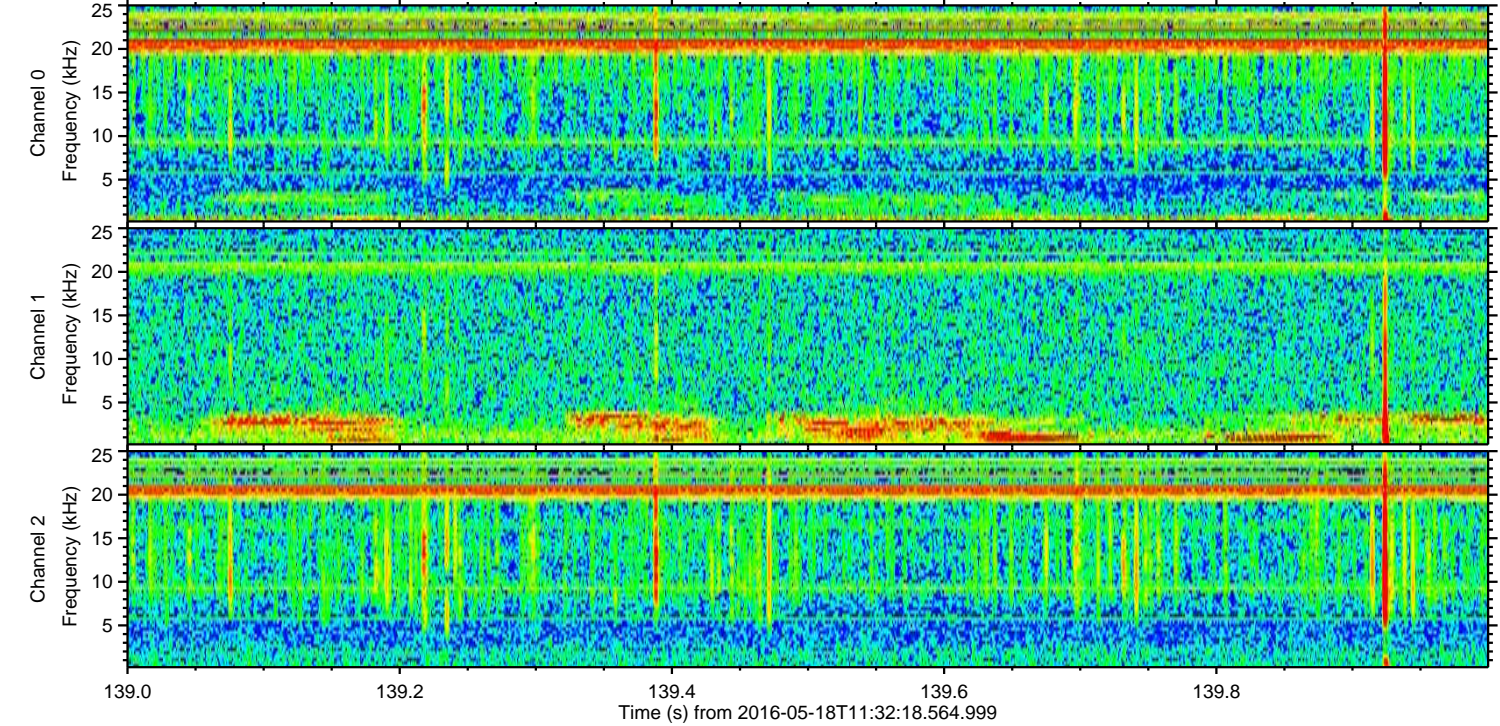
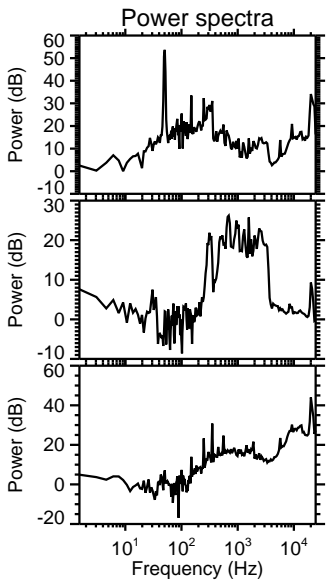
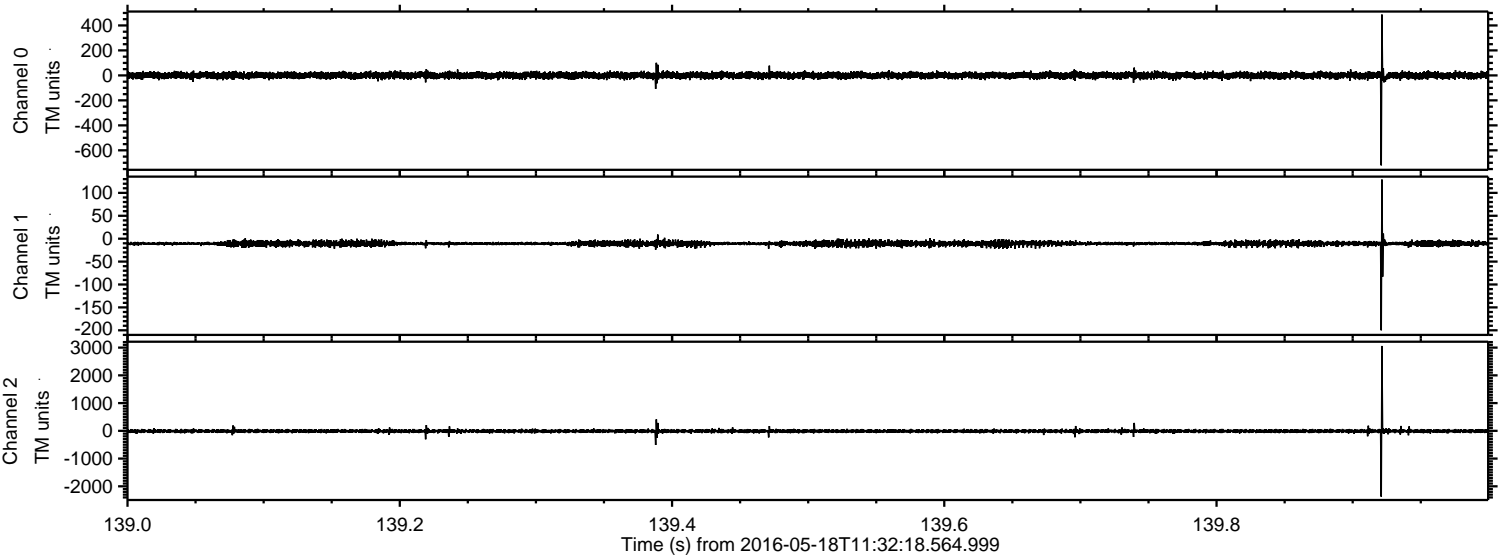
Processed Wed May 18 13:40:26 2016 by ELM ver.2012-10-06 from 001__elm20160518_113217__dat00.bin



Processed Wed May 18 13:40:26 2016 by ELM ver.2012-10-06 from 001__elm20160518_113217__dat00.bin

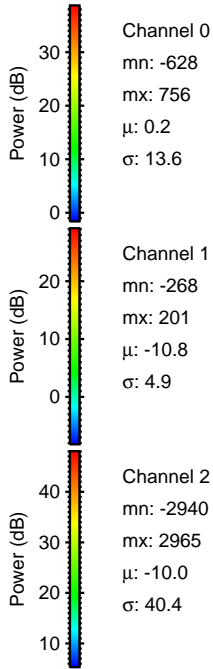
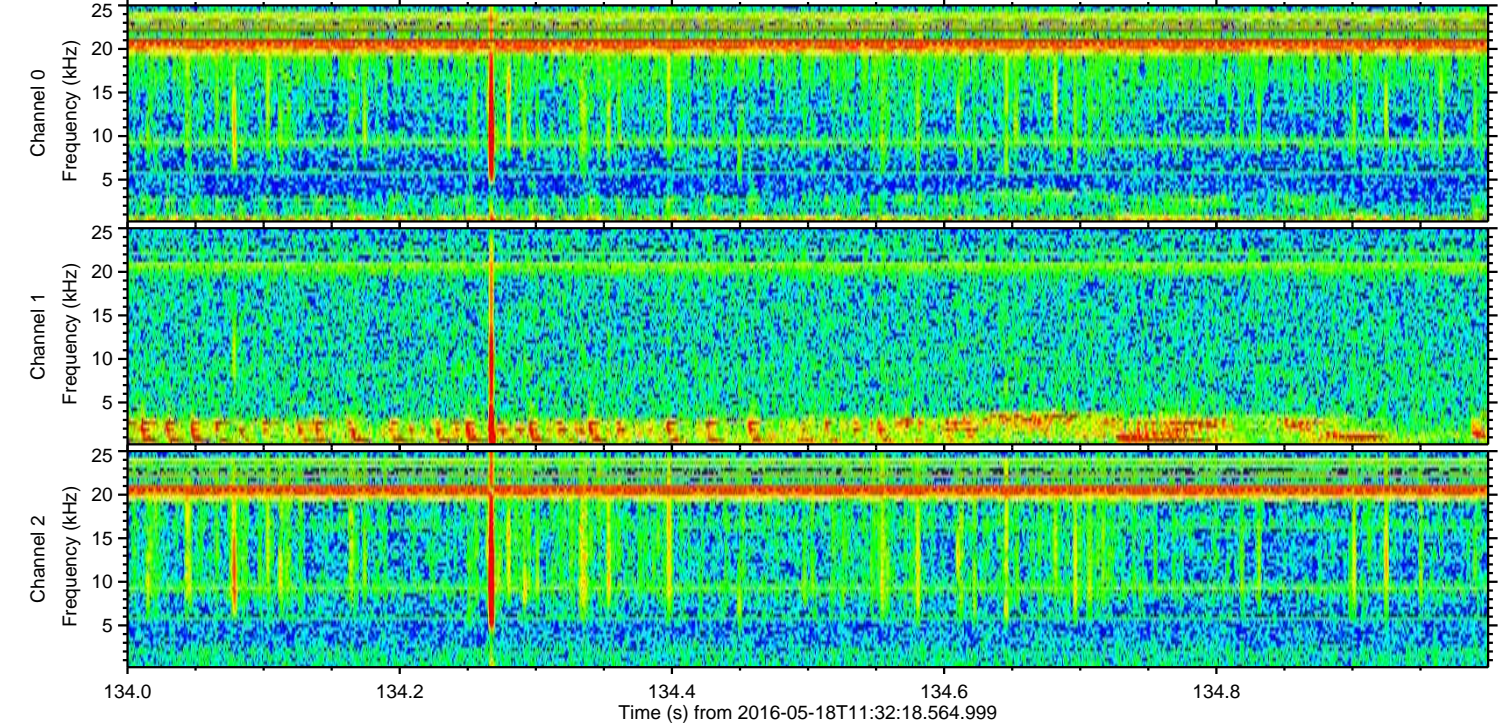
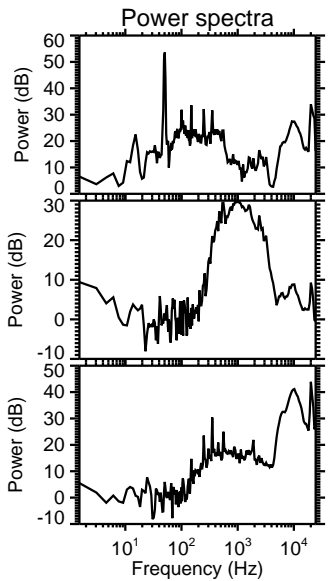
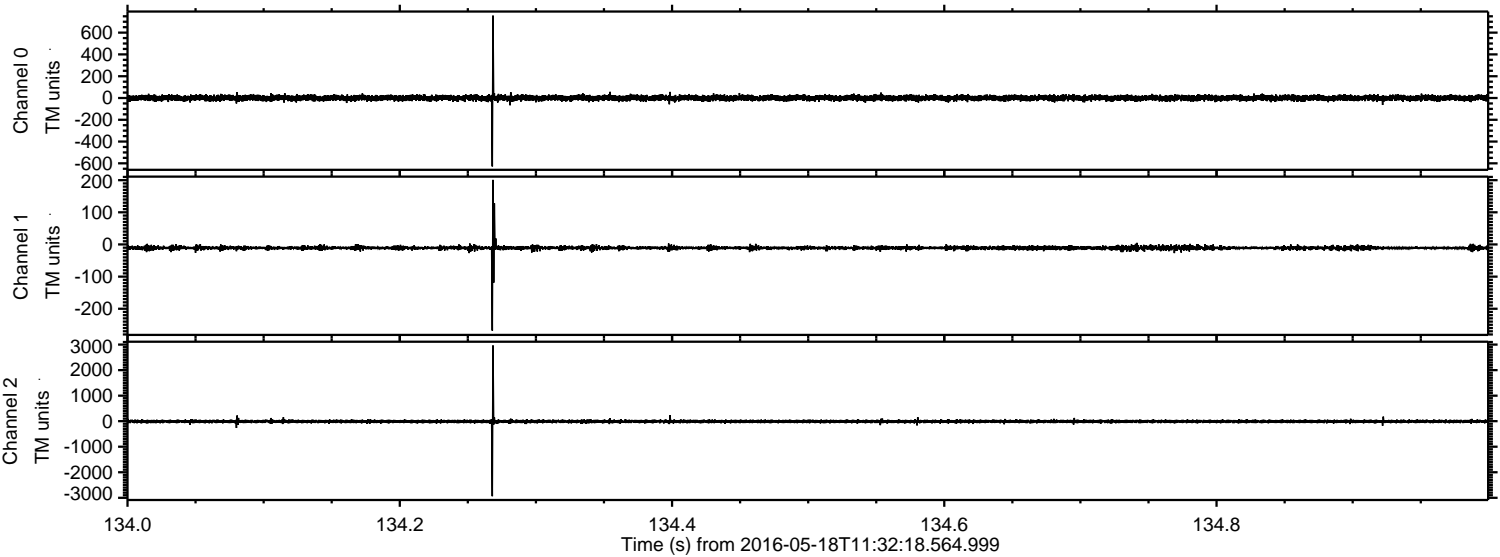


Processed Wed May 18 13:40:27 2016 by ELM ver.2012-10-06 from 001__elm20160518_113217__dat00.bin



ELMAVAN 3D WAVEFORMS (Measured data sampled at 50 kHz) 51000 packets of 144 samples from 2016-05-18T11:32:18.564.999. Part 135/147

Processed Wed May 18 13:40:28 2016 by ELM ver.2012-10-06 from 001__elm20160518_113217__dat00.bin

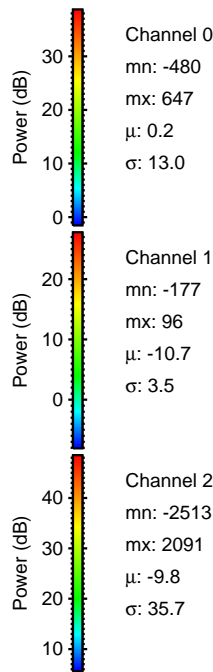
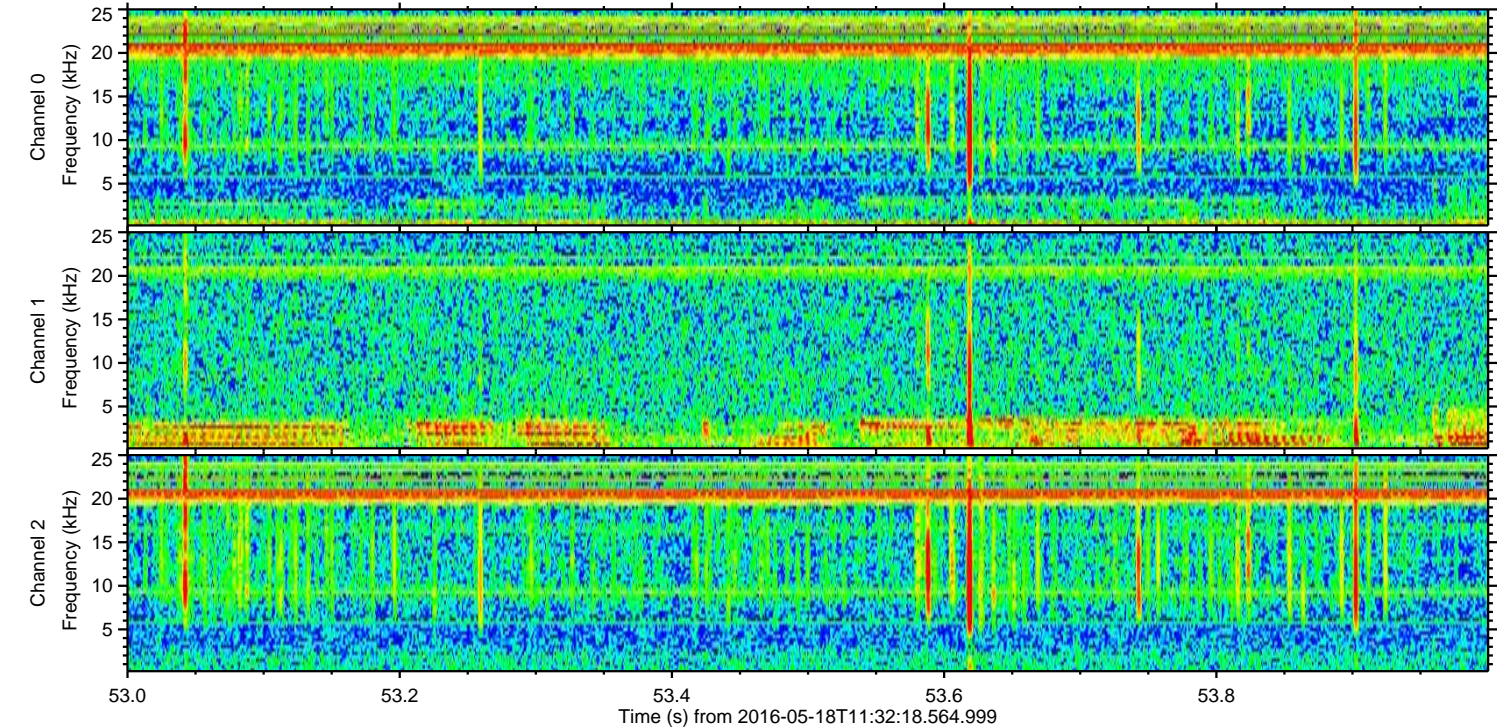
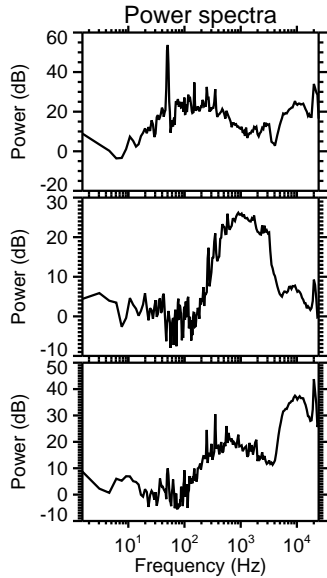
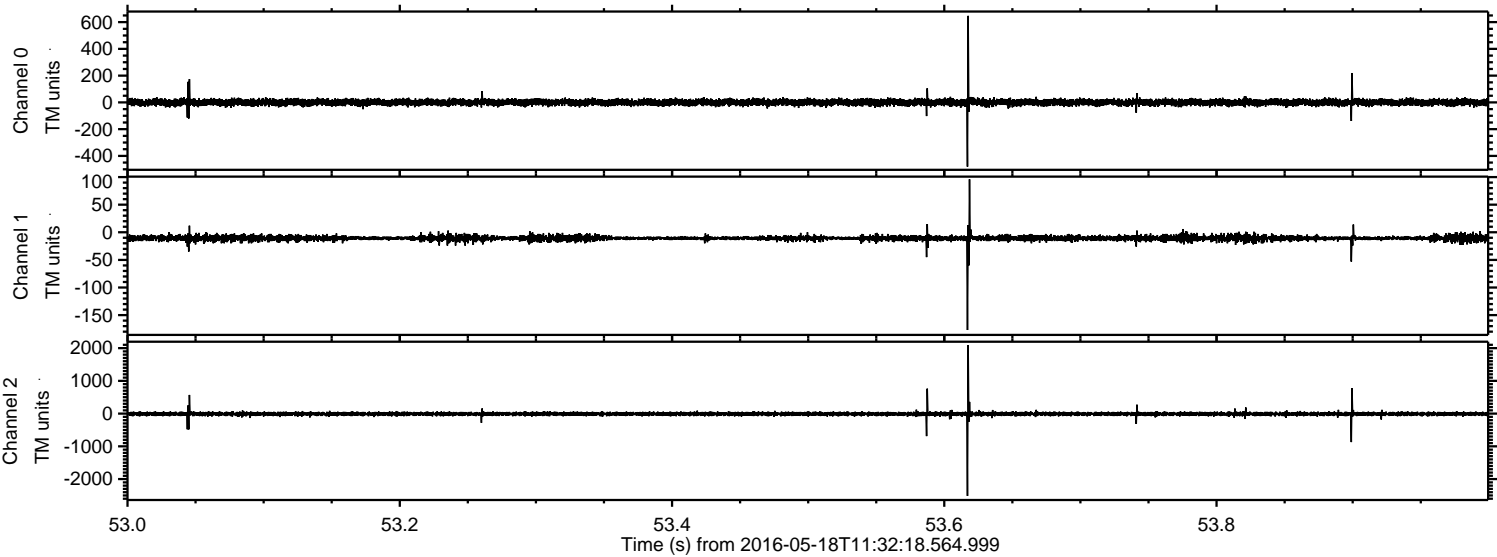


Channel 0
mn: -628
mx: 756
 μ : 0.2
 σ : 13.6

Channel 1
mn: -268
mx: 201
 μ : -10.8
 σ : 4.9

Channel 2
mn: -2940
mx: 2965
 μ : -10.0
 σ : 40.4

Processed Wed May 18 13:40:29 2016 by ELM ver.2012-10-06 from 001__elm20160518_113217__dat00.bin



Processed Wed May 18 13:40:30 2016 by ELM ver.2012-10-06 from 001__elm20160518_113217__dat00.bin

