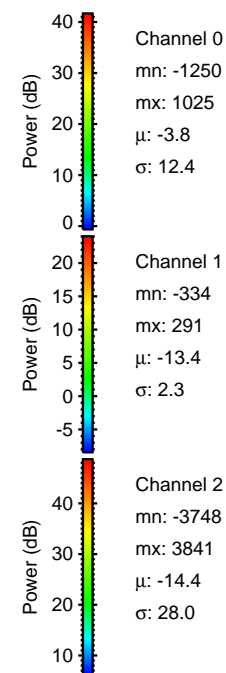
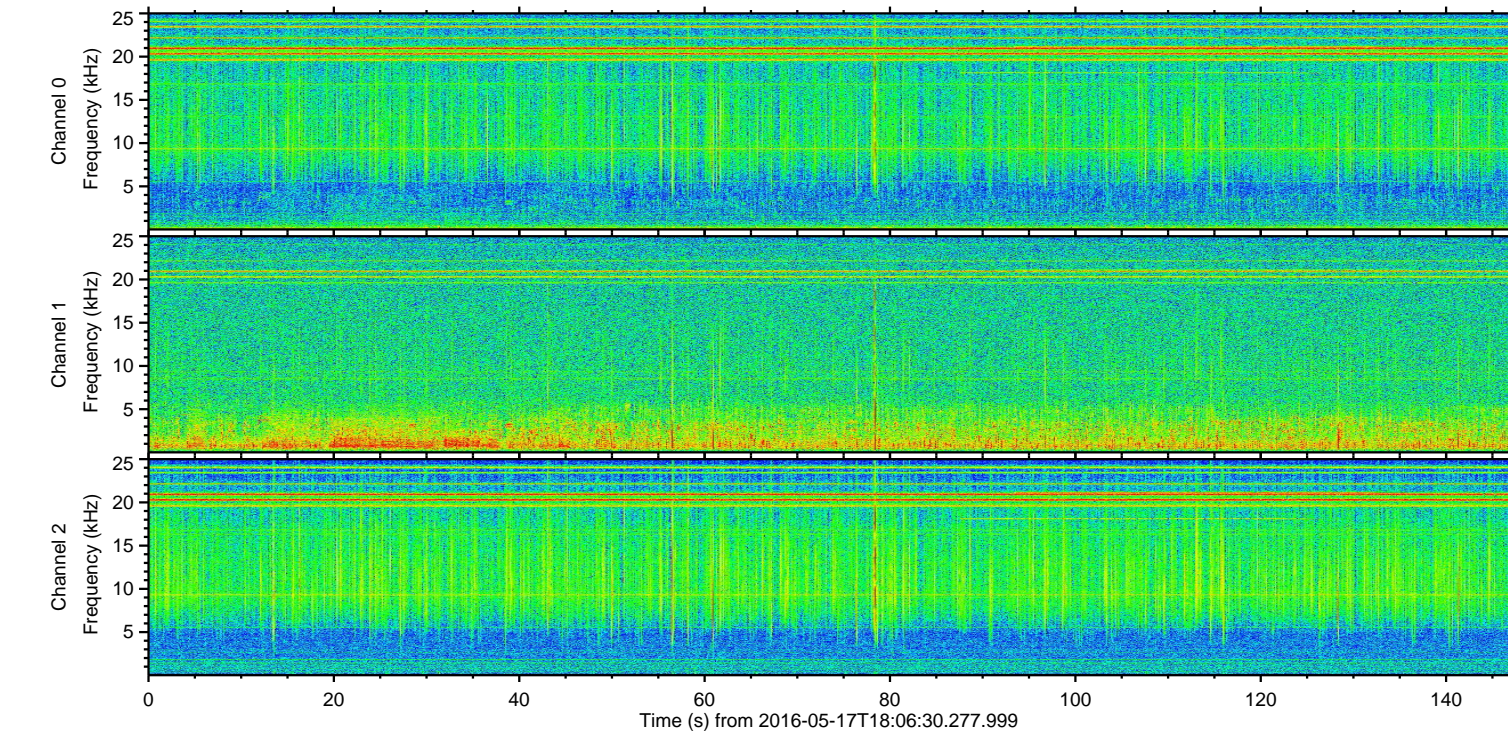
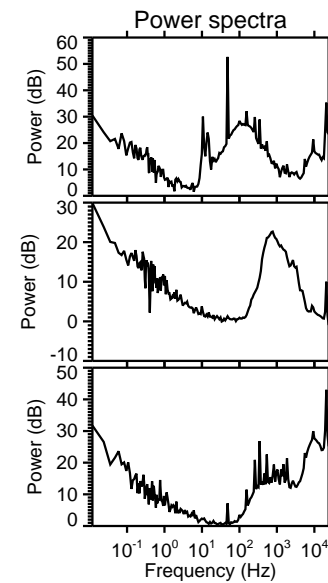
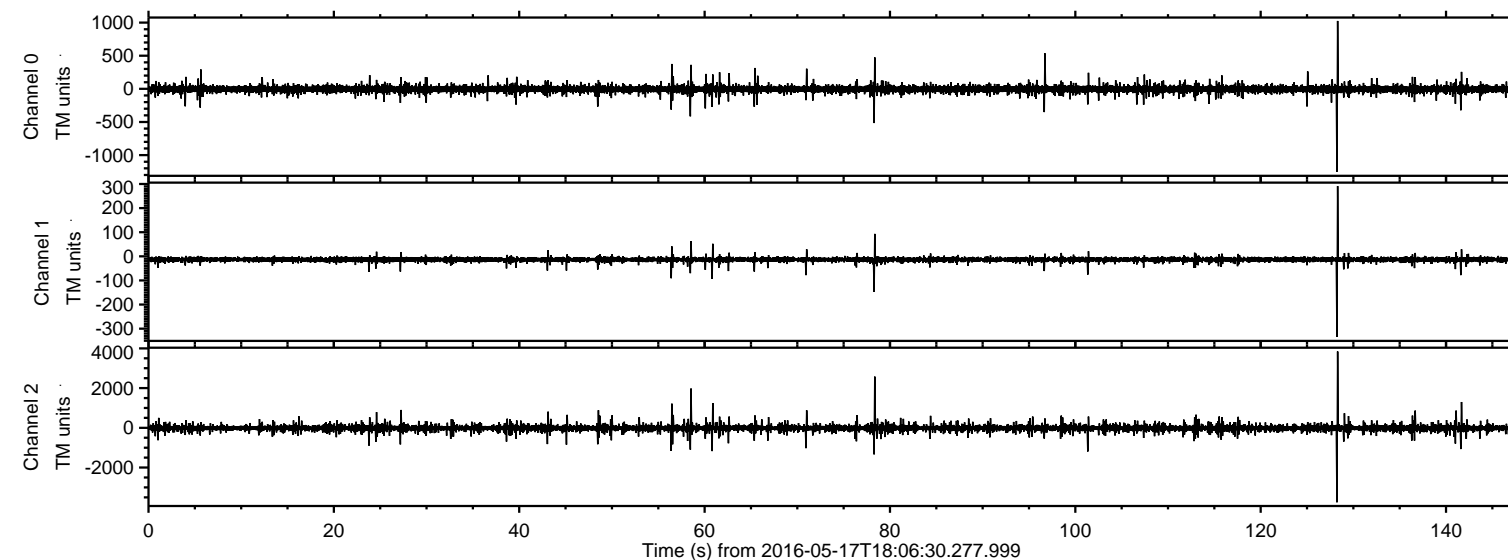


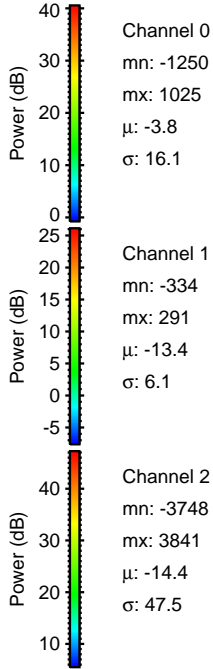
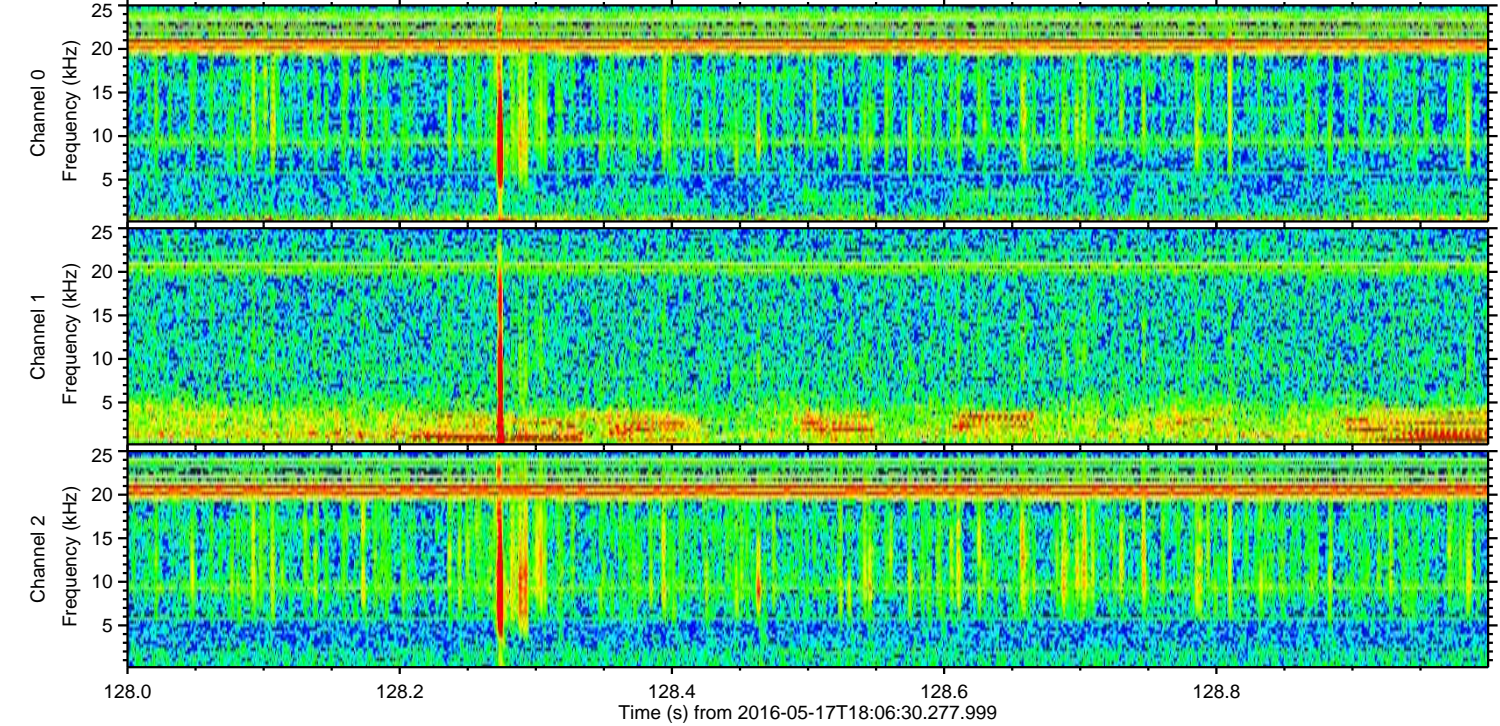
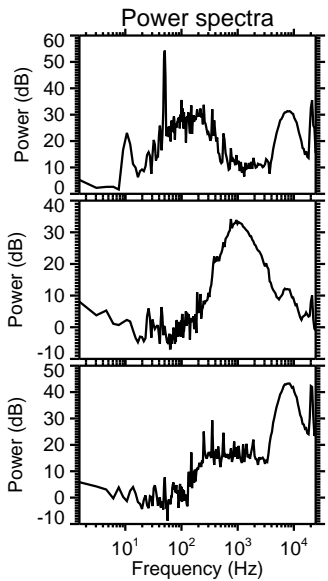
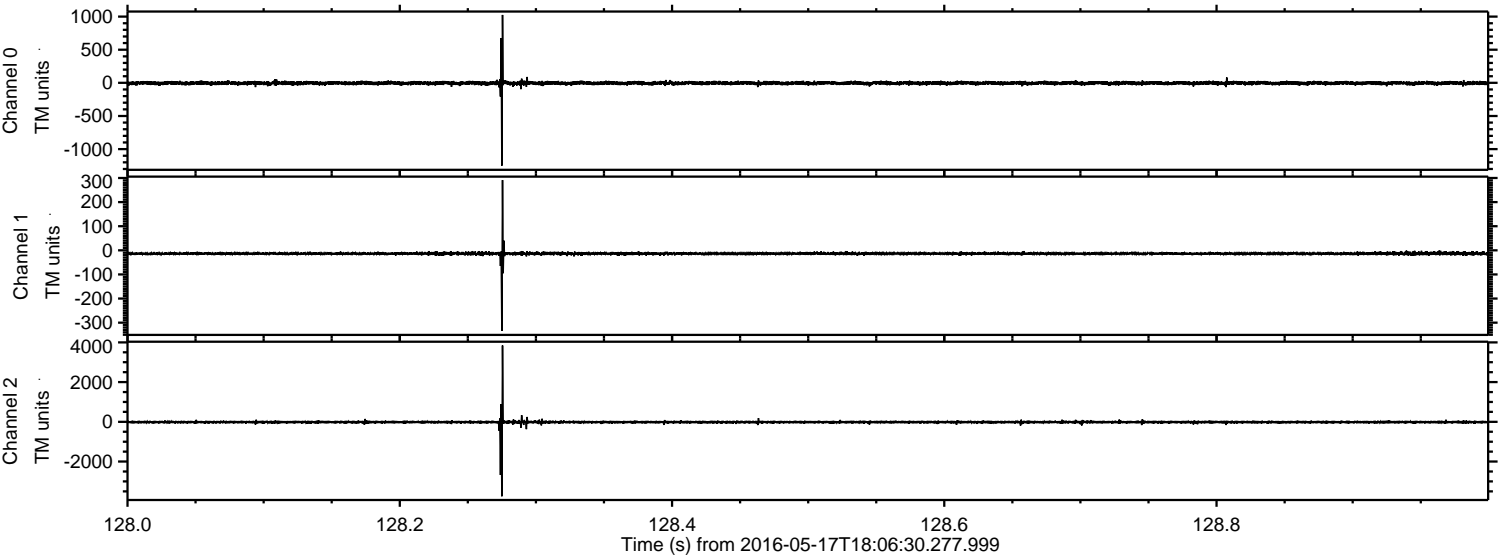
ELMAVAN 3D WAVEFORMS (Measured data sampled at 50 kHz) 51000 packets of 144 samples from 2016-05-17T18:06:30.277.999.

Processed Tue May 17 20:14:53 2016 by ELM ver.2012-10-06 from 001__elm20160517_180629__dat00.bin

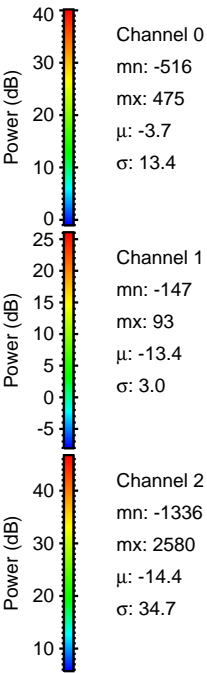
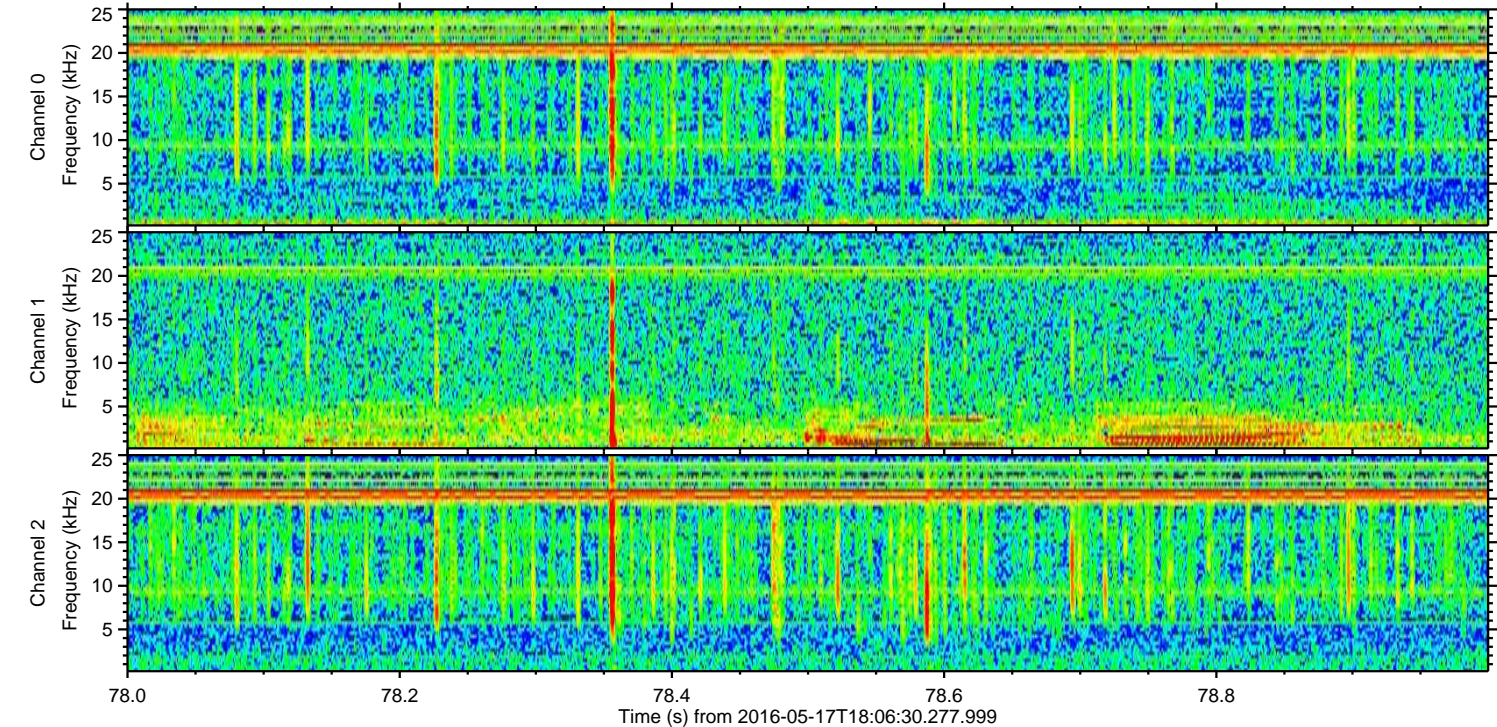
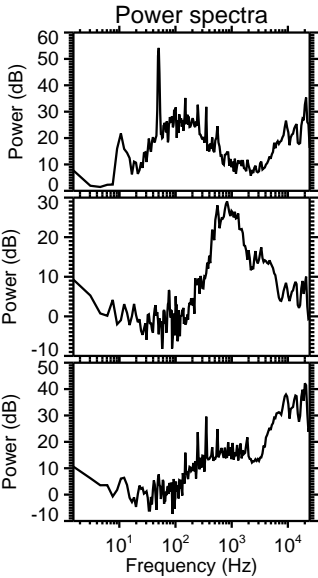
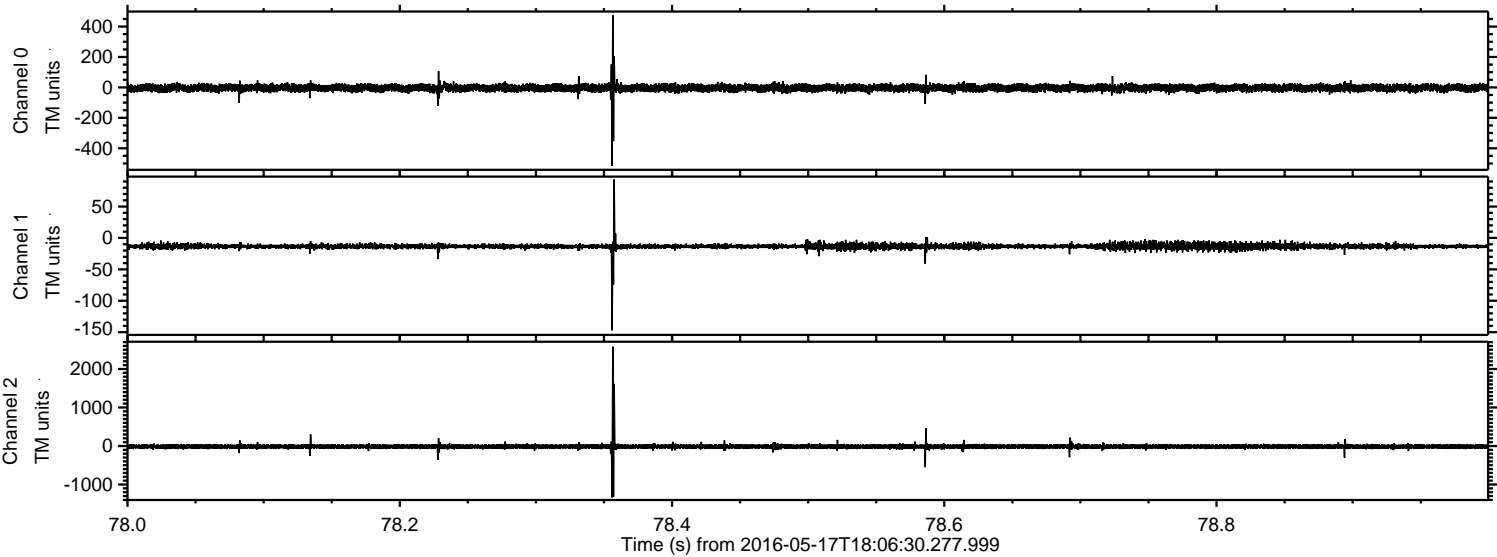


ELMAVAN 3D WAVEFORMS (Measured data sampled at 50 kHz) 51000 packets of 144 samples from 2016-05-17T18:06:30.277.999. Part 129/147

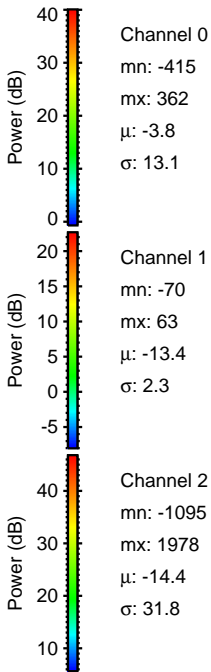
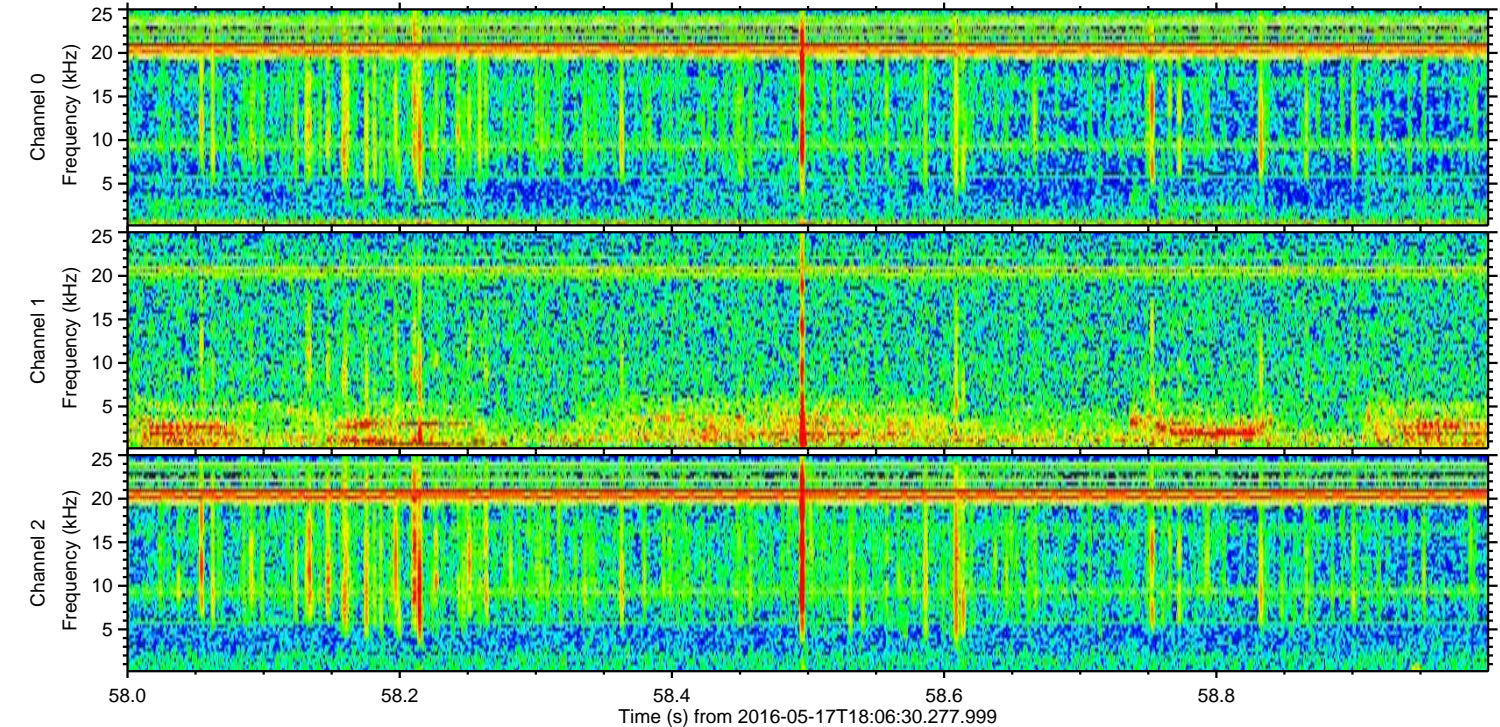
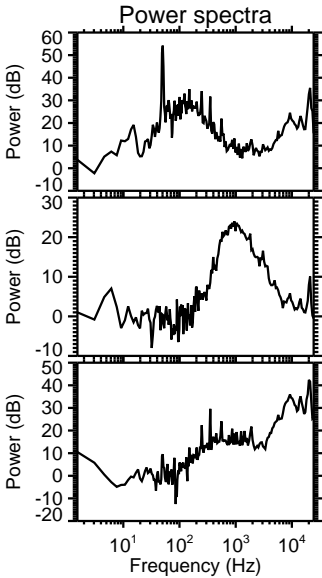
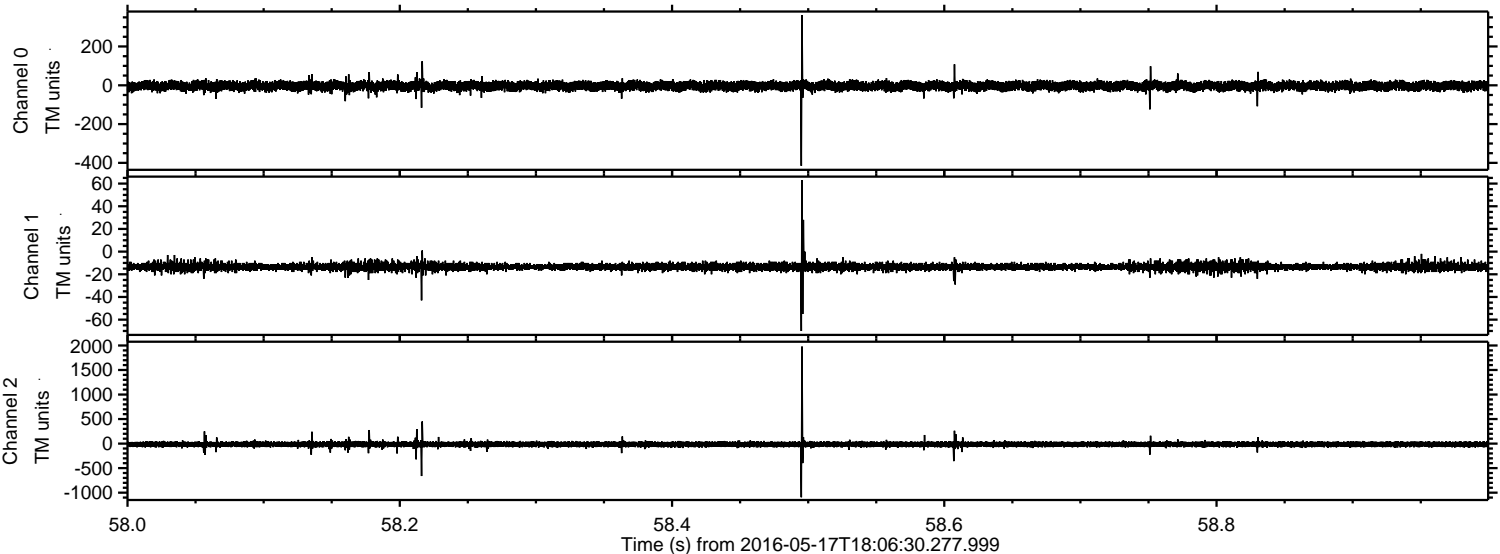
Processed Tue May 17 20:15:05 2016 by ELM ver.2012-10-06 from 001__elm20160517_180629__dat00.bin



Processed Tue May 17 20:15:06 2016 by ELM ver.2012-10-06 from 001__elm20160517_180629__dat00.bin

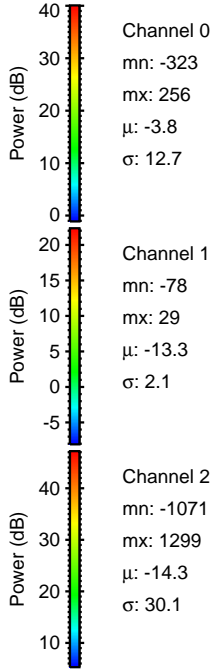
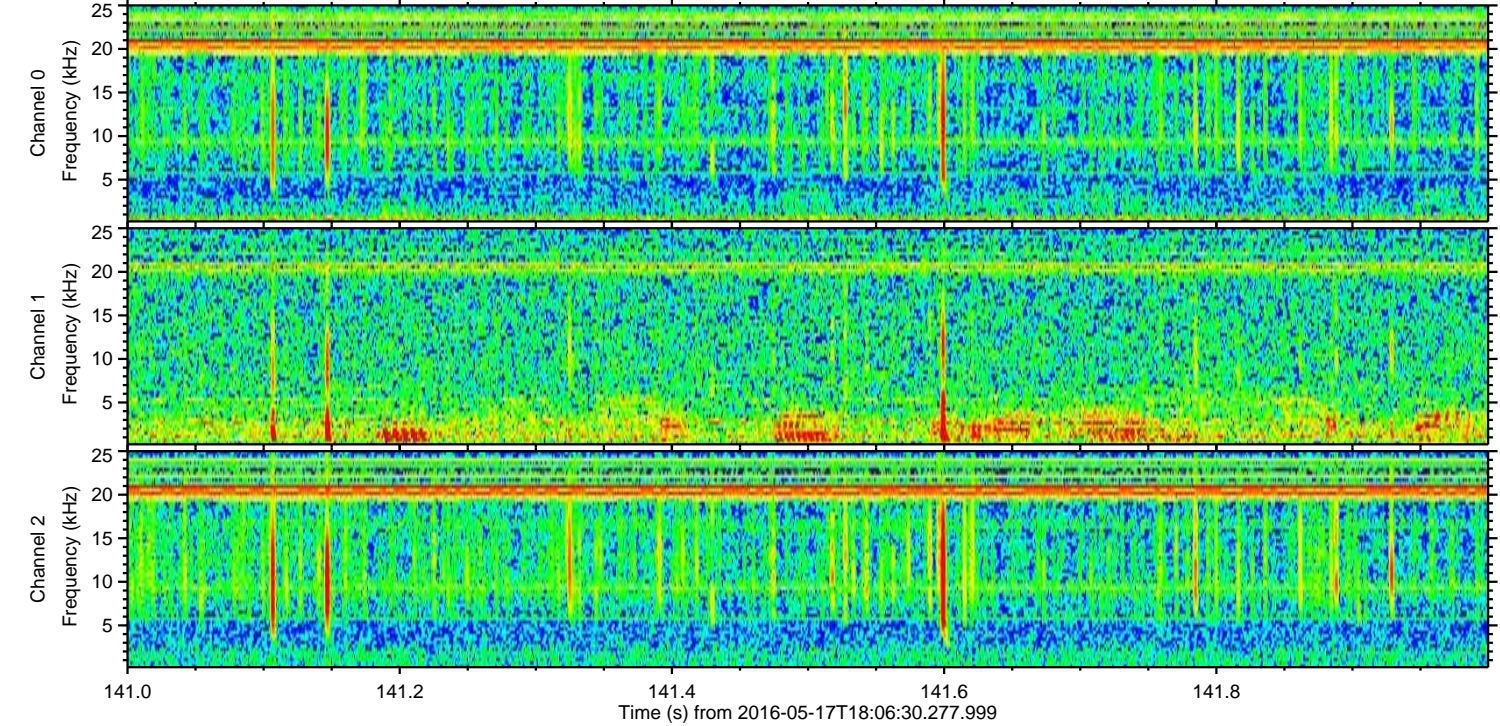
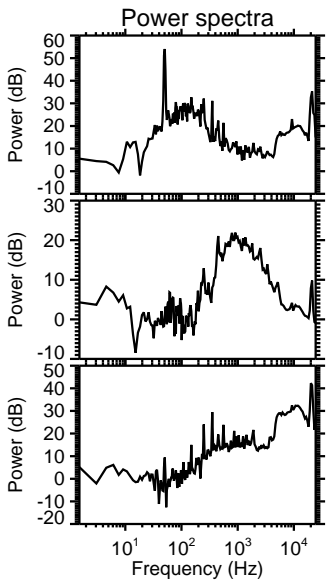
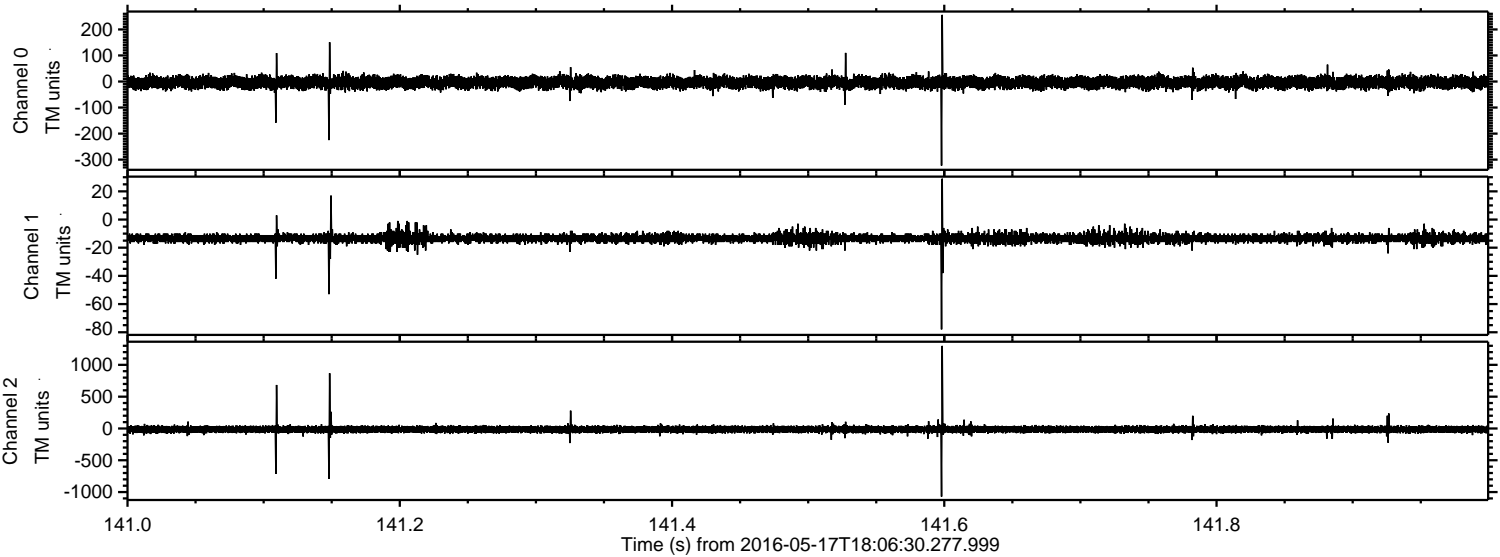


Processed Tue May 17 20:15:07 2016 by ELM ver.2012-10-06 from 001__elm20160517_180629__dat00.bin

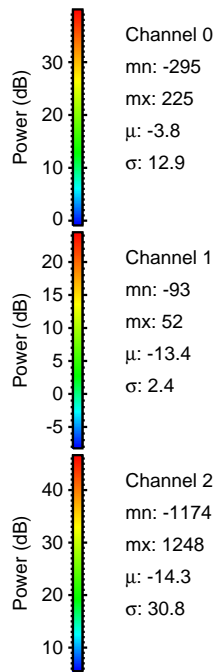
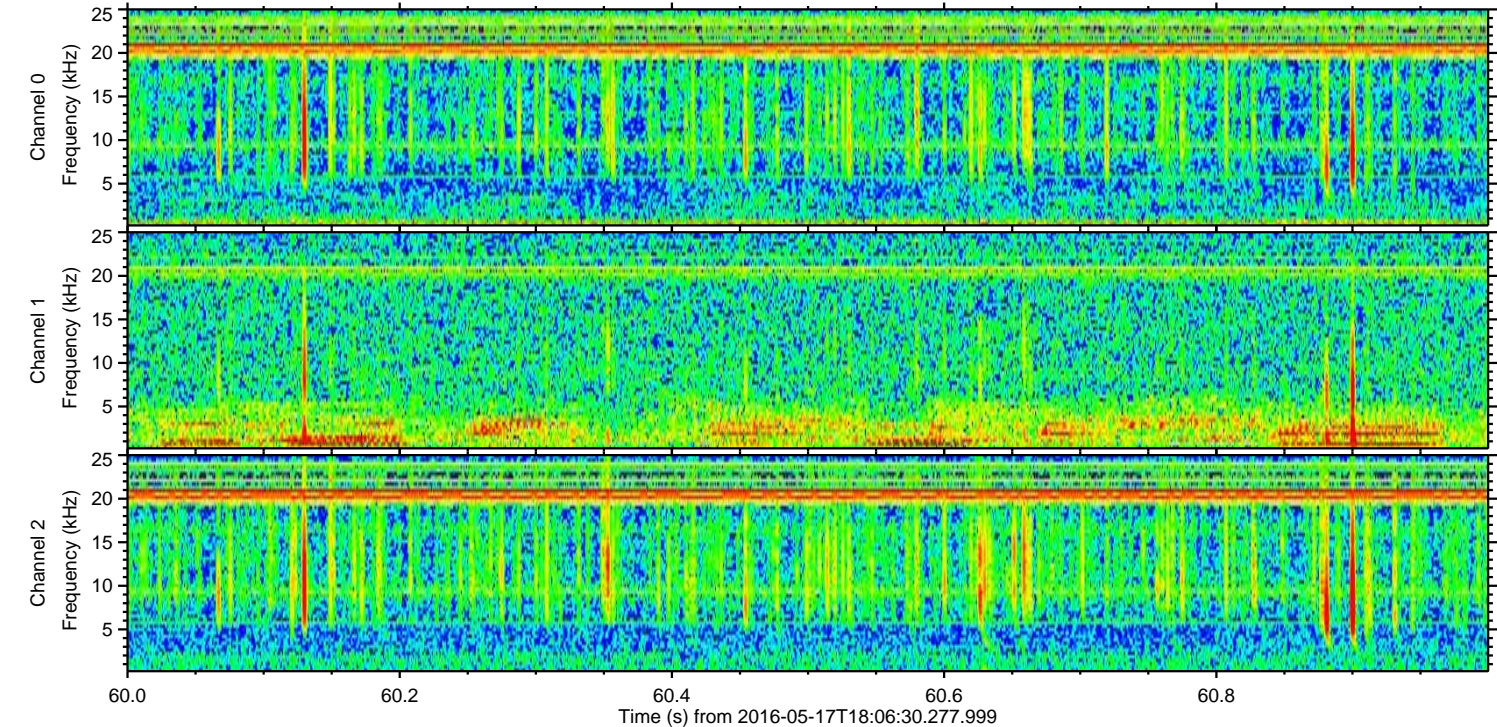
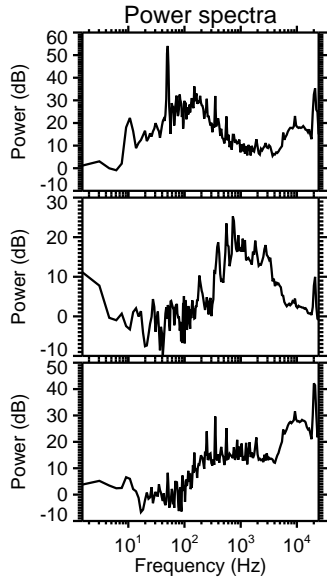
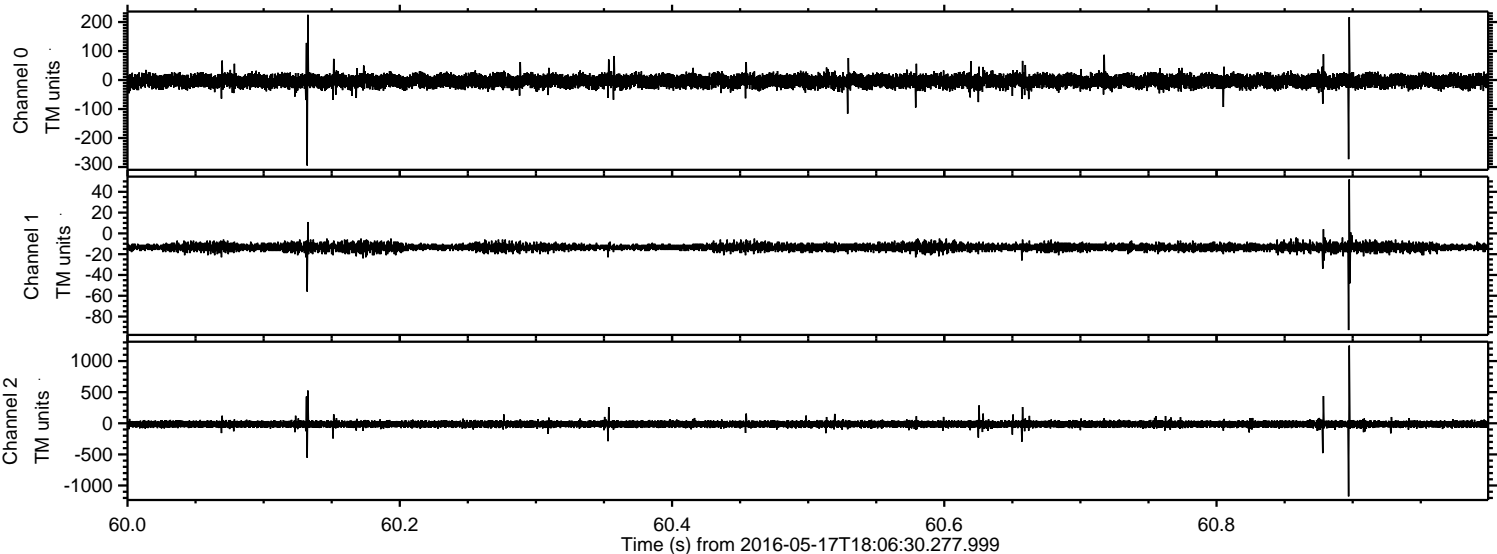


ELMAVAN 3D WAVEFORMS (Measured data sampled at 50 kHz) 51000 packets of 144 samples from 2016-05-17T18:06:30.277.999. Part 142/147

Processed Tue May 17 20:15:08 2016 by ELM ver.2012-10-06 from 001__elm20160517_180629__dat00.bin

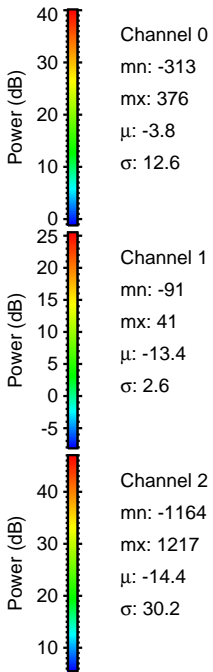
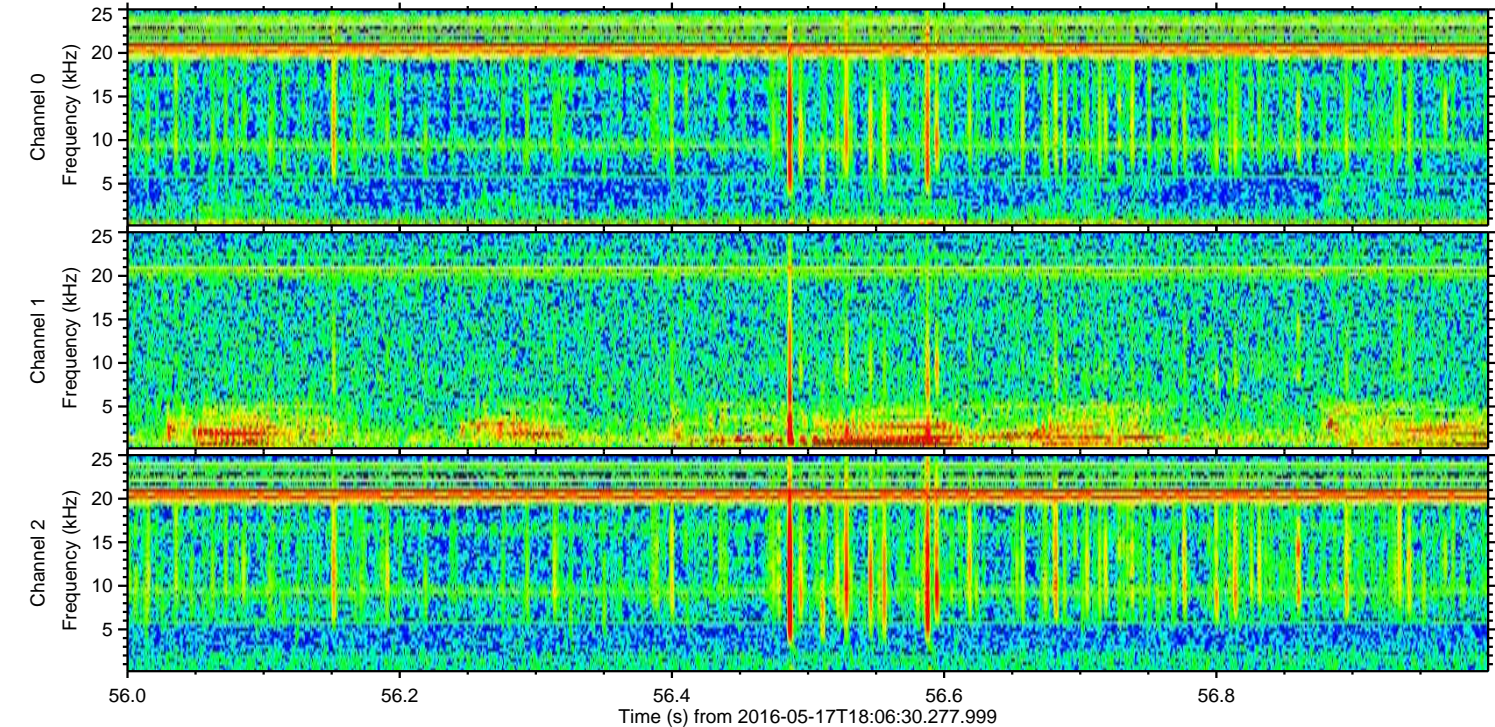
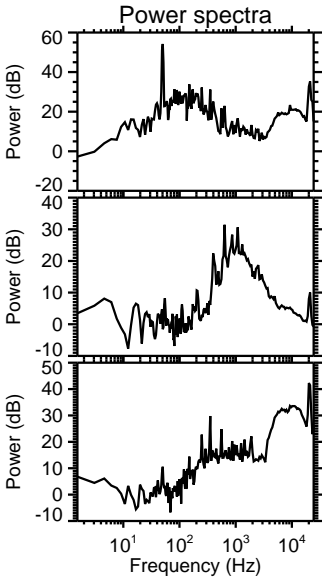
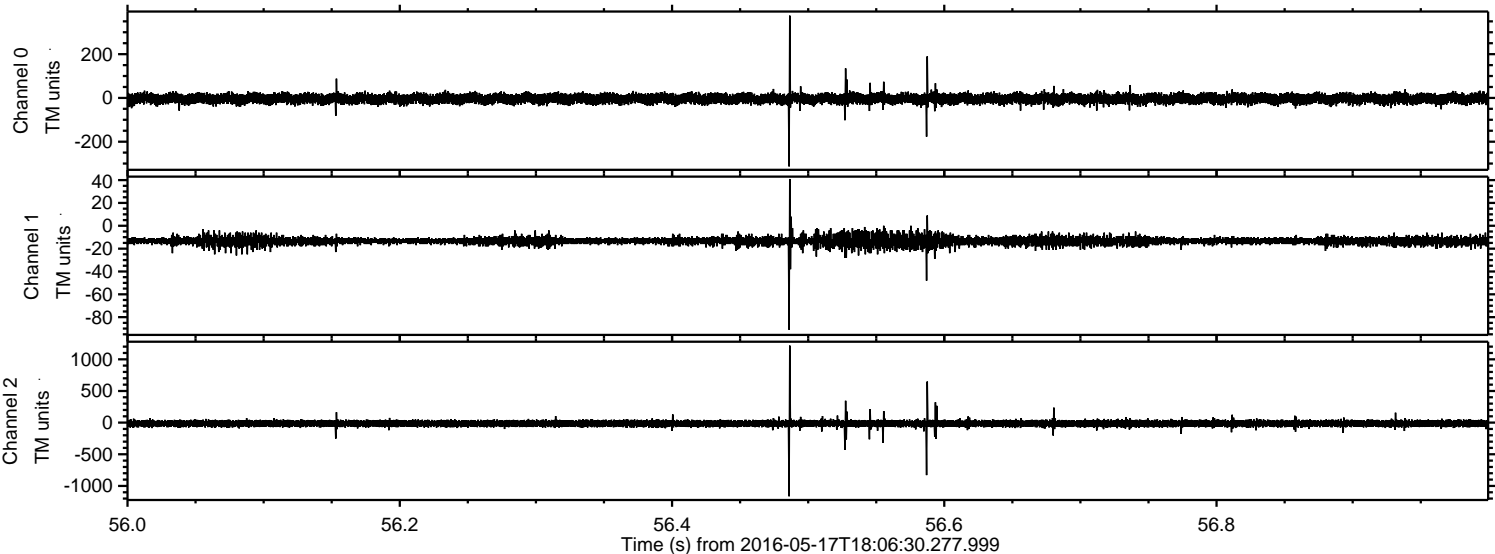


Processed Tue May 17 20:15:09 2016 by ELM ver.2012-10-06 from 001__elm20160517_180629__dat00.bin



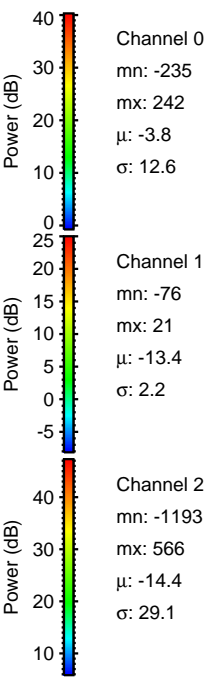
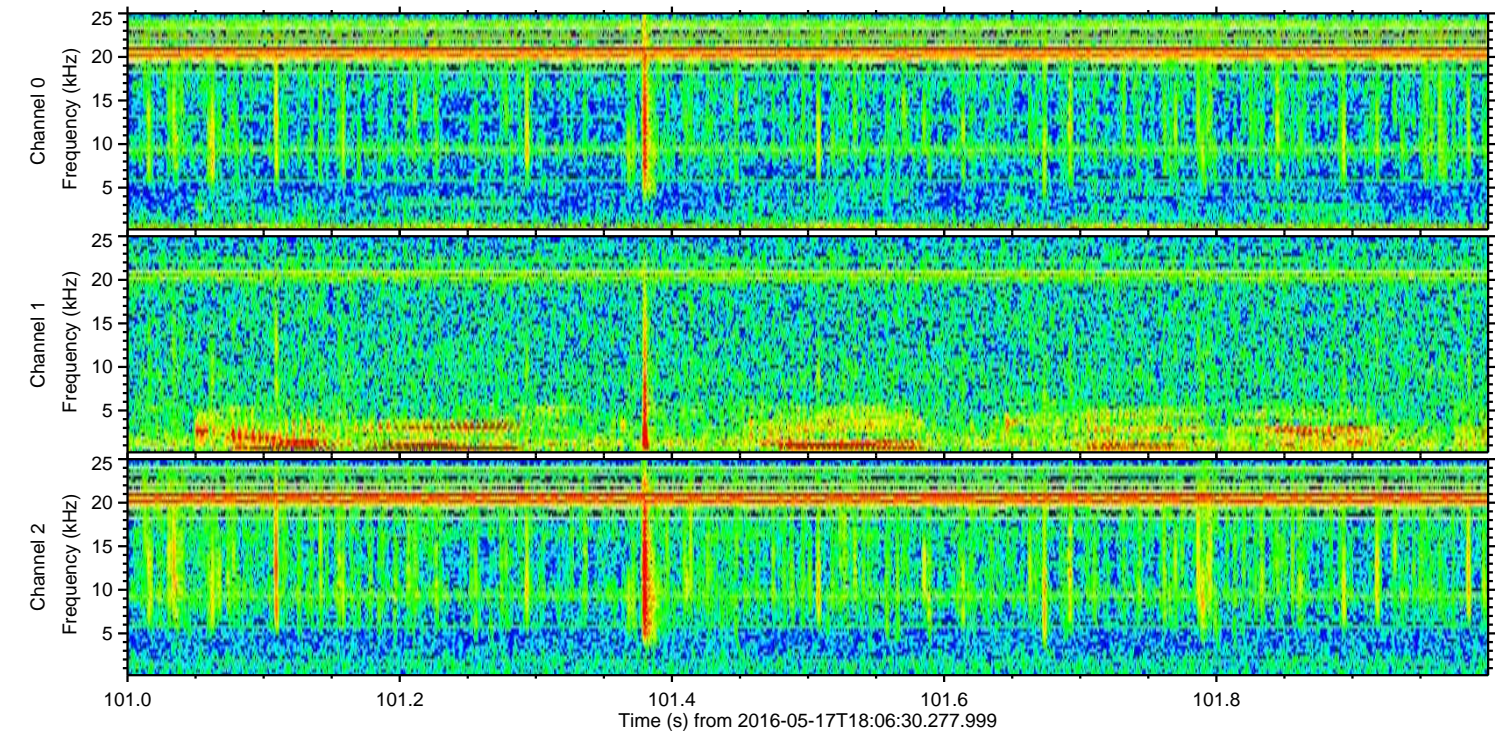
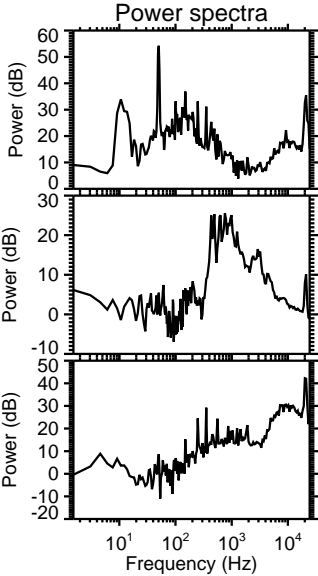
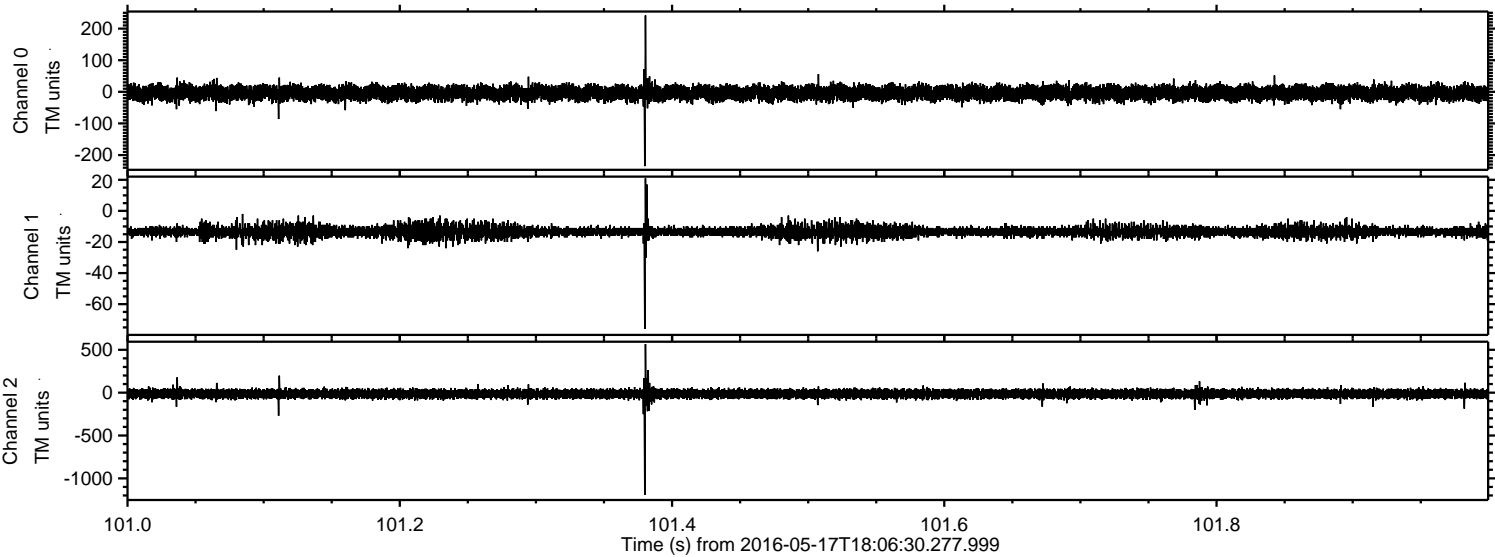
ELMAVAN 3D WAVEFORMS (Measured data sampled at 50 kHz) 51000 packets of 144 samples from 2016-05-17T18:06:30.277.999. Part 57/147

Processed Tue May 17 20:15:09 2016 by ELM ver.2012-10-06 from 001__elm20160517_180629__dat00.bin

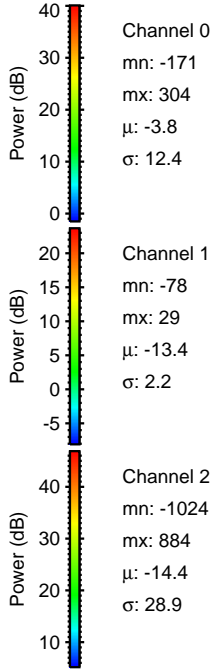
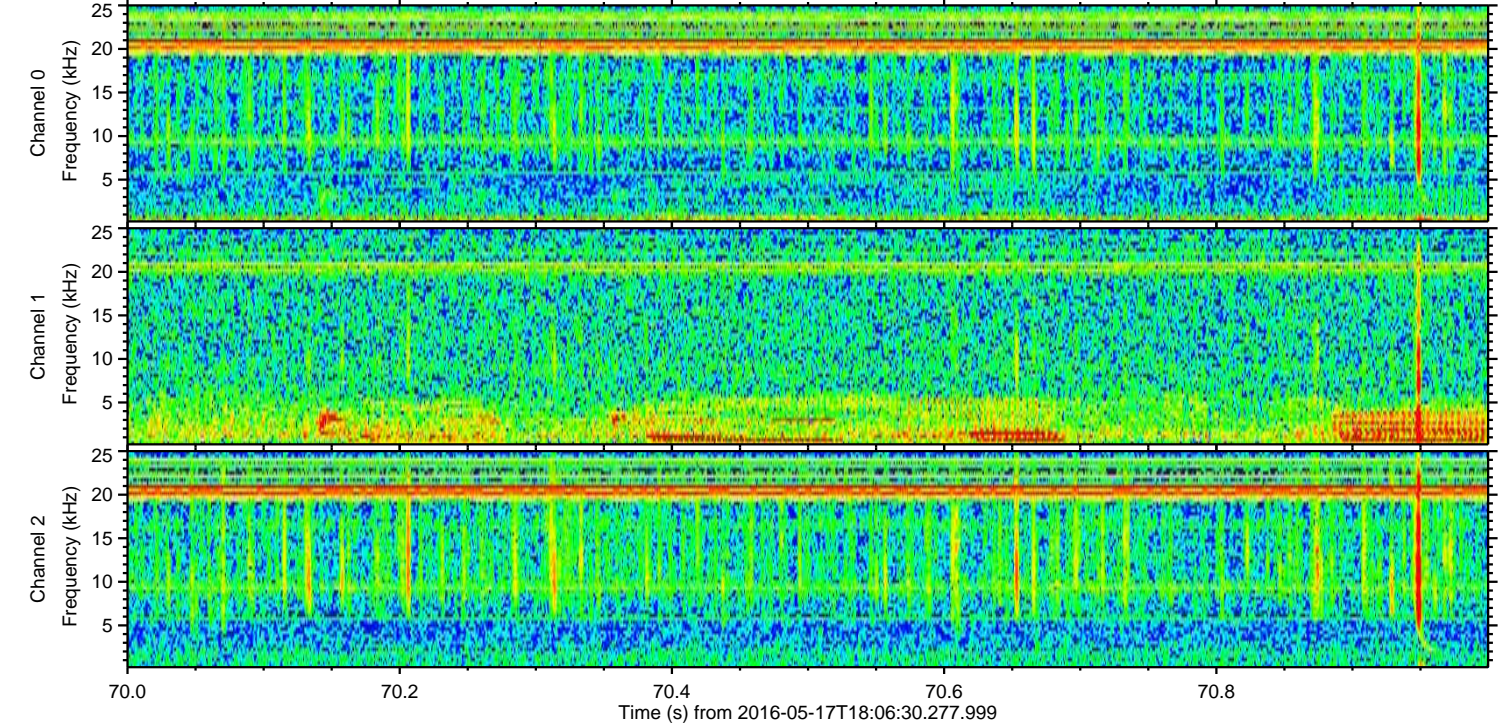
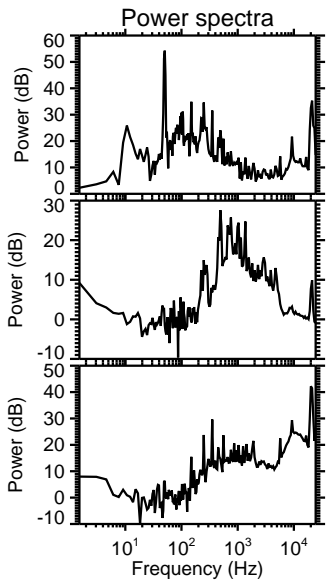
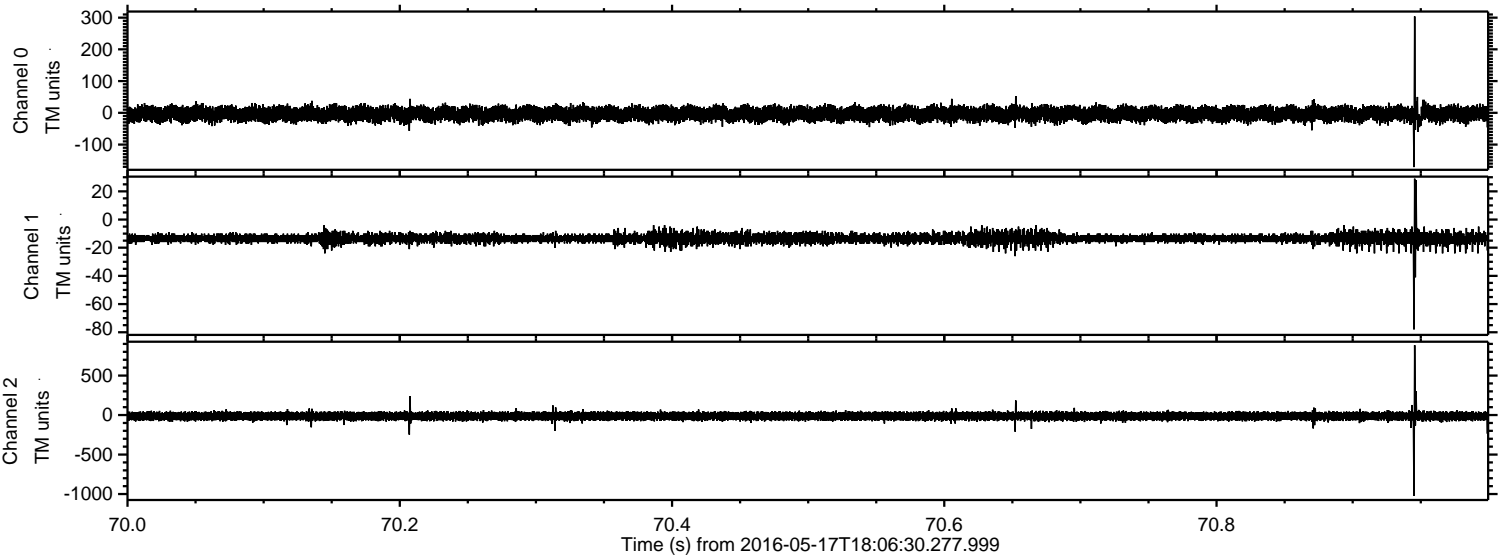


ELMAVAN 3D WAVEFORMS (Measured data sampled at 50 kHz) 51000 packets of 144 samples from 2016-05-17T18:06:30.277.999. Part 102/147

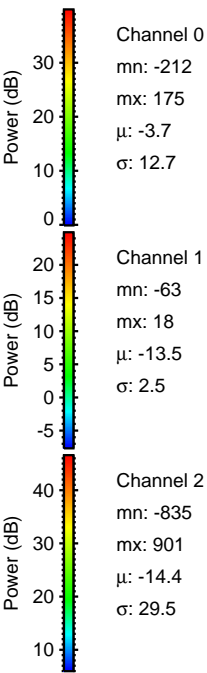
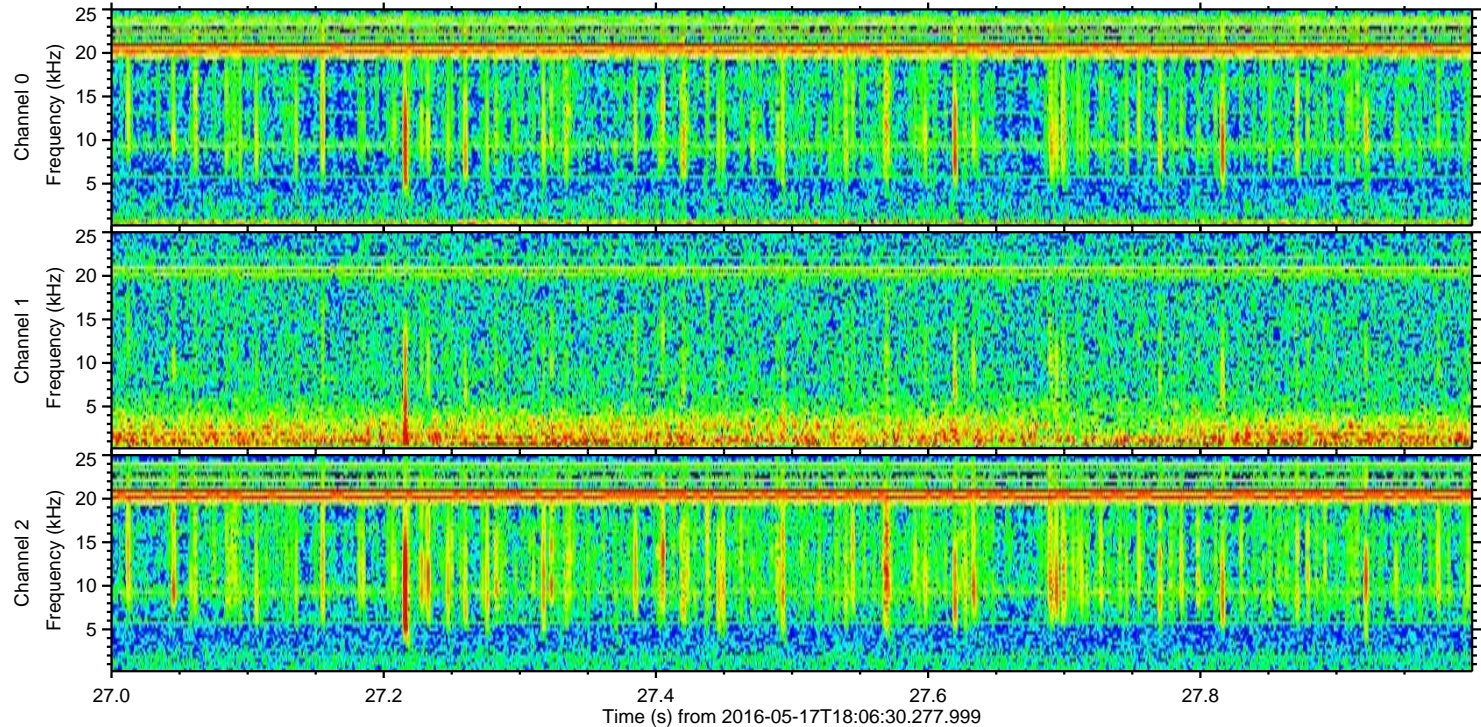
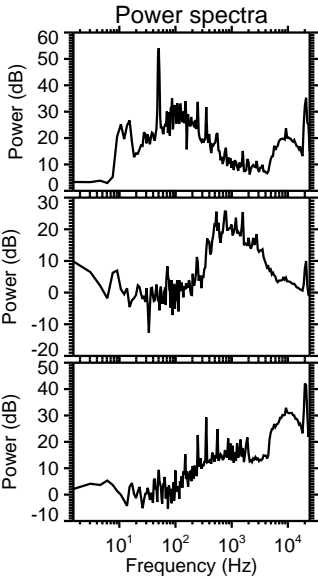
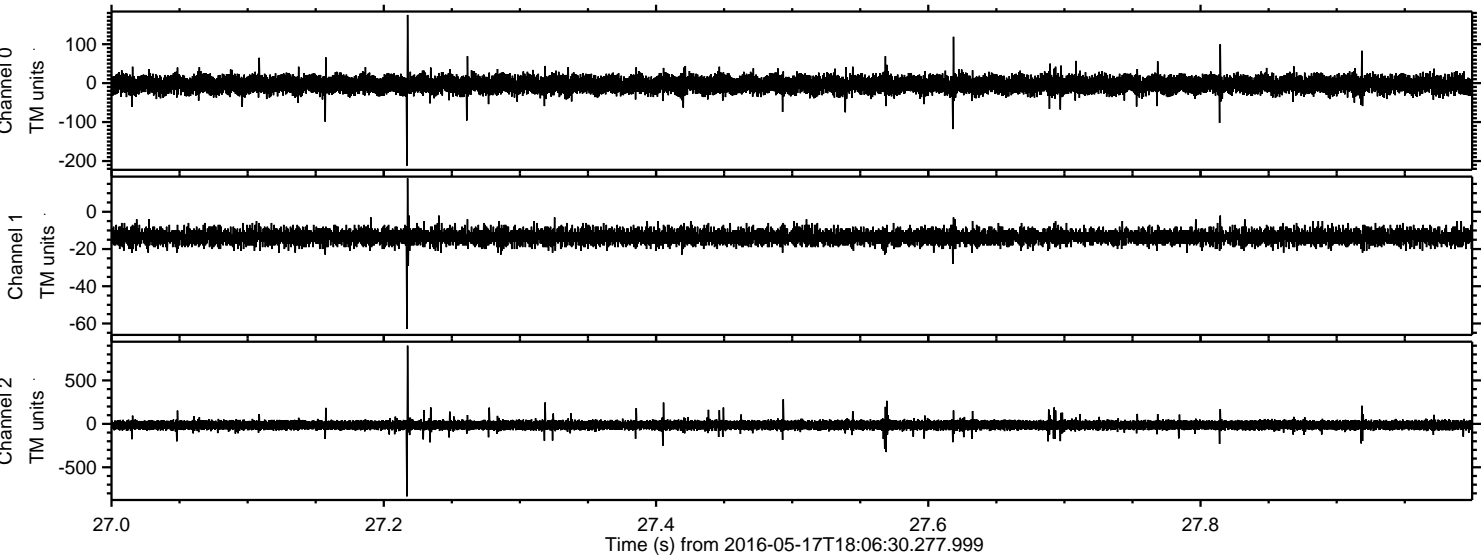
Processed Tue May 17 20:15:10 2016 by ELM ver.2012-10-06 from 001__elm20160517_180629__dat00.bin



Processed Tue May 17 20:15:11 2016 by ELM ver.2012-10-06 from 001__elm20160517_180629__dat00.bin



Processed Tue May 17 20:15:12 2016 by ELM ver.2012-10-06 from 001__elm20160517_180629__dat00.bin



Power spectra

Channel 0
mn: -212
mx: 175
 μ : -3.7
 σ : 12.7

Channel 1
mn: -63
mx: 18
 μ : -13.5
 σ : 2.5

Channel 2
mn: -835
mx: 901
 μ : -14.4
 σ : 29.5

Processed Tue May 17 20:15:13 2016 by ELM ver.2012-10-06 from 001__elm20160517_180629__dat00.bin

