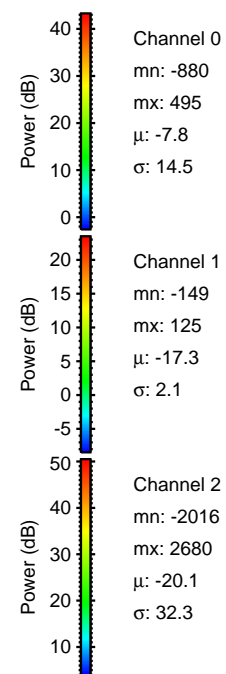
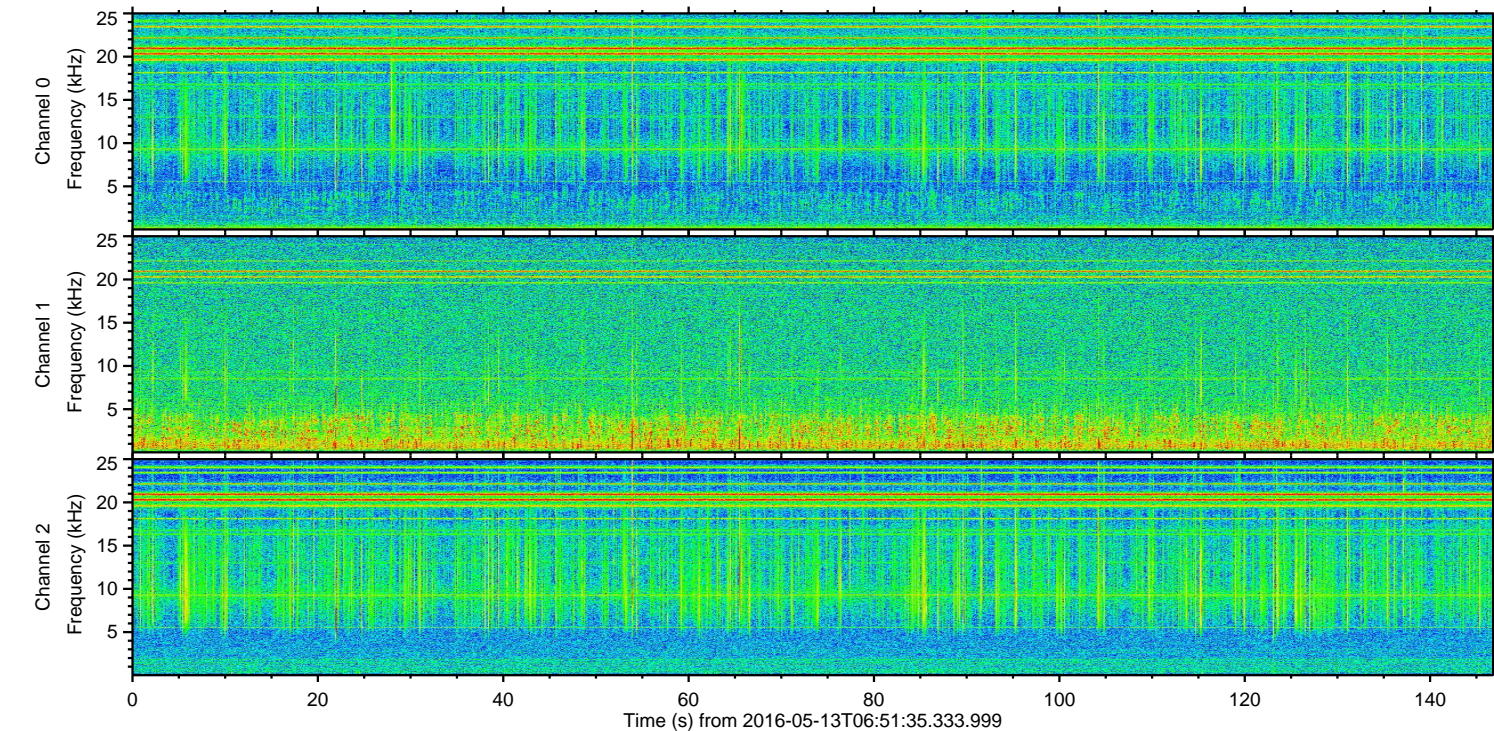
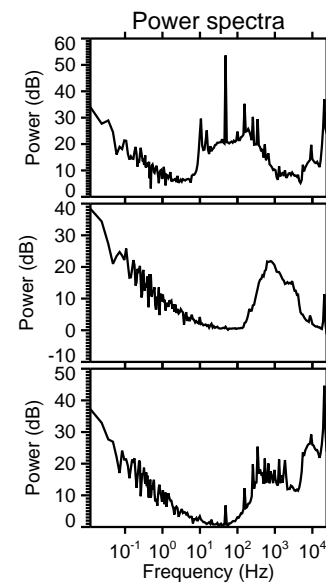
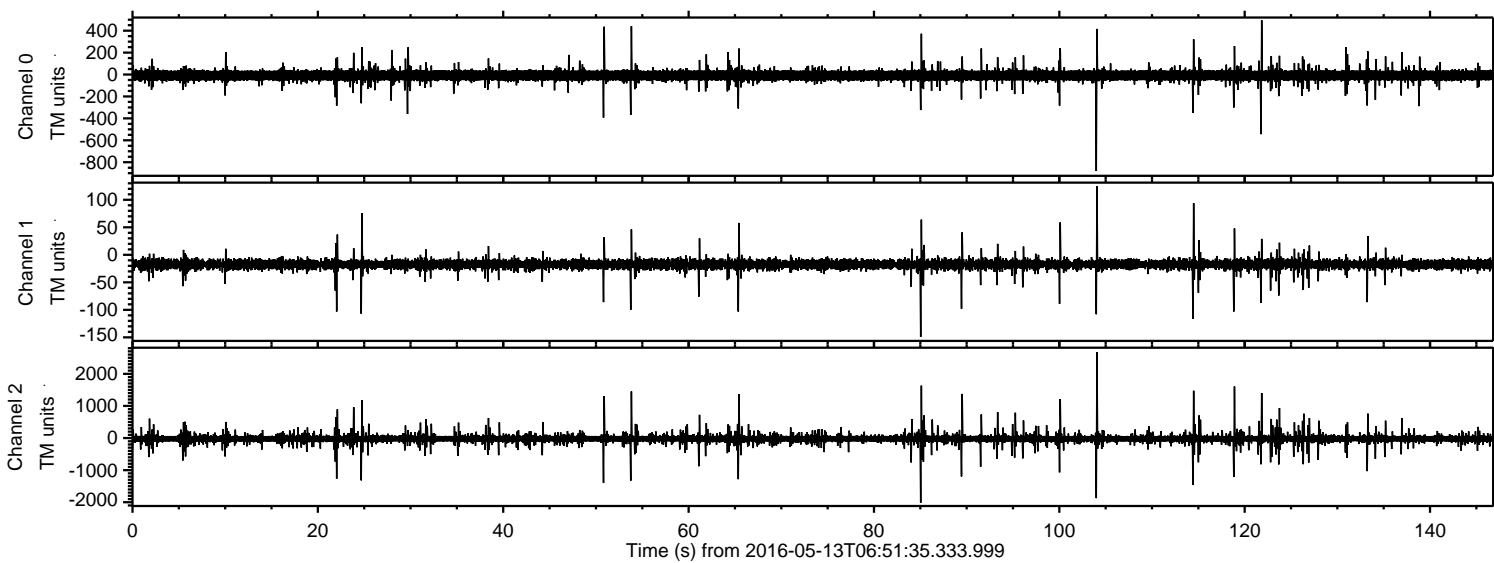


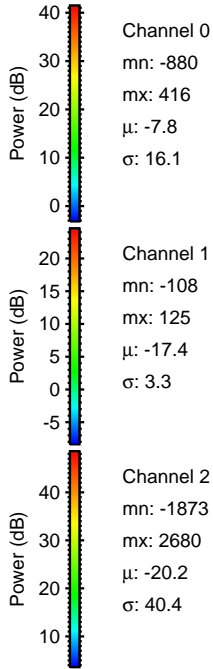
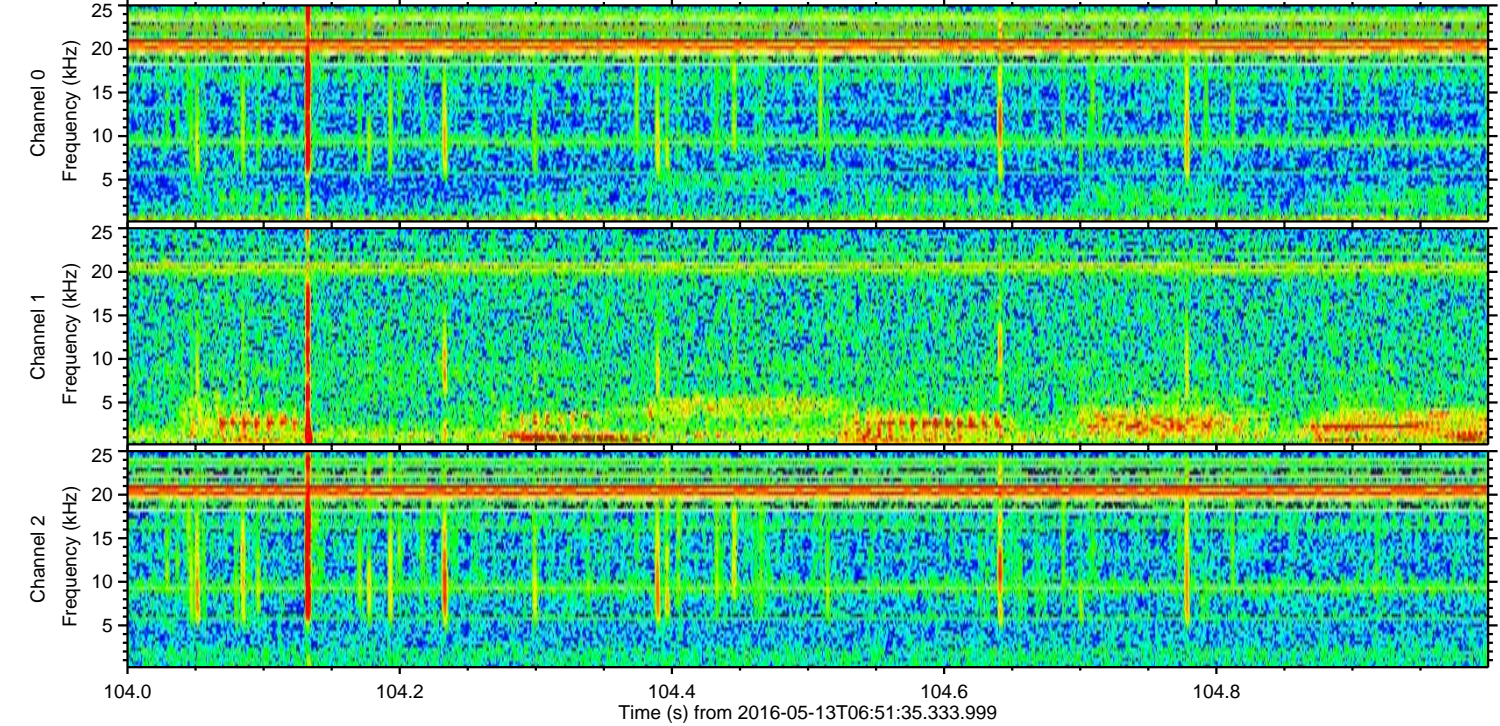
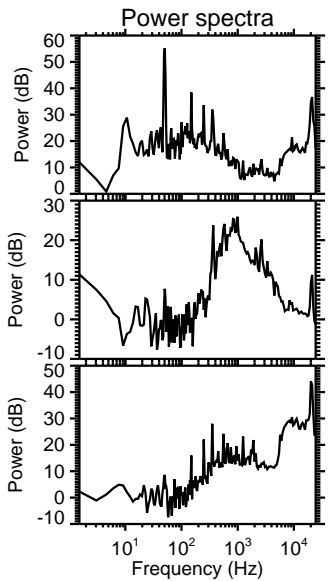
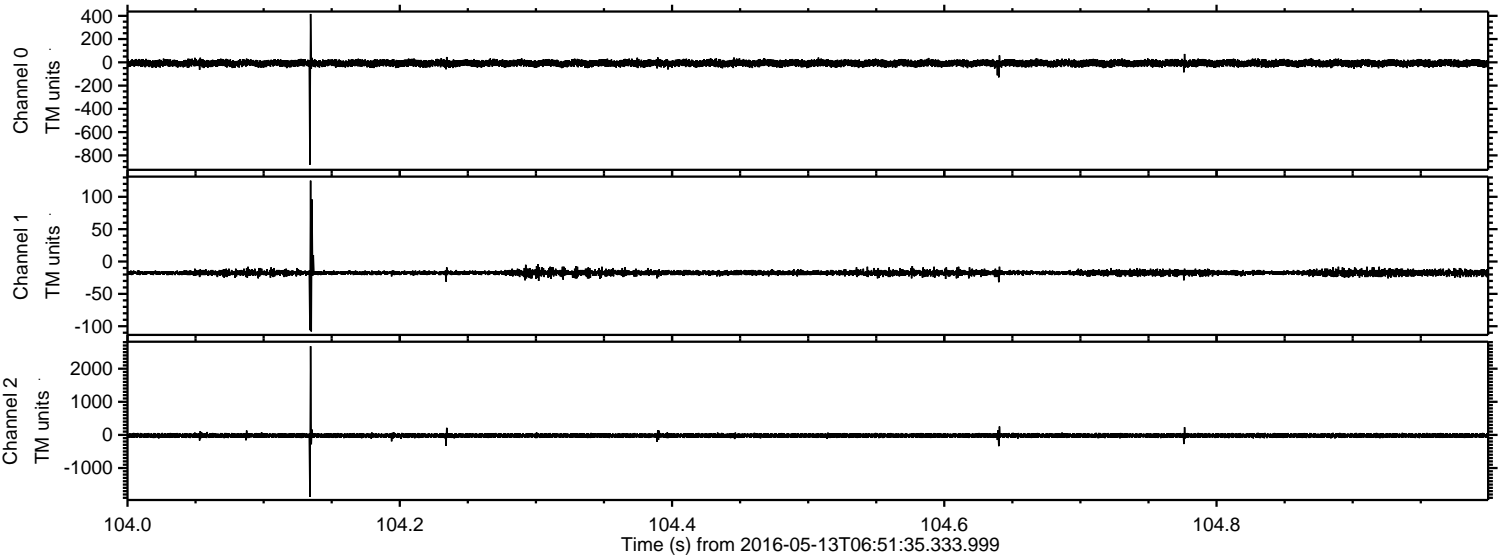
ELMAVAN 3D WAVEFORMS (Measured data sampled at 50 kHz) 51000 packets of 144 samples from 2016-05-13T06:51:35.333.999.

Processed Sat May 14 11:18:23 2016 by ELM ver.2012-10-06 from 001__elm20160513_065134__dat00.bin

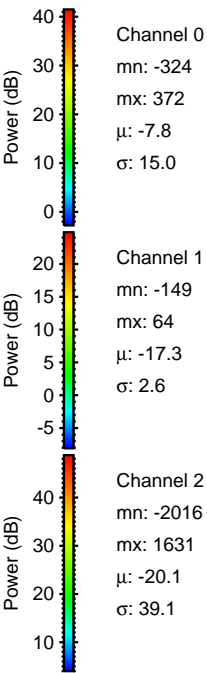
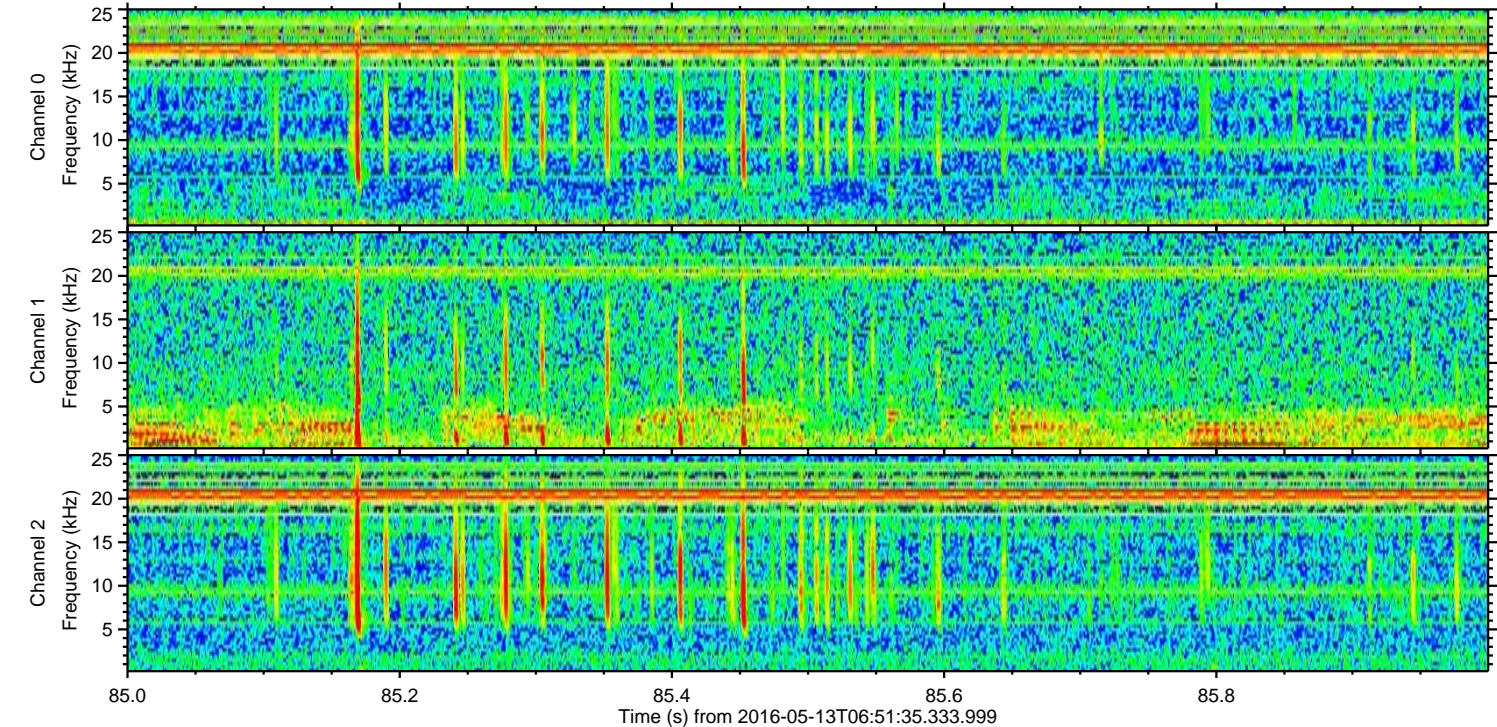
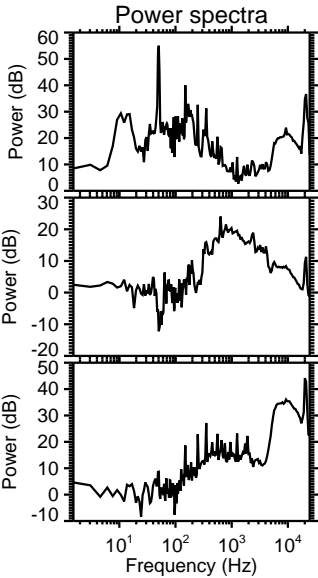
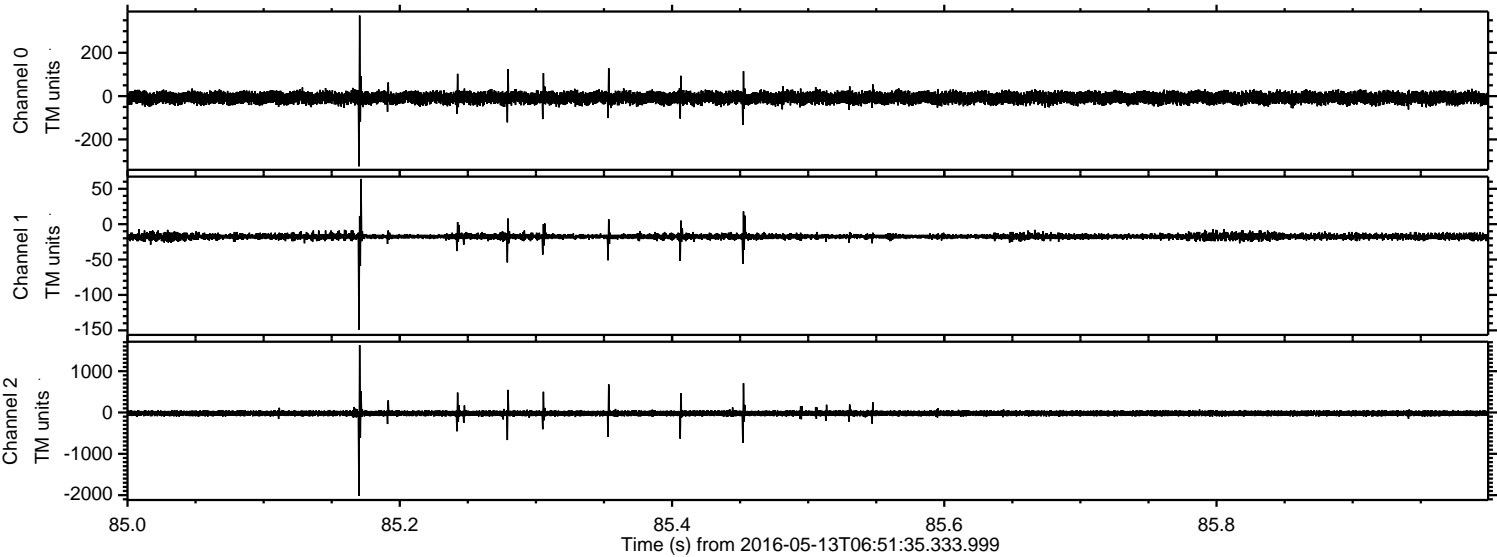


ELMAVAN 3D WAVEFORMS (Measured data sampled at 50 kHz) 51000 packets of 144 samples from 2016-05-13T06:51:35.333.999. Part 105/147

Processed Sat May 14 11:18:36 2016 by ELM ver.2012-10-06 from 001__elm20160513_065134__dat00.bin

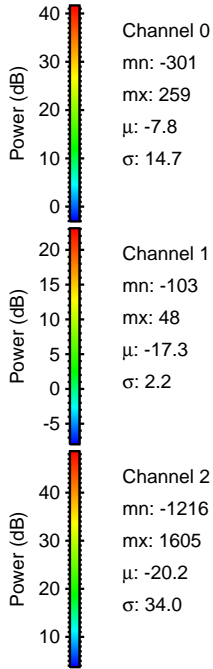
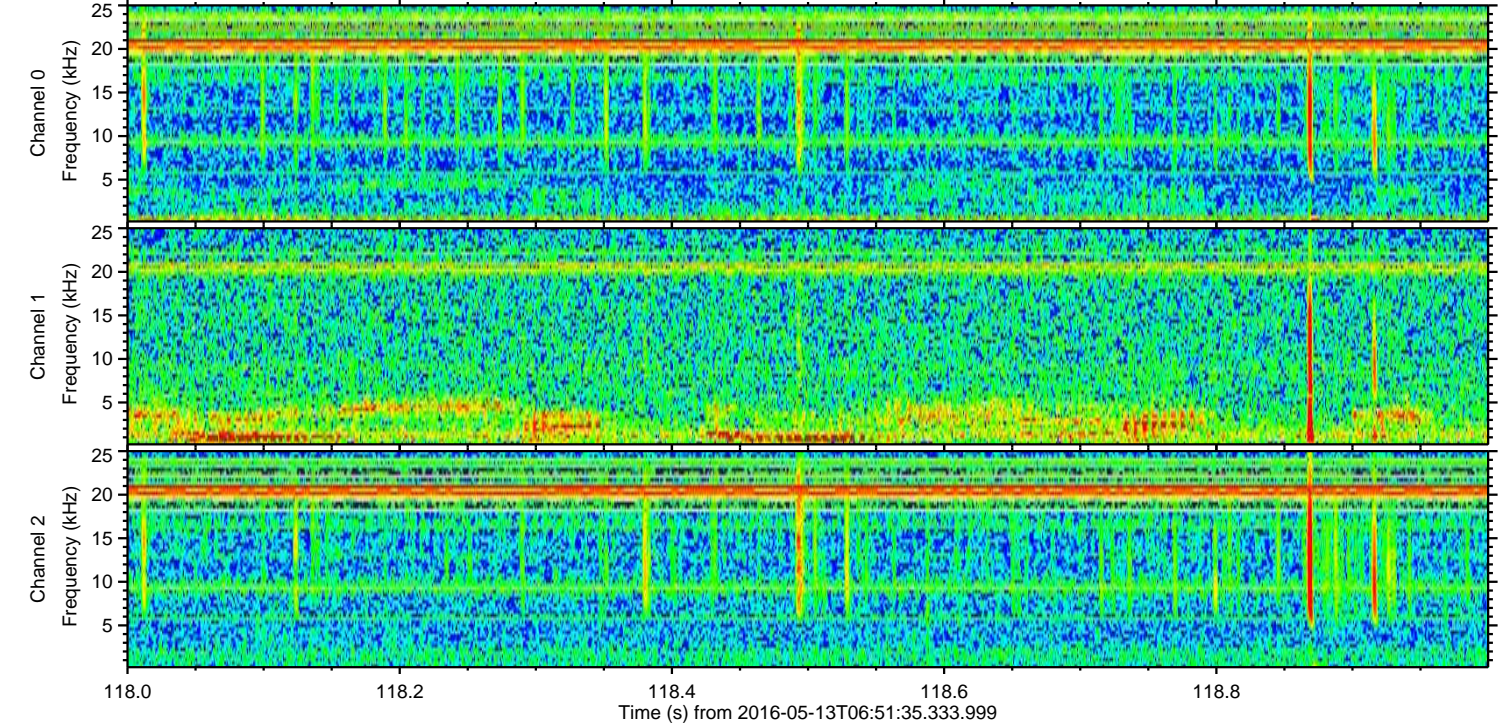
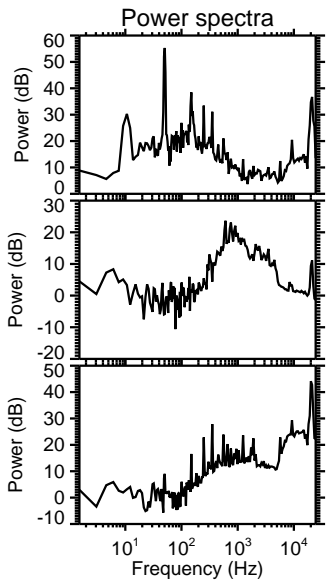
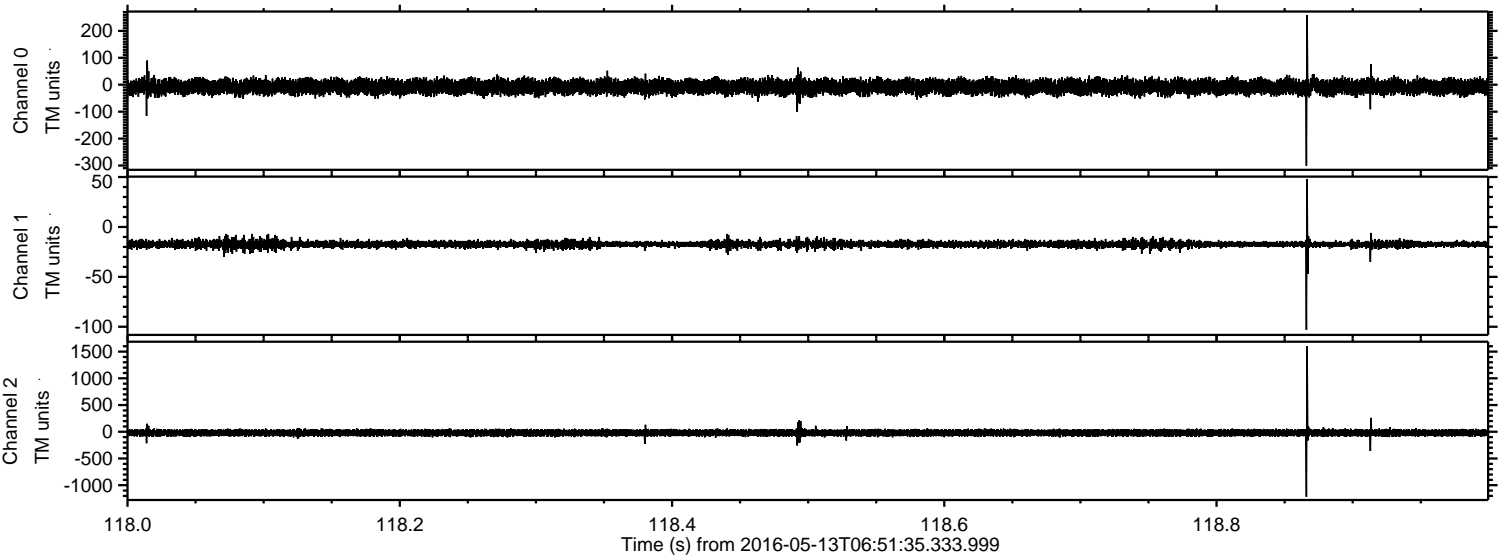


Processed Sat May 14 11:18:37 2016 by ELM ver.2012-10-06 from 001__elm20160513_065134__dat00.bin



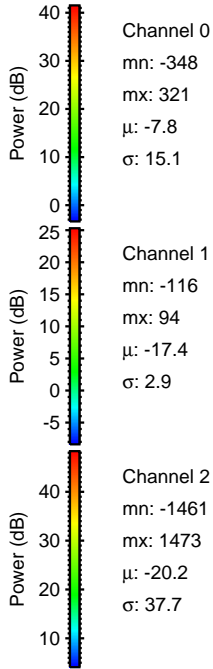
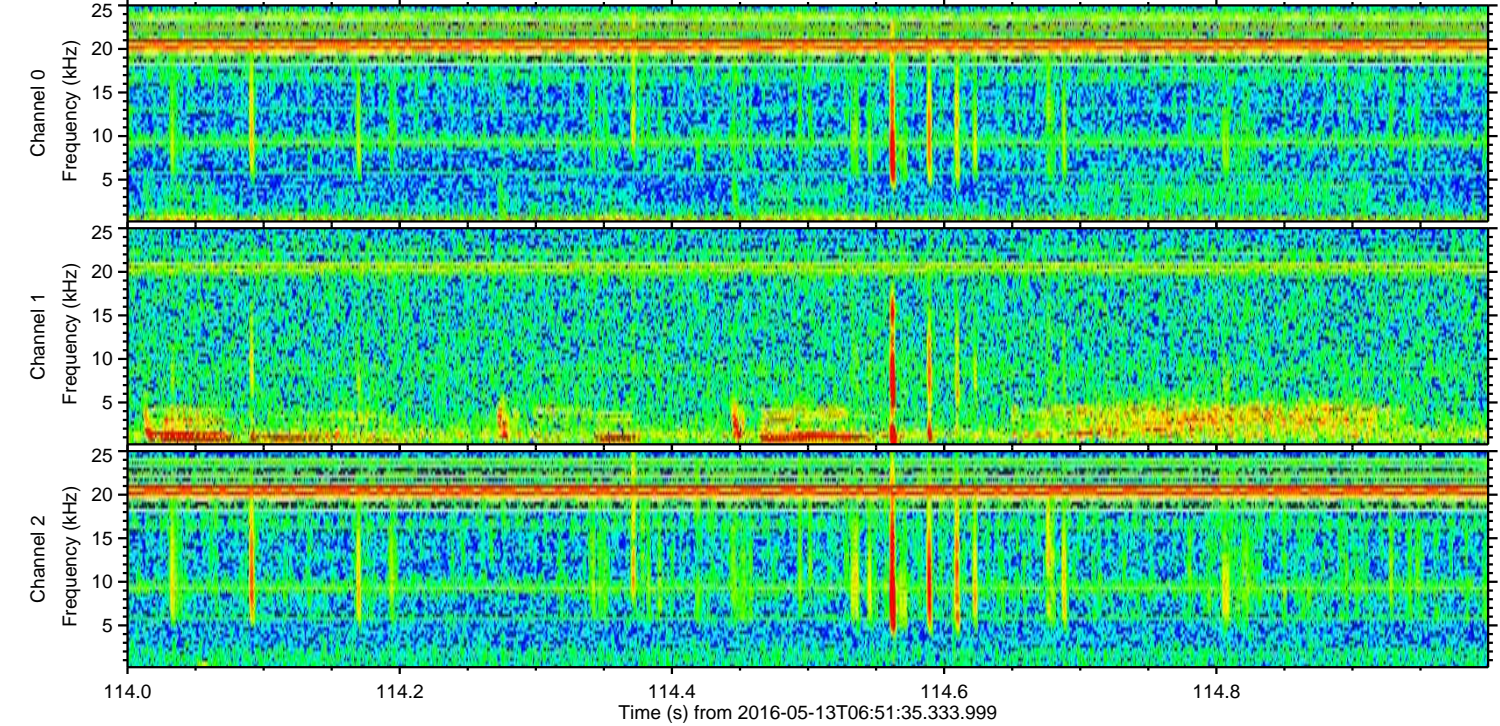
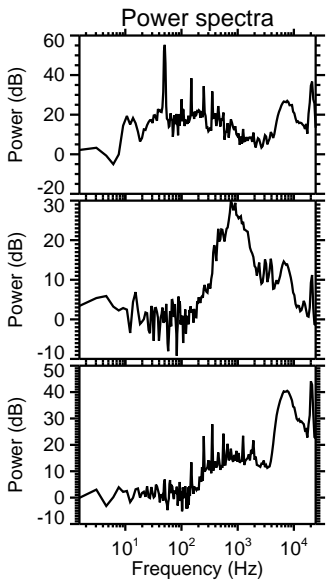
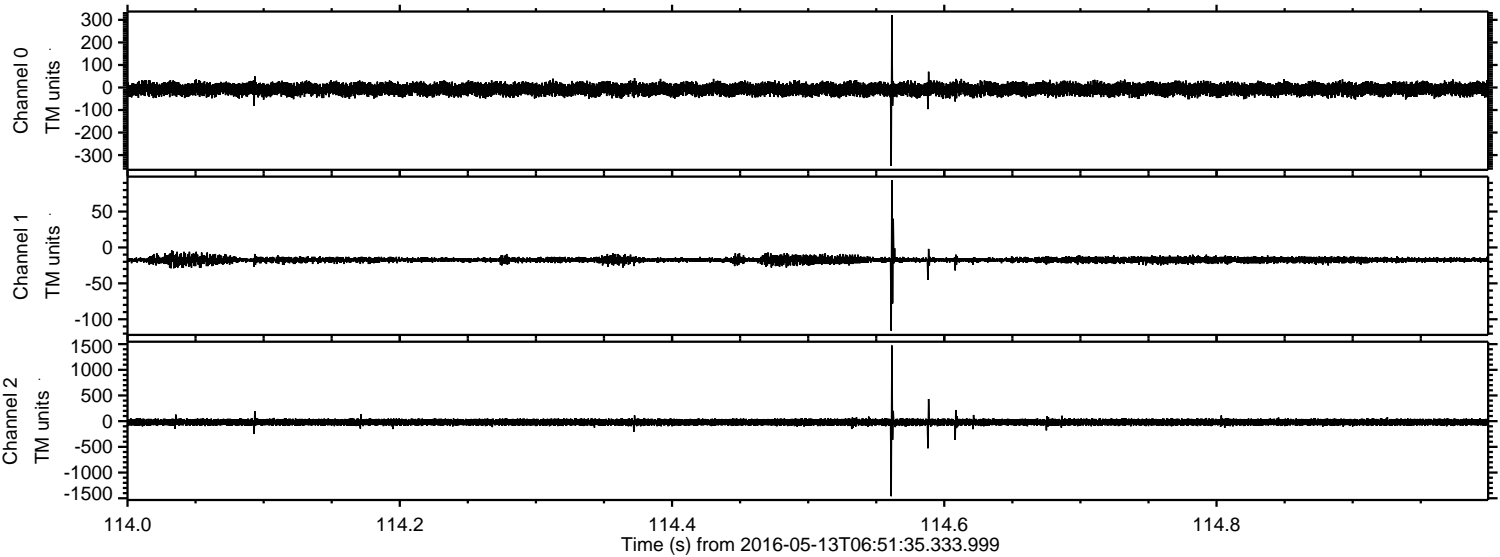
ELMAVAN 3D WAVEFORMS (Measured data sampled at 50 kHz) 51000 packets of 144 samples from 2016-05-13T06:51:35.333.999. Part 119/147

Processed Sat May 14 11:18:38 2016 by ELM ver.2012-10-06 from 001__elm20160513_065134__dat00.bin

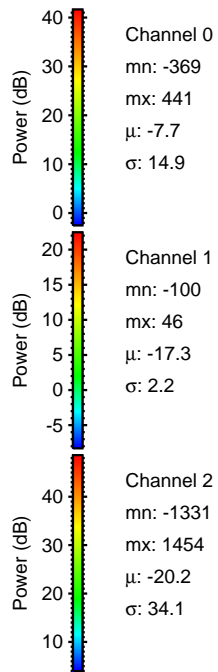
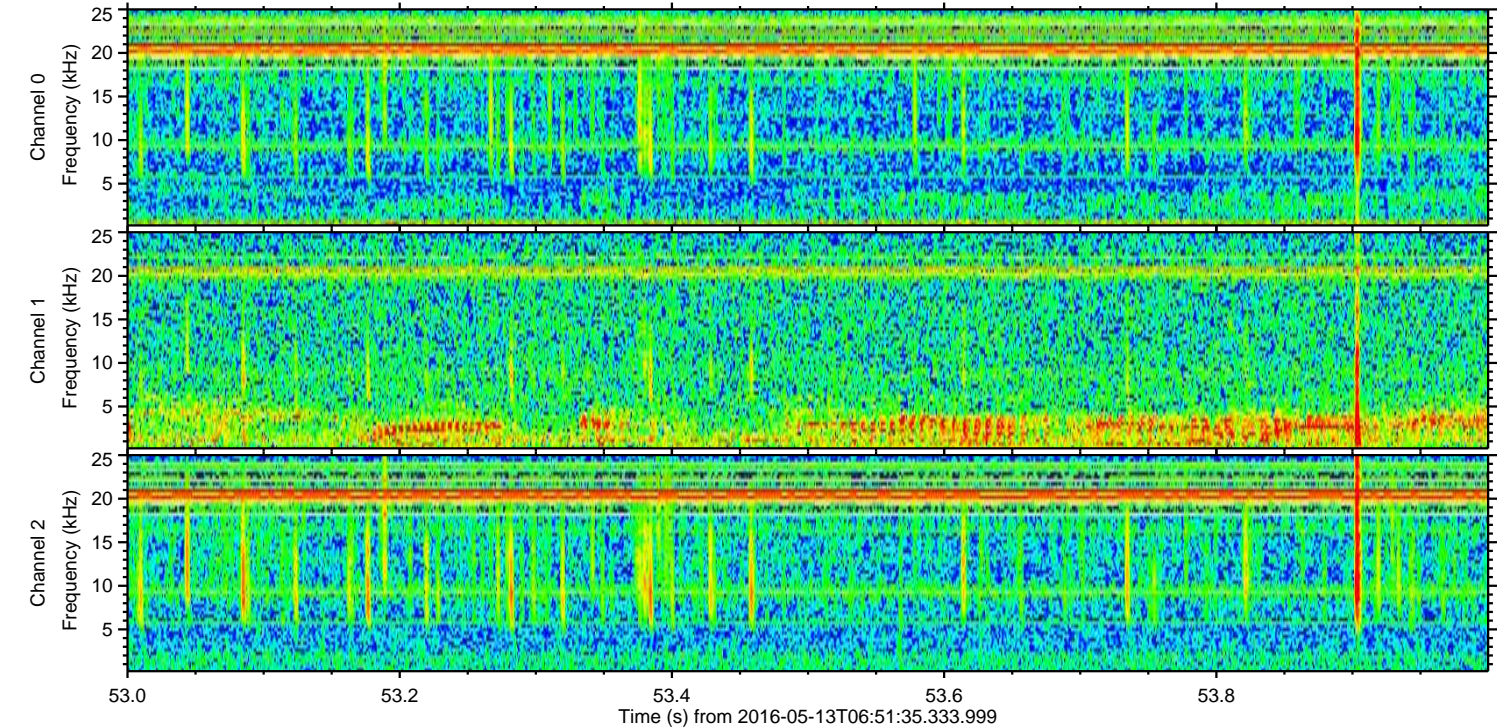
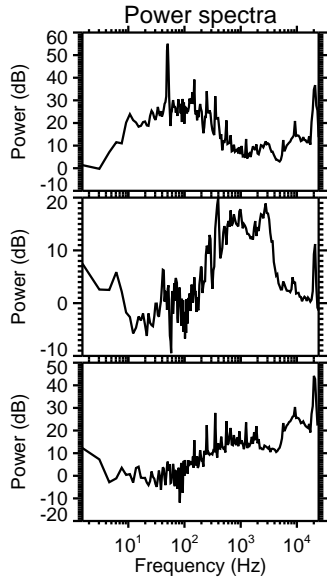
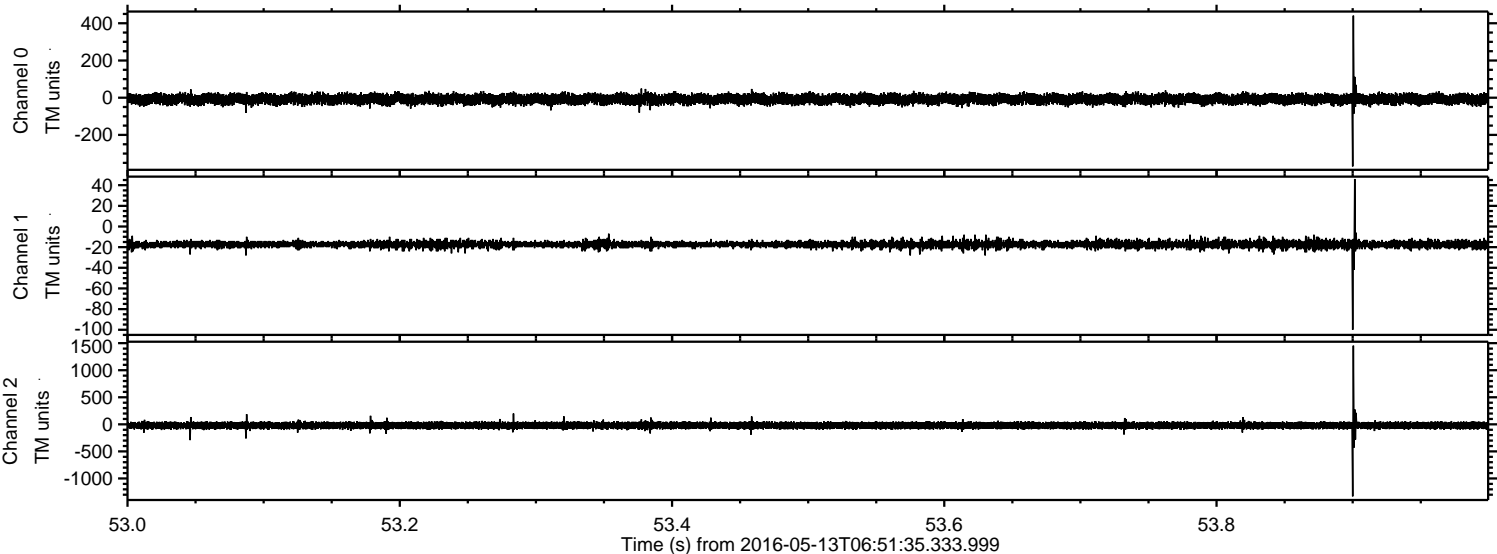


ELMAVAN 3D WAVEFORMS (Measured data sampled at 50 kHz) 51000 packets of 144 samples from 2016-05-13T06:51:35.333.999. Part 115/147

Processed Sat May 14 11:18:39 2016 by ELM ver.2012-10-06 from 001__elm20160513_065134__dat00.bin

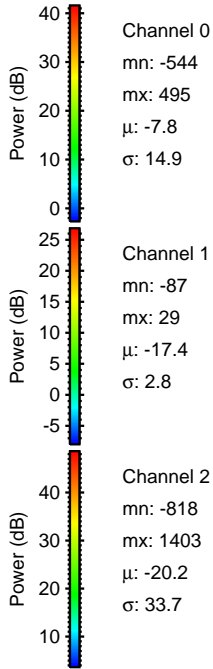
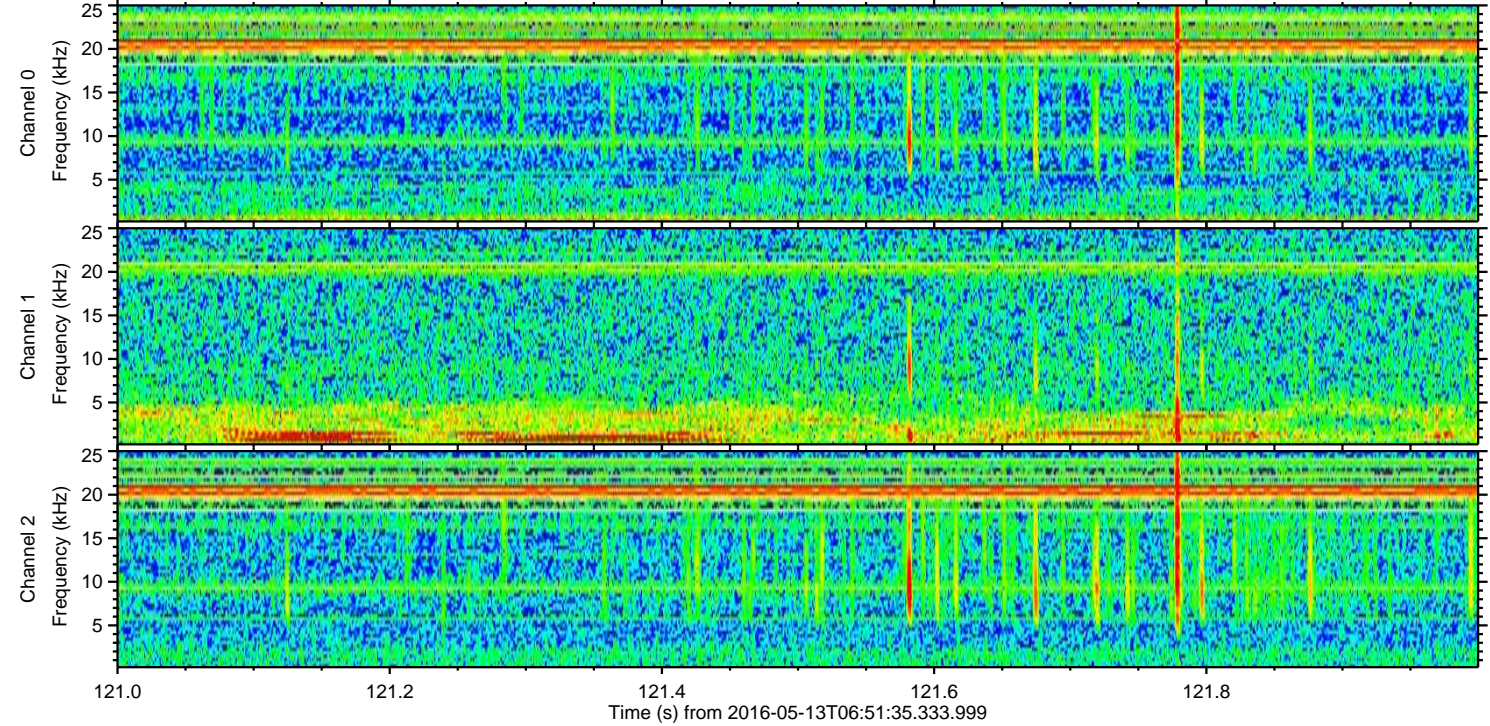
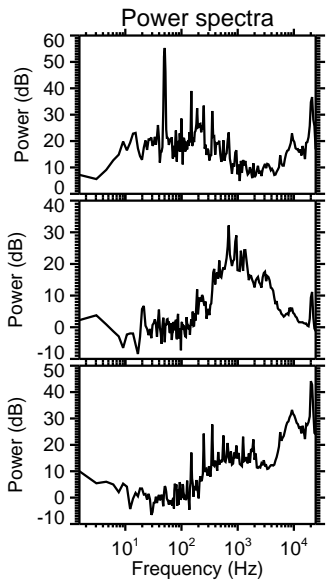
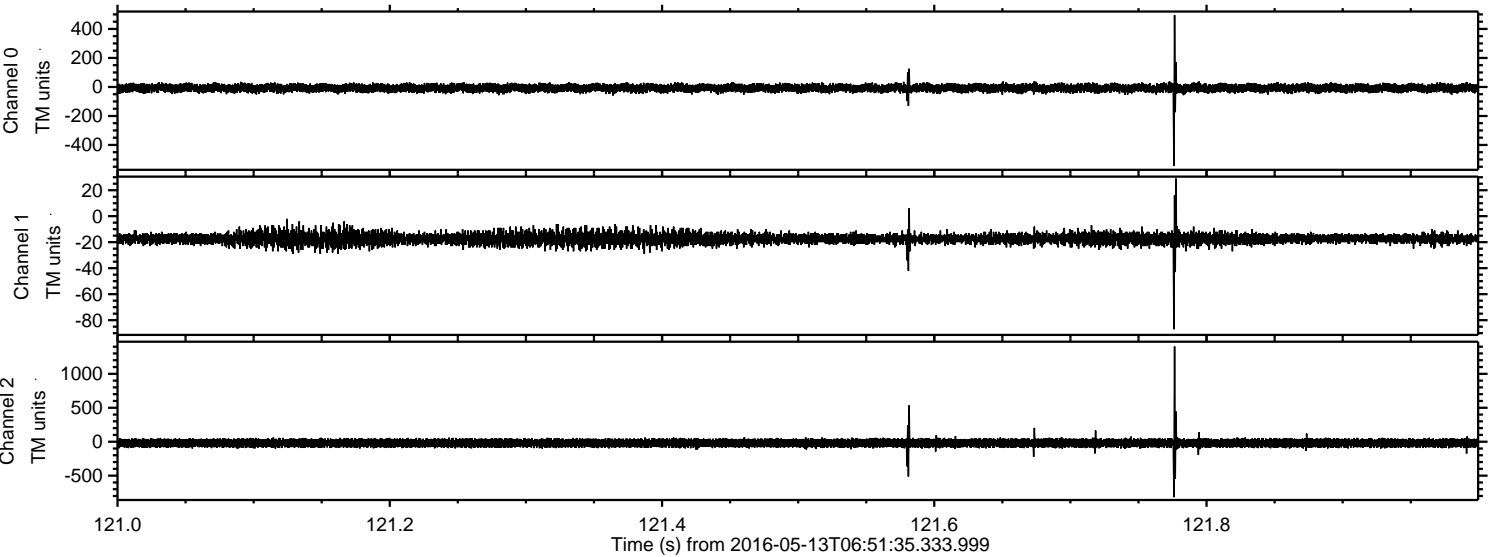


Processed Sat May 14 11:18:40 2016 by ELM ver.2012-10-06 from 001__elm20160513_065134__dat00.bin

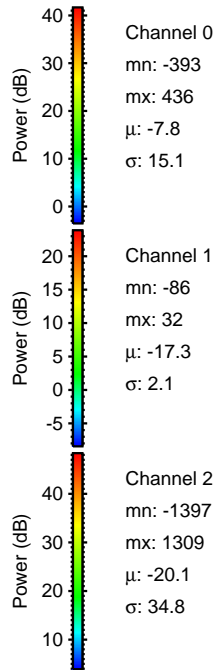
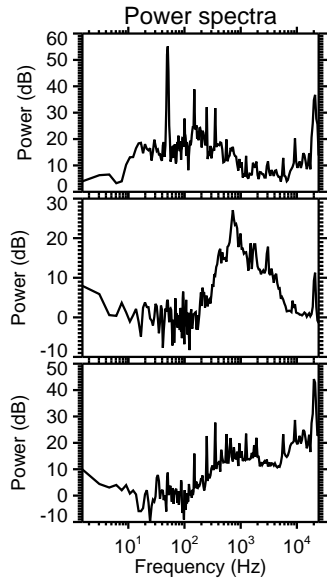
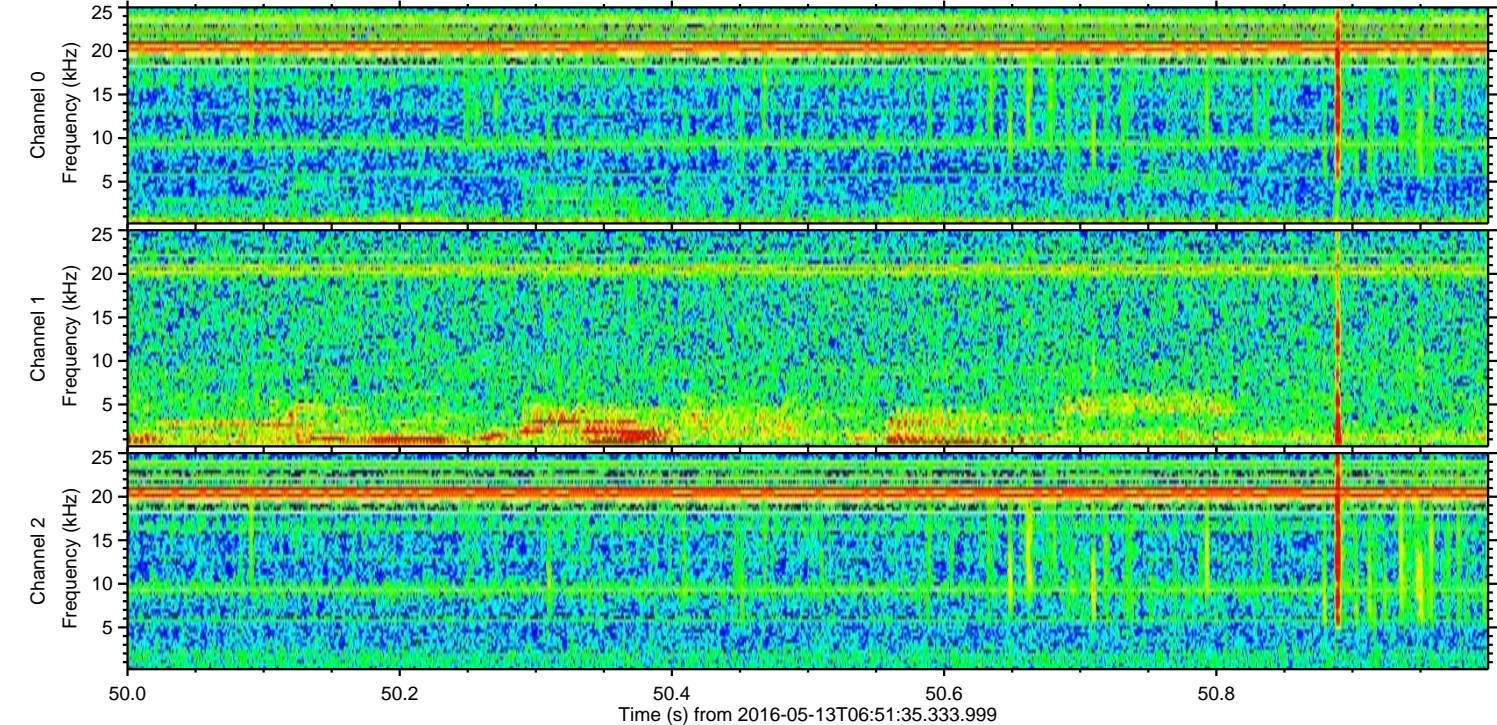
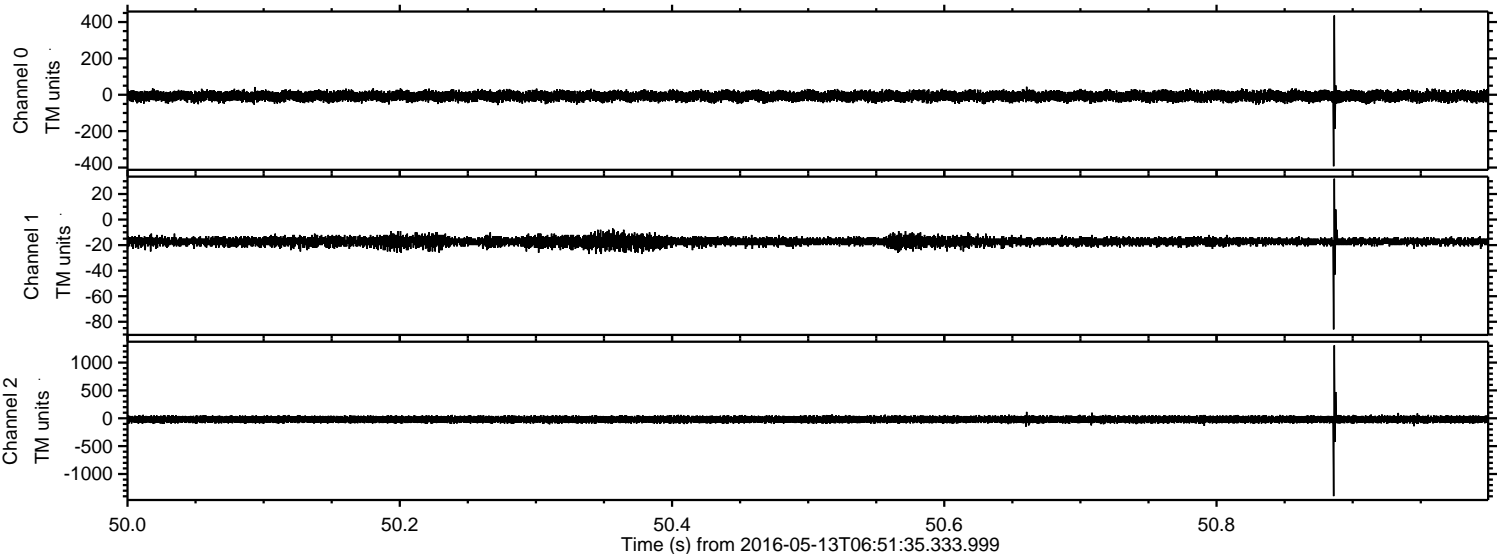


ELMAVAN 3D WAVEFORMS (Measured data sampled at 50 kHz) 51000 packets of 144 samples from 2016-05-13T06:51:35.333.999. Part 122/147

Processed Sat May 14 11:18:41 2016 by ELM ver.2012-10-06 from 001__elm20160513_065134__dat00.bin



Processed Sat May 14 11:18:42 2016 by ELM ver.2012-10-06 from 001__elm20160513_065134__dat00.bin

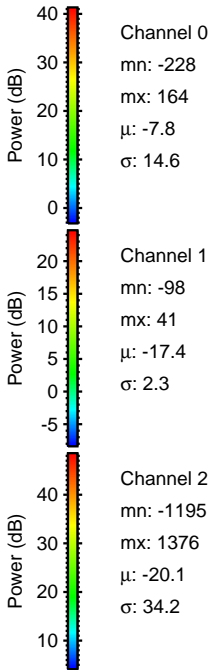
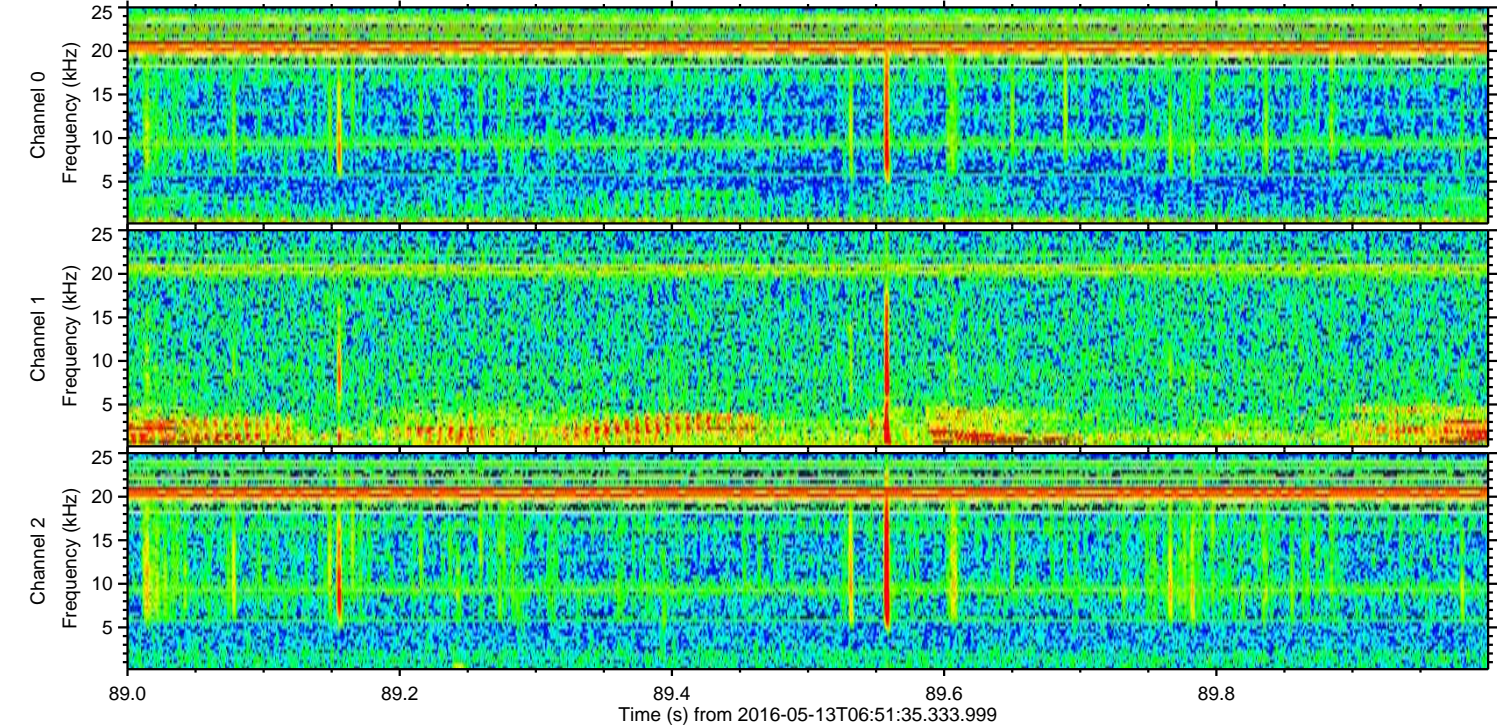
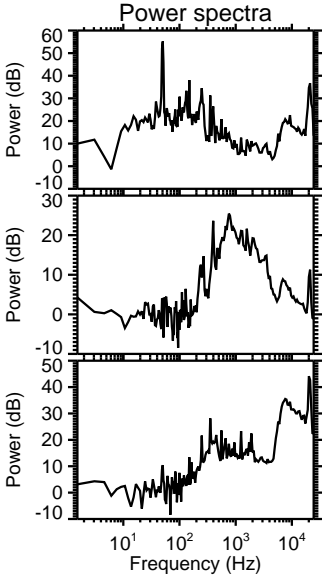
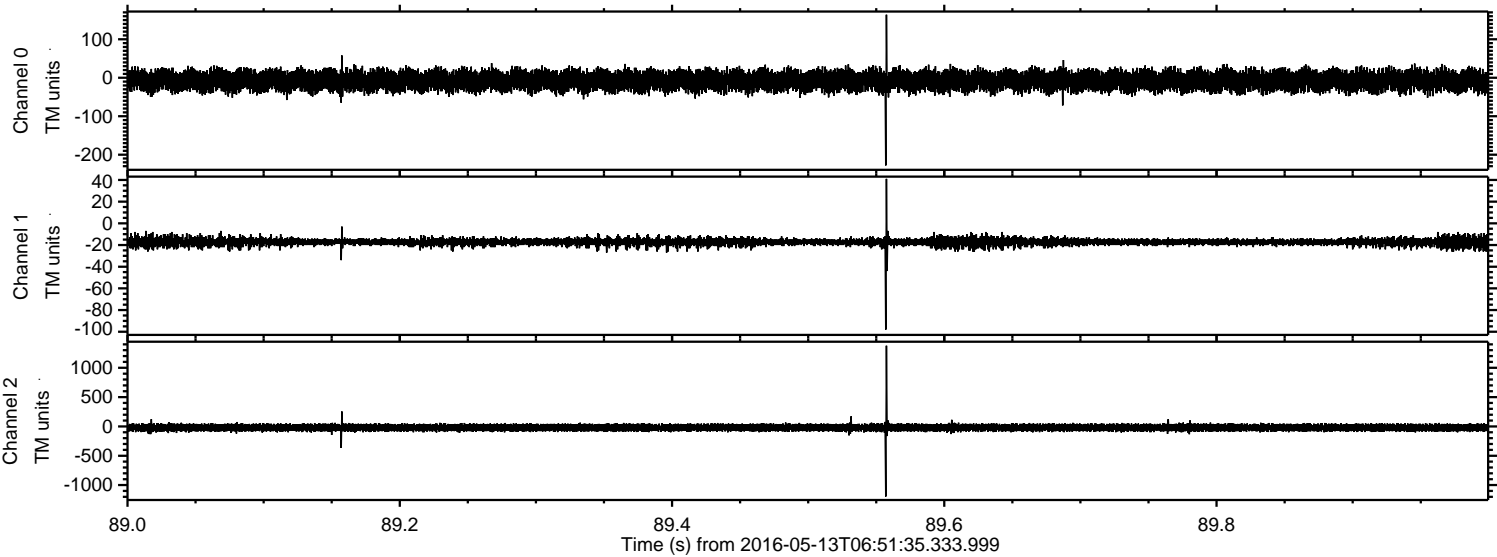


Channel 0
mn: -393
mx: 436
 μ : -7.8
 σ : 15.1

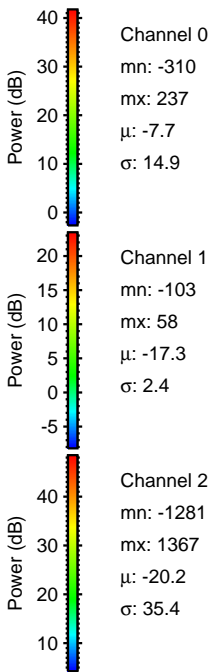
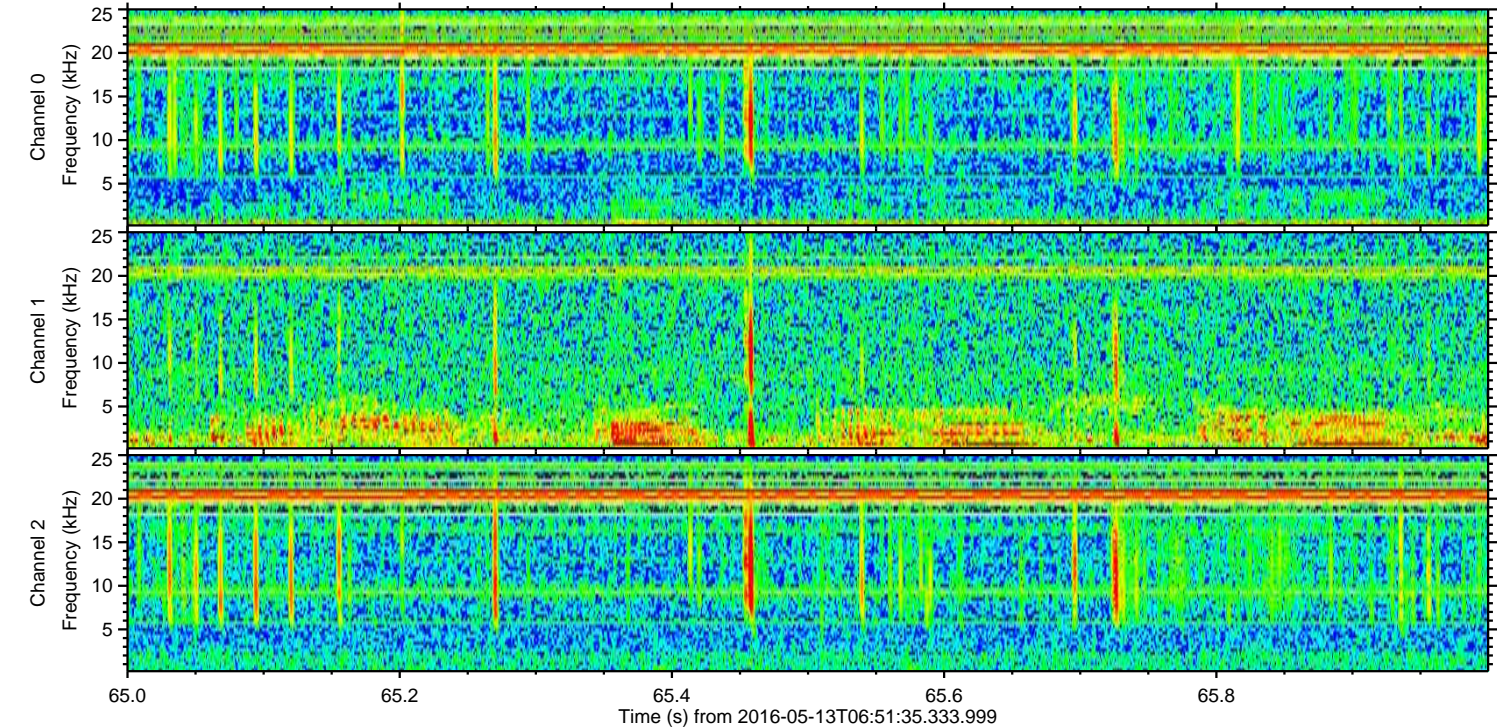
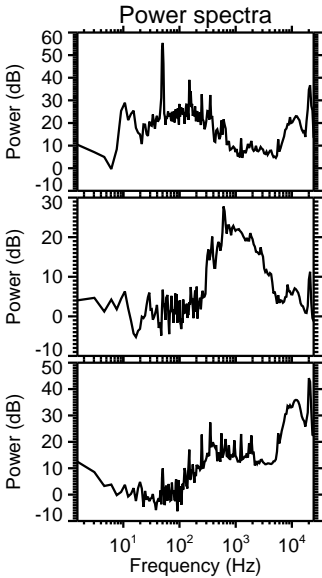
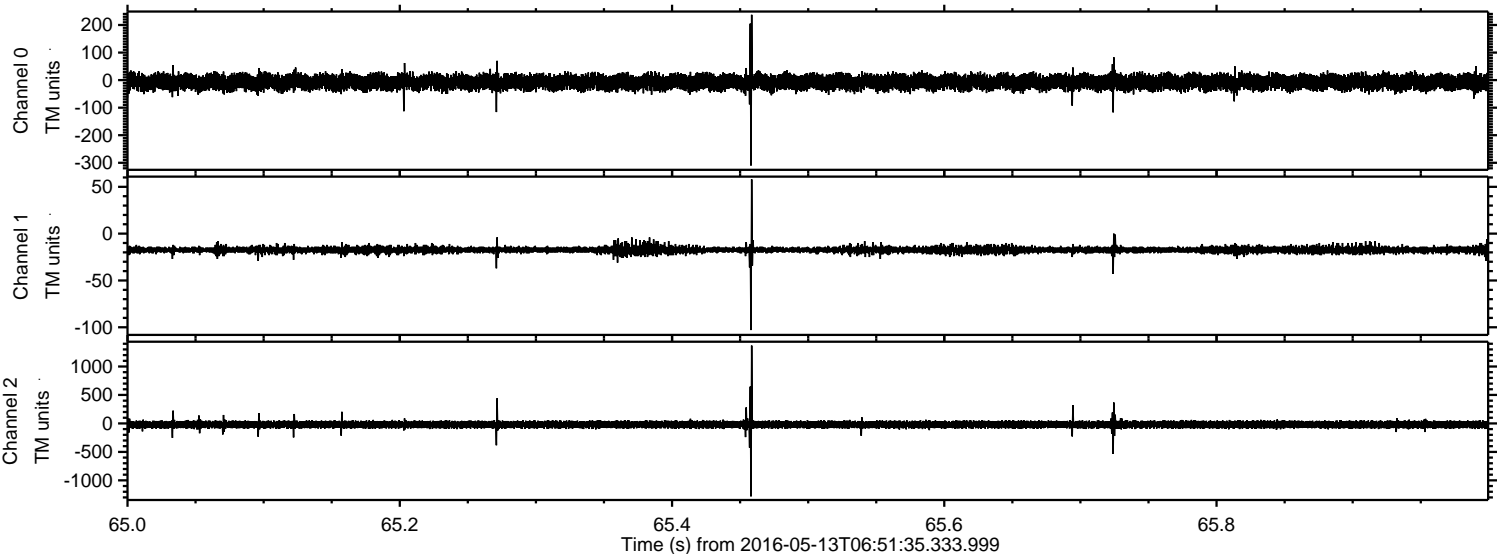
Channel 1
mn: -86
mx: 32
 μ : -17.3
 σ : 2.1

Channel 2
mn: -1397
mx: 1309
 μ : -20.1
 σ : 34.8

Processed Sat May 14 11:18:43 2016 by ELM ver.2012-10-06 from 001__elm20160513_065134__dat00.bin



Processed Sat May 14 11:18:44 2016 by ELM ver.2012-10-06 from 001__elm20160513_065134__dat00.bin



Processed Sat May 14 11:18:45 2016 by ELM ver.2012-10-06 from 001__elm20160513_065134__dat00.bin

