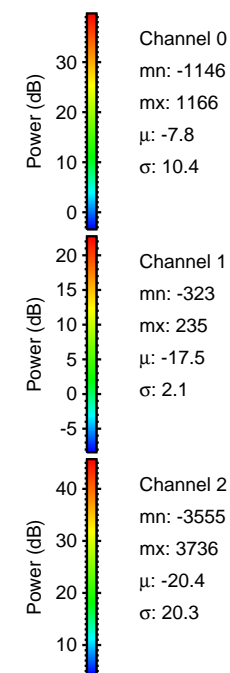
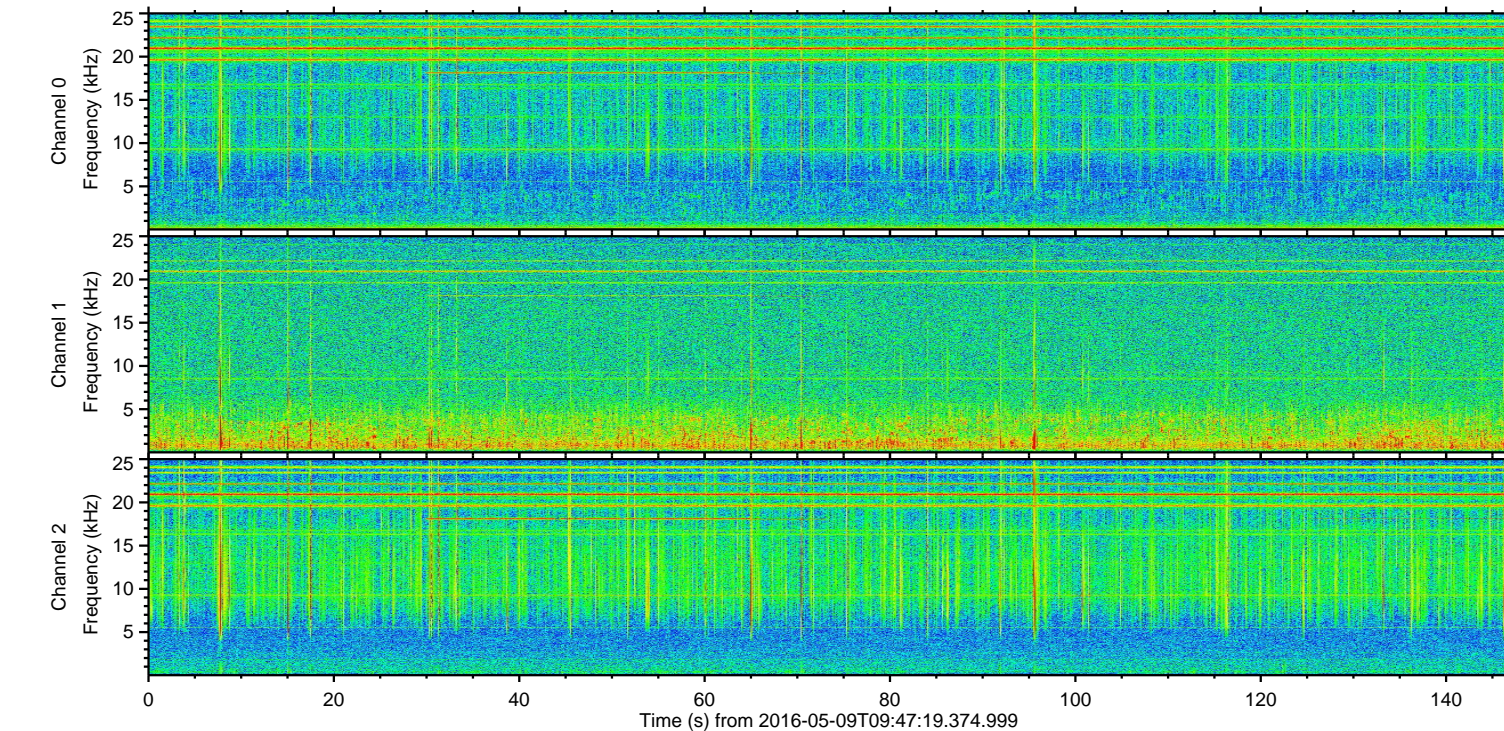
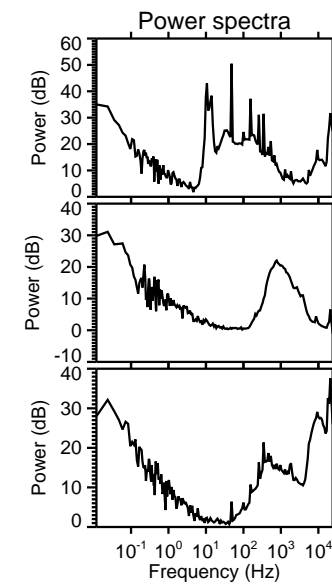
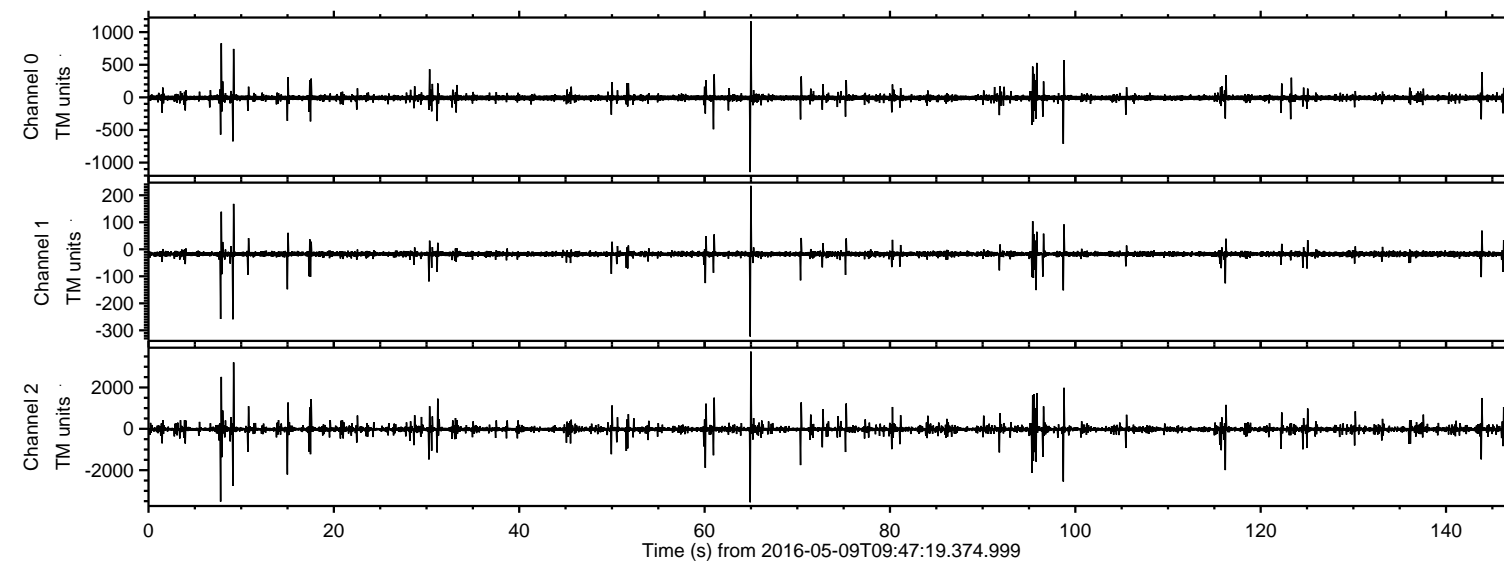


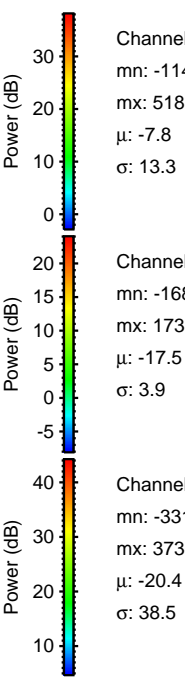
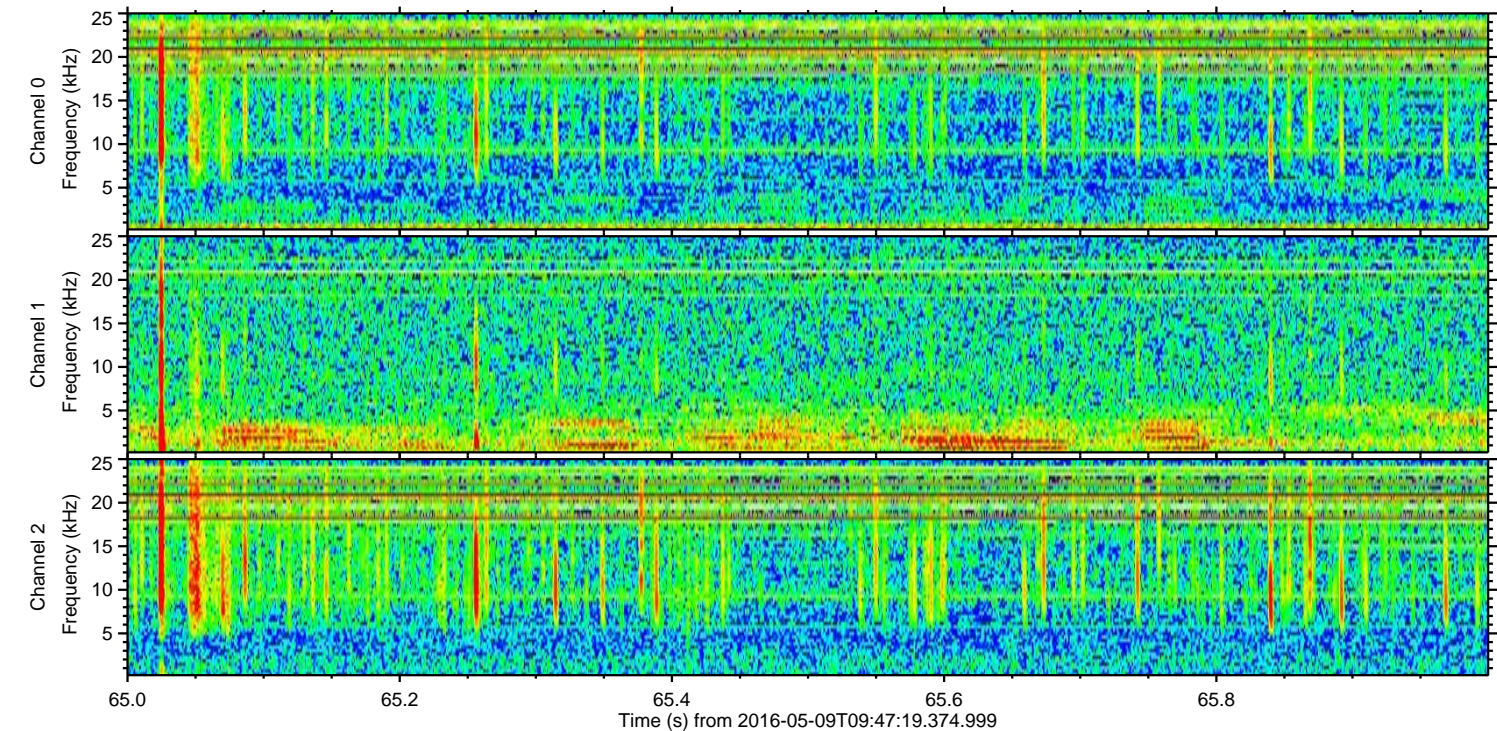
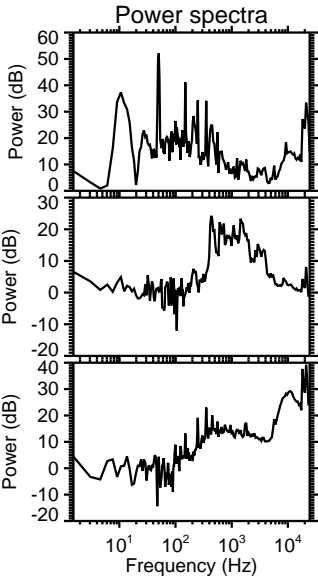
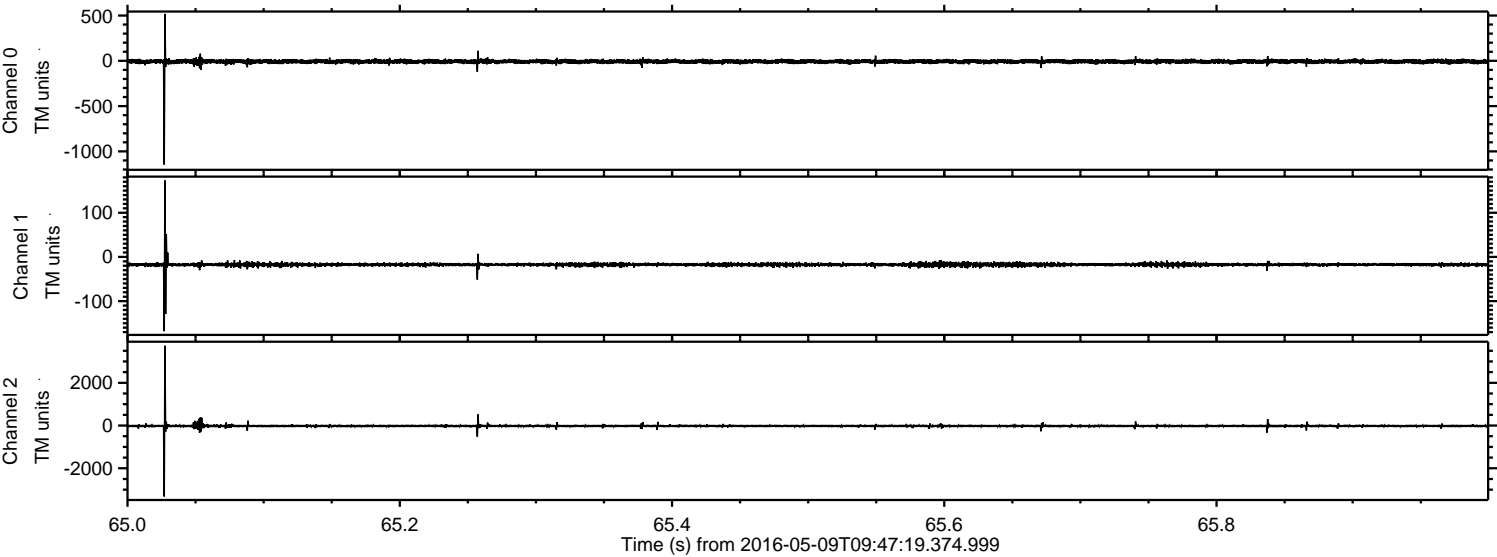
# ELMAVAN 3D WAVEFORMS (Measured data sampled at 50 kHz) 51000 packets of 144 samples from 2016-05-09T09:47:19.374.999.

Processed Fri May 13 13:50:08 2016 by ELM ver.2012-10-06 from 001\_\_elm20160509\_094718\_\_dat00.bin



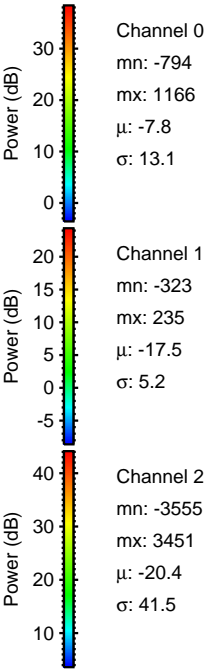
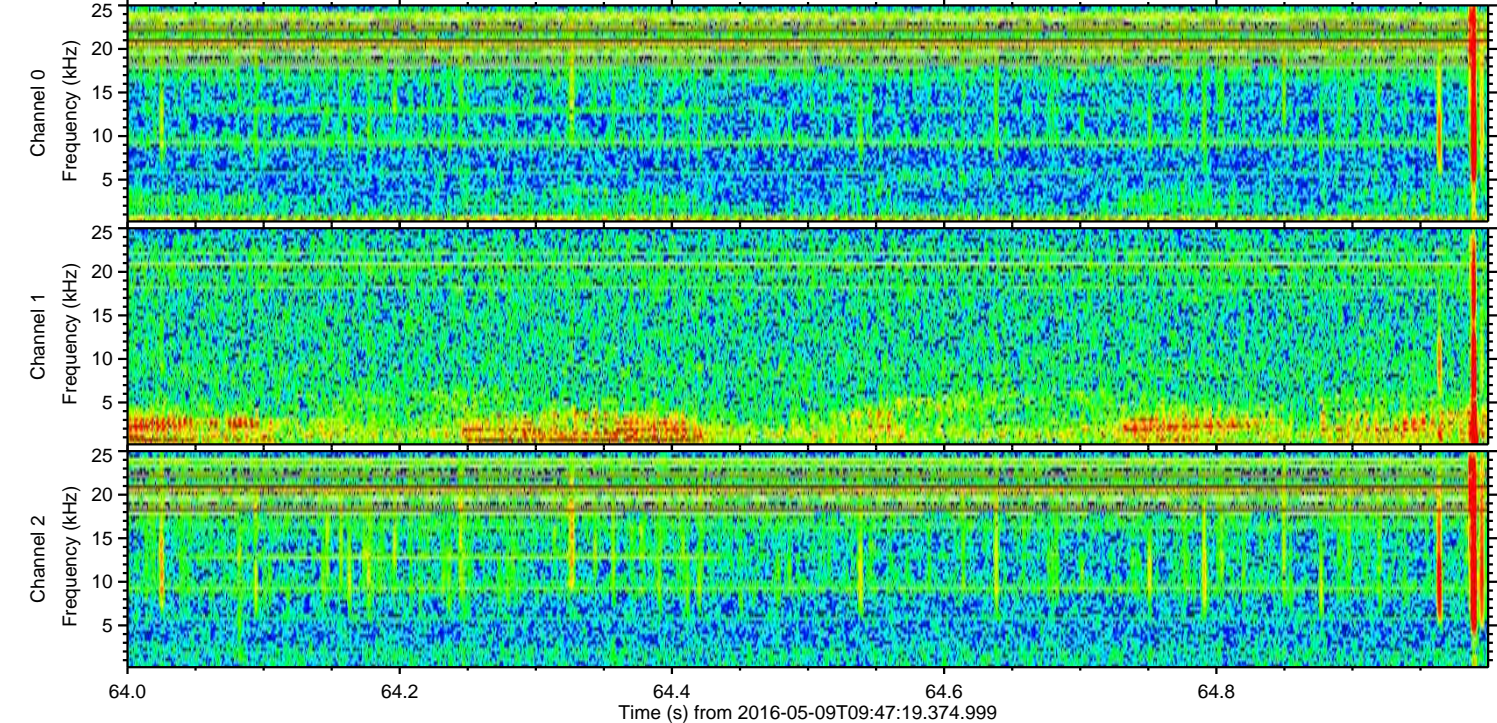
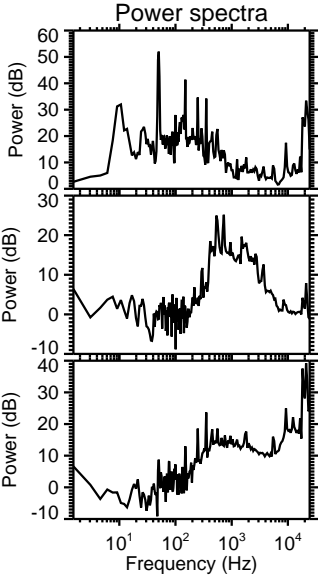
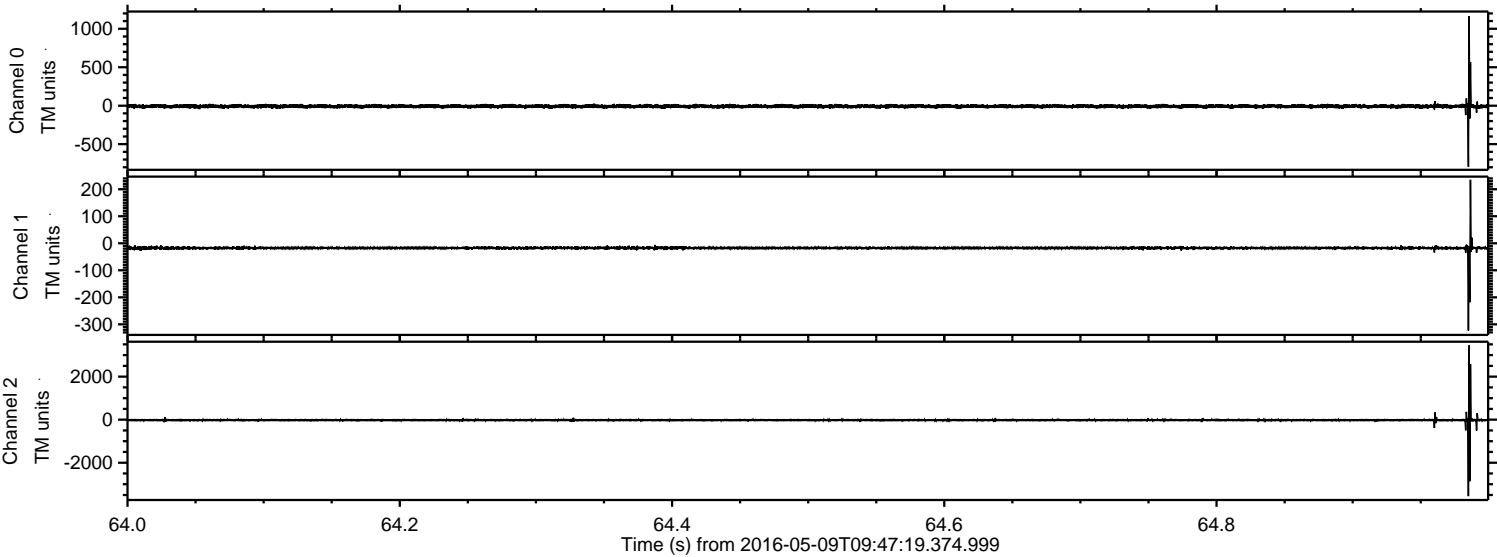


Processed Fri May 13 13:50:19 2016 by ELM ver.2012-10-06 from 001\_\_elm20160509\_094718\_\_dat00.bin





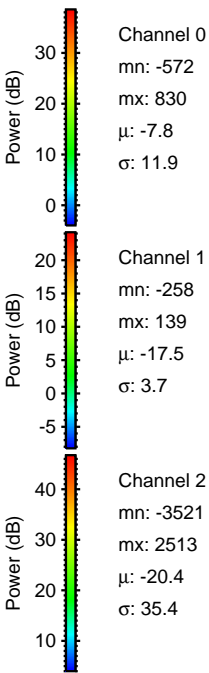
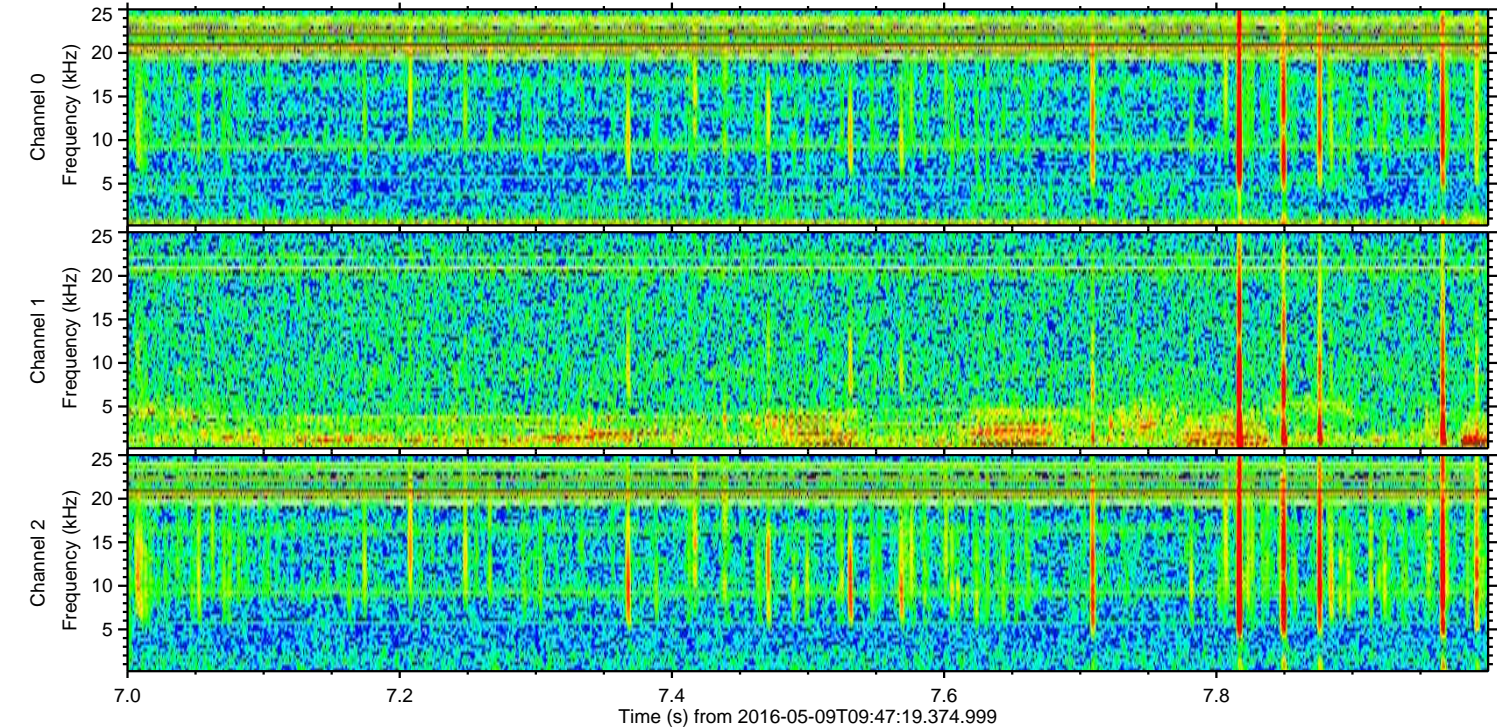
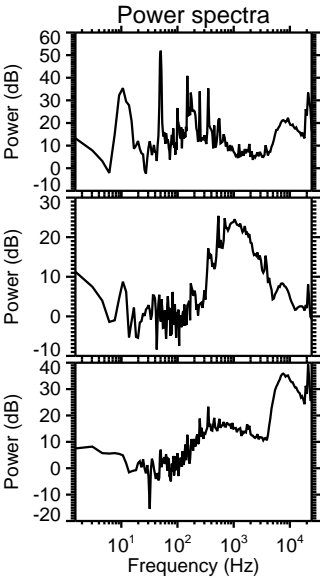
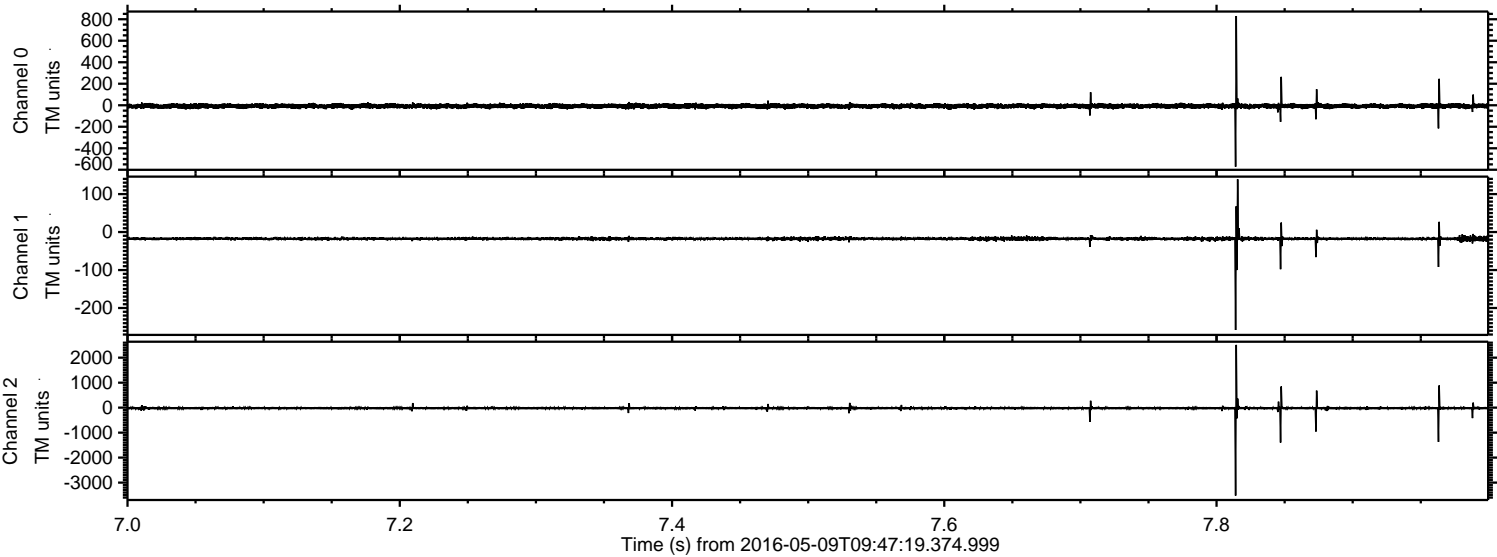
Processed Fri May 13 13:50:20 2016 by ELM ver.2012-10-06 from 001\_\_elm20160509\_094718\_\_dat00.bin





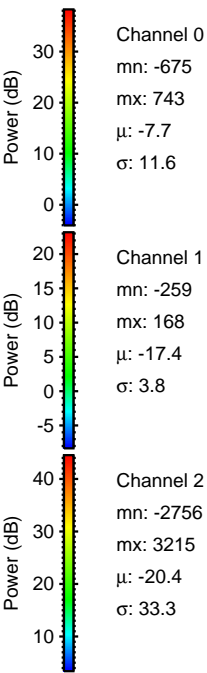
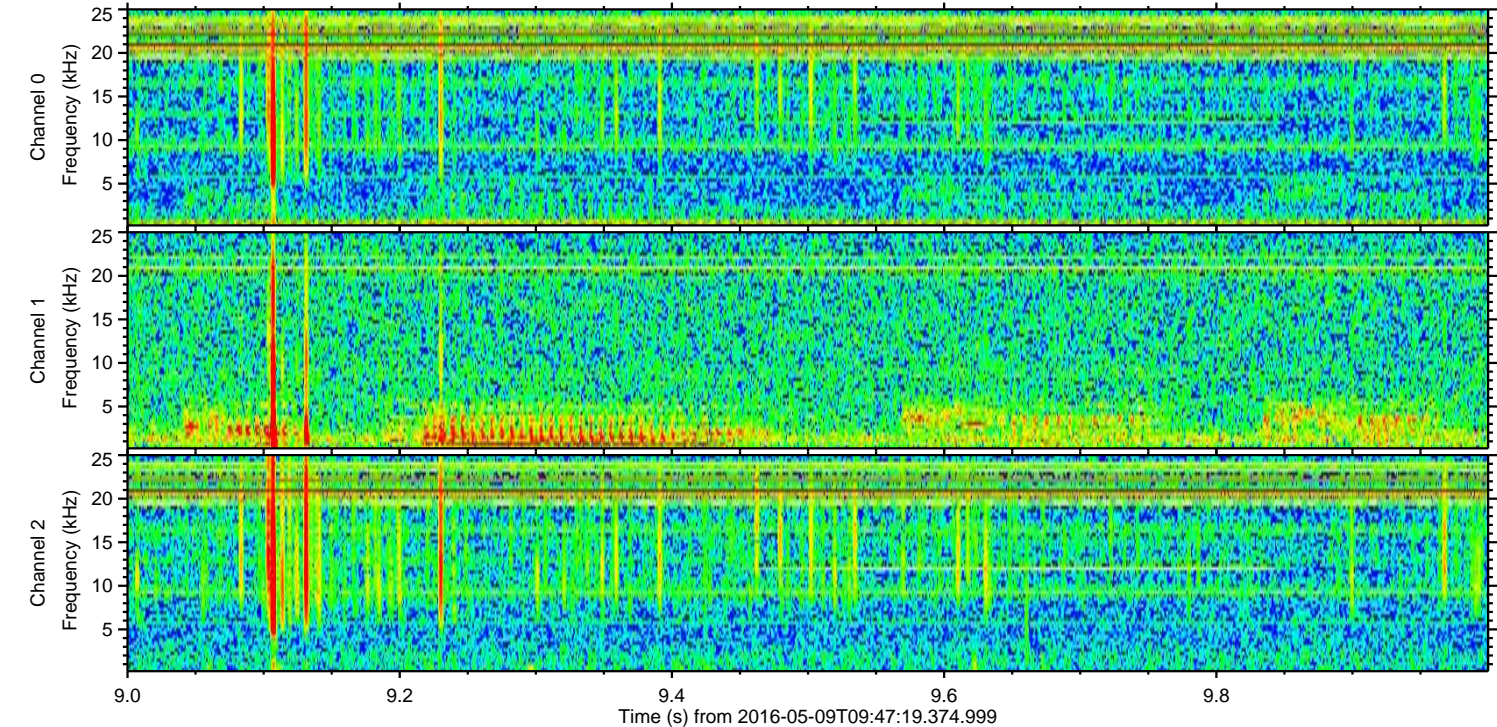
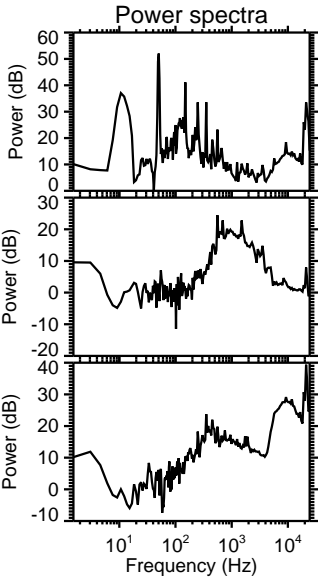
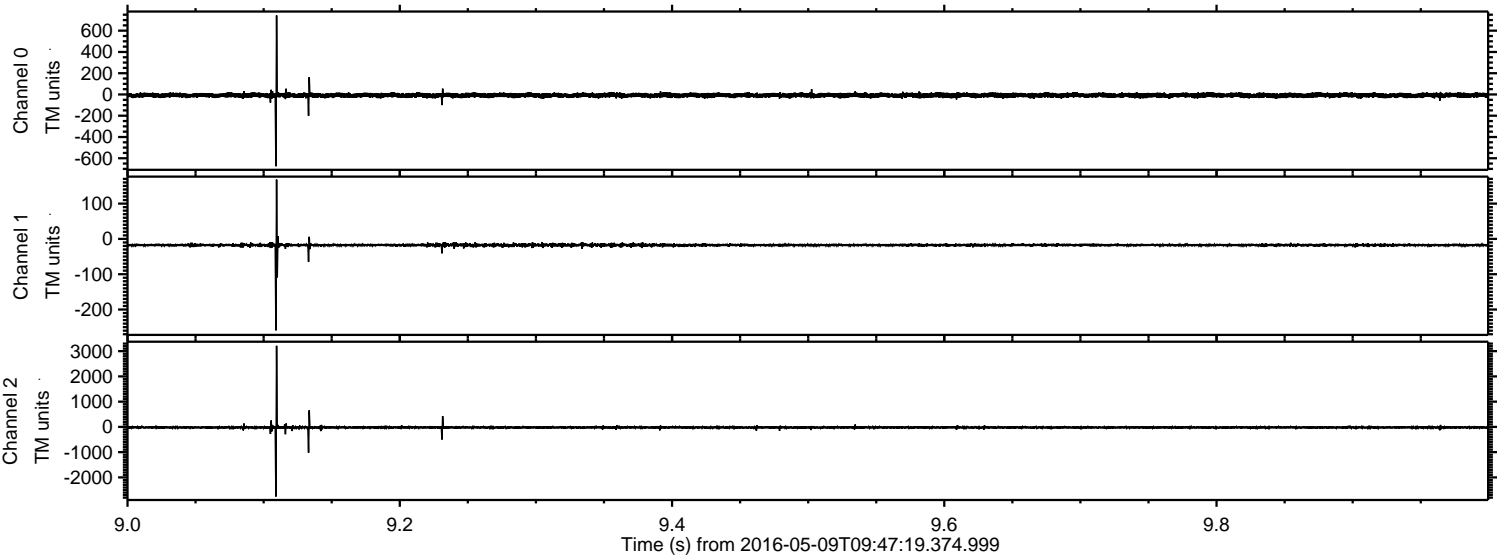
ELMAVAN 3D WAVEFORMS (Measured data sampled at 50 kHz) 51000 packets of 144 samples from 2016-05-09T09:47:19.374.999. Part 8/147

Processed Fri May 13 13:50:21 2016 by ELM ver.2012-10-06 from 001\_\_elm20160509\_094718\_\_dat00.bin



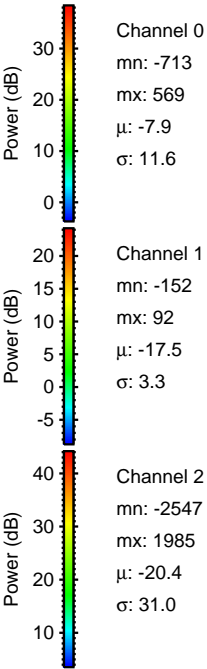
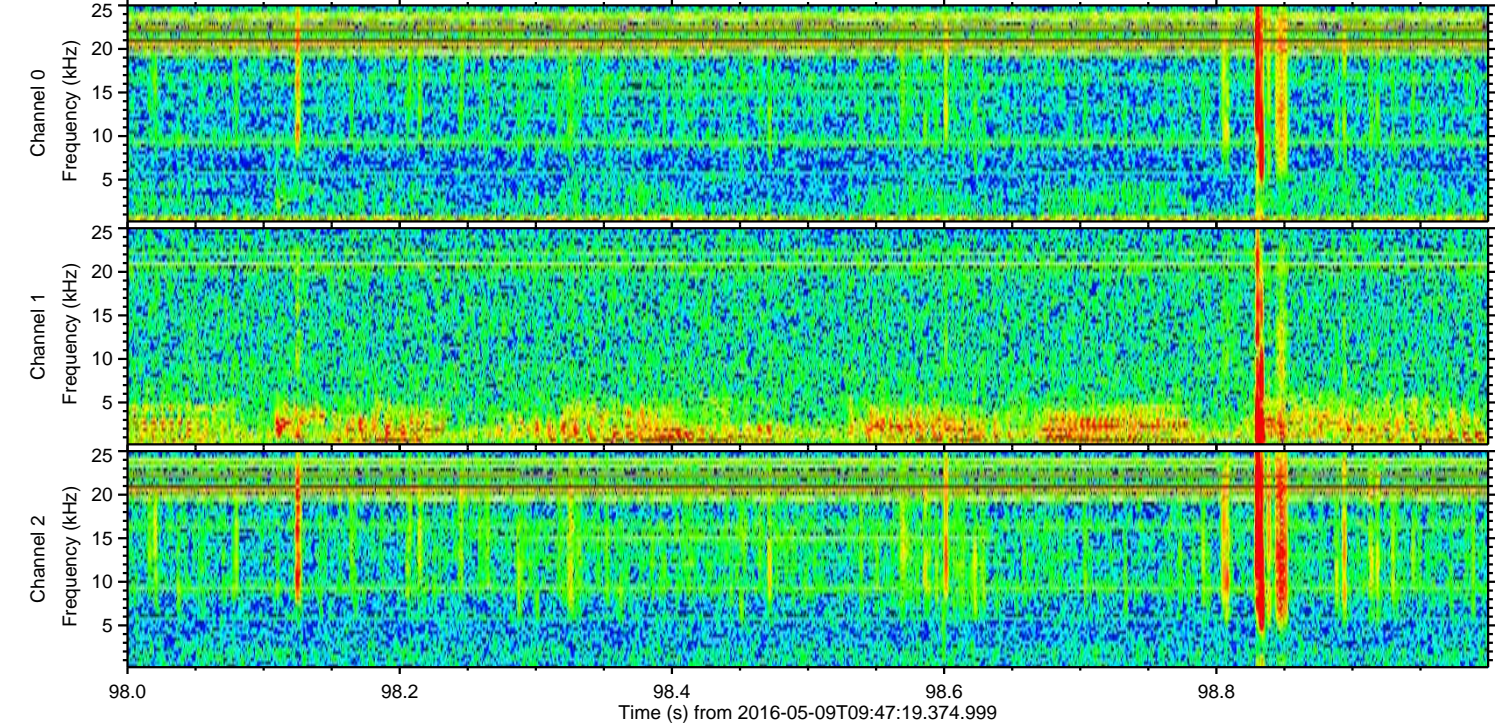
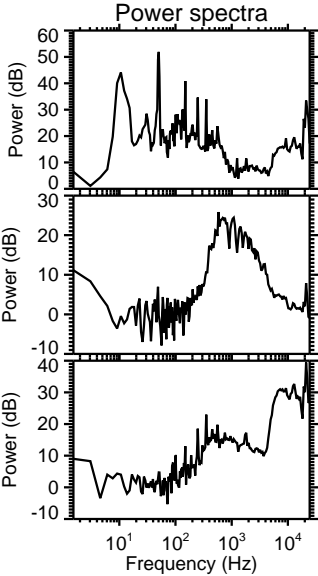
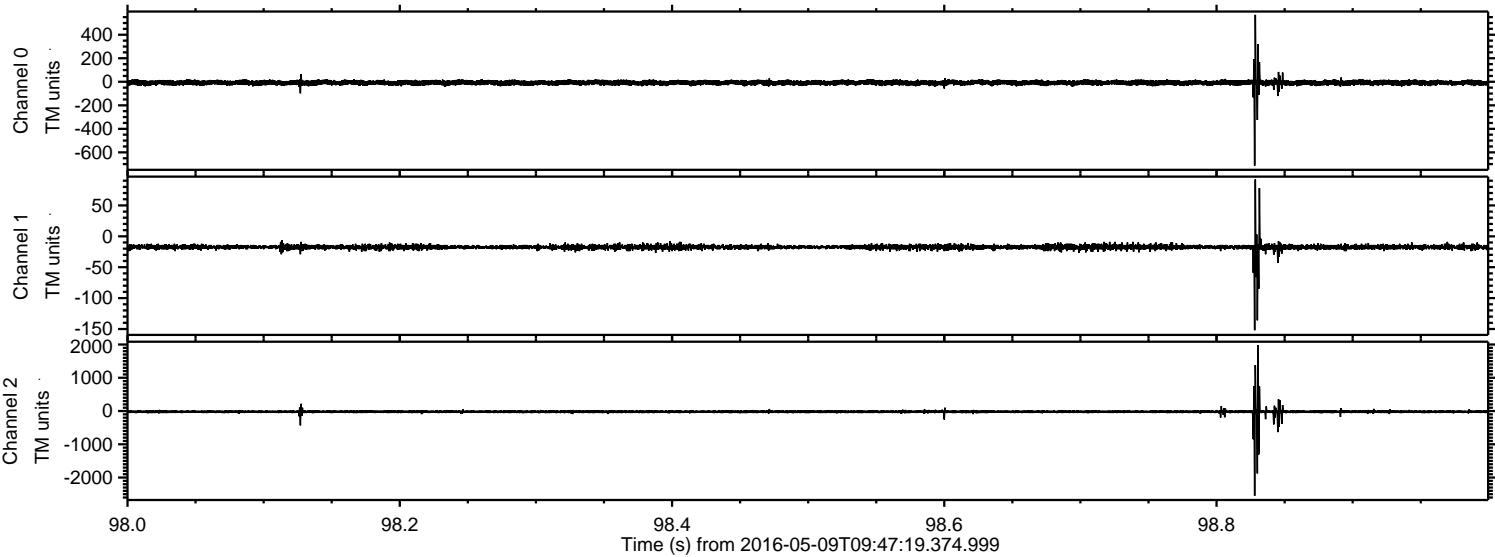


Processed Fri May 13 13:50:22 2016 by ELM ver.2012-10-06 from 001\_\_elm20160509\_094718\_\_dat00.bin



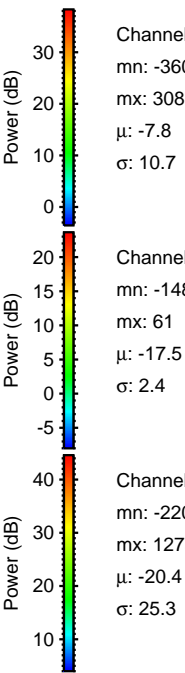
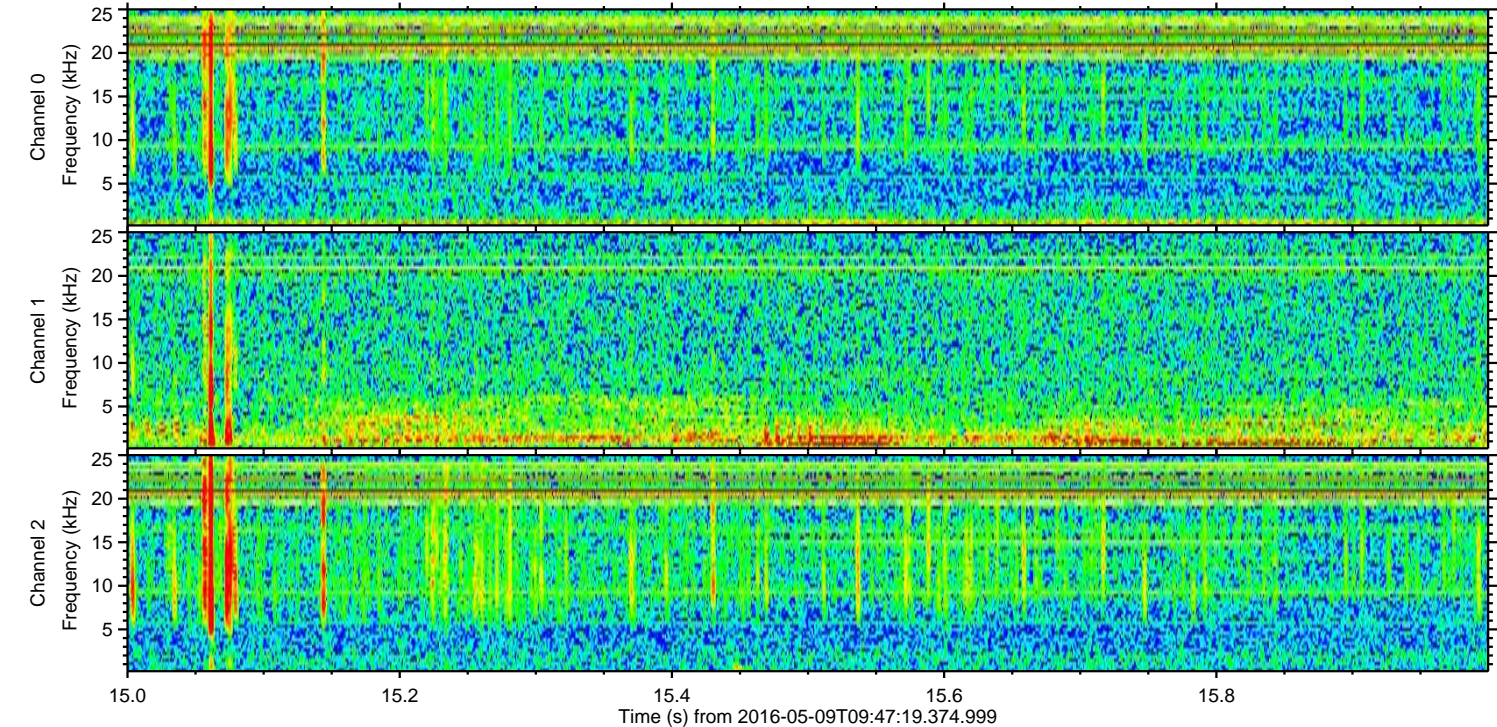
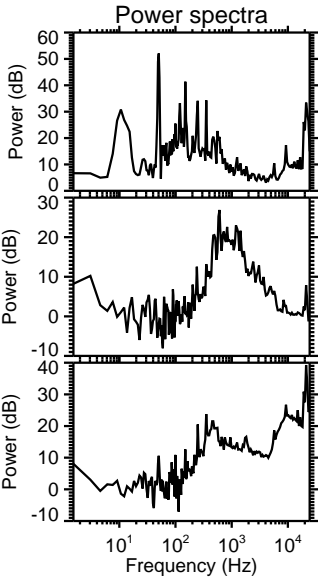
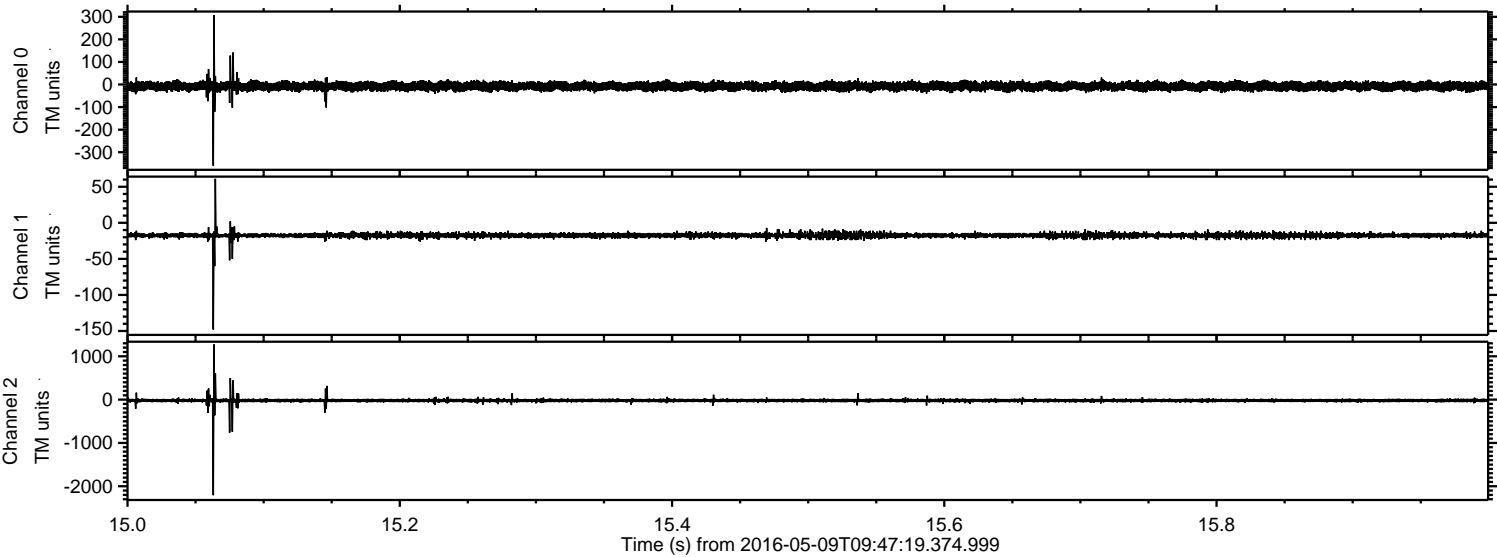


Processed Fri May 13 13:50:23 2016 by ELM ver.2012-10-06 from 001\_\_elm20160509\_094718\_\_dat00.bin



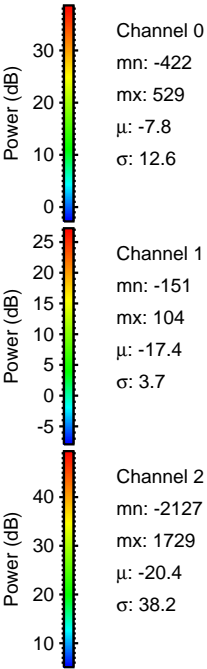
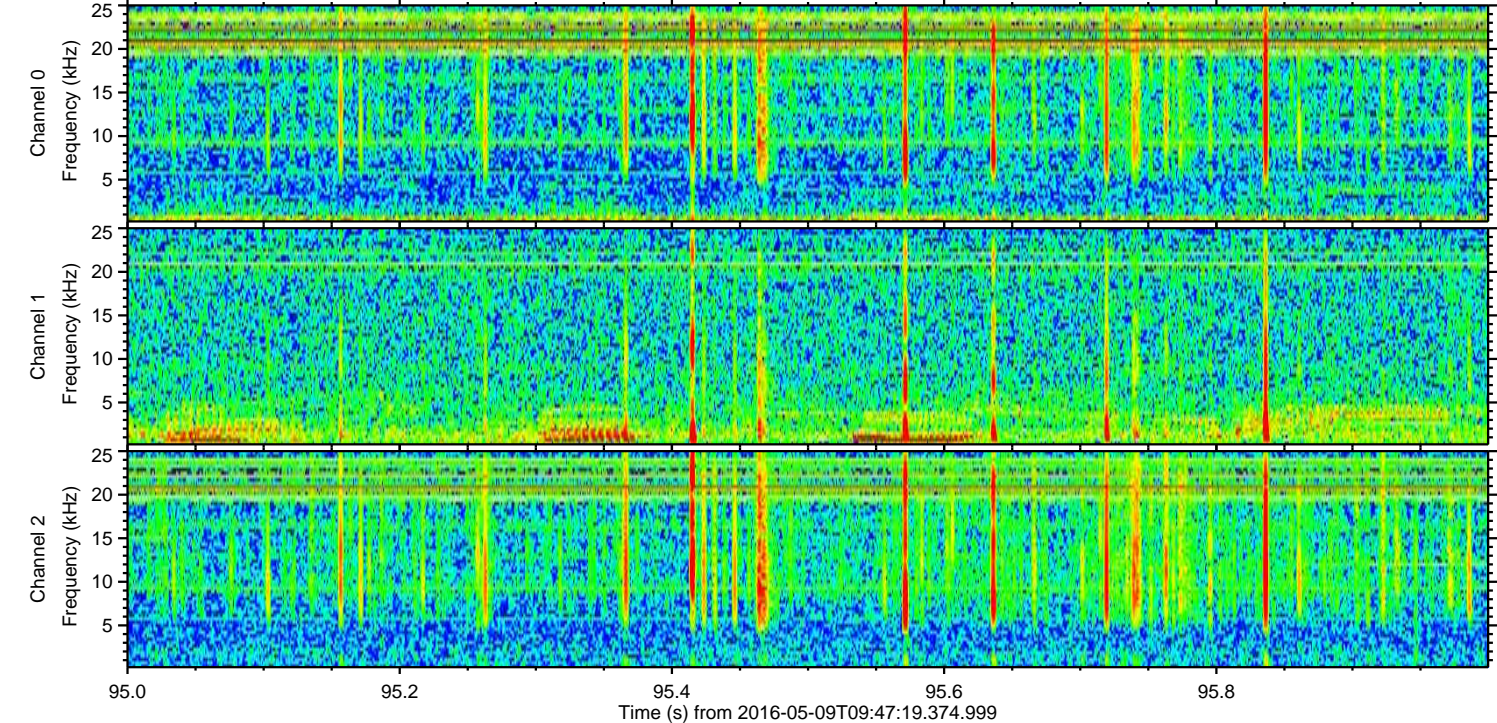
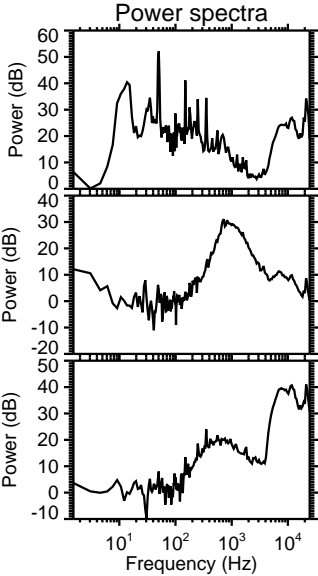
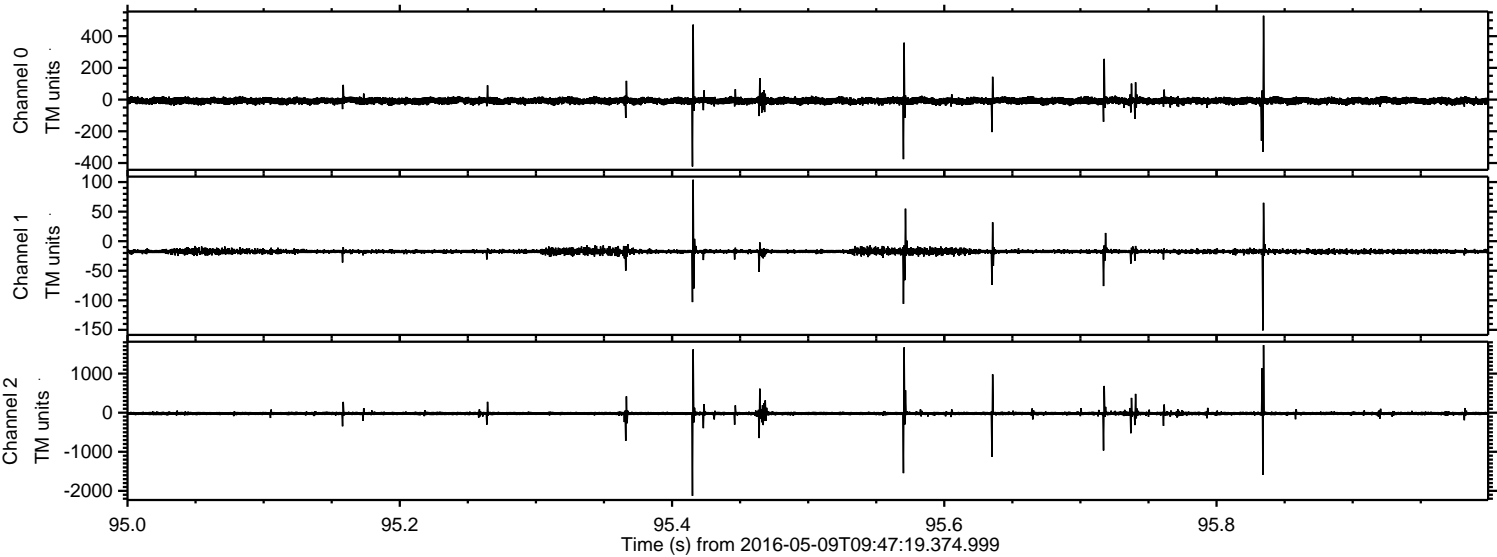


Processed Fri May 13 13:50:24 2016 by ELM ver.2012-10-06 from 001\_\_elm20160509\_094718\_\_dat00.bin





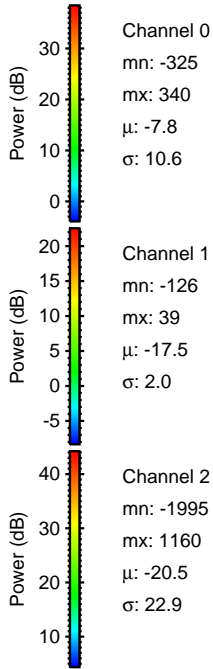
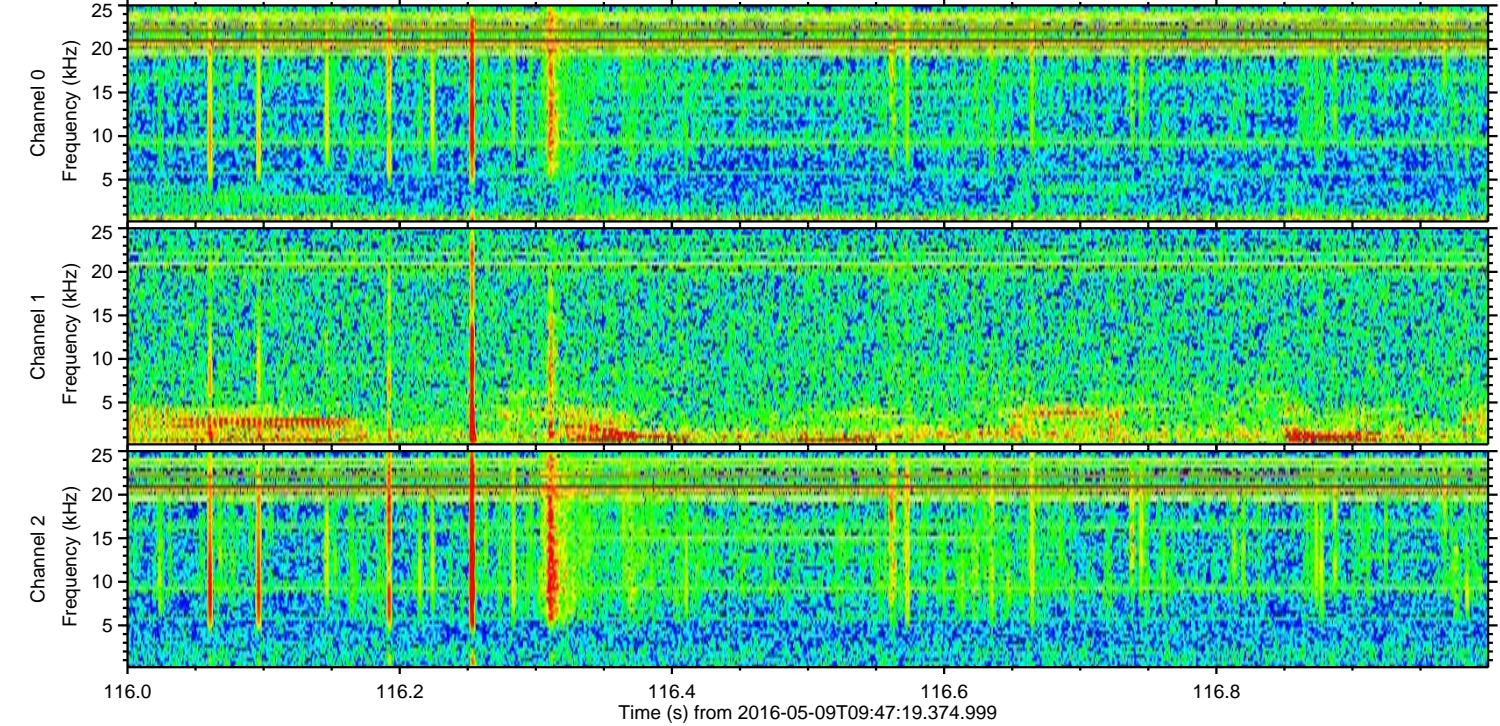
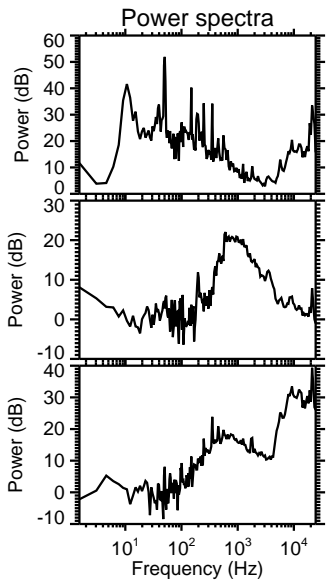
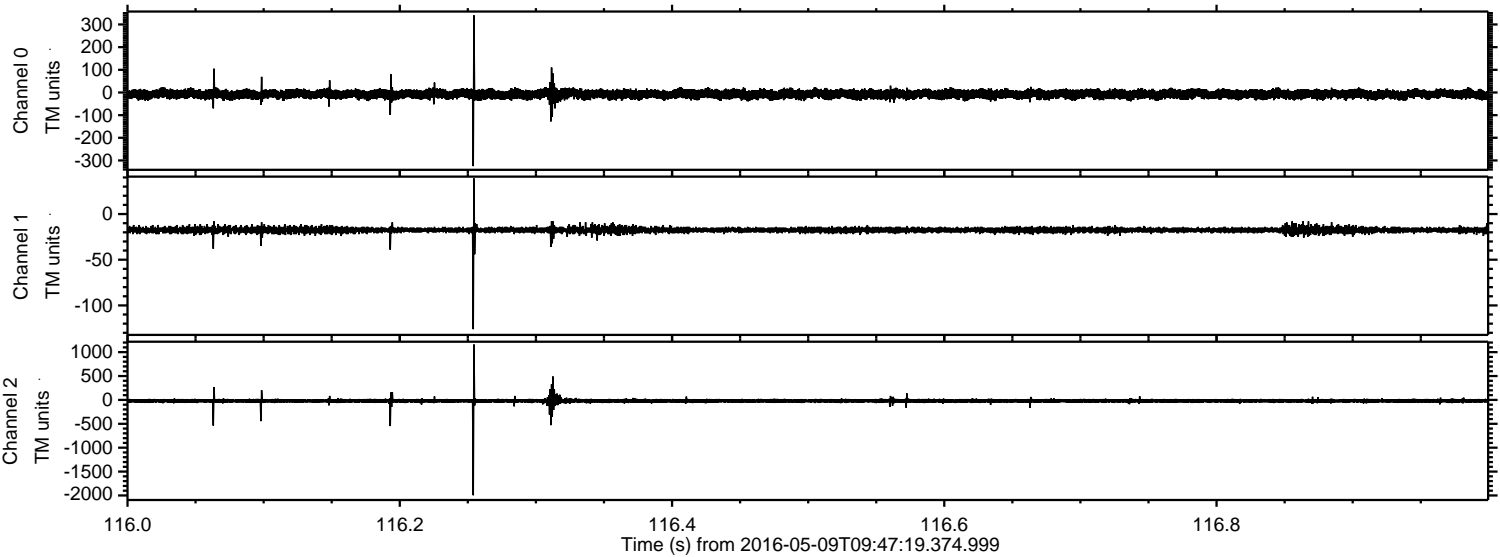
Processed Fri May 13 13:50:25 2016 by ELM ver.2012-10-06 from 001\_\_elm20160509\_094718\_\_dat00.bin





ELMAVAN 3D WAVEFORMS (Measured data sampled at 50 kHz) 51000 packets of 144 samples from 2016-05-09T09:47:19.374.999. Part 117/147

Processed Fri May 13 13:50:26 2016 by ELM ver.2012-10-06 from 001\_\_elm20160509\_094718\_\_dat00.bin



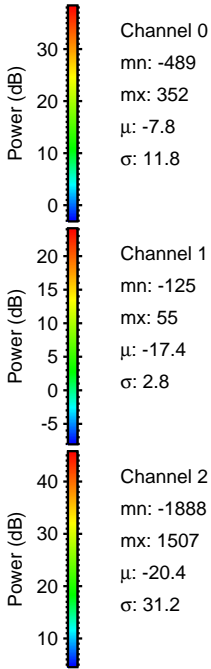
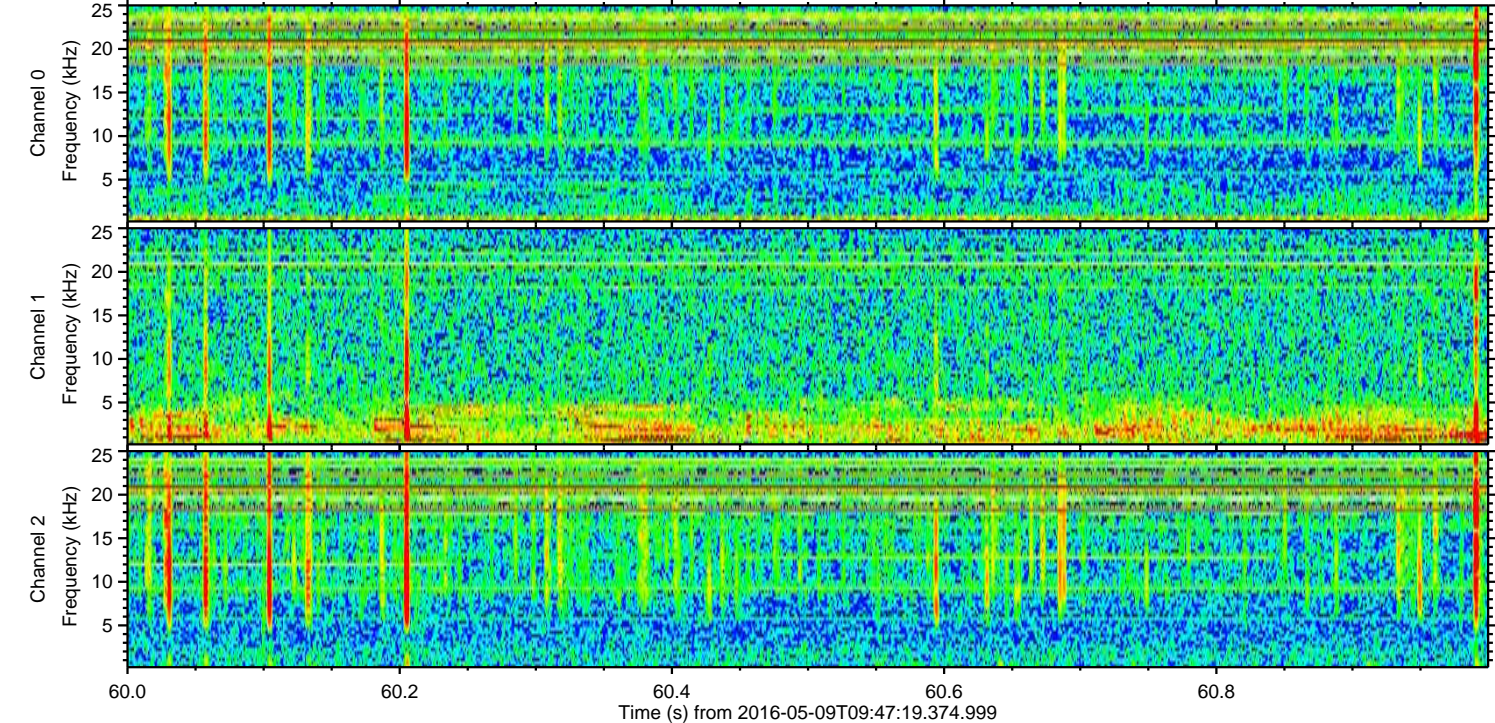
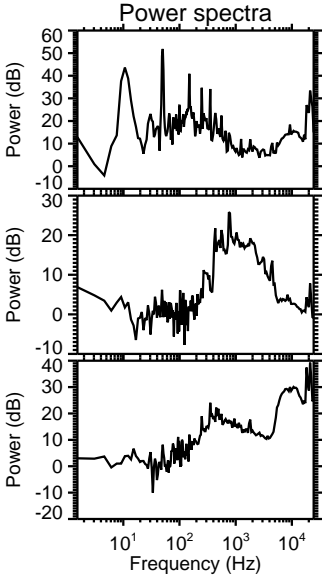
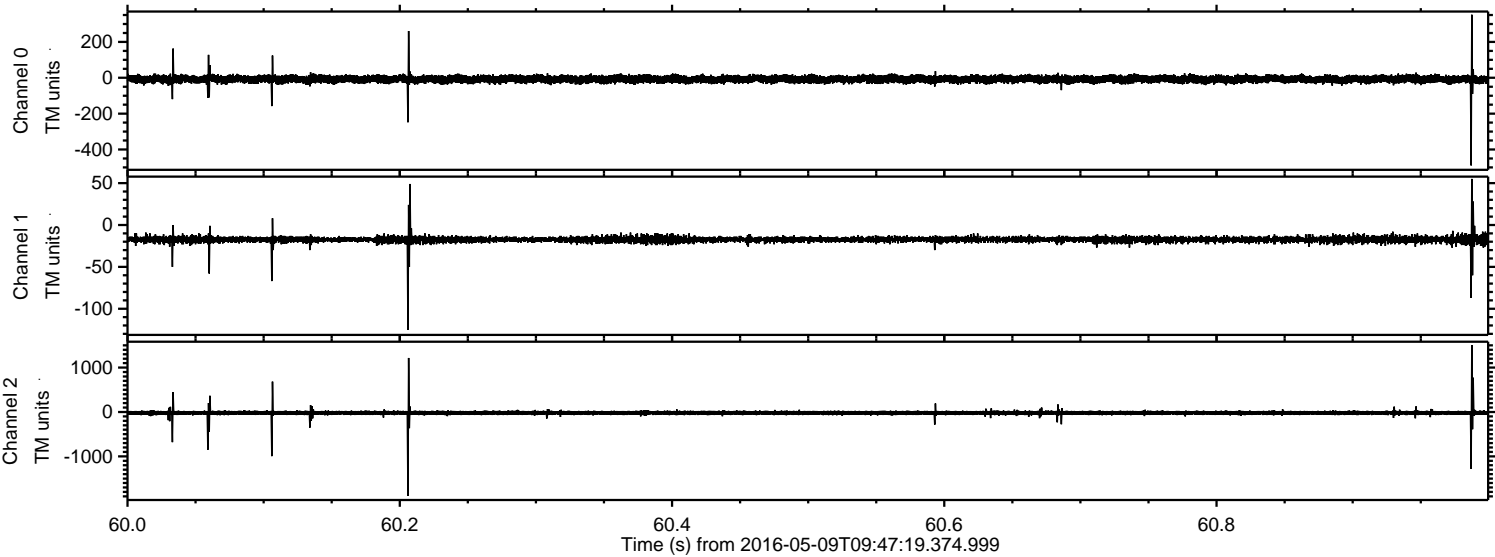
Channel 0  
mn: -325  
mx: 340  
 $\mu$ : -7.8  
 $\sigma$ : 10.6

Channel 1  
mn: -126  
mx: 39  
 $\mu$ : -17.5  
 $\sigma$ : 2.0

Channel 2  
mn: -1995  
mx: 1160  
 $\mu$ : -20.5  
 $\sigma$ : 22.9



Processed Fri May 13 13:50:26 2016 by ELM ver.2012-10-06 from 001\_\_elm20160509\_094718\_\_dat00.bin





Processed Fri May 13 13:50:27 2016 by ELM ver.2012-10-06 from 001\_\_elm20160509\_094718\_\_dat00.bin

