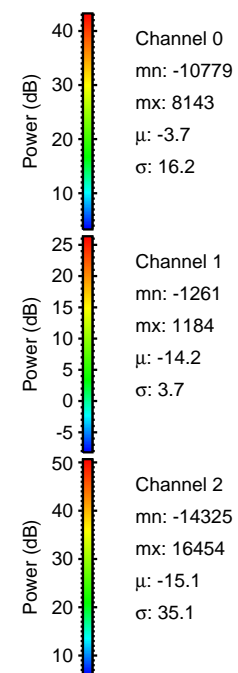
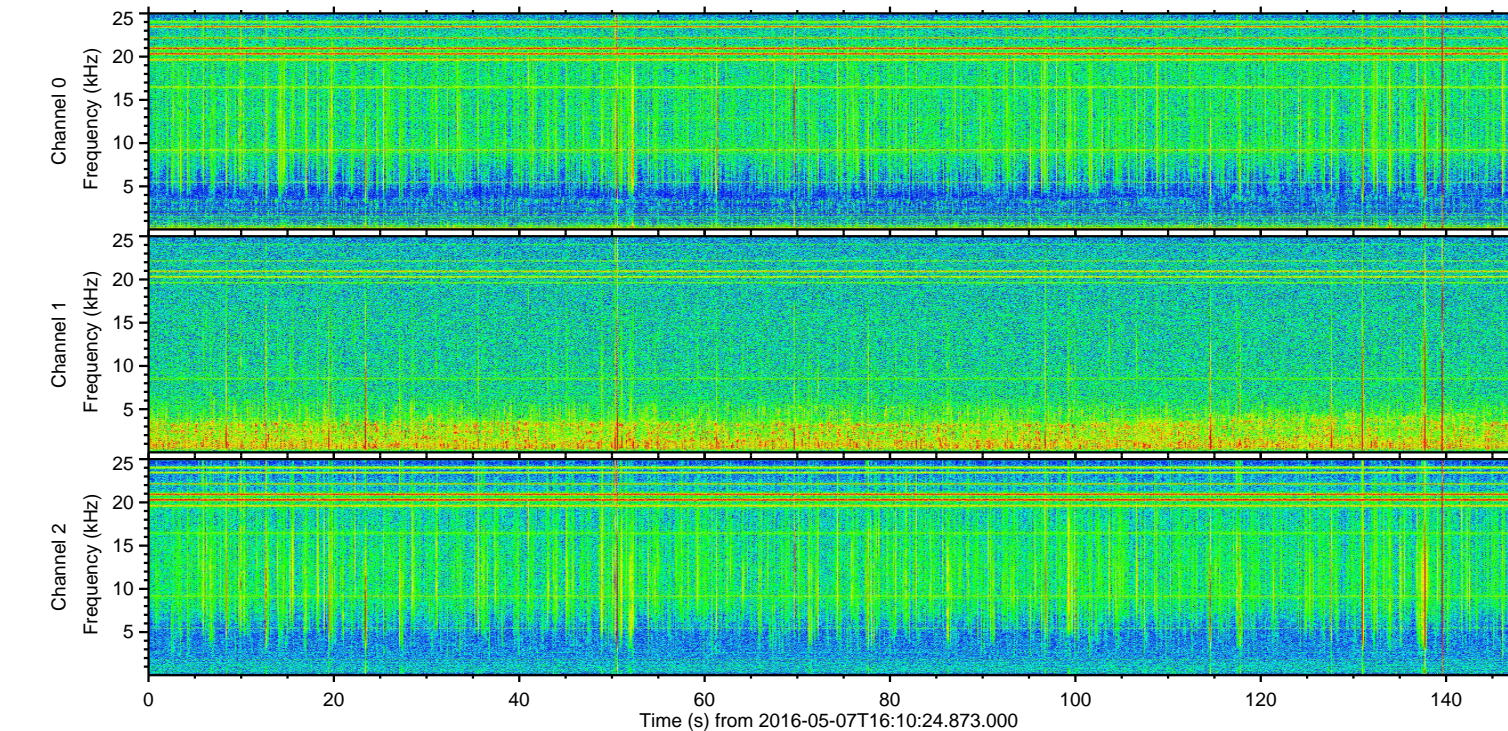
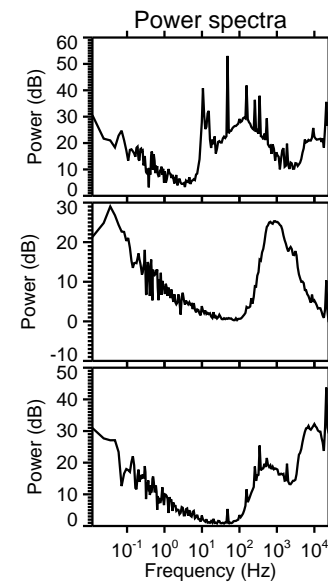
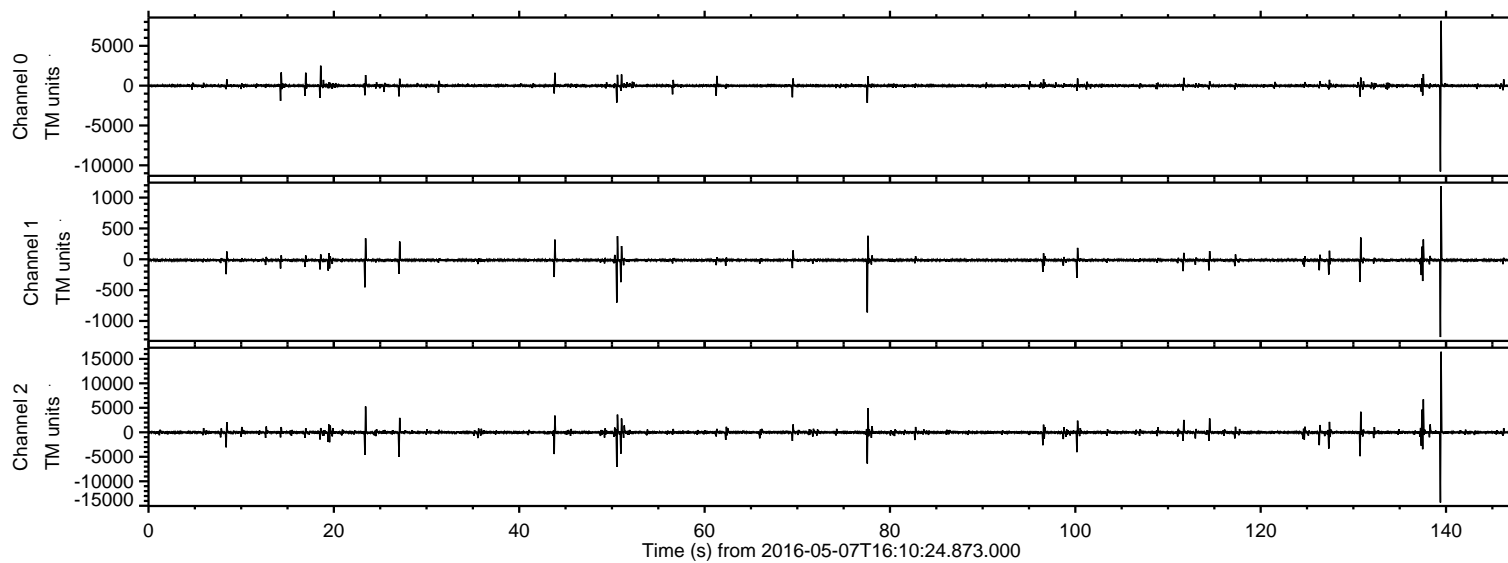


# ELMAVAN 3D WAVEFORMS (Measured data sampled at 50 kHz) 51000 packets of 144 samples from 2016-05-07T16:10:24.873.000.

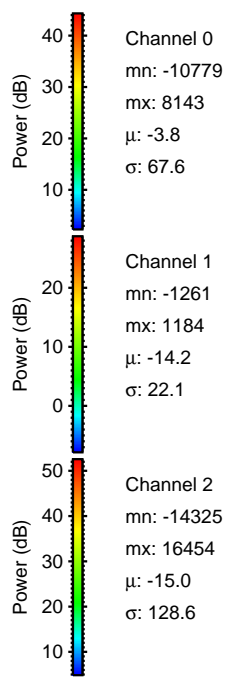
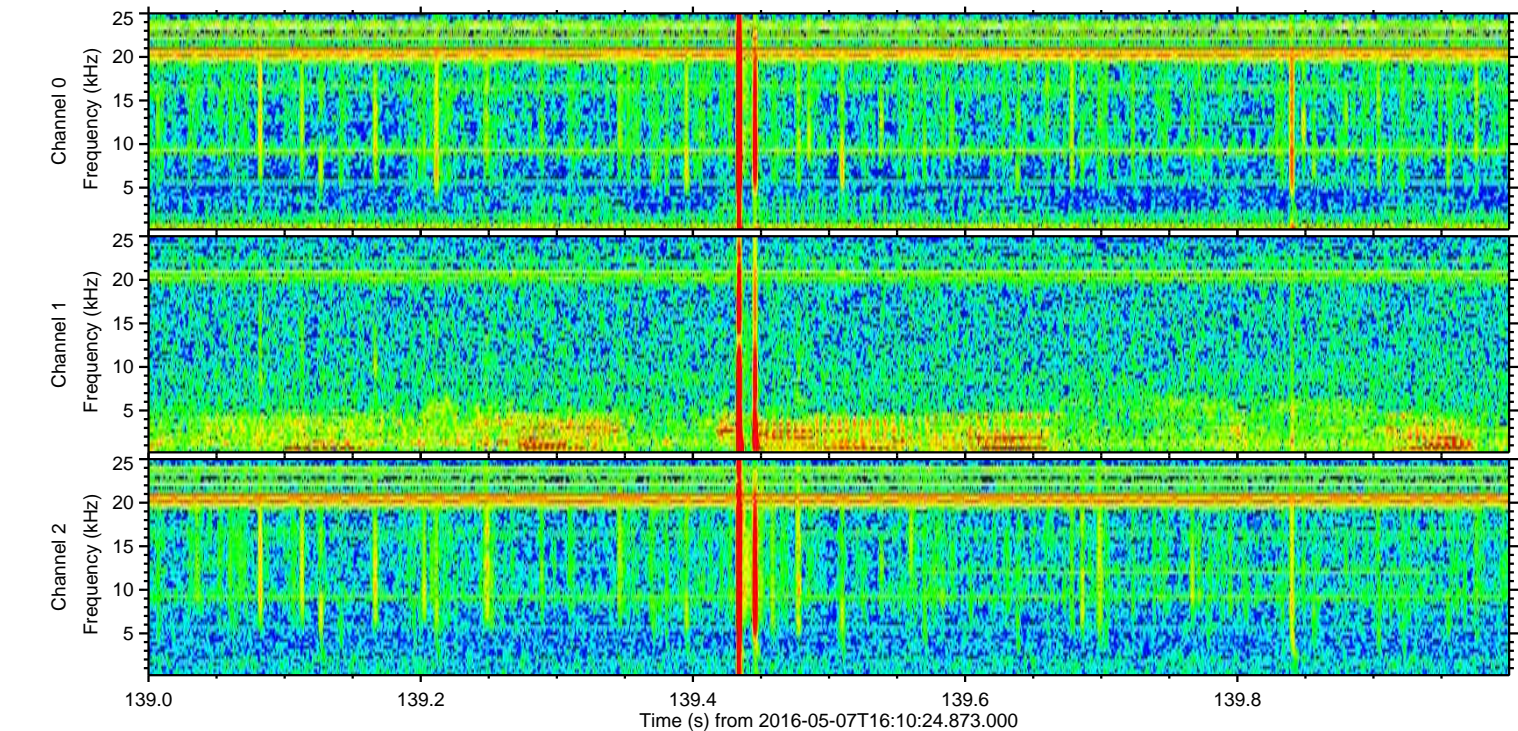
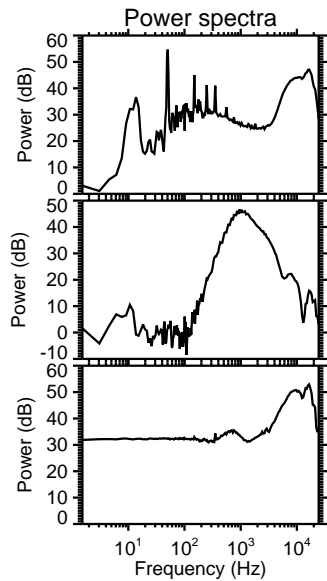
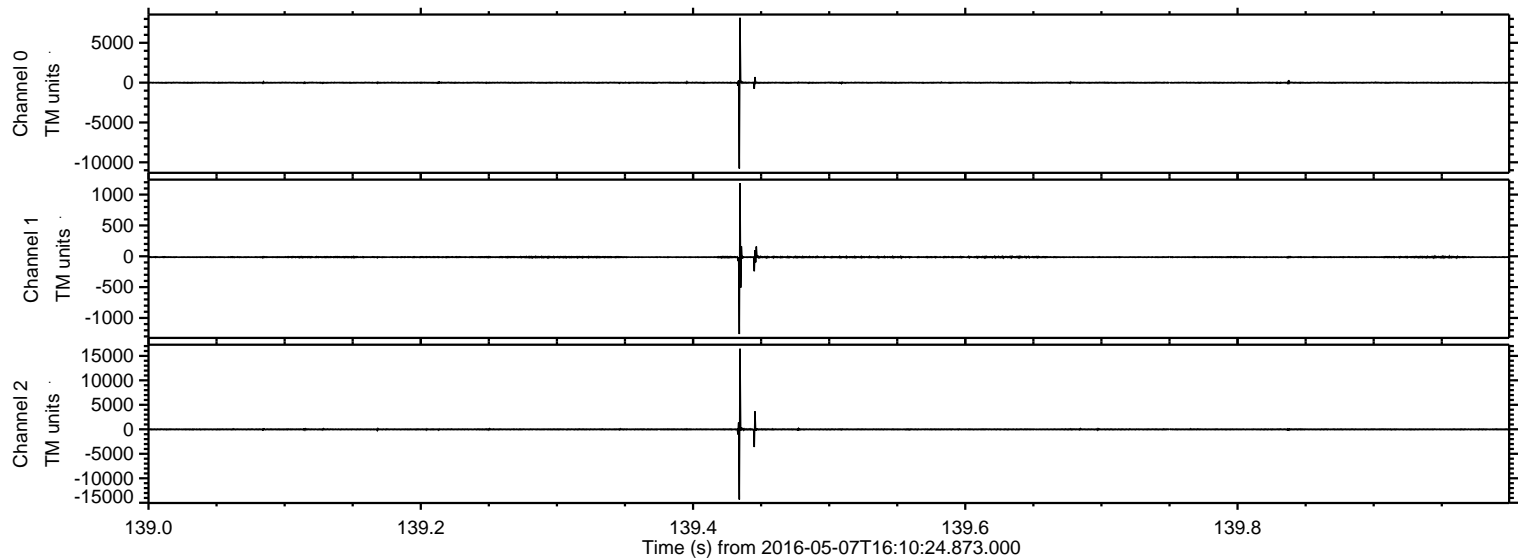
Processed Fri May 13 05:16:18 2016 by ELM ver.2012-10-06 from 001\_\_elm20160507\_161023\_\_dat00.bin





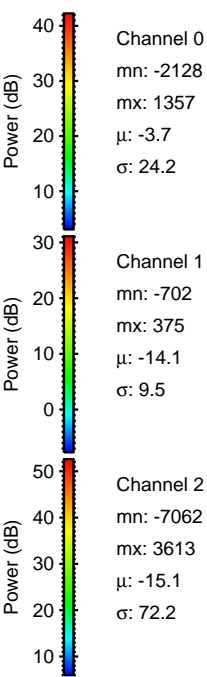
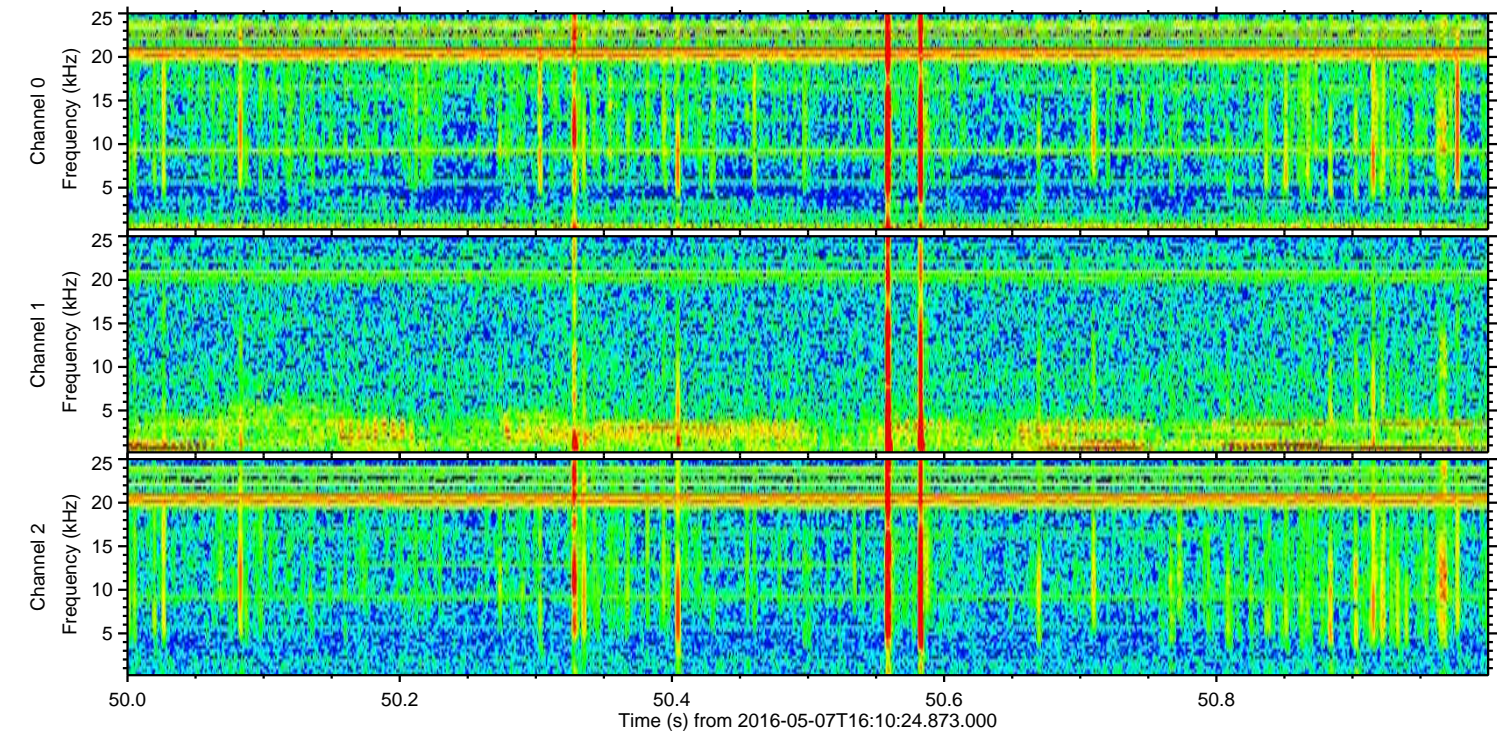
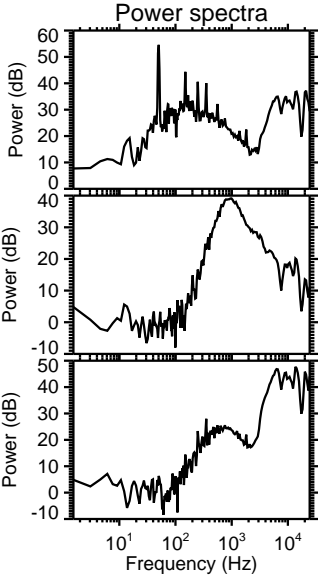
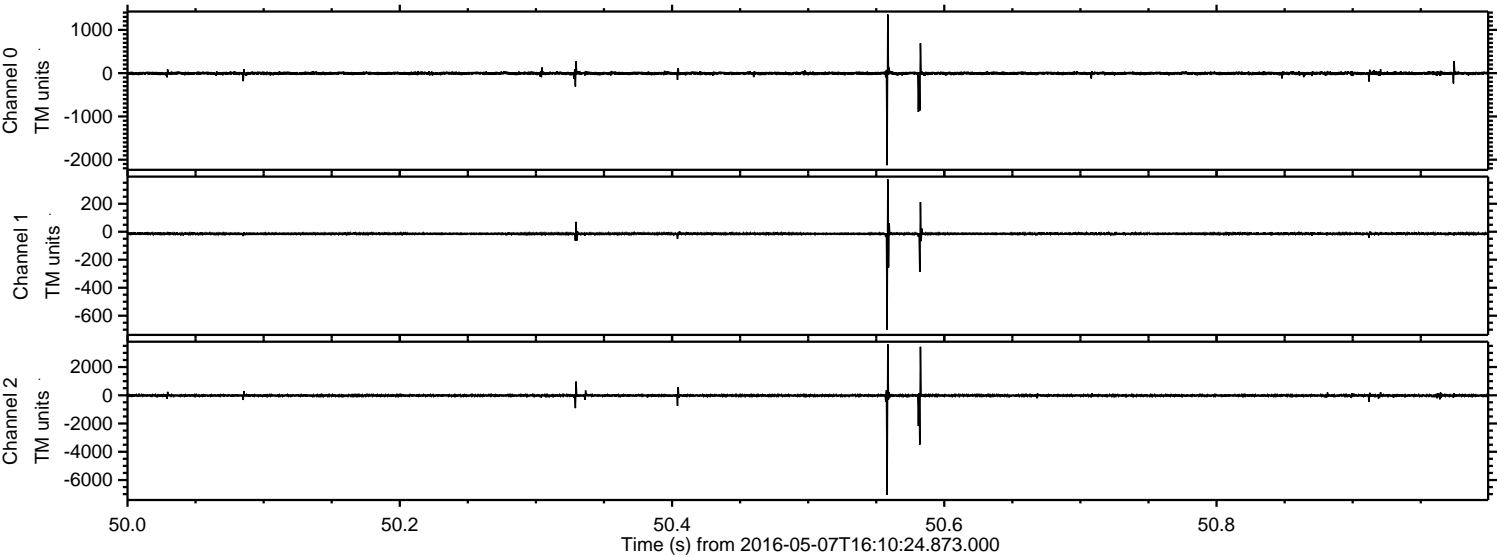
ELMAVAN 3D WAVEFORMS (Measured data sampled at 50 kHz) 51000 packets of 144 samples from 2016-05-07T16:10:24.873.000. Part 140/147

Processed Fri May 13 05:16:30 2016 by ELM ver.2012-10-06 from 001\_\_elm20160507\_161023\_\_dat00.bin





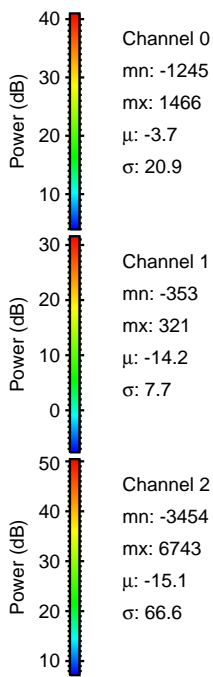
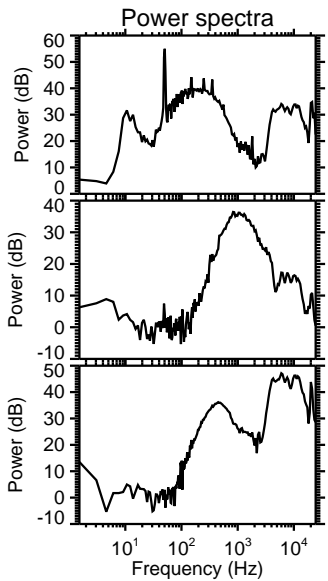
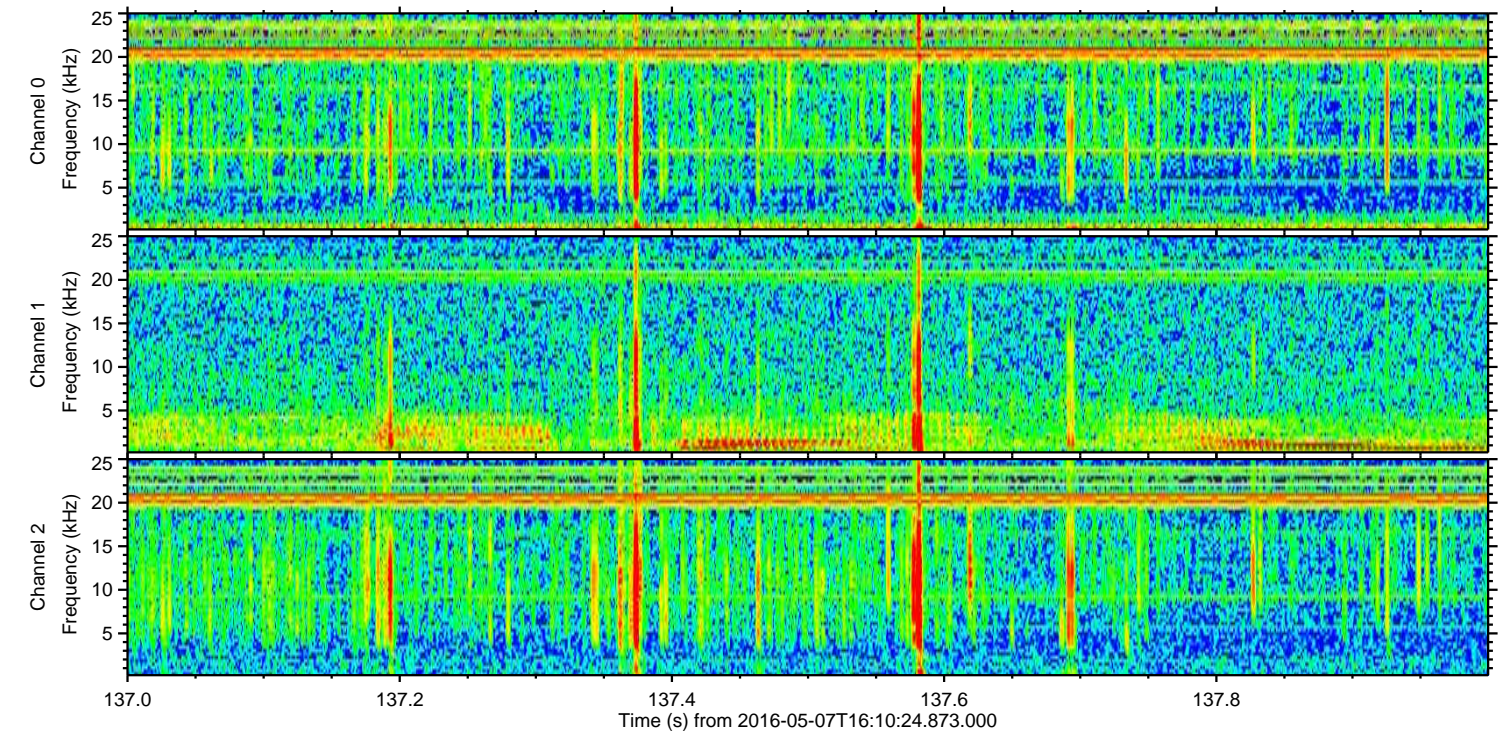
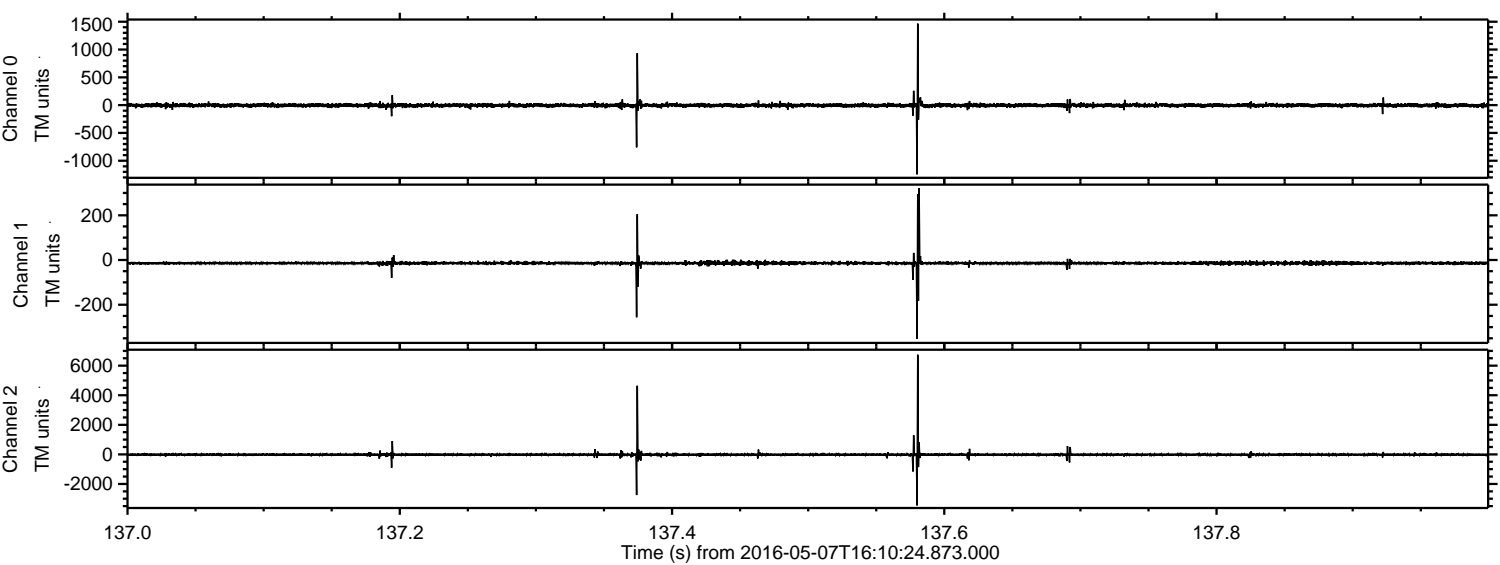
Processed Fri May 13 05:16:31 2016 by ELM ver.2012-10-06 from 001\_\_elm20160507\_161023\_\_dat00.bin





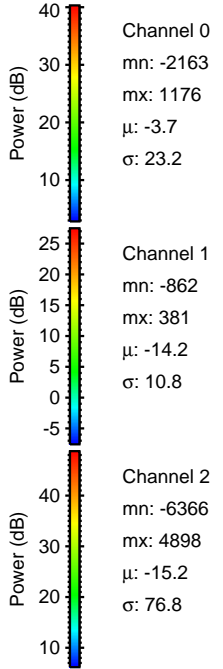
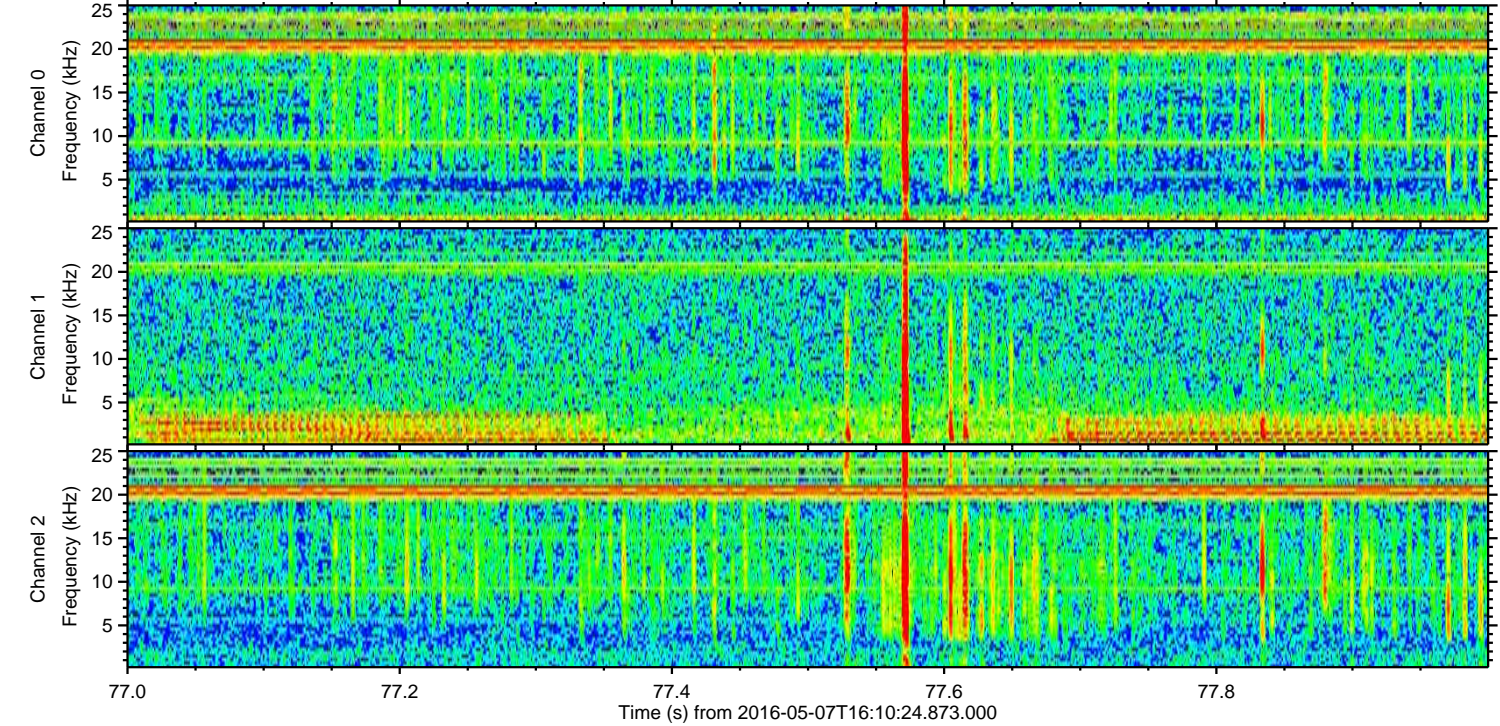
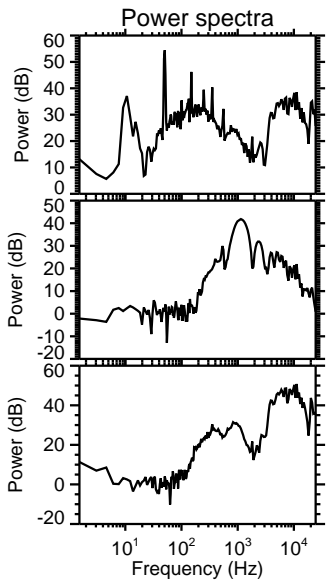
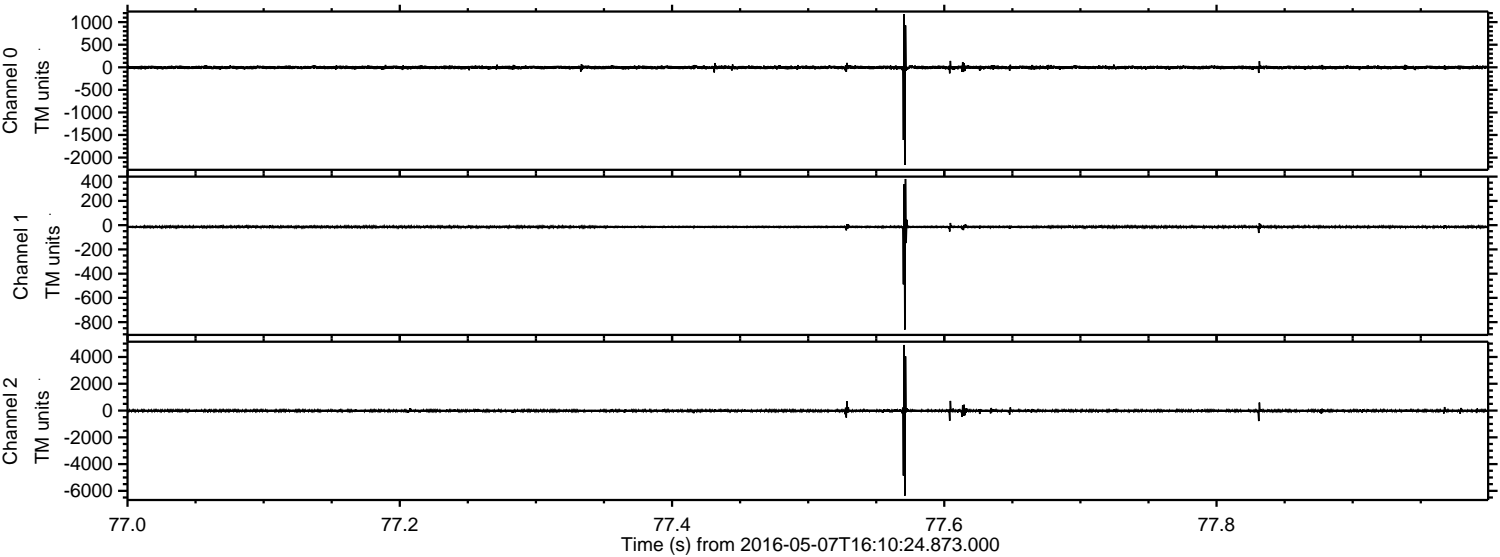
ELMAVAN 3D WAVEFORMS (Measured data sampled at 50 kHz) 51000 packets of 144 samples from 2016-05-07T16:10:24.873.000. Part 138/147

Processed Fri May 13 05:16:32 2016 by ELM ver.2012-10-06 from 001\_\_elm20160507\_161023\_\_dat00.bin



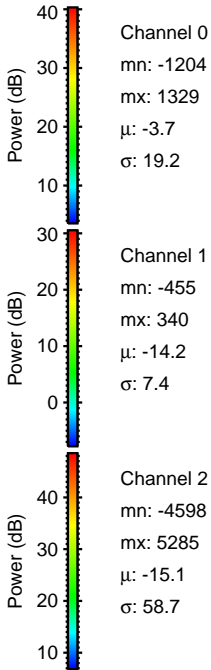
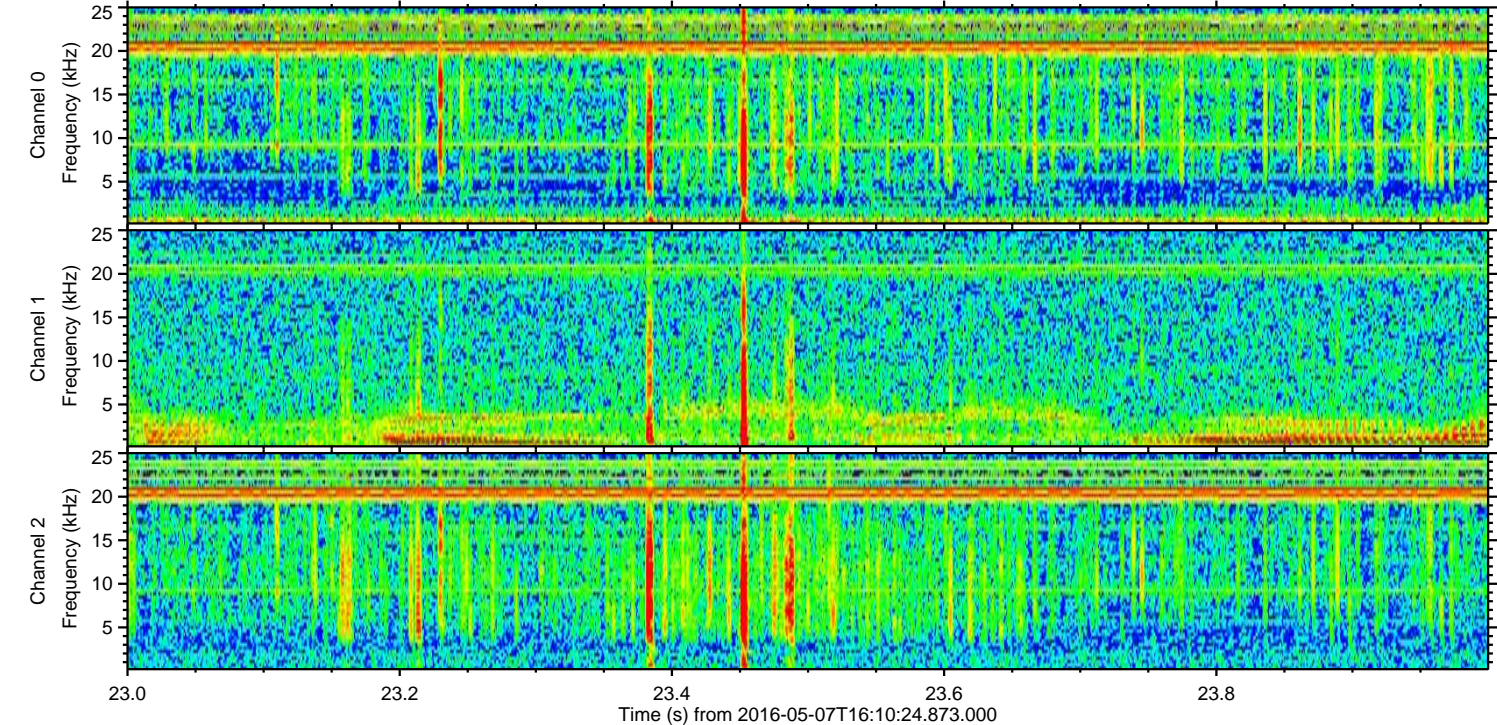
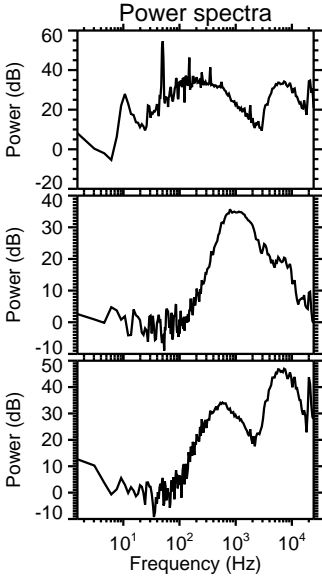
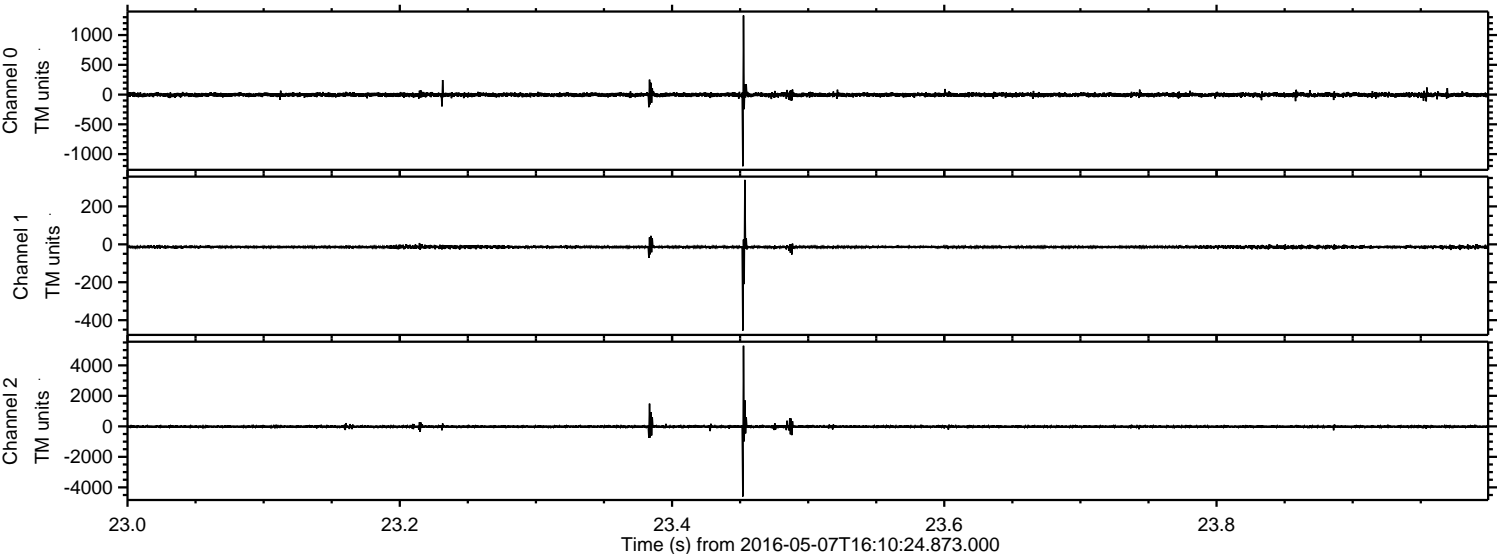


Processed Fri May 13 05:16:32 2016 by ELM ver.2012-10-06 from 001\_\_elm20160507\_161023\_\_dat00.bin



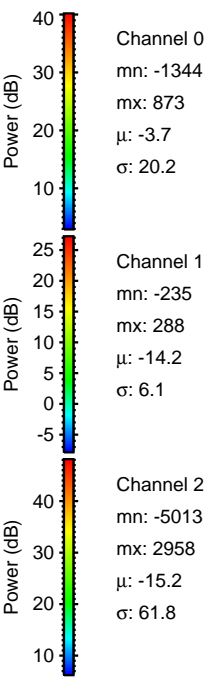
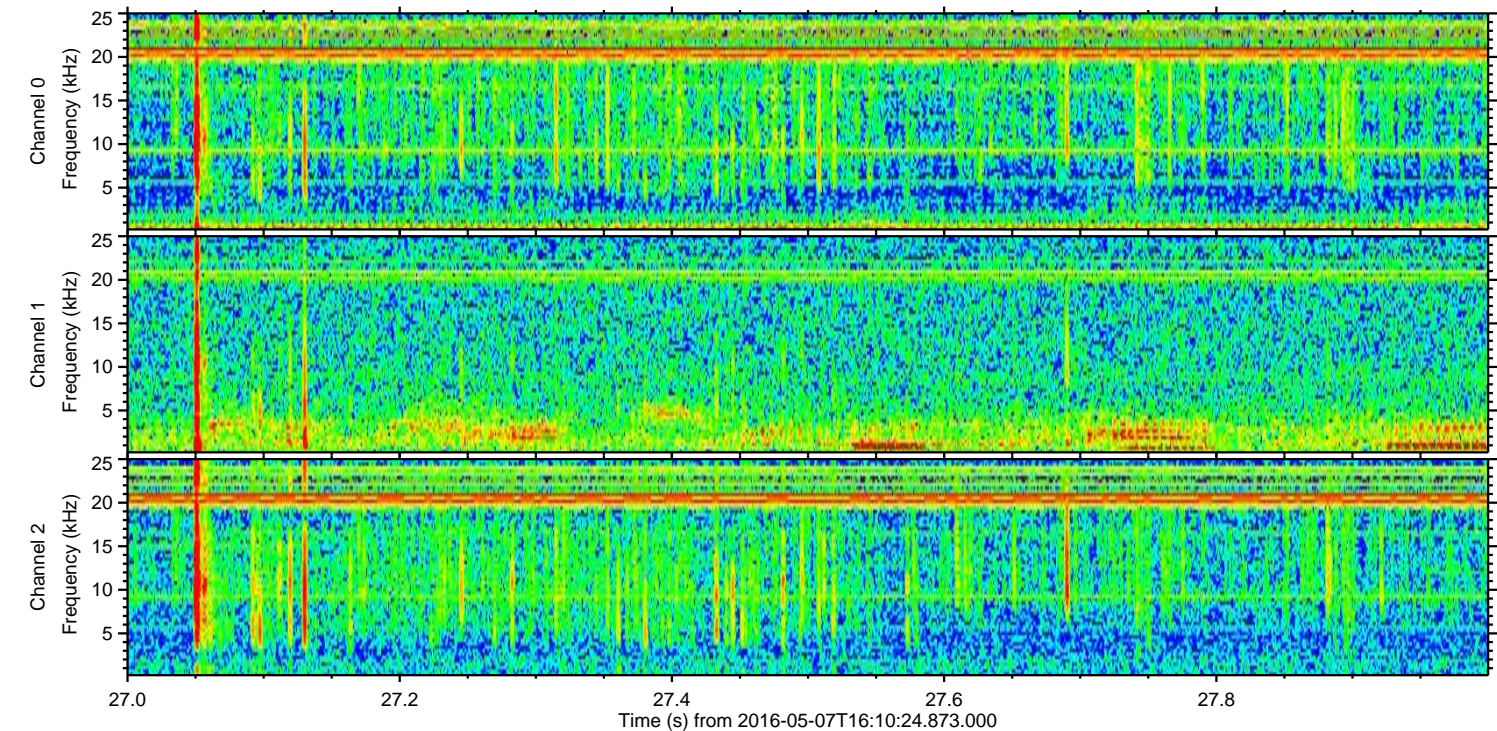
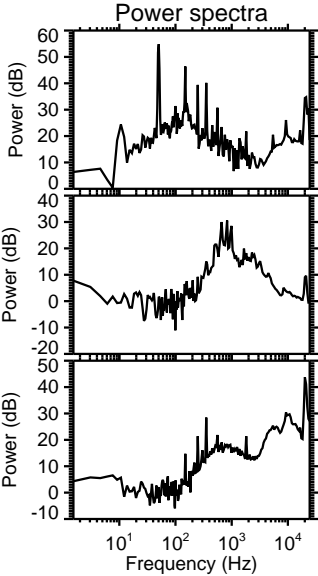
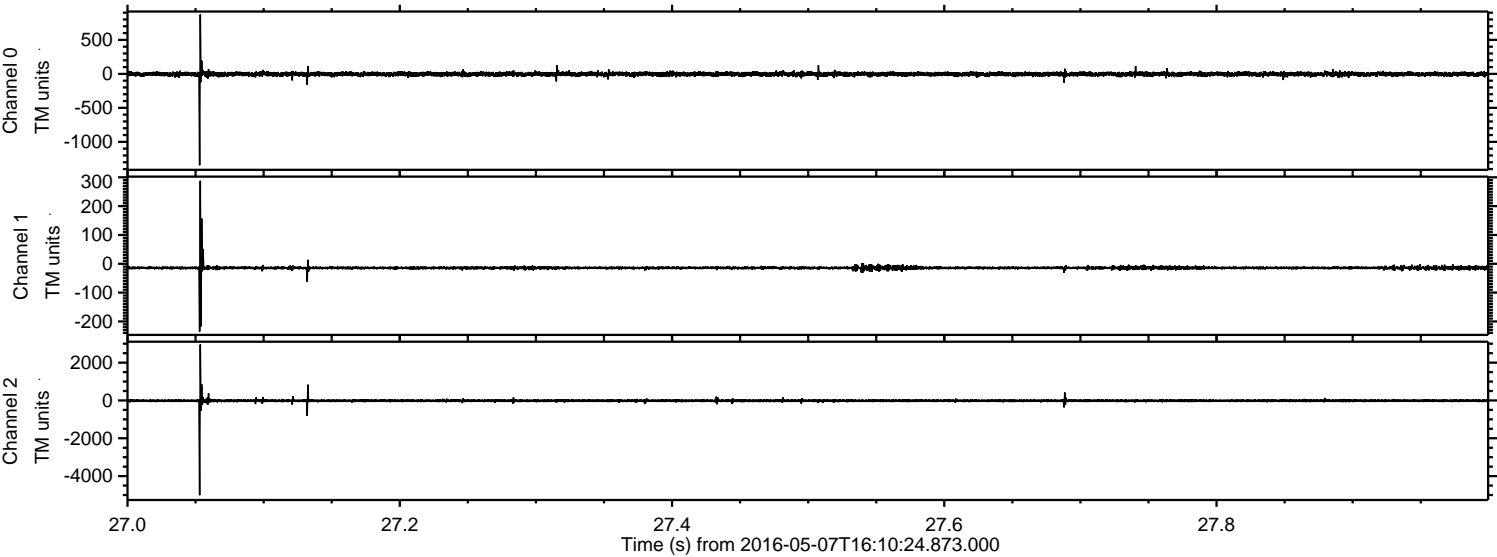


Processed Fri May 13 05:16:33 2016 by ELM ver.2012-10-06 from 001\_\_elm20160507\_161023\_\_dat00.bin





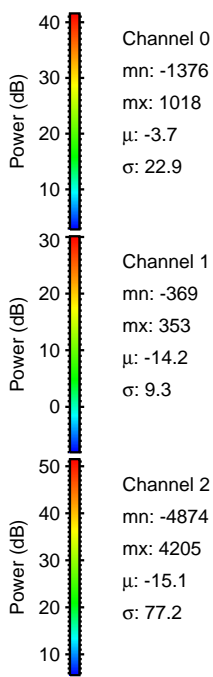
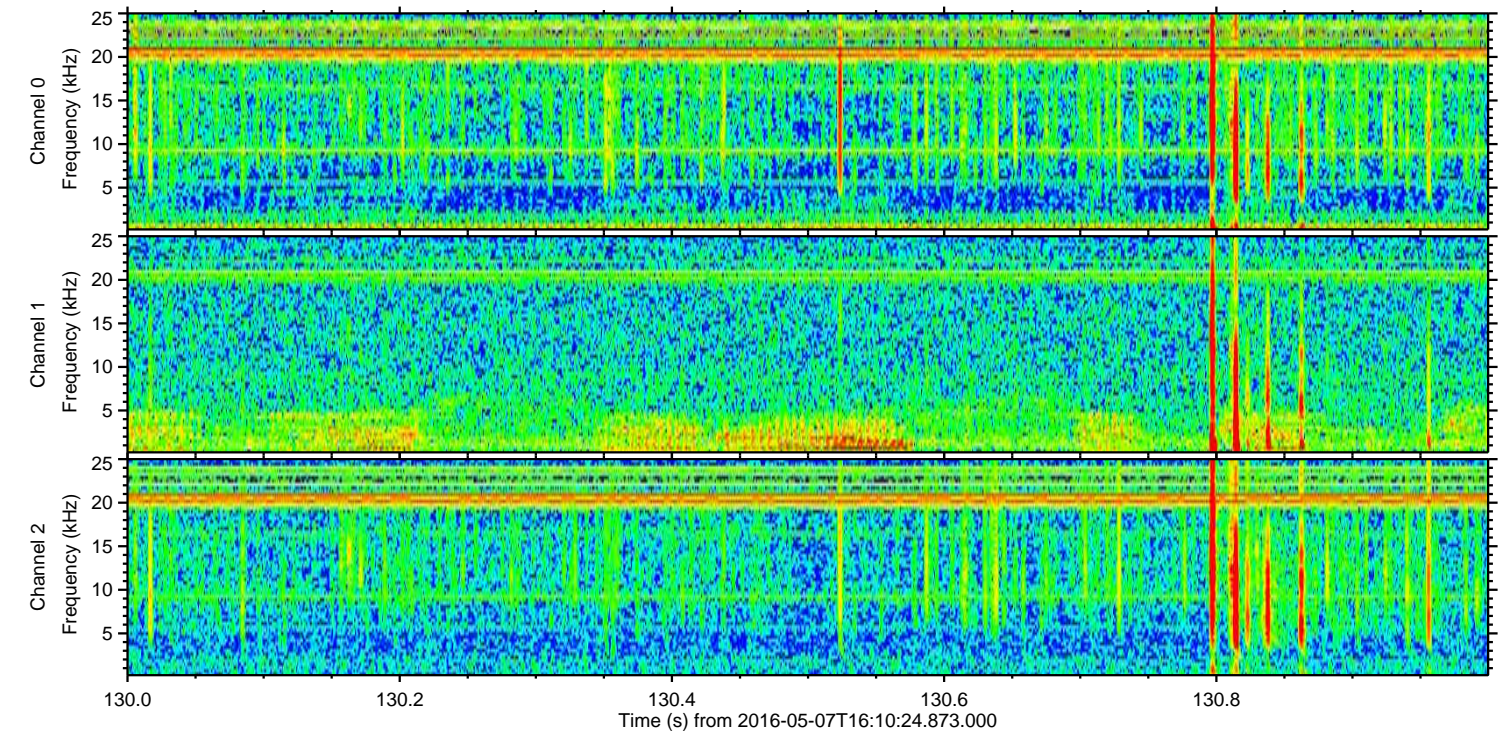
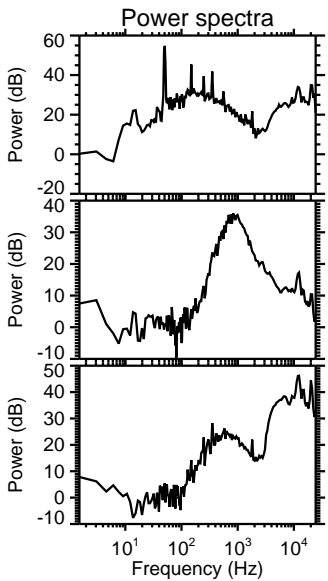
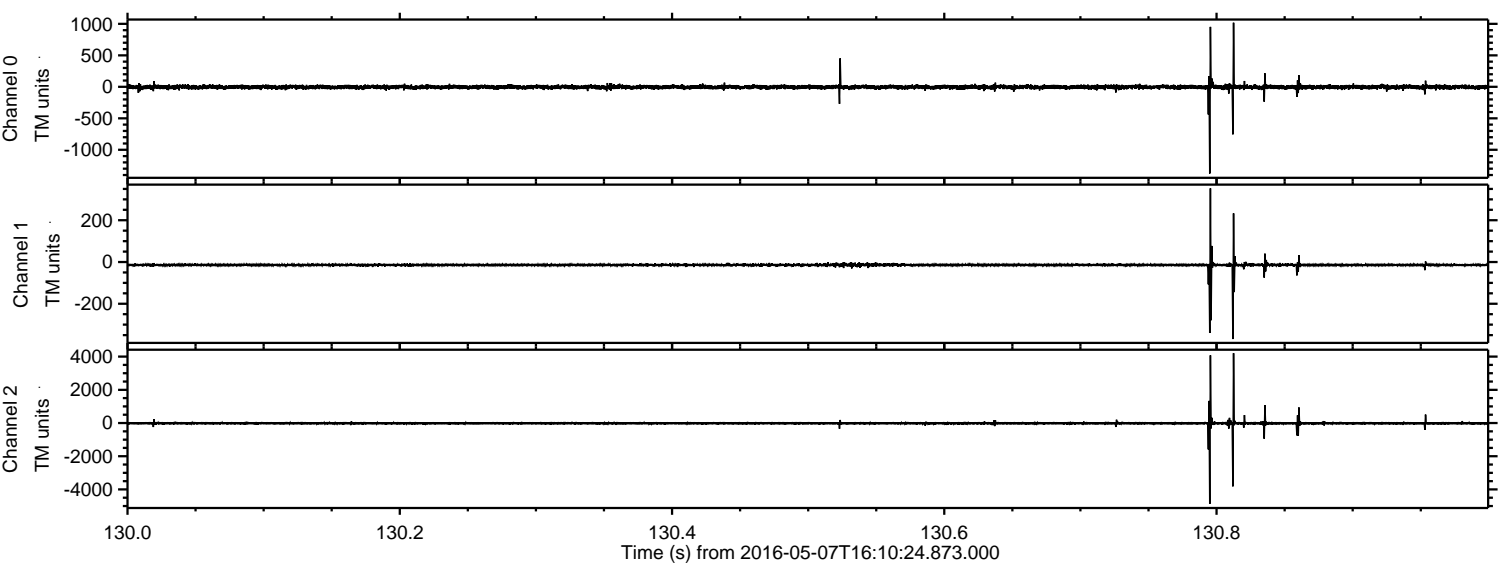
Processed Fri May 13 05:16:34 2016 by ELM ver.2012-10-06 from 001\_\_elm20160507\_161023\_\_dat00.bin





ELMAVAN 3D WAVEFORMS (Measured data sampled at 50 kHz) 51000 packets of 144 samples from 2016-05-07T16:10:24.873.000. Part 131/147

Processed Fri May 13 05:16:35 2016 by ELM ver.2012-10-06 from 001\_\_elm20160507\_161023\_\_dat00.bin



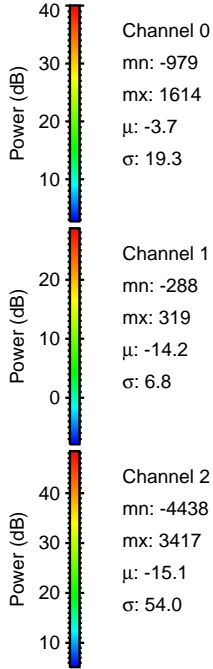
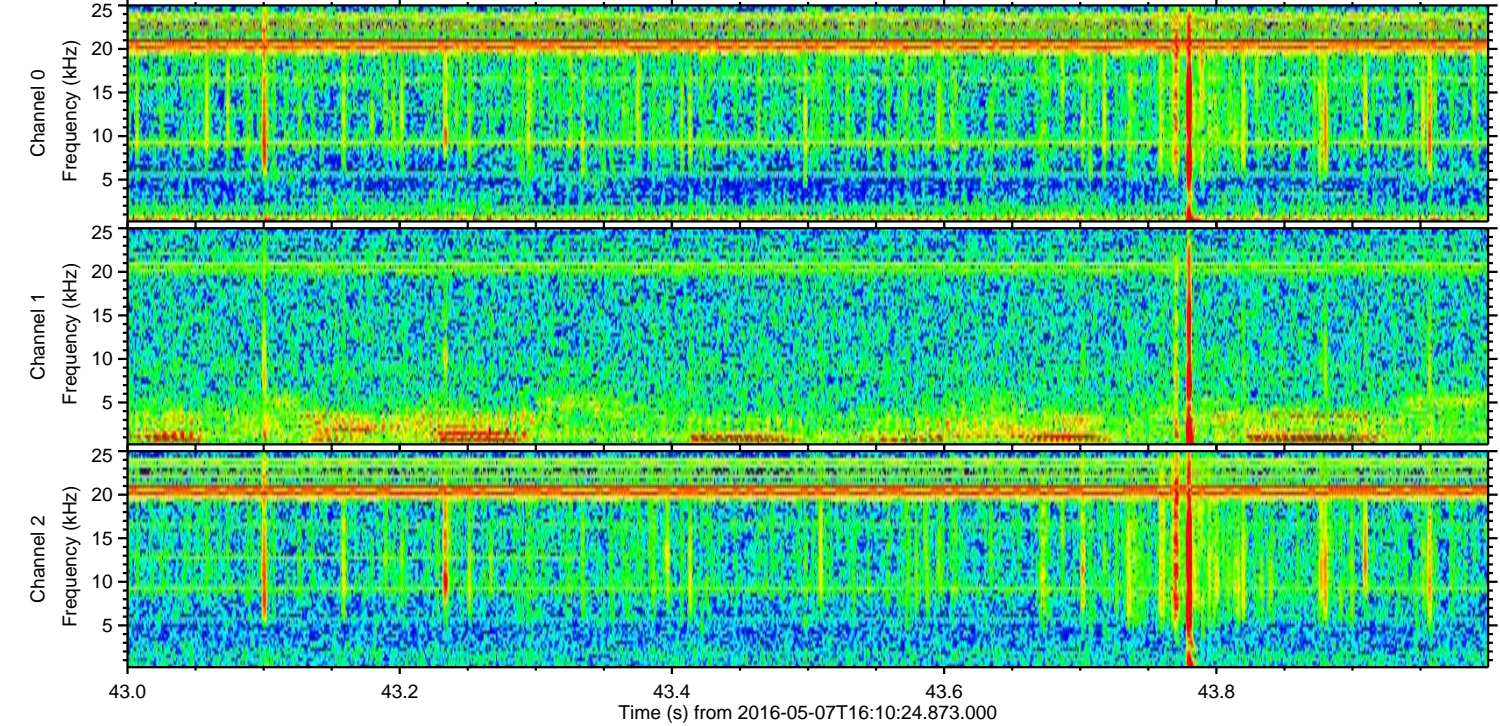
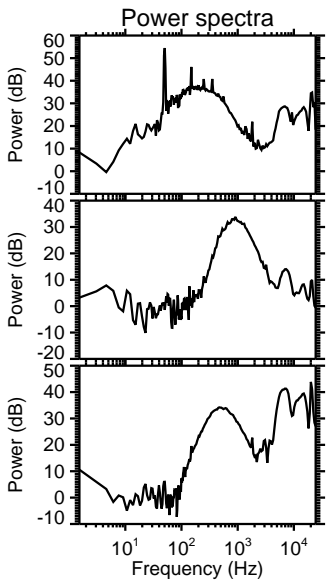
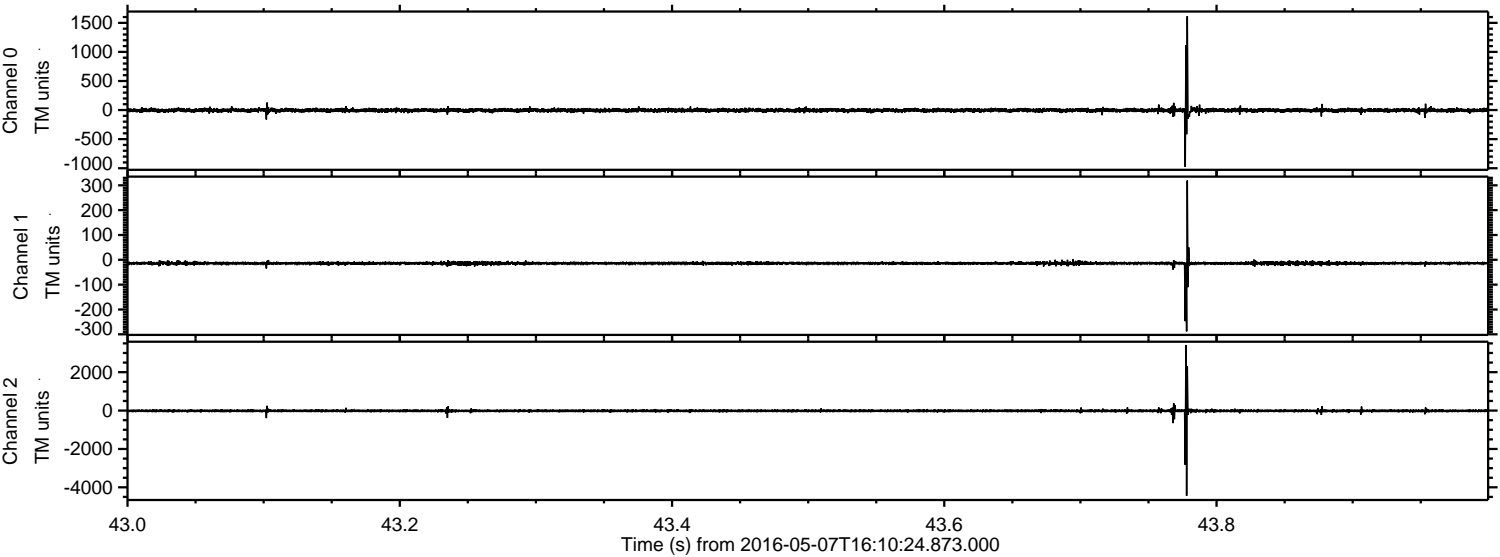
Channel 0  
mn: -1376  
mx: 1018  
 $\mu$ : -3.7  
 $\sigma$ : 22.9

Channel 1  
mn: -369  
mx: 353  
 $\mu$ : -14.2  
 $\sigma$ : 9.3

Channel 2  
mn: -4874  
mx: 4205  
 $\mu$ : -15.1  
 $\sigma$ : 77.2



Processed Fri May 13 05:16:36 2016 by ELM ver.2012-10-06 from 001\_\_elm20160507\_161023\_\_dat00.bin





Processed Fri May 13 05:16:37 2016 by ELM ver.2012-10-06 from 001\_\_elm20160507\_161023\_\_dat00.bin

