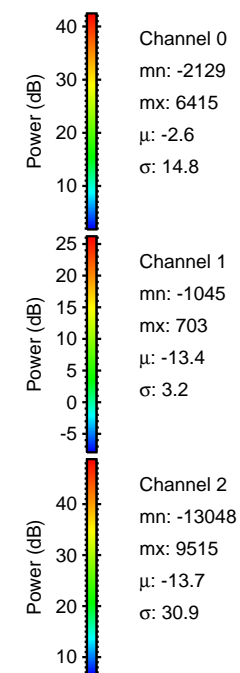
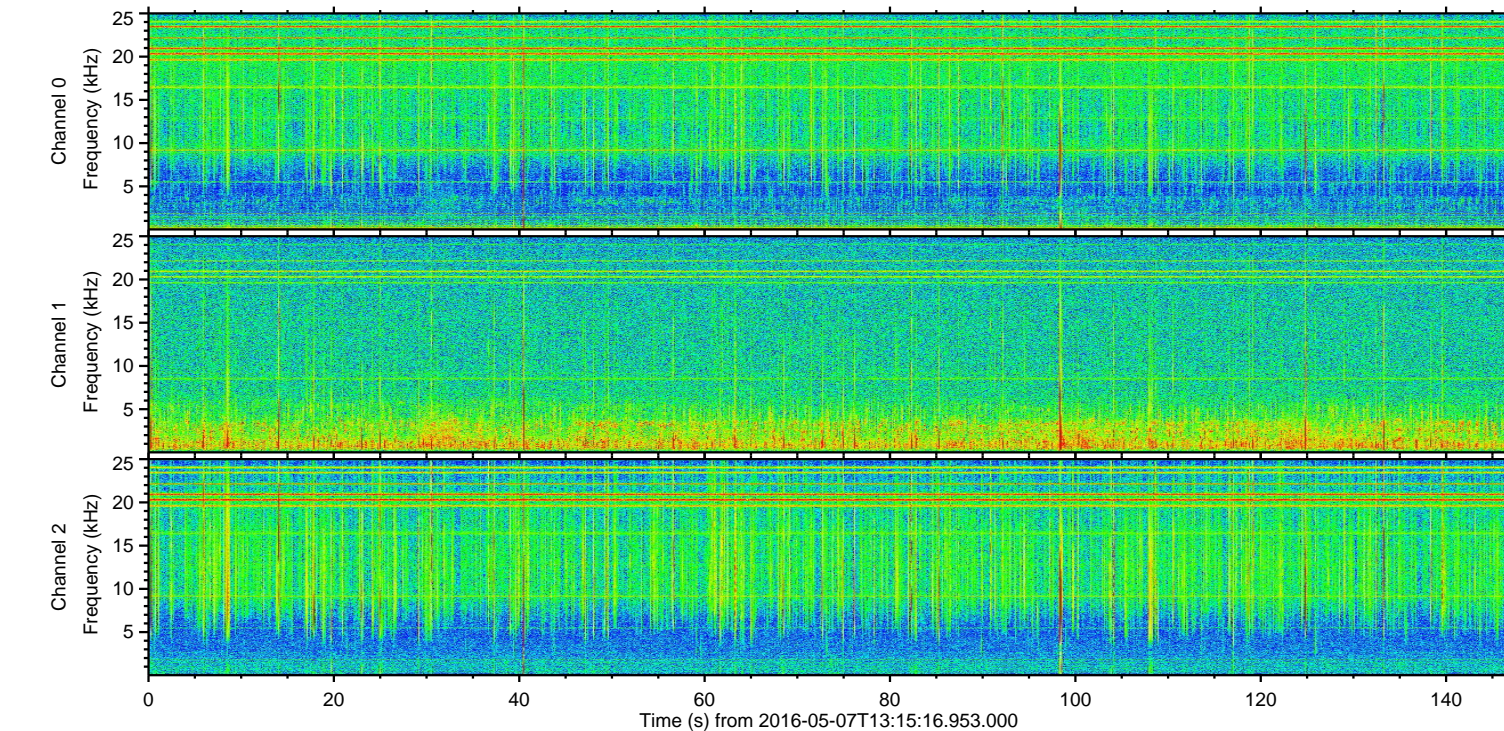
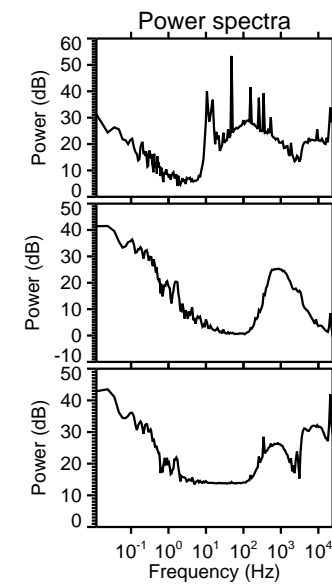
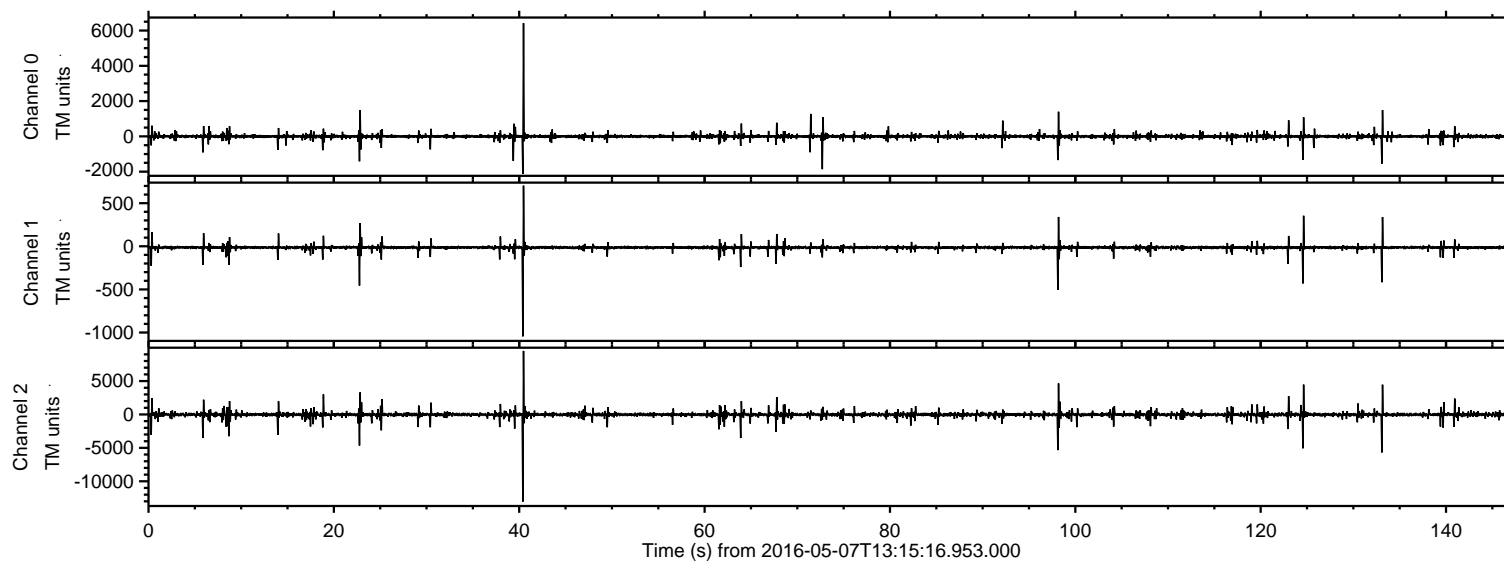
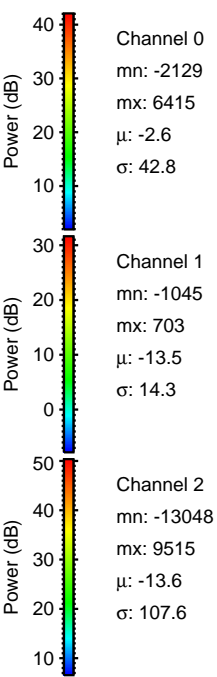
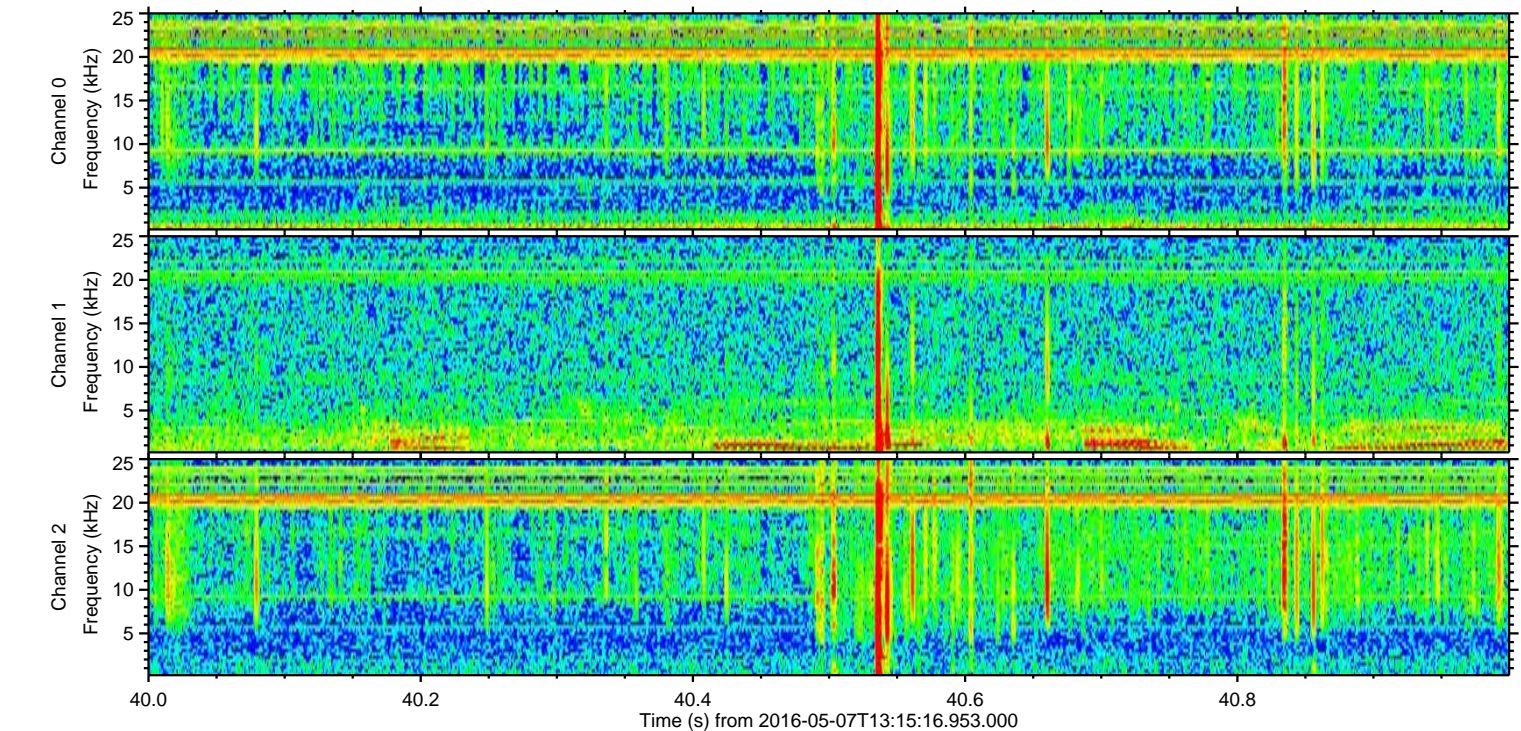
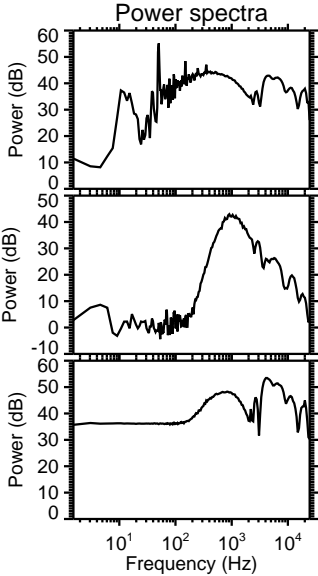
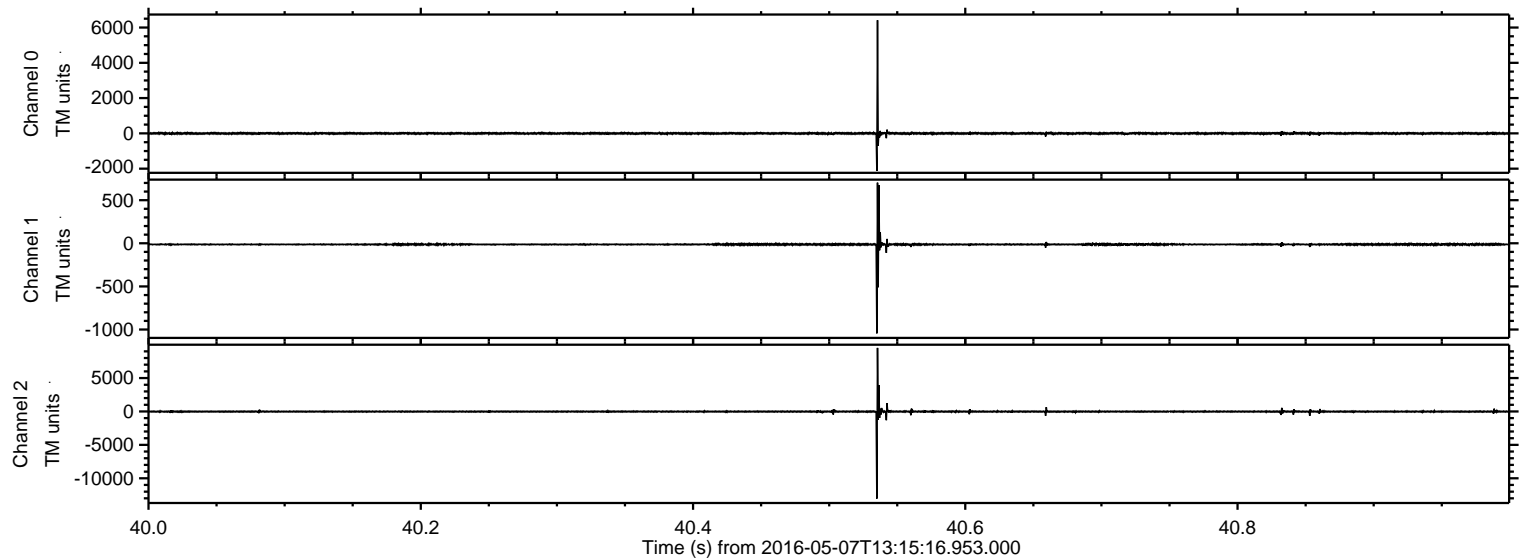


ELMAVAN 3D WAVEFORMS (Measured data sampled at 50 kHz) 51000 packets of 144 samples from 2016-05-07T13:15:16.953.000.

Processed Fri May 13 04:40:17 2016 by ELM ver.2012-10-06 from 001__elm20160507_131515__dat00.bin

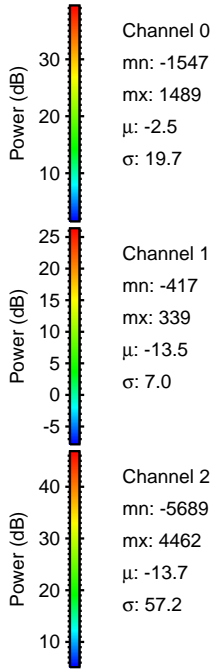
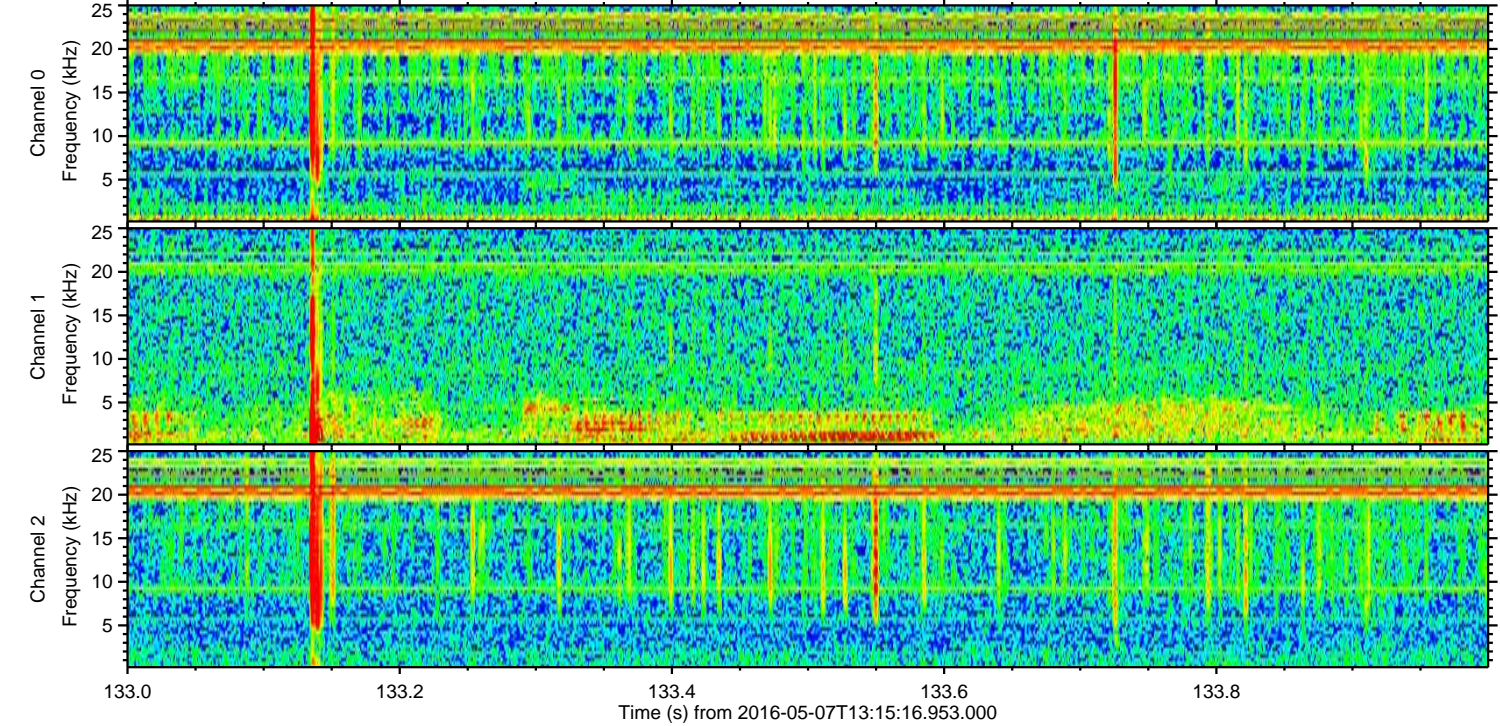
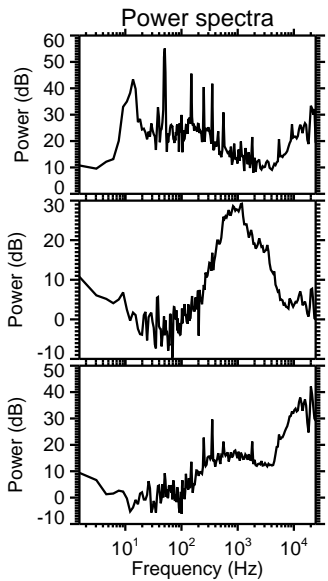
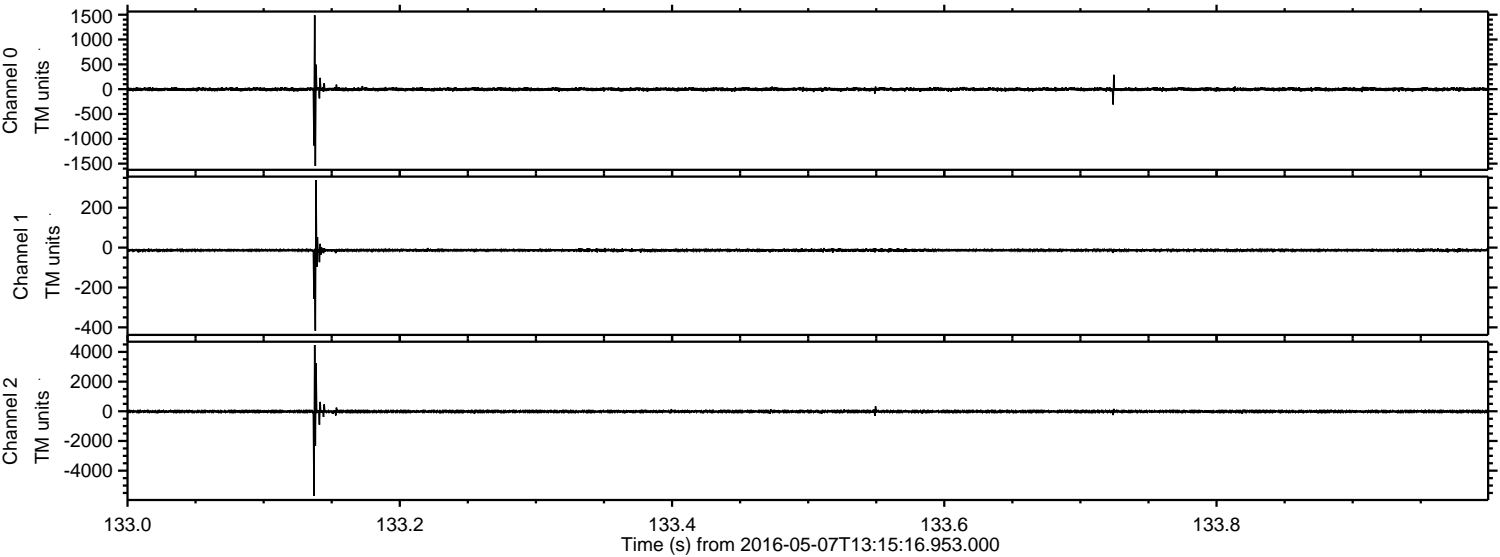


Processed Fri May 13 04:40:28 2016 by ELM ver.2012-10-06 from 001__elm20160507_131515__dat00.bin

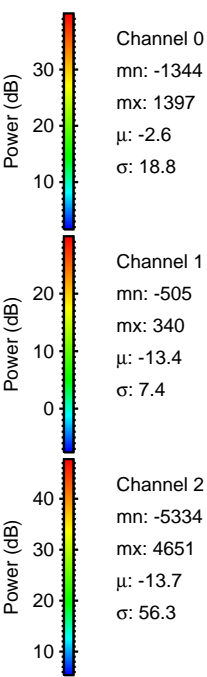
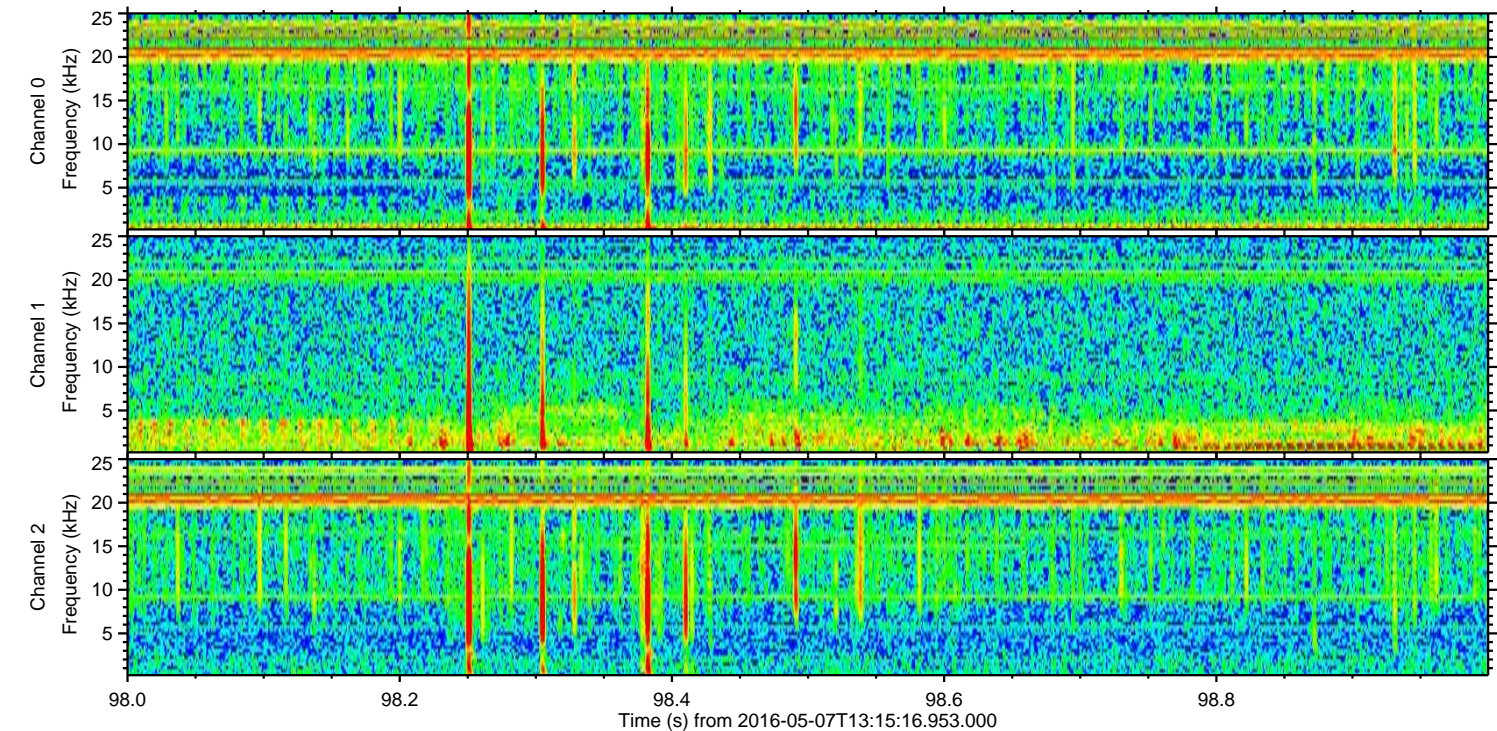
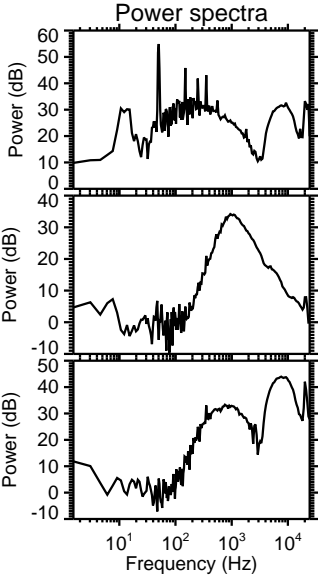
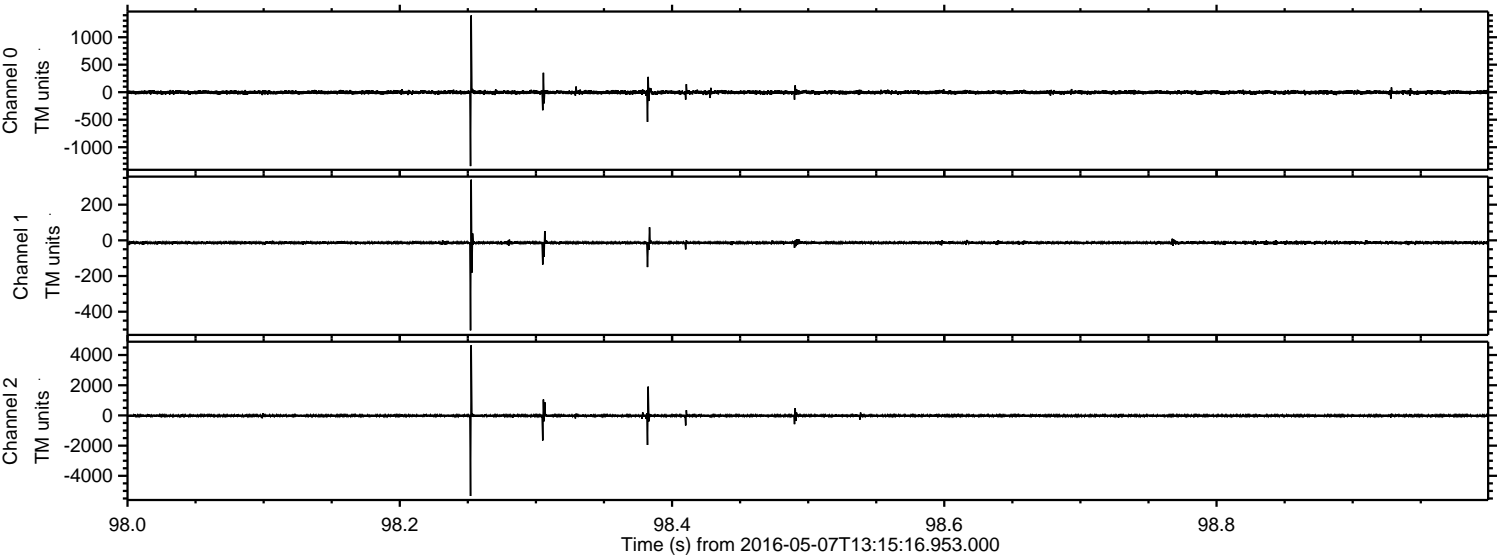


ELMAVAN 3D WAVEFORMS (Measured data sampled at 50 kHz) 51000 packets of 144 samples from 2016-05-07T13:15:16.953.000. Part 134/147

Processed Fri May 13 04:40:29 2016 by ELM ver.2012-10-06 from 001__elm20160507_131515__dat00.bin

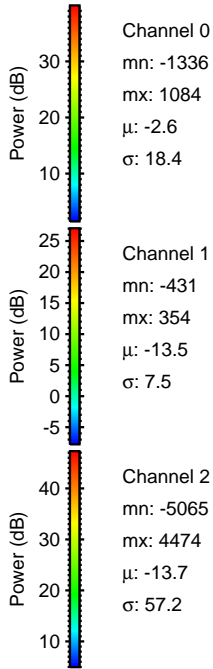
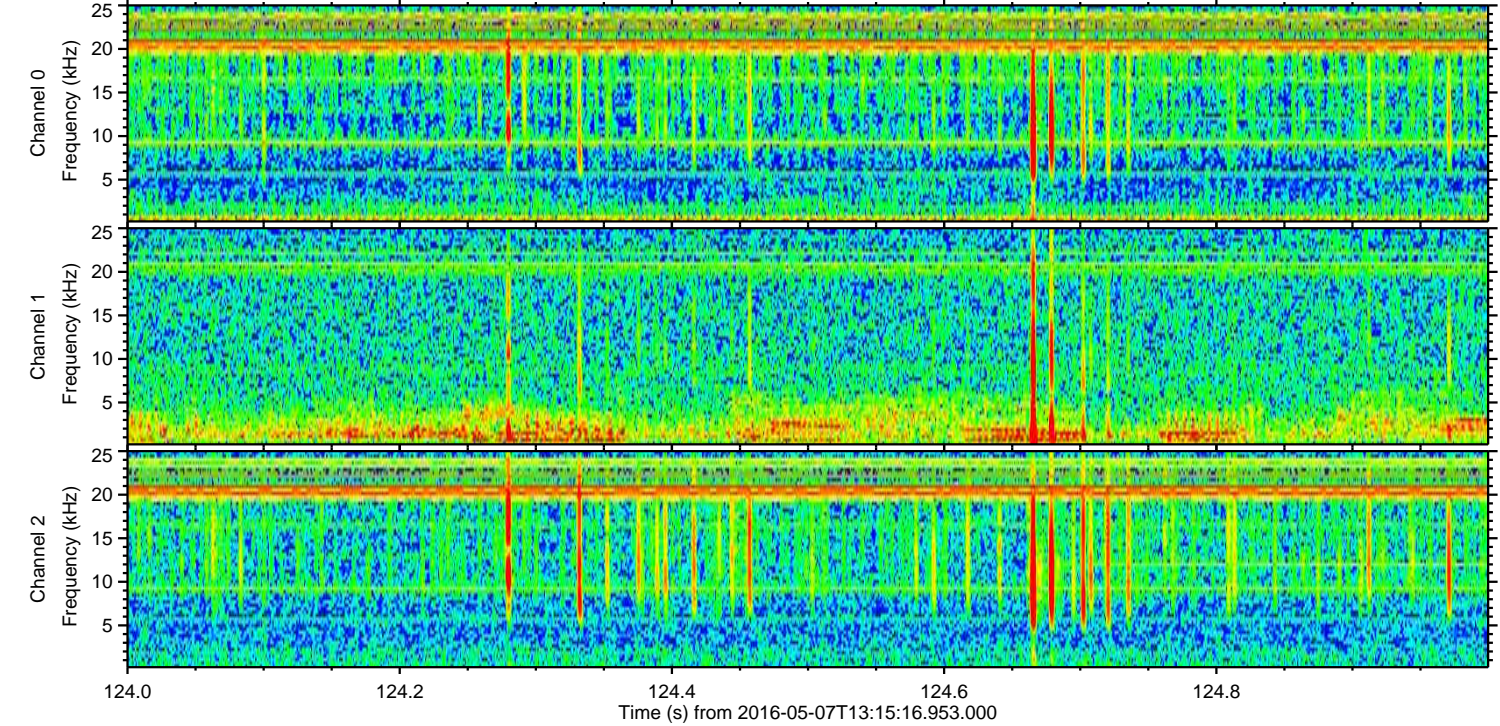
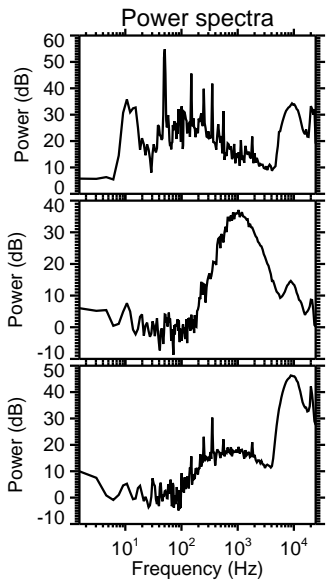
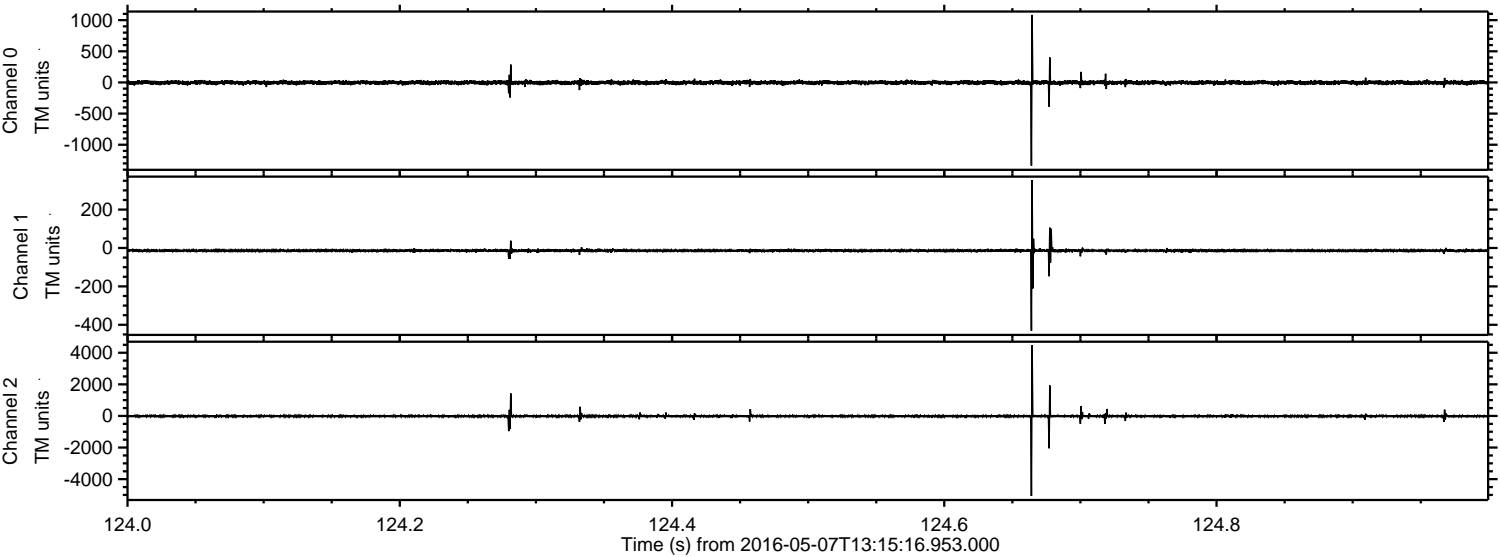


Processed Fri May 13 04:40:30 2016 by ELM ver.2012-10-06 from 001__elm20160507_131515__dat00.bin

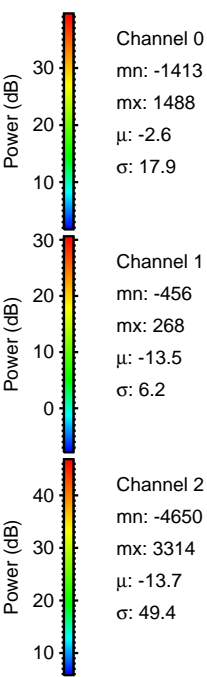
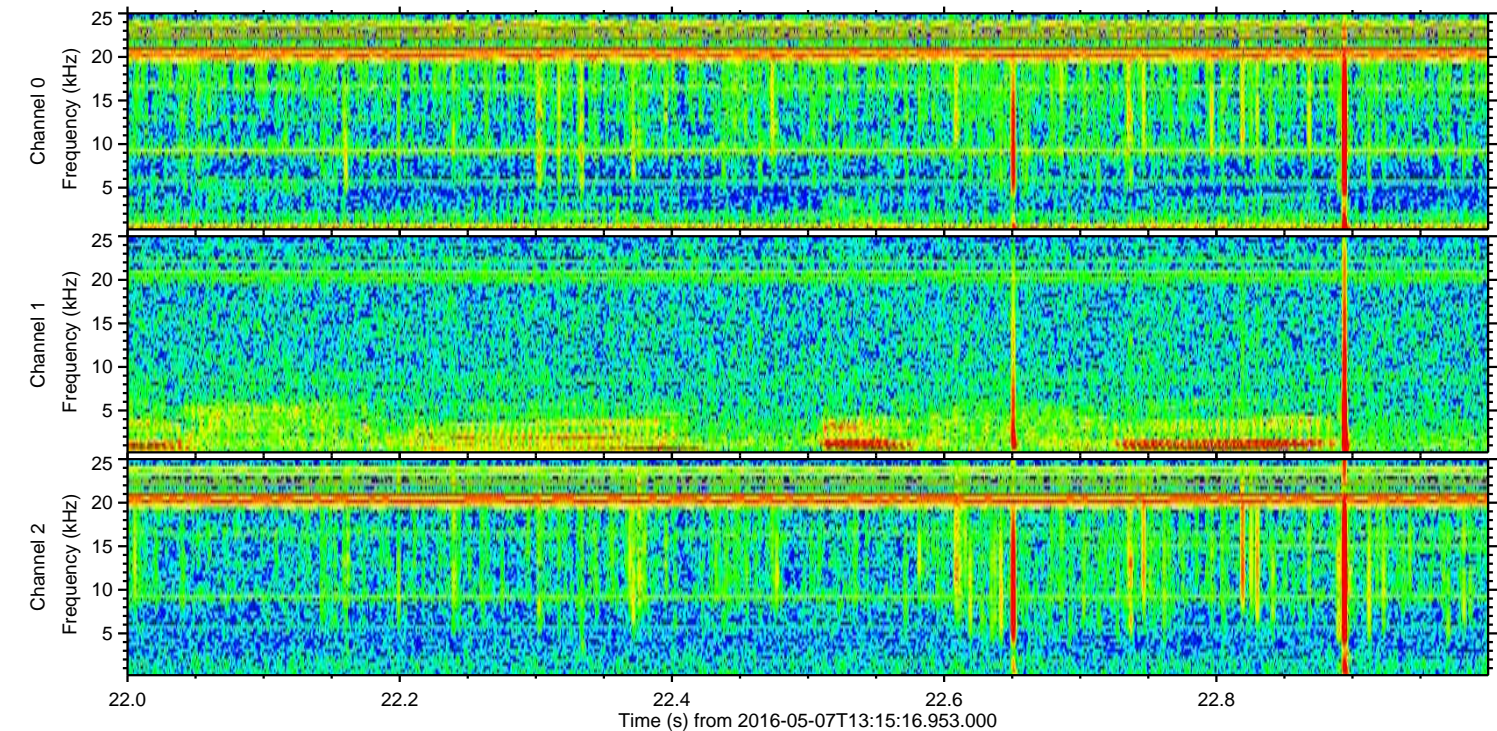
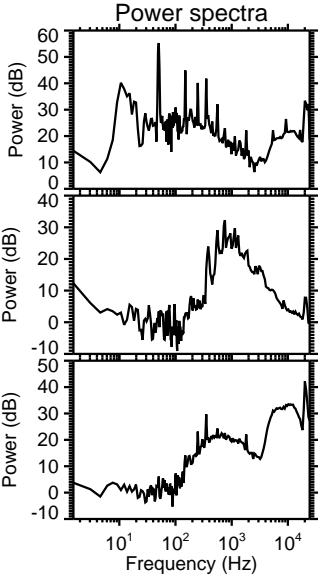
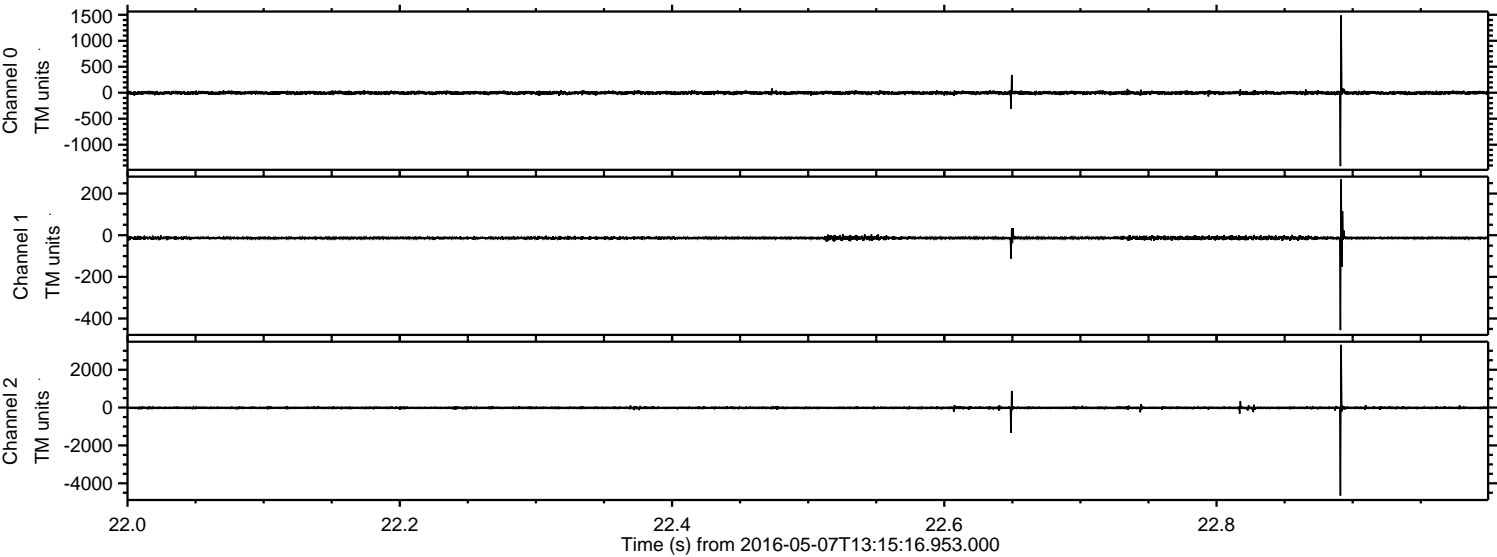


ELMAVAN 3D WAVEFORMS (Measured data sampled at 50 kHz) 51000 packets of 144 samples from 2016-05-07T13:15:16.953.000. Part 125/147

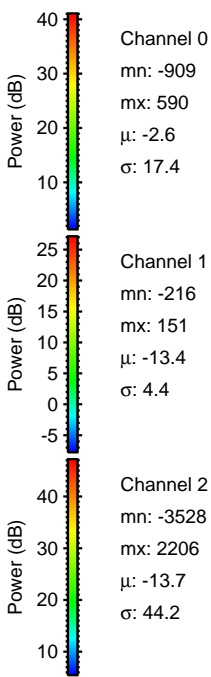
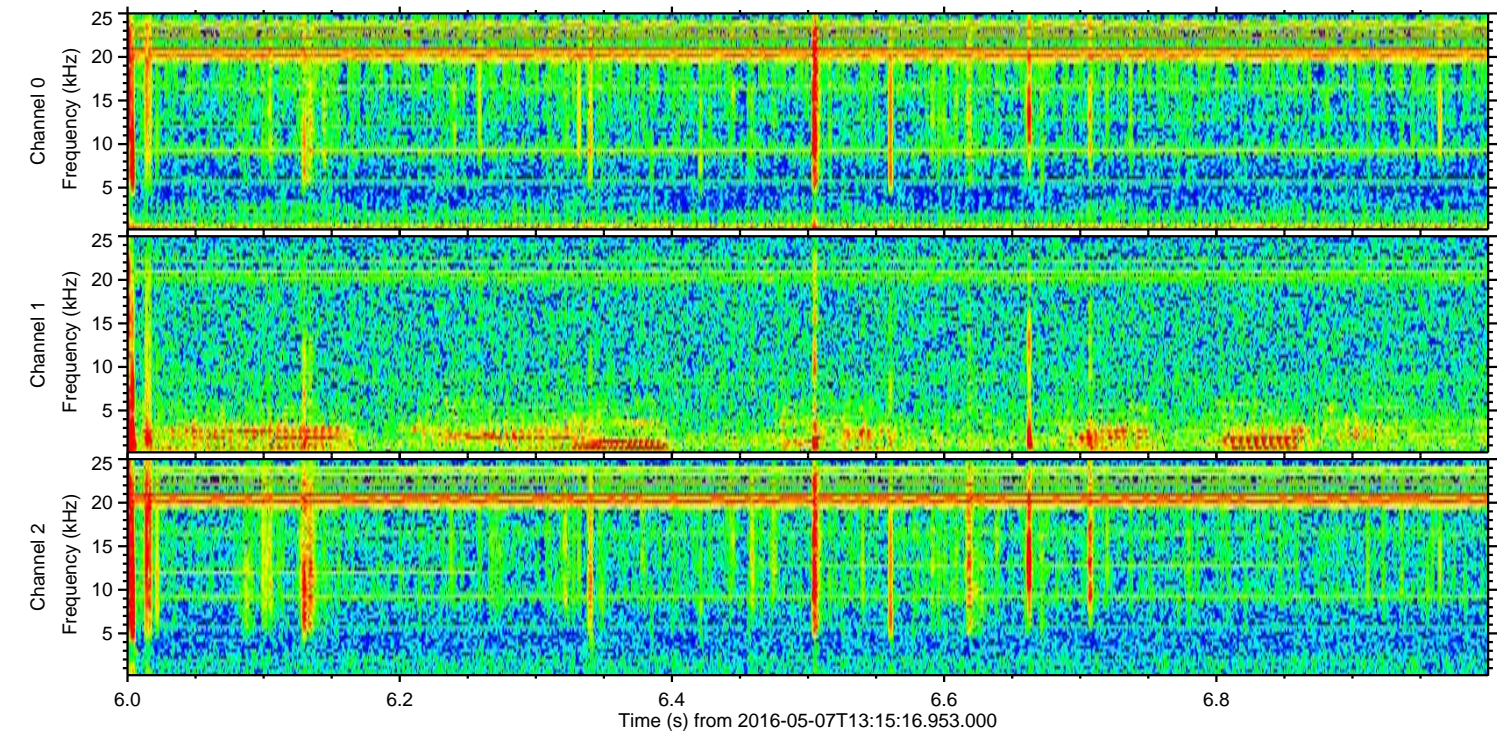
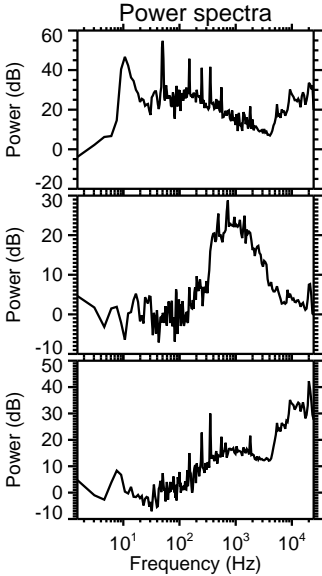
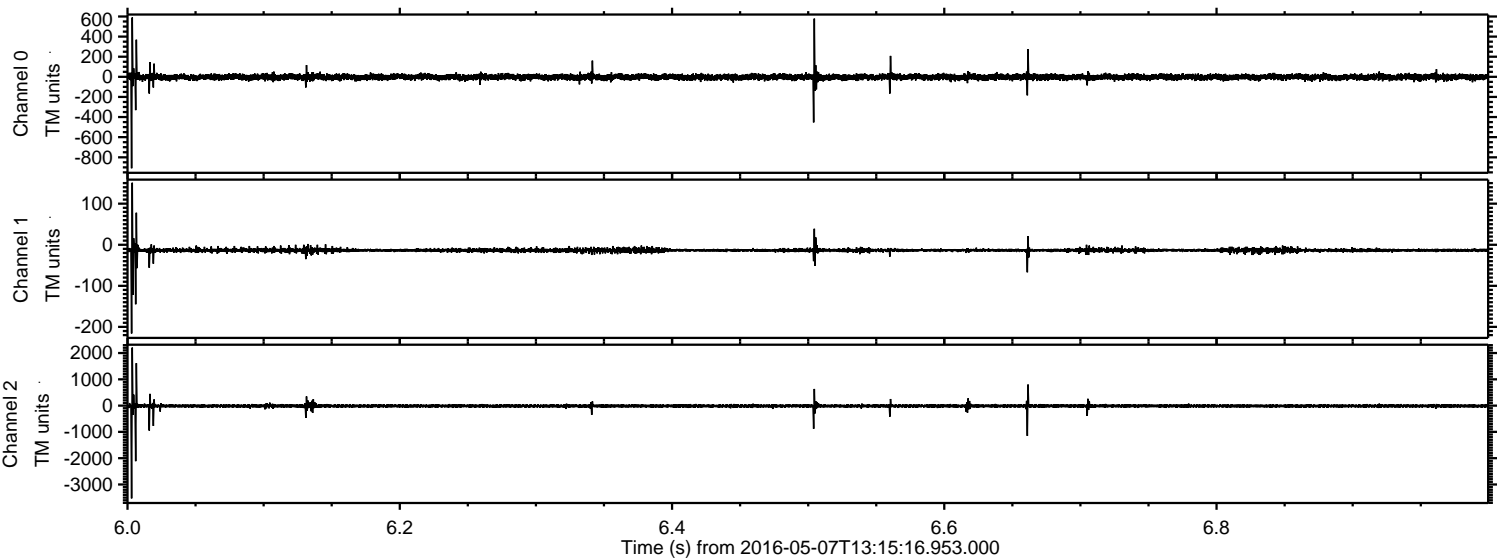
Processed Fri May 13 04:40:31 2016 by ELM ver.2012-10-06 from 001__elm20160507_131515__dat00.bin



Processed Fri May 13 04:40:32 2016 by ELM ver.2012-10-06 from 001__elm20160507_131515__dat00.bin



Processed Fri May 13 04:40:33 2016 by ELM ver.2012-10-06 from 001__elm20160507_131515__dat00.bin

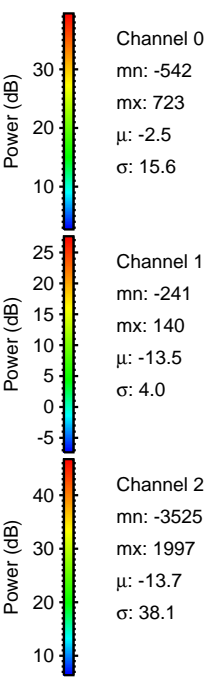
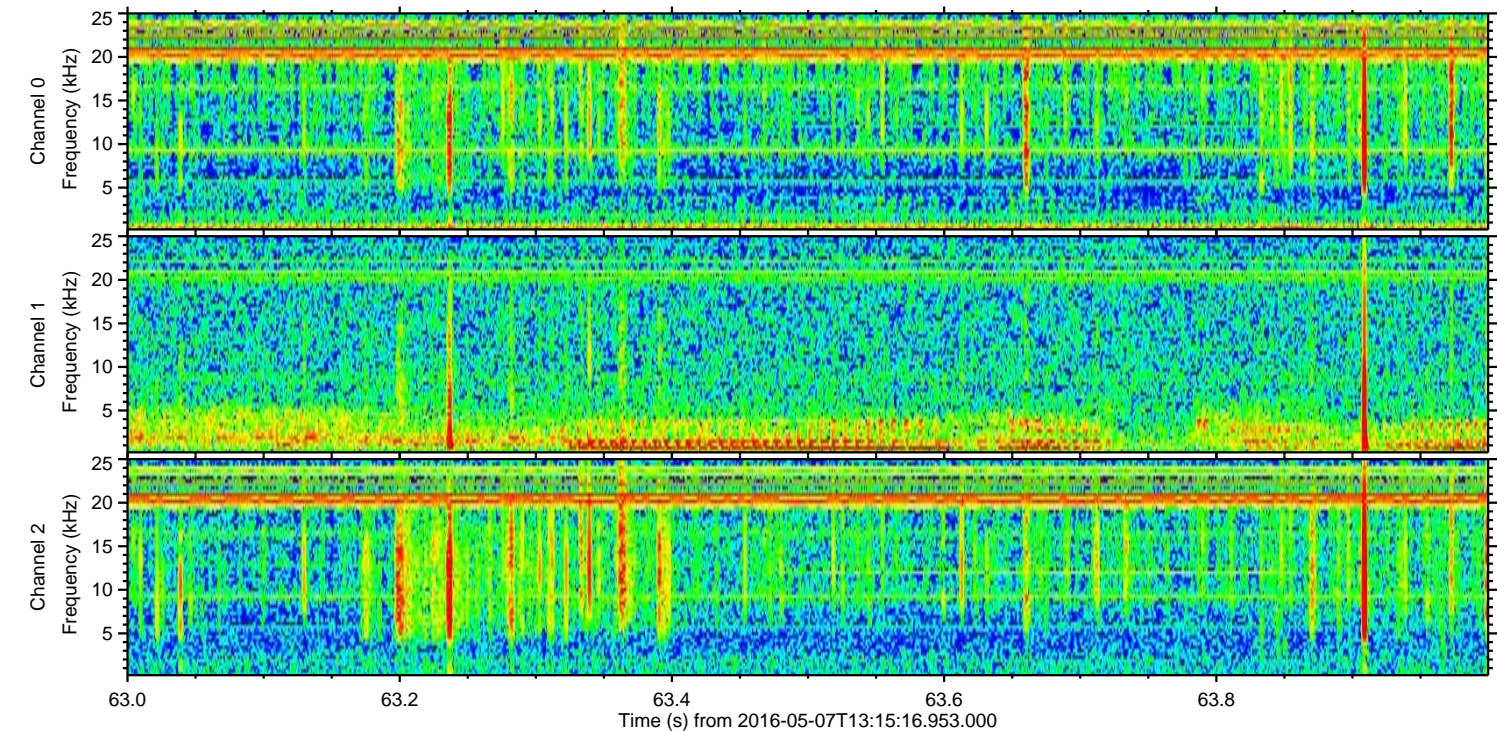
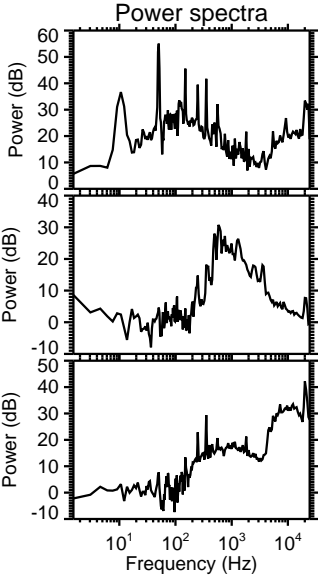
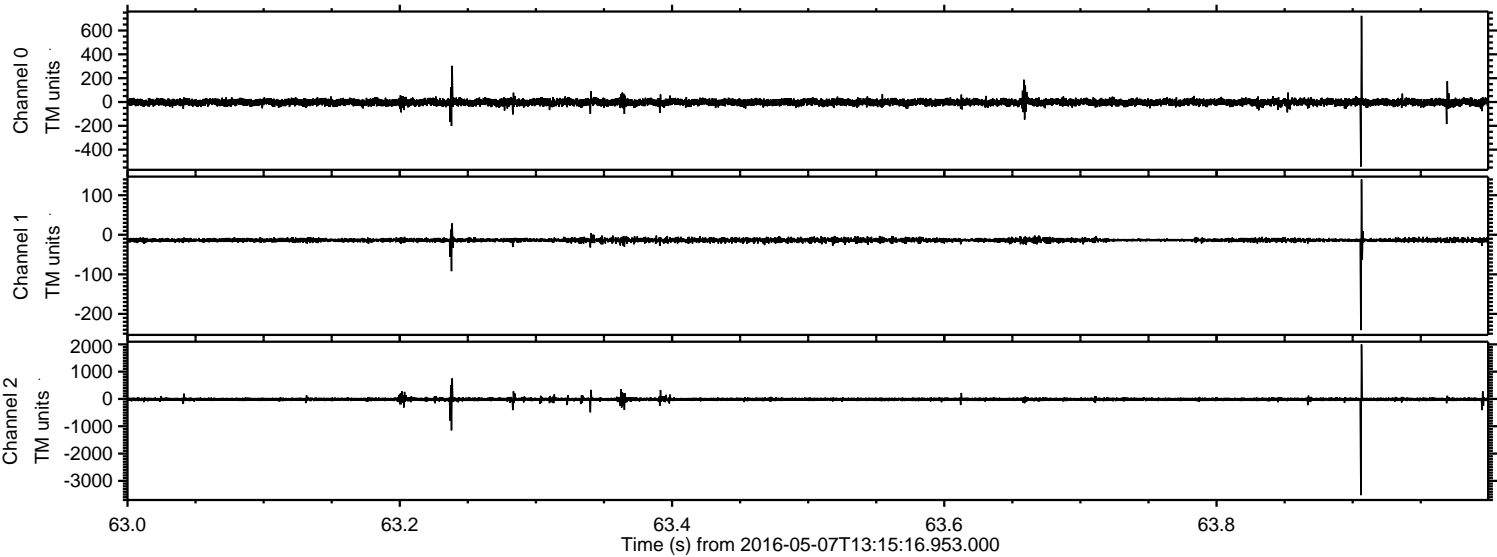


Channel 0
mn: -909
mx: 590
 μ : -2.6
 σ : 17.4

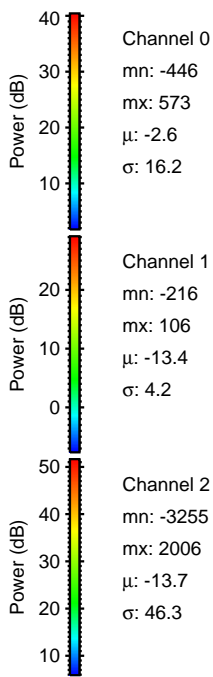
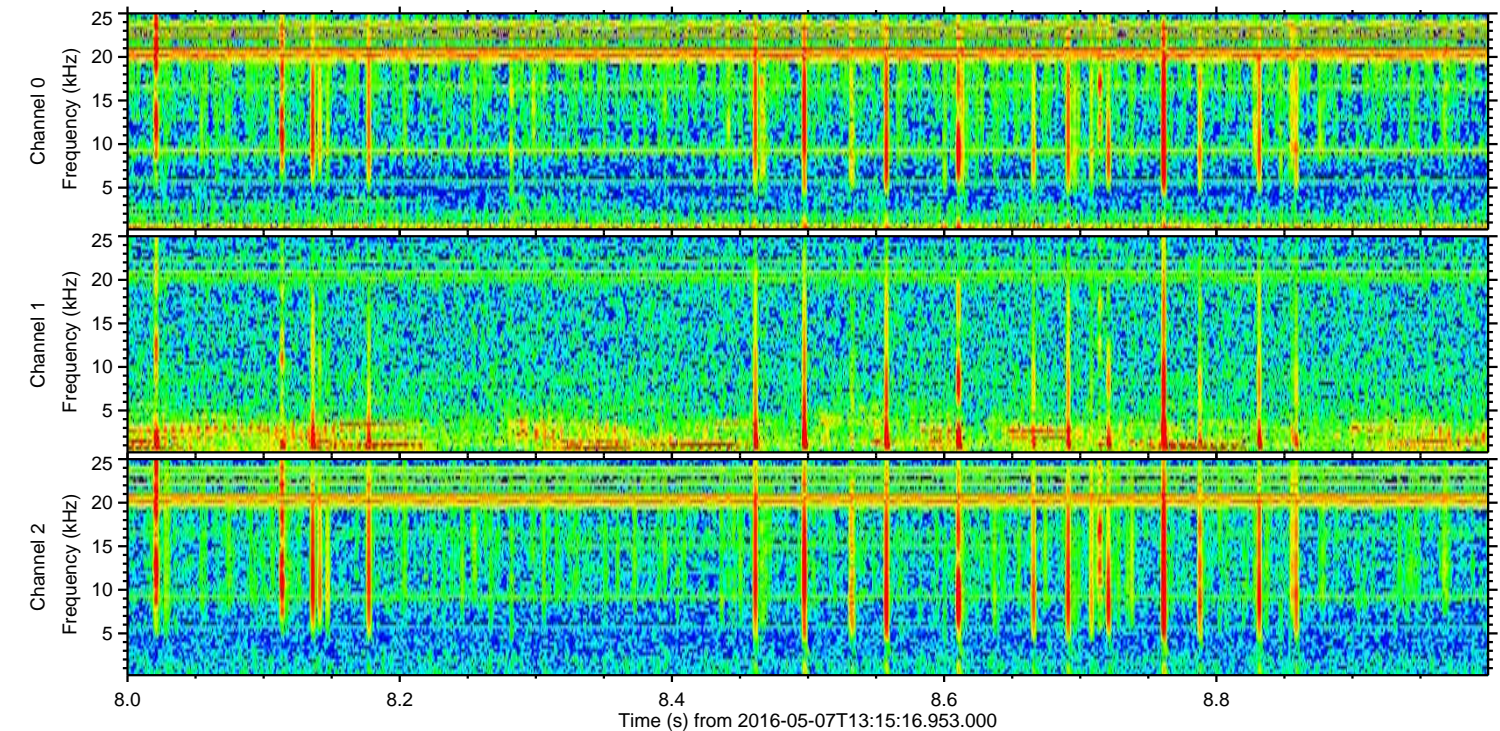
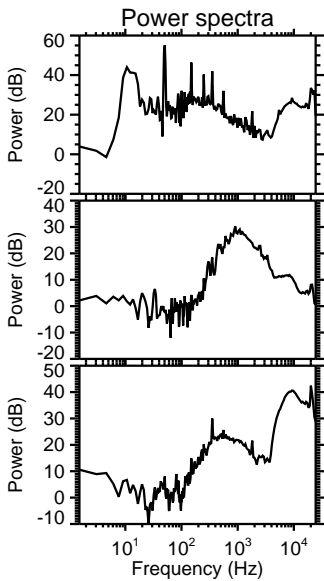
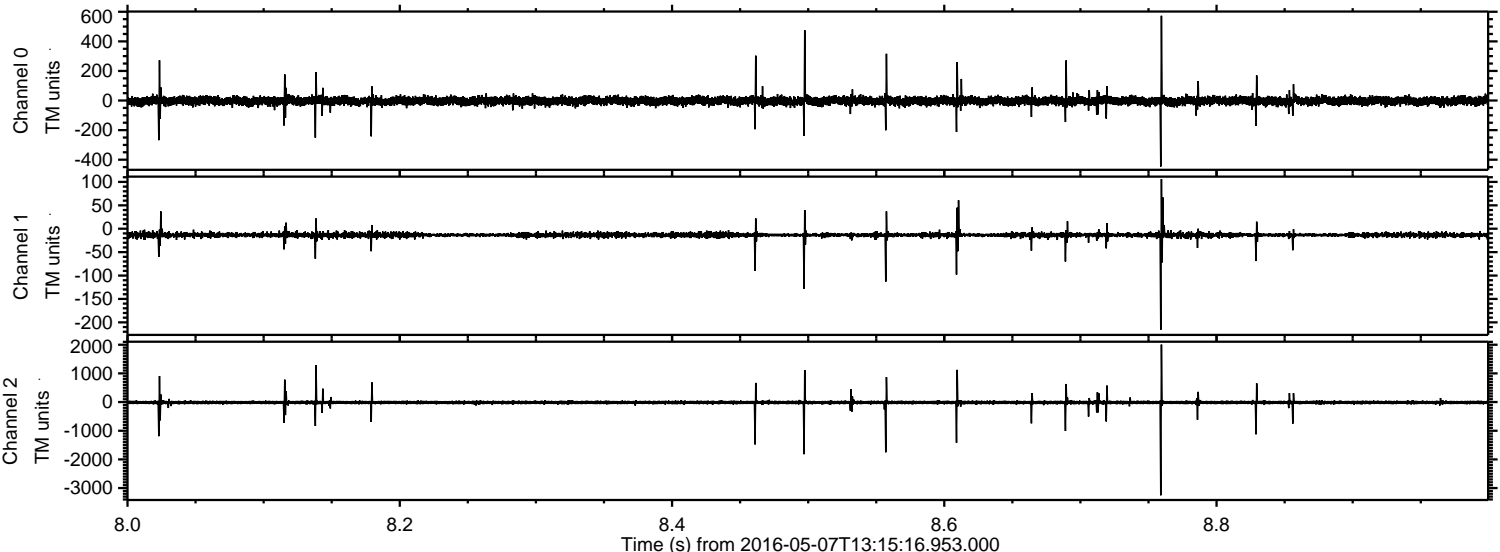
Channel 1
mn: -216
mx: 151
 μ : -13.4
 σ : 4.4

Channel 2
mn: -3528
mx: 2206
 μ : -13.7
 σ : 44.2

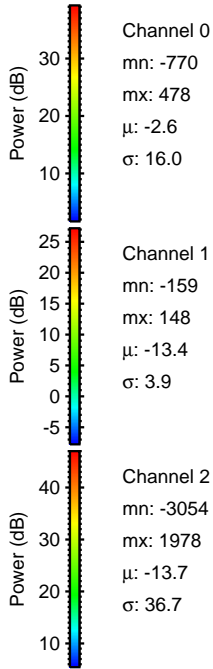
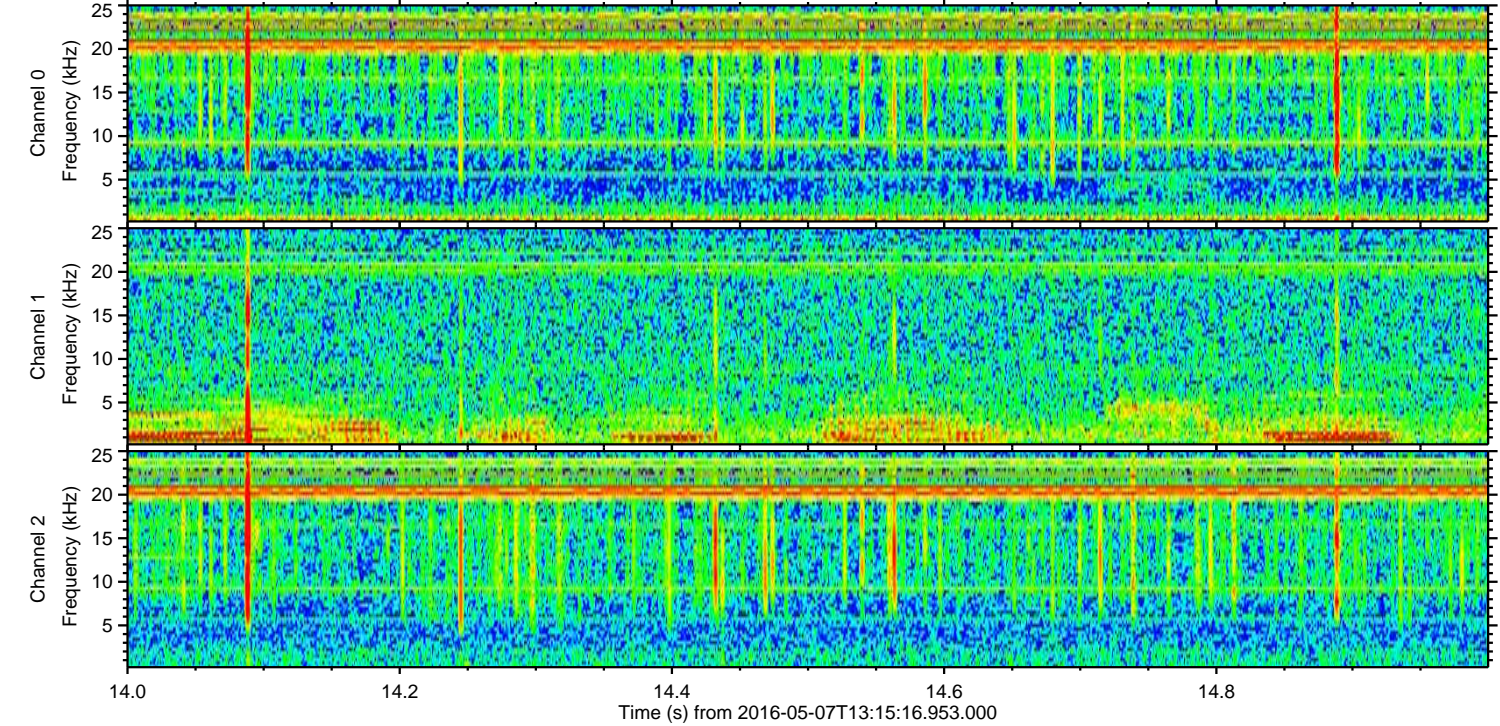
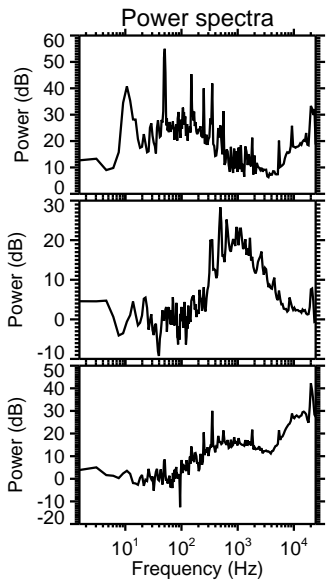
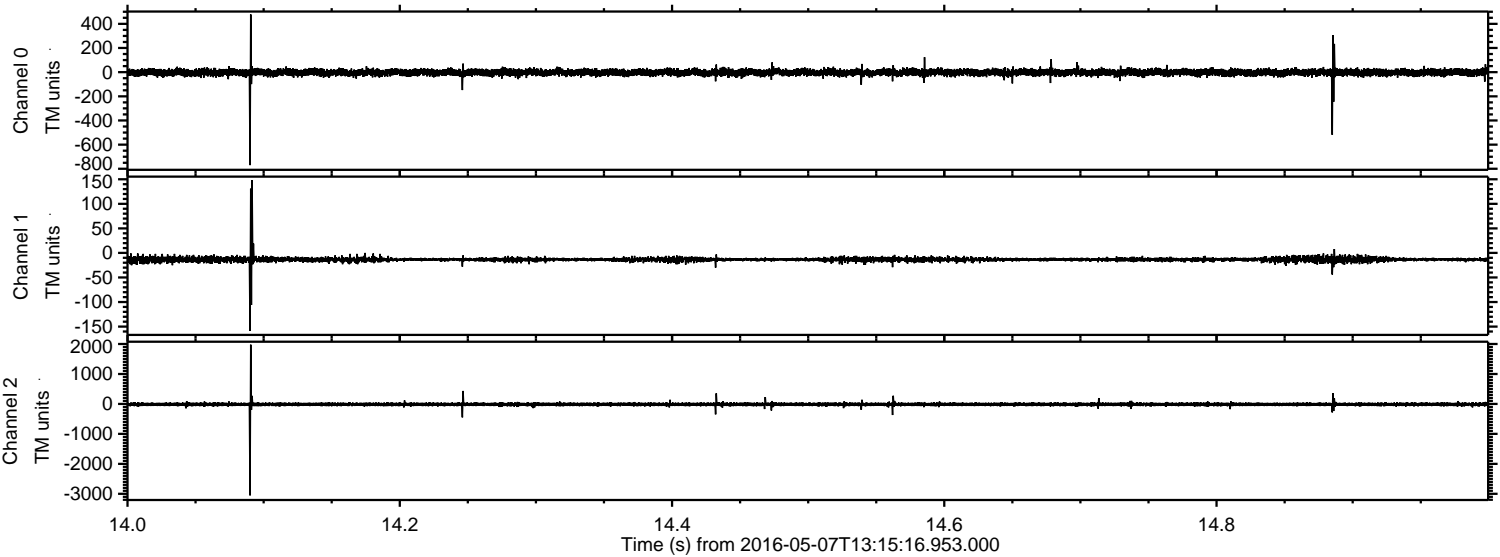
Processed Fri May 13 04:40:34 2016 by ELM ver.2012-10-06 from 001__elm20160507_131515__dat00.bin



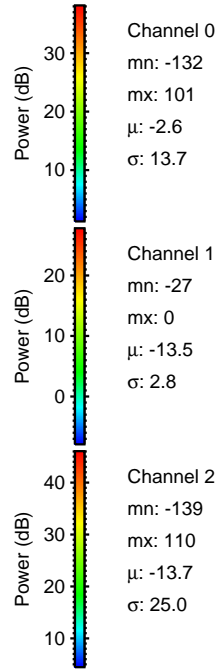
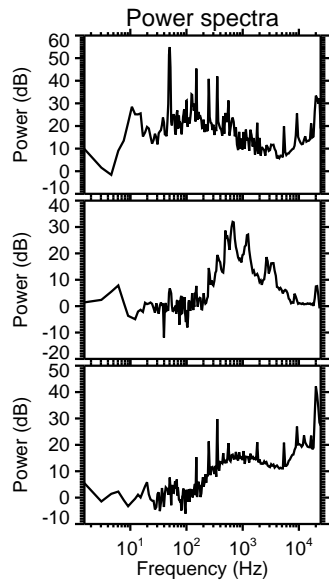
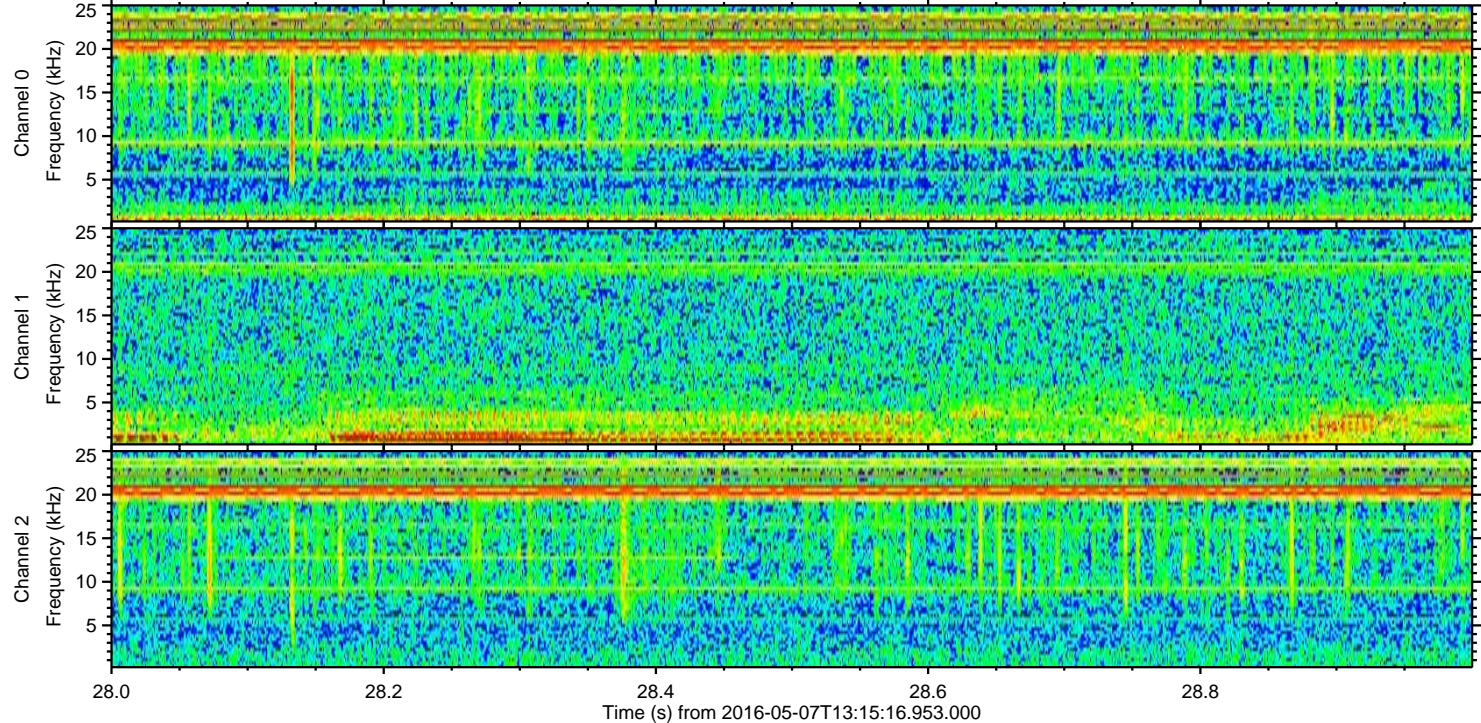
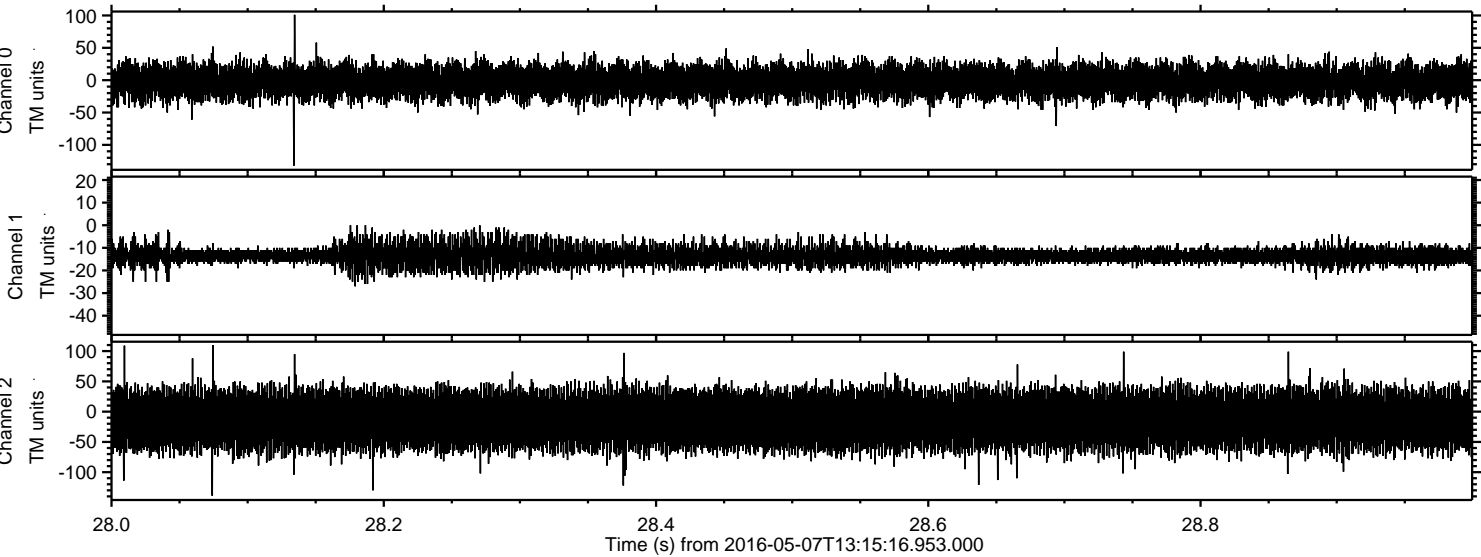
Processed Fri May 13 04:40:35 2016 by ELM ver.2012-10-06 from 001__elm20160507_131515__dat00.bin



Processed Fri May 13 04:40:35 2016 by ELM ver.2012-10-06 from 001__elm20160507_131515__dat00.bin



Processed Fri May 13 04:40:36 2016 by ELM ver.2012-10-06 from 001__elm20160507_131515__dat00.bin



Channel 0
mn: -132
mx: 101
 μ : -2.6
 σ : 13.7

Channel 1
mn: -27
mx: 0
 μ : -13.5
 σ : 2.8

Channel 2
mn: -139
mx: 110
 μ : -13.7
 σ : 25.0