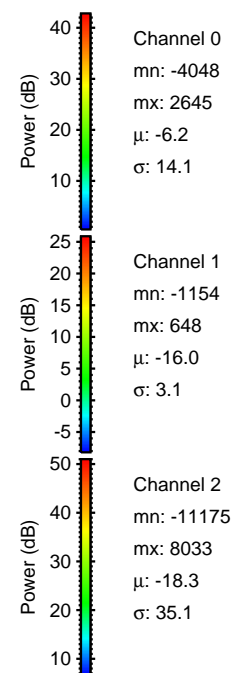
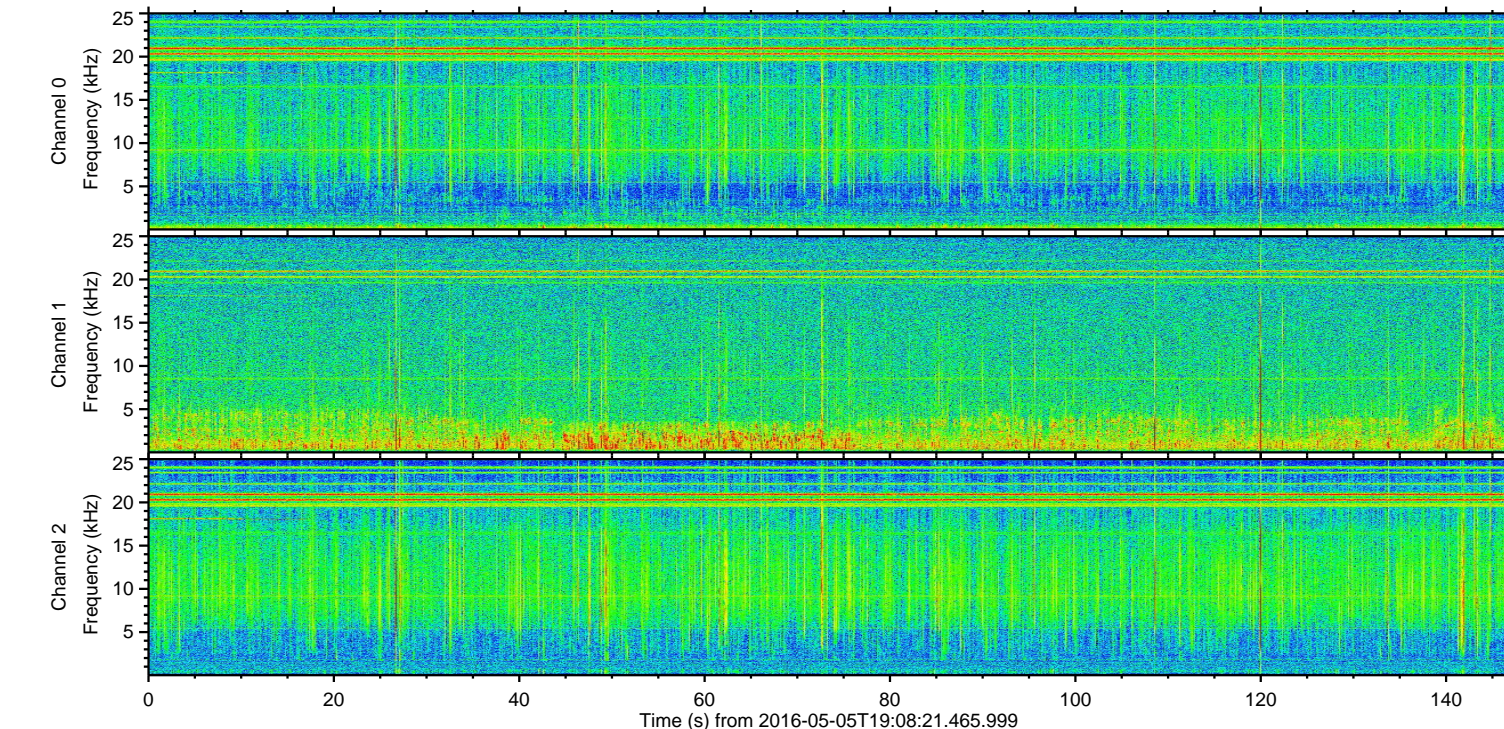
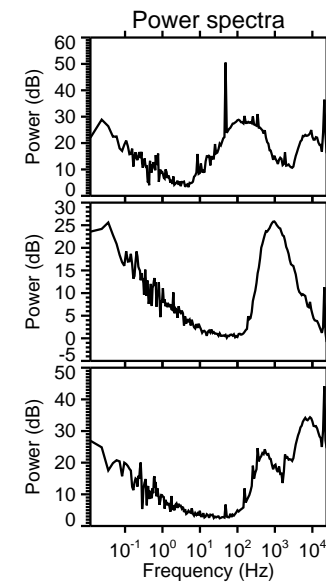
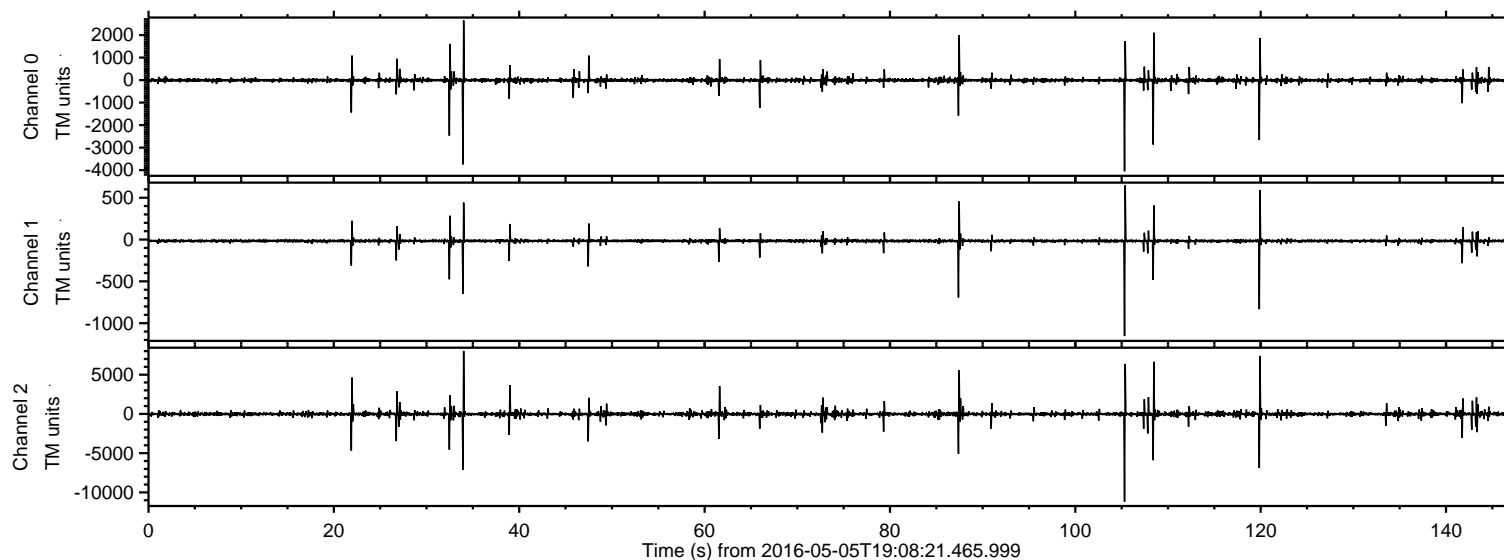


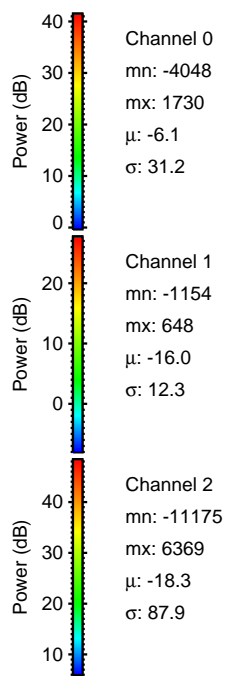
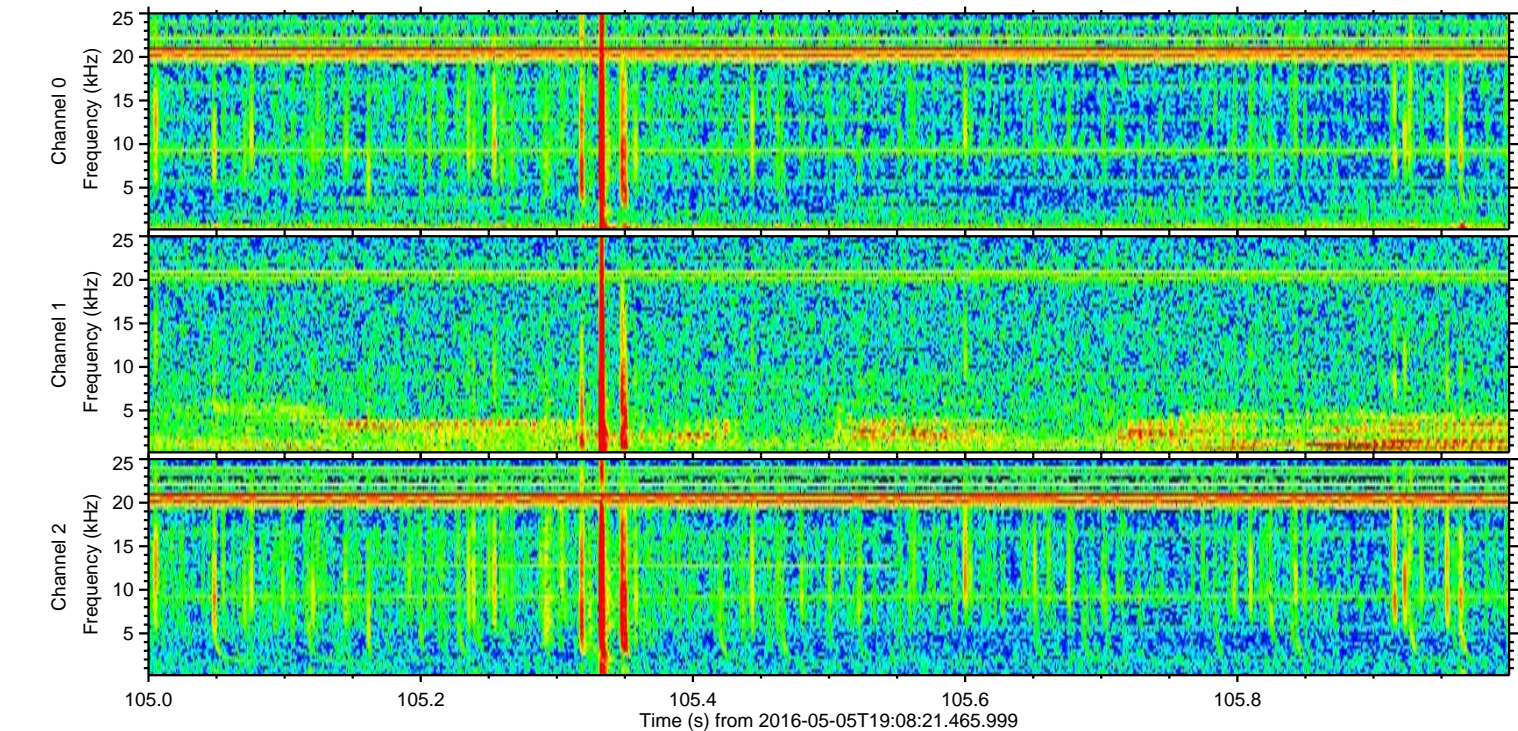
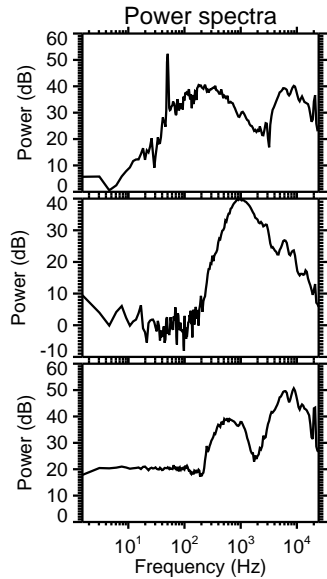
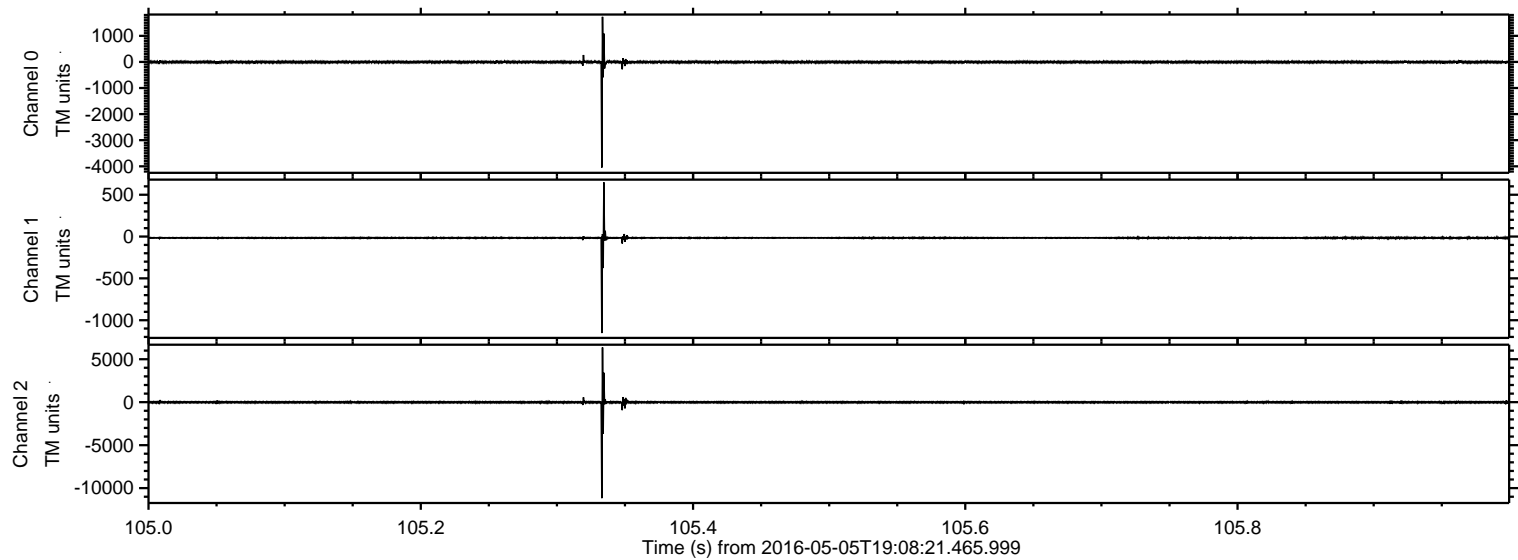
ELMAVAN 3D WAVEFORMS (Measured data sampled at 50 kHz) 51000 packets of 144 samples from 2016-05-05T19:08:21.465.999.

Processed Thu May 12 19:59:02 2016 by ELM ver.2012-10-06 from 001__elm20160505_190820__dat00.bin

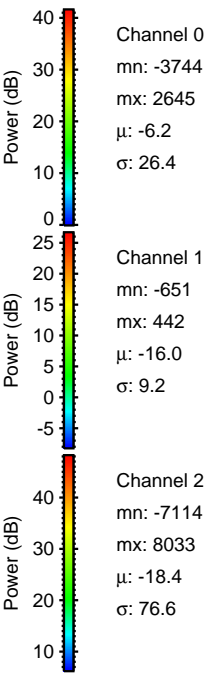
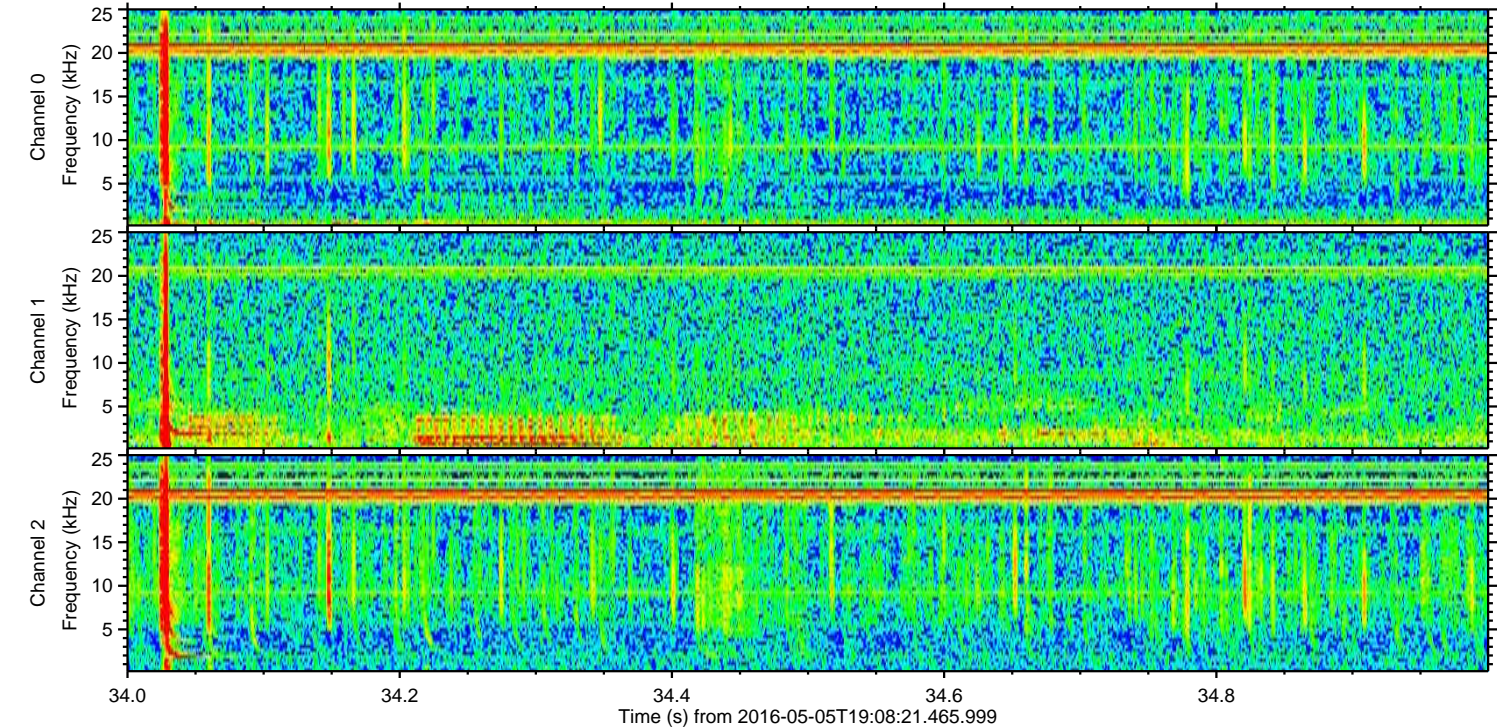
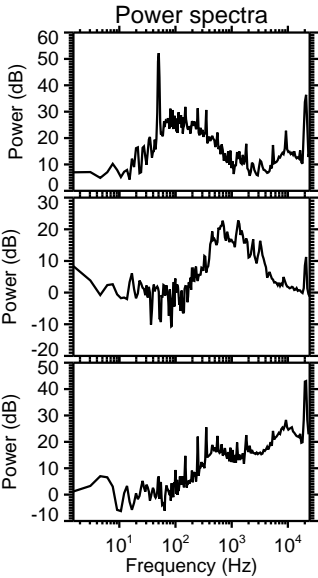
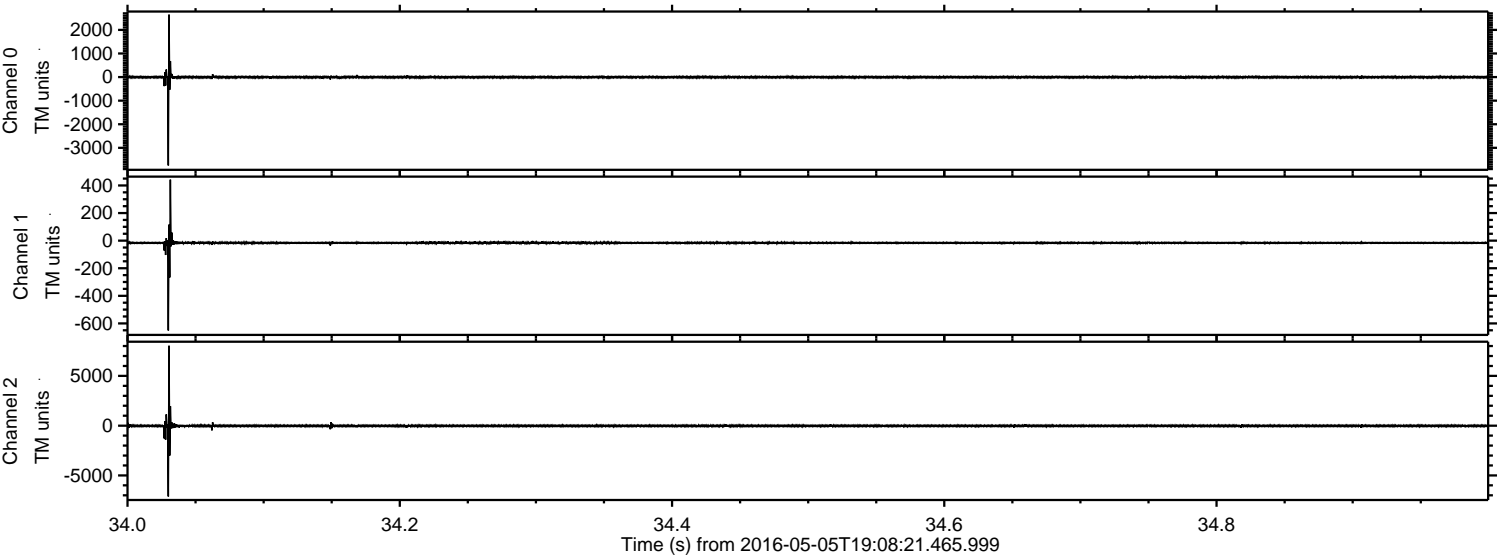


ELMAVAN 3D WAVEFORMS (Measured data sampled at 50 kHz) 51000 packets of 144 samples from 2016-05-05T19:08:21.465.999. Part 106/147

Processed Thu May 12 19:59:13 2016 by ELM ver.2012-10-06 from 001__elm20160505_190820__dat00.bin

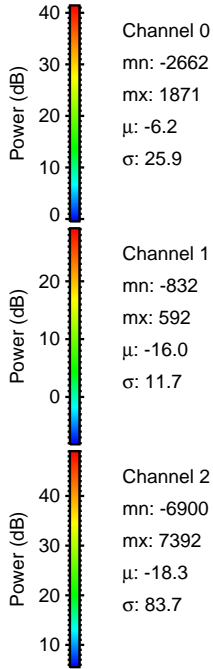
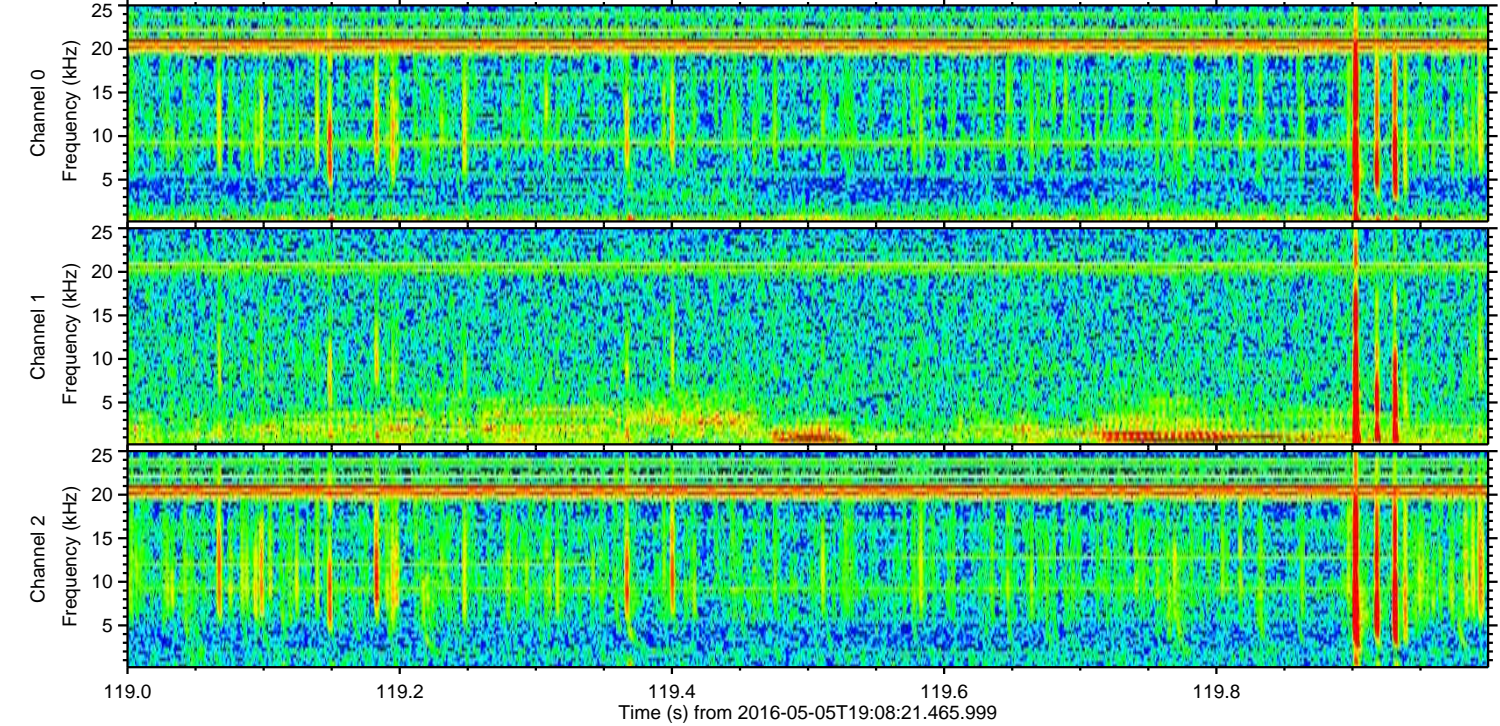
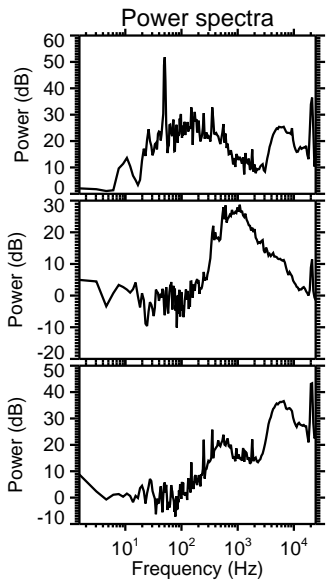
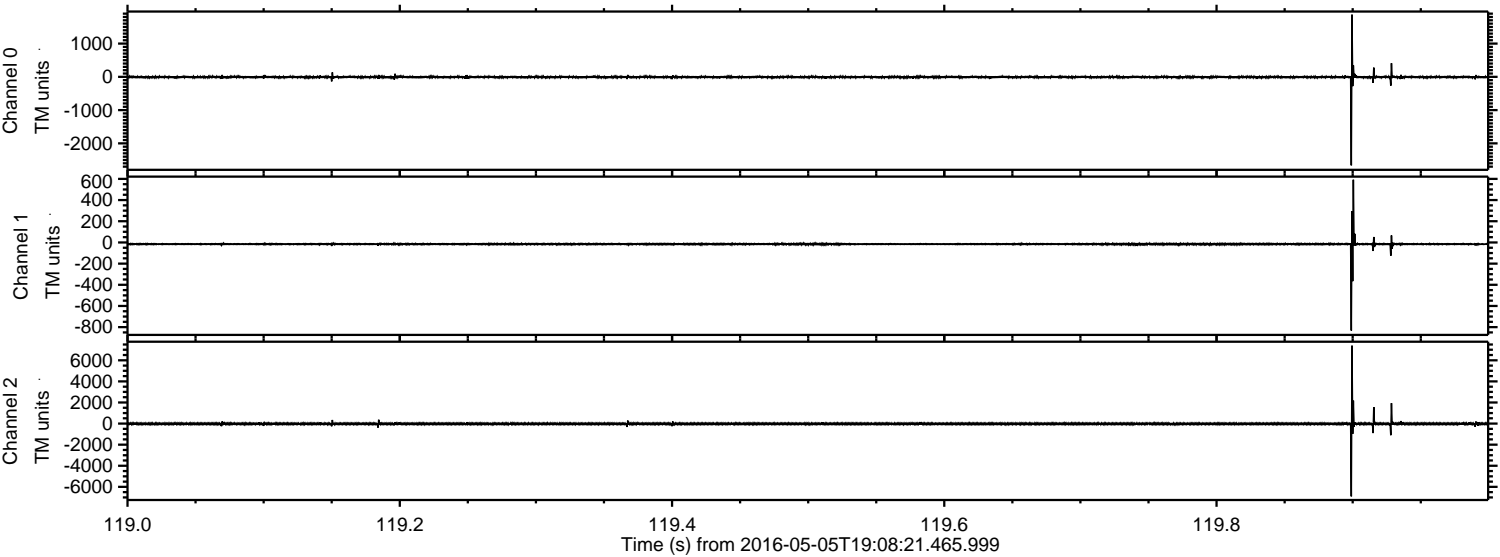


Processed Thu May 12 19:59:14 2016 by ELM ver.2012-10-06 from 001__elm20160505_190820__dat00.bin



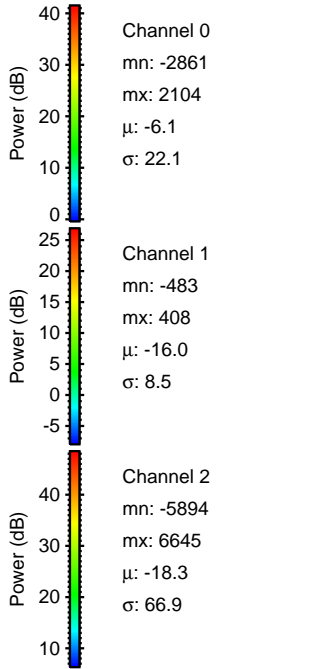
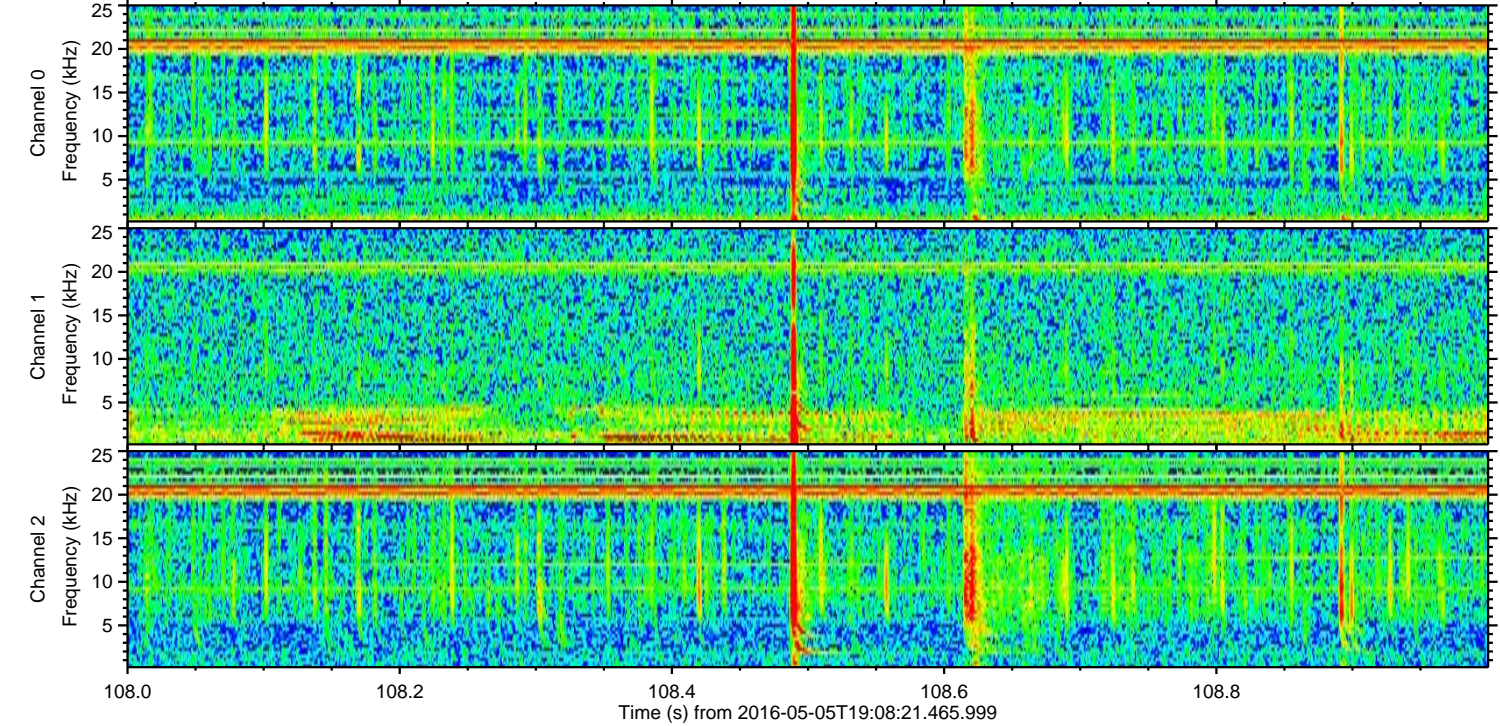
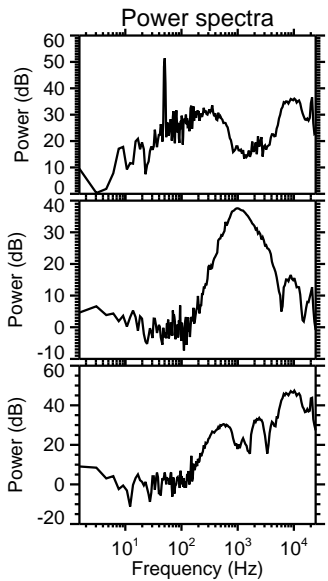
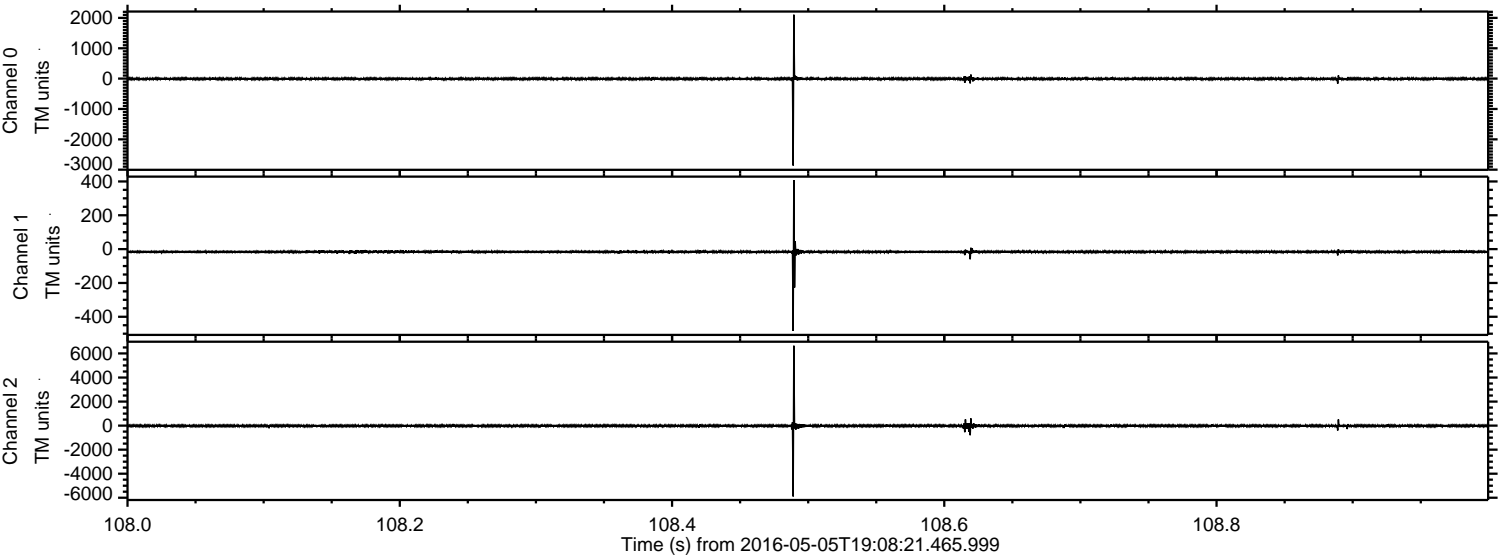
ELMAVAN 3D WAVEFORMS (Measured data sampled at 50 kHz) 51000 packets of 144 samples from 2016-05-05T19:08:21.465.999. Part 120/147

Processed Thu May 12 19:59:15 2016 by ELM ver.2012-10-06 from 001__elm20160505_190820__dat00.bin

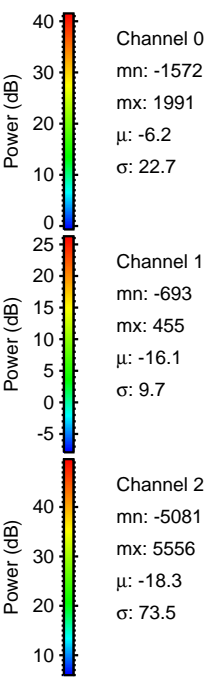
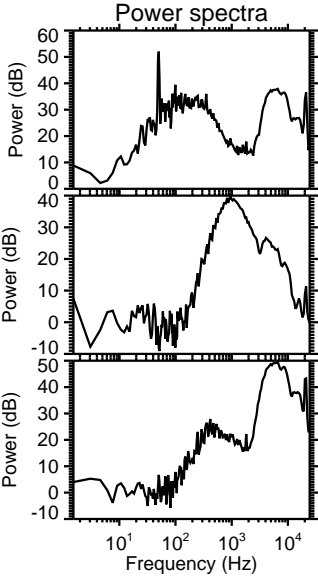
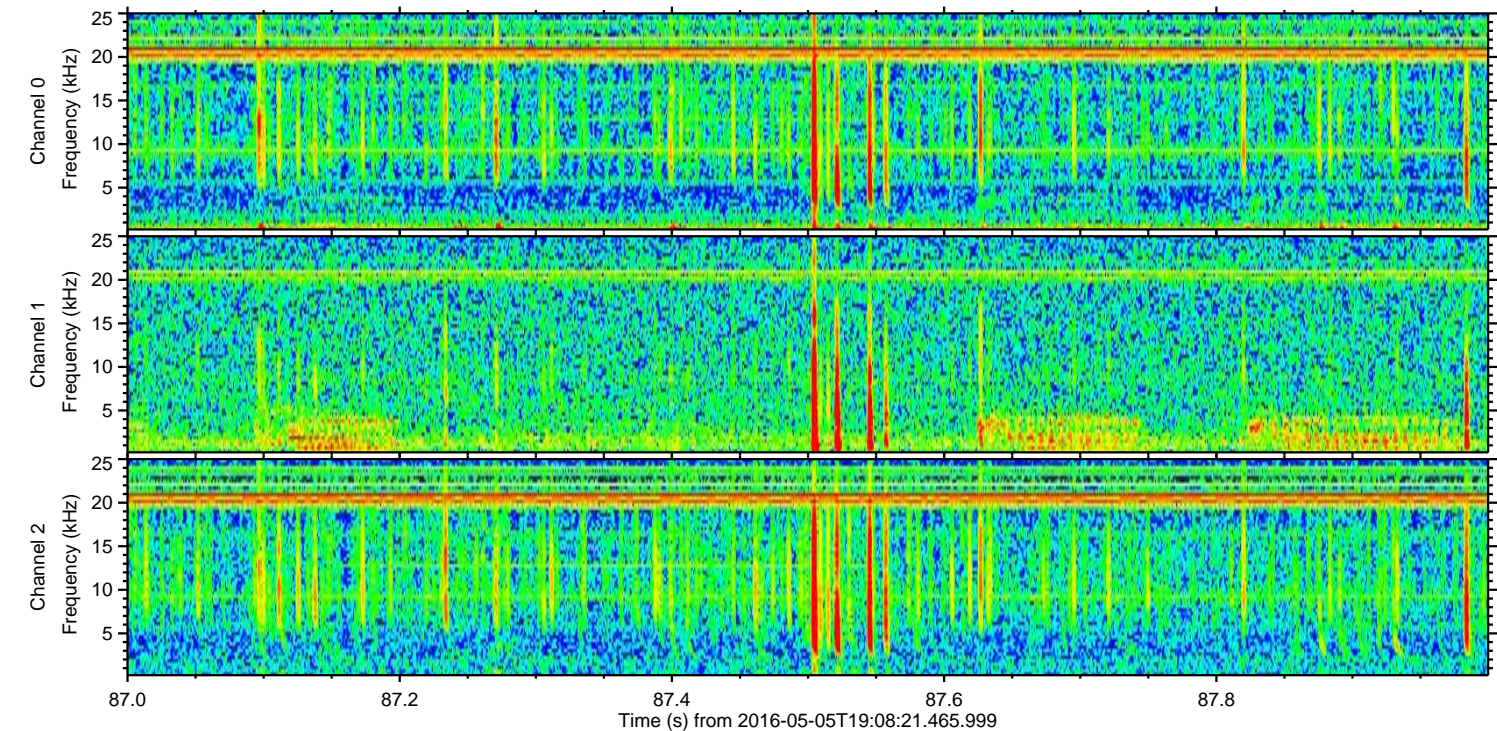
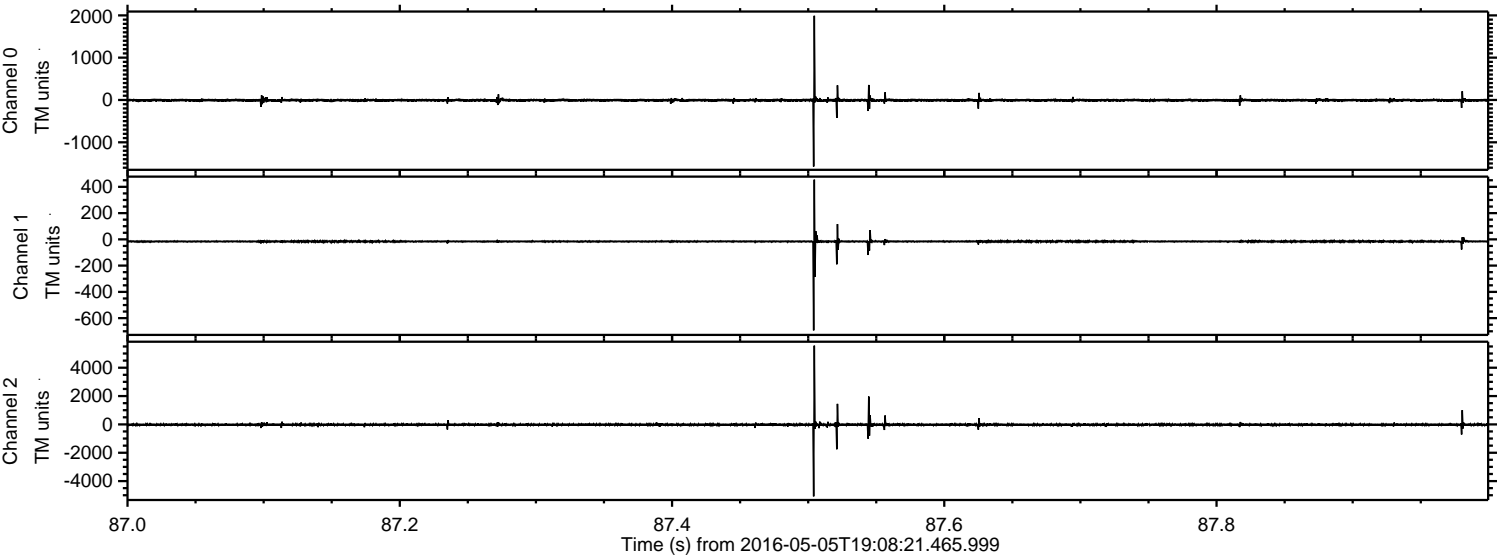


ELMAVAN 3D WAVEFORMS (Measured data sampled at 50 kHz) 51000 packets of 144 samples from 2016-05-05T19:08:21.465.999. Part 109/147

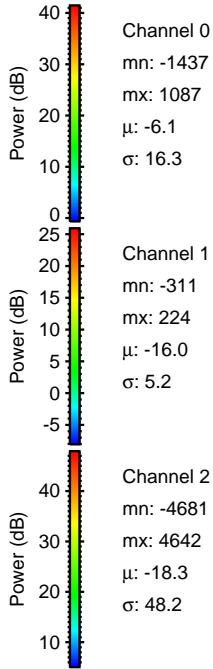
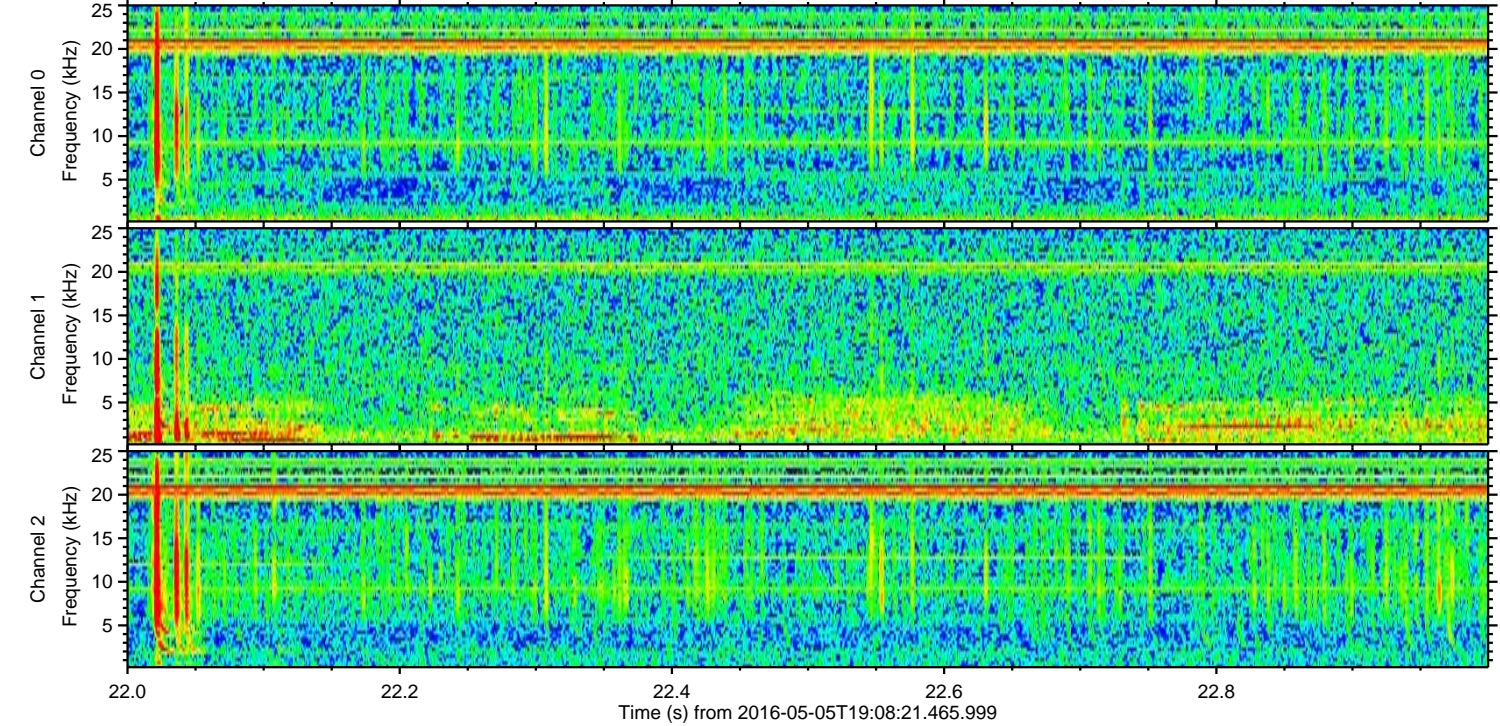
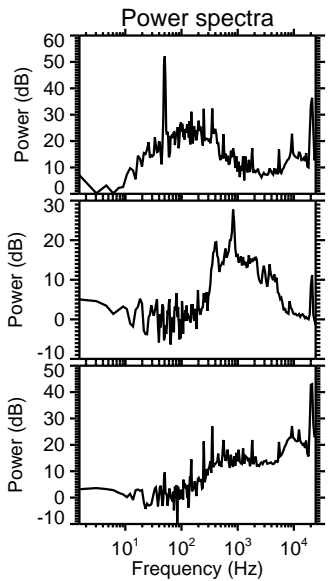
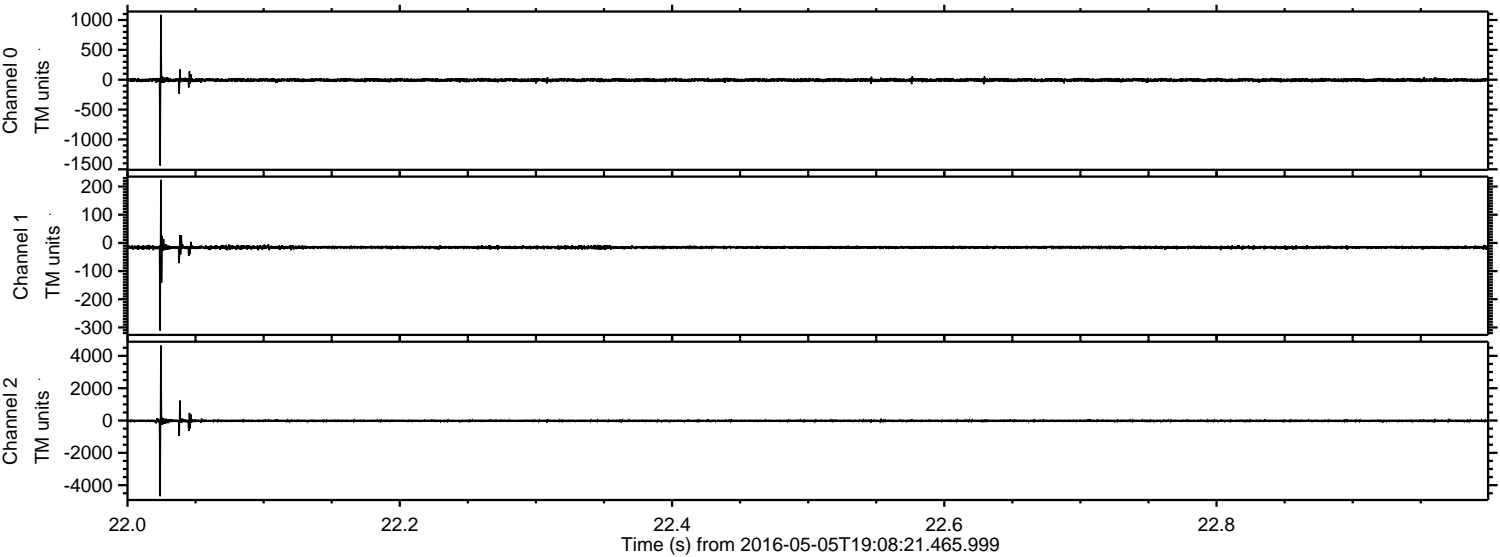
Processed Thu May 12 19:59:16 2016 by ELM ver.2012-10-06 from 001__elm20160505_190820__dat00.bin



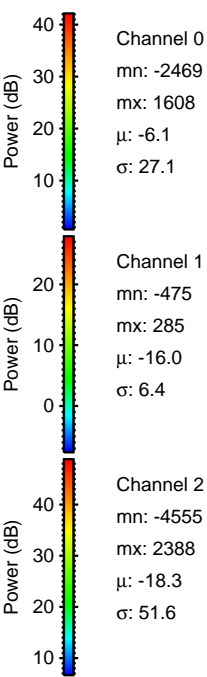
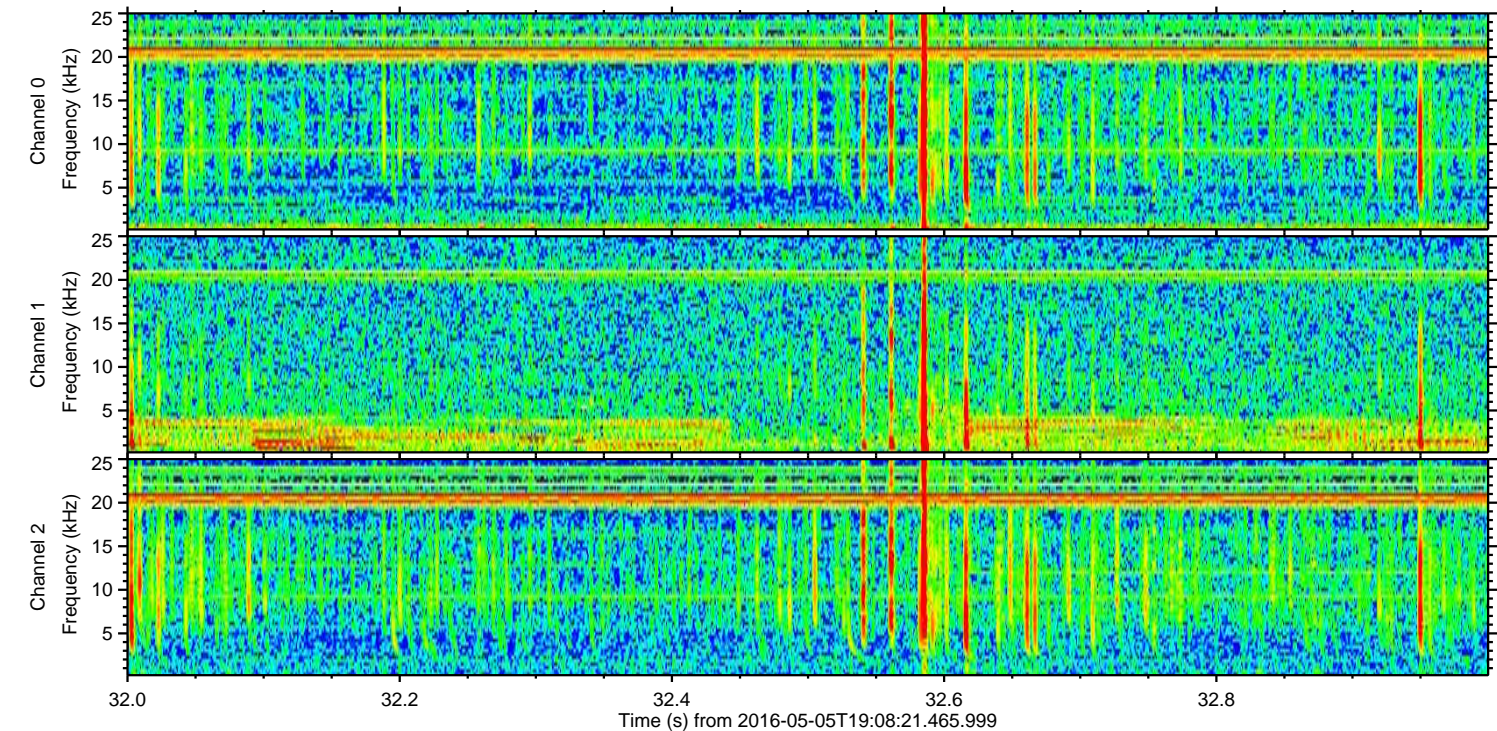
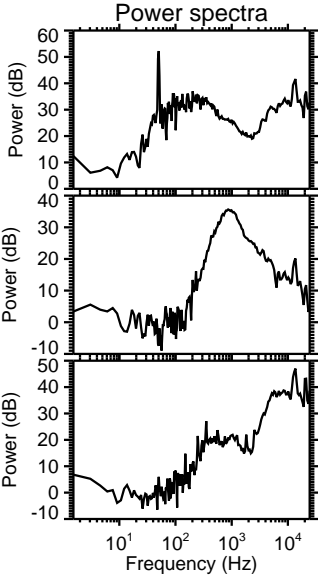
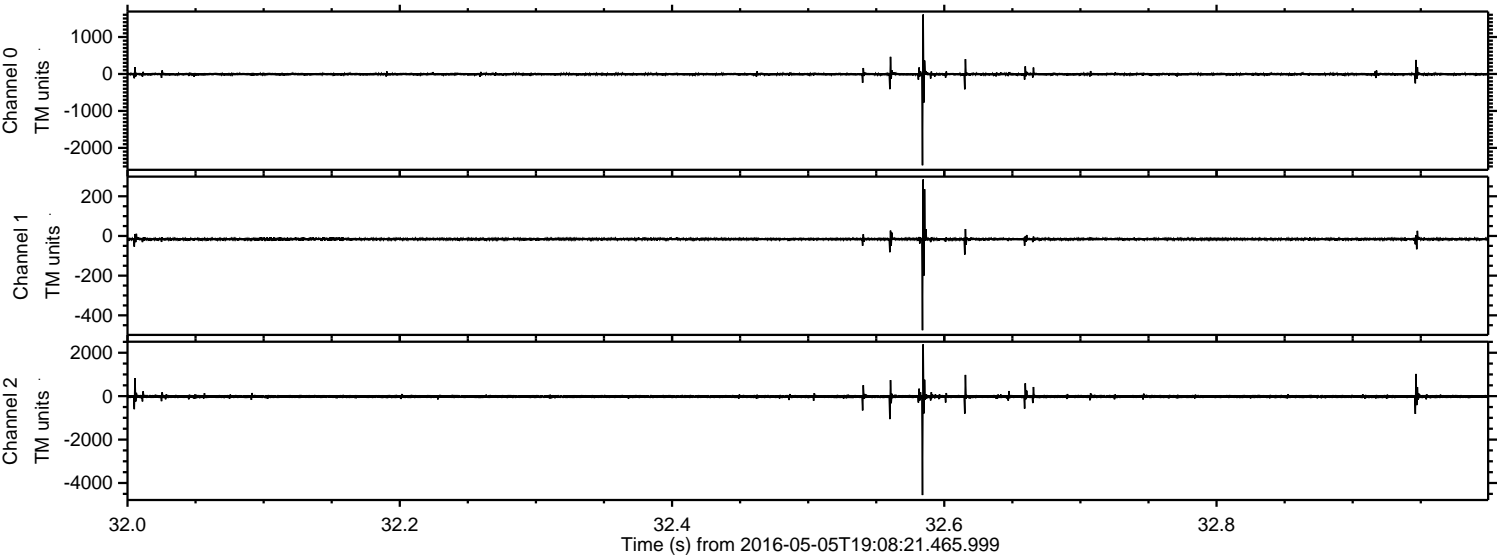
Processed Thu May 12 19:59:17 2016 by ELM ver.2012-10-06 from 001__elm20160505_190820__dat00.bin



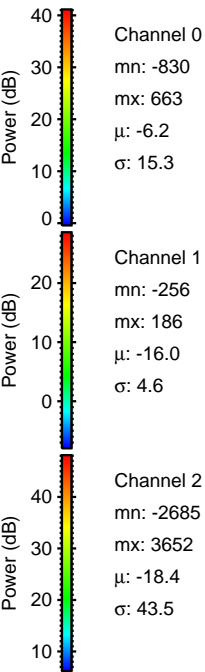
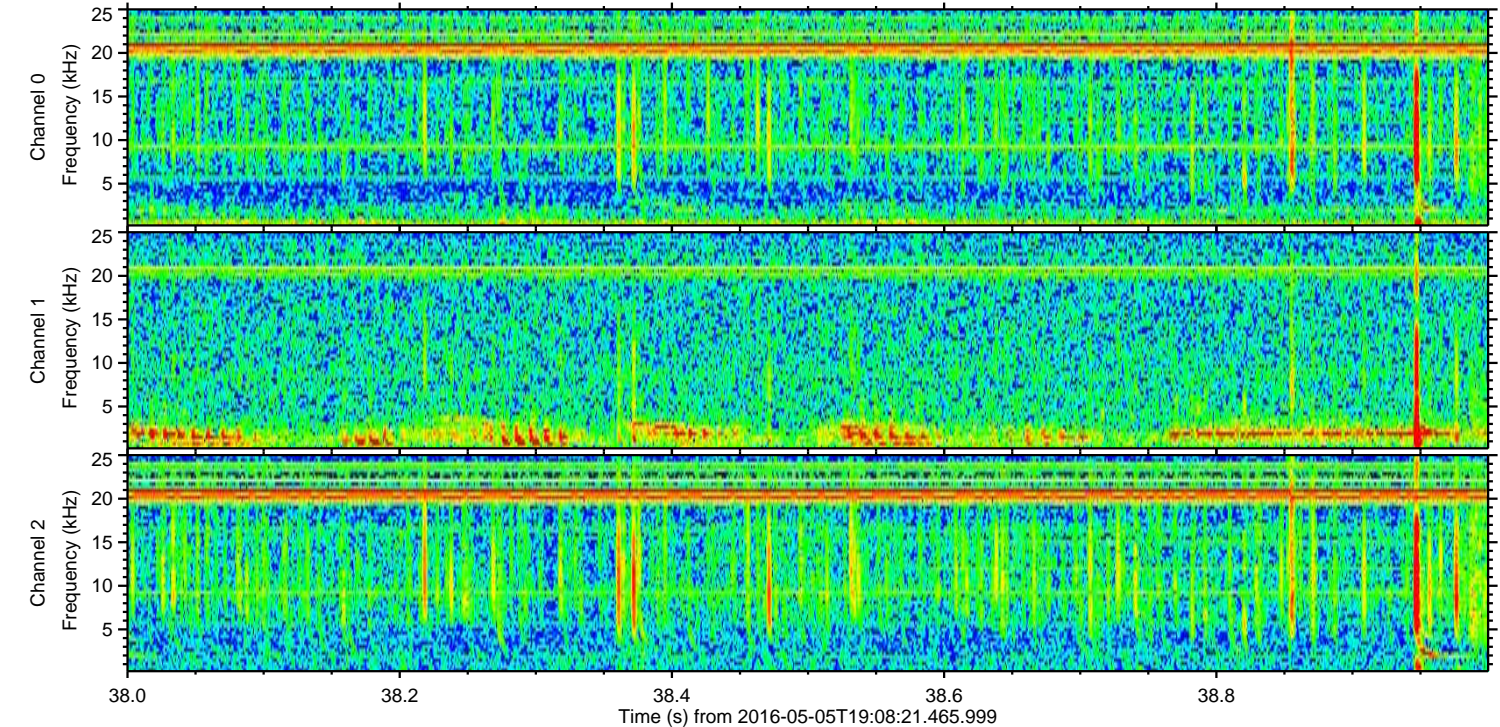
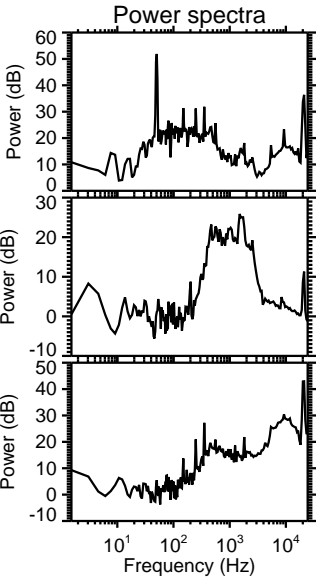
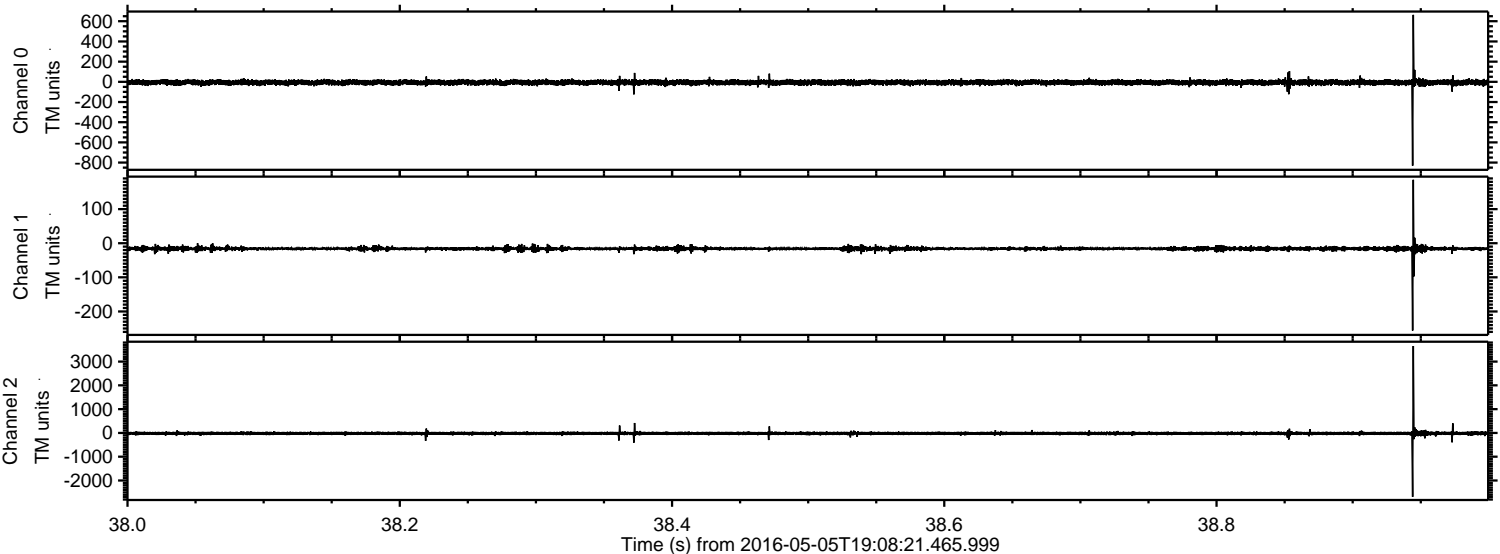
Processed Thu May 12 19:59:18 2016 by ELM ver.2012-10-06 from 001__elm20160505_190820__dat00.bin



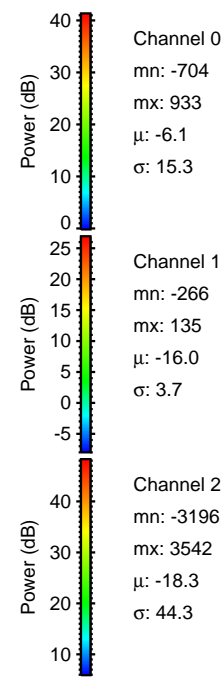
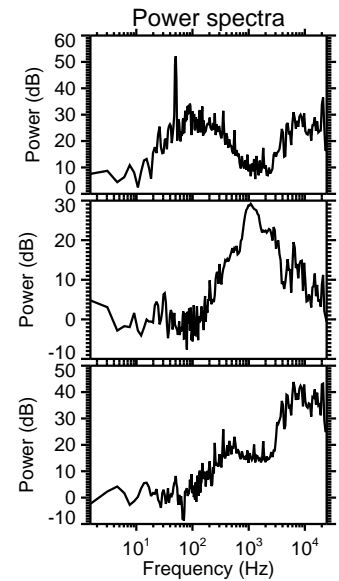
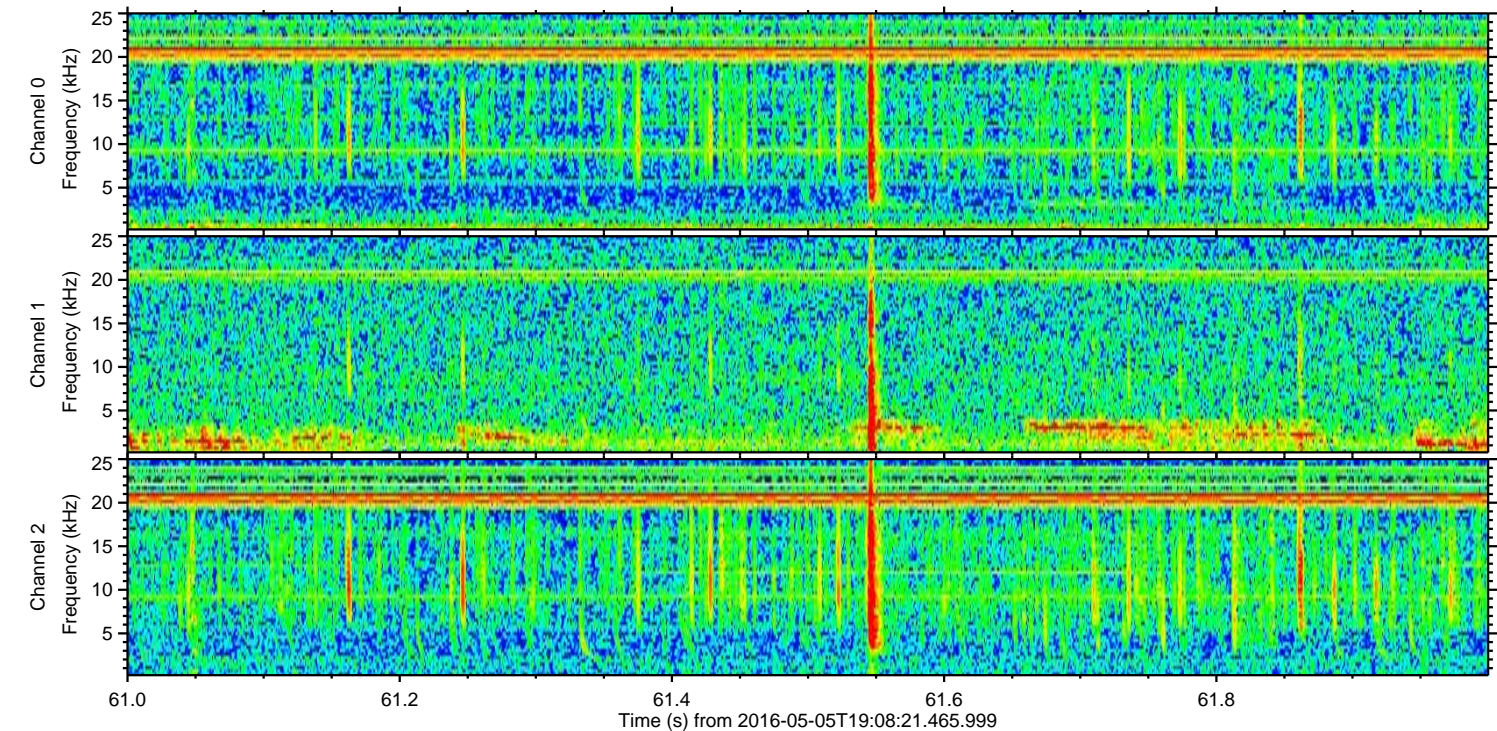
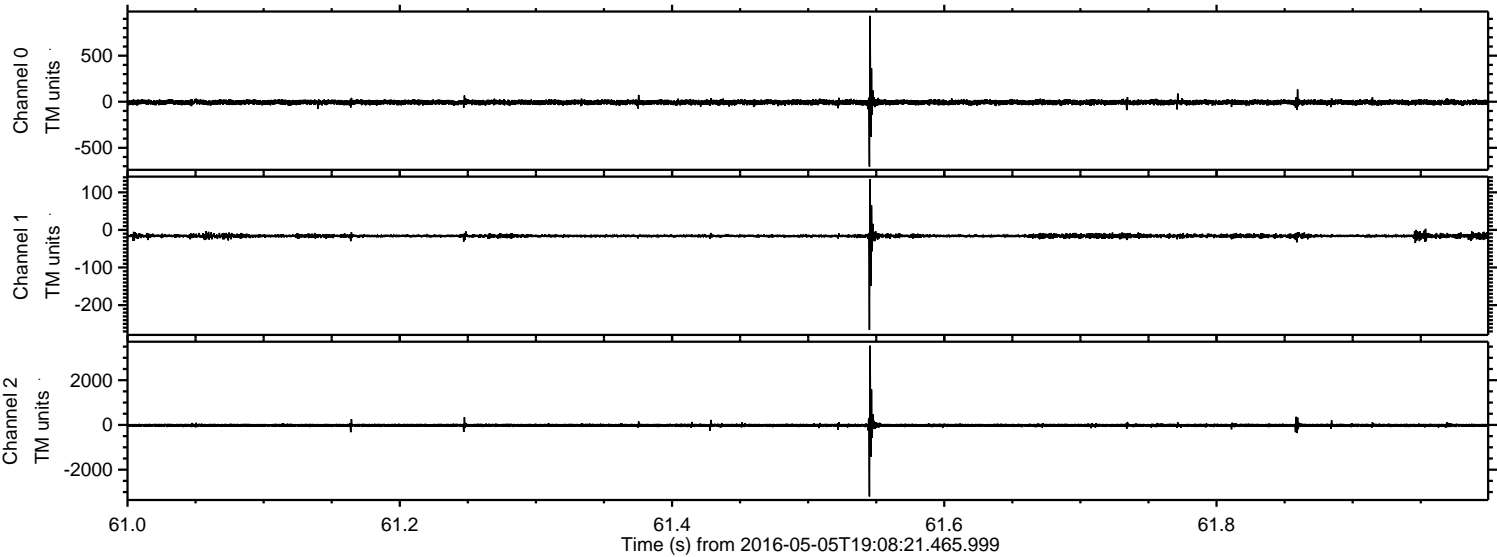
Processed Thu May 12 19:59:19 2016 by ELM ver.2012-10-06 from 001__elm20160505_190820__dat00.bin



Processed Thu May 12 19:59:20 2016 by ELM ver.2012-10-06 from 001__elm20160505_190820__dat00.bin



Processed Thu May 12 19:59:21 2016 by ELM ver.2012-10-06 from 001__elm20160505_190820__dat00.bin



Channel 0
mn: -704
mx: 933
 μ : -6.1
 σ : 15.3

Channel 1
mn: -266
mx: 135
 μ : -16.0
 σ : 3.7

Channel 2
mn: -3196
mx: 3542
 μ : -18.3
 σ : 44.3

Processed Thu May 12 19:59:22 2016 by ELM ver.2012-10-06 from 001__elm20160505_190820__dat00.bin

