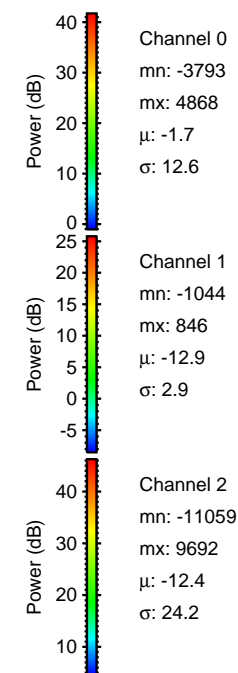
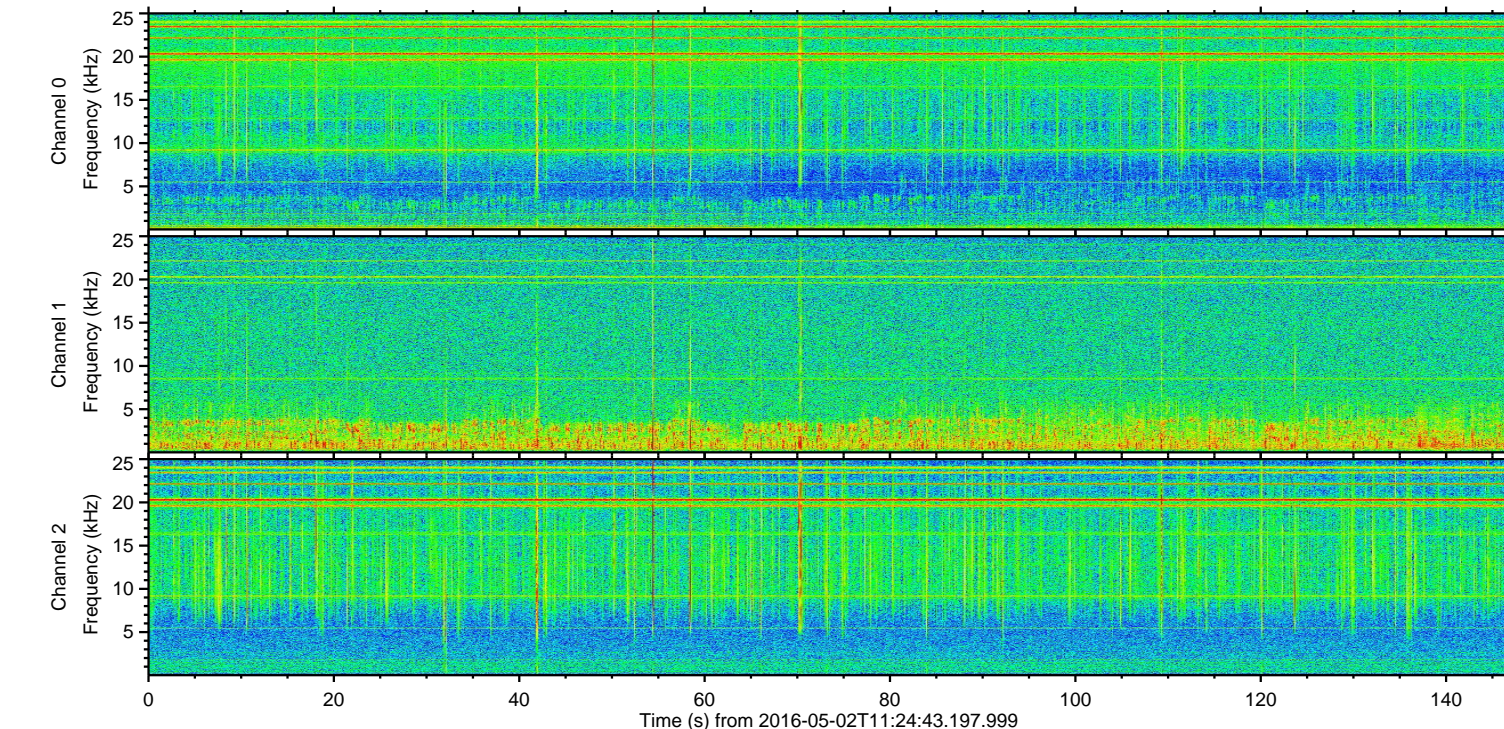
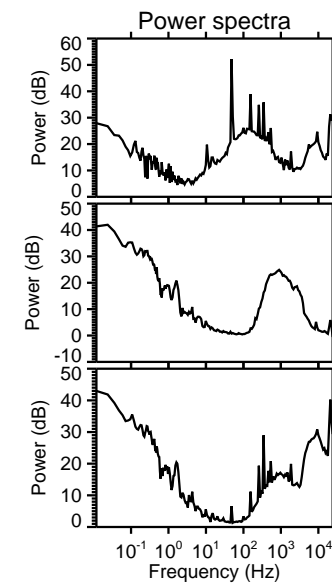
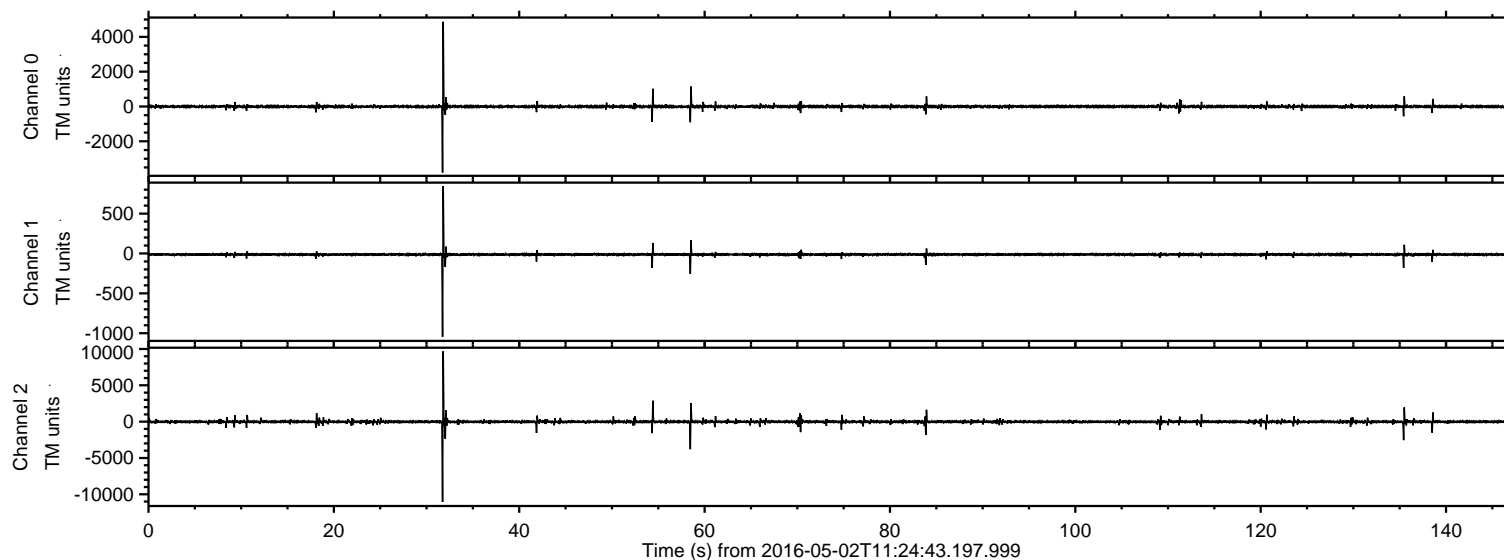


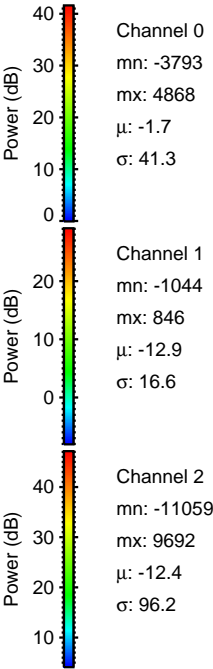
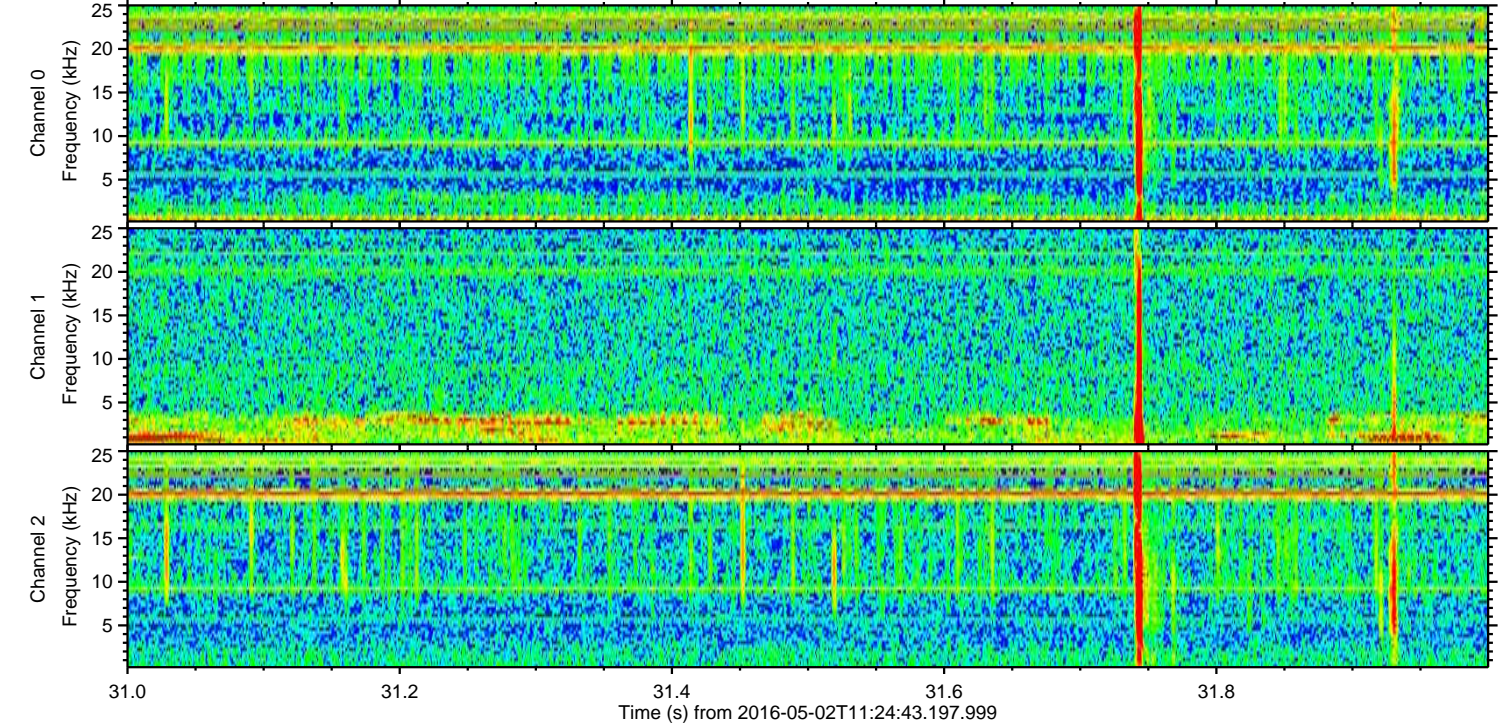
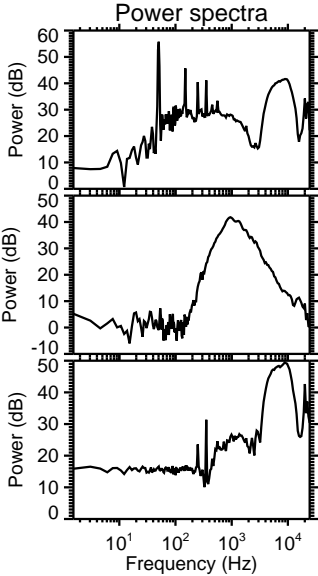
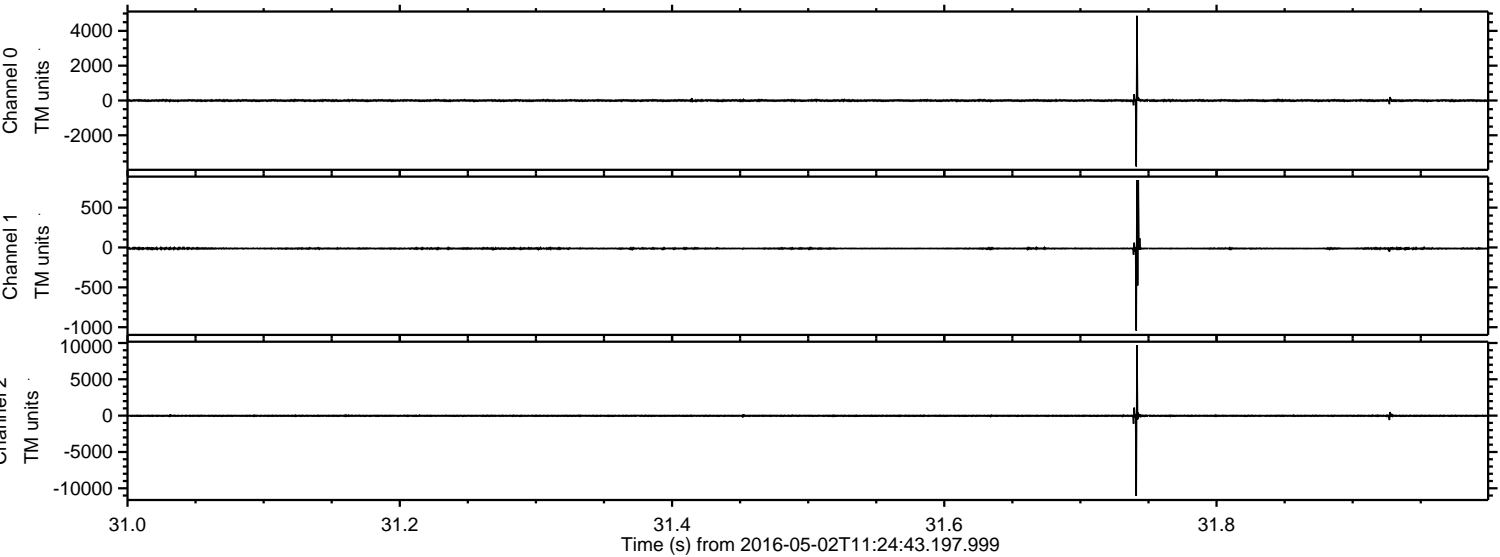
# ELMAVAN 3D WAVEFORMS (Measured data sampled at 50 kHz) 51000 packets of 144 samples from 2016-05-02T11:24:43.197.999.

Processed Thu May 12 03:33:16 2016 by ELM ver.2012-10-06 from 001\_\_elm20160502\_112442\_\_dat00.bin



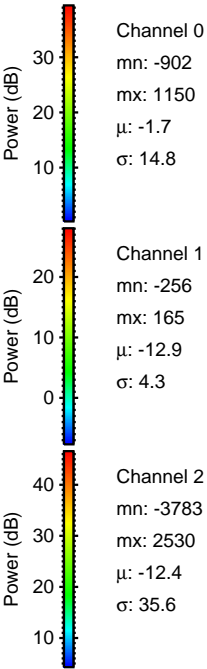
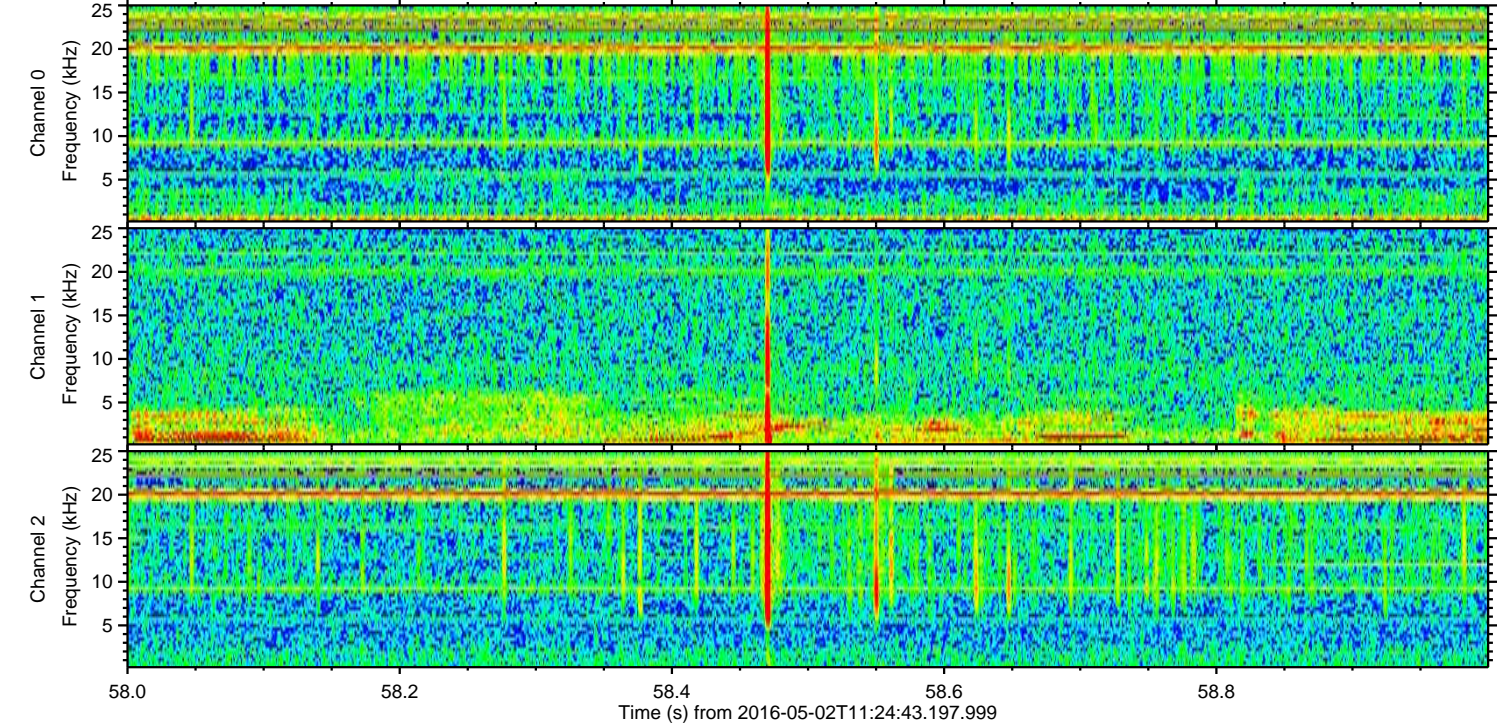
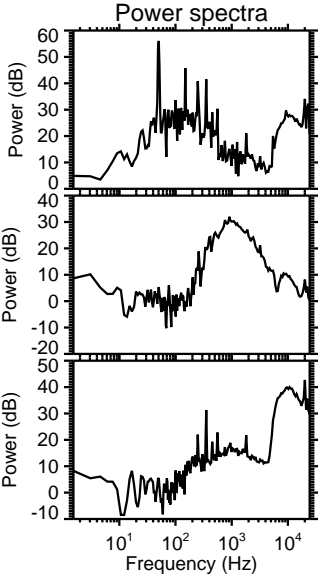
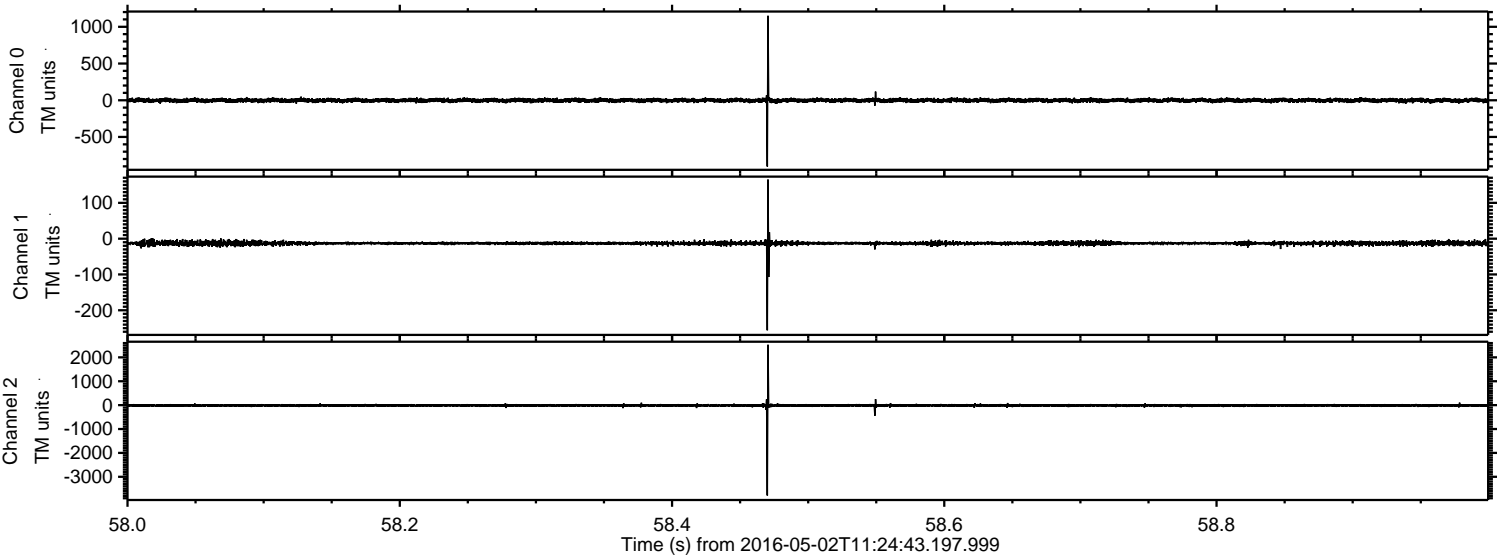


Processed Thu May 12 03:33:27 2016 by ELM ver.2012-10-06 from 001\_\_elm20160502\_112442\_\_dat00.bin



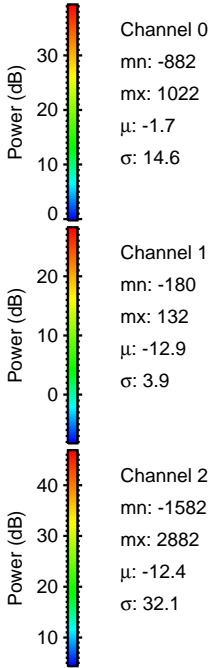
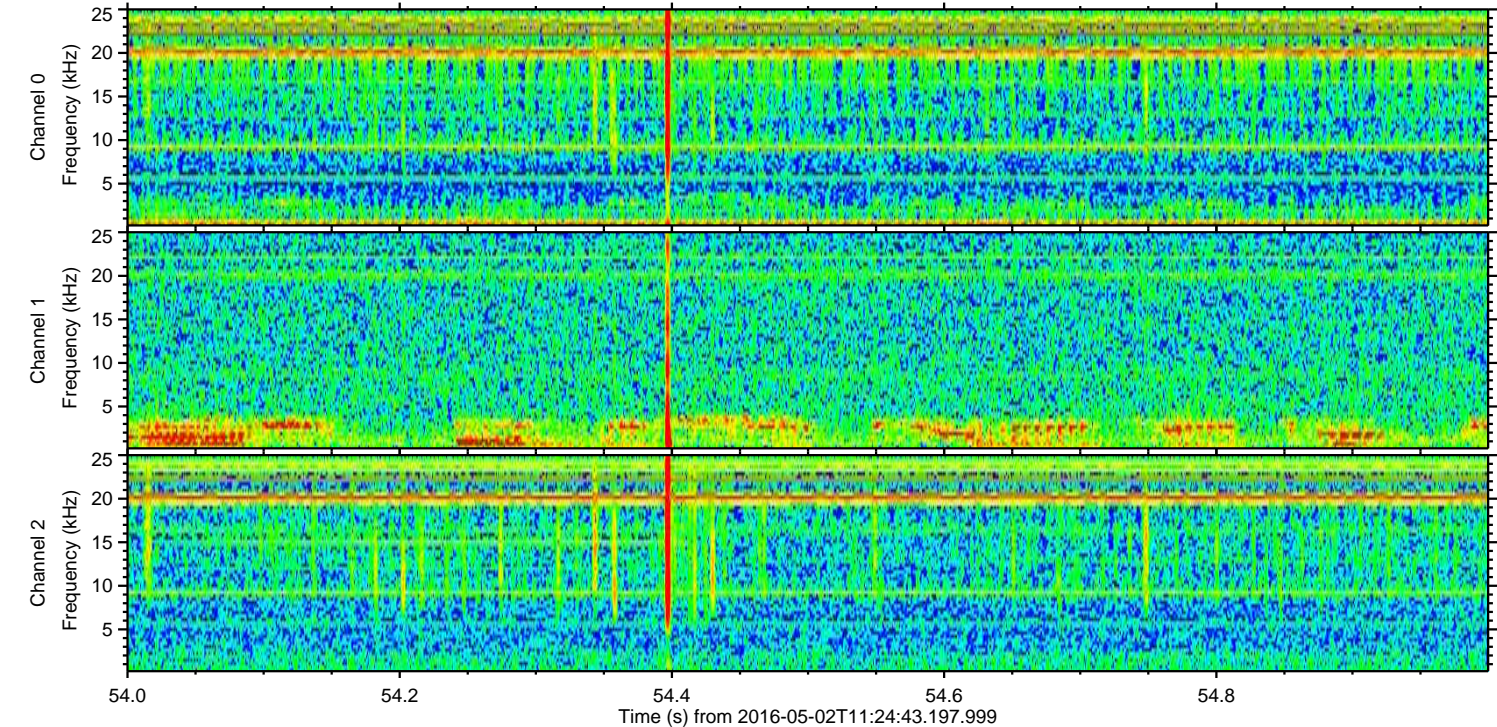
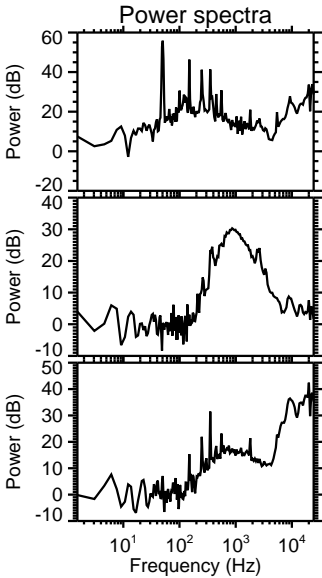
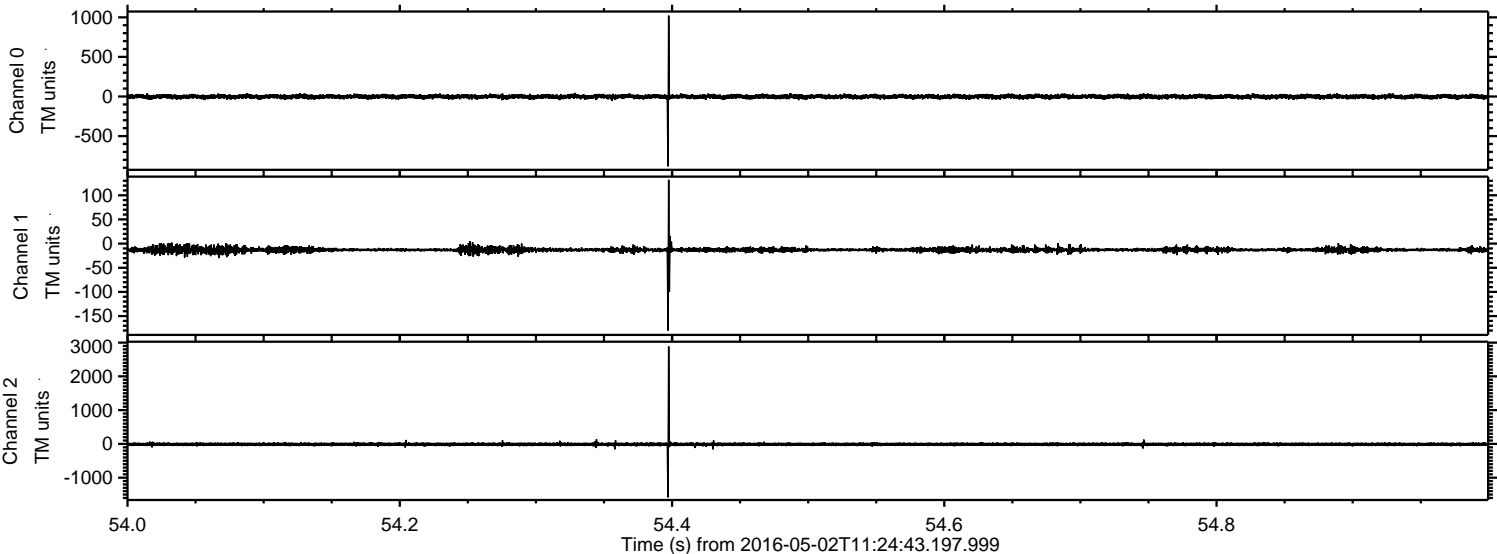


Processed Thu May 12 03:33:28 2016 by ELM ver.2012-10-06 from 001\_\_elm20160502\_112442\_\_dat00.bin





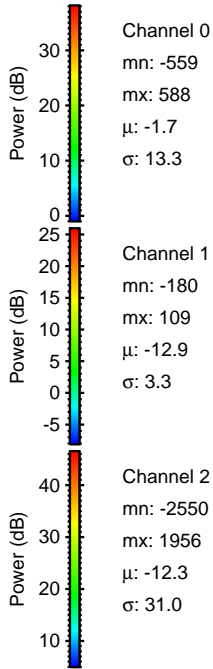
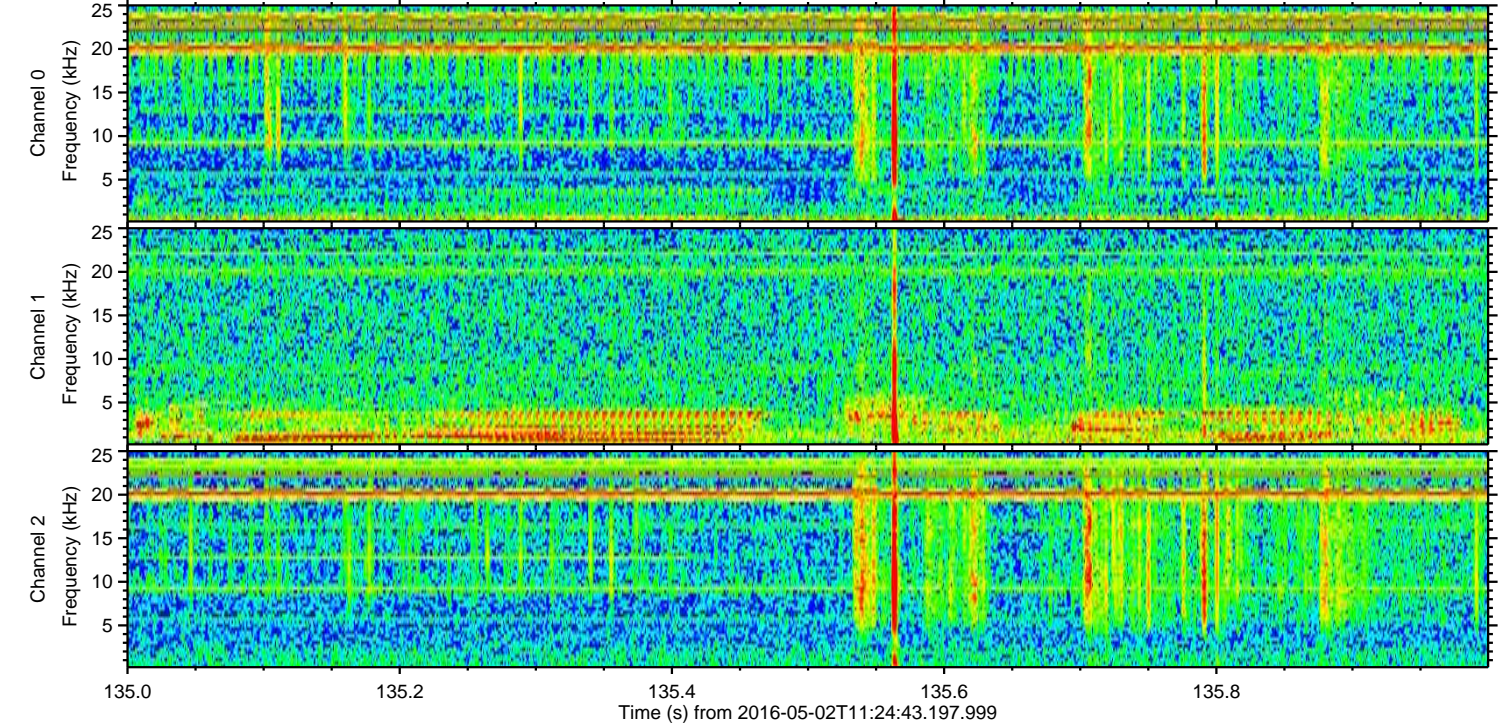
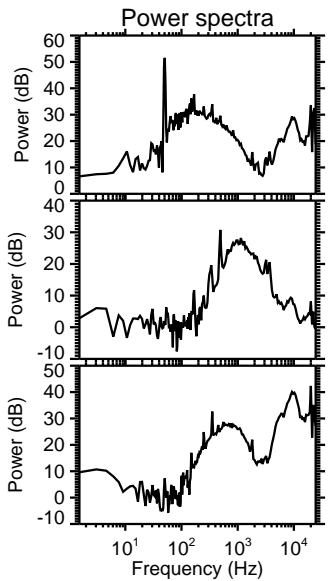
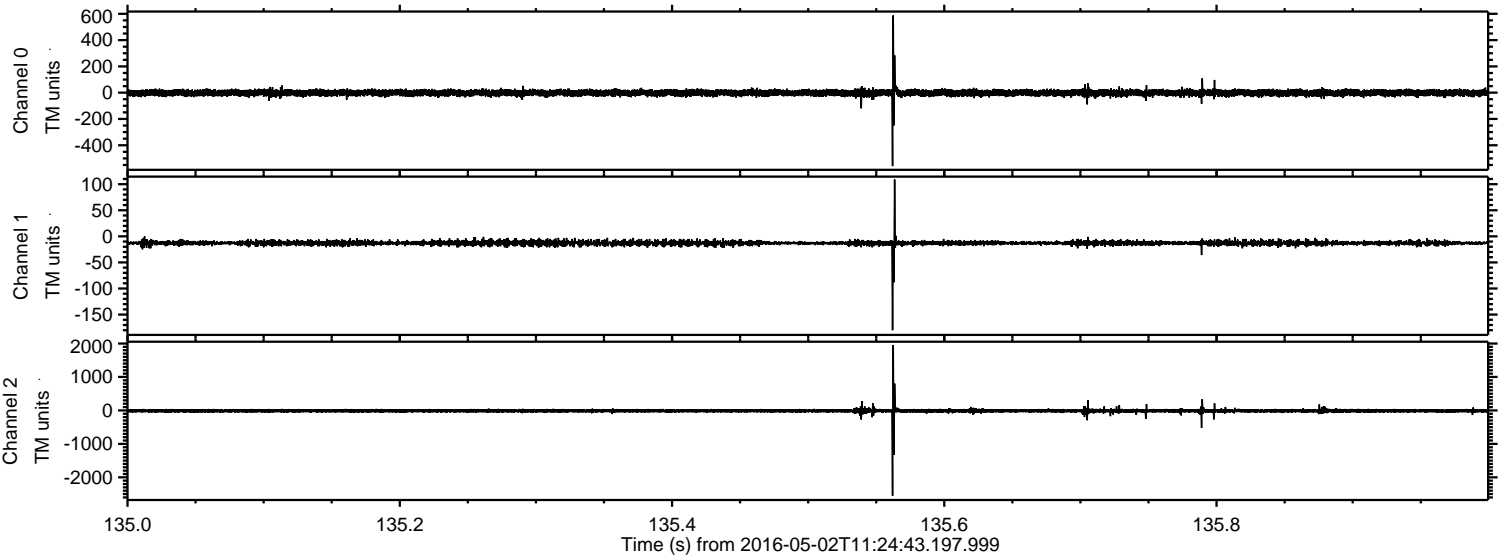
Processed Thu May 12 03:33:29 2016 by ELM ver.2012-10-06 from 001\_\_elm20160502\_112442\_\_dat00.bin





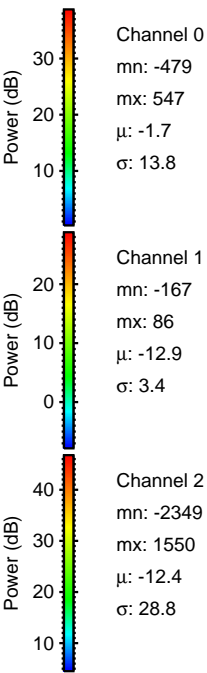
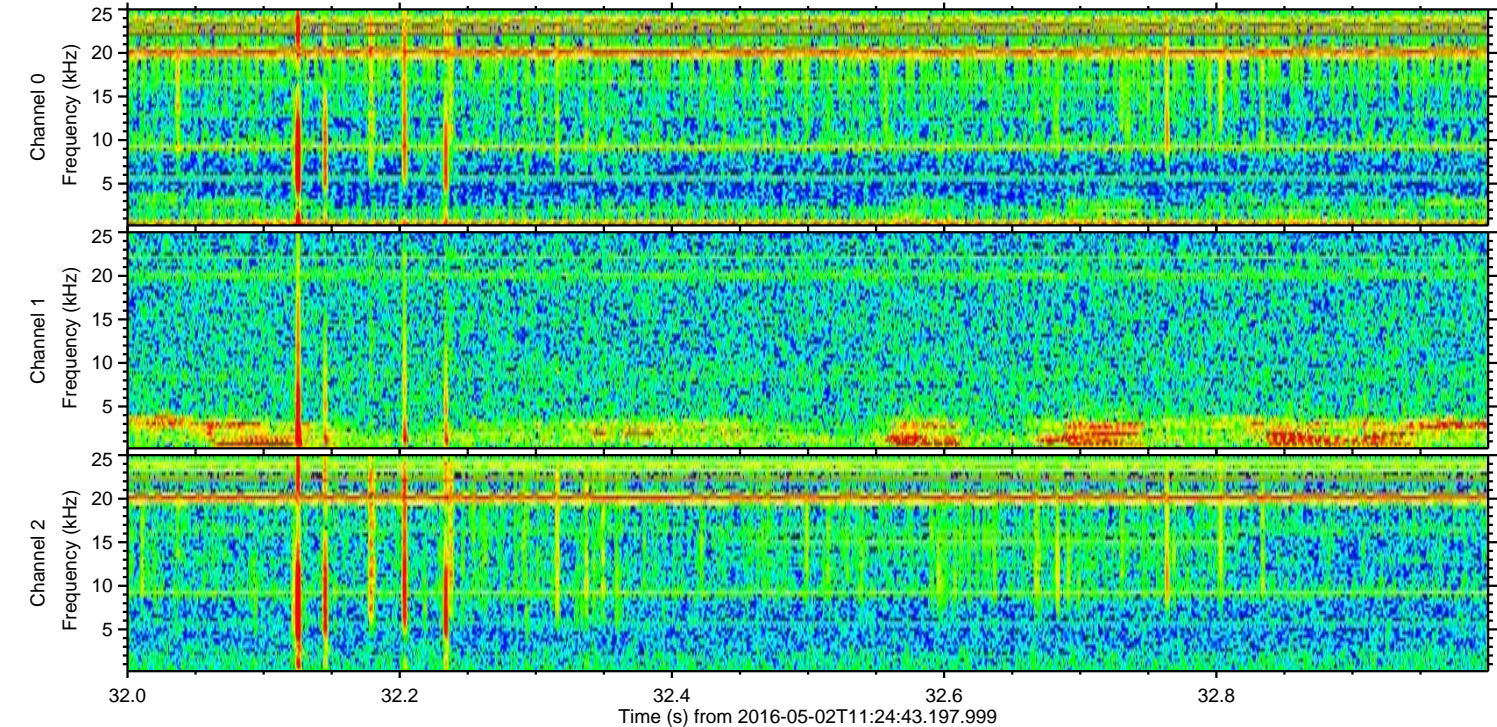
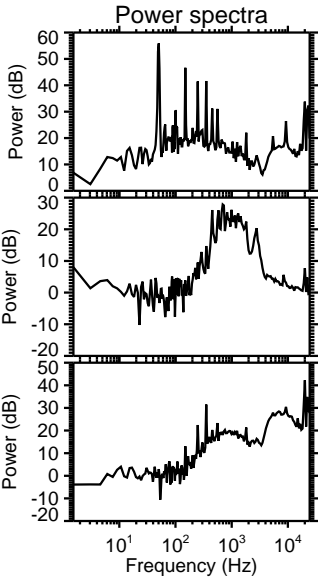
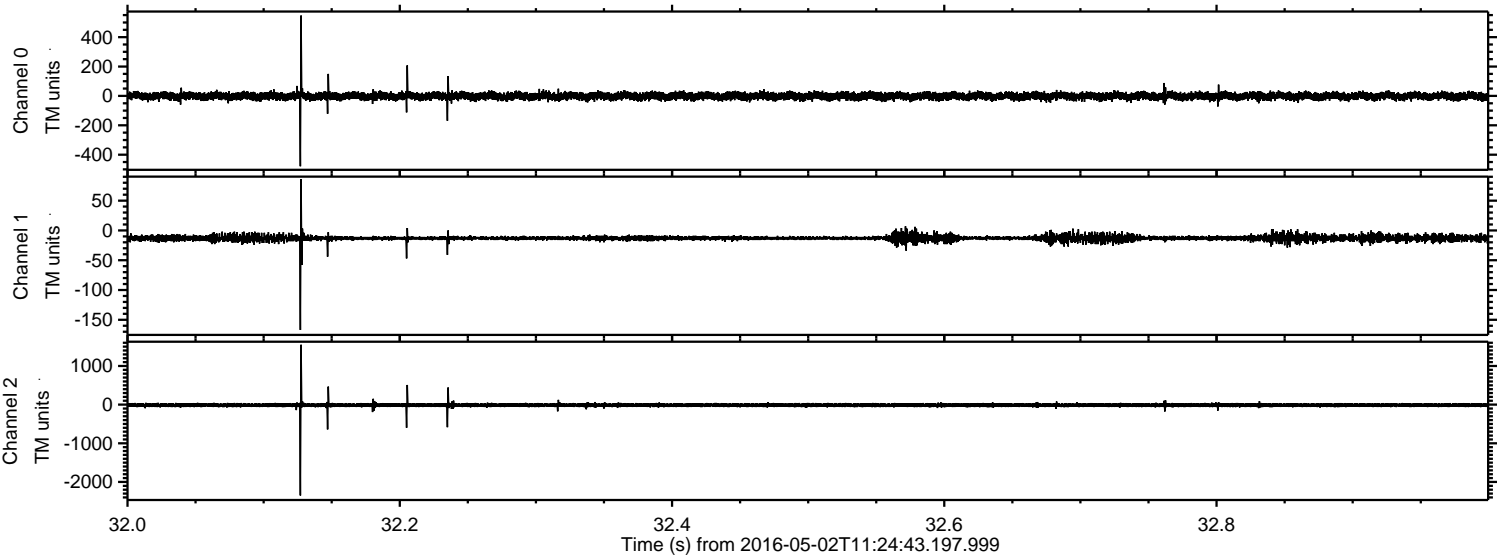
ELMAVAN 3D WAVEFORMS (Measured data sampled at 50 kHz) 51000 packets of 144 samples from 2016-05-02T11:24:43.197.999. Part 136/147

Processed Thu May 12 03:33:30 2016 by ELM ver.2012-10-06 from 001\_\_elm20160502\_112442\_\_dat00.bin



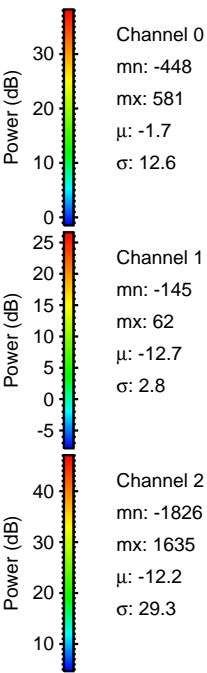
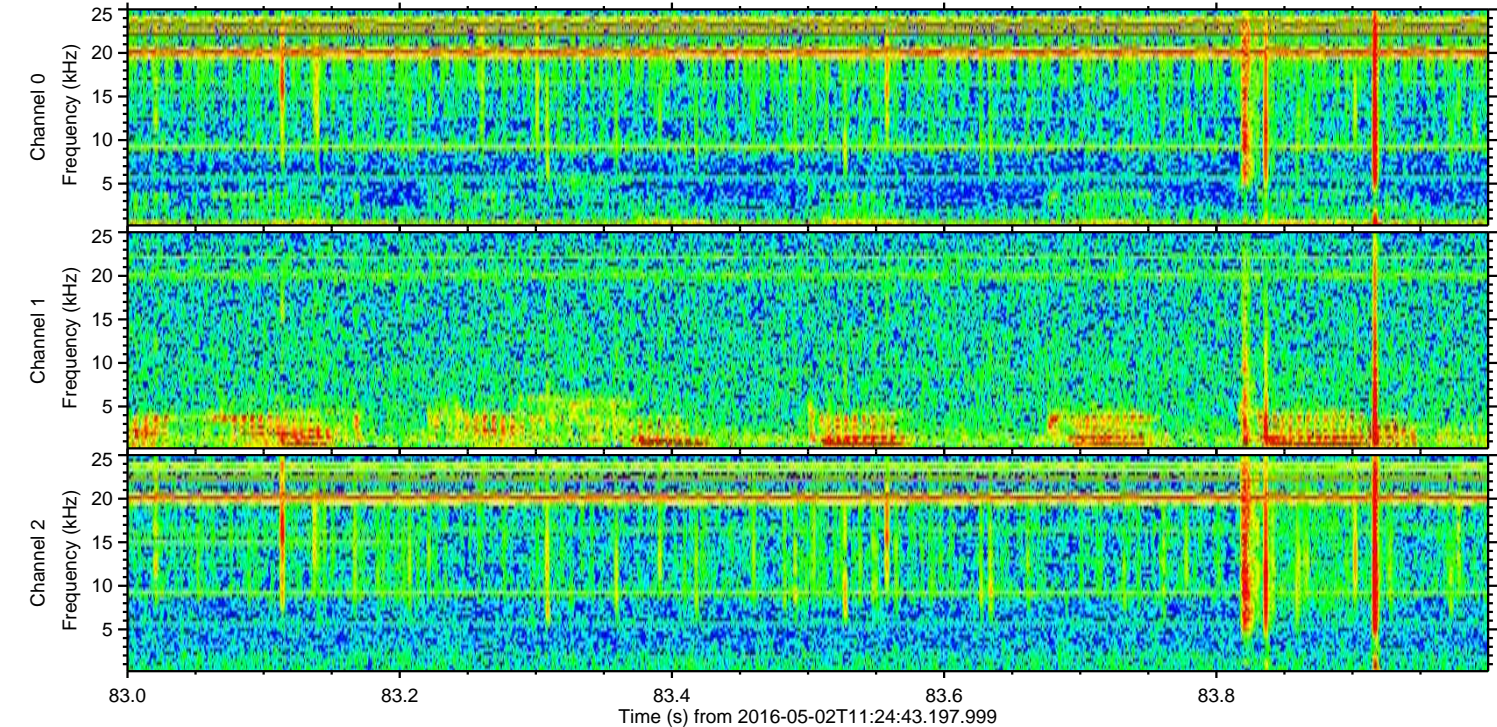
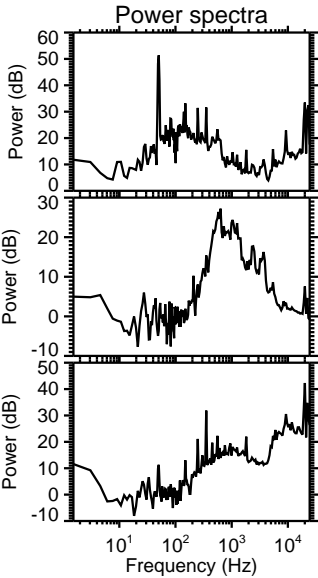
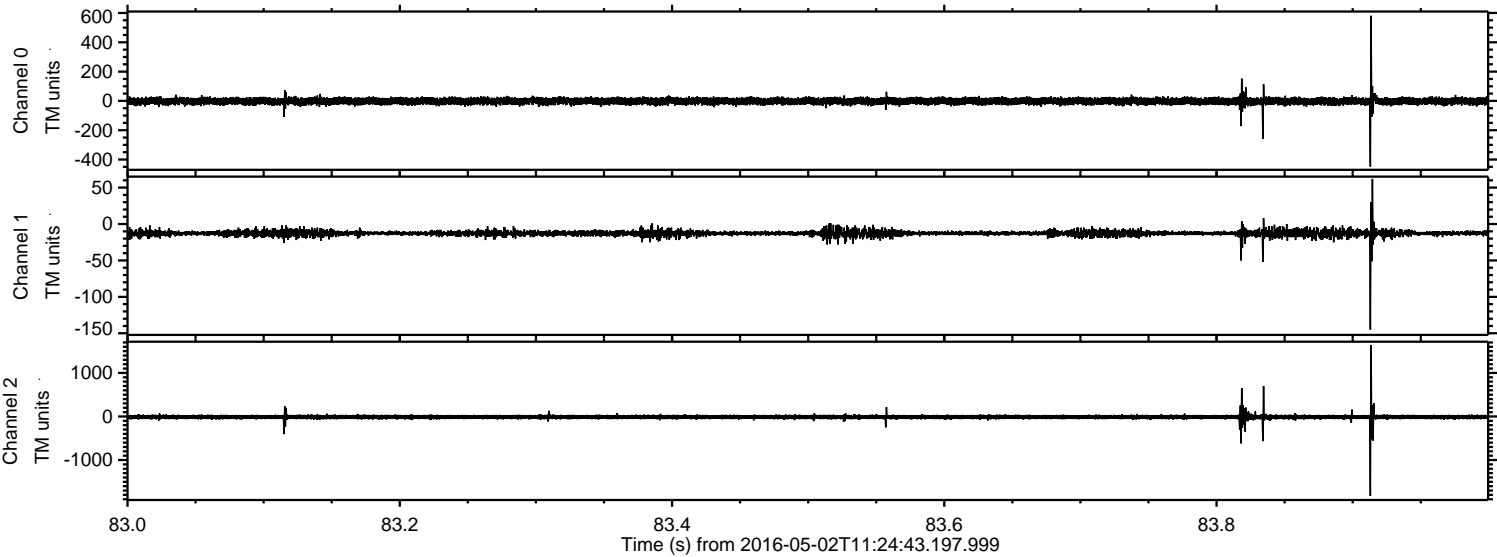


Processed Thu May 12 03:33:31 2016 by ELM ver.2012-10-06 from 001\_\_elm20160502\_112442\_\_dat00.bin



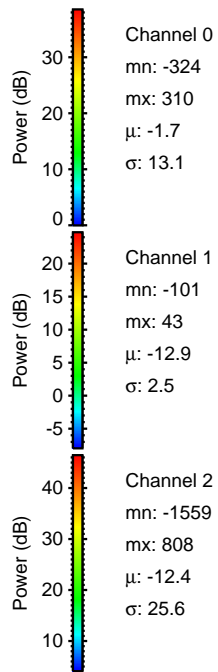
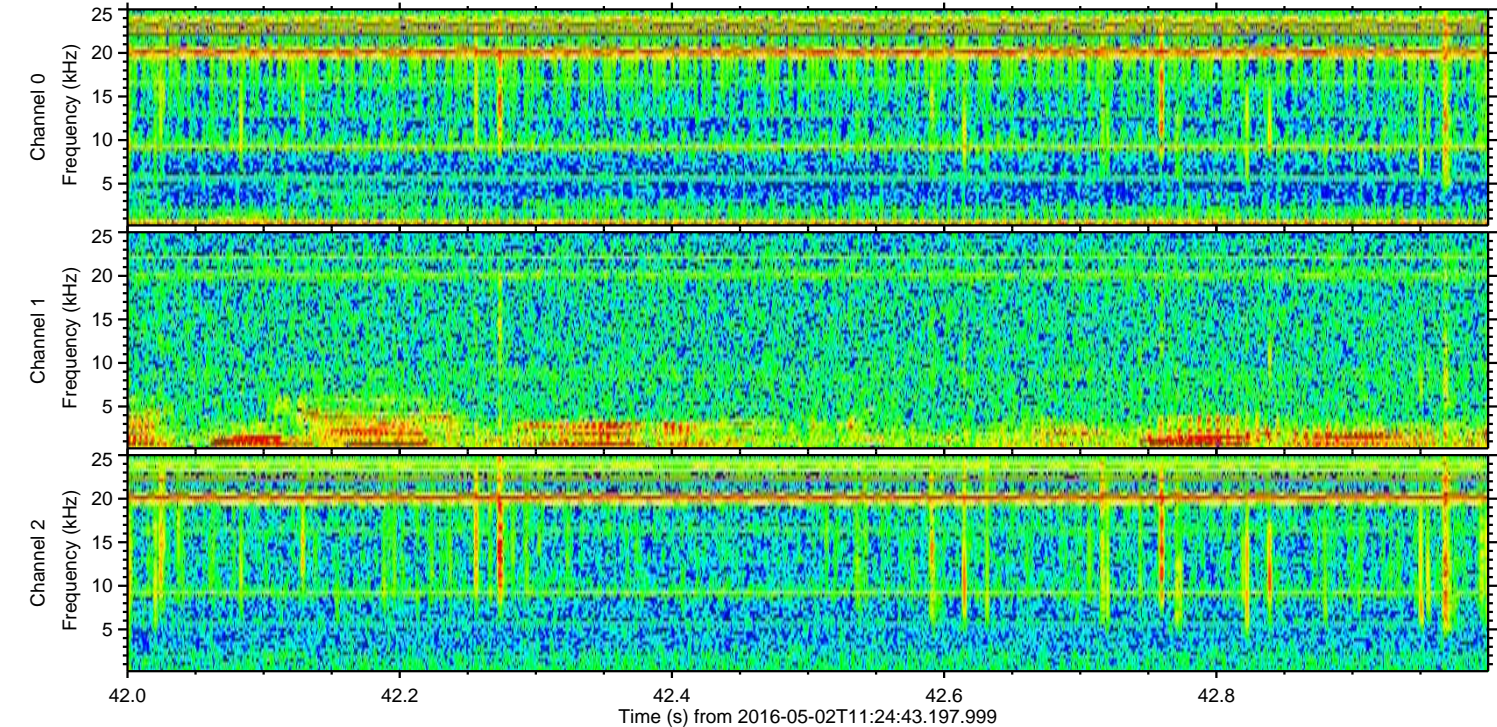
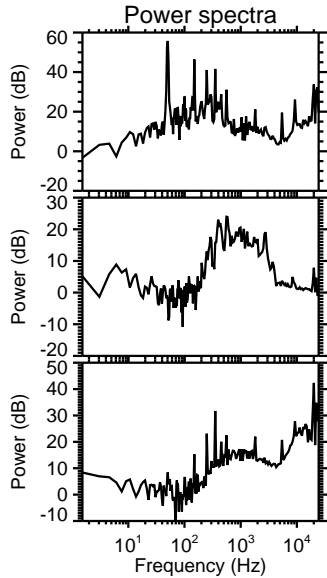
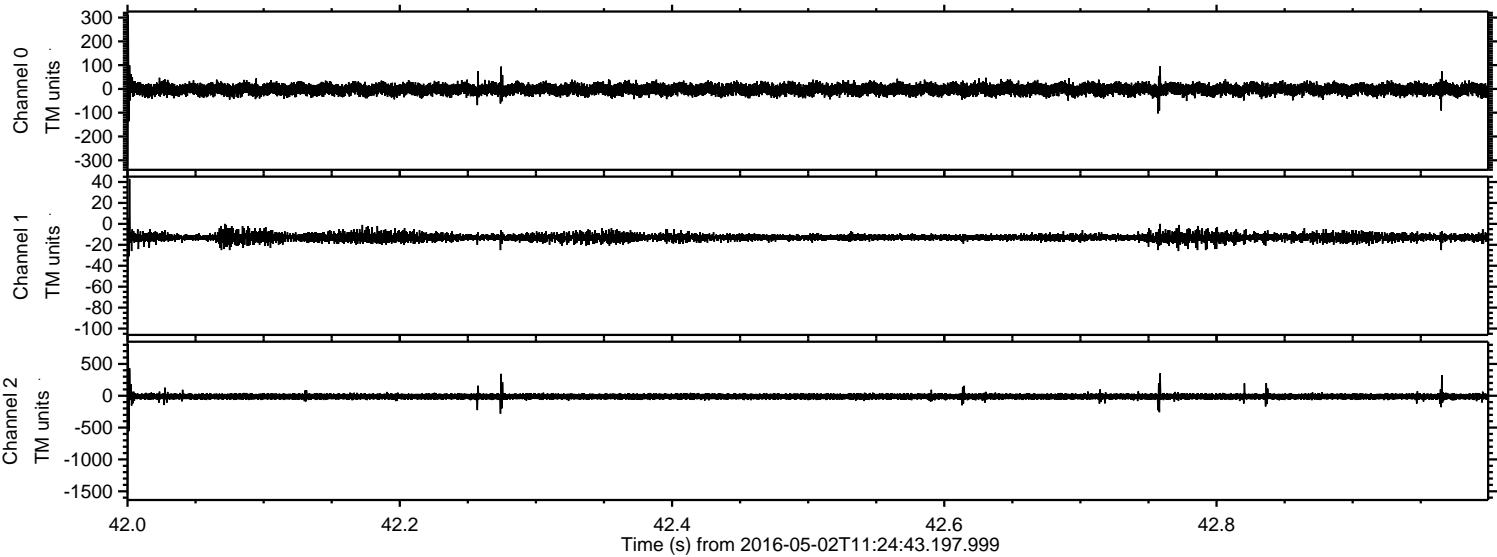


Processed Thu May 12 03:33:32 2016 by ELM ver.2012-10-06 from 001\_\_elm20160502\_112442\_\_dat00.bin





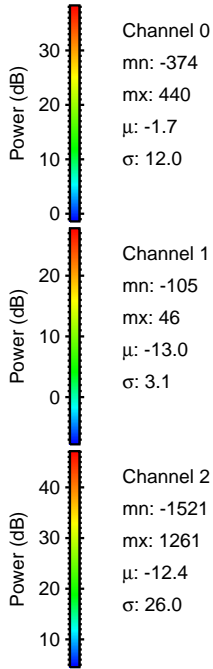
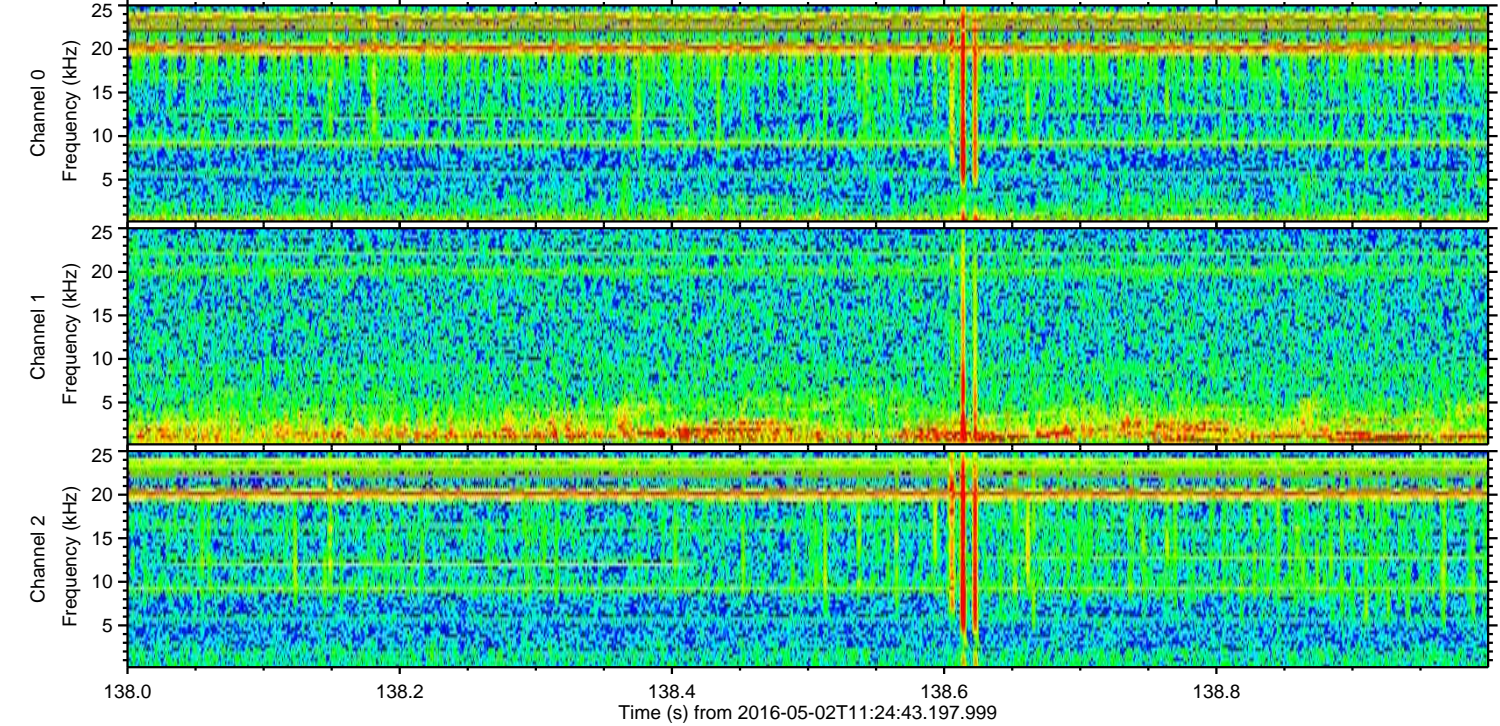
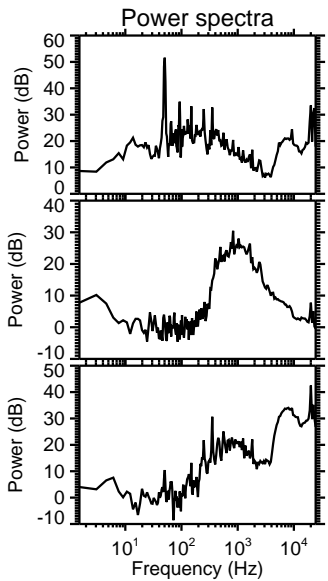
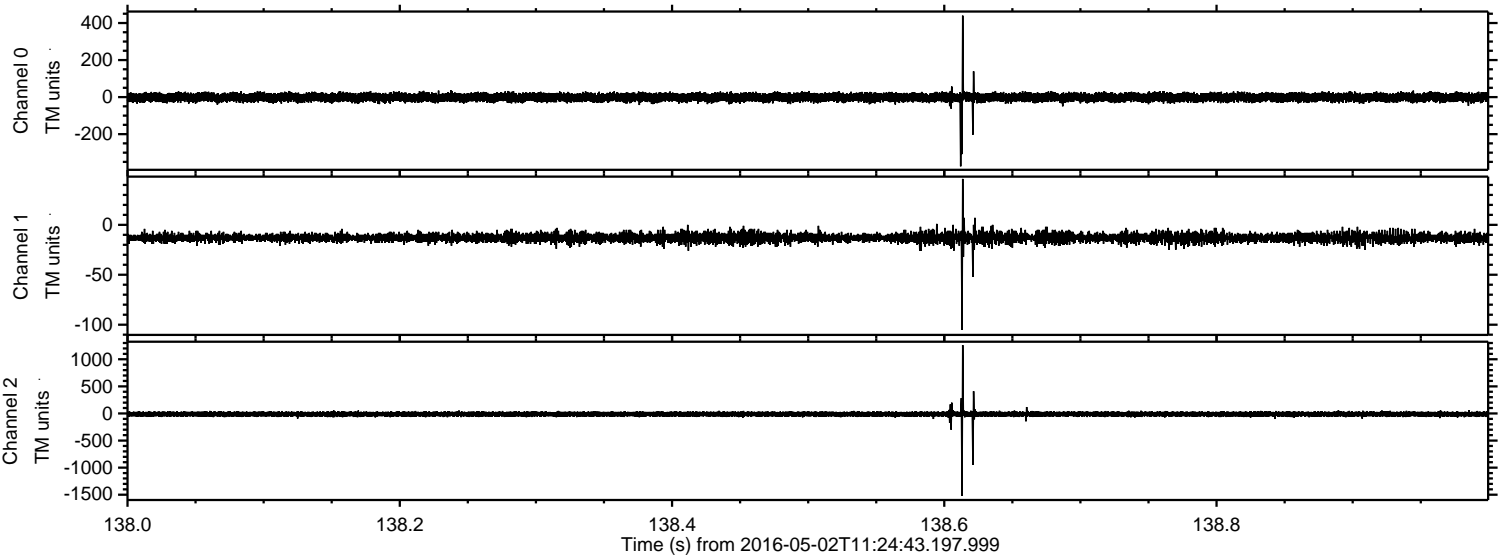
Processed Thu May 12 03:33:33 2016 by ELM ver.2012-10-06 from 001\_\_elm20160502\_112442\_\_dat00.bin





ELMAVAN 3D WAVEFORMS (Measured data sampled at 50 kHz) 51000 packets of 144 samples from 2016-05-02T11:24:43.197.999. Part 139/147

Processed Thu May 12 03:33:34 2016 by ELM ver.2012-10-06 from 001\_\_elm20160502\_112442\_\_dat00.bin



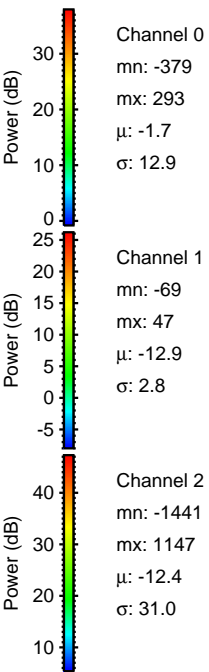
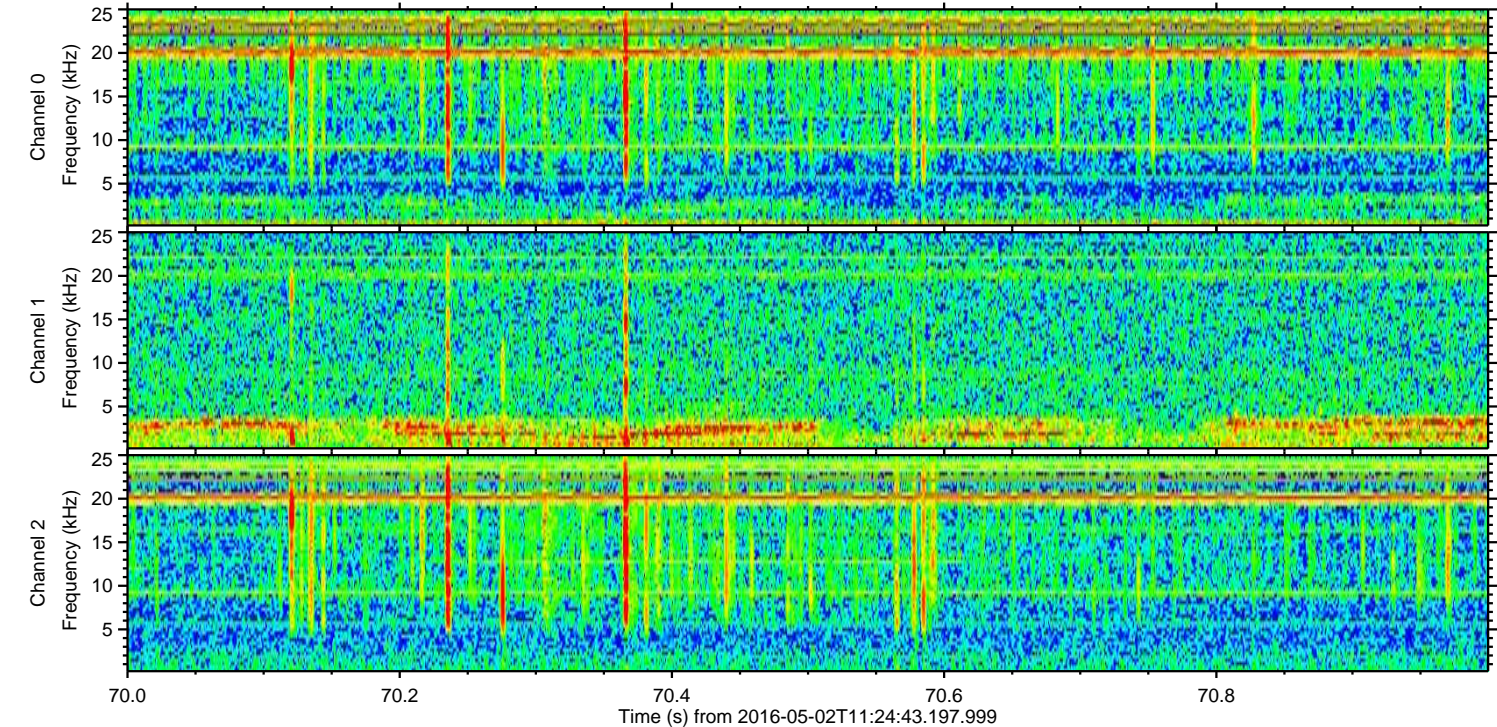
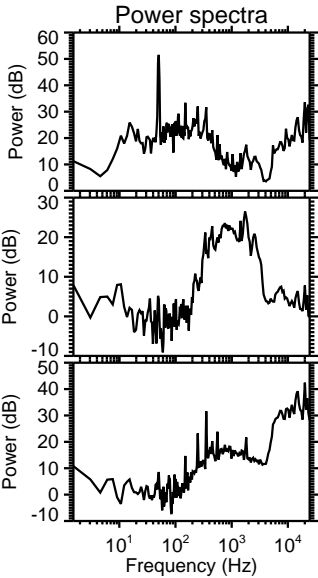
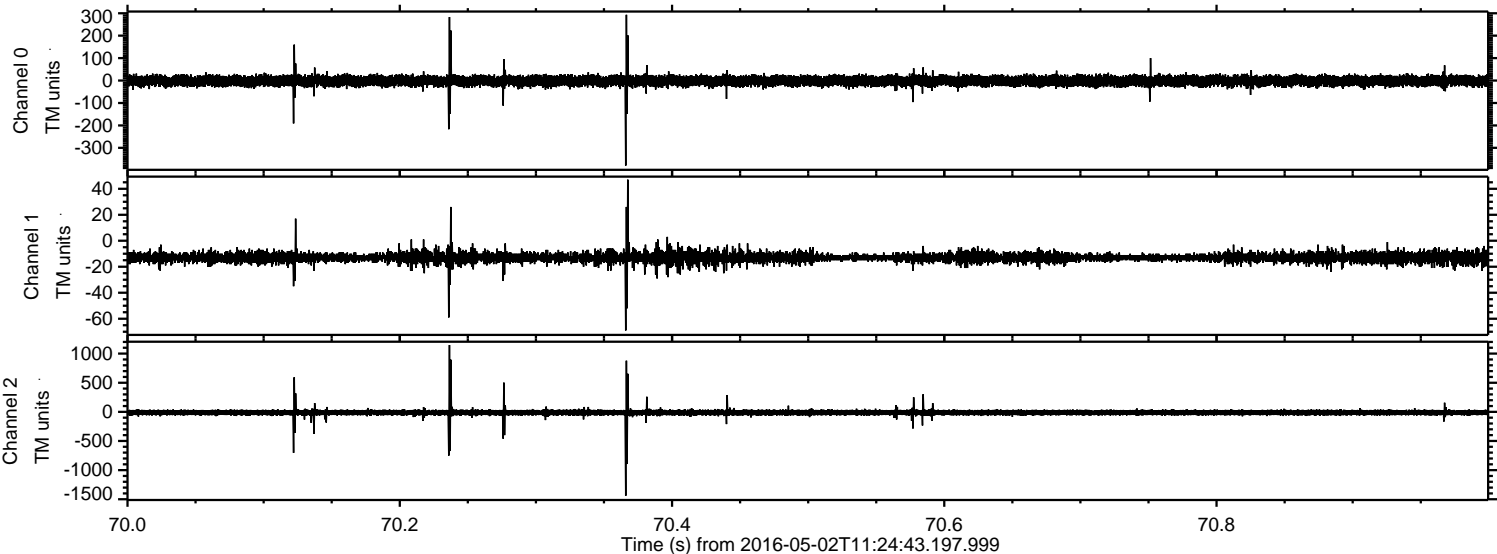
Channel 0  
mn: -374  
mx: 440  
 $\mu$ : -1.7  
 $\sigma$ : 12.0

Channel 1  
mn: -105  
mx: 46  
 $\mu$ : -13.0  
 $\sigma$ : 3.1

Channel 2  
mn: -1521  
mx: 1261  
 $\mu$ : -12.4  
 $\sigma$ : 26.0



Processed Thu May 12 03:33:35 2016 by ELM ver.2012-10-06 from 001\_\_elm20160502\_112442\_\_dat00.bin





Processed Thu May 12 03:33:36 2016 by ELM ver.2012-10-06 from 001\_\_elm20160502\_112442\_\_dat00.bin

