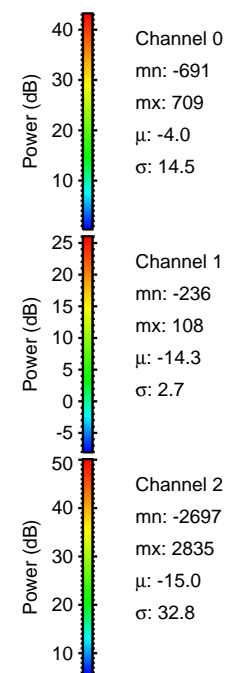
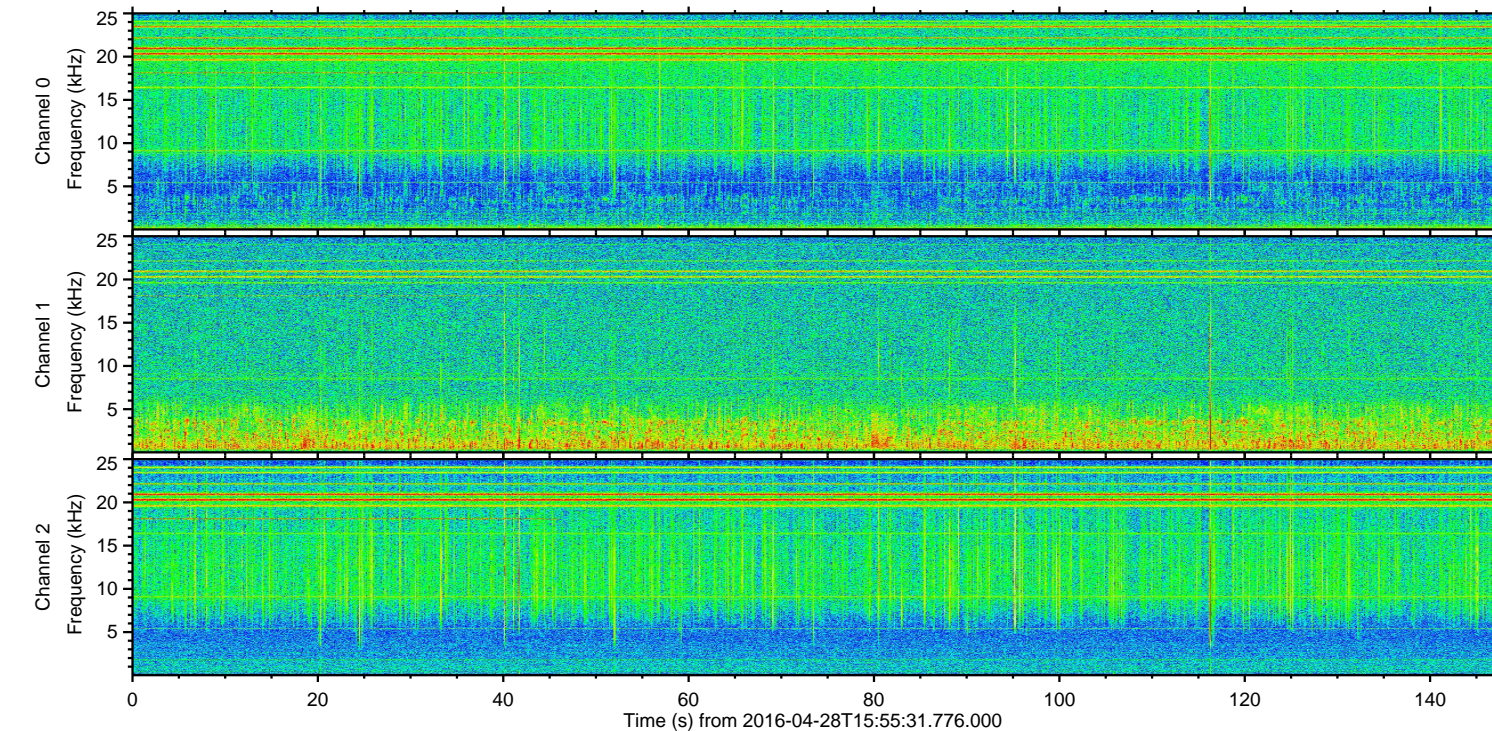
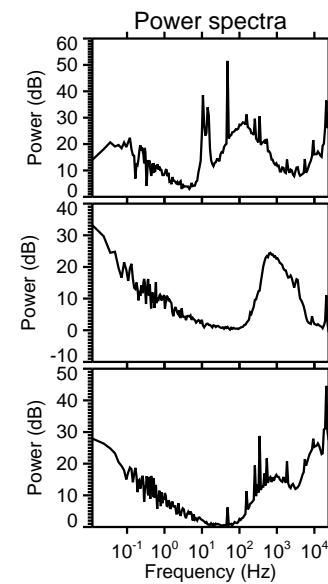
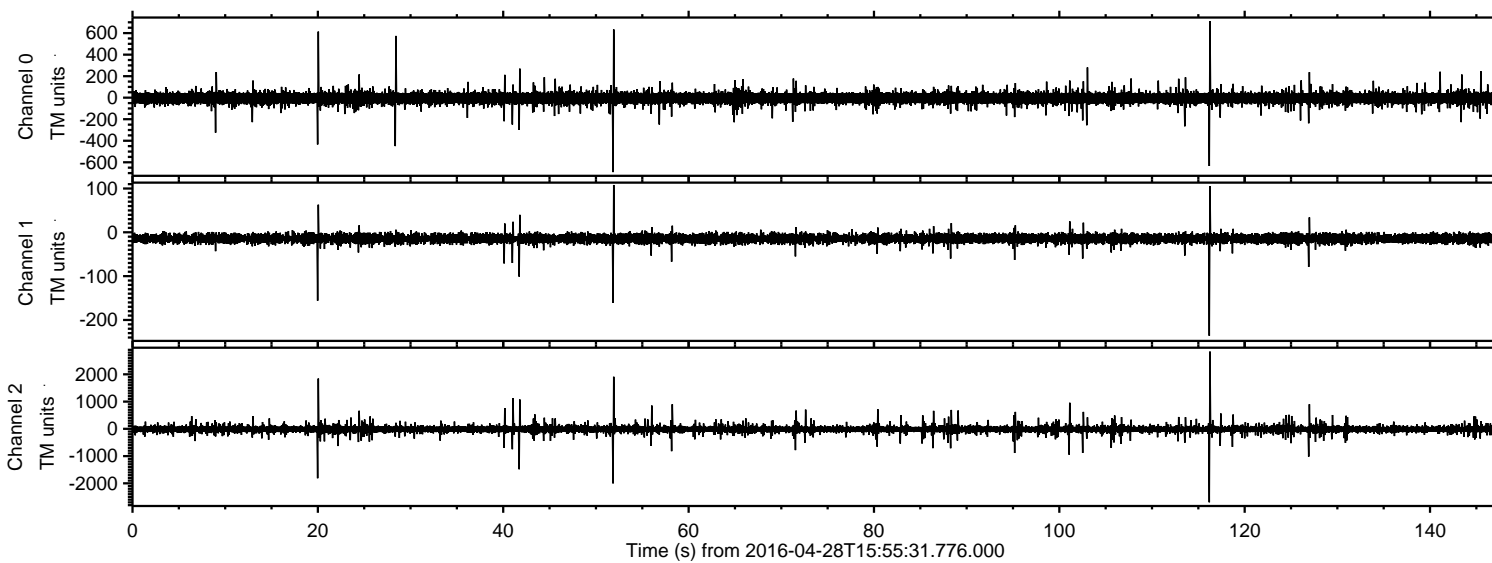


ELMAVAN 3D WAVEFORMS (Measured data sampled at 50 kHz) 51000 packets of 144 samples from 2016-04-28T15:55:31.776.000.

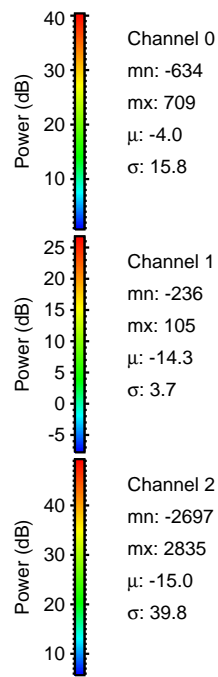
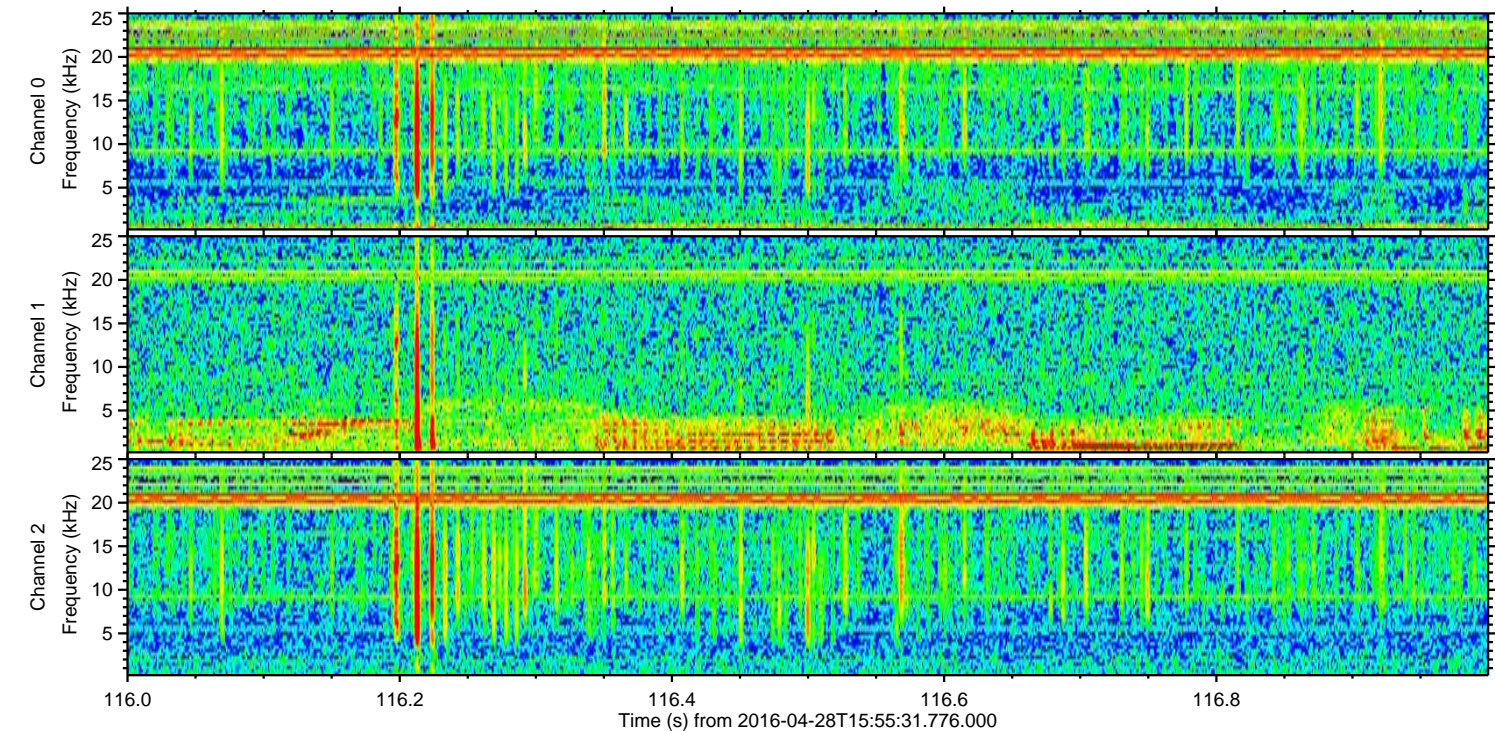
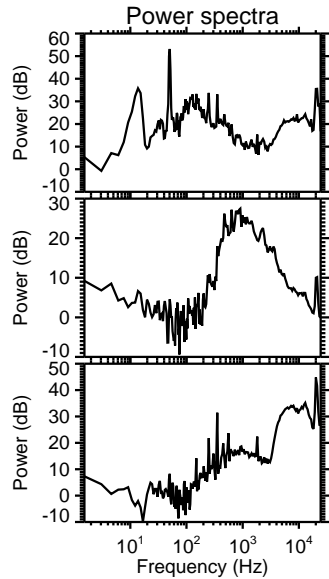
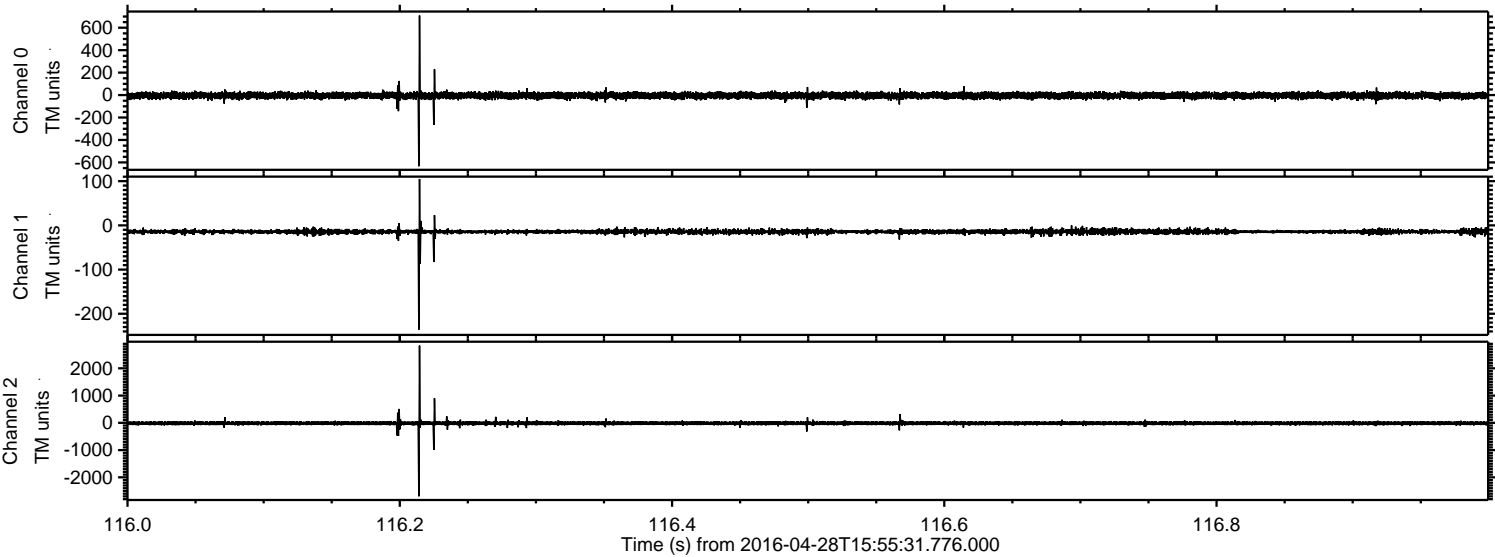
Processed Wed May 11 08:20:48 2016 by ELM ver.2012-10-06 from 001\_\_elm20160428\_155530\_\_dat00.bin





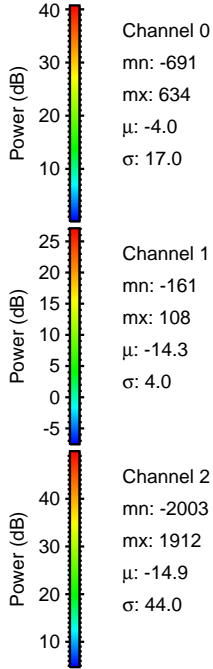
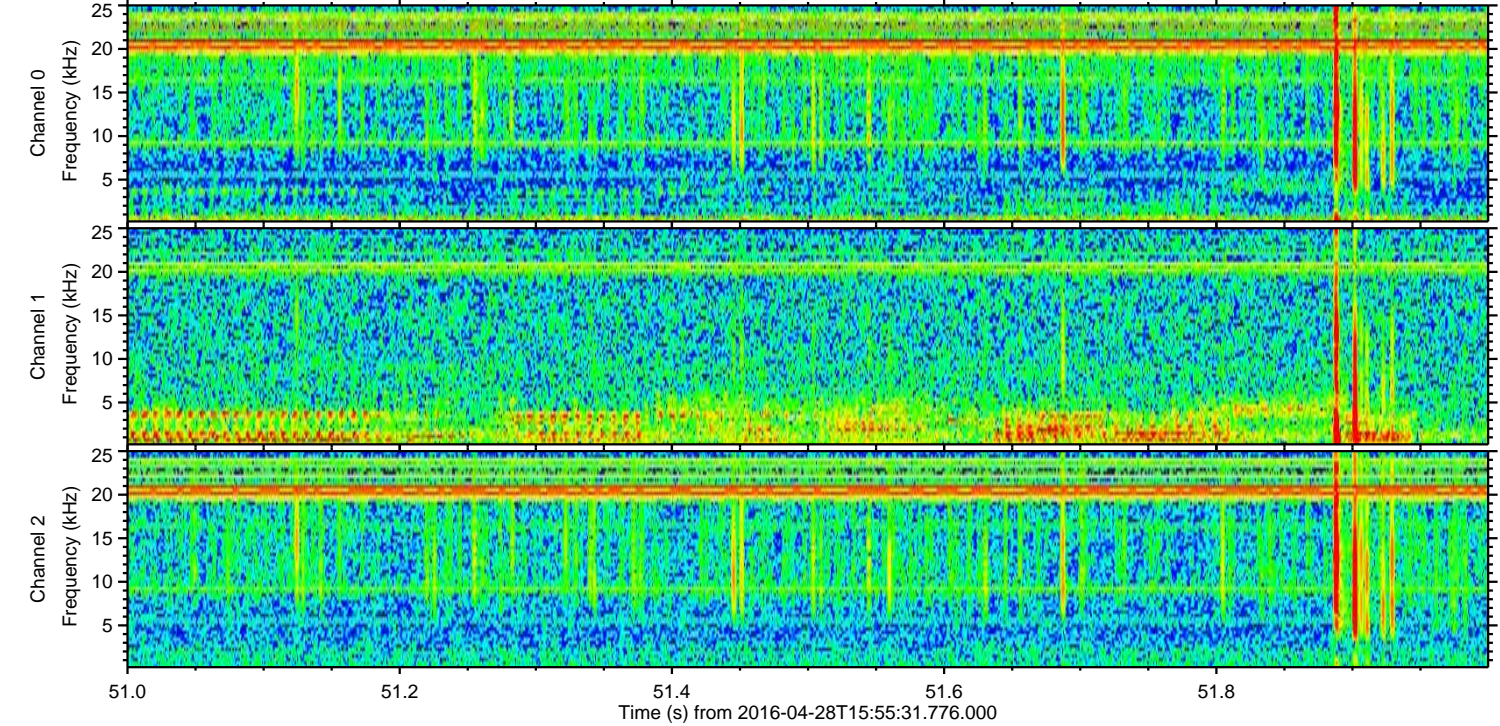
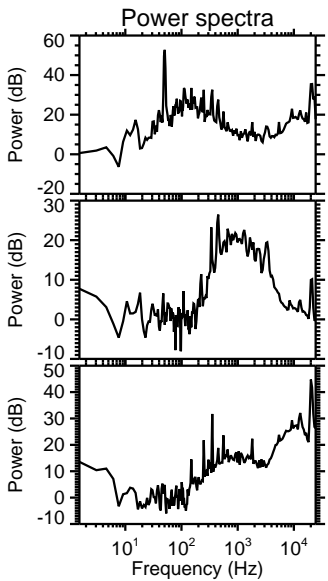
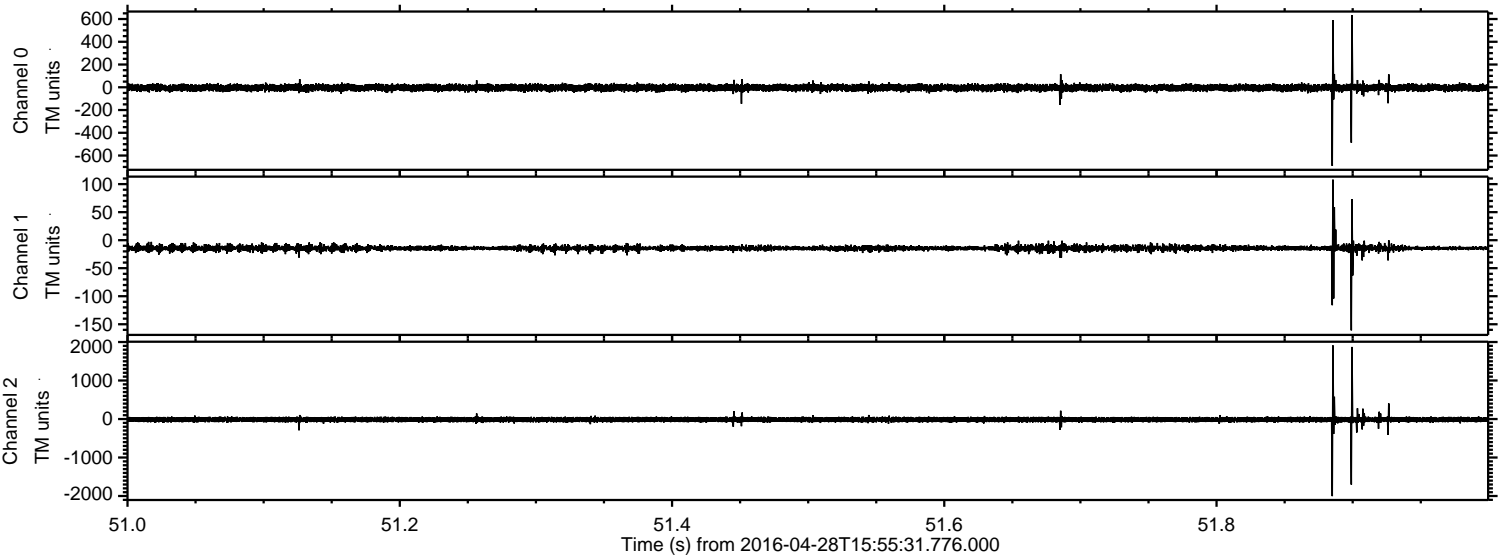
ELMAVAN 3D WAVEFORMS (Measured data sampled at 50 kHz) 51000 packets of 144 samples from 2016-04-28T15:55:31.776.000. Part 117/147

Processed Wed May 11 08:20:59 2016 by ELM ver.2012-10-06 from 001\_\_elm20160428\_155530\_\_dat00.bin



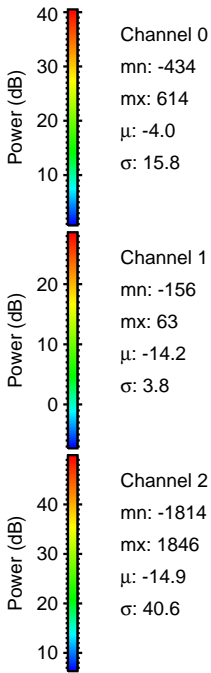
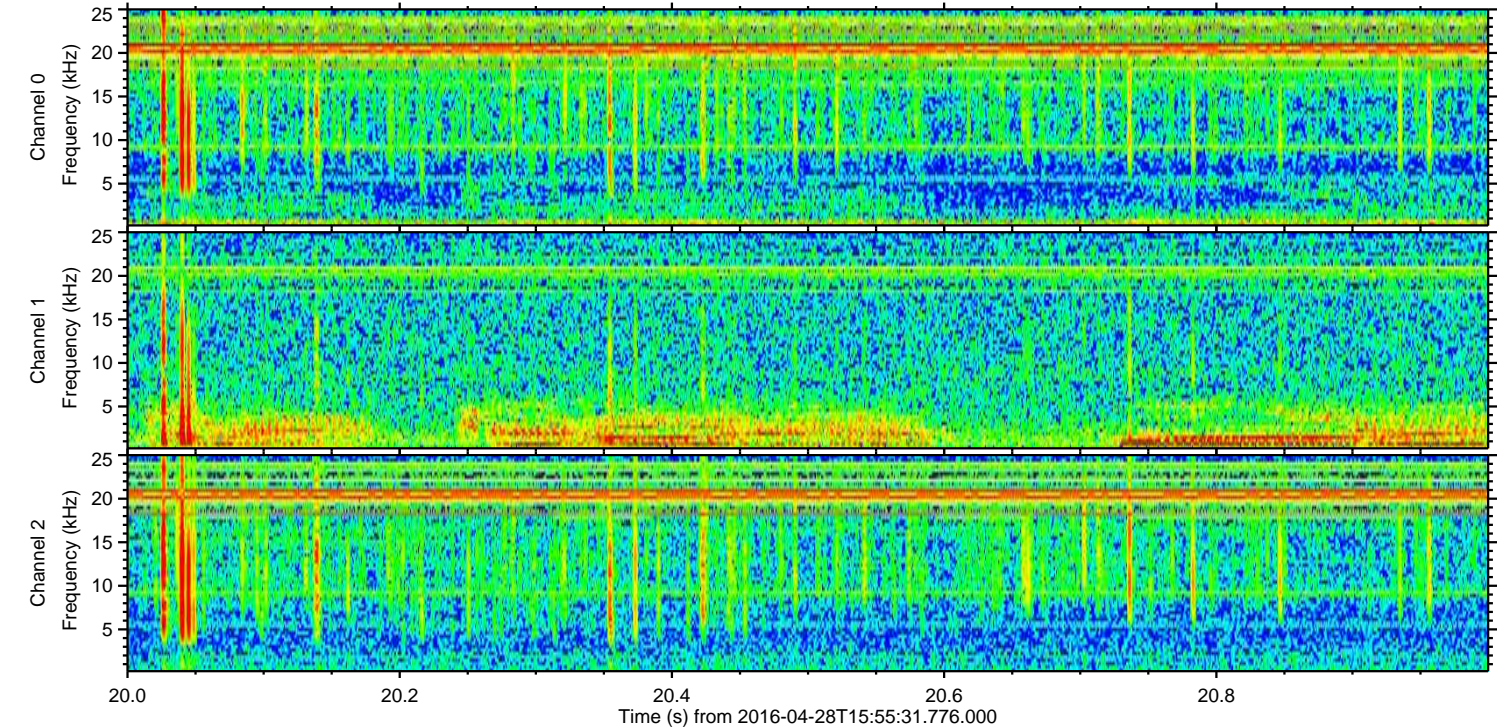
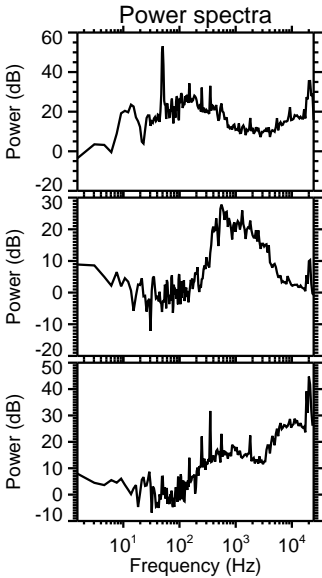
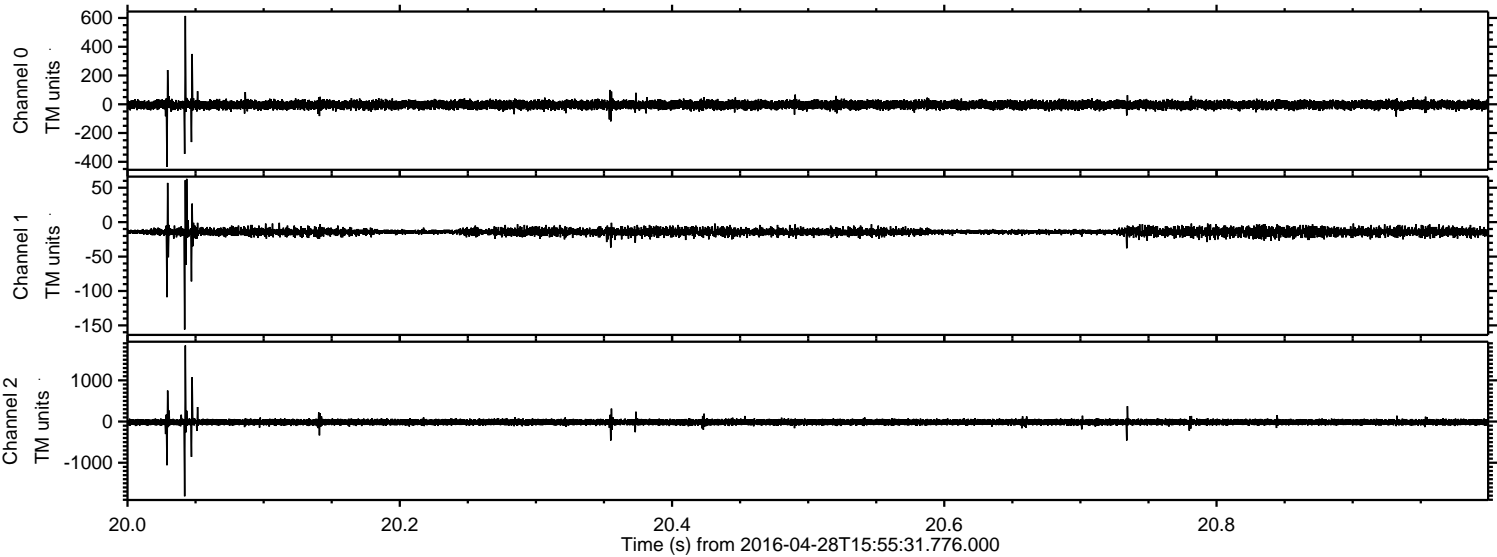


Processed Wed May 11 08:21:00 2016 by ELM ver.2012-10-06 from 001\_\_elm20160428\_155530\_\_dat00.bin



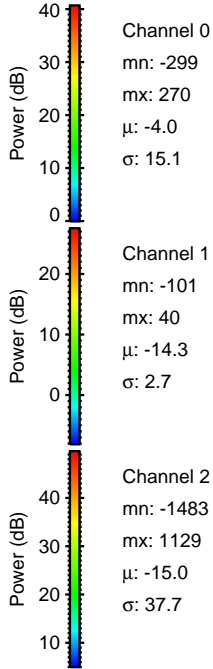
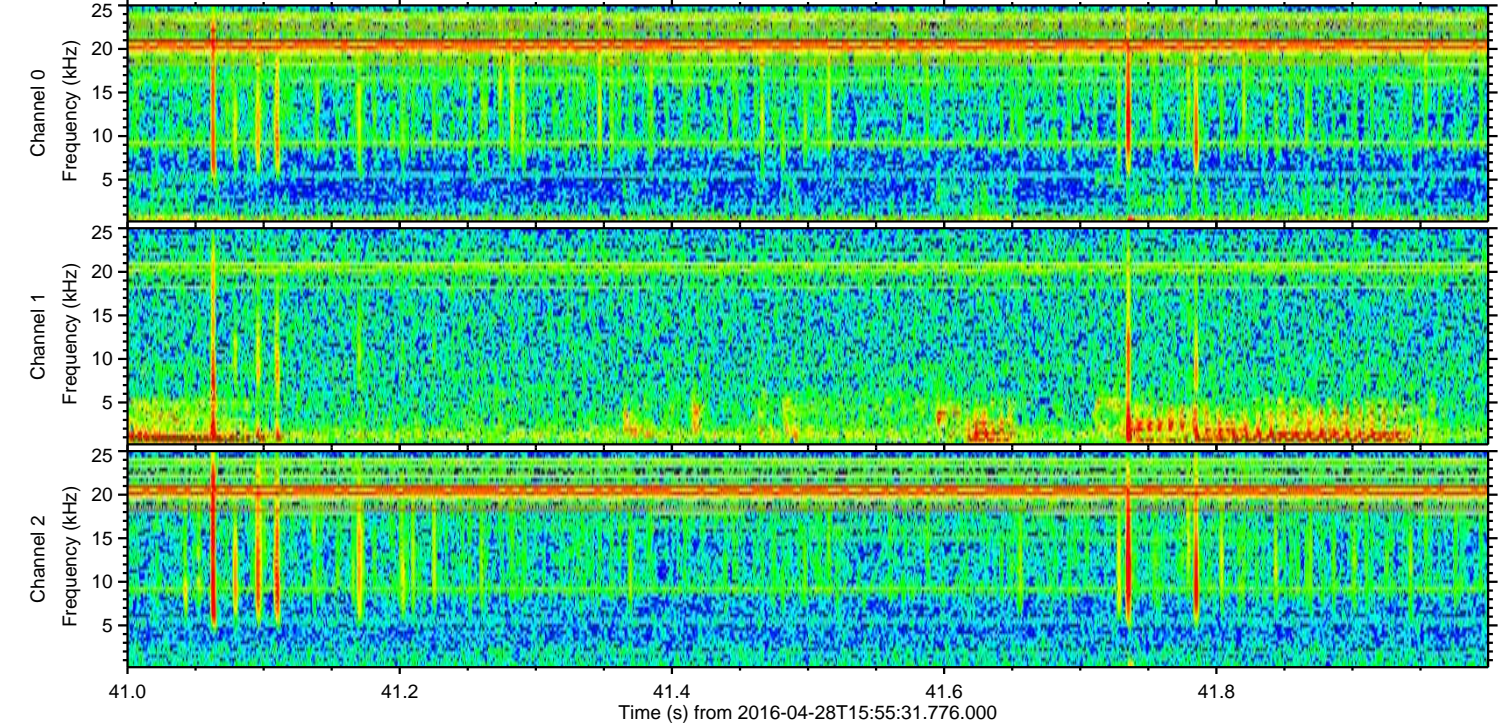
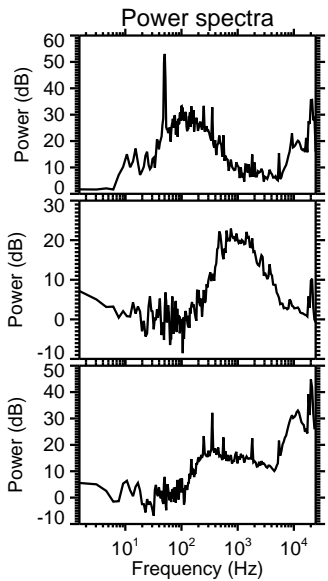
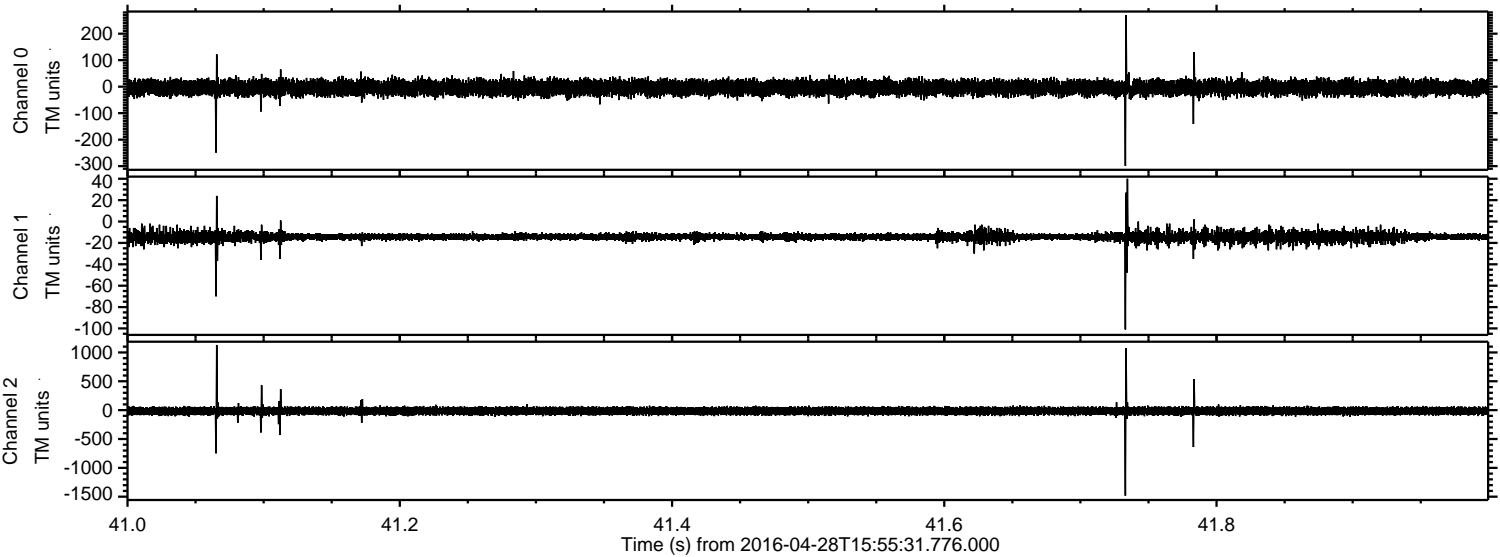


Processed Wed May 11 08:21:01 2016 by ELM ver.2012-10-06 from 001\_\_elm20160428\_155530\_\_dat00.bin





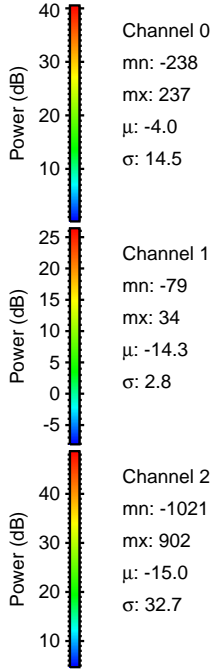
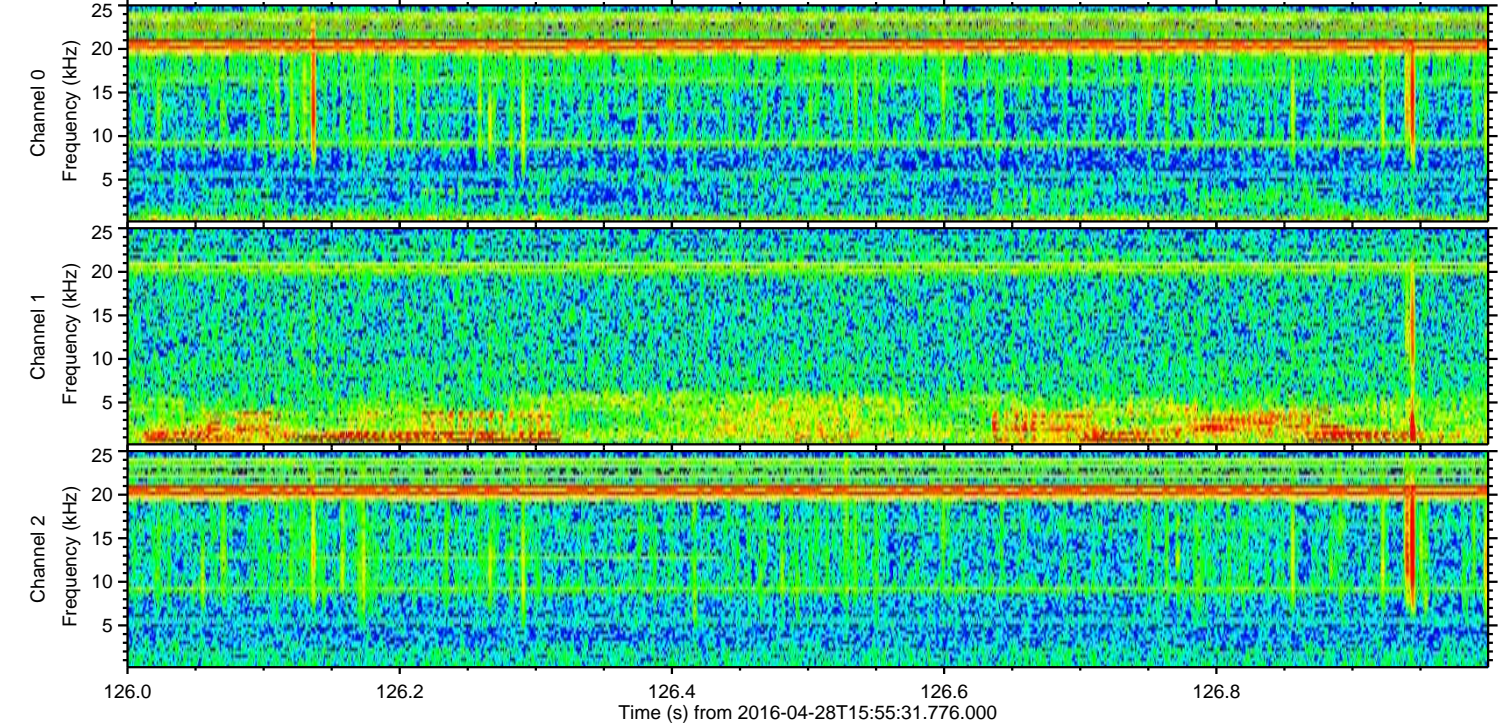
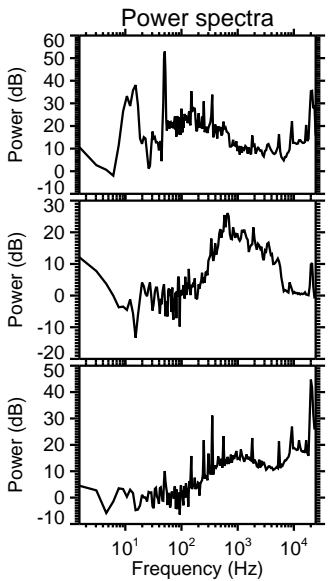
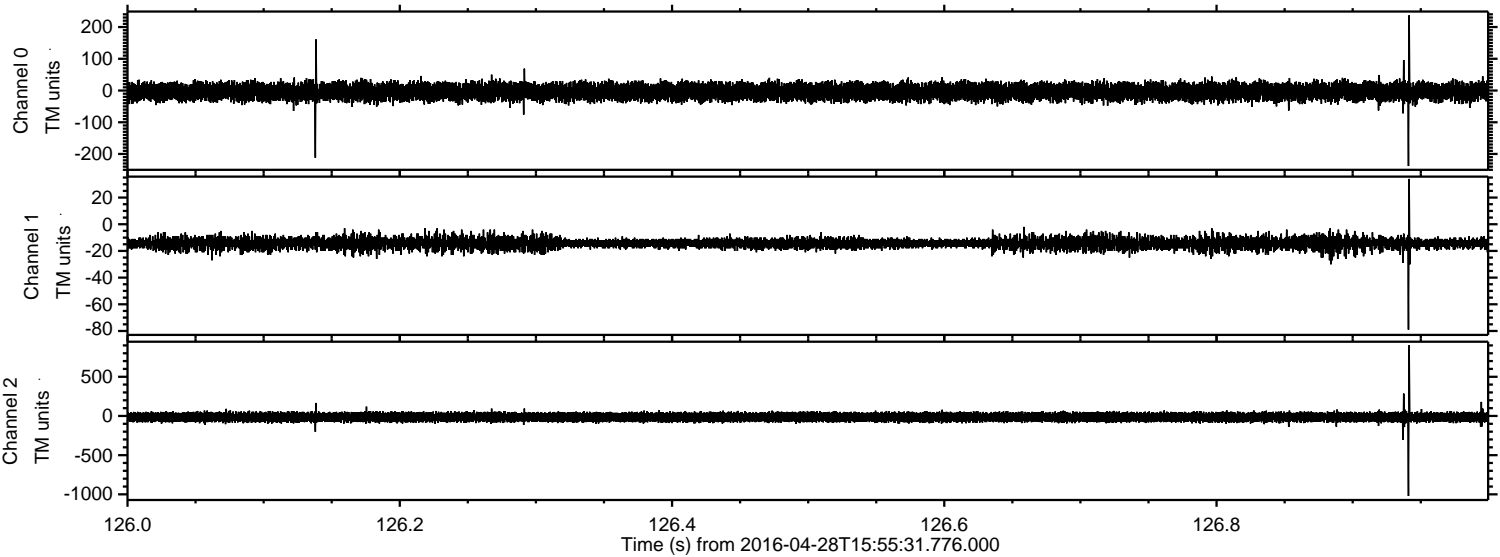
Processed Wed May 11 08:21:02 2016 by ELM ver.2012-10-06 from 001\_\_elm20160428\_155530\_\_dat00.bin





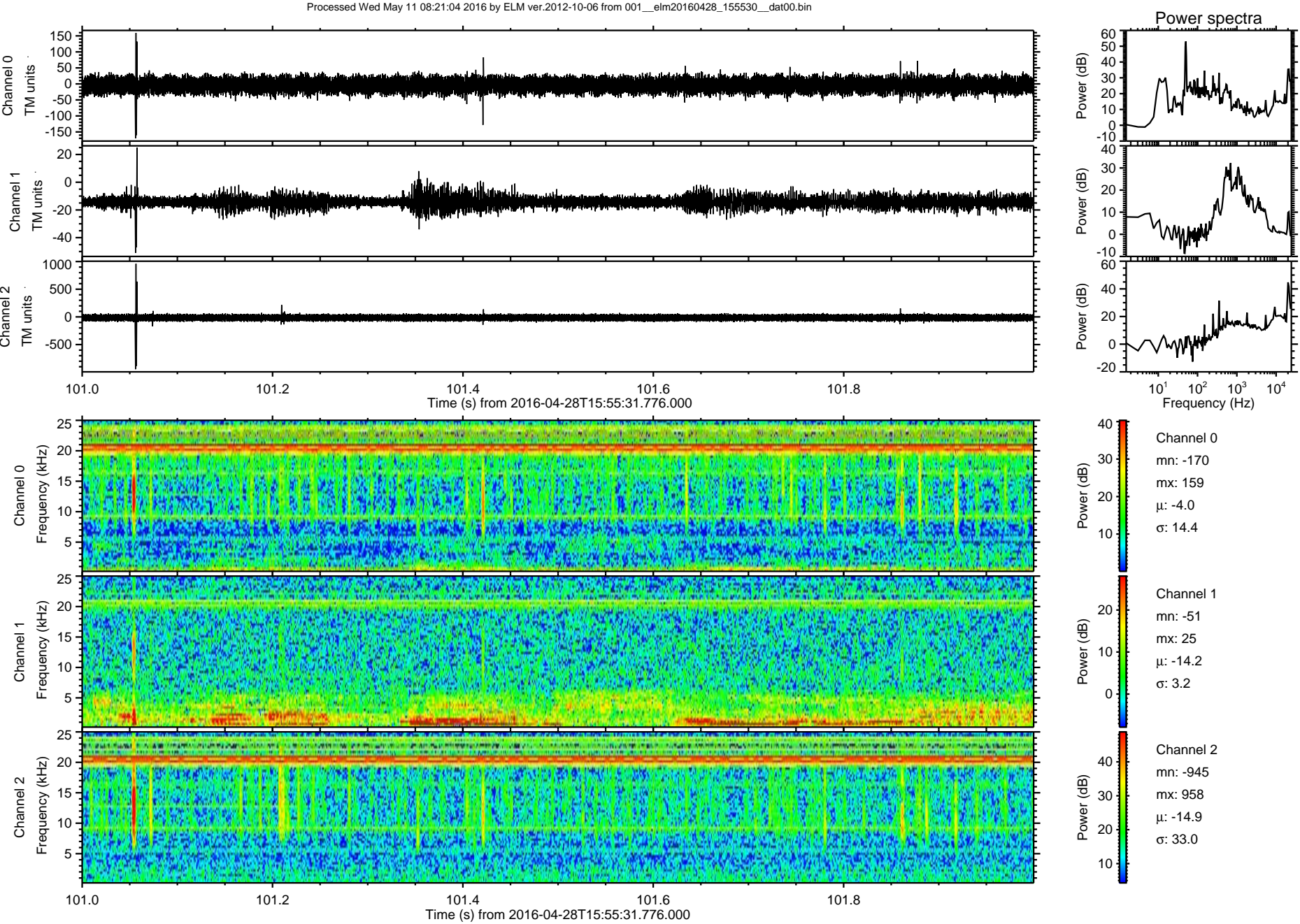
ELMAVAN 3D WAVEFORMS (Measured data sampled at 50 kHz) 51000 packets of 144 samples from 2016-04-28T15:55:31.776.000. Part 127/147

Processed Wed May 11 08:21:03 2016 by ELM ver.2012-10-06 from 001\_\_elm20160428\_155530\_\_dat00.bin



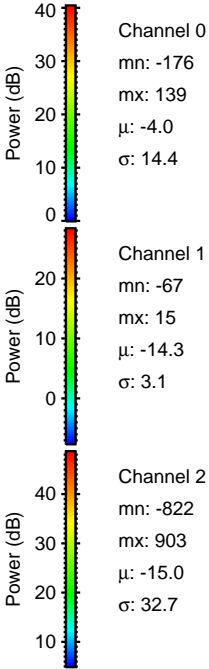
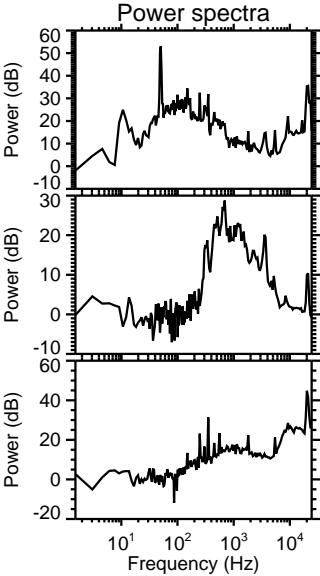
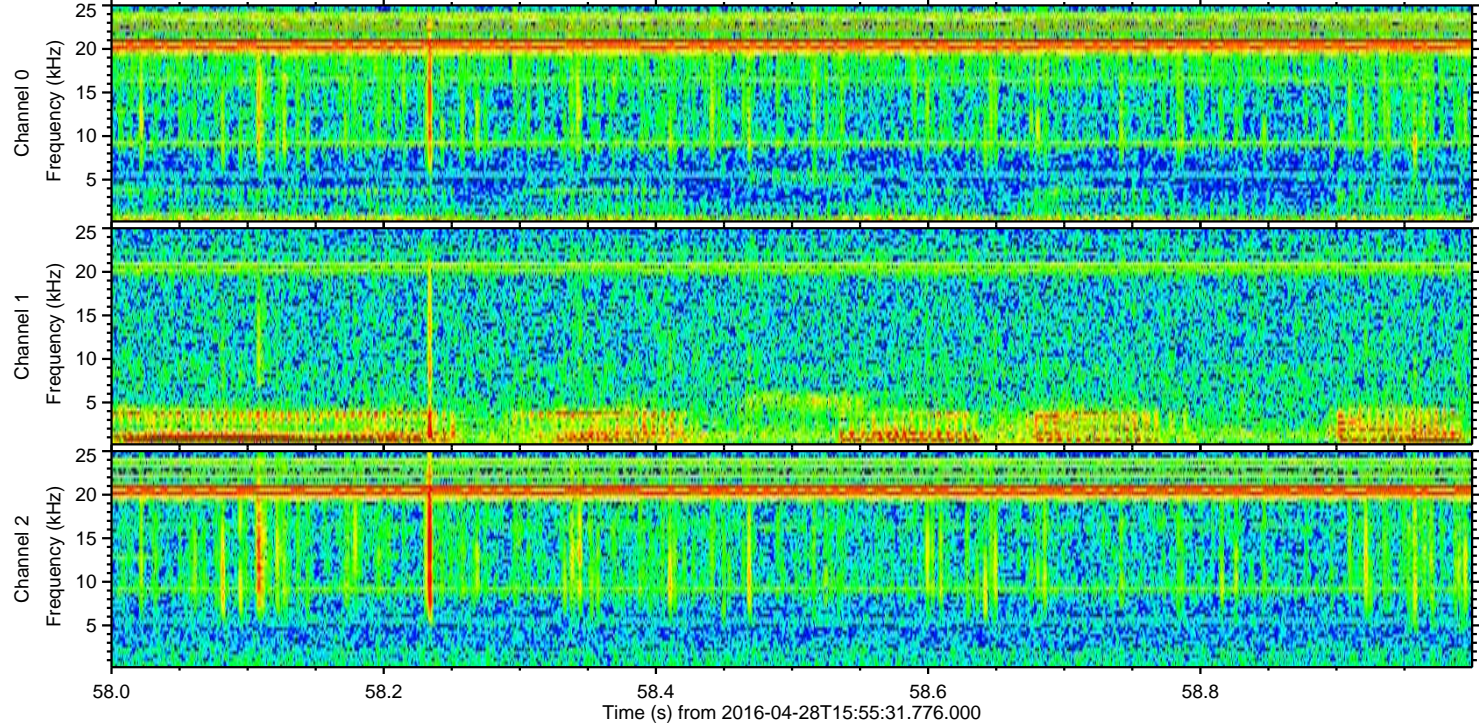
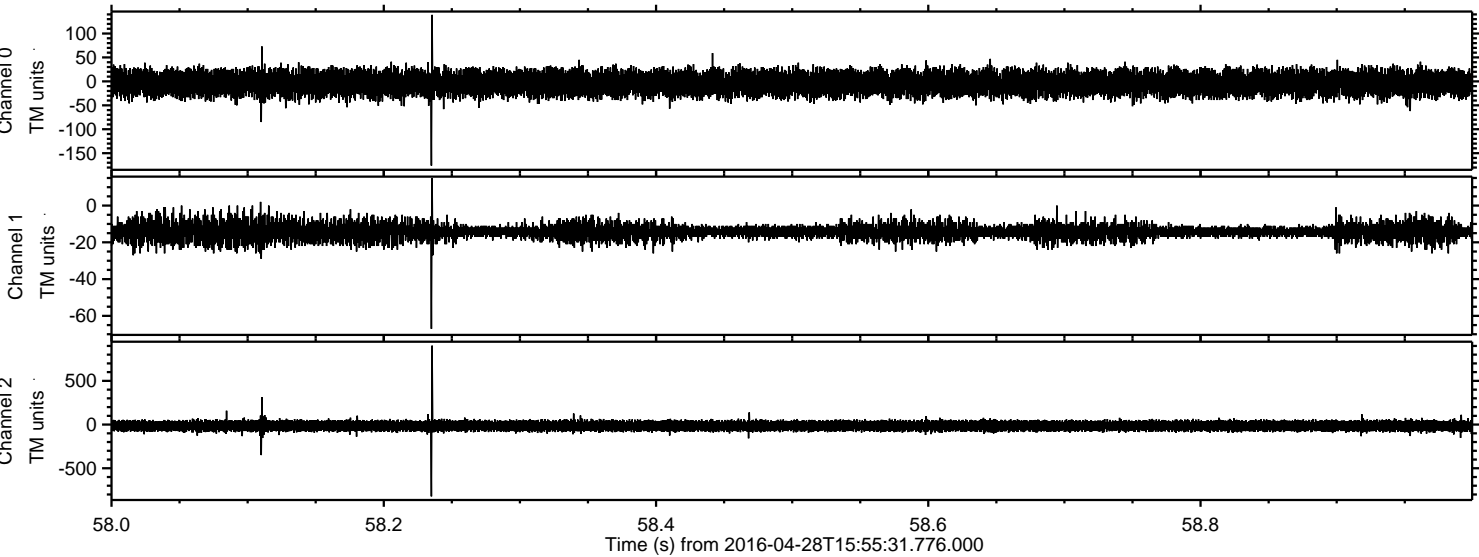


ELMAVAN 3D WAVEFORMS (Measured data sampled at 50 kHz) 51000 packets of 144 samples from 2016-04-28T15:55:31.776.000. Part 102/147



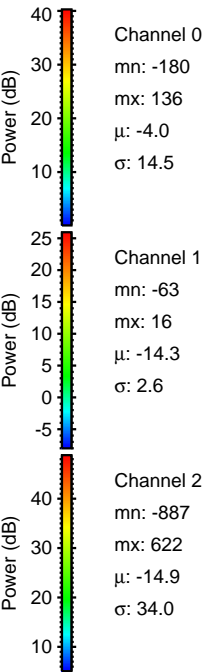
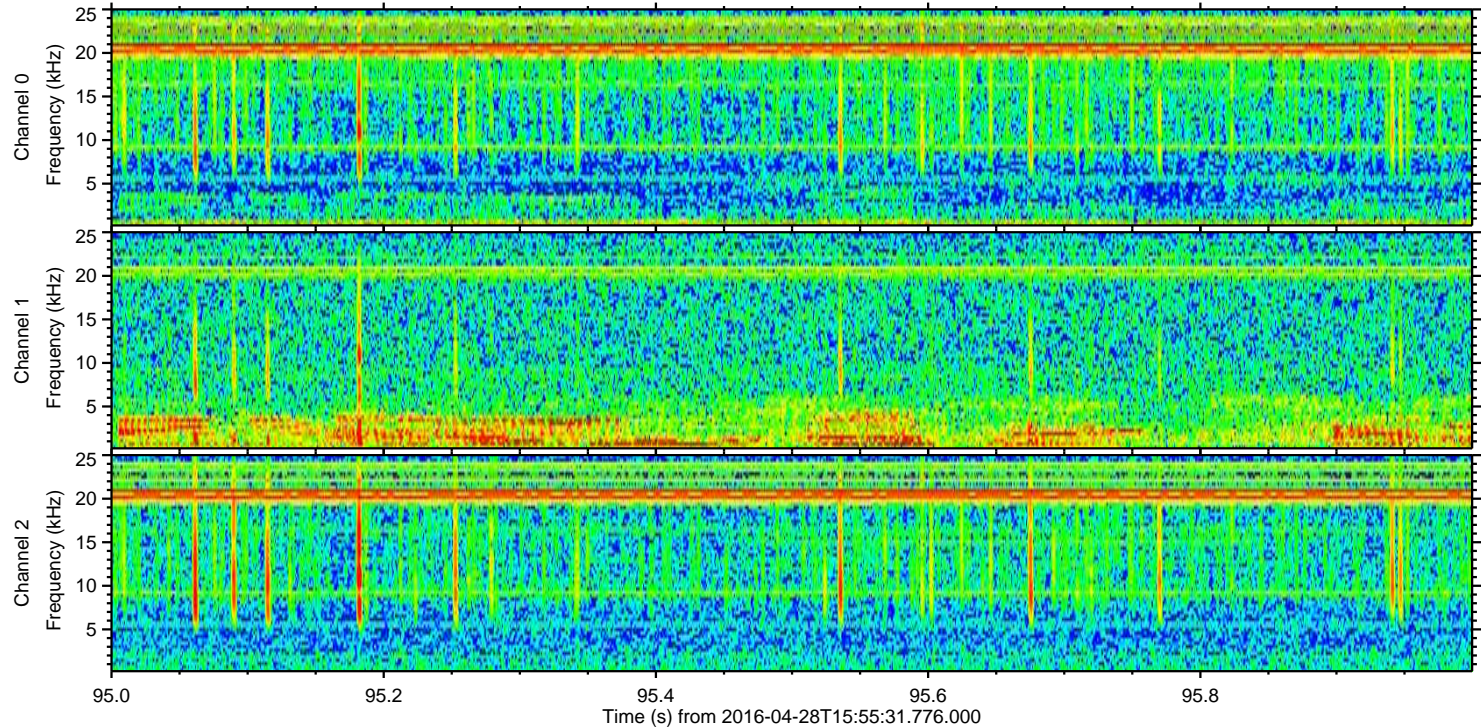
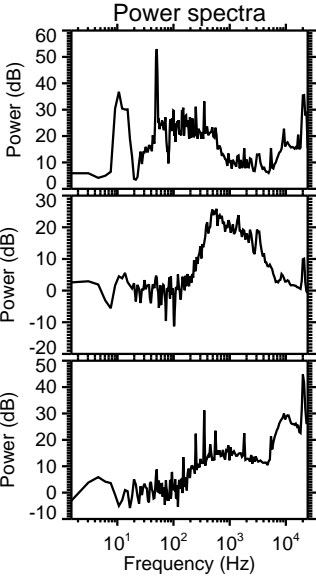
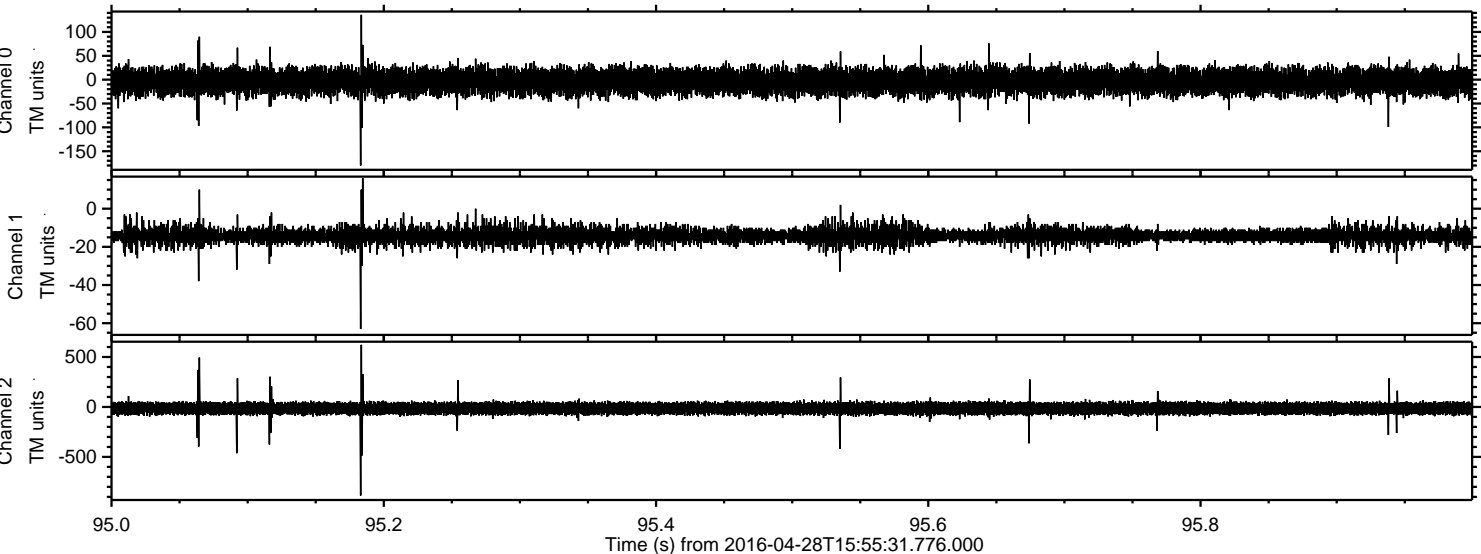


Processed Wed May 11 08:21:05 2016 by ELM ver.2012-10-06 from 001\_\_elm20160428\_155530\_\_dat00.bin





Processed Wed May 11 08:21:06 2016 by ELM ver.2012-10-06 from 001\_\_elm20160428\_155530\_\_dat00.bin





ELMAVAN 3D WAVEFORMS (Measured data sampled at 50 kHz) 51000 packets of 144 samples from 2016-04-28T15:55:31.776.000. Part 103/147

