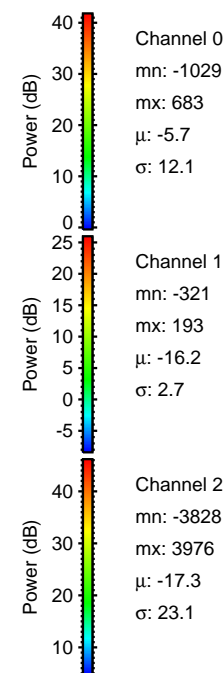
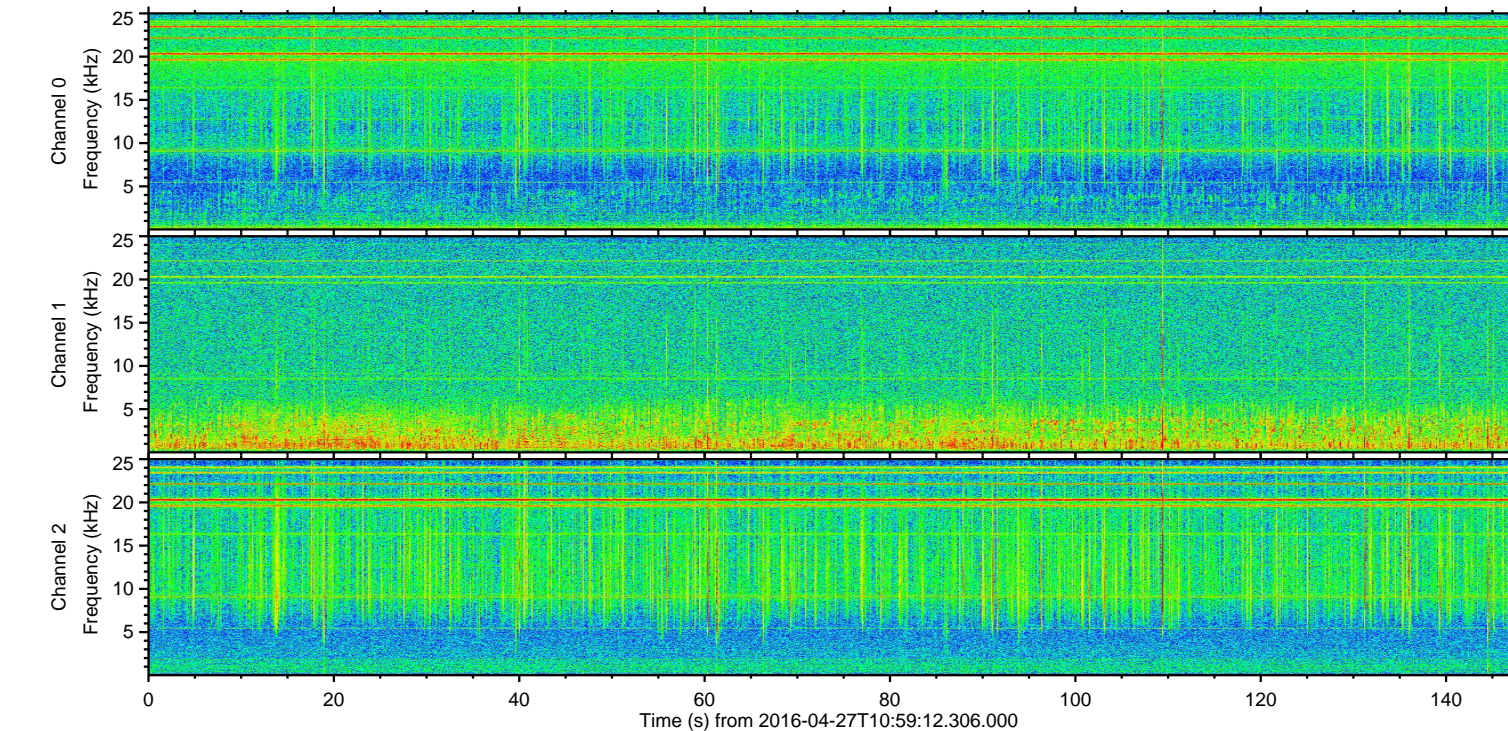
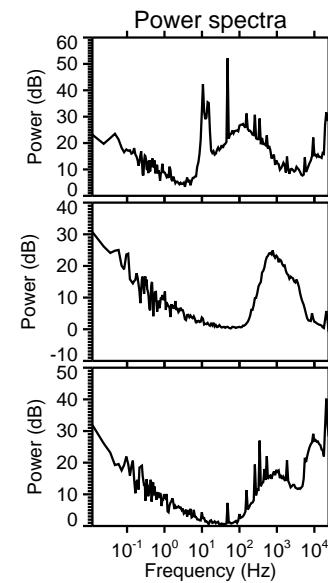
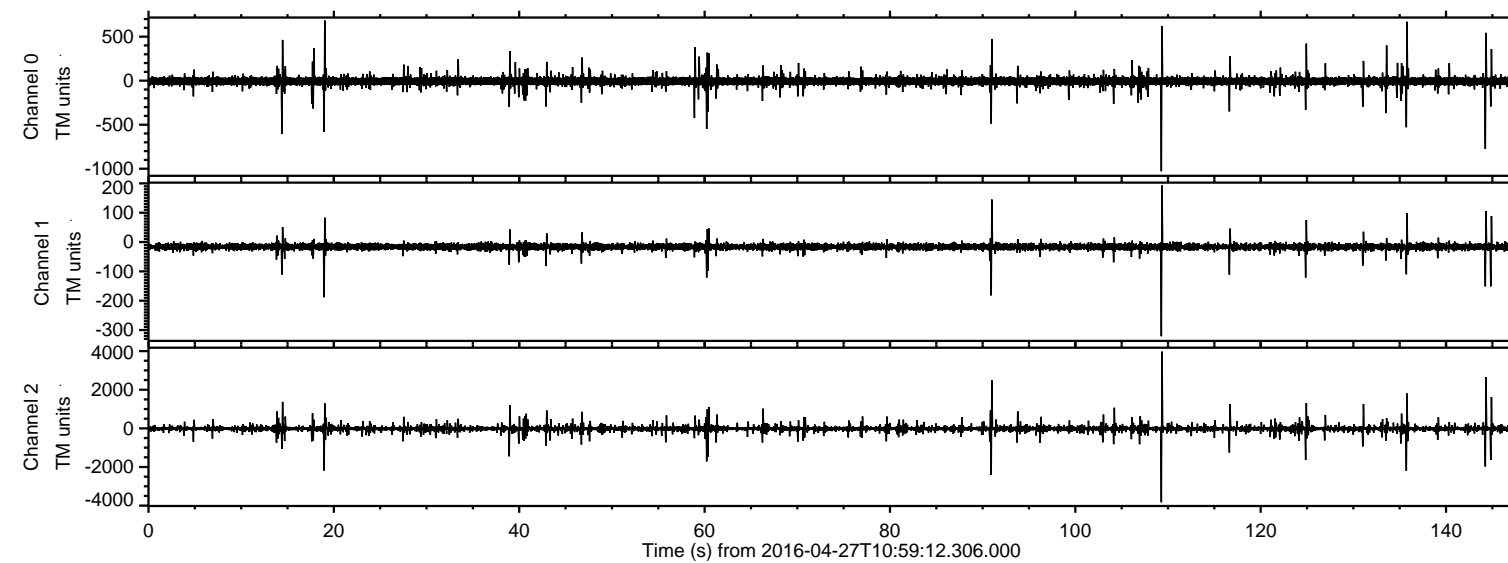


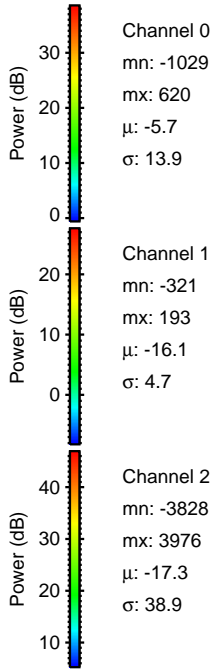
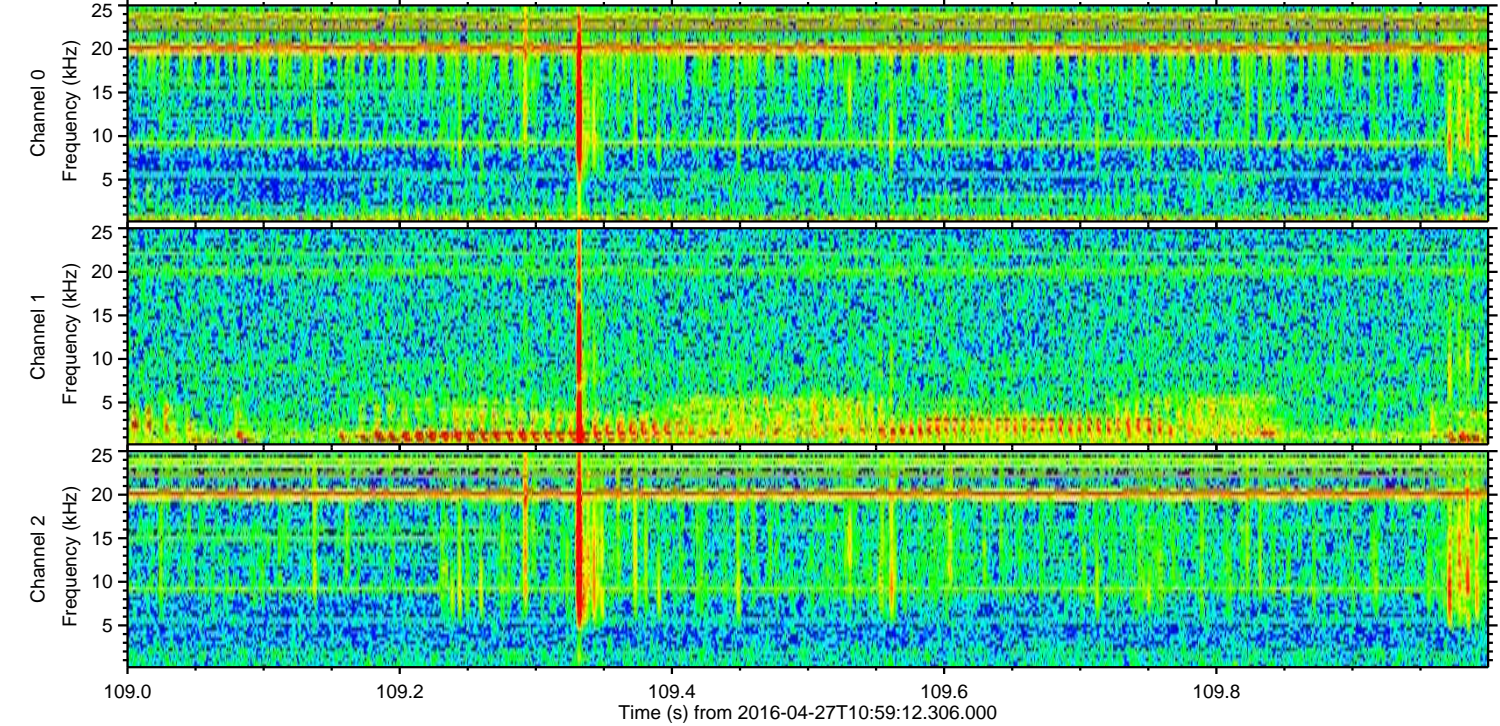
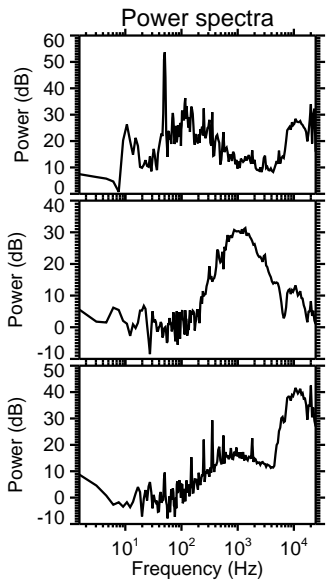
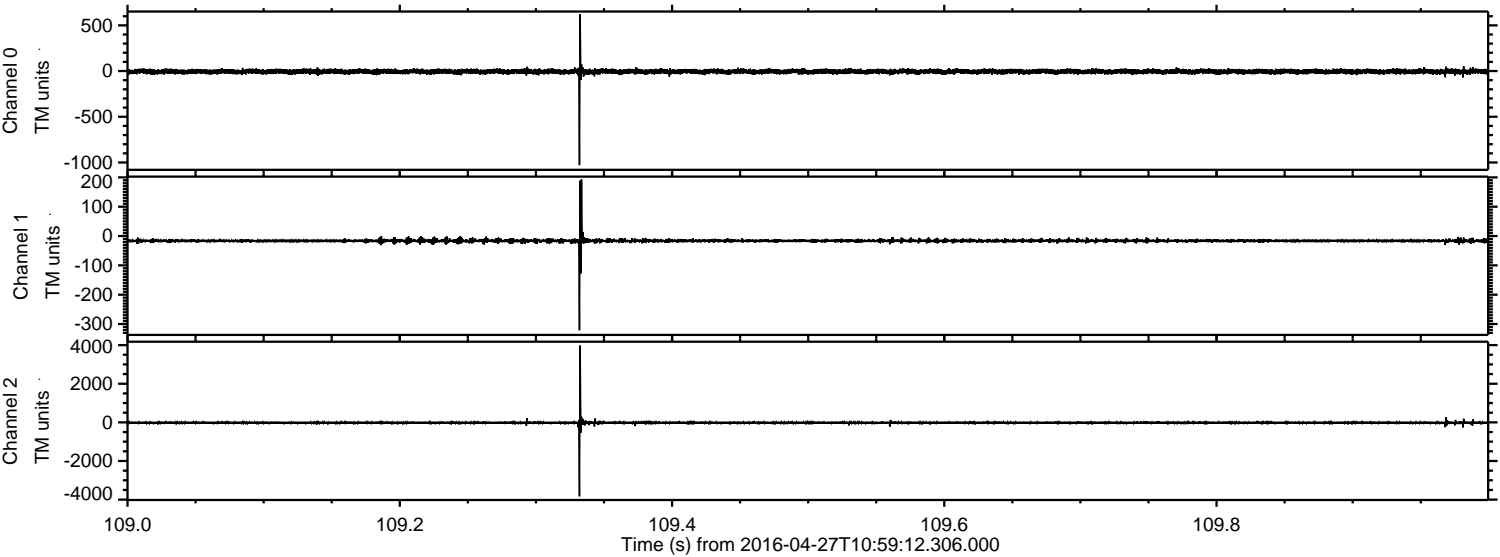
ELMAVAN 3D WAVEFORMS (Measured data sampled at 50 kHz) 51000 packets of 144 samples from 2016-04-27T10:59:12.306.000.

Processed Wed May 11 02:22:08 2016 by ELM ver.2012-10-06 from 001__elm20160427_105911__dat00.bin



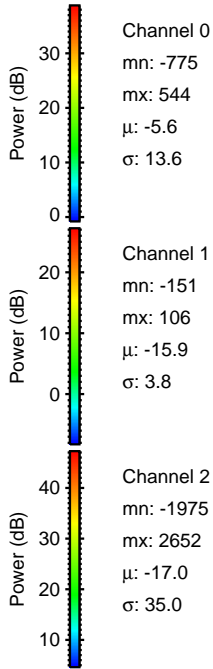
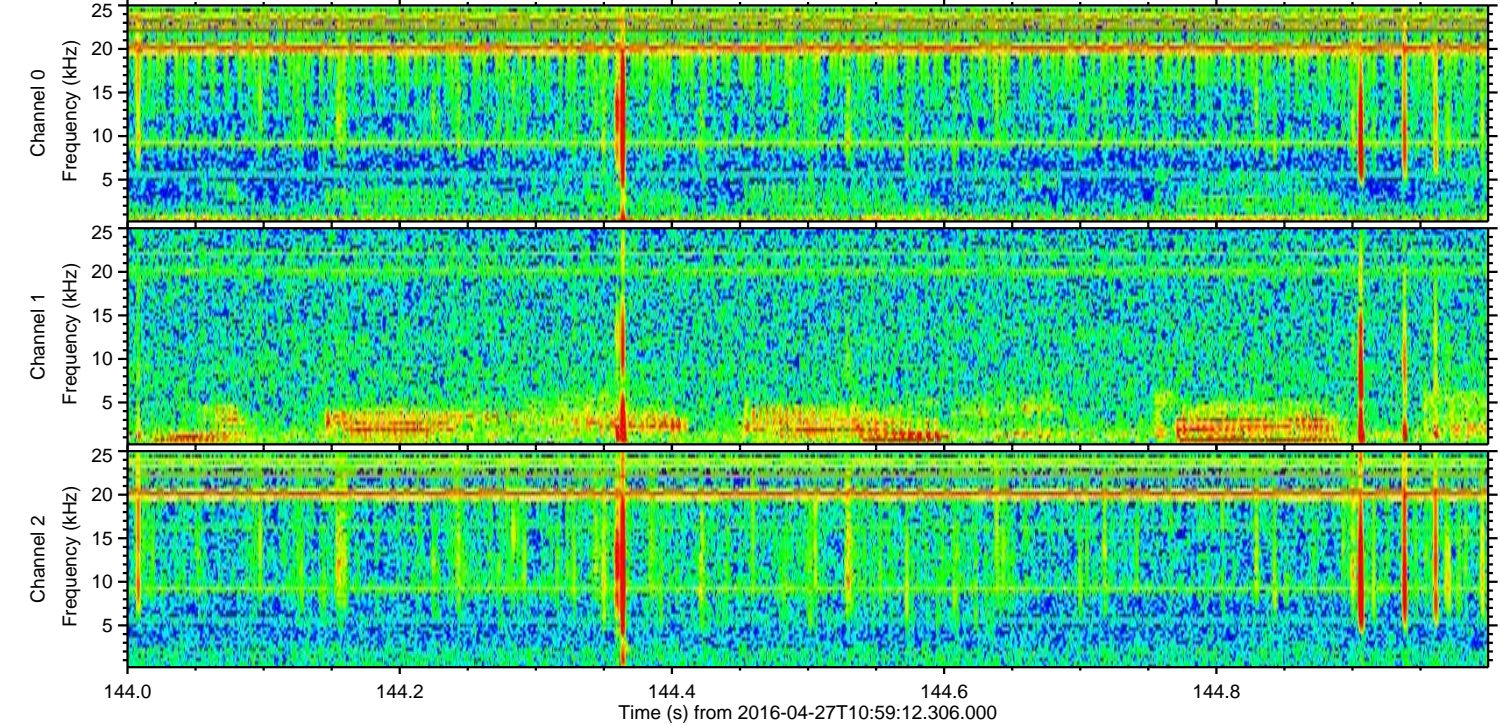
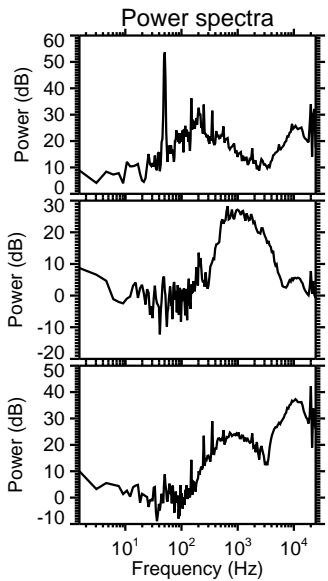
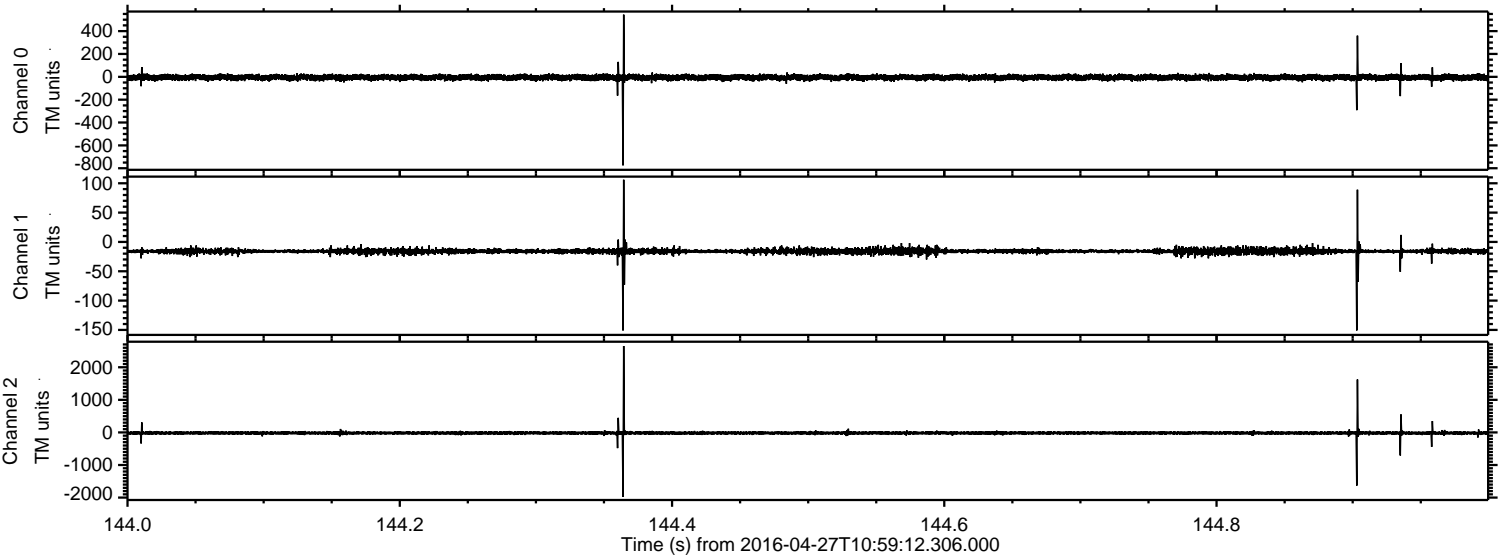
ELMAVAN 3D WAVEFORMS (Measured data sampled at 50 kHz) 51000 packets of 144 samples from 2016-04-27T10:59:12.306.000. Part 110/147

Processed Wed May 11 02:22:20 2016 by ELM ver.2012-10-06 from 001__elm20160427_105911__dat00.bin

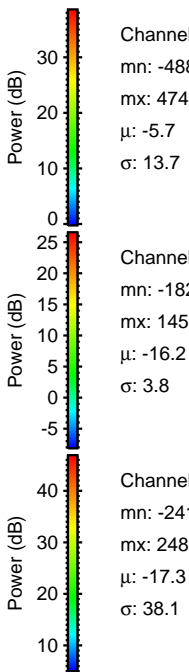
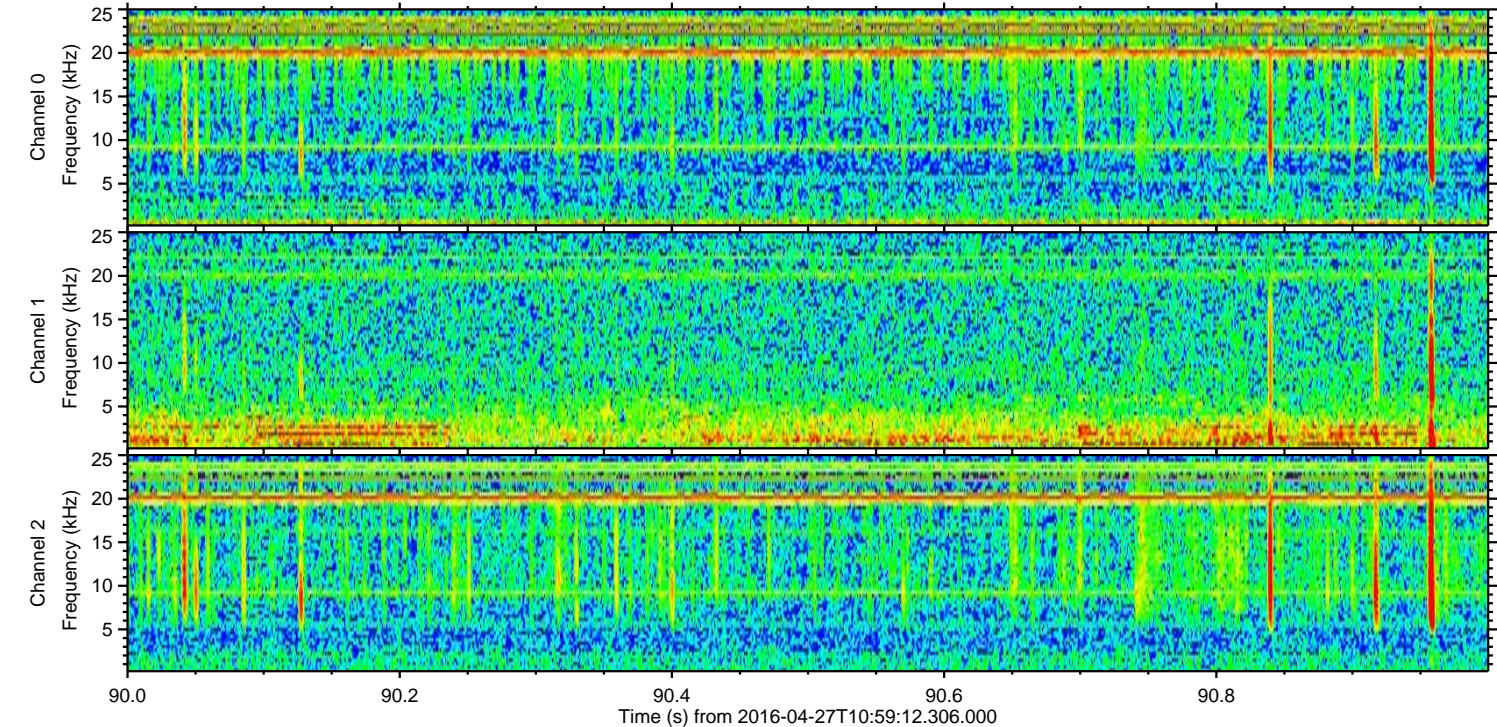
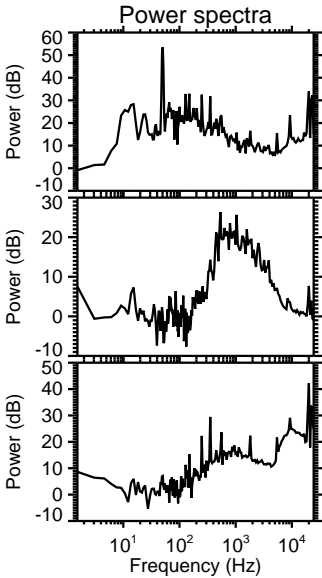
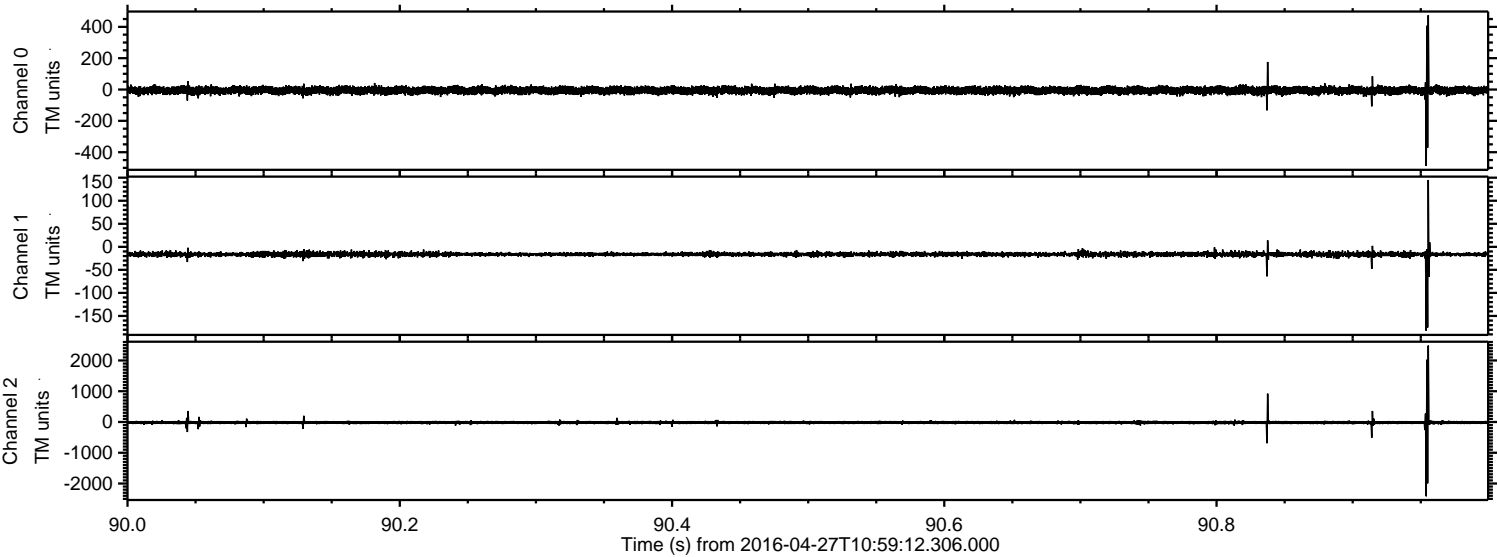


ELMAVAN 3D WAVEFORMS (Measured data sampled at 50 kHz) 51000 packets of 144 samples from 2016-04-27T10:59:12.306.000. Part 145/147

Processed Wed May 11 02:22:21 2016 by ELM ver.2012-10-06 from 001__elm20160427_105911__dat00.bin

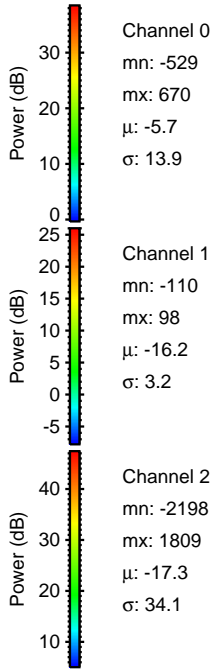
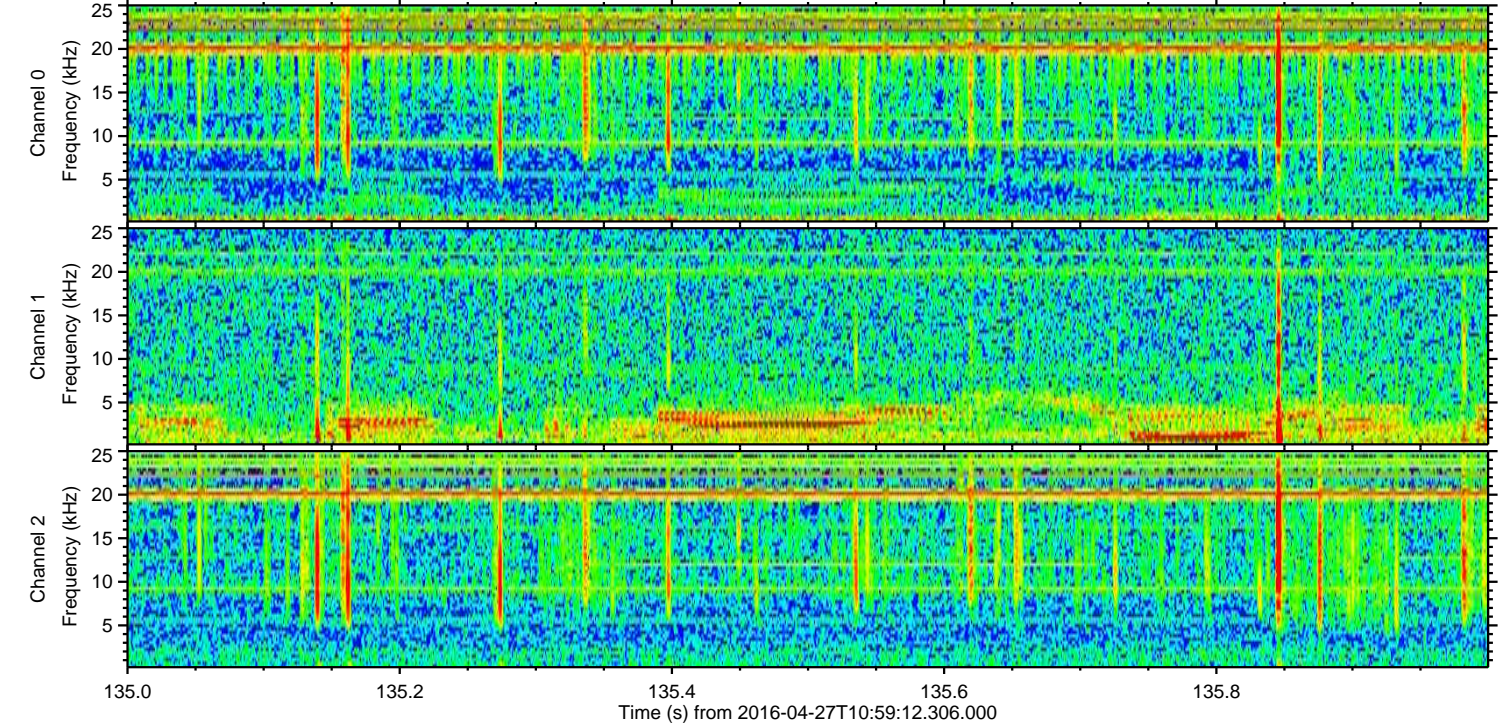
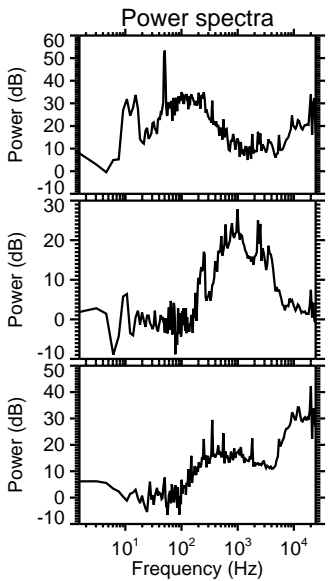
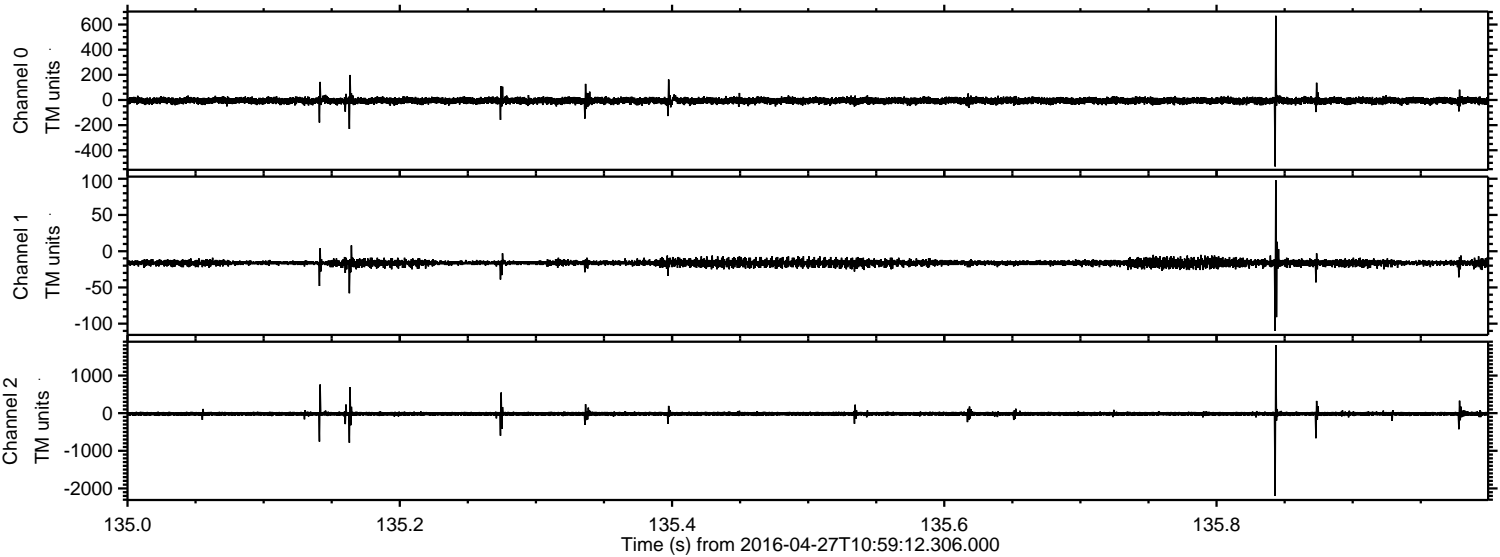


Processed Wed May 11 02:22:22 2016 by ELM ver.2012-10-06 from 001__elm20160427_105911__dat00.bin

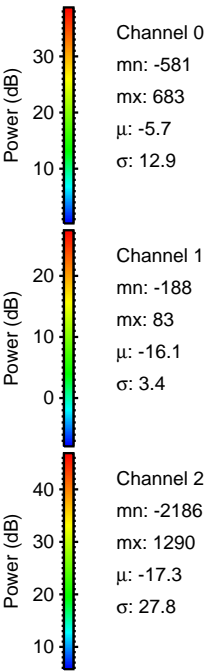
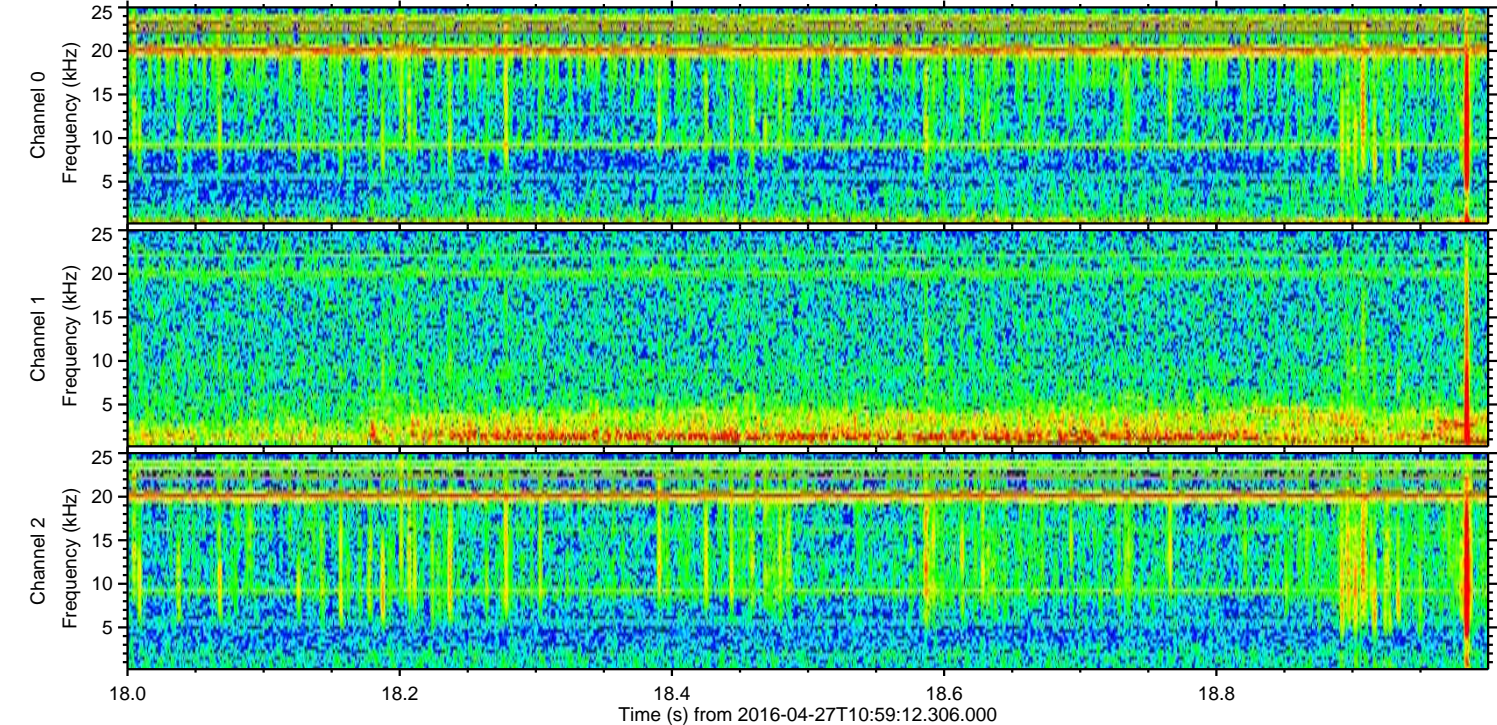
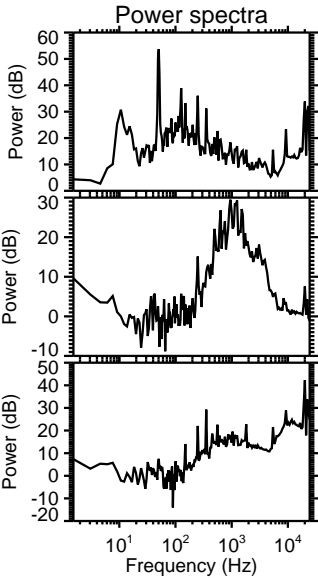
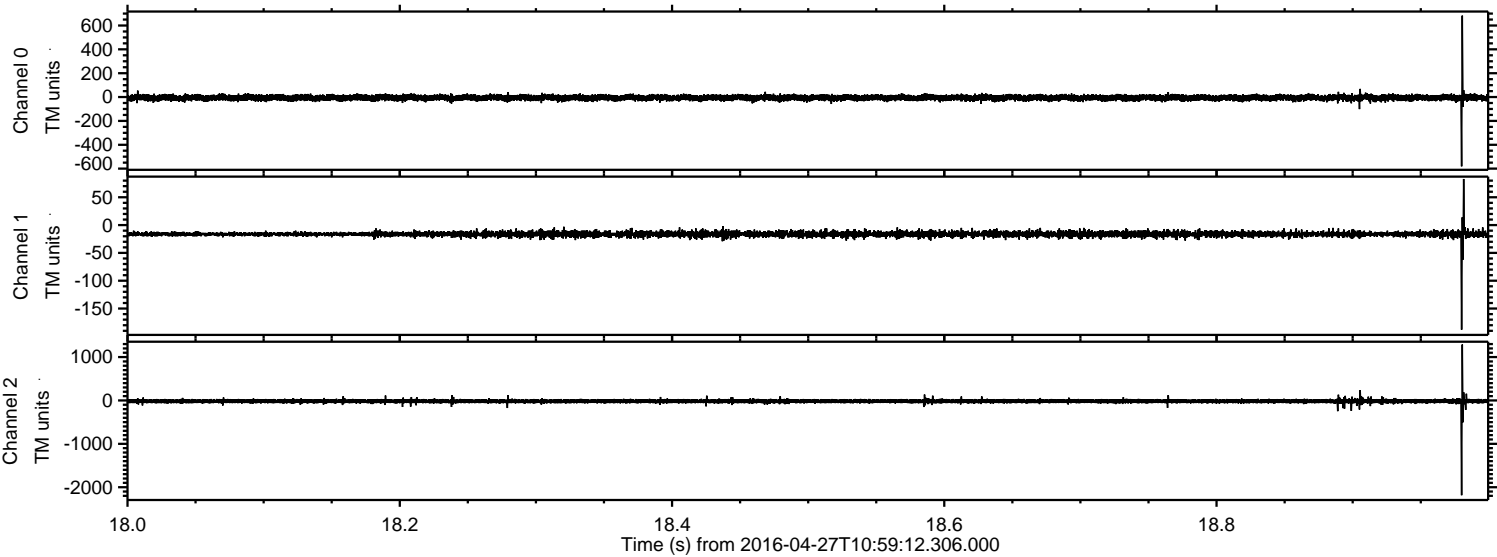


ELMAVAN 3D WAVEFORMS (Measured data sampled at 50 kHz) 51000 packets of 144 samples from 2016-04-27T10:59:12.306.000. Part 136/147

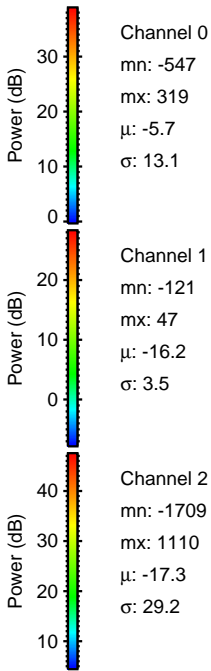
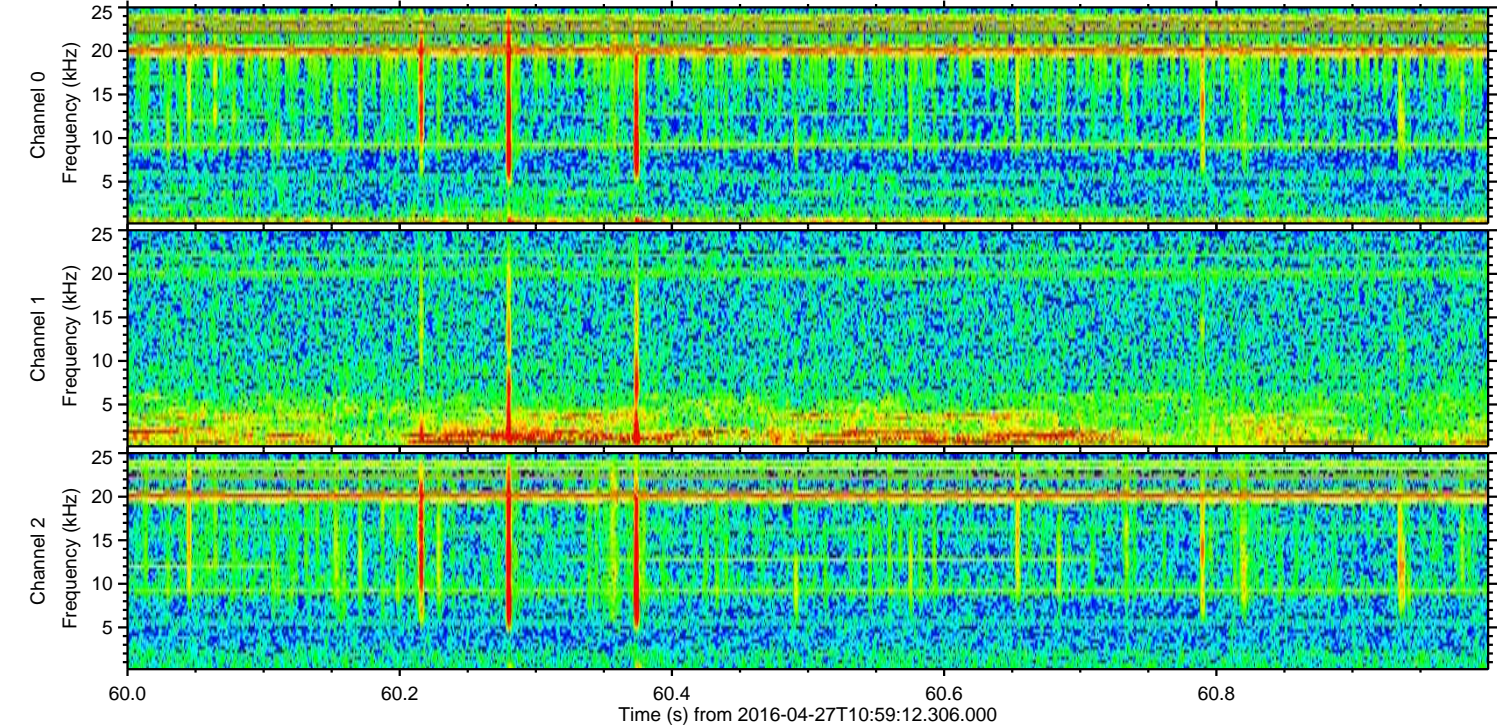
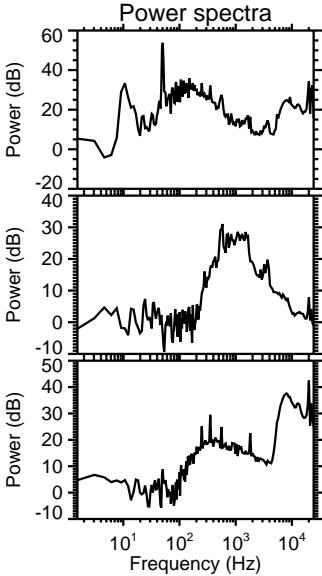
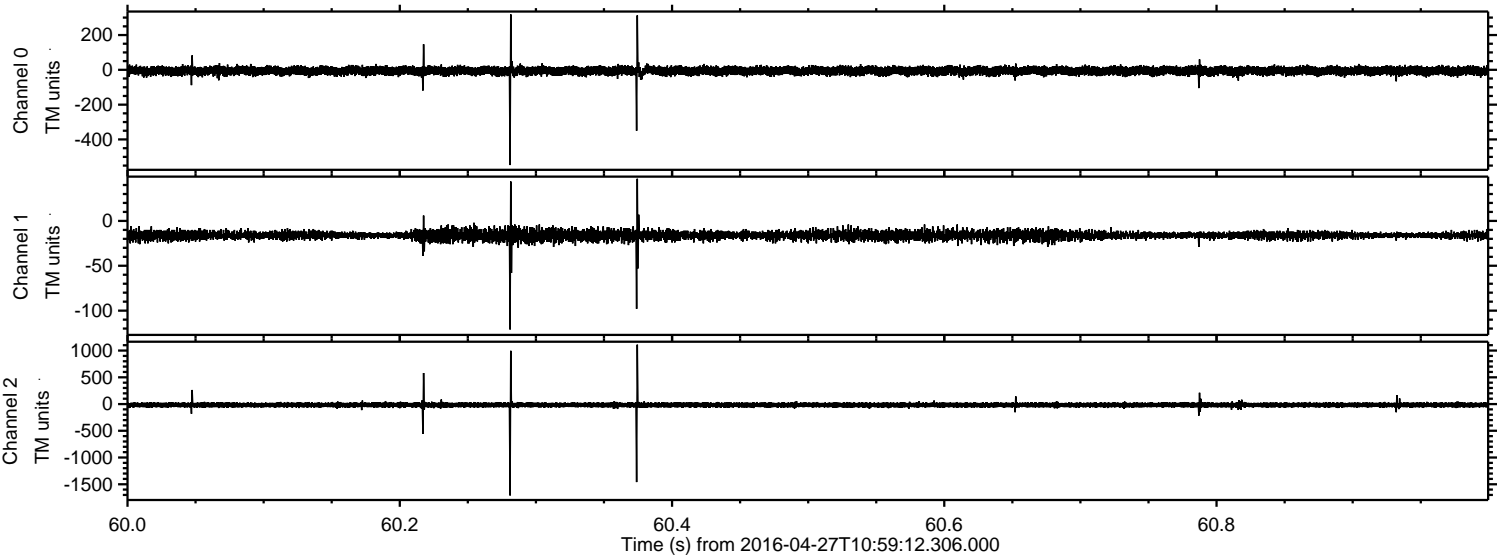
Processed Wed May 11 02:22:23 2016 by ELM ver.2012-10-06 from 001__elm20160427_105911__dat00.bin



Processed Wed May 11 02:22:24 2016 by ELM ver.2012-10-06 from 001__elm20160427_105911__dat00.bin

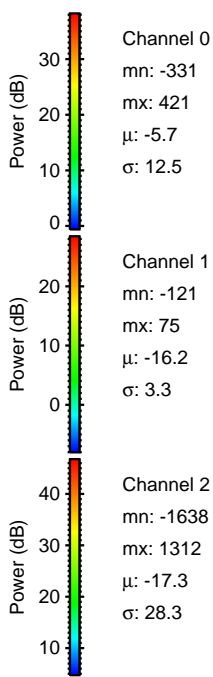
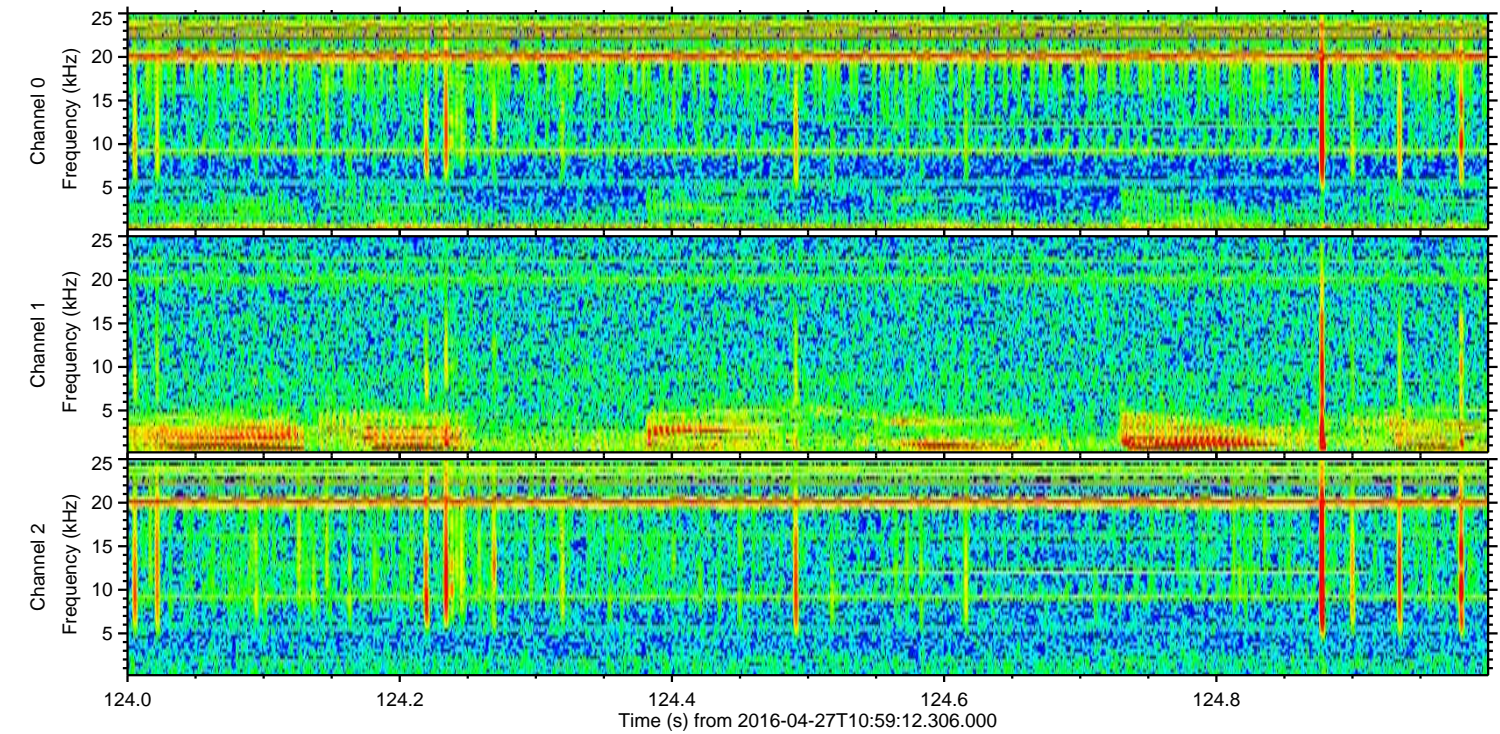
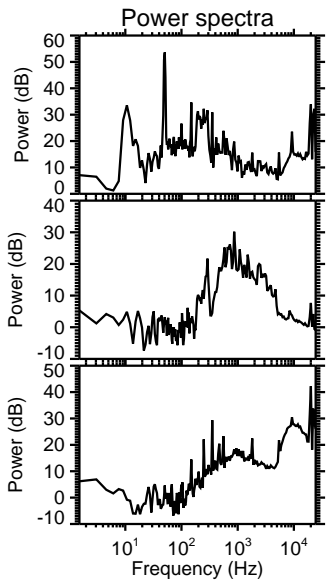
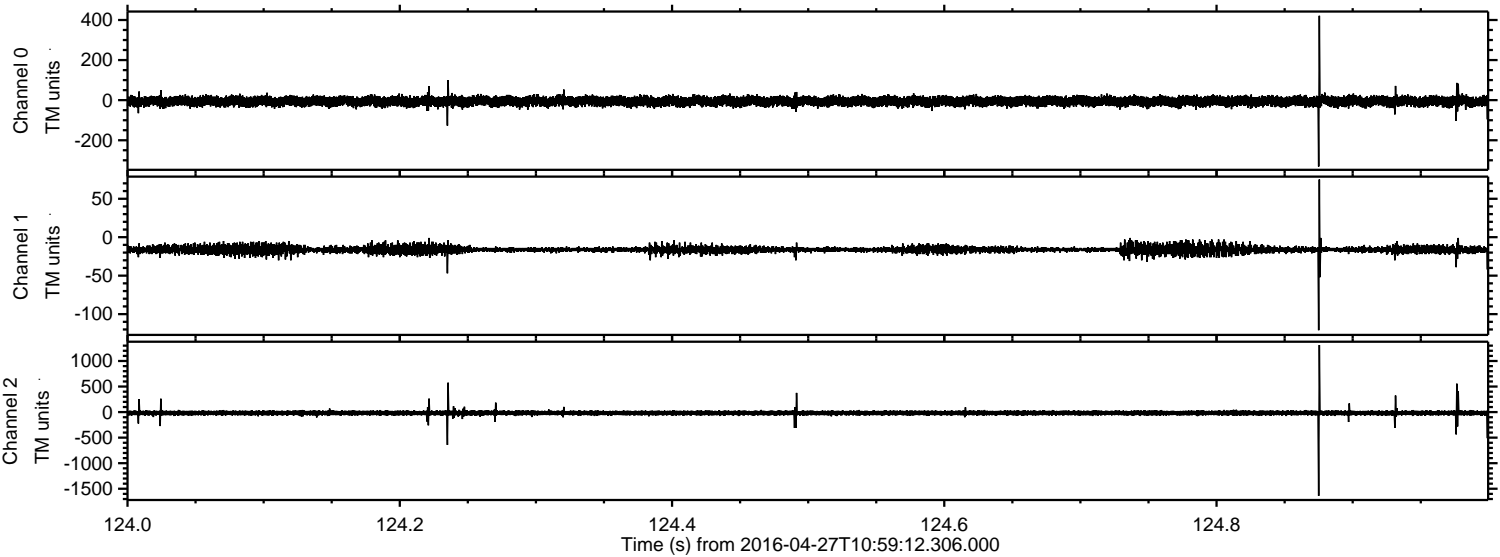


Processed Wed May 11 02:22:24 2016 by ELM ver.2012-10-06 from 001__elm20160427_105911__dat00.bin



ELMAVAN 3D WAVEFORMS (Measured data sampled at 50 kHz) 51000 packets of 144 samples from 2016-04-27T10:59:12.306.000. Part 125/147

Processed Wed May 11 02:22:25 2016 by ELM ver.2012-10-06 from 001__elm20160427_105911__dat00.bin

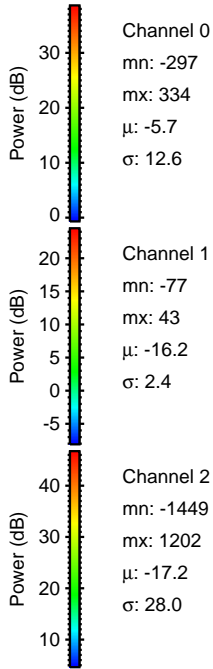
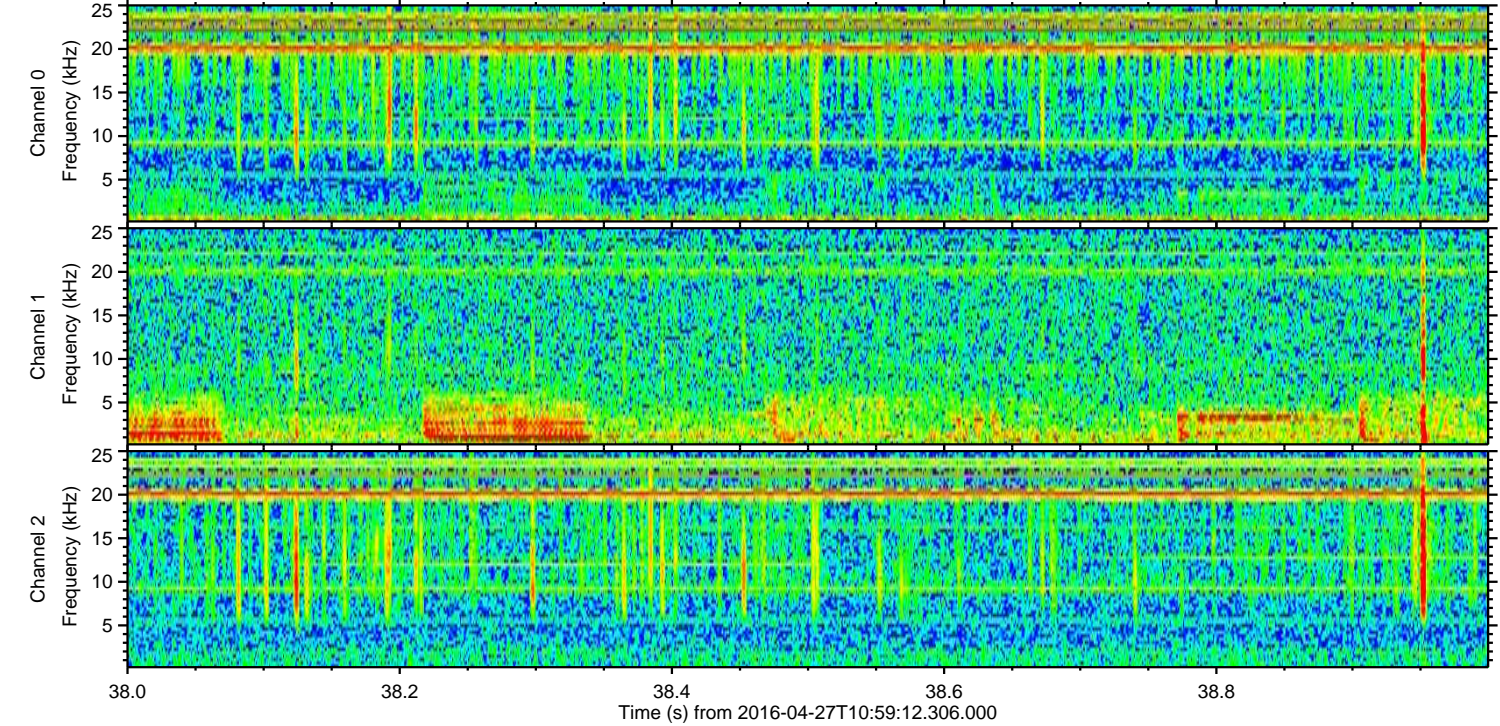
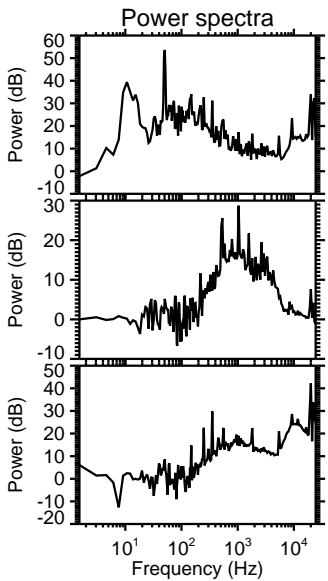
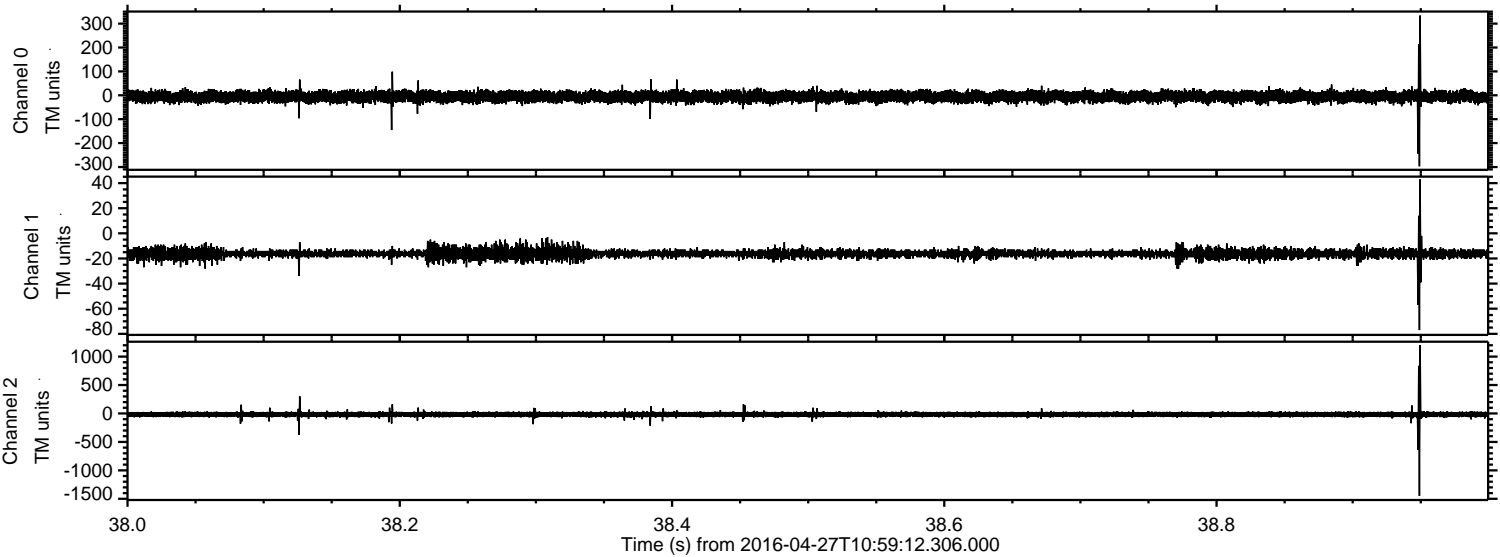


Channel 0
mn: -331
mx: 421
 μ : -5.7
 σ : 12.5

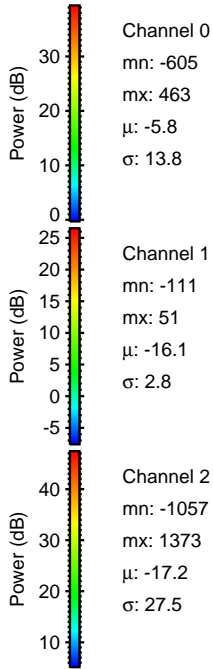
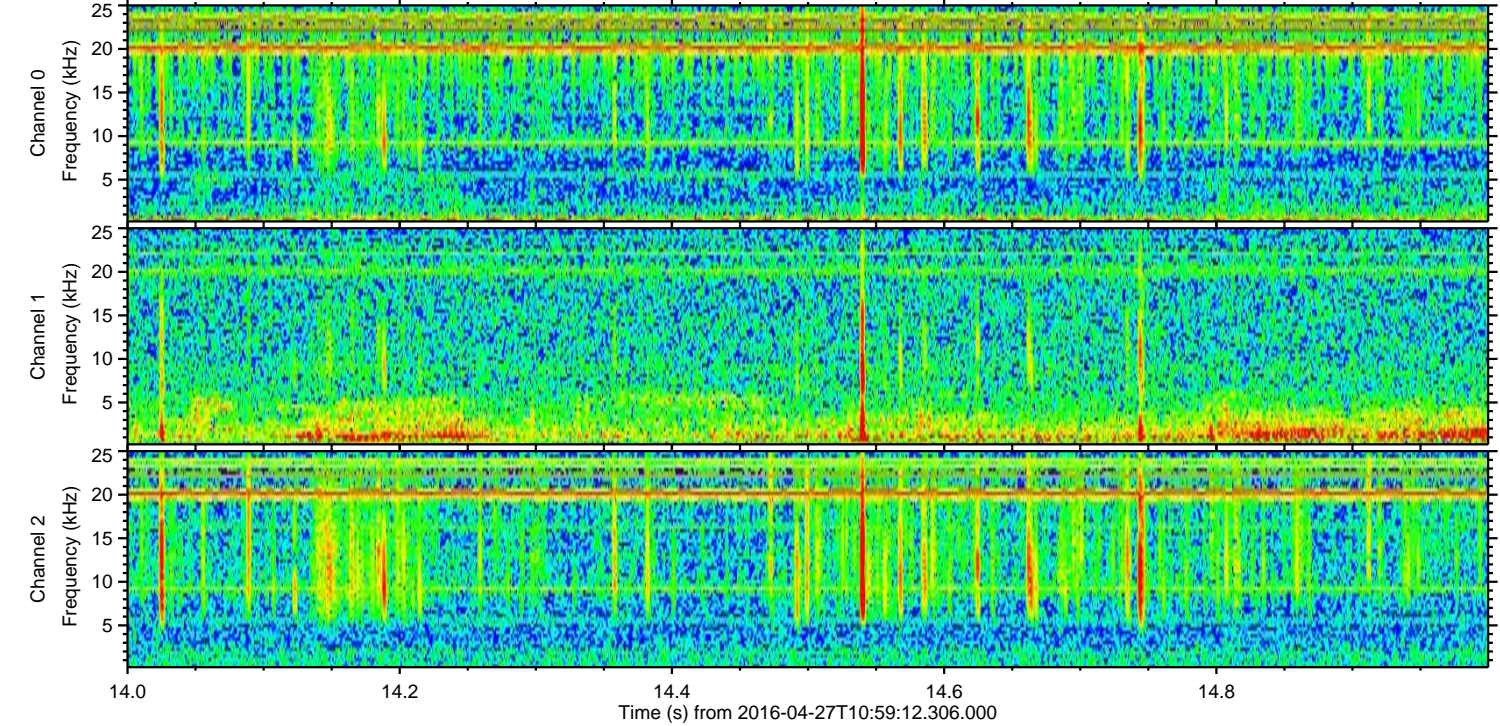
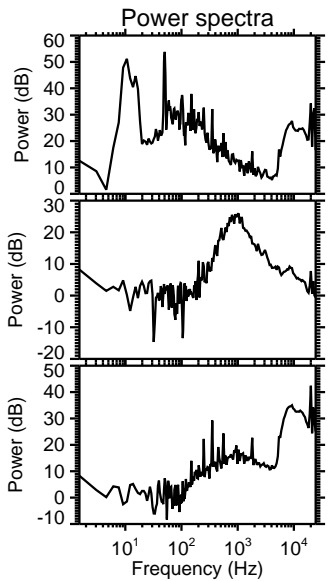
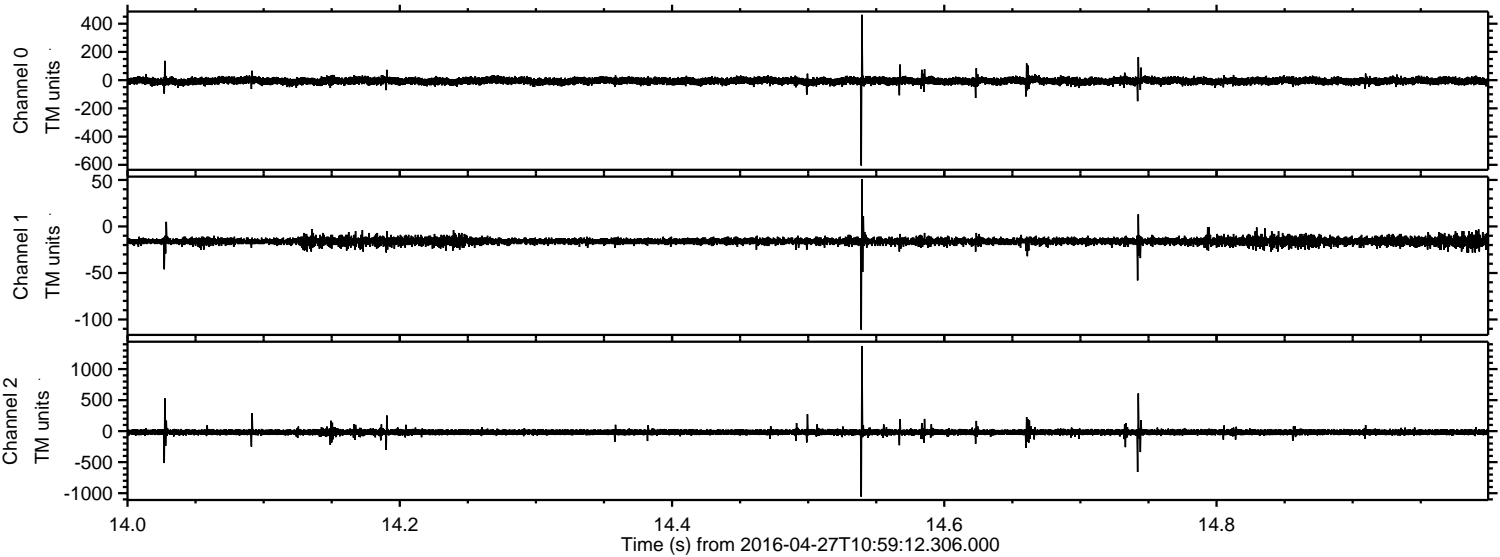
Channel 1
mn: -121
mx: 75
 μ : -16.2
 σ : 3.3

Channel 2
mn: -1638
mx: 1312
 μ : -17.3
 σ : 28.3

Processed Wed May 11 02:22:26 2016 by ELM ver.2012-10-06 from 001__elm20160427_105911__dat00.bin



Processed Wed May 11 02:22:27 2016 by ELM ver.2012-10-06 from 001__elm20160427_105911__dat00.bin



Channel 0
mn: -605
mx: 463
 μ : -5.8
 σ : 13.8

Channel 1
mn: -111
mx: 51
 μ : -16.1
 σ : 2.8

Channel 2
mn: -1057
mx: 1373
 μ : -17.2
 σ : 27.5

Processed Wed May 11 02:22:28 2016 by ELM ver.2012-10-06 from 001__elm20160427_105911__dat00.bin

