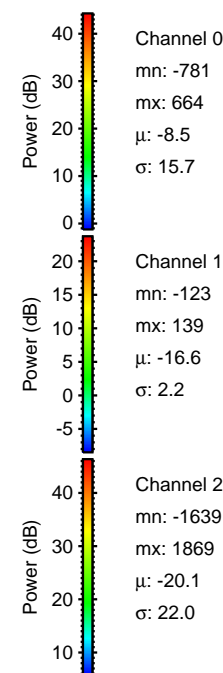
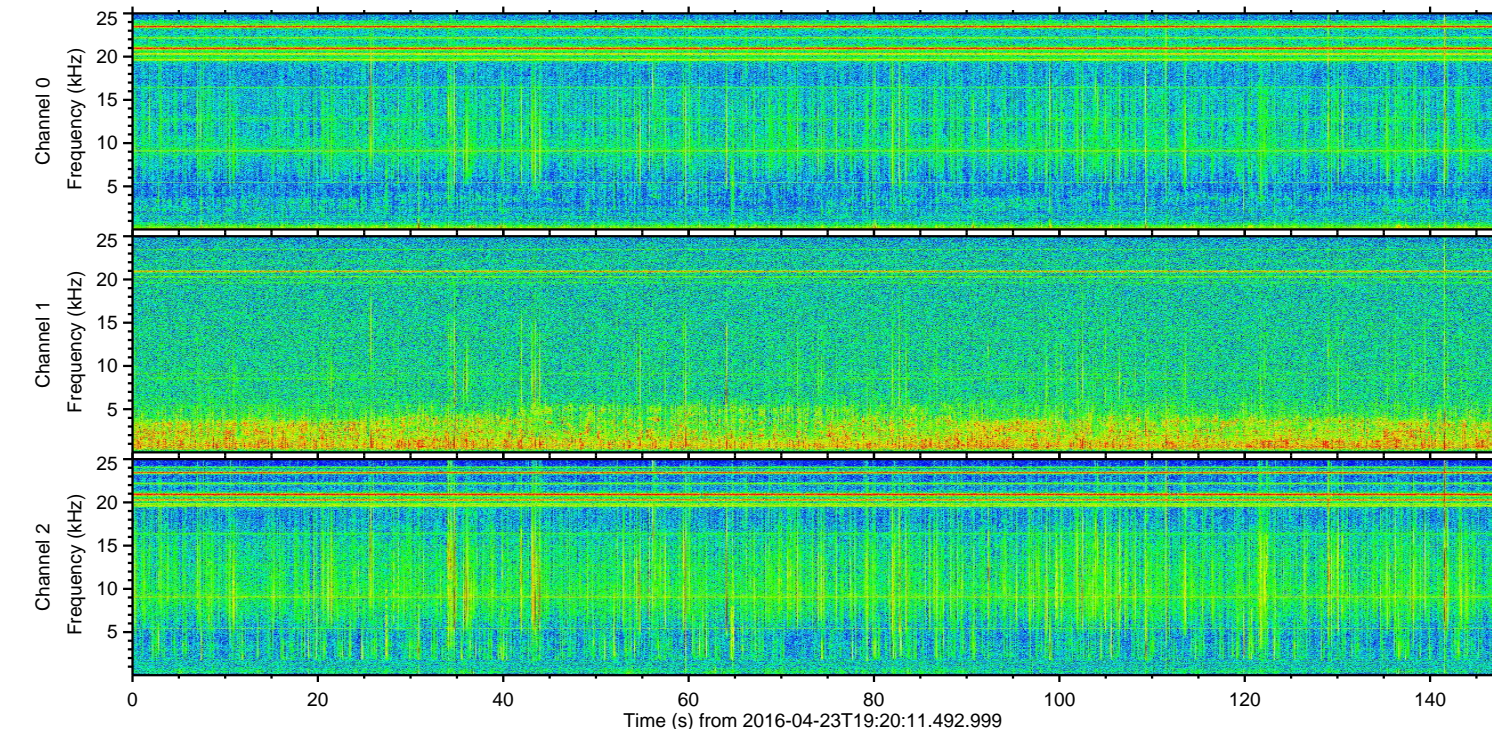
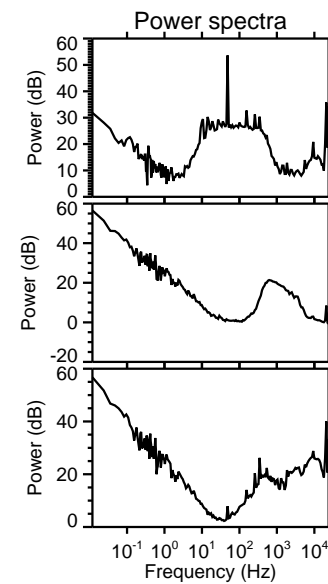
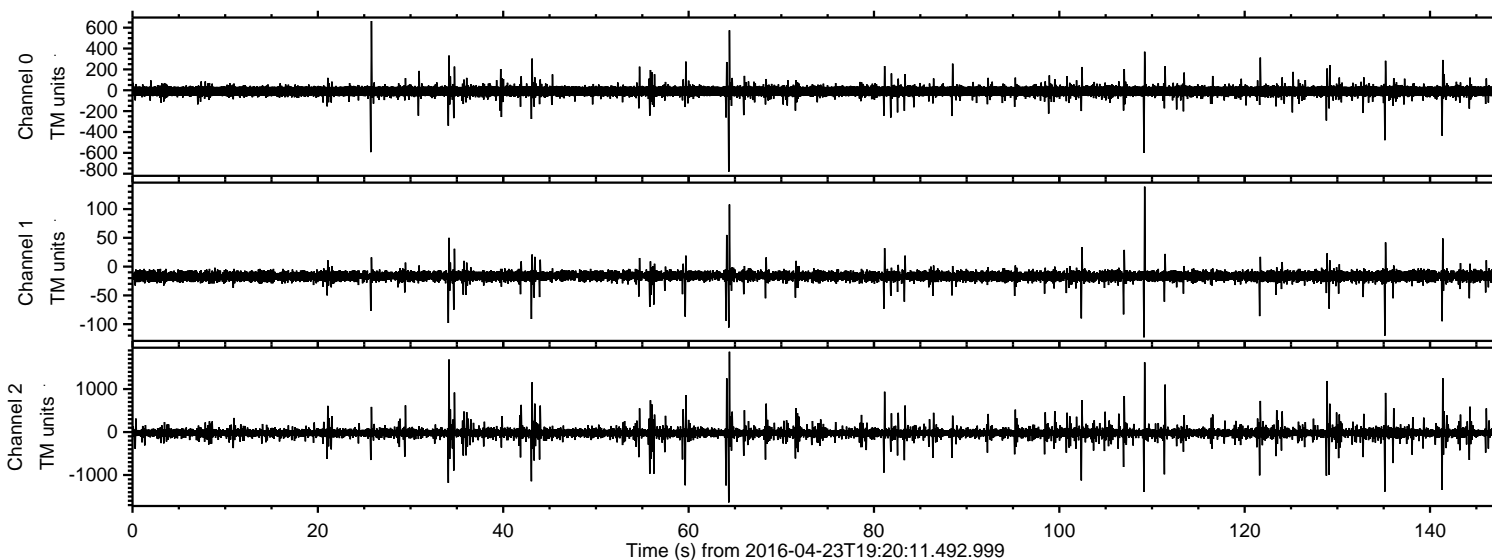


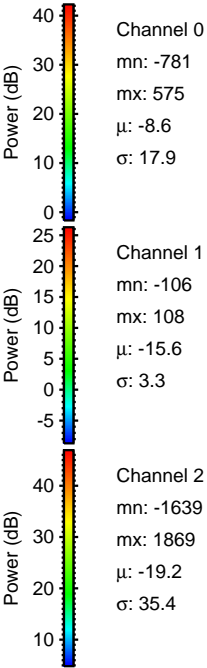
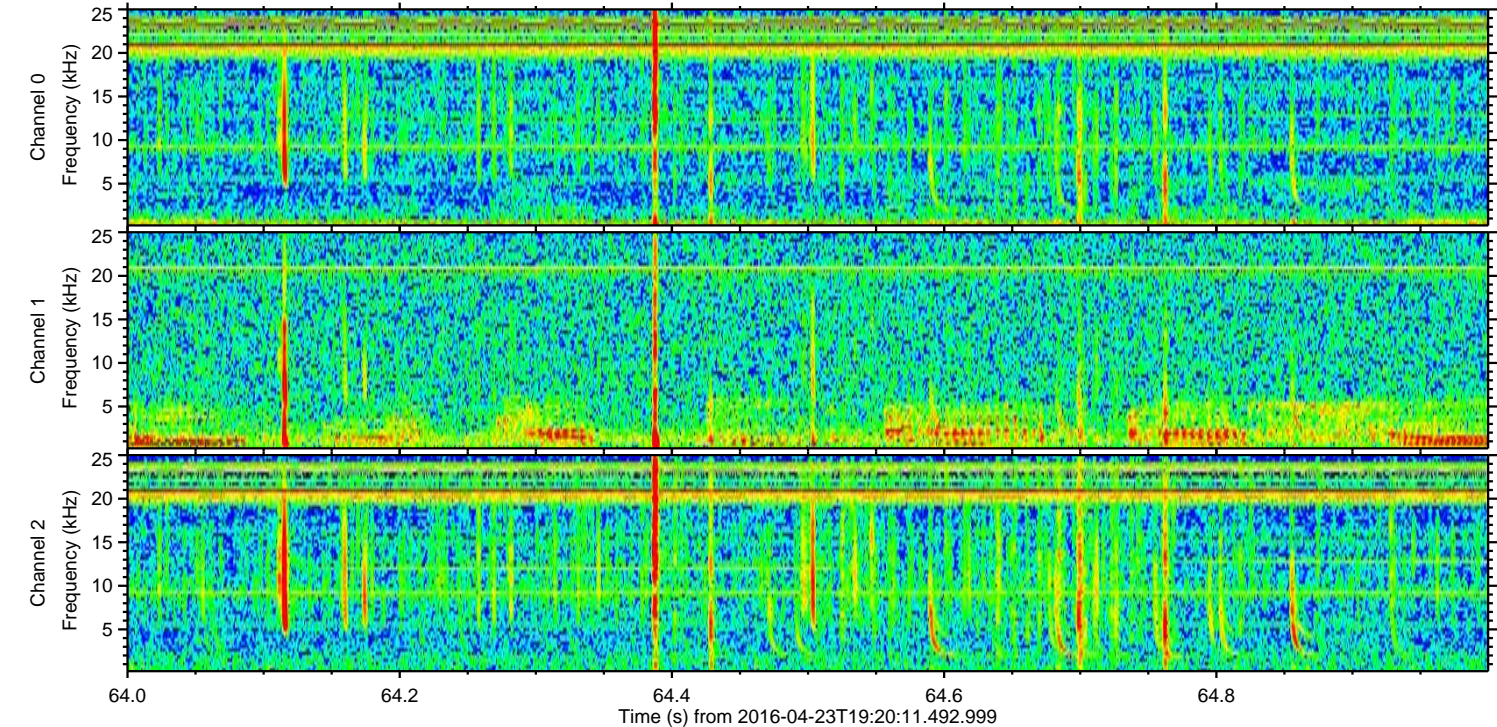
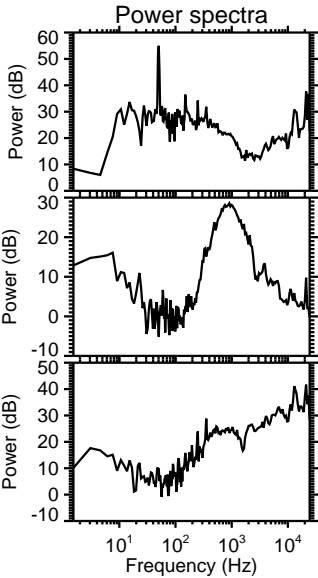
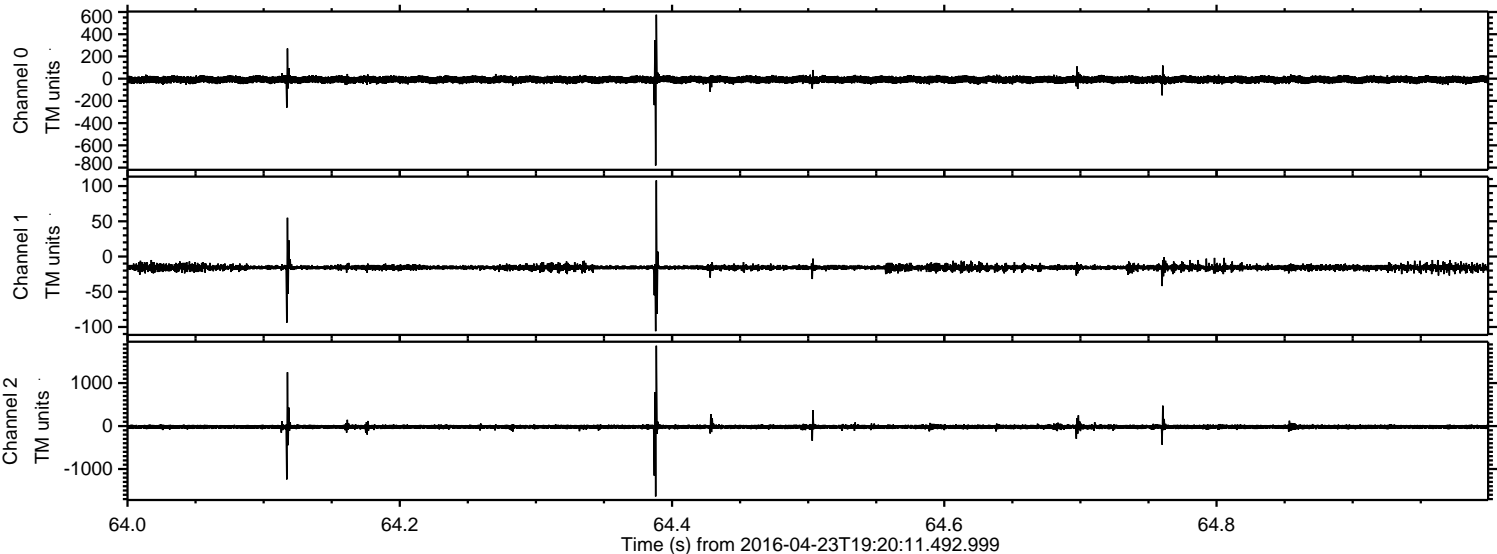
# ELMAVAN 3D WAVEFORMS (Measured data sampled at 50 kHz) 51000 packets of 144 samples from 2016-04-23T19:20:11.492.999.

Processed Tue May 10 07:52:32 2016 by ELM ver.2012-10-06 from 001\_\_elm20160423\_192010\_\_dat00.bin



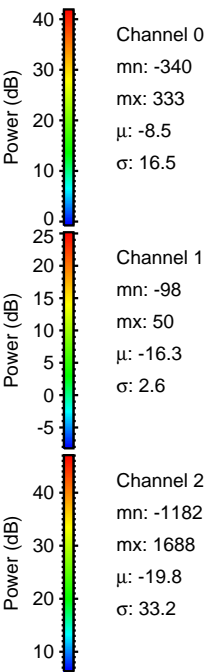
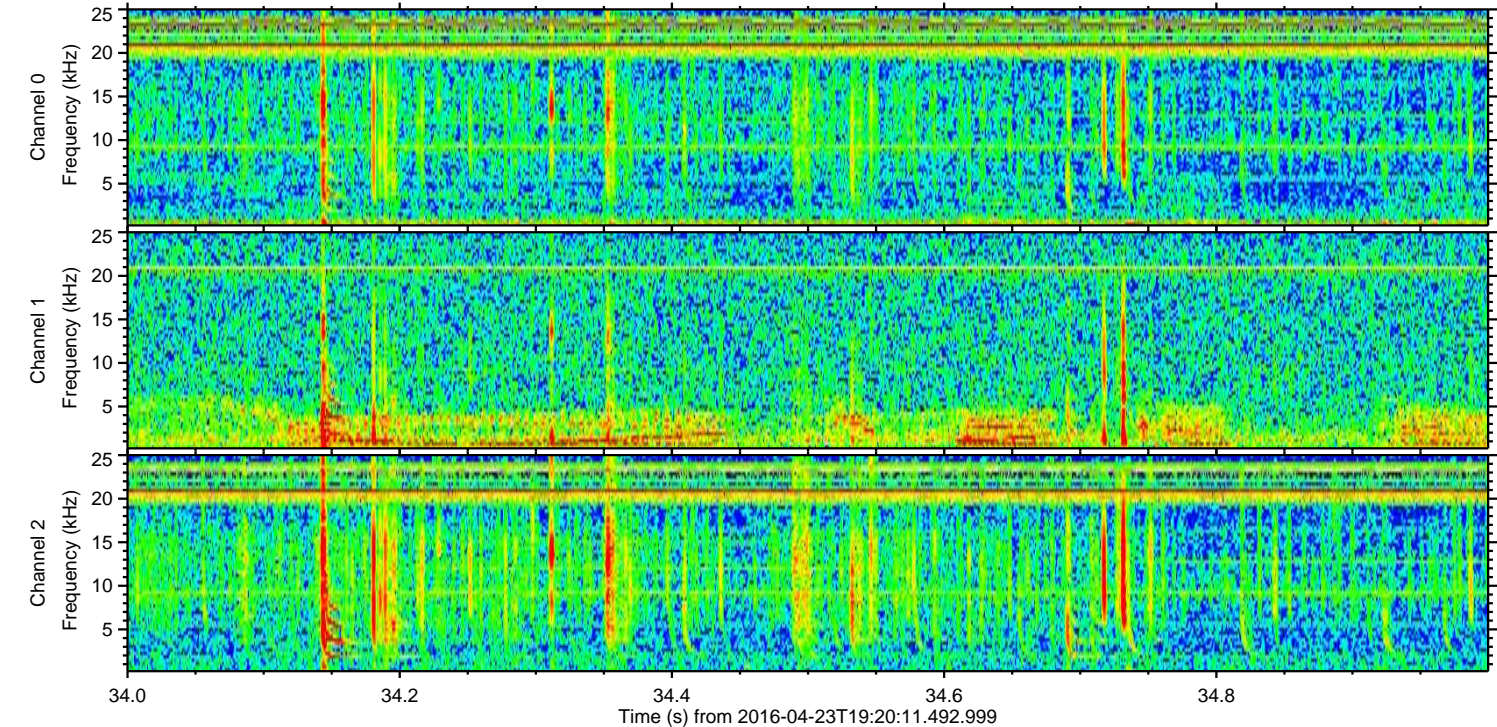
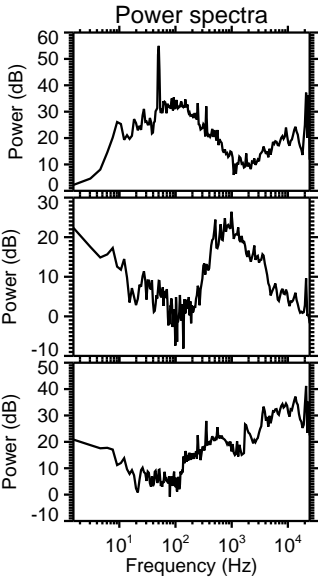
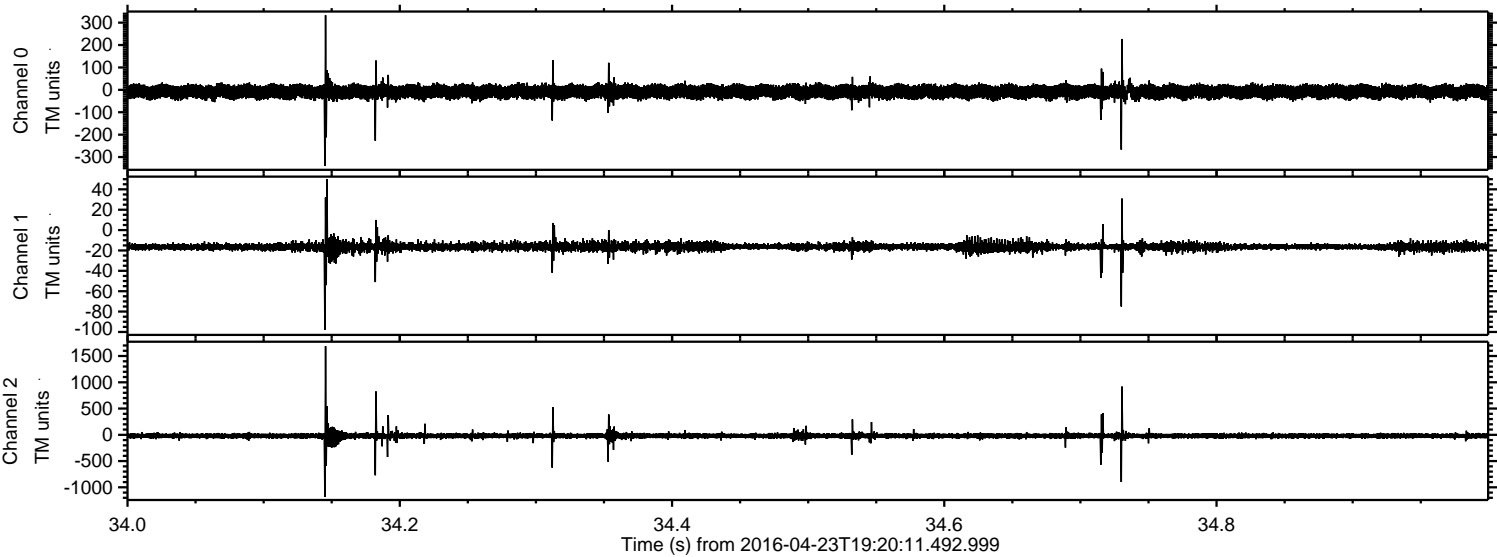


Processed Tue May 10 07:52:43 2016 by ELM ver.2012-10-06 from 001\_elm20160423\_192010\_\_dat00.bin





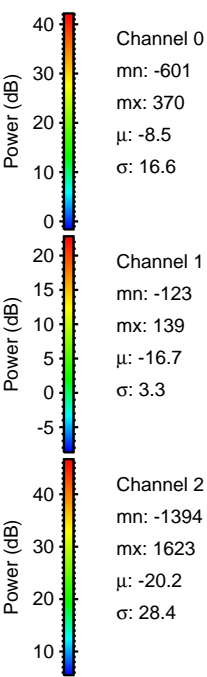
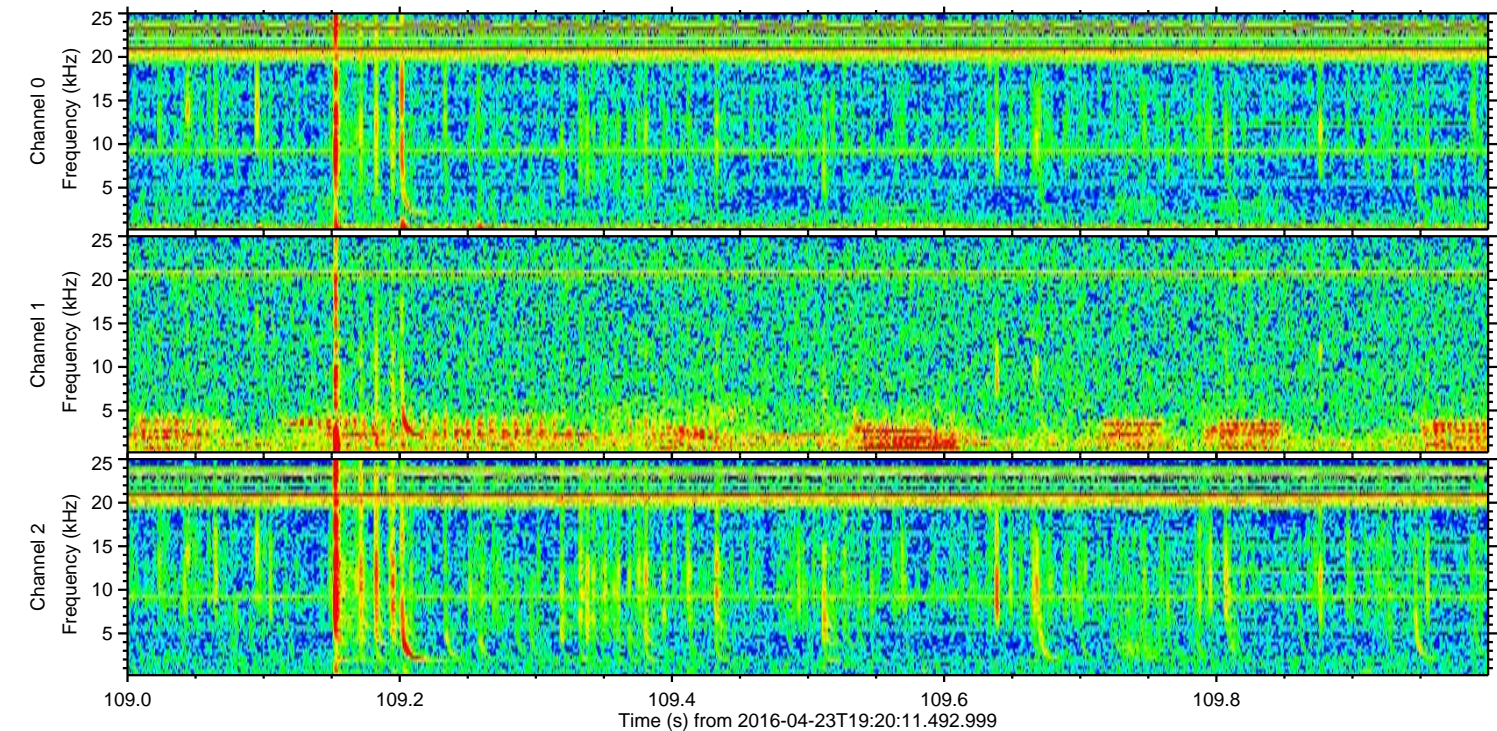
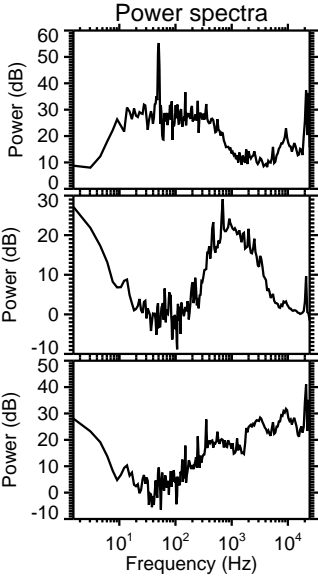
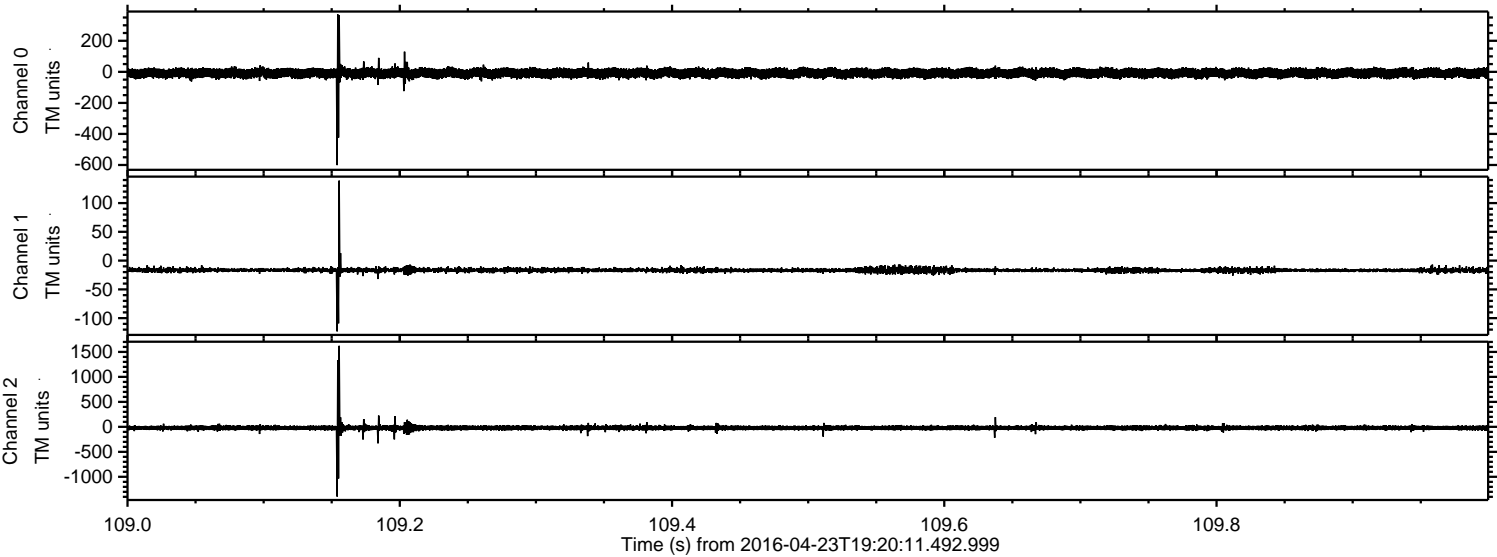
Processed Tue May 10 07:52:44 2016 by ELM ver.2012-10-06 from 001\_\_elm20160423\_192010\_\_dat00.bin





ELMAVAN 3D WAVEFORMS (Measured data sampled at 50 kHz) 51000 packets of 144 samples from 2016-04-23T19:20:11.492.999. Part 110/147

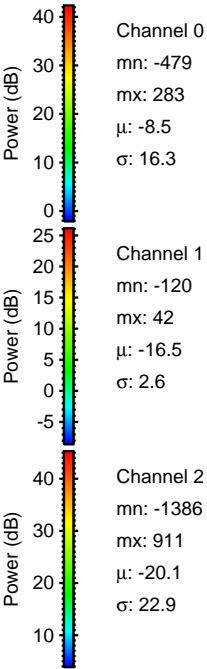
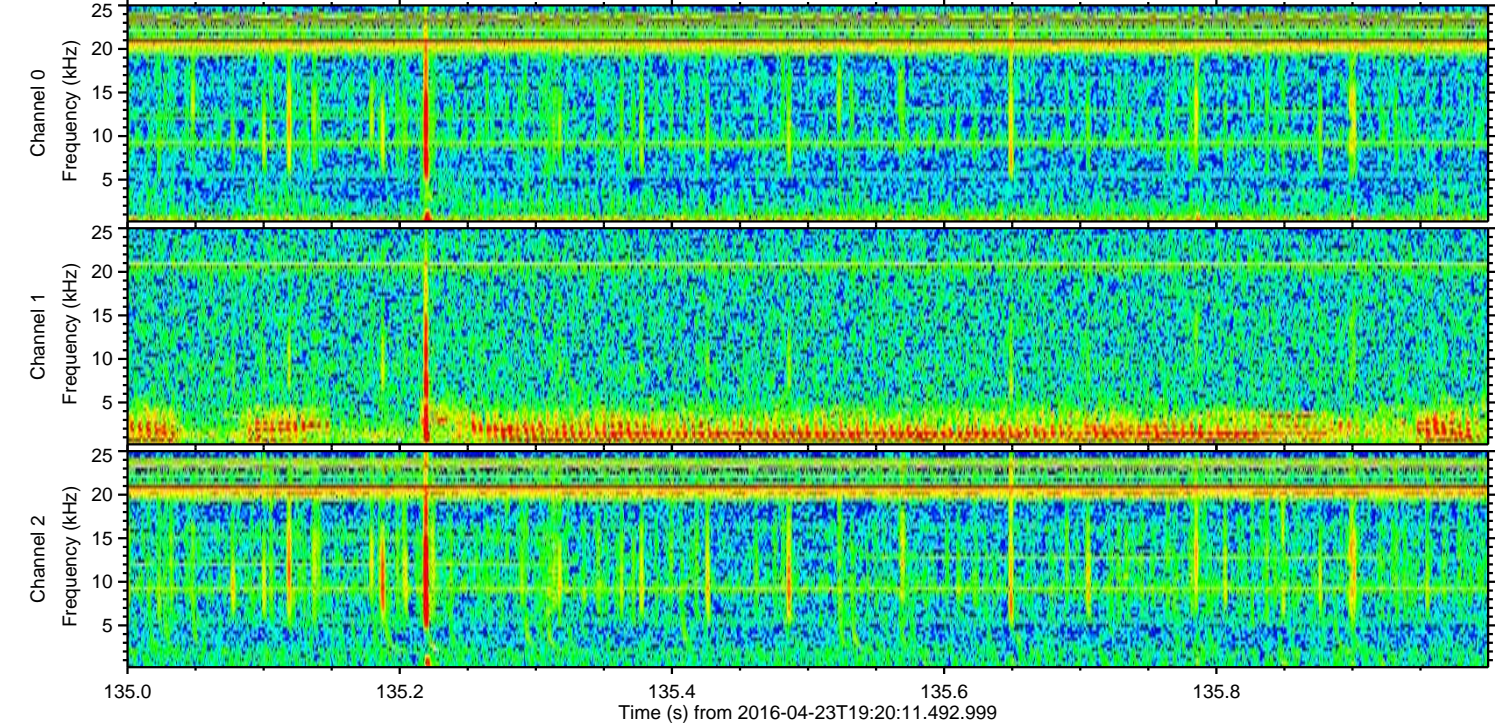
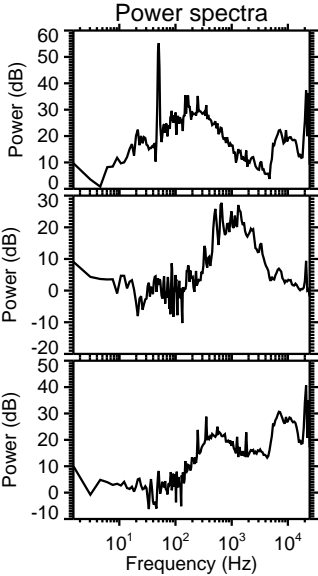
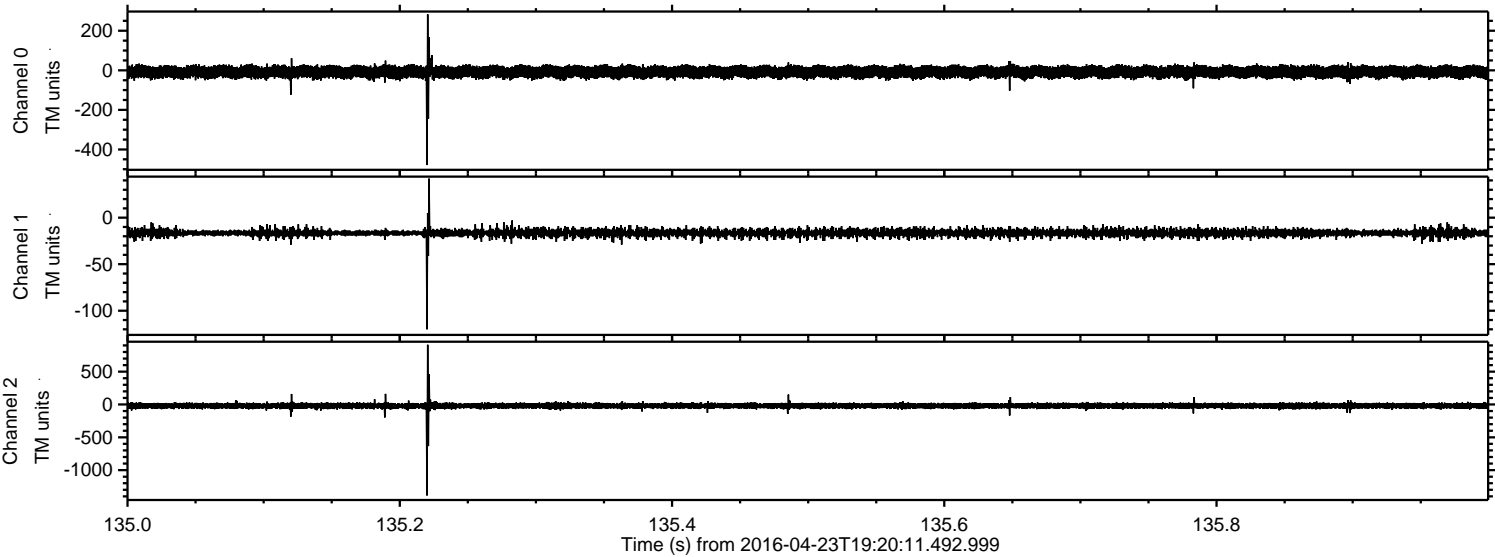
Processed Tue May 10 07:52:45 2016 by ELM ver.2012-10-06 from 001\_\_elm20160423\_192010\_\_dat00.bin





ELMAVAN 3D WAVEFORMS (Measured data sampled at 50 kHz) 51000 packets of 144 samples from 2016-04-23T19:20:11.492.999. Part 136/147

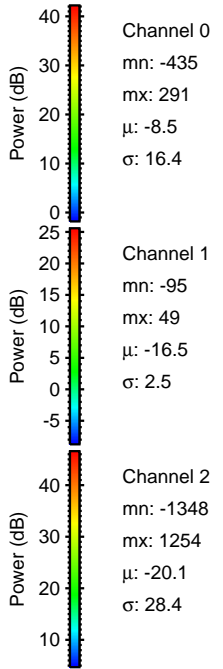
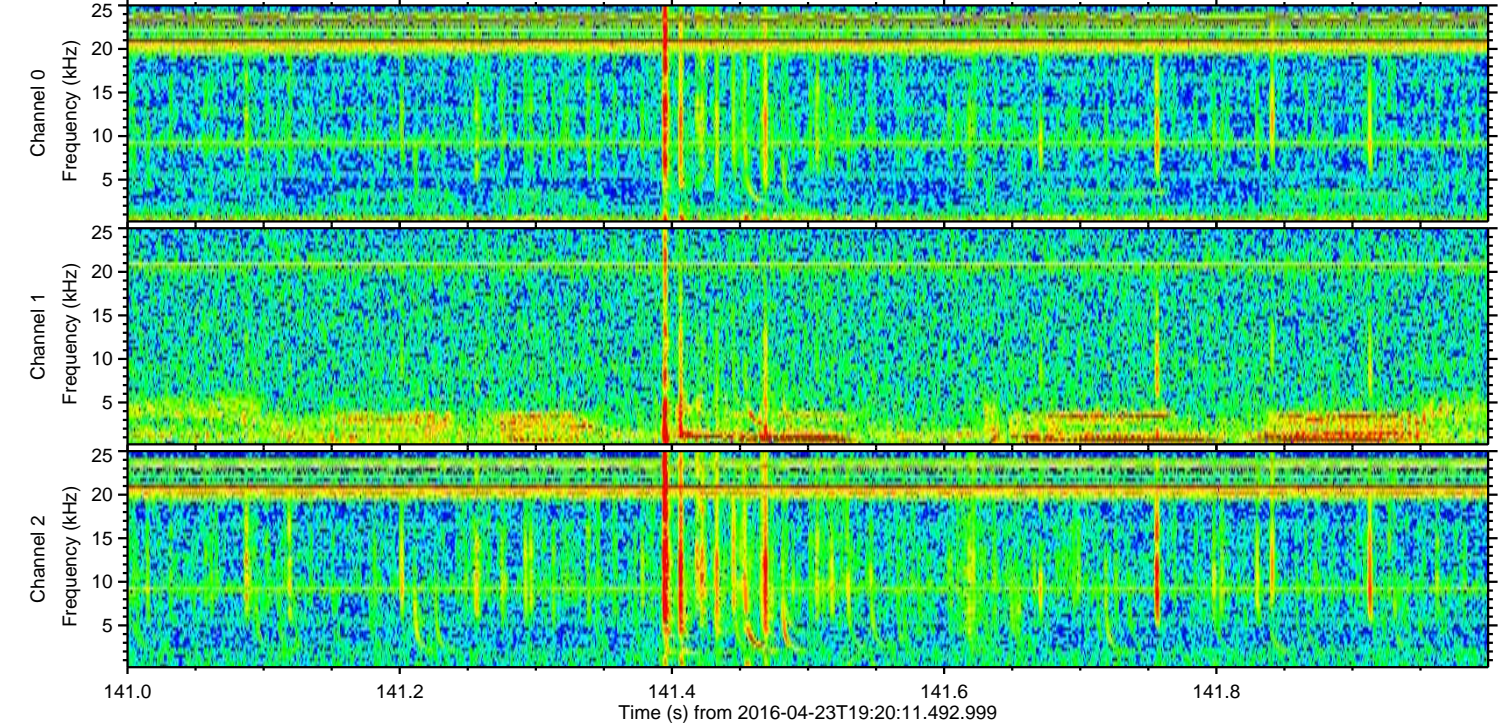
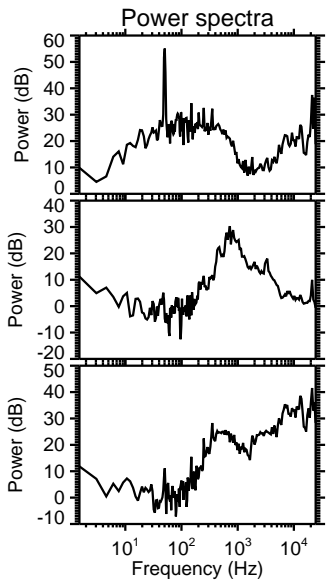
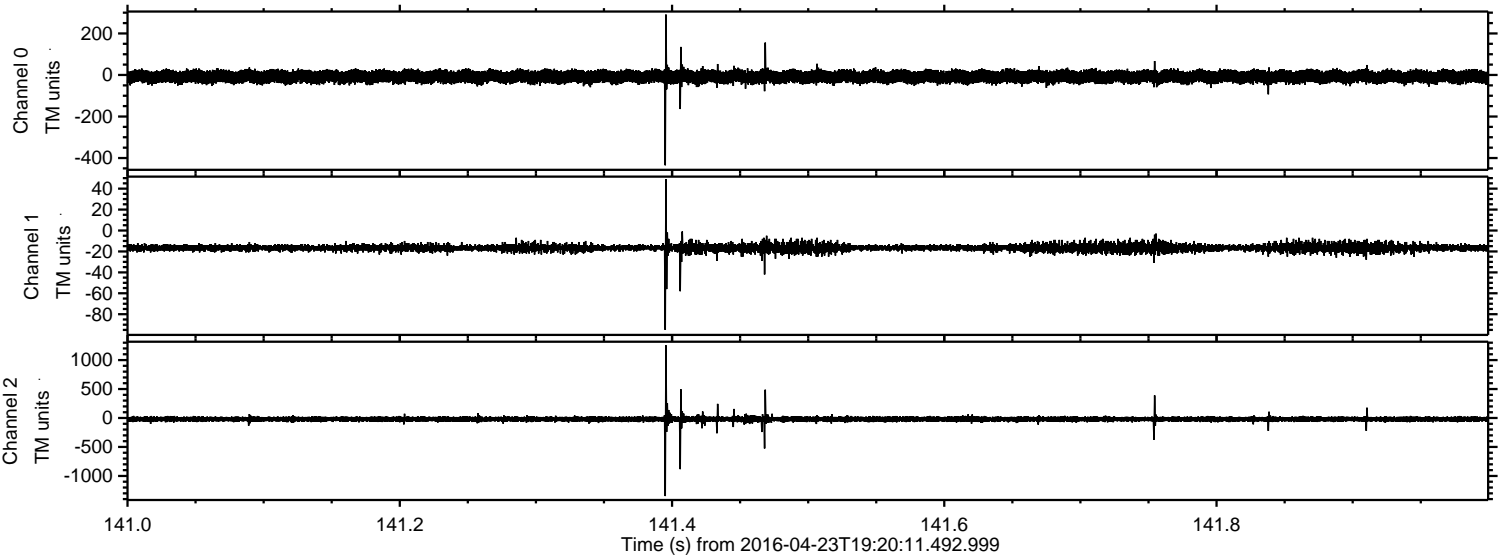
Processed Tue May 10 07:52:46 2016 by ELM ver.2012-10-06 from 001\_\_elm20160423\_192010\_\_dat00.bin





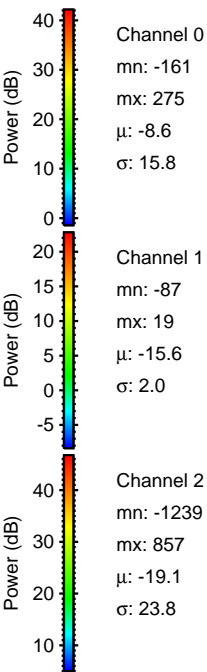
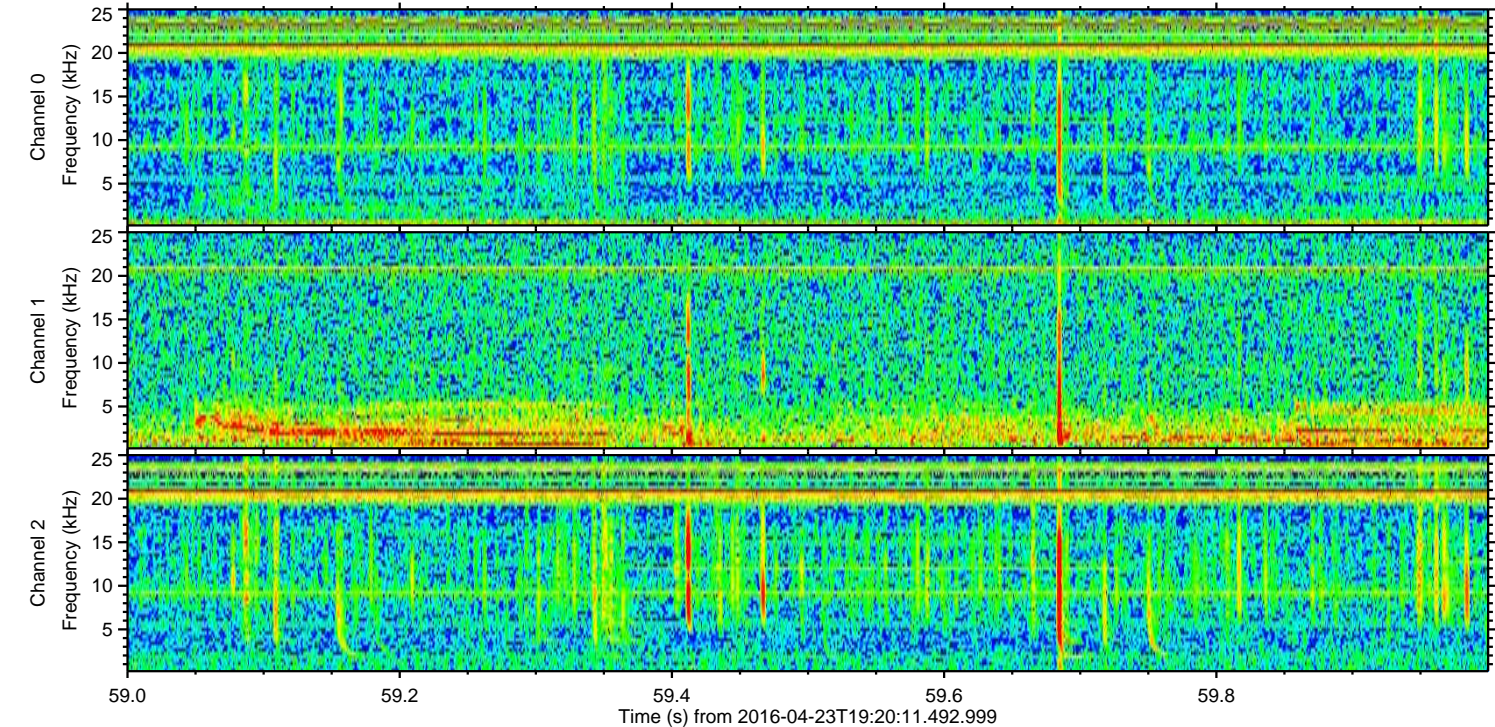
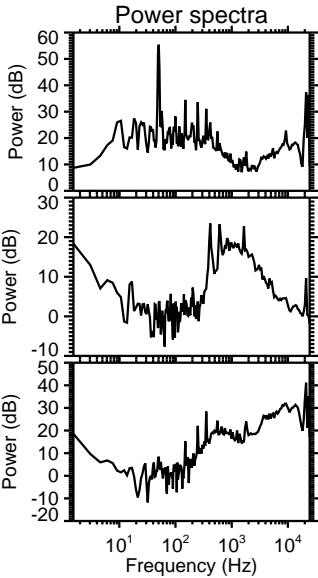
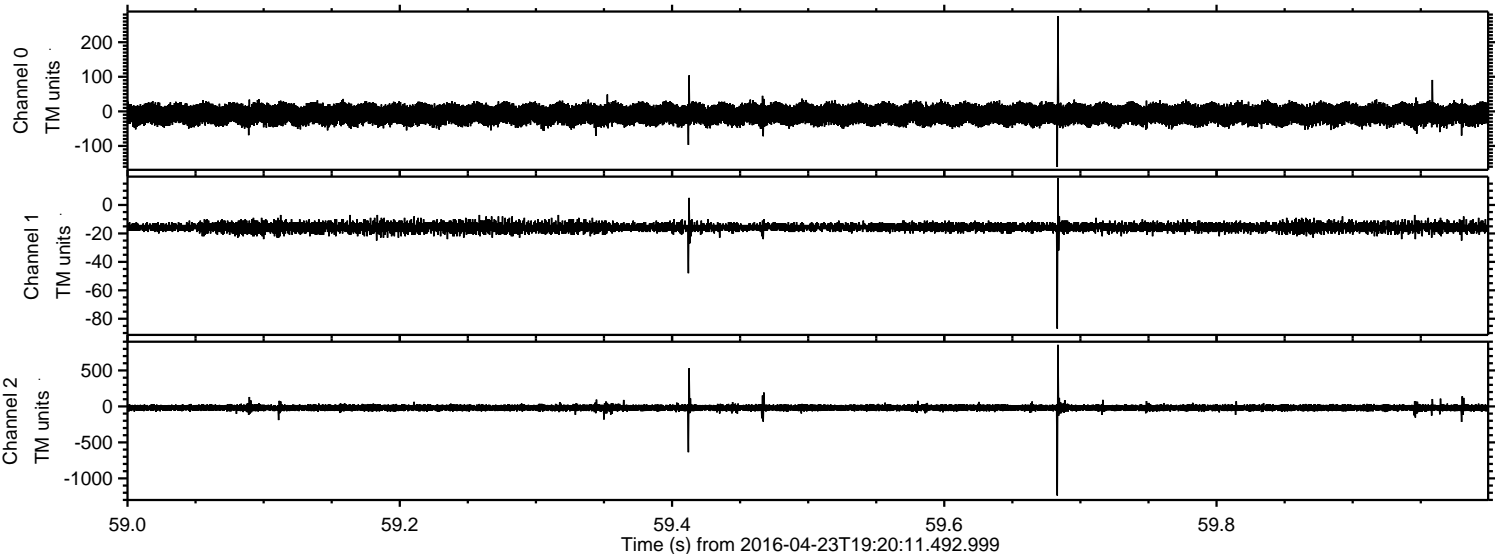
ELMAVAN 3D WAVEFORMS (Measured data sampled at 50 kHz) 51000 packets of 144 samples from 2016-04-23T19:20:11.492.999. Part 142/147

Processed Tue May 10 07:52:47 2016 by ELM ver.2012-10-06 from 001\_\_elm20160423\_192010\_\_dat00.bin





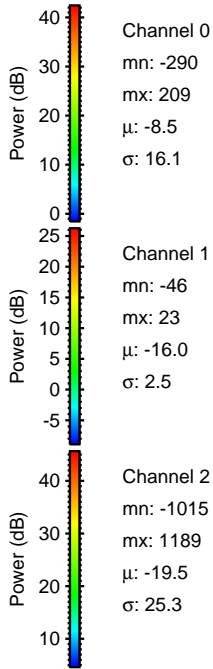
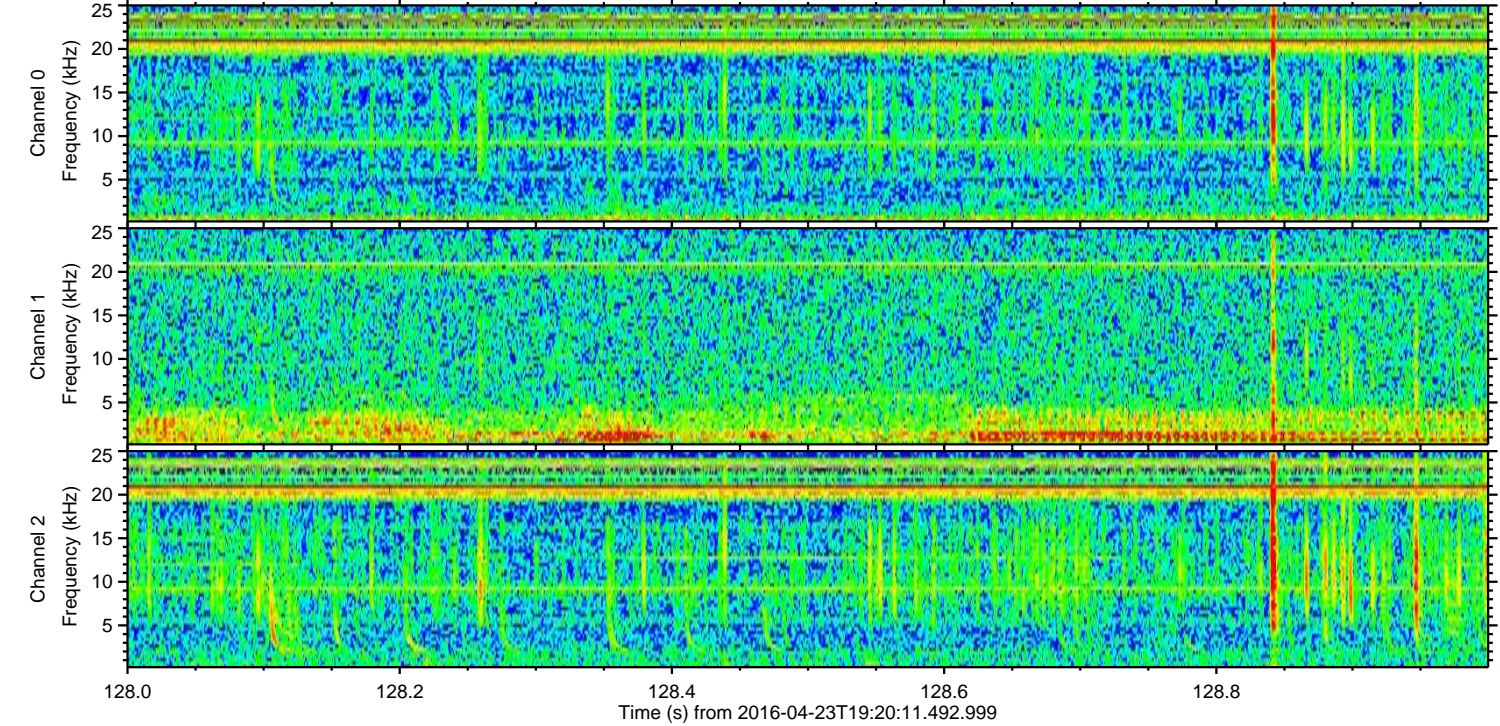
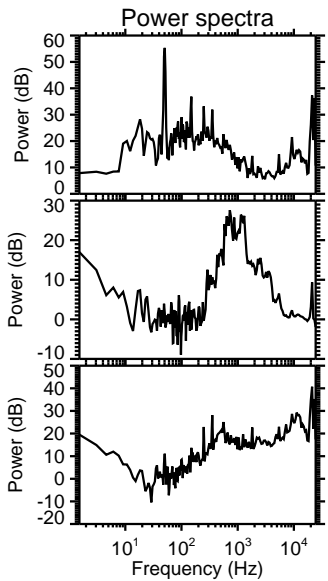
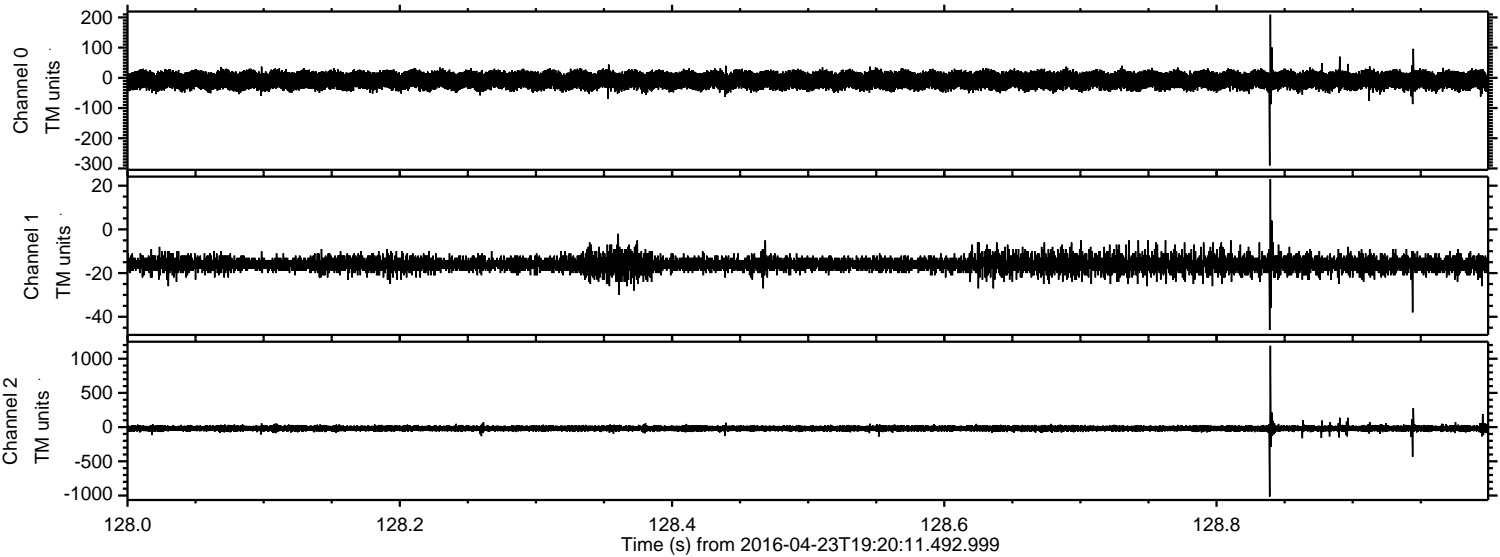
Processed Tue May 10 07:52:48 2016 by ELM ver.2012-10-06 from 001\_\_elm20160423\_192010\_\_dat00.bin





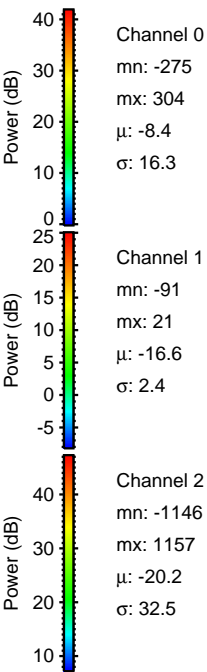
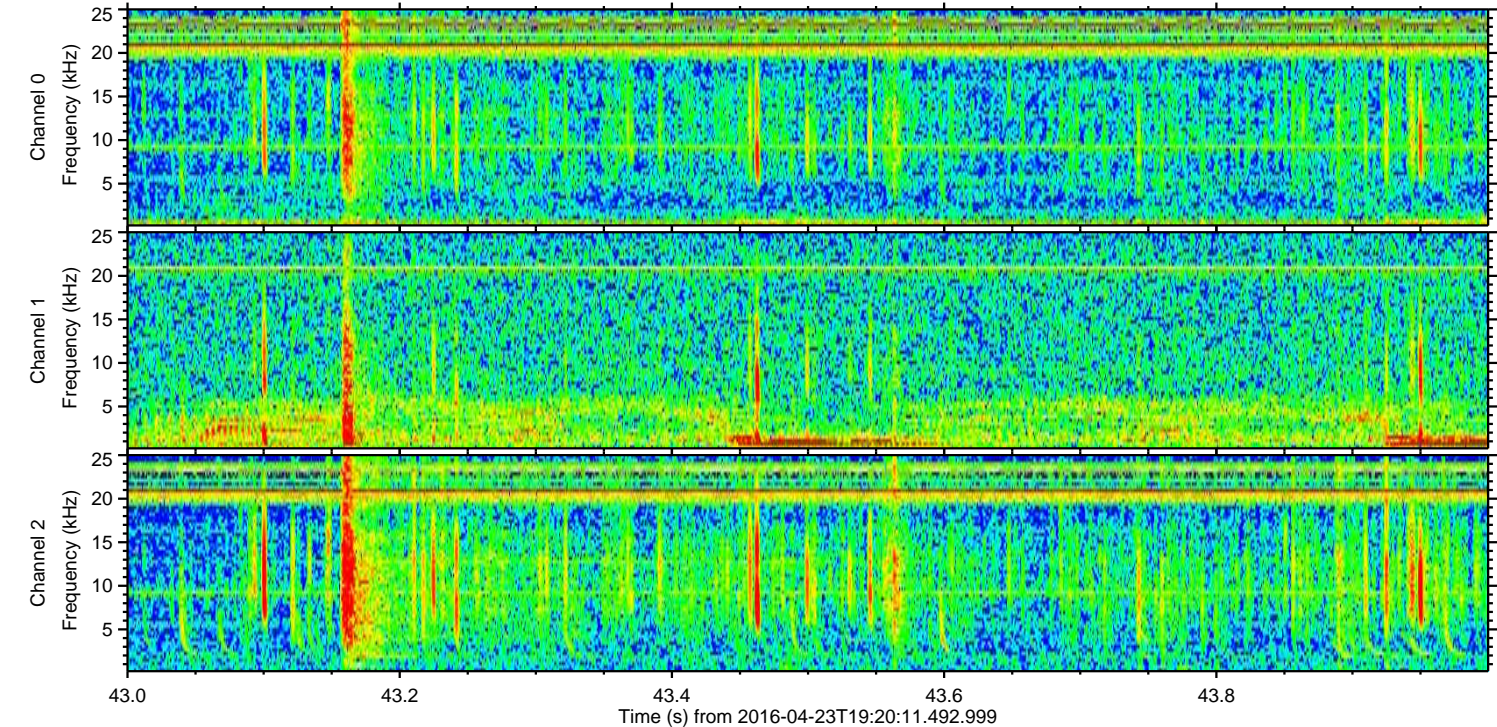
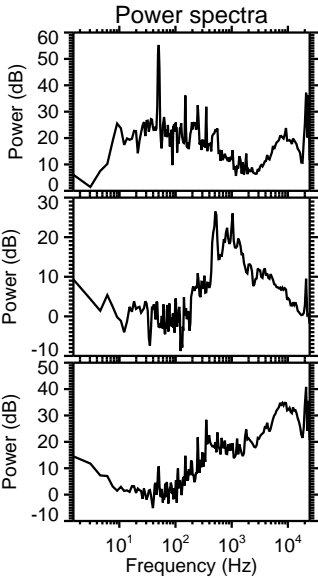
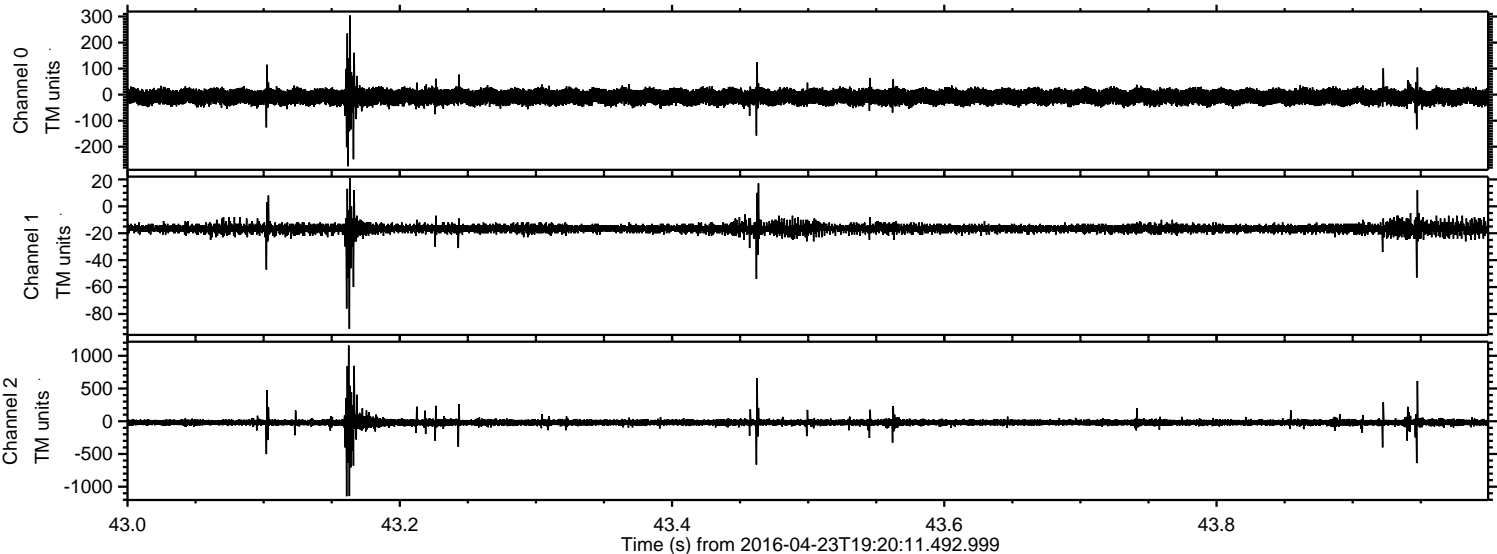
ELMAVAN 3D WAVEFORMS (Measured data sampled at 50 kHz) 51000 packets of 144 samples from 2016-04-23T19:20:11.492.999. Part 129/147

Processed Tue May 10 07:52:49 2016 by ELM ver.2012-10-06 from 001\_\_elm20160423\_192010\_\_dat00.bin



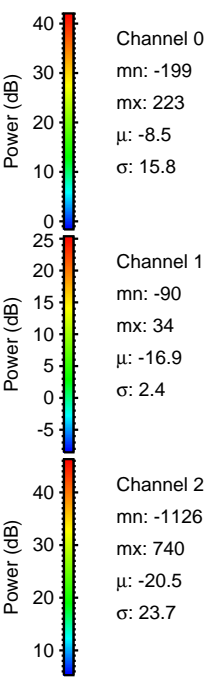
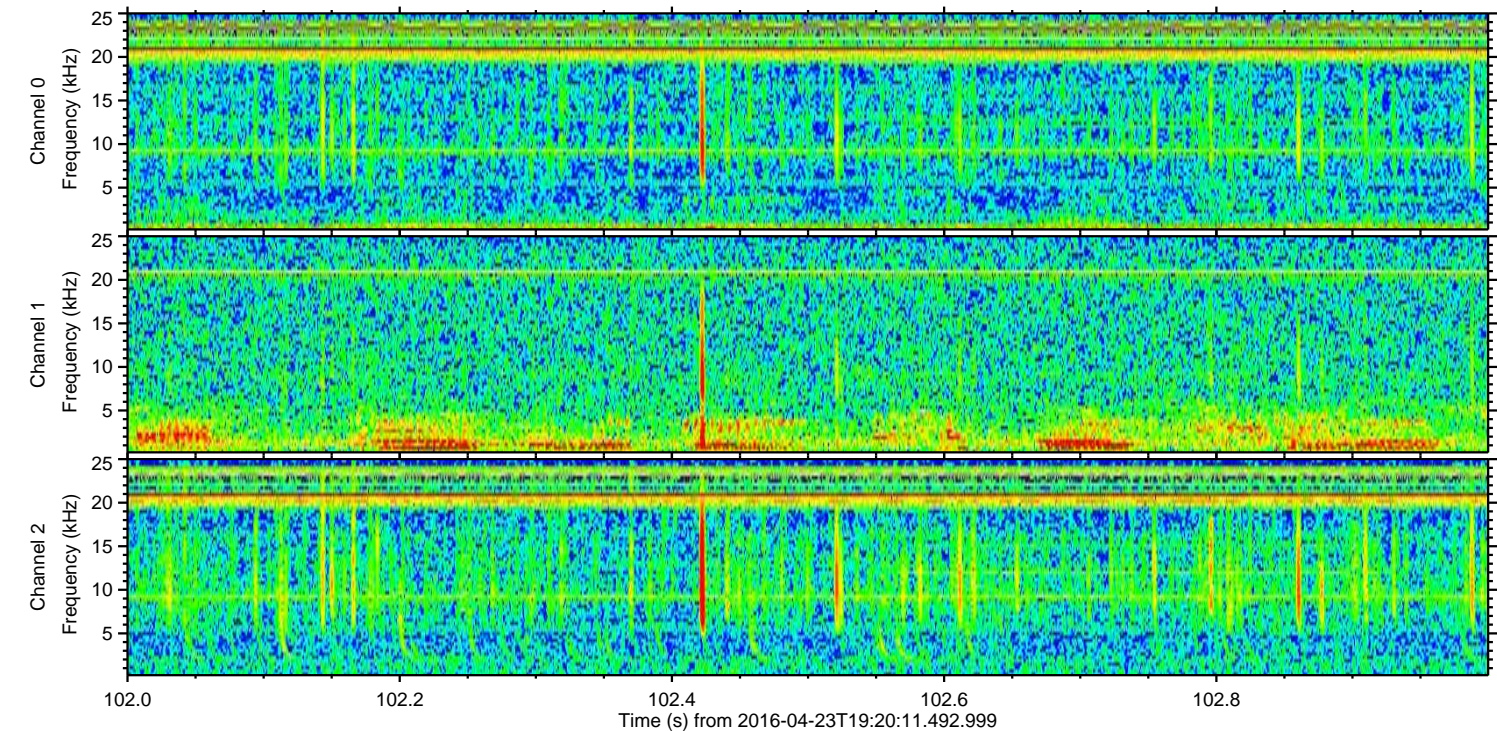
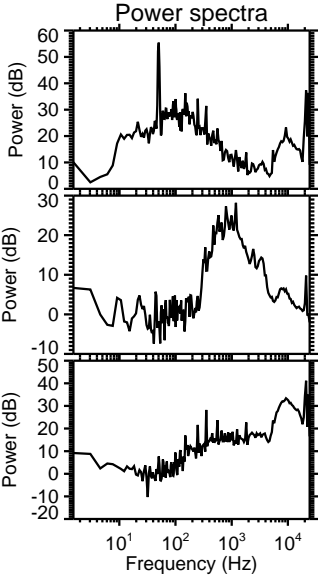
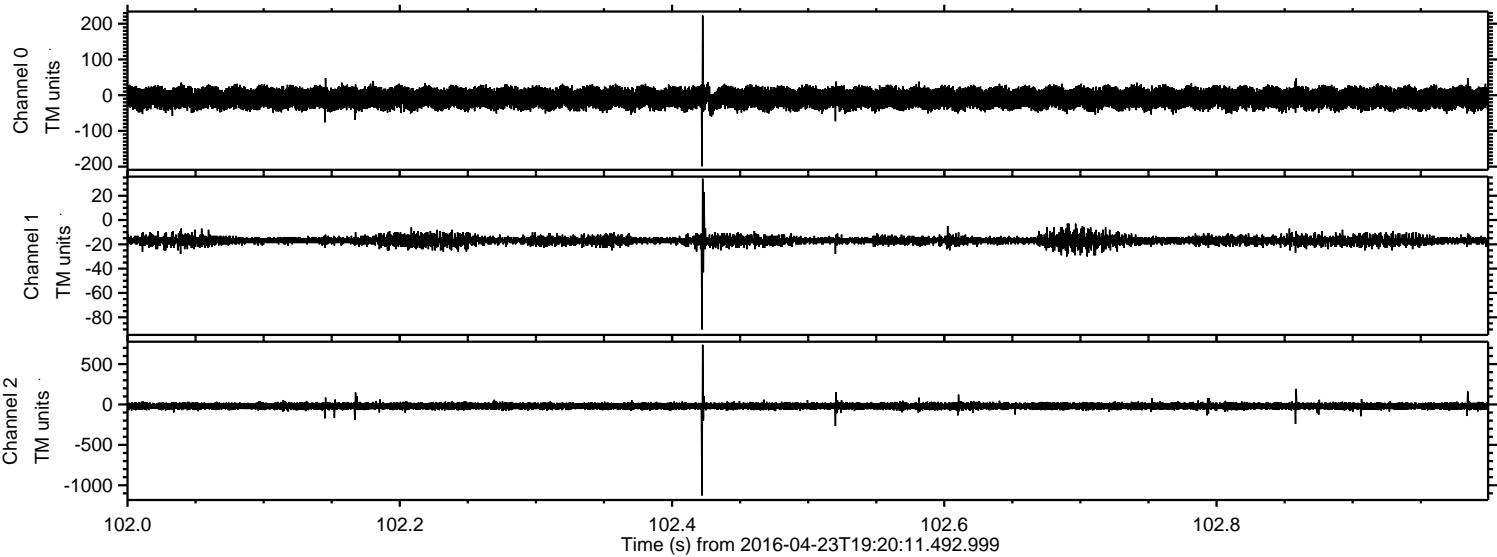


Processed Tue May 10 07:52:50 2016 by ELM ver.2012-10-06 from 001\_\_elm20160423\_192010\_\_dat00.bin





Processed Tue May 10 07:52:51 2016 by ELM ver.2012-10-06 from 001\_\_elm20160423\_192010\_\_dat00.bin





Processed Tue May 10 07:52:52 2016 by ELM ver.2012-10-06 from 001\_\_elm20160423\_192010\_\_dat00.bin

