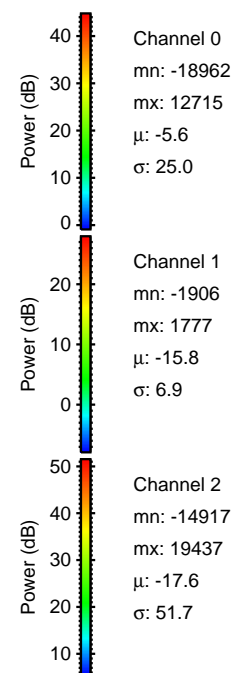
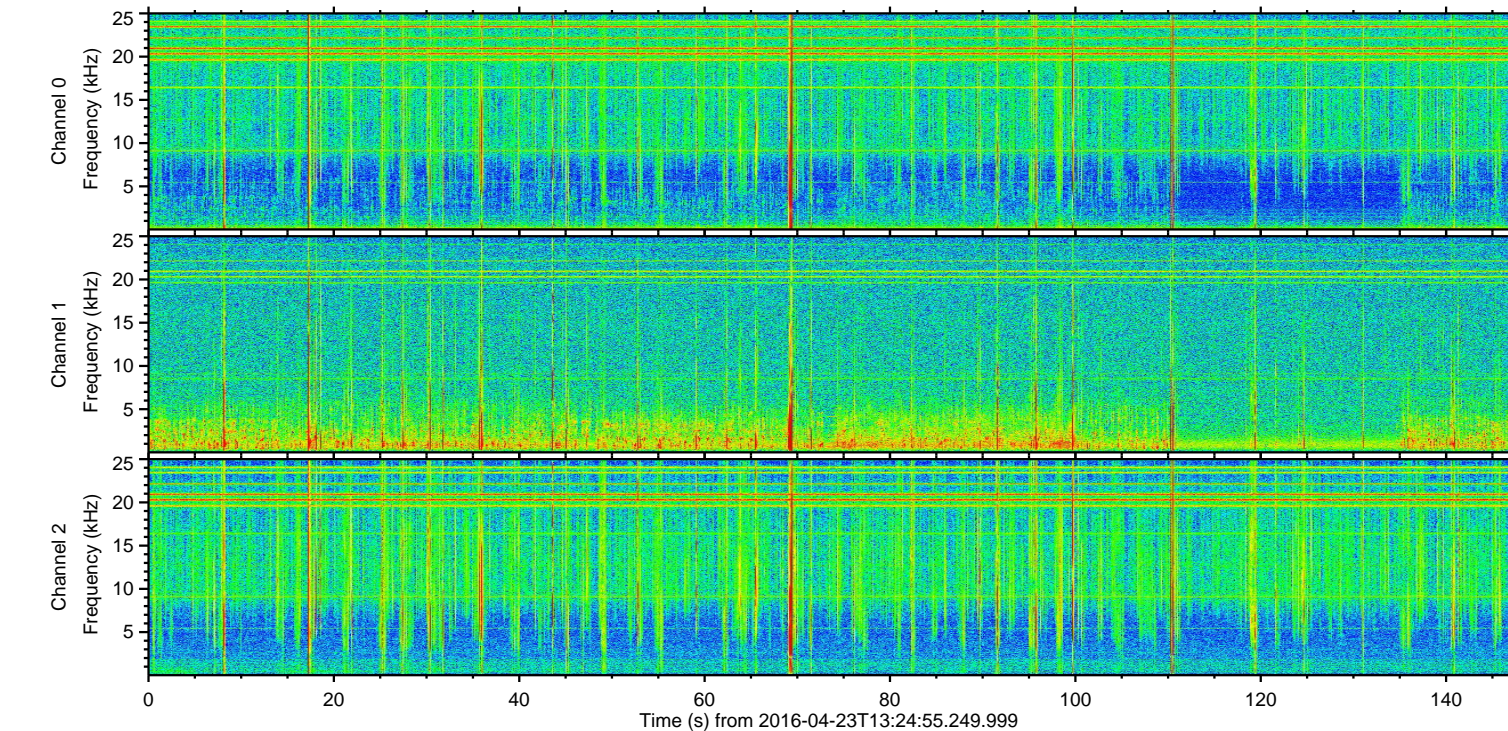
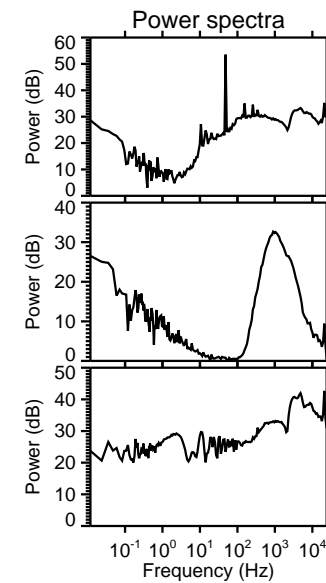
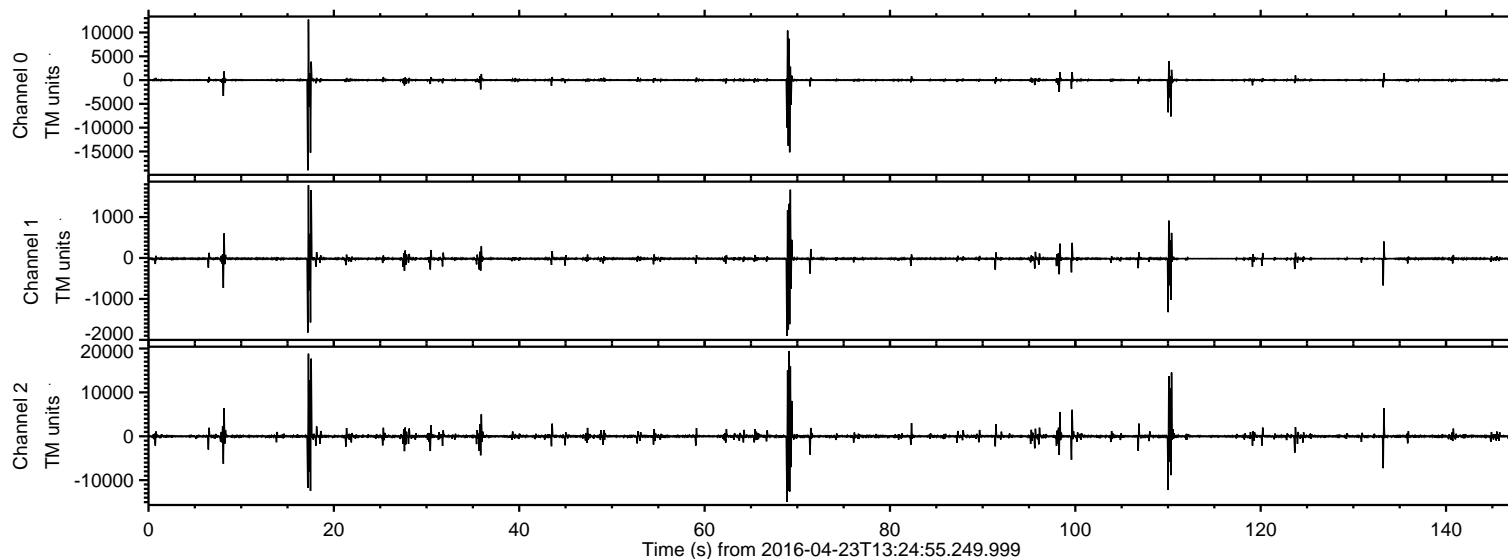
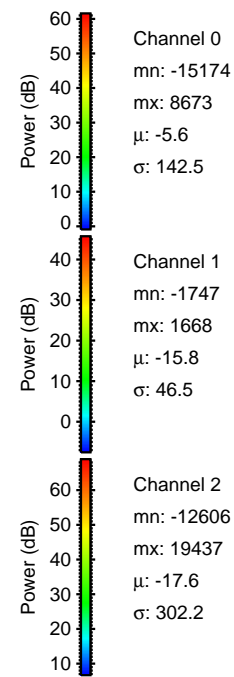
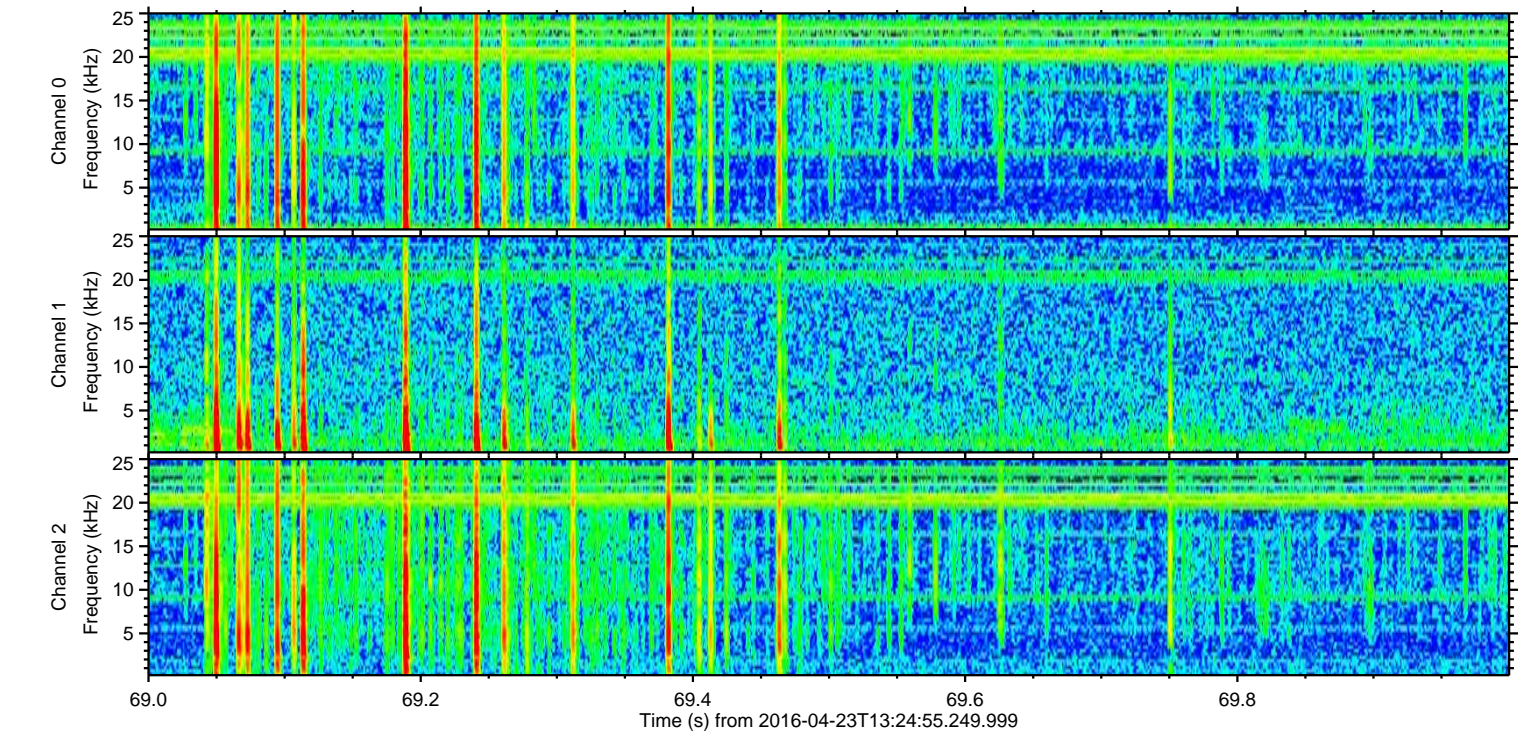
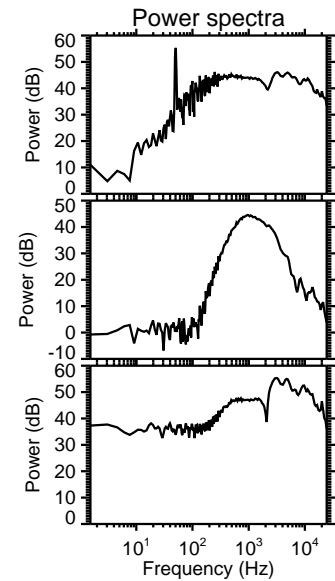
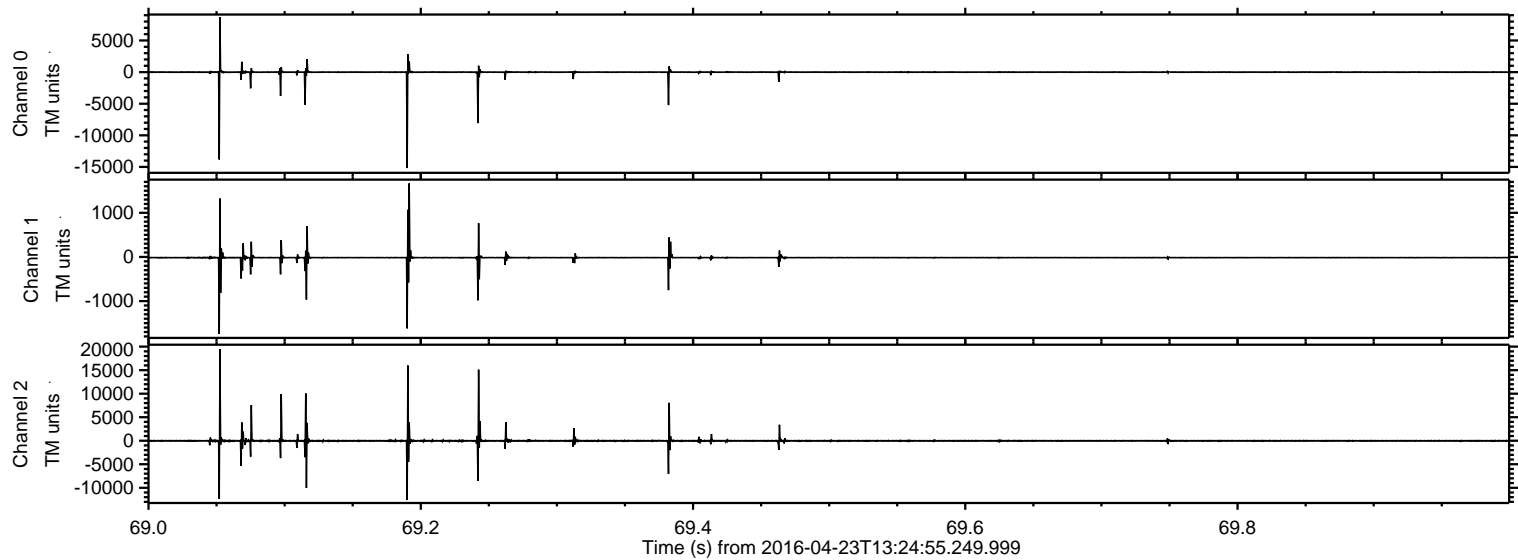


ELMAVAN 3D WAVEFORMS (Measured data sampled at 50 kHz) 51000 packets of 144 samples from 2016-04-23T13:24:55.249.999.

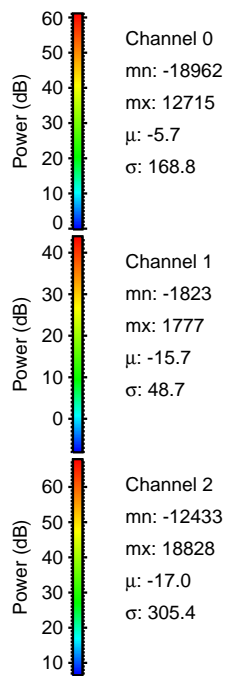
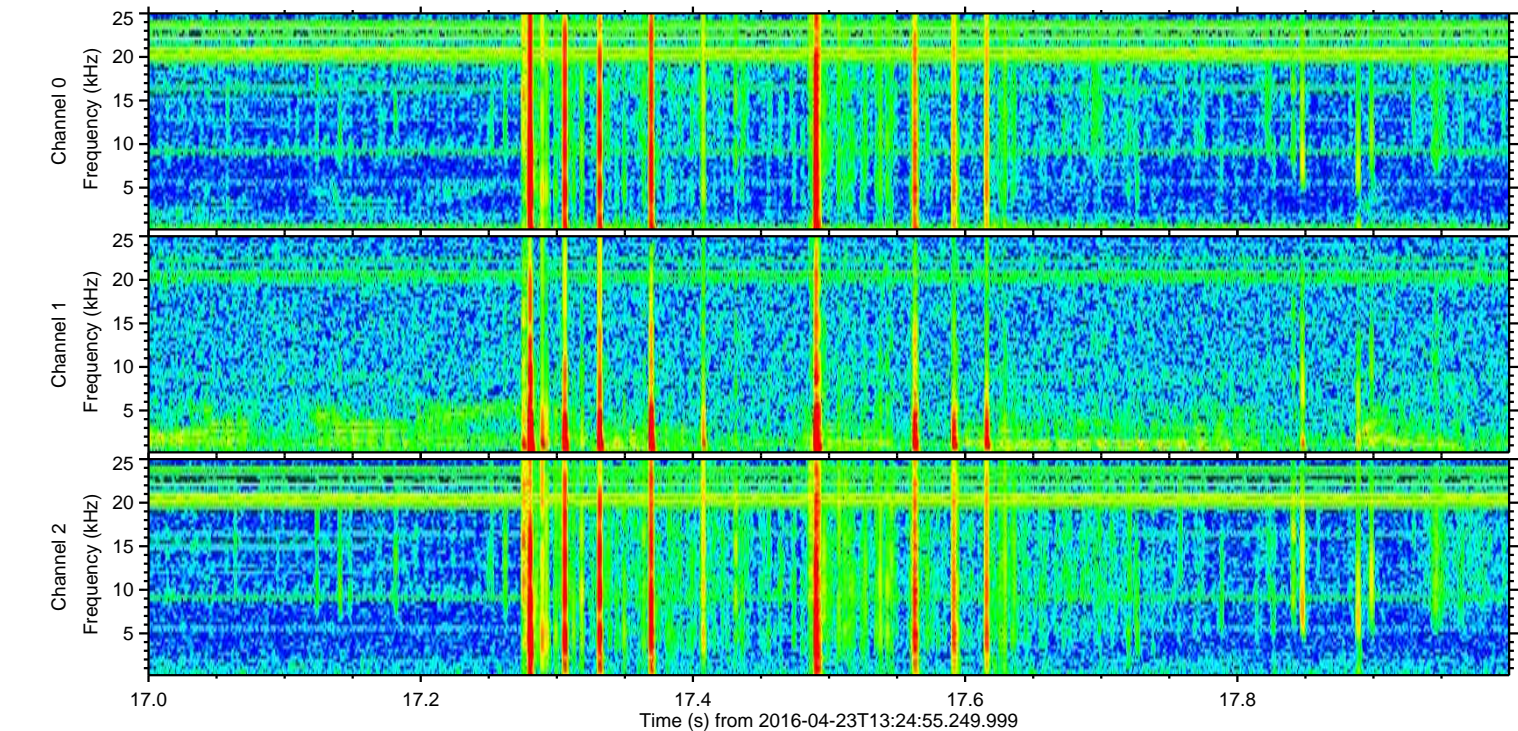
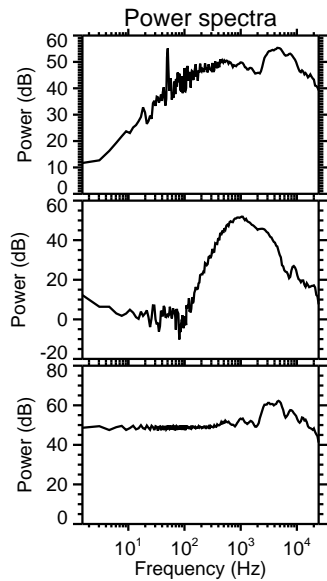
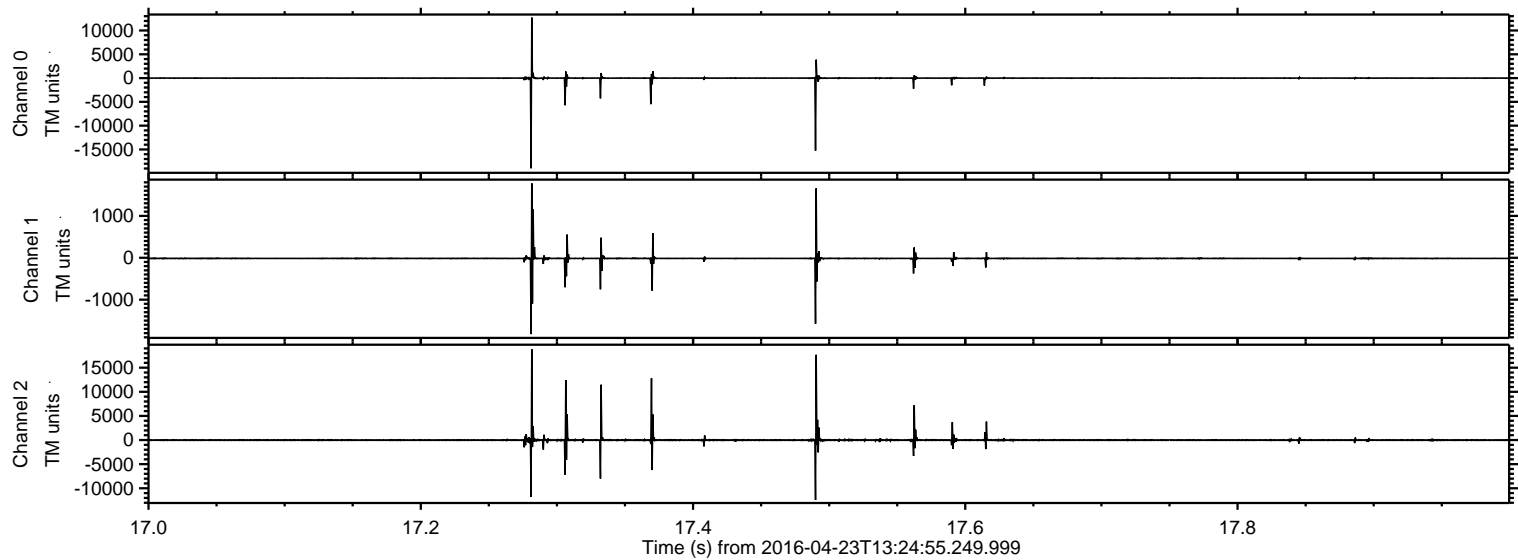
Processed Tue May 10 06:39:33 2016 by ELM ver.2012-10-06 from 001__elm20160423_132454__dat00.bin



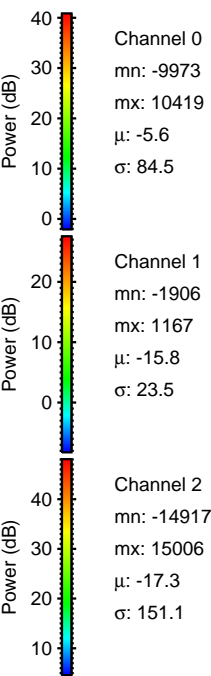
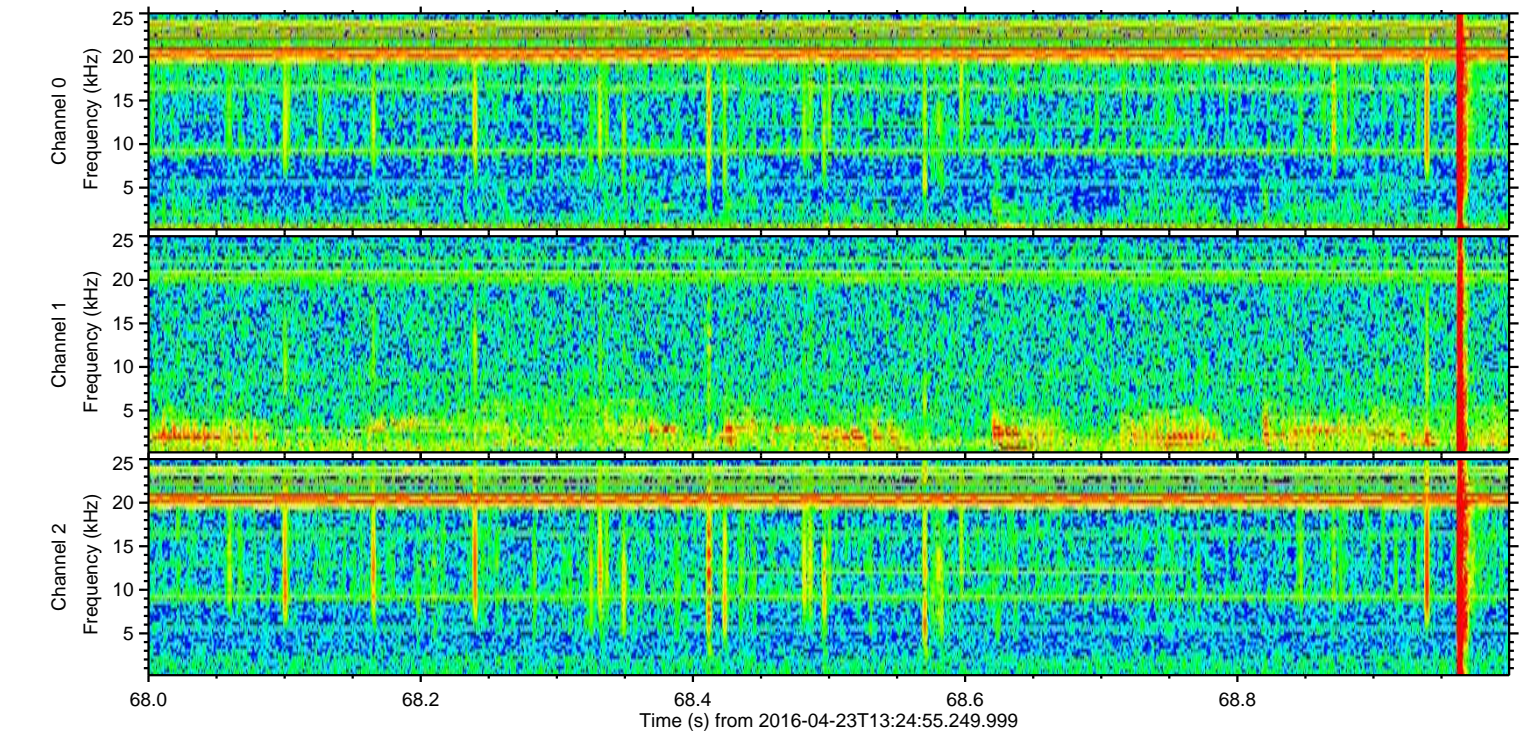
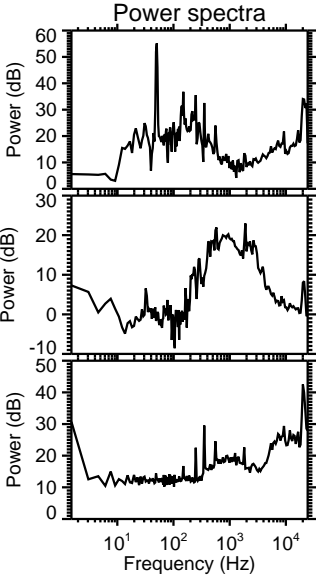
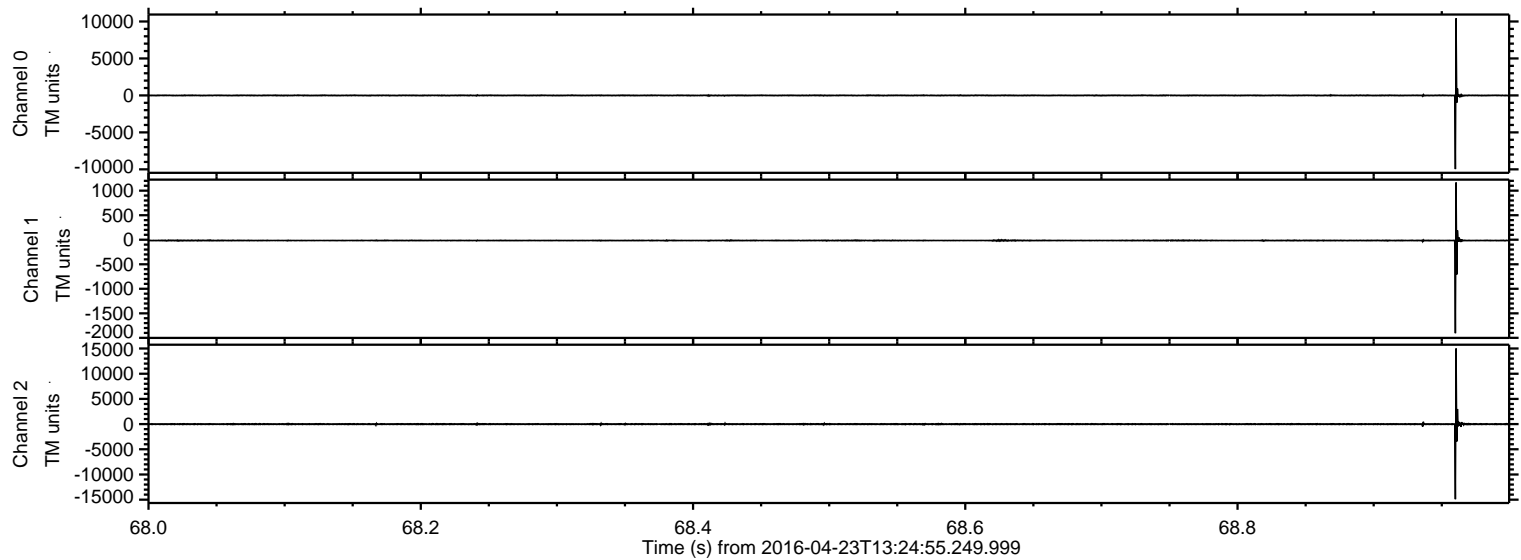
Processed Tue May 10 06:39:45 2016 by ELM ver.2012-10-06 from 001_elm20160423_132454__dat00.bin



Processed Tue May 10 06:39:45 2016 by ELM ver.2012-10-06 from 001__elm20160423_132454__dat00.bin

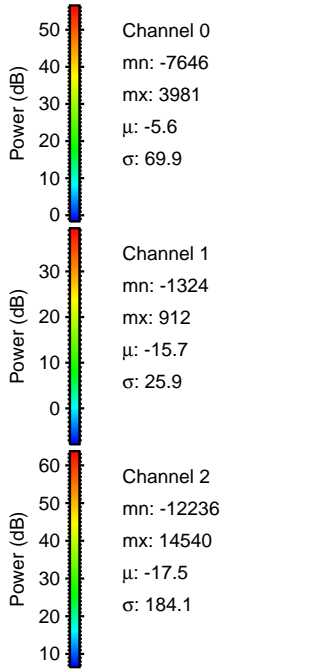
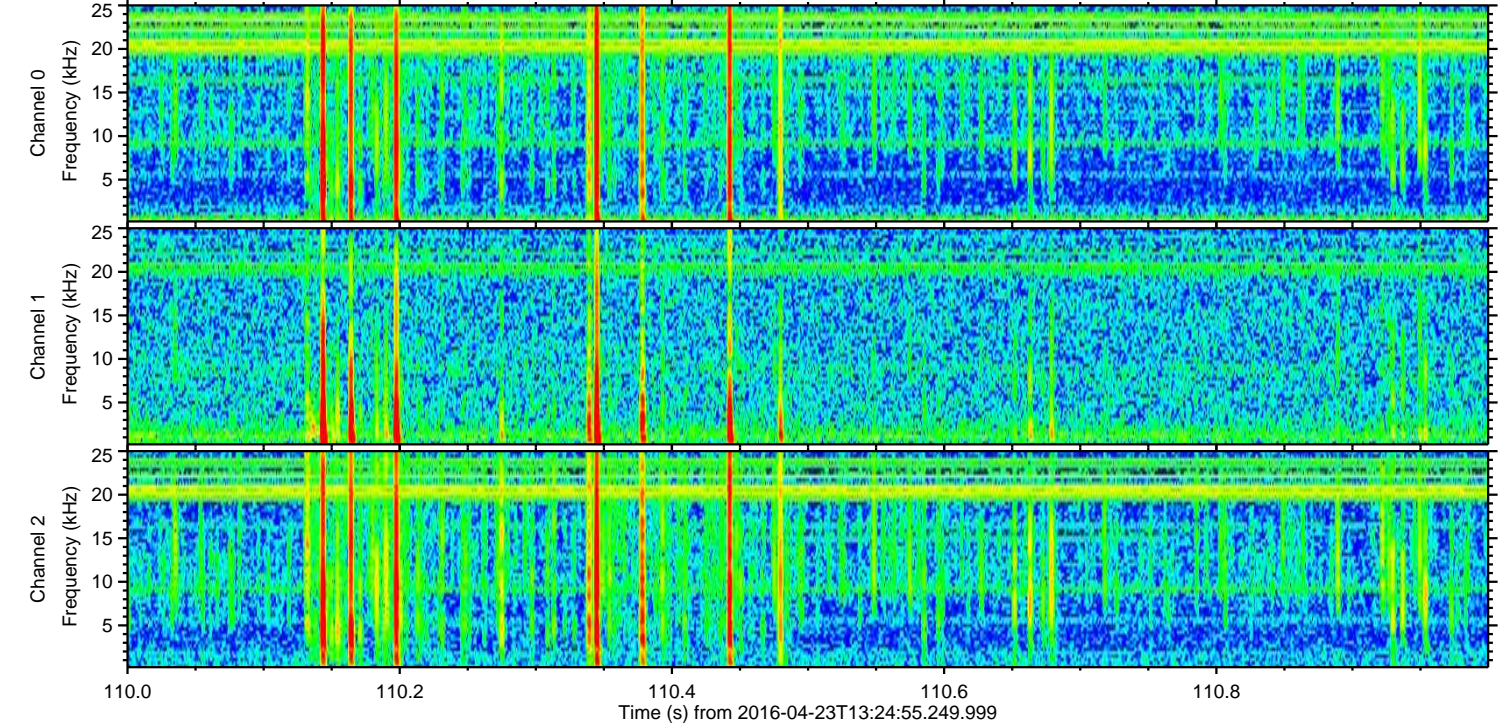
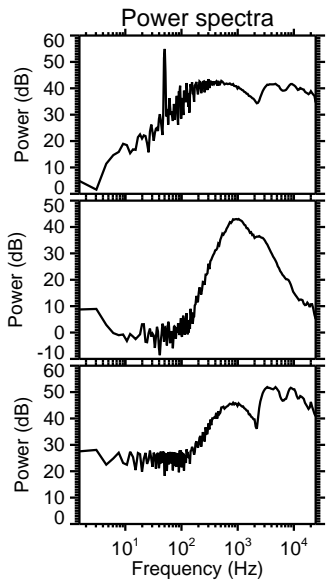
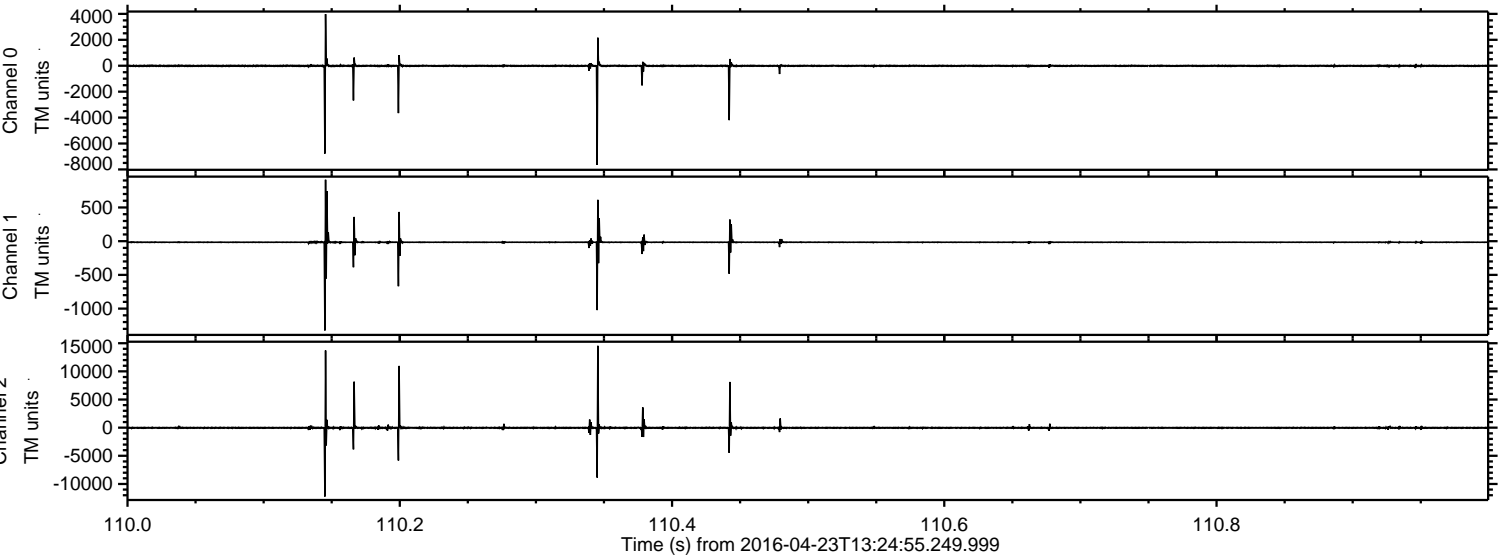


Processed Tue May 10 06:39:46 2016 by ELM ver.2012-10-06 from 001__elm20160423_132454__dat00.bin



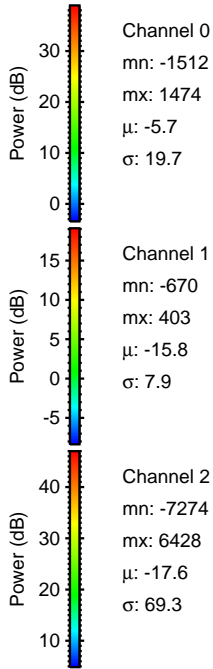
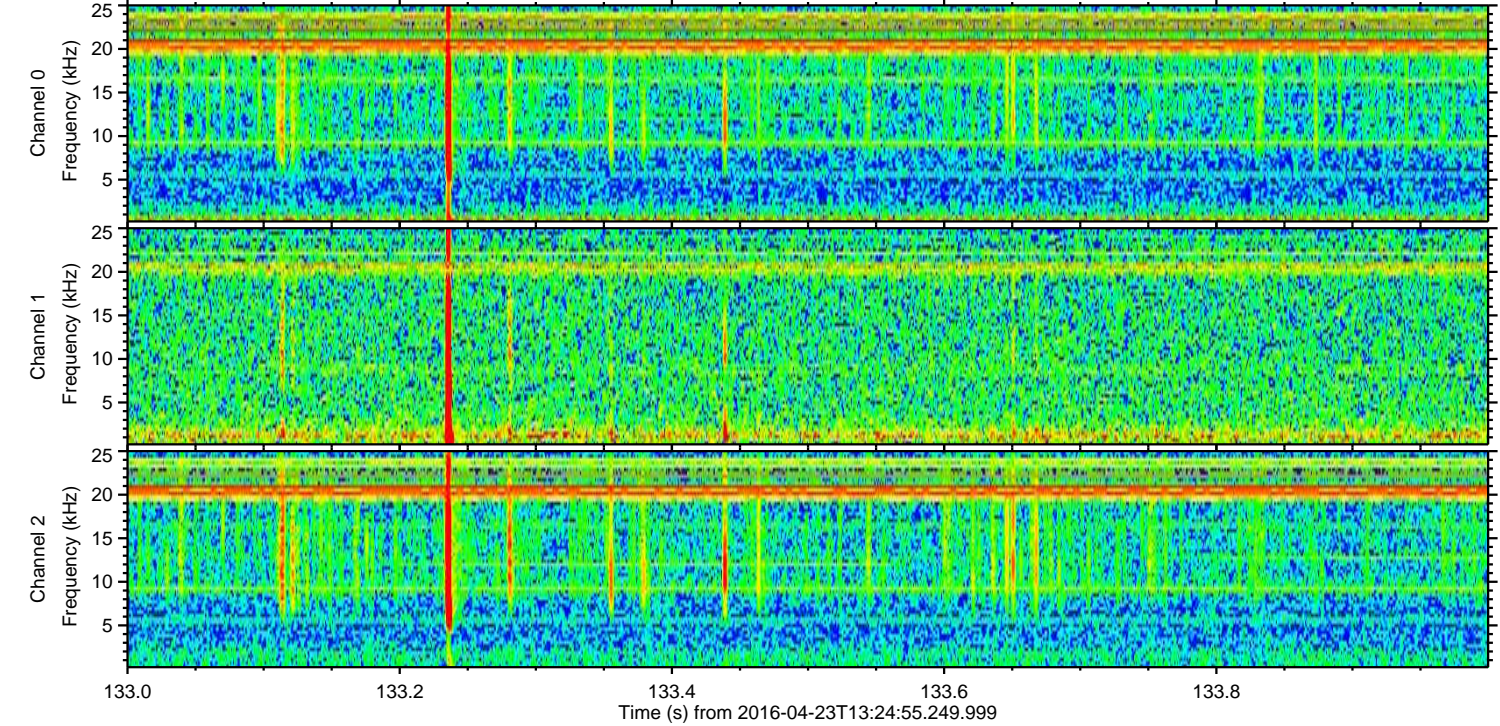
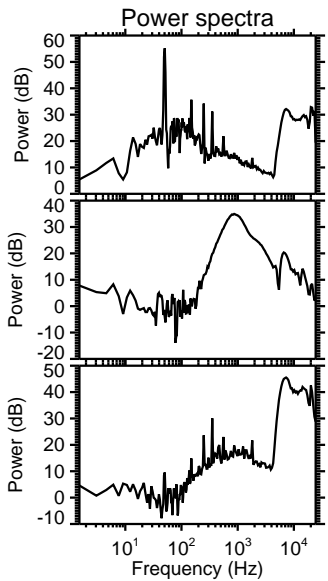
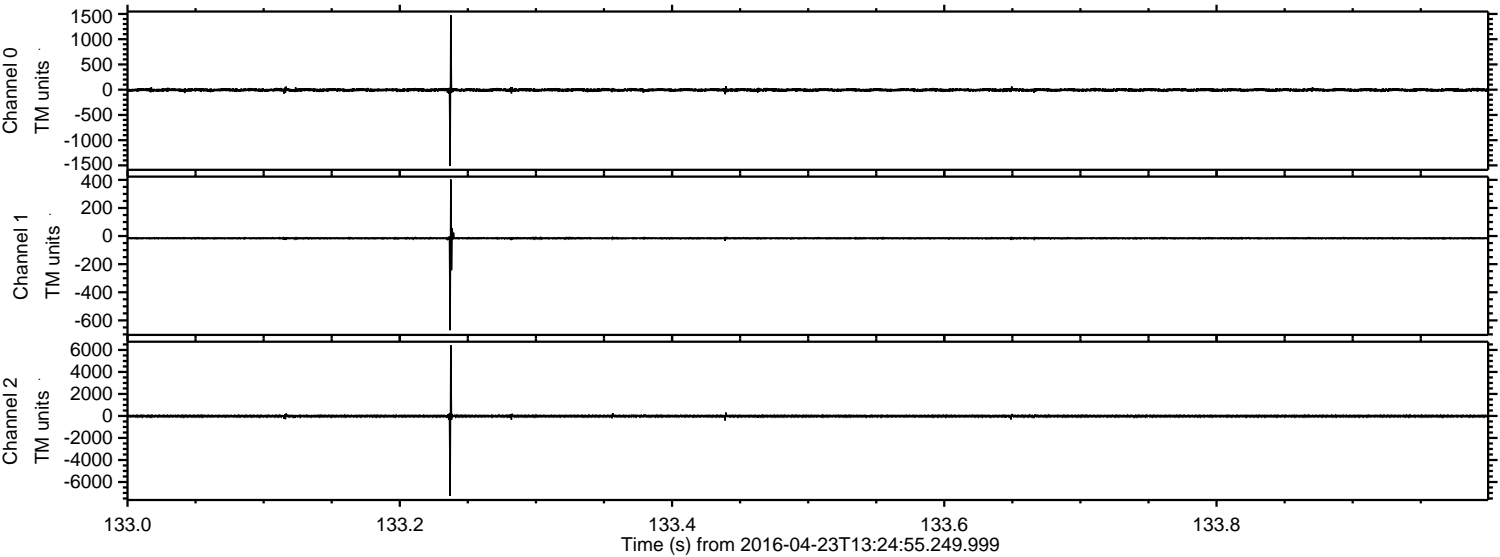
ELMAVAN 3D WAVEFORMS (Measured data sampled at 50 kHz) 51000 packets of 144 samples from 2016-04-23T13:24:55.249.999. Part 111/147

Processed Tue May 10 06:39:47 2016 by ELM ver.2012-10-06 from 001__elm20160423_132454__dat00.bin

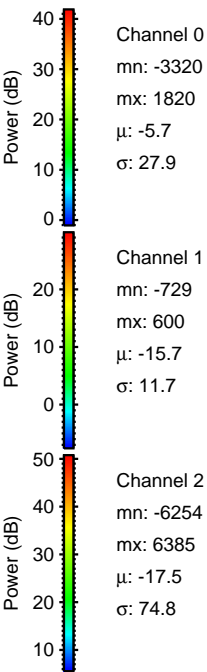
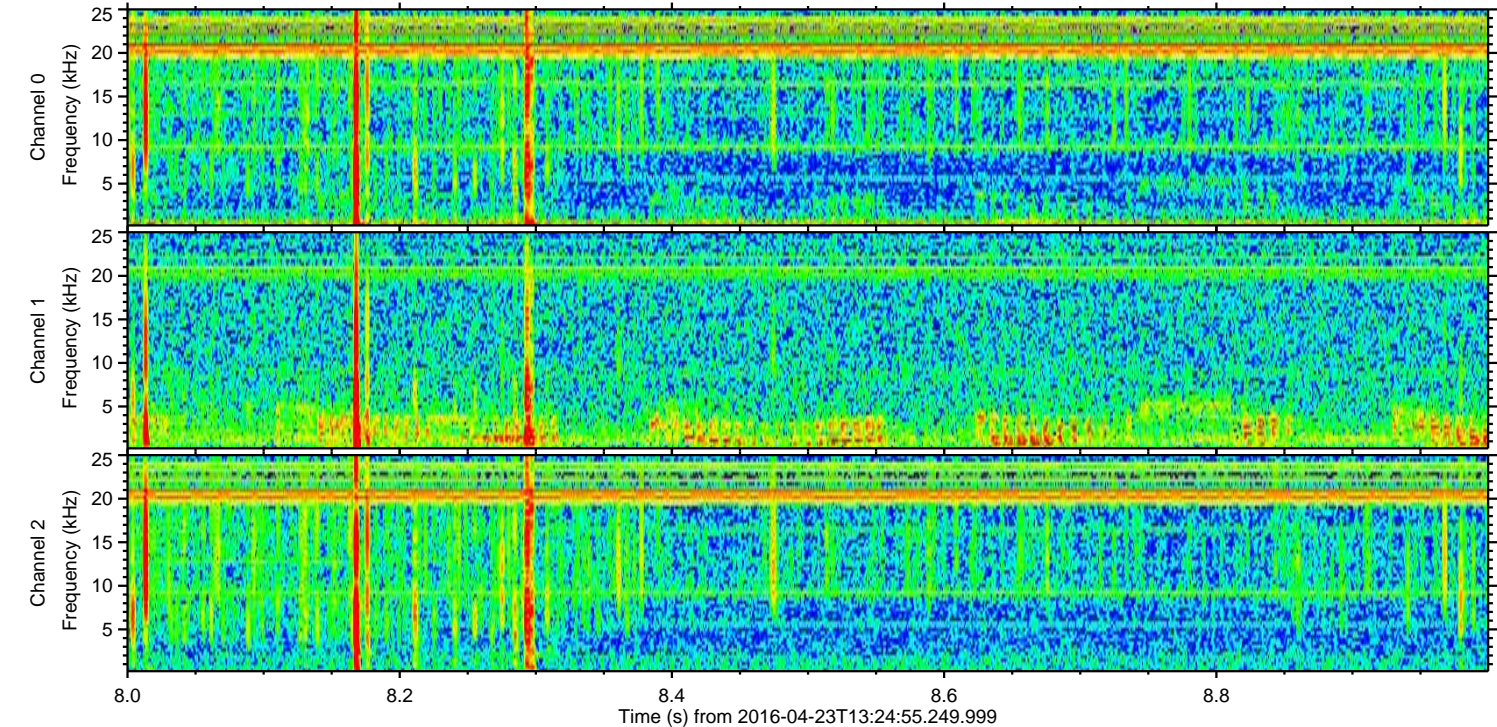
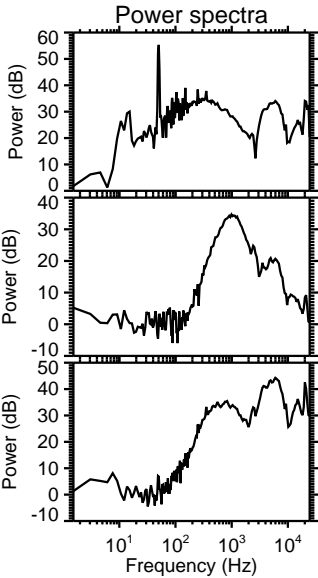
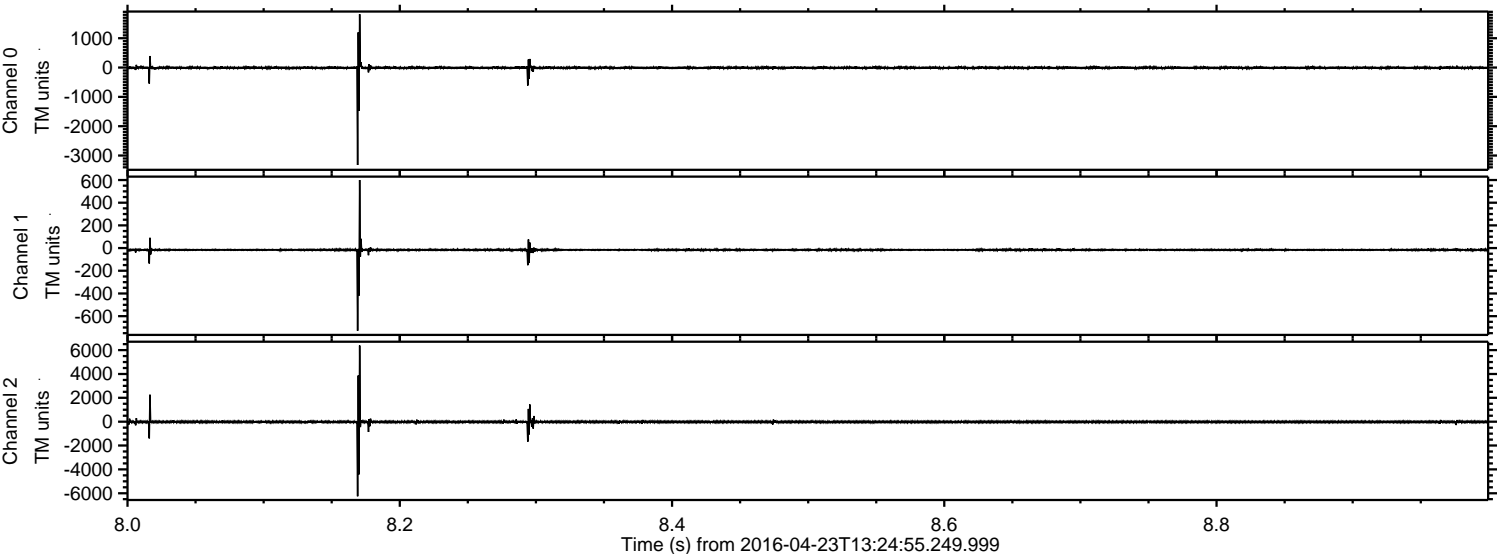


ELMAVAN 3D WAVEFORMS (Measured data sampled at 50 kHz) 51000 packets of 144 samples from 2016-04-23T13:24:55.249.999. Part 134/147

Processed Tue May 10 06:39:48 2016 by ELM ver.2012-10-06 from 001__elm20160423_132454__dat00.bin

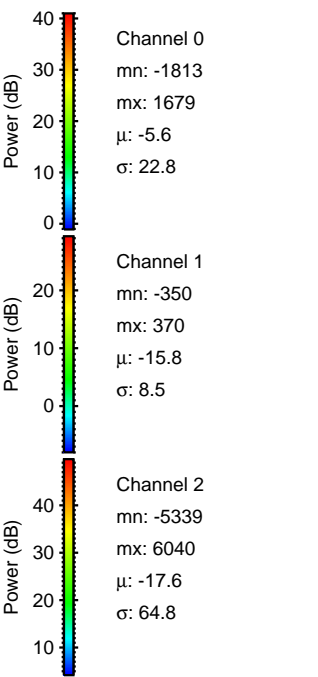
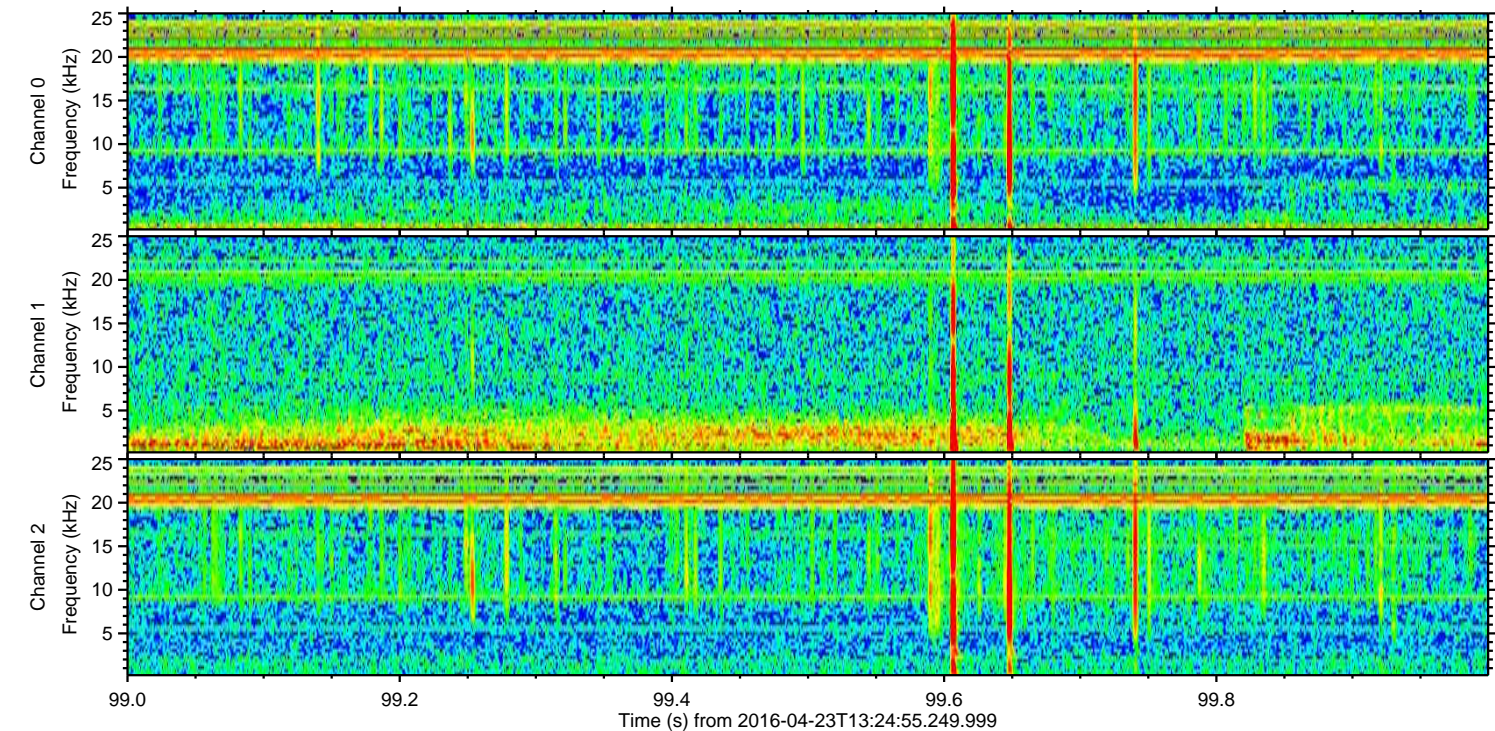
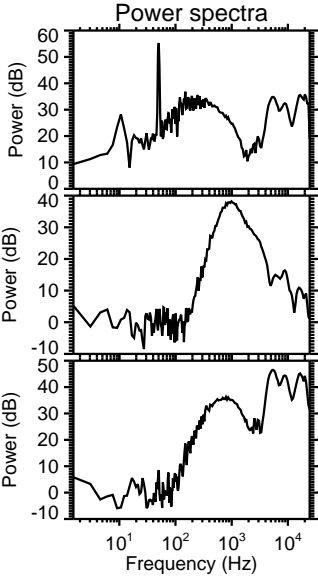
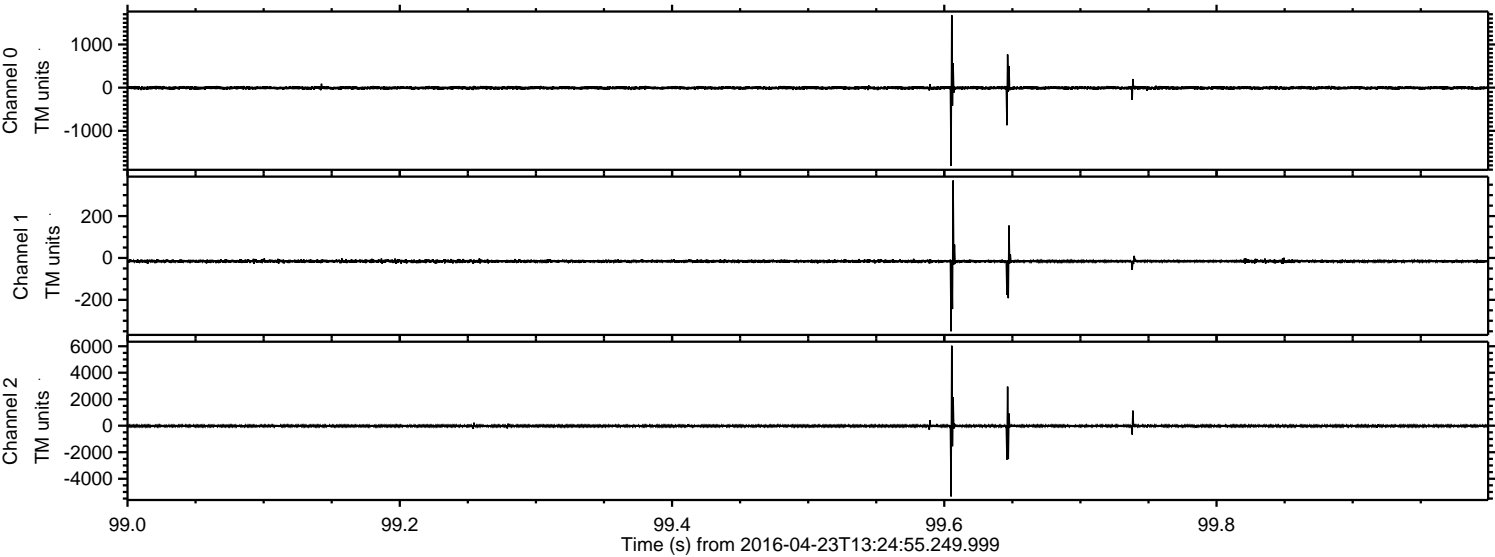


Processed Tue May 10 06:39:49 2016 by ELM ver.2012-10-06 from 001__elm20160423_132454__dat00.bin

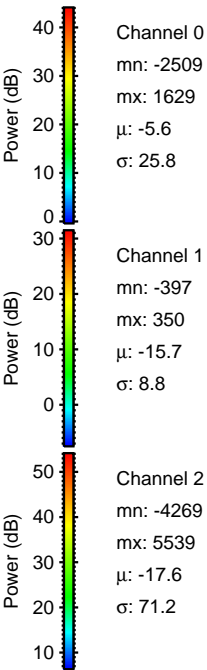
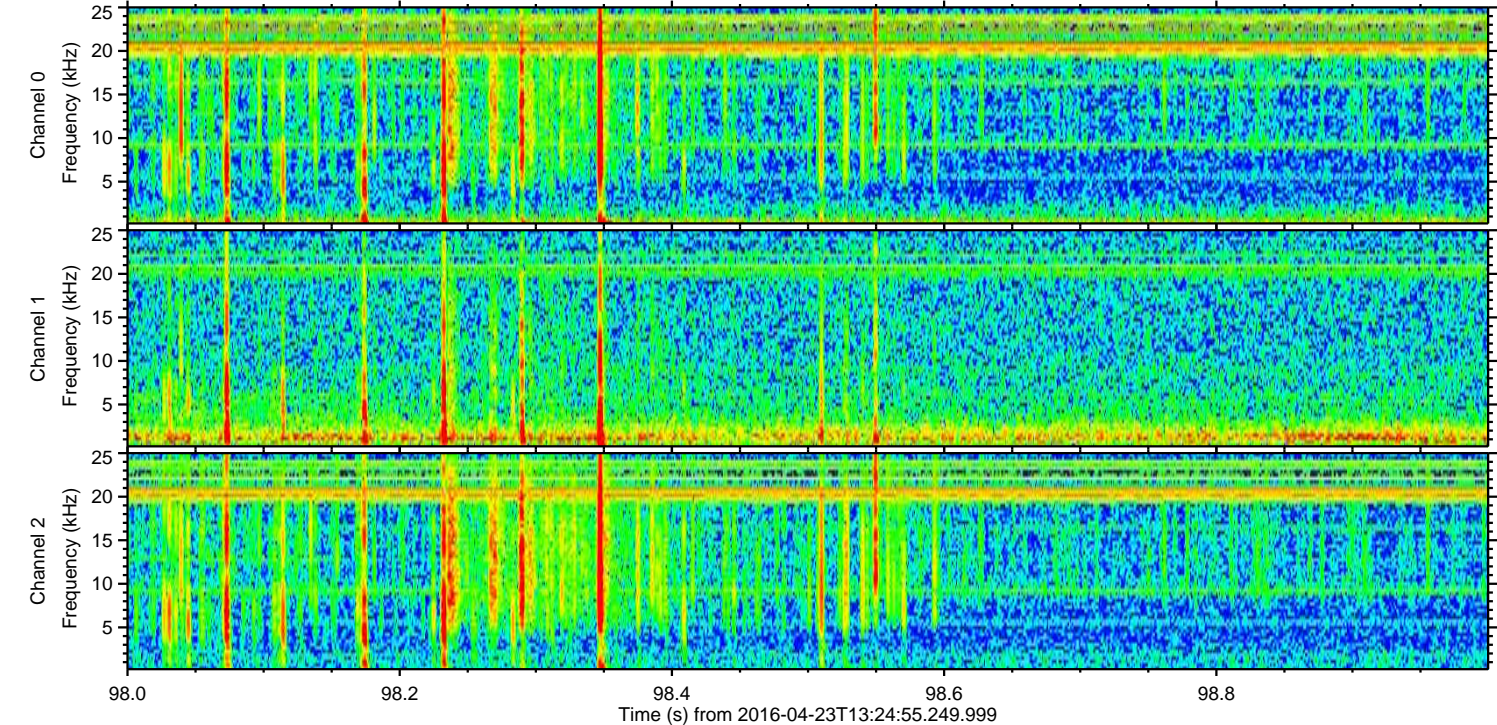
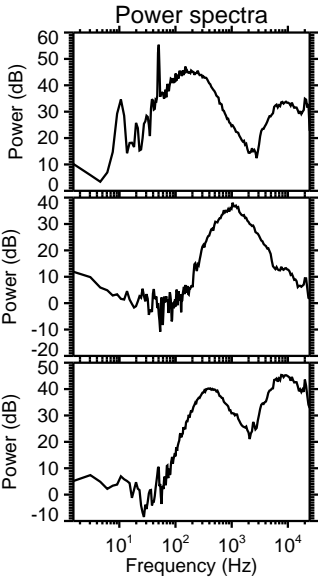
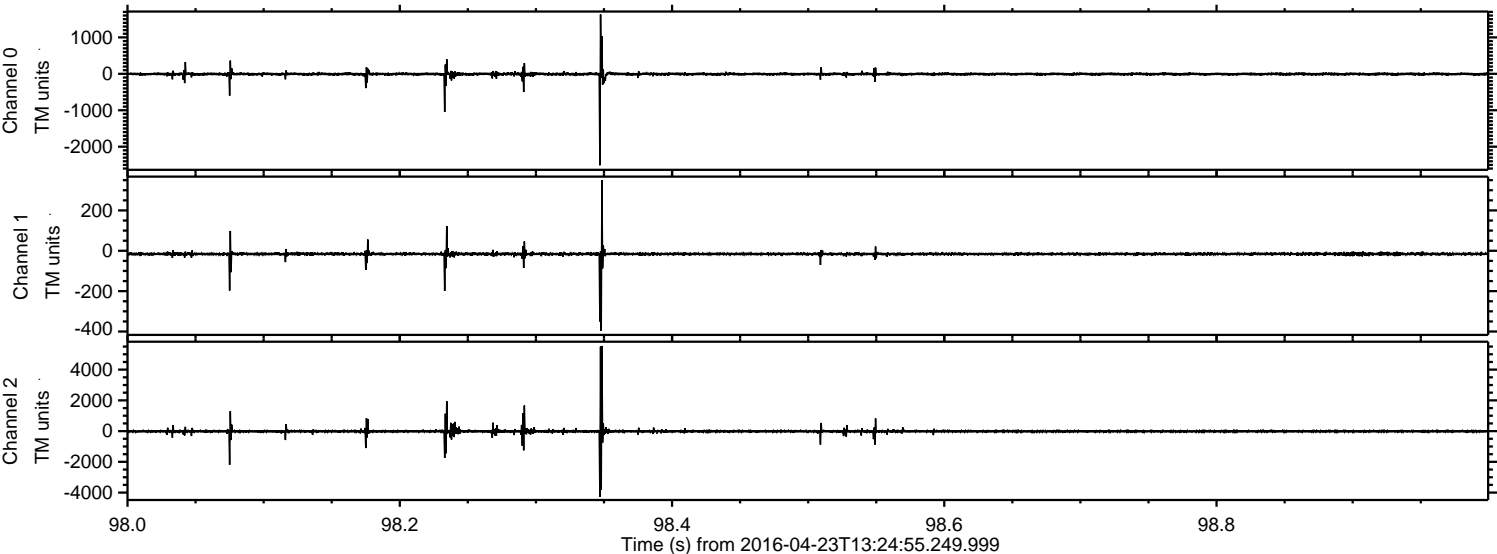


ELMAVAN 3D WAVEFORMS (Measured data sampled at 50 kHz) 51000 packets of 144 samples from 2016-04-23T13:24:55.249.999. Part 100/147

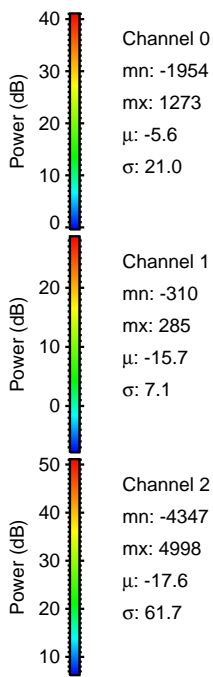
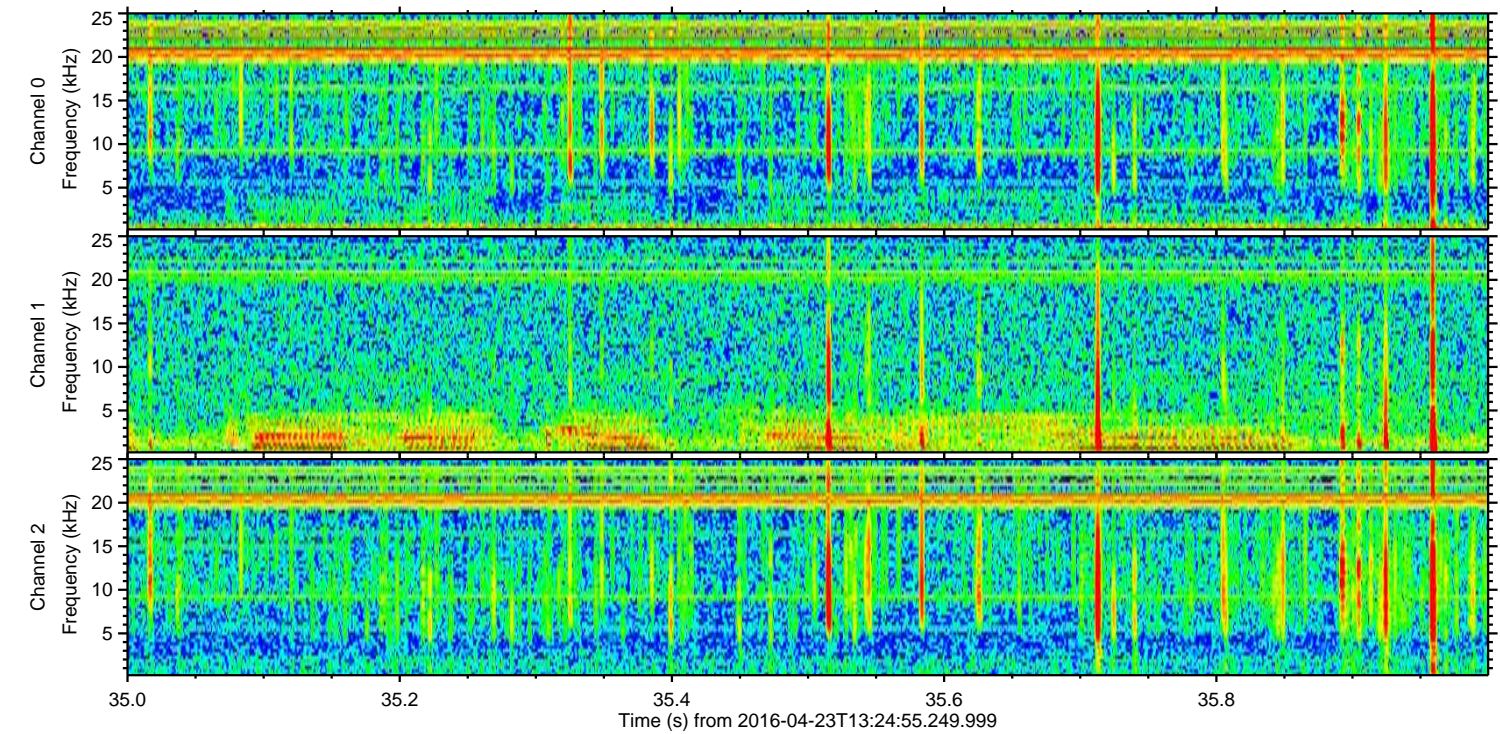
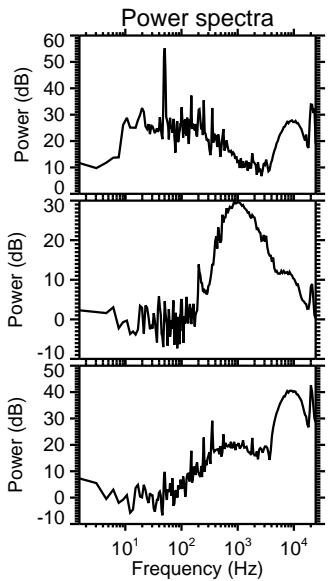
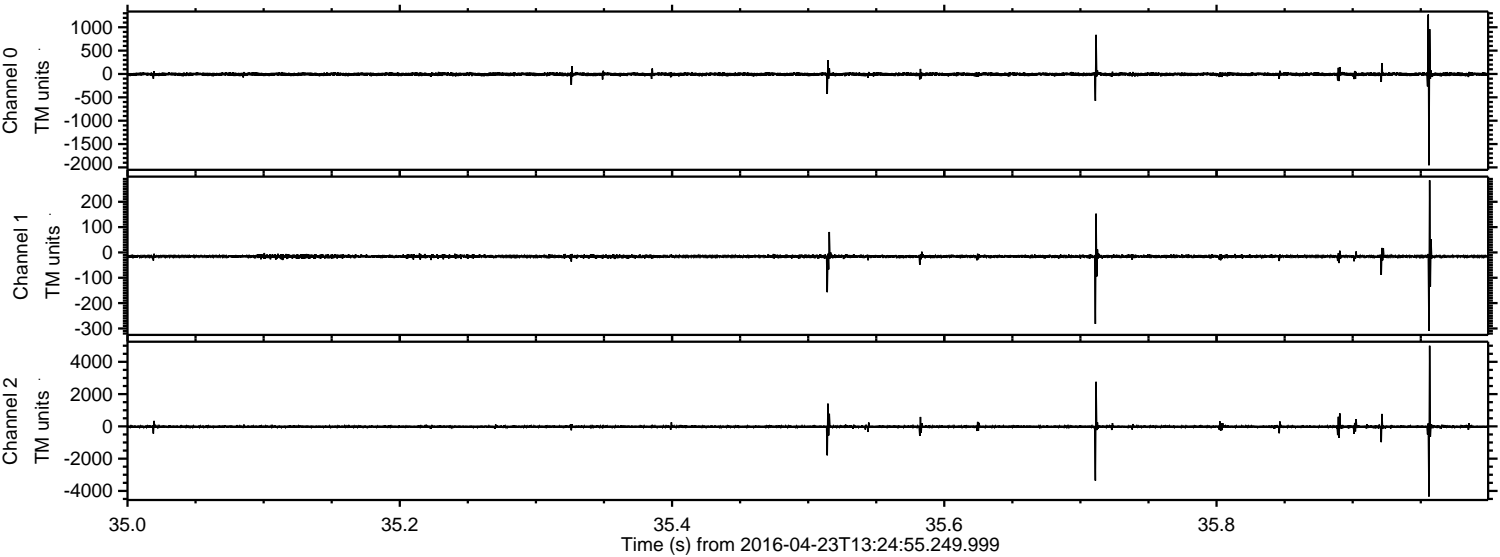
Processed Tue May 10 06:39:50 2016 by ELM ver.2012-10-06 from 001__elm20160423_132454__dat00.bin



Processed Tue May 10 06:39:51 2016 by ELM ver.2012-10-06 from 001__elm20160423_132454__dat00.bin



Processed Tue May 10 06:39:52 2016 by ELM ver.2012-10-06 from 001__elm20160423_132454__dat00.bin



Channel 0
mn: -1954
mx: 1273
 μ : -5.6
 σ : 21.0

Channel 1
mn: -310
mx: 285
 μ : -15.7
 σ : 7.1

Channel 2
mn: -4347
mx: 4998
 μ : -17.6
 σ : 61.7

Processed Tue May 10 06:39:53 2016 by ELM ver.2012-10-06 from 001__elm20160423_132454__dat00.bin

