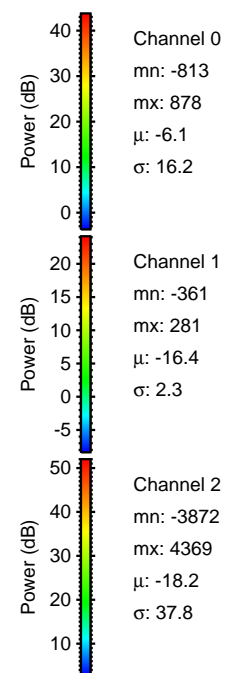
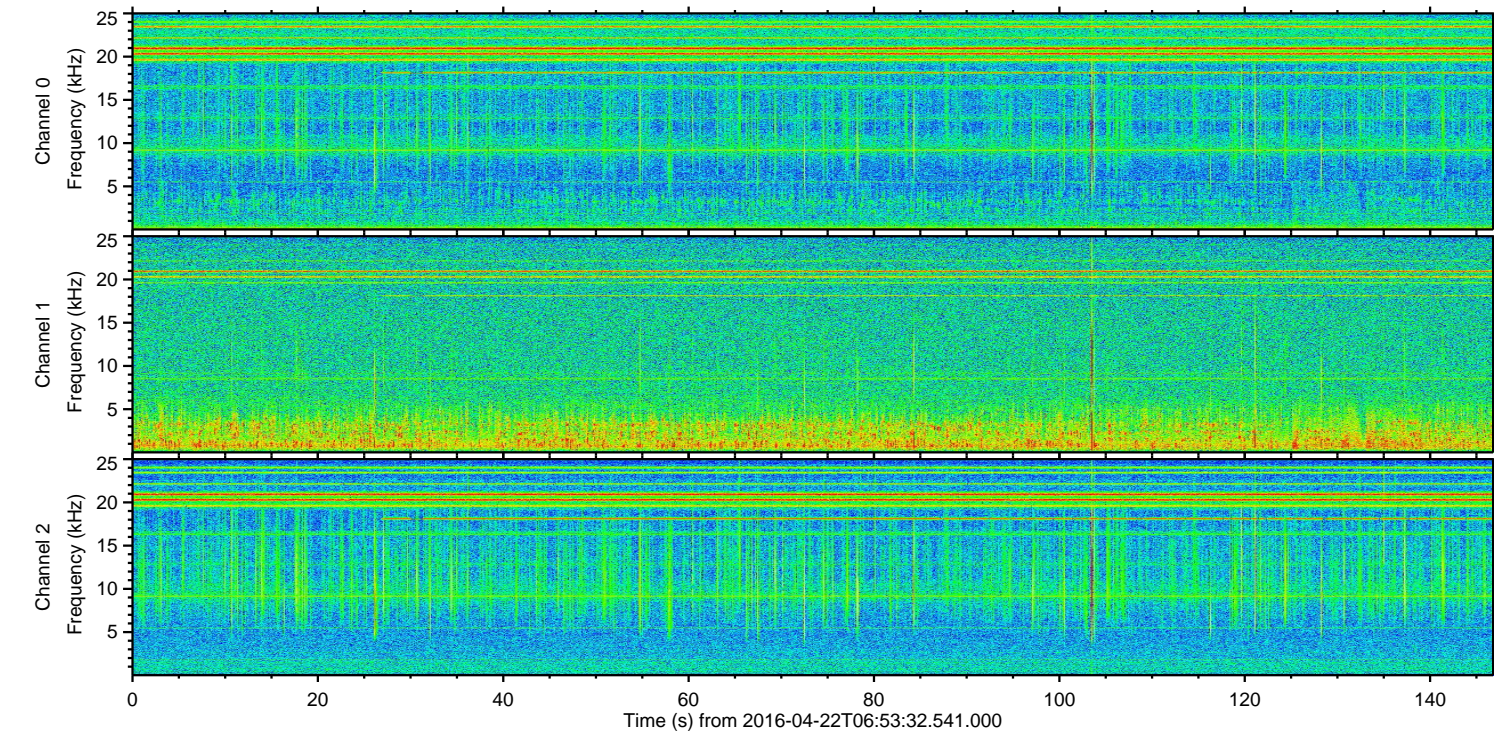
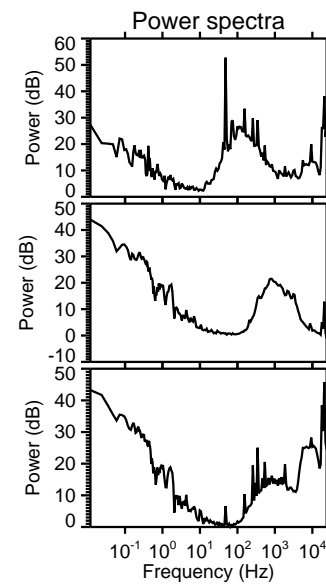
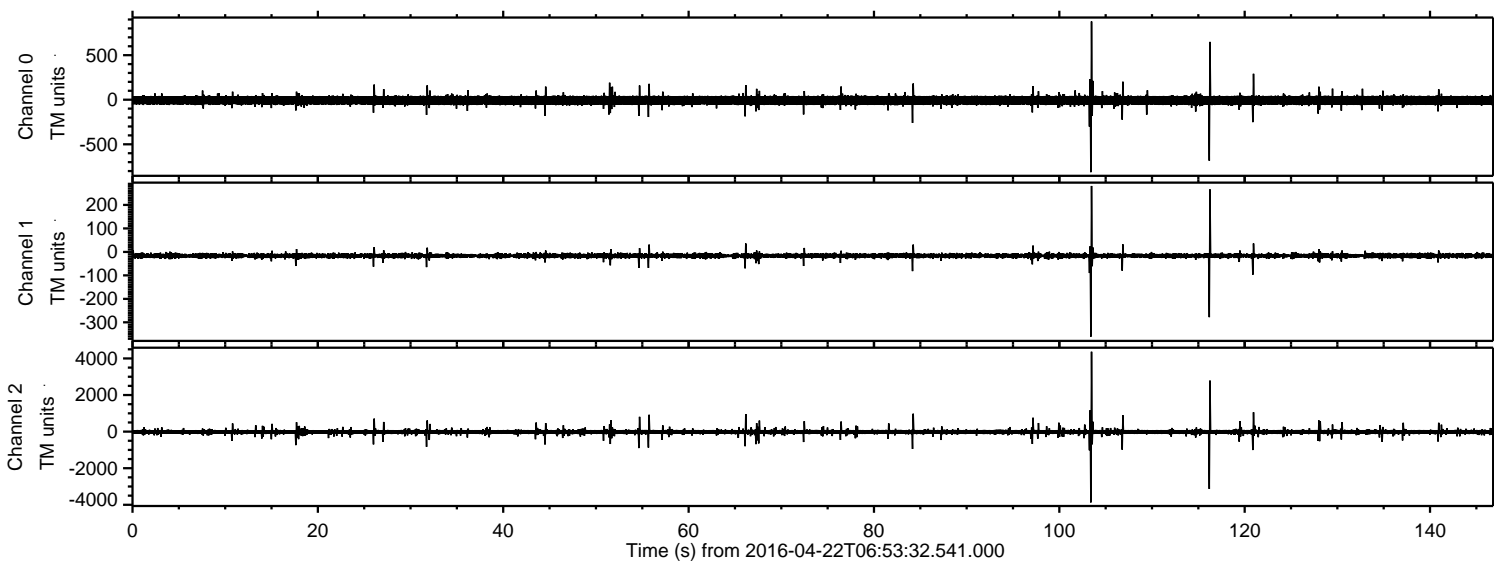


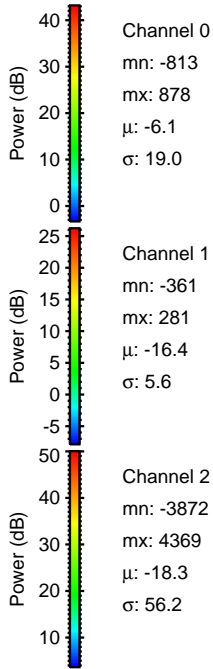
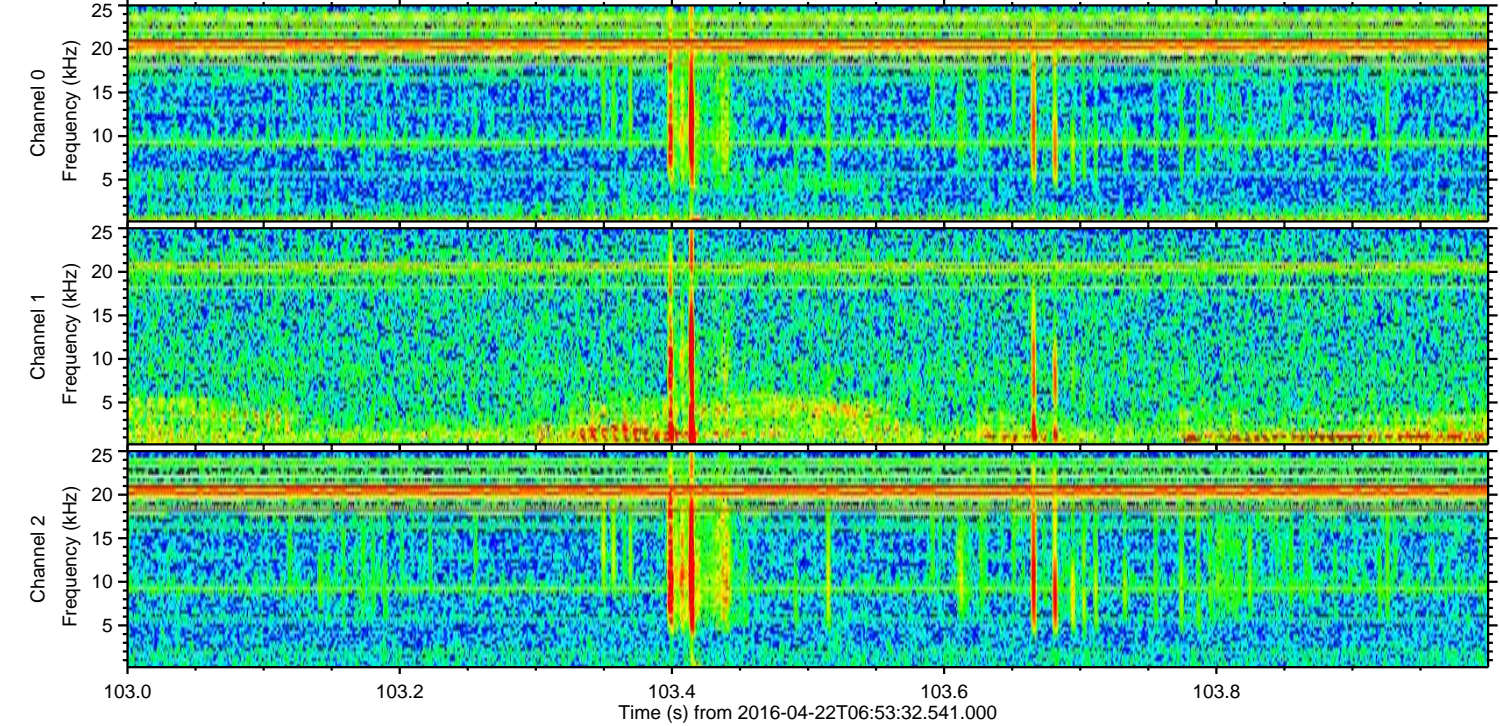
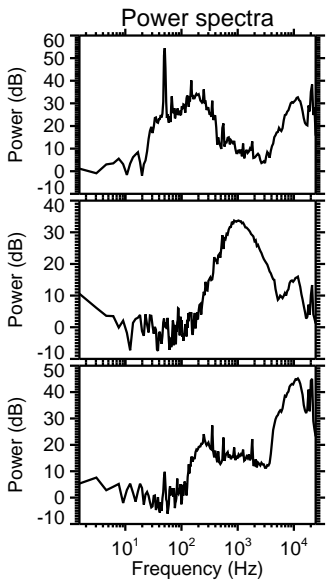
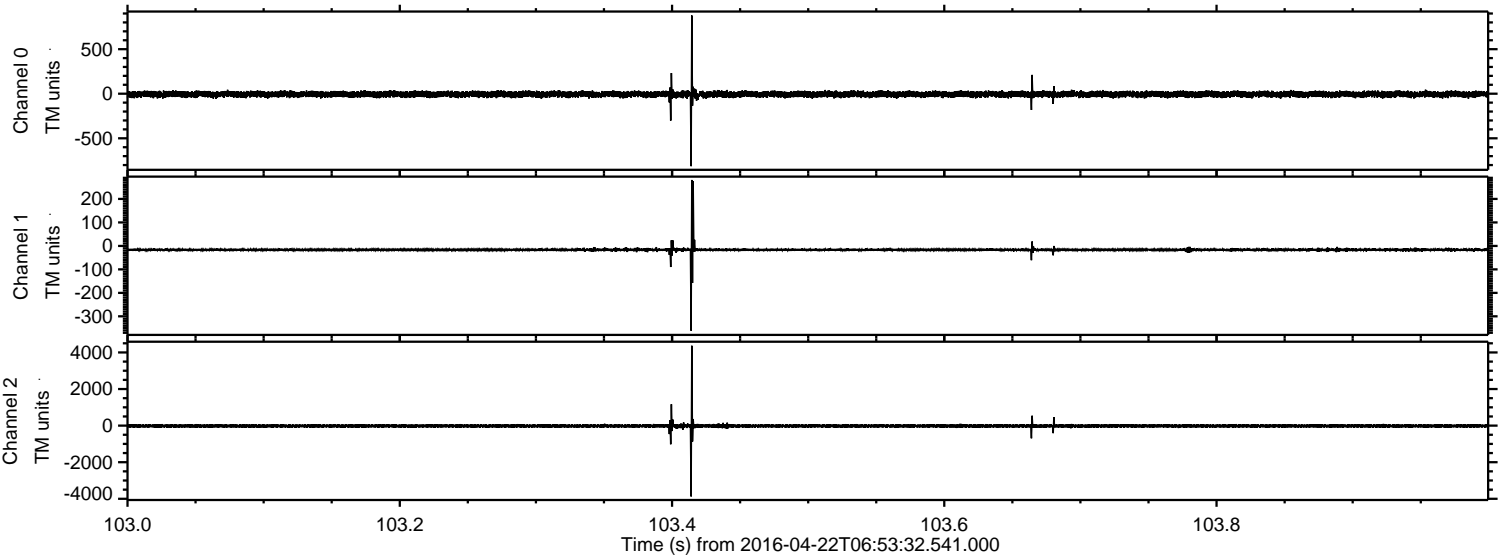
ELMAVAN 3D WAVEFORMS (Measured data sampled at 50 kHz) 51000 packets of 144 samples from 2016-04-22T06:53:32.541.000.

Processed Tue May 10 00:23:55 2016 by ELM ver.2012-10-06 from 001__elm20160422_065331__dat00.bin



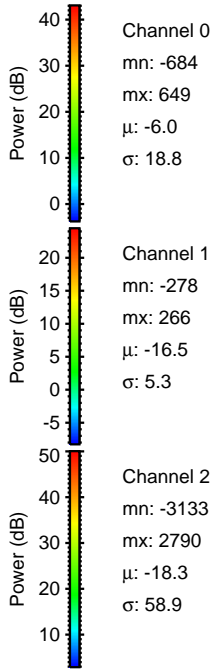
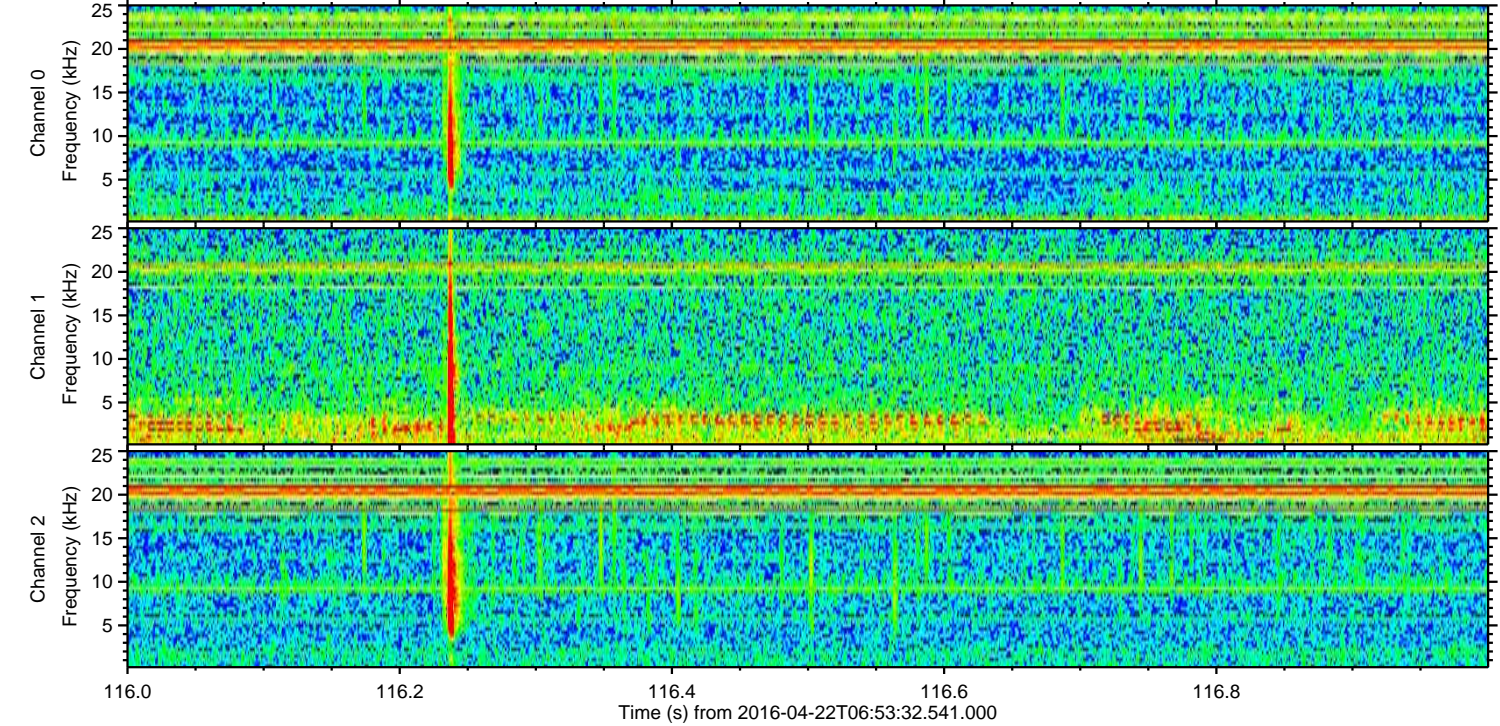
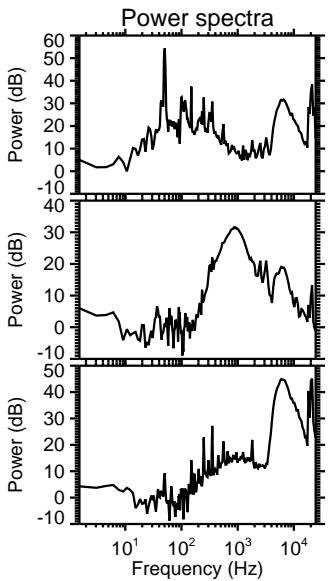
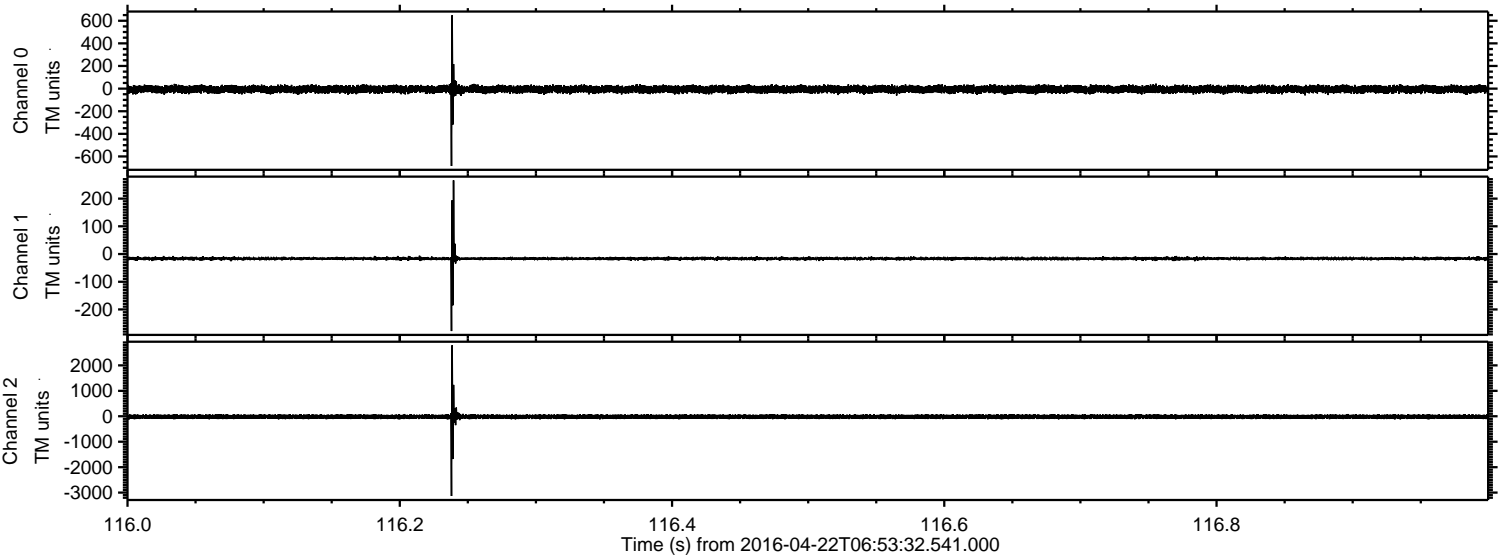
ELMAVAN 3D WAVEFORMS (Measured data sampled at 50 kHz) 51000 packets of 144 samples from 2016-04-22T06:53:32.541.000. Part 104/147

Processed Tue May 10 00:24:06 2016 by ELM ver.2012-10-06 from 001__elm20160422_065331__dat00.bin



ELMAVAN 3D WAVEFORMS (Measured data sampled at 50 kHz) 51000 packets of 144 samples from 2016-04-22T06:53:32.541.000. Part 117/147

Processed Tue May 10 00:24:07 2016 by ELM ver.2012-10-06 from 001__elm20160422_065331__dat00.bin



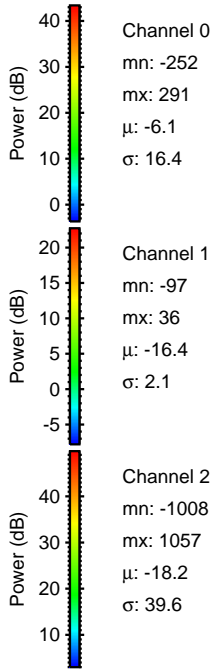
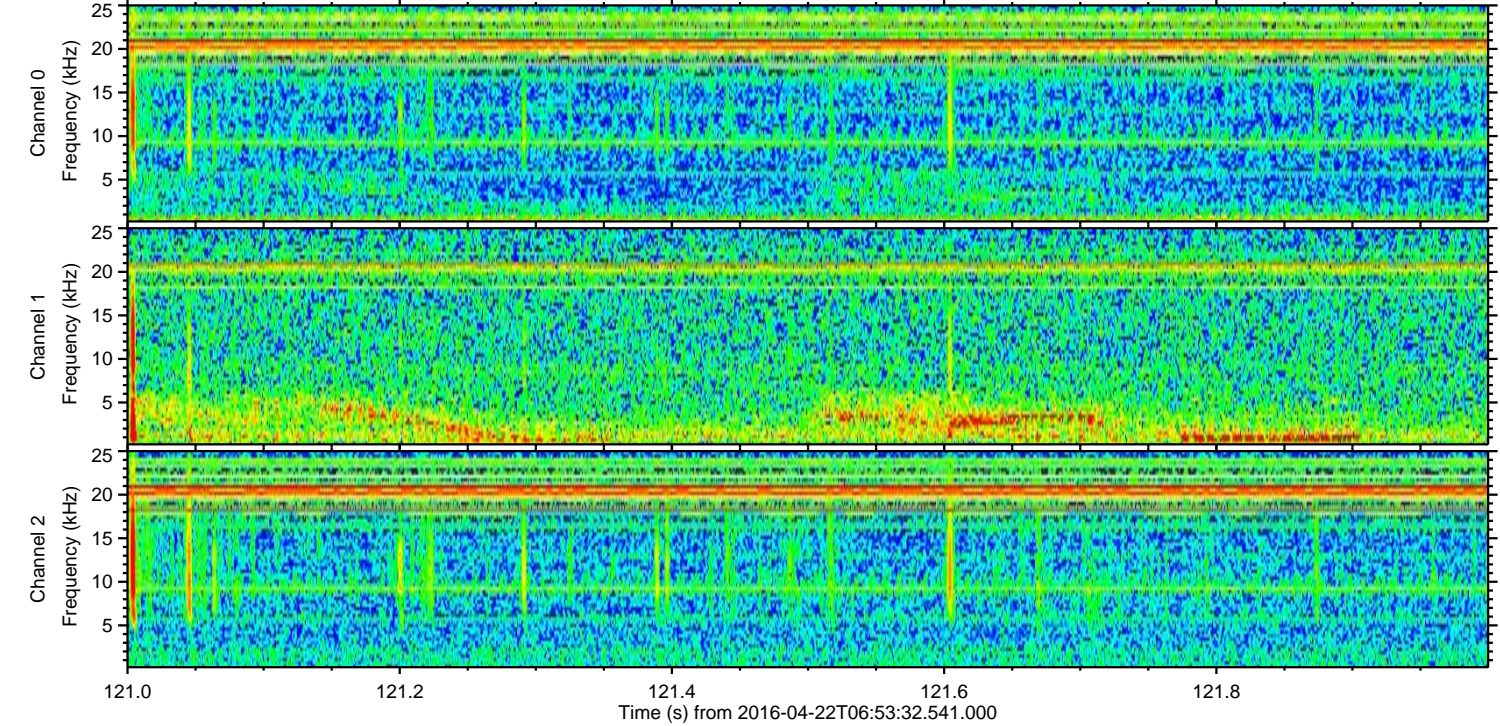
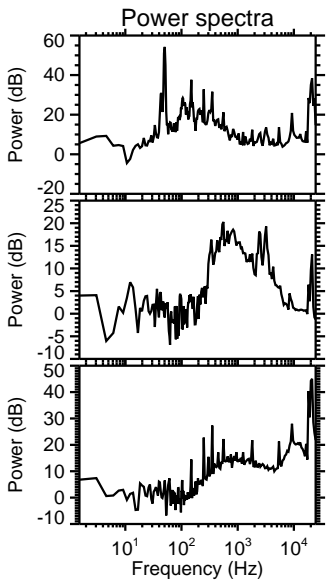
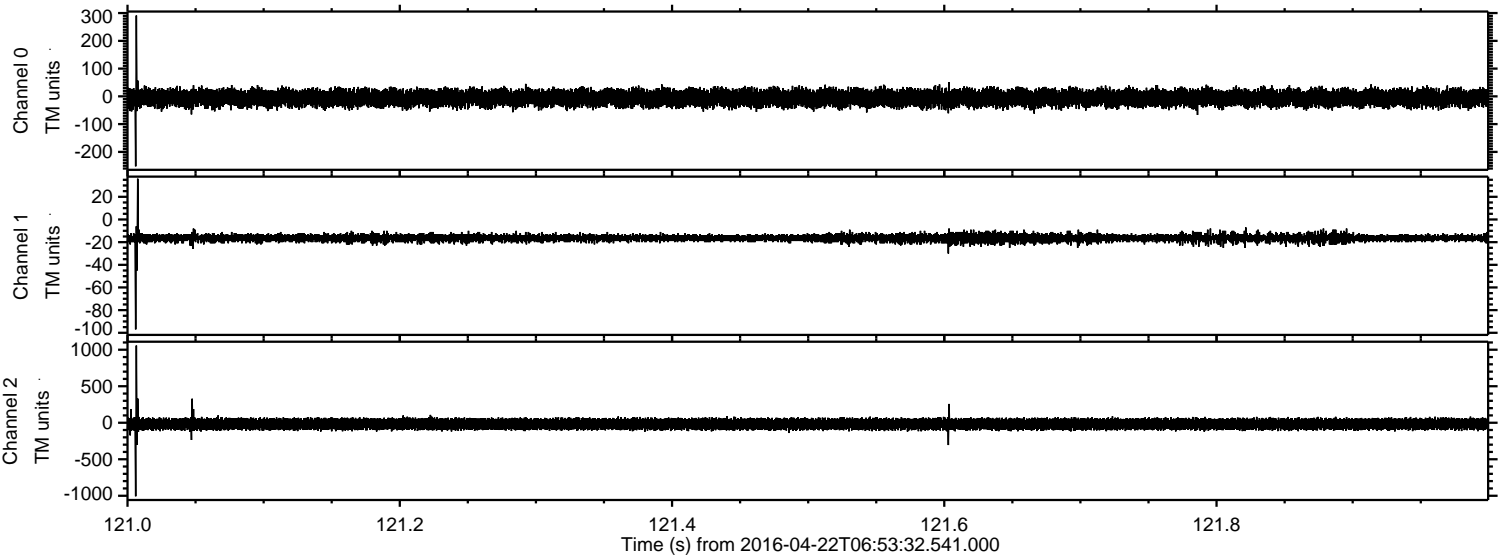
Channel 0
mn: -684
mx: 649
 μ : -6.0
 σ : 18.8

Channel 1
mn: -278
mx: 266
 μ : -16.5
 σ : 5.3

Channel 2
mn: -3133
mx: 2790
 μ : -18.3
 σ : 58.9

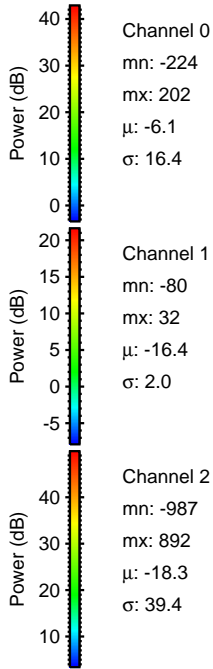
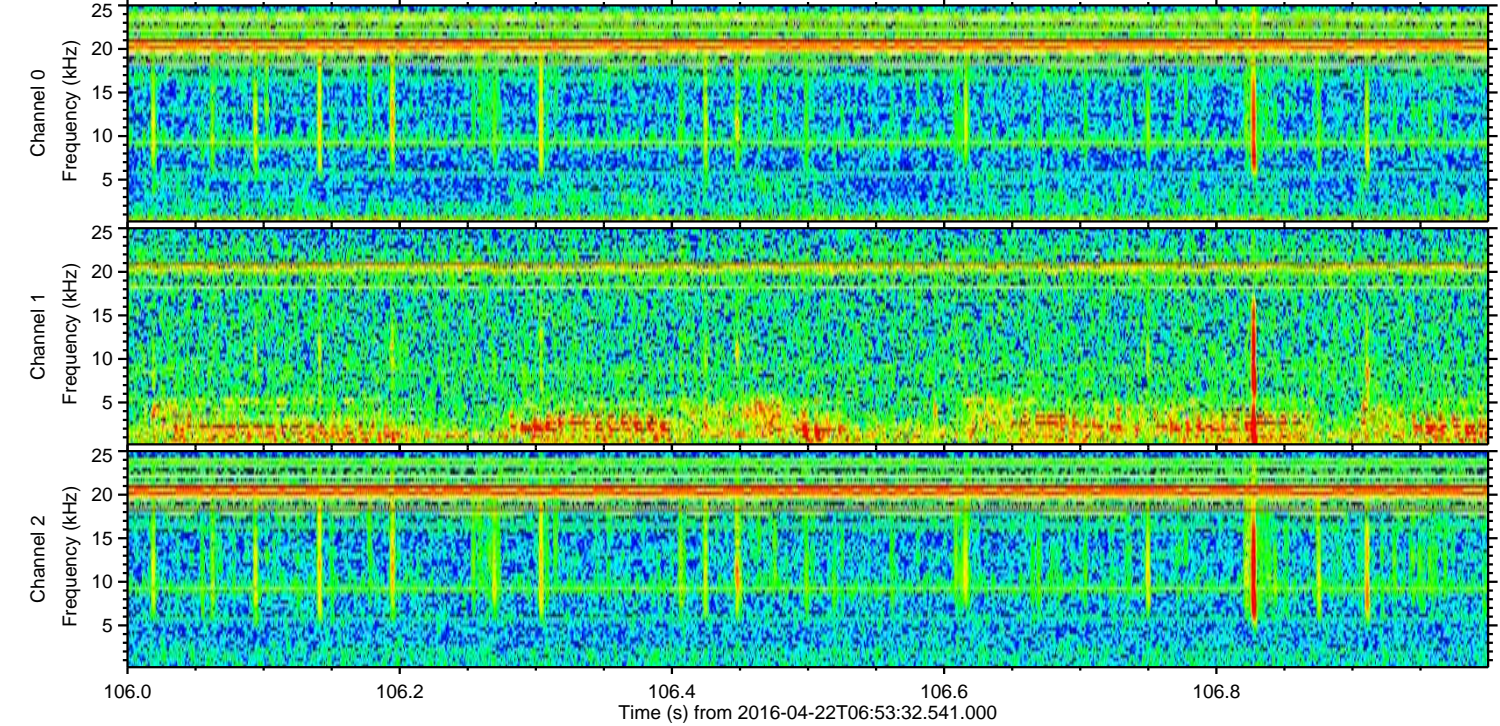
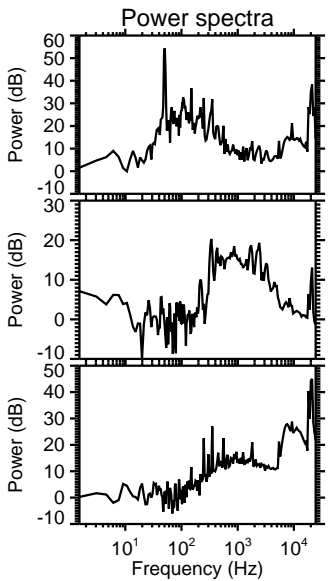
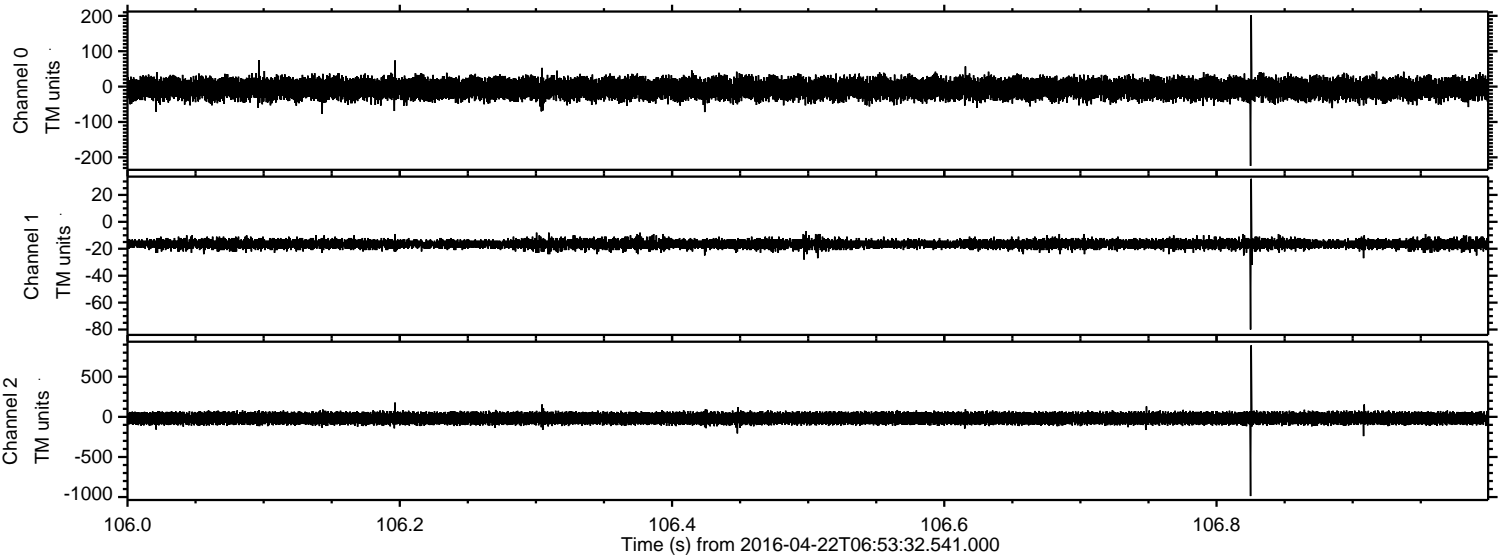
ELMAVAN 3D WAVEFORMS (Measured data sampled at 50 kHz) 51000 packets of 144 samples from 2016-04-22T06:53:32.541.000. Part 122/147

Processed Tue May 10 00:24:08 2016 by ELM ver.2012-10-06 from 001_elm20160422_065331__dat00.bin

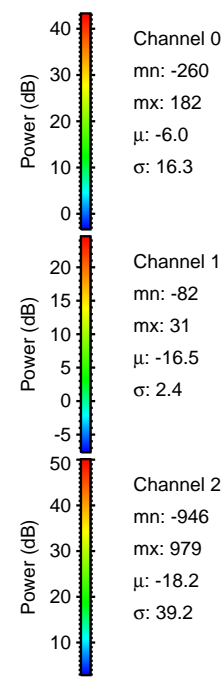
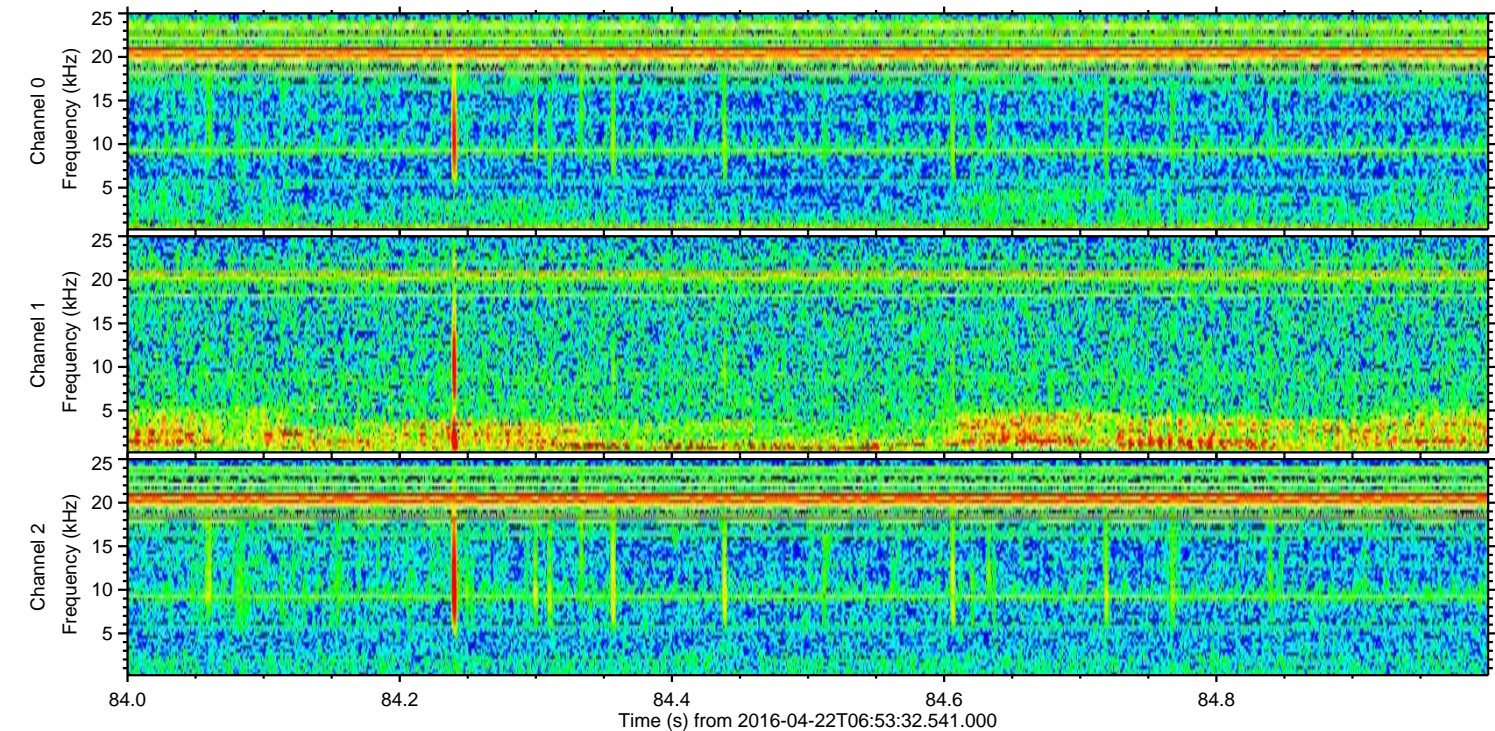
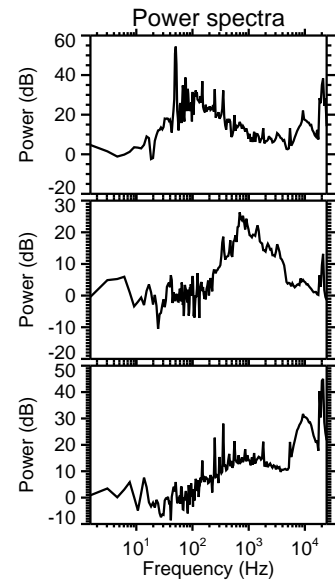
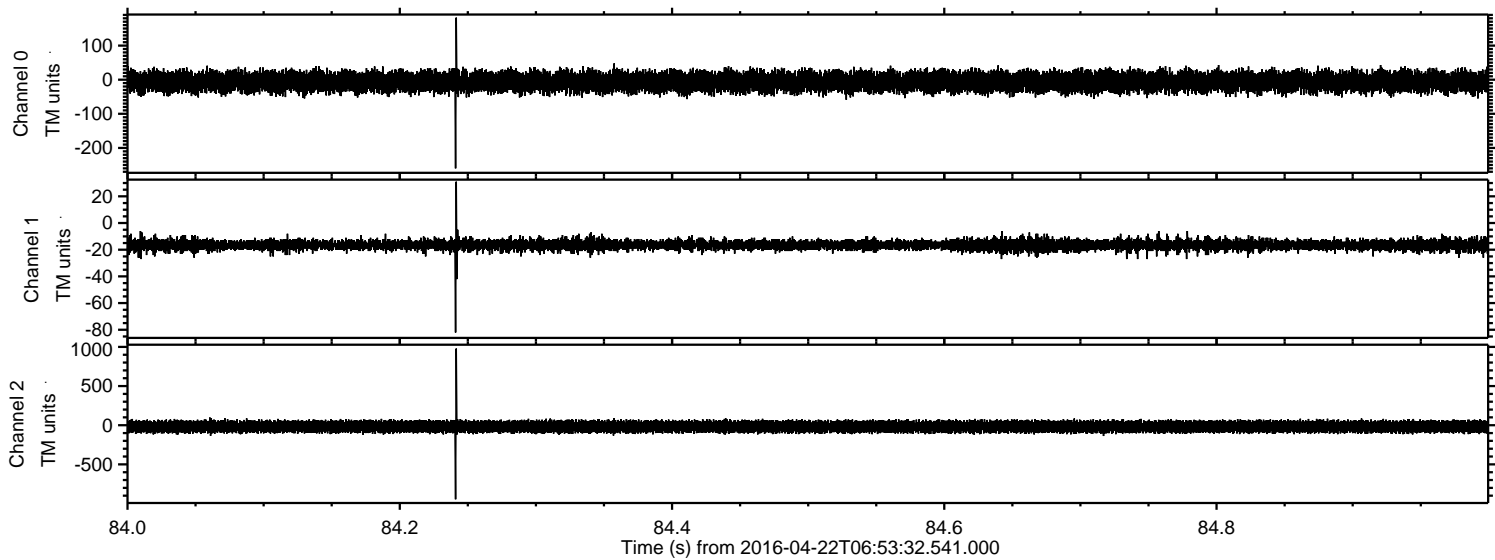


ELMAVAN 3D WAVEFORMS (Measured data sampled at 50 kHz) 51000 packets of 144 samples from 2016-04-22T06:53:32.541.000. Part 107/147

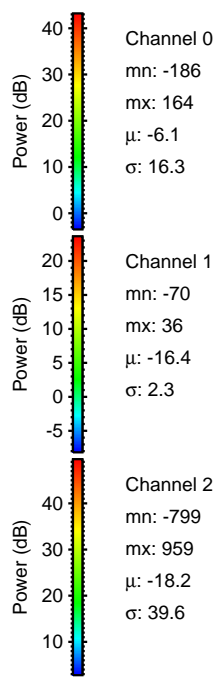
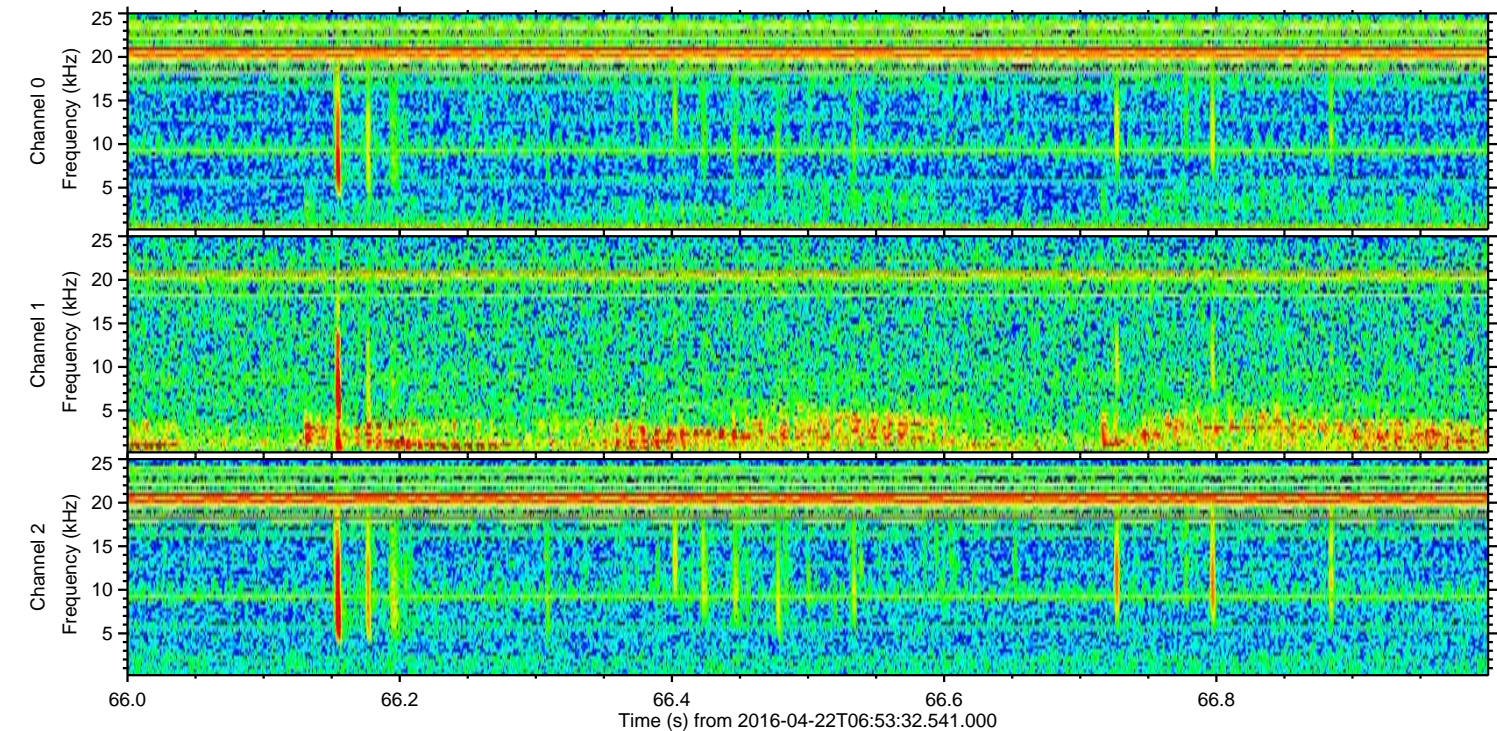
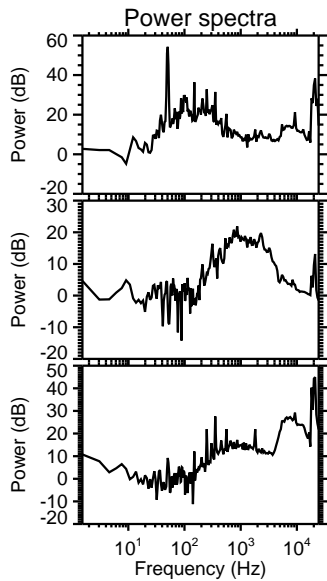
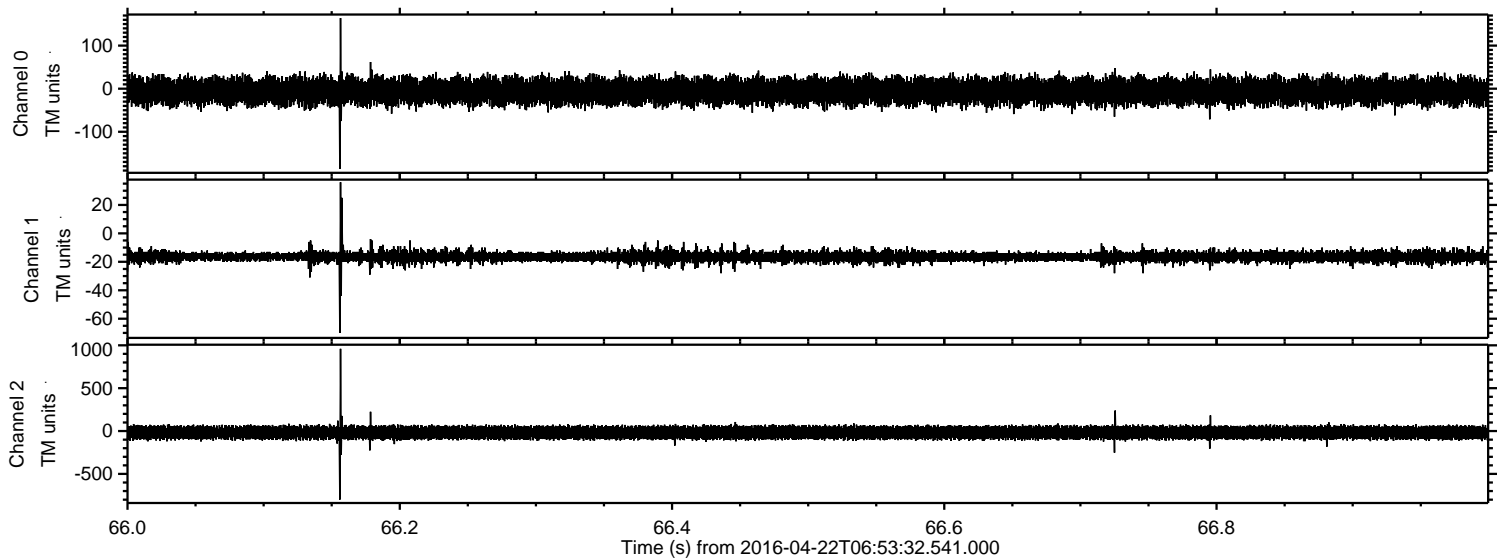
Processed Tue May 10 00:24:09 2016 by ELM ver.2012-10-06 from 001__elm20160422_065331__dat00.bin



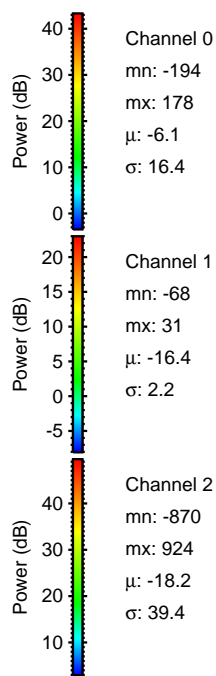
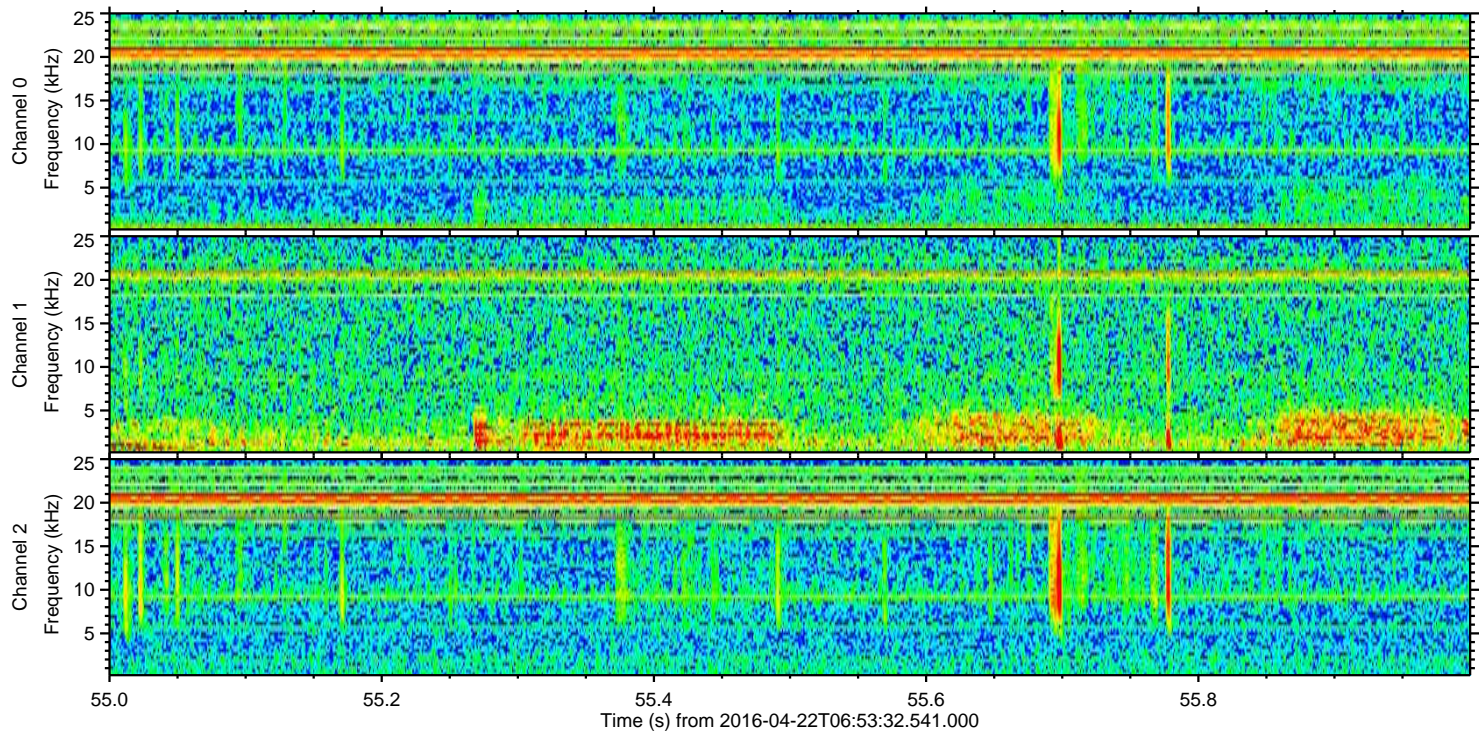
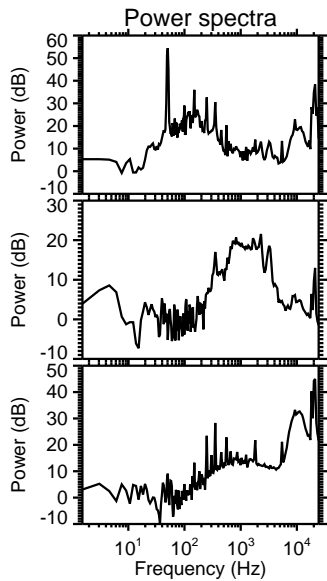
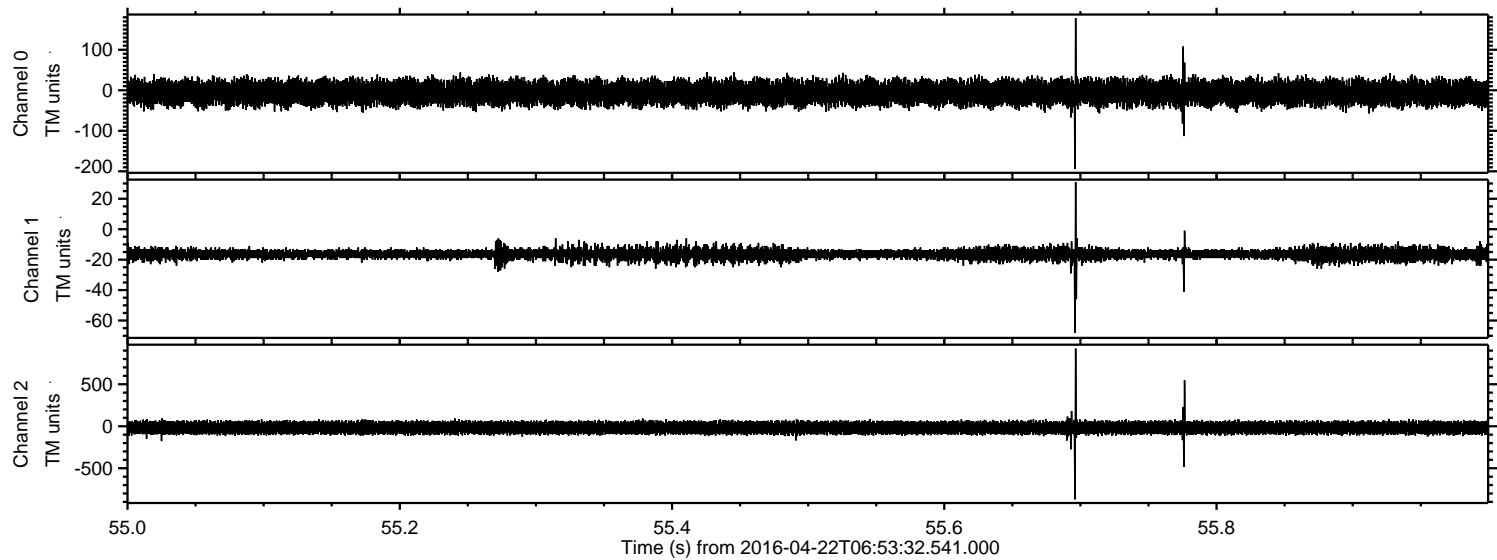
Processed Tue May 10 00:24:10 2016 by ELM ver.2012-10-06 from 001_elm20160422_065331__dat00.bin



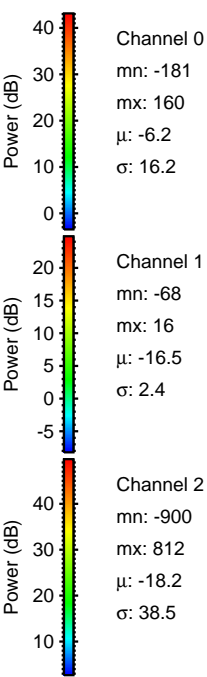
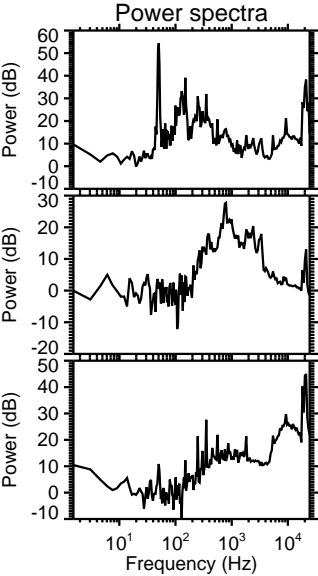
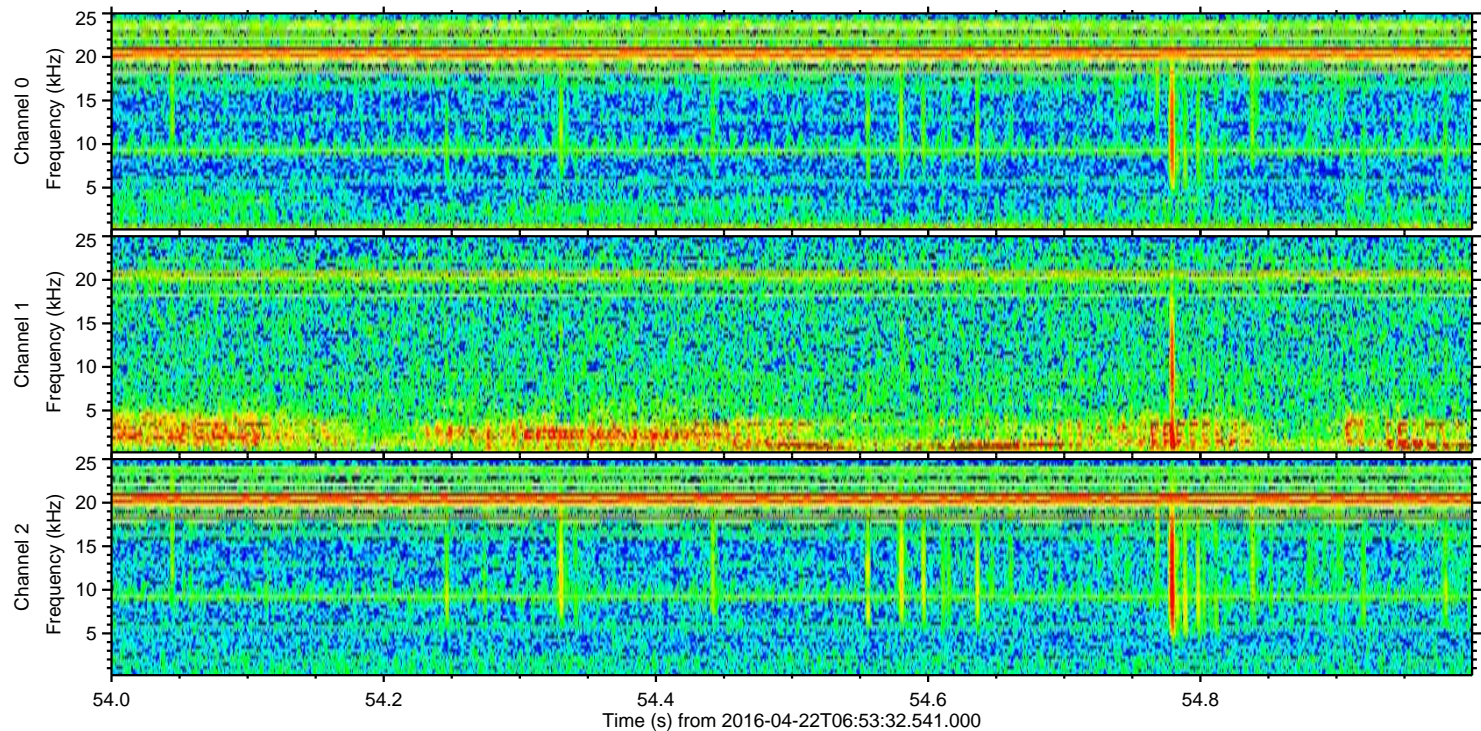
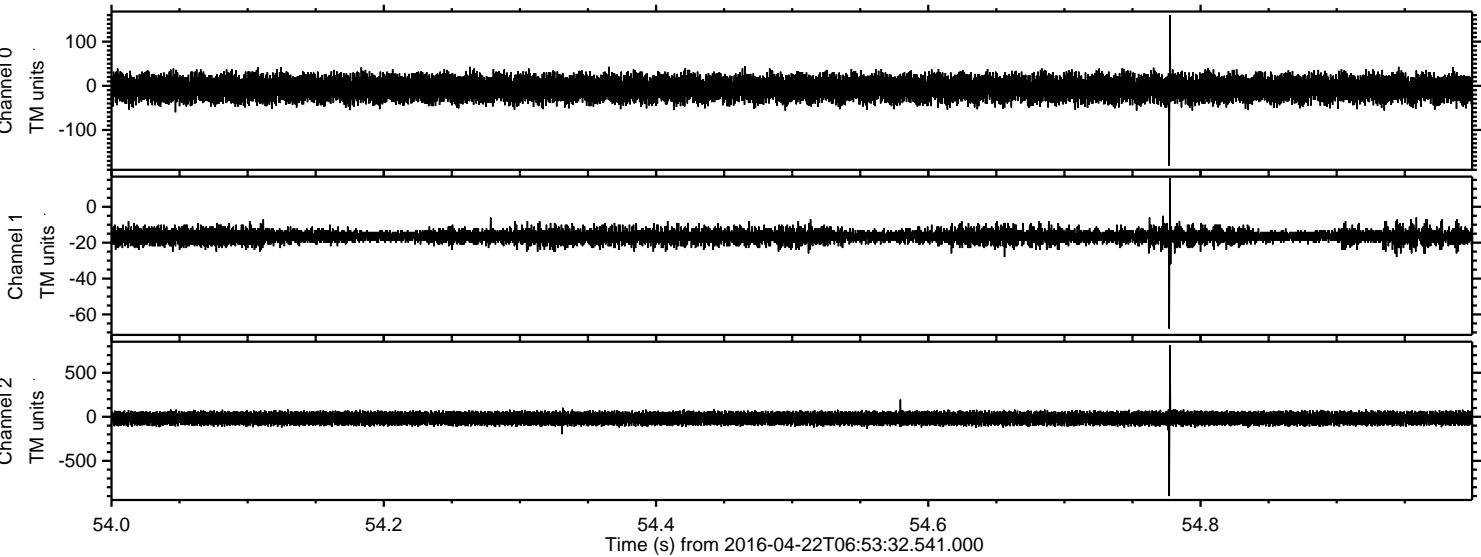
Processed Tue May 10 00:24:11 2016 by ELM ver.2012-10-06 from 001__elm20160422_065331__dat00.bin



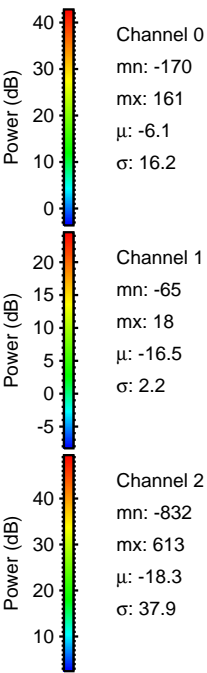
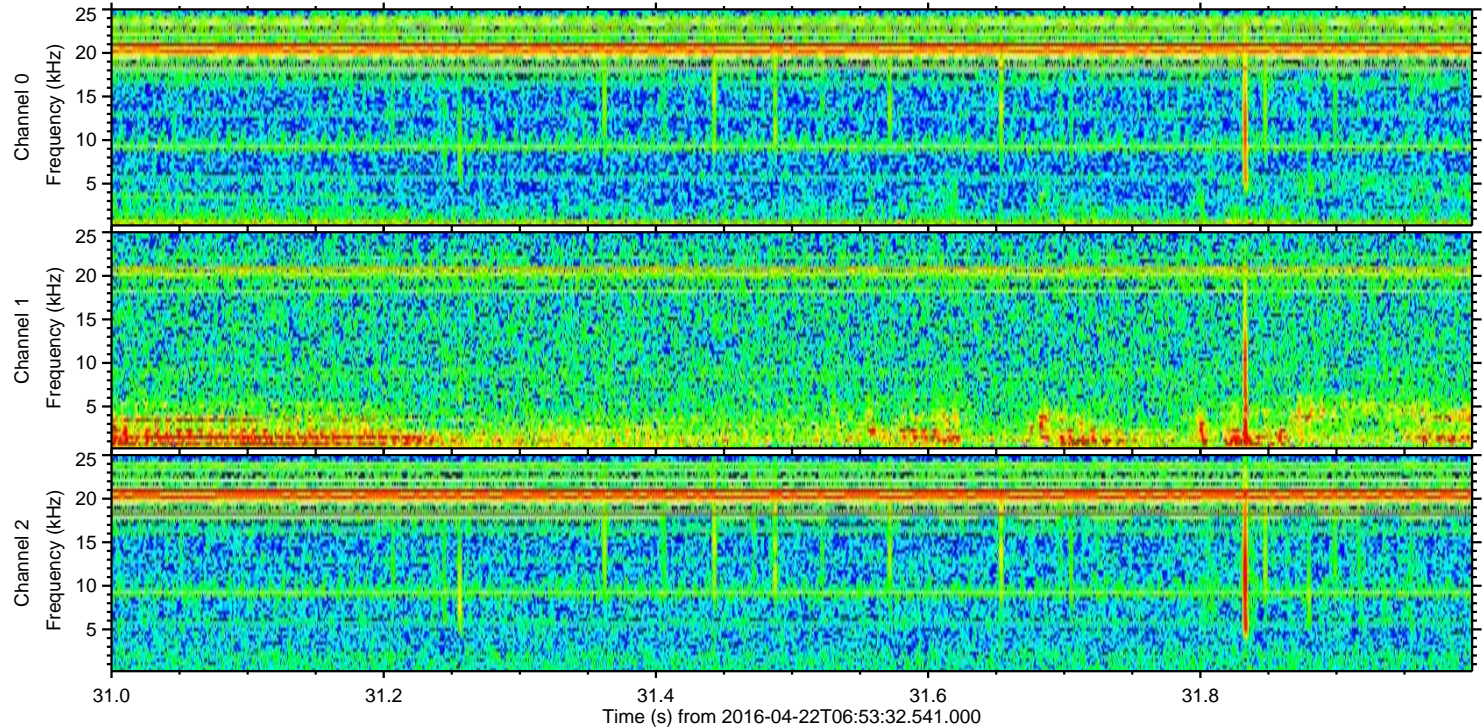
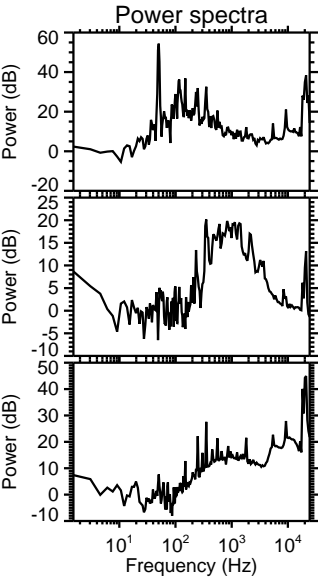
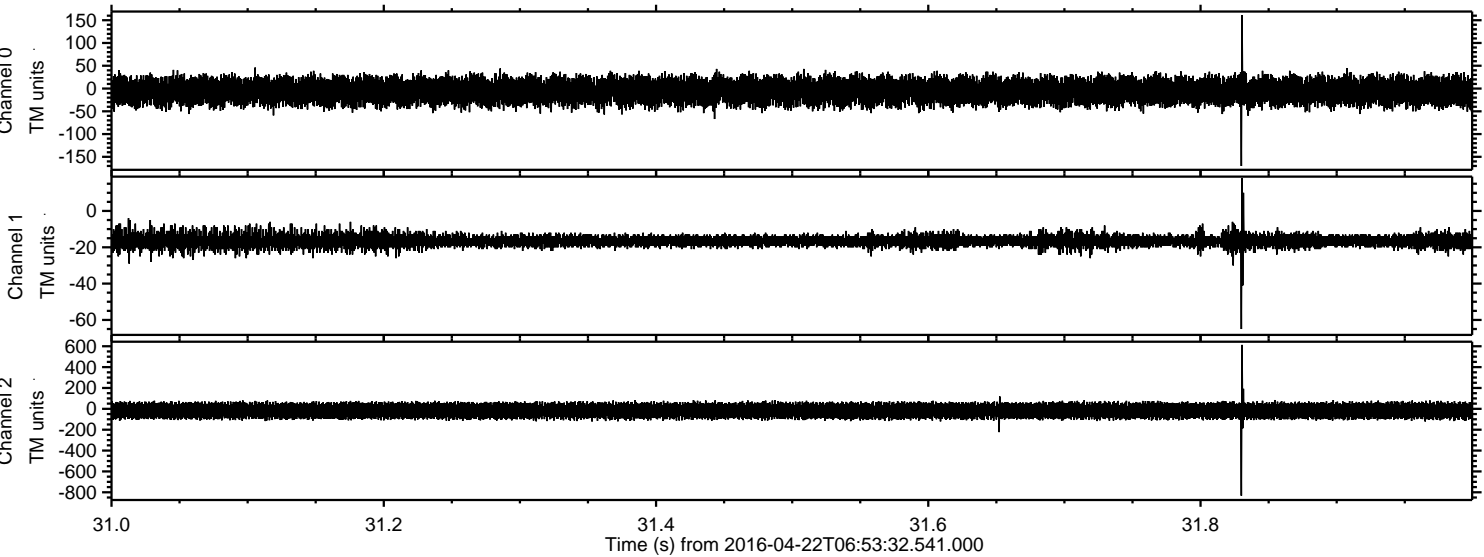
Processed Tue May 10 00:24:12 2016 by ELM ver.2012-10-06 from 001__elm20160422_065331__dat00.bin



Processed Tue May 10 00:24:13 2016 by ELM ver.2012-10-06 from 001__elm20160422_065331__dat00.bin



Processed Tue May 10 00:24:14 2016 by ELM ver.2012-10-06 from 001__elm20160422_065331__dat00.bin



Processed Tue May 10 00:24:15 2016 by ELM ver.2012-10-06 from 001__elm20160422_065331__dat00.bin

