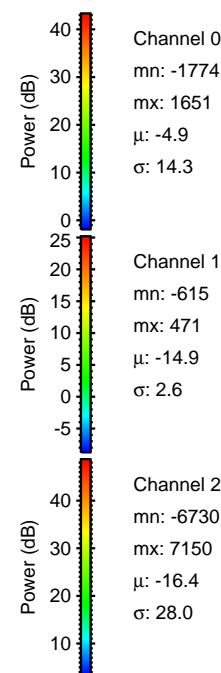
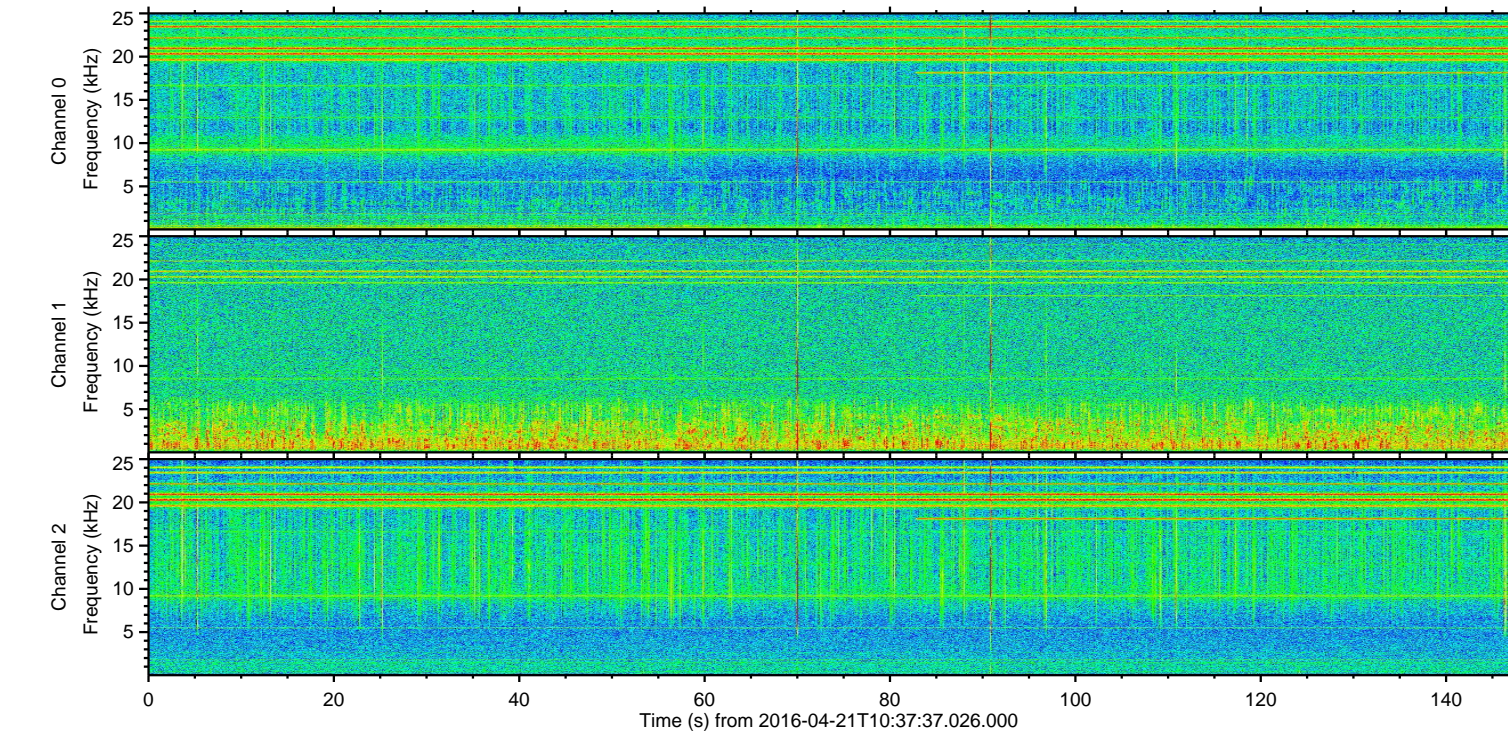
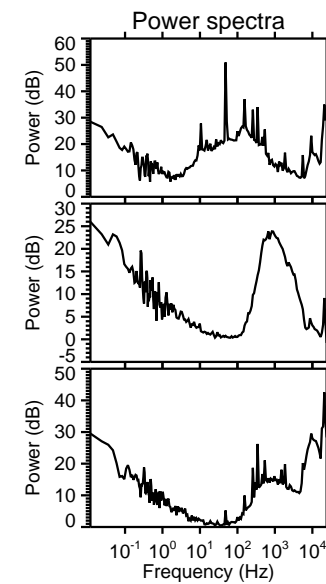
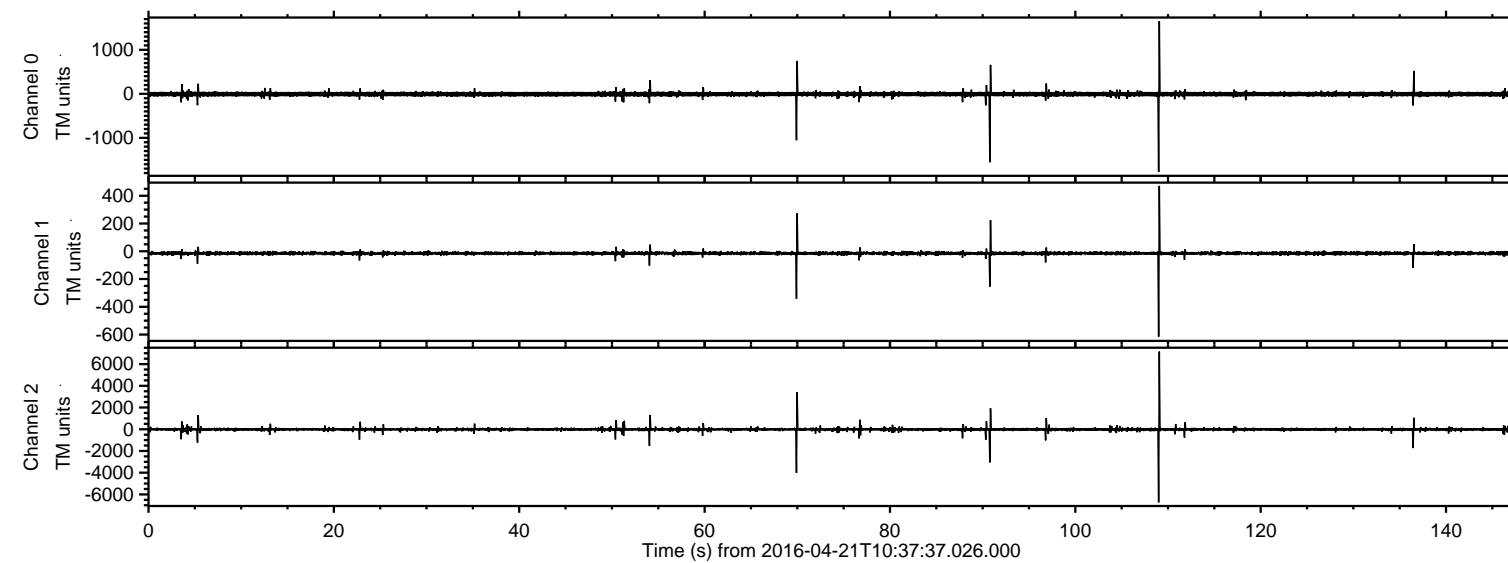


# ELMAVAN 3D WAVEFORMS (Measured data sampled at 50 kHz) 51000 packets of 144 samples from 2016-04-21T10:37:37.026.000.

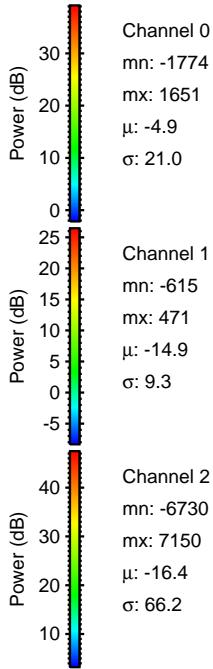
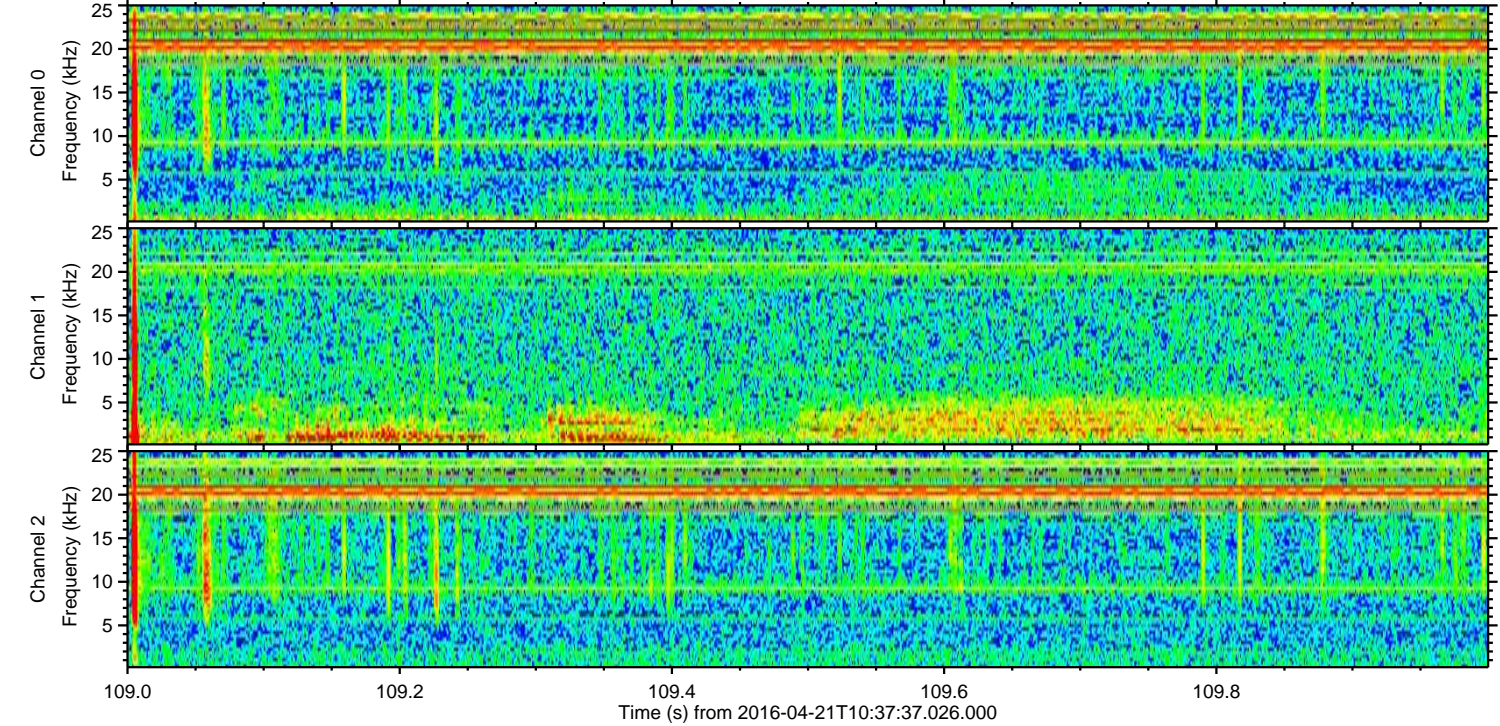
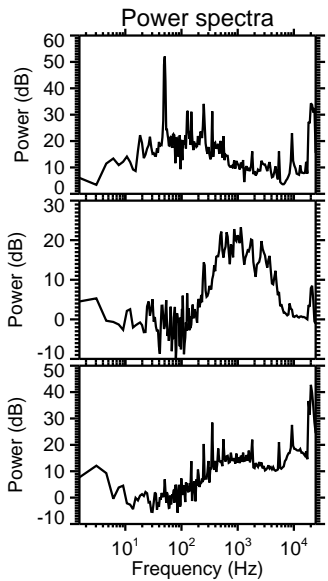
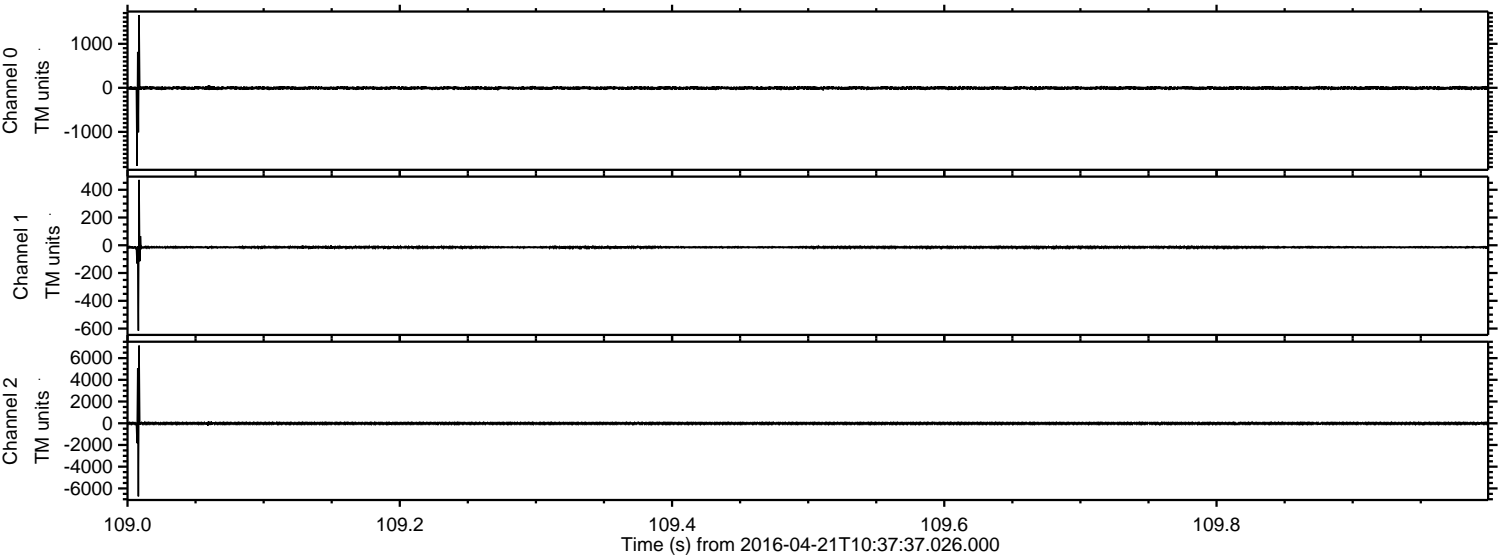
Processed Mon May 9 20:14:21 2016 by ELM ver.2012-10-06 from 001\_\_elm20160421\_103736\_\_dat00.bin





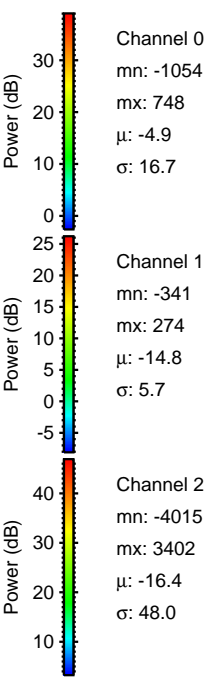
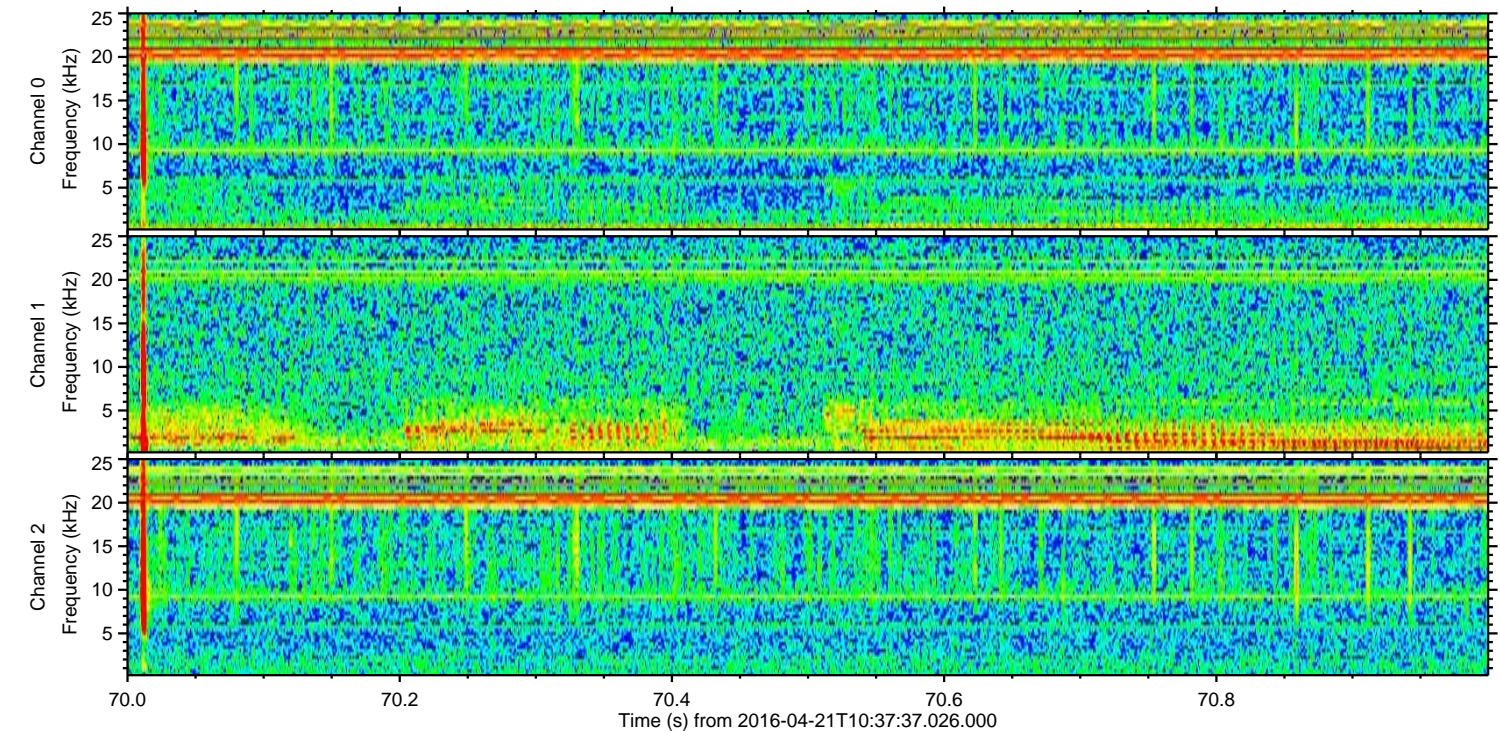
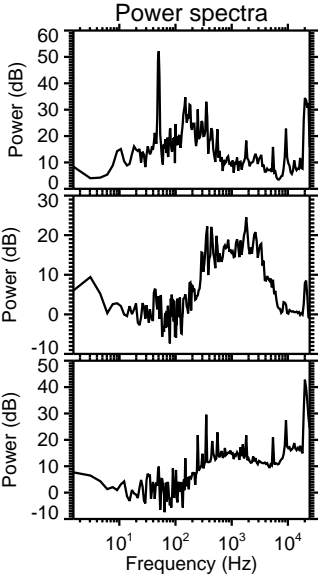
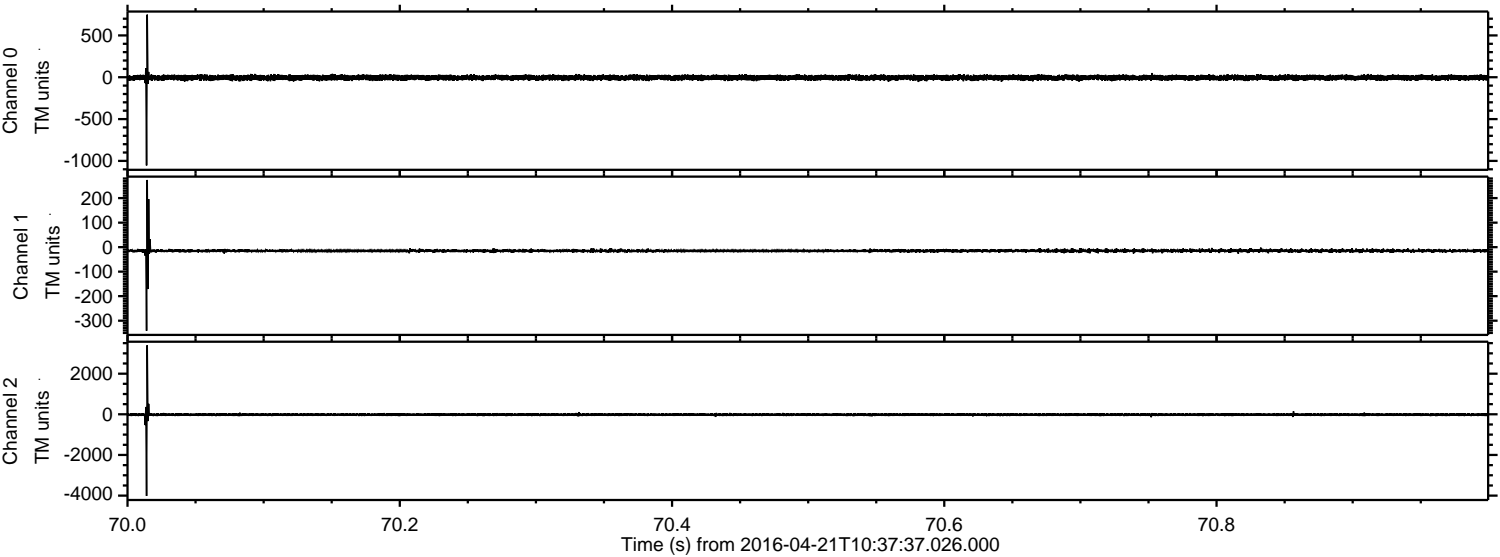
ELMAVAN 3D WAVEFORMS (Measured data sampled at 50 kHz) 51000 packets of 144 samples from 2016-04-21T10:37:37.026.000. Part 110/147

Processed Mon May 9 20:14:36 2016 by ELM ver.2012-10-06 from 001\_\_elm20160421\_103736\_\_dat00.bin



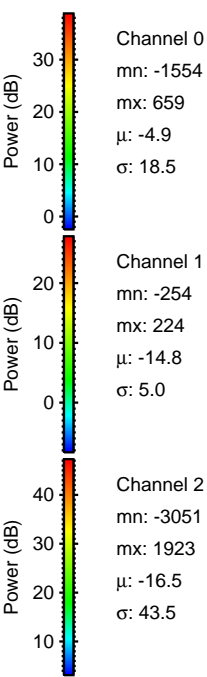
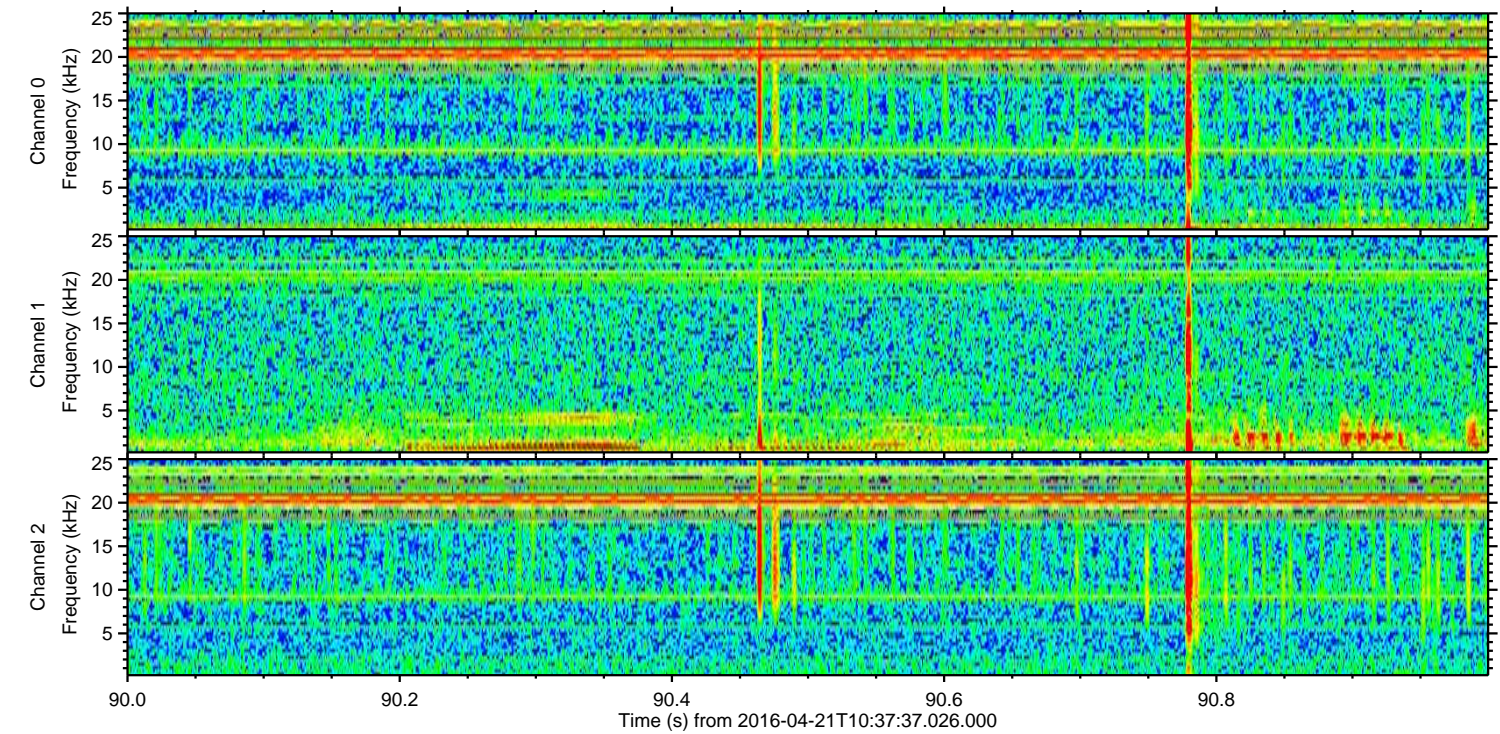
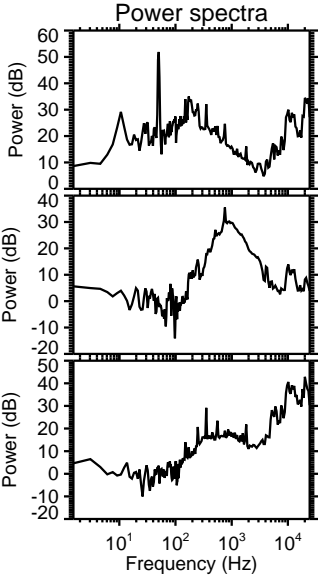
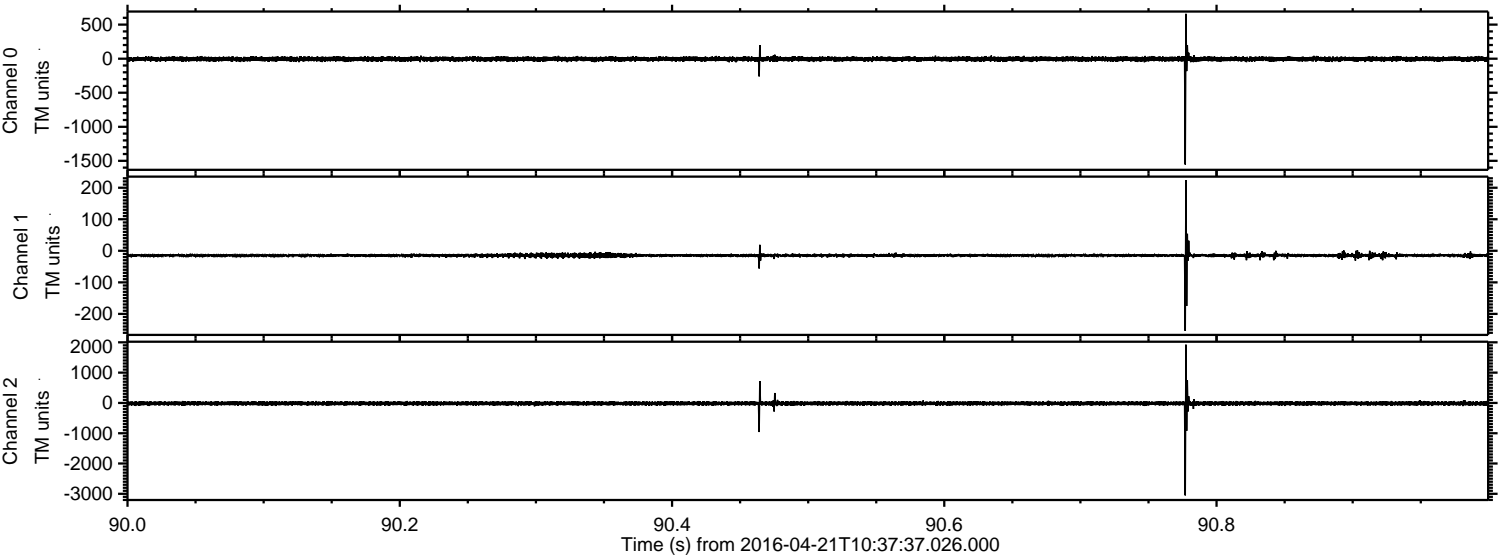


Processed Mon May 9 20:14:37 2016 by ELM ver.2012-10-06 from 001\_\_elm20160421\_103736\_\_dat00.bin





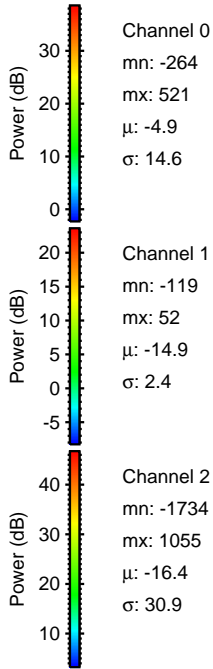
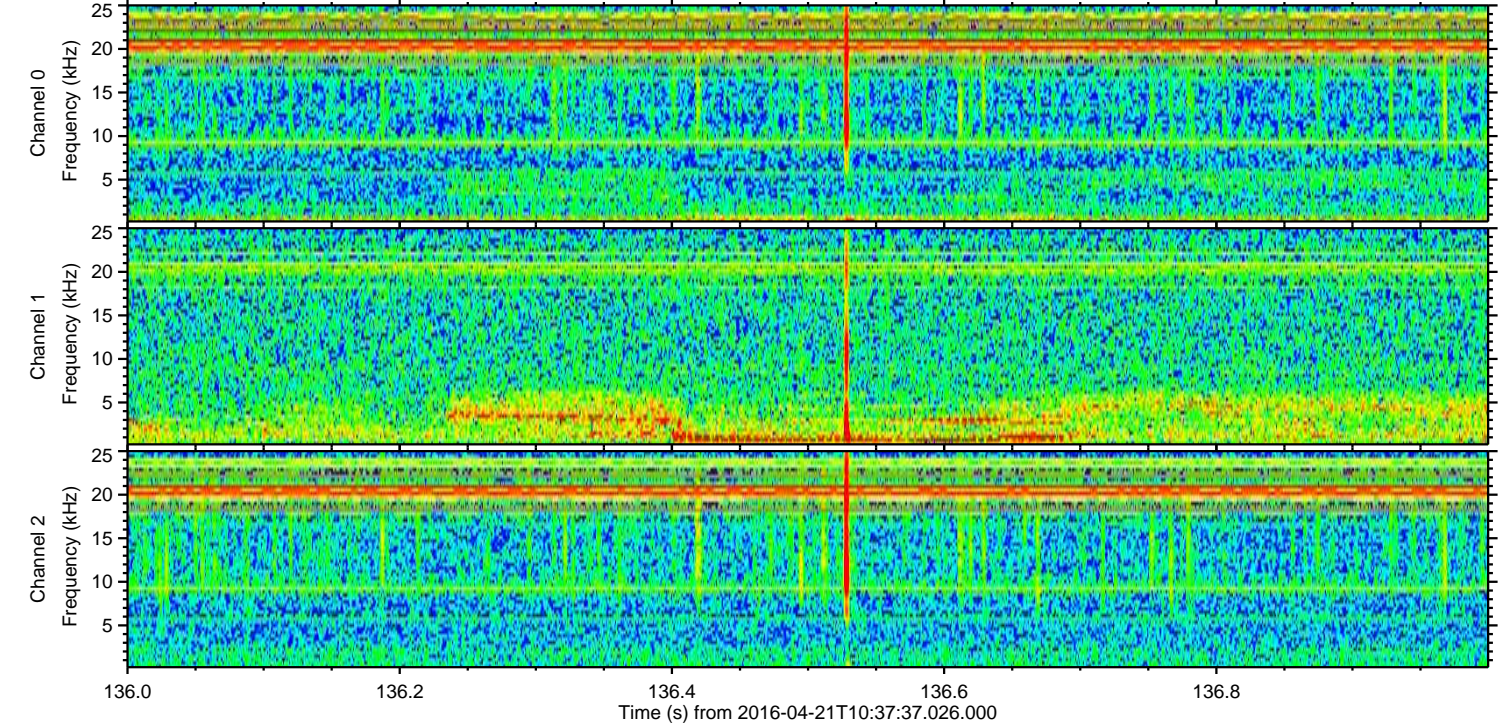
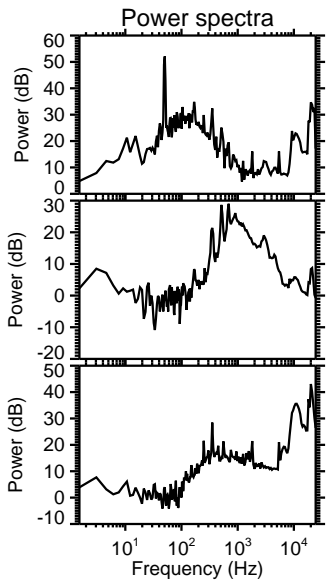
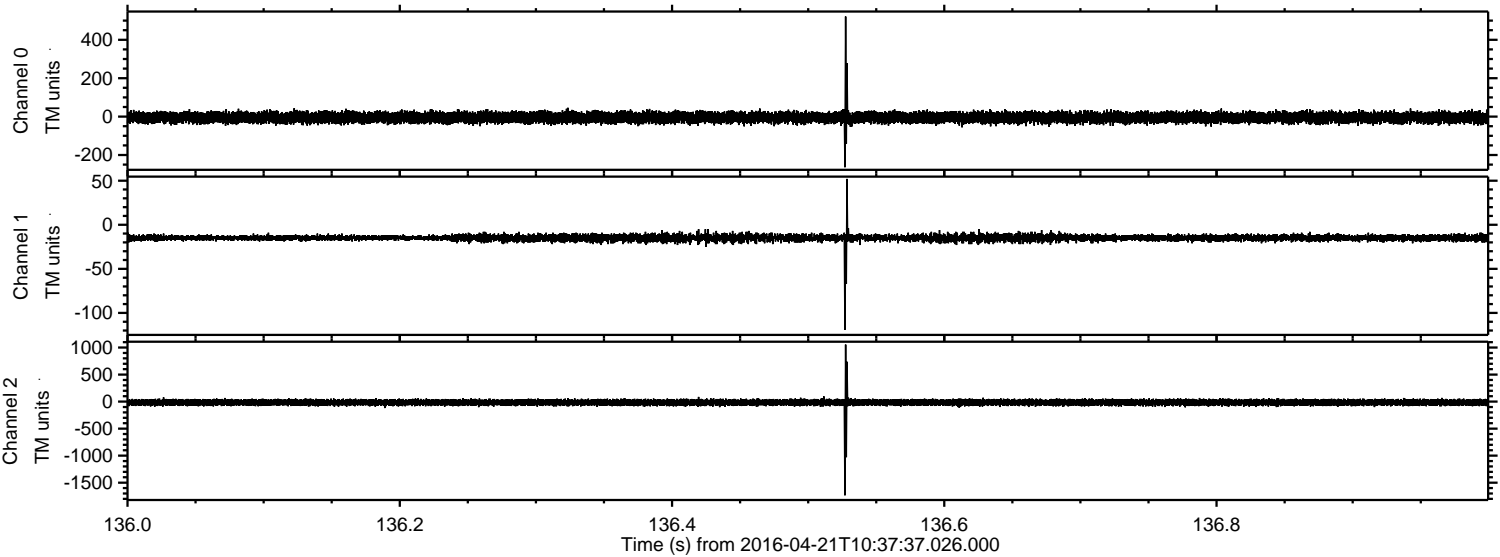
Processed Mon May 9 20:14:38 2016 by ELM ver.2012-10-06 from 001\_\_elm20160421\_103736\_\_dat00.bin





ELMAVAN 3D WAVEFORMS (Measured data sampled at 50 kHz) 51000 packets of 144 samples from 2016-04-21T10:37:37.026.000. Part 137/147

Processed Mon May 9 20:14:39 2016 by ELM ver.2012-10-06 from 001\_\_elm20160421\_103736\_\_dat00.bin



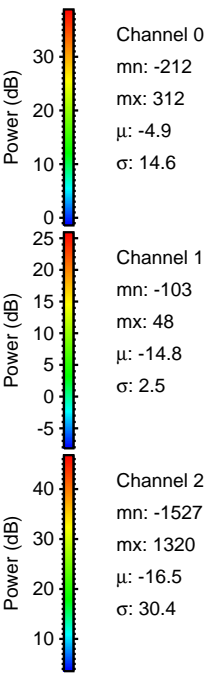
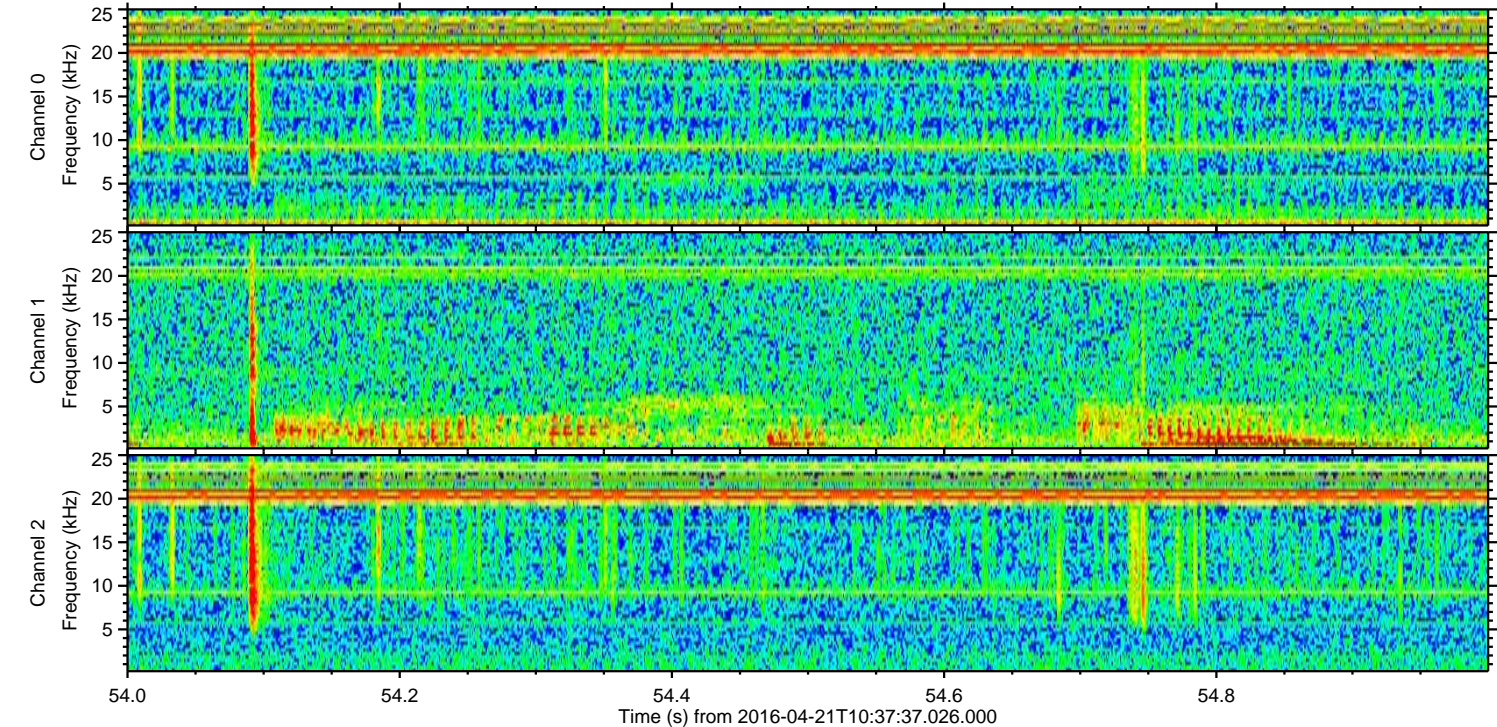
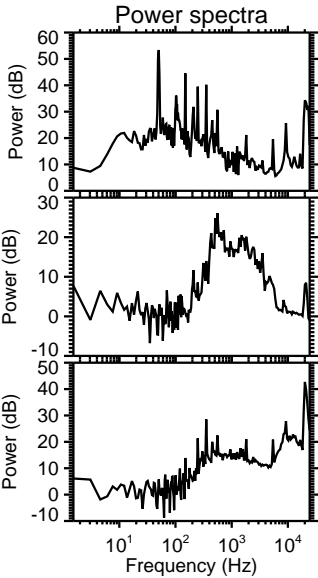
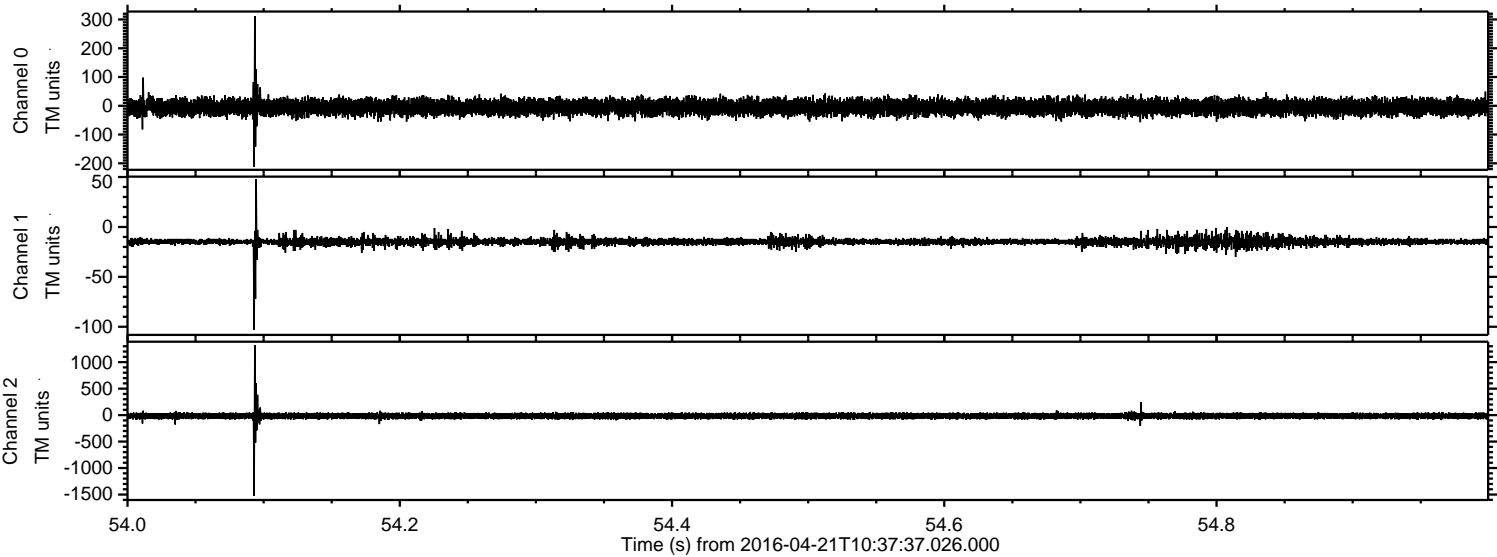
Channel 0  
mn: -264  
mx: 521  
 $\mu$ : -4.9  
 $\sigma$ : 14.6

Channel 1  
mn: -119  
mx: 52  
 $\mu$ : -14.9  
 $\sigma$ : 2.4

Channel 2  
mn: -1734  
mx: 1055  
 $\mu$ : -16.4  
 $\sigma$ : 30.9

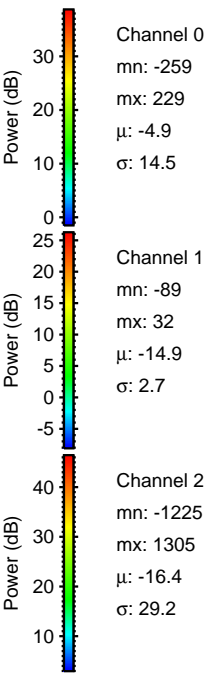
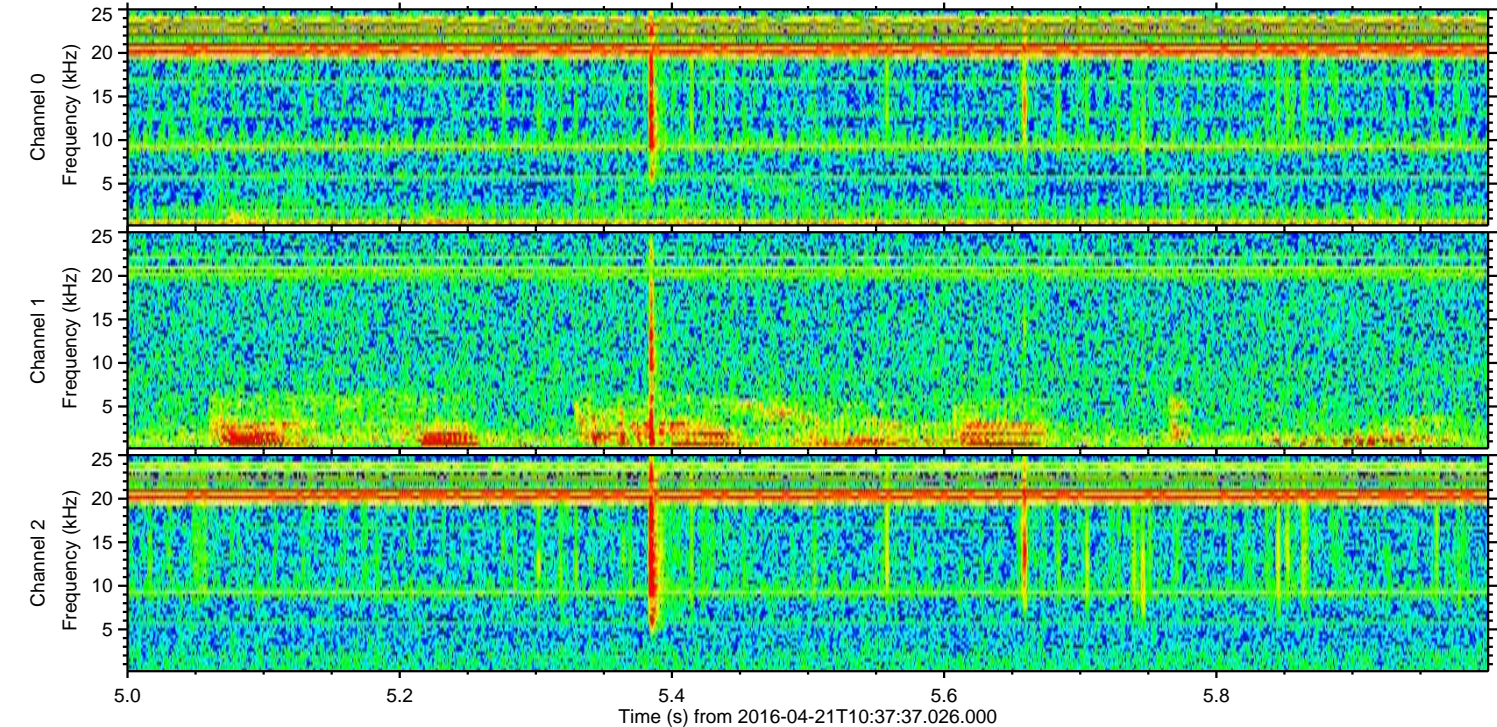
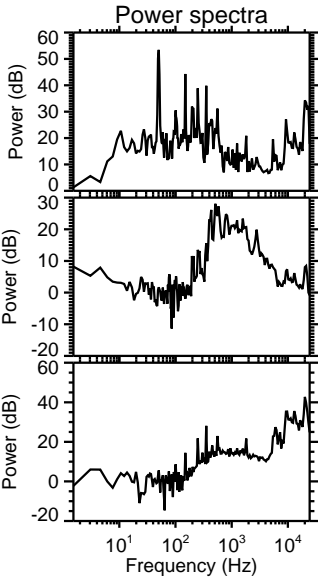
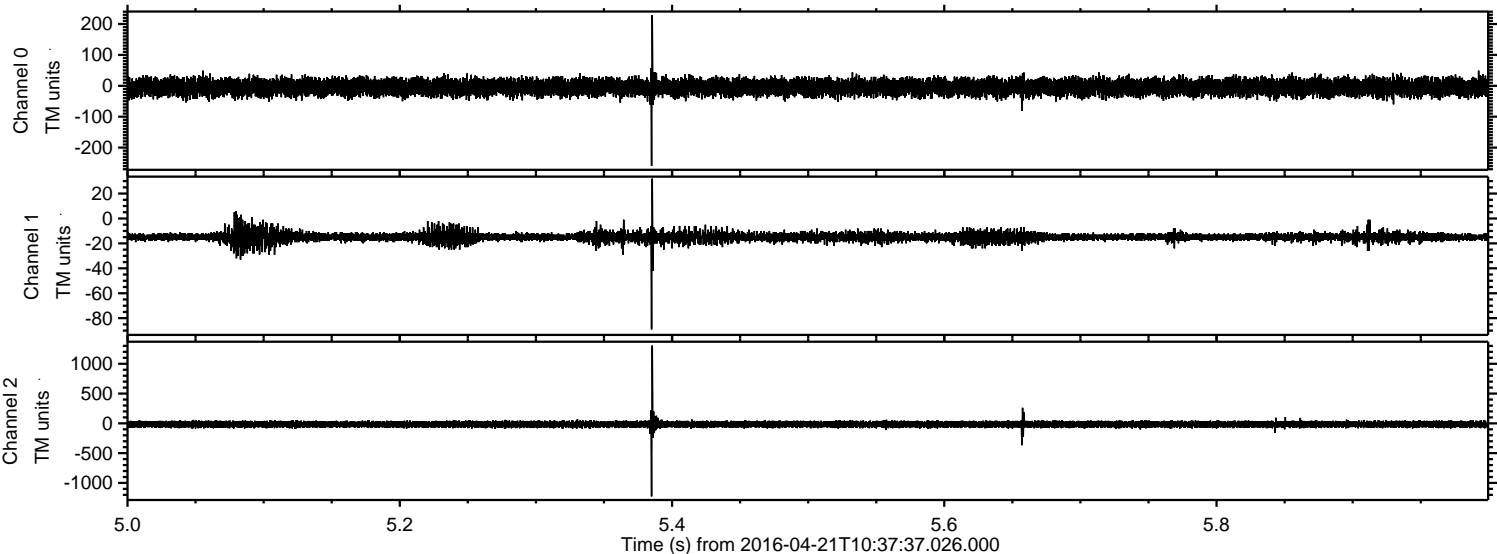


Processed Mon May 9 20:14:40 2016 by ELM ver.2012-10-06 from 001\_elm20160421\_103736\_\_dat00.bin



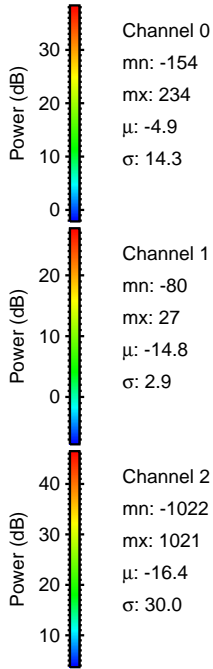
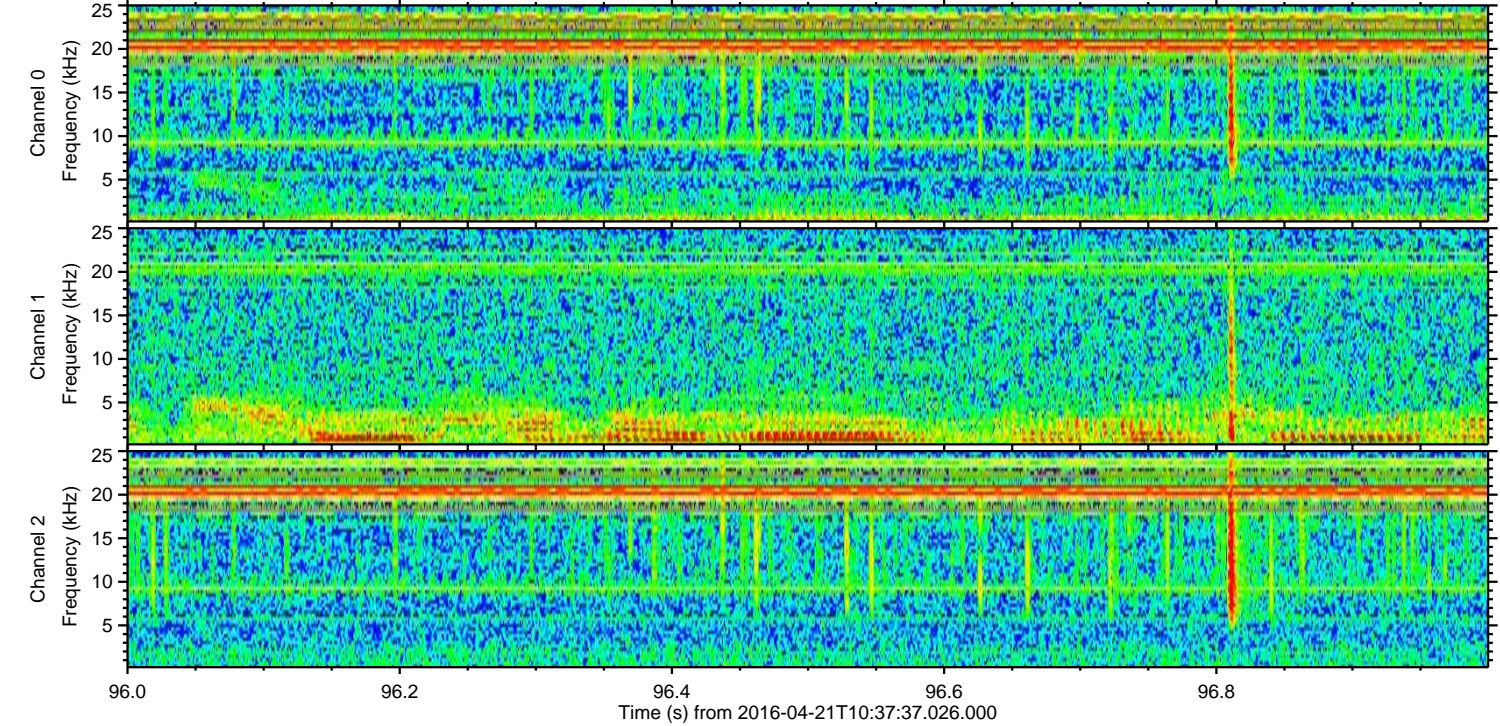
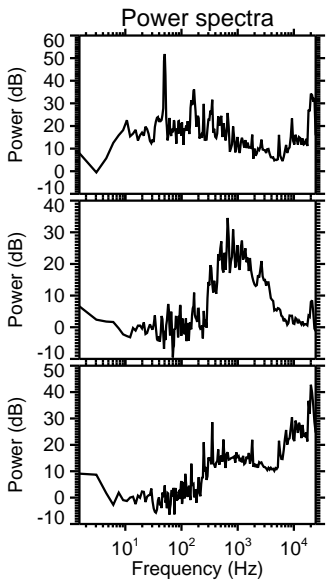
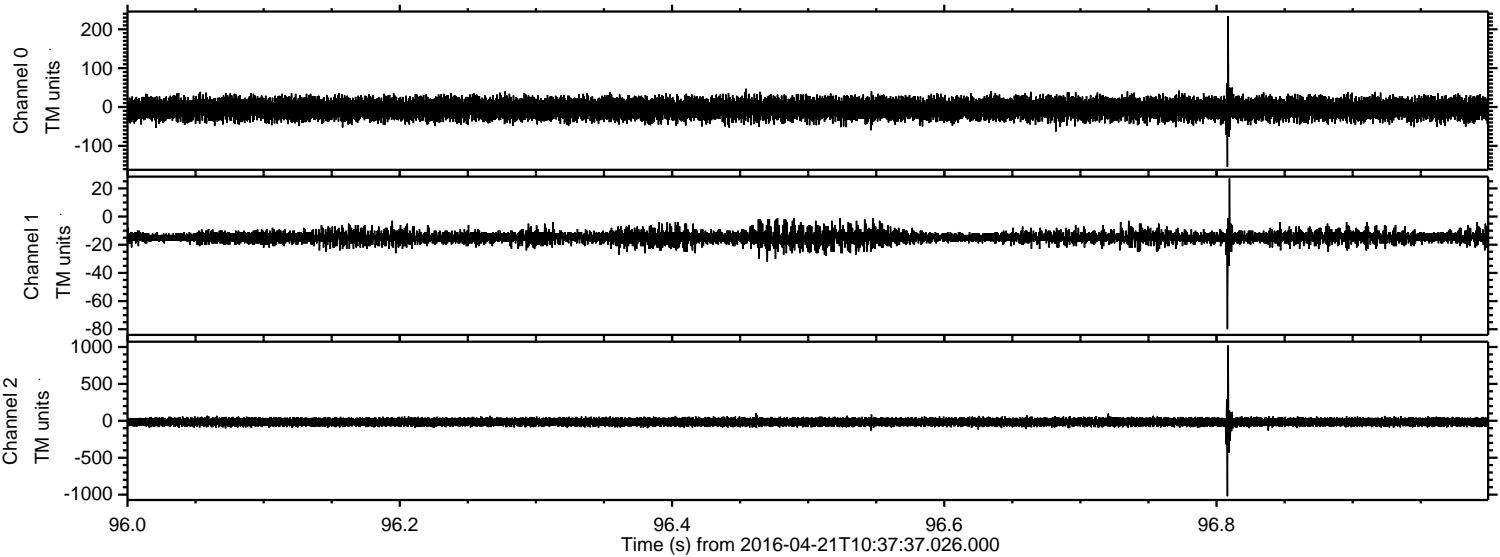


Processed Mon May 9 20:14:42 2016 by ELM ver.2012-10-06 from 001\_\_elm20160421\_103736\_\_dat00.bin



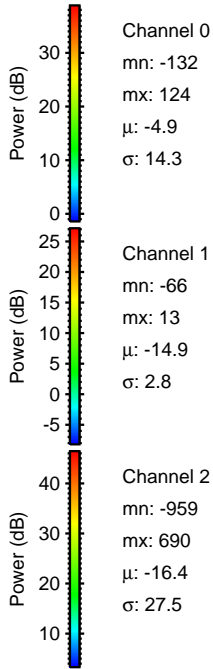
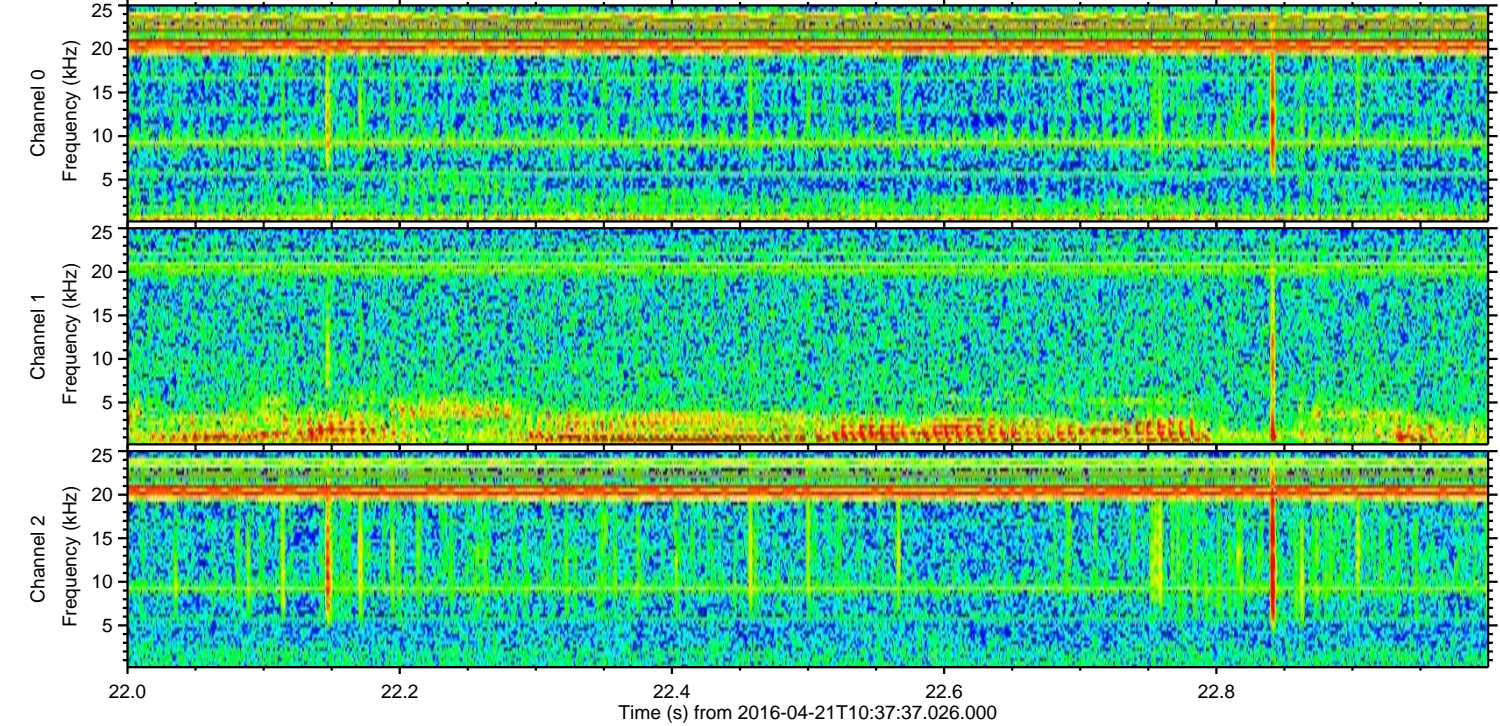
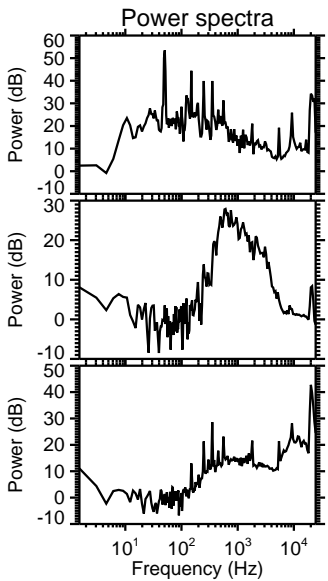
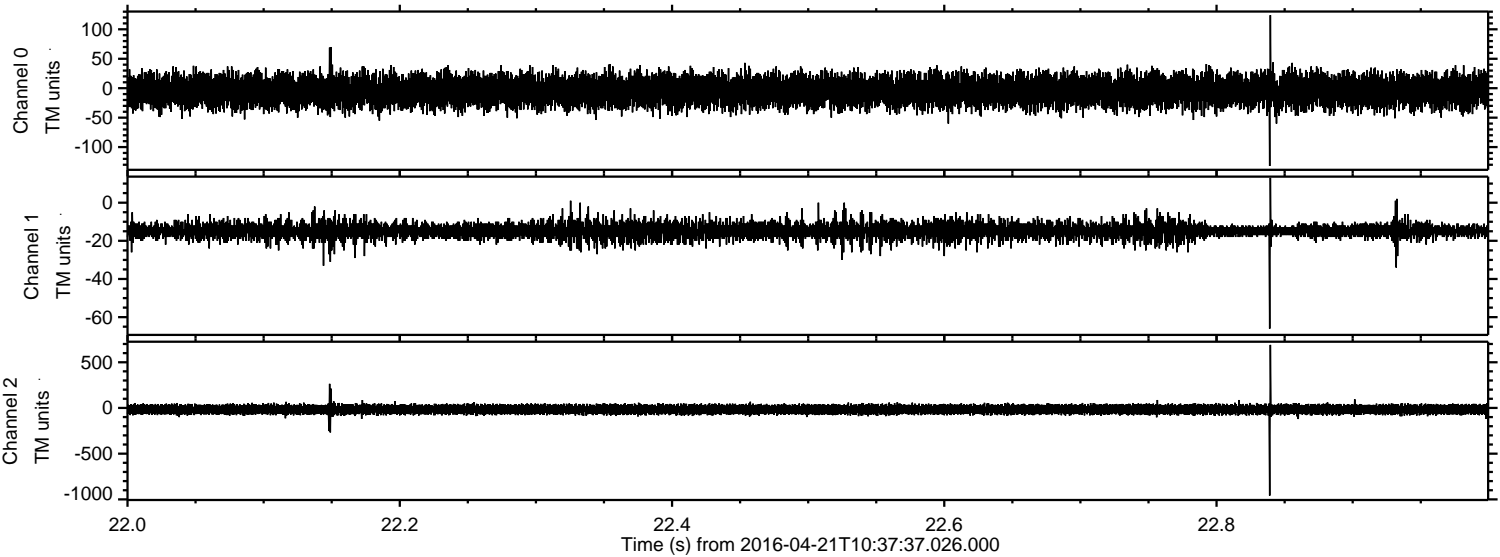


Processed Mon May 9 20:14:43 2016 by ELM ver.2012-10-06 from 001\_\_elm20160421\_103736\_\_dat00.bin



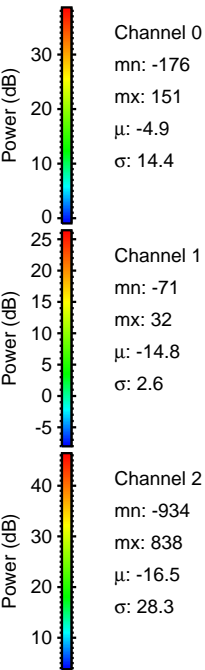
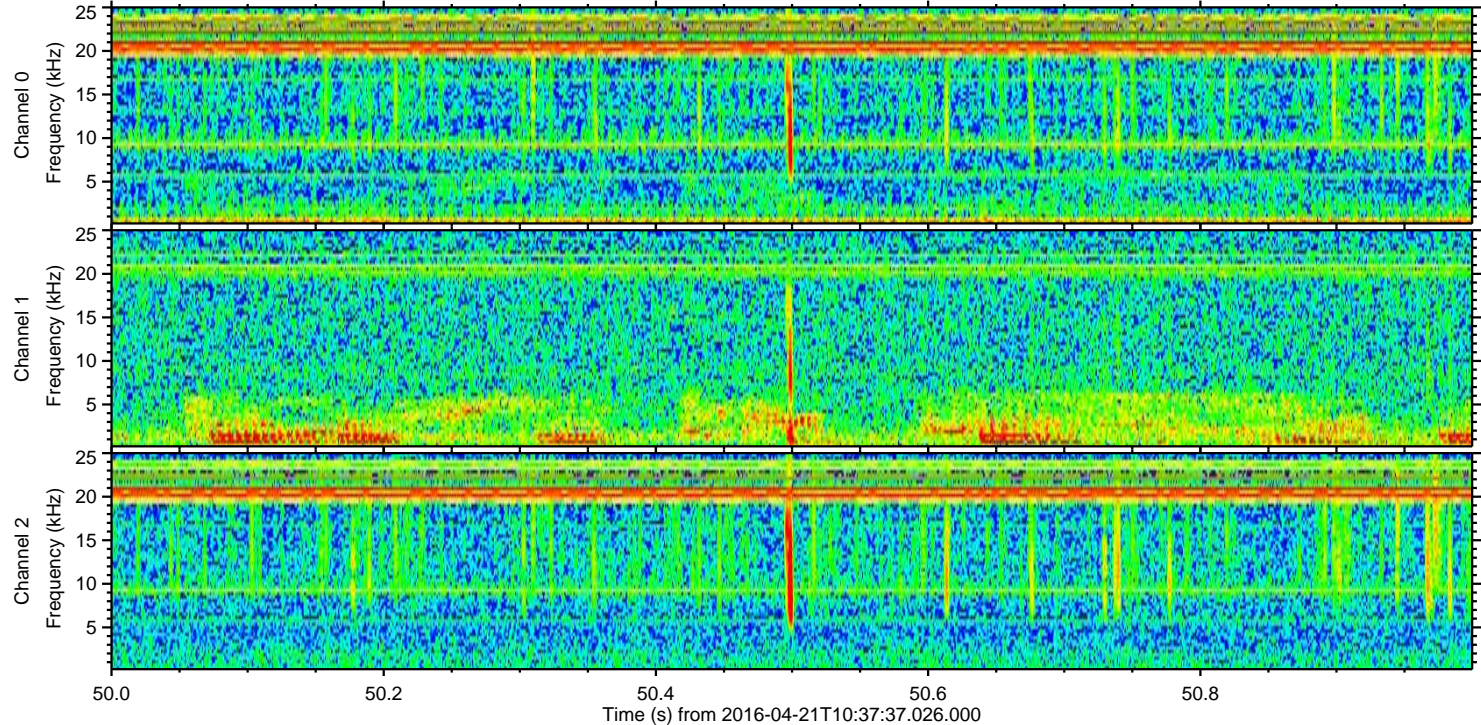
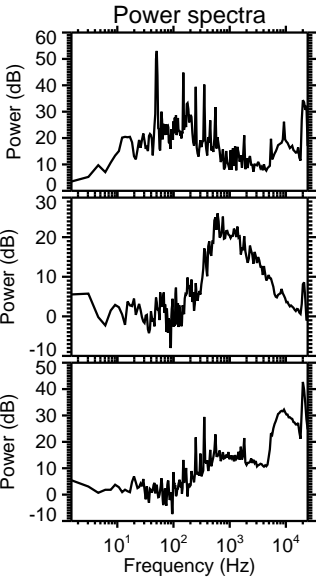
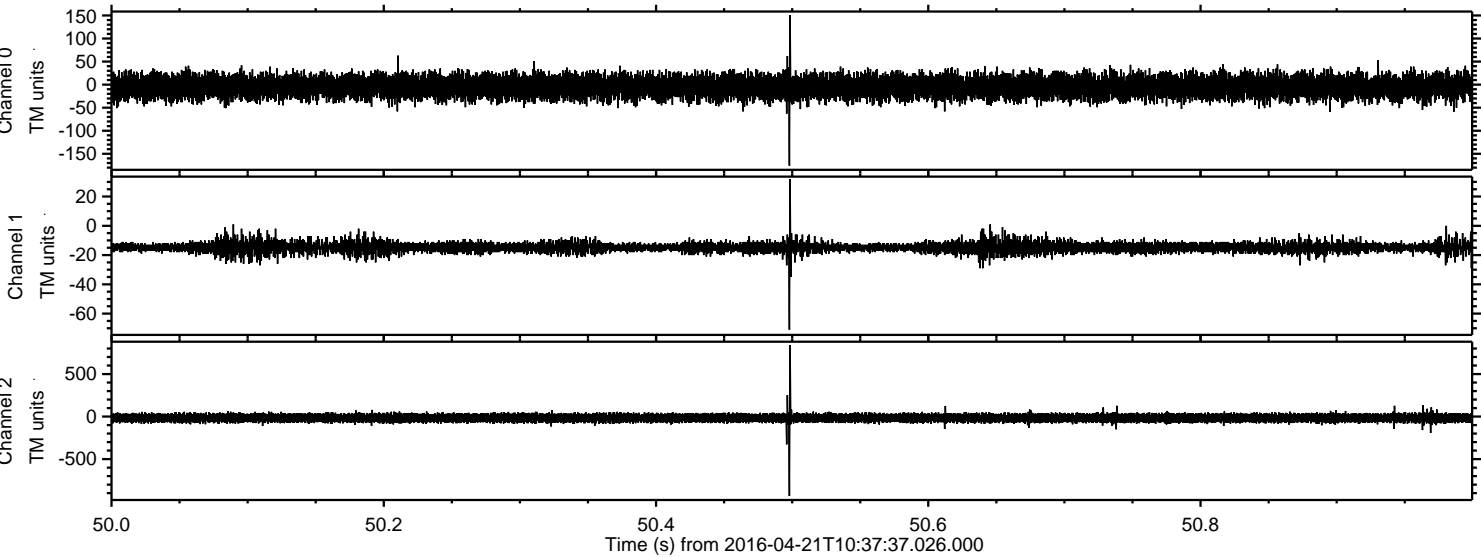


Processed Mon May 9 20:14:44 2016 by ELM ver.2012-10-06 from 001\_\_elm20160421\_103736\_\_dat00.bin





Processed Mon May 9 20:14:45 2016 by ELM ver.2012-10-06 from 001\_\_elm20160421\_103736\_\_dat00.bin





Processed Mon May 9 20:14:47 2016 by ELM ver.2012-10-06 from 001\_\_elm20160421\_103736\_\_dat00.bin

