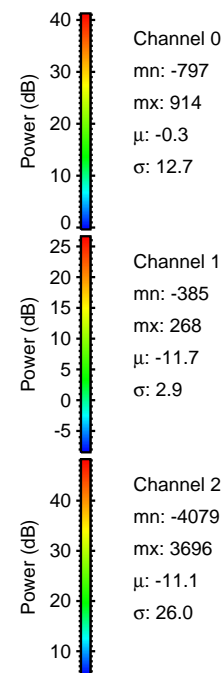
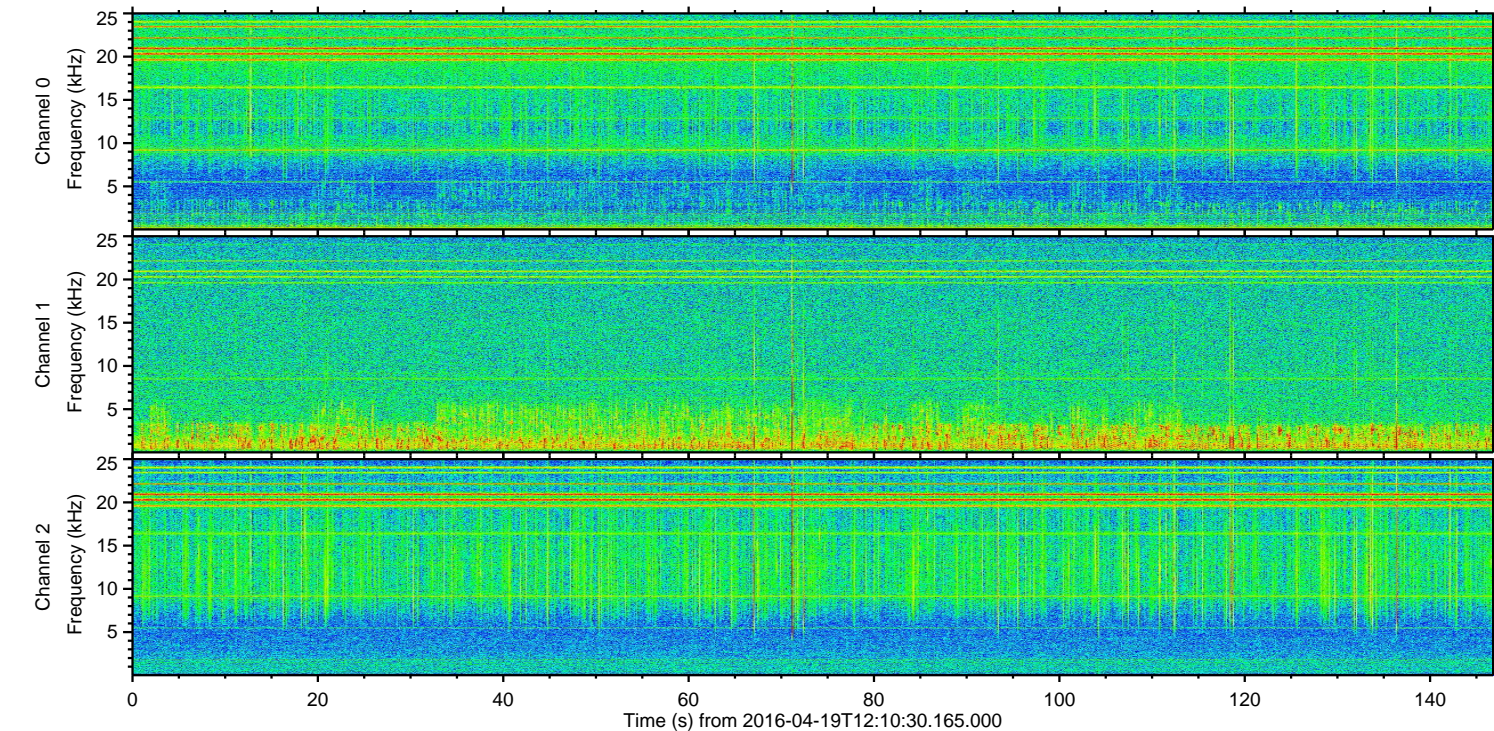
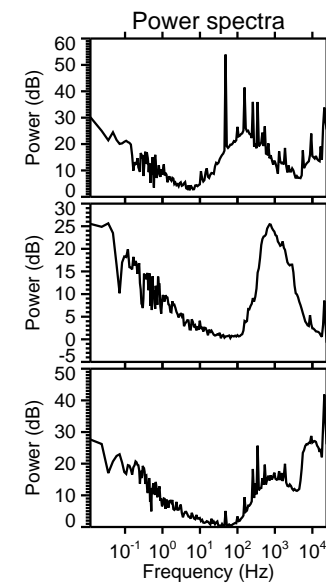
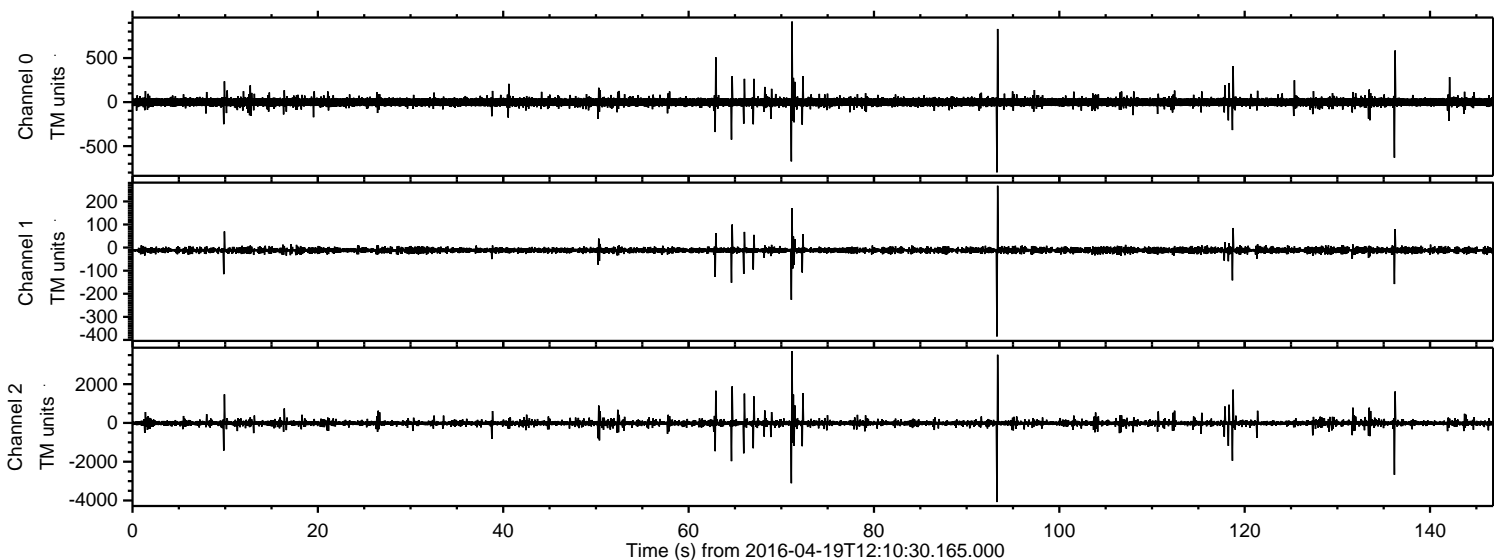
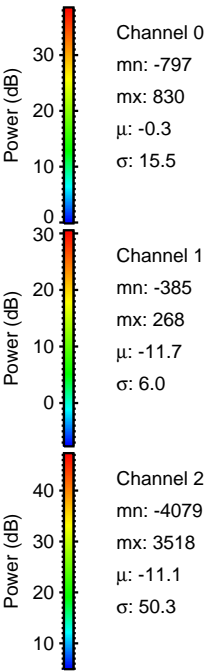
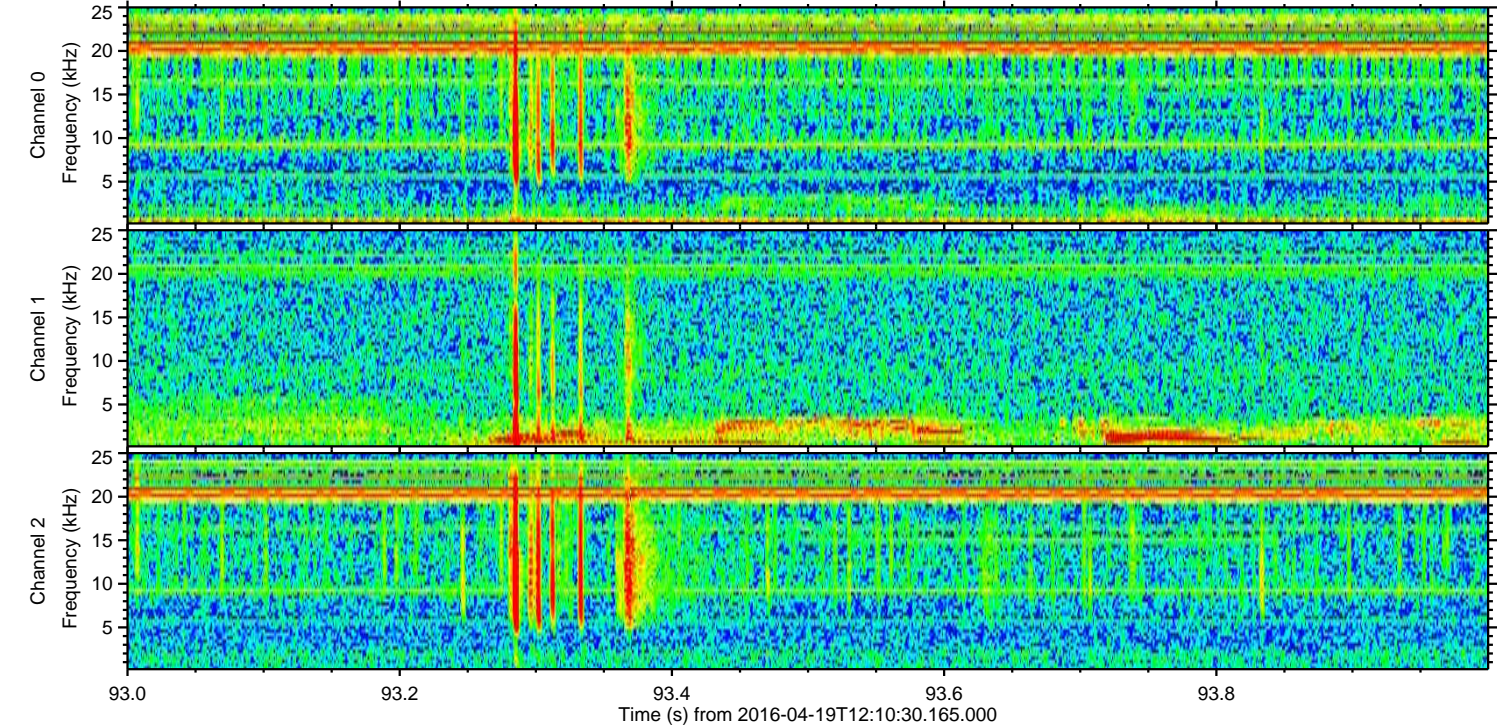
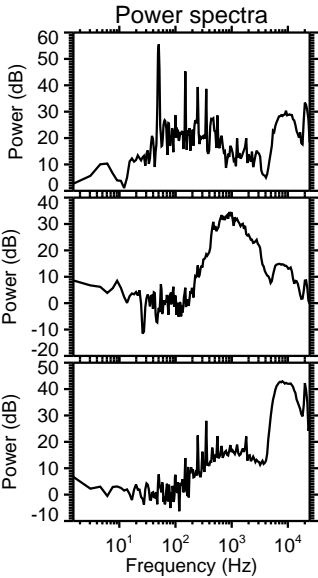
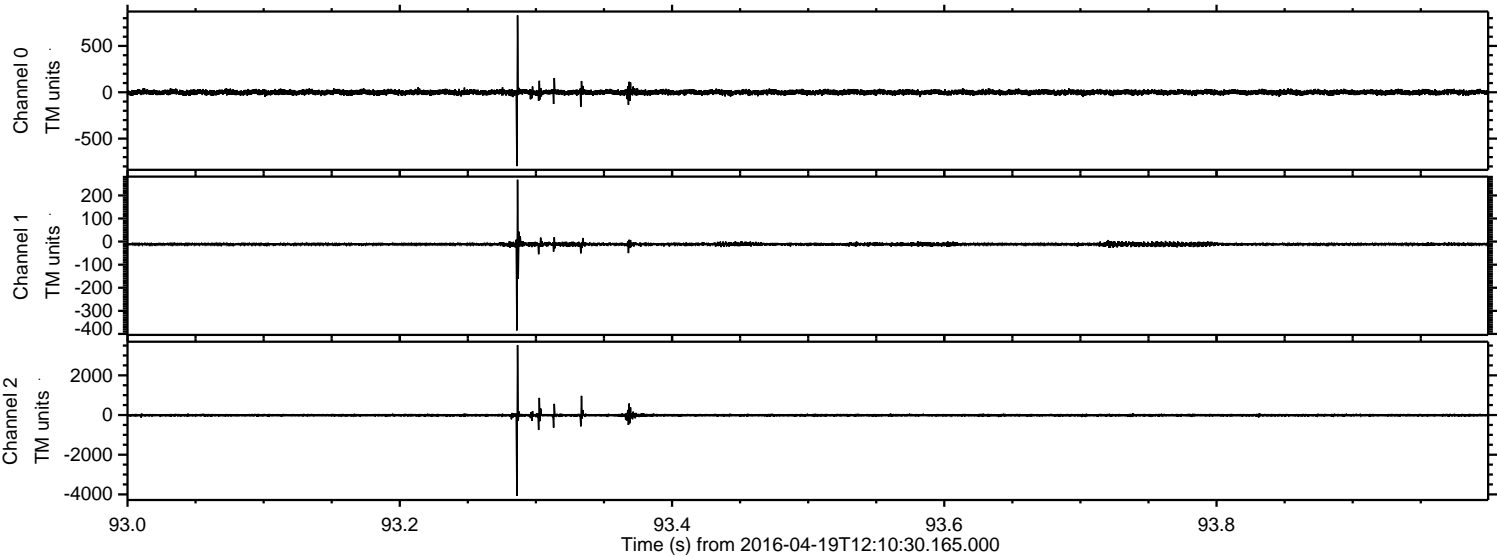


ELMAVAN 3D WAVEFORMS (Measured data sampled at 50 kHz) 51000 packets of 144 samples from 2016-04-19T12:10:30.165.000.

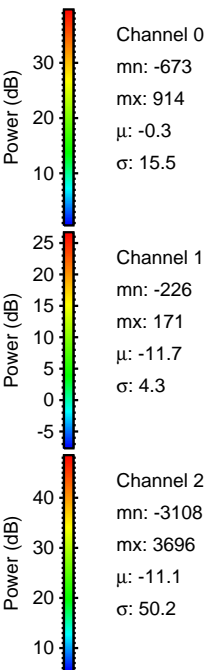
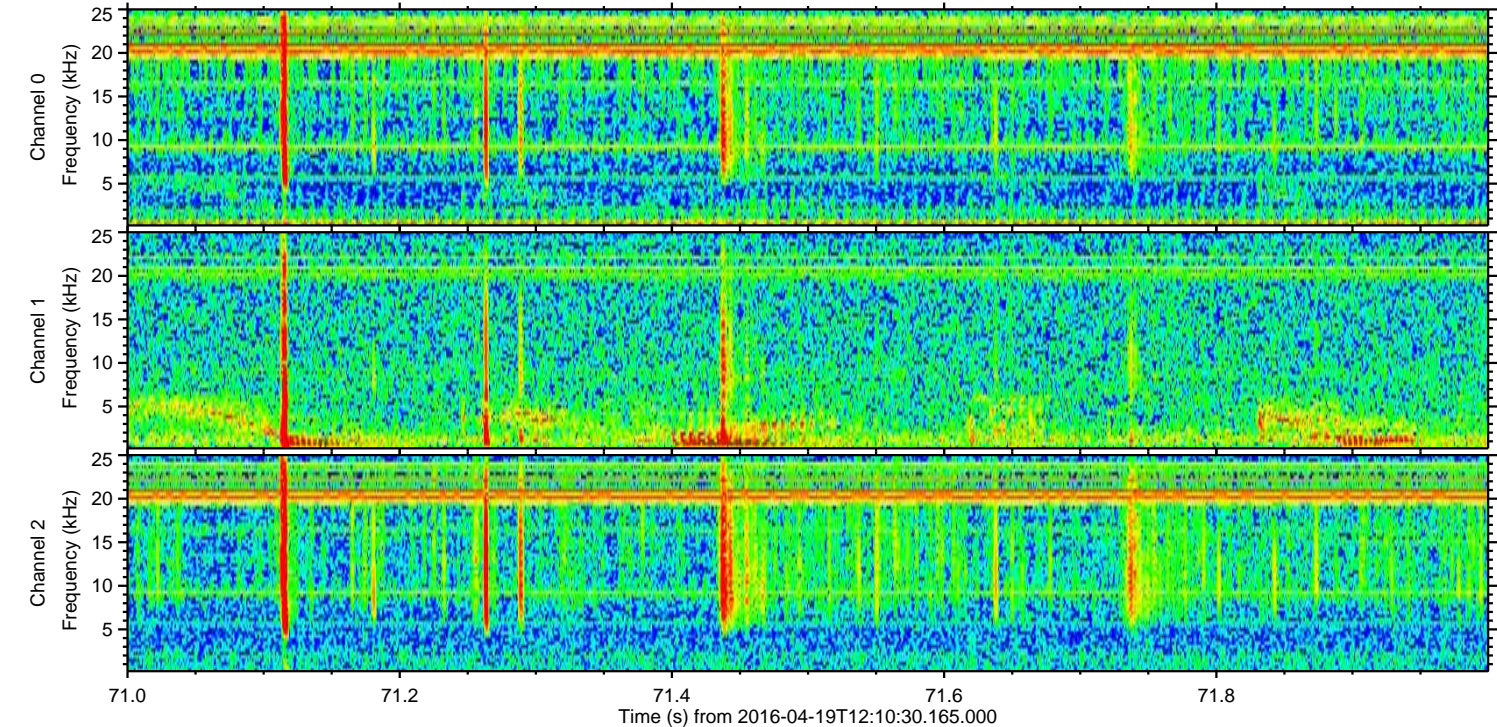
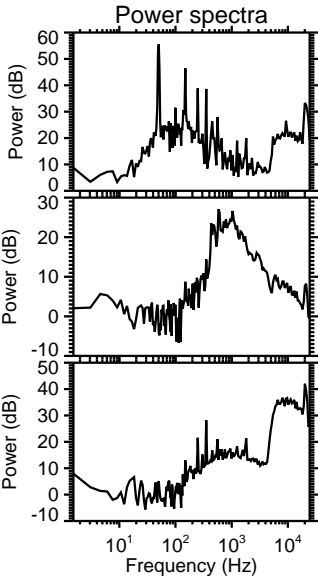
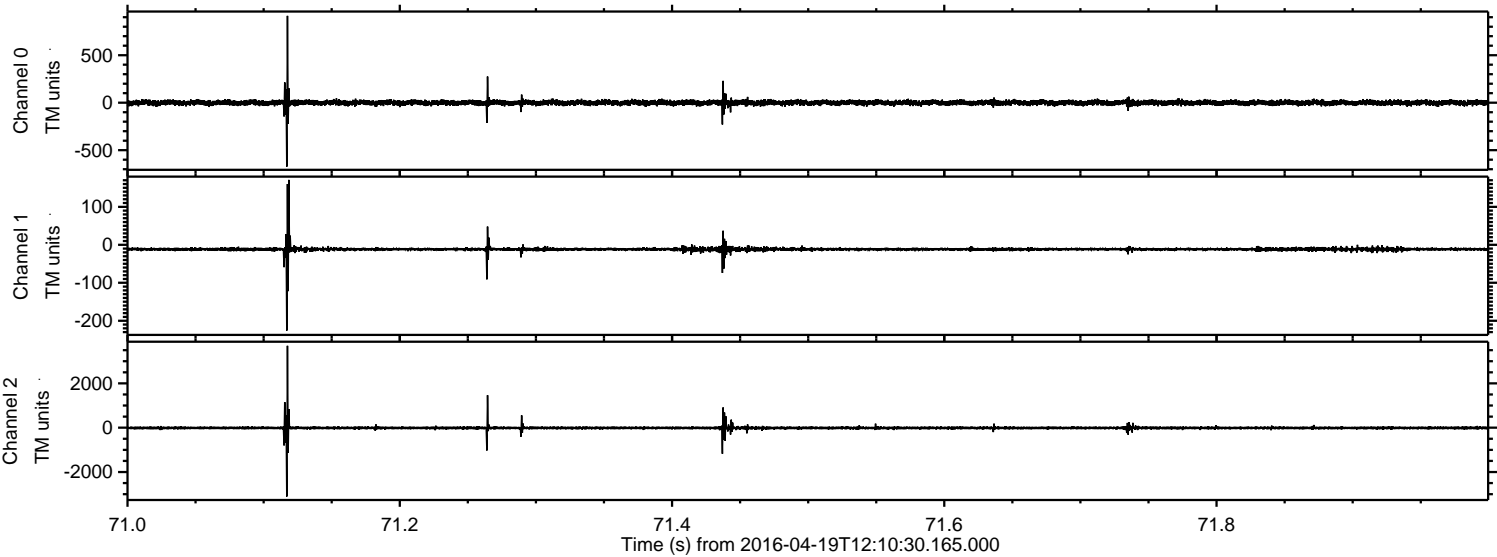
Processed Mon May 9 10:41:54 2016 by ELM ver.2012-10-06 from 001__elm20160419_121029__dat00.bin



Processed Mon May 9 10:42:05 2016 by ELM ver.2012-10-06 from 001__elm20160419_121029__dat00.bin

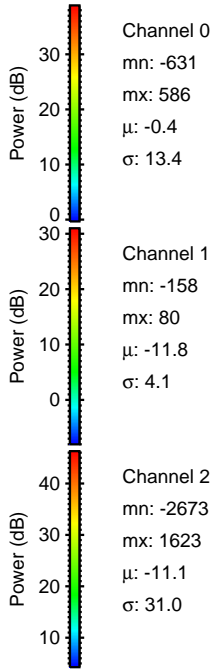
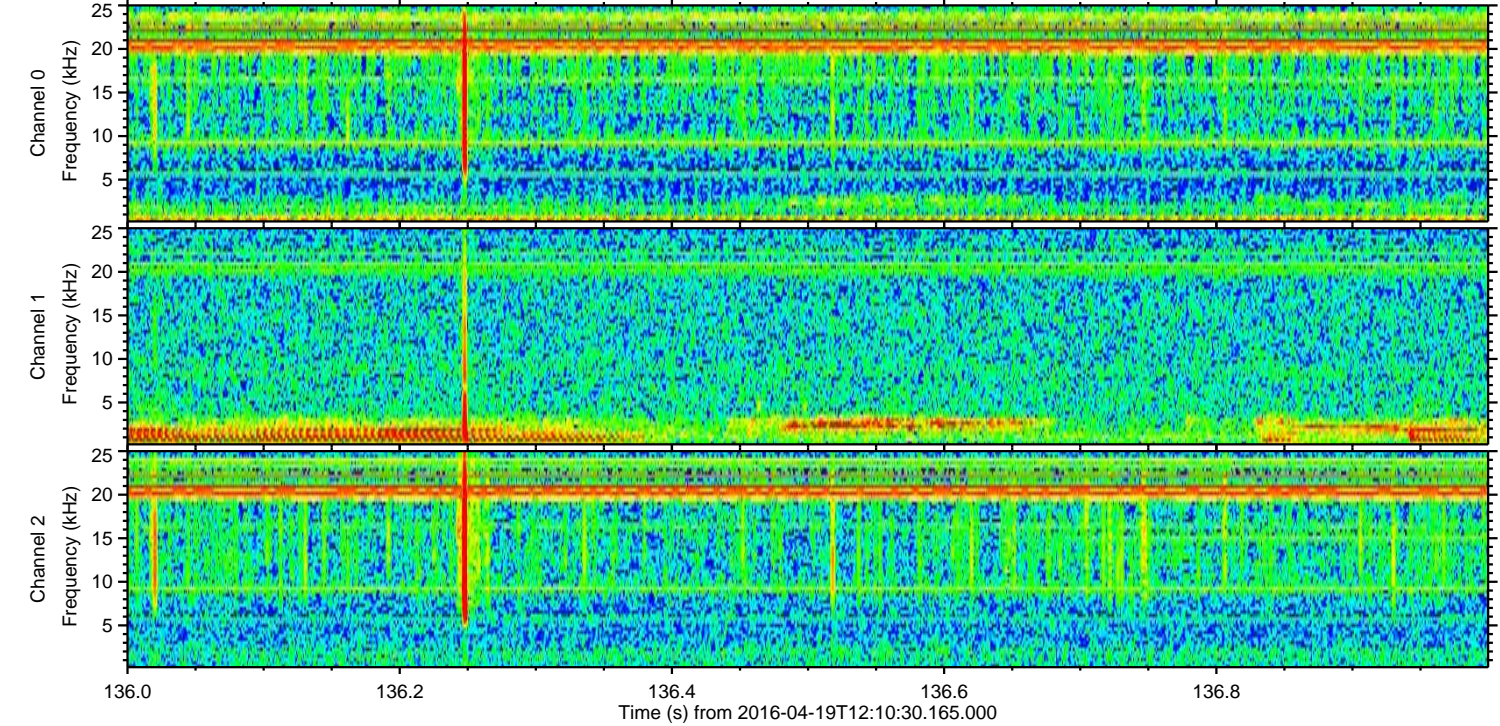
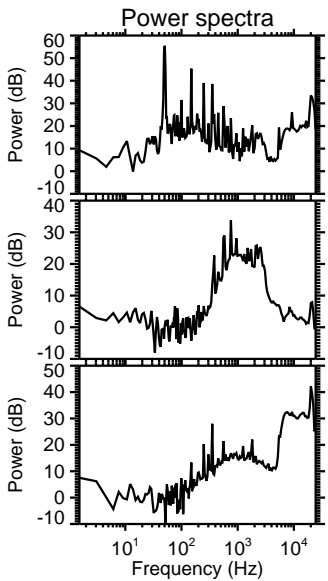
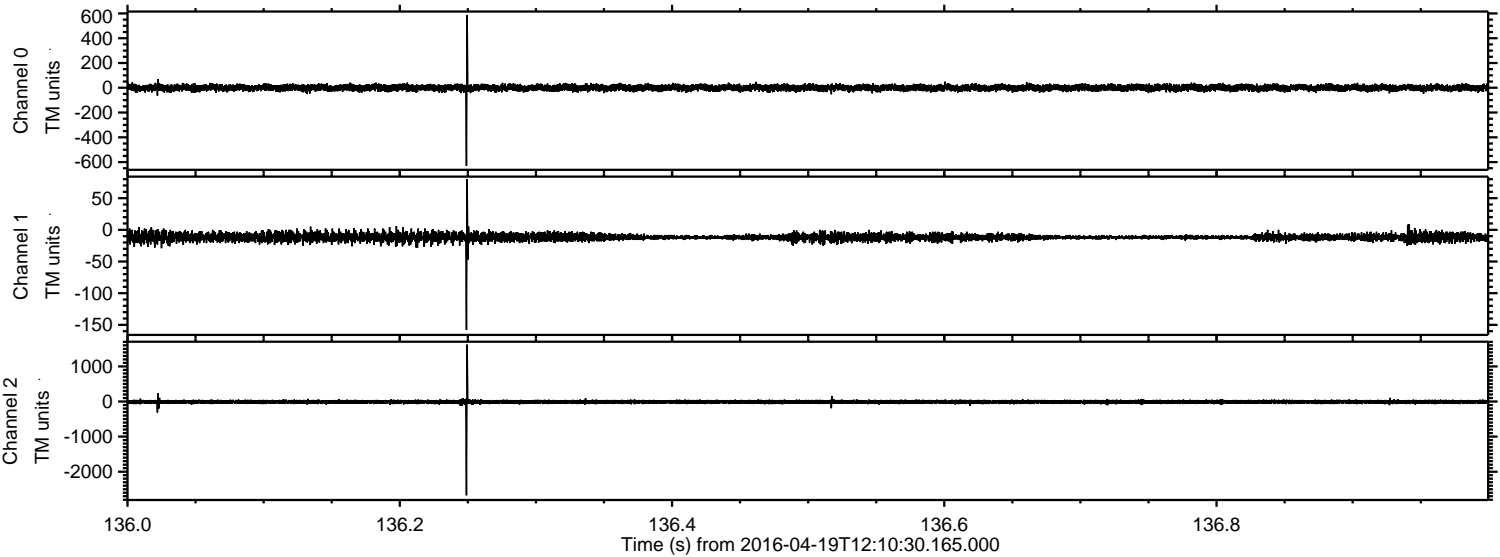


Processed Mon May 9 10:42:06 2016 by ELM ver.2012-10-06 from 001__elm20160419_121029__dat00.bin

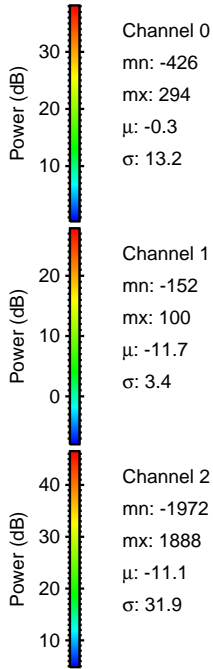
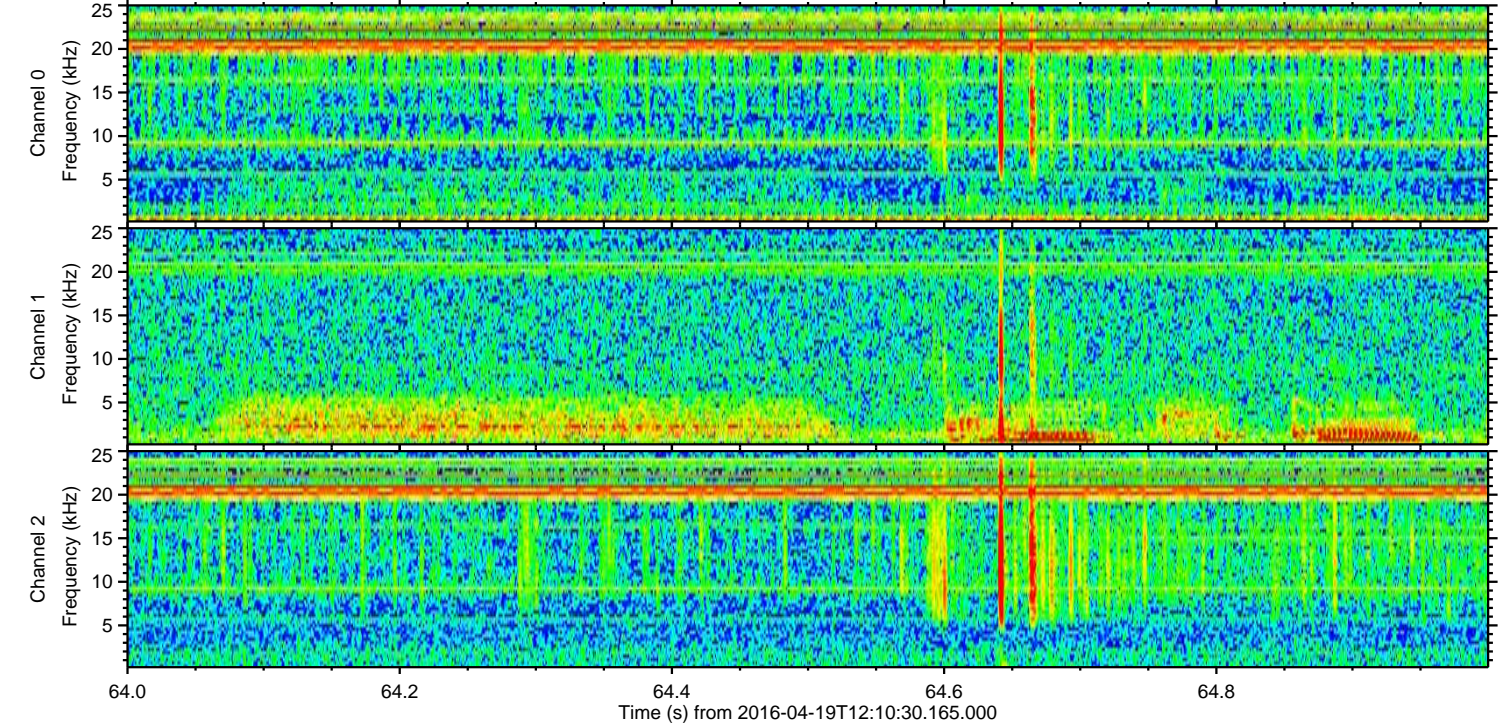
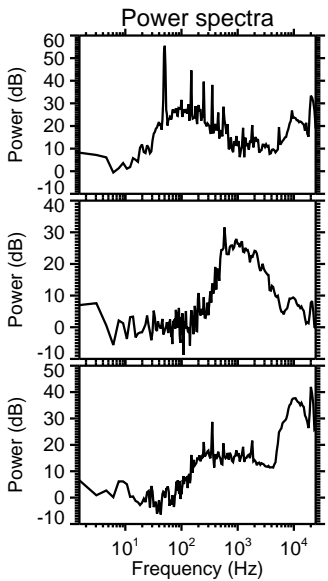
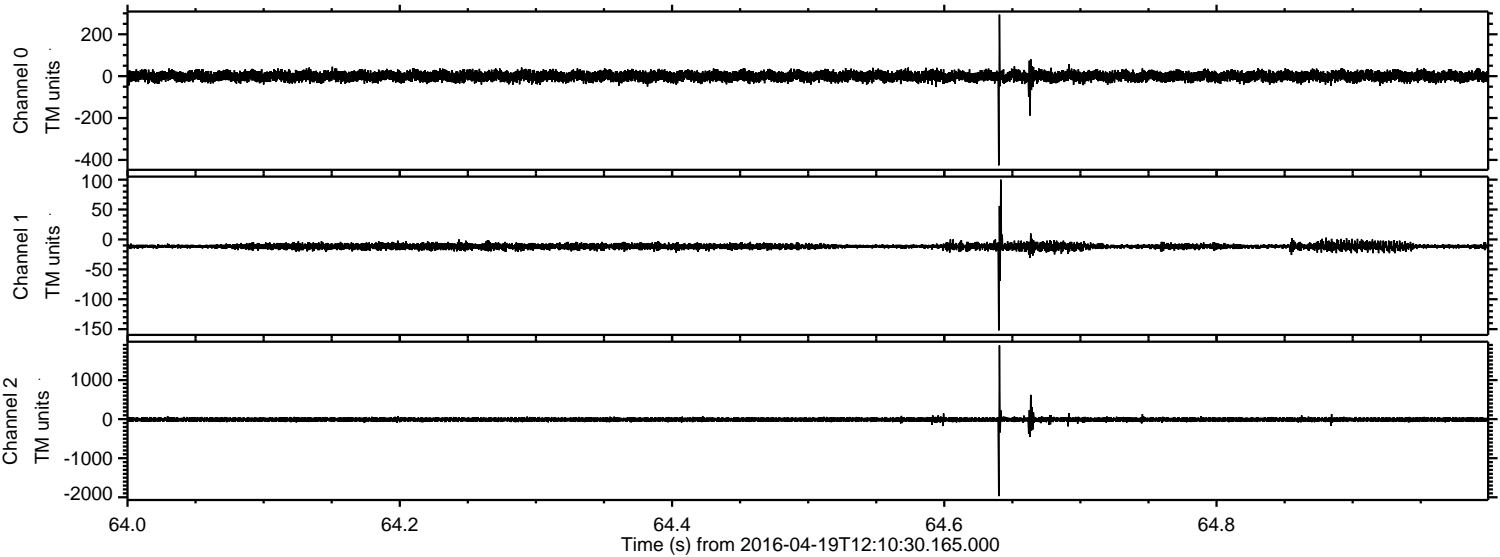


ELMAVAN 3D WAVEFORMS (Measured data sampled at 50 kHz) 51000 packets of 144 samples from 2016-04-19T12:10:30.165.000. Part 137/147

Processed Mon May 9 10:42:07 2016 by ELM ver.2012-10-06 from 001__elm20160419_121029__dat00.bin

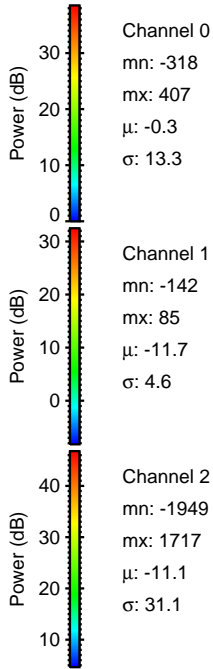
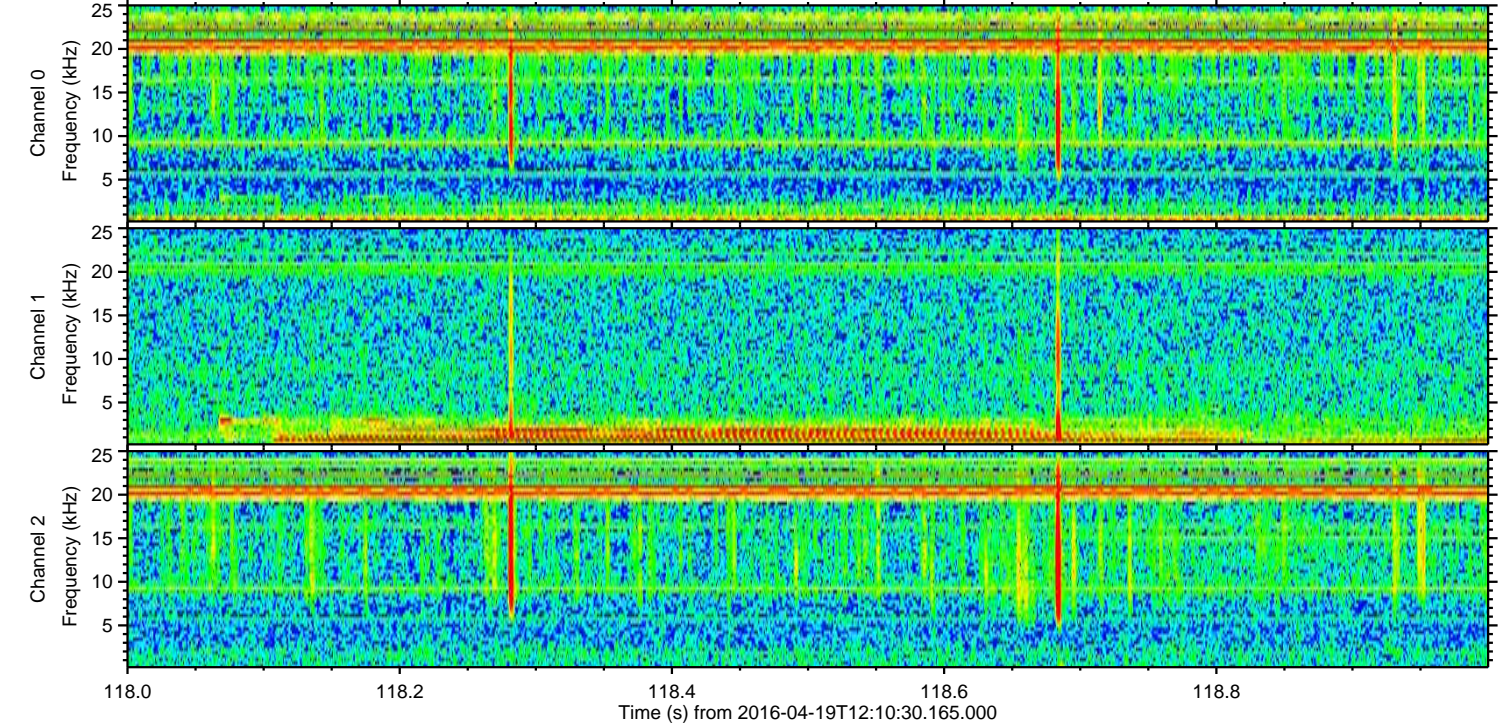
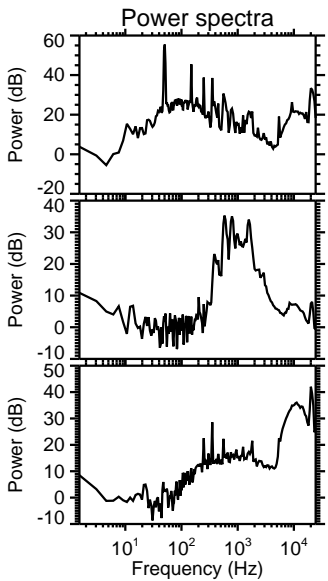
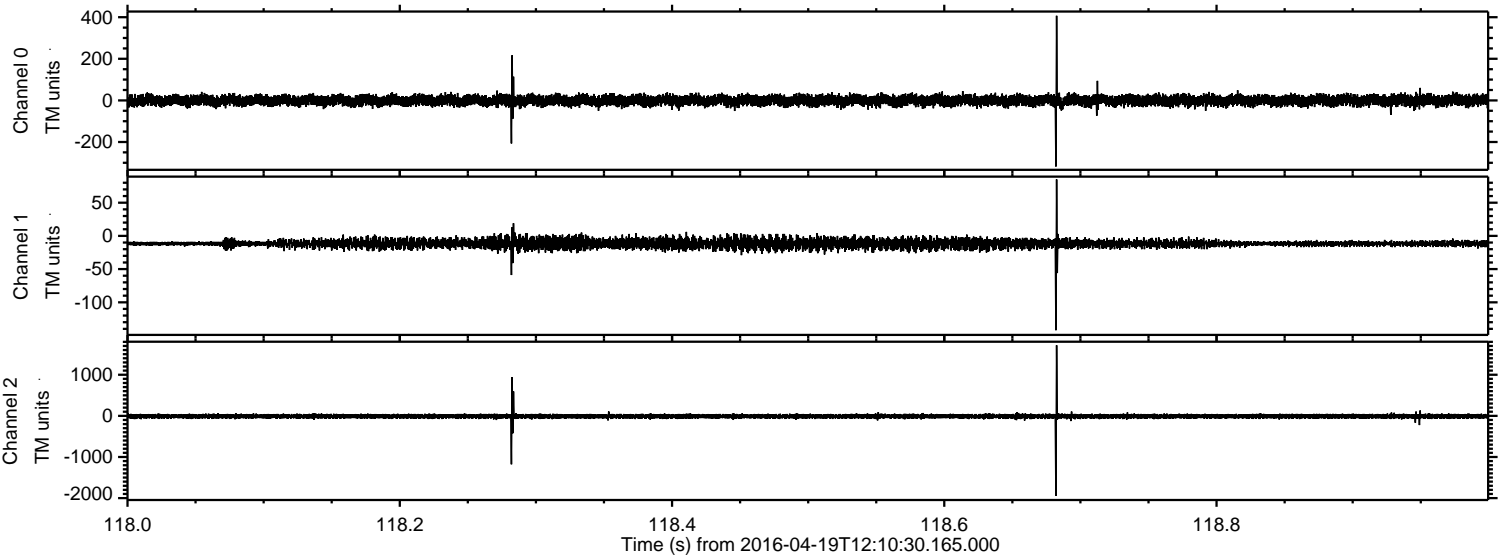


Processed Mon May 9 10:42:08 2016 by ELM ver.2012-10-06 from 001__elm20160419_121029__dat00.bin

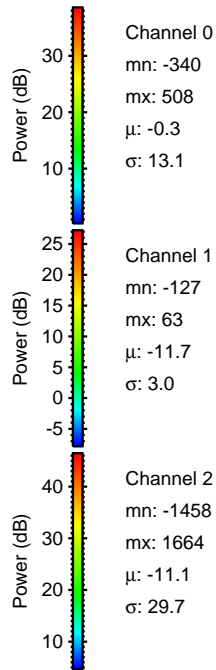
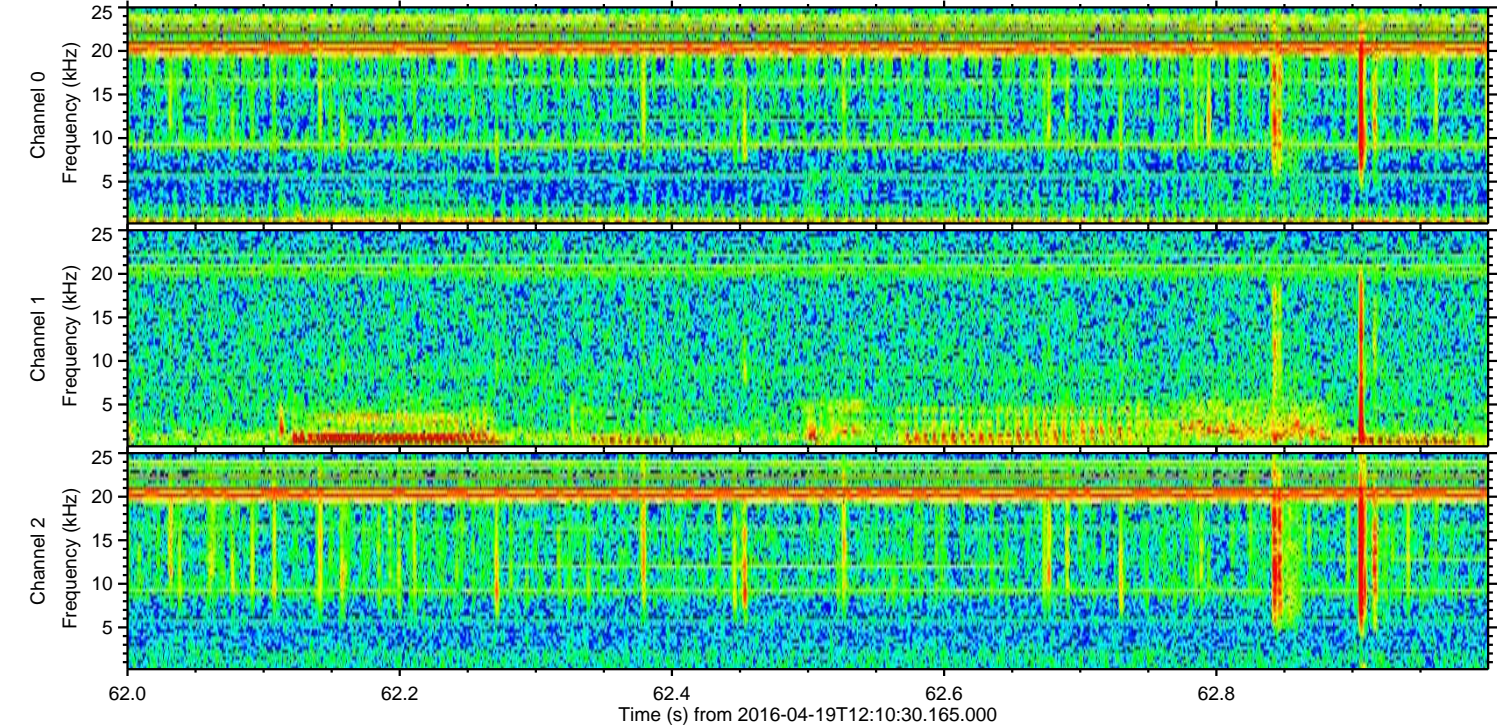
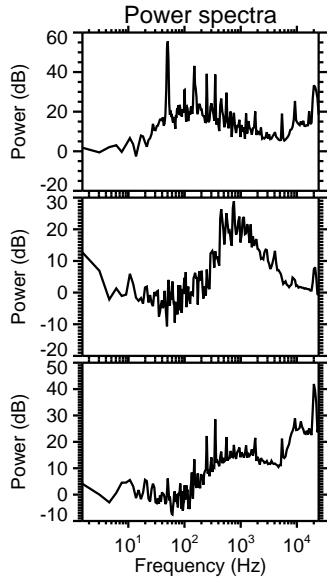
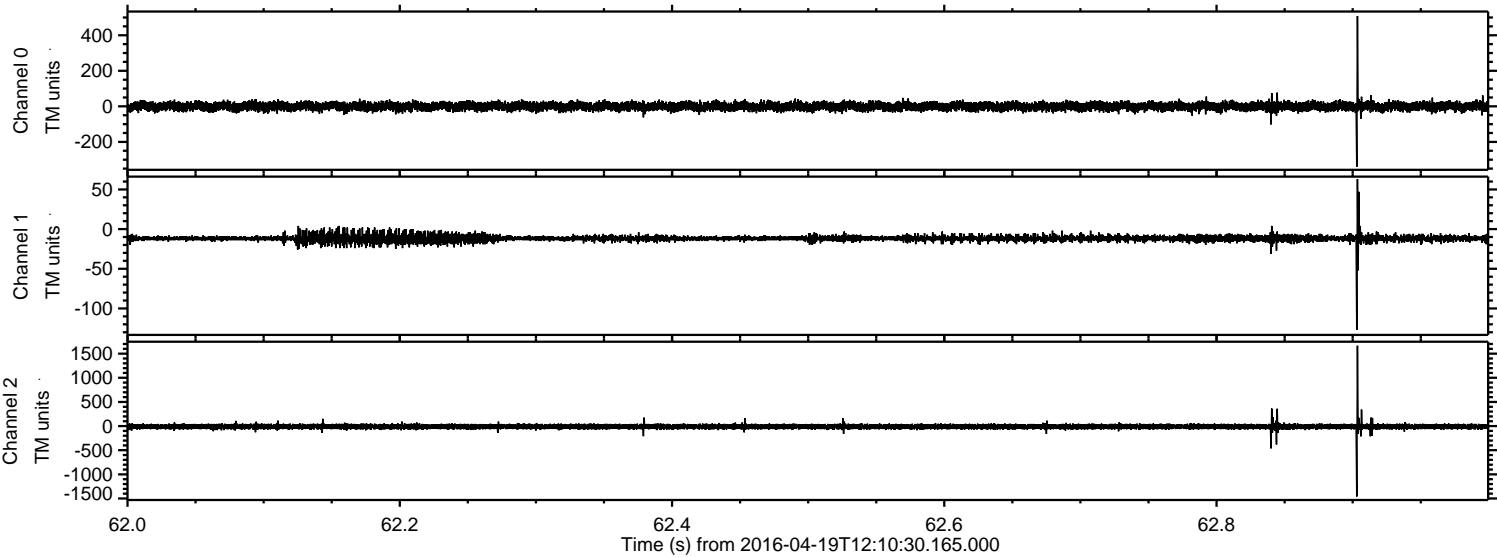


ELMAVAN 3D WAVEFORMS (Measured data sampled at 50 kHz) 51000 packets of 144 samples from 2016-04-19T12:10:30.165.000. Part 119/147

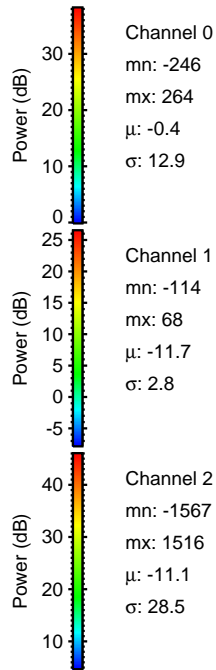
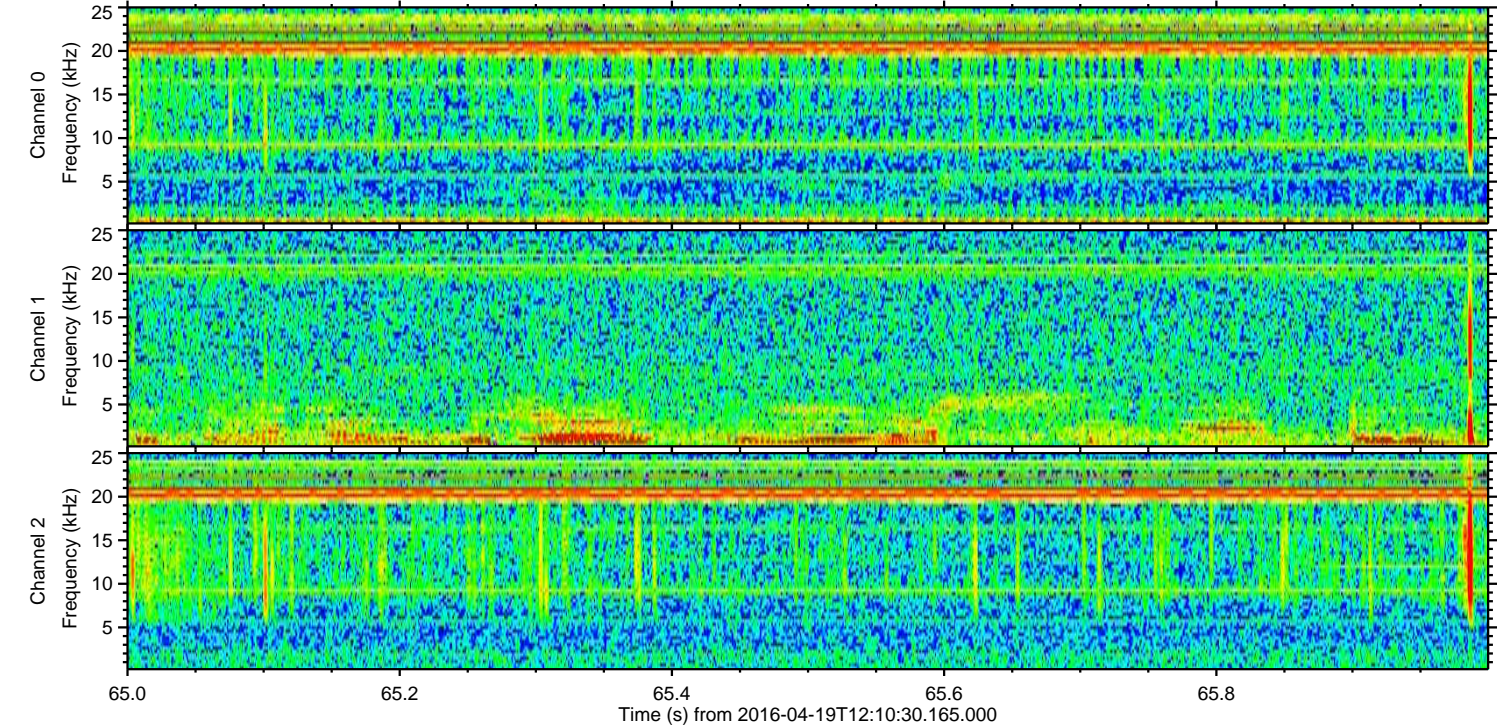
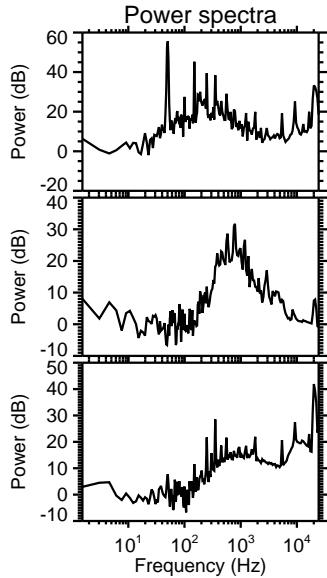
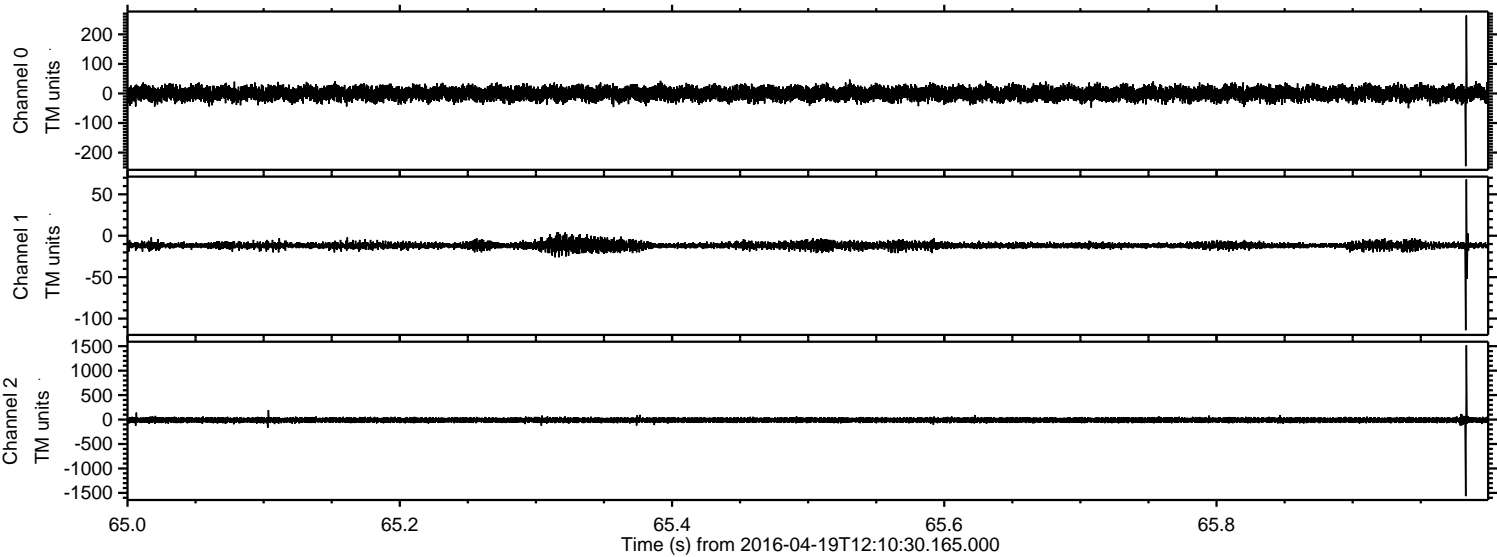
Processed Mon May 9 10:42:09 2016 by ELM ver.2012-10-06 from 001__elm20160419_121029__dat00.bin



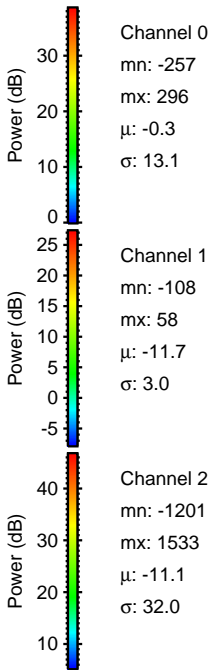
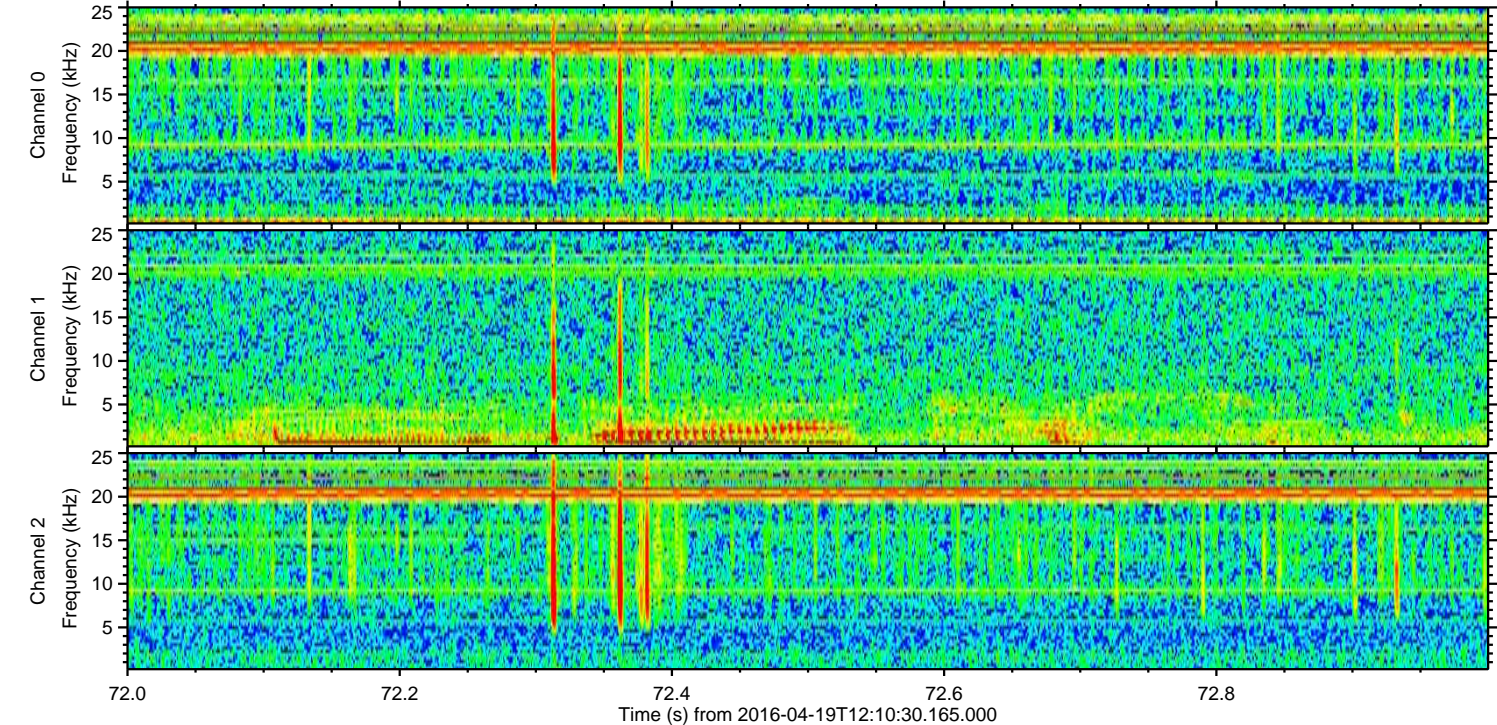
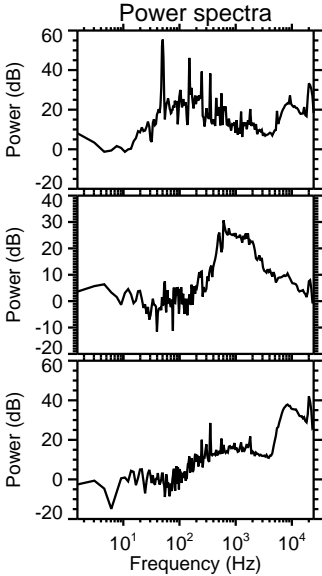
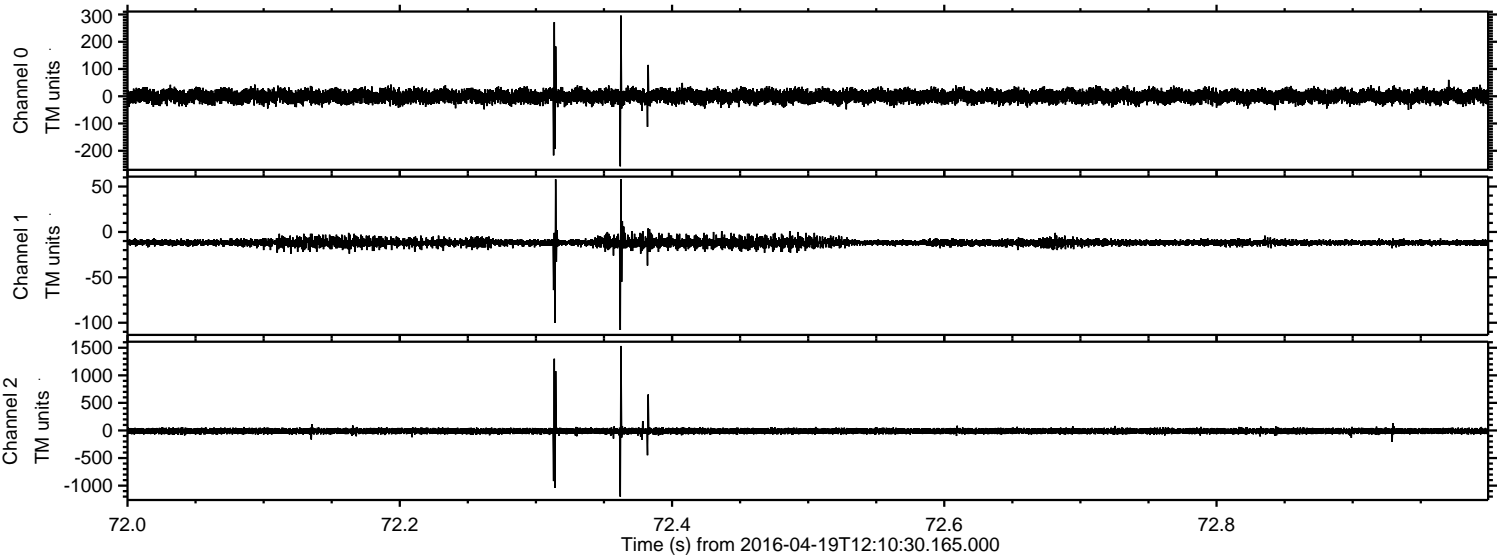
Processed Mon May 9 10:42:10 2016 by ELM ver.2012-10-06 from 001__elm20160419_121029__dat00.bin



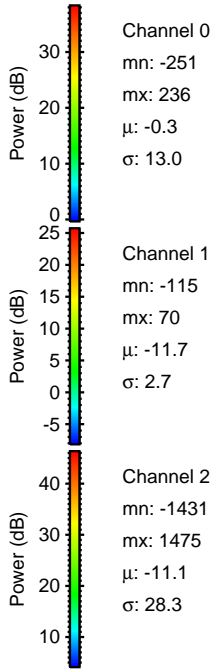
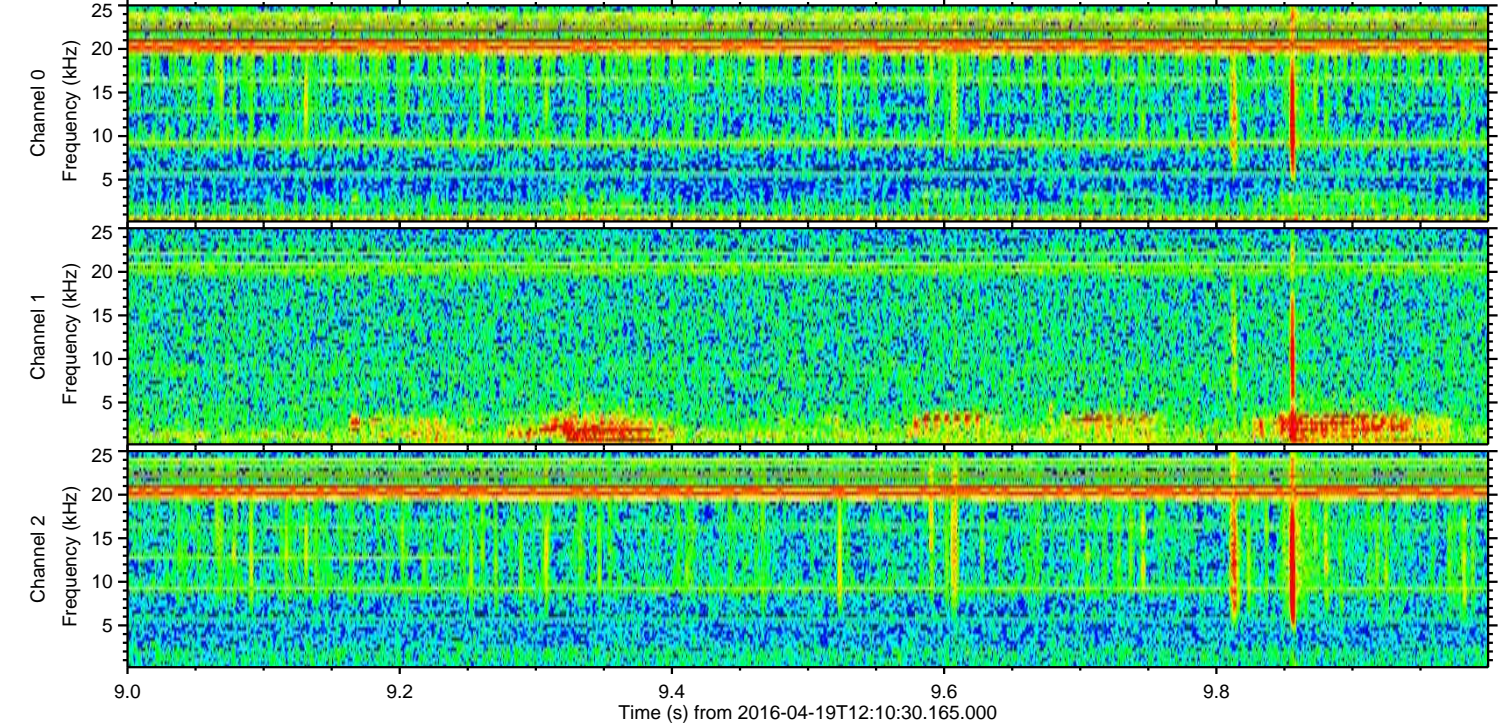
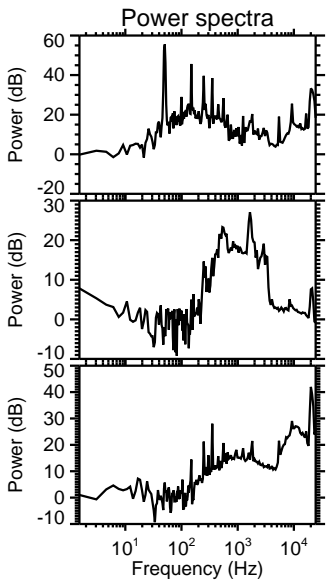
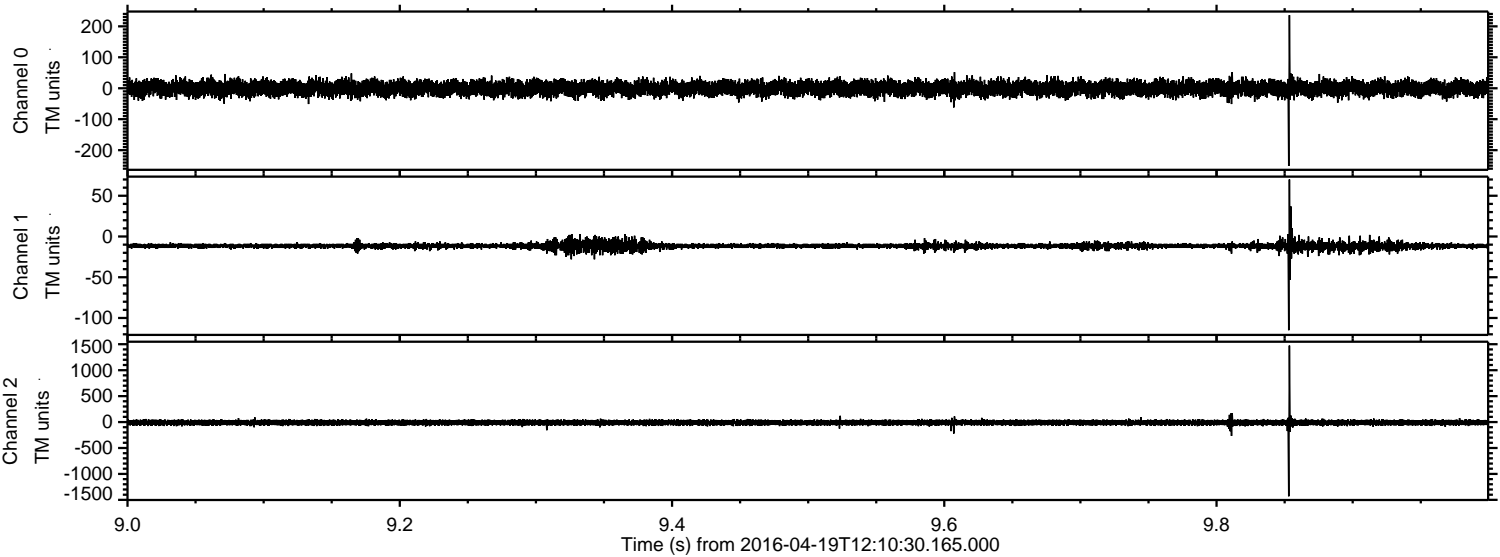
Processed Mon May 9 10:42:11 2016 by ELM ver.2012-10-06 from 001__elm20160419_121029__dat00.bin



Processed Mon May 9 10:42:12 2016 by ELM ver.2012-10-06 from 001__elm20160419_121029__dat00.bin



Processed Mon May 9 10:42:13 2016 by ELM ver.2012-10-06 from 001__elm20160419_121029__dat00.bin



Channel 0
mn: -251
mx: 236
 μ : -0.3
 σ : 13.0

Channel 1
mn: -115
mx: 70
 μ : -11.7
 σ : 2.7

Channel 2
mn: -1431
mx: 1475
 μ : -11.1
 σ : 28.3

Processed Mon May 9 10:42:14 2016 by ELM ver.2012-10-06 from 001__elm20160419_121029__dat00.bin

