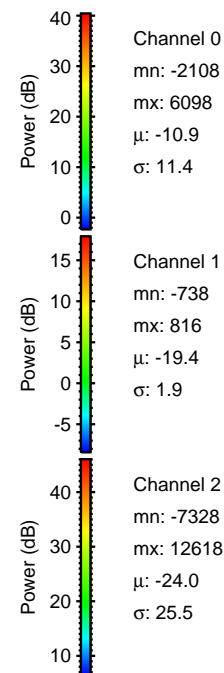
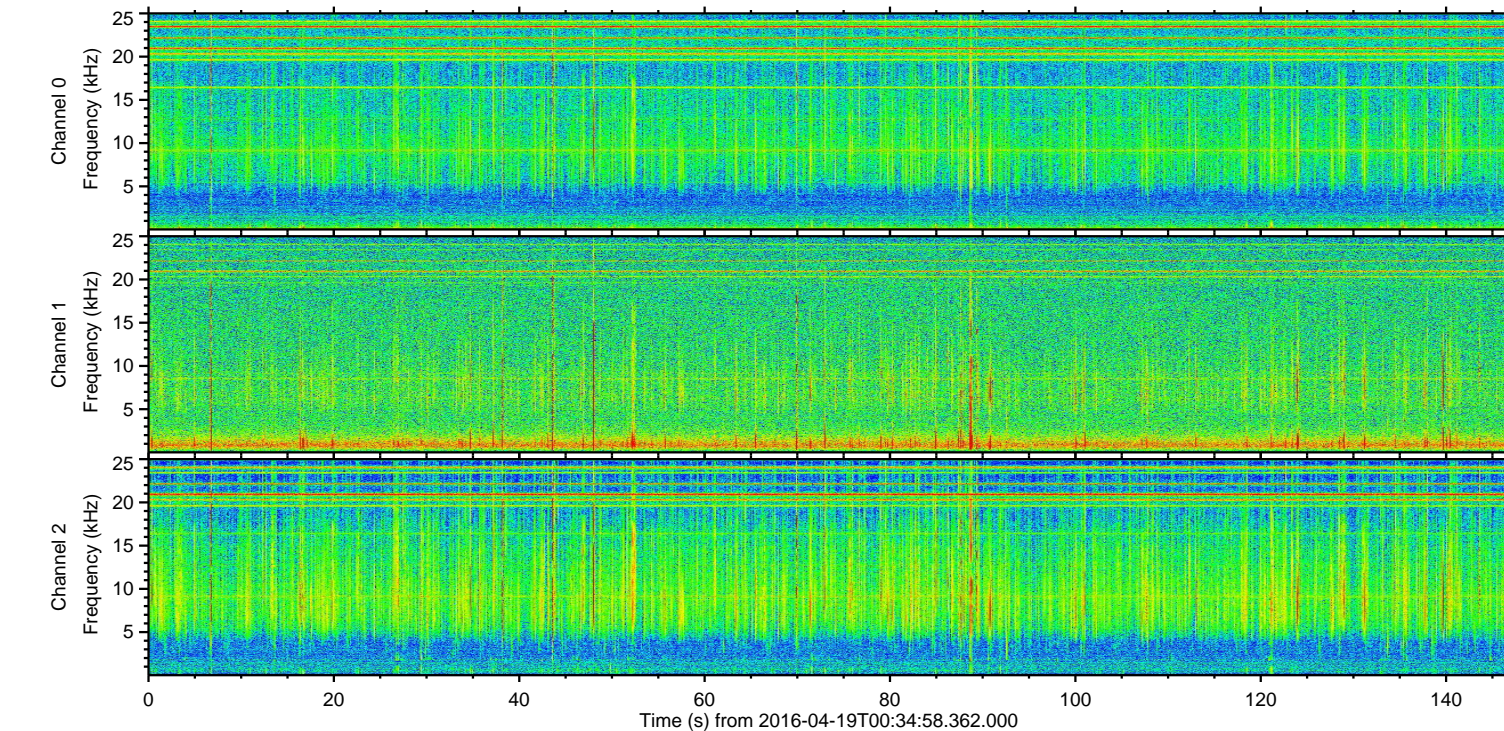
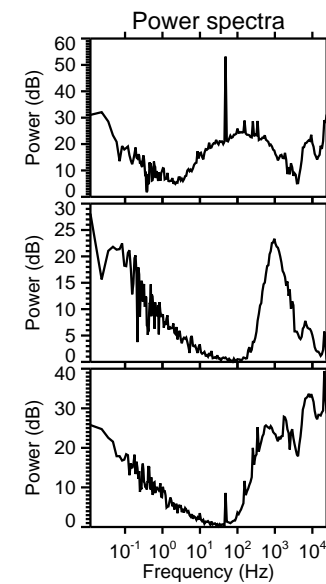
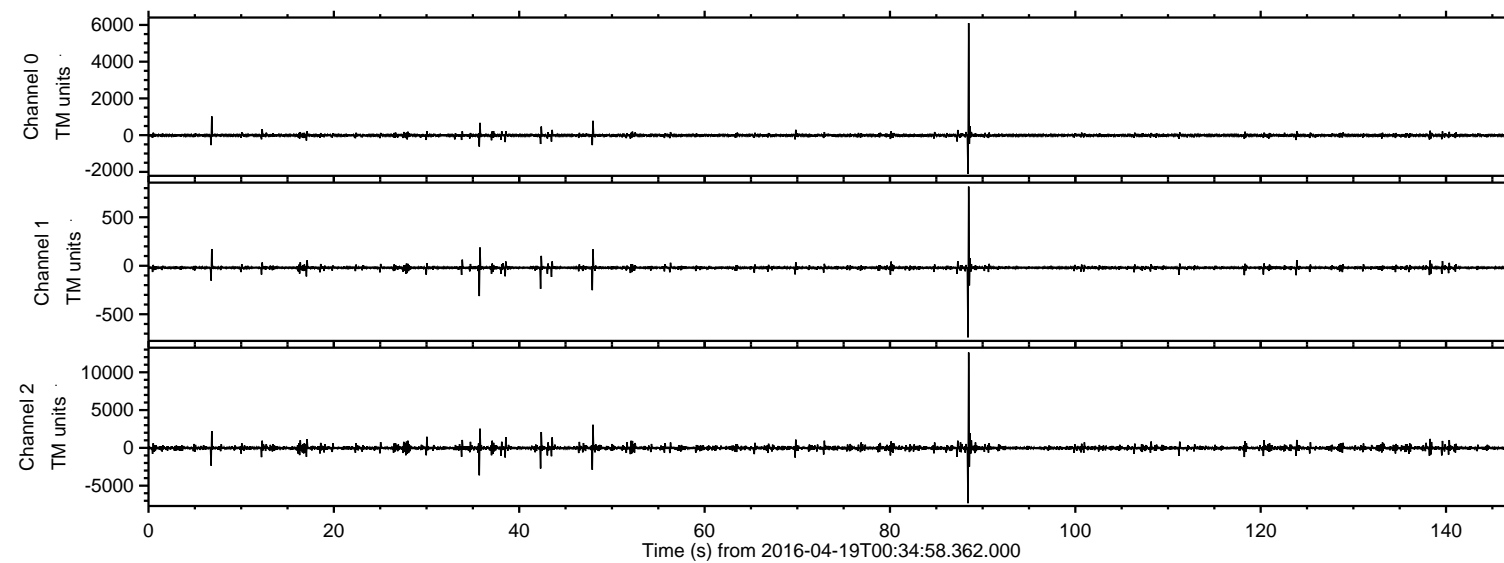
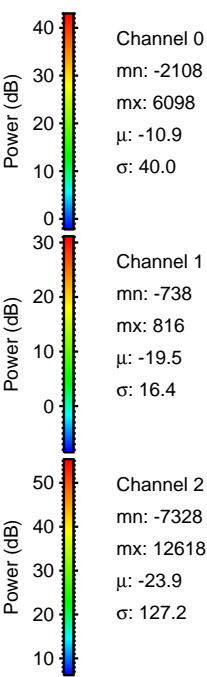
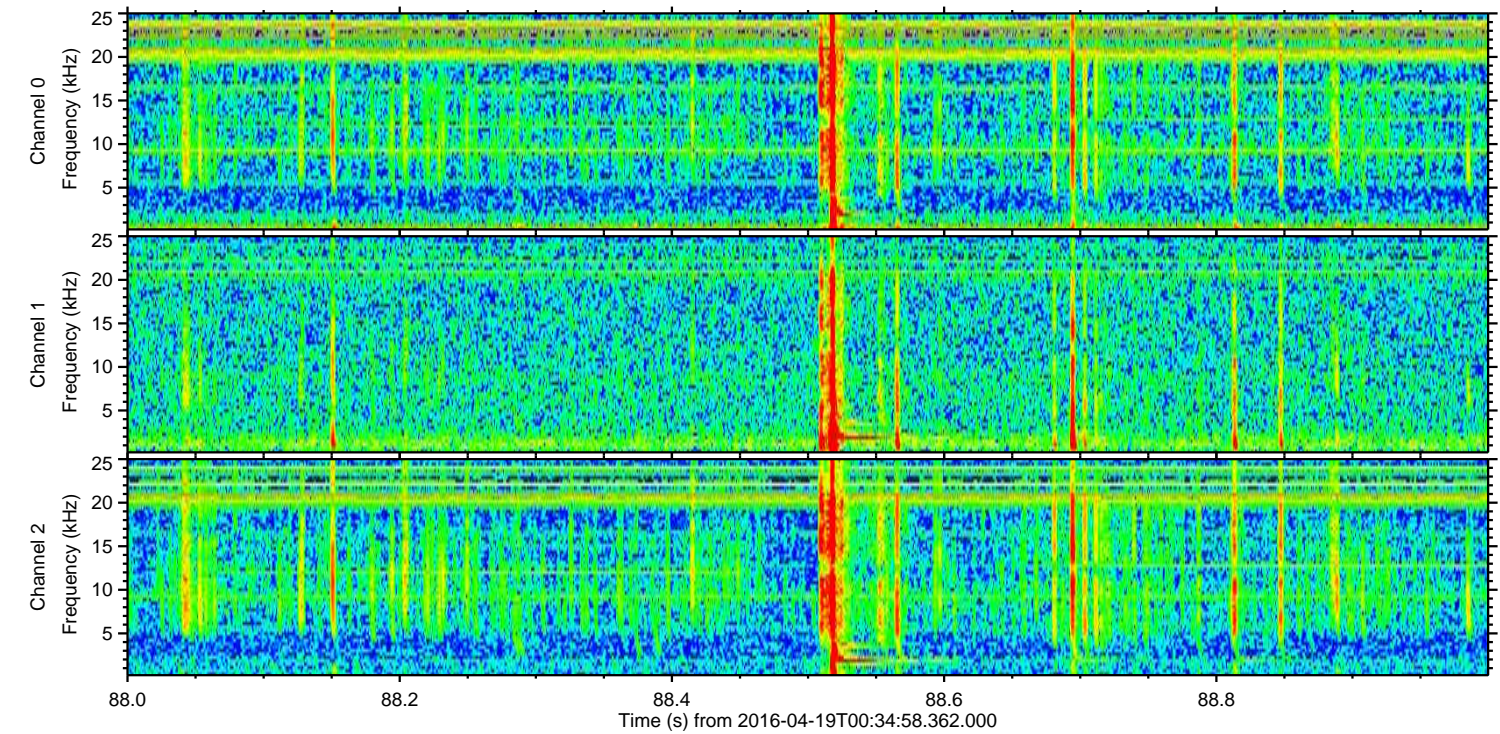
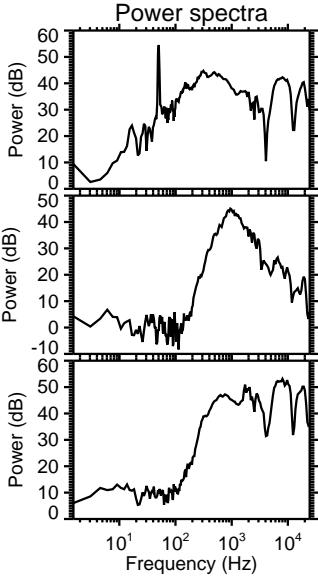
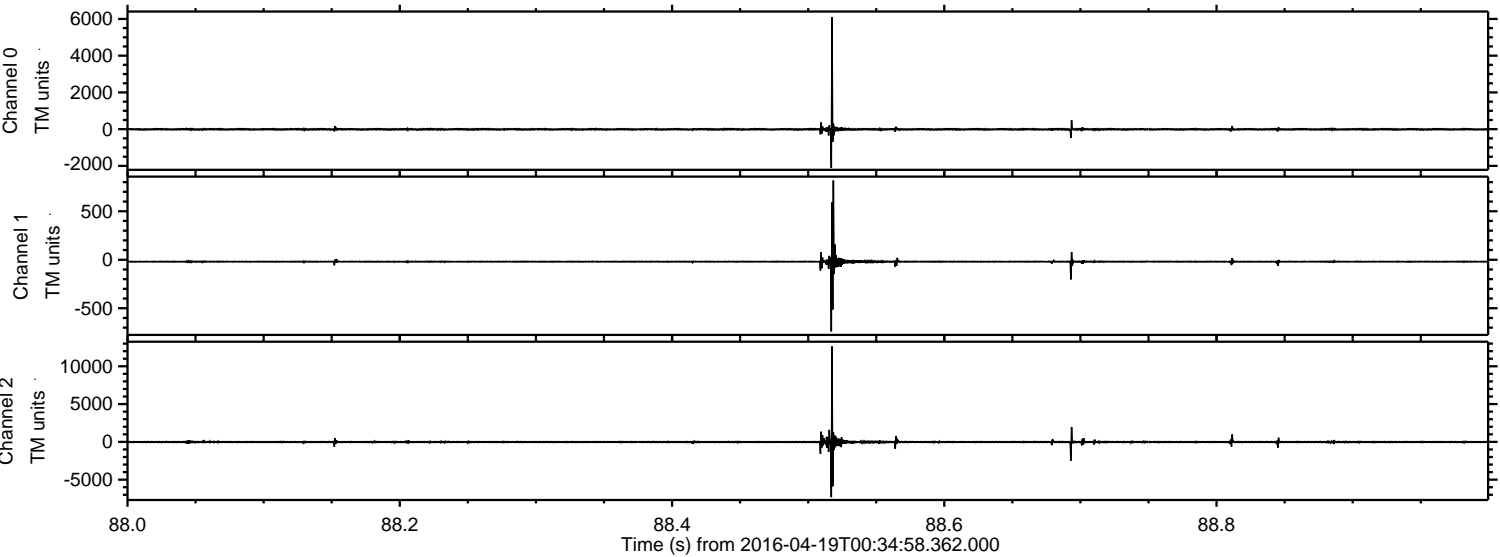


ELMAVAN 3D WAVEFORMS (Measured data sampled at 50 kHz) 51000 packets of 144 samples from 2016-04-19T00:34:58.362.000.

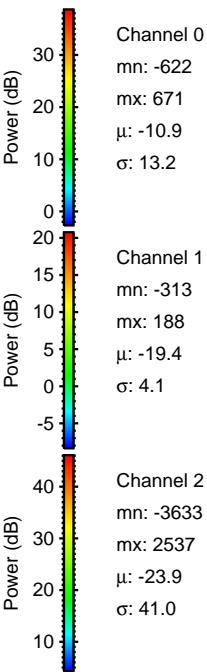
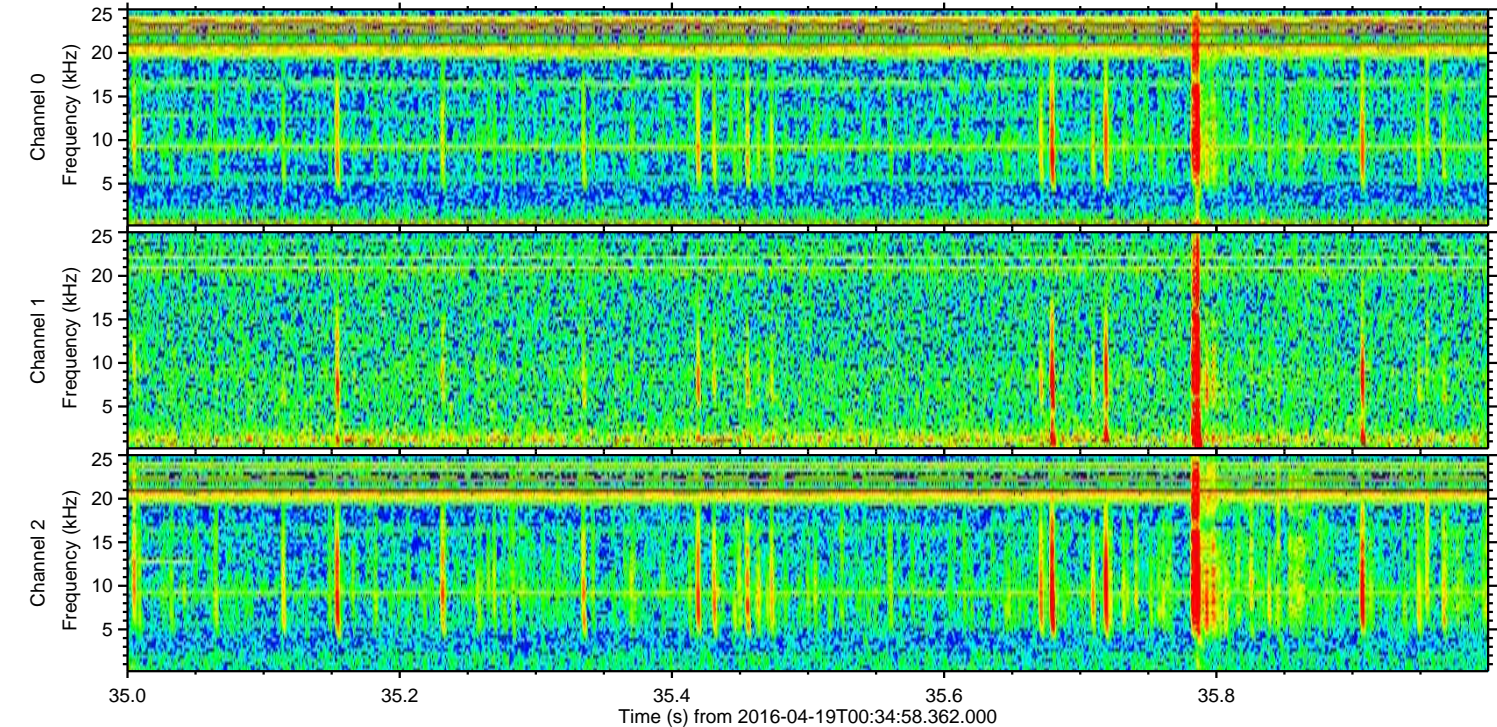
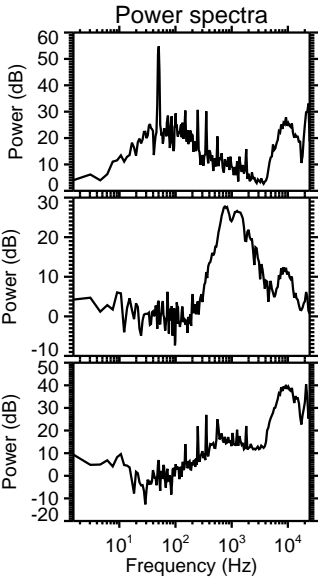
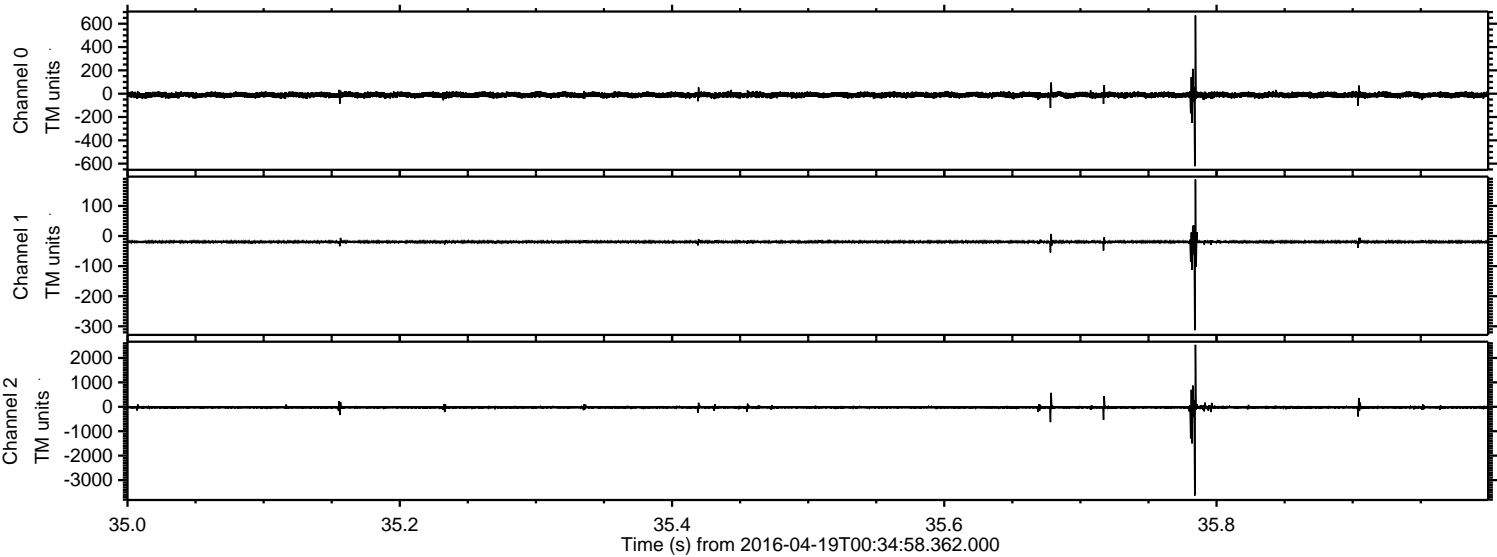
Processed Mon May 9 08:18:40 2016 by ELM ver.2012-10-06 from 001__elm20160419_003457__dat00.bin



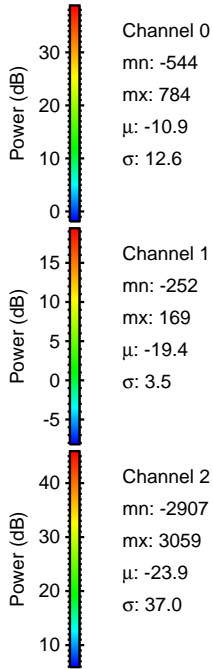
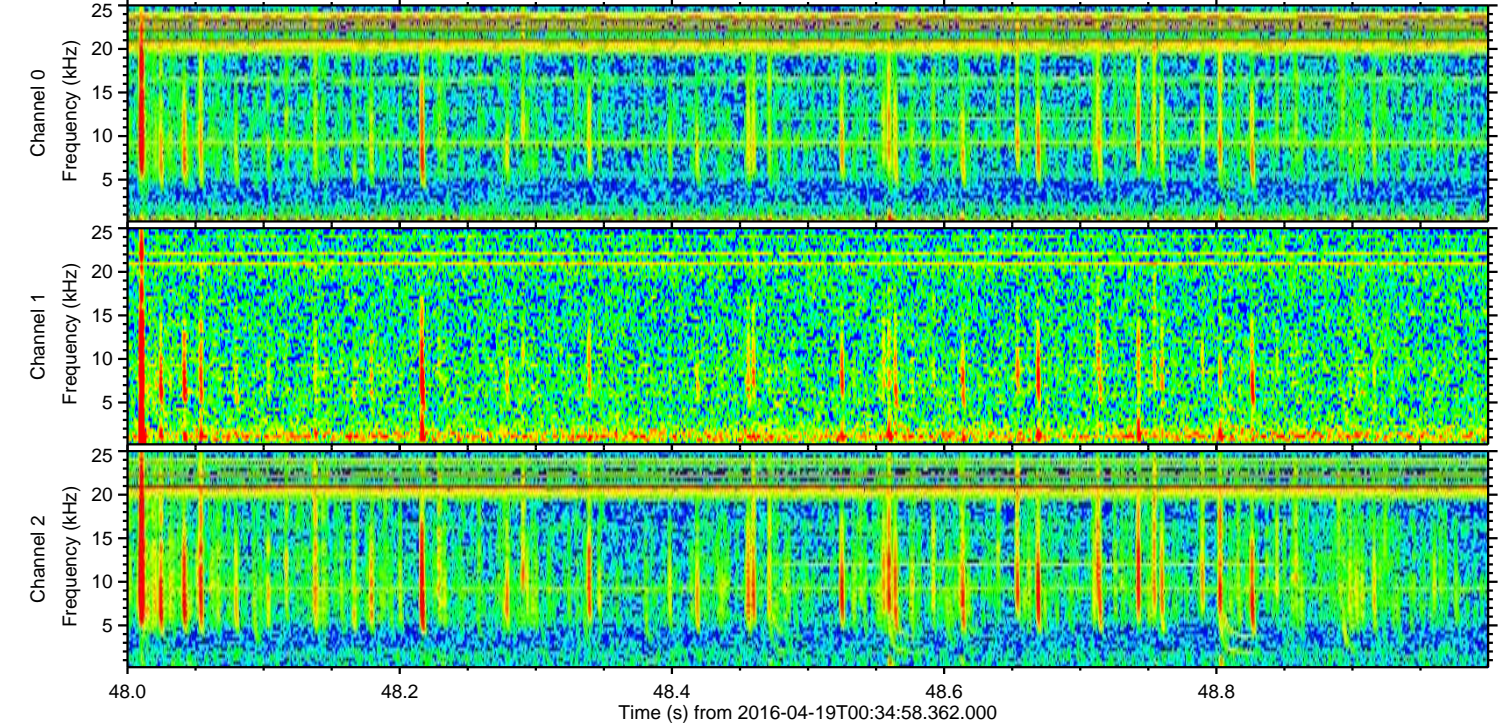
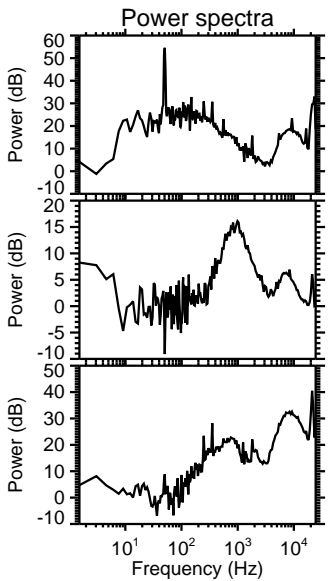
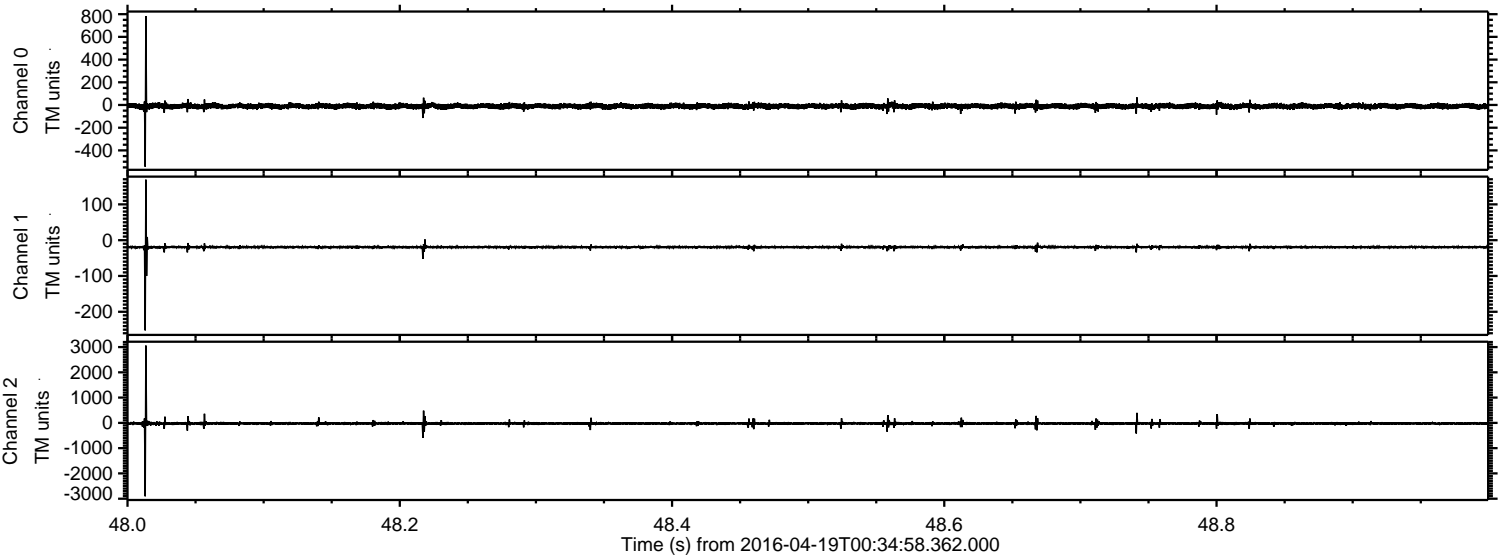
Processed Mon May 9 08:18:51 2016 by ELM ver.2012-10-06 from 001__elm20160419_003457__dat00.bin



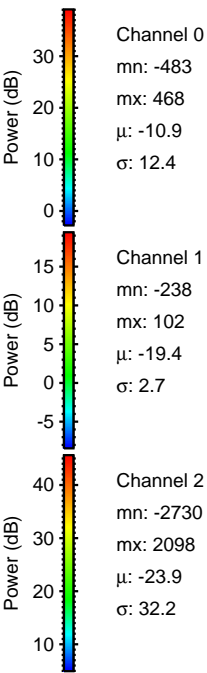
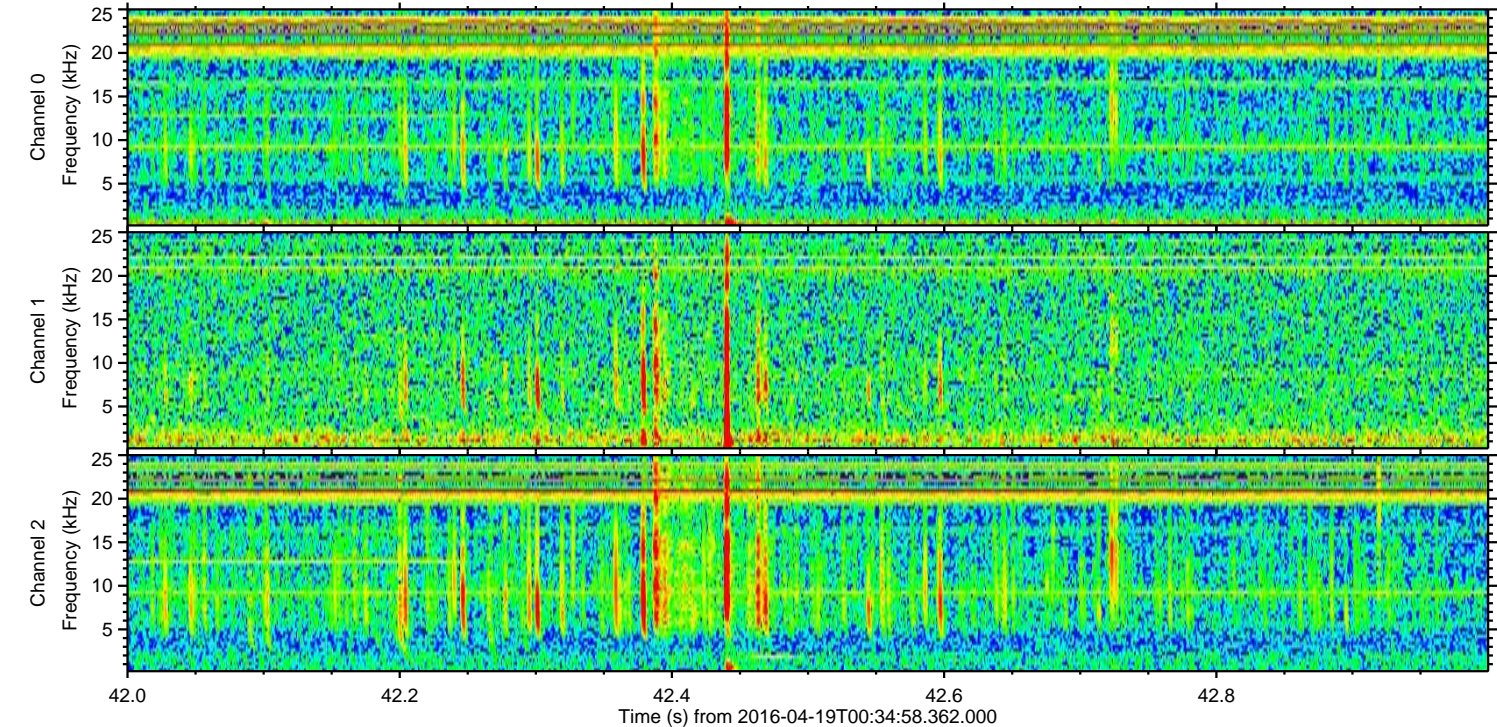
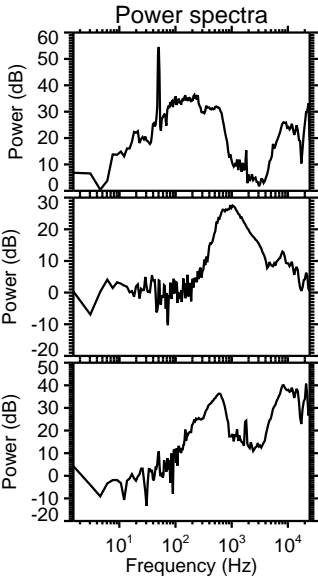
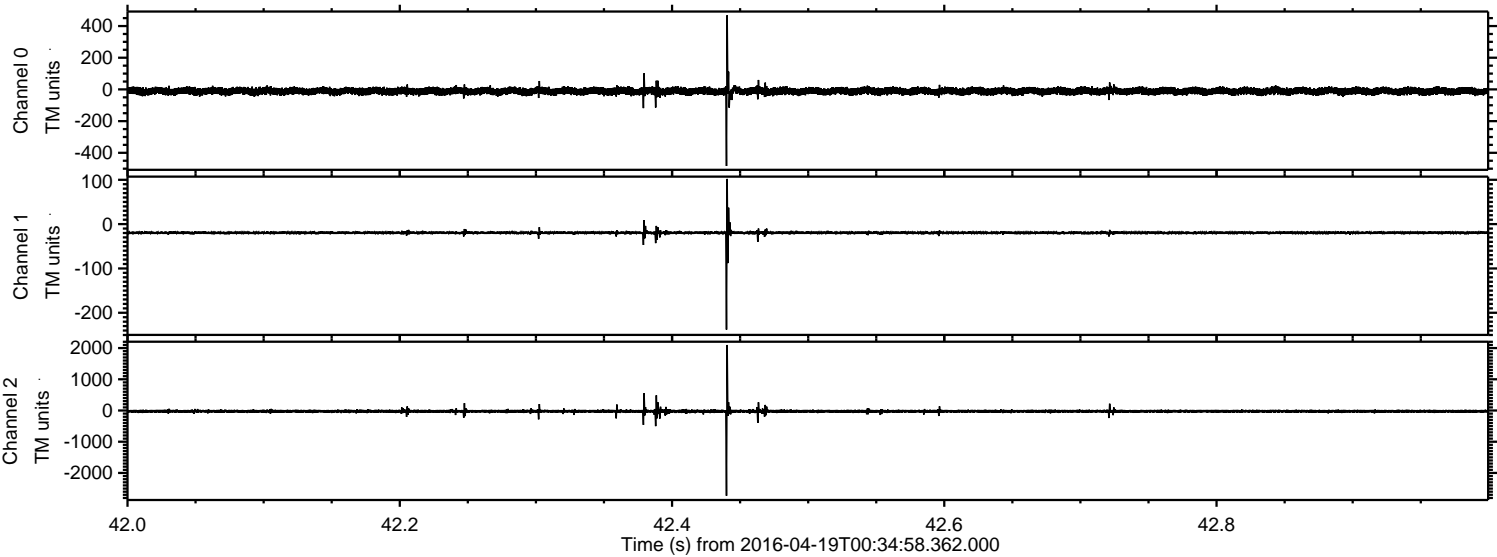
Processed Mon May 9 08:18:52 2016 by ELM ver.2012-10-06 from 001__elm20160419_003457__dat00.bin



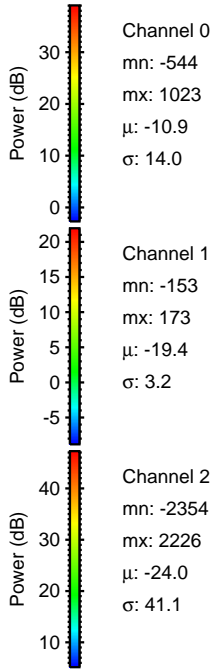
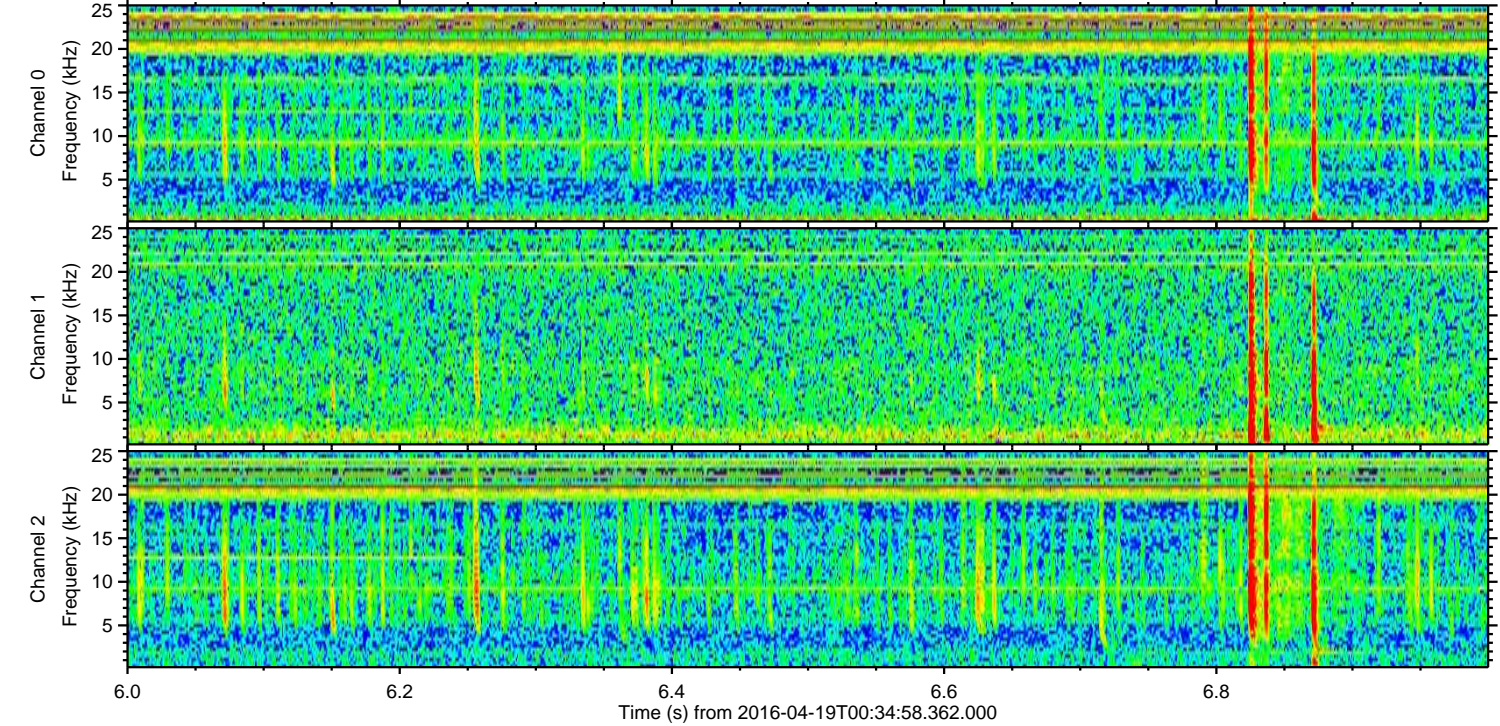
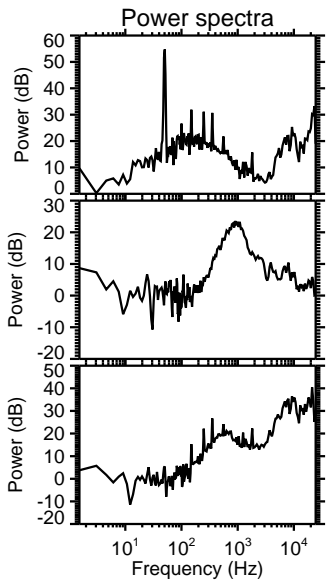
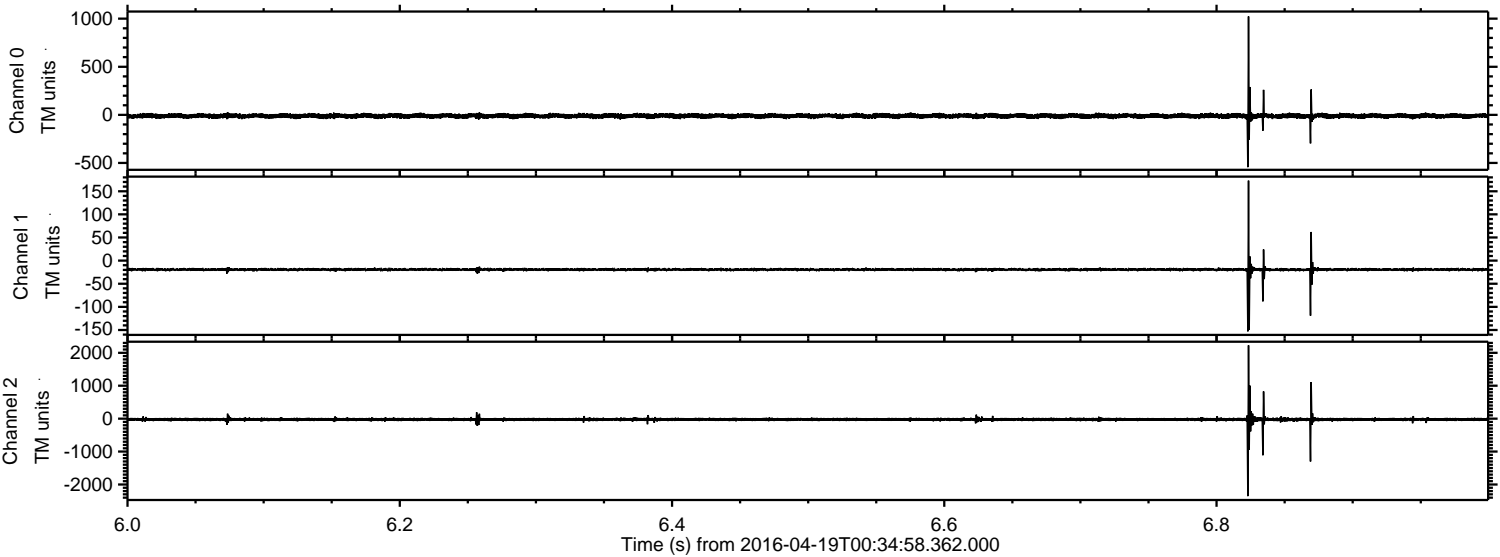
Processed Mon May 9 08:18:53 2016 by ELM ver.2012-10-06 from 001__elm20160419_003457__dat00.bin



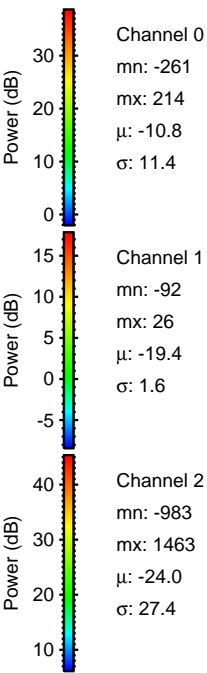
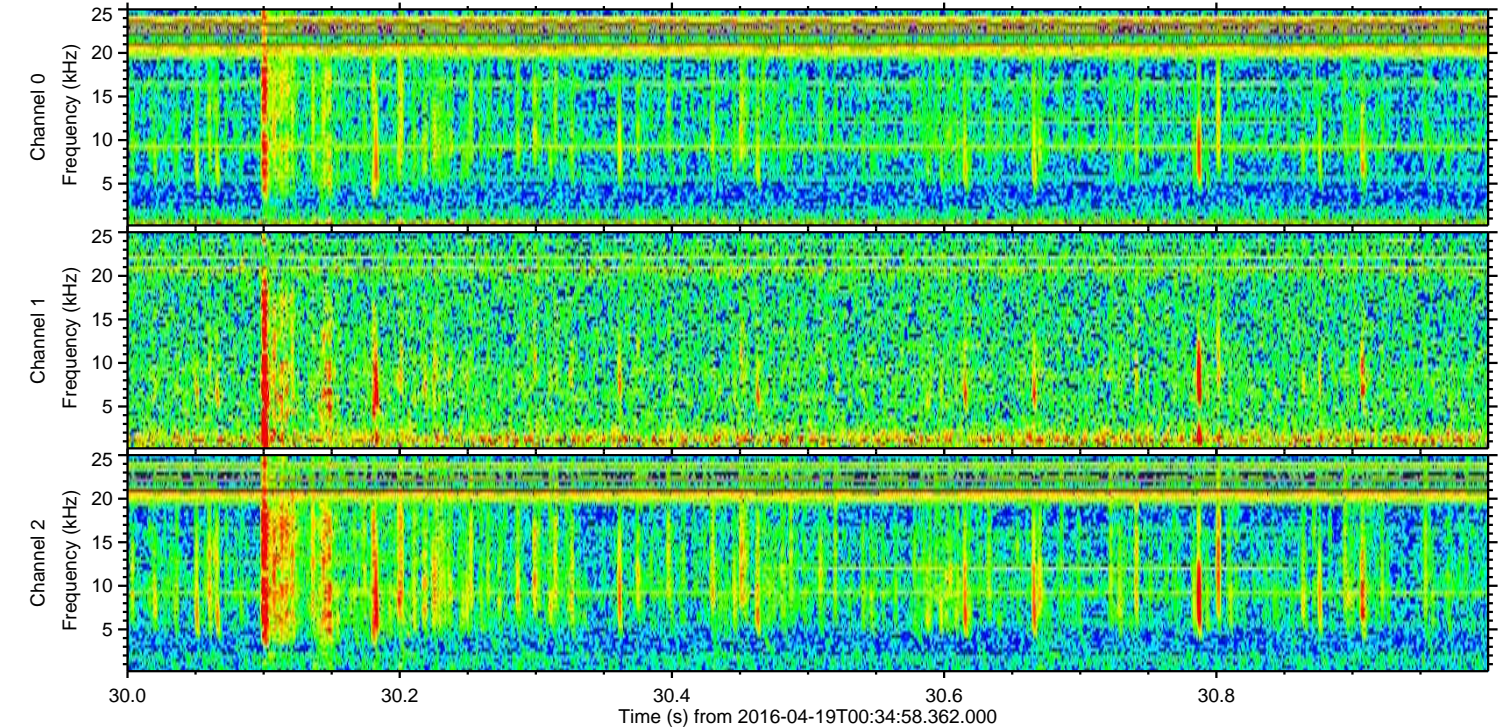
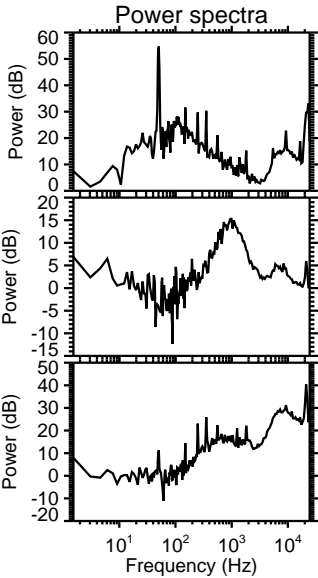
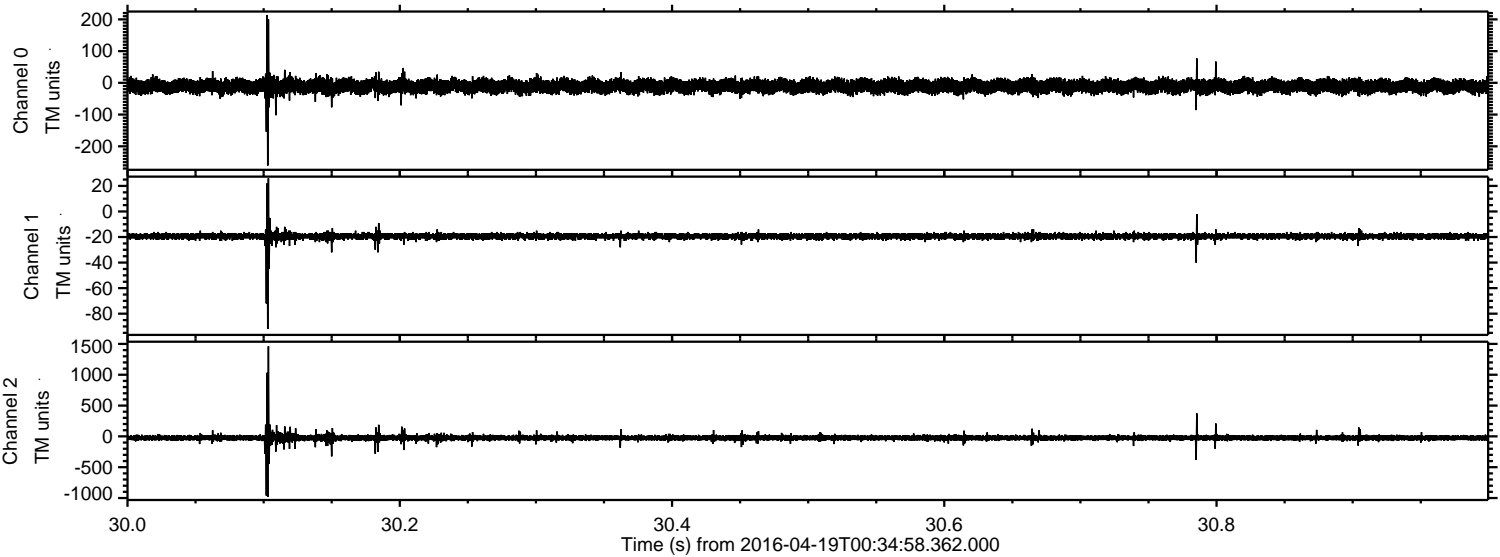
Processed Mon May 9 08:18:54 2016 by ELM ver.2012-10-06 from 001__elm20160419_003457__dat00.bin



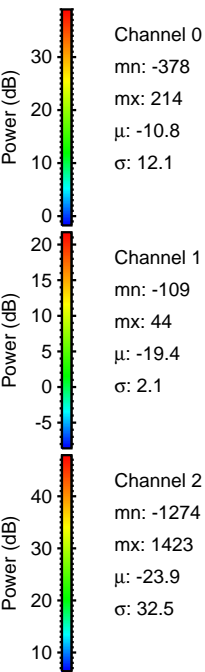
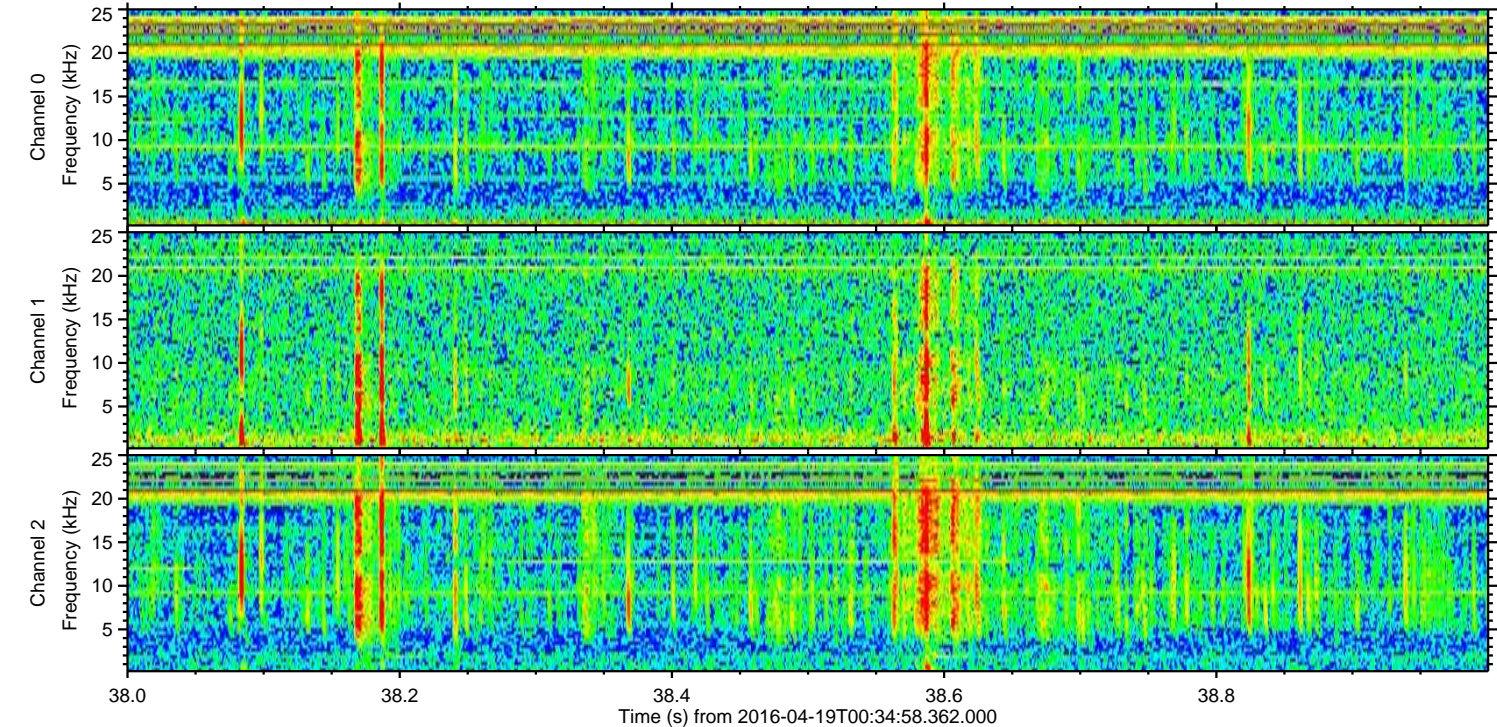
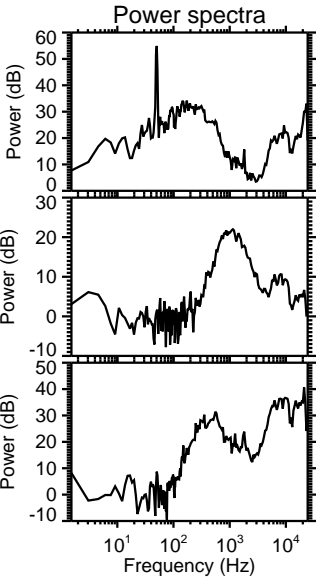
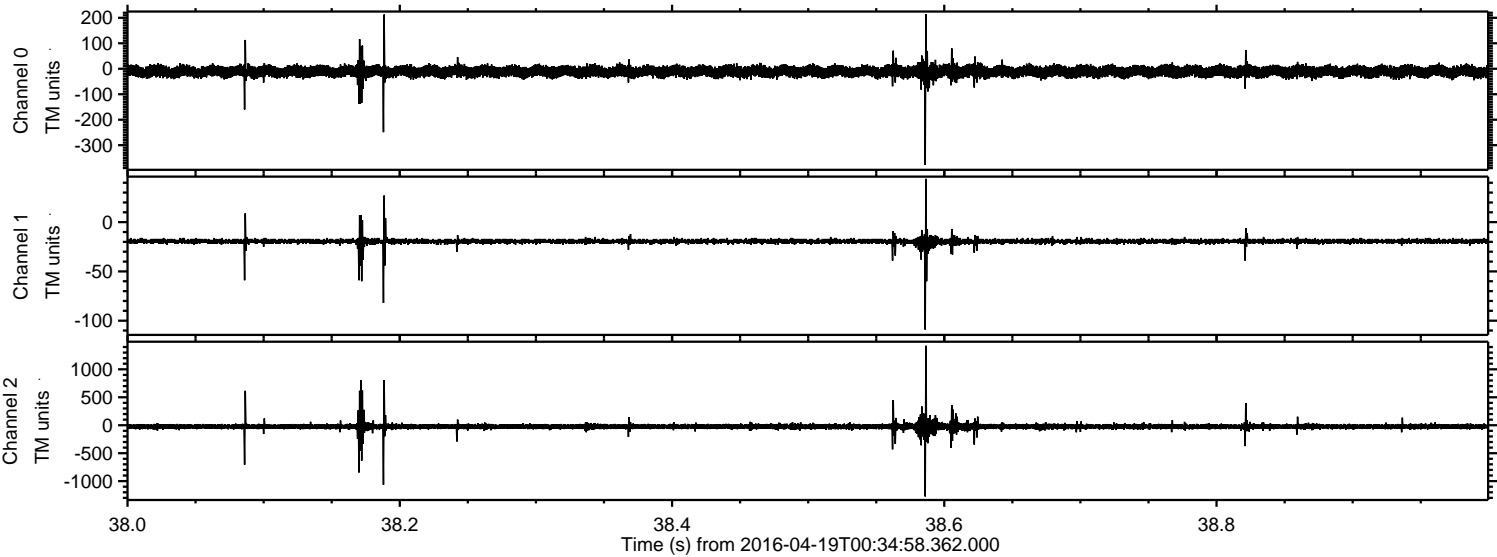
Processed Mon May 9 08:18:55 2016 by ELM ver.2012-10-06 from 001__elm20160419_003457__dat00.bin



Processed Mon May 9 08:18:56 2016 by ELM ver.2012-10-06 from 001__elm20160419_003457__dat00.bin



Processed Mon May 9 08:18:57 2016 by ELM ver.2012-10-06 from 001__elm20160419_003457__dat00.bin

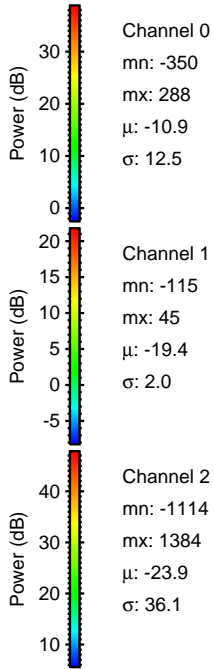
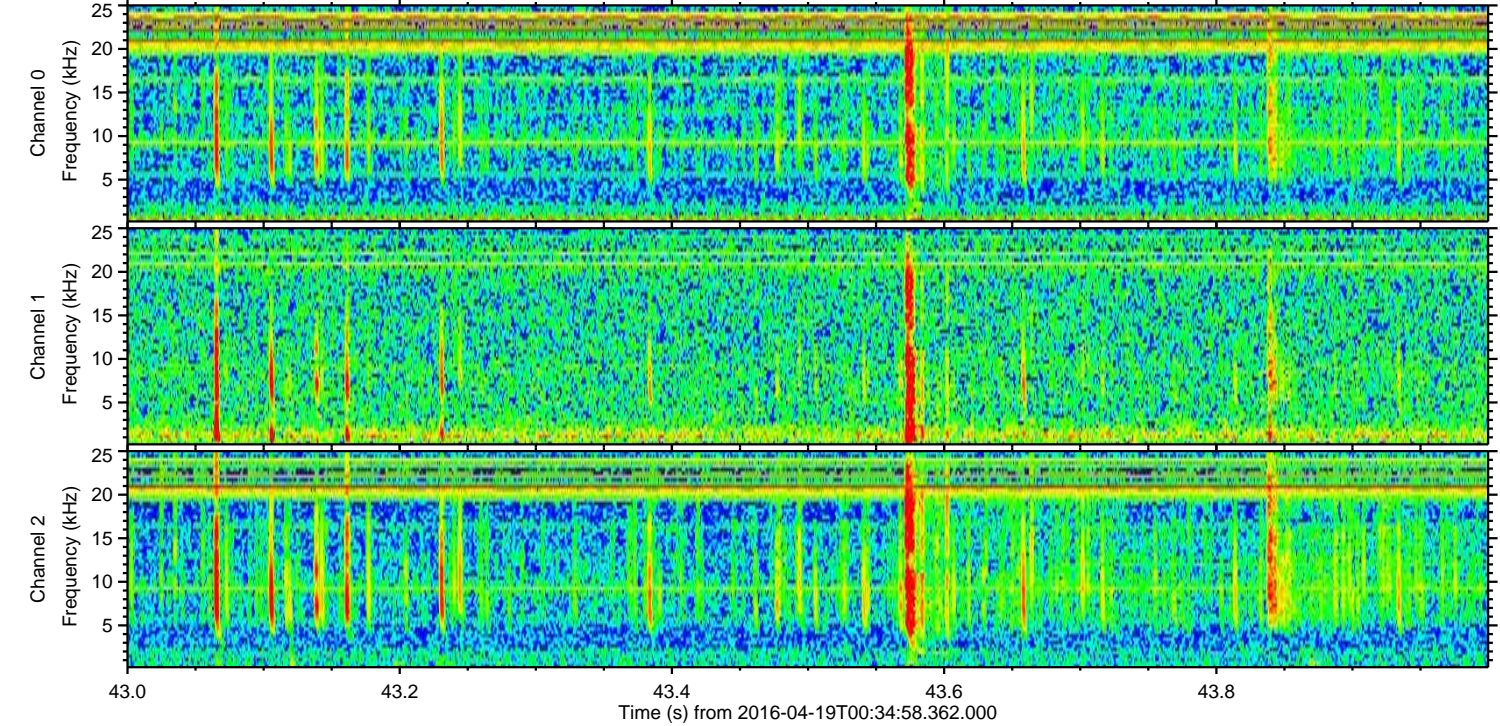
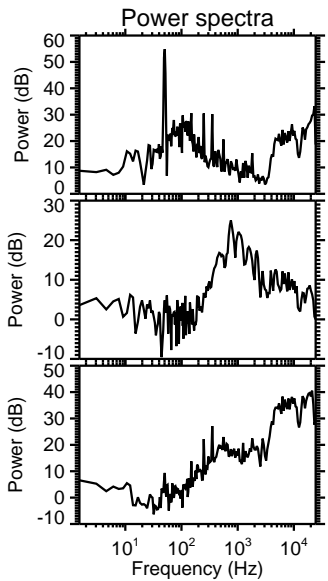
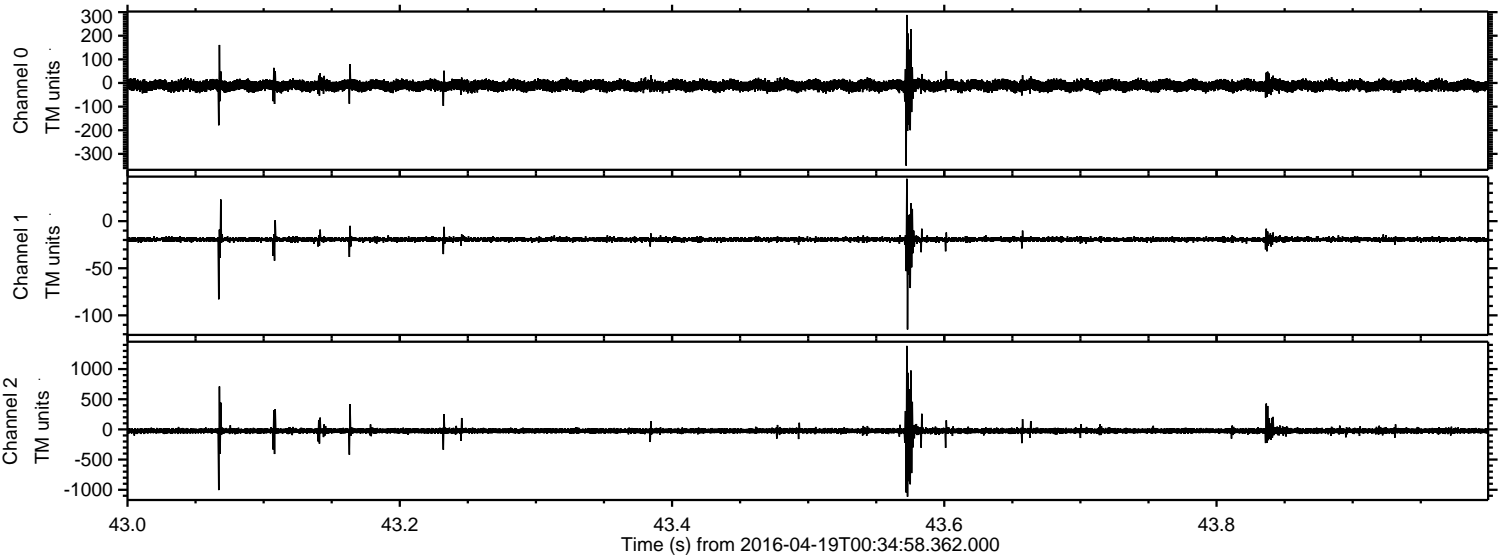


Channel 0
mn: -378
mx: 214
 μ : -10.8
 σ : 12.1

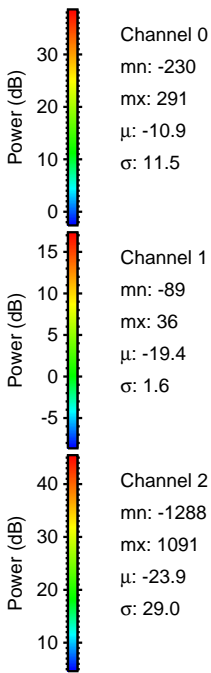
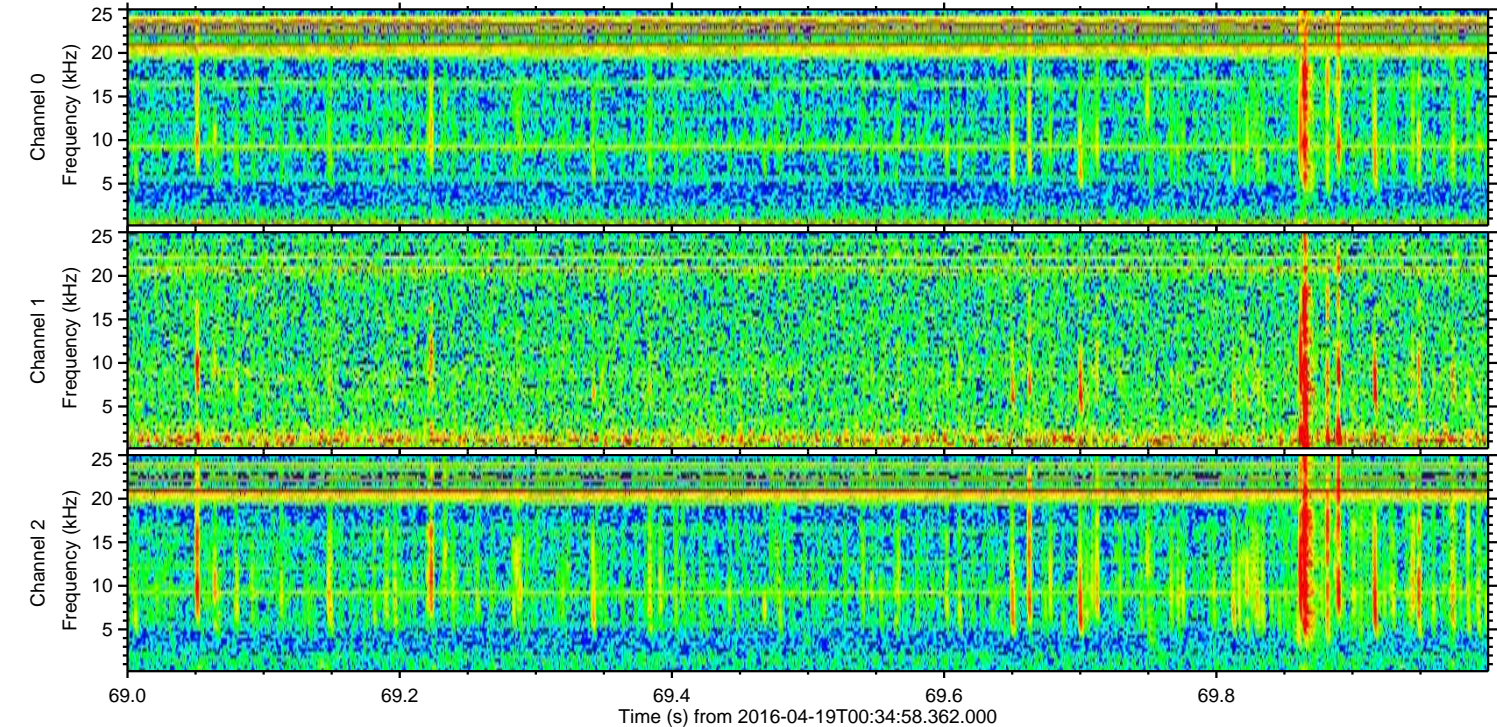
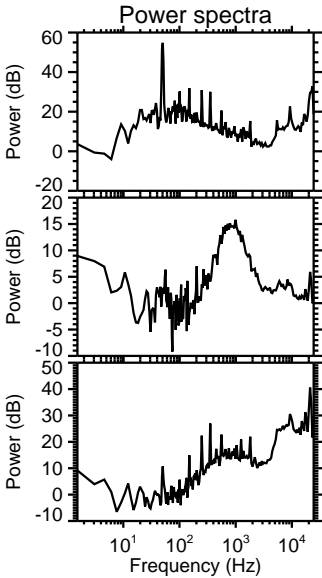
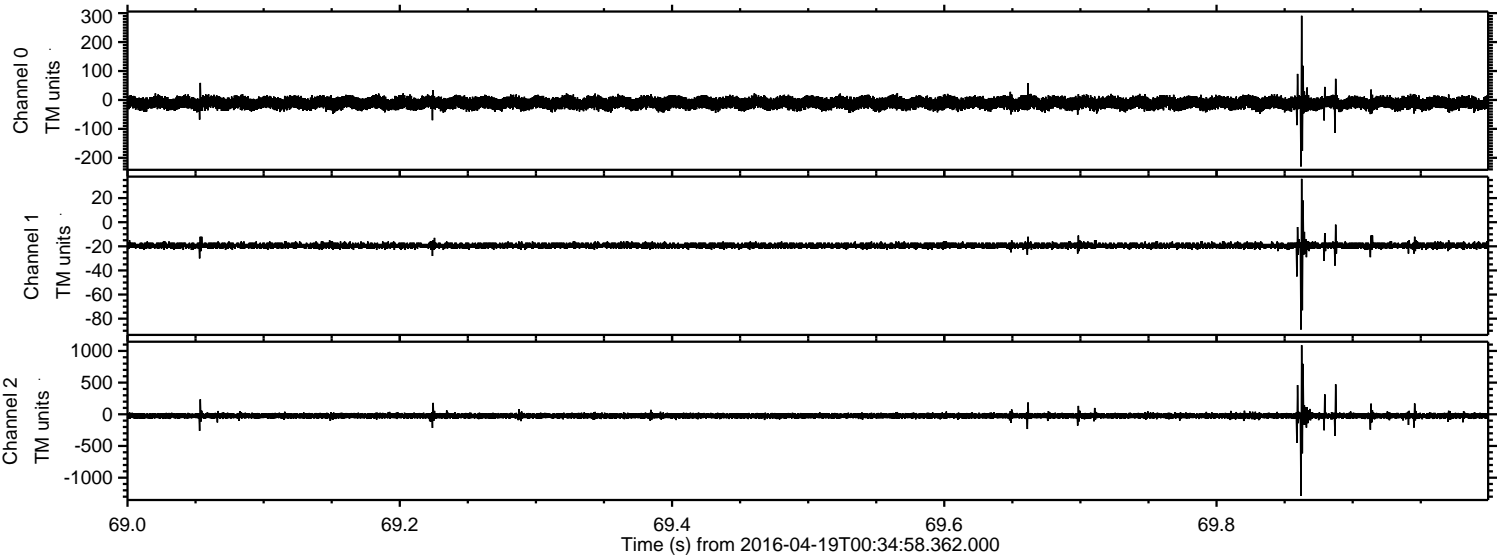
Channel 1
mn: -109
mx: 44
 μ : -19.4
 σ : 2.1

Channel 2
mn: -1274
mx: 1423
 μ : -23.9
 σ : 32.5

Processed Mon May 9 08:18:58 2016 by ELM ver.2012-10-06 from 001__elm20160419_003457__dat00.bin



Processed Mon May 9 08:18:59 2016 by ELM ver.2012-10-06 from 001_elm20160419_003457__dat00.bin



Processed Mon May 9 08:19:00 2016 by ELM ver.2012-10-06 from 001__elm20160419_003457__dat00.bin

